

It's Sandy, Bumpy, Slow, but Is Much Nearer To Portales

by R. J. Martin

The road to Portales is open, almost as straight as an arrow and lopping 21.3 miles off the previous route. To Loyd Stephens, commissioner whose farm lies alongside the new route, goes credit for a fantastic job of hooking the Texas and New Mexico links together and making a road out of the rolling hills which didn't want to become a road in the first place -- not under any circumstances. For that matter, the road, both on the Texas and the New Mexico side, still feels that way; the road wanted to stay just wide open spaces with sand, cacti, sand,

yucca, sand, scrub oak and sand - especially sand.

The route would have been perfectly happy to have lived like that for the rest of eternity, the hoof of an antelope the paw of a jackrabbit the only mobile creatures for miles around.

But there were some folks on both sides of the line who felt that it was time to shoo off the antelopes and the jackrabbits and push through a route for man and his gasoline and diesel-burning machines.

The commissioners at Portales liked the idea. The commissioners here liked the idea, Loyd Stephens especially liked it. And he

undertook the job of opening the route smack through to tie up the two states in a neat package at the top of a little sandhill knoll.

Folks were very cooperative. For the most part folks along the route liked the idea. Clovis took rather dim view since it would eventually leave Clovis high and dry so far as U. S. 70 is concerned.

There's even talk that U. S. 70 will skirt the north edge of Muleshoe eventually, by-passing this town and connecting with the present FR 1760 just west of town. And then it would only be a matter of some 17 miles of paving and there would be U. S. 70

cutting right straight through to Portales.

One road man who pleaded: "for pete's sake don't reveal my name," said that it will be "only a matter of a year or so until the Portales-Muleshoe road is paved, and then it will be less than five years before U. S. 70 cuts off Clovis and strikes out on its own, directly west from Plainview to Clovis." (And he added: "Including the west edge of Muleshoe, of course.")

Stephens just used donations or land and the money that was available to extend the route from his farm just a mile beyond the end of

(Continued to Page 8)



Where Road Starts

Except for a little jog to the left and then back to the right a fraction the new Portales-Muleshoe route, lopping nearly 22 miles off the previous distance between the two cities, is "straight as a string." Here's where the two states join in this newest road-building venture. Big post at far left is the dividing line. (Journal Photo)

The Muleshoe Journal

DEDICATED TO THE PROGRESS AND DEVELOPMENT OF BAILEY COUNTY AND THE GREAT MULESHOE COUNTRY

VOL. 44 — NO. 30 10 PAGES

Published Every Thursday at Muleshoe, Bailey County, Texas — 79347

THURSDAY, JULY 28, 1966

Substantial Postal Gains Shown Here

Summer Blazes Cracking Yet

Temperatures which have blazed their way through late July with a consistency completely out of keeping with the usual West Texas weather continued to crackle in the high 90's late this past week, sending many a farmer tumbling out of bed grumbling to "change the water."

As one irrigation farmer put it: "I'm a complete slave to the alarm clock these nights."



Charlie John Beaston, Jr., who counts Ralston, Okla. as his home town, will receive a master of education degree at Eastern New Mexico University, Portales, Friday evening, Aug. 5 in Greyhound Stadium. The next day he and his family will leave for Kaw City, Okla. to become superintendent of schools at that oil and Osage Ranch country city. He was basketball coach here for the past two years.

The Sunday School staff of the St. Paul Lutheran Church will meet following the 8:30 services Sunday morning, according to the pastor of the church.

The final day of summer school will be a big one for the students; They will leave the Santa Fe depot here at 9:32 a.m. for Clovis Aug. 12 where they will have their lunch and see the animals at the zoo. They will be back in time to ride the buses at 1 p.m. Children will need 50 cents for the train fare if they plan to make the trip.

Mr. and Mrs. Alvin D. Board from Lubbock visited in the home of Mr. and Mrs. Randall Kimbrough and a brother, J.C. over the weekend. They also visited with the Jerrill Ottwells.

Appointment of Robert Hooten, Muleshoe Motor Co., as Area Director of Texas Automobile Dealers Association was announced by H.E. Nall, Plainview who also represents this area on the TADA Board of Directors.

Hooten will serve as an Area Director until the next TADA convention in Houston, May, 1967. The Association with headquarters in Austin, represents 1,400 franchised dealers of new automobiles and trucks of the state.

George M. Williams, son of

Seems I just don't get back in bed until that pesky thing has gone off again. It's all because we just can't seem to get rain, and the wells are doing double duty.

He thought it over for a minute and then added, "looks like now that we might keep up just such a schedule right until harvest time."

However, some areas have had fair to good rains, again failing to follow the 1966 pattern. One farmer who lives in the West Camp area said Thursday that one of his farms had had a good two-inch rain down in the south part of the county, "and we haven't had a drop right here at my place."

Farmers for the most part are not yet worried about their underground water supply. A West Camp farmer who called these the "no shut-off days," said he had noticed no strain as yet on his ample wells. "But," he added, "It reminds me of 1938, I believe it was, when we just didn't have rain and the 100-degree temperatures piled up on us day after day."

Boys, Girls Sought For Farm Bureau's Two Contests

Bailey county Farm Bureau reminded young people - boys and girls between the ages of 17 and 30 -- of the Farm Bureau's two contests, a talent contest and a discussion meet to be held in the high school cafeteria here Friday, Aug. 5.

The announcement was made by Vera Engelking, publicity chairman.

She said any member of the Bailey County Farm Bureau or a member of a family of Farm Bureau between those ages is eligible to participate in the contests.

Up to midweek, the only entrant signed up so far is Jan Landers, daughter of Mr. and Mrs. Boyd Landers, Muleshoe. All participants must be amateurs but can be either single or married. Two \$150 scholarships will be given to each of the winners in the two events. The winners here will participate in the district 2 contest in Brownfield Aug. 8, and district winner at the state convention. State winner, in turn, will take part in the national contest.

Talent entrants must win on a "single" act, although may have an accompanist. Purpose of the discussion meet, "Mrs. Engelking explained, "is to in-

Continued on page 9



It's Farm Safety Week; Caution Urged on Farms

The signing of proclamations by President Lyndon B. Johnson and Governor John Connally designating July 24-30 as Farm Safety Week lends emphasis to the 23rd annual rural safety campaign.

The proclamations urge that all persons recognize and vigorously attack the hazards and unsafe practices that cause farm and rural accidents.

Farm Safety Week in Texas and the nation focuses attention on all farm hazards and places special emphasis on the prevention of highway accidents involving slow-moving farm vehicles. The campaign is sponsored jointly by the National Safety Council, the U.S. Department of Agriculture and the Texas Farm and Ranch Safety Council.

"Today's increasing demand for farm products places worldwide attention and importance on America's farm population," said Howard Pyle, president of the National Safety Council. "Farm families and rural leaders must make a joint effort to eradicate hazards that could cause death, unnecessary suffering, and loss of time and money."

Accidents kill more than 8000 farm residents each year and an additional 700,000 or more are victims of disabling injuries. Motor vehicle accidents are the leading cause.

Farm Safety Week comes at a time of the year when farm people are actively involved in all phases of farm work. It is an important and ideal time to check the safety of farm equipment and environment.

Continued on Page 10

Visitors from Venezuela Much Like Our U.S. System, Visitors Say

Venezuela is a bit hotter year round but otherwise it's pretty much like the United States, eight visiting Venezuelans said here this week. They were here as a part of a Statewide tour of farm and agricultural operations, the third stop on a two-months' tour through five states.

The group was sponsored by the Farm Leader Exchange Program of Farmers and World Affairs with local arrangements made by Gordon Murrah at several of the meetings here, spokesman for the group was fluent-speaker, Ramon Sosa, who told folk here that Venezuela is a democracy, that it

has free schools and free elections--"just as you folk here." He said: "We farm and we raise cattle and we have a diversified form of agriculture. We have big farms and little farms, and we raise just about everything you folk do here except we also have sugarcane. But on the whole, our farm life and yours are not greatly different."

He told several groups here--the Muleshoe Area Senior Citizens, the Rotary Club, and a meeting of Young Farmers as host (just to name a few)--

that the principle religion of his country is Catholic, but, he explained, "we have many other denominations too and they are free to practice their own religion as they see fit according to the dictates of their own consciences." He said schools are both public and private. In fact, one member of their party, he said, founded a private school which now has

Fertilizer Firm Opens New Plant Near Muleshoe

A new fertilizer mixing plant, Rowland-Gordon which originated in Plainview, has opened a new fertilizer blending plant just west of Muleshoe north of the Santa Fe track.

"We're open but we have been spending a lot of our time recently straightening up and getting ready for the start of business," said Garland Wolfington, local manager.

He said that before the end of summer, Rowland-Gordon expects to have mixing plants at Abernathy, Summerfield, Friona, Plainview, Bovina, Hart and Tulla.

Rowland-Gordon was founded by Virgil Rowland and Jason Gordon and is now owned by Tennessee Corporation which is a subsidiary of Cities Service Co.

3% Increase Shown in Year

Muleshoe post office has shown a substantial gain in receipts during the first six months of the year as compared with the same period

Choir Planning New Bake Sale; to Start Season

(Editor's Note: The Muleshoe high school choir is planning its 1966-67 season, and the article below, editorializing on the subject of need for public support, was written by the choir's reporter. It tells also of a bake sale coming up soon by the organization.)

The Muleshoe High School Choir is a school organization composed of youth who play many counterparts in service to their community. Their participation in the high school choir program requires many hours of hard work preparing material for programs and working on projects, of course, being in the choir is a great deal of fun, too!

The City of Muleshoe should be proud of its Muleshoe High School Choir. The choir has backed and supported the city many ways. The choir has performed for the civic clubs of our city a number of times. And has also prepared two community wide concerts each year.

Also organized personnel of the choir such as the "Muleshoe Minstrels" or the "Madrigals" often represent the city when she plays host to out-of-town dignitaries. The choir is important in the functions of the school. It performs programs for special school assemblies, and then the organized choir

Continued on page 10

last month, a check of postal receipts Wednesday revealed.

Les Jones, assistant postmaster, said total receipts for the period from Jan. 1, 1965 to June 30, 1965 totaled 40,070.69, while receipts for the same period this year ran to 41,275.49. This is a 3% increase at a time when many of the smaller post offices are showing decreases.

In addition, the post office here has 18 employees on full or part time basis on June 30 this year as compared with 16 full or part-time employees on the roster at the same time last year.

The annual payroll here, he said, has an annual payroll of \$106,000. This includes all postal employees.

Jones said the post office here handles and averages of 14,000 pieces of mail daily at the Muleshoe Post Office.

The post office makes a month by-month breakdown of receipts each six months. Receipts by months for this year were as follows: January, \$7340.33; February, \$8484.04; March, \$4738.40; April, \$9389.06; May, \$6593.47; June, \$4730.19.

Receipts for the same period last year were: January, \$5541.19; February, \$6524.32; March, \$6859.64; April, \$8465.27; May, \$7208.77; and June, \$5471.50

Temperatures

By R. J. Klump
Official U.S. Weatherman

	High	Low	Rain
July 24	97	70	
July 25	95	67	
July 26	98	68	.08
July 27	98	69	
	Sunrise	Sunset	
July 28	5:56	7:51	
July 29	5:57	7:50	
July 30	5:58	7:49	
July 31	5:58	7:48	

W. Q. Casey's Mother Dies

Funeral services will be conducted Wednesday at Coleman delete last line. ducted Wednesday at 4 p.m. in Stevens Funeral Home at Coleman for the mother of W. Q. Casey, president of the Muleshoe State Bank.

Mrs. W. C. Casey, 91, died at 10:20 p.m. Monday evening in Coleman.

Other survivors in Muleshoe are two grandchildren, Mrs. Aubrey Heathington and J. W. Casey.

Mrs. Casey is survived by four sons and two daughters.



This is the ending point (or starting point if you are coming from the west) of a new shortcut between Muleshoe and Portales which whittles more than 20 miles off the new route. Here County Judge Glen Williams and County Commissioner Loyd Stephens stand at the merging point five miles northeast of Portales. (Journal Photo)

Pleasant Valley 4-H Enters Lamb Co. Dress Revue

Accompanying the girls to Littlefield were Mrs. Crenshaw, Mrs. Embry, Mrs. Kuykendall, Mrs. J. E. Embry and Mrs. Kirk Pitts. The Lamb County district revue will be held in Lubbock Aug. 2.

Several members of the Pleasant Valley 4-H Club attended the Lamb County dress revue held in Littlefield Tuesday at 2:30 p.m.

Entered in the junior division from the 4-H club were Rhonda Embry, daughter of Mr. and Mrs. Joe Embry, who is a second year girl, and Vickie Crenshaw, daughter of Mr. and Mrs. G. W. Crenshaw, who is a first year girl. Entered in the senior division was Lynna Pitts. All three girls have met the requirements including their record books, meetings and other necessary requirements.

25 Years Ago

Saturday marks the opening of the larger Clair Variety Store, long identified with the ever-growing business section of Muleshoe. The store has been completely remodeled and hundreds of feet of new floor space added.

Mrs. Martin Oliver was honored with a miscellaneous shower on Wednesday at the home of Mrs. John Smith.



Anna Belle Cox ...bride-elect of Bob Lowe

Anna Belle Cox, Bob Lowe Plan August Wedding

The engagement of Anna Belle Cox, Quemado, N.M. and Bob Lowe, son of Mr. and Mrs. Gene Lowe, Muleshoe is being announced by the bride-elect's mother, Mrs. Myrtle Cox.

Vows for the couple will be repeated in Quemado Aug. 20 in the First Baptist Church at 5 p.m.

The bride-elect is a 1962 graduate of Mayer, Ariz. High School and is a senior at Sul Ross University. The prospective groom is a 1960 graduate of Muleshoe High School and is a junior at Sul Ross. The couple will make their home in Muleshoe for the present time.

Lamb County. The event will begin at 8 p.m. in the High School auditorium here with Mrs. Clarence Mason acting as narrator.

Mrs. Allen Haley will be in charge of the decorations and Mrs. Conrad Williams will be in charge of the cover design.

4-H girls in the Muleshoe area and surrounding areas will be represented in the dress revue.

Mrs. Bobby Borden, last year's rodeo queen for Eastern New Mexico University will model western clothes for the occasion. Mrs. Borden is a former 10-year 4-H member and a gold star girl for Lamb county.

Theme for the program tonight will be "Cotton Roundup." The script committee are Mrs. Clarence Mason, Mrs. Eugene Black and Mrs. Ernest Ramm. Cassie Precure will provide music and the band is made up of Wendell Williams, Charlie Abbe and Gene Abbe.

4-H clothing leaders are Mrs. Albert Gish, Mrs. Allen Haley, Mrs. Harold Mardis, Mrs. Alfred Miller, Mrs. Gordon Murrain, Mrs. Richard Puckett, and Mrs. Ernest Ramm.

Junior leaders are Jona Goucher, Betty Harbin, Sharon Huton, Karen Parks and Barbara Wilhite.



Karen Jones

...bride-elect of Jerry Howard

Karen Jones is Honored With Wedding Shower

The home of Mrs. Ruby Willman, 1716 Ave. D, was the scene of a wedding shower for a honoring Miss Karen Jones, white cut work cloth and featured Saturday from 4 to 6 p.m. tured gold punch. A silver Mrs. Travis Bessire regis- tured service was used in which ered approximately 45 guests Rhonda Wagon poured coffee, from a table which featured Mrs. Max King and Monica yellow rose buds, carrying out Griffiths served white cake with the bride-elect's chosen colors yellow roses and wedding bells

J. L. Dunbars Tour States

Mr. and Mrs. J. L. Dunbar Debbie, Frances and Sandy have returned home Saturday from a 19-day sightseeing tour. The Dunbars traveled through Denver, Colo. and Cheyenne, Wyo. on their way to Yellow-

stone National Park. Spending several days sightseeing and enjoying their trip, they began their return to Muleshoe by way of Salt Lake City, Utah. Mrs. Dunbar reports a "real good trip, but it surely was nice to be home again." If you are planning a wedding will you please let the Journal have your name and wedding date?

atop. Yellow daisies formed the centerpiece.

In the receiving line were the honoree, her mother, Mrs. Norma Jones; the prospective groom's mother, Mrs. C.B. Howard; and Mrs. Willman. The honoree was presented a corsage of white daisies and her mother and prospective groom's mother, yellow daisy corsages.

Hostesses for the shower were Mrs. Ruby Willman, Mrs. Russell Bryant, Mrs. Houston Hart, Mrs. Jack Lenderson, Mrs. Horace Blackburn, Mrs. G.F. Howell, Mrs. Horace Huton, Mrs. Harold Allison, Mrs. Truman Lindsey; Mrs. David Anderson, Mrs. Elmo Stevens, Mrs. Sammy Ethridge, Mrs. Travis Bessire and Mrs. J.B. Young, Jr.

A set of stainless steel cookware was presented by the hostesses. Miss Jones will be married to Jerry Howard at 8 p.m. in the First Methodist Church Aug. 27.

SEMI ANNUAL CLEARANCE SALE

SPRING and SUMMER SUITS SPORTSWEAR

Previous Sale 1/3 Off NOW

FURTHER MARK-DOWN

DRESSES 1/2 OFF

Sweetheart Lane

120 E. Ave. B

Phone 272-3916

4-H'ers Will Receive Ribbons For Achievements

Tonight will be a big night for 4-H girls as they will receive ribbons on the dresses and their record books which were judged yesterday.

Judges in tonight's dress revue will be Mrs. Doylene Mea-

dors, Plainview Home Demonstration Agent, who will also bring an adult leader with her; Judy Sanders, assistant agent from Lubbock County and Lady Claire Phillips, Home Demonstration agent from

END OF MONTH CLEANUP SALE

Thur. Fri. Sat.

Swim Wear Entire Stock

Ladies

\$4

Values to \$14.95

Mens and Boys

\$1

Values to \$2.98

Girls

\$2

Values to \$4.98
Your choice

PIECE GOODS

DAN RIVER COTTONS

Values 2 yd. \$1
to \$1.19 yd. For

SUMMER PRINTS

Values 4 yd. \$1
to 49¢ yd. For

Sleeveless Blouses In 3 Collar Styles

BLOUSE

\$1

Smart, cool and comfortable sleeveless blouses of 100% cotton broadcloth blouses

SHOP OUR BACK to SCHOOL LAY-A-WAY SALE



Ladies & Misses SHOES

DRESS STYLES FLATS CASUALS HEELS

Values to \$7.98

Mens SLACKS

Values to \$6.98 Values to \$10.98

\$2 \$2 \$6

Playwear for Your Littlest Girls!

Navy Blue or Red Sizes 2-3X & 3-6X

2 for \$3.

Play wear to take them through summer in comfort and high fashion. At a price that won't even dent your budget. Fine cottons.

Your Best Buys are at Your Nearby Anthony's



Girls or Ladies DRESSES-SPORTSWEAR

GROUP I

Values to \$5.98

Values to \$12.98 \$2 \$4

SAVE NOW

Anthony's C. R. ANTHONY CO.



SIGNS OF PROGRESS

By electrifying remote rural areas, BAILEY COUNTY ELECTRIC COOPERATIVE has made the country more comfortable for rural residents and more inviting for city folks.

Rural electricity attracts rural industry, too, which means more jobs, increased property values and a stronger economy.

BAILEY COUNTY ELECTRIC COOPERATIVE crews are planning ahead to provide the larger poles, heavier lines and bigger transformers needed to carry the increased demand for electricity. . . a demand that doubles every 8 years in rural areas. It is this dependable, low-cost electric service that is building a brighter tomorrow and Helping Texas Grow.

BAILEY COUNTY ELECTRIC COOPERATIVE ASSN.

WERE OVERSTOCKED! BUY NOW AND SAVE!

NEW '66s AT TREMENDOUS DISCOUNTS!

48 NEW FORD AND MERCURYS WILL BE SOLD AT UNHEARD OF PRICES TO MAKE ROOM FOR THE 1967 MODELS

1966 Ford Cars

- 1966 FORD MUSTANG Hardtop, Signalflare Red, AM Radio, Tinted Windshield, 695x14 White Side Wall Tires
- 1966 FORD GALAXIE 500 4 Door Sedan, Wimbledon White, Base 289 V8 Engine, (390 Thunderbird V-8), Cruise O Matic Transmission, 815x15 White Side Wall Tires, Power Steering, Power Brakes, Selectaire Conditioner, AM Radio, Tinted Windshield, Wheel Covers
- 1966 FORD MUSTANG Hardtop, Silver Blue, Accent Group, Unique Console, AM Radio, Tinted Windshield, Wire Wheel Covers, 695x14 White Side Wall Tires
- 1966 FORD LTD 4 DOOR Hardtop, Sahara Beige-Tutone Wimbledon White, 390 Thunderbird V8 Engine, Cruise O Matic Transmission, Courtesy Light Group, 815x15 White Side Wall Tires, Power Steering, Selectaire Conditioner, AM Radio, Tinted Glass, Visibility Group
- 1966 FORD GALAXIE 500 4 Door Sedan, Silver Blue, Base 289 V8 Engine, Cruise O Matic Transmission, 735 x 15 White Side Wall Tires, Power Steering, Selectaire Conditioner, AM Radio, Tinted Windshield, Wheel Covers
- 1966 FORD GALAXIE 500 4 Door Sedan, Wimbledon White, Base 289 V8 Engine (390 Thunderbird V8), Cruise O Matic Transmission, 775x15 White Side Wall Tires, Power Steering, Selectaire Conditioner, AM Radio, Tinted Windshield, Wheel Covers
- 1966 FORD GALAXIE 500 2 Door Hardtop, Candyapple Red-Tutone Wimbledon White, Stylesteel Wheel Covers, Exterior Ornamentation, 775x15 White Side Wall Tires, Cruise O Matic Transmission, All Vinyl Trim, AM Radio, Tinted Windshield
- 1966 FORD GALAXIE 500 2 Door Hardtop, Wimbledon White, Base 289 V8 Engine, Stylesteel Wheel Covers, Exterior Ornamentation, 775x15 White Side Wall Tires, Cruise O Matic Transmission, All Vinyl Trim, AM Radio, Tinted Windshield (390 Thunderbird V8 Engine)
- 1966 FORD MUSTANG Hardtop, Signalflare Red, Console, Accent Stripe, Wire Wheel Covers, Engine Trim, Cruise O Matic Transmission, 695x14 White Side Wall Tires, AM Radio, Tinted Windshield
- 1966 FORD GALAXIE 500 4 Door Sedan, Wimbledon White, Base 289 V8 Engine, Cruise O Matic Transmission, 735x15 White Side Wall Tires, Power Steering, Selectaire Conditioner, AM Radio, Tinted Windshield, Wheel Covers
- 1966 FORD GALAXIE 500 4 Door Sedan, Nightmist Blue, Base 289 V8 Engine, (390 Thunderbird V-8), Cruise O Matic Transmission, All Vinyl Trim, 775x15 White Side Wall Tires, Power Steering, Selectaire Conditioner, AM Radio, Tinted Glass, Wheel Covers
- 1966 FORD GALAXIE 500 2 Door Hardtop, Silver Blue, Base 289 V8 Engine, Cruise O Matic Transmission, 775x15 White Side Wall Tires, AM Radio, Tinted Windshield, Wheel Covers
- 1966 FORD MUSTANG Hardtop, Candyapple Red, Base 289 8 Cylinder Engine, Cruise O Matic Transmission, 695x14 White Side Wall Tires, AM Radio, Tinted Windshield
- 1966 FORD GALAXIE 500 4 Door Sedan, Wimbledon White, Base 289 V8 Engine, (352 Thunderbird), Cruise O Matic Transmission, 775x15 White Side Wall Tires, AM Radio, Deluxe Seat Belts - Front & Rear, Tinted Windshield, Wheel Covers
- 1966 FORD GALAXIE 500 4 Door Sedan, Tahoe Turquoise, Base 289 V8 Engine (352 Thunderbird), Cruise O Matic Transmission, 845x15 White Side Wall Tires, Power Steering, Selectaire Conditioner, AM Radio, Tinted Windshield, Wheel Covers
- 1966 FORD GALAXIE 500 2 Door Hardtop, Arcadian Blue, Stylesteel Wheel Covers, Exterior Ornamentation, 735x15 White Side Wall Tires, AM Radio, Tinted Windshield
- 1966 FORD FAIRLANE GT 2 Door Hardtop, Tahoe Turquoise, Cruise O Matic Transmission, 650/895x14 Wide Oval White Side Wall Nylon Tires, Power Steering, Selectaire Conditioner, AM Radio, Tinted Glass
- 1966 FORD GALAXIE 4 Door Sedan, Silver Frost, Base 289 V8 Engine, (390 Thunderbird V8), Cruise O Matic Transmission, 775x15 White Side Wall Tires, Power Steering, Selectaire Conditioner, AM Radio, Tinted Windshield, Wheel Covers

1966 Mercury

- 1966 MERCURY MONTCLAIR 4 DOOR, Jamaican Yellow, Marauder 390 V8 Engine, Multi-Drive Merc O Matic Transmission, 815x15 White Side Wall Tires, Power Brakes, Power Steering, Tilt Steering Wheel, Deluxe Air Conditioner, AM Radio, Tinted Glass, Remote Control Side View & Non Glare Rear View Mirror
- 1966 MERCURY MONTCLAIR 4 DOOR SEDAN, Polar White, Marauder 410 V8 Engine, Multi-Drive Merc O Matic Transmission, 815x15 4 Ply Rayon White Side Wall Tires, Power Brakes, Power Steering, Deluxe Air Conditioner, AM Radio, Rear Seat Speaker, Deluxe Front & Rear Seat Belts, Tinted Glass, Remote Control Side View Mirror
- 1966 MERCURY MONTCLAIR 4 DOOR Hardtop, Tiffany Blue with Caspian Blue, Marauder 410 V8 Engine, Multi-Drive Merc O Matic Transmission, 815x15 4 Ply Rayon White Side Wall Tires, Power Brakes, Power Steering, Deluxe Air Conditioner, AM Radio, Tinted Glass, Remote Control Side View Mirror
- 1966 MERCURY MONTEREY 4 DOOR SEDAN, Polar White, Marauder 390 V8 Engine, Multi-Drive Merc O Matic Transmission, 815x15 4 Ply Rayon White Side Wall Tires, Decor Group, Power Steering, Deluxe Air Conditioner, AM Radio, Tinted Glass, Door Edge Guards, Deluxe Wheel Covers
- 1966 MERCURY PARKLANE 4 DOOR Hardtop, Emberglo, Marauder 410 V8 Engine, Multi-Drive Merc O Matic Transmission, 845x15 4 Ply Rayon White Side Wall Tires, 6 Way Power Seat, Power Brakes, Power Steering, Remote Control Deck Lid Release, Deluxe Air Conditioner, AM Radio, with Rear Seat Speaker, Tinted Glass, Door Edge Guards
- 1966 MERCURY PARKLANE 4 DOOR Breezeway Sedan, Turquoise Frost, Marauder 410 V8 Engine, Multi-Drive Merc O Matic Transmission, 845x15 4 Ply Rayon White Side Wall Tires, 6 Way Power Seat, Power Brakes, Power Steering, Remote Control Deck Lid Release, Deluxe Air Conditioner, AM Radio, with Rear Seat Speaker, Tinted Glass
- 1966 MERCURY MONTCLAIR 2 Door Hardtop, Cardinal Red & Polar White, Marauder 390 V8 Engine, Multi-Drive Merc O Matic Transmission, 815x15 4 Ply Rayon White Side Wall Tires, Power Brakes, Power Steering, Deluxe Air Conditioner, AM Radio with Antenna, Tinted Windshield, Remote Control Side View Mirror
- 1966 MERCURY PARKLANE 4 DOOR Hardtop, Sage Gold, Marauder 410 V8 Engine, Multi-Drive Merc O Matic Transmission, 815x45 4 Ply Rayon White Side Wall Tires, Power Brakes, Power Steering, Deluxe Air Conditioner, AM Radio with Antenna, Tinted Glass

1966 Ford Trucks

- 1966 FORD ECONOLINE, Wimbledon White, 240 6 Cylinder Engine, Rear Door Glass Fixed, 3 Speed Transmission, (Standard Duty), 695x14 Tires, Stationary Passenger Seat
- 1966 FORD F100 1/2 TON PICKUP, 129" Wheel Base, Pure White, 352 V8 Engine, Full Foam Cushion, 3 Speed Cruise O Matic Transmission, 775x15 Tires, Body Side Mouldings, Ammeter & Oil Gauge, 1250 Lb. Rear Springs
- 1966 FORD F600 2 TON CHASSIS CAB TRUCK, 174" Wheel Base, Sahara Beige, ICC Emergency Flasher, 330 Heavy Duty V8 Engine, 4-Speed Direct Transmission, 15000 Rear Axle, 2 Speed, 825x20 10 Tube Tire, Spare Wheel, Frame Mounted Tire Carrier, 20x6.5 Disc Wheels, Heavy Duty Vacuum Booster, Fresh Air Heater, Left Hand & Right Hand Western Mirror, 11550 LB. Rear & Auxiliary Springs
- 1966 FORD F100 1/2 TON PICKUP, 129" Wheel Base, Marlin Blue, 240 6 Cylinder Engine, Cigar Lighter, 3 Speed Light Duty Transmission, 775x15 Tires, Radio, Left Hand Arm Rest, Right Hand Visor, 1966 Standard Equipment
- 1966 FORD F100 1/2 TON PICKUP, 115" Wheel Base, Wimbledon White, ICC Emergency Flasher, 240 6 Cylinder Engine, 3-Speed Light Duty Transmission, 775x15 Tires, Styleside Mouldings, Ammeter & Oil Pressure Gauge
- 1966 FORD F100 1/2 TON PICKUP, 115" Wheel Base, Beige & White, ICC Emergency Flasher, 352 V8 Engine, Custom Cab, 3 Speed Light Duty Transmission, 775x15 Tires, Side Mounted Tire Carrier (Left Hand), Styleside Mouldings, Ammeter & Oil Pressure Gauge, 1250 Lb. Rear Springs
- 1966 FORD F100 1/2 TON PICKUP, 129" Wheel Base, Springtime Yellow & White, ICC Emergency Flasher, 352 V8 Engine, Custom Cab, 3-Speed Cruise O Matic Transmission, 775x15 Tires, 2 Speed Electric Windshield Washer, Tinted Glass, 1250 Lb. Rear Springs
- 1966 FORD F100 1/2 TON PICKUP, 129" Wheel Base, Arcadian Blue, ICC Emergency Flasher, 352 V8 Engine, 3-Speed Light Duty Transmission, 775x15 Tires, Ammeter & Oil Pressure Gauge, 1250 Lb. Rear Springs
- 1966 FORD F100 1/2 TON PICKUP, 129" Wheel Base, Springtime Yellow & White, ICC Emergency Flasher, 352 V8 Engine, Custom Cab, 3-Speed Cruise O Matic Transmission, 775x15 Tires, Side Mounted Tire Carrier (Left Hand), Styleside Mouldings, Radio, Ammeter & Oil Pressure Gauge, 1250 Lb. Rear Springs
- 1966 FORD F100 1/2 TON PICKUP, 129" Wheel Base, Sahara Beige & White, ICC Emergency Flasher, 352 V8 Engine, Custom Cab, 3-Speed Light Duty Transmission, 775x15 Tires, Styleside Mouldings, Radio, Ammeter & Oil Pressure Gauge, 1250 Lb. Rear Springs
- 1966 FORD FALCON RANCHERO, Candyapple Red
- 1966 FORD F100 1/2 TON PICKUP, 115" Wheel Base, Sahara Beige, ICC Emergency Flasher, 240 6 Cylinder Engine, 3-Speed Light Duty Transmission, 775x15 Tires, Ammeter & Oil Pressure Gauge
- 1966 FORD F100 1/2 TON PICKUP, 129" Wheel Base, Sahara Beige & White, ICC Emergency Flasher, 352 V8 Engine, Custom Cab, 3-Speed Cruise O Matic Transmission, 775x15 Tires, Side Mounted Tire Carrier, (Right Hand), Styleside Mouldings, Deluxe Fresh Air Heater, Radio, Ammeter & Oil Pressure Gauge, 1250 Lb. Rear Springs
- 1966 FORD F100 1/2 TON PICKUP, 129" Wheel Base, Wimbledon White, ICC Emergency Flasher, 352 V8 Engine, Full Foam Cushion, 4-Speed Direct Transmission, 775x15 Tires, Side Mounted Tire Carrier (Right Hand), Styleside Mouldings, Left Hand Arm Rest, Right Hand Sun Visor, Ammeter & Oil Pressure Gauge, 1250 Lb. Rear Springs
- 1966 FORD F100 1/2 TON PICKUP, 129" Wheel Base, Wimbledon White, ICC Emergency Flasher, 240 6 Cylinder Engine, 4 Speed Direct Transmission, 775x15 Tires, Ammeter & Oil Pressure Gauge, 1250 Lb. Rear Springs
- 1966 FORD F100 1/2 TON PICKUP, 129" Wheel Base, Caribbean Turquoise & White, ICC Emergency Flasher, 352 V8 Engine, Custom Cab, 3-Speed Light Duty Transmission, 775x15 Tires, Side Mounted Tire Carrier (Left Hand), Styleside Mouldings, Radio, Ammeter & Oil Pressure Gauge, 1250 Lb. Rear Springs
- 1966 FORD F600 CHASSIS CAB TRUCK, 156" Wheel Base, Rangoon Red, ICC Emergency Flasher, 330 V8 Engine, 4-Speed Direct Transmission, 15000 Rear Axle, 2 Speed 825x20 10 Tube, 20x6.0 Disc Wheels, Fresh Air Heater, Left & Right Hand Mirrors, 2250 Lb. Auxiliary Rear Springs

1966 Comets

- 1966 COMET 202 2 Door Sedan, Polar White, with Custom Sports Coupe Package, including Vinyl Trim and Carpeting, Bright Window Frames, Deluxe Wheel Covers, 695x14 4 Ply White Side Wall Rayon Tires
- 1966 CAPRI 4 Door Sedan, Polar White, 695x14 4 Ply Rayon White Side Wall Tires, AM Radio, Tinted Windshield

1966 Ford Wagons

- 1966 FORD FAIRLANE 4 DOOR WAGON, Sahara Beige, Base 289 V8 Engine, Cruise O Matic Transmission, 775x14 White Side Wall Tires, AM Radio, Tinted Windshield, Wheel Covers
- 1966 FORD COUNTRY SEDAN 4 Door, Tahoe Turquoise, Base 289 V8 Engine (390 Thunderbird V8), Cruise O Matic Transmission, 845x15 White Side Wall Tires, Chrome Luggage Rack, Power Steering, Power Brakes, Selectaire Conditioner, AM Radio, Deluxe Seat Belts (Front & Rear), Tinted Glass, Visibility Group, Wheel Covers
- 1966 FORD COUNTRY SEDAN 6 Passenger Station Wagon 4 Door, Candyapple Red, Base 289 V8 Engine, (390 Thunderbird V8), Cruise O Matic Transmission, 845x15 White Side Wall Tires, Chrome Luggage Rack, Power Steering, Selectaire Conditioner, AM Radio, Tinted Glass, Wheel Covers

Biggest New Car Sale In The History Of Muleshoe

MULESHOE MOTOR CO.

CAR CAPITAL OF THE WEST PLAINS



Mrs. George Whatley
... the former Jackie Jean Kemp

Jackie Kemp, George Whatley Vows Recited in Church Ceremony

Jackie Jean Kemp, daughter of Mr. and Mrs. Jack Kemp, became the bride of George S. Whatley, son of Mr. and Mrs. R.Q. Whatley, Muleshoe, in a double ring ceremony performed in the Assembly of God Church Sunday at 4 p.m. The Rev. J.W. Farmer, pastor of the church, performed the ceremony beneath an archway covered with greenery and flanked on either side by lighted wedding tapers.

The bride, escorted and given in marriage by her father, wore a gown of white imported illusion featuring a bodice of imported chantilly lace, sweetheart neckline outlined with iridescent sequins and seed pearls, short sleeves and complimented by mitts. Her veil of imported lace was a cluster

of wedding daisies highlighted with iridescent pearl leaves. She wore a single strand of pearls to accent her illusion.

Mrs. D.G. Ivy, Muleshoe, served as matron of honor. She wore a dress of mint green brocade cotton with a bell style skirt and sweeping neckline. White accessories adorned her outfit and she carried a long stem rose.

Bridesmaids were Elizabeth Burris, Muleshoe, and Janice Townsend, Canyon. They were dressed identical to the matron of honor.

Candlelighters were Ellen English and Jo Anne Nicewarner from Muleshoe.

Tommy D. Whatley served his brother as best man and ushers were Ronnie Farmer, Muleshoe, and Steve Pierson from

Bovina.

Groomsmen were Billy Bob Whatley, Portales, N.M. and C.T. Heard, Muleshoe.

Mrs. W.T. Watson provided appropriate wedding selections at the organ and Mrs. Buddy Peeler was the soloist.

A reception followed the ceremony in the Assembly of God Fellowship Hall.

For a wedding trip to Colorado Springs, Colo., the bride chose a mint boxy suit with complimenting accessories.

Both are graduates of Muleshoe High School. The bride is employed at the Muleshoe State Bank.

PRE-NUPTIAL COURTESIES

A rehearsal in the Assembly of God Church Fellowship Hall Saturday evening.

Homemakers Class Discuss Year

Members of the Home Maker's Sunday School Class of the Trinity Baptist Church were entertained Friday evening in the home of Mrs. A.L. Burchell, 1829 Ash.

Mrs. Frank McCamish, president of the class, presided over the business meeting in which plans were made for the election of new officers for the coming year. A committee was appointed to compile the yearbook and installation for new officers was temporarily set for the next monthly meeting.

Refreshments of homemade ice cream, cake and punch were served by Mrs. Eva Ashford, Mrs. McCamish, Mrs. June Vinson and Mrs. Burchell.

Others attending were Dorothy Smith, Peggy Dodd, Lela Sue King, Frances Copeland, Willie Reeder and Helen Wright.

Mrs. Peeler Attends School

Mrs. Buddy Peeler attended a workshop in Portales Friday at Eastern New Mexico University at which Robert Dunn, dean of music, conducted the school. Also a workshop of students was given in which several of Mrs. Peeler's students attended.

Mrs. Clarence Mason, Mrs. Eugene Black, Mrs. Joe Embury and Mrs. Kenneth Nesbit took Ken Milner, Marilyn Black, Linda Mason, Rhonda Embry, Rhonda Wagnon, Robbie Nesbitt, and Sherry Wagon.

Also Melany and Kathy Precure, students of Mrs. Quinn at Clovis attended the workshop.

Mrs. A.M. Bradley also attended the school.

Methodists Play Volleyball

Sunday, the Muleshoe M.Y.F. and the Lazbuddie M.Y.F. played volleyball from 3:30 to 5:30.

Shower in Nickel's Home Honors Carol Huddleston



Carol Huddleston
.....bride-elect of Gary Smith

Carol Huddleston, Portales, was honored with a wedding shower Saturday from 3 to 5 p.m. in the home of Mrs. Guy Nickels, 307 W. 6th.

Mrs. O. D. Ray registered guests from a table which featured white daisies as a centerpiece.

Red Gladioli formed the centerpiece for the serving table which was laid with a white cloth with a net overlay. A silver service was used to pour coffee which was attended by Mrs. Edward Gaston and Mrs. Martin Oliver. Cookies were also served.

In the receiving line were the bride-elect, who was presented a corsage of red roses; the bride-elect's mother, Mrs. Don Huddleston; the prospective groom's mother, Mrs. John Smith and Mrs. Joe Damon.

Hostesses for the occasion were Mrs. A. W. Copley, Mrs. Less Bruns, Mrs. W. M. Oliver, Mrs. Eugene Black, Mrs. Jack Wood, Mrs. F. L. Brown, Mrs. Clarence Jones, Mrs. C. V. Riley, Mrs. Guy Nickels, Mrs. Harold Allison, Mrs. Ray, Mrs. Truman Lindsey and Mrs. Lib King.

The hostesses presented the honoree with an electric mixer. Miss Huddleston and Gary Smith will be married in the Calvary Baptist Church in Portales at 7:30 p.m. Aug. 5.

Rubber spatulas come with wide and narrow blades and both sizes are needed in the kitchen. Use the wide-blade spatula to scrape down batter from a large mixing bowl, the narrow-blade spatula for mixtures in small bowls. The narrow-blade spatula is also efficient to use in scraping down mixtures in an electric blender.

ATHLETE'S FOOT - HOW TO TREAT IT

IN ONE HOUR after applying T-4-L (a batch of chemicals in alcohol), itching must stop in 4 days infected skin sloughs off. Then you watch a HEALTHY skin appear! Sound simple? Try it. Thousands have. If not DELIGHTED, your 48¢ back at any drug counter. NOW at

DAMRON DRUG

25 Years Ago

A marriage license was issued in Clovis last weekend to Miss Lois Harvey, 30, and Wilson Witherspoon, 32, both of Sudan. Miss Harvey is well known in Muleshoe, having taught school in Bailey County for several years.

Wagon Grocery and Market installed a new air-conditioned meat display case Monday which is the last work in market fixtures.

H.B. Flanagan, son of Mrs. Hope Flanagan, of Muleshoe, underwent a tonsilectomy at the clinic here Tuesday. He is recovering nicely.

Dixie Jennings, daughter of Mr. and Mrs. Olen Jennings underwent a tonsilectomy at the local clinic Tuesday morning.

Congratulations to Mr. and Mrs. Howard Elliot on the birth of a daughter at the West Texas Hospital in Lubbock. Mrs. Elliot is the former Miss Medicine Rocky.



METHODIST CAMP GOERS--Eight members of the junior class left the church Monday to go to Ceta Canyon for their annual retreat. Here are three girls just before leaving with Mrs. Ernest Kerr. Making the trip were Gary Hooten, David McVicker, Lonnie Harris, Tracy Cowan, Debbie Kerr, Charlotte Wedel, Jan Cockrell and Patty Murray. The group returned Wednesday. (JP)

Lazbuddie young people playing were Tommy Jennings, Robert Gallam, Gary Elliott, Derrel Elliott, Jan Mason and Lee Gallam.

Mr. and Mrs. Ronald Elliott sponsored the young people from Muleshoe. Those from Muleshoe were Alfred Bleeker, Delton Bass, Cindy Crane, Carla Ellington, Dorsey Bauden, Royce Harris, Lindy Kerr, Fance Galloway and Patsy Perry who made up one team and Gary Edwards, Gary Murr, Joe Adams, Val Moore, Steph Peery, Marsha Blackman, Vondale Bleeker, David Dillman, Clifford Black, Delmar Bleeker and Leasel Richardson made up the other team.

Lazbuddie won one game and Muleshoe won three.

Refreshments were served in the recreation room of the First Methodist Church following the games.

The Muleshoe M.Y.F. is going on a hay ride to the Clifford Black home at 7 p.m. Monday. A big surprise is awaiting all who attend this hayride.

To look fresh, feminine, and stylish, be a white-collar girl. Many new spring outfits are accented with crisp white collars. You might sew washable collars made of cotton organdy or pique on dresses already in your wardrobe.

Saute halved chicken livers in butter, then add a little dry sherry; serve over cooked rice.

Second Debut for Mother

Now Mother can smooth out her facial lines right at home-- thanks to a new non-surgical face-lift discovery called 2ND DEBUT. It contains skin-smoothing CEF-600 (CEF 1200 for the face over 40). 2nd Debut is a moisturizing skin lotion that smooths out facial lines helps return eyes, mouth, chin and neck to firm, more youthful tone and softness. The process is simple; it's based upon resupplying the skin with the natural ingredient through which the inner cells obtain and retain much-needed water moisture. The ingredient is called CEF...Cellular Expansion Factor. 2nd Debut is a non-surgical face lift that gives Mother a more youthful look fast. Get it at your drug or department store today.



Cloverlake's MYSTERY MAN

Is Coming To Muleshoe

THIS WEEK WITH CASH AND PRIZES FOR YOU!

STOP -- LOOK AND LISTEN FOR THE CLOVERLAKE MYSTERY MAN
COMING TO MULESHOE TO GIVE AWAY MONEY.

HE WILL COME KNOCKING ON YOUR DOOR AND IF YOU HAVE ANY
OF THE MANY FINE CLOVERLAKE DAIRY FOODS IN YOUR HOME

HE WILL GIVE YOU **\$25** OR MORE

IF NOT HE WILL GIVE YOU A FREE GIFT OF ONE OF HIS FINE
DAIRY PRODUCTS

Be Sure And BUY
CLOVERLAKE PRODUCTS

AND BE READY WHEN THE MYSTERY MAN CALLS ---

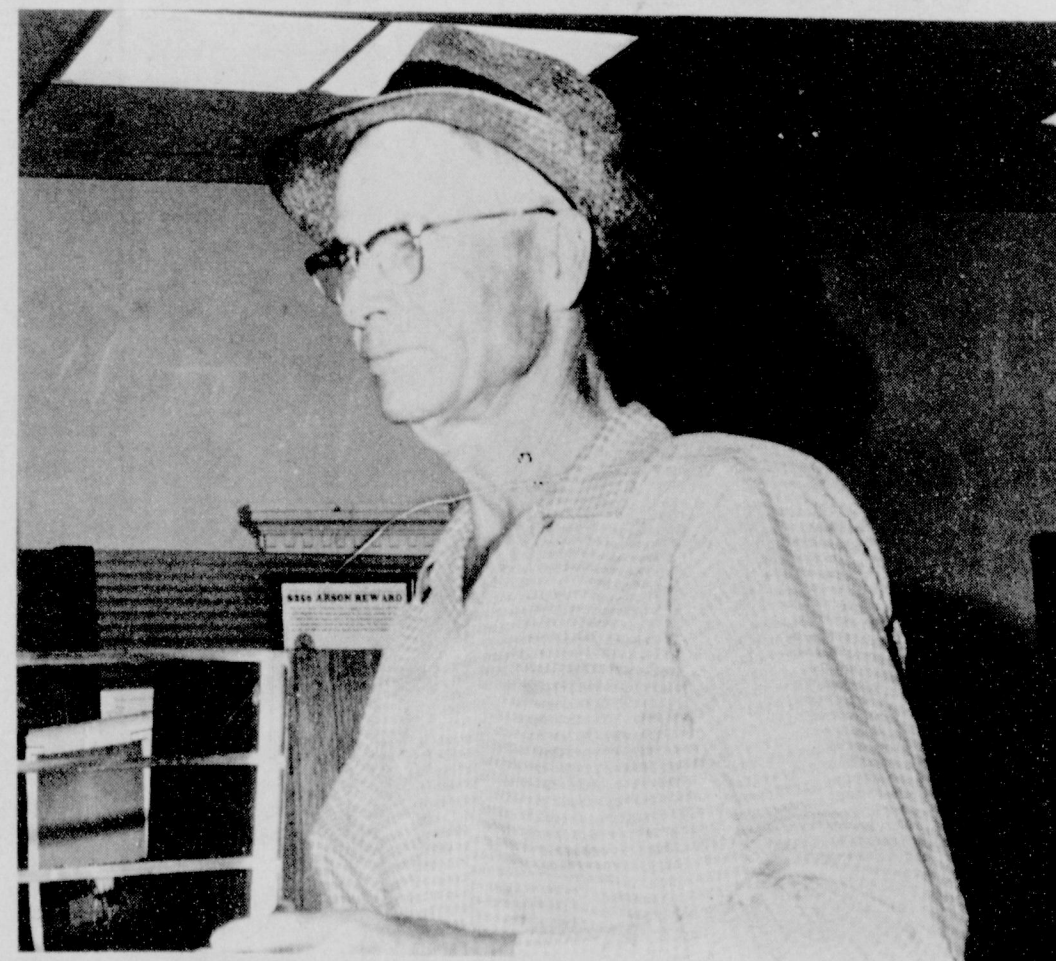
IF YOUR GROCER DOES NOT STOCK CLOVERLAKE PRODUCTS ASK
HIM-- HE CAN

RULES ON MONEY --
THE MYSTERY MAN WILL START WITH \$25 CASH AND WILL ADD \$5.
EACH TRIP UNTIL A WINNER IS FOUND . THEN THE JACKPOT
STARTS OVER AT \$25.

Cloverlake
DAIRY FOODS, INC.

Meet the

MULESHOE STATE BANK CUSTOMER of the Week



M. L. VINSON

Muleshoe State Bank honors M. L. Vinson of 216 W. 4th as their customer of the week. Vinson is a retired farmer who still has farming interests. His wife, Lulu, teaches school and they attend the Church of Christ.

Vinson has banked with the Muleshoe State Bank since 1929 and says, "I like it alright - they have always treated me pretty nice."

Muleshoe State Bank is proud to honor this customer of the week.

MULESHOE STATE BANK



Sam Barnes' Father Dies

By Mrs. C. A. Watson
Sam P. Barnes, Lazbuddie school Superintendent, received word Thursday that his father, W. E. Barnes, McKinney, Texas had passed away in a hospital at Terrell. Funeral services were held in the First Baptist Church at McKinney,

FAT OVERWEIGHT

Available to you without a doctor's prescription, our product called Galaxon. You must lose ugly fat or your money back. Galaxon is a tablet and easily swallowed. Get rid of excess fat and live longer. Galaxon cost \$3 and is sold on this guarantee: if not satisfied for any reason, just return the package to your druggist and get your full money back. No questions asked. Galaxon is sold with this guarantee by:

WESTERN DRUG STORE-- MULESHOE-- MAIL ORDERS FILLED. . . . 1-30t-3tp.

Saturday. W. E. Barnes was an uncle of Wesley Barnes and Mrs. Jimmie Seaton, Sr. and a brother-in-law of Mrs. Perry Barnes, all of Lazbuddie.

Some members of the Jr. class of the Lazbuddie Baptist Church in Lazbuddie went to the Youth Camp at Floydada Monday of last week. Going were Mary Longoria, Gennie Morris, and Rhonda Treider. Going with the girls as sponsors were Irene Thurman and Cynthia Harvey. They returned Wednesday. The intermediates of the First Baptist Church left Wednesday for the Floydada Camp. Girls going were Laura Burnett, Janie Harvey and Marsha Johnson. Sponsors going with the girls were Paulene Houston and Darlene Burnett.

Mrs. James Harvey, Tonie Smith and Cynthia Harvey went to Lubbock last Thursday to make plans for the girls entering Texas Tech.

Steve Jones, with his mother and the rest of the family, returned Friday from Colorado where they were on vacation for a week. They visited with the Raymond Houstons during the weekend. Steve is presently

helping the Houstons farm. The Rev. Calvin Beach held a revival last week at a Baptist Church near Dallas. Guest speaker for the Church at Lazbuddie was layman Jack Henry from Lorenzo.

Mr. and Mrs. C. C. Matthews received word Saturday that his sister, Mrs. Dolly Clark of Savoy, Texas had passed away. Mr. and Mrs. Clark were watching television when Clark went to bed, he discovered later that Mrs. Clark was not in bed and going to see about her founder had died sitting in the chair. Due to ill health, the C. C. Matthews were unable to attend the funeral.

Odis Bradshaw, son of Mr. and Mrs. C. W. Bradshaw and a graduate of Lazbuddie High school will graduate this week at a Naval base with top honors in the Naval Medical Corps. More details will appear in this column soon about his graduation.

Carol Littlefield, home from Ft. Collins, Colo. along with his parents, Mr. and Mrs. John Littlefield, returned home during the week from a vacation at Cloudcroft and Ruidosa.

Girls who participated in the Dress Review received awards and certificates in the 4-H show. Nancy Blackstone, Charlotte David, Kathy Coker, Nancy Bush, Lee Ann Farley, Ann Blackstone, Debbie Engleking, Jeannie McGeehee, Karan Mimms and Kim McDonald were girls participating and receiving awards.

Guests in the Junior Treider home this week are her parents, Mr. and Mrs. Charlie Neeley from Wichita, Kan.

May Mahon visited in Lubbock the past weekend with her children, the Chill Jordans.

WINE OLYMPICS BUDAPEST (AP) — For a "wine Olympics" in Budapest to be held in September, 12 countries already entered more than 200 different kinds of wine, the news agency MTI reported. MTI did not elaborate on "wine Olympics" but said most wine-producing countries will participate.

Hospital News

WEST PLAINS HOSPITAL

ADMISSIONS

Frank Gamble
U.C. Latimer
Mrs. Bob Stovall
Mrs. Nester Yruegas
Mrs. Willie Burford
Jess Copley
Baby girl Yregas
Mrs. Johnny Lopez
Baby girl Lopez
Randy Pearson
Mrs. Jimmy Lane
Mrs. Gloria Saldana

Mrs. Ascencion Tyerina
Isabell N. Flores
Olita Faye Childs
Gilbert Dale
Joe Flores
Joe Walker Lee
Cruz Vasquez
George Beddingfield
Robert Vestal
Angeline Morriel

DISMISSALS

U.C. Ray
Domingo Vasquez
Willie Steinbock
Ronald Steele
Debra Ann Stevens
Baby boy Ovalle
Clina Tuyna

Mrs. Ruby Espinoza and baby boy
Mrs. A.P. Sutton
Joe Flores
W.E. Latimer
Mrs. Bob Stovall
Mrs. Johnny Lopez and baby girl
Randy Pearson
Gloria Saldana
Mrs. Jimmy Lane
Mrs. Doyle Tapley
Marei Yregas

GREEN MEMORIAL

ADMISSIONS

Oran Reeves, Sr.

George Williams
Mrs. Opal Pugh
Mrs. Mae Quesenberry
Mrs. Willie Burford
Mrs. Artis Ivy

DISMISSALS

Mrs. Israel Pena

LOST WAS FOUND

GREENVILLE, Tenn. (AP) — Clarence McKay of Greeneville lost his wallet containing \$350 last summer while fishing on Douglas Lake near here.

This year, he went fishing in the same spot and hooked his wallet. The cash was water-damaged but intact.

WILD TURKEY CHARGE WILLOW SPRINGS, Mo. (AP) — Bob White had no more than sounded his turkey call when a big tom headed toward him over the hill about 100 feet away coming lickety split.

White said the bird's onrush caught him unprepared. The wild gobbler thundered by so fast and so close the hunter's turkey call went one way and his gun the other.

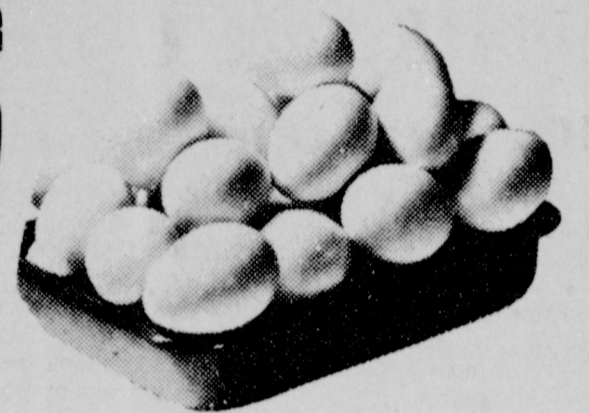
"I was five minutes finding my turkey call in the brush," White said. "That doggone tom must've heard some hen, and he was going to beat all the other birds there."

Eat Well and Enjoy These WE GIVE BUCCANEER STAMPS DOUBLE ON WEDNESDAY

EGGS

SMALL GRADE 'A'

3 DOZ. \$1



TEA

White Swan Instant or Regular- All Sizes-Buy One & Get One Free

COFFEE

1 LB. CAN

69¢

SHORTENING

3 LB. CAN

59¢

SHURFINE
CAKES MIXES
4 For \$1
ICE CREAM
CLOVER LAKE
1/2 Gal. 69¢

FRESH HEALTHFUL **Produce**

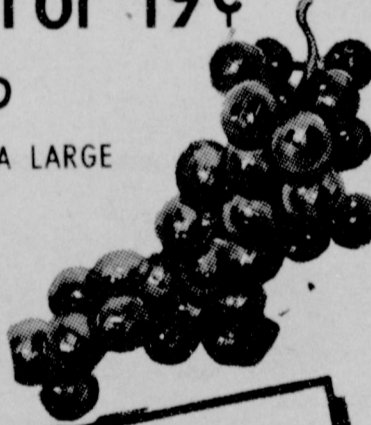
POTATOES

10 LB. 39¢

LEMONS 6 For 19¢

GRAPE S RED EXTRA LARGE

LB. 19¢



CLUB STEAK
CHOICE BONELESS
Lb. 79¢
CHOICE T-BONE OR SIRLOIN Lb. 89¢

SHURFRESH MILK



ARMOUR STAR
BACON
SLAB
69¢
Fresh Ground
HAMBURGER
3 LB. \$1

LISTERINE -- Lrg. 20 oz. Family Size \$1.29 Size 98¢

FLOUR - Golden West - 25 Lb. - \$2.09

FRUIT DRINKS Handi 1/2 Gal. Mix or Match - 3 For \$1

BEETS Shurfine cut #303 - 6 For 59¢

MILK Carnation Tall Can - 2 For 29¢

POP Shurfine Canned - 12 for \$1

LYSOL - Reg. \$1.69 - \$1.19

Jim's Pay N' Save

FRIENDLIEST STORE IN TOWN

QUALITY MERCHANDISE AT LOWEST PRICES

Open 7 Days A Week

Tennie's Beauty Shop

Now Open - Mon. July 25

CALL FOR APPOINTMENT



Open 6 days a week

WELCOME to all old and new customers

TENNIE'S BEAUTY SHOP

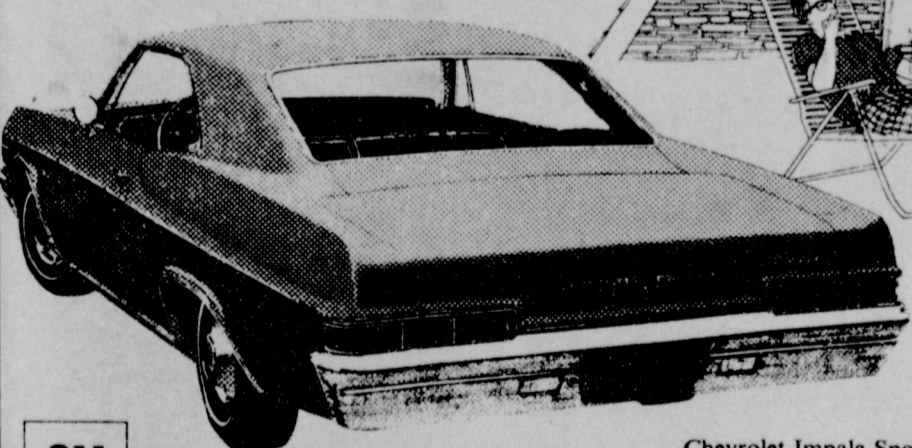
315 W. 11 (in rear)

TENNIE LAMBERT Ph. 272-4941



This summer Harry's renting a cottage with indoor plumbing-- on what he saved at his Chevrolet dealer's

Cruise this vacation in Impala comfort with foam-cushion seats, a trunk like a small trailer and your caliber 6 or V8 whisking you along. This year's Chevrolets are the most--and right now so are the savings.



Chevrolet Division

Chevrolet Impala Sport Coupe-- with door-to-door carpeting and all the other Body by Fisher comforts you richly deserve.

This is the time of year you feel like holding up a do-not-disturb sign to the world--and relaxing. And relax you will the moment the door of one of these new Chevrolets closes behind you. The ride--with a hefty Full Coil spring at each wheel--isolates you from bumps and such annoyances. The power--seven engines available all the way

to a 425-hp Turbo-Jet V8--is the kind that's made for getting away from it all. And to help you see exactly where you're getting, you've got 2-speed windshield wipers with washer among eight standard safety aids. So get off to the right kind of start this vacation--and get down to your Chevrolet dealer's.

See the man who can save you the most-- your Chevrolet dealer



Chevrolet Chevelle Chevy II Corvair Corvette

CROW CHEVROLET COMPANY

42 5827

201 MAIN

MULESHOE

PH. 272-3100

MULESHOE STATE BANK

NOW PAYS , EFFECTIVE JULY 20, 1966

5%

ON ONE YEAR CERTIFICATES OF DEPOSIT

Interest Payable Semi-Annually

4% Interest Compounded Quarterly	on SAVINGS ACCOUNTS
---	-----------------------------------

'It Does Make A Difference Where You Save'

MULESHOE STATE BANK

Member FDIC

US Depository

Phone 272-4571

Muleshoe, Texas

Busy, Busy, Week, Tower Declares

By Sen. John G. Tower

This has been the Senate's busiest legislative week of the year with action coming fast both on the senate floor and in the various senate committees. A number of matters of interest and importance to Texans were dealt with this week.

The senate passed two pay bills designed to help federal civilian and military employees cope with the increasing costs of living. As a part of a \$17 billion measure authorizing funds for the Defense Department, a three per cent pay raise was approved for our servicemen. And, in a separate measure a two per cent raise was given federal civil service and postal employees.

I supported both of these bills. It is obvious that federal employees have been hurt in recent months by inflation, just as have all other Americans. Only Congress can help ameliorate this burden on federal employees. In addition, Congress has for some time sought to give federal civilian workers wages comparable to pay in private business.

I was pleased that these pay bills did not attempt to raise the pay of members of Congress. I would oppose any such Congressional pay raise today as I have in the past.

Air and water pollution came in for their share of attention in the Senate this week. We passed--and I supported--bills to extend the life of our joint-federal-state, anti-pollution programs for both air and water.

In addition, I joined in co-sponsoring a bill that I think is of considerable importance. It would allow private industries and municipal agencies federal tax credits on the funds they devote to anti-pollution programs and anti-pollution facilities.

This would, I believe, encourage private firms already active in the field to increase their efforts. It should approve an effective and appropriate method of indicating federal concern in this field. Working with state and local authorities industries should--with the assistance of this bill--be able to make major strides toward the goal of preserving clean air and clean water for all Americans to use and enjoy.

This week the Senate also passed a bill authorizing feasibility studies for six Texas soil and water reclamation projects. Under the measure, planning work will be done on the Columbus Bend Project, the Palmetto Bend Project, the Cibolo Project, the Nueces River Project, the Cuero Project and on the Texas Basin Project. After these initial studies are

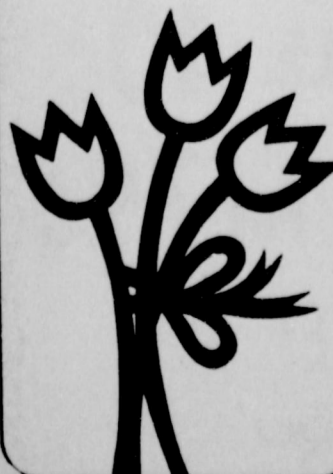
COMPUTER ANSWERS PHONE
NORTHLAKE, Ill. (AP) — Development of a telephone that can be used to query a computer over existing telephone lines and obtain an immediate voice response has been announced by Automatic Electric Co.

Company president Darwin H. Deaver said that a typical application, as checking a credit rating, would take about 30 seconds. In that time the computer would give the caller a voice message such as "Credit okay," "Limit credit to \$50," "Credit card reported lost" or "Credit not okay."

The computer is connected to telephone central office switching equipment through a data set. Once the connection is made by dialing, a question is asked the computer by tapping out a series of digits on pushbuttons. In the case of the credit inquiry, the sales clerk would enter the account number.

Tiptoetiptoe.

Surprise her with a bunch. Look under **FLORISTS** in the **YELLOW PAGES**. Where your fingers do the walking.



The Senate also approved this week bills continuing the School Lunch and School Milk programs in essentially the same successful form we have known them for some years. I was pleased to vote for these bills which reversed some earlier, unwise Administration requests to drastically change the School Milk Program.

That these school programs have been successful and have accomplished a definite good, I think, is incontestable. Responsibility for the program's administration has been left at a state and local school-board level. Therein lies the major reason for the success of the programs.

The benefits to needy children are obvious. The school lunch and surplus milk programs develop an annual total business of about \$1.5 billion for farmers, ranchers and local merchants--and federal contributions account for only 20 percent of this amount.

I addressed the Senate three times this week on matters I felt of importance. I urged the senate to leave supervision of the Central Intelligence Agency up to the key, senior Senate members who regularly view CIA work and not to endanger our intelligence operations by further publicizing the activities of this important defense agency.

In the same vein, I called to the Senate's attention the deterioration of our Army Reserve forces and urged the Defense Secretary to maintain a strong, ready Army and Air Force Reserve.

Scores of Texas Reservists have written to me complaining that confusion reigns because of dismemberment of Reserve units by the Defense Secretary in a manner directly contrary to the best judgment of the Congress. It has now reached a point where there is serious doubt our remaining Reserve forces are adequate to meet all our contingency plans for national defense.

History has taught us all too many times that it is far better to bear the expense of preparedness than to risk the consequences of unpreparedness. I hope a reversal will occur and the Reserve will be strengthened rather than weakened.

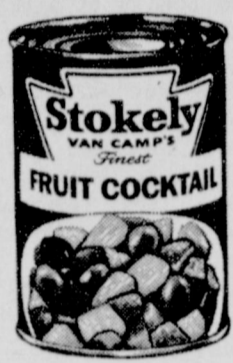
In another speech, I called on the Senate to act with dispatch on a constitutional amendment concerning prayer in schools.

Recent Supreme Court decisions have banned every vestige of voluntary prayer from our schools. I don't think the majority of Americans agree with those Court decisions and the constitutional amendment I support would let the people express their views. Next week, looks like a similarly active week for the Senate. The Housing Subcommittee on which I serve will be busy, and we hope to complete work in my Military Medical Care Subcommittee on a new health plan for our servicemen, their dependents and military retirees.

Play "MATCH the STAMP"! Win up to 1 Million S&W Green Stamps!



COFFEE
MARYLAND CLUB ALL GRINDS LB. CAN 69¢
2 LBS. \$1.45 • 3 LBS. \$2.15



COCKTAIL
STOKELY FRUIT NO. 300 3 CANS 69¢



BAKE RITE
WILSON'S SHORTENING LB. 59¢
3 CAN



MELLORINE
SWIFT'S OR LANE 39¢
1/2 GALLON



THESE PRICES GOOD July 28 - Aug. 3

AT YOUR PIGGLY WIGGLY IN **MULESHOE**

Stamp Winners:

Mrs. Russell Bryant	1000
Mrs. W. R. Broadhurst	1000
Mrs. Velma Weddington	500
Mrs. Albert Eggers	500
Mrs. Cordie Lucero	500
Mrs. Margaret Allen	500
Domingo Romos	500

Store Manager's Specials

COFFEE Hills Instant	6 oz. Jar	79¢
PRESERVES Strawberry Festival	2 lb. Jar	69¢
FRUIT DRINKS Del Monte	46 oz. can	3 for \$1
PORK and BEANS Van Camp	#2 Can	5 for \$1
ORANGE DRINK Texan	43 oz. can	2 for 89¢

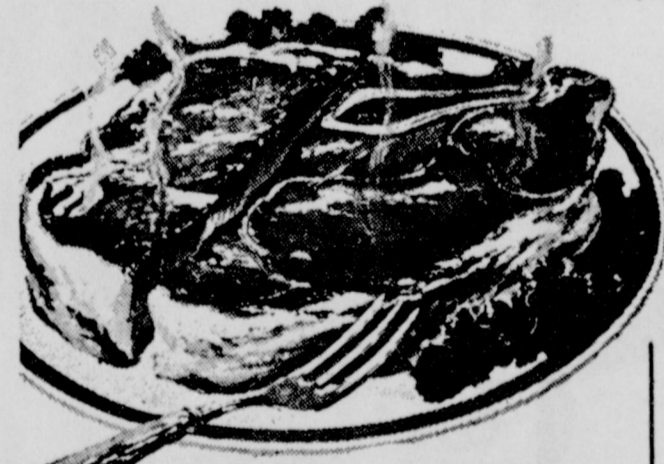
Piggly Wiggly has the Greatest Variety of National Brands!

Velveeta KRAFT'S CHEESE FOOD 2 Pound Loaf 98¢
Pork'n'Beans VAN CAMP'S 7 No. 300 Cans 1.00
Tomato Juice STOKELY'S FANCY 3 46-oz. Cans 1.00
Chunk Tuna DEL MONTE, Chunk Style 2 No. 1/2 Cans 69¢
Aluminum Foil KAISER, Standard 25-Ft. Roll 32¢
Green Beans DEL MONTE, Cut 3 No. 303 Cans 69¢
Grape Drink WELCH'S 46-oz. Cans 69¢
Drinks DOLE PINK Pineapple-Grapefruit 46-oz. Cans 89¢

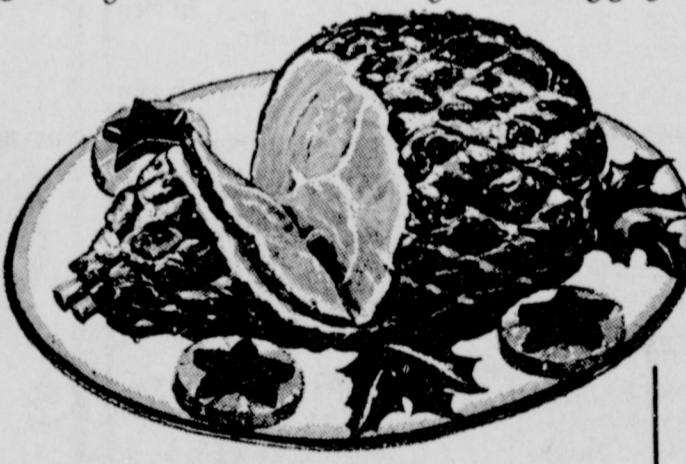
Fresh Fruits and Vegetables

LETTUCE CALIFORNIA, LEAF RED OR GREEN TIP 2 FOR 29¢
GRAPES RED CALIFORNIA EXTRA FANCY 19¢ lb.
POTATOES RED, U.S. No. 1 10 lb. bag 39¢
Celery Hearts California Green Pascal Each 39¢
Apples Washington Winesap Extra Fancy Lb. 29¢
Spinach California Fresh, Cello Bag Each 39¢
Red Cabbage Adds Color to Your Salad Pound 15¢
Cauliflower California Fancy, Sno-White Lb. 29¢

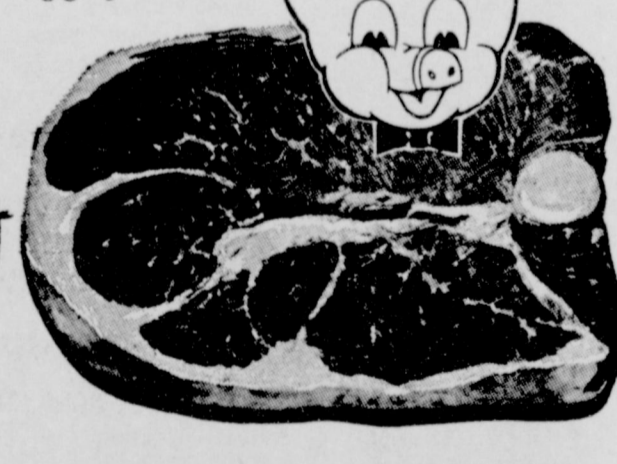
Fresh, Tender, Quality Meats --- Always at Piggly Wiggly!



FAMILY STEAK
U.S.D.A. CHOICE AGED, HEAVY BEEF, Valu-Trimmed lb. 49¢



SMOKED HAM
GLOVERS Dry Cured, Full Shank Half, No Center Slice Removed lb. 45¢



ROUND STEAK
BONELESS, TOP U.S.D.A. CHOICE AGED, HEAVY BEEF, Valu-Trimmed 98¢

Cube Steak U.S.D.A. Choice Aged Heavy Beef, Waste Free Lb. \$1.19

Beef Steak Blue Morrow's Tray Pak 18-oz. Pkg. \$1.00

Pork Chops Boneless, Lean Northern Pork Center Cut Chops Lb. \$1.39

Boneless Bottom Round Roast U.S.D.A. CHOICE AGED, HEAVY BEEF, Valu-Trimmed lb. 89¢

Rump or Pikes Peak Roast U.S.D.A. CHOICE AGED, HEAVY BEEF, Valu-Trimmed lb. 79¢

Eye of Round Steak U.S.D.A. CHOICE AGED, HEAVY BEEF, Valu-Trimmed lb. 39¢

Cheese Longhorn, Half Moon 8-oz. Pkg. 39¢

Cheese Longhorn, Block Style Pound 75¢

Cheese Sliced, American or Pimento 3 8-oz. Pkgs. \$1.00

Sausage Blue Morrow's All Pork Pound Package 69¢

Pork Chops Lean Northern Pork First Cuts Lb. 79¢

Bologna Sliced, Swifts Premium, All Meat, 12-oz. Pkg. 55¢

Sausage Blue Morrow's All Pork Pound Package 69¢

Pork Chops Lean Northern Pork First Cuts Lb. 79¢

Bologna Sliced, Swifts Premium, All Meat, 12-oz. Pkg. 55¢

Green Beans Libby Cut French 2 9-oz. Pkgs. 49¢

Broccoli Libby Chopped 2 10-oz. Pkgs. 38¢

Breakfast Drink Hi-C, Orange 9-oz. Can 29¢

Meat Pies Sparetime Beef, Chicken, Turkey 6 Pkgs. \$1.00

Casserole Macaroni & Cheese Banquet 6 Pkgs. \$1.00

Warm Weather Favorites

Instant Tea Nestle, 50¢ off label 3-oz. Jar 99¢
Dessert Topping Dreamwhip 8-oz. Package 89¢
Jello Gelatin Dessert Assorted Flavors 2 Pkgs. 39¢
Viennas Armour's Sausage 9-oz. Can 49¢

Proctor and Gamble Products

Detergent Liquid Ivory 22-oz. Bottle 67¢
Detergent Cheer, Heavy Duty Giant Box 79¢
Detergent Laundry, Dash, 10¢ off label Giant Box 75¢
Cleanser Comet 2 Large Cans 35¢
Fabric Softener Downey Giant Bottle 89¢
Cleaner Top Job, All Purpose 22-oz. Bottle 65¢
Detergent Salvo Tablets 24-count Box 87¢
Deodorant Soap Zest Two Regular Size Bars 35¢

From Our Dairy Case

Cookies Pillsbury Refrigerated, Assorted Flavors-Roll 47¢
Margarine Golden Glow, Soft 1-Pound Package 47¢
Cheese Food Chef's Delight 2-Pound Loaf 59¢
Romano Cheese Kraft's, Grated 6-oz. Can 67¢

More Low Prices

Baby Cereals Gerber's Assorted Flavors 8-oz. Box 19¢
Liquid Sweetener Sugarine 4-oz. Bottle 69¢
Applesauce White House 25-oz. Jar 33¢
Vinegar Speas, Cider Quart Bottle 27¢
Dog Food Alpo Beef, Chicken, Liver 14 1/2-oz. Can 27¢

Lowest Prices... Greatest Variety... always at...



Television Schedule For Muleshoe Area

KGNC - TV (4)	KVII - TV (7)	KFDA - TV (10)	KCBD - TV (11)	KLBK - TV (15)
Amarillo	Amarillo	Amarillo	Lubbock	Lubbock
Muleshoe Cable 4	Muleshoe Cable 5	Muleshoe Cable 6	Muleshoe Cable 2	Muleshoe Cable 3
Daytime Viewing	Daytime Viewing	Daytime Viewing	Daytime Viewing	Daytime Viewing
7:00 - Today 7:25 - News 7:30 - Today 8:00 - Today 9:00 - Eye Guess 9:25 - News 9:30 - Concentration 10:00 - M. Star 10:30 - P. Bay 11:00 - Jeopardy 11:30 - P. Office 11:55 - NBC News 12:00 - News 12:10 - Weather 12:15 - R. Brent 12:30 - Make-Deal 12:55 - NBC News 1:00 - Our Lives 1:30 - The Doctors 2:00 - Another World 2:30 - Don't Say 3:00 - Match Game 3:25 - NBC News 3:30 - Sheriff Bill 4:30 - Bronco 5:30 - Hunt-Brink 6:00 - News	6:15 - Agriculture 6:45 - Weather 6:50 - News 7:00 - Mod. Edu. 7:30 - Exercise 8:00 - Movie 10:00 - S. Market 10:30 - Dating Game 11:00 - Donna Reed 11:30 - Father 12:00 - Ben Casey 1:00 - For Women 1:30 - Newly Wed 1:30 - A Time 1:55 - Women's News 2:00 - Gen. Hosp. 2:30 - Nurses 3:00 - N. Shadows 3:30 - Action Is 4:00 - Trails West 4:30 - H. Patrol 5:00 - P. Jennings 5:15 - News 5:25 - Weather 5:30 - Wells Fargo 6:00 - Rifleman	6:25 - Sign On 6:27 - Meditation 6:30 - Am. College 7:00 - Farm News 7:30 - Tri Report 8:00 - Capt. Kang. 9:00 - I Love Lucy 9:30 - McCoys 10:00 - Andy 10:30 - Dick Van Dyke 11:00 - Search T. 11:45 - Guiding Lgt. 12:00 - News 12:10 - Weather 12:20 - Farm-Ranch 12:30 - The World T. 1:00 - Password 1:30 - Art Linletter 2:00 - To Tell Truth 2:25 - CBS News 2:30 - Edge of Night 3:00 - Secret Storm 4:00 - Sc. Fiction 4:30 - Mr. Mim. 5:00 - Cartoons 5:30 - CBS News 6:00 - News 6:20 - Weather	7:00 - Headlines 7:05 - Farm Report 7:25 - Weather 7:30 - Today 8:25 - News 8:30 - Today 9:00 - Eye Guess 9:25 - News 9:30 - Concentration 10:00 - M. Star 10:30 - P. Bay 11:00 - Jeopardy 11:30 - P. Office 11:55 - News 12:00 - Noon Rptl 12:15 - Com. Close 12:30 - Make Deal 1:00 - Our Lives 1:30 - Doctors 2:00 - Another World 2:30 - Don't Say 3:00 - Match G. 3:25 - Aft. Rpt 3:30 - S. Sweep 4:00 - Father 4:30 - Beaver 5:00 - Cartoons 5:30 - Hunt-Brink 6:00 - News	5:55 - Sign On 6:00 - Sun, Sem. 6:30 - Jimmy Dean 6:45 - Farm-Ranch 7:05 - M. Wallace 7:30 - Morn. Show 8:00 - Capt. Kang. 9:00 - Donna 9:30 - McCoys 10:00 - Andy 10:30 - D. Dyke 11:00 - Love of Life 11:25 - CBS News 11:30 - Search 11:45 - Guiding 12:00 - WTTN News 12:12 - Farm Ranch 12:25 - Weather 12:30 - World Turns 1:00 - Password 1:30 - Houseparty 2:00 - Gen. Hos. 2:30 - Edge Night 3:00 - Sec. Storm 3:30 - Dating G. 4:00 - Tele Bingo 4:30 - Col. Car. 5:00 - Rifleman 5:30 - News

Higginbotham Bartlett Building Needs



Lumber
Paint
Wallpaper
Hardware
Houseware
Gifts

Higginbotham Bartlett MULESHOE



For Year-Long Enjoyment

INSTALL NOW
Three Plans
for Hook-Up
MULESHOE ANTENNA CO.
Call Now
Phone 272-3310

ALSUP CLEANERS

Offer These FINE SERVICES

1. Drive-in window service for your convenience in cold weather.
2. Re-sizing of cottons to finer texture for that like-new look.
3. Alterations of all kinds of men's, women's and children's clothing.
4. A personal touch for your clothing by people who care how you look.

THAT'S ALSUP CLEANERS

Phone 272-3076

Sandy Road.. In Muleshoe..

(Continued from Page 1)

paving on 1760 to the New Mexico line. "There was just a little jog of some 170 feet," Stephens said, "where the two roads met a 'fault line' situation. So all we had to do was buy an acre of land, build a slight curve and we were in business with the folks over in New Mexico."

The big problem which Stephens faced was water - or the lack of it. But he solved that problem pretty well, too," he took advantage of every drop of water that fell during a spring and summer which have been exceptionally dry. And he has a very creditable road to his credit, built at almost no expense to the taxpayers and opening up a vast new trade territory for both Muleshoe and Portales.

The New Mexico commissioners also had a problem since they had a greater distance to cover with a new route than Texas had, to route slithering through the deep sandhills.

Roosevelt county officials, in fact, are already considering caliche. They say the New Mexico part will be paved eventually and will be caliche before very long.

Meantime, the road is open. Right now, it's sandy - almost boggy in places because of the deep sand. But eventually it will rain and then the road will be "smooth as silk." It's doubtful that there will ever be enough rain on that particular route to cause bogging - it's that kind of soil formation.

Meantime, summer school students have been scooting over the little scrubby hills west of the state line and gathering themselves an education at Eastern New Mexico University. Stephens says they come by his house early each morning, carloads of them going over to the halls of learning, and then coming home each evening a bit smarter than they were that morning.

"They're using the road right now. And you can't blame them; even though its sandy and bumpy, it whacks 21.3 miles off their route and that runs into quite a bit of gasoline money during a summer term."

(Continued from Page 1)

Mr. and Mrs. George Williams, 1729 W. Ave. F. recently departed on a four-year tour with the United States Army Security Agency.

George, who graduated from Muleshoe High School was selected for training in the Army Security Agency, a branch of the Army Intelligence Corps, based on his mental ability and the highly favorable results of a complete moral background investigation.

Upon completion of eight weeks of basic training at Fort Leonard Wood, Missouri, George will visit his parents for a few days prior to reporting for advanced individual training the Army Security Agency.

There are two candidates for graduation at the end of the 1966 summer session at Eastern New Mexico University from Muleshoe. They are: Marquita Splawn Adamson, Master of Arts degree and Betty Kraft Jennings, a Master of Education degree.

Army Pvt. Douglas L. Knowlton, 21, son of Mr. and Mrs. Walter H. Knowlton, Route 1, Muleshoe completed a cooking course at Fort Leonard Wood, Mo. July 21.

During the course he was trained in cake and pastry baking, meat cutting, and learned to prepare and serve food in Army mess halls and in the field.

Gordon R. Graves, 21, son of Mr. and Mrs. John A. Graves, Sudan was promoted to Army staff sergeant June 28 in Germany, where he is living with the 21st Artillery.

Commander H.A. Gregory, Commanding Officer, U.S. Navy Recruiting and office of naval Office Procurement, Albuquerque, announced that the U.S. Navy Recruiting Station, Clovis, has been named the top Recruiting Station of the year for the Albuquerque Recruiting district. The district includes the entire state of New Mexico, West Texas, and the Oklahoma Panhandle.

J.T. Washington, son of Mrs. Lillie M. Washington, Kerens, has been promoted to airman second class in the U.S. Air Force. His father, Prezel Washington, lives in Muleshoe.

Peter A. Wolff, Chicago, Ill. was through Muleshoe recently and admired the memorial to the Mule. He said in a card to the Journal that the work of Art was done by his brother. He also commented that it was a "masterpiece for a very nice town."

The Muleshoe Area Youth Center is sponsoring a "Sock-Hop" tomorrow night. The band will be the Ambers from Artesia, Bermuda shorts and decorated socks will be worn and prizes will be given for the best decorated socks for the boy and the girl.

The game of polo originated in Iran.

Open Week Days
7:45 P.M.
Saturday & Sunday
2 P.M.

Friday & Saturday
July 29 & 30

JERRY LEWIS THE FAMILY JEWELS

Sunday & Monday
July 31 & Aug. 1

Remaining to Muleshoe
By Popular Demand

WALT DISNEY'S "MARY POPPINS"

WALLACE THEATRE

Want to Secure Your Future?

No Beauty School is Better Equipped to Train You For One of The Highest Earning Professions. Than

ADELLE'S BEAUTY SCHOOL

We Welcome You to Visit Us or Fill Out This Coupon And Mail it to Us For More Information.

Adelle's Beauty School
708 Quincy
Plainview, Texas

Name _____
Street _____
City _____ State _____

FRESH PRODUCE ARRIVING EVERY TUESDAY FRIDAY

TOMATOES

4 lb. FOR \$1

or

lb. 29¢

Kelly Milk 89¢ GAL.

EGGS 3 Grade A Doz. FOR \$1

AVOCADO 11 FOR \$1

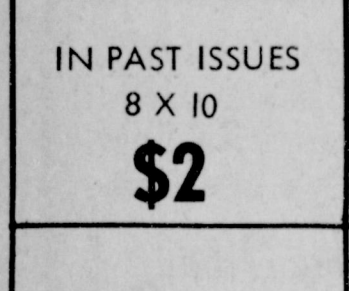
BANANAS Lb. 10¢

POP ALL BRANDS 2 For 79¢

B & D FRUIT MARKET
410 E AMERICAN BLVD.

KING BROS.
GRAIN & SEED CO.
Complete ELEVATOR SERVICE
AND SEED PROCESSING
FOR THE MULESHOE AREA

RE-PRINTS FROM ANY PHOTO



MADE BY THE **JOURNALS**

IN PAST ISSUES **\$2**

THIS SPACE FOR SALE

Call on Your Walgreen Agency For All Your Needs

PRESCRIPTIONS VETERINARY COSMETICS DRUGS

WESTERN DRUG Phone 272-3106

TRADE CLASSIFIED SELL BUY ADS LEASE

WANT ADS - PH. 272-4536

1 time per word - - 4¢ 3 times per word - - 10¢
2 times per word - - 7¢ 4 times per word - - 13¢
After 1st issue, 3¢ per word each additional time.
Minimum charge 50¢
Card of Thanks \$1.00

DEADLINE FOR CLASSIFIED ADVERTISING PAGE: For placing or cancelling ads is Monday, 4 p. m. for Thursday's paper and Thursday, 4 p. m. for Sunday's. Too late to classify is Tuesday, 4 p. m. for Thursday's and 4 p. m. Friday for Sunday's issue. Double rate for blind ads.

Check your ad and report errors immediately. The Journal reserves the right to classify, revise, or reject any classified ad, and is not responsible for errors after the ad has run once.

CLASSIFIED DISPLAY
85¢ per column inch
90¢ per column inch
for reverses.

I. PERSONALS

AVON, Phone 3510, 1-46t-tfc

FOR RENT, 15 ft. camper. By day or week. Call 272-3163, 1-35s-tfc

AM interested in making loans and buying first and second lien notes secured with farm and ranch loans.
J.J. Steele
Citizens Bank Building
Clovis, New Mexico
Dial: 763-4471 or 763-6455, 1-30s-4tc

For reservations for Oklahoma Lane Community Building call Edmond Kitten, Phone 825-2773, 1-30t-2tc

Rex Air Sales & Service, Write Box 232, Texico, N. M. 1-23t-tfc

If you need an auctioneer, I can't think of a better one, Emmette Cross, "The Cowboy Auctioneer" 1-29s-2tc

FURNISHED APARTMENTS:

Trailer Space, Briscoe Apartments, Phone 272-3465, 5-28t-tfc

3 room apt. for rent, Call or see Mrs. Jack Lenderson - 272-3038, 5-3s-tfc

3 room unfurnished apt. See Spencer Beavers at Post Office, 5-10t-tfc

Furnished apartment for rent: Air-conditioned, bills paid, Layne Apartments, 524 South First, 5-29s-tfc

6. ROOMS FOR RENT

Nice quiet bedroom for rent, Call 272-4903, 807 West 7, 6-26t-tfc

FOR RENT: Nice, quiet bedroom, 410 West Second, 6-29s-tfc

8. REAL ESTATE FOR SALE

FOR SALE: 3-BR-2 Bath, carpeted, drapes, garage, carport, central heat, stove, dishwasher, and disposal, paneled den and kitchen; fenced yard and patio, close to schools. Will carry part of \$1500 down. Assume low interest, FHA loan of \$12600, 803 W. 7th, Glenn Gaston 7008 Manor Dr, Ft. Worth, Texas, Ph. 817-BV-14439, -29t-5tp

FOR SALE: By owner 29.9 acres adjoining Muleshoe city limits. \$2500 per acre and smaller portions slightly more, Call CA 4-5877 in Plainview, Texas, 8-26s-8tc

FOR RENT OR LEASE:
30 x 40' Building
Formerly Wards store
Will Remodel
Contact Bill Jim St. Clair
Phone 272-4630

4. HOUSES FOR RENT

FOR RENT: 2 bedroom house at 608 East 4th. Call 946-2410, 4-26s-tfc

FOR RENT: 2 bedroom house newly decorated. Call 272-3038 or see Mrs. Jack Lenderson at 1818 West Ave. D, 4-26s-tfc

For rent - 3 room and bath unfurnished cottage, free water, lawn maintained. One person or couple only. See Ike or Lois Robinson at Robinson Boot Shop or call 272-3392 or 272-4721 4-21t-tfc

FOR RENT: Unfurnished house, \$25 per month. Couple only, 712 2nd St., 4-23t-tfc

FOR RENT: Nice 2 bedroom carpet, fenced back yard, wired for everything. 272-4052, Lewis Stewart 4-29s-tfc

5. APTS. FOR RENT

For Rent: 3 room and bath furnished apt. See Sam Ghoson at Sam's Auto Store, 5-44-tfc

For Rent: 1 or 2 bedroom apt. furnished or unfurnished. See Billy or D. L. Morrison at Billy's Superette, Call 4485, 5-5t-tfc

10. FARM EQUIPMENT

FOR SALE: Farm equipment 6-row John Deere Monitor; 1-6 row Rand J Crust Buster; 2-4 row gang rotor hoe; 1-3 pt 1-drag; 4-9 row sand fighters; 2-4 row stalk cutters; 1-6 row stalk cutter; 1-14' International disc; 1-10' John Deere Kellfer; 2-Combine trailers; 1-4 section harrow; 1-13' Graham Hamie; 1-4 room and bath house to be moved. See Durwood Chisholm, Baccus Chevrolet, Sudan, Texas, 10-23t-tfc

11. FOR SALE OR TRADE

FOR SALE: Dishwasher, Call 965-2668, 11-28t-tfc

FOR SALE: Quilt tops, Muleshoe Nursing Home, Room 72, 11-20t-2tp

What'll ya give for a 21-inch Philco television? It's pretty, big and works. Make offer, 272-4774, 11-30t-tfc

12. HOUSEHOLD GOODS

"Need party with good credit in Muleshoe area to take over payments on late model Singer sewing machine, cabinet optional, Will button hole, zig-zag, fancy designs, \$26.50, Cash or 5 payments at \$5.72. Write Credit Manager, 1114 19th Street, Lubbock, Texas," 12-22s-tfc

15. MISCELLANEOUS

FOR SALE: Fresh milk. Deliver Mon., Wed., Friday, 85¢ a gal., 40¢ 1/2 gal. Butter-milk. Cows are T.B. and Bang tested. R.H. White, Star Route, Sudan, 15-28s-8tp

WANTED: Someone with good credit to assume balances on spinet piano in this area, small monthly payments, first payment in September. Write Mr. Hall, Box 3192, Lubbock, Texas 79410 15-29t-3tp

IF carpets look dull and drear remove the spots as they appear with Blue Lustre. Rent electric shampooer \$1. Higginbotham-Bartlett, 15-30t-tfc

NOTICE TO DEBTORS AND CREDITORS

The State of Texas County of Bailey To those indebted to, or holding claims against the Estate of Pearl Mills, deceased, Number 759, in the County Court of Bailey County, Texas, sitting in matters of Probate.
The undersigned, having been duly appointed Independent Executor, of the Estate of Pearl Mills, deceased, late of Bailey County, Texas, by the Judge of the County Court, of said County, on the 25th day of July A. D. 1966, hereby notifies all persons indebted to the Estate to come forward and make settlement, and those having claims against the Estate to present them to him within the time prescribed by law, at his home, at 1538 West Ave. B, Muleshoe, Texas.
Dated this 25th day of July 1966.
John A. Mills
Independent

Executor of Estate of Pearl Mills, Deceased, 30t-2tp

LEGAL NOTICE

The State of Texas To any Sheriff or any Constable within the State of Texas—GREETING: You are hereby commanded to cause to be published once each week for four consecutive weeks, the first publication to be at least twenty-eight days before the return day thereof, in a newspaper printed in Bailey County, Texas, the accompanying citation, of which the herein below following is a true copy.

CITATION BY PUBLICATION

The State of Texas TO: Virgil Ritchie, Jr., Defendant, Greeting: You are hereby commanded to appear before the Honorable 154th Judicial District Court of Bailey County at the Courthouse thereof, in Muleshoe, Texas, by filing a written

Nurses Oppose Medicare Pay Plan for Homes

WASHINGTON,--The 6,000-member American Nursing Home Association has rejected the Social Security Administration's 63 member Governing Council's formula for paying nursing homes for care of Medicare patients.
The action was taken by the Association's 63 member Governing Council which held a one-day emergency session at the Statler Hilton Hotel here to

Families Return From Fishing

By Mrs. H. W. Garvin three way-Mr. and Mrs. D. V. Terrell and Mr. and Mrs. Pete Tarlton spent several days fishing at Ute lake the past week.
Rhonda, Chuck and Douglas Dupler spent the week end with their aunt and family, the Luther Edwards, in Sundown.
Mr. and Mrs. R. L. Reeves and Mr. and Mrs. Paul Carlisle spent several days fishing at Stamford the past week.
Part of the community had a rain Sunday. The community needs moisture badly.

Marie Robinson and Mrs. Paul Powell were shopping in Lubbock Thursday.
Mrs. H. C. Wellborn, Muleshoe, Mr. and Mrs. T. J. Foster Lamesa, and Mr. and Mrs. S. J. Bracken, Morton, visited Marie Robinson Sunday.
Mr. and Mrs. Oscar Timms from Muleshoe visited in the E. M. Lowe home Tuesday.
Mrs. R. L. Davis, Mrs. Dutch Powell and girls were shopping in Lubbock Thursday.

The WMS of the Maple Baptist Church met Tuesday in the Home of Mrs. E. A. Wright. The lesson was about the Mormons. Refreshments were served to Mrs. C. A. Petree, Mrs. A. E. Robinson and Mrs. E. M. Lowe.
Mr. and Mrs. R. A. Henderson from Lubbock spent Sunday in the D. S. Fowler home.

Mrs. J. N. Pagett, mother of Mrs. Cecil Lindsey fell Saturday in the Lindsey home and was injured. She is in Morton Memorial Hospital.

Mr. and Mrs. Joe Wheeler and children from Paris and Mr. and Mrs. Jimmy Wheeler and children from Lovington, N.M., and Mrs. George Wheeler and children from West Camp spent Monday with their parents, the Johnnie Wheelers.

Mr. and Mrs. D. A. Williams and son ate supper with her parents, the George Tysons Sunday night.

Mr. and Mrs. Carrol Fleming and son from Littlefield visited Sunday evening in the H. W. Garvin home.

As many as 245 earthquakes have been recorded in one week in Guatemala.

answer at or before 10 o'clock A.M. of the first Monday next after the expiration of forty-two days from the date of the issuance of this citation, same being the 5th day of September A.D. 1966, to Plaintiff's Petition filed in said court, on the 23 day of May A.D. 1966, in this cause, numbered 2931 on the docket of said court and styled IN RE: ADOPTION OF MINOR CHILDREN
A brief statement of the nature of this suit is as follows, to-wit:

A suit to adopt minor children, to-wit: Ricki Dale Ritchie and Shiela Gail Ritchie by L.N. Wilcox, and further to change the names of the said minor children to Ricki Dale Wilcox and Shiela Gail Wilcox,

as is more fully shown by Plaintiff's Petition on file in this suit.

If this citation is not served within ninety days after the date of its issuance, it shall be returned unserved.

The officer executing this writ shall promptly serve the same according to requirements of law, and the mandates hereof, and make due return as the law directs.

Issued and given under my hand and the seal of said court at Muleshoe, Texas, this 23rd day of July A.D. 1966.

Attest: Hazel Gilbreath, Clerk, 154th Judicial District Court Bailey County, Texas.

30t - 4tc

adopt a position on the proposed pay formula.

While rejecting the pay formula, the Association "substantially" accepted the announced conditions which nursing homes will have to meet to participate in the Medicare program.

And, President Roy J. McDonald, of Colfax, Washington, urged all of the association's member homes to take action to meet the conditions of participation.

In rejecting the proposed Medicare pay formula, the Governing Council called for an all out political action program to bring about a change in the Social Security Administration's principles of reimbursement. The formula neither provides for a return on capital funds invested in nursing homes nor does it provide for meeting the full costs of caring for patients.

The Council pointed out that nearly half of the 600,000 nursing home beds in the country have been built in the past five years at a cost in excess of \$1.5 billion. The vast majority of these funds have been put up by the private sector of the economy, which must have a return on its investments in these modern, new nursing homes to provide adequate quality care to Medicare recipients.

Contest..

(Continued from Page 1)

voive the young people who are active farmers in an opportunity to analyze their farm problems and develop a greater command of basic discussions skills and how people can think in a group.
Discussion top will be "What is the Future in Agriculture for a Young Person Today."

Interested persons are asked to stop by the Farm Bureau office here for entry blanks before Aug. 4, 5 p.m.

HOSPITAL CUT UP LOUISVILLE (AP) — During renovation work at St. Anthony Hospital, this sign was displayed on the front lawn:

"Development Program—Hospital in Surgery, Be Patient."

Youths to Lead Trinity Series Opening Sunday



Fred Sparkman



Phil Hall

Two young men from Wayland Baptist College, Plainview, will conduct a revival at Trinity Baptist Church here July 31 through Aug. 7, the pastor, the Rev. Troy Walker, has announced.

Mr. Walker said the youthful leaders will be Fred Sparkman, the evangelist, who is a senior at Wayland, and Phil Hall a freshman who will be singer for the series.

Mr. Walker said the two young men, "filled with much zeal for the Lord and enthusiasm for



WINS AWARD--Muleshoe Federal Credit Union received a "Thrift Honor Roll" award for its 1965 record this past week, with a letter from the national director of credit unions, J. Deane Gannon. Here J.M. Forbs, treasurer of the local credit union, admires the plaque which accompanied the letter from Gannon. (Journal Photo)

their holy calling," will conduct the services each night at 8 o'clock. Mr. Walker said the public is invited to attend all the services.
Both young men are from Plainview.

Parts of China's crowded Yangtze Valley support 3,500 people to the square mile.

THREE TELEPHONE NAMES NASHVILLE (AP) — Alexander, Graham & Bell are on the job for Southern Bell Telephone Co. here, helping maintain the communications instrument invented by their collective namesake 90 years ago.
L. N. Alexander, James L. Graham and Melvin L. Bell have worked together for the past 10 years.

A SAVINGS INSTITUTION DEDICATED TO THRIFT AND HOME OWNERSHIP



First Federal Savings & Loan Association of Clovis

HOME OFFICE 801 Pile St. Clovis, N. Mex.
BRANCH OFFICE 2nd. & Abilene Portales, N. Mex.

Current Dividend **5%**
PAID OR COMPOUNDED QUARTERLY

THRIFT AND HOME OWNERSHIP SAFEGUARDS TO AMERICAN LIBERTY

ENGINE REPAIRS

From minor to major motor repairs, our service is expert in every detail.
Try us!
Also Front End Aligning & Wheel Balancing
PLAINS AUTO SERVICE DEPT.
421 Main Muleshoe Ph. 272-4576

AUTO SPECIALISTS

BUSINESS DIRECTORY

Robinson's Boot Shop
127 Main — Phone 272-4721
FINE WESTERN WEAR
Men, Women & Children
SHOE REPAIR SHOP
Ike Robinson
Serving Muleshoe since 1925.

Farley Insurance Agency
Real Estate and Insurance
FARM & CITY LOANS
SERVICE BEYOND THE CONTRACT
209 West Avenue B
Off. Ph. 272-4727 Res 272-3778

SHOP MULESHOE FIRST
SINGLETON FUNERAL HOME
24 HOUR AMBULANCE SERVICE
PHONE 272-4574 MULESHOE

-SPECIAL-
STEAK FINGERS
IN BASKET
85¢
Rich, Thick
MALT or SHAKE
30¢
Had your hamburger today?
Phone 272-4725
19th and Clovis Road
BILL'S DRIVE IN

THIS SPACE FOR SALE



LEAVE FOR FLOYDADA CAMP---The Junior Royal Ambassadors of the Trinity Baptist Church left for camp Monday morning at Floydada Baptist Encampment. The theme for 1966 is "faith in action". The Rev. A. L. Burchel is sponsoring the group which includes Bobby Dodd, Boyd Lee McCamish, Don Johnson, Ken Patterson, Ronnie and Dennis Parker, Zan Walker, Walter Matthews, Jimmy Evans, Terry Burchel, Lynial Ashford and Jackie Bruton. The Rev. Troy Walker accompanied the group on the three-day trip. (JP)

Local Woman's Mother, 86, Dies in Clovis

Iris Etna Reynolds, age 86, long time resident of Clovis, passed away at 6:05 a.m. July 21 in Clovis Memorial Hospital. She was born Nov. 9, 1879. Services will be held at 2:30 Sunday in the First Nazarene Church with Rev. Fowler officiating and Rev. Lynn Mearz assisting. Burial will be at Grady Cemetery, under the direction of Steed Funeral home. Survivors are three daughters, Virgie Shaw of Muleshoe, Mrs. John McIntosh of Clovis, and Mrs. Buster Cogdill of Roswell, N. Mex., three sons Haskell Reynolds of Ft. Sumner, Roland Reynolds of Mosquero, Earl Reynolds of Clovis, 14 grandchildren, 27 great grandchildren, 3 great, great grandchildren. Four brothers, R.D. McCaslin, Ben McCaslin, of Tyler, Texas, Hancel McCaslin of Waco, and Carl McCaslin of Temple, and a host of nieces and nephews. Pallbearers will be grand-

A. H. Taack Rites Conducted Here

Funeral rites were held in the First Methodist Church Tuesday afternoon for August Henry Taack, 77, who died in West Plains Hospital here Sunday. He was born in Caddo Mills, and was a retired farmer.

Sims Dies Here ; Rites Conducted

Last rites for Samuel Ezra Sims, who died in West Plains Hospital Sunday, were held at the Assembly of God Church at 3 p.m. Tuesday, conducted by the Rev. Archie Beggs and the Rev. J.W. Farmer. Burial was in the Sudan cemetery with Singleton Funeral Home in charge of the arrangements. Survivors include his wife;

Bailey County Memorial Park. Survivors include a niece, Mrs. R. O. Gregory, Muleshoe; three sisters: Mrs. Minnie L. Wall, Kingsland; Mrs. Ida Black, Idalou, and Mrs. Annie Bramlet, Los Angeles, and a brother, George B. Taack, Wichita Falls.

his father, and mother, George Sims; these children, Charlie Sims, Amarillo; Edward, Bakersfield, Calif; Mrs. John Tatum, Plainview, Ark., and Mrs. Howard Harris, Garland; and these brothers; William Sims, Grand Prairie; Frank Sims, Chaw Chilla Calif; and Tom, Jones, Okla. Six grandchildren also survive.

Mrs. McCall Dies, Rites at Enochs

Funeral services for Loma McCall, 51, Enochs, who died last Saturday in West Plains Hospital here, were held at the First Baptist Church, Enochs, at 10:30 Monday morning, conducted by the Rev. Jimmy Grisson, the pastor, and the Rev. C.R. Smelser, Enochs Methodist pastor. Burial was in the Enochs cemetery under direction of Singleton Funeral Home. Survivors include these children: E.N. McCall, Enochs; R.P. McCall, Enochs, and George McCall, Harlington; two brothers, 10 grandchildren and eight great grandchildren.

Choir..

(Continued from Page 1) body plays the role of the chorus in the annual musical produced by the Fine Arts Department. Most important of all the choir represents its alma mater by participating in Inter-Scholastic League and other various contests.

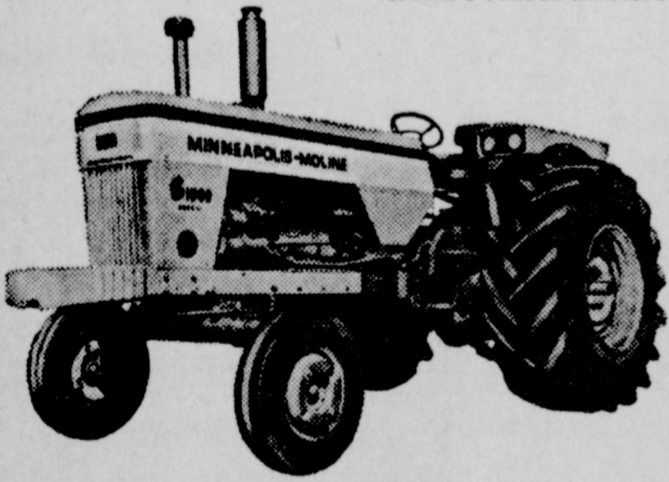
To begin another active year, the Muleshoe High School Choir is sponsoring a "Bake Sale." They will have stands at both Cashway and Piggly Wiggly groceries on Wednesday, Aug. 3. There will be a free delivery service offered Wednesday through Friday. Order your cake now by phoning 272-4159 or 272-3543.

Support your high school choir - it supports your community and your school!

Safety...

(Continued from Page 1) Farmers who sometimes drive slow-moving vehicles on the highways should know about and use the Slow-moving Vehicle (SMV) emblem. City and urban dwellers who travel the rural roads should know and recognize the SMV emblem. It could prevent your being involved in a rear end collision with slow moving equipment. The emblem is a fluorescent yellow-orange colored triangle with a dark red reflective border. It is placed on the rear of slow-moving vehicles so it can be seen easily by other drivers, day or night, from a distance of 500 feet or more. It was designed by Ohio State University researchers and first introduced two years ago as a safety device.

MM MINNEAPOLIS-MOLINE
World's Finest Tractors



NEW!-110hp G1000
Built for those who **FARM BIG!**

EIGHT-PLOW POWER—Now 110 hp, 504 cu. in. 6-cylinder Big MM engine in your choice of economical LP gas- or diesel-fueled types.

ROW CROP TYPE—Turns short like a small tractor—adjustable to fit your rows—adapts to ordinary implements.

HUNDREDS OF IMPROVEMENTS—Includes such new features as: dual shaft PTO for 540 and 1000 rpm; a new alternator; new 3-pt. hitch, drawbar and heavy-duty hydraulics. Many other comfort and convenience features.

MAKE A DATE FOR A DEMONSTRATION DRIVE AT:
FRY & COX
Your Friendly One Stop Farm Store
In Muleshoe
401 S. First Phone 272-4511

HIGHEST *Quality*

MEATS AND GROCERIES

FRESH FRUITS AND VEGETABLES

GUNN BROS. STAMPS
Double Every
WEDNESDAY

LOWEST *Prices*



Pinkney' Lean

PORK CHOPS

FIRST CUT Lb. **69¢**

CENTER CUT Lb. **79¢**

PINKNEY'S LEAN COUNTRY STYLE

Backbone Lb. **59¢**

DECKERS QUALITY THIN SLICED

BACON

1 Lb. Pkg. **89¢**

Armour's Star Muenchner

Summer Sausage

Lb. **69¢**

Swift's Premium Proteen Beef

RANCH STEAK

LB. **59¢**

Liver, Salami, & Spiced Luncheon Bologna, Olive, Mac & Cheese, Pic & Pim, 6 oz. Pkg.

LUNCH MEATS

Wilson Vac Pkg. **3 FOR \$1**

ARMOUR STAR FULLY COOKED

HAMS

'Ready To Eat'

5 LB. CAN \$4.79

DIAMOND

TOMATOES #303 Can 2 for 35¢

KOUNTY KIST

SWEET PEAS #303 Can 2 for 35¢

MAXWELL HOUSE

COFFEE 2 lb. can Drip, or Reg. \$1.37

KIM

DOG FOOD #1 Tall Can 6 For 49¢

SNOWDRIFT

SHORTENING 3 lb. Tin 69¢

GLADIOLA FLOUR 25 lb. Bag \$1.98

KLEENEX

FACIAL TISSUE 400 Count Box 25¢

COMET

CLEANSER New Decorator Size 2 For 49¢

KRAFT'S

VELVEETA CHEESE 2 lb. Box 99¢

TOMATO

CATSUP LIBBY'S 14 oz. Btl. 19¢

CHIFFON

OLEO 1 lb. Ctn. 39¢

KIMBELLS

PORK & BEANS #300 Can 2 For 19¢

DEL MONTE

SPINACH #303 Can 15¢

SWIFT'S

PREM 12 oz. Can 49¢

TIDE Giant Size Box 69¢

COLGATE

DENTAL CREAM Reg. 59¢ 39¢

BODY SET

HAIR SPRAY 59¢

Shasta Asst. Flavor

POP 6 12 oz. Can FOR 39¢

Maxwell House

COFFEE 1 Lb. Tin 69¢

Imperial Pure Cane

SUGAR 10 LB. BAG 98¢

FROZEN FOOD Sale

Banquet Chicken, Turkey & Beef

POT PIES 8 oz. Pkg. 5 For \$1

Welch's

GRAPE JUICE 12 oz. Can 39¢

Birdseye

PEAS & CARROT 10 oz. Pkg. 2 For 39¢

Keith's Cut

CORN 10 oz. Pkg. 2 For 39¢

GRAPES

California White Thompson Seedless



CALIFORNIA LARGE GREEN

Bell Peppers LB. 19¢

CALIFORNIA LONG WHITES

POTATOES 20 Lb. Bag 69¢

Calif. Large Size

AVOCADOS 2 FOR 19¢

Texas Size Vine Ripe

CANTALOUPE 4 FOR \$1

Listen to MULETRAIN over KMUL 10:15 a.m. sponsored by CASHWAY

Whites CASHWAY