

The Muleshoe Journal

Dedicated to the progress and development of Bailey County and the great Muleshoe country

Vol. 44 - No. 36 Published every Thursday at Muleshoe, Bailey County, Texas 79347 Thursday, Sept. 8, 1966

School Enrollment Pushes up; 32 Gain Reported for Week

Truant Officer Named

Muleshoe school enrollment pushed well above the two thousand mark Tuesday, the day after Labor Day, showing an overall gain of 32 from the previous week's figure. The school got off to an exceptionally early start this year, Neal Dillman superintendent, pointed out, accounting in part for the slow climb in numbers. First day's enrollment had been 2041.

In a week, Richland Hills gained 14, and senior and junior high each showed up 10. DeShazo, on the other hand, was down two from the opening figure.

Here are the Sept. 5 figures by schools:

Seniors, 99; juniors, 119; sophomores, 134; and freshmen, 167. Total 519.

Eighth grade, 174; 7th grade, 177; 6th grade, 192; special education, 7; total 550.

DeShazo elementary: 5th grade, 88; 4th grade, 99; 3rd grade, 94; 2nd grade, 108; 1st grade 131, and special education, 7.

He said that a mammoth facility to Field Day guests. His co-chairman is John I. Bowling of Hale Center. Members of the Board of Trustees

C-C Studies Fall Plans

Muleshoe Chamber of Commerce board got an advance view into autumn and winter plans, and then heard reports of MAIF, the Muleshoe organization designed to lure new industry to this area, at the board's September breakfast meeting this week.

They were told of plans to prepare a new brochure, extolling the Muleshoe country and its potentials for industry.

C-C president Charles Lewis appointed Vic Benedict to head a committee to prepare and print a new city map which also will include a tourist brochure.

"Go-Go" committee chairman Harvey Bass told of plans his committee, the business activities committee, has in the making. Bass said the regular September meeting of the committee, one of the most active in the chamber program, will meet next Tuesday, and "make plans for a whole lot of fall and winter business promotions."

He said that a mammoth

C of C To Pick Officers

"Moonlight Madness" sale is in the immediate future, and that plans are well under way for the event which will be held early in October. The moonlight madness sale, he explained, will be a night-time

See GO-GO on Page 5

White made his report at this week's meeting of the chamber of commerce breakfast board meeting, Manager Bob Janca said.

Names selected to be placed on the ballot include: Vic Benedict and D. B. Lancaster for president; Robert Hooten and Franklin Mann for vice-president; Jimmy Crawford and Wayne Williams for treasurer; For directors, Carl Bamert, Robert Blackwood, Eddie Faust, Don Harmon, Bob Jones, Max King, Buddy Peeler and the Rev. J. Frank Peery. Four directors are to be selected.

Ballots were mailed out to members Tuesday, and are to be returned to the chamber office no later than Sept. 26 at which time they will be opened and counted, Janca explained.

The board, at its Tuesday meeting, was reminded of the annual industrial development seminar to be held at Texas A & M Sept. 15. They also were reminded of the Texas Water hearing in Lubbock Sept. 9. Invocation was said at Tuesday's meeting by the Rev. Mr. Peery, and C-C president Charles Lewis presided.



Birthday Time

The Blackburns and the Brays got together over the weekend for a super birthday event. To begin with, Mrs. Effie Bray was a very young-ish 85 Wednesday, and her twin son and daughter, Bernice Bray and Mrs. Horace (Beatrice) Blackburn had birthdays on Tuesday. The clan got together here to celebrate the event over Labor Day Holidays. Bray lives in Dallas. (Journal Photo)

around muleshoe with the journal staff

'Promising' Teams Meet Each Other in Opener

Muleshoe Mules and Dimmitt Bobcats tangle in the first honest-to-goodness games for either team for this season, and both outfits are "promising."

Head coach Willie McAlpin in Muleshoe said last week that he is pleased with results so far, and Bobcat coaches also were pleased with Dimmitt 1966 edition after a scrimmage game with White Deer Bucks.

Mrs. John Tower Is Coming Here; Open House Set

Mrs. Thurman White announced Wednesday, that Mrs. John Tower, wife of Texas Senator John Tower, will be in Muleshoe Thursday, Sept. 14 for informal courtesies.

She will arrive at 12:30 and will be accompanied by the Tower Belles who will play in downtown Muleshoe.

At 1:30 Mrs. White says an open house and tea is planned for the White's back yard on U.S. Highway 70 east. Among events planned will be the presentation of a library book to the Rev. J. Frank Peery, Library Board Chairman.

Mrs. White said all interested persons, both democrats and republicans, are invited to meet Mrs. Tower.

Tomorrow night the two outfits - the Mules and the Bobcats--get together at Dimmitt in the opener. Tickets, incidentally, are available at the Senior high office and Corner Drug at 50 cents and \$1.25 each. Scores from here are expected to trek to Dimmitt for the non-conference setto.

The following story, discussing the Dimmitt Bobcats, appeared in the current issue of the Castro County News:

Technically, Dimmitt's Bobcats lost the battle last Thursday night--but their pleased coaches feel they learned a lot that will help them win the war.

In a scrimmage against the potent White Deer Bucks--last year's state Class A finalists who feature seven returning starters--the Bobcats were outscored 2-0 on touchdowns, but showed their mettle by outpacing the powerful Bucks in first downs from scrimmage.

Both of White Deer's touchdowns came on long runs, which helped the Bucks outgain the Bobcats by 53 yards, 238-185. Each team ran 45 plays from scrimmage.

"We've looked over the scrimmage film several times and we're really happy," Head Coach Brown L. Smith said. Nearly all the boys did a good job against White Deer. Of course, there's plenty of room for improvement, but for this early in the year we feel they gave us all they had."

Line Coach Roy Hunter added, "The more I watch the film, the better I think our boys did, considering White Deer was a

state finalist last year and has seven starters back."

"Of course, we weren't worrying about winning this scrimmage--that wasn't the purpose of it," Smith said. "We were interested mainly in giving our boys game experience and teaching them something."

Forty-two boys are now working out on the A and B squads, and Coach Smith expects to select an A squad of 23 boys

See OPENER on Page 6

Freeman Speech Tops Field Day at Halfway

Tomorrow is the big day for the High Plains Research Foundation at Halfway. The Foundation will hold its 10th annual field day and open house and scores of farmers and business men from here will be on hand for the event.

Featured attraction, of course, will be the appearance of U.S. Secretary of Agriculture Orville Freeman.

The offices of the Executive-Vice-President and Director of the Foundation, Business Manager, Education and Public Relations Department, Accountant, and stenographic staff are located in this building. Audio Visual color slides will be shown in the lobby.

T.E. (Gene) Mitchell, member is the Board of Trustees of the Foundation and Chairman of the Board of the First National Bank of Plainview is Chairman of the host committee that will show this new

A change of career is on the agenda for Mrs. Lucille Caldwell, 60, a Hobbs, N.M. beautician. It seems Mrs. Caldwell has definitely made up her mind to become flight instructor. She was issued her private license here Sunday by Federal Aviation Examiner Morgan Locker. Mrs. Caldwell told Locker that she planned to continue training and get her commercial and instructor rating, then aviation would be her occupation. She is the mother of four.

Visitors in the home of Mrs. Lula Kistler the past week were her son, Gene Kistler, Long Beach, Calif. and her brother and wife, Mr. and Mrs. W.V. Woolpert, Long Beach.

The Progressive Homes Club will meet in the home of Mrs. Vera Engelking Thursday at 2:30 p.m. Mrs. Art Ryan will be the hostess.

Mr. and Mrs. J.G. Arnn were in Denver, Colo. last week on a business and pleasure trip.

Mr. and Mrs. Don Harbert and daughters from Phoenix, Ariz. were in Muleshoe over the Labor Day weekend visiting Mrs. Harbert's parents, Mr. and Mrs. Andy Thompson.

Muleshoe area Young Farmers of Texas have been invited by Delton Stone, Area I president of the organization, to attend a meeting in the Tulia

See MULESHOE on Page 5

MAIF Ready for the 'Experts' to Take Over Our Story--It's 'Impressive'

"Our story is going to be an impressive one." That's the word of Harmon Elliott, president of MAIF (Muleshoe Area Industrial Foundation) who said Wednesday that the organization is now getting ready to "blast the Muleshoe story far and near."

Elliott said that 10 reports of as many committees have been completed, and "now we are ready for the experts to take those reports and start working up our story."

He added: "The 'silent time' is over for MAIF, and it has taken two and a half months for 33 people to compile information. The story has been broken down into 10 categories with chairmen for each category."

An accounting of the 10 committees was called last week by Elliott who said all 10 committee chairmen were present and gave their reports. "In fact," he explained, "most of the committee members of the various committees also were present for this accounting session."

"Now we are ready for the professional people to put the general report together, adding any areas which we may have overlooked."

He explained that the reports will be put into a community profile and professional people will be in town to help on that phase."

He explained that "material will be used to mail out to prospective industry." He said that MAIF already is building

up a prospect list for this material. He concluded: "We believe that here we have a very impressive supply of information to tell industry. The story will indeed be impressive."

Reports were made in these 10 areas: Sites and buildings, City and County government, utilities, community betterment, financing, labor, transportation, water, taxes, and agriculture.

A committee -by-committee report will be carried in future issues of the Journal starting as soon as the material can be condensed into proper newspaper form.

It will reveal such things as these: There are 17 factory or industry sites in the immediate Muleshoe area, water is plentiful and electricity and gas are also ample.

TEMPERATURES

By R. J. Klump
Official U. S. Weatherman

	High	Low	Rain
Sept. 4	85	61	.03
Sept. 5	82	54	
Sept. 6	85	58	
Sept. 7	84	57	
Sunrise Sunset			
Sept. 8	6:26	7:04	
Sept. 9	6:26	7:02	
Sept. 10	6:27	7:01	
Sept. 11	6:28	7:00	



Tape Recorder for Brazil

The Rev. and Mrs. Clyde Cooper came home from South America a few months ago after 39 years as missionaries in Brazil. Here they've visited his mother, Mrs. Mary Cooper and his sister, Mrs. Earl Ladd Sr. Now their vacation is about to end and they will return to Brazil for five years.

Sunday First Methodist Church here presented them with a tape recorder for use in his work. The presentation was made by Mrs. J. A. Nickels while the pastor, the Rev. J. Frank Peery looked on. (Journal Photo)

Nebraska Vows Said



Ann Blackstone
... 4-H County Winner
(Nowlin Photo)

See story on page 8

Vera Jean Odermatt, Columbus, Neb., daughter of Mr. and Mrs. Joseph Odermatt, and First Lt. James Curtiss Browder, United States Air Force, son of Mr. and Mrs. Lowell C. Browder, Bowie, were united in marriage Saturday at 2:30 p.m. in the First Baptist Church in Columbus with Dr. Arthur Slaiken, Lincoln, Neb., and the Rev. Ervin Basler, assisting, from Columbus.

The bride was attired in a floor length, white wedding gown of peau de soie with a straight skirt; two tiers of embroidery at the hemline and traditional long sleeves coming to points over the hands. A fitted bodice, bateau neckline edged in embroidery, with a chapel square train attached at the waistline and large self bow edged in embroidery completed the ensemble. The bride's veil of imported Japanese silk, a gift from the groom, was designed by the bride with two tiers edged in silk braid and held in place with pearl terra. She added a pearl necklace and earrings, a gift from the groom, and carried a white bride's Bible topped with a large white orchid and feathered mum cascades.

She was given in marriage by her father.

Matron of honor was Mrs. L. James Werts, sister of the bride, from Columbus. She wore an emerald green brocade satin gown with scoop neckline and long sleeves. The bell skirt featured a fitted bodice and she carried a cascade of yellow gladiolus.

Mrs. C. James Sutton from Columbus, was bridesmatron. She was dressed identical to the matron of honor. Both attendants wore green veils over satin hatlets.

The double ring ceremony was attended by Harold Browder, Seattle, Wash., brother of the groom, who served as best man.

Groomsman was Dr. Maurice Browder, Bowie, brother of the groom. Ushers were Joe Odermatt, Jr., brother of the bride, from Reliance, S. Dak., and Glenn Robinson, Hastings, Neb., a friend of the groom.

Organist for the ceremony was Charles Hodges, Jr., from Columbus, Neb., and Miss Mary Lou Sandell, was soloist. She sang "Oh Lord, Most Holy", "Oh Perfect Love" and "The Lord's Prayer."

Vows were repeated before pale yellow and green altar bouquets.

A reception followed in the church parlor in which a green lace cloth held green punch and a four tiered wedding cake. A miniature bridal couple under an arch decorated the top. Layers of the cake were divided with white colonial pillars and decorated in yellow and green. Angel candlebra were on either side of the cake. Mrs. Joe Odermatt, Jr., served punch, Mrs. Carl Rector poured coffee and the wedding cake was served by Mrs. August Janssen and Mrs. Orley Miller.

Immediately following the re-

ception the couple departed for a wedding trip to the south eastern states. They will be at home in Charleston, S. C. where the groom is a pilot serving with the Air Force. The bride will continue to work at St. Elizabeths School of Nursing in Lincoln.

The groom is a graduate of Muleshoe High School, ROTC and Texas Tech. The bride is a graduate of Platte Center Nebraska High School and completed two years at Sioux Falls, College at Sioux Falls, S. Dak., and is a graduate of St. Elizabeths School of Nursing in Lincoln, Neb.

Mrs. Young, Honoree At Shower in Bank Room

A wedding shower has given in the community room of the Muleshoe State Bank building Friday from 3 to 5:30 p.m. honoring Mrs. Steve Young, the former Nancy Hutcherson.

In the receiving line were the honoree, Mrs. Young; her grandmother, Mr. C. D. Chitwood and her husband's mother Mrs. J. B. Young Jr. They were presented corsages of kitchen tools.

Diane Brown, Lazbuddie, and Joy Williams, alternated at the guest registrar in which fall flowers centered the table.

Aqua and white, the bride's chosen colors were carried out at the serving table with an off white lace cloth covering

aqua. An arrangement of aqua and white flowers were featured. Punch from a crystal bowl and cookies decorated with aqua, were served by Mrs. Pat Hutton.

The honoree was presented an electric skillet by hostesses Mrs. George Washington, Mrs. Dorothy Green, Mrs. Feris Heathington, Mrs. Ernest McNatt, Mrs. D. T. Tanner, Mrs. Loyd Williams, Mrs. Gerald Allison, Mrs. Bob Coleman, Mrs. Max Bush, Mrs. Dee Brown, Mrs. Claude Watkins and Norma Jones.

The couple were married August 20 in San Antonio.

Club Begins New Year

Mrs. Cecil Cole, president of the Muleshoe Study Club will give her plans for the club year in which discussion will be held. The club will meet for its first meeting in the home of Mrs. S. L. Benefield at 4 p.m. today.

Mrs. Horace Blackburn will present the club's yearbooks also at this meeting.

Meeting Changed

The Progressive Homes Club will meet Thursday at 2:30 p.m. in the home of Mrs. Vera Engeling at 908 W. 7th with Mrs. Art Ryan as hostess.

Cecil Davis Heads Society

Cecil Davis was re-elected as chairman of the Bailey county Historical Society recently when the group met in the community room of the First National Bank building. Elected vice-chairman was W. H. Laney; Mrs. Horace Blackburn was elected secretary-treasurer and Mrs. Larry Hall, reporter.

The society meets the last Monday of each month in the community room of the First National Bank's building at 1:30 p.m. and anyone interested is welcome to attend the meetings.

Final Close Out on all 1966 Cars and Pickups Crow Chevrolet

ART CLASSES WILL BEGIN
Wed. Sept. 14th 9 to 12 a.m.
at Williams Office Supply
Beginners & Advanced Students
CONTACT BLANCHE LENDERSON PH. 272-3038

Meet the **MULESHOE STATE BANK** CUSTOMER of the Week



VAUGHN KEETH

Vaughn Keeth, Farwell, is customer of the week at Muleshoe State Bank. Keeth and his wife, Gloria, have six children. They are Jerry, 15; Gary, 14; Ricky, 12; Randy, 11; Rhonda, 4 and Corky, 6 months. Keeth and his family attend the Farwell First Baptist Church. After banking at Muleshoe State Bank three years Keeth says "The service here is the best."

Muleshoe State Bank is proud to recognize this Customer of the Week.

MULESHOE STATE BANK



VISITS WITH TEACHER-Parents of children who are in the second grade at Richland Hills Elementary School had a chance to visit with their teachers and find out what their children will be taught this school term. A total of 53 first grade mothers attended the P-TA sponsored coffee Monday. Coffees will continue throughout the week with the fourth grade parents Thursday and the fifth grade Friday. (Journal Photo)

SAM, YOUR SERVICE MAN SAYS...

TUNE-UP YOUR CAR FOR WINTER NOW!

Make sure your car is performing at peak form during this winter. Visit us for the expert motor tune-up you need. Latest electronic methods used.

Also Front End Aligning & Wheel Balancing

PLAINS AUTO SERVICE DEPT.

421 Main Muleshoe Ph. 272-4576



Mrs. James Curtiss Browder (Gene Neater Photo)

Mrs. Lenderson Will Paint At Festival

Blanche Lenderson will demonstrate tempera on burlap in the South Plains Art Festival Saturday from 2 to 5 p.m. at the Municipal Garden and Arts Center, 4215 College Ave.

The Annual Fall Art Festival is sponsored by Lubbock Art Association and marks the opening of the fall program of exhibits, programs and classes. Admission is free.

Each artist is urged to bring three original paintings. These will be exhibited throughout the day and entered for competition into new South Plains Circuit shows. J. Bryant Reeves, art instructor at Temple Junior College, will serve as juror and will select 15 paintings for each of the new circuits.

The festival will begin at 10 a.m. with an informal coffee. Paintings and competition will be accepted until 11 a.m. when

judging begins. A covered dish luncheon will be held at noon. Mr. and Mrs. Louis Murfree Jr., co-presidents, will present a preview of the association's plans for the fall months, and announcement of the circuit selections will be made.

An invitational showing of paintings by members of the Snyder Palette Club will be held in the meeting rooms. The Youth Art Exhibits, presenting the work of LAA summer classes, will be shown in the art studio.

Anyone interested in painting is urged to attend the festival and see several area artists demonstrate.

Mrs. Lenderson will begin her art classes in Williams Bros. Office Supply Bldg. Wednesday beginning at 9 a.m.

The Journals would like to have your name and college you plan to attend this fall.

Fat Overweight

Available to you without a doctor's prescription, our product called Galaxon. You must lose ugly fat or your money back. Galaxon is a tablet and easily swallowed. Get rid of excess fat and live longer. Galaxon costs \$3.00 and is sold on this guarantee: if not satisfied for any reason, just return the package to your druggist and get your full money back. No questions asked. Galaxon is sold with this guarantee by:

WESTERN DRUG

New Fall Dresses, Blouses, Tops, Slacks and Lingerie



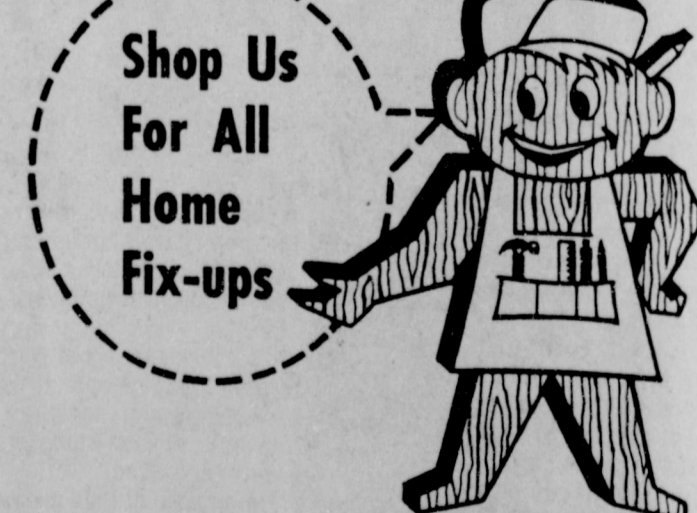
ONE-STOP LUMBER YARD

WATER HEATER
30 Gallon
10 Yr. Glass Lined ONLY \$ **44⁹⁵**

GALVANIZED GARBAGE CANS
While They Last!
ONLY \$ **2⁹⁵**

Mahogany Prefinished
3/16" **PANELING**
4X8 Panel ONLY \$ **4²⁹**

ALUMINUM EXTENSION **LADDER**
WHILE THEY LAST!
ONLY \$ **13⁹⁵**



Shop Us For All Home Fix-ups

Heathington Lumber Co.

814 W. AMERICAN BLV.

PHONE 272-4797



Mrs. Nelson Ray Shipman
...the former Patricia Ann Kemp

Repeat Vows in Paris

Before large baskets of white gladioli and stock with variegated foliage and lighted altar and kneeling pillow of white satin brocade, Patricia Ann Kemp, Paris, and the daughter of Mr. and Mrs. Frank Kemp, Paris, became the bride of Nelson Ray Shipman, Grapevine, son of Mr. and Mrs. Joe Shipman, Muleshoe.

The Rev. Glendell A. Jones, pastor of the First Methodist Church performed the double ring ceremony in the First Methodist Church in Paris.

The bride's father escorted the bride in marriage. She wore a slim full-length saki gown of candlelight. A floral motif complemented the empire bodice which was fashioned with a decollete neckline. Baroque venice lace accented the hemline and elbow-length sleeves. Tiny self-buttons fastened the back of the fitted bodice which was accented in the center back by a small flat bow extending into a chapel length train applied with floral motifs. Her full-length veil of imported silk illusion was held by a crown of peau-de-sole graced with seed pearls. She carried a modified cascade of white roses surrounded by variegated foliage.

Miss Vicki Lynn Kemp, sister of the bride, was maid of honor. She wore an ice blue gown of silk organza over taffeta, which was fashioned with scooped neckline and brief sleeves. A blue velvet ribbon adorned the empire waistline of the full-length a-line skirt. She wore a headpiece of silk-organza centered with a cabbage rose. She added a single strand of pearls, gift from the bride and carried a cascade of tropicana roses surrounded by variegated foliage.

Bridesmaids were Linda Park, Fort Worth; Sharon Perry, Paris; and Penny Alspaugh, Cedar Hill. They were dressed identical to the maid of honor and carried a single long-stemmed tropicana rose. Mona Le Ann Alspaugh, Cedar Hill, was flower girl. She wore a white silk organza over taffeta fashioned similar to the bridesmaids and carried a white basket with tulle and satin, dropping rose petals along the way.

Stacy Lacky, Muleshoe, served as best man. Groomsmen were Clyde Wayne Stinson, Grapevine; Danny Shipman, Muleshoe and brother of the groom, and Joe Horsley, Carrolton.

Ushers were Michael Alspaugh, Cedar Hill; Allan Shipman, Garland; Wayne Volrin, Dallas; and Charles Martin, Grapevine. They and the groomsmen wore single breasted black dinner jackets with matching trousers and black cummerbands. A single tropicana rosebud was attached to the lapels.

The groom was identical to the groomsmen only he wore a single white rosebud in his lapel.

Wedding selections were rendered by Dr. William Logee, vocalist from Paris and Larry Petty, organist from Garland. Previous to the wedding, Dr. Logee sang, "I Believe" with the organ accompanying; while kneeling for prayer, Dr. Logee sang "The Lord's Prayer."

A reception followed the ceremony in the Fellowship Hall of the First Methodist Church. Baskets of flowers adorned the room.

Connie Jo Deal, Dallas, registered the guests from a table covered with white tulle and featured the bride's book and the maid of honor's bouquet. Selections of music were done by Larry Petty.

The bride's table was laid with full-length cloth with flounce and a silver three-branch candelabrum with the bride's bouquet centered in the table. Long white tapers stood on either side.

A four tiered wedding cake decorated with spun sugar roses and topped with two small porcelain blue-birds in a cloud of white tulle from which flowed white satin ribbons tied in love knots, was served by Mrs. Clyde Stinson, Grapevine; and Mrs. Joe Horsley, Carrolton. Serving punch was Mrs. Don Hixon, Dallas; and Carolyn Nelson,

Paris. A blue ice ring surrounded the punch which was served from a crystal punch bowl.

Others in the house party were Mrs. Gerald Perry, Mrs. Roscoe Jones, Mrs. Robert (See Nelson, Page 8)

Berry, Gage Families Visit Texas Homes

Mr. and Mrs. Tom Berry, Mr. and Mrs. Raymond Gage Circleback and Mrs. Beulah Kelton, Needmore, have just returned to Muleshoe from a visit with the IOOF Home for the children at Corsicana and the aged home at Ennis. While at the children's home, they visited the Board of Directors meeting held at the Grand Secretaries Office. The meeting is held the first Thursday of each month.

The group was present for "Pilgrimage Day" Sunday. This is a yearly event where

The Muleshoe Journal

Published each Thursday by the Muleshoe Publishing Co.
302 West Second Street, Muleshoe, Texas

Member of the Associated Press


Entered as second class matter at the Muleshoe Post Office under act of Congress March 3, 1897

SUBSCRIPTION RATES

Immediate Territory-----\$4.00
Out of Territory-----\$4.50
Both Papers in Territory-----\$5.50
Both Papers Outside Territory-----\$6.25

Advertising rate on Application

L. B. HALL-----Publisher
RAMON MARTIN----Editor
PAT JOHNSON-----Woman's Editor



of Texas. Mr. and Mrs. Tom Berry also visited Cecil Perkins, Berry's brother, in the hospital wing of the aged home. He is reported to be improving. The Berrys spent Saturday night with their son and wife in Dallas, Mr. and Mrs. Glen Berry, before returning to Muleshoe Sunday.

MAY WE

Congratulate

HAMILTON CONSTRUCTION

ON THEIR

Open House

Sunday, Sept. 11th At 1714 Ave. H

◆ ◆ ◆

Our Beauti-Pleat Drapes
will be hanging for display.
We invite you to attend.

MRS. JOHN INMAN

Muleshoe, Texas Phone 272-3795

Final
Close Out on all 1966
Cars and Pickups

Crow Chevrolet

Goes to College

Miss Tonnye Victoria Welch daughter of Mr. and Mrs. J. Welch, Route 4, Muleshoe, will leave later this month for Columbus, Mo. where she will be a sophomore at Stephens College. Tonnye will be one of more than 1900 students from all across the United States and a dozen or more foreign countries at the four-year college for women.

Mrs. Benefield, Teacher and Housewife



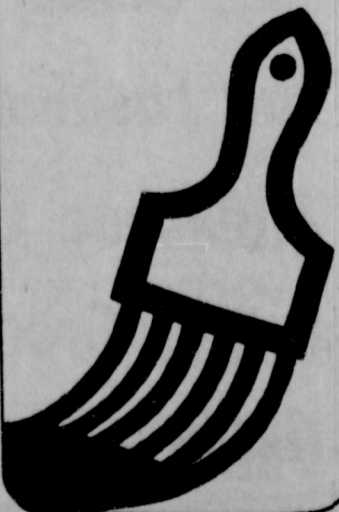
Mrs. S. L. Benefield, 609 W. Ave. D is one of the first grade teachers at Richland Hills Elementary school and also a housewife. Mrs. Benefield and her husband attend the First Methodist Church. Mrs. Benefield is a member of the Muleshoe Study Club, TSTA, P-TA and other teaching organizations.

The following recipe is one Mrs. Benefield chose for her favorite:

- Date Cake
- 1 package dates
- 1 tsp. soda
- 1 tsp. vanilla

METHOD
Over this pour 1 cup boiling water and let cool. Mix 1 cup sugar, 1 tbsp. butter, 1 cup nuts and 1-1/2 cups flour and add to other mixture. Bake in loaf pan in moderate oven until center of cake springs back when touched.

Slipslopslap!
Painting again? Get the right equipment. Look under PAINTS in the YELLOW PAGES. Where your fingers do the walking.



Congratulations
TO
HAMILTON CONSTRUCTION
ON THEIR
Open House

SUNDAY, SEPT. 11. . . AT 1714 AVE. H

We are pleased to have installed the
Carpeting and Appliances and invite you
to inspect our **Furniture on Display.**

JOHNSON- POOL FURNITURE & APPLIANCE

320 Main, Muleshoe

Which one do you want next?



Will it be the lovely, little STARLITE® telephone for the bedroom? Or the smart SPACE-MAKER® phone or Wallphone for

the kitchen or family room? All in decorator colors. Call our Business Office for details.

GENERAL TELEPHONE
A Member of the GTE Family of Companies



You are invited to attend Open House
Sunday, September 11th From 1 to 6 p.m.
At 1714 Ave. H

You must see this attractive dwelling
to appreciate the many features one
wants when buying a new home today

- . 3 Bedrooms
- . Double Garage
- . 2 Baths
- . Fireplace
- . All Electric Kitchen
- . Spacious Closets

PLUMBING AND HEATING INSTALLATION BY:
LAMBERT PLUMBING

HAMILTON CONSTRUCTION

Rt. 2 Box 254

ELBERT HAMILTON

Phone 272-4900

ENTER TODAY! MULESHOE'S ANNUAL FOOTBALL CONTEST

and WIN CASH PRIZES!



WIN WEEKLY PRIZES!
1st. Place \$5. . . . 2nd. Place \$3
GRAND PRIZE \$50
 For Expenses and Two Tickets to the Cotton Bowl at Dallas, Texas. There Will Also Be a Contest & Prizes For The Bowl Games!

RULES OF THE CONTEST:

Muleshoe Publishing Co. Box 449 - Muleshoe, Texas

- . Only one entry per person may be made for any one contest.
- . Weekly contests are open to everyone except employees and families of this newspaper.
- . Entries are to be judged by the Sports Editor and staff of this newspaper.
- . Bring or mail your entries to the Journal office. Mailed entries must be postmarked not later than 5 p.m. Friday.
- . Winners names will be published in this newspaper each Thursday following the close of the weekly contest.
- . Choose the team you think will win.
- . 10 points for 1st. place, 5 points for 2nd place determines the Grand Prize Winner.

THIS CONTEST MADE POSSIBLE BY THE FOLLOWING FIRMS:

**DON'T WAIT--
 ENTER NOW!
 YOU CAN WIN**

LET'S BACK THE MULES

SEPTEMBER 9 AT DIMMITT AT 8 P.M. ➔

OFFICIAL ENTRY FORM ONLY ONE ENTRY PER PERSON

NAME _____ ADDRESS _____
 CITY _____ STATE _____

1. SYRACUSE _____ <input type="checkbox"/>	BAYLOR _____ <input type="checkbox"/>
2. LEVELLAND _____ <input type="checkbox"/>	SEMINOLE _____ <input type="checkbox"/>
3. DENVER CITY _____ <input type="checkbox"/>	BROWNFIELD _____ <input type="checkbox"/>
4. DUMAS _____ <input type="checkbox"/>	PALO DURO _____ <input type="checkbox"/>
5. VERNON _____ <input type="checkbox"/>	TULIA _____ <input type="checkbox"/>
6. SWEETWATER _____ <input type="checkbox"/>	BRECKENRIDGE _____ <input type="checkbox"/>
7. LAZBUDDIE _____ <input type="checkbox"/>	WILSON _____ <input type="checkbox"/>
8. LITTLEFIELD _____ <input type="checkbox"/>	PLAINVIEW _____ <input type="checkbox"/>
9. DENVER CITY _____ <input type="checkbox"/>	SEMINOLE _____ <input type="checkbox"/>

TIE BREAKER

Muleshoe _____ SCORE At Dimmitt _____ SCORE

- | | |
|---------------------------------------|---------------------------------------|
| <i>Pool Insurance</i> | <i>First National Bank</i> |
| <i>Leal's Tortilla</i> | <i>King Grain & Seed Co.</i> |
| <i>Perry's</i> | <i>Muleshoe Motor Co.</i> |
| <i>Ben Franklin</i> | <i>White Cashway</i> |
| <i>Muleshoe State Bank</i> | <i>Piggly Wiggly</i> |
| <i>Richland Hills Texaco</i> | <i>Bovell Motor Supply</i> |
| <i>James B. Glaze Company</i> | <i>W. Q. Casey Ins.</i> |
| <i>Beavers Flowerland</i> | <i>Muleshoe Floral</i> |
| <i>Muleshoe Publishing Co.</i> | <i>Progress Gin</i> |
| <i>Western Drug</i> | <i>E. R. Hart Co.</i> |
| <i>Ladd Pontiac</i> | <i>Paul's Cafe</i> |
| <i>Brock Motor Co.</i> | <i>Texas Sesame</i> |
| <i>Dari-Delite</i> | <i>D & G Grocery</i> |
| <i>The Fashion Shop</i> | <i>West Plains Hospital</i> |
| <i>Muleshoe Co-op Gin</i> | <i>Main Street Beauty Salon</i> |
| <i>L & H Grocery</i> | <i>Union Compress & Warehouse</i> |
| <i>Union Compress & Warehouse</i> | <i>Cobb's</i> |

**DON'T MISS ANY OF THE FUN PRIZES
 SUBSCRIBE TO OUR PAPER: CALL 272-4536**



Muleshoe...

Continued From Page 1)
High School Saturday. The occasion is the sixth annual convention of Area 1 Young Farmers.

Army Private i/c James L. Schilling, son of Mr. and Mrs. Lawrence R. Schilling, Route 1, Friona, is participating in a three-week field training exercise conducted by the 4th Armored Division in Grafenwohr, Germany.

Bailey County folk have been advised that the Texas Water Development board will stage its last public hearing concerning the Texas water plan in Lubbock Friday. The session will start at 9:30 a.m. in the Lubbock Municipal auditorium.

The Walter Harrisons are in Wheeler visiting relatives.

The R.L. Piersons and the Ray Claytons were fishing at Roy, N.M. last weekend.

Glenna Rainey and Diane Lorraine left Muleshoe for Amarillo where they will attend business college.

Mr. and Mrs. James Withrow and daughters enjoyed a vacation at the Blue Haven Lodge in Las Vegas, N.M. the past week.

Muleshoe Softball will meet Thursday night at 8 p.m. at Babe Ruth Park for presentation of awards.

Mrs. Horace Hutton has been named Bailey County women's chairwoman for Waggoner Carr.

Freeman..

(Continued From Page 1)
All tours including the trip over the Research Farm at Halfway will start at 1 p.m. and will conclude at 4:30 p.m. Drawings for attendance prizes will be held preceding the program. The free barbecue served by the Lions Clubs of the area will be at 6 p.m. The visitors are guests of the Hale County State Bank, W.R. Grace and Company, and the Plainview Coop Compress.

for 12 months on a 24-hour basis at a cost of \$12 or for nine months while at school for \$5. Deadline for procuring this insurance is 10 a.m. Sept. 16, the superintendent explained.

Another item in regard to the opening of the new school year was discussed by the superintendent this week. He said student accidents insurance rules have been established for the current school year, explaining that applications for such insurance will be sent home today with each student enrolled in the schools as of Thursday. He explained that parents will have their choice of two insurance plans:
The children may be insured

Mrs. Anna Hill is in Oklahoma City visiting her sisters, Mrs. Nara Gardner, Mrs. Jim Edwards and niece, Sue Asher, Dallas who is in an Oklahoma City hospital.

The Murray Lemons and the Truman Lindseys are in Dallas attending market.

Mr. and Mrs. Roger Albertson left Sunday to attend gift market in Dallas. The Albertsons returned home Wednesday.

Mr. and Mrs. W.F. Dunn, Tulsa, Okla., were recent guests in the Ray Martin home. Dunn is a cousin of Mrs. Martin.

Go-Go..

(Continued From Page 1)
sale, as the name suggests, with all merchants in town taking part, he hopes.

Then a latter part of the same month, the annual Halloween promotion will be staged. He said plans for that event already are in the making.

Bass also told of plans to move a giant Christmas tree onto the Mule memorial plot for the Christmas season. He said the tree will be at least 30 feet tall and will be elaborately decorated. "We hope to have the big tree on display by the latter part of November, where it will be visible from both highways.

Plans already are well underway for buying the tree in New Mexico and moving it to Muleshoe. It will be lighted about the same time Christmas lights downtown are usually turned on, he concluded.

Bass said Johnny Shelton is in charge of the big Christmas tree project.

He said that the "Family Jamborees," so successful last winter and spring, will be resumed soon. The events were staged last season in the senior high auditorium, variety programs for the entire family, and were held on a Saturday night each month.

"This project was highly successful," he told the board members, "and we hope to get it under way again right away." Owen Burrows is chairman of that phase of the Go-Go program.

Bass urged all members of his committee to attend next Tuesday morning's meeting.

A certificate of merit was presented by Dr. Lewis to Bass and his committee for their work.

Everyday **LOW FOOD PRICES!**

...for the Greatest in Savings

Sliced BACON

Decker's Quality Thin Sliced



1 Lb. **79¢**
Pkg.

Swift's Premium Proten Beef **RANCH STEAKS Lb. 59¢**

- SWIFT'S PREMIUM PROTEN BEEF **ARM ROAST Lb. 59¢**
- SWIFT'S PREMIUM PROTEN BEEF **CLUB STEAKS Lb. 79¢**
- SWIFT'S PREMIUM PROTEN BEEF **SHORT RIBS 3 Lb. \$1**
- SWIFT'S PREMIUM PROTEN BEEF **GROUND BEEF 3 Lb. \$1**
- KRAFT AMERICAN SLICED CHEESE 12 oz. Pkg. 59¢**

Kimbell's

COFFEE

Drip or Reg.

1 LB. **69¢**
TIN

Kimbell's **PORK & BEANS**

NO 300 CAN **5¢**

GUNN BROS. STAMPS

Double Every **WEDNESDAY**

HI-C **ORANGE DRINK**

46 OZ. CAN **25¢**

WAPCO CHOPPED

TURNIP GREENS

No. 303 Can **9¢**

- FROZEN FOOD BUY TIME**
- WELCH'S 12 oz. CAN **GRAPE JUICE 2 FOR 79¢**
- BANQUET FAMILY SIZE **FRUIT PIES 3 For \$1**
- Blue Morrow 18 oz. Pkg. **BEEF STEAKS 79¢**
- KEITHS 2 LB. Pkg. **FRIED POTATOES 35¢**

GRAPES Thompson White Seedless **LB. 15¢**

APPLES NEW MEXICO RED DELICIOUS **lb. 19¢**

PORTALES GOLDEN NO. 1 **SWEET POTATOES Lb. 19¢**

AVOCADOS 9¢

California Large Size EACH

- Oreo Creme **SANDWICH COOKIES 1 lb. Pkg. 45¢**
- Friskies (Chicken Flavor) No. 1 Tall Can **DOG FOOD 3 For 29¢**
- 96 oz. Bottle **CRISCO OIL \$1.89**
- Pillsbury **FLOUR 5 Lb. Bag 59¢**
- Northern **BATH ROOM TISSUE 4 Roll Pkg. 35¢**
- Kaiser 25 Ft. Roll **ALUMINUM FOIL 29¢**
- Giant Size Box With Borax **FAB 69¢**
- White King 7 lb. Box **WATER SOFTENER \$1.09**
- Supreme 2 lb. Box **CRACKERS 59¢**
- Wagner Asst. Flavors Qt. Bottle **FRUIT DRINK 3 For 89¢**
- Chefs Boy-AR-Dee No. 300 Can **RAVIOLI 29¢**
- (6s King Size Bottles) **DR. PEPPER 2 For 79¢**
- Kimbell's Fancy Crushed No. 300 Can **PINEAPPLE 19¢**
- Zestee Pure Strawberry 18 oz. Glass Tumbler **PRESERVES 39¢**
- Del Monte Tomato 20 oz. Family Size **CATSUP 3 For 89¢**
- Reg. 1 1/2 lb. Loaf Save 12¢ **BREAD 3 For 87¢**

Enrollment..

(Continued From Page 1)

tion, 10. Total 530.
Richland Hills: 5th grade, 94; 4th, 91; 3rd, 89; 2nd, 85; 1st, 115. 474 total. Grand total, 2073.

Meantime, school attendance is going to be a "must." The school chief announced that a truancy officer has been selected. He said that "all youngsters between the ages of 6 and 17 years of age, as of Sept. 1, 1966, are required by state law to attend school regularly. A minimum of 165 days of the school year is required."

Dillman said the officer "has been instructed to give one warning to the parent and student; then if they do not enroll in school and attend regularly, the parent will be filed on in county court."

He said school officials are encouraging all citizens to report school-age children who are not attending school. He said such reports should be made at 272-3389 or at any principals office.

Final
Close Out on all 1966
Cars and Pickups
Crow Chevrolet

CORN AND SOYBEANS AND MILO

CONTACT US FOR **TOP MARKET PRICES AT HARVEST**

Grain Dept. Ph. Area Code 806 272 4585

Seed Dept. Ph. 272 4586

Ray Griffiths & Sons
Muleshoe, Texas

Listen to MULETRAIN over KMUL 10:15 a.m. sponsored by CASHWAY

White's **CASHWAY**

Television Schedule For Muleshoe Area

KGNC - TV (4)	KVII - TV (7)	KFDA - TV (10)	KCBD - TV (11)	KLBK - TV (15)	
★ ★ ★ Amarillo Muleshoe Cable 4	Amarillo Muleshoe Cable 5	Amarillo Muleshoe Cable 6	Lubbock Muleshoe Cable 2	Lubbock Muleshoe Cable 3	
KING BROS. GRAIN & SEED CO. Complete ELEVATOR SERVICE ★ ★ ★ ★ AND SEED PROCESSING FOR THE MULESHOE AREA RE-PRINTS FROM ANY PHOTO MADE BY THE JOURNALS IN PAST ISSUES 8 X 10 \$2 Remember Your College Student With A Subscription To The Muleshoe & Bailey Co. Journal 9 MONTHS SPECIAL COLLEGE SUBSCRIPTION \$5.00	Daytime Viewing 7:00 - Today 7:25 - News 7:30 - Today 8:00 - Today 9:00 - Eye Guess 9:25 - News 9:30 - Concentration 10:00 - M. Star 10:30 - P. Bay 11:00 - Jeopardy 11:30 - P. Office 11:55 - NBC News 12:00 - News 12:00 - Weather 12:15 - R. Brent 12:30 - Make-Deal 12:55 - NBC News 1:00 - Our lives 1:30 - The Doctors 2:00 - Another World 2:30 - Don't Say 3:00 - Match Game 3:25 - NBC News 3:30 - Sheriff Bill 4:30 - Bronco 5:30 - Hunt-Brink. 6:00 - News THURS EVENING 6:15 - Weather 6:25 - Sports 6:30 Tarzan 7:30 Star Trek 8:30 Branded 9:00 - Dean Martin 9:00 - News 10:15 - Weather 10:25 - Sports 10:30 - Tonight 10:30 - Tonight Friday evening 5:30 AFL-NY-Miami 8:00 Movie 10:00 - News 10:15 - Weather 10:25 - Sports 10:30 - Tonight 12:00 - Sign Off Saturday 7:00 - Roy Rog. 8:00 Super 6 8:30 - Atom Ant 9:00 - Squirrel 9:30 Space Kid 10:00 Cool McCool 10:30 Jetsons 11:00 Top Cat 11:30 - Cotton John 12:00 - Baseball 3:00 Golf 4:30 Hollywood Stars 5:00 Golden Jubilee 5:30 - Scherr-mcN. 6:00 - News 6:15 - Weather 6:30 Flipper 8:00 Preview 9:00 American Pag. 10:00 - News 10:15 - Weather 10:25 - Sports 10:30 - Movie 12:00 - Sign Off SUNDAY 7:30 - Dixie 8:00 Cotton John 8:30 Forecast 8:45 - Sheriff Bill 9:30 - Roy Rogers 10:30 - Dixie (Cont.) 11:00 - Church 12:00 Football 3:00 Golf 4:30 Hollywood Stars 5:00 Laramie 6:00 - News 6:15 - Weather 6:25 - Sports 6:30 - Disney 7:30 Hey, Landlord 8:00 - Bonanza 9:00 Andy Williams 10:00 - News 10:15 - Weather 10:25 - Sports 10:30 - Tonight Show 12:00 - Sign Off	Daytime Viewing 6:15 - Agriculture 6:45 - Weather 6:50 - News 7:00 - Mod. Edu. 7:30 - Exercise 8:00 - Movie 10:00 - S. Market 10:30 - Dating Game 11:00 - Donna Reed 11:30 - Father 12:00 - Ben Casey 1:00 - For Women 1:00 - Newly Wed 1:30 - A Time 1:55 - Women's News 2:00 - Gen. Hosp. 2:30 - Nurses 3:00 - N. Shadows 3:30 - Action Is 4:00 - Trails West 4:30 - H. Patrol 5:00 - P. Jennings 5:15 - News 5:25 - Weather 5:30 - Wells Fargo 6:00 - Rifleman THURS EVENING 6:30 - Batman 7:00 F. Troop 7:30 Wells Fargo 8:30 That Girl 9:00 The Hawk 10:00 - News 10:10 - Weather 10:15 - Agri-Business 10:30 - Movie FRIDAY EVENING 6:30 Green Hornet 7:00 Time Tunnel 8:00 Milton Berle 9:00 12 o'clock High 10:00 - News 10:10 - Weather 10:15 - Agri-Business 10:30 - Movie SATURDAY 7:30 - Mod. Edu. 8:00 - Silver Wings 8:30 - Baptist Church 9:00 King Kong 9:30 - Beatles 10:00 - Casper 10:30 - Mag. Gor. 11:00 - Bugs Bunny 11:30 - Milton 12:00 - Hoppity 12:30 Sports 2:00 Football - NCAA 5:30 NFL 6:00 Grimes 6:30 Shane 9:30 Movie 10:30 - Movie SUNDAY 7:30 - Mod. Edu. 8:00 - Oral Roberts 8:30 - Christ For 9:00 - Beany 9:30 - Peter Pot. 10:00 - Bullwinkle 10:30 - Discovery 11:00 - Church 12:00 - W. T. Adven. 12:30 - Issues-Ans. 1:00 - Western 2:00 - P.G.A. Golf 4:00 - Honest Jess 4:15 - Matinee 6:00 - Voyage to 7:00 - FBI 8:00 - Movie 10:15 - News 10:30 - Movie	Daytime Viewing 6:25 0 Sign On 6:27 - Meditation 6:30 - Am. College 7:00 - Farm News 7:30 - Tri Report 8:00 - Capt. Kang. 9:00 - I Love Lucy 9:30 - McCoys 10:00 - Andy 10:30 - Dick Van Dyke 11:00 - Search T. 11:45 - Guiding Lgt. 12:00 - News 12:10 - Weather 12:20 - Farm-Ranch 12:30 - The World T. 1:00 - Password 1:30 - Art Linletter 2:00 - To Tell Truth 2:25 - CBS News 2:30 - Edge of Night 3:00 - Secret Storm 4:00 - Sc. Fiction 4:30 - Mr. Mim. 5:00 - Cartoons 5:30 - CBS News 6:00 - News 6:20 - Weather THURS EVENING 6:00 Jericho 6:30 - Munsters 7:00 - Gilligans 7:30 - Three Sons 8:00 - Movie 10:00 - News 10:15 - Weather 10:30 - Movie 10:55 - News 11:00 - Movie FRIDAY EVENING 6:30 - Wild West 7:00 - Hog. Heroes 8:00 Movie 10:00 - News 10:15 - Weather 10:30 - TBA 10:55 - News 11:00 - Movie SATURDAY 6:45 - Sign On 7:00 - Cartoon 7:30 - Lone Ranger 8:00 Super 6 8:30 - Tenn. Tux. 9:00 - M. Mouse 9:30 - Lassie 10:00 - Tom-Jerry 10:30 - Quick Draw 11:00 - Sky King 11:30 - Linus 12:00 - Flicka 12:30 - News 12:45 - Movie 5:00 - Wilburn B. 5:30 - P. Wagner 6:00 - News 6:20 - Weather 6:30 Jackie Gleason 7:30 Pistol & Petticoat 8:00 Mission Impos. 9:00 Gunsmoke 10:00 - News 10:15 - Weather 10:25 - Sports 10:30 - Movie 10:55 - News 11:00 - Movie SUNDAY 8:00 - Pattern 8:30 - Church 9:30 - Gospel 10:30 - Religious 11:00 - Film 1:00 - Sc. Fic. 1:30 - Sports 3:00 - Detectives 3:30 - Westerners 4:00 - Mr. Ed 4:30 - Amateur 5:00 - 20th Cen. 5:30 - News 5:50 - Weather 6:00 - Carnival 6:30 - Martian 7:00 - Ed Sullivan 8:00 - P. Mason 9:00 - Can. Cam. 9:30 - W. My Line 10:00 - News 10:15 - Weather 10:25 - Sports 10:30 - Movie 10:55 - News 11:00 - Movie	Daytime Viewing 7:00 - Headlines 7:05 - Farm Report 7:25 - Weather 7:30 - Today 8:25 - News 8:30 - Today 9:00 - Eye Guess 9:25 - News 9:30 - Concentration 10:00 - M. Star 10:30 - P. Bay 11:00 - Jeopardy 11:30 - P. Office 11:55 - News 12:00 - Noon Rptl 12:15 - Com. Close 12:30 - Make Deal 1:00 - Our Lives 1:30 - Doctors 2:00 - Another World 2:30 - Don't Say 3:00 - Match G. 3:25 - Aft. Rpt 3:30 - S. Sweep 4:00 - Father 4:30 - Beaver 5:00 - Cartoons 5:30 - Hunt-Brink. 6:00 - News THURS EVENING 6:30 - Tarzan 7:30 - Destination 8:30 - Beaver 9:00 - Dean Martin 10:00 News 10:30 Tonight Show FRIDAY EVENING 5:30 - AFL 6:30 - Waite Paper 7:00 - Buck Owens 7:30 - Palladium 8:00 News 8:30 Sports World 9:00 - UNCLE SATURDAY 7:30 - R. Rog. 8:30 - Atom Ant 9:00 - Squirrel 9:30 - Kiddettes 10:00 - Cool McCool 10:30 - Top Cat 11:00 - H. Hooper 12:00 - Baseball 3:00 - Golf 4:30 - Lone Ranger 5:00 - Texas Youth 5:30 - Scherer-McN. 6:00 - News 6:30 - Flipper 7:00 - Jeanie 7:30 - Get Smart 8:00 - Class '67 9:00 - Miss America 11:00 - News 11:30 - Movie SUNDAY 7:25 - Sign On 7:30 - Mag. Gor. 8:00 - Peter Pot. 8:30 - Beany 9:00 - Herald of 9:30 - Living 10:00 - Discovery 10:30 - Drama 10:45 - Church 12:00 AFL 4:30 Meet Press 5:30 - Red Raider 6:00 - News 6:30 - Disney 7:30 Hey, Landlord 8:00 - Bonanza 9:00 Andy Williams 10:00 - News 10:15 - Weather 10:25 - Sports 10:30 - Movie	Daytime Viewing 5:55 - Sign On 6:00 - Sun. Sem. 6:30 - Jimmy Dean 7:30 - Today 7:05 - News 8:30 - Today 8:00 - Eye Guess 9:25 - News 9:30 - Concentration 10:00 - M. Star 10:30 - P. Bay 11:00 - Jeopardy 11:30 - P. Office 11:55 - News 12:00 - Search 12:00 - WTTN News 12:12 - Farm Ranch 12:25 - Weather 12:30 - World Turns 1:00 - Password 1:30 - Houseparty 2:00 - Gen. Hos. 2:30 - Edge Night 3:00 - Sec. Storm 3:30 - Dating G. 4:00 - Tele Bingo 4:30 - Col. Car. 5:00 - Rifleman 5:30 - News THURS EVENING 6:00 - News 6:10 - Weather 6:20 - News 6:30 - Eternity 7:00 - Gilligan 7:30 - Three Sons 8:00 - Movie 10:00 - News-Wea. 10:30 - Theatre 12:00 - Sign Off FRIDAY EVENING 6:00 - News 6:10 - Weather 6:20 - News 6:30 - Eternity 7:00 - Bewitched 7:30 - Hog. Heroes 8:00 - Gomer Pyle 8:30 - TBA 9:00 - NFL 11:45 - News - Wea. 12:15 - Movie SATURDAY 5:55 - Sign On 6:00 - Sun. Sem. 6:30 - S. Preston 7:00 - Bugs 7:30 - Porky 8:00 - Heckle-Jeckle 8:30 - Milton 9:00 - M. Mouse 9:30 - Beatles 10:00 - Tom-Jerry 10:30 - Casper 11:00 - Sky King 11:30 - Lassie 12:00 - Flicka 12:30 - Bandstand 1:30 - Wrestling 2:30 - Golf 4:30 - Bobby Lord 5:00 - Wilburn Bros. 5:30 - Pickin Time 6:00 - P. Wag. 6:30 - J. James 7:00 - Shenandoah 7:30 - Wild West 8:30 - Rifleman 9:00 - Gunsmoke 10:00 - News-Wea. 10:20 - Movie 12:00 - Late Show 1:30 - Sign Off SUNDAY 6:55 Sign On 7:00 - Bullwinkle 7:30 - Looney Tunes 8:00 - Linus 8:30 - Movie 10:15 - Spanish Music 10:45 - Church 11:45 - Inquiry 12:15 - Face Nation 12:45 - News 1:00 - Peter Gunn 1:30 - World Sports 4:00 TBA 4:30 - Amateur 5:30 Munsters 6:00 - Lassie 6:30 - F Troop 7:00 - FBI 8:00 - P. Mason 9:00 - Preview 9:30 - Smothers 10:00 - News 10:20 - Movie 1:30 - Sign Off

Opener...
(Continued From Page 1)
by whistle time. "We're still looking for A-team prospects," he said. "We'd like to have more than that, but these boys will have to prove themselves before they get on the squad."

"Billie Glidewell hasn't played before, and he's doing a real good job for us," Smith said. Glidewell is a 184-pound senior end. "Our twins, Donald and Ronald Johnson, (junior guards) are both doing good jobs, too. Ronnie Hutton (junior halfback) is up from the B Squad and is doing well. Tommy Stafford (senior halfback) has been a good worker both on offense and defense, and Joe Bob Sanders, (senior fullback) is doing a good job of running for us." The Bobcats will get another chance to put their lessons to practice tonight (Thursday) when they travel to Bovina of District 1-A for a scrimmage session.

Higginbotham Bartlett Building Needs



Lumber
Paint
Wallpaper

Hardware
Houseware
Gifts

Higginbotham Bartlett MULESHOE



Abel Cable
For Year-Long Enjoyment

INSTALL NOW Three Plans for Hook-Up MULESHOE ANTENNA CO. Call Now Phone 272-3310

KBFM FM Stereo Radio, Lubbock 90 Meg
KSEL FM Radio, Lubbock 89 Meg

ALSUP CLEANERS

Offer These FINE SERVICES

1. Drive-in window service for your convenience in cold weather.
2. Re-sizing of cottons to finer texture for that like-new look.
3. Alterations of all kinds of men's, women's and children's clothing.
4. A personal touch for your clothing by people who care how you look.

THAT'S ALSUP CLEANERS

Phone 272-3076

A SAVINGS INSTITUTION DEDICATED TO THRIFT AND HOME OWNERSHIP



First Federal Savings & Loan Association of Clovis
HOME OFFICE 801 Pile St. Clovis, N. Mex.
BRANCH OFFICE 2nd. & Abilene Portales, N. Mex.

Current Dividend 5%
PAID OR COMPOUNDED QUARTERLY

THRIFT AND HOME OWNERSHIP SAFEGUARDS TO AMERICAN LIBERTY



Low Prices on Our High Quality, High Performance Nylon Tire

THE GOODYEAR THUNDERBOLT

- Built with extra-mileage Tufsyn rubber
- With extra-strong 3-T nylon cord
- Built for extra-traction rain or shine
- The high-performance Goodyear tire tested for 500 miles at over 120 M.P.H. by A. J. Foyt, one of America's top racing drivers.
- The Thunderbolt is not a racing tire, but a premium quality tire for extra safety at all highway speeds... all cars.

Size Black Tubeless	Low Price*	Federal Excise Tax
6.50 x 13	\$ 18.95	\$1.83
7.00 x 13	\$20.63	\$1.90
7.35/7.75 x 14	\$22.73	\$2.20
8.25 x 14	\$24.90	\$2.36
8.55 x 14	\$27.93	\$2.57
7.35/7.75 x 15	\$22.73	\$2.21
8.15/8.45 x 15	\$27.33	\$2.55

*All Prices Plus Tax - No Trade Needed
Whitewalls also available at low prices

GOODYEAR NATION-WIDE "NO LIMIT" GUARANTEE - No limit on months - No limit on miles - No limit as to roads - No limit as to speed - For the entire life of the tread - All New Goodyear Auto Tires are guaranteed against defects in workmanship and materials and normal road hazards, except repairable punctures - Auto tires used on trucks are excluded from the road hazard portion of this guarantee - If a Goodyear tire fails under this guarantee, any of more than 80,000 Goodyear dealers in the United States and Canada will make allowance on a new tire based on original tread depth remaining and Goodyear's printed "Exchange Price" current at the time of adjustment, not on the higher "No Trade-In Price".

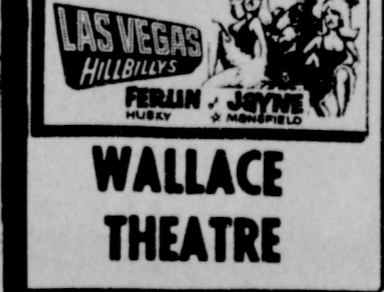
EASY TERMS FREE MOUNTING "NO LIMIT" GUARANTEE

GOODYEAR Johnson-Pool Tire Co.

SEPTEMBER 9-10



SEPTEMBER 11-12



WALLACE THEATRE

Call on Your Walgreen Agency For All Your Needs
PRESCRIPTIONS VETERINARY COSMETICS DRUGS
WESTERN DRUG Phone 272-3106

TRADE CLASSIFIED SELL BUY ADS LEASE

WANT ADS - PH. 272-4536
 1 time per word - 4¢ 3 times per word - 10¢
 2 times per word - 7¢ 4 times per word - 13¢
 After 1st issue, 3¢ per word each additional time.
 Minimum charge 50¢
 Card of Thanks \$1.00

DEADLINE FOR CLASSIFIED ADVERTISING PAGE:
 For placing or cancelling ads is Monday, 4 p. m. for
 Thursdays paper and Thursday, 4 p. m. for Sunday's
 Too late to classify is Tuesday, 4 p. m. for Thursday's
 and 4 p. m. Friday for Sunday's issue. Double rate for
 blind ads.

 Check your ad and report errors immediately. The
 Journal reserves the right to classify, revise, or re-
 ject any classified ad, and is not responsible for er-
 rors after the ad has run once.

CLASSIFIED DISPLAY
 85¢ per column inch
 90¢ per column inch
 for reverses.

3 bedroom, den, 2 baths,
 double garage, fireplace, built-
 ins, carpet, fence, central heat
 & air, Richland Hills Addition.
 Possession June 1, \$1000 down.
 Call L. H. Alex Adams, Ph.
 272-3496 or 272-3335. Apt. for
 rent.
 8-19t-tfc

FOR RENT OR LEASE
 30 x 40' Building
 Formerly Wards Store
 Will be remodel
 Contact Bill Dimm, St. Clair
 Phone 272-1630

FOR SALE or Trade - 3 bed-
 room, brick, complete, Richland
 Hills. Owner Ph. 272-4842.
 8-30s-tfc

FOR SALE: New 3 bedroom
 brick house, den with fireplace,
 formal dining room, built-in
 kitchen, 1 3/4 bath, double gar-
 age, on corner lot across from
 Richland Hills School, 1900
 Sq. ft. living area. Fully car-
 peted. Call Cecil Harvey, 272-
 4085.
 8-34t-2tp

FOR SALE: 3 bedroom, 1 3/4
 bath, carpet, central heating
 and air, built-ins, utility, roomy
 garage, (Like new). This is a
 real buy, \$1000 can handle.
 Good loan available, borders
 Richland Hills School, 1803 W.
 Ave. G. Call Wayland Ethridge
 Ph. 272-3133
 8-tfc

450 acres due west of Mule-
 shoe city limits, 3-8" wells,
 house, 150 alfalfa hay, 1/2 mile
 of pavement allotments, \$605
 per acre, 10% down, 14 years
 5 3/4% ideal future develop-
 ment, 1/2 mineral, Dial 272-
 3515
 8-34s-8tc

FOR SALE OR LEASE: Tile
 building 30' x 48' on large lot.
 Call 272-3208.
 8-35t-4tp

FOR SALE: 3 bedroom, 2
 bath, kitchen and den, combi-
 nations, built in range and
 oven carpeted built in range
 oven carpeted 2 car garage.
 Small equity. Call W.R. Byers
 3967.
 8-31s-tfc

FOR SALE: 3 bedroom, 2
 baths, living room, and den,
 builtins in kitchen, 2 car garage
 on pavement. Small down pay-
 ment. Call D.L. Morrison Jr.
 4886.
 8-31s-tfc

9. AUTOS FOR SALE
 For Sale: Farm Truck, 1959
 GMC, Power lift, excellent con-
 dition. 7 1/2 N-2 1/2 West
 Phone 965-2351.
 9-36t-2tp

10. FARM EQUIPMENT
 Four - Automatic 16' cattle
 feeders, \$325.
 15 - rolls barb wire, \$8 each.
 10 - 30' poles, \$70.
 17 - 18' treated poles, \$60.
 37 corner post, \$90.
 7 - 8' treated post, \$12.
 700 - 4x6 top post, 60¢ each.
 Dial 272-3515
 10-35t-tfc

12. HOUSEHOLD GOODS
 TO PARTY with good credit,
 repossessed 1966 model Singer
 sewing machine in optional five
 drawer desk. Automatic zig-
 zagger, blind hem, embroiders,
 buttonholes, etc., 6 payments
 at \$5.42, will discount for cash
 Write Credit Manager, 1114
 19th Street, Lubbock, Texas.
 12-31s-tfc

15. MISCELLANEOUS
 For Sale: 1 good used Wards
 Signature Washer - \$49.95.
 Guaranteed. Poynor's White
 Auto. 272-3511.
 12-36t-2tc

NEED YOUR FEED CUT?
 Custom combining. Contact
 Weldon Slayton, 965-2140, 6
 miles north of Muleshoe.
 15-36s-tfc

LOST bright, carpet colors,
 restore them with Blue Lustre.
 Rent electric shampooer \$1.
 Richinbotham - Bartlett
 15-36t-ltc

All-Schools' Grid Schedule

DATE	VARSITY	B TEAM	FRESHMEN	7 & 8th GRADE
Sept. 9	Dimmitt 8 T			
Sept. 10			Red Pups 10 T	
Sept. 13				Olton 5:30 H
Sept. 16	Littlefield 8 H			
Sept. 16		Hart 8 T		
Sept. 20			Hereford 5:30 H	Hereford 5:30 H
Sept. 22				
Sept. 23	Olton 8 T			
Sept. 27		Tulia T	Tulia 5:30 T	Hereford 5:30 H
Sept. 29				
Sept. 30	Morton H			Hereford T
Oct. 4		Hereford T	Hereford 5:30 T	Hereford T
Oct. 6				Coronado H
Oct. 7	Denver City 7:30 T			
Oct. 11				
Oct. 13		Olton 7:30 T	Blue Pups 5 H	Hereford 5:30 T
Oct. 18				
Oct. 20		Dimmitt H	Dimmitt 5 H	
Oct. 21	Dumas 7:30 H			
Oct. 25				Morton T
Oct. 27				
Oct. 28	Tulia H			
Nov. 1				Friona H
Nov. 3		Hereford H	Hereford 5:30 H	
Nov. 4	Hereford 7:30 H			
Nov. 8				Inner Squad
Nov. 10		Canyon 7 H	Morton 5:30 H	
Nov. 11	Canyon 7:30 H			
Nov. 19	Perryton 2 H			

1. PERSONALS

AVON, Phone 3510.
 1-46t-tfc

FOR RENT. 15 ft. camper.
 By day or week. Call 272-3163.
 1-35s-tfc

KIDDY KORNER NURSERY
 Licensed, excellent care. Mrs.
 Homer Long, 923 South 1st,
 272-3208.
 1-35t-4tp

Openings available at Young
 Mother Hubbard Nursery
 School. Call 272-4834
 1-35t-tfc

I will not be responsible for
 any debts not made by myself.
 Carl Burkhardt
 1-36t-3tp

Rex Air Sales & Service.
 Write Box 232, Texico, N.M.
 1-36t-tfc

LOOK !!
 Someone in this area needed
 to assume remainder of very
 small payments on fine
 SPINET PIANO
 Nothing down - extended list
 pmt. Write immediately to:
 "Credit Mgr."
 1841 E. Indian School Rd.
 Phoenix, Arizona
 1-36t-ltp

Acid Indigestion? Painful
 Gas? Get new PHS tablets
 Only 98¢. Damron Drugs
 1-36t-4tp

If you need an Auctioneer,
 I can't think of a better one.
 Over 20 years of experience.
 Emette Cross, "The Cowboy
 Auctioneer."
 -34t-tfc

FOR RENT: 2 Business
 Buildings.
 1-25x140'
 1-15x140'
 Between theaters. Down town
 Muleshoe. Contact Fair Store,
 across street.
 1-32s-tfc

3. HELP WANTED
 Beautician needed. Call 272-
 3448.
 3-16t-tfc

Day and night car hop wanted.
 Could use school girl part time
 at night. Bill's Drive In, Clovis
 Road, Muleshoe, Texas.
 3-34t-tfc

CASH IN ON the big Fall
 and Christmas Selling Season.
 Represent Avon in your neigh-
 borhood. Openings in and near
 Muleshoe. Write Dist. Sales
 Mgr. Box 1694, Plainview, Tex.
 Call CA 3-3183.
 3-36s-3tc

4. HOUSES FOR RENT
FOR RENT: 5 room house
 close to school 416 West 4th.
 4-34s-tfc

FOR RENT: 2 bedroom
 house, 3 bedroom house, Phone
 272-3779, Mrs. Goucher.
 4-35t-tfc

FOR RENT: 2 bedroom house
 newly decorated. Call 272-3038
 or see Mrs. Jack Lenderson at
 1818 West Ave. D.
 4-26s-tfc

FOR RENT: 2 bedroom house
 at 608 East 4th. Call 946-2410.
 4-26s-tfc

★ TRI-STATE ★
FAIR
 ★ IN AMARILLO, TEXAS ★
 Featuring the "Brenda Lee Show"

THE LARGEST ARRAY OF
 STARS EVER TO APPEAR
 AT THE FAIR:

- BRENDA LEE
- THE CASUALS
- VIC DANA
- JIMMY NELSON
- DIANE SHELTON
- RICHARD HAYMAN
- KOBEL SISTERS

★ AMERICA'S NO. 1
 GIRL SINGER
SEPT. 19 thru 24
 6 BIG DAYS & NIGHTS
 8 Performances - Wonder-
 ful Dazzling Entertainment
 for all the family!
 Write for advance tickets now!
 USE MAIL ORDER BELOW

Mail to BRENDA LEE SHOW - Box 1087 - Amarillo, Texas
 ENCLOSED IS (check or money order) WITH
 STAMPED SELF-ADDRESSED ENVELOPE TOTALING \$
 For _____ tickets at \$
 Date of Performance _____ Time of Performance _____
 Name _____
 Street or Box No. _____
 City _____ State _____

SHOW TIMES - Sept. 19 thru 24
 • MONDAY, SEPT. 19 - 2 & 8 PM
 • TUESDAY, SEPT. 20 - 8 PM
 • WEDNESDAY, SEPT. 21 - 8 PM
 • THURSDAY, SEPT. 22 - 8 PM
 • FRIDAY, SEPT. 23 - 8 PM
 • SATURDAY, SEPT. 24 - 2 & 8 PM

We reserve the right to substitute
 show personnel

**Pampa Man Leads
 Methodist Revival**

By Mrs. John Blackman

BULA - A revival will begin
 at the Bula Methodist Church
 Monday, Sept. 5, and will close
 Sunday Sept. 11. Dr. R.L.
 Kirk of Pampa will do the
 preaching, and Jim Claunch will
 lead the singing.

Services will be held twice
 daily 7:30 p.m. and 10 a.m.
 The public is invited to attend
 these services.

An assembly of school pa-
 trons, teachers, and pupils was
 held in the school auditorium
 Monday morning from 8:20 until
 9:00.

Rev. Leo Buscher, pastor of
 the Bula Baptist Church gave
 the invocation, followed by sing-
 ing led by Terry Blake, Super-
 (See Bula, Page 8)

16. LIVESTOCK
FOR SALE: 2-3 year old
 registered Hereford bulls.
 Phone 965-2988
 16-36s-3tc

17. SEED AND FEED
FOR SALE: Balboa Rye Seed
 \$4.50 cwt. and TASCOSA wheat
 seed, \$3.75 cwt. 9 miles north
 1-1/2 west Muleshoe Ph 965-
 2372, Clarence R. Mason.
 17-34t-tfc

LEGAL NOTICE
 Notice is hereby given that
 a public hearing on the pro-
 posed County Budget for the
 year 1967 will be held Monday
 September 12, 1966, at the reg-
 ular meeting place of the Com-
 missioners' Court in the Court-
 house in Muleshoe.

The time of the hearing is to
 be from 9:00 o'clock A.M.
 until 5:00 o'clock P.M. Any
 or all interested citizens are
 invited to attend.

DATED this 23rd day of
 August, 1966,
 Glen Williams, County Judge,
 Bailey County, Texas.
 36s-2tc

**You Are Invited
 To The
 10th ANNUAL FIELD DAY
 High Plains Research Foundation
 Halfway, Texas TODAY! Sept. 8th.
 EVENTS START AT 1 p.m. FREE BARBEQUE 6 p.m.
 FRY & COX ... YOUR
 MINNEAPOLIS MOLINE, MASSEY FERGUSON AND NEW HOLLAND DEALER ... IN MULESHOE**

BUSINESS DIRECTORY

Robinson's Boot Shop
 127 Main - Phone 272-4721
FINE WESTERN WEAR
Men, Women & Children
SHOE REPAIR SHOP
 The Robinson
 Serving Muleshoe since 1925.

Farley Insurance Agency
 Real Estate and Insurance
FARM & CITY LOANS
SERVICE BEYOND THE
CONTRACT
 209 West Avenue B
 Off. Ph. 272-4787 Res 272-3778

SINGLETON FUNERAL HOME
 400 E. AMPLANCE SERVICE
 Phone 272-4744

HEATHINGTON LUMBER COMPANY
 Lumber, Paint
 Builders Hardware
 Clovis Rd. Phone 272-4797

Ann Blackstone is County 4-H Bake Show Winner

Ann Blackstone, Lazbuddie, 4-H member was the county winner in Parmer County 4-H Bake Show contest Aug. 25 in the Bovina State Bank Community Room.

Ann is the 13 year old daughter of Mr. and Mrs. Harvey Blackstone who live in the Lazbuddie community. Her product was better rolls and two crust pineapple pie. She will compete with 13 other counties in the District I, bake show contest at the Tri-State Fair in Amarillo in September for top honors of bake show queen of the district and a \$100 bond as top award for the winner.

Second place winner went to Diane Coker, also from Lazbuddie Community 4-H Club. She is the 9 year old daughter of Mr. and Mrs. Ray Miller from Lazbuddie and a first

Bula..

(Continued From Page 7)

intendent Marion J. McDaniels introduced both old and new teachers in the school. Also introduced students of the school, who had made educational trips this summer and ask them to make a few remarks concerning their achievements.

Mike Richardson and Dennis Newton spoke concerning their recent trip to Austin attending the Attorney Generals conference. Mike, Dennis, and L.D. Holt, gave a report on their attending the Speech Clinic held early in the summer at West Texas State University, Canyon. Betty Salyer spoke of her recent trip to Austin, to the Citizenship Seminar, sponsored by the Farm Bureau. Juana Young spoke on her recent trip with a number of the MYF young people from this area. Their tour of England, Scotland, and France, also attending the World's Methodist Conference in London for five days.

McDaniels gave the announcements respective of the school proper for the year, followed by the benediction given by Mr. Gauer, husband of Mrs. Gauer, high school science teacher.

Following the program Monday morning, Mrs. John Crockett chairman of the membership committee, assisted by Mrs. Bill Sowder, served coffee to all patrons and ask for PTA members. Forty-five have paid dues to the local PTA.

Mrs. Lorene Cox moved Tuesday to Levelland where she will live this year. She will be keeping college girls attending South Plains College. Diana Cox will be a sophomore there this year.

Mr. and Mrs. Lloyd Pollard left early Saturday morning upon learning of the fatal accident of her brother, J.W. Phillips, of Hermiston, Oregon. Phillips was involved in a car wreck on his return trip home from a visit with relatives here and at Maple, and was involved in a car wreck at Moab, Utah. Funeral services were held in his home town at Hermiston, Tuesday. Other occupants of the car were not injured seriously.

Mrs. Cecil Jones left early Sunday morning by train for Riverside, Calif. to visit her parents, Mr. and Mrs. W.L. Thompson. Her father has been confined to a local hospital there.

Howard Weaver, from Anchorage, Alaska, is spending a few days in the home of his parents, Mr. and Mrs. V.C. Weaver, and other relatives here. He came to attend the funeral of his grandfather, Fred Weaver, of Fort Sumner, held Tuesday of last week.

Mr. and Mrs. John Latham have just returned from taking their daughter Mrs. Warner DeSautel and boys Cliff, and Criss to their home at New Orleans after a months visit here with them. On their return home they made a sight seeing trip through Mississippi, Arkansas, and Oklahoma. They visited his aunt, Mrs. Emma Coleman at Fort Smith, Ark. for a short while. They visited with relatives in Paris, Tex. and Seymour and also with her grandmother, Mrs. Ollie Holder at Wichita Falls. Mrs. Holder is 99 years old and still very active.

Members of the Church of Christ enjoyed a party and musical at the home of Mr. and Mrs. Blakes, Friday evening. Refreshments of sandwiches, pickles, olives, drinks and cookies and also a birthday cake for Mrs. J.D. Rowland were served. Mrs. Rowland was very surprised when friends showered her with little birthday remembrances and sang "Happy Birthday" to her. Mr. and Mrs. Earnest Ellison and son Randal of Muleshoe were supper guests Tuesday evening of her parents, Mr. and Mrs. J.W. Layton.

Nelson

(continued From Page 3)

Nelson, Paris; Mrs. W. O. Alspaugh, Cedar Hill, Mrs. Inez Diffenderfer, Muleshoe; and Mrs. Clotese Byrd from Glade-water.

For a wedding trip to Colorado, the new Mrs. Shipman chose a sleeveless two-piece suit of burgundy color, self belt interlaced at the hip-line with matching low heeled suede shoes and bag trimmed with matching cobra skin; her hat was a flowered cluster with veil in burgundy. She added white kid gloves, elbow length.

The bride is a graduate of Paris High School and a graduate of Methodist Hospital of Dallas, School of Nursing.

The groom is a Muleshoe High School graduate and was a student at Texas Wesleyan College in Fort Worth. He is now foreman of Austin Patio Dude Ranch in Grapevine.

PRE-NUPTIAL COURTESIES Preceding the wedding rehearsal, Mr. and Mrs. Shipman entertained 23 guests at the Ramada Inn at 6 p.m. White gladiolus and blue carnations were used as a centerpiece.

Crain..

(Continued From Page 1)

two daughters, Mrs. J.J. McDonald, Lazbuddie, and Mrs. Mike Lankford, Dimmitt; five grandchildren, Mikla Ann Lankford, Belinda Marlene Lankford, Donna Kim McDonald, and Pamela Beth McDonald; three sisters, Mrs. Otis Testerman, Littlefield, Mrs. Robert DeLoach, Sudan; and Mrs. Gadye Blount, Hubbard; and two brothers Arthur Crain and Grover Crain, both of Waco.

Crane was born in Clay County, Ala., Oct. 3, 1905.

Hospital News

WEST PLAINS ADMISSIONS-Mrs. Sudie Lee, Mrs. C. T. Cracker, Mrs. M.M. Bayless and baby girl, Jesus Hernandez, Effie L. Coffee and Clarence Weeks.

DISMISSALS-Mrs. Lewis Allen, Mrs. Herbert Basquez and baby girl, Samuel Lewis, Mrs. M.M. Bayless and baby girl, Lupe Bryan and Mrs. Jack Anderson.

Mrs. Rowena Richardson returned home Monday after a stay of several months with her mother, Mrs. Mary Tugman, at Rush Springs, Okla.

Mr. and Mrs. W.F. Dunn, Tulsa, Okla., were recent guests in the Ray Martin home. Dunn is a cousin of Mrs. Martin.

Final Close Out on all 1966 Cars and Pickups Crow Chevrolet

**Play "MATCH the STAMP"!
Win up to 1 Million S&W Green Stamps!**

WE GIVE



WE GIVE



WE GIVE



WE GIVE



WE GIVE



WE GIVE



WE GIVE



WE GIVE



WE GIVE



WE GIVE



WE GIVE



WE GIVE



WE GIVE



WE GIVE



BREAD
Baldrige, Rainbo, Mrs. Baird's & Cook Book
REGULAR OR THIN SLICED
3 1 1/2 LB. LOAVES 87¢

Frozen Foods
Pies Fruit Banquet, Apple, Peach, Plain Custard and Coconut Custard... **3 Family Size \$1**
Drinks LIBBY'S Asst. Flavors... **9 6 Oz. \$1**
Chopped Broccoli Libby's... **5 10-Oz. 89¢**
Spinach Libby's, Chopped, Leaf... **5 10-Oz. 89¢**
Cauliflower Libby's... **3 10-Oz. \$1.00**
Raspberries Libby's... **3 10-Oz. 39¢**
Pizza For Deluxe, Cheese, Hamburger, Sausage and Pepperoni, 22-Oz. Pkg... **89¢**
Limeade Libby's... **2 5-Oz. 29¢**
Grape Juice Seneca... **5 6-Oz. \$1.00**
Pecan Pie Johnston... **20-Oz. Pkg. 89¢**

Try Pampering Your Pet!
Cat Food Purina, Tuna... **2 6-Oz. 29¢**
Dog Food Ken L Ration, Stew or Hash... **2 15-Oz. 35¢**
Dog Yummies Snacks... **6-Oz. Box 19¢**
Dog Biscuits Gaines... **25-Oz. Box 43¢**
Dog Food Gaines Top Choice... **36-Oz. Pkg. 99¢**

Hunt's PEACH SLICES 2 No. 2 1/2 Cans **49¢**

BAKERITE Pure Shortening 3 Lb. Can **59¢**

Baby Food Heinz Strained Fruits & Vegetables 1/2-Gal. Carton **39¢**

Mellorine Plains or Foremost 1/2-Gal. Carton **39¢**

Drinks Hi C, Assorted Flavors 3 46-Oz. Cans **89¢**

Tuna Del Monte, Chunk Style 2 No. 1/2 Cans **69¢**

Sweet Peas Rosedale, Green 2 No. 303 Cans **35¢**

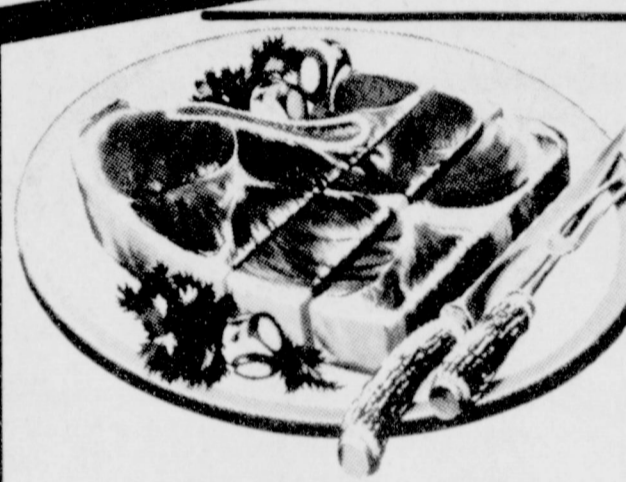
Crackers Brenner's Tea Flake 1-Lb. Box **23¢**

Pork & Beans Campfire 3 No. 300 Cans **25¢**

Pineapple Goodhope Sliced 3 No. 300 Cans **69¢**

Cottage Cheese All Brands 2 -Lb. Carton **49¢**

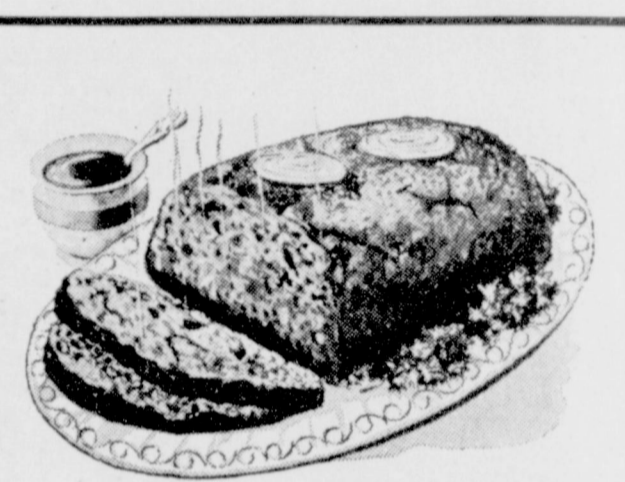
Pinto Beans Chef's Pride 4 Lb. Bag **49¢**



SIRLOIN STEAK 89¢
U.S.D.A. Choice, Aged, Heavy Beef, Valu-Trimmed... Lb.



T-BONE STEAK 98¢
U.S.D.A. Choice, Aged, Heavy Beef, Valu-Trimmed... Lb.



GROUND CHUCK 59¢
Extra Lean, Dated to Assure Freshness, Top Quality... Lb.

Cream Cheese Borden's Neufchatel... 8-Oz. Pkg. **39¢**
Sliced Cheese American or Pimento... 6-Oz. Pkg. **35¢**
Fish Fillets Icelandic Haddock, Skinless... 1-Lb. Pkg. **79¢**
Deviled Crab Tradewind... 15-Oz. Pkg. **\$1.39**
Lunch Meat Butcher Boy, Bologna, Macaroni & Pickle... 3 6-Oz. Pkgs. **\$1.00**

Canned Ham Wilson's Core King... 3-Lb. Can **\$2.98**
Sausage Blue Morrow, All Pork... 1-Lb. Pkg. **69¢**
Bacon Squares Rindless, Hormel's Smoked... 1-Lb. Pkg. **59¢**
Arm Roast U.S.D.A. Choice, Aged, Heavy Beef, Valu-Trimmed... 1-Lb. **69¢**
Short Ribs U.S.D.A. Choice, Aged, Heavy Beef, Valu-Trimmed... 1-Lb. **29¢**

Rump Roast U.S.D.A. Choice, Aged, Heavy Beef, Valu-Trimmed... Lb. **99¢**
Round Steak U.S.D.A. Choice, Aged, Heavy Beef, Valu-Trimmed Lb. **89¢**
Family Steak U.S.D.A. Choice, Aged, Heavy Beef, Valu-Trimmed Lb. **49¢**

Coffee

FOLGERS, All Grinds

Lowest At Piggly Wiggly!

Detergent Silver Dust, Blue Giant Box... **79¢**
Laundry Detergent Condensed All Giant Box... **79¢**
Bar Soap Lifebuoy, Assorted Colors... 2 Bath Bars **41¢**
Baby Cereals Gerber's, Assorted... 21¢
Cookies Sunshine Hydrox... 47¢
Chocolate Syrup Hershey's Famous... 23¢
Peanut Butter Jif, Smooth & Crunchy... 69¢
Spaghetti Auster, with Meatballs No. 300 Can... 33¢
Bleach Du Rite, Liquid... 33¢
Liquid Detergent EZ Time Pink... 39¢
Paper Towels Soft Ply, Assorted Colors, Jumbo Roll... 29¢

To Make Your Homemaking Easier!

Spray Starch Faultless, 10¢ off Label 24-Oz. Can... **69¢**
Deodorizers Glada, Assorted Scents 7-Oz. Can... **59¢**
Fabric Finish Faultless, 10¢ off Label, 20-Oz. Can... **69¢**
Bleach Beads O Bleach, Dry 26-Oz. Box... **75¢**
Oven Cleaner Oven Guard 8 1/2-Oz. Can... **89¢**
Cleaner Lysol, Foam, Disinfectant 14-Oz. Can... **89¢**
Fabric Softener Downy, 10¢ off Label Giant Bottle... **79¢**
Liquid Detergent Crystal White 48-Oz. Bottle... **69¢**
Detergent Dishwasher, Electro Sol, 5¢ off Label, 20-Oz. Box... **39¢**

Something Unusual!

Catsup Heinz Hot... 2 12-Oz. Btl. **49¢**
Dressing Kraft's Salad Secret 8-Oz. Bottle... **37¢**
Olives Towie, Almond Stuffed 3-Oz. Jar... **59¢**

1-Lb. **69¢**
2-Lb. **\$1.37**
3-Lb. **\$2.05**

Health And Home Needs!

Beverage Glasses

Mix or Match Your Choice
6 \$1

Shampoo Safin Green, Reg. 89¢ Retail 10-Oz. Btl. **69¢**
Aspirin Ltr. Reg. 29¢ Retail 100-Ct. Bottle **23¢**
Hair Dressing Vitalis, Reg. 83¢ Retail 3-Oz. Tube **59¢**
Blades Razor Personna, Stainless Steel, Double Edge, Reg. \$1.45 Ret., 10 Blades Per Pkg. **\$1.19**

FRESH PRODUCE

Potatoes Red All-Purpose... Lb. **3 1/2¢**
Carrots Sweet and Tender Clip Top... Lb. **3 1/2¢**

Prune Plums California Extra Fancy... Lb. **19¢**
Leaf Lettuce Californian Red or Green Tip... 2 for **29¢**

Store Manager's Specials!

CANNED DRINKS

FRESCA & SPRITE
COCA COLA 6 12-Ounce **59¢**
DEL MONTE
DRINKS 46-Ounce Can **3 FOR \$1**

TOMATO JUICE Texsun 46 Oz. Can **3 FOR \$1**

Lowest Prices... Greatest Variety... always at...
Piggly Wiggly

These Prices Good In Muleshoe September 8-14