

Muleshoe's two junior high teams, 7th and 8th graders, each took initial victories over Olton Tuesday afternoon and evening. Seventh graders, with David Spain galloping 28 yards around end, scored the TD and Lee Clodfelter tossed to Mike Riley for the two extra points. Eighth graders won 9-6 with Muleshoe's Stephen Black making the touchdown for Muleshoe and Keith Turner running over the goal line for the two extra points.

Muleshoe Fine Arts Booster Club will have their first business meeting of the new year on Sept. 19 at 8 p.m. in the Band Hall.

All parents of children in band, choir, art and speech are urged to attend.

Bailey county 4-H boys and girls have entered 14 barrows in the hog show at the Texas State Fair in Dallas next month, County Agent J. K. Adams said Wednesday. Those who have entered animals include: Darla Kendall, Jerry Scoggin, Steven Bickel, Johnny Bickel and Donald Glenn Harrison. The entries are to be in place Oct. 16 and will be under the supervision of Adams.

All area residents are invited to attend an appreciation dinner for State Rep. Jesse T. George in the Morton school cafeteria Saturday, Sept. 17. Hosts will be the Morton Junior chamber of commerce, and tickets will be \$2 per person, on sale at the door. Keynote speaker will be M. C. Ledbetter, judge of the 21st judicial district.

General Telephone Co., which serves Muleshoe, will dedicate its expanded general offices in San Angelo, Monday, Sept. 19, when Leslie H. Warner, New York, president of General Telephone & Electronics Corp. will be the speaker.

Airman 1/c Reid D. Lewis, son of Mr. and Mrs. H. Nelson Lewis, Frisco, is now on duty with the U. S. combat air forces in Southeast Asia. He is a navigation equipment repairman.

Three of six youths who attended the Texas Youth Conference recently spoke at Tuesday's Rotary meeting. They were Larry Meyers, Lyla Pitts and John Gulley, all from Muleshoe. Also attending from Bailey county were Julia Burke, Three Way, and Dennis Newton and Michael Richardson, Bula. Also present was Dennis Burrows, who is coordinator and county chairman of the program, which has the official name of Texas Law Enforcement and Youth Development Foundation. Sponsors of the county youth were Rotary, Lions and Jaycees, the Three Way Lions and the Bula P-TA.

Mr. and Mrs. Meredith Freedle have sold their establishment in Muleshoe and will be moving to Seattle, Wash. where Freedle will be employed by Boeing Aircraft.

Alfred Sparlock from Tennessee visited with his aunt, Ida Tapp, last weekend.

Richland Hills P-TA will be sponsoring a pancake supper preceding the football game Friday night in the high school cafeteria. Prices will be 75 cents for children and \$1 for adults.

Mrs. John Farley and Mrs. Frank Hinkson attended a Past Matrons club luncheon at Hereford Monday. Sudie Beth Hancock gave a talk on building activities and on the Eastern Star Home in Arlington.

### Power Company Boosting Help

Southwestern Public Service Company is embarking on an expanded industrial development program, it has been announced by W. L. Pearson, vice president and industrial manager for the electric company. Larry S. Milner, who has been an industrial development consultant with the Texas Industrial Commission, will become manager of industrial development at Southwestern Public Service, Pearson said. Pearson also announced that industrial development sem-

See POWER on Page 7



Tractor Tune-Up Time

It's time to get all machinery in shape for those bountiful harvests that are in store for Bailey County farmers, and that's just what young West Camp farmer Eugene Shaw is doing -- getting his tractor in shape for its autumn load. (Journal Photo)

## It's Happy Littlefield For Home Starter

Muleshoe Mules took a long, hard look at the film strips of Friday night's six-six set to with Dimmitt and decided that it's going to take a lot of hard work to get ready for the happy, happy Littlefield Wildcats. The boys from the next county are still chortling gleefully over last Friday night's upset of the Plainview Bulldogs, 13-12, a game the Dogs were supposed to have won. At least that was the way the dopsters had doped it out in advance. Of course, dopsters have been known to be wrong.

But the season's first local game here tomorrow night should be an interesting one, anyway you look at it.

Muleshoe got outplayed in several departments in Dimmitt last Friday night, but the game was just about two minutes too long. Because it was in the final two minutes that Dimmitt managed to score. Muleshoe had snagged an attempted Dimmitt passing spree near the end of the first half to gather in that six-pointer; it was Paul Swint who galloped the 70 yards for that marker.

But Dimmitt out-gained and first-downed the Mules and they were entitled to that final score. Of the Plainview-Littlefield game, Bob Hilburn, sports editor of the Plainview Herald, wrote along this line:



MOST COURTEOUS---Dwain Calvert, an employee of Garland Crosby and Vernon Bleeker at Central Texas, was named the "Most Courteous" sales person for the month. His mother, Mrs. Calvin Calvert received the plaque for him at a coffee Tuesday morning, and Crosby received the business award to display for a month. Presenting the awards was Harvey Bass (center), chairman of the C-C business committee. (Journal Photo)

"Something funny happened to Plainview's Bulldogs enroute to their best season in years. They forgot to win their first game.

The loss of defensive captain

Bill Hodges early in the game, the loss of tackle Lanny Savage later in the contest, and a leaky defense all played their part as the Dogs dropped a

See FOOTBALL on Page 7

## Merchants Set Moonlight Madness Sale, Yule Event

Go-Go got on the ball Tuesday and amped out a flock of plans for autumn and winter events. Go-Go is the name of Muleshoe Chamber of Commerce's committee for business activities and the group is headed by Harvey Bass.

In a session at Paul's Restaurant Tuesday morning the committee decided:

1. To stage a "Moonlight Madness" sale Oct. 13.
2. To resume the Family Night Jamborees, discontinued during the summer months, on Oct. 15.
3. To aid a district Parent-Teacher Association convention to be held here Oct. 13.
4. To procure a 30-foot Christmas tree at Cloudcroft, N.M. and haul here for the featured piece of Muleshoe's Christmas decorations.
5. To stage a Christmas

parade Saturday, Dec. 3.

To award \$450 in prize money for Christmas drawings. Other matters were also discussed but the six events mentioned above provided the principal business at the informal gathering of business and professional folk. Bass called the meeting "highly successful."

Olin Burrows, chairman of the Family Night Jamborees, said the Saturday night entertainments will be resumed Oct. 15 in the high school auditorium and Buddy Peeler, entertainment chairman for the monthly Saturday night shows, said schools in this area have already been asked to send talent to the show.

The committee also was told that an 11 county district P-TA session is to be held here Oct. 13, and the committee was asked to provide the "welcome" features for the gathering.

Earl Harris is in charge of the Moonlight Madness sale scheduled for Thursday, Oct. 13 from 7 to 9 p.m. He told the group that merchants and their employees will be asked to dress in nightwear for the event.

John Shelton, who is chairman of the Christmas tree committee, said a permit has been secured from the New Mexico forestry service to allow cutting of a 30-foot tree near Cloudcroft. He said the local organization must do the cutting and provide transportation to Muleshoe.

The big tree will be erected near the mule memorial downtown and will be the featured attraction of Muleshoe's Christmas decorations.

He asked that all housewives in the area start saving their 1,2 and 3-pound empty coffee cans which the committee will use as part of the tree decorations.

Mrs. Truman Lindsey re-

# The Muleshoe Journal

Dedicated to the progress and development of Bailey County and the great Muleshoe country

Vol. 44, No. 37 Published every Thursday at Muleshoe, Bailey County, Texas 79347 Thursday, Sept. 15, 1966

## Crops Look Up; Maize Is on Ice

Muleshoe crops have come through the autumn floods of 1966 in pretty good shape, and if frost holds off long enough, (say until late October) and if it doesn't keep right on raining, and if the sun shines out brightly and prettily from now until at least Nov. 1 --well there should be some good yields.

That's a bunch of "ifs", but farming is always like that in West Texas.

But as of right now, everything looks good, farm-wise.

So says J. K. Adams, county agent who opined at mid-week that cotton can have that late October frost like west Texas frosts should, "and with a reasonable amount of sunshine, a bountiful harvest is in prospect." The county agent admitted that "soggy, foggy mornings have caused some farmers concern over the rate of maturity of the 1966 cotton crop."

In this matter of frost dates, the county agent pointed out, that "a freeze has been known to occur as early as early October here in Bailey county, adding that a "heavy loss could thus occur if this happens in 1966."

But, as of now, cotton is looking good.

Grain Sorghum is also well along toward maturity, and nothing much is left for the farm-

ers to worry about in their grain sorghum crop. Of course, he added with his usual note of caution, "there is nothing much to worry about -- except the possibility of some lodging if it continues to be rainy. This would prevent combines from getting into the fields for harvest."

Ranges, he said, are making rapid progress, and presently are furnishing all the green grass Bailey county range cattle can eat.

"There should be plenty left for dry forage through the winter months," he summed up.

Another pleasing sign in the autumn crop picture is wheat. Wheat farmers are pleased because planted wheat is up and off to a good start, Adams said. There is plenty of moisture available to get all wheat fields off to a good start.

Another optimistic factor was seen in the alfalfa crop. He pointed out that "a large acreage of alfalfa is being seeded, and prospects are good for a greater tonnage of hay and dehydrated alfalfa for next year."

Bailey county's expanding truck crop industry also is nearing the end of a good season, the county agent summed up, explaining "tomatoes continue to mature as dry, sunny afternoons permit resumption of harvest."

"Carrot crop is making good progress, and rains should not hurt this crop in any way.

"Farmers are making good use of wet weather daytimes to put harvest machinery in top shape for a busy harvest season."

Meantime, PCG reported that the spraying program for cotton was making progress.

As of Friday morning, Sept. 9, 123,081 acres had been sprayed with low-volume, undiluted malathion in the third year of the High Plains Boll Weevil Control Program, according to Ed Dean, Field Service Director for Plains Cotton Growers, Inc.

Plains Cotton Growers is the See CROPS on Page 7

## Stovall Wins Grid Contest

With only one incorrect answer, Bob Stovall, 1212 Ave. B., Muleshoe, became the first winner in the annual Muleshoe Journal and Bailey County Journal football contest, it was announced Wednesday. He correctly picked the winners of nine games, missing only the winner of the Denver City-Brownfield affair.

He had predicted that Muleshoe would beat Dimmitt 13 to 7; that game ended instead in a 6-6 tie.

Owan Jones finished in second place with eight correct answers. He missed the outcome of the Levelland-Seminole game and the Plainview-Littlefield battle. He also guessed the score of the Muleshoe-Dimmitt game at 13-7 in favor of the Mules.

First place wins \$5 and second \$3 each week. Grand prize for the season will be \$50 in cash plus two tickets to the Cotton Bowl game in



Bob Stovall

Dallas. There will also be a contest and prizes for the bowl contest.

Today's contest will be found

See STOVALL on Page 7

## Gran Gran Bell Has Do-Dads And Flowers

Do-dads and flowers--they go together beautifully for Mrs. Alline Bell who lives nine miles west of Muleshoe in the West Camp neighborhood. And the do-dads and the flowers have turned her place into just about the most interesting home on 1760.

She's the mother of Louis Scoggin; they live next door. "Always figured some day we'd settle down here on this little corner parcel," muses Mrs. Bell. "Well, after I lost my husband, Louis said it was time

to open up that little parcel and build me a home there. And that's just what he did, right here within a stone's throw of his and Mary's home. Mary teaches school in Muleshoe, you know." And to the Scoggin kids, she's "Gran'Gran". In fact, her name plate says so--Gran'Gran.

Well, the do-dads have done wonders for her home which is all spruced up with tricky little items - like trivets (she's got a lot of those) a collection of cups and saucers, pillows of all kinds, all kinds of whatnot ornaments, angels and that sort of things.

And, of course, there are a lot of flowers. There's a strip alongside her driveway, for instance, where just about every kind of flower that will grow in West Texas (and some that don't for most people) flourish prettily. And there's a row of red cannas along the front. And, in the back are more flowers and her vegetable garden.

Her garden turned out a lot of very fine tomatoes this year, and cantaloupes will be coming along later. She lived in Artesia, N.M., coming here a couple of years ago.

### TEMPERATURES

By R. J. Klump  
Official U. S. Weatherman

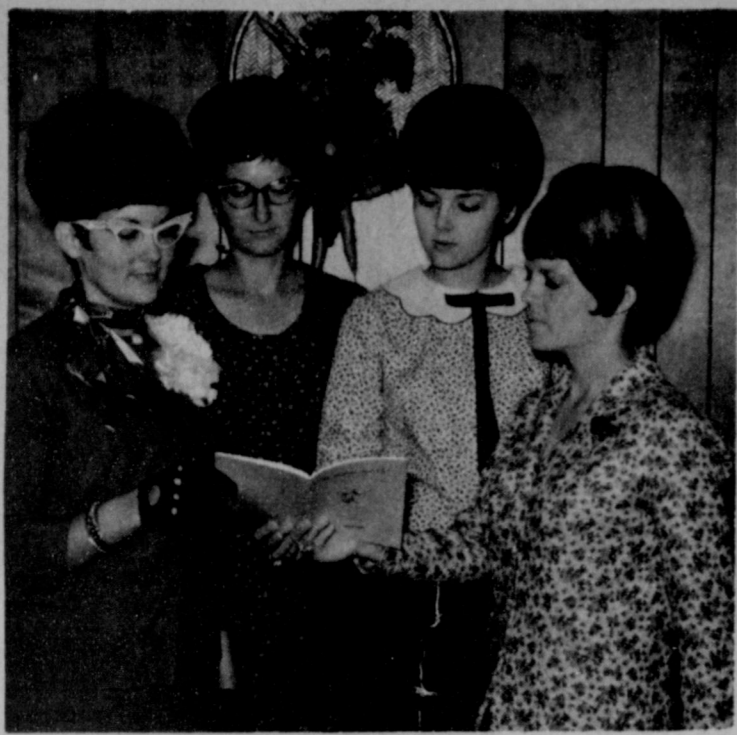
	High	Low
Sept. 11	79	55
Sept. 12	79	68
Sept. 13	82	53
Sept. 14	89	50
	Sunrise	Sunset
Sept. 15	6:30	6:54
Sept. 16	6:31	6:53
Sept. 17	6:32	6:51
Sept. 18	6:32	6:50



### Separator Goes Modern

Just because she no longer uses her cream separator doesn't mean that Mrs. Alline Bell doesn't put the separator to use any longer. It's the center of a portulaca bed (that's garden moss to you) "Turned that old crank many and many a time," she laughs. Now it just sits there and holds up flowers." (Journal Photo)





**PRESIDENT'S DINNER**--Members of the De Algodon Study Club honored their new president, Mrs. Carter Williams, with a dinner last Thursday night at the Corral Restaurant. Here the president is admiring the new year books along with the committee who compiled the books, Mrs. Ruel Kirby, Mrs. Frank Stegall and the chairman of the committee, Mrs. Mickie Sowder. The group presented their president a corsage of white carnations and plans for the new year were discussed during the meeting. Others present for the dinner were Mrs. Freddie Parkman and Mrs. Lewis Dale. The club will meet September 22 with Judge Glen Williams at the Court House when they will make a tour of the court house.

**Meeting, Supper Held in Amherst**

The Epsilon Delta chapter of the Delta Kappa Gamma Society met Saturday evening in the Methodist Church Fellowship Hall at Amherst. An Executive Board Meeting was at 6:30 p.m., and the salad supper was at 7 p.m.

Members from Muleshoe attended from Muleshoe, conducted the business session, and Mrs. Joyce Hedges, Amherst, reviewed the Constitution and Handbook of the Delta Kappa Gamma Society. Music was provided by Elizabeth Watson, Muleshoe. Hostesses were Amherst members: Mrs. Ray Blessing, Mrs. Willis Hedges and Mrs. Mona Ray Cummings. Members from Muleshoe at-See SUPPER on Page 4

**N.C. Whites Feted Pre-Nuptial Courtesies On Anniversary Given Beverly Crawford**

Mr. and Mrs. N. C. White, Sr. celebrated their 50th wedding anniversary Sunday in the home of their son and family at Hub, the Tulon Whites. The honorees are living in Corpus Christi, but are former Lazbuddie residents.

The open house event was attended by five of the 7 children; Mr. and Mrs. Harold White and family, Muleshoe; Mr. and Mrs. N. C. White Jr., and family from Hub; Pete White and family, Lazbuddie; Aaron White, Corpus Christi; and the Tulon Whites. Children who were unable to attend were Leroy from Wilcox, Ariz. and Mr. and Mrs. Glen James, Marble Falls, Ark. A sister from Washington, D. C., Mrs. Claude Evans attended and Mrs. White's brother and family from Maud, Okla., Mr. and Mrs. Rural Brown also attended.

Approximately 75 persons attended the anniversary party. Yellow and white were carried out on the serving table. Highlight of the table was a four-tiered wedding cake with "50th anniversary" inscribed. Corsages of yellow roses were used. Orange punch was served. A set of china was given the honorees by their children.



Beverly Crawford ... bride-elect of Theron Vaughn

**Fern Davis Gives Program**

A program of storage of medicines and cleaning out medicine cabinets was given by Fern Davis at the Progress Home Demonstration club Tuesday afternoon. The club met in the home of Fern Davis. Delores Gaddy, president of the club presided over the meeting.

Eight members and a guest, Robin Taylor, the new county agent, were present. The next meeting will be in the home of Myrtle Wells with fads, fabrics and styles for the program.

**Wanda Dyke Feted at At Party**

Wanda Dyke, Earth, who lives with her sister, Annie McNeil, was honored on her 64th birthday in the home of Mr. and Mrs. H. F. Dyke, 211 W. 10th in Muleshoe Sunday at 2:30 p.m. Others attending the party were John Dyke, Clovis; Mr. and Mrs. Benny Dyke, Pleasant Valley community, daughter Barbara and two grandchildren; Mr. and Mrs. Orbin Nowell and daughter, Norma and children from Lubbock; Mr. and Mrs. Arvel Lewallen and children, Wolforth, Mrs. Laura Trieder, Lazbuddie; and Mrs. Lena Steinbock.

**Wedding Unites Miss Flatt, Mr. Rainey**

Before an arch of greenery decorated with blue and white bows and ribbon intermingled with wedding bells, Miss Nomie Ilene Flatt, daughter of Mr. and Mrs. S. K. Flatt, Muleshoe, became the bride of Gary F. Rainey, Midland. The groom is the son of Mr. and Mrs. E. F. Rainey, Midland. A single paid of candelabra floored with greenery and blue candles, stood on either side before a white brick fireplace.

Given and escorted in marriage by her father, Friday at 6 p.m. in the bride's home, she wore a street length dress of silk organza over peau-de-sole. The fitted bodice had a sweetheart neckline and three-quarter length sheer silk organza sleeves. The skirt fell in graceful folds accented by a pointed bodice in the back. The bodice and skirt had sprays of embroidered silk illusion flowers. The headpiece was a cluster of silk organza leaves with a silk illusion veil. She carried a white orchid trimmed with white carnations and lilies of the valley with blue and white ribbons tied with love knots and accented by two tiny wedding rings.

Double ring vows were read by the Rev. Dale Self, Levelland. Linda Wells, Muleshoe, served as maid of honor. She was attired in a street length princess a-line dress of crystalin peau-de-sole with trumpet sleeves of sheer printed silk. Her headpiece was a band covered with the printed silk



Mrs. Gary Rainey the former Ilene Flatt (FROGGE PHOTO)

of the sleeves and had a tulle net attached and gathered in three places across the top of the veil. Rhetta Berry, cousin of the bride from Olton, was flower girl. She chose a sky blue cotton satin and featured an empire waistline accented by a pink satin band tied in a bow at one side in the front. Above the pink band, beige

See RAINEY on Page 4



SERVED AT TEA--Janelle Turner, a member of the Llano Estacado Civic Club is shown here serving Mrs. Charles Lenau and Mrs. Pat Bobo at the Sunday's tea sponsored by the Llano Estacado. (Journal Photo)

**Club Leaders Enjoy Tea**

It is true Muleshoe is a town in which professional and volunteer interests fill many hours in the housewives schedule, but nevertheless, some 40 signed the guest registrar attended by Pat King and Mary Watkins at the afternoon tea given by the Llano Estacado Civic Club Sunday. The complimentary tea was given in the parlor of the First Methodist Church. The planning committee was composed of Ann Haynes, Marilyn Parker, Dyanne Crooks and Pat King.

Vickie Young, president of See TEA on Page 4

**Fat Overweight**

Available to you without a doctor's prescription, our product called Galaxon. You must lose ugly fat or your money back. Galaxon is a tablet and easily swallowed. Get rid of excess fat and live longer. Galaxon costs \$3.00 and is sold on this guarantee; if not satisfied for any reason, just return the package to your druggist and get your full money back. No questions asked. Galaxon is sold with this guarantee by:

WESTERN DRUG

**new maidenform**

maternity pantie girdle

MATERNITY GIRDLER is designed for the expectant mother who needs comfortable support and protection! Girdle includes a highly-expandable front panel plus a low abdominal band for vitally-needed support. The Maternity Girdle is designed with Fashion in mind to help you look and feel your most attractive. They are made of lightweight power net... Guaranteed machine washable. S, M, L, XL. Pantie Girdle \$7.95. Long leg \$10.00

Don't forget Maidenform Maternity Bras and Nursing Bras!

**MATERNITY SHOP**  
MONTEREY CENTER LUBBOCK, TEXAS

come in and see our **NEW** Girl Scout Shop!

it's full of wonderful **GIRL SCOUT** equipment!

If it's Girl Scout, we have it in our new official Girl Scout Shop—uniforms, sportswear, accessories, camp equipment—everything a Brownie, Girl Scout and Leader needs. This is your shop so come in and visit us soon!

**ONE-STOP LUMBER YARD**

**WATER HEATER**  
30 Gallon  
10 Yr. Glass Lined ONLY \$44.95

**Mahogany Prefinished PANELING**  
3/16" 4X8 Panel ONLY \$4.29

**GALVANIZED GARBAGE CANS**  
While They Last!  
ONLY \$2.95

**ALUMINUM EXTENSION LADDER**  
WHILE THEY LAST!  
ONLY \$13.95

Shop Us For All Home Fix-ups

**Heathington Lumber Co.**  
814 W AMERICAN BLV. PHONE 272-4797

Quitting school? Ooops... There goes your future

And there goes about \$100,000. That's how much more you'll earn in a lifetime with a high school education.

And no high school diploma means no college. Holy smoke—there goes another \$150,000. That's how much more you'll earn in a lifetime with a college education.

In all, quitting school now means blowing \$250,000. That really knocks the fortune out of your future.

And it could be worse. You could be unemployed.

So stay in school right on through college. Come out a winner. You'll get a better job, earn more money, and enjoy life more.

To get a good job, get a good education

**Cobb's**

**St. Clair's**

**TRI-STATE BEAVER**

IN AMARILLO, TEXAS

Featuring the "Brenda Lee Show"

THE LARGEST ARRAY OF STARS EVER TO APPEAR AT THE FAIR:

- BRENDA LEE
- THE CASUALS
- VIC DANA
- JIMMY NELSON
- DIANE SHELTON
- RICHARD HAYMAN
- KORFI SISTERS

AMERICA'S NO. 1 GIRL SINGER

SEPT. 19 thru 24

6 BIG DAYS & NIGHTS

8 Performances—Wonderful Dazzling Entertainment for all the family!

Write for advance tickets now! USE MAIL ORDER BELOW

Mail to BRENDA LEE SHOW—Box 1087—Amarillo, Texas

ENCLOSED IS (check or money order) WITH STAMPED SELF-ADDRESSED ENVELOPE TOTALING \$

for \_\_\_\_\_ tickets at \$ \_\_\_\_\_

Date of Performance \_\_\_\_\_ Time of Performance \_\_\_\_\_

Name \_\_\_\_\_

Street or Box No. \_\_\_\_\_

City \_\_\_\_\_ State \_\_\_\_\_

SHOW TIMES — Sept. 19 thru 24

- MONDAY, SEPT. 19 — 2 & 8 PM
- TUESDAY, SEPT. 20 — 8 PM
- WEDNESDAY, SEPT. 21 — 8 PM
- THURSDAY, SEPT. 22 — 8 PM
- FRIDAY, SEPT. 23 — 8 PM
- SATURDAY, SEPT. 24 — 2 & 8 PM

We reserve the right to substitute show personnel



## Mrs. Nelson Shipman Feted With Shower



Mrs. Nelson Shipman

Mrs. Nelson Shipman was honored with a shower in the home of Mrs. Robert Kimbrough Saturday from 3 to 5 p.m.

In the receiving line were the honoree, the groom's mother, Mrs. Joe Shipman and the groom's grandmother, Mrs. R. E. Lowry from Sudan. They were presented corsages of blue and white carnations.

Mrs. Donna Smith and Mrs. Wayne Gregory served punch and wedding cake from a table covered with blue satin under white net with wedding bells applied to the corners.

Mrs. Inez Diffenderfer re-

## Mrs. Jay Spain Gives Recipe



Mrs. Jay Spain "thumbs" through her recipe book and comes across this recipe which she chooses as her favorite, TOMATO SOUP SPICE CAKE

1-1/2 cup sugar  
1 can tomato soup  
1/2 tsp. cloves  
1 tsp. soda  
2 tbl. water  
1/2 cup raisins  
2 eggs  
1/2 cup shortening  
2-1/4 cup cake flour  
1 tsp. baking powder  
1/2 tsp. cinnamon  
1/2 cup nuts

Cream shortening, add sugar slowly and continue creaming until light and fluffy. Add well-beaten eggs. Add soda dissolved in water. Sift 2 cups flour with spices and baking powder and add alternately with tomato soup. Add nuts and raisins dredged with the remaining 1/4 cup flour. Bake at 350 degrees for 1 hour.

Mrs. Spain is secretary to the county attorney and assists her husband in his printing shop. She is president of the Jayceettes and secretary of

gistered guests from a table centered with a crystal candelabra and candle intermingled with greenery and wedding bells.

An electric mixer was presented the honoree by the hostesses. Gifts were on display in the bedroom of the Kimbrough home.

Hostesses were Mrs. Alvin Allison, Mrs. J. T. Eubanks, Mrs. Allen Guinn, Mrs. Bruce Bureson, Mrs. O. M. Lackey, Mrs. J. C. Shanks, Mrs. Glen Splawn, Mrs. Robert Kimbrough, Mrs. A. W. Copley, Mrs. Elmo Stevens, Mrs. David Wier, Mrs. Jerry Gleason, Mrs. Truman Lindsey and Mrs. A. D. Stancell.

## Club Plans Chicken Fry

Members of the Needmore Club will host a chicken supper at the Community Center building at 7 p.m. Saturday Sept. 24.

The community wide event will be highlighted by table games of "42" and dominoes. Each family is to bring enough chicken, cut up and ready to fry, along with a salad and dessert for their family.

the Mary DeShazo P-TA.

A previous recipe given by Mrs. Rufus Gilbreath had a typographical error. Here is the recipe again, corrected.

ICING  
Five minutes before cake is done, combine the following ingredients and bring to boil:  
1 stick margarine  
4 tbs. cocoa  
6 tbs. milk  
Remove from heat and add:  
1 pound powdered sugar  
1 tsp. vanilla  
1 cup pecans  
Pour over cake as soon as removing from heat.

## Wesleyan Guild Begins New Year

Members of the Wesleyan Service Guild from the First Methodist Church met for their first meeting of the year at the home of Mrs. Clyde Bray, 403 W. 4th.

The meeting opened with a prayer by Mrs. Bill Elrod, followed by the minutes of the past meeting of the previous circle year given by the secretary, Mrs. C. O. LaRue. Mrs. Francis Gilbreath gave the treasurers report and the program was given by Mrs. Owen Powell. Mrs. Powell gave the purpose of the guild, its constitution and the by-laws.

The guild closed with a devotional from Micah.

Refreshments were served to those mentioned and Mrs. Arnold Gross, Mrs. Burl Wingo, Mrs. M. H. Laney, Mrs. Lois Schoenburger, Mrs. Clyde Krebs and Miss Elizabeth Hardin by the hostess, Mrs. Bray.

Next meeting will be in the home of Mrs. Willie McAlpin, 218 Elm, Sept. 26 at 7:30 p.m. All working women are urged to attend the meetings.



COMMITTEE CHAIRMEN--Members who make up the committee chairmen for the 1966-67 school term in Mary DeShazo Elementary P-TA are (l-r, standing) Mrs. John Gunter, Mrs. Frank Ellis, Ted Weaver, W. B. Slayden; (sitting) Mrs. Carl Bamert, Mrs. Irving St. Clair and Mrs. Ronnie Shafer. (Journal Photo)

## First Baptist Church Held GACoronation

The First Baptist Church was the scene of the Annual Girl's Auxiliary Coronation Sunday evening at 7 p.m. G. A.'s is a mission organization for girls age 9 through 15. It is the largest mission organization for girls in the world, having members in many foreign coun-

tries. It is an auxiliary of Woman's Missionary Union.

The theme for the coronation was "By Faith Committed To The Open Door". The pastor of the church, the Rev. Don Murray, opened the program with a prayer following a prelude of music pre-

## Second Debut for Mother

Now Mother can smooth out her facial lines right at home--thanks to a new non-surgical face-lift discovery called 2ND DEBUT. It contains skin-smoothing CEF-600 (CEF-1200 for the face over 40). 2nd D is a moisturizing skin lotion that smooths out facial lines... helps return eyes, mouth, chin and neck to firm, more youthful tone and softness. The process is simple: it's based upon resuppling the skin with the natural ingredient through which the inner cells obtain and retain much-needed water moisture. This ingredient is called CEF... Cellular Expansion Factor. 2nd Debut is a non-surgical face lift that gives Mother a more youthful look fast. Get it at your drug or department store today.

ARRIVALS LTD., CHICAGO, U.S.A.



Mrs. Jerry Ray Field ... the former Sherry Kay Bass

## Candlelight Ceremony Unites Couple

Wedding vows were exchanged between Sherry Kay Bass, daughter of the Rev. and Mrs. J.L. Bass and Jerry Ray Field, son of Mr. and Mrs. Billy Field, Muleshoe, before a setting of 15 branched brass candelabra holding white tapers, bouquets of white gladioli and giant mums, flanked by two nine branched candelabra of brass, bearing white tapers. Centering the setting was a brass kneeling bench entwined with white satin ribbon. Background for the entire setting was of palms and woodwardia fern trees. Focal point of the setting was a minute brass candelabra at the left of the altar, holding three white candles, two of which were lighted by the candlelighters preceding the ceremony. The couple were man and wife as they blew out the two burning candles and "together" lighted the central candle, symbolizing their life together.

The bride and groom each presented red roses to their respective mothers as the bridal party entered the church. Billy Field, father of the groom, played appropriate wedding selections preceding the See FIELD on Page 8

## THE MULESHOE MULES' PLAYER OF THE WEEK



Paul Swint

Paul Swint, offensive right end - defensive left end and game captain made the only score against Dimmitt on a 70 yard pass interception.

Paul played an alert defensive game and an aggressive game on offense.

This Recognition Courtesy of:

## FIRST NATIONAL BANK

5% on 12 Months Certificate of Deposit.  
Payable Semi-Annually  
4% Quarterly on Savings

"YOUR HOME OWNED BANK"

## Meohmywhatif

While you're worrying, it could happen! Take action now. Look under INSURANCE in the YELLOW PAGES. Where your fingers do the walking.



# Anthony's HOME FURNISHINGS SPECIALS

C. R. ANTHONY CO.

Famous Name Quality - Anthony Low Prices

## "PACIFIC" Printed Floral SHEETS and CASES

Full or Twin Sizes, One Low Price

- 81"x108" Flat or Bottom Full Fitted
- 72"x108" Flat or Bottom Twin Fitted

\$2. Ea.

42"x36" Matching Cases 2 for 1.39

Beautiful floral prints of fine quality Pacific balanced cotton muslin. Choose flat or bottom fitted sheets in twin or full sizes. Stock your linen cabinets now and save dollars.

## 9 FT. x 12 FT. NYLON RUGS

100% Continuous Filament Nylon Pile

Cushion Base Rubber Waffle Back. A Big Rug, A Tiny Price!

# \$25.

Add color and beauty to your home at a tiny little price. Colors of Avocado, Sandalwood, Inca gold, red or turquoise.

**48"x84" DRAPES**  
**2 PRS. \$5.**

Ready made. Choose new geometric patterns or solid colors in tones of champagne, gold or cocoa. Rayon acetate.

**WOVEN SPREADS**  
**5.88**

Fine quality textured jacquards, crochets, woven geometric patterns. 93x105" All 100% cotton, all first quality. Values to 7.95.

### 2 and 3 Piece Sets FOR YOUR BATH

Every One an Extra Value

# 1.99

set

One of the prettiest assortments of best quality merchandise you'll find at Anthony's low, budget price.

**THROW RUGS**  
**2.88**

Big Viscose rayon rugs . . . 27x45". Choose oblongs or ovals with fringe trim. Solids or multi stripes to go with any decor.

**Bath Towels**  
**66¢**

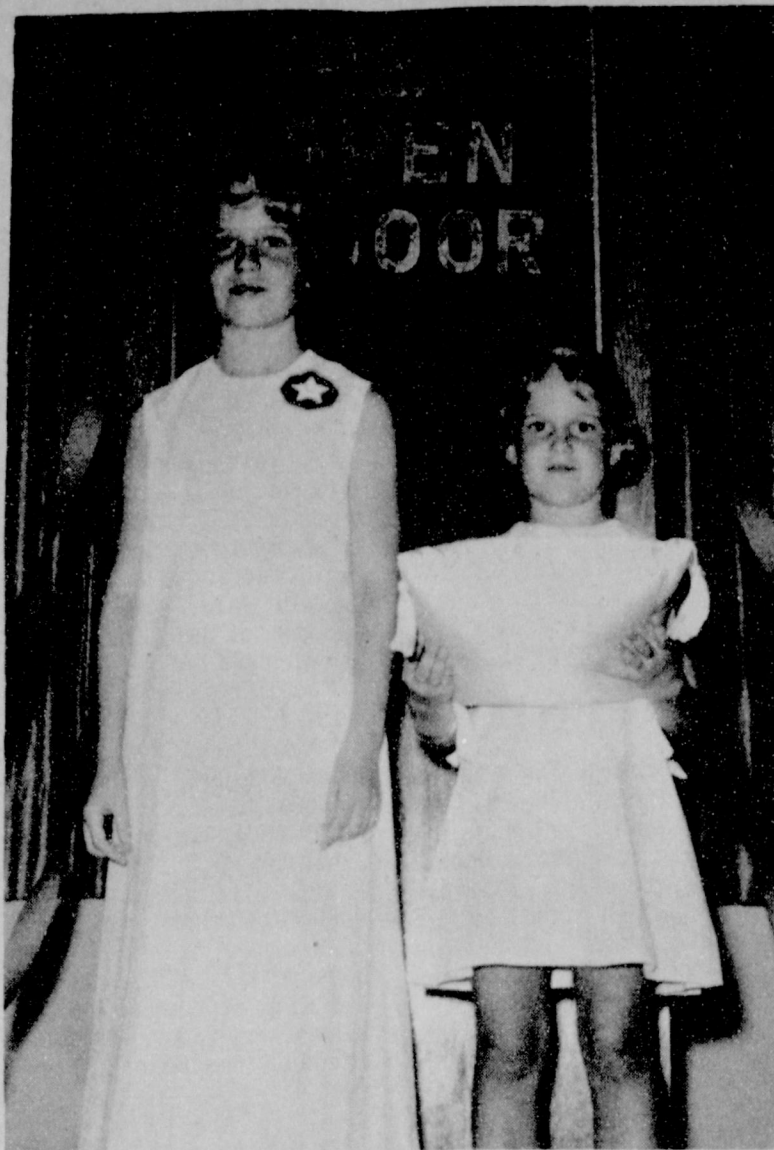
Screen printed cotton terry on frosty or white grounds. From famous Cannon mills. Big 22x44" size. Save plenty of Anthony's.



### All-Schools' Grid Schedule

You'll Want to Clip This Schedule for Future Use!

DATE	VARSITY	B TEAM	FRESHMEN	7 & 8th GRADE
Sept. 16	Littlefield 8 H.			
Sept. 16		Hart 8 T		
Sept. 20				Hereford 5:30 H
Sept. 22			Hereford 5:30 H	
Sept. 23	Olton 8 T			Hereford 5:30 H
Sept. 27		Tulia T	Tulia 5:30 T	
Sept. 29	Morton H			Hereford T
Oct. 4		Hereford T	Hereford 5:30 T	
Oct. 6	Denver City 7:30 T			Coronado H
Oct. 7				
Oct. 11		Olton 7:30 T	Blue Pups 5 H	
Oct. 13				Hereford 5:30 T
Oct. 18		Dimmitt H	Dimmitt 5 H	
Oct. 20				Morton T
Oct. 21	Dumas 7:30 H			
Oct. 25				Morton T
Oct. 27			Morton 5 T	
Oct. 28	Tulia H			Friena H
Nov. 1		Hereford H	Hereford 5:30 H	
Nov. 3	Hereford 7:30 H			Inner Squad
Nov. 4				
Nov. 8				
Nov. 10	Canyon 7:30 H	Canyon 7 H	Morton 5:30 H	
Nov. 11	Perryton 2 H			
Nov. 19				



QUEEN AND CROWN BEARER--Donna Grimsley, daughter of Mr. and Mrs. Mark Grimsley, was recognized as the youngest junior queen for the First Baptist Church Sunday evening when the annual G. A. Coronation was held in the First Baptist Church. Donna's sister, Patricia, was crown bearer. (Journal Photo)



Girl Scouts

#### INVITATION

Girls 7 to 17 interested in the Girl Scouting and Brownie programs are urged to contact Mrs. W. M. Dean, troop organizer, or Mrs. Bill Jim St. Clair, Muleshoe Neighborhood chairman, for information as to troops, meeting days, qualifications and other interests.

#### AREA ORGANIZATIONAL MEET

Twenty-five women from District I, Caprock Council, Girl Scouts, met in Muleshoe Girl Scout House Tuesday from 9:30 a. m. until 2:30 p. m. for the first district training meeting.

Mrs. Peggy Sugarek, District Advisor, spoke on the history of girl scouting and details of council and troop organization. Mrs. Richard Cagle, district council, spoke on the ethical code of scouting and how "to try to do Duty to God, to Country, and to help other people", embodied in the law and promise, points a way of life for all girls and women.

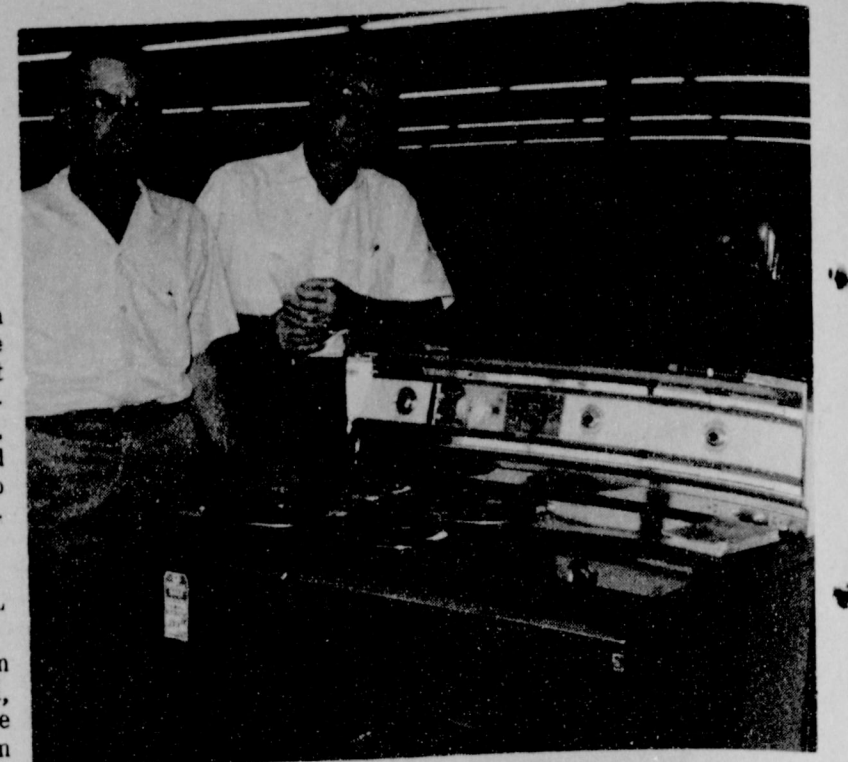
Representatives from Earth, Friena, Bovina and Muleshoe attended, including local leaders Mrs. St. Clair, Mrs. Eddie Faust, Mrs. Byron Gunter, Mrs. B. M. Vinson, Mrs. T. H. Dearling and Mrs. Larry Hall.

#### Supper...

Continued from Page 2  
tending were: Mrs. Jack Beedingfield, Mrs. Joe Costen, Mrs. Clifton Finley, Mrs. Hattie Boling, Mrs. E. W. Johnson, and Mrs. John Watson.

The next meeting will be a coffee October 1, at Sudan in the home of Mrs. Marvin Tollett.

ship charge of \$25 is required. President of the Llano Estacado Civic Club is Vickie Young; Sandy Turner is vice-president; Darlene Henry is recording secretary and reporter; Jo Harmon is corresponding secretary; Mary Watkins is treasurer and Jaquita White is the parliamentarian.



WINS RANGE--Clarence Mason won a range recently when his name was drawn as a door prize at the Texas Electric Cooperative's 1966 annual meeting in San Antonio. Mason won a copper range which is self cleaning. Red Johnson is shown here with range. (Journal Photo)



BOY SCOUT NEWS

#### NOW IS TIME TO JOIN BOY SCOUTING UNITS

Official Boy Scout Handbook says, "If you are 11 years old or older... you can be a Boy Scout right away."

"If you are 8 or older, you can be a member of the young-branch of the Scout movement - Cub Scouting..."

Three Boy Scout troops and two Cub Scout packs in Muleshoe are setting fall activities. They welcome new boys, former

#### Crawford...

Continued from Page 2

Elmo Stevens, Mrs. Evelyn Austry and Mrs. W. Q. Casey. Out of town guests were Mrs. B. P. Sandesua and Mrs. Robert Smith from Floydada.

Miss Crawford will be married to Theron Vaughn, Jr. at 5:30 p. m. in the Richland Hills Baptist Church Sept. 14, the pastor of the Church, the Rev. Calaway will officiate.

The bride is a 1964 graduate of Muleshoe high school and the groom was graduated from Lazbuddie high school in 1965.

scouts, and anyone interested to visit meetings as well as contact leaders. The welcome mat is out, said Owen Jones, local George White District Commissioner and a member of National Council of Boy Scouts, BOY SCOUT TROOPS Troop 620 - Sponsored by See BOY SCOUTS P. 10

#### Baptist...

Continued from Page 3  
sented by Mrs. Elbert Hamilton at the organ.

Mrs. Eugene Griffin and Mrs. Bill Bickel rendered "I'll Go Where You Want Me To Go" as special music and the introduction was given by Mrs. Don Murray, G. A. director. Accompanists for the service were Mrs. Elbert Hamilton and Mrs. Arvie Grogan.

Mrs. Don Murray presented girls and Mrs. J. P. Shelton brought the challenge. Counselors assisting with the service were Mrs. Edgar Hartley, Mrs. Roy Wrinkle, Mrs. Eugene Griffin and Mrs. J. P. Shelton.

Special recognition was given to those completing advanced steps; Donna Grimsley as the youngest Junior Queen for the First Baptist Church; Nelda Finley, as Queen-with-a-Scepter and Lana Washington as Queen-Regent in Girls Auxiliary.

#### Rainey...

Continued from Page 2  
french lace was attached. She carried a white hat-shaped basket and dropped blue and white love knot bows before the bride.

Candlelighters were Collin Flatt, brother of the bride, and Deafce Hill, niece of the groom from Plainview.

Mike Rainey, brother of the groom from Plainview, served as best man.

Harold Dean Carson, Olton, provided background music preceding the ceremony and also played traditional wedding marches.

Jane Branscum sang "My Own True Love" and "The Wedding Prayer."

Immediately following the ceremony, a reception was given in the home. Carolyn Thompson, Levelland, cousin of the bride, served wedding cake and punch was served from a cutglass punch bowl and coffee from a silver tea service by Renay Berry, Olton, cousin of the bride. The bride's table was covered with an ivory cloth over blue. Wedding tapers featuring lilies of the valley accented the table. The three-tiered wedding cake was decorated with clusters of blue flowers and featured a cluster of

#### Dr. Gleason Will Vaccinate Pets

The DeAlgodon Study Club, Maple are sponsoring a clinic in which Dr. Jerry Gleason will vaccinate your pets. Prices will be \$2. Gleason will be at the Three Way Agriculture building from 1 to 5 p. m.

three blue roses surrounding them were white net and lilies of the valley atop the cake. Behind the reception table was hanging a cluster of white wedding bells from a large white bow with streamers of white ribbon.

For a wedding trip to Carlsbad, N.M., the bride wore a sleeveless cotton knit with draped tie collar and dropped waistline featuring a flare skirt. The plum colored dress was accented with a white orchid from her bouquet and black accessories.

The bride was graduated from Muleshoe high school in 1964 and attended Texas Tech two years with a major in business education. The groom graduated from Wehnert high school and is a 1965 graduate of Texas Tech with a major in retailing.

The couple are at home in Midland where the groom is employed as assistant manager with TG & Y Co.

#### Tea...

Continued from Page 2  
the Civic Club, greeted the guests at the door with Sandy Turner, vice-president.

Punch was served from a silver punch bowl and assorted cookies were also served. Gold colored cut mums formed the centerpiece. Coffee was also served by Janelle Turner, Nelda Hunt and Dyanne Crooks.

Among the various clubs and organizations invited to the event, ten were represented. Among those were the Muleshoe Study Club, Muleshoe Art Association, Friendship Club, K.K.I. Sorority, A.A.U.W., E.S.A., K.K.G. Scouts, TOPS Club and the Library.

Members of the Llano Estacado Civic Club appreciated the clubs who accepted the invitation to the "return courtesy" tea. Purpose of the event is to provide for the introduction and interests of the club women with aims as better cooperation

and communication for the betterment of all area organizations.

The club was originally called the Los Planos Study Club and was re-organized in 1963 and became the Llano Estacado Civic Club.

The club helps the Girl Scouts in their needs, such as painting the "little hut", and other needs of the building. Last year the club installed a telephone in the "little hut" and also pay the monthly bills for the hut. The club sponsors annual style shows and loan of homes in the Muleshoe area. Twenty-five dollars was contributed to the library last year by the club.

The second Tuesday night of each month is set aside for club meetings in the members homes. During the summer, as do many clubs, the organization recesses. A member-

**TYPING STUDENTS**

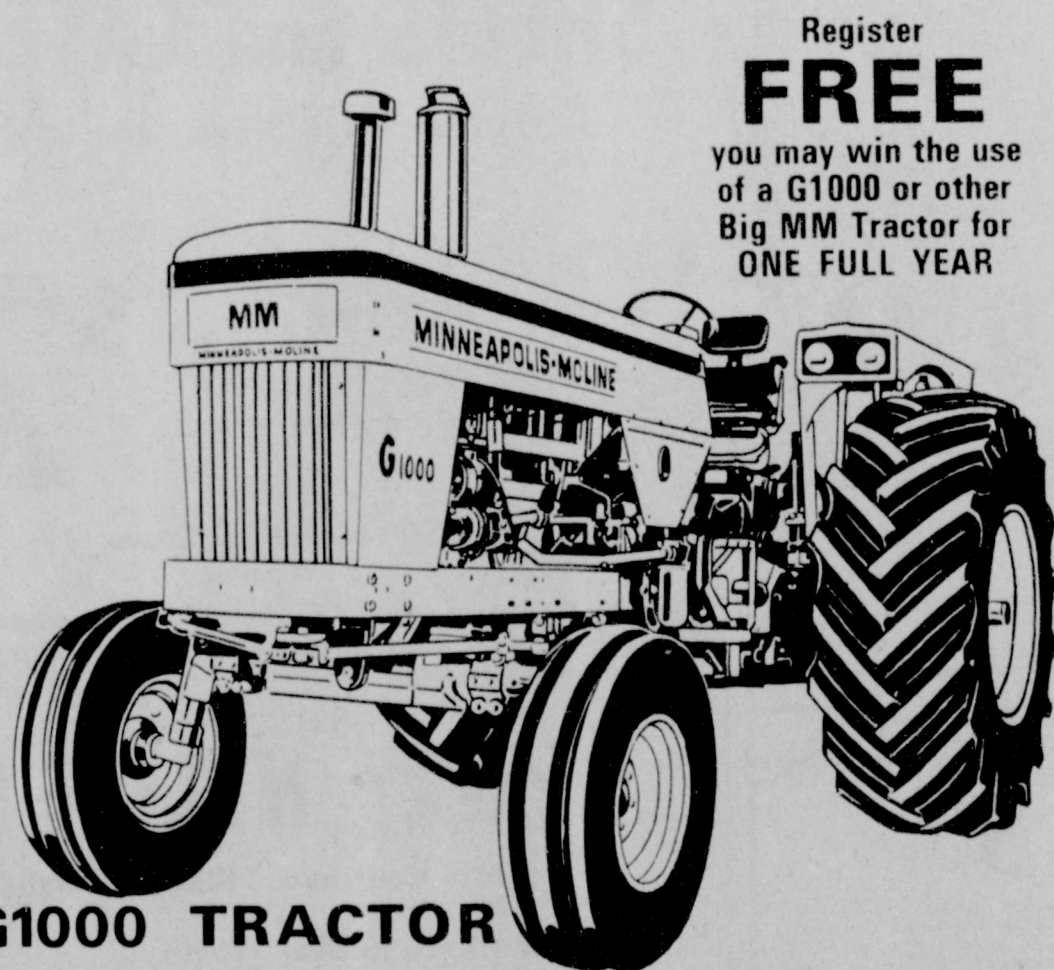
8 1/2 x 11"  
Approx. 500 Sheets  
**50¢ PER PKG.**  
IDEAL FOR KIDS TO SKETCH ON!

**Scratch Pads**  
6 x 5" **5¢**  
Each Pad

Muleshoe Publishing Co.  
304 W. 2nd.

### MINNEAPOLIS-MOLINE **MM** World's Finest Tractors

MINNEAPOLIS-MOLINE, INC. Hopkins, Minnesota • A Subsidiary of WHITE MOTOR CORPORATION



G1000 TRACTOR

## OPEN HOUSE

Sat. **Sept. 17th** Sat.  
Come One! All!

7 A. M. to 6 P. M.—COME EARLY—STAY LATE

Register **FREE**

Each farmer registering will receive a free gift and a door prize of a Presto Tractor Cab will also be given.

LADIES, YOU ARE INVITED, TOO!

Refreshments

See the wonderful new Big MM G1000 Tractor—other new and modern MM machinery on display.

Talk to G1000 Tractor Owners.

**FRY & COX**

401 S. First

Your Friendly One Stop Farm Store in Muleshoe

Phone 272-4511

### GREATEST SCORING POWER IN THE LEAGUE!

Looking for firing power? Or octane or cleaning power? Put a Tiger in Your Tank! with High-energy Enco Extra gasoline! You'll score a touchdown every tankful! And this year, for the 33rd consecutive year, Humble Oil & Refining Company will be broadcasting Southwest Conference Football on your favorite radio station. For a complete schedule of all Conference games, drop by your Enco dealer's and ask for your free copy.

**HUMBLE**

OIL & REFINING COMPANY. AMERICA'S LEADING ENERGY COMPANY





# 'Secret' Budget Irks Board, Chief Is Fired

By Vern Sanford  
Texas Press Association

AUSTIN -- It seems that a power struggle between House and Senate leaders on the Legislative Budget Board cost Director Vernon McGee his \$20,000 a year job.

Board is made up of five state senators and five house members. In the past they have fashioned the state budget . . . mainly behind closed doors.

House Speaker Ben Barnes maintains that the budget should be written "on the floor" by the lawmakers and that all committee hearings on it should be open to legislators and the public.

Barnes wants the House to have a larger role in writing the multi-billion-dollar state general appropriations bill. He also wants to put a brake on conference committee powers. He feels that a new budget chief, without close ties in the senate, will aid his drive for a joint legislative rules amendment to restrict conference committees to adjusting differences between bills, rather than writing new legislation in secret session.

McGee has helped process the state's \$3 billion biennial budget during the past 17 years. Speaker Barnes, while praising McGee's ability, said the budget director had become too powerful and was too close to veteran state senators who have long dominated budget writing.

Lt. Gov. Preston Smith favored re-employing McGee. But the board voted 6-3 against rehiring. One senator joined representatives in the vote for discharge and another voted "present."

PATROL GETS SHORT WEEK — Uniformed Texas Highway Patrolmen are going on a five day week as the Department of Public Safety moves to recruit and keep qualified officers and provide better law enforcement.

Col. Homer Garrison Jr., Director of the DPS, says there are 125 vacancies in the patrol services. Next deadline for applications is October 17.

TREASURY SURPLUS CLIMBS -- Biggest fiscal year-end surplus in the general fund in Texas' history was recorded August 31 by State Treasurer Jesse James. Total ran \$138 million.

James reported the surplus as \$1.6 million higher than the previous year. Current biennium ends August 31, 1967.

ATTORNEY GENERAL RULES -- A road district can be formed which encompasses territory

lying in more than one county. So held Atty. Gen. Waggoner Carr in an official opinion. However, the entire area of each county making up such district must be included and counties involved must be contiguous to each other. "Road districts," says Carr, "may acquire right of way for use by the State Highway Department to improve and extend the state highway system."

In other opinions, Carr held: Texas Parks and Wildlife Department may buy Calhoun

County land under a law authorizing purchase of property "near Rockport" for a salt water experiment pond. "Self-insuring" counties carrying their own liability risks rather than purchasing workmen's compensation insurance are not deprived of common law defenses. Also, liability is not affected. Service citation fees to Sheriffs or constables in small claims court cases (\$2) still are in effect.

APPOINTMENTS ANNOUNCED -- James Berger of Austin now is acting director of parole supervision. He succeeds Ray Williams who resigned to do graduate studies at the University of Texas. Joe Entzinger of Bay City, Tom Gordon of Abilene, Mrs. Howard Hurd of Brownfield, Tom McCrummen Jr. of Austin and Garrett Morris of Fort Worth were named as credentials sub-committee for the State Democratic convention. They will hear delegation disputes from Angelina, Denton and

Midland counties and protests concerning the Harris and Armstrong County conventions. MILLIONS ASKED FOR BUILDINGS -- State Department of Mental Health and Mental Retardation is seeking \$53 million for new buildings and for expansion of existing facilities during the next biennium. Money would go to facilities at Abilene, Austin, Denton, Corpus Christi, El Paso, Lubbock, Lufkin, Mexia, Richmond, Big Spring, Kerrville, Rusk, San Antonio, Terrell, Wichita Falls and in the Rio Grande Valley (site to be selected.) Board for MH/MR was informed that mental hospitals at Rusk, San Antonio and Wichita Falls fell below the standards of the Joint Commission on Accreditation and cannot participate in Medicare benefits until they correct short comings.

REVENUE SPLIT "BARRED" -- Staff attorneys for the Texas Legislative council say a proposal by big-city mayors that municipalities get a share of state tax revenue is unconstitutional. But municipal officials still are convinced that where there's a will, there's a way to obtain a partial refund of ped four per cent in July --

sharpest break since last fall the state in their boundaries. Texas Municipal League Director Steve Mathews says he feels "things can be worked out" if the Legislature wants to provide a source of supplemental aid to hard-pressed cities. CONNALLY SAYS NO. -- Gov. John Connally told Rio Grande Valley farm workers he will not call a special legislative session to consider a \$1.25 an hour minimum wage act. Connally went to New Braunfels to meet the marchers who were on a 400-mile trek to the Capital for a Labor Day rally. SHORT SHORTS Texas business activity dropped

Another \$1.5 million in Neighborhood Youth Corps projects for 27 counties has received the governor's approval. Texas Department of Public Safety is seeking authentic objects, used by Texas Rangers during any period, to be permanently placed in a public museum being organized at the department headquarters in Austin.

WE GIVE



WE GIVE



WE GIVE



WE GIVE



WE GIVE



WE GIVE



WE GIVE



WE GIVE



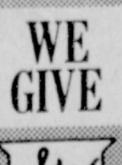
WE GIVE



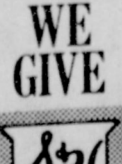
WE GIVE



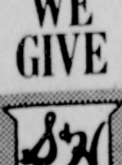
WE GIVE



WE GIVE



WE GIVE



WE GIVE

**WIN UP TO ONE MILLION GREEN STAMPS!**  
PLAY "Match the Stamp!"

Try Something Different!

Sweet Peas Libby's, Seasoned with Butter-Nut... 2 12-Oz. Cans	59¢	Mango & Pineapple Del Monte No. 303 Can	29¢
Smoked Oysters Goshute Brand 195-Oz. Can	35¢	Artichoke Hearts Pacific Mills 6-Oz. Jar	43¢

**CAREFULLY SELECTED**

**CHUCK ROAST** 49¢  
U.S.D.A. Choice, Aged, Heavy Beef, Valu-Trimmed . . . . . Lb.

**Short Ribs** U.S.D.A. Choice, Aged, Heavy Beef, Valu-Trimmed . . . . . Lb. 29¢  
**N. Y. Steak** U.S.D.A. Choice, Aged, Heavy Beef, Valu-Trimmed . . . . . Lb. \$1.98  
**K. C. Steak** U.S.D.A. Choice, Aged, Heavy Beef, Valu-Trimmed . . . . . Lb. \$1.39  
**Lunch Meat** Hormel's Corned Beef 6-Oz. Pkg. Pickle & Pimento, Olive Leaf . . . . . Pkg. 45¢  
**Beef Steak** Blue Morrow's 20-Oz. Thrift-T . . . . . Pkg. \$1.00

**SMOKED PICNICS** 39¢  
Swift's Premium Hickory Smoked, Whole . . . . . Lb.

**Roast** Boneless Bottom Round, U.S.D.A. Choice, Aged, Heavy Beef, Valu-Trimmed . . . . . Lb. \$1.09  
**Sliced Bologna** Swift's Premium . . . . . 12-Oz. Pkg. 49¢  
**Shoulder Roast** Boneless, U.S.D.A. Choice, Aged, Heavy Beef, Valu-Trimmed . . . . . Lb. 89¢  
**Swiss Steak** U.S.D.A. Choice, Aged, Heavy Beef, Valu-Trimmed . . . . . Lb. 79¢  
**Rib Steak** U.S.D.A. Choice, Aged, Heavy Beef, Valu-Trimmed . . . . . Lb. 79¢

ONE MILLION STAMPS EQUALS 833 1/3 BOOKS!

100,000 STAMPS EQUALS 83 1/3 BOOKS!

BELL, BORDEN, CLOVERLAKE OR FOREMOST

**MILK 89¢**  
GAL. Ctn.

**Weekend Values!**

Catsup Libby's, Fancy 14-Oz. Bottle	23¢
Mushrooms M. G. A. Stems 8 Pieces, 4-Oz. Can	33¢
Fabric Softener Kitten Soft Quart Bottle	49¢
Baby Juices Heinz, Asst. Flavors, 2 4 1/2-Oz. Cans	21¢
Olive Oil Pompeian, Pure 4-Oz. Bottle	33¢
Nestle's Quik Chocolate Flavor 1-Lb. Can	47¢
Crackers Supreme, Saltine 1-Lb. Box	35¢
Wesson Oil Pure Vegetable 24-Oz. Bottle	49¢
Ravioli Boyardee, Beef 1-Lb. Can	37¢
Lasagna Boyardee 15 1/2-Oz. Can	39¢
Beefaroni Boyardee 15 1/2-Oz. Can	33¢
Olives Tonic, Stuffed, No. 610 7-Oz. Bottle	59¢
Salad Dressing Morton's Quart Jar	45¢
Bar Soap Palmolive, 2 Bath Bars	35¢
Facial Soap Val. Beauty Bar, 2 Reg. Bars	41¢

## Hospital News

WEST PLAINS ADMISSIONS: Mrs. Alfonso Cabrena, Sidney Provence, Baby Girl Cabrena, Mrs. Ronald Fletcher, Mrs. Maud Vivian, and Baby Girl Fletcher.

DISMISSALS: Freddy Galan, L. V. Julian, Mrs. Thirio Branscum, Mrs. Maggie Fine, Mrs. Lilla Melendy, Mrs. Toai Barraza, Mrs. Frances Ball, W. O. Thomas, Mrs. Alfonso Cabrena and Baby Girl, Micky Wilson and Sidney Provence.

## GREEN MEMORIAL

ADMISSIONS: Mrs. Vernal King, Marvin Davenport, Mrs. Manual Trevino and baby girl, Mrs. Larry Hindez and baby boy, Lloyd Warren and Larry Seales.

DISMISSALS: Mrs. E. A. Seaton, Mrs. Roy Havens, Mrs. Linda Hinsley.

## Teachers Attend Plainview Meet

Mrs. Mary Maddox, speech therapist and Mrs. Addie Mae Spence, special education teacher, attended Region V Annual Fall Meeting of the Texas Association for Retarded Children, Saturday, at Wayne's Restaurant in Plainview. Dr. Carol Anderson, Ph.D., West Texas State University, Canyon; David Sloane, Executive Director of T.A.R.C.; Max Manley, Coordinator of Special Education Lubbock Public Schools; H. Russell White, Administrator of the Amarillo Mental Retardation Center and Dr. John Gladden Ph. D., Administrator of the Lubbock State School for the Mentally Retarded were the speakers for the conference. Seventeen area schools were represented and seventy-eight persons attended. The Texas plan to combat mental retardation was discussed by panel members.

<b>Cokes, Dr Pepper</b> King Size . . . . . 2 6-Btl. Ctns.	79¢
<b>Pinto Beans</b> Chef's Pride . . . . . 4 Lb. Bag	49¢
<b>Green Beans</b> Allen's Cut . . . . . 4 No. 303 Cans	49¢
<b>Facial Tissue</b> Soft Ply, Assorted Colors . . . . . 2 200-Ct. Boxes	29¢
<b>Tuna</b> Carnation, Chunk Style . . . . . No. 1/2 Can	29¢
<b>Mayonnaise</b> Kraft . . . . . Quart Jar	69¢
<b>Golden Corn</b> Stokely's Cream Style or Whole Kernel . . . . . 5 No. 303 Cans	\$1
<b>Tomatoes</b> Mountain Pass, Fancy . . . . . 6 No. 303 Cans	\$1
<b>Spray Starch</b> Faultless, 10¢ off Label . . . . . 22-Oz. Can	59¢

**Housekeeping Aids!**

Sponge Mop O Cedar, No. 201 Each	\$2.98	All Bran Kellogg's Famous 10-Oz. Box	29¢
Floor Wax Crackit, Prolong 37-Oz. Can	\$1.19	Corn Meal Glediola, White 5 Lb. Bag	49¢
Sponges 4-Pack	39¢	Mandarin Oranges Goodhue 11-Oz. Can	25¢
Deodorizer Room, Glade, Asst. Scents 7-Oz. Can	59¢	Instant Potatoes Pillsbury, Hash Brown 7 1/2-Oz. Pkg.	43¢
Water Softener Calgon 4 Lb. Box	\$1.23	Beans Ranch Style 52-Oz. Can	53¢
Fabric Finish Magic Finish, Spray 70-Oz. Can	69¢	Plum Jelly Bama, Red 18-Oz. Jar	45¢
Ammonia Person's Sudsy 15-Oz. Bottle	19¢	Dill Pickles Hammatt Quart Jar	39¢
Window Cleaner Windax, Aerosol 14-Oz. Can	59¢	Floor Wax Johnson's Paste 2 Lb. Can	\$1.39

**From The Dairy Case!**

Biscuits Ballard, Pillsbury 3 8-Oz. Cans	29¢	Margarine Golden Korn Corn Oil, 1-Lb. Pkg.	33¢
Swirl Rolls Pillsbury's New 8-Oz. Can	31¢	Cheese Whiz Kraft's 16-Oz. Jar	79¢
Brownies Pillsbury Refrigerated 18 1/2-Oz. Pkg.	49¢	Romano Cheese Kraft's Grated 4-Oz. Can	67¢

**TIDE** 69¢  
Heavy Duty Detergent  
Giant Box

**EGGS** \$1  
Robnett, Grade AA Small  
3 Dozen

**CRISCO** 79¢  
Pure Vegetable Shortening, 4¢ off  
3 Lb. Can

**Health & Beauty Aids!**

Hand Lotion Jergens, 7¢ off Label, Reg. 6¢, Med. Size Bottle	39¢
Shampoo Dandruff, Head & Shoulders, 8¢ off Label, Reg. 98¢, Med. Size Jar	69¢
Tooth Paste Colgate, 4¢ off Label, Reg. 59¢, 6 1/2 Size Tube	44¢
Deodorant Mennen, Reg. 1.39	\$1.09
Contac Reg. \$1.49 10-Ct. Capsule Per Pkg.	\$1.19

**Frozen Foods**

Dinners Mexican or Beef Enchilada, Patio 12-Oz. Pkg.	39¢
Potatoes Cal Ida, French Fries, 2 Lb. Poly Bag	29¢
Green Beans Libby's, French or Cut 2 7-Oz. Pkgs.	49¢
Mixed Vegetables Libby's 2 8-Oz. Pkgs.	49¢
Tacos Patis Cocktail 24-Ct. Pkg.	57¢
Avocado Dip Calavo 7 1/2-Oz. Can	69¢
Corn on the cob Birdseye 4 Ears Per Pkg.	47¢
Blackeyed Peas Libby's 10-Oz. Pkg.	27¢
Hush Puppies Gold King 3 Bags	\$1.00

**FARM-FRESH PRODUCE**

APPLES DELICIOUS FANCY NEW COPP 2 LBS.	29¢
AVOCADOS CALIF. THIN SKIN 3 FOR	29¢
TURNIPS CALIF. CLIP TOPS, LB.	10¢
POTATOES FOR CANDIED OR BAKING, LB.	15¢

**Store Manager's Specials!**

COOK BOOK, BALDRIDGE, RAINBO OR MRS. BAIRDS  
BREAD Reg. or Thin Sliced 1-1/2 Lb. Loaf 29¢  
GARDEN CLUB PEACH, APRICOT, PLUM PRESERVES or GRAPE JAM 18 oz. Jar 39¢  
COCA COLA, FRESCA, TAB  
Canned Drinks 6-12 oz. CANS 59¢

Lowest Prices . . . Greatest Variety . . . always at . . .

These prices good Sept. 15-21

**Piggly Wiggly**



# ENTER TODAY! MULESHOE'S ANNUAL FOOTBALL

# CONTEST

## and WIN CASH PRIZES!



**DON'T WAIT--  
ENTER NOW!  
YOU CAN WIN**

**1st. Place Winner  
Bob Stovall**  
**2nd. Place Winner  
Owen Jones**

**LET'S BACK THE MULES**

SEPTEMBER 16 LITTLEFIELD AT MULESHOE - 8 P.M.

**WIN WEEKLY PRIZES!**  
**1st. Place \$5. . . . 2nd. Place \$3**  
**GRAND PRIZE \$50**  
*For Expenses and Two Tickets to the Cotton Bowl at Dallas, Texas. There Will Also Be a Contest & Prizes For The Bowl Games!*

### RULES OF THE CONTEST:

Muleshoe Publishing Co. Box 449 - Muleshoe, Texas

- . Only one entry per person may be made for any one contest.
- . Weekly contests are open to everyone except employees and families of this newspaper.
- . Entries are to be judged by the Sports Editor and staff of this newspaper.
- . Bring or mail your entries to the Journal office. Mailed entries must be postmarked not later than 5 p.m. Friday.
- . Winners names will be published in this newspaper each Thursday following the close of the weekly contest.
- . Choose the team you think will win.
- . 10 points for 1st. place, 5 points for 2nd place determines the Grand Prize Winner.

THIS CONTEST MADE POSSIBLE BY THE FOLLOWING PROGRESSIVE FIRMS:

- |   |                                  |
|---|----------------------------------|
| <b>Pool Insurance</b>                   | <b>First National Bank</b>       |
| <b>Leal's Tortilla</b>                  | <b>King Grain &amp; Seed Co.</b> |
| <b>M. E. Lee &amp; Son Construction</b> | <b>Perry's</b>                   |
| <b>Shafer's Bell Station</b>            | <b>Muleshoe Motor Co.</b>        |
| <b>Ben Franklin</b>                     | <b>White Cashway</b>             |
| <b>Muleshoe State Bank</b>              | <b>Piggly Wiggly</b>             |
| <b>Richland Hills Texaco</b>            | <b>Bovell Motor Supply</b>       |
| <b>James B. Glaze Company</b>           | <b>W. Q. Casey Ins.</b>          |
| <b>Beavers Flowerland</b>               | <b>Muleshoe Floral</b>           |
| <b>Muleshoe Publishing Co.</b>          | <b>Progress Gin</b>              |
| <b>Western Drug</b>                     | <b>Lindsey Credit Jewelry</b>    |
| <b>Ladd Pontiac</b>                     | <b>E. R. Hart Co.</b>            |
| <b>Brock Motor Co.</b>                  | <b>Paul's Cafe</b>               |
| <b>Murray's Muleshoe Jewelry</b>        | <b>Texas Sesame</b>              |
| <b>The Fashion Shop</b>                 | <b>D &amp; G Grocery</b>         |
| <b>Dari-Delite</b>                      | <b>West Plains Hospital</b>      |
| <b>Muleshoe Co-op Gin</b>               | <b>Main Street Beauty Salon</b>  |
| <b>L &amp; H Grocery</b>                | <b>Cobb's</b>                    |
| <b>Union Compress &amp; Warehouse</b>   |                                  |

### OFFICIAL ENTRY FORM ONLY ONE ENTRY PER PERSON

NAME \_\_\_\_\_ ADDRESS \_\_\_\_\_

CITY \_\_\_\_\_ STATE \_\_\_\_\_

- |                     |                          |                 |                          |
|---------------------|--------------------------|-----------------|--------------------------|
| 1. FLORIDA STATE    | <input type="checkbox"/> | HOUSTON         | <input type="checkbox"/> |
| 2. TEXAS A&M        | <input type="checkbox"/> | GEORGIA TECH    | <input type="checkbox"/> |
| 3. ILLINOIS         | <input type="checkbox"/> | SMU             | <input type="checkbox"/> |
| 4. TEXAS            | <input type="checkbox"/> | SOUTHERN CAL.   | <input type="checkbox"/> |
| 5. WEST TEXAS STATE | <input type="checkbox"/> | ARLINGTON STATE | <input type="checkbox"/> |
| 6. TEXAS TECH       | <input type="checkbox"/> | KANSAS U.       | <input type="checkbox"/> |
| 7. MISSOURI         | <input type="checkbox"/> | MINNESOTA       | <input type="checkbox"/> |
| 8. NEW MEXICO STATE | <input type="checkbox"/> | N. TEXAS STATE  | <input type="checkbox"/> |
| 9. ARMY             | <input type="checkbox"/> | KANSAS STATE    | <input type="checkbox"/> |

#### TIE BREAKER

Muleshoe \_\_\_\_\_ SCORE Littlefield \_\_\_\_\_ SCORE

**DON'T MISS ANY OF THE FUN PRIZES  
SUBSCRIBE TO OUR PAPER: CALL 272-4536**



**It's Hay-Making Time**



Alfalfa has had a good season in the Muleshoe area, and this king-sized load is typical of the crops being turned out. This shows a load of freshly baled hay rolling off the Kenneth McIthan farm in the West Camp community. (Journal Photo)

**Power...**

Continued from Page 1  
 inar for the company's managers will be held at the Southwest Service Center in Amarillo on Sept. 22.  
 Milner, who is a native of Brownwood, has been with the Texas Industrial Commission since 1964. Prior to that time, he was chamber of commerce manager at Cisco and a staff member of the San Angelo chamber of commerce.  
 The new industrial development manager attended Howard Payne College and graduated from the University of Texas. In addition, he has taken a number of post-graduate courses in area and industrial development.

**Crops...**

Continued from Page 1  
 cotton producer organization through which the program was organized in 1964 and which continues to coordinate the efforts of all agencies involved. Dean said somewhere around

42,000 acres remain to be sprayed in this first application. This would bring total acres involved to about 165,000 acres. The reduction is due to the fact that intensive survey work has failed to find weevils in some of the area previously suspected of infestation.

the first estimate of 190,000 acres.  
 Weather conditions on Thursday, Sept. 20, grounded the 18 aircraft being used for the spraying. But it was felt that one more full days' spraying could complete the first operation.  
 The program, designed to prevent the spread of the dreaded weevil across the High Plains, has been dramatically successful to date, reducing per-acre weevil populations last year by 93 per cent.

other activities that we are planning, is to provide for each community some additional manpower, informed manpower, to help it in its industrial development program," Pearson said.

"As far as electric power is concerned, and its role in industrial development, each of the communities that we serve starts off equal like any other. Because of our interconnected generation and transmission system, we can meet the electrical needs of any industries that are likely to locate in this area at any point in the area. What we hope to do now, with the addition of Milner to our staff and with the seminar and

**Football...**

Continued from Page 1  
 13-12 opener to Littlefield.  
 "Hodges, who was substituting for Adam Cuevas, injured in a scrimmage a week ago, is possibly through for the season with a knee injury.  
 "Despite a lack-luster showing, the Plainview club almost salvaged the game late in the final period, but failed in two tries to pick up a valuable two-point conversion which would have put the monkey on Littlefield's back.

Etheredge into the line, also failed, and Littlefield ran out the clock.

"Plainview had taken a 6-0 lead late in the first period after Mike Rushing had grabbed a Littlefield fumble at the 27. Junior Halfback Joe Don Martin took charge, sliced to the 20, and on the next play went in from the 20. McBee's conversion attempt was blocked.

"The ball stayed in the middle of the field until Littlefield took over on its 29 with less than a minute in the half. But a 21-yard pass from Tim Tapley to Richard Wright, a 33-yard long peg from Mike Grissom to Kevin Hutson, and an eight-yard pass from Grissom to Phillip Pace were key plays in a 71-yard drive. The Grissom-Pace combination took the ball over with seven seconds left in the half. Fred Koontz converted.

The Wildcats made it 13-6 just before the third period ended as Grissom again was the man of the hour with a fifteen-yard toss to Wright with twelve seconds left in the period. Littlefield launched a Plainview fumble at the Dog 29, making a completion penalty.

"This time the Littlefield extra-point try was blocked by Larry Watson to set the stage for Plainview's rally attempt.  
 "Junior Richard Walker led Plainview on defense with 11 tackles, followed by David Etheredge with nine, Gary Covey with seven and Randy Bennett moved to the yard-and-a-half with four.

"On a try for two points the play bogged, but Littlefield was offside. The ball was moved to the yard-and-a-half with four, but the second try, by "Martin carried 20 times for

**Stovall...**

Continued from Page 1 on Page 6.

Sponsors of the contest are: Pool Insurance, Leal's Tortilla, Perry's, Ben Franklin, Muleshoe State Bank, Richland Hills Texaco, James B. Glaze, Co., Beaver's Flowerland, Muleshoe Publishing Co., Western Drug, Ladd Pontiac, Brock Motor Co., Dari-Delite, The Fashion Shop, Muleshoe Co-op Gin, L&H Grocery, Union Compress and Warehouse.

Also First National Bank, King Grain & Seed Co., Muleshoe Motor Co., White Cashway, Piggly Wiggly, Bovell Motor Supply, W. Q. Casey Ins., Muleshoe Floral, Also Progress Gin, E. R. Hart Co., Paul's Cafe, Texas Sesame, D&G Grocery, West Plains Hospital, Main Street Beauty Salon and Cobbs.

80 yards, Pat Buchanan carried 12 for 61 yards, and Etheredge lugged the ball six times for 22 yards.

"Both teams made 11 first downs, with Littlefield picking up 248 yards offensive while Plainview managed only 177.

**CORN AND SOYBEANS AND MILO**

CONTACT US FOR  
**TOP MARKET PRICES**  
 AT HARVEST

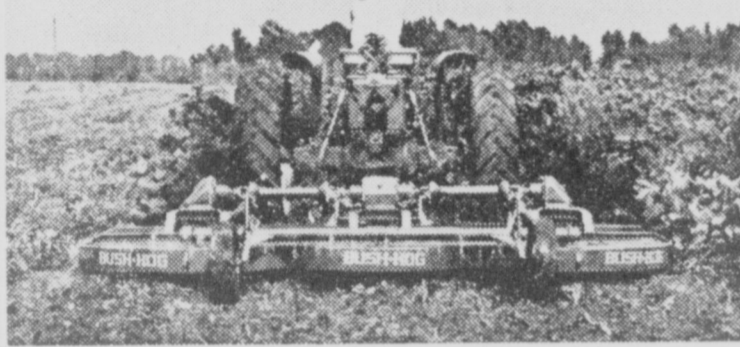
Grain Dept.  
 Ph. Area Code 806-272-4585

Seed Dept.  
 Ph. 272-4586

**Ray Griffiths & Sons**  
 Muleshoe, Texas

**NEW BUSH-HOG GIANT-160**

**SPEEDS STALK CUTTING ... GIVES YOU EXTRA TIME, LABOR, FUEL SAVINGS**



For BIG-ACRE FLATLAND CUTTING, the new BUSH-HOG Giant-160 is unsurpassed. It features 4-row capacity, lifetime unitized construction and three sets of direct gear-driven blades ... 20-inch overlap guarantees clean cut.

**HEAVY STEEL CONSTRUCTION GIVES YOU YEARS OF TROUBLE-FREE SERVICE!**

Now, breeze through roughest big field jobs THREE to FIVE TIMES FASTER. Cut, shred and mulch cotton and corn stalks ... 4 rows at a time. Clip pastures or clean up brush ... 100 to 120 acres a day. The new BUSH-HOG GIANT-160 is built to take this abuse in stride while you enjoy time, labor, fuel and repair savings. Heavy steel construction and exclusive BUSH-HOG features give you long years of trouble-free service. INSIST ON THE ORIGINAL BUSH-HOG THAT OUTWORKS, OUTLASTS, OUTSAVES ALL OTHERS!

Bush-Hog ... Foremost maker of Rotary Cutters, Disc Harrows, Ventilators, Garden Tractors.

CALL TODAY FOR FREE BUSH-HOG DEMONSTRATION

**JOHNSON AND NIX**  
 Muleshoe, Texas Ph. 272-4294

**ANNOUNCING!**

**5%**

\* COMPOUNDED QUARTERLY  
 Insured Savings

**Tri-County SAVINGS AND LOAN ASSOCIATION**

P. O. BOX 528 • MULESHOE, TEXAS

\* Anticipated Dividends, Effective Fourth Quarter Beginning October 1, 1966



**Field...**

Continued from Page 8 ceremony and accompanied Cliff Hardin, soloist, as he

sang, "Twelfth of Never" and "Wedding Prayer." Candlelighters were Pamela Bass, cousin of the bride from Brownfield, and Martha Coffey,

Farwell. Serving as ushers were Bobby Stice and Joe Jesko Clovis. Bobby Field, Muleshoe, served his brother as best man and Max, Friona,

also a brother, served as groomsman. Maid of honor for her sister's wedding was Joyce Bass. Another sister, Jana, was

bridesmaid. They wore identical floor-length dresses of red satin designed similar to that of the bride. They added crowns of silk organza roses

with shoes in matching hue. Each carried a long stemmed white mum.

Flower girl was Tina Gerles daughter of Mr. and Mrs. Herman Gerles. She wore a floor length dress of red satin, red shoes and wore a red silk organza crown identical to that of the other bridal attendants. She carried a white lace basket filled with white rose petals, and added a corsage of miniature white pom pom mums.

The bride, escorted and given in marriage by her father, wore a formal wedding gown of white peau de soie, designed with a fitted bodice, long sleeves which came to points at the wrists and a round neckline accented by appliques of white lace roses. Applied roses were also added at the hemline. The detachable train was adorned by a self bow at center back of the waistline.

The bride's tiered fingertip veil of white silk illusion fell from a crown of Pearls. She carried a cascade of red roses surrounding a white cymbidium orchid atop her white Bible. Carrying out the tradition, something new was her wedding dress made by her mother; borrowed was a necklace from her sister, Joyce; old was her mother's traditional garter. For luck, she carried in her shoes pennies minted in the year of her birth and that of the groom.

Mrs. Bass chose a two-piece suit of blue crepe with matching blue beads and earrings for her daughter's wedding. Her accessories were black and white and she wore a white cymbidium orchid corsage. For her son's wedding, Mrs. Field chose a navy blue two-piece dress with black and white accessories and she wore a white cymbidium orchid corsage.

Following the ceremony, a reception was held in the Fellowship Hall at the church. White lace over red adorned the serving table. It was centered by an arrangement of red roses.

The tiered cake, separated by columns, was decorated by minute confection red roses and topped by a bride and groom figurine. Crystal and silver table appointments were used. Napkins inscribed with the names "Sherry and Jerry" and the wedding date, "Sept. 1, 1966" completed the table decor. Presiding at the serving table were Mrs. Charles Roberts, Mrs. Cliff Hardin and Vicki Clayton. Guests were registered by Mrs. Hardin.

A two-piece knit suit of green with brown accessories was chosen by the new Mrs. Field for a wedding trip to points of interest in New Mexico and Texas. She lifted the orchid from her bridal bouquet. The couple are now at home in Plainview.

The bride was graduated from Farwell High School in 1966 and plans to attend Wayland this fall. She has been employed during the summer months



**RECEIVES VACATION**--Chief Jones won a three-day all expense paid vacation to Ruidosa, N.M. which he and Mrs. Jones took Aug. 18, 19 and 20. He received a 15 year distinguished service award for outstanding field of agriculture in Bailey County. Pictured are Kelly Maca Sears, field representative for Olan Mathis; Jones and his wife and George Kelt, salesman for Olan Mathis.

at the ASCS office. The groom is a 1965 graduate of Farwell High School and is a sophomore at Wayland where he majors in music and education.

Out of town guests at the wedding were Mrs. L. T. Field, Bowie; Mrs. Charlie Newton and Mrs. Lola V. McCraw, Amarillo; Mr. and Mrs. J.F. Carpenter, Oklahoma; Mr. and Mrs. Charles Roberts, Canyon; Mr. and Mrs. Otis Bass and Mr. and Mrs. G. I. Sims, Brownfield; Mrs. Cliff Hutson, Rice; and Rodney, Plainview; Mr. and Mrs. Max Field, Friona; Bobby Stice, Carol Looney, Mr. and Mrs. Cliff Hardin, Plainview; Mary Huguley, Clovis; Mr. and Mrs. Joe Costen, Mule-

shoe; Peggy Cheek, Morton; Mrs. John Hill and Velda and Carol Craft, Clovis; Rex Clayton, Earth; Mrs. Lela Gulley, Arkansas; Phyllis Renner, Friona; Mr. and Mrs. Russell Durham, Littlefield and Violet Dean, Muleshoe.

**SAFE DRIVING**  
BEAUMONT (AP) - Two veteran truck drivers, both recipients of several safe and courteous driving awards, listed what they feel are the major causes of highway accidents: "Impatience and negligence," said James D. Palmer and Bernard L. Sprinkle. They both concluded, also, that drunk drivers contribute to many fatalities.

**TELEVISION SCHEDULE FOR THE MULESHOE AREA**

STATION	PROGRAM	TIME
<b>FOOTBALL</b>	<b>IS FOREMOST</b>	
<b>KING BROS.</b>	<b>GRAIN &amp; SEED CO.</b>	<b>Complete ELEVATOR SERVICE</b>
<b>SEED PROCESSING FOR THE MULESHOE AREA</b>	<b>ALSUP CLEANERS</b>	<b>Offer These FINE SERVICES</b>
<b>THAT'S ALSUP CLEANERS</b>	<b>RE-PRINTS FROM ANY PHOTO</b>	<b>MADE BY THE JOURNALS</b>
<b>IN PAST ISSUES 8 X 10 \$2</b>	<b>Ph. 272-3106</b>	
<b>KGNC - TV (4)</b>	<b>KVII - TV (7)</b>	<b>KFDA - TV (10)</b>
<b>Amarillo</b>	<b>Amarillo</b>	<b>Amarillo</b>
<b>Muleshoe Cable 4</b>	<b>Muleshoe Cable 5</b>	<b>Muleshoe Cable 6</b>
<b>Daytime Viewing</b>	<b>Daytime Viewing</b>	<b>Daytime Viewing</b>
7:00 - Today 7:25 - News 7:30 - Today 8:00 - Today 9:00 - Eye Guess 9:25 - News 9:30 - Concentration 10:00 - M. Star 10:30 - P. Bay 11:00 - Jeopardy 11:30 - P. Office 11:55 - NBC News 12:00 - News 12:10 - Weather 12:15 - R. Brent 12:30 - Make-Deal 12:55 - NBC News 1:00 - Our Lives 1:30 - The Doctors 2:00 - Another World 2:30 - Don't Say 3:00 - Match Game 3:25 - NBC News 3:30 - Sheriff Bill 4:30 - Bronco 5:30 - Hunt-Brink. 6:00 - News	6:15 - Agriculture 6:45 - Weather 6:50 - News 7:00 - Mod. Edu. 7:30 - Exercise 8:00 - Movie 10:00 - S. Market 10:30 - Dating Game 11:00 - Donna Reed 11:30 - Father 12:00 - Ben Casey 1:00 - For Women 1:00 - Newly Wed 1:30 - A Time 1:55 - Women's News 2:00 - Gen. Hosp. 2:30 - Nurses 3:00 - N. Shadows 3:30 - Action Is 4:00 - Trails West 4:30 - H. Patrol 5:00 - P. Jennings 5:15 - News 5:25 - Weather 5:30 - Wells Fargo 6:00 - Rifleman	6:25 0 Sign On 6:27 - Meditation 6:30 - Am. College 7:00 - Farm News 7:30 - Tri Report 8:00 - Capt. Kang. 9:00 - I Love Lucy 9:30 - McCoys 10:00 - Andy 11:30 - Dick Van Dyke 11:00 - Search T. 11:45 - Guiding Lgt. 12:00 - News 12:10 - Weather 12:20 - Farm - Ranch 12:30 - The World T. 1:00 - Password 1:30 - Art Linletter 2:00 - To Tell Truth 2:25 - CBS News 3:00 - Secret Storm 4:00 - Sc. Fiction 4:30 - Mr. Mim. 5:00 - Cartoons 5:30 - CBS News 6:00 - News 6:20 - Weather
<b>THURS EVENING</b>	<b>THURS EVENING</b>	<b>THURS EVENING</b>
6:15 - Weather 6:25 - Sports 6:30 Tarzan 7:30 Star Trek 8:30 Branded 9:00 - Dean Martin 10:00 - News 10:15 - Weather 10:25 - Sports 10:30 - Tonight	6:30 - Batman 7:00 F. Troop 7:30 Wells Fargo 8:30 That Girl 9:00 The Hawk 10:00 - News 10:10 - Weather 10:15 - Agri-Business 10:30 - Movie	6:00 Jericho 6:30 - Munsters 7:00 - Gilligans 7:30 - Three Sons 8:00 - Movie 10:00 - News 10:15 - Weather 10:30 - Movie 10:55 - News 11:00 - Movie
<b>FRIDAY EVENING</b>	<b>FRIDAY EVENING</b>	<b>FRIDAY EVENING</b>
5:30 AFL-NY-Miami 8:00 Movie 10:00 - News 10:15 - Weather 10:25 - Sports 10:30 - Tonight 12:00 - Sign Off	6:30 Green Hornet 7:00 Time Tunnel 8:00 Milton Berle 9:00 12 o'clock High 10:00 - News 10:10 - Weather 10:15 - Agri-Business 10:30 - Movie	6:30 - Wild West 7:00 - Hog. Heroes 8:00 Movie 10:00 - News 10:15 - Weather 10:30 - TBA 10:55 - News 11:00 - Movie
<b>Saturday</b>	<b>SATURDAY</b>	<b>SATURDAY</b>
7:00 - Roy Rog. 8:00 Super 6 8:30 - Atom Ant 9:00 - Squirrel 9:30 Space Kid 10:00 Cool McCool 10:30 Jetsons 11:00 Top Cat 11:30 - Cotton John 12:00 - Baseball 3:00 Golf 4:30 Hollywood Stars 5:00 Golden Jubilee 5:30 - Scherr-mcN. 6:00 - News 6:15 - Weather 6:30 Flipper 8:00 Preview 9:00 American Pag.	7:30 - Mod. Edu. 8:00 - Silver Wings 8:30 - Baptist Church 9:00 King Kong 9:30 - Beatles 10:00 - Casper 10:30 - Mag. Gor. 11:00 - Bugs Bunny 11:30 - Milton 12:00 - Hoppity 12:30 Sports 2:00 Football - NCAA 5:30 NFL 6:00 Grimes 6:30 Shane 9:30 Movie 10:30 - Movie	6:45 - Sign On 7:00 - Cartoon 7:30 - Lone Ranger 8:00 Super 6 8:30 - Tenn. Tux. 9:00 - M. Mouse 9:30 - Lassie 10:00 - Tom-Jerry 10:30 - Quick Draw 11:00 - Sky King 11:30 - Linus 12:00 - Flicka 12:30 - News 12:45 - Movie 5:00 - Wilburn B. 5:30 - P. Wagner 6:00 - News 6:20 - Weather 6:30 Jackie Gleason 7:30 Pistol & Petticoat 8:00 Mission Impos. 9:00 Gunsmoke 10:00 - News 10:15 - Weather 10:25 - Sports 10:30 - Movie 10:55 - News 11:00 - Movie
<b>SUNDAY</b>	<b>SUNDAY</b>	<b>SUNDAY</b>
7:30 - Dixie 8:00 Cotton John 8:30 Forecast 8:45 - Sheriff Bill 9:30 - Roy Rogers 10:30 - Dixie (Cont.) 11:00 - Church 12:00 Football 3:00 Golf 4:30 Hollywood Stars 5:00 Laramie 6:00 - News 6:15 - Weather 6:25 - Sports 6:30 - Disney 7:30 Hey, Landlord 8:00 - Bonanza 9:00 Andy Williams 10:00 - News 10:15 - Weather 10:25 - Sports 10:30 - Tonight Show 12:00 - Sign Off	7:30 - Mod. Edu. 8:00 - Oral Roberts 8:30 - Christ For 9:00 - Beany 9:30 - Peter Pot. 10:00 - Bullwinkle 10:30 - Discovery 11:00 - Church 12:00 - W.T. Adven. 12:30 - Issues-Ans. 1:00 - Western 2:00 - P.G.A. Golf 4:00 - Honest Jess 4:15 - Matinee 6:00 - Voyage to 7:00 - FBI 8:00 - Movie 10:15 - News 10:30 - Movie	7:25 - Sign On 7:30 - Mag. Gor. 8:00 - Peter Pot. 8:30 - Beany 9:00 - Herald of 9:30 - Living 10:00 - Discovery 10:30 - Drama 10:45 - Church 12:00 AFL 3:00 Golf 4:30 Meet Press 5:30 - Red Raider 6:00 - News 6:30 - Disney 7:30 Hey, Landlord 8:00 - Bonanza 9:00 Andy Williams 10:00 - News 10:15 - Weather 10:25 - Sports 10:30 - Movie 10:55 - News 11:00 - Movie
<b>KCBT - TV (11)</b>	<b>KLBK - TV (13)</b>	
<b>Lubbock</b>	<b>Lubbock</b>	
<b>Muleshoe Cable 2</b>	<b>Muleshoe Cable 3</b>	
<b>Daytime Viewing</b>	<b>Daytime Viewing</b>	
7:00 - Headlines 7:05 - Farm Report 7:25 - Weather 7:30 - Today 8:25 - News 8:30 - Today 9:00 - Eye Guess 9:25 - News 9:30 - Concentration 10:00 - M. Star 10:30 - P. Bay 11:00 - Jeopardy 11:30 - P. Office 11:55 - News 12:00 - Noon Rptl 12:15 - Com. Close 12:30 - Make Deal 1:00 - Our Lives 1:30 - Doctors 2:00 - Another World 2:30 - Don't Say 3:00 - Match G. 3:25 - Aff. Rpt 3:30 - S. Sweep 4:00 - Father 4:30 - Beaver 5:00 - Cartoons 5:30 - Hunt-Brink. 6:00 - News	5:55 - Sign On 6:00 - Sun. Sem. 6:30 - Jimmy Dean 6:45 - Farm-Ranch 7:05 - M. Wallace 7:30 - Morn. Show 8:00 - Capt. Kang. 9:00 - Donna 9:30 - McCoys 10:00 - Andy 10:30 - D. Dyke 11:00 - Love of Life 11:25 - CBS News 11:30 - Search 11:45 - Guiding 12:00 - WTTN News 12:12 - Farm Ranch 12:25 - Weather 12:30 - World Turns 1:00 - Password 1:30 - Houseparty 2:00 - Gen. Hos. 2:30 - Edge Night 3:00 - Sec. Storm 3:30 - Dating G. 4:00 - Tele Bingo 4:30 - Col. Car. 5:00 - Rifleman 5:30 - News	
<b>THURS EVENING</b>	<b>THURS EVENING</b>	
6:30 - Tarzan 7:30 - Destination 8:30 - Beaver 9:00 - Dean Martin 10:00 News 10:30 Tonight Show FRIDAY EVENING 5:30 - AFL 6:30 - White Paper 7:00 - Buck Owens 7:30 - Palladium 8:00 News 8:30 Sports World 9:00 - UNCLE	6:00 - News 6:10 - Weather 6:20 - News 6:30 - Eternity 7:00 - Gilligan 7:30 - Three Sons 8:00 - Movie 10:00 - News - Wea. 10:30 - Theatre 12:00 - Sign Off FRIDAY EVENING 6:00 - News 6:10 - Weather 6:20 - News 6:30 - Eternity 7:00 - Bewitched 7:30 - Hog, Heroes 8:00 - Gomer Pyle 8:30 - TBA 9:00 - NFL 11:45 - News - Wea. 12:15 - Movie SATURDAY 5:55 - Sign On 6:00 - Sun. Sem. 6:30 - S. Preston 7:00 - Bugs 7:30 - Porky 8:00 - Heckle-Jecki 8:30 - Milton 9:00 - M. Mouse 9:30 - Beatles 10:00 - Tom-Jerry 10:30 - Casper 11:00 - Sky King 11:30 - Lassie 12:00 - Flicka 12:30 - Bandstand 1:30 - Wrestling 2:30 - Golf 4:30 - Bobby Lord 5:00 - Wilburn Bros 5:30 - Pickin Time 6:00 - P. Wag. 6:30 - J. James 7:00 - Shenandoah 7:30 - Wild West 8:30 - Riflem-n 9:00 - Gunsmoke 10:00 - News-Wea. 10:20 - Movie 12:00 - Late Show 1:30 - Sign Off SUNDAY 6:55 - Sign On 7:00 - Bullwinkle 7:30 - Looney Tunes 8:00 - Linus 8:30 - Movie 10:15 - Spanish Music 10:45 - Church 11:45 - Inquiry 12:15 - Face Nation 12:45 - News 1:00 - Peter Gunn 1:30 - World Sports 4:00 TBA 4:30 - Amateur 5:30 Munsters 6:00 - Lassie 6:30 - F Troop 7:00 - FBI 8:00 - P. Mason 9:00 - Preview 9:30 - Smothers 10:00 - News 10:20 - Movie 1:30 - Sign Off	

**PREMIERE WEEK SET**

**Higginbotham Bartlett Building Needs**

- Paint
- Lumber
- Wallpaper
- Hardware
- Houseware
- Gifts

**Higginbotham Bartlett Muleshoe**

**Abel Cable**  
For Year-Long Entertainment

**INSTALL NOW Three Plans for Hook-Up**  
KBFM FM Stereo Radio, Lubbock.....90 Meg.  
KSEL FM Radio, Lubbock.....89 Meg.

**MULESHOE ANTENNA CO. Call Now**  
Phone 272-3310

**Remember Your College Student With A Subscription To The Muleshoe & Bailey Co. Journal**  
9 MONTHS SPECIAL COLLEGE SUBSCRIPTION \$5.00

**SAM, YOUR SERVICE MAN SAYS...**

**TUNE-UP YOUR CAR FOR WINTER NOW!**

**PLAINS AUTO SERVICE DEPT.**  
421 Main Muleshoe Ph. 272-4576

**ANOTHER \$25 WINNER!! FROM THE CLOVERLAKE 'MYSTERY MAN'**



Mrs. Bob Glass, 406 Chicago, was glad she had purchased a Cloverlake product when Jack Barker (L) Cloverlake Mystery Man, called on her. He is presenting Mrs. Glass \$25. cash. Red Simmons, owner & mgr. of Red's Little Giant Grocery, (R) is pleased that the Cloverlake product was purchased at his store.

**BE ON THE LOOK-OUT FOR THE CLOVERLAKE MYSTERY MAN "YOU MAY BE THE NEXT TO WIN"**  
SAVE YOUR CLOVERLAKE POINTS FOR VALUABLE "FREE" PREMIUMS...

**Prescriptions for all your needs Complete Fountain Service Drugs & Veterinarian Supplies**  
**WESTERN DRUG**  
Your Walgreen Agency



# TRADE CLASSIFIED SELL BUY ADS LEASE

## WANT ADS - PH. 272-4536

1 time per word - - 4¢ 3 times per word - - 10¢  
 2 times per word - - 7¢ 4 times per word - - 13¢  
 After 1st issue, 3¢ per word each additional time.  
 Minimum charge 50¢  
 Card of Thanks \$1.00

**DEADLINE FOR CLASSIFIED ADVERTISING PAGE:**  
 For placing or cancelling ads is Monday, 4 p. m. for Thursday's paper and Thursday, 4 p. m. for Sunday's. Too late to classify is Tuesday, 4 p. m. for Thursday's and 4 p. m. Friday for Sunday's issue. Double rate for blind ads.

Check your ad and report errors immediately. The Journal reserves the right to classify, revise, or reject any classified ad, and is not responsible for errors after the ad has run once.

**CLASSIFIED DISPLAY**  
 85¢ per column inch  
 90¢ per column inch  
 for reverses.

### 1. PERSONALS

AVON, Phone 3510,  
 1-46t-fc

FOR RENT, 15 ft. camper.  
 By day or week. Call 272-3163.  
 1-35s-tfc

If you need an Auctioneer,  
 I can't think of a better one.  
 Over 20 years of experience.  
 Emc'te Cross, "The Cowboy  
 Auctioneer."  
 -34t-fc

FOR RENT: 2 Business  
 Buildings.  
 1-25x140'  
 1-15x140'  
 Between theaters. Down town  
 Muleshoe. Contact Fair Store,  
 across street.  
 1-32s-tfc

Acid indigestion? Painful  
 Gas? Get new PHS tablets  
 Only 98¢. Damron Drugs  
 1-36t-4tp

I will not be responsible for  
 any debts not made by myself.  
 Carl Burkhardt  
 1-36t-3tp

Repair Sales and Service,  
 Phone 482-9017, 321 Griffin,  
 Texico, New Mexico,  
 1-37s-tfc

Building For Lease: Located  
 at 210 West Ave. B. Will  
 remodel to suit tenant. Contact  
 Eddie Lane Real Estate  
 272-4433  
 1-37t-8tp

### 3. HELP WANTED

Beautician needed. Call 272-  
 3448.  
 3-16t-fc

Day and night car hop wanted.  
 Could use school girl part time  
 at night. Bill's Drive In, Clovis  
 Road, Muleshoe, Texas.  
 3-34t-fc

3 stray cows penned up. Call  
 965-2391  
 2-37t-6tc

WANTED IMMEDIATELY:  
 Man or Woman to supply con-  
 sultant with Rawleigh Products  
 in Bailey County or Muleshoe.  
 Can earn \$50 weekly, part-time-  
 \$100 and up full time. Write  
 Rawleigh TXH-270-336  
 Memphis, Tenn.  
 3-37t-ltp

### 4. HOUSES FOR RENT

FOR RENT: 5 room house  
 close to school 416 West 4th.  
 4-34s-tfc

FOR RENT: 3 bedroom house  
 located at 722 W. Ave. E. New-  
 ly decorated throughout. Call  
 272-4073.  
 4-33t-fc

FOR RENT: 2 bedroom house  
 newly decorated. Call 272-3038  
 or see Mrs. Jack Lenderson at  
 1818 West Ave. D.  
 4-26s-tfc

FOR RENT: 2 bedroom house  
 at 911 South 1st. Newly re-  
 decorated. \$80 per month.  
 Call 272-3221.  
 4-37s-tfc

FOR RENT: 2 bedroom house  
 3 1/2 west on Hwy. 1760. Phone  
 272-3567  
 4-37t-fc

FOR RENT: One Bedroom,  
 modern unfurnished house,  
 newly decorated, plumbed for  
 washer, back yard fenced. Call  
 272-3710. At 522 West 3rd.  
 4-37t-2tp

For rent - 3 room and bath  
 unfurnished cottage, free water,  
 lawn maintained. One parson  
 or couple only. See Ike or Lois  
 Robinson at Robinson Boot Shop  
 or call 272-3392 or 272-4721.  
 4-21t-fc

### 5. APTS. FOR RENT

THREE room furnished apt.  
 for rent. Call or see Mrs.  
 Jack Lenderson 272-3038.  
 5-32t-fc

FOR RENT: 1 and 2 bed-  
 room apt. Furnished or un-  
 furnished. 3 bedroom house.  
 Call D.L. Morrison Jr., 4886  
 5-31s-tfc

3 room unfurnished apt. See  
 Spencer Beavers at Post Office.  
 5-10t-fc

FURNISHED APARTMENTS:  
 Trailer Space, Briscoe Apart-  
 ments. Phone 272-3465.  
 5-28t-fc

FOR RENT: 4 room furn-  
 ished apt. Carpeted, wall heat,  
 to be seen at 1412 W. Ave C.  
 Phone 4463.  
 5-37t-fc

### 6. ROOMS FOR RENT

FOR RENT: Nice quiet bed-  
 room, 807 west 7th. Call 272-  
 4903.  
 6035t-fc

FOR RENT: Bedroom with  
 kitchen privileges, 522 West  
 3rd. Phone 272-3710.  
 6-37t-2tp

### 8. REAL ESTATE FOR SALE

EXCLUSIVE!!  
 2 bedroom home in 600 block  
 Main Street. A bargain. Hol-  
 land Real Estate, 121 American  
 Blvd. Phone 272-3293 day or  
 night.  
 8-36t-fc

3 bedroom, den, 2 baths,  
 double garage, fireplace, built-  
 ins, carpet, fence, central heat  
 & air. Richland Hills Addition.  
 Possession June 1. \$1000 down.  
 Call L. H. Alex Adams. Ph.  
 272-3496 or 272-3335. Apt. for  
 rent.  
 8-19t-fc

FOR SALE: New 3 bedroom  
 brick house, den with fireplace,  
 formal dining room, built-in  
 kitchen, 1 3/4 bath, double garage,  
 on corner lot across from  
 Richland Hills School, 1900  
 Sq. ft. living area. Fully car-  
 peted. Call Cecil Harvey, 272-  
 4085.  
 8-37t-2tp

160 Acres next to city limits,  
 west of Muleshoe, 1/2 minerals,  
 10% down, 14 years, 5 3/4%,  
 ideal for small tract sales or  
 farming. \$525 per acre. Dial  
 272-3515.  
 835t-8tc

FOR SALE: 178 acres irri-  
 gated farm. 2 miles west  
 Needmore, Texas. Joe W.  
 Miller 2001 12 St. Brownwood,  
 Texas.  
 8-36s-4tp

FOR SALE: Nice 3 bedroom  
 house. Paneled kitchen and  
 tile bath - 1000 square ft. G.I.  
 loan 1208 W. Ave. B or phone  
 272-3619.  
 8-33t-8tp

FOR SALE or Trade- 3 bed-  
 room, brick, complete. Richland  
 Hills. Owner Ph. 272-4842.  
 8-30s-tfc

Leaving town, MUST SELL.  
 Small equity and assume good  
 loan. 3 bedroom, den, 2 baths,  
 convenient to De Shazo, Junior  
 High and High School. Call  
 272-3774.  
 8-37s-3tc

FOR SALE: 3 bedroom, 1 3/4  
 bath, carpet, central heating  
 and air, built-ins, utility, roomy  
 garage, (Like new). This is a  
 real buy, \$1000 can handle.  
 Good loan available, borders  
 Richland Hills School, 1803 W.  
 Ave. G. Call Wayland Ethridge  
 Ph. 272-3133  
 8-tfc

450 acres due west of Mule-  
 shoe city limits, 3-8" wells,  
 house, 150 alfalfa hay, 1/2 mile  
 of pavement allotments, \$605  
 per acre, 10% down, 14 years  
 5 3/4% ideal future develop-  
 ment, 1/2 mineral, Dial 272-  
 3515  
 8-34s-8tc

For Sale: 3 Br. Brick, 2 tile  
 baths, lr, den office, two car  
 garage, built-in oven, surface  
 unit, dishwasher, disposal, cen-  
 tral heat with ref. air cond.  
 5' tile fence and 12x25 ft. tile  
 bldg. Shown by appointment  
 only. Call 272-4763, noon or  
 after 5:30 p.m. Spud Thomas.  
 1729 Ave. E.  
 8-37s-tfc

NICE large 2 bedroom house  
 Fenced back yard. Well located.  
 Price \$4250. Small down pay-  
 ment. Lot is worth \$3000.  
 CROSS REAL ESTATE AND  
 INSURANCE.  
 8-35s-tfc

FOR SALE: 3 bedroom, 2  
 bath, kitchen and den, combi-  
 nations, built in range and  
 oven carpeted 2 car garage.  
 Small equity. Call W.R. Byers  
 3967.  
 8-31s-tfc

FOR SALE: 3 bedroom, 2  
 baths, living room, and den  
 built-ins in kitchen, 2 car gara-  
 ge on pavement. Small down pay-  
 ment. Call D.L. Morrison J  
 4886.  
 8-31s-tfc

FOR SALE: 2 bedroom  
 house, fenced backyard, on cor-  
 ner lot. Reasonable. Must  
 sell. Inquire at 223 East Birch  
 or call 272-3270  
 8-37t-6tc

### 10. FARM EQUIPMENT

700 - 4x6 top post, 60¢ each.  
 15 - rolls barb wire, \$8 each.  
 10 - 30' poles, \$70.  
 17 - 18' treated poles, \$60.  
 37 corner post, \$90.  
 7 - 8' treated post, \$12.  
 Dial 272-3515  
 10-35t-8tc

### 12. HOUSEHOLD GOODS

Good combination G.E. Ref-  
 erator-Freezer. Works like  
 new. \$89.95. POYNOR'S WHITE  
 STORE, Phone 272-3511  
 12-37t-2tc

Good Credit: Repossessed  
 1965 motel zig-zag equipped  
 Singer Sewing machine in Wal-  
 nut console. Embroidery pat-  
 terns, buttonholes, etc. Six pay-  
 ments of \$5.46. Cash discount.  
 Write Credit Manager, 1114  
 19th Street, Lubbock, Texas.  
 12-37t-fc

For Sale: Hot Point 10'  
 Refrigerator. Like new. Call  
 4463 or see at 1412 West Ave. C.  
 12-37s-tfc

Re-posessed portable  
 Phonola Stereo. Works and  
 looks like new. Sold new at  
 \$99.95. \$49.95. POYNOR'S  
 WHITE STORE, Phone 272-3511  
 12-37t-2tc

### 15. MISCELLANEOUS

NEED YOUR FEED CUT?  
 Custom combining. Contact  
 Weldon Slayton, 965-2140, 6  
 miles north of Muleshoe.  
 15-36s-tfc

DON'T merely brighten your  
 carpets. Blue Lustre them  
 . . . eliminate rapid resoiling.  
 Rent Electric Shampooer \$1.  
 Higginbotham-Bartlett  
 15-37t-ltc

### 16. LIVESTOCK

FOR SALE: 2-3 year old  
 registered Hereford bulls.  
 Phone 965-2988  
 16-36s-3tc

## The Sandhills Philosopher



Editor's note: The Sand-  
 hills Philosopher on his  
 Johnson grass farm seems  
 a little excited this week,  
 his letter reveals.

Dear editor:  
 I don't know any more about  
 economics than the average  
 economics professor faced with  
 an overdraft at the bank, but a  
 headline in a newspaper I found  
 out here on this Johnson grass  
 farm yesterday has left me  
 further in the dark than ever.

It read: "President Urges  
 Bankers To Say No."

I stopped in my tracks and  
 sat down and read the entire  
 article, and sure enough, the  
 President, having been told by  
 his advisors that a danger sig-  
 nal was showing up in the  
 increased demands for bank  
 loans, which in turn was driv-  
 ing the interest rate higher  
 and higher, was advising bank-  
 ers to discourage borrowing.

This is the first time I ever  
 heard of any bankers having  
 trouble saying no and all I've  
 got to say is, Where are they?  
 How do you get in touch with  
 them?

I've heard of Washington  
 accused of not putting out all  
 the news, and here's an ex-  
 ample. I want those bankers  
 named, with their address and  
 phone number.

Actually, the whole thing has  
 me confused. As I understand  
 it, the country is more pros-

### 17. SEED AND FEED

FOR SALE: Tascosa wheat,  
 seed, \$3.75 cwt, 9 miles north  
 1-1/2 west Muleshoe. Phone  
 965-2372. Clarence R. Mason,  
 17-37t-fc

For Sale: Rye Seed  
 Brown Supply Company  
 Highway 84  
 Sulan, Texas  
 Phone 227-6471  
 17-37t-6tc

Complete stock of Rye at  
 BEST Prices. Either bulk or  
 sacked. Gilbreath's Seed and  
 Grain Co. Phone 272-3156.  
 17-37t-2tc

### LEGAL NOTICE

NOTICE TO BIDDERS  
 Pursuant to an Order passed  
 by the Commissioners' Court  
 on September 12, 1966, author-  
 izing the publication of NOTICE  
 TO BIDDERS for the purchase  
 of one (1) automobile, notice  
 is hereby given, that it is the  
 intention of the Commissioners' Court  
 to purchase one (1) new  
 automobile to be used by the  
 Sheriff's Department of Bailey  
 County. And sealed bids for  
 said automobile will be received  
 by the Commissioners' Court  
 at their regular meeting place  
 in the Courthouse in Muleshoe,  
 Texas, until 11:00 o'clock a.m.  
 Friday, September 30, 1966.  
 Said automobile, is to be a  
 four-door sedan, with not less  
 than a 380 cubic inch motor,  
 equipped with radio, fresh  
 air heater, air conditioner,  
 spotlight, heavy duty cool-  
 ing system, tinted windshield,  
 standard transmission with  
 overdrive or hydromatic trans-  
 mission, to be delivered  
 properly serviced in Bailey  
 County, Texas.

A group of small pitchers, of  
 clear glass or in harmonious  
 shades of china or pottery, may  
 be grouped, filled with flowers  
 or leaves and used as a charming  
 centerpiece for a dining table.  
 Such pitchers - with some age,  
 but not "antique" - may often  
 be picked up at inexpensive  
 prices.

As part consideration Bailey  
 County offers to trade-in the  
 following:

One (1) 1963 model Ford,  
 four-door custom sedan  
 with V-8 motor and over-  
 drive.

The balance of the purchase  
 price is to be paid in cash  
 out of the General Fund of  
 Bailey County.

A cashiers' or certified  
 check, issued by a Texas  
 Bank, payable without recourse  
 to the order of Glen Williams,  
 County Judge of Bailey County  
 Texas, in the amount of five  
 (5) per cent of the amount of  
 the bid must accompany each  
 bid as a guarantee that if  
 awarded the contract the bidder  
 will promptly enter into con-  
 tract and execute bonds in the  
 amount and in the form re-  
 quired by law.

The Court reserved the right  
 to reject any or all bids.

/s/ Glen Williams  
 Glen Williams  
 County Judge,  
 Bailey County,  
 Texas

37t-2tc

perous than it's ever been be-  
 fore, there are more people  
 employed, the gross national  
 product is soaring to new  
 heights, the average income  
 is the highest in history, and  
 never before have so many  
 people wanted to borrow so  
 much money.

I intend to devote some time  
 to figuring out the answer to  
 all this, and believe maybe I  
 could if the bill collectors would  
 stop hounding me.

Meanwhile, if you find out  
 where those bankers are who're  
 having trouble saying no are,  
 let me know at once.

Yours faithfully,  
 J.A.

## Rice Chancellor To Give Address At Tech Ceremony

LUBBOCK -- Dr. Carey  
 Cronels, Chancellor of Rice  
 University, will deliver the  
 principal address at the Nov. 1  
 inaugural ceremonies of Dr.  
 Grover E. Murray as Texas  
 Tech's eighth president, Dean  
 Gerald W. Thomas, Chairman  
 of the committee planning  
 the inauguration announced  
 Wednesday.

Dr. Murray, currently Vice  
 President for Academic Affairs  
 for the Louisiana State Univer-  
 sity System, will assume his  
 duties at Tech on Sept. 1 with  
 his inauguration to be preced-  
 ed by a symposium on arid  
 and semiarid lands on Oct.  
 30-31.

Dean Thomas made the  
 announcement Wednesday at a  
 report meeting of the various  
 committees.

Tech Academic Vice Presi-  
 dent Dr. W.M. Pearce will pre-  
 side at the two-hour inaugural  
 ceremonies beginning at 9 a.m.  
 Tuesday (Nov. 1) in the Lubbock  
 Municipal Coliseum.

Tech Student Body President  
 Bill Bueck of Midland, Ex-  
 Students Association President  
 Don Anderson of Crosbyton and  
 a member of Tech's Faculty  
 Committee will present greet-  
 ings.

Dr. John Gray of Beaumont,  
 Chairman of the Coordinating  
 Board, Texas College and  
 University System, will intro-  
 duce Dr. Cronels.

Dr. Pearce will present Dr.  
 Murray for induction and the  
 Tech Board Chairman will per-  
 form the installation.

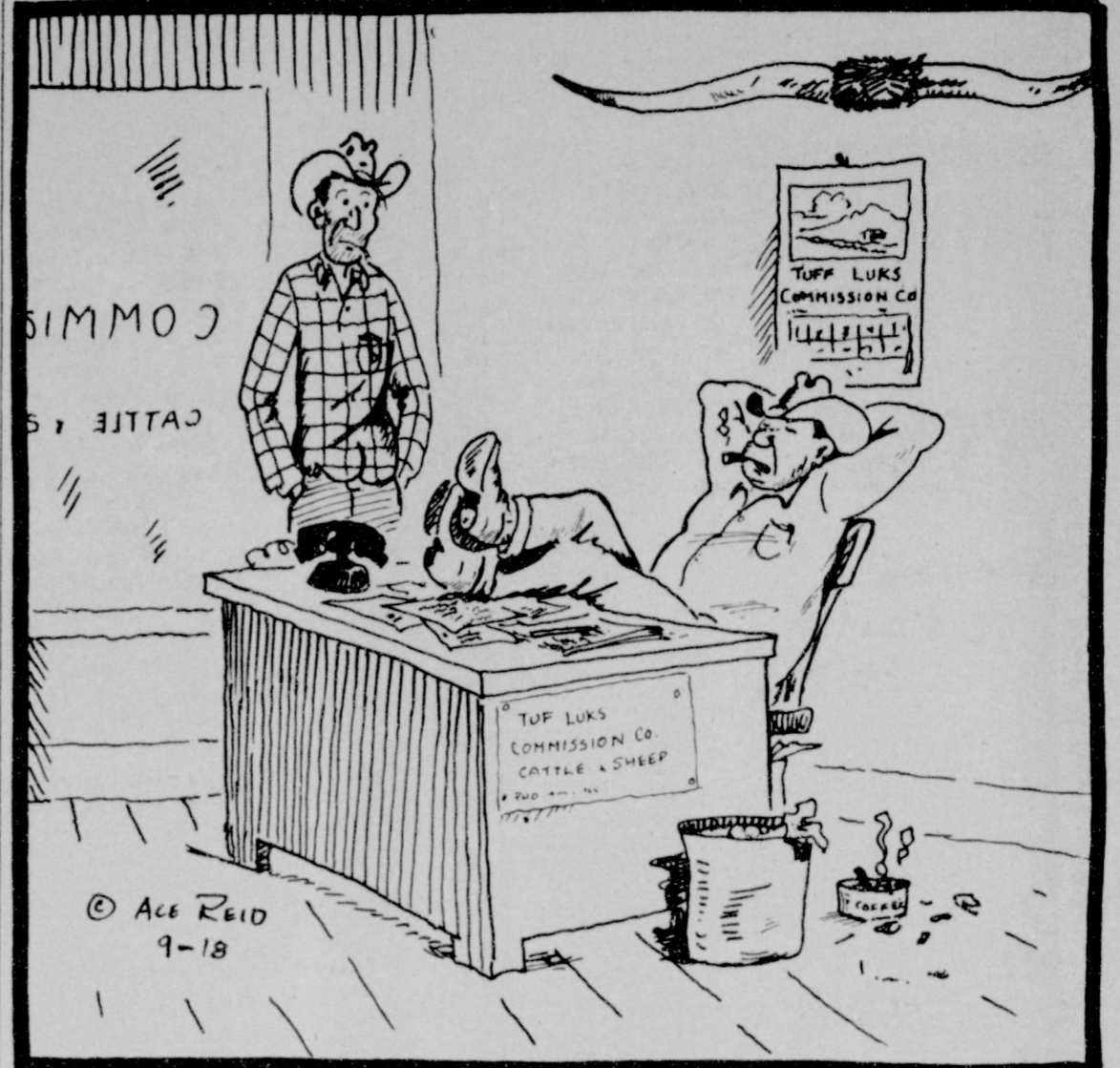
Tech's Music Department  
 will present musical selections.  
 Outstanding experts in their  
 fields are expected to partici-  
 pate in the symposium on  
 arid and semiarid lands which  
 will explore the various as-  
 pects of the arid and semiarid  
 regions of the world.

Under the bill I sponsor, the  
 Office of Economic Opportunity  
 would be stripped of all present  
 poverty programs except Com-  
 munity Action and VISTA. All  
 training programs would be  
 coordinated under the Man-  
 power and Training Act by the  
 Labor Department. The edu-  
 cation programs -- including  
 Headstart -- would be placed  
 in the hands of the Office of  
 Education. The business loan  
 program would be administered  
 by the Small Business Admin-  
 istration and the farm loan pro-  
 gram by the Farmers Home  
 Administration.

Thus, the talents of current  
 administrative experts would  
 replace the confusion that has  
 resulted from the decision to

## COW POKES

By Ace Reid



Oh business is up considerable, we've only lost a third as much money as we did at this period last year!

## Tower: Poverty War Slow, Costly

For two years now the so-  
 called War on Poverty has been  
 trying to get started, but its  
 troubles have been many and  
 costly. It is significant that  
 if the program had operated  
 as well in all the states as  
 it has in Texas many of the  
 current problems would be  
 avoided.

But, unfortunately, the Pov-  
 erty War has been, on the whole,  
 wasteful and ineffective with a  
 disproportionate amount of tax  
 funds applied to it going to  
 highly-paid administrators, and  
 very little of the money filter-  
 ing down to help the poor.

As many of us argued when  
 the program was begun, it is  
 not the idea but the organiza-  
 tion that is bad. Throughout  
 history, society has banded to-  
 gether its talents to help the  
 less fortunate among us. But,  
 this Poverty War was adopted  
 under procedures too often by-  
 passing state and local govern-  
 ments, and it was tied too  
 closely to hand-outs rather than  
 to self-help projects.

Plenty of evidence has been  
 produced to cause concern. Dol-  
 lar bills have been escaping  
 from the program in every di-  
 rection with only a few falling  
 into direct assistance for the  
 poor. There has been a serious  
 continuing turnover of top per-  
 sonnel. There has been a gen-  
 eral tendency to overlook the  
 desires of state governors and  
 local officials and to ignore  
 potential local contributions to  
 poverty programs.

Therefore, I believe the time  
 has come for us to take a good  
 close look at what has gone  
 wrong and to take action to get  
 this program back on the track.

To help accomplish this pur-  
 pose, I have joined in sponsor-  
 ing S. 3630, a bill called the  
 "Opportunity Crusade of 1966."  
 This bill seeks to continue what  
 is good about the troubled Pov-

erty Program, to correct what  
 has gone wrong, and to assure  
 that the economic benefits will  
 go to the poor and the needy as  
 intended.

This Opportunity Crusade  
 would mesh the combined  
 efforts of all government lev-  
 els with private endeavors to  
 provide an improved substitute  
 for the lagging Poverty Pro-  
 gram. It would coordinate  
 thousands of welfare and edu-  
 cation activities.

It would bring new vitality  
 and new realism into programs,  
 uniting local, state and federal  
 governments with private en-  
 terprise in a comprehensive  
 program of training, education  
 and motivation of the poor.

By involving all segments of  
 the economy it would produce  
 a \$2.4 billion program but would  
 require only \$1.4 billion of fed-  
 eral funds a sizable saving over  
 the present, wasteful program.  
 And, even while saving some  
 \$300 million, the Opportunity  
 Crusade could double funds  
 available for more successful  
 programs such as Headstart  
 and Community Action.

Under the bill I sponsor, the  
 Office of Economic Opportunity  
 would be stripped of all present  
 poverty programs except Com-  
 munity Action and VISTA. All  
 training programs would be  
 coordinated under the Man-  
 power and Training Act by the  
 Labor Department. The edu-  
 cation programs -- including  
 Headstart -- would be placed  
 in the hands of the Office of  
 Education. The business loan  
 program would be administered  
 by the Small Business Admin-  
 istration and the farm loan pro-  
 gram by the Farmers Home  
 Administration.

Thus, the talents of current  
 administrative experts would  
 replace the confusion that has  
 resulted from the decision to

lump these diverse programs  
 into a totally new bureaucracy.

The Job Corps program,  
 which has operated relatively  
 well in Texas but run into tre-  
 mendous difficulties elsewhere  
 would be revamped and im-  
 proved by providing better ad-  
 vance screening of candidates,  
 a limit on expenses and more  
 effective vocational training.

Activities of the Commu-  
 nity Action program could be  
 vastly increased under this new  
 approach. Such programs would  
 have representation from the  
 citizens to be helped, and em-  
 phasis would be placed on main-  
 taining local flexibility and  
 supervision so each city and  
 community might apply its ef-  
 forts on a priority basis to  
 its most pressing needs.

The Opportunity Crusade  
 would initiate a new Industry  
 Youth Corps whereby private  
 employers would receive in-  
 centives to hire young people  
 while they undergo on-the-job  
 training for permanent jobs.

Careful administrative guid-  
 lines are written into all these  
 programs to eliminate the con-  
 fusion, delay and frustration  
 which have plagued the current  
 poverty program.

The Opportunity Crusade,  
 then, would enlist state and  
 local government's as partners  
 in this effort. It would pro-  
 vide a more effective and use-  
 ful framework for a





MANAGER-PATRON- Pete Poteet, manager of the Needmore Coop Gin is pictured standing beside one of the eldest gin patrons, W.A. Mathis, 92, Muleshoe. These two were on hand for the annual supper sponsored by Needmore Coop Gin which was held Saturday night. More than 250 area people attended.

**Boy Scouts.**

Continued from Page 8  
 Muleshoe Lions Club. Bill Elrod scoutmaster, Kenneth Duncan and Hershel Parker, assistant scoutmasters. Meetings: Each Tuesday, 7:30 p.m., Boy Scout Hut.  
 Troop 634 - Sponsored by Muleshoe Volunteer Fire Dept., Silas Short, scoutmaster, Bob Copeland, assistant scoutmaster. Meetings: Each Monday, 7:30

p.m., Scout Hut.  
 Troop 633 - Sponsored by First Methodist Church, Roland McCormick scoutmaster. Meetings: Each Saturday, 9:30 a.m. at Methodist Church Fellowship Hall.  
 Explorer Post 630 - Sponsored by Muleshoe Jaycees. Advisor: Allen Berry. Meetings upon call on Saturdays, at Scout Hut. Individual work stressed.  
 CUB SCOUT PACKS  
 Pack 620 - Sponsored by Muleshoe Lions Club, B. E. Berres Scoutmaster; Bob Palmer, assistant scoutmaster and

Webelos Leader. Den meetings weekly under Den mothers to be announced later.  
 Pack meetings the fourth Thursday evening of each month at Scout Hut.  
 Pack 622 - Sponsored by Richland Hills P-TA, with Mrs. Bobby Free, P-TA president, (Phone 925-3426). Meetings to be announced.  
 AUSTRALIAN STOCK ON STAMPS  
 VICTORIA CAMP - There are 12,700 regular stamp collectors in Australia who bought 95 million worth of 14 million stamps from the post office collectors' department in 1965, the postal administration said.

Meet the  
**MULESHOE STATE BANK**  
 CUSTOMER of the Week



W.G. HARLAN  
 Muleshoe State Bank's "Customer of the Week" is W.G. Harlan who has banked with the firm since 1945. He and his wife, Dorothy Ray, have three children, Sammy, 19; Connie, 16; and Lee Ann, 13. The family lives on a farm 10 miles northwest of Muleshoe and are members of the First Baptist Church. Harlan says, "The service here is real fine." Muleshoe State Bank is proud to recognize this "Customer of the Week."

**MULESHOE STATE BANK**



**WE AIM TO KEEP PRICES LOW!**

GUNN BROS. STAMPS  
 Double Every  
 WEDNESDAY

**GRAPEFRUIT JUICE**  
 TEXSUN  
 46 OZ. CAN **39¢**

**HOMINY**  
 Kimbell's  
 WHITE or YELLOW  
 No. 300 Can **5¢**



**FROZEN FOOD Bargains!**

- Keith 10 Oz. Pkg. **MIXED VEGETABLES** 19¢
- SNOWBIRD OCEAN 1 Lb. Box **PERCH FILLETS** 39¢
- Banquet Chicken, Beef, Turkey **POT PIES** 5 FOR \$1
- HONEYSUCKLE BONELESS 2 1/2 Lb. Box **TURKEY ROAST** \$2.98

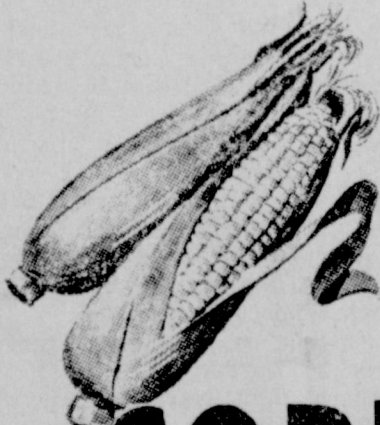
**COFFEE**

Drip or Reg.

1 Lb. **TIN**

MAXWELL HOUSE

**69¢**



**CORN**

COLORADO GOLDEN EARS

**4 For 19¢**

**Oranges**

California Choice Valencias

**Lb. 10¢**

**GRAPES**

**Lb. 15¢**

CALIFORNIA FANCY WAXED RUTABAGA

**TURNIPS**

**Lb. 12¢**

**HAMS**

Rodeo Smoked Fully Cooked

RODEO ECONOMY PAK  
**BACON**

Ends & Pieces  
 4 Lb. Pkg.

**\$ 1 29**

- Whole Lb. **59¢**
- Shank Half Lb. **49¢**
- Butt Half Lb. **55¢**

Swift's Premium  
**Bacon** Thin Sliced 1 Lb. Pkg. **79¢**

Rodeo Lean & Tender Pork  
**Spare Ribs** 3 Lb. Lbs. & Under **Lb. 59¢**

Swift's Premium Proten Beef  
**Club Steaks** **Lb. 79¢**



Listen to MULETRAIN  
 over KMUL 10:15 a.m.  
 sponsored by  
 CASHWAY

**Whites' CASHWAY**