

## PAGE ONE

A QUICK READ OF THE NEWS

### Election is a real gamble

Two pair helped Jim Blancq keep his job as a judge. The Republican incumbent was declared the winner in Catron County, N.M., after Democrat Lena Milligan lost a seven-card stud poker hand dealt in court last week by District Judge Neil Mertz.

The poker game in Reserve, the county seat, decided the outcome of the county magistrate's race, ending a legal dispute.

The results of last November's election were challenged after a recount came up with a tie between the two candidates. State election rules call for a game of chance to settle ties. Blancq's two pair — queens and fours — beat Milligan's pair of aces.

### Ah, the scents of Sapulpa

The problems in Sapulpa, Okla., these days simply stink.

"You can drive downtown Sapulpa in the evenings and you'll see a skunk walking down the sidewalk," said Donna Shackelford, adding that she and her husband have trapped 19 of the animals in their yard during the past year.

Candie Russell, Sapulpa's animal control supervisor, said her three-member department has trapped an estimated 60 skunks this year.

But she said not to worry: Despite citizens' stress, she said, "skunks are not vicious animals. If you leave them alone, they go about their merry way."

### Redwines win football 'game'

Harrol and Leslee Redwine of Lazbuddie to take first and second, respectively, in last week's football contest.

Each of them missed three games, but Mr. Redwine was 12 points closer on the Muleshoe-Tulia tiebreaker score to take first place by a nose.

This came two weeks after Leslee Redwine's No. 1 finish in the second weekly contest of the season.

Close behind the Redwines in third place was Sandra Orozco with only four games missed.

The most-missed games were the Tennessee at Jacksonville tilt and the Portales-Tucumcari high school game.



Drawing date: Saturday, Sept. 25  
Winning numbers: 06-10-20-21-29-34  
Estimated jackpot: \$4 million  
Winners: 1  
Next drawing: Wednesday, Sept. 29  
Estimated jackpot: \$4 million

### On this date in history

Sept. 30 — The first televised football game (between Fordham University and Waynesboro College) is aired by a New York TV station (1939).

Oct. 1 — Mao Tse-tung becomes chairman of the People's Republic of China (1949).

Oct. 2/3 — On Oct. 3, President Abraham Lincoln issues a proclamation designating the fourth Thursday in November as "Thanksgiving Day" (1863).

### LOCAL WEATHER

Sunshine is expected through Saturday with lows gradually warming from 37 Thursday to 53 Saturday. Sunday is expected to be partly cloudy, with a low of about 50 and a high in the low 80s. Temperatures are expected to reach the upper 80s on Friday and Saturday.

Editor Ronn Smith can be reached at 272-4536 or ctyankee@fivearea.com

Missed your paper? Call carrier Melissa Flores at 272-6719 or the Journal during business hours, 8:30 am-5 pm.

## Mules seek short trip back into win column

By KEVIN WILSON  
Journal Sports Writer

Where one journey ends, another begins.

The Muleshoe Mules' journey toward an undefeated was taken away last week by the Tulia Hornets, 13-12.

The journey to avenge that loss will end less than an hour away at Dimmitt.

The biggest part of their journey will be based on the team's focus,

which Mules head coach David Wood thought was missing last Friday.

"It was just loss of intensity," Wood said. "We let them (the Hornets) stay in the ball game. We could have put the game away early, but we didn't."

The Mules defense will arrive with a few chinks in its armor. The defense has allowed only four touchdowns this season, but two of them happened last Friday. But

Wood said he was pleased with the defensive effort nonetheless.

"Our defense did the job," he said. "They let one running play get by them and one passing play get by them."

Unfortunately, both of those resulted in touchdowns, which the Mules could not respond to.

There also were a few good points for the Mules. Mitch Mason was named player of the week after scoring two touchdowns, along

with 13 tackles (two for losses) and one sack.

One of the main goals against Dimmitt will be to maintain focus throughout the game. Wood said he felt Tulia dictated the style of play too much last week, and that was a huge factor in the late-game loss.

Another reason for the loss may have been overstudying the oppo-

see MULES on page 5

## Next CRP signup is scheduled for early next year

SPECIAL TO THE JOURNAL

WASHINGTON — Agriculture Secretary Dan Glickman announced Tuesday that the next Conservation Reserve Program general signup will be held during a four-week period from Jan. 18 through Feb. 11 in USDA local service centers across the nation.

"This is an opportunity for farmers and landowners to participate in a cost-effective, voluntary program to improve their land, water, and wildlife resources and lock in a multiyear payment based on local rental rates," Glickman said.

"It is also an opportunity for participants with contracts expiring next fall to make new contract offers," he added.

USDA will continue to evaluate and rank eligible CRP offers using an Environmental Benefits Index, which is based on the potential environmental benefits gained from enrolling the land in the CRP.

Decisions on the index cutoff will be made after the signup period ends. The cutoff used in previous signups may not be used for this one, since the cutoff is decided after analyzing the index numbers of all the offers.

Those who would have met previous signup thresholds thus are not guaranteed a contract under the next signup.

"CRP is a highly successful and competitive program," Glickman said. "I encourage all landowners to find out about the EBI before the Feb. 11, 2000, deadline, and to consult with local USDA experts on steps they can take to maximize EBI points and increase the likelihood that their bid will be accepted."

The index format in place for the 20th CRP signup is very similar to the one used for last year's signup.

The Farm Service Agency is authorized to maintain a CRP enrollment up to 36.4 million acres. About 31.5 million acres will be enrolled in CRP contracts as of Oct. 1, 1999. About 400 thousand acres currently subject to CRP contracts will expire Sept. 30, 2000.

The contracts to be awarded under the coming signup will become effective Oct. 1, 2000.

"Producers can avoid the highly competitive EBI under the general signup by enrolling the most environmentally desirable land under CRP's continuous signup program," Glickman said.

Under the continuous signup, relatively small amounts of land serving much larger areas, such as filter strips, riparian buffers, and grass waterways, can be enrolled at any time.

Normal eligibility requirements apply, but the competitive index is waived because of the environmentally desirable practices available.

The CRP is designed to improve the nation's natural resource base. Participants voluntarily enter into contracts with USDA to enroll erodible and other environmentally sensitive land in long-term contracts for 10 to 15 years.

In exchange, participants receive annual rental payments and a payment of up to 50 percent of the cost of establishing conservation practices.

The program protects millions of acres of American topsoil from erosion. By reducing water runoff and sedimentation, it also protects groundwater and helps improve the condition of surface waters. Acreage enrolled is planted to resource-conserving vegetation, which makes the program the major contributor to wildlife populations in many parts of the country.



Rey Martinez (No. 72) runs his pattern to try to clear the way for teammate Tim Hutton (No. 32) during last Thursday's freshman game between the Mules and the Tulia Hornets.

## JV, freshmen having good seasons

By RONN SMITH  
Editor

While the varsity Mules may have faltered on a couple of plays that cost them the game Friday, their junior varsity and freshman counterparts encountered no such obstacles.

The JV Mules downed Tulia's JV by an impressive 35-18 score, while the freshmen gave Tulia a 32-0 humbling.

In the JV game, the fun started for the Mules on the first play of the game when an A.J. Buhrman hit sparked a fumble.

Before the end of the first quarter, Kyle Atwood recovered a Tulia fumble.

But it wasn't until the second quarter that the Mules began to crank out touchdowns — after Tulia had scored on a 35-yard run.

Jesús Tovar tied the score with a 6-yard run (the kick failed) and before the second quarter ended, the Mules went ahead on a 33-yard pass from Travis Tunnell to Joey Tucker.

The Mules added a two-point conversion on a pass from Tunnell to Jerrell Otwell to take a 14-6 lead into the dressing room at halftime.

see SEASONS on page 5

## Combs urges farmers to speak often

SPECIAL TO THE JOURNAL

LUBBOCK — Texas farmers and ranchers should seize every opportunity in the coming year to voice their opinions on agricultural policy and rural development with their state legislators and congressmen, said Texas Agriculture Commissioner Susan Combs.

"This is the time for producers to stand up and be heard, in the state capitol and on Capitol Hill," Combs said earlier this month in her keynote address at the West Texas Ag Chemical Conference.

"The Texas Legislature is now studying options for a long-term state ag policy, and Congress is scrutinizing Freedom to Farm.

"Only 1.9 percent of all Texans are involved in production agriculture today, so it's important that we make ourselves heard amongst our growing population. We also stand to lose as many as eight rural legislative representatives when state redistricting occurs in 2001, so we'd better have our say in the next year."

Agriculture did receive a funding boost in the last state legislative session, Combs noted, and that money will drive Texas Department of Agriculture programs to improve rural Texas.

"We receive \$1 million over the next two years to promote Texas ag products and agri-

see FARMERS on page 5



### Driver injured

The single occupant of this car reportedly was treated and released after a one-vehicle rollover Friday afternoon west of Progress on U.S. 70-84. Details of the accident had not been released at press time Tuesday.

## AROUND MULESHOE

### Clinic to observe health center week

South Plains Health Provider Organization, 208 W. Second St. in Muleshoe, will observe National Community Health Center Week by serving refreshments to the public during the week of Oct. 4-8.

The South Plains center is one of 30 in Texas and almost 940 nationwide. More than 50,000 people work in the centers nationwide, according to a statement from the health center.

### Older-adult depression screening set

Older adults can take the first step toward getting help for depression or simply assessing their emotional health by attending the free, anonymous screenings to be offered from 1:30 p.m. to 3:30 p.m. Oct. 8 at the Muleshoe Area Healthcare Center, 106 W. Avenue H.

The service will be offered by Welch Home Place of the Castro County Hospital District as part of National Depression Screening Week, Oct. 4-8.

Participants will be able to complete a written screening test, hear an educational presentation and talk individually with a mental-health professional. Referrals will be provided to those in need.

More information is available by calling (800) 661-9989. No appointments are required.

### Juniors selling cookie dough

The Muleshoe High School junior class is conducting a fundraiser offering gourmet frozen cookie dough.

Among the flavors are the same six that were sold last year: Chunky Chocolate Chip, Radical Raisin Oatmeal, Peanut Butter

Pleasure, Macadamia Madness, Macadamia Nut Shortbread and Chocolate Brownie Peanut Butter Chip.

New flavors being offered are sugar, M&M and coconut macaroon.

The dough is packaged in 3-pound tubs, each of which should make about 100 2-inch cookies or 48 1-ounce cookies. The product should stay fresh up to two months in the refrigerator or six months in the freezer. It can be scooped out to make cookies in small quantities.

The cost is \$10 per tub, and the dough can be ordered through any junior class member or sponsor. The sale ends Oct. 8, and the dough is to be delivered about two weeks later.

Class sponsors are Debbie Conner, Kerry Moore, April Smith and Ron Welch.

### Soil conservation vote scheduled

A new director for zone three of the local soil and water conservation district will be held Oct. 5 at the Needmore Gin, starting at 8:30 a.m.

Zone three covers central Bailey County.

### Reception to honor Hutton

The board of trustees of the Muleshoe Independent School District have scheduled a public come-and-go reception honoring the district's new superintendent, David Hutton.

The event will be held from 9 a.m. to 11 a.m. Sept. 30 in the

board room of the district's administration building. Refreshments will be served.

### Lazbuddie homecoming dinner set

The senior class of Lazbuddie High School will host a dinner Oct. 1 before the homecoming game against El Paso Jesus Chapel.

Food will be served from 5 p.m. to 7 p.m. in the cafeteria. The cost will be \$6 for a regular plate and \$4 for a "lite" plate.

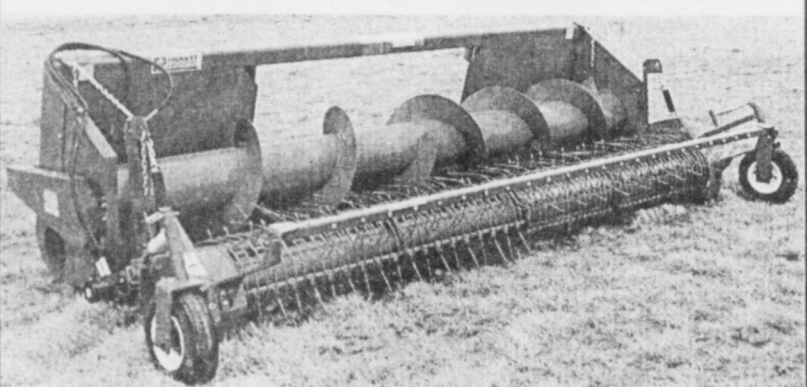
The menu will include brisket, scalloped potatoes, tossed salad, beans, homemade rolls and a homemade dessert.

### Public calendar

Oct. 4—7:30 p.m. Athletic Boosters Club, in the science room at the high school.



### New Universal Combine Platform & Header



Deep flighted 24" auger with 6" flights with no retractable high maintenance fingers.

**Advantage:** Provides a more consistent flow of product into the entire throat of the combine. Helps to eliminate unwanted slugs. This auger also has spring loaded float capability built into it.

Dent & Co. of Muleshoe, your John Deere dealer, is proud to announce that we have added the PICKETT EQUIPMENT to our list of harvesting equipment. Pickett Equipment has a full line of platforms and headers for harvesting your **Black-Eye Peas and Beans**.

Call Randy Bills or Tommy Gregory for information..

**806-272-4296**

## AROUND THE AREA

### 14 pit bulls picked up

Clovis animal-control officers recently picked up 14 pit bulls from the yard of a reportedly abandoned house, and police reports said officers believed that some of the animals had been used in dog fights.

The dogs included a nursing mother with six puppies plus seven male dogs.

Although the property was described as abandoned, a renter had recently been evicted for non-payment of rent, and a Clovis police official said the person who had leased the property was already in jail in Alamogordo, although the source said he did not know the charges involved.

Based on their investigation at the site, Clovis police are investigating charges of cruelty to animals, possession of stolen property and possession of less than 1 ounce of marijuana.

Since the dogs were confiscated, two of the puppies have been reported stolen from the pound.

### Hereford schools probe \$16 million loss

The Hereford School Board was scheduled to set the district's tax rate Tuesday night in the midst of an investigation of up to \$16 million in missing funds.

New Superintendent Elizabeth Abernethy says the situation began to come to light when she was informed that the district owes the Texas Education Agency more than \$800,000 in over-payments received last year.

That began a budget review that led to the conclusion that the district's funds are not in order. The \$16 million is only an estimate until a full review can be completed, Abernethy said.

She said the shortfall accumulated over a period of 14 months "or longer."

### Clovis recall drive coming to a head

The petition drive to recall two Clovis city commissioners has about two more weeks in which to collect signatures, and the organizer says "I'd say we're pretty close."

Under terms of the city charter, the recall organizers had 60 days to collect signatures, with the required number being set by the number of votes cast in each district in the last election.

In order to recall Commissioner John Schuller in District 1, 395 valid signatures are required. For Commissioner Eldred Noble, in District 2, the number is only 118.

Bobby Newman, organizer of the recall drive, has accused Schuller and Noble of trying to interfere in the operation of city government during the recent turmoil over City Manager Rodger Bennett's sacking of Police Chief Harry Boden.

Schuller and Noble were supporters of the police chief.

### Curry County tax rate drops

Most residents of Curry County will pay less in property taxes this year because of the considerable recent development in the county.

Several dairies have been added to the tax roll, and this will be the first year for taxes on the Wal-Mart Supercenter, a new

Walgreen's drug store, and several other retail stores, said County Tax Assessor Margie Crooks of Texico.

The only county residents who will see a slight tax increase are those within the city of Texico, who voted in a 2-mill levy effective this year.

Crooks reported an 18 percent increase in the county's taxable property value, to nearly \$374 million.

## OBITUARY

### JIMMY ALAN CAIN

Services were held Monday at the First Assembly of God in Muleshoe for Jimmy Alan Cain, 28, of Wake Village, Texas. The Rev. Jack Stone officiated. Burial was in the Oklahoma Lane Cemetery.

Ellis Funeral Home handled arrangements.

Mr. Cain was born Sept. 27, 1970, in Albuquerque. He died Sept. 23 at East Texas Medical Center in Tyler.

A correctional officer for the state of Texas, he had worked for three years at the Choice Moore Unit in Bonham before moving to the Teleford Unit at New Boston.

He had been a resident of Wake Village for a year, moving there from Bonham.

He is survived by a daughter, Savannah LaRay Cain of Wake Village; his parents, Janice and Gene Snell of Muleshoe; three sisters, Linda Watson of Panama City, Fla., and Katrina Scott and Rebecca Price, both of Muleshoe; six brothers, Gary Cain of Muleshoe, Andy Snell of Burleson, Texas, Lincoln Snell of Weatherford, Texas, Dennis Snell of Aledo, Texas, Jessie Snell of Albuquerque and Douglas Snell of Wichita

Falls.

He was preceded in death by his father, Cecil Cain, on Aug. 23, 1972; a baby sister in 1968; and a brother, Rusty Cain, in 1967.

The family suggests memorials to a favorite charity.

1-800-658-6378 106 E. American Blvd. Muleshoe, Texas

We Ship Everywhere!

## And Country Junction

# Bridal Selections

at Country Junction

**Denice Coldrin**  
*(nee Denice Greenhouse)*  
bride elect of  
**Ryan Coldrin**

**Shana Coker**  
bride elect of  
**Adam Vourazeris**

**We're brimming with beauties!**

## Celebrate with Silver!

- Silver Candleholders by Carson
- Candleholders for Yankee Candles
- Silver Picture Frames

## Dazzling Dishes & Pretty Pottery!

- Soup & Sandwich Sets by Frankoma\*
- Chips & Dips Trays
- Dishes • Glasses • Coffee Cups

*\* 7 colors to choose from*

## BIRTH

### ZACHERY ATWOOD

Delbert and Robin Atwood of Muleshoe announce the birth of a son, Zachery Louis.

He was born at 5:52 a.m. Sept. 13 at Muleshoe Area Medical Center. He weighed 6 pounds, 4 ounces and was 20 inches long.

Zachery has two siblings, D.J. and Shawn Atwood.

Grandparents are Barbara Berry of Muleshoe, Allen Berry of Amarillo and Martha Atwood of Olton.

The great-grandmother is Ona Berry of Muleshoe.

### Bailey County Journal USPS 040-200

Established March 31, 1963. Published by Triple S Publishing, Inc. Every Sunday at 304 W. Second, Box 449, Muleshoe, TX 79347.

Second Class Postage paid at Muleshoe, TX.

POSTMASTER: Send address changes to the Bailey County Journal, P.O. Box 449, Muleshoe, TX 79347.

We are qualified members of:

Panhandle Press Association, National Newspaper Association, West Texas Press Association and Texas Press Association

WEST TEXAS PRESS ASSOCIATION

PPA

Panhandle Press Association



Scot Stinnett, Publisher  
Lisa Stinnett, Vice-President/Comptroller  
Ronn Smith, Editor  
Andrea Kemp, Classifieds  
Leah Bell, Advertising

© 1990

SUBSCRIPTIONS: Muleshoe Journal and Bailey County Journal  
By Carrier Yearly - \$22.00  
Bailey County — by mail - \$24.00  
Elsewhere - \$26.00  
Advertising Rate Cards on Application

\*Advertisers should check their ad the first day of insertion. The Journals will not be liable for failure to publish an ad or for a typographical error or errors in publications except to the extent of the cost of the ad for the first day of insertion. Adjustment for errors will be limited to the cost of that portion of the ad where the error occurred.

# Tasks beckon gardeners to get back outside

By RONN SMITH  
Editor

As I've noted before, we are in the middle of one of the busiest times of the year for gardeners who grow a lot of perennials.

After months of heat that just didn't make yardwork any fun, the evenings are getting comfortable — and sometimes downright irresistible.

If you have perennials that have formed thick clumps and maybe didn't bloom as well this summer (or have spots in the middle of the clump that didn't bloom), they probably need to be scattered out so the roots have room to roam.

Most species adjust faster to being divided in the fall when the days are cooler but the soil is still warm, rather than waiting to divide them in spring when the ground is cold.

In our climate, this is best done by the middle of October, because soon after that our soil temperature usually begins to drop fairly rapidly.

But keep in mind that some plants have decorative seed heads that you may want to leave through the winter. Among perennials, these would include the common *Sedum spectabile*, possibly purple coneflower (*Echinacea purpurea*), several of the



grasses, and globe thistle (*Echinops ritro*), as well as some that might be less commonly grown.

You may want to transplant some of these species now and leave some for spring; snowfall on these seedheads can be nice.

Whether you're transplanting or not, you may want to deadhead (cut back) any plant tops that you aren't saving over the winter.

This is the time to topdress established lawns and ornamental grasses with a layer of compost. Plant spring-flowering bulbs now, so they have plenty of time to develop a root system before their blooming season arrives (and keep in mind that blooming season for snow crocus starts at the end of January — just four months from now).

This is also the best time to set out most new trees and shrubs. I've noted before that

magnolias are a major exception — they should be set in the spring.

The other day I was asked about planting michelia species in the fall. (First of all, I was a little surprised to be asked about michelia. But then, ever since I learned that Kevin Smith of Muleshoe has experience with some of the plants in the genus *Thalictrum*, I try not to be too surprised about area gardeners' expertise.)

Anyway, I have not found anything in reference books to indicate that michelia should not be planted in the fall, but since it's a magnolia relative, I wouldn't.

Any young tree or shrub that is planted now should be kept moist so it will develop as much root growth this fall as possible.

Also, I would use some type of tree guard on any new tree or shrub through the winter. A cottontail can whittle those tender twigs to the ground in one feeding, while larger rodents can practically fell your expensive plantings without even pausing to chew.

Once leaves have dropped from established trees and shrubs, it will be time to take hardwood cuttings from any that you want to propagate.

It's also time to start putting

seed in the bird feeders, too, but you probably should wait until mid-October to start feeding suet. When temperatures get warm, the suet has a tendency to melt and rub off on birds' feathers — not a healthy thing for the birds.

The flickers have arrived for the winter out at the farm, so if you put out nuts (still in the shell) for woodpeckers, this is a good time to start that.

Speaking of wildlife, with the recent increased interest in raptors, the hawk migration has become a big deal with some people and it should be getting under way. Last year, I saw three species of hawk and a barn owl right in the yard in a single day. Of course, none of them were rare species, but it was just interesting to see that variety of birds of prey in the yard at one time.

Once you get everything situated, you can virtually stop watering the plants as each species goes dormant for the winter.

For the gardener who grows ornamental plants, this is truly an invigorating time of year — and remember, only four months until spring flowers!

Happy planting!

Questions can be directed to Garden Writer, Route 2, Box 880, Muleshoe, Texas 79347.

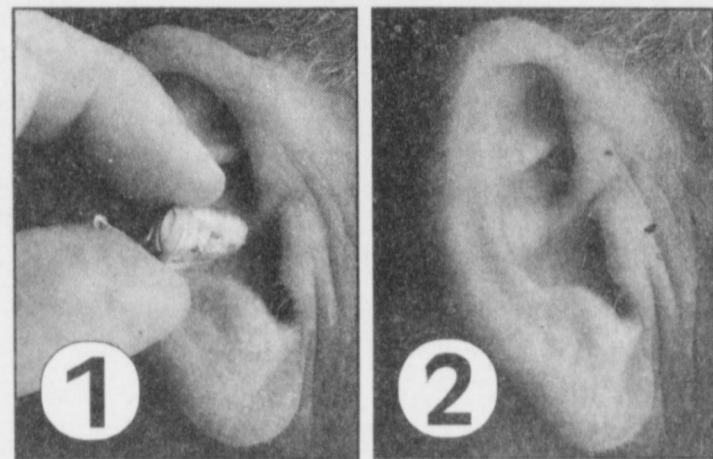
This player is smiling because she received a **FREE PAIR OF NIKE SOCKS** with the purchase of a pair of **WOMEN'S BASKETBALL SHOES**. Shoes priced from \$89.95 to \$99.95. You can smile, too!

*Williams Athletics*

322 Main St. • Muleshoe, Texas • 272-6853

## New Fully Digital Hearing Aid

Now Available in Muleshoe



Digital hearing aid prescriptions are precisely matched to your hearing loss. Once inside your ear, it is hardly noticeable.

"The new Direct Digital Hearing Aid has been released. It samples sound one million times per second with more processing power than many desktop computers," said Patrick McCarty, hearing aid specialist with Livingston Hearing Aid Center.

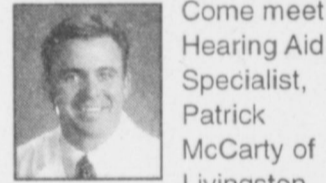
"Sound is pre-processed and fed 32,000 times per second through the digital sound processor for statistical analysis and over 100 parameters are adjusted automatically."

The Fully Digital hearing aid automatically and continuously analyzes the sound in the wearer's environment.

This new technology is capable of fitting mild to severe hearing losses and because of the ability to program this hearing aid, it can be modified to meet the needs of the user for many years. Livingston Hearing

Aid Center offers a 60-day money back satisfaction guarantee. Call for a free demonstration: 1-800-828-0722. Livingston Hearing Aid Center is located at the Bailey County Coliseum in Muleshoe.

**ONE DAY ONLY**  
Mon., Oct. 4th



Come meet Hearing Aid Specialist, Patrick McCarty of Livingston Hearing Aid Center. He will be demonstrating the new Direct Digital Hearing Aid one day only, Monday, October 4th at the Bailey County Coliseum in Muleshoe.

## New measure aims to crack down on criminals

AUSTIN — A new effort to crack down on gun-slinging criminals is under way in Texas.

Last week, Gov. George W. Bush announced a grant to Texas Attorney General John Cornyn for \$1.6 million to kick off Texas Exile, a two-year program to help prosecutors keep guns out of the hands of criminals.

"The best way to protect our citizens is to vigorously enforce the tough laws we have on the books," Bush said. "This program gives law enforcement the opportunity to combat gun violence by enforcing the toughest laws on the books, whether federal or state."

All four assistant U.S. attorneys in Texas and seven urban district attorneys are working together to create Texas Exile, which will be based on Project Exile, an effective program developed in Richmond, Va., to reduce gun crime.

Under the Richmond model,



when law enforcement catches a criminal using a weapon while committing a crime, the criminal is referred to a special prosecutor who uses a federal gun law to seek the longest possible sentence.

Another dimension to Texas Exile is a public awareness campaign that targets criminals.

The attorney general plans to use some of the funds to put a slogan developed by the city of Fort Worth — "Gun crime means hard time" — in newspaper ads, on billboards and on posters.

The campaign tells criminals that if they commit a crime

with a gun, they will serve at least five years in jail.

Texas Exile also will have a toll-free hotline.

**LULAC urges TV boycott**

State leaders of the League of United Latin American Citizens last week urged Hispanic parents to find better things for their children to do than watch television.

"Turn off the television and work on homework," said Rene Lara, a member of the LULAC state education committee.

The *San Antonio Express-News* reported that LULAC's effort corresponds to a nationwide TV boycott encouraged by leaders of the National Council of La Raza and the National Association for the Advancement of Colored People.

Both organizations have commented on the lack of minority actors on network TV shows and the use of negative stereotypes of minority characters.

**Bush swears in judges**

In the Texas Senate chamber last week, Gov. Bush swore in eight new state district judges — seven of them appointed to courts created by the Legislature last spring.

Judges sworn to serve in new courts were Laura Lee Parker and Robert C. Richardson of Bexar County, Ann Murray Moore of McAllen, Ernest Aliseda of Edinburg, Robert J. Kern of Sugar Land, Kathleen Cardone of El Paso, and George Boswell of Mineola.

Judge Karren S. Price of Center, appointed to an existing court, also was sworn in.

The new judgeships will on the ballot in the November 2000 general election.

**Other highlights**

Oct. 4 is the last day to register to vote in the Nov. 2 constitutional amendment election. Oct. 18 is the first day to vote early in person. The county clerk may order early voting to begin Oct. 16 or 17.

### 25 New 2000 Models Available

### Great Selection of Used Vehicles

**96 Jeep Grand Cherokee**  
4x4, V-8  
Stk. #35096  
**\$18,995\***

**96 Suburban**  
4x4, Red W/ Leather  
Stk. #20195  
**\$21,995\***

**98 Sunfire**  
Stk. #30116P  
**\$9,995\***

**98 Cutlass GLS**  
Leather  
Stk. #90005  
\$20,150  
Western disc. 3,000  
**Sale Price \$17,150\***

**94 Chrysler Concorde**  
Stk. #21820  
**\$8,995\***

**2000 Reg. Cab Shortbed**  
Stk. #10260  
\$18,115  
Western disc. 1,000  
**Sale Price \$17,115\***

**2000 Tahoe Limited**  
Stk. #10241  
2 wheel Drive  
Two-tone leather  
**Just Arrived**

**98 S10 Blazer 4x4**  
Stk. #35024P  
**\$18,995\***

**98 Grand Am 2 Door**  
Stk. #30118P  
**\$11,995\***

**93 Astro Van**  
Stk. #20203  
**\$4,995\***

A short drive from everywhere ... **WESTERN** Chevrolet - Oldsmobile  
1101 Grand, Friona, Texas  
1-800-957-2438

# DPS seeks new Capitol Police officers

**SPECIAL TO THE JOURNAL**  
The Texas Department of Public Safety is taking applications for openings on the Capitol Police force.

After completing the 14-week academy that begins Feb. 7, DPS Capitol Police officers will be assigned to Austin state properties to provide police services.

"We are hopeful that our

applicant pool will include large numbers of qualified minorities and women," said Lt. Curly Colquitt, who heads the DPS recruitment effort.

"This is a great opportunity for the right individual — someone who wants to make a difference, who wants a career in law enforcement with a first-class organization," he added.

The application deadline is Oct. 26 for Texas residents and Oct. 1 for out-of-state residents. Anyone interested should contact the nearest DPS office for more information and an application packet.

Additional information and a state application are also available on the DPS Web site, [www.txdps.state.tx.us](http://www.txdps.state.tx.us).

Applicants must be U.S.

citizens, be at least 21 years old by the time they graduate from the academy, be of good moral character, meet certain vision requirements and have a high school diploma or GED.

A final conviction (including probation) for any DWI, DUI, family violence or felony automatically will disqualify applicants, as will excessive traffic violations.

|   |  |   |
|---|--|---|
| <b>OFFENSE</b><br>James Barrett   | <b>Dairy Queen</b>   | <b>DEFENSE</b><br>Jeff Shelburne  |
| <b>PLAYERS OF THE WEEK</b>  |  |   |
|  | Stop by for your Congratulations Meal from the proud folks at Dairy Queen in Muleshoe! |  |
|  |  |   |
| 1201 W. American Blvd. • Muleshoe • 272-3412  |  |   |



Chant champions at the NCA Cheerleading Champ held in July at Wayland Baptist University were Lazbuddie's Montana Steinbock (left), Brianna Sánchez and Amberlee Steinbock.

## Three Lazbuddie girls win at camp

**SPECIAL TO THE JOURNAL**  
Brianna Sánchez, Amberlee Steinbock and Montana Steinbock of Lazbuddie attended the Wayland Baptist University NCA Cheerleading Camp at Plainview July 26-29.

Brianna is a fourth-grader and Amberlee and Montana are fifth-graders.

While at camp, the girls com-

peted against junior high squads from all over the area.

Out of four chant and cheer evaluations, the Lazbuddie girls received six superior ribbons and two excellent ribbons, and a Spirit Stick to bring home.

During the first two days, individual cheerleaders can get an All-American nomination ribbon from the NCA staff.

All three Lazbuddie girls received the ribbon, allowing them to try out and make the All-American NCA team, the top honor for an individual.

The girls also tried out for the chant champion contest. This is a competition for squads to see who can best perform a chant learned at the camp. They won, and got a trophy.

## HOSPITAL NEWS

Muleshoe Area Medical Center reported the following patient load:

**Sept. 17** — Salvador Cabrera, Olan Gatlin and Marie Lane.

**Sept. 18** — Gerald Bond, Olan Gatlin, Adelita A. González, Marie Lane, Arthur L. Martínez, Jerrell R. Ottwell, Mary M. Sims, Garrett Tombs, Henry Weatherbee and Albert

Wentz.

**Sept. 19** — Gerald Bond, Adelita A. González, Marie Lane, Jerrell R. Ottwell, Mary M. Sims, Garrett Tombs, Henry Weatherbee and Albert Wentz.

**Sept. 20** — Gerald Bond, Adrian Durán, Adelita A. González, Marie Lane, Jerrell R. Ottwell and Mary M. Sims.

**Sept. 21** — Adrian Durán, Tyrell Gonser, Adelita A.

González, Marie Lane and Baby Marrufo.

**Sept. 22** — Adelita A. González, Marie Lane, Baby Marrufo, Lillian H. Riddle and Laura Seales.

**Sept. 23** — Adelita A. González, Kenneth Hanks, Marie Lane, Baby Marrufo, Lillian H. Riddle and Laura Seales.

## REBEKAHS

Noble Grand June Green called the Muleshoe Rebekah Lodge No. 114 to order at 7:30 p.m.

Chaplain Ruby Green gave the opening prayer, escorted by Berni Marts.

Secretary Patsy Chance called roll, with 10 members answering. The minutes of the previous meeting were read and approved.

Chance reported that she had received word from Doris Lambert, who is on a different treatment and seems to be doing better.

Gail Deaton of Friona, a member of Hereford's Rebekahs, will be the new district deputy president of District 3 for March 2000.

June Green reported that her daughter, Lola, is better. It was reported that Ruby Garner and Cindy Smith are not feeling well.

Garner will be in charge of designing a skit for the birthday party for the nursing home.

Next week we will nominate for lodge deputy.

We will go to McDonald's next week after lodge.

Vice Grand Thursie Reid closed with the Rebekah Creed, and two verses of the song "An Evening Prayer."



Store #34  
312 W. AMERICAN BLVD.  
Muleshoe, TX  
(806) 272-4862

**ALLWAYS**  
 LOW PRICES!  
 ALL OFFERS WHILE SUPPLIES LAST  
 PRICES EFFECTIVE SEPT. 29 TO OCT. 5, 1999



**ALL FLAVORS  
FRITOS OR  
CHEETOS**  
REG. \$2.19  
**\$1.79**



**6 pack  
12 oz. cans ..... \$1.89**  
**3 liter ..... \$1.99**



**GERBER STRAINED  
BABY FOOD  
JAR**  
**39¢**



**SHURFINE  
NAPKINS  
120 CT. PKG.**  
**99¢**



**ALL SIZES CUDDLES  
DIAPERS  
PKG.**  
**\$3.49**



**SHURFINE  
FRUIT RINGS  
15 OZ. BOX**  
**\$1.99**

COME BY ANY PLATEAU STORE TO WIN A TRIP FOR 2 TO NYC FOR A NASCAR WEEKEND!

- PLATEAU Wireless** 1-877-PLATEAU
- |                             |                        |                       |                       |                               |                                 |                                   |                               |
|-----------------------------|------------------------|-----------------------|-----------------------|-------------------------------|---------------------------------|-----------------------------------|-------------------------------|
| <b>New Mexico</b>           | <b>ROVINA</b>          | <b>EARTH</b>          | <b>MARY</b>           | <b>GARY</b>                   | <b>MORISMAN</b>                 | <b>PECOS</b>                      | <b>SAN ANGELO</b>             |
| <b>CLAVIS</b>               | <b>Kerr's Auto</b>     | <b>Earth Radio</b>    | <b>Auto Parts</b>     | <b>200 E. Adams</b>           | <b>Plateau</b>                  | <b>Radio Shack</b>                | <b>Western</b>                |
| <b>Plateau</b>              | <b>105 Gardner</b>     | <b>304 W. Main</b>    | <b>104 E. Hwy 145</b> | <b>0600 894 9072</b>          | <b>Telecommunications</b>       | <b>1700 S. Eddy</b>               | <b>Communications</b>         |
| <b>Telecommunications</b>   | <b>908-228-1689</b>    | <b>936-222-2291</b>   | <b>936-292-2421</b>   | <b>LITTLEFIELD</b>            | <b>101 S. Betty</b>             | <b>0910-481-6184</b>              | <b>552 Andrewsacker Rd.</b>   |
| <b>908-269-1214</b>         | <b>BROWNFIELD</b>      | <b>KARRELL</b>        | <b>HEREFORD</b>       | <b>Larry's Radio Shack</b>    | <b>0910-943-0968</b>            | <b>PLAIN</b>                      | <b>7910 799 3702</b>          |
| <b>TEXAS</b>                | <b>Cellular Plus</b>   | <b>ENM/Plateau</b>    | <b>WT Services/</b>   | <b>601 1st Ave.</b>           | <b>MORTON</b>                   | <b>Plains Depot</b>               | <b>SONORA</b>                 |
| <b>ALPINE</b>               | <b>805 Lubbock Rd.</b> | <b>200 Ave. A</b>     | <b>Doug Baker</b>     | <b>0806 365-3422</b>          | <b>Farm Equipment Co.</b>       | <b>302 Cowboy Way</b>             | <b>Reaching Enterprises</b>   |
| <b>Marion True Value</b>    | <b>908-827-6232</b>    | <b>908-843-3880</b>   | <b>5 Hwy. 385</b>     | <b>Richardson Enterprises</b> | <b>Levelland Hwy.</b>           | <b>0806-486-7172</b>              | <b>107 Main</b>               |
| <b>Hardware</b>             | <b>Hamilton Auto</b>   | <b>FRIONA</b>         | <b>WT Services</b>    | <b>147 E. Dallas</b>          | <b>0806 266-5517</b>            | <b>PLAINVIEW</b>                  | <b>0910-387-3392</b>          |
| <b>301 N. 28th</b>          | <b>220 S. 5th</b>      | <b>WT Services</b>    | <b>0806-427-4351</b>  | <b>Kernel Electronics</b>     | <b>Five Area</b>                | <b>Two Way Radio &amp; Paging</b> | <b>VAN HORN</b>               |
| <b>0910-837-2061</b>        | <b>0806-256-5559</b>   | <b>BELL CITY</b>      | <b>0910-596-2345</b>  | <b>0910-318-2345</b>          | <b>Telephones Coop</b>          | <b>404 Columbia</b>               | <b>Van Horn Office Supply</b> |
| <b>Apartite Auto Rental</b> | <b>FRONTSIDE</b>       | <b>0910-968-2882</b>  | <b>FRONTSIDE</b>      | <b>0910-968-2882</b>          | <b>302 Uxable</b>               | <b>0806-272-5533</b>              | <b>100 Broadway</b>           |
| <b>504 E. Holland Ave.</b>  | <b>0910-968-2882</b>   | <b>JEM Cellular</b>   | <b>0910-968-2882</b>  | <b>LEVELLAND</b>              | <b>Lubbock</b>                  | <b>Wilson Appliance</b>           | <b>0910-283-2500</b>          |
| <b>0910-837-3463</b>        | <b>0910-968-2882</b>   | <b>430 S. Lea St.</b> | <b>0910-968-2882</b>  | <b>Plateau Wireless</b>       | <b>Communications</b>           | <b>117 Main St.</b>               | <b>Carwright Cellular</b>     |
| <b>BIG LAKE</b>             | <b>0910-968-2882</b>   | <b>0910-968-2882</b>  | <b>0910-968-2882</b>  | <b>1819 N. University</b>     | <b>0806 774-2628</b>            | <b>0910-272-5532</b>              | <b>2315 W. 5th St.</b>        |
| <b>Fisher Lease Service</b> | <b>DUMMETT</b>         | <b>0910-968-2882</b>  | <b>0910-968-2882</b>  | <b>Plateau Wireless</b>       | <b>0806-298-8358</b>            | <b>0910-298-8358</b>              | <b>0806-298-8358</b>          |
| <b>300 Garden City Hwy</b>  | <b>0806-547-5103</b>   | <b>0910-968-2882</b>  | <b>0910-968-2882</b>  | <b>1819 N. University</b>     | <b>0806-298-8358</b>            | <b>0806-298-8358</b>              | <b>0806-298-8358</b>          |
| <b>0910-894-2454</b>        | <b>0806-547-5103</b>   | <b>0910-968-2882</b>  | <b>0910-968-2882</b>  | <b>GRANDFALLS</b>             | <b>MIDLAND</b>                  | <b>John Henderson</b>             | <b>0910-387-3392</b>          |
|                             |                        |                       |                       | <b>Free Electronics</b>       | <b>The Telephone Store</b>      | <b>312 Ave. D</b>                 | <b>0910-387-3392</b>          |
|                             |                        |                       |                       | <b>9 Hwy. 19</b>              | <b>4110 N. Main St. Ste. C8</b> | <b>0910-387-3392</b>              | <b>0910-387-3392</b>          |
|                             |                        |                       |                       | <b>0910-968-2882</b>          | <b>0910-387-3392</b>            | <b>0910-387-3392</b>              | <b>0910-387-3392</b>          |

**SEASONS**

from page 1



A.J. Flores grinds out some of his 165 yards under attack from several Tulia defenders.



Brennan Broyles concentrates on his target as he prepares to get rid of the ball.

In the third quarter, the Mules scored on another Tunnell-to-Tucker pass, this one for 20 yards. D.J. Domínguez added an extra point after.

The fourth quarter saw Tovar scamper across the goal line again on a 16-yard run. Stephan Shelburne scored the Mules' final touchdown, running in from 10 yards out.

Domínguez kicked extra points after each of the fourth-quarter touchdowns.

The Hornets also added two more touchdowns in the fourth quarter, failing in their attempts to run for extra points.

Also in the JV game, coaches praised Tucker for causing a fumble on a fourth-quarter kickoff return, David Burciaga for an interception on Tulia's first two-point conversion try, and Otwell for two quarterback sacks and a caused fumble.

Tovar turned out to be the Mules' leading rusher in the game, with 134 yards on 20 carries. Tunnell completed five of eight passes for 101 yards — and had no interceptions.

Cade Hooten earned kudos for five solo tackles and four assists.

In the freshman game, A.J. Flores contributed the first and the last touchdowns en route to becoming the leading ground gainer, with 165 yards on 10 carries.

In between, Fabian Fabela scored on a 50-yard second-quarter run, Tim Hutton rammed across on a three-yard run (also in the second quarter), and Joel Cowart hit paydirt on a two-yard run in the third quarter.

The only extra points of the night for the freshmen came after Hutton's score, with

Brennan Broyles hitting Jordan Dale for two.

Other sparkling plays included a 45-yard run by Hutton, a 35-yard run by Flores, a fumble recovery by Rey Martínez and an interception by Dale.

Although Flores was the leading rusher in the game, Hutton contributed a more-than-respectable 118 yards.

Martínez racked up six tackles.

In junior high games, the eighth-graders lost to Tulia 46-0 and the seventh-graders lost 20-6.

Brady Broyles scored for the seventh-graders on a 53-yard reverse in the fourth quarter.

JV and freshman teams play Dimmitt (5:30 and 7 p.m. respectively) Sept. 23 at home, while the junior high teams have the same schedule in Dimmitt.

out of Brownfield, Dimmitt is allowing nearly 35 points a game. That could mean good things for an offense that only scored 12 points last week.

The Mules will look to go 4-1 while the Bobcats will try to climb above .500 for the second time this season. Game time is at 8 p.m. in Dimmitt.

**Ira Bulldogs nip Three Way, 24-22**

**THREE WAY** — For the Three Way Eagles, it was a matter of 'stopping Ira's 6-7 receiver Logan Daves.

But when the Eagles got Daves under control, it was too late.

Daves caught a pair of touchdown passes from Nathan Smith and kicked three PATs to lift the Bulldogs to a 24-22 victory over the Eagles here last Friday.

Trailing by the two-point margin midway late in the third period, Eagles shut down the Bulldogs the rest of the way. TWHS drove inside the Ira 15 yard line in the final period, but came away with no points and the Bulldogs came away with the two-point win.

The loss dropped the Eagles to 2-2 and just five points short of a 4-0 mark. Three Way's only other loss was a 40-37 defeat at the hands of El Paso Jesus Chapel in a game decided in the final 40 seconds.

Against Ira, the Eagles scored first and led three dif-

ferent times. Michael Soliz caught a 40-yard bomb from Alberto Valderas to put the Eagles on top with 5:06 left in the opening period. But a bad snap on the PAT try left the Eagles vulnerable at 6-0.

Ira came back just two minutes later as Smith found Daves over the top of the Three Way defense for a 14-yard touchdown. Daves' kick gave the Bulldogs an 8-6 advantage with 3:01 left in the opening period.

A one-yard run by Monty Kirby, and Kirby's PAT kick, gave the Eagles a 14-8 advantage with 9:55 left in the second period. But again Ira answered, as Smith passed to Jose Juarez, then ended up on the receiving end of a pass from Juarez. The 22-yard flea flicker, followed by Daves' PAT kick, gave Ira a 16-14 lead with 6:11 left before halftime.

Three Way bounded back with Kirby's second one-yard scoring run with 2:53 left in the second period. Kirby added

the PAT kick for a 22-16 Three Way lead at the half.

Ira regained the lead on a five-yard pass from Smith to Daves with 6:20 left in the third. Daves' PAT kick gave the Bulldogs a two-point lead for the third time in the game and it proved to be enough.

Ira completed an efficient 12 of 17 passes for 151 yards and added 91 yards rushing for 242 total. The Eagles picked up 162 on the ground and completed 11 of 22 for 156 in the air, totaling 318 yards of offense.

Marvin McCaul led the Eagle rushers with 23 carries for 142 yards. He also caught two passes for 12 yards.

Valderas completed 10 of 19 passes for 149 yards. Eight different receivers caught passes for the Eagles.

Three Way is back in action Friday, traveling to New Mexico to take on the Melrose Buffaloes. Melrose is the defending New Mexico state runnerup.

**Golf tournament marks homecoming at West Texas A&M**

**CANYON** — A golf tournament is par for West Texas A&M University's homecoming weekend, but this year a silent auction is planned in addition to a funny-putter contest and door prizes.

The putting contest begins at 10 a.m. Oct. 8, while the four-person scramble tees off at noon.

The cost is \$38 per person and \$5 for each mulligan. Entries are due by 5 p.m. Oct. 5 by calling (806) 651-2345.

**Tammy's Kitchen**  
will reopen October 4th!  
Open 7 am to 2 pm Monday thru Friday

**BOOTHS AND SHELF SPACE AVAILABLE FOR RENT**

Western Union, Bus and Fax Services Available

**GROOVY FOOD**

SMOKING SECTION — 308 S. Main  
New Phone - 272-4701 Muleshoe, TX

**MULES**

from page 1

nent, Wood said. He added that maybe the Mules had relied too much on analyzing the Hornets and not enough on their own game plan.

The Mules may find that focusing less on their opponent is a good strategy.

Dimmitt is 2-2 on the sea-

son, but is a tough team to register. The Bobcats beat Brownfield 35-0 last week but were outscored 98-20 in their previous two games.

The Mules will look to take advantage of a shaky Bobcat defense.

Even with last week's shut-

**FARMERS**

from page 1

culture, but that amount must be matched to the dollar before we can spend any of it through our Go Texas promotional campaign," Combs said. "We will soon have the fund-matching rules and guidelines drawn up for this campaign. A panel will then decide which commodity-specific promotions we undertake."

Combs also noted that the Legislature awarded \$200 million to the Texas Agricultural Finance Authority to boost new business start-ups and to main-

tain existing ones.

She encouraged rural Texans to submit their ideas on rural economic development as part of this endeavor — adding that the department has hired three new field staffers to boost rural development.

"We also need to speak out loudly in water planning efforts. There are 16 regional water planning groups statewide, and each is required to have at least one rural member, thanks to language added to three different state legislative bills," she

said. "That, too, is an opportunity. Get to know the rural rep of the water group in your region and make sure they know your concerns and ideas on water policy."

"We also need to re-instill the importance of rural prosperity among urban Texans, take a long, hard look at our commodity-handling infrastructure (railroads) and reform estate taxation that encourages folks to sell out during hard times. It will take all of that and more if we are to succeed in helping Texas stay strong."

**NOW THRU SUNDAY!**

**3-DAY BONUS SAVINGS!**

Clip the two BONUS COUPONS below & save on new-for-fall items throughout the store.

GOOD THRU OCTOBER 3 ONLY!

**15% OFF**  
ANY SINGLE REGULAR-PRICED ITEM\*

\*Excludes cosmetics, fragrances, Levi's, Dockers, designer collections, shoes by Dr. Martens, Easy Spirit, Nine West, Kenneth Cole Reaction, Nike. Coupon not valid on sale and permanently-reduced merchandise, must be relinquished at time of purchase; cannot be combined with any other coupon or private savings offer.

GOOD THRU OCTOBER 3 ONLY!

**15% OFF**  
ANY SINGLE REGULAR-PRICED ITEM\*

\*Excludes cosmetics, fragrances, Levi's, Dockers, designer collections, shoes by Dr. Martens, Easy Spirit, Nine West, Kenneth Cole Reaction, Nike. Coupon not valid on sale and permanently-reduced merchandise, must be relinquished at time of purchase; cannot be combined with any other coupon or private savings offer.

Plus, EXTRA 50% OFF all previously-reduced merchandise!  
Interim markdown have been taken. Selections vary by store. No other discounts apply on clearance merchandise.

CHARGE IT! GET 10% OFF ALL DAY WHEN YOU OPEN A NEW STORE ACCOUNT. Exclusions may apply. Subject to credit approval.

**BEALLS**

For the store nearest you, call 1-800-324-1313 or log on at www.beallstores.com

321 Main Street • Muleshoe, TX • (806) 272-3478 Open: Monday thru Saturday 10 am to 6 pm, Sunday Noon to 6 pm







# PENNY DAYS ARE HERE AGAIN!

**ALL ITEMS ONE PENNY!**  
**WITH 50 POINT X-TRA SAVINGS REWARD COUPON!**



## COKE AND PEPSI PRODUCTS

**1¢**  
 With Reward Coupon

Coke Classic Caffeine Free, Diet Coke, Diet Coke Caffeine Free, Sprite Regular, Diet Sprite Fresca, Coke Classic, Citra Soda, Dr. Pepper Regular, Diet Dr. Pepper Big Red, Nestea Cool, Minute Maid Orange, Barq's Root Beer, Surge  
 3 liter



Pepsi Cola, Pepsi Diet-Cherry, Diet Pepsi, Mountain Dew, Diet Mountain Dew, Dr. Slice, Wild Cherry Pepsi, Slice Red, Caffeine Free Pepsi, Caffeine Free Diet Pepsi, Slice Grape, Slice Orange, Slice Orange Diet, Mug Root Beer, Pepsi One, Mug Root Beer Diet, Mug Creme Soda, Lipton Tea, Lipton Diet Tea, Country Time Lemonade, Hawaiian Punch, 7-Up Regular, Diet 7-Up, 7-Up Cherry, 7-Up Diet Cherry  
 6 pack - 12 oz. cans

## SHUR FINE ICE CREAM

**1¢**  
 With Reward Coupon

Vanilla, Chocolate Whirl, Chocolate Chip, Banana Nut, Neapolitan, Strawberry, Chocolate  
 1/2 Gallon



## FUN SIZE CANDY

**1¢**  
 With Reward Coupon

13.3 oz. Bag



## TAMPICO PUNCH

Citrus Punch, Mango Citrus Punch, Island Punch  
 128 oz.

**1¢**  
 With Reward Coupon



## REDDY ICE

8 LB. Bag

**1¢**  
 With Reward Coupon

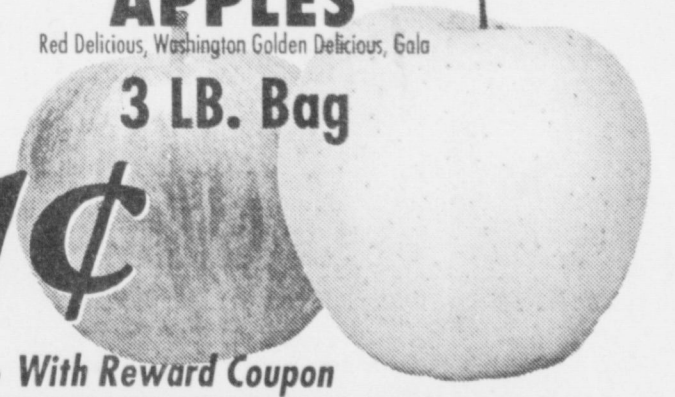


## APPLES

Red Delicious, Washington Golden Delicious, Gala

3 LB. Bag

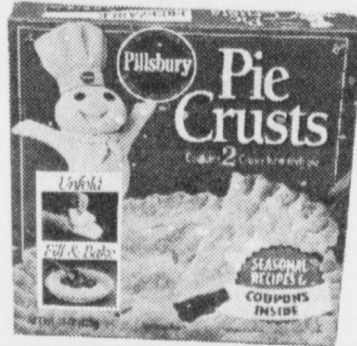
**1¢**  
 With Reward Coupon



## PILLSBURY READY PIE CRUST

**1¢**  
 With Reward Coupon

15 oz.



## WOLF CHILI

With or without beans  
 19 oz. can

**1¢**  
 With Reward Coupon



## MASECA CORN FLOUR

4.4 LB.

**1¢**  
 With Reward Coupon



## TONY'S PIZZA

Italian Sausage, Hamburger, Taco, Pepperoni Canadian Bacon, Extra Cheese, Sausage/Pepperoni, Supreme, Garden Supreme, Pepperoni Deluxe

**1¢**  
 With Reward Coupon



## PLAINS HOMOGENIZED MILK

Slim and Trim, 1%, 2%

**1¢**  
 With Reward Coupon



## MRS. BAIRDS BREAD

Texas Slice, Big, X-Thin, Large White, S/T Potato, Split Top White, Split Top Wheat, 100% Whole Wheat, Honey-N-Wheat, Wheat Sandwich

**1¢**  
 With Reward Coupon



**Why shop at your neighborhood Lowe's Supermarket?... Our Prices are LOWER!**

**SPECIAL PRICING GOOD 9/29/99 - 10/26/99 • Prices Good At Muleshoe Store Only**

No substitutions please on X-tra Savings Reward Items. Only one item may be purchased at the special deep discount per Reward Coupon.