

The Midland Reporter-Telegram

DIAL 682-5311, P.O. Box 1650, MIDLAND, TEXAS
Vol. 51, No. 13, Daily 15¢, Sunday 35¢

THURSDAY, MARCH 22, 1979
4 SECTIONS, 40 PAGES

HOME EDITION

Israel gives landslide support to treaty

JERUSALEM (AP) — Israel's Parliament gave its landslide endorsement to the peace treaty with Egypt early today, clearing the way for Prime Minister Menachem Begin and President Anwar Sadat to sign the historic pact on Monday in Washington.

Capping an often-raucous 28-hour debate, the 120-member Knesset voted 95-18 in favor of the treaty that will end the 30-year state of war with Egypt, Israel's most populous Arab foe; return the Sinai Peninsula, captured from Egypt in 1967, and pave the way for limited Palestinian autonomy on the West Bank of the Jordan River and in the Gaza Strip.

Most of those voting against the treaty were nationalists, many from Begin's own Likud Party, who oppose return of the Sinai and the creation of a Palestinian council to govern the West Bank and Gaza. The tiny pro-Soviet Communist Party also opposed the pact, claiming it did not go far enough toward Palestinian independence.

Two deputies abstained, three others voted "present," and two were absent. Begin, grinning, told reporters the vote was "the largest majority the Knesset has ever given on a political issue."

President Carter sent congratulations saying, "Israel's Knesset spoke with a voice heard around the world — a voice for peace."

A few hours after the vote, Foreign Minister Moshe Dayan left for Washington to wrap up negotiations on a memorandum of understanding between Israel and the United States.

"The question is ... would the U.S. assume the responsibility and take

measures in case one of the parties would not honor the agreement," Dayan told reporters as he left.

He said Defense Minister Ezer Weizman would follow him on Friday to negotiate the remaining dispute between Israel and Egypt — a timetable for giving up the offshore oil wells the Israelis developed in the Gulf of Suez off the Sinai coast.

Israeli officials have repeatedly said the oil issue is unlikely to hold up the treaty signing, but the Jerusalem Post reported the issue is proving

Treaty inking Monday

WASHINGTON (AP) — The peace treaty between Egypt and Israel will be signed at 2 p.m. EST Monday on the North Lawn of the White House, it was announced officially today.

The ceremony will occur in the middle of a day of specially planned festivities, including a state dinner for 1,300 in a circus tent Monday night.

Before the ceremony, President Carter will meet separately with Egyptian President Anwar Sadat and Israeli Prime Minister Menachem Begin.

Both leaders and their wives are scheduled to arrive in Washington Sunday afternoon. They will be greeted at Andrews Air Force Base in suburban Maryland by Vice President Walter Mondale and Secretary of State Cyrus Vance.

difficult. It said Israel wants to keep pumping oil from the wells until it begins its pullout from Sinai nine months after the treaty is signed. Egypt wants the pumps stopped immediately and has asked Israel to hand over the field in six months, the Post said.

Begin stepped to the Knesset's rosewood rostrum shortly before 4 a.m. — 9 p.m. EST — to deliver a speech concluding the emotional debate.

"There is joy that we have reached this day," he said. "There is worry for the future. There is trembling in our hearts — it is perfectly natural.

"With all this, there is recognition that we have reached a certain turning point ... all of us together want to achieve that goal, there is none more simple or more humanitarian: Shalom — Peace."

Begin proposed that he and Sadat shuttle between Cairo and Jerusalem on Monday, April 2 to sign Hebrew and Arabic treaty texts. Asked why he chose that day, Begin quipped, "Because Sunday is April Fool's Day." He said he would take up his proposal with Sadat in Washington.

In Cairo, Egyptian Vice President Hosni Mubarak discounted the possibility of Begin visiting Cairo to sign the treaty.

"Let us leave his visit to circumstances," he said. "... Let us first sign the treaty (in Washington) and start the talks for Palestinian self-rule."

Egypt and Israel have agreed to start those negotiations one month after the treaty is signed.

Sadat suggested last week that the English, Arabic and Hebrew texts all be signed in Washington as a tribute to President Carter's work in mediating the agreement.

Dayan due to work on U.S. treaty

WASHINGTON (AP) — Israeli Foreign Minister Moshe Dayan was flying to Washington today to work out final details of the military annex to the Egypt-Israel peace treaty and a "memorandum of assurances" between the Jewish state and the United States.

The last unresolved detail on the military annex is the date of the Israeli military withdrawal from the Sinai oil fields. Israel wants it to be nine months from the signing of the treaty, while Egypt is seeking to make it two or three months sooner.

The annex must be completed before the treaty is signed at the White House Monday afternoon by President Carter, Israeli Prime Minister Menachem Begin and Egyptian President Anwar Sadat. However, there is no deadline for the memorandum of assurances, U.S. officials said.

The memorandum would set out in writing American assurances of political and economic support for Israel in the event that the peace process collapses.

The U.S. officials, who declined to be identified, said they expect Dayan to ask Secretary of State Cyrus R. Vance for assurances tantamount to a military security treaty but hope Dayan can be persuaded to settle for less binding assurances of political support.

The New York Times reported today that the memorandum will include these two principles:

If Egypt violates any part of the treaty, the United States would consult with Israel on what to do next. And if the United Nations Security Council takes action against the treaty, the United States would use its veto power or otherwise take necessary steps.

The memorandum of assurances is similar to a secret series of agreements the United States and Israel signed in 1975 after the Sinai disengagement agreement. But this time, the State Department has said the document will be made public.



Weather conditions in the Midland area went from "post to post" Wednesday — the second day of spring — with clear skies and warm temperatures in the afternoon giving way to a tempestuous thunderstorm that dumped almost an inch of rain in some parts of the Tall City Wednesday night. This bolt of lightning was caught dancing east of Midland around 7 p.m. (Staff Photo by Mike Kardos)

Midland area lashed by rain, lightning, hail

By ED TODD
Staff Writer

Dense gray clouds accompanied Wednesday's sunset in Midland and unleashed lightning, pea-size hail and — in places — a drenching rain.

Officially, .57 inch of rain, mixed with quarter-inch hail, fell at the National Weather Service at Midland Regional Airport and came within .02 inch of matching the .59 normal rainfall for March.

Southerly winds gusted to a peak of 69 mph at 7:23 p.m. Wednesday. No significant damage was reported.

Wind-driven rain and soft hail cut visibility virtually to zero for a few minutes and caused a halt of some traffic.

More than an inch of rain was reported in far west Midland.

Some Midland streets, particularly Garfield Street, were flooded, but no water damage was reported, said Fred Baker, director of public works for the city of Midland, today.

"We really had nothing other than some water in some yards on Illinois (Avenue)" in central Midland, he said.

"...There were problems, nothing spectacular."

Garfield Street was flooded and was strewn with debris from the running water.

A tornado was sighted 10 miles southwest of Big Spring and, later, 15 miles southwest of there. No damage was reported.

The Central Fire Station near downtown Midland gauged .41 inch of rain, and up to .75 inch was reported on Midland's southside, said Hoot Leonard. Much of the rain was

accompanied by small hail. Jeff Flowers at the Valley View community reported "just barely a sprinkle here."

"It was giving us the dodge over here in this community," which is southeast of Midland, he said. "Sometimes it kind of catches us off guard and gives us a pretty good shower," said Flowers.

But Roy Graham at the Green-

(See SOME MIDLAND, Page 2A)

Sohio resubmits request for air quality permits

LOS ANGELES (AP) — The South Coast Air Quality Management District's chairman says the board could rule on Standard Oil Co. of Ohio's request for environmental permits for its oil pipeline project by April 15.

But the chairman of the state Air Resources Board said Wednesday he is not sure Sohio will ever go ahead with the pipeline, which will cost an estimated \$1 billion, including operating expenses for 20 years.

The proposed line would transport Alaska crude oil from California to Texas.

The Cleveland-based oil firm resubmitted an application to the air quality agency on Wednesday, after earlier withdrawing the application because of delays in getting approval. The air resources board also must evaluate the plan.

Al McCandless, chairman of the air quality management district, said the board will resume hearings on the proposal March 30.

"We will continue on Saturday, and if necessary into Sunday, in the hopes that by working those three days the board can complete the hearing process," McCandless said.

Sohio Chairman Alton Whitehouse announced the new applications in Cleveland, following a meeting in Washington on Tuesday with Energy Secretary James Schlesinger and others.

Whitehouse said, however, that he is still concerned that the permit process and lawsuits could block the project, which was first proposed about five years ago.

In ditching the plan last week, Whitehouse said it had grown too expensive because of the delay in issuing environmental permits. He said then that Sohio would continue its shipping surplus oil from the West Coast through the Panama Canal.

But Whitehouse said in a prepared

statement Wednesday that "the secretary of energy and various members of Congress made it very clear in our meeting in Washington yesterday that they wanted the PACTEX pipeline project to go forward promptly in the national interest and that they will do all they can to encourage the issuance of the necessary permits and approvals."

After the meeting Tuesday, a Sohio spokesman quoted Whitehouse as saying, "If we received the green light within 90 days, there is a strong possibility we would proceed. If we received the green light within six months, there is a probability we might proceed. The project is losing strength and character with the passage of time."

MCAA's Alexandra Morris says she's resigning post

By LANA CUNNINGHAM
Staff Writer

Charging that Midland Community Action Agency remains "a political football," Executive Director Alexandra Morris announced today she is resigning from her post effective March 31.

Mrs. Morris, speaking at a press conference, also said agency staff member Albert Jones told her he is resigning from his position as head of the weatherization program.

"I have seen that the agency is not and will not become a viable entity without the support and cooperation

of the local elected officials," she said.

That lack of support was evident when the Permian Basin Regional Planning Commission failed in February to give the agency's application for a general programming grant a favorable comment, she noted.

"Apparently this support and cooperation of the local elected officials is not to be forthcoming as long as two particular individuals are associated in any way with the Midland Commu-

(See COMMUNITY, Page 2A)

Hospital won't change employee pension plan

By SUSAN TOTH
Staff Writer

Replacing social security benefits with a private pension plan providing all the services the government plan offers would cost "more than you can afford," Midland County Hospital District directors were told Wednesday.

After meeting with consultants from Boone-Chapman, the agency that handles the hospital district's insurance, directors decided to stay with the social security system rather than change to a private pension plan.

The district had the option to remove its employees from the social security system when the hospital district was formed. Political subdivisions do not have to participate in the federal program.

Social security costs a total of 12 percent of payroll, Joe Duckworth,

the Boone-Chapman consultant said, including employee donations and the matching funds from the employer. To duplicate the services rendered by the system would cost 150 percent of payroll, he said.

The private plans cost so much more, Duckworth said, because private plans have to be secured by reserves, while the federal plan "has no correlation between costs and benefits."

In other words, directors pointed out, "ours would have to be fiscally sound and social security is bankrupt."

Some benefits offered by social security, which includes retirement and disability income for the wage-earner and dependents, could not be matched by a private fund because "the risks are uninsurable," Duckworth said.

"There is no better buy than social

(See HOSPITAL, Page 2A)

ROUSTIN ABOUT
Goes to
Big Spring
See Page 8A

INSIDE

IN THE NEWS: British ambassador assassinated in Netherlands.....2A

LIFESTYLE: How to cut blade chuck explained.....2B

SPORTS: Midland schools open District 5-4A baseball season with a bang.....1C

PEOPLE: President Carter's diplomacy fails to improve his popularity.....12A

...

Bridge.....11C Lifestyle.....1B
Classified.....1D Markets.....10A
Comics.....6B Obituaries.....11A
Crossword.....6B Oil & gas.....8C
Dear Abby.....1B Sports.....1C
Editorial.....4A TV listing.....3A

Around Town.....1B

Weather

Mostly fair through Friday. High Friday near 70. Details on Page 2A.

Delivery Service 642-5311
Want Ads 642-6222
Other Calls 642-5311



The Rays — Marleen, left; Herbert, right, and Randy.

You can call me Ray...

At first glance, it smacks of outright nepotism. There's a suspicious continuity of last names on the payroll at the Museum of the Southwest.

Of the museum's four full-time employees, three share the name "Ray."

There's Randy Ray, the exhibits curator; Marleen Ray, the secretary, and Herbert Ray, the custodian. "Some of the ladies at the Lancaster House have accused Randy of keeping a secret wife," said Marleen.

The three definitely are not related, however. Ray — Herbert, that is — has been the museum's custodian since 1966, when it was created, but he's not claiming any patriarchal position.

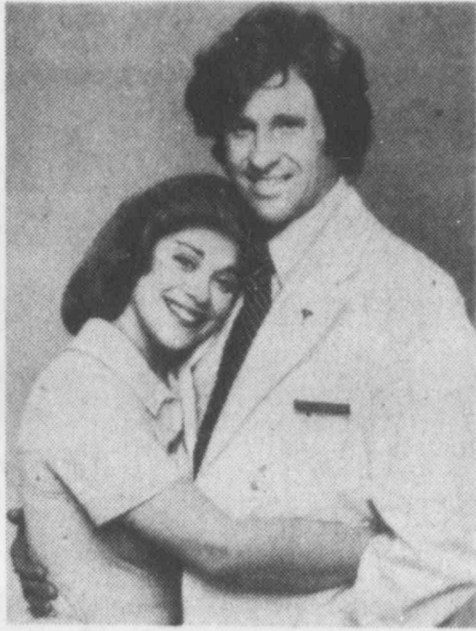
And Ray — Randy, that is — hasn't asked Mrs. Ray — Marleen, that is — if he could be included on her family medical plan.

This same-name business is all just a coincidence, they say. But it must leave the museum's acting director feeling a little left out.

He's the one full-timer who doesn't have "Ray" on the end of his signature.

He's Don Hedgpeh.
Donald Ray Hedgpeh.

Evening TV Schedule



HAPPILY WED

Lovely Donna Pescow stars in the title role of ABC's new comedy series "Angle," which airs Thursdays, and Robert Hays stars as her husband, Brad.

The young waitress meets, falls in love with and marries a young pediatrician who is a member of one of Philadelphia's wealthiest families. Angle may lack sophistication, but she has an abundance of warmth, understanding and honesty. However, Brad's family finds she's too much earthiness to take.

(Stations reserve the right to make last-minute changes.)

THURSDAY MARCH 22, 1979

Programs subject to change without notice

	KMID 2 Midland CABLE 3	KOSA 7 Odessa CABLE 8	KMOM 9 Monahans CABLE 9	S.I.N. 10 Spanish CABLE 10	KTVT 11 Fort Worth CABLE 11	KERA 13 Dallas CABLE 13	KXTX 39 Dallas CABLE 4
6:00	News M.T. Moore	News Newlywed Ga.	News Joker's Wild	Ven Conmigo	Bewitched Jeannie	Studio See MacNeil	Chico & Man Hogan's Heroes
7:00	Harris And Company	The Waltons	Mork & Mindy Angle	Humillados	Gunsmoke	Newsday Survival	Get Smart Andy Griffith
8:00	Quincy	Hawaii Five-O	Barney Miller Carter Contry.	Pasiones	M.T. Moore Bob Newhart	Nova "Rainbow"	700 Club
9:00	Mrs. Columbo	Barnaby Jones	Family	24 Horas	Movie: "I Walk"	Jacques Cousteau	Praise
10:00	News Tonight	News M.A.S.H.	News Starsky	Hermanos Coraje	The Line	Soundstage	Zola Levitt Word Of Faith
11:00		CBS Late Movie: "McCloud"	& Hutch Mannix	Variedades De Medianoche	Maverick	Growing Years	Faith Temp. Life Of Riley
12:00	Tomorrow				Night Gallery	Portrait	

Oilfield artist Gordon Bankston no longer drills many dry holes

By ROB WOOD

HOUSTON (AP) — For 20 years Gordon Bankston spent his days in the oil fields of West Texas, working as a roughneck, a pusher and a pumper.

At nights he would soak the oil and the grime from his calloused hands, pick up a pen and draw another cartoon, or a brush and paint a scene from that flat, often desolate, but always beautiful land where the black energy is sucked from deep under the sandy soil.

From the oil fields, Bankston made his living. From his paintings, sketches and cartoons he found "where I always thought I belonged."

Today Gordon Bankston has put aside his hard hat and his oil-stained overalls.

He is a full-time artist, with paintings going as high as \$1,500, and prints as low as \$4.50, and a cartoon strip called "Oil Patch," and playing cards, calendars, Christmas cards and designs for gags.

"I've hit a lot of dry holes since I went at art all the way, but I'd just back up and drill again. There was a time when first starting that I left Dallas with 15 cents in my pockets and heading for home in Odessa," Bankston recalled in a recent interview.

"I'm still not making a fortune, but I'm getting by. I set a goal and I'm going for it. I'd advise everybody to do something they enjoy. I went a lot of days without a payday, but I stayed with it."

Bankston was born 47 years ago in the shadow of an oil field in the Smackover field of Arkansas and grew up in the famed Permian Basin of West Texas.

He drew his first work of art at the age of 6, and naturally it was a drawing of a drilling rig.

WHEN IT came time to decide on a future, Bankston went where he knew a paycheck would arrive every week or so—to the oil fields where his father had worked for three decades until his retirement in 1957.

He never lost his love for art and eventually his cartoon strip became a fixture in several West Texas newspapers. It depicts the hard, but humorous life of the fields.

Using the cartoons as his base, Bankston spent \$4,000 to print calendars and postcards and "then I had to spend so much time working for the rent, the groceries and the clothes, I couldn't market them. Finally, I just took off and went the art route all the way."

Once travel money was hard to come by, but Bankston now says he can afford airplane fare to the major markets where his seemingly

endless supply of items, all decorated with his cartoons and paintings, are sold.

On some occasions he likes to go back to his earlier days and drive his 1948 pickup truck, loaded with his goodies, from one city to the next.

HE ADMITS it might not be in the best taste of the serious artist, but Bankston doesn't mind using a couple of good-looking gals in tight jeans to help promote his paintings, as he did recently in Abilene.

A man with the zeal of an evangelist and more energy than he pumped out of the ground in two decades, Bankston bounces up and down during an interview, flipping out this painting, displaying that cartoon, showing off his bath mats with the oil field scenes.

Always dressed in a sports shirt with the sleeves turned up a roll or two, displaying hands

and arms marked by the years of hard labor, he agrees he now is as much a promoter as an artist.

"But who else is going to do it? My big help comes from Daddy, who is 80, and mother, who is 70."

"And to tell you how far I have come, why, man I was even named a

judge in the World Championship Barbecue Cookoff in Pecos, Texas," he said.

RETAILERS: There's ANOTHER Midland market! The Code is M S G. Watch for it!

S. GARY HONG KONG

CUSTOM TAILORS IN MIDLAND

MADE-TO-MEASURE LADIES' & MEN'S SUITS
CUSTOM FITTED SPORT JACKETS & SLACKS

World's finest imported fabrics

Double Knit Suits	\$85.00
Silk-Mohair Suits	\$95.00
Sharkskin Suits	\$125.00
Superior Waxed Herringbone Suits	\$125.00
Cashmere Wool Sport Coats	\$85.00
Monogrammed Custom Made Shirts	\$12.00 up
Ladies Custom Made Suits	\$85.00 up

Our suits are tailored to your size. 100% Guaranteed satisfaction.

HOLIDAY INN
694-7774 10 AM TO 9 P.M.

March 22-24
Thurs.-Fri.
Sat.

UNPAINTED FURNITURE STORE

Oak
Reg. 185⁰⁰
139⁹⁵

Pine
Reg. 165⁰⁰
129⁹⁵

BUTCHER BLOCK CARTS

You'll love these multi-purpose solid oak carts. Kitchen counter height makes them ideal for food preparation and provides additional work surface near stove and sink. Ball casters, along with sturdy foundation and shelving make them ideal serving carts for meal time, party-time, or Bar B Q, both indoors and on the patio.

Reg. 140⁰⁰
\$119⁰⁰

BARSTOOL BONANZA

20%-40% OFF

While They Last!!
10% OFF any special ordered barstool!

MIDLAND
16 Imperial Shopping Ctr.
697-1321

UNPAINTED FURNITURE Store

ODESSA
1205 E. 8th
333-3492

Odessa's Unsafe Building Ordinance declared legal

Austin Bureau

AUSTIN—The city of Odessa's Unsafe Building Ordinance is legal and may be enforced, the Texas Supreme Court agreed Wednesday.

With no other comment, the Supreme Court agreed with lower courts which upheld the vote of the Odessa City Council to order a building at 312 Pitch Street destroyed, contending it was unsafe.

The structures were owned by Gladys O'Neal Jones, who court records indicate, now lives in Fort Worth. She brought the suit, attempting unsuccessfully to collect for damages.

Guess who's moving in next door?



National Bank of Midland

Friday, March 23rd

CLIP HERE

RING SALE

THURS. FRI. SAT. March 22, 23, 24, 1979
9 A.M. to 7 P.M. at

WALGREENS

Lifetime Guarantee
PRONG MOUNTED—HAND SET STONE
18K HGE or "Sterling Silver"

\$9.95

BE THERE!

\$14.95

\$9.95

COME EARLY!

\$19.95

"Bring in your diamonds and see if you can tell the difference"

BE A DO-IT-YOURSELF PROFESSIONAL

Rent The Rug Doctor—the only "steam" cleaner with the Vibrating Brush!



The exclusive vibrating brush agitates 3,200 times per minute. Hot solution is jetted powerfully into your carpet.

The vibrating brush agitates both sides of the pile, breaking up deep-down dirt. Professionally powerful jet suction pulls dirt out and lifts it away.

Rug Doctor Is Coming To Midland Looking For Rental Locations
Call 505-397-2727 Collect

GRAND OPENING

TROPICANA

5:03 P.M. 'TIL 9:00 P.M.

Thursday March 22nd

4 GREAT DAYS—THURS.—FRI.—SAT.—SUN.

FREE GIFTS FOR EVERYONE!

DISCOUNT ON EVERYTHING!

11" FIGUS BEN. \$12⁸⁸

Large Floor size

11" SCHEFFLERAS \$12.79

Large Floor size

LARGE 6" RUBBER PLANT \$4⁹⁹

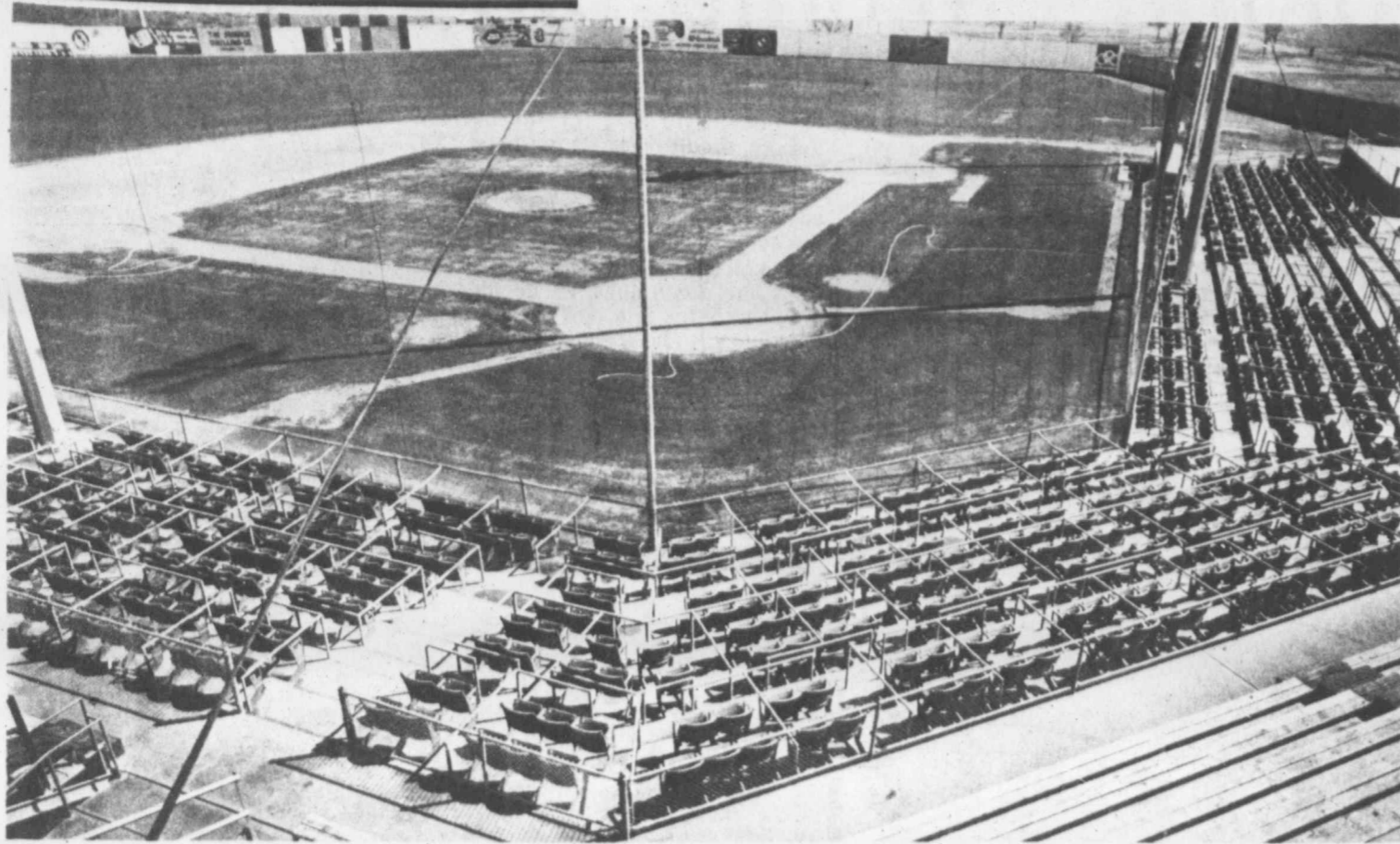
8" HANGING BASKETS

IVY/FERN FANTASIA MANY OTHERS \$7⁹⁹ each

GREAT BUYS ON POTTERY, WICKER BASKETS FROM THE PHILIPPINES & HAITI. WIDE VARIETY TO FIT ALL NEEDS INCLUDING THE DECORATOR DESIGNS. COME IN TONIGHT!

619 W. WALL

This Is Midland:



Ground crews have been busy getting Midland's Cub Stadium in shape for the season opener April 11. Home of the Texas League AA Midland Cubs since 1972, the stadium has been a fixture north of town for 25 years. The

Midland Cubs are part of the farm system of the Chicago Cubs. Fans will be able to see the Midland Cubs in action in Midland in 65 games this season. (Staff Photo by Mike Kardos)

Pullman ending production of railroad passenger cars

CHICAGO (AP) — Pullman Inc. is ending production of railroad passenger cars, including the sleepers associated with long-range rail travel. The firm's passenger car division will close after 1980 because of foreign competition and the fact that the division has turned a profit in only four of its last 25 years, vice president John S. Burr said. The decision was made Wednesday by the company's board of directors.

"What we can't figure out is how these foreign companies can produce the cars, have them shipped here and pay duties on them and still have prices 25 to 30 percent lower than ours," Burr said. The passenger division will close after two major contracts — an order for 60 cars from Boston and 284 cars from Amtrak — are completed in 1980, Burr said. He

said the division lost \$23 million after taxes during the last four years. The decision to close the passenger division does not affect the profitable freight and truck trailer divisions, he said. The firm's engineering and construction operation also will continue. Pullman is the latest corporate casualty in the railroad passenger car manufacturing business. Besides General Electric, Burr said the only other major manufacturer in the United States is Budd Corp., owned by a German steel company.

Pullman officials say they are uncertain what will happen to 2,000 employees at the Chicago and Hammond, Ind., plants whose jobs will be affected. The company said it would like to find jobs for them in the 12 other Pullman plants around the country that produce freight cars and truck trailers. The company nurtured

itself on the vision of George M. Pullman, an inventor and businessman who in 1858 began manufacturing sleeping cars. Pullman got his start in the railroad industry by remodeling two coaches into sleeping cars for the Chicago & Alton Railroad. He and a friend, Ben Field, then designed a more elaborate and larger car called the "Pioneer" that later was used in Abraham Lincoln's funeral train from Washington, D.C., to Springfield, Ill.

The sleepers could be converted from day to night use by folding down the upper berths, making the seats into lower berths and drawing curtains from the ceilings and between seats.

Value City Weekly Specials



#1141 4 DRAWER
NON-SUSPENSION
FILE

VALUE CITY
\$85.00

List Price \$112.00



#726 STENO
CHAIR

VALUE CITY
\$51.00

List Price \$69.98

MON.-FRI. 9-5:30 808 N. TEXAS
ODESSA, TEXAS
915/337-5479

Value City
PRESTIGE OFFICE FURNITURE
AT DISCOUNT PRICES

ECONOMY means HELP

For

Midland's Taxpayers



Parker Humes is a businessman. He is the only candidate for Place 5 on our school board who has proven, solid managerial business experience. Parker Humes believes in educational excellence, but he firmly believes our taxpayers should get more for our money. That means cutting costs where possible, and doing the job more efficiently.

Vote FOR

PARKER HUMES

School Trustee, place 5

And AGAINST Plan "O"

Absentee Voting Now In Progress
School Administration Building, 702 North "M"

Full ad paid for by Parker Humes Campaign Committee, Ted H. Kerr, Treasurer, P.O. Box 511, Midland, Texas 79702

FOR SALES ACTION IN A HURRY NOTHING WORKS LIKE A **WANT AD** FOR AN AD-VISOR Dial 682-6222

Alexander's
IMPERIAL

PRODUCE

"The Finest in Fresh Fruits and Vegetables"

RETAIL WHOLESALE
Imperial Shopping Center 3206-A Midkiff and Wadley

WINTER HOURS 9 a.m. to 6 p.m.
SIX DAYS A WEEK

FRIDAY ONLY

Top-of-the-Season
Beautiful Large
California
Red-N-Rips

79¢ Pint Basket

1.59 Qt. Basket

STRAWBERRIES

Mexico "Top-of-the-Season"
SALAD SIZE

TOMATOES

39¢ lb.

Mexico Fresh
Super-Selected-Large
Crisp
(Small Seed)

CUCUMBERS

6 FOR \$1.00

SALAD SIZE
CALIFORNIA-BLACK HASS

AVOCADOS

5 FOR \$1.00



Stewart
The contemporary look that's perfect for today's family room. Covered with matched chenille herculon in warm earth tones.

OTHER SIMMONS HIDE-A-BEDS LOW AS \$349.95

SIMMONS
HIDE-A-BED®
AND MATCHING
LOVE SEAT

\$899⁹⁵ BOTH



501 EAST ILLINOIS
682-2843

Pet cemeteries, undertaking become big business

SOUTH PADRE ISLAND, Texas (AP) — Fred Miller — a man who has helped bury more than 9,000 pets — says there's a good reason why some folks seem to care more about their pets than their relatives.

"People don't have bad memories with pets that they might have with relatives and friends. Even if you kick him, he still licks your hand," Miller, president of the International Association of Pet Cemeteries, said.

Some 60 pet undertakers are here this week for the association's eighth annual convention. The meeting includes a trade show featuring the latest in pet cemetery wares — including caskets for everything from a hamster to a large dog and Grecian urns for Fido's ashes.

"When a half dozen of us met in Chicago in 1971 we sort of looked at each other. Back then you were considered an unusual person — even an

oddball," Miller, who owns a 30-acre pet cemetery outside of Detroit, said. "But everyone looked normal and that gave us the courage to go on."

Now the association has 213 members.

Miller said the industry will continue to grow. He said the move to apartment living and local ordinances against burying pets in backyards have created an immediate need for pet cemeteries.

"Man's best friend is still the dog. But we've had everything. We've buried birds, rabbits, horses — anything a kid will make a pet. Turtles, chipmunks"

And the pet casket makers are joining in on the boom. Dennis Hoegh, a Gladstone, Mich., man who claims to have been the first manufacturer of pet caskets, said his plants crank out 57 caskets an hour.

The prices range from \$5 for a

10-inch molded plastic box for a bird or hamster to \$160 for the 40-inch deluxe model. That's without the satin liners and pillows.

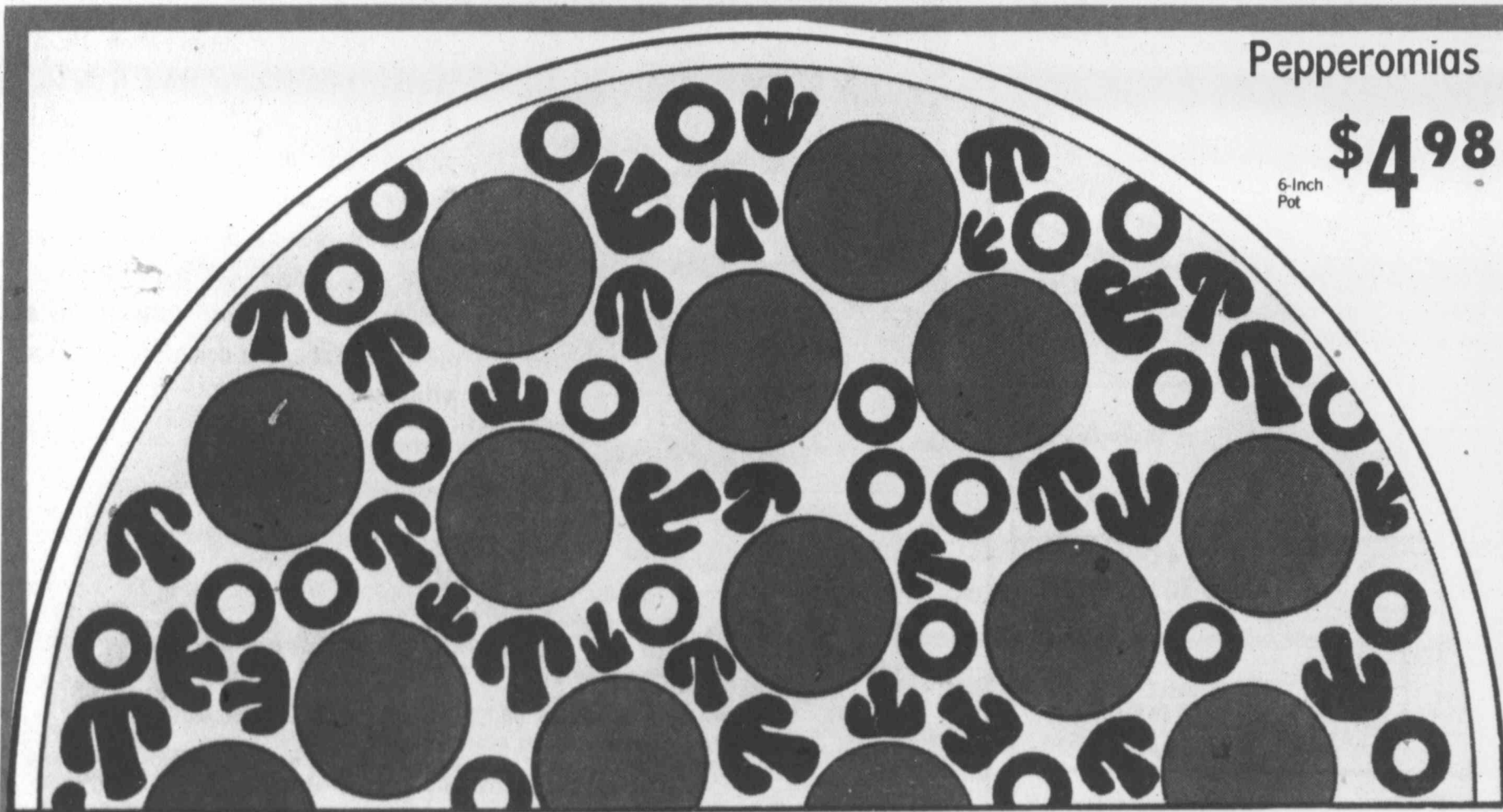
Miller said the average pet funeral costs from \$95 up to \$250. But that's the average.

"I had one old guy who spent \$8,000 for a half dozen dogs. He decided he didn't want his relatives to fight over his money, so he spent it on his dogs. A pink granite stone. It was beauti-

ful," Miller said.

He also recalled a dog funeral that attracted a 140-car procession. A maintenance man in a factory near the cemetery lost his pet and all his co-workers turned out for the Sunday burial.

"A lot of them thought it was a lark until they saw more flowers than you see at some human funerals," he said, adding that the factory now provides much of his business.



Pepperomias
6-Inch Pot
\$4.98



Head Lettuce Each Head **29¢**
Large Crisp Heads

Crisp Celery Long Shank Lb. **25¢**

Fresh Pineapples Cayenne Variety Each **69¢**

Crisp Apples Golden Delicious, Washington State Lb. **39¢**

Clorox Bleach Wghshday Must 1/2-Gal. Jug **67¢**

Glass Cleaner White Magic Refill Bottle 32-Oz. Btl. **62¢**

Cheer Detergent 10¢ off Label, Regular \$1.71 49-Oz. Box **\$1.61**

Dry Cat Food Safeway Brand, Save 20% 4-Lb. Bag **\$1.19**

Cleans & Shines White Magic, Safeway Brand 32-Oz. Btl. **\$1.39**

Hills Bros Coffee Instant 10-Oz. Jar **\$4.19**

Maryland Club Coffee 1-Lb. Can **\$2.90**

2-Lb. Can **\$5.97**

Lots of Ways to Save at Safeway!

INFLATION FIGHTERS!

SAVE ON SAFEWAY FAST AND EASY CONVENIENCE FOODS!

It's easy to do meal magic with the wide variety of fast 'n easy foods we have for you at Safeway. Be ready to please the young 'uns who like to eat at different times due to hectic schedules. Please grown-ups, too, who like these change-of-pace meals because their ease-of-preparation sure does leave a lot more time for just enjoying life. Come stock up and save!

COUNT ON EASY EXPRESS LANE CHECKING - ALWAYS

Pepsi Cola
Regular or Diet
Six Pack 32-Oz. Qt. Btls.
\$1.69
Regular \$2.04 Plus Btl. Dep.

Pizza
Chef Boy-Ar-Dee, 4 Little Pizzas, Cheese, Sausage, Pepperoni
10.5-Oz. Box
\$1.39

Tater Treats
Bel-Air, Frozen
2-Lb. Bag
92¢

Haddock Dinners
Captains Choice, Frozen
10-Oz. Dinner
\$1.34

Macaroni & Cheese
Town House
7.25 Oz. Box
29¢

Saltines
Scotch Buy Crackers
1-Lb. Box
45¢

Tomato Soup
Town House
10.75-Oz. Cans
5 \$1

Chunk Tuna
Chicken of the Sea (Save 29¢)
6.5-Oz. Can
65¢

Tuna Helper
Betty Crocker (Save 13¢)
7.75 Oz. Box
69¢

Kleenex Super Dry
Extra Absorbent 24-Cl. Box *25¢
Save 20¢ Toddler 12-Cl. Box
\$1.59

Kleenex
Facial Tissue, Save 18¢
200-Cl. Box
59¢

Right Guard
Bronze, 1.5-Oz. More, Save 20¢
6.5-Oz. Can
\$1.49

Gleem Toothpaste
SAFETY SPECIAL (Save 20¢)
5-Oz. Tube
79¢

Condition Shampoo
Chairol, Regular or Oily (Save 50¢)
16-Oz. Btl.
\$1.49

Killer bees: deadly threat or mild myth?

By KEVIN MCKEAN
NEW YORK (AP) — As lead players in an end-of-the-world scenario, they're laughable. As members of an invading horde, they're a flop. But laughable or not, those Africanized — or "killer" — bees are buzzing steadily through Venezuela on a northward trek that should bring them to the United States around 1988, give or take a year. And rather than fueling a public outcry,

they're posing a question for scientists interested in population genetics: Will the bees reach the U.S. border with fiery temperament intact? Some entomologists expect the bees to intermix with local bees along the way and lose their legendary bad tempers. "I don't say they're a perfectly lovable bee. What I'm saying is they're darn good honey producers," says Dr. Roger A. Morse of Cornell University, a "kill-

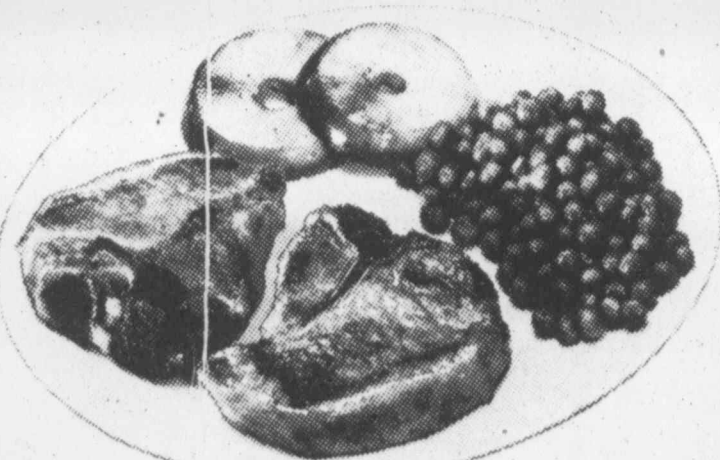
er" bee defender who has studied their habits in Brazil. But other scientists, like Dr. Orley R. Taylor Jr., head of a U.S. Agriculture Department research project on the bees, fear that if they reach North America untamed, they will pose a sticky problem for the country's \$125 million-a-year honey industry. The African "killer" bees were brought to this hemisphere in 1956 to an experimental breeding

station at Sao Paulo, Brazil, where it was hoped their honey-producing powers could be tapped. Instead, 26 queens escaped the following year and began mating with local bees. The Africans were used to tougher natural predators than the indigenous bees, who had descended from European stock. They acquired a reputation for nastiness. "A pig bumps up against a beehive and

four or five thousand bees come out and start stinging everything within 200 meters. When it's over, several animals are dead, several people are stung and the keeper is scared to death," says Taylor, professor of entomology at the University of Kansas. The "killer" bees were blamed for the deaths of 150 people and thousands of animals in the next two decades. But Brazilians say

years of intermixing have mellowed the irritable fellows. Hugo Muxfeldt, former president of the Brazilian Beekeeping Association, says there's been no effect on the country's 5,000-ton annual honey production. Nevertheless, U.S. beekeepers remain wary that the hybrids could hurt business. Bees make 115,000 tons of honey a year in the United States and help pollinate 90 crops, including most fruits and nuts.

Dr. Burt Martin, staff scientist for bees at the USDA research center in Beltsville, Md., says the aggressive tendencies probably can be bred out of the bees. But Martin is worried about two other undesirable traits — their tendency to swarm unpredictably and their tendency to abscond, or abandon a hive. "Commercial beekeepers are oriented to putting colonies on a truck and moving them around," says Martin.



Serving Suggestion

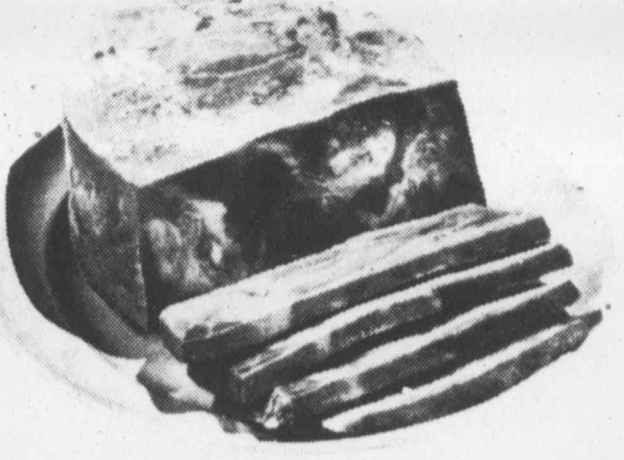
Pork Chops \$1.39
Assorted Lb.

Sliced Bologna \$1.29
Scotch Buy Brand 1-Lb. Pkg.

Sausage \$1.99
Breakfast Links, Safeway Whole Hog Lb.

Blue Bonnet 69¢
SAFETY SPECIAL Quatered Margarine 1-Lb. Ctn.

Orange Drink 89¢
SAFETY SPECIAL Boden, Rich-n-Ready 1-Gal. Jug



Serving Suggestion

Canned Picnics \$4.98
Farmland 3-Lb. Can

Sizzlean \$1.39
Swift's Breakfast Strips 12-Oz. Pkg.

Fish Sticks \$1.89
Mrs. Pauls, Light Batter 14-Oz. Pkg.

Ice Cream \$1.49
SAFETY SPECIAL Lucerne, Pecan Praline 1/2-Gal. Ctn.

Grape Juice 65¢
SAFETY SPECIAL Bel-air, Frozen 12-Oz. Can

Bel-air Waffles 59¢
EVERYDAY LOW PRICE Frozen, Safeway Brand 12 ct. 10-Oz. Box

Beverage Ice 69¢
EVERYDAY LOW PRICE Party Pride 10-Lb. Bag

Inst. Orange Drink \$1.99
EVERYDAY LOW PRICE Town House, Breakfast Drink 40.5-Oz. Can

Nabisco Oreo \$1.15
EVERYDAY LOW PRICE Oreo Cookies, 19-Oz. Double Stuff 15-Oz. Box

Mayonnaise \$1.25
Best Foods REAL Mayonnaise Qt. Jar Best Foods Save 37¢

SEARCH N' SCORE BINGO
SERIES S924
WIN UP TO \$2,000

- Rules and Instructions**
1. TO OBTAIN MATERIAL: With each visit to participating store, each adult (18 years or older) may obtain one ticket, and on first visit, one Collector Card. Tickets (one per inquiry) available by sending stamped, self-addressed envelope to: Game Programs, Inc., Series #S924, 23 Chestnut Street, Englewood, New Jersey 07631. No purchase required.
 2. INSTANT GAME: Scratch off circles with edge of coin to reveal prize amounts. Match 3 \$ amounts on one ticket in a straight row, vertically, diagonally or horizontally. Win that \$ amount.
 3. COLLECT GAME: Scratch off boxes and correctly place collector stubs on collector card. Match play number on stub with game and play number on this card. Any combination "FREE" and correctly matched play numbers in a straight row vertically, diagonally, or horizontally wins that \$ amount. NOTE: Game number must match.
 4. TO CLAIM PRIZE: Submit tickets for verification to Store Manager (sign on back in his presence). Winners of \$1-\$10.00 paid in cash at store. Redemption of \$50 and over: Complete Claimant's Form (retain receipt) for payment by check, after verification.
 5. OFFER NOT OPEN TO: Employees of sponsoring chain, its subsidiaries, manufacturers of game, their advertising agencies and families of foregoing.
 6. All tickets are subject to verification, are void, and may be rejected if not obtained through legitimate channels, if illegible, mutilated, forged, tampered with or irregular in any way or contain printing or other errors. Liability for irregular tickets, or those not verified, limited to replacement of ticket. Void where taxed or restricted by law. Person(s) using any device, scheme, information or method other than fair chance to play and win is disqualified. Valid winning tickets must be presented within two (2) weeks after end of game, or prizes are forfeited. Winning tickets become property of sponsoring chain and cannot be returned. State, federal and other taxes imposed on any or all prizes are sole responsibility of winners.
 7. THIS GAME IS SCHEDULED TO BEGIN DECEMBER 24, 1978 AND END APRIL 14, 1979, however, the game will officially and upon distribution of all game tickets.
 8. ALL TICKETS AND COLLECTOR CARDS must have the same series number and are valid only in that Series No. Game.
 9. UPDATING ODDS: Odds to win and number of prizes unclaimed will be updated each week after thirty (30) days for all prize categories \$25.00 and over.
 10. TICKET VOID if it does not contain: Series #, Title "Search N' Score Bingo," and under scratch-off box \$ Symbol.
- Game Program may be repeated by popular demand. \$225,000 available in cash prizes. Sponsoring Retailer: Safeway Stores, Incorporated. Subject to extension.

SERIES S924 is played in 59 participating Safeway Stores in the State of Texas, cities of El Paso, Marfa, Alpine, Pecos, Ft. Stockton, Odessa and Midland and in the State of New Mexico, cities of Hobbs, Artesia, Carlsbad, Roswell, Ruidoso, Alamogordo, Las Cruces, Deming, Los Alamos, Silver City, Socorro, Belen, Albuquerque, Santa Fe, Las Vegas, Espanola and Taos.

Revised As of Mar. 12, 1979

Prize Value	Instant Game	Collect Game	Total Prizes	Total \$ Value	Odds for 1 Store Visit	Odds for 13 Store Visits	Odds for 26 Store Visits
\$2000	11	10	21	\$42,000	1 in 174,399	1 in 13,415	1 in 6707
\$1000	6	12	18	\$18,000	1 in 203,465	1 in 15,651	1 in 7825
\$ 100	75	90	165	\$16,500	1 in 22,196	1 in 1707	1 in 853
\$ 50	73	75	148	\$ 7,400	1 in 24,745	1 in 1903	1 in 951

Prize Value	Instant Game	Collect Game	Total Prizes	Total \$ Value	Odds for 1 Store Visit	Odds for 13 Store Visits	Odds for 26 Store Visits
\$2,000	13	12	25	\$50,000	1 in 460,800	1 in 35,446	1 in 17,723
\$1,000	12	12	24	\$24,000	1 in 450,000	1 in 36,923	1 in 18,461
\$ 100	130	130	260	\$26,000	1 in 44,307	1 in 3,408	1 in 1,704
\$ 50	100	100	200	\$10,000	1 in 57,600	1 in 4,430	1 in 2,215
\$ 10	400	400	800	\$8,000	1 in 14,400	1 in 1,107	1 in 553
\$ 5	3,000	3,000	6,000	\$15,000	1 in 3,840	1 in 295	1 in 147
\$ 2	8,000	8,000	16,000	\$16,000	1 in 1,440	1 in 110	1 in 55
\$ 1	76,000	76,000	152,000	\$76,000	1 in 151	1 in 11.6	1 in 5.8
Totals	87,655	654	88,309	\$225,000	1 in 1.30	1 in 10	1 in 5

PHOTO PROCESSING

36 Exposure Slide Film Developed \$1.97 Ea.

20 Exposure Color Slide Film Developed 97¢ Ea.

A Safeway service in support of suggestions from the U.S. Office of Consumer Affairs

INFLATION FIGHTING ideas

"Use Open Dating"

Next week's Inflation Fighting Idea: "RECYCLING IN THE KITCHEN" together, we can be INFLATION FIGHTERS!

MIX 'EM or MATCH 'EM

DEL-MONTE

Canned Foods

Green Beans 3 Cans For
16-Oz. Can Cut or French Style

Golden Corn 89¢
17-Oz. Can Whole Kernel or Cream Style

Green Peas 89¢
17-Oz. Can

Spinach 89¢
15-Oz. Can

Del-Monte Catsup 99¢
Safeway Special, Save 15¢ 38-Oz. Btl.

Soft n Tuff Heavy Duty Vinyl Hand Tote Bag

GLOBALITE \$6.99 Ea.

Purchase a Piece Ea. Week at Safeway

These items and Prices Available March 22, 23 & 24, 1979 at Your Nearby Safeway Located at:

PLAZA SHOPPING CENTER AND 2500 W. ILLINOIS

SAFEBWAY

Official USDA Food Stamp Redemption Store

© Copyright, 1963,72 Safeway Stores, Inc.

Did China-Vietnam war aid Soviets?

BANGKOK, Thailand (AP)—The war between China and Vietnam may have led to greater Soviet influence in the region and confirmed Vietnam's domination over Laos and Cambodia, according to analysts here.

But they say it still is too early to tell for certain and add that the Chinese could have come out of it with a long-range advantage.

Intelligence sources in Bangkok and Washington say Soviet warships docked in at least one Vietnamese port during the border conflict that began Feb. 17 and Soviet ships and planes were

Union, ordered the expulsion of all Chinese aid personnel from its soil, weakening Chinese influence there.

BUT ALL HAS NOT gone in Vietnam's favor. The analysts, who include both diplomats and military experts in Bangkok, note that China's invasion of Vietnam may have signaled that Peking is ready to take aggressive action in the area if it feels threatened.

Some say the Chinese pullout from Vietnam last week may mark the end of the conflict but rather the first round of its attempts to weaken Vietnam by political, economic and military means.

The Chinese willingness to go to war and risk Soviet retaliation and the already stated threat that they may strike again will probably force Vietnam to divert large-scale resources to its northern defenses and thus further weaken its economy. A general mobilization order is still in effect in Vietnam.

Hanoi's leaders claim China wants to annex Vietnam, then Cambodia and Laos, and then the rest of Southeast Asia. The Chinese view the matter in even more global terms, branding Vietnam "a Cuba of the East" ready to carry out what they see as a Soviet ambition to dominate Asia.

THUS THE CONFRONTATION between China and Vietnam goes far beyond a few disputed border boundary markers, which will be the subject of negotiations if the two sides sit down at the conference table.

Two views are emerging among Indochina analysts about Vietnam's foreseeable future: —One says that Vietnam has overextended itself, trying to tackle too much too quickly. It is tied down to a long, bloody war trying to wipe out the guerrillas of the fallen Cambodian regime while China stokes anti-Vietnamese intrigues festering in Laos, where Hanoi's troops are already stationed.

Vietnam's economy is shattered by decades of war, mismanagement and natural disasters. Southern Vietnam is reported rife with dissatisfaction.

THESE PROBLEMS could sap Vietnam's strength, making it easier prey for Peking as time goes by. —The other view says that Vietnam has pulled off another victory and might even flex its muscles beyond Indochina.

Start your day with a new drier spray.

Here's 20¢ off to get you started.



20¢ STORE COUPON

SAVE 20¢ ON NEW DRIER SPRAY SECRET (or any other type or size Secret)

LIMIT ONE COUPON PER PURCHASE

TO THE CONSUMER: CASH/PROCTER: This coupon is redeemable for 20¢ off the face value of the Secret Drier Spray product, provided you and the consumer have complied with the terms of this coupon. It is not valid for cash redemption and will be void if presented through outside agencies, brokers or others who are not retail distributors of this brand or who are not specifically authorized by us to redeem this coupon. Cash value 1/20¢ of 1¢. Void if prohibited, saved or restricted. Limit one coupon per purchase. Offer expires December 31, 1979.

TO THE DEALER: This coupon must be redeemed by a consumer at the time of purchase of the Secret Drier Spray product, provided the consumer has complied with the terms of this coupon. It is not valid for cash redemption and will be void if presented through outside agencies, brokers or others who are not retail distributors of this brand or who are not specifically authorized by us to redeem this coupon. Cash value 1/20¢ of 1¢. Void if prohibited, saved or restricted. Limit one coupon per purchase. Offer expires December 31, 1979.

PROCTER & GAMBLE

16269 456400 9692 SE

Noting that the Soviet Union is supplying Vietnam with weapons and oil for its war machine, one military expert here said, "Moscow certainly has more of a leverage over Vietnam than ever before."

used to ferry Vietnamese troops to the front in the just-concluded conflict. Noting that the Soviet Union is supplying Vietnam with weapons and oil for its war machine, one military expert here said, "Moscow certainly has more of a leverage over Vietnam than ever before."

ALSO THE Soviets now can wield some influence in Cambodia, whose government was pro-Chinese until a Vietnamese invasion force early this year installed a pro-Hanoi government in Phnom Penh.

Asian and Western Indochina experts still are assessing gains and losses on both sides. But a few things have become clear:

—China failed to force the Vietnamese to withdraw from Cambodia, which would have set the stage for a counterattack by the ousted Pol Pot regime.

—Laos, a close ally of Vietnam and the Soviet

Abuse of alcohol increasing

AUSTIN, Texas (AP)—Alcohol abuse is increasing while treatment and prevention programs shut down for lack of funds, the House Committee on Health Affairs has been told.

"Most of our time is spent just trying to scratch up enough money to keep what we already have," Fain Williams, executive director of the East Texas Council on Alcoholism and Drug Abuse, said Wednesday.

She spoke in favor of a proposal to designate up to 20 percent of the state's income from the mixed drink tax to help fund regional alcoholism programs.

"Certainly not every Texan who pays a 10 percent tax on his bourbon and brandy water is an alcoholic, but certainly many of them are," she said.

Mrs. Williams said a detoxification center closed last year in Abilene and a program at Rusk State Hospital might shut down later this year.

The bill sponsored by Rep. Ben Z. Grant, D-Marshall, was sent to a subcommittee for further study.

Grant said the mixed drink tax brought in \$65 million to the state treasury last year. His bill would put a \$10 million limit on state aid to the regional alcoholism programs.

The mixed drink tax would not be increased, he added.

Grant said the social and economic costs of alcohol abuse in Texas has been estimated to be \$2.1 billion a year.

"There is a need for adequate funding for people who work with these programs," he said.

Robert Jungman, a Houston municipal court judge, said 70,000 of his 90,000 cases last year were alcohol-related offenses.

Here's something for the baker in everyone.



For delicious snacks and desserts, there's nothing like home-made. From scratch, with C and H pure cane sugar from Hawaii. So warm up your oven—and stand back. Once your family gets a whiff of this offer, everyone will want to get in on the act.

15¢ 15¢ Off Your Choice of C and H Brown or Powdered Sugar. 15¢

STORE COUPON

TO GROCER: This coupon is redeemable for 15¢ (plus 5¢ handling) toward two 1 lb. cartons of C and H Brown or Powdered Sugar... OR one 2 lb. polybag of C and H Brown or Powdered Sugar. Get reimbursement by mailing this coupon to C and H Sugar Co., P.O. Box 1420, Clinton, Iowa 52734. Redemption through outside agency will not be honored. This offer void in any state or locality prohibiting, or licensing, or restricting these coupons. Cash value 1/20 of 1¢. FRAUD CLAUSE: Any other application of this coupon constitutes fraud. Invoices proving retail sale, within the last 90 days, of sufficient stock to cover coupons presented for redemption must be made available on request. COUPON GOOD ON TWO 1-LB. CARTONS OF C AND H BROWN OR POWDERED SUGAR... OR ONE 2-LB. POLYBAG OF C AND H BROWN OR POWDERED SUGAR. Offer expires December 31, 1979. 1-NP-9-18

15¢

For you—Midland reader!

FREE 10 PAPERMATE WRITE BROS. Ball Point Pens

For 3 proofs of purchase plus 25¢ (Postage and Handling) plus **Money Saving Coupons**

Retail Value up to \$2.50

Pen Assortment—4 Blue, 4 Black, 2 Red

A high quality Papermate writing instrument with tungsten carbide ball. Unconditionally guaranteed Papermate item made in the U.S.A. Each pen writes more than a mile. Has scientifically contoured barrel.

You can obtain your Ten Free Papermate Write Brothers Pens by mailing 3 proofs of purchase from any three of the participating brands plus 25¢ for postage and handling.

Imperial Margarine—the weight designation cut from the front panel of the package of stick (net weight 1 lb.) or soft (two 8 oz. tubs net weight 16 oz.) or Diet (two 8 oz. tubs net weight 16 oz.)

Wisk Detergent, Final Touch Fabric Softener, and Lux Liquid—the net weight statement cut from the front label of any size.

Dove Beauty Bar—two front panels from any size package.

Papermate Pen Offer
P.O. Box 9000 Bridgeport, Ct. 06601

Please send me _____ sets of Ten Papermate Write Brothers Pens. For each set ordered, I have enclosed 3 proofs of purchase from 3 of the participating brands plus 25¢ for postage and handling.

Print Name _____
Address _____
City _____ State _____ Zip _____

Allow up to 8 weeks for shipment. Void where prohibited, taxed, or restricted. Offer good in the 50 United States, Puerto Rico, and for all members of the U.S. Armed Forces. Offer expires December 31, 1979. Lever Brothers Company, P.O. Box 9000, Bridgeport, Ct. 06601

10¢ STORE COUPON

Save 10¢ on 1 lb. Imperial margarine

The butter of margarines

TO DEALER: We will reimburse you for the face value of this coupon plus 5¢ for handling, provided that you and the consumer have complied with the terms of our coupon offer. This coupon is good only when redeemed by you from a consumer at time of purchasing specified brand. The consumer must pay any sales tax involved. This coupon is non-transferable. Invoices proving purchase of sufficient stock of our brands to cover coupons presented must be shown upon request. Coupons will not be honored and will be void if presented through outside agencies, brokers or others who are not retail distributors of this brand or who are not specifically authorized by us to redeem this coupon. Cash value 1/20¢ of 1¢. Void if prohibited, saved or restricted. Limit one coupon per purchase. Offer expires December 31, 1979. LEVER BROTHERS COMPANY, Box 1385, Clinton, Iowa 52734

15¢ STORE COUPON

Save 15¢ on any size Wisk laundry detergent

Gets your whole washload ring-around-the-collar clean

TO DEALER: We will reimburse you for the face value of this coupon plus 5¢ for handling, provided that you and the consumer have complied with the terms of our coupon offer. This coupon is good only when redeemed by you from a consumer at time of purchasing specified brand. The consumer must pay any sales tax involved. This coupon is non-transferable. Invoices proving purchase of sufficient stock of our brands to cover coupons presented must be shown upon request. Coupons will not be honored and will be void if presented through outside agencies, brokers or others who are not retail distributors of this brand or who are not specifically authorized by us to redeem this coupon. Cash value 1/20¢ of 1¢. Void if prohibited, saved or restricted. Limit one coupon per purchase. Offer expires December 31, 1979. LEVER BROTHERS COMPANY, Box 1385, Clinton, Iowa 52734

15¢ STORE COUPON

Save 15¢ on any size Final Touch fabric softener

Without our whitener we'd be just another fabric softener

TO DEALER: We will reimburse you for the face value of this coupon plus 5¢ for handling, provided that you and the consumer have complied with the terms of our coupon offer. This coupon is good only when redeemed by you from a consumer at time of purchasing specified brand. The consumer must pay any sales tax involved. This coupon is non-transferable. Invoices proving purchase of sufficient stock of our brands to cover coupons presented must be shown upon request. Coupons will not be honored and will be void if presented through outside agencies, brokers or others who are not retail distributors of this brand or who are not specifically authorized by us to redeem this coupon. Cash value 1/20¢ of 1¢. Void if prohibited, saved or restricted. Limit one coupon per purchase. Offer expires December 31, 1979. LEVER BROTHERS COMPANY, Box 1385, Clinton, Iowa 52734

15¢ STORE COUPON

Save 15¢ on any size LUX dishwashing liquid

For long lasting suds... mildness you can trust

TO DEALER: We will reimburse you for the face value of this coupon plus 5¢ for handling, provided that you and the consumer have complied with the terms of our coupon offer. This coupon is good only when redeemed by you from a consumer at time of purchasing specified brand. The consumer must pay any sales tax involved. This coupon is non-transferable. Invoices proving purchase of sufficient stock of our brands to cover coupons presented must be shown upon request. Coupons will not be honored and will be void if presented through outside agencies, brokers or others who are not retail distributors of this brand or who are not specifically authorized by us to redeem this coupon. Cash value 1/20¢ of 1¢. Void if prohibited, saved or restricted. Limit one coupon per purchase. Offer expires December 31, 1979. LEVER BROTHERS COMPANY, Box 1385, Clinton, Iowa 52734

10¢ STORE COUPON

Save 10¢ on 2 bars any size Dove

Dove can't dry your skin the way soap can. Dove helps keep your skin younger looking.

only Dove is 1/4 moisturizing cream

TO DEALER: We will reimburse you for the face value of this coupon plus 5¢ for handling, provided that you and the consumer have complied with the terms of our coupon offer. This coupon is good only when redeemed by you from a consumer at time of purchasing specified brand. The consumer must pay any sales tax involved. This coupon is non-transferable. Invoices proving purchase of sufficient stock of our brands to cover coupons presented must be shown upon request. Coupons will not be honored and will be void if presented through outside agencies, brokers or others who are not retail distributors of this brand or who are not specifically authorized by us to redeem this coupon. Cash value 1/20¢ of 1¢. Void if prohibited, saved or restricted. Limit one coupon per purchase. Offer expires December 31, 1979. LEVER BROTHERS COMPANY, Box 1385, Clinton, Iowa 52734

CONGRATULATIONS TO THESE WINNERS!

VICKI KIRBY	\$100.00	SUE JOBE	\$5.00
KATHY SMITH	\$20.00	MAY ARMSTRONG	\$5.00
J.C. CARRIER	\$20.00	MARIA GONZALES	\$5.00
NANCY GREEN	\$20.00	DORSETT KLATT	\$5.00
MATTIE JOINER	\$20.00	ELBERT MC FAN	\$5.00
BRENDA CHANDLER	\$20.00	L.G. WILLIAMS	\$5.00
JULIA YHARTE	\$5.00	DIANA WALLACE	\$5.00
LOQUITA GRAHAM	\$5.00	SHEILA HUGHS	\$5.00
MARY HALE	\$5.00	R.H. OVERBY	\$5.00
MARY MCCORMACK	\$5.00	CHARLES KING	\$5.00
GLINDA BUTLER	\$5.00	LILIAN WILLIS	\$5.00

SPECIAL PRICES
IN THIS AD -
GOOD THRU-
SATURDAY
MARCH 24th!

We Reserve Right To Limit
Quantities & Refuse Sales
To Dealers!



DR. NEIL SOLOMON
On feeding
of infants

Dear Dr. Solomon: To breast-feed or not to breast-feed—that is the question. I am expecting my first baby in a few months and would like to know if there is any evidence that breast-feeding actually is beneficial for the child.—Mr. A.L.

Dear Mrs. L.: Those who minimize the advantages of breast-feeding would probably argue that the evidence in its favor is circumstantial. For example: At present, it is a fact that only about one of every four American mothers breast-feeds her infant. It is also a fact that the United States ranks twelfth among nations in infant mortality. Are the two facts related? Dr. J. Kelly Smith, an associate professor of medicine at Cornell University, thinks they may be. He points out that in developed countries such as Sweden, which have the lowest incidence of infant mortality, breast-feeding is popular.

For some time, research has demonstrated that breast-feeding provides nutritional and immunological advantages, helping fight against viruses, bacteria, and some allergies. Dr. Smith further notes that some diseases for which the cause has not yet been established—such as the sudden infant death syndrome—seem to be less common among breast-fed infants. Breast-feeding is particularly important for premature infants, who are more prone to serious infection.

Although breast-feeding is not mandatory for the health and well-being of most children, nature has conferred many advantages on this method of nourishing infants.

Dear Dr. Solomon: I recently had occasion to go to a hospital emergency room to get a couple of stitches for a cut. After sitting in the smoke-filled room for an hour before being treated, I think I was healthier before I went to the hospital than when I left. If doctors are so certain that smoking is hazardous to a person's health, why don't they control it in hospitals?—Mrs. K.G.

Dear Mrs. G.: I couldn't agree more. Hospitals are moving in the direction of banning smoking, but I must admit they are moving slowly. The American Cancer Society has reported that a survey of the nation's 7,200 hospitals shows that 491 have banned cigarette sales, and 472 have designated nonsmoking areas.

The National Commission on Smoking and Public Policy has recommended that hospitals prohibit smoking in nonprivate rooms and public areas. And the American Hospital Assn. is preparing guidelines on how hospitals can discourage people from smoking. Some hospitals now sponsor smokecessation clinics. While much obviously remains to be done, hospitals are gradually moving in the right direction.

Dear Dr. Solomon: Is gonorrhea the same as syphilis?—Jana R.

Dear Jana R.: No. They are two different diseases, caused by different germs, and diagnosed by different tests. However, you can have both of these diseases at the same time.

JIMMY'S WHITE HOUSE
Carter Mideast
mission brings
real nightmares

By FRANK CORMIER

WASHINGTON (AP) — President Carter's action-packed Middle East mission gave some people nightmares. Literally.

These people weren't anti-treaty Arab rejectionists, either, although the rejectionists were far from pleased at Carter's success.

The nightmares, alas, afflicted several hard-working members of Carter's White House staff.

A prime example is Gael Doar, administrative assistant to Greg Schneiders, who in turn is deputy to Gerald M. Rafshoon, Carter's assistant for communications.

Ms. Doar, a young veteran of the president's 1976 campaign, was responsible for getting White House press corps "pools" to and from various events in Jerusalem. These designated pools represent the entire corps when space or transport limitations preclude what is called "open coverage" by everyone.

On her second night back in Washington, Ms. Doar was telephoned at 11 p.m. by a friend who asked, "Are you busy?"

"I'm trying to get some sleep," she replied. "I've got to take an early morning pool to the King David"—the name of the Jerusalem hotel where Carter had stayed.

The next night, another caller wanted to set up a tennis game with Ms. Doar. Again she mumbled something about having to get to the King David, and hung up.

On Saturday, Ms. Doar went to bed at 1 p.m. and slept until 6 a.m. Sunday.

That put a stop to her nightmares about the King David.

MS. DOAR AND a lot of others surely were pleased to learn that Carter would not be returning to the Middle East to sign the prospective Israeli-Egyptian peace treaty.

Such journeys not only induce mind-numbing fatigue but sometimes pose physical hazards, real or potential.

Take the case of the Egyptian air force C-130 transport that hauled members of the traveling press corps from Alexandria, Egypt, to Cairo.

One of the plane's four engines failed during a critical moment in its takeoff.

Ed Hodges of the Durham (N.C.) Morning Herald, a retired U.S. Air Force command pilot, immediately headed for the cockpit to assure himself that the craft was not in imminent danger of plunging to earth.

An inspection of the cockpit gauges put Hodges at ease—until the Egyptian crew broke out an English-language operator's manual and turned to the chapter on how to cope with mechanical emergencies.

Happily, the pilot made a perfect three-engine landing in Cairo.

VICE PRESIDENT Walter F. Mondale was outlining for reporters the president's proposal to move the National Oceanographic and Atmospheric Administration from the Commerce Department to the Interior Department, which in turn would be renamed the Department of Natural Resources.

Noting that Commerce now handles oceans while Interior has jurisdiction over the outer continental shelf, Mondale declared, "The laws of nature don't respect bureaucratic boundaries."

FROZEN FOOD VALUES

Staff Orange Juice 6-OZ. CAN **3 FOR \$1.**

TOTINO'S PIZZA 89¢
Pepperoni, Cheese, Hamburger, Sausage or Canadian Bacon.
-Large Size-

PET RITZ PIE SHELLS 5-ct. Pkg. \$1.19

SARA LEE POUND CAKE 11 1/4-OZ. SIZE \$1.19

The Pop Shoppe
SOFT DRINKS
-OVER 20 DELICIOUS FLAVORS-
•CASE OF 24 10-OZ. BOTTLES
\$2.29
Plus Deposit

Schlitz Beer 12-OZ. CANS 6-PACK **\$1.59**

TEXIZE SPRAY 'N' WASH 22-oz. Trigger Spray Bottle **\$1.29**

FOLGER'S INSTANT COFFEE 10-oz. Jar **\$3.79**

something special from the BAKERY

"FRESH" STRAWBERRY CAKE 2-LAYER 8-INCH **\$3.49**

STRAWBERRY PIE 8-INCH **\$1.89**

WHITE BREAD 16-oz. Loaf **2 FOR 99¢**

ASSORTED TROPICALS 4-Inch **\$1.29 ONLY**

STEAK FINGERS BLUE RIBBON 12-oz. Pkg. \$1.59	BIG COUNTRY CANNED BISCUITS 10-count Can. 39¢
FRESH SAUSAGE HANDY "AAA" 1-Lb. Pkg. \$1.69	GERMAN SAUSAGE DANKWORTH 12-oz. Pkg. \$1.39
KRAFT'S AMERICAN CHEESE Each Slice Wrapped. 8-Oz. Pkg. \$1.05	FRANKS CUDAHY "CHUCKWAGON" 12-oz. Pkg. 79¢
SLICED BACON FARMLAND "Bulk Sliced" Lb. \$1.39	FRANKS BLUE RIBBON JUMBO 1-Lb. Pkg. \$1.43

USDA CHOICE Beef

CHUCK ROAST Blade Bone Pot Roast! Lb. **\$1.29**

7-BONE STEAK Center Cuts-Lb. **\$1.69**

BONELESS SHOULDER ROAST Waste-Free! Lb. **\$1.79**

FRESH AND LEAN GROUND BEEF Family-Pak Lb. **\$1.33**

CUDAHY BAR "S" SLICED BACON 12-Oz. Pkg. **\$1.29**

ANACIN 100's **\$1.57**

AQUA-FRESH TOOTH PASTE 4.2-oz. Tube **63¢**

JOHNSON'S BABY POWDER 14-Oz. **\$1.39**

JOHNSON'S BABY OIL 10-oz. Jar **\$1.69**

M'SYSTEM FOOD STORES
400 MIDLAND DRIVE • 1200 RANKIN HWY. • N. "A" W. SHARBAUER DRIVE

SCRAM-LETS

That Intriguing Word Game with a Chuckle

Edited by CLAY R. POLLAN

1 Rearrange letters of the four scrambled words below to form four simple words.

W O W N I D
1 2 3 4 5 6

TY L U R
1 2 3 4 5 6

G I T R E
1 2 3 4 5 6

R O F R E G
1 2 3 4 5 6

2 PRINT NUMBERED LETTERS IN THESE SQUARES

3 UNSCRAMBLE LETTERS TO GET ANSWER

4 Complete the chuckle quoted by filling in the missing words you develop from step No. 3 below.

5 PRINT NUMBERED LETTERS IN THESE SQUARES

6 UNSCRAMBLE LETTERS TO GET ANSWER

As the politician said, "I never promised you a rose garden, just the stuff that makes --"

As the politician said, "I never promised you a rose garden, just the stuff that makes IT GROW."

Window - Tiger - Tiger - Forget - IT GROW

3-22



DAILY CROSSWORD PUZZLE

Edited by Margaret Farrar and Trude Jaffe

© 1979 Los Angeles Times Syndicate

ACROSS

1 Berbers

6 Talks, mod style

10 Musical direction; Abbr.

13 Toughens

15 "Rhythm:"

16 Cruise port of South America, for short

17 "And men are think and act..."

18 Liberality

20 Part of TV

21 Singing syllables

23 Bards

24 Call up

26 Carpe

27 City in S cen Pennsylvania

30 Beachwear of a type

33 Zooms

34 Tender years

36 Arafura

37 Joust

38 German cake

39 Equine animal

40 Houseboat

41 Gov. Brown's state

42 German man's name

43 Man in the ring

45 Pharaoh

47 1/20th pahlavi

48 Meaning

49 House of Lords members

51 Tres

52 Entreat

56 Kind of drawing

58 Shakespearean king

60 Presidential nickname

61 Even, in Avignon

62 Fusible alloy

63 Porcine abode

64 Peau de

65 Idealize

DOWN

1 Chink

2 Concerning

3 Kerosene

4 City in Illinois

5 Ready to go

6 Garand

7 Where Pearl Mosque is

8 Contemporary of Longfellow

9 Certain shoes

10 Members of a secret order

11 Hand; Colloq.

12 Ditch or moat

14 Wise man

19 Answered negatively

22 M. France

25 Exclamations

26 Jutlander

27 "is Born"

28 Tours' river

29 Speak one's mind

30 Liberate

31 Deed's relative

32 Tars

35 Joseph Lincoln's "Cap'n"

38 Asian weight

39 Estate; Law

41 Loud sounds

42 Spa in W Germany

44 Irish Free State

46 Money in India

48 Move like a crab

49 Army men; Abbr.

50 Part of Q.E.D.

51 Brith

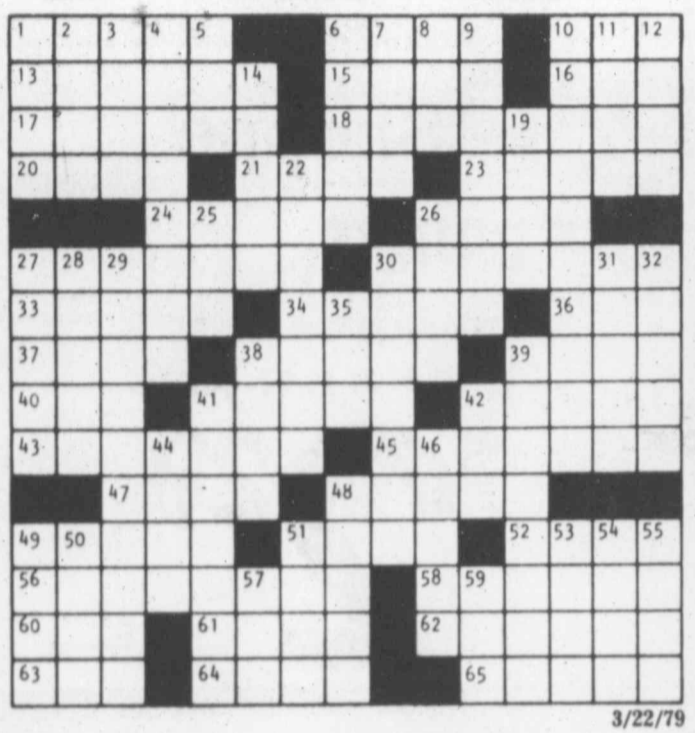
53 Remove wrappings

54 Elbe tributary

55 Ran rapidly

57 Gone by

59 Mauna



FUNKY WINKERBEAN

THE WORST THING ABOUT HAVING A NAME LIKE WINKERBEAN IS THAT I'M ALWAYS LAST, LAST, LAST!

HOW LONG HAVE YOU BEEN FEELING LIKE THIS, FUNKY?

EVER SINCE DEBBIE ZOTT MOVED AWAY!

BLONDIE

YOU'RE NO BEAUTY, BUT AT LEAST YOU'RE TIDY!

YOUNG CAVONED

MARY WORTH

I WISH I COULD AFFORD TO GIVE YOU A RING, DAPHNE... OR THAT I EVEN HAD A FRATERNITY PIN FOR YOU TO WEAR NOW!

IT DOESN'T MATTER, NEAL... WE KNOW WE'RE ENGAGED, EVEN IF I DON'T, Y'KNOW, WEAR A BADGE!

WE'LL HAVE TO WAIT, OF COURSE, UNTIL WE BOTH FINISH OUR EDUCATION!

I'LL TRY TO BE PATIENT...

...ALTHOUGH TONIGHT I WISH WE WERE GETTING MARRIED TOMORROW!

WHEN I KISS YOU I FEEL THE SAME WAY!

JUDGE PARKER

WOULD YOU CARE FOR A DRINK, PERHAPS SOME SHERRY, BEN?

ONLY IF YOU'RE HAVING SOMETHING! BUT LET ME DO IT!

YOU SAY YOU'RE DRIVING PATTY TO THE COAST TO VISIT HER PARENTS! IS THERE ANY OTHER PURPOSE IN YOUR TRIP?

YES! PATTY'S BEING ALONG IS ONLY INCIDENTAL!

I'M AN ARTIST ABBEY! I'M PAINTING AMERICA!

PAINTING AMERICA?

STEVE ROPER

OKAY, CHUM! ... OUT!

WH-? WHAT ARE YOU DOING, NOMAD? WHERE'S THE CARD GAME?--TH--THERE ISN'T A HOUSE WITHIN A MILE OF HERE!

FOR SALE in Chesham (near Sunday)

YEAH!... SO I NOTICED!

NANCY

I'LL GIVE YOU A CRACKER IF YOU BARK TWICE

ARF ARF

HM---I USED TO GET A CRACKER FOR JUST ONE BARK

THE COST OF LIVING HAS GONE UP FOR ME, TOO

STEVE CANYON

MR. HOCHHAUS! WHAT HAPPENED?

IT--IT'S THE BUTLER! --HE MUST HAVE THOUGHT I WAS A BURGLAR!

I'LL CALL A DOCTOR!

STOP! NO DOCTORS IN THIS HOUSE!

I AM A REGISTERED NURSE! I SHALL EXAMINE HIM!

SHE'S A NURSE-- AND WON'T SUMMON A DOCTOR?

NO BONES BROKEN! ELM, WE'LL HELP HIM TO HIS ROOM.

WHO WILL TAKE THINGS TO-- I MEAN, WHO WILL ANSWER THE DOOR?

MARMADUKE

INTERNAL REVENUE SERVICE

TAX AUDIT

"Why couldn't you be like other people and bring in your ACCOUNTANT?"

But you're my best friend that don't have FLEAS, Joey.

THE BETTER HALF

"The doctor said I'm 20 pounds too visible."

ANDY CAPP

OH! THE MORE YOU READ IN THE PAPERS THE MORE DEPRESSED YOU'BE! THE ONLY THING PEOPLE THINK ABOUT THESE DAYS IS THEMSELVES!

IF IT COMES TO THAT, WHAT HAVE YOU EVER DONE FOR YOUR FELLOW MAN?

MIND YOU, WHEN IT COMES TO HIS FELLOW HUMAN, HE'S DONE MORE THAN HIS FAIR SHARE

SHOE

I RARELY WATCH TELEVISION, BUT AS A JOURNALIST I FEEL OBLIGATED TO WATCH THE ONE RELEVANT SHOW THAT KEEPS ME IN TOUCH WITH THE TIMES...

YOU MEAN "60 MINUTES"?

"MORK AND MINDY," YOU DOOFUS...

DICK TRACY

Z. Z. ROWE HAS, IN A MOMENT OF GRAND ILLOGIC, MISTAKEN THE DISGUISED MEMORY BANKS FOR THE OTHER Z. Z. ROWE

DO SOMETHING!!!

MISS BANKS, THEY BOTH HAVE SHOTGUNS!

GIVE ME THAT! THIS TIME YOU'VE GONE TOO FAR, MR. ZEKE Z. ROWE...

REX MORGAN M.D.

BUT I'M NOT EXAGGERATING, ROY! YOU'RE OUT ALMOST EVERY NIGHT WITH CLIENTS! I'M REALLY NOT COMPLAINING! I'M ONLY MAKING A STATEMENT OF FACT!

I HEARD THE PHONE RING UPSTAIRS! YOU'LL HAVE TO GO OUT AGAIN TONIGHT?

AS A MATTER OF FACT, YES... FOR A SHORT WHILE!

LINDA'S TEMPERATURE 103. JUNE! WOULD YOU TAKE A LOOK AT HER AFTER DINNER? I'M WONDERING WHETHER I SHOULDN'T CALL THE PEDIATRICIAN

I'D BE GLAD TO SEE HER WITH YOU, KAY!

PEANUTS

ARE YOU GONNA PLAY THIS GAME OR NOT?

IF YOU ARE, ROLL THE DICE!

YOU'RE SURE THIS ISN'T GAMBLING?

THIS IS A KID'S GAME! ROLL THE DICE!

WHAT IF I COME UP SNAKE EYES?

HEATHCLIFF

ISN'T THAT YOUR TROMBONE UP THERE?!"

Fe on a idyll dau Mik

Pro gat

AUST Denton cer stati died "is

The Affairs that wo ment of about c and clin

Mrs. I ports w ways to statistic piled fr added.

Dr. F senting tion, sa states h "For

SHI SHI SHI

CH BA COI C U GR P B

Judge quits Davis case



Few can argue that the best time to enjoy an ice cream cone is on a warm afternoon. Ten-year-old Tracy Foster found herself an idyllic spot in Dennis the Menace Park recently. Tracy is the daughter of Shirley Foster, 3914 Tanner Drive. (Staff Photo by Mike Kardos)

FORT WORTH, Texas (AP) — Enraged by what he called "arbitrary actions" of a "wet-earred fool prosecutor" the presiding judge in the long and bitter Cullen Davis divorce case has called it quits.

District Judge John Barron said Wednesday he would withdraw from the case and declare a mistrial after five weeks of tedious testimony.

Prosecutors Jack Strickland and John Bankston appeared in Barron's chambers Wednesday about 1 p.m. with a grand jury subpoena for all the records of the divorce trial.

The records were to have been presented to a special session of the Tarrant County grand jury Wednesday afternoon and returned this morning.

"I've never been treated as a judge in this way before, by an arrogant DA, which Strickland is in the purest sense of the word," said Barron in an interview with KDFW-TV in Dallas.

"I'm withdrawing from the case and will declare a mistrial after five weeks of trial due to the calumny and arrogance and arbitrary actions in embarrassing me and my court by a wet-earred fool prosecutor having no respect for anyone," said Barron.

"I'M NOT GOING TO put up with this. I'll go back to Bryan and hunt rabbits."

The judge said Strickland "insulted everyone connected with his court including Mr. (Cecil) Munn, Mr. (Donn) Fullenweider, Mr. (Ronald) Aultman and myself."

Munn and Fullenweider are Davis' lawyers, and Aultman is Mrs. Davis' attorney. The judge said lawyers for both Davis and his estranged wife, Priscilla, objected to turning over evidence.

"He could have handled it with some dignity, but he didn't do it. He could have worked it out with me real well. That after I'd made a decision in the case I'd have given him the full record. He

comes up here and kicks us around just like we're a bunch of dogs," said Barron.

Strickland said he did not believe he acted illegally or unethically in securing the documents.

"IN MY OPINION, I certainly treated the judge with all due respect," said Strickland.

"Fortunately, the proceedings this afternoon were all taken down by the court reporter and another representative of the district attorney's office was there. I think the transcript will speak for itself."

Strickland also said he was shocked at the way Barron chose to air his differences. He said he has no interest in engaging in name-calling or finger-pointing with the judge.

Judge Barron said it was unprecedented for prosecutors to subpoena all records of an on-going divorce trial.

"It's the first time in my life, in the history of the judicial system that I've ever seen anything like this," said Barron.

Strickland said Barron objected to surrendering the records immediately and claimed he would make them available at the end of the trial.

BUT STRICKLAND objected because he said a decision in the case was not expected for another month.

"I wasn't going to be placed in the posture of having to review important evidence just a few days before I went to trial," said Strickland, an assistant prosecutor in Davis' murder-for-hire trial.

A mistrial was declared in January when a Houston jury could not reach a verdict in Davis' trial on charges he tried to solicit the murder of the previous presiding judge of his divorce case, District Judge Joe Eldson. But Tarrant County prosecutors plan to try Davis again, possibly within six weeks.

Fullenweider disagreed with Strickland's assessment. He said the testimony in the divorce

trial would have ended today. And Davis' attorney indicated he understood why the judge reacted as he did.

"I know he (Barron) was irritated. He was treated pretty shabbily. This man has come down here (as a visiting judge) ... and the damn district attorney comes in here and doesn't say boo to him. He just insults him," said Fullenweider.

Mrs. Davis' lawyer Jerry Loftin said when he walked out of the courtroom at 5 p.m. everything was okay, but at 10 p.m. everyone was saying everything is ruined.

"THE WHOLE damn thing is just getting ridiculous. I have no idea what is happening," said Loftin.

Strickland declined to comment on what specific information they are seeking.

However, substantial

portions related to the financial transactions of Davis and the details of the 84-company family conglomerate controlled by Davis and his brother Kenneth.

The subpoenaed records also include verbatim transcripts of closed-door proceedings in the judge's chambers.

DAVIS TERMED THE efforts to get the divorce trial records just a ploy by Tarrant County District Attorney Tim Curry.

"The DA wanted some publicity so he sent Strickland over," said Davis.

Strickland said he told Curry about his plan to subpoena the divorce records.

"Curry told me to proceed in a legal, ethical and appropriate manner," Strickland said. "I'm quite confident we did."

AUCTION

CHINESE ANTIQUES CH'ING DYNASTY
Late 18th Thru 19th Century
Certified by the Chinese Government

Magnificent cloisonne, porcelains, vases, ginger jars, tea pots, blue & white celadons, cricket boxes, embroideries and museum pieces.

Thurs., Mar. 22

Auction 8 P.M. Preview 7 P.M.

AT

HOLIDAY INN
3904 W. WALL ST.
MIDLAND

Col. Leib Rosenblum
Auctioneer
Lic No. CAE 119-0596

Terms:
Cash/Check

Proposed bill would facilitate gathering of cancer statistics

AUSTIN, Texas (AP) — Rep. Betty Denton thinks waiting to gather cancer statistics until after a patient has died "is a little late."

The House Committee on Health Affairs approved Wednesday her bill that would allow the state Department of Health to gather information about cancer cases from hospitals and clinics throughout Texas.

Mrs. Denton, D-Waco, said the reports would help doctors find better ways to treat the disease. Cancer statistics in Texas are presently compiled from death certificates, she added.

Dr. Fred Conrad of Houston, representing the Texas Medical Association, said cancer registries in other states have proven their value.

"For example, we have completely

changed the treatment of breast cancer," he said.

The bill goes next to the full House.

The information gathered on each case would be confidential, Mrs. Denton said. Only the general statistics would be released.

"The system would red flag any unusually high rate of cancer in any area," she said. "The information from these medical records would be invaluable research tools in evaluating treatment methods and perhaps even the cause."

Dr. C.R. Allen Jr. of the health department said the cost for the cancer registry would be about \$370,000 for its first two years. He estimated that 85 percent of the cancer cases would be included in the registry at first.

QUALITY FOODS

SHURFINE SPINACH 15oz. Can
SHURFINE CUT GREEN BEANS 16 oz. Can
SHURFINE CREAM STYLE CORN 16 oz. Can
SHURFINE WHOLE KERNEL CORN 16 oz. Can

MIX OR MATCH **3/\$1.00**

SHURFINE BISCUITS **7/\$1.00**
REGULAR OR BUTTERMILK

COLO. BULK PINTO BEANS **29¢** LB.
SALT JOWLS **89¢** LB.
SEASONING

Fresh FRUITS & VEGETABLES

CHIQUITA BANANAS **25¢** LB.
CALIF. NAVEL ORANGES **39¢** LB.
CALIFORNIA GREEN ONIONS **2/39¢**
RUSSET POTATOES...20 LB. BAG **\$1.89**

FARM FRESH DAIRY PRODUCTS

GANDY'S "TEXAS GALLON" ICE CREAM **\$2.89**
"VITA FRESH" ORANGE JUICE "PLASTIC QUART JUG" **69¢**

Michelob. SIX PACK CANS **\$1.79**
Budweiser. 12 PACK CANS **\$3.39**

POWELL'S
4319 W. ILLINOIS
711 E. FRONT
PRICES EFFECTIVE THRU SAT. MARCH 24TH

STORE HOURS: 8AM-9 PM MON.-SAT. CLOSED SUNDAYS

AFFILIATED FOOD STORES

TOP GRADE MEATS

USDA GRADE 'A' WHOLE FRYERS **57¢** LB.
WISCONSIN RED RIND CHEESE **\$1.59** LB.
BOSTON BUTT PORK ROAST **\$1.19** LB.
TENDER, SLICED BEEF LIVER **79¢** LB.
FRESH LEAN PORK STEAK **\$1.39** LB.
GOOCH'S HOT LINK SAUSAGE **\$1.39** LB.
GOOCH'S SUMMER SAUSAGE **\$1.49** LB.

QUICK TO FIX BEAN & BEEF BURRITOS **89¢** LB.
HEAT & SERVE

Radio Shack
The Nationwide Supermarket of Sound

HI-FI SALE

EXPERIENCE OUR SUPERB AUDIO SYSTEM WITH DOLBY FM

\$799 Reg. Separate Items 1109⁰⁰

SAVE 310⁸⁰

- Realistic STA-2000D AM/FM Stereo Receiver with Dolby FM (75 watts min. RMS per channel at 8 ohms, 20-20,000 Hz, 0.18% total harmonic distortion)
- Two Mach One Walnut Veneer Floor Speakers with 15" Acoustic-Suspension Woofers
- Realistic LAB-200 Belt-Drive Changer with Base, Dust Cover and \$29.95-Value Realistic Shure Magnetic Cartridge

CHARGE IT (MOST STORES)

NOW ENJOY REALISTIC SOUND FOR LESS!

\$259 **SAVE 42⁷⁵**

Reg. Separate Items 301⁷⁵

- Realistic STA-42 AM/FM Stereo Receiver (10 watts min. RMS per channel at 8 ohms, 20-20,000 Hz, 0.9% total harmonic distortion)
- Two Minimus-9 Speakers
- Realistic LAB-53 Changer with Magnetic Cartridge
- Novo-30 Stereo Headphones

TWO-WAY FLOOR/SHELF SPEAKERS
Minimus-9 by Realistic
49⁹⁰ Pair
Reg. 59⁹⁰ Pair
SAVE \$10
Perfect add-on for your system! 22"-high air-suspension speakers. 8" woofer. 3" tweeter. With cable. Walnut vinyl veneer. 40-914

SILENT BELT-DRIVE CHANGER
LAB-65 by Realistic
149⁹⁵ Reg. 179⁹⁵
SAVE \$30
Includes \$29.95-Value Magnetic Cartridge, Hinged Dust Cover
Our finest automatic changer! Adjustable anti-skate, cue/pause. 42-2958

COMPACT AM/FM STEREO 8-TRACK SYSTEM
Modulette-8 by Realistic
\$88 Reg. 99⁹⁵
SAVE 12%
Lets you play your car tapes at home! Enjoy FM stereo or AM, too. Aux input. Matching speakers. 12-1402

OUR FINEST CARTRIDGE
Realistic by Shure
39⁹⁵ Reg. 49⁹⁵ **SAVE \$10**
Upgrades most turntables! With integrated head shell. 42-2645

THINK OF HI-FI, THINK OF REALISTIC, THINK OF RADIO SHACK

MIDLAND OPEN 9 TO 7
"South 9 Meta Dr. In The Village"

ODESSA OPEN 9 TO 7
"901 N. Grandview
1 Energy Square Shop. Ctr.
West County Plaza Shop. Ctr."

Plaza Shop Ctr. Garfield & Wadley *1617 West County Rd.
A DIVISION OF TANDY CORPORATION

Most items also available at Radio Shack Dealers. Look for this sign in your neighborhood.

Radio Shack DEALER

PRICES MAY VARY AT INDIVIDUAL STORES

SPORTS SCOREBOARD

WHA results

World Hockey Association table with columns for team, W, L, T, Pts, GF, GA. Includes Edmonton, New England, Winnipeg, and St. John's.

NHL results

National Hockey League table with columns for team, W, L, T, Pts, GF, GA. Includes Montreal, Pittsburgh, Toronto, and Philadelphia.

Pro basketball

Professional Basketball table with columns for team, W, L, Pct, GB. Includes Washington, Philadelphia, New Jersey, and New York.

WHA schedule and results for various dates including Toronto, Philadelphia, and New York.

NHL schedule and results for various dates including Toronto, Philadelphia, and New York.

Pro basketball schedule and results for various dates including Detroit, Chicago, and Philadelphia.



Members of the 1979 Midland Tennis Club's Board of Directors are, back row from left, Janie Pollard, women's president; Glenna Blair, secretary; Sandy Bramlett, director; and Jane Petree, director. Front row from left, Dave Galerston, director; Jeff Goodell, men's president; Gary Hilton, chairman; and Will Green, director. Not pictured are Greg Wyant and Mary Jane Belden. (Staff Photo by Brian Hendershot)

Exhibitions

Exhibition Baseball table with columns for team, W, L, Pct. Includes Detroit, Seattle, Boston, Milwaukee, and Texas.

American League

American League table with columns for team, W, L, Pct. Includes Detroit, Seattle, Boston, Milwaukee, and Texas.

National League

National League table with columns for team, W, L, Pct. Includes Los Angeles, San Diego, Philadelphia, and Cincinnati.

Wednesday's Games

Wednesday's Games table with columns for team, W, L, Pct. Includes Toronto, Philadelphia, and New York.

Wednesday's Exhibitions

Wednesday's Exhibitions table with columns for team, W, L, Pct. Includes Los Angeles, San Diego, Philadelphia, and Cincinnati.

Women's results

Women's results table with columns for team, W, L, Pct. Includes Detroit, Chicago, and Philadelphia.

Nicklaus not asking for eulogies

JACKSONVILLE, Fla. (AP) — The possibility exists, Jack Nicklaus said, "that this may not be a good year for me."

"You can't expect to come back from that long a layoff and be sharp. You have to work at it after that long a layoff."

cut-back in schedule may signal the end of his long reign as the game's premier performer.

King has respect for girl netters

By WILL GRIMSLEY AP Special Correspondent. "Billie Jean King," said France's Francoise Durr without a moment's hesitation, "Chris Evert is steepest but Billie Jean is toughest in a tight spot."

"The trouble with me, I wake up happy every morning," Chris said, attempting to explain her inexplicable loss of three matches so far this season when as many as three losses a year have been rare.

"To beat Billie Jean, you had to beat her mind," added Francoise. "She was prepared mentally to stay on the court all day. She gave 125 percent effort. Chris could be depended upon to maintain a higher level. She might never get as high as Billie Jean nor as low."

Three Rivers pulls big upset

HUTCHINSON, Kan. (AP) — Robert Kirby pumped in a field goal with 15 seconds left to break a 64-64 tie and Three Rivers, Mo., went on to upset top-ranked Westchester, N.Y., 68-64, in National Junior College Tournament first-round action Wednesday.

Chris Evert and her friends were looting around Madison Square Garden, awaiting their turns in the \$275,000 Avon Championships, and the talk naturally turned to tennis, with a few detours involving love and marriage, slumps and the game's fierce net tiggers.

Kirby's bucket pulled Three Rivers ahead 66-64. Three Rivers managed a steal on Westchester's trip down the court and capped it with a dunk by Mark Guthrie as the last second ticked off.

Nastase is bad again

NEW ORLEANS (AP) — Doug Laing, the umpire who kicked Ellis Nastase out of the \$175,000 New Orleans Tennis Festival for repeated obscene gestures Tuesday night, withdrew from the tournament on Wednesday.

"I didn't give it to anybody. I gave it to myself," Nastase said. "They were too strict with me," he said. "They defaulted me too fast. The guys are not flexible, especially with me."

Three Rivers, now 34-3, led most of the game and Marvin McCrary pumped in 19 points. Westchester, 33-3, was led by Felix Tertulien with 22 points on 10 of 12 shots from the field.

Women's results

Women's results table with columns for team, W, L, Pct. Includes Detroit, Chicago, and Philadelphia.

Women's results

Women's results table with columns for team, W, L, Pct. Includes Detroit, Chicago, and Philadelphia.

Women's results

Women's results table with columns for team, W, L, Pct. Includes Detroit, Chicago, and Philadelphia.

Women's results

Women's results table with columns for team, W, L, Pct. Includes Detroit, Chicago, and Philadelphia.

Women's results

Women's results table with columns for team, W, L, Pct. Includes Detroit, Chicago, and Philadelphia.

Women's results

Women's results table with columns for team, W, L, Pct. Includes Detroit, Chicago, and Philadelphia.

Women's results

Women's results table with columns for team, W, L, Pct. Includes Detroit, Chicago, and Philadelphia.

Women's results

Women's results table with columns for team, W, L, Pct. Includes Detroit, Chicago, and Philadelphia.

Women's results

Women's results table with columns for team, W, L, Pct. Includes Detroit, Chicago, and Philadelphia.

Women's results

Women's results table with columns for team, W, L, Pct. Includes Detroit, Chicago, and Philadelphia.

Women's results

Women's results table with columns for team, W, L, Pct. Includes Detroit, Chicago, and Philadelphia.

Women's results

Women's results table with columns for team, W, L, Pct. Includes Detroit, Chicago, and Philadelphia.

Women's results

Women's results table with columns for team, W, L, Pct. Includes Detroit, Chicago, and Philadelphia.

Women's results

Women's results table with columns for team, W, L, Pct. Includes Detroit, Chicago, and Philadelphia.

Women's results

Women's results table with columns for team, W, L, Pct. Includes Detroit, Chicago, and Philadelphia.

Advertisement for MR. MUFFLER DISCOUNT CENTER featuring custom duals, side pipes, and mufflers. Includes contact information for 2324 W. Wall, Midland, Texas.

Advertisement for Guess who's moving in next door? by Texas National Bank of Midland, dated Friday, March 23rd.



BIG SAVINGS

ON LUCITE PAINT AND FIX UP SUPPLIES

<p>Regular Price \$12⁹⁷ Sale Price \$9⁹⁹</p> <p>Less Du Pont STORECHECK \$1⁰⁰</p> <p>YOUR NET COST \$8⁹⁹</p> <p>ONLY</p>	<p>Regular Price \$9³⁸ Sale Price \$7⁹⁹</p> <p>LESS DU PONT STORE CHECK \$1⁰⁰</p> <p>YOUR NET COST \$6⁹⁹</p> <p>ONLY</p>	<p>Regular Price \$12⁹⁷ Sale Price \$9⁹⁹</p> <p>LESS DU PONT STORE CHECK \$1⁰⁰</p> <p>YOUR NET COST \$8⁹⁹</p> <p>ONLY</p>
<p>LUCITE House Paint</p>	<p>LUCITE Wall Paint</p>	<p>LUCITE Interior Enamel</p>

WE GIVE GOLD BOND STAMPS

PAINT BRUSHES BY LUCITE

1 1/2" PAINT BRUSH, EACH **\$1⁹⁹**

2" PAINT BRUSH, EACH **\$2⁴⁹**

3" PAINT BRUSH, EACH **\$3⁹⁹**

THE IDEAL PAINT BRUSHES TO USE WITH LUCITE PAINTS!

CAULKING COMPOUND

RELY-ON TUBE CAULKING 11 OZ. TUBE..... **69¢**

SPRAY PAINT

TOPCREST 13-OZ. CAN, 20 COLORS TO CHOOSE FROM. QUICK DRYING ENAMEL

EA..... **89¢**

Red Devil PROFESSIONAL QUALITY

PUTTY KNIFE HARDWOOD HANDLE

NOW AT FURR'S

EA. **\$1⁷⁹** 1 1/4" STIFF BLADE

MASKING TAPE

3/4", 60 YDS.

EACH **59¢**

ROLL-O-MATIC REFILL HEAD

EA..... **\$1⁹⁹**

TURPENTINE

CHEMICAL GUM TURPENTINE ONE GALLON

EA .. **\$3⁹⁹**

PAINT & VARNISH REMOVER

RED DEVIL FOR INTERIOR AND EXTERIOR NO WASH NO. 88 32 OZ. CAN. **\$1⁸⁹**

DROP CLOTH

9x12 DROP CLOTH

EA. **32¢**

SANDPAPER

BEAR SANDPAPER 9x11, FINE, COARSE OR MEDIUM.

EA. **79¢**

KLEENEX FACIAL TISSUE WHITE OR ASSORTED

280 SIZE, EACH .. **79¢**

SINUS MEDICATION SINE-OFF

THE SINUS MEDICATION IN THE BRIGHT RED BOX.

24 COUNT. EACH .. **\$1³⁹**

TAMPONS

16 DEODORANT SUPER PLUS EA ... **\$1²⁹**

16 NON-DEODORANT SUPER PLUS EA. **99¢**

16 DEODORANT REGULAR SUPER. EA **\$1¹⁹**

DEODORANT BAN SOLID

2 1/2 OUNCE

SIZE. EACH.... **99¢**

FOLGERS COFFEE

FOLGER'S FLAKED COFFEE.

13-OZ. CAN .. **\$1⁸⁹**

FLOUR

GOLD MEDAL SELF-RISING OR REGULAR 10-LB. BAG

EA. **\$1⁵⁹**

DENTURE CLEANSER DENTU-CREME

TOOTH PASTE FOR CLEANING DENTURES.

EA..... **99¢**

Just PHARMACY

LOW PRESCRIPTION PRICES HAVE ALWAYS BEEN A POLICY AT FURR'S: Come in and let us tell you how much your prescription will cost. We serve hundreds of senior citizens who insist on the MOST for their MONEY...and they get it at Furr's Pharmacy. This consideration to ANYONE regardless of age. Give us a try. You will like our low prices.

PRICES EFFECTIVE THRU MARCH 24, 1979

CHARGE ANYTHING IN THE STORE EXCEPT FOOD AND SUPER MARKET ITEMS

YOU DON'T NEED CASH! USE EITHER OF THESE CONVENIENT CREDIT CARDS

Master Charge VISA





Cattle egrets are birds that usually chase insects among herds of cattle, but this flock decided to move in among herds of cars. The birds thrive near a freeway in Irvine, Calif. The bird in the left photo rests after a snack. (Los Angeles Times Photos by Steve Rice)

Egrets raise some brows

By GORDON GRANT
The Los Angeles Times

IRVINE, Calif. — The bird books describe egrets as being gregarious. In fact, one text says, gregariousness — the inclination to associate with others of one's kind — is their outstanding feature.

It's not unusual for many species of nature's creatures to hang around "with their own kind" although there are many others who play the solitary game.

But for a flock of wild egrets to carry their togetherness over to a close association with man, in one of man's worst environments — a freeway interchange — is enough to raise some Audubon eyebrows.

Yet, in recent weeks, a score or more of cattle egrets — white-plumed, long-necked, long-legged and long-billed — have chosen to feed in a patch of grass hemmed in closely on all sides by roaring traffic.

The site is at the Jamboree Boulevard overpass of the San Diego Freeway in Irvine, Calif., about 32 miles southeast of downtown Los Angeles. The grass, made lush by rains, is bordered by the onramp and offramp cloverleaves.

This means that cars and trucks generally traveling at high speeds pass within a few feet of the birds. But they seem unruffled.

"I have no idea why they would choose a place like that," said Gordon Marsh, director of the Museum of Systematic Biology at the University of California Irvine.

"We do know that the population of cattle egrets seems to be growing."

Cattle egrets, as their name implies, usually congregate among herds of cattle, snapping up the bugs and small frogs or lizards that expose themselves when trying to get out of the way of bovine hooves.

"Any bug that jumps away from a hoof when an egret is around has made a fatal mistake," Marsh said.

Greg Nuessly, a laboratory assistant at the museum, said that cattle egrets were first seen in the Irvine area in 1964, that they are known to migrate to some extent and that more and more of them are showing up here each year.

The birds stand about 20 inches tall and have wingspreads of up to 4 feet.

The flock that feeds by the freeway, incidentally, seems to do so mostly during the morning rush hour. When traffic eases off after midmorning, the birds fly to nearby but more sequestered fields.

Like white-tailed kites and other hawks, whose habitats are being taken over by housing developments, these egrets have turned to the "open spaces" along the freeways — seemingly aware that men do not tread there.

Singer keeps one foot in classroom

By MARIAN FOX

MEMPHIS, Tenn. (AP) — When he isn't singing Mississippi Delta blues in a local bistro, you might find Sid Selvidge at the zoo teaching an orangutan sign language or in a college classroom describing Mbuti Pygmies.

"I've got one foot in the ivory tower and one foot in the streets," Selvidge says. "That's the way I like to maintain my life."

Selvidge, 35, is a blues musician who sunlights as an anthropology instructor at Southwestern at Memphis, a private college. He once felt drawn between the books and the blues.

"It's very schizophrenic. I've been trying very hard over the years to figure out how I was going to balance academia and the artistic life."

About six years ago, about to write his doctoral dissertation, Selvidge decided he'd rather sing the blues. "I had to make a choice between full-time teaching or music. The music was getting neglected."

For Selvidge, a relaxed, witty man, married and the father of five, the choice was a natural.

"I crawled on the stage when I was 6 years old in elementary school in Greenville, Miss., and played 'Ole Black Joe' on a harmonica. I loved it. Certain people like to get up in front of other people ... and I'm one of them."

Still his interest in anthropology persisted, and, between recording himself and Alex Childress, former lead singer of the Box Tops, on his own Peabody label, Selvidge teaches six hours a week.

"I'm teaching at Southwestern for an academic base, to do research projects I'm interested in," he says. "And teaching is similar to performing. You've got a body of information you've got to get across so people like it and want to come back."

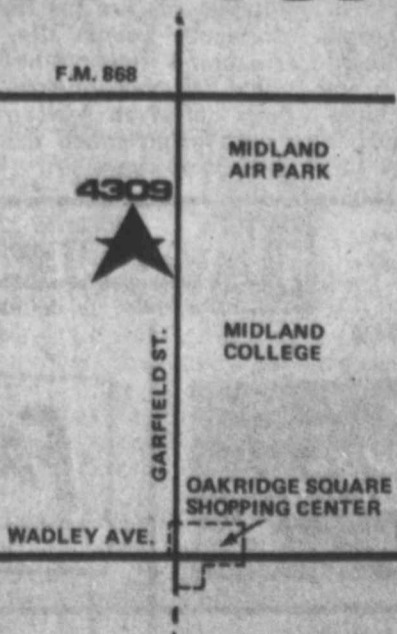
Although he's had some national exposure, the name Sid Selvidge is not universally known. He'd like it that way, but he wants fame on his own terms and, above all, he wants his music to be fun.

Selvidge's laid-back approach is apparent when he plays with a group called "Mud Boy and the Neutrons."



Guess who's moving in next door?

Grand Opening Friday, March 23, 9 a.m.



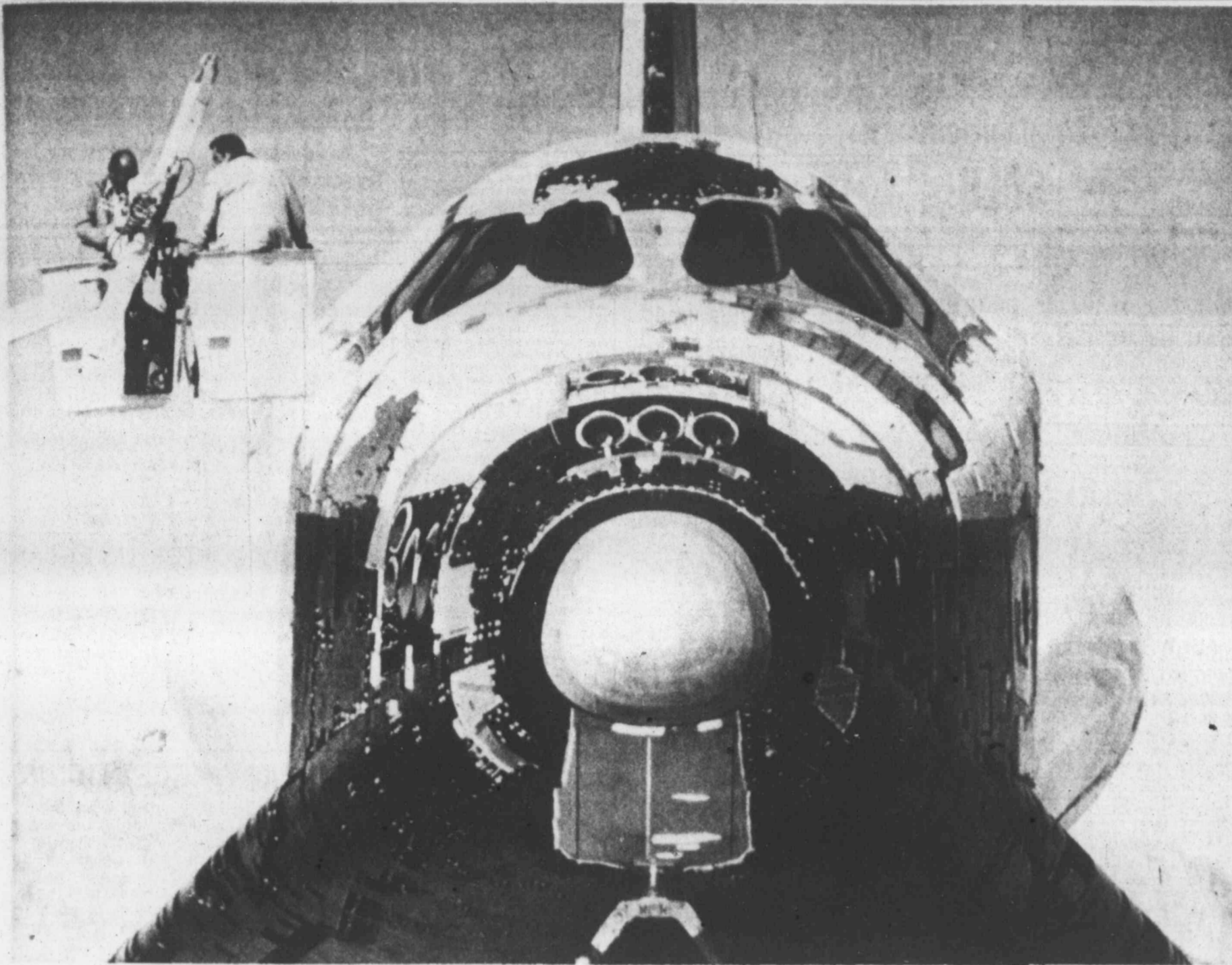
Midland has grown a lot in the last several years and will continue to grow in the years to come. We felt a new bank was needed which would be located in the direction of that growth. And it's here . . . the

Texas National Bank of Midland, located at 4309 Garfield, just north of Midland College.

We have the facilities to meet the needs of a growing Midland. We're easy to find and eager to please. Come see our new home. We're proud of it. Register for free door prizes . . . drawing 5:30 p.m., March 23, 1979. We'll be looking for you.

REGISTER FOR FREE PRIZES: VIDEO TAPE RECORDER / COLOR TV / SAVINGS BONDS

Wor
feet a
Sp
SAN
Ameri
bolted
landed
ing af
stopov
Florida
the tri
Only
schedu
before
probab
dem
governi
Secu
U.
WAS
tempt
among
assurin
sacrific
food pr
tion.
Alfre
inflatio
ing witi
in wha
monito
determ
higher.
"We
Americ
anti-inf
ly on
ample
tion."
Kahn
news c
Secreta
rumors
be read
and oth
"We
Co
na
WAS
admini
will as
months
toward
cost \$10
presen
health
But e
Phase
nificant
cal 1983
congres
legislat
creases
A. Calif
The
Carter'
Califan
deliver
The s
and we
dent re
providi
erage fr
Califa
messag
univers
insuran
during 1
But fo
sional 1
"cannot
plete n
bite."
The P
protecti
major il
ic cover
nificant
benefits
employe
do not n
coverag



Workmen maneuver a skyhook nearly 80 feet above the ground near the shuttlecraft "Columbia" while the craft sits on an El Paso runway. (AP Laserphoto)

Space shuttle Columbia lands in San Antonio

SAN ANTONIO, Texas (AP)—The American space shuttle Columbia, bolted to the back of a jumbo jet, landed here for refueling this morning after an unscheduled two-day stopover in El Paso on its way to Florida. But it was "very unlikely" the trip would continue today.

Base, where the piggy-back pair of aircraft landed under cloudless skies at 10:38 CST, estimated more than 10,000 people were on hand to see the spacecraft, which is bolted atop a Boeing 747 jumbo jet.

"We're going to check it (the weather) and decide. Unless it improves considerably, we're not going today," said Slayton. "We'll just have to sit tight. We're at the mercy of the weather. Nobody can control that. We'll wait until we get good enough weather to go."

The shuttle is on its way from California to shuttle launch facilities in Florida. The shuttle made a two-day, unscheduled stopover at Biggs Field at Fort Bliss near El Paso because of bad weather in southern and western Texas.

U.S. farmers won't be sacrificed: Kahn

WASHINGTON (AP)—In an attempt to calm fears and indecision among farmers, the administration is assuring them that they will not be sacrificed in a scramble to dampen food price increases and curb inflation.

Wheat, corn and other feed grains from the 1978 harvest will not be permitted to enter the government's grain reserve program under which farmers hold the grain for up to three years or until prices go up enough to trigger their release.

—The administration "will not accept any increases in commodity price supports or target prices" as some have suggested to bolster government crop guarantees to farmers.

The debate is important both because it has the potential to slow the growth of nuclear energy and more importantly because, if critics such as Bross are correct, thousands of lives may have been lost or will be lost as the result of underestimating the dangers.

Carter to seek limited national health program

WASHINGTON (AP)—The Carter administration announced today it will ask Congress in the next few months to take a limited first step toward national health insurance, at a cost \$10 billion to \$15 billion more than present government spending on health care.

He said Carter's initial plan would establish "a sound structure for future phases" and would go into effect in the fiscal year beginning Oct. 1, 1983.

New Jersey teachers settle strike at college

A strike by state college teachers in New Jersey is over and a boycott at Boston University has been averted, but teacher picket lines are still up in Minnesota, Louisiana and Washington, D.C.

Teachers in the 65,000-pupil system voted by a 10-1 margin to ratify a new two-year pact that provides for 7 percent across-the-board salary increases each year.

Insurance rates reduced for Midland's homes

AUSTIN, Texas (AP)—The State Insurance Board today ordered a 4.1 percent average statewide reduction in property insurance rates, effective July 1.

Included in the board's unanimous decision was an average cut of 2.3 percent in rates for homeowners policies, the most common type of coverage.

Other rate changes ordered by the board include: Tenant homeowners — Seacoast down 3 percent, Central up 5.2 percent and North-Northwest down 3.7 percent.

X-rays report attacked

NEW YORK (AP)—A recent report warning of increased cancer danger from ordinary medical X-rays has touched off an attack by scientists who question the study's methods and conclusions.

The article by Dr. Irwin D.J. Bross was published in February's American Journal of Public Health, a scientific monthly.

Bross, chief of biostatistics at Roswell Park Memorial Institute in Buffalo, N.Y., and a frequent critic of current radiation standards, said he re-analyzed old data and found the leukemia risk from X-rays was 10 times as high as previously thought.

But the journal took the unusual step of publishing the article without "peer review," a process in which other scientists evaluate an article before it is printed.

The first national report of Bross' conclusions, carried Feb. 21 by The Associated Press, was written after an interview with Bross and without benefit of a copy of the journal or knowledge of its full contents.

The controversy surrounding Bross' article reflects the impassioned and sometimes bitter debate among scientists over whether repeated doses of low-level radiation pose a special health threat.

At issue is whether the small but well established cancer risk from large doses of radiation exists in a proportional level at low doses as well.

But Boice and Land said Bross failed to consider alternate explanations.

But Boice and Land said Bross failed to consider alternate explanations.

But Boice and Land said Bross failed to consider alternate explanations.

LEGAL NOTICES
PUBLIC NOTICE
NOTICE IS HEREBY GIVEN that the County of Midland, State of Texas, at the regular meeting of the County Commissioners' Court at 1:30 p.m. on March 28, 1979 will hold a public hearing to consider adoption of an Ordinance...

RETAILERS: There's ANOTHER Midland market! The Code is M S G. Watch for it! Classified Advertising Dial 682-6222

OFFICE HOURS: Week Days . . . 8 a.m. to 5 p.m. Closed Saturdays. Corrections and cancellations may be made Saturday morning between 8 am and 10 am only.

COPY CHANGES: 3 p.m. day prior to publication except 3 p.m. Friday for Sunday editions; 10 a.m. Saturday for Monday editions. WORD AD DEADLINES: 5:00 p.m. Friday for Sunday; 5:00 p.m. Monday for Tuesday; 4:00 p.m. Tuesday for Wednesday; 4:00 p.m. Wednesday for Thursday; 4:00 p.m. Thursday for Friday; 4:00 p.m. Friday for Saturday.

SPACE AD DEADLINES: 5:00 p.m. Friday for Sunday; 5:00 p.m. Monday for Tuesday; 3:00 p.m. Tuesday for Wednesday; 3:00 p.m. Wednesday for Thursday; 3:00 p.m. Thursday for Friday; 10:00 a.m. Friday for Saturday. DISPLAY DEADLINES: 12:00 a.m. Thursday for Sunday; 12:00 a.m. Monday for Tuesday; 12:00 a.m. Tuesday for Wednesday; 12:00 a.m. Wednesday for Thursday; 12:00 a.m. Thursday for Friday; 12:00 a.m. Friday for Saturday.

1 LODGE NOTICES
2 PUBLIC NOTICE
3 PERSONALS
4 CARDS OF THANKS
5 LOST AND FOUND
6 MONEY LOANS-WANTED
7 SCHOOLS-INSTRUCTION
8 WHO'S WHO
9 HELP WANTED
10 SALES-AGENTS
11 SITUATIONS WANTED
12 CHILD CARE SERVICE
13 BUSINESS OPPORTUNITIES
14 AUTOMOBILES
15 TRUCKS AND TRACTORS
16 WHEEL DR. VEHICLES
17 MOTORCYCLES
18 AIRPLANES
19 BOATS AND MOTORS
20 RECREATIONAL VEHICLES
21 AUTO SERVICE & ACCESSORIES
22 AUCTIONS
23 GARAGE SALES
24 MISCELLANEOUS
25 HOUSEHOLD GOODS
26 SPORTING GOODS
27 ANTIQUES AND ART
28 MUSICAL INSTRUMENTS
29 CAMERAS AND SUPPLIES
30 GOOD THINGS TO EAT
31 FRESH FOOD LOCKERS
32 FIREWOOD
33 OFFICE SUPPLIES
34 STORE, SHOP, CAFE EQUIPMENT
35 AIR CONDITIONING & HEATING
36 BUILDING MATERIALS
37 PORTABLE BUILDINGS
38 MACHINERY & TOOLS
39 OILFIELD SUPPLIES
40 FARM EQUIPMENT
41 LIVESTOCK-POULTRY
42 PETS
43 APARTMENTS FURNISHED
44 APARTMENTS UNFURNISHED
45 APTS. FURN. UNFURN.
46 HOUSES FURNISHED
47 HOUSES UNFURNISHED
48 HOUSES FURN. UNFURN.
49 BEDROOMS
50 MOBILE HOMES FOR RENT
51 MOBILE HOMES SPACE FOR RENT
52 BUSINESS PROPERTY, OFFICE
53 WAREHOUSE SPACE FOR RENT
54 RECREATION & SPORTS RENTALS
55 HUNTING & FISHING LEASES
56 OIL AND LAND LEASES
57 MOBILE HOMES FOR SALE
58 OPEN HOUSE
59 HOUSES FOR SALE
60 SUBURBAN HOMES
61 OUT OF TOWN REALTY
62 LOTS & ACREAGE
63 FARMS & RANCHES
64 RESORT PROPERTY SALES
65 BUSINESS PROPERTY SALES
66 INVESTMENT PROPERTY
67 LODGE NOTICES

after a snack. Steve Rice

TOP QUALITY USED AUTOS!

'78 TOYOTA CELICA LIFTBACK
Ice box white with blue velour interior, customized, 5-speed, air, AM-FM stereo, radials & wire wheels, must see & drive to appreciate. \$6995

1978 DATSUN B210
4-Door sedan. Solid white, tan interior, automatic, air, radio, heater, whitewall tires, 17,000 miles. \$4995

1976 CHEVROLET CAPRICE
Classic 2-dr hardtop, 38,000 miles, red metallic, white top, red velour, power seats & windows, tilt, cruise, AM stereo tape, one owner. \$3995

LOOK! (Only 1100 Actual Miles)
1978 PLYMOUTH SAPPORO Sports Car. It's the Dodge Challenger counterpart. Spanish red metallic, 5-speed, 4-cylinder, red velour, overhead console, AM-FM stereo, never been registered, Lovington, N.M. car. New \$7200. Our Price \$5995

1977 CHEVY 3/4-TON PU
A 4-Door pickup with 350 V8, air, power, white, blue trim, 2 gas tanks, regular gas, comes complete with \$695 camper shell. For only \$6495

1978 OLDS DELTA ROYALE
4-Door, 11,000 miles, silver metallic, silver top, red velour, power seats & windows, tilt, cruise, door locks, AM-FM stereo 8-track, wire wheels, local one owner. \$6995

USED IMPORT CAR HEADQUARTERS
Save Gas and Save Dollars!!
1977 DATSUN B210 4-dr., automatic, air, radio, V8 tires, must. \$6995

See Harry Smith or Bill Madry
Bob Huggins, Used Car Manager
NICKEL-WILLIAMS
CHRYSLER-PLYMOUTH-DODGE
3705 W. Wall 694-6661 or 563-2283

HONDA - JEEP of Midland
4000 West Wall Dial 697-3293

USED 4-WHEEL DRIVE HEADQUARTERS

'78 FORD FAIRMONT
Automatic transmission, power steering and brakes, air, radio, tinted glass, 10,000 miles. \$4795

'77 CUTLASS SUPREME
Automatic transmission, power steering and brakes, air, vinyl top, rally wheels. \$4995

'76 COUGAR XR-7
Automatic transmission, power steering and brakes, air, power windows, AM-FM 8-track, tilt, rally wheels. \$4495

'78 JEEP CJ-7 RENEGADE
4-wheel drive, power steering and brakes, automatic, 5,000 miles, plenty of warranty left, V8 engine. \$7195

'78 FIAT SPIDER CONVERTIBLE
5-Speed, AM-FM with cassette, roll bar, rally wheels, One Week Only. \$5995

'75 JEEP J-10 PU
Local one owner, automatic transmission, power steering and brakes, air, AM-FM-8 track radio, roll bar. \$3995

'78 CHEVY BLAZER
4-Wheel drive, automatic, power steering and brakes, air, AM-FM, rally wheels, tilt, wide tires, 350 V8, low miles. \$8795

'75 CHEVY MONTE CARLO
Automatic, power steering, power brakes, air, power windows, AM-FM 8-track, tilt, cruise, one owner. \$3495

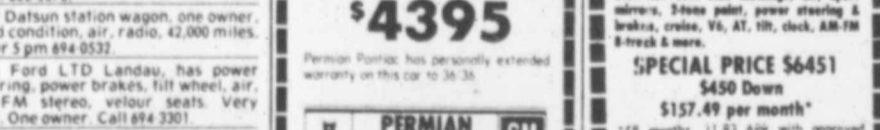
'78 AMC GREMLIN
Power steering and brakes, air, automatic, 11,000 miles, a real gasoline saver. \$3995

"WE SELL TO SELL AGAIN"

BUDGET BUYERS
\$167.67 PER MO.

LET US "SHOW YOU THE LIGHT"
NEW 1979 MERCURY MARQUIS 4-DOOR
See this Blue beauty with Blue trim, automatic transmission; power brakes, power steering, complete tinted glass, V8, deluxe sound package, full wheel covers, and lots more. Stock No. 304.

Sale price of \$6690. \$399 down cash or trade, total 48 month payback \$804.16. APR 13.51.



Save At Our Cost!

YOU SAVE \$300, \$400, \$500, \$600 ... UP TO \$700!

MOST ANY TRADE-IN WILL FAR EXCEED THE DOWN PAYMENT (with approved credit)

On-The Spot Bank Rate Financing

Table with columns: Year, Make, OLD PRICE, NEW PRICE. Lists various car models and their prices.

FOR YOUR PROTECTION & PEACE OF MIND... ROGERS FORD GIVES USED VEHICLE BUYERS AN EXCLUSIVE AND NO CHARGE 12-MONTH OR 24,000 MILE USED VEHICLE SERVICE CONTRACT

For A "No Hassle" Deal... Come See the Difference

ROGERS FORD

4200 W. HWY 80 694-8801; from Odessa 563-1125

1979 Mercury Capri 3 door, by owner 4 speed, 4 cylinder, air, AM-FM cassette with Pioneer speakers, 28 mpg, \$5,000. Call John Walker, 484-1441, after 5:30, call 483-7829.

1977 Olds Cutlass Supreme Brougham. Fully loaded \$1495. Call 694-8257 or 497-3421.

1975 Porsche 914, 2 litre engine, excellent gas mileage. Very nice car. \$4000. Call 694-2621.

1976 GRAND PRIX
Silver with black vinyl top, tilt cruise, air, AM-FM stereo. \$4395

1978 Buick Regal
EXTRA clean. 2000 miles, air, sport seats, 1000 miles. \$5451

1975 Olds Cutlass Supreme Brougham. Fully loaded \$1495. Call 694-8257 or 497-3421.

1979 NEWPORT SPECIAL OFFER EXTENDED THROUGH MARCH!! Save Now!!
\$165.00 MO.
43 IN STOCK TO CHOOSE FROM!
NO WAITING NO SPECIAL ORDERS
NICKEL-WILLIAMS CHRYSLER-PLYMOUTH-DODGE

Houses for Sale

Real estate listings for houses for sale, including prices and descriptions.

Houses for Sale

Real estate listings for houses for sale, including prices and descriptions.

Houses for Sale

Real estate listing for a house at 10941 WARD, 3 bedrooms, 1 3/4 baths.

Real estate listing for a house with 3 bedrooms, 1 1/2 baths, priced at \$32,750.

Real estate listing for a house with 3 bedrooms, 1 bath, priced at \$35,700.

Real estate listing for a house with 4 bedrooms, 3 bath, priced at \$42,000.

Real estate listing for a house with 4 bedrooms, 3 bath, priced at \$42,000.

Real estate listing for a house with 4 bedrooms, 3 bath, priced at \$42,000.

Real estate listing for a house with 4 bedrooms, 3 bath, priced at \$42,000.

Real estate listing for a house with 4 bedrooms, 3 bath, priced at \$42,000.

Real estate listing for a house with 4 bedrooms, 3 bath, priced at \$42,000.

Real estate listing for a house with 4 bedrooms, 3 bath, priced at \$42,000.

Real estate listing for a house with 4 bedrooms, 3 bath, priced at \$42,000.

Real estate listing for a house with 4 bedrooms, 3 bath, priced at \$42,000.

Real estate listing for a house with 4 bedrooms, 3 bath, priced at \$42,000.

Real estate listing for a house with 4 bedrooms, 3 bath, priced at \$42,000.

Real estate listing for a house with 4 bedrooms, 3 bath, priced at \$42,000.

Real estate listing for a house with 4 bedrooms, 3 bath, priced at \$42,000.

Real estate listing for a house with 4 bedrooms, 3 bath, priced at \$42,000.

Real estate listing for a house with 4 bedrooms, 3 bath, priced at \$42,000.

Langston REALTORS - BUILDERS 1908 W. WALL 682-9495

LATEST LANGSTON LISTINGS: PRINCETON Spacious, inviting contemporary 5BR/3B...

FABULOUS FOURS AND MORE: GULF Quality French-style 4BR, abundant living areas...

MOVING TO MIDLAND?: For your free copy of the Langston "RELOCATION Package"...

TERRIFIC THREES: BEDFORD Quality contemporary, imaginative design, luxury throughout...

MOVING FROM MIDLAND?: Our RELOCATION Division can send you maps and information on any place in the country...

NEW CONSTRUCTION: GODDARD New construction 4BR/2B, beamed ceiling den...

FOR LEASE: HUNTER'S PARADISE Texas Hill country, game reserve, over 1,000 acres...

* CAR POOL DROP OUT: Is what you will see when you see this 3 bedroom brick home...

* NEW HOME NEEDS FAMILY: 3 bedrooms, 2 baths, den plus gameroom...

MARY ANN REALTORS 1207 W. WALL 683-5156

PRINCETON-3 1/2 baths, 2 story, country kitchen, separate dining, stone fireplace...

NOTICE TO PARTY GIVERS! 2814 DURANT Run circles around your guests while you entertain in this lovely home...

As you can see, most of our listings are under contract. WE'VE GOT THE SERVICE! CALL US!

4101 SKYLINE Owner sad over transfer from this lovely home in much sought after area...

RENT PROPERTY FOR SALE: 1008 S. FORT WORTH-Small home, 1 bedroom, 1 bath...

COMMERCIAL PROPERTY: 201 E. OHIO Owner will consider carrying partial note...

ACREAGE: 1140 SOUTH 29.99 acres, fenced with water well...

HAZEL HELIUMS REALTORS No. 3A Imperial Shopping Center 697-4177

WANT TO BUY FHA OR VA????? CALL FOR 2 and 3 BR homes - Call us to locate one of you...

The Carriage Co. REALTORS OAKRIDGE SQUARE 684-5881

HUGHES-Almost new Mediterranean style home, unusual design, excellent kitchen...

PRINCETON-3 1/2 baths, 2 story, country kitchen, separate dining, stone fireplace...

LOOKS LIKE SPRING W/greens & yellows, MBR has conversation area w/raised area for bed 3.

LAVERA-Country estate, Rig., 8 acres for \$81,500 or house & 1 acre...

BUILDING FOR LEASE: One year with five year option. \$750.00 per month...

WARREN ROAD-Approx. 35 acres planted in alfalfa, 7 water wells & 1 irrigation pipe system...

RELO WORLD LEADER IN RELOCATION

COUNTRY REALTY 684-9020 Rural Property Specialists

THREE bedrooms, one bath, refrigerator, microwave, kitchen, 2 living areas...

DOON HARVEY REALTORS 702 ANDREWS HWY. MLS OFFICE 683-5333

RESIDENTIAL PROPERTY: Douglas-4 br., 2+4 1/2 ba., den, frpl., patio, 4 car gar., extras...

5,000 S&H GREEN STAMPS FOR LETTING US MARKET YOUR HOME

NEW CONSTRUCTION: Erie-3 br., 2 ba., frpl., ref., 2 car gar., modern, nice...

TOWNHOUSES: Boulder-3 br., 3 1/2 ba., frpl., patio, 2 car gar., courtyard...

SUBURBAN PROPERTIES: Sorrell-2 br., 2 1/2 ba., frpl., patio, atrim, fen., extras...

MOBILE HOMES: Airline-2 br., 2 ba., frpl., ref., dishwasher, nice mobile home...

COMMERCIAL: Louisiana-2 br., 1 ba., efficiency in rear, zoned commercial...

OUT OF TOWN: Horseshoe Bay-3 br., 2 1/2 ba., frpl., ref., courtyard, farm...

LOTS AND ACREAGE: Florida-zoned LR-2 with 300' frontage on Fla. and two corners...

Real estate listings for houses for sale, including prices and descriptions.

