



Muleshoe Journal



Striving to be your source for local news

75¢

Volume 93, No. 8 www.muleshoejournal.com Muleshoe, Texas February 23, 2012

May Election Includes Proposition

By Larry Thornton
Managing Editor

Muleshoe voters will be going to the polls to do more than elect a mayor on May 12. At last week's city council meeting a resolution was also approved calling for a vote aimed at local street maintenance.

Specifically, the proposition before

the voters will allow the municipal sales tax earmarked for the Muleshoe Economic Development Corporation to be reduced from one half to one quarter of a cent, at the same time adding a quarter of a cent earmarked for local street repairs and maintenance.

According to City Manager David Brunson, approval of the proposition will not increase the local sales tax rate.

While infrastructure improvements, such as street maintenance, are a valuable tool for economic development, the city manager explained that state

statutes prevented the use of economic development funds in this manner, requiring the vote that will in effect change how this particular quarter cent is earmarked.

The City of Muleshoe has been aggressive in its street maintenance program, Brunson said, however, the \$70,000

budgeted for such work this year isn't sufficient to maintain the level of repair possible five years ago due to the rise in oil prices — the driving cost behind seal coating.

With the additional \$90,000 that will be generated for street maintenance through the quarter cent sales

tax it's thought that each of Muleshoe's paved streets can be seal coated every five years, significantly increasing the life of the road surfaces.

According to Brunson's understanding, the funds can't be used to surface the city's

Continued on A3



Photograph by Larry Thornton

Training Begins Early

Train up a child in the way he should go: and when he is old, he will not depart from it. — Proverbs 22:6

While the scripture wasn't written with athletic accomplishments in mind, it's never too early to teach a child, whether in the classroom, at home

or on the basketball court.

Pictured above, Muleshoe ISD Athletic Director David Wood checks out the ball-handling capabilities of future Mules during halftime at a recent basketball game.

Suspect Still Hospitalized

Charges Pending

By Larry Thornton
Managing Editor

A Feb. 10 shooting that involved a Muleshoe police officer responding to a domestic abuse call is still under investigation, and charges are still pending according to Dist. Attorney Kathryn Gurley on Monday.

Muleshoe Police Sgt. Steve Bartley, 35, had responded to a reported incident of domestic violence at 416 E. Fifth, at about 11:30 p.m. on Feb. 10.

While conducting his investigation concerning the 911-domestic violence call suspect Juan Mendoza

Quezada, 44, allegedly fired a handgun at Bartley, striking him once in his bulletproof vest, and once in the right hip.

Bartley returned fire with his sidearm, striking Quezada four times, at least once in the face, according to information presented to the Bailey County Commissioners' Court on Monday, Feb. 13.

Both the officer and the suspect were airlifted to hospitals in Lubbock. Bartley to University Medical Center, from where he was released on Saturday, Feb. 11, and

Continued on A3

Muleshoe HS Student Accepted Into Lubbock Art Program



Morgan Burris

Muleshoe High School student Morgan Burris has been accepted to the Saturday Morning Art Project at Texas Tech, sponsored by the Helen Jones foundation.

The SMAT is a program for talented high school art students from the city of Lubbock and the surrounding

area. Established in 1980 by Terry Morrow, Professor of Drawing and Printmaking, this project has been supported for the last 14 years, by grants from the Helen Jones Foundation of Lubbock.

During the past 21 years the Saturday Morning Art Project has contributed to the education of talented high school art students. Many former participants of this program have gone on to pursue successful professional art careers.

The Saturday Morning Art Project identifies talented high school art students in the immediate Lubbock area and its surrounding school districts.

The program serves approximately 20 gifted students annually.

Through this project talented art students experience numerous traditional and contemporary visual art processes through hands on workshops in figure drawing, printmaking, book construction, jewelry metal casting, clay sculpture and lectures on how to function in the college environment.

The art sessions area specifically planned to provide enrichment experiences that may not be consistently available to students through the usual public school.

Morgan is an art student of Sandi Chitwood's. Along

Continued on A2



Up For Two

Mule Juan Guerrero goes up for two during the game against the Friona Chieftans. More basketball season photos on B2.

Photograph by Larry Thornton



First Bank is proud to announce our new MasterCard Debit Card.

FIRST BANK ONLINE www.fbmmuleshoe.com

202 S. First • Muleshoe, TX 79347 • 806-272-4515

OPINION

Around Muleshoe...



Announcements from non-profit organizations in the Muleshoe area.

To post an announcement send an email to editor@muleshoejournal.com

Scholarship Applications

Applications for the Kristy M Landers Memorial Scholarship are available from Muleshoe High School counselor, Heidi Moore. The final day to apply is Feb. 27

Chamber Nominations

The Muleshoe Chamber of Commerce & Agriculture is encouraging the community to help select the right person and family for Man of the Year, Woman of the Year and Farm family of the Year to be presented with awards at the annual chamber banquet on March 31.

Names should be submitted to Becky at the chamber office by Feb. 27. Also the chamber continues to seek nominations for Employee of the Month and Business of the Month.

Project Graduation

Donations are being sought for Muleshoe's Project Graduation 2012, a drug-free, alcohol-free, parent-sponsored graduation celebration.

Donations should be addressed to "Project Graduation 2012, Attention: Carla Ambriz, c/o First Bank of Muleshoe, PO Box 565, Muleshoe, TX 79347-0565.

Muleshoe's Fine Arts Students Are Having A Successful Year

The Muleshoe High School Fine Arts Program is having a very successful year! The year is certainly not over, but here are some of the latest accomplishments of the MHS choir and band programs.

We will highlight the MHS speech team and MHS art program in the coming weeks.

MHS Choir

The MHS Choir competed at the UIL

Solo and Ensemble contest on Feb. 4! Students brought home 30 ensemble medals in the Madrigal division, as well as 16 gold medal soloists.

These 30 plus students will advance to the State UIL Solo and Ensemble competition that will be

Please Do Something That's Not In The Bulletin

It's not the kind of "funny" that makes you fall down and roll in laughter, but the cartoon I saw recently did make me stop, think, and whisper a heartfelt, "Amen!"

The cartoon pictures a preacher on his knees in his study, evidently just before he is up to bat for one more Sunday morning, and he prays simply, "O Lord, please do something that's not in the bulletin."

"Amen!" indeed.

I know. There is a particular kind of, well, faith-weakness really, that manifests itself in a need to see something in our lives every morning akin to the parting of the Red Sea.

We catch ourselves wanting a big-time, heart-thumping, adrenaline-pumping miracle a day to keep doubt away. And in worship, we want to start with an earthquake and work up from there in emotional intensity.



Focus On Faith

Curtis Shelburne

If we don't see those miracles almost every day and have mountain-top worship experiences almost every Sunday, our fervor cools, disappointment mounts, and we begin to act as if God is nowhere near because we haven't seen pillars of fire appearing right in front of us recently.

Out of his compassion, Jesus once fed five thousand. But he knew that folks who show up because of free fish only stay if the fish keep coming, and, sure enough... Nothing has changed.

Brother Billy Bob down at the Church of What's Happening Now would do well to realize that folks attracted by skyrockets and earthquakes will

only stay if you keep on manufacturing skyrockets and earthquakes.

And that's an extreme. Faith that must always be propped up by outward show and ceaseless hyper-emotion is not much faith.

But the temptation I seem to face most often is at the other end of the spectrum. Far from expecting an eye-popping miracle to appear behind every coffeepot, I find myself expecting far too little. I catch myself living life and "doing church" as if God had set the world spinning and then retired or settled down for a long gazillion-year nap.

For example, I work hard to plan worship (as well I should), but I need to remember that the most important things that happen in worship are not things I can plan. When God breaks in and astounds

me, I'm so surprised that one wonders why I bothered to come if I really didn't expect him to show up.

I pray, and then I'm surprised when God rocks me on my heels with a wonderful answer.

I plan and organize and work and almost despair when for long spells not much seems to be happening. Sometimes my hardest work seems to accomplish the least, and then God breaks in and does something far more wonderful than I could ever have planned or imagined.

Dear God, help me to remember that you are God and that your job is to work and my job is to trust in you. It's all the job I can handle and I do it pretty poorly. Forgive me when I'm surprised when you do something that's not in the bulletin. But thank you for doing it!

Super news from MISD

By Superintendent Dr. Gene Sheets

held in May.

Solo qualifiers are: Andrea Alfaro, Bailey Bales, Isaiah Guerrero, Marissa Hernandez, Stephanie Infante, Ryan Johnson, Jessica Kube, Dalia Melendez, Kari Mendoza, Garrison Myers, Don Ann Rempe, Crystal Rubio,

Mandy Scolley, Blayne Shipman, Sheridan White, and Cristian Zaragoza. Madrigal qualifiers are: Andrea Alfaro, Bianca Aviles, Bailey Bales, Magen Cantrell, Adrian Estrada, Hector Flores, JJ Gandara, Isaiah Guerrero, Marissa

Hernandez, Stephanie Infante, Ryan Johnson, Jessica Kube, Jose Martinez, Michael Martinez, Kristen McCoy, Dalia Melendez, Kari Mendoza, Patrick Mendoza, Garrison Myers, Kayla Preston, Don Ann Rempe, Christain Reyna, Jayde Rodriguez, Crystal Rubio, Mandy Scolley, Blayne Shipman, Sheridan White and Cristian Zaragoza.

In addition, Ryan Johnson was selected to perform at the TMEA All-State Choir concert held on Feb. 11 in the San Antonio Convention Center. Students qualifying for the Texas All-State choirs, bands, and orchestras represent the top 2.6 percent of musicians in the state. Congratulations to Ryan on this extraordinary

Continued on A3

Letter to the Editor

Local Reader Speaks Out

To the Editor:

Your editorial on Feb. 16 pinpointed that the US Constitution grants President Obama no authority to "accommodate" the rules of the Constitution.

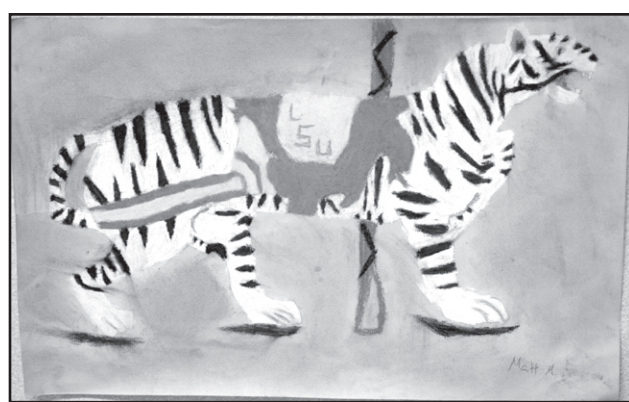
He has no legal presidential right to do anything but abide by the laws of the Constitution.

President Obama seems to think he is a king and can adapt our government's laws.

The laws must fit his wishes as to what the government can do. That the people must obey his government's laws. And he does not have to abide by the people's Constitution.

Thank you for pointing out in your editorial that he cannot accommodate the people's Constitutional law. He must abide by the peoples' Constitution law.

Lavonne McKillip, Muleshoe



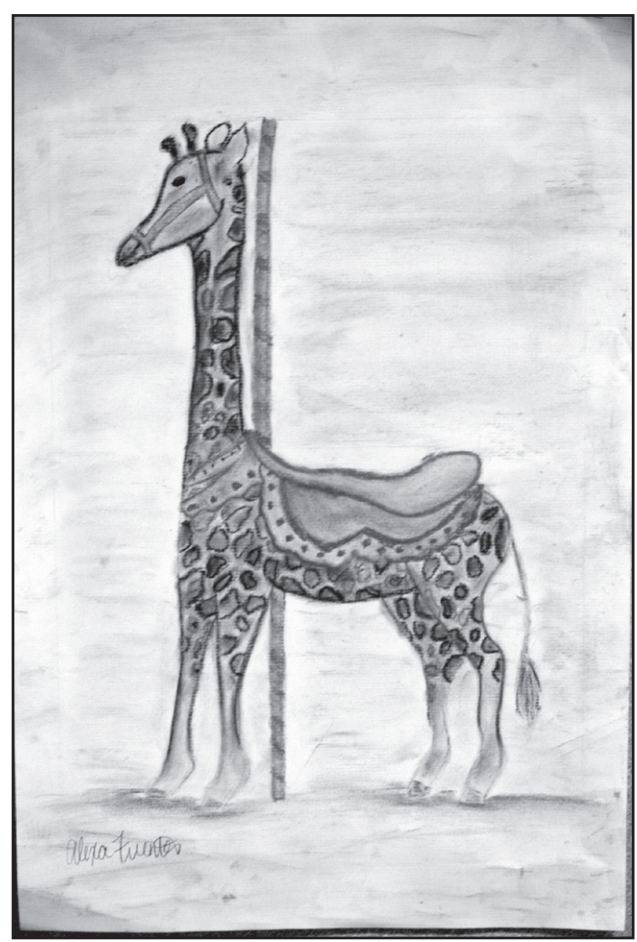
MHS Student Art Work...

Continued from A1 with Morgan's watercolor "Dinner in Paris," Bianca Avila's watercolor "Flowers," a pastel giraffe by Alexa Fuente and a pastel white tiger by Matthew Mendoza are on display at First Bank of Muleshoe.

Health Tip

Did you know that sunscreen rapidly loses effectiveness after one hour?

If you are going to be out for a while, plan to put on more sunscreen to avoid sunburn.



Muleshoe Journal USPS 367820
 Established Feb. 23, 1924 Published by Panhandle Weeklies, LLC.
 Every Thursday at 201 W. Ave. C, P.O. Box 449, Muleshoe, TX 79347.
 Periodicals paid at Muleshoe, TX.
 Postmaster: Send address changes to the Muleshoe Journal, P.O. Box 449, Muleshoe, TX 79347.
 We are qualified members of the Panhandle Press Association, West Texas Press Association and Texas Press Association

David Wedel, Publisher
 dwedel@hearstnp.com

Larry Thornton, Managing Editor
 editor@muleshoejournal.com

Rhea Gonzales Ad Representative
 adsales@muleshoejournal.com

Ad Design / Classified Advertising
 advertising@muleshoejournal.com
 classifieds@muleshoejournal.com

Subscriptions:
 By Carrier Yearly — \$27
 Bailey County, by mail — \$29
 Elsewhere — \$40
 By E-mail — \$22

Advertising rate cards on request

Hours are 8 a.m. to 5 p.m., Monday - Thursday, and 8 a.m. to noon on Friday.
 *Advertisers should check their ad the first day of insertion. The Journal will not be liable for failure to publish an ad or for a typographical error or errors in publications except to the extent of the cost of the ad for the first day of insertion. Adjustment for errors will be limited to the cost of that portion of the ad where the error occurred.

Williams General Store
 February 25, 2012

20% off Coupon if you name the Udderly Unique Cow.

Special Guests:
"The Wonders of a Wife"
 by Tammy Mardis, Author (Wife of Eddy Mardis)

&
Kathy Embry
 Hand-painted Greeting Cards

Coffee & Donuts * 10 AM - 12 PM
 Tea & Cookies * 12 PM - 2 PM

Start Spring Off Right!

Super News

Continued from A1
accomplishment!

MHS Band
After earning a Division 1 Rating at the UIL Region 16 Marching Contest in October, the Muleshoe Mighty M Band competed at the UIL Region 16 Solo and Ensemble Contest on Feb. 18.

A total of 39 students qualified for the Texas State Solo and Ensemble contest that will be held in May in Austin, and 43 Ensemble Division 1 Medals were awarded to our band along with

two solo Division 1 Medals.

In addition, Lourdes Martinez, Colton Clarkson and Merced Campos qualified for the Region 16 High School All Region Band.

The following Watson Jr. High School students qualified for the Region 16 Middle School All Region Band: Rachele Whitworth, flute sixth chair; Lisette Mojica, clarinet 20th chair; Kaytlin Moore, clarinet 18th chair; Bobby Guzman, alto saxophone first alternate;

Julian Borrunda, tenor saxophone second chair; Bobby Guzman, baritone saxophone first chair; Austin Garza, trumpet first alternate; Dylan Miller, trumpet first chair; Dylan Miller, baritone third chair; Kevin Pope, trumpet sixth chair; Kevin Pope, baritone fifth chair; and Dominik Hasley, tuba fourth chair.

Fine arts teachers tend to reach students and encourage learning in ways that may be more engaging than times tables and square roots.

It is part of the power and the magic of the arts to engage young people in learning. We are very proud of Muleshoe ISD's Fine Arts Programs, and we intend to continue to promote the advancement of Fine Arts in Muleshoe.

Pesticide Applicator Training Offered

A "Last Chance Pesticide Applicator Training" will be offered by Texas AgriLife Extension Service. The event will be held Feb. 24 at the Bailey County Extension office, 118 West Avenue C, Muleshoe.

The pesticide applicator training will be delivered in two-hour blocks; pesticide applicators will be able to attend any or all blocks in order to earn continuing education units (CEU) they may need to renew their pesticide applicator

license. The blocks will be arranged as follows:
 • 8-10 a.m. — Laws and Regulations (1.5 L&R, .5 general)
 • 10-noon — Integrated Pest Management (2 IPM)
 • 1:30-3:30 p.m. — Pesticide Safety (2 general)

This is truly a last chance option to earn CEUs, the courses will be delivered via video.

Participants will need to attend the entire block(s) they need and complete a survey

in order to earn their CEUs.

There will be a \$10 registration fee.

Licensed private applicators are required to recertify every five years by obtaining 15 continuing education credits, including two (2) credits in laws and regulations and two (2) credits in integrated pest management (IPM), prior to expiration of the license

For more information contact Monti Vandiver, Extension Agent-IPM (806)272-4583.

May 12 Elections...

Continued from A1
remaining caliched roads.

If the proposition isn't approved by Muleshoe voters, the sales tax earmarked for the MEDC will remain at one half cent.

If approved by the voters, it will have to be voted on again after four years.

As previously noted the May 12 general election will include positions on the Muleshoe Independent School District's board of directors, the Muleshoe Area Hospital District's board of trustees, and the city's mayoral position.

To date, the following candidates have filed applications for places on the May 12 general election ballots, according to Muleshoe

City Secretary, and election administrator, LeAnn Gallman:

- MISD — Thurman Myers, Dist. 1, incumbent; Sergio Leal, Dist. 4, incumbent.

- MAHD — Herb Ramage, Place 1, incumbent; Zona Gatewood, Place 5, incumbent.

- City of Muleshoe — Cliff Black, mayor, incumbent.

The deadline for filing an application for a place on the ballot is Monday, March 5, at 5 p.m.

Shooting...

Continued from A1
Quezada to Covenant Medical Center, where he remains hospitalized, and under guard by deputies with the Bailey County Sheriff's Department.

HealthTip

Small changes in eating will have a big impact on health. Just don't take that second helping or skip the dessert.

McDaniel's APPLIANCE 1020 Main Street, Clovis, NM 505-762-4481 or 800-682-7891

Time for new appliances?

WE ARE YOUR HOMETOWN WHIRLPOOL DEALER.

Names Numbers
We Now Carry Speed Queen!

Whirlpool

Annual Membership Meeting
of the Members of

FIVE AREA TELEPHONE COOPERATIVE, INC.

SATURDAY, FEBRUARY 25, 2012
BAILEY COUNTY COLISEUM

Registration: 9:00 a.m.
Meeting starts promptly at 10:00 a.m.

Lunch after meeting
(River Smith's Chicken & Catfish)
Prizes and Door Prizes
"Please Come"

Only members of Five Area Telephone Cooperative are included in this membership.




Billy Joe Tolliver and Mike Mitchell invite you to come out and visit Adobe Auto Sales on the Levelland Highway.

BUY HERE, PAY HERE

✓ better deals

We have a large inventory of vehicles and a staff empowered to help you drive away in your dream car. We'll make a deal that works for you plus every Adobe Auto Sales vehicle comes with 3-month power train warranty so you can drive with confidence.

✓ better vehicles


Our large inventory of vehicles includes the makes and models you're looking for - in good condition, with lower mileage and and all newer models.

✓ better financing


We are uniquely able to offer both in-house and bank financing to ensure you get the best available rate with a payment you can afford.

19th Street	Upland
Levelland Hwy 114	

We would love for you to stop by so we can show you all we have to offer!



GMC Sierra 1500 SLT
2007. All smiles with great mpg*! It's time for you to get a GMC - extra safety equip.!
Stock #1787




Acura TSX
2005. This luxury vehicle has less than 92k miles! Ready to get on the road!
Stock #1339



Buick Rendezvous
2006. Look! Look! Look! Driving excitement that will have you all smiles!
Stock #1738



Dodge Ram 1500
2006. A car that sparkles! Not another one anywhere at this fabulous price!
Stock #1849



Hyundai Elantra Blue
2010. Stretch your purchasing power with this super hot Elantra!
Stock #1794



Cadillac Escalade
2005. All of the right ingredients with just 86K! Your search is over!
Stock #1915

Senior Citizen News

By Brittany Gibbs
 With the month of love winding down and March peeking around the corner, we at the Oneita Wagnon Senior Center hope all of you sweethearts enjoyed the month of love. We would also like to praise the Lord for all the wonderful moisture we have been receiving!
 What's going on at the center this week:
 The center's board

meeting is on Monday, Feb. 27.
 Bingo is on March 1, so grab a gal pal and come test your luck at bingo and enjoy a laugh or two.
 The center's famous fund raiser pancake breakfast will be on Saturday, March 3.
 The price for adults will be \$5 and children \$3.
 We will began serving at 7 a.m., and go through 11 am. The menu will be pancakes, bacon, sausage, a variety of syrups, coffee, milk and orange juice.
 So mark your calendars for March 3 and take your wife,

sweetheart or even both out for breakfast.
 We would like to send our prayers out for Vernell Nance and hope for a speedy recovery, as well as Olan Clements and anyone else who has been feeling under the weather.
 Menu for Feb. 26 - March 2:
 Monday, Feb. 26 - Chicken teriyaki, fried rice, seasoned vegetable blend, strawberries and bananas, and low fat milk.
 Tuesday, Feb. 28 - Rigatoni with meat sauce, garlic bread, seasoned lima beans, tossed salad with dressing, mandarin

oranges with whipped toppings, and low fat milk.
 Wednesday, Feb 29 - Chicken-fried steak, mashed potatoes, country gravy, stewed okra, seasoned corn, pumpkin squares, and low fat milk.
 Thursday, March 1 - Herb-roasted chicken, potato wedges, peas and carrots, strawberries with topping, and low fat milk.
 Friday, March 2 - Breaded fish on a bun, lettuce, tomato, pickle, tarter sauce, potato wedges, coleslaw with dressing, peach chantilly, and low fat milk.

Thanks for reading the Journal!

Obituaries and Death Notices

Death notices will be published free of charge in the Muleshoe Journal.
 Obituaries will be published at the rate of \$4.50 per column inch.
 In all cases, the death notice and obituary information should be submitted by the funeral home for verification purposes.
 The guidelines that will be used to determine if, and how much the publication will cost is as follows:
Death Notices...
 Death notices may include the deceased's name, city of residence, age, date and place of birth, date and place of death, and the names of parents. Survivor information will not be included.
 If the notice is to be published prior to any services, the time, date and location of services, and location of burial may be included.
 If publication will be after said services, the time will not be included.
Obituaries...
 Obituaries printed in the *Muleshoe Journal* are printed at the rate of \$4.50 per column inch, and may contain a variety of information, including but not limited to: Date and details of funeral and place of burial; date and place of birth and parents names; date of marriage; biographical information; names of parents, spouses or children who have preceded the person in death; names of survivors; and where memorials may be directed.
 A black and white photo will be included; however, there is an additional charge of \$75 to include a color photograph.

BAILEY COUNTY DEVOTIONAL PAGE

"THE FIVE AREA TELEPHONE COOPERATIVE, INC."
 West Plains Telecommunications, Inc.
 Five Area Systems, Inc. • Plateau Wireless
 Five Area Long Distance • Five Area Internet
 302 Uvalde Muleshoe, USA (806) 272-5533

McDONALD'S OF MULESHOE
 1315 W. American Blvd. • 272-3333
 Open at 5 AM every day! i'm lovin' it

PACO FEED YARD, INC.
 Commercial Cattle Feeders
 P.O. Box 956, Friona 265-3281
 Feller Hughs - Mgr.

MAPLE COOP GIN
 927-5501
 Maple, Texas

Pizza Hut
 1412 W. American Blvd. Muleshoe • 272-4213
 Open: Sun.-Mon. 11AM-11PM
 Lunch Buffet: Sun.-Fri. 11:30 AM-1:30PM
 Monday Night Buffet: 6-8PM
PIZZA HUT WING STREET IS HERE!
 "Gather round the Good Stuff"

Ray Lee EQUIPMENT CO., LTD.
 2800 West American Blvd. Muleshoe 272-4296

MULESHOE PEA & BEAN, INC.
 1680 CR 1044, Muleshoe • 272-5589
 Nicky Nickels

This spot could be yours! Call Rhea at the Muleshoe Journal for more details!

IRRIGATION PUMPS & POWER
Zimmatic W. Hwy. 84 272-5597
 CENTER PIVOTS

Interim HEALTH CARE
 110 E. Ave. C Muleshoe 272-5549
 www.InterimHealthcare.com
 Elizabeth Jaime, CSR • Olivia Barrera, Home Health Aide
 Birdie Valdez, LVN • Brenda Testerman, RN Case Manager

Lowe's MARKETPLACE
 401 W. American Blvd. • Muleshoe • 272-4585

Muleshoe Journal
 www.muleshoejournal.com
 201 W. Ave. C, Muleshoe
 806.272.4536 FAX 806.272.3567

1 Corinthians 13:4-8 (Solutions on A8)

I P C W I X J Z Q B E N H U N C A O W D Z K W Q K
 D Q T H G I L E D J F W G A V A N R T T W F B J G
 P A T L H W B B Y N I S F V P R Z G U Y V O W E W G
 A A U T E P T V V U I E O S Q D H L W X C H Q Y E
 N D R O C E R O N R A K P Z T J P P G G X V T O U
 H J E N E T U R E Y S E S O A A X Y X W J A N E F
 V U W L B R J A P I R E N W H E R E T H E R E V B
 Z G P D L O E V J S Y G L P L K G S A H R A M R C
 Y Y F S E I D J E V U M D F A I Z D M M T L B T B
 A Z K L J R T V O E B A A B S B R F E E J U S Z Q
 E P T T W J E S S I V C T B R E M E V L S E R L A
 E X O Q S R S G E T C L D J D V E O M Z W F B T J
 Y V O J E A B E N B T E B I Y U L K T A G O J H G
 S A D S O V O Q I A U S S F K N O R I Y O K N E Y
 B D W W A W K B S W Y H X A M N U R J N M S P K M
 H G Z A R D Y B G C O L V I U S O M P S G X R B K
 Y L G O S J R E H N W L I M T N E I T A P Q Q R V
 Q Y N Y N S F S O T D V A S L I A F R E V E N Y J
 J G L L K Z A R C Z P F L Q A Q R F T F N Z K A U
 S T C E T O R P R O P H E C I E S T C N L G T E B

"Love is patient, love is kind. It does not envy, it does not boast, it is not proud. It does not dishonor others, it is not self-seeking, it is not easily angered, it keeps no record of wrongs. Love does not delight in evil but rejoices with the truth. It always protects, always trusts, always hopes, always perseveres. Love never fails. But where there are prophecies, they will cease; where there are tongues, they will be stilled; where there is knowledge, it will pass away."

This devotional & directory is made possible by these businesses who encourage all of us to attend worship services.

ASSEMBLY OF GOD
FIRST ASSEMBLY OF GOD
 Pastor Ryan Pate
 521 South First Street
 272-3017
 S.S. 9:45 am,
 W.S. 10:30 am & 6:00 pm,
 Wed. 7:00 pm
EL BUEN PASTOR
 415 E. Ave. F - 272-5455
 Pastor Domingo Luna -
 272-4542
 S.S. 9:45 am, W.S. 11 am &
 6 pm; Wed. 7 pm

CATHOLIC
IMMACULATE CONCEPTION CATHOLIC CHURCH
 805 E. Hickory
 Leonardo Pahamtang, Min.
EPISCOPAL - CHARISMATIC
ST. CLEMENTS CHURCH
COMMUNION OF CHRIST THE REDEEMER
 Hwy. 214 South • 272-5954
 Father Sergio Leal
 Sun. W.S. 10:30 am

Growth Gr. 1:30 pm;
 Wed. 7:00 pm
LUTHERAN
ST. JOHN LUTHERAN
 Lariat, TX • David Symm, Min.
 S.S. 10:30 am; W.S. 9:30 am
METHODIST
FIRST UNITED METHODIST
 507 W. 2nd St.
 S.S. 9:45; W.S. 11:00;
 Praise & Prayer 6 pm;
 First Sunday of Month
 4 pm Parkview Nursing Home Service
 Mon. 9 am Ladies Bible Stdy;
 Tues. 6 pm Adult Bible Stdy;
 Pastor Monty Leavell,
 272-5517
LAZBUDDIE METHODIST
 S.S. 9:30 am; W.S. 10:30 am
 Pastor Ken Peterson
 965-2121
EL DIVINO SALVADOR U.M.C.
 619 E. 5th Street & Ave. G,
 Fernando Sanchez, Pastor
 272-6888

BAPTIST
CALVARY BAPTIST
 1733 W. Ave. C.
 Rev. Jeff Coffman
FIRST BAPTIST
 220 West Ave. E
 Dr. Stacy Conner
FIRST BAPTIST
 Lazbuddie • 965-2126
PRIMERA IGLESIA BAUTISTA
 223 E. Ave. E
 Interim Rev. Troy Smith
PRIMITIVE BAPTIST
 621 South First
 Elder Bernard Gowens, Min.
PROGRESS BAPTIST
 Progress, TX
PROGRESS SECOND BAPTIST
 Arthur Hays, Min. - 1st & 3rd
 Sundays
RICHLAND HILLS BAPTIST
 Bro. Larry Thornton
 17th & West Ave. D
 S.S. 10 am; W.S. 11 am
 www.rhbc-muleshoe.org
TRINITY BAPTIST
 314 E. Ave. B - Bennie
 Wright, Min.

CHRISTIAN
TRINITY CHRISTIAN CENTER
 1723 W. American Blvd.
 272-3877
 Reydon Stanford, Pastor
 Sun. W.S. 10:30 am
CENTRO CRISTIANO
 117 E. Birch St.
 Hermanos Barron
 S.S. 10 a.m.; W.S. 11 a.m. &
 6 p.m.; Wed. 7 p.m.
CHURCH OF CHRIST
LARIAT CHURCH OF CHRIST
 Wesley Roach, Min.
 S.S. 10 a.m.; W.S. 11 a.m. &
 6 p.m.; Wed. 7:30 p.m.
LAZBUDDIE CHURCH OF CHRIST
 Nathan Crawford, Min.
 S.S. 9:30 am; W.S. 10:20 am
 & 5 pm; Wed. 7 pm
MULESHOE CHURCH OF CHRIST
 22nd & W. American Blvd.
 S.S. 9:30 am; W.S. 10:20 am
 & 6 pm; Wed. 7:30 pm
16th & AVE. D CHURCH OF CHRIST
 Curtis Shelburne, Min.
 272-4619
 S.S. 9:30 am; W.S. 10:30 am;

PENTECOSTAL
UNITED PENTECOSTAL LIGHTHOUSE
 207 East Ave. G
 1-800-454-6051
 S.S. 10 am; Thursday,
 Bible Study 7 pm
INTER DENOMINATIONAL NEW COVENANT
 Plainview Hwy.
 Steve Claybrook, Pastor
 W.S. 10 am; Wed. 7 pm
MULESHOE COWBOY FELLOWSHIP
 710 E. American Blvd.
 Steve Friskup, Minister
 272-5199
 Service: 7:30 p.m. Thursday

Antiques & Fine Things
 2104 W. American Boulevard
 Muleshoe • 272-4217
Trollbeads
 every story has a bead!

This spot could be yours! Call Rhea at the Muleshoe Journal for more details!

CENTRAL COMPRESS & WAREHOUSE
 SUDAN, TEXAS

Deaf Smith County Grain, Inc.
 Cliff A. Skiles, Jr.
 Job S. Skiles

McCORMICK SEEDS, INC.
 400 East Ash • 272-3156
 Muleshoe, Texas
A COMPLETE LINE OF FIELD SEEDS
 Tim McCormick

ST BANK MEMBER FDIC
 202 South First 272-4515

Lial's TORTILLA FACTORY
 105 E. Ash St., Muleshoe • 272-5772
 Phillipians 4; "I can do all things through Christ who strengthens me."

MULESHOE ANIMAL CLINIC
 GENERAL PRACTICE
MVS
 1430 US Hwy. 84, Muleshoe Office: 272-3061

BOEHNING DAIRY
 690 CR 45, Earth
 "MILK - A PART OF EVERYTHING THAT IS GOOD!"

BCEC BAILEY COUNTY ELECTRIC COOPERATIVE ASSOCIATION
 A Touchstone Energy® Cooperative
 Muleshoe — 272-4504 Morton — 266-8600

WAYNE COPLEY TRUCKING
 CALICHE, SAND & ROCK PRODUCTS
 P.O. Box 63 Muleshoe, Texas 79347 (806) 272-3697
 Mobile: (806) 946-8072

J&S Dairy
 1260 CR 1038, Muleshoe 272-7706

To Place Your Ad Here Call Rhea At Muleshoe Journal 272-4536

BAILEY COUNTY DEVOTIONAL PAGE



AED Machines Presented

Great Plains Ag Credit presented Muleshoe Superintendent Dr. Gene Sheets and Springlake-Earth Superintendent Denver Crum with AED machines at the Bailey County Electric Cooperative's meeting room on Thursday, Feb. 16.

Photograph by Rhea Gonzales

The family of *Kline Buhrman* wish to express their Appreciation for your presence and support for the prayers, words of kindness and comfort, memorials, cards, food and your many calls.

It was *Kline's* pleasure to have your friendship as he truly enjoyed visiting with everyone these many years.

Blessings for each one of you.

Margaret Buhrman,
Marsha and Miles Welch and family,
Rodger and Peggy Buhrman and family, and
Curtis Buhrman

Use Sunscreen to Prevent Skin Cancer

DeShazo Spelling Bee Winner Announced

Lexi Pate of DeShazo Elementary won the MISD annual spelling bee on Feb. 16.

Brendon Mehl took second place in the competition, and Rebecca Berry was third.

Other DeShazo participants include, pictured below: Back row — Mercedes Manzanales, Jordan Spears, Brendon Mehl, Lexi Pate, Arturo Huerta and Jason Belmonte; and front row — Mia Reyna, Bode Box and Valentina Plata.



Spelling Bee Winner Lexi Pate

The Families of *Rebecca "Vickie" Villarreal* wish to thank you and extend our deepest gratitude and appreciation for every expression of love and concern that was shown to us during her illness and death. We extend a special thanks to the following: Rev. Jack Stone, First Assembly of God Church, Ladies and Choir of Immaculate Conception Catholic Church, Ellis Funeral Home, and the Staff of U-MC of West.

The pain is lessened by your kindness.

Jessie Villarreal Sr. Jessie Jr., Maureen, & Maya Villarreal
Michael & Desmond Villarreal Samuel Villarreal
Sarah, Freddy & Andrew Santos Manuel & Teresa Pineda
Ruben & Gloria Gonzales Ester Gonzales
Estolia Anguiano Rachel Pineda Mata



Watson Junior High Spelling Bee participants included, from left to right: Michael Lozano, Justin Reyes, Allegra Mora, Giovanni Ceja and Mario Dehoyos.

Don't Miss Out on your local news!

Subscribe TODAY!

Muleshoe Journal

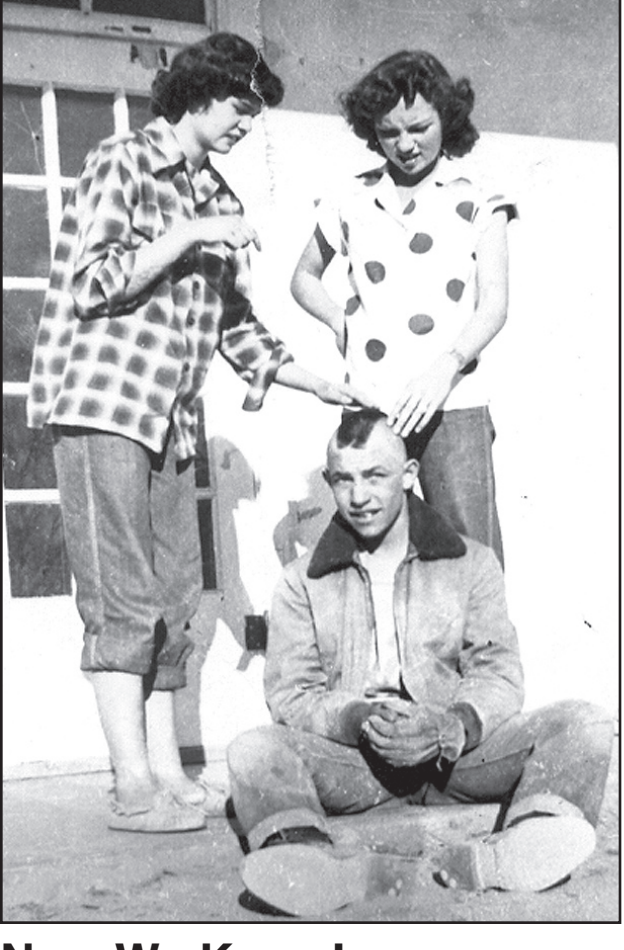
One year in Bailey County...carrier delivered **\$27.00**

One year in Bailey County...mailed **\$29.00**

One year "out of Bailey County"...mailed **\$40.00**

Electronic delivery...www.muleshoejournal.com **\$22.00**

201 W Ave C, Muleshoe, TX 79347
Call 806-272-4536



Now We Know! The individuals in the Muleshoe Journal photograph above have been identified as Carolyn Kirk, Norma Graves and Pete Collins.

5 STAR AUCTIONEERS PLAINVIEW, TEXAS

AUCTION

Wednesday, February 29, 2012 — Sale Time: 10:00 a.m.
LOCATED: From Lazbuddie, Texas (Parmer County) From Highway 145 & 1172 Go 4 Miles South Then Jog East Then 1 Miles South Then 1 1/2 Miles West.

MARTINEZ FARMS & BRYANT FARMS - OWNERS

For Information Telephone: Marcus Martinez (806) 566-5500 or Don Bryant (806) 272-5955 or Jacob Fehr (806) 566-7037
Or 5 Star Auctioneers: Jim Summers (806) 864-3611 or Jimmy Reeves (806) 864-3362
Check Our Website For Complete Listing: www.5starauctioneers.com
We are retiring from farming and the following will be sold at public auction.

TRACTORS —
1—2006 Case/IH MX255 M.F.W.D. Dsl. Tractor, Cab, A/C, Hlr., Radio, 3pt., 3 Hyd., Wts., Q.H., 14.9x30 Front Rubber, 46" Rear Rubber W/Duals (Sells with Trimble Guidance System) (4675 Hrs.) Shredded & Good
1—2005 Case/IH MX255 M.F.W.D. Dsl. Tractor, Cab, A/C, Hlr., Radio, 3pt., 3 Hyd., Q.H., 14.9x30 Front Rubber, 46" Rear Rubber W/Duals (Sells with 300 Gal. Front Mount Tank) (6112 Hrs.) Shredded & Good
1—1975 Case 1370 Dsl. Tractor, Cab, A/C, Hlr., Radio, P/S Trans., 3pt., 2 Hyd., Wts., 480/80R46 Rubber, Long Axles

COMBINE, PLATFORM, CORN HEAD, GRAIN CARTS —
1—2005 Case/IH 2388 Axial Flow Dsl. Combine, Cab, A/C, Hlr., Radio, Monitors (Sells With 1025 25' Grain Platform & 2006 Case/IH 2212 12 Row 30" Corn Head) Combine Has Approx. 700 Eng. Hrs & Approx. 545 Machine Hrs. S.N. HAJ 292028 Cornhead S.N. CBJ030922 Combine and Headers Clean & Nice (Sold as One Unit) With Wheat, Corn, Soybean Concaves
1—Lot Combine Parts
1—Lot #50 & #60 Combine Gathering Chains
2—A&L 650 T.T.A. Grain Carts
2—Big 12 400 Bu. Grain Carts

TRUCKS, GRAIN TRAILERS, GRAIN TRUCK —
1—1989 Volvo T.A. Truck Tractor, Integral Sleeper, Cat. Eng., 9 Spd. Trans. Sells As One Unit With 1-1984 Merritt 40' Double Hooper Btm. Grain Trailer, 64' Sides
1—1990 International T.A. Truck Tractor, Day Cab, Cummins Eng., 9 Spd. Trans. Sells As One Unit With 1-1985 Timpte 40' Super Hopper Btm. Grain Trailer, 60" Sides
1—1986 International S2300 T.A. Truck Tractor, Day Cab, Cummins Eng., 9 Spd. Trans. Sells As One Unit With 1-S/M 33' Hopper Btm. Grain Trailer

1—1984 International S2300 T.A. Truck Tractor, Day Cab, Cummins Eng., 9 Spd. Trans. Sells As One Unit With 1-1976 Timpte 40' Hopper Btm. Grain Trailer, 60" Sides
1—1984 Volvo T.A. Truck Tractor, Day Cab, Cummins Eng., 9 Spd. Trans., Sells As One Unit With 1-S/M 33' Hopper Btm. Grain Trailer
1—1975 GMC T.A. Grain Truck, V-8, 5 Sp., 2 Sp., 22' Bed, Hoist, 10.00x20 Rubber

COTTON EQUIPMENT, PEANUT EQUIPMENT, FARM EQUIPMENT, SPRINKLER PARTS, IRRIGATION, TRAILERS, TANKS, TOOLBAR MAKEUPS, 4 WHEELERS, SHOP EQUIP.,

Note: Any Announcement Sale Day Takes Precedence

Five Star Auctioneers
OFFICE: (806) 296-0379 — P. O. BOX 1030 — PLAINVIEW, TEXAS 79073-1030
WEB SITE: WWW.5STARAUCTIONEERS.COM
Terms of Sale: Cash, Personal or Business Check, Cashier's Check
All Accounts Settled Day of Sale — Lunch Will Be Available
NOTE: Please Bring Your Own Check Book. If You Have Not Established Yourself With Our Company, Please Bring Bank Letter.
WINCH TRUCK AVAILABLE ON SALE DAY • BRING YOUR TRUCK OR TRAILER • WE ARE AGENTS AND AGENTS ONLY

JIM SUMMERS(806) 864-3611
(10006) (HOME)
JIMMY REEVES(806) 864-3362
(Clerk) (HOME)
DONNA NOEL(806) 292-1990
(Secretary)

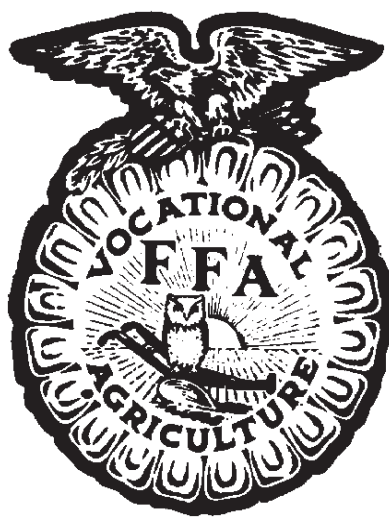
In Proud Recognition of Our Future Farmers

BELIEVE

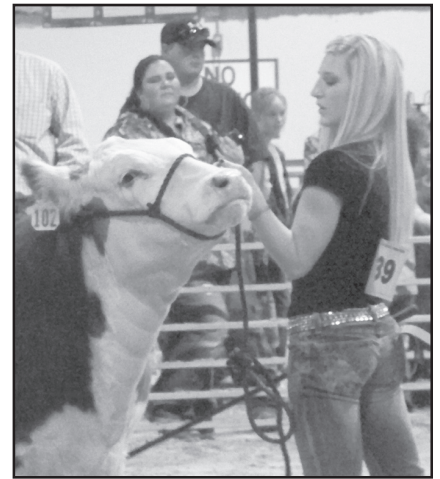
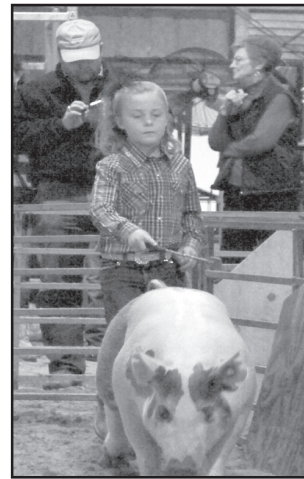
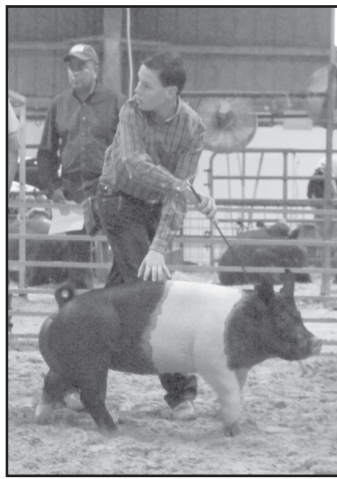
FFA Week February 18-25, 2012



2011-2012 Muleshoe FFA Officers
L-R Officers - Blake Edwards, Alex Mendoza,
Bailey Bessire, Jessica Kube, Stephanie Vasquez,
Tony Molina



2011-2012
Lazbuddie FFA
Members



FFA Week gives members a chance to educate the public about agriculture. During the week, chapters host teacher appreciation breakfasts, conduct "Ag Olympics" competitions, speak to the public about agriculture, volunteer for community service projects and more.

The week of George Washington's birthday was designated as National FFA Week in 1947 at a National FFA Board of Directors meeting. FFA Week always runs from Saturday to Saturday, and encompasses February 22, Washington's birthday.

We Proudly Support FFA!

Join these local businesses in Recognizing our local FFA members for their hard work.

We wish you continued success in 2012!

**Irrigation Pump & Power
Zimmatic**
W. Hwy. 84, Muleshoe
806-272-5597

**Muleshoe Animal Clinic
& Vet Supply**
1430 US Hwy. 84, Muleshoe
806-272-3061

**Bailey County Electric
Cooperative**
604 E. American Blvd., Muleshoe
806-272-4504

**Five Area Telephone
Cooperative, Inc.**
302 Uvalde Ave., Muleshoe
806-272-5533

**Bailey County Farm
Bureau**
1612 W. American Blvd., Muleshoe
806-272-4567

Lazbuddie Garage & Supply
P.O. Box 100, Lazbuddie
806-965-2188

J&S Dairy
1260 CR 1038, Muleshoe
806-272-7706

Muleshoe Journal
201 W. Ave C, Muleshoe
806-272-4536

**Support the Sponsors
that support our
local FFA!**

Dairy Direct
E. of Loves Truckstop, Clovis
575-762-7997

The Altman Group
310 Main Street, Muleshoe
806-946-9129

Ronnie Holt Insurance
218 S. Main St., Muleshoe
806-272-4271

Muleshoe Valley, Inc.
2601 W. American Blvd., Muleshoe
806-272-4266

Russell Spraying
637 Hwy. 214, Lazbuddie
806-965-2624

Capital Farm Credit
1601 W. American Blvd., Muleshoe
806-272-3010

Wilson Drilling
2900 W. American Blvd., Muleshoe
806-272-5521

Lowe's Marketplace
401 W. American Blvd., Muleshoe
806-272-4585

Blackwater Agri. Assn.
W. Hwy. 84, Muleshoe
806-272-4962

Muleshoe Tire, Inc.
807 Main Street, Muleshoe
806-272-4594

Leal's Restaurant
1010 W. American Blvd., Muleshoe
806-272-3924

Clays Corner Gin
558 Hwy. 214, Muleshoe
806-965-2176

Dale Oil Co., Inc.
413 W. American Blvd., Muleshoe
806-272-5576

NATIONAL FFA WEEK February 18-25, 2012

Engagement

Montanez, Castorena Set June Wedding Date

Mr. and Mrs. Robert Montanez of Portales, N.M., announce the engagement of their daughter, Amanda Montanez of Lubbock, to Miguel Castorena, also of Lubbock.

The prospective bride is a graduate of Clovis Christian High School and Clovis Community College, and is currently employed at Regis Salon.

The prospective groom is the son of

Sylvis Castorena and the late Gilbert Castorena of Muleshoe.

He is a graduate of Muleshoe High School and South Plains College. He is currently employed at United, and is a student at Texas Tech University.

The wedding has been set for June 9, 2012, at 6 p.m., at the Marriage Island on San Antonio's River Walk, with a reception to follow at the Pavillion.




The Sudan Buzz

USDA Announces New Highly Erodible Cropland Initiative For CRP

Agriculture Secretary Tom Vilsack has announced a new conservation initiative to protect up to 750,000 acres of the nation's most highly erodible croplands.

The new initiative will assist producers with targeting their most highly erodible cropland (land with an erodibility index of 20 or greater) by enabling them to plant wildlife-friendly, long-term cover through the Conservation Reserve Program (CRP).

Producers can enroll land on a continuous basis beginning this summer at their local Farm Service Agency (FSA) county office. With the use of soil survey and geographic information system data, local FSA staff can quickly determine a producer's eligibility for the initiative.

"As we work towards President Obama's vision for an economy that is built to last, America's natural resources must play an important role. Lands in CRP help support strong incomes for our farmers and ranchers and are the source of good middle class jobs related to outdoor recreation, hunting, and fishing," said Vilsack.

"This announcement will strengthen CRP by

focusing on protecting the most environmentally sensitive land. It targets limited resources where they can make the most difference for farmers, ranchers and to drive economic growth. I urge landowners who have highly erodible land to visit their county office to learn more about this program."

Lands eligible for this program are typically the least productive land on the farm. In many cases the most cost-effective option to reduce erosion is to put the land into a wildlife friendly cover, which will improve habitat and reduce sediment and nutrient runoff and reduce wind erosion. For 25 years, CRP has improved water and air quality, preserved habitat for wildlife, and prevented soil erosion. Programs such as CRP are important conservation safeguards. They prevent the return of the dust storms of the 1930s and the ravages of unmitigated gully erosions of our past.

CRP is a voluntary program designed to help farmers, ranchers and other agricultural producers protect their environmentally sensitive land. Through this initiative, eligible landowners receive annual rental payments and cost-share assistance

to establish long-term, resource conserving covers on eligible farmland.

Land can be enrolled on a continuous basis for a period of 10 years. Land currently not enrolled in CRP may be offered in this sign-up provided all eligibility requirements are met. Current CRP participants with eligible land expiring on Sept. 30, 2012, may make new contract offers.

CRP has a 25-year legacy of successfully protecting the nation's natural resources through voluntary participation, while providing significant economic and environmental benefits to rural communities across the United States. In addition today's announcement, USDA will conduct a four-week CRP general sign-up, beginning on March 12 and ending on April 6.

CRP continues to make major contributions to national efforts to improve water and air quality, prevent soil erosion by protecting the most sensitive areas including those prone to flash flooding and runoff.

At the same time, CRP has helped increase populations of pheasants, quail, ducks, and other rare species, like the sage grouse, the

lesser prairie chicken, and others. Highlights of CRP include:

CRP has restored more than two million acres of wetlands and two million acres of riparian buffers;

Each year, CRP keeps more than 600 million pounds of nitrogen and more than 100 million pounds of phosphorous from flowing into our nation's streams, rivers, and lakes.

CRP provides \$1.8 billion annually to landowners—dollars that make their way into local economies, supporting small businesses and creating jobs; and

CRP is the largest private lands carbon sequestration program in the country. By placing vulnerable cropland into conservation, CRP sequesters carbon in plants and soil, and reduces both fuel and fertilizer usage. In 2010, CRP resulted in carbon sequestration equal to taking almost 10 million cars off the road.

In 2011, USDA enrolled a record number of acres of private working lands in conservation programs, working with more than 500,000 farmers and ranchers to implement conservation practices that clean the air we breathe, filter the water we drink, and prevent soil erosion.

Producers are encouraged to contact their local FSA office or visit FSA's website at www.fsa.usda.gov/crp for additional information regarding CRP.

SISD CX Debate Team Does Well

By Cheri Sain
Sudan Correspondent

The Sudan CX Debate Team of Joaquin Azua and Doug Ames have advanced to the UIL State Meet in Austin the second week in March. Azua and Ames placed second at the tournament behind the first place team of Farwell.

Also competing for Sudan were Alex Hernandez, Andrew Ames, and Brianna Azua and Jacob Markham.

Hernandez and Ames placed third after defeating the Sundown CX team for that position.

Winning fifth place was the team of Azua

and Markham.

Two of the Sudan teams are also TFA State qualified.

The CX Debate contest is the first contest of the race for the annual district UIL Academic contest.

The team earned 28

points on Thursday putting Sudan in first place ahead of Farwell with 20 points and Sundown with 10 points.

The remaining eight schools in the district have not earned any points to date.

SUDAN ISD

EXCELLENCE

IN

EDUCATION



WWW.SUDANISD.NET

Hwy. 303 PHONE: (806) 227-2431
SUDAN, TX 79371 FAX: (806) 227-2146

NEWSPAPER POLICIES

Editorials are the opinion of the newspaper. They are written by staff members of the *Muleshoe Journal*. They are not signed because they express the position of the publisher, owners and the newspaper staff.

Letters to the Editor are written by readers of the newspaper. They are "brief" expressions of opinion (limited to 200 words), most concerning issues of local interest. Letters must be legible, with a single endorsement. All letters must be signed by the writer and must include a daytime telephone number for verification. Third party, form letters and unsigned letters will not be published.

Columns are the personal opinion of the writer whose byline appears with the column. Columns are assigned by the editor, and may be edited for content, length and space.

Letters to the Editor can be sent to:

Editor - Muleshoe Journal

P.O. Box 449, Muleshoe, Texas 79347

Fax: 806.272.3567 or e-mail: editor@muleshoejournal.com



Lance Insurance

Competitive Rates, Variety of Leading Companies
For Home, Auto, Commercial and Crop

806-227-2466



KING AG AVIATION, INC.

Specializing in Aerial Spraying - Insecticide, Herbicide & Seeding - Field Scouting Service

<p>Johnny King P.O. Box 189 Sudan, Texas 79371 Business (806) 946-3399</p>	<p>Home (806) 227-2211 Fax (806) 946-3659 Mobile (806) 946-7309 Vernon Office (940) 552-6102</p>
---	--

SUDAN VETERINARY SERVICES

S & S

CHRIS LARSON D.V.M.

- ◆Specializing in Dairy Medicine◆
- ◆Small Animal & Equine◆
- ◆Same Day Minor Surgery◆
- ◆Farm & House Calls◆
- ◆Climate Controlled Boarding◆
- ◆Services by Appointment Only◆

208 Ormand Street

806-227-2444 806-241-1915

www.muleshoejournal.com



Now offered at

J.W. HALTOM

Family Dentistry & Orthodontics



J.W. Haltom, Jessica Haltom, Amber Garcia and Erika Trotter

Come in for an Ortho Consult for only \$99!

- Invisalign, the new invisible braces now offered!
- Adults and children welcome!
- Convenient, no interest payment plan!

320 E. 8th St.
385-6935
Mon.- Thur. * 8 to 5
Fri. 8 to Noon

COMPOSTED CATTLE MANURE

Farwell Feed Yard -- Farwell
Cargill Cattle Feeders -- Bovina
Bovina Feeders -- Lazbuddie

BRANDON SCHILLING

Mobile 806-225-7700
OFFICE 1-800-650-2550

NORTH PLAINS COMPOST, INC.

PO BOX 1099
FARWELL, TEXAS 79325

ENTERTAINMENT NEWS

We complain when there's too...  **Newspaper Fun!**  ...much snow and when there's no snow!

www.readingclubfun.com Annimills LLC © 2012 V9-N8

Weird, Wintry Weather!

Wow! We are having weird weather this winter. The temperatures have been higher than normal in many areas for the first half of the winter season. Events have been called off due to lack of cold, ice and snow. Yet, I heard that some areas of Alaska have been having an "old-fashioned" winter with cold and lots of snow. Some homeowners are even shoveling snow off their roofs! They have had record snowfall!

Before going skating, check with your town's recreation department to make sure ponds are frozen solidly enough.

Ice is Safe! Open Today

Don't you just love a snowy day?

Can you do this dot-to-dot puzzle to see what's coming down? Next, find and circle the snowy day words in the word search puzzle.

Oh, no you don't!

Is that a carrot?

There's No Day Like a Snow Day!

Read the clues to fill in this wintry weather puzzle:

- handy to clean the driveway and sidewalks
- are sharpened and ready to glide
- will keep hands warm while building a snowman
- will keep people from slipping on ice
- is waxed and ready to carry friends downhill
- is stacked high and ready to fuel warm fires
- are next to the poles, ready to slide downhill

Words: toboggan, mittens, skis, woodpile, sand, shovels, skates

Word Search: S N O W, L E Z A L G I E, O N R U I T O, F R O Z E N, J U B Y F Y, G E N T R Y, H U Y E T, I C E, S N O W F L A K E, C O L D, F R O S T, G L A Z E, F R O Z E N, H A I L, S L E E T, I C I C L E S

No Snow? So What? Go!

Some people think that we may be in for more bitter, cold weather before spring arrives. Right now, in many areas it is too cold to stay outside for long periods of time, but there is no snow for sledding, and the ponds are not safe for skating. Yet, people are still getting outside for exercise and a breath of fresh air. **The fun activities below can be done when there's no snow. Can you fill in each blank with the word that is missing?**

Dad is putting _____ on the car, because a snowstorm may be coming.

Tag! You're It.

Kids are:

- playing a game of _____
- playing street _____
- scattering _____ for birds
- bouncing _____
- racing radio-controlled _____
- walking their _____
- kicking _____ balls

cars tag hockey
basketballs dogs seeds
snow tires soccer

Too Much Snow!

Fill in the missing letters to see what people are busy doing when there's just too much snow!

- s _ o _ e _ i _ g
- s _ o _ b _ o _ i _ g
- s _ o _ m _ b _ l _ n _
- s _ n _ i _ g
- s _ l _ i _ g

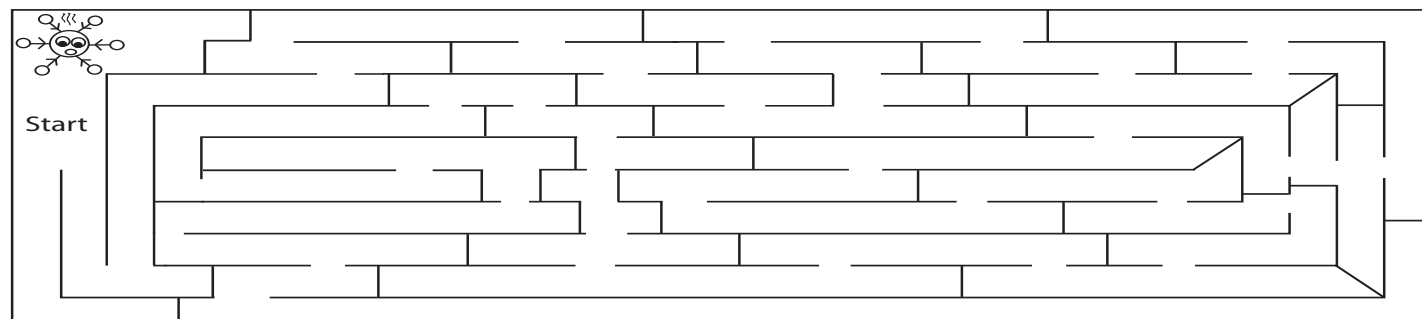
Visit our web site to print out new puzzles: **Snow and Ice**, and **United States Presidents**. Don't forget to print out the new reading log and certificate set too: www.readingclubfun.com

Free Puzzles!

Whaaaat!!! You haven't joined yet?

Snow Daze!

Just one little snowflake is swirling in the sky! Help him drift through the maze to land gently on the ground!



Finish

Health Tip

Did you know that using tanning beds can cause cancer? Be very careful (or stop) using tanning beds as you won't know how they will hurt you until you are older and the effects are not reversible. Be sure to tell someone you care about.

1 Corinthians 3:4-8

I P C W I X J Z Q B E N H U N C A O W D Z K W Q K
D Q T H G I L E D J F W G A V A N R T T W F B J G
P A T L H W B B Y N S F V P R Z G U Y V O W E W G
A A U T E P T V U I E O S Q D H L W X C H V Q Y E
N D R O C E R O N R A K P Z T J P P G G X V T O U
H J E N E T U R E Y S E S O A A X Y X W J A N E F
V U W L B R J A P I R E N W H E R E T H E R E V B
Z G P D L O E V J S Y G L P L K G S A H R A M R C
Y Y F S E I D J E V U M D F A I Z D M M T L B T B
A Z K L J R T V O E B A A B S B R F E E J U S Z Q
E P T T W J E S S I V C T B R E M E V L S E R L A
E X O Q S R S G E T C L D J D V E O M Z W F B T J
Y V O J E A B E N B T E B I Y U L K T A G O J H G
S A D S O V O Q I A U S S F K N O R I Y O K N E Y
B D W W A W K B S W Y H X A M N U R J N M S P K M
H G Z A R D Y B G C O L V I U S O M P S G X R B K
Y L G O S J R E H N W L I M T N E I T A P Q Q R V
Q Y N Y N S F S O T D V A S L I A F R E V E N Y J
J G L L K Z A R C Z P F L Q A Q R F T F N Z K A U
S T C E T O R P R O P H E C I E S T C N L G T E B

Subscribe!

SHOP THESE MULESHOE MERCHANTS!

Muleshoe Auto Parts

Quick Oil Change & Service
102 W. American Blvd.
272-4288

Auto Plus

FARMERS INSURANCE GROUP
Symbol of Superior Service

FARMERS

Julie DeBruin
Agent

Call for a free quote
AUTO • LIFE HOME • BUSINESS
1602 W. American Blvd.
Muleshoe, Texas
272-7548
jdebruin@farmersagent.com

2231

RED WING SHOES
Made in USA

The Fair Store
120 Main 272-3500

LOWE'S

Lowe's MARKETPLACE

401 W. American Blvd.
Muleshoe, Texas
272-4585

Tip your newspaper carrier

This is the perfect way to tell your carrier "Thank you" for delivering your newspaper each week.

You're contributions are appreciated and we look forward to serving your home well into the future!

Missed your paper or have a special request? **Call Bobby or Melissa Flores at 272-5856.**

Support The Merchants Who Support Your Local News!

If Your Door is Stuck... You're in Luck!

CMB GARAGE DOORS
Factory Certified Door Technicians

Ask About Our **TRADE-UP Incentive**

Sales, Service & Repair Specialists

575-763-1216
www.cmbgaragedoors.com

We're at Your Service

Visit the following local businesses for quality service and customer satisfaction!

Interested in Advertising your business in this location? Call Rhea at the Muleshoe Journal, 272-4536 or 806-518-4606

Handy Randy
We will travel!

If we can't fix it, throw it away!
Sheetrock, Drywalling, Tape & Bed, Patch Up Jobs, Acoustic & Paneling, Small Concrete Jobs, Picket Fences, Bathroom Remodeling, Floor Tile, Sky Lights, Carports, Garage Doors, Insulation, Etc. Add On's and Roofing - References Available

Pager: 766-9342
Home: 806-385-3103
Member of BBB of Lubbock
Cell: 806-632-5261
Littlefield, TX

SPORTS NEWS

Mules Fall To District Champions Wildcats

By Delton Wilhite
Sportswriter

The Idalou Wildcats demonstrated for the Mules Monday afternoon why they were the undefeated champions of District 2-2A.

The Cats poured in 46 points in the opening half and that was enough for the victory.

The Mules seemed to have left the key to the defense that would have slowed down the Wildcat scoring machine.

Idalou pumped in 27 points in the first period and made only one 3-pointer.

The Cats hit cruise control for an 83-45 win in the final regular season game. Idalou advanced to the playoffs and the Mules moved on to spring sports.

Eli Leal began a drive before passing the ball out side the 3-point arc to Beau Avila.

Avila's shoulders were square with the hoop and sank the trey one minute into the game.

He finished a fast break with a basket before the period ended.

Leal sank a 3-pointer. Eric Orozco finished a fast break for a hoop before he nailed a 3-pointer from the corner.

Saul Elizalde added a basket before the period ended.

The Mules trailed 27-15 going into the second quarter.

Idalou found the hoop for 19 points in the second period.

Elizalde made a trey with four minutes left in the half for the Mules first points of the second quarter. He nailed a second before the half.

Shawn Atwood was fouled shooting from the blocks and made both free throws.

The Mules had scored eight points and trailed 46-23.

Idalou hit the floor hot in the third period and pumped in 25 points. They followed that with 14 in the final period.

Avila and Orozco

each sank two free throws and hoop in the third quarter. Juan Guerrero put back and offensive rebound for a basket.

Elizalde dropped in a 3-pointer for his final points as a Mule.

The Mules trailed 69-36 with eight minutes left in the Mules' season.

Leal lit up the score board with seven points in the final quarter. He made a trey and four charity tosses.

Guerrero added a hoop for his final basket.

Leal led the Mules with 10 points that included a pair of treys and four free throws. Elizalde made three treys and a hoop for his 11 points.

Avila and Orozco finished with nine points each. Guerrero scored four points and Atwood chipped in two.

The Mules started spring sports or off-season football later in the week.



Mule Saul Elizalde drives for the basket in the game against Friona.

JV Mules Defeated By Wildcats

By Delton Wilhite
Sportswriter

The JV Mules zeroed in their shooting eyes from behind the 3-point arc in Idalou Monday afternoon.

The Mules poured in 11 treys during the 32 minute game.

The Mules 3-point show was not enough to slow down Idalou and the Wildcats jumped out to an early lead with a 26-8 run in the first quarter.

The Mules rallied in the second period with four treys to out score Idalou 14-13.

The Wildcats led 39-22 at the half.

The Wildcats cruised to a 74-54 win over the Mules in the final game of the season.

Nacho Elizalde got the Mules started from behind the arc with two

treys. Blaine Hurtado made a basket for the Mules first points of the game.

Matthew Barron heated up in the second quarter with a pair of 3-pointers and a basket.

Hurtado and Grey Johnson each dropped in a trey before the half.

The Mules cooled down from long range in the third quarter. Barron finished two fast breaks for baskets and Hurtado completed one break.

Tony Molina scored a basket in the paint and Jaxiel Lopez sank a 12-foot jump shot.

Elizalde had the Mules only trey of the quarter.

The Mules trailed 54-35 with eight minutes left to play.

Saul Sanchez made back-to-back 3-pointers in the final quarter after Molina made the Mules first basket.

Barron drained a pair of treys and Hurtado made two hoops and free throw.

The Mules had played the Wildcats within three points in the second half.

Barron led the Mules with four treys and 18 points.

Hurtado dropped in 12 points and Elizalde's three treys added nine points. Sanchez made two from behind the arc for six points.

Molina finished with four, Johnson three and Lopez chipped in two.

The JV Mules started football off season and spring sports later in the week.

Muleshoe Country Club Ladies Association

The Ladies Association of Muleshoe Country Club held their monthly meeting and luncheon on Feb. 15.

A lunch of chicken spaghetti, salad, bread and cherry cobbler was provided by Jerie Flowers, Helen Templeton, and Deborah Noble.

Linda Erdmann called the meeting to order, and asked Deborah to offer the prayer.

The birthdays for the month of February are Helen Templeton and Donna Glover.

Judy Wilbanks gave the treasurers report, and some old business was discussed.

The ladies association will have a general cleaning day on March 12 at 9 a.m.

Plans are in place to find a new golf handicapping system, and Pat Kirk was assigned to be this year's tournament chairman.

Additionally, plans are being made to purchase some new flooring and make a few other improvements to the appearance and function of the club.

Jerie Flowers reported on the play day winners for the year so far. For golf on Jan. 4, Tammy Black won for closest to



Helen Templeton and Pat Kirk

the pin on Hole 9, while Deborah Noble won the prize for fewest putts on Feb. 1.

The winners for cards on Jan. 18 was Pat Kirk and Treena Matthews for high score on the first hand.

Jan. 25 Judy Wilbanks had the first pat hand, and on Feb. 1 Helen won

for first pat hand.

On Feb. 8, Laverne Winn and Treena got the prize for best sport.

Marlene Martin then held the drawing, and the lucky winner was Jerie Flowers. The meeting was then adjourned, and eight ladies played cards.



Results Next Week

The Varsity Mules faced off against Sundown Monday evening in a rescheduled game, the details of which will appear in next week's issue.

Photograph by Larry Thornton

Support the Boosters Who Support Our Teams, Schools and Community!

MULESHOE ANIMAL CLINIC & MULESHOE VET SUPPLY
1430 US HWY. 84, MULESHOE
272-3061 OR 272-4990

BCEC
A Touchstone Energy Cooperative
BAILEY COUNTY ELECTRIC COOPERATIVE ASSN.
610 E. American Blvd.
Muleshoe • 272-4504

McDonald's
i'm lovin' it
McDONALD'S OF MULESHOE
1315 W. American Blvd.
806-272-3333

Muleshoe Tire

107 Main Street, Muleshoe
272-4594

FIVE AREA TELEPHONE COOPERATIVE

302 Uvalde
Muleshoe, TX
272-5533

WESTCARD

Western "66"
607 N. 1st St.
Muleshoe • 272-4556

CHS
Service Center
Clovis Hwy. West
Muleshoe • 272-4203
Bruce Bruns, Location Mgr.

Irrigation Pumps & Power
www.drippi.com
West Hwy. 84
Muleshoe • 272-5597
ZIMMATIC CENTER-PIVOTS

LOWE'S MARKETPLACE
401 W. American Blvd., Muleshoe
272-4585

Serve Wholesale only, as if you were serving the Lord, not man. Ephesians 6:7
MV ALLEY INC.
2601 W. American Blvd.
P.O. Box 631
Muleshoe, Texas
(806) 272-4266
Mobile (806) 946-8763
mviinc@fivearea.com

Health Tip

Did you know that chewing tobacco is almost as dangerous as smoking? Consider ways to cut your risk by sometimes chewing gum instead.

Be sure to tell someone you care about.

WE SUPPORT THE MULES & LADY MULES!

SOFTBALL

Feb. 28th • VG - 7:00 PM (Lubbock Titans, Here)
Mar. 6th • VG - 5:00 PM • JVG - 5:00 PM (Brownfield, There)

BASEBALL

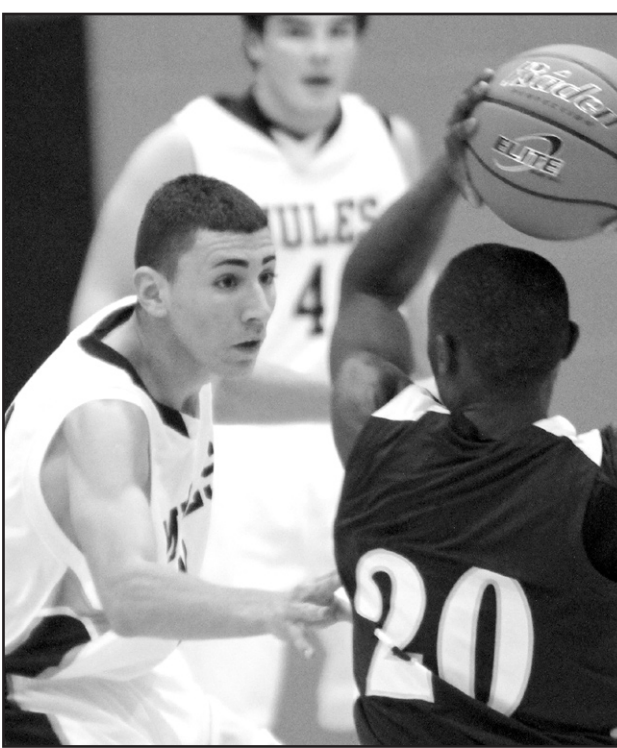
Feb. 23 - 25 • VB - TBA (Shallowater Tournament, There)
Feb. 28th • VB 7:00 PM • JVB - 4:30 PM (Smyer, Here)



SPORTS NEWS



2012 Muleshoe Basketball



INDOOR STORAGE FOR LARGE EQUIPMENT AVAILABLE

COMBINES, COTTON STRIPPERS, PLANTERS, TRAILERS, RVS

MONTHLY RATE DEPENDING ON SPACE USED

CALL MAX KING @ 806-946-8455 (CELL)
OR 806- 272-3918 (HOME)

COMPLETE AUTOMOTIVE REPAIR



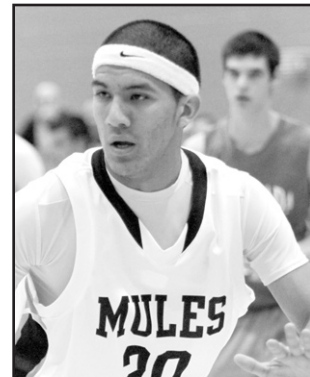
Burton Service Center

272-5330
Cell: 946-8274

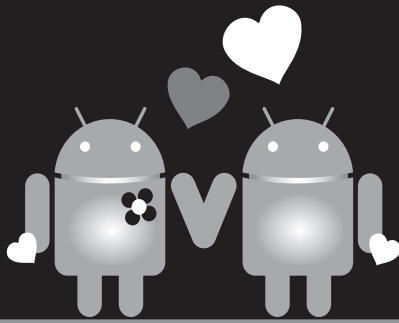
IRRIGATION ENGINES & SERVICE
COMPUTER DIAGNOSTICS
OIL CHANGES STATE INSPECTIONS

803 W. American Blvd., Muleshoe

Photographs by Stacy Conner



A SWEETHEART Deal You'll LOVE!



With the Alcatel 990S Android phone and Plateau, you'll have access to 1000s of popular apps, the best regional network, and other extras you can only get from Plateau, such as **Unlimited Texting** for only **\$4.95** per month, Carryover Minutes and the lowest cost local calling plans.

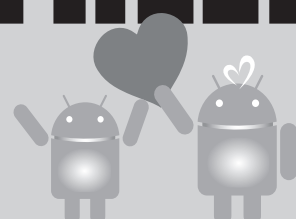
Find the nearest Plateau store at www.plateautel.com.

Call today to learn more!

Sign up for new wireless service in February, and get the Alcatel 990S Android phone

FREE!

Offer ends February 29, 2012. Alcatel 990S Android phone is available for FREE with a two-year contract for wireless service. Other restrictions apply. Visit a Plateau store for complete details.



1-877-PLATEAU (752-8328)
plateautel.com

PLATEAU

CLASSIFIEDS

Deadline is Monday at noon to place a classified ad. Call 272-4536.

HELP WANTED

4 Temp positions: Farm work, 4/1/12 to 12/31/12 @ 11.61 p/hr. Housing provided, 48 hrs p/wk. 3/4 guarantee, transportation and subsistence expenses to worksite paid after 50% completion of contract. Tools, equipment provided at no cost. Min. 3 months experience. Duties: drive, plant, harvest, store grain, repair operate tractor, rock picker, plow, disc, drill, harvest equip, sprayer, grain truck. Must be able to obtain a drivers license within 30-90 days following hire. Green Circles Farm, Golva, ND, Interested? **Apply at ND Workforce Solutions office job # 268132.**

2 Temp positions: Farm work, 3/5/12 to 12/31/12 @ 11.61 p/hr. Housing provided, 48 hrs p/wk. 3/4 guarantee, transportation and subsistence expenses to worksite paid after 50% completion of contract. Tools, equipment provided at no cost. Min. 3 months experience. Duties: drive, plant, harvest, store grain, repair operate tractor, rock picker, plow, disc, drill, harvest equip, sprayer, grain truck. JES Farms Partnership, Pierre, SD. **Apply at nearest SD Dept of Labor office use job listing # SD1550713.**

16 Temp positions: Farm work, 3/30/12 to 12/31/12 @ \$15.00 p/hr. Free housing, 48 hrs p/wk. 3/4 guarantee, transportation and subsistence expenses to worksite paid after 50% completion of contract. Tools, equipment provided at no cost. Tasks: Loading, mixing, hauling, and spreading of fertilizer, maintenance and repair of farm equipment. 3 months exp. Must be able to obtain a drivers license within 30-90 days following hire. United Agronomy, Berthold, ND. **Apply ND Dept of Labor & Workforce Dev., job order #267796.**

3 Temp positions: Farm work, 4/2/12 to 12/31/12 @ 15.00 p/hr. Housing provided, 48 hrs p/wk. 3/4 guarantee, transportation and subsistence expenses to worksite paid after 50% completion of contract. Tools, equipment provided at no cost. Min. 3 months

and subsistence expenses to worksite paid after 50% completion of contract. Tools, equipment provided at no cost. Min. 3 months experience. Duties: drive, plant, harvest, store grain, repair operate tractor, rock picker, plow, disc, drill, harvest equip, sprayer, grain truck. Must be able to obtain a drivers license within 30-90 days following hire. Green Circles Farm, Golva, ND, Interested? **Apply at ND Workforce Solutions office job # 268132.**

2 Temp positions: Farm work, 3/5/12 to 12/31/12 @ 11.61 p/hr. Housing provided, 48 hrs p/wk. 3/4 guarantee, transportation and subsistence expenses to worksite paid after 50% completion of contract. Tools, equipment provided at no cost. Min. 3 months experience. Duties: drive, plant, harvest, store grain, repair operate tractor, rock picker, plow, disc, drill, harvest equip, sprayer, grain truck. Must be able to obtain a drivers license within 30-90 days following hire. United Agronomy, Berthold, ND. **Apply ND Dept of Labor & Workforce Dev., job order #267796.**

2 Temp positions: Farm work, 3/31/12 to 12/31/12 @ 11.61 p/hr. Housing provided, 48 hrs p/wk. 3/4 guarantee, transportation and subsistence expenses to worksite paid after 50% completion of contract. Tools, equipment provided at no cost. Min. 3 months

experience. Duties: drive, plant, harvest, store grain, repair operate tractor, rock picker, plow, disc, drill, harvest equip, sprayer, grain truck. Cronin Farms, Inc., Gettysburg, SD. **Apply at nearest SD Dept of Labor office use job listing # SD1551181.**

2 Temp positions: Farm work, 4/7/12 to 12/31/12 @ 15.00 p/hr. Housing provided, 48 hrs p/wk. 3/4 guarantee, transportation and subsistence expenses to worksite paid after 50% completion of contract. Tools, equipment provided at no cost. Min. 3 months experience. Duties: drive, plant, harvest, store grain, repair operate tractor, rock picker, plow, disc, drill, harvest equip, sprayer, grain truck. Racota Valley Ranch, Hazel, SD. **Apply at nearest SD Dept**

of Labor office use job listing # SD1550326.

Cargill Cattle Feeders, Bovina Texas - Positions available in the cattle department. Cattle department responsibilities include processing cattle, doctoring, shipping, riding pens, and other duties as assigned. Applicants must be willing to perform all of these responsibilities. Work schedule will include 1&1/2 days off on most weeks and hours

will average 50-60 straight wage no overtime. Position include full benefits package including 401K and Health Insurance. (806)225-4400. interested applicants should apply in person at Cargill Cattle Feeders 600 US HWY 60. *Continued on B4*

be able to obtain a drivers license within 30-90 days following hire. Smetana Farms, Lansford, ND, Interested? **Apply at ND Workforce Solutions office job # 268614.**

4 Temp positions: Farm work, 3/26/12 to 12/31/12 @ \$11.61 p/hr. or \$2200 p/m, whichever is highest. Housing provided, 48 hrs p/wk., 3/4 guarantee, transportation and subsistence expenses to worksite paid after 50% completion of contract. Tools, equipment provided at no cost. Min. 3 months experience. Duties: drive, plant, harvest, store grain, repair operate tractor, rock picker, plow, disc, drill, harvest equip, sprayer, grain truck. JES Farms Partnership, Pierre, SD. **Apply at nearest SD Dept**

DRIVER

Now Hiring for Exciting Opportunity!

Regional Drivers Home Every Other Day Set Route & Great Pay Milk Run to Tulsa, OK Free Medical Benefits Avail. CDL-A w/1 yr. T/T exp. Must have tank endorsement

800-879-7826
www.ruan.com/jobs

RUAN
Dedicated to Diversity. EOE

REAL ESTATE

FARM REAL ESTATE FOR SALE
Northeast Lamb County, Texas
307.24 acres, more or less
The owner offers for sale the following described real estate:
307.24 acres of land, more or less, being in the N/2 of Section 23, Block 0-2, D. & S.E. RR Co. Survey.
The Seller will accept bids which must be received by **4:00 P.M., February 28, 2012**. The top bidders will be notified and invited to attend a private auction.
Seller reserves the right to reject any and all bids and waive any irregularities of sale. Any announcements on the date of sale will take precedence over any prior advertisements.
For other information concerning the farm, interested bidders should obtain a copy of the bidder's information packet from Howard Huisinga or Stephanie Hagen at Rabo AgriFinance, Inc. at fm.us.stlouis.RA@AGSAM@rabobank.com or call (800) 395-8505.

Medwards Realtors
FARM & RANCH RESIDENTIAL COMMERCIAL

LAND

360 acres - Two pivots, on highway. With 1004 cotton yields. **SOLD**

1440 acres - Seven pivots, 600 gal. water, with 1021+ cotton yields. **SOLD**

360 acres - Three pivots, 500 gal. water, with 936+ cotton yields. **SOLD**

Springlake - 35 acres just east of town on Highway 70. Dryland cotton land or home place. \$70,000.00

RESIDENTIAL

Sudan - 104 Ormand, 2180sf 3-2-2 home, lots of space, nice yard, close to school, low cost/sq.ft. at \$65,500.

Sudan - 406 Wilson, 3-2-1. Very nice brick home. 1291sf at \$52,500.

Sudan - 205 Smith, 2-3-2. Plus basement or another bedroom 1794 sf plus 528 sf Garage, outside storage, close to school. \$97,800.

COMMERCIAL

Muleshoe - Investment Opportunity, (SELF STORAGE UNITS) - 509 West American Blvd. 44 units, plus office rental, 100% leased on 100 X 140 corner lot. W HWY 84. Asking \$174,500.

Littlefield - 701 West 3rd. Laguna Market: 40x40 metal building, combination Deli and convenience store. Money Maker, Large Lot close to school. Frisbee course brings in a lot of customers.

Monty Moore Broker **Vernie Moore Agent**

(806) 227-2465
Free consultation! We will work with other brokers.
www.medwardsrealtors.com

STEPHENS REALTY
Keith Stephens, Broker
Jane Stephens, Realtor

Keith 806-789-4311 Jane 806-787-5925
stephensrealty@suddenlink.net
www.stephensrealtytx.com

MULESHOE: 1513 W Ave J - 3/2.5/2 + basement, Geo-thermal heat and air, Double Pane Windows, open concept, neutral colors, 2 water heaters, large workshop, many extras, outstanding location. **Price Reduced \$138,000**

MULESHOE: 905 Ivy - near COUNTRY CLUB - 3/3/2 - 2516 sq ft - large living area w/ fireplace, isolated master suite, extra storage thru/out, Central air/heat, one owner, great family home. Call for more details. **\$134,600**

Byrd Realty
Ronald Byrd 575-760-1495 Licensed Broker
Crista Bass 806-946-7261 Sales Associate
Carleton Johnson 806-789-4289 Sales Associate

- Very nice 3 bedroom, 2 bath brick home, central air and heat, fireplace, stove, dishwasher, extra room for den, bedroom, or playroom, new fenced backyard, 2 car garage, priced to sell. Call for an appointment today!
- Nice 2 bdr, 1 bath brick home, central heat, appliances, large tile single car garage, fenced backyard, Only \$60,000. Call for an appointment today!
- **Lazbuddie-New Country Listing on Highway**- Spacious Spanish Style brick home, 3 bedroom, 2 1/2 bath, built-ins, central A/H, sunroom with indoor grill, fireplace, office, large utility, lots of storage, patio, 2 car garage, plus a lot more, all on approx. 10 acres, call for an appointment today!!
- **New Listing** - 2 bedroom, 2 bath home, central air and heat, fireplace, utility room, large living room/dining room, stove, dishwasher, all on corner lot, priced to sell.

228 Main Street, Muleshoe, Texas
Check all of our listings at www.byrdrealestate.net

Nieman Realty

116 E. Ave. C • George Nieman, Broker • 272-5285 or 272-5286
CHECK OUR LISTING INFO., PHOTOS, ETC. ON-LINE AT www.niemanrealty.com
HAVE BUYERS! NEED HOME AND LAND LISTINGS!!

HIGH SCHOOL AREA

- VERY NICE 3-2-2 Brick Home, Cent. A&H, built-ins, FP, approx. 2336' lv. area, auto. spklr, fenced yd, MORE!! **\$125K!!**
- NICE 3-2-2 Home, corner lot, built-ins, Cent. A&H, workshop/storage plus storage building!! 1974' lvg. area!! **\$96K!! PRICE REDUCED \$79,500**
- Remodeled 3-2-1 Det. Garage Home, Cent. A&H, built-ins, hdwood & tile floors, 4 fans, fenced yd., approx. 1520' lv. area!! **\$80K!!**
- **REMODELED 2-1-1** (detached garage) Home, Cent. A&H, built-ins, workshop/stor.) fenced yd!! MORE!! **\$40K!!**

RICHLAND HILLS • PARKRIDGE • HIGHLAND

- 2 Nicely Remodeled Duplex Units & 1 NEW Duplex Unit!! **Price Reduced!! \$410K!!!!**
- NICELY REMODELED 3-2-2 Brick, new Cent. A&H, built-ins, FP, 3125' lv. area, spklr. sys., fenced yard, MORE!! **REDUCED \$195K!! MAKE OFFER!!**
- Nicely Remodeled 3-2-2 Brick, Cent. A&H, built-ins, FP w/wood pellet insert, corner lot, fenced yd., auto. spklr., + lot w/stor. bldg!! 2159' lv. area!! **\$179K!! REDUCED!**
- VERY NICE 3-2-2 Brick Home, Cent. A&H, built-ins, FP, approx. 2749' lv.area, lots of storage, nice courtyard & landscaping, workshop/storage/fenced yd., Much More!! **Reduced-\$175K!**
- VERY NICE 3-2-2 Brick Home on corner lot, Cent. A&H, built-ins, FP, remodeled bathrooms, nice carpet & tile, sunroom, fenced yd., auto. spklr., approx. 2216' lv area!!! **\$125K!!**
- 3-2-2 Brick, Cent. A&H, built-ins, approx. 2310' lv. area, 2 Franklin wood stoves, storm shelter, fans, fenced yd., man. spklr.!!! **\$120,000!!**
- NICE 3-2-2 Brick Home, Cent. A&H, built-ins, FP, fans, auto. sprinkler, cov. patio!! Approx. 1781' lv. area!! **\$82,500!!**

LENAU • COUNTRY CLUB

- 3 Bdrm, 2 bath, 2 carport, Cent A&H, Dishwasher, WB Stove, approx. 2156' lv. area, \$60K!!
- 3-2-1 CP Brick Home, corner lot, fenced yd., DW, FP, tile & carpet, alarm sys., man. spklr., 2 cp & 2 stor. bldg!! **\$80K!!**

RURAL

- VERY NICE CUSTOM BUILT 3 Bedroom, 3 Bath, 2 car garage home, at edge of town on 80 acres!! Geothermal heat & air, built-ins, FP, ash cabinets, approx. 2544' main lv. area plus 625' finished basement w/safe & storage, spklr system, beautiful trees and landscaping, circle spklr, 5 wire barbwire fence, 36' x 48' metal insulated bldg w/2 12' doors!! MUCH MORE!!
- VERY NICE 4-3 doublewide (2006) on 7.38 acres, Cent. A&H, built-ins, FP, fenced yd., 28' x 40' Metal Bldg. septic system, domestic well, on pavement close to town!! **\$152K \$130K!! MAKE OFFER**
- NICE 4.8 acre homesites, deed restricted!! **\$17,500!!**
- LARIAT AREA - 3-1 Home, Cent. heat, 5 acres, 1989' lv. area (2 story), 2880' quonset barn, out bldgs., **Reduced \$39K!! POSSIBLE OWNER FINANCE!!**
- 3-2-2 HOME ON 2 AC. (2860 FM 303)- APPROX. 2146' lv. area, DW, ceiling fans, thermal windows, lg. conc. patio, workshop/storage!! **\$89,000!! \$80 K!!**
- **PROGRESS**- 3-2-2 Home, Cent. Geo, A&H, built-ins, FP, approx. 2064' lv. area on 1.24 acres, 2 wells, 720' insul. mch w/288' awning, carport, storage Bldg., cellar!! MUCH MORE!! **\$125K!!**
- West of Sudan 3-2-2 Brick Home on 5.57 acres, Cent. A&H, builtins, approx. 2688' lv. area, fenced yd., 40' x 80' quonset barn!! MUCH MORE!! **\$135K!!**
- NICE 3-2-2 Home on 11 acres at edge of town, Cent. A&H, built-ins, FP, freshly painted interior, thermal windows & doors, plus 1 bdrm house, workshop, storage, greenhouse, plus 3 garages, barns & outbuildings!! **\$155,000!!**
- FM 1760 @ edge of town, nice 3-2-2 carport home on 3 acres, cent. A&H, built-ins, FP, approx. 2253' lv area, fenced, horse barn w/corrals, hay & tack room!! **\$105K!!!**
- Remodeled 3-2 Home on 20 acres, Cent. A&H, built-ins, basement, nice yard, auto. spklr., wkshp., stor. bldg. approx. 2145' lv. area!! **\$150K!!**

LAND & COMMERCIAL

- Building w/approx. 3300' plus 1040' upstairs, Cent. A&H, 2 restrooms, MORE! **\$39,500!! MAKE OFFER!!**
- Approx. 1080' metal bldg. w/off. & 3 bay garage/workshop area plus chain link fenced area!! **\$39,500!!**
- GREAT BUSINESS LOCATION - 13000' Bldg., 7000' paved parking, corner lot, Hwy. 84 & Main. A&H, \$100,000!!
- NICE 7000' bldg., Cent. A&H (2-3 yrs old), corner lot, \$70,250!!
- 101.8 acres, edge of town, pasture & farm land, 1 irrig. well!! **\$122,244!!**

MANAGEMENT OPPORTUNITY

Sonic Drive-In is on the grow - with exciting opportunities for fast food restaurant general managers, managers and assistant managers. Are you looking for a change? Sonic is a quick service food chain whose time has come again . . . on the grow with new ideas and innovations in the food industry. We want to take a few potential managers and provide them with the opportunity to achieve. If you have food service experience, operational and people skills, the willingness and stamina to follow through, a possibility of relocation, and a desire to work, then Sonic may be the place for you. We are a locally owned and operated franchise with 35+ years of success.

Please send resumes to:
J. Howard
217 Springfield
Clovis, NM 88101

SONIC
America's Drive-In

January Milk For Texas Show Increase

Texas milk production totaled 827 million pounds during January, up 3.8 percent from last year's production of 797 million pounds. December 2011 production totaled 809

million pounds. The number of milk cows during January averaged 435 thousand head, up 10 thousand head from last year, but unchanged from December 2011.

Production per cow averaged 1,900 pounds during January, 25 pounds more than last year and 40 pounds more than December 2011.

Production per cow during January averaged 1,857 pounds, 46 pounds above a year ago.

Milk production in the 23 states participating in the monthly survey totaled 15.8 billion pounds, up 3.7 percent from production in these same states in January 2011.

The average number of milk cows in the 23 states was 8.50 million head, 93 thousand head more than last year and up 13 thousand head from December 2011.

More Classifieds

Continued from B3

Positions available as nightwatchman. Responsibilities include unloading cattle, bunk reading, housekeeping, and other duties as assigned. Applicants must be willing to perform all of these responsibilities.

This is night shift position 4pm to 4am. Work schedule will include 2 days off on most weeks and hours will average 50-60 straight wage no overtime. Position includes full benefits package including 401K and Health insurance. Interested applicants should apply in person at Cargill Cattle Feeders 600 US Hwy 60. (806)225-4400.

Sonic Drive-In is now accepting applications for dependable, mature, enthusiastic, friendly crew members for all shifts, all positions. Apply in person at 1633 American Blvd. EOE

2 Temp positions: Farm work, 3/4/12 to 12/31/12 @ 15.00 p/hr. Housing provided, 48 hrs p/wk. 3/4 guarantee, transportation and subsistence expenses to worksite paid after 50% completion of contract. Tools, equipment provided at no cost. Min. 3 months experience. Duties: drive, plant, harvest, store grain, repair operate tractor, rock picker, plow, disc, drill, harvest equip, sprayer, grain truck. Must be able to obtain a drivers license within 30-90 days following hire. Morlock Farms, Lansford, ND, Interested? **Apply at ND Workforce Solutions office job # 267913.**

HOUSE FOR RENT
House for Rent - 2br, den, living/dining room, kitchen with small dinning area. 1 bath, double garage, central air, large storm shelter. House is located 3 mi due west of Progress pallet place on county road 1018. Contact me at home: 806-925-6736 or cell: 806-315-0249.

FOR SALE
40'x8'x10' Fruehauf storage container for sale. Item sold "as is, where is." Located at 1431 FM 54, Littlefield, Texas. If interested in receiving a bid sheet, call 806-272-6026 or 325-672-2846 ext. 3114. All sealed

bids must be received by March 9, 2012.

Price Reduced! Excellent Condition 1994 Fleetwood Double Wide Mobile Home 4br, 2bath, over 2000 sq. ft. Serious Inquiries 806-946-7698.

FOR LEASE OR RENT

For Lease - 517 W. Ave E. 2 bedroom 2 bath. 475mo 475dep. Call 956-821-3082 or 956-624-6805.

HOUSE FOR SALE BY OWNER

1804 West Ave I. Nice 3 Bedroom/2 Bath brick home in Richland Hills. Has an extra room for office or another room, New Heater/AC unit, new dishwasher, sprinkler system, skylights, fireplace, and much more. Has huge insulated brick building in back with bathroom. \$115,000 Call 806-928-0339 or 512-787-6782

1001 NE 1st, Earth - Nice 4BR/2B brick home in Hite edition with open concept family/kitchen, 2nd family/study, new carpet, fireplace, skylight, basement, 3 car carport, storage, and covered patio. 2500 sq.ft. \$127,000. Call 806-257-3308.

1907 W. Ave H 3br/2bath Asking price \$90,000. Call 806-946-6573

HOUSE FOR RENT

House for Rent - 2br, den, living/dining room, kitchen with small dinning area. 1 bath, double garage, central air, large storm shelter. House is located 3 mi due west of Progress pallet place on county road 1018. Contact me at home: 806-925-6736 or cell: 806-315-0249.

516 W. Ave E 2Bdr/1Bath, no appliances, \$420mo., \$375 dep required. Tenant pays water/elec./gas. Call 272-5144 or 210-867-8911.

Eating Healthy = Lower Cancer Risk

12 12*

12-Months 12,000-Mile

BUMPER-TO-BUMPER WARRANTY PLUS 5 YEAR 100,000 MILE WARRANTY
*Limited warranty per manufacture warranty

2010 CHEVY COBALT LT

\$13,450^{+TTL} or \$180^{per month*}



stk# P8631

2009 CHEVY EQUINOX

\$19,450^{+TTL} or \$262^{per month*}



Stk #P8640

2010 CHEVY HHR LT

\$14,500^{+TTL} or \$195^{per month*}



stk# P8678

2009 DODGE CARAVAN SXT

\$18,950^{+TTL} or \$255^{per month*}



stk# P8683

2005 DODGE DAKOTA Club Cab

\$12,950^{+TTL} or \$175^{per month*}



stk# 16219AA

2011 CHEVY CRUZE LTZ

\$19,950^{+TTL} or \$270^{per month*}



stk# 21005AA

2006 CHEVY 2500 Ext Cab 4x4

\$20,450^{+TTL} or \$276^{per month}**



stk# 16167A

2009 HONDA ELEMENT LX

\$18,450^{+TTL} or \$249^{per month*}



stk# P8548B

2000 Chevy Silverado 1500

\$9,450^{+TTL}



stk# P8703

2005 Chevy SSR

\$25,450^{+TTL}



stk# P8641A

BENDER GM WORLD

575-763-4465 • 1-800-530-8842 • 2500 Mabry Drive, Clovis NM

View our entire line of Used inventory at

WWW.BENDERCHEVYCAD.COM

* 10% Down +TTL for 72 mo @ 2.5% apr. WAC, ttl extra. ** 10% Down +TTL for 84 mo @ 3.3% apr. WAC, ttl extra
*** Pictures for illustration purposes only, not actual vehicles! Sale Ends 2/29/12

Who are they?



Do you have any blank spots in your photo albums? Photographs that have been submitted for publication in the Muleshoe Journal may be picked up during regular business hours.

The photographs above, and a large number of other photographs, have accumulated at the news office. Please reclaim these pieces of family history.

Valentine Couple's Lunch at Park View

"To love is to receive a glimpse of heaven" ~ Karen Sunde

Adella & Doc Jones

Carman & Carmen Vega

Corina & Jessie Hernandez

Mickey & Lala Hernandez

Ollie & Willie Mae Murray

Wilma & Boyd Magby

Scott & Tamara Churchman

Mr./Mrs. James Gray