



**GRADUATES AT ST ANTHONY'S**

Miss Ethel Maye Hicks, daughter of Mr. and Mrs. A. J. Hicks of Muleshoe, was among the graduates of the Nursing School at St. Anthony's

Hospital in Amarillo last week. She is a sister of Mrs. Medford Scrifres, also a graduate of St. Anthony's, who is employed now at Green Hospital & Clinic in Muleshoe.

**RAYMOND BASS HOME**

Raymond Bass, son of Mr. and Mrs. M. G. Bass, has been spending a few days with his parents, and hopes to begin work soon for a seismograph company in Tulsa. Raymond majored in geology.

**PMA Definition Clarifies Parity**

Parity, the magic word of agriculture, probably is used more than any other term in the modern language of farmers and ranchers in the Tri-State Empire. Sometimes its meaning is clear. Sometimes it's vague. This definition by Harry W. Henderson, information branch, Production and Marketing Administration, may help to bridge the gap:

"The parity price of an agricultural commodity, generally speaking, is the price which will give the commodity the same purchasing power as it had during a given base period in terms of

1. Prices of Commodities farmers buy.
2. Interest on mortgage indebtedness.
3. Taxes on farm real estate and
4. For most commodities, wage rates for hired farm labor.

"The parity price of an individual farm commodity, in other words, is a standard of measuring the purchasing power of that commodity in relation to prices of goods and services during a definite base period."

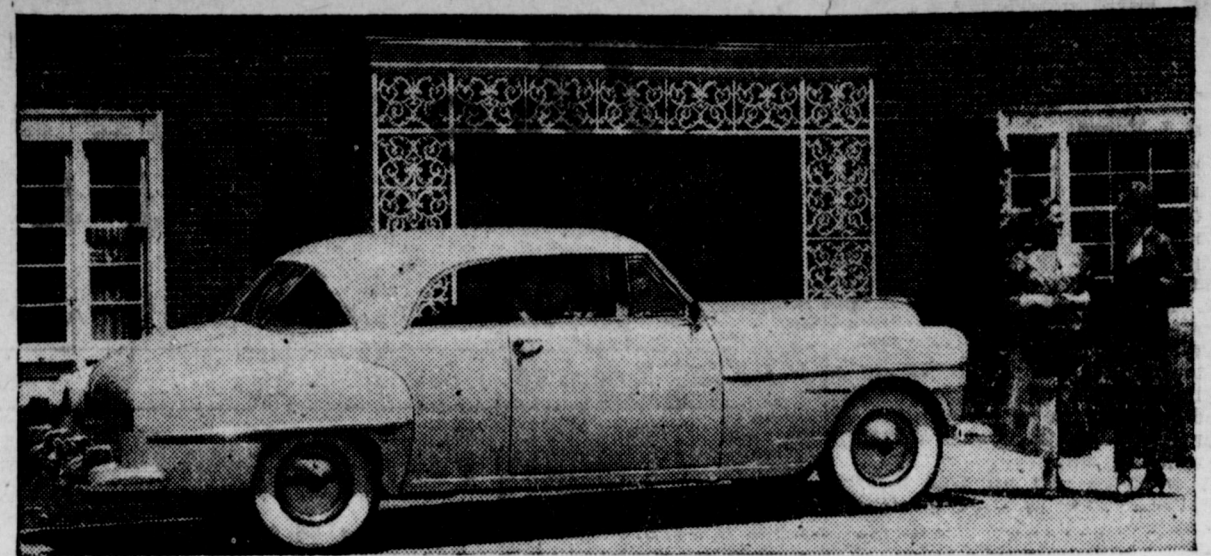
**RAIN NORTHEAST OF TOWN**

Russell Bryant, 13 miles northeast of Muleshoe, reported a three-quarter inch rain fell at his place Thursday night. He said that southeast of him about an inch and a half fell. Russell's father, he said, who lives about 8 miles northeast, had a half inch rain.

**Legal Directory**

- Members Bailey County Bar Association**
- Norman W. Bays, Glibreath bldg. Phone 271.
- Pat R. Bobo, Courthouse, Phone 97.
- Karl L. Lovelady, South Side of Square, Phone 229-V.
- Cecil H. Tate, Courthouse, Phone 154.

**NEW CHRYSLER "HARDTOP"**



Popular "hardtop" styling has now been made available in Chrysler's New Yorker and Windsor lines. The sleek body style, shown here in the New Yorker Newport, combines the safety and comfort of the sedan with the smartness of the convertible. Open-car effect is accentuated by side windows and window frames which lower completely out of sight. Maximum rearward vision is provided by the "Clearbac" rear window which curves well into the permanent steel top.

Newport styling that combines the sleek lines of the conventional convertible with the sedan comfort and safety of a permanent all-steel top has now been made available in the Chrysler New Yorker and Windsor lines.

Known as the "hardtop convertible," the Newport body style was pioneered by Chrysler at the close of the war, but production was deferred at that time because of material shortages. It made its

first appearance in the Chrysler line in the Town and Country Newport.

Public enthusiasm for the hardtop styling in the luxurious Chrysler Town and Country Newport has prompted the company to add Newport models to the New Yorker and Windsor lines, according to J. A. O'Malley, general sales manager of the Chrysler Division.

**"Clearbac" Windows**

A distinctive feature of the Newport models is the "Clearbac" rear window that curves well into the sides of the steel top, providing a maximum of rearward vision and accentuating the convertible-like lines of the car. Further enhancing the effect of an open car, all side windows and window frames can be lowered completely out of sight.

Covin Motor Co. is Chrysler dealer for Muleshoe.

**BE MILES AND MONEY AHEAD...  
TRADE FOR A DODGE TODAY!**



**Now...make your new car dollar worth more**

HERE'S the BIGGER DOLLAR VALUE you've been looking for! Longer, wider, higher on the inside, today's big Dodge gives you head room, leg room and shoulder room that even more expensive cars can't match.

Dodge seats are "knee-level" so you sit naturally—ride relaxed. A big Landscape wind-

shield and huge rear "picture window" give full visibility for safer driving.

The big, high-compression "Get-Away" engine gives you flashing performance with gyrol Fluid Drive to smooth out every mile you drive. Let your Dodge dealer show you how Dodge VALUE will put you miles and money ahead.

Come in for "MAGIC MILE" ride—Prove Dodge VALUE for yourself. See how Dodge makes cobblestone streets ride like parkways. Take convincing "Magic Mile" demonstration ride today.

**NEW BIGGER VALUE**

**DODGE**

Just a few dollars more than the lowest-priced cars!

**GYRO-MATIC**

LOWEST-PRICED AUTOMATIC TRANSMISSION

Frees You From Shifting

Available on Coronet Models at Extra Cost



**LOOK AT THE SHOULDER ROOM**  
—Dodge design gives you full width at shoulder level as well as seat level—no cramping.

Arnold Morris Auto Co. Muleshoe

We can save you money on .....

- CAR TIRES
- TRUCK TIRES
- TRACTOR TIRES

**H. C. HOLT**

Your gasoline man in Muleshoe for more than 15 years—

**STATE LICENSED DEALER**

—FOR—

**OIL LEASES -- ROYALTIES**

**CLYDE A. BRAY, Sr.**

P. O. Box 793

Muleshoe, Texas

Phone 282

**CASHWAY GROCERY & MARKET**

Brings You .....

**A Gigantic Sale On Canned Goods**

Featuring .....

**Kimbell And Diamond Label Products**

We have purchased 5000 cases of canned goods (5 big van loads) to bring you this big sale. We will feature these and many other items in our store at exceptionally low prices. At these prices you can afford to buy enough canned vegetables to last until your garden can supply you.

**FRIDAY & SATURDAY - JUNE 9 & 10**

**FREE DELIVERY**

Phone 139

Shop Early And Avoid The Rush

Muleshoe, Texas

## Hi-Hegari Seed Is Developed

COLLEGE STATION, June 7—Seed of a new variety named Hi-Hegari has been released to certified seed growers for increase, R. E. Karper, agronomist in charge of Texas Agricultural Experiment Station grain sorghum investigations, has announced.

It is a tall variety of Hegari, bred

and developed primarily for forage and silage.

Karper says it has the high quality and palatable forage of Hegari and the same maturity and adaptation, but yields approximately 20 percent more forage.

The first grain sorghums were tall and late maturing. Hegari, one of the more popular, was imported from Africa in 1909 and was first grown at the Chillicothe station. In 1938 Texas sorghum breeders came up with Early Hegari, a dwarf, drought resistant, early



Now .....

IS THE TIME TO RENT

FOOD LOCKERS

So that you may take advantage of this year's low seasonal prices for your food needs in out-of-season months. Preserve the freshness and flavor of vegetables, fruits and meats without canning.

FOOD PREPARATION

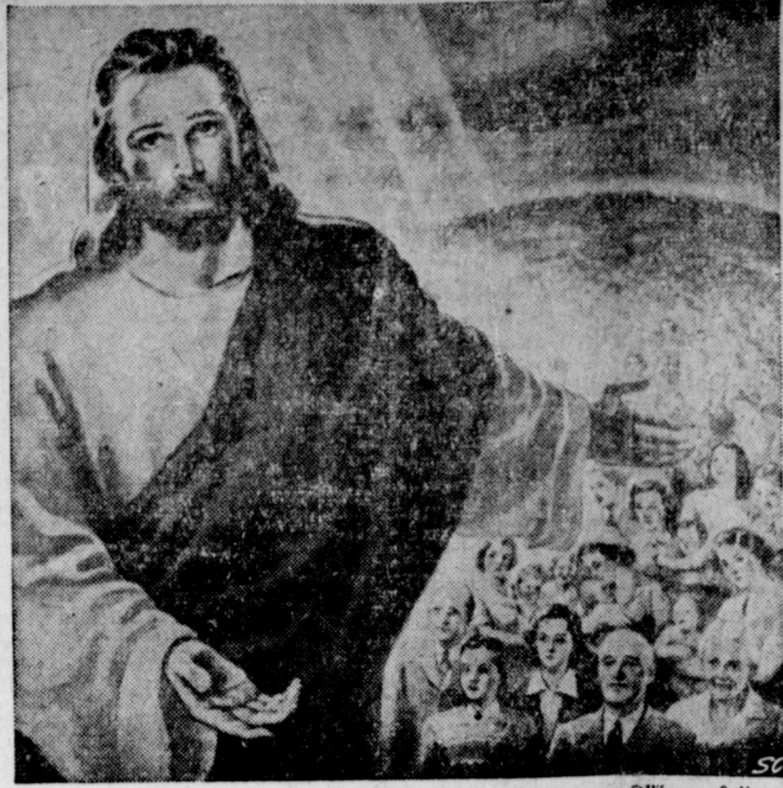
We will be glad to assist you in preparing your foods for freezing. We have all necessary containers and supplies. We will butcher, cure and pack-age your meat animals for you.

MULESHOE LOCKER CO.

Telephone 133

Muleshoe, Texas

## Striking Picture Emphasizes Lay Witness



Warner Sallman

NASHVILLE, TENN. — Warner Sallman's striking picture, "Feed My Sheep," presents the challenge of evangelism to laymen. It will have world-wide distribution on the cover of the all-laymen issue of The Upper Room, devotional guide published here. Writers of the daily meditations are laymen and laywomen of many occupations including: housewives, farmers, editors, merchants, manufacturers, labor leaders, lawyers, engineers, doctors.

The churches of the United States and Canada are participating in a United Evangelistic Advance. The all-layman issue of The Upper Room emphasizes the place of laymen and laywomen in this movement. Thirteen editions of this devotional guide are printed in its world-wide circulation, with more than two million copies distributed in the United States.

maturing type which is still the principal variety of Hegari.

The labor shortage during World War II, the demand for grain and the development of the double dwarf grain sorghums brought the combine into the sorghum fields. In 1949, more than 95 percent of Texas grain sorghums were combine harvested.

The popularity of the combine varieties in turn led to a shortage



Mrs. Alben W. Barkley, wife of the Vice-President, looks at replica of Liberty Bell, symbol of the Independence Drive, as Mrs. Nancy C. Robinson, director of women's activities, U. S. Savings Bonds Division of the Treasury, tells her the story of the "miracle of the bells."

### BACK FROM CALIFORNIA

Mrs. Mirtie Priboth, her son, Gerald, and daughter, Mrs. Dorothy Matthieson and little daughter, Shirley, returned last week after a two weeks visit in Long Beach and Huntington Park, Calif. Another daughter of Mrs. Priboth, Mrs. Carl Tolliver, of Huntington Park, returned with them for a visit.

of bundle feed; the supply is expected to be shorter still in the future, because of acreage reductions.

Plant breeders of the Texas Agricultural Experiment Station foresaw the need for forage and silage and for the past several years have been working on the problem; Hi-Hegari is the result. The entire supply of seed has been distributed for increase, and a fair amount of Hi-Hegari will be available for 1951 planting through regular trade channels.

## Protection From Lightning Can Be Accomplished

COLLEGE STATION, June 7—Early summer weather in Texas is often characterized by violent electrical storms. These storms emphasize the necessity for lightning protection, says W. S. Allen, extension agricultural engineer—buildings of Texas A. and M. College.

He says that farm property losses from lightning averages about \$10 million per year to say nothing of the estimated 400 lives lost and the 800 to 1,000 rural people who are injured each year by lightning. Something can be done to prevent these losses.

Allen points out that lightning rods, when properly installed and maintained, will give practically complete protection to buildings against damage from lightning. He recommends that the installation of rods be done in accordance with the National Code for the Protection Against Lightning. He says it is very important that all metal bodies inside buildings be grounded and bonded together to prevent electricity from jumping from one body to another. The metal tracks for feed carriers, feed or hay elevators and the heavy hardware on barn doors should always be grounded and tied into

the lightning rod protection system on the barn.

A metal roof, electrically bonded properly grounded, and provided with air terminals to protect chimneys or other non-metallic projections, usually gives satisfactory protection. He says the metal roof will give little or no protection unless it is grounded and bonded and here again he says do the job according to the National Code.

If you have lightning rods on the farm buildings, he suggests that you give them periodic checks to be sure they'll perform their duty should the need arise. If you plan to install rods, be sure they are installed according to the National Code. It means you've got a good job.

### ATTENDS COLLEGE

Jerry Kirk, high school principal, is attending school at Canyon's West Texas State College the first six weeks of the summer session.

### ON NORTHWEST TRIP

Mr. and Mrs. Jack Lenderson and Kay are on a trip to the northwest. They left last week to be gone about three weeks, and were accompanied as far as Gunnison, Colorado by Mr. and Mrs. Walter McGuire, of Dora, N. M., former Muleshoe residents. Mr. McGuire a former principal of the high school here, will attend college at Gunnison this summer.

## Political Announcements

The following announcements for public office are made subject to the action of the Democratic Party primaries.

**For State Representative, 120th Legislative District:**  
HAROLD M. LAFONT  
Of Hale County (Reelection)  
H. J. (Doc) BLANCHARD  
Of Floyd County

**Judge, 64th Judicial District:**  
ROBERT (Bob) KIRK  
Of Lamb County  
E. A. BILLS  
Of Lamb County

**For District Attorney, 64th Judicial District:**  
JOE SHARP  
(Reelection)

**For County Judge And Ex-Officio County School Superintendent:**  
CECIL H. TATE  
(Reelection)

**For County Treasurer:**  
HELEN JONES  
(Reelection)

**Sheriff, Tax Assessor & Collector:**  
HUGH FREEMAN  
(Reelection)  
DANIEL B. BOONE  
G. G. YOUNG

**For County Attorney:**  
NORMAN BAYS

**County & District Clerk:**  
M. G. BASS  
(Reelection)

**Commissioner, Prec't. 1:**  
L. T. McKILLIP  
(Reelection)  
NEAL WARREN  
CLYDE D. HENRY

**For Commissioner, Prec't. 2:**  
WOODROW W. COUCH  
TOM L. SMITH  
A. T. (Tracy) WHITE  
(Reelection)

**For Commissioner, Prec't. 3:**  
R. R. (Bob) KINDLE  
(Reelection)

**For Commissioner, Prec't. 4:**  
R. P. McCALL  
(Reelection)

**LAMB COUNTY**  
E. C. CLAYTON  
**For Commissioner, Prec't. 2:**

## Certified Sweet Sudan Seed

No. 372

Raised & Certified by J. R. McNeil

Of Spur, Texas

150 BAGS OF CERTIFIED SEED

\$15.00 per 100 lbs.

ALSO HAVE 300 BAGS OF

CUTBACK SEED

(This cutback seed is also grown by J. R. McNeil from the same registered seed as the certified, but it being grown on the outer border of the certified field, it could not be certified by the State Department of Agriculture.)

THIS 300 BAGS OF SEED GROWN FROM REGISTERED

SEED IS AVAILABLE AT —

\$12.50 per 100 lbs.

## KING BROS.

GRAIN AND SEED

Phones 134 & 350 Muleshoe, Texas

## GROWING YOUNGSTERS NEED PLENTY OF FRESH MILK

Now that summer vacation time is here, growing boys and girls need plenty of pure fresh milk to furnish calcium for strong bodies.

Our milk is always pure, clean and fresh. It is pasturized to kill all harmful bacteria.

Always Ask For MALONE'S MILK At Your Grocers.



Our Delicious ICE CREAM

Is a treat for any occasion. Ideal for desserts, parties and home. Any amount in any flavor. Always pure, nutritious and wholesome.



MALONE MILK CO.

TELEPHONE 206

MULESHOE, TEXAS

## HOME LOANS



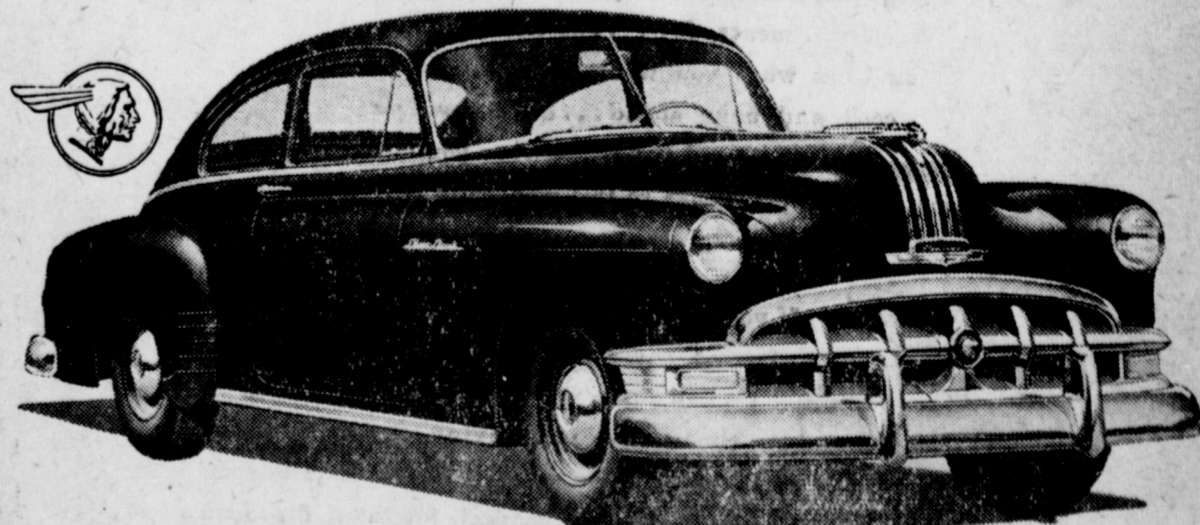
CONVENTIONAL AND FHA TO BUY, BUILD or REMODEL IN MULESHOE

FOR INFORMATION SEE



Clovis, N. M. P. O. Box 470

## Dollar for Dollar - you can't beat a PONTIAC



A Wonderful Performer — at a Wonderful Price!

Almost everybody has a good word for the immensely popular Pontiac. The most enthusiastic spokesmen are those who own this great car. The facts behind this admiration of Pontiac are very simple—

Pontiac is America's lowest-priced Straight Eight. Pontiac is the lowest-priced car with GM Hydra-Matic Drive. Pontiac is the

most beautiful thing on wheels. And Pontiac is famed everywhere for its dependability and economy.


Those are the facts, and they are impressive. But they are a lot more impressive to the person behind the wheel of a Pontiac. He knows for sure that dollar for dollar, you can't beat a Pontiac!

DAVIS - LENDERSON

MULESHOE, TEXAS PHONE 56

COME IN AND SEE FOR YOURSELF!

## TODAY'S meditation



**The Upper Room**  
© THE UPPER ROOM, NASHVILLE, TENNESSEE

THE WORLD'S MOST WIDELY USED DEVOTIONAL GUIDE

**THE KINGDOM WITHIN US**  
"Neglect not the gift that is in thee . . ." (I Timothy 4:14.) Read I Timothy 4:10-16.

Whistling carelessly, a young man sauntered along the street. A little boy nearby asked: "Is that the best you can whistle?" "No", replied the young man, "but can you beat it?" The little boy said he could and proceeded to prove it. When he had finished, he turned and said, "Now see if you can beat that." The young man whistled again, much better than before. "How do you like that?" he inquired. "Well, that's all right," replied the little boy, "but if you can whistle that way, why did you ever whistle the other way?"

So it is with us. Too many of us are living poor, slipshod lives when we could be living on a higher

plane. Persons constantly seeking to live up to their best in the Spirit of Christ can bring about the Kingdom.

Without Christ a man is just a human being; with Christ, a person may become a saint. Life then is no longer lived in the valleys but on the mountain tops. By His grace we can become the kind of persons acceptable in the Kingdom.

**PRAYER**

Forgive us, we pray Thee, O God, for the shoddiness of so much that we do and say and are. Help us to be Christian in every respect of our living. In Jesus' name. Amen.

**THOUGHT FOR THE DAY**

The unused ability of a Christian is the exultation of hell, the surprise of heaven, the loss of man, and the grief of God.

—James E. Ward, Educator (Tenn.)

## 4-H Club Round-Up Will Be Held In College Station Next Week

COLLEGE STATION, June 6.—The campus of Texas A. & M. College will be a bee-hive of activity next week. 4-H club members from every section of the state will move in Sunday afternoon the 11th to be on hand for the 4-H annual judging and team demonstration contests on Monday. The 4-H Round-Up will be held June 13-14 and it will be followed by the annual conference, on June 15-16, for all agricultural extension personnel.

The 4-H Round-Up will get underway Monday night with a get acquainted program—a jeans and calico round-up. For the second year, Billy Triggs, minister of music, First Methodist Church, Wichita Falls, will direct the group singing—always a favorite part of the program for the 4-H delegates.

Director G. G. Gibson, Texas Agricultural Extension Service, will welcome the 4-H boys and girls to

Texas A. & M. and in rapid-fire order will come the introduction of the officials of the College and the A. & M. System. During the afternoon, visits will be made to different departments of the College for special shows. The evening program will be highlighted by the annual 4-H leaders banquet and the State 4-H Dress Revue.

Featured on the Wednesday morning program will be reports from the 1949 out-of-state 4-H trip winners. Lue Ruth Stevens, Dallas county; Beverly Rannels, Brazoria county; Harry Lee Schneider, Guadalupe county and Carter Gene White, Garza county will report on National 4-H Club Camp. Fred L. Sutton, Menard county, will report on the American Youth Foundation Camp, Danforth Award. Betty Bernsen, Nueces county and Alton Nelson, Wharton county, the 1949 International Farm Youth Exchange delegates from Texas, will change delegates from Texas, will report on their trips to Sweden and Denmark. Barbara Dean, Johnson county, will describe the activities of the 1949 National 4-H Club Congress.

This section of the program will be followed by an address by President M. T. Harrington, Texas A. & M. College. The afternoon will be devoted to the special departmental shows on the campus.

The final night program on Wednesday will feature 4-H talent and the presentation of the awards to the winners in the various contests. The talent show will be in the form of a pageant and will be held at Kyle Field.

## MEN BEWARE!



Beware, brother, beware! The female of the species will take the shirt right off your back and put it on her own. The newest fad of the season among fashionable girls is to team a man's cotton shirt with shorts for playtime wear. This radiant young lady has swiped her husband's white shirt for wear on an outing during a Bermuda holi-

The United States produces the greatest amount of iron and steel in the world.

**DR. B. Z. BEATY**  
DENTIST  
Across Street From  
Muleshoe Motor Co.  
OFFICE HOURS  
9 a. m. to 12 — 1 to 5 p. m.  
Of. Ph. 249 - Res. Ph. 253-W

## WEEK'S VISITOR

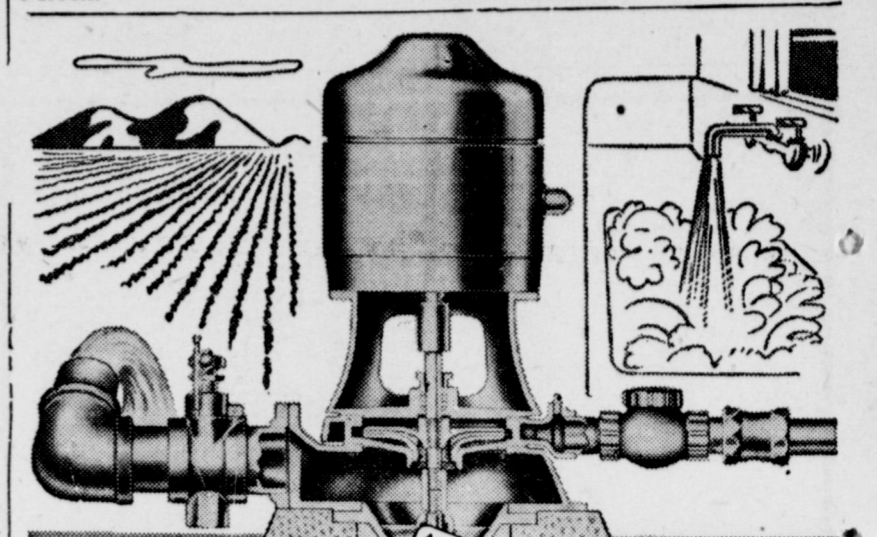
Fuston McCarty, who has been attending A&M College, is at home this week visiting relatives and friends. He is to leave the first part of next week for a summer of specialized training in San Antonio.

## MARRIAGE LICENSES

Marriage licenses issued in the office of County Clerk, M. G. Bass during the month of May included: Bobby Dale Broyles and Fern Marie Steinbock both of Muleshoe.

## FROM DENVER

Mr. and Mrs. Muriel Armstrong of Denver, Colo., are visiting this week with her parents, Mr. and Mrs. J. J. Williams, other relatives and friends.



## YOUR ACE in the hole

# A BERKELEY

### Water level dropping?

Go after it with a Berkeley  
Dual-Purpose Deep-Well Turbine

For farms of 3 to 30 acres, this remarkable pump will supply both irrigation water and high pressure needs—efficiently. For larger farms, it adds to your irrigation source and gives excellent pressure service.

Capacity up to 275 gallons per minute: open discharge.  
Water levels 30 feet and deeper.

See us today. Let us help you select the turbine for your needs.

## E. R. HART CO.

Phone 23  
Muleshoe, Texas

## NOW AVAILABLE

# JOHNSON KNIFE ATTACHMENT

For All 4-Row Tractors  
Fits Any Make or Model  
and All Power Lifts

## MORRIS DOUGLASS IMP. CO.

CASE SALES & SERVICE  
Phone 91 Muleshoe, Texas

## REAL ESTATE TRANSFERS

The following property transfers were made through the office of County Clerk M. G. Bass the last two weeks:

Mrs. Lula Sadler, et al, to Bob Hayley, et ux, Tract Nos. 1, 2, 3, 4, & 5, SF 3111, SF 3112, SF 3113, SF 3114 and SF 3099, \$10, and other considerations.

Bob Hayley, et ux, to Vernon B. Cox the foregoing property, \$148,776.

Joshua Blocker to Estelle W. Cox, et ux, Lots 57-59, block No. 5, Grape St. town of Progress, \$55.

W. D. Wanzor, et ux, to A. Hugh Freeman, et al, 4 acres, part of survey No. 54 in Block Y of W. D. & F. W. Johnson Subdivision No. 2 Bailey County, \$10,000.

Estelle Waldrop, et ux, to E. F. Campbell, et ux, all tract No. 63 in League No. 181 of Floyd County School land, 160 acres, \$10, and other considerations.

A. J. Lenderson, et ux, to F. H. Davis, all their 1/2 interest in and to all of Lot No. 9 Block No. 1, Pool addition to the town of Muleshoe, \$150.

Stanley Price Gower, et ux, to A. L. Peacock all E. 10 A. of a certain 23.75 A., SE 1/4 of Section No. 33, Block X of W. D. & F. W. Johnson Subdivision of Bailey County, \$1750.

Grady Adecock, et ux, to Veteran Land Board of Texas SW 1/4 of Section No. 75, Block B of the Melvin, Blum & Blum Survey, Bailey County Texas, \$7500.

J. E. Wilhite, et ux, to R. L. Kimbrough, et ux, all of lot No. 1 Block No. 1 Lakeside addition No. 2 to town of Muleshoe, \$10,000.

L. G. Pitts, et ux, to James W. Dickson, all W. 60 A. out of the NE 1/4 of Section 71, Block Y, W. D. & F. W. Johnson Subdivision No. 2 of Bailey County, \$4510.

Mary Snow Davis to Mildred Davis a tract of land in Warren addition No. 2 Muleshoe, \$10, and other consideration.

## COMPLETE ROOFING SERVICE AND REPAIRS

### ALL SHEET METAL WORK

Contract or Open Jobs

FREE ESTIMATES ON ALL JOBS

## MULESHOE SHEET METAL

### And ROOFING CO.

Phone 369-J Muleshoe, Texas


# ENJOY THIS JUNE



## Next JANUARY

How? It's easy! An electric home freezer makes a perfect "food bank" for all the fresh, seasonal delights you gather from your own garden . . . that you buy from the market at low summer prices. Fruits, vegetables, meats, fowl . . . pastries . . . all on hand when you want them. You can cook and bake ahead . . . have complete meals . . . stored and ready when you want them . . . thanks to this wonderful electric store house!

If you haven't invested in an electric home freezer, now's the time to see your dealer. He can show you how food purchased in time-and-money-saving quantity will prove to be a real boost to your budget. So very economical, low cost, dependable electric service makes it so!



# NOW!

You Can Cut  
TRACTOR COSTS  
Fuel - Oil - Repairs

# 50 %

WITH THE NEW, IMPROVED AND  
LOW IN PRICE

## FLASHOTRAC SYSTEM

TRADE MARK PAT. APPLIED FOR



The Only L. P. Gas Tractor System in U. S. A. With A  
**Built-in-the-tank Heat Exchanger**

Hot water from radiator circulates through Heat Exchanger and keeps up plenty of pressure for plenty of power with no burnt valves.

Which Not Only Eliminates Expensive  
Filter — Heat Exchanger — Butane Carburetor  
BUT IS ACTUALLY

### SAFER - BETTER - MORE EFFICIENT

And Too  
YOUR GASOLINE TANK AND CARBURETOR ARE NOT REMOVED—  
You Can  
Switch back to Gasoline if and when L. P. Gas Fuel Tank runs empty

Example		Every	
2000 gals. Gasoline cost	\$380.00	<b>FLASHOTRAC SYSTEM</b> TRADE MARK PAT. APPLIED FOR	SOLD WITH A MONEY BACK GUARANTEE
Tax Refund	80.00		
	\$300.00		
2000 gals. L. P. Gas cost only	\$140.00		
You Save	\$160.00		

We invite you to come in and let us explain the Flash-O-Trac System to you

# MULESHOE LIQUEFIED GAS CO.

LOCATED ON CLOVIS HIGHWAY  
MULESHOE, TEXAS  
PHONE 125 NIGHT PHONE 314-J

## SOUTHWESTERN

# PUBLIC SERVICE

### COMPANY

25 YEARS OF GOOD CITIZENSHIP AND PUBLIC SERVICE

J. M. FORBES . . . Publisher



Entered as second-class matter at the Muleshoe Post Office under the Act of Congress, March 3, 1897.

Subscription Rates  
IN IMMEDIATE  
TERRITORY, Year . . . \$2.00  
OUT OF IMMEDIATE  
TERRITORY, Year . . . \$2.50

FARM PROGRAM TINKERING  
BEGINS ONCE MORE

The present farm price support program is a precariously topheavy structure. It is a piece of political jerry-building designed more as an effort to place a sound and lasting foundation under farm income. Even though seeking to perpetuate the high wartime level of farm prices by underpinning them with lofty government price supports, it has not succeeded in preventing a 7 per cent decline in agricultural income since the war's end. Chiefly this has been due to the vast crop surpluses encouraged by the program, which have exerted such pressures on prices that they have declined in spite of government supports.

Many farmers now are viewing this unsteady structure with a fearful eye. They are afraid of a system which seeks to stave off adjustment to more normal patterns of production and prices. They are uneasy over the rising threat to the program of consumer resentment over artificially high food prices. They are distrustful, too, of a setup in which farm income depends almost entirely upon the willingness of Congress to vote huge sums each year for price supports.

Now Senator Thomas of Oklahoma and Representative Cooley of North Carolina, chairmen respectively of the Senate and House agriculture committees, have announced they are drafting a new farm price support program. But instead of gearing it to the farmers' need for a sound system to protect them against possible disastrous price drops, and at the

Drs. Woods & Armistead  
OPTOMETRISTS

IRA E. WOODS, O.D.  
B. W. ARMISTEAD, O.D.  
GLENN S. BURK, O.D.  
Phone 328 Littlefield

RABSON DISCUSSES  
Government Price Fixing

Babson Park, Mass., June 2—Can anyone tell me why, in the name of common sense, our Government bought and stored away 114,000,000 pounds of butter last year at a cost to you and me of better than \$78,000,000?

**The Farmers' Cry**  
The cry has gone up from farmers across the land that people's eating habits are changing. They say folks aren't eating as much butter as they used to. Obviously not—they can't afford to! But why not? Because the economic medicine men in Washington have pushed the price so high that substitutes have to be bought. The family physician may tell you that vitamin-reinforced margarine is just as nutritious as butter, but abolish your phony controls on price and you will see which spread the people really prefer! They prefer good creamery butter.

Last year, for example, we spread only 1 1/2 billion pounds of butter as against 2 1/2 billion pounds pre-war. But still the farmers cry in their churns over the sharp increases in margarine sales—from 300 million pounds pre-war to nearly 1,000 million pounds last year. Yet they let the department of agriculture continue turning their churns! If the boys in the Agriculture Department keep on, they will churn butter producers right out of business. And I say this as a boy brought up on a dairy farm who has both milked cows and delivered milk.

**We Want Golden Butter**  
But this isn't the end of the sad tale. People cannot afford to pay current high prices for butter. Hence, consumption falls off. The government buys mountains of the stuff to maintain high prices. So the dairy farmers go merrily on churning out more and more spread for no one to buy; but for Uncle Sam to store away, and for

same time giving reasonable consideration to consumers, the two congressional farm leaders have announced the new program will call for continuance of high supports on basic commodities through 1953. As for such "problem crops" as potatoes, eggs, butter and other perishables, Senator Thomas says only that "improved" methods of supporting and disposing of these commodities will be explored.

This seems to be another attempt to build farm policy according to the blueprint of political expedience rather than on the basis of sound agricultural economics. It is but adding more weight to an already topheavy structure. What is needed is to call in the real agricultural leaders of the nation—genuine representatives of the farmers and their viewpoint—to help design a program reasonably calculated to serve the long-range interests of the whole country without being constantly in danger of collapsing of its own weight. The farmers ought to begin to beware—as they are showing healthy signs of doing—of politically designed farm plans whose chief purpose is to win elections. —Star-Telegram

WANTED!

Oil Leases and Minerals, and Royalties on land in South Bailey and Cochran Counties, Texas, Lea and Roosevelt Counties in New Mexico. Would also like to have your listings on land or other real estate for sale or trade.

Come in and visit with us on any kind of Sales or Trades.

— See —  
J. A. McGEE

Office Phone 213 MULESHOE Res. Phone 334J  
Office at north end of Main Street on Lubbock Hi-Way

Spend Vacation  
In Colorado

Mr. and Mrs. Walter Witte and Mrs. Ludie Barlow have been vacationing in Colorado. They spent five days with their sons, Lamar Witte and John Barlow and their families in Dove Creek, near the Utah line and while there went over into Utah to see the farm land the boys had purchased.

It's all new sage brush land and their spring planting wheat was showing up good. There was plenty of snow moisture. They say it's a very pretty country. Known for beans and wheat.

Both families seem to like it fine and are really rushing to get their crop in. Mrs. Barlow stopped off at home on their return and Mr. and Mrs. Witte finished up his vacation in Big Spring with their daughter, Mrs. Pete Jenkins, husband and baby son, Jerry Lee.

While in Colorado they visited a short time with Bits and Gale Holt at Durango. They saw plenty of snow on the high points and plenty of rain at Big Spring. They reported it is extremely dry between Muleshoe and Colorado, all the way.

ATTENDS MEETING

The South Plains Optometric Society, of which Dr. B. R. Putman of Muleshoe is a member, will hold a dinner meeting Thursday evening at 7:30 p. m. in Floydada.

you and me to pay for the privilege of not using.

What's the Government going to do with all the golden butter bricks? Who knows? Recently they have been trying to give them to relief agencies, schools, and so forth. But takers are few because they haven't the kind of money it takes to pay transportation charges, especially when a good substitute answers the purpose. Anyway, who wants rancid butter? To my way of thinking, not only the butter, but the whole phony system is rancid.

Action and Reaction

This is but one illustration of the system of false economics in vogue in this country today. You just can't tamper for long with the Law of Supply and Demand before it will boomerang. Newton's law of action and reaction also apply here as aptly today as two hundred years ago. Ostich economics (the head in the sand variety) is due for a terribly rude awakening some day.

Yet, our President is urging other spending programs like the butter program that could run up a debt of nearly \$15,000,000,000 in three years. Projects requiring huge outlays of public money—when business is at near peak performance—will lead some day to economic disaster. If we must prime the pump in this fashion in good times, what can the soothsayers possibly have in store for us in hard times? The awful consequences of this kind of reckless spending ought to be taught by all high school teachers to their classes. The harsh object lessons of Great Britain offer excellent source material.

Unemployment Is Rising

Unemployment is currently and steadily rising. Even Leon Keyserling suggests we may have as many as 12,000,000 jobless by 1954. I wonder if Mr. Keyserling sees the connection between a mountain of butter and the mounting unemployment. As long as business is stifled by an increasing tax burden to hold up prices there just isn't venture capital sufficient to create and expand business.

Wear-U-Well  
SHOES

Tho' Priced To Sell  
They Wear-U-Well

Mrs. Carothers

T. Aigaki Is  
Selling Lettuce

Lettuce harvest has begun in the Plainview area. The first of the crop was marketed last week.

T. Aigaki and Tod Matsumoto, both of Japanese ancestry, have large acreage of the crop. Aigaki sold the first crate he harvested to the L. M. Reaves grocery store, operated in the neighborhood where he lives.

Aigaki arrived in Plainview last January to begin his truck farm. He originally came from Alamosa, Colo. He farmed about a year near Muleshoe and then came here.

Aigaki's farming activity breaks down to the following: He has 20 acres in lettuce, 15 acres in peppers, 45 acres in onions, 15 acres in cabbage, 10 acres in carrots, 10 acres in squash, 10 acres in sweetcorn and 70 acres of tomatoes.

To operate effectively the 200 acres of land devoted entirely to vegetables, Aigaki keeps three tractors working and uses three irrigation wells—one 10-inch and two eight-inch wells. He is married and has two small sons.

Matsumoto, a neighbor of Aigaki, is actually a competitor in vegetable growing business, but both are very good friends and exchange notes on truck farming. Tod, working 140 acres, is also reaping the results of his first year in Plainview and is satisfied. He also works three tractors and uses three 10-inch wells for growing as many different varieties of vegetables as does his neighbor. Matsumoto and Aigaki are both United

Hockley County  
May Form Water  
Saving District

LEVELLAND, June 3—Hockley County has asked the State Board of Water Engineers to define boundaries of an underground water reservoir for the purpose of forming an Underground Water Conservation District.

Bert Eads and Burnett Roberts of the Hockley County Farm Bureau announced that petitions bearing the signatures of 87 property-owning, tax-paying voters in Hockley County have been mailed to the State Board of Water Engineers.

The petitions request formation of a district "for Hockley County and such additional territory as the board sees fit."

Boundaries of the district, under States citizens by birth and neither has ever been to Japan. Aigaki said, "I would kind of like to visit over there just to see what kind of a mess it is." —Star-Telegram.



Show Starts 8:00 P. M.  
ADMISSION  
Children under 12 . . . 9c  
Adults . . . . . 40c

Last Time Friday, June 9

Spencer Tracy  
Kathrine Hepburn  
—in—

Adam's Rib

SATURDAY ONLY

Destry Rides Again

—starring—

James Stewart  
Marline Dietrich

SUNDAY & MONDAY

Jane Wyman  
Lou Ayres  
—in—

Johnny Belinda

TUESDAY & WEDNESDAY

The Gal Who  
Took The West

—starring—

Yvonne DeCarlo  
Charles Coburn  
Scott Brady

THURSDAY & FRIDAY

Paulette Goddard  
Ray Milland  
—in—

The Crystal Ball

Super Duper  
SPECIAL

Every Tuesday and  
Wednesday Nights

\$1.00 per car

Load up a car and  
come on out.

SEE . . .  
THE NEW 1950 MODEL  
ZENITH  
COMBINATION AT  
SPENCE RADIO  
SHOP  
PLAYS ALL THREE  
SPEED RECORDS  
ALSO  
YOUR DEPENDABLE  
SERVICE  
SHOP  
PHONE 270-W

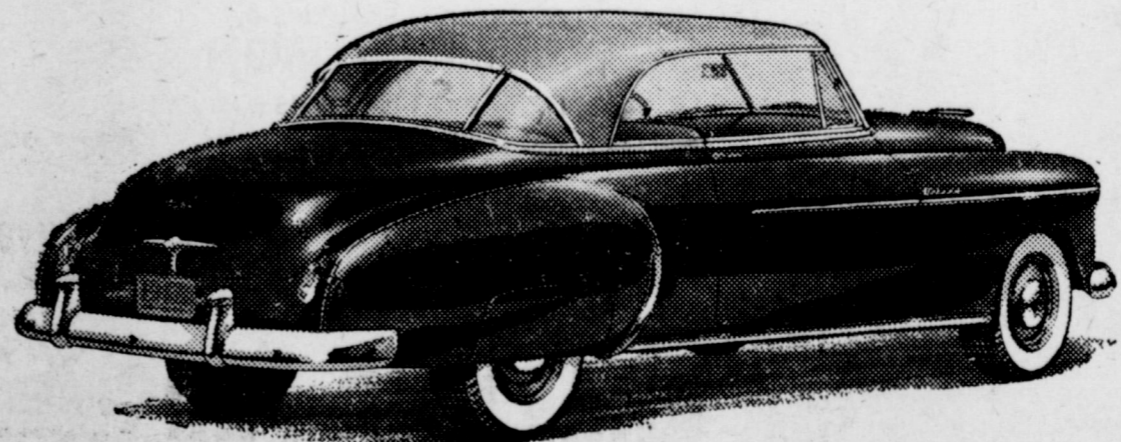
DELIGHT

Delighted . . . that's you, after a month of using our Special Checking Account. It's easy to pay bills, keep a record of your spending—and it saves you money, too. Come in and ask us about it today!

MULESHOE STATE BANK  
MEMBER F. D. I. C.

Now see the style-star of an all-star line . . . the new Chevrolet

Bel Air



It's the only car of its kind in the entire low-price field!

Here is the most beautiful Chevrolet ever built—here is the magnificent new Chevrolet Bel Air! Here, for the first time in the low-price field, is a car that combines all the dash and jauntiness of a convertible with the comfort and safety of an all-steel body by Fisher. The new Chevrolet Bel Air combines fresh breath-taking beauty of design with all the traditional Chevrolet advantages . . . makes it possible for you to

own the liveliest-looking, loveliest-looking car on the road!

But come in and find out all about the Bel Air for yourself . . . its low-lined, youthful silhouette . . . its wide side windows unobstructed by any post . . . the exceptionally generous vision from its sweeping rear window . . . its sparkling color harmonies . . . the rich blendings of its luxuriously appointed interior.

Combination of Powerglide Automatic Transmission and 105-h.p. Engine optional at extra cost.

First . . . and Finest . . . at Lowest Cost



C. & H. CHEVROLET COMPANY

PHONE 12

YOUR CHEVROLET DEALER

MULESHOE, TEXAS

MARTIN MILO  
PLANTING SEED

CLEANED & SACKED

No Other Grain Grown—  
No Other Seed Cleaned—

STATE TESTED

At The Farm, Lariat Elevators & O. M. Self Farm

GEORGE STOTTS

3 Miles South Of Lariat, Texas

### Mrs. Willman Hosts Muleshoe W S C S

Muleshoe W. S. C. S. met May 31 with Mrs. L. F. Willman, there were ten members and two visitors present.

The meeting opened with the song "In The Service OF THE King". Mrs. H. C. Holt brought a timely devotional based on Matt. 5:13-16. Her talk brought out woman's responsibility toward the United Nations in our country. Mrs. Willman gave the Christian's Progress in making Prayer an integral part of the United Nations procedure, she cited the report that a "Prayer Room" had been incorporated into the new UN building, where each member of the UN could retire and worship or pray as he chose. There is also a Laymen's movement whereby any interested person the world over could inform themselves about UN and pray over world affairs.

Mrs. Finley Pierson gave the reasons "Why We Believe In The UN". The program was ended with a prayer by Mrs. Roy Bayless.

During the business session a committee was appointed to welcome the new pastor and family Thursday afternoon. The next meeting will be with Mrs. Pierson Monday June 5 instead of Wednesday, June 7.

### Muleshoe Rebekahs Elect Officers

The Muleshoe Rebekahs met in regular session, Tuesday evening, with Noble Grand, Ruthe Anderson presiding.

The election of officers was held and Lola Goodnough was elected Vice Grand and Hazel Whalin will take the chair of Noble Grand.

June 12 will be Memorial Night for deceased members of our order and there will be a short program. A cordial invitation is extended to all Oddfellows, Rebekahs and their families to attend. A supper will be served after the program.

### Mrs. Motheral Hosts Homemakers Class

The Homemakers Class of the First Baptist Church met in the home of Mrs. Beulah Motheral, Tuesday afternoon, for their regular monthly business and social meeting. Mrs. Motheral brought the Devotional taken from the 27th chapter of Psalms.

The minutes were read and approved. The group captains made their reports and they were approved.

Five members and one honorary member were present. The meeting was dismissed by Lois Shook.

### Our Honor Roll ...

New subscribers to the Journal this week are:

Mrs. Earl Wilkins, Calif.  
James Tarbett, Springtown, Tex.  
Mrs. A. M. Carothers, City  
Robert Trapp, Lubbock  
Pete Jenkins, Big Spring  
Nancy Seid, Hamilton

Those renewing their subscriptions to the Journal this week are:

Howard Cox, City  
J. H. Wingo, Route 1  
Ross Goodwin, Route 2  
E. P. Burlesmith, Route 2  
M. D. Locker, Route 2  
Helen Jones, City  
Mrs. R. L. Jones, City  
Mrs. W. P. Flowers, City  
Sam E. Fox, City  
Mrs. J. T. Gilbreath, City  
Byron Griffiths, City  
Cobb's, City  
Fry and Cox Bros., City  
H. C. Holt, City  
Geo. E. Hicks, City  
R. V. Ivy, City  
J. H. Farley, City  
Opal Booth, City  
M. G. Bass, City  
C. M. Baker, City  
F. T. Coffey, City  
M. E. Finley, City  
Bill Kistler, City  
W. M. Pool, H. City  
Scott Williams, City  
Willis Wood, City  
A. P. Lambert, City  
Muleshoe Ice and Produce, City  
Earl Lee, City  
Mrs. Carrie Wilhite, City  
C. D. Rogers, Star 1  
F. M. Hawkins, Route 1  
R. Pyritz, Route 1  
B. M. Meyers, Route 2  
B. M. Seales, Star 2  
Frank Snyder, Route 2  
W. S. Marthieson, Route 2  
A. F. Hutchinson, Goodland  
Glenn Williams, Goodland  
Jack Bates, Sudan  
W. W. Rush, Amarillo  
Gil Buhman, Minnesota  
Mrs. Lester Garth, California.  
A. X. Erickson, Colorado  
Hank Gowdy, New Mexico  
H. L. Lowery, Shamrock  
T. C. Wiseman, San Antonio  
Joe S. Menefee, Friona

### Rainbow Girls To Grand Assembly

The Assembly of Rainbow for Girls met in regular session, Thursday, June 1, for a business meeting. Those officers were installed who missed the regular installation service.

Instruction in the ways of a Rainbow Girl was given to assist the new members in learning the work.

Thursday evening June 15, at 8:00 o'clock the impressive and beautiful initiation service will be put on in honor of Tommy Ann Drinkard. There will be a practice

for the officers at 3:00 that afternoon.

Misses Peggy Jo Robinson and Kay Malone will leave Sunday June 11, for Mineral Wells to attend Grand Assembly June 12, 13 and 14. Miss Robinson is Worthy Advisor and Miss Malone is Grand Representative to New Mexico from Texas.

### BAILEY COUNTY ABSTRACT CO.

ESTABLISHED IN 1900  
MRS. LELA BARROY — L. S. BARRON  
ABSTRACTS — LOANS  
F.H.A. & G. I. LOANS — TITLE INSURANCE

### Expression Pupils In Recital, June 1

Mrs. Horace McAdams presented her expression pupils in a recital Thursday, June 1 at the Fellowship Hall.

A formal fashion parade was given with the girls modeling their evening dresses and escorted by a friend.

Barbara Green and Edwin Cox, Julie Ann McAdams and Bobby Green and Scotty Oliver, La Nelle Boothe and Don Gardner, Dona Guinn and Everett McAdams, Polly Bristow and Derrell Oliver, Mary

Beth Jeter, Sandra Bristow and Clinton Murrain, Elaine Evans and Gerry Ray Hicks.

Readings given were: The Pokey Donkey, Only Four, and Digging by Edwin Cox; Perfume by Julie Ann McAdams; Playing Tramp, Welcome and Despair by La Nelle Boothe; Toys by Everett McAdams; Strategy, Story of a Rose and Off

the Ground by Mary Beth Jeter.

The program was announced by Lelda Ann Thompson of Dimmitt.

Piano selections were played throughout the evening by Mrs. Sam Dameron.

### DR. ABNER ROBERTS

OPTOMETRIST

ACROSS FROM POST OFFICE

117 W. 4th St.

Clovis, N. M.

Phone 6753

### MULESHOE FUNERAL HOME

LOYD ROBERTS

FOR AMBULANCE SERVICE CALL

47



**Coca-Cola and PIGGLY WIGGLY**  
DAVIS & HUMPHRIES SUPER MARKETS OWNERS & OPERATORS

*Hospitality Go-Together*

 <p><b>SALMON</b> ALASKA PINK TALL CAN <b>33c</b></p>  <p><b>CIGARETTES</b> POPULAR BRANDS CARTON <b>\$1.79</b></p> <p>6 BOTTLE CARTON <b>Coca Cola</b> <b>19c</b></p> <p>LARGE BOX <b>VEL</b> ..... 25c LARGE BOX <b>DREFT</b> ..... 25c LARGE BOX <b>TREND</b> ..... 19c REGULAR BAR <b>LUX or LIFEBOUY 2 For</b> .. 15c LARGE BOX <b>SUPER SUDS</b> ..... 25c HEINZ <b>BABY FOOD 3 For</b> ..... 25c LB. CAN FOR DAD ON FATHER'S DAY <b>SIR WALTER RALEIGH</b> .. 98c LB. CAN FOR DAD ON FATHER'S DAY <b>PRINCE ALBERT</b> ..... 89c</p> <p><b>FRESH FRUITS &amp; VEGETABLES</b></p> <p><b>ROASTING EARS</b> FRESH 3 FOR <b>10c</b> <b>CAULIFLOWER</b> Snowwhite Lb. .... 12 1/2c <b>BEANS</b> Fresh Kentucky Wonder Lb. .... 15c <b>RHUBARB</b> Fresh California Lb. .... 15c <b>ONIONS and RADISHES</b> Fresh Bunch ..... 7 1/2c FRESH CALIFORNIA RIPE <b>TOMATOES</b> LB. <b>19c</b> NEW RED OR WHITE NO. 1'S <b>POTATOES</b> LB. <b>5c</b></p>	<p>MARSHALL NO. 300 CAN <b>PORK &amp; BEANS 3 For</b> ..... 25c MARSHALL NO. 2 CAN <b>HOMINY 3 For</b> ..... 25c MARSHALL NO. 300 CAN <b>KIDNEY BEANS 3 For</b> ..... 25c <b>OLEO</b> Hollandale Lb. .... 19c HERSHEY'S 6 OZ. BAG <b>KISSES</b> ..... 22c HEINZ TOMATO <b>SOUP No. 1 Can</b> ..... 11c PENICK GOLDEN <b>SYRUP 1/2 Gal.</b> ..... 33c DELSEY <b>TISSUE 2 Rolls For</b> ..... 25c FRENCH OR MIRACLE <b>DRESSING 8 Oz. Bottle</b> .. 23c</p> <p><b>FRUIT COCKTAIL</b> LIBBY'S NO. 303 CAN 5 FOR <b>99c</b></p> <p><b>FRESH FRUITS &amp; VEGETABLES</b></p> <p><b>BACON</b> MORRELL PRIDE HOTEL SLICED LB. <b>59c</b> <b>STEAK</b> Loin Choice Beef Lb. .... 83c <b>WEINERS</b> All Meat Lb. .... 49c <b>BACON</b> Wilson's Corn King Lb. .... 49c <b>ROAST</b> Brisket or Short Ribs Lb. .... 35c WHITE TROUT <b>FISH</b> FRESH FROSTED LB. <b>19c</b> <b>HAMS</b> BUTT END LB. <b>55c</b> SHANK END LB. <b>49c</b></p>	<p>TUXEDO 1/2 SIZE CAN <b>TUNA FISH</b> ..... 25c SUGAR KIST 8 OZ. CELLO <b>MARSHMALLOWS</b> ..... 15c HI-HO <b>CRACKERS 1 Lb. Box</b> ..... 29c <b>TOMATOES</b> No. 2 Can .. 10c LIPTON'S <b>TEA 1 Lb. Box</b> ..... \$1.19 REX 5 LB. JAR <b>JELLY</b> ..... 65c MILK OF 50c SIZE <b>MAGNESIA</b> ..... 39c RUBBING PINT BOTTLE <b>ALCOHOL 2 For</b> ..... 25c REGULAR \$1.00 SIZE <b>TONI REFILLS</b> ..... 69c</p> <p><b>PIGGLY WIGGLY</b> DAVIS &amp; HUMPHRIES SUPER MARKETS OWNERS &amp; OPERATORS</p>
--	--	--

## OES Installation Service Held Wednesday, May 31

Wednesday night, May 31, in a hall beautifully decorated with cut flowers and lighted tapers, OES officers for the ensuing year were installed.

The retiring Worthy Matron and Patron, Mr. and Mrs. Clyde Holt, presented their officers lovely gifts. They were in turn presented gifts from the chapter, the officers and the Worthy Matron, a gift from the Past Matrons of the chapter.

Officers installed were Mrs. Margaret Collins, Worthy Matron; R. J. Klump, Worthy Patron; Mrs. Bettie Burkhead, Associate Matron; J. E. Mills, Associate Patron; Mrs. Lou Green, Secretary; Mrs. Dorothy Barron, Treasurer; Mrs. Viola Layne, Conductress; Mrs. Ruby Cox, Associate Conductress; Mrs. Anna Lucy McAdams, Chaplain; Mrs. Lela Barron, Marshal; Mrs. Beth White, Ruth; Mrs. Grace Lane, Esther; Mrs. Hattie Ray Jones, Warder; Mrs. Bertha Johnson, Sentinel.

In an inspiring program presented to the new Worthy Matron, Mrs. Collins, by the Marshal and the star points, she received a beautiful bouquet of flowers representing the five rays of the star. She was

## 1/2 Century Honors Mrs. Belle Snyder

The Half Century Club met June 1, in the home of Mrs. Frank Snyder, honoring Mrs. Belle Snyder, on her birthday. The honoree received many lovely cards and gifts.

A sumptuous dinner was served cafeteria style to the following members and visitors Jimmie Panter, Carles, Welch, Witterding, Jones, Kistler, Witherspoon, Templar, Harris, Gilbreath, Duke, Farrell, Layne, Julian, Paul and guests Hattie Griffiths, J. J. Gross, Joan Mills, Jackie Chitwood, Joy Snyder, Pearl Moore.

Mrs. Moore has invited the club to meet with her June 15, in honor of Mrs. Lucy Layne in an all day meeting. Please bring a covered dish to the meeting.

also presented a gift by Mrs. Holt. Mrs. Pat Bobo sang three songs "Now Is The Hour", "Star Of The East" and "End Of A Perfect Day", accompanied by Mrs. Helen Gardner and Mrs. Elizabeth Gardner, in honor of the incoming and outgoing Worthy Matrons.

Installing officers included Mrs. Mary DeShazo, Mrs. Beulah Carles, Clyde Holt, Mrs. Elizabeth Gardner, Miss Elizabeth Harder, Mrs. Gladys Laing of Earth, Deputy Grand Matron of the Grand Chapter of Texas, and Mrs. Clemmie Ladd.

## Society News

THE MULESHOE JOURNAL, Thursday, June 8, 1950

### Calendar Of Events Gwyneth Bigham Presented In An Organ Recital

**LIONS CLUB**—Each Wednesday noon at Gerald's Cafe.

**ROTARY CLUB**—Each Tuesday noon at Gerald's Cafe.

**AMERICAN LEGION**—First and third Wednesday nights at Legion home.

**MASONIC LODGE**—Second Tuesday night of each month at Masonic hall. Practice each Monday night.

**IOOF LODGE**—Each Thursday night at Odd Fellow's lodge.

**MULESHOE REBEKAHS**—Each Tuesday night at Odd Fellow's hall.

**CANTON**—Second Friday night of each month at Odd Fellow's hall.

**JAYCEES**—First and third Monday nights at Cross Roads Cafe.

**COMMISSIONERS' COURT**—Recruit meeting each second Monday at court house.

**FIRE DEPT.**—Second and fourth Wednesday night of each month.

**EASTERN STAR**—First Tuesday night of each month at Masonic hall.

**MULESHOE TRUSTEES**—Meet on Monday nearest 10th of month. Any other organizations wishing to be listed please contact the Journal office.

## Mrs. Gross Hosts Progress HD Club

The Progress H. D. Club met in the home of Mrs. J. J. Gross Monday June 5.

The president called the meeting to order. Mrs. Bratcher gave the inspirational on Smiles.

A very good report on the Commissioners Banquet was given.

Mrs. J. J. Gross was elected as nominee to send to council to be voted on as a delegate to the state meeting at Big Spring in August.

Plans were made for a political rally to be held June 30 in the large barn at the farm of Gordon Murrah. Everyone is to bring a basket lunch to be spread. Eating will begin at 8:30 followed by a candidate speaking. Come bring family, lunch and hear the candidates. Everything free.

The program was given under the leadership of Mrs. Gordon Murrah. The subject was Master Mix and its many uses in cooking. Some of which were sampled. A yellow cake was served made from the mix. Also cheese biscuits made from a different Master Mix recipe by Mrs. Fern Davis. The mix was found to be much more economical and quicker to use than commercial mixes or the old method of mixing ingredients as needed. Roll call was answered with "Cooking Time Savers I Use."

The next meeting will be June 20 in the home of Mrs. Ray Maberry. There will be a roundtable discussion on the Luxury Tax. Roll call will be "What I Can Do Toward Soil Conservation."

Don't forget the Political Rally June 30.

## OES In First Meet Of Year

Muleshoe Chapter Order of the Eastern Star met Tuesday evening, June 6, in their first meeting of the new year.

Mrs. Margaret Collins, Worthy Matron, very graciously presided during the evening.

Mrs. Mary Frances Holt was the installing marshal during the installation of three officers who were unable to attend at regular installation. Those officers being installed were Mrs. Helen Gardner, organist; Mrs. Jo Wood, Martha; and Mrs. Lola Bray, Electa.

In the course of the business session it was decided by the group to serve refreshments at each meeting.

Committees were appointed for the year by the Worthy Matron. Mrs. Juanita Roberts gave a reading that was enjoyed very much. The Chapter was closed in regular form to meet again, Tuesday, July 4.

## Attend Reunion Held In Amarillo

Mrs. Audine Geuy and Mrs. Jim Clements were in Amarillo over the week end attending a family reunion held in honor of Mrs. J. D. Humphreys. Mrs. Humphreys is the former Miss Izora Hatley, of Olton, Texas.

She is a model for the Rose Marie Reid Co. swim suit originals, of Los Angeles, Calif. Mrs. Humphreys has been on a 6-weeks tour modeling in the Southwest.

Mrs. Geuy and Mrs. Humphreys are old school chums and worked together at the Dalhart Army Air Base during the war.

There were about 50 people attending the reunion. A very nice time was enjoyed by all. Mrs. Humphreys' husband flew in to Amarillo from Los Angeles Saturday morning to be at the reunion. Mr. Humphreys is employed by the Northrop Aircraft Company, of California.

## DR. B. R. PUTMAN OPTOMETRIST

First Door North Sue's Beauty Shop Muleshoe, Texas Phone 342-J

## Commercial Refrigeration Service

All Work Guaranteed  
Call CLOVIS AL FOSIE  
Day Phone 7252 Night Phone 6778

## FOR SALE

GRIMM ALFALFA SEED

35c per lb.

K. E. PRIBOTH  
AT ROLLER RINK

SEE US FOR PROTECTION POLICIES YOU NEED

## BOBO INSURANCE AGENCY

PHONE 97 — COURT HOUSE — MULESHOE

## LEGER CLINIC

Dr. C. N. Leger Naturopathic Physician  
Dr. L. E. Blackard Naturopathic Physician  
Dr. Blackard is a lady and confines her practice to women.  
Leger Clinic Located in Amherst, Texas  
Next Door to U. S. Post Office

YOU EXPECT MORE  
—YOU GET MORE—  
IN A MATHES COOLER!



\$24.95

MATHES COOLER

- ★ **MORE VALUE!**  
COMPARE THEM ALL AND YOU WILL KNOW WHY YOU GET MORE IN A MATHES COOLER!
- ★ **MORE FEATURES!**  
COMPARE THEM ALL AND YOU WILL KNOW MATHES COOLER HAS MORE EXCLUSIVE COMFORT FEATURES THAN ANY FAN!
- ★ **MORE PERFORMANCE!**  
COMPARE THEM ALL AND YOU WILL KNOW WHY YOU GET MORE—THE FINEST PERFORMANCE IN A MATHES COOLER!
- ★ **MORE COMFORT!**  
COMPARE THEM ALL AND YOU WILL KNOW WHY THE NEW MATHES COOLER COMFORT FEATURES GIVE YOU MORE COOL, RESTFUL COMFORT!

Yes, YOU EXPECT MORE AND YOU GET MORE IN MATHES COOLER!  
Dyer Hardware & Furniture  
Genuine Maytag Parts & Service  
Phone 151 Muleshoe, Texas

Cobb's Has The Right Gift For

# Father's Day

Sunday  
June 18

Make June 18th the most memorable Father's Day of all! Select his gifts from the thrilling and practical suggestions on this page. There is something here to suit his taste and your budget. Shop now while there is still a wide selection.



## TIES

Beautiful selections in conservative or bright patterns.

\$1.50 & \$2.00



## SUMMER SLACKS

Gabardine, Rayon and Wool. Your choice of colors, patterns and styles.

\$5.98  
To  
\$17.95

## STETSON HATS

Summer straws made of genuine Panama

\$5.00 to \$10.00



## It's a FREEMAN Shoe

THE FOOTWEAR OF SUCCESSFUL MEN

Combining all your favorite summery features, this handsome oxford is designed for greater walking-wearing pleasure. Blended brown and sun-tan calfskin . . . air-jet cooling . . . easy-fitting custom-type last.

## ARROW SHIRTS

\$3.65 to \$4.50

Treat Dad to a shirt he'll wear with comfort and good looks for many a season to come. Choose it from our extensive selections. White or Pastel colors.



For Your Greater Pleasure...

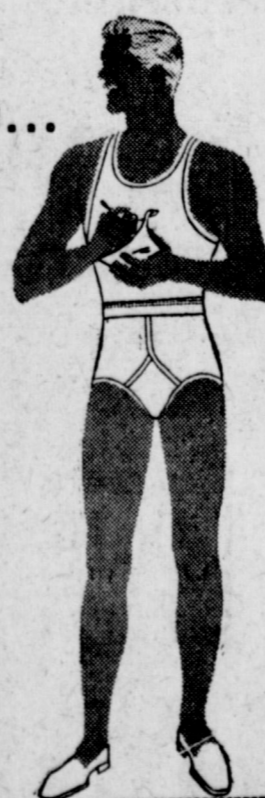
## Jockey

SHORTS

Made Only by COOPERS

Talk about comfort—that's Jockey Shorts. They fit snug as your skin, move with your skin, give you comfort in action. With the famous patented Y-Front no-gap opening. Other exclusive features. Come in today for your supply of Jockey Shorts.

Jockey Contoured Shorts to Match



Cobb's



**SCHEDULE OF SERVICES**

**ANTIOCH PRIMITIVE BAPTIST CHURCH**  
Across Street From Hospital  
ELDER JIMMIE BASS, Pastor  
Services 1st Saturday at 2:30 p. m. and first Sunday.  
Singing every Sunday night except 1st Sunday night.

**NORTH SIDE CHURCH OF CHRIST**  
Worship, each Lord's Day 10:30  
Extending to all a cordial invitation.

**Y. L. BAPTIST CHURCH**  
First and Third Sundays  
Rev. Lavender, Pastor  
Sunday School 10 a. m.  
Morning Worship 11 a. m.  
Training Union 7:30 p. m.  
Evening Worship 8:30 p. m.  
Services every 3rd Sunday  
Starting at 10:30

**PROGRESS BAPTIST CHURCH**  
Rev. E. W. Campbell  
Sunday school 10:00 a. m.  
Morning Worship 11:00 a. m.  
B. T. U. 8 p. m.  
Evening Worship 8:30 p. m.  
Mid-Week Prayer Service 7:30 p. m.  
Wednesday 7:30 p. m.

**LONGVIEW BAPTIST CHURCH**  
Rev. J. E. Moore, Pastor  
Sunday School 10 a. m.  
Preaching Services 11 a. m.  
B. T. U. 8 p. m.  
Evening Services 8:30 p. m.  
W. M. S., Monday 2:30 p. m.  
All Church Night, Wed., 7:30 p. m.

**CHURCH OF THE NAZARENE**  
Rev. D. L. Grant, Pastor  
Mack Heile, S. S. Supt.  
Sunday School 10 a. m.  
Morning Worship 11 a. m.  
Evening Worship 8:30 p. m.  
Young People's Service 7 p. m.  
Evening Worship 7:45 p. m.

**ST. JOHN'S LUTHERAN CHURCH**  
Luzbuddie, Texas  
W. B. Gummelt, Pastor  
S. S. and Bible Class 10 a. m.  
Divine Services 11 a. m.  
Ladies Aid meets the first  
Thurs. of each month 2:30 p. m.  
The Waltham League meets 1st  
Sun. of each month 6:30 p. m.  
Sunday School Teachers meet  
every Wednesday 7:30 p. m.  
A cordial welcome awaits you at  
St. John's Lutheran Church.

**MULESHOE PRIMITIVE BAPTIST CHURCH**  
On Clovis Hi-way at Shady Rest  
Second Sunday 11:30 a. m.  
Elder L. M. Handley  
Fourth Sunday 10:30 a. m.  
Elder K. B. Martin  
Theron West, Church Clerk

**FIRST BAPTIST CHURCH**  
Luzbuddie, Texas  
L. B. Edwards, Pastor  
Sunday School 10 a. m.  
Morning Worship 11 a. m.  
Training Union 6:45 p. m.  
Evangelistic Service 7:45 p. m.  
"Not forsaking the assembling of  
yourselves together. Heb. 10:25"

**ASSEMBLY OF GOD CHURCH**  
Rev. L. H. Hubbard, Pastor  
Sunday School 10 a. m.  
Morning Worship 11 a. m.  
Evening Service 8 p. m.  
Young People's Service,  
Tuesday 8 p. m.  
Mid-week Service,  
Thursday 8 p. m.

**METHODIST CHURCH**  
Luzbuddie, Texas  
Rev. Silas Dixon, Pastor  
Sunday School 10 a. m.  
Church Service 11 a. m.  
Evening Service 8:30 p. m.  
Mid-week Prayer and Song  
Service 8:40 p. m.  
Everyone invited to our services.

**MAIN STREET MISSIONARY BAPTIST CHURCH**  
M. E. Robinson, Pastor  
Sunday School 10 a. m.  
Morning Worship 11 a. m.  
Training Union 6:30 p. m.  
Evening Worship 8 p. m.  
W.M.U., Wed. 2 p. m.  
Mid-week Prayer Service,  
Wednesday 7 p. m.

**WEST CAMP FIRST BAPTIST CHURCH**  
Rev. E. H. Mitchell, Pastor  
Sunday School 10 a. m.  
Morning Worship 11 a. m.  
B. T. U. 7 p. m.  
Evangelistic Service 7:45 p. m.  
Mid-week Prayer Service 7 p. m.  
W. M. U., Thursday 2 p. m.

**FIRST BAPTIST CHURCH**  
Rev. A. W. Blaine, Pastor  
Sunday School 9:45 a. m.  
Morning Worship 11 a. m.  
Training Union 6:30 p. m.  
Evening Worship 8 p. m.  
Officers and Teachers,  
Wednesday 7 p. m.  
W. M. U., Wednesday 2 p. m.  
Choir Rehearsal, Thurs. 7 p. m.

**FIRST METHODIST CHURCH**  
H. W. Hanks, Pastor  
Church School 9:45 a. m.  
Bible Study 10 a. m.  
Preaching 11 a. m.  
Evening Service 8 p. m.  
W. S. C. S., Tuesday 2:30 p. m.  
Wesleyan Guild Meets second and  
fourth Monday nights.  
Choir Practice, Wed. 8 p. m.

**UNITED PENTECOSTAL**  
Mrs. Maggie Aken, Pastor  
Sunday School 10 a. m.  
Church Service 11 a. m.  
Preaching Service 11 a. m.  
Evening Service 8 p. m.  
Tuesday Evening 7:30 p. m.  
Friday Evening 7:30 p. m.

**Shampoo A La Carte**



This sudsy pup with the soulful eyes doesn't know what a lucky dog he is. A shampoo in the sun from such a pretty miss should make even a dog smile. He's getting his Saturday afternoon bath in a versatile new cart, designed to take the hard work out of yardwork. It's handier and easier to use than a wheelbarrow, and eliminates the stooping and straining necessary when totin' leaves, soil or ashes in a finger-cutting bushel basket. The front tilts down flush with the ground or floor so that rubbish may be swept or raked directly in, and heavier objects rolled in. The handle acts as a lever making it easy to bring the loaded cart back onto the wheels. Full or empty, it's so well balanced even a child may use it. Made of sturdy steel, the cart is large enough to carry several basket-fuls in one trip, and it's wide rubber tires are easy on the lawn. It may even be used for bringing groceries or packages home from the store. Available at hardware stores and other dealers, it is brightly colored in green and orange. It makes an attractive ice box on wheels to keep bottled drinks cold for outdoor parties and picnics.

**Friona School Contract Is Let**

Contract for construction of Friona's new auditorium and gymnasium was let Monday to the BMFP Construction Company of Lubbock. Lowest of eight bidders BMFP received the job with a bid of \$167,000.00 which was \$22,000.00 lower than the high bid received. The superintendent said this sum includes a complete job with exception of furniture for the auditorium. Construction is expected to begin in a week's time, with material to commence arrival at once. The contract on grade school repair was not let at Monday's meeting as all three of the bids submitted were unsatisfactory. New bids are anticipated this week, and contract probably will be let within six or seven days.

Your gift to the Cancer Crusade will help the American Cancer Society reduce cancer deaths. You can aid the American Cancer Society by mailing your gift to CANCER, care of your local post office.

**SAFETY SERVICE**



Before you start on a trip or week end drive, let us fill your car with Conoco gasoline, check your oil (we handle all popular brands) check your tires, radiator and battery water. You can always drive with a confident feeling when you know your car is correctly serviced by us.

**City Motor Co.**

JIM BURKHEAD — "RED" GLASSCOCK — FRANCIS GILBREATH  
Phone 53 Muleshoe, Texas



**R. M. "Bob" Gregory**  
REPRESENTATIVE OF  
**Great National Life Insurance Company**  
LIFE INSURANCE FOR YOU & YOURS  
P. O. Box 187 - 1308 W. 4th

**MULESHOE ABSTRACT CO.**  
Complete & Efficient Abstract Service  
Phone 352-J  
Barry T. Lewis

**Y. L. PROGRESS METHODIST CHURCH**  
(At Progress 1st & 3rd Sun.)  
(At Y. L. 2nd & 4th Sun.)  
Carrol M. Jones, Pastor  
Unit Sunday School 10 a. m.  
Preaching Service 11 a. m.  
Bible Study Classes 7 p. m.  
Preaching Service 8 p. m.

**ZILPHA ZIMMER**  
RETAILER  
Look and Feel Better in Individually Designed "Spirella" Natural Support  
Free Demonstration

**GREEN Hospital & Clinic**  
Muleshoe, Texas  
L. T. GREEN, Jr., M. D.  
M. F. GREEN, M. D.  
Mrs. Luia Gorrell, R. N.  
Mrs. Alice Scifres, R. N.  
Winona Blair, R. N.  
Geraldine Green, R. N.  
(Offices At Hospital)

**A GOOD PUMP in A GOOD WELL**  
Hornbrook Drilling Company

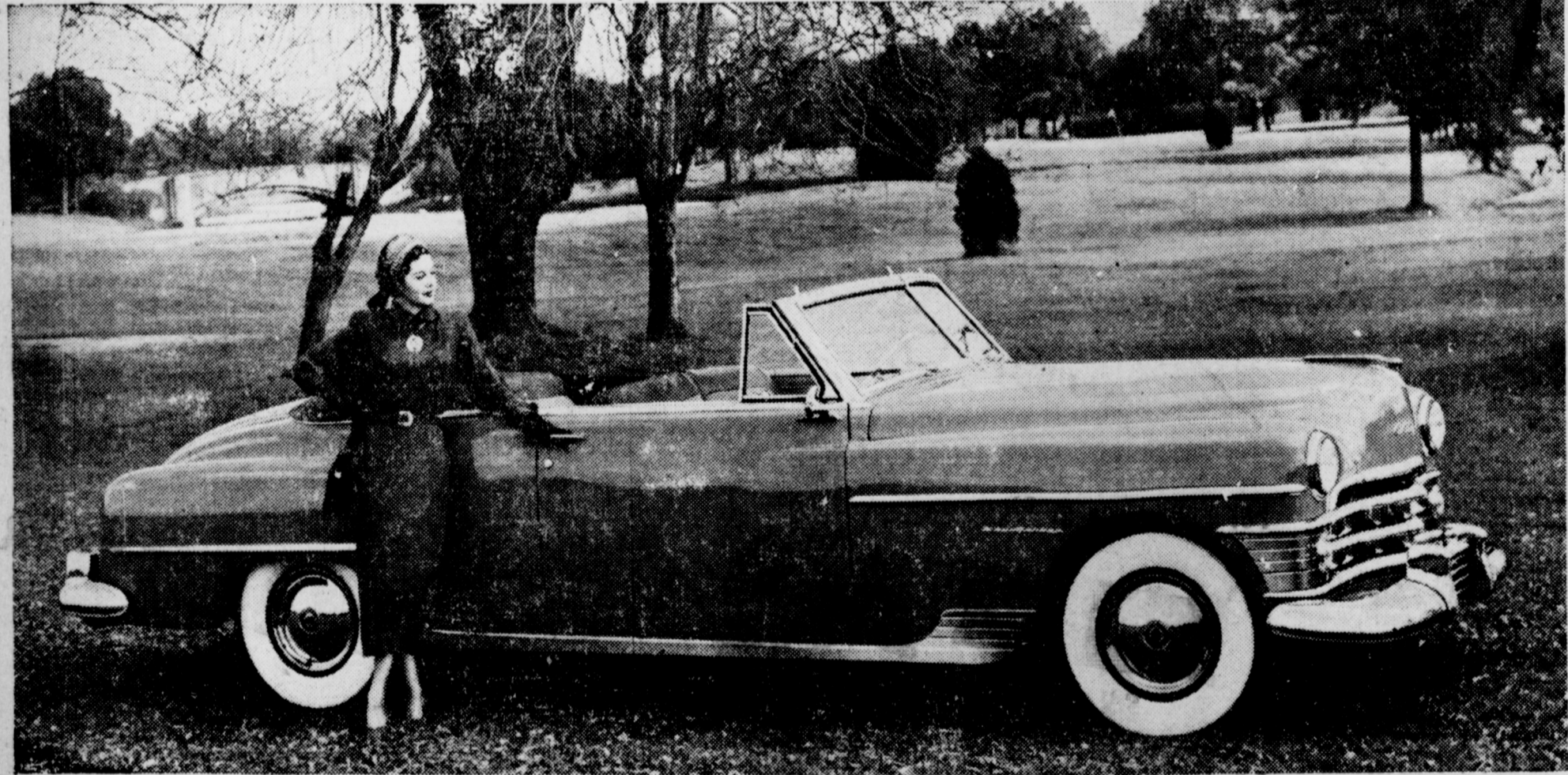
Entertainment at Your Local **THEATERS**  
MULESHOE, TEXAS  
Week Days Open 7:45 P. M., Starts 8:00 P. M.  
Saturday and Sunday Open at 1:45, Start at 2:00 and Continuous Showing

<b>VALLEY</b> THURSDAY and FRIDAY Vincent Price Ellen Drew In <b>The Baron Of Arizona</b> SATURDAY Eddy Arnold Gloria Henry In <b>Feudin Rhythm</b> SUNDAY and MONDAY TUESDAY Donald O'Conner Patricia Medina In <b>Francis</b> WEDNESDAY ONLY Leo Gorcey Bobby Jordan In <b>Bowery Blitzkreig</b>	<b>PALACE</b> THURSDAY and FRIDAY Evelyn Keyes Larry Parks In <b>Renegades</b> SATURDAY Robert Alda Hoosier Hotshots In <b>Hollywood Varieties</b> SUNDAY and MONDAY Robert Taylor Elizabeth Taylor In <b>Conspirator</b> TUESDAY and WEDNESDAY Joyce Reynolds In <b>Girl's School</b>
---	---

Motion Pictures Are Your Best and Cheapest Entertainment

**Beautiful model of a great idea!**

Look, and you see beauty! New trend-making, pace-setting beauty inside and out! Then look deeper . . . beneath the surface! There's where you find an even greater difference! Great engineering—solid quality of construction. The great Chrysler idea that means new pleasure in the comfort of a car . . . new satisfaction in the durability and safety and convenience of a car! Look closer still! At the workmanship . . . at the quality of the materials . . . at the value all the way through that only Chrysler offers. That's what you pay for . . . and that's what pays you back! Come look . . . take the wheel . . . drive . . . there's nothing like this Chrysler.



See it—drive it . . . there's built-in value all the way through!

**Chrysler Driving Advantages:**  
Fluid Drive . . . automatic gear shifting with exclusive car control! High Compression Spitfire Engine . . . extra power at all speeds. Super-finished parts for longer life. Exclusive Lubricated cylinder walls for far greater wear! Waterproof Ignition System . . . prevents stalling in flood or storm. Full Flow Oil Filter keeps oil clean.

**Chrysler Comfort Advantages:**  
Chair Height Seats . . . no crouching on the floor . . . Functional Design . . . room for your head, legs, shoulders. Easy to enter and leave. Center-arm Steering . . . minimizes road shock, wheel fight. Rubber Body Mountings . . . Floating Power . . . eliminate vibration, help give softest, smoothest ride in history.

**Chrysler Safety Advantages:**  
Safety Rim Wheels . . . won't throw tires after blowouts at normal speeds. Constant Speed Windshield Wiper . . . electrically operated. Safe Guard Hydraulic Brakes . . . balanced brake power, smoother stops, less pedal pressure. Cyclebonded linings for double the wear. Full vision . . . wherever you need it.

The Beautiful **CHRYSLER** with Fluid Drive  
**COVIN MOTOR CO.**  
"Your Chrysler & Plymouth Dealer"

PHONE 327

MULESHOE, TEXAS



**Quartet Of Styles For A Twinkle-Toed Summer**



Here are eight steps to a stylish "understanding" that will keep you well-shod around the clock all spring and summer-long. Left to right, from the fashion pages of Cosmopolitan magazine, are: high-strapped, patent sandals, Dior-designed and I. Miller-made for \$24.95; snide-fitted, white pumps by Rhythm Step at \$12.95; Fortunet's red leather beach sandals that are easy on feet, eyes and purse at \$6.95; and a pair of shantung pumps, made in several colors by Paradise to sell for less than \$13.

LEGAL FORMS, Notes, Bill of Sale, etc. at The Journal.

**6 POINT SUMMER INSPECTION**  
A Timely Suggestion for Careful Drivers—

- CHANGE TO SUMMER LUBRICANTS
- CHECK STEERING MECHANISM
- TEST ENTIRE ELECTRICAL SYSTEM
- CHECK WHEEL ALIGNMENT
- PULL WHEELS INSPECT BRAKE LININGS
- DRAIN AND CHECK COOLING SYSTEM



With The Latest Scientific Tools And Equipment, Our Expert Mechanics Will Do The Job Quicker, For Less Money.

**ARNOLD MORRIS AUTO CO.**

YOUR DODGE-PLYMOUTH DEALER

MULESHOE, TEXAS

PHONE 111

**DODGE · PLYMOUTH**  
DODGE Job-Rated TRUCKS

**LOVELY VIEW!**



This attractive sunbather finds a lovely ocean view from her vantage point atop a big rock. She is temporarily shielded from the sun by her cotton terry cloth jacket that is designed to be worn over wet bathing suits or beach clothes. The terry cloth shortsie was designed by Rose Marie Field.

**Muleshoe Trims Portales, 22-9**

The Muleshoe baseball club won another in their long series of wins Sunday afternoon when they defeated the Portales nine here with the score standing 22 to 9 at the end of the ninth inning. Sunday the locals are scheduled to play Lazbuddie 1 there.

Portales scored twice in the first inning, made four runs in the fourth, one in the eighth and one in the last inning. Muleshoe made one run in the first, scored three in the second, five in the third, six in the fourth, three in the sixth, one in the seventh, and three in the eighth. They did not take their last turn at bat the last half of the ninth inning.

Player	AB	R	H	PO	A
Clements, ss, lf	6	2	2	0	2
Howell, cf	5	4	3	0	0
Wallace, 3b, p	6	2	4	0	0
Williams, 1b	4	2	1	6	0
Barbour, 2b	3	2	0	3	2
Lambert, lf	4	3	2	1	0
Rudell, c	5	3	2	16	1
Wright, rf	3	3	1	0	1
White, p	4	1	2	1	1
*Gray, 3b	1	0	0	0	0
Tibbets, ss	0	0	0	0	0
	40	22	17	27	7

Runs batted in: Rundel, 4; Lambert, 3; Wallace, 3; White, 3; Wright, 2; and Williams, Clements and Howell, 1 each.

Two base hits: Wright, Lambert, and Rudell.  
Three base hits: White.  
Home Runs: Lambert and Wallace.

Base on balls: White, 4.  
Struck out: White, 11; Wallace, 4.  
Pitching record: White, 5 hits, 7 runs in seven innings. Wallace, 3 hits, 2 runs in two innings.

Winning pitcher: White.  
Losing pitcher: Willis.

**TO A & M COLLEGE**

Teddy Joe Lawler expects to enter Texas A & M College this fall. He graduated with the class of 1950, after making an outstanding record scholastically, in athletic competition and in extra-curricular activities.

**DRIVE GAINS MOMENTUM BAILEY COUNTY BONDS**

Bailey County citizens had bought E bonds totaling \$7,500.00 up to the second week of the current Independence Savings Bonds Drive. This report was received from Gordon Brown, director of publicity for the drive.  
Bailey County's quota was set at \$16,000. They had bought 48.88 per cent of their quota when the report was made.

**Batting Averages For Six Games**

Player	AB	Hits	Ave.
Barbour	7	4	.572
Howard	24	13	.540
White	24	12	.500
Williams	29	14	.483
Howell	24	11	.457
Wallace	25	11	.440
Clements	28	11	.392
Tibbets	16	6	.375
Gray	30	11	.367
Lambert	23	8	.347
Rundel	26	9	.356
Wright	19	6	.315
Gross	5	1	.200

**INSURANCE**

Life - Health - Accident  
Hospital - Polio  
Cancer

For All Your Needs See—

**EDDIE LANE**

Phone 24-W

**Highest Prices For Your Livestock**

BRING YOUR LIVESTOCK TO OUR SALE

EACH WEDNESDAY AFTERNOON

COL. DICK DOSHER, Auctioneer

**Muleshoe Livestock Auction**

HUGH FREEMAN

A. H. FREEMAN

**Make Your Haying Easier With**

John Deere Power Mowers

John Deere Rakes

John Deere Power Balers

Automatic Pickup)

**DAVIS - LENDERSON**

John Deere Sales & Service

Muleshoe, Texas

**Complete Repair Service**

On any farm tractor or farm machinery. All labor and parts guaranteed.

**New And Used Machinery**

Make our store your headquarters for new and used Massey-Harris tractors and farm equipment.

**TEXAS MACHINERY CO.**

"Your MASSEY-HARRIS Dealer"

On Clovis Highway

Phone 80-W

Muleshoe, Texas

*It's New! It's Here!*  
**IT'S THE SENSATIONAL UNIVERSAL Select-a-Range**

with the exclusive "CONVENIENCE-LEVEL" OVEN

Of course, it's Electric!



NO STOOPING!  
NO BENDING!

- Set it at the height you select!
- Can be installed separately in the wall!

RIGHT or LEFT HAND OVENS!

3 TIMES MORE STORAGE SPACE!

\$295

- Full size steel drawers!
- Can be expanded at any time!

**COMPLETELY AUTOMATIC!**

- Timer-controlled oven!
- Push-button pre-heat!
- Balanced-Heat oven!
- 7-heat Monotube Units!

Over 25 Select-a-Range arrangements to choose from to fill every cooking need!



Economy arrangement

With drawers added

Separated oven plan

Left-hand variation

Built-in double ovens

Typical 2-oven plan

**UNIVERSAL**

**WILLSON-SANDERS LUMBER CO.**

Phone 93

Muleshoe, Texas

GARDEN

TEXAS AND ARIZONA CERTIFIED

**SEED**

NON-CERTIFIED FROM SELECTED STOCKS

HYBRID

**BE SURE WITH YOUR SEED**

**RAY GRIFFITHS ELEVATOR**

Phone 32

Muleshoe, Texas

Spotlight Favorites

TO CALIFORNIA

Glenda Stevens, a graduate of Muleshoe high school this spring, has gone to Long Beach, Calif., to

accept employment during the summer. She is a daughter of Mr. and Mrs. Elmo Stevens of Muleshoe.



Just Plain . . . . .

HORSE SENSE

It stands to reason, that when you have your Chevrolet Car or Truck repaired . . . that it is foolish and costly to have old worn out parts put back in . . . when you can get NEW ONES . . . that will give you a lot more wear and satisfactory service.

WE HAVE GENUINE CHEVROLET PARTS. We sell parts to anyone. If you are doing your own work, we will be glad to sell you new parts, or, if your garage man is doing the work for you, we will be glad to furnish him with new parts. So be sure to insist that you get GENUINE CHEVROLET PARTS when your car is repaired.

C. & H. Chevrolet

PHONE 12 — MULESHOE



Dairy foods step into the spotlight with the Scotvold Twins of Ice Follies fame when the dairy industry observes nationally in June its 14th Annual Dairy Month. The twins, Joanne and Joyce, whose skating skill is acclaimed from coast to coast, say: "We're healthy because our favorite foods are dairy products."

With the annual per capita use of milk and its products at 249 quarts, there is still need for a 40% higher consumption of milk and its products, according to scientists, who say Americans should consume 341 quarts a year.

Among the cooperators with the dairy industry in the June Dairy Month nationwide program to develop a better understanding of dairy foods are the nation's newspapers, magazines, radio and television stations, food, drug and variety stores, restaurants, hotels and the railroad industry.

June 26 Is Last Day For New Farms To Apply For 1951 Wheat Allotment

Farms on which no wheat was seeded for harvest in any of the years 1948, 1949 or 1950, may apply for a 1951 Wheat Acreage Allotment, according to H. E. Schuster, chairman of the Bailey County Production and Marketing Administration Committee. To be considered for an allotment on a new farm the farmer must apply in writing to his county PMA committee at its office in Muleshoe, Texas by JUNE 26, 1950.

The application must contain evidence that land for which an allotment is required is suitable for the production of wheat and that the operator will be largely dependent for his livelihood on his farming.

TO LUBBOCK AND PLAINVIEW Mrs. Clyde Holt visited in Plainview and Lubbock Monday.

VISITING IN FT. WORTH

Mr. and Mrs. Spencer Beavers and boys are visiting in Ft. Worth this week with Mr. and Mrs. Clay Beavers.

FROM CALIFORNIA

Mrs. C. C. Tolivar of Huntington Park, Calif. is visiting her sisters Mrs. Myrtle Priboth and Mrs. Hattie Jones and other relatives and friends in Muleshoe this week.

TO ROPES

Mr. and Mrs. J. M. Moore and family visited with an aunt of Mr. Moore's, Mrs. J. W. Hunsinger, at Ropes, Sunday.

MULESHOE VISITORS

Mr. and Mrs. Mrs. Buck Chandler and son of Corpus Christi are visiting her parents, Mr. and Mrs. R. G. Horsley, and other relatives and friends this week.

RETURNS HOME

Miss Caroline Holt of Amherst who has been visiting her grandparents, Mr. and Mrs. H. C. Holt, other relatives and friends in Muleshoe has returned to her home.

IN DALLAS HOSPITAL

Miss Mildred Miller of Clovis, formerly of Muleshoe, has been reported ill in Baylor Hospital, Dallas. Last reports were that she is doing fine.

ELIZABETH WOODLEY INSURANCE

Nat'l Farm Loan Office Bldg.

Phone 83

CLEARANCE

ON ALL

AIR COOLERS

LAWSON and SNO BREEZE

Keep cool this summer with one of these air conditioners. We are closing them out at drastic reductions. Any size to fit your needs.

\$35.00 up

Wiedebush & Childers

On Clovis Highway

Muleshoe, Texas

Announcing . . . . .

The Formal Opening Of

WEST'S POST OFFICE CAFE

(In The Old Post Office Building)

THURSDAY, JUNE 8, 2-10 P. M.

Free Pie And Coffee For All!

SUNDAY DINNER

Will Be Served BUFFET STYLE

Just pass along and serve yourself. Choose what you want and the amount you want.



Completely Remodeled And All New Fixtures For Your Comfort And Convenience

All New Booths & Fixtures Completely Air Conditioned Prompt & Courteous Service Accommodations For Parties & Banquets

The Preparation Of Meals And Short Orders Will Be By Mrs. Theron West

Air Conditioned For Your Comfort

CONGRATULATIONS

And Best Wishes To

MR. AND MRS. T. F. WEST

upon opening of your new

POST OFFICE CAFE

Fixtures & Equipment

Furnished By

McGUIRE SALES CO.

1502 10th

Lubbock

## Chrysler Starts Paper Campaign

A newspaper campaign described as the biggest and most consistent that has ever been put behind a line of Chrysler cars has been announced by Joseph A. O'Malley, general sales manager, Chrysler

Sales Division, Chrysler Corporation. The campaign will include more than three thousand daily and weekly newspapers from coast to coast, covering practically every Chrysler-Plymouth dealer town that has a newspaper.

The first advertisement appeared the week of May 14th. A second followed the week of May 21st, and the series will continue each week during the month of June.

## Do You Know Your Highway Traffic Signs?

The shape and color of a highway sign should have a meaning for you, Mr. and Mrs. Motorist, even though there is no message or symbol on it. You have only a split second at high speeds to read a written message or grasp the meaning of a symbol on a traffic sign. If you fail, you may be courting disaster. Is it not logical then that meaning should be assigned to the shape and color of a sign as added assurance of your safety? Wouldn't knowledge of both be added insurance of your safety?

From the shape and color of a sign, it is possible for you to tell whether it is a REGULATORY sign intended to inform you of a law or regulation enacted to promote safety and convenience upon the streets and highways, whether it is a warning sign erected to tell you of a hazardous condition either on or beside the road, or whether it is a GUIDE or DIRECTIONAL sign to lead you to your destination.

This is the first of a series of four articles designed to make Mr. and Mrs. Average Driver more familiar with traffic control signs, which when properly understood and obeyed, make our highways a safer place to be. This is the story of a REGULATORY sign.

It is important enough to repeat that the regulatory sign is used to inform you of certain laws and regulations enacted to promote safety and convenience on streets and highways. A violation of these rules is a misdemeanor.

Generally, the REGULATORY sign is rectangular in shape, and it is mounted with the longer side up. The letters and border are black, and the background is white only with the following exceptions: (1) Night speed signs which have white letters on a black background; (2) Parking signs which have green or red letters on a white background; and (3) Stop signs which are so important as to merit a full description.

The stop sign is the outstanding exception to the usual shape and color combination of the REGULATORY sign group and it needs no explanation to most motorists. It is the only standard sign which has an octagonal (eight-sided) shape, and it usually has black letters and border on a yellow background.

Unless they are illuminated by a fixed source of light, the REGULATORY signs are always reflectorized to improve night visibility by using reflector buttons or by covering the entire background with reflective materials. Remember the shape and color of REGULATORY signs. Remember, too, that they inform you of laws or regulations that have been enacted for your safety and convenience. If you disregard them, you are not only endangering the life and property of others who use the highways, but also threatening the lives and property of yourself and loved ones who may be with you.

Hadrian (122 A. D.) built the Roman Wall in England. Mohammed's great desert is called the Gobi.

## Check Tractor's Cooling System

COLLEGE STATION, June 8.—The busiest part of the year for the farm tractor has arrived and will continue for the next several months. The extremely hot summer days—just ahead—will bring delays and repair bills unless the tractor's cooling system is functioning properly, says W. L. Ulich, extension agricultural engineer of Texas A. and M. College.

Ulich says there are several things that will cause the tractor engine to overheat but the main one is overloading. Each particular type tractor is made to pull certain equipment and when larger and heavier equipment is used the tractor is overloaded. The only remedy is to use a larger tractor.

A second cause of overheating comes from using a fuel that is too low in anti-knock reading. Body worn or loose fan belts can cause overheating, he says and either a new belt or properly adjusting the belt will correct the situation.

A clogged water pump or a worn bearing in the pump can cause trouble especially if the pump is leaking. The pump should be checked and if it cannot be repaired it should be replaced. He points out that water pump should be serviced regularly with proper grade of grease to prevent the worn bearings.

Faulty timing and improper carburetor adjustments will contribute to overheating and valve trouble. He recommends that you use your operator's manual when making adjustments to correct these troubles.

Clogged radiator fins will cause

overheating. The accumulating of trash, dirt, weeds and the like will not permit sufficient air to pass to cool the water in the radiator. Keep the grill and radiator fins clear of all obstructions and if your tractor is equipped with radiator shutters be sure they are open and not clogged.

All hose connections should be checked and he points out that a hose may look all right on the outside but it may be in bad shape on the inside and will keep the water from circulating as it should in the sections of the state where hard water is used in the cooling chambers. Rain water or water that is free from minerals should be used in the cooling system for it will reduce these deposits.

He says it is a good idea to flush the cooling system once a year with a lye flushing compound or with a solution of one pound of common washing soda to a gallon of water. The soda and water solution should remain in the radiator for about two or three hours with the motor running. Then drain and flush the radiator with clean water before filling it. Lubrication plays an important

THE MULESHOE JOURNAL, Thursday, June 8, 1950

part in engine cooling, he says for the oil absorbs and dissipates a considerable amount of heat. That is the reason the correct weight of oil should be used. Don't forget to check the thermostat for it can cause overheating if it isn't working properly.

Ulich concludes with this word of caution. He says that hot water should not be poured into a cold engine nor should cold water be poured into a hot engine. The sudden contraction or expansion of

the metal is apt to result in a cracked block or head. Proper care and maintenance of the farm tractor will enable you to get the most from your tractor during the busy months ahead.

Most musical terms are derived from the Italian language. In the patriotic hymn, "America", the word America does not appear.

## PRESENTING . . .

### AMERICA'S FIRST FAMILY OF THE HOME



MODEL PICTURED  
\$299.95

## Check These Outstanding Features

ONLY CROSLY GIVES YOU THE SHELVADOR the world's most convenient refrigerator! And the new 1950 Crosley gives you new space . . . more space . . . all where it's easiest to reach—all at the "convenience level!"

You don't have to stoop to the floor to reach even the lowest shelf in a Shelvador Refrigerator! And those gleaming white shelves, recessed all the way in that new double-thick door, add nearly two cubic feet of capacity . . . take no space at all from inside the cabinet!

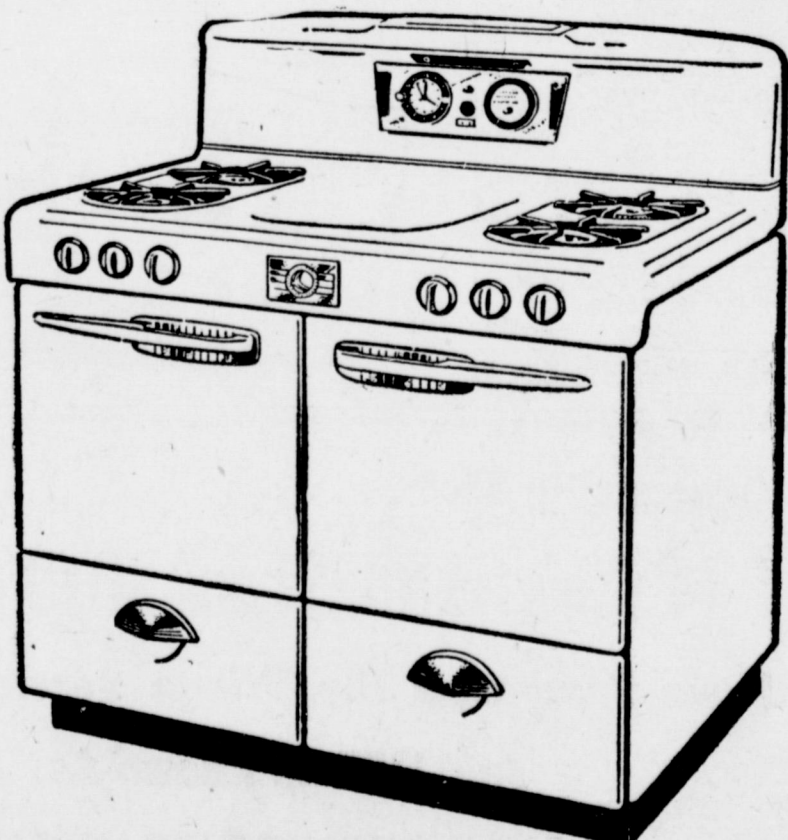
Crosley alone gives you this completely dependable refrigerator that doubles your "front-row" space, keeps twice as much food where you want it . . . in front . . . in sight . . . in reach . . . at the "convenience level!"

TAKE YOUR CHOICE OF 8 GREAT SHELVADOR MODELS FOR THE refrigerator that best fits your Kitchen and your family needs.

## JOHNSON FURNITURE CO.

Phone 116 Muleshoe, Texas

## Made the way you'd make it FOR YOUR DREAM KITCHEN!



Why wait another minute? See the new, MODERN, automatic GAS ranges at your dealer's today. You'll be delighted with the smart new lines of the 1950 GAS ranges. And you'll be thrilled to know how easy it is for you to make that "Dream Kitchen" become real. Let your GAS range dealer tell you how to take the first step, today.

## West Texas Gas Company

HELPING BUILD WEST TEXAS SINCE 1927

## COL. DICK DOSHER Auctioneer

Phone 2501

Farwell, Texas

All Farm Sales 5% And I Pay All Bills.

**FAMILY TREAT.** They'll all have fun in this roomy 4-door Sedan with generous luggage space for trips. Shown here is the SPECIAL. Same body type available also in the SUPER series.



## Look at the FUN you're missing!

SURE, we know—a car is a "necessity" these days. A modern family "couldn't get along without one." Or so you tell yourself.

Come, come, sir! We know, and so do you, the real reason you got the new-car fever—and the kind of car you are hankering for.

You want a car with some fun in it, don't you?

A car you'll get a big bang out of every time you see it parked in front of your house—every time you slip into its front seat—every sweet and easy mile you travel in it.

Well, come see what this beauty does for you.

How the doors swing open in warm welcome at a thumb touch on a button. How the broad seats invite you to take it easy. How the big straight-eight under the

bonnet snaps into purring life at your toe-touch.

And then note—

How smoothly you slip away from the curb—especially when Dynaflo\* is handling the power transmission.

How firm and steady the whole car feels. How it holds on curves, free of "heel-over" and sway. How each coil-sprung wheel quicksteps over bumps and rough spots that mean jounce and jiggle on most cars—how buoyantly road-free a Buick is.

\*Dynaflo Drive is standard on ROADMASTER, optional at extra cost on SUPER and SPECIAL models.



### FOUR-WAY FOREFRONT

This rugged front end (1) sets the style note, (2) saves on repair costs—vertical bars are individually replaceable, (3) avoids "locking horns," (4) makes parking and garaging easier.

Fun? You bet it's fun—too much fun to miss.

And there's no reason to miss it; really, for this strapping traveler is priced under many sixes. Starts at figures just an easy step above the so-called Lowest Price cars.

What's keeping you from trying one, when the nearest Buick dealer is ready to demonstrate without obligation any time you want to call on him.

### Only Buick has Dynaflo—and with it goes:

HIGHER-COMPRESSION Fireball valve-in-head power in three engines. (New F-263 engine in SUPER models.)  
• NEW-PATTERN STYLING, with MULTI-GUARD forefront, taper-through fenders, "double bubble" taillights • WIDE-ANGLE VISIBILITY, close-up road view both forward and back • TRAFFIC-HANDY SIZE, less over-all length for easier parking and garaging, short turning radius • EXTRA-WIDE SEATS cradled between the axles • SOFT BUICK RIDE, from all-coil springing, Safety-Ride rims, low-pressure tires, ride-steadying torque-tube • WIDE ARRAY OF MODELS with Body by Fisher.

WHATEVER YOUR PRICE RANGE

## "Better buy Buick"

Time in HENRY J. TAYLOR, ABC Network, every Monday evening.

YOUR KEY TO GREATER VALUE

Phone Your BUICK Dealer for a demonstration Right Now!

## MULESHOE AUTOMOBILE CO.

PHONE 375W

"BETTER BUY BUICK"

MULESHOE, TEXAS

WHEN BETTER AUTOMOBILES ARE BUILT BUICK WILL BUILD THEM

