

**USE IT...**  
RENT  
to and from  
a bit, just  
CLAS  
I have been  
The minimum fed up pretty  
per word for one's than not I  
ditional insertion, the note book  
cash in advance, who picked me  
I didn't do  
been an exper-

# The Muleshoe Journal

DEDICATED TO THE PROGRESS AND DEVELOPMENT OF BAILEY COUNTY AND THE GREAT MULESHOE COUNTRY

Volume 28, Number 35

MULESHOE — County Seat of Bailey County — TEXAS

Thursday, August 24, 1950

## THE MULESHOE JOURNAL

**OUR BEST HOG IS AT CLC**  
CLOVIS HOGS  
Cloviss, Tex.  
Phone 6122

**A MILLWAVE**  
WORTH  
Bovina, Fr.

to and from a bit, just CLAS I have been The minimum fed up pretty per word for one's than not I ditional insertion, the note book cash in advance, who picked me I didn't do been an exper-

## Muleshoe School Pupils To Register Thursday And Friday For New Term

High school students are to register Thursday, August 31, and Friday, September 1, in preparation for the opening of the new school term on Monday, Sept. 4. Supt. C. W. Grandy announced today. He gave the following schedule of registration for other groups:

On Thursday, from 9 to 12, high school freshmen are scheduled to register for the new term. On the same day, 1 to 3 p. m. those who will be sophomores are to register.

Juniors in high school will register Friday morning from 9 to 12 and seniors will register between the hours of 1 and 3 in the afternoon.

## Grid Scrimmage Here Tonight!

People of this vicinity will get their first chance to see the Muleshoe High School Yellow Jackets football squad for 1950 tonight when the boys scrimmage Tulia on the local field at 8 o'clock.

Under the direction of Coaches Woodie Green and T. J. Bailey the boys have been working out twice daily on the high school practice field while in their summer training camp. They have been heading down in preparation of a 10-game schedule, the most ambitious schedule yet arranged for a Muleshoe eleven.

Snhi Doss repeat it, but the boys are looking good to the fans who have seen them work out.

## Garden Club To Present Fall Flower Harvest Here

Muleshoe Garden Club this week perfected plans for their Fall Flower Harvest, first event of the kind to be sponsored by them, and an event they hope to make an annual affair. The show will take place in the American Legion Home here on Tuesday, September 5.

The ladies announced today they have secured the services of qualified judges, who all live at Hereford and are members of the Federated Garden Clubs of Hereford.

A complete schedule of rules and pertinent information about the Fall Flower Harvest is printed below:

## John Ben Shepperd To Be Honored With Muleshoe Jaycee Luncheon



John Ben Shepperd, Secretary of State and former president of the United States Junior Chamber of Commerce, will be honored with a luncheon at the Cross Roads Cafe Saturday noon by the Muleshoe Jaycees.

Mr. Shepperd will arrive by train Saturday morning and will be met by a delegation of Jaycees, and will be special guest of the Muleshoe Jaycees at the bi-regular meeting in Hereford Saturday and Sunday.

Members of the Lions Club and Rotary Club will also be guests of the Jaycees at the luncheon Saturday.

At the regular meeting Monday night at the Cross Roads Cafe, the club voted to donate \$250 to the Tennis Club for construction of the tennis courts at the old high school. They are also planning to erect lights at the courts so they may be used by the Tennis Club and others at night. Work on the courts is now underway.

## Saturday Is Election Day In Texas, Five Important Offices To Be Filled

Saturday is election day again in Texas!

Since there are no local contests, many are predicting that the people will neglect to cast their ballots in this August 26 runoff primary, which is just as important to them, in many ways, as was the first primary, held in July.

There are several state offices to be filled by the choice of the people in the primary Saturday. Voting will be in every box in the county, all seven of them, and the voters are again reminded that it is their duty and privilege to go to the polls and register their opinions.

Run-off races to be decided by the people and candidates are:

## Griffin Rates Votes Of Plains People

A Plainsman stands a very fine chance to be elected to one of the highest positions in Texas the coming Saturday, but his chances may be dimmed by the fact that many folks will not take the interest to vote since in Bailey County there are no local races to claim their attention.

Meade F. Griffin of Plainview, now serving as an associate judge of the Texas Supreme Court, who led the field of four candidates in the first primary in July, will be opposed by Mr. Harwood, of Dallas County. Justice Griffin is running for his first elective term.

He is well known to all the people of this section, since, among his other public services he has served for eight years as district attorney of this, the 64th Judicial District.

Justice Griffin worked his way through University of Texas law school, entered the Army in World War I, raising to the rank of captain; in World War II he served as a Colonel, having during all those years maintained his interest in things military and having regularly attended reserve training camps. He helped to organize the Legion Post at Tulia and that at Plainview, was a charter member of both and was the first commander of the Plainview Post. He served as county attorney and as county judge of Hale County. In the July primary he carried his home county by 18 to 1.

Members of the local bar, who are all friends of Justice Griffin, are joining to urge that the people turn out and vote in the election Saturday. They fear the apathy of the people since there are no local contests.

Newspapers of the state have been liberal in their political support of Justice Griffin. The Dallas News has come out editorially in favor of Mr. Griffin over the Dallas county candidate, Mr. Harwood. The following editorial from the Dallas News gives the reason for that public stand:

**SUPREME COURT RACES**  
(From The Dallas News)  
Incumbent Justice Meade Griffin of Plainview established an enviable reputation as an outstanding lawyer in thirty years of general practice, interrupted after his World War I service by two terms as County Judge of Hale County. In May, 1945, he was detailed to the Judge Advocate General's Department to establish the Trial Section of the War Crimes Branch of the Army and headed its prosecution branch at Weisbaden. Justice Griffin gave up a lucrative private practice to serve the State on the Supreme Court. Few men stand higher with fellow members of the bar than this University of Texas law graduate, soldier, barrister and jurist.

Justice Griffin is opposed by George Harwood of Dallas, whom he led by approximately 64,000 votes in the first primary. Harwood, familiar as a Dallas County politician, served as District Clerk for several terms, ran against and was defeated by Ed Cobb for Tax Assessor and Collector in 1938, lost to Cobb for county judge one term (1941-42), was defeated for reelection by Al Tompkins in 1942. He has had no judicial experience except as County Judge (a post that is not limited to lawyers) and is not widely known as a practitioner. In the primary, Dallas County gave Harwood a slight plurality over Justice Griffin, but he fell 8,500 short of a majority of the four candidates.

The News believes that his ability and qualifications entitle Meade Griffin to continue service on the Texas Supreme Court.

## 8 Muleshoe Boys Enlist In USAF

M/Sgt. John Temple, in charge of the US Army and Air Force Recruiting Station at Clovis announced that 24 applicants, eight of which were from Muleshoe, for enlistment in the USAF were shipped to Amarillo for final type physicals and enlistment.

In the group are eight men who have attended college, 12 have graduated from high school and four have some high school work. Sgt. Temple stated that in 12 years of recruiting he believes this group to be superior to any he has previously recruited.

In the Muleshoe group were Roy Lee Bayless, Jr., 19; R. E. Bryant, 18; Arlo E. Farrell, 21; Joe B. Horsley, 19; Margaret C. Hurst, 20; Johnny L. Seid, 20; Teddy Joe Lawler, 18; and Jess P. Winn, 21.

The other sixteen enlistees were from various places in eastern New Mexico, and Jay C. White of Melrose, N. M. was in charge of the group.

## Parking Meter Hearing Sept. 15

Postponement of the parking meter hearing which was to have been conducted in the district courtroom here last Friday morning before District Judge E. A. Bills, was not announced until after last week's paper had been printed. Judge Bills granted a postponement, principally, it was said, upon request of counsel for both sides.

Judge Bills set September 15 as the date for the hearing. He previously had granted a temporary injunction against the installation of the parking meters in Muleshoe upon request of counsel for a group of local businessmen.

## Voc. Guidance Is Rotary Subject

It was time Tuesday of this week for a youth vocational guidance program and it was Chief Jones' place to provide the program. Euell Porter, head of the voice department at Hardin-Simmons U., Abilene, here to direct the music for the First Baptist Church revival, filled in very nicely when the Rotarians held their weekly luncheon meeting at the Post Office Cafe.

He told the group how vocational guidance is carried on in Hardin-Simmons and other colleges and universities. Aptitude tests and other criteria are used to determine the student's particular bent and then the institution goes to work to develop the youth in that direction.

President Ray Keeling read to the club the greetings of the Rotary Club of Hampton-on-Thames, near London, England, and of the Sao Paulo, Brazil, Rotary Club. Also, he read a letter from the Lubbock Club inviting local Rotarians to attend an inter-city club meeting there on the evening of September 8. Ernest Thompson, member of the Texas Railroad Commission will address the gathering.

Guests included four members of the Rotary Club of Sudan: Eldon Nichols, A. Dooley, Wayne Brown, and O. B. Stamper. Other guests were Bob Adams of the district office of Dodge Motor Corporation, Dallas; Walter Johnston, Lubbock; Floyd Ashcraft, Amarillo; Dinty Moore, Lubbock, with Grand National Life Insurance Co.; and Mr. Porter.

The Jaycees invited six Rotarians to attend their luncheon on Saturday when John Ben Shepperd, secretary of the state and a former president of the national Jaycees organization, will be guest of honor.

## Ice Vendor Is Installed Here

A new wrinkle in Muleshoe and, indeed, in Texas is the coin ice vending machine installed here last week by J. Clyde Taylor, proprietor of the Taylor Ice and Produce Co. Mr. Taylor said he understood it is the only deal of its kind in this state.

The customer inserts the coins calling for the amount of ice he wants, waits a few seconds and the ice rolls out in front of him with a string attached for toting.

Blocks of ice are cut to the proper size inside of the small building. They are placed on a rubber belt. The insertion of the coins activates a small motor, which pulls the belt, causing the block of ice to fall off the end and into the chute to the outside. Another block advances and cuts off the motor. The Taylors are still in business even though out of town for the week-end the ice vendor is open for business to all comers 24 hours a day, seven days a week.

A bystander Tuesday remarked: "This gadget was invented by a lazy man." It is a convenience to the person who waits until after the regular business hours to buy his ice.

## Contest Boosts Lions Attendance

Bill Moore's side is ahead of the team under the guidance of Tye Young by a narrow lead of three persons in the attendance contest now underway in the Lions Club. Contest ends next week and all Lions members are urged to be present. The losing side has to treat the winning team.

One guest was present for the luncheon held Wednesday noon at Gerald's Cafe, James St., Clair of Morton, was the guest of Irvin St. Clair. He addressed the club briefly and invited the Muleshoe Lions to visit with their club.

## Legion Dance Is Saturday Night

A dance at the American Legion home here the coming Saturday night, August 26, is under auspices of Ben Richardson Post, American Legion, Lowell Irvin St. Clair is chairman of the post's dance committee.

Lloyd Alsop, of Muleshoe, who has played several dances here in the past, will again bring his fine orchestra to Muleshoe for this occasion. Lloyd is receiving his degree in music at Texas Tech this week.

## CHURCH DINNER AT YL SUNDAY

There is to be a combined Church dinner at YL Sunday, August 27, at 1:00 o'clock. The food is being prepared by the Methodist and Baptist women. Everyone is invited.

The dinner is in honor of the closing of the Baptist Revival and the Methodist Quarterly Conference.

## FUNERAL SERVICES FOR TEDDY McCLAIN IN LUBBOCK

Funeral services were held Wednesday afternoon in Lubbock for Teddy McClain, 10, son of Mr. and Mrs. Glen McClain. Teddy was a nephew of Mrs. H. D. King of Muleshoe. Teddy was struck by a dump-truck Tuesday morning and died a few minutes later in St. Mary's Hospital.

Mr. and Mrs. H. D. King and children attended the funeral.

## 21-County Hearing In Plainview Set Aug. 29 On Conservation Districts

The three-man state Board of Water Engineers will conduct a 21-county hearing in Plainview Aug. 29 prior to designating boundaries of one or more underground water reservoirs for the purpose of creating underground water conservation districts.

The High Plains Water Conservation and Users Association this week reminded irrigation farmers that their testimony at the hearing will have a direct bearing on boundaries designated.

Arthur P. Duggan, Jr., Littlefield, an attorney for the association, said that all farmers who depend on underground water for irrigation should attend the hearing, set for 10 a. m. Tuesday in the Plainview municipal auditorium.

"Any man who thinks he should be in or out of the district should be prepared to appear before the board, giving reasons for his desire to be included or excluded from the proposed district," Duggan advised.

Designation of reservoirs by the State Board is a step toward formation of conservation districts under provisions of House Bill 162, passed by the 51st Legislature in 1949. The law provides for districts, controlled by elective local boards of five directors, to conserve and protect underground waters in a program of well spacing, re-charging and waste prevention.

Board members are H. A. Beckwith, A. P. Rollins and James S. Guleke.

The hearing is for 21-Panhandle-South Plains counties, Armstrong, Bailey, Briscoe, Castro, Cochran, Crosby, Deaf Smith, Dickens, Floyd, Garza, Hale, Hockley, Lamb, Lubbock, Lynn, Oldham, Farmer, Potter, Randall, Swisher and Terry.

Herewith is printed the list of participants in "Ballad for Americans," the musical production to be presented Friday evening, August 25, at the new high school auditorium by 25 talented young men and women of Muleshoe.

All proceeds from sale of tickets will go to the fund for purchase of a piano for the auditorium. Everyone is urged to attend for an evening of pleasure and inspiration—and to help our young people in this worthy undertaking by their presence.

This is the first dramatic production to be given in the new auditorium.

**Personnel Is Listed**  
Two piano team, Jane Scott and Joan Darby.  
Dance team, Helen Gardner and John D. Whipple.  
"Boozie," Joan Darby  
Soloists, Dixie Lee Jennings and Dale Covert.  
Cast of Characters:  
GI Joe, Marvin Grandy  
Stranger, Dale Covert.  
Rosie, Dixie Lee Jennings.  
Night Club Singer, Dixie Lee Jennings.

in shades one color, suitable for a mantel.  
45. SUMMER'S GRAND FINALE—Any combination of materials—any container.  
SECTION I. Juniors  
46. Arrangement made by elementary school pupil with no assistance.  
47. Arrangement made by junior high school pupil without assistance.  
SECTION J. Blue Ribbon Arrangements  
48. Line arrangement of flowers made by blue ribbon winners only.  
SECTION K. Bottle Arrangement  
49. Any arrangement in a bottle  
50. A corsage  
SECTION M. Miniatures  
51. A miniature arrangement using miniature flowers, overall height and width not more than three inches  
SECTION N. Club Tables—Arrangements for Thanksgiving dinner tables.

## "Ballad For Americans" Is First Dramatic Production In Auditorium

Here with is printed the list of participants in "Ballad for Americans," the musical production to be presented Friday evening, August 25, at the new high school auditorium by 25 talented young men and women of Muleshoe.

All proceeds from sale of tickets will go to the fund for purchase of a piano for the auditorium. Everyone is urged to attend for an evening of pleasure and inspiration—and to help our young people in this worthy undertaking by their presence.

This is the first dramatic production to be given in the new auditorium.

**Personnel Is Listed**  
Two piano team, Jane Scott and Joan Darby.  
Dance team, Helen Gardner and John D. Whipple.  
"Boozie," Joan Darby  
Soloists, Dixie Lee Jennings and Dale Covert.  
Cast of Characters:  
GI Joe, Marvin Grandy  
Stranger, Dale Covert.  
Rosie, Dixie Lee Jennings.  
Night Club Singer, Dixie Lee Jennings.

**MULESHOE ROTARIANS ARE INVITED TO "ROTARY DAY"**  
The Muleshoe Rotary Club has been invited to participate in a gigantic Rotary Fellowship Day on Friday, Oct. 20, at the 1950 State Fair of Texas.  
A block of tickets to "South Pacific," the sensational music show which will play in the Auditorium during the Fair, and to "Ice Cycles of 1951," sparkling skating extravaganza, will be available to Rotarians on a first-come, first-served basis on this day at the Fair.  
Dallas Rotarians have mailed out about 15,000 invitations to members of some 225 clubs over the state. Members of the nine Dallas County Clubs are hosts for the occasion.

**UNDERGOES SURGERY**  
Howard Cox underwent major surgery at the Green Hospital and Clinic Wednesday morning. He is progressing as well as can be expected.

## Local Markets

Cream	.....	.50
Eggs, doz.	.....	.30
Heavy Hens, lb.	.....	.17
Light Hens, lb.	.....	.17
Hogs, cwt.	.....	24.00
Hegari, cwt.	.....	1.75
Maize, cwt.	.....	1.75
Kafir, cwt.	.....	1.75
Wheat, bu.	.....	1.98

**The Muleshoe Journal**  
Published Every Thursday  
At  
Muleshoe, Texas  
J. M. Forbes . . . . . Publisher



Entered as second-class matter at the Muleshoe Post Office under the Act of Congress, March 3, 1937.

**Subscription Rates**  
IN IMMEDIATE TERRITORY, Year . . . . . \$2.00  
OUT OF IMMEDIATE TERRITORY, Year . . . . . \$2.50

**Careful Use 2,4-D Urged By Expert**

LUBBOCK, Aug. 22. — More harm than good may result from indiscriminate use of 2-4-D weed killers and might even result in damage suits, a Texas Technological College plant expert said today.

Dr. A. W. Young, head of Tech's agronomy department, said under Texas laws persons who spray 2-4-D with power-driven machines must have a license from the state before they can begin operation. Only hand-operated sprayers are exempted from the licensing restriction.

Dr. Young exhibited cotton plants which had leaves with finger-like extensions. He said they were caused by weed-killers which had "backfired" on the growers, particularly the stronger forms like the amine and ester 2-4-D.

"Wind can cause droplets of 2-4-D to drift into fields where serious damage can result, although ammonium and sodium compounds are not as potent as some forms," he said.

He suggested that persons planning to use the weed-killer write the commissioner of agriculture's office at Austin before they begin operation of the power-driven sprayers.

**BACK AFTER LONG TRIP**

Mrs. Eva Murrah and Jesse Murrah accompanied by Bobby Ray and Kim Loveless of Lubbock, returned Monday from a 3500 mile trip to Colorado Springs and vicinity, Grand Canyon and Hoover Dam.

While in Colorado they visited Mrs. Murrah's son, Dalton, who lives at Alamosa, Colorado.

**DENTIST**  
**DR. A. E. LEWIS**  
Downstairs - McCarty Bldg.  
Office Hours  
9 a. m. to 12 — 1 to 5 p. m.  
Office Pho. 131 - Res. Pho. 2207

**INSURANCE**  
Life - Health - Accident  
Hospital - Polio  
Cancer  
For All Your Needs See—  
**EDDIE LANE**  
Phone 24-W

We are proud of our record of safety and profit for our investors.  
*Look into it!*

Attractive earnings paid on savings working here. Savings are loaned on conservative mortgages on modern homes.

**MULESHOE FOR INFORMATION SEE**  
Mildred Davis  
Western NFLA  
Building  
Muleshoe  
**FIRST FEDERAL SAVINGS AND LOAN ASSOCIATION**  
Covis, R. B. P. O. Box 470

**Social Hostess Needed By Reese Air Force Base**

An opening for recreational and social hostess exists at Reese Air Force Base near Lubbock, Texas, the starting salary to be \$3,450 annually, according to the Civilian Personnel officer at that base.

In order to qualify the applicant must be a citizen of the United States, who has passed her 25th but not her 41st birthday, with a minimum of two years in college or university of recognized standing. She must have had at least three years' experience in planning and directing social and recreational activities, in or with educational, recreational, or similar organizations, and have developed skill in handling group and mass recreational activities.

Preference will be given to those with training in recreation, either as an undergraduate or in a recognized graduate school. Experience in business administration and in a wide variety of recreational activities is desirable but not required as a minimum requirement.

No written examination will be made. Applications may be made on Form 57 obtainable at the Civilian Personnel office at Reese Air Force Base or any first or second class post office or federal agency. The completed application will be mailed to the Civilian Personnel Officer, Reese Air Force Base, Texas.

**EMPLOYED AT THE HILTON**

Miss Dorothy Murrah has recently been employed by the Hilton Hotel of Plainview. Miss Murrah's duties will be in the auditing department, she has been attending Lippert's Business College since September 1949. Dorothy who graduated with the 1949 class of Muleshoe is a daughter of Mrs. Eva Murrah of this city.

**ABILENE VISITORS**

Mr. and Mrs. James Musick of Abilene visited a few days this week with their daughter and husband, Mr. and Mrs. Travis Barnett.

**RABSON DISCUSSES Scare Buying**

Babson Park, Mass., Aug. 18. The day-today news from the fighting front in Korea does not always give us a very clear picture of what is happening there. But recent price rises in farm products, foods and non-durable raw materials leaving little count as to what is happening here, where heavy "scare buying" seems to be the order of the day.

**HOARDING IS FOOLISH**

I suspect that much of this so-called "scare buying" which is just plain hoarding, is being done by businessmen who believe they are using foresight in piling up large reserves of items scarce during World War II. Such heavy buying has already resulted in price advances some of which might not have otherwise occurred. It has also started a wave of consumer hoarding which, if it becomes too bad, will certainly hasten price controls and rationing. Such hoarding is foolish and, at the same time, dangerous because it breeds inflation. This does not mean we should not always—war or no war—keep reasonable supplies on hand.

**FEW REAL SHORTAGES**

We have learned a lot as a result of World War 2 and I hope we have learned that one of the most terrible things that could happen to us in or out of wartime, is wild inflation. Fortunately, few civilian items are really in short supply today. Actually we have surplus supplies of many items. However, the quickest way to change all that and to invite disaster is to permit

ourselves to be carried away by foolish fears. Besides being unpatriotic and anti-social, the goods which were in shortest supply during World War 2 may not become scarce as a result of the past conflict.

Holders of unreasonably over-large stocks of those items which do become critically short will almost certainly have to give up the surplus they went to such lengths to obtain. Also note this: Here at Babson Park, our economists are continually studying the supply and demand ratios in nearly 100 basic commodities, including the principal foodstuffs and farm products. Each month we issue price forecasts and clear-cut buying advice for each of these commodities. Thus, I am always in close touch with developments in the important commodities markets. It is my opinion, based on this carefully gathered information, that most commodities are now in good current supply. Perhaps our greatest weakness lies in metals, because we are so dependent on foreign sources for the huge amounts we need to keep our great industrial machine rolling in high gear. Certainly, foods are plentiful generally.

**COCOA AND COFFEE**

Much of the "scare buying" of foods has centered on cocoa and coffee, and with some excuse. Both are now in tight supply, but there should be no immediate stringency in either if abnormally heavy buying is cut down at once. Cocoa beans now in the U. S. may not suffice for all needs between now and next fall when new supplies will arrive from Brazil's mid-term crop. The consumption of cocoa and cocoa products in this country has risen sharply in recent years and is now very heavy. A moderate, voluntary cutback would not entail any great hardship.

The coffee situation is this: Owing to past neglect of the coffee plantations in South America, supplies are not much in excess of growing world consumption. Total do not compare very favorably with last year, and we must admit that 1949 was not an especially good year. Yet high prices could

**H. A. OWEN IS HEAD OF SCHOOLS AT PETERSBURG**

H. A. Owen, former principal of the Muleshoe high school, has been elected superintendent of schools at Petersburg, Mr. Owen was principal here three years, serving under Supt. W. C. Cunningham. The two had been associated before that at Munday. During his stay here, Mr. Owen also was director of the Muleshoe high school band.

The opportunist meets the wolf at the door and gets a hide for a new fur coat.

curb U. S. consumption to such an extent that current and anticipated supplies might suffice. But here again, the situation does not justify further hoarding.

**NO NEED FOR A SUGAR PANIC**

Sugar was in surplus supply on June 25 when the trouble began in Korea. It still is in surplus supply, despite the buying rush of the past few weeks. Cuban and Puerto Rican output is running above 1949 levels, while both beet and cane production here in continental U. S. exceeds year-ago totals by a substantial margin. Only destruction of shipping can cause a shortage of sugar. Hoarding, whether by wholesalers, retailers or consumers could create a temporary shortage. If this should push prices too high, it could result in sugar price controls and, perhaps, rationing; but not so long as the war is confined to Korea.

**GREEN Hospital & Clinic**  
Muleshoe, Texas  
**MARION F. GREEN, M. D.**  
**OSCAR W. FRISKE, M. D.**  
Mrs. Lula Gorrell, R. N.  
Mrs. Alice Scifres, R. N.  
Dora Goheen, R. N.  
Geraldine Green, R. N.  
(Offices At Hospital)

**TODAY'S meditation**  
The world's most widely used device for hair-line adjustment.  
Cheerful, can be restored  
work by mechanics  
hair-line adjust-

**SOME PROCLAMATIONS OF JESUS**  
" . . . whosoever heareth these sayings of mine, and doeth them, I will liken him unto a wise man, which built his house upon a rock." (Matthew 7:24.) Read Luke 6:46-49

These "sayings" to which Jesus refers in this text constitute the Sermon on the Mount. In them He sets forth the inner spiritual qualities that distinguish the Christian. He gives a new interpretation of sin—something that goes deeper than such external acts as murder, adultery, returning evil for evil. Sin is of the heart—evil attitudes such as anger, hatred, lust, insincerity, unwillingness to forgive. He describes the nature of righteousness as not merely in doing things like alms, making prayers, and fasting, but as meaning such close fellowship with the Father as to make one show forth love for all, even enemies.

If one will so apply the teachings of Jesus that his life becomes their perfect fruit, then he is happy, wise, and fruitful, an asset to others. The rains may come, the storms may beat, but the house

of his life will upon a rock. . . . These and Thy word come like Thee, imperishable. In Christ ask it. Amen.

PRAY service dep-  
O Christ, may what you need These and Thy word come like Thee, imperishable. In Christ ask it. Amen.

THOUGHT FOR THE DAY  
Let us not only call but also do the things we have says.  
L. D. Patterson (Alabama)

**ZILPHA ZIMMER**  
RETAILER  
Look and Feel Better in Individually Designed "Spirella" Natural Support  
Free Demonstration

**IF IT'S WORTH OWNING IT'S WORTH PROTECTING**  
**INSURANCE**  
WILL PROTECT WHAT YOU OWN  
WE HAVE A POLICY FOR YOUR EVERY NEED  
Farm - Irrigation & FHA House Loans — Auto Financing  
**POOL INSURANCE AGENCY**  
PHONE 113  
MULESHOE

**FARLEY INSURANCE AGENCY**  
FIRE, CASUALTY, POLIO, AUTO FINANCING  
MULESHOE STATE BANK BLDG. PHONE 375-W

We can save you money on . . . . .  
• CAR TIRES  
• TRUCK TIRES  
• TRACTOR TIRES  
**H. C. HOLT**  
Your gasoline man in Muleshoe for more than 15 years—

**Business Leader With Great War Record Tells How Hadacol Has Rebuilt Him Physically**

Was run-down, weak, after service in South Pacific due to deficiencies of Vitamins B<sub>1</sub>, B<sub>2</sub>, Iron and Niacin

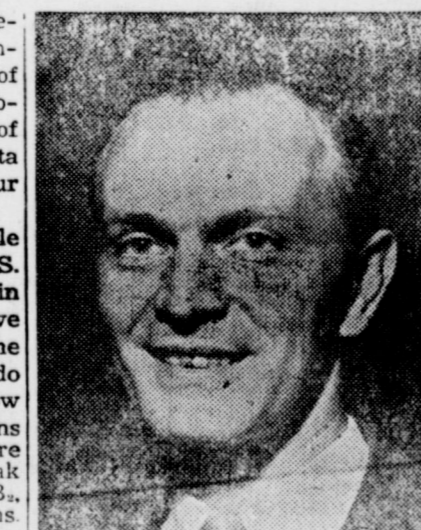
Mr. Donald Hedburg, who resides at 1812 Parker in the fashionable Riverside District of Wichita, Kansas, has been an up-and-coming executive member of the staff of the great Wichita Eagle newspaper for over four years.

Mr. Hedburg has an enviable record of combat with the U. S. Army in the South Pacific in World War II. He is very active in civic affairs. And just as he was anxious to pitch in and do a job during the war—he now wants to help his fellow citizens who (like he was once), are physically run-down and weak due to lack of Vitamins B<sub>1</sub>, B<sub>2</sub>, Iron, and Niacin in their systems.

Here is Donald W. Hedburg's witnessed statement: "When I returned from service, I faced the problem of rebuilding myself physically. I was in a general run-down condition.

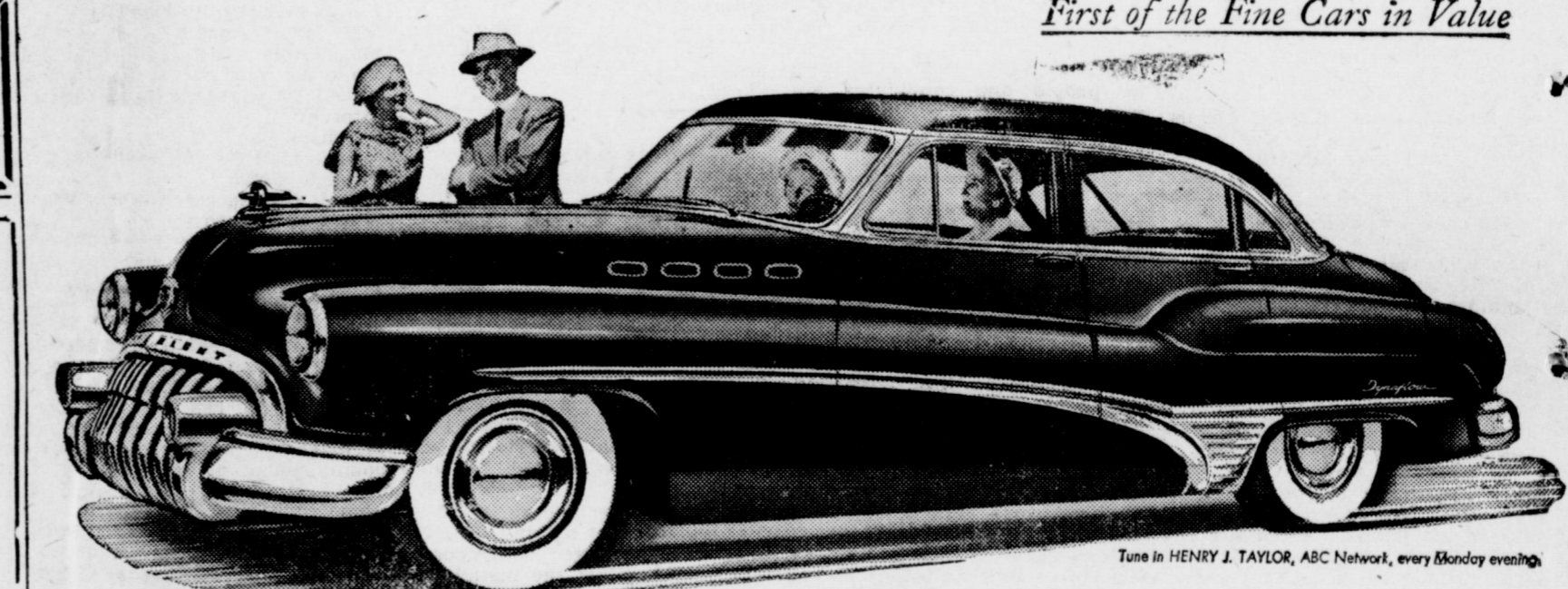
"In my present capacity of advertising salesman for Kansas' greatest newspaper, The Wichita Eagle, it's absolutely necessary that I have plenty of vitality—get up and go. I had real cause to worry. Nothing seemed to rebuild me constitutionally. Then a friend of mine on the national staff told me about HADACOL—he asked me to try at least five bottles. I'm on my fourth bottle and already I feel like my old self. I look forward to a day's work and go home—play with the children—work in the yard—fish until midnight! Thanks again to HADACOL, energy and vitality once again course through every fiber of my body. You bet, I too, am now a missionary for this great new HADACOL."

Get That Wonderful HADACOL Feeling Everyone is Talking About  
HADACOL gives such wonderful results because it not only supplies deficient, weak run-down systems with more than their daily needs of important



Vitamins B<sub>1</sub>, B<sub>2</sub>, Iron, and Niacin—but also helpful amounts of precious Calcium, Phosphorus and Manganese—elements so vital to help maintain good health and physical fitness.  
If you are a victim of neuritis pains, certain stomach and nervous disturbances, constipation, insomnia or a weak, run-down condition due to such deficiencies, HADACOL will start you on the road to feeling better often within a few days. Thousands upon thousands of records of grateful men, women and children proved this to be so.

Many Doctors Recommend It  
HADACOL is recommended by many doctors not only to their patients but to members of their own families who have such deficiencies. Before giving up hope—you owe it to yourself to at least give HADACOL a chance to help you. Why keep dragging yourself around feeling "half-alive" when it's so easy to have that wonderful HADACOL feeling that everyone is talking about! Trial-size bottle, only \$1.25. Large family or hospital size, \$3.50. Refuse substitutes.  
© 1950 The LeRhone Corporation



**It's a very satisfying feeling**

YES, it's good to slip into a truly fine automobile and sense its richness, its comfort, its room.  
And there's a great thrill in touching off the waiting power of a great-hearted straight-eight and feeling its swift response at any speed.  
It's fun to count the quick, admiring glances thrown your way.

It's nice to have a car that parks easily, for all its inches. It's very pleasant to do away with gear-shifting and clutch-pedal pushing, and know in its stead the utter smoothness of Dynaflow Drive's silky transmission of power.  
And still that doesn't probe the depths of a ROADMASTER owner's secret satisfaction.  
For while he knows he has a fine car, by its look, its feel, its appointments—  
While he has performance at his command that needs play second fiddle to no other on the road—  
While he enjoys a very special measure of creature comfort in the quite matchless gentleness of ROADMASTER's ever-level ride—  
He knows too, that he has made

an exceptionally wise investment. He has spent his money for the things that make a fine car fine—and nothing simply for show.  
He has paid the lowest price per pound in the fine-car field—he has the very satisfying feeling of knowing his dollars have given him solid merit, and solid merit alone.  
We'd like to have you try ROADMASTER in honest comparison with the highest-priced cars to be found. We'd like to have you try to match it for room, for comfort, for finish, for handling ease and for ability on the road.  
Then check the prices—and see if your own sense of value doesn't advise signing up right now with your Buick dealer for a Buick ROADMASTER.



**Buick Roadmaster**  
with Dynaflow Drive  
YOUR KEY TO GREATER VALUE

**MULESHOE AUTOMOBILE CO.**  
PHONE 375-J  
"BETTER BUY BUICK"  
MULESHOE  
WHEN BETTER AUTOMOBILES ARE BUILT BUICK WILL BUILD THEM

**MOURNING DOVE - WHITE-WINGED DOVE OPEN SEASONS 1950**

**MOURNING DOVES-**

**OPEN SEASON - NORTH ZONE:** Sept. 1 to Oct. 15, both days inclusive. Shooting hours, one-half hour before sunrise to sunset.

**SOUTH ZONE:** Oct. 20 to Dec. 3, both days inclusive, except in Cameron, Hidalgo, Starr, Zapata, Webb, Maverick, Dimmit, LaSalle, Jim Hogg, Brooks, Kenedy and Willacy counties where mourning doves may be hunted only on Sept. 15, 17, and 19, from 4 p. m. until sunset, and from Oct. 20 to Nov. 30, from one-half hour before sunrise to sunset.

**BAG LIMIT:** Not more than 10 per day and not more than 10 in possession.

**McMULLEN COUNTY:** State law Nov. 1 to Dec. 15. Federal law, Oct. 20 to Dec. 3



A hunter may not have more than 10 a day of either or both species (White-wings or mourning doves) in the aggregate.

**WHITE-WINGED DOVES**

**OPEN SEASON:** Sept. 15, 17, and 19, inclusive, only in area indicated.

**SHOOTING HOURS:** 4 p. m. to sunset.

**BAG LIMIT:** Not more than 10 per day and not more than 10 in possession.

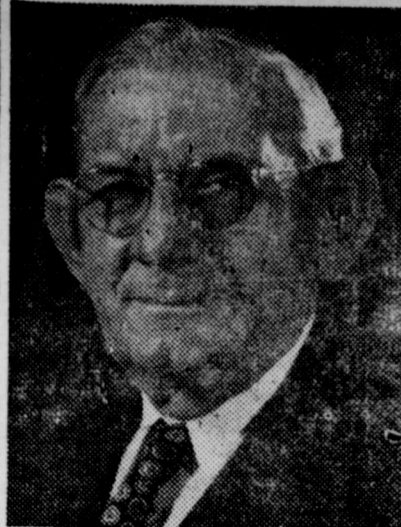
**McMULLEN COUNTY:** State law, Nov. 1 to Dec. 15. Federal law, season closed.

Shotguns must be permanently plugged to three shell capacity.

Shotguns may not be larger than 10 gauge.

Texas Game, Fish and Oyster Commission.

**TEXAS FREEDOM CHIEF**



**Rev. Brown Takes Colo. Pastorate**

Rev. Autry Brown of Portales, New Mexico has accepted the pastorate of the First Baptist church in Montca, Colorado. He and his family will move there September first.

He received his B. A. degree from Eastern New Mexico University last spring with a major in religious education. While a student there Rev. Brown was president of the Baptist Ministerial Alliance and also a member of the Silver Key an honorary scholastic organization.

He has several friends in Muleshoe, having spent two summers here. Rev. Brown is a brother to Mrs. H. E. Wimberley of this community.

**VISITORS FROM SILVERTON**

Mrs. Alvis Cowart and Mrs. Fred Lemons of Silverton, were visitors Sunday in the home of Mr. and Mrs. Homer Sanders Sr.

**MOORE BOYS BATTING HIGH IN WT-NM LEAGUE**

Don Moore and Wiley Moore, both of the Lubbock club in the West Texas-New Mexico Baseball League, are among the league leaders in batting. Don Sunday was leading the Lubbock club with a husky .361 average and Wiley's batting average was not far behind. They are sons of Mr. and Mrs. N. C. Moore of Longview community.

**BACK FROM VACATION**

O. S. Prather is back on the job at the City Cleaners after a two weeks vacation. He spent most of the time with his son and wife, Mr. and Mrs. Carl Prather, in El Paso. Carl Prather is manager of the Hilton Hotel in El Paso.

**ON VACATION**

Mr. and Mrs. Bob Gregory left Wednesday on a 10-day vacation. They will visit relatives at Lorenzo, Snyder and Wingate. August 27-31 they will attend a convention of the Great National Life Insurance Company at Camp Waldman near Kerrville.

Lieut. General Preston A. Weathered, Dallas, prominent attorney of the Southwest and retired former commander of the 36th Infantry Division, Texas National Guard, has been appointed Texas State Chairman of the Crusade For Freedom by General Lucius D. Clay, national chairman of the movement.

General Weathered said that he was pleased to take the post of directing the Texas program for the Crusade For Freedom, which will include an intensive nation-wide, six weeks campaign in September and October. Plans are being made now for a strong Texas executive committee to lead the campaign in every section of the state.

Designed to halt communism and to save freedom, the movement will enroll millions of Americans on "Freedom Scrolls," to be permanently enshrined in the base of a 10-ton, 8-foot high "Freedom Bell" to be erected in Berlin next October. It also will support a vigorous and continuous series of radio programs to pierce the Iron Curtain of Communist Russia and its satellite countries.

General Dwight D. Eisenhower and General Clay, who was American Military Governor of Germany during the Berlin airlift, together with a group of outstanding business, professional and civic leaders of the nation, are heading the National Committee For A Free Europe, the organization sponsoring the Crusade.

**ATTENDS SALES MEETING**

Red Johnson of Johnson Furniture Company attended a sales meeting of the Crosley products in Amarillo Wednesday morning.

**TO COLORADO**

Mr. and Mrs. Travis Winter have returned from a vacation trip. They visited for a time at Red River, N. M., then fished around Creed, Colo., and went sightseeing.

**Appeals.**

Alexander said an eight-member committee, including Mayor R. O. Smith of Marble Falls and M. C. Winters, Johnson City rancher and merchant, vice-chairman, were pushing the "scratch Dallas" campaign.

**IS ASSOCIATE EDITOR OF HOME LIFE MAGAZINE**

Mr. and Mrs. Richmond Brown, Norman, Okla. are visiting in the home of his sister, Mrs. H. E. Wimberley.

Mr. Brown is a graduate of E. N. M. U., Portales, New Mexico and for the past three years has been taking post-graduate work in journalism at Oklahoma University. Mr. Brown is on his way to Nashville, Tennessee where he has accepted a position as associate editor of the Home Life Magazine, a publication which has featured several of his short stories. He is also author of a book, Practical Church Publicity, soon to be published by Broadman Press.

**Scratch Dallas Claimed Gaining Momentum In Texas**

The country boys' campaign to "scratch Dallas" in Aug. 26 election is sweeping the state, Chairman Emmett Alexander of Marble Falls said today.

The Marble Falls businessman who announced plans last week for the revolt against Dallas County's control of state government, said he had received hundreds of letters, telegrams and phone calls in support of his plan.

The plan calls on Texans to vote against the four Dallas County candidates in the five statewide races, to elect their four opponents and to thereby strengthen representation of other areas in the government.

"The reaction to our drive to decentralize the power held by the

Dallas County in state government has been more than satisfactory", Alexander said. "And we expect it to snowball into victory by Saturday.

"We are not running any one man. We have picked the opponents of the four Dallas candidates because we do not want Dallas to boss the entire state and because we think the out-of-Dallas candidates are equally qualified for the different state offices."

Alexander said Texans in all parts of the state, especially in the small towns, were working for the "scratch Dallas" idea.

The Dallas County candidates and their opponents are Pierce Brooks of Dallas and Ben Ramsey of San Augustine County, for Lieutenant Governor; Will Wilson of Dallas County and Fagen Dickson of Bexar County, for Supreme Court Place 1; George W. Harwood of Dallas County and Meade F. Griffin of Hale County, for Supreme Court, Place 3; and Robert L. Lattimore of Dallas County and W. A. Morrison of Milam County, for Court of

**SCRATCH DALLAS!**

**Why Should Dallas Run Texas?**

**Four of five run-off races have Dallas candidates — TOO MUCH DALLAS!**

For Lieutenant Governor: **PIERCE B. BROOKS** of Dallas County ← **EAST TEXAS**  
**BEN RAMSEY** of San Augustine County ←

For Associate Justice of Supreme Court (Place 1): **WILL WILSON** of Dallas County ← **SOUTH TEXAS**  
**FAGEN DICKSON** of Bexar County ←

For Associate Justice of Supreme Court (Place 3): **MEADE F. GRIFFIN** of Hale County ← **WEST TEXAS**  
**GEORGE W. HARWOOD** of Dallas County ←

For Judge of the Court of Criminal Appeals: **W. A. MORRISON** of Milam County ← **CENTRAL TEXAS**  
**ROBERT L. LATTIMORE** of Dallas County ←

**SCRATCH DALLAS ON AUGUST 26**

**COMMITTEE FOR STATEWIDE GOVERNMENT**  
Chairman: EMMETT ALEXANDER, Marble Falls, Texas

**FARM MACHINERY FOR SALE**

★ ★

**Four Combines & Two Binders**

2 International Combines: 1-1948 Self propelled and 1-1947 Pull Type. Both 12 ft. machines

2 Massey-Harris Combines. 1949 Model, 14 ft. Canvas headers.

2 McCormick-Deering 2-row Binders. Have cut 300 acres each.

**TOP QUALITY USED MACHINERY AT REASONABLE PRICES**

**CONRAD WILLIAMS**

GOODLAND, TEXAS

**QUALIFIED**

By Experience

for

**Supreme Court**

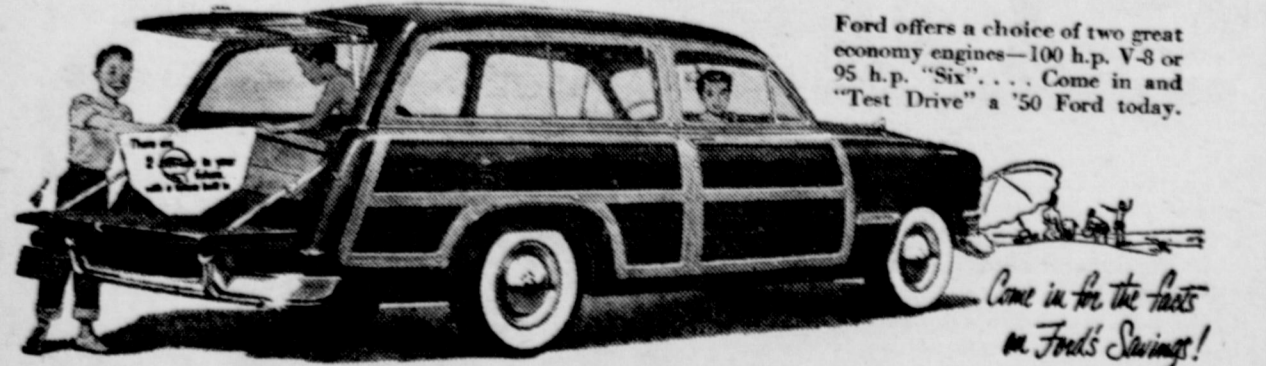
PLACE 3



**Now thousands own 2 Fine Fords**



they're that easy on the purse!



**MOTOR CO.**

Phone 33 Muleshoe, Texas

**Save Time And Money Harvesting Grain Sorghums With A . . . . .**

**Massey-Harris Forage Clipper**

Harvesting your grain sorghum at the correct stage of growth produces more succulent feed . . . a greater percentage of protein, carotene, and other valuable nutrients. You get better butterfat and livestock production from a crop cut at the right time.

That's where the Massey-Harris Forage Clipper steps in. You harvest your crop at the height of its nutritional best. Not only hay, but all grain sorghums as well.

Its lawn mower type cylinder has four special knives . . . cuts forage cleanly to selected lengths

You can put up far more high quality forage in less time than the ordinary way. Mowing, raking, stacking or hand pitching combined all in one operation.

A Massey-Harris Forage Clipper will more than pay its way.

**TEXAS MACHINERY CO.**

"Your MASSEY-HARRIS Dealer"

Clevis Highway Muleshoe, Texas

**JUDGE MEADE F. GRIFFIN**

Of Plainview

- \* Appointed to the Texas Supreme Court in April, 1949
- \* Leader over three opponents in Primary—His home County voted 18-1 for Judge Griffin
- \* Veteran of World Wars I and II
- \* Director Texas Bar Association, 1939-42
- \* A distinguished lawyer and judge for over 30 years

Return

**JUDGE MEADE F. GRIFFIN**

for

**A TERM OF HIS OWN**

**SAMPLE BALLOT**

Second Democratic Primary

August 26, 1950

I am a Democrat and pledge myself to support the nominee of this Primary.

For LIEUTENANT GOVERNOR:

Ben Ramsey, San Augustine County  
Pierce P. Brooks, Dallas County

For ASSOCIATE JUSTICE OF SUPREME COURT (Place 1):

Fagan Dickson, Bexar County  
Will Wilson, Dallas County

For ASSOCIATE JUSTICE OF SUPREME COURT (Place 3):

Meade F. Griffin, Hale County  
Geo. W. Harwood, Dallas County

For JUDGE COURT OF CRIMINAL APPEALS:

W. A. Morrison, Milam County  
Robert L. (Bob) Lattimore, Dallas County

For COMMISSIONER OF AGRICULTURE:

John C. White, Wichita County  
J. E. McDonald, Travis County

**SUB-DIVISIONS STATEMENT OF POLICY MULESHOE WATER AND/OR SEWER POLICY**

Due to the rapid development of vacant territories in and adjacent to the City and due to several requests for information as to the assistance that will be given by the City of Muleshoe in the way of water and sanitary sewer construction, the following policy has been adopted to govern such projects for both new subdivisions and original areas of the City.

**DEFINITIONS:** For the purposes of this policy, the following definitions will describe the different areas or territories under consideration:

**A. NEW ADDITIONS OR SUB-DIVISIONS:** The term "new addition" or "sub-division" refers to any record plat of property that has been drawn and approved subsequent to January 1, 1944, for recording; wherein vacant territories are divided into lots, blocks, streets, and alleys or where the alignment of old streets has been changed.

**B. ORIGINAL AREAS OF CITY:** The term "original areas of city" refers to all areas and streets within the present city limits of the City of Muleshoe that were dedicated or in existence prior to January 1, 1944.

**C. AREA OUTSIDE CITY LIMITS:** The term "Area outside city limits" refers to all areas outside the present city limits of the City of Muleshoe.

**1. POLICY IN REGARD TO NEW ADDITIONS OR SUB-DIVISIONS:** The owners, agents or developers of new additions will be required to either pay the city for extending the water or sewer to the property or will be required to have the water and/or sewers constructed by contract or individual at their own expense. If water and/or sewers are constructed by the City, the owner will deposit with the city the estimated cost of the extension. If constructed by contract or individual, the city will approve contract before beginning of work and will approve materials, size of pipe to be used and specifications of construction. The consideration of contract and/or estimated cost will be used as basis for refund until paid in full. Refund will be each month, one dollar (\$1.00) per

paying sewer service charge; two dollars (\$2.00) per water paying residence; and four dollars (\$4.00) per water paying commercial. Estimate sheet attached hereto and made a part hereof.

**2. POLICY IN REGARD TO ORIGINAL AREA OF CITY:** Same as before.

**3. POLICY IN REGARD TO AREA OUTSIDE CITY LIMITS:**

The owners, agents or developers of new additions outside the city limits shall pay all cost of extensions and no refunds. However, if ever taken into city limits, city refunds same as within the city limits except 3% depreciation per year or fraction thereof is deducted. If water and/or sewers are constructed by the city, the owner will deposit with the city the estimated cost of the extension. If constructed by contract, the city will approve materials, size of pipe to be used and specifications of construction.

The above policies are not to be considered retroactive and will not cancel or void any agreement either written or verbal that has been previously made with respect to any water and/or sanitary sewer construction.

PASSED AND APPROVED this 18th day of August A. D. 1950.

(s) H. D. King  
Mayor  
City of Muleshoe, Texas

ATTEST:  
(s) R. J. Klump  
City Secretary  
City of Muleshoe, Texas

34-1tc

**Ole Sarge . . . . .**

As the Korean conflict enters its ninth week of hostilities, changes in manpower requirements and enlargement of training facilities continue to dominate military activity within the United States.

From Fourth Army headquarters in San Antonio comes word that two new replacement training centers are to be opened in the Fourth Army area. The first of the two, an antiaircraft center, will be established at Ft. Bliss, Texas with operations scheduled to get under way August 28; while the other, an artillery center, will be located at Fort Sill, Oklahoma and will begin operations September

4th. Personnel assigned to these new centers will receive eight weeks of advanced training, under a new training plan not yet published. The training will follow the initial six weeks of basic training.

Meanwhile, the Department of the Army announced that Reserve officers of company grades can now apply for active duty regardless of arm or service. The announcement

**Cool Desserts Are Fine For August**

There's nothing quite so tempting as a cool, tasty desert on a warm August evening. The homemaking specialist suggests some summer deserts that you can put together in the cool of the morning, place in the freezer compartment of your refrigerator, and forget until meal-time rolls around. Then just a short trip to the refrigerator and you have a luscious dessert to serve the family or guests.

**Toasted Coconut Pie**  
1 1/2 cup finely crushed chocolate wafers

said that company grade officers will be accepted by the Army as long as the maximum age requirements of 41 for Lieutenants and 45 for Captains are met.

The Air Force has announced that it will recall 50 Reserve Chaplains to active duty in the grades of First Lieutenant and Captain under the age of 42. At the same time, the AF stated that 300 additional young clergymen were needed to be commissioned as First Lieutenants in the Reserve, to form a reservoir for future Air Force needs. They would not be called to active duty, however, until specifically needed to meet Air Force requirements.

The Army and Air Force are seeking to build up their strength levels with qualified volunteers. They indicate that many choice jobs are open to single men between the ages of 18 and 34 who can qualify and who act now. They also point out that all the benefits of a regular enlistment will go to the volunteer. It wouldn't be bad advice for men who are contemplating a military career, to investigate the possibilities of a regular enlistment in the United States Army or Air Force.

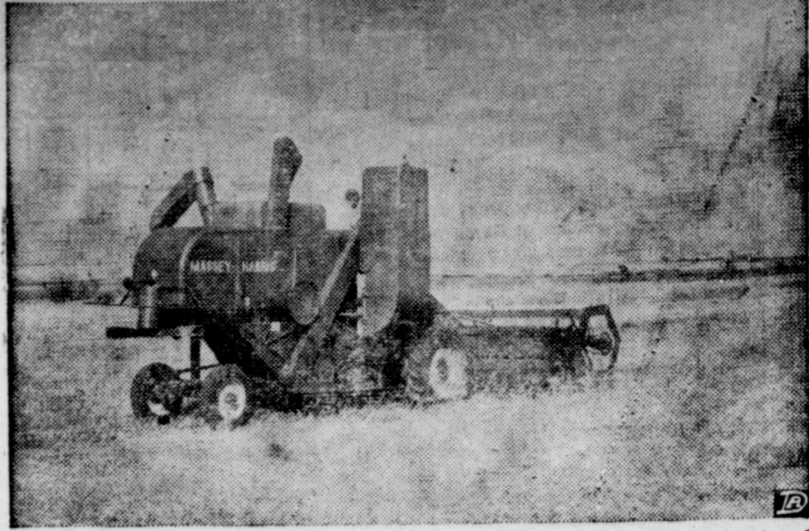
So long 'till next week,  
Ole Sarge

2 tbsp sugar  
1-3 cup melted butter or margarine  
2 cups heavy cream  
1-3 cup sugar  
1 tsp vanilla extract  
1 cup toasted coconut  
2 egg whites, stiffly beaten  
About 16 canned or fresh peach slices  
Mix chocolate wafer and sugar. Add butter or margarine and blend. Press mixture evenly and firmly on bottom and sides of 9-inch pie pan. Whip cream stiff; gradually add sugar. Fold in vanilla extract, coconut and beaten egg whites. Pour into chocolate pie shell. Place in refrigerator on refrigerated shelf or bottom of freezer. Set temperature control at coldest point; freeze firm. Drain peaches well, arrange on frozen mixture and serve immediately. Makes one 9-inch pie.

**Orange Milk Sherbert**  
1 envelope (1 tsp.) plain unflavored gelatine  
1/2 cup milk  
1 1/2 cup orange juice  
1/2 cup lemon juice  
2-3 cup of sugar  
1/2 cup of light corn syrup  
1/2 tsp salt  
1 1/2 cups milk  
2 tsp. orange rind, grated  
Few drops of yellow food coloring

Soften gelatine in milk for 5 minutes in sauce pan. Place pan on slow heat until gelatine dissolves, stirring constantly. Remove from heat and let stand. Combine orange juice, lemon juice, sugar, for syrup and salt; stir until sugar is dissolved. Add milk, orange rind and gelatine mixture; blend thoroughly. Add food coloring as desired. Pour into two ice trays. Place in refrigerator on refrigerated shelf at bottom of freezer. Set temperature control at coldest point; freeze to mush. Place in chilled bowl and beat until smooth. Return sherbert to trays. Return to freezer and freeze until firm. Makes 8 servings.

**Winter Wheat Brings High Price**



**KANSAS CITY**—After spirited bidding, the first carload of winter wheat, a ripple in what will become a flood of golden grain, was sold for \$2.44 1/2, regarded as an excellent price. Last year's first carload brought \$1.99 1/4. Harvested in Temple, Okla., the first of the new grain was graded as No. 1 hard. It test-weighed 61.7 pounds and protein content was 12 per cent.

Warm, dry weather in southern sections of the winter wheat belt resulted in early maturity of the advanced grain. As the harvest progresses, Massey-Harris Self-Propelled combines like the above will again be seen in large numbers, each machine combining 80 or more acres per day. Rains halted a critical stage in crop prospects in some large-producing areas. Timely moisture brought some improvement in yields and the Department of Agriculture's report of 154 millions in Kansas alone may be topped by 10 million bushels.

**HOME FROM CALIFORNIA**

Mr. and Mrs. F. L. Wenner have returned home after a two weeks visit in California where they visited in the home of their son, Ralph, in San Diego. They were met there by their son, Gilbert, who for the last two years has been stationed at Fort Lewis, Washington. Ralph brought them home after visiting many places of interest. Ralph will return home after a short visit here.

**THEY MEANT IT**

An insurance agent asked a cowboy if he had ever had any accidents. "No," replied the cowboy, "none to speak of . . . a bronc kicked in a couple of my ribs and busted my collar bone and a rattlesnake bit me last year." "Good gracious," said the agent, "don't you call those accidents?" "No," said the cowpuncher, "they done it a-purpose."  
—Santa Fe Magazine

**TO LAMESA**

Harvey Bass was a business visitor in Lamesa Wednesday.

**IN RUIDOSA**

Mr. and Mrs. Carroll Goss, Sr. left Tuesday to spend a few days in Ruidosa, N. M.

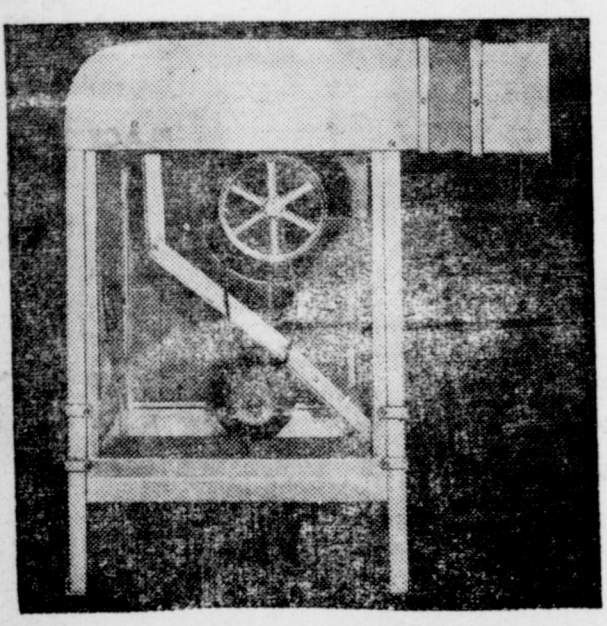
Let Us Service Your **PRIDE and JOY**

Appoint us the guardians of that car of yours. Let us see to its needs, through regular check-ups on tires, battery, radiator and crankcase. We make this check every time you drive up for gas or oil and they cost you nothing. For necessary service, our charge is very moderate. Drive up and let demonstrate, today!

**CONOCO GASOLINE**  
ALL LEADING BRANDS OIL  
DUNLOP TIRES & TUBES  
COMPLETE OVERHAUL JOBS

**City Motor Co.**  
Jim Burkhead — "Red" Glasscock — Francis Gilbreath  
Phone 53  
Muleshoe, Texas

**SUMMER END CLOSE -- OUT AIR CONDITIONERS**



An Unusually Cool Summer Has Caught Us With Stock Of Air Conditioners That We Don't Want To Carry Over.

**FAMOUS CLEAR-VUES**  
Slashed To  
**\$99.75**  
CASH & CARRY

Others \$29.75  
**OUR Loss --- YOUR GAIN**  
**FIRST COME --- FIRST SERVED**  
**---DON'T DELAY---**

**MULESHOE LIQUEIED GAS CO.**  
Located On Clovis Highway  
Muleshoe, Texas  
Phone 125  
Night Phone 314-J

**Drs. Woods & Armistead**  
OPTOMETRISTS  
IRA E. WOODS, O.D.  
B. W. ARMISTEAD, O.D.  
GLENN S. BURK, O.D.  
Phone 328 Littlefield

**"It's time for BROOKS!"**

**Pierce Brooks**  
for **LT. GOVERNOR**

**World Renowned Road Record for Economy and Long Life**

**Just give it plenty of exercise!**

When you take the wheel of a new Pontiac you may be so proud of its beauty that you will be inclined to pamper it a little. No Pontiac ever needs pampering! Pontiac is built, through and through, to be a great and dependable performer—for a long, long time. Just give Pontiac plenty of exercise and your speedometer will reveal the whole truth of the statement—*dollar for dollar you can't beat a Pontiac!*

**Dollar for Dollar you can't beat a PONTIAC**

**DAVIS & LENDERSON** Phone 56 Muleshoe

### Methodists Will Gather In O. C.

OKLAHOMA CITY, Aug 22—Over 2500 Methodist leaders, approximately 1000 from Texas, will convene here Sept. 12-15 for the Methodist Convocation for Teachers and Presidents of Adult Classes in the denomination's South Central Jurisdiction.

Theme for the convocation is "Christian Teaching to Turn the Tide."

Chief purpose of the meeting is to enable presidents and teachers of adult classes to have a part in turning the tide of totalitarianism that threatens to engulf civilization. Other aims are to help leaders

of adults to catch a new vision of their work, to provide information that will make Christian teaching more effective, and to promote fellowship, according to Rev. M. Leo Rippey, director of the adult department of the Board of Education, Nashville, Tenn.

This will be the second meeting of its kind ever to be held in the Methodist church, the first having been held in June at Lake Junaluska, N. C.

#### PANHANDLE VISITORS

Mr. and Mrs. Glen Pratt of Panhandle were visiting here Sunday with Mr. and Mrs. Harvey Toten and daughters and Mr. and Mrs. R. G. Toten and boys. Her father, D. R. Toten, returned home with them for a visit.



With skirts slightly inched up and often slim and straight, emphasis is more than ever focused on the well-groomed leg—well-turned, too, but that's nothing new. Haven't you noticed all the pretty designs on hosiery—double outlined heels, clocks, triangles, pyramids and other geometric designs? They almost look like etchings, and in order to show up all this fine stitching, stockings are appearing in much lighter colors. For a while there, only black shades were the mode. But the fashion pendulum swings and now leading hosiery departments show light colored stockings in beige, honey tones and soft grays.



Actually there's plenty of good logic in this change. Shoes this year are wispy affairs—often just thin straps or what they call the shell shoe. And nothing quite flatters an ordinary set of toes like light stockings. The skin shows through in delicate honey hues, making an ordinary looking toe pretty.

Then, too, those far-sighted businessmen reason that with all the willowy sheer dresses taking the ladies' eye, they will need lighter shades of hose to match. And right they are. You just can't wear dark stockings with organdy, net, voile and other sheers.

So, what does a Pretty Miss do, particularly, when she has an ample supply of dark hose that's been serving fine up till now? Here's the answer. Dip them in color remover and redye them with all-purpose dye. You'll find they step out of the color remover white as new linen and very receptive to taking on light sunbeam shades that blend perfectly with frothy dresses and spider web shoes. Try it.

Then after being so economical and wise, treat yourself to some of those stockings with clocks or other stitched etchings. They're vivacious, alluring and, in case you're interested, very slimming to the ankle.

### Rudolph Johnson In Tokyo Hospital

Lieut. Rudolph Johnson, of Muleshoe, is in a military hospital in Tokyo, Japan, according to word received by his parents, Mr. and Mrs. S. L. Johnson.

Lieut. Johnson did not say whether he was wounded but relatives here presumed that he was. He said he was hurt in the foot but that he thought he would be all right in a few weeks.

He is an officer in the first regiment of the 24th Army Division, which has borne the brunt of the fighting in Korea since the invasion by the North Koreans. He was home on leave when the division went to Korea but left at once and it was supposed that he joined his regiment in Korea.

The letter received here was written August 11, posted August 14, and arrived here Friday, August 18.

#### LAMB COUNTY PIONEERS TO GATHER AUGUST 29

Tuesday, August 29, will mark the Second Annual Reunion of Lamb County Pioneers to be held in Littlefield, Texas at the Littlefield Country Club. Anyone who lived in Lamb County at any time up to and including 1925 is eligible for membership. Pioneers will convene at 2:00 o'clock in the afternoon with an old-fashioned basket picnic served at 5:30 p. m.

"I have a dog that growls, a parrot that swears, a fireplace that smokes, and a cat that stays out all night. Why should I want a husband?" the spinster says.

could eliminate the need for farm animals and the muscles of the farmer. As the tractor began its

If the paper shortage continues they are going to have to make our shoes out of leather again.

### Extensive Oil Activity For Area Predicted

If rumors may be believed, Lamb County will have eight or nine new oil wells in the near future.

Worth Ware of Hereford, who was in Littlefield last week, said Magnolia Oil Corporation was moving 40 families into the Hereford area and that exploration operations would be undertaken in counties within a 200 mile radius of Hereford.

Ware said the explorations would continue for about three years. Hobgood No. 1, located southeast of Littlefield was drilling

ahead Wednesday at approximately 9,000 feet. Tests at that depth have shown good indication of oil. The contract calls for the well to be drilled down to and including the Ellenberger.

—Lamb County Leader

One thing that can be said for the automobile is that it virtually stopped horse stealing.

The modern mother is one who can hold safety pins in her mouth and puff on a cigarette at one and the same time.

**KARL L. LOVELADY**  
ATTORNEY-AT-LAW  
So. Side of Square  
Muleshoe - Texas

SEE US FOR PROTECTION POLICIES YOU NEED  
**BOBO INSURANCE AGENCY**  
PHONE 97 — COURT HOUSE — MULESHOE

### Entertainment at Your Local THEATERS

MULESHOE, TEXAS

Week Days Open 7:45 p. m., Starts 8:00 p. m.  
Saturday and Sunday Open at 1:45, Start at 2:00 and Continuous Showing

Bargain Nights — Tuesday And Wednesday  
Adults 25c Children 12c  
Regular Admission Prices  
Adults 36c Children 12c

#### VALLEY

THURSDAY and FRIDAY

Betty Hutton

In

**Annie Get Your Gun**

SATURDAY

Charles Starrett  
Smiley Burnette

In

**Frontier Outpost**

Sunday, Monday

Claudette Colbert

In

**Three Came Home**

Tuesday & Wednesday

Ginger Rogers  
Joseph Cotten  
Shirley Temple

In

**I'll Be Seeing You**

Motion Pictures Are Your Best and Cheapest Entertainment

#### PALACE

THURSDAY and FRIDAY

Cornell Wilde

In

**Four Days Leave**

SATURDAY

Joan Bennett  
George Brent

In

**Twin Beds**

SUNDAY and MONDAY

John Hall

Frances Langford

**Deputy Marshall**

Tuesday & Wednesday

Bargain Nights

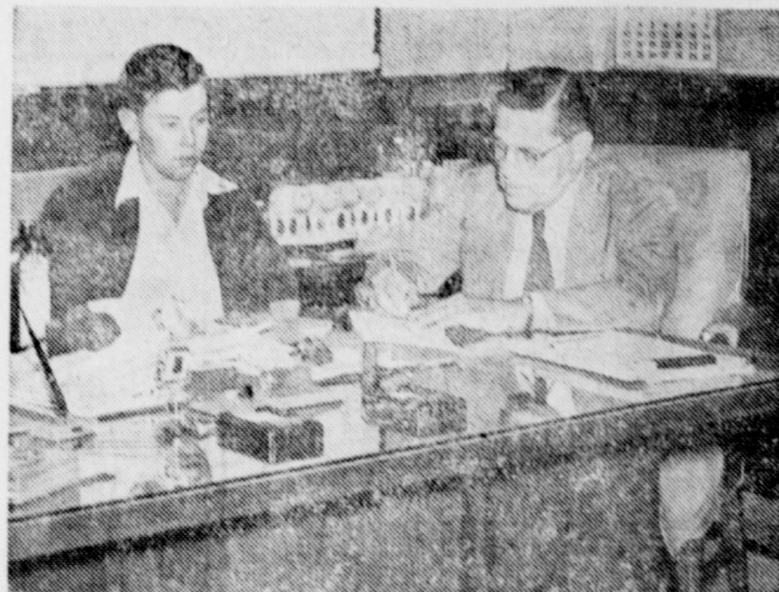
Scott Brady

K. T. Stevens

Port Of

**New York**

### Wins Louisiana Star Farmer Title



(L to R) Fred Jones, La. Star State Farmer; and Jack Rathbun, Adv. Director, The LeBlanc Corporation.

Fred Jones, 17, Mangham, La., State Convention held recently at was named Star State Farmer at Southwestern Louisiana Institute in Lafayette. Jones won over \$1700 in awards in addition to Certificate and plaque. Major prize was 1950 Ford Tractor presented by Senator Dudley J. LeBlanc, Pres. of The

LeBlanc Corporation, at whose desk Jones is shown above. It was the most valuable prize in State Star Farmer history. Jones' title was given for having "best supervised farm program" in state. Now a Senior in Mangham High he plans to attend L. S. U. next year and also try for Star American Farmer title.

### New Wildcat Oil Well Near Earth

National Associated Petroleum Company of Tulsa has staked an 8,000-foot wildcat in Central Lamb County, three miles southeast of Earth.

The proposed venture is the No. 2 Erving Haisell, located 1,300 feet from north and 755 feet from east lines of labour 2, league 239, Cottle county school land survey. Operations are to begin by Sept. 15. Slated depth of 8,000 feet should test through the Pennsylvanian formation in that area.

National Associated has 8,023 acres under lease in that immediate area.

#### ALBA VISITORS

Mr. and Mrs. Roy E. Foster of Alba returned home last Friday after a two week's visit with Mrs. Foster's parents, Mr. and Mrs. O. Q. Holley of Muleshoe.

You can always depend on a streetcar having vacant seats, when it's coming back from where you are going.

**HAVE YOU TRIED OUR 18 MONTHS UNCONDITIONALLY GUARANTEED TIRES H. C. HOLT**

#### Legal Directory

Members Bailey County Bar Association

Noel W. Beys, Gilbreath bldg. Phone 271.

Pat R. Bobo, Courthouse, Phone 97.

Karl L. Lovelady, South Side of Square, Phone 229-W.

Cecil H. Tate, Courthouse, Phone 154.

## "Size 'em Up"

There's always enough hot water for the extras of today's home-making when you "Size" your water heater to your needs. See the many fine Automatic Gas Water Heaters on display at your dealer's. For fast, dependable, economical hot water service—buy a gas water heater "Sized" to your needs.

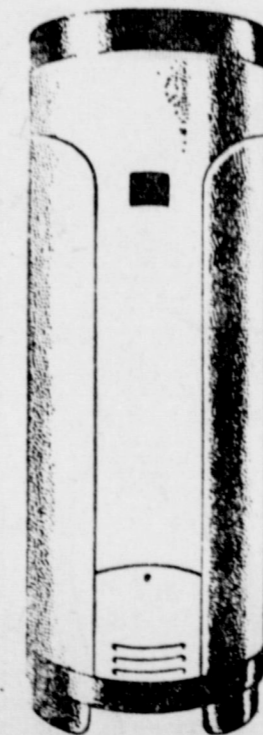


See Your Dealer Today

USE THIS GUIDE TO HELP SELECT THE RIGHT SIZE

Automatic Storage Gas Water Heater

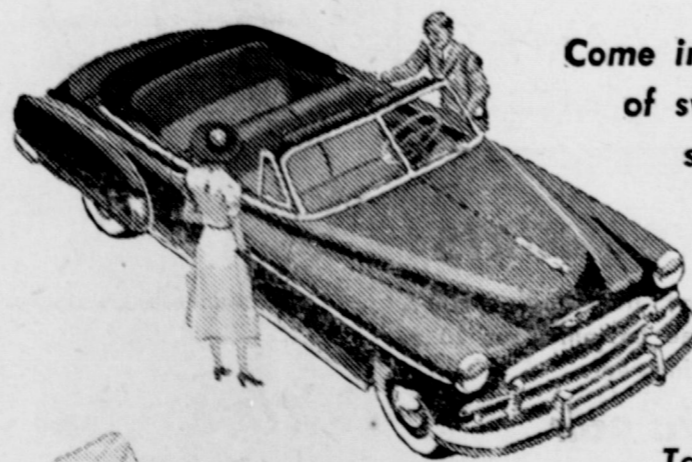
Number Bathrooms	Number Bedrooms	Storage Capacity Gallons
1	1 or 2	30
1	3 or 4	40
2	2 or 3	40
2	4 or 5	50
3	3	50
3 or 4	4 or 5	75



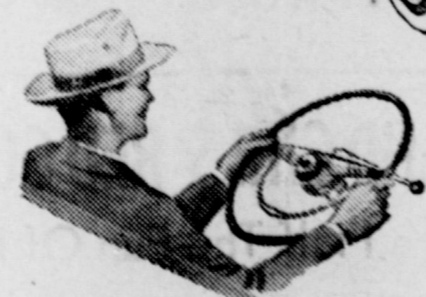
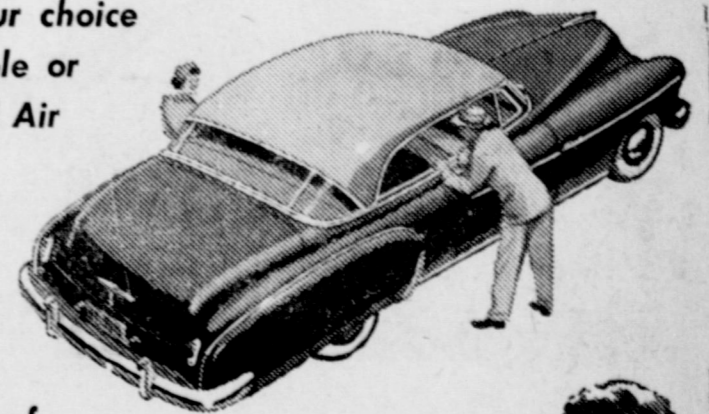
*West Texas Gas Company*

HELPING BUILD WEST TEXAS SINCE 1927

Chevrolet alone offers such a *wide and wonderful choice* . . . and at the lowest prices, too!



Come in and take your choice of swank convertible or steel-topped Bel Air

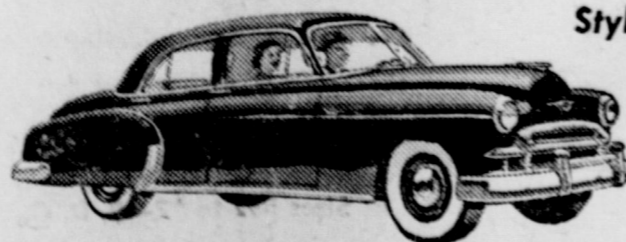


Take your choice of Standard Drive or POWERGLIDE Automatic Transmission\*

\*Combination of Powerglide Automatic Transmission and 105-hp. Engine optional on De Luxe models at extra cost.



Take your choice of Styleline or Fleetline styling at the same price



America's Best Seller



America's Best Buy!

C. & H. CHEVROLET COMPANY

PHONE 12

YOUR CHEVROLET DEALER

MULESHOE, TEXAS



to your **GOOD HEALTH** . . . . .

**MILK AND ICE CREAM**

They're good for you. Eat lots for pep, energy, and radiant health. They're perfect menu stretchers at budget-pleasing prices. Always ask for Malone's Milk and Ice Cream.

**MALONE MILK COMPANY**

PHONE 206

MULESHOE



## Bailey County's Wheat Allotment Established At 21,722 Acres

Bailey County's total wheat allotment for the 1950 seeding has been placed at 21,722 acres, according to announcement of Travis Winter, Bailey County PMA administrative officer. Mr. Winter added that individual allotments have been mailed out to farmers whose farms were eligible for an allotment.

The total acreage is 6,000 acres less than that for last year, he said, principally due to the Colorado Amendment, which sets the allotment at 50 per cent of the acreage planted in 1948 or 1949, whichever is highest.

Another limiting factor was the fact that last year the allotment was based on the four preceding years, 1945, 1946, 1947, and 1948. For this year it was based on the four years 1946, 1947, 1948, and 1949, and since the acreage in 1949 was less than that in 1945, the allotment was cut accordingly.

A letter signed by H. E. Schuster, chairman of the Bailey County PMA Committee has addressed the following letter to all wheat farm operators:

Dear Wheat Producer:

Under the 1951 Wheat Program the following acreages will be classified as wheat acreage and charged against the farm wheat allotment:

1. The acreage seeded to wheat.
2. The acreage seeded to a mixture containing any wheat.
3. The acreage of volunteer wheat which reaches maturity.

It is the responsibility of the farmer to see that the 1951 wheat acreage for each farm in which he has an interest does not exceed the 1951 wheat allotment for the farm if he intends for the wheat

### LLOYD ALSUP GETS HIS MUSIC DEGREE AT TECH

Members of the Alsup family were present at Texas Technological College last night when, in graduation exercises at the close of summer school, Lloyd Alsup received his degree in music.

There to witness the ceremony were his parents, Mr. and Mrs. J. L. Alsup, of Muleshoe; and Lloyd's brothers, Charles of Sudan, Jimmy of El Paso, and Major Hershel Alsup of San Antonio and their families.

Lloyd is known here as a fine musician, who not only can play and direct, but who has done a little composing also. He has his own band and is scheduled to play for the American Legion dance in the Legion Home here the coming Saturday night.

I Will Do Ironing Or Care For Children In My Home Day Or Night  
**MRS. L. S. HALL**  
 2nd house from corner of 9th and Ave. D

## Progress WSCS Will Meet August 28

The Progress Society of Womens Christian Service met August 14, at the Methodist Church with 17 members present.

The program, "The Pillars of the Earth" was given; Scripture Meditation, Mrs. Jones; Song, "My Hope is Built," group; "Bennett College of Brazil," Mrs. Davis; "Ewha College of Korea," Mrs. John Thomson; "Laura Haygood Normal School, China," Mrs. Actkinson; "Schools of Malaya," Mrs. Richards; "Isabella Thoburn College, India," Mrs. Gwyn; Prayer, Mrs. Shaw. The program was both educational and inspirational.

The president, Mrs. Westbrook, had charge of the business session.

## Muleshoe WSCS In Meeting

Plans were made to entertain the Hester Dale Zone, Thursday, August 17. Orders were given for our first study of the year, "Toward a Christian Community." This study will begin in September.

Reports were made on the sale of Christmas cards. Gifts were brought for a package for Billy Wayne Lumsden, who is in service overseas.

Mrs. Westbrook gave a splendid report on her trip to the mission meeting in Lubbock. Mrs. Garrett will give her report on this meeting next Monday, August 28.

Let us all realize that we are responsible as individuals for furthering God's Kingdom here on earth.

### TO FT. WORTH

Mrs. J. T. Gilbreath and Mrs. Rufus Gilbreath and daughter, Doris Ann, are in Ft. Worth to visit a daughter of Mrs. J. T. Gilbreath, Mrs. P. F. Wooley.

## Muleshoe WSCS In Meeting

The Women's Society of Christian Service of the Muleshoe Methodist church met in the church Wednesday, August 23, with ten members present.

Mrs. Roy Bayless brought the devotional service on "Stewardship." After the song "Take My Life," she read Psalm 24:1 and other appropriate scriptures. She brought the thought that each of us will be accountable for our stewardship, and closed with the scripture loved by Dr. George Washington Carver, "In all thy ways acknowledge him and he will direct thy paths." The service was closed with prayers for our boys and girls who are leaving for college and the Armed services of our country.

Mrs. F. B. Pierson presided over the business meeting. She announced that the local WSCS would be entertained at Earth on September 3.

Mrs. J. A. Bryant was elected superintendent of supplies. The meeting was closed with a prayer.

### THE PLEASANT VALLEY SOCIAL CLUB IN MEETING

The Pleasant Valley Social Club met Wednesday, August 23, in the home of Mrs. Oscar Allison, with nine members and two visitors present.

Thursday, August 31, at 7:30 a. m. was the date set to sew the drapes for the school house. The picnic to the sand hills will be set at 7 p. m. Saturday, August 26.

After the business meeting, delicious refreshments were served. The next meeting will be in the home of Mrs. Harold Allison at 8:00 p. m.

SEED FOR SALE: Canadian Five Point Wheat, Balboa Rye, Austrian Winter Peas, Kentucky 31 Fescue. O. C. THOMSON, 4 mi. south of Lariat. 35-3tp

WANTED: Motherly type woman to care for children and keep house. Write Box 235, Muleshoe. 35-1tp

NOTICE: Please contact Mrs. Houston Hart for your dishes left at Hart home at the death of Mr. E. R. Hart or during his illness. 35-1tc

FOR SALE: Westar Wheat Seed. \$250 bu. 5 mi. west, 1/4 north Muleshoe. A. Z. Morris. 35-2tp

BACK HOME TODAY  
 Mrs. James Thompson of Prague, Okla., mother of W. H. Thompson, and Mrs. Maude Newton, Stroud, Okla., mother of Mrs. Thompson, returned to their homes today after a visit here in the Thompson home.

EVERY ONE IS GETTING READY FOR

# HAPPY SCHOOL DAYS at COBB'S

Make Our Store Your Headquarters For School This Year

### Boys' Sport Shirts

We have made a special purchase for this back to school promotion, and we are passing the saving to you. Long sleeves, fancy or solid colors. Only

**\$1.98 and \$2.98**

### BOYS T-SHIRTS

Nylon reinforced neck ribbing. Will never lose its shape. Munsingwear. Sizes 4 to 16.

**98c each**

### BOYS TEX-N JEANS

Zipper Fly  
 8 oz. Sizes 1 to 6 ..... \$2.10  
 8 oz. Sizes 7 to 16 ..... \$2.39  
 11 oz. Sizes 7 to 16 ..... \$2.98



Tom Sawyer APPAREL For Real Boys

### BOYS' JACKETS

Water proof. Lined or unlined. With or without fur trimmed collars.

**\$3.98 up**



USE OUR LAW-AWAY PLAN

### BOYS SHORTS

Made just like dad's. 100% Mercerized cotton. Sizes 20 to 30. Munsingwear.

**79c pair**



Kate Greenaway

### GIRLS' DRESSES

A large variety of children's dresses. Sizes 3 to 6x and 7 to 14. Ginghams, chambrays, broadcloths. Fast color. Sanforized. Choose several of these.

**\$2.49 to \$5.98**



### SHIP-N-SHORE

Little girls' blouses. Solid gingham and broadcloth in white and colors. Sanforized. Sizes 7 to 14.

**\$1.98 to \$2.49**

### PANTIES

Little Misses Munsingwear Panties. Rayon in Pink and White. Sizes 1 to 16. Plain brief or lace trimmed styles.

**59c up**



## BOYS' AND GIRLS' RED GOOSE SHOES

"They Are Half The Fun Of Having Feet"



We have a large selection from which to choose for that boy and girl returning to school. All leather, built for action.



Sizes 5 1/2 to 12—B, D, C, Width

Sizes 12 1/2 to 3—A, B, C, D, Width

**\$3.98 to \$5.98**



### GIRLS' ANKLETS

In all the Fall shades. Sizes 5 1/2 to 11. Ribbed or plain. Knighted knit on tops. "Trimfit" guaranteed by Good Housekeeping.

**39c pair**

# COBB'S

Introducing A NEW SERVICE!  
**Marilyn BELTS**  
 NOW IN OUR SEWING ACCESSORIES DEPARTMENT

Great news for the home sewer! Custom-Made Belts... CREATED FROM YOUR FABRIC! Available Now... for the first time! Add the professional touch to the dress you are making. Order a Marilyn Custom-Made Belt!

- \* Made to your Individual Measure
- \* In Six Different Widths
- \* A variety of Buckle Styles, Including the New WIRE-STITCH BUCKLE
- \* Also Available, Marilyn Covered Buttons

SEE DISPLAYS AND PLACE ORDERS AT OUR STORE

American Finest Custom-Made Belt GUARANTEED TO LAUNDER DRY CLEAN Marilyn Belt (MADE IN TEXAS)

This Your Label is Guarantee

**COBB'S**

## Would You Rather Pay PREMIUMS or LOSSES?

Suppose your place of business, home or furniture burned to the ground today? Could you replace the loss? BUT—if you had insurance many of the worries would be taken from your shoulders. No man can afford to run a business without adequate protection against the unforeseen.

Let us insure you now—our policies will give you the coverage you need.

And don't forget your car also may need insurance.

## POOL INSURANCE AGENCY

Myron Pool Lee Pool  
 Telephone 113 Muleshoe, Texas



**LET US HELP YOU BUY A GOOD HOME**

320 acres the best of land and well improved. 2 good irrigation wells. 320 acres north of town. Well improved. \$100.00 per acre. 320 acres near Lazbuddie. Good irrigation well. Fair improvements. \$150.00 per acre. A good 80 acre tract on the highway with a good irrigation well. Can be bought worth the money.

One of the best 80 acres east of town. 6 room and bath house. This is a good farm. Plenty of other good listings and we welcome more. We sell them and don't keep them. We have some good houses in the city for sale.

Notary  
**C. L. "HAPPY" DYER**  
Phone 13 Muleshoe

FOR SALE—4 row knife sled, \$60.00  
Howard Griffin, Progress. 35-4tc

**DR. B. Z. BEATY**  
DENTIST  
Across Street From  
Muleshoe Motor Co.  
OFFICE HOURS  
9 a. m. to 12 — 1 to 5 p. m.  
OL. Ph. 249 - Res. Ph. 253-W

★ ★ ★ ★ ★  
**IT'S TIME for BROOKS!**  
Because...

Something must be done now about the runaway cost of our state government—a cost which has increased more than 500 percent in the period between 1935 and 1950. Aside from the cost of the Federal government did not increase that much during the same period.

With the State plunging wildly towards a financial crisis, the Lt. Governorship is a business rather than a political office. It needs a business man with a business viewpoint.

Only by the election of a business man can the people of Texas be assured of a direct and vigorous attack on this runaway cost, useless waste, and needless extravagance in our State government.

Only a business man who has not been a part of the system which spawned this era of waste and extravagance can give the problem that searching inquiry and impartial analysis needed now. Pierce Brooks is that man.

The next Lt. Governor of Texas should be above any internal friction, beyond all cross currents of politics, and completely judicial when clashes of personalities arise among members of the Senate. He must be in a position to treat them all alike, to be fair to each, and also to be true to his obligations to the people. Pierce Brooks meets these tests.

Pierce Brooks is the only candidate completely free from the entangling alliances, political obligations, cliques, clans and groups which grow up when men stay in office too long.

The Lt. Governor to be elected in 1950 should not come from the confused atmosphere of the State government, but direct from the people with a program for the people. Pierce Brooks is such a man.

In these crucial times the next Lieutenant Governor should be answerable to the people of the State and not to any group of special interests that has made millions of dollars off the taxpayers.

**Pierce Brooks for Lt. Governor**

★ ★ ★ ★ ★

FOR RENT—3 rooms and bath. Across from Legion Hall. Mrs. Anna Schroeder. 35-1tp

FOR SALE—1948 Model Ford tractor with 4-row slide. Priced to sell. Hicks Tractor Co., Muleshoe. 35-1tc

1945 MODEL FORD TRACTOR—Recently overhauled and ready to go. Bargain Price. Hicks Tractor Co., Muleshoe. 35-1tc

1945 MODEL UTL Minneapolis-Moline Tractor with heavy duty front end loader. In good shape. Worth the money. Hicks Tractor Co., Muleshoe. 35-1tc

FOR SALE—1942 Model Ford Tractor with cab and Sherman transmission. Hicks Tractor Co., Muleshoe, Texas. 35-1tc

BUY SELL LOAN  
**USE THE CLASSIFIED**  
RENT TRADE

FOR RENT—Two furnished apartments and one three room modern house. Nellie Dean. 35-1tp

**FOUR BEST HOG MARKETS IS AT CLOVIS**  
**CLOVIS HOG CO.**  
Clovis, N. M.  
Phone 6122 - Box 267

**CLASSIFIED AD RATES**

The minimum for any classified ad is 35c; 2 1/2 cents per word for one insertion; 1 1/2 cents per word for additional insertions. All classified advertising is strictly cash in advance.

THE MULESHOE JOURNAL, Thursday, August 24, 1950

**REAL ESTATE SPECIALISTS**

If you are contemplating buying property in or around Muleshoe the person to see is Emmette Cross, who always has listings on the best available property.

Large farms, small farms, ranches, houses, residence lots, or whatever your needs might be, be sure you check with him before you buy.

Listen to KVOW 7:45 a. m., 1:30 on your dial, six days a week.

**EMMETTE CROSS**

Real Estate & Auctioneer  
East side of Muleshoe on Lubbock Highway

**FOR SALE: 500 bushels of Westar Seed Wheat, and Oliver wheat drill 16-10. R. L. Kimbrough, 12 miles north of Muleshoe. 33-3tp**

**Come to see us, Folks!**

- \$30.00 per acre on two sections of land that is located here in Bailey County, about half farm land and half grass, three good windmill, water wells, fenced and cross fenced, a good stock farm. Terms.
- A well improved irrigation farm, shallow water, electric irrigation well, half minerals reserved. \$150.00 per acre.
- If you have a good 40, 60, or 80 acre tract, give us a listing. Let us sell your property now and you can locate where you like.

FOR SALE—Drug store, well located and in a good trade center. Invoice.

• An extra nice house, well located in west part of town. Garage, sidewalk, nice lawn and shrubs, priced to sell.

• 320 A. with crop and possession if sold soon. 120 A. irrigated maize, 10 A. alfalfa, 5 A. permanent pasture and 115 acres wheat allotment. Half mineral reserved. Priced \$150 per acre.

**MULESHOE REAL ESTATE AGENCY**  
**CLYDE A. BRAY, SR.**  
Box 793 - Muleshoe - Phone 282

**STANLEY PRODUCTS**  
Phone 241  
**MRS. ELGIN BOYTER 6-1tc**

**SEED WHEAT** for sale. Comanche and Wichita seed, \$2.50 bu. Also winter oat seed \$1.00 bu. Harry Engleking. 35-3tp

**SOUND INVESTMENTS**  
• 960 A. close to Bovina, on pavement, very highly improved, 480 A under irrigation, balance good grass. 10 inch irrigation well and lots of out buildings. This will make some one a beautiful home. Possession this fall at only \$100. per acre.

• 640 A. North of Bovina, small improvements, about 600 A. in cultivation, all nice and smooth, 250 A. very nice looking row crop. Balance being summer-tilled for wheat. All goes, possession on purchase, \$70. per acre.

• Several small tracts that will irrigate.

**O. W. RHINEHART**  
Or  
**W. E. MCCUAN**  
Bovina, Texas

FOR SALE—All wool, gray gabardine suit. Size 38, good as new. Mrs. C. D. Gustin, Rt. 1, Muleshoe, Texas. 35-1tp

FOR SALE—160 acres land near Summerfield, this land is fenced has four room house, fair out-buildings, good irrigation well. Price \$140.00 per acre. SEE US FOR FARM AND RANCH LANDS M. A. CRUM, PRIONA, TEXAS.

APARTMENT FOR RENT—furnished efficiency. Across from hospital. Mrs. Dora McCarty. 35-1tp

• 320 acres, level red land, located one mile from pavement, irrigated, well improved. Clean. 1/2 minerals — priced at only \$157.50 per acre.

• 160 acres level, clean land, located 1/2 mile good town. Irrigated. Good house and barns. Priced at \$225.00 per acre.

• 640 acres of good wheat land. Clean. Will sell for \$50.00 acre. Small down payment.

• Six acres close in on pavement small house and irrigation well and pump and motor. city. \$750.00 down, balance easy terms.

• 80 acres with good 4-room and bath. No. 12 pump. 12 acres alfalfa and three acres permanent pasture. Total price only \$10,500.

• 80 acres new land. New irrigation well and pump and motor. No house. Priced at \$185 with crop rent. Terms.

• We need more listings. Have plenty of buyers. Give us a trial.

• 14 ft. Self Propelled combine and Ford truck with grain bed. These tools are good. Both priced for \$5,250.00. See them at the **LOVE STAR TRADING POST** On The Clovis Highway

Wanted—Will take orders for custom made Venetian Blinds. Howard Cox, Cox Radio Shop. 23tc.

**JOHN DEERE** Implement Agency for sale. Bud Holdeman. 34-2tp

LOST: Blue nylon glove, Mrs. Jesse Osborn. 35-1tc

**REAL ESTATE FOR SALE**

City property; dry land farms; small, medium and large irrigated farms; some good buys and trades. Need more listings.

**We Make Farm and City Loans**  
**J. H. FARLEY**  
**REAL ESTATE & INSURANCE**  
Phone 375-W  
Over Bank Muleshoe, Texas

**SPECIAL PRICES**  
On all Radiators. International Farmall Cores \$25 exchange.  
**STOVALL-BOOHER**  
Radiator Sales & Service  
Plainview, Texas 13-1tc

FOR SALE—Five room and bath. 901 West 5th, phone 198-J. 28-1tc

WANTED—6 per cent loan \$5,000 to \$8,000. First mortgage on \$30,000 investment. Write Box 11, Muleshoe Journal. 34-3tp

**RESIDENCE LOT**—For sale or trade. FHA approved. Bill Collins. 33-1tc

**BEDROOM FOR RENT**—903 West Third. Phone 274-W. 32-1tc

**FARMS AND HOMES FOR SALE**  
• 80 A. good level land, three room house, good irrigation well. \$9,000. Loan on place, some grass. A good buy.

• 160 A. 6 room house good basement, good barns, irrigation well, some alfalfa, 90 A. in cultivation, lots of good grass. You should see this before you buy.

• We have lots of good places for sale and lots of nice homes in town. SEE US BEFORE YOU BUY.

**SEE US FOR A SQUARE DEAL**  
**HANOVER & DAY**  
**REAL ESTATE**  
On Morton Highway just North of Courthouse

NOTICE: The party who borrowed my shotgun last Fall, please return it. Homer Millsap. 35-1tp

FOR SALE—Used gas ranges. Good condition. Priced right. Muleshoe Liquefied Gas Co. 33-1tc

WANTED—Ironing to do, price reasonable. 1201 E. Third St. 32-5tp

FOR SALE—Good used Servel refrigerator, excellent condition. Dyer Hardware and Furniture. 35-1tc

**ALFALFA SEED FOR SALE** — No Johnson Grass. See W. H. Awtrey, 3 miles north, 1 west of Muleshoe. 35-1tp

**We Have A Complete Stock Of—**  
**Insecticides**  
**DUST AND**  
**SPRAY EMULSIONS**  
See Us For Complete Sprayers or parts — We carry PUMPS, NOZZLES, HOSE, and all parts to build your own.

**WESTERN FERTILIZER CO.**  
Makers of WESCO Brand Fertilizers  
Office At King Bros. Grain & Seed  
**H. D. King** **Bob King**  
Phones 134 & 350 Muleshoe, Texas

**Cotton Poisons!**  
Toxaphene—DDT spray (leafworms and bollworms)  
3-5-40 Dust (leafworms and bollworms)  
10-40 Dust (bollworm only)

**Fertilizers**  
0-20-0 Superphosphate  
(We honor PMA Purchase Orders)  
**MIXED ANALYSIS**  
12-24-12 (Pelleted)  
11-48-0 (Pelleted)  
16-20-0 (Pelleted)  
13-39-0 (Pelleted)  
10-30-10 (Pelleted)

**Johnson Grass Poison**  
Sodium Chloride  
Poloborchlorate  
(Non-Fire Hazardous)  
**HAIRY VETCH SEED**  
**CERTIFIED ORIGINAL 31 KENTUCKY FESCUE GRASS (Pasture Grass)**

**JONES FARM STORE**  
Phone 212-W Muleshoe, Texas

**COMBINE REPAIRS ON ALL ALLIS-CHALMERS MACHINES**

Get Your Machine Ready For The Busy Season While Parts Are Plentiful

**Muleshoe Implement & Supply Co.**  
PHONE 137 MULESHOE

**24 Hours A Day Service With Our Automatic Ice Vendor**

All you do is to put your coins into the slot—wait a few seconds and your block of ice comes to you—it has a string tied around it for your convenience. 25 lbs. for 20 cents—50 lbs. for 40 cents. First machine of its kind in Texas—Dispensing ice every hour of every week!

**TAYLOR ICE & PRODUCE**  
Muleshoe, Texas

**SCOOP! .. IT'S NOT \$7.50**  
SENSATIONAL  
The Price You'd Expect to Pay THE ESTABLISHED MANUFACTURER'S PRICE.  
**SATURDAY AUGUST 26**  
OFFERS THE MOST SENSATIONAL DEAL OF 1949 IN FINE WRITING INSTRUMENTS  
One of the Newest, Most Efficient 3-PC. COMBINATION Sets in the Country Today!  
• BALL POINT PEN • HOODED FOUNTAIN PEN  
• AND A REPEAT ROYAL EXPEL FENCE  
Complete Set of All 3... with Lovely Gift Box Ready to Present. All for Only **\$1.00**  
All this and a handsome gift box, too! A truly smart set, these 3, with gold-colored metal caps, a lustrous plastic barrel in black, grey and maroon, and a fountain pen with a gold-colored nib and clip. (Part)

**WESTERN DRUG CO.**  
"Muleshoe's Leading Drug Store"  
Phone 5 Muleshoe, Texas

**THE DELUXE Morning Glory**  
**DOUBLE-CUSHIONED**  
**FLEX-O-REST SUPPORT**  
**EQUI-BALANCED SPRING UNIT**  
We Give S & H Green Stamps  
**Dyer Hardware & Furniture**

## On The Farm Grain Storage Can Be Built At A Cost Of 15 Cents Bushel

COLLEGE STATION, Aug. 22—With another bumper crop of grain sorghum being harvested in Texas, the farmer is again faced with the problem of disposing of his grain. Although several million bushels of storage space have been provided on Texas farms since last year, additional space may still be needed to take care of this year's crop.

W. S. Allen, extension agricultural engineer of Texas A. & M. College, points out that on-the-farm storage gives the farmer insurance that his crop can be taken care of and enables him to qualify for government loans. It also allows him to store his grain and feed it to livestock, if that appears to be his most profitable method of marketing it.

According to Allen, storage facilities can be constructed at

a cost of from 15 to 50 cents a bushel, depending on the size of the structure. The larger the structure, the less the cost will be per bushel of storage space.

Due to the lack of sufficient labor in many localities, some farmers may prefer to buy prefabricated bins or granaries. This year, most of these prefabricated structures are costing about 30 cents per bushel of storage capacity.

Allen cautions that regardless of whether the farmer builds his storage or buys a prefabricated bin there are several things to be considered when planning for grain storage.

Low moisture content is necessary for long, safe storage of grain. This is particularly true of grain sorghum which should not test

## Control Insects In Stored Grain

COLLEGE STATION, Aug. 22—Much of the bumper crop of grain sorghum being produced in Texas this year will be stored on the farm. J. A. Deer, assistant extension entomologist of Texas A. & M. College, recommends that farmers give special attention to controlling insect infestations in the stored grain.

Thorough cleaning of the bins is necessary to prevent the new crop of grain being mixed with old grain which is already infested. If the bins are constructed of wood, apply a residual spray to the walls and floor at the rate of two gallons of spray per 1000 square feet of surface area. Spray steel bins around the door frames and other places where the insects may be concealed.

Deer says that sprays consisting of two and one-half parts DDT or chlordane as emulsions or water suspensions have been found satisfactory for treating grain bins. A water suspension of DDT can be prepared by mixing ten and one-half pounds of 50 per cent wettable DDT powder in 25 gallons of water.

As further precaution against insects, Deer advises removing all sources of infestation, including feed, waste grain and other materials stored or accumulated near the bins, before the new grain sorghum is moved in.

Deer warns also that the grain sorghum should be as dry as possible when stored. If the moisture content is higher than 12 per cent, the insect infestation will be heavier.

## GRANDMA'S CLEANER



There were vacuum cleaners as far back as 1872, but they worked by hand and looked like Rube Goldberg contraptions. Bunny Kilkenny, model, demonstrates the "Agan," which was made nearly 80 years ago, and compares it with the latest Hoover Electric Cleaner, introduced in February. At right is the "Leasure" cleaner, made shortly after 1900. You pushed it along like a baby carriage and revolving rear wheels operated bellows which created the vacuum. Fifteen of the ancient cleaners, in the collection of The Hoover Company, North Canton, O., were displayed at the recent National Antiques Show in New York.

## New Government Publication Is Best Seller

The American people are principally interested in children, aviation, and gardening, as disclosed by sales figures of U. S. Government publications, but officials of the Government Printing Office today made ready to add a new best seller to its list as purchasers lined up at the Government Printing Office Book Store in Washington, and mail orders began arriving from all over the country for the new Atomic Energy Commission publication entitled "The Effects of Atomic Weapons."

This publication contains previously unpublished details on atomic explosions and is of primary interest to persons engaged in civilian defense, the building trades, and all others vitally interested in what happens when an atom bomb explodes.

The book, prepared by the A-

Atomic Energy Commission from non confidential, scientific, and technical information, presents the most informative and authoritative data that can be disclosed and is now for sale to the public by the Superintendent of Documents, Government Printing Office, at \$1.25 a copy.

### JUNIOR BENSON HERE

Junior Benson, who was injured while working near the Los Alamos atomic bomb installation in New Mexico, arrived Sunday for a stay of some time with his father, John Benson. He received severe burns in a stove explosion.

### VISIT IN ARLINGTON

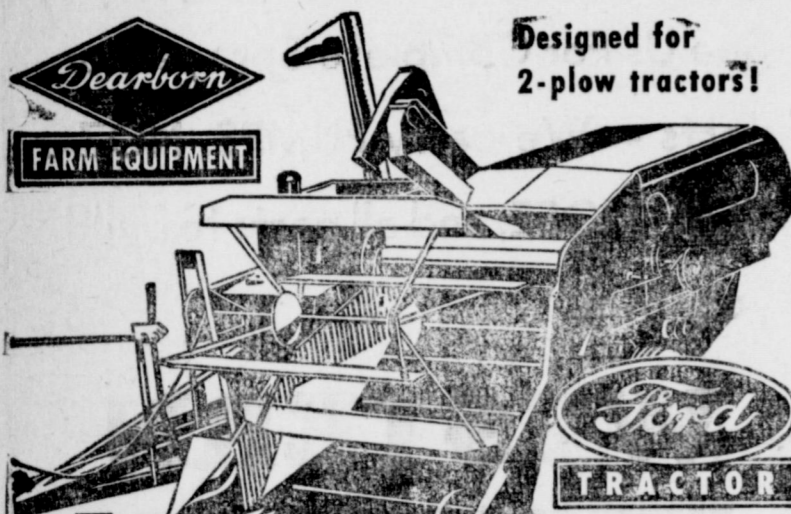
Mr. and Mrs. A. H. Owen returned Tuesday from Arlington where they attended a family reunion of Mrs. Owen's relatives. This has been an annual event for a number of years.

### AMARILLO VISITORS

Mr. and Mrs. Dorman Totten of Amarillo were visiting in the home of his parents, Mr. and Mrs. Harvey Totten and daughters over the week end.

## MULESHOE FUNERAL HOME

LOYD ROBERTS  
FOR AMBULANCE SERVICE CALL  
47



## 5 reasons for selecting DEARBORN-WOOD BROS. COMBINE

- 1—Straight-through balanced design
- 2—6 ft. cut. Straw-walker type rack
- 3—Oversize cylinder; quick speed changer
- 4—Easy adjustments
- 5—Finest construction. Priced right

See us for complete information on this great combine. Genuine parts, expert service on Ford Tractors and Dearborn Implements.

## SEE....

Us Today For A Free Demonstration. Liberal Trade-In Allowance For Your Old Combine Or Other Equipment.

## HICKS TRACTOR CO.

GEORGE & J. E. HICKS

## Letters To The Editor...

POOLS THANK MULESHOE PEOPLE AND THE PAPER  
1123 Strand  
Galveston, Texas

Dear Mr. Forbes:

Thank you for sending me the Muleshoe Journals. We have always thought it was an unusually fine little paper, and it looks better than ever when one is away from home.

Sylvia is recovering nicely and we hope to be home before long. The Galveston and Houston papers have been very helpful in securing blood-donors for Sylvia and the people here have been very kind and generous.

Please thank the people of Muleshoe who have showered Sylvia with cards, letters and gifts, and for their many kind words and deeds during her convalescence.

Thanking you, I am  
Sincerely,  
Mrs. Lee R. Pool

P. S. I'm sending you an appealing picture of Sylvia that appeared on the front page of the Galveston paper along with the story.

over 12 per cent. Construct a strong, durable building and eliminate cracks and holes through which moisture and insects may enter. Provide facilities for fumigation where necessary. Rat proof the grain structure and locate it conveniently on a firm, dry site. Plan an easy way for moving the grain in and out. Build the structure so they will last for many years.

Allen points out that the qualifications for a government loan require that the grain be stored in bins or granaries where it will not be subject to damage from moisture, insects, rodents, or other causes.

If you are in need of blueprints and additional information about building on-the-farm storage, Allen suggests that you contact your local county agent.

## SHOOTING HIGH!



Shooting high among Hollywood's new stars is lovely Arlene Dahl, one of MGM's most glamorous young actresses. Arlene is dressed for the California sun in a striking sun dress of emerald and white cotton poplin trimmed with shamrock appliques. For cover-up occasions, the trim star adds a matching cotton stole.

Two old maids went for a tramp in the woods. The tramp escaped.

## CALIFORNIA VISITORS

Mr. and Mrs. Cleo Aduddell and daughter, Ina Faye, and Mr. and Mrs. Bobby Aduddell, all of San Bernardino, Calif., are visiting Mrs. Aduddell's mother, Mrs. Nettie Blackman of Bula, Mr. and Mrs. Buddy Blackman of Muleshoe, and other relatives. They arrived last Thursday and will leave Monday.

## THINKS GRAIN WILL MATURE

Odell Henderson, of Baileyboro community, in The Journal office to renew his subscription Monday, said he had lots of young feed on his place that he is very hopeful will make grain. Planting was very late in that part of the country and then heavy rains prevented planting at once. There are hundreds of acres in that section that is like that of Mr. Henderson, just a little over a month old Sunday and it will have to hump to head out and mature grain before cold nights stop its progress.

# CANNING and PRESERVING

NEEDS and SUPPLIES

## NATIONAL PRESSURE COOKERS

ANY SIZE YOU NEED - 5, 7, and 21-QUART PRESSURE COOKERS

FRUIT JARS - CANS - LIDS  
COLANDERS

FREEZING SUPPLIES

FREEZING CARTONS & WRAPPING SUPPLIES

See Us For All Your Canning Needs

## E. R. HART CO.

Phone 23

Muleshoe, Texas



## "I spent 5 minutes and saved \$1000"

Says Walter Boyd, Los Angeles, Calif.



*I didn't have to lay out a penny in cash for my new Dodge - The liberal allowance on my old car more than covered the down payment.*  
Walter Boyd

Come in... see how you could pay \$1,000 more and still not get all Dodge extra room... ease of handling... famous dependability

You can surely spare 5 minutes—especially when that's all it takes to see exactly how you could pay \$1,000 more without getting everything Dodge gives you!

Yes, in just 5 minutes behind the wheel, you'll discover roominess that cars costing much more don't give you

... driving ease you've never experienced before... ruggedness and dependability to save you money mile after mile. These are things that belong to Dodge... and only in Dodge do you get them all!

Come in today, see how easy it is to own the new Dodge of your choice.

## NEW BIGGER VALUE DODGE

Just a few dollars more than the lowest-priced cars!

Arnold Morris Auto Co.

Muleshoe



# Bailey Women To Attend THDA State Meeting

COLLEGE STATION, Aug. 22—The annual state convention of the Texas Home Demonstration Association will be held at Big Spring this year, August 23-25. According to Mrs. R. L. Campbell of Wildorado, president of the THDA, the theme of the meeting will be "Better Homes Make For a Better World."

Eight or nine hundred people are expected to attend the meeting. Guest speakers will include Dr. L. D. Haskew, dean of the college of Education, University of Texas, and Beverly Runnels, 1950 winner of the Maggie W. Barry Scholarship. Miss Runnels will speak on "What 4-H Work Means to Me."

In order that each county may have delegates at all of the workshops, two workshop sessions will be held for each of the five committees—4-H, Recreation, Legislative, Education and Marketing.

New officers for the THDA will be installed on Thursday evening August 24, following the election on Thursday afternoon.

A skit, "United We Stand", showing the relationship of the THDA and the home demonstration clubs to the Extension Service, will be included in the program. Mrs. Bob Potter, Legislative Committee Chairman, will direct the skit.

At a meeting of each district, a report of the work done in carrying out the committee recommendations for the past year will be given in panel discussion.

During the business session of the convention, the program of work for 1950-51 will be adopted. Local arrangements for the convention are being made by Mrs. Fred Gibson, District 6, vice-president; Mrs. L. A. Groene, District 7, vice-president; Mrs. Sam Armstrong, Howard County Home Demonstration Council Chairman; and Mrs. Edward Simpson, Howard County THDA Chairman.

**DEVOLL FAMILY GATHERED AT O'HAIR HOME SUNDAY**  
The Robert O'Hair home in the Earth community was the scene of a family gathering Sunday. Mrs. C. M. Devoll and her sister, Miss Minnie Patterson, of Quanah, were here to visit Mrs. Devoll's daughter Mrs. Ernest Holland.

At the gathering Sunday were Mrs. Devoll, Miss Patterson, Mr. and Mrs. Holland, John Devoll of Clovis, Minister George Stanley Devoll and family of Earth, Mr. and Mrs. Oliver Gross of Plainview.

**VISIT IN PLAINVIEW**  
Mrs. Jim Clements visited in Plainview Monday with Mrs. Prentiss Graham.

# Society News

THE MULESHOE JOURNAL, Thursday, August 24, 1950

## Mrs. Loyd Roberts Guest Speaker At Garden Club

The Muleshoe Garden Club met Wednesday, August 9, at the Legion Hall.

Mrs. Loyd Roberts of the Muleshoe Floral gave instructions for flower arrangement and demonstrations for two types of flower arrangements.

Plans are being made for a corsage and flower arrangement school which will be open to the public. The definite date will be announced later. There is to be a nominal registration fee.

Plans are also in progress for a Fall flower show. There will be no charge for this show and the public is cordially invited.

Members of the club will have fall planting bulbs for sale at the proper time for planting.

Mrs. Woodie Green and Mrs. Houston Hart hostesses served coffee and doughnuts to the 18 members present.

## Progress W. M. U. Meets August 14

The Progress W. M. U. met Monday, August 14, at 3 p. m. in the Baptist Church with several present.

The meeting was opened by Mrs. J. J. Redwine leading the group singing "A Friend of Mine". Prayer was given by Mrs. Raymond Houston. Mrs. Clyde Henry read the minutes of the last meeting and a business session followed. Arrangements were made to take care of those who take part in their revival which will begin Friday, August 18 and continue through Sunday, August 27.

Mrs. Vernon Raney gave the Home Mission report from "The Prophet of Little Cane Creek" by Harold E. Dye of Clovis.

The meeting was closed by each lady taking part in sentence prayers.

Those present were Mesdames H. T. Pugh, J. H. Wimberly, J. J. Redwine, Vernon Raney, H. C. Lee, Clyde Henry, Jack Rials, C. A. Bishop, Elton Gulley, Raymond Houston and Miss Lillie Ruth Lee, four babies and 11 Sunbeams.

The next meeting will be Monday, August 21 at 3 p. m.

## W.S.C.S. Meets At Y. L. Church

The W. S. C. S. of Y. L. Methodist church met August 10 at 2:30 in the church, with 12 members present.

The president, Mae Wilterding, presided. The meeting was opened by the group singing "Keep Me Singing." The prayer was given by Miss Dottie Wilterding.

Roll call was answered by a scripture verse. Last weeks minutes were read and the treasurer's report was given. It was reported that we have received part of the books for the library. The president had received word of the meeting at Progress Aug. 17 and invited all to go.

Miss Dottie had a letter from Miss Neoma Hall, the missionary from Friona, now in Lima, Peru. Miss Wilterding led the devotional taken from 1 Cor. 3:16-17. The group sang the "Great Physician" and Mrs. Bryant led in prayer.

Mrs. Mooney had the lesson on "We Seek Him Together." She gave the first chapter, "Why Make Study Worship." Mrs. Blaylock gave the second and third chapters on "Just What is Worship?" and "Formal and Informal Worship." The third chapter teaches a wonderful lesson if taken right.

Next meeting will be at the church on August 24 and all are invited to attend.

## Birthday Dinner For Mrs. Clements

The home of S. L. Jackson was the scene of a birthday dinner Sunday, August 13, honoring Mrs. W. F. Clements of Glenn, Texas, mother of Mrs. Jackson and Jim and Henry Clements. Those in attendance were the sons, W. H. and family, Muleshoe, Jim and family and W. A. and family of Rotan.

Also in attendance were the daughters, Mr. J. A. Barker, of Abilene, Mrs. S. L. Jackson and family, of Lorenzo; Mrs. J. T. Jackson and husband, Glenn and Mrs. Ed Struve and family of Abilene.

There were 15 grandchildren and seven great grandchildren. Everyone reported a wonderful day and all returned to their respective homes Sunday.

## HERE FROM SANTA ANNA

Mr. and Mrs. Earl Hardy of Santa Anna, Texas, have been visiting here with Mrs. Hardy's father, P. D. Taylor. Mr. Hardy, an old friend of Rufus Gilbreath, is county commissioner for his precinct in Coleman County.

## ON FISHING TRIP

Mr. and Mrs. N. H. Greer and son, Bob, left Sunday for Red River for a few days fishing and vacation. They were accompanied by his sister and her two children of Hereford.



Though RKO studio is grooming talented Faith Domergue for serious dramatic parts, this picture proves that the attractive starlet might very well fill a bathing beauty role. Here, fascinating Faith wears a comfortable knit cotton T-shirt and cotton shorts for leisure-hour relaxing.

## Mrs. Dudley Hostess "Fun Night" For Go & Sew Club

The Go and Sew Club met in the home of Mrs. Lou Dudley, Thursday, August 17. Tea towels were embroidered for the hostess.

Refreshments were served to Mrs. Lucille Thomas, Mrs. Lou Testerman, Mrs. Cora Thomas, Mrs. Barbara Kloepper, Mrs. Esther Magby, Mrs. Imogene Townsend, Mrs. Lee Dudley, Mrs. Bertha Watts.

Next meeting will be in the home of Mrs. Lou Testerman August 24, at 2:30 p. m.

## Garden Club Plans Flower Clinic

The Muleshoe Garden Club is planning a Corsage and Flower Planning Arrangement Clinic which will be held in the American Legion Home on September 6 from 10:30 a. m. until noon, and from 1 p. m. to 4 p. m.

Admission will be \$1.00 per person and the materials for one corsage will be furnished. If additional corsages are desired, materials can be bought from the club.

Anyone desiring may attend. Valuable instruction will be given on flower arrangement and the construction of corsages.

## Mrs. Allan Harris Is Complimented With Bridal Shower

Mrs. Allan Harris of Muleshoe was complimented with a bridal shower at the home of Mrs. Oscar Bartley west of Sudan August 18 at 3 p. m. Mrs. Harris is the former Miss Wanda Bates, Sudan.

Roses and dahlias decorated the house. Refreshments of punch and cookies were served. She received many lovely gifts.

Hostesses were Mrs. Oscar Bartley, Mrs. Roscoe Biles, Mrs. Joe Gregg and Mrs. Powell Merriott.

## RETURNS FROM JACKSBORO

Mrs. A. E. Ward returned home Friday night after a two week's visit with her mother at the Mash Clinic in Jacksboro, Texas. Her mother, 78 years old, suffered a severe heart attack.

## "Fun Night" For Local HD Club

Muleshoe home demonstration Club's "Fun Night" will be at the W. H. Awtry home Thursday, Aug. 31.

All members and their families are invited to come and bring a picnic lunch which will be served to those present on tables spread on the lawn.

Everyone is there for lots of fun. Bring your card tables and dominos.

## Horace Richards Has Birthday

Master Horace Richards was honored with a birthday party at his home last Tuesday, August 25, on his eleventh birthday by friends and relatives.

He received many nice gifts and games were played by the group. Happy birthday and 11 candles decorated the birthday cake which was served with ice cream to the honoree, Butch Smith, Richard Smith, Billy Gene Spights, James Howe, Jimmie White, Troy, Connie, Bobby, and Sandy Witherspoon, James, Linda and Diana Whitson, Shirley, Emelie, Junior, Teddy and Buster Jacobs, Sandra Gene and Tommie Paul Long of Dallas.

A good time was reported by all who attended.

## Kenneth Lovelady Enlists In Navy

Kenneth R. Lovelady, 18, is "in the Navy now." Kenneth volunteered for the Navy and left Albuquerque last Friday for the Naval Training Station at San Diego.

Kenneth is the son of Mr. and Mrs. E. M. Lovelady, of Muleshoe. He was a member of the Muleshoe high school Yellow Jackets football squad last year and graduated from the school with the class of 1950.

Man: What are you cutting that piece out of the paper for?

Neighbor: It tells about a man who got a divorce because his wife went through his pockets.

Man: What are you going to do with it?

Neighbor: Put it in my pocket.

## Leonard Family In Reunion Sunday

The Leonard family held a reunion at Littlefield Park last Sunday, August 20, with a large number present. A picnic lunch was served at noon.

Attending were:

The brothers and sisters: Mrs. Ellen Bonner, Phoenix, Ariz.; Mrs. Dovie Ashley, Martha, Okla.; Mrs. Lula Anders, Grand Saline, Texas; Mrs. Ollie Williams, Petersburg; John Leonard, Grand Saline; Jim Leonard, Wichita Falls.

Vergie Leonard, wife of Jim Leonard; Maggie Leonard, wife of John Leonard;

The following children and grandchildren: Mr. and Mrs. Mack James and children, Billie and Maxine of Wichita Falls; Mr. and Mrs. Dick Conlee and children, Henry and Shirley of Andrews, Texas; Mr. and Mrs. E. G. Williams, Jr. and children, Neta Gale, Eda Lee, Ernestine and Larry; Mr. and Mrs. Glen Williams and children Bobby and Jerry Don, Mr. and Mrs. Walter Schroder and Danny, all of Petersburg; Weldon Williams, Mrs. Faye Cox and children, Frank, Charlene and Claudia, of Muleshoe; Mr. and Mrs. O. D. Troutman of Muleshoe.

Mr. and Mrs. Harold Bonner and children, Barbara and Ronny, Mr. and Mrs. Dub Davis and children, Latrice, Myrnloly, and Gary Don, of Phoenix, Ariz.; Mrs. Jewel Hayes and Emma Ray, Mr. and Mrs. Glover Dodson of Erick, Oklahoma, and Elmer Ashley of Lockney, Texas.

**TO ARKANSAS**  
Mr. and Mrs. C. R. Mayhew and Mr. and Mrs. Jerry Kirk and little daughter, Carolyn Sue, left yesterday for a trip of several days in Arkansas. They will be back in time for Jerry to be present at registration in the high school, of which he is principal.

**FROM LEVELLAND**  
Miss Eunice Florence of Levelland visited with Mrs. Mary Davis and Mildred Davis last week end.

**LUZIER'S**  
Fine Cosmetics & Perfumes  
1101 East 2nd St.  
MRS. E. E. HOLLAND  
Phone 256-W

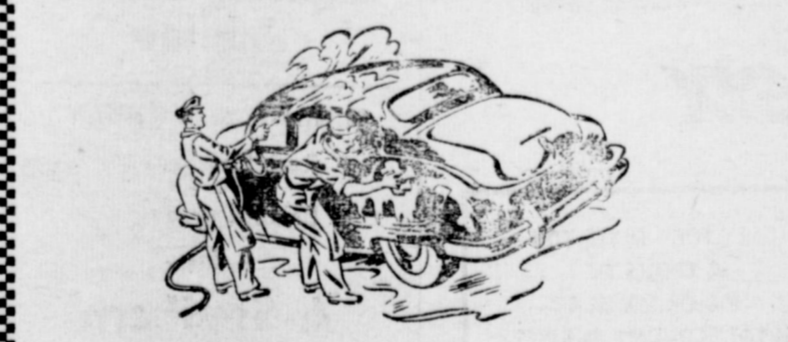
## Receiving New Shipments Of . . .

**WYLER WATCHES**  
1847 ROGERS SILVER (New Daffodil Pattern)  
JEWELRY AND GIFT ITEMS

## MULESHOE JEWELRY

**Corsage And Arrangement Clinic**  
—Sponsored By—  
**MULESHOE GARDEN CLUB**  
Wednesday, September 6  
10:30 a. m. to 12 noon — 1:00 to 4:00 p. m.  
Admission \$1.00  
Material for one corsage furnished. Other materials for sale.  
**PLAN NOW TO ATTEND**

**Let Youngstown Modernize Your Kitchen**  
We now have all the Youngstown accessories including Rotating Cabinet Corners  
NOW ON DISPLAY  
**NEW YOUNGSTOWN DISHWASHERS**  
**WILLSON & SANDERS LUMBER**  
PHONE 93 - MULESHOE, TEXAS



## KEEP YOUR CAR CLEAN INSIDE AND OUT

When you decide on what car laundry that you will patronize, select one that offers COMPLETE SERVICE. Our car-wash specialists are equipped to clean your car thoroughly on the outside and keep your paint bright and shiny longer. Road scum tends to fade your color. We brighten up your car on the inside, too, cleaning upholstery, seat covers, floors, dashboards, etc. Service is rapid; the cost is low. Make an appointment now to have your car washed and greased.

**CONOCO PETROLEUM PRODUCTS**  
FIRESTONE TIRES & TUBES  
PARTS & ACCESSORIES

**GOSS CONOCO SERVICE**  
On Plainview Highway  
Phone 364-W Muleshoe, Texas

**ELIZABETH WOODLEY INSURANCE**  
Nat'l Farm Loan Office Bldg. Phone 83

**Wheat Seed**  
TENMARQ WICHITA WESTAR  
We Now Have On Hand A Good Supply Of  
**VETCH SEED**  
WEED KILLER & INSECTICIDES  
JOHNSON GRASS CHLORDANE  
BIND WEED D D T  
**RAY GRIFFITHS ELEVATOR**  
Phone 32 Muleshoe

### Pierce Brooks Is Winding Up Drive

Pierce Brooks, Dallas Insurance executive, took his aggressive campaign for lieutenant governor into East Texas this week and told supporters that he was supremely confident of winning the Democratic nomination for lieutenant governor on August 26th.

Brooks said he was greatly encouraged by the tremendous number of pledges of support he has received in East Texas. "The groundswell for Pierce Brooks which started in West Texas has swept into East Texas," he said. "The people are thoroughly aware of the vital issues in this campaign and the smear campaign launched by supporters of the other candidate has been met with cold resentment."

The Dallas county candidate pointed out the lieutenant governor's office is a business office and that the state's financial affairs, now at their lowest ebb in history, can best be solved by a business man.

"The political experience that

has brought the state to the brink of its worst financial crisis in history," Brooks said, "is not the type of experience to get the state out of the present financial mess."

Brooks called upon all Texans who believe in free and clean government to go to the polls on August 26th and vote.

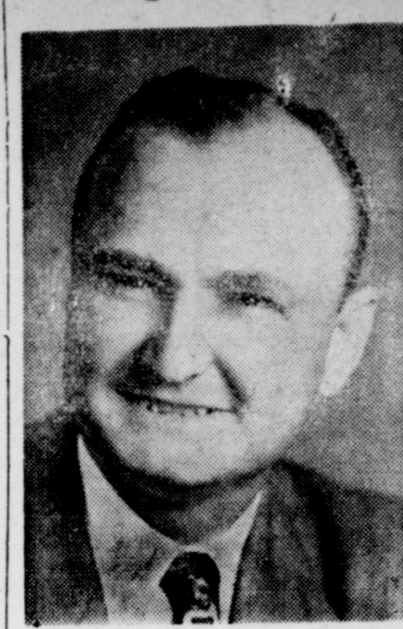
"The people have a choice between two candidates for lieutenant governor," Brooks said. "One, Pierce Brooks, is a business man without any political obligations or alliances; the other is a professional office holder who is being supported by a group of power thirsty and money hungry individuals and corporations."

The Dallas insurance man will bring his campaign to a close Friday night at Tyler with a statewide radio broadcast over the Texas Quality Network.

#### HAS BROKEN HAND

Johnnie Allison, son of Mr. and Mrs. Alvin Allison, received a broken hand in an accident which happened Saturday. Johnnie, who was riding a bicycle, was in collision with another bicycle.

### JayCeos To Gather For Regional Meet



Ralph S. Krebs

The Muleshoe Junior Chamber of Commerce will be well represented at the bi-regional meeting in Hereford August 26 and 27. Approximately 12 members of the local club will send representatives.

The meeting will open Saturday, August 26, at 10 a. m. Headquarters will be at Hereford's Jim Hill Hotel.

Special guests for the two-day program of business, elections and recreation will be Secretary of State John Ben Shepperd, former president of the United States Junior Chamber of Commerce; and Jim Brown of Abilene, executive secretary of Texas Jaycees.

D. C. McWhorter of Hereford is general chairman. Other leaders for the Bi-Regional meeting will be J. L. Pate, Jr. of Amarillo, vice president of Region 1; and RRalph Krebs of Lubbock, vice president of Region 2.

A golf tournament will be held in connection with the convention and several Muleshoe JayCeos are planning to enter. Included are Paul Gardner, Skinny Winn, Irvin St. Clair, and Myron Pool, II. Jaycees and their wives from Amarillo, Borger, Dalhart, Hereford, Pampa, Perryton, Shamrock and Tulia, in Region 1; and Abernathy, Brownfield, Crosbyton, Floydada, Lamesa, Levelland, Littlefield, Lubbock, Muleshoe, Plainview and Tahoka, in Region 2, will be in Hereford for the meeting.

#### VISIT MERRIOTT'S

Those visiting in the home of Rev. and Mrs. Ernest L. Merriott Sunday were her parents, Mr. and Mrs. F. L. Wenner, Mr. and Mrs. Delter F. Wenner, Mr. Reaford K. Wenner, Mr. and Mrs. Ancel L. Ashford, Ronald and Linda Carol, all of Muleshoe; Ralph D. Wenner of San Diego, Calif.; Pfc. Gilbert F. Wenner of Ft. Lewis, Wash., and Mr. Duncan of Dallas.

#### MARRIAGE LICENSES ISSUED

Marriage licenses issued in Clovis the last few days include the following:

Arch John Hood and Dorothy Helen Womack, both of Muleshoe; Jess Parrish Winn and Laverne Lewallen, both of Muleshoe.

### So This is HOUSEKEEPING

For some unknown reason, brides are generally looked upon by the rest of the sisterhood as being a trifle on the stupid side. The fact of the matter is that a bride has to be smartly alert for all kinds of facts for future reference in eventually running a successful home.

Take the other evening when my favorite spouse and I were invited to dinner at the home of friends. I was anxious to see how Marie managed a home, a husband, and a three months old baby.

Digging in after dinner to help with the dishes, the first thing I



spied was several Everflo nursing bottles. Acting very professional, I rinsed the bottles, then asked for a bottle brush to scrub off the milk film. Then I learned some facts on time, money, and drudgery-saving.

It seems Marie had been having too many sessions with broken nursing bottles and finally took her woe to a clerk at a baby counter. When the clerk discovered she had been using a bottle brush he explained that the brush was responsible for much of the trouble. Apparently among hardware men an established trick for breaking glass smoothly is to first score or scratch the surface with a hard instrument. When force is applied the glass breaks cleanly along the score mark. The same principle, the clerk pointed out, applies in using a wire-handled brush when cleaning baby nursing bottles. The metal end of the brush weakens the glass with tiny, almost unnoticeable scratches which are sufficient to break the bottle when it is subjected to a slight jar or to quick heating or cooling.

The clerk gave my friend some Everflo brushless baby bottle cleaners which solved the whole problem. A tablespoonful in warm water quickly dissolves and removes the milk film in baby bottles and leaves them sparkling clean. Now there's a bit of information that might come in handy some day!



**MULESHOE**  
Show Starts 8:00 P. M.  
**ADMISSION**  
Children under 12 ..... 9c  
Adults ..... 40c

Last Time Friday, August 25

Randolph Scott  
—In—  
**The Nevadan**

**SATURDAY ONLY**  
20 Variety Specialties  
25 Song Hits  
**Square Dance Jubilee**

**SUNDAY & MONDAY**  
Red Skelton  
Brian Donlevy  
—In—  
**A Southern Yankee**

**TUESDAY & WEDNESDAY**  
Richard Arlen  
Patricia Morison  
Mary Beth Hughes  
—In—  
**The Return Of Wildfire**

**THURSDAY & FRIDAY**  
John Wayne  
—In—  
**Sands Of Iwo Jima**

**Super Duper SPECIAL**  
Every Tuesday and Wednesday Nights  
**\$1.00 per car**  
Load up a car and come on out.

### Farm Animals Need Vitamin A

COLLEGE STATION, Aug. 22.—During the hot summer months or when long dry periods stop the growth of range and pasture grasses and legumes, farm animals may be affected by vitamin A deficiency. The lack of green feeds, over a long period of time, may result in a condition that is characterized in the early stages by night blindness and later by a loss of energy and appetite, swelling at the joints, rapid breathing, staggering gait, convulsions, nasal discharge, watering at the eyes and complete blindness. This condition, says U. D. Thompson, assistant extension animal husbandman of Texas A. & M. College, is caused by a lack of vitamin A.

He says that research work of the Texas Agricultural Experiment Station shows that cattle placed in the feed lot and limited to rations such as cottonseed meal, cottonseed hulls, white corn and other white grains often are affected by the condition. Following drought periods, cattle placed in dry lots and on vitamin A deficient rations may show symptoms of vitamin A deficiency in a relatively short time. Younger animals become affected sooner than the older ones.

Thompson says that calves born to cows which have been subjected to a shortage of vitamin A usually are in very poor condition at birth and unless placed on cows receiving adequate vitamin A, may die within two or three weeks.

Farm animals, he says get most of their vitamin A requirements from carotene which is found in green range or pasture grasses and hays and other roughage. The carotene is changed to vitamin A by a process that takes place in the liver of the animal which is also the chief storehouse of the carotene and vitamin in the body.

Both carotene and vitamin A are destroyed when exposed to light and air. The process is hastened by high temperatures, but heat in the absence of oxygen has only a minor effect, says Thompson. Large losses in carotene occur during the curing of roughages, especially when they are cured in direct sunlight. The lack of green color in hay or forages means that a large percentage of the vitamin A potency is lost. This fact emphasizes the need for preserving the color in forages at harvest time.

The lack of vitamin A potency in the ration apparently has little or no effect upon the rate of gain so long as the cattle have reserves of vitamin A in the body. When symptoms of deficiency show up, the loss of appetite immediately causes gains to cease.

Thompson says research has

shown the addition of a pound of good green alfalfa hay to the daily ration will protect the animals from a deficiency of the vitamin when they are receiving a deficient ration. The giving of cod-liver oil to the affected animals will also correct the situation.

To guard against any occurrence of the deficiency condition, he advises watching for night blindness. If symptoms of night blindness are noted, start feeding immediately from one to two pounds of good quality leafy green alfalfa hay per head of stock per day in addition

to the regular ration. He suggests that you ask your local county agent for a copy of C-171, "Control of Vitamin A Deficiency in Feeding Beef Cattle." The bulletin contains information that can help you avoid trouble in the feed lot but on the range as well.

#### DAVIS VISITORS

Visiting in the home of his mother, Mrs. Mary Snow Davis and sister, Miss Mildred Davis, are Mr. and Mrs. Hugh Davis and children of St. Louis, Mo. They will be here about two weeks.

## Did You Know?

That We Have The Most

### Complete and Modern Blacksmith and Machine Shop

To Be Found Anywhere and That We Can Do All Your

### Pump Work, Blacksmithing, Welding and Machine Work

We CAN and WILL if you will bring your jobs here and give us a chance to prove to you that no job is too small or too large.

NOT ONLY THAT but we carry the largest stock of STEELS, SHAFING, PLATES, ANGLES, CHANNELS and a complete line of WELDING EQUIPMENT.

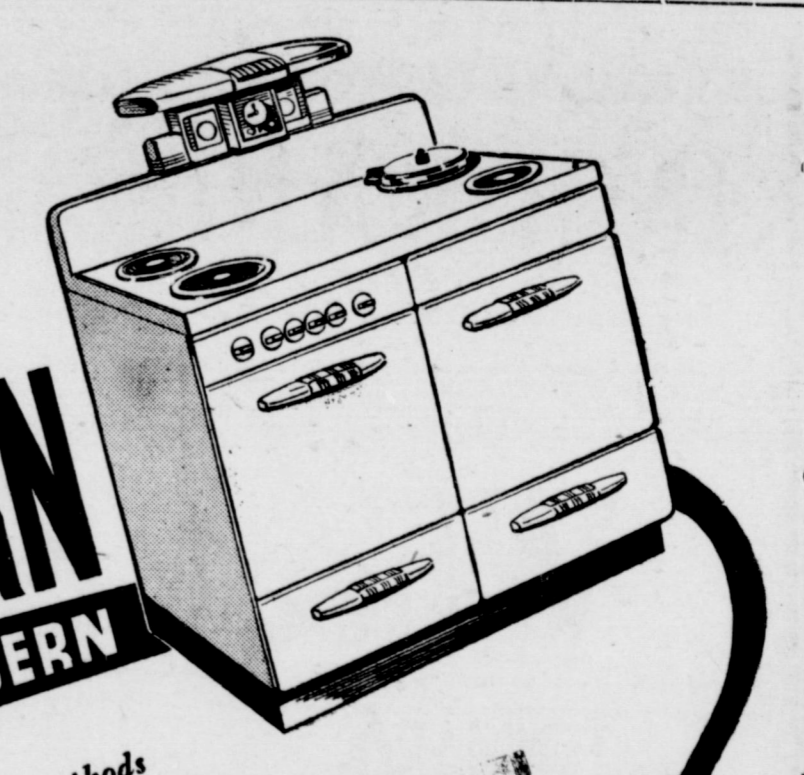
## FRY & COX BROS.

M-M. Farm Machinery

Your Friendly One-Stop Farm Service

Phone 35

Muleshoe, Texas



**MODERN STAYS MODERN**

No out-dated cooking methods for you!

The streamlined beauty of your modern Electric Range is matched only by its modern efficiency. Completely automatic time and temperature controls give perfect results every time, from oven, broiler... deep-well cooker. Foods taste better— are better for you. Since you cook without flame, there's no smoke, soot or fumes. Walls, ceilings, curtains remain fresh much longer. And there's no sooty pans to scrub! Switch to a modern ELECTRIC RANGE. It's convenient, carefree and economical... Low cost electricity is the lowest item in your family budget. Yes, only 7 cents a day operates the modern electric range for the average family.

Your electric dealer displays electric ranges in styles and sizes to fit your family requirements... and your budget. See them today!

**SOUTHWESTERN PUBLIC SERVICE COMPANY**  
26 YEARS OF GOOD CITIZENSHIP AND PUBLIC SERVICE

### Contour Strip Cropping Holds The Soil On The Slopes

Contour strip cropping—the planting of alternate strips of cultivated and close growing crops on the contour, holds fertile soil and increases crop yields.

To be most effective, some of the strips must be kept in close growing crops. A thick matting of grass filters the water increases absorption and penetration, and slows down the movement of the runoff water. By keeping the soil and more and more of the water on the slope, crop production is benefitted.

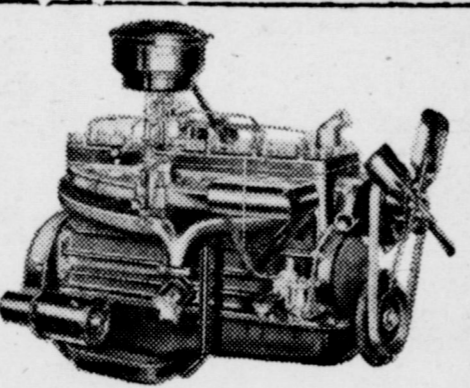
Let's Do All We Can To Preserve Our Soil.

## MULESHOE STATE BANK

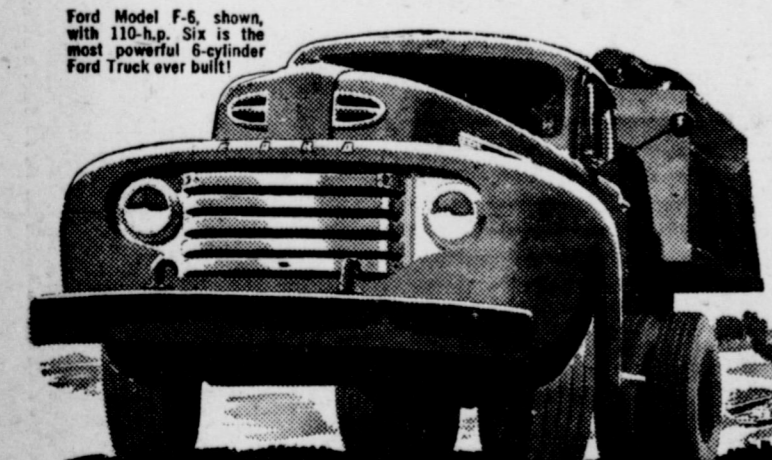
Member F. D. I. C.

## POWER CHAMP

OF THE 5 LEADING MAKES IN THE 16,000-LB. G.V.W. RANGE



## NEW FORD 110-H.P. SIX



Ford Model F-6, shown with 110-h.p. Six is the most powerful 6-cylinder Ford Truck ever built!

● The Ford F-6 with 110-h.p. 6-cylinder engine brings you more power than any of the other 4

	Gross	Net	Gross	Net
	H.P.	H.P.	Torque	Torque
Ford 110-h.p. Six	110	100	212	200
Make B	108	93	192	180
Make C	110	97	202	185
Make D	105	93	192	180
Make E	100	91	192	180

leading makes in its class—bar none! This new Six, plus 4-speed Synchro Silent transmission, and bigger drive shaft available in the F-6 make it a top performer in the heavy-duty field.

High-lift camshaft... free exhaust valves... chrome-plated top rings... you get these and many other advancements in the 110-h.p. Six. See your Ford Dealer today. Get all the facts on this 254-cu. in. powerhouse!

**ONLY FORD GIVES YOU A CHOICE OF V-8 OR SIX IN 4 GREAT ECONOMY ENGINES**

95-h.p. 226 cu. in. Six. For all models except BIG JOBS.

100-h.p. 239 cu. in. V-8. For all models except Parcel Delivery and BIG JOBS.

90-h.p. 254 cu. in. Six. For use in Series F-6.

145-h.p. 337 cu. in. V-8. For BIG JOBS only.

**Ford Trucking Costs Less Because—**

## FORD TRUCKS LAST LONGER

Using latest registration data on 6,592,000 trucks, life insurance experts prove Ford Trucks last longer!

## MOTOR CO.

Phone 33 Muleshoe, Texas

**CHRISTIAN SCIENCE SERVICES**

"Christ Jesus" is the subject of the Lesson-Sermon which will be read in all Churches of Christ, Scientist, on Sunday, August 27.

The Golden Text is: "Behold, the days come, saith the Lord, that I will raise unto David a righteous Branch, and a King shall reign and prosper, and shall execute judgment and justice in the earth. And this is his name whereby he shall be called, THE LORD OUR RIGHTEOUSNESS"

(Jeremiah 23:5,6)

Among the citations which comprise the Lesson-Sermon is the following from the Bible: "And Jesus answered them, saying, The hour is come, that the Son of man should be glorified" (John 12:23). The Lesson-Sermon also includes the following passage from the Christian Science textbook, "Science and Health with Key to the Scriptures" by Mary Baker Eddy: "Jesus could give his temporal life into his enemies' hands; but when his earth-mission was accomplished, his spiritual life, indestructible and eternal, was found forever the same" (page 51).

**AT FAMILY REUNION**

Mr. and Mrs. Matt Dudley attended a family reunion at Denton on Sunday. They were accompanied by their children, taking a two weeks vacation. Matt found time to do a lot of fishing in Lake Worth and other fine fishing spots and he says they were biting freely. There are so many fish in that section that limits on most kinds have been removed. Insects have wrought havoc in the cotton crops there, Mr. Dudley reported.



**SCHEDULE OF SERVICES**

**MAIN STREET MISSIONARY BAPTIST CHURCH**

M. E. Robinson, Pastor  
 Sunday School ..... 10 a. m.  
 Morning Worship ..... 11 a. m.  
 Training Union ..... 6:30 p. m.  
 Evening Worship ..... 8 p. m.  
 W.M.U., Wed. .... 2 p. m.  
 Mid-week Prayer Service, Wednesday ..... 7 p. m.

**ST. JOHN'S LUTHERAN CHURCH**

Lariat, Texas  
 W. B. Gummelt, Pastor  
 S. S. and Bible Class ..... 10 a. m.  
 Divine Services ..... 11 a. m.  
 Ladies Aid meets the first Thurs. of each month 2:30 p. m.  
 The Walther League meets 1st Sun. of each month ..... 6:30 p. m.  
 Sunday School Teachers meet every Wednesday ..... 7:30 p. m.  
 A cordial welcome awaits you at St. John's Lutheran Church.

**Y. L. BAPTIST CHURCH**

First and Third Sundays  
 Rev. Lavender, Pastor  
 Sunday School ..... 10 a. m.  
 Morning Worship ..... 11 a. m.  
 Training Union ..... 7:30 p. m.  
 Evening Worship ..... 8:30 p. m.  
 Services every 3rd Sunday Starting at 10:30

**FIRST CHRISTIAN CHURCH**

2 blks. West 1/2 blk. North Shady Rest  
 Frank Reece, Minister  
 Bible School ..... 9:45 a. m.  
 Morning Worship ..... 11:00 a. m.  
 Evening Worship ..... 8:00 p. m.  
 Midweek Prayer Service Wednesday ..... 8:00 p. m.  
 Organization Committee Meeting 1st Wed. each month. "We are Workers Together With God"—Paul.

**CHURCH OF THE NAZARENE**

Rev. J. O. McCaskell, Pastor  
 Mock Lake, S. S. Supt.  
 Sunday School ..... 10 a. m.  
 Morning Worship ..... 11 a. m.  
 Young People's Service... 7:30 p. m.  
 Evening Worship ..... 8 p. m.

**ANTIOCH PRIMITIVE BAPTIST CHURCH**

Across Street From Hospital  
 ELDER JIMMIE BASS, Pastor  
 Services 1st Saturday at 2:30 p. m. and first Sunday.  
 Singing every Sunday night except 1st Sunday night.

**METHODIST CHURCH**

Lazbuddie, Texas  
 Rev. Silas Dixon, Pastor  
 Sunday School ..... 10 a. m.  
 Church Service ..... 11 a. m.  
 Evening Service ..... 8:30 p. m.  
 Mid-week Prayer and Song Service ..... 8:40 p. m.  
 Everyone invited to our services.

**NORTH SIDE CHURCH OF CHRIST**

Worship, each Lord's Day ..... 10:30  
 Extending to all a cordial invitation.

**PROGRESS METHODIST CHURCH**

Carroll M. Jones, Pastor  
 Sunday School ..... 10 a. m.  
 Morning Worship ..... 11 a. m.  
 Evening Fellowship ..... 8 p. m.  
 Classes ..... 8 p. m.  
 Evening Worship ..... 8:45 p. m.  
 W.S.C. 2nd & 4th Mondays

**LONGVIEW BAPTIST CHURCH**

Rev. J. E. Moore, Pastor  
 Sunday School ..... 10 a. m.  
 Preaching Services ..... 11 a. m.  
 B. T. U. .... 8 p. m.  
 Preaching Services ..... 8:30 p. m.  
 W. M. S. Monday ..... 2:30 p. m.  
 All Church Night, Wed., 7:30 p. m.

**WEST CAMP FIRST BAPTIST CHURCH**

Rev. E. H. Mitchell, Pastor  
 Sunday School ..... 10 a. m.  
 Morning Worship ..... 11 a. m.  
 B. T. U. .... 7 p. m.  
 Evangelistic Service ..... 7:45 p. m.  
 Mid-week Prayer Service ..... 7 p. m.  
 W. M. U., Thursday ..... 2 p. m.

**FIRST METHODIST CHURCH**

H. W. Hanks, Pastor  
 Church School ..... 9:45 a. m.  
 Bible Study ..... 10 a. m.  
 Preaching ..... 11 a. m.  
 Evening Service ..... 8 p. m.  
 W. S. C. S., Tuesday ..... 2:30 p. m.  
 Wesleyan Guild Meets second and fourth Monday nights.  
 Choir Practice, Wed. .... 8 p. m.

**FIRST BAPTIST CHURCH**

Rev. A. W. Blaine, Pastor  
 Sunday School ..... 9:45 a. m.  
 Morning Worship ..... 11 a. m.  
 Training Union ..... 6:30 p. m.  
 Evening Worship ..... 8 p. m.  
 Officers and Teachers, Wednesday ..... 7 p. m.  
 W. M. U., Wednesday ..... 2 p. m.  
 Choir Rehearsal, Thurs. .... 7 p. m.

**ASSEMBLY OF GOD CHURCH**

Rev. M. C. Cox, Pastor  
 Sunday School ..... 10 a. m.  
 Morning Worship ..... 11 a. m.  
 Evening Service ..... 8 p. m.  
 Young People's Service, Tuesday ..... 8 p. m.  
 Mid-week Service, Thursday ..... 8 p. m.

**FIRST BAPTIST CHURCH**

Lazbuddie, Texas  
 L. B. Edwards, Pastor  
 Sunday School ..... 10 a. m.  
 Morning Worship ..... 11 a. m.  
 Training Union ..... 6:45 p. m.  
 Evangelistic Service ..... 7:45 p. m.  
 "Not forsaking the assembling of yourselves together. Heb. 10:25"

**VISITS PARENTS**

Luella Wilterding, who is employed at Scoggins Beauty Salon in Abilene, and a friend, Jo An Akens, also of Abilene, are visiting in the home of Luella's parents this week.

**UNITED PENTECOSTAL**

Mrs. Maggie Aken, Pastor  
 Sunday School ..... 10 a. m.  
 Preaching Service ..... 11 a. m.  
 Evening Service ..... 8 p. m.  
 Tuesday Evening ..... 7:30 p. m.  
 Friday Evening ..... 7:30 p. m.

**CHURCH OF CHRIST**

Muleshoe, Texas  
 Ebb Randol, Minister  
 Bible Classes for all ..... 10 a. m.  
 Preaching ..... 10:50 a. m.  
 Communion ..... 11:45 a. m.  
 Preaching ..... 8 p. m.  
 Wednesday  
 Ladies Bible Class ..... 3 p. m.  
 Bible Study & Singing ..... 8 p. m.

**PROGRESS BAPTIST CHURCH**

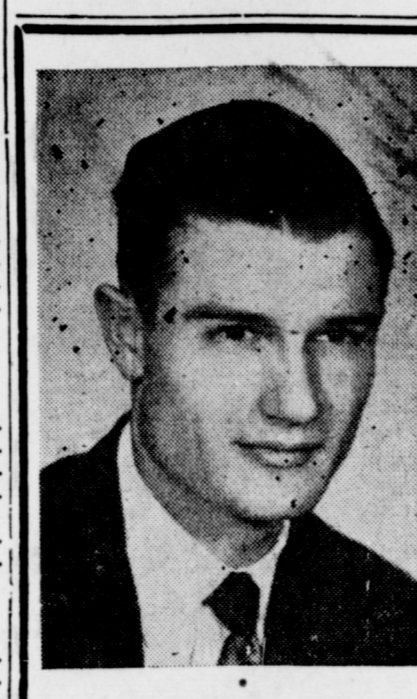
Rev. E. W. Campbell  
 Sunday school ..... 10:00 a. m.  
 Morning Worship ..... 11:00 a. m.  
 B.T.U. .... 7:30 p. m.  
 Evening Worship ..... 8:30 p. m.  
 Mid-Week Prayer Service Wednesday ..... 7:30 p. m.

**Bobby Goss To Midwestern U.**

Bobby Goss, for three seasons a performer in various positions on the Yellow Jackets football squad of Muleshoe high school, has cast his lot with Midwestern University, Wichita Falls, where he will come out for the football team. Bobby was a star player at the fullback slot the last two seasons. He will leave in about two weeks to enter school. The school plays McMurry, Hardin-Simmons, Austin, and such schools and is a member of the Gulf Coast Conference. Bobby, who graduated last spring at Muleshoe high, is a son of Mr. and Mrs. Carroll Goss. His athletic career will be watched with interest by local friends and sports fans.

**HERE FROM WASHINGTON**

Mr. and Mrs. Richard Rockey and children, Rilla Mae and Jim, have been here for a visit with his parents, Mr. and Mrs. Neil Rockey and other relatives.



**R. M. "Bob" Gregory**  
 REPRESENTATIVE OF  
**Great National Life Insurance Company**  
 LIFE INSURANCE FOR YOU & YOURS  
 P. O. Box 187 - 1308 W. 4th

**Wear-U-Well SHOES**  
 The' Priced To Sell  
 They Wear-U-Well  
**Mrs. Carothers**

**DR. B. R. PUTMAN OPTOMETRIST**  
 First Door North Sue's Beauty Shop  
 Muleshoe, Texas Phone 342-J

**WE PUT YOU IN BUSINESS**  
 \$149.50 will bring you at least \$4,000.00 net profit in six months if you will give this business some attention. Our franchise protects you in your town. Only one man allowed a franchise. Every home a sale for you. We have other products to keep you making the same profit the year around. Write TRIMBLE & WELLS, 1013 E. Marshall Ave., Longview Texas. Our salesman will call on you. This will bear fullest investigation, either through Longview Chamber of Commerce or First National Bank.

**MIRACLES Are Not Out Of Date Many A Motor Car....**  
 which seems to be dying, can be restored to life with a few hours work by mechanics who know how to make hair-line adjustments.  
**From A Set Of New Spark Plugs...**  
 to a complete overhaul, our service department is ready to figure what you need for satisfactory transportation.  
**Our Staff Of Mechanics...**  
 is the same type of specialist we have always had and are specially trained for their job. They do not guess.  
**The Economical Tune Up**  
 is needed at regular intervals by every car, regardless of its age or make. Quite frequently it gives you results which seem like a modern miracle.  
**C. & H. Chevrolet**  
 PHONE 12 — MULESHOE

**TRY SUNLITE BREAD**  
 Now On Your Grocers' Shelves

**Library News...**  
 Four new books have been added to the library, Mrs. Wright, librarian, has announced.  
 They are: "The Stubborn Heart" by Frank G. Slaughter, "Boot Hill" by Weston Clay, "Cayuse Courier" by Chuck Stanley and "The Maverick Queen" by Zane Grey.  
 Mrs. Buck Ragsdale says that she thinks new books will be coming in each week or so now. The library has had more readers this summer than they've ever had through the summer months.  
**ATTEND APPRECIATION DAY**  
**STEINBOCK ADDS TO HIS MILKING SHORTHORN HERD**  
 Rex Steinbock has added to his herd by the purchase of Princess Helen 29th and Wenner's Clare 12th from F. L. Wenner & Sons, also of Muleshoe. The new animals are purebred Milking Shorthorns and the records of the transfer of ownership have been made by the American Milking Shorthorn Society at Springfield, Mo.  
**HOLLAND BARBER SHOP EMPLOYEES LAMOND LANE**  
 Lamond Lane, who has recently returned from Ft. Worth, has acquired a position as barber at the Holland Barber Shop here. He invites his many friends and customers to stop by and see him.

**BAILEY COUNTY ABSTRACT CO.**  
 ESTABLISHED IN 1900  
 MRS. LELA BARRON L. S. BARRON  
 ABSTRACTS — LOANS  
 F.H.A. & G. I. LOANS TITLE INSURANCE

**Ferguson**  
**WORLD'S MOST COPIED TRACTOR**  
 ... yet, the ONLY one that gives you ALL these fine features:  
 • Built-In Hydraulic System  
 • Automatic Implement Protection  
 • Finger Tip Implement Control  
 • Automatic Steering Alignment  
 • 3-Point Converging Implement Linkage  
 • Automatic Draft Control  
 • Traction Without Built-In Weight  
 • Special Valve-in-Head Engine  
 ... plus many more!  
 When you add Ferguson's unusually high-quality standards to these features—and the many others you will see in an actual demonstration on your farm—we know you'll agree that although you can buy a cheaper tractor, you can't buy a better tractor at any price.  
 Ask for a demonstration on your farm. Find out for yourself why so many others have tried to copy the features of the revolutionary Ferguson Tractor.

**D. H. SNEED SUPPLY CO.**  
 Phone 364-J Muleshoe, Texas Plainview Highway  
**The FERGUSON SYSTEM makes the DIFFERENCE!**

**"ROCKET 8"**  
 MORE THILLS PER MILE...  
 MORE MILES PER GALLON!  
**MAKE A DATE WITH A "ROCKET 8"!**  
  
 Drive\* delivers all this wonderful power in one, smooth surge. Discover how much you save when you drive the "Rocket"; the amazing gas economy of a true high-compression engine—plus the lower price of the "Rocket 8" in 1950! Make your date with a "Rocket 8"—today!  
**OLDSMOBILE**  
 A GENERAL MOTORS VALUE  
 \*Minimum Hydra-Stat Drive, at reduced price, now optional on all Oldsmobile models.  
**PHONE YOUR NEAREST OLDSMOBILE DEALER**  
**JOHNSON & NIX**  
 Muleshoe  
 BUY WITH CONFIDENCE FROM AN AUTHORIZED NEW-CAR DEALER!

# Dawn of a new day... BUDGET BREAKFASTS



3 LB. CAN  
**CRISCO** 87c

TEXSUN 46 OZ. CAN  
**ORANGE AID** 29c

- HOMINY Marshall No. 2 can 3 for ... 25c
- PORK & BEANS Marsh. No. 300 3 for 25c
- CORN Milford No. 303 can 2 for ... 25c
- SWIFT'S Cleanser 3 cans for ... 25c
- PEAS Saracen 2 No. 303 for 25c
- SPINACH Deer No. 2 ... 14c
- TUNA Tuxedo 1/2 can 25c

**PIE APPLES**  
**COCA COLA**

- PEACH PRESERVES Bama 2 lb. jar - 49c
- VINEGAR Majestic gallon jar - 39c
- GRAPE JUICE Betsy Ross qt. - 39c
- COFFEE Folgers 1 lb. can - 10c
- PRINCE ALBERT can - 85c
- RAISINS Plum, Meaty 2 lb. pkg. - 33c
- P'NUT BUTTER Peter Pan 12 oz. - 12 1/2c
- G. BEANS Goldtip Peter Pan 12 oz. - 25c
- CATSUP CHB lg. bottle - 28c
- BABY FOOD Heinz 3 - 28c
- DREFT lg. box - 28c
- KOOLAID 6 pk. 25c
- HOUSE OF GEORGE 44 OZ. CAN  
TOMATO JUICE - 15c
- CHERRIES Red Pitted No. 2 c. - 19c
- BUTTER BEANS - 19c
- Comstock Sliced No. 2 Can - 19c
- Carton 6 Bottles - 19c

- FROZEN FOODS FEATURES**
- STRAWBERRIES Snow Crop 12 oz. Pkg. - 39c
  - ORANGE JUICE Snow Crop 6 oz. can - 27c

- WILSON'S CERTIFIED PIGGLY WIGGLY QUALITY MEATS**
- HAMS** Butt End 59c, Shank End 55c
  - HENS** Full Dressed & Drawn Lb. 49c
  - SLICED BACON Wilson's Corn King lb. 53c
  - STEAK Veal Cutlets lb. 89c
  - SMOKED SAUSAGE Morrell lb. 55c
  - CHEESE LONGHORN lb. 49c
  - DRY SALT No. 1 lb. 39c

- DRUG SPECIALS**
- CANDY, 5c Bars, 6 for ... 25c
  - MODART SHAMPOO 75c size - 30c
  - DENTAL CREAM Colgate 50c size - 33c

- FRESH FRUITS AND VEGETABLES**
- BANANAS** Golden Fruit Lb. 12 1/2c
  - TOMATOES** California No. 1 Lb. 17c
  - CARROTS Large Bunch 7 1/2c
  - CABBAGE Firm Heads Lb. 4c
  - LEMONS Blue Goose Lb. 10c
  - GRAPES Thompson Seedless Lb. 12 1/2c

**PIGGLY WIGGLY**  
DAVIS & HUMPHRIES  
SUPER MARKETS  
OWNERS & OPERATORS