

Eastland CofC Banquet Jan. 28

The Eastland Chamber of Commerce Banquet will be Jan. 28 at the Siebert Elementary Cafeteria. Tickets will be \$7.50 each.

BIRTHS

Mr. and Mrs. Louis Hollywood are happy to welcome their new daughter, Kira Diane. Kira was born December 13, 1:34 a.m. at Hendricks Hospital in Abilene. She was twenty inches long and weighed 7 lbs. 8 ozs. Her maternal grandmother is Mrs. R.L. Medford of Cisco. Her paternal grandmother is Mrs. W.A. Hollywood of Gorman. Kira's parents, Louis and Jill, formerly lived in Cisco. Louis is now employed as a deputy sheriff with the Abilene Sheriff's Office.

Know Label Lingo For Food Buying

COLLEGE STATION--Knowing how much good to buy can have a major impact on the family food budget -- and you must know "label lingo" to do it, says Dr. Dymple Cooksey, a food and nutrition specialist.

Cooksey is with the home economics staff of the Texas Agricultural Extension Service, The Texas A&M University System.

Thrifty shoppers do not wait until they get to the market to figure out what to buy and how much they need -- they understand amounts and sizes of foods and food products, and they plan purchases before the actual shopping trip, Cooksey says. "Needs" refers to quality as well as quantity -- both of which are closely inter-related with cost, the specialist notes.

Quantities of food needed are based on number of persons to be served, the portion of size each person needs and preparation of methods, she adds.

Since most families make extensive use of canned foods, their selection is of particular importance, the specialist says. And it's here that "label lingo" can be confusing, she adds.

WORD of GOD

There shall not be found among you any one that maketh his son or his daughter to pass through the fire, or that useth divination, or an observer of times, or an enchanter, or a witch,

Or a charmer, or a consulter with familiar spirits, or a wizard, or a necromancer.

For all that do these things are an abomination unto the Lord; and because of these abominations the Lord thy God doth drive them out from before thee.

Deuteronomy 18:10-12

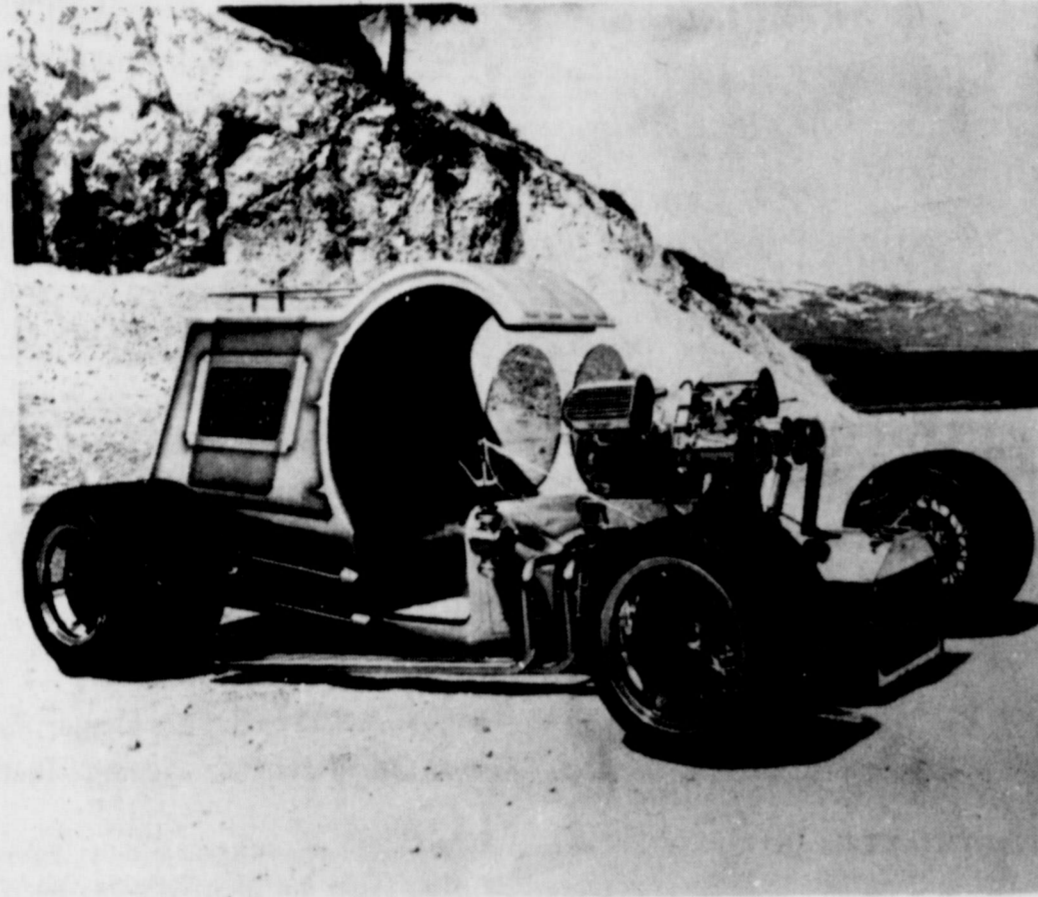


Read it
for yourself.

Dr. Don Newbery of West Texas College in Snyder will be the guest speaker. He was also the banquet speaker in 1977 and is back by popular demand.

Don Bradshaw will be the outgoing president and Steve Hains, incoming president. Incoming vice president will be Mike Kise and Delton Ake will be second vice president.

Two Golden Deed Awards will also be presented at the banquet.



World Of Wheels To Show In January

The International Championship Auto Show series returns to Abilene for three days only when the all new 4th Annual International WORLD OF WHEELS takes place at Taylor County Coliseum on January 1, 2 and 3. The event promises to extend its reputation of providing entertainment for all ages.

One of the featured attractions is the \$25,000 Pizza Wagon, built to provide hot deliveries and fast service. Powered by an 800 horsepower aluminum Buick engine with dual GMC superchargers, its body is completely handmade or wood and laminated with fiberglass. The frame was fabricated from rectangular tubing and rides on independent Jaguar suspension with rack and pinion steering. The multi-colored pearl and candy paint was applied in shades of purple, lavender, and violet. Upholstery is a matching button-tufted plush velvet, and all removable parts have been chromed or brass plated. Bob Schoonhoven of Vancouver, Washington, owns this beauty.

WORLD OF WHEELS will match local exhibitors of uniquely customized, modified, and restored vehicles in a judged competition against ones from

throughout Texas and the South Central United States. The Abilene Street Rod Association will sponsor the event and prospective entrants may contact Show Chairman J.B. Evans at 1302 Beech, Abilene, Texas 79601. Phone (915) 677-4433.

The International Show Car Association sanctions this and 200 similar events throughout the U.S. and Canada each year. Amateur entries are divided into such classes as hot rods, customs, street machines, pickups and vans, motorcycles, racing vehicles, boats, antiques and classics, sports cars, off-road, and special interest. ISCA judges will spend most of the weekend inspecting the various vehicles and selecting class and special award winners, who will receive their prizes in a stage presentation on Sunday night at 8 p.m.

Over 100 trophies, merchandise awards, and \$1,000 in cash will be presented. And depending on the awards won, each participant earns points toward the Mid-America Division and International Championships which offer over a half-million dollars in additional prizes at the close of the circuit. More than 26,000 contestants will compete in the 200-event series this season which includes the Houston Autorama in December and Dallas Autorama in February as well as Waco, Wichita Falls and Austin. The Grand Finale is scheduled for Atlantic City, New Jersey, in June.

The only requirement of the entrant is that each vehicle must be individually customized and/or restored by or for its owner, and some spend upwards of \$50,000 in an effort to win the most prestigious of the awards, Best-in-Show. One may go on to win a new car as the Grande Prize for the Mid-America Division or become International Champion.

In addition to the exciting

WORD of GOD

New Testament

And this gospel of the kingdom shall be preached in all the world for a witness unto all nations; and then shall the end come.

Matthew 24:14

WORD of GOD

Old Testament

Behold, I will send you E-li-jah the prophet before the coming of the great and dreadful day of the Lord:

And he shall turn the heart of the fathers to the children, and the heart of the children to their fathers, lest I come and smite the earth with a curse.

Malachi 4:5-6

THE CISCO PRESS

'Your Hometown Paper'

1981-Eastland County Newspaper Co.

Cisco, Texas 76437



Number 104

Sunday, December 27, 1981

USPS No. 113780

Plans Nearing Completion For Annual CofC Dinner Jan. 23rd

Plans are near completion for the 66th annual Cisco Chamber of Commerce membership banquet to be held Saturday night, Jan. 23, 1982, according to an announcement by President Ronnie Ledbetter.

Congressman Charles Stenholm of the 17th District will be the banquet speaker, and the dinner will be held at 7 p.m. at the Cisco Junior College Agricultural Building. More than 250 persons are expected to attend the event, which will be open

to the general public.

The banquet will be catered by Oscar's Barbecue, and tickets will go on sale next week, Manager Gene Abbott reported. The menu will feature barbecued beef with all the trimmings. Tickets will cost \$6.

Dr. Norman Wallace, president of Cisco Junior College, heads the banquet arrangements committee, which includes Elaine Dixon, Robert Dudley, Mayor Ernie Ritchie, Joe Wheatley and Barbara Pope.

The program will include the presentation of five special awards, including a trophy for academic excellence for students of Cisco High School and Cisco Junior College. Another trophy will go to a city employee as a special municipal service award. Trophies will also go to a Ciscoan as an "over-due" award to someone and as a community service award.

Mr. Ledbetter said the identity of those receiving awards would not be reveal-

ed prior to the dinner. Committees have been appointed to select those to be honored. "We are real pleased that Congressman Stenholm could accept our invitation to be our dinner speaker," Mr. Ledbetter said. "He is doing an outstanding job as our representative in Washington and we anticipate that a large gathering of his friends will be with us to hear him."

Queens of 1964

To Play B-Ball Game Monday

The Lobo Queens of the year 1964 will play a basketball game against the Tuscola area women of the same year at 7:00 p.m. Monday, Dec. 28, in the Cisco Community Gym. The proceeds from the game will benefit the Cisco High School basketball girls team.

Admission will be \$1.00 for adults and 50 cents for students.

OBITUARY

Services For Cora Matthews Held Saturday

Mrs. Raymond (Cora Mae) Matthews, 78, of Clyde and Abilene died at 3:25 a.m. Friday at North Runnels Hospital in Winters where she had lived about a month. Services were at 2:30 p.m. Saturday at Winters Funeral Home. Rev. Cecil Tackett officiated. Burial was in Cedar Gap Cemetery south of Abilene.

Born to pioneer settlers C.A. and Ella Mae Swinson April 14, 1903 in Baird, she married Bob Hood in Abilene when a young woman. After his death, she married Raymond Matthews May 31, 1938 in Abilene.

She was preceded in death by her husband and a son Robert Hood in 1977. A brother, Cicero Van Swinson, died in 1979 in Eastland.

Survivors include a son Richard Lee of Winters, two granddaughters and a brother, Everett Swinson of Clyde. Eastland relatives include Mrs. C.V. Swinson, Mrs. M.E. Graves, Mrs. Olen Trout and Randy Swinson.

Fullen Motor Thought-A-Day

A Sunday school teacher was telling her class the difference between right and wrong.

"All right, children," she said, "if I were to get into a man's pocket and take his billfold with all his money, what would I be?"

A little girl raised her hand and responded, "You'd be his wife."

CISCO KID CAR WASH
3rd St. and Ave. E
Where Most People Wash. Wash your venetian blinds, throw rugs, motor.

Sales Of Crude Oil And Natural Gas Boost Economy

The Sales of Crude Oil and Natural Gas from Eastland County wells in 1980 boosted the county economy and accounted for \$48.8 million of the \$31.2 billion value placed on Texas production last

year. WORLD OF WHEELS will include the continuous showing of the feature-length movie "Smokey and the Bandit" starring Burt Reynolds, Sally Field, Jackie Gleason, and Jerry Reed. It's action-packed and hilarious as Bandit attempts to achieve an impossible deadline for transporting a truckload of beverages from Texas to Georgia to collect his \$80,000 reward.

WORLD OF WHEELS opens Friday, January 1st, from 4-11 p.m.; Saturday, January 2nd, from noon-11 p.m.; and Sunday, January 3rd, from noon-10 p.m.

of the output, the Association said.

"Although crude oil and natural gas production in Texas declined slightly last year from 1979 levels, we in the industry are encouraged by the fact that drilling starts in 1980 were up 16 percent over the previous year," said the Association's chairman, Avery Rush Jr. of Amarillo. "Since petroleum remains the cornerstone of our state's economy and its tax base, Texas must continue to encourage the development of its energy resources," Rush added.

In addition to paying local, county, and state property taxes, producers in the county also supported state government through production tax payments estimated at \$2.9 million, according to the Association. Crude oil taxes amounted to \$1.2 million while natural gas

levies totalled \$1.7 million.

Based on Texas Employment Commission figures, some 553 oil and gas industry employees in the county received wages of about \$6.6 million in 1980.

In the search for new petroleum reserves in the county, oil and gas operators spent a reported \$37 million in the drilling of 377 wells, including 36 wildcat, or exploratory, wells. This effort resulted in the completion of 199 oil wells and 40 gas wells, although some \$2.9 million was lost in the drilling of 138 dry holes. As of March 1, 1981, there were 1,292 producing wells in the county; 948 oil and 344 gas.

Petroleum processing also contributed to the county economy, with six natural gasoline plants, having a total capacity of 30.8 million cubic feet of natural gas, in operation.

Burgess Reports Net Loss Of \$909,000

Dallas-Burgess Industries December 11 reported a net loss of \$909,000 (48 cents per share) for the fiscal year ended September 30, 1981 on sales of \$48,173,000. Last year the Company had net income of \$91,000 (5 cents per share) on sales of \$48,050,000. For the fourth quarter, the net loss was \$148,000 (8 cents per share) on sales of \$12,788,000 versus a net loss of \$231,000 (12 cents per share) on sales of \$11,963,000 during last year's final quarter.

Due to a recently enacted change in the accounting for gains or losses on foreign currency translation, the Company has restated its net income for the first three quarters of the fiscal year. This resulted in a restated net loss of \$761,000 (40 cents per share) for the nine months ended June 30, 1981, versus the previously reported net loss of \$1,100,000 (57

cents per share). The originally reported net loss for that period had included a net unrealized currency translation loss of \$339,000, an item that no longer is includable in the determination of net income. Such gains or losses are now considered to be direct credit or charges to the net worth section of the balance sheet.

For the three months ended September 30:
Sales-1981 \$12,788,000;
1980 (b) \$11,963,000
Net (Loss)-1981 (148,000);
1980 (b) (231,000)
Per Share-1981 (.08);
1980 (b) (.12)
Average Shares Outstanding-1981 1,912,208;
1980 (b) 1,912,208

For the 12 months ended September 30:
Sales-1981 \$48,173,000;
1980 (b) 48,050,000
Net Income (Loss)-1981 (909,000)(a); 1980 (b) 91,000
Per Share-1981 (.48);
1980 (b) .05
Average Shares Outstanding-1981 1,912,208;
1980 (b) 1,912,180

(a) Including the restatement of the first nine months (ended June 30, 1981) net loss to \$761,000 from the originally reported \$1,100,000 as a result of a recent change in the accounting for gains or losses on foreign currency translation.

(b) Not restated for recent change in the accounting for gains or losses on foreign currency translation since amount (\$13,000 unrealized gain for the quarter and \$29,000 unrealized gain for the year) not considered significant.

Donald L. Rogers, presi-

dent, stated that a very poor first half (net loss of \$893,000) overshadowed a second half that came close to breakeven. "In fact, the second half would have been profitable were it not for the adverse effects of lower dollar equivalent sales and earnings from our European operations due to the weakening of those currencies vis-a-vis the dollar. All divisions made a strong comeback in the second half, with only the Power Equipment Division turning in an unprofitable second half and full year."

Mr. Rogers noted that although operating profits for all divisions were below prior year levels, new orders remained strong. "Burgess-Manning Process Equipment in particular had an outstanding year in the new business area, with order bookings 29% ahead of fiscal 1980 and ending backlog up 38%. Overall Company backlog at year-end stood at about \$16.1 million, up about 10% from last year even though the dollar value of European backlog was converted at rates almost 25% below the prior year."

Fiscal 1981 was marked by widely varying divisional results, according to Mr. Rogers. "Burgess-Manning Silencing Equipment registered the highest earnings on rather low sales volume, while Burgess-Manning Process Equipment, plagued by low margins, turned in lower earnings than last year despite a 70% increase in volume. The European Divi-

sion's earnings and sales were down from last year largely if not entirely because of significantly lower conversion rates on foreign currency denominated transactions.

The Power Equipment Division's industrial distribution business was up slightly on sales volume, but lower margins resulted in a greater loss than last year."

Mr. Rogers is cautiously optimistic regarding 1982. "Both Process Equipment and Silencing Equipment should have a reasonably good start in fiscal 1982 and be able to maintain that momentum. Burgess Manning/Europe will start very slowly, but should begin showing good results in the second quarter. Power Equipment, however, is continuing to experience very slow market conditions in its Louisiana and Arkansas markets. These regions are quite dependent on construction-related customers and will remain depressed until that industry recovers from its present severe recession. In summary, we see a poor opening quarter, with improvement over the balance of the year."

Burgess Industries designs and manufactures a broad range of specialized industrial products and systems on an international scale and distributes mechanical power transmission, fluid power and material handling components and systems. Burgess common stock is traded on the American Stock Exchange.

Lone Star Title & Abstract Co.

Joe B. Koonce, Mgr.
101 W. Main
Eastland, Texas 76448
(817) 629-2683



Carol Senkel



LOAN PRODUCTION & REAL ESTATE

COMPLETE LOAN SERVICE
(817) 629-8539 Office
(817) 629-1269 Res.

CAROL SENKEL, Broker
601 West Main Street
Eastland, Texas 76448

KING INSURANCE AGENCY REAL ESTATE

CISCO
106 W. 6th
442-2552

Mrs. Opal C. King-Broker
Res. 647-1510

RANGER
207 Main
647-1171

RANGER

NEW LISTING

REAL NICE two-bedroom, one bath dwelling, carpet, nice kitchen cabinets, car-port with storage room, small building, fenced back yard, corner lot. Owner will carry, with 1/2 down. Reduced for quick sale.

TWO BEDROOM HOUSE, 2 nice lots, paneled, carpeted, good neighborhood. \$21,000.

GOOD COMMERCIAL location: two bedroom house, store building, trailer park with six hook-ups, lots of beautiful trees, on 23 lots, on Hwy. 80, inside city limits.

Attractive home with 3 bedrooms and 2 1/2 baths. Well kept, good foundation and plumbing, insulation. Nice neighborhood.

Home with six comfortable rooms, one bath. Good location, paneling, two refrigerated air unit, assumable financing.

Very affordable mobile home with one bedroom. Located on fenced lot. Owner interested in sale or trade.

STRAWN

Lovely two story cottage, 4 bedroom and spacious kitchen dining area. Has been re-iced, extensively remodeled, with fresh decorating ideas. Ceiling fans, unique wall treatments, beautiful carpets. Must see to appreciate.

We Need and Appreciate Your Listings

Conventional, VA, and FHA

Financing Available

Ardyth Caldwell

442-2134

Patricia C. Nowak

672-5711 672-5521



Lee Russell
647-1383

Don Adair
629-2848

Lilia Pittman
734-2055

LARGE BUILDING FOR SALE

50 x 100 Feet
Ave. D In Cisco

- ★ Front Offices
- ★ Clear-Span Back
- ★ 2 Large Back Doors
- 1 on alley
- 1 on slab

Ideal Commercial, Oil Field
Related, Warehousing,
Retail Center

Write: Bldg.
P.O. Box 29

Eastland, Texas 76448

or Call 629-1707 or 629-2413

See M.H. Perry for
DISABILITY IN-
SURANCE
629-1566 or 629-1095
104 N. Lamar-Eastland

Registered Public
Surveyor
Ronald E. Owings
112 S. Seaman
Eastland, Texas
(817) 629-8689 T-95

AVAILABLE IMMEDIATELY
DOWNTOWN
OFFICE or RETAIL SPACE
FOR RENT

Will remodel to suit tenant

Steve Haines
Steve's Printing
629-2682



Carol Senkel



LOAN PRODUCTION & REAL ESTATE

2 1/4 AC & New Home: 1300 sq. ft., 3 bedroom, 2 bath. Total electric. Gorman. Nice Home. NEED A GROWING BUSINESS: Nice Modern Restaurant in good location. Doing a booming business.

We need acreage listings.

Your Business Is Our Pleasure.

COMPLETE LOAN SERVICE
(817) 629-8539 Office
(817) 629-1269 Res.

CAROL SENKEL, Broker
601 West Main Street
Eastland, Texas 76448



BRADFORD Realty

Helen Bradford, Broker
Ken Parrack, Associate

Main Office-205 East Main-Ranger, Texas 647-3230
Branch Office-116 North Seaman-Eastland, Texas 629-8641



Equal Housing
Opportunities

SAVE TAX DOLLARS-INVEST NOW and let rent income make your payments on these 4 houses on 150x136 foot lot in Eastland. Approx. 1868 square feet fully carpeted, 3 bedroom, 2 bath, fireplace, cedar cabinets, central heating and air conditioning. Would make lovely home. Other houses are now rented. Nice location.

BUSINESS BUILDING located on .614 Acres on Highway 80 West in Ranger. Approximately 1350 square feet newly remodeled would serve for four offices. Price reduced for quick sale. Call today.

LARGE BRICK BUILDING downtown Ranger. Excellent buy for Mechanic. Living quarters, lots of room for Garage. Priced right to sell. \$28,000.00

BEAUTIFUL 3 Br., 2 bath, C H/A, fireplace, cathedral ceiling one of the best built homes in Ranger - Pier & Beam with slab in Game Room with bar. Cedar inside and out. Approx. 2900 sq. ft. Assumable loan - 6 lots.

161 ACRES 10 miles northwest of Ranger will sell all or divide. 40 acres of coastal. 3 tanks, some trees. Good loading corrals, chute, hunting and fishing. Cross fenced, 5 pastures, road frontage on 2 sides, assumable loans with \$20,000 down. \$550.00 per acre. Beautiful home site among oak trees.

6 1/2 ACRES includes pecan orchard & fruit trees. Approximately 1900 square feet in house. Double car port & patio-Beautiful place. Make offer.

22 ACRES Close in-I-20 Highway frontage-in Ranger. Large House, lots etc. Call for more details.

120 ACRES 1/4 minerals on this. Cleared, excellent grass, city water available, some of the best black land in Stephens County. Will sell all or divide. Available financing. Need tax deduction? Consider this! \$550.00 A.

TWO-STORY 5 Br. 2 bath, fireplace, hardwood floors, some carpet. Priced to sell! \$31,500.00 APPROX. 13 lots - good location 2 blks. off Hwy. 80 \$4000.00

IDEAL Hwy 80 E. Business property! 2 A. with house and shop building. Lots of highway frontage. Great location - call today!

800 A. Coleman Co., Ranch land, 1/4 minerals, 10 wells and still drilling. Cross fenced, good tanks, excellent hunting \$100,000.00 down and owner carry \$320,000 at present FLB int. Rate.

320 A. Coleman Co. Black Land Farm - all cultivation. 1/2 minerals \$220,500. - 30% bal. down - Owner finance. Located on Hwy.

320 A. Coleman Co. 320 A. Black Land Cultivation 1/2 minerals, beautiful home, on Hwy. \$340,000 - 30% down and Bal. Owner financed.

MOBILE home to be moved - 14x8 Wayside. 3 Br., 2 b., 1 walk-in shower 4T C H/A, wet bar and stools, DW, stove, Ref. W/M-W&D. Carpeted, drapes, shades, \$21,000.00.

RESIDENTIAL

SPACIOUS HOME ON 2 LOTS-4 bedrooms, 1 1/2 baths, fully carpeted, custom kitchen with built-ins, energy saving storm windows. Covered patio faces large, fenced back yard. Near schools. See this one soon!

GORMAN: Ideal for retired or small family. This nice 2 bedroom with separate utility sits on two lots with large garden area. Excellent condition, well insulated. City utilities and well for garden use. Reasonably priced.

RENTAL PROPERTY - 3 bedroom 1 bath home on large lot. \$12,500.00

PRICE DRASTICALLY REDUCED Invest your money in duplexes and have a hedge against inflation while you enjoy the tax advantages of rental property. We have two duplex units, brick, built-ins, carpet, carports, 100% occupancy. Inquire today.

LAKE LEON: Deeded lot. Approx. 200 ft. road frontage. Approx. 65 ft. waterfront Willow Beach subdivision, old Staff Road.

RUSTIC ROCK AND CEDAR HOME on secluded one acre in Ranger. 3 bedrooms, 2 baths, formal dining room and living room with fireplace, kitchen with built-ins and breakfast area and family room ideal for home entertaining. Equity and assume 13% loan.

RANGER: Older home on 2 lots. Needs repair. Bargain priced.

NEW HOME COMPLETED on 2 1/4 ac. with own water well. 1300 sq. ft. Brick home, total electric.

CORNER LOT-3 bd, 1 bath home with attached garage in Ranger.

JUST LISTED: Colonial brick on choice wooded lot in Crestwood. Just finished complete remodeling - new carpet, new kitchen, new drapes, fenced back yard, double car garage. Immediately possession - Equity Buy.



Town & Country REAL ESTATE

OFFICE HIGHWAY 80 E
FHA-VA CONVENTIONAL FINANCING

629-1725

BARBARA LOVE, BROKER



COMMERCIAL PROPERTY

THRIVING BUSINESS-Ideal family operation. Retail sales and service in Ranger. Don't delay reap the holiday profits.

RENTAL INVESTMENT: 3 homes on one large lot. 100 percent occupancy, minimum upkeep. Chain link fence, 3 car metal garage-in good location convenient to schools. If you're in the rental market, don't miss this opportunity.

BRICK BUILDING with 20 x 25 ft. office on several lots in Gorman. Excellent for garage or small factory.

LIQUOR STORE in Ranger. High volume, excellent return. Take possession in time for holiday profits.

STARTER HOME-Neat frame 1 bedroom, 1 bath, fully carpeted home on large lot in Olden. Affordable price for the newly weds or retirees. Call today-this maybe what you've been waiting for!

COMPLETELY REMODELED - 2 bedroom with carport and storage room in Eastland. Perfect for the small family.

LAKE LEON is the ideal place for year-round living or summer fun! This attractive, well-built home has been remodelled and is ready for immediate occupancy. Large tree-shaded, fenced lot, staff water and many other extras.

WE WANT YOUR BUSINESS - YOU ARE OUR BUSINESS

PEGGYE SWAFFORD 647-1050

BARBARA LOVE 647-1397

ACREAGE

161 ACRES of excellent grassland complete with steel pens and loading chute. 40 acres of coastal, 20 acres seeded in improved grasses. Good outside fences, cross fenced. Front County road on two sides. 4 tanks, one hand dug well. Located NE of Morton Valley in Stephens County. Financing available. Will divide.

5 ACRES of oak trees is the setting for this large brick home with 3 bedroom, 2 1/2 baths, separate dining room and living room. Lived in only 2 years. Good water well, 2 septic tanks, total electric. Located near Gorman.

53 ACRES convenient to Eastland. All cleared with scattered trees. Water a **SOLD** County Road. Will divide for Texas Vet. with papers.

60 ACRES So. of Cisco, 1 mile off Hwy. 206. Approx. 30 acres coastal, 15 acres love grass, some timber. One good stock tank, shallow hand-dug well.

79 ACRES sandy land **SOLD** tal, mostly cleared, good fences, at Olden. Will

3.965 acres in City Limits with mobile home hookup, city water. Cleared, fenced, some large pecan trees.

60 ACRES, 26 acres peanut allotment, 1 water well, sandy loam, south of Cisco. Approx. 1 mile off pavement.

LOOKING FOR A COUNTRY SITE FOR YOUR NEW HOME? 12 1/2 acres on blacktop near Lake Leon has staff water meter in, access to lake thru nearby permanent easement.

BUILD your dream house on one of these 2 to 3 acre tracts. Located on Hwy 6, 5 miles S. of Eastland. City water available.

51 ACRES with beautiful 3 bedroom, 2 bath 5 yr. old brick home. Horse pens, 3 stock tanks, 25 acres in coastal, good fences. Located 4 miles NE of Gorman.

6 1/4 ACRES with new large 2600 sq. ft., 3 bedroom, 2 full baths, family room, separate utility. Only 3 months old. Plenty of trees. Just outside the city limits of Gorman: Price reduced for quick sale.

20 ACRES approximately 3 miles west of Gorman. Co-Op water can be arranged. Some minerals

by Barry McWilliams



CAPITOL UPDATE

John Tower
U.S. SENATOR for TEXAS
142 RUSSELL OFFICE BUILDING
WASHINGTON, D.C. 20510



The spectre of nuclear war has threatened the world for over 30 years.

The United States' response to the awful possibility that mankind might destroy itself has been to maintain a force designed to deter use of these weapons by others -- while at the same time seeking a way, through negotiations, to reduce the number and deployment of weapons in the world.

We demonstrated the peacefulness of our motives during the years in which we possessed unquestioned vast superiority. Never did we use even the threat of our nuclear power to further our objectives -- even under severe provocation from aggressive powers. Indeed, beginning with President Kennedy's first steps toward the Nuclear Test Ban Treaty, we have sought negotiations to end the nuclear arms race.

On the other hand, the Soviet Union has engaged in a single-minded effort to build its nuclear arsenal beyond the level which would be required to defend itself under any conceivable circumstance. Their goal has not been deterrence, but superiority -- a superiority which could be used to further their stated aggressive goals in the world.

Unfortunately, the Soviet Union is on the verge of being able to threaten our security and that of our European allies. We have the national will and the ability to counter that threat through building new weapons of our own. But still we seek the stability that can only come as a result of balanced arms control agreements.

It was this goal which prompted President Reagan to propose new arms reduction talks with the Soviet Union

The United States' proposal in the start talks which began last week in Geneva is to rid Europe of intermediate-range nuclear weapons.

The Soviets have three different missile systems which fall into this category -- all with a range of reaching virtually all of Western Europe. And the Soviets continue to add one new SS-20 to its arsenal each week.

If they persist on this course, we and our NATO allies have no choice but to place comparable weapons in Europe. In this way, the Soviets would be unlikely to use their weapons because we would have the ability to effectively retaliate against their own territory. We do not currently have such missiles in Europe.

However, under President Reagan's arms reduction proposal, we would not deploy these new weapons if the Soviet Union agrees to remove their comparable ones. This is the so-called "zero option," and would be a firm step on the road to a safer world.

In fact, the President has said he views these negotiations as a first step. If they are successful, we would hope to expand arms reduction to other kinds of nuclear weapons, and even to conventional forces.

But however much we all would like to see the negotiations succeed we must remember that the threat to world peace can be reduced only through an agreement which provides for equality in forces by all relevant measure of merit. Any agreement must be verifiable, and it must be clear and unambiguous in its terms. Only an agreement which meets these stringent conditions will meet our goal of reducing the risk of war and the risk of aggression.



Congressman

Charles W. Stenholm

Congressional Comment

WASHINGTON, D.C. — The United States is unquestionably better at responding to emergency situations than preventing problems from becoming full-fledged crises. We are a nation whose history seems to be built on our ability to react rather than to prepare.

The 40th anniversary of the bombing of Pearl Harbor might serve as a tragic, timely reminder of this tendency. Congress' failure to deal with politically sensitive problems is not new. That failure must also be shared, however, by the general public that often encourages the philosophy of "let's put it off until tomorrow."

In no industry is the folly of refusing to face reality -- and plan for its actualities -- more evident than in the agricultural industry. Nor do we seem to learn from the lessons of the past. Fifty years ago President Franklin Roosevelt warned, "The nation that destroys its soil destroys itself." And yet today we are losing topsoil at a faster rate than at any time in history, including the Dust Bowl era that prompted Roosevelt's warning.

Technological advances -- the use of fertilizers, pesticides, better seeds and better strains of livestock -- masked many of the potential problems, with emphasis on increased productivity per acre providing short term solutions. Government involvement with agriculture in the past decade has, in fact, addressed problems of over production, rather than shortages and warnings that the supply-demand balance could sharply shift have appeared to be unfounded.

Much of the technology that the agricultural industry became so dependent upon to increase production became, in the mid-70s, increasingly expensive as it depended on

available, cheap sources of petroleum. The Arab oil embargo changed that scenario and we began to recognize that continued expectations of more and more production from less and less resources were unrealistic. Production capabilities at some point are limited in growth.

In 1977, Congress responded to concerns about our future to produce limitless amounts of food and fiber from limited soil and water resources and passed the Soil and Water Resources Conservation Act (RCA). In the Act, the Secretary of Agriculture was asked three basic questions: What are the resource problems? How do you propose to solve these problems? What are the expected results of your solution?

The U.S. Department of Agriculture has released a comprehensive report in reply -- The 1981 Program Report and Environmental Impact Statement. Copies of this publication are available for study at local offices of the Soil Conservation and Conservation Service and Agricultural Stabilization and Conservation Service, along with forms for formal reply.

I would strongly encourage every reader to take an active part in the policy development procedure by studying the information compiled that shows that conservation problems threaten to reduce agricultural productive capacity and increase production costs.

Despite our national tendency to wait until the dust is on the horizon before preparing for the sandstorm, we have the opportunity to realize and work toward sound, economically feasible and workable programs to address soil and water conservation problems.

Forestry Big In Texas

COLLEGE STATION -- Forestry is big business in Texas, providing necessary products for daily life and employing more than 51,000 people.

These people are either directly involved in the timber and lumber business in East Texas or in related industries throughout the state which manufacture furniture, cabinets, mobile homes and other products. However, this figure does not include people in the gigantic Texas housing industry.

Texas looms big in the forestry industry with 134 sawmills, 10 wood pulp mills, 18 veneer plants and 35 wood preserving plants located primarily in eastern areas, notes Dr. Michael Walterscheid, forestry specialist with the Texas Agricultural Extension Service, Texas A&M University System.

The wood industry ranks eighth in the nation in the number of employees and payrolls, according to U.S. Census Bureau statistics. Most people are involved in the primary manufacture of

lumber and wood products, with the pulp and paper industry running a close second.

Forestry is important to the total economy of Texas, with cash receipts from timber sales alone totaling some \$391 million last year, explains Walterscheid. Forestry firms own only about one-third of the commercial forest land in Texas while there are more than 100,000 small private timberland owners.

Wood manufacturing plants are widely distributed over eastern Texas as well as other parts of the state, notes Walterscheid. They produce such things as paper, fiberboard, lumber, plywood, crossties and materials needed for secondary manufacturing such as furniture, boxes and containers.



... U SAVE ... PHARMACY

PRESCRIPTIONS -- DRUG SUNDRIES
PHOTO SUPPLIES -- MEDICAL EQUIPMENT
-- RENTAL OR SALES --
DRIVE-IN WINDOW SERVICE

201 S. DAUGHERTY EASTLAND, TEXAS 629-1166

Bookkeeping and Tax Service

Ken Parrack

205 East Main, Ranger, 647-3022
116 North Seaman, Eastland, 629-8641

**INCOME TAX RETURNS
MONTHLY AND QUARTERLY
REPORTING FOR BUSINESSES**

Individual, Partnership, and Corporation Tax Returns

R & J Quick Stop

Open 7 A.M. - 11 P.M. Daily

Now featuring specials from
our delicious deli.

This Week's Special:
Large vegetable 1/2 price with
purchase of 1 whole chicken.

Also Available at
R & J Quick Stop

**Dining Area
Gas and Groceries**

I-20 & Hwy 6 Eastland
629-2226



Happy New Year

**FROM
D.L. KINNAIRD
GENERAL INSURANCE**

629-2544
"Eastland's Oldest Insurance Agency - Since 1819"

104 S. Seaman

CHURCH OF CHRIST

309 S. Daugherty Eastland, Texas 629-1040

This simple memorial consists of the bread, which represents the body of Jesus, and of the fruit of the vine, which represents the blood of Jesus (Mark 14:22-25). Jesus was nailed to the cross, and His blood was shed as one of the soldiers pierced His side, and forthwith came there out blood and water (John 19:34).

The Lord's Supper is a service of communion. Those who partake share in the suffering and death of Jesus (1 Cor. 10:16). It is a service of thanksgiving, for Jesus gave thanks as the memorial was instituted, and those who partake ought to be thankful for the sacrifice that has been made on the behalf of man. It is a service of memorial and anticipation. Jesus said, "Do this in remembrance of me." It is a proclamation that Jesus died, and that, in partaking, the people of God are looking for His coming (1 Cor. 11:23-26).

The Lord's Supper is to be observed upon the first day of each and every week. In Acts 20:7 the disciples of the first century met upon the first day of the week to observe the Lord's Supper. A careful study of 1 Cor. 11 and 16 will show that the church at Corinth came together upon the first day of every week.

CHURCH OF CHRIST

309 S. Daugherty Eastland, Texas 629-1040

THE LORD'S SUPPER

On the night that Jesus was betrayed, the Lord's Supper was instituted by the Son of God as a memorial to be observed by His disciples until He returns at the end of the world. And as they were eating, Jesus took bread, and blessed it, and gave it to the disciples, and said, "Take, eat; this is my body." And He took the cup, and gave thanks, and gave it to them, saying, "Drink ye all of it: for this is my blood of the new testament, which is shed for many for the remission of sins" (Matthew 26:26-28; 1 Cor. 11:23-26).

This simple memorial consists of the bread, which represents the body of Jesus, and of the fruit of the vine, which represents the blood of Jesus (Mark 14:22-25). Jesus was nailed to the cross, and His blood was shed as one of the soldiers pierced His side, and forthwith came there out blood and water (John 19:34).

The Lord's Supper is a service of communion. Those who partake share in the suffering and death of Jesus (1 Cor. 10:16). It is a service of thanksgiving, for Jesus gave thanks as the memorial was instituted, and those who partake ought to be thankful for the sacrifice that has been made on the behalf of man. It is a service of memorial and anticipation. Jesus said, "Do this in remembrance of me." It is a proclamation that Jesus died, and that, in partaking, the people of God are looking for His coming (1 Cor. 11:23-26).

The Lord's Supper is to be observed upon the first day of each and every week. In Acts 20:7 the disciples of the first century met upon the first day of the week to observe the Lord's Supper. A careful study of 1 Cor. 11 and 16 will show that the church at Corinth came together upon the first day of every week.

CHURCH OF CHRIST

309 S. Daugherty Eastland, Texas 629-1040

**Eastland National Bank
will be closed
New Year's Day
Friday, January 1st**



EASTLAND NATIONAL BANK

You've got a friend in Eastland.

201 EAST MAIN 817/629-8551 Member FDIC

Sunday, December 27, 1981

BERNINA

Sewing Machines

\$2000⁰⁰ off on model No. 830

Sale ends Dec. 31, 1981

House of Joy

Downtown Gorman 734-2121 T-104



Barbara Blakely
Independent Beauty Consultant

For Appt. or Interview
Call (817) 629-2739

Box 253
EASTLAND, TX 76448

**1/4 OFF
ENTIRE**

**stock of winter
SHOES,**

BOOTS & BAGS

MY SHOESHOPPE

I-20 West of Best Western



Texas
Department of Public Safety

PAT MAYNARD REAL ESTATE

INT. 20 E. NORTH SIDE
629-8568 EASTLAND
442-1880 CISCO

A nice 3 bedroom, 1 bath home close in. Fully carpeted, dishwasher, disposal, drapes and an attic fan. These are just some of the extras. Priced to sell! \$26,500.

In Gorman, a 3 bedroom, 1 bath home on two lots. Some carpet and paneling. Included also are 2 ceiling fans. \$21,500.

2 bedroom, 1 bath mobil home on a large deeded lot at Lake Leon. Included are 2 storage buildings. \$31,000.

An older 3 bedroom frame home on corner lot. Needs some work done on it. Terms can be arranged. \$17,000.

A large 2 bedroom, 1 bath home with permanent siding. Carpeted, some paneling, carport and detached garage. Owner will consider second on part of down payment. \$29,900.

A nice 3 bedroom frame home close in. Carpeted, fireplace, central heat and detached garage. \$35,000. \$2500 down, 13% loan available.

A large 5 bedroom home on corner lot. 2 story. Better hurry on this one. \$25,000.

Lake Leon! 1 bedroom, 1 bath home on deeded lot. Screened in porch, fully carpeted. \$25,000.

Want a new home? We have 100' lots available in exclusive area. City water, sewer and paved streets. Reasonable priced at \$4500 each.

We have owner financed lots and others at Lake Leon.

CISCO HOMES

A nice 3 bedroom, 1 1/2 bath brick home on nice size lot. Central heat and air, large closets, covered patio, 2 car garage, plus storage building.

2 bedroom, 1 bath, could be three, with separate den and living room. Has been remodeled, with central heat and air added. Also, a 24 x 24 garage and shop area.

2 bedroom, 1 bath stone home on 2 1/2 lots. Lots of pecan, fruit and oak trees. Owner will consider terms. \$17,500.

A large 2 story with 5 bedrooms, 2 baths, den, separate dining and breakfast rooms, located on corner lot. Has apartment attached. A very scenic yard with lots of trees.

Big 2 story older home. First floor could be used for a business and still have 3 bedrooms, 1 1/2 bath upstairs. Also, has a basement and big attic, which could be used for more living space. Good location and price has been reduced to \$22,000.

A nice 3 bedroom, 1 1/4 bath home on corner lot. Central air and heat, new carpet, modern kitchen and built-in dishwasher. Also, a garage and storage area.

A large 3 bedroom, 1 1/4 bath, 2 story carpeted home. Large game room and also a study which could be a 4th bedroom. As a bonus, two rent houses go with property, which are fully furnished. 2 large corner lots with several fruit and other trees.

FARMS & RANCHES

20 ac. with a large 3 bedroom, 2 bath home. Extras include: carpet, wood paneling, dishwasher, 2 hot water heaters, built-in desk and typing table, lots of cabinets and closets, two car garage, barn and other out buildings. There are 12 ac. of coastal that yields 1300 bales off two cuttings. See to appreciate. \$75,000.

Home plus rental! We have 3 mobil homes on 7 lots in Cisco. Hookups for two more. All are rented right now. Priced to sell. \$23,000.

Approx. 4 acres on highway towards Lake Leon. City water guaranteed. Would make a good building site or mobil home site. either. \$9500.

435 acres northwest of Cisco. Approx. 50 acres cultivated land, fair to good fences. For the hunter, it has deer, turkey and quail. Some minerals. \$450 per acre.

11.19 acres with a nice 1 or 3 bedroom home, 3 car garage plus barn and other out buildings. The house is carpeted, built-ins in kitchen and with a fireplace. Lots of fruit and pecan trees. A beautiful place. \$64,000.

We have other home, land, and commercial listings.
We appreciate your listings and business!

Office Open Saturday Mornings

Kay Bailey
Associate
629-2365

Pat Maynard
Broker
629-8063

Judy Orms
Associate
629-1218

Cindy Foster
Associate
629-8195

In Gorman Russell Cordell
Associate
734-2690

In Cisco Ann Williams
Associate
442-1880

Century 21

FOWLER REALTORS
Bill Griffith, Broker

820 West Main 629-1769

Residential Eastland

IN EASTLAND: Three apartments that gross monthly \$435.00. Upstairs can be made into another apartment. Carport and furnishings stay with apartment. E-1

WE HAVE new homes under construction. Call for details.

TWO BEDROOM, 1 bath - has wall furnace and refrigerated air condition, carport on side of house, carpeted. This is only \$25,000.00. E-5

NICE BRICK home on large lot, house has approx. 2400 sq. ft. living area. 4 BR, 2 baths, Cent. H/A, Nice built in kitchen, custom made drapes, covered patio, Brick BQ pit and smoker in back yard, nice large oak trees. You must see this one. E-7

ROCK CHURCH 412 N. Bassett. Very spacious could be converted into residence. Already has two baths, two rooms that could be bedrooms. Kitchen with dining room. Worship hall could be huge living room. Call for details. E-6

NEW THREE bedroom, two bath home now under construction. This is a real beauty, in an exclusive area and on a wooded lot. Call for details. E-9

THREE BEDROOM, fenced back yard. Nice neighborhood. This is a real beauty. E-4

Three bedroom, one bath home in nice neighborhood, close to town. This is only \$22,500. E-4

NICE OLDER home situated on four lots. Two bedrooms, one bath. All electric kitchen, beautiful fireplace, big beautiful oak trees. Call for more details and how to get this one! E-11

ASSUMPTION with low interest rate: Excellent location, close to school. Nice three bedroom, two bath, brick home fenced backyard, large metal bldg in back. If you want a nice home with low payments, check this one out. E-10

AT LAST! A nice home that is affordable. \$28,500. This house has 1056 square feet, three bedrooms, one bath, fenced in back yard. Lots more! E-8

IN OLDEN: Nice 3 bdrm., one bath home. 100 x 100 foot lot. Paved street. This is really a neat place. E-16

Cisco

BEAUTIFUL HOME on large corner lot. Lots measure 212.5 x 125 feet. Three bedrooms, two baths, central heat and air with two car attached garage. Excellent condition. C-2

A VERY GOOD BUY A nice well kept older home with approx. 1100 sq. ft. on 2 1/2 lots. Large storage building with electricity. 2 separate garages. Storm cellar. Nice garden spot. Beautiful fruit trees. 3 BR, 1 bath. Very comfortable home on a quiet street. Call about this one. C-1

Ranger

IN RANGER, nice 3 bedroom, 1 bath. Has a breakfast room and a 1 car garage. This house is close to school. R-2

TWO bedroom, 1 bath home with two car garage on large lot. FHA appraised. R-11

SMALL 2 bedroom home in good location for only \$9,000.00.

NICE HOME in very good location: This is a three bedroom, two bath home. Has central heat and air. Its fully carpeted and also has a garage. Call for more information today. R-2

WANT A house with extras? This is a three bedroom, two bath home. A few extras include a huge den, a game room, and a fireplace. Also has central heat and air and is fully carpeted. Sits on six lots and has a good sale price. Call today R-1

THIS IS real nice one: Four bedroom, two bath, living room, dining room, kitchen. Completely remodeled. Has a huge utility room that could be made into a fifth bedroom. Sits on a nice large corner lot. Call now for more details. R-6

REMODELED: Three bedroom one bath home. Close to schools, church, and shops. Has one car garage. City water. FHA appraised. Call for details. R-5

3 BEDROOM, 1 bath home with den, wood heater, carport, FHA appraised. R-9

NICE: Three bedroom, one bath, den home. Completely carpeted. Back of house has an efficiency apt. Call for details. R-3

SMALL three bedroom home with fully carpeted home on large lot. **SOLD**

Lake Property

LAKE HOME: One bedroom, one bath, large living room overlooks lake. Built in kitchen, stove, dishwasher and disposal. Antenna with UHF attachment. Back of lots slopes gently down to the lake. Call for more information. LP-4

Country Homes & Acreage

Acreage

SPORTSMAN DREAM: 168 1/2 acres in Stephen County. This is good land for hunting. Has 1/8 minerals, three tanks and one water well. Call now for more information. A-3

INSIDE CITY LIMITS: 1.2104 acres. all cleared land. Great for building a new home, or putting a mobile home on it. Like to know more about this? Call Now! A-19

55 ACRES good building site. Across from new high school in Ranger. May be subdivided or sold as a unit. A-6

FRESH ON MARKET 60 acres about 12 miles South of Cisco, 30 acres Coastal, 15 acres in Love Grass, rest in timber, 1 tank and 1 hand dug well. Call for details. A-1

4 ACRES off old hwy. 80 E. 1/2 block from city water main. Excellent for pipe yard or for oilfield storage. A-10

SMALL ACREAGE TO BUILD ON between 2 and 3 acre tracts about 6 miles south of Eastland on Hwy. 6. City water and electricity available. Call for details. A-17

161.1 ACRES: Located NW of Ranger. This land is some coastal and some wooded. Four ponds sits on this land. Also has some corrals. Call for more details. A-5

House with Acreage

400 ACRE RANCH: Some minerals. Executive home with many extras! Beautifully maintained! Oil and gas wells on acreage. Call now for more details! HA-1

1.10 ACRES with a nice one bath house on it. Equity buy, loan assumable. Call now for more information. HA-9

EXTRA LARGE home energy efficient, five bedrooms, four baths. Nimrod area on two acres. \$75,000. HA-2

6.52 ACRES: with three bedrooms one bath. Has a fireplace and a two car garage. This is in a very good location. HA-8

Commercial & Lots

ATTENTION MERCHANTS - RELOCATE! ONE half to ONE ACRE TRACTS, all utilities and pave street, situated in new shopping development. Adequate parking space. \$8,500.00. C-2

IN CISCO, 2 large lots with many oak trees. Utilities on property great for mobile home. L-15

LAKE LEON BUSINESS with 3 bedroom siding home on water front, 2 gas pumps, 4 trailer hook-ups, store is 500 sq. ft., 24' x 30' workshop, storeroom, storm cellar, staff water, garden spot. GOOD LOCATION AND A GOOD BUSINESS. CP-5

CISCO, LARGE COMMERCIAL Bldg., includes nice size apartment, 2 bay car wash, mobil home hookup. Make offer. CP-6

PACKED WITH POTENTIAL Going business good income, excellent location. Call for details. CP-8

EXCELLENT BUSINESS LOCATION on Old Hwy. 80 West - has room for four office spaces, central heat and air, carpeted. CP-1.

EXCELLENT commercial property on large corner lot central air and heat - perfect for business offices. Eastland. CP-12

SMALL BUSINESS making good profit. Owners will train. Good investment for couple seeking opportunity. In Eastland. CP-4

EXCELLENT COMMERCIAL property on W. Main Street in Eastland. Sits on corner lot and has adequate parking. Call for details. CP-12

CISCO-Excellent property for office with plenty of parking space. 150 x 150; lot with 1500 sq. ft. building. Owner financing with 25% down at 11% interest. Located on a main thoroughfare. CP-10

EASTLAND-Small motel with good income. This is an excellent investment only 25% down and owner financing at 12% interest. This is a good buy. CP-9

WE NEED AND APPRECIATE YOUR LISTINGS!
WE'RE HERE FOR YOU

Bill Griffith, Broker
647-1635

Shirley Griffith
647-1635

Hazel Underwood,
Assoc. Broker
629-1188

Chris Frost Crum
629-8224

Looking Ahead

by
Dr. George S. Benson
President

COUNCIL ON
FOREIGN RELATIONS
I recently read a statement with profound significance. It stated that the last American military men "who ever

savored victory," are the Veterans of World War II. Think about it! That war closed in 1945 as a clear-cut victory for America. Our entire nation looked with pride upon the achievements of our men in World War I and again in World War II.

Then came the war in Korea 1950-53; this was totally different. General MacArthur was in charge of the soldiers in Korea. He had the men and the means to have won that war very decisively, but the orders from Washington did not permit him to proceed to win the war. He was told where to stop.

A line of demarcation was set-up beyond which he was not to go. The enemy could cross that line and attack and then run back across the line and be secure. MacArthur came home to discuss the matter with the people in Washington. He was permitted to deliver a joint address before the House and the Senate. He was heard on national TV. He explained why they should win the war and begged for permission to win the war. According to reports at that time, Truman was confused as to what to do. He had on his hands the most popular General in the world who was in the midst of a war and who was begging for permission to win it. President Truman seemed constrained from unknown sources to give approval. He delayed.

According to reports at that time he got advice from England—a country that did not necessarily have at heart our best interest. Churchill said: "Fire him." Truman followed the Churchill advice and fired MacArthur; then he sent out General Eisenhower who did follow Washington directions. He failed to win the war, but finally signed an Armistice. Now we have been

keeping men over there guarding that Armistice line for 28 years, and no treaty has yet been signed.

Had MacArthur been allowed to win that war, there would probably have been no Vietnam War and the entire history of the Orient would likely have been very different.

But what really disturbed Americans most was the appearance of a strange situation in Washington. It appeared that there was some force able to pressure President Truman into making a decision that was probably against his own best judgment and certainly against the best interests of the nation. Consequently, something happened to the spirit of American patriotism. It has never been the same since. Then came in 1961 the Vietnam War. Fighting dragged on for nine years. Many Americans believed it could have been won any time in nine months if the American forces had been allowed to follow the directives of their own Generals on the ground and allowed to fight for a termination of the war and a final victory. But again, boundaries were established from Washington beyond which American soldiers were not to pass even though the enemy could cluster behind those boundaries, cross over for attack at night and then jump back again before daylight and be on sacred territory. It appeared to many Americans that the war was being so directed from Washington as to prevent victory. When a cease fire was finally declared at the end of nine years of fighting, the American soldiers came home, but they came not to a victor's welcome; their reception was, in reality, a disgrace.

City Sales Tax Totals \$41.4 Million

State Comptroller Bob Bullock Monday sent checks totaling \$41.4 million to 802 cities as their share of the one-percent city sales tax for December.

This final payment for 1981 brought to \$656 million the total collected and returned to Texas cities during 1981. Bullock said this total is more than 17 percent over last year's \$560 million.

The December monthly payment is \$7.9 million more

than the cities received during a comparable period in 1980.

The optional one-percent city sales tax is collected along with the state four-percent sales tax by merchants and businesses and is rebated each month by the Comptroller to cities where it is levied.

The net payment this period for Cisco is \$9,235.83. The 1981 payments to date is \$173,261.65. The percent

change to date is 8.56%.

For Eastland the net payment this period is \$12,226.67. The 1981 payments to date is \$176,689.15. The percent change is 19.46%.

The net payment this period for Gorman is \$1,971.51. The 1981 payments to date is \$31,122.02. The percent change is 20.26%.

For Ranger the net payment this period is \$9,599.73.

Sunday,

December 27, 1981

WORD of GOD

For those who want peace:

Thou wilt keep him in perfect peace, whose mind is stayed on thee: because he trusteth in thee.

Isaiah 26:3

YEAR END CLEARANCE

Odds and Ends

all over the store.

Discounts up to

50% Off.

Austin's Furniture Co.

601 Avenue D Phone 817-442-2533
Cisco, Texas 76437

BUDDY AARON INSURANCE

Talk to us about
35% diviations

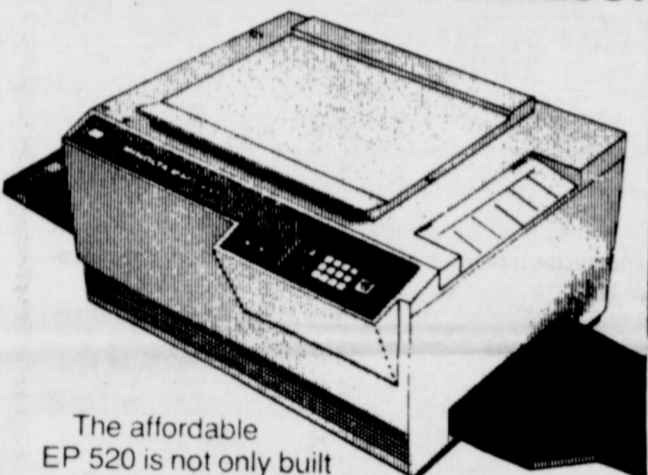
Home-owners "B"
Farm & Ranch owners "B"

and also ask about
Farm Equipment
Special Rates

Broad-Form
Coverage on
Commercial
Properties

629-8533
P.O. Box 392
108 S. Seaman
Eastland, TX

MINOLTA EP 520. THE COPIER THAT CAN KEEP UP WITH A GROWING BUSINESS.



The affordable EP 520 is not only built to handle increasing workloads. Optional accessories turn it into a system copier as your business grows. And it's built with all the dependability Minolta copiers are noted for.

- Copies just about any original on virtually any paper.
- Extraordinary self-diagnostic system warns you of problems.
- Dual paper cassettes hold up to 11x17" paper.
- Optional Document Feeder, Sorter, Departmental Counter.

See a demonstration soon.

STEVE HAINES
OWNER
RES. 817/629-2682

STEVEN PRINTING & PHOTOGRAPHY

Office Machines — Office Furniture

205 S. Lamar - Box 831 629-2682 Eastland, Texas 76448

24 Hour Film Processing



Kodachrome & Ektachrome
Processing by Keaton Kolor
Kodak Film & Supplies

Morren's Gift Shop
1013 W. Main In. Eastland

W.A. Criswell

Heads Conference Speakers List

W.A. Criswell, pastor of the First Baptist Church in Dallas, headlines the cast of pastors, evangelists and lay persons who will address the annual Texas Baptist Evangelism Conference at the Tarrant County Convention Center in Fort Worth, Jan. 18-20.

Criswell, who is pastor of the world's largest Baptist church, will be the keynote speaker during the closing session of conference Wednesday morning.

The theme of the three-day conference is "Listen now. Hear forever". Dr. Carlos McLeod, director of the Texas Baptist Evangelism Division, said the theme was chose to "provide impetus for simultaneous revivals which are slated in Southern Baptist churches across the state this spring."

McLeod said he hoped the conference would set the pace for a year that would see 75,000 baptisms in Texas Baptist churches.

Other speakers on the program include Perry Sanders, pastor of the First Baptist Church in Lafayette, La.; Gardner Taylor, pastor of the Concord Baptist Church in Houston; and Frank Pollard, Pastor of the First Baptist Church in San Antonio.

Frank Cooke, of the Purley Christian Trust, Purley, Surrey, England, will lead the Bible study for the conference.

On Tuesday evening, there will be a special commissioning service for McLeod who became director of the Evangelism Division, Nov. 1, 1981.

The conference sessions of inspirational messages and music begin at 7 p.m., Monday; 9 a.m., 1:50 p.m., and 7 p.m., Tuesday; and 9 a.m., Wednesday.

The Evangelism Division of the Baptist General Convention of Texas sponsors the conference which is free and open to the public.

REST TAKE A AREA BREAK

WHERE FAMILIES OF ONE OR MORE ARE WELCOME



What picture comes to mind when you hear the word "family"? Do you see a mother, father and 2-3 children? What does a family look like?

Every family is unique. There are families with children, some with no children, some are single-parent families, and there are blended families — where a new family is formed from former ones. "Part-time" families occur when a parent has custody on week-ends or during vacations. Families come in all sizes and in wide variation.

Your family — of one or more — is welcome with us. Though every family has its own specific set of problems and potentials, we all need Christ. His love, and human caring. Let us meet your family this week!

BIBLE BAPTIST CHURCH

17th and Avenue E
Cisco, Texas 76437

Sunday School 10:00 a.m.
Morning Worship 11:00 a.m.
Evening Service 7:00 p.m.
Prayer Meeting, Wed. 8:00 p.m.

Bob Mayberry, Pastor
Telephone 442-3964

Independent Fundamental - Premillennial

GOOD YEAR SERVICE STORES

YEAR-END CLEARANCE SALE

GET SET FOR '82 AT LOW '81 CLEARANCE PRICES!

SAVE WITH CONFIDENCE! POWER STREAK 78

Size & Type	SALE PRICE	Plus FET, no trade needed.
D78-14 Whitewall	\$34.70	\$1.77
F78-15 Blackwall	\$36.85	\$2.20
F78-15 Whitewall	\$38.75	\$2.20

\$32⁹⁵

Strength and resilience of polyester cord... performance dependability of bias ply construction.

D78-14 Blackwall. Plus \$1.77 FET. No trade needed.

RADIAL SAVINGS FOR YOUR CAR

Size & Type	SALE PRICE	Plus FET, no trade needed.
P155/80R13 Viva Radial Blackwall	\$38.95	\$1.43
P155/80R13 Viva Radial Whitewall	\$40.95	\$1.43
P195/75R14 Viva Radial Whitewall	\$49.95	\$2.11
P205/75R15 Viva Radial Whitewall	\$54.95	\$2.44
P225/75R15 Viva Radial Whitewall	\$62.95	\$2.68
P235/75R15 Viva Radial Whitewall	\$64.95	\$2.88

SAVINGS FOR YOUR TRUCK

700-15 Rib Hi-Miler Blackwall TT LRC	\$49.95	\$2.77
750-16 Rib Hi-Miler Blackwall TT LRD	\$68.50	\$3.53
G78-15 Tracker LT Blackwall TL LRC	\$57.00	\$3.11
300-16.5 Tracker LT Blackwall TL LRD	\$68.50	\$3.38
G78-15 Tracker XG Blackwall TL LRC	\$59.75	\$3.23

CUSTOM WHEEL CLEARANCE SAVE 20%

Quantities are limited and reduced for clearance. First come — first sold. Not available in all stores.

CYCLONE II One piece, all aluminum 40 series, triple machined to a high gloss.	\$55 ⁰⁰	Reg. \$68.95 Model 40-4712 Size 14x7
TRACKER CHROME 75 series in two-piece steel, triple nickel chromed.	\$43 ⁹⁰	Reg. \$54.95 Model 75-5857 Size 15x8
BULLET WHEEL One piece, all aluminum 15 series, triple machined to a high gloss.	\$54 ⁰⁰	Reg. \$67.95 Model 15-3410 Size 13x5.5 F.W.D.

OTHER SIZES AVAILABLE IN LIMITED QUANTITIES AT REDUCED PRICES

SAVE \$16.30! Power House Battery



\$54⁹⁵ With Trade

Regularly \$71.25 (with trade). Group 24 and 24F ONLY

More powerful than many new car batteries. Fits most standard and small cars, many tractors, farm implements and industrial vehicles.

SALE ENDS SAT.

AUTOMOTIVE STEREO BY KRACO



3 DAY SALE!

Your Choice

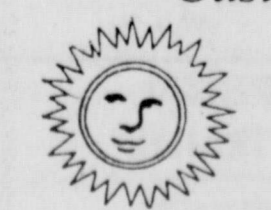
\$69

Sale Ends Saturday

\$29 Save \$3.95 a pair on speakers! 6"x9" or 5"x4" round coaxial speakers. Reg. Price \$32.95

In/under-dash AM/FM radio & tape player — 8-track or cassette. 1003-1004.

REYNOLDS MANUFACTURING CO. Customer Service Division



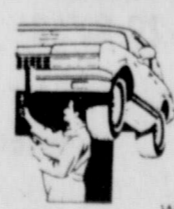
- Siding
- Storm Windows
- Replacement Windows
- Patio Storm Doors

SUNGLAS: ... THE ENERGY SAVING GLASS FOR YOUR HOME

105 E 8th - Cisco
442-1380

FREE ESTIMATES

LUBE & OIL CHANGE



\$8 Includes up to 5 qts major brand motor oil. Oil filter extra if needed.

INCLUDES OUR 9-PT. MAINTENANCE CHECK.

We'll change oil, perform chassis lube, and check:
• Transmission fluid • Power steering fluid

PROLONG TIRE LIFE AND BOOST MPG



Total Alignment Headquarters

Service Front Wheel... Rear Wheel... Four Wheel!

• Inspect all four tires, correct air pressure • Set front wheel caster, camber, toe

\$19

Prices start at \$19 for our regular front-end alignment service. Parts and additional service extra if needed.

EVERISTO Your Local Goodyear Store

JIMENEZ,

Mon thru Fri, 7:30 a.m. to 6:00 p.m.; Sat, 7:30 a.m. to 5:00 p.m.

Phone: 629-2662

Main Eastland

CLASSIFIED ADS sure to get results

NOTICE

Residential and commercial. Remodeling, ad-ons, concrete work, new homes, electrical work, etc. Mickey Williams 652-2235. TC

SUNBELT TANK COMPANY is now accepting applications for secretarial duties. Apply in person at Sunbelt Tank Co. on old power plant road. TNF

FOR A fret-free flue call Hardin's Chimney Sweep. 639-2307. T-105

NOTICE: Land Development Service

- (1) Land Clearing
- (2) Farm and Ranch Improvement
- (3) Terracing
- (4) Other improvements

Experienced operator bulldozer. Further information call after 6 p.m. (817) 629-2058. TNF

Bob Weeks
New Telephone No. 629-8404

J & A Bargain Box
701 W. Main
New & Used Merchandise
629-1133

Protect your checks, for your business, buy purchasing a Driver License Information Rubber Stamp from The Eastland Telegram - 110 W. Commerce. TNF

HOLLIS WILLIAMS CONSTRUCTION

Residential and commercial. Remodeling, add-ons, new homes, custom cabinets, concrete, electrical work, etc. 442-1933, Cisco p-58tfc

Complete Remodeling
Concrete-Electrical-Roofing
Patios-Driveways-Room Additions
Siding-Windows-Plumbing
Chain Link Fence
No job to large for A-1 Sales
215 S. Walnut
629-2102 Anytime

We now have 1982 desk calendars and stands for sale at the Eastland Telegram.

Metal Buildings
All Welded Construction
Clear Span to 60' Wide
Any Length
Built to suit your needs
A-1 Sales
215 S. Walnut
629-2102 Anytime



HOLIDAY SAVINGS
Service call FREE
within Ranger City Limits
until Jan. 1, 1982

Coleman Electric
601 Pershing
647-1136 T-105

WE CARE ABOUT YOUR HEALTH
Specializing in physical ailments related to the spine and nervous system.
Dr. Geo. G. McPaul
Chiropractor
Telephone 647-3821
454 Pine Street Ranger
Please Clip & Save TC

TV RENTAL and Repair
Buy, sell or trade.
301 W. Commerce
629-8761

WESTERN MATTRESS
Sales and Service Complete bedding. New, Exchange, Renovate. Call Lois Measell at 629-2703 or 442-9995. TC

Choice Building Sites Located East Side of Eastland near Gibsons Starting at \$3,000.00 Can build to suit your needs or you build A-1 Sales
215 S. Walnut
629-2102 Anytime

See M.H. Perry for HOSPITALIZATION INSURANCE
629-1566 or 629-1095

NOTICE: Duke Johnson Contractor Remodeling, Concrete, Electrical, Plumbing, Fencing, Boat Dock, House Leveling. Call 647-3682 or 647-3679. tc

Donut Shop
Shop 315 W. Main
Ranger During Dec.
Check our daily specials. We offer a wide range of donut delights. Free coffee with any purchase.
Bob and Paula Bailey.

See M.H. Perry for EDUCATIONAL INSURANCE
629-1566 or 629-1095
104 N. Lamar-Eastland

OPPORTUNITY

BUSINESS OPPORTUNITY
Looking to Diversify Income? Marketing company expanding and looking for success minded persons to expand with. Some management and sales experience would help. We will train. Send publications to: International Marketing Associates, P.O. Box 867, Breckenridge, Texas 76024. T-105

EMPLOYMENT

POSITION FOR LVN's for 2:30-11 and 10:30-7 shifts. Apply in person at Eastland Memorial Hospital 304 S. Daugherty, Eastland, Texas 76448. AN EQUAL OPPORTUNITY EMPLOYER. T-1

HELP WANTED: Person needed to work in Deli night and day shift. 7-3 and 3-11 apply in person at R&J Quickstop. TNF

"POSITION OPEN for Ward Clerk, 10:30-7 shift. Apply in person at Eastland Memorial Hospital 304 S. Daugherty St. Eastland, Texas 76448. AN EQUAL OPPORTUNITY EMPLOYER. T-1

"POSITION OPEN for nurses aides, all shifts. Apply in person at Eastland Memorial Hospital 304 S. Daugherty St. Eastland, Texas 76448. AN EQUAL OPPORTUNITY EMPLOYER. T-1

LVN's have you tried a personal rewarding joy as a charge nurse in a nursing home. Cisco Nursing Center has openings for full time and part time LVN's on all shifts. Call 442-1471 or P.O. Box 190, 1401 Front Street, Cisco. p-94tfc

WANTED

WORK WANTED House leveling, painting barns and hours - inside and out.
FREE ESTIMATES
Pho. 817-643-3027 day or night. Tnf

WANT TO BUY: Used furniture. S&K Sales, 515 E. Main, Eastland. Call 629-8382 or 629-2241. TC

FOR SALE

For Sale: Brangus Bulls Call 647-1182 or 647-1155 TF

FOR SALE: Large 2 bedroom house with 2 lots. 203 N. Oak Eastland. \$8,000. Phone 915-662-3502 after 7 p.m. in Putnam. T-105

DUPLEX
With excellent income and tax shelter benefits. Owner will carry note. Located on quiet paved street in Cisco. Both sides now rented. Call Ray Ferris, Century 21, Alden Cathey Inc., 915-692-8311 or 915-893-4888. Co-brokers welcome. p-1

OWNER CARRY
Completely remodeled frame home in Cisco. 3 bedroom or 2 bedroom with study. New central air and heat, fresh paint and carpet, many more improvements. A good value for the money. Call me for more details Ray Ferris, Century 21, Alden Cathey Inc. 915-692-8311 or 915-893-4888. Co-brokers welcome. p-1

FORCED TO SELL 1980 Ford LTD four door, new tires \$3,200. 629-2682 or 629-8002. TNF

FOR SALE: 'Antique Glass and Furniture' and other collectables. 'We Buy Estates.' The House of Antiques moved to 908 So. Bassett, Eastland, Texas open every day. T-105

HOME FOR SALE
By Owner
Nice brick home on large lot in Meadowbrook addition. Three bedrooms, two baths, with large paneled den. Central heat & air, utility room with washer and dryer connections, range and dishwasher. Home has approximately 1800 sq. ft., redwood fenced backyard with several trees. Good neighborhood. Call 647-1864 after 5:00 p.m. TC

FOR SALE: 1977 Ford LTD, 4 door, \$2,000. Call 442-2757 after 5 p.m. on weekdays and anytime on weekends. p-99tfc

FOR SALE: 100-year-old antique upright piano with works made in England; hand-carved cabinet from France. See to appreciate. Has been maintained, but presently needs tuning. Call 629-2487 or 629-1671. TF

1977 FORD COURER in good shape see at Scott's Body Works 300 W. Commerce phone 629-2372 or 629-1514. TNF

FOR SALE: 80 Ford 3/4 ton, 300, power, air, 4 speed, 28,000 miles. Call 442-1709. p-1

FOR SALE: Ideally suited lease lot at Lake Leon with 200 feet waterfront; Staff Water; enclosed floating boat dock with walkway. Rugged, secluded, good roads, and convenient. Close to Country Club. 629-2413. TF

FOR SALE: (escape television bondage.) Beautiful carved front, all wood Motorola system. FM/AM radio and four-speed turntable. Solid state stereo with high quality built-in speaker system. 20 by 56 inches. Record storage. Controls for remote speakers and input. Inquire to see at 629-2413. tf

FOR SALE: Genuine, original, full-size type trays in beautiful condition, from the local newspaper office. Makes excellent gift memobrella boxes. \$45. each. See at the Eastland Telegram. tf

FOR RENT

FOR RENT: 3 bedroom house in Eastland. \$185.00. \$100.00 deposit. Call 442-2745 or 442-1049. Other rent property to be available soon. T-105

FOR RENT: New 2 bdr., 1 1/2 bath apt. 301 E. Conner. Call 559-8268. TNF

FOR RENT: Furnished or unfurnished apartments. Royal Oak Apartments, 1304 Royal Lane, Cisco. Call 442-3232. T-C

See M.H. Perry for GROUP INSURANCE
629-1566 or 629-1095
104 N. Lamar-Eastland

J & J Air Conditioning
Let us check your heating system
Call now about the free furnace program with the purchase of a Coleman heating & cooling system.
James Schuman 629-2251

Rent The Rug Doctor
The original "steam" carpet cleaner with the Vibrating Brush. Easy to use!
NOW AVAILABLE AT
TAYLOR CENTER
Eastland & Cisco

R&R CARPET CLEANING
Over 5 years service in this area
Call 629-1121
FOR FREE ESTIMATE
Randall Rogers, owner

FOR SALE

REAL NICE 74 Chevrolet 4 door Impala. P. & Air. aut. One owner. \$1,995.00. 629-1055. TNF

MIXED PECANS Nice ones, \$1 per pound. Call 442-1693. T-104

FOR SALE BY OWNER: Executive home, brick, 3 bedroom, 3 bath, approx. 2400 sq. ft. including 600 ft. office area. Central heat and air, pool, fireplace, built in kitchen, double garage on 72 wooded acres. 12 miles South of Cisco on Hwy. 206. Some minerals \$150,000. Phone 817-725-6300, 817-629-8768. TNF

FOR SALE: Three bedroom house. Call 629-2683 between 8:00 a.m. to 5 p.m. TNF

Desks, chairs, files, safes, tables, cash and carry. Save 20-50 percent. Large selection 9:50-3:30 weekdays. Value City 1030 Butternut, Abilene. T-tfc

1 refrigerator for sale - \$125.00. Call 629-8944. TF

FOR SALE: 1978 Chevy Chevette assume payments of \$156 per month with small equity. Call 442-4777 or 629-2002. p-105

For Sale: side-by-side gold refrigerator with ice maker. Call 647-3415 See at 458 Pine St. Ranger. T-105

For Sale: Used Furniture, etc. Buy, Sell, or Trade. Also Buy Estates. 1701 West Commerce J. & F. Resale 629-8952. TC

OAK FIREWOOD for sale. \$65 per cord. Delivered and stacked call 629-2915 after 5:00 p.m. weekdays and all day weekend. T-1

WANTED

HELP WANTED: Receptionist, must be accurate typist and neat with paper work. Some knowledge of bookkeeping. Send resume to: P.O. Box 642, Eastland, Texas 76448. T-105

DUMP TRUCK WORK WANTED 647-3202 call anytime. T-8

FOR RENT

FOR RENT: One bedroom furnished cabins in Ranger all utilities paid including cable T.V. Call Gorman 817-734-2055 after 8:00 p.m. or between 7:00-9:00 a.m. T-104

FOR RENT: Furnish or unfurnished mobile homes. Also mobile home spaces. Phone 653-2415. T-c

Furnished apts for rent - All utilities paid. - \$150.00 per month. Hillside Apts. 700 W. Plummer Eastland Phone 629-8097. T-c

NOTICE

EXPERT: Sewing machine repair any make or model, all work guaranteed. Call Jesse Price 629-8988 after 4:30 p.m. TC

MASONIC LODGE NO. 467
Meets second Thursday of each month at 7:30 p.m. in the Masonic Hall. Call Floyd Allmand at 629-1763 opr 629-8077. Mr. L.E. Huckabay 629-1391, Sed. TC

COMPLETE AUTO SERVICE
...qualified mechanic on duty
...transmission repair
...air-conditioning service
...Lubrication-polish-Gulf Tires
...Farm Bureau Tire Distributor
ROAD SERVICE PICK-UP & DELIVERY
Int. 20 at Carbon Hwy 629-8894

RUBEN'S INTERSTATE GULF

D.L. KINNAIRD GENERAL INSURANCE
Since 1919

Contact us if you want to save money on all your insurance needs
CALL 629-2544
I.C.

Tune up \$15.00
Parts Extra
Wheel Alignment \$15.00
Most Cars
Bruce Pipkin Motor Co. 214 W. Main 629-2636
Cadillac-Olds-Buick-Pontiac TC

OTIS COLEMAN
Rt. 2 Eastland, Texas 76448 (817) 629-1644.
Vinyl Siding, STORM WINDOWS, Replacement Windows, Patio Covers, Window Screens, Window Awnings, Insulation. TC

Herring Mechanical Plumbing Contractor
629-8008
Licensed Master Plumber Complete Plumbing Installations & Repair. TC

STEVE COZART CONSTRUCTION
Remodeling, Add-ons, New Homes, Cabinets, Concrete, Electrical, Etc. Free Estimates. Phone 442-1709 TC

STORAGE You Keep The Key
629-2201 T-C

Jim Wortman
412 W. Commerce
P.O. Box 68 Eastland, Tx
Pho. 629-1096
"See me for a State Farm Homeowners Policy!"
Like a good neighbor, State Farm is there.
State Farm Fire and Casualty Company Home Office: Bloomington, Illinois

THE EASTLAND TELEGRAM

Publication No. (USPS 186240)
1981 - EASTLAND COUNTY NEWSPAPER CO.
629-1707 110 W. Commerce St. Eastland, Texas 76448

Second Class Postage paid at Eastland, Texas, under Act of Congress in March, 1879. Published semi-weekly Thursdays and Sundays.
Publishers-Mr. & Mrs. H.V. O'Brien
Editor-Cisco-Herrell Hallmark
Editor-Eastland-H.V. O'Brien
Assoc. Editor-Eastland-Michelle Lindsey
Editor-Ranger-Betty McGee
Editor-Rising Star-Evelyn Donham
Office Staff-Stella Brown
Office Staff-Faye Merritt
Office Staff-Margaret Hallmark
Office Staff-Patricia Hallmark
Office Staff-Diane Hughes
Office Staff-Edra Butler
Columnist: J.W. Sifton
Production Supervisor-Ted Rogers
Production: Raymond McCoy
Production Ass.-Wayne McCoy
Adv. Production-Bonnie Rogers
Computer Operator-Kathy Willeford
Photo-Michelle Lindsey
Feature Writer-Viola Payne
Commercial Printing-Hale Dunsen

Volume 77
Number 104

SUBSCRIPTION RATES: City and in county \$13.00. Out of county and out of state \$16.00.

EASTLAND TELEGRAM And Weekly Chronicle
Consolidated May 15, 1947
Chronicle Established 1887
Telegram Established 1923

L & L Electrical Appliance Repair
* resident & commercial *
* wiring 629-1448 *
* T-6 *****

Handy Man Available for Carpentry, Painting, and Small Hauling Jobs.
647-1731

For Dependable Small Repair Jobs Saw Sharpening call Russell C. Turner 629-2286 517 Foch St.

CAKE DECORATING DONE
T-103
Decorated Cakes for birthdays anniversaries and weddings. Also bread dinner rolls, brownies, cookies, innamon rolls and pies. Everything is HOMEMADE. Will deliver to your home or office. Call 639-2505

DOYLE E. SQUIRES CONTRACTOR
built roofs and shingles all new work guaranteed. Ph. 653-2212 after 6 p.m. Olden, Texas 76466. T-105

R.N.'s Needed
11-7 --- 3-11
Please contact Kay Mosley, RN, Director of Nursing Services 817 442-3951 Cisco, Texas
E.L. Graham Memorial Hospital
Equal Opportunity Employer T106

Stewart's Radiators and Batteries
100 South Mulberry
(Behind Montgomery Wards)
Radiators repaired and recored
Motor parts vatted.
Reconditioned Batteries 18⁵⁰
& up with exchange
Fair Prices, Excellent Service.
629-1091 TC

Fred's TEXACO CAR CARE CENTER
1-20 & Hwy 80 East
629-8895

Transmission Special
(filter & 4 qts. fluid)
\$22⁶⁵ Plus Tax
JARTRAN RENTAL TRUCKS & TRAILER
Auto State Inspection
Open 7AM to 7PM except Wednesday
Fred Pevehouse

Free State Construction Company
817/629-8713 817/629-8924
Crushed Rock for Roads and Oilfield Locations.
(Delivery Available)
All types of Heavy Machinery for Oilfield Locations.

BUY, SELL, TRADE OR RENT THROUGH THE CLASSIFIEDS

RANGER TIMES EASTLAND TELEGRAM CISCO PRESS
Ranger, Texas Eastland, Texas Cisco, Texas

Sunday, December 27, 1981

647-1101

THE RANGER TIMES

Publication No. (USPS 455-406)
647-1101 Box 118 Ranger, Texas 76470

Second Class Postage paid at Ranger, Texas, under Act of Congress in March, 1879. Published semi-weekly Thursdays and Sundays.

Publishers-Mr. & Mrs. H.V. O'Brien
Editor-Cisco-Herrell Hallmark
Editor-Eastland-H.V. O'Brien
Assoc. Editor-Eastland-Michelle Lindsey
Editor-Ranger-Betty McGee
Editor-Rising Star-Evelynn Donham
Office Staff-Stella Brown
Office Staff-Faye Merritt
Office Staff-Margaret Hallmark
Office Staff-Patricia Hallmark
Office Staff-Diane Hughes
Office Staff-Edra Butler
Columnist: J.W. Sittin
Production Supervisor-Ted Rogers
Production: Raymond McCoy
Production Asst.-Wayne McCoy
Adv. Production-Bonnie Rogers
Computer Operator-Kathy Willeford
Photo-Michelle Lindsey
Feature Writer-Viola Payne
Commercial Printing-Hale Dunson

CISCO-EASTLAND-RANGER
SUBSCRIPTION RATES: City and in county \$13.00. Out of county and out of state \$16.00, \$1.25 by the month.

MEMBER 1982
TEXAS PRESS ASSOCIATION

FOR SALE

4 bedroom, two bath house, sitting on six lots, for sale by owner. Priced to sell.
Day phone 647-3280
Night phone 647-1617
TF

MUST SACRIFICE: ski boat with walk thru windshield, in good condition. Has 80 hp engine, cover and sun top plus a new battery, 2 pairs skis, 2 ski jackets, radio, ladder and more. Runs great - \$1,695.00. Call 647-3305. T-3

For Sale: side-by-side gold refrigerator with ice maker. Call 647-3415
See at 458 Pine St. Ranger.
T-105

Excellent buy in Strawn. 14'x80', 1975 House Trailer, 3 bedrooms, 2 baths on concrete slab. 8 lots. Also an old house that could be fixed up. Call 647-3022.
TC

For Sale: 1973 Delbrook Mobil Home, 3 bedroom, 2 bath, dishwasher, stove, refrigerator, 2 refrigerated air conditioner units, underpinning, and on blocks. Judy Wheat. T-109.

Admiral console color TV and Sylvania stereo with speakers. \$250 will buy all of the above. Call 647-3242 on weekdays or 647-3720 on weekends and after 6 p.m. T-105

For Sale: Open face heaters, Dearborn heaters.
212 Lula Street
647-3103.
TEC

DRESSMAKING AND ALTERATIONS
647-3528
Geneva Durham
T-5

BUY USED BRICK
647-1569
T-9

Coastal Hay
fertilized, irrigated,
No weeds or burrs
\$2.50 per bale
rolled bales \$30.00
Martin at Mingus
672-5326

Motorcycles For Sale:
1981 Yamaha, 650 Special, 400 miles on it - dressed out nice - \$2100.00. Also a 1978 ZIR1000 Kawasaki, wrecked, less than 400 miles \$750.00 or best offer. Call 647-3034. T-1

For Sale: 2 female registered, full-grown, English Bulldogs. Call 693-5632 in Gordon. TF

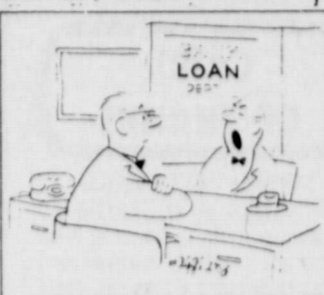
RANGER MASONIC LODGE 738
Meets first Thursday of each month at 7:30 p.m.
Tommy Brashier, W.M.
Michael Noth, Sec.
TC

DUMP TRUCK WORK WANTED 647-3202 call anytime. T-8

D&J Sewing Center
General Sewing and Alterations
647-3679
or
647-1914 TC

ARNOLD GOHLKE
Some New-Some Good-Some Junk
Want to buy cookstoves, heaters, refrigerators, all types of furniture.
Call 647-3103
212 Lula St. - Ranger

Little Stories About Great Thoughts



"Do I ask what you're going to do with the money when I make a deposit?"

Jim Wortham
412 W. Commerce
P.O. Box 68 629-1096
Eastland, Texas

"See me for a State Farm Homeowners Policy?"

Like a good neighbor, State Farm is there.

Upholstery • Radiators • Plumbing
HATTY'S TRIM SHOP
114 S. Marston
Childrens rockers, chairs, love seats
Phone 647-3429
Paul & Dorothy Fonville, owners
T-103

CITY FLORAL
James Boone
647-3222
For your floral needs

BARBERING
Wear your hair long but
Let me shape it
BILL'S BARBER SHOP

Private Piano Lessons
Piano tuning & Repair
Call Roy Rodgers
after 5 - 647-3187

Please Call
Police Dispatch
For Ranger Police
629-1728

Blossom Shop
We Now Give Green Stamps!
Phone (817) 647-1811
401 W. Main Ranger, Texas 76470

EMPLOYMENT
Daily Babysitting Wanted
Reasonable Rates. 12 years experience



Dale O. Bakker

"All the fair examples of renown out of distress and misery are grown." Samuel Daniel (1562-1619)
In this great thought the author points out the truth that the lives of great leaders and famous personalities indicate that they were not spared any of the everyday life experiences so common to us all. That their greatness came from finding strength to rise above their distress.
Here at Bakker Funeral Home we seek to serve in time of bereavement by being as helpful as possible in making the task of arranging the final rites of a loved one less difficult.

BAKKER FUNERAL HOME
411 S. Mulberry 629-1726
Eastland, Texas

FONVILLE PLUMBING CO.
Rotary Rooter service, unstop drain lines, sewer lines. Replace sewer, water and gas lines anywhere day or night.
Paul Fonville owner
Phone res. 647-1273
Office 647-3429
T-105

MATTRESSES
• New and Renovate
• Choice of ticking
• Choice of firmness
• New innerspring unit
• New mattress guarantee
Western Mattress Co.
231 North Belknap
Stephenville, Tx. 76401
In Ranger Call Collect
1-817-965-4077

FOR RENT
Furnished apts for rent - All utilities paid. \$150.00 per month. Hillside Apts. 700 W. Plummer Eastland. Phone 629-8097. T-1c

RENTAL PROPERTY
34'x14' office building, 2 offices, 1 plus acre. \$350 per month, excellent for pipe yard or oil field related.
Call 647-3022
TC

OFFICE BUILDING FOR LEASE OR RENT
CALL 647-1311 or after five call 647-3581. TC

FOR RENT: One bedroom furnished cabins in Ranger all utilities paid including cable T.V. Call Gorman 817-734-2055 after 8:00 p.m. or between 7:00-9:00 a.m. T-104

For Rent: 2 bedroom, new kitchen and bath, some carpet. Highway 80 E., near school. Phone 647-1822. TF

FOR RENT
2 and 3 bedroom mobile homes - carpet, air conditioned.
MANN MOBILE HOME RENTALS
Tel. 647-1787 or 647-9349.

babysitting for the public. I am a licensed nurse. Fenced back yard with play house, swing set, sand pile, riding toys, hot meals with 2 snacks. My home is registered and licensed with the state.
Sue Cherry 458 Pine Ranger 647-3415.
TC(9/13) T-1-T-2A.

Help Wanted: Responsible and reliable persons to work full or part time. Apply in person Colonial Food Store, 100 Railroad Ave. Ranger TF

ALLSUPS Convenience Store is now taking applications for full and part time positions in Ranger, Cisco, Eastland. We offer challenging work, training and advancement for the right person. Stop by your local store for further information. An Equal Opportunity Employer. T-104

Looking for a future? Will train in livestock nutrition and ration formulation. You will represent our line of vitamins, minerals and premixes. Full or part time dealerships available. Call (817)481-4641 daytime or (817)368-1429 evenings. T-104

Mary Kay Cosmetics
Now available in Cisco. For a private, complimentary facial or reorder call
VIRGIE GREGG
PROFESSIONAL BEAUTY CONSULTANT
442-3460 P-911fc

YOU NEED A TV CABLE CONNECTION
for complete television enjoyment
★ ★ ★
Southern Television Systems Corps
Serving Cisco, Eastland, Ranger
Call us for complete information

Adult Education Classes
ATTENTION: ADULT LEARNERS - INVEST IN YOUR FUTURE.
Free adult education classes are now in progress. These classes will enable a person to earn their G.E.D. Certificate (high school equivalency).
Enrollment is continuous. Room 102 Eastland High School. Time 6:00 to 8:30 P.M. Monday and Thursday.

??LEGAL PROBLEMS??
Divorce from \$49⁵⁰
Bankruptcy from \$300⁰⁰
Simple Wills from \$25⁰⁰
filing fees not included
Saturday & Sunday appointments available.
Our temporary Office will be in your area soon.
Full Legal Services available, including oil & gas leases, title opinions, etc. civil suits & criminal actions
Terms Available
Willow Park Legal Clinic
Weatherford, Texas
(817) 441-7551
Call 8-6 for appointment

BIG COUNTRY REAL ESTATE
609 E. 8th
Cisco, Texas 76437
DANA GOOSEN Broker
(817)442-3958

NICE BRICK HOMES
Newly built house and you choose the carpet, tile & counter tops, 3 BD, 2 bath, firepl, garage, Good price.
Cozy & Nice, 3 BD, great yard with privacy fence paved street, FHA

HOMES WITH ACREAGE
NW Cisco on 42 ac or 400 acs 3 BD, Brick, firepl, sprinklers, tanks, grasses, shop, barn, hands quarters. Pay additional \$100 an acre and get 1/64 mineral interest that nets near \$400 a mo.
Cross Plains - 116 acs, really nice mini-farm with plenty of extras 2 BD, brick that can be easily a 3 BD, 2 bath.

LAKE CISCO PROPERTY
2 or 3 BD., firepl, boat dock, Cent H/A, patio & plenty of storage
1 BD cabin on 2 nice lots, carport, dock, beach main channel
1 BD cabin, firepl, private cove, trees, lovely location, \$17,500

OTHER LISTINGS
3 BD, open kitchen & livingrm, priced to move \$16,500
2 BD, older, firepl, Cent H/A, 2 carport, lovely corner lot, paved, fenced
W. 8th St. Building on busy corner, nets good income, nice offices
Small safe, steady & comfortable income for the business minded
Eastland - remodeled for shop down & 1 BD upstairs, good location
Eastland - 4plex, 1 BD units, for adult living, nets a good income

ACREAGE
1 & 2 ac build sites East Cisco. Will be a nice subdivision.
96 acres at Moran fronts paved road, excellent price, \$50,000

OFFICE (817) 442-1693
OFFICE HOURS 9-12 1-5 & SATURDAYS, SUNDAYS & EVENINGS CALL
Rosemary 442-4226 • Dana 442-3958 • Penny 442-1707

HARGRAVE INSURANCE AGENCY

1106 Ave. D
Cisco, Tex

Personal Sales & Service For
✓ HOME Insurance
✓ Car Insurance
✓ Commercial Business Insurance
✓ Mobile Home Insurance & Travel Trailers
✓ Boat Insurance
✓ Life Insurance
✓ Bonds Of All Kinds

Shirley A. Hargrave
442-1477 Or 442-1059

MONUMENTS

CISCO MONUMENT WORKS
LOYAL & DORIS LUNDSTROM - OWNER
CURBING LAST DATES
708 E 8th
442-9995
CISCO, TEX.

Naylor's Used Cars

1980 Subaru SW 4 Wheel Dr.
1980 T-Bird
1979 Ford Fairmont
1979 Buick Regal
1978 Buick Regal
1978 Trans Am
1974 Ford Grand Torino
1974 Olds. Cutlass
1978 Buick Park Ave.
1978 T-Bird
1973 Grand Prix
1980 Ford Courier PU
1979 Chev 3/4 ton PU 4 Speed
1973 350 Honda M.C.
1976 Ford 1/2 ton PU
Wheel chair lift for van
Bass Chasher boat and trailer

1105 West 8th Street Phone 442-1842
Cisco, Texas p-z

BUY, SELL, TRADE OR RENT THROUGH THE **CLASSIFIED ADS**

Sunday, December 27, 1981

OPPORTUNITY RINGS
Every Time you use the Want Ads



JUST CALL 442-2244

Have something to buy or sell? One phone call to us is like dialing our entire circulation...person-to-person! Place your Want Ad today!

THE CISCO PRESS
Publication No. (USPS 111780)
442-2244 700 Ave. D. Cisco, Texas 76437

Second Class Postage paid at Cisco, Texas, under Act of Congress in March, 1876. Published semi-weekly Thursdays and Sundays.

CISCO-EASTLAND-RANGER SUBSCRIPTIONS RATES: City and in county \$13.00. Out of county and out of state \$16.00. \$1.25 by the month.

Editor: Mr. & Mrs. H.V. O'Brien
Editor: Eastland-Hallmark
Editor: Eastland-H.V. O'Brien
Assoc. Editor: Eastland-Michelle Lindsey
Editor: Ranger-Betty McGee
Editor: Rising Star-Evelynn Dunham
Office Staff: Stella Brown
Office Staff: Faye Merritt
Office Staff: Margaret Hallmark
Office Staff: Patricia Hallmark
Office Staff: Diane Hughes
Office Staff: Edna Butler
Columnist: J.W. Sitton
Production Supervisor: Ted Rogers
Production: Raymond McCoy
Production Assl.: Wayne McCoy
Adv. Production: Bonnie Rogers
Computer Operator: Kathy Willeford
Photo: Michelle Lindsey
Feature Writer: Viola Payne
Commercial Printing: Hale Danson

TA MEMBER TEXAS PRESS ASSOCIATION

NOTICE: Unless you have established credit with the Cisco Press all classified ads must be paid in advance.

IMPORTANT
Check your ad the First Day it appears. In event of errors, please call immediately to have it corrected. No claims will be allowed for more than one incorrect insertion. The publishers liability shall be limited to only the amount of space consumed by these errors.

NOTICE

FRESH doughnuts, cinnamon rolls, twists. Delivered to Cisco home or office Tuesdays through Saturday. Deliveries between 11:00 a.m. and 12:00 a.m. Call 629-2002 a day ahead. Tfn

NOTICE
For your aluminum storm windows, doors, screens, window awnings and carports. Call Otis Coleman, 629-1644.

FUR AND HIDE BUYER
Will Be In Cisco Monday, Wednesday and Friday 8:30 to 10:00 at B.D. Green Used Cars, 606 East 10th. J&L FUR & HIDE CO. p-3

NOTICE: For home delivery of the Abilene Reporter News! If you live north of 8th Street or west of Avenue N call Laura Hamilton, 442-4007. p-tfc

HOUSE LEVELLING
915-893-5803 Clyde p-106

Mr. Farmer or Rancher
Want to Lease your land for oil and gas? Write Thornton Investments, P.O. Box 113, Cross Plains, Texas 76443. p-88tfc

NOTICE

DOZER SERVICE
Tanking, brush pushing and all types of dirt work. \$35 per hour. Call Bob Hallmark, 442-2127. p-tfc

STEVE COZART CONSTRUCTION
Remodeling Add-ons New Homes Cabinet Concrete Electrical, etc. Free estimates Phone 442-1709. p-41tfc

SAW SHARPENING SERVICE
Scissors, hand saws, tin snips, circular saws, chain saws, lawn mower blades. R.B. Boyd, 1602 Ave. H. Cisco. p-tfc

In ONE FAMILY Out of 5. MOTHER Gets a JOB To Help PAY For a CHILD'S UNIVERSITY EDUCATION. LIFE INSURANCE Can Help AVOID THIS!

Allen's Heating Air Conditioning Sales & Service 854-1795. Baird p-tfc

HOME REPAIRS
Anything done around the house. Painting, carpentry work, concrete work, small plumbing, etc. Call 442-1446. p-33tfc

Freeman Draper Custom Drapes for one window or for the whole house. For more information call 725-6684. 44-4TP

For MACHINE SHOP service including lathe, milling machine and welding. Call 442-3805 days and 442-1839 evenings. p-105

NOTICE

THRIFT SHOP
Free transfers for one week when you buy t-shirts. 510 East 7th. Cisco, 442-2564. p-104

GET UP NIGHTS? BACKACHE.
Leg pains, smarting may warn of functional kidney disorders--"Danger Ahead." FLUSH kidneys, REGULATE passage with gentle BUKETS 3-tabs-a-day treatment. Feel GOOD again or your 69 cents back in 12 hours at any drug counter! NOW at City Drug. p-105

THE CLEAN SWEEP
Chimney Sweeping Wood heater service and insulation 817-442-4568. p-1

FOR RENT

FOR RENT: Peanut farm of approximately 80 acres near Nimrod. Contact Bill Winston, call toll free 1-800-242-3306 or write to P.O. Box 7007, Corpus Christi, Texas 78415. p-4

MINI WAREHOUSE STORAGE as low as \$20 month. Call 442-3340. Cisco. p-57tfc

MOBILE HOME SPACE FOR LEASE: One acre tract. 442-3330. p-4tfc

WANTED

PARTTIME CASHIER for 3 to 11 Friday and Saturday nights. Taylor Center 805 W. Main. Tfn

YARD WORK: Light and heavy hauling. All tree work. Call 442-3869 or 442-4098. p-52tfc

HOUSEKEEPER NEEDED: Oak Motel, 300 East I-20, Cisco. Please apply in person. p-98tfc

EMPLOYMENT OPPORTUNITY
General office, good clerical skills required. Competitive salary and fringe benefits. Apply in person Cisco I.S.D. Tax Office, 610 Avenue D. p-105

WANTED TO BUY: House with low equity or owner finance. Call Big Country Real Estate, 442-1693. p-104

HELP WANTED: Cisco Nursing Center is now taking applications for nurses aids and medication aids on all shifts. 1404 Front Street, Cisco, or call 442-1471. p-95tfc

WANTED: Landowners that are offering season and or day lease privileges for hunting game. Cisco Chamber of Commerce, P.O. Box 991, Cisco, Texas 76437, 817-442-2537. p-84tfc

WANTED
Need a job? Apply in person at Farrington Fina, I-20, Cisco, that is, if you are honest and dependable. p-7

HELP WANTED: Mature cashier. Apply in person at Taylor Center, 100 Ave. D. Cisco. p-45tfc

WANTED

Looking for a future? We will train you in livestock nutrition and ration formulation. You will represent our line of vitamins, minerals and pre-mix. Full or part-time dealerships available. Call 817-481-4641, day or 817-268-1429, night. p-105

WANTED

HOUSEKEEPER NEEDED
E.L. Graham Memorial Hospital in Cisco. An equal opportunity employer. Contact Willie Hunt, Housekeeping Supervisor. p-97tfc

CARD OF THANKS

CARD OF THANKS
The family of Myrtle D. Rawson wish to express their heart felt thanks and gratitude to Dr. Ayres Cermin, and Arno Chambers and Buck Sharp of Cisco Funeral Home. Also Gary Adams, 1-20 Church of Christ. Also for the many flowers and food sent by friends and relatives during our time of sorrow.
Jack Rawson and family

"GOD With Out Man is Still God" Man Without God is Nothing
Church of Christ Meets at I-20 and Ave. N
"Come Worship with Us"
Worship hour 10:30 A.M. Bible Study 9:30 A.M. p-104

FRED'S TEXACO CAR CARE CENTER
I-20 & Hwy 206 West
442-4411

DECEMBERSPECIAL
Anti-Freeze \$425 (in stock) (with winterize service) plus tax
Hose, clamps-labor extra
Good Month of December Only

Tune-up Auto Repair
Tires Flats Batteries
Open 7A.M. to 7P.M. Except Thursday

MACK FARQUHAR
MANAGER

THE REST OF THE GOSPEL

All churches but one teach one thing alike, that marriage ends at death. You will not have or know your wife or husband in heaven. Neither will you have your children or parents. After you and your mate live a righteous life, is this the reward your Heavenly Father will give you in heaven? Will He separate families one from another? Are we to exist in heaven as single people; only as servants to a Father that would do that to us? Search out your hearts, ask the Holy Ghost, is this the kind of Father we have in God? No! Our Father loves us dearly. He wants families to be for time and all eternity with Him in heaven. Seek out the true church and Jesus true Gospel. The Rest of the Gospel, P.O. Box 763, Cisco, Texas 76437. p-105

RAMBIS ELECTRIC
P.O. Box 144
Cisco Texas
817-442-1500
WIRING & REPAIR SERVICE
RESIDENTIAL COMMERCIAL OIL FIELD
24 HR SERVICE
LICENSED - INSURED - GUARANTEED

Williams Pumping Service
R.L. (Rocky) Williams
P.O. BOX 451
RISING STAR TEXAS 76471
TELEPHONE (817) 643 4692

PLUMBING
Special Rates For Those On Fixed Incomes
Carpentry & Electrical All Work Guaranteed
647-1432
TF

COTTON'S STUDIO
Quality-Snapshots
Cameras & Supplies
Films-All Sizes
And Of Course
Fine Photography
Is Our Business

Cotton's Studio
442-2565 300 W. 8th

FOR SALE

FOR SALE: 1980 Honda Express, excellent condition, over 100MPG. Perfect Christmas gift for someone. \$350. Also long wide pickup camper shell. \$100. 1310 Bullard, Cisco. p-4

FOR SALE: 1980 Corvette. Black with black interior. 27,000 miles. 4-speed, power windows and locks, AM-FM-8-track stereo. Like new. Call 629-1219 after 5 p.m. p-84tfc

FOR SALE: 14x80 New Moon trailer, 3 bedrooms and 2 bath. 309 Ave. L, Cisco. Take clear camper trailer or cash for our equity. Phone 442-3380 or 442-3826 or will sell trailer out right for \$18,500.00 cash. p-105

FOR SALE: 1975 David Brown 885 Diesel Tractor. Front end loader and trailer. Also 1966 Ford dump truck. Call 442-3031 after 6 p.m. weekdays. p-105

FOR SALE: TD14 dozer runs good. \$2,000. Needs peenion. Call 442-3410. p-95tfc

FOR SALE: 1978 Chevy Chevette. Assume payments of \$156 per month with small equity. Call 442-4777 or 629-2002. p-101tfc

MIXED PECANS Nice ones. 442-1707 or 442-1693. T-104.

FOR SALE: Coastal Bermuda grass milo maize. Conrad Schaefer, 643-2528, Rising Star. p-5

FOR SALE: Peanut hay. Call 442-3667. p-105

Nice three bedroom frame, good location in the country, with small acreage.
Neat frame in finest location, paved street, handy to school and worth more. \$15000.00
Five room, attractive, location good close to school interior need redecorating but priced to make it worthwhile. \$14,500.00
Solid, attractive five room dwelling, corner lot and good location.
Brick dwelling with small acreage, like country living only in town.
A very desirable roomy frame dwelling, corner lot, paved street and ready to move in.
Small but neat and solid, four room frame just right for a couple, priced right.
Good two story, paved street, corner lot priced \$20,000.00 less than actual value, need to sell for cash.
One of the better two story bricks, paved street excellent location and well equipped.
A very attractive spanish type stucco, garage apartment, corner lot and paved street.
Beautiful frame dwelling with large storage building and plenty of ground.
Notice, some of the above listings can be owner financed at a lesser rate of interest.
We have other property to pick from. Business is good and we need more listings. We do not just list property, we sell it.

807 Ave. D., Cisco
Garl D. Gorr
Real Estate Brokerage
Three salesmen to assist in all phases of the work. 442-3642 or, night 442-1642

FOR SALE: 1973 Ford 3/4 ton, 4 wheel drive, customized. \$2,900. See at 1205 West 8th, Cisco. p-5

REAL ESTATE

FOR SALE BY OWNER: Executive home, brick, 3 bedroom, 3 bath, approx. 2400 sq. ft. including 600 ft. office area. Central heat and air, pool, fireplace, built in kitchen, double garage on 72 wooded acres. 12 miles South of Cisco on Hwy. 206. Some minerals \$150,000. Phone 817-725-6300, 817-629-8768. TNE

FOR SALE: Hogs. Registered Duroc. Gilt and boar. Call H.T. Sutton after 5 p.m. at 647-1026.

FOR SALE: Seen by appointment only. 4 bdrm. house on paved street, 3 full baths, den, l.r., d.r., two 3 ton central heating a/c units, fully carpeted. Call 442-2527 after 5 p.m. p-97tfc

HOUSE FOR SALE: 3 bedroom home with wood fire heater, stove, dishwasher, dryer, storm windows, on 4 acres, with lots of pecan and oak trees. Equity \$12,500 and take up payments at 10% interest. Call 442-3644 or 442-2457 after 5:00 p.m. on weekdays. p-105

FOR SALE: 5 and 10 acres suitable for building or trailer house located five miles west Cisco. Call 442-3410. p-95tfc

FOR SALE BY OWNER: 3 BR, 1 Bath, Living room, Dining room, Kitchen - corner lot - large oak trees - quite neighborhood - fireplace - double carport - storage/shed - 711 E. 21st, Cisco. Call 442-2211 (ask for Ron Patton) or 442-4377 after 5:00 PM.

FOR SALE: Large 2 bedroom home on large lot. Recently remodeled with central heat/air. Assumable FHA note with low equity payment. Call 442-2475. p-104

FOR SALE: Commercial building across street from Bank. About 40' x 100' sales floor, two rest rooms, four office rooms, vault, attic storage space. 713 Ave. D. Lone Star Gas office building. Call 442-1588 or see Wayne West. p-69tfc

FOR SALE: 3 bedroom home with life time vinyl siding, all paneled, carpet and drapes, dishwasher and garbage disposal, 2 1/2 lots with good water well, 2 storage buildings, 2 air-conditioners, and pool table included. 508 East 8th, Cross Plains, 725-6648 or 725-7311. p-82tfc

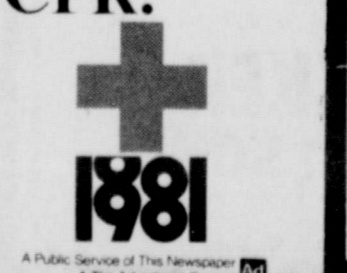
Need a cabin...or a permanent home...on Lake Cisco? You'll like this North Lake Shore Drive 2 story water front home. Priced low 30's includes furniture. Owner carry. Call today Corine Ingram, RE/MAX Realtors, Abilene, office (915) 698-4440, home (915) 554-7767.

Mary Yvonne McMillan
Real Estate Broker
104 East 8th - 442-3846

806 West 13th. 2 bedrooms, 2 lots, 80% financing possible. \$22,000
605 West 11th. 2 bedroom home with fenced yard. Priced to leave you with fixing up money. \$13,000.
610 West 9th. 16 year old home, good shape, 2 bedroom, 1 bath. \$25,000
801 West 7th. Lovely 2 bedroom home, guest house, 2 carport, beautiful yard. \$55,000.

WE NEED LISTINGS
ALMOST SOLD OUT
LET US SELL YOURS TOO
Anita Webb, Associate, 442-3546
Ray Moody, Broker, 725-7279

Office hours 9-12 and 1-5 Mon.-Fri.
Saturday & Sunday Anytime
By Phone.
"We solicit your listings."



Legal Notices

PUBLIC NOTICE
 THE STATE OF TEXAS
 COUNTY OF EASTLAND
 NOTICE OF SALE
 BY Virtue of a Writ of Execution issued out of the District Court of Eastland County, Texas, on the 28th day of August, A.D., 1981, on a Judgment rendered in the 91st District

Court of Eastland County, Texas on August 28, 1981, in favor of WESTERN OIL AND MINERALS, INC. vs. LITTON OIL CORPORATION, Cause No. 29,384, on the docket of said court, I, the undersigned, did on the 11th day of December, 1981 at 11:55 o'clock A.M. levy on the following real estate lying and being situated in Eastland County,

December Prices HENSON'S Ranch Supply December Prices

Double 445-2801

6" T Post	S	Barbwire
5 1/2" x 1 1/2"	A	CFI - '32"
6" x 1 1/2"	E	Bekoert - '32"
6 1/2" x 1 1/2"	A	Gaucho - '22"
	T	
	*	
No. 2 Sq. Tubing	H	Angle Iron
1" - 20 1/4" Ft.	E	1 1/2" x 1/8 - 29' Ft.
1 1/4" - 28' Ft.	N	1 1/2" x 1/8 - 31' Ft.
1 1/2" - 35' Ft.	S	1 1/2" x 1/8 - 31' Ft.
2" - 53' Ft.	O	1 1/2" x 3/16 - 41' Ft.
1" x 2" - 35' Ft.	S	2" x 1/8 - 42' Ft.
		C-Channel
		4" x 6 1/2" Ft.
		6" x 9 1/2" Ft.
		8" x 11 1/2" Ft.
No. 1 in Stock		
American Sheet Metal '27" sq. - Foreign '23" sq.		
Pipe	No. 2 Tubing	No. 1 Tubing
2 3/8 - 85' x 90' Ft.	1" - 22' Ft.	1" - 40' Ft.
2 7/8 - 90' Ft.	1 1/4 - 21' Ft.	1 1/4 - 32' Ft.
Random Length	1 3/4 - 33' Ft.	1 3/4 - 47' Ft.
2 3/8 - 80' Ft.	1 1/2 - 33' Ft.	1 1/2 - 47' Ft.
Rd. Bale Feeder (Metal on Bottom) '119"		
'79" - Bale Buck ('168") - Bale Buggy '795"		
Corral Gates	Pipe Gates	Panel Gates
10' - '55"	4' - '18"	4' - '16"
12' - '66"	6' - '21"	6' - '32"
14' - '77"	8' - '28"	10' - '35"
16' - '88"	10' - '35"	12' - '38"
	12' - '42"	14' - '46"
	14' - '49"	16' - '49"
	16' - '56"	
50 & 58" V-Mesh in Stock - Mineral Feeder '69"		
Bunk Hand Feeder '59"		
Prieffert	Wood Fencing	
Squeeze Chute - '985"	Split Rail - '110 Ft.	
Head Gate - '175"	6' x 8' Panel - '23" ea.	
Soccrete - '2" - Portland - '5"		
Panels	Stock Panels	Chain Link
Hog - '15"	Corral - '54"	4' - '25"
Stock - '16"	Pipe - '42"	5' - '39"
Comb - '18"	Galv. - '29"	6' - '41"
	Tube - '21"	
Treated Wood Post All Size In Stock - Other Items Not Listed		
8' & 10' Bunk Feeder - 5' & 10' Hay Rack Trough Feeder		

Texas as the property of LITTON OIL CORPORATION, to-wit:

All oil, gas and mineral leases and assignments covering the following described tracts of land, to-wit:

"EXHIBIT A"

Tract I: 60 acres of land, more or less, out of the West half (W/2) of the Southeast Quarter (SE/4) of Section 11, Block 4, H&T.C. RR Co. Survey, more particularly described in that certain Commissioner's Report filed July 7, 1927, in Cause No. 12,616, 88th Judicial District Court of Eastland County, Texas in Volume P, Page 560, District Court Minutes of Eastland County, Texas, to which reference is here made for all particulars.

Tract II: 83 acres, more or less, in Section 11, Block 4, Abstract 390, in the H&T.C.R.R. Survey, Eastland County, Texas. Lessee, its successors and assigns, shall pay to Lessor, surface damages in the sum of \$500.00 for each well drilled.

The Lessors herein reserve to themselves 1/32 of 7/8 overriding royalty interest on the entire 83 acres.

Tract III: 74-1/2 acres, more or less, about 4 miles N. 45 E. from Eastland being part of a 362 acre Survey, patented to B.B.B. & C. Ry. Co. Survey, Certificate No. 808, Abst. No. 43, described as follows: Beginning at the N.E. Corner of B.B.B. & C. RR. Co. Survey; Thence S. 72°-45' vrs.; Thence E. 562 vrs.; Thence N. 72°-45' vrs. to place of beginning.

Tract IV: 87 acres, more or less, and being described as 96-1/4 acres, more or less, out of the S.J. Robinson Survey, Certificate No. 3, Patent No. 487, Volume 24, Abstract No. 424, described as follows: Beginning at N.E. Corner of B.B.B. & C. Ry. Co. Survey; Thence S. with E.L. of said Survey, 1295 vrs.; Thence East 420 vrs.; Thence N. 1295 vrs.

Thence W. 420 vrs. to place of beginning, containing 96-1/4 acres, SAVE AND EXCEPT 15-410 acres conveyed by L. W. Forganon, et ux to O.J. Cotton on November 3, 1917 by W/D recorded in Vol. 101, Page 93, Deed Records, Eastland County, Texas.

Tract V: 50 acres, more or less, out of the B.B.B. & C. RR. Co. Survey, Certificate No. 808, Abst. No. 43, and being more particularly described by metes and bounds as follows: BEGINNING at the N.W.C. of the B.B.B. & C. RR. Co. Survey; THENCE South 72°-45' vrs.; THENCE East 388 vrs.; THENCE North 72°-45' vrs.; THENCE West 388 vrs. to the place of beginning.

Tract VI: 166.5 acres, more or less, and being all of the S.E. 1/4 of Section 2, Block 4, H & T.C. Ry. Co. Survey, Abstract No. 1434, Eastland County, Texas.

Tract VII: 175.80 acres, more or less, out of Lots No. 13 and 15 of the Harvey Kendrick Survey, Abstract No. 340, Eastland County, Texas and being more particularly described by metes and bounds as follows: BEGINNING at an iron rod set at a fence corner post, the N.W. Corner of Lot No. 15 and the N.W. Corner of the Harvey Kendrick Survey and the N.W. Corner of the Hanson 175.80 acre tract described above, at the N.W. Corner of this tract; THENCE S. 86° 45' East along a fence line on the occupied North line of the Harvey Kendrick Survey, 1135.2' to an iron rod set at a fence corner post in the South right-of-way line of a County Road, for a North corner of this tract; THENCE S. 85 deg. 56' 30" E. along a fence line on the South right-of-way line of said County Road, 2128.5' to an iron rod set at a fence corner post at the intersection of another County Road, for the N.E. Corner of this tract; THENCE S. 01 deg. 02' 30" W. along the West line of said County Road, and along a fence line 509.0' to an iron rod set in the South line of the former M.E. Church Lot for an easterly corner of this tract; THENCE N. 87 deg. 37' W. along a fence line, 136.0' to an iron rod set at a fence corner post at the S.W. Corner of the M.E. Church lot, for an interior corner of this tract; THENCE S. 06 deg. 27' E. along a fence line, 94.4' to an iron rod set at a fence corner post, for an external corner of this tract;

THENCE West along the S.B.L. of said right-of-way to the East boundary of that tract described in an oil and gas lease from H.L. King, et al, to Delmar O. Branson, dated October 28, 1977 at vol. 677, Page 43 of the Deed Records of Eastland County, Texas;

THENCE South along the East boundary of the lands leased to the said Delmar O. Branson to the S.B.L. of the King-Messengale barbed wire fence;

THENCE East along the S.B.L. fence to the E.B.L. line of said John House Survey to the place of beginning.

Tract XII: 83 acres, more or less, out of Section 2, G.C. & S.F. Ry. Co. Survey, Abstract No. 1803, described by metes and bounds as follows: BEGINNING at the NW corner of said Survey; THENCE East 388-1/2 vrs.; THENCE South 1210 vrs. to NBL of Samuel Forney Survey; THENCE West 388-1/2 vrs. to corner of said Forney Survey; THENCE North 1208 vrs. to beginning.

Tract XIII: The West 136 acres of the following described tract out of the Samuel Forney Survey, Abstract 132: BEGINNING at the NE corner of said Survey; THENCE South 200 vrs.; THENCE West 178 vrs.; THENCE North 900 vrs. to NBL of said Survey; THENCE East 430 vrs. to corner of said Survey; THENCE South 200 vrs. to corner of said Survey; THENCE East 1333 vrs. to beginning. SAVE AND EXCEPT the South 63.2 acres of the following described land being 184 acres, more or less, out of the Samuel Forney Survey, Abstract 132: BEGINNING 700 varas South and 808.4 varas West of Northeast corner of said Survey; THENCE North 700 varas to North Boundary Line of said Survey; THENCE West to inside corner of said Survey; THENCE North 200 varas to corner of said Survey; THENCE West 430 varas; THENCE South 87.5 varas; THENCE East to beginning. SAID Acreage to be covered under SECOND TRACT containing 72.8 acres, more or less.

THENCE N. 87 deg. 15' W. 243.3' to an iron rod set at a fence corner post, for an interior corner of this tract;

Tract VIII: Being 160 acres more or less out of the HARVEY KENDRICK SURVEY, Abstract No. 340, Eastland County, Texas and being the same property described in one certain deed from Allen H. Crosby et ux Marie Crosby to W.W. Worley et al recorded in Volume 561, Page 475 in the Deed Records of Eastland County, Texas;

Tract IX: 20 acres, more or less, out of the Harvey Kendrick Survey, Subdivision 13, Eastland County, Texas and being described as follows, to-wit: BEGINNING at the Southeast corner of said Subdivision No. 13 of the S.E. corner of this tract THENCE West 582 vrs. to the Southwest corner of this tract; THENCE North 194 vrs. to the Northwest corner of this tract; THENCE East 582 vrs. to the Northeast corner of this tract; THENCE South 194 vrs. to the place of beginning.

Tract X: Part of John House Survey No. 18, described as follows and stated to contain 620.3 acres: BEGINNING at the original Northeast Corner of the John House Survey; THENCE West with the NBL thereof 217 vrs. to a stone mound, the NWC of this tract; THENCE South 1389 vrs. to a point in the North line of the right-of-way of Texas & Pacific Railway Company; THENCE in a Northeasterly course with the North line of said railway right-of-way 220 vrs. to a corner; THENCE South crossing the railway, with the EBL of the EBL of the N.W. corner of the House Survey, 915 vrs. to the center of Eastland and Stephenville Public Road, for the Southwest Corner of this tract; THENCE East with the center of said road 600 vrs. to the Southwest corner of the George Dawson Tract out of the House Survey, the Southwest corner of this tract; THENCE North with Dawson's WBL 829 vrs. to Dawson Northwest Corner for an inner corner of this tract; THENCE East with Dawson's NBL 1126 vrs. to a stone in the EBL of the House Survey, the Northeast Corner of the Dawson Tract and the most eastern Southeast Tract at 512 vrs., in all 1450 vrs. to the place of beginning; THENCE S. 01 deg. 38' W. along a fence line, 180.5' to an iron rod set at a fence corner post, for an external corner of this tract;

THENCE N. 86 deg. 21' 30" W. along a fence line, 635.6' to an iron rod set at a fence corner post, the N.E. Corner of a 13.0 acre tract of land for a corner of this tract;

THENCE S. 01 deg. 28' W. along a fence line, 384.7' to an iron rod set at a fence corner post, the most northerly N.W. Corner of a 38-3/4 acre tract for a corner of this tract;

THENCE S. 88 deg. 18' E. along a fence line, 833.2' to an iron rod set at a fence corner post, the most northerly N.E. Corner of said 38-3/4 acre tract and a corner of this tract;

THENCE S. 01 deg. 14' W. along a fence line, 208.5' to an iron rod set at a fence corner post, an interior corner of said 38-3/4 acre tract and of this tract; THENCE S. 88 deg. 25' E. along a fence line, 177.2' to an iron rod set at a fence corner post in the West right-of-way line of a public road for a corner of this tract;

THENCE S. 01 deg. 03' W. along the west right-of-way line of said road, 1014.1' to an iron rod set at a fence corner post in the South line of an old lane now abandoned for the S.E. Corner of this tract from which the S.E. Corner of Lot 13 bears S. 88 deg. 33' E., 30.0'; THENCE N. 86 deg. 53' W. along the south line of said lane and a fence line, 1800.4' to an iron rod set at a fence corner post, the S.W. Corner of a 38-3/4 acre tract and the S.E. Corner of a former 54 acre tract for a southerly corner of this tract;

THENCE N. 89 deg. 07' W. along the South line of said lane and a fence line, 718.8' to an iron rod set in the north right-of-way line of Farm Road No. 2214 for the most southerly S.W. Corner of this tract;

THENCE N. 81 deg. 32' W. along the North line of said highway, 1013.6' to an iron rod set in the West line of the Harvey Kendrick Survey and the West line of said 54 acre tract for the S.W. Corner of this tract;

THENCE North along the west line of said Harvey Kendrick Survey and a fence line, 2251.8' to the place of beginning and containing 175.80 acres.

Tract XI: 68 acres, more or less, out of the John House Survey No. 18, Abstract No. 159, and being more particularly described by metes and bounds as follows: BEGINNING in the E.B.L. of said John House Survey at its intersection with the South Texas & Pacific right-of-way;

THENCE West along the S.B.L. of said right-of-way to the East boundary of that tract described in an oil and gas lease from H.L. King, et al, to Delmar O. Branson, dated October 28, 1977 at vol. 677, Page 43 of the Deed Records of Eastland County, Texas;

THENCE South along the East boundary of the lands leased to the said Delmar O. Branson to the S.B.L. of the King-Messengale barbed wire fence;

THENCE East along the S.B.L. fence to the E.B.L. line of said John House Survey to the place of beginning.

Tract XII: 83 acres, more or less, out of Section 2, G.C. & S.F. Ry. Co. Survey, Abstract No. 1803, described by metes and bounds as follows: BEGINNING at the NW corner of said Survey; THENCE East 388-1/2 vrs.; THENCE South 1210 vrs. to NBL of Samuel Forney Survey; THENCE West 388-1/2 vrs. to corner of said Forney Survey; THENCE North 1208 vrs. to beginning.

Tract XIII: The West 136 acres of the following described tract out of the Samuel Forney Survey, Abstract 132: BEGINNING at the NE corner of said Survey; THENCE South 200 vrs.; THENCE West 178 vrs.; THENCE North 900 vrs. to NBL of said Survey; THENCE East 430 vrs. to corner of said Survey; THENCE South 200 vrs. to corner of said Survey; THENCE East 1333 vrs. to beginning. SAVE AND EXCEPT the South 63.2 acres of the following described land being 184 acres, more or less, out of the Samuel Forney Survey, Abstract 132: BEGINNING 700 varas South and 808.4 varas West of Northeast corner of said Survey; THENCE North 700 varas to North Boundary Line of said Survey; THENCE West to inside corner of said Survey; THENCE North 200 varas to corner of said Survey; THENCE West 430 varas; THENCE South 87.5 varas; THENCE East to beginning. SAID Acreage to be covered under SECOND TRACT containing 72.8 acres, more or less.

Tract XIV: Being Section 5, D.S. Richardson Survey, Abstract No. 414, Eastland County, Texas and containing 200 acres more or less. BEGINNING 1,380 vrs. South of the Northwest corner of said Richardson Survey; THENCE South 1,500 vrs.; THENCE East 752 1/2 vrs.; THENCE North 1,500 vrs.; THENCE West 752 1/2 vrs. to the place of beginning.

Tract XV: Being part of the D.S. Richardson Survey, Abstract No. 414, Eastland County, Texas and containing 40 acres more or less.

BEGINNING at the Northwest corner of a 130 acre tract sold to J.H. Wheat by S.R. Wheat on February 9, 1904 by deed recorded in Volume 50, page 149, Deed Records, Eastland County, Texas;

THENCE East 186 yards; THENCE South 862 yards; THENCE West 277 yards; THENCE Northeasterly to the place of beginning;

Tract XVI: 320 acres, more or less, being the S/2 of the R.A. Pace Survey No. 48, Abstract 402, Eastland County, Texas;

Tract XVII: Being 38 acres, more or less, out of the South part of the S.P. RR Company Survey 382, Abstract 2020, all of said survey lying in Eastland County, Texas;

Tract XVIII: Being the NW/4 of Section 472, S.P. RR Company Land, containing 160 acres, more or less, in Eastland County, Texas;

Tract XIX: 20 acres, more or less, out of the Harvey Kendrick Survey, Subdivision 13, Eastland County, Texas and being described as follows, to-wit: BEGINNING at the Southeast corner of said Subdivision No. 13 of the SE corner of this tract; THENCE West 582 vrs. to the Southwest corner of this tract; THENCE North 194 vrs. to the Northeast corner of this tract; THENCE South 194 vrs. to the place of beginning.

Tract XX: A tract of land containing 487 acres, more or less, out of the Harvey Kendrick Survey, Abstract No. 340, described as follows: BEGINNING at a point on the WBL of said Survey 1733 vrs. South of the NW corner of said Survey; THENCE East 2443.5 vrs. to a point; THENCE South 1150 vrs. to a point; THENCE West 2443.5 vrs. to a point; THENCE North 1150 vrs. to the place of beginning, SAVE AND EXCEPT that certain 13 acre tract conveyed to R.L. Hamilton by instrument recorded Volume 545, Page 115, Deed Records, Eastland County, Texas, reference to which is here made for all particulars.

Tract XXI: 54 acres out of Lot 15, Kendrick Survey, Abstract No. 340;

Tract XXII: 36.5 acres out of Lot 15, Harvey Kendrick Survey, Abstract No. 340;

together with all oil and/or gas wells, buildings, appurtenances, materials, machinery, tanks, pipes, tubing, pump equipment and supplies located on the above-described leasehold estate.

You are further notified that January 5, 1982 being the first Tuesday of said month, between the hours of ten o'clock a.m. and four o'clock p.m., on

SEEDS FROM THE SOWER

By Michael A. Guido

A teacher asked, "If I the sea to fish with the Saviour for souls. In love he helped arrange the Last Supper; in love he stood at the Cross, the only disciple there, and heard the Lord Jesus commend His mother Mary to his care; in love he ran to the empty tomb on that first Easter morning, and in love he was the first to recognize our risen Redeemer. Later, in love, he wrote the loveliest life of Christ.

If you would show the love of God, you must know the God of love. Do you?

In love he left his nets in

YOUR CARPETS HAVE HAD IT!

GROUND IN SALT - SLUSH MUD - DIRT - GRIME

Now... Rent **RINSE VAC** Get carpets professionally clean.

ONLY \$6.00 PER DAY \$10.00 24 hrs.

CARPET CLEANING RENTAL CENTER

COATS NAME FURNITURE 305 South Seaman

JUST ARRIVED Men's Wrangler Fashion Jeans \$16.99

Boy's Wrangler Fashion Jeans \$11.99

Feather HAT BANDS reg. \$7.50 reg. \$9.99 Sale \$7.50 Sale \$5

B&H Trading Post

311 N. Seaman Eastland 629-2885 T-2

Beil Draperies

Your Complete Decorating Center

Draperies - Carpet - Ceiling Fans - Mini Blinds - Bedspreads

Woven Wood Shades and Shower-Curtains

Rods & Parts - Fireplace Equipment

Fine Custom Accessories

Light Fixtures/Tables/Special Pieces

Call 629-1319 For Appointment-Or Come By 1706 W. Commerce Eastland, Tx Free Estimates

Majestic Theatre

Eastland 629-1220

One Showing Only Each Evening Open 7:30 p.m. Showtime, 7:50 p.m.

Sun. thru Wed.

Theatre will be open Wednesday

RANGER DRIVE IN THEATRE

Ranger 647-3802

One Showing Only Each Evening Open 7:30 p.m. Showtime 8:00 p.m.

Sun. Last Day

Indiana Jones - The New Hero from the creators of JAWS and STAR WARS.

RAIDERS of the LOST ARK

Fri., Sat., Sun.

HE WANTS YOU TO HAVE HIS BABY

BURT REYNOLDS PATERNITY

PG PARENTAL STRONG LANGUAGE

WHO SAYS YOU CAN'T TAKE IT WITH YOU?

THE PURSUIT OF D.B. COOPER

PG PARENTAL STRONG LANGUAGE

IF LOOKS COULD KILL...

LOOKER

PG PARENTAL STRONG LANGUAGE

PLAN NOW TO RELAX AFTER THE CHRISTMAS RUSH!

Bring the family and enjoy our special Mini Vacation at the Kiva Inn. Abilene's finest resort hotel.

December 31st through January 3rd.

Family rates \$30.00 plus tax per room for anyone staying 2 or more days.

Enjoy our Indoor pool - Game Room

Saunas, Putting Green - Exercise Area, whirlpool, Children's play area - Shuffleboard

Also 2 restaurants for your convenience.

Call today for reservations. 1-800-592-4466

Kiva Inn

MOTOR HOTEL

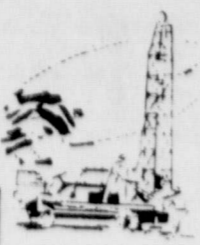
Abilene's Inn-Door Resort of Summer Fun

5403 S. First Abilene, Texas 79605

Be sure to ask for our Mini Vacation Family Plan!

OILFIELD DISPATCH

Call 629-1707 to List Here.



AMV Operating from Ardmore, Okla., filed application to drill No. 3 Wright as a proposed 2,000-foot wildcat in the Nimrod (Cross Cut) Field in Eastland County.

Location is one mile east of Nimrod on a 180-acre lease.

It spots 425 feet from the north and 490 feet from the

west lines of Section 95, Block 3, H&TC Survey.

Ridge Oil Co., Breckenridge, staked two locations in the Ranger, Northwest (Marble Falls) Field with each test slated for 3,700 feet.

No. 1 Decker is located one mile northwest of Ranger on

a 53-acre lease.

It spots 4,021 feet from the south and 4,000 feet from the west lines of John P. Rohus Heirs Survey, A-415.

Other project is No. 1 Nichols, located on a 40-acre lease one-half-mile north of Ranger.

It spots 330 feet from the south and 1,250 feet from the west lines of Section 2, BBB&C Survey.

North Ridge Corp., Grand Prairie, No. 1 Hall Walker (Barker) was spotted in the Ranger (Black Lime West) Field six miles northwest of Ranger.

The planned 4,000-foot venture is located on a 225-acre lease.

It spots 3,470 feet from the south and 400 feet from the west lines of Section 1, T&NO Survey.

Colorado Texas Development Corp., Abilene, staked three locations in the regular field three miles northeast of Cisco.

Each venture is located on a 1,933-acre lease and slated for 4,500 feet.

No. 1-B Fee will be drilled 1,771 feet from the north and 467 feet from the east lines of Section 76, Block 4, H&TC Survey.

Site for No. 2-B Fee is 1,777 feet from the north and 2,173 feet from the east lines of Section 76.

Location for No. 3-B Fee is 467 feet from the south and

west lines of Section 65.

Parker Operating Co. Inc., Fort Worth, will drill three projects in the Scranton Field one-half-mile south of Scranton.

Each venture is located on a 160-acre lease and slated for 1,750 feet.

No. 4 Neely spots 1,150 feet from the north and 1,850 feet from the west lines of Section 127, Block 3, H&TC Survey.

Location for No. 5 Neely is 1,730 feet from the north and 2,150 feet from the east lines of Section 127.

No. 6 Neely spots 1,150 feet from the north and 1,550 feet from the east lines of the same section.

Oil News

Snow Oil Co., Fort Worth, No. 2 Alexander is a planned 4,000-foot wildcat for Eastland County.

It will be drilled two miles east of Cisco on a 160-acre lease.

Site is 467 feet from the south and 2,173 feet from the west lines of Section 62, Block 4, H&TC Survey.

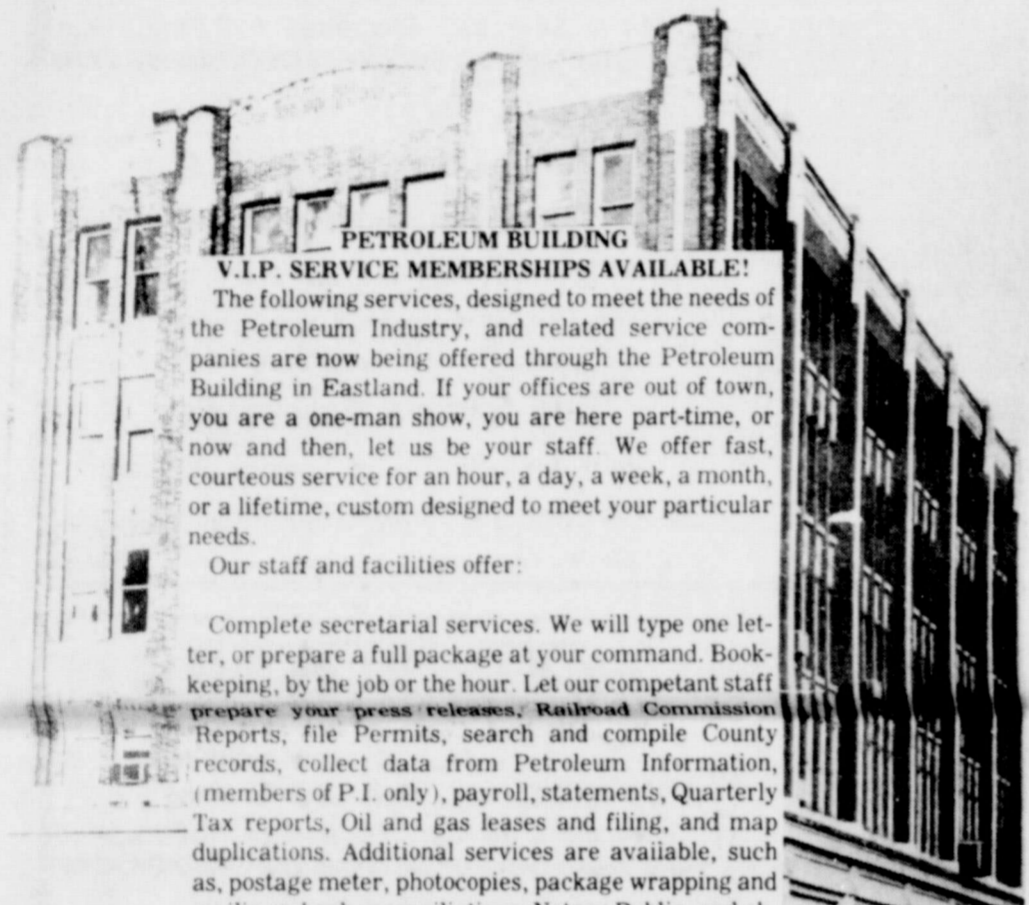
Eastland National Bank salutes the oil industry.

We are eager to help in your growth and welcome the opportunity to serve you. You've got a friend — in Eastland.



EASTLAND NATIONAL BANK

201 East Main Street 817/629-8551 Member FDIC
Equal Opportunity Employer M-F-H



PETROLEUM BUILDING V.I.P. SERVICE MEMBERSHIPS AVAILABLE!

The following services, designed to meet the needs of the Petroleum Industry, and related service companies are now being offered through the Petroleum Building in Eastland. If your offices are out of town, you are a one-man show, you are here part-time, or now and then, let us be your staff. We offer fast, courteous service for an hour, a day, a week, a month, or a lifetime, custom designed to meet your particular needs.

Our staff and facilities offer:

Complete secretarial services. We will type one letter, or prepare a full package at your command. Book-keeping, by the job or the hour. Let our competent staff prepare your press releases, Railroad Commission Reports, file Permits, search and compile County records, collect data from Petroleum Information (members of P.I. only), payroll, statements, Quarterly Tax reports, Oil and gas leases and filing, and map duplications. Additional services are available, such as, postage meter, photocopies, package wrapping and mailings, bank reconciliations, Notary Public, and obtaining price quotes on services or supplies. When you don't have the time or staff to hunt or prepare for your immediate needs, let us do the details. It will save you time and money. For those of you operating an office in Eastland, your membership will insure you temporary coverage during your staff's vacation or absence. Why get behind when you can get ahead by joining the Petroleum V.I.P. Services now?

Memberships will be limited. Your membership also offers full Board Room and Conference facility availability. The Board Room will be available by reservation. Seating capacity 50-60 with theatre seating, conference table seating up to 25. Furnished with podium, projector screen, slide carousel or 16 mm projectors, presentation easels, chalk board, note pads, pens, pencils, place cards, ashtrays, name tags, coffee or soft drinks. Private restrooms will be provided. If desired, a confidential secretary will be available for minutes or meeting records.

Your next conference should be in the board room of the Petroleum Building. Why pay for the extras, all the time on a square footage basis, when you can have the finest for less? The V.I.P. services will begin November 1, 1981. The membership fee will be \$150.00 per year for charter member (limited to fifty members) and after charter, memberships will be \$250.00 per year. Membership will be limited to insure the quality and availability of the facilities. The Petroleum Building will be open for your inspection the last week of October. Stop by and file your membership application now!

Please send additional information to:

Company Name _____
Address _____
City _____
State _____ Zip _____
Telephone _____
Individual _____
Position _____
Petroleum Building
112 S. Seaman
First Floor-Main Tower
Eastland, TX 76448 817/629-1543

AT PETROLEUM BLDG

Tucker Auction Barn
Monthly Consignment Sales
First Saturday of Each Month
CONSIGNMENTS NEEDED
Contact Fred Tucker—Licensed Auctioneer
(TXS 082-1152)
At (817) 629-1956
Approximately 1/2 mile off FM 2563 in Flatwood Community TC

JIREH ENTERPRISES
Oil Field Assistance Service
Roustabout - Wench Truck - Backhoe -
Loader - Welding - Tanks Painted
Box 129 Cisco, TX 442-1828
JESUS IS LORD

O. L. RODGERS
817/442-3133
MULTIVERSAL PIPE COMPANY
Casing-Tubing-Drill Pipe-Sucker Rods
Polyethylene Pipe & Equipment
P.O. Box 831 EASTLAND, TEXAS 76448
BUS. PHONE 817/629-6581 OR 817/629-2662

AERIAL BUCKET TRUCKS • HOLE DIGGERS • DITCH DIGGERS
CARROLL ELECTRIC SERVICE CO.
ELECTRICAL MAINTENANCE CONSTRUCTION
OIL FIELD COMMERCIAL & RESIDENTIAL
P.O. BOX 891 EASTLAND, TEXAS 76448
Bus 817/629-2842 629-8793
Night 629-1320
RON CARROLL-OWNER

S & S DRILLING CO.
OIL & GAS
Route 4
CISCO, TEXAS 76437
BILL GARY 442-3048 LEE STARR 442-3226

Carl Coleman, Owner
Coleman's Electric
Residential - Commercial
Service Calls
601 Pershing • Ranger, Texas • 647-1136

K&S Equipment & Machine Co.
Precision Machining & Welding
Compressor Valve Repair & Sales
All Types Gas Compressors & Equipment
109 N. Main P.O. Box 426
Rising Star 76471 Ph. (817) 643-3177

Oil related businesses we have best location in Eastland for your business.
In **POGUE INDUSTRIAL PARK** located across Highway 80 from Service Pipe & Supply.
Sell by the lot or acre.
A-1 Sales 215 S. Walnut
629-2102 Anytime

CISCO RADIATOR SERVICE
207 E. 6th Street (Breckenridge Hwy) Cisco, Texas
Cleaning-rod-ding-recoring-auto-truck-tractor radiators-heaters. New radiator and heaters. Auto gas tanks cleaned-repaired.
Open Monday thru Friday, 8 a.m. to 5:30 p.m.
Call 442-1547, Cisco. p-5tlc

RANGER TIMES EASTLAND TELEGRAM CISCO PRESS
Ranger, Texas Eastland, Texas Cisco, Texas
Sunday, December 27, 1981
DEVIATIONS REDUCE PREMIUM
TO SAVE MONEY FOR FARM BUREAU MEMBERS
FARM & RANCH OWNERS AND HOMEOWNERS POLICIES
30% off Regular Rate with Texas Farm Bureau Mutual Insurance Company's Deviation
25% off Regular Rate with Southern Farm Bureau Casualty Insurance Company's Deviation
See your Texas Farm Bureau Insurance Companies' Agent at your County Farm Bureau Office to check if you qualify for either of these savings in premium for your Farm and Ranch Owners or Homeowners policies.
Joe Gosch-Jack Shults-Helen Grimshaw
Eastland County Farm Bureau
Eastland 629-1704
Texas Farm Bureau Insurance Companies

DRIVE A LITTLE SAVE A LOT
EASTLAND Direct Factory Outlet
MOBILE HOME SALES
SINGLE WIDES DOUBLE WIDES
FHA & VA FINANCING
WE SERVICE YOUR HOME FOR ONE YEAR AFTER THE SALE
653-2432 IF NO ANSWER CALL 629-2117

Oil Is Where You Find It...
...so sayeth the oilmen. So is love, happiness, success and all of the other elements that make up our lives. Where do you go to find title information? Not on the street corner or the barber shop or any other place except in an abstract office. Yes, we have it, compiled, indexed and assembled daily, from the very beginning down to the present time, plus years of experience and training. Visit us soon and let us have an opportunity to serve you.
Eastland County Abstract Company
Pat And Annelle Miller
Abstracts and Title Insurance Eastland, Texas

Hours: 9:00-2:00
Drive-In: 4:00-6:00 Fri
Night Deposit
THE FIRST NATIONAL BANK
Gorman, Texas 76454
Full Service Banking
Checking • Savings • Loans
Money Market Certificates
Interest Bearing Checking Accounts
P O Box 38 Phone: 817-734-2255 Member FDIC

GREAT WESTERN Natural Resources
• 0 - 6,000 Ft. Depths
• Day Rate Or Footage
• Fully Insured
• 24 Hr. Communications
• Competitive Rates
For All Of Your Current And Future Drilling Needs.
Give Us A Call! P.O. Box 874, Eastland, TX 76448
(817) 629-8516

LOOK WHAT'S GOING ON





JAMES W. RATLIFF

REALTOR-BROKER



647-1260 HOME 647-1667

HOMES-RANGER

Very attractive two story home with four bedrooms, two baths. This is an older home that has been well kept with a large master bedroom, separate dining room, living room, separate garage with two storage rooms. This house is on 1 1/4 lots, very nice neighborhood.

Rock three bedrooms, two full baths, large den with wood burning fireplace, game room, large patio enclosed. This place is on six lots.

Brick three bedrooms, two baths, den, living room, dining room combination. Fenced back yard with workshop, double attached garage.

Three bedrooms, utility room, nice kitchen, Franklin wood stove in living room. This place has three storage buildings. This house was completely redone two years ago. \$22,500.

Older home on about 1/2 block with three bedrooms, one bath. This house needs to be re-done; priced right to sell \$15,000.

This house could be made into a nice large home. Three bedrooms, one bath, on two lots, has beamed ceiling in dining room. \$16,500.

Brick two bedroom, one bath, central heat and vented evaporative cooling, corner lot and 1/2. Fenced back yard, range and cooktop, washer and dryer connection. This house will FHA finance.

Three bedrooms, two full baths, central heat and air, utility room, nice large kitchen, dishwasher, wall oven, cook top. Approx. five acres of land with barns go with this place.

1980 Mobil home on eight lots. Three bedrooms, two full baths, central heat and air. There is a large 24x30 steel building with concrete floor that goes with this property. Also a 14x20 storage building. \$65,000. Some owner financing available.

Brick three bedrooms, two full baths, den with wood burning fireplace, kitchen with double wall oven, ceramic cook-top, dining room, living room combination, central heat and air, utility room with washer dryer connections. Fenced back yard with covered patio, two storage buildings. This is located in a nice neighborhood. \$75,000.

Thirty two acres on Lake Leon with a three bedroom, two bath house. Several barns and sheds, young orchard, good garden spot, ten acres of Klein grass. \$60,000.

COMMERCIAL PROPERTY

7,000 sq. ft. Delta Steel building in Ranger. This building has large truck scale that goes with it.

Two lots on Hwy. 80 next to Food-Fair. This is a good commercial location.

Twenty four lots in Lackland Addition, good commercial property.

FARMS AND RANCHES

Irrigated farm in Yoakum County. 835 acres, all but 80 acres in cultivation, five water wells, one older house. Crops look real good this year, still in the field. Some owner financing available.

161 acres west of Ranger, cross fenced, 40 acres of coastal, klein and love grass. Set of good pens, four tanks.

90 acres South East of Ranger, 20 acres of coastal, 18 acres Blue stem, 16 acres in cultivation. Four tanks, one water well, barns, pens. You can purchase cattle, equipment and all with the place.

LAKE PROPERTY

Tile block house on deeded lot, one large bedroom with large open area living room with sleeping facilities. This place has boat dock. All furniture and appliances go with place. \$30,000.

We solicit your listings on any type of Real Estate



KINCAID REAL ESTATE

817/629-1781

100 S. Seaman St. Eastland, TX 76448

RESIDENTIAL

COME LOOK AT THIS ONE! This house has 2 bdms., 1 bath, big fenced back yard with pretty trees and covered back porch. Will make someone a very comfortable home. Owner will finance. Priced lower for cash. \$35,000.

NOT GETTING OLDER-GETTING BETTER! This older frame home has been recently improved with paint, panelling and carpet. Has 2 or 3 bedrooms, 1 bath. Roomy house on big pretty lot. Lots of trees in nice quiet neighborhood. \$24,500.

DOUBLE WIDE MOBILE HOME Only three months old. Is fully furnished and has a fireplace, too. Has 3 bedrooms - 2 baths. Washer and dryer included. \$32,000.

NEWER BRICK HOME IN STEPHENVILLE-3 bdms., 2 bath, fire place, new carpet, custom drapes, central air conditioning, fenced yard, double attached garage. 2 blocks from high school. **SOLD**

LOW DOWN PAYMENT on this neat 2 bedroom, 1 bath mobile home on 1/2 acre lot. Only \$1,000 down and owner finance. \$8,500. **SOLD**

IDEAL MOBILE HOME SITE - City utilities available on this cleared lot in Olden. 150' x 75'. Owner finance. \$2,750.00

IN RANGER-2 bedroom, 1 bath house with chain link fence. Would make a good first home. Has assumable 10% loan. Affordable and nice. \$18,000.

COZY & CUTE - 2 bdrm, new paint and carpet. Small yard, carport on paved street. Nice for single or starter home. \$25,000.

AFFORDABLE LIVING-Start with this small home 2 or 3 bdms., 1 bath, 12,500. Owner will finance.

3 ACRE HOMESITE in Mountain Valley. Hiway frontage. Lots of pretty trees. Would make a great homesite. Hurry before it's gone! \$4,750. **SOLD**

LARGE OLDER frame house on over sized lot. 7 rooms and full attic. Lots of space inside. Needs remodeling. Would like to trade for airplane or other. \$30,000.

RENTAL PROPERTY

2 bedroom, 1 bath house for rent. \$150 deposit. \$280/month.

LAKE PROPERTY

SUMMER HIDE-AWAY - Modern cabin on deeded lot. Good fishing. **SOLD** for on this one! LL-07 \$11,700

LAKE LOTS- We also have many lots available some with excellent water frontage. The fishing is good and the price is right. LL-01

COMMERCIAL

OWN A FAMILY BUSINESS-locally owned convenience store with gas pumps. Has good cash flow. Owner will consider financing for right person. Also has trailer park on 3 acres. Can accommodate 21 trailers. Good buy. Call for information.

COMMERCIAL PROPERTY 2.9 acres on I-20 frontage road in Cisco. Owner would finance part with good down payment. \$20,000.

PRIME RAILROAD SPUR LOCATION-1 building with office, 1400 sq. ft. floor space - dock height, 2 storage buildings on 1 1/2 acres. Excellent for bulk delivery shipping point. \$75,000.

THRIVING BUSINESS - Local business that grossed \$740,000 in 1979. Excellent cash flow and terrific location. Terms negotiable.

COMMERCIAL LOCATION-Large bldg. site on N. access of I-20. Excellent location. Good investment. Owner finance. 25% down. \$25,000.00

EXCELLENT LOCATION - 1.5 acres on Hwy. 80 near I-20. Unlimited potential. Older 3 bdrm. house. Call for more information.

DEVELOPMENT POSSIBILITIES 151 acres with I20 frontage, paved hwy. Numerous options. Owner finance. \$1,000.00/acre.

SEVERAL MOTELS - listed in various parts of the state. All excellent investments. Call for location and details.

HOMES & ACREAGE

WANT TO LIVE IN THE COUNTRY? Try this 4 bedroom, 2 1/2 bath house on 2 acres of land. Has vaulted ceiling, ceiling fans, and very nice redwood deck. Lots of room. Call us to look. You'll like it. Priced at \$72,000.

LIVE IN THE COUNTRY! In this 2 bedroom house on 66 acres. Has city water and water well. 36 acres of pasture with 3 stock tanks and 30 acre fields. Also roping pens. Good fence and hiway frontage. Take a look - you'll like it. \$65,000. **SOLD**

COUNTRY HOME ON 120 ACRES- Income producing property-brings in over \$10,000/month in royalties! 120 acres is all in coastal timber. This property has plenty of water with 5 water tanks. The house is a 3 bedroom, 2 bath with approx. 1900 sq. ft. This is a very nice place. Call us for the details. **SOLD**

ACREAGE

ONE ACRE IN COUNTRY-with city water and hiway frontage. Three tracts available. Will make very nice homesites! \$5,000.

5-7 ACRE HOMESITES-Lots of trees, nice view, city water. Close to town, Lake Leon, country club. Flexible financing. Sell or trade. Buy one or buy all! Call for more details.

SPORTSMAN RETREAT-78.9 acres of hunting and fishing! 3 stocked tanks for fishing with live creek. Dove, quail, turkey, deer. 20 acres coastal and 13 ac. wheat. 1 acre tence garden. City water. Pretty campsite with all hook-ups. Some assumable financing. \$633/acre. **SOLD**

93.34 ACRES in Okra area. Has good stock tank, 57 acres cultivation, 13 acres of pretty timber. Also a 33 acre peanut allotment. Owner will finance with 29% down or will Texas VET/Also will divide. Has minerals that will go. Great buy at \$540/acre.

77 ACRES - Close to Ranger. Good pasture land, tank, easy access. Also good deer and turkey hunting. \$725/Acre.

52.8 ACRES-Coastal and love grasses. 3 tanks, water well, corrals, roping pen, barn, very pretty homesite. Northeast of Eastland. \$1000/acre.

42.53 ACRES - Oak trees, pasture land. New tank - really pretty land. Come and look at it. Owner will finance. \$685/acre.

20 ACRES - available on paved highway about 4 miles from Eastland. All improved with coastal bermuda, 1 tank, few trees, good fence. Possible owner finance. Will Tex. Vet. \$15,000. **SOLD**

12 1/2 ACRES - Pecan orchard at Carbon, about 70 producing trees, city water tank for a mobile home, all on paved hiway. **SOLD** Owner financed at 10% interest. \$25,000.

39.29 ACRES - Farm - Pasture. 1/2 minerals. Has tank and water. South of Cisco on Hwy. 183. Priced at \$700/acre. **SOLD**

20 ACRES - Scenic and rustic area. Scattered trees, city water available 5 miles from Cisco, ideal mobile home site. Owner finance. \$900.00 **SOLD**

85 ACRES - All improve, good native grasses. Scattered oak trees, stock tanks, good fences. Old frame house. WILL TEXAS. \$525/acre. **SOLD**

50 ACRES - All secluded 35 acres timber, river bottom, 2 tanks, well, 15 acres cultivation with small 1 bedroom house S. of Cisco. Some owner finance. \$1,000/acre.

97 ACRES-about 1/2 native pasture, some improvements. Older frame house and dairy barn. Owner finance. \$567.00/acre.

124 ACRES - Excellent on this property. Travel Trailer included. 1 acre pasture. \$50,000 **SOLD**

420 ACRES - Peanut farm. Fully cultivated and irrigated, 1/2 minerals. Beautiful 4 bdrm., 3 bath home with fireplace. Excellent investment. Call for more details.

We have several other tracts of land from 37 acres up to 78 acres. Priced from \$685/acre to \$900/acre. Each tract has trees and at least one tank. Owner will consider financing. Call for more details.

49 ACRES - in northern part of Eastland County. Tank has been stocked. On good County Road less than 1 mile off pavement. \$700/Acre.

FHA-VA-CONVENTIONAL FINANCING

We have many other listings on ranches, motels, and apartments.

We want to SELL your listing.

Eddie Kincaid (817) 647-1902 Mita Kincaid (817) 629-8757 Gilbert Meredith (817) 653-2472 Debby Kincaid (817) 647-1902

Robert M. Kincaid, Broker

Dr. H.J. Bulgerin - A Love Of Life

By Viola Payne

Any discussion with Dr. H.J. Bulgerin of Eastland is bound to include ideas about medicine and the proper treatment of patients. For behind the Doctor's soft-spoken, unhurried manner lies an intense feeling for the practice of medicine - and for life itself.

This enjoyment of living has led Dr. Bulgerin into a number of interests in addition to medicine - politics, ranching, photography, hunting, stamp collecting, and art.

Among the highlights of his life have been: riding out a typhoon on a small boat in a harbor of Okinawa, the satisfaction of having a large medical practice, serving as Chief of Staff of Eastland Memorial Hospital, working with his wife Loretta for a better government, the special years when his five children were growing up, the time the Eastland Chamber of Commerce gave him a "Golden Deed" award, and the day he took George Bush on a tour of Eastland.

Dr. Bulgerin had a varied background before he began to practice medicine. He was born in Atcoza, south of San Antonio, in 1926, but grew up in New Braunfels. His family belonged to the Lutheran Church. Bulgerin's father worked for United Gas Company, and his mother was a librarian. Her love of literature and learning influenced Dr. Bulgerin and two other sons to get as much education as they could.

Dr. Bulgerin's brothers became Lutheran ministers. At the present time Melton William Bulgerin pastors a Church in Appleton, Wisconsin. He has been an Educational Director for the overall work of the Church, and has written much Church material. This work has taken him on travels around the world.

Another brother, Davis Lewis Bulgerin, is a minister in Taylor, Texas.

World War II was bogged down in the Pacific when Dr. Bulgerin graduated from New Braunfels High School in '43. He enlisted in the Navy and became an Aviation Metalsmith. When he arrived in Okinawa in May, 1945, he learned his title could cover a very wide field of work! He was stationed with a combat Aircraft Service Unit, which had to do everything from patching disabled aircraft to hauling fuel and guarding Japanese prisoners.

Patching up airplanes had its points, but another kind of "patching up" was much more interesting to the young sailor. For the Navy had a large field hospital near the base, and there they received Air Force casualties. H.J. could look beyond the mosquito netting and makeshift surroundings and watch surgery and other tense situations. He was fascinated, and began to admire the Doctors who battled for lives.

He began to wish he had the skill to accomplish something that meaningful.

The Island of Okinawa was being secured, and geared up for an invasion of Japan. Bulgerin's outfit was going to be right in the middle of it. But then an extremely heavy typhoon hit Okinawa, inflicting great losses on the Navy.

"I had a unique spot in that typhoon," chuckles Bulgerin. "I was one of two men on a 45 ft. aircraft refueler. The other members of the crew were removed - but they didn't come back for us! All other ships in the harbor were dashed to pieces on the shore. But ours made it through the storm!"

Bulgerin believes that the loss from this typhoon was so disabling that it led to President Truman's decision to drop the atomic bomb on Japan.

"It would have taken a long time after that to get



material together for such a massive invasion, and we would have probably lost a million men," he says.

The dropping of the bomb on Japan was welcome news to the troops of Okinawa, Bulgerin remembers. It simply meant that they could go home.

After his return to civilian life, Bulgerin enrolled in Southwestern University at Georgetown, Tex., where he majored in Chemical Engineering and took some pre-med basics. At Southwestern he met Loretta Davis, who later became his wife. In 1950 he graduated from the University Cum Laude, with a B.S. in Chemistry.

By this time he realized he could never forget his desire to become a Doctor. So he enrolled in the University of Texas at Galveston to study medicine, and worked during the summers at hospitals in Houston. Two shifts per day, he recalls.

While Bulgerin took studies leading to his M.D. Degree, Loretta Davis studied Medical Technology. They were married in 1953.

In 1954 Bulgerin graduated from the University as a member of the Omega Alpha Society - in the top ten percent of his class. After he served as Chief Resident at City-County Hospital in Ft. Worth.

In 1955 Dr. Bulgerin, while looking for a place to set up his medical practice, became acquainted with Dr. B.B. Westbrook of Eastland, who was head of the local hospital. Bulgerin looked over the town, liked what he saw, and went into partnership with Westbrook in an office located in what is now the Petroleum Building.

"I have always been happy about this decision," Dr. Bulgerin says. "Eastland has been a great place to practice medicine and raise my family. And I surely don't have to fight traffic to get down Plummer St. to where Dr. B.B. Alexander and I have our Clinic! Yet our facility is as well-equipped as one in a city, and just across the Street from Eastland Memorial Hospital. This hospital, too, is as modern as any Doctor could wish."

Bulgerin's partnership has been with Dr. Westbrook, Dr. Lindsey (both of whom moved from Eastland) and Dr. B.B. Alexander. The remarkable Alexander partnership has lasted 20 years, ever since Dr. Alexander left the Army to establish a practice here. In 1972 the Doctors moved to the spacious B and W Clinic on West Plummer, which is listed as offering "Surgery and General Practice", "Family Practice", Dr. Bulgerin calls it. At the present time the Clinic employs 2 full time nurses, 1 for part time, a Lab Director, an X Ray Director, and 7 clerical workers. Mrs. Sonia Henson is office manager.

The Clinic has a completely equipped emergency area, with a special ramp and entrance at back for invalid patients and those being transported by ambulance. But visitors to the clinic are impressed by even more than all the latest

medical equipment. For the facility is decorated in vibrant color-shades of turquoise, gold, russet and brown. These provide a background for art work throughout the place. Who would want to stay sick there?

When Dr. Bulgerin first came to Eastland most people would have said: "Medicine and politics don't mix". But soon afterward this physician found that they were being mixed, both by legislation and directives.

Dr. Dr. Bulgerin became drawn into politics, to support ideals which he defines as "freedom and responsible government. Although he has not held as many offices in the Republican organization as his wife, Loretta, Bulgerin has been well acquainted with state and national political figures. (Democrats as well as Republican).

Among them are Congressman Jim Collins and Vice President, George Bush. Bulgerin has a lot of admiration for Bush, whom he describes as "A brilliant man". One day in 1964 Bush visited in the Bulgerin home and then toured Eastland. "He like it, too, the Doctor reports.

Among the changes Dr. Bulgerin notes since he came to Eastland are the great improvements in Eastland Memorial Hospital, and the general advancement in medical technology.

"But the bad part," he says, "is the increase in the cost of medical and hospital care. Some is due to the rise in cost of medicine and machinery, and increased salaries of personnel. Some is due to the extremely high cost of medical malpractice insurance. But a great deal is due to the government management of medicare, with its mass of directives and paperwork. In our Clinic we have to hire about 3 extra people just to handle this work. And any clinic or hospital involved with government payments has to comply with many detailed regulations in order to provide medical care for anyone. This driving up the cost of medical care such a staggering amount that people are hard pressed just to pay their medicare deductions and buy medicine! Sweeping reforms are needed on this.

"In late years I have become very involved with the care of heart patients, and have seen great changes in their treatment. Sometimes I feel like we are just on the frontiers of medicine. I want everyone to have the benefit of new discoveries. But how can they - if the government keeps tangling up the profession?"

Some of the Bulgerin children are in fields related to medicine. Stephen Mitchell is a pharmacist for Revco in Weatherford, and Donald Lawrence is a pharmacist for Revco in Tyler. Curtis Wayne is a C.P.A. and works for Todd Bookkeeping in Abilene. Claudia Diane, the daughter, is a Senior at Texas Tech - a Health Major who is also studying to be a School Coach. Keith Ed-

HOT LINE PHONE BOOK

Anti-Cruelty Society: Chicago, 312-644-8338.

Humane Society: Atlanta, 404-875-0536.

Society for the Prevention of Cruelty to Animals: New York City, 212-876-7700.

ARSON

Special Arson Control Centers: Exist in most cities, ask operator; New York City, 212-566-7340; 24 hours.

BUSINESS

Service Corps of Retired Executives (SCORE): Small-business advice, 375 offices. Check under "Small Business Administration" or "SCORE"; New York City, 212-264-1466.

CIVIL RIGHTS

American Civil Liberties Union, National H.Q.: New York City, 212-725-1222; will direct to nearest office.

CONSUMER PRODUCTS

Consumer Product Safety Commission: 800-638-8326.

Call for Action: 49 broadcast stations throughout the country, check under "Call for Action" or call headquarters: New York City, 212-355-5965.

Consumer Problems with Automobiles: 800-424-9393.

COUNSELING

Contact Teleministries, U.S.A.: Chapters in 90 cities: 24-hour hot lines throughout the country; check phone book or call national headquarters, 717-652-3410.

Neurotics Anonymous: Washington, D.C., 202-628-4379; or check local directory.

Recovery, Inc.: Support-groups for former mental patients; 1,000 chapters; national headquarters, Chicago, will refer to local meetings, 312-283-2292.

CRFDIT

Bureau of Consumer Protection: Washington, D.C., 202-523-3727; credit problems and false advertising.

CRIME

Check under "Victim/Witness Assistance" in your phone book, or call National District Attorneys Association, Chicago, for information, 312-944-4610.

Victim Hot Line: New York City, 212-834-7444; hours, 8 a.m.-11 p.m.

DAY CARE CENTERS

Day-Care Centers: Washington, D.C., 202-638-2316; for information on starting a day-care center. Check state government, "Health, Education and Welfare," or "Human Resources" local information.

DRUG ABUSE

Crisis Intervention Center: New York City, 212-662-8630.

Phoenix House: New York City, 212-787-7900; California, 714-953-9373.

Most cities have a drug hot line; check directory.

EDUCATIONAL GRANTS

Student Information Center: 800-638-6700. Offers correspondence courses for parents of deaf and blind children.

HEALTH

Tel-Med: 714-825-6034; Plays short tapes on over 300 medical problems; located in California, will direct to closest outlet; 225 offices.

Cancer - Cancer Information Center: 800-638-6694.

Make Today Count: Iowa, 319-753-6521; has 225 chapters, will direct to one nearest your area; check phone book for specific medical association in your area.

HOUSING

Fair Housing Commission: 800-424-8590.

HUNGER

World Vision Hunger Crisis Center: 800-423-4200;

ward, too, is a Senior at Tech, and a History Major. He is considering entering a Baptist Seminary and taking studies leading to the ministry.

Dr. Bulgerin says he hopes more Doctors will turn to Family Practice in the future. But, for now, his own patients state they are glad to have a person who will identify with them - a Doctor who hates the word "terminal".

California, call 800-326-7070.

Food Stamps: New York State only, 800-342-3710; check under state or city for "Food Stamp Certification Office" in your area.

Hunger Hot Line: New York City only, 212-695-0202; hours, 9:30 a.m.-1:30 p.m.

INFERTILITY

Resolve, Inc.: Massachusetts, 617-484-2424; but will advise people around the country; hours, 9 a.m.-4 p.m.

INFORMATION

Freedom of Information Center: Missouri, 314-882-4856; will advise and send material on how to find what you need under Freedom of Information Act.

INSURANCE

Crime Insurance Hot Line: 800-638-8780; advice on how to get it.

Flood Insurance Hot Line: 800-424-8872; advice on how to get it.

JOBS FOR YOUNGSTERS

J.O.B.S.: Washington, D.C., 202-737-9616; gives information on Federal jobs available around the country.

KIDNAPPING BY NON-CUSTODIAL PARENT:

Children's Right, Inc.: Washington, D.C., 202-462-7573.

ELDERLY

New York State Office for the Aged: 800-342-9871.

Most states have offices for the aged or elderly; check under "Dept. of Aging," "Aging and Adult Services," or "Dept. of Elder Affairs."

ENVIRONMENT

U.S. Environmental Protection Agency (EPA): Washington, D.C., 202-755-0707; check for regional offices in your area.

EX-CONVICTS

The Fortune Society: New York City only, 212-677-4600.

FAMILY PLANNING

Planned Parenthood's Family Planning: New York City, 212-677-3040; check under "family Planning" or "Planned Parenthood" in your area.

FRAUD

Fraud Task Force: 800-424-5454; to report frauds involving government money.

GAMBLING AND DEBTORS

Debtors Anonymous: New York City only, 212-868-3330; check local directory.

Gamblers Anonymous: 213-386-8789; national service office, California, will direct to nearest meeting.

Gam-Anon: 213-862-6014; national service office, California, will direct to nearest meeting.

GASOLINE HOT LINE

National hot line for gasoline overcharging:

EASTLAND DENTAL CENTER

John D. Hill

General Dentist

GOOD DENTISTRY REASONABLE FEES

Can't Believe It? Call Us!

Open Mon-Fri 8:30-5

711 W. Commerce

At Dixie St.

Eastland, TX 76448

(817)629-8193

The Land Bank

We say a farm real estate loan should be as easy to pay back as possible.

See us:



FLBA of Breckenridge
1824 W. Walker Box 271
Breckenridge, Texas 76024
(817) 559-2311

800-424-9246.

GAYS

Gay Switchboard: New York City, 212-777-1800; 3 p.m. to midnight; check in your area.

HANDICAPPED

J.O.B. (Just One Break): New York City only, 212-725-2500; employment agency for the handicapped. John Tracy Clinic: California, 213-748-5481.

LEGAL

Children's Defense Fund: 800-424-9602; provides information on national issues and refers callers to proper government agencies for help; not a direct-service organization.

National Legal Aid and Defender Association: national headquarters, 202-452-0620; check local listing under "Legal Aid."

Women's Legal Defense Fund: Washington, D.C., area only, 202-638-1123.

MARRIAGE-DIVORCE

Save-a-Marriage (SAM): New York City only, 212-799-0101.

Divorce Anon: Chicago, 312-341-9843.

POISON

Poison Control Center: Seattle, 206-634-5252; gives emergency advice across country.

Poison Control Center: New York City only, 212-340-4494; 24 hours; similar hot lines available in most cities; check under "Poison Control Center."

PREGNANCY

Birthingright: New Jersey, 609-848-1818; will help people throughout the country.

Birthingright: New York City, 212-847-8000; (Birthingright is listed throughout the country in local phone directories). National Pregnancy Hot Line: 1-800-344-7211.

RAPE

Rape Help Line: New York City only, 212-233-3000; 24 hours; service available in most cities; check under "Rape Crisis Center."

RUNAWAYS

Operation Peace of Mind: 800-231-6946 (Texas, call 800-392-3352); 24 hours.

National Runaway Switchboard: 890-621-4000 (Illinois, call 800-393-3352); 24 hours.

SEX EDUCATION

Community Sex Information Hot Line: New York City only, 212-677-3320, available 9 a.m.-5 p.m., weekdays. Check under "Sex Education" in your area for similar service.

SINGLE PARENTS

Parents Without Partners: Washington, D.C., national headquarters, 301-654-8850; or check under "Parents Without Partners" for local chapter.

SUICIDE

The Samaritans: Boston, 617-247-0220; but will direct to local chapter; available 24 hours.

Suicide Prevention League: New York City, 212-736-6191; but will refer to help source throughout the country; available 24 hours.

SURGERY

Second Opinion Hot Line: 800-638-6833 (Maryland, 800-492-6603); referrals for second medical opinion on elective surgery.

TRAVEL

Ride Referral Service (People Transient): 800-547-0933; national car pool, private aircraft pooling, etc.

VENEREAL DISEASE (VD)

National Operation Venus: 800-227-8922; 11:30 a.m.-1:30 a.m.

UNWANTED PREGNANCY

Abortion Assistance Association: Eastern U.S.A., 800-523-5151; 9 a.m.-9 p.m.

Abortion Information Service Clinic: Eastern U.S.A., 800-321-1682; 8 a.m.-9 p.m. weekdays; 8 a.m.-7 p.m. weekends.

National Abortion Information Hot Line: 800-523-5350; hours, 9 a.m.-9 p.m. weekdays; 9 a.m.-4 p.m. Saturdays, closed Sunday.

VGLUNTERING

ACTION: 800-424-8580; a U.S. agency coordinating a dozen programs, particularly for the elderly.

WEIGHT PROBLEMS

Overeaters Anonymous: California, 213-320-7941; will direct to nearest meeting; or check in phone book.

WOMEN

National Organization for Women: Chicago, 312-922-0025; or look under "National Organization for Women" for local chapter.

Name Brand Fashions



Thousands Of Garments To Choose

From Missy, Half & Large Sizes

Save 40-60% New Arrivals Each Week Open Mon.-Sat. 9:00 a.m.-5:30 p.m. 112 N. Lamar Eastland Next to Majestic Theater

Golden Destiny New Location

2 1/2 Miles West 80

Open Mon.-Fri. 9 to 5

Call

629-8492 629-8194

All Breeds

Bathing, Clipping,

Grooming.

Specializing in Poodles

Operated By Lorraine Lester

PUBLIC NOTICE

Texas Electric Service Company, in accordance with the rules of the Public Utility Commission of Texas, hereby gives notice of intent to amend its fuel cost factor tariff schedule to establish a procedure for regulatory approval of certain fuel related expenses prior to those expenses being included in the fuel cost factor portion of monthly bills for electric service. This revision will be effective in areas served by the company on the 13th day of January, 1982, or as soon thereafter as permitted by law.

This revision constitutes an administrative change and is not expected to increase or decrease the rates or the revenues of the company.

A copy of this revision is on file with the Public Utility Commission at Austin, Texas, and with each affected municipality. Copies are also available for inspection in each of the company's business offices.

TEXAS ELECTRIC SERVICE COMPANY

WORD OF LIFE FAITH CENTER

Philippians 2:16

Sunday Morning—10:00

Sunday Evening—7:00

Thursday Evening—7:00

24 Hour Prayer Line 442-1828 — 442-3380

JESUS IS LORD

Temporarily Meeting At Cisco Revival Center Corner of

ACU Purchases 246 Additional Acres

ABILENE...Abilene Christian University today purchased 246 acres of land adjacent to the present campus, closing the largest single acquisition of property for campus development since the school moved to northeast Abilene in 1929, and doubling the acreage available for campus development, Dr. William J. Teague, president of the university, announced.

A contract for the purchase of the land between Mrs. Janice Miller of Athens, Texas and Dale Scoggins of Abilene, was assigned to the university by Scoggins, precipitating the purchase closed December 14, 1981, said Gaston Welborn, ACU attorney.

"We are delighted that long years of effort have culminated in this purchase," Teague said. "This should meet the growth requirements of ACU for the foreseeable future," he added.

Teague explained that the land is not only the most desirable piece of property for expansion, but also the only appropriate property for that purpose. Residential areas border the campus on two sides and part of a third, with only a limited amount of property appropriate for growth existing across Ambler Avenue at the northeast corner of the campus.

Property used by the university for instructional and residential purposes before this addition included the 108 acres that compose the main campus, the 35-acre Sherrod Residential Park, and the 100-acre Allen Farm.

The land is bordered on the south by E.N. 10th Street, on the west by Judge Ely Boulevard, on the east by the West Texas Utilities right of way near Griffith Lake Road, and on the north by a boundary near Ambler Avenue.

The sale actually represents a reacquisition by ACU of acreage first purchased in 1928 when the university trustees agreed to leave its original campus on North 1st Street near the current site of the Coca-Cola bottling plant. At that time the university trustees acquired through purchase and donation more than 800 acres near the northeastern corner of the city, including 320 acres bought from Mrs. Xenia Adams Miller, Janice Miller's mother-in-law.

In 1932 financial pressures of the Depression forced the trustees to deed back to Mrs. Miller all of the land except for 12 acres that had been sold to West Texas Utilities and the 12 acres nearest the campus, bordered by Avenue F, E.N. 16th Street, Judge Ely Boulevard and Ambler Avenue. Mrs. Miller agreed to allow the school to keep that portion of the land in consideration for payments that had been made toward the entire purchase.

Since that time 12 acres of the original 320 were sold by the Miller estate to the Abilene Independent School District for the construction of Taylor Elementary School. Approximately 12 acres more were developed by the estate for residential use or remain vacant.

Dr. John C. Stevens, ACU chancellor who served for 12 years as its president, said that during his administration and that of the late Don H. Morris, ACU president from 1940 to 1969, numerous approaches were made to the Millers concerning the property but none were successful.

The matter was complicated, Stevens said, by estate problems arising after the deaths of Mrs. Xenia Miller in 1938 and of her son Edwin P. (Blue) Miller in 1973.

Property from the Xenia Miller estate was partitioned only last year according to Welborn. At that time Janice Miller, Edwin Miller's widow, was awarded this portion of the properties in the estate.

Teague, who declined to comment on the purchase price of the land, said a decision on the utilization of the property would be made "only after an appropriate land use study has been conducted."

Teague said that those portions not used for campus expansion would be developed as residential, commercial or business properties that "will complement the university area."

THE PUBLIC INTEREST

Congress May Hit America's Inflation by Making Clean Air Act Laws Less Extreme

The Clean Air Act, one of the most controversial and significant pieces of legislation of the past decade, is undergoing close scrutiny these days as Congress prepares to reauthorize its funding for the next several years.

The Act originated at a time when there was more concern about doing something to protect the environment than there was clear understanding about what exactly the problem really was—or how it should be addressed.

Our scientific knowledge, while growing, remains limited about the intricate dynamics of air quality changes and health effects.

At the same time, we must face up to other equally legitimate, competing national concerns such as economic growth, inflation and energy—issues that loomed much less large on the horizon back in the Sixties when the Act was first written.

Substantial progress has been made under the Clean Air Act. According to EPA's latest estimates, nationwide photochemical oxidant (smog) levels have tapered off in recent years, sulfur dioxide readings have decreased 67 percent since 1964, carbon monoxide in major cities is down 36 percent since 1972, soot and dust particles are down 32 percent since 1960 and nitrogen dioxide levels are above the national standard in only seven counties.

Motor vehicle emission regulations are another case in point. Since Federal auto exhaust standards began in 1968, hydrocarbons and carbon monoxide have been reduced 96 percent and oxides of nitrogen some 76 percent.

However, standards which began with some 1981 models and which are applicable to all cars by 1983, add substantial costs and provide little or no added air quality benefit.

It is a classic case of rapidly diminishing returns and escalating costs.

Clearly, careful review of the Act is urgent.

Manufacturers estimate that if the 1980 standards were retained by Congress, it would mean a consumer savings of between \$80 and \$360 per car depending on the type of control technology used. In a 10-million-car sales year, that means a potential savings impact on the economy of from \$800 Million to \$3.6 Billion.

And, according to EPA's own projections, if the 1980 automotive CO and NOx standards are kept, all areas except California—which sets its own standards—will meet the national air quality standards.

We believe the Clean Air Act should be modified this year to best serve air quality, the consumer and the economy.

Clearly, action is needed—and needed now.

THINK ON THESE THINGS

Philippians 4:8

Roy L. Foutz, preacher, Eastside Church of Christ
304 Strawn Road, Ranger, Texas 76470, 647-1547.

LOOKING BACKWARD AND FORWARD

As you read this, the year of 1981 is drawing to a close. Within a few days, we will have a New Year - if it be the Lord's will - and we will be looking forward to the days, weeks and months ahead. It is also a time for looking backward, but for a definite purpose.

Business establishments in particular and all of us in general pauses at this time of the year to take inventory - to assess the accomplishments and failures of the past and to envision ways and means of making improvements for the future. As individuals, it is time for making resolutions, and that is good for us to do. Some do not like to make resolutions, for they say, "I am afraid I will not keep them." Of course, we should not make idle commitments at any time, but it is better to make resolutions and then fail to keep all of them, than it is to never make any at all. As someone has written: "Tis better to have loved and lost, than never to have loved at all."

The Bible emphasizes the need of continually looking, or pressing, forward. Other than the reason given above - for looking backward - we should ever have our minds and our eyes on the goals ahead. The apostle Paul summed it up in these beautiful words: "I count not myself to have attained, but this one thing I do; forgetting the things which are behind, and reaching forth unto those things which are before, I press toward the mark for the prize of the high calling of God in Christ Jesus." (Philippians 3:13-14) Paul had accomplished many great things in his past - perhaps more than any other man of his time - but he was not resting on his laurels, but rather was looking forward to greater accomplishments before his earthly life was finished. When the Lord was here on the earth, he said: "No man, having put his hand to the plow, and looking back, is fit for the kingdom of heaven." (Luke 9:62). Thus, the Lord emphasized the need of keeping our eyes to the front.

We can use the past to our advantage, if we are willing to profit from our mistakes and to use them as stepping stones to higher purposes and accomplishments; but there is no way that we can live in the past. We must, at all times, live in the present, with our hearts set on the goals that lie ahead.

Happy New Year to everyone, and may the Lord bless us as we strive to do His will.

THE WHOLE MEAL QUIZ FOR KIDS

Eating a wide variety of wholesome foods each day will help you grow, stay healthy, and have "fuel" for sports and other activities. You probably have heard that before, but how does the advice relate to the way you like to eat?

To practice, take this quiz designed by food experts at Kraft about typical meals you might eat. Each meal has something missing. Add a food to make the meal balanced.

- You have ordered the following at a fast food restaurant: Hamburger on a bun, plus milk or a milkshake. To balance the meal you would add
- You are fixing a delicious dinner at home for your family. So far you have planned spaghetti with tomato-meat sauce and a green salad. You should add
- Dashing off to school, you just don't have much time to eat. Often it is only a piece of toast. A quick but better breakfast would also include what foods?
- You are packing a lunch for school. So far, you have included a peanut butter sandwich on whole wheat bread and a cookie. Add two different foods to make the lunch balanced.

ANSWERS

1. A fruit or vegetable—preferably one that is deep yellow-orange or dark green (for vitamin A)
2. A serving of milk, cheese, or any dairy product (for calcium, riboflavin, and protein)
3. Several combinations are correct: cereal, milk, fruit, egg, fruit, milk, meat, milk, fruit
4. A serving of milk or a dairy product, plus a serving of a fruit or vegetable

Trees, if properly placed, can help cool your house in summer by casting a shadow and blocking the sun. In winter, they drop their leaves and permit the sun to shine on your house and warm it.



Specializing in Heating, Cooling, and Air Conditioning

Window and Central Units

Beighley Refrigeration

George Beighley
1001 DESDEMONA
RANGER, TX 76470

Day - 647-9383
Nite - 647-1423

PAINT CONTRACTOR

D. R. WELLS

OVER 10 YEARS EXPERIENCE

•References Furnished

QUALITY WORK AT REASONABLE PRICES

•Custom Homes

•Residential •Commercial

PHONE
647-5110
647-3882

COPY MACHINES

Eastland Office Supply

629-8942

112 N. Seaman TC

BUSINESS FURNITURE

"NOBODY BENDS IT BETTER"
COMPLETE EXHAUST SYSTEM WORKS

SHOCKS HEADERS TURBO MUFFLER

CRAWFORD MUFFLER SERVICE

CUSTOM & DUAL EXHAUST SYSTEMS

121 PINE ST.
RANGER, TX 76470 (817) 647-1726

Name Brands 20% Off Sale

Blazers - Velvet Suede	Size 8-20
Missy Blouses - Size 6-20	Pull-On-Pants - Size 6-20
Large Sizes- Blazers - Blouses - Pants - Dresses	
Pant Suits - Size 6-20	Missy Dresses - Size 6-20
Gaberdine 3-Piece Suits-Fully Lined-Fall Colors	
Mix and Match - Sizes 8-18	

ENTIRE STOCK ON SALE

One Week Only Dec. 28th - Jan. 2nd.

Name Brand Fashions

114 N. Lamar Eastland Open Mon Sat - 9:00-5:00

GIGANTIC After Christmas Sale

from 25-50% off

Christmas ornaments
Christmas giftwrap
Christmas decorations
Christmas box cards

all Hallmark Candles & Candle Rings and much more.

HEATHER'S Hallmark
CISCO, TEXAS 442-2091

Pickrell Real Estate

647-3582

FOR SALE

HOMES

FRAME DWELLING, 3 bdrm., 1 bath, lg. LR and DR, breakfast room, roomy kitchen and stove, fireplace, carpeted, paneled, drapes included, 3 lots, fenced backyard, double garage. VA appraised \$38,900. Price may be negotiated.

4 bedroom, 1 1/2 bath, all over carpet, 2 car carport, close to town. \$20,000.

FOR SALE: Wayside Mobile Home 80x14, balcony type 3 bd, 2 bath, walk-in shower, central air and heat, carpeted, drapes and shades, washer-dryer, stove, ice-box with ice maker, \$5,000 down, terms for five years, total cost \$21,500. To be moved.

FOR RENT: Large Mobile Home, 4 bd, 2 bath, in city limits, some furniture, \$200 mo., \$200 deposit.

FOR RENT: 3 Lots with mobile home hook-ups, \$40.00 month.

ACREAGE

TWO LOTS, each 125x130, on Hwy. 2451, 1 mi. No. of Lake Leon, nice site for home, owner will carry.

MEADOWBROOK ADDITION - Several lots ready for immediate home building. Two especially nice corner lots.

BURGER ADDN: Several lots behind the new school. Can be sold reasonably. Chances for increase in value excellent.

COMMERCIAL

COMMERCIAL PROPERTY - on Hwy. 80 West, nice building newly remodeled into lovely office space, close to Ranger Jr. College and Ranger Hospital. Price newly adjusted. Lots of parking space.

BUILDING HOMES IS OUR SPECIALITY

SEE OUR KINGSBERRY HOMES BOOK

ASSOCIATE

Mildred Pickrell, 647-1680
Melvin H. Henexson 629-1335

David D. Pickrell, II 647-3686

LOOK FOR A REALTOR BEFORE LOOKING FOR REAL ESTATE

Phone 647-3582 111 W. Main - Ranger

People n Things

THE ONE PER Cent sales tax that the City of Cisco receives when you pay a five-cent tax every time you make a purchase (except food at the grocery store) represents a pretty good slice of our town's budget. Figures released by the state comptroller the other day showed that the City's take for 1981 through November amounted to \$173,261.

This was more than \$12,000 over collections for the same period in 1980. Figures showed that Eastland's total was \$176,689 for 1981 - up from \$147,905 last year. Moran's 1981 total for 11 months was \$4,016, Putnam had \$12,838, Ranger \$134,160 and Rising Star \$17,822.

MARY ELLEN Wood of our town is now an educated

woman. She received a BA degree in mid-term commencement at Tarleton State University the other day... The Olin Odoms III enjoyed Christmas weekend at the home of Mrs. OO's parents, the Dr. S.W. Reynolds, at Killeen... If you watched the National Rodeo finals on television the other night, you saw T.J. Walter as one of the contestants in the bareback bronc riding event. He was listed from Stephenville. He formerly lived at Lake Leon.

A VISITOR IN our town last week was Mike Stanford of Dallas, a production man for Channel 8 television. He came to pick up his grandmother, Mrs. Lois Whitaker, who spent Christmas over there with relatives.

Mike produces things for Channel 8 like big department store advertising scenes and features. He went to Big D a year or so ago after winning a number of awards for his television production work with a Corpus Christi station.

Mike was here a few months ago to pick up his grandmother and told her that they had oughta get an early start. He suffered temporary shock when she aroused him at 5 a.m. next morning. Last week, he suggested to Mrs. Whitaker that "let's get up early - say 7 a.m."

Mike was due to be in New York this week to film something that will be on Channel 8 one night soon.

THERE WAS some folks moving during the past weekend - just before Christmas. The Arley Whitleys moved from their home in west Cisco to 909 Austin Street so the house they sold to the Charles Lees could be occupied by the Lees. The Whitleys, you know, are building a new house.

The Whitleys are doing some of the work on their

new home, which is located near the one they sold. Mrs. AW must be one of those swinging hammers for the thumb nail on her left hand is black and blue.

OUR SCOUTS report that the old skating rink at the north end of Avenue E is now the new Derrick Club, and it opened a week or so ago. Rube Cozart is the manager and Bill Cozart is assistant manager. Skating business wasn't good enough to justify the operation, they said.

The club has tables and chairs to seat 200 people, a big dance floor and plans call for live western bands to be there on Friday and Saturday nights... Another scout report says a new private club will be opening soon over on the highway in Morton Valley.

SORRY TO HEAR about the death a week or so ago of Mr. Fleming Waters of Dallas. He was born and raised in Cisco, was a military veteran, and practiced law here for several years in the 1950s. His wife, a son and a daughter, and several sisters and brothers

survive.

Mr. Waters was buried in Dallas. He had been retired for sometime. Mr. Waters was well known in our community.

GOLF PRO Bob Bennie took his mother, Mrs. Bill Bennie, to Sherman for a Christmas weekend gathering of their family... Only one four-some of golfers teed off in cold weather at the CCC last Friday and there was only one birdie - Carrel Smith's on No. 9... The Cisco Lions Club has some new signs telling about their meetings that will be put up soon near town on area highways... Buford Hageman, long-time employee of West Texas Utilities Co., was presented an award by the company over in Abilene the other day for 35 years of driving without an accident.

IF YOU'VE renewed your auto liability insurance lately, you probably noticed that they gave you a small card with the name of your insurance company on it. Effective Jan. 1, all motor vehicle owners are required by law to carry liability insurance and to have evidence of it with them when they drive - hence the little card.

Drivers picked up without liability insurance will be

fined \$70 for the first offense and \$250 or so the second time, we're told.

A LOCAL LADY stopped in at a shopping center over in Abilene last week and was surprised to see the White House, the president's home in Washington, there in the center of the indoor mall. It was an authentic replica over 60 feet long and 20 feet wide - an exact one inch to one foot scale model as the White House appeared on July 4, 1976 - the bicentennial day.

Our friend had visited the White House in Washington and was amazed at the replica, completed in every detail. It cost \$400,000 and some 200,000 man hours of work went into it over a 20-year period. Inside the model are miniature furniture items, complete with real lights on chandeliers.

The White House replica has appeared in over 150 cities and has attracted many visitors. Plans call for it to visit all 50 states and several foreign countries to let folks inspect and photograph it, with the goal of creating a deeper understanding and sharing its beauty with everyone. The replica divides into 35 sections for moving.

The E.L. Jacksons enjoyed an early Christmas

gathering of their four children at their home here last weekend. Present were daughters Eugenia Arrington who is living over in Arkansas and Dorothy Ryan of Marfa and sons Eddie of Garland and Robert of Fort Worth. And the gathering in-

cluded several son-in-laws, daughter-in-laws and grandchildren.

It was the first time the Jackson clan held a full reunion in a good many years. Needless to say, Christmas was especially festive for the Jacksons this year.

**1/4 OFF ALL
FALL
AND WINTER
MERCHANDISE**

DAVID & QUETTA'S

1-20 West of Best Western

**YEAR END
CLEARANCE**

Odds and Ends

all over the store.

Discounts up to

50% Off.

Austin's Furniture Co.

601 Avenue D Phone 817-442-2533
Cisco, Texas 76437

GRAND OPENING

Christian Child Care Center Registered With
Texas Department of Human Resources

Kay Plowman Petree, Director


We Provide
1 Hot Meal
2 Snacks &
Lots of Attention

Large Fenced
Yard and
Daily Learning
Activities

629-2265

We Have A
Clean and
Cheerful
Environment

School Children
and Drop Ins
Welcome



807 W. Moss

**TAYLOR CENTER
WASHATERIA**

805 W. Main-Eastland 629-8074

New Speed Queen Machines

50¢ A LOAD

And Be Sure To Try Our Video Games

SEASON'S GREETINGS



Best Wishes Always From

Dale, Sue, Jeff, Jonie & Chad

Eastland

411 S. Mulberry

629-1726

★

**MAY
THE JOY
AND PEACE
OF CHRISTMAS
BE WITH YOU THIS
SEASON**

★
★

Bakker Funeral Home