

D 7 01/28/83  
LIBRARY CISCO JR COLLEGE  
RT 3 BOX 3  
CISCO, TEX 76437

## HALL OF REMARKS

BY HERREL HALLMARK

MAKE PLANS now to attend the holiday open house being held Monday night at Heather's Hallmark in Cisco. Their open house is being used as a starting point for the downtown holiday season.

The Chamber of Commerce has made a number of tentative plans for making this holiday season bigger and better than ever for local people.

More information on the open house and Chamber plans may be found elsewhere in this edition.

THANKSGIVING DAY is less than two weeks off and everyone is already planning their holiday menus and guest lists. Thoughts of turkey seem to be filling everyone's minds.

We in America have so much to be thankful for on that day, especially the freedom of religion. We can thank God for that privilege. In Cisco alone, there are

any number of different religions and denominations. Can you imagine Cisco without any churches and no Bibles? It is hard to even get the smallest idea of how devastating it could be if we were not allowed to gather together and worship the Lord.

We live in a free enterprise where we can be in any type of business we desire and we can buy anything we have the money for, or in some cases good credit.

So, on Thursday, November 25, let's try to forget about the mouth-watering smell of the cooking turkey, just for a minute or so, and give thanks to God for allowing us to live in America.

WITH LOCAL football teams finished for the season, I wonder how many persons are going to begin paying closer attention to the Professional Football strike?

25¢

# THE CISCO PRESS

'Your Hometown Paper'

1982-Eastland County Newspaper Co.

Cisco, Texas 76437

Volume 74

Number 91

Sunday, November 14, 1982

USPS No. 113780



### Schools Will Issue Report Cards Wednesday

Cisco Junior-Senior High School will issue student's report cards on Wednesday, November 17th.

## Heather's Hallmark Open House Will Launch Annual Cisco Holiday Season

Heather's Hallmark, 711 Conrad Hilton Avenue, will be having its second annual Holiday Open House, Monday night, November 15, from 7 to 10 p.m. This event will launch Cisco's retail trade area into the holiday season, according to Chamber of Commerce president Elaine Dixon.

The Chamber is encouraging downtown merchants to plan something special this year for the holiday season to entice local citizens to "shop Cisco first." Mrs. Dixon said any other merchants interested in doing something for the season are

asked to call the Chamber and it will support them.

Plans call for Christmas street decorations to be put up November 26, the Friday following Thanksgiving, to officially kick-off the Christmas season. The annual Christmas parade is scheduled for Saturday, December 4.

Other tentative plans for the holiday season include most downtown businesses staying open late on Thursday nights (December 2, 9 and 16); singers caroling downtown Cisco on Saturdays (December 4, 11 and 18); and Santa Claus making

appearances downtown during the month of December.

Owner and operator of Heather's Hallmark, Barbara Parker, stated her store held an Open House last year which was very successful, with a full house most of the night and a lot of fun. She said she plans for the Holiday Open House to become an annual event.

The store will have its Christmas items on display with a number of specials in the store purchased for the Open House, according to Mrs. Parker. She invites everyone to attend. Prizes, with a combined

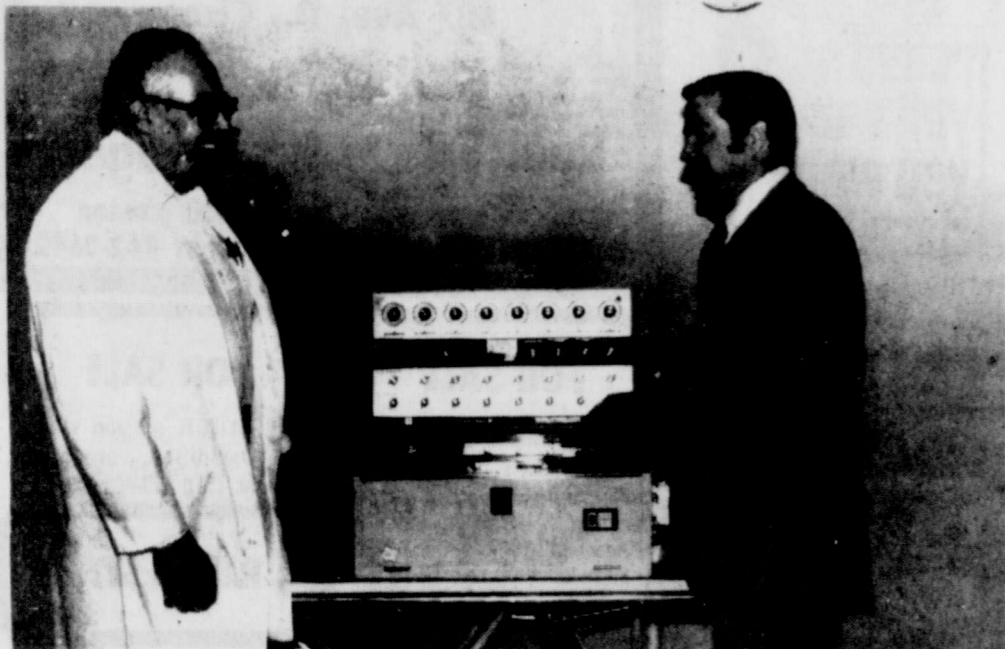
value of \$250, will be given away during the night with a drawing every 15 minutes and a grand prize at the end of the open house. Mrs. Parker stated winners of the prizes must be present when their name is drawn, with the exception of the grand prize drawing at 10:00 p.m.

Prizes to be drawn on the hour and half-hour include: Set of eight Cisco glasses valued at \$24.00; six-inch round Cranberry candle by Carolina valued at \$24.00; 22-inch Snoopy dog valued at \$22.00; Snoopy night light by Hallmark valued at \$25.00; silk flower arrangement

valued at \$18.50; and a set of four place mats, napkins and rings valued at \$18.00.

Quarter and three-quarter hour prizes which will be awarded are: Recipe book holder by Hallmark valued at \$11.75; bears cricket box with arrangements valued at \$10.25; porcelain bird by George Leffon valued at \$15.00; candle and candle ring valued at \$14.50; large puzzle by Hallmark valued at \$9.00; and crystal from Imperial valued at \$20.00.

The Grand Prize, to be drawn at 10 p.m., will be a Santa's Workshop Table Decoration from Hallmark valued at \$40.00.



HOSPITAL Personnel and representatives from MASI were looking over the medical diagnostic machinery in Cisco Tuesday morning. MASI personnel were presenting demonstrations at E.L. Graham Memorial Hospital on how the machinery operates. (Staff Photos)

## Graham Memorial Hospital Adds Modern Testing Service

Administrator Helen Orr announces that the E.L. Graham Memorial Hospital has contracted with Medical Ancillary Services, Inc., to provide sophisticated medical testing services in Cisco that many small hospitals cannot provide.

The procedures involve nuclear medicine, ultrasound tests and electroencephalography (brain wave tests).

Many patients who formerly had to go to large medical centers to get their complaints diagnosed can now remain at home in full confidence that diagnosis and treatment they will receive will be in accordance with the most modern medical practices.

In the past, medical diagnostic services were the exclusive province of large city hospitals. Smaller community hospitals could not economically afford to keep their own nuclear medicine departments.

Medical Ancillary Services, Inc. (MASI) a division of Harris Methodist Health Services, Inc. is an alternative to that situation. By purchasing and maintaining their own equipment, MASI can economically provide Nuclear medicine, Ultra-

sound, Electroencephalography and other related services to small hospitals. These services are provided on a mobile basis, throughout the western area of north central Texas and southern

Oklahoma. In addition, these services are provided to large hospitals for back-up during heavy loads, breakdowns and technical absences.

MASI also provides the technologist and all necessary supplies to perform the required examinations.

In this manner, MASI makes it possible for smaller hospitals to admit these patients instead of referring them to larger regional facilities and resulting in higher costs. By providing the service on site in local communities patient discomfort is minimized and the risks and expense associated with patient transportation to larger medical centers are decreased.

Hospitals utilizing the services of MASI enable local community physicians to better use their training and skills obtained in Medical School. Qualified physicians who recognize the role of these medical diagnostic procedures are attracted to hospitals that offer such technology and prefer to practice where all of their training is put to use. Many physicians find it necessary to refer patients out of town because hospitals do not offer the service at a level commensurate with their training.

E.L. Graham Memorial Hospital now offers a fuller range of new services for physicians practicing here

and certainly offers greater convenience and improved care for Cisco area residents.

### NUCLEAR MEDICINE

Nuclear Medicine Imaging uses radioactive isotopes to aid in diagnosing a variety of disorders. This is accomplished by introducing the isotope into the patient by injection, ingestion or inhalation.

A pictorial representation is produced using specialized nuclear instrumentation, and the pattern of the isotope's distribution enables a physician to evaluate the subject organ. Many areas of the body (including the brain, lungs, liver, bone, pancreas and heart) can be evaluated by this means.

### ULTRASOUND

Diagnostic Ultrasound utilizes sophisticated equipment which employs high frequency sound waves (millions of cycles per second) to image soft tissue organs. The sound waves reflect off the organ and form images. The image enables the physician to differentiate normal and abnormal organ structure.

Diagnostic Ultrasound does not use ionizing radiation and presents an alternative or supplement to the use of x-ray. For example, exposure through the use of x-ray is not desirable with pregnant mothers. Diagnostic Ultrasound is useful in visualizing a fetus and placenta without radiation.

MASI REPRESENTATIVES arrived at E.L. Graham Memorial Hospital Tuesday morning in vehicles like the one shown near the emergency entrance. (Staff Photo)

Hospital-based radiologists provide diagnostic evaluation of the examinations performed by MASI and report to the local attending physician. ELEC-TROENCEPHALOGRAPHY

MASI's Electroencephalographic Service provides a diagnostic electroencephalogram (EEG). EEG is the process by which electric impulses of the various areas of the brain are picked up, amplified and recorded in graph form for a physician's diagnosis.

MASI is a member of the Harris-Methodist Health System of Fort Worth and provides all three of these important new services to E.L. Graham Memorial Hospital from its Stephenville regional office through Paul Blevins, a registered nuclear medicine and x-ray technologist.

George West is President of MASI and Douglas H. Keefer, Ph.D., serves as Vice President of MASI.

### Chamber Plans

#### Abbott Memorial

A true friend of Cisco was lost in the passing of Gene Abbott, Chamber of Commerce manager. He worked hard to keep a good image of our town before the eyes of people in the Big Country.

In order that the efforts of Gene will not be forgotten, a memorial to him is being planned by the directors of the Chamber of Commerce. Tentative plans call for a brick planter and/or bench in front of the Chamber building with a memorial plaque bearing his name.

If you would like to make a contribution to this fund, it can be sent to the First National Bank in Cisco. Please make checks payable to the Gene Abbott Memorial Fund.

## Local Cub Scouts In Pushmobile Derby Sun.

Cub Scouts from twenty-six dens in Brownwood, Goldthwaite, Lampasas, Bangs, Comanche, Dublin,

### Nursing Home

#### Will Host Its

#### Thanksgiving Meal

Cisco Nursing Home will host a Thanksgiving supper for residents and their families on Thursday, November 18, at 5:30 p.m. Families of all residents are urged to attend.

The Nursing Home staff will supply the turkey and dressing. Families are asked to bring a covered dish to supplement the menu.

The Madrigal Singers of Cisco Junior College, conducted by Wyley Peebles, will provide musical entertainment.

### Lutheran Women

#### Will Sponsor Bake Sale Nov. 20

The Redeemer Lutheran Women's Missionary League is sponsoring a Bake Sale on Saturday, November 20, 1982, beginning at 8:00 a.m. in the Redeemer Lutheran Parish Hall, Avenue D and East 18th Street, Cisco, Texas.

Items furnished by members of the congregation will include homemade breads, rolls, cakes, pies and candy. Proceeds from the bake sale will be utilized for the various projects of the Redeemer L.W.M.L. and the World wide mission efforts of the congregation.



## What Are You Doing For Christmas?

What? You don't want to think about it? It's too soon? At least wait 'till after Thanksgiving? You don't want to think about the Holidays yet because you're not ready? You don't have the money set aside that you intended to have this year? Toys are about the same price as a compact car, and the kids want one of each that's on the market. You always wait 'till the last minute to do your shopping and you don't like the unruly crowds that are foolish enough to do the same. And, oh yes, it's your turn to have the family over for dinner. They still haven't finished the repair work on Aunt Martha's from last year. Well, if those are the only problems you have, you're among the lucky ones.

Sure Christmas is a long way off, or so it seems. For some people it never comes. Let's think about the people that may not be able to enjoy the holidays as much as

others. There are people who because of illness, the economy, death of a breadwinner, or other reasons, who cannot celebrate the season as they might wish.

They're really in a bind. Christmas is a religious celebration and a time for peace, love, and understanding, but how do you explain to a small child that Santa Claus will not be stopping at your house this year? How does that child explain to his or her friends that Santa didn't bring them anything? Well, maybe with a little peace, love, and understanding they won't have to. The Kiwanis Club of Cisco would like to insure a happy holiday for all. We appreciate donations of toys for the children of less fortunate families. Nearly every family with children has old, broken, or forgotten toys. Remember the excitement and joy your children experienced when they first got them? Maybe with a little sewing, paint, or glue, those toys can bring excitement and joy to other children. You know the warm feeling you get when a small child looks up at you wide-eyed with face gleaming and says, "Thank you," or "Look what Santa brought me!" Let's not let the economy or unemployment deprive others of that wonderful feeling. Let's all pitch in and make this a Christmas season that will fill all hearts with joy and singing. Please take the time to help. Donations can be brought by Cisco Lumber and Supply or Batteas Builders at 203 East 8th Street. If you cannot deliver a toy, call 442-2320, 442-3024, or any Kiwanis Club member. We need time to look over the toys for safety or repairs, so please don't wait until the last minute. Remember, Christmas is a time for children, and we are all God's children.

### Country Club

#### Stockholders Will

#### Meet Thursday

The Lake Cisco Country Club Annual Stockholder's meeting will be held Thursday, November 18, 1982. There will be a covered dish dinner beginning at 7:00 p.m. with the business meeting immediately following at 8:00 p.m.

Business to be considered will be the routine election of two Board Members and replacement of two retiring Board Members. All members are urged to attend.

### Boy Scouts

#### Troop 101

#### Selects Patrols

Troop 101 selected new patrols Monday, Nov. 1. The patrols are as follows:

Flaming Arrows—Steve Abbott, Randy Batteas, Brent Evatt, Pete DeLeon, Daven Hohertz, Billy White and Tim Rains.

Eagles—Dusty Petree, Kevin Hollingshead, Gary Byars, William Pevey, Rodney Williams and Joe Paul Carter.

Ravens—Robert Rains, Ronnie Scheuren, Kevin Sellstrom and Lonnie Pevey. Scrib Randy Batteas

CISCO KID CAR WASH  
3rd St. and Ave. E  
Where Most People Wash. Wash your venetian blinds, throw rugs, motor.

Lobo & J.R.'s (Family Hair Care)  
Full service family hair care center.  
"Specializing in just you." 442-9979 or 442-3551. 709 Conrad Hilton, Cisco, p-90

# BUY, SELL, TRADE OR RENT THROUGH THE CLASSIFIED ADS

Sunday, November 14, 1982

## OPPORTUNITY RINGS every time you use the Want Ads



**JUST CALL 442-2244**

Have something to buy or sell? One phone call to us is like dialing our entire circulation... person-to-person! Place your Want Ad today!

### THE CISCO PRESS

Publication No. (USPS 113780)  
1981 - EASTLAND COUNTY NEWSPAPER CO.  
442-2244 700 Ave. D Cisco, Texas 76437

Second Class Postage paid at Cisco, Texas, under Act of Congress in March, 1879. Published every Thursdays and Sundays.

**SUBSCRIPTION RATES:**  
In Eastland County \$14. In Adjoining Counties \$18. In other Texas Counties \$20. Out of Texas \$25. No out-of-continential United States except for APOs.

**Staff:** Editor-Cisco-Herrell Hallmark, Editor-Eastland-H.V. O'Brien, Assoc. Editor-Eastland-Michelle Lindsey, Editor-Ranger-Betty McGee, Editor-Rising-Star-Carolyn Ratliff, Staff-Gary Slade, Office Staff-Margaret Hallmark, Office Staff-Patricia Hallmark, Office Staff-Daisy Rutledge, Columnist-J. W. Sisson, Production Supervisor-Ted Rogers, Production-Raymond McCoy, Production-Wayne McCoy, Adv. Production-Wanda Hallmark, Computer Operator-Kathy Willeford, Feature Writer-Viola Payne, Commercial Printing-Hale Dunson

**NOTICE:** Unless you have established credit with the Cisco Press all classified ads must be paid in advance.

**MEMBER**

## TEXAS PRESS ASSOCIATION

**IMPORTANT**  
Check your ad the First Day it appears. In event of errors, please call immediately to have it corrected. No claims will be allowed for more than one incorrect insertion. The publishers liability shall be limited to only the amount of space consumed by these errors.

### NOTICE

NOTICE: House leveling and repairing. 1-915-893-5803. Clyde. p-3

### WELDING

Oilfield Commercial or Residential.  
Day or Night  
Jerry Douglas  
442-4655 or 442-9919 p-95

### NOTICE

**DOZER SERVICE**  
Tanking, brush pushing and all types of dirt work. \$35 per hour. Minimum 4 hours. Call Bob Hallmark, 442-2127. p-tfc

**NOTICE:** For home delivery of the Abilene Reporter News! If you live north of 8th Street or west of Avenue N call Morgan Fleming, 442-3031. p-6tfc

### HOLLIS WILLIAMS CONSTRUCTION

Residential and commercial. Remodeling, additions, new homes, custom cabinets, concrete, electrical work, etc. 442-1933, Cisco. p-10tfc

In ONE FAMILY Out OF 5, MOTHER Gets a JOB To Help PAY For a CHILD'S UNIVERSITY EDUCATION. LIFE INSURANCE Can Help AVOID THIS!

**TIM BARTON** Construction & Insulation  
New Homes, add-ons, cabinets, metal const., concrete, electrical work & blown cellulose insulation. Call 442-3727 after 5, 442-4049 daytime. p-59tfc

Allen's Heating Air Conditioning Sales & Service  
854-1795, Baird p-tfc

### Steve Cozart CONSTRUCTION

442-1709  
Remodeling, Add-ons, New Homes, Cabinets, Electrical, Etc. Free Estimates

### NOTICE

**GET UP NIGHTS? BACKACHE,**  
Leg pains, smarting may warn of functional kidney disorders—"Danger Ahead." FLUSH kidneys, REGULATE passage with gentle BUCKETS 3-tabs-a-day treatment. Feel GOOD again or your 69 cents back in 12 hours at any drug counter! NOW at City Drug. p-95

### NOTICE

New homes built on your lots. No down or closing cost. 10% financing. Call Royal Oak Apts., 442-3232. p-91

### FOR RENT

**FOR RENT:** East side of duplex at 1111 West 8th, Cisco. Give references. Call 629-1327. p-90

### FOR LEASE

**MOBILE HOME SPACE FOR LEASE:** One acre tract. 442-3330. p-tfc

**NOTICE:** I will not be responsible for any debts other than my own.  
Fred Mullinax

### PETS

**FREE KITTENS:** 808 Front Street, 442-1472. p-92

**FOR RENT:** 2 bedroom mobile home. 3/4 mile on Breckenridge Highway across from Otis Engineering. \$150 a month plus \$100 deposit. Call 442-1025. p-92

### GARAGE SALES

**GARAGE SALE:** Saturday, Nov. 13, 9:00 a.m. Miscellaneous. 1307 Liggett, Cisco. p-91

**PREPARED CHILDBIRTH CLASSES (LAMAZE):** The "hows" and "whys" of childbirth for expectant parents. Call Donna Veal R.N., B.S.N., for information. (817)559-8422 or (817)442-2266. Breckenridge, Tx. p-99

**TO GIVE AWAY:** Female German Shepherd. Loves children. Call 442-1199. p-91

### FONTAINE APARTMENTS

Now leasing 1 or 2 bedroom. \$210-\$225 a month. Water and cable paid. 215 West 8th, Cisco. 915-893-5082. p-68tfc

**RUMMAGE SALE:** Friday and Saturday, November 19-20. 400 West 7th, Cisco. p-93

**NOTICE:** Guitar lessons. For more information call 442-3262. p-92

**FREE KITTENS:** Kittens need a good home. Call 442-1051. p-93

### MINI WAREHOUSE STORAGE

as low as \$20 month. Call 442-3340, Cisco. p-57tfc

**Garage Sale:** Saturday, Nov. 13, 9:00 a.m. Miscellaneous. 1307 Liggett, Cisco. p-91

**NOTICE:** Housekeeper. Will do it all for you. Have my own transportation and references. \$4.50 per hour. Gladly do babysitting when available. Call 442-2264 ask for Leah. p-92

### WANTED

**CLASSIFIED ADS PAY OFF!**

**results you want? you want classifieds!**

### HOME REPAIR HANDYMAN

For All Your Home Needs PAINTING CARPENTRY INSULATION  
Call for free estimates 442-3872  
Discount to All Senior Citizens. p-91

### ROOM-MATE WANTED:

Male or female, \$112.50/month, call (915)945-2921, or come by 806 Avenue D, Apartment A, after 10 p.m. p-91

## WANTED

"Not all the Business--Just Yours!"

### REWARD

Complete Supply Of All Types Fence Material At Discount Prices  
4 ft. Chain Length Fence \$1.75 a ft. (Body Installed)  
American Made 6 ft. Orange T-Post \$1.79 each  
Orange 6 ft. Armco T-Post \$2.19  
80 Pounds Sakrete \$2.09  
Portland Cement \$4.79 per bag  
Field Fence, Barb Wire, Cedar Post, Treated Post, Bale Feeders, Portable Pandles, and Farm Gates

## FRONTIER FENCE

646-3309  
1051 Early Blvd. Early, Texas

### THE CISCO PRESS

### HARGRAVE INSURANCE AGENCY

1106 Ave. D  
Cisco, Tex

Personal Sales & Service For

- HOME Insurance
- Car Insurance
- Commercial Business Insurance
- Mobile Home Insurance & Travel Trailers
- Boat Insurance
- Life Insurance
- Bonds Of All Kinds

Shirley A. Hargrave  
442-1477 Or 442-1059

### MONUMENTS

**CISCO MONUMENT WORKS**

LOYAL & DORIS LUNDSTROM - OWNER  
CURBING LAST DATES  
708 E 8th  
442-9995  
CISCO, TEX.

### Mary Kay Cosmetics

Now available in Cisco. For a private, complimentary facial or reorder call

**VIRGIE GREGG**  
PROFESSIONAL BEAUTY CONSULTANT  
442-3460 P-91tfc

### Nu-Charm Beauty Shop

400 West 10th and Ave. G  
30 Day Special  
On Perm.  
For Information Call 442-3460

### ORDER NOW FOR CHRISTMAS Book Cases

Gun Cabinets Toy Chests Desks  
File Cabinets China Cabinets, etc.

### Steve Cozart Construction

442-1709  
CUSTOM MADE TO ORDER

### AUTO UPHOLSTERY

SEAT COVERS - VINYL TOPS  
CARPETS - BOAT SEATS  
FREE ESTIMATES  
CISCO AUTO TRIM

Hwy. 80 West - Cisco  
WILLIAM JOHNSON  
442-4452

### Washer-Dryer-Refrigeration Repair

Whirlpool, Kenmore. General Electric. Hot Point  
**Ted Parrish**  
Route 2  
Box 240A-1  
Cisco, Texas  
442-3674  
15 Years Experience  
Formerly Factory Service

119 A. land in Cisco area with or without some minerals. Some production now. 80 A. very good land without minerals.  
One of the newer brick dwellings in Royal Oaks addition, a very fine place and well equipped also priced to sell.  
Near new three bedroom brick with plenty of yard, you will like this place and priced to suit.  
A very beautiful older brick dwelling, good location. These three brick dwellings are new on the market. If you would like a nice home you need to look at these.  
Another two story brick, you will like this one, good location and well preserved.  
Older frame new inside and out, very well worth the money and owner needs to sell as soon as possible. Had to move out of town. This is a real bargain.  
A very solid older brick with a few acres of land that goes with.  
Attractive four (4) bedroom frame, new inside, large new fireplace, very good location and the best part about it is the price. You will like it all.  
We have many other dwellings also so be sure and inquire.  
Several commercial buildings also.  
We do not advertise big but our sales are big and that's what counts.

**807 Ave. D., Cisco**  
**Carl D. Gorr**  
**Real Estate Brokerage**  
Three salesmen to assist in all phases of the work. 442-3642 or, night 442-1642

### FOR SALE

1970 BUICK station wagon, good condition, runs great. \$600.00. Call 629-8037. T-92

### REAL ESTATE

**FOR SALE:** Strawberry plants \$1.25 doz., peach, apricot, pear and plum trees 50 cents each, gift plants, dish gardens, cactus gardens \$2.50, cabbage, asparagus, mums, black berry plants. ABC PLANT GARDEN, 405 West 13th, Cisco. p-91

**FOR SALE:** Alfalfa hay. \$115 ton or \$3.70 bale. See at Avenue E and 8th Street, Cisco, 442-1660 or 442-3681. p-88tfc

**FOR SALE:** 1979 Harley Sportster, low miles, good condition. \$2,000. 647-3603. p-91

**FOR SALE:** 80 Ford pickup Ranger 150, fully equipped. See at 210 West 18th, Cisco. 442-1075. p-91

**FOR SALE:** Fresh paper shell pecans. Prices vary from \$1.00 to \$1.50 per pound. Also will do custom pecan tree shaking. Call 442-3413. p-93

**REMINGTON** model 700, 6mm with scope, \$240. 817-643-5005 after 6 p.m. 90 & 91

**FOR SALE:** 4 year old Jersey bull. Four Jersey cows. Three Heifer calves. Two 18 month old heifers. Also two male border collie pups. 817-725-7279. p-91

**FOR SALE:** Admiral 25-inch color T.V. with built-in stereo tape player. Call (817) 442-3863 after 5 p.m. weekdays, or anytime on weekends. p-94

**FOR SALE:** David Bradley walking tractor with breaking plow and cultivator. Call 442-2667. p-91

**Mary Yvonne McMillan**  
*Real Estate Broker*  
104 East 8th - 442-3846

810 W. 9th. 2 bedroom, with porch that could be 3rd bedroom, 1 bath, central air and heat. Good neighborhood. \$27,500.

406 W. 6th. 5 bedroom home, 2 bath, living room with fireplace, dining room, built-in in the kitchen, utility room, storage shed, assumable low interest loan with good size equity. \$55,000.

708 Avenue I. 14 room older home. Could adapt to commercial and home use. \$70,000. Available for lease or lease/purchase \$750 per mo.

Anita Webb, Associate, 442-3546

Office hours 9-12 and 7-5 Mon.-Fri.  
Saturday & Sunday Anytime  
By Phone.  
"We solicit your listings."

# Homemaking Teacher Leaves Her Impression

One day in the early 1940's a dark haired young Homemaking teacher named Loretta Morris went out to make another "home visitation". Miss Morris had just begun her teaching career in Eastland County, and her projects included visiting the home of each student. That way she could help the girls plan on how to best improve their surroundings.

When she arrived at this home, to her surprise, she saw a railroad boxcar. There she found the family, all of whom lived in this one room. But she was received most graciously, and given the one chair in the middle of the

room. While she sat, the family stood respectfully.

"It was quite a challenge to improve that boxcar," Loretta Morris smiles. "During my 30 years of teaching, I visited home from every walk of life - from those with all material advantages, to those where the people had very little. It was always a pleasure to help the girls work with what they had."

Loretta Morris was the daughter of a pioneer Carbon family, Nate and Amanda Morris. There was one son in the family, Guy, and two more daughters, Esta Lee and Opal. The parents were devoted to the

Methodist Church and to education.

Loretta alternated between work and college during the depression years, receiving a Bachelor's Degree in Home Economics Education at North Texas State College. Later she obtained her Master's Degree at Southwest Texas University.

In 1942 Loretta Morris taught her first school at Alameda, between Ranger and Gorman. Then she spent 1½ years at Olden, teaching Homemaking and Science. In 1944 she accepted the position of Homemaking teacher at Eastland High School, and remained there until her

retirement in 1972. Mrs. Imogene Maun became Homemaking teacher upon the retirement of Miss Morris, and has continued in that position.

From the beginning Loretta Morris told her pupils: "Don't you say 'I'm just a homemaker!'! Being a homemaker is a high calling - a profession, one of the most important anywhere!"

She set up programs to pass along skills in many aspects of making a home. Sometimes new needs would



Loretta Morris

arise, and she would expand her work to cover them.

Realizing that homemaking dealt even more with human relations than pots and pans, Miss Morris offered studies to help young people cope with living. Besides the traditional Clothing and Foods, the classes covered child care, family relations, housing, consumer buying, and home nursing.

Morris also held night classes to teach Red Cross Nursing to adults in the community. At various times she also had community classes in Homemaking.

The Candy Strippers Volunteer Program at the hospital was begun by Miss Morris. She also organized the Eastland Chapter of Young Homemakers of America, and sponsored the Junior Class for a number of years. During the summer she often had special projects for her students, such as Play Classes for small children.

One year Miss Morris decided to show her students how to plan and carry out a formal wedding. So she staged a mock wedding, borrow-

ing a "groom" from another class. The class went to great lengths to make the affair realistic, with proper clothing and even a reception afterward. It was so realistic, in fact, that when the mother of the "bride" arrived on the scene she was none too happy about the whole affair!

The wedding training was quite appropriate, for a number of Loretta Morris's students have had formal weddings. She has a collection with more than 80 pictures of "her girls" as brides - lovely young women who have established homes in this area and in many other places. Besides homemaking, her "graduates" have careers in many other fields - Homemaking teachers, Nursing, Home Economist work, work as a florist, Minister's wives, and various business careers.

Since her retirement, Miss Morris's homemaking is generally limited to the family home in Eastland where she resides. This home was built in 1954, and her parents moved into it on their Golden Wedding Anniversary. The parents are

no longer living, but along with Loretta the residence is occupied by her brother, Guy, and a sister, Opal, also a retired teacher. The other sister, Esta Lee (Mrs. Rufus Price) lives in Mexia, Texas.

There are countless memories enshrined in the many photographs and clippings kept by Loretta Morris. One of these keepsakes is a poem written by a girl named Shirley Berry. It is titled:

"On Cup Towel, 1953  
Along the hem my needle did glide  
Clumsily - flying low and flying wide

Although off the hem it sometimes did slide,  
You will have to admit, teacher, I tried."

"Of course she tried," smiles the teacher. "She was a good pupil. I haven't seen Shirley for a long time.

"But I'm glad I've retired here, where a lot of my pupils live. I can see them again, feel in touch with their lives."

And the hundreds of girls who studied in Miss Morris's classes know that she left an indelible touch indeed, no matter how far they go from Eastland County.



FHA ASSOCIATION-Pictured above is the Future Homemakers Association members from 1956-57. They are front row, l to r, Linnett Capers, Joy Phillips, Roma Kay Plowman, Betty Young, Judy Hassell, Brenda Evans, Janie Arther, Maxine Yancey. Back row Ina Hunt, Fay Phelps, Garland Love, Rowena Brooks, Frances Cogburn, Kay Culbertson, Miss Loretta Morris, advisor, Laverne Akers, Beverly Moser, Jean Burrow, Sandra Cox, Jannie Morton, Jean McCrary, Linda Huckabay, Jan Robertson.

## Court Of Appeals

### AFFIRMED

5676 Layne Gregory, Grady Gregory and Kathy Coker v. Stanley Pirtle. (Opinion by Judge Brown) Eastland

11-82-003-CV In the Estate of T.W. Pittman, Deceased. (Opinion by Judge Brown) Eastland

11-81-173-CR James King v. State of Texas. (Opinion by Judge Dickenson) Erath  
11-82-012-CR Jessie Flores Santibanez v. State of Texas. (Opinion by Judge McCloud) Taylor

11-82-018-CV Larry Blackmon v. Clyde M. Harper. (Opinion by Judge McCloud) Palo Pinto

11-82-211-CV Texas Employment Commission v. Harrod Paving Company, Inc. (Opinion by Judge Brown) Dallas

### REVERSED & REMANDED

11-81-007-CR James Delbert Funderburgh v. State of Texas. (Opinion by Judge Brown) Brown

### REVERSED & RENDERED

11-82-038-CV Ford Motor Credit Company v. Garnett Ray McLendon d/b/a Shorty Mac Auto Salvage. (Opinion by Judge Dickenson) Taylor

11-82-193-CV Leonard Kilburn, Jr. and Johnny G. Gardner v. Brazos River Authority. (Opinion by Judge Dickenson) Palo Pinto

### MOTIONS SUBMITTED & DISMISSED AS MOOT

11-82-272-CV Howard Wright et al v. Norma Jean Prater. Appellants' motion for extension of time to file transcript and statement of facts. Erath

### MOTIONS SUBMITTED AND OVERRULED

11-81-039-CV Harold E. Steele v. Brown Foundation Repair and Consulting. Ap-

pellee's motion for rehearing. Dallas

11-81-063-CV Elna Hettie Berry v. Giles Coulter Berry. Cross-Appellant's (Giles Berry) motion for rehearing. Dallas

11-81-181-CV Short Stops of Texas, Inc. d/b/a Marr's Short Stops v. Atlantic & Gulf States Insurance Company et al. Appellees' (Broadus, Foster & Associates & Essex Insurance Brokers, Inc.) motion for rehearing. Palo Pinto

11-81-181-CV Short Stops of Texas, Inc. d/b/a Marr's Short Stops v. Atlantic & Gulf States Insurance Company et al. Appellee's (Tom Hardin d/b/a Hardin and Company) motion for rehearing. Palo Pinto

### REVERSED AND RENDERED IN PART AND REVERSED AND REMANDED IN PART

11-82-048-CV County Commissioners Court of Dallas County v. Roger G. Williams et al. (Opinion by Judge McCloud) Dallas

### MOTIONS SUBMITTED AND GRANTED

11-82-010-CR Henry David Williams v. State of Texas. Appellant's motion for extension of time to file statement of facts. Mitchell

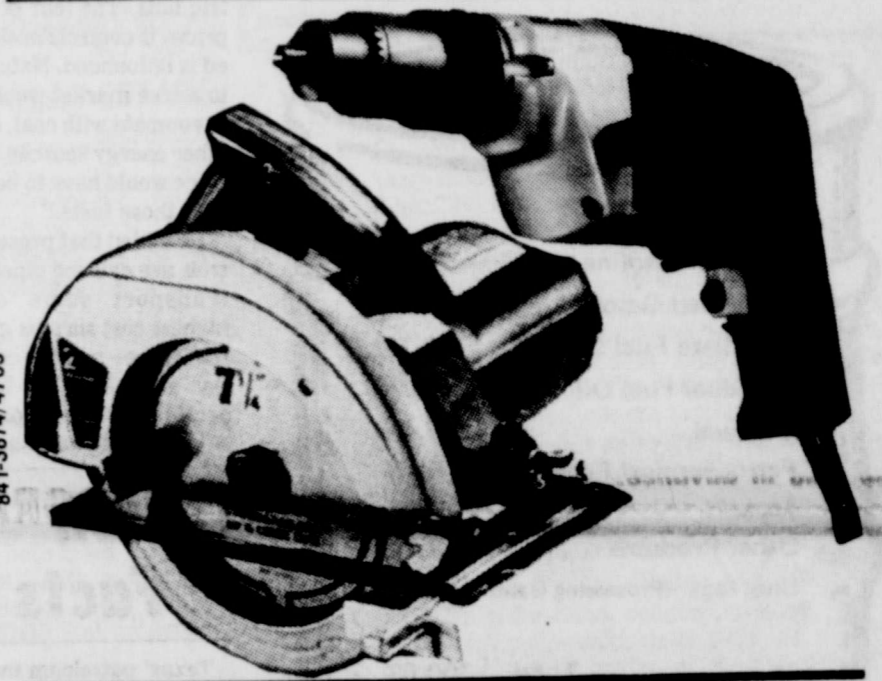
11-82-050-CR Joe Mike Camirillo v. State of Texas. State's motion for leave to file late brief. Taylor

11-82-191-CR Louis Wallace Smith v. State of Texas. State's motion for extension of time to file brief. Dallas

11-82-217-CV Beulah Pearl Owen v. Joe Baker Owen et al. Appellant's motion for extension of time to file brief. Dallas

11-82-233-CV Tyra Drilling Company and C.L. Tyra v. Dunlap Welding, Inc. Appellee's motion for extension of time to file brief. Stephens

from the new JCPenney Catalog



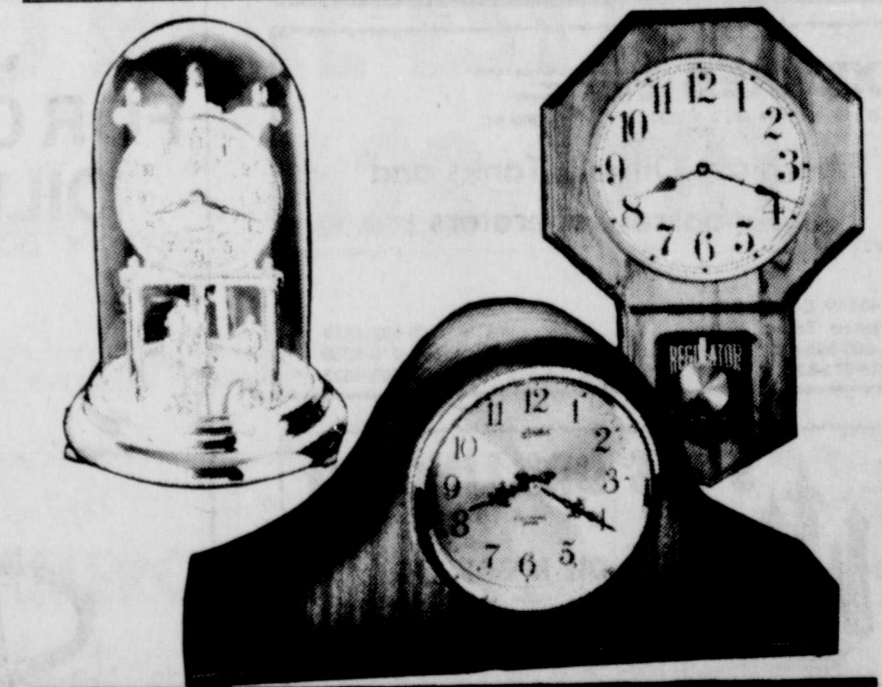
Save \$25 and \$34

Now 39.99 and 49.99  
Reg. 64.99. 7 1/4" 2 Hp circular saw, as shown on page 412 of our Christmas Catalog.  
Reg. 83.99. 1/2" triple action drill, as shown on page 413 of our Christmas Catalog.

The JCPenney Catalog Department

Cisco, Texas

from the new JCPenney Catalog



Save \$20 and \$25

Now 59.99 to 84.99  
Reg. 79.99 to 109.99. Fine collection of distinctive decorator clocks, as shown on page 388 and 389 of our Christmas Catalog.

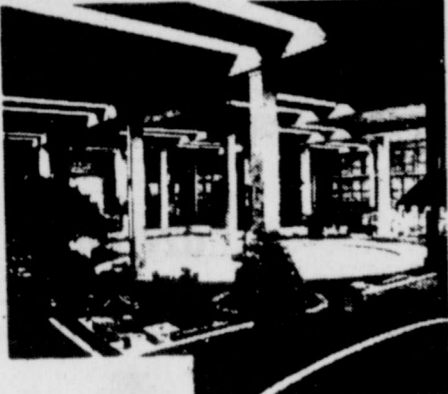
The JCPenney Catalog Department

Cisco, Texas

# Kiva Inn

ABILENE'S YEAR ROUND INN-DOOR SUMMER FUN

Kiva Inn is Abilene's "In-Door Resort of Family Fun."

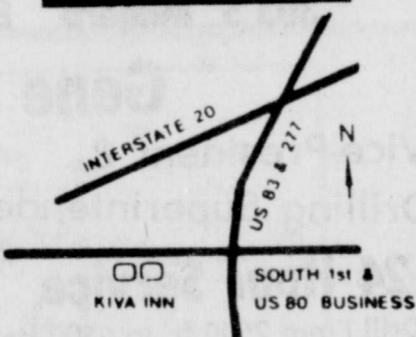


Within the giant, beautifully landscaped atrium, climate-controlled for total comfort, a world of activity unfolds before your eyes. The distinctive blend of luxury hotel & resort. The best of two worlds.



Enjoy dining in your choice of restaurants at the Kiva Inn. In the Sidewalk Cafe overlooking our beautifully landscaped atrium area is the perfect place to relax for breakfast, lunch or dinner. Should a more formal or relaxed setting be your pleasure, try our Library recognized in service and excellence as Abilene's finest room.

- \* Two Restaurants & Cocktail Lounge
- \* Indoor & Outdoor Pool
- \* Game Room
- \* Two All Weather Surfaced Tennis Courts
- \* Exercise Area
- \* Whirlpool
- \* Cable TV
- \* Shuffleboard
- \* Hot & Her Saunas
- \* Indoor Putting Green



ABILENE TEXAS HWY 80 WEST  
915-695-2150  
For Reservations Call 1-800-592-4466  
5402 S. First Street

## Eastland Library Celebrates Children's Book Week

Centennial Memorial Library will join the nation in celebrating Children's Book Week, November 15 to 21.

We have many new children's books on the shelves in the children's corner. Come read with us.

### MAYOR'S PROCLAMATION

WHEREAS, books are one of the best ways to bring the world to the child; and

WHEREAS, books can expand the child's world, inspiring his imagination and ambition; and

WHEREAS, curiosity is aroused as horizons are widened and knowledge increased by the experiences books offer; and

WHEREAS, books are vital to a child's educational growth and should be available to all children to buy, to borrow and to own; and

WHEREAS, when we "Pass the Word - Read," we remind children and ourselves how worthwhile and important reading books truly is;

NOW, THEREFORE, I Charles P. Marshall, Mayor of the City of Eastland, Texas, do hereby proclaim the week of November 15 through November 21, 1982, to be in CHILDREN'S BOOK WEEK in the City of Eastland, and encourage the year-round reading and enjoyment of children's books.

IN WITNESS WHEREOF, I have here unto set my hand and caused the seal of the City of Eastland to be affixed this 10th day of November, 1982.

Attest: Lewis Tiner  
City Clerk  
Charles P. Marshall  
Mayor

Since 1919

# D.L. KINNAIRD GENERAL INSURANCE



- INSURANCE -

Better to have and not need than to need and not have

629-2544

629-1116

104 S. Seaman

# BILFIELD DISPATCH

## 1200 Page Report States Coal Burning Hazards

Former Chairman of the Texas Railroad Commission John Poerner said this week in San Antonio that a new 1200-page report detailing pollution from coal-burning utilities provides "still more concrete evidence that existing laws governing natural gas distribution and pricing are causing economic problems and possible physical harm to the nation's citizens."

The extensive new study, commissioned by the federal government and compiled by 46 industry, government and university scientists over the past two years, says that sulfur dioxide and other

pollutants from coal burning plants are carried by winds and "contribute to acid deposition" in the northeastern United States.

The report concludes that the pollutants return to earth as acid rain, which can destroy lakes, kill aquatic life, damage buildings, and are a threat to human health.

Poerner, who is president of Purdental Energy Company, and head of a legislative action committee for Texas Independent Producers and Royalty Owners, said, "The additional tons of pollutants are in the air

because Congress banned the use of clean-burning natural gas, and required power plants and industrial installations to switch to coal."

He explained that the Fuel Use Act, and the Natural Gas Policy Act of 1978 were based on the assumption that the nation had exhausted its natural gas supply, and gas must be saved for residential consumers.

"Most experts agree that we have ample natural gas supplies to last more than 100 years," Poerner said, "but the laws now being enforced have raised natural gas fuel bills nationwide by transferring to homeowners the bulk of pipeline costs which were formerly paid by industrial users."

"Furthermore, the cost of converting electric plants to coal has raised home electric bills. The fear of higher prices if controls are removed is unfounded. Natural gas in a free market would have to compete with coal, oil, and other energy sources, and its price would have to be in line with those fuels."

He added that present controls are causing pipelines to transport some of the highest cost surplus gas, but that if free market competition were in effect less expensive gas would probably be delivered to consumers.

Located 10 miles south of Cisco, the well is in a 134-acre lease block of Eastland County's H&TC Survey.

It was drilled to a total depth of 1,190 feet, after entering the pay stratum at 1,142 feet. It will produce from a perforated interval of 1,142 to 1,148 feet into the hole.

## EnRe Corp. Of Cisco Stakes 4,200 Foot Wildcat

Location has been staked by EnRe Corp. of Cisco for a 4,200-foot Eastland County wildcat. The explorer well will be known as the No. 6 Mitcham C. It is in a 640-acre lease in the SP&RR Survey, 11 miles northwest of Cisco. This well is aimed at oil production.

Regal Operating, Inc. of Eastland has revealed plans to drill four 1,200-foot developmental wells in the Midriff Field. The operator has 510-acres leased, with drillsite in Eastland County's Mary Ann Clark Survey and has designated the ventures as the No. 2A, 3A, 5A, and 7A Johnson. Drillsites are 10 miles south of Cisco.

The No. 3 L.A. Lawrance is slated to be drilled in the Eastland Field by Royal W. Reiss, operator from New Braunfels. With projected total depth of 2,000 feet, it will be spudded in a 40-acre lease of the H&TC RR Survey, nine miles northeast of Cisco, Eastland County.

Location has been staked by Ridgeway Oil Exploration & Development, Inc. of Houston for three 1,500-foot developmental probes in Eastland County's East Nimrod Field.

The No. 3 Henry will be about two miles northeast of Romney, in a 40-acre lease of the H&TC Survey.

The No. 9 Schaefer is in a 45-acre lease of the H&TC Survey, two miles northwest of Romney in a 160-acre lease of the H&TC Survey.

Pumping at the rate of 62 barrels of oil per day, the No. 19 Cox has been completed in the Hawk-Eye Field by Eastland-based, Buck Wheat Resources, Inc.

134-acre lease block of Eastland County's H&TC Survey.

It was drilled to a total depth of 1,190 feet, after entering the pay stratum at 1,142 feet. It will produce from a perforated interval of 1,142 to 1,148 feet into the hole.

Petrolero Exploration, Inc. of Abilene has staked location for the No. 2 Scott "A", in Eastland County's SPRR Co. Survey. It is scheduled for 4,000 feet of hole making. The location is in a 105-acre lease in the Eastland Regular Field, about two miles northwest of Cisco.

The No. 1 J.C. Harrell, a developmental try in Eastland County's Ranger Field, is scheduled to be spudded six miles northwest of Ranger. With projected total depth of 4,000 feet, the well will be in a 108-acre lease in the Ben Willis Survey. North Ridge Corp. of Grand Prairie is listed as the operator.

A&D Petroleum, Inc. of Lexington, Texas has revealed plans to drill two 1,450-foot developmental probes in the Eastland Regular Field, 10 miles south-southwest of Cisco. The wells will be located in a 137-acre lease in the H&TC RR Survey and are to be designated as the No. 2A and 3A Ramsey.

Phoenix Minerals, Inc. of Austin has filed for permit to

drill the No. 1 Fran, a 1,200-foot developmental well in the Eastland Regular Field, one-half mile north of Rising Star. The operator will be in a 109-acre lease in Eastland County's ET RR Co. Survey.

The No. 12 V.P. Simpson, a developmental well in Eastland County's Hawk-Eye Field, is scheduled to be drilled 1.5 miles northwest of Romney. Mercury Exploration Co. of Ft. Worth is listed as the operator. Location is in a 243-acre lease in the H&TC RR Co. Survey. Projected total depth is 1,350 feet.

At a location five miles northeast of Cisco, Southern Resources Corp. of Rising Star has completed the No. 4

M.K. Courtney "A", new oil well in the JMJ Field.

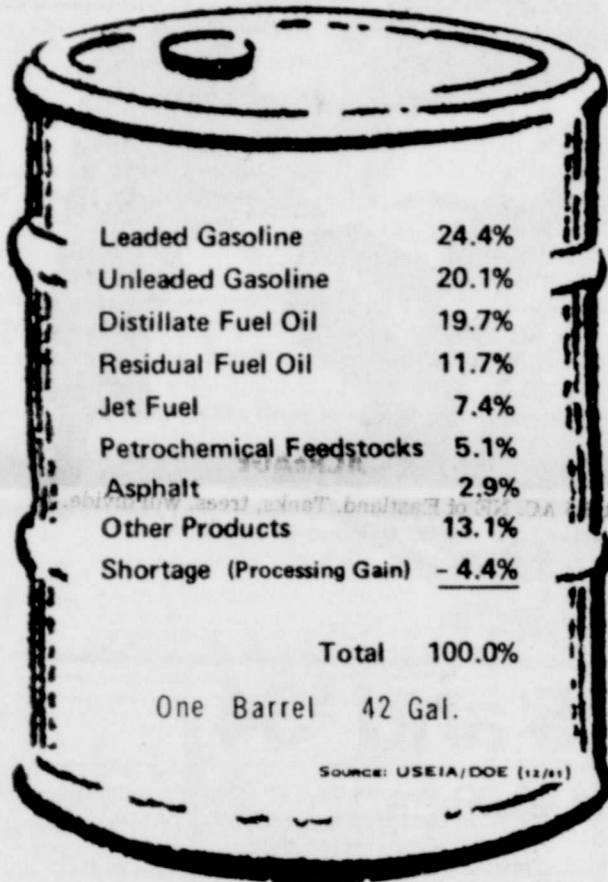
Drillsite was in a 480-acre lease in Eastland County's H&TC RR Co. Survey.

The well showed daily potential for 47 barrels of oil and 495,000 CF casinghead gas on a 15/64 choke, with tubing pressure of 200 PSI. Production will be from an

interval 3,440 to 3,448 feet. Well's total depth was 4,004 feet, with top of pay logged at 3,428 feet.



### Average Product Yield From A Barrel Of Crude Oil



**NEWLY REMODELED OFFICE**

Space for rent near square in Eastland. Three offices and reception area available. (Approximately 500 square feet. Will rent one or all. TF)

**Smith, Verett & Parker**

207 So. Lamar Eastland, Tex 629-8901

**XERXES** FIBERGLASS OILFIELD TANKS AND GUNBARREL SEPARATORS

1400 W. Overland Trail Abilene, Texas 79601

WATS 1-800-592-4459  
1-800-592-4459  
915-673-8238

Bus. 915-673-8238  
Res. 915-695-4823

**S & S DRILLING CO**

OIL & GAS

Route 4  
CISCO, TEXAS 76437

BILL GARY 442-3048  
LEE STARR 442-3226

**CARROLL ELECTRIC SERVICE CO**

HWY. 69 EASTLAND, TEX

OILFIELD ELECTRICAL MAINTENANCE AND CONSTRUCTION

RADIO DISPATCHED 24 HR. CALL

OFFICE: 817/629-2842  
NIGHT: 647-3745

HOLE DIGGERS  
BUCKET TRUCKS  
TRENCHERS

### Oil Facts

Texas' petroleum industry employed some 436,035 persons (about one out of every 14 workers) with wages of \$11 billion in 1981.

Texas' drilling and well servicing firms employed 168,153 workers in 1981, with wages of \$3.95 billion.

Oil and gas production workers numbered 112,422, with wages of \$3.6 billion.

Refinery workers numbered 44,181, with wages of \$1.3 billion.

Wages of Texas refinery workers averaged about \$12.50 per hour, one of the highest rates in the state last year.

**Welding**

Oilfield-Commercial-Residential

**Gary Lindsey**

629-2213

If no answer call: 647-1485

202 S. Hillcrest  
Eastland

4th Annual

## JOINT VENTURE FOR CRIPPLED CHILDREN OILFIELD EQUIPMENT AND SERVICES SALE

1 p.m., Wednesday, December 1, 1982

Abilene Civic Center  
Abilene, Texas

Benefits the West Texas Rehabilitation Center and the handicapped of the southwest.  
Abilene - San Angelo - Snyder  
Central Office 4501 Hartford, Abilene, Texas 79605

For more information about participation in the Joint Venture for Crippled Children, call (915) 692-1633

**Snow Oil Plaza**

Pipe & Supply

Drilling Corp.

Well Service

Petroleum Land Leasing

Terry Patty

Off. (817) 629-8521  
Linda Nelson  
Res. (817) 629-8123

DUB McCLURE LARRY ROBERTS

## ARER

15 Years Experience

AMERICAN REFUSE EQUIPMENT REBUILDERS

We exchange hydraulic cylinders or rebuild of any size. We also sell seals and packing. (817) 831-0676

2824 N. BEACH • FORT WORTH, TEXAS 76111

**ACE WELL SERVICE INC.**

Dale Jones

Completions Swabbing

Workovers Roustabout Crews

Rods & Tubing

Fully Insured For Customers Protection

Radio Equipped Call Day Or Night

200 S. Newton 559-5439

**TANK BOTTOM CLEANING & HAULING**

50-Barrel Vacuum Truck Service

Oil Well Chemical Squeeze and Stimulation Services

**West Texas Disposal System, Inc.**

Day or Night, Call 817-442-4341 Cisco, Texas

**Many Good And Sincere Individuals**

.....give little thought to the question of values when we should measure them in terms of personal worth in everything he buys, enjoys or does. For example, some folks will buy real estate without any kind of evidence of title disregarding the fact that the principal value of the purchase is in the title, not in the land itself or the improvements thereon. This kind of thinking costs property owners thousands of dollars annually which could be saved and a part of the savings wisely spent for an abstract of title or title insurance.

**Eastland County Abstract Company**

Pat and Annelle Miller 629-1077

Complete Drilling Services

## OTIS DRILLING INC.

303 S. Madera 817/629-2040

**Gene Cliff**

Vice-President & Drilling Superintendent

24 Hour Service 26 Years Experience

Drill From 2500 ft. to 6500 ft.

Well Maintained Rigs Radio Controlled

Reliable Experienced Crews

817/629-8162 Unit 9862

Many Satisfied Customers

Hours: 9:00-2:00  
Drive-In: 4:00-6:00  
Fr. Night Deposit

J.B. HICKS President

**THE FIRST NATIONAL BANK**

Gorman, Texas 76454

- Full Service Banking
- Money Market Certificates
- Interest Bearing Checking Accounts

Teller 24 Locations At:

Cisco 202 W. 8th  
Eastland 601 W. Main  
Ranger 112 Railroad Ave.

# County Real Estate

SUNDAY, NOVEMBER 14, 1982

## THE REAL ESTATE CONSUMER

The Real Estate Consumer is provided as a public service by this newspaper and The Texas Real Estate Research Center. Address inquiries to: The Real Estate Consumer, The Texas Real Estate Research Center, Texas A&M University, College Station, Texas 77843.

### SUBURBAN GROWTH SLOWS

The 1980 Census shows that suburbs are not only experiencing slower growth, but demographically, population profiles are becoming more like cities.

In the 1970's, nationally the population of suburbs increased less than 20 percent. This compares to almost 27 percent in the 1960's, and almost 50 percent in the 1950's.

In part, these statistics reflect the larger population of the suburbs. Since population increases, it takes more people to add each percentage point of growth.

The statistics also show that more people live outside metropolitan area. The single family household that once dominated suburban populations is changing as well.

In 1980, singles and female

heads-of-households accounted for 35 percent of suburban households, and apartment dwellers made up almost one-third of suburban households. These figures indicate a maturing of the suburbs and a closer population resemblance to cities.

### SAVINGS AND LOANS OFFER NEW MORTGAGES

If you are looking for a lender who offers one of the new adjustable-rate mortgages, chances are you will not have to look very far.

A survey of 308 savings and loan associations was conducted by the Texas Real Estate Research Center. Seventy-seven percent of the lenders responding to the survey said they now offer some form of adjustable rate mortgage, and another 20 percent said they planned to do so in the near future.

Eighty-four percent indicated they favored phasing out the fixed-rate mortgage. Shared-appreciation mortgages were not popular with most lenders in Texas. Eight-seven percent said they did not plan to offer such loans.

Legal questions associated with shared appreciation in-

struments and Texas homestead laws were cited by 58 percent of the respondents as the reason these mortgages were not offered.

### HOME REMODELING ON UPSWING

Many people are responding to the high cost of buying a new home by fixing up the one they already own.

The National Association of Home Builders reports that American homeowners spent more than \$47 billion in 1981 on home improvements.

The most common improvements were installation of new bathrooms and remodeling and constructing garages.

For families needing more space or better facilities, the remodeling option holds several advantages. Moving costs are saved. The existing mortgage loan may be retained, thereby avoiding new and expensive financing.

Much of the work can be done by the homeowner and home improvement stores are abundant to help in this task. The money to finance small jobs generally comes from personal savings, and second mortgage loans are arranged for large jobs.

### MOBILE HOMES CAN SAVE ENERGY

If you live in a mobile home, you can still have energy-efficient housing.

Because mobile homes are sensitive to weather, proper siting can reduce energy consumption by an estimated 10-16 percent. Modifications to the roof, walls and floors can save energy, too.

For example, you can add insulation, storm windows or weatherstripping and caulking to help seal in your conditioned air. Additions such as entrance air locks, carpets and skirting not only serve the obvious primary purpose but also provide a wind break and shading.

You may wish to consider alternative heating and cooling systems—such as a heat pump or active or passive solar systems. If you would like more information on practical and cost effective methods of saving energy in a mobile home, contact the Center for Energy and Mineral Resources at Texas A&M University.

### PLANNING ON TWO INCOMES

In the past, mortgage lenders would not consider the working wife's income on a mortgage application, nor would they lend to a single woman or female head-of-the-family.

Fortunately, these discriminatory practices are against the law now, and

## Suburban Growth Slows

To place your real estate ad in this section call:

EASTLAND TELEGRAM 629-1707  
CISCO PRESS 442-2244  
RANGER TIMES 647-1101

**Lone Star Title & Abstract Co.**  
Joe B. Koonce, Mgr.  
101 W. Main  
Eastland, Texas 76448  
(817) 629-2683

## Real Estate... Your BEST Investment

**LOANS** **REAL ESTATE**

Carol Senkel

**LOAN PRODUCTION & REAL ESTATE**

COMPLETE LOAN SERVICE  
(817) 629-8539 Office  
(817) 629-1269 Res.

CAROL SENKEL, Broker  
601 West Main Street  
Eastland, Texas 76448

**Town & Country REAL ESTATE**

BARBARA LOVE, INC. HIGHWAY 80 EAST  
BROKER EASTLAND, TEXAS 76448

**629-8391 629-1725**

**EASTLAND**  
NEAR SCHOOLS-4 bdr. 1 1/2 baths on 2 lots. E1  
NEW BRICK 3 bdr. 2 baths, fireplace, wet bar. E2  
ASSUMABLE LOAN, Large 3 bdr., 2 baths. E3  
OWNER FINANCE 2 bdr. 1 bath, Seaman St. E4  
LIKE NEW older brick, 4 bdr. 1 1/2 baths. E7  
IDEAL LOCATION, 3 bdr. 1 1/2 baths, .87 acre. E10  
SPECIAL PRICE, frame 3 bdr., 2 baths, den. E11  
FAMILY ROOM, fireplace, 2 bdr. 1 bath brick. E13  
TASTEFULLY REMODELED 4 bdr. 3 bath, extras. E14  
REMODELED frame 3 bdr., central heat. Neat. E8  
NEW HOMES UNDER CONSTRUCTION, Call for details.

**GORMAN**  
MUST SELL large home, garden spot, cellar. G2  
UNIQUE 3-yr. old brick with furnished apt. G3

**OTHER**  
BUY, LITTLE MORE THAN RENT, 2 bdr. Cisco. O1  
OLDEN, Small home, 15 lots, large trees. O2  
RANGER, 3 bdr., 1 bath, large corner lot. O3  
CISCO, partially remodeled 3 bdr. 1 bath. O4  
RISING STAR, 1900's home needs TLC, on 8 Ac. O5  
CARBON, mobile home, 2 lots, many extras. O6  
RANGER EXECUTIVE HOME, 5 lots, assumable loan. O7  
RANGER 3 lots with utilities, totally fenced. O8

**LAKE LEON**  
MOBILE HOME, large deeded lot, 3 bdr. 1 bath. L2

**PEGGYE SWAFFORD 647-1050**  
**HAZEL UNDERWOOD 629-1188**  
**BARBARA LOVE 647-1397**

Moving to Eastland County? or anywhere in U.S.A. Call Toll Free 1-800-525-8910 Ext. 4385 for information. (No Rentals Please)

DEEDED LOT, 2 bdr. 1 bath mobile home, extras. L3  
NEAR LAKE LEON, off FM2461, large lot. L4

**HOUSE AND ACREAGE**

58.8 ac., large home, total elec., city water. HA1  
4.99 ac., 3 bdr., 1 1/2 bath rock home, h/a. HA2  
GORMAN, new brick 3 bdr., 2 1/2 wooded acres. HA3  
GORMAN, 5 ac., oak trees, 3 bdr. 2 1/2 bath home. HA4  
3 ac. So. of Eastland, 3 1/2 yr. old brick home. HA5  
CARBON, 7.9 ac. coastal, double wide mobile home. HA6  
8.41 ac. edge of Eastland, 2 bdr. home, city water. HA7  
SPACIOUS BRICK home on 4.38 ac. Lake Leon area. HA9  
RANGER, rock home on 1 ac. up to 21 ac. Nice. HA10  
CROSS PLAINS, 116 ac., custom brick home. HA11  
KOKOMO, 3 bdr. frame on 1 ac., cellar, well. HA12

**ACREAGE**

100.5 AC. NE of Eastland. Tanks, trees, will divide. A1  
.725 AC. So. access of I-20, near 2 exits. A2  
5 AC. West of Ranger, barn, city water. A3  
SMALL tracts So. of Eastland, building sites. A4  
142.93 AC. coastal & cult., tanks, wells, barn. A5  
12 1/2 AC. near Lake Leon on pavement. Rest timber. A7  
80 AC. SW of Cisco, 45 ac. cleared, stiff water. A8  
74.189 AC. 4 1/2 MI. NW of Rising Star, irrigated. A9  
TWO 8 AC. tracts SW of Cisco, good coastal. A10  
.746 AC. 2 MI. N. of Lake Leon dam. Wooded. A11  
167 1/2 AC. 70 ac. field, rest pasture, tanks, well. A14  
30.87 AC. on FM571 SE of Lake Leon, trees, minerals. A15  
20.12 AC W/I-20 frontage, Ranger. Pens, shed, tanks. A16  
RISING STAR, 8 ac. w/older home, owner carry. A17

**COMMERCIAL**

OFFICE BLDG. on Seaman, owner carry. C1  
4-FLEX APTS. 2 bdr., 1 or 1 1/2 baths. FHA. C2  
3 RENTALS, large lot, fenced, garage. C3  
HWY. 80 E. near I-20, large bldg. 1/2 ac. C5  
MAIN ST., Eastland, 6 rooms or re-do. C6

## Feature Of The Week Kincaid Real Estate

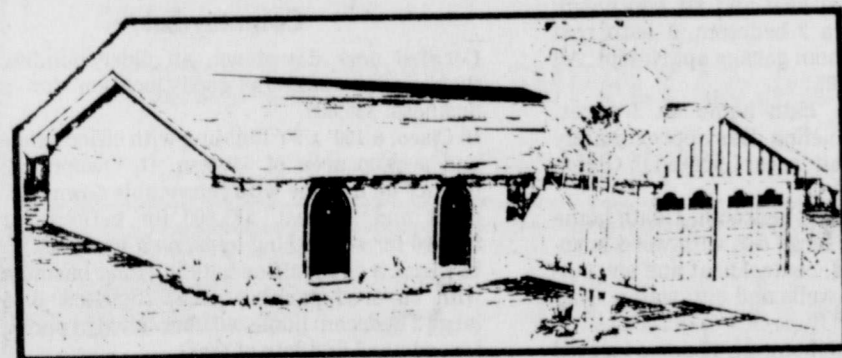


Executive house looking over Eastland located in Oak Hollow Addition. 1,950 sq. ft. 3 bedroom, 2 bath brick, all the extras. \$91,500.00. Good financing. Featured by Kincaid Real Estate, 629-1781.

**CHECK YOUR LABEL:**  
Most Subscriptions To Your Local Newspaper Expire Jan. 1-

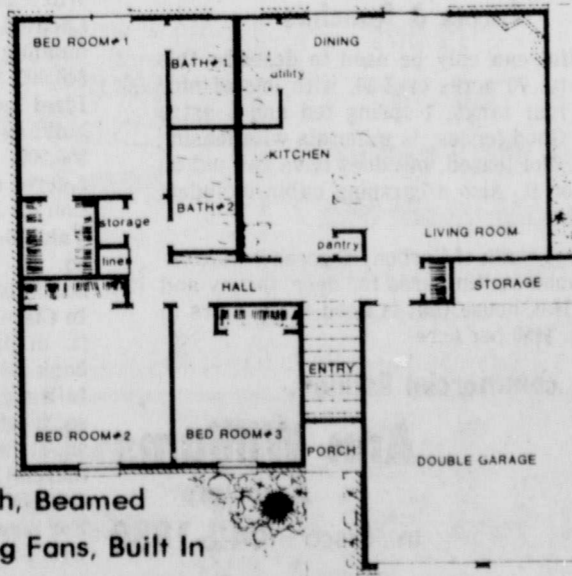
**RE-SUBSCRIBE NOW**

Don't Miss An Issue!  
Cisco Press  
Eastland Telegram  
Ranger Times  
Rising Star



## FIXED 12% FINANCING (FHA) ON NEW HOMES

Several Floor Plans To Choose From. Example:  
1258 sq. ft. Home Pictured Above -- \$43,500.00  
5% Minimum Down  
Payment -- \$2,175.00  
Balance Financed 30 yrs./12% -- \$41,325.00  
Principal and Interest Payment -- \$425.35  
This Price Includes -- Brick Structure, 3 Bedroom, 2 Bath, Beamed Family Room Ceiling, Ceiling Fans, Built In Stove, Oven, Dishwasher, Garbage Disposal, Two Car Garage and the Land. This Price Also Includes A Fireplace.



## KINCAID REAL ESTATE

100 S. Seaman,  
Eastland, Texas 76448

**629-1781**

### RESIDENTIAL

Brick, 3 Bedrooms, 2 Baths, 1800 sq. ft. with all the extras, Exclusive Area, \$91,500.  
Brick, 3 Bedrooms, 1 1/2 baths, 1100 sq. ft., fenced, one acre lot, \$44,500.  
Brick, NEW 3 Bedroom, 1 Bath, 1100 sq. ft., 2 car garage, \$41,000.  
Frame, NEW 2 Bedroom, 1 Bath, 900 sq. ft., 1 car garage, \$38,500.  
Frame, 2 Bedroom, 1 Bath, 1100 sq. ft., lots of trees, Owner finance, \$35,000.  
Frame, 1 Bedroom, 1 Bath, New carpet, some owner finance, \$17,000.  
Frame, 3 Bedroom, 2 Bath, 1800 sq. ft., Good neighborhood.

Robert M. Kincaid  
(Broker)

Frame, Brand NEW Townhouses, Each side has 2 Bedrooms, 1 1/2 baths, Quiet Neighborhood, \$85,000.  
Frame, 2 Bedrooms, 1 Bath, 1050 sq. ft., partially furnished, \$24,500.

### COMMERCIAL

EXCELLENT LOCATION! 3/4 to 1 1/8 acre lots, looking over Lakeside Golf Course.  
NEW Office Building, 2200 sq. ft. and 600 sq. ft. storage-Appraised at \$91,000. Will sell for \$75,000.  
Located in Rising Star: 11 acres, tank, 2 wells, several misc. shop buildings, one 40x80 steel building with office space and maintenance area-Reduced Price \$85,000.  
One acre lot-Pogue Industrial Park-\$14,000.

Guy Kincaid  
(817) 629-1804

### ACREAGE

160 acres, Northeast of Eastland, 15 acres cleared, Water well, 10% financing, \$85,000.  
42.35 acres, Owner finance, Good pasture land, \$685.00/acre.  
52.25 acres, 1/8 mineral, good water, new corral, All improved land, \$1050.00/acre.  
622 acres, Close to Lake Leon, 1/4 mineral, 9 tanks, 2 large barns, Good financing.  
420 acres, South of Comanche, 3500 sq. ft. Home, completely remodeled, totally working ranch, \$1,000.00/acre.  
97.5 acres, North of Olden, 60 acres cleared with cultivation, well, old house and barns. \$695/acre. Owner finance.  
235 acres located on the S/E corner of 183 and 60 Y across from the Gulf Substation. Cleared pasture, good tank, rolling terrain. \$730/acre. Owner finance.

Milta Kincaid  
(817) 629-8757



# Pest Alert

By Gordon Woolam

Texas producers annually store millions of bushels of grain, of which a great amount is subject to devastation by stored-grain insects. Insect population increases are greatly favored by improperly cleaned and maintained storage structures, or too high temperatures and high grain moisture at binning. Grain prices are based on clean, dry, wholesome grain. Anything that lowers quality also lowers its price. Insect

## Editorial

WE'VE NOW GOT A RIGHT TO EXPECT:  
An Editorial

One gets the impression from some utility company officials that there isn't universal pleasure with the way the governor's race turned out.

"Mark White can't lower utility bills and there's nothing he can do with the fuel adjustment clause," is generally the tone you hear from the utility people.

Maybe not!

But, in their sudden evaluation, they're apparently over looking one very important tenant:

The first step toward becoming a great statesman is "getting elected."

Now this is not to say that a candidate could or should do anything just to get elected, but if it's true that the majority of the voters "went for White" because he talked utility rates (and we don't personally think that they did), then at least you've got to give him credit for picking the one subject that got the voters' attention.

White passed the first test: he got elected. And elected in spite of over-whelming odds. He spent less money, but by campaigning hard, "got the ears" of the most voters.

So, in view of that first victory, we probably shouldn't count him out on utility costs. A year ago; six months ago; three months ago; a month ago; not many thought that he would be elected?

What can he do about utility rates? We honestly don't know, but we're going to be among those who give him a chance. We'll not expect miracles, perhaps the first year, maybe two, and certainly not before he's even sworn in.

He tilted with the windmill of incumbency and money—and won. Who's to say that he, through leadership, can't bring about changes.

Let's give him a chance before we say "it can't be done."

## Grain Storage

damage reduces grain quality and may make the grain unsalable. Insects or their parts, droppings, webbing, heat and moisture that they cause in grain, broken grains, and odors all contribute to the loss.

The three primary pests of stored grain are the rice or corn weevil, the lesser grain borer and the angoumois grain moth. In the immature stages, these insects feed within the kernel. These immature stages cannot be removed by ordinary cleaning machinery and in most cases must be controlled by fumigation.

When storing grain in farm facilities, provide the least favorable conditions for insect development. Store clean, sound grain with 12 percent or less moisture content. Prior to storage, clean and treat bins

thoroughly with an approved residual spray. When grain is put in final storage, an approved protectant insecticide should be mixed with the grain. During storage, surface moth infestations can be reduced greatly by surface spray treatments. Control of other pests feeding below the surface requires thorough fumigation with liquid, gaseous or volatile solid fumigants.

Examine grain regularly to detect early infestations of insects. If an infestation is detected early, insects can be controlled before they have caused extensive damage. There are minimum acceptable levels of damage and continuation.

For more information contact your County Extension Office.

## Mrs. Truett Been Speaks To Homemakers Class

The Homemakers Sunday School Class of the First Baptist Church met in the lovely home of Mr. and Mrs. L.D. Keith, 415 South Seaman St.

Mrs. Adele Whitten led in the opening prayer. A business meeting was led by the Outreach leader, Mrs. Ora Mae Jordan. A discussion of State and Foreign Missions was conducted as well as a discussion of the needs of our church members in the local rest homes.

Mrs. Jordan introduced the guest speaker, Mrs. Truett Been who brought the devotion. She used Psalms 5:3 and Exodus 16:7. Her inspiring subject was, "The Forgotten Iris." A story that will linger with us for a long while.

Mrs. Maudie Bennett gave the invocation, followed by a

delicious luncheon of roast beef, gravy, pinto beans, potato salad, cole slaw, green beans with new potatoes, cucumber and beet pickles, celery, garden fresh onions, an assortment of pies, coffee and tea.

Those attending were: Mr. and Mrs. Jim Bennett, Mrs. Hazel Estes, Mrs. Tina Graves, Mrs. Allean Gibson, Mrs. Gayle Hardin, Mrs. Ora Mae Jordan, Mr. and Mrs. Sidney Roff, Mrs. Laura Lou Trammell, Mrs. Ludell Morgan, Mrs. Adele Whitten, Mrs. Vera Woodward. The host and hostess Mr. and Mrs. L.D. Keith and guest Mrs. Truett Been.

## Hypertension Contributes To Heat Attacks

Hypertension, or abnormally high blood pressure, is one of the most prevalent health problems in the United States and is also one of the major contributors to heart attacks and strokes, reports Dr. Mary Ann Shirer, health education specialist with the Texas Agricultural Extension Service, Texas A&M University System.

Although progress has been made to increase public awareness of hypertension and to develop effective ways of treating it, the problem still remains a major health concern.

"High blood pressure often has no clear signs or symptoms and a person can have it and not know it. That's why it's so important to get your blood pressure checked regularly and, if it is high, to follow the treatment your doctor prescribes," Shirer says.

Leaders of an industry-funded symposium on nutrition and blood pressure control recently gave these guidelines concerning hypertension. They recommended that people:

1. Define their risk status, including diabetes, obesity, and family history of the disease.
2. Check blood pressure regularly, whether or not they are in a high-risk group.
3. If pressure is normal, continue present lifestyle.
4. If pressure is slightly high, begin a program of moderate exercise; lose weight, if needed; and reduce salt intake as necessary.
5. Stop smoking and cut down alcohol intake.
6. If over 40, get a doctor's advice on exercise and take a stress test.
7. Do not drastically alter your diet by cutting out all fats or all salt-containing foods, or by following only a high fiber diet. If you cut out dairy products because they contain salt, you will also lose calcium, which is essential to blood pressure regulation.
8. If sodium-sensitive.

follow a prescribed medical diet. Persons with normal blood pressure need not restrict their salt intake, but prudent use is advised.

9. If your doctor decides

that you don't need medication, don't insist on it. It's better to regulate blood pressure through diet and exercise than with chemicals.

### Hutton Insulation

BLOWN-IN INSULATION Saves Blown-Up Energy Bills

• Blown-in Cellulose

• Acoustical Ceilings

• Fiberglass Batts

FREE ESTIMATES

817-725-6683

BLOWN IN INSULATION

FULL THICKNESS WALL INSULATION

### EMERGENCY OVER-STOCKED SALE

10% to 30% OFF

- \* Immediate delivery
- \* Heavy duty floor
- \* Genuine Morgan quality throughout
- \* Several other models, specially priced.
- \* Financing available

P.O. Box 816  
Highway 69 N  
Eastland, TX 76448  
(817) 629-2668



EASTLAND

## DIRECT FACTORY OUTLET

653-2432

### MOBILE HOME

SALES

Nite 629-2117

EASTLAND DIRCT FACTORY OUTLET

One Mile East Of Eastland  
Phone 653-2432

## NOVEMBER DOUBLE WIDE HOME SALE

**\$1,000 Rebate**  
On All Double Wides In Stock Or Ordered Home  
NOVEMBER "ONLY"

Don't Delay

Classified Ads  
Get Results

# PAT MAYNARD REAL ESTATE

629-8568 EASTLAND INT. 20 E. NORTH SIDE 442-1880 CISCO

### Cisco Homes

An assumable 9 3/4% loan on this one! A 3 bedroom, 1 1/2 bath, brick home. Separate den, utility room and large closets.

Spacious rooms in this 3 bedroom frame home. Carpeted with large carport, pecan and fruit trees. Two lots go with this one with a good garden spot.

A 2 bedroom, 1 bath older home with separate dining and utility rooms. Partially carpeted, assumable loan. \$22,500.

A large 2 bedroom home with carpeting, screened in porch, fenced yard and a small office building for a business.

Large 3 bedroom, 1 bath older home. Has large rooms, separate dining room. Bathroom and kitchen have been remodeled. Also has separate garage and storage. \$21,000.

New vinyl siding on this 3 bedroom, 1 bath home. Large rooms, carpeted, storage building, combination garage and shop and fenced backyard.

A large 2 story with 5 bedrooms, 2 baths, den, separate dining and breakfast rooms, located on corner lot. Has apartment attached. A very scenic yard with lots of trees.

A nice 3 bedroom, 1 1/2 bath home on corner lot. Central air and heat, new carpet, modern kitchen and built-in dishwasher. Also, a garage and storage area. \$25,000.

Three bedroom, 1 1/2 bath, brick home with carpet. Fenced back yard, fruit trees, double garage. \$3,000 and assume loan.

### Homes-Eastland & Ranger

Close in! A 3 bedroom, 2 bath older home that has been remodeled. Fully carpeted, ceiling fan, fenced back yard. \$29,500.

In walking distance to downtown, a two bedroom, 1 bath home. Kitchen has been remodeled. Just right for a couple. \$28,500.

Located in Carbon! A 2 bedroom home on one acre. Just like living in the country and only \$16,000.

11% interest on assumable loan. This nice 3 bedroom, 1 1/2 bath brick home is located in exceptionally good neighborhood, near schools. Carpeted, built-ins, central heat and air. \$59,900.

Magnificent can only begin to describe the den area in this 3 bedroom, 2 bath home. Excellent location. 2400 sq. ft. of living area, and many other features. \$85,000.

Located in Ranger! A 3000 sq. ft. home on over an acre of land. 3 bedrooms, 2 baths, den, playroom, dining area. A fantastic home priced to sell at only \$79,500. Extra bonus! An assumable loan.

This 2500 sq. ft. home has 4 bedrooms, 3 baths, living room and den. This is a very neat and attractive place with a fenced yard, double carport and storage. Assumable loan. Total price \$52,000.

8 lots located in the northwest part of Eastland. \$25,000.

In Oakhollow, a 103.44 x 105 foot lot. Good location. \$5500.

On corner lot, a 3 bedroom, 1 1/2 bath home. Carpeted, beautiful fireplace in den. This home has 2000 sq. ft. and priced at only \$39,500.

Located close to downtown, a large 3 bedroom, 1 bath home that has been remodeled. Priced to sell at \$21,500.

An older 3 bedroom frame home on corner lot. Needs some work done on it. Terms can be arranged. \$16,000.

### Farms & Ranches

Beautiful can only be used to describe this property. 70 acres on I-20, with lots of nice trees, four tanks, 1 spring fed and 1 extra large. Good fences, 1/4 minerals with leasing rights. Not leased, but does have two old oil wells on it. Also a camping cabin included. \$98,000.

150 acres south of Carbon, 60 acres in cultivation. Good hunting area for deer, turkey and quail. Has house that is good for hunters to stay in. \$450 per acre.

### Commercial

Located near downtown, an older building that would make a good location for a business. \$35,000.

In Cisco, a 100' x 50' building with office space and a shop area of 4400 sq. ft. Owner will finance on this one with reasonable down payment and interest. \$75,000 for building or \$95,000 for everything as is, as a business.

In Cisco, a small office building for a business with covered parking area. Included is a large 2 bedroom home with screened in porch, fenced yard and lots of trees.

In Ranger, a large 2 story brick building with good sized fenced yard. Located near railroad tracks with spur. \$85,000.

Good location! We have a quick stop grocery doing a good business. All fixtures, shelves and stock are included. Also, a trailer park with spaces for 21 trailers. These are assumable notes with good interest. \$91,000. Will lease.

Located near downtown! A two story brick building, 4 lots and a house. All this for \$40,000. Will consider splitting.

Ideal location for a business. A 4,400 sq. ft. building on large, paved corner lot. Close in. \$60,000.

2 acres on I-20 Olden Ramp East. Ideal location for a business. \$20,000.

Valuable I-20 property! Approximately 4,600 sq. ft. building very versatile, easy accessibility. \$87,500.

In Cisco! A nice brick building with 5,000 sq. ft. in prime downtown location, near new bank. \$60,000.

In Ranger. 4 1/2 acres on highway 80 W. 1,800 sq. ft. office, 24,000 sq. ft. shop building, 2400 sq. ft. warehouse, other buildings and commercial antenna. Owner will consider terms. \$170,000.

For commercial use only. One to five acres with I-20 frontage.

We have other home, land and commercial listings.

**Pat Maynard**  
Broker  
629-8063

**Ann Williams**  
Associate  
In Cisco 442-1880

Kay Bailey 629-2365 Judy Orms 629-1218 Cindy Foster 629-8195 In Gorman Russell Cordell 734-2690

CHAIN LINK WOOD SECURITY FARM & RANCH

## SMALLEY FENCE & PAINT CO.

A FENCE FOR EVERY NEED

MATERIALS FOR THE "DO-IT-YOURSELF"

INTERIOR AND EXTERIOR PAINTING

DAN SMALLEY 647-3873

DAYS CALL 629-1010

## Contest Winner Will Receive Scholarship

Some talented high school senior from the Cross Timbers area will get a \$1,000 educational assist - in the form of a scholarship - thanks to the

Tarleton State University Development Fund and the Cross Timbers Fine Arts Council. The two organizations

have joined hands to sponsor a writing contest for all graduating seniors in the eight-county Cross Timbers area. The winner of the contest will be awarded a \$1,000 scholarship to TSU.

Connie Birdsong, president of CTFAC, said, "the whole concept is to nurture a creative feeling and provide additional incentive to look forward to a higher level of education."

Ms. Birdsong said the contest is one of her group's yearly projects. "If this generates a lot of interest and enthusiasm, it will be an on-going contest," she said.

The rules of the competition are as follows:

- 1) The contest is open to any graduating senior of a high school in one of the eight counties of the Cross Timbers area - Erath, Bosque, Eastland, Hood, Palo Pinto, Somervell, Comanche and Hamilton.
- 2) The student must submit one original and three typewritten double-spaced copies of an original short story, poem, essay, one-act play, or non-fiction article.
- 3) Single-spaced at the top of the page should be this information:

- student's name
- address
- name and address of school
- name of sponsoring teacher

4) No limit has been set on the number of words, but each student may submit only one entry.

5) As a cover letter, each entry should have a note from the sponsoring high school teacher, on letterhead school stationary, certifying that the work is original and was composed by the submitting student.

6) The entry should be received by the Cross Timbers Fine Arts Council, Inc., P.O. Box 1172, Stephenville, 76401 before midnight Feb. 28.

7) A panel of judges will decide the winner. All decisions are final.

8) No entries will be returned.

9) First prize of a \$1,000 scholarship to Tarleton State University in Stephenville will be awarded to the winner and a plaque engraved with the winner will be presented to the winning high school.

10) A special scholarship presentation will be staged, and the winner must be present to accept.

11) Any questions about the contest should be directed to the Cross Timbers Fine Arts Council, Inc., P.O. Box 1172, Stephenville.

## County Law Enforcement To Be Discussed On KVMX

Dial 629-8585 and join the discussion Sunday evening about Law Enforcement in Eastland County on the "Anything Goes" program at KVMX FM 97.

John Forshee, government professor at Ranger Junior College, will moderate. Guests on the program include Emory Walton, District Attorney, and a

representative of the Sheriff's Department.

Ask questions or share your opinion by tuning to KVMX FM 97 at 8:00 p.m. Sunday evening and then dialing 629-8585.

Is there a particular topic you would like to hear discussed on the show? If so, call 629-8585 or write to KVMX, 2010 W. Commerce, Eastland, Texas 76448.

**Now Open**

### Red's Taco Plaza

120-B • W. Main • Ranger  
Open 10:00 a.m. to 7:00 p.m.

Specializing in Mexican Food

Red's House Special \$2.25  
Ranger Special \$1.29

As Advertised On National Television

## Best Buys for NOV.

**ACE HARDWARE**

"Ace is the place with the Helpful Hardware Man"

SHARP EL 326 \$8.44

## SOLAR CALCULATOR\*

**NEVER NEEDS BATTERIES!**

Calculator Features:

1. Easy-to-read FEM type liquid crystal display.
2. Independently accessible 4 key memory with clear memory CM, recall memory RM, memory minus M-, and constant plus C+.
3. Convenient one-touch percent, and square root keys.

Calculations:

Four arithmetic calculations, constant calculation, power calculation, reciprocal calculation, chain calculation, percent calculation, square root calculation, add and subtract calculations, memory calculation, approximate results in excess of 8 digits etc.

Silicon Solar Cell Powered

Operates on natural or artificial light.

- Sunlight.
- Incandescent Lamp.
- Fluorescent Lamp.

ENERGY EFFICIENT

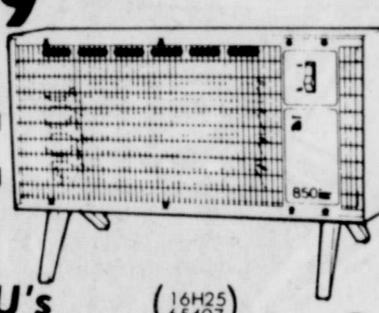
- Comes with attractive wallet.

Color: Dune Beige

Arvin \$13.99

## Radiant PORTABLE ELECTRIC HEATER

850 watts • 2900 BTU's



- Durable steel case.
- On/off selector switch.
- Close mesh safety grille.
- Instant ribbon elements.
- Safety tip-over switch.
- High temperature cord & plug.
- Convenient carrying handle.
- Height 10 1/2", width 15 1/4", depth 6".

**CISCO LUMBER & SUPPLY Co. Inc.**

110 Sandler Sq. Phone 442-2320

Special Rates For Groups Of 15 Or More

## The Pizza House

Hours: Sunday thru Thursday, 11 am-9 pm  
Friday & Saturday till 10 pm

115 S. Lamar Eastland, Texas  
629-8838 or 629-8731

For one price you can feast yourself on mounds of delicious food expertly prepared.

Salad Bar Monday-Friday \$2.50

Eastland's Sunday Special Bar-B-Q Chicken \$2.95

All You Can Eat - Including Garlic Bread

Mon. Tue. Wed. Buy One Pizza At Reg. Price and Get The Second At 1/2 Price

**Arcade** Springer The Pit Mr. Do Donkey Kong Jr. and Many More

Highway 80 E. Ranger, Texas 647-1733

The Latest in Country & Rock Music

Hamburgers Hot Dogs Corn Dogs French Fries Pizza Spaghetti

Closed Sundays Due To Remodling

# Brittain DISCOUNT Center

South Side Of Square Eastland, While Supplies Last

Wear-Ever Super Shooter Electric Cookie, Canape' & Candy Maker \$17.87

Mr. Coffee Brewing System \$38.97

Fashion Tress Curling Iron \$4.96

Hall Tree Hat & Coat Rack \$24.97

Leaf Rake \$2.29

Gering 100% Vinyl 2 Ply 1/2" 50 ft. Garden Hose \$3.99

For Oily Hair Only Shampoo Or Rinse \$1.99

Old Spice After Shave Reg. or Lime 4 1/4 oz. \$2.99

Aim Toothpaste \$1.37 4.6 oz.

Mennen Speed Stick Super Dry Anti-Prepspirant 2.5 oz. Spice or Fresh Scent \$1.99

Oil Of Olay Beauty Fluid 6 oz. \$6.99

Childrens Co-Tylenol Liquid Cold Formula 4 oz. \$3.99

Kaopectate Peppermint Flavor 8 oz. \$2.47

Lipton Cup-A-Soup 79c

St. Marys Sheets 25% off

3/4 Bushel Laundry Basket 79c

Conimat Place Mats 83c/day

Aluminum Rack 'n' Roast \$1.69

Sprite Case \$4.99 6 pk. \$1.27

Hot Wheels City or Service Center \$17.83

Baby Magic Tender Love Doll \$14.73

Butterick Patterns 1/2 Price

The Missing Link by Ideal \$4.42

**SUPER**

**DUPER**

SPECIALS EFFECTIVE  
SUNDAY NOV. 14 -  
WEDNESDAY NOV. 17th

SAVINGS ON  
EVERY ISLE

OPEN  
7AM-11PM  
SEVENDAYS

EASTLAND  
COUNTY

# BRINGS LOW PRICES!

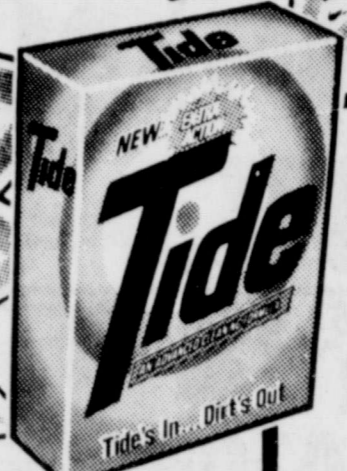
Super Duper  
**Buttermilk**  
1/2 Gal.  
Carton  
**89<sup>c</sup>**



Del Monte  
Cut  
**Green Beans**  
16 oz. Cans  
**3 For \$1.00**



Golden Grain  
**Macaroni & Cheese Dinner**  
Buy One 7 1/4 Box And Get One  
**FREE**



Tide Laundry  
**Detergent**  
49 oz. Giant Size  
**\$1.98**



Whole Sun  
**Orange Juice**  
12 oz. Can  
**76<sup>c</sup>**



Delta  
**Paper Towels**  
Jumbo Roll  
**2 For 99<sup>c</sup>**



Good Value  
Pure Vegetable  
**Shortening**  
3 Lb. Can  
**\$1.39**



Good Value  
**Flour**  
**48<sup>c</sup>**  
5 Lb. Bag

68<sup>c</sup> Without Purchase  
Limit One With A \$10.00 Purchase



DELI  
BAR-B-QUE  
**Chicken \$2.69**

Ham & Cheese Sandwich  
2 Slices of Ham  
2 Slices of Cheese .....  
**\$1.99**

**BREAKFAST SPECIAL** SERVED 7-10 a.m.  
☆ 2 SCRAMBLED EGGS  
☆ 2 PIECES OF BACON  
☆ HASH BROWNS & GRAVY  
☆ 2 BISCUITS  
**\$1.29** ALL FOR



OPEN  
AM 11PM  
EVEN DAYS

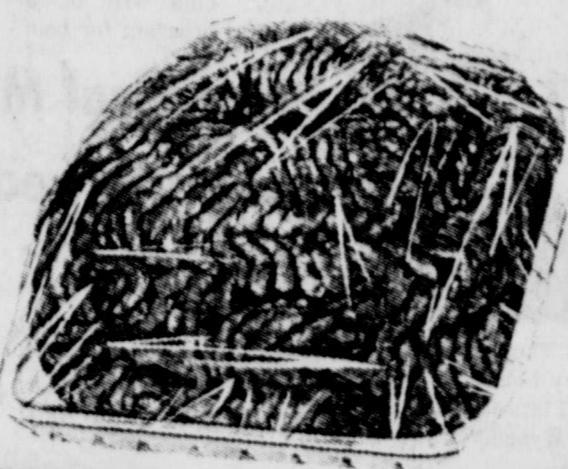
Vine Ripe  
**Tomatoes**  
**3** Lbs. **99<sup>c</sup>**



**Fresh  
Ground Beef**

3 Lbs. Or More

**99<sup>c</sup>** Lb.



Owens  
Whole Hog  
**Sausage**  
Lb. Roll  
**\$1.69**



Packer  
Trim Boneless  
**Brisket**  
8-10 Lb. Avg. Wt.  
Lb. **\$1.08**



**FLORAL**  
Yellow  
Shrimp **\$7.99**  
Plants 6" Pot  
Ivy **\$2.99**  
Plants 4" Pot  
Assorted Tropical  
Plants 3" Pot **99<sup>c</sup>**

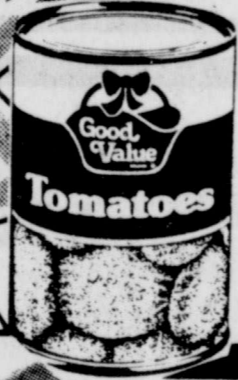
30 Gal.  
**Glad  
Trash Bags**

Buy One At Regular  
Price Of \$1.49 -  
And Get One

**FREE!**



Texsun  
**Grapefruit  
Juice 69<sup>c</sup>**  
46 oz. Can.....



Good Value  
Whole Peeled  
**Tomatoes 39<sup>c</sup>**  
16 oz. Can.....



Lipton  
Instant  
**Tea**  
3.6 oz. Jar  
**\$1.99**

**BAKERY**

Dozen Fudge Nut  
**Brownies \$1.99**

Delicious Chocolate Icing Topped With Nuts

**Onion Rolls**

Large Fluffy Rolls Sprinkled With Onion

**6 For 99<sup>c</sup>**

Cakes Specially Decorated  
To Your Order

Golden Ripe  
**Bananas**



Lb. **18<sup>c</sup>**



**WOMEN OF THE YEAR**-The Texas Extension Homemakers Club held their achievement day Tuesday in the basement of the First Baptist Church. The featured speaker for the day was Marilyn Gollightly who spoke on the war on drugs and showed the group several demonstrations. Pictured here are

the Women of the Year for each area club. They are from left to right: Helen Phillips of Morton Valley, Mary Louise Hearn of Pleasant Hill, Bessie Marie McCollum of Flatwood and Ruth Brown of Lake Cisco. Not pictured is Wynelle Brown of Kokomo.

(Telegram Staff Photo)

**Eastland Memorial Hospital**

Mary Wood  
Mildred L. Smith  
Charlie Jessup  
Tracy Alford  
Walter Cox  
Dodson Blair  
Leland D. Warren  
Linda Tilley  
Teresa L. Brown  
Ruth Layton  
Frank Beaty  
Baby Girl Thetford  
Baby Girl Brown  
Sybil Woodard  
Lois Meazell  
Amy O. Rice  
Nora Adams  
Earlene Smith  
Andrew McFall  
Deborah Cox  
Curtis Koen  
Alberto Jimenez  
Jim Terrell  
Shirley Hoffman  
Jackie Hendricks  
Wylleen Davis  
Sidney Robertson  
Glenn Hamilton  
Olen T. Killion  
Lee Smith  
R.V. Lewis  
Annie Weaver  
Willie Jo Carter  
Edna Ballew  
Lewis Starr

**Graham Memorial Hospital**

Patients in the E.L. Graham Memorial Hospital were listed as follows:  
Etha Sparks  
Elmer Denman  
Gertrude Millar  
John McDougal  
S.L. Boatman  
Ruby Tullos  
H.D. Willingham.

**Ranger General Hospital**

Patients in Ranger General Hospital were as follows:  
Thomas Rogers  
Mary Green  
Ida Brashears  
Gladys Wells  
Norvell Keesee  
Tammie Ainsworth  
Linda Harris

See M.H. Perry  
For Southland Life  
629-1556 or 629-1095  
104 N. Lamar-Eastland

**TAX RATES AND WHERE THEY WENT**  
(rate per \$100 valuation)

	NEW RATE	OLD RATE
Eastland County (road and bridge)	0.450	0.080
(general)	1.250	0.200
Total	1.700	0.280
Eastland County Water Supply Dist.	.0100	0.350
Carbon Ind. School Dist.	0.620	0.810
Carbon, City	0.975	0.300
Cisco, City	0.510	0.910
Cisco Ind. School Dist.	0.470	1.350
Cisco, City	0.130	0.220
Cisco Jr. College	0.100	0.190
Cisco (E.L. Graham) Hospital Dist.	0.670	1.150
Eastland Ind. School Dist.	0.360	0.875
Eastland, City	0.85	0.850
Ranger Ind. School Dist.	0.279	0.280
Ranger, City	0.155	0.180
Ranger Jr. College	0.079	0.110
Ranger Hospital Dist.	0.440	0.800
Gorman Ind. School Dist.	0.263	0.910
Gorman, City	0.270	0.370
Gorman (South East. County Hos. Dist.)	0.700	0.890
Rising Star Ind. School	0.440	0.850
Rising Star, City		
AVERAGE, ACROSS THE BOARD	0.430	1.590

**Cross Timbers Schedules Fine Arts Programs During Holiday Season**

The Cross Timbers Fine Arts Council, with headquarters in Stephenville, invites Eastland County residents to some interesting programs to be presented during the Holiday season. On Dec. 15, 1982 there will be presentations of Cinderella at 2 p.m. and at 7 p.m. in the Wells Fine Arts Center. This will be a delightful program for both adults and children. On Jan. 7 the Texas A and M Singing Cadets will appear at the Wells Fine Arts Center at 8 p.m. This is expected to be an outstanding vocal treat. The Cross Timbers Fine Arts Council is dedicated to presenting high quality entertainment at the lowest possible cost to the public. It is supported and recognized

by the local government of the city of Stephenville. Membership is open to the public, and its emphasis is on the eight counties in the Cross Timbers Basin - Erath, Eastland, Comanche, Palo Pinto, Somervell, Bosque, Hood, and Hamilton. Eastland County residents who are interested in membership and support may contact the Council at P.O. Box 1172, Stephenville, Tex., 76401. The Cross Timbers Fine Arts Council has joined with the Tarleton State University Fund group to sponsor a writing contest open to all graduating Seniors, 1983, in the eight-county Cross Timbers area. The winner of the contest will be awarded a \$1,000 scholarship to TSU.

**Evangelical Methodist Sets Ladies Retreat Nov. 19**

To all women in the Eastland County area: The Evangelical Methodist Women of Cisco will be having a Ladies Retreat on November 19 & 20. Women from Slaton, Lubbock, Sweetwater, Ft. Worth, Euless, Cross Plains, & Abilene will be attending. Women will start arriving at the 1st Evangelical Methodist Church, Highway 80 E. in Cisco around 6:00 p.m. on Friday, November 19. A time of fellowship and getting acquainted is the main agenda. Sandwiches will be served Friday night. Ladies will be spending the night in the church fellowship hall Friday night. Breakfast and dinner will be furnished on Saturday, November 20. Mrs. Josephine Cleveland will be the speaker after lunch, Saturday. She will be talking about her trip to Russia, delivering Bibles. Area ladies from all denominations are urged to make plans to attend this Ladies Retreat. For more information call EMW president Ramona Nichols, 442-3737 or Wanda Hallmark, vice president at 442-2757.

**the Wearhouse**  
Pre-Holiday Sale  
Nov. 13-20  
**1/4% off**  
**On Children's Clothes**  
Sizes 2T-14'  
Avoid The Christmas Rush Now. Add An Inexpensive Special Touch To Your Gifts - Monogram  
Enjoy fashions from the Wearhouse.  
800 North Seaman • Eastland, Texas  
Telephone 629-8141

**The Skinner Cabinet Shop**  
is now open. We make Gun Cabinets, Chest, Cedar Chest, Toy Chest, China Closets & Cabinets of all sorts.  
Call 629-2738

**Hallmark**  
Heather's Hallmark is pleased to invite you to our Holiday Open House Monday evening, November 15, 1982 from seven until ten o'clock. Bring a guest and take advantage of our Open House Specials for the coming Christmas season. Door prizes will be given - so do join us for this festive celebration!

**Central Drug**  
is your ONE-STOP CENTER for all HEALTH CARE NEEDS  
★ Blood Pressure checks, We have kits for monitoring blood pressure at home.  
★ Diabetes Checks. We have kits available for testing both blood and urine sugar levels.  
★ Pregnancy Tests, We have kits to test pregnancy from the first month.  
★ Urinary Tract Infection Checks, We have Micro Stix Test kits.  
Be sure to ask for a FREE CHART of poison antidotes for your home. Feel free to ask the Pharmacist at Central Drug about drug-use interaction, and con-current dosages.  
**On The Square 629-2681**

**Taylor Centers**  
Eastland & Cisco  
**Open 24 Hours**  
Groceries Gas  
Laundry and Video Arcade

**HERCULES**  
Trampoline & 3 Wheeler  
KEN'S MOTORCYCLE SHOP  
411 E. Main 629-2382 Eastland

**Carey Electric**  
Licensed Master Electrician  
**629-1065**  
Electrical contracting  
Repairs

**Betty's Cakes & Party Supplies**  
**Thanksgiving Special**  
9 inch Pie Cream \$2.50 Pumpkin \$2.25 Fruit & Pecan \$3.00  
8 inch Cakes German Chocolate Chocolate Coconut Cherry & etc. \$4.95  
Special: Decorated Turkey Cake \$6.50  
Call In Orders / Free Delivery  
**Betty's Bakery & Party Supplies**  
Ranger, Texas 647-1108

305 N. Oak  
Eastland, Texas 629-1218  
**Something Special**  
"Has It All"  
Wreaths, centerpieces and other decorative arrangements.  
Do it yourself supplies of all kind and we'll even show you how.  
Ribbon & ornaments featuring Miss Piggy, Kermit, Strawberry Shortcake and Victoria Plum.  
A great selection of trees for home or office.  
Sale Still In Progress.  
Hours- 10:30-5:30 Mon. - Sat  
Open Thanksgiving Day 2:00-5:00

**WOODMEN FAMILIES**  
enjoy special life insurance protection to meet each family's needs. We know your needs are very special and we can answer them.  
Ray Wright  
207 S. Lamar  
P.O. Box 785  
817-629-8971  
Al Rogers  
207 S. Lamar  
P.O. Box 785  
817-629-8971  
**WOODMEN OF THE WORLD LIFE INSURANCE SOCIETY**  
HOME OFFICE: OMAHA, NEBRASKA  
"The FAMILY FRATERNITY"

You'll fall for The Flower Falls by **VANITY FAIR**  
Feminine as can be, Vanity Fair's nylon travel set is as fresh as a spring garden. Banded with daisy chain embroidery, these lovelies have the easy fit and comfort of a nighttime nosogay.  
**Bob Elliott**  
"THE MAN'S STORE"  
Cisco Texas

# 1,000 Attend CJC Campus For Homecoming & Parents Day

Over 1,000 ex-students and parents of students visited the Cisco Junior College campus last weekend during the annual Homecoming and Parents Day.

The day's program began with registration and open house at 10 a.m. Saturday at Maner Memorial Library. The various dormitories held open house during the morning.

A noon barbecue luncheon at the Laguna Hotel Corral Room attracted 756 persons. Entertainment was provided by the CJC Choir under the direction of Wyley Peebles.

Approximately 80 ex-students attended the association meeting presided over by Rick Wende of Eastland, president, during the past year. New officers elected for the coming year

are Charlie Hubbard of Eastland, president; Olin Odom, III, of Cisco, vice president; and Emma Watts of Cisco, secretary-treasurer. New directors are Rick Wende of Eastland, Randy Speegle of Cisco, Charlotte Johnson Price of Albany and Helen Crawford of Cisco.

Prior to the kickoff at the 2 p.m. football game between CJC and NEO, the exes introduced Mrs. Patsy Agnew Kincaid as their coming home queen. She is the wife of Don Kincaid of Chandler, Arizona. She was crowned by president Rick Wende. The exes association presented three Outstanding Educational Standard plaques to Mr. George Brazzell, Mrs. Beryle Cutting and Mr. Milton Humphreys

(posthumously). Beginning in 1983 the association will present one Outstanding Educational Standards award each year. Members of the Cisco Junior College Board of Regents were also introduced during pre-game activities.

Plaques were presented to Mr. and Mrs. Don Kincaid of Chandler, Arizona, ex-students who traveled the longest distance. Helen Gray of Holbrook, New York, was the parent traveling the longest distance. Mr. N.W. Barnhill of Fort Worth received a plaque for the earliest male graduate—1936. Mrs. Lela Lloyd of Cisco was

honored as the earliest female graduate—1926. Mr. Richard Wood of Albany was introduced as the parent of 4 ex-students of CJC—the most from one family. Jim Lewallen of Wheeler was the winner of the Homecoming blanket and Herman Blahak of Abilene was the winner of the Parents Day blanket.

A half-time feature was the introduction of Miss Vicki Mangham of San Antonio as the 1982 homecoming queen. Miss Mangham is the daughter of Mr. and Mrs. Dulane Mangham. She is a member of the Wrangler Belle drill team and a cheerleader.



1983 EXES ASSOCIATION officers of Cisco Junior College are (left to right) Charlie Hubbard, president; Emma Watts, secretary-treasurer and Olin O. Odom III, vice president.

Mrs. Pat Agnew Kincaid was named the 1982 Coming Home Queen at the annual Cisco Junior College homecoming.



Vicki Mangham was named the 1982 Homecoming Queen of Cisco Junior College.



Helen Gray of Holbrook, New York, was presented a plaque as the parent who traveled the longest distance for the CJC homecoming.

## KVMX-FM 97 Changes Format To Country Music

Don Pierson, President of KVMX-FM 97, announced today that due to popular demand, FM 97 has changed to country music starting this weekend.

"Radio stations change as people's music tastes change," stated Mr. Pierson, "and FM 97 will always broadcast the music that the majority of citizens in the Microplex enjoy."

KVMX-FM 97 has already contracted with Century 21 Programming Services to provide the most complete contemporary country music available.

Popular music will be played during evening hours, along with the very best special concerts, for the "young at heart" audience. The ever popular Casey Casin's American Top 40 on Sunday afternoons, the Top 30 on Saturday afternoons, and the Top 20 Countdown on Wednesday evenings, will all be continued.

The Microplex has responded very favorably to KVMX-FM 97's acquisition of the ABC network's Paul Harvey program, which made FM 97 the only dual major network FM station in Texas, with NBC news being the top offering by the station.

Last week KVMX-FM 97 had a Scientific Atlanta Earth Digital Station installed to bring all ABC and NBC programs live via satellite. This method offers the purest and clearest sound known to man today and everyone is invited to listen to the clarity on their radios.

Pierson said, "We spent \$12,600 for this state of the art system and our listeners should notice a distinct difference in the sound. Right now we are only receiving our on the hour NBC news by satellite, but in about eight weeks we will also be receiving our ABC news on the half hour by satellite."

Continuing FM 97's policy of constantly offering the very best to the Microplex, a new SONO-Matic time machine was also installed last week. The time machine automatically announces the precise time during each program hour.

In closing Pierson said, "I would like to invite all citizens of the Microplex to tune to KVMX-FM 97 radio and hear the new pleasures the station is now broadcasting."



LOCAL HUNTERS, Tommy Lee, Keith Bailey and Larry Pence (left to right) are shown with three elk they shot last Saturday on a hunting trip to Pagosa Springs, Colorado. They spent five days in the mountains and would have stayed longer, except it started snowing. They said four-to-six inches of snow on the ground drove them out of the mountains. They returned to Cisco Wednesday morning. The three elk all field-dressed around 500 pounds. (Staff Photo)

visiting.

A business meeting was conducted by Mrs. Larry Sowels after which something new was started by Mrs. Sowels called "Spot-light." Mrs. Faye Owings was the first chosen. She was given a red rose and told some interesting things about her life, that she was faithful to her church and family and they showed some of her paintings and also pictures of her family.

The Bible study was given by Mrs. Larry Sowels after she prayed. The subject was "Faithfulness." Paul was a good example. He was faithful through many trials and persecutions he gave thanks to God. After a very interesting Bible lesson Mrs. Linda Wells gave the closing prayer.

Those in attendance were Mrs. Wanda Payne, Nelda Gary, Lois Holder, Faye Owings, Betty Green, Carrie S. Collier, Katharine Copeland, Mary Ann Copeland, Pauline Copeland, Maunia Copeland, Willie Langford, Linda Wells, Tammy Wells, Denise Jackson, Sue Steddum, Elizabeth Lee, a visitor, Sophia Eudy, and the hostess, Mrs. Larry Sowels.

## Mary Martha Class Meets In Abbott Home

Mary Martha Sunday School Class of East Cisco Baptist Church met Tuesday night, at 7 o'clock, in the home of Viola Abbott for their regular class social and business meeting. Following prayer led by their teacher Lucy Hagan, the group was served delicious stew with crackers, pumpkin pie, tea and coffee.

Class president Florene Hagan presided over the business meeting starting off with the group repeating the class watch word, with prayer led by Chrystine Nance. Venita Mitchell gave a devotional on love, reading from St. John 11:5 and Luke 11:38-42, and read an inspirational devotion from

"Sings In The Valley." Class secretary and treasurer, Louise Pryor gave the treasurer's report.

Those present discussed what they would like to do for a class Christmas project. Plans were made for the Christmas social to be Tuesday night, December 14th, in the home of Florene Hagan.

The group enjoyed fun games under the directions of Mildred Foster and Lucy Hagan. Prizes were given to ones getting the most points or correct answers.

The meeting was closed by listening to religious recordings by Jim Tate, former music director of the East Cisco Baptist Church. Those present were Dorothy Wright, Chrystine Nance, Florene Hagan, Mildred Foster, Ruth Carey, Lucy Hagan, Venita Mitchell, Louise Pryor and the hostess, Viola Abbott.

## Music Study Club Meets

The Cisco Music Study Club, member of the Texas Federation of Music Clubs and the National Federation of Music Clubs, met Wednesday morning, November 10, at 10 a.m., in the Federated Club House.

Mrs. J.C. Darr, president, presided over the meeting. The club collect was presented by the club members, led by Mrs. Travis Payne.

The program was "Music in Texas". The music of the Mexican Wars was discussed by Mrs. Ben Krauskopf.

The musical program was a piano solo, "Fuer Elise" by Beethoven, played by Katie Lynn Baird.

Leveridge Studios presented the following pupils in piano solos: Amy Hawkins, Jami Roberts, De Ann Parrigan and Allison Williams.

Hymn of the month was "May Jesus Christ Be Praised" presented by Mrs. Garland Shelton.

Members present were Mrs. J.C. Darr, Mrs. Ben Krauskopf, Mrs. Hal

Lavery, Mrs. Ada Mobley, Mrs. Jan Steffen, Mrs. Garland Shelton, Mrs. Vida Killion, Mrs. Travis Payne and Mrs. Ora Howell. Two visitors were present, Mrs. J.B. Baird and Mrs. Bill Roberts.

## Pleasant Hill Homemakers Club Receives Ribbon

The Pleasant Hill Extension Homemakers Club received a first place ribbon for their yearbook.

Eight members from the club attended the annual Extension Homemakers Achievement Day, Tuesday at Eastland.

Mary Heurn, president of the club, was honored as the club's outstanding Club Woman. Mary also received a first place ribbon for her pickleokra, a second place for canned green beans, and a second place ribbon for a dress she made.

Muri Campbell received a first place ribbon for her canned pears and second place for a vest, an entry in sport clothes.

Arieta Shirley received a first place ribbon for a dress she made and a second place for a handwoven picture.

Twila Lee, received a first place ribbon for a pink poodle skirt she made.

Virgie Hall entered some place mats she made from old cards.

Marilyn Golightly, a field coordinator for the Texan's War on Drugs, was the guest speaker.

Sunday,

November 14, 1982

## WORD OF GOD

Jesus heals a woman with an issue of blood:

And, behold, a woman, which was diseased with an issue of blood twelve years, came behind him, and touched the hem of his garment:

For she said within herself, If I may but touch his garment, I shall be whole.

But Jesus turned him about, and when he saw her, he said, Daughter, be of good comfort; thy faith hath made thee whole. And the woman was made whole from that hour.

Matthew 9:20-22

Capture Next Moment with a Gift Photo

Quality - Snapshots

Cameras & Supplies

Films-All sizes

And of Course

Fine Photography

Is Our Business.

COTTON'S STUDIO

**BIG COUNTRY REAL ESTATE**

509 E. 8th  
Cisco, Texas 76437

DANA GOOSEN Broker  
(817) 442-3958

### HOMES

- 1 Bd., on 12 lots, fenced, out buildings, in town, owner financing.
  - 2 Bd., could FHA, fruit trees, paved st., low downpymt., mo. pymts under \$275
  - 2 Bd., completely remodelled, new carpet, new bath, paved street.
  - 2 Bd. quality home on corner lot, Cent. heat, 2 car garage with separate apt.
  - 2 Bd., frame with carport, near intermediate school, excellent price \$13,500.
  - 2 Bd., frame with large rooms, trees, will make good rental. Only \$12,000.
  - 2 Bd., SE porch, carport, Central H/A, laundry, big trees.
  - 2 Bd., formal dining, 2 bath, paved street, 2 car garage with 1 Bd. apt., nice yard.
  - 3 Bd., near primary school, fenced back yard, corner lot, paved street.
  - 3 Bd., owner will finance - extra lot too. Fenced yard, apt. at rear and more.
  - 3 Bd., 2 bath, BRICK, in completion, fireplace, small lot or large corner lot.
- We have access to OTHER BRICK HOMES under \$50,000.
- Beautiful 4 Bd., 2 bath, on 3 lots, Cent. H/A, VA appraised, ready to Go!
- 4 Bd., 2 bath, on 3 lots, fireplace, carport, storage shed and garden spot.

### LAKE CISCO PROPERTY

We have access to lake properties with some owner financing

### ACREAGE & LOTS

- 10 acres with a 3 Bd., 1 1/2 bath home, sheds & workshop, fenced, pastures, close in, city water, canyon gas.
  - 247 acres, south of Romney, peanut allotment, over 3/4 minerals on 1 tract, in CROSSCUT FIELD, excellent hunting, good farm land, tanks, fenced.
  - 2 corner lots set up for a mobile home, paved street, trees. Owner financing.
  - 10 lots, one with mobile hook up, owner will not break up. \$8,000.00
- We still have 1 & 2 acre parcels East Cisco, good build sites.

### COMMERCIAL

- House on large corner lot, good commercial investment. Owner financing with reasonable down payment.
- Office building on corner lot, nets good income, parking.
- Duplex-good shape, paved street, excellent price.
- I-20 6 lots, good for freeway exposure, near exits

**OFFICE (817) 442-1693**  
AFTER HOURS CALL Dana 442-3958 Penny 442-1707

### BUY WISELY... PAY PROMPTLY...

## PROTECT YOUR CREDIT

If you are not enjoying the advantages of Credit buying let us help you open a charge account. Your home town merchants welcome a new charge customer. Many of life's luxuries and good things are enjoyed by those who have good credit and use their credit ratings.

### ★ MEMBERSHIP ★

Lemon Tree Boutique  
Altman's Style Shop  
Austin's Furniture Co.  
Dr. R.F. Blackstock

Cisco Aero Service  
First National Bank, Gorman  
Pierce Motor Co.

Cisco Lumber & Supply  
Kimbrough Funeral Home  
Southern TV Systems Inc.  
Sears, Roebuck & Co.

The Cisco Press  
Dr. Chas. M. Cleveland  
Brown's Sanatorium  
Chiropractic Office  
City Drug Company  
Dean Drug Store  
Dixon Auto Supply  
Gazebo

Heidenheimer's Dry Goods  
H&W Development,  
Eastland  
Ledbetter Insurance  
Walton's Electric  
City of Cisco

Cisco Loan Production  
Hargrave Insurance  
S&M Supply Co.  
West Texas Utilities Co.  
Thornton's Feed Mill  
Western Auto Assoc.  
Quickway Grocery  
Winnett Oil

Farm & Ranch Supply  
First National Bank  
Dr. E.E. Addy  
Anderson's Jewelers  
E.L. Graham Memorial  
Hospital  
Chamness & Sons Plumbing  
Heating & Air Conditioning  
Century 21  
National Insurance Agency  
The Wood Shed  
Ruebner's Interstate Gulf,  
Eastland

Moran National Bank  
Roberson TV, Eastland  
Lee's Truck Service  
Best's Garage  
Guthrie Truck Harbor Inc.  
David Callarman Insurance  
Higginbotham Dept., Rising  
Star

Red Gap Western Store  
First State Bank, Rising Star  
Carol Senkel Loan Production,  
Eastland  
Schaefer's TV  
Gilbert Garces Service Station  
Miears & Associates Inc.,  
Gorman  
Family Medical Center, Gorman  
Dr. Ayres Cermin  
Big Country Real Estate,  
Cisco

We're Here To Help You

**Credit Bureau of Cisco**

707 Ave. D  
442-1616

**Lobo & J.R.'s**  
**Family Hair Care**  
 709 Ave. D  
 Cisco 442-9979  
 "Autumn Classic"  
 High Fashion Hair cuts  
 with the added touch of  
 Bi-Level & Tri-Level Color Highlights  
 Lobo & J.R.'s  
 "Specializing in Just You"

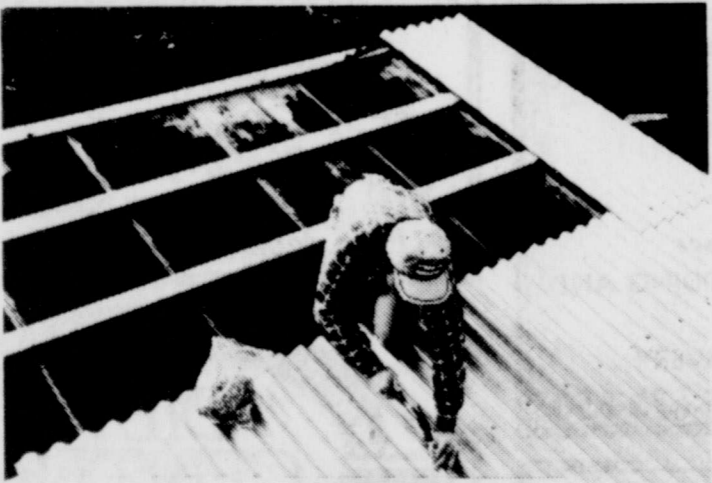
---

Select  
 Groups of  
 Fall And  
 Winter  
 Merchandise  
 up to 1/2 off  
 the Original Value.

**David & Quetta's**  
 Interstate 20  
 629-8030

Beginning Wed.,  
 Nov. 10  
 All Fall & Winter  
 Shoes 1/4 off  
 Bags 20% Off  
 Boots \$15<sup>00</sup> Reg.  
 MY Price  
**SHOE SHOPPE**  
 I-20(next to Best Western)  
 629-2172

IF YOU'RE THINKING OF  
 RE-ROOFING, THINK QUICK.  
 ONDULINE IS NOW ON SALE.



**Offer Ends Nov. 30**

Onduline is growing famous as a re-roofing material. It's so lightweight, it goes right over your old roof, without having to tear old roofing off.

It's also easy to install. And Onduline's strong, corrugated sheets are totally impregnated with asphalt. So they can't rust or corrode, ever.

Best of all, now's the best time to buy Onduline ever. For a limited time only, you can put on Onduline and take off \$4.00 per square.

For details, see your Onduline dealer. Hurry to get the best re-roofing material around.

**ONDULINE  
 LIFETIME  
 ROOFING  
 NOW \$4.00  
 OFF PER  
 SQUARE**

**Onduline**  
 The Lifetime Roofing

**CISCO LUMBER & SUPPLY Co. Inc.**  
 110 Sandler Sq. Phone 442-2320

# Courthouse Report

R.C. Hedlund & Wife To The Public Ratif. Unit Agree.  
 Wallace Harbin To The Public Ratif. Unit Agree.  
 Delma Blanton Herrington To The Public Ratif. Unit Agree.  
 Lee S. Henry Est. by Ind. Exr To The Public Ratif. Unit Agree.  
 David Hudgins To The Public Ratif. Unit Agree.  
 Mrs. Mary Paul Handley To The Public Ratif. Unit Agree.  
 Mary C. Hamrick To The Public Ratif. Unit Agree.  
 Elvise Householder To The Public Ratif. Unit Agree.  
 Delma Butler Hughes To The Public Ratif. Unit Agree.  
 Ronald Lynn Harbin To The Public Ratif. Unit Agree.  
 Wade Harbin To The Public Ratif. Unit Agree.  
 Callie V. Harbin & Husband To The Public Ratif. Unit Agree.  
 Myriene Cannon Harbaugh To The Public Ratif. Unit Agree.  
 V.E. Hise To Chester F. McNett & Wife Warranty Deed.  
 Margaret B. Hanna To Michael H. Kelly & Wife Warranty Deed.  
 Tillman C. Harbin & Others To The Public Ratif. Unit Agree.  
 Dale Harbin & Others To The Public Ratif. Unit Agree.  
 Nora D. Harbin & Others To The Public Ratif. Unit Agree.  
 Mary J. Christmas-Holiday To The Public Ratif. Unit Agree.  
 Lary Butler Hollis To The Public Ratif. Unit Agree.  
 Lila McGenty Holmes To The Public Ratif. Unit Agree.  
 Florrie N. Cooper Hudson To The Public Ratif. Unit Agree.  
 Gysin Harbin To The Public Ratif. Unit Agree.  
 D.S. Harbin To The Public Ratif. Unit Agree.  
 Edward D.W. Harbin To The Public Ratif. Unit Agree.  
 Ruth Grammer Hodges To The Public Ratif. Unit Agree.  
 Florine Mitchell Hodley To The Public Ratif. Unit Agree.  
 Bryant F. Haddock Jr. & Others To The Public Ratif. Unit Agree.  
 Bob G. Hughes To The Public Ratif. Unit Agree.  
 Elmer C. Hill, Jr. To The Public Ratif. Unit Agree.  
 Florine S. Haddock & Husband To The Public Ratif. Unit Agree.  
 Charles R. Haddock, Jr. To The Public Ratif. Unit Agree.  
 Lela L. Harding To The Public Ratif. Unit Agree.  
 Melba J. Cook Hart To The Public Ratif. Unit Agree.  
 Doris M. Hay To The Public Ratif. Unit Agree.  
 H.C. Hardin To Edd Wittie OGML.  
 Charles D. Hatten & Wife To John R. Hatten & Wife Warranty Deed.  
 John R. Hatten & Wife To 1st St. Bk. Rising Star Deed of trust.  
 Lois Holder To 1st Natl Bk-Cisco Deed of trust.  
 Kenneth Allen Harris & Wife To 1st St. Bk-R.S. Deed of trust.  
 Mrs. Herman H. Harrelson To The Public Afdt.  
 Lee Alton Harbin & others To The Public Afdt.  
 John N. Haymaker by Rep. To W.P. Robinson M/D.  
 John Haymaker, Dec'd To The Public Ratif. Unit Agree.  
 Marvin Hutto & Wife To Bill Carlton & Wife Warranty Deed.  
 John N. Haddock Jr. To The Public Ratif. Unit Agree.  
 Geo. P. Haddock, Dec'd To The Public Ratif. Unit Agree.  
 Noia J. Hainsworth & Husband To The Public Ratif. Unit Agree.  
 Mary Hairston Trustee To The Public Ratif. Unit Agree.  
 Nancy Johnston Halbrosk To The Public Ratif. Unit Agree.  
 Margie Lou Hale To The Public Ratif. Unit Agree.  
 Hendrick Medical Center To The Public Ratif. Unit Agree.  
 Patricia B. Halford To The Public Ratif. Unit Agree.  
 Esta Fay Roberts Hanby To The Public Ratif. Unit Agree.  
 Anne B. Halverson To The Public Ratif. Unit Agree.  
 S.H. Heard To The Public Ratif. Unit Agree.  
 William Dwayne Hill To The Public Ratif. Unit Agree.

Dan Hightower To The Public Ratif. Unit Agree.  
 Roy Gene Hill To The Public Ratif. Unit Agree.  
 Hugginbotham-Bartlett Co. To The Public Ratif. Unit Agree.  
 Thelma Inman To The Public Ratif. Unit Agree.  
 Frances Elizabeth Ingram To The Public Ratif. Unit Agree.  
 Interfirst Bank N.A. To Charles Hatten Rel. Judgment.  
 Inter First Bank Houston N.A. Trustee To The Public Ratif. Unit Agree.  
 Meredith Strauss Jackson & Wife To The Public Ratif. Unit Agree.  
 Fannie Jacobs To The Public Ratif. Unit Agree.  
 Gene McDavid Jameson To The Public Ratif. Unit Agree.  
 T.E. Jameson Jr. To The Public Ratif. Unit Agree.  
 Ella Mae Jensen To The Public Ratif. Unit Agree.  
 Worwick H. Jenkins & Others To The Public Ratif. Unit Agree.  
 Dorothy Turner Jones To The Public Ratif. Unit Agree.  
 Beverly Ann Jones To The Public Ratif. Unit Agree.  
 Alta Ine Edwards Jones To The Public Ratif. Unit Agree.  
 Ruth M. Johnson To The Public Ratif. Unit Agree.  
 John Pelham Jarvis To The Public Ratif. Unit Agree.  
 Elmer A. Johnston To The Public Ratif. Unit Agree.  
 Mildred M. Johnston To The Public Ratif. Unit Agree.  
 James W. Jordan, Trustee To The Public Ratif. Unit Agree.  
 Lorene Jay To Lesley Brent Lassater Power of Atty.  
 Alice McClain Jamison & Others to C.M. Root Ratif. OGI.

**WALLPAPER  
 Beil Draperies**  
 Eastland 629-1319  
 1706 W. Commerce

**STEVE COZART CONSTRUCTION**  
 Remodeling, Add-ons, New Homes, Cabinets, Electrical, Etc. Free Estimates. Phone 442-1709. TC

**SLASH GROCERY Bills**  
 90%! Weekly! Learn insiders Proven Refunding Method! Information? Rush stamped addressed envelope! Procter's-RD, RR2-B29-1, Cisco, Texas 76437. p-91

See M.H. Perry for **DISABILITY INSURANCE**  
 629-1566 or 629-1095  
 104 N. Lamar-Eastland TC

Sponsored by:  
**Ranger Lions Club**  
 Old High School Gym.  
 Sat. Nov. 13th  
 7:00 p.m.  
 Tickets At Door  
 \$3<sup>00</sup> Child &  
 \$4<sup>00</sup> Adult  
*on stage ~ in person*

**FRED STORY**  
 Master Magician and company  
 Presents  
**20th Century Phantasies**

**MOTHER LODE**  
 THE NEXT GREAT ADVENTURE.  
 PG PARENTAL GUIDANCE SUGGESTED  
 1982 Agamemnon Films

Adah Charline Jordan To The Public Ratif. Unit Agree.  
 Mary Lee Jones To The Public Ratif. Unit Agree.  
 Mariam M. Jordan Trustee To The Public Ratif. Unit Agree.  
 William Turner Jones To The Public Ratif. Unit Agree.  
 Shannon Jones, Jr. To The Public Ratif. Unit Agree.  
 Patricia Jones To The Public Ratif. Unit Agree.  
 Hannah H. Klar by Trustee To The Public Ratif. Unit Agree.  
 Kathryn Brooks Kurtz To The Public Ratif. Unit Agree.  
 Marianne Keating To The Public Ratif. Unit Agree.  
 Ann Kibittewski To John A. Freeman Jr. & Others Asgn OGI.  
 E.O. Kizer Est. by Ind. Exr To Ralph E. Kizer Warranty Deed.  
 Daisly F. Kizer To Ralph E. Kizer & Others Warranty Deed.  
 Jack D. Kizer To Gene M. Snow Asgn OGI.  
 Audrey Kimbrell To The Public Ratif. Unit Agree.  
 Leo Edwin Klar To The Public Ratif. Unit Agree.  
 Monte Kaplan To The Public Ratif. Unit Agree.  
 Verla Joyce Kemper To The Public Ratif. Unit Agree.  
 Flora Evelyn Keith To The Public Ratif. Unit Agree.  
 Norman Keen To The Public Ratif. Unit Agree.  
 Marvin Keen To The Public Ratif. Unit Agree.  
 Arnold Keen To The Public Ratif. Unit Agree.  
 Marjorie Robinson Kniseley To The Public Ratif. Unit Agree.  
 Eugene A. Kraemer To The Public Ratif. Unit Agree.  
 Bobby M. Kimbrough To The Public Ratif. Unit Agree.  
 Florence Hudson Knight To The Public Ratif. Unit Agree.  
 Verdi Kimbro To The Public Ratif. Unit Agree.  
 Cynthia Koets To The Public Ratif. Unit Agree.  
 Elmer Brooks Koenig To The Public Ratif. Unit Agree.  
 Peggy J. Kidwell To The Public Ratif. Unit Agree.

**Bookkeeping and Tax Service**  
 Ken Parrack  
 205 E. Main, Ranger, 647-3022  
 116 North Seaman, Eastland, 629-8641  
**INCOME TAX RETURNS**  
**MONTHLY AND QUARTERLY REPORTING FOR BUSINESS**  
 Individual, Partnership, and Corporation Tax Returns

**Willie's Ceramics**  
 203 N. Oak Eastland  
 We have a good selection of supplies Greenware and Finished items. Make or buy your Christmas gifts now. SALE 10% off Greenware. 20% off with purchase of \$10<sup>00</sup> or more and this ad. Due to higher rates we are having our phone removed. SALE 198



**MAKE A DATE WITH GABRIEL**—Eastland County citizens are urged to mark the date Saturday, Dec. 11, to hear Gabriel, popular Christian musical starring Jeff Walter and Robin Lyle, sponsored by the Cisco Baptist Association Youth Rally. The free concert will be held at First Baptist Church, Eastland, beginning at 7:30 p.m.

## Eastland Music Club Begins 1982-83 'Friends Of Music'

The Eastland Music Study Club will begin its 1982-1983 Friends of Music series next Wednesday, Nov. 17 at 3:00 p.m. at the Women's Club. The program will be the first in this year's course of study, American Folk Music. Mrs. Viola Payne will be presenting the program. Performing will be Tim Webb, a vocalist and guitarist from Carbon, and Marvin Payne, a guitarist from Tarleton State University. Anyone may join Friends of Music. The \$3.00 membership fee entitles the member to attend three Friends of Music Concerts throughout the year.

**D.J.'s**  
 211 S. Rusk Ranger 647-3911  
 Each Week Until Christmas D.J.'s Will Have 20% Off a Different Name Brand Item.  
 This Week D.J. Features  
**Ship 'n Shore**  
 Now Is The Time To Lay-A-Way For Christmas.

## Majestic Theatre

Eastland 629-1220

One Showing Only Each Evening  
 Open 7:30 Show Starts At 7:50 P.M.

**Inflation Nite Tuesday All Seats \$1.50**  
**Sunday, Monday, Tuesday**



Warning: This Movie May Be Dangerous To Your Health. You May Never Stop Laughing.

**Young Doctors in Love**

Closed Wed-Thru Starts Friday

**MOTHER LODE**  
 THE NEXT GREAT ADVENTURE.  
 PG PARENTAL GUIDANCE SUGGESTED  
 1982 Agamemnon Films

## Ranger Drive-In Theatre

Ranger 647-3802

One Showing Only Each Evening  
 Open 7:30 Showtime 8:00 p.m.

**Sunday Last Day**  
 "MORE Laughs than ANIMAL HOUSE!"

**Waitress**  
 THE FUN STARTS AS SOON AS YOU'RE SEATED!  
 A LLOYD KAUFMAN MICHAEL HEZEL PRODUCTION  
 From THOMA HERRING'S COPIATION

**Friday & Saturday & Sunday**

**AWESOME, TOTALLY AWESOME!**

"Hey Bud, Let's Party"

**FAST TIMES AT RIDGEMONT HIGH**  
 A REFUGEE FILMS Production An AMY HECKERLING Film  
 "FAST TIMES AT RIDGEMONT HIGH"  
 SEAN PENN. JENNIFER JASON LEIGH JUDGE REINHOLD  
 PHOEBE CATES BRIAN BACKER ROBERT ROMANUS and RAY WALSTON  
 Screenplay by CAMERON CROWE Based on the book by CAMERON CROWE  
 Executive Producer C.O. ERICKSON Produced by ART UNKSON and IRVING AZOFF  
 Directed by AMY HECKERLING Read the SIMON and SCHUSTER Book  
 A UNIVERSAL PICTURE © 1982 Universal City Studios Inc.

# time out for GOD

## ATTEND THE CHURCH OF YOUR CHOICE.....

The following firms, recognizing the importance religion plays in our community, make this church page possible each Sunday.

<b>White Elephant Restaurant</b> Eating Out Is Fun	<b>Thornton Feed Mill</b> 1200 Ave. D.
<b>The Cisco Press</b> 700 Avenue D 442-2244	<i>Count Your Blessings</i>
<b>Kimbrough Funeral Home</b> 300 W. 9th 442-1211 Cisco, Texas	<i>Experience the Joy of Faith</i>

## CHURCH SERVICES

Sunday, November 14, 1982

**REDEEMER LUTHERAN CHURCH**  
Sunday School and Bible Classes begin at 9:30 a.m. Our Worship Service begins at 10:30 a.m. Pastor Crockett's message is entitled "The Greatest Commandment!" based on Deuteronomy 6:1-9. During the Worship Service, Jennifer Lynn Johnson will receive the Sacrament of Holy Baptism through which she becomes a member of Christ's kingdom of grace. The Lutheran Hour will be aired over KRBC in Abilene at 8:00 a.m. Young people today are facing challenges and decisions which make life difficult and sometimes, it seems, even impossible. Pastor Wallace Schulz brings encouragement in Jesus for all young people in his sermon entitled "God Helps Young People!"

in New Testament History will meet in the Parish Hall on Monday at 7:30 p.m. Studies in the Gospel according to St. Luke (7:18) will meet in the Parish Hall on Tuesday at 9:30 a.m. Committee for revision of the Constitution will meet at 7:30 p.m. The Cisco Nursing Center worship service will meet on Wednesday at 10:00 a.m. Catechism class meets in the Parish Hall at 4:00 p.m. Adult Information Session meets at 7:00 p.m. Jesus' Friends meets in the Parish Hall on Thursday at 9:30 a.m. and 2:45 p.m. Acolyte training begins at 4:30 p.m. in the Church chancel.



### BIRTHDAYS

We salute the following Ciscoans who will be observing birthdays during the week of November 15-21:  
November 15--Wanda Dunlap, Bob Laird, Mark Wayne Cottrell, Mrs. Alma Ingram, Mrs. R.C. Speegle, Melissa Wood and Kimberly Stovall.  
November 16--Mrs. A.J. Sanders, Mrs. W.P. Walton, Cecelia Strawn Boles and Spurgeon Parks Jr.  
November 17--Mrs. W.R. Huestis, Clara Jackson, Mrs. Thelma Schaefer Magee, Dorothy Mae Ballinger, Carol Caudle, Mrs. C.H. Stevens and Gerald Hunt.  
November 18--Elizabeth Ann Rosales, Carolyn Pruitt, Ena Walker and Serenity Shea Norman.  
November 19--Leroy Taylor, Jimmy Smith,

Samuel Shaw, Lloyd McGrew, D.O. Edwards, Mrs. Helen Anderson, J.H. Key, Lucy Maxwell and John McGuire.  
November 20--Mrs. S.L. Cook, Carolyn Parker, Lois Ford, Mike Childress, Ira Mae Taylor and Mike Rogers.  
November 21--J.B. Pratt, Cheryl Beth Thetford, Edith Cox, Luther L. Hayes, Jean Nix, George Hughes and Betty Webb.  
The following couple will be celebrating their wedding anniversary during the week: Mr. and Mrs. Martin Weiser, November 18.  
The couple warns us about never using a raw egg that has a cracked or dirty shell. Once the shell is damaged, Salmonella Bacteria can easily contaminate the inside.  
When cooling hot food to room temperature let it stand for no more than 30 minutes and then refrigerate.  
The specialists state bacteria grows more rapidly in high-moisture, high-protein foods, such as meat and dairy products. They also grow more easily in foods such as casseroles, which have many small particles, than in one solid piece of food, such as a roast.  
Next week we will continue with the final discussion in ways to ward off food poisoning for Thanksgiving and Christmas.  
The programs for the week included: Lou and Joyce Jones sang songs of old. Lou Jones played the piano and the Star Bright Band from Rising Star brought their band to the Cisco center. A covered dish luncheon for Eastland and Cisco Senior Centers was held at the Park Hill Center in Eastland. The two centers get together at least twice a month for game day and for a luncheon. Leah Brown provided dinner music.  
All members of the Cisco Senior Center should plan to attend the center November 15, 17, 18 and 19. The center will meet four times next week because the center will be closed November 25 and 26 due to Thanksgiving.  
The menus for the week are:  
Monday, November 15--Luncheon steak, scalloped potatoes, buttered spinach, sliced pears, bread, butter and drink.  
Wednesday, November 17--Chicken pot pie, chopped broccoli, buttered corn, spice cake, bread, butter and drink.  
Thursday, November 18--Beef stew, tossed salad, apple sauce, gingerbread, cornbread, butter and drink.  
Friday, November 19--Oven fried steak, cream gravy, whipped potatoes, green beans, carrot/cabbage slaw, vanilla pudding/pineapple, bread, butter and drink.

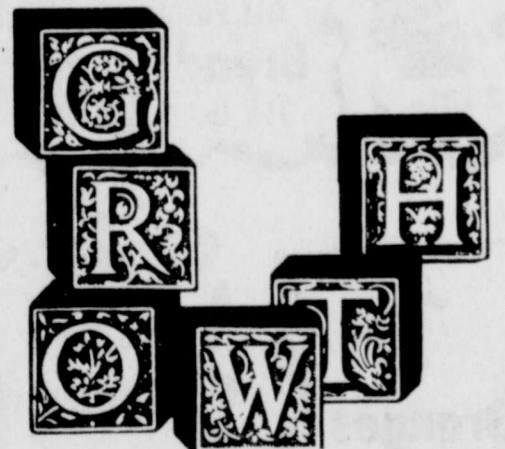
### Senior Citizens Nutrition Menu

Last week we started a series of ways to ward off food poisoning as outlined by Carol Davis who teaches food service sanitation at TCU, and by Dr. Phil Hart-

## Church Directory

- CALVARY BAPTIST CHURCH**  
Rev. Ronnie Shackelford  
Pastor  
18th and Ave. D  
Sunday School 9:45 a.m.  
Morning Worship 11:00 a.m.  
Training Union 6:00 p.m.  
Evening Worship 7:00 p.m.  
Wednesday Prayer Meeting 7:30 p.m.
- FAITH BAPTIST CHURCH**  
700 West 18th  
J. Doyle Roberts  
Pastor  
Sunday School 10 a.m.  
Worship Service 11 a.m.  
Evening Worship 7:00 p.m.  
Wednesday Evening Worship 7:30
- CORINTH BAPTIST CHURCH**  
Cisco-Eastland Highway  
Pastor  
Rev. Burditt Hitt  
Sunday School 10 a.m.  
Morning worship 11:00
- HOLY ROSARY CATHOLIC**  
Rev. Dennis Smith  
7:00 p.m.-St. Francis in Eastland  
8:00 a.m. Sunday-St. Rita's in Ranger  
11:30 a.m. Sunday-Holy Rosary in Cisco
- FIRST UNITED METHODIST CHURCH**  
Rev. David Adkins  
Pastor  
Sunday School 9:45 a.m.  
Worship Service 10:50 a.m.  
Evening Worship 6:00 p.m.  
U.M. Women Tuesday 9:30 a.m.
- FIRST PRESBYTERIAN CHURCH**  
500 W. 6th St.  
Rev. William C. Weeks  
Pastor  
Sunday School 9:45 a.m.  
Morning Service 11:00 a.m.
- CHURCH OF GOD**  
Seventh Day  
Romney Community  
South of Cisco  
Worship: 11:00 a.m. Saturday  
Telephone 442-3962
- EAST CISCO BAPTIST CHURCH**  
Rev. Armo Bently  
506 E. 11th  
Sunday School 9:45 a.m.  
Morning Worship 10:50 a.m.  
Training Union 5:30 p.m.  
Evening Worship 6:30 p.m.  
Mid-Week Services: Wednesday 7:00 p.m.
- INSPIRATION CHURCH OF GOD**  
Rev. Larry Smith  
Camp Inspiration-Box 167  
Eastland, Texas  
Sunday School 9:45 a.m.  
Morning Worship 10:45 a.m.  
Evening Worship 7:00 p.m.  
Wednesday Service 7:00 p.m.
- PRIMITIVE BAPTIST CHURCH**  
James E. Robertson Jr.  
Minister  
Services 2nd Sunday each month  
Singing 10:30 a.m.  
Preaching 11:00 a.m.
- FIRST CHRISTIAN CHURCH**  
Milo Steffen  
Minister  
Church School 9:40 a.m.  
Morning Worship 10:50  
Bible Study 6:30 p.m.
- LONG BRANCH BAPTIST CHURCH**  
John Hagan Pastor  
11 Miles S. of Cisco  
183-Follow Signs  
Sunday School 10:00 a.m.  
Morning Service 11:00 a.m.  
Sunday Evening 7:00 p.m.  
Wednesday 7:00 p.m.
- CHURCH OF JESUS CHRIST OF LATTER DAY SAINTS**  
Opening Exercises 9:30 a.m.  
Primary 9:30-11:10  
Priesthood 9:30-10:20  
Relief Society 9:30-10:20  
Sunday School 10:30-11:10  
Sacrament Service: 11:20-12:30
- MARANATHA BAPTIST CHURCH**  
Independent Fundamental  
Pastor M.H. Jones  
Highway 80 West of Eastland  
Sunday School 10:00 a.m.  
Prayer Services 6:00 p.m.  
Wednesday Service 7:30 p.m.
- WESLEY UNITED METHODIST CHURCH**  
Rev. David Adkins  
Pastor Ave. A  
Morning Worship 9:00 a.m.  
Church School 10:00 a.m.  
Family Night: 4th Thursday each month.  
Administrative Board Meeting: 1st Monday Night Each Month.
- FIRST ASSEMBLY OF GOD**  
307 W. 7th St.  
Rev. James Fellers  
Pastor  
Phone 442-1561  
Sunday School 9:45 a.m.  
Morning Worship 11:00 a.m.  
Evening Worship 6:00 p.m.  
Wednesday Bible Study 7:00 p.m.
- HOLY TRINITY EPISCOPAL CHURCH**  
S. Seaman  
Eastland, Texas  
The Rev. John A. Holmes  
Holy Communion 11:00 a.m.
- PLEASANT HILL BAPTIST CHURCH**  
Pleasant Hill Community  
8 miles south of Cisco  
Dr. Leon Woods  
Pastor  
Sunday School 10:00 a.m.  
Morning Worship 11:00 a.m.  
Evening Service 5:30 p.m.
- REDEEMER LUTHERAN CHURCH**  
Rev. Dell J. Crockett  
Pastor  
Ave. D and East 18th  
Sunday School 9:30 a.m.  
Worship Service 10:30 a.m.
- FAITH CHAPEL FULL GOSPEL CHURCH**  
308 West 11th  
Rev. James Harris  
9:45 a.m. Sunday  
7:00 p.m. Sunday  
7:30 p.m. Wednesday
- GOSPEL ASSEMBLY**  
1000 Ave. A. and East 10th  
Carl Begley-Minister  
Bible teaching subject to question and children's Church Sunday 2:30 p.m.  
Worship service Thursday & Saturday 7:30 p.m.  
Special Music & Singing All Services

### SPIRITUAL GROWTH



Sunday  
10:00 A.M.  
6:30 P.M.

**CAN BE YOURS WITH THE Greater Mountain Top Pentecostal Church U.P.C.**

"A Spirit-Filled Church"  
10 miles S. on Hwy 183  
Just 10 minutes from downtown



"The rural church where city folks attend"

### WORD OF GOD

For Those Who Love the Lord:  
Turn you at my reproof: behold, I will pour out my spirit unto you, I will make known my words unto you.  
Psalms 1:23

With us little things make the BIG difference  
**CISCO FUNERAL HOME**  
442-1503 203 West 7th Cisco



# OBITUARY

## Services For William Wallace Are Friday

Funeral services for William Warren Wallace Jr., 63, of Midland, formerly of Cisco, were at 4 p.m. Friday at Ellis Funeral Home in Midland. Leon Odom, Church of Christ minister, officiated. Burial was in Midland.

Mr. Wallace died at 12:30 p.m. Wednesday at Midland Memorial Hospital after a long illness.

He was born October 4, 1919, in Oklahoma. He moved to Ranger in 1920 and then to Cisco in 1922. He graduated from Cisco High School in 1939 and from Texas A&M University in 1942. He was an Army captain during World War II. He married Norma King on April 5, 1942, in Cisco. He was a member of the Church of Christ in Midland. He was an independent oil operator.

Survivors include his wife; three sons, William III of Midland, Jeffery Calhoun of Saratoga, Wyo. and John Timothy of Diboll; his mother, Mrs. William Warren Wallace of Cisco; and eight grandchildren.

## Services For Eugena Henley Are Friday

Funeral services for Mrs. Eugena Lou Henley, 63, of Granbury, a former employee of Tarleton State University, were at 10 a.m. Friday at Acton United Methodist Church in Acton, directed by Martin Funeral Home of Granbury. Burial was at 12:30 p.m. at DeLeon Cemetery in DeLeon.

Mrs. Henley died Wednesday at Ranger General Hospital in Ranger.

She was born November 24, 1918, in DeLeon. She had lived in Hood County more than a year and in Irving about 2 1/2 years. She received a bachelor of arts degree from the American Conservatory of Music and received a master's degree from Howard Payne University. A former Cisco public school teacher, she had been dean of women at Tarleton State University and served on the board of directors of the TSU Alumni Association. She was a member of Delta Kappa Gamma and the Order of the Eastern Star in Cisco.

Survivors include her husband, Reginald; an aunt, Mrs. C.E. Newman of Cisco; and several cousins.

November 14, 1982

## Services For Allen Ogden Jr. Are Thursday

Graveside services for Allen Lee Ogden Jr., 2 year-old son of Mr. and Mrs. Allen Lee Ogden Sr. of Cisco, were at 2 p.m. Thursday at Eastland Cemetery, directed by Bakker Funeral Home of Eastland. The Rev. Larry Sowels of Bible Baptist Church in Cisco officiated.

He died at 2:39 a.m. Monday at Harris Hospital in Fort Worth.

Survivors include his parents; paternal grandparents, Mr. and Mrs. Jesse Ogden of Guy, Ark.; maternal grandparents, Mr. and Mrs. Robert Carr of Southgate, Mich.; and a brother, Jesse of the home.

## Funeral Services For Letha Estes Are Thursday

Funeral services for Letha Estes, 86, of Cisco, were at 2 p.m. Thursday at Kimbrough Funeral Home. The Rev. Buddy Sipe of First Baptist Church officiated. Burial was in Oakwood Cemetery.

Mrs. Estes died at 12:35 p.m. Tuesday at E.L. Graham Memorial Hospital. She was born June 14, 1896, in Hamilton. She attended Stanton schools and graduated from Stanton High School. She attended Draughon's Business College, Hardin-Simmons University and Parson's Beauty School in Abilene. She moved to Cisco in 1924, where she operated Home Beauty Shop for 25 years. She retired in 1961. She was a member of First Baptist Church.

Survivors include a sister, Mayme Estes of Cisco; a brother, A.D. Estes Jr. of San Antonio; and a number of nieces and nephews.

## Funeral Services For Eva Thames Are Wednesday

Funeral services for Mrs. J.J. (Eva) Thames, 78, of Moran, were at 2 p.m. Wednesday at First United Methodist Church in Moran, directed by Holden-McCauley Funeral Home of Haskell. The Rev. Jim Chandler of First United Methodist Church in Breckenridge officiated. Burial was in Moran Cemetery.

Mrs. Thames died at 1:20 p.m. Saturday at Haskell Memorial Hospital.

The body was at Godfrey Funeral Home in Moran until 1 p.m. Wednesday.

She was born September 6, 1904, in Mason. She married J.J. Thames on March 31, 1927. They moved to Moran in 1966 from Sagerton. She was a member of First United Methodist Church in Moran.

A granddaughter, Brenda Kay Myrick, died January 4, 1975.

Survivors include her husband; six daughters, Eleanor Myrick of Midland, Mildred Osteen of Waco, Lois Keown of Crockett, Dorothy Kaminski of Belton Mo., Thelma Foshee of Sweetwater and Aileen Wyatt of Irving; a son, Herbert Jesse of Las Vegas, Nev.; a sister, Nora Goll of Mason; 16 grandchildren; seven great-grandchildren and two step-granddaughters.

Pallbearers were Dale Garrett, Mike Myrick, Bill and John Kaminski, Jesse James and Tony Wyatt. Honorary pallbearers were Reece Osteen and Ken Foshee.

## Services For Richard Rhyne Are Wednesday

Funeral services for Richard Rhyne, 70, of Cisco, an associate of Kimbrough Funeral Home, were at 3 p.m. Wednesday at East Cisco Baptist Church, directed by Kimbrough Funeral Home. The Rev. R.E. Zell, Church of the Nazarene minister from Weatherford, officiated, assisted by the Rev. Armo Bentley of East Cisco Baptist Church. Burial was in Scranton Cemetery.

Mr. Rhyne died Monday evening at West Texas Medical Center in Abilene.

He was born March 17, 1912, in Rosebud, Ark. He moved to Rising Star at an early age. He had farmed in Rising Star and in the Scranton and Romney communities for a number of years. In 1965, he became associated with Rust Funeral Home in Cisco. It became Rust-Martin-Rhyne Funeral Home, later Holly-Rhyne Funeral Home. The business later became Kimbrough Funeral Home. He was a member of Mitchell Baptist Church.

A brother preceded him in death.

Survivors include a step-daughter, Mrs. Dianne Pence of Enid, Okla.; a step-son, Dennis Boland of Clyde; two brothers, Clarence of Big Spring and Donald of Cisco; three sisters, Dorothy Patterson of Lamesa, Agnes Belew of Big Spring and Opal Cozart of Dublin; and four grandchildren.

Nephews served as pallbearers.



### BIRTHS

SARAH JEAN GEARSON

Ralph and Elizabeth Gearson of Cisco announce the birth of a daughter, Sarah Jean Gearson, born Wednesday, October 27, at the DeLeon Hospital. She weighed seven pounds and was 19 inches long.

Grandparents are Ralph and Margie Gearson of Plano, Illinois, and Margaret and Marshall Moore of Louisville, Kentucky.



## Letters to the Editor

Editor, In The Cisco Press, "Letter to the Editor", November 11, 1982, Peter B. Vanderhoef (Committee on Publication for Texas) laments that Christian Science (Church of Christ, Scientist) is known as a cult. "This label" is not "applied to a responsible Christian denomination of many years standing in the community" by historic Biblical Christianity, but is simply honest recognition which Christian Science has justly and accurately earned for itself by its own earmarks.

### SCHOOL MENU

The breakfast and lunch menus for the Cisco Primary and Intermediate Schools during the week of November 15-19 are as follows:

Monday: breakfast--oatmeal, juice and milk; lunch--meat with rice, pork and beans, fruit, roll, cookies and milk.

Tuesday: breakfast--rice, juice and milk; lunch--pinto beans, french fries, spinach, cake, cornbread and milk.

Wednesday: breakfast--cereal, juice and milk; lunch--turkey and dressing-gravy, green beans, whipped potatoes, roll, pears and milk.

Thursday: breakfast--toast and jelly, bacon, juice and milk; lunch--barbequed bun, later tots, tossed salad, jello and milk.

Friday: pancakes and syrup, juice and milk; lunch--weiners and cheese, buttered corn, macaroni with tomatoes, fruit cobbler, milk and roll.

Creator - Spirit; Mind, intelligence; the animating divine Principle of all that is real and good, self-existent Life, Truth, and Love.

## Important AARP Meeting Set For November 18

The Thursday, November 18, meeting of the Cisco Chapter of AARP will be a very special meeting and president Walter Knowlden urges all members to attend. The covered dish supper begins promptly at 6:00 p.m. and is held at the Corral Room.

Election of officers for 1983-84 will be held. Also, members are reminded to bring donations of canned goods and all kinds of non-perishable foods for the Christmas Basket that the Chapter voted to give to some needy Cisco family.

Details for the trip to Albany on December 9 to attend the Christmas Pageant will be discussed.

Preliminary information will be offered for consideration by the AARP members, for possible participation in the cheese distribution project, under sponsorship of the Department of Human Resources and the Federal Department of Agriculture. This would not take place until after January 1, and would include distributions in Cisco, Eastland and Ranger. As of now, the matter is only for consideration by the local group.

As always, an entertaining social program will be presented. "Please come," urges president Knowlden.

Cordially,  
Dell J. Crockett, pastor  
Cisco, Texas



### The Cisco Press

**Country Basket**  
\$2.29  
Prices Good Monday, November 15 thru Sunday Nov. 21  
**Dairy Queen**  
2101 Ave. D. Cisco  
Call In Orders 442-2299

**Notice**  
**Walton Electric Co.**  
is pleased to announce the addition of Ed Hammer to its staff. Ed was born and raised in Cisco. He is an experienced mechanic in all phases of auto repair, and invites his friends and acquaintances to visit him at his new location.  
105 West 9th Cisco 442-2366

MONTGOMERY WARD  
214 W. Main Eastland, 629-2618  
**EARLY SHOPPER SALE**  
Nov. 15 - 20  
REFRESHMENTS  
COLORING CONTEST  
DOOR PRIZE  
BONUS CERTIFICATES  
FROM CHRISTMAS  
CATALOG ORDERS  
OPEN TUES. NOV. 18 Til 9:00

**Tell Quickway Sale**  
Gro. Deli. Bakery  
Sale Nov. 13 thru Nov. 17

Foremost Dairyland \$1.99 Gallon	Coke 7-up, Mr. Pibb, 89c 2 Liter	NEW Country Hearth's Old Fashioned Sandwich Bread 1 1/2 lb. 69c
Country Hearth's Old Fashioned Buttermilk 1 lb. 59c	Russets \$1.19 10 lb. Bag	Red Rome Apples 49c lb.
FROM THE DELI!!!		
Chicken Nuggets Basket 99c	12 oz. Fountain Drink FREE	Burrito's 3 For \$1.00
FRESH FROM OUR BAKERY		
Rolls Pkg. 12 ct. Reg. \$1.29 79c	2 For \$1.00	Sugar Cookies Dozen 89c

**Marvallee's Dress Shop**  
611 E. 8th Cisco, Texas

<b>TOPS—TOPS—TOPS</b> One Rack Misc. \$2.95 - \$4.95	<b>TOPS—TOPS—TOPS</b> 2 Double Racks \$5.95 - \$9.95
<b>ACTION WEST JEANS</b> One Rack \$12.95 Embroidery Pockets	<b>LYCRA STRETCH JEANS</b> New Shipment Jr. \$15.95 Jr. and Missy Size 32-40 \$16.95
<b>SKIRTS</b> 2 Double Racks \$8.95 - \$19.95	<b>KNIT STRETCH PANTS</b> Size 6-20 \$5.95 Size 32-46 \$6.45
<b>WE HAVE A FEW SIZE 5 &amp; 7 JEANS</b> At \$7.95	<b>TOPS</b> \$8.95 - \$14.95

We Also Have A Few \$10 Dresses