

# The Muleshoe Journal

DEDICATED TO THE PROGRESS AND DEVELOPMENT OF BAILEY COUNTY AND THE GREAT MULESHOE COUNTRY

Volume 27, Number 4

MULESHOE — County Seat of Bailey County — TEXAS

Thursday, January 20, 1949

## "March Of Dimes" Dance Planned To Raise Funds To Fight Polio

### Mr. Muleshoe . . .

By Forbes

The constitutional amendment relating to college building in Texas, 1947 seems to be working out, despite the opposition of many, especially of Texas Tech followers. At Denton the North Texas State College is getting a \$1,400,000 science building and a \$300,000 gymnasium building from funds made available by this amendment. Construction on the two buildings is beginning soon.

Considerable opposition was voiced before the election by the people who figured Texas University and Texas A&M would be the principal beneficiaries of the plan.

Among other things found in the mail bag this week is an explanatory letter on Texas Parade, published by the Texas Good Roads Association and referred to in the columns of The Journal many times in the past. Texas Parade is a non-profit magazine, issued to interpret the Lone Star State, to tell tourists about the state's many attractions, to tell prospective citizens about its many economic and industrial advantages, to tell about state parks, hunting and fishing, spiritual and artistic advancement of the people, and many other things which concern Texas and Texans. Texas Parade is must reading for Texans and all interested in this big state.

Also in the mail: More tourists thronged through the Panhandle Plains Historical Museum, on the campus of West Texas State College, Canyon, in 1948, than in any previous year. Some time when you are passing through Canyon, stop and view the exhibits there and learn more about the section you call home.

### Seen & Heard:

Jack Cox: Wait until brother Jim reads what you said about The Journal. E. R. Hart Company, and Ray Griffiths Elevator being the oldest firms. He will make a run at you that echo from which will reverberate thrice around the planet.

Upon investigating more closely the writer finds that Fry & Cox Bros. was indeed founded long before The Journal, to be exact, in 1921. First it operated as a hardware and smith shop, and my, how it has grown. And before any noggin gets busted, this column hastens thus to make amends.

Old Super Cunningham is as proud of the name "Muleshoe" as it is possible to get.

He gets a bang out of telling folks in far distant parts about his home town, how Muleshoe got its name, the fertility of our soil and how easy it is to make a living here. Our service men have the same experience in their travels during the war.

Muleshoe does have a good name, and it is known far and wide; for you can say "Muleshoe" in Chicago and the listener immediately will conjure up a pleasant picture of the Plains shallow water irrigation region, where rolling prairies are covered with lush green fields, and the finest water on earth, sub, pours out from windmill or pump to delight the palate of the thirsty wayfarer. Yes, Muleshoe has a good name and a good name is desirable, as Shakespeare aptly said:

Who steals my purse, steals trash;  
'Tis something - nothing;  
'Twas mine, 'tis his, and soon  
And has been slave to thousands.  
But he who filches from me my good name,  
Robs me of that which not enriches him,  
And makes me poor indeed.

It is always an indication of erudition and culture to quote from Shakespeare, even though the thing quoted is not apropos.

### NE-ROUND DESHAZO WINS BOUT BY KO ROUTE

It took Jack DeShazo, erstwhile Muleshoe high school boy, now at John Tarleton, Stephenville, only one round to dispose of a favored opponent by a knockout in a tournament there recently. A Cisco Brown, student at Tech, was the victim. Jack wrote his parents, Mr. and Mrs. J. J. DeShazo, that he was entered in another tournament at Brownwood.

Jack used to work for The Journal, and the editor is only too glad that he never did cross old Jack in any way, and he sure doesn't aim to cross him in the future.

## JayCees Will Get Attendance

A climax to the 1949 March of Dimes campaign will come with the March of Dimes Dance, set for the evening of January 31, in Muleshoe. The Millsap-Robinson new garage on the Plainview highway has been graciously offered by its owners for the dance. Music will be furnished without charge and Howard Cox will furnish a public address system.

Mrs. Irvin St. Clair is chairman of the dance committee and has appointed Vance Waggon, Tye Young, and Bill Moore in charge of the food. Anyone wishing to donate food to be sold will please see any of this committee.

Sandwiches, doughnuts, and coffee will be sold in the building. Bill Collins, Blondie Ray, Mrs. M. F. Green and Mrs. Jesse Osborn are in charge of the food. Anyone wishing to donate food to be sold will please see any of this committee.

Seating arrangements for the building is in charge of P. Q. Stickney, Gil Wollard, and Buck Wood. A picked square of the Muleshoe square dance club will give an exhibition number with Noel Woodley calling the square. Tickets were placed on sale Wednesday at the Western Drug, Dameron Drug, and in the hands of Lions Club members.

Mrs. Noel Woodley, county drive chairman, said: "This dance is to be a community affair and it is hoped that all citizens will unite in making it a get together that will be a credit to our community and raise the much needed money for the polio drive. Whether you attend or not it will be appreciated if you buy a ticket."

The JayCees, headed by Bill Hale, have placed collection cans in the various stores of Muleshoe. Marion Harris has placed collection cans in Needmore, Baileyboro, and Enoch, and has taken the collection cards to the Three Way and Bula schools. Mrs. Katherine Sanders is handling the drive at the Three Way school.

Muleshoe schools are holding their drive Wednesday, Thursday and Friday of this week. Mrs. Bertha Walker will start the drive at the movies Jan. 24, to run through the 31st with the help of the Girl Scouts of Muleshoe. Mrs. Woodley reports everyone is cooperating fine and it is hoped these efforts will net the polio fund a representative amount, because the need is urgent.

## Goss Dealer For Hudson Autos

Muleshoe this week is the home of still another automobile dealership, this one for the Hudson line of motor cars.

Carroll Goss, of the C. W. Goss Auto Co., announces that he has accepted the dealership here for the Hudson line. He brought in one of the new 1949 models Tuesday and expected that more would be arriving shortly.

The firm operates a service station and automobile repair garage and the new dealership will fit in with their business very nicely. Mr. Goss issued an invitation to the people to come and see the new Hudson.

## Jackets Play Littlefield There Friday Night

The jacket cagers will take time out during their own Invitation Tournament to travel down to Littlefield where they will meet the Littlefield cagers in a conference encounter at that city. However the tournament play will be in progress at the local gym and will not be affected in any way by the Jackets game that is to be played in Littlefield Friday night.

## 40 Counties In The State Do Not Use Horses Or Mules For Farm Work

Texas farmers are making long strides toward complete mechanization of crop production, according to H. P. Smith, agricultural engineer of the Texas Agricultural Experiment Station.

Smith has just completed analyzing information on power used on Texas farms in crop production furnished him by county agricultural agents.

No horses or mules are now used in crop production in about 40 Texas counties. With the exception of some hand-hoeing and hand-harvesting of cotton, crop production in these counties is completely mechanized, Smith said.

Tractor power is used almost exclusively in the production of all

## Electric Co-op Held Its Best Meeting

### Greatest Show Ring Bull Retires

Good attendance is expected at meetings of the Junior Chamber of Commerce in the next few weeks. For the club Monday night adopted a system whereby the poorest attenders would have to feed and care for the donkeys they have borrowed from Leveland.

A picture of the donkey and any JayCees who happen to be about will be carried in The Journal soon.

The JayCees will offer \$10 to the child under twelve who suggests the best name for the donkey. There will be a first prize of \$7.50 and a second prize of \$2.50, the JayCees announced.

The JayCees met at Gerald's banquet room for their semi-monthly banquet meeting.

Other matters discussed was the club's project of renaming the streets and numbering the houses. The plan has been approved by the city commission and will be carried out as soon as a city map can be completed.

## Muleshoe Students In School Register

Six students of the Muleshoe High School have been chosen to be in the 1948-49 edition of the High School Register.

The High School Register is a biographical index of outstanding students selected from schools accredited by regional associations or by several states. It is published annually in book form.

Students are nominated by school officials on the basis of scholarship, leadership ability, service to school and community, personality, and probable future usefulness to society. The 1947-48 edition included biographical sketches of more than two thousand students representing more than three hundred schools.

The following students were chosen for several nominations: Rufus Aylesworth, Waneen Beller, Weldon McCarty, Charlene Prather, Ted Lawler, Joyce Blackburn.

## Two Way Radio In Use Here By Service Company

Installation of a two-way radio for sending and receiving messages by the Muleshoe office of the Southwestern Public Service Company has placed the office in position to maintain service better than ever, Roy Holland, manager announced.

The two way radio extends over the entire system of the company, so that Amarillo headquarters or Plainview division headquarters are enabled to get into touch with all stations in the event of a breakdown of telephone and telegraph communication.

The local office is able to call Littlefield or Plainview, and in some cases can call the plant at Tucco. A receiver and transmitter have been installed in the local office, and the same equipment is carried in the service truck, so that the office can call the line crew or the latter can call in to the office, in cases that might save considerable time.

Call letters of the local office are KCTR314. The whole system has a wave length, assigned by the Federal Communications Commission.

The local office has a 75 foot pole, which is surmounted by a 20 foot pipe for their antenna.

## Electric Co-op Held Its Best Meeting

### More Moisture Fell This Week

Another snow Monday brought an additional .09 of an inch of moisture, which, on top of that which fell last week brings the January total moisture precipitation in Muleshoe to 1.53 in January. The Monday night snow amounted to 3 inches.

It is about the best January for moisture in the history of the Muleshoe weather recording station, which has a record of only five January's when as much as an inch was received.

Low temperature Tuesday morning was 8 degrees above zero, H. J. Klump, weather recorder said.

## Rev. Craft Is Lions Speaker

Rev. T. G. Craft, pastor of the First Methodist Church, of Muleshoe, was the speaker at the Wednesday noon luncheon of the Lions Club, held in the banquet room at Gerald's.

Rev. Craft went into the genesis of man on earth, giving the Lions some thoughts that might help them to reconcile the Biblical account with other known facts.

He explained these matters in such a way that even those who are not Bible students could understand and all seemed to enjoy hearing him. Rev. Craft was introduced by Jack Lenderson, in charge of the program for the day.

Among guests was little Dixon Ray, son of member Blondie Ray. A new member was Marvin Wilson, in charge of the Farmers Home Administration in this county. Noel Woodley presided.

A committee of Lions passed out tickets to the "March of Dimes Dance," each member being expected to sell 10 tickets. Supt. W. C. Cunningham told the Lions it is his intention to give a number of copies of The Muleshoe Journal to St. Louis with him on the occasion of the annual national school men's convention, and to place a copy on every newstand in the city. The Journal has agreed to furnish the papers to Mr. Cunningham, who will let no one escape knowing just what and where Muleshoe is.

## Bailey County Electric Co-op Men To Attend National Convention

Six officers and directors of the Bailey County Rural Electric Association, of Muleshoe, plan to be present when the annual national REA convention is held in New York City at the end of this month.

Those who expect to be present are W. W. Brancum, J. T. Eubanks, H. E. Schuster, J. T. Eubanks, Pete Todd, directors, and W. H. Thompson, manager.

Reservations have been made for the group on a special REA train which will leave Amarillo the night of January 27. The convention will last three days and the local men expect to be home February 6.

A number of side trips have been planned this year to break the monotony of the train ride. On the way up the group will spend a time sight seeing in St. Louis, and will visit Niagara Falls. On their return they will spend several hours in Washington, D. C., viewing the historic places of the national capital, and later will stop at Sheffield, Ala., for a tour of inspection of the TVA project. Besides these trips there is a sight seeing tour of New York and environs for those who will have the time.

The local group will stop at Hotel Commodore, where convention meetings will be held. Some 2,500 delegates from every part of the nation are expected to attend the convention.

yield came to only 30 bushels. On land where ammonium nitrate was applied at the rate of 200 pounds per acre, the yield amounted to 65 bushels of oats, more than doubling the yield on the plot that had no fertilizer.

In McLennan county, 20 pounds of nitrogen increased the yield of lint cotton from 300 pounds per acre to 486 pounds.

In East Texas, Henderson county ran a vetch-phosphate experiment, and here's what the results were. The land had a crop of vetch on it that was turned under. Phosphate was applied when vetch was planted. At the time hybrid corn was planted, 400 pounds of 5-10-5 was applied. Later the corn was sidedressed with 400 pounds of ammonium nitrate. Result: 111 bushels per acre. Sixty-three bushels of hybrid corn was the yield where only 300 pounds of 5-10-5 was applied at planting time and later sidedressed with 200 pounds of ammonium nitrate. The check plot for this demonstration ran only 15 bushels.

## Electric Co-op Held Its Best Meeting

### More Moisture Fell This Week

Another snow Monday brought an additional .09 of an inch of moisture, which, on top of that which fell last week brings the January total moisture precipitation in Muleshoe to 1.53 in January. The Monday night snow amounted to 3 inches.

It is about the best January for moisture in the history of the Muleshoe weather recording station, which has a record of only five January's when as much as an inch was received.

Low temperature Tuesday morning was 8 degrees above zero, H. J. Klump, weather recorder said.

## Rev. Craft Is Lions Speaker

Rev. T. G. Craft, pastor of the First Methodist Church, of Muleshoe, was the speaker at the Wednesday noon luncheon of the Lions Club, held in the banquet room at Gerald's.

Rev. Craft went into the genesis of man on earth, giving the Lions some thoughts that might help them to reconcile the Biblical account with other known facts.

He explained these matters in such a way that even those who are not Bible students could understand and all seemed to enjoy hearing him. Rev. Craft was introduced by Jack Lenderson, in charge of the program for the day.

Among guests was little Dixon Ray, son of member Blondie Ray. A new member was Marvin Wilson, in charge of the Farmers Home Administration in this county. Noel Woodley presided.

A committee of Lions passed out tickets to the "March of Dimes Dance," each member being expected to sell 10 tickets. Supt. W. C. Cunningham told the Lions it is his intention to give a number of copies of The Muleshoe Journal to St. Louis with him on the occasion of the annual national school men's convention, and to place a copy on every newstand in the city. The Journal has agreed to furnish the papers to Mr. Cunningham, who will let no one escape knowing just what and where Muleshoe is.

## Bailey County Electric Co-op Men To Attend National Convention

Six officers and directors of the Bailey County Rural Electric Association, of Muleshoe, plan to be present when the annual national REA convention is held in New York City at the end of this month.

Those who expect to be present are W. W. Brancum, J. T. Eubanks, H. E. Schuster, J. T. Eubanks, Pete Todd, directors, and W. H. Thompson, manager.

Reservations have been made for the group on a special REA train which will leave Amarillo the night of January 27. The convention will last three days and the local men expect to be home February 6.

A number of side trips have been planned this year to break the monotony of the train ride. On the way up the group will spend a time sight seeing in St. Louis, and will visit Niagara Falls. On their return they will spend several hours in Washington, D. C., viewing the historic places of the national capital, and later will stop at Sheffield, Ala., for a tour of inspection of the TVA project. Besides these trips there is a sight seeing tour of New York and environs for those who will have the time.

The local group will stop at Hotel Commodore, where convention meetings will be held. Some 2,500 delegates from every part of the nation are expected to attend the convention.

yield came to only 30 bushels. On land where ammonium nitrate was applied at the rate of 200 pounds per acre, the yield amounted to 65 bushels of oats, more than doubling the yield on the plot that had no fertilizer.

In McLennan county, 20 pounds of nitrogen increased the yield of lint cotton from 300 pounds per acre to 486 pounds.

In East Texas, Henderson county ran a vetch-phosphate experiment, and here's what the results were. The land had a crop of vetch on it that was turned under. Phosphate was applied when vetch was planted. At the time hybrid corn was planted, 400 pounds of 5-10-5 was applied. Later the corn was sidedressed with 400 pounds of ammonium nitrate. Result: 111 bushels per acre. Sixty-three bushels of hybrid corn was the yield where only 300 pounds of 5-10-5 was applied at planting time and later sidedressed with 200 pounds of ammonium nitrate. The check plot for this demonstration ran only 15 bushels.

## Electric Co-op Held Its Best Meeting

### More Moisture Fell This Week

Another snow Monday brought an additional .09 of an inch of moisture, which, on top of that which fell last week brings the January total moisture precipitation in Muleshoe to 1.53 in January. The Monday night snow amounted to 3 inches.

It is about the best January for moisture in the history of the Muleshoe weather recording station, which has a record of only five January's when as much as an inch was received.

Low temperature Tuesday morning was 8 degrees above zero, H. J. Klump, weather recorder said.

## Rev. Craft Is Lions Speaker

Rev. T. G. Craft, pastor of the First Methodist Church, of Muleshoe, was the speaker at the Wednesday noon luncheon of the Lions Club, held in the banquet room at Gerald's.

Rev. Craft went into the genesis of man on earth, giving the Lions some thoughts that might help them to reconcile the Biblical account with other known facts.

He explained these matters in such a way that even those who are not Bible students could understand and all seemed to enjoy hearing him. Rev. Craft was introduced by Jack Lenderson, in charge of the program for the day.

Among guests was little Dixon Ray, son of member Blondie Ray. A new member was Marvin Wilson, in charge of the Farmers Home Administration in this county. Noel Woodley presided.

A committee of Lions passed out tickets to the "March of Dimes Dance," each member being expected to sell 10 tickets. Supt. W. C. Cunningham told the Lions it is his intention to give a number of copies of The Muleshoe Journal to St. Louis with him on the occasion of the annual national school men's convention, and to place a copy on every newstand in the city. The Journal has agreed to furnish the papers to Mr. Cunningham, who will let no one escape knowing just what and where Muleshoe is.

## Bailey County Electric Co-op Men To Attend National Convention

Six officers and directors of the Bailey County Rural Electric Association, of Muleshoe, plan to be present when the annual national REA convention is held in New York City at the end of this month.

Those who expect to be present are W. W. Brancum, J. T. Eubanks, H. E. Schuster, J. T. Eubanks, Pete Todd, directors, and W. H. Thompson, manager.

Reservations have been made for the group on a special REA train which will leave Amarillo the night of January 27. The convention will last three days and the local men expect to be home February 6.

A number of side trips have been planned this year to break the monotony of the train ride. On the way up the group will spend a time sight seeing in St. Louis, and will visit Niagara Falls. On their return they will spend several hours in Washington, D. C., viewing the historic places of the national capital, and later will stop at Sheffield, Ala., for a tour of inspection of the TVA project. Besides these trips there is a sight seeing tour of New York and environs for those who will have the time.

The local group will stop at Hotel Commodore, where convention meetings will be held. Some 2,500 delegates from every part of the nation are expected to attend the convention.

yield came to only 30 bushels. On land where ammonium nitrate was applied at the rate of 200 pounds per acre, the yield amounted to 65 bushels of oats, more than doubling the yield on the plot that had no fertilizer.

In McLennan county, 20 pounds of nitrogen increased the yield of lint cotton from 300 pounds per acre to 486 pounds.

In East Texas, Henderson county ran a vetch-phosphate experiment, and here's what the results were. The land had a crop of vetch on it that was turned under. Phosphate was applied when vetch was planted. At the time hybrid corn was planted, 400 pounds of 5-10-5 was applied. Later the corn was sidedressed with 400 pounds of ammonium nitrate. Result: 111 bushels per acre. Sixty-three bushels of hybrid corn was the yield where only 300 pounds of 5-10-5 was applied at planting time and later sidedressed with 200 pounds of ammonium nitrate. The check plot for this demonstration ran only 15 bushels.

## Electric Co-op Held Its Best Meeting

### More Moisture Fell This Week

Another snow Monday brought an additional .09 of an inch of moisture, which, on top of that which fell last week brings the January total moisture precipitation in Muleshoe to 1.53 in January. The Monday night snow amounted to 3 inches.

It is about the best January for moisture in the history of the Muleshoe weather recording station, which has a record of only five January's when as much as an inch was received.

Low temperature Tuesday morning was 8 degrees above zero, H. J. Klump, weather recorder said.

## Rev. Craft Is Lions Speaker

Rev. T. G. Craft, pastor of the First Methodist Church, of Muleshoe, was the speaker at the Wednesday noon luncheon of the Lions Club, held in the banquet room at Gerald's.

Rev. Craft went into the genesis of man on earth, giving the Lions some thoughts that might help them to reconcile the Biblical account with other known facts.

He explained these matters in such a way that even those who are not Bible students could understand and all seemed to enjoy hearing him. Rev. Craft was introduced by Jack Lenderson, in charge of the program for the day.

Among guests was little Dixon Ray, son of member Blondie Ray. A new member was Marvin Wilson, in charge of the Farmers Home Administration in this county. Noel Woodley presided.

A committee of Lions passed out tickets to the "March of Dimes Dance," each member being expected to sell 10 tickets. Supt. W. C. Cunningham told the Lions it is his intention to give a number of copies of The Muleshoe Journal to St. Louis with him on the occasion of the annual national school men's convention, and to place a copy on every newstand in the city. The Journal has agreed to furnish the papers to Mr. Cunningham, who will let no one escape knowing just what and where Muleshoe is.

## Bailey County Electric Co-op Men To Attend National Convention

Six officers and directors of the Bailey County Rural Electric Association, of Muleshoe, plan to be present when the annual national REA convention is held in New York City at the end of this month.

Those who expect to be present are W. W. Brancum, J. T. Eubanks, H. E. Schuster, J. T. Eubanks, Pete Todd, directors, and W. H. Thompson, manager.

Reservations have been made for the group on a special REA train which will leave Amarillo the night of January 27. The convention will last three days and the local men expect to be home February 6.

A number of side trips have been planned this year to break the monotony of the train ride. On the way up the group will spend a time sight seeing in St. Louis, and will visit Niagara Falls. On their return they will spend several hours in Washington, D. C., viewing the historic places of the national capital, and later will stop at Sheffield, Ala., for a tour of inspection of the TVA project. Besides these trips there is a sight seeing tour of New York and environs for those who will have the time.

The local group will stop at Hotel Commodore, where convention meetings will be held. Some 2,500 delegates from every part of the nation are expected to attend the convention.

yield came to only 30 bushels. On land where ammonium nitrate was applied at the rate of 200 pounds per acre, the yield amounted to 65 bushels of oats, more than doubling the yield on the plot that had no fertilizer.

In McLennan county, 20 pounds of nitrogen increased the yield of lint cotton from 300 pounds per acre to 486 pounds.

In East Texas, Henderson county ran a vetch-phosphate experiment, and here's what the results were. The land had a crop of vetch on it that was turned under. Phosphate was applied when vetch was planted. At the time hybrid corn was planted, 400 pounds of 5-10-5 was applied. Later the corn was sidedressed with 400 pounds of ammonium nitrate. Result: 111 bushels per acre. Sixty-three bushels of hybrid corn was the yield where only 300 pounds of 5-10-5 was applied at planting time and later sidedressed with 200 pounds of ammonium nitrate. The check plot for this demonstration ran only 15 bushels.

## Electric Co-op Held Its Best Meeting

### More Moisture Fell This Week

Another snow Monday brought an additional .09 of an inch of moisture, which, on top of that which fell last week brings the January total moisture precipitation in Muleshoe to 1.53 in January. The Monday night snow amounted to 3 inches.

It is about the best January for moisture in the history of the Muleshoe weather recording station, which has a record of only five January's when as much as an inch was received.

Low temperature Tuesday morning was 8 degrees above zero, H. J. Klump, weather recorder said.

## Rev. Craft Is Lions Speaker

Rev. T. G. Craft, pastor of the First Methodist Church, of Muleshoe, was the speaker at the Wednesday noon luncheon of the Lions Club, held in the banquet room at Gerald's.

Rev. Craft went into the genesis of man on earth, giving the Lions some thoughts that might help them to reconcile the Biblical account with other known facts.

He explained these matters in such a way that even those who are not Bible students could understand and all seemed to enjoy hearing him. Rev. Craft was introduced by Jack Lenderson, in charge of the program for the day.

Among guests was little Dixon Ray, son of member Blondie Ray. A new member was Marvin Wilson, in charge of the Farmers Home Administration in this county. Noel Woodley presided.

A committee of Lions passed out tickets to the "March of Dimes Dance," each member being expected to sell 10 tickets. Supt. W. C. Cunningham told the Lions it is his intention to give a number of copies of The Muleshoe Journal to St. Louis with him on the occasion of the annual national school men's convention, and to place a copy on every newstand in the city. The Journal has agreed to furnish the papers to Mr. Cunningham, who will let no one escape knowing just what and where Muleshoe is.

## Bailey County Electric Co-op Men To Attend National Convention

Six officers and directors of the Bailey County Rural Electric Association, of Muleshoe, plan to be present when the annual national REA convention is held in New York City at the end of this month.

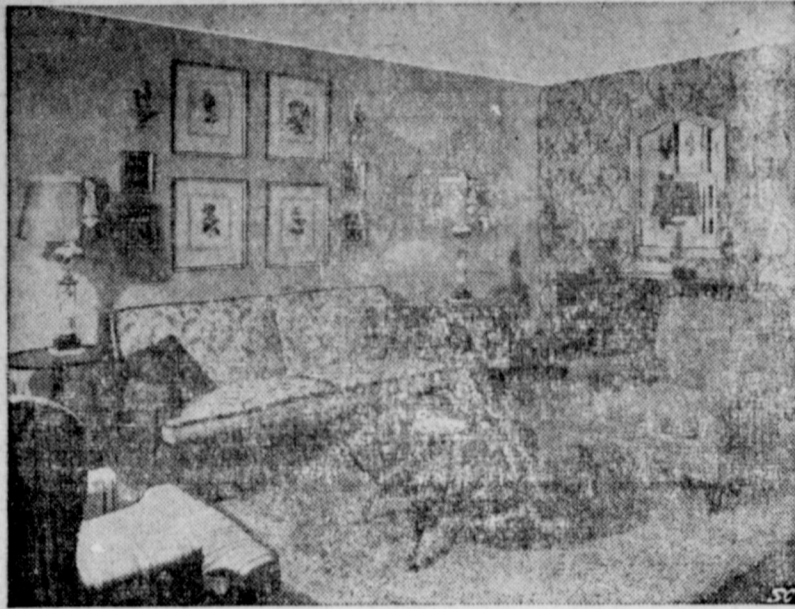
Those who expect to be present are W. W. Brancum, J. T. Eubanks, H. E. Schuster, J. T. Eubanks, Pete Todd, directors, and W. H. Thompson, manager.

Reservations have been made for the group on a special REA train which will leave Amarillo the night of January 27. The convention will last three days and the local men expect to be home February 6.

A number of side trips have been planned this year to break the monotony of the train ride. On the way up the group will spend a time sight seeing in St. Louis, and will visit Niagara Falls. On their return they will spend several hours in Washington, D. C., viewing the historic places of the national capital, and later will stop at Sheffield, Ala., for a tour of inspection of the TVA project. Besides these trips there is a sight seeing tour of New York and environs for those who will have the time



**Framed Pictures And Mirrors Accent Furniture Groupings**



Tomlinson of High Point Photo.

Well-balanced arrangements of appropriately framed pictures and mirrors focus attention on the furniture in a room. In the living room above, the grouping of four large and four small fruit prints, all framed in simple gilt frames, provides a pleasingly symmetrical and dramatic center of interest over the horizontal line of the couch. In vivid contrast to the plain wall, an over-all patterned wall paper relieves any impression of bareness. And to carry out further the feeling of contrast, a large framed mirror has been hung, also over a horizontal furniture piece, to give depth and spaciousness to the room.

**Lack Of Vitamin A May Cause "Night" or Total Blindness In Cattle**

COLLEGE STATION, Jan. 19.—There is a saying that history repeats itself. And that's just what it will do this year, unless Texas stockmen do something. About a year ago, a number of West Texas cattle feeders had trouble. Their cattle lost their appetites and didn't gain as well as they should have. The blame went to the late summer drought of the year before, says Dr. W. C. Banks, extension veterinarian of Texas A. & M. College.

little green feed in the winter pastures. It takes high quality green feed and lots of it—to keep the cattle in shape. Good quality alfalfa hay is one of the best sources of vitamin A there is, says Dr. Banks. Two to four pounds per T. Marion, assistant animal husbandman of the Spur Experiment Station. On the night of December 22, one Hereford steer in a pen of five was found to be completely night blind. Two others had a little night blindness. If nothing is done to correct the vitamin A deficient ration, all the steers in this group will become night blind. They will soon lose their appetites, some may fall to the ground and have convulsions. Later they may become totally blind.

Texas had a good share of dry summer ranges this past year, so history may repeat itself again this year unless Texas stockmen keep a good eye on their cattle. Cattle are facing a tough winter. They have spent a lot of time on drouthy ranges, and now there is

**FARLEY INSURANCE AGENCY**  
 JOHN H. FARLEY  
 Owner  
 • General Insurance  
 • City & Farm Property  
 • Real Estate  
 Residence Phone 242-W  
**OFFICE**  
 In Gilbreath Building  
 Phone 115 — Muleshoe

**Competitive Examinations To Be Held February 26, For State Jobs**

The Merit System Council, which serves as a "clearing house" for positions in the State Department of Public Welfare and the Texas Employment Commission, will hold open competitive examinations on February 26, 1949, for a number of positions now open in those agencies, according to Chas. S. Gardner, Director of the Merit System Council.

There is a continuing need for workers in the State Department of Public Welfare and the Texas Employment Commission. The immediate need for professional workers consists of Field Worker, with the Public Assistance Program; Child Welfare Worker and Senior Child Welfare Worker, with the Child Welfare Program.

Clerical and stenographic needs consist of Clerk-Typist, Senior Clerk, Key Punch Operator, and Junior Stenographer in the State Department of Public Welfare; Stenographer II and Apprentice Clerk with the Texas Employment Commission. The Commission is making very few appointments at this time, but feels that registers should be established to take care of anticipated vacancies between now and the time of the next examinations.

The Council points out that applications for these examinations must be made out on an official application blank which may be obtained from local agency offices or by writing to the Merit System Council, 808 Tribune Building, Austin, Texas. The closing date for submission of applications is February 9.

Now is the time to see that your cattle get plenty of high quality alfalfa hay or silage, says Dr. Banks. This will keep them off the sick list later on.



**Drouth In Texas Occurs Every Twelve Years According To Records**

AUSTIN, Jan. 19.—The recent Texas drouth was a part of a climatic cycle which can be expected to recur about every 11 or 12 years, says a University of Texas archaeologist who is interested in the relation between climatic change and human history in North America.

Alex D. Krieger, participant in a program on weather cycles at the recent Plains Archaeological conference in Lincoln, Neb., says drouths have recurred repeatedly for many centuries in the Great Plains states, and this information should be a sign-post to farmers to anticipate these changes in their crop planning.

He points to modern drouth periods in 1934-36, 1923-24, 1910-12, 1899-1901, and the 1880's as examples of climatic cycles which

have had profound effects on American economy. Establishment of the exact dates on climatic periods in North America during the past 25,000

years is one of the problems facing climatologists.

The archaeologist can date his finds through geological and other means, thus helping the climatologist to determine the date of climatic periods which changed life on this continent during the past 25,000 years, Krieger says.

Read The Want Ads. Every Week.

**PERMANENT SPECIAL**

\$8.50 OIL PERMANENT	\$3.50
\$15.00 COLD WAVE	\$8.00
SHAMPOO & SET	\$1.00

**NANCY'S BEAUTY SHOP**  
 LAZBUDDY, TEXAS

**NEW UPHOLSTERY . . .**

**... Makes Your Furniture "LIKE NEW"**

**WE DO FURNITURE & AUTO UPHOLSTERY**

**SPRADLEY'S UPHOLSTERY SHOP**  
 West of Gwyn Body Werks  
 PHONE 364-J — MULESHOE

**Entertainment at Your Local THEATERS**  
 MULESHOE, TEXAS

Box Office Opens 6:45 p. m.—Show starts 7:00 Weekdays  
 Saturday & Sunday Show Starts 2:00 p. m.

<b>--- VALLEY ---</b>	<b>--- PALACE ---</b>
<b>THURSDAY &amp; FRIDAY</b> Jeanne Crain William Holden In <b>Apartment For Peggy</b> <b>SATURDAY</b> Jimmy Wakely In <b>Cowboy Cavalier</b> <b>SUNDAY &amp; MONDAY</b> Gregory Peck Anne Baxter In <b>Yellow Sky</b> <b>TUESDAY &amp; WEDNESDAY</b> Dennis Morgan In <b>Bad Men Of Missouri</b>	<b>THURSDAY &amp; FRIDAY</b> Ray Milland In <b>Sealed Verdict</b> <b>SATURDAY</b> Gloria Henry In <b>Racing Luck</b> <b>SUNDAY &amp; MONDAY</b> Betty Grable Douglas Fairbanks, Jr. In <b>That Lady In Ermine</b> <b>TUES. &amp; WED.</b> <b>Train To Alcatraz</b> With Donald Barry Janet Martin

**NOW COMES THE LEADER WITH A 7-YEAR ADVANCE IN ONE!**

**CHEVROLET**  
 Is the only car bringing you all these fine-car advantages at lowest cost!

*YOU'LL PREFER ITS "LUXURY LOOK!"*

Chevrolet's new Leader-Line Styling is lower, wider, flatter . . . with new Dyna-Cool radiator grille. Single-Sweep front and rear fender treatment, and fixed-ss-rocket lines all around . . . by far the most beautiful development of the new "functional form" for motor cars.

**MORE BEAUTIFUL FROM EVERY ANGLE!**

The new Beauty-Leader Bodies by Fisher (with push-button door openers outside) are true masterpieces by the master builder of Chevrolet's most advanced lines, extra-line upholstery and a wide variety of alluring colors . . . much more beautiful from every angle—inside and outside—front, side and rear.

**MORE ROOM AT EVERY POINT!**

The new Super-Size Interiors featuring extra-wide "Fisher Four Seats," give you plenty of head, leg and elbowroom as well as extraordinary seating space for six full grown passengers. And you'll also notice that the giant rear deck has what amounts to "trunk room" capacity.

**SEE ALL! ENJOY ALL!**

New Panoramic Visibility, with wider (new) windshield, thinner windshield pillars, and 20% more glass area . . . and, of course, permits you a new kind of enjoy-ment to travel in maximum safety.

**THESE ARE CARS THAT "BREATHE"!**

Yes, you'll enjoy the additional pleasure of riding in a "car that breathes" for a completely effective heating and ventilating system supplies warm air to every corner of the interior—exhausts stale air—and keeps glass clear in all weather. \*Heater and defogger units optional at extra cost.

**THE NEW RIDE'S A REVELATION!**

A vastly improved Utilized Kneec-Activ-Ride, combined with new direct-acting airplane type shock absorbers, front and rear, and extra low pressure tires, gives the stability, smoothness and road-safety you have always wanted.

**THERE'S ONLY ONE WORLD'S CHAMPION ENGINE**

You get the finer results of Chevrolet's sturdy Valve-in-Head Thrift-Master engine in all Chevrolet models . . . together with all of Chevrolet's money-saving economy of operation and upkeep . . . and this is the world's champion engine for miles served, owners satisfied, and years tested and proved.

**JUST COUNT THE COMFORTS!**

Push-Button Starter for simplest, easiest starting; Hand-E-Shift with Synchro-Mesh Transmission for maximum shifting ease; and Firm Foundation Box-Girder Frame for ride-stability and road-sturdiness unsurpassed in the Chevrolet price range.

**STOP MORE SWIFTLY AND SAFELY!**

The new Cert-Safe Hydraulic Brakes give even faster stops with safety . . . and assure the highest degree of effective braking action for you and your family.

**YOU'LL SAVE MORE MONEY, TOO!**

This new Chevrolet is designed, engineered and built to speed your pulse and spare your pocketbook, for it brings you all these and many other important improvements at the lowest prices and with extraordinary economy of operation and upkeep.

**Plus NEW CENTER-POINT DESIGN!**

A remarkable 4-way engineering advance exclusive to Chevrolet in its field, and consisting of Center-Point Steering—Center-Point Seating—Lower Center of Gravity and Center-Point Rear Suspension gives the new Chevrolet riding and driving results without precedent or parallel in low-cost motoring. That means a new kind of riding ease and a new kind of driving ease heretofore reserved for owners of more expensive cars. Remember—only new Center-Point Design can give you all these finer motoring results; and only the new Chevrolet brings you Center-Point Design at lowest cost!

*The Styline De Luxe 4-Door Sedan*

**ON DISPLAY SATURDAY**

*The most Beautiful BUY of all*

We cordially invite you to see the new Chevrolet for '49—the first completely new car the leader has built in more than seven years—and the most beautiful buy of all!

You'll find it's the most beautiful buy for styling, for driving and riding ease, for performance and safety, and for sturdy endurance born of quality construction throughout . . . because it alone brings you all these advantages of highest-priced cars at the lowest prices and with the low cost of operation and upkeep for which Chevrolet products have always been famous.

Yes, here's the newest of all new cars—pre-tested and preproved on the great General Motors Proving Ground—and predestined to win even wider preference for Chevrolet as the most beautiful buy of all, from every point of view and on every point of value. Come in and see it!

*First for Quality at Lowest Cost.*

AMERICA'S CHOICE **CHEVROLET** FOR 18 YEARS

**C. & H. CHEVROLET COMPANY**  
 YOUR CHEVROLET DEALER  
 MULESHOE, TEXAS



# INVENTORY SALE



Ladies & Childrens'  
**COATS & SUITS**  
1/2 Price



**LADIES BLOUSE**  
1 Group ..... \$4.99  
1 Rack ..... \$2.99  
ALL SIZES



Men Corduroy  
**SPORT COATS**  
All Sizes - Reg. & Long  
Reduced To  
**\$12.99**

ALL  
LADIES  
Fall



**HATS** ..... \$1.59

**DARK OUTING**

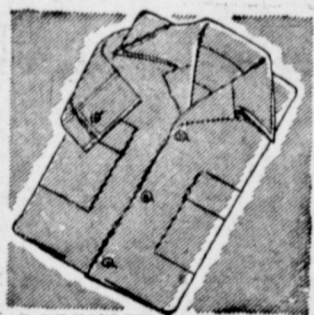
30c per yd.

**PRINTED PERCALES**

80x80 & 63x63  
30c per yd.



One Group  
**LADIES SHOES**  
1/2 Price



Boys Flannel  
**SPORT SHIRTS**  
Reg. \$2.98 Val.  
**\$1.99**

**SWEATERS**

Ladies, Girls,  
Boys and Mens  
1/2 Price  
All Sizes and Colors

Mens  
**Leather & Wool  
JACKETS**

1/2 Price

YOU'LL SCARCELY BELIEVE THE FIGURES ON THESE PRICE TAGS—

MISSES & WOMEN'S

**WASH DRESSES**

Gay Prints of Fine Quality 80x80 Percales  
Regular  
\$2.98 - \$3.49 - \$3.95  
**\$2.47**

QUALITY 54-inch  
**WOOLENS**  
REDUCED TO  
**\$1.00 yd.**

**CANNON TOWELS**  
REGULAR 49c  
3 For ..... **\$1.00**

**MELBA SHEETS**

81x99 - Reg. \$2.98 - Now  
**\$2.00**

**Ladies Rayon Panties**



Reg. 79c  
**Now  
47c**



Boys  
WOOL  
AND  
LEATHER  
**Jackets**

9.95 val.

Your Choice  
**\$4.99**

Mens  
**SWEAT SHIRTS**

Reg. \$1.69 - Now  
**\$1.39**



Haynes Fine Quality  
**LONG - HANDLES**  
Reg. \$2.39 - Now  
**\$1.79**

**LADIES SLIPS**

Black - White - Tearose



Reg. \$2.98 - \$3.98 - Now  
**\$1.99**

ODD LOTS MENS

**Khaki Pants** ..... \$1.98  
**Khaki Shirts** ..... \$1.98

Mens Water Repelant

**JACKETS**

All Sizes - Only  
**\$2.99**

Mens

**OVERALLS**

Reduced To Meet  
Your Budget

CONRO, reg 2.98  
Now ..... **\$2.79**  
BIG SMITH reg. 3.25  
Now ..... **\$2.98**



300 Ladies  
**DRESSES**

19.95 val. .... **\$10.99**  
14.95 val. .... **\$ 8.99**  
12.95 val. .... **\$ 7.99**  
10.95 val. .... **\$ 5.99**

ALL SIZES

Walls

**O. D. COVERALLS**

With A Zipper  
Sizes 34 to 46  
Reg. \$5.99 - Reduced To  
**\$4.99**



**BIG  
SMITH'S**  
Cramertor

Top  
Quality  
Suit

Regular  
\$5.95  
EACH

Now



**SHIRT** ..... **\$4.95**  
**PANTS** ..... **\$4.95**

## ST. CLAIR DEPT. STORE

All Sales Final - Strictly Cash - No Lay-A-Way or Alterations On Sale Merchandise

### SALE STARTS FRIDAY --- ENDS MONDAY



**Our Honor Roll . . .**

The Journal this week renews an old custom, recently neglected, of printing the names of those who subscribe for the paper during the week under the above heading. Several readers have requested we do this regularly.

- Old subscribers who renewed their subscriptions in the last few days are:
- B. J. Beaty, city.
  - J. R. Wedel, route 2.
  - J. W. Hornbrook, city.
  - E. L. Maby, city.
  - Cecil Tate, city.
  - Clinton Bristow, city.
  - H. A. Gore, Circle Back.
  - J. W. Bowen, city.
  - Cecil Young, city.
  - J. W. Gregory, Hot Springs, NM.
  - W. E. Thomas, city.
  - H. N. Nivens, city.
  - Glenn Stiles, route 1.
  - Mrs. Essie Plunkett, Baileyboro.
  - Pat Bulloch, city.
  - Guy Nickels, city.
  - Otis Nowell, city.
  - J. T. Shofner, route 2.
  - I. F. Willman, city.
  - Roland Bigham, city.
  - Lester Howard, Star route 2.
  - F. L. Shelby, star route 1.

- New Subscribers:**
- Geo. J. Harlan, Sacramento, Calif.
  - J. K. Smart, Circle Back.
  - Arthur Kingery, St. Jo, Texas.
  - R. V. O'Neal, Lubbock.
  - L. R. Elder, route 1.

**VISITING IN AMARILLO**  
Mrs. I. W. Haney is visiting her daughter, Mrs. Arch Pool in Amarillo this week.

**PLEASANT VALLEY CLUB WILL MEET**  
The Pleasant Valley Social Club will meet with Mrs. Jack Epps next Wednesday, January 26.

**CEMETERY ASSOCIATION TO HAVE MEETING**  
The Bailey County Cemetery Association will have a meeting in the district courtroom January 28, at 8 p. m. The public is urged to be present.

**IT WAS COLD SUNDAY NIGHT**  
Low temperature recorded for Sunday night was 16 above. R. J. Klump, local weather recorder said. Sunday was a blustery, snowy day, but very little snow fell, probably as much as an inch, and added little to the store of moisture deposited by last week's snow, rain and sleet.

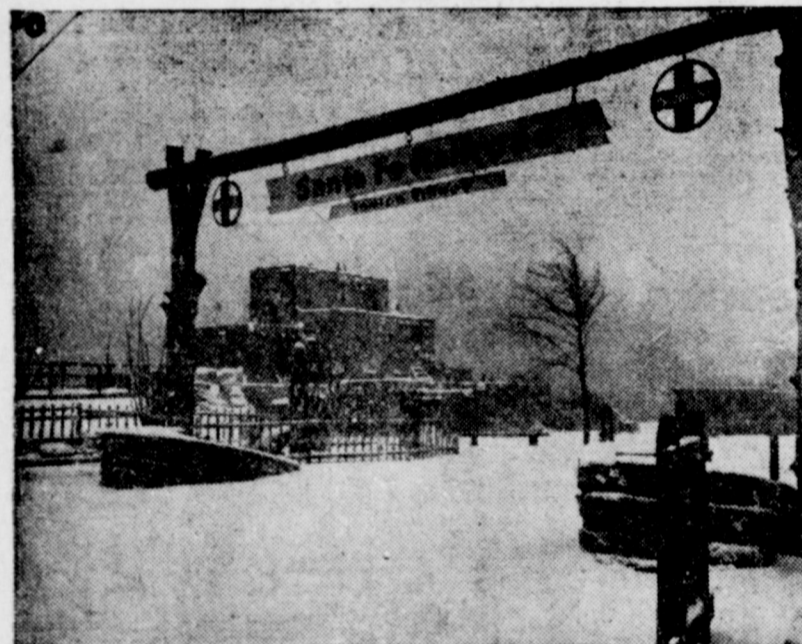
**VISITING DAUGHTER**  
E. M. Grigsby, of Wellington, has been visiting here in the home of his daughter, Mrs. Otis Nowell.

**REBEKAHS TO MEET**  
Muleshoe Rebekah Lodge will hold a public installation at the Fellowship Hall Monday night, January 24, at 8 o'clock. The public is cordially invited to attend.

**VISIT IN SOUTH TEXAS**  
Mr. and Mrs. S. C. Caldwell have just returned from a trip to South Texas. They visited friends in Lovington, Pecos and Harlingen, while in the Valley they visited the Sunny Glenn Orphans home at San Juan. They reported that it was summer time down that way with temperature around 85, on the way back they were ice-bound in Santa Anna 24-hours.

**CARD OF THANKS**  
We are deeply grateful to our friends and neighbors for their kindness and sympathy, accorded us in our recent bereavement, and for the beautiful flowers. We especially appreciate the thoughtfulness of the Muleshoe Funeral Home.

Mr. and Mrs. Jim Lane  
Mr. and Mrs. Earl Lee  
Monte Lane  
Bette Guthrie.



Mantle of snow drapes Santa Fe Indian Village at deserted Railroad Fair. Snowfall lends weird touch to pueblos usually found in warmer climes. Summer residents of cliff dwellings, long returned to homes in Southwest, probably have never seen snow. Buildings were erected as exhibit for popular lake front show held in Chicago last summer. The fair will open again June 25, 1949, and operate until October.

**COTTON FARMERS OF BAILEY COUNTY**

WE HAVE THE PEDIGREED . . .  
**Marv-L-S Cluster Cotton Seed**  
Texas Certified For Your  
**PROTECTION**

See us and book your needs now, so we can protect and assure you we will have the seed.

**Ray Griffith's Elevator**  
PHONE 32 — MULESHOE



**It's Baby Chick Time**

HATCHING EACH TUESDAY & FRIDAY

Start your brood early for fall layers with our healthy-hatched chicks from 100% blood-tested flocks that are sired by outstanding males.

**Chicks Are Sexed**

IF DESIRED

—Let Us Book Your Order Now—

**Taylor's Produce & Hatchery**

MULESHOE, TEXAS

Remember Last Year?...

**'S-NO FUN**  
WHEN WINTER WEATHER CATCHES YOU WITHOUT A FULL PANTRY!

**BE PREPARED FOR AN EMERGENCY • PIGGLY WIGGLY**

Hunt's Peaches No. 1 Can <b>19c</b>	<b>FAB</b> Washing Powder 2 Lge. Boxes <b>41c</b>	<b>FLOUR</b> 25 lbs. Everlite <b>1<sup>65</sup></b>	Campbells Tomato Soup No. 1 Can <b>12<sup>1</sup>/<sub>2</sub>c</b>
	<b>PEAS</b> Shasta No. 2 Can <b>10c</b>		

**Dorman New POTATOES**  
NO. 2 CAN  
**14c**

**Harvest Inn CORN**  
No. 2 Can  
**19c**

**LART SAUERKRAUT**  
No. 2 1/2 Can  
**15c**

**CANNED VEGETABLES**

**FRANCO-AMERICAN SPAGHETTI, No. 1 can . . . . . 15c**

**Brooks BUTTER BEANS**  
No. 1 Can  
**18c**

**CANNED FRUITS**

**LIBBY'S SLICED PINEAPPLE, No. 1 flat . . . . . 17c**

**WOLF BRAND CHILI, No. 2 can . . . . . 59c**

**MARSHALL HOMINY, No. 2 can . . . . . 10c**

**RANCH STYLE BEANS, No. 1 can . . . . . 14c**

**WIDMERS GRAPE JUICE, qt. . . . . 45c**

**ALL GOLD SUGAR PEAS, No. 303 can . . . . . 20c**

**HUSTON CLUB — 12 oz. Bottle GINGER ALE . . . . . 5c**

**GOLD TIP TOMATOES, No. 2 can . . . . . 14c**

**LIBBY'S — No. 303 Can SPAGHETTI & MEAT . . . . . 25c**

**SNYDER'S TOMATO CATSUP, 14 oz. . . . . 22c**

**GOLD TIP — No. 2 Can GREEN BEANS . . . . . 15c**

**BROOKS SPAGHETTI, No. 1 can . . . . . 10c**

**WORLD OVER — No. 2 Can GRAPEFRUIT JUICE . . . . . 9c**

**Pork Cuts**

FRESH DRESSED & DRAWN  
**Fryers lb. 65c**

BACON — NO. 1  
**Dry Salt POUND 29c**

CUDAHY — 1/2 or WHOLE  
**Picnic Hams POUND 43c**

MORRELL PURE PORK  
**BEEF SHORT RIBS lb. 39c**

ARMOUR STAR  
**SAUSAGE lb. 39c**

**FIRM HEADS CABBAGE, lb. . . . . 5c**

**NEW RED POTATOES, lb. . . . . 6c**

**CALIFORNIA — LARGE BUNCH CARROTS . . . . . 12<sup>1</sup>/<sub>2</sub>c**

**Green ONIONS Large Bunch 10c**

**Lge Bunch RADISHES 7<sup>1</sup>/<sub>2</sub>c**

"THE STORE YOU'RE MOST AT HOME IN!"  
**PIGGLY WIGGLY**



## Boy Scout Meeting Postponed; To Be Monday Night At Lubbock

The Annual Meeting and Banquet of the South Plains Council, Boy Scouts of America, which was postponed due to the slippery roads, will be held on Monday, January 24, at the Hilton Hotel in Lubbock.

The afternoon session for all Scout leaders will start at 4:00 p. m. Mr. Frank Runkles, Scoutmaster of American Legion Troop 8 in Lubbock, will preside.

The Annual Business Meeting of the Council, for all Institutional Representatives, Board Members, and District Chairmen, will also meet at 4:00 p. m. Dr. F. B. Malone, Council President, presiding. The address of the evening to be given at the Annual Banquet which starts at 6:45 p. m., will be

given by Rev. Robert Boshen, pastor of the Hemphill Presbyterian Church of Fort Worth, Texas.

Reservations for the Banquet should be made with the Scout Headquarters Office at 2109 Ave. X in Lubbock. Tickets \$2.00 per plate. All Scouters, friends of Scouting and their wives are cordially invited to attend.

**AT MOTHER'S BEDSIDE**  
Mrs. Carrie Wilhite returned home from Oklahoma City where she was called to be with her mother, Mrs. Sophia Snow, of Blair, Okla., who fell and broke her hip several weeks ago. Mrs. Blair is much improved.

Try Journal Want Ads Today!

## Ringold Lady Dora Tops Hampshire Sows Raises Total of 71 Pigs to Weaning Age

First of her Hampshire breed to become a "seven-star" sow, Ringold Lady Dora No. 753,056 has raised a total of 71 pigs to weaning age, an average of 10.1 pigs per litter. This record is more impressive when compared with national averages. According to U. S. department of agriculture reports, the national average is 6.18



Here, with her seventh "star" family, is Ringold Lady Dora No. 753,056, champion production sow in the Hampshire breed and the first of her kind to qualify as a "seven-star" sow.

spring pigs and 6.39 fall pigs per litter raised to weaning age.

To qualify for a star in the Hampshire production registry a sow must raise a litter of at least eight pigs, without fault or defect, to weigh 320 pounds within 56 days of farrowing. And of course to gain a "seven-star" record Ringold Lady Dora has repeated this performance seven times. She is the first sow in the Hampshire breed to be listed for either the sixth or seventh "star" litters.

In her seventh "star" litter, this sow farrowed 15 pigs, nine of which were saved. The eight selected for registration weighed 443 pounds at 56 days after farrowing.

The production champion was fed a ration containing corn, oats, alfalfa and pelleted milk by-products prior to farrowing. Her pigs were creep fed early and raised on a ration of seven parts corn and three parts oats, with 8 per cent milk by-products added.

Ringold Lady has been owned and bred by William C. Goodheart, Jr., of Eaton, Ohio, since 1944, and was sold to Meadowlark Farms, Inc., Sullivan, Ind.

"If you acquire enough good habits, the old ones vanish just as good grass crowds out the weeds."—Clarence T. Hubbard.

## TO RECEIVE DEGREE

ABILENE, Jan. 19.—Mrs. Betty Craft Jennings, daughter of the Rev. and Mrs. T. G. Craft, Muleshoe, will receive the bachelor of science degree from McMurry college next spring, having completed her work at the close of this fall term. She is a secondary education major.

## Cancer Control Chairman



Karl Hoblitzelle (above) of Dallas has been selected state campaign chairman of the American Cancer Society, Texas Division, for its annual cancer control month in April.

## POPEY'S PUNCH



## PLUMBING LICENSE DEADLINE SET

C. E. Belk, Administrator for the Texas State Board of Plumbing Examiners, announced in Austin today that the deadline for renewing State Plumbing Licenses is February 1, 1949. The Texas State Board of Plumbing Examiners was created by the 50th Legislature for the purpose of examining and licensing plumbers on a state-wide basis. All plumbers who are affected by the Law must renew their 1948 plumbing licenses by

## THE MULESHOE JOURNAL, Thursday, January 20, 1949

February 1st in order to avoid the payment of a deferred renewal fee.

## TRAINEE WANTED

"The Civil Service Commission announces examination for the position of Civil Engineer Trainee. Employment will be the Department of the Army, Corps of Engineers, Galveston District. Application forms may be obtained from the post office; Executive Secret-

ary, U. S. Civil Service Examiners, Department of the Army, Galveston, Texas; or from the Regional Director, 14th U. S. Civil Service Region, 210 South Harwood Street, Dallas 1, Texas."

## HOME FROM TECH

James M. Bowen, student in Texas Tech, Lubbock, spent the week end here with his parents, Mr. and Mrs. J. W. Bowen.

# AUCTION SALE

EVERY MONDAY IN MULESHOE  
2:30 & 7:30 P. M.

WE WILL SELL ANYTHING  
ON COMMISSION

FURNITURE — TOOLS — APPLIANCES  
PRODUCE, etc.

## Competent Auctioneer

SEE WHAT WE HAVE — TELL US  
WHAT YOU WANT

SEE WHAT WE HAVE — TELL US WHAT YOU WANT

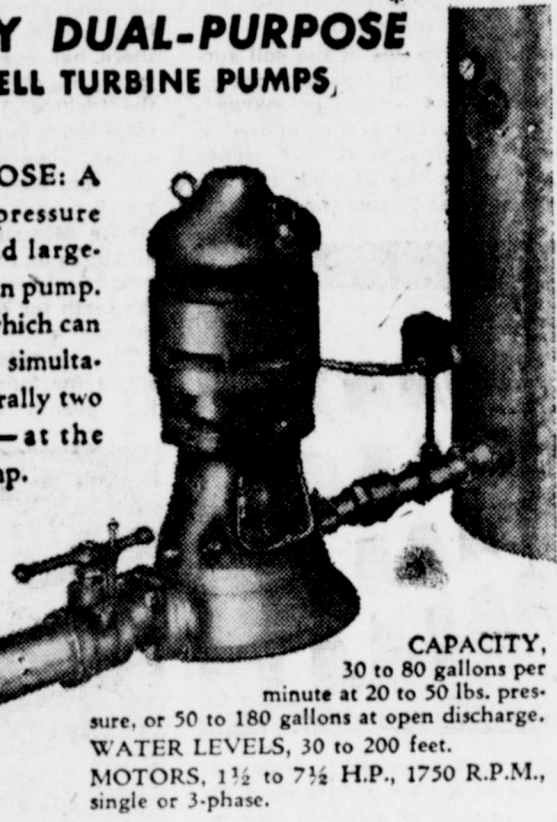
McCORMICK FURNITURE

PHONE 170 — MULESHOE, TEXAS — BOX 265

IRRIGATE ALL DAY WITHOUT INTERRUPTING  
YOUR HOME WATER SUPPLY—FROM ONE PUMP!

## BERKELEY DUAL-PURPOSE DEEP WELL TURBINE PUMPS

\*DUAL PURPOSE: A combined high-pressure water system and large-volume irrigation pump. Has two outlets which can be used alone or simultaneously. . . . Literally two pumps in one—at the price of one pump.



**CAPACITY.**  
30 to 80 gallons per minute at 20 to 50 lbs. pressure, or 50 to 180 gallons at open discharge.  
**WATER LEVELS,** 30 to 200 feet.  
**MOTORS,** 1½ to 7½ H.P., 1750 R.P.M., single or 3-phase.

- DELIVERS 50% TO 75% MORE WATER FOR IRRIGATION THAN CONVENTIONAL TURBINE WATER SYSTEMS OF EQUAL POWER.
  - LONG-LIVED, WEAR-RESISTANT RUBBER BEARINGS.
  - WATER LUBRICATED—NO OILY-TASTING WATER.
  - DURABLE CONSTRUCTION, ATTRACTIVELY PRICED.
- Many small farms can use only one deep well pump for both irrigation and domestic pressure water. The ordinary deep well turbine has not enough pressure, and a jet pump will not deliver sufficient volume. The Berkeley Dual-Purpose Pump solves this problem perfectly—high capacity for flood irrigation, high pressure for sprinkler and house—with both services at top efficiency. LET US SHOW YOU!

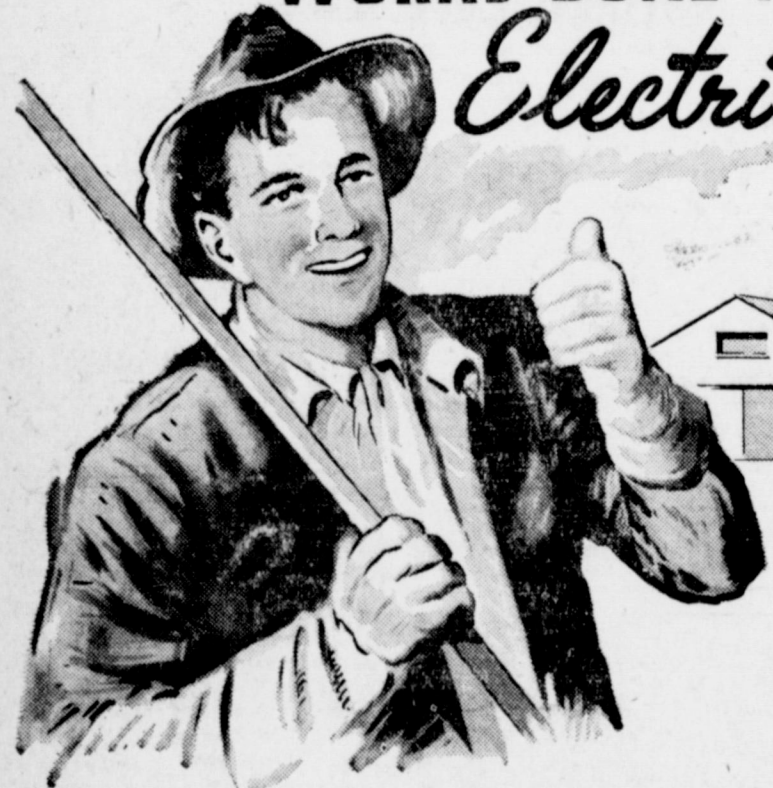
**E. R. HART CO.**

PHONE 23

MULESHOE

## WORKS DONE FASTER

# Electrically



ON THE farm and on the ranch work is done faster when electric service is effectively used.

Today more farms and ranches have electricity than ever before, and those who already have dependable electric service are finding more uses for it than ever before.

These progressive men are finding that electric lighting in the work areas, electric refrigeration, electric power tools for repairs and maintenance, electric milkers, brooders, incubators, choppers, and loaders all mean that more work can be done in a shorter period of time... at less cost.

When the time saved is compared with the low operating cost of modern electrical farm and ranch aids, the answer is obvious. That's why so many are using so much electric service. Check with your nearest county agent, REA or Public Service representative to see where electricity can help you.

**SOUTHWESTERN  
PUBLIC SERVICE  
COMPANY**

24 YEARS OF GOOD CITIZENSHIP AND PUBLIC SERVICE

# BIG CAR? YES!

**Big Car Comfort!** Seats as wide as sofas...up to 60.9 inches wide

Plenty of hip and shoulder room for 6 Big People.

Yes, a real "Mid-Ship" Ride in the smooth center-section.

New "I-dra-Coil"

Front Springs

New

"Para-Fix"

Rear

Springs

**Big Car Visibility!** "Picture Windows" all around

Rear window alone 88% larger.

**Big Car Safety!** "Lifeguard" Body

of heavy-gauge steel... "King-Size"

Brakes that operate 35%

easier... lower center of gravity to

hold the road without

wander, even in a

cross wind.



Take the wheel...  
try the **Feel!**

**Big Car Power!** Your choice of 100 h.p.

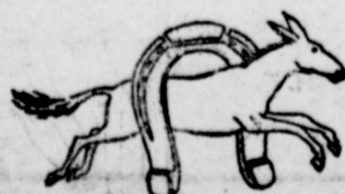
V-8 or a 95 h.p. Six. Up to 10% greater

gasoline savings.

# '49 FORD

**BIG NEW NEW**  
There's a **Ford** in your future

Your Dealer invites you to listen to the Fred Allen Show, Sunday Evenings—NBC Network.  
to the Ford Theater, Friday Evenings—CBS Network. See your newspaper for time and station.



# Motor Co.

Phone 33

Muleshoe, Texas



### Enochs Club Met With Mrs. Thomas

The Enoch's H. D. Club met in the home of Mrs. T. A. Thomas January 13. Due to bad weather only nine members and one visitor Mrs. Ray Seagler were present. Our president, Mrs. Dutch Cash, was in charge of the meeting. Our secretary, Mrs. Roland Gipson was absent, and Mrs. E. C. Gilliam served as secretary. The meeting was opened with a reading by our president, and roll call was answered by a new year's resolution by each member present.

Our new goal for 1949 is to see about buying a club house. The committee appointed to see about this is, Mrs. T. A. Thomas, Mrs. Vernon Reid, and Mrs. J. E. Autry. Motion was made and seconded to send cards instead of flowers to sick people. Mrs. E. C. Gilliam is on this committee.

A metal training school is to be held February 21 at Muleshoe. Members chosen to go to this meeting are Mrs. Dutch Cash, Mrs. C. W. Vanlandingham, Mrs. M. J. Gipson and Mrs. D. T. Johnson.

Members present at the meeting quilted a quilt for the hostess. Refreshments of cake, sandwiches and coffee was enjoyed by all.

Next meeting will be held in the home of Mrs. C. G. Seagler Jan. 27 at 2:30. The County Home Demonstration Agent will meet with us. All members are urged to be present.—Reporter, Mrs. R. P. McCall.

### Shower Honors Mrs. Cooper

A shower honoring Mrs. Joe Cooper, the former Mrs. Joe Davis, was given in the home of Mrs. Birdie Paul Wednesday, January 12, from 3 to 4 o'clock. The table was decorated with a beautiful lace cloth. Refreshments of delicious spice tea and spice cake were served by the hostesses: Mrs. D. W. Winn, Mrs. H. G. Harvey and Mrs. Ray Black. The honoree received many lovely gifts.

### Martha Roberts Bride of Mr. Rudd

Miss Martha Roberts, daughter of Mr. and Mrs. M. F. Roberts of Muleshoe, became the bride of Coney Rudd, son of Mrs. Alice Rudd of Sudan, Saturday January 1, at 4 p. m. in Clovis, N. M. with the Justice of Peace performing the ceremony.

Attending the couple were Miss Marlene Lindsey of Muleshoe and J. B. Fulcher of Sudan. The bride wore a blue grey street length dress of iridescent fallie with black accessories. For something old, cameo ear rings belonging to her sister, Mrs. J. W. Bowen, for something new a cano necklace and for something blue a scarf.

The couple left immediately for Albuquerque, N. M., where they visited in the home of her brother A. J. Roberts and Mrs. Roberts. They will make their home on a farm near Sudan.

### Muleshoe Club Met January 13

On Thursday, January 13, the Muleshoe H. D. Club met for their first meeting of the new year at the home of Mrs. W. H. Awtry. Each member present answered the roll call with a New Year's Resolution.

Mrs. Marie Corrington, the new H. D. Agent, explained "Metal Work" and gave a demonstration of "Special Finishes in Laundry." The new year books were passed out to members present. Mrs. J. T. Shofner took first prize for having the best "Reporter's Book" in the County.

Refreshments were served to Mesdames Marie Corrington, D. E. Beller, C. E. Briscoe, J. E. Day, S. C. Caldwell, Kenneth Briscoe, A. W. Cooley, Byron Jeffcoat, and the hostess, Mrs. Awtry.

The next meeting will be at the home of Mrs. D. E. Beller, January 27. Each member is urged to be present.

### Mrs. H. D. King Study Club Hostess

The Muleshoe Study Club met in the home of Mrs. H. D. King Thursday, January 13, with Mrs. Charles Lenau and Mrs. Lee Pool in charge of the program, "Your Stake in World Peace."

The club decided to send boxes to a family in Holland and Mesdames H. D. King, Homer Sanders, Jr., M. F. Green, Milton Forbes and Buck Wood were appointed to pack and send the boxes.

An invitation from the Friona Study Club inviting members of the Muleshoe club to a guest book review was read.

It was decided by members to help organize a junior study club in Muleshoe. A nominating committee composed of Mrs. Pat Bobo, A. E. Lewis, and E. R. Hart was appointed by the president.

A delicious refreshment plate consisting of tuna fish salad, pickled peaches, ham sandwiches, potato chips and coffee was served to Mesdames S. C. Beavers, Pat Bobo, M. F. Green, E. R. Hart, Marion Harris, Milton Forbes, Clyde Holt, G. O. Jennings, Charles Lenau, Jack Lenderson, Julian Lenau, A. E. Lewis, Lee Pool, Buck Ragsdale, Buck Wood, Homer Sanders, Jr., Miss Elizabeth Harden and the hostess.

The club will meet in the home of Mrs. Julian Lenau January 27, with Mrs. Buck Wood and Mrs. Marion Harris in charge of the program, "How to Relax."

### Wesleyan Service Guild Met Monday

The Wesleyan Service Guild met Monday in the home of Mrs. Jim Burkhead. The president, Mrs. Francis Glibreath, had charge of the business. Mrs. Homer Sanders, Jr., gave the devotional. Mr. Fred Johnson gave the last chapter of the Guild study, "Ten Thousand Years in China." Next meeting is to be a joint session with the WSCS at the church Monday evening, Jan. 24.

Delicious refreshments of pecan pie and coffee were served to one visitor, Mr. Johnson, and Mesdames Fred Johnson, Curtis Spivey, Jim Cox, Homer Sanders, Jr., Francis Glibreath, and Elizabeth Harden, and the hostess, Mrs. Burkhead.

### West Camp Club Meeting Is Held

"In choosing an electric ironer I would choose a Maytag," said Louise Busbice at the West Camp H. D. Club meeting, because the roller is larger which makes ironing faster.

As our agent wasn't present, we had a round table discussion on special finishes in laundry. One was gelatin added to water in which rays are washed and another way to wash woollens in water in which glue has been added.

Each member present bought aluminum to make a tray. Our year book was filled out. Viola Dutton was appointed garden demonstrator; Bonnie Williams, Clothing demonstrator; Joy Jones, Food preparation; Sylvia Couch, Landscape demonstrator.

Delicious refreshments were served by the hostess, Joy Jones, to Wilma Austin, Naomi Austin, Viola Dutton, May Busbice, Louise Busbice, Sylvia Couch, Louise Roark, Hazel Willingham and Bonnie Williams.

**NEW SUBSCRIBER**  
Another new subscriber to The Journal is Ray Maberry, who lives on route 2, out Progress way. Thanks, Mr. Maberry.

**VISIT IN TAHOKA**  
Mr. and Mrs. W. E. Hill and daughter Marion Lee, visited their parents in Tahoka last weekend. Mrs. Hill and daughter stayed for a longer visit and will return to Muleshoe this weekend.

### H. D. Council In Meeting Here

Bailey County Home Demonstration Council had their monthly meeting Monday January 17, and eleven members of the Bailey County Council met with the new agent Mrs. Corrington, for their regular meeting, with two visitors present.

In the absence of the chairman the vice-chairman Mrs. Thomson of the Progress club presided.

Mrs. Corrington announced the training school on aluminum etching work will be held Friday, January 28, at 2:30 in the courthouse. Each club is urged to have one or more representatives present to carry the demonstration back to their club.

Mrs. Corrington also wishes to have a complete mailing address of each club roll in county, officers, committees and demonstrators by the first of February. This is very important, so please get this information to her at once.

The agent also says she wants to get the 4-H girls clubs in the county better organized and working this year and urges the women's H. D. clubs to sponsor this work in their own communities. Ladies bear this in mind and help in any way you can in this worthy work.

Mrs. Ida Murrah T. H. D. A. chair man read a letter from the vice-president of District 2, Mrs. Maltby to the clubs in which she reminded the members of the importance of "Measuring Your Club," "The Messenger," "The Reading List," and the T.H.D.A. fee of 15 cents for members with the clubs argued to send into the council by the 1st of February. The place of the District meeting has not yet been decided.

The Council decided that the clubs of the county would take the month about serving lunch at the by-monthly Tuesday auction sales at Your Exchange on the Lubbock highway. The Muleshoe Club will take the month of February, Watson club March and Enoch's club April. Other clubs will decide their months later.

### Rainbow Girls To Install Officers

The Muleshoe Assembly for Rainbow No. 161 will have a public installation on Sunday, January 23, at 3 p. m. in the Masonic hall. Installing officers are:

Installing officer, Billie Margaret Collins; Installing marshal, Mrs. Yvonne Waggon; Installing chaplain, Mrs. Bill Collins; Installing recorder, Joyce Nickles.

The following girls will be installed for the term of 4 months: Worthy advisor, Billie Fay Graves; Worthy associate advisor, Kay Jones; Charity, Janice Jordan; Hope, Sondra Waggon; Faith, Peggy Robinson; Drill leader, Pat Lane; Chaplain, Jeff Nell White; Recorder, Joyce Nickles; Love, Dolores Locker; Religion, Barbara Grandy; Nature, Bobbie Roberts; Immortality, Gay Sanders; Fidelity, Jo Addine Wagnon; Patriotism, Bobbie Collins; Serice, Marilyn Gupton; Musician, Catherine Norwood; Confidential observer, Holly Ann Cox; Outerobserver, Jackie Bovell; Choir director, Jon Ann Thompson; treasurer, Pat English.

Mother advisor for these term is Mrs. Jo Wood. The advisor board to be installed is composed of Mrs. Morris Douglas, Mrs. Ross Goodwin, Mrs. Thurma White, Miss Elizabeth Harden, Mr. Jack Cox, Mr. Elbert Nowell and Mr. Buck Wood.

**WEST CAMP NEIS**  
Mr. and Mrs. W. A. Astin and daughter of Lubbock visited Mr. and Mrs. Partin Austin. Bot families went to Carlsbad, N. M., Friday and returned Sunday.

Mr. and Mrs. Guy Aush visited in Lubbock.

Mr. and Mrs. C. A. Moore of Morton, visited in the Pershing Busbice home.

Mr. and Mrs. Melvin Dutton of Amherst and Mr. and Mrs. A. L. Dutton of Muleshoe visited with Mr. and Mrs. Dutton of Estcamp.

Mr. and Mrs. Melvin Hider and Wilma visited in Abethy and Lubbock Saturday.

Mr. and Mrs. John Williams and Mr. and Mrs. Will Williams, went to Abernathy Bay and Saturday to the basketball tournament. Saturday they visited with Mr. and Mrs. Dutton of Estcamp.

Mr. and Mrs. Melvin Hider and Wilma visited in Abethy and Lubbock Saturday.

Mr. and Mrs. John Williams and Mr. and Mrs. Will Williams, went to Abernathy Bay and Saturday to the basketball tournament. Saturday they visited with Mr. and Mrs. Dutton of Estcamp.

Mr. and Mrs. Melvin Hider and Wilma visited in Abethy and Lubbock Saturday.

Mr. and Mrs. Melvin Hider and Wilma visited in Abethy and Lubbock Saturday.

Mr. and Mrs. Melvin Hider and Wilma visited in Abethy and Lubbock Saturday.

Mr. and Mrs. Melvin Hider and Wilma visited in Abethy and Lubbock Saturday.

Mr. and Mrs. Melvin Hider and Wilma visited in Abethy and Lubbock Saturday.

Mr. and Mrs. Melvin Hider and Wilma visited in Abethy and Lubbock Saturday.

Mr. and Mrs. Melvin Hider and Wilma visited in Abethy and Lubbock Saturday.

Mr. and Mrs. Melvin Hider and Wilma visited in Abethy and Lubbock Saturday.

Mr. and Mrs. Melvin Hider and Wilma visited in Abethy and Lubbock Saturday.

Mr. and Mrs. Melvin Hider and Wilma visited in Abethy and Lubbock Saturday.



### Farm Outlook Bright For Coming 5 Years

**U. S. Economists Show Optimism in Forecasts**

In spite of some recent declines in farm prices, agricultural economists of the U. S. department of agriculture took an optimistic point of view at their recent outlook conference in Washington, D. C. In the past, these economists have confined their estimates of the outlook to the coming 12 months. This time they tried to look five years ahead. And, they decided that things look fairly good for the farmer for that long.

Of course, they made two basic assumptions that some people still are a little doubtful about—that a stable peace will be established and that there will be no serious de-

pression. If time should prove them wrong about one of the two, the effect may be drastic. And they hasten to point out that these are assumptions, not predictions.

They then go on to point out that the population will increase between one and two million persons a year until 1952; that industrial output per worker will increase, and that yields per acre and per livestock unit probably also will increase.

High incomes for industrial workers will mean a steady market for foodstuffs and clothing. High yield per worker might mean more stable prices for industrial goods. Higher yields per acre and per animal unit will mean more economical production for the farmer.

All in all, this shapes up to just about the kind of five-year period that the farmers themselves would like to enjoy. High production at fair prices means a break for producers and consumers—a square deal for both.

High incomes for industrial workers will mean a steady market for foodstuffs and clothing. High yield per worker might mean more stable prices for industrial goods. Higher yields per acre and per animal unit will mean more economical production for the farmer.

All in all, this shapes up to just about the kind of five-year period that the farmers themselves would like to enjoy. High production at fair prices means a break for producers and consumers—a square deal for both.

All in all, this shapes up to just about the kind of five-year period that the farmers themselves would like to enjoy. High production at fair prices means a break for producers and consumers—a square deal for both.

All in all, this shapes up to just about the kind of five-year period that the farmers themselves would like to enjoy. High production at fair prices means a break for producers and consumers—a square deal for both.

All in all, this shapes up to just about the kind of five-year period that the farmers themselves would like to enjoy. High production at fair prices means a break for producers and consumers—a square deal for both.

All in all, this shapes up to just about the kind of five-year period that the farmers themselves would like to enjoy. High production at fair prices means a break for producers and consumers—a square deal for both.

All in all, this shapes up to just about the kind of five-year period that the farmers themselves would like to enjoy. High production at fair prices means a break for producers and consumers—a square deal for both.

All in all, this shapes up to just about the kind of five-year period that the farmers themselves would like to enjoy. High production at fair prices means a break for producers and consumers—a square deal for both.

All in all, this shapes up to just about the kind of five-year period that the farmers themselves would like to enjoy. High production at fair prices means a break for producers and consumers—a square deal for both.

All in all, this shapes up to just about the kind of five-year period that the farmers themselves would like to enjoy. High production at fair prices means a break for producers and consumers—a square deal for both.

All in all, this shapes up to just about the kind of five-year period that the farmers themselves would like to enjoy. High production at fair prices means a break for producers and consumers—a square deal for both.

All in all, this shapes up to just about the kind of five-year period that the farmers themselves would like to enjoy. High production at fair prices means a break for producers and consumers—a square deal for both.

All in all, this shapes up to just about the kind of five-year period that the farmers themselves would like to enjoy. High production at fair prices means a break for producers and consumers—a square deal for both.

All in all, this shapes up to just about the kind of five-year period that the farmers themselves would like to enjoy. High production at fair prices means a break for producers and consumers—a square deal for both.

All in all, this shapes up to just about the kind of five-year period that the farmers themselves would like to enjoy. High production at fair prices means a break for producers and consumers—a square deal for both.

All in all, this shapes up to just about the kind of five-year period that the farmers themselves would like to enjoy. High production at fair prices means a break for producers and consumers—a square deal for both.

All in all, this shapes up to just about the kind of five-year period that the farmers themselves would like to enjoy. High production at fair prices means a break for producers and consumers—a square deal for both.

All in all, this shapes up to just about the kind of five-year period that the farmers themselves would like to enjoy. High production at fair prices means a break for producers and consumers—a square deal for both.

All in all, this shapes up to just about the kind of five-year period that the farmers themselves would like to enjoy. High production at fair prices means a break for producers and consumers—a square deal for both.

All in all, this shapes up to just about the kind of five-year period that the farmers themselves would like to enjoy. High production at fair prices means a break for producers and consumers—a square deal for both.

All in all, this shapes up to just about the kind of five-year period that the farmers themselves would like to enjoy. High production at fair prices means a break for producers and consumers—a square deal for both.

All in all, this shapes up to just about the kind of five-year period that the farmers themselves would like to enjoy. High production at fair prices means a break for producers and consumers—a square deal for both.



### 'Soil Surgeon' Says Seedbed-Making Boon

**Performs Multiple Work, Cuts Time in Half**

A new, efficient device for producing finer, smoother seedbeds is the "Soil Surgeon" now on the market.

Designed for use in a plowed field only, the device does the combined work of a double-disc, spiked toothed harrow and a float—and manufacturers declare it gives the farmer a finer, smoother seedbed in half the ordinary time.

The exclusive use of the soil surgeon after plowing does not turn up dormant weed seeds or plowed-under vegetation, thus giving a cleaner growing crop and richer soil. It levels the ground, fills all air pockets, and seals the moisture

The exclusive use of the soil surgeon after plowing does not turn up dormant weed seeds or plowed-under vegetation, thus giving a cleaner growing crop and richer soil. It levels the ground, fills all air pockets, and seals the moisture

The exclusive use of the soil surgeon after plowing does not turn up dormant weed seeds or plowed-under vegetation, thus giving a cleaner growing crop and richer soil. It levels the ground, fills all air pockets, and seals the moisture

The exclusive use of the soil surgeon after plowing does not turn up dormant weed seeds or plowed-under vegetation, thus giving a cleaner growing crop and richer soil. It levels the ground, fills all air pockets, and seals the moisture

The exclusive use of the soil surgeon after plowing does not turn up dormant weed seeds or plowed-under vegetation, thus giving a cleaner growing crop and richer soil. It levels the ground, fills all air pockets, and seals the moisture

The exclusive use of the soil surgeon after plowing does not turn up dormant weed seeds or plowed-under vegetation, thus giving a cleaner growing crop and richer soil. It levels the ground, fills all air pockets, and seals the moisture

The exclusive use of the soil surgeon after plowing does not turn up dormant weed seeds or plowed-under vegetation, thus giving a cleaner growing crop and richer soil. It levels the ground, fills all air pockets, and seals the moisture

The exclusive use of the soil surgeon after plowing does not turn up dormant weed seeds or plowed-under vegetation, thus giving a cleaner growing crop and richer soil. It levels the ground, fills all air pockets, and seals the moisture

The exclusive use of the soil surgeon after plowing does not turn up dormant weed seeds or plowed-under vegetation, thus giving a cleaner growing crop and richer soil. It levels the ground, fills all air pockets, and seals the moisture

The exclusive use of the soil surgeon after plowing does not turn up dormant weed seeds or plowed-under vegetation, thus giving a cleaner growing crop and richer soil. It levels the ground, fills all air pockets, and seals the moisture

The exclusive use of the soil surgeon after plowing does not turn up dormant weed seeds or plowed-under vegetation, thus giving a cleaner growing crop and richer soil. It levels the ground, fills all air pockets, and seals the moisture

The exclusive use of the soil surgeon after plowing does not turn up dormant weed seeds or plowed-under vegetation, thus giving a cleaner growing crop and richer soil. It levels the ground, fills all air pockets, and seals the moisture

The exclusive use of the soil surgeon after plowing does not turn up dormant weed seeds or plowed-under vegetation, thus giving a cleaner growing crop and richer soil. It levels the ground, fills all air pockets, and seals the moisture

The exclusive use of the soil surgeon after plowing does not turn up dormant weed seeds or plowed-under vegetation, thus giving a cleaner growing crop and richer soil. It levels the ground, fills all air pockets, and seals the moisture

The exclusive use of the soil surgeon after plowing does not turn up dormant weed seeds or plowed-under vegetation, thus giving a cleaner growing crop and richer soil. It levels the ground, fills all air pockets, and seals the moisture

The exclusive use of the soil surgeon after plowing does not turn up dormant weed seeds or plowed-under vegetation, thus giving a cleaner growing crop and richer soil. It levels the ground, fills all air pockets, and seals the moisture

The exclusive use of the soil surgeon after plowing does not turn up dormant weed seeds or plowed-under vegetation, thus giving a cleaner growing crop and richer soil. It levels the ground, fills all air pockets, and seals the moisture

The exclusive use of the soil surgeon after plowing does not turn up dormant weed seeds or plowed-under vegetation, thus giving a cleaner growing crop and richer soil. It levels the ground, fills all air pockets, and seals the moisture

The exclusive use of the soil surgeon after plowing does not turn up dormant weed seeds or plowed-under vegetation, thus giving a cleaner growing crop and richer soil. It levels the ground, fills all air pockets, and seals the moisture

The exclusive use of the soil surgeon after plowing does not turn up dormant weed seeds or plowed-under vegetation, thus giving a cleaner growing crop and richer soil. It levels the ground, fills all air pockets, and seals the moisture

The exclusive use of the soil surgeon after plowing does not turn up dormant weed seeds or plowed-under vegetation, thus giving a cleaner growing crop and richer soil. It levels the ground, fills all air pockets, and seals the moisture

The exclusive use of the soil surgeon after plowing does not turn up dormant weed seeds or plowed-under vegetation, thus giving a cleaner growing crop and richer soil. It levels the ground, fills all air pockets, and seals the moisture

The exclusive use of the soil surgeon after plowing does not turn up dormant weed seeds or plowed-under vegetation, thus giving a cleaner growing crop and richer soil. It levels the ground, fills all air pockets, and seals the moisture

The exclusive use of the soil surgeon after plowing does not turn up dormant weed seeds or plowed-under vegetation, thus giving a cleaner growing crop and richer soil. It levels the ground, fills all air pockets, and seals the moisture

The exclusive use of the soil surgeon after plowing does not turn up dormant weed seeds or plowed-under vegetation, thus giving a cleaner growing crop and richer soil. It levels the ground, fills all air pockets, and seals the moisture

The exclusive use of the soil surgeon after plowing does not turn up dormant weed seeds or plowed-under vegetation, thus giving a cleaner growing crop and richer soil. It levels the ground, fills all air pockets, and seals the moisture



### Company Improves Side Delivery Rake

**Completely Engineered For Power Operations**

A new side-delivery rake, engineered from the ground up for power take-off raking and tedding, and completely designed for mechanized farming is now in production.

Manufacturers declare that a "history of the side-delivery rake, which is the machine you see piling up long rows of hay, straw and other crops for baling, shows that there has been little or no change in the machine since the advent of the tractor. It is the first all-new rake in 50 years."

Exclusive features of the rake are the floating reel and basket which permits use of the full length of the 64 pairs of raking teeth at all times and a positive chain pitch control which changes the angle of the teeth for different raking conditions.

Two speeds forward and one speed for tedding, or reverse raking, permit the operation of the

Two speeds forward and one speed for tedding, or reverse raking, permit the operation of the

Two speeds forward and one speed for tedding, or reverse raking, permit the operation of the

Two speeds forward and one speed for tedding, or reverse raking, permit the operation of the

Two speeds forward and one speed for tedding, or reverse raking, permit the operation of the

Two speeds forward and one speed for tedding, or reverse raking, permit the operation of the

Two speeds forward and one speed for tedding, or reverse raking, permit the operation of the

Two speeds forward and one speed for tedding, or reverse raking, permit the operation of the

Two speeds forward and one speed for tedding, or reverse raking, permit the operation of the

Two speeds forward and one speed for tedding, or reverse raking, permit the operation of the

Two speeds forward and one speed for tedding, or reverse raking, permit the operation of the

Two speeds forward and one speed for tedding, or reverse raking, permit the operation of the

Two speeds forward and one speed for tedding, or reverse raking, permit the operation of the

Two speeds forward and one speed for tedding, or reverse raking, permit the operation of the

Two speeds forward and one speed for tedding, or reverse raking, permit the operation of the

Two speeds forward and one speed for tedding, or reverse raking, permit the operation of the

Two speeds forward and one speed for tedding, or reverse raking, permit the operation of the

Two speeds forward and one speed for tedding, or reverse raking, permit the operation of the

Two speeds forward and one speed for tedding, or reverse raking, permit the operation of the

Two speeds forward and one speed for tedding, or reverse raking, permit the operation of the

Two speeds forward and one speed for tedding, or reverse raking, permit the operation of the

Two speeds forward and one speed for tedding, or reverse raking, permit the operation of the

Two speeds forward and one speed for tedding, or reverse raking, permit the operation of the

Two speeds forward and one speed for tedding, or reverse raking, permit the operation of the

Two speeds forward and one speed for tedding, or reverse raking, permit the operation of the

**NOW!**

**Dearborn FARM EQUIPMENT**

**A FULL SIZE TANDEM DISC THAT Lifts and Lowers at a touch**

This is the Dearborn Lift Type Tandem Disc for the Ford Tractor with Hydraulic Touch Control. The Ford Tractor can pick it up and carry it over roads at highway speed without blade damage. It lifts for fast short turns on headlands, for passing over grassed waterways, for backing into corners. It really pulverizes and levels the dirt.

Come in and see it! We are headquarters for Ford Tractors, Dearborn Implements, genuine parts and expert service.

**Ford**

**MULESHOE LIQUEFIED GAS COMPANY**

PHONE 125 — MULESHOE

**ANNOUNCEMENT...**

**BOB'S SERVICE STATION**

—PHILLIPS 66—

We have purchased the Phillips 66 Service Station on North Main Street from Dudley and Pearson.

**We Sell All Makes of Oil Phillips 66 Gasoline**

**PROMPT & COUTEOUS SERVICE**

Drive In — Give Our Products & Service A Trial

**MOZELLE and BOB BURKETT**

**CHENILE**

**Spreads -**



# USE THE CLASSIFIED FOR RESULTS

**FARM LOANS**—Will make some choice farm loans. 15 years with 4 1-2 per cent interest. No handling charges except recording of your papers. S. E. Goucher, 1 blk. west of hospital. 15-tfc

**FOR RENT**—4 room furnished apt. See Eddie Lane or phone 24-W or 40-J. 50-tfc

**WANTED TO BUY**  
Top prices for Fat Hogs and Feder Pigs  
**CLOVIS HOG CO., Phs. 224**

**WANTED**—Old Batteries. We will pay \$2.50 for limited time. Millsap & Robertson. 35-tfc

**1947 2-ton Dodge Truck For Sale**, \$1,200. Wiedebush & Childers. 46-tfc

**SIGNS** — J. E. McWhorter. Phone 211. 33-tfc

**LOANS** of all kinds, on farms or city property. Low rate interest. Littlefield, Texas. Phs. 389M. 32-20tp

**WANTED**—Will take orders for custom made Venetian Blinds. Howard Cox, Cox Radio Shop. tfc

**ELECTROLUX**  
Cleaner & Air Purifier

Now available at pre-war price, \$69.75. Immediate delivery. At Cottage Courts, on Lovellville Highway No. 51, across street from Star Trading Post. Phone 261-M, Littlefield, Texas. Boyd Stamps. 2-tfc

**FOR RENT**—Newly decorated furnished three room apartment and private bath. Mrs. Faulkner. 1-tfc

**SEWING & ALTERATIONS**, belts buckles and buttons finished. We certainly appreciate our growing trade. Sewing Room, Mrs. C. D. and L. V. Julian. 1-tfc

**1949 Dodge Pickup for sale**. Mileage 7,000. See Johnson-Pool. 1-tfc

**FOR SALE**—2 two room houses on 25X140 lot. Price \$2,500. See E. K. Angeley. 1-tfc

**SUBSCRIBE To The Journal Today.**

**NOTICE**  
No hunting allowed on Wasson Ranch, known as old King Ranch. H. B. Allison. 1-tfc

**FOR RENT** with sale of C-C Case Tractor and 4-row equip. 410 acres cult. land, 4 mi. north, 1 east of Goodland, Texas, P. O. I. W. Self. 3-2tp

**FOR RENT**—3 room house and bath. Royce Garth. 3-tfc

**FOR SALE**—2-11-38 Slightly used Firestone Deluxe Champion Tread tractor tires, tubes, mounted at a bargain.—Bass Firestone Store. 3-tfc

**FOR SALE**—SC Case '41 mod. Tractor, 2-row lister, planter; 4-row cult. A-1 condition. Reece Willterding, 8 1/2 mi. NE Muleshoe. 2-3tp

**WANTED**—Will do washing and ironing at my home in progress. Close to school. Mrs. Cleo Johnson. 2-3tp

**SEWING MACHINES** repaired, all makes and models. We also change your machine over to electric. Satisfaction guaranteed. Also repair electric irons, tractors, heaters, waffle irons, percolators, etc. A trial will convince you. Prices reasonable. KELLOG'S, Phone 2197, Amherst, Texas. 2-tfc

**FOR SALE**—John Deere Tractor, 4-row planter; 2-row cultivator; 37 model Norge Deep Freeze Box; Living room suite; piano. Leo Holt, Bula, Texas. 3-2tp

**DO YOU NEED A Red Polled Bull?** Write or see Roy Harre, Ribera, N. M. 2-4tp

**FOR CASH RENT**—160 acres, 6 1/2 miles northwest of Muleshoe. Mrs. C. L. Holman, Mangum, Okla. 2-3tc

**FOR SALE**—Good frame house, 432 ft. floor space, built-in cabinet, Virgil Nowell, 5 mi. northwest on Clovis road, 9 mi. west on farm to market road, 2 south. 2-3tp

**FOR SALE**—Registered Hereford calves, all sizes, 2 miles west, 1/2 mile north of Lariat. Mutt Magness. 2-4tp

**STORM PROOF COTON SEED**

**MACHA**—old variety tested—re-cleaned—Ceresan treated—Bulk & delinted. Johnnie Graham, Sudan, Rt. 1; Farm & Warehouse 7 mi. south Bula, Texas. 3-tfc

**I CAN CLEAN** most any kind of planting seed. See R. E. Williams, Muleshoe, Tex. 3-8tc

**FOR SALE**—F-20 Farmall tractor, with 4-row equipment. Calvin Embury, 10 mi. NE Muleshoe. 3-3tp

**JOHNSON-POOL TIRE & APPLIANCE**

We recommend calcium chloride for your tractor. We will fill them at our store or at your farm. 3-tfc

**FOR SALE**—Used upright Grand piano. Johnson Furniture. 2-3tc

**FOR SALE**—New Pontiac streamliner, color two-tone gray. Price, \$2,580. See Doc Wilhite, Muleshoe. 2-3tc

**HOUSE FOR SALE**—4 rooms and bath, 1 block south hospital. Reasonable. D. E. Beller, 3 mi. north Shady Rest. 3-2tp

**FOR RENT**—Nice bedroom with outside entrance. Private entrance to bath. See Mrs. James Phipps S. Main St. 3-2tc

**FORD TRACTOR FOR SALE**—'40 model, with 2-row lister, planter, cultivator & moldboard. Frank Spitzer, 3 mi. N., 3 1/2 mi. W. of Lazbuddy. 4-2tp

**FOR RENT**—1 room house 12x24. Gas furnished. See Perkins at Perkins Refrigeration Service. 3-2tp

**WANT AD RATES**—Minimum 35c; per word, one time 2 1-2c; for each additional insertion, 1 1-2c per word. Strictly cash in advance.



## THE LONE STAR TRADING POST IN MULESHOE

**Wants To Sell:**

—20 acres good level land, close in with good new five room and bath, butane plant, outbuildings, all in alfalfa, 10 in. well with electric motor. This place is a steal at \$12,000.

—1 practically new B Farmall with tools. Cheap.

—1 1938 model F-20 Farmall, good condition, new tires, all equipment

—160 acres, level, close in, 10 in. well, for cash rent, Fair house.

—6 acres, good 6 room house, has pump. Cheap. A good suburban home.

—160 acres, on pavement, irrigated, fair improvements, \$175 A.

—160 acres level black land, good pump, well improved, \$200 acre. We have plenty of land to sell. Let us show you!

"We can sell Anything".

SEE THE

## LONE STAR TRADING POST

Dave Aylesworth  
Across Street from Piggly Wiggly  
Phone 356-J Muleshoe

**FOR SALE**—M International Tractor with new 4-row lister & Planter; 1948 Model Baldwin Combine; 1941 Allis-Chalmers tractor with 2-row equipment. See Cleo Clements. 3-6tp

**WANTED**—IC or CC Case Tractor. Want to trade 1948 combine, 7 mi. south, 3 west of Muleshoe. Bud Holdeman. 3-2tp

**FOR SALE**—Montgomery Ward electric sewing machine; harrow and 2-way breaking plow for Ford tractor. All practically new. Byron Gwyn, 1/2 mile north Progress. 3-3tp

**FOR SALE OR TRADE**—80 acres, improved, shallow water, 3 1-2 mi. from Muleshoe. One-half mile of pavement. Noel Woodley, Farm Loan Office. 4-2tc

**FOR SALE**—12 New Hampshire reds pullets. Mrs. Ira H. Thomas. 4-1tp

**FOR SALE**—F. M. Magneto good as new, also endless belt and pulley and Wakasha radiator. Ira H. Thomas at Coney Elevator. 4-1tp

**FOR RENT**—3 room unfurnished apt., gas and water paid. See Claudia Murrah. 4-1tp

**FOR SALE**—2 bedroom house, built 1946, on lot 50x140 ft., east front, 1 blk. W., 2 S. Hospital, C. W. Wilhite. 4-5tp

**MODERN HOUSE FOR RENT**—3 rooms and bath, 1/2 blk. of pavement. Phone 274-W. 4-1tc

**FOR SALE**—22 ft. platform truck scales. Muleshoe Gin, Muleshoe, Texas. 4-2tp

**LOST**—A pair of wool lined tan leather gloves at Valley Theatre, Reward, Clay Beavers. 4-1tp

**FOR RENT**—Three rooms and bath apartment, unfurnished. Contact Pauline Griffin, Pool Insurance. 1tp

**FOR SALE**—Handsome crochet baby sets or by the piece. Carrie Wilhite, City. 4-2tp

**BEDROOM FOR RENT**—1 block south.—See G. D. Kersey at Dyer-Kersey Land Office. 4-1tp

**FOR SALE**—One Farmall "H" and one F-20 tractor, 2 row equipment. Good condition. Would trade either or both for "M" Farmall and pay difference, 2 miles south, and 2 west of Causey, N. M., Ernest McNatt. 4-2tp

**MACHINE WANTED**—Good working conditions.—Batson Motor Co., Chet Layne Bldg., Muleshoe, Texas. 4-tfc

**SALESMEN WANTED**—Start a Rawleigh Business. Real opportunity now for permanent, profitable work nearby.—Write Rawleigh's, Dept. TXA-270-K, Memphis, Tenn. 4-1tp

**JOB WANTED**—As fry cook, waitress, dishwasher or laundry or tailor work.—Mrs. May Shaw, 2 1/2 Mi. W. on Clovis Hi-way, P. O. Box 1051. 4-1tp

**FOR RENT**—3 rooms and bath apartment. Mrs. Irvin St. Clair. 4-2tc

**FOR SALE OR TRADE**—Choice corner lot, 60x140, half way between high school and new school building, Muleshoe. Noel Woodley, at Farm Loan Office. 4-2tc

**WANTED**—1 gear head 1.25 to 1 ratio preferred. For Rent—1-50-60 ft. building, 1/2 blk of Main Street. Inquire Mrs. Dean's Camp. 4-3tp

**FOR RENT**—3 room house. J. O. Aday, 2nd door west Pop's Cafe. 4-2tp

**FOR RENT**—2 room apartment, partly furnished. J. A. Dearing, S. Main Street. 4-1tp

## REAL ESTATE FOR SALE

—80 A. close to town \$60 per acre, some terms

—100 A.; 70-A. alfalfa, \$150 per A. \$6,000 cash will handle.

—320 A. with two good wells, \$150 per acre, good terms.

—If you plan to buy a farm, come to see me, I have most any size farm.

## CITY PROPERTY

—Good corner lot 60x140, \$700.

—3 rm. house, new, to be moved, \$1,500.

—3 rm. house to be moved, \$750.

—6 room duplex. This is priced to sell. \$5,000 and \$1,500 will handle

—2 bedroom home, \$5,000, and \$1,500 will handle.

—If it is a home you want—come to see me.

See  
**EDDIE LANE**  
at  
**LANE & HALE BARBER SHOP**  
Phone 40-J

## YOUR EXCHANGE OF TEXAS

Box 201 ♦ Muleshoe

● 960 Acres, 2 sets improvements, \$4250 per acre. 29 per cent down, rest easy payments.

● We have several good farms for rent on third and fourth. See us for anything you need. Listings appreciated.

● Come to see us when in town.

● 2-room apartment for rent. \$25 per month.

See EMMETTE CROSS  
Tune in KVOW, Littlefield  
7:45 a. m. Daily

## YOUR EXCHANGE

Box 201 ♦ Muleshoe

## FOR SALE

● 1—Late 1948 4-door Special DeLuxe Plymouth, Radio Heater. Looks like new, guaranteed like new. \$1,850.

● 1—1948 DeLuxe "98" Olds. This is a demonstrator, 3,000 miles, price \$2700.00.

● 1—Lincoln with Mercury motor, new tires, \$550.00.

● 1—1948 Olds Station Wagon, Heater, Radio, Hydromatic drive. \$1650.00.

## JOHNSON - NIX

Muleshoe, Texas

## EXTRA SPECIAL FOR A LIMITED TIME ONLY

The following farms will be offered for sale with possession and all the wheat included.

—480 A., Six miles from Bovina, on paved highway. Four room house, well, barns, REA, school bus, and mail route. 320 A., in cult., 140 A. in wheat good stand, 260 A. will irrigate nicely. Price \$68.50 per A., good terms.

—218 A. One mile from Bovina, REA, school bus and mail route, on paved highway, 30 A. Grass, 52 A. Wheat, balance row crop stubble. This would be a beauty to irrigate. Small house, good well, barns and cow sheds. Very attractive price and terms.

—If you are interested in a good sound business proposition here is something that will stand the most rigid investigation. A well located and well established business of high standard and necessity, the stock of merchandise is very clean and current throughout and is now showing a profit of about \$700 per month. The buildings are only about three years old, and there is a permanent connected income of about \$150 per month that will go with this business. The merchandise will be invoiced at wholesale price. The property and mds. will run about \$14,000. This business will be identified to prospective buyers only.

## O. W. RHINEHART

Next Door To Hotel  
Bovina, Texas 4-1tc

## FOR LUZIER'S COSMETICS

SEE  
**MRS. GLENN SPLAWN**  
Call 197-W 4-3tp

## Progress Club Met In Maberry Home

Progress H. D. Club met in the home of Mrs. Ray Maberry Jan. 18. The president presided over the meeting.

Roll call was answered by giving one club goal for the year. The list of articles we could buy cooperatively through the club was read and discussed.

We discussed serving lunches at the sale exchange in Muleshoe. Reports were given by the various committees.

Sandwiches, cake and coffee were served to Mesdames Mardis, Malby, Gulley, Murrah, Garrett, and the hostess, Mrs. Maberry. The next meeting will be in the home of Mrs. Davis Gulley, February 1.

## LAND FOR SALE

Number 5

—875 acres located 6 mi. northeast of the town of Lometa, small farm about 35 acres, the rest in good grass.

—Good 4-rm. residence, REA, school bus, 2 story rock barn with hall, grain bins, REA at barn. Plenty of good sheds for different purposes, deep creek, fenced in 5 pastures, water everywhere, wind mills, storage and float valve water, lots of budded pecans, grass suitable for cows or sheep. Priced at \$35 per acre, possession can be arranged.

Number 10

—510 acres small field, fair house, REA, school bus, cedar picket corral, sheep and goat fence, good turf of grass, 4 pastures, mill and rock storage, two-thirds open country, located 8 mi. east of Lometa, open all-weather road. Priced at \$35 per acre.

Number 12

—1,020 acres located 12 miles east of Lometa, on pavement, extra large nice modern residence, big barn, plenty of sheds and corral, net fence, deep creek, fishing, lots of pecans, 10 acres in good farm, all bottom land and does not overflow. Priced at \$65 per A.

—I have just any size farm or grass land if interested please contact anytime.

**JACK CARROLL**  
Lometa, Texas 1-4tc

**FOR SALE**—1 14-inch 2 bottom roll-over mole board plow. Earl Marrs farm, 2 1/2 miles north of Shady Rest. 4-1tp

**FOR SALE**—Hegari bundles, good grain, 10 bales alfalfa hay, 2 miles of Clovis highway and 2 miles west of Muleshoe. F. R. Moses. 4-2tp

**FOR RENT**—2 room furnished apartment. L. T. McKillip. 4-1tp

## WANTED

LISTINGS ON  
MULESHOE HOMES  
and  
BUSINESS LOTS

We have Cash Buyers For  
Hoes or Would Trade  
Liblock Property For  
omes in Muleshoe

We Would Like To Have  
Listings on City Property,  
farms or Ranches

We Have Cash Buyers

We Would Appreciate Your  
Listings and Will Give  
Prompt Service

**A. Bell & Sons**  
REAL ESTATE  
3 1/2 Broadway  
Liblock, Texas  
Phs 2-6462 or 5866

The  
**Muleshoe Journal**  
Published Every Thursday  
At  
Muleshoe, Texas

**J. M. FOGES . . . . . Publisher**

Entered second-class matter at the Muleshoe Post Office under the Act of Congress, March 3, 1879.

Subscription Rates  
IN IMMEDIATE  
TERRY, Year . . . \$2.00  
OUT OF IMMEDIATE  
TERRY, Year . . . \$2.50

## New Chevrolet

Chevrolet's 1949 passenger cars, completely restyled and possessing more mechanical improvements than any model within recent years, go on display at dealer showrooms here Saturday, January 22.

The automobile is the product of three years of engineering research and design development. Begun immediately after V-J Day, experimental work has included 1,068,000 miles of test driving over roads of the General Motors Proving Ground and arid highways of the southwest.

The local showing will be held simultaneously with displays in other cities and is expected to draw one of the biggest crowds in the history of events of its kind.

"From inquiries at our offices and dealer showrooms, we know that literally millions are waiting to see the car," said T. H. Keating, general sales manager. "Chevrolet's solid reputation for value and reports of impressive new features have kindled a nationwide interest."

"We do not believe the public will be disappointed. While the car carries numerous comfort and convenience advances, it maintains our tradition of rugged, reliable transportation at the lowest possible cost."

Uncle Sam Says

Ten years can make a big difference. That youngster, now in pig-tails, will be grown up and ready for college in 10 years. Or you may be ready to tackle that pet project of yours, a new home, retirement, or starting a small business. Yes, 10 years can make a difference in many things. Money, for instance. If you go about it right you can make today's money grow, right along with those plans for the future.

Figure, today, how much you'll need in 10 years. Then put aside the amount in U. S. Savings Bonds each week, enough to equal the total you have in mind, always remembering that for every three dollars you invest today, you will receive four dollars in 10 years. If you are on a payroll, join the Payroll Savings Plan where you work. If you are self-employed, enroll for the Bond-a-Month Plan at your own bank.

U. S. Treasury Department

## Novel Dinner Rolls



Next time you make dinner rolls, duplicate these tricky-looking buttermilk and S-shaped buns, for the shaping is easy to learn and do.

When you serve hot rolls, your simple stew, meat loaf, or franksters and kraut, will taste extra good. After you have made raised a few times, you can turn out a number of variations with ease.

Use a standard roll recipe or a hot roll mix to make buttermilk and S-shaped rolls. For buttermilk, cut a circular sheet of dough into pie-shaped pieces and roll up, starting at the wide end. Go a step farther, if you like, and curve into crescents on the baking sheet.

Although intricate looking, S-shaped rolls are simple. Roll both sides of a rectangular sheet of dough to the center, cut in inch slices and twist each piece in the middle. After rolls are shaped, brush a little melted butter or margarine over the top to keep a crust from forming during the second rising. Rolls baked quickly until a medium brown are moist and fluffy inside, crusty-crisp outside. A moderately hot oven (425 degrees F.) is best for achieving this color and quality.

Leftover rolls can be re-heated for serving at another meal. Put them into a paper bag, sprinkle lightly with water, fold the end of the bag to close it, and heat in a hot oven for five minutes before serving.

In addition to providing variety in the menu at low cost, dinner rolls contribute six-way nourishment: protein, iron, food energy, and three B-vitamins.

**DINNER ROLLS**  
1 package yeast, compressed or dry granular  
1 cup lukewarm water  
1 cup milk  
1/2 cup sugar  
2 teaspoons salt  
1/2 cup shortening  
1 egg, beaten  
6 cups sifted enriched flour (about)

Soften yeast in lukewarm water. Scald milk. Add sugar, salt, and shortening. Cool to lukewarm. Add one cup flour. Beat well. Add softened yeast and egg. Mix well. Add enough more flour to make a soft dough. Turn out on lightly floured board and knead until satiny (about 10 minutes). Place in greased bowl, cover and let rise until doubled (about one and one-half hours). Punch down. Cover and let rest ten minutes.

For buttermilk: Turn dough out on mixing board and divide into four portions. Roll each portion into circle about one-eighth inch thick. Brush rolled dough with melted butter or margarine. Cut into pie-shaped pieces. Roll up, starting at wide end.

For S-shaped rolls: Roll dough out to rectangle eight inches wide and one-fourth inch thick. Brush with melted butter or margarine. Roll each side toward center as if making twin jelly-roll. Cut into one-inch slices. Twist each piece in center to form S-shaped roll. Place rolls on greased baking sheets. Let rise until doubled (about one hour). Bake in hot oven (425 degrees F.) 15 to 20 minutes.

Makes three and one-half dozen rolls.

## DR. B. J. WELCH

WILL BE IN MULESHOE  
SATURDAY, JANUARY 22

To Fit Glasses - Examine Eyes - and Duplicate Broken Lenses

at the  
**HARPER APPLIANCE STORE**

# 20% Superphosphate

FOR ONLY

## \$13.60 Per Ton

COST TO YOU

ASSIGN US YOUR AAA PAYMENT FOR THE BALANCE

BOOK YOUR NEEDS NOW

# Ray Griffiths Elevator

Muleshoe, Texas Phone 32



**Chevrolet's 'Balanced Design' Adds Beauty and Comfort**



Progressive streamlining of the 1949 Chevrolet is in line. Notable in the roomier, lower cars is a balance emphasis in this view of the Styleline De Luxe four-door sedan against a new Martin 202 passenger air-

**C. & H. Chevrolet Company To Have Formal Showing Of The New 1949 Model Chevrolet's Sat.**

A product of three years' development work and more than a million miles of engineering research, the 1949 Chevrolet goes on display in C. & H. Chevrolet showrooms here Saturday.

The latest model has been completely restyled. It is lower, wider and more distinctive than any previous series. Not only does the design introduce superior beauty to the lowest-priced ranks, but numerous body and chassis improvements promise to add to Chevrolet's reputation for comfort, safety and convenience.

Two series of cars, the Fleetline and Styleline, are included with De Luxe treatment an option in most body types. De Luxe cars lay increased emphasis on the styling of fabrics, trim and appointments. The lineup shows: Fleetline—Two and four-door sedans. This design is distinguished by the extension of the roof line in an unbroken sweep to the rear. Known to the trade as a "fast back," the form achieved great popularity in the 1948 two-door Aerosedan.

Styleline—Two and four-door sedans, sport coupe, three-passenger

business coupe, convertible, wood and all-steel station wagons. Styleline sedans carry the "notch back." Here the curvature of the roof meets the rear deck at the body belt line.

In both styling and performance the 1949 series continues the "big car" aspects that have always been traditional with Chevrolet. The design is fresh and substantial-looking without approaching the extreme. Greater comfort is reported demonstrable by "ruler and by ride." The rugged six-cylinder, valve-in-head engine remains fundamentally the same, but refinements will increase appreciably the car's handling ease and owner satisfaction.

"In the engineering of our most important model in several years, we considered first the qualities that have consistently given Chevrolet the leadership in the industry," said a company statement. "We did not make changes simply for the sake of change. Every innovation throughout the chassis and body was exhaustively tested and proved. We exercised great care to assure ourselves that each departure met Chevrolet stan-

dards."

The first impression of the new cars is one of smart styling, structural strength and generous dimensions. The entire passenger compartment has been moved forward, lengthened, broadened and lowered, affording a pleasing balance in proportions. Rearwardly the front fenders have been absorbed into the body, their vertical planes built flush with the doors. Crowns of the fenders have also been raised to fit more snugly into the hood and low, clean ensemble of the grille. To add grace and protect body surfaces, a partial rear fender has been retained.

From the passenger's standpoint perhaps the chief improvement in bodies is the immense increase in glass area. All windows have been deepened and widened. The windshield takes full advantage of broader bodies, curving inward at the narrowed pillars to improve sideway as well as forward vision. On comparable models the gain is visibility over 1948 has been as much as 30 per cent.

Try Journal Want Ads Today!

**Mumps Spreads By Direct Contact**

AUSTIN, (Sp.)—Commenting on the necessity for individual cooperation in affecting the control of mumps, now widespread throughout the State, Dr. Geo. W. Cox, State Health Officer, emphasizes the fact that the contagion factor is present before any symptoms appear, and strict isolation of patients is the surest means of controlling the spread of this disease.

Mumps is transmitted by direct contact with an infected person or articles freshly contaminated by the secretions of the mouth or nose of persons having the disease. It takes from 12 to 26 days for mumps to manifest itself after the infection occurs. The disease can be easily transmitted, but one attack usually establishes permanent immunity and second attacks very rarely occur.

**Maple News**

Mr. G. H. Lowe is home and doing fine after major surgery at West Plains Hospital at Morton.

Fred Warton reported seeing flying discs Wednesday. Fred poured hot water in his cream separator to melt the ice and the disc bowl blew up and discs flew all over the house. It cost him several dollars to replace broken parts of the separator.

Mr. and Mrs. Paul Powell moved to the Glenn Thompson farm southeast of Maple.

Carl Dupier moved to the Bob Kendell house in Maple. Leon Dupier moved on the Jim Renfro farm.

We have received quiet a bit of moisture along with a lot of cold weather.

Mr. and Mrs. Charles Abbe spent the weekend in San Angelo visiting her parents, Mr. and Mrs. E. B. Richardson.

Mr. and Mrs. G. A. Davis were Lubbock visitors Thursday.

Mr. and Mrs. Truman Kelley and Mr. and Mrs. R. L. Davis were

Lubbock visitors Sunday. Mr. and Mrs. H. W. Garvin were Muleshoe visitors Friday.

**NOTICE FOR BIDS ON COUNTY DEPOSITORY**

Notice is hereby given that the Commissioners' Court, of Bailey County, Texas, will accept bids for the Depository of State, County, School Districts, and of Trust Funds held by the County and District Clerk, of Bailey County, Texas, at its regular meeting to be held at the Courthouse, in Muleshoe, Texas, Monday, the 14th day of February, 1949, at 10:00 o'clock A. M. Depository Bonds covering County Funds are separate and apart from those covering

School funds. The Court reserves the right to reject any and all bids.

Witness my official hand and seal of office, this 10th day of January, A. D., 1949.

Cecil Tate, County Judge, Bailey County, Texas. (SEAL) 3-5tc

**FROM HAMLIN**

Mr. and Mrs. I. R. Elder and five children have recently moved here from Hamlin, Texas, to make their home on the J. B. Harris farm five miles north of Muleshoe.

**We Invite You To See Our Line Of**



**Refrigerators and FARM FREEZERS**

In Stock Now—

**ELECTRIC and GAS RANGES**

**WATER HEATERS and HEATING APPLIANCES**

Of All Kinds

**WILLSOI & SANDERS LUMBER**  
PHONE 93 - MULESHOE, TEXAS

**Let's Conserve That Moisture!**

**THE BEST WAY IS TO CHISEL YOU CAN BUY A**

**JEOFFROY CHISEL PLOW**

Equipped with Hydromatic Lit—Ideal for Row Crop Farmers—In Any Size, from 7 to 28 feet in width

**ALSO IN STANDARD OR HEAVY DUTY TYPE**

The heavy-duty type has a clearance of 22-in. Will not plug in heavier stubble.

**WE ALSO HAVE . . . The Following Machines For Sale:**

- 5-Row Stalk Cutters . . . . . \$250
- 4-Row Stalk Cutters . . . . . \$200
- 2 IHC No. 10-A 8-ft. Tandem discs . . . . . \$255

**Land Levelers — Ditchers — Texas Terracers**  
**2 and 3-inch Irrigation Tubes**  
**CANVAS and PLASC DAMS**

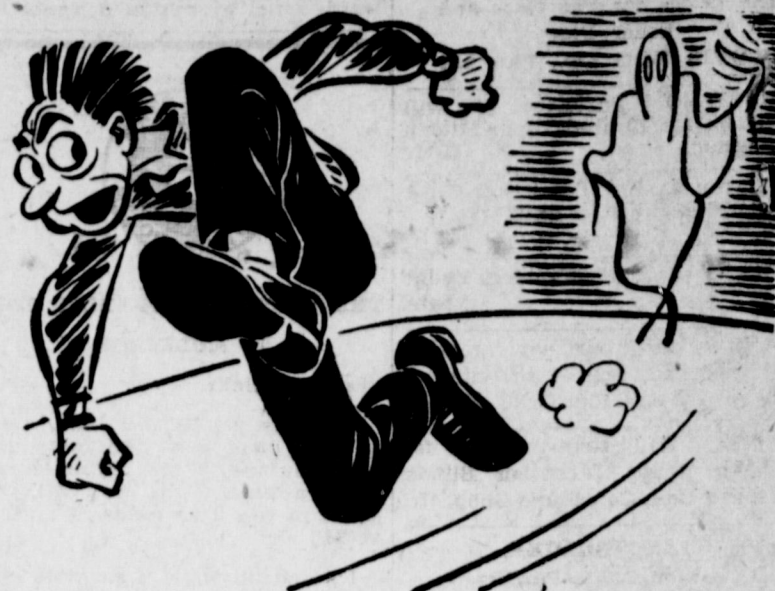
**SPECIAL**

1—12-FOOT No. 22 COMBINE—BUY NOW—SAVE MONEY.

**JOHNSON & NIX**  
**IHC AND OLDSMOBILE**  
**SALES AND SERVICE**  
PHONE 166.. MULESHOE & CLOVIS HIGHWAY

**TALK ABOUT**

**"FAST STARTS"**



**THIS GASOLINE'S GOT IT!**

Phillips 66 is "CONTROLLED" To Give You Fast Action In Cold Weather or Hot!

If your car is a "sluggish starter"—look to the gasoline—it may be sluggish, too. Why not start with Phillips 66—now!

You see, Phillips 66 is controlled so you can get high quality performance from this fine fuel even at very low temperatures. Try a tankful and see for yourself!



\*PHILLIPS 66 GASOLINE IS ESPECIALLY DESIGNED FOR UNIFORMLY HIGH-LEVEL PERFORMANCE ALL YEAR 'ROUND

**PHILLIPS 66 GASOLINE**



**Evans Oil Company**

DISTRIBUTORS Muleshoe, Texas

**Journal Want Ads Buy, Sell & Rent**

Why Not Have That Tractor or Equipment . . . Completely Overhauled by our

**SKILLED MECHANICS**

- Magneto Repairing**
- Carburetor Repairing**
- Painting**
- Replacement Motors complete**
- Ready To Install**

ALL WORK DONE BY EXPERIENCED MECHANICS . . . with modern equipment and GENUINE FACTORY RECOMMENDED REPAIR PARTS.

**FRY & COX BROS.**

A One-Stop Farm Service  
MINNEAPOLIS-MOLINE • WESTINGHOUSE APPLIANCES  
Muleshoe, Texas Phone 35

We Cordially Invite You To The Premier Showing of the

**NEW CHEVROLET**

to be held in our showroom

Saturday, January 22nd, 1949

from 9 a. m. until closing



**C. & H. Chevrolet**

PHONE 12 — MULESHOE



## Senator Corbin To Make Reports

AUSTIN, Jan 18—Senator Kilmer, B. Corbin of the 30th Senatorial District along with ten other new members of the Senate took the oath of office at noon on January 11th. The Senate completed the organization on the date and is the 31 members of the Senate. Senator Corbin is the youngest member.

Senator Corbin reports that the problems which will confront the

51st Legislature are many and varied. At the present time financial matters are principal among the topics of discussion among lawmakers.

Senator Corbin was selected to serve as the chairman of the Committee on Town and City Corporations; vice-chairman of the Committee on Aeronautics; and as a member of the following committees: Agriculture; Civil Jurisprudence; Public Printing; State Institutions and Departments; and Water Rights.

Corbin and his wife and three children—Barry, 8; Blaine, 5; and Jane, 4—are living in Austin during the season.

In a recent letter to The Journal,

Senator Corbin expressed his intention to keep the people of this area informed on legislative matters through the columns of this paper.

### TO FRIONA

Mrs. Noel Woodley accompanied by Mrs. Irvin St. Clair and Mrs. Marion Harris represented The Muleshoe Study Club in Friona Tuesday night where Mrs. Woodley gave a book review for the Modern Study Club of Friona.

### REPORTED BETTER

Mrs. A. C. Gaede is reported much better after undergoing an operation in the Lubbock Hospital recently.

### TO CARLSBAD AND ODESSA

Mr. and Mrs. Noel Woodley plan to spend some time with his mother, Mrs. Henry Woodley who is taking treatments in Carlsbad, N. M. Then they are going to Odessa and visit her parents, Rev. and

## 7-Step Cotton Program Is Being Used By Farmers "In A Big Way"

COLLEGE STATION, Jan. 18—Now, it's about time for Texas cotton growers to decide how their cropping pattern will shape up for 1949.

For many cotton men, the 1949 season is already set. Others, however, are asking the question, "What should I do with cotton in 1949?" says C. H. Bates, extension farm management specialist of Texas A. & M. College.

Texas cotton farmers have taken to the 7-Step Cotton Program in a big way—and have come out on top in many ways by following the improved practices set up in

Mrs. C. E. Jameson.

this cotton program, says Bates. Many growers have built up their profit through more efficient production, ginning and marketing that is encouraged in the educational efforts of all agencies.

Back to this question many Texas cotton farmers are asking—"What should I do with cotton in 1949?" That is a matter for the farmer himself to decide, says Bates. But a few guiding facts may help to reach a decision. Here are some points to keep in mind:

1—The carry-over stocks of cotton next August are expected to be about three million bales greater than on last August 1.

2—The total cotton used in this country is expected to drop a little during the coming months. However, the foreign shipments are to increase under the European Aid

### Program.

3—Price prospects through the government loans are a little more favorable than for feed grain crops due to storage difficulties with grains.

4—Finally, the prospective demand for livestock and livestock products is relatively stronger than for crops.

Bates concludes that this year should be one of fair opportunity for cotton growers if good production and marketing practices are followed. It looks as if cotton "has the edge" on cash grains if it's a toss-up between these two crops.

Certainly where livestock production is handled along with cotton, the output of meat, milk and eggs should not be decreased next year. It's good, common sense, says Bates, to keep up the production schedule on the basis of long-run profits.

During the coming year, farmers must keep up the production system which will maintain the soil

and provide permanent gains for better living.

### DAGWOOD DIGS



Try Journal Want Ads Today!

Bring Us Your

## SUDAN - CANE HEGARI

THAT IS SUITABLE FOR SEED PURPOSES

GILBREATH FEED & SEED

Phone 115

Muleshoe

SALES - SERVICE  
PARTS

ALLIS - CHALMERS FARM  
MACHINERY

MULESHOE IMPLEMENT  
& SUPPLY CO.

PHONE 137

MULESHOE

### Glamour Girl of the Kitchen



CHICAGO—No more telltale hands for pretty Mrs. Helen Olson who has joined the ranks of happy homemakers with this new automatic electric dishwasher. A touch of the dial, after the dishes and the glassware are loaded; a spoonful of the new type detergent added to condition the water, and the machine whirls into action to rinse, wash and electrically dry the dishes. Developed by Hotpoint, this machine washed the pots and pans while the family was at dinner—they were put into the washer as the food was taken from them. Mrs. Olson has scraped the food waste into the disposal, placed the dishes on the counter surface over the washer, and now has them ready to receive four sprays, a rinse, and two washes with a rinse between. Mrs. Olson says, "It's the glamour girl of my new complete kitchen."

Seen & Heard:  
A. W. Gore, Circle Back: I wish you would resume publication of names of new and old subscribers. I used to get a lot of entertainment from just reading the names and addresses, which kept me posted about many acquaintances. Well, Mr. Gore, we are going to try to resume that little feature. We thought it was a good thing, too.

Read The Want Ads. Every Week.

## SALE

HUNDREDS OF ITEMS  
CLOCKS - VASES  
PLATES - CUPS - GLASS  
PICTURES  
and LAMPS

AT A BARGAIN  
Marie Lenau  
Antiques

If It's A  
CAR  
or  
TRUCK  
You Need  
SEE...

NOTTIE  
WITH  
BATSON  
Motor Company

NOTTIE also has...  
TWO KAISERS  
AVAILABLE NOW!  
Located  
Chet Layne Bldg.  
On Clovis Highway  
PHONE 257-J

# NOTICE

CITY OF MULESHOE

## TAX PAYERS

PENALTY & INTEREST  
WILL BE CHARGED ON ALL  
DELINQUENT CITY TAXES  
ON AND AFTER

**FEBRUARY 1st**

Pay This Month and Avoid Extra Cost

BY ORDER OF THE

## City Commission

Connie D. Gupton, Mayor

# JANUARY Clearance

FRIDAY and SATURDAY

SUITS  
COATS  
DRESSES

1/2 PRICE

ALL NEW FALL MERCHANDISE...

CHILDRENS  
DRESSES  
1-3 Off

RAYON GABARDINE  
SKIRTS  
7.98 values ----- \$4.98

FALL HATS  
TO CLOSE OUT  
\$1.00

WOOL  
SKIRTS  
8.98 values ----- \$5.98

CHILDRENS  
CORDUROY O'ALLS  
Reg. 2.49 ----- \$1.49

BLOUSES  
CREPES AND COTTON  
\$3.98

## THE DIXIE LEE SHOP

Phone 234 - Hattie Jennings - Muleshoe, Tex.



75c BOTTLE <b>ANACIN</b> 50c	100 Size <b>PHILLIPS MAGNESIA TABLETS</b> 67c	25c <b>RIT DYE</b> 16c
15c <b>PUTMAN DYE</b> 10c	<b>QUALITY SYMBOLIZES A DAMRON DRUG STORE PRESCRIPTION</b> Every prescription that you have compounded at the Damron Rexall Drug is completely symbolized in Highest Quality. You are always sure that our prescription is the finest quality in ingredients, skillful compounding, accuracy, and everything that goes into the finest prescription compounding. You're sure of quality when your prescription is from Damron Drug. The only Drug Store in Muleshoe that has TWO Registered Pharmacists in charge. JOE S. DAMRON, Reg. No. 9576 SAM DAMRON, Reg. No. 11483 B. S.	200 SIZE <b>ONE-A-DAY</b> \$1.34
\$1.00 Size <b>MENNEN'S SKIN BRACE</b> 67c		\$1.00 SIZE <b>CARDUI</b> 67c
<b>KING'S VALENTINE Chocolates</b> 80c to \$4.00	<b>HALLMARK Valentines</b> NEW SHIPMENT OF Dirilyte	<b>BAYER'S ASPIRIN</b> 49c

**DAMRON REXALL DRUG**  
PHONE 36 MULESHOE

**TO CLOVIS**  
Mrs. Bill Boothe and daughter spent Monday in Clovis.

**GUESTS IN TRAPP HOME**  
Mr. and Mrs. Will Daniel of Clovis visited Mr. and Mrs. Grover Trapp and daughter Sunday.

**VISITING IN MORTON**  
Miss Margaret Aday is visiting her sister, Mrs. Florine Knight in Morton this week.

**TO POST AND ABILENE**  
Mr. and Mrs. L. D. Taylor went to Post and visited their daughter and husband, Mr. and Mrs. Cecil Osborne, Jr. Then the couples went to Abilene and visited Mr. Taylor's brother, Benny Taylor.

**IN MULESHOE**  
H. H. Homsley, superintendent of Three Way school was in Muleshoe Saturday.

**MOVED TO LARIAT**  
Mr. and Mrs. L. D. Rundell and son, Scotty, moved this week to a farm near Lariat.

**FROM AMARILLO**  
Mr. and Mrs. J. F. Wharton, Amarillo, spent the weekend with their daughter, Mrs. Murrell Brown and family.

**TO LUBBOCK**  
Members of the Bailey County Commissioners Court were in Lubbock on business Wednesday.

**MARRIAGE LICENSES**  
Charles J. Lowery, Muleshoe, and Gladys Francene Monk, Sudan, Elmond D. Jahson and Doris Leota Cubert, Muleshoe.

**TO LUBBOCK**  
B. H. Morgan was in Lubbock Tuesday on business.

**VISITOR IN BRAY HOME**  
Mrs. Clyde Bray's brother, J. T. Carpenter of Ida Bell, Okla., spent several days with Mr. and Mrs. Bray this week.

**VISITING HERE**  
Mr. and Mrs. J. E. Burch of Clovis have been visiting in the home of Mr. and Mrs. C. W. Wilhite. The couple's little son, Darrel is under medical treatment here.



**Selection of Feeds Vital in Stock Health**

**Ration Must Be Adequate In Minerals, Vitamins**

What you feed your livestock today will determine the profit you make tomorrow, for experts are agreed that keeping livestock healthy is a profitable job—and to do that, care must be observed in choosing livestock feed.

Feeding livestock on a ration deficient in minerals, vitamins, proteins and carbohydrates, as well as fats, often leads to nutritional diseases. Lack of any of the common or trace minerals in home grown feeds may be and often is, responsible for terrific livestock, feed, labor and investment losses.

The problem of supplying minerals in their right proportions is only a part of the compounding of a product that will solve the livestock man's problems. First, no matter how good the ingredients that go into the making up of a feed, if livestock refuse to eat it the feed is useless so far as benefiting the animal is concerned.

In recent years much has been discovered about livestock diseases due to dietary influences. In this connection, the U. S. department of agriculture says: "Whenever a vital function . . . is interrupted owing to continued failure of the diet to supply sufficient quantities of essential nutrients, or to the inability of the body to utilize these nutrients, the so-called nutritional diseases develop."



**Grand Champ**

Grand champion of the 48th International Live Stock exposition at Chicago was "Old Gold," a 1,200-pound Black Angus junior, shown with C. E. Yoder (left) of Muscatine, Iowa, the owner. In the center is Henry Marshall, president of the exposition, and at right is A. D. Weber of Kansas state college, the judge who picked the winner.

**'Love Apple' Popular**

The scarcity of tomatoes in the past year's otherwise abundant harvests recalls something of the history of this romantic fruit-vegetable.

A sharp drop in production in some of the nation's principal tomato-growing areas means smaller domestic stocks of tomato soup, juices, stews, ketchup and chili sauce this winter. Unseasonable weather is given as the cause.

One hundred years ago the tomato was just beginning an uphill fight for respectability as a food



item. Indians of the Andes had cultivated it since about 1000 A. D. The Aztecs of Mexico gave it the name that Cortez' men altered into "tomato"—and they probably said "toh-mah-toe." And the Spaniards took it back to Europe, but there it was recognized as a member of the deadly nightshade family.

It was wrinkled and small and was known as the "love apple" in Europe and, later, in North America. And for centuries the supposedly poisonous fruit was nothing more than a garden ornament.

**Paper Lining Doubles Effect of Light Shades**

Lights around the house often seem dim at the time of year when evenings are longer. But light from lamps often can be increased by arranging for simple and better reflection.

Light colors reflect light, dark colors absorb it. A white paper lining or a coat of white paint—or even white shoe polish on the inside of a lamp shade may double or triple the light given off.

**REBURIAL SERVICES FOR FORMER FARWELL LAD HELD IN FORT WORTH**

(From State Line Tribune)

Reburial services for 1st Lieut. Morris Edward Martin were held at the Harverson & Cole Funeral Chapel in Fort Worth Saturday, with Dr. H. Guy Moore, pastor of the Broadway Baptist Church officiating, assisted by Rev. R. L. Butler, Methodist pastor at Merkel formerly of Farwell.

Lt. Martin, who was 23 at the time of his death, was the son of Mrs. Lura Martin, Fort Worth, and the late J. H. Martin, former sheriff of Parmer County. He graduated from the Farwell high school several years ago. He was commissioned in the Marine Air Corps and was stationed in Japan at the time of his death.

Getting in his last hour of flying time at Honshu, Japan, on June, 1946, Lt. Martin was killed in an accident. His group was set

to return home the following day and he was slated to receive his discharge 12 days after the day on which he lost his life. Young Martin was born and grew to manhood in this city and was well known here.

Besides his mother he is survived by a sister, Mrs. T. L. Wilkins, Jr., and a brother, James O. Martin, both of Fort Worth.

Try Journal Classified Ads.—They buy, sell and trade.

**THE REVOLUTIONARY PLOW**

**GRAHAM-HOEME PLOW**  
10--BIG FEATURES--10

SELF-SHARPENING POINTS — NO SIDE DRAFT  
EXTRA LIGHT DRAFT—NOTHING TO GREASE  
PLOWS ALL TYPES OF LAND WITHOUT ADJUSTMENTS  
PREVENTS EROSION BY WIND AND WATER  
**BUILT TO LAST A LIFETIME**  
CUTS PLOWING COST IN HALF—DOUBLES SUB-SOIL MOISTURE

FOR SALE BY  
**DAVIS - LENDERSON**  
YOUR JOHN DEERE DEALER

PHONE 56 MULESHOE

**Mr. Farmer--**

NOW TAKING ORDERS FOR

**20% Superphosphate**

Sasco Phos, Mfg. by Southern Acid & Sulphur Co.

— FOR —

**\$13.60 Per Ton**

— OR —

**68c Per Sack**

**THE AAA PROGRAM WILL PAY US THE BALANCE**

Get your Prior Approval from the AAA office of your county on the amount and kinds of crops you can fertilize under this program, then—

**--BOOK YOUR ORDERS NOW--**

**SO WE CAN ANTICIPATE YOUR NEEDS**

**--SEE US ABOUT THIS NOW!--**

**JONES FARM STORE**

YOUR LOCAL PURINA DEALER

PHONE 212-W MULESHOE

**TAX NOTICE**

To The Citizens of Muleshoe Independent School District:

**This Is The Last Month To Pay Your Taxes**

**Without Penalty**

**PAY THIS MONTH AND SAVE**

**Reminder--**

School Tax Payments Are Accepted at the Business Office of the District, located northwest of the Courthouse in Muleshoe.

**MULESHOE INDEPENDENT SCHOOL DISTRICT**

FRANK CUMMINGS  
Business Manager



At the Churches



Schedule of Services

**FIRST BAPTIST CHURCH**  
Rev. A. W. Elaine, Pastor  
Sunday School 9:45 a.m.  
Morning Worship 11 a.m.  
Training Union 6:30 p.m.  
Evening Worship 7:30 p.m.  
Officers and Teachers,  
Wednesday 7 p.m.  
WMU, Wednesday 2 p.m.  
Choir Rehearsal, Thursday 7 p.m.

**FIRST METHODIST CHURCH**  
T. G. Craft, Pastor  
Sunday Services  
Bible Study 10 a.m.  
Church School 9:45 a.m.  
Fellowship 11 a.m.  
Young People 6 p.m.  
Evening Worship 7:30 p.m.  
Midweek Service, Wednesday 7:30 p.m.  
W.S.C.S., Monday 2:30 p.m.  
Choir Rehearsal, Wednesday 7:30 p.m.

**CHURCH OF CHRIST**  
Ebb Randol, Minister  
Bible Study, 10 a.m.  
Church Services, 10:50 a.m.  
Evening Services 7:30 p.m.  
Ladies Bible class Wednesday at 3 p.m.  
Mid-week Service, Wednesday, at 7:30 o'clock.

**LONGVIEW BAPTIST CHURCH**  
Rev. J. E. Moore, Pastor  
Sunday School 10 a.m.  
Preaching Services 11 a.m.  
B. T. U. 8 p.m.  
Preaching Service 8:30 p.m.  
W. M. S., Monday, 2:30 p.m.  
All Church Night, Wed., 7:30 p.m.

**CHURCH OF CHRIST**  
Legion Hall West of Courthouse.  
Worship, 10:30 Each Lords Day.  
Extending to all a cordial invitation.

**Y. L. - PROGRESS METHODIST CHURCH**  
(At Progress 1st & 3rd Sun.)  
(At Y. L. 2nd & 4th Sun.)  
Carrol M. Jones, Pastor  
Union Sunday School 10 a.m.  
Preaching Service 11 a.m.  
Bible Study Classes 7 p.m.  
Preaching Service 7:30 p.m.

**UNITED PENTECOSTAL CHURCH**  
Maggie Kent, Pastor  
Sunday School 10:00 a.m.  
Preaching Service 11:00 a.m.  
Evening Service 7:30 p.m.  
Tuesday Evening 7:30 p.m.  
Friday Evening 7:30 p.m.

**MAIN STREET MISSIONARY**  
Rev. M. E. Robinson, Pastor  
Sunday School 10 a.m.  
Church Services 11 a.m.  
B. T. U. 7:30 p.m.  
Church Services 8:15 p.m.

**LAZBUDDY METHODIST CHURCH**  
J. G. Walker, Pastor  
Sunday School 10 a.m.  
Church Services 11 a.m.  
Evening Service 8:30 p.m.  
Mid-Week Prayer and Song Service 8:40 p.m.  
Everyone invited to our services.

**FIRST BAPTIST CHURCH**  
L. B. Edwards, Pastor  
Lazbuddy, Texas  
Sunday School 10 a.m.  
Morning Worship 11 a.m.  
Training Union 6:45 p.m.  
Evangelistic Service 7:45 p.m.  
Mid-Week Prayer Service 7 p.m.  
"Not forsaking the assembling of yourselves together. Heb. 10:25."

**ASSEMBLY OF GOD CHURCH**  
Rev. L. H. Hubbard, Pastor  
Sunday School 10 a.m.  
Morning Worship 11 a.m.  
Evening Service 8 p.m.  
Young People's Service, Tuesday 8 p.m.  
Mid-week Service, Thursday evening 8 p.m.

**CHURCH OF THE NAZARENE**  
Rev. Martin L. Patton, Pastor  
Mack Hale, S. S. Supt.  
MORNING WORSHIP  
Sunday School 10:00 A. M.  
Morning Worship 11:00 A. M.  
EVENING WORSHIP  
Young People's Service 7 P. M.  
Evening Worship 7:45 P. M.  
You are invited to our services in the Chorus Hall, on the High School Campus.

**MULESHOE PRIMITIVE BAPTIST CHURCH**  
Elder L. M. Handley, Preacher  
Sunday at the school house.  
Song Service 10:30 a.m.  
Preaching 11 a.m.

# Business & Professional Page



**FARM LOANS**  
DRY LAND FARM LOANS  
NEW IRRIGATED LAND LOANS  
NOW AVAILABLE  
No Appraisal or Examination Fee  
L. S. BARRON  
Representative  
Kansas City Life Ins. Co.  
AT  
BAILEY CO. ABSTRACT

**ALVIN C. WEBB**  
PUBLIC ACCOUNTANT  
Income Tax — Audits  
Systems  
429 1/2 Phelps Ave., Littlefield  
Phone 394-M

TRY US FIRST  
FOR ALL YOUR  
OFFICE SUPPLY NEEDS  
THE MULESHOE JOURNAL

**ELECTRICIAN**  
DAVE COULTER

DRS. WOODS & ARMISTEAD  
Optometrists  
406 LFD Drive Littlefield  
Phone 328

FOR  
Refrigeration  
Sales & Service  
and HOUSE WIRING

Call 272-W  
PERKINS'  
Refrigeration  
Service  
BOX 1025

**GREEN**  
Hospital & Clinic  
Muleshoe, Texas  
L. T. Green, Jr., M. D.  
M. F. Green, M. D.  
Mrs. Lula Gorrell, R. N.  
Alice Hicks, R. N.  
Winona Blair, R. N.  
Geraldine Green, R. N.  
(Offices At Hospital)

Water Well Drilling

California Irrigation Pumps  
Estimates on  
TURN KEY JOBS  
Any Size Hole up to 20 Inch  
50 Yr. Experience  
3 Machines In Operation  
ALL WORK GUARANTEED  
K. & L. Drilling Co.  
E. H. Kennedy - L. D. Lancaster  
Muleshoe, Box 612 Ph. 268-W

**NOTICE**

Before You Buy  
A Radio See  
The New  
**ZENITH'S**  
At  
Spence Radio  
Shop

ALSO APPLIANCES FOR  
YOUR NEEDS  
HEADQUARTERS  
For All Kinds Of  
RADIO BATTERIES  
And  
DEPENDABLE SERVICE  
On  
ANY MAKE RADIO  
Phone 270-W

**IN HOT WATER**

It is estimated that there are 25 million homes in the US with no means to produce controlling temperature hot water. The kitchen stove provides more than 35 per cent of the hot water; furnace coils and manual heaters another 35 per cent. All other methods, including automatic water heaters make up less than 30 per cent.

There are more than 200 different kinds and sizes of electric lamps now used in homes.

"Most of the shadows of this life are caused by standing in our own sunshine."—Emerson.

Electricity is now supplied to 94 per cent of all dwellings in the US including 65 per cent of all farm homes.

Marry by all means. If you get a good wife you become very happy; if you get a bad one you will become a philosopher. —Socrates.

"The greater the obstacle, the more glory in overcoming it."—Moliere.

**FISHERMAN'S PRAYER**

Lord give us grace to catch a fish  
So large that even I  
When telling of it afterwards  
May never need to lie.

Lye and strong soaps hinder the bacterial action in septic tanks. Occasional pouring of a mixture of yeast and buttermilk down the drain will help. It stimulates bacterial action and may postpone cleaning.

**LET IT SNOW!**



All dressed up for cold weather and winter winds, this little lady sings "Let It Snow" with real meaning. She's wearing a washable pink snowsuit that is Zelanz-treated to shed snow and rain. The National Cotton Council reports the snowsuit is made of cotton poplin and trimmed with French angora.

Try Journal Classified Ads.—  
They buy, sell and trade.

**POMEROY PATTERN**



When the time for spring cleaning and redecorating rolls around, there will be many lovely new patterns in cotton fabrics for draperies, upholstery, and slip covers. The National Cotton Council points to Pomeroy, a modernized version of 19th Century English bed valance by Mallinson, as one of the most unusual. The chair pictured above is covered in Pomeroy.

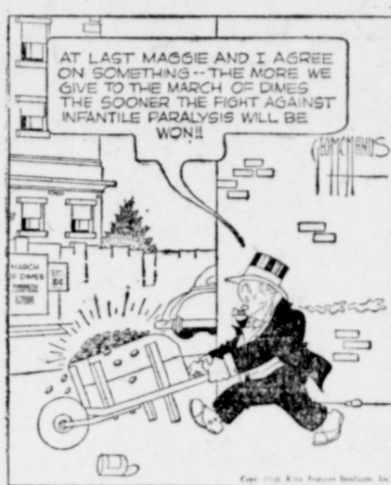
**Income Tax Returns**

C. C. GRIFFITHS  
At Ray Griffiths Elevator

**Clovis Cabinet Shop**

Cabinets - Windows  
and Door Frames  
Let Us Give You  
OUR PRICES  
Across Alley From Hotel Clovis  
49-6tp

**JIGGS JOINS**



**Bobo Insurance Agency**  
Pat R. Bobo, Owner  
Office in Court House  
Phone 97 — Muleshoe

Next Time Try A Journal Want Ad

**Western PUMPS for IRRIGATION**



ANY CAPACITY  
300 TO 2500 GALLONS PER  
MINUTE, AND ANY LIFT FROM  
10 TO 300 FEET  
H. D. CRAWFORD  
SALES & SERVICE  
FOR TURKEY JOB  
Muleshoe — Texas

**PASTURE IMPROVEMENT  
ADVANCED IN 1948 . . .**

"Better Homes for the Livestock Population in Texas" is the subject matter of a report of progress in 1948, made by B. F. Vance, state director of the Production and Marketing Administration. The report shows that, in Texas alone:

Adapted pasture grasses and legumes were seeded on 450 thousand acres. More than 8 thousand earthen dams were constructed to provide adequate water for livestock. Competitive plants, such as prickly pear, mesquite and cedar were eradicated from 480 thousand acres of Texas pastures in order to give grasses and legumes a better chance to grow. Weeds were controlled by mowing 595 thousand acres of pasture land. Agricultural limestone was applied to 57,800 acres and superphosphate was applied to almost 1 1/2 million acres, part of which was cropland. Many acres of pasture land were terraced. In fact, 450 thousand acres of pasture and cropland were protected on Texas farms by AAA terraces constructed during 1948.

**DENTISTS**

A. E. LEWIS B. Z. BEATY  
OFFICE:— First Door West of Western Drug  
HOURS:— 9 A. M. to 6 P. M.

**DR. B. R. PUTMAN  
OPTOMETRIST**

Office: Muleshoe Bank Bldg.  
Hours: 9 to 5

**ELECTRIC SERVICE**

IRRIGATION MOTOR HOOK-UPS & REPAIRS  
REA HOUSE WIRING A SPECIALTY  
FOR ANY ELECTRICAL NEEDS  
Contact

**MULESHOE ELECTRIC**

SPUD THOMAS  
First Door East of Magnolia Wholesale

**CAR FINANCING — FARM LOANS**

For Complete Insurance Protection  
Including Polio See . . .

**Pool Insurance Agency**

M. W. POOL, Jr. — LEE R. POOL  
Muleshoe Phone 113 Texas

**SURVEYING & MAPPING**

Surveying of all kinds, Contour Maps.  
Terracing lines run and have party who  
builds them.

**John J. Mock**  
COUNTY SURVEYOR  
Muleshoe Phone 356-J

**A. S. STOVALL  
COTTON BUYER**

TOP PRICES PAID FOR ALL GRADES.  
PROMPT CCC LOAN SERVICE.  
WE ARE ALSO IN MARKET FOR 1948 LOAN EQUITIES  
AT CROSSROADS  
MULESHOE, TEXAS TELEPHONE 286



PORTABLE • LIGHT WEIGHT  
QUICK COUPLING • POSITIVE LOCK  
SPRINKLER IRRIGATION EQUIP. CO.  
LITTLEFIELD, TEXAS

Read The Journal Want Ads

**"SPEEDY" by COVIN MOTOR CO.**





**REAL ESTATE**

◆ 80 Acres, all cult, 30 A. alfalfa. Elec. Irrig. set up. Fair Imp., 8 mi. out, level, all for \$14,000.

◆ 160 A. good large irrig. well. Chrysler motor, butane equipped. two room house, large granery, new land, close to pavement, \$21,000.00.

◆ 316 A., large irrig. outfit, good imp., all in cult., Clean, on F. M. Road, 6 mi. from town, \$175.00.

◆ 160 A., all in cult., no imp., good location, \$65.00 per A.

◆ 160 A., all in cult., no imp., good location, \$65.00 per acre.

◆ 160 A., all in cult., good land, level, 4 miles east of Lariat, \$75 per A.

◆ 80 A., all in cult., shallow water, \$90.00.

◆ 640 A., in cult., good new irrig. well, bal, in good draw grass, will carry 100 head of cows and their calves, \$50.00 A.

◆ 45 A., 18 A. alfalfa, all in cult., two room house well and mill, irrig., \$200.00 A.

◆ 40 A., all in cult, on Plainview Hiway, shallow water, \$125.00 A.

◆ Four rooms and bath frame and stucco, close in, nearly new, \$4,000.

◆ We have lots all over town priced some too high, and some about right, come in and let us tell you about our bargains . . .

**BEAVERS - HANOVER & DAY**

Bank Building

**Slants From The Sidelines . . .**

By W. E. Hill

Last weekend we had the pleasure to attend the final games of the O'Donnell Invitation tournament. . . . The game was played before a capacity crowd every day and night. The gym held approximately 1,000 people . . . and every seat was taken for every game. . . . We wonder how many capacity crowds will see the tournament games here next week. . . . How ever capacity crowds attend every game at O'Donnell, Tahoka, Post, Sundown, and many other places. . . . Only a handful have ever been on hand to witness the local cagers in action. . . . what's wrong with the citizens of Muleshoe and school territory. . . . why don't you give the MHS teams backing like that?

We saw the Bennett boy of Tahoka perform at the O'Donnell tournament. . . . and brother he's plenty hot. . . . He will become eligible at mid-term for the A-team and will more than likely add the spark that will make them a top contender for the championship of that district.

Next weekend the local school will be hosts to many out-of-town basketball teams as the Annual Invitational Basketball Tournament will get underway next Thursday afternoon. Many out-of-town fans will follow their teams here to witness the tournament games and to back up their teams. . . . We wonder if Muleshoe fans will be interested enough to come out and back their own teams and witness other games that will have plenty of thrills.

Coach Hedges teams are still showing improvement and won another ball game to prove it last weekend.

It's too bad that none of the local civic organizations have enough interest in their own schools to sponsor a drive to buy and have installed an electric score board for the high school gymnasium. It certainly would be nice for the kids to have as well as a public benefit. Some of the out-of-town fans that have been attending games here were surprised that a town as large as Muleshoe couldn't afford to buy an electric scoreboard. At Levelland a firm took advantage

**Basketball Tournament To Get Under Way Here At Local High School Gym Next Thursday At 1 P. M.**

The Annual Muleshoe Basketball Invitation Tournament will get under way next Thursday afternoon at around 1 o'clock with several out-of-town teams scheduled to participate.

Both the boys and girls teams will participate in the tournament. Boys teams that have been entered are; Otton, Bula, Sudan, Morton, Three Way, Levelland and Muleshoe.

Girls teams entered in the tournament are from Texico, Bula, Sudan, Morton, Otton, Three Way, Levelland and Muleshoe.

The tournament will begin next Thursday afternoon and will continue on through Saturday with the final games being scheduled for Saturday night.

**Awards To Be Made**

After the final game on Saturday night the awards will be made to the teams and outstanding players, high-point men for the tournament and all-tournament teams will be chosen and recognized.

The starting line-up for the local boys A-team are: Joe Bob Horsley, center; Woody Jackson, forward; Ed Nickels, forward; Arlin Kriegal, guard; Joe Cummings, guard.

However this is only a tentative starting line-up and is subject to change according to a statement made by Coach Hedges.

The local boys play a slow, methodical offense with fast-breaking plays while they usually play a fast man-to-man defense, switching occasionally to a zone defense. However they have only used the zone defense for a short time in the past two or three games and then for only a short time.

With all of these fine teams participating in the tournament, they should be playing to capacity crowds every day and night.

of the opportunity to purchase a scoreboard for advertising purposes as well as for the benefit of the school and citizens.

The Golden Gloves are coming into the spotlight in most of the area. However there are no pugilists, amateur or otherwise within the immediate vicinity of Muleshoe. . . . The main reason for that is the fact that the Scholastic League does not recognize boxing as a sport in Texas high schools, therefore many high schools like Muleshoe do not put any emphasis on the sport.

It won't be long before track season will be making its appearance on the scene and high schools all over the state will start competing in track events which will eventually take some of the better boys down to Austin where they will compete for state honors.

Jack DeShazo, John Tarleton student and a Muleshoe product, is doing a little fighting. . . . He won his first fight the other night in the first round by a KO.

One thing that has always puzzled us are the so-called-eligibility rules set up by the Interscholastic League. If a boy participates in athletics in one school, then moves to another town maybe clear across the nation, he will not be eligible to participate in any athletics until 1-year later. . . . He can come out, but he can't play in conference games. Therefore he loses his interest. . . . and some times they even quit school.

That boy should be eligible to play all four of his years in high school providing he makes his grades regardless of where he goes to school or when he makes a move from one city to another.

Try Journal Classified Ads.— They buy, sell and trade.

**MULESHOE JOURNAL SPORTS**

THE MULESHOE JOURNAL, Thursday, January 20, 1949

**Jackets To Play Out Of Town Tilts**

The next two scheduled basketball games for the Muleshoe Yellow Jacket squads will be away from home.

The first game will be with the Three Way cagers tomorrow night in the Three Way gymnasium.

The last time these teams met the local boys A-team defeated the Three Way five.

Next Tuesday night the Jacket cagers will travel over to Sudan where they will meet the Sudan Hornets in a conference encounter.

**Tournament Coming Up**

The Annual Muleshoe Invitation Basketball Tournament will get under way next Thursday afternoon at the local gymnasium with both boys and girls teams from many of the area communities and towns participating.

A capacity crowd is expected to attend most of the tournament games here Thursday, Friday and Saturday. The local gym will seat

approximately five to six hundred spectators. Admission prices for the tournament games have not been announced by school officials but the price will not be very much and every body is invited to come out and watch these fine basketball teams perform.

**LITTLE ANCHELS**



**Automobile Owners Attention!**

**NEW ENGINES**  
(LESS ACCESSORIES)

ENGINEERED AND BUILT BY CHRYSLER CORPORATION

FOR **CHRYSLER AND PLYMOUTH** AUTOMOBILES

*Now-Not Rebuilt!*

ALL BRAND NEW PARTS  
ASSEMBLED AND BLOCK-TESTED AT FACTORY

All Latest Improvements!

**COVIN MOTOR Co.**

South East Corner of Square  
Phone 327 • MULESHOE TEX.

**Local Cagers Win Four Games; Lose Three To Littlefield and Three Way**

Over the past weekend and the first part of this week all of the Jacket teams have landed in the win columns as well as in the losing columns.

**B-Team Loses To Springlake**

Last Friday night the boys B-team went down in defeat before the B-team of Springlake by a score of 24 to 11.

Britt scored 5 points for the local boys with Whipple following with 4-points and Gaede and Roark were credited with 1-point each.

**A-Team Trims Springlake**

Ed Nickels and Woody Jackson led their teammates to a 28-19 victory over the Springlake five last Friday night. Nickels swished the basket for 10-points and Jackson close behind with 9-points. Joe Bob Horsley hit for 7-points and Cummings for 2-points.

**Girls Down Springlake**

The girls B-team smothered the Springlake girls B-team by a

Locker led her teammates and was high-point player for the game, with a total of 13-points. Score of 26 to 11.

**Springlake A-Team Wins**

The Springlake girls A-team edged the Muleshoe girls A-team by a score of 26 to 20.

Clevinger was high point scorer for the game with 14-points and Angeley a teammate was close behind with 12-points. In fact they were the team. All their teammates failed to score during the entire game.

**B-Team Trips Littlefield B's**

Whipple scored 8-points to lead his teammates to victory over the Littlefield B squad in a game reeled off in the local gym last Tues-

day night 21 to 19. Gaede followed in the scoring department with 6 points; Britt, 4; Spivey, 2; Roark 1.

**Littlefield A-Team Wins**

The Littlefield Wildcats rolled to a 25-17 victory over the Jacket A-team here last Tuesday night in a conference game. Currin led his teammates to victory with 11-points for high-point honors and teammate Crosby hit the basket for 8-points.

Nickels and Jackson led the local five with 7 and 6-points respectively.

**Girls A-Team Wins**

Miss Sanders led the local sextett, scoring 11-points to own the Littlefield A-team girls 23-22 in a hotly contested battle.

Malone sank three goals for 6-points, Kimbrough sank a 4-for-4 field goal and Truelock scored one field goal and two free throws for 4-points.

Young led the visitors with a total of 9-points, and a teammate Wallace scored 8-points.

Try Journal Want Ads Today!

**OPEN ON SATURDAY**

WET WASH — ROUGH DRY — FINISHING  
PLENTY SOFT WATER

**PUCKETT'S LAUNDRY**

— 3 MILES OUT CLOVIS HIGHWAY —

**NOTICE**

**25% Discount**

On BUTANE And Natural Gas HEATERS

600 BTU to 28,000 BTU

**BERRY ELECTRIC**

PHONE 98 — MULESHOE

**WESCO**

20% SUPERPHOSPHATE  
Bagged, Per TON ..... \$34.00

WESCO

47% SUPERPHOSPHATE  
Bagged, Per TON ..... \$64.50

We also offer you some saving if you wish to buy this material in bulk.

BOOK YOUR ORDERS NOW

P. S.: H. D. Says We Are Still In The GRAIN BUSINESS!

**WESTERN FERTILIZER CO.**

MAKERS OF WESCO BRAND FERTILIZERS

Office At King Bros. Grain & Seed Co.

PHONE 134 — MULESHOE

**SECOND COMMUNITY AUCTION SALE**

MULESHOE, TEXAS

**Tuesday, Feb. 8**

**BEGINNING AT 11:00 A. M.**

H. D. CLUB LADIES TO SERVE LUNCH & COFFEE

Nothing Too Large — Nothing Too Small  
Farm Implements — Cows — Chickens — Hogs

**This Is Everybodys Sale**

**WE WILL SELL ANYTHING**

**A REGULAR MONTHLY EVENT IN MULESHOE**

**Buy What You Need — Sell What You Don't Need At This Sale**

Ladies Clubs Invited To Serve Food  
**ON GROUNDS AT**

**Your Exchange**

Lubbock Hi-way across from Muleshoe Elevator

**NEW 44-K MASSEY-HARRIS TRACTOR**

Mowers — One-Ways  
Breaking Plows — Parts

**TEXAS MACHINERY CO.**

—Massey-Harris Better Built Farm Equipment—

Irrigation Supply Building - Clovis Highway  
**HOWARD SPLAWN, Mgr.**