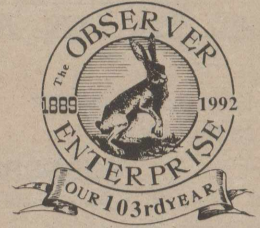


# THE OBSERVER/ ENTERPRISE

Serving Coke County

(USPS 467-480)  
(ISSN 8750-197X)

Vol. 104, No. 01

Friday, August 7, 1992

## Ole Coke County Pageant hosts over 900

The 1992 production of Ole Coke County, Home of the Rabbit Twisters, has been pronounced a great success. During the four night performances, around 900 people saw Coke County residents portray numerous incidents based on historical events which really did happen, or could have happened. Starting with Comanche Chief Katemcys camp in 1854, arrival of early pioneers, and on through exciting eras of the past. Harrell Johnson as "The Rabbit Twister" led crowds through scenes that brought forth many laughs and much applause.

More than 100 people were involved with the production, concession stand, souvenir booth, ticket sales, registration, etc. Coke County Pageant Association, Inc. in its effort to give the public an enjoyable evening of family entertainment, leaves nothing undone that it considers an

enhancement to the comfort and pleasure of viewers. Actors from Bronte, Robert Lee, Silver and other points in the county spent many hours in rehearsal in order to give a polished performance.

Three new scenes were well received: The Great Chicken Heist, by Lynn Green, Buyin' Or Sellin'?, by Allen Bloodworth, and The Gossips, by Don Fields.

All other scenes used previously had new material which new actors made "as good as new".

The cast wholeheartedly dedicated the production to the late Milder "Bo" Reese.

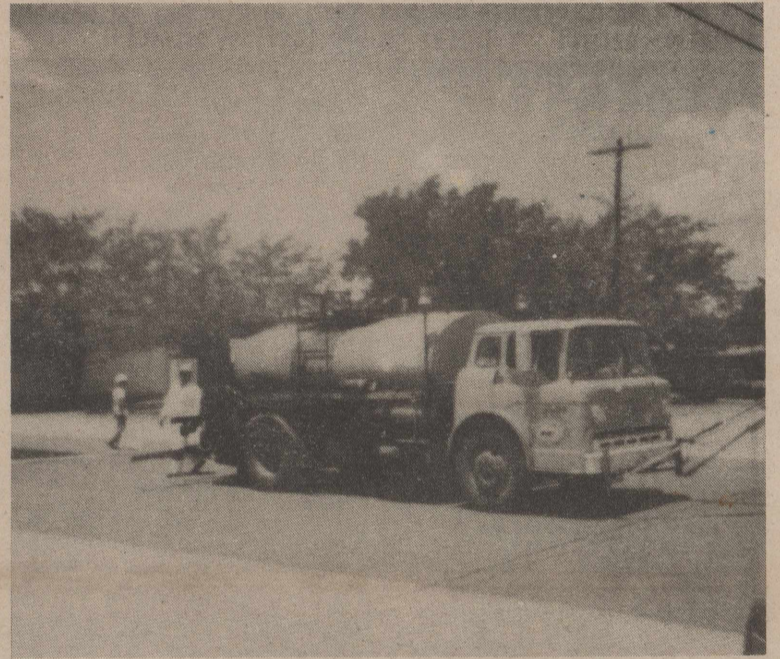
Booger Red, Never Been Thrown, was new to many people, since it had been seen only three times last year, due to the last production's being rained out. The wedding really took place on the street of the old town of Bronte before it moved closer to the railroad, at about the

same time the town was given the name Bronte. Molly Webb, the bride, was an ancestor to the Clarence Webb family who live in Bronte.

Plans are being made for the 1993 production of Ole Coke County, Home of the Rabbit Twisters, with none of this years scenes repeated. All will be related to different stories from Coke's past, but different periods, at least three brand new.

All who are willing to help in any way are welcome. Workers with sets, costumes, theatre grounds, new scenes, publicity, and acting are needed, and we need paying customers and many memberships.

Help keep the pageant alive. Be an active pageant partner. Write or call Pageant Association Officers as listed in your program for 1992.



The Texas Highway Department worked in downtown Bronte on Monday, seal coating the main street, Highway 158 from Highway 277 and extending 1 mile toward Robert Lee. Donnie Jackson, employee, is behind the truck.

### Sheep seminar set for RL

There will be a Sheep Production Seminar held on Wednesday, August 12, 1992 beginning at 7:30 pm in the Recreation Hall in Robert Lee. On hand to present information will be Dr. Frank Craddock, State Extension Sheep Specialist, and Dr. Tom Fuchs, Extension Ento-

mology Specialist.

Topics to be discussed will include control of external and internal parasites, ram selection utilizing actual rams to be evaluated and discussed, and various sheep production practices.

All interested producers are invited to attend.

### Deere speaks to WCCCD

The West Coke County Community Development met at Betty's Restaurant on Monday, August 3, 1992. Twenty persons heard Bruce Deere's program and watched an interesting 10-minute video concerning community involvement in RC&D partnerships. Deere, with the Soil Conservation Service, said that by participating in this program to utilize natural resources and entering into a partnership with surrounding counties, rural areas may benefit. Local water districts and county commissioners must join with other sponsors to receive grants for specific programs. In the event the community development group would like to sponsor a local project, it would then be

presented to the SCS who would provide technical assistance. West Coke County Community Development President Laura Crenshaw tabled the decision until the next meeting.

Most of the agenda concerned the Annual Labor Day Extravaganza on September 5, 1992. Other business included Treasurer Phelan Wrinkle's report on finances and Secretary Carol Hardaway's July minutes. Committee heads reported on various work-memberships, the West Texas Travel Guide, printing, and events for the Extravaganza.

The board members and event chairmen will meet later this month in a called meeting.

### Bronte Golf

Hometown Hardware of Bronte is sponsoring an ABC, 18 Hole, Single Shot golf tournament on Sunday, August 9, 1992, beginning at 1:30 pm at the Singing Winds Golf Course in Bronte.

For more information call Richard Hembree at 473-2137.

There will be a tournament on Saturday, August 15, 1992, beginning at 8:30 am at the Singing Winds Golf Course. This tournament will be for senior men and women from ages 50 to 64, 65 to 74, and 75 & over.

### Commissioners Meeting Set

The Coke County Commissioners Court will meet Monday morning, August 10, 1992, at 9:00 am.

On the agenda will be the possible amendment and adoption of the 911 emergency program. All interested county residents are encouraged to attend. As always, the court meetings are public.

### Mt. Creek Tourny

Mountain Creek Golf Club will host a 27 Hole (2 person) tourny Saturday, August 8,

1992. Teetime is set for 9:00 am. Cash prizes will be awarded. For more information call 453-2317.

### Robert Lee P.T.A.

On Tuesday, August 11, 1992, there will be a meeting for those interested in the organization of a P.T.A. in Robert Lee. This meeting will begin at 7:00 pm at the small Recreation Hall. Representatives from P.T.A. will be there to explain what the P.T.A. is all about and answer any questions. For more information call Kim Hodge at 453-4745, after 6:00 pm. Everyone is welcome.

### 4-H Enrollment

There will be a swimming party at the Robert Lee Swimming Pool on Thursday, August 13, 1992, beginning at 7:00 pm. This party will be to enroll 4-H members for the coming year. Any youth from the second grade up to 19 years old are eligible to join.

### Bronte ISD

Bronte ISD will begin the 1992-93 school year on Monday, August 17. The first bell will ring at 8:15 am.

Beginning this school year,

the schools will have closed campuses. This means all students may not leave the campus during the regular school day. Students will need to bring a lunch or purchase a meal ticket from the lunchroom.

### BHS Schedules

The Bronte High School students may pick up their schedules August 10, 1992 in the High School office as follows:

12th grade - 9:00 am to 10:00 am.  
11th grade - 10:00 am to 11:00 am.  
10th grade - 11:00 am to 12:00 noon.  
9th grade - 1:00 pm to 2:00 pm.  
8th grade - 2:00 pm to 3:00 pm.  
7th grade - 3:00 pm to 4:00 pm.

### Sports Booster Work Day

Monday, August 10, 1992, at 1:00 pm the All Sports Boosters will have a work night at the Bronte School Ag. Barn to complete the longhorn sign.

## UPCOMING

**THE OBSERVER/ENTERPRISE**

Published Weekly Except Christmas  
707 Austin (915) 453-2433

(USPS 467-480) (ISSN 8750-197X)

Second Class Postage paid at Robert Lee, TX.

**POSTMASTER: Please send address changes to Observer/Enterprise**

**PO Box 1329, Robert Lee, TX 76945.**

**STAFF**

Hal Spain, Publisher Kelly Baker  
Jo Nell Blair Joan Davis Margaret Martin

**SUBSCRIPTION RATES**

Per Year in Coke County.....\$12.00  
Per Year Elsewhere in Texas.....\$13.00  
Per Year Outside of Texas.....\$15.00

**RLISD Personnel Roster**

Personnel Roster - 1992-93  
Kindergarten - Christie Bagwell  
First Grade - Linda Burns and Lana Goodman  
Second Grade - Mimzi Horn  
Third Grade - Judy Gibbs and Kathy McCown  
Fourth Grade - Carolyn Davis  
Fifth Grade - Suzie Wilson  
Sixth Grade - Melba Mauldin  
Music, P.E. - Gayle Bolding  
Special Education - Denise Roberts

English  
Sheri Millican - Homemaking  
Jerry Horn - Computer, Math  
Sid McCown - Jr. High Boys Athletics, Math  
Beth Heard - Jr. High English  
Jeff York - Vocational Agriculture  
Kurt White - Boys Athletics, Social Studies  
Tammy Roe - Math  
Stazie Church - Band

High School  
Patricia Ballew - English  
Winnie McPeck - Typing  
Ed Poehls - Athletic Director, Social Studies  
Terry Page - Science, Girls Athletics  
Bobby Bolding - Social Studies, Jr. High Girls Athletics  
Dorthea Wright - Science  
Elena Sanchez - Spanish,

**911 UPDATE**

Just a short update on the 911 system. At this time both East and West Coke County nursing homes have agreed to have the 911 system installed. Both Bronte and Robert Lee City Councils and the County Commissioners have passed resolutions to proceed with 911. The resolutions will be presented to the Concho Valley Council of Governments for their approval and then passed on to the State Board in their September meeting.

We will let you know at what time you can expect to see an extra fifty cent (50 cents) charge on your monthly telephone bill.

The 911 system should be installed in six to eight months. You will be receiving a lot of information on what kind of calls you should route through the 911 number.

We must all remember that this is an emergency number only, and be sure we use it for that and that alone.

**Meet the Longhorns**

It is time for a new school year to begin and with it comes anticipation of an exciting season for our Longhorn teams, the Longhorn Band, the Cheerleaders, and Mascot.

The Band Boosters and the All Sports Boosters invites everyone to the annual "Meet the Longhorns" night Thursday, August 13, 1992, at 7:00 pm in the Bronte Park. Homemade ice cream, cakes, and cookies will be served by the booster clubs as we start the 1992-93 "Year of the Horns."

Parents of the band students are asked to bring cakes and cookies. Homemade ice cream will be provided by the athletic team parents.

On hand will be the teachers, coaches, and the administration for the 1992-93 school year. We want to encourage everyone young and old of our community to bring your lawn chairs out to the park for an enjoyable evening of visiting with your neighbors as we "Meet the Longhorns."

**Whiteside**

T.K. Whiteside died Sunday, August 2, 1992, in the West Coke County Nursing Home in Robert Lee.

Service was at First United Methodist Church with burial in the Robert Lee Cemetery, directed by Shaffer Funeral Home. Officiants for the services were the Rev. Kary Rawlings, assisted by Bro. Jimmy Rogers.

Mr. Whiteside was born in Coke County on January 29, 1911, to pioneers Temp and Virgie Pritchard Whiteside and was a lifelong resident. He and Louise Preslar were married June 17, 1934, in Abilene. The couple ranched and made their home on the old Whiteside Ranch on the Divide west of Robert Lee. He was a member of the First United Methodist Church.

Survivors include his wife, Louise Preslar Whiteside of Robert Lee; son and daughter-in-law, Bennie K. and Shirley Whiteside of Brandon, Miss.; one grandson; and a number of nieces and nephews.

Serving as pallbearers for the services were Howard C. Preslar, Jay Gordon Brock, Darrel Brock, Roland Bert Sheppard, Melvin McCabe, and Maxie Evans. Honorary pallbearers were Jack Brock, and Dale Grandstaff.

**Hanks**

Savannah E. Hanks, 86, of Colorado City died Friday, July 31, 1992, in a Colorado City nursing home.

Service was held at 1:00 pm Sunday, August 2, 1992, in McCoy Chapel of Memories with burial in Slater's Chapel Cemetery.

She was born July 24, 1906, in Crosscut and was a longtime resident of Nolan County. She was a nurse at Simmons Memorial Hospital and was a Methodist.

Survivors include two sons, S.R. Hanks of Snyder and Gene Hanks of Colorado City; four daughters, Dorcas Rhodes of Carlsbad, N.M., Martha Gluck of Vienna, VA., Joanne Bray of Colliar, KS., and Dody Gibbs of Hobbs, NM.; two sisters, Isador Lewis

**Obituaries**

of Nolan, and Mary Spencer of Bronte; 16 grandchildren; and several great-grandchildren.

**Bennett**

Maggie Lorene Bennett, 81, died Saturday, August 1, 1992, at her residence in Robert Lee.

Service was at 10:00 am Tuesday at Southside Church of Christ with burial at 4:00 pm in Stacy Cemetery near Doole, directed by Shaffer Funeral Home. Ministers Greg Fleming and Tommy Williams officiated the services. Mrs. Bennett was born April 1, 1911, in Doole; her parents were Jeff and Alice Golden Deason. She and E.C. Bennett were married October 15, 1927, in Brady. The couple

would have celebrated their 65th anniversary this year.

Mr. and Mrs. Bennett moved to Robert Lee from Hobbs, NM. in 1977. She was a member of the Church of Christ and was a homemaker.

Survivors include her husband, E.C. "Doc" Bennett of Robert Lee; two daughters, Helen Roberts of Goree and Wanda Roach of Clovis NM.; a sister, Opal Short of Robert Lee; six grandchildren; and ten great-grandchildren. She is also survived by a brother-in-law, Virgil Bennett of Robert Lee.

Pallbearers for the services included Ernest Carroll, Wally Roberts, Audie Roach, Caylon Roach, and J.C. Wallace.

**Speaker's bureau formed**

The San Angelo AIDS Foundation, through its rural education effort, announces the formation of a rural speaker's bureau. The purpose of the bureau is to provide HIV/AIDS transmission and prevention education to rural communities in the Concho Valley.

Membership in the speaker's bureau is open to persons who are interested in providing HIV/AIDS education in their local and surrounding communities. Qualified participants will be trained to provide information about HIV/AIDS to civic, school, and church groups. Training will consist of two, 8 hour sessions which will be held either in San Angelo or in a centrally located rural community. Topics will include "HIV/AIDS 101", "Direct Services for Clients", "Community Re-

sponses to HIV/AIDS", and "Public Speaking Techniques". Upon successful completion of the training, the foundation's educator will accompany the presenter on his/her first presentations.

The fight against HIV/AIDS will be successful only when prevention education is available to all communities. HIV/AIDS is a public health issue which will directly or indirectly affect all of us-no matter where we live. So please join the San Angelo AIDS Foundation in making sure that everyone knows the facts and that everyone becomes involved in the fight against HIV/AIDS. It is Everybody's problem.

For more information please call Jose Eliel Lopez at (915) 949-6381 or write the San Angelo AIDS Foundation, P.O. Box 62474, San Angelo, TX. 76906

**PUBLIC NOTICE  
COKE COUNTY  
TEXAS COMMUNITY DEVELOPMENT PROGRAM**

Coke County will hold a public hearing at 1:30 pm on August 10, 1992 at the County Courthouse in regard to the submission of an application to the Texas Department of Housing and Community Affairs for a Texas Community Development Program (TCDP) grant.

The purpose of this meeting is to allow citizens an opportunity to discuss the citizen participation plan, the development of local housing and community development needs, the amount of TCDP funding available, all eligible TCDP activities, and the use of past TCDP funds. The County encourages citizens to participate in the development of this TCDP application and to make their views known at this public hearing.

Citizens unable to attend this meeting may submit their views and proposals to the County Judge at the County Courthouse. Handicapped individuals that wish to attend this meeting should contact the County Judge's office to arrange for assistance.

County Judge  
Coke County  
Royce Lee

**Aron's**

**Daughter's**




**Restaurant**

**Erin & Alex**  
**Open all day every day**  
**11am - 9 pm**  
**473-2247**

**CLEAN = HEALTHY  
AIR = LUNGS**

*Join the  
fight for  
Clean Air*

CONTACT THE  
AMERICAN  LUNG ASSOCIATION  
The Christmas Seal People

## Harold Dunn family attends reunion

The Harold Dunn Family recently attended a family reunion held at Burket.

The reunion coincided with a ceremony for Harold's great-grandfather. In honor and memory of John McAlester Dunn, Pvt. Capt. Thomas K. Carmach's company 1st Battalion, Texas Rangers, Cavalry, Confederate Soldiers who fought in the Civil War.

The ceremony was held at Harrington Creek Cemetery between Burnet and Marble Falls.

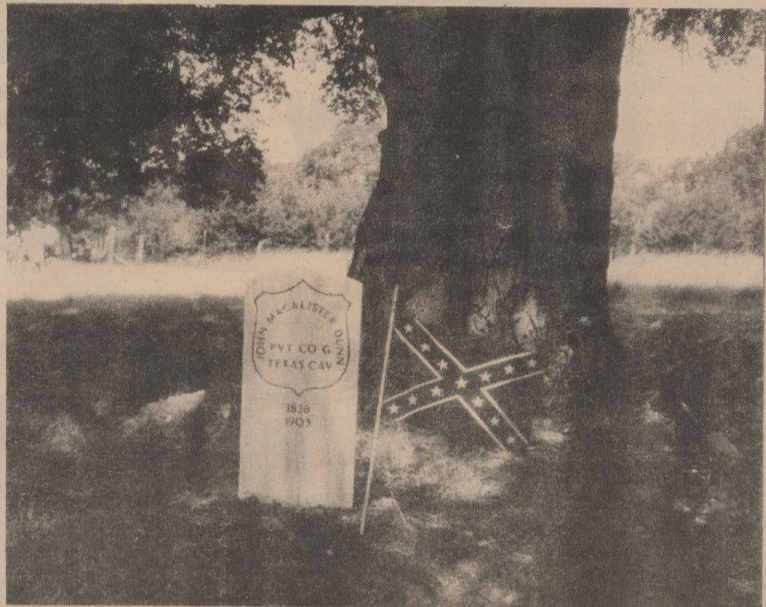
The United Daughter of the Confederacy Unit VI Texas Division were in charge serving with the cemetery records and grave marker of Confederate Veterans, Texas Division.

The United Daughters of Confederacy had recently installed a marker in honor of the Confederate Hero and Pioneer.

Members of the Dunn family from Bronte attended.



Members of the Harold Dunn family attending the special family reunion were (l-r) Mandy Dunn, Patsy Dunn, Harold Dunn, Marty Vaughn, and Bruce Vaughn, all of Bronte.



The Harold Dunn family recently attended the United Daughters of the Confederacy ceremony honoring Harold's great-grandfather, John McAlester Dunn. Pvt. McAlester served in the Cavalry during the Civil War and died in 1905.

### July Golf Results

Golf scores from the tournament held at Singing Winds Golf Course in Bronte on Thursday July 23, 1992. It was a 9 hole, select shot with 32 entries. Results are as follows:

1st 30  
Davis Corley  
Leon McFerron  
Tom Ensor  
Jerry Boshears

2nd 31  
Sue Caudie  
Russell Johnson  
Donald Butler  
Scotty McCorkle

3rd 32 Tied with two other teams - won on Hole #2

Rocky Rawls  
Mack Baker  
Ed Martindale  
Ealy Baker  
Thursday night golf July 30, 1992.  
38 entries  
Katie Campbell won closet to pin on #1  
1st 29  
Wayland Ensor  
Doug Fiveash  
Robbie Sanford  
Richard Hembree

2nd 31 Won on hole #1  
Scorecard playoff

Ealy Baker  
Mary Morrow  
Gwen Baker  
J.T. Henry  
Sue Caudie

3rd 31  
Tom Ensor  
James Tidwell  
Stephen Lee  
Mickey Pierce

4th 32  
Jackie Corley  
Donald Butler  
Wade Stautzenberger  
Jim Morrow

### Lady Longhorns

Volleyball two-a-days will begin on Monday, August 10, 1992, at 7:00 am. Anyone, Freshman, Sophomore, Junior, Senior, who is interested, please come.

## Masons install officers

Installation of officers for new Bronté Masonic Lodge #962 AM and FM was held recently at the Lodge Hall.

Installing officer, Bob Large of the Hayrick Chapter #696 of Robert Lee installed the following: Jim Lammers, Worshipful Master; Paul McGuire, Senior Warden; Martin Lee, Junior Warden; Royce Lee,

Treasurer; Harold Dunn, Secretary; R.W. Blackmon, Chaplain; Harley Hilliard, Senior Deacon; Ed Ehl, Junior Deacon; Eddie Collins, Senior Steward; J.T. Henry, Junior Steward; and Billy Joe Luckett, Tiler.

The lodge meets monthly on the first Monday night of each month.

New Concept in Medical Insurance  
**Extremely Low Rates**  
Call Bill or Pat Carwile  
**AGWEST LIFE & HEALTH DEPT.**  
(915) 453-2522

CONGRATULATIONS  
to All  
Coke County  
Goat Roping  
Winners!



**BELL AUTO PARTS**  
Robert Lee 453-2911

FOOD **SUPER H** LIMIT  
**IGA** RIGHTS  
STAMPS WELCOME RESERVED

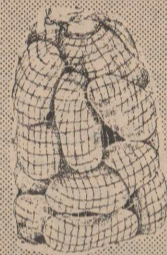
501 Commerce - Robert Lee, TX

Store Hrs: Mon-Sat 8-8 Sun. 8-6

SPECIALS GOOD 8/5 THRU 8/11



Family Pack  
**Fryer Breast**  
Lb. **.99**



Russet

**Potatoes**

15 Lb. Bag **1.89**

IGA

**Charcoal Briquets**

10 Lb. Bag **.99**



Del Monte



**Ketchup**

28 oz. Squeeze Bottle **.89**

Family Pack

**Pork Chops**

**1.49** Lb.



Bartlett



**Pears or Nectarines**

**10/\$1**

Reg. & Diet

**Dr. Pepper**



24 pack  
12 oz. cans

**4.98**



COUNTRY AGENTS NEWS

by Tommy Antilley  
Coke County Agent

It's important to control small mesquite as a follow-up treatment for an expensive clearing operation or as a preventative measure for removing small numbers of mesquite when they first come in. Small mesquite are plants with stems less than 1 inch in diameter and less than 6 feet tall. For individual plant treatment, when the number of plants averages greater than 200 per acre, it would probably be more economical to go to a broadcast treatment or general mechanical procedure. But if you are dealing with less than 200 per acre or small acreages, there are about five choices to select from:

- A) You can grub by hand or use one of several low-energy grubbing attachments to tractors and dozers.
- B) You can use foliage spray.
- C) You can treat stems basally with diesel fuel and herbicide or diesel alone.
- D) You can treat stems above ground with diesel fuel and a stout percentage of herbicide.
- E) You can use soil-active herbicide.

1) Grubbing

First or second year mesquite can be killed with a grubbing hoe. The important thing is to cut the stem bud below the zone to prevent sprouting. Usually the bud zone is no more than 2 to 4 inches below the soil surface unless soil has been washed in or blown in around the base of the plant. Mesquite cannot sprout from roots left in the soil. Soil moisture condition is more important than time of the year in grubbing. Some deep silty floodplain soils work better when dry. Most sands, clays, and loams work better when moist.

2) Foliage Spraying

Good results can be obtained using several herbicide mixtures. Best results have been obtained with Reclaim (clopyralid) spraying from May through September when plants are healthy, green and soil temperature at 12 inches deep is over 75°F. Root kill above 75 percent is consistently obtained. Often the percentage is above 90 percent. These results can be obtained when Reclaim is mixed with picloram (Grazon PC), triclopyr (Remedy or Grazon ET), dicamba (Banvel), Weedmaster, Grazon P+D or Hi-Dep. To mix a gallon of spray use 30 ml of one of the other herbicides (to reduce the cost) plus water to make a gallon. Spray the foliage until it glistens rather than until it drips, making sure that all leaves are hit. Some people prefer to add 1 pint of diesel fuel and 1/2 teaspoon emulsifier to obtain slightly better control. If so, it must be mixed or shaken vigorously to emulsify the oil and water. A gallon of spray mixture will treat approximately 50 knee-

high to waist-high mesquite sprouts.

3) Basal Spraying

Basal treatment with diesel fuel is one of our oldest and most successful methods of killing mesquite. By adding 2 1/2 ounces (75 ml) Reamdy or Grazon ET (triclopyr) per gallon of diesel fuel a higher percentage of root kill (above 90 percent) can be obtained alone. The lower 12 inches or so of each stem should be to the point of run-off accumulation at the soil surface. Basal treatment can be done any time of the year when soil is dry, but best results will occur when temperatures are high and soil is dry and cracked away from the mesquite stem base.

4) Stem Spraying

This is also called streamline basal treatment. A stout percentage of triclopyr (Remedy or Grazon ET) is added to diesel fuel; as much as 25 percent and as low as 10 percent have shown good results. Usually 10 percent of a penetrant such as Cide-Kick II is also added. A typical mixture would be 1 1/2 pints Remedy of Grazon ET (18.75 percent), 1 pint Cide-Kick II (12.5 percent) to make one gallon of mix. A very fine stream of this mixture can be sprayed on the stem about one foot above the ground to make a band 3 to 4 inches wide completely around the stem. Streamline treatment can be done any time of the year and it is not necessary for all the soil to be dry. It should be used only on smooth bark stems.

5) Soil Applying

Control of small mesquite with the soil-active herbicide Velpar L (hexazinone) is effective any time of the year (the optimum time is late winter to early spring). It is usually applied with a hand-held drench gun that delivers a specific amount of herbicides in each squirt. One 4-cc squirt of Velpar is suggested for each inch of stem diameter. It should be applied on the soil beneath the canopy but not on the plant. Soil moisture is required to move the herbicide into the root zone. Because Velpar can kill desirable trees, such as Live Oak, it should not be used within 100 feet of any tree you don't want to damage or in the drainage above where soil and herbicide may wash down on it. Mesquite treated with Velpar L dies very slowly usually taking 2 to 3 years. This herbicide is more effective on sandy, shallow, or rocky soils, than on heavy clay soils.

The first balloon flight in the United States occurred in 1793.

LOOK WHO'S NEW

Shelbi J. Garth

Shelbi JoAnn Garth was born at 8:00 am, July 24, 1992, at University Medical Center in Lubbock. She weighed 7 lbs. 9 oz. and was 21 inches long.

Proud parents are Lori Ann and Gerald Garth of Lubbock. Grandparents are Carl and Laveta Bloodworth of Sundown, Delores Garth of Hollister, California and Tommy Teague of Amarillo. Great-grandparents are Raymond and Gerie Bloodworth of Silver and Jack and Rose Williams of Lubbock. Amy Jo Bloodworth of Sundown is Shelbi's very proud aunt.

HEART DISEASE.

We're Making a Difference.



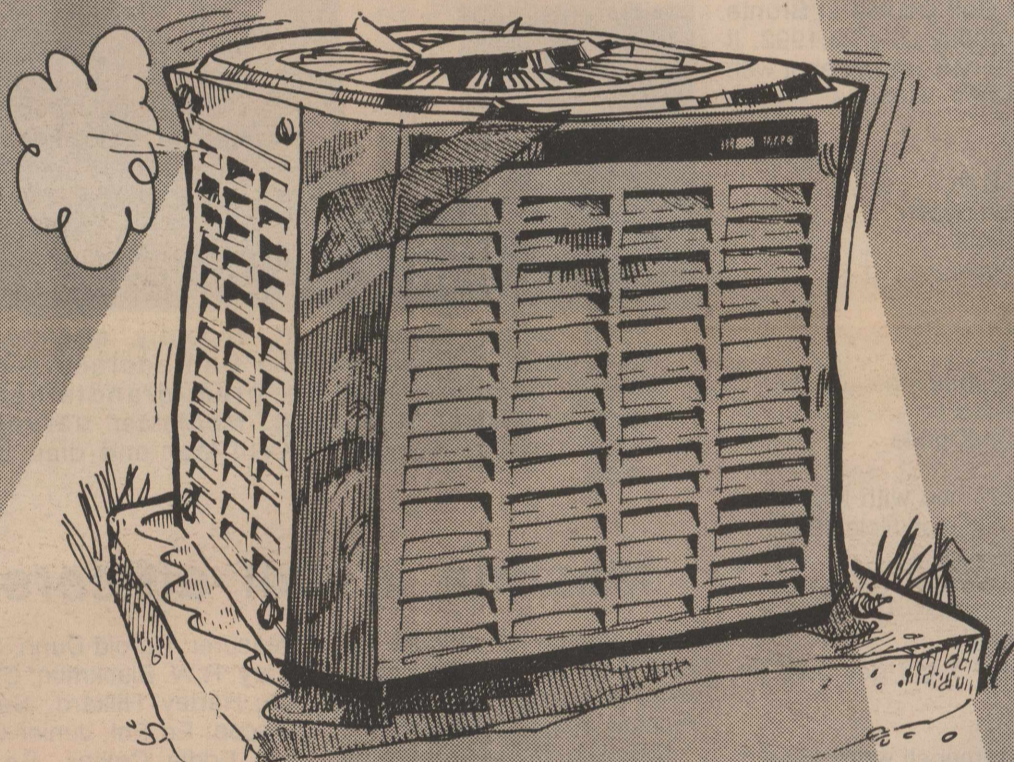
WINK INSURANCE AGENCY



Home\*Auto  
Life\*Health\*Commercial

715 Austin - 453-4551

When the heat of too many summers has aged your air conditioner...



...replace it with a system that can help lower heating bills this winter - The DUAL-FUEL HEAT PUMP!

The DUAL-FUEL HEAT PUMP can efficiently cool your home in summer. Then in winter the heat pump provides the most efficient heating for your home during normal winter weather and can work with your gas system to assist during extremely cold conditions.

WEST TEXAS UTILITIES COMPANY

An Equal Opportunity Employer



A Member of The Central and South West System

Pay for a new heat pump and its installation on your monthly electric bill with WTU's Finance Plan. Call WTU for details.

# RLISD school supply list announced

**Robert Lee ISD  
School Supplies**  
1992-93 School Year  
(name on all supplies)  
**Kindergarten**

crayolas  
school glue  
regular pencils (not husky)  
scissors  
2 pkgs. assorted construction paper  
school box  
1 spiral notebook  
1 tray water colors  
1 box Kleenex  
old shirt (art)  
towel for rest time (please, no plastic mats)

**First Grade**

2 pencils  
1 eraser  
rubber cement  
smallest Elmer's Glue  
1 pkg. assorted construction paper  
scissors  
1 box tissues  
primary tablet  
ruler  
school box or cigar box

**Second Grade**

4 - #2 pencils

1 pink eraser  
1 box crayons  
1 lg. glue  
1 pkg. construction paper (assorted colors)  
wide rule spiral notebook (not college rule)  
1 lg. Kleenex  
1 ruler with inches and centimeters  
1 pair scissors  
1 pkg. 3X5 index cards

**Third Grade**

1 pair of scissors  
1 large glue  
1 box of crayons  
1 eraser  
3 Kleenex  
2 red pencils  
6 #2 pencils  
markers (optional)  
3 spiral notebooks (no college ruled)  
3 pkgs. notebook paper (no college ruled)  
1 ruler with inches & centimeters  
1 crayon box  
trapper or notebook three ring  
6 pocket file keeper folders  
1 map colors

**Fourth Grade**

wide ruled notebook paper  
1 large spiral  
3 ring notebook  
2 pocket folders  
6 #2 pencils  
3 red pens or pencils  
map colors  
crayons  
Elmer's school glue  
2 large erasers

scissors  
cigar box  
wooden ruler (3 hole)  
zipper pouch  
1 pkg. assorted construction paper  
2 boxes of Kleenex

**Fifth Grade**

1 open center protractor  
1 scissors  
1 12" ruler showing mm. and cm.  
6 plain yellow #2 pencils  
2 blue or black ink pens  
2 red grading pencils or pens  
1 pkg. crayons or markers (ass't. colors)  
1 pkg. construction paper (ass't. colors)  
2 spiral notebooks, regular lines (no college ruled)  
glue  
2 boxes Kleenex  
notebook filler - no college ruled

**Sixth Grade**

2 boxes Kleenex  
3 pencils w/ erasers  
2 pens (blue or black)  
2 pens (red)  
notebook paper  
scissors  
map colors  
crayons  
glue  
ruler  
protractor  
4 subject spiral notebook  
colored markers (optional)



**American Heart Association**

This recipe is intended to be part of an overall healthful eating plan that would not include more than 30 percent of daily calories from fat.

**Chicken Salad Casserole**

Have a bang of a July Fourth Celebration with this casserole on your table!

<b>2 Tbsp.</b>	Vegetable oil spray* acceptable** margarine	<b>1/4 cup</b>	fresh bread crumbs (1/2 slice bread)
<b>1/2 lb.</b>	fresh mushrooms, sliced	<b>1 Tbsp.</b>	grated Parmesan cheese
<b>1/2 cup</b>	diced green bell pepper	<b>1/4 cup</b>	light, reduced-calorie mayonnaise
<b>1/2 cup</b>	diced red bell pepper	<b>2 tsp.</b>	fresh lemon juice
<b>1/2 cup</b>	chopped onion	<b>1/2 tsp.</b>	thyme
<b>1/2 cup</b>	slivered water chestnuts	<b>1 dash</b>	white pepper
		<b>2 cups</b>	diced cooked chicken

Preheat oven to 375° F.  
Lightly spray an 8 x 8-inch pan with vegetable oil.  
In a nonstick skillet over medium-high heat, melt margarine. Add mushrooms, bell peppers, onion and water chestnuts. Cover and cook 7 to 9 minutes. Uncover and continue cooking over high heat until juices evaporate. Set aside.

In a small bowl, combine bread crumbs and grated Parmesan cheese. Set aside. In a large bowl, combine mayonnaise, lemon juice, thyme and white pepper. Add chicken and vegetable mixture. Stir to mix well. Spoon into prepared pan. Sprinkle bread crumb mixture evenly on top. Bake 20 minutes.

Makes 6 servings.

\* Do not use vegetable oil spray near an open flame or a heat source. Read directions on can before using, and follow directions carefully.

\*\* Select margarines that have no more than 2 gm of saturated fat per tablespoon.

**Nutritional Analysis per Serving**

190	Calories	43 mg	Cholesterol	3 gm	Saturated Fat
16 gm	Protein	196 mg	Sodium	3 gm	Polyunsaturated Fat
8 gm	Carbohydrates	10 gm	Total Fat	4 gm	Monounsaturated Fat

**NOTICE OF EFFECTIVE TAX RATES**

1992 Property Tax Rates in

EAST COKE COUNTY HOSPITAL DISTRICT, CITY OF ROBERT LEE, CITY OF BRONTE

This notice concerns 1992 property tax rates for the above jurisdictions. It presents information about three tax rates. Last year's tax rate is the actual rate the taxing unit used to determine property taxes last year. This year's effective tax rate would impose the same total taxes as last year if you compare properties taxed in both years. This year's rollback tax rate is the highest tax rate the taxing unit can set before taxpayers can start tax rollback procedures. In each case these rates are found by dividing the total amount of taxes by the tax base (the total value of taxable property) with adjustments as required by state law. The rates are given per \$100 of property value.

**Last year's tax rate:**

	ECCHD	CITY OF ROBT LEE	CITY OF BRONTE
Last year's operating taxes	\$ 141,240	\$ 57,171	\$ 56,590
+ Last year's debt taxes	\$ -0-	\$ -0-	\$ -0-
= Last year's total taxes	\$ 141,240	\$ 57,171	\$ 56,590
÷ Last year's tax base	\$ 61,407,810	\$ 17,569,540	\$ 13,160,350
= Last year's total tax rate	\$ .23000 /\$100	\$ .3254 /\$100	\$ .43000 /\$100

**This year's effective tax rate:**

Last year's adjusted taxes (after subtracting taxes on lost property)	\$ 141,044	\$ 57,171	\$ 56,590
÷ This year's adjusted tax base (after subtracting taxes on new property)	\$ 64,845,255	\$ 17,218,470	\$ 12,976,850
= This year's effective tax rate	\$ .21750 /\$100	\$ .33203 /\$100	\$ .43608 /\$100

x 1.03=maximum rate unless unit publishes notices and holds hearing

**This year's rollback tax rate:**

Last year's adjusted operating taxes (after subtracting taxes on lost property)	\$ 141,044	\$ 57,171	\$ 56,590
÷ This year's adjusted tax base	\$ 64,845,255	\$ 17,218,470	\$ 12,976,850
= This year's effective operating rate	\$ .21750 /\$100	\$ .33203 /\$100	\$ .43608 /\$100

x 1.08=this year's maximum operating rate

+ This year's debt rate	\$ -0- /\$100	\$ -0- /\$100	\$ -0- /\$100
= This year's rollback rate	\$ .23490 /\$100	\$ .35859 /\$100	\$ .47096 /\$100

**SCHEDULE A: UNENCUMBERED FUND BALANCES**

The following balances will probably will be left in the units' property tax accounts at the end of the fiscal year. These balances are not encumbered by a corresponding debt obligation.

ECCHD Emergency Fund	\$75,000
Insurance Fund	\$50,000
Indigent Health	\$13,000
City of Robert Lee	\$72,000
City of Bronte	\$20,000

**SCHEDULE B: DEBT SERVICE**

These taxing units do not have any long-term debt to be paid from property tax revenue.

This notice contains a summary of actual effective and rollback tax rate calculations. You can inspect a copy of the full calculations at 710 Austin St., Robert Lee, Texas.

Name of Person Preparing this Notice: Patsy N. Dunn  
Title: Tax Assessor/Collector

Date Prepared July 29, 1992

**30**  
Color  
Photos

\$1199

1-10x13 (Wall Photo)  
1- 8x10  
2- 5x7  
2- 3x5  
16-King Size Wallets  
8-Regular Size Wallets

99¢ Deposit  
11<sup>00</sup> Due at  
Pick up  
(plus tax)

AT

**Cumbie & Arrott's  
Mercantile**  
119 Main St.  
Bronte, TX  
Tuesday, August 11

WE USE  
KODAK PAPER

*Shugart's*  
inc.®

Group charge  
99¢ per person

**PAPER**  
for a Good Look

FOR CREATIVE COLOR PORTRAITS

## Coke County Rodeo results announced

### Eight & under Girls

- BARRELS**  
 1st Lauren Lucas -19.23  
 2nd Brandi Lee -19.48  
 3rd Natasha Reed -19.73
- POLES**  
 1st Lauren Lucas -24.68  
 2nd Brandi Lee -26.86  
 3rd Natasha Reed -26.90
- FLAGS**  
 1st Lauren Lucas -10.70  
 2nd Kacy Thomas -12.22  
 3rd Natalee Reed -12.49
- GOAT HAIR PULLING**  
 1st Natasha Reed -11.93  
 2nd Natalee Reed -17.00  
 3rd Lauran Lucas -18.26

### Eight & under Boys

- BARRELS**  
 1st Jody Bob Jordan-18.70  
 2nd Matthew Lucas-19.77  
 3rd Jess McMullan-28.53
- POLES**  
 1st Matthew Lucas-24.58  
 2nd Jody Bob Jordan-25.14  
 3rd Jess McMullan-28.53
- FLAGS**  
 1st Jody Bob Jordan-10.23  
 2nd Jess McMullan-14.68  
 3rd Matthew Lucas- 17.55
- GOAT HAIR PULLING**  
 1st Stewart Millican-12.28  
 2nd Jody Bob Jordan-14.14  
 3rd Jake McCabe-17.31

### 9 to 12 yr. Girls

- BARRELS**  
 1st Tessie McMullan-18.51  
 2nd Margaret Ann Jameson-18.83  
 3rd Briana Bollinger-19.15  
 4th Brittany Barrett-19.19
- POLES**  
 1st Margaret Ann Jameson-

- 21.70  
 2nd Erin Kelly-21.71  
 3rd Kannan Millican-23.17  
 4th Briana Bollinger-23.95
- FLAGS**  
 1st Tessie McMullan-9.58  
 2nd Kannan Millican-9.84  
 3rd Margaret Ann Jameson-9.88  
 4th Erin Kelly-9.92
- GOAT TYING**  
 1st Margaret Ann Jameson-13.41  
 2nd Erin Kelly-13.63  
 3rd Kannan Millican-13.83  
 4th Tessie McMullan-14.70

### 9 to 12 yr. Boys

- BARRELS**  
 1st Jared Greer-19.70  
 2nd Dusty Arrott-21.83
- POLES**  
 1st Tate McMullan-22.31  
 2nd Jared Greer-26.09
- FLAGS**  
 1st Tate McMullan-9.85  
 2nd Dusty Arrott-10.27
- GOAT TYING**  
 1st Tate McMullan-15.73  
 2nd Dusty Arrott-21.05

### 13 to 15 yr. Girls

- BARRELS**  
 1st Crystal Bell-18.65  
 2nd Jill Smith-20.59
- GOAT TYING**  
 1st Crystal Bell-19.34
- POLES**  
 1st Crystal Bell-20.95  
 2nd Brandi Brosh -24.55

### 16 to 18 Girls

- BARRELS**  
 1st Gina Chambliss-19.00

- GOAT TYING**  
 1st Gina Chambliss-17.92
- POLES**  
 1st Kim Carver-23.33

### 13 to 15 Boys

- BREAKAWAY ROPING**  
 1st Josh Blaneck-18.16
- TIE-DOWN ROPING**  
 1st Josh Blaneck-139.85
- RIBBON ROPING**  
 1st Josh Blaneck-24.78

### 16 to 18 yr. Boys

- BREAKAWAY ROPING**  
 1st (TIE) Ross Sims & Thad Metcalf-2.86
- TIE-DOWN ROPING**  
 1st Cody May-16.14
- RIBBON ROPING**  
 1st Ross Sims-7.34  
 2nd Justin Dockery-14.34

### 19 & over Women

- BREAKAWAY ROPING**  
 1st Cheryl Dusek-4.31  
 2nd Mary McMullan-4.39
- POLES**  
 1st Reba Lindsey-22.18  
 2nd Peggie McMullan-22.48  
 3rd Susan Lucas-22.67
- BARRELS**  
 1st Reba Lindsey-18.27  
 2nd Ruby Lee-18.46  
 3rd Barbie York-18.58  
 4th Michele Head-18.69
- GOAT TYING**  
 1st Ruby Lee-10.07  
 2nd Mary McMullan-11.27  
 3rd Cheryl Dusek-11.52

### 19 & over Men

- BREAKAWAY ROPING**  
 1st Marshall Millican-3.19  
 2nd Eddy Don Templeton-4.30  
 3rd Thomas Bryan-8.28
- TIE-DOWN ROPING**  
 1st Marshall Millican-11.24  
 2nd Eddy Don Templeton-12.79
- RIBBON ROPING**  
 1st Marshall Millican-8.39  
 2nd Thomas Bryan-10.53  
 3rd Calvin Steen-11.85
- TEAM ROPING**  
 1st Sparks Burdett/Bobby



Pictured are officials and participants in the July 17 & 18, 1992, Coke County Rodeo. Included were (standing l-r) Mary McMullan, Joel Percifull, Lynn Denton, Thad Metcalf, Waylon Ensor, Wayne McCutchen; ( front row, l-r) Wayne Coalson, Jimmy Skinner, and Ed Brosh.

- Bolding-9.08  
 2nd Sparks Burdett/Billy Jack Roe-10.78  
 3rd Bobby Bolding/Red Guzman-15.22  
 4th Mike McCabe/Marshall Millican-17.77  
 5th Mike McCabe/Johnny McMullan-17.95  
 6th Joe Perales/Susan Perales-19.39

- 19 & Over Women - Reba Lindsey  
 19 & Over Men - Marshall Millican

The results of the 1992 Coke County Rodeo Businessmen's Steer Saddling event are as follows:  
**1ST PLACE TEAM-** Robert Lee State Bank  
 Joel Percifull, Lynn Denton, and Thad Metcalf.

**2ND PLACE TEAM-** Way's Chevron  
 Paul Williams, Waylon Ensor, and Wayne McCutchen

**3RD PLACE TEAM-** Western Gas Resources  
 Wayne Coalson, Jimmy Skinner, and Edwin Brosh.  
 Melvin McCabe, Larry Roland, and Jerry Graves.

### ALL AROUND CHAMPIONS

- 8 & Under Girls - Lauren Lucas  
 8 & Under Boys - Jody Bob Jordan  
 9-12 Girls - Margaret Ann Jameson  
 9-12 Boys - Tate McMullan  
 13-15 Girls - Crystal Bell  
 13-15 Boys - Josh Blaneck  
 16-18 Girls - Gina Chambliss  
 16-18 Boys - Ross Sims

### GLENN-BIVINS INSURANCE



Come See Us For  
**AUTO HOUSE LIFE HEALTH**  
 123 W. Main Bronte 473-6791

## Fever wards off infection

Fever-for most parents it's a sure sign that their child isn't feeling well. What many parents don't realize, however is that most fevers do more good than harm.

"In a majority of cases fever is the body's way of fighting off infection," said Yoghesh Pandya, M.D., chief of staff at Methodist Children's Hospital.

Here's how a fever typically plays its protective role in guarding against infection. When a virus or other microorganism invades the body, white blood cells release a hormone called interleukin which instructs the brain to turn up the body's thermostat, producing fever. Often an individual will experience chills along with the fever. Such chills produce shivering and muscle activity which prompts the body to produce even more heat.

Although such symptoms are unpleasant and can be alarming to parents, they do provide protective advantages, "Extra body heat inhibits the growth of infectious microorganisms and also boosts the ability of white blood cells to fight disease," said Dr. Pandya. "A fever also robs bacteria of iron, a key facilitator in the spread of infections." And, fever is rarely a serious threat to children-such rare occurrences as

seizures and are only possible when body temperatures dramatically rise in susceptible children.

Parents can help their children feel more comfortable when they have a fever by:

- \* Administering a fever reduction medication such as children's acetaminophen;
  - \* Giving tepid baths;
  - \* Increasing fluid intake to prevent dehydration; and
  - \* Dressing children in lightweight comfortable clothing.
- According to Dr. Pandya a physician should be consulted if a fever:
- \* Is present in a infant 3 months or younger;
  - \* Persists without symptoms for more than 48 hours;
  - \* Is 103 degrees axillary (under the arm) or 102 degrees orally for children over six months of age;
  - \* Is accompanied by either a stiff neck or seizures;
  - \* Is not brought down by medication; or
  - \* Is accompanied by any other symptoms such as painful urination, a sore throat or a productive cough.

### PARKER PLUMBING

Residential-Commercial  
 All Types Plumbing Repair

- \*New Construction
- \*Remodeling
- \*Fixtures
- \*Sewer Service



Licensed Master Plumber

473-2131 Bronte

## BRONTE'S BRIGHT FUTURE has been ensured by businesses such as Rosebud Antiques & Collectibles

Rosebud Antiques and Collectibles, 120 S. State in Bronte is operated by Elaine Scott.

The location enables people that normally pass through Bronte to stop and browse. Shortly after the opening of the store Ross McSwain, writer for the San Angelo Standard Times, mentioned Bronte and Rosebud in his column.

Elaine specializes in handling estate and garage sales. She offers a layaway plan and will trade for equal value. The business has been in operation for only a few months, but we are looking forward to serving people, regardless of their budget, for a long time to come.

**We encourage citizens of Bronte to patronize OUR local merchants.**

## 1st FIRST NATIONAL BANK IN BRONTE



Committed to Bronte's future. See us for your banking needs.

Equal Housing Lender. Personal, Home, and Automobile Loans.

Member FDIC

Hours  
 Monday - Friday  
 Lobby 9-3  
 Drive Thru 8-3

## One-Dish Supper Is Healthy and Fast



(DM)—With time at a premium, more families are turning to fast food, frozen dinners and takeout. While convenient, these choices may be high in sodium and fat, and lacking fruits and vegetables.

Raisin Chicken Santa Fe is a one-skillet dish for today's busy families. It uses wholesome ingredients, such as chicken, peppers and tangy California raisins. Total cooking time? Just 30 minutes!

Versatile and convenient, raisins also are a good value. It takes four pounds of grapes to make a pound of raisins.

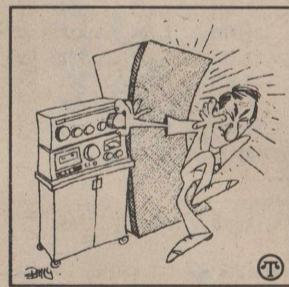
### RAISIN CHICKEN SANTA FE

- |  |                                      |
|--|--------------------------------------|
| 4 chicken breast halves, skinned                           | 1 1/2 cups chicken broth or bouillon |
| 1 tablespoon olive oil                                     | 1 cup raisins                        |
| 2 cloves garlic, minced                                    | 1/4 cup tomato paste                 |
| 1 onion, chopped   | 1 teaspoon ground coriander          |
| 2 red or green bell peppers, seeded and sliced into strips | Salt and pepper, to taste            |
| 1 fresh or canned jalapeño pepper, minced                  |                                      |

In large skillet over medium heat cook chicken in oil until lightly browned, turning once. Add garlic, onion, and bell and jalapeño peppers; saute 2 minutes. Mix in broth, raisins, tomato paste and coriander. Bring to boil, reduce heat, cover and simmer 10 minutes. Uncover; cook about 10 minutes until chicken is tender and sauce is slightly reduced. Season with salt and pepper. Makes 4 servings.

## Did You Know?

Your ears have no defense against loud noise. In order to protect your hearing, turn down the volume whenever possible.



•A loud noise, such as a firecracker exploding or feedback from an amplifier, may cause hearing loss with only one exposure.

•Warning signs such as a temporary ringing or buzzing in your ears following prolonged exposure to excessive volume of sound, or a slight muffling of sounds for a few minutes or hours after exposure, indicate that your hearing may have been at risk.

•This type of hearing loss can be prevented. In order to protect your hearing, turn down the volume

whenever possible. Wear ear plugs or earmuffs when you know you'll be exposed to excessive noise. Alternate a noisy activity with a period of quiet to rest your ears. Limit the length of time you're exposed to noise.

Noise pollution is part of today's environment, but you can protect your ears by using common sense. For a free brochure about protecting your ears, write: House Ear Institute, Hearing Is Priceless Program, 2100 West Third Street, Los Angeles, CA 90057.



Suzie Wilson of Robert Lee accepts a certificate of completion from WTU's Kit Horne following a science workshop for teachers held in Lubbock recently.

## Wilson attends workshop

Fourth, Fifth, and Sixth grade science teachers recently participated in a science workshop co-sponsored by West Texas Utilities Company and Southwestern Public Service Company. Forty teachers attended the workshop "Electric Principles for the Classroom" July 14 at Lubbock.

The workshop featured demonstrations and hands-on projects the teachers could use in their classrooms. Di-




rected by Texas Agri-Business Electric Council Executive Director Greg Stark, teachers worked with static electricity, studied electrical circuits and made electric motors.

In addition, Amarillo meteorologist Len Slesick spoke on environmental issues, emphasizing the importance of balance between the cost and the benefits of government regulation.

Attending the recent workshop was Robert Lee teacher Suzie Wilson.

## Davis Grocery & Meat

North Hwy 208 - Robert Lee - 453-2488

Parade Homo or LoFat		
Milk	Gal.	1.89
Bluebell All Flavors		
Ice Cream	1/2 Gal.	2.79
Potatoes	10 Lb. Bag	1.49
Bounty		
Paper Towels	Big Roll	1.19
Diet or Classic		
Coca Cola	 12 pack	2.59
Parade		
Bread	1 1/2 Lb. Loaf	.49
Kraft Ass't. Flavors		
Barbecue Sauce	18 oz.	.99
Home Grown		
Cantaloupes		2/.99
"Thick Slice"		
Slab Bacon	Lb.	1.29
"Fresh"		
Ground Meat	Lb.	1.49
Cut to Order		
Sirloin Steak	 Lb.	2.29
Cut to Order		
Rib Eye Steak	Lb.	3.69

WATCH FOR OUR IN STORE SPECIALS!

Specials good 8-6-92 thru 8-12-92

**WE HAVE BAR-B-QUE BEANS - POTATO SALAD**

### PUBLIC NOTIFICATION OF NONDISCRIMINATION

The BRONTE INDEPENDENT SCHOOL DISTRICT offers vocational programs in Agriculture and Home Economics. Admission to the programs is open to all students enrolled in the BRONTE INDEPENDENT SCHOOL DISTRICT.

It is the policy of BRONTE INDEPENDENT SCHOOL DISTRICT not to discriminate on the basis of race, color, national origin, sex, handicap, political belief or religion in its educational and vocational programs, services, or activities as required by Title VI of the Civil Rights Acts of 1964, as amended, Title IX of the Education Amendments of 1972, and Section 504 of the Rehabilitation Act of 1973, as amended.

It is the policy of the BRONTE INDEPENDENT SCHOOL DISTRICT not to discriminate on the basis of race, color, national origin, sex, handicap, political belief or religion in its employment practices as required by Title VI of the Civil Rights Act of 1964, as amended, Title IX of the Educational Amendments of 1972, the Age Discrimination Act of 1975, as amended, and Section 504 of the Rehabilitation Act of 1973, as amended.

BRONTE INDEPENDENT SCHOOL DISTRICT will take steps to assure that lack of English language skills will not be a barrier to admission and participation in all educational and vocational programs.

For information about your rights or grievance procedures, contact the Title Coordinator, Michael Hartman, at Bronte ISD, Bronte, Texas, 915-473-2511, or the Section 504 Coordinator, Michael Hartman, Bronte ISD, Bronte, Texas. 915-473-2511.

## Br. Elem. Supply List

The following items will be community property. All supplies will be kept together and distributed as needed. Do not put your name on any of the following items.

- 1 box of 24 or more crayons
- 1 pair of good quality scissors
- 1 large box of kleenex
- 12 # 2 pencils
- Watercolor set with brush
- 2-8 oz. glue
- 6 portfolio folders
- 1st Grade**
- 2 rolls Scotch Tape

### WCC EMS

Contributions for July 1992 to the West Coke County EMS included the following:

#### MEMORIALS

##### Opal Brown

- Mr. and Mrs. R.L. McGuire
- Barton Waldrop
- Winnie Waldrop
- Lynnette Boykin
- J.F. McCabe
- Mr. and Mrs. Wayne McCabe
- R.H. Richards
- Karen Rasco
- Irma Casey
- Bobby and Nona Davis
- J.E. and Hazel Ruth Green
- Ethel Forgy
- Irma Casey
- Bessie Caston
- Irma Casey
- Alpha Roe
- Irma Casey
- Melva Metcalf
- Mr. and Mrs. Wayne McCabe
- Charles P. Oliphant
- James Hood
- James B. "Buck" Gray
- Dale Brown

#### DONATIONS

- Concho Valley Electric
- Billy and Barbara Sparks

### Personal

Mrs. Zola Hatley of Robert Lee returned home last week from Houston where she spent some time with her grandson, Steve Hatley. He has been a patient at Houston Northwest Medical Center for over a month. He has suffered from Hodgkins Disease for an extended time but has had periods of remission.

His grandmother reports he is out of remission, and following 2 surgeries in July for a perforated colon and much medication, he remains in critical condition.

Steve Hatley, who lived in Robert Lee as a child, resides with his wife and two children at Conroe.

Zola was transported to Houston and back home by Steve's brother, Tommy Hatley, and Sam Thomas, Steve's Navy buddy, both of Conroe.

### LOOK WHO'S NEW

#### Sarah J. Smith

Sarah Jessie Marie Smith was born July 21, 1992 at Angelo Community Hospital. She weighed a healthy 9 lbs. 6 oz. and was 20 1/2 inches long. Her mother is Kristie Jones. She was welcomed home by her cousins, Cody, Corbin, and Kelsey Martin. Grandparents are R.D. and Mary Ann Smith of Robert Lee. Great-grandparents are Roland and Mae Pearl Smith of Possum Kingdom Lake. She has two aunts, Brenda Martin, and Karen Smith.

- Pointed scissors
- 8 portfolio-pockets, no brads
- 16 crayons
- 1 large eraser
- 2 large boxes of tissue
- 2-8 oz. Elmer's Glue
- 2 dozen #2 pencils
- school supply box
- 12" ruler (inch and centimeters)
- 1 box watercolors with brush
- 1 set watercolor markers
- \*\* Please label your child's supplies. (except pencils)

#### 2nd Grade

- pointed scissors, ruler (inch and centimeters)
- 12 #2 pencils
- clear tape
- 24 crayons
- watercolor paints (8 colors)
- soft pink eraser
- school supply box
- PKG. of 10 markers (water base)
- 2 lg. boxes tissue
- notebook and notebook paper (wide ruled)
- 8 oz. glue
- \*\* Each item needs to be individually labeled.

#### 3rd Grade

- 12-#2 pencils
- wide ruled notebook paper
- 2 red pencils
- ruler with inches and centimeters
- pointed scissors
- 1 set watercolor markers
- 8 oz. glue (no colors)
- crayons (24)
- soft pink eraser
- 1 roll Scotch Tape
- 2 boxes tissue
- long map colors
- school supply box
- 1 -50 page spiral notebook (wide ruled)
- 2 folders with pockets

#### 4th Grade

- crayons
- map colors
- loose leaf notebook and paper
- pointed scissors
- bottle of Elmer's Glue
- 3#2 pencils
- blue ballpoint pens
- red pen
- 2 composition notebooks
- 12" ruler with metric
- clear tape
- 3 folders with brads and pockets
- 2 large boxes of tissue

#### 5th Grade

- 3 #2 pencils
- 1 set - subject dividers
- clear tape
- 1 box map colors
- loose leaf notebook and paper
- pointed scissors
- 1 bottle of glue (large)
- 1 red pen
- 1 blue ballpoint pen
- 2 large boxes tissue
- 12" ruler with metric
- 3 folders with pockets, brads and 3 rings
- 1 50 page composition notebook

#### 6th Grade

- crayons
- pointed scissors
- hole punch
- 1 box map colors
- wide - ruled loose notebook paper
- large looseleaf notebook (large)
- 1 bottle Elmer's Glue (sm)
- 3 #2 pencils
- blue or black ballpoint pen
- 2 composition notebooks (lg)
- 2 large boxes of tissue
- 12" metric ruler
- 2 folders with brads and pockets
- 1 red pen

## New fall tomato variety introduced

Surefire, a new fall tomato variety named for its reliability and rapid ripening qualities, is being introduced by the Texas Agricultural Extension Service.

With this variety you can be eating luscious, vine-ripened tomatoes from your own garden on Thanksgiving Day.

It's the reliability of Surefire that really makes it a fall gardener's dream come true. It has good flavor, stores well, ripens quickly and never misses a crop when planted and cared for properly. Now that's something to be thankful for.

July, August and September actually comprise a second summer season in Texas.

This is the ideal period for planting most fall vegetables and several annual flowers as well.

While selecting the right tomato variety is important in the spring, it's critical in the fall. Make a mistake in the fall and a freeze will harden those dreams of fresh tomatoes into a blackened nightmare.

Transplants of Surefire make their debut in North Central Texas nurseries on Friday, July 3, and in the South Central Texas area in mid-July.

Surefire's most significant feature is the short time required from planting to first harvest. Only 65 days are re-

quired from transplanting to the first ripe fruit, and only 30 more days to the end of harvest. Surefire is a superb fall tomato for North Texas and ideal for areas where the first frost is mid-October or later. Its small vine makes it particularly well-suited to planting in patio containers.

Developed by private industry and field-tested by the Extension Service, Surefire is a firm, meaty, round-fruited hybrid that produces fruit very early. Its flavorful medium-sized fruit resists radial cracking, and the vine itself is genetically resistant to two wilt fungi.

Vine-ripened tomatoes are easily the most revered of garden vegetables, yet often the most difficult to produce in the fall. Spring planted tomatoes may continue producing into the fall but both the quantity and quality decline. Often, these plants are ravaged by disease and insect problems, requiring unwanted pesticide applications.

Surefire provides a better solution. Simply remove the old plants and replace them

with young, vigorous transplants of this new, fast-maturing variety.

The most common problem plaguing fall tomatoes is that nighttime temperatures do not cool soon enough for the timely fruit set that ensures vine-ripened tomatoes before the first frost or freeze.

Surefire overcomes this problem since it's a heat-setting tomato. In one trial, it actually ripened more fruit earlier than fall-planted cherry tomatoes. And, it also ripens the majority of its fruit simultaneously, a great benefit when frost is in the forecast.

Extension specialists have prepared a Surefire brochure, available free of charge at participating nurseries, which contains complete information on how to grow this new high performance plant.

## EXERCISE

Does Your Heart Good.

American Heart Association

Make us your school supply headquarters. A full stock of required school supplies plus more items.

**S & S Printing**

207 S. Washington

473-2020

Bronte

### LETTER TO HOUSEHOLDS (Multi-Child Meals) NATIONAL SCHOOL LUNCH PROGRAM/SCHOOL BREAKFAST PROGRAM

Parent/Guardian:

The BRONTE school serves meals each school day. Children K-6 may purchase lunch for \$1.00 and children 6-12 may purchase lunch for \$1.25. Breakfast for children K-12 will be \$.60. Meals are also available free or at a reduced price. Lunch tickets may be purchased in the Elementary or High School Principal's office. If you now get food stamps or AFDC for your children, your children can get free meals. If your total household income is the same or less than the amounts on the Income Chart below, your children can get free meals or reduced price meals. A foster child may get free or reduced price meals regardless of your income. The reduced price is \$.40 for lunch and \$.30 for breakfast.

TO GET FREE OR REDUCED PRICE MEALS FOR YOUR CHILDREN, YOU MUST COMPLETE AN APPLICATION AND RETURN IT TO THE SCHOOL. WE CANNOT APPROVE AN APPLICATION THAT IS NOT COMPLETE.

#### HOW TO APPLY

If you now get food stamps or AFDC for the child you are applying for, the application must have the child's name, a food stamp or AFDC case number for that child, and the signature of an adult household member. If you are applying for a foster child, the application must have the child's name, the child's "personal use" income, and an adult signature. If you do not list a food stamp or AFDC case number for the child you are applying for, then the application must have the child's name, the names of all household members, the amount of income each person got last month and where it came from, the signature of an adult household member and that adult's social security number or the word "none" if the adult does not have a social security number.

#### INCOME CHART

Household Size	Annual	Monthly	Weekly
1.....	12,599.....	1,050.....	243
2.....	17,002.....	1,417.....	327
3.....	21,405.....	1,784.....	412
4.....	25,808.....	2,151.....	497
5.....	30,211.....	2,518.....	581
6.....	34,614.....	2,885.....	666
7.....	39,017.....	3,252.....	751
8.....	43,420.....	3,619.....	835
For each add'l member			
add.....	+4,403.....	+367.....	+85

**Verification:** Your eligibility may be checked at any time during the school year. School officials may ask you to send papers showing that your children should get free or reduced price meals.

**Fair Hearing:** You may talk to school officials if you do not agree with the school's decision on your application or the results of verification. You may also ask for a fair hearing. You may do this by calling or writing:

Name Michael Hartman, Superintendent Phone 915-473-2511

Address P.O. Box 670, Bronte, Texas 76933

**Reporting Changes:** If your children get free or reduced price meals because of your income, you must tell the school if your household size decreases or your income increases by more than \$50 per month or \$600 per year. If your children get meals because you get food stamps or AFDC, you must tell the school when you are not getting AFDC or food stamps for them. You may then fill out another application giving income information.

**Confidentiality:** School officials use the information on the application only to decide if your children should get free or reduced price meals.

**Reapplication:** You may apply for meals anytime during the school year. If you are not eligible now but have a change in status, like a decrease in household income, an increase in household size, become unemployed or get food stamps or AFDC for your children, you may then complete an application.

**Handicapped:** Meal substitutions at no additional cost for children who meet the definition of "handicapped" will be served, provided a physician has submitted a statement attesting to this fact and prescribing a substitute.

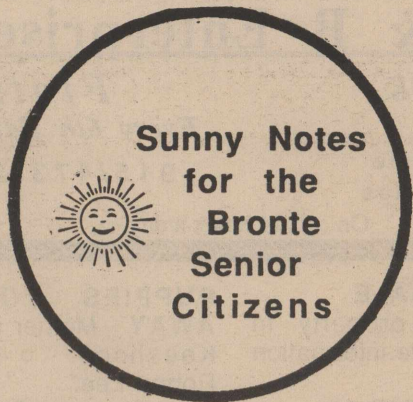
IN THE OPERATION OF THE CHILD FEEDING PROGRAMS, NO CHILD WILL BE DISCRIMINATED AGAINST BECAUSE OF RACE, SEX, COLOR, NATIONAL ORIGIN, AGE OR HANDICAP. IF YOU BELIEVE YOU HAVE BEEN DISCRIMINATED AGAINST, WRITE IMMEDIATELY TO THE SECRETARY OF AGRICULTURE, WASHINGTON, D. C. 20250.

We will let you know when your application is approved or denied.

Sincerely,

*Michael Hartman, Supt.*





**Sunny Notes  
for the  
Bronte  
Senior  
Citizens**

**An Afternoon At The Movies**

Come to the Bronte Senior Center, sit back and enjoy a movie with us, eat popcorn and drink a soda. This all happens on Tuesday, August 11th, from 1:00 pm to 3:00 pm.

**Miles Opera House**

On Thursday, August 13th, we will be leaving the Bronte Senior Center at 10:30 am to go to Miles for a tour of the Opera House and to have lunch. The cost of the lunch is \$2 and you will need to make reservations with us by Monday, August 10th. If you haven't made the trip with us before, you might really enjoy the Opera House; it is a historical building in this area.

**AWARENESS**

**'A Look at Elder Abuse'**

A seminar sponsored by the Concho Valley Area Agency on Aging and Aging Challenges Committee of the Concho Valley will be held at San Angelo University on August 12th. A full day of activities for professional and private caregivers, law enforcement, physicians, and any

other individuals or groups serving an elder clientele. The Director from the Bronte Senior Center will be attending the seminar. If you are interested in attending, call for more information at 944-9666.

**Meals For The Week**

**Monday, August 10**

- Tuna Sandwich
- Tomato Soup
- Carrot & Raisin Salad
- Bread
- Brownie
- Applesauce

**Wednesday, August 12**

- Salisbury Steak
- Pork 'N' Beans
- Mustard Greens
- Cornbread
- Peach Halves

**Friday, August 14**

- Fried Fish
- Tartar Sauce
- Corn O'Brien
- Okra Gumbo
- Cornbread
- Rice Pudding w/Raisins

This program is funded in part by the Concho Valley Area Agency on Aging through grants from the Texas Department on Aging.

**SW Golf Results**

Singing Winds Golf Course hosted Coke County Golf Association with a Parent - Child Tournament on Saturday, August 1, 1992. The following list shows the winners and scores:

**CHAMPIONSHIP FLIGHT**  
J.W. Caudle - Chris Webster; 64 P/O Hole 2  
Davis Corley - Jamie Morrow; 64  
Michael and Joe Laura; 66  
Ben and Jason Trowbridge; 67

**1ST FLIGHT**  
Donus Belew - Bill Belew; 70  
M.L. and Marty Woodall; 71 P/O Hole 2  
Rick and Wade Howaker; 71  
Ed and Joe Coronado; 72

**2ND FLIGHT**  
Lynn and Lane Rutland; 79 P/O Hole 1  
R.D. and Rives Tyler; 79  
Delbert Gaffey and Mandi Meurer; 80  
Mark and Chad Duncan; 82

**3RD FLIGHT**  
Gary and Garrett Merriman; 87 P/O Hole 1  
Greg and Joel Priddy; 87  
Scotty and Ryan McCorkle; 88  
Todd and Cody Lee; 89

31 Total teams entered

Lane Rutland age 12  
P.O. Box 575  
Carlsbad, TX. 76934  
915-465-4716  
Playing in the Parent - Child Tournament with his father Lynn Rutland, made a hole in one on the #6 par 3-177 yards with a #5 wood.

**Count fat not calories**

For many years, dieters across the country have counted their caloric intake in the hopes of losing weight. But according to recent studies, counting fat intake may be a more precise way of reducing weight.

"Foods with a high fat gram level are more easily changed into body fat than foods rich in protein and carbohydrates," said Tracey Norman, outpatient dietitian at Methodist Hospital.

One gram of fat is equal to 9 calories, as compared to 4 calories in one gram of protein and carbohydrates. "The average person consumes about 40 to 50 percent of their total caloric intake from fats, when a more acceptable level would be 20 to 30 percent," Norman said.

Norman suggests the following formula for tabulating 20 percent fat consumption:

$$\text{Calories per day} \times .2 = \text{No. of fat grams}$$

For example, if a person was on an 1,800 calorie per day diet, their daily fat allowance would be 40 grams.

In order to reduce their fat consumption, dieters must first be aware of what types of food it is found in. There are basically two kinds of fat: visible, such as the marbled effect found in some meats; and hidden, such as the fats found in milk, egg yolks, grains and nuts.

"People who want to watch their fat intake need to replace these types of food with lean meat, fish, poultry, dry beans and peas," Norman said. "They should also trim excess fat off meats, broil and bake instead of fry, limit their intake of saturated fat and watch labels for fat content."

**BETTY'S RESTAURANT**  
*Felipe & Betty Rangel*  
**Mexican & American Food**

**Daily Specials - \$3.95**  
**All you can eat**  
**Sunday Buffet - \$5.95**  
**10% Senior Citizens Discount**

Open 10 am - 9 pm  
Closed Tuesdays  
*Use our convenient drive-thru window.*  
453-4790      500 Commerce      Robert Lee

**Hall's Super Save**

FOOD STAMPS WELCOME

473-2065      473-2065      **OPEN 7 Days a Week**

OF BRONTE      STORE HOURS  
Mon.-Sat. --7:30 am to 9 pm  
Sunday -- 8 am to 7 pm

**Check your mail to find more savings!**

**Dr. Pepper or Pepsi**  
12 pk 12 oz. cans  
**2 / \$4.99**

Bounty Big Roll Paper Towels 1.19  
Parade Regular or Buttermilk  
Biscuits 10 count 6 / \$1  
Parade White 2 ply 4 roll Bath Tissue .69  
Chicken of the Sea Tuna in oil or water 6.5 oz. can .59

Parade Ice Cream 2.99  
4 Qt. Bucket

Parade Fruit Cocktail 17 oz. <b>.69</b>	Hunt's Ketchup 32 oz. <b>1.29</b>	Kraft Cheez Whiz 8 oz. Ass't. <b>1.69</b>	Boneless Chuck Roast Lb. <b>1.69</b>	Bone-In Round Steak Lb. <b>1.89</b>
Parade Liquid Bleach Gal. <b>.79</b>	Multi-Grain Cheerios Breakfast Cereal 11.25 oz. <b>1.99</b>	Iceberg Lettuce Head <b>.69</b>	81% Lean Ground Beef Lb. <b>1.59</b>	Extra Lean Cube Steak Lb. <b>2.29</b>
U.S. #1 Bananas 3 Lbs. <b>/\$1</b>	U.S. #1 Russet Potatoes 10 Lb. Bag <b>1.59</b>	Dairy Gold LoFat Milk 1 1/2 or 1/2 Gal. <b>1.79</b>	Lean Ground Chuck Lb. <b>1.69</b>	Holiday Soft Drinks 6 pk. 12 oz. cans <b>.89</b>



**BUY IT.  
SELL IT.  
FIND IT.**

**CLASSIFIED.**

**AGRI - PLEX** - Heating and air conditioning company of Ballinger is now working in Coke County. We specialize in sales and services. Compare prices. For more information call Dale Monse at 1-800-530-4153. License number is TACL00670SE.

**B & B Enterprises**

**Planting Seed** **Flats**  
Every 6th flat free!  
124 N. State  
Bronte, Texas  
915/473-2200  
On call 24 hours a day.

**CLASSIFIED ADVERTISING RATES**

1st. Insertion...  
20c Per Word  
(\$3.00 Minimum)

2nd. and Subsequent Insertions...  
16c Per Word  
(\$2.50 Minimum)

Additional 50c for Blind Ads

Cards/Thanks...  
20c Per Word

Legal Notices...  
20c Per Word

**COPY DEADLINE**  
Class Ads..5 pm Tues.  
Display Ads..5 pm Tues.  
Classified Ads & Cards of Thanks are payable in ADVANCE unless customer carries regular account.

**FOR SALE**

4 OR 5 BR, 3 BA on approximately 4 acres with workshp and orchard.

**MOBILE HOUSE** on Cedar Cove, partially furnished

**3 BR HOUSE, 2 BA**, central heat & air, numerous extras, well-kept, large corner lot, trees, sprinkler system, garage, patio, and storage buildings.

**2 BR, 1 BA house** Bayview Estates

**NICE 3 BR, 2 BA**, new to market. Large corner lot near school.

**NEW LISTING** - 100 Ft. Lot located on 11th street.

**3 BR, 2 BA** with apartment located on lg. corner lot.

**10.88 ACRES** with scenic creek, 3 bedroom, 2 bath home in Bronte; CH/CA, and many extras, storage building and carport.

44B-TNC

**FOR SALE**  
Red S-10 pickup. 5 speed overdrive, chrome wheels, A/C. Phone 473-7701, ask for Terry.  
51B-2tc

**PIANO FOR SALE**  
Wanted: Responsible party to take on small monthly payments on piano. See locally. Call Manager at 800-635-7611.  
51-3tp

**FOR SALE**  
Nice 3 bedroom - 2 bath in Bronte. Large corner lot. Double carport. Mid-twenties. Call Joe at Century 21 - Tri-Lakes Realty. 915-942-1666 or 915-949-4930.  
51B-2tc

**ANTIQUES** - Main Street Market, downtown Bronte.  
01B-1tc

**SHAFFER FUNERAL HOME**

BRONTE ROBERT LEE  
473-3131 453-2424

**MONUMENTS**  
Duplications  
Custom Designs

**4 YEAR OLD REGISTERED BEEFMASTER** bull for sale. Call Don Fields, 453-2638.  
51-2tc

**HOUSE FOR SALE**  
3 BR, 2 bath, 2 car garage, CH/CA. 102 Key St., Bronte. 473-3171 or 453-4349.  
51B-4tc

**HAIRBOWS** - 1/2 wholesale price, Main Street Market, downtown Bronte.  
01B-1tc

**DICK'S FIREWOOD** - Fireplace wood, campfire wood, and BBQ wood. 453-2151, Robert Lee.  
41-TNC

**FOR SALE** - triple dresser, solid wood; super-single water bed, 1 yr. old with 6 drawers, heater included, \$75 each. Cindy Bessent, 453-2393.  
01-1tc

**ROSS PEROT COLLECTIBLES**  
Main Street Market, downtown Bronte.  
01B-1tc

**HOUSE FOR SALE:**  
424 S. Jefferson, Bronte. Large 2 bedroom, 1 bath. Owners will finance. Call Mary Lou Hudman at 387-2817 after six or 387-3893 (work).  
49-tnc

**FOR SALE** - 6 acres joining golf course in Bronte, Texas. Ideal building site. Call Doyle Lightfoot at 806-794-2652.  
44-TNC

**BASEBALL CARDS**  
Main Street Market, downtown Bronte.  
01B-1tc

**FOR SALE**  
All or part of property in Bronte. For more information call 473-2191.  
51B-3tc

**VINE & FABRIC WREATHS**  
Main Street Market, downtown Bronte.  
01B-1tc

**El Vaquero**  
Restaurante  
MEXICAN FOOD

Open Tuesday thru Saturday  
11 am - 2 pm  
5 pm - 9 pm

Downtown Bronte

Fish Friday



**FOR RENT**

**LARGE 1 BR TRAILER** for rent. Furnished, bills paid. 1518 Washington, Robert Lee, 453-4786.  
47-TNC

**MISC**

**CHEERLEADER MINI-CAMP**  
August 10-14 at RLHS tennis courts from 9-11 am. \$2.00 per day. Ages 5 and up. Come join the fun!!!  
51-2tc

**REVEAL YOUR MAKE-UP AND FASHION** personality. Have your Instant Image makeover done with free color and skin condition analysis. Career opportunity also available. Call for appointment, Kim Whiteker at 453-4720.  
45-TNC

**CHINTZ RAG RUGS & BASKETS**  
Main Street Market, downtown Bronte.  
01B-1tc

**WE'LL PAY YOU** to type names and addresses from home. \$500.00 per 1000. Call 1-900-896-1666 (\$1.49 min/18 yrs+) or Write: PASSE -G132, 161 S. Lincolnway, N. Aurora, IL 60542.  
50-4tp

**NRA LIFETIME MEMBER** wants deer lease for 2 to 5 hunters who respect property rights. Call for Clark at (915) 337-8315.  
01-2tc

**ADOPT-A-BUNNY**  
Main Street Market, downtown Bronte.  
01B-1tc

**WANTED** - Babysitter, Monday - Friday, 8-5. For more information call Darnisha at 453-2196.  
01-1tp

**PHOTO TRIMMERS**  
Earn to \$125 per day. No experience needed. 1-800-262-4389.  
49-5tc

**PUPPIES TO GIVE AWAY** - Mother is purebred Keeshond. 453-2439, Robert Lee.  
51-2tc

**\$200-\$500 WEEKLY**  
Assemble products at home. Easy! No selling. You're paid direct. Fully guaranteed. FREE information-24 Hour Hotline. 801-379-2900  
Copyright #TX310DH  
50-8tp

**CHEAP! FBI/U.S. SEIZED**  
89 Mercedes - \$200  
86 VW - \$50  
87 Mercedes - \$100  
65 Mustang - \$50  
Choose from thousands starting \$25.  
FREE information-24 Hour Hotline. 801-379-2929  
Copyright #TX310JC  
50-8tp

**NOW HIRING**  
Nurse's Aides, 7-3 & 3-11 shifts. Apply in person at West Coke County Nursing Home, 307 W. 8th, Robert Lee, TX. EOE

**SERVICES**

**DO YOU NEED HELP** with your baking? Wedding, anniversary, birthday cake, pies, etc. Sharon Pitcock, 453-2038.  
51-3tc

**HAIR WITH PATIENCE**  
Toni Rainwater and Patience Pinson. Monday - Friday 8:30 - 5:30, Saturdays 9:00 - 1:00. 453-4734.  
48a-TNC

**Johnson's Water Well Service**

Farm  
Ranch Home  
Windmills & Pumps  
24 HR. SERVICE  
658-6039  
or  
655-0379

**PIANO & VOICE LESSONS** - some band instruments. Carolyn Long, 453-2383, Robert Lee.  
51-3tp

**TREE SPRAYING**  
Pecan, Mulberry, etc. Excellent service, reasonably priced, PBS Nursery, Ballinger. Day 915-365-3269, Night 365-2372, Donnie Bruton.  
41-tnc

**DO YOU HAVE** a drinking problem? Call Alcoholics Anonymous, 453-2158, 453-4508, or 453-4382. Meetings - Friday, 8 pm; Sunday, 5 pm; Coke County Courthouse, Robert Lee.  
23-tnc

**FOR SALE**

**GERMANIA FARM MUTUAL** Insurance Association - reasonable, sound insurance protection for your home and other property. If you want to save, contact J.A. Dunklin, 805 Vicki St., 915/453-2397, Robert Lee, Texas.  
26a-1tc

**HANDPAINTED CLOTHING**  
Main Street Market, downtown Bronte.  
01B-1tc

**FOR SALE**  
Jenny to work with livestock. \$150.00  
01B-tnc

**FOR SALE:**  
**ACREAGE** in King Subdivision, water, electricity and phone available. Let's go look, very appealing.

**WATERFRONT LOT**, sandy beach, nice restricted area. Lake Spence Estates.

**EXTRA LARGE 2 bdrm**, refrigerated air/central heat. Nice, loan assumable. Lets deal.

**2 BDRM**, with storage buildings. Nice and priced to sell.

**MOBILE HOME** and 11 lots. Owner ready to deal.

**BAYVIEW ESTATES** - 2 BR, 1 BA mobile home located on 2 lots; storage and water well.

**3/4 Acre Waterfront lot** in Cedar Cove with improvements.

**Mobile Home** on 4 lots in Robert Lee.

**IN BRONTE**, 3 BR house, fenced yard, owner finance.

**2 1/2 CORNER LOTS** facing Hwy 208

**OTHER LOTS** available in Robert Lee.

**2 STORY 3 BR, 2 BA** on 2 corner lots with sprinkler system.

**FOR SALE OR RENT** - 2 BR, 2 BA, attached garage. Nice location.



**ADAMS LAND & REALTY CO.**  
Phone 453-2723 or 655-9429  
Elsie Adams 453-2757  
Becky Clendennen 453-4748

**FOR SALE**  
Maple Hutch, Drop Leaf Table & Chairs. 473-4251.  
01B-1tc

**CHENILLE BEDSPREADS**  
Main Street Market, downtown Bronte.  
01B-1tc

**FOR SALE OR LEASE**  
3 BR, 2 bath brick home on large corner lot in Bronte. Double car garage, extra room-could be office. Large utility room. Pecan trees, grapevines, well established yard. Call 473-2186-leave message.  
51B-4tc

Lee Associates



453-2226

Elaine Lee  
453-2995

Laura E. Crenshaw  
453-2761

# CLASSIFIED

## GARAGE SALES

### BIG GARAGE SALE

Saturday and Sunday, 8-5. Five miles west of Robert Lee, Hwy 158. Turn right on Wildcat road at the Rosses. Furniture, material, handmade gifts, and books.

01-1tp

### 3 FAMILY GARAGE SALE

Saturday only, 9 - ? Clothes, toys, misc. 112 W. Jackson, Bronte.

01-1tc

### GARAGE SALE

School clothes, furniture, misc. housewares at 302 State St., Bronte, August 7 & 8, 8:00 am to ? Taylor's, 473-5551.

01B-1tc

### GARAGE SALE

Saturday, 8 til ? Baby clothes, little bit of everything. 707 Westwood, Bronte.

01B-1tc

## CARD OF THANKS

**THE EUBANKS AND MONTEZ FAMILIES** want to express their gratitude to everyone for their prayers, many gifts, calls, and visits that were given to Justin during his recovery. May the Lord Bless all your kindness.

01B-1tc

## NOTICES

**TAKING APPLICATIONS** Waitress and kitchen help. El Vaquero Restaurant, Bronte, TX.

51B-2tc

### BIDDERS' NOTICE

Bronte ISD is accepting bids on the following: Teachers' Supplies, Food Service

Products, Athletic Supplies, Janitorial-Maintenance Supplies, Computers and Supplies. Specifications and bid documents may be obtained in the Superintendent's Office, 210 South Jefferson, Bronte, Texas. Please mark your proposal "sealed bid" and deliver it to the Superintendent's Office by September 4, 1992.

01B-2tc

### MEDICAL BILLING

AmeriClaim electronic insurance claims processing for medical practitioners. \$30,000 parttime to over \$80,000 fulltime. Investment \$5950 plus PC. For information by mail call 913-599-7955.

01-2tc

### NOW HIRING

Dietary personnel. Apply in person at West Coke County Nursing Home, 307 W. 8th, Robert Lee. EOE

01a-1tc

### PUBLIC NOTICE

Notice is hereby given that a Public Hearing will be held on Thursday, the 27th day of August, 1992 at 9:00 am in the District Courtroom, Coke County Courthouse, Robert Lee, Texas for the purpose of hearing comments on the amount of annual compensation of the County Auditor and Assistant Auditor.

01a-1tc

### JOB OPPORTUNITIES

Bronte ISD is accepting applications for two part-time cafeteria workers. Contact Michael Hartman, Supt. 915-473-2511.

01B-1tc

### CONTRACTOR'S NOTICE OF TEXAS HIGHWAY MAINTENANCE WORK

Sealed proposals for contract MOWING OF RIGHT OF WAY in various counties will

be received at the Texas Department of Transportation's District Office, Loop 306 & Knickerbocker Rd., in San Angelo, Texas 76906-1550 on the date and time indicated below; and then publicly opened and read.

AUGUST 17, 1992 - 2:00 PM Contract No. 073XXM1001, Runnels County Contract No. 073XXM1003, Concho/Menard Counties Contract No. 073XXM1005, Crockett County Contract No. 073XXM1009, Coke County Contract No. 07XXM1011, Val Verde/Kinney Counties AUGUST 18, 1992 - 2:00 PM Contract No. 073XXM1002, Irion/Reagan Counties Contract No. 073XXM1004, Kimble County Contract No. 073XXM1007, Sutton/Schleicher Counties Contract No. 073XXM1008, Sterling/Glasscock Counties Contract No. 073XXM1010, Edwards/Real Counties

Plans, specifications and proposals for the above mentioned contracts are available at the office of Mr. Dennis W. Wilde, P.E., Director of Operations, at the above mentioned address.

### THERE WILL NOT BE A PREBIDDERS MEETING FOR THIS PROJECT.

Any questions concerning the scope of work should be directed to the maintenance supervisor in charge of the section you are bidding on. Any questions as to contract administration should be directed to the District Maintenance Office in San Angelo.

Minority contractors are encouraged to participate. Usual rights reserved.

01a-2tc

### NOTICE OF BUDGET HEARING

The president of the Board of Trustees of the Robert Lee ISD pursuant to Section 23.45 of the Texas Education Code and Article 29 E, V.A.T.S. has called a meeting of the Board of Trustees for the purpose of adopting a budget for 1992-93 fiscal year of the district that shall cover all expenditures for the fiscal year. The meeting shall be held on the 18th day of August, 1992 at 8 pm in the board room of the public school building at Robert Lee, Texas. Any tax payer of the district may be present and participate in the hearing.

01a-1tc

### PUBLIC NOTICE CITY OF ROBERT LEE

The City of Robert Lee will hold a public hearing at 7:00 pm on August 10, 1992 at the Robert Lee City Hall. The purpose of this hearing is to allow for final public comments regarding the completion of the 1990 Texas Community Development Program - Water and Fire Protection Improvements (Contract No. 700751.) The general public is invited to attend and participate.

Should any non-English speaking citizen(s) desire to address the City during the public hearing and needs the assistance of an interpreter, the City will attempt to provide one if sufficient notice is provided. Also, should any citizen(s) desire technical assistance or handicap accessibility

to the hearing site, please call the City Secretary at the City Hall.

Jackie Walker, Mayor  
City of Robert Lee  
01a-1tc

wish to attend this meeting should contact City Hall to arrange for assistance.

Jackie Walker  
Mayor  
City of Robert Lee

01a-1tc

### PUBLIC NOTICE CITY OF ROBERT LEE TEXAS COMMUNITY DEVELOPMENT PROGRAM

The City of Robert Lee will hold a public hearing at 7:00 pm on August 10, 1992 at the Robert Lee City Hall in regard to the submission of an application to the Texas Department of Housing and Community Affairs for a Texas Community Development Program (TCDP) grant.

The purpose of this meeting is to allow citizens an opportunity to discuss the citizen participation plan, the development of local housing and community development needs, the amount of TCDP funding available, all eligible TCDP activities, and the use of past TCDP funds. The City encourages citizens to participate in the development of this TCDP application and to make their views known at this public hearing.

Citizens unable to attend this meeting may submit their views and proposals to the City Secretary at the City Hall. Handicapped individuals that

## Political Calendar

### The Observer/Enterprise

has been authorized to make the following announcements for the political offices in Coke County. Each candidate or a campaign representative has paid for his or her announcement. All political advertising, and printing is cash in advance.

17TH CONGRESSIONAL DISTRICT U.S. REPRESENTATIVE  
Charles Stenholm

COKE COUNTY COMMISSIONER  
PRECINCT 1  
Paul Burns

## Chumley family reunion



The Chumley family recently gathered for a five-generation photo session. Pictured are (standing) Linda Leonard Walker, (seated, l-r) Louise Chumley Leonard, Sadye McCabe Chumley, and Wendy Walker Wheeler with her baby, Elizabeth Louise.

Five generations of the Chumley family spend as much time as possible together.

Sadye, 97, is a life time resident of Coke County. She and her late husband, Mark, ranched in the area from 1941 to 1970. In 1970 they moved into Robert Lee and lived there until 1983. Sadye taught Sunday School for over 30 years at the First Baptist Church and has always considered it her church. When Mr. Chumley became seriously ill in 1983, they moved to Big Spring to be near their family. The past few years she has split her time between the homes of her two daughters, Louise Leonard and Jo Marie Collier. Sadye has recently moved back to Coke County and currently resides at the West Coke County Nursing Home. Louise Chumley Leonard

was raised on the family ranch outside Robert Lee. She is a frequent visitor to Robert Lee now that her mother is there. She currently resides in Big Spring. Louise has two daughters, Linda Walker and Paula Duncan.

Linda Leonard Walker and her husband, Royce, reside on their farm in Big Spring. They currently operate the family ranch outside Robert Lee as well as other holdings in Coke County. They spend as much time as they can on the ranch. They have three children, Doby, Cole, and Wendy.

Wendy Walker Wheeler currently resides with her husband and daughter in Big Spring. She is a pharmacist at the Veteran's Administration Hospital in Big Spring. They too have land interest in Coke County and like to spend weekends on the ranch.

# Direct Deposit



Many people have their Social Security or other Government checks sent directly to our bank where it is credited immediately to their account. No chance of loss or theft and your money can begin earning interest immediately.

Stop in and let us help you fill out a request for "Direct Deposit". There is no extra charge for this service.



**ROBERT LEE STATE BANK**

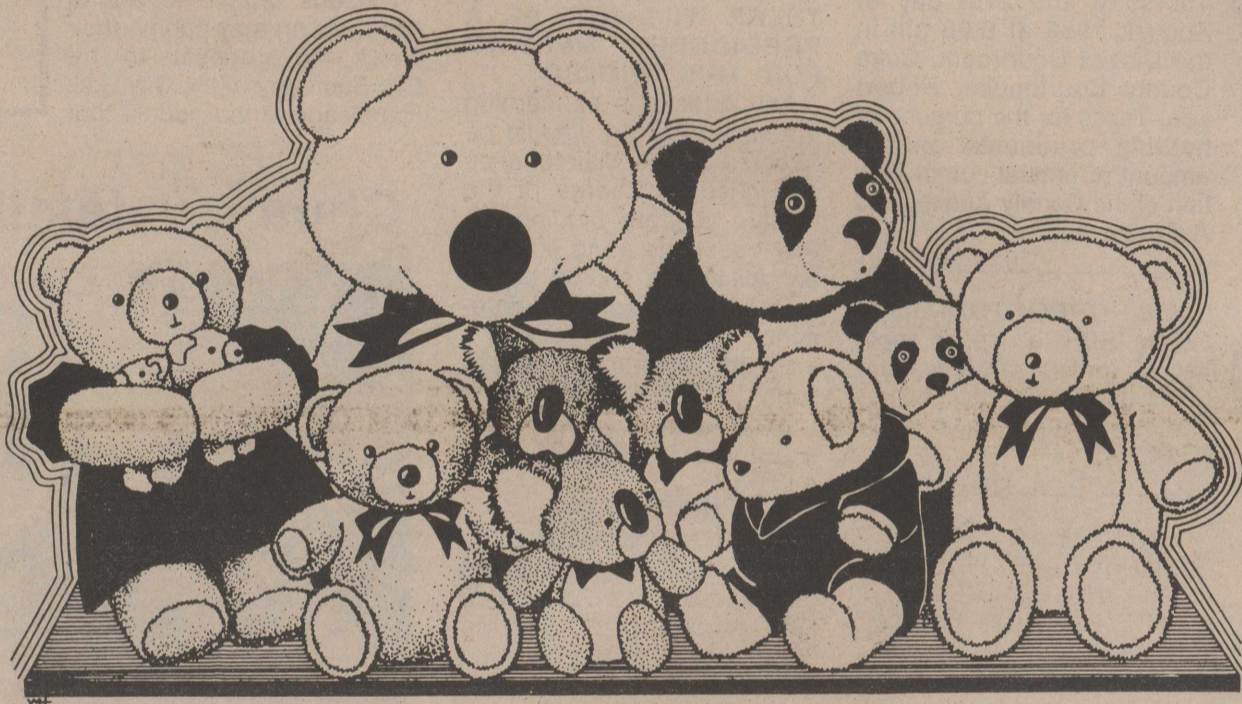
Member FDIC

Robert Lee

453-2545

**Don't forget to**

**Renew Your Subscription...**



**We can't BEAR**

**to lose you!**