

THE OBSERVER/ ENTERPRISE

Serving Coke County

(USPS 467-480)
(ISSN 8750-197X)

Vol. 106, No. 05

Friday, September 3, 1993

Saturday's Extravaganza schedule set

The WCCCD Labor Day Extravaganza promises to be a fun filled day starting at 9:00 am on Saturday. Following is a schedule of events:

9:00 am - Beach Volleyball Tournament (Sand Volleyball Pit)

9:00 am - Washer and Horseshoe Tournament

(Under Shade Trees)
9:00 - 4:00 - "88" Domino Tournament (Big Rec Hall)
9:00 - 5:00 - Food Booths (Under Shade Trees)
9:00 - 5:00 - Arts and Crafts Booths (Under Shade Trees)
9:00 - 5:00 - Red Canyon Archery Club (Mt. Creek Amphitheatre)

10:00 - 11:00 - Miss WCCCD and Jr. Miss WCCCD Beauty Pageant (Stage)

10:00 - 12:00 noon - Children's Activities (Show Barn Arena)

10:00 - 12:00 noon - 4-H Petting Zoo (South End of Show Barn)

11:30 - 12:00 Russ and Lisa Book, Fiddler and Violinist (Stage)

1:00 - 2:00 Cindy Nix, C & W, Patriotic, Dinner Music (Stage)

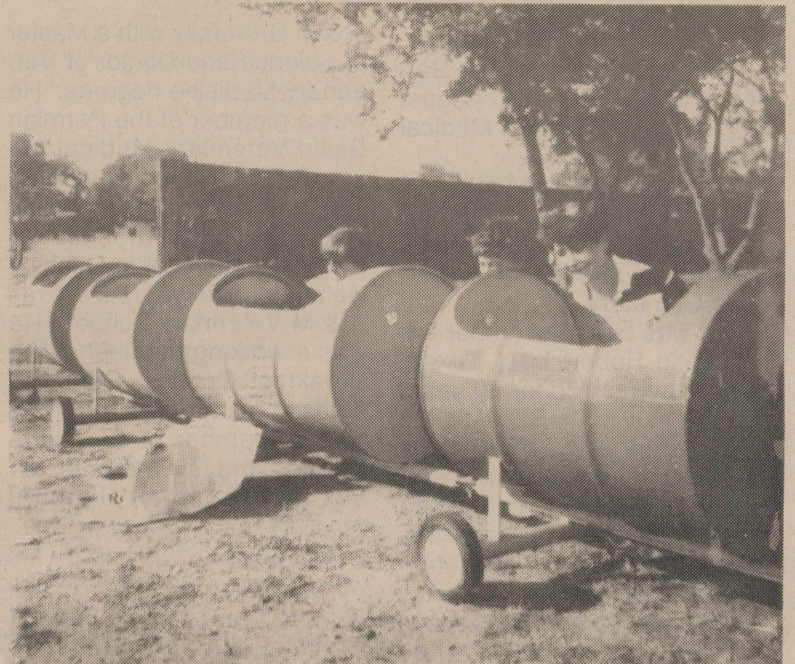
1:30 pm - Jake Jacoby Memorial "ABC" Golf Tournament (Mt. Creek Golf Club)

2:30 - 3:30 Local talent show, variety (Stage)

4:00 - 5:00 - Keith Longbotham, Gospel, C & W, Patriotic (Stage)

8:00 - 12:00 midnight - DJ "Shockwave" FREE Street Dance (Tennis Courts)

C. A. S. I. Chili and Rabbit Twister BBQ Cookoff winners will be announced from the stage area at appropriate times.



AON Service Club members finish painting their "train" for children's rides at the Labor Day Extravaganza on Saturday. Proceeds from the rides will be used for the Club's community projects.

ASCS taking disaster apps

The Agricultural Stabilization and Conservation Service office is still taking applications under the 1993 Disaster Program. The deadline for making application is September 17, 1993. It is important anyone interested in making application understand that they MUST purchase 1994 Crop Insurance for any 1993 crop they disaster. If you've already made application and

didn't purchase 1994 crop insurance, you MUST. Before September 17, 1993 you must bring proof of purchase of 1994 crop insurance to the ASCS office or your application will be no good.

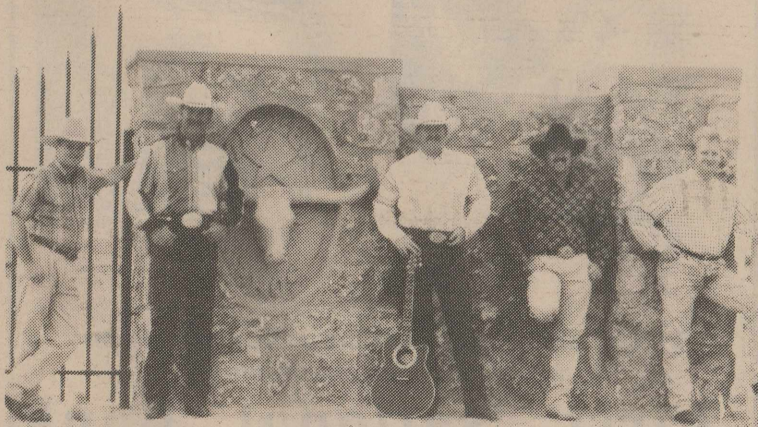
If you have further questions about this or any other program administered by ASCS you may come by the office or call 453-2751 and we will be glad to assist you.

Prairie Fire slated for RL

Prairie Fire, an area band with some deep local roots, will come home in a sense when they play for West Coke County Community Development's Extravaganza dance Friday night. The group includes Richard Long of Ira, keyboard and vocals; Scot Long of Sterling City, drums and harmony; Buddy Wallace of Gail, rhythm guitar and vocals; Kirk Williams of Roby, bass; and the newest band member, Jeff Sellers of Abilene, lead guitar. The Long brothers and Wallace were raised in Robert Lee where

they began playing together before they finished school and left for college.

The band plays weekend engagements and are well-known for their wide variety of music. They conduct occasional practice sessions to hone up on new songs and arrangements. Prairie Fire is available for various engagements including weddings, anniversaries, dances, and private parties by contacting any of the band members. The group will have promotional material on hand at Friday's dance.



PRAIRIE FIRE will play for the dance Friday night (tonight) at the Rec Hall in Robert Lee as the opening event of the Labor Day Extravaganza. Band members are (l-r) Kirk Williams, Richard Long, Buddy Wallace, Scot Long, and Jeff Sellers.

New Parcel Lockers

The Robert Lee Post Office began offering a new service to their customers Monday. The addition of sixteen parcel lockers to the box lobby, according to Postmaster Harrell Johnston, will augment delivery and customer satisfaction. "Service is what we offer at the Post Office," says Johnston, "and these lockers are meant to help us provide that service. The lockers are accessible 24 hours a day so everyone will be able to pick up packages without having to make special arrangements to get to the Post Office before it closes.

Instructions on the use of the lockers are fairly simple. An orange handled key with a tag attached will be placed in the Post Office box. Take the key to the parcel locker with the matching number. Place the key in the bottom key hole of that locker and turn the key counter-clockwise (left) and open door. Do not try to remove the key, it stays with the locker.

Br. Gospel Singing

A Gospel Singing will be held at Central Baptist Church in Bronte Sunday, September 5 from 2-4 pm. Everyone is invited to attend.

Stenholm discusses issues

A respectable crowd of about forty Coke County residents assembled at the courthouse on Monday. The purpose of the gathering was a town hall meeting featuring Congressman Charles Stenholm discussing current legislative issues affecting the district.

The first item on the agenda was the upcoming health care debate, which according to Stenholm is very complicated. His stated goal is to bring the cost of escalating health care down to the same level as the increase in the overall cost of living. Stenholm indicated that if we could accomplish this task, "we will have hit a home run."

Concerning the North American Free Trade Agreement, or NAFTA, which is up for debate shortly, Stenholm

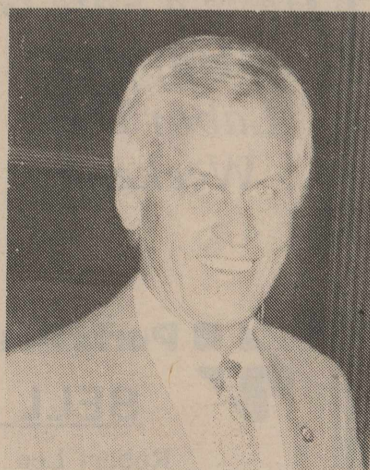
indicated that he thought it would pass by a very slim margin sometime just before Christmas. He supports NAFTA, and indicated that environmentally, Mexico is way behind the U.S., but they are making progress under President Salinas. He also indicated that if we do not pass the agreement, then Texas and the rest of the nation will incur even more immigration problems and Mexico will look more toward the Japanese for assistance. He indicated that Japan was opposed to the passage of the agreement.

The upcoming farm bill was discussed, which will be somewhere in the neighborhood of \$72 billion, with \$39 billion of that going to the food stamp program. He also discussed issues concerning production agriculture such as the Delaney Clause and FIFRA, which were sure to impact this year's farm program.

A lengthy discussion of discretionary and entitlement spending in the new budget bill concluded the town hall meeting.

Br. Car Wash

A car wash will be held Saturday, September 4 from 8:00 am til 4:00 pm at the First National Bank. Proceeds will benefit Project Graduation for the 1993-94 graduating class at Bronte.



Cong. Charles Stenholm

THE OBSERVER/ENTERPRISE

Published Weekly Except Christmas
707 Austin (915) 453-2433

(USPS 467-480) (ISSN 8750-197X)

Second Class Postage paid at Robert Lee, TX.

POSTMASTER: Please send address changes to Observer/Enterprise

PO Box 1329, Robert Lee, TX 76945.

STAFF

Hal Spain, Publisher Joan Davis Barbie York
Jo Nell Blair Margaret Martin

SUBSCRIPTION RATES

Per Year in Coke County.....\$15.00
Per Year Elsewhere in Texas.....\$17.00
Per Year Outside of Texas.....\$20.00

Obituaries

Wojtek

Victor Wojtek, 83, of San Angelo, died Sunday, August 29, 1993, at Shannon Medical Center.

Service was conducted at 10 am Tuesday in Johnson's Funeral Home Chapel with graveside service in Robert Lee Cemetery.

He was born November 24, 1909, in Robert Lee, Texas, where he resided for 80 years before moving to San Angelo. His business interests included stock farming and movie theaters in Robert Lee and Bronte that he and his brother owned and operated. He served on the county hospital board and served as a director of the Robert Lee State Bank.

Survivors include his wife, Ronda, whom he married in 1940; a daughter, Vicki Trimble and husband, Monty of Corsicana; a daughter, Mary Hollis and husband, Mike of Alvin; a daughter, Rinda Wojtek of San Angelo; a daughter, Phyllis Murphy and husband, Gaylon of Balch Springs; a son, Buz Wojtek and wife, Kay, of San Angelo; a brother, Frank Wojtek and wife, Jeanie; sisters-in-law, Charlotte Wojtek of Abilene and Mildred Wojtek of Robert Lee; and grandchildren, Monty Vic Trimble and wife, Lesley, Charles Trimble and Michel Hollis.

Preceding him in death were brothers, V. V., Otto and Gene; sisters, Inez and Leta; and a granddaughter, Angela. Pallbearers were nephews.

Jones

Dr. C. K. Jones, 75, a veterinarian, died Monday, August 23, 1993, at his residence.

Services were conducted at 10 am Wednesday at Cumberland Presbyterian Church with Dr. Robert Weston officiating. Burial was in Sunset Memorial Gardens. Funeral arrangements were directed by Frank W. Wilson Funeral Directors.

Dr. Jones was born October 8, 1917, in Midland. He married Estell Miller on May 23, 1947, in Laredo.

Dr. Jones was a Captain in the U. S. Army during World War II (veterinary corp). He moved to Odessa in 1970 from College Station. He was a member of Cumberland Presbyterian Church.

He was a graduate of Texas

A & M University with a Master of Science and Doctor of Veterinary Medicine degrees. He was a member of the Permian Basin Veterinary Medical Association. He belonged to TVMA and AVMA. Dr. Jones was in private practice in Kingsville and later in Odessa. He taught nine years at Texas A & M Veterinary School. He was a working member of the Breakfast Optimist Club and Odessa Optimist Club. He was a member of El Miada Shrine and a member of Medical Center Hospital Auxiliary.

Dr. Jones is survived by his wife, Estell Jones of Odessa; a son, Dr. Terry Jones of Bryan; a brother, Billy M. Jones of Robert Lee and four grandchildren.

He was preceded in death by a son, Brad Jones, who died in 1984.

The family suggests memorials be sent to Hospice of the Southwest or Door of Hope Mission.

Scott

Ouida Faye Scott, 59, of Bronte died Monday, August 30, at Baptist Memorial Hospital following a long illness. Services were held at Central Baptist Church in Bronte Tuesday, August 31 at 2 pm with Rev. Pete Patterson and Rev. R.W. Blackmon officiating. Burial followed in Fairview Cemetery under the direction of Shaffer Funeral Home.

Mrs. Scott was born January 19, 1934 in Bronte. She was a LVN. She was a lifelong

resident of Bronte and a member of Central Baptist Church.

She was preceded in death by her husband Joe Lee Scott on January 16, 1968; one grandson, Joe Don Campbell on September 14, 1981; and her mother, Frances Beavers on January 15, 1988.

Survivors include one daughter and son-in-law, LaDonna Lee and Rodger Campbell of Bronte; her father, T.B. "Dink" Beavers of Bronte; one sister, Pauline Blair of Bronte; and 2 grandsons, Timothy Carr Campbell and John Raymond Campbell of Bronte.

Haynes

L. A. Haynes, 87, of Roscoe, died Sunday, August 29, 1993, in an Abilene nursing home.

Service was conducted at 3 pm Tuesday at First United Methodist Church with burial in Roscoe Cemetery, directed by McCoy Funeral Home.

He was born September 24, 1905, in Big Spring. He had been employed 48 years with RS&P Railroad as an auditor and treasurer and had been vice president. He was a member of First United Methodist Church.

Survivors include his wife, Rhonda Lee Haynes of Abilene; a daughter, Geri Smith of Big Spring; two sons, Harold Haynes of Abilene and Phil Haynes of Sweetwater; a brother, J. W. Haynes of Big Spring; two sisters, Pauline Vaughan of Robert Lee and Nadine Hodnett of Big Spring; 11 grandchildren; and 29 great-grandchildren.

Clark

Florence Clark died August 22, 1993 in the Bronte Nursing Home. She was born October 2, 1898 in Rosebud, Arkansas.

She is preceded in death by her husband John W. Clark and one son Olen V. Clark.

She is survived by three sons, Henry Clark of Klamath Falls, Oregon, Harrell Clark of Chicago, Illinois, and Leon Clark of Pine Bluff, Arkansas; six daughters, Leona Barrong of Grants Pass, Oregon, Ozell Trammell of Pine Bluff,

Obituaries

Arkansas, Marlena Abernathy of Conway, Arkansas, Mada Belew of Bronte, Texas,

Maxine Smith Harrison and Mary Jones of Azalia, Oregon. Burial was held in Arkansas.

New tin can barrel

The Robert Lee city maintenance crew has added another barrel for tin cans to the recycling site near the post office.

This is another opportunity to help reduce the load at the landfill. Robert Lee is fortunate to be able to keep the local landfill open, but the State has mandated a significant reduction in waste material.

According to the EPA, 50% of the volume of waste discarded is packaging. By careful consideration of packaging on items purchased, waste can be reduced before it even enters the home.

If anyone has ideas as to improving the recycling site, please jot down your thoughts and leave them at city hall. The City Council needs citizen's suggestions.

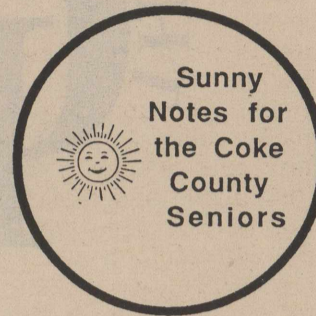
As yet there is no viable way to collect paper for recycling in Robert Lee.

It is hoped a way to store and transport paper can be arranged in the future.

'64 Study Club

Fifteen members of the '64 Study Club were present for a "Wish You Well" luncheon for Maxine Shaffer, August 25 at the Cracker Barrel. She and Mr. Shaffer are returning to Big Spring after thirteen years in Robert Lee. They will be greatly missed in our community.

Present were: Opal Baker, Leta Caston, Grace Ditmore, Thelma Jo Hinnard, Opal Jacoby, Margaret Jones, Winnie Pitcock, JoAnn Reese, Joyce Rives, Maxine Post, Olene Sims, Maybelle Stewart, Reba Tabor, and Irma Casey in addition to the honoree.



Bronte & Robert Lee Senior Centers Closed Monday, September 6, Labor Day.

Bronte Commodities

Commodities will be distributed at the Bronte Senior Center on Friday, September 10 beginning at 8:00 am. Ballinger Home Health will also be on hand to take your blood pressure.

RSVP Luncheon

Those of you who are RSVP volunteers in Bronte will be receiving an invitation in the mail from RSVP inviting you to their annual luncheon in San Angelo. Mark your calendar for Friday, September 10. You will be receiving more information.

Meals for the Week Monday, September 6 Center Closed

- Wednesday, Sept. 8**
- Spaghetti w/Meat Sauce
- Spinach
- Garlic Toast
- Tossed Salad
- Friday, September 10**
- Meat Loaf
- Brown Gravy
- Mashed Potatoes
- Broccoli
- Wheat Bread
- Sugar Cookies

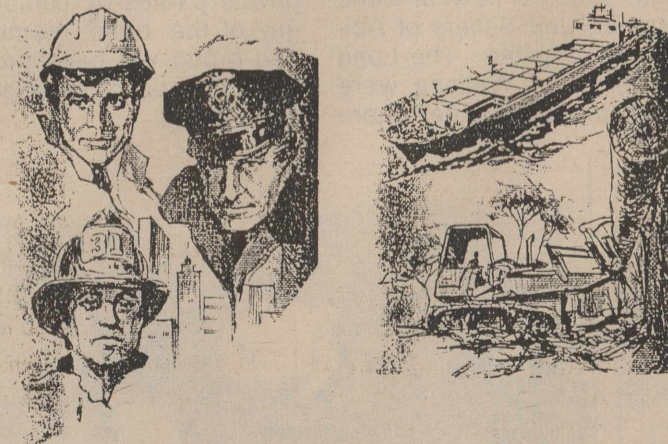
These programs are funded in part by the Area Agency on Aging, Concho Valley Council of Governments, through grants from the Texas Department on Aging.

All facilities of this bank will be

CLOSED

Monday, September 6

in observance of
Labor Day



Please plan your banking requirements to avoid any inconvenience.

First National Bank

Hours:
Monday - Friday
Lobby 9 am - 3 pm
Drive-Thru 8 am - 3 pm

MEMBER FDIC
473-2911
Bronte, Texas

GLENN-BIVINS INSURANCE



Come See Us For
AUTO HOUSE LIFE HEALTH

123 W. Main Bronte 473-6791

Have a Safe & Happy Labor Day Weekend.



Parts Plus

BELL AUTO PARTS

Robert Lee 453-2911

UPCOMING

Courthouse Closed

The Coke County courthouse will be closed on Monday, September 6, in observance of Labor Day, a national holiday. Business will continue as usual on Tuesday. Public buildings, such as Robert Lee and Bronte city halls, will be closed Monday, also, as well as banking institutions and most other businesses and offices. Some restaurants and convenience stores will remain open for business, however. The Robert Lee and Bronte newspaper offices will close for the Labor Day holiday but will open as usual on Tuesday.

RL Senior Citizens

The Robert Lee Senior Citizens, along with WCCCD will host an 88 tournament in the Big Rec Hall from 9:00 until 4:00 pm during Saturday's Extravaganza. They will award prizes. A small entry fee will be charged. The Senior Citizens will also be selling sandwich plates and the WCCCD will furnish tea and coffee through-out the day.

The Robert Lee Senior Citizens have recently purchased four new card tables and a new dish drain for the center to replace some of the wobbly tables they were using.

WTU Open House

West Texas Utilities Company in Robert Lee will host an Open House to celebrate Customer Appreciation Day on Friday, September 3 from 10 am - 2 pm. A drawing will be held for an electric grill.

Family Reunion

The Tennyson Homecoming and the Brown-Green-Hegwood Family Reunion will be held Saturday, September 4, 1993 at 2 pm in the Tennyson Community Center. The annual business meeting will be at 6:30 followed by the supper at 7 pm.

The BBQ, tea, coffee, ice, plates, bread, and silverware will be furnished. Bring your salads, vegetables, and desserts.

Team Penning

A team penning will be sponsored by the Runnels Co. Riding Club on September 11 at 8:00 pm in the Ballinger arena on Hwy. 158 West. Books open at 7:00 pm and close at 8:30 pm. Part of the proceeds will go to help the Runnels Co. 4-H Horse Judging team attend Congress in Columbus, Ohio. For more information call 365-3849 or 365-2936.

Rescuers receive recognition

San Angelo Police Officer Rick Keeling, along with four San Angelo firefighters, received commendations on Tuesday, August 24, from the City Council. The five men were credited with rescuing 13-month old Daniel Stephen from his burning residence on August 18.

Keeling is the son-in-law of Les and Geneva Gray of Robert Lee. His wife is the former Brenda Gray.

RL Landfill Closed

The Robert Lee Landfill will be closed Saturday, Sept. 4 and Monday, Sept. 6 in observance of the Labor Day Holiday.

40+ Dance

Tuesday, September 7, is the scheduled date for the monthly first Tuesday 40+ Dance at the Robert Lee Rec Hall. Dancing begins at 7:30

with tickets available at the door.

Commodities

Food commodities will be distributed on the second Friday of the month, September 10, at the Bronte and Robert Lee Senior Citizens buildings, beginning at 8 am and continuing until 12 noon. All commodities are distributed on a first come, first serve basis.



Mr. and Mrs. Donald Stewart of San Angelo and Barbara Renfroe of Robert Lee are proud to announce the engagement of their children, Paula Denise Stewart to Samuel Lee Renfroe. A November 13th wedding date has been set by the couple, to be held at Baptist Temple in San Angelo at 2 pm. The prospective groom's grandparents, Mr. and Mrs. J. H. Phillips, are long-time residents of Coke County. Friends of the family are invited to attend.



Total moisture never felt so free.

Our fall gift, a \$24.00 value, yours free with any \$14.50 Merle Norman cosmetic purchase.

Our Fall free gift with purchase gives you Total Body Moisturizer to replenish lost moisture; Luxiva Triple Action Eye Gel to revitalize stressed eyes, reduce puffiness and help minimize the appearance of fine lines; Color Rich Lipcream with long lasting color; and Aqua Base Foundation to protect your complexion year round. A \$24.00 value, yours free with any \$14.50 Merle Norman Cosmetics purchase at participating Studios.*

MERLE NORMAN
COSMETIC STUDIOS

Located in
The Carousel 711 Austin Robert Lee
453-2415

*One per customer, while supplies last.

FOOD LIMIT
STAMPS RIGHTS
WELCOME RESERVED



501 Commerce - Robert Lee, TX
Store Hrs: Mon-Sat 8-8 Sun. 8-6
SPECIALS GOOD 9/1 THRU 9/7



IGA Tablerite Meat
Franks
12 oz. Pkg. **.39**

New Crop Colorado
Cob Corn
5 Ears **/\$1**



Lay's
Potato Chips
Asst. Flavors
6 oz. Bag **.79**

IGA
Charcoal Briquets

10 Lb. Bag **.99**



TownTalk
Hot Dog or Hamburger Buns



8 ct. Pkg. **2 / .89**

7-Up or Mr. Pibb
15 pack 12 oz. cans **2.19**



BRONTE SCHOOL NEWS

Project graduation begins for seniors

The parents of the Class of '94 have been busy planning a fun filled year for this years seniors.

The year started with a swim party at the Bronte Park on July 31. Homemade ice cream and watermelon were served to all in attendance. The evening ended with a good game of volleyball. Those attending were: Seniors: Casey Thorn, Eddie Pullian, Brain Hall, Jacob Golsen, Jennifer McCorkle, Jennifer Sparks, Wendy Huck-

abee, Amy Bailey, Jason Cooper, and Shane Boyd. Guests in attendance were: Marifrances Mackey, Scott Turner, Loyd Walker, Rocky Rawls, George Tomes, Trey, Jonathan, and Stephen Tomes, Vanessa Sparks, Eric Sensabaugh, and special guest, Elizabeth Acres

Coke Co. Couples Golf Results

Results from the Coke County Couples Tourney held August 28 and 29 have been released. They are as follows.

- Championship Flight**
 1st. Ebenstein-Tate - 127*
 2nd. Fletcher-Fowler - 127
 3rd. Koerth-Jackson - 132
 *Card Playoff Hole #1
- President's Flight**
 1st. Morrow-Morrow - 140
 2nd. McCutchen-McCutchen - 141
 3rd. Green-Green - 142
- First Flight**
 1st. Howard-Howard - 144
 2nd. Gibbs-Gibbs - 145
 3rd. Patterson-Patterson - 146
- Second Flight**
 1st. Gibbs-Gibbs - 150
 2nd. Stephens-Stephens - 151
 3rd. Kitten-Kitten - 154
- Third Flight**
 1st. Oliver-Self - 159
 2nd. Eisenhunt-Eisenhunt - 160*
 3rd. Wicker-Wicker - 160
 *Card Playoff Hole #1

LOOK WHO'S NEW

Benjamin R. Mohundro
 Benjamin Ross is the new son of Mr. and Mrs. Randy Mohundro of Coahoma. He arrived on Friday, August 20 at 6:47 pm. Benjamin weighed 8 pounds and 15 1/2 ounces and was 19 1/2 inches long.

Proud grandparents are Ben and Eula Mae Taylor of Ballinger, and Wayne and Lou Mohundro of Lancaster. Great-grandparents are Dillie Taylor of Ballinger, Mary Mitchell of Lawton, Oklahoma, and A.Y. Mohundro, Sr. of Ferris. Genni Taylor of Ballinger is the proud aunt.

Benjamin's mother is the former Penni Taylor, a 1985 graduate of Bronte High School.

(Jennifer McCorkle's grandmother). Parents attending were: Ron and Fayne Thorn, Scotty and Patti McCorkle, Gerald and Beth Parker, Linda Clark, and Betty Sparks.

The Project Graduation group will be having a car wash on Saturday, September 4, starting at 8:00 am til 4:00 pm on the bank parking lot. Please come out, get your vehicle cleaned, and help support the Project Graduation of '94.

More news on this group coming....

Lady Horns Volleyball

The Lady Longhorns placed seventh in the Ector County Tournament last weekend. Friday they defeated Lubbock Monterey and Water Valley. Bel-Air, El Paso, De Valle, and Kermit won games against the Longhorns. After defeating Brownwood, Sweetwater, Water Valley, and Lubbock Monterey, the Longhorn's record is 4-3.

Jill Johnson was selected to be on the All-Tournament Team at the Ector County Tournament.

This weekend there will be a Varsity Tournament at San Angelo Central High School. The volleyball team will compete in pool play at 10:00 am (Caprock), 4:00 (Monahans), and 8:00 pm (Brownwood). Saturday they will return for a bracket play to go for the championship. Come on out to watch the Lady Longhorns in action.

Perry receives degree

Mrs. Russ Perry of Chillicothe received her Master of Education degree on August 14 from Sul Ross State University of Alpine.

Mrs. Perry is the former Kelly Lawhon of Bronte. She is a graduate of Bronte High School and the daughter of Mr. and Mrs. Jerry Lawhon of Bronte.

She and her husband are with Chillicothe Schools. She is a teacher and he is Elementary Principal.

Attention 4-H & FFA students! Do you need a loan to get your project off the ground? Come visit with us and see what we can do for you.

FIRST NATIONAL BANK

102 W. Main Bronte
 Member FDIC

Jim Lammers - Craftsman

New construction - Remodeling
Commercial - Residential
Carpentry - Concrete
Painting - Sheetrock
Siding - Roofing
Property Management for Absentee Owners
 Phone: 473-2114 Bronte, Texas

The Eagle

With the dry dew of the turning times
 And the jagged pass of the hellish mountain climes
 Darkness comes of the life we lead
 And its somewhere I read
 Of an eagle.

Who all has known to be freed
 And of its captive life its a certain blood it will bleed
 As his heart breaks deep in his dreams
 Of the dew desert canyons
 And mountains with fish-filled streams.
 As the Eagle knows it is untrue
 He sometime thinks of no future in the past
 To be free he will pursue through faith and undying faith is vast.
 As the years rush on
 There is only so much time before this certain blood is gone.

It runs deep in his soul and sure in his veins
 With faith and love dreaming of the flat Texas plains.
 But he courageously drives on
 Living on a prayer and a dream
 Hoping that the certain blood Will not soon be gone.

This poem was written by Amy Harrell, born in Ballinger January 1, 1979. She went to school in Bronte until March, 1993, when she went to Kodiak, Alaska to be with her mother. She says she is coming back to Texas to finish her Junior and Senior years in Bronte, and she says this poem is about her.

Charm is a way of getting the answer yes with out asking a clear question.

Albert Camus

City-Wide Garage Sale

The Ballinger Chamber of Commerce has set Saturday, September 18, 1993 for the "City-Wide" garage sale.

Each participant will be given the choice of using their home, yard, garage, or being furnished a central location in the downtown area. The Chamber will be responsible for advertising, furnishing maps, marking each location and coordinating the event. There will be no charge, and each individual will receive the proceeds from their own sales. Also, tables and chairs will be the individuals responsibility.

To be included on the "Garage Sale Map", please contact the Chamber office at 365-2333 no later than September 3. Individuals and organizations are welcome to participate the morning of the 18th at the downtown locations.

For more information please contact the Ballinger Chamber of Commerce.



Scott Turner is the new Jr. High and High School principal for the Bronte School.



Breakfast

- Monday, September 6**
 Holiday
Tuesday, September 7
 Cereal
 Pineapple Tidbits
 Toast
 Milk
- Wednesday, Sept. 8**
 Pancake & Sausage on a Stick
 Grape Juice
 Milk
- Thursday, September 9**
 Scrambled Eggs
 Orange Juice
 Toast
 Milk
- Friday, September 10**
 Sausage
 Banana
 Biscuit
 Milk

Lunch

- Monday, September 6**
 Holiday
Tuesday, September 7
 Chicken Nuggets w/gravy
 Creamed Potatoes
 Green Beans
 Pineapple Tidbits
 Roll
 Milk
- Wednesday, Sept. 8**
 Frito Pie w/Chili & Cheese
 Buttered Corn
 Tossed Salad
 Cornbread
 Fritos
 Peanut Butter Cookie
 Milk
- Thursday, September 9**
 Pigs in a Blanket
 Tator Tots
 Ranch Style Beans
 Banana
 Milk
- Friday, September 10**
 Hamburgers
 Lettuce, Tomato, Pickles
 French Fries
 Bun
 Rice Krispie Bars
 Milk

PARKER PLUMBING
 Residential-Commercial
 All Types Plumbing Repair

- *New Construction
- *Remodeling
- *Fixtures
- *Sewer Service

Licensed Master Plumber

473-2131 Bronte

Eureka SALE

3 Day

Eureka Powerline Gold™
 On-Board Attachments
 1 Year Supply of FILTERAIRE Dust Bags Included \$16.98 Value

119⁹⁹

Save \$130

Model 9615

• Brilliant headlight
 • Filteraire bag system filters over 99% of household dust & pollens

EUREKA Bravo!® Boss®
 Convenient On-Board Cleaning Attachments
 AS SEEN ON TV!

99⁹⁹

Floor to Ceiling Cleaning

Model 9334

SAVE \$130

8.0 Amp Motor
 • Triple Filtration Bag System
 • 7-Position Carpet Height Adj.

Eureka Bravo!® Model 9002

69⁹⁹

Save \$50

Model 9002

6.0 Amps

• Triple filtration bag system

Buy 2 Pkgs. of Genuine Eureka Bags or Belts and Get 1 FREE!

Performance You Expect
Quality You Demand

EUREKA

VACUUM CLEANERS

HOMETOWN HARDWARE

FEED & SUPPLY

Bronte, TX

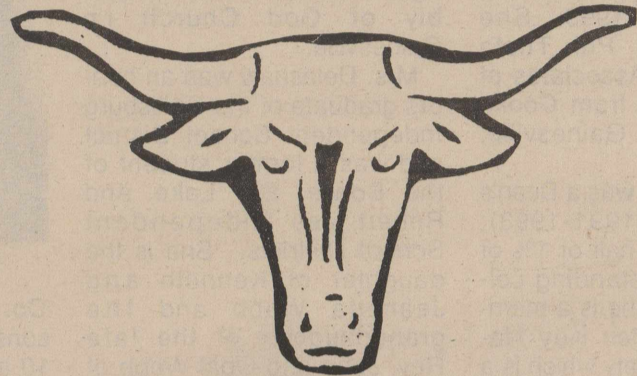
BRONTE LONGHORN FOOTBALL

Friday, Sept. 3
8:00 P.M. THERE
**BRONTE LONGHORNS
VS.
Cross Plains**

1993 BHS Football Schedule

DATE	OPPONENT	SITE	TIME
Sept. 3	Cross Plains	There	8:00
Sept. 10	Miles	There	8:00
Sept. 17	Water Valley	Here	8:00
Sept. 24	Irion Co.	There	8:00
Oct. 1	Menard	Here	8:00
Oct. 8*	Robert Lee	Here	7:30
Oct. 15*	Sterling City	There	7:30
Oct. 22*	Roscoe	Here	7:30
Oct. 29*	Roby	There	7:30
Nov. 5*	Forsan	Here	7:30

*District Games



Turner's Mini-Mart
Hurley Pharmacy
Hope you have a winning season.
Hall's Super Save Foods
Ivey Motor Company
Red Barn Barbecue
Margaret's Flowers & Gifts
Eddie & Earlene Alexander
Butane Sales Company
Doug & Grace Ditmore
Glenn-Bivins Insurance
Tuny, Mary, Garry, Marilyn & Shalon
S&S Printing and Supplies
Bruce & Fran Sonnenberg
Bell Auto Parts
Jim & Beverly Bell
Town & Country
Food Store #114
Hometown Hardware
Feed & Supply - ACCO Feeds
James & Brenda
Tidwell
B & B ENTERPRISES
Marty Boyd &
Mr. & Mrs. W. M. Brown
Billy Joe & Diane
Lockett

**County Judge &
Mrs. Royce Lee**
Shaffer Monument Company
First National Bank
Member FDIC
Key Feed Store
Bob Wrinkle's Ace Hardware
416 Commerce - Robert Lee
Ivey Motor Company
Butane Sales Company
Doug & Grace Ditmore
**Askins Propane Company &
Coke County Feed & Supply**
Charlie, Raynelle, Foy, Estelle,
& Rhonda Askins, Danny & Debbie Carper
Margaret's Flowers & Gifts
Eddie & Earlene Alexander
Glenn-Bivins Insurance
Tuny, Mary, Garry, Marilyn & Shalon
S&S Printing and Supplies
Bruce & Fran Sonnenberg
Bell Auto Parts
Jim & Beverly Bell
Town & Country
Food Store #114
MERLE NORMAN
COSMETIC STUDIOS
Come in for your
free fashion makeover.

*John Beck
Edwin Thomas
Brian Hall
Jason Cooper*

*Michelle Arnold
Dorinda Purcell
Russell Knight*

*Gene B. Drey
Joy Parker
Cody Hall
Cody Hall*

*Ramon Fuentes
Dante Lopez
Cody Maxwell*

*John Rodriguez
Daniel Sharp
Jonathan DeLoach*

*Jason Wilson
Blake Hart
Lane Parker*

*Daniel Green
Gary Dasher
Cody Hall*

*Clat Brasner
Phillip Matloff
Shane Kellie*

ROBERT LEE SCHOOL NEWS

Delashaw graduates TWU with honors

Kenda Kay Webb-Delashaw graduated Magna Cum Laude with a Bachelor of Science Degree in Elementary Education with a minor in Early Childhood from Texas Women's University, Denton, Texas, May 15, 1993. She also graduated Phi Theta Kappa with an Associates of Science Degree from Cooke County College, Gainesville, Texas.

Mrs. Delashaw was a Dean's List Nominee (1991-1993), awarded to only half of 1% of the nation's outstanding college students. She is a member of The Golden Key National Honor Society which is a national academic honors organization dedicated to excellence, inviting no more than the top 15% of juniors and seniors. She is also a member of educational organizations such as The Kindergarten Teachers Association (KTOT), The National Association for the Education of Young Children (NAEYC), The International Reading Association (IRA), and The Teachers and Students Educational Association (TSEA).

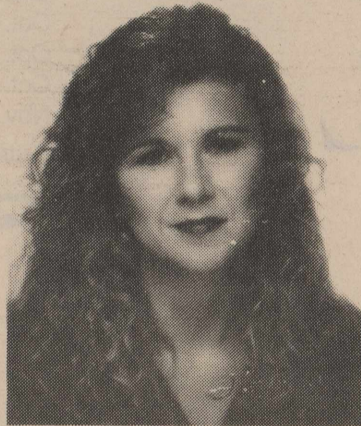
She is a member of the Red River Chapter of the TWU Alumnae Association, A National Alumnae Organization which provides services and scholarship funds to the local

communities of the Red River area.

She is currently a teacher of Beginners class ages 4 & 5; a children's church sponsor and substitute teacher for the ages 5-12 at the First Assembly of God Church in Gainesville.

Mrs. Delashaw was an honors graduate of the Callisburg Independent School District and was a former student of the Bowie, Big Lake and Robert Lee Independent School Districts. She is the daughter of Kenneth and Jeanetta Webb and the granddaughter of the late Rev. John and Opal Webb of Bowie.

Mrs. Delashaw currently resides at Rt. 2 of Gainesville with her husband, Bobby, an employee of Peterbilt Motor



Kenda Delashaw

Co. of Denton, and their two sons, Kyle and Matthew, ages 10 and 5 years. She plans to student teach in Gainesville this fall and to further specialize in Reading and Language Arts for young children with emphasis on children at-risk.

Beauty Tips and Techniques

by Becky Ross and Leigh Ann Stephens

Many times we are asked about the benefits of face powders. Face powders, in loose or compact form, help to "set" foundation, powder and creme blushers so that they stay in place and last longer. Face powders also provide a matte surface so that color products will blend evenly and give a softer, natural appearance. Merle Norman's Remarkable Finish Powder is an ultra-fine, long-wearing face powder which contains light-diffusing microbeads that soften the appearance of facial lines while providing a translucent matte finish. For oily complexions, Remarkable Finish Oil Control Powder provides maximum absorption and is beneficial for controlling oily breakthrough.

LOOK WHO'S NEW!

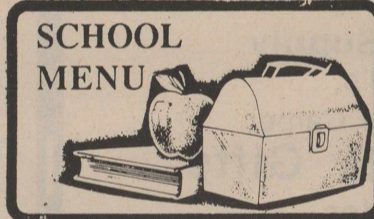
Chad J. Martin

Chad Jeremy Martin was welcomed into the world by a big brother, Shannon Martin, and parents, Larry and Lorrie Martin of Robert Lee. He arrived at Angelo Community Hospital August 26, 1993 at 8:24 am, weighing 7 lb. 4 oz. and measured 19 1/4 inches long.

Paternal grandparents are Mr. and Mrs. Jerrell Martin of Abilene. Maternal grandparents are Mr. and Mrs. Elmon Higgs, also of Abilene. The great-maternal grandparents-mothers are Mozell Morris of Irving and Arlene Higgs of Abilene. Great-paternal-grandmothers are Lucille Martin and Louise Glenewinkel, both of Abilene.

Silence is not only golden; it's seldom misquoted.

Bob Monkhouse



- Monday, Sept. 6**
Labor Day
No School!
- Tuesday, Sept. 7**
Pigs in Blanket w/mustard
Ranch Beans
Macaroni & Cheese
Applesauce
Milk
- Wednesday, Sept. 8**
Bean Chalupas w/ cheese
Lettuce/Tomato Salad
Corn
Applecrisp
Milk
- Thursday, Sept. 9**
Fish Sticks w/tartar sauce
Cream Potatoes
Green Beans
Hot Rolls - Butter
Sliced Pears
Milk
- Friday, Sept. 10**
Sloppy Joes
Tator Tots w/catsup
Sliced Peaches
Applesauce
Milk

Germania Insurance

Covering Texas since 1896.
Property, liability and life insurance

Bill Carwile
453-2522

SHANNON HEALTH NOTES

Witnessing Violence

Real-life violence may be taking a toll on others besides the primary victims. Children who witness violence in their homes and neighborhoods may feel their lives are so vulnerable and tenuous they may fail to take care of themselves. A commentary in the *Journal of the American Medical Association* (1-12) by Betsy McAlister Groves and her colleagues from Boston City Hospital says young witnesses of violence may seek relief from intolerable feelings of fear and anxiety through alcohol and other drugs, and may engage in violent behavior themselves, thereby perpetuating the violence.

Health professionals and other adults in the child's life are urged to recognize the harm being done just from witnessing violence. Groves says they are victims and need treatment. For a start, children must have an opportunity to talk about the violence in their lives. She says talking about a terrifying or overwhelming experience can be therapeutic.

1992, Lyle Dean, Inc.

Shannon Health Notes is a public service of



SHANNON MEDICAL CENTER

120 East Harris • San Angelo, Texas • 915-653-6741 Ext. 347

WTU News

Expanding businesses in West Texas may now have greater representation when they seek Small Business Administration funding. Eric Geisler, Economic Development Specialist at West Texas Utilities Company, was elected to the Board of Directors of the Capitol Certified Development Corporation at its quarterly meeting recently held in Midland. San Angelo Chamber of Commerce Vice-President, Patrick Malloy and Alpine Chamber of Commerce President, Stephanie Haynes were elected as general board members. The Capitol CDC, established by the Texas Department of Commerce, is the only statewide CDC that serves small businesses in Texas by assisting them in accessing federal funds administered by the SBA's 504 Loan Program.

"The establishment of the statewide Certified Development Corporation means representation for communities not previously served by CDC and we are pleased that these newly elected members will be representing communities within WTU territory," said David Young, Director of Wholesale and Business Development. "We are always

looking for ways to provide Economic Development tools to our region and this can be a competitive funding source for new or expanding businesses."

The SBA 504 Loan Program rewards financially sound businesses with money for expansion, relocation, and the creation of jobs. SBA 504 loans have long terms; financing for fixed assets; low, fixed-rate financing; and low equity injection - only 10% down. A business can only access the federal SBA 504 Loan Program through certified development company.

The Capitol CDC has a 10 member board with statewide representation from private lenders, business organizations, local government, and community organizations. All board members are active in small business economic development and have business finance expertise.

For more information on the Capitol CDC, please contact Armando Ruiz in the Texas Department of Commerce Office of Business Finance at 512-320-9469 or any of the board members.

There is always hope when people are forced to listen to both sides.

John Stuart Mill

Davis Grocery & Meat

North Hwy 208 - Robert Lee - 453-2488

- Parade LoFat or Homo Milk Gal. **1.89**
- Parade Grade A Large Eggs Doz. **.79**
- Pepsi, Diet Pepsi, Mt. Dew 6 pk. cans **.99**
- Dankworth-Smoked Bone-In Ham Half-Lb. Whole **1.99**
- Red Rind
- Longhorn Cheese Lb. **2.19**
- Sandwich Meat
- Chopped Ham Lb. **1.19**
- "Thick Slice" Bacon Lb. **1.19**
- Sirloin Steak Lb. **2.49**
- "Fresh" Ground Meat Lb. **1.49**
- "Cooked" Bar-B-Q Jalapeno or Reg. German Sausage Lb. **1.95**

WATCH FOR OUR IN STORE SPECIALS!

Specials good 9-2-93 thru 9-8-93
Food Stamps Welcome

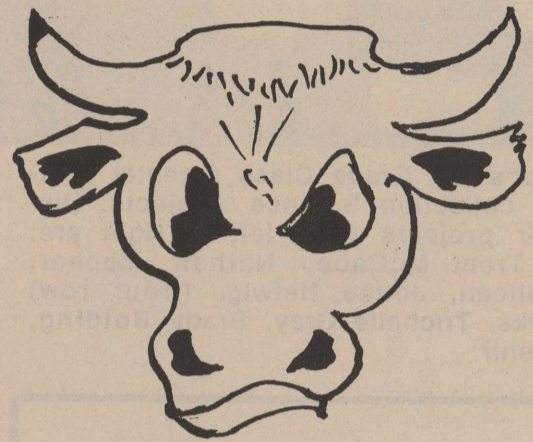
WE HAVE BAR-B-QUE BEANS - POTATO SALAD

ROBERT LEE STEERS FOOTBALL

1993 RLHS Football Schedule

DATE	OPPONENT	SITE	TIME
August 26	Open		
Sept. 3	Miles	Here	8:00
Sept. 10	Water Valley	There	8:00
Sept. 16	Snyder JV	Here	6:00
Sept. 24	Garden City	There	8:00
Oct. 1**	Irion County	Here	7:30
Oct. 8*	Bronte	There	7:30
Oct. 15*	Forsan	There	7:30
Oct. 22*	Sterling City	Here	7:30
Oct. 29*	Roscoe	There	7:30
Nov. 5*	Roby	Here	7:30

**Homecoming
*District



Friday, Sept. 3
8:00 P.M. Robert Lee
**ROBERT LEE STEERS
VS.
Miles Bulldogs**

J&B Lumber & Hardware
West Coke County
Community Development
Bell Auto Parts
Jim & Beverly Bell
Coke County Pharmacy
Steve & Wanda Oleksiuk
Joan Davis
T-Mart Foods
Melvin & Martha Terral
Butane Sales Company
Doug & Grace Ditmore
Bob Wrinkle's Ace Hardware
416 Commerce - Robert Lee
Davis Grocery & Gas
Highway 208 - Robert Lee
**Tommy Blair Welding &
Backhoe Service**
Robert Lee State Bank
Member FDIC
Super "H" IGA
Dave & Betty Hughes
S&S Printing and Supplies
Bruce & Fran Sonnenberg
Ranchland Restaurant

Skinner's Grocery & Station
Jim & Geanette Skinner
**Askins Propane Company &
Coke County Feed & Supply**
Charlie, Raynelle, Foy, Estelle,
& Rhonda Askins, Danny & Debbie Carper
W.E.B. Construction
Edwin, Wyndell, & Family
Ernest Clendennen, Inc.
Oilfield Services - Silver, TX
**County Judge &
Mrs. Royce Lee**
Ivey Motor Company
Key Feed Store
The Flower Sak
Rhonda Hood & Judy Blair
PCR Feed Lot
Waldon & Judy Millican
The Carousel Fashions & Gifts
Becky, Leigh Ann, Brenda, & Teri
C&W One Stop #14
Shaffer Monument Company
Robert Lee-Silver Lions Club
The Best Connection
The Wayland Drennan's
Observer/Enterprise
Glenn-Bivins Insurance
Tuny, Mary, Garry, Marilyn, & Shalon

Coach Pfeiffer
Coach Kauldolph
James Tennison
T S Roe
Coach McLain
Baron Hood
Jeremy Johnson
Charles Hayer
Adam Morgan
Bobby Johnson
Jason Favarez
Keith Bradshaw
James Pittcock
Quinn Jordan
Fred [unclear]
Wayne Hays
Anthony Winters
Erson [unclear]
BAET Goodman
Lee McLain
Mark Goodman
Jeremy Vincent
Jeremy Burn
Coach Bolding
Harley Wagner
David Sevier
Judd Pittcock
John Williams
Casey Willey
Coach White
David [unclear]
David [unclear]
William [unclear]

473-2065

473-2065

473-2065

Hall's Super Save

FOOD STAMPS WELCOME

OF BRONTE

OPEN
7 Days a Week

STORE HOURS
Mon.-Sat. --7:30 am to 9 pm
Sunday -- 8 am to 7 pm

Boneless
Sirloin Lean
Steak Lb. **2.79**
Ground Chuck Lb. **1.79**
Boneless
Chuck Steak Lb. **1.79**
Market Trim
Brisket Lb. **1.99**

Fryer
Drumsticks
or Thighs Lb. **.79**
Eckrich
Cooked Ham 10 oz. Pkg. **1.99**
Swift Market Sliced
Bologna Lb. **1.59**

Gooch
German Sausage
12 oz. pkg. **.99**

Alpo
Dog Food

14 oz. can **2 / \$1**

Parade
Apple Juice

64 oz. Bottle **1.69**

Decker
Meat Franks

12 oz. Pkg. **.89**

Ultra Gain
Laundry Detergent

98-104 oz. **4.99**

Charmin
Bath Tissue

6 roll pkg. **2 / \$3**

Hormel Black Label
Bacon

1 Lb. Pkg. **1.69**

Hormel
Little Sizzlers Links

12 oz. Pkg. **.79**

Parade Hamburger
Dill Slices

32 oz. Jar **.99**

Better Valu
Shortening

42 oz. can **.99**

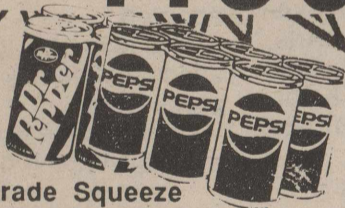
Lay's
Potato Chips

6 oz. Bag **.69**

Dr. Pepper & Pepsi

Big Red, A&W Rootbeer, Squirt, Country Time Lemonade

6 pk. 12 oz. cans **1.39**



Hormel Reg. or Chicken
Vienna Sausage

5 oz. can

3 / .99

Folgers
Coffee

13 oz. can

3 / \$5



Sunny Delight
Citrus Punch

64 oz.

.89



Parade Squeeze
Mustard

16 oz. **.69**

Hormel No Beans
Chili

15 oz. **1.19**

Pepsi

Mt. Dew



24 12 oz. cans
LIMIT 5 CASES
CASE ONLY **3.99**

Parade 8 oz. Pkg.
American Singles .99

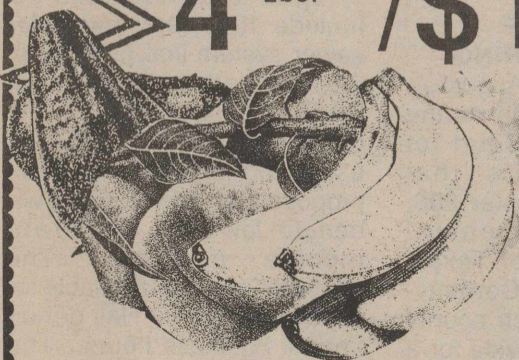
Parade (Like Velveeta) 2 Lb. Box
Cheese Spread 3.59

Gandy's Reg. or Slim & Trim
Cottage Cheese 24 oz. ct. 1.79

Gandy's
Buttermilk qt. ct. .69

Bananas

4 Lbs. **/\$1**



FRESH PRODUCE

Thompson Seedless
Grapes Lb. **.99**
California
Peaches Lb. **.69**
Hass
Avocados **6/\$1**
Jalapeno
Peppers Lb. **.99**

FROZEN FOOD

Gandy's
Ice Cream 1/2 Gal. Ctn. **1.99**
Gandy's Slim & Trim
Ice Milk or Sherbert **1.79**
Mrs. Smith Boston Cream or French Silk
Pie 19-24 oz. **2.99**

Prices Good 9/2 Thru 9/8
FOOD STAMPS WELCOME

Classifieds Get Results!

NOTICES

Martin Lee
Mayor
City of Bronte
05b-1tc

NOTICE TO BIDDERS

Notice is hereby given that Coke County Commissioners Court will receive bids until 10:00 am Monday Oct. 4, 1993 for oil and gas leases as described below.

#1 - 2 acres out of the Northwest Corner of Sec. 458, Block 1A, H. & T. C. Ry Company, Coke County, Texas as described in Deed recorded in Volume 8, pg. 419, Deed Records of Coke County, Texas.

#2 - Approximately 1 1/2 acres of Indian Creek Cemetery out of Sec. 445, Block 1A, H. & T. C. Ry Company, Coke County, Texas as described in Deed recorded in Volume 19, pg. 469, Deed Records of Coke County, Texas.

For further information contact Chris Wyatt Coke County Attorney.

Coke County reserves the right to reject any and all bids and waiver any technicality.
05a-3tc

PUBLIC NOTICE COKE COUNTY TEXAS COMMUNITY DEVELOPMENT PROGRAM

Coke County will hold a public hearing at 5:15 pm on September 7, 1993 at the County Courthouse in regard to the submission of an application to the Texas Department of Housing and Community Affairs for a Texas Community Development Program (TCDP) grant.

The purpose of this meeting is to allow citizens an opportunity to discuss the citizen participation plan, the development of local housing and community development needs, the amount of TCDP funding available, all eligible TCDP activities, and the use of past TCDP funds. The County encourages citizens to participate in the development of this TCDP application and to make their views known at this public hearing.

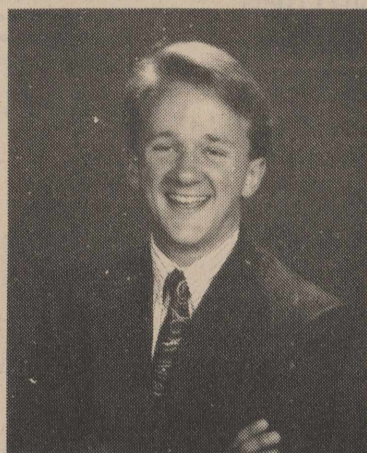
Citizens unable to attend

Royce Lee
County Judge
Coke County
05a-1tc

NOW TAKING

applications for Dietary Helpers and 11-7 Nurse Aides. Apply in person at West Coke County Nursing Home, 307 West 8th Street, Robert Lee.

05a-2tc

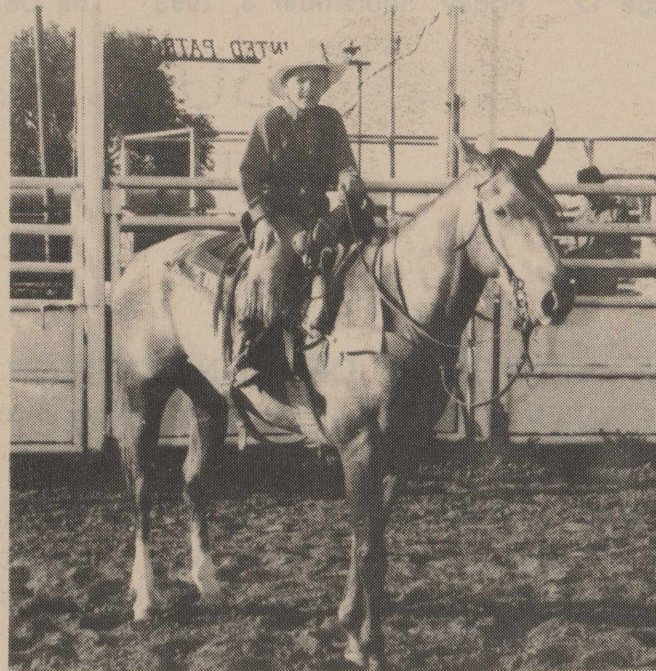


Ronald D. Harmon, son of Mr. and Mrs. Joe Harmon of Keller, recently was awarded a Master of Science degree in Accounting from the University of North Texas in Denton. He is the grandson of Mr. and Mrs. Finis Harmon of Robert Lee.

TSTC Graduates

Texas State Technical College held its annual graduation ceremonies on August 20, 1993 at the Sweetwater High School Auditorium. State Representative Robert Junell addressed the graduating class of 1993. Taina Davis, a graduate of the Drafting and Design program gave the student response address. Earlier in the day an awards ceremony was held. The Outstanding Alumni Award went to Oscar Zertuche of Spring (Class of 1981) and the President's Award went to David Hamill of Big Spring. The following students earned the Associate in Applied Science degree or a certificate of completion: Completing their field of studies were Danny Thomas, Air Conditioning/Refrigeration; Kenneth Colvin, Computer Maintenance Technology; and Victoria Balderas, Vocational Nursing. All three of the graduates are Bronte residents.

Texas State Technical College main campus is located in Sweetwater with extensions in Abilene, Brownwood, and Breckenridge.



Chance Millican

Rodeo Success

Chance Millican, 8 year old son of Clifton and Ida Millican of Elida, New Mexico, has racked up a number of impressive awards and honors this year in rodeo events. Some of his accomplishments are as follows:

Age Group - 8 year olds

Boots, 1st. place in Dummy Calf Roping at the Western Heritage Classic in Abilene, TX on May 28, 1993.

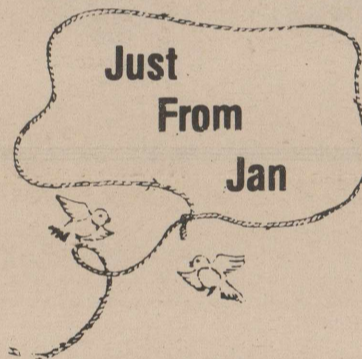
Buckle, 1st. place in Dummy Calf Roping at the Roosevelt County Fair in Portales, NM on Aug. 14, 1993.

Jacket & Money, Participated in Goat Tying at the finals in Lovington, NM in the High Plains Jr. Rodeo Association. **Age Group - 9 & Under**

Buckle, 1st. place in Goat Tying at Little Wrangler Jr. Rodeo Association in Portales, NM.

Buckle, Received All Around at Little Wrangler Jr. Rodeo Association in Portales NM. The events were Poles, Goat Tying, and Breakaway Roping.

Chance is the grandson of Lorene Millican of Silver and the late Son Millican and Mr. and Mrs. Calvin Griffith of Trent.



by Jan Yanez
Coke County
Ext. Agent

Family Loyalty

We all need people we can count on to stand by us through good times and bad. A supportive family provides safety, security, and sense of belonging.

Strong families are committed to promoting each member's happiness and well being. Such families spend time and energy listening to each other's personal fears and disappointments. They offer encouragement and revel in each other's triumphs.

Family loyalty emphasizes that the whole is greater than the individual parts. We do not live just for ourselves, we have a responsibility to take care of one another.

A supportive, nurturing family creates bonds of trust and loyalty to the group. This sense of commitment can then be extended to one's friends, community and country.

Be there for each other's important moments, from piano and ballet recitals, to basketball tournaments and parents' work picnics.

Make sure everyone has input when major family decisions are made. This allows everyone to "buy in" to the decision.

Locals graduate at ASU

Four Bronte students at Angelo State University were among 231 students to receive degrees during the Summer commencement at the university.

Sherri Ann Eubanks received a Bachelor of Arts, with a major in Psychology, Kevin Shane Kelton received a Bachelor of Science with a major in Animal Science-Production Option, Ericka Clendennen Knight received a Bachelor of Science, with a major in Medical Technology, and Terri Kay Oats received a Master of Business Administration, with a major in Management.

To do injustice is more disgraceful than to suffer it.

Plato
Regardless of how much patience we have, we would prefer never to use any of it.

James T. O'Brien

Glamour Time STUDIOS

Fine Photography
for the whole
Family.



- *Adult Glamour
- *Childrens Glamour
- *School Portraits
- *Family Portraits

\$10.95 Plus Tax

- 2-8x10s
- 2-5x7s
- 2-3 1/2x5
- 4-Wallets
- 8-1/2 Wallets

Sitting Fee -\$1.50

Shooting in:

Bronte - Sunday, Sept. 5
Country Inn
Robert Lee - Tues. Sept. 7
Mountain Creek Lodge

We supply make-up for
Glamour Portraits.

Photos to be taken
9:00 am - 8:00 pm

WINK INSURANCE AGENCY



Home*Auto
Life*Health*Commercial

715 Austin - 453-4551

El Rancho Restaurant

Mexican-American Food

Open Tues.-Sat. 11 am-2 pm & 5-9 pm

224 W. Main Bronte 473-2140

This notice is required by the Texas Legislature.

*The percentage increase shown in the first paragraph below may appear unusually high because it does not reflect 1992 taxes levied by the now-abolished county education district (CED). In 1992, the CED levied a portion of the taxes used for school purposes, and the school district levied the remainder of school taxes. In 1993, school districts will levy all school taxes. For an explanation of the increase, attend the public hearing scheduled below or call your school district.

Notice of Public Hearing on Tax Increase

The Bronte Independent School District will hold a public hearing on a proposal to increase total tax revenues from properties on the tax roll in 1992 by 192.6 percent. Your individual taxes may increase at a greater or lesser rate, or even decrease, depending on the change in the taxable value of your property in relation to the change in taxable value of all other property.

The public hearing will be held on September 14, 1993 at 8:00 P. M. in the Boardroom
 FOR the proposal: Steve Kelton, Andra Arrott, Wayne Coalson, Richard Hembree
 AGAINST the proposal: Kendall Gibbs
 PRESENT and not voting: None
 ABSENT: Ray Barnett, Martin DeLaGarza

The statement above shows the percentage increase the proposed rate represents over the effective tax rate that the unit published on August 27, 1993. The following table compares taxes on an average home in this taxing unit last year to taxes proposed on the average home this year. Again, your individual taxes may be higher or lower, depending on the taxable value of your property.

	Last Year County Education District	Last Year School District	This Year School District
Average home value	\$ 25,260	\$ 22,260	\$ 22,260
General exemptions available (amount available on the average home, not including senior citizen's or disabled person's exemptions)	\$ 10,050	\$ 10,000	\$ 10,000
Average taxable value	\$ 15,210	\$ 12,260	\$ 12,260
Tax rate	\$.82011	.51598 /\$100	1.35749 /\$100 (proposed)
Tax	\$ 124.74	\$ 63.26	\$ 166.43 (proposed)
Total 1992 School Taxes	\$ 188.00	Total 1993 School Taxes	\$ 166.43 (proposed)

This paragraph compares last year's CED and school district taxes with this year's proposed school district taxes:

Under this proposal taxes on the average home would decrease by \$ 21.57 or 11.47 percent compared with last year's total school taxes. Comparing tax rates without adjusting for changes in property value, the tax rate would increase by \$.0214 per \$100 of taxable value or 1.6 percent compared to last year's total school tax rate. These tax rate figures are not adjusted for changes in the taxable value of property.

This paragraph compares last year's school district tax with this year's proposed school district taxes:

Under this proposal taxes on the average home would increase by \$ 103.17 or 163 percent compared with last year's school district taxes. Comparing tax rates without adjusting for changes in property value, the school district tax rate would increase by \$.84151 per \$100 of taxable value or 163 percent compared to last year's school district tax rate. These tax rate figures are not adjusted for changes in the taxable value of property.

EXPLANATION OF CONVERSION FROM COUNTY EDUCATION DISTRICT TAXES

County Education Districts have been abolished. In order to compare school tax rates from last year to this year, it is necessary to compare the combined school tax rate below to the school district's proposed tax rate for this year.

Last year the Bronte Independent School District's tax rate was \$.51598.

Last year the Coke County Education District's tax rate was \$.82011.

The combined tax rates for BISD and Coke County Education District was \$1.33609.

The proposed tax rate for the Bronte Independent School District for this year is \$1.35749.

This notice is required by the Texas Legislature.

*The percentage increase shown in the first paragraph below may appear unusually high because it does not reflect 1992 taxes levied by the now-abolished county education district (CED). In 1992, the CED levied a portion of the taxes used for school purposes, and the school district levied the remainder of school taxes. In 1993, school districts will levy all school taxes. For an explanation of the increase, attend the public hearing scheduled below or call your school district.

Notice of Public Hearing on Tax Increase

The Robert Lee Independent School District will hold a public hearing on a proposal to increase total tax revenues from properties on the tax roll in 1992 by 374 percent. Your individual taxes may increase at a greater or lesser rate, or even decrease, depending on the change in the taxable value of your property in relation to the change in taxable value of all other property.

The public hearing will be held on September 14, 1993 at 7:30 P.M. in the Boardroom
 FOR the proposal: Billy Hill, Butch Davis, Beverly Burdett, Mary Grim, Bill Burns,
 AGAINST the proposal: None
 PRESENT and not voting: None
 ABSENT: Jim Clendennen

The statement above shows the percentage increase the proposed rate represents over the effective tax rate that the unit published on August 27, 1993. The following table compares taxes on an average home in this taxing unit last year to taxes proposed on the average home this year. Again, your individual taxes may be higher or lower, depending on the taxable value of your property.

	Last Year County Education District	Last Year School District	This Year School District
Average home value	\$ 25,260	\$ 25,400	\$ 25,400
General exemptions available (amount available on the average home, not including senior citizen's or disabled person's exemptions)	\$ 10,050	\$ 10,080	\$ 10,080
Average taxable value	\$ 15,210	\$ 15,320	\$ 15,320
Tax rate	\$.82011	.26369 /\$100	1.31 /\$100 (proposed)
Tax	\$ 124.74	\$ 40.40	\$ 200.69 (proposed)
Total 1992 School Taxes	\$ 165.14	Total 1993 School Taxes	\$ 200.69 (proposed)

This paragraph compares last year's CED and school district taxes with this year's proposed school district taxes:

Under this proposal taxes on the average home would increase by \$ 35.55 or 21.53 percent compared with last year's total school taxes. Comparing tax rates without adjusting for changes in property value, the tax rate would increase by \$.2262 per \$100 of taxable value or 20.87 percent compared to last year's total school tax rate. These tax rate figures are not adjusted for changes in the taxable value of property.

This paragraph compares last year's school district tax with this year's proposed school district taxes:

Under this proposal taxes on the average home would increase by \$ 160.29 or 396 percent compared with last year's school district taxes. Comparing tax rates without adjusting for changes in property value, the school district tax rate would increase by \$ 1.04631 per \$100 of taxable value or 396 percent compared to last year's school district tax rate. These tax rate figures are not adjusted for changes in the taxable value of property.

EXPLANATION OF CONVERSION FROM COUNTY EDUCATION DISTRICT TAXES

County Education Districts have been abolished. In order to compare school tax rates from last year to this year, it is necessary to compare the combined school tax rate below to the school district's proposed tax rate for this year.

Last year the Robert Lee Independent School District's tax rate was \$.26369.

Last year the Coke County Education District's tax rate was \$.82011.

The combined tax rates for RLISD and Coke County Education District was \$1.0838.

The proposed tax rate for the Robert Lee I.S.D. for this year is \$1.31.