

The Floyd County Hesperian-Beacon

*****5-DIGIT 79235
426 07-30-21 9P 1N
FLOYD COUNTY HISTORICAL MUSEUM
PO BOX 304 2794-1
FLOYDADA TX 79235-0304

WEDNESDAY, DECEMBER 2, 2020

HESPERIAN-BEACON.COM

\$1.00

Bigham selected for 2021 Texas 4-H Shooting Sports Texas

By Teresa Bigham
The Hesperian-Beacon

LOCKNEY - Wyatt Bigham of Lockney has been selected to participate as a member of the 2021 Texas 4-H Shooting Sports Smallbore Rifle team. He will be part of the Texas Team competing at the



Wyatt Bigham practices in the standing position during a 4-H rifle project meeting. (The Hesperian-Beacon/Teresa Bigham)

National 4-H Shooting Sports Invitational, June 20-25 in Grand Island, Nebraska.

The Texas 4-H Shooting Sports Smallbore Rifle team is made up of four kids from Bell County, Guadalupe County, Cameron County and Floyd County.

At the national invitational in Grand Island, Nebraska the rifle team will shoot silhouette targets. They will also be required to shoot from the three positions: prone, kneeling and standing.

Bigham is a freshman at Lockney High School, where he plays football and baseball. He has been a member of Floyd County 4-H for five years and is active in stock shows, photography and food and nutrition. He is the son of Clint and Teresa Bigham.

"I'm excited to have this opportunity to represent Texas and the Texas 4-H youth club. I have wanted this since the first day I walked into my first 4-H rifle class," Bigham said. "The Floyd County 4-H Rifle project has changed my life. It has taught me to have patience; it has also built up my self-esteem. I've made new friends from all over the state of Texas," he added. "4-H has taught me if you dream it, you can live it. I believe in this club, and all 4-H stands for."

Floyd County 4-H offers projects such as



Floyd County Rifle coach, Jerry Chappell, watches as Wyatt Bigham shoots off a round in the kneeling position. (The Hesperian-Beacon/Teresa Bigham)

sewing, veterinarian science, meat judging, archery, shot gun, photography, food challenge, public speaking and stock shows. For more information on the projects that 4-H has to offer, please contact Mark Carroll or Cristen Brooks at the Texas A&M AgriLife office at 806-983-4912.

6th Annual Country Christmas Ball rescheduled

By Barbara Anderson
The Hesperian-Beacon

FLOYD COUNTY - The Sixth Annual Country Christmas Ball scheduled for Dec. 5, 2020 at the Floyd County Friends Unity Center has been rescheduled because of the high rate of Covid-19 infections in Floyd County. The decision to postpone the event to a later date was made by the firefighters and the sponsors, Wendell and Dustee Sollis.

According to the firefighters, Floyd County has a higher than usual rate of cases and the hospital is at capacity with patients. Several firefighters are quarantined or have Covid-19 themselves. It's in the best interest of all participants to postpone the December event.

Wendell and Dustee Sollis would like to encourage people to watch the local newspapers and the Facebook page of Wendell Sollis and the Sidekicks All Star Band, for information about the "Christmas in July" ball that will be held Saturday, July 17, 2021 at the Floyd County Unity Center in Muncy.

If you have purchased tickets for the Dec. 5 event, sponsors will refund your money or hold it for the next ball. Please call Dustee Sollis at 806-983-6228 for more information.



The Country Christmas Ball has been rescheduled due to the coronavirus. The "Christmas in July" ball will be held July 17, 2021. The quilt donated by Cindy's Country Quilts of Plainview will still be raffled off. The quilting is done in designs of firefighter equipment of an engine, a helmet, an axe and a ladder. Tickets are \$10.00 each or 12 for \$100.00. The drawing for the quilt will be held at the next ball. Call Cindy's Quilt Shoppe at 806-296-5888 or Dustee Sollis at 806-983-6228 to purchase tickets. (Courtesy photo)

ation.

Donations and sponsorship money already made for the firefighters from area businesses and corporations will be presented to the Floydada and Lockney Volunteer Fire Departments later in December.

Raffle tickets are still available for the beautiful

quilt that was made by Cindy's Country Quilt Shoppe in Plainview. Tickets are \$10.00 each or 12 for \$100.00. The drawing for the quilt will be held at the next ball. Call Cindy's Quilt Shoppe at 806-296-5888 or Dustee Sollis at 806-983-6228 to purchase tickets.

Phillips, Bigham honored at 4-H District 2 banquet

By Teresa Bigham
The Hesperian-Beacon

FLOYD COUNTY - TyAnn Phillips and Clint Bigham were honored at the District 2 4-H Banquet that was held in Lubbock on November 23.

TyAnn Phillips is this year's Gold Star recipient. The Gold Star Award is the highest county level achievement award made available through Texas 4-H. This award is only awarded once in a member's 4-H career and is presented to the most qualified and deserving 4-H members.

To be considered as a recipient for the Gold Star award, nominees must have completed at least three years in 4-H and must submit a current recordbook. The member must have exhibited leadership skills by serving as a 4-H officer or committee chairman and/or as a junior or teen leader in an activity or project.

Phillips is the daughter of Tyler and Lacy Phillips of Lockney.

The Distinguished Leader Award is presented to an



Clint Bigham
4-H Distinguished Leader
(Courtesy photo)

adult volunteer who has gone above and beyond in supporting the 4-H program.

This year, Clint Bigham was selected to receive the award. He has been involved with Floyd County 4-H for several years and serves in various leadership positions. Bigham is dedicated to growing and improving the local 4-H program.

To find out more about 4-H, contact the local Texas AgriLife office at 806-983-4912.



Mark Carroll presenting TyAnn Phillips with the Gold Star Award. (Courtesy photo)

Stay Safe

Upcoming

Events are listed free of charge for nonprofit civic organizations, schools and community events. Please submit listings at least two weeks ahead of the date. Listings will run through the date of the event. Emailed submissions are preferred to banderson@lknewsgroup.com or fchb.editor@yahoo.com.

LOCKNEY SENIOR CITIZENS FISH FRY

The Lockney Senior Center will have a Friday Night Fish Fry on Dec. 4 from 5-7 p.m. There will be eat-in (limited seating) and carry-outs. The Center is also hosting a gift basket raffle full of gift certificates and prizes. For tickets, contact the Center at 806-652-2745 or contact a board member.

SANTA ON THE SQUARE

The Floydada Chamber of Commerce will hold their annual 'Santa on the Square' on Thursday, Dec. 4 from 5-7 p.m. Santa will arrive at 5:30 p.m. to start welcoming all the children and will stay until 7:30 p.m.

SANTA LETTERS

The Hesperian-Beacon is accepting letters to Santa Claus that will be published in the Christmas issue dated Dec. 23. The deadline for submission is Tuesday, Dec. 8. Letters can be dropped by the Hesperian-Beacon office located at 201 W. Missouri, Floydada. The drop box is located outside the building on the edge of the square glass pane windows. Students at Duncan Elementary in Floydada and Lockney Elementary will be writing letters to Santa in the classroom.

BURN BAN FLOYD COUNTY

The Floyd County Commissioners' Court extended the burn ban in Floyd County until January 11, 2021.

News on the go



Use your smartphone to scan the quick response, or QR, code to visit us online.

The Floyd County Hesperian-Beacon
Copyright 2020
124th Year, No. 30
USPS 202-680



8 10499 02101 7

BARWISE
GIN

Chance and Trina Cornelius
205 FM 784, Floydada, Texas 79235
806-983-2737 (office) • 806-983-6146 (cell)

Call today about
"Open Enrollment for Medicare Part D!"
Last day to enroll is 12/07/20
Payne Pharmacy

200 S. Main St., Floydada (806) 983-5111 • (800) 345-7561 • Denton Payne, R. Ph.

ADVERTISE HERE

If you are reading this, so are your potential customers!
Contact us for details.
To ADVERTISE IN THIS SPACE, CALL 806-983-3737

SOCIETY

Floydada Chamber will hold annual Santa on the Square



Santa rides in on the Floydada firetruck for Santa on the Square. (Courtesy photo)

By Kortney DeBock
Chamber Manager

FLOYDADA – The Floydada Chamber of Commerce is excited to announce that this year's Santa on the Square will be Thursday, Dec. 10 at Nutthouse Designs.

Santa will arrive at 5:30 p.m. to start welcoming all the children and will stay until 7:30 p.m.

A fun craft for the kids will be available as well.

We invite you to bring the kids and your camera. Take your own pictures of the little ones with Santa and capture that special moment.

Vendors are also welcome to set up booths at no charge. Please call or text (806) 983-3434 to reserve your spot.

High Cotton Confections

will be selling "decorate your own Christmas cookie" kits. Social Fly will be selling coffee.

There will also be to-go barbeque plate dinners for sale at \$7 per plate. All proceeds of this will go to the Wells family for medical expenses.

Come on down and enjoy an evening with the family on the square in Floydada.

Floydada Senior Citizens news

Special to The Hesperian-Beacon

FLOYDADA – Due to the spread of the coronavirus, "The Floydada Senior Citizen's Center will be

closed for the rest of November starting Monday, Nov. 9," said Lu Ann Collins. "We will notify everyone when we will reopen." The mailing address is

P.O. Box 573, Floydada, TX 79235 and the phone number is 806-983-2032.

Thank you for remembering the Center with donations or memorials.

Lockney Senior Citizens news

Special to The Hesperian-Beacon

LOCKNEY – The Center is having a Friday Night Fish Fry on Dec. 4 from 5-7 p.m. There will be eat-in (limited seating) and carry-outs.

The Center is also hosting a gift basket raffle full of gift

certificates and prizes. For tickets you may contact the Center at 806-652-2745 or contact a board member.

The Center serves lunch from 11 a.m. to 1 p.m., Monday through Friday, by curbside pickup, drive-through or delivery. Anyone wanting

lunch can call the Center by 9:30 a.m. daily.

Meals are \$6 for members and \$7 for non-members.

The Center's staff appreciates everyone and said they can't wait to see everyone again.

For questions, contact the center at 806-652-2745. Stay safe.

Mental health and the holidays: Tips for thriving, not just surviving

By Cristen Brooks
County Extension Agent
Floyd County FCH

For some people, the holidays are a happy and joyous time, where families get together, friends are reunited, and food and gifts are shared. However, for many people the holidays can be one of the most difficult times of the year. Along with joy, the holiday season can bring unwelcome guests and excessive demands: cooking, shopping, cleaning, decorating, and parties, just to name a few. All these extra pressures can lead to stress, depression, and other mental health issues.

It's important for you to know that you are not alone in your struggles and that there are some practical tips that can help you navigate your way through the holiday season happier and healthier.

Tips to prevent holiday melt down (taken from an article titled "Stress, depression and the holidays: Tips for coping," written by the Mayo Clinic Staff):

When stress is at its peak, it's hard to stop and regroup. Try to prevent stress and depression in the first place, especially if the holidays have taken an emotional toll on you in the past.

Acknowledge your feelings. If someone close to you has recently died or you can't be with loved ones for other reasons, realize that it's normal to feel sadness and grief. It's OK to take time to cry or express your feelings. You can't force yourself to be happy just because it's the holiday season.

Reach out. If you feel lonely or isolated, seek out community, religious or other

social events or communities. Many may have websites, online support groups, social media sites or virtual events. They can offer support and companionship.

If you're feeling stress during the holidays, it also may help to talk to a friend or family member about your concerns. Try reaching out with a text, a call or a video chat.

Volunteering your time or doing something to help others also is a good way to lift your spirits and broaden your friendships. For example, consider dropping off a meal and dessert at a friend's home during the holidays.

Take a breather. Make some time for yourself. Find an activity you enjoy. Take a break by yourself. Spending just 15 minutes alone, without distractions, may refresh you enough to handle everything you need to do. Find something that reduces stress by clearing your mind, slowing your breathing and restoring inner calm.

Some options may include: Taking a walk at night and stargazing.

Listening to soothing music.

Reading a book.

Be realistic. The holidays don't have to be perfect or just like last year. As families change and grow, traditions and rituals often change as well. Choose a few to hold on to and be open to creating new ones. For example, if your adult children or other relatives can't come to your home, find new ways to celebrate together, such as sharing pictures, emails or videos. Or meet virtually on a video call. Even though your holiday plans may look different this year, you can find ways to celebrate.

Set aside differences. Try

to accept family members and friends as they are, even if they don't live up to all of your expectations. Set aside grievances until a more appropriate time for discussion. And be understanding if others get upset or distressed when something goes awry. Chances are they're feeling the effects of holiday stress and depression, too.

Stick to a budget. Before you do your gift and food shopping, decide how much money you can afford to spend. Then stick to your budget. Don't try to buy happiness with an avalanche of gifts.

Plan ahead. Set aside specific days for shopping, baking, connecting with friends and other activities. Consider whether you can shop online for any of your items. Plan your menus and then make your shopping list. That'll help prevent last-minute scrambling to buy forgotten ingredients. And make sure to line up help for meal prep and cleanup.

Learn to say no. Saying yes when you should say no can leave you feeling resentful and overwhelmed. Friends and colleagues will understand if you can't participate in every project or activity. If it's not possible to say no when your boss asks you to work overtime, try to remove something else from your agenda to make up for the lost time.

Don't abandon healthy habits. Don't let the holidays become a free-for-all. Over-indulgence only adds to your stress and guilt.

Recipe of the Week

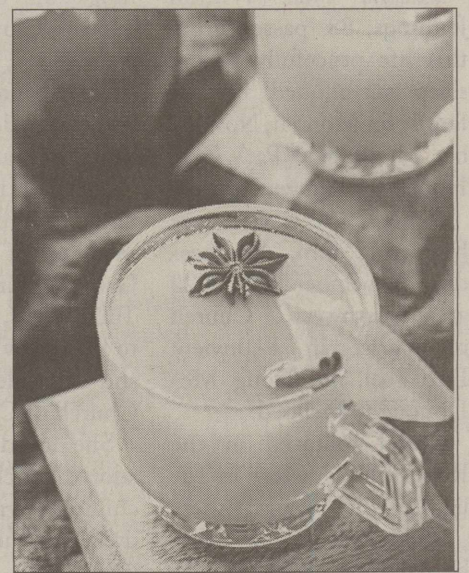
By Teresa Bigham
The Hesperian-Beacon

This Hot Wassail recipe is a delicious drink made with warm apple cider, juice, brown sugar, and spices. This warm holiday drink is made in the slow cooker for ease and is perfect for serving at gatherings!

This wassail tastes primarily like hot mulled cider, but it's slightly sweeter and laced with tart flavors of citrus.

Wassail means be in good health and wassailing was an English Yuletide and New Year's Eve tradition where people went caroling and offered drinks from the wassail bowl to their friends and neighbors.

Over the years, wassailing turned into caroling and the tradition faded in popularity but it still practiced in some parts of



Scotland and England. In many places, wassail has become a drink that extends from the harvest season right through to the new year.

Slow Cooker Wassail

Ingredients:

- 1 apple sliced
- 1 orange sliced
- 2 cinnamon sticks
- 10 whole cloves
- 4 star anise
- ¼ cup light brown sugar
- ½ teaspoon ground ginger
- ½ teaspoon ground nutmeg
- 8 cups apple cider
- 2 cups orange juice
- ¾ cup pineapple juice
- ¼ cup lemon juice

Instructions:

Add all the ingredients to a large crockpot and cook on high for at least two hours or low for at least four hours. Keep on warm and serve straight from the crockpot.

Note: For best flavor, make sure to use fresh apple cider and not the shelf stable kind or apple juice. Usually fresh apple cider is found in the produce section of the grocery store.

THE FLOYD COUNTY HISTORICAL MUSEUM MEMORIES 1979

THE CLYDE STOWE FAMILY

By Mrs. Clyde Stowe

Clyde and I, Lona Hill Stowe, are not newcomers to Floyd County, although Clyde was born at Olney, Texas, August 2, 1909. I was born in Ellis County, June 5, 1911.

In 195, my father and mother, Jesse James Hill and Emma Shadix Hill, my

brothers and sisters, and I left Ellis County with everything we owned, including horses and cows on a train for Hillis, Oklahoma. We settled on a farm south of Hollis. Our mill pumped gyp water. Dad was forced to haul water from Red River about two miles away.

In 1917, our next move was to Floyd County by covered wagon. We settled on a farm in the Liberty Community east of Lockney where we attended school.

Mother was born in Tennessee in 1886. She passed away in Plainview in 1963. Dad was born in Alabama in 1886. He died in Lockney in 1971.

Clyde and I met in Lockney in 1929. We were married in 1930 in Clovis, New Mexico.

We farmed in the Liberty Community about three years. Our daughter, Nita Joyce, was born in 1932 and our son Billy Clyde was born in 1933. They were both born in Floyd County.

We moved to Olney, Texas and farmed three years. Another daughter, Emma Jean, was born in 1935. We lost her in an automobile accident in 1938.

We moved to Lockney in 1937 and have resided here about 45 years. We have six grandchildren and two great-grandchildren.

Nita Joyce married F. G. Jones, Jr. in Lockney, in 1949. They are the parents of four children. Genita was born in 1951, married Bill Finley in 1969. While living in Lubbock, both

lost their lives in a traffic collision in 1971. Terry was born in 1953, married Sandra Gibson in 1972. They are the parents of two children, Shawn and Valarie.

Tenna was born in 1954, married Richard Wooten in 1977. Belinda was born in 1957, married Sidney Gibson in 1976.

Our son Bill, after spending four years in the air force, two of which were spent in Tokyo, Japan, came home and married Nadine Eilers in Plainview in 1958. Bill is an airplane instrument technician at Shepard Air Base in Wichita Falls, Texas, where they reside. They are the parents of two sons, Stacey was born in 1961 and Jason was born in 1974.

Clyde's parents were Soley and Clara Rushing Stowe. His father was born in 1863 in Wayne County, Tennessee. He moved with his parents to Texas at the age of six.

Clyde's mother was born in Parker County. She was the daughter of the late G. W. Rushing, who was the founder of the Cumberland Presbyterian Church in Olney where he was the pastor.

Clyde's parents were married in 1894 in Parker County. They moved to Olney in 1900. His father was a retired farmer. He passed away in 1951 and his mother died in 1962. They were the parents of five sons, Clyde of Lockney and Wayne of Wichita Falls survive this date, January, 1978.

The Floyd County
Hesperian-Beacon
PART-TIME POSITION
We are looking for an outgoing, self-motivated person to join our team.
Media experience preferred but not required.
Please forward your resume with contact information to:
FCHB.EDITOR@YAHOO.COM
LK MEDIA GROUP

Karen Houchin
Attorney
806-983-5556

AGRICULTURE

Floyd County 4-H Spotlight

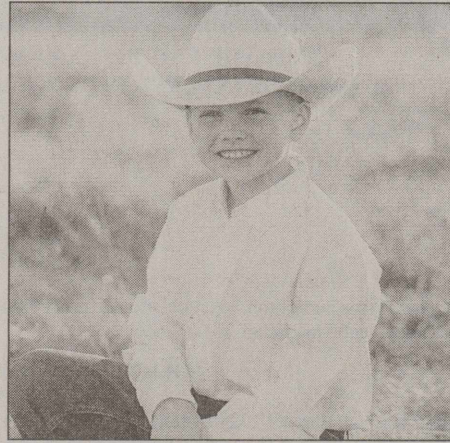
By Teresa Bigham
The Hesperian-Beacon

Carter Duniven is a second year Floyd County 4-H member who is in the 4th grade at Lockney Elementary school. His favorite classes are Science, Math and English. "Yes, I really do love all three subjects," Duniven said.

Once he graduates from high school, Duniven plans to attend college at Texas Tech, Oklahoma State University or WTA-MU. "I haven't decided which college, but I am interested in architecture or engineering," he said.

Duniven takes part in the 4-H rifle project and stock shows. In his spare time, he loves to play football, basketball, and baseball. He plays the piano and takes percussion lessons. Duniven enjoys participating in UIL spelling, music memory and chess. He is a member at the First United Methodist Church in Lockney.

"4-H has taught me how to care for and be responsible for my animals. I feed them, walk and bath them. They like to be brushed, and I



Carter Duniven
(The Hesperian-Beacon/Teresa Bigham)

am learning how to keep a financial log of all the expenses for my swine project," said Duniven. "4-H has also taught me how important showmanship and work ethic are, but what I really love most about 4-H would have to be the friendships I have made."

Duniven is the son of Tyler and Brittany Duniven of Lockney.

High Plains Ag Conference set for Dec. 4

By Susan Himes
Texas A&M AgriLife Extension Service

LUBBOCK - The Texas A&M AgriLife Extension Service will hold the annual High Plains Ag Conference online this year. The event will run from 9-noon on Dec. 4 on the Zoom meeting platform.

The cost is \$15, and the registration deadline is Dec. 2. Once the registration is processed, participants will receive an email with a link to the meeting. There will be three Texas Department of Agriculture continuing education units available - one laws and regulations, and two

general.

Checks should be made out to "LLC" and mailed to Lubbock County Extension, PO Box 10536, Lubbock, Texas 79408. Include your phone number and email. For CEUs, please include the pesticide applicator license number and the name on the CEU certificate.

"We started this conference in 2007, so it has now been going for 13 years," said Robert Scott, AgriLife Extension agent for Lubbock County. "I just didn't want our producers to miss out on the opportunity this year, so we will be holding it online due to COVID-19."

Topics and speakers include:

- Cover Crops, Crop Rotations and Nutrient Management - Katie Lewis, Ph.D., AgriLife Extension soil chemistry and fertility specialist, Lubbock.

- Managing Forage Sorghum to Optimize Silage Quality - Jourdan Bell, Ph.D., AgriLife Extension agronomist, Amarillo.

- Pesticide Laws and Regulations - Scott Handley, agriculture consumer protection instructor, Texas Department of Agriculture, Lubbock.

For more information, contact Scott at 806-775-1740 or rj-scott@tamu.edu.

Three agencies join forces to provide plant experts each quarter

Special to The Hesperian-Beacon

AMARILLO - It's a virtual rangeland "plant party," and all are welcome to attend, beginning Dec. 16.

Free quarterly rangeland plant webinars will be hosted by the Texas A&M AgriLife Extension Service, Texas Parks and Wildlife Department (TPWD) and the U.S. Department of Agriculture - Natural Resources Conservation Service (USDA-NRCS).

The three agencies will provide experts on various focused topics in short, 15-minute presentations from 10:30 a.m. to noon at each meeting. The first session on Dec. 16 will focus on brush.

Participants must register at <https://www.surveymonkey.com/r/27X-CXN5> and will be sent the link to join the webinar the day before. Door

prizes will be available for attendees.

Scheduled talks on Dec. 16 will include:

- Brush identification tips by Ricky Linex, USDA-NRCS wildlife biologist, Weatherford.

- Endemic or rare plant species by Jason Singhurst, TPWD botanist/plant ecologist, Austin.

- Brush sprouting mechanisms by Bob Lyons, Ph.D., AgriLife Extension rangeland specialist, Uvalde.

- Restoring brush diversity by Jimmy Rutledge, co-author of "A Field Guide to Common South Texas Shrubs" and former TPWD technical guidance biologist, Carrizo Springs.

- Managing brush with the new Invara herbicide by Megan Clayton, Ph.D., AgriLife Extension range specialist, Corpus Christi.

Anyone from agriculture and natural resource



The first rangeland "plant party" will focus on brush. (Texas A&M AgriLife photo by Kay Ledbetter)

professionals, landowners, Texas Master Naturalists, Texas Master Gardeners, 4-H youth and the general public are invited to join in, Clayton said.

"Our Texas Grass Gathering held this past September was such a hit that

we, as three partnered agencies, decided to keep the fun going," she said.

For more information, email Megan.Clayton@ag.tamu.edu, Tim.Siegmund@tpwd.texas.gov or Charles.Kneuper@usda.gov.

First National Bank of Floydada
983-3717
THE FIRST NATIONAL BANK OF FLOYDADA
Member F.D.I.C.

FLOYDADA COOPERATIVE GINS, INC.
COOP
Floydada • 983-2884

Find us on Facebook!
f

Diversity D
specializing in drip irrigation

We are committed to offering state of the art irrigation solutions to meet your every need.

Nick Joiner-Manager
Cell: 806.983.3532
117 E. Locust St., Lockney, TX • 806.652.5000

LOCKNEY CO-OP GEN
The Gin of Choice
806-652-3377
LOCKNEY, TX.

1000 West Locust Street
Clay Lowrance - Manager
lockney.coop.mgr@pcca.com

BRIAN & DILIA'S PROFESSIONAL SERVICE CENTER

Brian and Dilia Emert
611 East Houston Street
Floydada, Texas
(806)983-9368

"Come see us when your engine light comes on—we can scan your vehicle! James is 'Dealer-level Certified' and can get you back on the road!"

Specializing in John Deere Tractor and automotive repairs
"Proud to use GoldenWest Hydraulic Oil"

COWPOKES By Ace Reid
http://www.cowpokes.com

"Wul that wuz a heck of a shower, sixteen sprinkles and one bolt of lightning!"

FEATURE IS SPONSORED BY THE

Out here, three things remain constant: the land, the family who farms it, and the local co-op that helps keep it profitable.

Your cooperative takes pride in providing you with the quality inputs and the risk management, agronomic and other services that are right for your operation. Out here, the co-op's commitment to the success of its members never wavers. As long as you have a local cooperative, you never farm alone.

Your cooperative. Local. Loyal. Trusted by generations.

CHS

1002 FM 786, Lockney, TX 79241
(806)652-3389 | jimmy.cervantes@chsinc.com

AN OWNER OF THE CHS® COOPERATIVE SYSTEM

Financing for: Farms, Ranches, Rural Recreational Properties and Rural Homes

Plains LAND BANK

Ryan Pierce
806-724-5828

plainslandbank.com
Part of the Farm Credit System

Lockney Longhorns

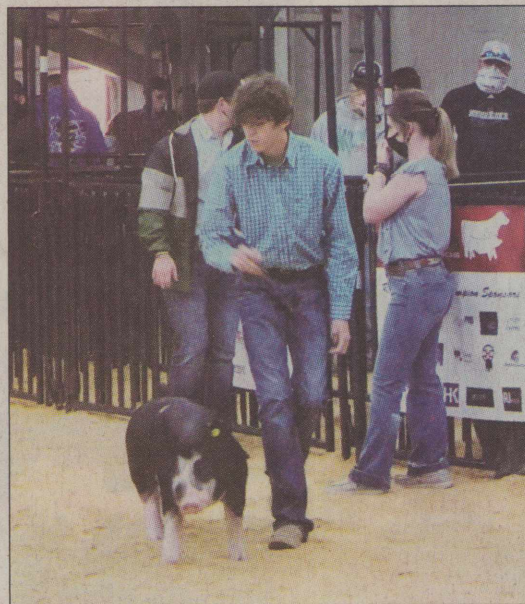
Floyd Co. 4-H members had success at the Texas Tech Livestock Show

By Teresa Bigam
The Hesperian-Beacon

LUBBOCK - Floyd County 4-H members had a great weekend at the Texas Tech Fearless Champion Livestock Show that was held at the South Plains Fairgrounds on Nov. 20-22.

Malaki Alvis, Bo Alvis, Adaliyah Jones, Davis Duni-ven, Adrian Jimenez, Brinley Lefevre, Hagen Lefevre and Thalia Ascencio all showed their swine projects.

In the heifer division, Avery McInvale, Brailey Kidd, Aaren Rexrode, Audrey Rexrode and Hartlee Battey all did a great job showing their projects.



Malaki Alvis
(courtesy photos)



Hartlee Battey



Adaliyah Jones



Davis Duni-ven



Audrey Rexrode



Brinley Lefevre



Adrian Jimenez



Avery McInvale



Hagen Lefevre



Bo Alvis



Kalebh Cook

LOCKNEY SCHOOL MENU Dec. 7 - Dec. 11

Monday
Breakfast - Waffles, bacon, fruit juice, fruit, milk
Lunch - Steak patty or meatloaf, mashed potatoes, okra, roll, strawberries, milk

Tuesday
Breakfast - Sausage biscuit or PBJ, fruit juice, fruit, milk
Lunch - Enchiladas or tacos, salsa, cucumbers, beans, applesauce, milk

Wednesday
Breakfast - Breakfast pizza, fruit juice, fruit, milk
Lunch - Chicken tenders, roll, gravy, broccoli, sweet potato fries, fruit, cookie, milk

Thursday
Breakfast - Cinnamon roll, sausage, fruit juice, fruit, milk
Lunch - Chicken spaghetti or pizza, garden salad, carrots, milk

Friday
Breakfast - Scrambled eggs, biscuit, gravy, or cereal, toast, juice, fruit, milk
Lunch - Fish sticks or BBQ, coleslaw, green beans, oranges, cookie, milk

These businesses support Lockney's schools, teachers, administrators and students.

Wright's Auto Service
Parts and Repairs

105 East Locust Street | Box 931 | Lockney, TX 79241
806-652-2335 • Fax 806-652-2762

W.J.
MANGOLD
MEMORIAL HOSPITAL

320 N. Main • Lockney, Texas • 806-652-3373

Advertise Here!

Be a advertising sponsor for your school's youth \$10 a week

DAVID & DAR LEE FOSTER
JODY & SHAWNDA FOSTER

D & J Gin

LESCA DURHAM Marketing Specialist
SEGAYLE FOSTER Admin. Assistant

806-652-3351
806-652-3738 (Fax)

306 E. Shurbet St.
Lockney, TX 79241

Texas Plains Federal
Just plain Texas... Just like you!

806-983-3922 office
800-272-6641 toll free
806-983-3932 fax

206 W. California St.
Floydada, Texas 79235
www.texasplainsfederal.org

CDs • Loans • Checking • Savings

WILBUR-ELLIS®

Tyler Kidd-Manager • 806-652-2544
803 E HWY 70, Lockney TX

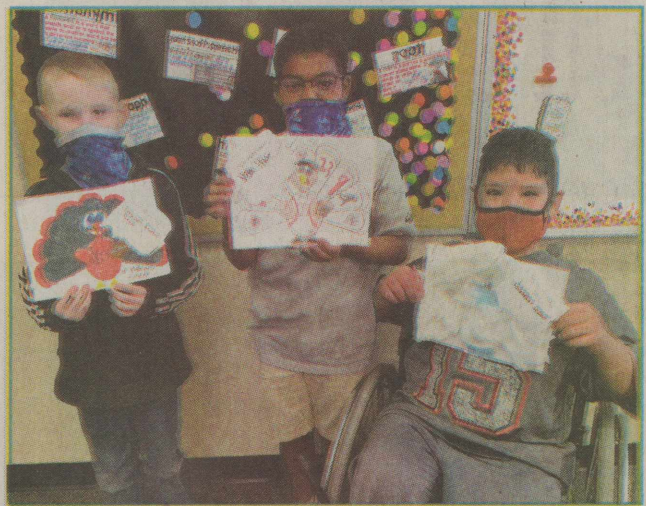
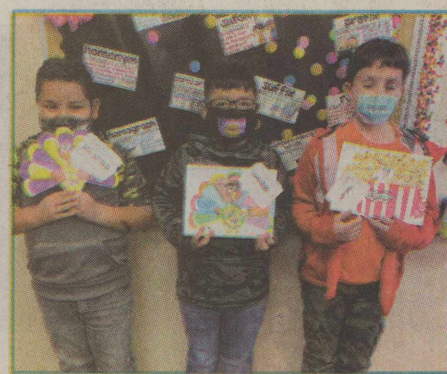
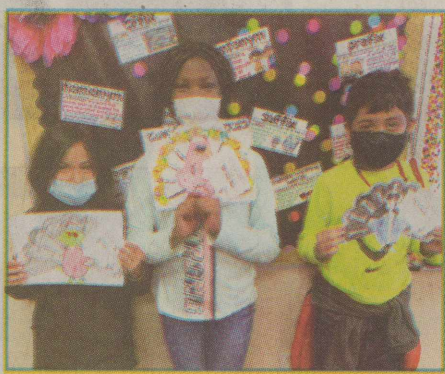
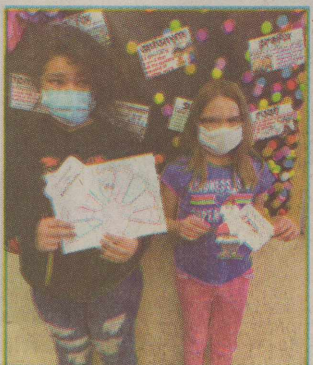
Floydada Whirlwinds

Fifth grade students read 'Tom the Turkey'

By Kalissia Hinson
The Hesperian-Beacon

FLOYDADA - Jordan Beedy's fifth grade class at Duncan Elementary read 'Tom the Turkey.' The students then had a contest to see who could disguise their turkey to keep it from getting eaten at Thanksgiving.

Each child took a paper turkey home, dressed them up and brought them back to the class. Mia Casares won the contest with her turkey dressed as Elvis.



(Courtesy photos)

Floydada CISD yearbooks for sale

By Kalissia Hinson
The Hesperian-Beacon

FLOYDADA - Floydada Collegiate ISD has yearbooks from past years for sale to the public. Each yearbook from 1980-2017 is \$5.00 each. Not all years are available. Available years are: 1980, 1983, 1985, 1987, 1996, 1997, 1998, 1999, 2000, 2001, 2003, 2005, 2006, 2007, 2008, 2009, 2010, 2012, 2013, 2016.

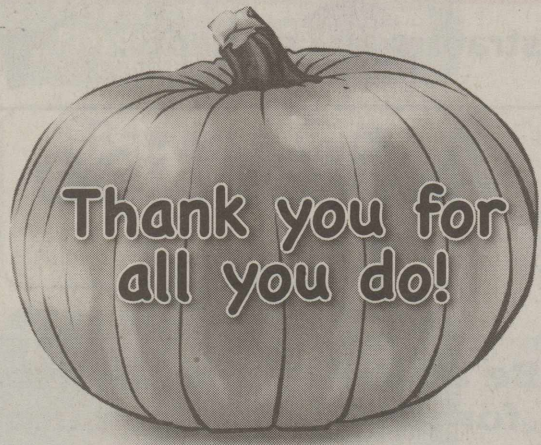
Also for sale: 2018 for \$20 each, 2019 for \$30 each and 2020 for \$40 each.

You can preorder 2021 for \$50 by emailing khinson@floydadaisd.esc17.net.

Floydada Whirlwinds / Lady Winds Basketball Schedule 2020-21

DATE		OPPONENT	JVG	JVB	VG	VB
Oct 31	Sat	at Roosevelt Scrimmage (Girls)	10:00 AM		10:00 AM	
Nov 7	Sat	at Whitharral (Girls)			11:00 AM	
Nov 10	Tue	Crosbyton (Girls)	4:00 PM		5:15 PM	
Nov 13	Fri	at Olton	4:00 PM	5:00 PM	6:30 PM	8:00 PM
Nov 17	Tue	at Lorenzo	4:00 PM	5:00 PM	6:15 PM	8:00 PM
Nov 20	Fri	Anton	4:00 PM	5:00 PM	6:15 PM	7:45 PM
Nov 24	Tue	at Hermleigh (Girls)			3:00 PM	
Nov 24		at Idalou (Boys)		TBA		TBA
Dec 1	Tue	Lubbock Roosevelt	4:00 PM	5:00 PM	6:15 PM	7:45 PM
Dec 4	Fri	at Sundown	5:00 PM	5:00 PM	6:15 PM	7:45 PM
Dec 5	Sat	at Highland Park (Girls)			2:00 PM	
Dec 5	Sat	at Slaton (Boys)		3:00 PM	4:30 PM	
Dec 8	Tue	Littlefield	4:00 PM	5:00 PM	6:15 PM	7:45 PM
Dec 11	Fri	Tulia	4:00 PM	5:00 PM	6:15 PM	7:45 PM
Dec 12	Sat	Aspermont (Girls)	1:00 PM		2:15 PM	
Dec 12	Sat	(Boys) TBA				
Dec 14	Mon	at Sudan	7:30 PM	8:00 PM	8:00 PM	7:30 PM
Dec 18	Fri	at Plainview Christian (Girls)			8:00 PM	
Dec 21	Mon	Post	4:00 PM	5:00 PM	6:15 PM	7:45 PM
Dec 30	Wed	Sands (Girls)			1:00 PM	
Jan 5	Tue	at Ropes (Girls)	4:00 PM		6:15 PM	
Jan 5	Tue	at Tahoka (Boys)		TBA		TBA
Jan 8	Fri	Lockney (Girls)	5:00 PM		6:15 PM	
Jan 8	Fri	(Boys)				
Jan 12	Tue	at New Deal	4:00 PM	5:00 PM	6:15 PM	7:45 PM
Jan 15	Fri	Hale Center	4:00 PM	5:00 PM	6:15 PM	7:45 PM
Jan 19	Tue	at Ralls	4:00 PM	5:00 PM	6:15 PM	7:45 PM
Jan 22	Fri	OPEN				
Jan 26	Tue	at Lockney	4:00 PM	5:00 PM	6:15 PM	7:45 PM
Jan 29	Fri	New Deal	4:00 PM	5:00 PM	6:15 PM	7:45 PM
Feb 2	Tue	at Hale Center	5:00 PM	5:00 PM	6:15 PM	7:45 PM
Feb 5	Fri	Ralls	4:00 PM	5:00 PM	6:15 PM	7:45 PM
Feb 9	Tue	OPEN				
Feb 12	Fri	Lockney (Boys)		5:00 PM		6:15 PM

The Families of Pumpkin Pyle wholly support our community's students, athletes, teachers and administrators.



Floydada Junior High 2020-2021 Basketball Schedule

			7th A	8th A	B Team
Nov 16	Mon	Ropes (Here)	5:00 PM	6:00 PM	
Dec 3	Thur	at Lockney	5:00 PM	6:00 PM	
Dec 7	Mon	New Deal (Here)	5:00 PM	6:00 PM	7:00 PM
Dec 14	Mon	at Hale Center	5:00 PM	6:00 PM	7:00 PM
Jan 7	Thur	Ralls (Here)	5:00 PM	6:00 PM	7:00 PM
Jan 11	Mon	at Ropes	6:00 PM	6:00 PM	
Jan 21	Thur	Lockney (Here)	5:00 PM	6:00 PM	
Jan 25	Mon	at New Deal	5:00 PM	6:00 PM	7:00 PM
Feb 1	Mon	Hale Center (Here)	5:00 PM	6:00 PM	7:00 PM
Feb 8	Mon	at Ralls	5:00 PM	6:00 PM	7:00 PM

LIGHTHOUSE ELECTRIC CO-OP

806-983-2814
703 A Hwy 70 E
Floydada TX

Floydada - Memphis, Texas

ASSITER & ASSOCIATES

REALTORS AUCTIONEERS • APPRAISERS

Office: 806-983-3322 • www.assiter.net • www.assiter.auction
Tim Bandy Assiter Broker #533147

Nutrien Ag Solutions™

(806) 983-2233
517 E. Houston St., Floydada, TX
nutrienagsolutions.com

Floydada Power & Light

114 West Virginia Street
Floydada, TX 79235
806-983-2834

ZIMMATIC BY LINDSAY

Shannon Shurbet

Caprock Irrigation Systems

609 N. 2nd Street
Floydada, TX
(806) 983-8095

Floyd County 4-H October photo contest winners are announced

By Teresa Bigham
The Hesperian-Beacon

FLOYD COUNTY - Every month Floyd County Texas AgriLife Ag agent, Cristen Brooks holds a photography class as a 4-H project. This project has become one of the 4-H members favorite projects. Every month the 4-H members can take part in the

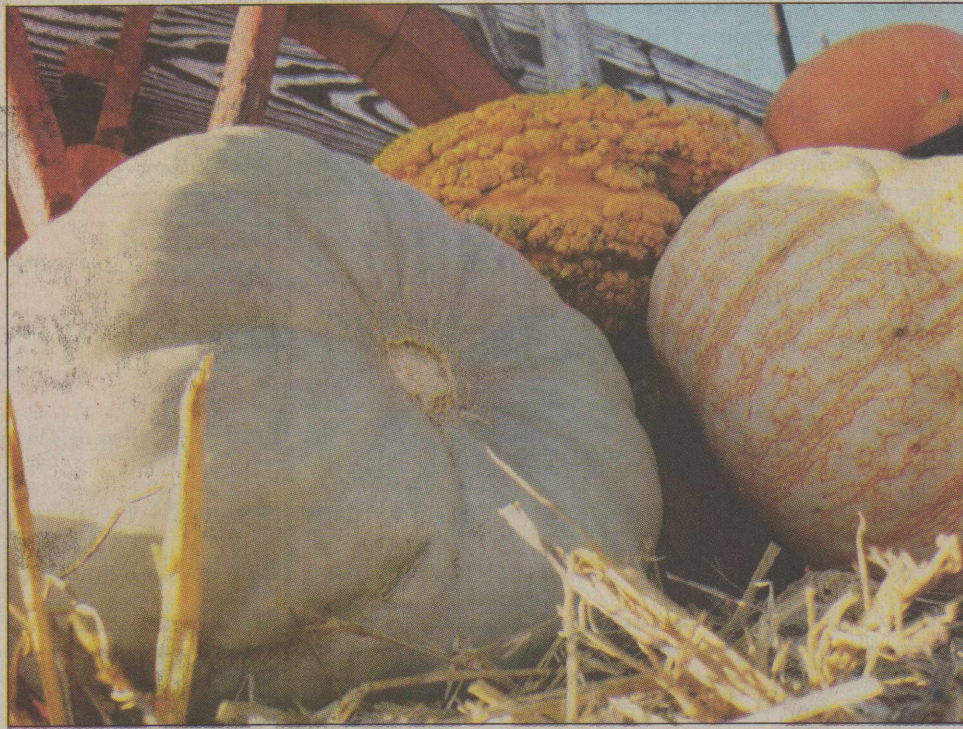
monthly photo contest, and every month has a different theme. The photos are judged by an outside Texas AgriLife agent.

This 4-H project is designed to help students explore the world of photography. From learning about camera equipment to creating great images and sharing lessons learned with others, students are bound to love photography.

October's theme was "Fall."

The 1st place photo was taken by Teagan Rogers, 2nd place photo was taken by Scout Rogers and 3rd place was taken by Hannah Kasner.

For more information on this Floyd County 4-H project call Cristen Brooks at the Texas AgriLife Extension Office at 806-983-4912.



1st place photo taken by Teagan Rogers. (Courtesy photo)



2nd place photo taken by Scout Rogers. (Courtesy photo)

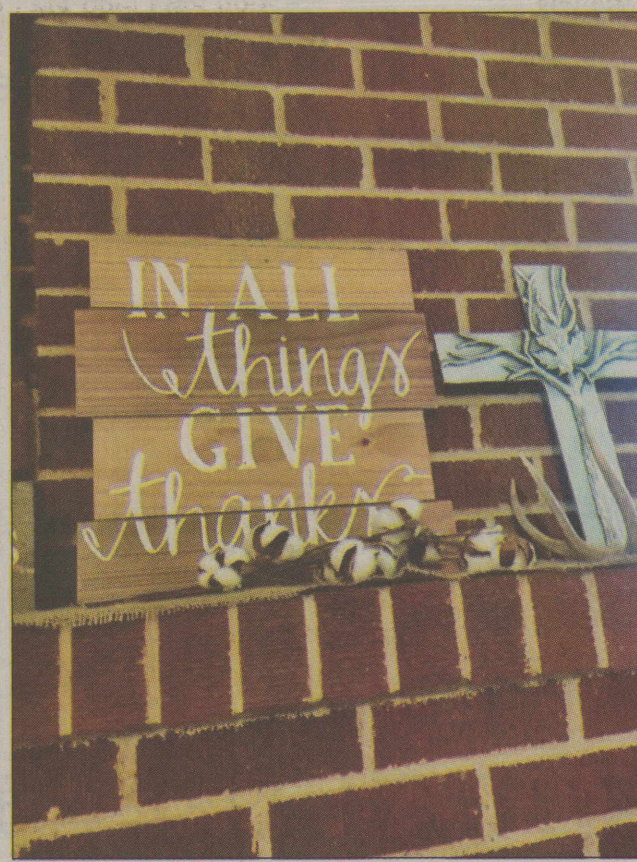
Santa Letters due December 8

By Barbara Anderson
The Hesperian-Beacon

FLOYD COUNTY - The Floyd County Hesperian-Beacon is accepting letters to Santa Claus that will be in the Christmas issue dated Dec. 23. The deadline is Tuesday, Dec. 8.

Children are invited to submit their wish lists to Santa and drop them by the Hesperian-Beacon office located at 201W. Missouri, Floydada. The drop box is located outside the building on the edge of the square glass pane window.

When submitting letters, please make sure that your child clearly prints their names on the letter. Students at Duncan Elementary School in Floydada and Lockney Elementary School will be writing letters to Santa in the classroom. The staff at the Hesperian-Beacon will pick those up to make sure they get submitted to Santa.



3rd place photo taken by Hannah Kasner. (Courtesy photo)

Thanks for Reading

The Floyd County Hesperian-Beacon Weather Summary

Seven Day Forecast

Wednesday Partly Cloudy 46 / 24	Thursday Partly Cloudy 45 / 25	Friday Sunny 49 / 26	Saturday Partly Cloudy 51 / 30	Sunday Mostly Sunny 53 / 31	Monday Sunny 56 / 35	Tuesday Sunny 54 / 31

Local UV Index

0-2: Low, 3-5: Moderate, 6-7: High, 8-10: Very High, 11+: Extreme Exposure

Weather Trivia

Where is the driest place on Earth in terms of average annual rainfall?

Answers: Atacama Desert, Chile.

Weather History

Dec. 2, 1925 - A late season hurricane caused extensive damage across the Florida peninsula, then moved off the Georgia coast crossing Cape Hatteras as a tropical storm. The storm produced whole gales along the Middle Atlantic and Southern New England coast.

Dec. 3, 1989 - Heavy snow and high winds created blizzard conditions in northern New England. Snowfall totals in Maine ranged up to 31 inches, at Limestone. Presque Isle, Maine reported a record 30 inches of snow in 24 hours, along with wind gusts to 46 mph.

Detailed Local Forecast

Today we will see partly cloudy skies, high of 46°, humidity of 36%. North wind 11 to 18 mph. The record high for today is 78° set in 2012. Expect partly cloudy skies tonight, overnight low of 24°. West southwest wind 11 mph. The wind chill for tonight could reach 13°. The record low for tonight is 10° set in 1985. Thursday, skies will be partly cloudy, high of 45°, humidity of 37%. North wind 9 to 15 mph. Thursday night, skies will be clear, overnight low of 25°.

Peak Fishing/Hunting Times This Week

Day	Peak Times		Day	Peak Times	
	AM	PM		AM	PM
Wed	1:10-3:10	1:37-3:37	Sun	4:41-6:41	5:07-7:07
Thu	2:03-4:03	2:30-4:30	Mon	5:32-7:32	5:56-7:56
Fri	2:57-4:57	3:23-5:23	Tue	6:21-8:21	6:45-8:45
Sat	3:50-5:50	4:16-6:16			

Sun/Moon Chart This Week

Day	Sunrise	Sunset	Moonrise	Moonset
Last 12/7	7:35 a.m.	5:37 p.m.	7:34 p.m.	9:39 a.m.
Wed	7:36 a.m.	5:37 p.m.	8:30 p.m.	10:31 a.m.
Thu	7:37 a.m.	5:37 p.m.	9:31 p.m.	11:19 a.m.
Fri	7:38 a.m.	5:37 p.m.	10:34 p.m.	12:02 p.m.
Sat	7:39 a.m.	5:37 p.m.	11:39 p.m.	12:41 p.m.
Sun	7:39 a.m.	5:37 p.m.	Prev Day	1:16 p.m.
Mon	7:40 a.m.	5:37 p.m.	12:44 a.m.	1:49 p.m.

Last Week's Almanac & Growing Degree Days

Date	High	Low	Normals	Precip	Farmer's Growing Degree Days
11/20	67	45	60/33	0.00"	11/20 6 11/24 1
11/21	67	49	59/33	0.00"	11/21 8 11/25 0
11/22	48	43	59/32	0.00"	11/22 0 11/26 0
11/23	56	40	58/32	0.00"	11/23 0
11/24	66	37	58/31	0.00"	
11/25	62	27	57/31	0.00"	
11/26	64	30	57/31	0.00"	

Growing degree days are calculated by taking the average temperature for the day and subtracting the base temperature (50 degrees) from the average to see how many growing days are attained.

Choose your Medicare coverage for 2021!

October 15 - December 7

Dental	Vision	Hearing
Prescription Drugs	24/7 Nurse Connect	Virtual Visits

Benefit offerings may vary by plan.

It's time to find the right Medicare plan. Allwell can help.

Now more than ever, it's important to choose the coverage that's best for you. We have Medicare Advantage experts in your neighborhood who can answer all your questions about Medicare Advantage.

Get your Medicare questions answered

- Join a local or virtual event to speak with a Medicare Advantage expert. Find an event in your neighborhood at TX.AllwellMedicareAdvantage.com/JoinUs
- If you are unable to attend an event, we are happy to answer your questions over the phone. Call 1-866-212-7895 (TTY: 711)
- You can also compare plans and enroll online. Visit TX.AllwellMedicareAdvantage.com

Call today to reserve your space
1-866-212-7895 (TTY: 711)
8 a.m. to 8 p.m., 7 days a week*

Or RSVP for an upcoming event at
TX.AllwellMedicareAdvantage.com/JoinUs

*From October 1 to March 31, you can call us 7 days a week from 8 a.m. to 8 p.m. From April 1 to September 30, you can call us Monday through Friday from 8 a.m. to 8 p.m. A messaging system is used after hours, weekends, and on federal holidays. Allwell is contracted with Medicare for HMO, HMO C-SNP, HMO D-SNP, and PPO plans, and with some state Medicaid programs. Enrollment in Allwell depends on contract renewal. A salesperson will be present with information and applications. For accommodations of persons with special needs at meetings call 1-866-212-7895 (TTY: 711). Allwell complies with applicable federal civil rights laws and does not discriminate on the basis of race, color, national origin, age, disability, or sex. For assistance, please call: 1-844-796-6811 (HMO), 1-877-935-8023 (HMO SNP) (TTY: 711). Español (Spanish): Servicios de asistencia de idiomas, ayudas y servicios auxiliares, traducción oral y escrita en letra más grande y otros formatos alternativos están disponibles para usted sin ningún costo. Para obtener esto, llame al número de arriba. Tiếng Việt (Vietnamese): Các dịch vụ trợ giúp ngôn ngữ, các trợ cụ và dịch vụ phụ thuộc, và các dạng thức thay thế khác hiện có miễn phí cho quý vị. Để có được những điều này, xin gọi số điện thoại nêu trên.

Y0020_21_20945PRAD_M_21306_FINAL_Accepted_09072020

Discovery Center Holiday Happenings

By Sarah Silva
Marketing Specialist

AMARILLO - The Don Harrington Discovery Center is revamping their holiday offerings this year in order to give families opportunities to make memories and to do it safely.

New Holiday Hours

The Don Harrington Discovery Center will expand its hours back to normal hours for the holiday season. DHDC has been operating with temporary hours since they were able to reopen in June. Starting Tuesday November 17th through the end of the year hours will be Monday-Saturday 9:30am-4:30pm, and Sunday Noon-4:30pm. The Discovery Center is requiring masks or shields for ALL guests, school age and up. Updated Face Mask Policy Effective 11/19/20: Face coverings are required for guests age 10 and up. Face shields are

required for medical mask exempt guests. Masks and face shields are available for purchase at the front desk for \$1. Entry to DHDC will be granted only to those wearing a face mask or face shield. All other safety protocols are still in place and can be found here at dhdc.org.

Membership Special

If you're having a hard time finding the perfect gift for that special friend or family member the DHDC has your solution. The DHDC is offering a BOGO 50% off Family or Family Plus membership SALE! With this Buy One GIVE One special, you can renew your own membership for a year AND give one membership for those special families on your list, OR just give 2 as a gift! This membership sale is good from Black Friday, November 27th, through December 31st. Give the gift of science this holiday season!

Discounted memberships are available in person at the Discovery Center or by calling (806) 355-9547. Must purchase 2 of the same level membership for discount (Family or Family Plus). Not valid on previous purchases.

Are you or someone you know the BIGGEST DHDC lover? We are also offering 25% off the Lifetime Memberships from November 27th-December 31st.

Visit DHDC.org to learn more about Black Friday and the Membership Special.

Santa's Jolly Jamboree

Families are invited to a special holiday event with timed admission on Saturday, December 5th from 9:30 am to 1:30 pm Enjoy a jolly good time at Santa's Jolly Jamboree filled with cheerful activities and delightful crafts in Santa's workshop to celebrate the holiday season! Santa will be here too, for families to get a picture with the big guy! Professional photos will

be printed on site to take home with you. Due to current regulations, Santa's Jolly Jamboree admission will be sold in 1.5 hour time slots. You can choose the time that works best for your family, but don't wait because capacity at each time is limited. A link is available at dhdc.org to purchase your admission and printed photos with Santa in the time slots of 9:00 - 10:30, 10:30 - Noon, and Noon - 1:30. Online sales will end at 2:00 pm, December 4th or when an event sells out.

Admission to Santa's Jol-

ly Jamboree is \$5 per person for members and \$8 per person for non-members. Each child and adult in your party will need to purchase admission for entrance; 2 and under Free. All crafts and activities are included in admission price, with the exception of Santa Photos. Santa photos are \$10 per printed photo. For the safety of our guests, only those with photo tickets will be allowed to visit Santa.

Santa's Jolly Jamboree is a community event at the Discovery Center and proceeds help the DHDC continue

their mission and vision to spark curiosity, inspire lifelong learning and bring families and communities closer together while exploring the wonders of science. Generous donations from Happy State Bank, and support by KAMR Local 4 News and Fox 14 have made it possible to hold this very merry event.

For more information about Santa's Jolly Jamboree, see details at dhdc.org or contact Shanna Collins, DHDC Development, Marketing and Events Coordinator, at (806) 355-9547 x 120 or email scollins@dhdc.org.

We All "FALL" In Love With Babies!



Announce the birth of your baby in Hesperian-Beacon.
\$65/Color - \$25 Black & White

Email a picture of your baby along with a write-up to
fchb.editor@yahoo.com

Be sure to include your baby's name, time and date they were born, place of birth, weight, length, parent's names, etc.



DECEMBER SUBSCRIPTION SPECIAL!

Texas Residents

\$29⁹⁵ per year

3 Year Subscription

\$79⁹⁵

Prices good through December 31, 2020.

The Floyd County
Hesperian-Beacon

SUBSCRIBE TODAY! Call 888-400-1083 Ext. 1

LIGHT UP YOUR AD WITH COLOR!

DECEMBER SPECIAL

Add Color \$25
for Just

Offer good through December 28, 2020

The Floyd County
Hesperian-Beacon

CALL THE FLOYD COUNTY HESPERIAN-BEACON! 888-400-1083 EXT. 6