

# The Floyd County Hesperian-Beacon

\*\*\*\*\*CAR-RT LOT\*\*B 003  
426 07-30-16 0001A04 3P 1N  
Floyd County Histori Museum  
PO BOX 304  
FLOYDADA, TX 79235-0304

THURSDAY, OCTOBER 8, 2015

HESPERIANBEACONONLINE.COM

\$1.00

## The 28th Annual Punkin Day Celebration is Here!!



**By Darolyn Snell**  
Floydada Chamber President

That's right... Our 28th Annual Punkin Days has arrived! This Saturday, October 10th, we will celebrate our community and all it has to offer. We look forward to showing our citizens and all visitors to our town, our pride in this community and its industries.

This week your Chamber of Commerce will continue to work to make this year's event a success! Chamber manager Kim Perez will be on the road to other communities around

the area to promote all the great things we have planned for Punkin Days and encourage people to come out and be a part of the fun!

Driving around town, many individuals and businesses have been pulling out their decorations in preparation for the decorating contest which will be judged this week. The Chamber office continues to receive applications from vendors and all local groups that are planning to participate have been making their plans as well.

Remember that in addition to the judging of the decorat-

ing contest, other events will kick off early as well. The Floyd County Historical Museum will be open and receiving visitors and even teaching people how to make rope.

The Chamber of Commerce also wants to encourage everyone that can to make plans to be a part of the excitement when KLBK comes to our community on Thursday, October 8th! That's right... KLBK will be in Floydada that day to broadcast both their "Trends & Friends" program at 5 p.m. and their 6 p.m. newscast from our own See **PUNKIN DAYS**, Page 2



October is  
Breast Cancer  
Awareness  
Month

### Upcoming

Events are listed free of charge for nonprofit civic organizations, schools and community events. Please submit listings at least two weeks ahead of the date. Listings will run through the date of the event. Emailed submissions are preferred to fchb.editor@yahoo.com.

### DUANE GRIFFITH BOOK SIGNING

Duane Griffith, author of the new novel, *Plant My Feet*, will be at the Floyd County Museum on Saturday, October 1 during Punkin' Days for a book signing. Come by the museum between 10 a.m. - 4 p.m. for a visit and learn more about life in the old Wes

### "KEEP TEXAS BEAUTIFUL" CHRISTMAS ORNAMENTS

Nelda Laney's "Keep Texas Beautiful" Christmas ornaments are now available at the Floyd County Historical Museum in Floydada. The cost of the ornament is \$20. This year's beautiful ornament design is the "Gulf Coast".

### 3RD ANNUAL FLOYDADA FIRE DEPARTMENT CAR SHOW

The Floydada Fire Dept will be hosting their 3rd Annual Car Show at Floydada's 28th Annual Punkin Day to be held on Saturday, Oct. 10. Setup time is 8 - 11 a.m. Any questions please contact Rusty Hopper at 806-559-0058 or Chad Guthrie at 806-292-8122. All proceeds to benefit the Floydada Volunteer Fire Department.

### ST. MARY MAGDALEN CATHOLIC CHURCH

St. Mary Magdalen Catholic Church in Floydada will have an enchilada dinner fundraiser on Friday, Oct. 16th - 5 - 7 p.m. at the Duncan Cafeteria (before Tahoka football game). Cost is \$7 per plate. Enchiladas, rice, beans, iced tea, cobbler. Dine-in or carryout

See **UPCOMING**, Page 2

### Correction

If you spot an error of fact, contact the FCHB office email: fchb.editor@yahoo.com

### News on the go



Use your smartphone to scan the quick response, or QR, code to visit us online.

The Floyd County Hesperian-Beacon  
Copyright 2015  
119th Year, No. 28  
USPS 202-680



8 10499 02101 7

## Filipino Bishop Crosses Ocean to Visit Priest



Courtesy Photo

**Most Reverend Jose Corazon Tala-Oc, bishop of Kalibo in the Aklan Province of the Philippines visited Father Ike Temporaza, priest of St. Mary Magdalen Catholic Church in Floydada during his travels in the United States.**

**By Jennifer Harbin**  
Special to The Hesperian-Beacon

A Filipino bishop recently traded the humid, tropical climate of the Philippines, travelling over 8,300 miles, for the dry plains of West Texas to visit his priest serving in the diocese of Lubbock.

Most Reverend Jose Corazon Tala-Oc kicked off his American tour with a six day stopover in Floydada to visit Father Ike Temporaza, one of his priests on loan from the Diocese of Kalibo in the Aklan province. To date, the

Lubbock diocese has been the temporary home to three priests hailing from the Filipino diocese: Fathers Jose Relante, Angelo Consemينو and now, Ike Temporaza. Each priest agrees to serve the diocese of Lubbock for two years, with the possibility of a short extension. There are priests from his diocese currently residing in California, Nevada, New York, Texas and Virginia.

Bishop "Cor" arrived in Lubbock on September 17 to experience where his current

See **BISHOP**, Page 9

## Former Lockney Santa Fe Train Station Being Renovated into a Vacation Getaway

**By Kay Ellington**  
The Hesperian-Beacon

If you ever wondered what happened to the old Lockney Santa Fe train station, we have the answer. Brad Blake who works for the SunEdison windmill project in Floyd County and his wife, Suzanne, and two of their friends, Dan and Denise Pope, have gone into a partnership to buy the station and are refurbishing it in Southland, a small town between Post and Lubbock.

"We bought it about 18 months ago," Blake said. "Dr. Smith from Snyder had bought it in 1980 and moved it to Southland. Dr. Smith's wife's father had been a builder, and they were interested in the building. They didn't pay much for the building, but they paid a whole lot to move it."

Blake said the new owners still had all of the manifests and official paperwork from each municipality the building went through to be moved to Garza County.

Denise Pope is a designer and she's the one who spotted the train station on a ranch in Southland when she was doing some consulting work.

The Popes and the Blakes have been busily refurbishing the former railway station which they think was constructed in the era of 1917 to 1921. "It has ticket areas, lobby areas, and a warehouse," Blake said.

The old train station hadn't been inhabited in years, and it took two roll-outs to clean it out, Blake noted. He said that owls had been living in it for awhile.

Their target date for finishing the project is first quarter 2016, and they'll be using it



Courtesy photos

**The old Lockney Santa Fe Train Station is getting a new life and is being refurbished by its new owners Brad and Suzanne Blake and Dan and Denise Pope. The station is on a ranch in Southland.**

as a vacation getaway. But Blake said he hopes to host a special commissioning party there for SunEdison's windmill farm.



Join us in celebrating  
**"PUNKIN' DAYS"!**  
Saturday, October 10th, Downtown Floydada  
**Cathy's Floral & Gifts**  
128 W. California St. Floydada • 806-933-5013

**New Fall Arrivals**  
Bridal Selections  
Bethany Wilson & Titus Miller~ Nov. 21  
*Hearts Desire*  
2900 Otton Road Plainview (806) 296-2548  
120 S Main Lockney (806) 652-2548

Make Plans Now To Attend  
The 28<sup>th</sup> Annual  
"Punkin' Day" Celebration  
On Saturday, October 10<sup>th</sup>!  
See You There!  
**Payne Pharmacy**  
Monday-Friday 8:30-6:00 p.m. • Saturday 8:30-1:00 p.m.  
200 S. Main St. Floydada  
(806) 983-5111 • (800) 345-7961  
Made in USA

BMG BLACKBURN MEDIA GROUP

The Floyd County Hesperian-Beacon, 201 W. California, Floydada, Texas 79235. Is open from 10 a.m. to 5 p.m. Monday through Friday. Phone (888) 400-1083 Email fchb.editor@yahoo.com

**PUBLISHER**  
William C. Blackburn

**REPORTER**  
Charles Keaton  
**GENERAL MANAGER**  
Barbara Anderson

The Floyd County Hesperian-Beacon (USPS 202-680) is published every Thursday, including holidays, by Blackburn Media Group Inc., P.O. Box 1260, Childress, Texas, 79201-1260. Entered at U.S. Post Office, Floydada, Texas, for transmission through the mail as a Second-Class matter, according to an Act of Congress, March 3, 1879. Periodical Rate Postage Paid at Floydada, Texas, 79235. Postmaster: Send address changes to The Floyd County Hesperian-Beacon, 201 W. California, Floydada, Texas, 79235

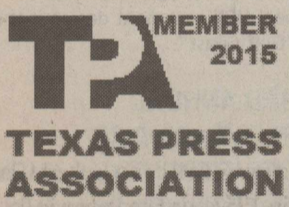
All material Copyright 2014 The Floyd County Hesperian-Beacon

It is the mission of this newspaper to promote the rights of individualism in the American Declaration of Independence. The right of life, liberty and ownership of property are the cornerstone of freedom. Government's sole purpose is to enhance our liberty and freedom. Therefore, we hold every elected and appointed agent of government accountable to that standard.

**DEADLINES**  
Advertising: Noon Fridays  
Editorial: Noon Mondays

**SUBSCRIPTIONS**  
\$36 a year in the county  
\$42 a year outside the county

Call 806-447-2559



## State Representatives

Texas U.S. Representatives  
Congressional District

13--Congressman  
Mac Thornberry

Congressional District

19--Congressman  
Randy Neugebauer

Texas State Senator  
Texas State  
Senate District

28--Senator  
Charles Perry  
Capitol Office: EXT E1.810  
Capitol Phone:  
(512) 463-0128  
Capitol Address: P.O. Box 12068, Capitol Station  
Austin, TX 78711  
District Address: 11003  
Quaker Avenue, #101  
Lubbock TX 79424  
Phone: (806) 783-9934

State District Offices

Texas State Representative  
Texas State House District

68--Representative  
Drew Springer  
Capitol Office: EXT E2.410  
Capitol Phone: (512) 463-0526  
Capitol Address:  
P.O. Box 2910  
Austin, TX 78768  
District Address:  
110 W. Main St., Suite F  
Gainesville, TX 76240

Texas State Board of  
Education Members  
Texas State SBOE District

15--Mr. Marty Rowley

## PUNKIN DAYS

From Page 1

Wester Field! So come early and enjoy all the free fun! FREE admission to the JV Whirlwinds game against the Olton Mustangs, free hot dogs from 5:30-6, T-shirt giveaways, and even get entered in the drawing to win a 40" TV! So wear your Whirlwind GREEN and come out to show your pride in our town!

We still have openings available if you want to put together a team for the Chili Cook-Off contest, so if you haven't signed up NOW is the time! Decided at the last minute you want to get a booth? Contact the Chamber office and we will try to accommodate your request.

When Saturday does arrive, make sure you are downtown and ready to be a part of all the fun! Before you tour the wide variety of vendors in the arts and craft booths, fuel up for your day at the Floydada Lions Club Pancake Breakfast when they start serving at 7 a.m. Then browse the vendors' booths, participate in the games and contests, stop by the Museum, or enjoy entertainment under the Pavilion...or better yet do it all! That's what Punkin Days is all about!

Remember if you need assistance in getting down to the square, that the "Senior Citizen

Park and Ride Service" will be available all day long and all you have to do is go to the back parking lot at the First Baptist Church.

The Chamber is proud to offer the ride service and our other new events like entertainment by Greg Maldo and the Bigg Maxx Pumpkin auction both under the Pavilion, but we are also proud to bring back a lot of favorites. Cow Patty Bingo, the Pumpkin Pie Eating Contest, the Costume contest for all ages, the "punkin" games at the Chamber booth, the Cake Walk and much, much more will still be a part of our exciting day of events!

Remember you can contact the Floydada Chamber of Commerce at (806) 983-3434, by email at manager@floydadachamber.com or on the web at www.floydadachamber.com/punkin-days.

We have a great day planned with something for everyone during the 28th Annual Punkin Days celebration this Saturday in downtown Floydada. So we look forward to seeing everyone there, and showing our citizens and all our visitors what we mean when we say there is everything pumpkin here in "Pumpkin Capital USA! Floydada, Texas!"

## UPCOMING

From Page 1

### WEST TEXAS FAMILY MEDICINE AT COGDELL CLINIC

The mobile mammography truck will be back in Floydada at the clinic on Thursday, Nov. 5. If you are due for a mammogram call 806-726-6579 to set up an appointment time.

### FLOYD COUNTY HISTORICAL MUSEUM

To make memorial donations or any contribution to the Floyd County Historical Museum, please mail to PO Box 304, Floydada, Texas 79235

### BLOOD PRESSURE CLINIC

Calvert Home Health holds their blood pressure clinic on every first and third Thursday of each month between 9 - 11 a.m. at the Community Room of the First National Bank of Floydada.

## Lockney Senior Citizens News

By Renee Armstrong

Special to The Hesperian-Beacon

Be sure and call the Center by 9:30 a.m. if you would like to eat. Our phone #652-2745.

Remember Exercise with Dorothy - Monday, Wednesday, and Friday, 8:45 - 9:15 a.m.

Coffee time - Monday- Saturday - 9:30-10:30 a.m.

Thursday night pot luck- 6:00-9:00 p.m. Come bring a dish and enjoy the games after supper.

Family Night Fish Fry every Friday night from 5 - 8 p.m. Come join us for lots of food fun and fellowship.

### MENU October 12 - October 16

Monday - Soup & cornbread

Tuesday - Taco salad

Wednesday - Pulled pork

Thursday - Baked potatoes

Friday - Meatloaf

(Menus subject to change with notice)

**Proud to be a part of the Floyd County farming community**  
**Closed today for Punkin Day**  
**Saluting everyone who makes Punkin Day a success**

**Pumpkin Pyle Farms**  
900 North 2nd  
Floydada, Texas  
office-806-983-2363  
www.pumpkinpyle.com

**Don't miss**  
**"PUNKIN' DAYS"**  
**Saturday,**  
**October 10th**

## The Paperboy

# This planet is a dumpster fire

How about that good 'ol U.S. foreign policy?

This country has become a said joke to our allies and around the world.

It's really hard to fathom how much credibility we've lost in all corners.

Is there a country out there that even fears the United States?

Is there a country out there which can rely on the United States?

Is there a country out there which respects the United States?

CHRIS BLACKBURN President Obama has been made to look like the fool so many times recently, I just

can't understand it. From the "red line in the sand" to having Russia fight for our enemies without any indication tells me we are even weaker than many had feared.

You have to think that China, South Korea, Venezuela and others are looking at their neighbors and thinking the land grab is on.

If Obama is wanting a more nationalistic country, like we had pre-World War II, then he's never stated it.

If that's the goal, then seal up the border and fire up the nukes because World War III is a few short years away.

After World War II, like it or not, we became the free world's policeman. As the Cold War escalated through the 1980's, there were two Super Powers, the U.S. and the U.S.S.R.

Once the Russians went broke, we were the loan Super Power which is the position we should be in today.

Unfortunately, that is no longer the case.

As I right this, Russia is gaining strength and money. China is an economic force and the actions of these two countries has emboldened other dictatorships.

Meanwhile, we've become weak and make horrible deals that jeopardize the very existence of countries depending on us.

Israel is nervous. Europe is under siege

by refugees and is struggling financially. These countries have become conditioned to depend on us to be the stabilizing force for Democracy, but we have a president which is strong in rhetoric only.

In the late 1930's and into the 1940's, we let our allies go down, country by country, until the Nazis had just about taken all of Europe and Japan had taken control of Asia. It took Japan attacking Pearl Harbor for us to flip the switch.

This is a much different world today, but there are still some real bad guys running around forcing their will on innocent people.

Obama seems to believe diplomacy is how you handle these issues.

While diplomacy is great, no one backs the schoolyard bully down by talking.

There are a number of things the Obama Administration could do to end much of the disarray that is happening in the Middle East and other hotspots, without firing a shot. But instead, we sit quietly watching the world burn.

Sooner or later, Russia or China is going to mess with a country we do care about. Will it be too late?

Liberals want to believe in this utopian society where everyone in the world joins hands and loves and respects one another and there is ever-lasting peace.

I've got news for them, that's not going to ever happen with the U.S. on the sidelines while dictators take over the planet and gain natural resources. In fact, the opposite will happen.

There is no question that this country is weaker now than it was when Obama took office. And there is no reason why that should be the case.

Copyright 2015

Chris Blackburn serves as CEO at Blackburn Media Group, proud owner of The Red River Sun, The Floyd County Hesperian-Beacon, The Knox County News-Courier and The Post Dispatch. He can be reached by email at [chris@blackburnmediagroup.com](mailto:chris@blackburnmediagroup.com) and you can follow him on Twitter @WCSBlackburn.

## Applications being accepted for early voting

Special to The Hesperian-Beacon

With the Nov. 3, 2015 Constitutional Amendment Election approaching, the Floyd County Early Voting Clerk is accepting applications for ballot by mail, according to Floyd County Clerk, Ginger Morgan.

The clerk must receive applications for the November 2015 election by 5 p.m. on Friday, Oct. 23, 2015.

According to the Texas Secretary of State's web site, to be eligible to vote early by mail in Texas, you must: be 65 years or older; be disabled; be out of the county on election day and during the period for early voting by personal appearance; or be confined in jail, but otherwise eligible.

An applicant who checks the Annual Application box will receive ballots for all elections during that calendar year, January through

December.

Voters who are eligible and want to vote by mail, must submit an application each year to receive ballots for that year.

Mail ballot applicants must be aware that if they submitted an annual application in 2014 and want to vote by mail for the 2015 November election, they need to submit another application for this next election. Looking forward to 2016, a new application with the Annual Application box checked, must be submitted starting in January to receive ballots for each election to be held in the busy presidential election year.

The application for ballot by mail can be obtained in

person at the clerk's office at the courthouse or can be requested to be mailed by calling the office at 983-4900.

Early voting for the Constitutional Amendment Election will be held Monday, Oct. 19, 2015 - Friday, Oct. 30, 2015.

Polling places for Early Voting are:

1. Floyd County Courthouse Annex Community Room, 105 W. Wall, Floydada ...north end, east and west door. All Precincts.
2. First United Methodist Church, 102 W. Poplar, Lockney...north end, Main Street entrance. All Precincts.

Early voting hours are 8:30 a.m. - 5:30 p.m. (Weekdays).

**Saluting the pumpkin growers and everyone in agriculture in Floyd County.**

**Proud to support the Floyd County community with this great tradition.**

**Enjoy the Punkin Day!**



**JEFF S TAYLOR**  
Vice President Lending  
[jtaylor@plainslandbank.com](mailto:jtaylor@plainslandbank.com)  
806.296.5579 | Cell 806.778.3630  
[plainslandbank.com](http://plainslandbank.com)

**For great rates and service on Homeowners Insurance Call Today!**

**Nick Long, Agent**  
201 W. California  
Floydada, TX 79235  
(806) 983-3441  
[nick.long.cgr0@statefarm.com](mailto:nick.long.cgr0@statefarm.com)



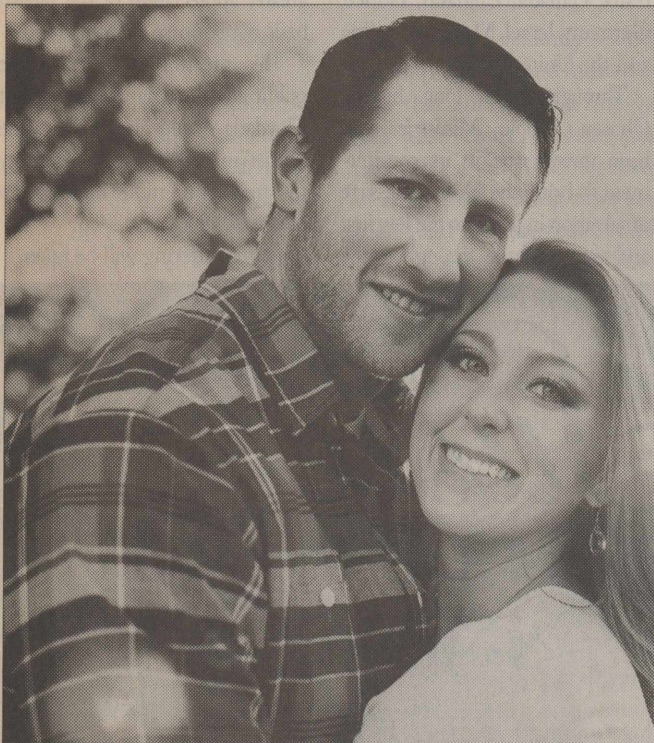
LIKE A GOOD NEIGHBOR STATE FARM IS THERE  
Providing Insurance and Financial Services

State Farm Mutual Automobile Insurance Company (not in NJ) Bloomington, IL

PO400238 12/04

# SOCIETY

## Bennett and Mazzarelli announce engagement



ROSS BENNETT AND LEAH MAZZARELLI

Pam Bennett and the late Gary Bennett are proud to announce the engagement and upcoming marriage of their son, Ross Bennett, to Leah Hart Mazzarelli, daughter of Gary and Melissa Mazzarelli of Broadalbin, New York.

Ross is the grandson of Harold Wayne and Geneva Bennett of Floydada.

Leah is the granddaughter of Ida May Mazzarelli of Colorado Springs, Colorado.

The prospective groom is a 2004 graduate of Floydada High School and a 2010 graduate of McMurry University where he obtained his B.A. in Business Administration. He is

currently employed as a loan officer at the First Financial Bank in Abilene, Texas.

The bride-elect is a 2008 graduate of Broadalbin-Perth High School and a 2011 graduate of Syracuse University where she obtained a B.S. in Broadcast Journalism and Political Science. She is currently employed by Church of the Heavenly Rest in Abilene, Texas as a Communications Coordinator.

The couple plans a Saturday, November 7, 2015 wedding at the Church of the Heavenly Rest in Abilene, Texas.

The couple will reside in Abilene, Texas.

## Plainview Main Street/ CVB Department to Manage Fair Theatre

**Plainview Main Street**  
Special to The Hesperian-Beacon

The Main Street and Convention and Visitors Bureau (CVB) department assumed operations of the Fair Theatre on October 1, 2015.

"Shane has done a great job with the Fair and we hate to lose him," said Jeffrey Snyder, City Manager. "But with all the additional HR duties coming down the pipeline, this made the most sense now that we have Main Street/ CVB maintaining an office out of the theatre."

The Fair Theatre originally opened as a silent movie house in 1925. Since that time, it has undergone many transformations: popular movie house, to a vaudeville showcase, to an empty shuttered building, to the jewel in the crown of downtown Plainview.

From the beginning, the Plainview City Council saw the possibilities, as well as the

feasibility of having a theater in the historic downtown area. In an effort to promote tourism and recapture a bit of historic grandeur reminiscent of downtown's glory days, the City of Plainview purchased the building in 1994 with hotel / motel taxes.

After the purchase, the building underwent a \$200,000 restoration project. Various fundraisers, private donations, and grants helped to pay for stage curtains, lighting systems, sound systems, central heat and air, and other necessities. The restoration was made possible in large part thanks to free craftsman labor provided by prisoners from the local Wheeler Formby Unit. Special thanks go to David Wilder for spearheading that effort and turning this into great a facility for our community.

The restoration took about 18 months and the main au-



Courtesy photo

The Plainview Main Street and Convention and Visitors Bureau (CVB) department assumed operations of the Fair Theatre on October 1.

ditorium and lobby were restored to their original grandeur. The theatre stands three stories tall and sports a split balcony. It seats 422 on the main floor and another 112 upstairs.

"Shane has done a wonderful job making the Fair a gem in downtown," said Melinda Brown, Main Street Director. "We look forward to continuing the great work that he has done."

Reopened in October 1999, The Fair Theatre has re-established itself in the cultural fabric of Plainview. The theater offers a venue for plays, musicals, and symphonic performances, as well as a place to hold business meetings and seminars. The emphasis is that the building be used to its potential and to benefit the local community. For more information, contact the Fair at 293-4000.

## Museum Archives

### Floyd County Historical Museum "Memories, 1979"

R. C. COVINGTON

A young man age 19 from Russellville, Kentucky, wearing a derby hat and carrying a cane, stopped at the Willie Stacey farm in deep East Texas, seeking a job. In this home a young lady lived, m a year or more Robert dark Covington and Ora Lee Stacey were married at Sulphur Springs, Texas on Saturday, June 21, 1891. . . The couple remembered well the tragedy on their wedding day, because a man was burned at stake in town across from their hotel.

Their first home was at Como, Texas, a small community a few miles from Winnboro, Texas in Hopkins County. Robert dark operated a gin. To this union were born four boys, Jess, Guy, Milton, Wallace, and two girls; Gladys and Syble. Their second son, Guy, died in

1897 from spinal meningitis.

Because of rainy weather one year, when Christmas came, there was no money for Santa. The three boys were given five hens to buy their gifts, which they bought at the little country store at Como.

On account of the damp weather's causing chills, Robert Clark and Ora Lee brought their family to West Texas. Getting in touch with Mr. R. I. Bennett in Floyd County in the year of 1907. They arrived in Plainview by train, from there Mr. Bennett carried them to his farm in the Roseland Community. Their nearest neighbors was Mrs. Albert King's family. They later moved to Mr. Bennett's farm in the Sunset Community, which is now South Plains, Texas. Here three girls- Cecile, Thelma, and Lois were

born. The older children went by hack across the prairie to Sunset School; the family attended church there, also.

While living there, a stampede of cattle came across their yard from the northeast, stumbling and crossing over road culverts stacked in the front yard, causing a lot of excitement and damage.

One year, in the late fall, a prairie fire was sighted in the southwest, causing the sky to darken as it burned on toward the Cap.

Many good times were had at fiddlers, socials, ice cream suppers, and church dinners. A big event was the new surrey with the finge on top.

The family moved to Floydada in 1915 where Robert dark built roads for the county, which included Shott Cap. He

was later elected public weigher, an office he held for several years. All the children graduated from Floydada High School and attended the First Baptist Church, where they were all members.

A son, Wallace, preceded his mother in death from a hunting accident in 1940 at Midland, Texas. Ora Lee passed away in 1941 and Robert Clark in 1957. Two sons, Jess in 1958 and Milton in 1974, followed him, and a daughter Lois Glover in 1960.

Four daughters- Gladys Edwards of Olney, Texas; Syble Teeple of Silverton, Texas; Cecile Fyffe of Floydada; and Thelma Jones of Stockton, California, survive this family; also fifteen grandchildren, thirty-three great grandchildren and nine great-great grandchildren.

## Floydada Rotary Club



Photo by Karen Houchin

Floydada Rotary Club is ready for Pumpkin Days as Rotarians Clar Schacht and Wes Anderson placed the Rotary Club's welcome sign for visitors on East Highway 70. The pumpkins were provided by Pumpkin Pyle. Pumpkin Days is held Saturday, Oct. 10th in downtown Floydada.

THE 41<sup>ST</sup>

# RUNNING WATER DRAW

# ARTS & CRAFTS

# FESTIVAL



**October 16, 17, 18**

**Friday 10:00-6:00**

**Saturday 10:00-6:00**

**Sunday Noon-5:00**

**OLLIE LINER CENTER**  
**BUSINESS I-27 SOUTH**  
**PLAINVIEW, TX**

**Adults - \$2.00**  
**Children - \$1.00**

SPONSORED BY  
**PLAINVIEW**  
**ROTARY CLUB**

## Floydada Senior Citizens News

Special to The Hesperian-Beacon

Nancy Lawson hosted a luncheon in her home last week for her two sisters from Lubbock, Geraldine Calloway and daughter, Kay Phillips, Chris Sepkowitz, Florene Jackey of Lubbock, Kellie Williams and Amanda Hinsley of Floydada, Judy Tatch of Pueblo, Colorado, and family friend Edith Muncy. The local relatives brought food to add to the luncheon buffet.

After lunch the ladies drove their automobiles out to Cedar Hill to look at their old home place the Brown farmland, and the new windmills that have changed that area in recent weeks.

We are all saddened to hear of so many of our senior residents falling around in their homes recently. Carolyn Cheek, Carolyn Hall, Margaret Jones in addition ladies have all contributed to the development and education of Floydada over the years. We appreciate the influence they have been to our community.

Bill and Charlene Hendrix went to Lubbock Wednesday evening to attend the dinner honoring Bill and others on the Veteran's Flight to Washington, D.C. Thursday morning.

Ruth Hammonds been moved back to Shepherd's Meadow for care.

Ronnie Evans was honored with a birthday party at Shep-

herd's Meadow recently. His brother, Donnie Evans and his wife, Dora, came from Dallas to honor Ronnie.

Freida Simpson, now of Weatherford, Texas, called Bill Ferguson to say how much she enjoys reading the Floydada Senior Citizen's news and all other news as reported in the Hesperian-Beacon. She said it makes her homesick to read familiar names and recalls neighbors of past years.

Charlene Alldredge entertained family in her home last Sunday. Steve's birthday dinner was the main event. They guests thoughtfully brought the meal to Charlene's who baked the birthday cake. We seniors really appreciate it when family and other guests help provide the meal, as well as bringing fruit and garden bounty to share with the hostess and guests. Charlene says she now has 14 great-granddaughters.

New serving procedures have been added for the electrically heated steam table at the Center's dining room.

Virginia and Iantha Pyle at-

tended Ronnie Evan's birthday party and visited with Ruth Hammonds.

The Caprock Courier newspaper recently reported Matador Senior Citizen's Center will offer the public a take-out meal on the third Sunday of each month as a fundraiser and Matador men will do all the cooking. This report caused quite an alarm among Floydada senior men, who looked toward the lady's section of Floydada's dining room and said, "Now don't any of you Floydada girls start getting any ideas about us Floydada men doing any Sunday cooking."

However, local ladies say there are some very good Floydada men cooks in our midst, so you never can tell what ideas the "Girls" might announce in the future

Floydada Senior Citizens is open to all ages. We serve at 12 noon every weekday. Join us at 925 W. Crockett Street or we will deliver a meal anywhere in town. Call 983- 2032.

Our mailing address is P.O. Box 573, Floydada, Texas 79235

### MENU

October 12 - October 16

- Monday** - Sirloin patty w/natural gravy
- Tuesday** - Fried fish
- Wednesday** - Brown beans, corn bread & French fries
- Thursday** - Beef stew
- Friday** - Hamburgers & French fries  
(Menus subject to change with notice)

## Obituaries

### Dewey Rockford Henry, Jr.

Dewey Rockford Henry, Jr., 69, of Plainview passed away on Thursday, September 24, 2015. Cremation arrangements were under the care of Kornerstone Funeral Directors of Plainview.

Dewey was born on July 23, 1946, in Plainview, Texas to Dewey and Violet Henry. He attended schools in Plainview and graduated from Plainview High School. He served in the U.S. Navy for 5 years. After his military service, he returned home and worked in construc-

tion with his father. They also had a house moving company. He later worked at the Prison for several years before owning and operating the Plainview Bowling Center. He retired in 2008.

Dewey was a lifetime member of the V.F.W., and former member of the Elks Lodge.

He married Ann Perkins on August 14, 1987.

Dewey was preceded in death by his parents and one grandchild, Kaylib Henry.

Dewey is survived by his

wife, Ann Henry of Plainview; four children, Christina Leilani Baxter and husband, Joshua of Garfield, Arkansas, Eureka Pualani Pledger and husband, Rick of Denison, Amanda Leann Fincher of Plainview, and Michael Allen Henry of Lubbock; one brother, Leroy Henry and wife, Lanette of Plainview; eight grandchildren and seven great-grandchildren.

Online condolences can be sent at [www.kornerstonefunerals.com](http://www.kornerstonefunerals.com)

## Goldstein to speak at First Baptist Church of Floydada

Special to The Hesperian-Beacon

Gabriel Goldstein, a representative of Chosen People Ministries, will be speaking at the First Baptist Church of Floydada on Sunday, October 11, 2015 during the 6 p.m. worship service.

The program being presented is *The Fall Feasts of Israel*.

Chosen People Ministries is an over one-hundred-year-old mission that was founded in 1894 by Leopold Cohn, a Hungarian rabbi who came to believe

that Jesus was the Messiah of Israel. From humble beginnings to Brooklyn, New York, Chosen People Ministries has grown into a worldwide ministry with outreach centers in Argentina, Australia, Canada, England, France, Germany, Israel, Mexico, Ukraine and the United States.

Throughout its long history, Chosen People Ministries has been unwavering in its commitment to bring the Gospel message of salvation in Jesus "to the Jew first and to the Gentile" throughout the

world. In stressing the Jewish roots of Christian faith, Chosen People Ministries hopes to make the message of the Messiah more accessible to Jewish people and also to help Christian believers achieve a greater appreciation of the Jewish basis of their own faith traditions.

This meeting is open to the public and First Baptist Church of Floydada would like to invite the Christian and Jewish community to attend. For more information please call 806-983-3755.

A love offering will be taken.

### Lindsey Nelson Lackey

Lindsey Nelson Lackey, age 94, of Floydada, passed away peacefully on October 3, 2015 in Lockney.

Graveside service were held at 10:30 a.m. on Monday, October 5, 2015 at the Floyd County Memorial Park in Floydada with Pastor Tim Franks officiating.

Visitation was held from 6 p.m. to 8 p.m., Sunday, October 4, 2015 at Moore-Rose Funeral Home in Floydada. Arrangements were under the care of Moore-Rose Funeral Home in Floydada.

Lindsey was born on September 7, 1921 in the Cedar Hill community, Floyd County, Texas to William "Elvie" Lackey and Rosa Lee (Massengale) Lackey.

Lindsey served in the Air Force during World War II at Randolph Field in San Antonio, Texas. After returning from the service, he married Billie Ruth (Love) Lackey on July 29, 1943. He was a farmer in the Cedar Hill community until his retirement. After retirement, Lindsey and Billie enjoyed traveling in their travel trailer especially to Port Isabel, Texas where they enjoyed fishing and made many life-long friends. Lindsey also enjoyed taking trips on his Harley Davidson motorcycle to Colorado with neighboring farmers. Lindsey loved his family, friends, farming, and fishing.

He was preceded in death by a daughter, Deborah Kay Lackey, in 1951, his parents

William "Elvie" Lackey and Rosa Lee (Massengale) Lackey, a sister, Bennie Golightly, a sister, Wanda DuBois, a brother, James Greer, a niece and a nephew.

Lindsey is survived by his wife of the home; his daughters, Linda Turner and son-in-law, Donnie of Flomot, Texas, and Kimberly Erpelding and son-in-law, Jeffrey of Plainview, Texas; a sister Thada Fowler of Silverton, Texas, and several nephews.

In lieu of flowers, donations may be made to Area Community Hospice of Plainview - 3109 Olton Road, Plainview, TX 79072 and the Floydada Cemetery Association - P.O. Box 444, Floydada, TX 79235.

Online condolences may be made to [www.moore-rose.com](http://www.moore-rose.com).

*Susie*

**IN CONCERT**

October 18, 2015

**First United Methodist Church**

120 West Poplar Lockney, Texas

10:30 a.m. & 6:00 p.m.

[WWW.SUSIEMCENTRE.COM](http://WWW.SUSIEMCENTRE.COM)

**Floydada Housing Authority**

**Request for Proposals for Independent Audit Services #2015-10-1**

**How to Obtain RFP Documents**

1. Access [nahro.economicengine.com](http://nahro.economicengine.com) (no www)
2. Click on the "Login" button in the upper left side
3. Follow the Listed Directions
4. If you have problems accessing or registering on the system, please call Customer Support at 866-526-9266.

**Proposal Submittal Deadline: November 10, 2015**

Section 3, Minority and/or Women-owned businesses are encouraged to respond.

Date of Issue: October 8, 2015

**Lockney Co-op Gin**

Lockney, Texas

806.652.3377

**Lighthouse Electric Coop**

806.983.2814

703 A Matador Hwy.

**Sunshine Pump**

Oliver Clark

806.983.5087 - 806.774.4412 (mobile)

Box 266 - Lockney

**Agriculture Precision Supply**

Pivots, Flow meters & Equipment

[www.GoA-P-S.com](http://www.GoA-P-S.com)

806.773.3025 • 806.253.2521

**Payne Family Pharmacy**

806.983.5111

200 S. Main, Floydada

**Goen & Goen Insurance**

806.983.3524

102. E. California - Floydada

**Floydada Coop Gin, Inc.**

319 N. 5th Street

Floydada TX 79235

806-983-2884

**Barwise Gin**

Barwise Community

806.983.2737

**Oden Chevrolet Inc.**

806.983.3787

221 S Main, Floydada

**Prosperity Bank**

Member FDIC

217 W. California — 806.983.3725

## CHURCH DIRECTORY

### Childhood Memories

*The Lord says, "As a mother comforts her child, so I will comfort you."*  
— Isaiah 66:13 (NRSV)

Our daughter was six years old when we told her that the parents of her best friend were divorcing. Soon she began to cry. We tried to console her. I had no idea what to do. Eventually, I gathered her in my arms and walked outside into the warm night. I don't remember what I said, if anything. In time, she rested her head on my shoulder, and we simply gazed at the bright moon.

I had forgotten that painful yet tender moment. But over 30 years later, my daughter became the foster parent of a child who would cry at night because he missed his mother. My daughter told me she tried to console

the little boy but to no avail. Remembering her own childhood heartache, she held him and took him outside. Together, they looked at the moon as she tried to comfort the child. In time, the child's sobbing subsided.

I think of those times in our lives when God touches us with love and grace in moments of hurt and uncertainty. Those memories bring comfort and peace as well as thanksgiving and humility that God would intervene in the life of parents trying to comfort their child.

**Gary Story (Kentucky, USA)**

#### Thought for the Day

When life seems hopeless, God's steadfastness gives us hope.

|  |   |   |  |
|--|---|---|--|
| <p><b>Aiken Baptist Church</b><br/>Dennis Butler, Pastor<br/>Morning Worship - 11 a.m.</p> <p>*****</p> <p><b>Bible Baptist Church</b><br/>810 S. 3rd, Floydada<br/>Darwin Robinson, Pastor<br/>983-2578<br/>Sunday School - 10 a.m.<br/>Morning Worship - 10:50 a.m.<br/>Evening Worship - 6 p.m.<br/>Wednesday - 7 p.m.</p> <p>*****</p> <p><b>Calvary's Cornerstone Fellowship</b><br/>Floydada<br/>Armando Morales, Pastor<br/>Sunday School - 9:45 a.m.<br/>Morning Worship - 11 a.m.<br/>Bible Study - 6 p.m.<br/>Wednesday Evening - 7 p.m.</p> <p>*****</p> <p><b>Carr's Chapel</b><br/>Service Every Sunday<br/>Morning Worship - 9 a.m.<br/>Sunday School 10:30 a.m.</p> <p>*****</p> <p><b>Church of Christ</b><br/>West College &amp; Third<br/>Lockney<br/>Morning Worship - 10:30 a.m.<br/>Afternoon Worship - 1:30 p.m.<br/>Wednesday Service - 7:30 p.m.</p> <p>*****</p> <p><b>City Park Church of Christ</b><br/>Matthew Benfield, Minister<br/>Floydada<br/>Sunday Bible Study - 9:30 a.m.<br/>Morning Worship - 10:30 a.m.<br/>Evening Worship - 6 p.m.<br/>Wed. Bible Study - 7 p.m.</p> <p>*****</p> <p><b>First Baptist Church</b><br/>Floydada<br/>Tim Franks, Pastor<br/>Logan Lamb, Min. Students<br/>Sunday School - 9:15 a.m.<br/>Morning Worship - 10:30 a.m.<br/>Evening Worship - 6 p.m.<br/>Wed Bible Study - 6:30 p.m.</p> <p>*****</p> <p><b>First Baptist Church</b><br/>Lockney<br/>Joseph Tillery, Pastor<br/>Albert Oliveira, Youth Min.<br/>Phil Cotham, Music Min.</p> | <p>Sunday School, 9:45 a.m.<br/>Morning Worship, 10:45 a.m.<br/>Evening Worship, 6:00 p.m.</p> <p>*****</p> <p><b>First United Methodist Church</b><br/>Floydada<br/>Rev. Ken Peterson, Pastor<br/>Morning Worship - 9:30 a.m.<br/>Sunday School - 10:50 a.m.<br/>Youth (Sunday) - 6:30 p.m.</p> <p>*****</p> <p><b>First United Methodist Church</b><br/>Lockney<br/>Rev. Ricky Carsensen, Pastor<br/>Sunday School - 9:30 a.m.<br/>Worship Service - 10:30 a.m.<br/>Evening Service - 6 p.m.<br/>Wed. Jr. High - 5:30 p.m.<br/>Wed High School - 6:30 p.m.</p> <p>*****</p> <p><b>Grant Chapel Church of God in Christ</b><br/>Joe Bennett, Pastor<br/>Sunday School - 10 a.m.<br/>Morning Worship - 11 a.m.<br/>Evening Worship - 7:30 p.m.<br/>Tuesday - 8 p.m.<br/>Wednesday Service 7:30 p.m.</p> <p>*****</p> <p><b>Main Street Church of Christ</b><br/>Lockney<br/>James Blair, Minister<br/>Bible Study - 9:30 a.m.<br/>Morning Worship - 10:30 a.m.<br/>Evening Worship - 6:00 p.m.<br/>Wednesday - 7:00 p.m.</p> <p>*****</p> <p><b>Mt. Zion Baptist Church</b><br/>Floydada<br/>Rev. Timothy Askey<br/>401 N 12th Sty. 983-5805<br/>Sunday School - 10 a.m.<br/>Morning Worship 11 a.m.<br/>Evening Worship - 6 p.m.<br/>Wednesday Study - 6 p.m.</p> <p>*****</p> <p><b>New Salem Primitive Baptist Church</b><br/>Floydada<br/>Pastor Elder Ronnie Hedges<br/>(806) 637-0430<br/>Sunday Singing - 10:30 a.m.<br/>Morning Worship - 11 a.m.</p> <p>*****</p> <p><b>Out Reach Harvest Pentecostal Church</b><br/>310 Mississippi</p> | <p>Floydada<br/>Rev David Ramos, Pastor<br/>Ester Ramos, Praise Leader<br/>Sunday Bible - 10 a.m.<br/>Morning Praise - 11 a.m.<br/>Evening Praise 5 - p.m.<br/>Wed Worship - 7 p.m.</p> <p>*****</p> <p><b>Power of Praise Full Gospel Church</b><br/>Rev. Manuel Rendon, Pastor<br/>704 B Main, Lockney<br/>Sunday Services - 10 a.m.<br/>Sunday Evening - 5 p.m.<br/>Wednesday - 7:30 p.m.</p> <p>*****</p> <p><b>Primera Iglesia Bautista</b><br/>Lockney<br/>Jesus Caballero, Pastor<br/>Sunday School - 9:45 a.m.<br/>Worship Service - 11 a.m.<br/>Discipleship - 5 p.m.<br/>Wed. Service - 7 p.m.</p> <p>*****</p> <p><b>Primera Iglesia Bautista</b><br/>Floydada<br/>Rev. Toby Gonzales<br/>Sunday School - 9:30 a.m.<br/>Morning Worship 10:40 a.m.<br/>Evening Worship - 6 p.m.<br/>Wed Evening - 7 p.m.</p> <p>*****</p> <p><b>San Jose Catholic Church</b><br/>Lockney<br/>Msgr. Nickolas Rendon<br/>Wed. Communion - 8 p.m.<br/>Sunday Mass - 11:30 a.m.</p> <p>*****</p> <p><b>South Plains Baptist Church</b><br/>Joe Weldon, Pastor<br/>SuNday School - 10 a.m.<br/>Morning Worship - 11 a.m.<br/>Prayer Meeting - 7 p.m.</p> <p>*****</p> <p><b>Templo Getsemani Assembly of God</b><br/>701 W. Missouri<br/>Joe M. Hernandez<br/>983-5286 (Church)<br/>Sunday School<br/>English - 9:45 a.m.<br/>Spanish - 11 a.m.<br/>Worship<br/>Spanish - 9:30 a.m.<br/>English - 11 a.m.<br/>Evening Service 5 p.m.<br/>Wednesday 7 p.m.</p> | <p>*****</p> <p><b>St Mary Magdalen Catholic Church</b><br/>Floydada<br/>Rev. Ike Temporaza<br/>983-5878<br/>Sunday Mass - 11:30 a.m.<br/>Mon. &amp; Wed. Mass - 6:30 p.m.<br/>Confession Sat - 10-11 a.m.</p> <p>*****</p> <p><b>Templo Bautista Salem</b><br/>Lockney<br/>Rev. Joe Hernandez<br/>Bun Prayer Service - 9:30 a.m.<br/>Sunday School - 9:45 a.m.<br/>Worship Service - 11 a.m.<br/>Evening Worship - 6 p.m.<br/>Wed. Meeting - 7 p.m.</p> <p>*****</p> <p><b>Templo Bethel</b><br/><b>Spanish Assembly of God</b><br/>Washington And 1st St.<br/>Sunday School 9:45 a.m.<br/>Morning Worship - 11 a.m.<br/>Evening Worship - 5 p.m.<br/>Tuesday - 7:30 p.m.<br/>Thursday Service - 7:30 p.m.</p> <p>*****</p> <p><b>Trinity Assembly</b><br/>500 W. Houston<br/>Tom Ross, Pastor<br/>983-5499<br/>Sunday School - 9:45 p.m.<br/>Morning Worship - 10:40 a.m.<br/>Sunday Evening - 6 p.m.</p> <p>*****</p> <p><b>Trinity Lutheran Church</b><br/>Providence Community On Fm 2301<br/>293-3009<br/>Rev. Peter W. Harrington, Minister<br/>Sunday School - 9:45 a.m.<br/>Worship Service 11 - a.m.</p> <p>*****</p> <p><b>West Side Church of Christ</b><br/>Floydada<br/>983-2672 Or 470-0950<br/>Sunday Worship - 10:30 a.m.<br/>Sunday Evening - 2 p.m.</p> |
|--|---|---|--|

# AGRICULTURE

## Archery Season Offers Early Chance at Mule and White Tailed Deer

2015-2016 Archery Season runs from October 3rd through November 6th

Special to The Hesperian-Beacon

Lubbock and surrounding areas—Texas bow hunters will be waking up extra early this Saturday, as the archery season kicks off for two popular game animals. In certain counties with an open season, starting October 3rd, Texas hunters can legally hunt White Tailed and Mule Deer with lawful archery equipment.

The archery season which will go until November 6th, allows hunters to test out their stealthy skills, well before the general season opens up for each of the two deer species. Often times bow hunters spend countless quiet hours watching and waiting as a deer of their liking approaches close enough to take.

Texas Parks and Wildlife Game Warden and public information officer Aaron Sims says taking a deer with a bow is no easy task. "Bow hunters are a different breed altogether. To get close enough to a wild ani-

mal, which's constantly searching for predators, and humanely take that animal is an impressive feat." Sims explains that deer have a much keener sense of smell and hearing than humans, and they use that to their own advantage. "A bow hunter has to blend into the natural environment, including knowing what direction the wind is blowing, so that a deer does not pick up the hunters scent."

Throughout the early archery season, hunters can only use legal archery equipment, including longbows, compound bows, recurved bows, and crossbows. The public is encouraged to refer to the Outdoor Annual for specific County and equipment restrictions. Sims also reminds that each hunter will need their current Texas hunting license, including the additional archery stamp to legally hunt during the archery season.

Although it is not mandatory to have completed, archery hunters are encouraged to complete the Texas Parks

and Wildlife bow hunter education course, which covers more specific issues relating to archery. For course information please call toll-free (800) 792-1112 (menu 6) or go online at <https://tpwd.texas.gov/education/>.

Hunting and fishing regulations can be found in the 2015-2016 Outdoor Annual, available at license retailers and online at [www.txoutdoorannual.com](http://www.txoutdoorannual.com). A new app now available enables hunters to carry the Outdoor Annual with them on their mobile devices. To download the free app, visit <http://www.txoutdoorannual.com/app> or search the iTunes App Store, Amazon AppStore or Google Play for Outdoor Annual - Texas Hunting and Fishing Regulations.

If you'd like more information about this topic, or to schedule an interview with J. Aaron Sims, then please call/text at 806-773-3946, or e-mail Aaron at [Aaron.Sims@tpwd.texas.gov](mailto:Aaron.Sims@tpwd.texas.gov)

## Key Customers to See U.S. Cotton's Advantages

By Plains Cotton Growers  
Special to the Hesperian-Beacon

Textile manufacturing executives representing 18 countries will visit the U.S. Cotton Belt September 27-October 3 to get a close look at how U.S. cotton is produced, processed and marketed. This biennial COTTON USA Orientation Tour is sponsored by Cotton Council International, the export promotions arm of the Memphis-based National Cotton Council.

CCI President Dahlen Hancock, a Ropesville, Texas, cotton producer, said, "For nearly half a century, the Orientation Tour has been an excellent vehicle for furthering the U.S. cotton industry's reputation as a reliable supplier and for helping U.S. cotton capture additional market share. I believe this year's tour will help the participating foreign textile manufacturers develop an even deeper appreciation for U.S. cotton fiber quality and our industry's timely delivery system."

Represented on this 39th Orientation Tour will be executives from 29 companies

from Bangladesh, China, Colombia, Costa Rica, Ecuador, Ethiopia, Honduras, India, Indonesia, Japan, Korea, Mexico, Pakistan, Peru, Taiwan, Thailand, Turkey and Vietnam. These companies are expected to consume about 3.1 million bales in 2015 while U.S. cotton exports to those companies are estimated at about 1 million bales.

The represented countries consume about 96.5 million cotton bales per year in their textile mills, which represents about 84 percent of the world's consumption. The countries import about 29.4 million bales annually or about 85 percent of the world's total cotton imports.

The Tour participants will visit a cotton farm and gin in the Mississippi Delta, observe cotton research in Mississippi and North Carolina, and see the USDA cotton classing office in Bartlett, Tennessee. They will meet with exporters in the four major Cotton Belt regions and get briefings from CCI, the NCC, Cotton Incorporated, the American Cotton Shippers Association, the Texas Cotton Association,

the Lubbock Cotton Exchange, AMCOT, the American Cotton Producers, the Delta Council, the Southern Cotton Growers Association, the Plains Cotton Growers Association, the Western Cotton Shippers Association, the San Joaquin Valley Quality Cotton Growers Association and Supima.

More than 800 textile executives from more than 60 countries have participated in CCI's Orientation Tour, which was initiated in 1968. Major Tour objectives are to increase U.S. cotton customers' awareness of the types/qualities of U.S. cotton, help them gain a better understanding of U.S. marketing practices and enhance their relationships with U.S. exporters.

### Upcoming Area Field Days

October 7 - Americot Field Day, 9 a.m., Texas Tech Quaker Farm (Lubbock County South). Questions: Chiree Fields, 806-793-1431.

October 8 - Deltapine Field Day, Noon, Steve Chapman Farm near Lorenzo. Questions: Eric Best, 806-790-4646.

## Reminder to Take Hunter Education before Heading to the Field

Special to The Hesperian-Beacon

AUSTIN — With hunting season right around the corner, it's time to get your hunter education certification.

To hunt legally in Texas, anyone born on or after Sept. 2, 1971, must complete a hunter education training course or purchase a one-time 'deferral', good for one license year. Because the minimum age of certification is 9 years old, hunters under the age of 9 must be accompanied by a licensed hunter in the field. Hunters ages 9 through 16 must either complete hunter education courses or be accompanied while in the field. Deferral purchasers must also be 'accompanied' which means to be within normal voice control of a licensed hunter 17 years of age or older who has completed hunter education or who was born before Sept. 2, 1971. Hunters 17 and up must complete hunter edu-

cation courses.

To make this process easier than ever, the Texas Parks and Wildlife Department now offers the option of completing training courses completely online for Texas residents 17 years and older.

However, TPWD also offers three other convenient methods of getting certified: the basic, enhanced and advanced courses, which involve classroom and/or field time.

The basic hunter education course is designed for novice and young hunters ages 9 and above and requires six hours of classroom instruction. The enhanced hunter education course is a combination of an online home study program and up to five hours of field training. The advanced hunter education course requires more than six hours of instruction and includes more content than the basic and enhanced courses.

Each of the courses costs \$15, and the passing grade for all courses is 75 percent.

Since mandatory hunter education first started in 1988, the number of hunting accidents and fatalities has declined to fewer than 3 per 100,000 hunters. Incidents involving those who had completed hunter education courses are only in the single digits each year.

To help improve hunter safety, choose from one of the many flexible options to get your hunter education certification now. For more information and to register for hunter education programs, visit <http://www.tpwd.texas.gov/outdoor-learning/hunter-education>.

The certification is valid for life and is honored in all other states and provinces.

Some federally controlled areas require all hunters using that site to have hunter education certification. In Texas, this includes Corps of Engineers property and most military reservations. Check with the specific area prior to going hunting.

## New features added to HPWD website

By Plains Cotton Growers  
Special to the Hesperian-Beacon

Refinements are continually being made to improve the information presented on the interactive map section ([map.hpwd.org](http://map.hpwd.org)) of the High Plains Water District (HPWD) website.

It includes links to several maps illustrating the location of all permitted water wells, location of wells in the district's water level observation network, wells with associated driller's logs, and also has a well spacing guide for permit application purposes.

"Our most recent refinement is the assignment of a unique identification number for each water well permit in the district," said HPWD General Manager Jason Coleman. "When the water well permitting program

began in 1954, permits were issued in sequential order by county. You might have permit numbers 1 to 5,000 in Castro County—but you will find the same sequence of permit numbers in several other counties. This has proven cumbersome when trying to locate well information for our residents. Adding a unique identification number will simplify the process," he said.

Persons visiting the "All Wells" link can click on specific water well locations to view a pop-up box containing information relating to that individual well. The box contains the new District well identification number, the county in which the well is located, the existing HPWD well permit number, the current well status, and the aquifer in which the well is

drilled.

Other refinements added in the past few months include access to water level data recorded on a daily basis in the district's continuous monitoring well network and the addition of geophysical log data for wells completed in the Dockum Aquifer. Legal descriptions and latitude/longitude have also been added to the base maps.

"HPWD has a great wealth of information about the water wells within its 16-county service area. Our staff is looking for new, innovative ways to present this information to the public. This will give a better understanding of the groundwater resources of the aquifers within the district. We welcome any and all comments relating to the interactive map portion of the district website," Coleman said.

## SW Oklahoma and the Texas Panhandle fishing report

Oklahoma Department of Wildlife Conservation and Texas Parks and Wildlife Department

Special to The Hesperian-Beacon

**Tom Steed:** Elevation normal, water 65. Blue and channel catfish are fair on cut bait, shad and stinkbait at 5 ft.-10 ft. along flats.

**Waurika:** Elevation normal, water 77. Blue and channel are catfish fair on punch bait, stinkbait and cut bait in the main lake, around points and shorelines.

**Alan Henry:** Water stained; 76-82 degrees; 1.65

ft. low. Black bass are fair to good on topwaters early, later switching to jigs, Texas rigs and weightless flukes. Crappie are fair to good on jigs and minnows. Catfish are fair on chartreuse (use Worm-Glo) nightcrawlers.

**Arrowhead:** Water off color; 77-82 degrees; 1.13 ft. low. Black bass are fair on Texas rigs, chatterbaits and Senkos. Catfish are fair to good on nightcrawlers.

**Brownwood:** Water stained; 80-84 degrees; 1.73 ft. low. Black bass and hybrid striped are slow. White bass are good on Pop Rs, crankbaits, minnows and jigs under lights at night and around State Park and Sandy Beach. Crappie are good on white and shad Li'l Fishies and minnows in 12 ft.-16 ft. Channel and blue catfish are slow. Yellow catfish are slow.

**Coleman:** Water murky; 83-87 degrees; 7.24 ft. low. Black bass are fair on watermelon spinnerbaits, crankbaits and soft plastics. Hy-

brid striped are slow. Crappie are fair on minnows. Channel catfish are good on stinkbait, nightcrawlers and liver. Yellow catfish are slow.

**Ft. Phantom Hill:** Water clear; 76-81 degrees; 8.22 ft. low. Black bass are fair on jigs, Texas rigs and chatterbaits. Crappie are fair on jigs and minnows. Catfish are fair on nightcrawlers.

**Hubbard Creek:** Water off color; 74-82 degrees; 19.31 ft. low. Black bass are fair to good on Yellow Magics early, later switching jigs, Rat-L-Traps and Texas rigs. Crappie are fair to good on jigs and minnows. Catfish are fair to good on nightcrawlers and live shad.

**Nasworthy:** 1.44 ft. low. Black bass are fair to good on chatterbaits and Texas rigs. No reports on crappie. Catfish are fair on nightcrawlers.


**O.H. Ivie:** Water stained; 74-83 degrees; 44.46 ft. low. Black bass are good on top-

See **FISHING** Page 12

**COWPOKES®** By Ace Reid

<http://www.cowpokes.com>

| MENU          |        |
|---------------|--------|
| PLATE LUNCH   | \$2.50 |
| HAMBURGER     | 1.00   |
| CHILI         | 1.00   |
| MEXICAN PLATE | 2.50   |
| PIE           | 1.00   |



© ACE REID 10/4/2015

"I'm required by law to tell you that everything you order today may be harmful to your health!"

FEATURE IS SPONSORED BY THE

Financing for: Farms, Ranches,  
Rural Recreational Properties  
and Rural Homes



Jeff Taylor  
806-296-5579

[plainslandbank.com](http://plainslandbank.com)

Part of the Farm Credit System

**First National Bank of Floydada**  
983-3717

**THE FIRST NATIONAL BANK OF FLOYDADA**  
Member F.D.I.C.

**FLOYDADA COOPERATIVE GINS, INC.**

**COOP**

Floydada • 983-2884

**WE BUY OIL, GAS & MINERAL RIGHTS**

**Both non-producing and producing, including Non-Participating Royalty Interest (NPRI)**

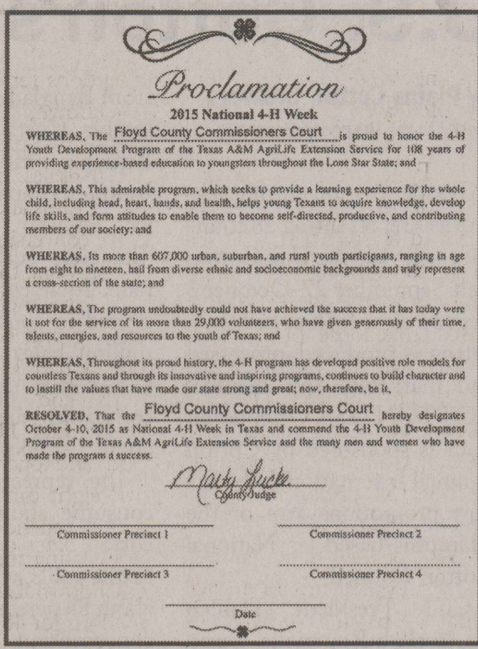
Please provide us your desired price when you contact us and we will evaluate for a possible offer.

**Lobo Minerals, LLC**  
P.O. Box 10906 • Midland, TX 79702  
C: 806-620-1422  
[lobomineralsllc@gmail.com](mailto:lobomineralsllc@gmail.com)



# FLOYDADA SCHOOL NEWS

## National 4-H Proclamation Whirlwinds Fall to Eagles 26-10



**By Charles Keaton**  
The Hesperian-Beacon

FLOYDADA - Floydada could not overcome four turnovers as the Roosevelt Eagles game to town on Sept. 25 and defeated the Whirlwinds 26-10 in Floydada's last non-district game.

The Eagles grabbed the lead late in the first quarter when Colt Garrett connected with Zyketh Campbell for a 29-yard touchdown pass and the two-point conversion to give Roosevelt an 8-0 lead with 3:46 left in the quarter.

In the second quarter, Floydada got on the board when Miguel Pena connected on a 20-yard field goal to make it 8-3 with 8:38 left in the half. Garrett and Campbell teamed up again on a 45 yard touchdown pass, giving the Eagles a 14-3 lead with 6:16 left in the second. With 4:44 left in the half, Michael Ryan Gomez returned a Pena punt 89 yards for another touchdown for Roosevelt, giving them a 20-3 lead. On the next possession,

Floydada's Kyi Baker raced in from 58 yards out to make it 20-10 with 4:24 left in the half.

Neither team managed to score in the third quarter but Roosevelt added their last score of the night just as the fourth quarter started when Garrett found Jacob Garcia open for a 26 yard touchdown pass to make the final score 26-10.

The Roosevelt defense limited the Whirlwinds to only 240 yards of total offense including 50 yards passing and 190 yards rushing. Baker was 5-14 passing for 50 yards. Baker also had 14 carries for 125 yards and a touchdown, Corey Mathis had five carries for 22 yards, Pena had one carry for 19 yards, Marcos Cervera had nine carries for 17 yards, Albert Dehoyas had three carries for four yards and Isaac Herrera had two carries for three yards. Dehoyas had two catches for 25 yards and Cervera had two catches for 11 yards.

For Roosevelt, the Eagle offense had 414 yards including 254 passing and 160 rushing. Campbell was 16-23 passing

for 254 yards and three touchdowns and he had one carry for minus two yards. Isiaia Montgomery had 23 carries for 97 yards, Garrett had nine carries for 61 yards, Teagan Cooksey had one carry for three yards and Jacob Garcia had two for one yard. Campbell had six receptions for 133 yards and two touchdowns, Gomez had two receptions for 66 yards, Garcia had two receptions for 26 yards and a touchdown, Marcus Byers had two catches for 12 yards, JD Rojas had one catch for nine yards, Tray Bass had two catches for eight yard and Montgomery had one catch for no yards.

Floydada fell to 1-4 and Roosevelt moved to 2-1 at the time and after defeating Friona 14-6 last Friday, they are now 3-1 on the year. They open District 1-3A-D2 play by traveling to winless Tulia this Friday. Floydada travels to Olton (1-4) to being District 2-2A-D1 play. In other district action, Abernathy travels down I-27 to take on New Deal and Hale Center travels to Tahoka.

**National 4-H Week Proclamation - Kirby Nixon, President of the Floyd County 4-H Council witnessed County Judge Marty Lucke at the signing of a proclamation designating October 5 through 9, 2015 as National 4-H Week.**

Courtesy Photos

### FLOYDADA SCHOOL MENU

October 12 - October 16

#### Monday

**Breakfast** - Fruit Loops w/ graham crackers, fruit juice or fresh fruit, milk variety  
**Lunch** - Bean and cheese burrito, grilled ham and cheese sandwich, hamburger, seasoned potato wedges, vegetable bar, fresh fruit, milk

#### Tuesday

**Breakfast** - Breakfast sausage bagel pizza, fruit juice or fresh fruit, milk  
**Lunch** - Cheese pizza, pepperoni pizza, turkey & cheese sandwich, mixed vegetables, vegetable bar, fresh fruit, milk

#### Wednesday

**Breakfast** - Sausage biscuit sandwich, fruit juice or fresh fruit, milk  
**Lunch** - Sloppy Joe sandwich, ham & cheese sandwich, Spaghetti w/meatball & breadstick, mixed vegetables, vegetable bar, fresh fruit, milk

#### Thursday

**Breakfast** - Maple mini waffles, fruit juice or fresh fruit, milk  
**Lunch** - Hamburger, cheesy chicken quesadilla, salisbury steak, w/roll, seasoned peas & carrots, vegetable bar, fresh fruit, milk

#### Friday

**Breakfast** - Cinnamon toast crunch cereal w/graham cracker, fruit juice or fresh fruit, milk  
**Lunch** - Turkey & cheese sandwiches, hamburger, bbq beef dipper slider, vegetable bar, seasoned potato wedges, fresh fruit, milk

## Wit and Wisdom

**By Charles Keaton**  
The Hesperian-Beacon

Facts do not cease to exist because they are ignored. - **Aldous Huxley**

Get the facts, or the facts will get you. And when you get them, get them right, or they will get you wrong.  
- **Dr. Thomas Fuller**

Facts are stubborn things; and whatever may be our wishes, our inclinations, or the dictates of our passion, they cannot alter the state of facts and evidence.  
- **John Adams**

Facts have a cruel way of substituting themselves for fancies. There is nothing more remorseless, just as there is nothing more helpful, than truth.  
- **William C. Redfield**

Calamities are of two kinds: misfortunes to ourselves, and good fortune to others.  
- **Ambrose Bierce**

We should manage our fortunes as we do our health - enjoy it when good, be patient when it is bad, and never apply violent remedies except in an extreme necessity.  
- **Francois de La Rochefoucauld**

Nature magically suits a man to his fortunes, by making them the fruit of his character. - **Ralph Waldo Emerson**

Some are born great, some achieve greatness, and some hire public relations officers.  
- **Daniel J. Boorstin**

Greatness is more than potential. It is the execution of that potential. Beyond the raw talent. You need the appropriate training. You need the discipline. You need the inspiration. You need the drive. - **Eric A. Burns**

There be three things which make a nation great and prosperous: a fertile soil, busy workshops, easy conveyance for men and goods from place to place.  
- **Sir Francis Bacon**

### Roosevelt vs FLOYDADA

| Teams     | 1st | 2nd | 3rd | 4th | FINAL |
|-----------|-----|-----|-----|-----|-------|
| Roosevelt | 8   | 12  | 0   | 6   | 26    |
| Floydada  | 0   | 10  | 0   | 0   | 10    |

**1st Qtr - Roosevelt - 3:46 - Colt Garrett passes to Zyketh Campbell for 29 yards; Garrett to Campbell for 2-point conversion pass**

**2nd Qtr - Floydada - 8:38 - Miguel Pena 20 yard Field Goal**

**2nd Qtr - Roosevelt - 6:16 - Garrett passes to Campbell for 45 yards; Kick Failed**

**2nd Qtr - Roosevelt - 4:44 - Michael Ryan Gomez 89 yard punt return; Kick Failed**

**2nd Qtr - Floydada - 4:24 - Kyi Baker 58 yard run; Pena Kick Good**

**4th Qtr - Roosevelt - 12:00 - Garrett passes to Jacob Garcia for 26 yards; Kick Failed**

## SPC to offer NRA Basic Pistol course for Women on Oct. 17-18

Special to The Hesperian-Beacon

LEVELLAND - South Plains College will offer NRA Basic Pistol for Women from 9 a.m. to 5 p.m. on Oct. 17 and 2 p.m. to 5 p.m. on Oct. 18 in Law Enforcement Room 116. The cost is \$75.

The class will meet at 9 a.m. on Oct. 17 (Saturday) with breaks every hour as well as a lunch break. The shooting portion will begin at 2 p.m. on Oct. 18 (Sunday). Pistols, ammunition, hearing and eye protection

are provided although students are free to bring their own pistols.

This is an excellent course for new pistol shooters or those who need more training before applying for a Texas Concealed Handgun License.

Basic Pistol covers NRA's rules for safe gun handling; pistol parts and operation; ammunition; shooting fundamentals; range rules; shooting from the bench rest position, and two handed standing positions;

cleaning the pistol; and continued opportunities for skill development. The cost includes the NRA Guide to the Basics of Pistol Shooting handbook, NRA Gun Safety Rules brochure, and Winchester/NRA Marksmanship Qualification booklet.

To sign up, call Kasey Reyes, administrative assistant to the Dean of Continuing and Distance Education, at (806) 716-2341 or email kreyes@southplainscollege.edu.

**TALK TEXAS!**

Save a Life  
Texas Department of Transportation

### Football Contest Standings Week 6

|                 | THIS WEEKS | TOTAL   |
|-----------------|------------|---------|
| Pam Fulton      | 22/27      | 116/158 |
| Ricky Ascencio  | 18/27      | 115/158 |
| Martin Ramirez  | 21/27      | 114/158 |
| Lanny Barnett   | 20/27      | 113/158 |
| Coy LaBaume     | 20/27      | 113/158 |
| Brent Sanders   | 18/27      | 109/158 |
| Franklin Harris | 16/27      | 108/158 |
| Stanley Collier | 19/27      | 108/158 |
| Max Yeary       | 20/27      | 107/158 |
| Renee Armstrong | 21/27      | 107/158 |
| Boyd Lee        | 16/27      | 102/158 |
| Paul Lopez      | 17/27      | 102/158 |
| Daniel Diaz     | 19/27      | 98/158  |
| Diego Ascencio  | 15/27      | 96/158  |
| Mac Sherman     | 16/27      | 96/158  |
| Andrew Vega     | 14/27      | 91/158  |
| Debra Lee       | 12/27      | 90/158  |
| Steve Stringer  | 21/27      | 73/131  |

**Touchstone Energy**  
Your Touchstone Energy Cooperative  
The power of human connections

**ADAMS WELL SERVICE**  
806.983.5003

On-line Banking and TeleBanking  
Banking at your fingertips  
**THE FIRST NATIONAL BANK OF FLOYDADA**  
MEMBER FDIC

**Quality Body Shop**  
983-5032

**J & H Insurance Agency, Inc.**  
119 West College, Box 100  
FLOYDADA, TEXAS 79235

**ROGER HUGHES SALES**  
800 983-5999 Home  
800 282-6157 Mobile  
Route 2, Box 1  
Floydada, Texas 79235  
(806) 983-3752 Work

# LOCKNEY SCHOOL NEWS

## LOCKNEY SCHOOL MENU

Oct. 12-16

### Monday, Oct. 12

**Breakfast** – Pancakes, Bacon, Fruit, Fruit Juice, Milk  
**Lunch** – Chicken Sandwich, Oven Fries, Beef and Bean Burrito, Salsa, Corn, Fresh Veggie Cup, Mandarin Oranges, Milk

### Tuesday, Oct. 13

**Breakfast** – Sunrise Sandwich, Cheesy Toast, Fruit, Fruit Juice, Milk  
**Lunch** – Nacho Grande, Refried Beans, Salsa, Grilled Cheese, Soup, Tomato Cup, Garden Salad, Lime Sherbet Cup, Pears, Milk

### Wednesday, Oct. 14

**Breakfast** – Biscuit and Gravy, Scrambled Eggs, Fruit, Fruit Juice, Milk  
**Lunch** – Corn Dog, Stuffed Baked Potato, Roll, Baked Beans, Broccoli, Apple-Pineapple Delite, Milk

### Thursday, Oct. 15

**Breakfast** – Oatmeal with Cinnamon Toast, Breakfast Strudel with Yogurt, Fruit, Fruit Juice, Milk  
**Lunch** – Country Pot Pie, Salisbury Steak, Biscuit, Brown Gravy, Roasted Potatoes, Garden Salad, Fruity Gelatin, Milk

### Friday, Oct. 16

**Breakfast** – Breakfast Burrito, Fruit, Fruit Juice, Milk  
**Lunch** – Pizza, Hot Dog with Corn Chips, Carrots with Ranch, Broccoli Salad, Grapes, Cookie, Milk

## Vega Defeats Lockney 28-8

By Charles Keaton  
 The Hesperian-Beacon

VEGA – In a battle of Longhorns, the Vega Longhorns came out on top of the Lockney Longhorns, 28-8 in the last non-district contest for Lockney.

Vega got on the board first when Trevor Dukes ran it in from 39 yards out to give Vega a 7-0 lead with 7:17 left in the first quarter. Both teams were scoreless throughout the rest of the first half.

In the third quarter, Lockney scored with 10:12 left in the third when Daylen Gatica connected with Avian Luna for a 31-yard pass. Gatica found Jaden Rosales open for the two point conversion giving

Lockney an 8-7 lead. Just three minutes later, Vega responded when Justin Joyce connected with Tyler Long for a 3-yard touchdown pass to give them the lead at 14-8 with 7:11 left in the third quarter.

Early in the fourth quarter, Joyce broke loose for a 41-yard touchdown run to stretch Vega's lead to 21-8 with 11:51 left in the game. Later in the fourth quarter, Colton Luster sprinted in from 35 yards out to give Vega the final score of 28-8.

For Lockney, they managed 237 total yards with 98 rushing and 139 passing yards. Tevin Phillips rushed 17 times for 84 yards and Gatica had three carries for 11 yards. Gatica was 17-24 passing for 139 yards and one touchdown. Luna had nine

receptions for 108 yards and a touchdown. Trevor Ascencio caught two passes for 43 yards and Rosales had two catches for 19 yards and caught the two point conversion.

For Vega, they piled up 422 total yards including 355 yards rushing and 67 yards passing. Dukes had 15 carries for 165 yards and one touchdown, Luster had 11 carries for 65 yards and touchdown and Joyce had eight carries for 85 yards and a touchdown. Joyce was 3-8 passing for 67 yards and a touchdown. Luster had two receptions for 48 yards.

"We had two missed scoring opportunities for us in the first half that would have made the game much closer," Head Coach Jay Ragland said. "Giv-

ing up the big runs by Vega hurt us, too."

Offensive player of the week was Luna and the Defensive Line was named Defensive players of the game.

Lockney falls to 3-2 on the season and Vega remains undefeated at 6-0.

"We have to get back on track offensively," Ragland said, "and limit our mistakes on offense."

Lockney opens district play Friday, Oct. 10 at 7:00 P.M. by hosting Clarendon who is also 3-2 and coming off their open week. In other district action, Ralls travels to Memphis and Crosbyton travels to Quanah. Vega, who plays in District 2-2A-D2, hosts Bovina to begin their district schedule.

### LOCKNEY vs VEGA

| Teams   | 1st | 2nd | 3rd | 4th | FINAL |
|---------|-----|-----|-----|-----|-------|
| Lockney | 0   | 0   | 8   | 0   | 8     |
| Vega    | 7   | 0   | 7   | 14  | 28    |

1st Qtr – Vega – 7:17 – Trevor Dukes 39 yard run; Kick Good

3rd Qtr – Lockney – 10:12 – Daylen Gatica passes to Avian Luna for 31 yards; Gatica passes to Jaden Rosales for 2-point conversion

3rd Qtr – Vega – 7:11 – Justin Joyce passes to Tyler Long for 3 yards; Kick Good

4th Qtr – Vega – 11:51 – Joyce 41 yard run; Kick Good

4th Qtr – Vega – ? – Colton Luster 35 yard run; Kick Good

## South Plains College releases fall 2015 enrollment figures

Special to The Hesperian-Beacon

LEVELLAND — South Plains College has enrolled 9,384 students for the 2015 fall semester, which SPC President Dr. Kelvin Sharp calls "a good solid number" for the college.

Even though the headcount is 3.1% less than a year ago, College officials say the drop in enrollment reflects the low unemployment rate in Lubbock, as well as, more options for students to receive dual credit from other institutions of higher education.

"This is still a good solid number for South Plains College," said Dr. Sharp. "I appreciate the hard work of our faculty and staff to help us reach that number and help our students. The number reflects the low unemployment rate in Lubbock, but we haven't seen the impact of lower oil prices and what that will do in the coming months to the energy industry," he said.

Prior to a surge in enrollment that began in 2009 and peaked in 2011, South Plains College enrollment has averaged approximately 9,500 students each semester.

"It is pivotal that we get the new SPC Lubbock Center open to bring opportunities to more students especially those who may be facing transportation issues," Dr. Sharp said.

Last month, SPC announced plans to renovate a former car dealership at 3907 Ave. Q into a new career and technical education center in partnership with the Helen Jones Foundation, The CH Foundation and the Lubbock Economic Development Alliance.

"The new SPC Lubbock Center will enable us to better serve our students and residents of Lubbock with expanded career and technical education programs, as well as general academic transfer education," he said. "Our goal is to open this facility in early 2017, and we're excited about the opportunities this center will bring for our students. It's coming very soon."

College officials also point to a decrease this fall in dual credit enrollment of high school students, which accounts for 75% of the decline the college has experienced.

"The Texas Legislature has opened the door for high school students to earn college credit while in high school by removing restrictions related to location, service area and eligibility," said Dr. Robin Satterwhite, vice president for academic affairs. "As a result, some of our regional university partners are providing dual credit options within the college's service area. South Plains College has a reputation for excellence in instruction and service to our school districts that we feel, in the long run, will help us build back the enrollment we have lost this semester."

SPC's fall enrollment is 307 students fewer than its fall 2014 enrollment of 9,691. Dual credit enrollment is 227 students fewer than a year ago.

Historically, SPC's enrollment has ebbed and flowed with the economic conditions of the South Plains region. During economic downturns, enrollment has increased as residents seek to be retrained for new jobs and students who stopped out of college return. When job opportunities are plentiful and unemployment is low, college attendance tends to decline.

## Area Football Wrap-up Week 6

### DISTRICT 2-2A-D1 (Floydada's)

#### Week 6 Results

ALL TEAMS ARE OPEN

| TEAM        | OVERALL |        | DISTRICT |        |
|-------------|---------|--------|----------|--------|
|             | Wins    | Losses | Wins     | Losses |
| New Deal    | 5       | 0      |          |        |
| Hale Center | 3       | 2      |          |        |
| Tahoka      | 3       | 2      |          |        |
| Abernathy   | 2       | 2      |          |        |
| Floydada    | 1       | 4      |          |        |
| Olton       | 1       | 4      |          |        |

Week 7 Schedule: Floydada at Olton; Abernathy at New Deal; Hale Center at Tahoka

### DISTRICT 3-2A-D2 (Lockney's)

#### Week 6 Results

Vega 28, LOCKNEY 8; Panhandle 25, QUANAH 20

| TEAM      | OVERALL |        | DISTRICT |        |
|-----------|---------|--------|----------|--------|
|           | Wins    | Losses | Wins     | Losses |
| Crosbyton | 5       | 0      |          |        |
| Lockney   | 3       | 2      |          |        |
| Clarendon | 3       | 2      |          |        |
| Quanah    | 2       | 3      |          |        |
| Memphis   | 1       | 4      |          |        |
| Ralls     | 0       | 5      |          |        |

Week 7 Schedule: Lockney vs Clarendon; Memphis vs Ralls; Quanah vs Crosbyton

### AREA TEAMS (Records) Week 6 Results

PLAINVIEW (3-3) 28, Hereford 14

PETERSBURG (5-1) 62, Whiteface 24

VALLEY (5-1) 68, Meadow 20

LORENZO (4-1) 62, Lazbuddie 12

Wilson 46; PLAINVIEW CHRISTIAN (0-5) 18

Hart 64, SILVERTON (3-3) 15

MOTLEY COUNTY (4-1) — OPEN

### WEEK 7 Schedules

PLAINVIEW — OPEN; PETERSBURG vs Guthrie; VALLEY at Groom; LORENZO at Southland;

SILVERTON at Valley JV; MOTLEY COUNTY vs Klondike; PLAINVIEW CHRISTIAN vs Lazbuddie

## SPC announces October digital photography classes

Special to The Hesperian-Beacon

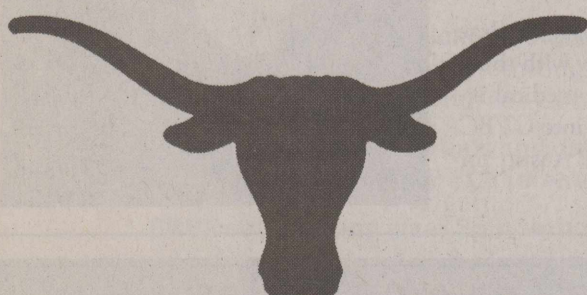
LEVELLAND — South Plains College announces fall 2015 photography classes available for the month of October. The classes are designed to improve the abilities of digital

photo enthusiasts.

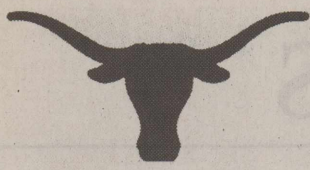
The Macro Photography Class is set from 9 a.m. to 4 p.m. on Oct. 14 in Room 822a in Building 8 at Reese. The class focuses on up-close photographic images such as flowers and insects. The cost is \$50.

The Fall Fandango class with location to be announced is set for 6 a.m. on Oct. 17. This class is for students who have taken the Jumpstart Class. Participants must be approved by the instructor. The cost is \$125.

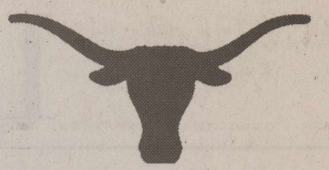
The instructor will be Wes Underwood, Photography Specialist for South Plains College. To register or contact Underwood, call (806) 716-2215 or email wunderwood@southplainscollege.edu.



**GO HORNS!**



# Longhorn News



## Lockney Longhorns Prepare For District

By: Trigga Trev and Lexi Chavez

The Lockney Longhorns have started their football season 3-2. The Longhorns have been fighting to maintain a good season and plan to improve for district play, beginning October 9. Lockney's district includes Clarendon, Memphis, Ralls, Quanah, and

Crosbyton, in that order. The Longhorns are working hard to make playoffs this season. It has been a century since the Longhorns have secured a play-off spot. This year, UIL is taking the top four teams in the district to playoffs.

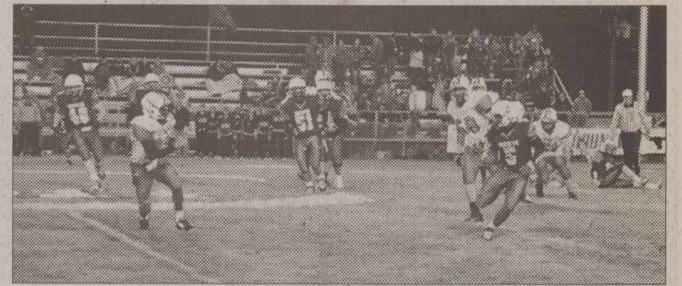
After the loss to the Vega Longhorns on Friday, October 2, (28-8) Lockney football players are plan-

ning to change their game. "We must work harder every day and strive to be the best" said Joshua Guerrero, left guard.

Lockney must have a winning mentality as the face Clarendon for their first district game. The Broncos are also 3-2, which should result in a great game to watch. The Longhorns faced defeat to Clarendon last year, losing

by one point (20-19). "It's all about M.O.E. (matter of effort). If we continue to practice our best we will play our best and succeed in our plans of winning" said Sergio Ascensio, linebacker.

Lockney's greatest concern this year comes from the undefeated Crosbyton Chiefs. Crosbyton won district last year, also



making it deep into the playoffs. Lockney is ready to play and prove to them that they will rise to the top.

## LHS Band Starts on Their Treasure Map to Success



By: Emilee Encizo, Trevor Ascensio, & Lexi Chavez

The Lockney High School Band has started working on their show for this year's marching competition. The theme for the show this year will involve pirates and is called Blood on the Captain's Sword, written by Luke McMillan.

"Band is going well, they sound great. The band has been working really hard to learn the drill," said band director, Rob Lovett. "They have proven to us that they are willing to do the work to advance in UIL Contests."

The band has practiced since mid-August during summer band, every day during class, and every Tuesday night. After first learning some important marching techniques, the band is now learning their marching show piece-by-piece.

"I am extremely excited for marching this year, Mr. Lovett has pulled out all the stops," said Jake Moore. "He had original music and an amazing marching drill made for us and I think that if we work hard, we'll have no problem making it to state."

It is an advancing year for the Lockney High School Band; this means that if they score high enough at competition they will continue to advance as far as they

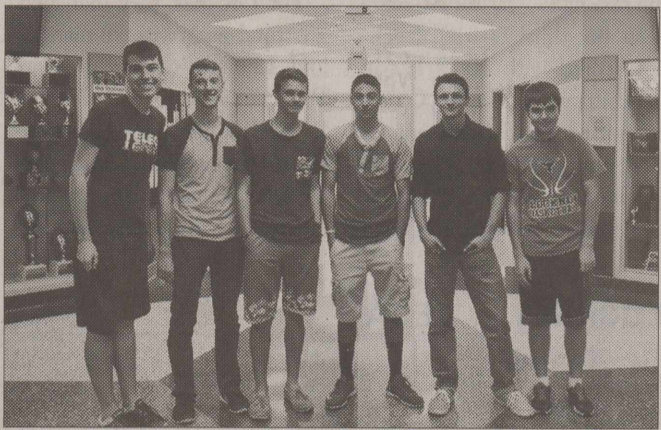
can go. If the band continues to advance past area, they will go on to state and where they will have the opportunity to perform in the Alamo Dome.

"I am really excited to see how the show comes together and looks when it is put out on the field in the end," said drum major JJ Rodriguez. "We have been working extremely hard and I can't wait for people to see what we're made of."

The LHS Band has brought an enormous amount of success to Lockney High School throughout the years. This year, with band director Rob Lovett and assistant director Chris Rodriguez, the band hopes to bring in more success and accomplishments.

"I am excited to be here this year, I enjoy working with the band and I see a lot of potential in everyone," said Rodriguez. "I believe work ethic could take us all the way to San Antonio, TX. I am very excited for upcoming events."

The band will compete at the Lubbock Marching Festival on October 10th. On October 17th, the band will compete at the UIL Marching Contest. If the band advances, they will next go on to the Area Marching Competition on October 24th. After Area, the band could possibly compete at the State Marching Competition on November 22nd.



## Jazz Band Tryouts

By: Karissa Petty and Mackenzy Ragland

Each year, Lockney High School band members have the opportunity to try out for jazz band. At this tryout, students from different schools compete against each other for the honor of being a member of the select band.

This year, five students made the trip to Seminole to audition, seniors Levi Kasner, Jace Klein, and Steven Setliff, junior Luke Kasner, and sophomore Joe Ochoa. Jake Moore, also a senior, also traveled to Seminole to support his fellow band members.

The students worked hard in preparation for the tryouts, and each person had their own unique way of practicing to get ready.

"I spent several hours in the band hall with my trap set in the backroom," said Luke Kasner.

After hours of practice, students were finally ready to audition. In addition to the try out itself, students also had an opportunity to spend time with other area band students.

"I enjoyed the tryouts and

hanging out with people I only see at All Region," said Levi Kasner.

For some members, such as Joe Ochoa, this year was a first experience with the jazz band process.

"It was good, I finally experienced something like this as a sophomore," said Ochoa. "I got to enjoy meeting new people, and I got to eat at Panda Express."

Levi Kasner, Joe Ochoa, and Jace Klein made this year's jazz band. Klein managed to get first chair for the piano section, an accomplishment he was proud of.

"I was super excited that after all these weeks of work, it finally paid off," said Klein. "I had my eyes set on first chair and beating every last one of the other piano's was really satisfying!"

Mr. Lovett, LHS band director, was very proud of all of his students.

"The auditions are always a challenge because we are competing with schools from class 1A-4A," said Lovett. "We think our band members compete very well and of course me and Mr. Rodriguez are very proud of them."

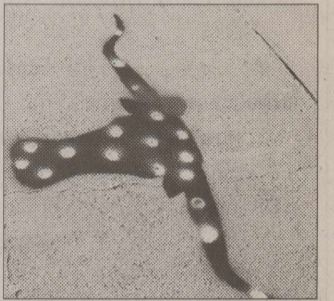
## Longhorns on Location

By: Lena Luna and Lissa Hernandez

Lockney's National Honor Society is at it again. Every year, the students involved in the National Honor Society head out to sell driveway paintings of longhorns to Lockney residents. The money raised through this program is used to provide scholarships for senior NHS members. This year's profits will help thirteen seniors after graduation.

"This year with me being a senior, being able to do this fundraiser really helps me out with my future plans," said Anissa Guerrero, senior NHS member.

Along with raising money for the seniors, this project is also a great way for all the members to go out and interact with the community.



"I think it's good to show our support for the community by painting these longhorns, while also being able to raise money that will help us in college," said Stephen Setliff, senior NHS member.

Anyone who is interested in buying a longhorn can contact Carol Lane, business teacher and NHS sponsor at the high school, or email her at lane.carol@lockneyisd.net.

## Pink Day

By: Mackenzy Ragland and Karissa Petty

Every year, the month of October is recognized as Breast Cancer Awareness month. Pink is the color selected to represent this month, which is why on October 2, Lockney High School students were all dressed in as much pink as possible.

At Lockney High School we fully support Breast Cancer Awareness month. Students, faculty, coaches, and our football players will be showing their support by wearing pink throughout the rest of the month during games.

At the pep rally, the gym was covered in pink, and the LHS cheerleaders wore special pink shirts. They also choreographed a new dance routine to honor Breast Cancer Awareness. In this

routine, the cheerleaders made shapes such as a heart to symbolize love, a cross to symbolize hope, and a Breast Cancer ribbon to show support to those who are fighting or have fought a battle with Breast Cancer, and to remember those who have lost their battle.

During the October 2nd game against Vega, football players wore pink on the field. While they are not allowed to wear full pink uniforms due to UIL rules many wore pink gloves, towels, socks and cleats to show their support.

Breast Cancer is the most common type cancer amongst women; it is the second-most common type of cancer overall. Breast cancer awareness is aimed at informing people of the dangers of the disease, supporting those who have breast cancer, and remembering those who have lost their battle.

## October

By Lena Luna and Lissa Hernandez

OF C P F X D P G D V V W N L  
C Z O P N W O L L E Y E W L O  
T I L I E E F Y P P A O A P O  
O F D Y E O G X C T R B D U D  
B Y A E W A N N H B T R K B H  
E A W L O S C E A O O W T C O  
R S U K L C R O O R C S F F H  
R E C O L L A F S B O B G V W  
A V K O A J W D V T O G D S M  
D A Y A H Q O F Z M U B P C M  
D E N J U B M P B R N M B N D  
U L J I V T R C R D B T E R M  
B Q R P U M P K I N S Z R S U  
G D N O G G C M B R N D K S K  
V N I C A N D Y B U F N R I O

|          |           |          |
|----------|-----------|----------|
| BROWN    | FOOTBALL  | ORANGE   |
| CANDY    | HALLOWEEN | PUMPKINS |
| COLD     | LEAVES    | WEATHER  |
| COSTUMES | OCTOBER   | YELLOW   |
| FALL     |           |          |

## Senior Spotlights

By Haley M. Sanchez  
6th Period Clement

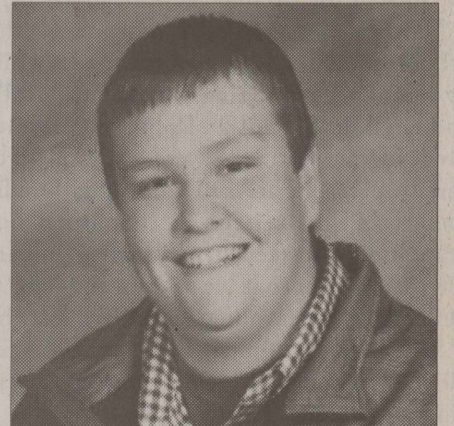
### Christian Bursiaga

Christian Bursiaga was born at WJ Mangold Memorial Hospital on December 23, 1997, to Ymelda Franco and Ben Bursiaga.

Christian has lived in Lockney his entire life.

During high school, Christian has participated in band and theatre.

After high school, he plans to either attend Texas Tech University or join a private military company, such as Blackwater USA.



### Dezira Borunda

Dezira Eulalia Borunda was born in Lockney, Texas. She went to East Ward Elementary in Killeen, Texas, before moving back to Lockney in the 6th grade. Dezira then went to Harlingen South High her sophomore year, but is now back to being a Longhorn.

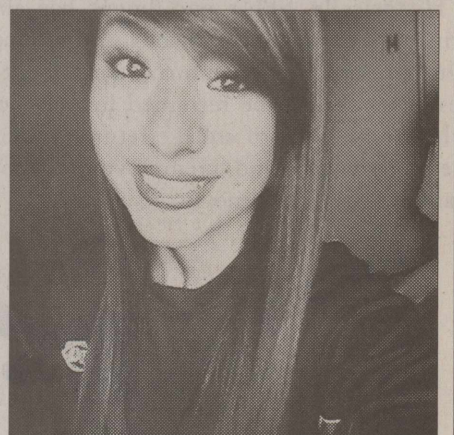
Dezira participated in cross country and tennis her junior year and plans to play tennis once again this year.

After graduating, Dezira plans to

pursue a degree in cosmetology.

"I'm really passionate about cosmetology," she said. "I want to learn everything I can in cosmetology and continue my cosmetology education. This is my ultimate goal."

Aside from cosmetology, Dezira would love to work closely with those with cancer or any other medical issues. She is hopeful to get into CTBC or the Aude Institute in Austin for their great programs.



**Touchstone Energy**  
Your Touchstone Energy Cooperative  
The power of human connections

W.J. **MANGOLD** MEMORIAL HOSPITAL  
320 N. Main Lockney, Texas 806-652-3373

Hospice Hands of West Texas  
Established From the Year 1992  
806-652-3000  
Toll Free: 1-888-795-1212  
Fax 806-652-2766  
305 N. Main P.O. Box 1118 • Lockney, TX 79241  
hospicehandsofwesttexas.com

DAVID & DARLEE FOSTER  
JODY & SHAWNDA FOSTER  
**D & J Gin**  
806-652-3351  
LESCA DURHAM  
806-652-3738  
Marketing Specialist  
301 E. Shober St.  
Lockney, TX 79241

**J.S.H. Insurance Agency, Inc.**  
119 West College, P.O. Box 103  
JIM MARTIN  
806-652-3351  
JODY MARTIN  
806-652-3351  
119 West College, P.O. Box 103  
Lockney, TX 79241

**Hardy's**  
Classic Cars and More  
Don & Carolyn Hardy  
201 E. Main - Lockney



**BISHOP**  
From Page 1



Courtesy Photo

**Bishop "Cor" toured a pumpkin farm owned by Amado Morales while visiting Father Ike Temporaza in Floydada. In the Philippines, pumpkins are known simply as squash. While visiting he saw many varieties of "squash", one of which is also grown in the Philippines.**

resident priest lives and ministers, as well as to see for himself "the faith of the people here." Although the bishop made one brief trip to Houston last year after attending a conference in New Orleans, it is his first time to West Texas and to meet Most Reverend Plácido Rodríguez, bishop of the Diocese of Lubbock.

While here he travelled the weekly route with Father Temporaza as he performed Mass in the mission parishes of Paducah, Matador and Floydada. Saturday evening he concelebrated Mass in Matador, followed by a Mexican dinner prepared by the parishioners. Sunday morning he received another dose of the local cuisine, breakfast burritos and menudo, when they drove to Paducah.

"I love it (Mexican food). I'm familiar with that, because in Baraka (north of Manila) they serve it to cater to tourists," he shared. "Even the aroma was familiar."

The next morning, on the car ride to Paducah, the bishop attentively searched the land for animals and enjoyed the expansive scenery, explaining that the geography was "impressive".

"Unlike our place, we have lots of mountains, here there are open

fields and prairies," he pointed out. "I love the rural areas where there are no crowds and open spaces" and the friendly people wave as you pass on the highway.

Because the island he calls home is so mountainous, residents do not see animals in the wild unless they travel into the mountains. So travel time between churches in Cottle, Motley and Floyd counties became makeshift animal expeditions as well.

No trip to Floydada would be complete without a personalized tour of a pumpkin patch. Local pumpkin farmer, and parishioner at St. Mary Magdalen Catholic Church in Floydada, Amado Morales took Bishop "Cor" to his farm to explore the different varieties grown in the area. After walking among the pumpkins, which he referred to as squash because there is no specific name for the orange gourd in the Philippines, the bishop gave his best attempt to lift the biggest pumpkin he could find to no avail. Among the copious varieties found in Morales' field, one was identified as also being grown in the Philippines.

The Philippines, officially known as the Republic of the

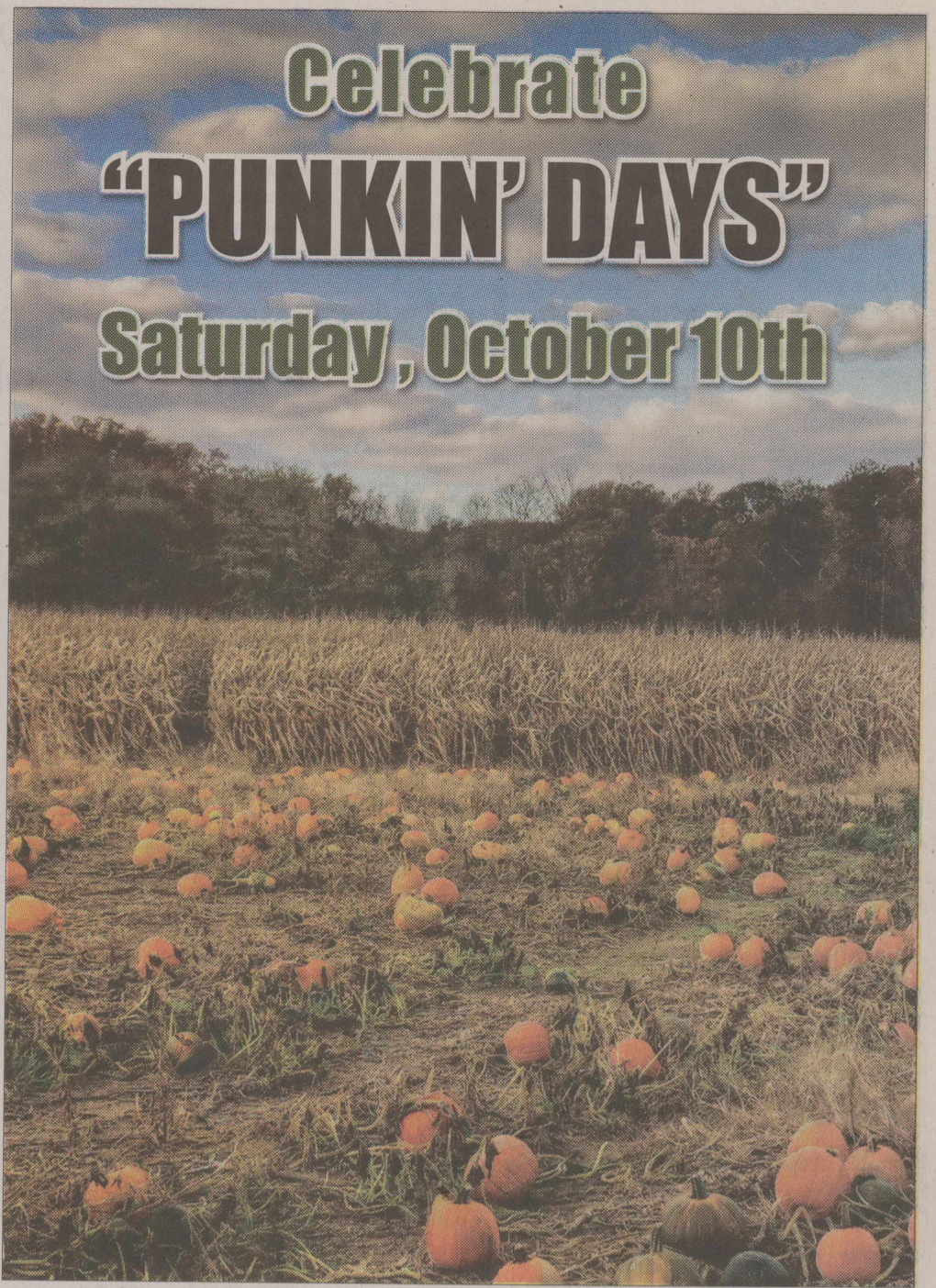
Philippines, is an archipelago nation comprised of 7,107 islands in Southeast Asia situated in the western Pacific Ocean. It is one of only two predominantly Christian nations in Asia, boasting approximately 79 percent Roman Catholics and seven percent Protestant denominations or members of Iglesia ni Cristo.

On Saturday afternoon, bishops from east and west met at the Pastoral Center in Lubbock.

"Regarding our Church, we belong to the same church. I can observe the same apostolate and mission. Maybe we use other methods of teaching it because of varied cultures, but basically it is the same," Bishop "Cor" assessed.

He explained that in the Philippines the churches are "full and overflowing", but here is not the case. What impressed him about the parishes he visited was how the people came together to cook, eat and drink. Fundraising in this method is something he will be taking back with him to share with his diocesan priests.

The bishop travelled on to New Orleans on Tuesday, September 22, to attend a religious association meeting and will return to the Philippines on October 13.

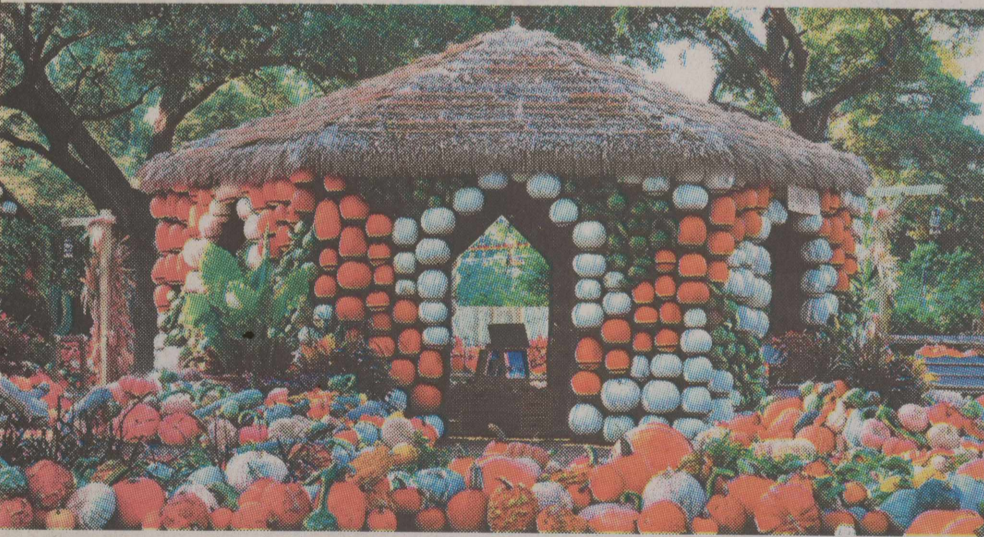


If you are active duty in the military and live in Floyd County or know someone from Floyd County who is active duty, please contact the Floyd County Hesperian Beacon at 888-400-1083 or 806-787-1334. We would like to honor all active military in Floyd County each month by listing your name and allowing those in our area to keep you in their thoughts and prayers. If you are a business and would like to sponsor this page, please call and let us know.

**D** DALLAS ARBORETUM  
**Autumn at the Arboretum**

Through November 25

"One of the Best Fall Festivals to Celebrate the Season"  
- MSN.com, 2015



Experience the Best Fall Experience in America and the nationally acclaimed Pumpkin Village featuring over 75,000 pumpkins, gourds and squash.

**Children's Activities**

Kimberly-Clark Mommy & Me Mondays and Tiny Tot Tuesdays and Friday Afternoon Pumpkin Painting

**Featured Discounts**

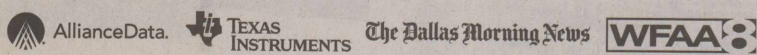
BOGO Wednesdays, C.C. Young Senior Thursdays, Grandparents' Day on Fridays and more.

**2015 State Fair Ticket-holder Discount**

\$2 off general admission through October 29 (Monday-Thursday Only)

Exciting new adventures and daily activities in The Rory Meyers Children's Garden.

FREE self parking after 3pm through October 11.



**DallasArboretum.org**

8525 Garland Road • Dallas, Texas 75218 • 214-515-6500

The Dallas Arboretum is a non-profit organization that is supported, in part, by funds from Dallas Park & Recreation.

28th Annual  
**Punkin Day**  
Saturday October 10, 2015  
Downtown on the Square  
Floydada, Texas

**EVENTS:**

**THURSDAY, OCTOBER 8, 2015**

6:00 P.M. Judging of Best Decorated Home & Business

**FRIDAY, OCTOBER 9, 2015**

Friends of the Library Book Sale - Floyd County Memorial Library Community Room

**SATURDAY, OCTOBER 10, 2015**

--- Downtown on the Square ---

7:00 A.M.-10:00 A.M. Floydada Lions Club Pancake Breakfast

8:00 A.M. Chili Cook Off Begins - Awnings at Moonlight Racing, 200 Block East Missouri

8:00 A.M.-11:00 A.M. Floydada Fire Dept. Car Show set up with Nifty Fifties Car Club

9:00 A.M. Vendor Booths Open

9:00 A.M.-3:00 P.M. Friends of the Library Book Sale - Floyd County Memorial Library Community Room

9:00 A.M.-5:00 P.M. Floyd County Historical Museum Open & Rope Making Activities

9:30 A.M. - 1 P.M. Live Performance by Greg Maldo - Pavilion

10:00 A.M. Pumpkin Games & Activities - Chamber Booth

11:00 A.M. Floydada Fire Department Car Show

11:00 A.M.-2:00 P.M. Cake Walk - Corner of Main & Missouri Streets for a Donation at the Chamber Booth

1:00 P.M. Pumpkin Auction - Locally grown Big Maxx Pumpkins up for bidding; under Pavilion

2:30 P.M. Cow Patty Bingo Begins - On Missouri Street by the Floyd Co. Historical Museum

Pie Eating Contest at the Pavilion - Prizes Awarded

3:00 P.M. Costume Contest Registration for all ages - Pavilion

3:15 P.M. Costume Contest Under the Pavilion - Prizes Awarded

4:00 P.M. Award Winners, Under the Pavilion:

Cow Patty Bingo

Chili Cook Off

Guess the Weight of the Pumpkin Trailer

Guess the # of Pumpkin Seeds & Candy Pumpkins



Variety of Arts/Crafts and Food Vendor Booths  
Classic Car Display & Show  
Cow Patty Bingo  
Pumpkin Pie Eating Contest  
Chili Cook Off  
Games for Kids & Adults  
Rope Making at the Museum  
Book Sale at the Floyd Co. Library  
Costume Contest for Ages Newborn - 99

Bring the whole family out to Floydada for a "Punkin" good time!



Come by the Floydada Chamber of Commerce Booth: Located in front of Courthouse

Buy your Punkin Capital™ T-shirts, caps and Cookbooks

Enter the Guess the number of pumpkin candy and pumpkin seeds in a jar. Prizes Awarded

Cow Patty Bingo Tickets can be purchased for \$5.00 each as well as from Floydada Boy Scouts Booth

Entry forms for the pie eating contest

Pumpkin Games and Activities All Day Long

**PUMPKIN GAMES SCHEDULE:**

9:00 A.M. Decorate Your Own Pumpkin

10:00 A.M. Wheelbarrow Races and Team Obstacle Courses

1:00 P.M. Pumpkin Toss

1:30 P.M. Pumpkin Bowling

For Entry Forms and More Information go to [www.floydadachamber.com](http://www.floydadachamber.com)

**\*Senior Citizen Park & Ride Service\***

Park at the Baptist Church parking lot on Wall Street and a Ride will be provided to and from the museum for all the festivities, running all day Saturday the 10th

Ad Designed by Script Printing, Floydada, Texas

**THE FIRST NATIONAL BANK OF FLOYDADA**



# The 501 Colonial Times all over again

School, school, school. It repeats itself. First you're a student. You learn stuff. Next you learn it again when you help your kids with homework. Then, if you're lucky, you get to revisit the curriculum as a grandparent.

If you skip parenting and go straight to grandparenting (like me), good luck remembering anything from the first time around.



HANABA MUNZ WELCH

Granddaughter Rylee, 13, is currently studying life in Colonial America. All I remember is that the Pilgrims learned how to plant corn from the Indians, who told them to put the seed in the ground when the leaf on the oak tree is the size of a mouse's ear and to throw in a couple of dead fish.

But Rylee doesn't need help with the facts. She needs a costume. She thought I might have one in my closet.

How old does she think I am? Don't answer that.

Rylee gave me a picture to go by - an image of a woman in a long dress with lace edging the scoop neck, her garment accessorized with floppy white cuffs and a long bib-less white apron.

First I got my friend Terri to make both the apron and the cuffs. Next I found a pair of Pilgrim-looking shoes at a thrift store. They already had gold buckles and promised to look more Colonial with bigger buckles. I took a picture, not willing to spend \$3 on something a 13-year-old might spurn, perfect though they were.

Then I went to eight other stores looking for a dress or skirt and top that would work for the rest of her outfit.

The best part of the whole shopping experience was meeting a young sales clerk who remembered the ordeal of Colonial Days from his recent past. His mother had been forced to chop off a pair of his pants to make knee britches.

When I finally took Rylee the makings of her outfit, having found both a black dress and a black skirt and top, she was pleased - especially with the apron.

The cuffs puzzled her.

"They're in the picture," I said, realizing Rylee hadn't scrutinized it as closely as I. But she's got volleyball and soccer, and I don't - which is probably why I'm the one who created a 15-slide PowerPoint on Colonial dress styles.

Regarding the shoes, Rylee said they wouldn't fit. I thought we wore the same size. That was yesterday.

"I'll wear my Converse," she said, referring to the classic high-tops that give us one thing in common, except in my day Converse shoes were just for basketball.

"You can't do that!" I protested. "If you do, don't tell me."

Her mother suggested flip-flops.

"That's worse!" I said.

Both told me not to worry, saying they could Photoshop any pictures they ultimately show me. They'll probably disguise the offending Converse footwear with Pilgrim buckles. I'm cringing.

When you're a grandparent helping with a school project, there comes a time to bow out.

I think maybe I should have stopped with the apron.

## Family Caregiver Support Program provides assistance

Special to The Hesperian-Beacon

The Family Caregiver Support Program is designed to provide assistance, support, and services - such as respite, emergency response systems, or other supplemental services - to caregivers

and their loved one. Caregivers need support in the everyday activities that surround the long-term care of their loved one. This way, caregivers can retain greater control over their personal life and health.

The focus is to empower the

caregiver with training, education, information, support groups, and temporary relief from caregiving responsibilities. The rural area senior centers are provided with books purchased by the caregiver program as well.

To qualify for this program,

the caregiver must be 18 years of age or older providing for a care recipient over the age of 60.

If you are a caregiver and need assistance contact our office and ask for Linda Rautis at 806-762-8721 or 806-687-0940 to have an intake completed.

## Early Fall Color Could Be Sign of Tree Distress

Special to The Hesperian-Beacon

In many parts of North America, people will soon enjoy one of nature's finest shows - fall foliage. Color-changing leaves make for a beautiful display, but early changes in leaf-color can be a sign that your tree is stressed and vulnerable to insect and disease attack.

If the leaves on your trees are changing color sooner than similar trees in the area, consult a professional arborist, who can identify any problems and offer possible solutions.

"Premature color change can be an indication that a tree isn't vigorous enough to withstand insects and disease organisms that may attack it, not to mention the usual changes that occur when the weather turns cold," says Tchucki Andersen, BCMA, CTSP\* and staff arborist with the Tree Care In-

dustry Association. "Occasionally, only one or two limbs of the tree will show premature fall color. This could be a sign of a disease at work, though only the infected limbs are weakened."

The more common situation is for the entire tree to exhibit premature fall coloration, a phenomenon usually linked to root-related stress. "Trees respond to these stresses by trying to curtail their above-ground growth," adds Andersen.

Leaves can be thought of as small factories containing raw materials, products and by-products, all in chemical form and some with color. As the leaf is "abandoned" by the tree, the green chlorophyll - the dominant chemical found in most leaves - is broken down and "recycled," leaving behind other-colored chemicals. Supply lines to the leaves also be-

come clogged, affecting which chemicals are left in the leaf: If the major chemical remaining in the abandoned leaf is red, the leaf turns red; if it's yellow, the leaf turns yellow, and so on.

"The yearly variation in color intensity is due to fluctuating weather conditions, which can affect the balance of chemicals and their composition in the leaves," Andersen says.

Differing amounts of rainfall, sunlight, temperature, humidity and other factors may have an effect on how bright and how long the "leaf-peeping" season will be in any given year.

**Find a Professional:** A professional arborist can assess your landscape and work with you to determine the best trees and shrubs to plant for your existing landscape. Contact the

Tree Care Industry Association, a public and professional resource on trees and arboriculture since 1938. It has more than 2,200 member companies who recognize stringent safety and performance standards and who are required to carry liability insurance. TCIA has the nation's only Accreditation program that helps consumers find tree care companies that have been inspected and accredited based on: adherence to industry standards for quality and safety; maintenance of trained, professional staff; and dedication to ethics and quality in business practices. An easy way to find a tree care service provider in your area is to use the "Locate Your Local TCIA Member Companies" program. You can use this service by calling 1-800-733-2622 or by doing a ZIP Code search on [www.treecaretips.org](http://www.treecaretips.org).

## Texas Oil and Gas Production Statistics for July 2015

AUSTIN — Production for July 2015 as reported to the Railroad Commission of Texas (Commission) is 76,150,903 barrels of crude oil and 656,846,810 Mcf (thousand cubic feet) of total gas from oil and gas wells. These preliminary figures are based on production volumes reported by operators and will be updated as late and corrected production reports are received. Production reported to the Commission for the same time period last year, July 2014, was: 69,573,013 barrels of crude oil preliminarily, updated

to a current figure of 83,999,620 barrels; and 632,494,096 Mcf of total gas preliminarily, updated to a current figure of 736,716,925 Mcf.

The Commission reports that in the last 12 months, total Texas reported production was 997 million barrels of crude oil and 8.4 trillion cubic feet of total gas. Crude oil production reported by the Commission is limited to oil produced from oil leases and does not include condensate (the liquid hydrocarbons produced from gas wells). Condensate is

reported separately by the Commission.

Texas preliminary July 2015 crude oil production averaged 2,456,481 barrels daily, compared to the 2,244,291 barrels daily average of July 2014.

Texas preliminary July 2015 total gas production averaged 21,188,607 Mcf (thousand cubic feet) a day, compared to the 20,403,035 Mcf daily average of July 2014.

Texas production in July 2015 came from 176,180 oil wells and 96,098 gas wells.

For additional oil and gas production statistics, including condensate statistics, visit the Commission website at <http://www.rrc.texas.gov/oil-gas/research-and-statistics/production-data/texas-monthly-oil-gas-production/>.

Note that monthly gas storage statistics reported to the Commission, previously featured in this monthly news release, are now available on the Commission website at <http://www.rrc.texas.gov/gas-services/publications-statistics/gas-storage-statistics/>.

Prices Good Thru 10/31/15

**Store #50**  
102 East Houston Floydada  
806-983-5773

**Store #59**  
209 South Main St Lockney  
806-652-3727

**EXTRA SAVINGS**

Enjoy a  
**BBQ Beef Sandwich**

**Fish or Chicken Tender Basket Deal**  
Includes Potato Wedges

\$3.99 ea

World Famous Beef & Bean Burritos

buy one **FREE** get one

Growers' Pride Orange Juice

59 oz.

\$2.79

**PEPSI PRODUCTS**  
12 PACK, 12 OZ. CANS

\$3.99

**BIGS SUNFLOWER SEEDS**  
5.35 OZ.

2 \$2.50 FOR

**CHEEZ-IT CRACKERS**  
3 OZ.

2 \$2 FOR

# 2015 Hesperian-Beacon FOOTBALL CONTEST

First, second and third place overall winners get cash prizes.  
Those who come in fourth through tenth get a FREE one-year subscription.

|  |  |   |  |  |
|--|--|---|--|--|
| <b>Robin's Nest Photography</b><br>1. Lockney<br>2. Clarendon                | <b>Stapp Paint &amp; Body Shop</b><br>3. Floydada<br>4. Olton                  | <b>Providence Farm Supply</b><br>5. Littlefield<br>6. Childress | <b>Muncy Elevator</b><br>7. Crosbyton<br>8. Quanah       | <b>Lighthouse Electric Co-op</b><br>9. Coronado<br>10. Amarillo High |
| <b>Wright's Auto Service</b><br>11. Snyder<br>12. Big Spring                 | <b>First National Bank Member FDIC</b><br>13. Hale Center<br>14. Tahoka        | <b>Adam's Well Service</b><br>15. Sundown<br>16. Seagraves      | <b>Scott Gin</b><br>17. Ralls<br>18. Memphis             | <b>Quality Body Shop</b><br>19. Texas Tech<br>20. Iowa State         |
| <b>Heart's Desire</b><br>21. Oklahoma<br>22. Texas                           | <b>McCoy Gin</b><br>23. Tennessee<br>24. Georgia                               | <b>Lowe's Floydada</b><br>25. Arizona<br>26. Oregon State       | <b>D &amp; J Gin</b><br>27. Nevada<br>28. New Mexico     | <b>Floydada Power &amp; Light</b><br>29. Illinois<br>30. Iowa        |
| <b>Payne Pharmacy</b><br>31. California<br>32. Utah                          | <b>Cogdell Clinic Mangold Memorial Hospital</b><br>33. TCU<br>34. Kansas State | <b>Lowe's Lockney</b><br>35. Nebraska<br>36. Wisconsin          | <b>Floydada Co-op Gin</b><br>37. Cowboys<br>38. Patriots | <b>Lockney Coop Gin</b><br>39. Packers<br>40. Rams                   |
| <b>Assiter Ins. Agency Assiter Punkin' Ranch</b><br>41. Eagles<br>42. Saints | <b>Crop Production Services</b><br>43. Redskins<br>44. Falcons                 | <b>Ray Lee Equipment</b><br>45. Browns<br>46. Ravens            | <b>R.K. Hunt Photography</b><br>47. Bills<br>48. Titans  | <b>Raceway Fuel</b><br>49. Bears<br>50. Chiefs                       |
| <b>Oden Chevrolet Inc.</b><br>51. Raiders<br>52. Broncos                     | <b>Helena Chemical Co.</b><br>53. Seahawks<br>54. Bangals                      |   |  |  |

## Contest Rules

Floyd County Hesperian-Beacon Football Contest

Any subscriber or purchaser, age 7 or older, is eligible to enter this contest. Only one entry per week, per person. Entrants **MUST** play every week to be eligible for overall prize.

**There is NO COST to play in the contest.**

To play, circle the number of the team you believe will win on the official entry form to the left.

Only entries on official entry forms brought to a Hesperian-Beacon office in Floydada no later than 5 p.m. on Friday will be accepted. Photocopies and mail entries **WILL NOT** be accepted. Three cash prizes are awarded at the end of the contest. In the event of a tie, prizes will be combined and shared equally by those tied.

Print your name and address plainly on the official entry form and double check your choices before clipping out the entry form and depositing it at the Hesperian-Beacon office before 5 p.m. on Friday. Entries are limited to one entry per person, per week.

At the end of the 11-week contest period, the person with the best overall record will win a first place prize of \$100.  
 Second place will be awarded \$75.  
 Third place will be awarded \$50.

CUT ALONG THE DOTTED LINE

### Official Entry Form Floyd County Hesperian-Beacon Football Contest

|    |    |    |    |    |    |    |    |    |    |    |    |    |    |
|----|----|----|----|----|----|----|----|----|----|----|----|----|----|
| 1  | 2  | 3  | 4  | 5  | 6  | 7  | 8  | 9  | 10 | 11 | 12 | 13 | 14 |
| 15 | 16 | 17 | 18 | 19 | 20 | 21 | 22 | 23 | 24 | 25 | 26 | 27 | 28 |
| 29 | 30 | 31 | 32 | 33 | 34 | 35 | 36 | 37 | 38 | 39 | 40 | 41 | 42 |
| 43 | 44 | 45 | 46 | 47 | 48 | 49 | 50 | 51 | 52 | 53 | 54 |    |    |

www.HesperianBeaconOnline.com

Name: \_\_\_\_\_

Address: \_\_\_\_\_

City: \_\_\_\_\_

# Time again to check your Medicare health and drug plans

By Bob Moos

Southwest public affairs officer for the U.S. Centers for Medicare and Medicaid Services

Special to The Hesperian-Beacon

Now's the time for Texans with Medicare to look over their health and drug coverage for 2016. Medicare's annual open enrollment period runs from Oct. 15 until Dec. 7. Even if you've been satisfied with your health and drug plans, you may benefit from reviewing all your options. Some plans have adjusted their out-of-pocket costs and benefit packages for next year. Shopping around may save you money or improve your coverage. Here are five things to know as you sort through the many Medicare health and drug plans available for 2016.

## 1) Generally, health and drug plan premiums will be stable next year.

Texans in Medicare's original fee-for-service program can choose from 25 drug plans with monthly premiums ranging from \$18.40 to \$163 – about the same premium range as last year. The average premiums for basic drug plans will inch up 91 cents to \$32.50 per month. Texans who prefer an alternative to the traditional Medicare program may join a Medicare Advantage health plan sold by a private insurer. You can select from among four to 37 health plans, depending on where you live in the state. Most plans include drug coverage. The average premiums for Medicare Advantage plans will drop 31 cents to \$32.60 per month. Look beyond premiums, though. The only way to determine the true cost of your coverage is to consider other factors like deductibles, co-payments and coinsurance. Medicare's website – [www.medicare.gov/find-a-plan](http://www.medicare.gov/find-a-plan) – has the best tool for helping you narrow your search for a new health or drug plan.

## 2) Check the quality of a health or drug plan's service, too.

To help you identify the best and worst Medicare plans in your area, [www.medicare.gov/find-a-plan](http://www.medicare.gov/find-a-plan) will provide star ratings for each by mid-October. A gold star will show those plans with the highest, five-star rating. A warning icon will alert you to plans that have performed poorly for the past three years. Higher-rated plans deliver a higher level of care, such as managing chronic conditions efficiently, screening for and preventing illnesses, and making sure people get much-needed prescriptions. Higher-rated plans also provide better customer service, with fewer complaints or long waits for care. The well-publicized star ratings have spurred many health and drug plans to improve their performance over the last several years. About 65 percent of Medicare Advantage enrollees are now in health plans with four or more stars, a significant increase from 17 percent in 2009.

## 3) If you need help comparing health or drug plans, it's readily available.

There are four places to turn for assistance: Visit [www.medicare.gov/find-a-plan](http://www.medicare.gov/find-a-plan) to compare your current coverage with new health or drug plans. If you want to make a change, the website will guide you to where to enroll in a new plan. Call Medicare's help line at 1-800-633-4227 at any hour and talk with a customer service representative. Consult your "Medicare & You 2016" handbook, which you should have received in the mail in the last few weeks. The book may also be viewed at [www.medicare.gov](http://www.medicare.gov). Get one-on-one benefits counseling through your State Health Insurance Assistance Program. In Texas, you may call 1-800-252-9240 for the counselors nearest you.

## 4) If you're on a tight budget, see whether you can get help paying for your prescriptions.

If you're having difficulty affording medications, you may qualify for the government's "extra help" program. The amount of help depends on your income and resources. Generally, you'll pay no more than \$2.95 for each generic drug and \$7.40 for each brand-name drug in 2016. To qualify, your annual income can't be more than \$17,655 if you're single or \$23,895 if you're married. Also, your resources can't exceed \$13,640 if you're single or \$27,250 if you're married. Savings and investments count as resources, but homes, cars and personal belongings do not. Thirty-four percent of Texans with a Medicare drug plan get extra help. To apply, visit the Social Security website, at [www.socialsecurity.gov/i1020](http://www.socialsecurity.gov/i1020), or call Social Security at 1-800-772-1213.

## 5) If you think you've been the victim of a plan's deceptive marketing, report it.

Medicare closely monitors plans' marketing activities to make sure they comply with the law. No one should have to put up with high-pressure sales tactics. If you believe you've been given incorrect or misleading information or enrolled in a drug or health plan without your consent, and you haven't been able to resolve the issue with the plan, call Medicare at 1-800-633-4227 or send an email to [surveillance@cms.hhs.gov](mailto:surveillance@cms.hhs.gov). There's no better time to check your Medicare coverage. Any changes you make will take effect on Jan. 1.

## FISHING

From Page 5

waters early, later switching to split shot rigged flukes, Texas rigs and finesses jigs. Crappie are fair to good on minnows and jigs fished shallow. Catfish are fair to good on live bait.

**Oak Creek:** Water stained; 73–81 degrees; 19.44 ft. low. Black bass are fair to good on topwaters early, later switching to Texas rigs and jigs. Crappie are fair to good on minnows and jigs. Catfish are

fair on chartreuse (use Worn-Glo) night-crawlers.

**Possom Kingdom:** Water fairly clear; 74–82 degrees; 1.21 ft. low. Black bass are fair to good on Texas rigs, chatterbaits, drop shot rigs and jigs. Crappie are fair to good on minnows and jigs. White bass are fair on slabs. Striped bass are fair on live shad. Catfish are fair to good on live shad and nightcrawlers.



**RN's and LVN's**  
Hospital (all units),  
Nursing Home and Psych  
Regular Rotations and PRN Shifts  
In and Around Your Area

**TOP PAY RATES**  
**AND 100% of YOUR PAY THE**  
**SAME DAY YOU WORK!**

**\$1,000.00 incentive paid after just 20 shifts!**

**Opening: Nurse**

A shift or two each month or A Full  
Schedule It's Always Your Choice!

**Critical Health Connection, Inc.**  
(888) 653-6877 • [info@chcmedstaff.com](mailto:info@chcmedstaff.com)

Drug Screen and minimum  
of one year experience  
required

## Texas monthly oil and gas statistics

### JULY PERMITS TO DRILL

The Railroad Commission of Texas issued a total of 979 original drilling permits in July 2015 compared to 2,419 in July 2014. The July total included 798 permits to drill new oil and gas wells, 18 to re-enter existing well bores and 163 for re-completions. Permits issued in July 2015 included 240 oil, 81 gas, 589 oil and gas, 61 injection, two service and six other permits.

### JUNE CRUDE OIL PRODUCTION

Texas preliminary June 2015 crude oil production averaged 2,433,903 barrels daily, up from the 2,157,001 barrels daily average of June 2014.

The preliminary Texas crude oil production figure for June 2015 is 73,017,089 barrels, up from 64,710,024 barrels reported during June 2014.

### JULY OIL AND GAS COMPLETIONS

In July 2015, operators reported 1,510 oil, 235 gas, 37 injection and nine other completions compared to 1,958 oil, 234 gas, 73 injection and eight other completions in July 2014.

Total well completions for 2015 year to date are 13,333 down from 18,101 recorded during the same period in 2014.

Operators reported 430 holes plugged and four dry holes in July 2015 compared to 302 holes plugged and zero dry holes in July 2014.

### JUNE NATURAL GAS PRODUCTION

Texas oil and gas wells produced 615,762,474 Mcf (thousand cubic feet) of gas based upon preliminary production figures for June 2015 up from the June 2014 preliminary gas production total of 602,891,617 Mcf. Texas preliminary June total gas production averaged 20,525,416Mcf (thousand cubic feet) a day.

Texas production in June 2015 came from 169,083 oil wells and 90,567 gas wells.

### JULY TEXAS OIL AND GAS DRILLING PERMITS AND COMPLETIONS BY DISTRICT

RRC District: (1) SAN ANTONIO AREA

Permits To Drill Oil/Gas Holes: 120

Oil Completions: 266

Gas Completions: 58

RRC District: (2) REFUGIO AREA

Permits To Drill Oil/Gas Holes: 115

Oil Completions: 65

Gas Completions: 41

RRC District: (3) SOUTHEAST TEXAS

Permits To Drill Oil/Gas Holes: 46

Oil Completions: 118

Gas Completions: 11

RRC District: (4) DEEP SOUTH TEXAS

Permits To Drill Oil/Gas Holes: 29

Oil Completions: 35

Gas Completions: 29

RRC District: (5) EAST CENTRAL TEXAS

Permits To Drill Oil/Gas Holes: 18

Oil Completions: 12

Gas Completions: 3

RRC District: (6) EAST TEXAS

Permits To Drill Oil/Gas Holes: 31

Oil Completions: 24

Gas Completions: 10

RRC District: (7B) WEST CENTRAL TEXAS

Permits To Drill Oil/Gas Holes: 45

Oil Completions: 30

Gas Completions: 4

See **OIL STATS**, Page 14

## Apex Clean Energy

is proud to be a part of

## Floydada's Punkin Day Festival

on behalf of

## Cotton Plains Wind Pumpkin Farm Wind

and

## Old Settler Wind

**Happy Punkin Day Floyd County!**

Learn more about us at:

[www.apexcleanenergy.com](http://www.apexcleanenergy.com)

or

[www.cottonplainswind.com](http://www.cottonplainswind.com)

(806) 424-0823



# Hesperian-Beacon Market Place

Phone: 888-400-1083 • Email: fchb.editor@yahoo.com • 201 W. California, Floydada

## GARAGE SALE

**GARAGE SALE** – 701 West Poplar, Lockney - Saturday, October 10th - 8 a.m. – Noon - 10-8p

## SERVICES

**LARRY OGDEN AUCTIONEERING** – FLOYDADA Estates, Farm, Ranch, Business, Liquidations, State Licensed and Bonded. 806-983-5808. TX #9240. tfn

## FOR SALE OR RENT

**LOCKNEY 4 BEDROOM 2 BATH HOUSE** - 2 Living Areas, Large Dining, CHA, W/D Conn, Carport. \$795 month, \$500 Deposit, 1-year lease. Call 806-983-6059 Texas Licensed Realtor. tfn

**AMADO MORALES CONCRETE WORK** – Driveways, sidewalks, curbs, gutters, patios. Call 806-983-7486. tfn

**Children's Eye Exams**  
Medicaid, Chip, Most Insurances  
3415 19th Street Lubbock  
806-796-2020

Thanks for Reading

## LEGAL NOTICES

### NOTICE OF SPECIAL ELECTION AVISO DE ELECCIÓN ESPECIAL

To the registered voters of the County of Floyd, Texas:  
(A los votantes registrados del Condado de Floyd, Texas:)

Notice is hereby given that the polling places listed below will open from 7:00 AM to 7:00 PM, on Tuesday, November 3, 2015, for voting in a special election to adopt or reject the Proposed Constitutional Amendments as submitted by the 84<sup>th</sup> Legislature, Regular Session, of the State of Texas.  
(Aviso por este medio es que los lugares de votación a continuación abrirá de 7:00 a 19:00, en martes, 03 de noviembre de 2015, para votar en una elección especial para aprobar o rechazar las enmiendas constitucionales propuestas como por la legislatura de 84<sup>o</sup> período ordinario de sesiones, del estado de Texas.)

**On Election Day, a voter may vote at any of the locations listed below:**

(En el día de las elecciones, un votante puede votar en cualquiera de las ubicaciones siguientes:)

Floyd County Courthouse Annex Community Room  
105 South Wall in Floydada  
North End, East and West Doors  
All Precincts  
(Floyd County Courthouse anexo comunidad sala  
105 sur pared en Floydada  
Norte final, este y oeste puertas  
todos los recintos)

First United Methodist Church  
102 West Poplar in Lockney  
North End, Main Street Entrance  
All Precincts  
(primera Iglesia Metodista Unida  
102 oeste Álamo en Lockney  
Norte final, entrada calle principal  
todos los recintos)

**For early voting, a voter may vote at any of the locations listed below, on Weekdays (Monday through Friday) from 8:30 AM to 5:30 PM:**

(Para la votación anticipada, un votante puede votar en cualquiera de los lugares enumerados a continuación, en días laborables (de lunes al viernes) de 8:30 a 17:30:)

Floyd County Courthouse Annex Community Room  
105 South Wall in Floydada  
North End, East and West Doors  
All Precincts  
(Floyd County Courthouse anexo comunidad sala  
105 sur pared en Floydada  
Norte final, este y oeste puertas  
todos los recintos)

First United Methodist Church  
102 West Poplar in Lockney  
North End, Main Street Entrance  
All Precincts  
(primera Iglesia Metodista Unida  
102 oeste Álamo en Lockney  
Norte final, entrada calle principal  
todos los recintos)

**Applications for ballots by mail shall be mailed to:**

(Solicitudes de votos por correo se le enviará a:)

**Ginger Morgan**  
105 South Main – Room 101  
Floydada, TX 79235

**Applications for ballots by mail must be received no later than the close of business October 23, 2015.**

(Aplicaciones para las papeletas por correo deben recibirse a más tardar al cierre de negocios 23 de octubre de 2015.)

Issued this the 2<sup>nd</sup> day of October, 2015  
(Esto publicó el día 2 de octubre de 2015)

*Marty Fuchs*  
Signature of County Judge (Firma del juez del Condado)

## The Floyd County HESPERIAN-BEACON

### DEADLINES

Display ads - Friday @ 5 p.m.  
Legals - Monday @ 12 Noon  
Classified ads - Monday @ 1 p.m.  
Editorial - Monday @ 2 p.m.

E-mail: fchb.editor@yahoo.com  
Telephone: 806-983-3737  
Address: 201 W. California Street,  
Floydada, Texas 79235

*These deadlines must be met in order to guarantee your ad or editorial is placed in the Hesperian-Beacon on the date requested.*

## WE BUY OIL, GAS & MINERAL RIGHTS

Both non-producing and producing, including Non-Participating Royalty Interest (NPRI)

Please provide us your desired price when you contact us and we will evaluate for a possible offer.

**Lobo Minerals, LLC**  
P.O. Box 10906 • Midland, TX 79702  
C: 806-620-1422  
lobomineralsllc@gmail.com

### NOTICE TO CREDITORS

Notice is hereby given that original Letters Testamentary for the Estate of June Ross Hale, Deceased, were issued on September 14, 2015, in Cause No. 6020, pending in the County Court of Floyd County, Texas, to: Clinton Wayne Ware.

All persons having claims against this Estate which is currently being administered are required to present them to the undersigned within the time and in the manner prescribed by law.

Clinton Wayne Ware  
c/o Myatt Law Firm  
P. O. Box 133  
Plainview, Texas 79073

DATED the 28 day of September, 2015.

MYATT LAW FIRM  
709 Broadway  
P. O. Box 133  
Plainview, Texas 79073  
806-494-3514  
FAX: 806-494-3516

By: *Jody L. Myatt*  
Jody L. Myatt  
State Bar No.: 24039084  
ATTORNEY FOR THE ESTATE

### 2016 TEXAS CORN PRODUCERS BOARD ELECTION Voting Region 2

The Texas Corn Producers Board is conducting its 2016 biennial election pursuant to the Texas Commodity Referendum Law, Texas Agriculture Code, Title 3, Ch. 41, Subchapter C, Section 41. The TCPB elections will only be conducted in the 196 Texas counties within three of its five regions, for the purpose of electing five board members to fulfill expired board seats. There are a total of fifteen TCPB voting board members.

There are three seats open for election in Voting Region Two, which consists of Andrews, Archer, Armstrong, Bailey, Baylor, Borden, Briscoe, Callahan, Castro, Childress, Clay, Cochran, Collingsworth, Cottle, Crosby, Dawson, Deaf Smith, Dickens, Donley, Eastland, Fisher, Floyd, Foard, Gaines, Garza, Hale, Hall, Hardeman, Haskell, Hockley, Howard, Jack, Jones, Kent, King, Knox, Lamb, Lubbock, Lynn, Martin, Mitchell, Motley, Nolan, Palo Pinto, Parmer, Randall, Scurry, Shackelford, Stephens, Stonewall, Swisher,

Taylor, Terry, Throckmorton, Wichita, Wilbarger, Yoakum and Young counties.

Corn producers eligible to vote in the election are persons, including the owner of a farm on which corn is produced or the owner's tenant or sharecropper, engaged in the business of producing corn or causing corn to be produced for commercial purposes. The producer must reside within the counties stated above to vote in this voting region.

Any eligible voter-producer may place his or her name in nomination to serve as a director on the TCPB. Nomination applications must be submitted to TCPB, signed by the applicant and ten additional eligible voters.

Nomination forms will be available in all 196 counties where elections are to be held or can be obtained by writing TCPB, 4205 North I-27, Lubbock, TX 79403. Please state your county of residence if you request a nomination form in writing. Nomination

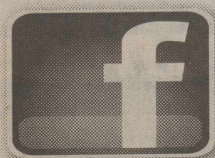
forms will be available Nov. 23, 2015 and must be filed no later than Dec 23, 2015.

The director elections in three voting regions will be held by mail ballot. Ballots containing the nominations of all persons who have validly filed petitions under Section 41.025 of the above stated code will be available Jan. 9, 2016. Ballots will be available at grain elevators and county agent offices in each of the appropriate voting regions, or by writing TCPB at the address stated above. Voters may also vote for board members by "writing in" the name of any eligible persons. Ballots must be postmarked no later than Jan. 23, 2016 to be counted.

TCPB is certified under Section 41.011 and Section 41.021 of the Texas Commodity Referendum Law to conduct this referendum and has obtained all approvals and determinations required by law from the Commissioner of Agriculture, Texas Department of Agriculture.

Find us on Facebook!

The Floyd County Hesperian-Beacon



## IDEAL RECREATIONAL HUNTING TRACTS INTRACOASTAL RECREATIONAL PARADISE The Preserve at LaSalle Ranch • 2,400± Acres

OFFERED IN 4 TRACTS AUCTION  
THURS, OCTOBER 29 • 10 AM

TRACT 1: 690± acres, Highway 185 & intracoastal waterway frontage  
TRACT 2: 540± acres w/ Highway 185 frontage  
TRACT 3: 1,002± acres, fresh water wells w/ intracoastal waterway frontage  
TRACT 4: 247± acres & ¼± mile of intracoastal waterway frontage

PROPERTY TOURS:  
Oct 8 & Oct 20 or by appt  
Call today to reserve your property tour time!



-in conjunction with-  
United Country - Jones Swenson Auction Marketing and Superior Farm & Ranch Realty LLC  
TERMS: 10% buyer's premium on-site bidders & 13% buyer's premium online. See website for complete terms.

800-460-2078  
IntracoastalLandAuction.com

Jerry Michael Jones, TX Auctioneer #6756, TX Broker #339614

## TEXAS STATEWIDE CLASSIFIED ADVERTISING NETWORK TexSCAN

|   |  |  |
|---|--|--|
| <b>TexSCAN Week of October 4, 2015 TRAINING/SCHOOL</b><br>AIRLINE CAREERS begin here - Get started training as FAA certified Aviation Technician. Financial aid for qualified students. Job placement assistance. Aviation Institute of Maintenance. Call 1-800-475-4102. | <b>DRIVERS</b><br>DRIVER TRAINEES - PAID CDL TRAINING! Stevens Transport will cover all costs! NO EXPERIENCE NEEDED! Earn \$800 per week! Local CDL Training! 1-888-589-9677 or drive4stevens.com<br>AVERITT EXPRESS - Start Pay: \$0.40 to \$0.435 CPM + Fuel Bonus! Get Home EVERY Week + Excellent Benefits. CDL-A req. Recent Tractor/Trailer School Grads Welcome. Call Today: 1-888-602-7440 OR Apply @ AverittDrivers.com EOE/AA including Veterans and Disabled. | <b>BUSINESS OPPORTUNITIES</b><br>SAWMILLS FROM ONLY \$4397.00 - MAKE & SAVE MONEY with your own bandmill - Cut lumber any dimension. In stock ready to ship! FREE Info/DVD. www.NorwoodSawmills.com or 1-800-578-1363 ext. 300N  |
| <b>REAL ESTATE</b><br>10.69 ACRES, south of George West. Heavy brush cover, joins large ranch. Deer, hogs, turkey. \$2,272 down, \$414/month, (9.9% - 20 years.) Toll-free 1-800-286-0199 or www.ranchcenterprisesllc.com   | <b>MEDICAL</b><br>SAFE STEP WALK-IN Tub. Alert for Seniors. Bathroom falls can be fatal. Approved by Arthritis Foundation. Therapeutic Jets. Less than 4 inch step-in. Wide door. Anti-Slip floors. American made. Installation included. Call 1-800-606-8052 for \$750 off.   | <b>LEGAL</b><br>SOCIAL SECURITY DISABILITY BENEFITS. Unable to work? Denied benefits? We Can Help! WIN or Pay Nothing! Contact Bill Gordon & Associates at 1-800-755-0168 to start your application today!   |
| <b>LOOKING TO SELL land?</b> Reach over 2-million readers for one low price in the Texas Statewide Advertising Network. Contact this newspaper or call 1-800-749-4793   | <b>GOT KNEE PAIN? Back Pain? Shoulder Pain?</b> Get a pain-relieving brace - little or NO cost to you. Medicare Patients Call Health Hotline Now! 1-800-518-0173   | <b>Run Your Ad In TexSCAN!</b><br>Statewide Ad .....\$550<br>288 Newspapers, 844,050 Circulation<br>North Region Only .....\$250<br>95 Newspapers, 297,505 Circulation<br>South Region Only .....\$250<br>101 Newspapers, 366,627 Circulation<br>West Region Only .....\$250<br>92 Newspapers, 205,950 Circulation<br>To Order: Call this Newspaper direct, or call Texas Press Service at 1-800-749-4793 Today! |

NOTICE: While most advertisers are reputable, we cannot guarantee products or services advertised. We urge readers to use caution and when in doubt, contact the Texas Attorney General at 1-800-621-0508 or the Federal Trade Commission at 1-877-FTC-HELP. The FTC web site is www.ftc.gov/bizop. Extend your advertising reach with TexSCAN, your Statewide Classified Ad Network.

## Would your child be safe in a car seat crash? September 13-19 is National Child Passenger Safety Week

Special to The Hesperian-Beacon

Every parent wants the best for their child, but when it comes to keeping their child safe in the car, there is often confusion surrounding which car seat is safest and how to use it correctly. Even though the majority of parents buckle up their children in car seats, booster seats, or seat belts, most do not use them correctly. According to the National Highway Traffic Safety Administration (NHTSA), nearly 3 out of 4 child safety seats are not used properly, which is a grave risk when traveling. Correctly securing your children properly in age- and size-appropriate child safety seats — in the back seat of a vehicle — is the most effective way to protect them in the event of a crash. In vehicle crashes, car seats reduce the risk of fatal injury by 71 percent for infants and by 54 percent for toddlers. This year National Child Passenger Safety Week will be celebrated from Sept. 13-19th and provides an opportunity for parents to make sure they are transporting their children safely.

Children are at greater risk than adults in a vehicle crash. In fact, motor vehicle crashes are the number one cause of death for children. Crash data from the National Highway Transportation Safety Administration shows that on average, nearly 2 children under age 13 were killed, and 345 children were injured every day in 2013 while riding in cars, SUVs, pickups, and vans. Unfortunately in 2013, nearly 40% of children killed in car crashes were unrestrained — they were not in car seats, booster seats, or seat belts.

That's why Texas A&M AgriLife Extension Service agent Nancy McDonald is urging all parents and caregivers to attend one of the many car seat checkup events or inspections by appointment that will be offered all over the country during National Child Passenger Safety Week. To find a check-up event or inspection by appointment location near you, go

to <http://www.safercar.gov/cpsApp/cps/index.htm> and then check the box for Child Passenger Safety Week 2015.

For a child safety seat to do its job correctly, it has to be:

- Appropriate for your child's age and size,
- Installed properly in your vehicle, and
- Adjusted to fit your child securely.

Follow these guidelines from NHTSA to keep your children riding safely:

- Birth – 12 months: For the best possible protection, your child under age 1 should always ride in a rear-facing car seat. There are different types of rear-facing car seats; infant-only seats can only be used rear-facing. Convertible and 3-in-1 car seats typically have higher height and weight limits for the rear-facing position, allowing you to keep your child rear-facing for a longer period of time.

- 1 – 3 years: Your child should remain in a rear-facing car seat until he or she reaches the top height or weight limit allowed by your car seat's manufacturer. This may result in many children riding rear-facing to age 2 or older. Once your child outgrows the rear-facing car seat, your child is ready to travel in a forward-facing car seat with a harness.

- 4 – 7 years: Keep your child in a forward-facing car seat with a harness until he or she reaches the top height or weight limit allowed by your car seat's manufacturer. Once your child outgrows the forward-facing car seat with a harness, it's time to travel in a booster seat, but still in the back seat.

- 8 – 12 years: Keep your child in a booster seat until he or she is big enough to fit in a seat belt properly. For a seat belt to fit properly, the lap belt must lie snugly across the upper thighs, not the stomach. The shoulder belt should lie snugly across the shoulder and chest and not cross the neck or face. Children under 13 should ride in the back seat!

## OIL STATS

From Page 12

RRC District: (7C) SAN ANGELO AREA  
Permits To Drill Oil/Gas Holes: 99  
Oil Completions: 171  
Gas Completions: 2  
RRC District: (8) MIDLAND  
Permits To Drill Oil/Gas Holes: 292  
Oil Completions: 802  
Gas Completions: 19  
RRC District: (8A) LUBBOCK AREA  
Permits To Drill Oil/Gas Holes: 65  
Oil Completions: 87  
Gas Completions: 0  
RRC District: (9) NORTH TEXAS  
Permits To Drill Oil/Gas Holes: 71  
Oil Completions: 112  
Gas Completions: 38  
RRC District: (10) PANHANDLE  
Permits To Drill Oil/Gas Holes: 48  
Oil Completions: 69  
Gas Completions: 20

### JUNE TEXAS TOP TEN OIL PRODUCING COUNTIES RANKED BY PRELIMINARY PRODUCTION COUNTY – CRUDE OIL (BBLs)

1. KARNES – 6,417,473
2. DEWITT – 4,776,077
3. LA SALLE – 4,510,290
4. GONZALES – 3,258,072
5. MIDLAND – 3,146,491
6. MARTIN – 3,091,979
7. UPTON – 3,036,673
8. ANDREWS – 2,984,605
9. MCMULLEN – 2,742,131
10. REEVES – 2,623,828

### JUNE TEXAS TOP GAS PRODUCING COUNTIES RANKED BY PRELIMINARY PRODUCTION COUNTY – TOTAL GAS (MCF)

1. WEBB – 55,710,856
2. TARRANT – 50,070,517
3. PANOLA – 26,862,621
4. DIMMIT – 23,458,829
5. JOHNSON – 21,901,481
6. DEWITT – 21,515,359
7. WISE – 19,621,036
8. KARNES – 18,831,778
9. LA SALLE – 17,384,336
10. DENTON – 17,326,249

## National Ranching Heritage Center Debuts Grant-Funded App

Special to The Hesperian-Beacon

The National Ranching Heritage Center (NRHC) at Texas Tech University has introduced an app for mobile devices that will allow visitors to take self-guided tours, learn more about objects in the museum and plan their visit to one of the nation's premier museums for ranching heritage.

The app is designed to make an NRHC visit fun for all ages. It includes a GPS-enabled tour of the historical park and provides information on the 49 structures. Visitors can access as much information as they would like as well as determine their location in the 27-acre park. It also

has interactive games such as a history quiz and scavenger hunt for older children and a "critter count" for younger children who may want to count the lizards, jackrabbits and other animals they see in the park.

The app is available on the App Store and Google Play and is free to download.

The app has many of the same features as apps from world-class museums like the Metropolitan Museum of Art and the Guggenheim Museums and Foundation in New York City. Julie Hodges, Helen Devitt Jones director of education, said planning for the app started in March 2014. The goal was to better meet vis-

itors' needs by going where many visitors already were — smartphones and tablets.

"As usage of digital platforms increase among consumers, NRHC and other cultural institutions are working to find ways to meet the evolving needs and expectations of their audiences," Hodges said. "By meeting these needs and expectations we can create a more interactive experience, attract new visitors and provide supplementary information about artifacts, historic structures and exhibitions."

The app also has a postcard feature with branded frames so visitors can get a fun picture of themselves to upload to social media and share with friends and

family.

The app is helpful before and after a visit to the NRHC as well. Visitors can join the Ranching Heritage Association, view upcoming events on the interactive calendar and find nearby restaurants, hotels and other points of interest.

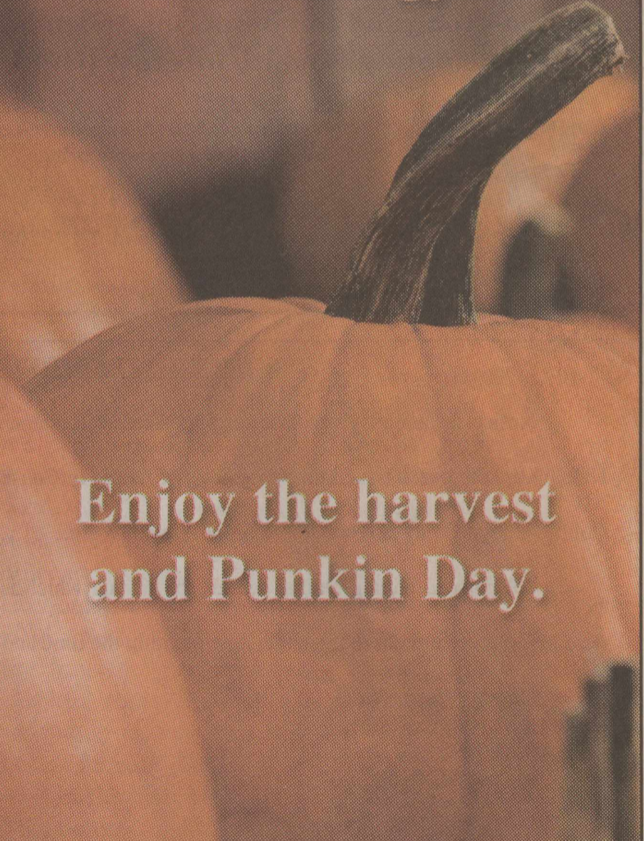
"Technology is a powerful educational tool," Hodges said. "Children have a natural affinity for it. Countless studies and scholarly articles argue that integrating technology into learning is central to creating the meaningful learning opportunities that will engage and motivate youth."

The NRHC received a grant from the Amon G. Carter Foundation to develop the app and a grant from the South Plains Foundation for the purchase of 20 iPads for school groups visiting the center.

Find Texas Tech news, experts and story ideas at Texas Tech Today Media Resources or follow us on Twitter.

CONTACT: Julie Hodges, Helen Devitt Jones director of education, National Ranching Heritage Center, Texas Tech University, (806) 742-0498 or [julie.hodges@ttu.edu](mailto:julie.hodges@ttu.edu).

Proud to be a partner with Floyd County. Saluting agriculture and energy.



Enjoy the harvest and Punkin Day.

