

XXXXXXXXXXXXXXXXXXXX5-DIGIT 79235  
 Floyd County Histori Museum  
 PO BOX 304  
 FLOYDADA, TX 79235-0304

**Out with the Old. In with the New.**  
**Dec 31 - 50% off almost**  
**Everything in the store!**  
**Closed Jan 1 & Jan 2**

Heart's Desire  
 M-F 10 am - 6 pm Sat. 10 am - 6 pm  
 www.heartsdesireonline.com  
 120 S Main Lockney (806) 652-2548

**ACE HARDWARE & LUMBER**  
**We have appliances**  
**• Crosley • Amana • Speed • Queen**

**ACE** 1101 S. Ralls HWY., Floydada  
 www.floydadahardware.com

**Shop Our Christmas Sale**  
 Wedding Shower  
 Maggie Vick & Nick Brown  
**Payne Pharmacy**  
**Happy New Year**  
 Will be closed January 1  
 Open Sat. January 2  
 Monday - Friday 8:30-6:00 p.m. Saturday 8:30 - 1:00 p.m.  
 200 S. Main St. Floydada  
 (806) 983-5111 • (800) 345-7961



The Floyd County  
**HESPERIAN-BEACON**

©The Floyd County Hesperian-Beacon

(USPS 202-680)

www.hesperianbeacononline.com

**VOLUME 114 NUMBER 1 THURSDAY, DECEMBER 31, 2009 6 PAGES - 75¢**



Staff Photo by Jim Huggins

**COLD WEATHER HAZARD** – A water main broke Tuesday morning in downtown Lockney and sent water spewing up through the brick pavement on Main Street.



Courtesy Photo

**POOL DONATION** – Jeff and Cindy Bertrand donated to the Friends of the Lockney Swimming Pool repair fund. Thank you Miss Lesca for water proofing so many of our kids over the years. Pictured are Lesca Durham, Blake Fawver, Elizabeth Bertrand and Hallie Bertrand.

**State housing agency awards \$1.6 million**

(AUSTIN) – The Texas Department of Housing and Community Affairs (TDHCA) and State Representative Joe Heflin have announced a major award to a regional nonprofit organization designed to generate a wide array of jobs that will help jump start the region's construction industry, while increasing home energy efficiency for low income households, reducing their cost burden, and creating a healthier environment.

TDHCA awarded \$1.6 million in federal stimulus funding to South Plains Community Action Association to weatherize the homes of low income residents living in Bailey, Cochran, Crosby, Dickens, Floyd, Garza, Hale, Hockley, King, Lamb, Lynn, Motley, Terry, and Yoakum counties.

"I am extremely pleased to see these federal-stimulus funds reaching communities in my district."

(continued on Page 6)

**Gov. Perry Activates State Resources as Precautionary Measure as Winter Storm Threatens Texas Communities**

AUSTIN – Gov. Rick Perry has directed the activation of state resources, including Texas Military Forces personnel and high profile vehicles, as a precautionary measure as a severe winter storm threatens many Texas communities. These resources will be used to provide assistance to motorists and others in the coming days.

"Another severe winter storm is bearing down on Texas communities and will create dangerous driving conditions as travelers make their way to and from holiday celebrations. I urge Texans in the projected path of this storm to remain cautious, pay attention to changing weather conditions and heed warnings from your local officials," Gov. Perry said. "We will continue to closely monitor this storm to ensure state resources can quickly assist the impacted communities, and I appreciate the brave men and women who are always ready to respond to events that place Texans in harm's way."

The National Weather Service is predicting a severe winter storm system will affect Texas communities, stretching from El Paso to Dallas/Fort Worth, starting late today and extending over the next few days. Local law enforcement, the Texas Department

of Public Safety (DPS), the Texas Department of Transportation (TxDOT) and the Texas Military Forces will assist motorists and perform any necessary rescues. Aviation assets are on standby should they be needed to assist with surveillance and potential rescues.

The following state resources responding include:

•Four teams of 17 Texas Military Forces personnel and 5 high profile vehicles have been activated and prepositioned; one team each in Abilene, Amarillo, Lubbock and Wichita Falls.

•All TxDOT district offices in the affected area stand at a high level of readiness and are prepared to provide assistance as needed to motorists and to clear snow from the roadways.

•The DPS Disaster Districts in Abilene, Amarillo, Lubbock, and Wichita Falls are prepared to fully activate and support their districts, and all DPS troopers in the impacted and surrounding area are prepared to provide assistance to motorists and others.

The State Operations Center is fully activated and working with the National Weather Service to closely monitor this severe weather event.



Photo Courtesy of Gina Adams

**SNOW DEER**—On Christmas Day Tyler Derryberry of Floydada (right) and Chance Baker of Lubbock (left) decided to do something a little bit different and sculpt a deer out of the snow that Floydada received Christmas Eve instead of building the traditional snowman.

**Hackberry Creek Care Center**

*Need Nursing Home placement for your loved one?*

Call Hackberry Creek Care Center. We are a brand new, state of the art skilled nursing facility located in beautiful Matador.

**"A Place To Call Home"**

Please contact John Vunk, Administrator  
 or  
 Amy Cruz, Assistant Director of Nursing

**806-347-2942**

**Wishing you and yours a safe and happy New Year!**

**The Floyd County Hesperian-Beacon**

# OPINIONS



## The Paperboy

By Christopher Blackburn

### No Christmas Card This Year

For the past several years, our family Christmas card has been a photo of the four of us. This year, we didn't get a photo taken, thus, no card.

In addition, with all that we've been through and the outpouring of love we've received from so many, we originally wanted to send Christmas cards to darn near everyone. In the end, the cards never materialized. We simply ran out of time to make it happen.

At one point, I thought about writing a letter featuring family highlights of the past year. That didn't happen either.

Had I written a letter, I certainly would have mentioned how the awesome power of prayer has had a dramatic effect on the physical and mental well-being of my family. Simply put, our family, friends and neighbors have sustained us with their support.

In my hypothetical Christmas letter, I surely would have mentioned how the acts of kindness, food, flowers and cards lifted our spirits greatly. We've been in awe of so many and how thoughtful people can be. Sharon and I both agree that we are better people because of the people around us.

Surely I would have remembered to thank businesses and individuals we deal with. When you drop your normal routine and basically live in another city for a month, many things can fall through the cracks regardless of what you think you are taking care of. Again, we are blessed in our many professional relationships as business needs to continue regardless of the situation.

One of the most important things I would have said in the letter was how we appreciate the love and support shown to our children. Our two sons have been cared for by so many people. I doubt the boys have a clue how dire things were at times, and that is a result of caring friends and family keeping them active and happy (as well as rested and fed).

No letter would have been complete without mentioning how strong our relationship is, as husband and wife. Not that it is anyone's business, but what was already a strong relationship and been reinforced with faith and determination. When you see your partner fight with everything they have ... every fiber in their being, it is hard to convey the feelings of adoration which develop. I now know without a doubt that my wife is ready to face whatever life throws our way and that she is truly formidable and resilient. There is great comfort in that thought.

During a conversation over the weekend, Sharon and I were discussing how we both feel like we've been in a cloud for nearly three months. Now we feel the clouds have started clearing and the forecast calls for a beautiful life together. A life made much better because of what many of you have done for us in one way or another. Our humble gratitude is yours and our prayer is that each of you have the best year of your life thus far in 2010.

Copyright Christopher Blackburn 2009

Christopher Blackburn is the president of Blackburn Media Group, owner of this publication. Feel free to comment on The Paperboy at <http://thenewbastion.blogspot.com/>

Get involved in your community, Send us a letter to the editor!

### Auction Calendar

Tuesday, January 12, 2010 - Sale Time: 9:00 a.m.

**Bishop Farms—Owner**

Located: Edmonson, Texas - Selling: Combines, Cotton Equipment, Tractors, Trucks, Farm Equipment

Wednesday, January 13, 2010—Sale Time: 9:30 a.m.

**Squires Farms—Owners**

Located: Springlake, Texas—Selling: Combines, Cotton Equipment, Tractors, Trucks, Farm Equipment

Thursday, January 14, 2010—Sale Time: 10:00 a.m.

**Jeff Rainey Estate—Owners**

Located: Lamesa, Texas—Selling: Tractors, Cotton Equipment, Farm Equipment

Saturday, January 16, 2010—Sale Time: 10:00 a.m.

**Bobby Pool—Owner**

Located: Groom, Texas—Selling: Farm Equipment

Tuesday, January 19, 2010—Sale Time: 10:00 a.m.

**Barker Farms—Owners**

Located: Plainview, Texas—Selling: 160 Acres Dry Land, Farm Equipment, Hog Equipment

Wednesday, January 27, 2010—Sale Time: 10:00 a.m.

**Jerry Ford—Owner**

Located: Lockney, Texas—Selling: Cotton Equipment, Tractors, Farm Equipment

Saturday, January 30, 2010—Sale Time: 10:00 a.m.

**Mitchell Farms—Owner**

Located: Hart, Texas—Selling: Tractors, Cotton Equipment, Farm Equipment

JIM SUMNERS.....(806) 864-3611  
(10006)  
(HOME)  
JIMMY REEVES.....(806) 864-3362  
(Clerk)  
(HOME)  
DONNA NOEL.....(806) 293-1124  
(Secretary)  
(HOME)  
Please Bring Bank Letter.

### Five Star Auctioneers

OFFICE: (806) 296-0379 — P. O. BOX 1030 — PLAINVIEW, TEXAS 79073-1030

WEB SITE: WWW.5STARAUCTIONEERS.COM

Terms of Sale: Cash, Personal or Business Check, Cashier's Check

All Accounts Settled Day of Sale — Lunch Will Be Available

NOTE: Please Bring Your Own Check Book. If You Have Not Established Yourself With Our Company.

### THE FLOYD COUNTY HESPERIAN-BEACON

Published weekly each Thursday at

111 E. Missouri St., Floydada, Texas 79235.

Periodical postage paid at Floydada, Texas 79235.

Postmaster: Send change of address to: The Floyd County Hesperian-Beacon, 111 E. Missouri Street, Floydada, TX 79235 (806) 983-3737 • www.hesperianbeacononline.com

### Letters to the Editor Policy

Letters should be no more than 200 words and can be mailed to the Floyd County Hesperian-Beacon, 111 E Missouri St., Floydada, Texas 79235. Please include your street mailing address (no P.O. boxes), daytime phone number and full name and signature. Our e-mail address is floydada@amaonline.com.

### More Moms Have to Go to War

By Nancy Fulton

In 2001, after the attack on the twin towers, the US went to war in Afghanistan. Since the folks that had attacked us were funded by Saudi Arabians, and the people of Afghanistan are some of the poorest and most insular on earth, that didn't make much sense. But we've spent almost 10 years moving the rubble around to the tune of a few hundred billion a year anyway.

Attacking Iraq in 2003 made even less sense since they had absolutely nothing to do with the 9/11 attack, had one of the most westernized/secular regimes in the region, and were fully contained by a very effective no-fly zone. We've been at war there for more than seven years . . . and all we've done is set up a puppet government that will fall unless US military forces and vast sums of military aide are continuously poured into Iraq to maintain it.

Here in the US . . . most of us have managed to do a pretty good job of ignoring both wars. And one can make the case that's kind of adaptive. If people of the US allowed ourselves to get violently angry every time our government did something completely stupid, our society would rip itself to bits. So we all work hard to ignore the crap it does.

But now it is time for us to start a war of our own and I think Mothers are going to have to be on the front lines.

#### Yes, I Mean You . . .

Most of us Mom's can barely manage to get the kids to school and feed them dinner every day. Most of us work. Most of us are responsible for doing the laundry, paying the bills, getting the dog to the vet and taking Grandma to the doctor.

Most of us have barely five minutes a day to call our own.

But I'm here to make the case that if you love your kids you had better decide to spend that five minutes every day working hard to end these two stupid wars.

Our lack of effective political action has cost us a great deal in the last decade and it is on the verge of costing is a great deal more in the months to come. Ignoring these wars and all the related government spending is like ignoring a lump in your breast or your husband's chest pains.

You'll live to regret your mistake very much.

#### I Know You Don't Have Much Time . . . So Here's the Low Down

The wars in Iraq and Afghanistan have cost the US about one trillion dollars (\$1,000,000,000,000) in cold hard cash. Since the war was paid for by deficit spending, which is effectively like paying for it with high interest credit cards), and since those direct costs don't take into account the impact on VA and veterans benefits going forward, or the cost to states, National Guardsmen and their equipment, the price is actually two or three times higher.

Much of the money we have spent has gone to companies like Kellogg Brown Root, who poisons the water our soldiers drink and electrocutes them in their showers, and Blackwater, who (unconstrained by the Universal Code of Military Justice), commits atrocities that get our military men killed. These companies, and all the other military contractors our money has been "donated" to, have very active "political lobbies" that we've funded insanely well over the last decade.

Believe me, hundreds of millions of the dollars you and have have "invested" on fighting this war are being used to keep it going in perpetuity by the folks who make a profit from it.

Spending all this money on war has meant not spending it on education, jobs, or anything else you or your family benefit from.

In fact, this spending has siphoned money from every program that provides any direct benefit to you, including law enforcement, government regulation that's supposed to protect your food, water or financial investments. It has even gutted disaster relief programs, as we saw in New Orleans.

#### The Problem has Become Critical So You Have to Take Effective Action Now

The United States is currently in an economic crisis which has occasioned more than two trillion dollars of deficit spending in the last year alone. The government tells us that the unemployment rate is over 10%, and that doesn't take into account the 5%-7% that have been unemployed so long that they no longer have benefits.

States, ranging from Arizona and Michigan to California are collapsing due to lack of tax revenues and an explosion in the number of people who need food, housing and health care.

Safety nets that protect children, the elderly and the infirm are evaporating. Cuts to education from kindergarten through University are making it harder for folks who live in this country to get the skills they need to build the infrastructure and economy that we'll need to support the 10 Billion or so people who will be living on this planet in 2050.

Fifty percent of all bankruptcies are related to medical bills, and the multitrillion dollar bailout we are about to give the health insurance industry does nothing to stop that. Across the US, people are losing their homes while Federal bailout programs that prop up banks and ensure investors who purchased Mortgage Backed Securities won't lose a dime.

We are being told we can't afford to have programs that help people start new new businesses, find jobs, have health care or educate their children . . . But we can continue to fund these two stupid wars.

If you are a mother with kids, and you'd like to see them have a future, its time to commit yourself to taking some meaningful action. If you don't want your kids to be living hand to mouth for the rest of their lives, beggared by the cost of caring

Thanks For Reading  
The Floyd County Hesperian  
Beacon

Estate Planning - Retirement Savings  
Family Protection - Loan Requirements

ALL GOOD REASONS  
FOR LIFE INSURANCE

### GOEN & GOEN

HAS A POLICY TO FIT YOUR NEEDS  
Come by for more information

102 E. California St., Floydada • 983-3524

www.goen-goen.com

Wishing  
you a  
Happy  
New Year

## TDHCA released \$117.4 million in energy assistance funds

The Texas Department of Housing and Community Affairs (TDHCA) today released \$117.4 million in energy assistance funds designed to help low income Texans pay their energy bills while providing the consumer education and case management needed to reduce their dependence on future government assistance.

The funds were awarded to 50 cities, counties, and nonprofit organizations through the Department's Comprehensive Energy Assistance Program (CEAP), a utility co-payment assistance program that also helps eligible households better manage their energy consumption for a safe, affordable environment. Funding contracts are effective January 1, 2010.

According to Michael Gerber, TDHCA Executive Director, CEAP plays a critical role in the Department's mission of fostering affordable housing because energy costs consume a much greater percentage of a low income family's annual income than that of the average Texas household.

"The cost of heating and cooling a home significantly impacts a low income household's ability to afford their home," Gerber said. "This important funding award will help our most vulnerable residents, particularly elderly persons and home with very young children, meet their utility costs and avoid a potential health or financial crisis. Our goal is to help low income Texans pay their bills in the short-term while helping them achieve self-sufficiency in the long-term."

Studies indicate that the average family in Texas spends approximately 3.7 percent of their annual household income on utility costs, while low income households can spend as much as 12.2 percent of their annual household income to pay their utility bills.

The Department annually assists more than 68,000 low income Texans through CEAP services, helping low income households meet their immediate energy needs and control future energy

costs through consumer education. In addition, some households may qualify for the repair or replacement of inefficient heating and cooling equipment.

Services are provided at the local level by contract organizations serving all 254 counties in Texas and target households earning an annual income of less than \$26,500 for a family of four. These organizations accept applications for assistance, determine eligibility, and provide direct service to clients. Service providers include Community Action Agencies or other qualifying nonprofit organizations, Councils of Government, and local city or county governments.

The U.S. Department of Health and Human Services is the funding source for CEAP through its Low Income Home Energy Assistance Program (LIHEAP). Funds are allocated as a block grant to states based on a formula which includes weather related factors and low income populations.

To find the nearest CEAP provider, call toll free at (877) 399-8939 between 8 a.m. and 5 p.m., Monday through Friday. Callers will automatically be connected with the CEAP service provider serving their county. However, callers must use a land-based phone when dialing the toll free number; cell phones will not make this automatic connection.

### About the Texas Department of Housing and Community Affairs:

The Texas Department of Housing and Community Affairs is the state agency responsible for The Texas Department of Housing and Community Affairs is the state agency responsible for affordable housing, community services, energy assistance, colonia housing programs, and disaster recovery housing programs. It currently administers \$2 billion through for-profit, nonprofit, and local government partnerships to deliver local housing and community-based opportunities and assistance to Texans in need.

## TDA Market Recap Dec. 28, 2009

AUSTIN – For the week ending Dec. 26, feeder cattle price trends at Texas auctions are not available as most locations were closed for the Christmas holiday. One sale early in the week did report prices \$2 to \$5 higher per hundredweight. Fed cattle prices were higher in light holiday-week trade. Cotton and wheat prices ended the week modestly lower. Corn and grain sorghum were higher as markets continue to adjust to potential corn production losses from snow storms in the Midwest. As for futures markets, fed cattle and corn ended the week higher while feeder cattle, cotton, wheat and lumber were lower. Weather and crop progress information are not available this week, as USDA has suspended its report until after the first of the new year.

|                            |                 | Week Ending<br>Dec. 26, 2009 | Previous<br>Week | Previous<br>Year |
|----------------------------|-----------------|------------------------------|------------------|------------------|
| <b>Texas Cash Markets:</b> |                 |                              |                  |                  |
| Feeder Steers              | (\$/cwt)        | na                           | 98.66            | 89.72            |
| Fed Cattle                 | (\$/cwt)        | 83.13                        | 82.02            | 85.84            |
| Slaughter Lambs            | (\$/cwt)        | na                           | 133.50           | 126.50           |
| Slaughter Goats            | (\$/cwt)        | na                           | 160.00           | 131.50           |
| Cotton                     | (¢/lb)          | 69.00                        | 69.50            | 44.00            |
| Grain Sorghum              | (\$/bu)         | 6.17                         | 6.08             | 5.31             |
| Wheat                      | (\$/bu)         | 4.44                         | 4.47             | 5.03             |
| Corn                       | (\$/bu)         | 3.98                         | 3.93             | 3.90             |
| Oranges                    | (\$/carton)     | 12.28                        | 11.78            | 9.65             |
| Grapefruit                 | (\$/carton)     | 13.65                        | 13.65            | 11.65            |
| Cabbage                    | (\$/carton)     | 6.00                         | 6.50             | 6.25             |
| <b>Futures Markets:</b>    |                 |                              |                  |                  |
| Feeder Cattle              | (\$/cwt)        | 94.62                        | 94.72            | 92.82            |
| Fed Cattle                 | (\$/cwt)        | 83.07                        | 82.05            | 85.90            |
| Cotton                     | (¢/lb)          | 73.65                        | 72.28            | 46.18            |
| Wheat                      | (\$/bu)         | 5.22                         | 5.24             | 6.16             |
| Corn                       | (\$/bu)         | 4.09                         | 3.98             | 4.12             |
| Lumber                     | (\$/1000 bd ft) | 209.00                       | 211.40           | 175.50           |

All cash prices above are market averages for locations covered by the TDA Market News program and do not reflect any particular sale at any specific location. Feeder cattle prices are for 500-600 pound medium and large No.1 steers. Futures prices are quoted for the nearest month contract on the last trading day of the week. For additional information, contact TDA Market News at (800) 252-3407 or visit our Web site, www.tdamarketnews.com.

## VJ's News

By Vera Jo Bybee

I know all of you have had a wonderful Christmas and are looking forward to celebrating a Happy New Year. Can you believe it will be 2010? I pray that God will be watching over all of us and will keep us all healthy and well.

I am sorry I don't have any news for you this week. Not one person called to tell me who all they had visiting them on Christmas. I have been home all week watching TV, reading, checking my email and playing games on my laptop. Louie came and shoveled my sidewalk off, but it is still icy since it is on the north side of the house. Becky has brought my paper up on the porch to me. I want also want to thank Elsa Cooper for risking walking on the ice to bring me my paper.

I nearly forgot that Bobbye Lu Casey Bean of Silverton did email me that all of her and Walter's children came last Sunday for Christmas and went to church with them. That was wonderful.

I do know that we need to keep Tracy Long and her family in our thoughts and prayers on the passing of her father. I will have more information next week on his name and where he

was buried, etc.

Also please keep all of our ill friends on your prayer list.

I promise you I will do some calling next week and have more news for you. Please call me at 652 2357 or email me at vjb48@att.net what news you would like for me to put in the paper.

Thank you, VJ.

### MENU

January 2-8

Saturday, Jan. 2: breakfast 8 a.m.

Monday: tacos

Tuesday: hamburger steak

Wednesday: chicken and rice

Thursday: Frito pie

Friday: beef nachos

**AMA-TECHTEL**

Satisfy your need for speed!

AMA-TECHTEL brings you high-speed fixed wireless internet access. With speeds up to 50 times faster than dial-up and access that's always on, you'll connect to the world faster than ever.

AMA-TECHTEL is committed to providing the latest technology and the best customer service, so no matter who you're connecting with, you can count on us to get you there.

Now you can have the fastest, most reliable internet service available. So act fast; contact your local distributor today!

ASSITER INSURANCE  
120 W. CALIFORNIA • 983-2511



**TEXAS**  
Auto • Home • Life

**For all your Insurance Needs...**

Whether you need Auto, Home, or Life Insurance, you can be sure that we will work hard to provide you the best coverage for your money. That's why people from all walks of life depend on Texas Farm Bureau Insurance.

**FLOYD COUNTY**  
101 S Wall • Floydada, TX 79235  
(806) 983-3777

**BRISCOE COUNTY**  
802 Lone Star • Silverton, TX 79257  
(806) 823-2234

James Race, LUTCF Agency Manager  
David True, LUTCF Agent  
Tammy Brannon Agent  
Chris Fulton Agent

sfbli.com • txfb-ins.com

## Floydada School Menu January 4 - 8

**MONDAY**  
Breakfast-Cheese pizza or cereal and graham crackers, juice, milk  
Lunch- Chicken fajitas, refried beans, salad, orange smiles, chocolate pudding cup, milk

**TUESDAY**  
Breakfast- Sausage/biscuit or cereal and graham crackers, juice, milk  
Lunch- Stuffed baked potato, baby carrots/ranch, fresh fruit cup, Texas toast, milk

**Wednesday**  
Breakfast-Pancakes/syrup or cereal and graham crackers, juice, milk  
Lunch-Chicken fried steak, mashed potatoes/gravy, green beans, hot roll, strawberries w/whipped

topping, milk

**Thursday**  
Breakfast- Oatmeal and cinnamon toast or cereal and graham crackers, juice, milk  
Lunch-Meat and beans chalupas, Spanish rice, lettuce & tomatoes, rosie applesauce, milk

**Friday**  
Breakfast-Breakfast burrito or cereal and graham crackers, juice, milk  
Lunch-Submarine sandwich, lettuce, tomatoes, pickles, tater tots, brownie, milk

## Lockney School Menu January 4-8

**MONDAY**  
Breakfast: mini corn dogs or cereal, toast, juice, milk  
Lunch: chicken nuggets or burrito, potatoes, green beans, pears, roll, milk

**TUESDAY**  
Breakfast: rice or cereal, toast, juice, milk  
Lunch: nacho grande or tuna sandwich, corn, salad, pineapple, milk

**WEDNESDAY**  
Breakfast: waffle or cereal, toast, juice, milk

**Lunch:** chicken quesadillas or grilled cheese, pinto beans, salad, fruited gelatin, milk

**THURSDAY**  
Breakfast: eggs/bacon or cereal, toast, juice, milk  
Lunch: pizza or corn dog, salad, peaches, milk

**FRIDAY**  
Breakfast: cinnamon roll or cereal, toast, juice, milk  
Lunch: hamburger or tuna sandwich, baked fries, salad, orange smiles, milk

**Thanks for Reading**

We are proud to offer

**CIRCLE E CANDLES**

983-2220

Come see Stacie at Scott Gin

Two miles south on the Ralls Hwy.

got news?  
Call The Hesperian-Beacon  
983-3737

**happy new year**

**From Willie and Faye!**

# Floyd County Classifieds

Call 806-983-3737 or 806-652-3318

website: www.hesperianbeacononline.com

e-mail: fchb.editor@yahoo.com

## Services

**GARAGE DOOR SERVICE**—New sales or repair. Call Scott Taylor, 983-4701.

1-14c

**LARRY OGDEN AUCTIONEERING** Estates, Farm, Ranch, Business, Liquidations, State Licensed and Bonded. (806) 983-5808. TX. #9240.

tfn

**CEMENT WORK**—Need a new driveway, sidewalk, patio or flowerbed curb? Call Gary Bennett at 983-5120 (home) or 778-8549 (cell).

tfn

**COVINGTON CONSTRUCTION**—Home repairs and remodels. Call me, Monte Covington, 548-3357.

tfn

**ERNIE'S LAWN SERVICE**—Includes tree trimming and leaf clean-up. Call Ernie Torrez, Sr. - 806-685-4539 or 806-983-3365.

tfn

## Pets

**HUGE REWARD!!** Lost miniature Schnauzer in Claude, Texas. Has floppy ears. Gray and white. Call 806-584-6220.

1-7p

**BORDER COLLIE PUPS** for sale. Poco Bueno Stock Dogs. Call Tim at 983-3322 or email: tim@pocosd.com

tfn

**ALPHATEX KENNEL, AIKEN, TEXAS** offers superior quality AKC Registered, DNA Certified Collies, Golden Retrievers and German Shepherds. Puppies and stud service available.

www.alphatextkennels.com

tfn

## Houses for Rent

**FOR RENT**—3 bedroom, 2 bath house. 740 W. Ross. Call 292-7990.

1-7p

**\*\* FOR RENT**—Section 8 welcome. 3 bedroom, 1 bath. \$595 month. 721 W. Grover.

**\*\* FOR RENT OR SALE**—2 bedroom, 1 bath. Rent \$450 month. 738 W. Grover. Owner will finance with \$4000 down. Call Dustin, 806-535-4278.

tfn

## Houses for Sale

**FOR SALE**—Large 3 bedroom, 2 bath, central heat. \$19,900 Cash, FIRM. AS IS. 406 W. Mississippi. Call 806-685-0194.

tfn

**HOUSE FOR SALE**—3 bedroom, 2 bath, large utility. Lots of storage. Large corner lot. \$74,000 REDUCED \$65,000. 801 W. Tennessee. Call 806-983-2040.

tfn

**HOUSE FOR SALE**—818 W. Georgia Street. Approximately 2400 sq. ft. 4 bedroom, 2 bath with large storage building and new carport. Corner lot. Call 806-543-3932 or 806-634-0658.

tfn

**LARRY JONES REAL ESTATE**—\*\* Very nice 3 bed-2 bath home on 3 lots with 1 bed-1 bath apartment! REDUCED PRICE!!!

\*\* Cute 3 bed-1 bath home with 2 car carport -Motivated Sellers!!

\*\* One and Half story home with 3 bed-3 bath, office, workshop, etc., recently remodeled - Great Home!!

\*\* Fixer-upper -2 bed-1 bath with 1 car carport -Low Price!!

\*\* Higginbotham-Bartlett buildings and lots -Great Buy!!!

\*\* Office building downtown with 5 internal offices -fax, phone, internet ready!

Call Dedra at 543-7540 for more details or appointment.

tfn

**HOUSE FOR SALE** - 745 W. Grover Street. Cash offers only. Investors take notice. All offers considered. Call Milton, 806-790-0827

1-14c

**HOUSE FOR SALE**  
1222 Ralls Highway  
3 BR, 1 1/2 bath  
1-car garage, brick  
305 W. Georgia  
2 BR, 1-car garage  
\$17,500. Make offer  
Call Bill Strickland at  
Roberts & Wilkins Realtors  
(806) 292-1687

tfn

## Miscellaneous

**TEXAS PLAINS FEDERAL**  
206 W. California, Floydada  
Remember us for all your personal financial needs - CD's, loans, checking and savings accounts. Call Laura at 983-3922 or visit our website at: www.texasplainsfederal.org

1-30-10p

## Help Wanted

**MACKENZIE MUNICIPAL WATER AUTHORITY** is accepting applications for a full-time employee until 12 noon on Friday, January 8, 2010. Applications may be obtained from the Lake Office located at 141 S. Mackenzie Road, Lake Mackenzie, Silverton, TX. 79257 between the hours of 9 a.m. and 4 p.m. Monday thru Friday. (806) 633-4326.

1-7c

**HACKBERRY CREEK CARE CENTER**—Help wanted. LVN's - F/T and PRN, Weekend RN and CNA-F/T and PRN. Competitive salary, excellent working conditions and flexible schedules! Looking for food service employees and housekeeping employees. Please contact Amy Cruz for more information at 806-347-2942.

1-21c

**FULLTIME PT AND OT** -For Home Health Therapy Excellent benefit package and salary. Apply at Interim Health Care. 2620 Yonkers, Plainview, TX. 79072 806-288-0220. EOE

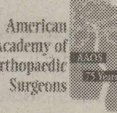
1-7c

LAST YEAR, IT HURT TOO MUCH TO STAND. TODAY, SHE CARRIES A NATION ON HER SHOULDERS.

At her clinic in Freetown, Sierra Leone, Dr. Olabisi Claudius-Cole treated patients of all ages with any condition, and would often take no payment in return. When arthritic hips and knees kept her from the rigors of daily patient care, a disaster loomed.

Dr. Claudius-Cole's sister led her to an American orthopaedic specialist, who had just heard rocker/activist Bono issue his mandate for caring people everywhere to step up and make a difference. As he listened to Dr. Claudius-Cole, he saw his own chance to do just that. Donating his own surgical services, he helped mobilize an entire medical team to get Dr. Claudius-Cole back on her feet. He even arranged free hip and knee implants.

Today, Dr. Claudius-Cole is fully recovered, and back at her vital healing practice in West Africa. Her story truly brings new meaning to the term "pro-Bono." We share it here because it sends two of the most contagious messages we know. Don't give up, and remember to give back.

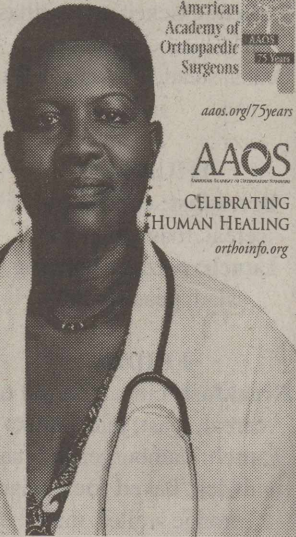


aaos.org/75years

AAOS

CELEBRATING HUMAN HEALING

orthoinfo.org



## Subscribe Today!

806-983-3737

### BARKER MINI-STORAGE

#### MONTHLY RENTALS

5'x10' - \$20.00 per month  
10'x10' - \$30.00 per month  
10'x15' - \$40.00 per month

ASK ABOUT OUR LONG TERM DISCOUNTS  
PHONE: 652-3379  
Lockney

got news?

Want to view your paper online too?

If you have a subscription to The Hesperian-Beacon, you can add the online subscription for ONLY \$10

### SCRIPT PRINTING & OFFICE SUPPLY

\* Commerical Printing  
\* Office Supplies & Furniture  
\* Business Machines

108 S. Main Floydada

### NOW LEASING

#### Floydada Storage Spot

Sizes --- 10'x10' and 10'x15'

115 W. Virginia, Floydada (across from City Hall)

Call 806-853-9075

### NOTICE TO BIDDERS

South Plains & Caprock Community Action Association, (SP-CAA/CCAA) is soliciting bids for the **Repair and Replacement** of heating and cooling appliances and **Energy Assessment Inspections** of heating and cooling appliances under the Comprehensive Energy Assistance Program in a six county area consisting of Crosby, Dickens, Floyd, Hale, King, and Motley County. Do not have to bid on both.

Interested persons may obtain bid packets at the Caprock Community Action located at 2813 W. 8th, Plainview, TX or 224 S. Berkshire Crosbyton, TX.

Sealed Bids must be received no later than 2:00 p.m., January 19, 2010 delivered to 2813 W. 8th Plainview, TX. Sealed bids will be publicly opened at 2:15 p.m. January 19, 2010 at the Caprock Community Action 2813 W. 8th, Plainview, TX.

SPCAA/CCAA reserves the right to refuse any and/or all bids. All qualified bidders will receive consideration for award of contract without regard to race, color, creed, sex, religion, national origin, disability, marital status, parenthood, or age.

A pre-bid conference will be held at 10:00 a.m. January 11, 2010 at 2813 W. 8th Plainview, TX. For additional information, contact Henry Tarango at (806) 894-5153.

12-31 1-7c

### COMBINED NOTICE OF FINDING OF NO SIGNIFICANT IMPACT AND INTENT TO REQUEST RELEASE OF FUNDS

December 31, 2009

City of Floydada

114 W. Virginia

Floydada, TX 79235

806/983-2834

This Notice shall satisfy the above-cited two separate but related procedural notification requirements.

#### REQUEST FOR RELEASE OF FUNDS

On or about January 18, 2010 the City of Floydada will submit a request to the Texas Department of Rural Affairs for the release of Community Development Block Grant funds under Section 104(f) of the Title I of Housing and Community Development Act of 1974, as amended, to undertake a project known as water facility improvements, for the purpose of installation of two (2) booster pumps, booster pump station building, controls, electrical, fencing and necessary appurtenances. Construction shall take place on Hwy 62 and Hwy 207.

#### FINDING OF NO SIGNIFICANT IMPACT

The City of Floydada has determined that the project will have no significant impact on the human environment. Therefore, an Environmental Impact Statement under the National Environmental Policy Act of 1969 (NEPA) is not required. Additional project information is contained in the Environmental Review Record (ERR) on file at City Hall at 114 W. Virginia, Floydada, TX 79235 and may be examined or copied weekdays (7:00) A.M. to (6:00) P.M., Monday through Friday, excluding Holidays.

#### PUBLIC COMMENTS

Any individual, group, or agency disagreeing with this determination or wishing to comment on the project may submit written comments to the Office of Mayor, City of Floydada, Floydada, Texas. All comments received by January 15, 2010 will be considered by the City of Floydada prior to authorizing submission of a request for release of funds. Commentors should specify which part of this Notice they are addressing.

#### RELEASE OF FUNDS

The City of Floydada certifies to Texas Department of Rural Affairs that Bobby Gilliland in his capacity as Mayor consents to accept the jurisdiction of the Federal Courts if an action is brought to enforce responsibilities in relation to the environmental review process and that these responsibilities have been satisfied. TDRA's approval of the certification satisfies its responsibilities under NEPA and related laws and authorities, and allows the City of Floydada to use Program funds.

#### OBJECTIONS TO RELEASE OF FUNDS

The Texas Department of Rural Affairs will consider objections to its release of funds and the City of Floydada certification received by February 4, 2010 or a period of fifteen days from its receipt of the request (whichever is later) only if they are on one of the following bases: (a) the certification was not executed by the Certifying Officer or other officer of the City of Floydada approved by Texas Department of Rural Affairs; (b) the (RE) has omitted a step or failed to make a decision or finding required by HUD regulations at 24 CFR Part 58; (c) the grant recipient or other participants in the project have committed funds or incurred costs not authorized by 24 CFR Part 58 before approval of a release of funds by Texas Department of Rural Affairs; or (d) another Federal agency acting pursuant to 40 CFR Part 1504 has submitted a written finding that the project is unsatisfactory from the standpoint of environmental quality. Objections must be prepared and submitted in accordance with the required procedures (24 CFR Part 58) and shall be addressed to Texas Department of Rural Affairs at P.O. Box 12877, Austin, Texas 78711. Potential objectors should contact TDRA to verify the actual last day of the objection period.

Honorable Bobby Gilliland  
Mayor, City of Floydada

Bobby Gilliland

## SUDOKU

|   |   |   |   |   |   |   |   |   |
|---|---|---|---|---|---|---|---|---|
| 5 |   | 7 |   |   |   | 4 |   | 8 |
|   | 2 |   | 4 |   |   |   |   | 9 |
|   | 9 | 6 |   |   | 5 |   |   |   |
| 3 |   | 9 | 7 | 5 |   |   |   | 2 |
| 2 |   |   | 3 |   |   |   |   |   |
| 7 | 5 |   |   | 6 |   |   |   | 4 |
|   |   |   | 5 | 3 |   | 8 | 1 |   |
|   |   |   |   | 4 | 7 | 3 |   |   |
| 9 | 7 | 3 |   | 1 | 8 | 2 |   |   |

Level: Beginner

### Fun By The Numbers

Like puzzles? Then you'll love sudoku. This mind-bending puzzle will have you hooked from the moment you square off, so sharpen your pencil and put your sudoku savvy to the test!

### Here's How It Works:

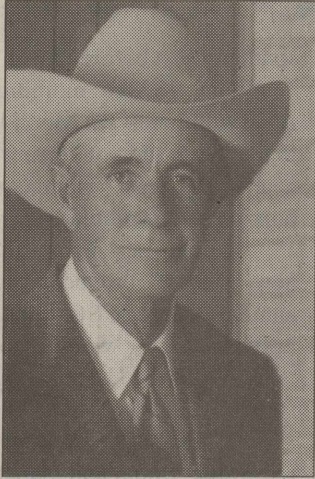
Sudoku puzzles are formatted as a 9x9 grid, broken down into nine 3x3 boxes. To solve a sudoku, the numbers 1 through 9 must fill each row, column and box. Each number can appear only once in each row, column and box. You can figure out the order in which the numbers will appear by using the numeric clues already provided in the boxes. The more numbers you name, the easier it gets to solve the puzzle!

|   |   |   |   |   |   |   |   |   |
|---|---|---|---|---|---|---|---|---|
| 4 | 9 | 2 | 8 | 1 | 9 | 3 | 7 | 6 |
| 9 | 6 | 3 | 7 | 4 | 2 | 5 | 8 | 1 |
| 7 | 1 | 8 | 6 | 3 | 5 | 2 | 4 | 9 |
| 3 | 4 | 1 | 2 | 9 | 6 | 8 | 5 | 7 |
| 5 | 7 | 6 | 1 | 8 | 3 | 4 | 9 | 2 |
| 2 | 8 | 9 | 4 | 5 | 7 | 6 | 1 | 3 |
| 1 | 3 | 7 | 5 | 2 | 8 | 9 | 6 | 4 |
| 6 | 9 | 5 | 3 | 7 | 4 | 1 | 2 | 8 |
| 8 | 2 | 4 | 9 | 6 | 1 | 9 | 7 | 5 |

ANSWER:

# Obituaries

## PAUL ATTEBERRY



Paul Atteberry, age 69, of Floydada passed away December 23, 2009 at the Covenant Medical Hospital in Lubbock.

Funeral services were held at 2 p.m. Sunday, December 27, 2009 at the Floydada Cemetery with Pastor Terry Simmons officiating. Services were under the direction of the Moore-Rose Funeral Home in Floydada.

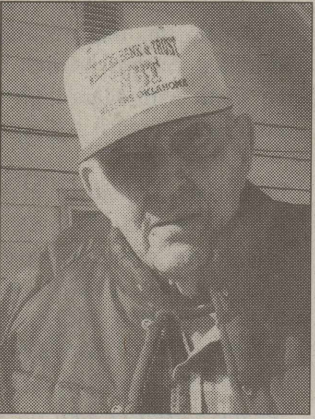
Paul Wendoll Atteberry, Jr. was born December 19, 1940 in Floydada to Paul Wendoll Atteberry, Sr. and Anna Daisy (Aaron) Atteberry. Paul married Brenda Green on March 18, 1967 at the First Baptist Church in Floydada. The couple is blessed with a daughter Dawn (Atteberry) Ryan. Paul had retired from working for the Texas Highway Department. Paul also farmed his entire lifetime in Floyd County. He enjoyed weekending in his RV, going fishing, and raising and working hunting dogs. Paul was a member of the First Baptist Church

in Floydada.

Paul is survived by his loving wife of over 42 years, Brenda Atteberry of Floydada; his daughter Dawn Ryan and husband Greg of Nacogdoches; his grandchildren, Tristan, Jasmine, and Brianna.

Memorial donations may be made in Paul Atteberry's name to the Floyd County Historical Society.

## OWEN ELBERT EMERT



Owen Elbert Emert, age 89, passed away on Tuesday, December 29, 2009 at his residence near Dougherty.

Services will be held at 10 a.m., Thursday, December 31, 2009 at the Trinity Assembly Church with Pastor Henry Russell officiating. Burial will follow at the Floydada Cemetery under the direction of Moore-Rose Funeral Home in Floydada.

Owen was born February 25, 1920 in Floyd County to A. T. Emert and Audrey (Miller) Emert. Owen married Avis Lavern "Jackie" Emert on November 11, 1942 in Lubbock. She preceded him in death in June of 2002. Owen had a career as a tractor mechanic. He worked on Internal Harvester Tractors at Martin & Company until his retirement. In his spare time, Owen enjoyed fishing and working at the family farm. He was a loving father, husband, and grandfather.

Owen is survived by two sons, Keith Emert of Hale Center and Floyd Emert of Sulfur, Oklahoma; two daughters, Patsy Bailey and Vickie Emert both of Floydada; two brothers, Lon Emert and Tommie Emert also of Floydada; 15 grandchildren, 29 great-grandchildren and one great-great grandchild.

Memorial donations may be made in Owen Emert's name to the American Cancer Society.

## Caprock Crop Conference scheduled for January 20

By J. W. Wagner, CEA-Ag/NR Floyd County

The Caprock Crop Conference is scheduled for Wednesday, January 20, 2010 at the Floyd County Friends Unity Center located 6 miles west on Hwy 70 from Floydada and 4 miles east on Hwy 40 from Lockney.

Registration begins at 7:00 a.m. The cost of the conference is \$25.00 (we will be accepting pre-registration until January 19) after this date a \$10 late fee will be collected. Registration information can be received through the Floyd or Crosby County Extension offices. Registration fee will include lunch, conference cap and program materials. The conference is open to all area producers as well as anyone interested in the crop production industry. Booth exhibitors will be on hand introducing the latest in technology and equipment.

In addition, Continuing

Education Units will also be available by attending the conference. We have been approved for a total of 7 CEU's through TDA. They include 4 General, 1.5 IPM, 1 Laws & Regulation and .5 Drift Minimization. We will also be offer 7.5 Certified Crop Advisor credits for those interested. They will be 3 Pest Management, 4 Crop Management and .5 Professional Development.

The program will start at 8:00 a.m. Speakers and topics will be: Roger Haldenby, TX Cotton Quality Past, Present & Future; Dr. Peter Dotray, Weed Issues in Cotton & Other Crops; Dr. Jason Woodward, Disease Issues in Cotton & Other Crops; Mike McDonald, SURE Program Eligibility; Dustin Patman, IPM Management in Corn & Sorghum; Morgan Newsom, Sorghum Check-Off Dollars Program/Legislative Update; Dr. Calvin Trostle, Wheat

Production on the High Plains; Ray Akers, Drift Minimization & Equipment Calibration; Dr. Randy Boman & Dr. Mark Kelley, 2009 High Plains Cotton Update; Dr. James Richardson, Cap & Trade Update; Dr. Wayne Keeling, Crop Rotation; Dr. Jackie Smith, Profitability in 2010; and Levon Harmon, TDA Laws & Regulations. The conference should conclude around 5:00 p.m.

Extension programs serve people of all ages regardless of socio-economic level, race, color, sex, religion, disability or national origin. The Extension Office will seek to accommodate all person with disabilities for the meeting. If you need assistance or have questions please call the Crosby County Extension Office (675-2347) or the Floyd County Office (983-4912) as soon as possible to advise of auxiliary and/or service needed.

## Floyd County Church Directory

### AIKEN BAPTIST CHURCH

Dennis Butler, Pastor  
Morning Worship...11:00 a.m.  
\*\*\*\*\*

### BIBLE BAPTIST CHURCH

810 S. 3rd, Floydada  
Darwin Robinson, Pastor  
983-5278  
Sunday School.....10:00 a.m.  
Morning Worship...10:50 a.m.  
Evening Worship....6:00 p.m.  
Wednesday.....7:00 p.m.  
\*\*\*\*\*

### CALVARY'S CORNERSTONE FELLOWSHIP

Floydada  
Armando Morales, Pastor  
Sunday School.....9:45 a.m.  
Morning Worship...11:00 a.m.  
Bible Study.....6:00 p.m.  
Wednesday Evening 7:00 p.m.  
\*\*\*\*\*

### CARR'S CHAPEL

Service Every Sunday:  
Morning Worship.....9:00 a.m.  
Sunday School.....10:30 a.m.  
\*\*\*\*\*

### CHURCH OF CHRIST

West College & Third,  
Lockney  
Steve McLean -Minister  
Morning Worship...10:30 a.m.  
Evening Worship...5:30 p.m.  
Wednesday Service 7:30 p.m.  
\*\*\*\*\*

### CITY PARK CHURCH OF CHRIST

Levi Sisemore, Minister  
Floydada  
Sunday Bible Study..9:30 a.m.  
Morning Worship...10:30 a.m.  
Evening Worship...6:00 p.m.  
Wed. Bible Study.....7:00 p.m.  
\*\*\*\*\*

### FIRST BAPTIST CHURCH

Terry Simmons,  
Minister of Ed./Music  
Sunday School.....9:15 a.m.  
Morning Worship...10:30 a.m.  
Evening Worship.....6:00 p.m.  
Wed. Bible Study.....6:30 p.m.  
\*\*\*\*\*

### FIRST BAPTIST CHURCH, Lockney

John Franklin, Pastor  
Chad Cook, Youth Min.  
Phil Cotham, Music Min..  
Sunday School.....9:45 a.m.  
Morning Worship....10:45 a.m.  
Evening Worship.....6:00 p.m.  
Wednesday.....6:30 p.m.  
\*\*\*\*\*

### FIRST UNITED METHODIST CHURCH

Floydada  
Rev. Les Hall, Pastor  
Early Worship....8:30 a.m.  
Sunday School.....9:45 a.m.  
Morning Worship...10:50 a.m.  
Youth (Sunday).....5:00 p.m.  
Youth (Wednesday)..7:30 p.m.  
\*\*\*\*\*

### FIRST UNITED METHODIST CHURCH

Lockney  
Rev. Ricky Carstensen  
Pastor  
Sunday School.....9:30 a.m.  
Worship Service....10:30 a.m.  
Evening Service.....6:00 p.m.  
Wed. Jr. High.....5:30 p.m.  
Wed. High School...6:30 p.m.  
\*\*\*\*\*

### GRANT CHAPEL CHURCH

OF GOD IN CHRIST  
Joe Bennett, Pastor  
Sunday School.....10:00 a.m.  
Morning Worship...11:00 a.m.  
Evening Service.....7:30 p.m.  
Tuesday.....8:00 p.m.  
Wed. Service.....7:30 p.m.  
\*\*\*\*\*

### MAIN STREET CHURCH OF CHRIST

Lockney  
Jay Don Poindexter, Minister  
Bible Study.....9:30 a.m.  
Morning Worship...10:30 a.m.  
Evening Worship...6:00 p.m.  
Wednesday.....7:30 p.m.  
\*\*\*\*\*

### MT. ZION BAPTIST CHURCH

Floydada  
Rev. Ralph Jackson  
401 N 12th St (983-5805)  
Sunday School.....10:00 a.m.  
Morning Worship...11:00 a.m.  
Evening Worship.....6:00 p.m.  
Wednesday Study...7:00 p.m.  
\*\*\*\*\*

### NEW SALEM PRIMITIVE BAPTIST CHURCH

Floydada  
Pastor Elder Ronnie Hedges  
(806) 637-0430  
Sunday Singing....10:30 a.m.  
Morning Worship...11:00 a.m.  
\*\*\*\*\*

### OUT REACH HARVEST PENTECOSTAL CHURCH

310 E. Mississippi  
Floydada  
Rev. David Ramos, Pastor  
Ester Ramos, Praise Leader  
Sunday Bible...10:00 a.m.  
Morning Praise...11:00 a.m.  
Evening Praise....5:00 p.m.  
Wed. Worship....7:00 p.m.  
\*\*\*\*\*

### POWER OF PRAISE FULL GOSPEL CHURCH

Rev. Manuel Rendon, Pastor  
704 N. Main, Lockney  
Sunday Services...10:00 a.m.  
Sunday Evening....5:00 p.m.  
Wednesday.....7:30 p.m.  
\*\*\*\*\*

### PRIMERA IGLESIA BAUTISTA

Lockney  
Jesus Caballero, Pastor  
Sunday School.....9:45 a.m.  
Worship Service....11:00 a.m.  
Discipleship.....5:00 p.m.  
Wed. Service.....7:00 p.m.  
\*\*\*\*\*

### PRIMERA IGLESIA BAUTISTA

Floydada  
Pastor Reverend Raymond Asebedo  
Sunday School.....9:45 a.m.  
Morning Worship...10:55 a.m.  
Evening Worship...6:00 p.m.  
Wed. Evening.....6:00 p.m.  
\*\*\*\*\*

### SAN JOSE CATHOLIC CHURCH

Lockney  
Jim McCartney, Pastor  
Wed. Communion...8:00 p.m.  
Sunday Mass.....11:30 a.m.  
\*\*\*\*\*

### SOUTH PLAINS BAPTIST CHURCH

Joe Weldon, Pastor  
Sunday School.....10:00 a.m.  
Morning Worship...11:00 a.m.  
Prayer Meeting.....7:00 p.m.  
\*\*\*\*\*

### TEMPLO GETSEMANI ASSEMBLY OF GOD

701 W. Missouri  
Andy Rodriguez  
983-5286 (church)  
983-3047 (parsonage)  
Sunday School.....9:45 a.m.  
Morning Worship...11:00 a.m.  
Evening Service.....5:00 p.m.  
Wednesday.....7:00 p.m.  
\*\*\*\*\*

### ST. MARY MAGDALEN CATHOLIC CHURCH

Floydada  
Rev. Angelo Consemينو  
Phone: 983-5878  
Sunday Mass.....11:30 a.m.  
Mon./Wed. Mass.....6:30 p.m.  
Confession Sat.....10-11 a.m.  
\*\*\*\*\*

### TEMPLO BAUTISTA SALEM

Lockney  
Rev. Joe Hernandez  
Sun. Prayer Service 9:30 a.m.  
Sunday School.....9:45 p.m.  
Worship Service....11:00 a.m.  
Evening Worship...6:00 p.m.  
Wed. Meeting.....7:00 p.m.  
\*\*\*\*\*

### TEMPLO BETHEL SPANISH ASSEMBLY OF GOD

Washington and 1st St.  
Sunday School.....9:45 a.m.  
Morning Worship...11:00 a.m.  
Evening Worship....5:00 p.m.  
Wed. Service.....7:00 p.m.  
\*\*\*\*\*

### TEMPLO NUEVA VIDA

Rev. Herman Martinez  
308 W. Tennessee, Floydada  
Sunday School.....10:00 a.m.  
Evening Worship....5:00 p.m.  
Tuesday.....7:30 p.m.  
Thursday Service...7:30 p.m.  
\*\*\*\*\*

### Trinity Assembly

500 W. Houston, Floydada  
Henry Russell, Co-Pastor  
Vance Mitchell, Co-Pastor  
Children's Church.....10:30 a.m.  
Morning Worship.....10:40 a.m.  
Sunday Evening.....5 p.m.  
\*\*\*\*\*

### TRINITY LUTHERAN CHURCH

Providence Community  
on FM 2301 293-3009  
Rev. Peter W. Harrington  
Minister  
Sunday School.....9:45 a.m.  
Worship Service....11:00 a.m.  
\*\*\*\*\*

### WEST SIDE CHURCH OF CHRIST

Floydada 983-3548  
Sunday Worship...10:30 a.m.  
Sunday Evening....5:00 p.m.

**American State Bank**  
Member FDIC  
217 W. California  
983-3725

**Goen & Goen Insurance**  
102 E. California  
983-3524

**Barwise Gin**  
Barwise Community  
983-2737

**Lockney Co-op Gin**  
652-3377

**Tastee Burger**  
116 North Main  
652-2630

**Oden Chevrolet Inc.**  
221 S. Main, Floydada  
983-3787

**Clark Pharmacy**  
320 N. Main - Lockney  
652-3353

**Payne Family Pharmacy**  
200 S. Main, Floydada  
983-5111

**Davis Lumber**  
102 E. Shubert  
Lockney  
6523385

**Pay-n-Save**  
210 N. Main  
Lockney  
652-2293

**Sawaya Ins. Agency**  
120 E. 7th Street  
Plainview  
293-1318

**Schacht**  
Flowers, Jewelry & Gifts  
112 W. Poplar, Lockney  
652-2385

**Lighthouse Electric Coop**  
703 A Matador Hwy  
983-2814

**Sunshine Pump**  
Oliver Clark  
Box 266, Lockney  
983-5087 - 774-4412  
(Mobile)

**Shepherd's Meadow Assisted Living**  
1230 S. Ralls Hwy  
Floydada  
983-8177

Wishing  
You and  
Yours a  
Happy  
New  
Years!

**Thanks for Reading!**

**PRODUCER'S COOPERATIVE ELEVATOR**  
www.pcefloydada.com  
983-2821 Floydada  
983-3020 Dougherty

**First National Bank of Floydada**  
983-3717  
THE FIRST NATIONAL BANK OF FLOYDADA  
Member F.D.I.C.

**FLOYDADA COOPERATIVE GINS, INC.**  
COOP  
Floydada • 983-2884

Why cut **CORNERS** on car insurance?  
Turn to me for competitive rates and the right coverage.  
Call today.

**Nick Long, Agent**  
201 W. California  
Floydada, TX 79235  
(806) 983-3441  
nick.long.cgr0@statefarm.com

STATE FARM INSURANCE  
LIKE A GOOD NEIGHBOR STATE FARM IS THERE®  
Providing Insurance and Financial Services  
State Farm Mutual Automobile Insurance Company (not in NJ), Bloomington, IL  
P040028 12/04

**FLOYDADA COMPUTER SERVICE**

- Computer Repairs and Troubleshooting
- Windows, Software and Virus Problems
- Custom and High-end Computers and Upgrades

Free Estimates Very Reasonable Home Calls Prices

Call Greg at (806) 686-4740

824 W. Tennessee St.  
Floydada, Texas 79235

STATE...

(continued from Page 1)

said Representative Heflin in making the announcement. "In addition to reducing the utility cost burden on households who can least afford it, these funds will create construction jobs and safer, more energy efficient homes for the residents of West Texas. I am confident that TDHCA and South Plains Community Action will make good use of these funds."

The award represents a portion of \$288 million in weatherization stimulus funds the state is allocating to 45 cities, counties, and eligible nonprofit organizations across the state to weatherize the homes of an estimated 40,000 low income Texans.

The awards were made through the Department's Weatherization Assistance Program (WAP) and were provided on a one-time basis to the state through the American Recovery & Reinvestment Act of 2009.

The Recovery Act provided approximately \$314 million more in funds than what TDHCA typically administers each year for weatherization activities. By comparison, the Department annually weatherizes approximately 3,700 homes using current funding levels of approximately \$13 million.

"The state has been given an extraordinary opportunity to make an enormous difference in the everyday lives of Panhandle residents," said Michael Gerber, TDHCA Executive Director, "actions that will lower their energy consumption, create healthier surroundings, and reduce the state's overall demand for energy. We also pledge to ensure these funds are administered in a responsible, accountable manner at the state and local levels."

WAP is designed to help low income customers control their energy costs through the installation of weatherization materials and consumer education. Income eligible households spend 12.2 percent of their income on home energy costs, compared an average of 3.7 percent. Households assisted through WAP typically save over \$400 on utility costs each year, savings can be enjoyed for as long as 15 to 20 years.

Primary efforts focus on caulking; weather-stripping; the installation of ceiling, wall, and floor insulation; patching holes in the building

envelope; duct work; and the possible repair or replacement of energy inefficient heating and cooling systems.

The U.S. Department of Energy (DOE) is the funding source for this one-time allocation of weatherization funds. In addition to the substantial increase in funds, the Recovery Act contains two provisions that will extend TDHCA's ability to reach those in need.

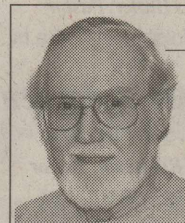
Under the Recovery Act, the income limit for eligibility increases from 150 percent to 200 percent of federal poverty guidelines. TDHCA currently sets its income limits at 125 percent to ensure these funds, which are normally quite limited, reach deeper pockets of need.

Additionally, the Act raises the monetary cap that may be spent on each household from \$2,500 to \$6,500. The Department, which combines WAP funds from DOE and the U.S. Department of Health and Human Services, currently caps assistance per household at \$4,000.

For more information about weatherization efforts eligible under the Act, or to learn more about WAP in general, please visit the section's Web site at www.tdhca.state.tx.us/ea/wap.htm. To contact the nearest contract service provider, use a land-based phone and call (888) 606-8889; callers will automatically be routed to the WAP provider serving their county. Cell phones will not make this automatic connection.

As stimulus funds flow, there will be a variety of procurement opportunities and new jobs created. All fund recipients must post any procurement opportunities on the Department's Web site at www.tdhca.state.tx.us/recovery/bids.htm. Also, as TDHCA administers these funds, it will provide regular reports on job creation.

# Galileo's Moon



Paul Derrick Stargazer

Four hundred years ago this month, in

December 1609, Galileo began his telescopic study of the Moon and almost immediately found evidence that challenged the Aristotelian view that was fundamental to much of the scholarly and ecclesiastical thinking of the day.

The ancient Greek philosopher Aristotle set forth a world view that still influenced Galileo's 17th century world nearly 2,000 years later. According to Aristotle, Earthly things, composed of earth, water, air, and fire, were imperfect, changing, and subject to death and decay, whereas heavenly bodies, composed of aether (quintessence), were of a completely different nature. They were perfect, eternal, and unchanging, thus objects beyond Earth were perfectly round with perfectly smooth surfaces.

Viewed with the naked eye, the Moon appears perfectly round, and even with its obvious darker and lighter areas, it could well have been perfectly smooth, like a multi-shaded marble.

But that's not what Galileo's telescope revealed. He saw what appeared to be mountains and other seemingly uneven terrain. After observing the same areas several nights and giving attention to the changing shadows they cast, it became clear to him that the Moon was not perfectly smooth. Indeed, in many ways, its surface resembled that of Earth's -- the Moon appeared more Earth-like than heavenly.

Being an astute mathematician, Galileo even used shadows and basic geometry to estimate the highest Moon mountains to be some 4 miles high.

He also noted that the Moon's surface was covered with countless roundish areas of, widely varying sizes. By studying their shadows, he determined that they were depressions in the Moon, although he never knew what caused them. We now know them to be

craters formed from meteor impacts.

When the Moon is in its thin crescent phase, one can easily see its faintly lit night side, even with the naked eye. In Galileo's day many assumed the glow came from the Moon itself, but from his observations, Galileo correctly deduced that earthshine -- sunlight reflecting off Earth -- produced the faint glow, showing that imperfect Earth could have an effect on a heavenly body.

Galileo's lunar discoveries put the first cracks in Aristotle's world view, and there were more to come which we will look at in future columns.

Sky Calendar.

\* Dec. 31 Thu.: The second full Moon of the month is popularly referred to as a Blue Moon, although it has nothing to do with its color.

\* Jan. 2 Sat.: Earth is at perihelion, its nearest point to the Sun in its annual orbit.

\* Jan. 7 Thu.: The Moon is at last quarter.

\* Jan. 11 Mon. morning: A thin crescent Moon less than a moonwidth from the star Antares low in the

southeast just before dawn.

\* Jan. 13 Wed. morning: A very thin crescent Moon is to the lower right of Mercury near the east southeast horizon as dawn breaks.

\* Jan. 15 Fri.: The new Moon produces an annular eclipse of Sun which unfortunately won't be visible over the U.S.

• Naked-eye Planets. (The Sun, Moon, and planets rise in the east and set in the west due to Earth's west-to-east rotation on its axis.) Evening: Jupiter is the brightest object in the southwest; Mercury is just above the west southwestern horizon at dusk; Mars now rises late in the evening. Morning: Saturn is high in the south with Mars high in the west southwest.

Stargazer appears every other week. Paul Derrick is an amateur astronomer who lives in Waco. Contact him at 918 N. 30th, Waco, TX 76707, (254) 753-6920 or paulderrickwaco@aol.com. See the Stargazer Web site at stargazerpaul.com.

## High Plains Irrigation Conference set Jan. 22 in Amarillo

AMARILLO -- The latest in irrigation technology, groundwater district concerns and drought-tolerant crops will be highlighted at the annual High Plains Irrigation Conference and Trade Show.

The conference will run from 8:30 a.m. until 4 p.m. Jan. 22 in the Regency Room of the Amarillo Civic Center, 401 S. Buchanan Street, in Amarillo, according to Nich Kenny, Texas AgriLife Extension Service irrigation specialist.

"We get lots of questions on how to cope with limited water, so we want to give more specific answers to it during the program," Kenny said. "We've lined up speakers with experience in dealing with practical issues of limited water."

Conference topics include: Panhandle-region groundwater concerns, drought-tolerant corn, subsurface drip irrigation and center-pivot technology, he said.

Continuing education units that have been requested are: 4.5 credits for certified irrigation designers by Irrigation Association, five soil and water management credits for certified crop advisors, and two general credits for pesticide applicators.

Industry, groundwater districts and education institutions will have about 25 booths set up for the trade show, Kenny said.

Registration will be \$20 at the door and includes lunch. For more information on the conference, contact Kenny at 806-677-5600. For information on the trade show, contact Dana Faulkenberry at 806-317-9006.

The conference is a joint venture of AgriLife Extension and the Texas Agricultural Irrigation Association.

## Convenience Store Owner Arrested for Tax Fraud Under New Law

AUSTIN -- A new audit tool used by Texas Comptroller Susan Combs has led to the indictment and arrest of a South Texas convenience store owner for tax fraud.

Rogelio Ramirez, owner of two Pepe's Drive In stores in McAllen, was arrested

today after being indicted for four felony counts of failure to remit sales tax collected on alcohol and tobacco and two felony counts of falsifying records.

According to the indictment issued Nov. 30 by a Travis County grand jury, Ramirez is alleged to have collected and not remitted \$100,000 or more in sales tax in 2008, and between \$20,000 and \$100,000 in the first eight months of 2009. He is charged with collecting but failing to pay the state \$100,000 or more in calendar years 2006 and 2007 as well.

The indictment is the

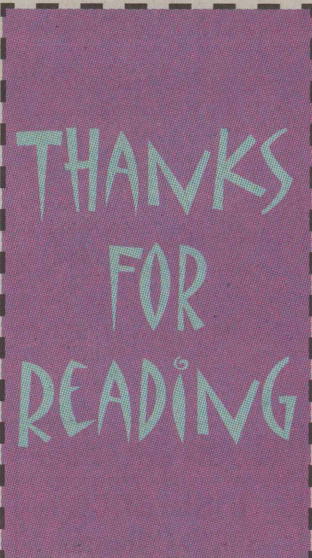
first in Texas based on an investigation using a fraud detection tool initiated by Combs and passed by the Legislature in 2007. The law requires distributors of alcohol and tobacco products to report sales to retail outlets monthly, giving the Comptroller's auditors the ability to compare the distributors' reports against taxable sales already reported by retailers. Distributor reporting under the law began in January 2008.

"This law passed with the overwhelming support of convenience store operators," Combs said. "It

helps protect legitimate, law abiding convenience store owners against competitors who attempt to profit from tax fraud."

So far, the Comptroller has assessed nearly \$90 million in sales tax that might have gone unreported without the fraud detection capability offered by the new law.

For more information about the Comptroller's efforts to arrest and prosecute tax evaders and prevent tax fraud, visit the Criminal Investigations Division Web site at <http://www.window.state.tx.us/about/cid/>.

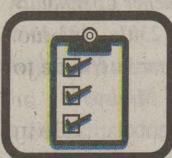


# STOP THE FLU TEXASFLU.ORG



### STAY HOME

If you get sick, stay home until you're well so you don't spread more germs. Steer clear of others who are sick.



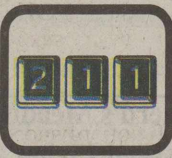
### PLAN

Even if you're not sick, plan ahead. Stock food and medicine to last several days for family and pets. Also check into alternate work options and child care, in case your family gets the flu.



### STAY INFORMED

Get the latest updates at TexasFlu.org, and check your local news for any canceled events or closings.



### DIAL 2-1-1 FOR FLU ADVICE

Medical professionals can provide information about managing flu symptoms. They can also give advice on when to seek medical care.

Stopping the flu is up to you.



TexasFlu.org

## Ecological Revolution on the High Plains

CANYON -- The significant invention of barbed wire, followed by its wide-spread use, began an ecological revolution whose implications are only now being felt. A 2009-2010 Excellence in West Texas History Fellow, Daniel S. Kerr presents Sheepdogs and Barbed Wire: Ecological Revolution on the High Plains on January 9 at 2:00 pm in the Hazlewood Lecture Hall.

The most fundamental changes in plains ecosystems have been in the relationships between grazers and their sources of food. Plains animals once walked to their food--migrating, distributing grazing, and adjusting to seasonal and long-term environmental changes. These animals followed the grasses that followed the moisture, developing long-lived and stable symbioses in an otherwise unstable place.

Tools like barbed wire enabled the creation of an ecological system in which, for the first time, food started moving toward the animals. Necessities of capitalist production and the constraints of a semiarid environment combined to drive the large-scale implementation of barbed wire.

Today, ranchers grow feed themselves; sometimes they buy it from nearby farmers. Either way, because the climate is too dry to produce reliable yields on its own, these food sources depend on the unsustainable exploitation of groundwater.

# We Appreciate Every One of You...Our Readers