

Hesperian-Beacon

"Celebrating 111 Years of Floyd County News"

www.hesperianbeacon.com

Thursday, August 9, 2007

©The Floyd County Hesperian-Beacon

Floydada, Texas 79235 (USPS 202-680)

Volume 111 Number 32

FISD approves bid for construction at Duncan

By Darwin Robinson

The Floydada ISD Board of Trustees met Monday, August 6, and unanimously approved a mediation Coop dissolution agreement and a \$6.88 million dollar construction bid for renovations and new construction at A.B. Duncan Elementary.

Concerning the Coop agreement between FISD, Lockney ISD and Petersburg ISD for the dissolution of CSSA (Caprock Shared Services Agreement), the board approved the dissolution motion by Board Member Bart Greer and seconded by Board Member William Dean. The motion included the option for FISD to keep the FLC (Functional Living Center) Coop building at R.C. Andrews Elementary School. Both LISD and PISD have already approved the dissolution agreement.

According to Superintendent Jerry Vaughn, FISD will pay LISD and PISD \$11,000 for the FLC building. LISD will receive 60 percent, while PISD will receive 40 percent of the money.

In another matter, the board unanimously approved a \$6.88 million dollar construction base bid by Grimes & Associates for a new wing and the partial renovation of A.B. Duncan Elementary School.

Floydada voters approved a \$5.5 million bond election in May, 2006 for the new construction and renovations at A.B. Duncan Elementary.

In a chart handed out to the board by Joe Grimes and Bert Moffet of Grimes & Associates, the \$6,881,791.06 base bid will cost Floydada tax payers an additional \$631,791.06 to be taken from the FISD fund balance. "If you pass this, we will start construction within two weeks to one month. It should be finished

around 18 months from when we start," Grimes said.

According to the chart, the money will come from: bond proceeds - \$5,500,000.00, prior contingency FISD pledge from fund balance - \$500,000.00, estimated earned interest - \$250,000.00, and additional from FISD fund balance - \$631,791.06.

Some of the larger expenses for the construction project shown on the chart are: construction management fee - \$331,718.78, reimbursable expense estimate - \$245,261.92; contingency allowance - \$250,000.00, remaining A&E fees - \$205,579.00, Lynx abatement (asbestos) and monitoring - \$130,311.00, sidewalks around building - 47,403.00, allowance to upgrade existing finishes - \$40,000.00, Library bookshelves - \$38,459.00 and Marker & Tack boards in existing rooms - \$23,817.00.

Items not included in the base bid were: trees, telephone system & equipment, technology wiring (for computers), furniture, desks & chairs, new air-conditioning and dining room, mini blinds or curtains and moveable items or furniture.

Concerning these items not included, Grimes told the board, "You can buy these items cheaper than we can. I suggest you designate \$100,000.00 for these items."

Board Member Greer replied, "Remember what I say, we will not be able to buy all these items for \$100,000.00. My guess is, it will run around \$250,000.00."

Superintendent Vaughn added, "We could easily spend \$100,000.00 on just furniture alone. We will buy only what we need."

Two other construction op-

tions were presented to the board before their vote. Some options the board discussed were about new kitchen equipment, or not, or an entire new roof over the entire building, or just on the new wing, and to buy new furniture for the new wing, or use old furniture.

Superintendent Vaughn said, "I would rather have new kitchen equipment for our day to day operations, because of the disruption it causes, if an oven goes out."

Board Member Lyle Miller added, "I think new kitchen equipment is needed."

Superintendent Vaughn added, "We plan to redesignate \$2.8 million of our facilities funds at our next board meeting on August 21st and our cash flow shows \$300,000 over this month."

Concerning using the FISD fund balance for some needed equipment, Board President Kerry Pratt said, "These additions can be covered by our fund balance. It will still leave around \$1.5 million in our fund balance. We need to do this now, not later. I think the tax payers want us to use our fund balance for our kids, not just save it in CDs."

Board Member William Dean added, "I think we should do this right."

Board Member Rachael Castillo commented, "I agree. I think we should do all of them (options)."

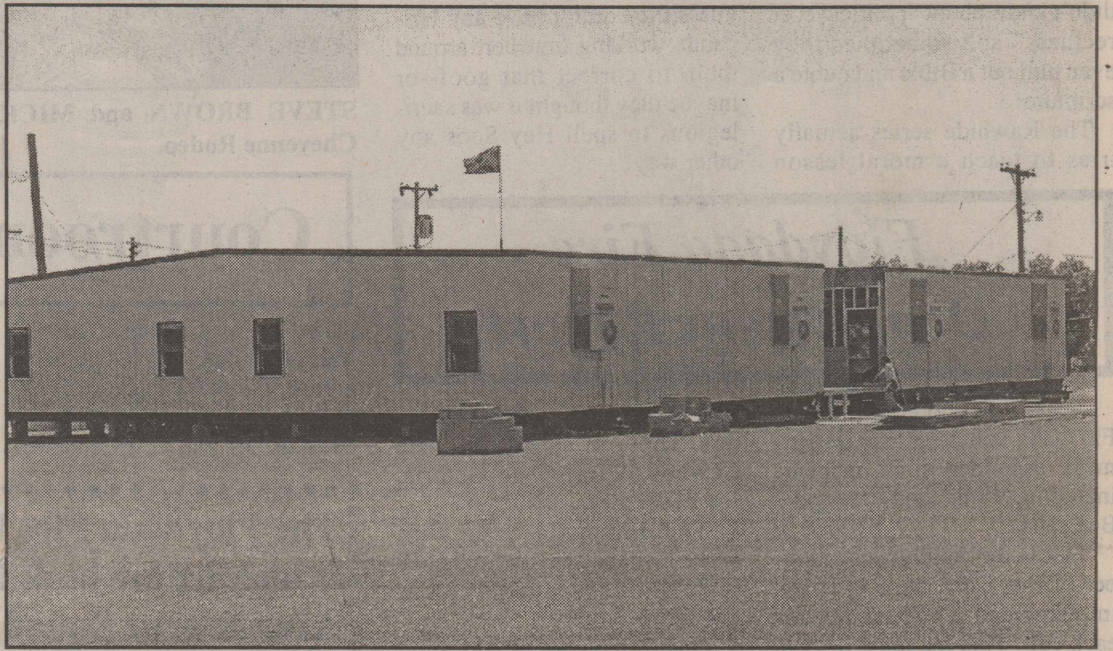
Board Member Marty Lucke said, "Everything is there that is needed. This way we won't have to come back. This is a turnkey package with a good roof and getting it all done."

Board Member Amado Morales added, "I think we should go with the base bid option."



LONGHORN TWO-A-DAYS are now in full swing (above). Their temporary Field House has been set up and includes separate team locker rooms and showers (below). The temporary building will be used until a new Field House can be built. The schools Field House was recently totaled in a fire.

Staff Photo



Lockney Elementary "Recognized"

Lockney ISD has once again met academic standards for the 2006-07 school year, according to the annual accountability ratings released by the Texas Education Agency on August 1, 2007.

Lockney's Elementary campus achieved a Recognized status for the second year in a row, which means that at least 75 percent of all student populations passed the subjects tested in the Texas Assessment of Knowledge and Skills, the state's standardized test.

"Lockney Elementary has already prided itself in being a strong academic campus," said Curriculum Director Marva Rasco. "The teachers and staff set high goals for themselves every

year. They have a strong work ethic which is reflected in their students. They strive to meet the challenges set before them and they won't settle for anything less. I am proud of all of our campuses and am especially excited for the elementary staff and students on their Recognized status."

As with last year, the TAKS passing standards have become more stringent. For this reason, a school or district could have experienced gains, but not necessarily receive a higher accountability rating.

The LISD Jr.High and High School campuses each received Academically Acceptable ratings. The Jr. High campus, which was a Recognized campus last

year, met the Recognized rating in 9 of the 10 indicators that were used to determine the 2007 accountability. "In other words they were very close to being a Recognized campus again this year," said Rasco. "Our goal is for every campus to be no less than recognized. At the same time, the results of one test is not the only indicator we use to measure a student's learning."

"I am very excited about the direction that the Jr. High campus is taking. When you walk down the halls of Lockney Jr. High you will see many new programs being implemented to benefit the students, academic achievement as well as their character development."



FLOYDADA HIGH FOOTBALL ATHLETES are shown working out Tuesday morning in their "2-a-days" workouts.

Staff Photo

FISD falls "just short" of Recognized rating

According to the annual accountability ratings released by the Texas Education Agency on August 1, 2007, Floydada ISD earned the rating of Academically Acceptable on all campuses.

FISD Administrative Assistant Rex Holcomb said, "We missed Recognized Ratings by one or two points."

TEA ratings are based largely on TAKS scores, but also include drop out rates and completion rates.

Acceptable ratings in the area of TAKS scores are awarded to schools that meet 65% of "standard" in Reading/ELA; 65% in Writing; 65% in Social Studies; 45% in Mathematics; and 40% in Science.

Recognized ratings are schools that meet 75% standard in each subject. Exemplary meets 90% standard in each subject.

Other schools in Region 17 and their rating are as follows:

Abernathy Elementary: Recognized; Abernathy HS and JHS, Acceptable;

Amherst: Acceptable
Anton: Recognized
Brownfield: High School, unacceptable; Middle and Elementary, Acceptable.

Crosbyton: Acceptable
Denver City: Acceptable
Frenship: Recognized
Hale Center: Elementary, Recognized, Middle and High School are Acceptable.

Idalou: Acceptable
Lamesa: Acceptable; Middle-Recognized.

Levelland: Acceptable; Cactus Elementary and Middle, Recognized.

Littlefield: Acceptable; Elementary was Recognized.

Motley County: Recognized
New Deal: Elementary, Recognized; High School and J.H. were Acceptable.

Olton: Elementary and Junior High, Recognized; High School,

Acceptable.
Petersburg: Acceptable
Ralls: Elementary, Unacceptable; High School, Acceptable; Middle School, Recognized.
Spur: Recognized

Commissioners propose tax rate

Floyd County Commissioners voted, August 3, to set the 2007 Effective Tax Rate at \$.58438 per \$100.

An effective tax rate of \$.53976 would have raised the same amount of money as last year.

A public hearing on the proposed tax rate be held Friday, August 10 and August 27th, at 9:00 a.m. in the County Courtroom. The Commissioners will vote on the proposed tax rate on August 27th.

Rising postal rates for small publications has forced increases in subscription rates for The Floyd County Hesperian-Beacon.

"Effective September 1, 2007 our subscription rates will increase," said Hesperian-Beacon publisher Alice Gilroy.

"In County rates will be \$25.00 a year and Out-of-County rates will be \$28.00. That is still low considering our increases and compared to other weeklies in the area. We have really been putting this off too long.

"The newsstand rate will also increase to 75¢ per issue."

The U.S. Postal Service recently overhauled the way it calculates the amount that publishers must pay to mail periodicals in a change that took effect July 15. Postal officials say the new rates, based on a plan advanced by media giant Time Warner, give mailers incentives to be more efficient and will help curb the rising costs of mailing periodicals. But small publishers say the plan, which affects newspapers, magazines and newsletters,

threatens to drive up their costs at a time when many already face losses.

The Postal Service first asked regulators for an 11% increase, which would have been about the same for large and small mags, in May 2006. It was the fourth rate hike since 2000. After months of hearings, the Postal Regulatory Commission recommended in February, 2007, a modified version of Time Warner's plan that the governors of the USPS soon approved.

"We were shocked because it quickly became clear that there was going to be a huge variation in increases," says Teresa Stack, president of *The Nation*.

Business Week publishers McGraw-Hill filed a brief arguing that the Time Warner plan would cause "an unduly large number of unacceptably high rate increase, particularly for smaller mailers."

Postal rates for smaller mailers could increase by as much as 30-50% while some of the larger circulation magazines will face hikes of less than 10 percent.

Area newspapers will now incur increases of up to \$100 per week for mailing out newspapers to out of county subscribers.

USPS say skyrocketing energy costs and rising health care costs are the reasons for the increase.

The advocacy group Free Press says the rate change was developed with no public involvement or Congressional oversight. They are calling for a congressional hearing on the changes.

"In my opinion," said Gilroy, "the worst part of this increase to our Out-of-County customers is that their delivery service is unacceptable. They have every right to complain and I hope they do. We are doing everything we can - which frankly, doesn't amount to much.

"Most of our complaints come from customers whose newspaper are routed through the Dallas/Ft. Worth Post Office. Our customers are getting their papers a month late - sometimes 3 at a time. The increase in rates certainly hasn't affected the quality of service in Dallas/Ft. Worth."

By The Way
By Alice Gilroy
email:floydada@amaonline.com

I recently bought the 2nd season of the long running Western TV series, "Rawhide".

My husband and I have enjoyed watching an hour of Rawhide at night--instead of the new T.V. shows. Not too long ago, I bought a season of the "Big Valley" series.

If I keep this up I won't have to subscribe to cable. I can cancel cable and use that monthly money to buy old T.V. series. They are definitely more family friendly.

Have you ever noticed that when people were shot back in the old days there was never any blood anywhere--and, they could get shot in the shoulder every week and not be the worse for wear. It always makes me laugh when I hear a cowboy say, "I'll be alright--it's just a shoulder wound".

One thing that hasn't changed is that the bad guys can't shoot and nobody ever runs out of bullets.

And, by the way, you youngsters that think the old shows were unrealistic--there is nothing realistic about James Bond walking away from buildings blowing up.

It's obvious the old Westerns didn't know about "political correctness" and sometimes they even pull out a Bible and quote a scripture!

The Rawhide series actually tries to teach a moral lesson

through their stories.

You can sure see how times have changed in the past 50 years through these old T.V. shows.

A couple of nights ago my husband and I were watching one of the Rawhide shows. We enjoy trying to guess who the guest star is, because they almost always feature a famous person before they became famous.

There was a Mexican cow puncher on the drive called by the name of "Jesus". It was pronounced the normal Hispanic way of pronouncing "Jesus".

At the end of the show we were watching the credits roll and trying to catch who played what role.

They listed the real name of the "Jesus" character and then out beside his real name they had the stage name spelled....

Are you ready for this? They spelled "Jesus".... "Hey Soos"!

I'm not kidding! It was really spelled exactly like it sounds!

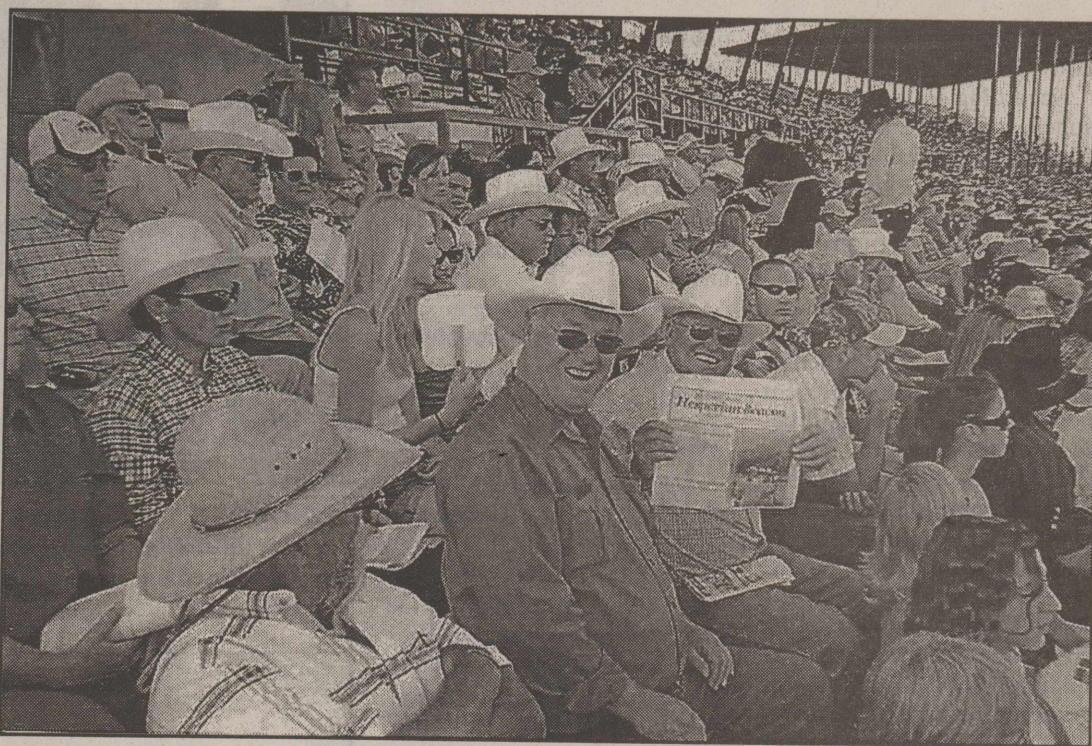
I haven't laughed that hard in a long long time.

I wish I could go back in time and ask the guy that typed that out, why in the world they thought it was spelled that way. I guess they didn't have any Hispanics working anywhere around them to correct that goof--or maybe they thought it was sacrilegious to spell Hey Soos any other way!



BROWN HONORED BY MASONS--Claude Brown, of Lockney, was honored by the Masonic Lodge, Saturday, August 4, for his 60 years as a Mason. Shown with Brown are fellow Masonic Lodge members: (L-R) Robert Webb, Embry Douglas, Robert Lee "Red" Daniels, Claude Brown, Jerry Cawley, and Terry Ellison.

CONTEST PHOTO



STEVE BROWN and MICKEY DOT HAMMONDS take The Hesperian-Beacon to the Cheyenne Rodeo.

Oil and Gas Update
By Tom Musser

Floyd County: On Saturday August 4, 2007 the Bass Petroleum, Inc. Yearly #1 Lease Well #1 drilling permit expired without this wellbore being drilled. The Yearly #1 Lease Well #1 was to be located 660 feet from the South Line and 1980 feet from the East Line of section 18, Abstract-1967, Block D-2, Gulf Colorado & Santa Fe Railroad Company Survey, 9 miles Est of Lockney. Drilling permits issued by the Railroad Commission of Texas Oil and Gas Division are valid for two years.

Tyner Resources, LTD.: On July 30, 2007 the Tyner Resources, Ltd. Canadian Annual Oil and Gas Disclosure form was filed on the Sedar Website of the Canadian Securities administrators. Pages 13 through 47 of this Annual Disclosure is the Evaluation of Tyner Texas Operating Company Palo Duro Basin Operations, including information on the Geology of the Basin, the R.G. Stephens Well #1 in Motley County and the Kenneth Broseh Well #1 and the Foster Well #1 in Floyd County.

The R.G. Stephens Lease (68972) Well #1 has been producing condensate and flaring gas since November 2006.

The Kenneth Broseh Lease (68969) Well #1 has been shut in since March 1, 2006 and is listed by Tyner Resources as Non-Commercial, with possible future plans to be used as a salt water disposal well if needed.

The horizontal completion of the Foster Lease Well #1 was a joint venture between BASA Resources, Apollo Energy Operating Company and Tyner Texas Operating Company. The Foster Lease Well #1 has been shut-in since December 2006, and according to Tyner Resources is pending a future re-evaluation and future stimulation program.

Floydada Fire Department Report

During the month of July the Floydada Volunteer Fire Department responded to 10 incidents including 3 wild land fires and 7 Bee calls.

Due to the rapidly rising number of Bee calls, the FVFD has implemented a \$75.00 fee for each call. This fee must be pre-paid at City Hall before anyone is dispatched.

The FVFD also sent three representatives to the Texas A & M

Fire Training School as instructors. Those in attendance were Cowboy Wiley, Chad Guthrie, Joe Barrientos.

The Floydada Area Fire School will be held on August 18 at the new training facility off of FM 1958.

Due to the cost of relocation of the training facility, any donations that could be made to the FVFD would be greatly appreciated.

Courtroom Activities

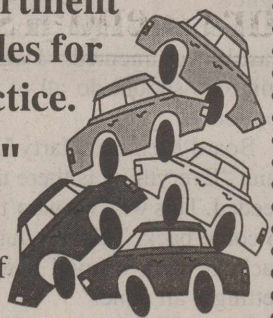
In County Court, August 7, Yreal Morales, 41, pled guilty to a June 10, 2007 charge of Assault. He was sentenced to 59 days in jail and court costs of

\$258.00. He also pled guilty to a June 10, 2007 charge of Criminal Mischief and was sentenced to 59 days in jail, court costs of \$258 and restitution of \$900.

The Floydada Fire Department is looking for junk vehicles for Area Rescue Squad Practice.

"You call, we'll haul."

If you have a vehicle to donate please call Floydada Police Chief Darrell Gooch @983-2834



Last Day for Photo Contest is August 14th

YES!
GOEN & GOEN WRITES
Life Insurance
Come in for a Quote

102 E. California, Floydada 983-3524

www.goen-goen.com

God Bless Our Nation

WE DELIVER • WWW.GOWOLFE.COM • WORK THE WHOLE DEAL OVER THE PHONE • WE DELIVER • WWW.GOWOLFE.COM

WOLFE FORD DODGE
VERNON, TX • 1-888-889-7709

1999 CHEVY BLAZER 4x4, LOW MILES \$6,987
2006 F350 Dually 4x4 LARIAT, 23K MILES
1994 DODGE 2500 CUMMINS 4x4 \$7,495
2006 CHEVY 2500 HD LS 4x4, DURA MAX W/ALLISON, SUPER CLEAN, LOW, LOW MILES
1969 INTERNATIONAL SCOUT NICE CLASSIC
1995 CADILLAC SEDAN DEVILLE SUPER CLEAN, LOADED
2006 RAM 2500 SLT 4x4 CUMMINS, AUTO., LOCAL 1 OWNER TRADE
1978 DATSUN 280Z, WOW, SUPER CLEAN, LOW MILES
1962 FORD T-BIRD WOW SUPER CLEAN, CALL FOR DETAILS
2006 DODGE 3500 MEGA CAB, 4x4, LARAMIE 6" LIFT, 37" TIRES
1995 CONVERTIBLE MUSTANG AUTOMATIC \$4,285
2006 NISSAN PATHFINDER LOADED, 3RD ROW SEAT LOW MILES
1997 FORD MUSTANG \$6,995
2007 FORD EXPEDITION ED EDDIE BAUER 4x4 NAVIGATION

2007 DODGE RAM 3500 MEGA CAB DUALY 4x4 SLT \$37,985
2008 FORD F350 SUPER CREW POWERSTROKE LARIAT \$37,987
2007 FORD F-150 4x4 SUPER CREW XLT 5.4 LITER V8 \$27,981
2007 DODGE CALIBER LEASE \$169 MO* 32 MPG

2004 POWERSTROKE QUAD CAB 4x4, LOW MILES \$24,984
1999 FORD F250 4x4 POWERSTROKE LEATHER \$12,995
2004 FORD EXCURSION LIMITED 4x4, \$23,979
2006 TOYOTA SOLARA LOW MILES, EXTRA CLEAN
2005 CHEVY COLORADO Z-71, CREW CAB \$15,977
DODGE 3500 6 SPEED DUALY 4x4 CUMMINS, SUPER CLEAN, LOW MILES
CHEVY BERETTA \$995
2006 FORD EXPLORER EDDIE BAUER
1999 FORD RANGER X-CAB \$4,995
2007 F-350 \$19,984
2005 F-350 4x4 XLT SINGLE REAR WHEEL, SUPER NICE, LOW MILES
STREET LEGAL MONSTER TRUCK MUST SEE! \$33,945
2004 F250 KING RANCH POWERSTROKE 4x4 \$25,981

2000 FORD FOCUS ZX3 \$3,995
2002 GMC DENALI LOADED, BLACK!
2005 PONTIAC VIBE SUNROOF, ALLOYS, AUTO.
2006 F350 4x4 KING RANCH EXTRA CLEAN
2005 CHEVY 2/CAB Z71-LT LEATHER, HEATED SEATS, AND MUCH MORE
1996 LINCOLN TOWN CAR CARTIER
2002 KIA SPECTRA \$99mo
2004 RAM 2500 4x4 SLT DIESEL, AUTO.
2006 CHEVY TRAILBLAZER 1 OWNER, LOCAL TRADE
1999 DODGE CUMMINS DUALY \$8,900
2004 PONTIAC GTO BLACK ON BLACK SUPER FAST!
2004 RAM Q/CAB 4x4 SLT 20" WHEELS, LOW MILES
2003 HONDA ACCORD EX ALLOYS, SUNROOF, AUTO., EXTRA CLEAN
2003 CHEVY STEPSIDE Z-71

NO CREDIT? BAD CREDIT? NO PROBLEM! CALL NOW! 1-866-234-7979

West Texas Truck Outlet
Work The Whole Deal Over The Phone 1-888-889-7709

DOWNTOWN VERNON, TEXAS 1-888-889-7709

WE DELIVER • WWW.GOWOLFE.COM • 1-888-889-7709 • WORK THE WHOLE DEAL OVER THE PHONE • WE DELIVER • WWW.GOWOLFE.COM

CONTEST PHOTO

Horn and Hill wed



MRS. WARREN HILL
Nee Jessica Beth Horn

Jessica Beth Horn and Warren John Hill were united in marriage 7:00 p.m. Friday, August 3, 2007 at the First United Methodist Church in Levelland. Reverend Don Kinder of Lubbock and Reverend Wendell L. Horn, father of the bride, of Levelland officiated. The bride is the daughter of Reverend Wendell and Jennifer Horn of Levelland. She is the granddaughter of Joan Horn of Littlefield and Glen and Clara Robertson of Kingsland. The groom is the son of Carla Torres of Lubbock and the late John Hill. Escorted on the arm of her father, the bride wore an ivory satin gown with beading and pearls on the bodice. She carried a bouquet

of pink gerbera daisies, white calla lilies and white roses. Matron of honor was Erin Trevathan of Pampa, friend of the bride. Bridesmaids were Abilou Kirk of Idalou, friend of the bride and Katy Gooch of Floydada, friend of the bride. The bride's attendants wore tea length black dresses and carried bouquets of pink gerbera daisies. The groom was attired in a black tuxedo with an ivory vest. The best man was Michael Murphy of Lubbock, friend of the groom. Groomsmen were Ted Leman of Lubbock, friend of the groom and Dax Reinitz of Lubbock, brother-in-law of the groom.

Groomsmen were also attired in black tuxedos. Ushers were Clay Horn of Lubbock, brother of the bride, Justin Gunter of Olton and Erick Arellano of Indianapolis, Indiana, both brothers-in-law of the bride. Serving at the guest registry was Autumn Schaub of Pampa, friend of the bride. The church was decorated with votive candles, vases of hot pink gerbera daisies, white calla lilies, pink calla lilies and white roses. Deann Sowder was the organist. Music selections included "Canon in D", "Sheep May Safely Graze" and "Angel Eyes." Soloist Tate Greer of Floydada sang "Lost In The Moment." A reception was held at the church following the wedding ceremony.

The bride's table was hosted by Phyllis McFerrin of Cotton Center and Sally Odenwald of Austin, aunts of the bride. Tables were decorated with hot pink ribbons over white tablecloths, vases of pink gerbera daisies and white roses. A special table was set up featuring photographs of the bride and groom, their parents' wedding pictures and their grandparents' and great-grandparent's wedding pictures. The bride attended Floydada and Pampa High Schools and is a graduate of South Plains College, where she is employed. The groom is a graduate of Coronado High School. He is also a graduate of South Plains College. He is currently employed by Gene Messer Ford. Following a wedding trip to Cozumel, Mexico the couple will be at home in Lubbock. Prenuptial courtesies included a rehearsal dinner hosted by Mr. and Mrs. Raymond Torres at the First United Methodist Church August 2 at 6:30 and a shower to be held August 25 in Levelland at the home of June Gerstenberger.



CLASS OF '57 READING HESPERIAN-BEACON--While celebrating their 50th Reunion, some of the classmates from Lockney High School Class of 1957 paused to read The Hesperian-Beacon. Classmates shown here are: (Back, l-r) Peggy Hall Nance, Patsy Bybee Stephens, Nelda Cates Maurer, Lynn Jolly Milligan, Lonell Hays, Pat Vanek CdeBaca, Pat Bayley Dicuffa, Gene Handley; (front, l-r) Roland Watson, Marvin Wells, Loyd Widener, and Charlie Williams. Photo by Carolyn Cunningham



THAYER & WASHINGTON, CPAs SELECTED AS BUSINESS OF THE MONTH by the Floydada Chamber of Commerce. Fred Thayer and Dianne Washington are partners in the business. The business was started in 1976. They provide tax preparation, bookkeeping and financial planning services. They are located at 122 E. California Street. Call them at 983-3121. Shown are employees: (l-r) Patti Miller, Linda Matsler, Sherre Green and Fred Thayer, CPA. Staff Photo

Old Fashion Saturday in Lockney will be held September 15 this year. Mark your calendars!

Lockney Senior Citizen News

By Vera Jo Bybee

Gene Brotherton, who sees about most of the Center's business, said to remind everyone that their dues are now due and payable. Twenty dollars a person for a year. You are invited to come by and eat lunch at the Center and pay your dues at the same time or you can mail them in to Lockney Senior Citizen's Center, P.O. Box 82, Lockney, Texas 79241.

The Center wants to thank Evelyn Ulmer and Renee Armstrong for sharing their fresh delicious tomatoes with us. If any of you need a place to take your extra vegetables you will sure find some takers at the Center.

On behalf of the Lockney Seniors I want to invite everyone to attend Lockney's Old Fashion Saturday on Sept. 15th. Lots of entertainment and food is being planned for you.

Each week I plan on previewing an activity that will be held that Saturday on Main Street Lockney. It will be quite a Main Street Extravaganza.

Please put Sept. 15th on your calendar so you will be in Lockney on that day to take part in and see the Biggest Car Show in Floyd County. The show will be open to any and all kinds of cars and motorcycles. A judge is coming from Clovis to present Trophies to "Best of Show", Best Motor, Best Interior, Best Paint and Best Motorcycle.

Well I'm coming out of my bride retirement tomorrow afternoon (Tuesday) at Wanda

Turner's house in Floydada. I haven't held a deck of cards in my hand in over 10 years. I hope it is like swimming and riding a bicycle. You never forget how but just get out of practice if you don't do it often. I'll let you know if that is true next week.

Betty Veal is now at her home after a month's stay in the Lockney Rehab Center. I had a nice visit with her this afternoon and she said the nursing home is a nice place to go if you have to, but being in your own home is great.

Gladys Bobbitt is in Mangold Memorial hospital having tests run and receiving treatment for an illness. Her daughter, Donna Mitchell of Amarillo was here to be with her Mom. Please keep Gladys in your prayers.

Our sympathy is with Geneva Burke Stansell's family on her passing away Friday, July 3rd in the Lubbock Covenant Medical Center. Her funeral services were held in Lockney at Main Street Church of Christ Tuesday, July 7, 2007. Burial was in the Floydada Cemetery.

Thought for Today, Just because you move to Texas it does not make you a Texan. After all, if a cat had kittens and moved them to the oven, that wouldn't make them biscuits.

Menu
August 13 - August 17
Mon: Chicken strips
Tues: Meat & cheese nachos
Wed: Chicken fried steak
Thrs: Soup and cornbread
Fri: Fried chicken

By Margarette Word

Last week in my article about renting the Center was misunderstood. I need to clear up some information. We have a group that plays "Train" during the week. We have some that play bridge. We have some that put puzzles together. The charges I referred to last week do not affect them.

The groups we are trying to encourage to use the Center are

family reunions, bridge tournaments, club meetings that are in the building at night and all day activities over the weekends or on holidays.

We felt this would be a way to earn money for the Center. We open at 8:00 a.m. and lunch starts at 12:00 noon.

We want people to come during the day to play games, work on puzzles, come to visit, have a cup of coffee or such at no

charge.

If you are 60 years or older this Center is here for you to enjoy. If you have any further questions, call 983-2032.

Bob and Evalene Goodnight's

visitors this past week were Bill Queen of Pagosa Springs, Colorado and grandson Kalib Queen of Dolores, Colorado.

Steve Craig of Houston ate
Continued On Page 5



100TH BIRTHDAY PARTY IN CALIFORNIA--Louis and Janice Lloyd celebrated with "Aunt Ellen Lloyd" at her 100th birthday, July 14, 2007 in Napa, California. Ellen is the widow of Arthur Lloyd, John A. Lloyd's brother. She is the remaining member of that generation. Her family decorated the hall beautifully and made Ellen "Queen For A Day" with a purple velvet robe, tiara and scepter. Many relatives attended, including Janet Lloyd Webb, Louis' sister from Fairfax, VA.

CONTEST PHOTO

New Shipments of WEBKINZ plush, purses, back packs & trading cards.

Close-Out Specials on Dept. 56 Snow Village & Precious Moments

Schacht FLOWERS, JEWELRY & GIFTS
112 W. Poplar, Lockney
8:30-5:30, Mon.-Sat., 652-2385
1-800-566-5754

Summer Clearance

Bridal Selections Laci Schumacher & Greg Kish Reid & Sandra Carthel

M-F 10AM-6PM
Sat. 10AM-6PM

www.heartsdesireonline.com
652-2548 Fax 652-2546

Heart's Desire

New Market Arrivals Daily

Bridal Selections: Laci Schumacher & Greg Kish Reid & Sandra Carthel

CLARK PHARMACY
Danny Clark

309 North Main, Lockney- Pharmacy - 652-3353
Residence - 652-3712 (24 hour call)
Free in town prescription delivery

Hernandez and Ferrer exchange wedding vows



MR. AND MRS. MIGUEL FERRER
Nee Cynthia Marie Hernandez

Cynthia Marie Hernandez and Miguel Ferrer were united in marriage at 2:00 in the afternoon, June 30, 2007 at Sacred Heart Catholic Church in Plainview. Father Arsenio Redulla officiated.

The bride is the daughter of Santos and Rosa Hernandez of Floydada. She is the granddaughter of Alfredo and Maria Martinez of Floydada, and the late Apolonio and Dolores Hernandez of San Angelo.

The groom is the son of Maria Ferrer and the late Pedro Ferrer of Kress. He is the grandson of the late Jose and Maria Peralez and the late Remedios and Maria Del Carmen Ferrer, all of Plainview.

Escorted on the arm of her father, the bride wore a lovely white satin strapless A-line gown with side drape bodice and

beaded lace appliques. She wore an elbow length, three layer veil, sequenced with pearl beading. The dress featured a chapel train. She carried a bouquet of baby pink gerbera daisies and hot pink roses accented with light pick lace.

Keeping with tradition, something new was her dress; something borrowed was her shoes and something blue was her garter.

Serving as matron of honor was Bertha Garcia, sister of the bride. Bridesmaids were Audrie Hernandez, sister of the bride; Jasmine Ferrer, daughter of the groom; Amber Ferrer, daughter of the groom; and Veronica Garcia of Edinburg, sister-in-law of the bride.

The bridesmaids wore black satin, floor length strapless dresses and the matron of honor

wore a baby pink floor length, strapless dress. The bridesmaids carried handtied bouquets of black and pink silk roses and the matron of honor carried a handtied bouquet of white silk roses.

Flowergirls were Valerie Hernandez, little sister of the bride; Cynthia Azua, daughter of Salvador and Dianna Azua, friends of the bride and groom; and Raquel Mariscal, niece of the groom.

The ring bearer was Ethan Gomez, son of the bride.

Train carriers were Mikey and Seth Ferrer, sons of the bride and groom.

Serving as best man was Joe Manuel Ferrer of Plainview, brother of the groom. Grooms-men were Jonah Ferrer of Florida, brother of the groom; Rick Hernandez of Lubbock, brother-in-law of the groom; Homey Castillo of Plainview, cousin of the groom; Junior Hernandez of Floydada, brother of the bride and Adrian Hernandez of Edinburg, brother of the bride.

Lectors of the church were Joey and Marisela Rodriguez of Plainview.

The Gospel of Matthew 5:1-12a was read by Father Arsenio Redulla.

The church altar was decorated with flower arrangements of baby pink roses, white calla lilies, baby pink gerbera daisies and hot pink carnations. A white aisle runner streamed the aisle.

Robert Garza and several others were the musicians of the Mass.

The Unity candles were lit by the mothers of the bride and groom.

The bride and groom made their way down the aisle to the song, "De Colores."

Gifts given were the lasso, given by Adrian and Nora Hernandez of Edinburg. Rosary and Bible were given by Margarito and Maria Elena

Arrelano of Lockney. Pillows were given by Roy and Gloria Garibay of Plainview. Arras were given by Rick and Elsa Hernandez. Roses to the Virgin Mary were given by Angel and Elida Ferrer of Lubbock. Unity candles were given by Abel and Flora Ramos of Plainview. The guestbook was given by Eddie and Christy Hernandez of Floydada. Pictures were taken by Dolores Castillo. Video and pictures were given by Joe Luis Ferrer of Lubbock. The knife and cake servers were given by Joe and Maria Pardo of Plainview. A photo album was given by Gina Mendoza and other gifts by Herman and Bibi Arroyon.

Main witnesses were Margarito and Gloria Ferrer of Plainview.

A reception followed the ceremony at the James Dean Hearn Activity Center.

A dance followed immediately after the reception at the Plainview Country Club.

The bride and groom entered and took their first dance together dancing to the song, "When You Say Nothing At All".

The tables were decorated with black linens and candle arrangements and favors of black and pick match books.

The bride's cake was a seven layered vanilla cake decorated with pink flowers, greenery and a fountain in the middle.

The groom's cake was a two layered chocolate cake topped with green and purple grapes and strawberries. The table was decorated with monogrammed black and pink napkins.

The bride attended school in Floydada and is currently a home maker.

The groom attended school in Kress and is the owner/operator of La Barber Shop in Plainview.

The couple will reside in Plainview to become one family together with their five children and one grandson.



DE LA FUENTE
Marco and Sarah De La Fuente of Floydada are proud to announce the birth of their son Abram Ray De La Fuente. He was born 5:53 p.m. July 4, 2007. He weighed 6 pounds 8 ounces and was 19 3/4 inches long.

His brother and sister are Aaron and Anna De La Fuente.

Grandparents are Juan and Beatriz De La Fuente and Raul and Diana Mendoza, all of Floydada.

Great-grandparents are Dolores De La Fuente, Jesusa Mendoza and Tomas and Virginia Hernandez, all of Floydada.

Great-great-grandparent is Theodore Santos.



CUELLAR
Jaime Cuellar and Kimberly Garza of Floydada announce the birth of their son Jakob Allen Cuellar. He was born 7:36 p.m. July 14, 2007 at Lockney. He weighed 7 pounds 1 ounce and was 20.5 inches long.

Grandparents are Javier and Martha Garza of Floydada and Jaime and Maria Cuellar also of Floydada.

Great-grandparents are Juan Garcia of South Carolina, Dora Enriquez of Lubbock, Oscar and Cande Garza of Floydada, Dolores De La Fuente of Floydada and Cesareo Cuellar of Villagrana-Tamps, Mexico.

We are proud to offer
Circle  Candles.

Come see Stacie 983-2220
at Scott Gin 2 miles south on the Ralls Hwy.

Carlton family holds reunion

By Margie Rexrode

The family of Aubrey and Elmina (Crow) Carlton, formerly of Friona, held their 21st annual reunion at the home of Joe and Margie Carlton Rexrode of Lockney, Saturday, July 21.

Special guests were aunt Zula Carlton of Plainview; aunt Sue Inman of Hereford; cousins Jack and Claire Johnson of George town; cousin W.L. Cleveland of Friona; and friends Dorothy Crawford of Lubbock; Ethelyn Garnett of Lockney; and Jaclyn Garnett of Clovis, New Mexico.

Family members present were: Sonny and Sandra Carlton of Ocala; Jerry and Liz Carlton of Clovis, New Mexico; Jerry Jr.,

Berna, Chad, Britthy, Cole and Caleb Carlton of Clovis, New Mexico; Jerry and Liza Nunez of Clovis, New Mexico; Barry M. Carlton of Clovis, New Mexico; Darren, Crystal, Amber and Dustin Lott of Shirley, Arizona; Rick Carlton of Shirley, Arizona; Walter and Renda Carlton of Weatherford; Marti and Hanna Gresham of Stephenville; Jesse

Milton and Sandra Carlton of Leander; David and Patti Carlton of Plano; Micah, Leslie and Aiden Carlton of McKinney; Jared Carlton of Lubbock; Debra Carlton of Plainview; Rocky, Donette and Sarah Sabins of Plainview; Timothy Sabins of Kress; and Heath, Jeri, Austen and Audrey Rexrode of Lockney.

Fresh vegetables for sale, when available, inside the Lockney Beacon office on Mondays and Thursdays.

Have You Made Your Will?

Laney & Stokes, Lawyers
293-2618

cBc Photography
Connie Curry Barnett

cbarnett@midplains.coop On site shooting,
(806)847-2296 Seniors call for your appointment

"It Can Happen"

Unity Center Special Project

PAVED PARKING LOT
Entire front of building

CENTRAL AIR CONDITIONING / HEAT
City Bank room - small south building

Thanks to these local donors:
Paul & Gayle Schacht
Muncy Elevator
Margaret Saul
Thomas Kinder & Martha Farris Charitable Foundation
City Bank - Floydada & Lockney
American State Bank
Sally Shaw
Roy & Neva Baxter
Dr. Jack & Billie Jordan
Royce & Foncine Carthel
Kendis & Janice Julian

Total Project Cost: \$135,000

\$119,050 has been collected (88% of goal)

All donations are tax deductible since Floyd Co. Friends have a 501(c)(3) permit from IRS

Floyd County Friends, Inc
PO Box 58
Floydada, Tx 79235

Medicare Supplement Insurance... The State Farm Way!

Look to your Good Neighbor agent for help in choosing a Medicare Supplement Insurance plan that is right for you. Call me for choices in health care protection.

Nick W Long, Agent
201 W California
Floydada, TX 79235
Bus: 806-983-3441
nick.long.cgr@statefarm.com

Like a good neighbor, State Farm is there®
statefarm.com

*State Farm Mutual Automobile Insurance Company
Home Office: Bloomington, Illinois

Call for details on coverage, costs, restrictions and renewability. Note: These policies are not connected with or endorsed by the United States Government or the Federal Medicare Program. P-02403TX03/02 Rev. 03/02

THE FLOYD COUNTY HESPERIAN-BEACON

Published weekly each Thursday at 111 E. Missouri Street, Floydada, TX 79235. Periodical postage paid at Floydada, Texas 79235

POSTMASTER: Send change of address to: The Floyd County Hesperian-Beacon, 111 E. Missouri Street, Floydada, TX 79235 (806) 983-3737

Phones to fit your Back-to-School Budget

Prices start at \$9.95

Caprock Cellular

The wireless evolution

ACE Hardware, Floydada (806) 983-3000

Oden Chevrolet, Floydada (800) 570-3787

Unlimited Text Messaging \$9.95 per month

©2007 Caprock Cellular. All rights reserved. Coverage not available in all areas. See coverage maps for details. Limited time offer. Other conditions and restrictions may apply. See contract and rate plan brochure for details. \$25 non-refundable activation fee per phone may apply. Subject to credit approval or a deposit may be required. Equipment price and availability may vary. Early Termination Fee: None if cancelled in first 14 days; thereafter \$200 may apply per phone. Taxes and fees excluded. Fifty percent of all plan minutes should be on the Caprock Cellular Network. Minutes used while off of the Caprock Cellular Network which exceed 50% of plan minutes will be billed at 20¢ per minute. All products and service marks referenced are the names, trade names, trademarks and logos of their respective owners. Screen images are simulated.



FLOYDADA BOY SCOUTS--(Back row, l-r) David McGowen, Bob Gilliland, Curtis Emert, J.C. Chappell and William (Bubba) Goode (front row, l-r) Matthew McGowen, Joseph Herrera, Juan Ibarra, Landry Morren, D.J. Lackey, Brandon Gomez and Glen Goode. Courtesy Photo

Floydada Boy Scouts return from summer camp at Tres Ritos, NM

By Curtis Emert

Floydada Boy Scouts have returned from another exciting time at summer camp. We travelled to Tres Ritos, New Mexico up in the mountains. We left Saturday July 14 and drove to Tres Ritos. When we arrived it was raining a little.

We walked around until it had stopped and started to set up camp. It was a little damp but we put down tarps and set up tents. After the tents, we set up our dining fly, which is where we cook and eat our meals.

A lot of our meals are cooked on propane stoves because it's faster and sometimes the wood is wet. When the wood is dry we cover it up and we will start a fire

to cook on and to sit around at night.

Some of our meals are sloppy joes, beef and rice, cheeseburgers, brisket cooked over our fire, we also had pancakes, eggs, biscuits, bacon, sausage and cake and cobbler. While at camp the boys worked on tying knots, cooking, nature, archery rifle and other fun badges.

We have had boys who have never seen the mountains and when they get out of the vehicles they just walk around staring at the trees and other scenery. They get to see chipmunks and other little animals. Sometimes we have deer and elk. On Wednesday we go to Taos and go white

water rafting.

If your son is interested in excitement and adventure contact Bob at 983-5131 or Curtis at 983-5046 to sign up.

We had 5 boys and 3 leaders go from Floydada and we had 3 boys and their leader come from Cumby which is 60 miles east of Dallas. The leader is the nephew of Bob Gilliland. The group from Cumby was 3 boys D.J. Lackey, Brandon Gomez, Glen Goode and William (Bubba) Goode, the Scoutmaster. From Floydada J.C. Chappell, Landry Morren, Matthew McGowen, Joseph Herrera, Juan Ibarra and leaders Bob Gilliland, David McGowen and Curtis Emert.

CONTEST PHOTO



JA WELCH and SCOTT FAULKENBERRY reading The Hesperian-Beacon at Frontier Days, in Cheyenne, Wyoming, July 29th.

Floydada Senior Citizen News

Continued from page 3

lunch at the Center with his dad Charles Craig, Wednesday, August 1.

I got a note from Dale and Carolyn Smith of Lubbock telling me they are enjoying having their daughter Sharon's girls visit with them for a week or two. They plan to bring the girls to Floydada with them to visit Jimmie Lou Stewart.

Thank you for remembering the Center when you need to make a memorial donation.

In memory of **Queen Annie Lawson** - Kendis and Janis Julian, Dale and Carolyn Smith.

In memory of **Jerry Crawford** - Dale and Carolyn Smith

Our sympathy to the family of Geneva Stansell.

Thought for the week - Studies show that gazing at the night sky will help you feel relaxed and more connected to nature.

Menu

August 13 - August 17
Monday- Baked fish, ranch potatoes, coleslaw, apple crisp, cornbread

Tuesday-Baked ham with pineapple, scalloped potatoes, squash, bread, fruit

Wednesday-Chicken fried steak with gravy, baked potatoes, vegetable, bread, fruit

Thursday-Ham and noodle casserole, green peas, salad, whole wheat roll, fruit salad

Friday-Chicken salad with roll, potatoes, salad, pudding



Vendor's Wanted

The Floydada Chamber of Commerce has Arts & Crafts, Food, and Commercial vendor's spaces available for their 2007 PUNKIN DAYS on Saturday, October 13. For more information, you may contact Patti at the Chamber office at 806-983-3434.



AMA-TECHTEL

Satisfy your need for speed!

AMA-TECHTEL brings you high-speed fixed wireless Internet access. With speeds up to 50 times faster than dial-up and access that's always on, you'll connect to the world faster than ever.

AMA-TECHTEL is committed to providing the latest technology and the best customer service, so no matter who you're connecting with, you can count on us to get you there.

Now you can have the fastest, most reliable Internet service available. So act fast; contact your local distributor today!

ASSITER INSURANCE
120 W. CALIFORNIA • 983-2511

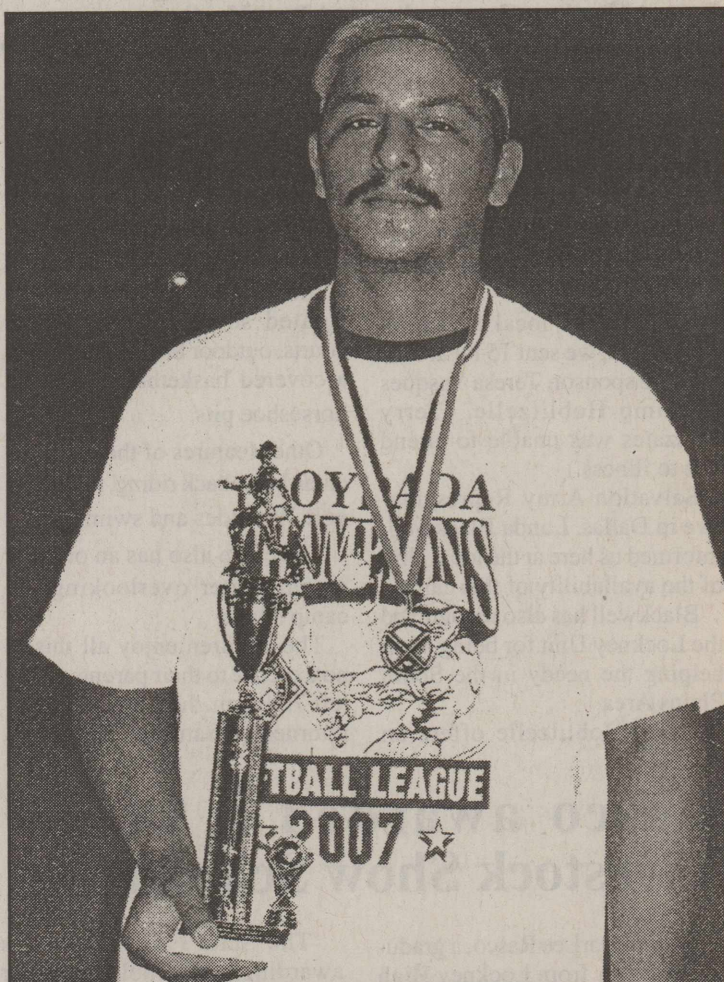
ACE HARDWARE
1101 S. RALLS HIGHWAY • 983-3000

connect



2007 SOFTBALL CHAMPIONS 'WRECKING CREW' -CONGRATULATIONS!(back row, l-r) Josh, Amado, Jimmy, Daniel, Robert, J.J., Trey, Fat Boy; (front row, l-r) Robert, Alex, Jesse, Isidro, Buddy, Gene, Rey.

SPORTS



2007 SOFTBALL HOMERUN CHAMPION REY PEREZ - CONGRATULATIONS!

The Hesperian-Beacon has a wide variety of ad sizes to fit your budget and your needs.

Floydada Independent School District today announced its policy for providing free and reduced-price meals for children served under the National School Lunch and School Breakfast Program. Each school or the central office has a copy of the policy, which may be reviewed by any interested party.

The household size and income criteria identified below will be used to determine edibility for free and reduced-price benefits. Children from households whose income is at or below the levels shown are eligible for free or reduced-price meals. Foster children who are the legal responsibility of a welfare agency or court may also be eligible for benefits regardless of the income of the household with whom they reside. Eligibility for the foster child is based on the child's income.

Application forms are being distributed to all households with a letter informing households of the availability of free and reduced-price meals for their children. Applications also are available at the principal's office in each school to apply for free and reduced-price meals, households must fill out the application and return it to the school. Applications may be submitted anytime during the school year. The information households provide on the application will be used for the purpose of determining eligibility and verification of data. Applications may be verified by the school officials at any time during the school year.

For school officials to determine eligibility for free and reduced-price benefits, households receiving food stamp or Temporary Assistance for Needy Families (TANF) only have to list their child's name and food stamp or TANF case number. An adult household member must sign the application.

Households that do not list a food stamp or TANF case number must list the names of all household members, the amount and source of the income received by each household member, and the Social Security number of the adult household member who signs the application. If the adult who signs the application does have a Social Security number, the household member must indicate that the Social Security number is not available by writing the word "None," "No Number," or some indication that the person does not have a Social Security number. The application must be signed by an adult household member.

Under the provision of the free and reduced-priced meal policy, Rex Holcombe will review application and determine eligibility. Parents or guardians dissatisfied with the ruling of the official may wish to discuss the decision with the reviewing official on an informal basis. Parents wishing to make a formal appeal for a hearing on the decision may make a request either orally or in writing to Jerry Vaughn, Superintendent, 806-983-3498.

If a household member becomes unemployed or if the household size increases, the household should contact the school. Such changes may make the children of the household eligible for benefits if the household's income falls at or below the levels shown above.

In accordance with federal law and U.S. Department of Agriculture policy, this institution is prohibited from discriminating on the basis of race, color, national origin, sex, age or disability.

To file a complaint of discrimination, write USDA, Director, Office of Civil Rights, 1400 Independence Avenue, SW, Washington, D.C. 20250-9410 or call (800) 795-3272 or (202) 7207-6382 (TTY). USDA is an equal opportunity provider and employer.

NATIONAL SCHOOL LUNCH AND CHILD NUTRITION PROGRAMS 2007 - 2008 INCOME ELIGIBILITY GUIDELINES

FAMILY SIZE	ANNUALLY		MONTHLY		TWICE PER MONTH		EVERY TWO WEEKS		WEEKLY	
	FREE	REDUCED	FREE	REDUCED	FREE	REDUCED	FREE	REDUCED	FREE	REDUCED
1	\$13,273	\$18,889	\$1,107	\$1,575	\$554	\$788	\$511	\$727	\$256	\$364
2	\$17,797	\$25,327	\$1,484	\$2,111	\$742	\$1,056	\$685	\$975	\$343	\$488
3	\$22,321	\$31,765	\$1,861	\$2,648	\$931	\$1,324	\$859	\$1,220	\$430	\$611
4	\$26,845	\$38,203	\$2,238	\$3,184	\$1,119	\$1,592	\$1,033	\$1,470	\$517	\$735
5	\$31,369	\$44,641	\$2,615	\$3,721	\$1,308	\$1,861	\$1,207	\$1,717	\$604	\$859
6	\$35,893	\$51,079	\$2,992	\$4,257	\$1,496	\$2,129	\$1,381	\$1,965	\$691	\$983
7	\$40,417	\$57,517	\$3,369	\$4,794	\$1,685	\$2,397	\$1,555	\$2,213	\$778	\$1,107
8	\$44,941	\$63,955	\$3,746	\$5,330	\$1,873	\$2,665	\$1,729	\$2,460	\$865	\$1,230
9	\$49,465	\$70,393	\$4,123	\$5,867	\$2,062	\$2,934	\$1,903	\$2,708	\$952	\$1,354
10	\$53,989	\$76,831	\$4,500	\$6,404	\$2,251	\$3,203	\$2,077	\$2,956	\$1,039	\$1,478
11	\$58,513	\$83,269	\$4,877	\$6,941	\$2,440	\$3,472	\$2,251	\$3,204	\$1,126	\$1,602
12	\$63,037	\$89,707	\$5,254	\$7,478	\$2,629	\$3,741	\$2,425	\$3,452	\$1,213	\$1,726
For each additional family member add:										
	\$ 4,524	\$ 6,438	\$377	\$537	\$189	\$269	\$174	\$248	\$87	\$124



KIDS GO TO CAMP HOBLITZELLE courtesy of Salvation Army. (On wall, l-r) Taleah and Tanesha Perez (back row, l-r) sponsor Terry Gonzales, Carmichael Ramos, Jose Guerrero, Isaiah Gonzales, John Palomin, Rubina Luna and Racquel Mejia (center row, l-r) Devin Esquivel, Noah Ramos, Robert Martinez, Javier Guerrero, sponsor Teresa Vasquez, Dominique Trevino and Robert Martinez (front and center) Paul Martinez.

Courtesy Photo

Salvation Army provides local children a chance to go to summer camp for free

By Alicia Luna, Supervisor of Lockney Salvation Army Unit

Through the local Salvation Army Unit, we sent 15 local kids and one sponsor, Teresa Vasquez to Camp Hoblitzelle. (Terry Gonzales was unable to attend due to illness.)

Salvation Army Representative in Dallas, Landa Blackwell, informed us here at the local Unit of the availability of this camp.

Blackwell has also recognized the Lockney Unit for being #1 in helping the needy in the South Plains Area.

Camp Hoblitzelle offers an

outstanding athletic complex including two sand volleyball courts, a football/soccer field, a lighted softball field, tennis courts, outdoor basketball courts, a covered basketball court and horseshoe pits.

Other features of the camp include horseback riding, miniature golf, hay rides and swimming.

The camp also has an outdoor amphitheater overlooking the camp's lake.

The children enjoy all this at no expense to their parents. They left 7:30 a.m. July 30, 2007 and returned on Saturday, August 4.

Rasco awarded a \$4,000 Livestock Show Scholarship

Krista DarLee Rasco, a graduating senior from Lockney High School has been awarded a four year \$4,000.00 Youth Livestock Show Scholarship sponsored by the State Fair of Texas.

The \$1,000 a year scholarship is renewable by maintaining a 3.0 GPA.

Since 1992, the State Fair of Texas Scholarship Program has awarded scholarships to academically talented students who graduate from high schools in the Dallas State Fair Park area. In 1993, the State Fair of Texas Scholarship Program expanded its youth support by awarding scholarships to academically talented students who participated in State Fair of Texas

Youth Livestock Shows. The 2007 Youth Livestock Show will be held this fall during the 121th State Fair of Texas, September 28 to October 21, at Fair Park in Dallas, Texas.

The State Fair of Texas is awarding 172 scholarships for the 2007 - 2008 school year.

This includes 36 new and 69 renewed Youth Livestock Scholarships and 25 new and 42 renewed Fair Park Scholarships.

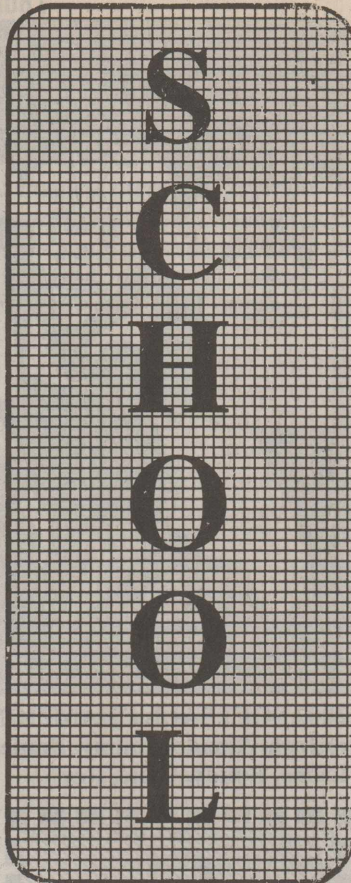
Miss Rasco participated in the State Fair of Texas Youth Livestock Show in 1998, 2002, and 2005. She showed in the Youth Market Barrow and Youth Market Lamb Shows. In high school she has been an active member of FFA, Track, Basketball, Cheerleading, Tennis, U.I.L. Academics, Class Representative and the Student Council. She has held numerous offices in those clubs and received many awards and honors and been active in community service during her high school career.

Miss Rasco plans to attend West Texas A&M University and major in agribusiness. She is the daughter of Darrell and Marva Rasco of Lockney.

PHOTO CONTEST

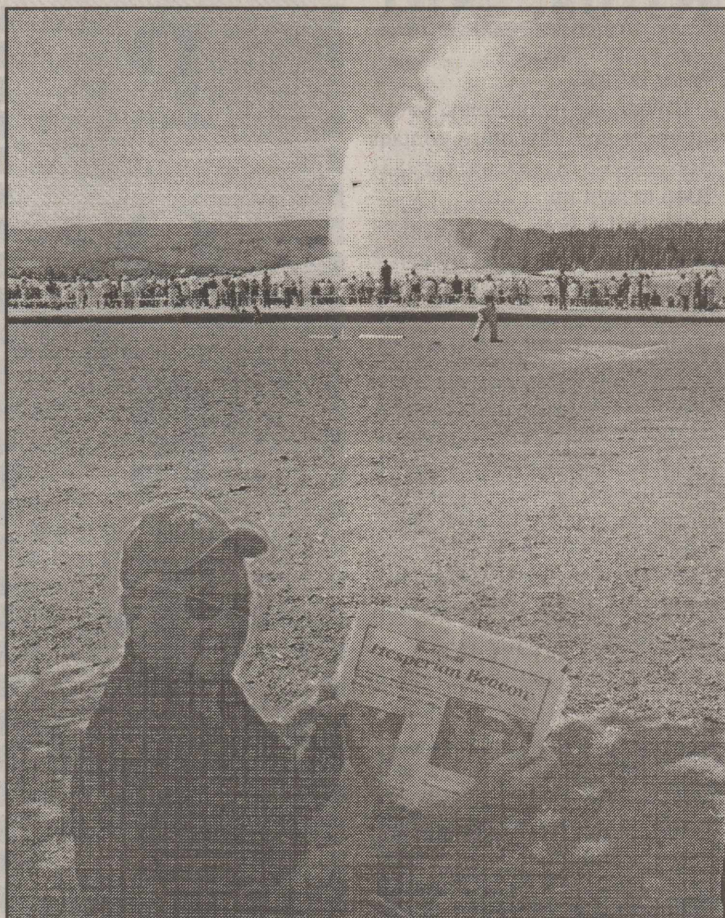


RUIDOSO, NEW MEXICO WATER WHEEL is where Retha Wofford of Lockney was seen reading the Hesperian-Beacon on July 12. She and her two daughters, Jean Curtsinger and Jann Ball were enjoying a "girls only" trip to Ruidoso.



SMILE TODAY!

PHOTO CONTEST



OLD FAITHFUL AT YELLOWSTONE NATIONAL PARK-Bill Hendrix is shown reading the Hesperian-Beacon while on vacation, June 28, at the park.



CLASS OF 1957 REUNION--Lockney High School Class of 1957 gathered for their 50th Reunion, July 28th, at Lockney's Senior Citizens. Shown here are: (back, l-r) Billy Rexrode, Jerry Mickey, L.Ray Crouch, Floy Baxter Lancaster, Marvin Wells, Sandra Landrum Thompson, Oleta McCandless Casey, Donald Rexrode, Kenneth Kendrick, Roland Watson, Lonell Hays, Brannon Darnell, and Loyd Widener; (middle, l-r) Arlene Matthews Jones, Ann Davis Pevehouse, Patsy Vanek CdeBaca, Katie Rucker Handley, Charlene Messimer Hughes, Gene Handley, Charles Williams, and Marvin Christy; (front, l-r) Shirley Warren Griffith, Peggy Hall Nance, Patsy Bybee Stephens, Lynn Jolly Milligan, Pat Bayley DiCuffa, Nelda Cates Maurer, and Carolyn Cunningham. Attending, but not pictured were: C.F. Barber, Tommy Davis, and David Frizzell.

Lockney Athletic Booster Club News

Another year is under way, and the LABC will have its regular meetings on **Mondays at 7:00pm** in the Longhorn Gym. Please make every effort to attend, we need your input!

New officers have been elected, but we still have several sports that need Vice Presidents: JV Football, Cross Country, Power Lifting, Boys and Girls Track, Tennis, and Softball.

Important Upcoming Dates:

Friday, August 17th at 9:00am

Photos for football players & cheerleaders

Saturday, August 18th at 10:00am

Scrimmage at Roosevelt High School

***Painted Longhorns and Hooves for driveways and sidewalks**

Schedule yours now — #652-2219

Longhorn Band News

The 2007 version of the Lockney Longhorn Band will begin with a general meeting on **Thursday night, August 9th, from 7:30-8:45pm in the Band Room.**

Marching and playing rehearsals will begin on **Monday evening, August 13th, from 8-10pm.**

Band members should call the Band Room phone, 652-4940, if they are going to be out of town and miss any of the evening rehearsals.

This year's competition show will be "Highlights from The Wizard of Oz". This should be a great marching and football season for the Longhorn Band.

Lockney Elementary School Pre-Kindergarten Program

Beginning with the 2007-2008 school year, Lockney ISD will offer Pre Kindergarten classes for both 3 and 4 year old students.

Qualifications For Entry Into 3-year-old Pre-K:

- Must be 3 years old on or before September 1, 2007, and
- **One of the following:**
- Must qualify for the Free & Reduced Price Lunch Program (See principal for details); or
- Must be limited in English proficiency; or
- Must be homeless.

Qualifications For Entry Into 4-year-old Pre-K:

- Must be 4 years old on or before September 1, 2007, and
- **One of the following:**
- Must qualify for the Free & Reduced Price Lunch Program (See principal for details); or
- Must be limited in English proficiency; or
- Must be homeless.

All students enrolling in school must bring the following by the school office **Monday - Thursday 9:00am - 2:00pm** or by arrangement with the school principal:

- Certificate of Birth
- Social Security Card
- Current Record of Immunization
- Parent's drivers license for office copy

Students enrolled in Pre K will attend at the following times:

- 8:00am - 11:30am 3 year old class
- 12:00pm - 3:30pm 4 year old class

Lockney Elementary School Pre-Kindergarten Program

El principio con el 2007-2008 año escolar, Lockney ISD ofrecerá clases Pre K para 3 y de 4 años de edad estudiantes.

Los requisitos Para la Entrada En de 3 años de edad Pre-K:
 • Debe tener 3 años en o antes de el 1 de septiembre de 2007, y uno de lo Siguiente: • Debe calificar para el Libre & el Programa Reducido del Almuerzo del Precio (Ve a director para detalles); o
 • debe ser limitado en inglés pericia; o
 • debe ser sin hogar.

Los requisitos Para la Entrada En de 4 años de edad Pre-K:
 • Debe tener 4 años en o antes de el 1 de septiembre de 2007, y uno de lo Siguiente: • Debe calificar para el Libre & el Programa Reducido del Almuerzo del Precio (Ve a director para detalles); o
 • debe ser limitado en inglés pericia; o
 • debe ser sin hogar.

Todos estudiantes que matriculan en la escuela deben traer el siguiente por la oficina de la escuela el lunes - el jueves 9:00am - 2:00pm o a convenir con el director de escuela:
 • Certificado del Nacimiento
 • Tarjeta de Seguridad social
 • el Registro Actual de la Inmunización
 • conductores de Padre licencian para la copia de la oficina

Los estudiantes matriculados en Pre K asistirán en los tiempos siguientes:
 8:00am - 11:30am de 3 años de edad clase
 12:00pm - 3:30pm de 4 años de edad clase



Auto • Home • Life



James Race, LUTCF
Agency Manager



David True, LUTCF
Agent



Tammy Brannon
Agent



Chris Fulton
Agent

For all your insurance needs...

Whether you need Auto, Home or Life Insurance, you can be sure we will work hard to provide you the best coverage for your money. That's why Americans from all walks of life depend on Farm Bureau Insurance.

Helping You is what we do best.

FLOYD COUNTY
 101 S. Wall • Floydada, TX 79235
 (806) 983-3777

BRISCOE COUNTY
 802 Lone Star • Silverton, TX 79257
 (806) 823-2234

sfbli.com • txfb-ins.com

Texas Farm Bureau Mutual Insurance Co. • Texas Farm Bureau Underwriters
 Southern Farm Bureau Casualty Insurance Co. • Southern Farm Bureau Life Insurance Co., Jackson, MS
 Farm Bureau County Mutual Insurance Company of Texas

Lockney Tiger League Sign-Ups
August 15th
4:30 p.m. - 6:00 p.m.
at the Lockney Elementary
for youth entering 5th & 6th grade



PARKING LOT IMPROVEMENTS PLANNED--(l-r) Martin Stoerner, Pat Bradley, and Nick Long look over the parking lot in front of the Unity Center and discuss the future paving plans for the lot. Bradley is the Branch Manager for American State Bank which recently donated \$5,000 toward the fund raising campaign for the Unity Center's air conditioning and paving. The donation put the campaign total at \$114,900.00 The total cost of the project is \$135,000. Courtesy Photo



CLASS 33 WINNER--Will Foster, of Lockney, exhibited the Class 33 winner, SVF/J&T Peony S65A, at the 2007 AJCA National Junior Heifer Show June 30, 2007 in Bowling Green, Ky. Pictured with Foster are Darlee, David & SyAnn Foster. Foster also competed in various contests during the week and was a member of the second place intermediate quiz bowl team. Courtesy Photo

Cotton  **News**
 4517 West Loop 289
 Lubbock, Texas 79414
 Telephone: 806-792-4904 Fax 806-792-4906

By Shawn Wade

As of today there is little to report about the 2005/2006 Crop Disaster Program except that USDA is still in the process of writing and finalizing the regulations that will govern implementation of the program.

Based on conversations with Congressional staff and personnel within the USDA Farm Service Agency it appears that sign-up for the crop loss portion of the program is unlikely to occur before the end of September. Once final rules are agreed upon, it will simply take some time to complete the final software revisions, distribute information to State and County offices and train FSA personnel to implement the program.

Such an open-ended time line means growers and agricultural lenders eager to know when the ball will get rolling will have to wait a little longer, or at least until USDA decides to officially announce the implementation time line.

High Plains crop on track despite below average temperature trend in 2007

With the month of August newly arrived, the 2007 High Plains cotton crop continues to look good in the field and is supporting a cautiously optimistic outlook among producers.

A number of factors have played pivotal roles in the development of the 2007 crop, which is generally regarded as being in good shape but not quite where growers would prefer it to be.

After planting in the neighborhood of 3.1 million acres to cotton, farmers across the High Plains are still seeing a lot of potential in the crop. In order for all that potential to be realized however the area still needs a little extra boost from mother nature when September and October roll around.

Following the above normal rainfall pattern that lingered in the area early in the season, July's open weather was a welcome change. July temperatures were marginally below normal, but still helped the crop make up

some of the ground it lost early on.

Another positive factor is that this year's crop has been relatively stress free thanks to the above average rainfall and below normal temperatures. This allowed growers to save a considerable amount of money on irrigation expenses and many didn't feel the need to turn on wells until just recently.

This year's early August snapshot indicates things are looking good, even though most crop watchers would likely admit to expecting far less cotton than usual to be ready for harvest aid treatments in late September and early October.

The success or failure of the 2007 crop will not hinge on how the crop has pulled through the challenges presented up to this point. As always the High Plains will rest its fortunes on what happens from this point forward.

Summing up what the crop needs is fairly simple. A few timely rains, seasonal August temperatures and an extended period of above average temperatures and sunny days after Labor Day would be a welcome finale to another challenging High Plains cotton production season. **June marketing price/figures released**

As the 2006 cotton marketing year eased to a close earlier this week, USDA's National Agricultural Statistics Service released the July Agricultural Prices report containing Upland cotton

price and marketing information for the month of June.

According to the July report, the Average Price Received by farmers for Upland cotton in June rebounded slightly from May's sharp decline and came to rest at 46.4 cents per pound. Marketing figures for the month went the opposite direction, however, settling at an estimated 1.067 million bales.

Incorporating June's numbers moves the 2006 marketing year's Weighted Average Price Received calculation down slightly to 47.32 cents per pound - 4.68 cents below the Upland cotton base loan rate of 52 cents per pound. Cumulative Upland cotton marketings through June 2007 total 14,473 million bales according to the USDA National Agricultural Statistics Service.

This month's marketing figures reinforce the fact that the 2006 Counter-cyclical program (CCP) payment rate for Upland cotton will be 13.73 cents per pound, the maximum allowed under the 2002 Farm Bill.

For cotton the 12 month Weighted Average Price will reflect price and marketings for the 2006 marketing year that began August 1, 2006 and ended July 31, 2007.

The following table shows the average price received each month by farmers and the associated weighted average price based on prices and cumulative marketings from August 1, 2006 through June 30, 2007.

Average Price Received for 2006-crop Upland Cotton
 (Weighted by Marketings)

	Marketings (000's of Running bales)		Prices (cents/Lb.)	
	Monthly	Cum.	Monthly	Weighted
August	1,970	1,970	45.80	45.80
September	182	2,152	47.30	45.93
October	994	3,146	46.10	45.98
November	1,117	4,263	47.60	46.41
December	2,062	6,325	49.30	47.35
January	1,557	7,882	49.70	47.81
February	1,253	9,135	48.00	47.84
March	1,566	10,701	47.40	47.77
April	1,155	11,856	47.30	47.73
May	1,550	13,406	44.80	47.39
June	1,067	14,473	46.40	47.32
July	n/a	n/a	46.80*	n/a

* Source: National Agricultural Statistics Service; * = preliminary

Perennial grass workshop set for Friday, August 10th

Perennial grass selection and pasture management highlight a turnrow meeting and workshop near Lockney, August 10th.

Attendees can review a grass trial established in 2007 that includes native and improved range species under different levels of irrigation.

The workshop is sponsored by Texas Cooperative Extension and the Texas Alliance for Water Conservation (TAWC).

The meeting begins 8:30 AM at the grass plots 3 miles south of Lockney on FM. 378.

Discussion will be led by Texas A&M, TAWC, and NRCS staff focusing on grass selection, pasture management for produc-

tion and animal performance, and integrating perennial pastures into cropping systems.

The meeting will reconvene 10:30 AM at the Muncy Unity Center on U.S. 70 between Lockney and Floydada for further discussion as well as a Fall 2007 wheat update.

You may purchase lunch at the Muncy Center. The program concludes at 1 PM. Two CEUs are available. For further information and your RSVP contact the Floyd Co. Extension office, (806) 983-4912 or Hale Co. Extension Office, (806) 291-5267. 2.5 CEU's will be provided for all private applicants.



PRODUCERS COOPERATIVE ELEVATOR

983-2821 - Floydada
 983-3020 - Dougherty

FIRST NATIONAL BANK OF FLOYDADA



Floydada 983-3717
 Member F.D.I.C.

FLOYDADA COOPERATIVE GINS, INC.



Floydada 983-2884



Fresh vegetables for sale, when available, inside the Lockney Beacon office on Mondays and Thursdays

Floydada say HELLO to High-Speed Internet!



SIGN UP TODAY TO GET FREE INSTALLATION

and the 3rd month of service free!

Total savings up to \$169⁹⁵

- 6 Speeds available to fit any need and budget
- Download photos and music quickly and easily
- No busy signals, never have to wait again
- No phone line or cable wire needed to receive service

Service is available in the rural areas surrounding Floydada. Call for more details.



Call Today and Save!
1.800.963.4984

Rapid Communications 2007. For new residential customers only. Available services & pricing may vary and not be available in all areas. Credit for the 3rd month of service will be posted to your account and will appear on your third month's bill. Regular retail rates apply thereafter. Download & upload speeds are maximum speeds; they may vary & are not guaranteed. Franchise fees, taxes, installation, restrictions & other fees may apply, the actual amount depending on location & service ordered. If service is canceled before 12 months, a \$100 service charge will be applied to customer's account. A cable modem or network card may be required at installation. Minimum computer requirements may be required. Offer subject to change. Other restrictions may apply. RAPID0714



Fresh vegetables for sale, when available, inside the Lockney Beacon office on Mondays and Thursdays.

B.O.F. SERVICES INC.
 Now accepting applications for truck drivers.
 No experience needed. We are willing to train.
 We offer great benefits
 * Paid Vacation
 * Insurance
 * 401K
 * 80 Hour Guarantee
 Applicants please call 806-495-3805 to schedule appointment

Have a nice week!

All ad sizes are noticed!

Enter the Photo Contest and Win \$100

Thank You

St. Mary Magdalen Catholic Church would like to thank all the wonderful and generous businesses that made our Jamaica such a great success. May God continue to bless you always.
 Thank you as well to every individual that helped and participated in any way.

Ace Hardware, American State Bank, Azteca, Bibi's Dream Cuts, Dollar General, Floydada Chamber of Commerce, Frito Lay, Garcia's OK Tire Store, Lowe's Pay-n-Save, Floydada, Molina Roofing, Nielson's Restaurant & Catering, Norma's Hair Studio, Panchitas Place, Floydada Police Department, Tequeria Dos Amigos, Tina's Donut Shop, KFLP Radio, City of Floydada, Rosa's, RRR Monreal, SuddenLink Cable, Mrs. Baird's, Wal Mart, Producers, Allure Hair Cuts, Plainview.

PUBLIC NOTICE

NOTICE OF PROPOSED SALARY INCREASE

The Commissioners' Court of Floyd County shall exercise its authority provided by VTCA Local Government Code §152.013 at the regular Budget Hearing, August 27, 2007, at 9:00 a.m. to set the salary, expenses and other allowances of Elected County or Precinct Officers. Proposed increased are as follows:

Elected Officials	Salary		
	Present Salary	Proposed Annual Increase	Proposed Salary
County Judge	23,380.00	704.00	24,084.00
County Clerk	25,058.00	754.00	25,812.00
District Clerk	25,058.00	754.00	25,812.00
Justice of the Peace #1 & 4	25,058.00	754.00	25,812.00
Justice of the Peace #2 & 3	25,058.00	754.00	25,812.00
County Attorney	24,093.66	1,718.34	25,812.00
County Treasurer	25,058.00	754.00	25,812.00
Tax Assessor - Collector	25,058.00	754.00	25,812.00
Sheriff "Disparity"	25,776.58	6,419.42	32,196.00

COMMISSIONERS' COURT, FLOYD COUNTY, TEXAS

8-9c

NOTICE OF PUBLIC HEARING ON TAX INCREASE

The COMMISSIONERS' COURT OF FLOYD COUNTY will hold a public hearing on a proposal to increase total tax revenues from properties on the tax roll in the preceding tax year by 7.99% percent (percentage by which proposed tax rate exceeds lower of rollback tax rate or effective tax calculated under Chapter 26, Tax Code). Your individual taxes may increase at a greater or lesser rate, or even decrease, depending on the change in the taxable value of your property in relation to the change in taxable value of all property, and the tax rate that is adopted.

The public hearing will be held on August 10, 2007 and August 27, 2007 at 9:00 a.m. in the Courthouse, County Courtroom, Room 106.

The members of the governing body voted on the proposal to consider the tax increase as follows:

For: Lennie Gilroy, Ray Nell Bearden, Bill Quattlebaum, Jon Jones
 Against:
 Present and Not Voting:
 Absent:

Comparison of Proposed Budget with Last Year's Budget

The applicable percentage increase or decrease (or difference) in the amount budgeted in the preceding fiscal year and the amount budgeted for the fiscal year that begins during the current tax year is indicated for each of the following expenditure categories:

Maintenance and operations	3	% (increase)	or		% (decrease)
Debt service	0	% (increase)	or		% (decrease)
Total expenditures	3	% (increase)	or		% (decrease)

Total Appraised Value and Total Taxable Value as calculated under section 26.04, Tax Code

	Preceding Tax Year	Current Tax Year
Total appraised value* of all property	\$ 390,156,300	\$ 395,355,880
Total appraised value* of new property **	\$ 921,420	\$ 692,480
Total taxable value*** of all property	\$ 265,862,550	\$ 266,279,030
Total taxable value *** of new property**	\$ 336,699	\$ 602,260

Bonded Indebtedness

Total amount of outstanding and unpaid bonded indebtedness \$ 0.00

Tax Rates

Adopted tax rate for the preceding tax year \$ 0.005409 per \$100 in value
 Proposed tax rate for the current tax year \$ 0.0058438 per \$100 in value
 Difference in the proposed tax rate and the adopted tax rate for the preceding tax year \$.0004348 per \$100 in value

Percentage increase or decrease in the proposed tax rate and the adopted tax rate for the preceding tax year 7.99% % Increase OR % Decrease

These tax rate figures are not adjusted for changes in the taxable value of property.

Comparison of Residence Homestead Values

Average appraised and taxable values on residence homesteads are compared from the preceding tax year and the current tax year.

Average residence homestead appraised value Preceding Tax Year \$ 31,311.00 Current Tax Year \$ 30,026.00

Homestead exemption amount for the taxing unit (excluding special exemptions for persons 65 years of age or older or disabled) \$ 5,000.00 \$ 5,000.00

Average taxable value of a residence homestead (excluding special exemptions for persons 65 years of age or older or disabled) \$ 26,311.00 \$ 25,026.00

Comparison of Residence Homestead Taxes

The taxes that would have been imposed in the preceding tax year on a residence homestead at the average appraised value (excluding special exemptions for persons 65 years of age or older or disabled) are estimated to be \$142.00. The taxes that would be imposed in the current tax year on a residence homestead appraised at the average appraised value in the current tax year (excluding special exemptions for persons 65 years of age or older or disabled), if the proposed tax rate is adopted, are estimated to be \$146.00. The difference between the amount of taxes on the average residence homestead in the current tax year, if the proposed tax rate is adopted, and the preceding tax year would be an increase of \$4.00 or a decrease of \$ in taxes.

Special Provisions if Applicable

Criminal Justice Mandate (use for counties, if applicable):

The FLOYD County Auditor certifies that FLOYD County has spent \$7,562.00 in the previous 12 months beginning April 2006, for the maintenance and operations cost of keeping inmates sentenced to the Texas Department of Criminal Justice. FLOYD County Sheriff has provided information on these costs, minus the state revenues received for reimbursement of such costs.

Enhanced Indigent Health Care Expenditures (use if applicable):

The spent \$ from to on enhanced indigent health care at the increased minimum eligibility standards, less the amount of state assistance. For the current tax year, the amount of increase above last year's enhanced health care expenditures is

8-9c

2007 PROPERTY TAX RATES IN FLOYD COUNTY

This notice concerns 2007 property tax rates for FLOYD COUNTY. It presents information about three tax rates. Last year's tax rate is the actual rate the taxing unit used to determine property taxes last year. This year's effective tax rate would impose the same total taxes as last year if you compare properties taxed in both years. This year's rollback tax rate is the highest tax rate the taxing unit can set before taxpayers can start tax rollback procedures. In each case these rates are found by dividing the total amount of taxes by the tax base (the total value of taxable property) with adjustments as required by state law. The rates are given per \$100 of property value.

	General Fund	Farm to Market/ Flood Control Fund	Special Road/ Bridge Fund
Last year's tax rate:			
- Last year's operating taxes	\$ 1,438,147		\$ 59,884
- Last year's debt taxes			
- Last year's total taxes	\$ 1,438,147		\$ 59,884
- Last year's tax base	\$ 265,862,550		\$ 265,564,760
- Last year's total tax rate	\$.5409 /\$100	/\$100	\$.02255 /\$100

This year's effective tax rate:			
- Last year's adjusted taxes (after subtracting taxes on lost property)	\$ 1,434,025		\$ 59,752
+ This year's adjusted tax base (after subtracting value of new property)	\$ 265,676,770		\$ 265,564,760
= This year's effective tax rate for each fund	\$ /\$100	\$ /\$100	\$.02255 /\$100
Total effective tax rate	\$.53976 /\$100	/\$100	\$.02255 /\$100

In the first year a county collects the additional sales tax to reduce property taxes, it must insert the following lines unless its first adjustment was made last year.

- Sales tax adjustment rate	\$ 0 /\$100
= Effective tax rate	\$ 0 /\$100

This year's rollback tax rate:

- Last year's adjusted operating taxes (after subtracting taxes on lost property and adjusting for any transferred function, tax increment financing, state criminal justice mandates, and/or enhanced indigent health care expenditures)	\$ 1,437,635		\$ 59,752
+ This year's adjusted tax base	\$ 265,676,770		\$ 265,564,760
= This year's effective rate	\$.54112 /\$100	\$ /\$100	\$.02255 /\$100
x 1.08 = this year's maximum operating rate	\$.58440 /\$100	\$ /\$100	\$.02435 /\$100
+ This year's debt rate	\$ 0 /\$100	\$ /\$100	\$ 0 /\$100
= This year's rollback rate for each fund	\$ /\$100	\$ /\$100	\$.02435 /\$100
This year's total rollback rate	\$.58440 /\$100		

A county that collects the additional sales tax to reduce taxes, including one that collects the tax for the first time this year, must insert the following lines:

- Sales tax adjustment tax	\$ 0 /\$100
= Rollback tax rate	\$ 0 /\$100

A county with additional rollback rates for pollution control, insert the following lines:

+ Additional rollback rate for pollution control	\$ 0 /\$100
= Rollback tax rate	\$ 0 /\$100

Statement of Increase/Decrease

If FLOYD COUNTY adopts a 2007 tax rate equal to the effective tax rate of \$.54112 per \$100 of value, taxes would DECREASE compared to 2006 taxes by \$ 783.00.

Schedule A - Unencumbered Fund Balances

The following estimated balances will be left in the unit's property tax accounts at the end of the fiscal year. These balances are not encumbered by a corresponding debt obligation.

Type of Property Tax Fund	Balance
General	15,818.15
Road and Bridge	14,376.73

Schedule B - 2007 Debt Service

The unit plans to pay the following amounts for long-term debts that are secured by property taxes. These amounts will be paid from property tax revenues (or additional sales tax revenues, if applicable).

Description of Debt	Principal or Contract Payment to be Paid from Property Taxes	Interest to Be Paid from Property Taxes	Other Amounts to be paid	Total Payment
	\$	\$	\$	\$

(expanded as needed)

Total required for 2007 debt service	\$
- Amount (if any) paid from funds listed in Schedule A	\$
- Amount (if any) paid from other resources	\$
- Excess collections last year	\$
= Total to be paid from taxes in 2007	\$
Amount added in anticipation that the unit will collect only % of its taxes in 2007	\$
= Total Debt Levy	\$

Schedule C - Expected Revenue from Additional Sales Tax

(For hospital districts, cities and counties with additional sales tax to reduce property taxes) In calculating its effective and rollback tax rates, the unit estimated that it will receive \$ in additional sales and use tax revenues. For County: The county has excluded any amount that is or will be distributed for economic development grants from this amount of expected sales tax revenue.

Schedule D - State Criminal Justice Mandate (For Counties)

The FLOYD COUNTY JUDGE County Auditor certifies that FLOYD COUNTY has spent \$ 7,582.00 in the previous 12 months beginning April 1, 2006 for the maintenance and operations cost of keeping inmates sentenced to the Texas Department of Criminal Justice. FLOYD County Sheriff has provided information on these costs, minus the state revenues received for reimbursement of such costs.

Schedule E - Transfer of Department, Function or Activity

The spent \$ from to on the . The operates this function in all or a majority of the . (Second Year of Transfer: Modify schedule to show comparison of amount this year and preceding year by unit receiving the function.)

Schedule F - Enhanced Indigent Health Care Expenditures

The spent \$ from to on enhanced indigent health care at the increased minimum eligibility standards, less the amount of state assistance. For the current tax year, the amount of increase above last year's enhanced indigent health care expenditures is \$.

This notice contains a summary of actual effective and rollback tax rates' calculations. You can inspect a copy of the full calculations at FLOYD COUNTY JUDGE'S OFFICE, COURTHOUSE ROOM 105, FLOYDADA, TX. 79235
 Name of person preparing this notice - PENNY GOLIGHTLY
 Title - COUNTY JUDGE
 Date Prepared - AUGUST 8, 2007.

8-9c

THE CLASSIFIEDS

Call 806-983-3737 or 806-652-3318

web site: www.hesperianbeacon.com ----- e-mail: floydada@amaonline.com

FARM MISCELLANEOUS

HELP WANTED to plow 150 acres of wheat stubble. Call Bill Quattlebaum (day) 806-787-6279; (night) 806-983-8065.

8-16c

I NEED A PART-TIME tractor driving job. Call 806-231-9648.

8-16p

CUSTOM HAY SWATHING and baling. Large round bales. Call Steve Pierce, 983-5348 or (cell) 292-1642.

10-19c

GARAGE SALES

Floydada GARAGE SALE--Saturday -8:00 a.m. - ?? One mile south on FM 1958. Grey brick house on left side of road.

8-9p

725 W. KENTUCKY--Garage sale Saturday, 8:00 a.m. - 5:00 p.m. Lots of clothing.

8-9p

905 W. GEORGIA--Garage sale Thursday. Furniture, kids clothes, miscellaneous.

8-9p

DIAMOND TURF

Landscape maintenance
Irrigation installation
& repair

Call 806-392-1152
Brandon Gilliland

Thanks for reading
the Hesperian-Beacon

HELP WANTED

HELP WANTED: Full time morning waitress at Billie Dean's Restaurant in Matador. Call 806-347-2310, ask for Pat.

tfn

FOOD MANAGEMENT--Earn top salary plus monthly bonuses as the Spur DQ Manager. 501 East Hill Street. Excellent opportunity for continued salary growth. We pay for the job well done. Need responsible, honest service leader to do the job. Background check, drug testing. Call Andy Gonzales @ 940-550-5577.

8-30c

LOOKING FOR ANGELS. Hiring experienced caregivers (minimum one year) for the Plainview area and surrounding areas. Must have own transportation, valid drivers license and current auto insurance. Must be available for all shifts Mon-Sun. Call Visiting Angels at 1-888-434-5584 or 806-687-2780.

8-9c

RALLS NURSING HOME seeking certified nursing aides. 12 hour shifts. Every other weekend off. Please call Dawn at 806-253-2596.

8-30c

HACKBERRY CREEK CARE CENTER at Matador needs LVN's and CNA's. Immediate opening. Call Sherry Robertson or Rosie Rendon at 806-347-2942.

8-9c

\$1500 BONUS FOR experienced satellite installers. We need full-time, hard working, DirecTV satellite installers with strong customer service skills. Excellent wages and medical/dental/vision/401K benefits available. Paid training for those with no experience. Call 800-411-4374 or go to www.premiercomm.com for further info.

8-16p

HOUSES FOR SALE

Floydada
605 N. MAIN-- 2/1, eat-in, utility room, large backyard, nice front porch. OWNER FINANCING AVAILABLE. Call Shawna at 781-9025 or Milton at 790-0827.

tfn

HOUSE FOR SALE--217 E. Tennessee. Call 983-3455.

8-16c

***819 W. MISSOURI--**Neat and clean, 3 bedroom, 2 bath, 2 car garage in great neighborhood. \$80,000.
*** GREAT COUNTRY PROPERTY** with 8 acres, nice barn, pens and 3 bedroom, 1.75 bath home with basement. Super nice condition. \$110,000.

*** 510 W. GROVER--**Good buy! 3 bedroom, 1.75 bath with nice shop. Owner will pay closing cost. \$39,900.

KIM STREET, STREET REAL ESTATE, 806-292-9944.

tfn

MUST SEE! 3-2-2, 810 W. California. 2 family rooms, covered patio, storage. Call 806-789-0872.

tfn

COZY 3 BEDROOM, 2 bath home located in the 800 block of west Ross in Floydada. A MUST SEE! Call Assiter & Associates. 806-983-3322.

tfn

***BEAUTIFUL COUNTRY HOME** -4 bedrooms, 2 baths, 2 car garage on 3 acres. \$149,500.

***3 BEDROOM, 2 BATH** brick home for sale in South Plains. \$58,230.

***2 BEDROOM, 1 BATH.** 128 W. Tennessee. Good credit, will finance. ERA, Roberts and Wilkins. Call Bill Strickland, 806-292-1687.

tfn

Lockney
3 BEDROOM, 2 LIVING AREAS, sunroom, 1-1/2 baths, new backyard fence. 520 SW 3rd, Lockney. Call 505-762-6658 or 505-749-3459.

tfn

INSTRUCTIONAL

MRS. LUCY DEAN RECORD is now enrolling music students for piano, organ, keyboard, guitar and piano accordion. Call 806-652-2364 and leave your name and number if necessary. Record Music Shop, 811 W. Willow, Lockney, TX. 79241.

8-30c

PIANO, VOICE and flute lessons. Call 652-2536.

8-30p

LOST AND FOUND

FOUND: Siamese Cat. Please call Dana at 806-317-9006.

8-9p

LOST in Floydada. Family pet - female English Pointer. Liver (brown) and white. If found please call 806-231-9648 or 806-685-5055.

8-16p

MISCELLANEOUS

WIFE: We can't seem to get control of our money. I wonder how some people do it?

8-9c

PLAINS BELL FEDERAL CREDIT UNION

206 W. California, Floydada. Remember us for all your personal financial needs - CD's, loans, checking and savings accounts. Call Laura at 983-3922. www.plainsbellfcu.org

1-4-08p

MATTRESS SET, both pieces, full/double, brand new in wrap. \$119. Call 806-549-3110.

8-9c

\$149 - queen pillowtop orthopedic mattress and foundation, unused with warranty. 806-549-3110.

8-9c

BED- ALL new KING set (pillowtop) left in package. \$235. Call 806-549-3110.

8-9c

MISCELLANEOUS

TWO twin matt sets and frame. \$125 each. Never used. 806-549-3110.

8-9c

L-RM no stain microfiber sofa/love. All new, life warranty. 806-549-3110.

8-9c

BEDROOM SET & matt., headboard, dress/mir., nitest, new. \$599. 806-549-3110.

8-9c

DINING ROOM set. NEW cherry lit china cabinet, table, chairs. \$550. 806-549-3110.

8-9c

BARKER MINI-STORAGE

MONTHLY RENTALS

5'x10' - \$20.00 per month
10'x10' - \$30.00 per month
10'x15' - \$40.00 per month

ASK ABOUT OUR LONG TERM DISCOUNTS

PHONE: 652-3379

Corner Main & Locust, Lockney

PETS

ALPHATEX KENNEL, AIKEN, TEXAS offers superior quality AKC Registered, DNA Certified Collies, Golden Retrievers and German Shepherds. Puppies and stud service available.

www.alphatexkennels.com

tfn

RENTAL PROPERTY

"INVESTOR'S SPECIAL" 3 rental properties for sale in Floydada. Potential income of \$1500 a month. Motivated seller. Call Erby at 806-543-0108.

10-4p

SERVICES

CEMENT WORK--Need a new driveway, sidewalk, patio or flower bed curb? Call Gary Bennett, 983-5120 (home) or 778-8549 (cell).

tfn

LARRY OGDEN AUCTIONEERING Estates, Farm, Ranch, Business, Liquidations, State Licensed and Bonded. (806) 983-5808. TX. #9240.

tfn

Have a nice week!

SWISHER CO., TX. - 9,882 acres in 9 tracts, 8 pivots, dryland, grass & CRP, beautiful home, great stocker operation. **OWNER MIGHT DIVIDE!**
FLOYD CO. - 627 acres, 3 pivots (1 towable), 7 wells with 40 hp subs, pavement on 3 sides.
BRISCOE CO. - 1493 acre recreation paradise, 17-acre lake, 3 creeks, 3 homes.
FLOYD CO. - 514 acres, sprinkler irrig, improved and native grass, CRP pavement.
FLOYD COUNTY - 191 acres irrigated, sprinkler.
CROSBY CO., TX - 741 acres on caprock, great recreation, mineral and wind energy potential.
www.scotlandcompany.com
Ben G. Scott-Broker 800-933-9698

Subscriptions Make Great
Graduation Gifts!

PUBLIC NOTICE

Notice

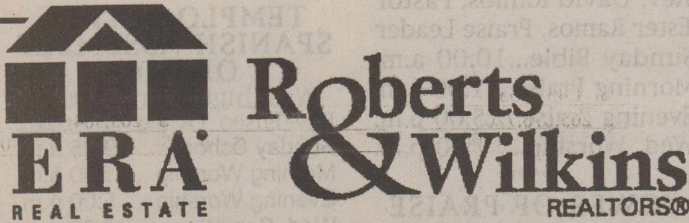
The Caprock Hospital District will hold a meeting at 7:00 a.m. on Tuesday, August 21, 2007 at Cogdell Clinic at 901 W. Crockett St. to consider adopting a proposed tax rate for tax year 2007.

The proposed tax rate is \$.1361 per \$100 of value.

The proposed tax rate is the same as 2006; however it will increase total taxes in Caprock Hospital District by 1.91 percent due to increased valuations.

Tax Code Section 26.04

8-9, 8-16c



Roberts & Wilkins
REALTORS®

- * Beautiful 4 Bedroom, 3 bath 6 miles S. of Lockney on pavement, garage shop with 2 overhead doors, comm. shop with alarm, bath, heating
- * Well kept on large corner lot, 3 bed, 1 bath, 2 car garage, \$64,500. Call for details!
- * Completely updated, 4 bed, 2 bath home with oversized garage in Floydada. 2437 sq. ft. - \$149,500.
- * 10 acres in Lockney, with 3 bed 1 bath home, nice open floor plan, large shop. Priced to sale at \$89,500.
- * Close to town, nice 3 bed 2 bath brick home, several small buildings, grain bins, metal barn, located on Hwy 70, Floydada., \$169,750.
- * Large 4 Bedroom, 2 bath with enclosed patio, oversized garage and 2 storage buildings - \$79,900.

Rhonda K. Thomas 652-2152
Rob or Ceil Wilson 293-5722
Dan or Debbi Wilkins 292-0263
Joey Davis - 292-7589
Jolie Steele - 729-6278
Bill Strickland - 292-1687

3009 Olton Road
Plainview, Texas
www.erarerealtors.com

NOW LEASING

Floydada Storage Spot
Sizes --- 10'x10' and 10'x15'

115 W. Virginia, Floydada (across from City Hall)
Call 806-853-9075

SCRIPT PRINTING & OFFICE SUPPLY

- * Commerical Printing
- * Office Supplies & Furniture
- * Business Machines

108 S. Main Floydada
983-5131

POOLE WELL CAM & SUBMERSIBLE SERVICE

Dual Lens
for Color Videos of
Irrigation and domestic
wells.

Reveals sand infiltration,
crusting or deterioration,
blockage 4" - 30" I.D.

704 Matador Hwy.
Floydada, Texas
806-983-2285

Have a nice week!

Public Notice

NOTICE TO ALL PERSONS HAVING CLAIMS AGAINST THE ESTATE OF ADELLA WORD, DECEASED

Notice is hereby given that original Letters Testamentary for the Estate of ADELLA WORD, Deceased, were issued on the 2nd day of August, 2007, in Cause No. 5777, pending in the County Court of Floyd County, Texas, to:

LAVERNE CHRISTIAN AND LOUANN BRITTAIN

All persons having claims against this Estate which is currently being administered are required to present them within the time and in the manner prescribed by law to such Joint Independent Executors in case of the attorney of said Joint Independent Executors.

Bill LaFont
% LaFONT, TUNNELL, FORMBY,
LaFONT & HAMILTON, L.L.P.
P.O. Box 1510
Plainview, Texas 79073-1510

DATED the 2nd day of August, 2007.

LAVERNE CHRISTIAN, Joint Independent Executor of the Estate of Adella Word, Deceased

LOUANN BRITTAIN, Joint Independent Executor of the Estate of Adella Word, Deceased.

8-9c

Dedra Thomas
806-791-2277 (o)
806-543-7540 (c)

- * Cute 2 bed-1 bath home with 2 car attached garage on a corner lot. MUST SELL!!!
- * MUST SELL!!! Nice 3 bed-2 bath home with 2 car attached garage on south side of town.
- * NEW LISTING!!! 3 bed, 2 bath home with 1 car garage on south side of town.
- * REDUCED PRICE!!! 2 bed, 1 bath home with 2 car garage on south side of town.
- * Cozy 3 bed, 2 bath home with 2 car garage on large corner lot.

Call for more details on these houses and the others we have listed!!

Obituaries



GENEVA BURKE STANSELL

Funeral services for Geneva Burke Stansell, age 73, of Floydada, were Tuesday August 7, 2007 at Main Street Church of Christ in Lockney, at 2 p.m. with Minister Jerry Klein officiating and Bill Sherman assisting. Burial was in Floydada Cemetery under direction of Moore Rose Funeral Home.

She passed away Friday, August 3, 2007 in Lubbock at Covenant Medical Center Hospital. Geneva was born May 22, 1934 to the late Herbert C and Myrtle Burke of Lockney, TX. She graduated from Lockney High School in 1952. On December 24, 1954 she married Willis Keith Stansell. They were married for 52 wonderful years.

She was a beloved wife, mother, and grandmother known for her generosity, friendliness, and sweet sense of humor. Geneva was responsible for introducing the Satellite School in Lockney, for a few years to teach children with mentally challenge disorders, and was a Central Plains Center board member. She most recently had joined a ladies Bible class in Lockney. She was known for her big heart and three of her biggest passions were her grandchildren, fishing, and traveling. Geneva was a member of City Park Church of Christ.

Geneva was preceded in death by her parents and brothers, HC and Ocie Burke.

She is survived by her husband, Keith of Floydada; daughters, Sandra Lundgren of

Colleyville; and Lisa Stansell of Plainview; two grandchildren, Russ and Austin Candelaria, along with several nieces and nephews.

Family suggest memorials be made to Central Plains MHMR, 2700 Yonkers St., Plainview, TX 79072.

DORA TURNER

Graveside Services for Dora Elizabeth "Beth" Turner were held at 3:00 p.m. Thursday, July 2, 2007 at the Wheeler Cemetery in Wheeler, Texas.

Officiating was Rev. Matt Crawford of the First Baptist Church of Matador. Arrangements were under the direction of Seigler Funeral Home of Matador. Mrs. Turner passed away at the Lockney Rehab and Care Center, Monday July 30, 2007.

She married Jesse Turner on May 25, 1956 in Pampa, Texas. Throughout Beth's life she enjoyed being a mother and homemaker. Early in her children's lives, she was active in her local church teaching Sunday School, Vacation Bible School, and sang in the choir. Later as her children grew up, she began her own business at home decorating cakes. Her health declined, but not her enthusiasm and love for arts and crafts. Due to declining health Beth had been a resident of the Lockney Rehab and Care Center for the past 5 years.

She is survived by: her husband, Jesse Turner of Matador, Texas; daughter, Teresa Cuebertson and husband John of San Angelo, Texas; son, Stephen Turner and wife Melissa of Vincennes, Indiana; a sister, Twaunah Keelin of Pampa, Texas; and 4 grandchildren.

We, as a family would like to thank everyone at the Lockney Rehab facility for all their care and support for the last 5 years. Mom truly thought of you as part of the family.

LOVE FUND FOR MELISSA POOLE

Make donations at:
American State Bank in Floydada
or
Matador Branch of the First Nat'l Bank of Seymour in Matador



Beginning September 1st Subscription Rates Change

**In-County: \$25.00
Out-of-County \$28**



PUBLIC NOTICE

Notice of Vote on Tax Rate

The Commissioners' Court of Floyd County conducted a public hearing on a proposal to increase the total tax revenues of the County of Floyd on Friday, August 3, 2007.

The Commissioners' Court has voted to increase the total tax revenue from properties on the tax roll in the preceding year by 7.99% percent.

On August 10, 2007 at 9:00 a.m. and August 27, 2007 at 9:00 a.m. the Commissioners' Court of Floyd County is scheduled to conduct public hearings. On August 27, 2007 at 10:00 a.m. the Commissioners' Court will adopt the Budget. Following at 10:15 a.m. the Commissioners' Court will then adopt the Tax Rate at the Courthouse Room 106, Floydada, Texas.

Floyd County Church Directory

AIKEN BAPTIST CHURCH
Jay Simpson, Pastor
Sunday School 10:00 a.m.
Morning Worship .. 11:00 a.m.
Evening Worship 6:00 p.m.
Wednesday 7:30 p.m.

BIBLE BAPTIST CHURCH
810 S. 3rd, Floydada
Darwin Robinson, Pastor
983-5278
Sunday School 10:00 a.m.
Morning Worship .. 10:50 a.m.
Evening Worship 6:00 p.m.
Wednesday 7:30 p.m.

CALVARY'S CORNERSTONE FELLOWSHIP
Floydada
Armando Morales, Pastor
Sunday School 9:45 a.m.
Morning Worship .. 11:00 a.m.
Bible Study 6:00 p.m.
Wednesday Evening 7:00 p.m.

CARR'S CHAPEL
Service Every Sunday:
Morning Worship 9:00 a.m.
Sunday School 10:30 a.m.

CHURCH OF CHRIST
West College & Third, Lockney
Steve McLean -Minister
Morning Worship .. 10:30 a.m.
Evening Worship 5:30 p.m.
Wednesday Service 7:30 p.m.

CITY PARK CHURCH OF CHRIST
Ken Free- Minister
Floydada
Sunday Bible Study 9:30 a.m.
Morning Worship .. 10:30 a.m.
Evening Worship 6:00 p.m.
Wed. Bible Study 7:00 p.m.

FIRST BAPTIST CHURCH
Anthony D. Sisemore, Pastor
Bill Swinney,
Minister of Ed./Music

FIRST BAPTIST CHURCH, Lockney
Carl Moman, Pastor
Chad Cook, Youth Min.
Phil Cotham, Music Min..
Sunday School 9:45 a.m.
Morning Worship ... 10:30 a.m.
Evening Worship 6:00 p.m.
Wed. Bible Study ... 6:30 p.m.

FIRST UNITED METHODIST CHURCH
Floydada
Rev. Les Hall, Pastor
Early Worship8:30 am.
Sunday School..... 9:45 a.m.
Morning Worship ...10:50 a.m.
Youth (Sunday).....5:00p.m.
Youth (Wednesday)..7:30 p.m.

FIRST UNITED METHODIST CHURCH
Floydada
Rev. Les Hall, Pastor
Early Worship8:30 am.
Sunday School..... 9:45 a.m.
Morning Worship ...10:50 a.m.
Youth (Sunday).....5:00p.m.
Youth (Wednesday)..7:30 p.m.

American State Bank
Member FDIC
217 W. California
983-3725

Barwise Gin
Barwise Community
983-2737

City Auto Buick, Pontiac, GMC
201 E. Missouri
Floydada
983-3767

Clark Pharmacy
320 N. Main - Lockney
652-3353

Davis Lumber
102 E. Shubert
Lockney
6523385

Garcia's OK Tire Store
306 S. Main - Floydada - 983-3370
511 1st Olton, TX 2657796

Lighthouse Electric Coop
102 E. California
983-3524

FIRST UNITED METHODIST CHURCH
Lockney
Rev. Brian Adams
Pastor
Sunday School 9:30 a.m.
Worship Service ... 10:30 a.m.
Evening Service 6:00 p.m.
Wed. Jr. High5:30 p.m.
Wed. High School... 6:30 p.m.

GRANT CHAPEL CHURCH OF GOD IN CHRIST
Joe Bennett, Pastor
Sunday School 10:00 a.m.
Morning Worship .. 11:00 a.m.
Evening Service 7:30 p.m.
Tuesday 8:00 p.m.
Wed. Service 7:30 p.m.

MAIN STREET CHURCH OF CHRIST
Lockney
Jay Don Poindexter, Minister
Bible Study 9:30 a.m.
Morning Worship .. 10:30 a.m.
Evening Worship ... 6:00 p.m.
Wednesday 7:30 p.m.

MT. ZION BAPTIST CHURCH
Floydada
Rev. Ralph Jackson
401 N 12th St (983-5805)
Sunday School 10:00 a.m.
Morning Worship .. 11:00 a.m.
Evening Worship 6:00 p.m.
Wednesday Study .. 7:00 p.m.

NEW SALEM PRIMITIVE BAPTIST CHURCH
Floydada
Pastor Elder Ronnie Hedges
(806) 637-0430
Sunday Singing 10:30 a.m.
Morning Worship .. 11:00 a.m.

OUT REACH HARVEST PENTECOSTAL CHURCH
310 E. Mississippi
Floydada
Rev. David Ramos, Pastor
Ester Ramos, Praise Leader
Sunday Bible...10:00 a.m.
Morning Praise...11:00 a.m.
Evening Praise ...5:00 p.m.
Wed. Worship.... 7:00 p.m.

POWER OF PRAISE FULL GOSPEL CHURCH
Rev. Manuel Rendon, Pastor
704 N. Main, Lockney
Sunday Services .. 10:00 a.m.
Sunday Evening 5:00 p.m.
Wednesday 7:30 p.m.

Goen & Goen Insurance
102 E. California
983-3524

Lockney Co-op Gin
652-3377

Lockney Ins. Agency
105 N. Main
652-3347

Oden Chevrolet Inc.
221 S. Main, Floydada
983-3787

Payne Family Pharmacy
200 S. Main, Floydada
983-5111

Pay-n-Save
210 N. Main
Lockney
652-2293

Schacht
Flowers, Jewelry & Gifts
112 W. Poplar, Lockney
652-2385

PRIMERA IGLESIA BAUTISTA
Lockney
Jesus Caballero, Pastor
Sunday School 9:45 a.m.
Worship Service ... 11:00 a.m.
Discipleship 5:00 p.m.
Wed. Service 7:00 p.m.

PRIMERA IGLESIA BAUTISTA
Floydada
Pastor Reverend Raymond Asebedo
Sunday School 9:45 a.m.
Morning Worship .. 10:55 a.m.
Evening Worship ... 6:00 p.m.
Wed. Evening 6:00 p.m.

SAN JOSE CATHOLIC CHURCH
Lockney
Jim McCartney, Pastor
Wed. Communion .. 8:00 p.m.
Sunday Mass 11:30 a.m.

SOUTH PLAINS BAPTIST CHURCH
Joe Weldon, Pastor
Sunday School 10:00 a.m.
Morning Worship ... 11:00 a.m.
Prayer Meeting 7:00 p.m.

TEMPLO GETSEMANI ASSEMBLY OF GOD
701 W. Missouri
Rev. Ray Gonzales
983-5286 (church)
983-3047 (parsonage)
Sunday School 9:45 a.m.
Morning Worship ... 11:00 a.m.
Evening Service 5:00 p.m.
Wednesday 7:00 p.m.

ST. MARY MAGDALEN CATHOLIC CHURCH
Floydada
Father Jose Relente
Phone: 983-5878
Sunday Mass 11:30 a.m.
Mon.Wed. Mass 6:30 p.m.
Confession Sat. 10:00-11:00 a.m.

TEMPLO BAUTISTA SALEM
Lockney
Sun. Prayer Service 9:30 a.m.
Sunday School 9:45 p.m.
Worship Service ... 11:00 a.m.
Evening Worship ... 6:00 p.m.
Wed. Meeting 7:00 p.m.

TEMPLO BETHEL SPANISH ASSEMBLY OF GOD
Washington and 1st St.
Rev. Eliseo Ovalle 983-6202
Sunday School 9:45 a.m.
Morning Worship .. 11:00 a.m.
Evening Worship ... 5:00 p.m.
Wed. Service 7:00 p.m.

TEMPLO NUEVA VIDA
Rev. Herman Martinez
308 W. Tennessee,
Floydada
Sunday School 10:00 a.m.
Evening Worship 5:00 p.m.
Tuesday 7:30 p.m.
Thursday Service ... 7:30 p.m.

TRINITY ASSEMBLY
500 W. Houston
Floydada
Henry Russell, Co-Pastor
Vance Mitchell, Co-Pastor
983-5499 or 983-2887
Sunday School 9:45 a.m.
Morning Worship .. 10:40 a.m.
Sunday Evening 6:00 p.m.
Wednesday 7:00 p.m.

TRINITY LUTHERAN CHURCH
Providence Community
on FM 2301 293-3009
Rev. Burnell Lund,
Minister
Sunday School 9:45 a.m.
Worship Service ... 11:00 a.m.

WEST SIDE CHURCH OF CHRIST
Floydada 983-3548
Sunday Worship ... 10:30 a.m.
Sunday Evening 5:00 p.m.

This page is brought to you by the following sponsors:

Sunshine Pump
Oliver Clark
Box 266, Lockney
983-5087 - 774-4412 (Mobile)