



Wheeler Girls, Tunnell Sweep Stock Show

Around Muleshoe

Arnold R. Henson of Austin will be the featured speaker for the annual stockholders' meeting of the Federal Land Bank Association of Muleshoe. The meeting is scheduled for 2:30 p.m. on February 8, 1983 in the Bailey County Coliseum at Muleshoe, according to Gordon Duncan, chairman of the board of directors. Henson is a vice president and treasurer of The Federal Land Bank of Texas. He has been with the Bank since 1972. Mr. Henson will speak to the stockholders on "the financial and fiscal operations of the Bank."

The Board of Trustees of the Muleshoe Independent School District will meet in a specially called session on Monday, January 31 at 7 p.m. in the school administration office. This meeting is being called for the purpose of considering personnel.

Mark E. Northcutt, husband of JoRonda Rhoades Northcutt and son of Mr. and Mrs. Ell Northcutt of Muleshoe is among twenty five students who are attending Texas Tech University this year on \$1,000 Texas Interscholastic League Foundation Scholarship. Northcutt was awarded the scholarship on the basis of his previous high school literary and academic competition at UIL state meets.

State Comptroller Bob Bullock has announced that Phillip Land from his Lubbock Field Office will be at the Bailey County Courthouse in the County Commissioner Courtroom on February 8, 1983 from 2:00 p.m. to 4:00 p.m. A controller's representative is available to assist local residents at the courthouse the second Tuesday of each month.

Muleshoe Chapter Order of the Eastern Star will hold its stated meeting Tues. Feb. 1, 1983 at 7:30 p.m. in the Masonic Hall. The Worthy Matron, Margaret Epting invites all members to attend.

The Bailey County Farm Bureau will be holding their Board of Director's meeting on Thursday evening at 7:30 p.m., February 3, 1983 in the Bailey County Farm Bureau office. Cont. Page 6, Col. 1

Lazbuddie To Sponsor Blood Drive

The residents of Lazbuddie will sponsor a blood drive Monday, Feb. 7 from 11 until 2 p.m. at the Lazbuddie United Methodist Church.

Residents of the community are encouraging all students to participate and become a vital part of the communities' lifeblood. High school students who are at least 17 years of age are being especially urged to become blood donors.

If you are a high school student, at least 17 years of age, and you want to donate blood you are asked to fill out a form, complete with your's and your parent or guardian's signature and bring it with you.

Everyone who donates blood will receive free blood insurance for his immediate family for the next 12 months compliments of the Coffee Memorial Blood Center in Amarillo.

There is no substitute for human blood. It often means the difference between life and death, yet less than 50 percent of the American public are blood donors.



GRAND CHAMPION STEER.....Jodie Wheeler (holding her steer) took Grand Champion honors at the Bailey County Junior Livestock Show here on Thursday evening. Jodie is shown here with her sister Jamie, who won Reserve Champion honors and proudly displays her sister's trophy. They are the daughters of Mr. and Mrs. Joe Wheeler.



WINNING LAMB.....Taking home top honors in the sheep division of the local county Livestock show on Thursday was Jodie Wheeler, of Three Way 4-H. Jodie's lamb was the top lamb shown out of about fifty other lambs.



SWINE GRAND CHAMPION.....Tracey Tunnell, son of Mr. and Mrs. Wayne Tunnell won the distinction of having the top swine of the show on Friday at the Bailey County Junior Livestock Show. Tunnell showed a Hampshire Barrow and is shown here with his Grand Champion trophies.

City Tax Rebate Drops By 20 Percent For Year

State Comptroller Bob Bullock Thursday sent \$32 million to nearly 1,000 Texas cities as their share of the one percent city sales tax for January. "These payments are down 7.7 percent from last January's checks," Bullock pointed out. "Collections are down in every major

city in the state except Austin. It is this trend that led me to reduce my estimate of available state revenue and it's affecting the finances of Texas cities even more drastically than the finances of the state," Bullock said. Citing depression in the Texas oil industry and the

repeated devaluation of the Mexican peso, Bullock dropped his estimate of available state revenues by 1.5 billion dollars this week. In Bailey County with Muleshoe being the only city reporting, the net

Cont. Page 7, Col. 1

Bank Deposits, Loans Reflect Local Economy

On January 20, the Journal ran the quarterly bank call, giving totals of deposits for eight area and local banks. It was pointed out that despite low farm prices and a sagging local and national economy, those eight banks surveyed for their December figures showed total deposits in the amount of \$205,028,495 up a little over \$17 million. Loans reflected an over all increase of \$4,391,448 for the period of time involved.

A combination of the two Muleshoe banks was given showing a substantial increase in deposits over the past year of \$3,112,526; and loans were shown to be down by \$2,624,198 for the year's time. However, while the two totals for the banks involved were given together, a Journal oversight caused only one Muleshoe bank's totals (First National) to be given separately. Since Muleshoe States totals were not given then - they are offered now, with apologies.

The Muleshoe State Bank for December call deposits in 1982 reflected \$34,997,000, an increase of \$776,000 over the 1981 total December call deposits of \$34,221,000. Loans at Muleshoe State were down over the year's time to \$18,490,000 in 1981 to \$18,433,000 in 1982 - a dif-

Jennyslippers Name Committee Chairmen

Recently new officers were elected for the Women's Division of the Chamber of Commerce and Agriculture, with Marjorie Merritt serving as president, Kathryn Taylor as president elect, Billie Downing secretary and Vivian White treasurer.

The Executive Board has chosen the following members to act as Committee Chairmen for the coming year: public relations, Nelda Merriott; membership, Ann Camp; special events, Dianne Nieman; budget and finance, Linda Lee; agriculture, Rose Lee Powell; business development, Sherry Wisian; commercial growth, Lucy Mardis and Service and Cultural development co-chairman, Thursie Ried and Donna Kirk. Also, committee duties have been re-defined somewhat, with each member being asked to serve on at least two committees.

The next meeting for the Jennyslippers will be on February 8 and will be a "sweetheart banquet" beginning at 7 p.m. in the Civic Center. The affair is intended to honor husbands or other sweethearts and to recognize both old and new officers. It will also serve the purpose of official installation.

Bailey County To Elect PCG Producer-Director

Bailey County cotton producers and agribusinessmen will elect a Producer Director to Plains Cotton Growers, Inc. at a 7:00 p.m. meeting on Thursday, February 3 in the courtroom of the Bailey County Courthouse, Muleshoe.

Announcement of the election comes from Guy Austin of Farwell, current Bailey County Producer Director to the 25-county cotton organization, and Bennie Claunch of Bula, Businessman Director. Each of the counties in PCG territory has two directors, one a businessman and the other a cotton pro-

ducer. They are elected on alternate years for two-year terms. Each is eligible for re-election every second year. All producers and businessmen are invited to the meeting. However, under PCG By-Laws, only current dues-paying members of PCG will be eligible to be elected a director or to vote in the election. This provision of the by-laws will be fully explained at the meeting. A PCG staff member will conduct the election, review and answer questions about recent and planned PCG activities and current farm programs.

Intra-State Rates Approved By P.U.C.

The new intrastate long-distance rates approved Jan. 11 by the Public Utility Commission of Southwestern Bell apply to all customers placing intrastate long-distance calls. The rates were increased by 10 percent, effective Jan. 11. O.D. Hearn, Brownfield operations manager, said Bell administers the tariffs which contain the rates approved by the commission.

"We are partners in the provision of long-distance services," the manager said. "All intrastate long-distance revenues and expenses are placed in a pool administered by Bell. Bell then returns to the other telephone companies' expenses plus a return based upon each company's investment." The telephone company manager said that even though General Telephone feels long-distance earnings are still not at the level they should be, the company is pleased the commission approved some increase to long-distance rates.

The telephone company official said any increased revenues General Telephone obtains from the new long-distance rates will ultimately help reduce the

Robertson, Gleason Kirby Top Showmen

Several hundred entries from Muleshoe FFA, Bailey County and Three Way 4-H's and FHA members made up one of the best local shows in several years. The show began at 6:30 p.m. on Thursday with the judging of sheep and cattle that evening. Judging resumed on Friday with the swine.

Taking top honors in the Lamb Division was Jodie Wheeler, daughter of Mr. and Mrs. Joe Wheeler of Three Way. Reserve Champion lamb was shown by Mitzie Robertson, daughter of Mr. and Mrs. Darwin Robertson of Three

Elaine Burgess Named Assistant Cashier

The Board of Directors of Muleshoe State Bank are proud to announce the appointment of Elaine Burgess to the position of Assistant Cashier. Her duties became official, Jan. 18, 1983.

Burgess has been with the bank since May, 1977, has served in the capacity of handling new accounts; and, at the present is head of the Certificate of Deposit department. She handles IRA's, Keogh, and assists customers with investment concerns. She has attended several of the American Institute of Banking courses. Courses she has completed are Principles of Cont. Page 6, Col. 4

Way. Mitzie was also selected as the top sheep showman on Thursday night by judge, Storm Gerheart who is a vo-ag instructor from Grady, New Mexico. Approximately 50 sheep were entered in this year's show.

Winning the top prize money in the Cattle Division this year was once again, Jodie Wheeler, almost making a clean sweep of the show with this win. Jodie placed first, breed champion and Grand Champion with a Heavy Cross Bred Steer; and her sister, Jamie placed as Reserve Grand Champion also with a Cross steer. The showmanship honors in cattle went to Jerry Lionel Gleason, son of Dr. and Mrs. Jerry Gleason of Muleshoe. About fifty head of cattle were shown in competition under Judge John Kuykendall, county extension agent from Llano County.

Friday morning, the showing of approximately 100 head of swine got underway in the Bailey County Coliseum at 8:30 with Dr. Donal Orr, Texas Tech Professor, judging. Taking top honors with a Grand Champion Hampshire Barrow was Tracey Tunnell, Muleshoe 4-H'er son of Mr. and Mrs. Wayne Tunnell of Muleshoe. Winner of the reserve grand championship was Robin Moore, daughter of Mr. and Mrs. Dewey Moore of Muleshoe, showing under the Muleshoe FFA banner.

Showmanship honors in swine went to Staci Kirby, daughter of Mr. and Mrs. Ruel Kirby of Three Way. Both Staci Kirby and Mitzie Robertson vied for top showman honors and the Jimmy Dale Black Memorial Showmanship Award following all classes of animals. Although Jerry Gleason was also a showmanship winner, he was not eligible to compete for the memorial award, having won it previously.

The following is a list of placings and classes, beginning with sheep and go Cont. Page 6, Col. 1

Rash Of Accidents Blamed On Icy, Snow-Packed Roads

Local law enforcement activity has continued to pick up over the past two weeks, following the lull immediately after the year end holidays. City Police have been relatively busy during the past week with accidents caused by the recent ice and snow which packed city streets.

On January 20, an accident involving Maria Carmen Lopez and Carlos Gonzales occurred when the Lopez vehicle slid into the Gonzales auto while attempting to pass. Also on the 20th, Michell

Vincent and Gary Lynn Herring were involved in an accident which occurred while Herring was traveling west on American Boulevard. He had slowed down due to the bad road conditions and was struck in the rear by the Vincent vehicle.

Emilio Cortez Sandoval was arrested at the Allsup's 7-11 parking lot on a warrant charging him with assault. He was taken before Judge Linda Huckaby.

In connection with the Sandoval assault warrant, Tim Roberts reported an occurrence of aggravated assault on January 24, involving Sandoval. Roberts had reportedly stopped at Allsup's to get something to eat and the suspect (Sandoval) came inside and started trouble. Roberts tried to ignore him and went on to pay out, with the suspect still harrasing him. Roberts left the store and got into his pickup, which contained three other persons, and started to drive away. Sandoval reportedly hit Roberts in the left eye, according to witnesses' reports. Roberts then drove to the police department and requested to be taken to the West Plains Medical Center, where a doctor's care was necessary to sew up his eye. Following treatment, the complaint was filed. On January 22, Dennis

O. Williams was involved in an accident with a parked vehicle which belonged to the Texas Highway Department. Williams vehicle was south bound on West 8th and apparently slid into the parked auto in the 900 block of West 8th due to the ice and snow on the road.

James P. Wedel reported to City Police on January 23 a criminal mischief Cont. Page 6, Col. 3

O. Williams was involved in an accident with a parked vehicle which belonged to the Texas Highway Department. Williams vehicle was south bound on West 8th and apparently slid into the parked auto in the 900 block of West 8th due to the ice and snow on the road.

James P. Wedel reported to City Police on January 23 a criminal mischief Cont. Page 6, Col. 3

Commissioners Court Calls Special Session

The Bailey County Commissioners' Court will meet in SPECIAL SESSION at their regular meeting place in the Courthouse, Wednesday, February 2, 1983.

The meeting will begin at 10:00 a.m., and will continue until all business is concluded, with the following items on the agenda.

1. Meet with Howard Maddera of South Plains Community Action Association.
2. Appointment of Three Public Members to the Salary Grievance Committee.
3. Accept resignation of J.R. Carpenter, Constable of Precinct #1.
4. Payment of bills.
5. Miscellaneous items.

Cherry Services Held In Tyler

Services for Cora Walling Cherry, 84, of Tyler were held at 10 a.m. Saturday, Jan. 29 in the Lloyd James Funeral Chapel with James Mosley and Judge Donald Carroll officiating.

Interment was in Parker Cemetery in Grapeland. Mrs. Cherry died at 11 p.m. Thursday in a Tyler Hospital following a short illness.

She had lived in Tyler 20 years and was a member of the Church of Christ.

Survivors include eight daughters, Mrs. Virginia Moore of Stanford, Mrs. Gilberta Pierce of Los Fresnos, Mrs. Winona Skelton of Amarillo, Mrs.

Janita Crawford of Leveland, Mrs. Joan Pollard of Nashville, Tenn., Mrs. Wanda Harmon of Ruidoso, N.M., Shirley Whitehead of Longview and Mrs. Kay Wright of Tyler; one brother, W.A. Walling, Sr. of Huntsville; 16 grandchildren; and 16 great grandchildren.

Grandsons were pallbearers.

Plummer Services Held Monday

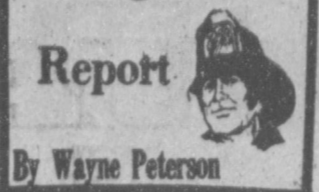
Services for Ella Mae Greene Plummer, 79, of San Antonio, formerly of Austin, were held at 1 p.m. Monday, Jan. 24 in the University United Methodist Church at Austin.

Graveside services were held at 3 p.m. Monday in Oak Hill Cemetery at Smithville, under the direction of Weed-Corley Funeral Home of Austin. Mrs. Plummer died Friday, Jan. 21.

She was a career registered nurse, a member of the Eastern Star and the widow of the late Lt. Col. Leonard Broadnax Plummer, Sr. She was a graduate of the University of Texas Nursing School.

Survivors include one son, Leonard Broadnax Plummer, Jr., of Austin; two daughters, Dottie Blacklock of San Antonio and Nina Mavrinac of Converse; 17 grandchildren; one great granddaughter; two sisters, Pauline Paul of Hereford and Margie Johns of California.

Firefighters Report



By Wayne Peterson

Why Red? Have you ever wondered why fire trucks are red?

Fire trucks have six wheels and six fire fighters. Everyone knows that six and six make twelve. There are twelve inches in a foot. A foot is a ruler. Queen Elizabeth, a ruler, is also the name of the largest ship on the sea. Seas have fish and fish have fins. The Finns fought the Russians. Russians are red. Fire trucks are always rushing, therefore, fire trucks are red. If you think this is wild, you should here some people explain why they don't have time to attend meetings, drills or find a quarter for monthly dues.

J.O. Parker Certification Coordinator reported a total of 1703 training hours obtained by firemen through 1982. During the last snow two calls to assist other fire departments. The Morton fire department called for assistance to Enochs where they had a develling a fire. Lazbuddie also called with a house on fire. Weather hampered and help assistance. We regret such a helplessness when others suffer losses such as this. Last Wednesday's meeting didn't go as planned by the training officer as film and equipment ordered didn't show up. The meeting was although real informative on a variety of topics, some of which hopefully will mature into something beneficial in the future. Air tanks for the Lazbuddie department Scott air packs were filled and the fire truck windows were cleaned and trucks checked for the next call.

The meeting went on endlessly, also lasted longer than usual as Rich Mag-

by was late and no one else could remember how to adjourn a meeting with out the chief or assistant chief who were helping prepare for the county 4-H and FFA Stock show, with the departments permission are blessing whichever, if either was necessary.

We are proud that there have been no city dwelling fires thus far this winter. We want to stress once again the importance of safety for ones family by making safe all heating and ventilation equipment.

Owen Jones has been reported as doing well at home after a short stay in the hospital.

BALLOUT PLAN
A \$169 billion bailout plan designed to keep Social Security solvent through 1990 won endorsement recently from President Reagan, congressional leaders and a majority of a special commission.



Golden Gleams
It will never be possible to get rid of evil altogether, for there must always be something opposite to good. -Plato.
The power of choosing good and evil is within the reach of all. -Origen.

YOUR HOUSE NEED DOCTORING?

WE HAVE JUST WHAT YOU NEED!

Brass & Chrome Numbers
Brass Door Knockers
SMALL SIGNS & BIG SIGNS
'NO HUNTING' - 'FOR RENT'
'HOUSE FOR SALE'
'BEWARE OF DOG' & OTHERS
Check Our Complete Supply
Fry & Cox, Inc.
401 S. First 272-4511

BIBLE VERSE

"A new commandment give I unto you, That ye love one another; as I have loved you, that ye also love one another."

- Who gave the above commandment?
- To whom was he speaking?

Answers to Bible Verse

- Jesus Christ.
- To his disciples.

LOOK

O.B. Gulley is now associated with

Jones - Wilkinson Pontiac - GMC - AMC - JEEP - RENAULT HIWAY 80-70-64 E.

Best Wishes To All Stock Show Winners

RESERVE CHAMPION STEER-In the Bailey County Junior Livestock Show, shown by Jodie Wheeler, daughter of Mr. and Mrs. Joe Wheeler.

First National Bank
Member FDIC

BE SURE TO SEE OUR COLORFUL INSERT IN TODAY'S BAILEY COUNTY JOURNAL

BORDEN'S
ICE CREAM
1/2 GALLON ROUNDS
\$1.59

BORDEN'S 1/2 GALLON
HI-PRO MILK 99¢

BORDEN'S
YOGURT 3 8 OZ. CTNS. \$1.00

SHURFINE
FRUIT COCKTAIL 16 OZ. CAN 59¢

BETTY CROCKER 10 FLAVORS
HAMBURGER HELPERS 99¢

SWEETENED CONDENSED MILK 14 OZ. CAN
EAGLE BRAND \$1.09

CHOCOLATE FLAVORING
NESTLE'S QUIK 2 LB. \$2.79

LAUNDRY DETERGENT WITH FABRIC SOFTENER
FAB
GIANT SIZE 20% OFF
\$1.79

PEPSI
6-32 OZ. BOTTLES
\$1.89

SHURFINE
SUGAR
5 LB. BAG
\$1.45

ALL-VEGETABLE SHORTENING
CRISCO
\$1.95

SPILLMATE
TOWELS
JUMBO ROLL
69¢

DISHWASHER DETERGENT
ELECTRA-SOL 35 OZ. BOX
\$1.59

DISPOSABLE WIPES 24x13 INCH
HANDI-WIPES 99¢

AT AFFILIATED FOODS INC.
MEMBER STORE
404 W. American 272-4739
Prices Effective Jan. 30 - Feb. 5 1983

SERV-ALL
THRIFTWAY

WE RESERVE THE RIGHT TO LIMIT QUANTITIES
WE ACCEPT FOOD STAMPS
STORE HOURS
MON THRU SAT 8:00 a.m.-8:30 p.m.
SUN 9-7
Double Stamps With \$5.00 Purchase Wednesday.

St. Clair's **FINAL** WINTER **CLEARANCE SALE**

272-4453

110 Main

Ski Sweaters Values to \$24⁰⁰ **\$9⁹⁷**

Entire Stock

Hanes Underwear 20% OFF

Large Group Young Men Chennel & Terry Cloth

Shirts Values to \$20⁰⁰ **\$9⁷⁷**

Mens

Corduroy Jeans **\$14⁹⁷**

Cotton Flannel Western

Shirts Reg. \$18⁰⁰ **\$7⁹⁷**

Work Clothes

Big Smith Bib

Overalls Reg. \$21⁹⁵ **\$17⁹⁷**

Grey Chambray Shirts **\$11⁹⁷** Reg. \$14⁰⁰

Big Smith Small Group Khaki Pants \$9⁹⁷

Lee

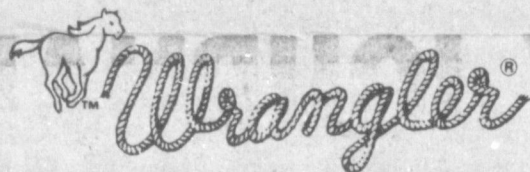
Khaki Pants Reg. \$18⁹⁵ **\$15⁹⁷**

Walls Brown Cotton Duck

Coats Reg. \$35⁰⁰ Only 8 Coats Left **\$19⁹⁷**

Entire Stock

Work Gloves Values to \$18⁵⁰ **\$8⁹⁷**



955 Lycra Stretch Regular \$28⁰⁰ Sale **\$18⁹⁷**

957 ESP Stretch \$24⁰⁰ **\$16⁹⁷**

13 MW2 Cowboy Cut \$19⁹⁵ **\$13⁹⁷**

935 Slim-Fit Boot Jean \$18⁰⁰ **\$12⁹⁷**

Student Wrangler Jeans

Straight Leg \$18⁵⁰ **\$10⁹⁷**

Boy's Wrangler Jeans

Wrangler Kids \$15⁰⁰ **\$8⁹⁷**

Boot Cut \$16⁵⁰ **\$9⁹⁷**

Straightleg \$16⁵⁰ **\$9⁹⁷**

Husky \$17⁵⁰ **\$10⁹⁷**

Men's Shoes

Grizzlies & Streetcars Values to \$44⁰⁰ **\$19⁹⁷**

Justin Western Heel

Work Boots Reg. \$90⁰⁰ **\$49⁹⁷**

Save \$15⁰⁰ On Any Red Wing

Work Boots In Stock

Home Furnishings

Towels

Group 1	Regular	Sale
Face	\$2 ⁰⁰	\$9^{7c}
Hand	\$3 ⁰⁰	\$1⁹⁷
Bath	\$4 ⁰⁰	\$2⁹⁷

Group 2

Face	\$3 ⁰⁰	\$1⁹⁷
Hand	\$7 ⁰⁰	\$3⁹⁷
Bath	\$9 ⁰⁰	\$5⁹⁷

Blankets

	Reg.	Sale
Full	\$30 ⁰⁰	\$16⁹⁷
Queen	\$36 ⁰⁰ - \$37 ⁰⁰	\$19⁹⁷
King	\$40 ⁰⁰ - \$45 ⁰⁰	\$24⁹⁷

Sheets

	Reg.	Sale	Gold Bond Stamps
Twin	\$10 ⁰⁰	\$6⁶⁵	2 2/5 Books
Full	\$12 ⁰⁰	\$8⁰⁰	3 Books
Queen	\$18 ⁰⁰	\$12⁰⁰	4 2/5 Books
King	\$22 ⁰⁰	\$14⁶⁵	5 2/5 Books
Pillow Case S&D	\$10 ⁰⁰	\$6⁶⁵	2 2/5 Books
King	\$11 ⁰⁰	\$7³⁵	2 3/5 Books

One Table Odds & Ends 75% OFF

Thermal Underwear

	Reg.	Sale
Top	\$5 ⁰⁰	\$2⁹⁷
Bottom	\$5 ⁰⁰	\$2⁹⁷
Top	\$7 ⁵⁰	\$3⁷⁵
Bottom	\$7 ⁵⁰	\$3⁷⁵

Winter Caps Reg. \$7⁰⁰ **\$2⁹⁷**

Ladies Wear

Jr. & Missy By Lady Wrangler Values to \$30⁰⁰ **\$11⁹⁷**

Blazers Values to \$40⁰⁰ **\$15⁹⁷**

1 Group **Jr. Blouses** Values to \$25⁰⁰ **\$7⁹⁷**

Missy Blouses Values To \$28⁰⁰ **\$14⁹⁷**

1 Group **Missy Blouses** Values To \$28⁰⁰ **\$9⁹⁷**

1 Group (Only 33 Left) **Missy Pants** **1/2 OFF**

Blazers & Jackets **1/2 OFF**

Children's Coats

One Group **Children's Coats** By Jiminy 4-6X Values To \$42⁰⁰ **\$16⁹⁷**

7-14 Values To \$52⁰⁰ **\$20⁹⁷**



Boys Beau Jac **Coats** 4-7 Reg. \$44⁰⁰ **\$16⁹⁷**

Boy's Beau Jac **Coats** 8-14 Reg. \$48⁰⁰ **\$18⁹⁷**

All Weather Tamer Coats

Month Size Values To \$35⁰⁰ **\$17⁵⁰**

Toddler Values To \$46⁰⁰ **\$23⁰⁰**

4-6X Values To \$60⁰⁰ **\$30⁰⁰**

Boys 4-7 Values To \$52⁰⁰ **\$26⁰⁰**

Shoes

1 Group Children's (Over 100 Pair) **Athletic Shoes** Values to \$29⁹⁷ **\$15⁹⁷**

Small Group Naturalizer **Shoes** Values to \$46⁰⁰ **\$15⁹⁷**

One Group Nunn Bush **Shoes** Values to \$55⁰⁰ **\$22⁹⁷**

SAS Walker Reg. \$36⁰⁰ **\$22⁹⁷**

Shu Make-Up Dye Reg. \$2⁹⁹ **97^c**

We Will Be Closed 'Till Noon Monday Preparing For The Sale Open-12 Noon-6p.m.

Anniversary Reception Honors

Mr. and Mrs. Chester

Mr. and Mrs. Dorman Chester were honored with a 50th. wedding anniversary reception in their home Sunday, Jan. 9th. Hosted by their children, Mr. and Mrs. Glenn Chester and family of Sudan and Mr. and Mrs. Frank Prokop and daughters of Odessa.

The table was covered with a floor length all over white lace over white cloth and accented with a floral arrangement of yellow roses. The two tiered cake was decorated in white trimmed with white roses and gold leaves and a gold "50" in the center.

Coffee, wessail, nuts and bell shaped gold and white mints were served from crystal and gold services.

Serving were their granddaughters, Shellye Chester of Sudan and Michelle Prokop of Odessa; and a niece Jeannie Reynolds of Fort Worth. Another granddaughter, Denise Prokop of Odessa, registered the 200 guests.

Among those from out of town included Mr. and Mrs. Carol Wiseman of Borger, Mr. and Mrs. Jim Boyer, Mr. and Mrs. Edgar Chance, Mr. and Mrs. Lee Townes, Mrs. Dudley Townes, Mr. and Mrs. Claude Patton, all of Lubbock; Mr. and Mrs. Bill Kelly, Lee Hewitt, Ron Lawlis, Joel Thompson, Mrs. Ola Howard, Mrs. Stella Chester, Mr. and Mrs. Forbes Tatum and Mr. and Mrs. Kenneth

Burgess, all of Littlefield; Mr. and Mrs. Buddy Wiseman and Christy of Friona; Mr. and Mrs. Charles Wiseman of Hereford.

And Laverne Bernethy of Dimmitt; Calvin Jordan of Clovis, N.M.; Mr. and Mrs. Bob Reynolds and Jeannie of Fort Worth; Mr. and Mrs. Macky McCarty of Earth, Mr. and Mrs. Hubert Bellar of Amarillo, Vernon McRee of Elk City, Okla.; Ray McCollum of Hale Center; Mr. and Mrs. Dean Wiseman of Dimmitt, Charlene Griffin and Mr. and Mrs. Troy Fuller of Plainview, Mr. and Mrs. Jack Schuster, Cecil Davis, Clifton Finley, Mrs. Raneta Dawson, Mrs. Hazel Reeder, Mr. and Mrs. Robert Montgomery and children and Mrs. Carrie Lee Bishop, all of Muleshoe and Mr. and Mrs. Bob Masten of Morton.

Raspberry Walnut Torte

1 1/4 c flour
1/2 c confectioners sugar
1/2 c soft butter
10 oz. frozen red raspberries, thawed
3/4 c walnuts, chopped
2 eggs
1 c sugar
1/2 t salt
1/2 t baking powder
1 t vanilla
whipped cream topping

Combine 1 cup flour, confectioners sugar and butter; blend well. Press mixture into bottom of 13 X 9 inch pan. Bake at 350 degrees for 15 minutes. Cool. Drain raspberries, reserve liquid for sauce. Spoon berries over crust, sprinkle with walnuts. Beat eggs with sugar until fluffy. Add salt, 1/4 cup flour, baking powder and vanilla. Blend well. Pour over walnuts. Bake at 350 degrees for 30 to 35 minutes; cool. Cut into squares. Serve with whipped cream and sauce.

Raspberry Sauce

1/2 c water
1/2 c sugar
reserved raspberry juice
2 t cornstarch
1 T lemon juice.

Combine water, raspberry juice, sugar and cornstarch in saucepan. Cook, stirring constantly, until thickened and clear. Add lemon juice; cool.



JANUARY BIRTHDAYS... Three residents of the Muleshoe Nursing Home celebrated their birthdays during the month of January. The Needmore Community Club hosted a birthday party in their honor Thursday afternoon, and Decorators Nursery and Floral provided corsages and a boutonniere for those celebrating birthdays. Odessa Shanks played the piano as the residents and guests sang Happy Birthday. (L-R) Bunnie Hurd, born Jan. 7, 1894, and Cleo Bellar, born Jan. 4, 1912. Also celebrating his birthday but unable to attend was Ray Griffiths, born Jan. 2, 1895.

Baby Shower Honors Shellye Pickering

Marv Smith and Lydia Wright were the hostesses for a baby shower in honor of Shellye Pickering on Thursday, Jan. 27 in the community room of Summit Savings. The honoree was presented a silk flower corsage.

Chosen colors of soft yellows and mint green were carried out in the decorations. The cake, baked and decorated by Lydia Wright, featured mini-bootsies and rattles and centered a yellow net covered table, it was flanked by yellow candles and flowers.

Candy coated pretzels, mints, nuts, hot cider, tea and coffee were served along with the cake. Candy "pacifiers" served as favors for all of the guests.

Linda Cogliandro was in charge of the guest book. Along with best wishes, the honoree received many cards and gifts.

Guests present were

Shellye Pickering, Marv Smith, Lydia Wright, Kay Madry, Lois Martinec, Mary Ann Ramirez, Carmen Luna and Anthony, Bettie Moore, Adelia Jones, Betty Barker, Nora Flannery and Amy, Faye Wellborn, Dell Aycock, Deanna Rasco and Jason, Pam Tomlinson, Linda Cogliandro, Alice Phillips, Karen Mason and Glenda Duncan.

Interferon-For Colds May Cause Side Effects

Preliminary results indicate that interferon may prevent the common cold, but it produces side effects that need further study, Baylor College of Medicine researchers said today.

Stephen Greenberg, M.D. and Tobias Samo, M.D., recently completed tests of interferon given to a small group of college students before they were exposed to a type of common cold virus.

The initial study was done with 26 students at Texas A&M University in College Station. Fourteen of the students received interferon in nose sprays and then were given nose drops containing a common cold virus. Twelve were given a nose spray without interferon and the cold virus.

Only one of the 14 who received the interferon got sick. Eight of the 12 who did not receive the interferon got sick.

In subsequent tests on 50 persons over a two-week period at Baylor College of Medicine in Houston, some of the volunteers who used interferon daily for more than one week developed tolerance problems, especially nose irritation and bleeding.

"While the results of the testing were very positive in terms of preventing colds, the tolerance problems may limit long-term use," said Greenberg, a Baylor infectious disease expert.

"In a sense, using interferon to prevent the common cold would be like taking a vaccine for several days. One of the thoughts is that if you have a child who came home with a cold you might put yourself on interferon for five to seven days until the child was over the cold."

Further studies will be done on a larger scale, he said, with the hope of refining the dosage to lower levels that would eliminate the bad side effects but still provide the protection against colds. Only then, he said, could the drug be recommended for public use in preventing colds.

Interferon is a protein produced in the human body that prevents the spread of foreign substances such as viruses. When one cell is infected by a virus, it releases interferon, which goes to other cells and "tells" them to release antiviral chemicals.

The type of interferon Greenberg used was synthetically produced by Hoffman-LaRoche, Inc. Greenberg and Samo

Artists Business Workshop Scheduled

The sixth annual "Business Side of Art" workshops for artists and craftspeople are scheduled for two February weekends in Kerrville. Dates are February 10-11-12 and February 24-25-26.

Sponsored by the Texas Arts and Crafts Educational Foundation, the workshops focus on areas usually not included in artistic training. Experts in fields pertinent to arts business present carefully selected classes. Each teacher is also experienced in the arts.

Workshop structure allows artists or craftsmakers to select any day or days they wish to attend. Those attending all three days of either weekend receive a \$10.00 discount. Fees are \$20.00 per day, or \$50.00 per weekend.

A hearty buffet luncheon and coffee are included in the fee, and there is no charge for parking. Each participant receives the workshop manual "The Arts Business System" at no additional cost.

On Thursday, February 10, Kerrville CPA George Rose will focus on record keeping and taxes which must be paid. Good opportunity for questions and examples are provided. Mr. Rose has worked with the accounting problems of many Texas artists and is co-author of the workshop manual. At 3:30 p.m. on the same day, Jim Samples with the State Comptroller's office will give a presentation on sales tax designed especially for the beginning arts business person.

Attorney Robert E. Sandfield of Houston, presents the increasingly critical areas of contracts and copyrights in a day long session on Friday, February 11. He has extensive experience and research in these areas to his credit. A

founder of the Volunteer Lawyers and Accountants for the Arts, Mr. Sandfield also is chairperson for the Young Lawyers for the Arts Committee of the Texas Young Lawyers Association.

February 12, a Saturday, will be devoted to portfolio and jurying. Audie Hamilton, executive director of the Texas State Arts and Crafts Fair, and the Texas Arts and Crafts Educational Foundation, will present components of the ideal portfolio. The use of press releases and mailing lists, plus tips on applying for juried shows will be included.

At 2:30 p.m. the same day, professional photographer James Partain of Kerrville will demonstrate the set up for photograph-

ing arts or crafts. Emphasis will be on good color slides for jurying and prints for portfolio or to accompany press releases.

The second weekend of workshops focuses extensively on sales techniques and peak performance for artists and craftsmakers. On February 25-25, Ed "Randy" Kirk of Austin will present a two day in depth course in the personal selling of art. The longer session will provide time for role playing to actually practice sales technique learned. Attendance for both days of this workshop is encouraged.


Mr. Kirk has much experience in marketing, completing the prestigious Volkswagen of America sales training program. He

is a very successful artist personally handling his own art sales.

Peak performance for artists will be the subject for a full day session by Lynda Kirk on Saturday, February 26. Stress mastery, removing creative blocks, imagery and creative visualization are presented as tools for success. Techniques for increasing production and creativity are actually practiced.

Free brochure, registration forms and information on accommodations are available by contacting TACE, P.O. Box 1527, Kerrville, Texas 78028. Telephone (512) 896-5711.

Eating is getting to be a costly habit.



Sale Starts Monday

Lookin' Good

Regular Store Hours
9:30 a.m. - 5:30 p.m.

206 Main 272-5052

SUMMIT SAVINGS

HAS THE ALL NEW

MONEY FUND I ACCOUNT

- ★ INITIAL DEPOSIT OF \$2,500.00
- ★ NO MINIMUM ON ADDITIONAL DEPOSITS
- ★ EARN HIGH MONEY MARKET INTEREST
- ★ WITH LIMITED CHECKING
- ★ INSURED UP TO \$100,000.00 BY F.S.L.I.C.
- ★ NO EARLY WITHDRAWAL PENALTIES

MONEY FUND I ACCOUNTS CURRENTLY EARNING:

10.75%

RATE SUBJECT TO CHANGE EVERY TUESDAY.

SUMMIT SAVINGS ASSOCIATION

BRANCH OFFICES
3000 OLTON ROAD IN PLAINVIEW, FLOYDADA, MATADOR, HALE CENTER,
MULESHOE, FRIONA, LITTLEFIELD, FARWELL, PLANO and ALLEN

MEMBER FS LIC

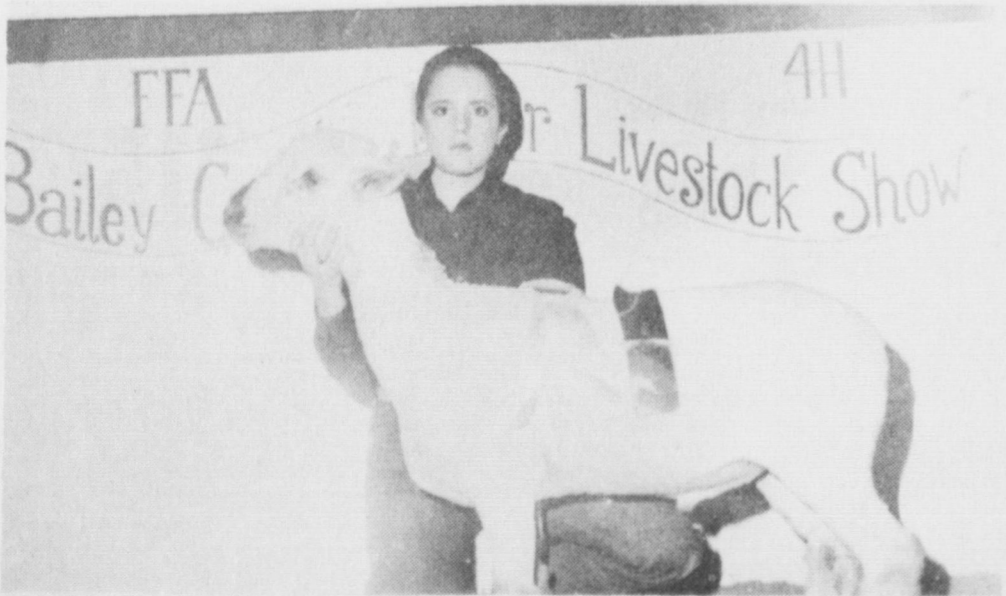
304 MAIN
MULESHOE
272-5527

Best Wishes

All Stock Show Exhibitors



BEST LAMB OF SHOW-Jodie Wheeler, daughter of Mr. and Mrs. Joe Wheeler, is shown with her Medium Weight, Medium Wool Lamb, Grand Champion of the 1983 Bailey County Junior Livestock Show. She also showed another first place winner.



RESERVE BREED CHAMPION-In the Fine Wool Cross, was shown by Beth Harmon, daughter of Mr. and Mrs. Bill Harmon.

Bailey Co. Farm Bureau

Candlelight Ceremony Unites Miss Adams, Doty

Sheryl Lynne Adams and Joe Craig Doty were united in marriage at 3 p.m. Saturday, Jan. 15 in the First Baptist Church of Munday. Rev. Jim Way, pastor, read the double ring vows.

Parents of the couple are Joyce Melton of Munday and Mr. and Mrs. J.C. Doty of Sudan.

The church was decorated with a brass archway, two brass candelabras accented with peach tapers and unity candle. The pews were marked by six hurricane lamps.

Laura Powell, pianist, of Sudan accompanied Dawn Ham of Lueders as she sang "The Lord's Prayer," "If" and "Always and For Ever."

Given in marriage by her mother and escorted by her uncle, R.D. Hurst of Clifton, the bride wore a gown of poly-organza adorned with Chantilly-type lace. The gown featured a Queen Anne neckline and sheer lace Bishop sleeves with lace appliques and simulated pearl accents leading

into a softly gathered skirt with a center lace panel and six tiered bouffant chapel train. Her chapel length veil was trimmed in Chantilly lace and seed pearls to match her gown.

The bride's bouquet consisted of white gardenias and rose buds accented with lace ribbons of peach and white and streamers of English Ivy.

In keeping with tradition, the bride wore the groom's grandmother's pearl earrings for something borrowed. A handkerchief for something new and something old was a pearl necklace of her great grandmother's. Her garter was blue. For good luck, she wore a sixpence in her shoe, given to her by Mrs. W.A. Lyles of Haskell.

Teresa Lynn Adams Brown of Rhineland served as her twin sister's matron of honor. She wore a peach floor length gown with fitted bodice and short Chantilly lace cap.

Bridesmaids were Lisa Hurst of Clifton, cousin of

the bride and Lissa Myers of Goree. Their gowns were identical to that of the matron of honor. They carried lighted hurricane lamps accented with peach flowers and long streamers of peach and white lace and wore peach and brown flowers in their hair.

Sarah Woodard, daughter of Mr. and Mrs. Ray Woodard of Haskell was flower girl. She was dressed in a white floor length dress with a peach satin ribbon and two peach bows on the top of her dress. She carried a flower basket decorated with peach and white flowers and ribbon

streamers. Vicki Robinson of Lubbock, sister of the groom, registered the guests at the wedding.

Mitch Chester of Sudan was the best man. Groomsmen were Larry Baker and Mike Hill, both of Sudan.

The groom was attired in a white tuxedo and matching vest with a white ruffled shirt and a peach rosebud boutonniere. His attendants were dressed in brown tuxedos with matching vest and an ivory ruffled shirt.

Andrew Melton of Munday, brother of the bride, served as ring bearer. He wore a beige suit with a peach rosebud boutonniere and carried a white satin pillow accented with white

ribbons tied in love knots. Ushers were Johnny Melton of Munday, brother of the bride, and John Chester of Sudan. They were dressed identical to the groomsmen. They also served as candle lighters.

The bride presented both mothers with a kiss and long stemmed red rose. Mrs. Inez Hurst of Aspermont, grandmother of the bride; Mrs. Evah Doty and Mrs. Delma Gann, grandmothers of the groom, were each presented a kiss and

long stemmed peach rose.

Following the ceremony a reception was held in the fellowship hall of the church. The bride's table was decorated with a peach tablecloth and beige overlay and accented with crystal candelabras and peach candles, a flower arrangement of peach and brown flowers in a crystal vase. The three tiered wedding cake was sitting upon a flowing fountain. Serving at the bride's table was Lori Kimmel of Munday and Laura Powell of Sudan.

The groom's cake was a chocolate sheet cake decorated with beige and brown flowers. The table was accented with a brown tablecloth with silver coffee service and silver nut and mint dishes. Serving at the grooms table were Sheila Summer and Debbie Hill of Sudan.

Kelli Baker, daughter of Mr. and Mrs. Larry Baker, of Sudan handed out rice bags from a basket decorated with peach and white ribbons.

The bride is a graduate of Munday High School and is attending West Texas State University.

Doty is a graduate of Sudan High School and is employed by Southwestern Public Service Plant X.

Following a wedding trip to Lubbock the couple will make their home in Sudan.

The parents of the groom hosted a rehearsal dinner in the fellowship hall of the Baptist Church. Curley and Dortha Awat prepared the meal. White tablecloths accented with brown napkins and candle centerpieces of brown, in keeping with the bride's chosen colors, were used.

WOTS Weekly Meeting

January 27 was "Eat Out" day for the WOTS group. The group met at the Dairy Queen for their noon luncheon.

Members present included Kay Mencerief and Tyson, Bert England, Lois Martinec, Faye Wellborn, Karen Mason, Kay Madry, Linda Cogliandra, Margaret Quintane and Joseph, Alice Phillips, Pam Thomason and Brandon, Nora Flanary and Amy, Mary Ann Ramirez, Betty Barker, Lydia Wright, Glenda Duncan, Del Aycock of Sudan, Marv Smith, Rose Crosswhite, Bettie Moore of Earth, Kathy Railsback, Deanna Rasco and Jason, Carmon Luna and Anthony, Pat Mudford, Shellye Pickering and Jeread, Mildred Williams, Adela Jones, and Edna Haynes.

Hostesses for the Feb. 3 luncheon at Summit Savings will be Lydia Wright and Mary Ann Ramirez.

For more information on WOTS you may call either Alice Phillips at 272-5172 or Lois Martinec at 272-3019.

Guests for the luncheon were Sid Duncan, Jim Foster, Munzia Cogliandra, Bianche Lenderson, Charles Thomason, Randy Pickering and Terri Diaz and Brittney.

Promenaders Sponsor Heart Fund Dance

The Dimmitt Promenaders are sponsoring the Ninth Annual Square 'Em Up For The Heart Fund Square and Round Dance Feb. 5th in the Castro County Exposition Building. Rounds will be at 7 p.m. and the grand march will be at 8 p.m.

Loenard and Arlene Marchbanks will cue the rounds. Callers for the dance are Johnny Gillenwater of Tulia, Sid Perkins of Plainview, Tom Aldridge and Freddie McKee of Amarillo.

There will be an auction of home crafted items, refreshments, door prizes galore, and an exhibition by the Top of Texas Cloggers.

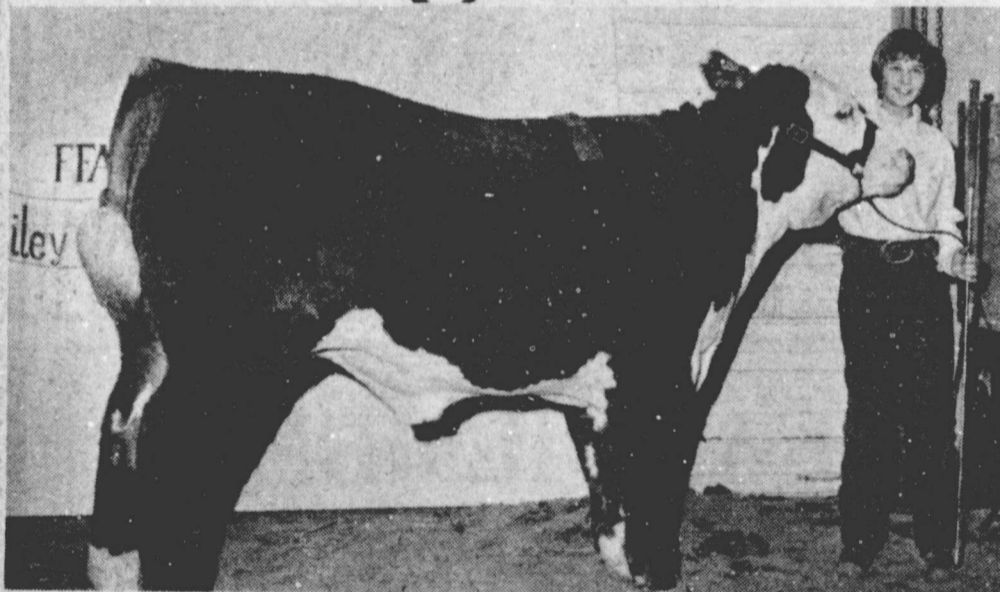
Admission will be by donation with all proceeds going to heart related needs.

"Dancers and spectators alike are promised a fun filled night on Saturday at Dimmitt," a spokesman for the group said.

A good friend is one who doesn't care how much money you have.

You are cordially invited to attend a Special Valentines presentation of original Water Color and Oil Paintings by Muleshoe Artist Sheryl Engelking on Tuesday, February 8, 1983 from 10:00 a.m. till 5:00 p.m. at Katy's in Earth, Texas located at 115 Main. Also enjoy shopping the unique and unusual gift selections Katy's will offer. Refreshments will be served.

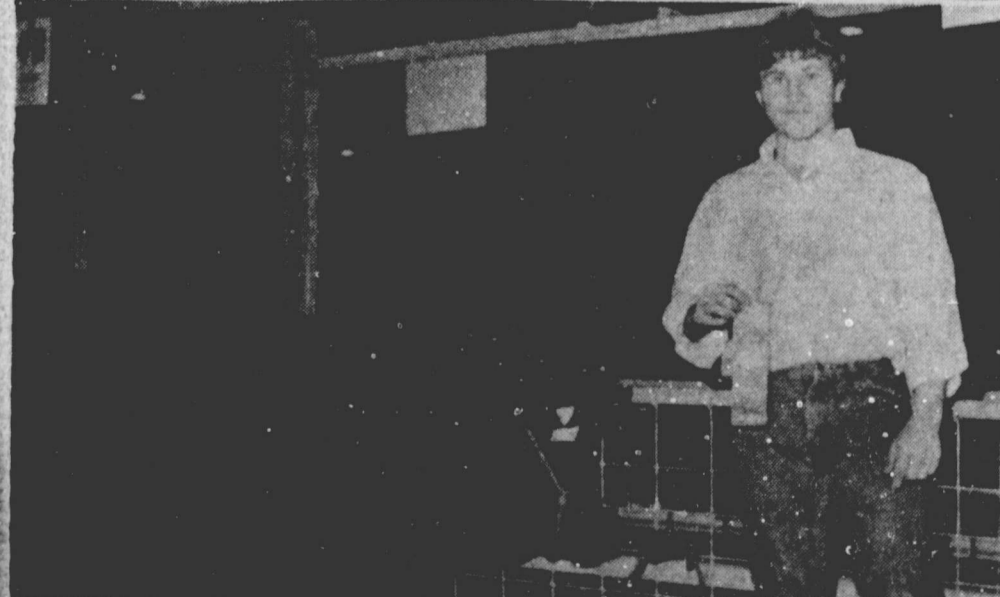
Congratulations



PUREBRED HEREFORD Shown to a first place by Brenna Roberson, daughter of Mr. and Mrs. Billy Roberson.



FINE WOOL CROSS. Darren Albertson, son of Dr. Gary Albertson and Twila Albertson, exhibited the First Place Fine Wool Cross.



FEEDER STEER - First Place was shown by Jay Gleason, son of Dr. and Mrs. Jerry Gleason.

John's Custom Mill

303 Main

Sale

14-OZ
PERRY'S SALE PRICE
39¢

1-LB BROCK CHOCOLATE VALENTINE CANDY
PERRY'S SALE PRICE
388

SOAP BATH SIZE
PERRY'S SALE PRICE
34¢

CURTAIN RODS
26" TO 46"
WHITE
PERRY'S SALE PRICE
62¢

WHITE LIGHT FILTERING VINYL WINDOW SHADE
PERRY'S SALE PRICE
188 EACH

64-OZ
PERRY'S SALE PRICE
197

LARGE GROUP LADIES BLOUSES
1/3 OFF
JR. AND MISSES SIZES

200 YD. 100% POLYESTER SEWING THREAD
PERRY'S SALE PRICE
8 FOR \$1.00

100% ORLON ACRYLIC SAYELLE KNITTING YARN
4 oz. in Solid Colors
3 oz. in Variegated Colors
PERRY'S SALE PRICE
87¢

#2-GRADE ROSES BUSHES
Best selling varieties in colors.
PERRY'S SALE PRICE
\$188 EACH

Stock Show

Page 1

ing to cattle and swine. As many photos as possible are being run in the Sunday's Journal, and the swine photos will appear in Thursday's Muleshoe Journal, as space permits.

SHEEP

Grand Champion Lamb: Jodie Wheeler. Jodie is the daughter of Mr. and Mrs. Joe Wheeler of Three Way, showing under the Three-way 4-H Banner.
Reserve Champion Lamb and Top Sheep Showman: Mitzi Robertson. Mitzi, daughter of Mr. and Mrs. Darwin Robertson of Three Way, showing for Three Way 4-H.

Southdown:
1. Jason Harmon, also Breed Champion.
2. Steven Griswold, Res. Breed Champ.
Southdown Cross:
1. Lisa Black, also Breed Champ.

2. Chad Griswold, Res. Breed Champ.
3. Jason Harmon
Fine Wool:
1. Darren Albertson, also Breed Champ.
2. Brent Black, Res. Breed Champ.

3. James Stevens
Fine Wool Cross-Lt. Wt.
1. Donae Parker
2. Jamie Wheeler
3. Darren Albertson
4. Jason Morris
Fine Wool Cross-Hv. Wt.
1. Jodie Wheeler, also Breed Champ.
2. Beth Harmon, Res. Breed Champ.

3. Ricky Rasco
4. Monty Black
Med. Wool-Med. Wt.
1. Jodie Wheeler, Breed Champion
2. Mitzi Robertson
3. Cooper Black
4. Beth Harmon
5. Ricky Rasco
6. Donney Burris
7. Jason Harmon
8. Wade King
Med. Wool-Lt. Wt.
1. Chad Griswold
2. Steve Griswold
3. Chad Griswold
4. Donney Burris
5. Cooper Black
6. Jason Morris
7. Curtis Snell
Med. Wool-Hv. Wt.
1. Mitzi Robertson
2. Donae Parker
3. Jodie Wheeler
4. Lisa Black
5. Beth Harmon
6. James Stevens

CATTLE

Grand Champion Steer: Jodie Wheeler, Reserve Champion Steer: Jamie Wheeler, all are children of Mr. and Mrs. Joe Wheeler of Three Way.
Champion Showman: Jerry Lionel Gleason son of Dr. and Mrs. Jerry Gleason of Muleshoe.

Feeders Steers:
1. Jay Gleason

Muleshoe...

Cont. from Page 1

Any members are welcome to attend this meeting.

Heifers:
1. Staci Kirby
2. Jerry Gleason
3. Steve Griswold
Purebred Herefords:
1. Brenna Roberson
2. Colin Tanksley
3. Wade Wheeler
4. Sharla Morrison
5. Eddie Johnson
6. Eddie Johnson
American Cross:
1. Todd Bessire
2. Tracey Tunnell
Middle Wt. Cross
1. Jerry L. Gleason
2. Colin Tanksley
3. Sharla Morrison
4. Todd Bessire
5. Russell Brown
6. Mitzi Robertson
7. Jeanine Robertson
8. Casey Stewart
Light Wt. Cross
1. Staci Kirby
2. Sherri Bessire
3. Chris Young
4. Brenna Roberson
5. Chris Young
6. Jeanine Robertson
7. Casey Stewart
8. Monty Black
Middle Wt. Hv. Cross
1. Jodie Wheeler, Breed Champ and Grand Ch.
2. Jerry Gleason
3. Jay Gleason
4. Mitzi Robertson
5. Greg Young
6. Jamie Wheeler
7. Jay Gleason

SWINE

Grand Chapion Swine exhibited this year was a Hampshire, shown by Tracey Tunnell of Muleshoe 4-H and, son of Mr. and Mrs. Wayne Tunnell of Muleshoe.
Reserve Champ honors went to Robin Moore of Muleshoe FFA and, daughter of Mr. and Mrs. Dewey Moore for her heavy weight York Barrow. Showmanship honors in swine went to Stacie Kirby, daughter of Mr. and Mrs. Ruel Kirby of Three Way.

Lt. Wt. Berkshire
1. Zanna Huckaby
2. Bret Stegall
3. Holly Huckaby
4. Earl Parish
5. Heath Scott
6. Heath Scott
7. Mike Whitehead
Heavy Berkshire
1. Jeff Vinson, Breed Champ
2. Michelle Stevenson, Res. Breed Champ
3. Ray Vinson
4. Troy Watson
5. Holly Huckaby
6. Beth Harmon
Lt. Wt. Chester
1. Sharla Morrison, Breed Champ
2. Jason Harmon
3. Brad Stegall
4. Steve Roberts
5. Sherri Bessire
Hv. Chester
1. Rhonda Dunham, Res. Breed Champ
2. Troy Watson
3. Chad Griswold
4. Amy Harrison
Lt. Wt. Duroc

1. Bill Eubanks
2. Jodie Wheeler
3. Sherri Bessire
4. Jason Harmon
5. Robin Moore
6. Todd Bessire

Hv. Wt. Duroc
1. Mike Dunham, Breed Champ
2. Todd Bessire, Res. Breed Champ
3. Michelle Stevenson
4. Kim Farmer
5. Jodi Wheeler
6. Colin Tanksley
Lt. Wt. Hampshire
1. Mike Dunham
2. Scotty Bickel
3. Gena Reeves
4. Leo Rubalcava
Hv. Light Wt. Hampshire
1. Noel Vourazeris
2. Wade Wheeler
3. Lupe Rejino
4. Frank Medina
5. Dee Kinard
6. Cheyenne Bickel
Med. Wt. Hampshire
1. Tracey Tunnell, Grand Champion
2. Sharla Morrison
3. Bill Eubanks
4. Craig Hunt

5. Zanna Huckaby
6. Todd Jones
Hv. Wt. Hampshire
1. Staci Kirby, Res. Breed Champ.
2. Colin Tanksley
3. Tracey Tunnell
4. Lee Copley

Burgess...

Cont. from Page 1

Banking, Money and Banking, Selling Bank Services, Time Deposits, and currently she is taking Trust Business.

Mrs. Burgess is Secretary/Treasurer of the American Cancer Society, Vice-president of the Epsilon Delta sorority, and member of the First Baptist Church.

Mrs. Burgess is the wife of Jim Burgess, General-Manager of Fry & Cox, of Muleshoe. They have three daughters, Lauri, a student of West Texas State; Robin a student of San Angelo; and Trisha, a sophomore of Muleshoe High School.

Law Enforcement

Cont. from Page 1

occurrence in which four tires on a 1983 Ford Pickup had the air let out of them. Wedel stated that he had no idea who would have done this.

Lloyd Garlington also reported a criminal mischief to local police on January 23, caused by someone apparently throwing a log into the windshield of a 1971 blue pickup truck. Approximately \$250 in damages were estimated.

On January 19, Target Gas reported the theft of fuel when a suspect came in and paid for \$10 worth of gas, but took \$17.17 worth before driving away from the station. This is currently under investigation.

Alicia Garcia reported the theft of her handbag to local police on January 19. She had left her bag, along with some groceries in a parked, unlocked auto for a few minutes at 314 East Avenue C. When she returned to the vehicle, her bag was gone. Estimate of loss was around \$40.00.

On January 20, Clifford Buckner, an employee of Jamie Crane Fire Company reported to local officers the burglary of that building. Suspects apparently broke into the building through a window on the east side, taking among other things, all the change in the cash register. Investigation revealed that the burglar(s) removed their shoes before entering the building.

On January 17, the Muleshoe Police Department filed a criminal mischief charge when a rear window and the rear seat upholstery of a squad car was damaged by a suspect being taken in to the police station. The suspect involved was arrested in the 1700 block of Avenue B accompanied by a juvenile. The suspect resisted arrest and appeared to be intoxicated according to reports. He kicked out the right

rear window of the auto and caused considerable damage to the upholstery, continually threatening officers with violence, being verbally abusive and combative.

In the Jail book at the Bailey County Sheriff's office, only five prisoners have been processed in the past week's time. On January 17, Department of public Safety officers arrested Keith O. Calhoun on dual charges of driving while intoxicated and criminal mischief. Bond was set on the DWI charge at \$265 and at \$500 on the criminal mischief charge. Calhoun was released following the posting of the bonds.

On January 15, Muleshoe Police arrested Bobby Ray Brown on charges of possession of narcotic paraphernalia, along with an arrest made on a Lubbock Warrant on check law violations. A cash bond of \$171 was made on the possession charge and \$156 on the check law.

Brandon Dee Hall was arrested by DPS troopers on January 16 on a charge of DWI, along with a warrant from Potter County on revocation of parole. Hall was released after posting \$750 bond on the DWI charge and a \$2,000 bond on the revocation of probation.

On January 19, Michael Lewis was arrested by the Sheriff's department and charged with burglary of a habitation. He was still incarcerated at the time of this report.

On January 24, Jose Candarco was arrested by the Bailey County Sheriff's office on a charge of driving with license suspended. He was fined \$50 and court costs.

4. Mike Holt
5. Micheal Barrett
York - Hv. Wts.
1. Robin Moore, Res. Breed Champ
2. Lee Free, Res. Breed Champ.
3. Brad Stegall
4. Steve Roberts
Spots
1. Chris Hopkins
2. Jason Harmon
3. Bill Eubanks
4. Joey Bruton
5. Earl Parish
York Lt. Wt.
1. Russell Brown
2. Lisa Black
3. Scott Branscum

Hv. Light Cross
1. Russell Brown
2. Russell Brown
3. Staci Kirby
4. Chris Hopkins
5. Sherri Bessire
6. Chad Griswold
7. Brian Houston
Med. Wt. Cross
1. Tracey Tunnell, Res. Breed Champ
2. Rhonda Dunham
3. Beth Harmon
4. Mike Holt
5. Steve Griswold
6. Brad Stegall
7. Todd Jones
Hv. Weight Cross
1. Noel Vourazeris, Breed

Champ
2. Sharla Morrison
3. Polly Harrison
4. Craig Hunt
5. Wade Wheeler
6. Lee Copley

Definition

Bore--A person who keeps you from being lonely--when you wish you were.

-Irish Digest.

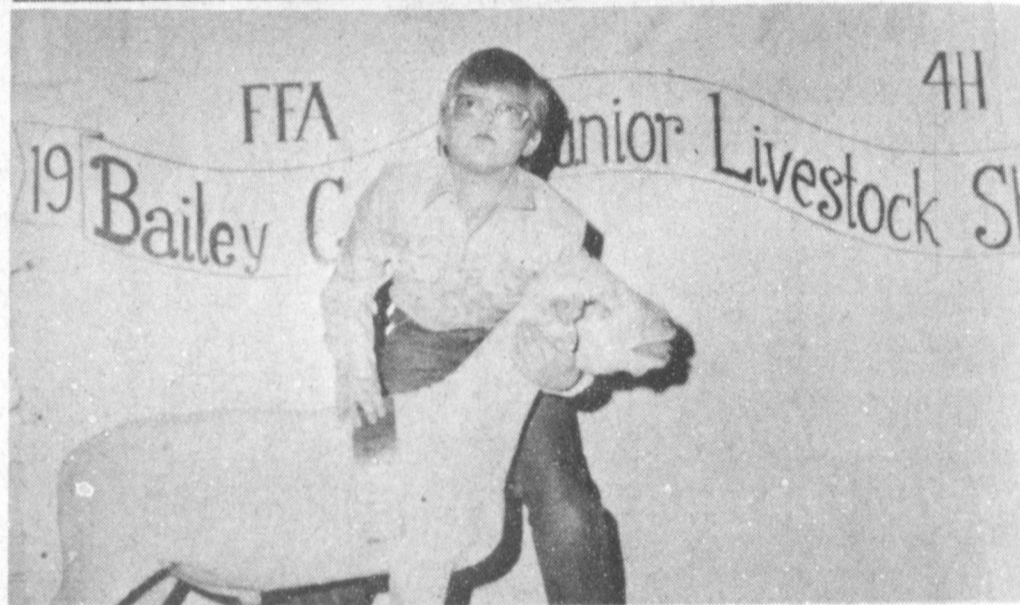
Good Advice!

The best way to break a bad habit is to drop it. -Spotlight, San Diego.

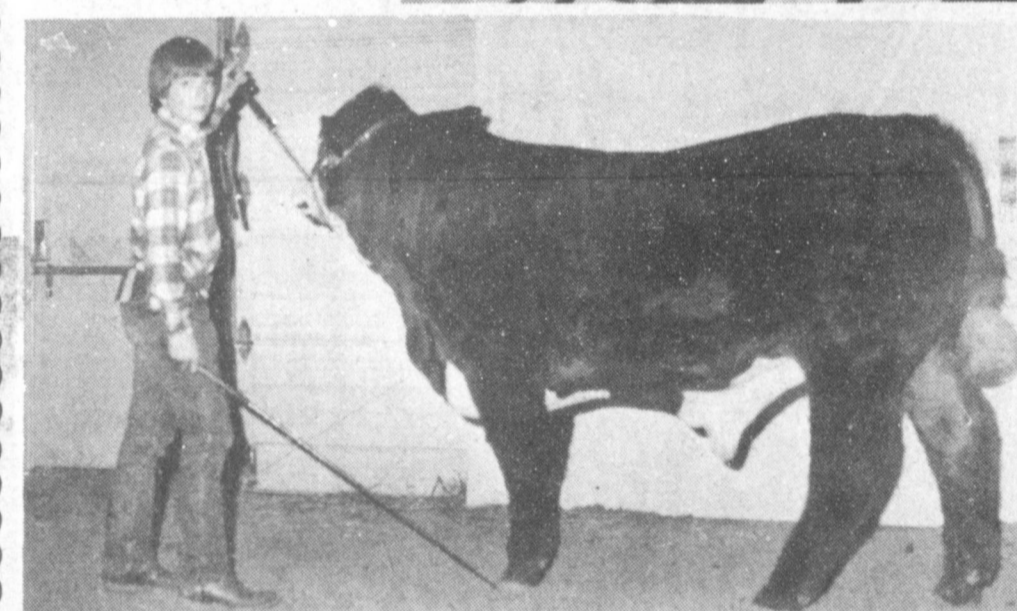
Congratulations



FIRST PLACE WINNER-Lisa Black, daughter of Mr. and Mrs. Ronnie Black, with her first place Southdown Cross.



SHOWING A WINNER-Todd Bessire, son of Mr. and Mrs. Travis Bessire, shows the First Place American Cross.



SOUTHDOWN - Showing his first place Southdown is Jason Harmon, son of Mr. and Mrs. Bill Harmon.

Farmers Co-op Elevators

MEET OUR NEW TEAM MEMBER
HE'S ON YOUR TEAM, TOO



Murry Joiner has 22 years experience in fertilizer and farming. He is dedicated, as we are, to making your farm more profitable. Give us a chance to show what we can do with:

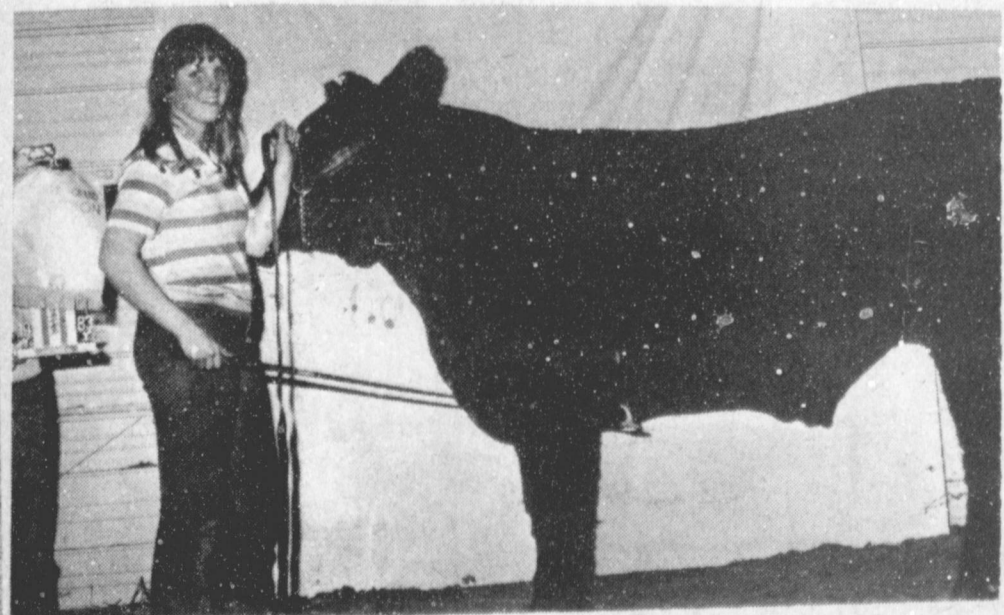
- Accurate Soil Analysis
- Profit-Proven Fertility Recommendations
- Computerized Custom Fluid Blends
- Efficient Custom Application
- Innovative Methods

ALL WITH YOUR PROFIT
IN MIND

WESTERN '66' COMPANY
EARTH HIGHWAY
CALL 272-4556



You're A Winner!



IT'S THE BEST-Jamie Wheeler holds her trophy while Jodie Wheeler shows Jamie's Grand Champion Steer of the 1983 Bailey Co. Junior Livestock Show. They are the daughters of Mr. and Mrs. Joe Wheeler.

Muleshoe
Livestock Auction

Tax Rebate

Cont. from Page 1

payment of city sales and use tax for the January period amounted to \$7,286.76; down by \$1,924.41 from the \$9,211.17 comparable payment at the same time last year. Total 1983 payments to date for Muleshoe are also \$7,286.76, as compared to \$9,211.17 from the same time in 1982, a minus 20.89 percent change to date.

In Castro County, Dimmitt is the largest city reporting with \$7,139.36 for a net payment for January as compared to \$7,784.26 for January, 1982; a difference of \$644.90. Total 1983 payments to date for Dimmitt are \$7,139.36 as compared to \$7,784.26 for 1982 payments to date; a minus 8.28 percent change for the year.

The City of Hart received a net payment in January, 1983 of \$601.34; with a zero showing for comparable payment at the same time last year. Total 1983 payments to date are the same amounts as previously given.

County had a total net payment for the January, 1983 period of \$849.47, as compared to \$1,263.97 for the same time last year - a difference of \$414.50. Total 1983 payments to date amount to \$849.47, while 1982's total payments to date were \$1,263.97. This reflects a minus 32.79 percent change.

City sales tax rebates for the City of Morton for the January, 1983 period amounted to \$998.43, as compared to \$2,192.87 for the same time in 1982. Total 1983 payments to date in Morton amount to \$998.43 and when compared to 1982 payments of \$2,192.87, reflect a minus 54.47 percent change.

Also in Cochran County, Whiteface reported a zero net payment for the January, 1983 period, but reported \$921.55 in January, 1982. These same figures apply for payments to date both years and result in a minus 100.00 percent change to date.

City Sales rebates in Hereford for the period ending January 7, 1983

totalled \$19,822.23, down by \$819.25 from the \$20,641.48 comparable payment in 1982. Total 1983 payments to date amount to \$19,822.23, as compared to 1982 payments of \$20,641.48, a minus 3.97 percent change.

In Hockley County, the City of Anton reported a net payment during January 1983 of \$1,541.77, down from the \$1,794.68 comparable payment in 1982. Both 1982 and 1983 payments to date are the same figures and reflect a minus 14.09 percent change. The city of Levelland, the largest reporting city in the County had a net payment in January, 1983 of \$26,074.49, down from the \$38,803.89 of 1982 at the same time. Payments to date for 1982 and 1983 are the same as the January payments and reflect a minus 32.80 percent change to date.

Ropesville, also in Hockley County, reported zero payment for the 1983 January period, but showed \$737.49 for January, 1982, with the same figures applying for year to date, reflecting a minus 100.00 percent change to date. Sundown reported \$3,543.06 in January 1983, compared to \$8,282.73 for January, 1982, with year end totals being the same. These reflect a minus 57.22 percent change to date for the city of Sundown.

Lamb County's largest City, Littlefield reported a total of \$9,200.75 net payment through the period of January, 1983, down from the \$9,824.07 in January 1982. Both 1982 and 1983 payments to date are the same as mentioned, and reflect a minus 6.34 percent change to date.

The City of Amherst shows no payments in 1982 or 1983.

Earth, Texas, also in Lamb County reported \$927.79 net payment for the January, 1983 period, as compared to \$897.09 for the same time in 1982; one of the few area towns showing an increase. Year end totals for both years are the same as the January reports and reflect a

3.42 percent change to date for the year. The city of Olton's net payment for the January, 1983 period was \$911.16, as compared to \$1,548.16 in 1982 - these figures also apply for year to date and show a minus 41.15 percent change to date.

In Sudan, \$868.98 was the net payment for the 1983 January period. The total for January, 1982 was a zero amount. These figures are also the same as year to date amounts with no percent of change shown to date.

Friona, in Parmer County showed \$3,344.32 as net payment for the January, 1983 period in city sales rebates, as compared to \$3,433.02 in January 1982. Year to date totals are the same figures and reflect a minus 2.58 percent change to date. In Bovina a net payment of \$728.52 for January, 1983 was reported as compared to \$642.88 in January, 1982. These same figures apply as year to date amounts and reflect a 13.32 percent change to date.

Houston's payment--as usual the biggest in the state--dropped more than \$1 million below last January's check. The city received \$6.4 million this month, compared to more than \$7.4 million in January 1982.

Bullock also sent January rebates to the state's two Metropolitan Transit Authorities. The Houston MTA received \$7.3 million, down 15 percent from last January. The San Antonio MTA got a check for \$982,000, down 12 percent from last year.

The City and MTA sales taxes are collected along with the state sales tax by merchants and rebated monthly to the cities in which they are collected

TFU Claims PIK Lacks Price-Support

Individual farmers and ranchers should sharpen their pencils and calculate what advantages there may be in participating in the Reagan Administration's "Payment-in-Kind" program.

Speaking at the annual convention of the Texas Farmers Union, being held at the Austin Marriott Hotel, Stone observed that "each farmer will have to make his own decision about what makes sense in his operation, but this ought to be considered in the light of the desirability of reducing stocks for which there is no immediate market."

The Farmers Union official said that if there is heavy participation by wheat, feed grains, cotton, and rice producers, "it could result in some appreciable price increases by mid-1984."

"The tragedy is that price help is needed right now and the new program admittedly will not do that," Stone explained. "If Congress and the executive branch do nothing now about low prices, some farmers will have difficulty getting refinanced for the 1983 crop year and others may not be around for the 1984 season."

He recollected that a "Payment-in-Kind" approach had been tried before, as part of a special agricultural conservation program for feed grains in the years 1961 through 1965.

"At that time, farmers were given the option of taking their diversion payment in cash or in kind," he continued.

"Most farmers chose to take the cash payments and only a handful of farmers took the in-kind option." Stone commented that a cash payment program

would have been much more effective, would have assured more participation, and would have been simpler to understand and to administer.

Congratulations Winners



ANOTHER LAMB WINNER-Donae Parker, daughter of Mr. and Mrs. Don Parker, exhibited the first place Lt. Wt. Fine Wool Cross.

Western Drug

Two different short forms this year. H&R Block can un-complicate them for you.

Two different short forms and new deductions make short form filing more complicated this year. Our preparers know the new tax laws and forms. We've studied them for months.

224 W. 2nd Weekdays 9-6 Sat. 9-5
272-3332

H&R BLOCK

The new tax laws. This year's number one reason to go to H&R Block.

MONEY MAKING FARM TOOL.

It's the soil testing probe. The start of maximum profits from your fertilizer program.

Now is the best time to get soil samples. We are ready to help you get them and have them tested. We can examine the lab analysis together, and arrive at a fertilization program that meets your crop goals.

That way, you won't waste money by applying too much fertilizer; or rob your yield potential by applying too little.

Fertilizer is the single biggest contributor to crop profits. Soil testing is the most important factor in profitable fertilizer programs.

Come in and see us. Or call today for a soil test.

Soil test now. Profit later.



Western '66' Company
Earth Highway
Call 272-4556

A&M
FARM AND RANCH SUPPLY
OPEN ALL DAY SATURDAY

3 Locations:
2600 E. Mabry Drive, Clovis
1601 S. Ave. D. Portales
1300 W. American Blvd., Muleshoe, Tx.
Prices effective thru: Feb. 5

WRANGLER COWBOY CUT

12⁸⁸
38" Inseams 13⁸⁸

THE OFFICIAL **prorodeo** COMPETITION JEANS.

The authentic Wrangler Cowboy Cut jean, 13MWZ, has been a favorite of professional working cowboys for over 34 years, and now this original Wrangler jean has been named the "Official ProRodeo Competition Jean" by the Professional Rodeo Cowboys Association. The cowboy's loyalty to this legendary jean is a tribute to 13MWZ's exceptional durability, comfortable fit, and to the integrity of the Wrangler brand. This original Wrangler Cowboy Cut jean of 100% Cotton, heavyweight 14 1/2 oz. denim has the fit credered by generations of working cowboys - extra room in the seat and thigh, plus a leg which fits perfectly over boots. No other jean but the Wrangler Cowboy Cut 13MWZ can wear the official emblem of the PRCA. Accept no substitute - ask for the authentic Wrangler Cowboy Cut jean - the official ProRodeo Competition Jean.

Wrangler

Wrangler Western Shirt
15⁹⁵

Pretty plaids or colorful checks in easy care polyester/cotton blends. Snap front and cuffs. 2 pockets with snap closures.

Wrangler



MULE'S TALE

Editor: Kacy Henry

Official Publication of Muleshoe High School Written and Edited by Students of the Muleshoe Schools

Sunday, January 30, 1983



Muleshoe School Menu

Jan. 31-Feb. 4-1983

BREAKFAST MONDAY

Milk
Cereal
Fruit

LUNCH MONDAY

Milk
Meat Loaf
Creamed Potatoes
Green Beans
Hot Rolls
Fruit

BREAKFAST TUESDAY

Milk
Toast
Jelly
Fruit

LUNCH TUESDAY

Milk Hamburgers
Lettuce & Tomato
Pickles & Onions
Tater Tots
Fruit Cobbler

BREAKFAST WEDNESDAY

Milk
Blueberry Muffins
Juice

LUNCH WEDNESDAY

Milk
Lasagna
Cole Slaw
Beans
Corn Bread
Pudding

BREAKFAST THURSDAY

Milk
Honey Buns
Juice

LUNCH THURSDAY

Milk
Corn Dogs
Veg. Beef Soup
Crackers
Cinnamon Rolls
Fruit

BREAKFAST FRIDAY

Milk
Cereal
Fruit

LUNCH FRIDAY

Milk
Fried Chicken
Eng. Peas
Creamed Potatoes
Hot Rolls
Fruit

MULESHOE SCHOOLS COMBO LINE

Jan. 31-Feb. 4-1983

MONDAY

Milk
Pizza
Mixed Veg.
Pickles
Fruit

TUESDAY

Milk
Hamburgers
Lettuce & Tomato
Pickles & Onions
Tater Tots
Fruit Cobbler

WEDNESDAY

Milk
Chalupas
Cheese
Lettuce & Tomato
Crackers
Fruit

THURSDAY

Milk
Frito Pie
Salad
Pork & Beans
Crackers
Fruit

FRIDAY

Milk
Fish
Cheese Stick
Eng. Peas
Hot Rolls
Fruit

Hosni Mubarak, President of Egyptian peace plan:

"If we are going to lose another year with just delivering statements without any activity... it will be a big loss and the problem will be more difficult to solve."



Varsity Boys Action.....Muleshoe Varsity Basketball boys played a tough Abernathy team Thursday night and came out on the short end of things with a 58-42 score in favor of Abernathy. John Isaacs makes two for the Mules in this shot.

College Fund Available

You've got the brain; to make it through college. You've been looking forward to it for a long time. Just when you're almost there, you realize that you may not be able to afford it!

According to Lieutenant Colonel Robert C. Karlson, commander of Army recruiting activities in New Mexico and West Texas, a lot of young people are beating the college money crunch through a program

DECA Takes Field Trip

Kevin Harris, senior DECA student, made arrangements for his class to visit his training station, Five Area Telephone, on Tuesday morning, January 25. Thirteen students including Mike Foss, Rosa Garza, Kevin Harris, Jackie Holmes, Shawna Kelton, Kathy Killingsworth, Jimmie Lee, Ginger Morris, Robert Nowlin, Homer Perez, Chubby Ramos, Randall Stevens, and Donna Crenshaw went on this tour. They toured the facility in Muleshoe and the central office in Lubbock.

The field trip was conducted by Hugh Young, Staff Assistant at Five Area Telephone, and Alton Carpenter, Plant Supervisor. The visit was very interesting and the students learned a great deal about the company as consumers, as well as from a career standpoint.

DECA would like to thank Kevin and Five Area Telephone Inc. for providing them with this opportunity.

Mighty M Band Goes To All-Region Contests

The director of the MHS Mighty "M" Band, Eddie Chance announces that All-Region band will be held January 29 at 6:30 p.m. in the Monterrey High School.

This year several of the Mighty "M" Band members qualified for All-Region at a contest in Dimmitt. The students who are going to participate in All-Region are as follows: Donna Horn and Shelly Sain on the flute; Nicki Hagins, Michelle Berry, Frances Garza, Esther Garcez, and Robert Orozco on clarinet; Brenda Flowers and Melissa Wagnon on saxophone; Ben Martinez on coronec; Alan Finney on coronec and French horn; Laura Leal on trombone; Chris Hernandez and Joey Cox on tuba; and Robert Nowlin and Eddie Alvarado

called the Army College Fund. They're enlisting for two or three years and coming out with college funds and vocational skills they can possibly use in civilian life.

A soldier can save from \$25 to \$100 of his pay each month, to a maximum of \$2,400 for a two-year enlistment, or \$2,700 for three years. The government then increases that investment by more than 500 percent allowing him to accumulate up to \$15,200 for a two-year enlistment or \$20,100 for a three-year enlistment. While a soldier is earning funds for college, he will be receiving

Art Club Exhibits Work

The Muleshoe High School Art students will be sending entries to Amarillo to be exhibited at the Northwest Texas Regional Exhibition February 12-26. This show is sponsored by the Western Plaza Merchants. The entries were carefully selected by the art teacher, Mrs. Sandy Chitwood, based on superior showing.

The categories for the exhibits include oils, acrylics, water colors, pencil drawings, ink drawing, mixed media, etching, pottery, jewelry, and two and three dimensional design. The Muleshoe entries consist mainly of oils and pencil etchings. The students chosen to represent Muleshoe include, Darin Bratcher who is sending two oils titled "The Lioness" and "Hawkeye," also one etching "Star Quarterback." Melissa Wilbanks is entering four oils "Bouquet of

valuable training in one of more than 50 skills available under the Army College Fund.

With monthly starting pay topping \$570, most soldiers can save up to \$100 a month for the fund. The Army also provides room and board, clothing, medical expenses and other benefits.

A civilian-related skill and up to \$20,100 for the college or vocational school of your choice are two good reasons for considering the Army College Fund. For further information call Berna Facio at (505) 766-5939.

Calendar Of Events

CALENDAR OF EVENTS
February 1
Varsity Littlefield Three Boys and Girls Basketball.
February 3
Freshman Dimmitt Girls there boys here Basketball
February 4
Amarillo Overnight Tascosa Speech Tourney, NASSP - Dallas, El Paso Stock Show 4-10.

House." Marvin Ward selected a pencil drawing, "Boots," and Jessie Pineda drew "Saddle." Holly Oakes created two oils, one titled "Daisies," and the other "The Old Homestead." Berto Orozco is sending an oil titled "Hot Pink." Denise Wilson chose "The Wilderness," "December," and "The Farm," and Terry Graves sent four oils to be judged including "Sad Clown," "Red Fox in Snow," "Pheasant," and "Old Barn and Windmill." Joni Suddeth will also be sending artwork to be judged. Awards will be sent to the students in early May.

Calendar Of Events

CALENDAR OF EVENTS
February 1
Varsity Littlefield Three Boys and Girls Basketball.
February 3
Freshman Dimmitt Girls there boys here Basketball
February 4
Amarillo Overnight Tascosa Speech Tourney, NASSP - Dallas, El Paso Stock Show 4-10.

Francois Mitterrand, France's President: "There is no direct relation between the situation of the two superpowers and the situation of France."

Senior English Students Write Satires

Mrs. Wrinkle's senior English class recently wrote a Satire for an assignment. A satire uses wit or humor as a weapon against a target outside the work. It

MHS Honor Roll

HONOR ROLL
FIRST SEMESTER
1982-83

SENIORS

Michael Isaac 3.4
Tamra Gilliland 3.2
Dana Rasco 3.1
Holly Oakes 3.1
Belinda Clayton 3.0
Lincoln Snell 3.0
Rhonda Dunham 3.0
Kristi Ethridge 2.9
Lori Del Toro 2.9
Jackie Holmes 2.9
Shelli Walker 2.8
Kelly Bayless 2.7
Lynda Bell 2.7
Denise Wilson 2.7
Eva Rejino 2.5
Misti Prater 2.5
Steve Cavitt 2.5
Lori Hanks 2.5

JUNIORS

Randall Stevens 3.3
Donna Horn 3.1
Sherr Bessire 3.1
Brenda Flowers 3.0
Tonda Gunstream 2.9
Sherr Kinard 2.9
Ronald Briggs 2.9
Donna Crenshaw 2.9
Kacy Henry 2.8
John David Agee 2.7
Keisha Johnson 2.7
Jay Cage 2.6
Candy Long 2.6
Sharla Morrison 2.6
Melissa Wagnon 2.5

SOPHOMORES

John Isaac 3.3
Kristi Campbell 3.3
Percilla Quintana 3.0
Florenda Mendoza 2.8
Janna Wuelflein 2.8
Vana Pruitt 2.7
Jodi Cruickshank 2.7

FRESHMEN

Jessie Holmes 3.0
Mike Harris 2.8
Zanna Huckaby 2.7
Deborah Nieman 2.7
Shelly Sain 2.7
Sherr Stovall 2.5
Caice Hendrix 2.5

HONOR ROLL THIRD SIX WEEKS 1982-83

SENIORS

Michael Isaac 3.3
Tamara Gilliland 3.3
Belinda Clayton 3.3
Dana Rasco 3.2
Lincoln Snell 2.9
Shelli Walker 2.9
Jackie Holmes 2.9
Lori Del Toro 2.9
Kelly Bayless 2.9
Kristi Ethridge 2.8
Rhonda Dunham 2.8
Lori Hanks 2.7
Lynda Bell 2.6
Misti Prater 2.5
Eva Rejino 2.5
Cristal Taylor 2.5

JUNIORS

Randall Stevens 3.4
Sherr Bessire 3.4
Donna Horn 3.2
Donna Crenshaw 3.2
Tonda Gunstream 3.0
Kacy Henry 3.0
Brenda Flowers 3.0
Sharla Morrison 3.0
John David Agee 2.9
Ronald Briggs 2.9
Candy Long 2.7
Sherr Kinard 2.7
Keisha Johnson 2.7
Melissa Wagnon 2.6
Darin Shaw 2.6
Jay Cage 2.9

SOPHOMORES

John Isaac 3.3
Percilla Quintana 3.2
Kristi Campbell 3.2
Janna Wuelflein 2.9
Florenda Mendoza 2.7
Vana Pruitt 2.6
Jodi Cruickshank 2.6

FRESHMEN

Jessie Holmes 3.1
Zanna Huckaby 2.8
Sherr Stovall 2.8
Deborah Nieman 2.7
Shelly Sain 2.7
Sherr Stovall 2.5
Caice Hendrix 2.5

attacks foibles and follies of mankind and the purpose of a satire is to bring about the improvement of humanity and human society. The Mule's Tale Staff, with the help of Mrs. Wrinkle, has selected a few of these to feature.

John Wuelflein attacked insurance in his satire, Lori DelToro talked about the Food Stamp program and Belinda Clayton targeted the MX Missile location problem.

Insurance is a deed that you can buy to protect anything of value you want to protect. It costs a tremendous amount of money to obtain. The problem is, it sometimes will leave you paying the insurance company. For example, an adjuster will come to inspect your roof after a recent hail storm. He gets an estimate on it and tells you that you will have to pay the insurance company before it is fixed. You ask him why and he tells you that it was in the small print at the bottom of the form. It seems like the heart of the form is in the small print. I see only one solution in solving the issue: have the insurance forms come with built on magnifying glasses. That way everyone can see what they are really getting into and not get rooked.

MX Missile Location

The problem of where to locate the MX missile has held up the final process of getting the missile out. Many places have been suggested to put the missiles. Nevada, and in New Mexico has been discussed, but the most recent suggestion is in Cheyenne, Wyoming. Congress still has not come up with where to put the MX. So what do we do with all these homeless MX missiles?

What I am suggesting is to start a program called "Foster a MX." A person who would like to foster one of these homeless missiles should call the nearest "Foster a MX" agency. The missiles are not hard to take care of. They do not talk back and just need water or fuel once a month. Show the missile a little T.L.C. and you will have no problem. If Congress never does

come up with where to place these MX missiles, you can adopt a missile of your own.

Talent, Career Day Held

At ENMU

Eastern New Mexico University will host a Talent and Career Day February 26. There will be activities beginning at 8:00 a.m. for parents and counselors as well as students. Students will be tested for scholarships, and programs on careers and financial aid will be presented. Awards will be presented at 2:30. Talent scholarship testing areas will be: Business, Education and Technology, Fine Arts or Liberal Arts, and Sciences. Students interested in this opportunity should contact the counselor, Linda Marr.

Carr Scholarships Offered To Seniors

Applications from high school seniors are being accepted by Angelo State University for approximately 400 Carr Academic Scholarships for 1983-84 ranging in value from \$1,000 to \$3,500.

Supported by a growing multi-million dollar trust established in 1978 by Mr. Robert G. Carr of San Angelo, the undergraduate scholarships may be renewed annually by the University and can be worth from \$4,000 to \$14,000 during a four-year course of undergraduate study.

During the current year 674 students are attending Angelo State University on Carr Academic Scholarships.

The priority deadline for submitting applications for 1983-84 is March 15, 1983 although applications from outstanding students may be considered up until July 1, 1983 to the extent that funds are available.

Applicants who are high school seniors must normally have a high school average of 90 or above, rank in the top 10 percent of their class, and present a composite score of 21 or

Food Stamps-Free Money

Food stamps, an important capital around here for the needy people, are practically free money for everyone. If you need to save your money for other luxuries besides food, just follow these four simple steps. First, put on the worst, worn-out clothes you have in your closet, or go to a garage sale. Second, leave your limousine at home and borrow your dad's '54 Chevy. Third, take a couple of your neighbor's kids with you. And fourth, when you arrive at the welfare office tell them a really sad story and shed a few tears and you are home free! Now you can go out and buy your second limousine, or that beautiful fur coat on display at The Blue Room or that big, beautiful three-story house in the new addition of town that you've always dreamed of.

MHS Has New Counselor

Muleshoe High School is proud to have a new counselor, Mrs. Linda Marr moved to the High School counselor's office at the beginning of this semester which started last week.

Mrs. Marr was raised in Dallas. She has one older sister, Linda Marr attended North Texas State University. She has a Bachelor's degree in Education, a Master's in Psychology, a certification in early childhood and she has recently received a certification in counseling. For the past two years she has worked in Dillman Elementary and Mary DeShazo as a counselor, before that she taught in Jr. High.

Linda Marr is married to Dave Marr. Dave Marr is the city administrator. They have one son, Cyle who is five, and are expecting another baby in April. Mrs. Marr enjoys reading and when she is in the mood she enjoys latch hook and crewel.

When the Mule's Tale Staff asked Mrs. Marr how she felt about her new job, she commented, "Last week was a hectic first week. It's a lot different from elementary counseling. I've enjoyed working with students I've taught before and look forward to more great things happening."

The students at MHS and the Mule's Tale Staff look forward to working with Mrs. Marr too and would like to welcome her to Muleshoe High School.

Scholarships Available To MHS Seniors

The Bailey County Electric Cooperative Association of Muleshoe will be presenting three scholarships of \$400.00 each. These will be for a period up to two years. The only prerequisite is that the applicant's parent, parents or guardian, live in the area and receive electric service from the Bailey County Electric Cooperative Association. Deadline for application forms is March 15. Contact Mrs. Marr for more information.

Mules Win Two, Lose One In District Play

The varsity mules are 1 and 2 in district losing to Littlefield in the opening game of district and coming back beating the Chiefs of Friona. The mules traveled to Tulia to play the Hornets in their third district game. However, they came out on the short end of a hard fought ball game by the score of 65 to 70 in overtime. The mules shot poorly in the first half connecting on only 7 of 23 shots for 30% and down by three points when the first half buzzer sounded. They came out hat in the second half connecting on 57% of their shots. At the end of regulation time the score was tied at 58. The mules got the first bucket of the 3 minute overtime period but were outscored 12 to 7 in the overtime with the score ending up 70 for the Hornets and 65 for the Mules. The Mules rebounded well getting a total of 57 boards. The Isaac brothers led the miles on the boards with Hohn getting 26 rebounds and Michael getting 16 for the Mules. The Mules didn't shoot that well from the charity line only connecting on 19 points, Mark Moton with 15, and Michael Isaac with 10. Also scoring for the Mules were Jeff Hamilton, Darin Shaw, and Trent Ysinger scoring 9, 8, and 4 points respectively.

Juniors Raise Banquet Funds

The Junior Class is sponsoring two money making projects during February.

The first project started Monday, January 24, the class passed out computer questionnaires to every student in high school. The questionnaires were sent to a company and the results will be tabulated. For every student who filled out a questionnaire, the company will send a personal list of the top ten most compatible people of the opposite sex in Muleshoe High School. These lists will be sold on Valentine's Day to those students who want to buy them. No one is obligated to purchase the list, but every student filled out the questionnaire.

The second project will be the annual carnation sale. Beginning Feb. 1, 26 students may purchase their silk carnations for \$1.00 each. White carnations are for friendship, pink for a secret admirer, and red is for love.

The carnations will be delivered during first period on Monday Feb. 14. The Junior Class urges everyone to participate in their projects.

Clower: Special Entertainer At Ft. Worth Show

Jerry Clower of the Grand Old Opry, honored for the past nine years by the Country Music Association as "Country Comic of the Year," has been signed as special entertainer for the 1983 Fort Worth Stock Show Rodeo, reports W.R. Watt, Jr., president manager.

The Rodeo, scheduled with 22 performances in Will Rogers Coliseum, will be held in conjunction with the 87th annual Southwestern Exposition and Fat Stock Show January 26 through February 6.

"The Stock Show Rodeo is pleased to have Jerry Clower appear at each of our 22 performances," Watt said. "He will offer a new brand of entertainment to the audience and, if his past successes are any indication, his appearance here will add greatly to

making our 1983 Rodeo the best ever held in Fort Worth."

Mail orders for Stock Show Rodeo tickets are being accepted now at the show office, 3400 Crestline Road, or at P.O. Box 150, Fort Worth, TX 76101. Tickets for all night and weekend rodeos are \$8 each, Monday through Friday 2 p.m. matinees are \$6. Mail orders should include \$1 extra per order for return postage and handling. Tickets will be mailed out in mid December.

Clower, who is one of the most active citizens of Yazoo City, Miss., entertains by telling humorous stories. He is called a salesman, selling the good life—laughter, remembering the fun of bygone days, the friends, the simple things, the humorous side of even

the bad times. The basic part of every Clower story is, to quote him, "something that has happened to me or almost happened."

Clower finished high school one night and joined the Navy the next day. Afterwards, he got his college education at Southwest Mississippi Junior College and Mississippi State University, where he played varsity football. He was named 1982 Alumnus of the Year by MSU for his support of the university through the years.

Receiving his degree in agriculture, Clower was an assistant county agent for a couple of years. Then, he began selling fertilizer to farmers, and for 18 years was employed by a Mississippi chemical firm where he advanced to director of field services.

To improve the selling, he began the telling. Through the suggestion and help of friends who saw the potential entertainer in this strapping salesman, the first record album was produced, "Jerry Clower from Yazoo City, Mississippi, Talkin'." Today, Clower is one of the leading sellers of MCA Records, having had 12 chart-busting LP's. He also has written two books, "Ain't God Good!" and "Let the Hammer Down." Clower has received the outstanding 4-H club alumnus award and the high-

est honor that the Future Farmers of America can bestow on its alumnus. He was honored in 1977 by the Southern Baptist Radio and Television Commission with the presentation of its Christian Service Award at the Eighth National Abe Lincoln Awards Banquet in Fort Worth.

The entertainer is a co-host with Bill Mack on Country Crossroads, a weekly radio program produced by the Southern Baptist Radio and Television Commission in Fort Worth. The program is aired on more than 1,700 radio stations world-wide, including the American Forces Radio Network.

Other entertainment scheduled during the Stock Show Rodeo will be an act that includes Jerry Olson of

Belle Fourche, S.D., and his trained buffalo, Chief. Olson has spent three years training Chief.

He is the second generation of his family to have a buffalo act. His father, LaRue Olson, began with a buffalo named Pat about 15 years ago. Then the father and son worked with another named Sam. Chief is well trained and follows the rigid routine with precision.

Another outstanding act will be performed by World's Champion Trick Roper Gene McLaughlin from Simi, Calif., who will present incredible rope feats while skating on boot skates. This presentation will be quite a contrast from the act McLaughlin performed from horseback here several years ago.

Congratulations



RESERVE CHAMPION LAMB-As shown by Mitzi Robertson, daughter of Mr. and Mrs. Darwin Robertson.

**Bailey Co.
Electric Co-op**

**Remember Now
So You Can
Remember Then.**

**A Professional
8 x 10 Color Portrait
For 88 Cents**

All ages welcome - babies, adults, and families! Choose from our selection of scenic and color backgrounds. We'll select poses, and additional portraits will be available with no obligation.

One 88¢ portrait per subject or group. Backgrounds may occasionally change. Minors must be accompanied by a parent.

THESE DAYS ONLY

Thurs. - Fri. - Sat.

Feb. 3-4-5

Daily-10 A.M. - 6 P.M.

Sat.-10 A.M. - 5 P.M.

303 Main Street
Muleshoe

PERRYS



WHO KNOWS

1. What is the largest bay on the U.S. eastern coast?
2. For what do the letters AFL-CIO stand?
3. Name the 17th president.
4. Where would you find the Black Forest?
5. What is the nickname for Wisconsin?
6. Name the capital of Idaho.
7. Name the movie that has made the most money in 1982.
8. What is the name of Thomas Jefferson's country home?
9. What does "the name mean"?
10. When was the first U.S. satellite launched?

Answers to Who Knows

1. Chesapeake Bay.
2. American Federation of Labor and Congress of Industrial Organizations.
3. Andrew Johnson.
4. In southwest Germany.
5. Badger State.
6. Boise.
7. E.T.
8. Monticello.
9. Italian for little mountain.
10. January 31, 1958.

Most people are quick to listen to and believe gossip, unfortunately.

Final Winter Clearance

Boys' Blazers **40% Off**

Playmates

1015 W. 2nd
Portales
Grand & Main
Clovis



Sold Only By **TRU-TEST PAINTS**
True Value
HARDWARE STORES®

**Super 8
Paint Values**



Your local independently owned True Value® Hardware Store has national chain-buying power.



888

Refinishing Kit
Includes refinisher, 8-oz. Tung oil, steel wool, 8-oz. lemon oil, plus refinishing instructions. 0029

Factory-To-You Savings From Our 3 Modern Tru-Test Paint Factories!

X-O Rust® Enamel

Rust-resistant paint for indoor or outdoor in quarts and handy aerosol spray. Use on wood or metal. High-gloss finish will not chip, peel or crack when applied as directed. Self-leveling, dries quickly. Nontoxic. Choice of colors. X-O

SALE ENDS
SAT.
FEB. 8



TuckTape

FROM **49¢**



Masking Tape

Moisture resistant, solvent and creep proof tape. For any masking or holding job.
2-in. x 60-yd. size 1.38
1-1/2 in. x 60-yd. size 1.79
1-in. x 60-yd. size 1.19
3/4-in. x 60-yd. size49



148

2-Inch Varnish Brush
Orel bristles outlast ordinary brushes three-to-one. Flat edge trim. 0007



498

Congratulations



LT. WT. MEDIUM WOOL-Chad Griswold, son of Mr. and Mrs. Dale Griswold, showed the first place winner.



898 Gal.
Flat Latex Wall Finish

Vinyl-acrylic latex combines quality, economy. High hiding, washable. Soapy-water cleanup. 16 colors, white. A



898 Gal.
Latex Ceiling Paint

One-coat coverage saves time and money. No brush streaks or lap marks. Soapy-water cleanup. White only. CBW



198 qt.

Professional All-Purpose Cleaner
Dilute with water to clean any washable surface. Leaves no residue even when used with the hardest water. CC-11

1398 Gal.
E-Z™ Kare Latex Flat Enamel

Durable flat finish resists stains and is super-scrubbable. Ideal for walls and trim. 44 colors, white. EZ



1098 Gal.
Sat-N-Hue® Latex Flat Wall Finish

Top-quality interior paint goes on velvety smooth, dries quickly to a rich, no-sheen finish. 44 colors and white. P



Lee's Western Wear

FRY & COX, INC.

401 South 1

272-4511

Court House News

MARRIAGE LICENSE
Salud Almarez and Rita Villa, Friona

WARRANTY DEEDS
Allen Haley to Muleshoe Independent School District -- A tract of land in Bailey County, Texas, out of the (SE/4) of Section (39), Block Y, WD&FW Johnson Subdivision, Bailey County,

Texas.
J.M. Flowers and wife, Josie Koonty Flowers to Zulema Gomez -- A four acre tract of land out of Garden Block No. 1, Save and Except that portion out of the East part lying South of Block No. 2 East Blocker Street, Bailey County, Texas.
Juanita Partridge to J.F. Furgerson and wife, Gearldine Furgerson--The Southeast Quarter of the East one-half of the Northeast Quarter of section forty seven, block B, Marvin,

Blum and Blum Survey in Bailey County, Texas.
Burley Lee Roberts and wife, Carolyn Sue Roberts to Melonie Gay Roberts, Brian Lee Roberts, Tomothy Lynn Roberts and Torrey Brawn Roberts--The North 100.16 acres of the South 1/2 of Section 25, League 108, Fisher County School Lands, Bailey County, Texas.

OIL AND GAS LEASES
Phyllis P. Beavers, Executrix of the Estate of Spencer C. Beavers, to Sun Exploration Company -- SW/4 of Section 28, Block Z, State Capitol Lands, Bailey County, Texas.
Ralph Hall and Dora Hall to Sun Exploration Company--All of the (SE/4) of Section 28, State Capitol Lands, Block Z, Save and

Except 13.3 acres.
COUNTY COURT
Deborah Lynn Basinger, Order of Dismissal.
Alicia Valdes, DWI, 3 days jail, \$100 fine.
Eddie Tivis, Order of Dismissal.
Herbert Leroy Griffiths, Speeding \$5 fine.
John E. Birdwell, Order of Dismissal.
Gary Warren Lambert, Order of Dismissal.
Henry Carrion, Possession of Alcoholic Beverage, for sale, \$250 fine.
Josie Carrion Flores, Sale of Alcoholic Beverage, \$200 fine.

Peblo Lira, DWI, 30 days jail, \$100 fine.
Domingo Ramos, Disorderly Conduct, \$200 fine.
DISTRICT COURT
State of Texas and Bailey County, et al VS M.C. Street, Jr. et ux, Motion for Dismissal.
Ruben Marquez and Ortenicia Galvan Marquez, DV

West Plains Medical Center Report

ADMITTED
Jan. 24-Sylvia Guirra, Kelli Lee, William Welch, Trinidad Navajar, Eula Brock, Laura Montano, Jesus David Aronce, O.Z. Franks and Delma Mann
Jan. 25-Nati Salcida, John David Minor and Celestine Lewis
Jan. 26-Alfred Steinbock, Helen Bayless, Sammy Allison, Frank Parker and Ronnie Parker
DISMISSED
Jan. 24-Carel Pruitt, Macrina Gonzales and baby girl
Jan. 25-Nancy Bennett, W.U. Lowey and Irene Dyck
Jan. 26-Edward Greenwood, Maria Torres, Martha Robledo and Jesus Aronce
Jan. 27-Norene Booth

ON WHOLESALE PRICES
Wholesale prices, restrained by a record plunge in the cost of gasoline, rose just 3.5 percent last year, the government said recently. But that showing against inflation, the best since 1971, came at the pain of a sharp recession which drove up unemployment and slowed assembly lines.

Lazbuddie School Menu

LAZBUDDIE CAFETERIA
Jan. 31-Feb. 4

LUNCH MONDAY
Beef & Cheese Tacos/Hot Sauce
Pinto Beans
Green Salad
Fruit
Milk

BREAKFAST MONDAY
Cereal
Juice
Milk

LUNCH TUESDAY
Hamburgers
French Fries
Pickles, onion, lettuce
Fruit
Milk

BREAKFAST TUESDAY
Toast, Jelly
Juice
Milk

LUNCH WEDNESDAY
Nacho's
Corn
Green Salad
Cookies
Milk

BREAKFAST WEDNESDAY
Hot Cereal
Applesauce
Milk

LUNCH THURSDAY
Juicy Burger
French Fries
Pickles
Cake
Milk

BREAKFAST THURSDAY
Hot Buttered Pancakes
Syrup
Juice
Milk

LUNCH FRIDAY
Fried Chicken/Gravy
Creamed potatoes
Green Beans
Jello
Hot Rolls
Milk

BREAKFAST FRIDAY
Cereal
Juice
Milk

Unemployment Compensation To Be Reported

Taxpayers receiving unemployment compensation in 1982 may be required to include some or all of the money they received as income when filing their federal tax return, the Internal Revenue Service says.

Generally, unemployment compensation payments are taxable, in whole or in part, if the total adjusted gross income, including unemployment compensation, exceeds \$12,000 for single taxpayers or \$18,000 for married taxpayers filing a joint return. Married taxpayers filing separate returns must report all un-

employment compensation regardless of their adjusted gross income levels.

Unemployment benefits totaling \$10 or more during the calendar year are reported to the IRS by the agency making the payments. The agency should furnish a record of payments made to the tax-

payer on Form 1099-UC by the end of January 1983. Detailed information regarding the computation of the tax on unemployment compensation is contained in IRS Publication 905, Tax Information on Unemployment Compensation which is available free by using the order blank in the tax package.

ROBERT D. GREEN, INC.
2800 West Ardmore Blvd.
MULESHOE, TEXAS 79857
OLDSMOBILE — BUICK — PONTIAC — GMC

TERRY YELL
Sales Representative
Business Phone 806 272-4588 Home Phone 806 272-4948

Ellis Funeral Home
Pre-Need Funeral Needs
Price Is Frozen At Time Of Purchase & Guaranteed
272-4574 Muleshoe

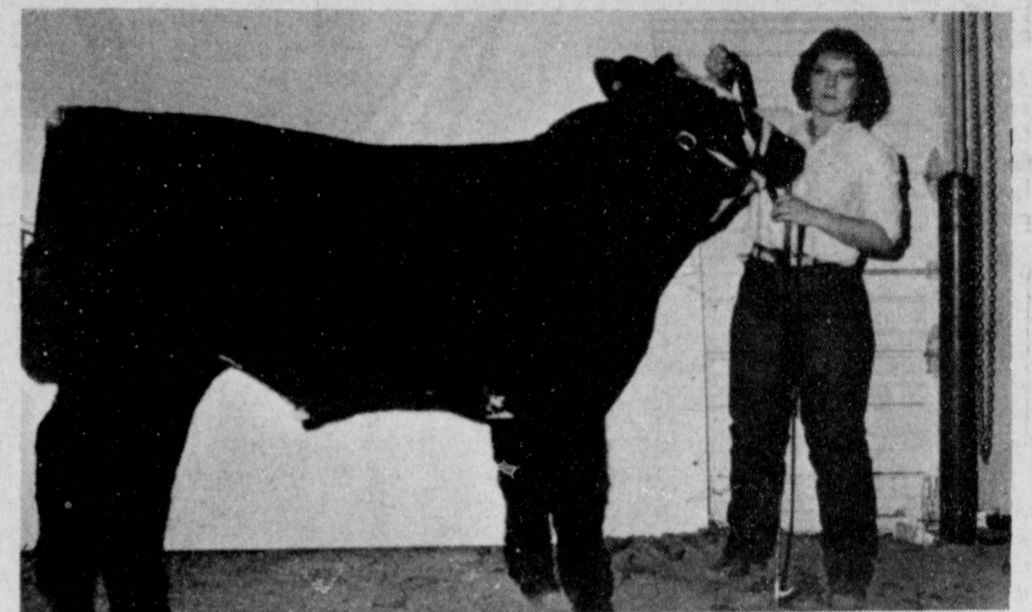
Best Wishes and Congratulations



LIGHT WEIGHT LAMB WINS-Monty Black, son of Mr. and Mrs. Gaylon Black, showed the first place Medium Wool Lamb.

Reynolds & Young Inc.

Congratulations

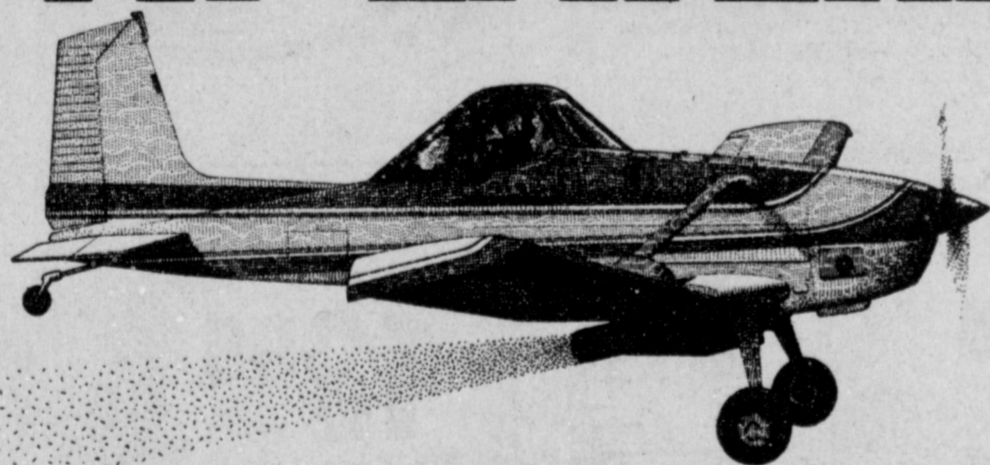


STEER WINNER-The first place Light Weight Cross Steer was exhibited by Staci Kirby, daughter of Mr. and Mrs. Ruel Kirby.

A&M Farm Supply

SPRING SPECIAL ON GRASLAN BRUSH CONTROL:

FLY NOW, PAY LATER.



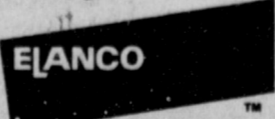
Order aerial-applied Graslan before June 30 and save all these ways:

- Buy at 1982 price with guaranteed protection.
- No payment required until December 15, 1983.
- Extra discounts for payment before December 15.
- Additional 4% discount when Graslan applied at Elanco's convenience.

*We recommend application this Spring to get Graslan's brush control benefits a year earlier. Then, when the cattle market improves, you'll be ready with more grass for higher carrying capacities.

Graslan gets the brush. You get the grass.

Graslan is a totally new, proved effective approach to brush control. A high-density, pelleted herbicide that works through the roots of sand shiner, oak and other troublemakers... controls them for years in just one application. For early-order savings, see your Graslan Range Management Specialist. Or right now, call toll-free:



Pioneering a new era in range management.

1-800-428-4441

Graslan® - (tebuthiuron, Elanco)

"What'd folks plant around here this year?"
"They planted a lot of XL-73 and XL-72aa."
"Which did better... the XL-73 or the XL-72aa?" "To tell you the truth, Herb, it was kind of a toss-up. Both are consistent, high-yielding numbers. Can't beat that XL-73 for top grain quality."

"Will you plant them again next year?"
"I sure will. The way they yield and stand up to the weather, I can't afford not to."
"What will you back 'em up with?"
"I really like the way T1230 looks. I think I'll go with it."

"How do you think that mix will work out?"

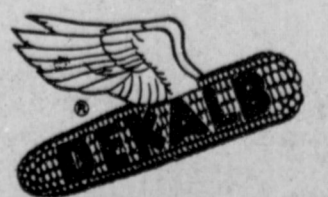
"Should work out great. First of all, it'll let me spread the risk. And then too, plantin' several different maturities will sure take some of the pressure off at harvest time. Anyway, each of these numbers comes with a darn good track record."

"How good?"

"Tell you what, Herb, you guys keep supplying my dealer with hybrids like these, and he won't hear any complaints from me."



Herb Brown, Corn Product Manager for DEKALB-PFIZER GENETICS, talks with local corn grower about top-yielding hybrids.



DEKALB-PFIZER GENETICS

3100 Sycamore Road • DeKalb, IL 60115

*DEKALB® is a registered brand name. Numbers designate hybrids. As a condition of sale, please note statement of limited warranty and remedy on DEKALB-PFIZER GENETICS orders and tags.



ALL REGION QUALIFIERS.....Twenty-five members of the Junior High School Band attended tryouts this past week, and 16 of those members made the all region band. From the back row left: Brandon Carpenter, Mark Mata, Donnie Nowlin, Steve Neptune, Ramma Garner. (Middle) Joel Soto, Scott Williams, Lloyd McCray, Francesco Ybarra. (Front) Susie Leal, Shannon Crozier, Elizabeth Posadas, Emilie Martinez and Pam Williamson. They will perform on January 29 at 5:30 p.m. in Monterrey HS at Lubbock.

Information For Veterans

The Houston and San Antonio, Texas, and Jackson and Biloxi, Miss., Veterans Administration Medical Center canteens have won Outstanding Performance awards for being among the top 22 last year in VA's 172 medical centers.

ines in the four Texas and Mississippi medical centers received the awards by passing stringent requirements, said Richard Percival, VCS director in Washington, D.C. They related to sales and operating supplies budgets, retail inventories, cafeteria gross and retail accountability. The canteens competed equally, regardless of size or sales volume.

Each employee in the winning canteens received an outstanding performance certificate and cash award. VCS is a self-supporting, independent organization.

It VA Medical Center facilities offer a wide range of products for personal hygiene, grooming, entertainment, recreation and leisure time. No product is priced at more than \$100. VCS food service provides complete meals or snacks for VA patients, their families, employees, volunteers and visitors.

Tact
A diplomat is a man who remembers a lady's birthday but forgets her age.
-Tribune, Chicago.

Those from Sudan who attended funeral services for Othel Chambers in Slaton last Thursday were Mr. and Mrs. Allen Beale, Mr. and Mrs. Duane Beale, Mr. and Mrs. Edwin Harper, Verna Beadle, and Edith Williams accompanied Mr. and Mrs. Dale Weaver of Amherst.

Mr. and Mrs. Terry Graves and infant son, Timothy Lee visited during the weekend in the home of her parents, Mr. and Mrs. Billy Chester while she recuperated. They were dismissed from the Littlefield Medical Center Thursday.

Holiday visitors with Mr. and Mrs. Lendle McCarty were their grandchildren, Ricky Don Fair and Christie Humphreys both of Austin and Kim Humphreys of Calif. Kim and Christie also visited their father, Mr. and Mrs. Norman Humphreys and other family members. Kim returned to her home in Calif. Friday.

Mrs. Pearl Wright was in Lubbock for the holidays with her son and family.

Phil Kent, former Sudan bank employee resigned his position and has moved to Dallas.

Mr. and Mrs. Derwin Beauchamp, and Mr. and Mrs. Larry Baker were among those from Sudan who were in Munday dur-

ing the weekend to attend the wedding of Craig Doty and Sherri Adams.

Mr. and Mrs. Paul Wersall of Carlsbad, N.M. has been visiting here with their aunt, Faye Dorsey. While here, Paul was hospitalized at Amherst Hospital where he remains a medical patient.

Sheila Summer, Laura Powell and Laura Ramos were in Munday during the weekend to attend the Adams-Doty wedding Saturday. Mrs. Doty, nee Sherri Adams, was a college classmate of the girls, at West Texas.

Sheila Summer has enrolled at SPC this semester having changed from West Texas State in Canyon.

Glenda Cardwell of Lubbock and Herman Synatsch of Anton visited Sunday in the home of her parents, Mr. and Mrs. Glen Cardwell. Mr. and Mrs. Barry Nettles and girls of New Home also visited Saturday with her parents, the Cardwells.

Mr. and Mrs. John Williams, Jon Ann and Ginger Gore were in Greenwood Sunday to visit Mr. and Mrs. Cliff Stephens and family. On Monday they were in San Angelo to visit Angelo State University where Jon Ann plans to enroll this fall. They also visited Joey Bellar who is a student at the University.

It was announced that

Dr. Dan Kamp, of Lubbock and a former Sudan resident has been invited to speak at the Chamber of Commerce Banquet which will be held in the near future.

The Llanos Altos Associational Brotherhood Rally will be held Tuesday, Feb. 1st at Lee Street Baptist Church in Dimmitt with the meal at 7:00 p.m. and the program to being at 8:00 p.m.

Spending the weekend with Mr. and Mrs. Conner Burford were Mr. and Mrs. Bill Hamons of Lawn. Joining them for lunch Sunday were Mr. and Mrs. Carl Freeman of Levelland and also Mr. and Mrs. Tommy Rosson and family of Hereford.

Calvin Jordon of Clovis was among those who were here Sunday to attend the

50th wedding celebration of Mr. and Mrs. Dorman Chester. Also her neice, Mr. and Mrs. Bob Reynolds and Jeannie of Fort Worth.

Albert Simmons, 99, remains a patient in the Amherst Hospital where he had been for the past several days.

Final Winter Clearance
Large Rack Misc. **75% off**
Playmates
1015 W. 2nd Portales Grand & Main Clovis

Congratulations

MIDDLEWEIGHT CROSS-A first place winner for Jerry Lionel Gleason, son of Dr. and Mrs. Jerry Gleason.

McCormick Seeds

Final Winter Clearance
Boys' & Girls' Sweaters & Cords **60% off**
Playmates
1015 W. 2nd Portales Grand & Main Clovis

AFTER INVENTORY SALE
20% OFF EVERY TIRE IN STOCK!
All stores will be open at 10 a.m. Monday due to price reductions.

GS-300 POLYESTER MICHELIN X
20% OFF

GS Radial Whitewall ALL WEATHER Steel Belted Radial
20% OFF

LEE FREE MOUNTING!

Front Disc Brake Service
•Turn rotors
•Pack front bearings
•Replace front disc pads
\$59.99
Most cars

Heavy Duty Shocks
•Lifetime Warranty
•Installation Available
\$9.99
Each

Prices good thru Feb. 5, 1983
SHOOK TIRE & SERVICE
"the only way to go!"
301 North First • 272-3420
Manager: John Robinson

Partners map progress.

Lewis and Clark were men of destiny who challenged over 2,000 miles of trackless wilderness west of the Mississippi. Captain Meriweather Lewis, army officer and frontiersman, chose the artist and mapmaker Lieutenant William Clark for his partner. From 1803 to 1806 the two young men combined their skills and talents to search for a northwest passage to the Pacific Ocean.

As partners, Lewis and Clark provided detailed maps and valuable scientific journals which later encouraged rapid settlement and development of the West.

Today there is a new frontier to challenge — an energy frontier. **You and Southwestern Public Service Company are partners** like Lewis and Clark. Partners working together making energy decisions to make a difference. For instance, **when you install a High-Efficiency Add-On Heat Pump in your home, you and SPS work together to better manage electricity.** And when electricity is efficiently managed, it makes the difference.

Together, Lewis and Clark charted the maps that made the difference which helped win the West. Together, you and SPS can work as partners, charting progress for a new frontier in electricity management.

You and SPS, partners managing electricity, make the difference.

SPS
SOUTHWESTERN PUBLIC SERVICE COMPANY

Bank Loans, Deposits

Cont. from Page 1

the PIK programs. This is due to the fact that the more land a farmer lays out of production, the less money he will have to borrow to use for farm operations.

Banks generally will allow producers to use the PIK Commodity Certificates as a sort of loan collateral, and according to one banker, it will be treated just like any other crop that farmer has planted.

A small survey of area grain dealers generally indicates that most elevator facilities will be able in some way to off-set the decline of business that the crop lay-out will cause for them. Elevators will be handling the CCC stored grain that will be delivered to farmers for their PIK payments, once possession is taken by the farmer. This will enable them to collect an "in and out" charge on the grain when it is picked up. Joe Bob Stevenson of King Grain told the Journal that their standard charge for this is 26 cents - 13 cents in and 13 out. Stevenson also feels that much more grain will be put into the loan program this next year due to the loan prices. His explanations indicated to the Journal that a farmer can hold his new milo off the open market by placing it in the loan program and then selling his PIK commodity.

Stevenson stated, "We (the elevator) will hurt, along with a lot of other people in this area." And, it only stands to reason that if half of the land in the area is layed-out of production, farmers will be buying about half of what they normally would in chemicals, fertilizer, seed, fuel, equipment, parts and just about anything else that is farm related.

Most farmers feel that the PIK program is not the final answer, nor a quick fix program. It is, in their opinion, a program that is just about all they have right now. Not many farmers have been anxious to sign into the program as yet, since it is a legal and binding contract for the farmer. The Government, however, is still proceeding with changes and revisions of the plan. Most producers

will, according to a general consensus, wait until the last possible time, since these changes are still being made. They are not anxious to get locked into a contract that they do not yet understand, and that is still having changes made on it.

Most retailers expect to have to increase some prices in order to get to a

Banker Advises Farmers To Be Smart Shoppers

"Farmers who survive 1983 will be ones who cut corners without cutting their jugular," says a leading Southwestern Panhandle agricultural banker.

In speculating on how Southwestern Panhandle area farmers can offset high interest rates and depressed crop prices, Mr. Hal Easley, vice president of agricultural loans for First National Bank of Hereford, stresses, "Only producers who find ways to save on production expense and not put their yields in jeopardy will succeed in making a profit for the coming year."

"Farmers will have to become true bargain shoppers, just like other consumers who have learned to track down discounts and sales," he recommends.

Mr. Easley encourages agricultural producers of the Southwestern Panhandle area to seek out finance waiver programs, early payment discounts and other money-saving deals now being offered in the agricultural marketplace.

"Something like a 10 percent discount on good quality seed now being offered by some seed dealers can give the farmer a real price break on a product he's going to have to buy if he farms at all," he says.

"You wouldn't want to jump at just any deal that comes down the pike," he points out, noting that farmers operating on borrowed money must carefully weigh the savings offered by the sellers against the interest to be paid on borrowed money.

"break even" point in their businesses, due to the cut back in farm buying. One parts dealer stated that he was "sure we would have a pretty poor year, but we'll just have to hang on and weather it together."

While the basic outlook is pretty gloomy, the area businessmen, bankers and lending institutions have an attitude that things are going to be better with time. They give the impression of stamina and of a determination to hang on through this crisis, doing

the best with what they have.

FmHA has recently been authorized to make disaster loans to area farmers who were hard hit in early summer of 1982 and have also been advised by the President to work in every way possible with the farmer to keep him in business. Banks have also loosened their lending policies some to help farmers stay in business.

VA reminds World War I veterans holding U.S. Government Life Insurance policies that premiums no longer are required after Jan. 1, 1983. USGLI policies are generally prefixed with the letter "K." Details are available at all VA regional offices nationwide.

I.R.S. Has New Hotline Service

"Although there is a new number to dial - 1-800-424-1040-the service will be the same as in prior years," said Carlos Rojas, Director's Representative for the Internal Revenue Service Lubbock office in announcing the taxpayer assistance program for the 1983 filing period. "Taxpayers will be able to get answers to their tax questions, order forms and publications, get information regarding their accounts, and find out about the Volunteer Income Tax Assistance (VITA) site nearest their home from 8:00 a.m. to 4:30 p.m. each Monday

through Friday."

Rojas noted that, while the Lubbock office will provide walk-in tax assistance, IRS will be working with community agencies this filing period to conduct a series of group self-help sessions. He also mentioned that IRS has produced two films - one on the short forms, Form 1040A and Form 1040EZ, and one on Form 1040 and Schedule A & B - which are available to schools and civic groups beginning in February.

The Lubbock office will maintain a limited selection

of forms and publications, but Rojas encourages taxpayers to use the order form contained within the tax package received in the mail. Certain post offices and banks will stock individual returns and local libraries will have a file of reproducible forms as well.

"Our VITA volunteers are attending training sessions right now and will be ready to do basic return preparation for low-income, handicapped, elderly and otherwise disadvantaged taxpayers by mid-January," said Rojas. Taxpayers may pick up a list

of VITA sites and their schedules at the Lubbock office or may order a schedule through the toll-free service.

VA reports a dramatic increase in the use of the GI home-loan program by veterans. October, 1982, figures reveal more than 18,000 applications received by the agency for loans with a 12 1/2 percent interest rate. In January, 1982, only 8,462 applications were received when the rate was 16 1/2 percent. The current GI home loan interest rate is 12 percent.

JOHN'S CUSTOM MILL

Value • Quality • Dependability

Ralston Purina Company produces America's largest line of pet foods, animal feeds, and pet and animal care products. They provide top performance for your dollar. Make us your one-stop shop for all your animal and pet needs.

272-4373
523 E. Amer.
8-6, Mon.-Sat.

A&M MasterCard VISA

Hi Pro Dog Food

50 Lb. Bag **916** Regular
25 Lb. **515**

Sportsman High Protein Dog Food

50 Lb. **1059**

Five Point Cat Food

10 Lb. **345**

CHUNK STYLE
100 1000
Five Point
CHUNK STYLE
100 1000

ATTEND THE CHURCH OF YOUR CHOICE

DEAR GOD

Dear God... that's how this boy begins his prayers. How do you begin yours? Is God dear to you and near to you, or are you a wayward son who has strayed so long from home that you have forgotten your Father's address. No mind, He has not forgotten you, nor ceased to care for you. "Fear not, for I have redeemed you; I have called you by name, you are mine." We may forget this, but He never does.

He invites every straying son to come home today and learn again to say, "Dear God."

Go while it is day to His house and claim your sonship for the night cometh in which no man can find the way.

EVERYONE IN THE CHURCH IS THE CHURCH IN EVERYONE

Is something wrong with your life - an inner restlessness, dissatisfaction? The answer to every human problem comes only from God our Maker. He alone can forgive and reason.

Through the church, God has committed the provision and redemption of His forgiveness and redemption of love. Without a church relationship, no one is securely related to God. Everyone should be in the Church and the Church in everyone!

Churches listed:

- FIRST ASSEMBLY OF GOD**
521 South First
Lee R. Rich, Pastor
- EMMANUEL BAPTIST CHURCH**
Iglesia Bautista Emmaneul
107 East Third
Isaias Cardenas, Pastor
- RICHLAND HILLS BAPTIST CHURCH**
17th and West Ave. D
Brock Sanders, Pastor
- SPANISH BAPTIST MISSION**
East Third and Ave. E
Roy Martinez, Pastor
- TRINITY BAPTIST CHURCH**
314 Ave. B
Don Knight, Pastor
- LONGVIEW BAPTIST CHURCH**
Phone 946-3413
- B.C. Stonecipher, Pastor**
- SIXTEENTH AND D CHURCH OF CHRIST**
James Johnson, Pastor
Sunday - 10:30 a.m.
Evening - 6 p.m.
Wednesday - 8 p.m.
- PROGRESS BAPTIST CHURCH**
Donald G. Proctor, Pastor
Progress, Texas
- NORTHSIDE CHURCH OF CHRIST**
117 E. Birch Street
- SPANISH ASSEMBLY OF GOD**
East 6th and Ave. F
Luis campos, Pastor
- UNITED PENTECOSTAL GOSPEL LIGHTHOUSE CHURCH**
207 E. Ave. G.
George Green, Pastor
- MULESHOE BAPTIST CHURCH**
8th and Ave. G
Bob Dodd, Pastor
- FIRST BAPTIST CHURCH**
220 West Ave. E
J.E. Meeks, Pastor
- NEW COVENANT CHURCH**
Plainview Highway
Sunday - 10:00 a.m.
Wednesday - 7:00 p.m.
Jimmy Low, Pastor
- TEMPLO CALVARIO**
507 S. Main
Sunday - 10:00 a.m.
Sunday evening - 7:00 p.m.
Evangelistic Services
J.L. Soto, Pastor
- CHURCH OF THE NAZARENE**
9th and Ave. C
Jimmie Williams, Pastor
- FIRST CHRISTIAN CHURCH**
130 W. Ave. G
Dick Tarr, Pastor
Sunday School - 10:00 a.m.
Worship 11:00 a.m.
- LATIN AMERICAN METHODIST MISSION**
5th and Ave. D
R.Q. Chavez, Pastor
- THE COMMUNITY CHURCH**
Morton Highway
H.D. Hunter, Pastor
- CALVARY BAPTIST CHURCH**
1733 W. Ave. C
James Williams, Pastor
- PROGRESS SECOND BAPTIST CHURCH**
1st and 3rd Sundays
Clifford Slay, Pastor
- FIRST UNITED METHODIST CHURCH**
507 W. 2nd, Muleshoe
Bill Kent, Pastor
- ST. JOHN LUTHERAN**
Lariat, Texas
Sunday School - 10:00 a.m.
Worship Service - 11:00 a.m.
Herman J. Scheller, Pastor
- PRIMITIVE BAPTIST CHURCH**
621 S. First
Elder Bernard Gowens
- MULESHOE CHURCH OF CHRIST**
Clovis Highway
JOHN A. BOOR, Minister
Jehovah Witness
Friona Highway
Boyd Lowery, Pastor
- IMMACULATE CONCEPTION CATHOLIC**
Father Patrick Maher
Northeast of City in Morrison Edition
- ST. MATTHEW BAPTIST CHURCH**
Corner of West Boston and W. Birch
M.S. Brown, Pastor

Final Winter Clearance

Several Racks **50% off**

Playmates

1015 W. 2nd
Portales
Grand & Main
Clovis

SUPER SAVINGS SPECIAL SALE

To start our New Year you can buy Amalie products at 10% off regular prices.

Buy 10 cases, drums, or 5 gallon cans and get one unit free.

The way our oil prices are going up, this program could easily save you as much as 40% in the coming months.

Offer expires March 1, 1983

Sale Items Include Our Complete Line Of Diesel & LPG Engine Oils, Hydraulic & Transmission Oils & Gun Grease!

Wiedebush & Co.
1620 W. Amer. Blvd. 272-4281

Muleshoe Co-op Gins	Epy & Cox 401 S. 1st 272-4511	Dairy Queen Margie Hawkins Manager 272-3412	Bratcher Motor Supply 107 E. Ave. B 272-4288
Robert Green Inc. Your Oldsmobile, GMC, Pontiac, Buick Dealer W.Hwy. 84 272-4588	Dent-Rempe Implement Co. John Deere Dealer	White's Cashway Grocery Where Friends Meet And Prices Talk	American Valley Inc.
Farmers Spraying Service	Kemp's Discount Furniture 1210 W. Amer. Blvd. 272-5023	Western Drug 114 Main	Muleshoe Body Shop 402 N. First 272-4246
Main Street Beauty Salon 272-3448	Attend The Church Of Your Choice		BAILEY COUNTY JOURNALS MULESHOE

BUYING? SELLING? CHECK OUT THE...

CLASSIFIED ADS

DEADLINE FOR CLASSIFIED ADS IS TUESDAYS AND FRIDAYS 11:00A.M

WE RESERVE THE RIGHT TO CLASSIFY, REVISE OR REJECT ANY AD.

NOT RESPONSIBLE FOR ANY ERROR AFTER AD HAS RUN ONCE.

PERSONALS

Want to do babysitting in my home. Call 272-3222. 1-30t-tfc

SELL THE BEST. We're number one in cosmetics. Fragrance, jewelry, we're Avon. Call now, Phyllis Duff 794-3498 or 272-3208. 1-2t-6tc

OWN YOUR OWN Jean-Sportswear, Infant-Preteen or Ladies Apparel Store. Offering all nationally known brands such as Jordache, Chic, Lee, Levi, Vanderbilt, Calvin Klein, Wrangler over 200 other brands. \$7,900 to \$16,900 includes beginning inventory, airfare for one to Fashion Center, training, fixtures, grand opening promotions. Call Mr. Loughlin at (612) 888-6555. 1-5s-1TP

REDUCE SAFE & fast with GoBese Tablets & E-Vap "water pills" Damron Drug. 1-5s-3tp

ATARI SERVICE center at Wilhelm TV & Appliance. 601 Main Friona. 247-3035. 1-5s-9tc

Classes in watercolor Tuesday mornings beginning February 15 9:30 - 12:30, six weeks.

Drawing classes beginning February 9 9:30 - 12:30, six weeks.

Night classes adult watercolor Wednesday beginning February 9 6:00 - 9:00 p.m. 6 weeks.

Adult oil painting beginning February 10 9:30 - 12:30 a.m., six weeks.

Childrens and Teenagers basic art Thursday beginning February 10 4:15 - 6:15, 8 weeks.

Night classes adult oil painting Thursday beginning February 10 6:30 - 9:30, six weeks.

Rheata White Studio
213 E. Fir Ave.
West Door
272-3889 or 272-4696
1-4t-4tc

HOUSES FOR RENT

FOR RENT: 3 room furnished house. Couple or single only. Call before 4 p.m. 272-5366. 4-3s-tfc

14x60 2 bedroom & 1 bath furnished trailer house for rent. Central heat. Real Clean. 257-3776. 4-3T-TFC

REAL ESTATE

TOWN and COUNTRY

Real Estate

If You Have Property To Sell, List It With Us.

We Have Time To Give You Extra Personal Service

Farms Ranches Homes

John W. Smith, Broker
806/272-5335
223 East Avenue B
Muleshoe, TX 79347

8-3T-TFC

J. B. SUDDERTH
REALTY, INC.
Drawer 887
Phone 418-3288
Farwell, Texas

COUNTRY LIVING AT ITS BEST-3 BR, 1 1/2 bath. Brick home, all on approximately 4 1/2 acres west of Muleshoe on Highway. Possible terms available. Need immediate sale.

JUST LISTED IN PROGRESS AREA-3-2-2 with corral, 2 wells, 2 box-cars, 1 grainary, 5 acres of established alfalfa, very nice. All on approximately 15 acres. See to appreciate.

GET THE FAMILY OUT OF TOWN and into this 3 BR, 1 1/2 bath stucco house in Lariat. Has domestic well, central heating and air conditioning, insulated with garage, incinerator, corral and small feed shed, all on approximately 7/10 of an acre. Just \$20,000.

8-48s-tfc

PERSONALS

CARD OF THANKS

The family of James (son) Whisenunt want to say thank you for all the food, flowers, your love and prayers.

CARD OF APPRECIATION

The family of Alfred Patterson wish to extend their appreciation of visits, cards, phone calls, food, and flowers during the time of Alfred's illness and untimely death. May God bless each and every one of you.

Letha Patterson,
Nancy, Carl, Kathleen,
Lionel and Liz Patterson,
Sarah and Greg Mitchell

LEASE-PURCHASE a new mobile home first and last months lease. Down payment required. Call 373-9469. 13-2s-7tc

KREBBS REAL ESTATE
Appraisals
201 W. Ave. C

Have residential property, commercial, farms and vacant land.

Good 1/2 sec. dry land, good wheat, 1/2 min. Small dwn. pmt.

Beautiful 3 br. home. Terms or trade.

160 A, exceptionally good water, some minerals.

Have good lots and acreages, close in. Give terms. Utilities available.

160 A irrigated, beautiful, sell or trade.

Need good 1/2 Sec. close in.

Lets Trade

8-5s-TFC

JIMMIE CRAWFORD
REAL ESTATE & INS.
1725 W. Ave E

Muleshoe, Texas
272-3666

3 bedroom house in Lenau Addition.

3 bedroom house West on 1760.

40 acres East of town with 8" well.

80 acres West of town with 6" well.

160 acres West of town with 2 wells.

320 acres N.E. of town with 3 wells.

Metal office bldg. with 4 offices and lobby.

8-42S-STFC

REID REAL ESTATE WEST HWY 84

JUST LISTED -- 3 Bedroom Brick home close to High School. Living Room and Den. Fireplace. Cedar Roof. Assumable Loan.

NEW LISTING -- 2 Bedroom home on 1/2 Acre close to town. Double Car Garage. Neat as a pin.

SEE IT TO APPRECIATE IT -- Beautiful 3 Bedroom, 1 1/2 Bath Brick home. Fireplace. Ash paneling with bookshelves. Cedar Roof. Lots of Extras.

GOOD STARTER HOME -- Nice 2 Bedroom home. Right on the price.

2 BEDROOM HOME -- Large Kitchen with wood paneling.

COMPACT HOME -- 1 Bedroom home. Owner Financing.

OWNER FINANCING -- with assumable loan and down payment on 2 Bedroom home with garage.

CLOSE TO PARK -- 3 Bedroom home on corner lot.

FARMS-
640 Acres. 6 wells. 2 Electric Valley Pivots. 6 siderolls sprinkler systems. Ideal for grazing operation.

Small Acreage close to town. Plenty of depreciation. Railroad frontage. Irrigated with siderolls.

160 Acres. Lays good with 2 6" wells. Good allotments.

144 Acres. Valley Pivot Sprinkler System. Good assumable loan. Some owner financing.

80 Acres. Planted in alfalfa. Irrigated with sideroll sprinkler systems. Lots of Depreciation.

1 Labor with Valley Pivot Sprinkler System. Good Allotments.

1 Labor. Semi-irrigated. Priced to sell. Good Allotments.

3 Dry Land Labors.

20 Acres south of Muleshoe. Ideal for Texas Veteran Loan.

Thursie Reid-----272-3142
Karen Harris-----272-5183
Lucille Harp-----272-4693
Rex Harris - Broker John Craig - Builder

8-49S-STFC

For Fast Results And To Place Your Want Ads Call 272-4536

REAL ESTATE

LARGE 3 BR, 2 bath home \$67,500. Immediate possession, excellent terms. Excellent financing. Call your local realtor, owner broker. 806-794-5595. 8-31s-tfc

FOR SALE: by owner. 2 bedroom house with utility and garage, newly redecorated. Call 272-5578 or 272-3658, evenings and week ends. 8-45s-stfc

HOUSE FOR SALE: 3 BR brick home for sale or rent. Hyatt Addition, Earth, Texas. Assumable loan or owner will finance. 257-3721. 8-28t-tfc

TAKE OVER payments of \$190.95 on beautiful 14 wide home. Insurance included. Has carpet and appliances. Call 353-1280. 13-2s-7tc

SMALLWOOD REAL ESTATE 232 Main

272-4838

\$500.00 Down payment, \$142.00 Monthly payments for a 2 bedroom, 1 bath home.

\$1,000.00 Down payment, \$193.00 monthly payments for 2 bedroom, 1 bath home.

4 bedroom, 4 bath, owner will finance.

We have 3 bedroom, 2 bath brick home for sale.

FARM FOR sale. 155 AC. S.E. Clays Corner. 8 in. well, tail water return; Good yields. 965-2695. 8-4s-7TP

FOR SALE: 4 bedroom-2 bath house, one mile east of Circleback on Highway 298. Call 946-3335. 8-4t-tfc

NICE 2 and 3 bedroom homes for sale, ideal locations, reasonably priced. 272-4732 days, 272-4827 evenings and weekends. 8-3s-tfc

3 BEDROOM, 1 1/2 bath, 1 car garage, brick, new paint on trim. Central heat with evaporative cooling. 1,400 Sq. Ft., 10x10 storage room on concrete slab. Sidewalk in back yard. Approximate equity \$12,000. Payments \$497.00. 704 W. Ave. K, 272-3612. 8-52t-tfc

BINGHAM & NIEMAN REALTY
116 E. Ave. C
272-5285**272-5286

JUST LISTED-3-1 3/4-2 Brick home, approx. 1700 sq. ft. of liv. area, isolated master bdrm. Cent. A&H, on corner lot, buy equity & assume 12 percent loan!!!!

JUST LISTED-3 bdrm. home on approx. 3.5 acres, N. on Hwy. 214...

CLOVIS HWY. CLOVIS HWY. Approx. 4.4 ac., 3 bdrm., 1 bath home (remodeled & very nice) & a 2 bdrm. home for a rental unit. Has sprinkler system to make this an ideal truck farm, close to town...

HIGH SCH. AREA- 3-1 3/4-2 Brick home, Cent. A&H, 2 bed living area, central vacuum system. Buy equity & assume loan!!!!

RICHLAND HILLS - 3-1 3/4 Brick home, immaculate condition fireplace, fenced yard, & Priced to sell!!!!

HIGH SCH. AREA-3-2-2 Brick home, built-ins, fireplace, isolated master, Cent. A&H, game-room, loads of closet & storage space, plus storm cellar!!!!

COUNTRY LIVING-3-2-2 home, Cent. A&H, on 1 acre, 14' x 28' storage bldg., close to town on pavement...

3-1 home, built-ins, lv. room, & large den with fireplace!!!!

DESHAZO ELEM. - 3-2 3/4 home, Cent. A&H, built-ins, large game-room with fireplace, & basement. Priced to sell!

VERY NICE - 4-1 3/4-2 home, completely remodeled, Cent. A&H. Lets take a look at this one...

4-1 3/4-2 Brick Home, Cent. A&H, large workshop. Priced to sell!!!!

JUST LISTED-3-2 plus 1 car detached garage with storage room. Interior has been completely remodeled, new cabinets, new carpets, & much more. Priced in mid-30's.

RICHLAND HILLS-3 nice lots, just right for that new home. Take your choice!!!!

4 homes-2 bdrm.-1 bath. Nice start homes or good rent property...

60' x 130' lot with mobile home hookups...Make an offer!!!!

EARTH-3-1 home on large corner lot, plus storage bldg. Priced to sell!!!!

We also have a good selection of farms & commercial property listed. Check with us for details on these listings. **"WE APPRECIATE YOUR BUSINESS"** George and Dianne Nieman

USED CARS • TRUCKS

JEEPS, CARS, Trucks under \$100 available at local gov't sales in your area. Call (refundable) 1-619-569-0241 ext. 7964 for your 1983 directory. 24 hrs. 9-4T-3TC

FARM EQUIPMENT

FOR SALE: 1974 760 Allis Chalmers broadcast cotton stripper, A/C, heater, CB radio. Good condition. Only \$14,000.00. Call 806-364-2613 in Hereford, Tx. 10-5s-4tp

West Texas Auction Co. Generous Finder Fee Farm & Industrial Auctions Day: Les-747-6629 Night: 797-5518 10-2s-9tc

WANTED TO BUY: Used irrigation equipment. 3 in. and 4 in. x 30 ft. sprinkler pipe. Used pivots, 5 in. side rplls with 5 ft. wheels. Massey Irrigation, Lubbock 806-793-4452 or 793-3121 Will pay cash. 15-41S-TFC

WANTED TO BUY sideroll sprinklers, 2", 3", 4", sprinkler pipe. Call State-line Irrigation. 272-3450 or 385-4487. 15-49s-tfc

HOUSEHOLD GOODS

BURROWS UPHOLSTERY AND FURNITURE REPAIR
209 W. 2nd
phone 272-4255
12-44s-1tc

WE BUY USED FURNITURE AND APPLIANCES CALL 272-3030
HARVEY BASS APPLIANCE
18S-TFC

CUSTOM BUILT storm windows and doors. Call Carl Ellington, 272-5402 after 5:00 for appointment and estimate. 15-48t-tfc

FOR SALE OR TRADE

HONEY FOR SALE

Nick Landers
334 W. Ave. J.
272-3096
11-28S-TFC

SPLIT OAK firewood for sale. Will deliver. Call 272-3987 after 6 p.m. or anytime on weekends. 11-5s-tfc

FOR SALE: 1977 14x60 mobile home. 272-5689 after 5 p.m. 11-5s-2tc

FOR SALE: Pinon Firewood. Split. Call Rick at 272-5420. 11-4t-2tp

PROPERTY FOR LEASE

FOR LEASE: Long Term Storage. New 60x100 flat grain storage building. A.S.C.S. approved. 3 miles North of Muleshoe on Friona Hwy, Call 272-4805. or /94-6419, or 272-4086. 15-44s-tfc

LIVESTOCK

FOR SALE choice doelings from registered str milkers Nubian goats. 1-12 month old-some bred. One good yearling star buck. Call 272-3378. 16-2T-4tc

MISCELLANEOUS

ALEX'S TIRE SERVICE
For service 24 hours a day telephone 272-5012 or Mobile 965-2242. 224 East Fourth Street. Muleshoe, Tx. 79347. 15-51s-6tp

FRANK'S REFRIGERATION APPLIANCE & SERVICE PARTS & REPAIR
315 W. 3rd. Ph. 272-3822
15-7T-TFC

GARZA RECYCLING
112 W. 6th
Clovis, N.M. 88101
762-2247
"WE BUY"
Aluminum Cans 25 cents
Lb./Copper/Brass
Radiators/Batteries
Mon.-Fri. 8-5 Sat.
8-12 Mountain Time

ROOF DAMAGE? J. L. Soto, Construction. Shingles - new - repair acoustical ceilings, painting, carpentry. 272-4142. Free estimates. 15-23s-stfc

STORAGE ROOMS FOR RENT
\$25.00 - \$30.00
TED BARNHILL
272-4903
15-14t-tfc

REPOSSESSED SIGN! Nothing down! Take over payments \$58.00 monthly. 4'x8' flashing arrow sign. New bulbs, letters. Hale Signs. Call FREE 1-800-626-7446, anytime. 15-5s-2tp

SEED & FEED

DAMAGED CORN 1/2 price. Call 925-6715. 17-2t-tfc

LEGAL NOTICES

NOTICE TO ALL PERSONS HAVING CLAIMS AGAINST THE ESTATE OF LLOYD FREDERICK HAIRE* DECEASED

Administration of the Estate of LLOYD FREDERICK HAIRE, Deceased, has been commenced by the issuance of original Letters Testamentary to MARTHA VERA HAIRE, on January 24, 1983, by the County Court of Bailey County, Texas, acting in Cause No. 1539, styled IN RE: ESTATE OF LLOYD FREDERICK HAIRE* DECEASED in which court the matter is pending.

All persons having claims against the estate are hereby notified to present them to the undersigned at the address shown below within the time prescribed by law.

DATED this 24th day of January, 1983.

/s/Linda Guelker
Linda Guelker, Of Counsel
State Bar Number 08567300
THOMPSON, THOMAS & BROWN

103 West Avenue D
Muleshoe, Texas 79347
806/272-4275
Attorney for Estate
pub. not. 5s-1tc

NOTICE TO BIDDERS
The City of Sudan in behalf of applicants under the City's Community Development Block Grant Program is seeking bids for home improvement work.

Sealed bids for four separate projects will be received until 1:00 p.m. Thursday, February 3, 1983 at City Hall, 100 First Avenue, Sudan, Texas and at that time publicly opened.

The right is reserved by the Owner/City of Sudan to reject any and/or all bids. All qualified bidders will receive consideration for

award without regard to race, color, religion, sex or national origin.

Bidding information for these projects may be obtained at City Hall, between the hours of 8:00 a.m.-5:00 p.m., Monday-Friday.

Pete Phillips
City of Sudan
Housing Coordinator

There will be a pre-bid conference on the afternoon of February 1, 1983. All interested bidders may meet at City Hall at 1:30 p.m., where I will answer any questions relevant to the projects. Everyone interested may then visit project sites with me for inspection and further explanation of the work to be done. Bid packets will be available at that time if not picked up beforehand. pub. not.-4T-2TC

PUBLIC NOTICE

Notice is hereby given that the Commissioners' Court of Bailey County will enter into a contract with any banking corporation, association or individual banker in Bailey County for the depositing of the public funds of Bailey County in such bank, on February 14, 1983.

Any banking corporation, association or individual banker in Bailey County desiring to be designated as county depository shall make and deliver to the County Judge an application applying for such funds and said application shall:

1. State the amount of paid up capital stock and permanent surplus of said bank; and,

2. there shall be furnished with said application a statement showing the financial condition of said bank at the date of application; and

3. be delivered to the County Judge on or before February 14, 1983 at 10:00 a.m.; and,

4. be accompanied by a CERTIFIED CHECK for \$10,169.72, as required by Art. 2545, V.T.S.A.

Said application should set out all terms and conditions for the handling of such funds, including, but not limited to, the rate of interest, if any, to be paid on demand deposits, and the rate of interest, if any, to be paid on time deposits.

This notice shall be published once a week in some newspaper published in Bailey County and posted at the courthouse door of Bailey County.

/s/Gordon H. Green
Gordon H. Green
County Judge
pub. not.-4s-4tsc

PEANUT FARMING LESS "TYPICAL"

"Typical" - With changing economic conditions, peanut production is likely to become less "typical" as "belt-tightening" continues for farmers. Peanut producers, in striving to realize profits, will identify and adopt new least-cost production systems which will probably include various crop rotations, says an economist with the Texas Agricultural Extension Service, Texas A&M University System. Farmers must work to keep yields up at less cost. This means selecting cost-efficient combinations of labor, machinery, fertilizer and pesticides. Production costs for the 1983 peanut crop should change little from last year so that the 1983 breakeven price per pound to cover all costs could be below the 1982 actual breakeven price.

CHEMICAL & GROWTH

Scientists have synthesized a rare brain compound that stimulates tissue growth, a development they say could help both in speeding the healing of wounds and regulating the growth of humans and animals.

FAREWELL

Outgoing Energy Secretary James Edwards declared recently that energy supply is no longer one of the nation's most serious problems, and despite falling short of his goal of abolishing his own department, said "I am going to claim victory and leave town."