

## Weather disasters bring low bale count

Two separate hailstorms in Floyd County, May 25th, and June 11th, devastated much of the area's cotton crop. However, many gins and producers were pleasantly surprised at the outcome of the cotton that remained.

Gins were just wrapping up their business at the close of 1999 showing a total bale count of 136,416 bales-down by 21,633 bales from 1998's count-however, there were approximately 13,000 more acres planted in 1999 compared to 1998.

Both Larry Noland, manager of Floydada Cooperative, and Charlie McQuhae, manager of Lockney Cooperative, said the "quality of the cot-

ton was good." Trent Johnson, Area Director of FSA said, "Initially we certified 208,620.5 acres of cotton. Of that, 57,924.1 acres were completely hailed out. Another 50,000 acres received at least 35% or greater loss.

"About 150,000 acres went to harvest."

According to Johnson the total ramifications of the drought and hail will not be known "until we finish this disaster program."

"Hail and drought weren't our only disaster. The price of cotton is a disaster by itself."

Gin	1999	1998	1997	1996
Barwise Gin	18,074	14,577	13,832	11,511 (est.)
Blanco Gin	7,000	7,646	16,371 (est.)	10,770
Brown Gin (now Scott Gin)			Not Open	5,000 (est.)
Darty Gin	8,936	7,515	12,113	13,100 (est.)
D&J Gin	27,362	27,500	22,150	27,208
Floydada Coop	21,349	37,200	36,140	40,000 (est.)
Lockney Coop	28,700	23,920	19,500	29,000
Lockney Gin	9,300	10,025	6,600	10,000
Marble Bros.	3,745	3,700	3,050	5,200
McCoy Gin	3,857	8,166	5,544	4,074
Scott Gin	8,093	12,400	13,985 (est.)	11,056
South Plains	Not Open	5,400	10,474 (est.)	13,300
<b>Totals</b>	<b>136,416</b>	<b>158,049</b>	<b>159,759</b>	<b>180,149</b>

## Local candidates throw their hats into the ring

Monday, January 3rd, was the filing deadline for candidates seeking local office in Floyd County.

Seven incumbents and one newcomer filed their intentions to run for office. Only one race will be contested.

Seeking re-election are incumbents: District Attorney Becky McPherson, Commissioner Craig Gilly, Pct. #3,

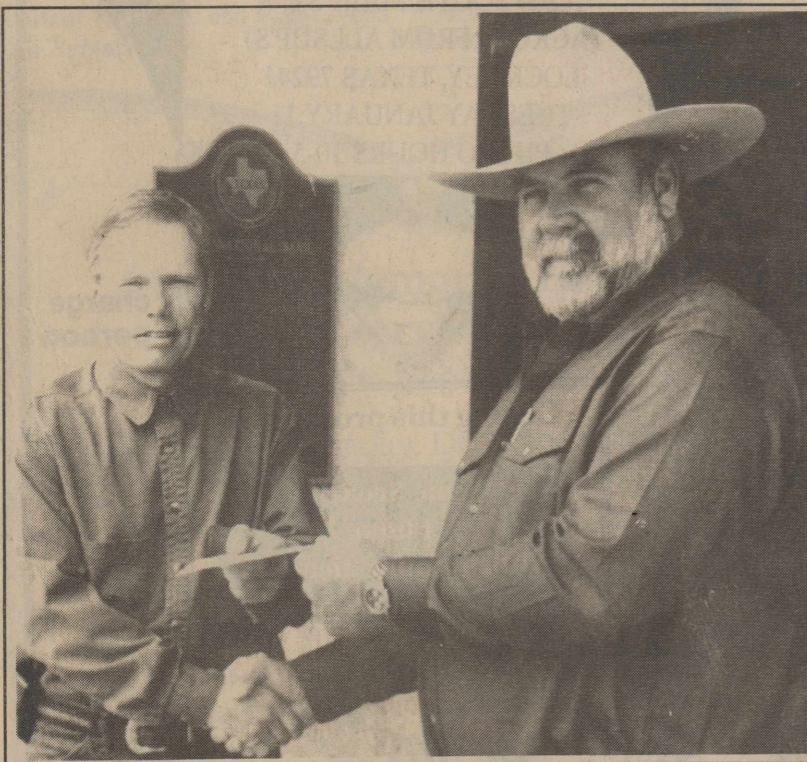
Commissioner Ray Nell Bearden, Pct. #1, Sheriff Royce Gilmore, Tax Assessor Penny Golightly, and Constable Ray Macha, Pct. #2 & #3.

Only one incumbent has an opponent. Newly appointed Michelle Araujo, J.P. Pct. #2 & #3, will face off Bill Strickland in the Democratic Primary.

Continued On Page 2



**DONATION TO FLOYDADA VOLUNTEER FIRE DEPARTMENT**-The First National Bank of Floydada donated \$5,000.00 to the Floydada Volunteer Fire Department last week. Vice-President Beth Eckert (center) of FNB of Floydada is shown presenting the check to Gary Brown (right) and Bobby Welborn (left) of the Floydada Volunteer Fire Department. Staff Photo



**DONATION TO LOCKNEY VOLUNTEER FIRE DEPARTMENT**-First National Bank of Floydada donated \$5,000.00 to the Lockney Volunteer Fire Department last week. Director David Patterson (left) of FNB of Floydada presented the check to Jimmy Kemp of the Lockney Volunteer Fire Department. Staff Photo

## Combined talents raise Unity Center

Floyd County Friends President Nick Long has compared the building of the Unity Center to an old fashioned "barn raising".

"People from all over have come to the Unity Center to lend a helping hand by using their natural talents and personal equipment.

"It has been overwhelming how many people have helped us out with discounted labor and materials."

According to Long the "Friends" have done their best to use local contractors, but have at times had to reach beyond Floyd County. Even when shopping out of town the "Friends" have been blessed with "good neighbors".

"Lubbock Electric brought out heavy equipment and 6 electricians to help install lights and wall circuitry," said Long. "They said they get a lot of business out of Floyd County Gins and they wanted to give something back to the community. They gave us a significant discount.

"Our local contractors have also worked slightly above cost.

Long also gives much of the credit to the project moving smoothly to Gary Brown, Project Coordinator, and Jon LaBaume, Site Foreman.



**WORKING TOGETHER**--Checking out the large lights that are being installed at the Unity Center are: (l-r) Site Foreman Jon LaBaume, Project Coordinator Gary Brown, Brian Polson, of Lubbock Electric, electrician Brent Sanders, Weldon Emert, of Emert Electric, and building contractor Ed Marks.

"Brown has been invaluable with the utility services, such as water, gas, and sewer. He has given us his experience and is very good at running

them down.

"Jon is retired and has been able to be at the site every day all day for four months. Gary got the contractors to

the site and then Jon helped get them going.

For a rundown on jobs and workers at the Unity Center, see page 2.

## Brag Page Deadline

The Valentine issue with the popular Brag Pages will be published February 10th.

Anyone wishing to put a photo of their child, grandchild, or any other loved one, should have the pictures to the Hesperian-Beacon offices in Floydada or Lockney, by February 3rd, at 5:00 p.m.

The cost for 1-3 children in a heart frame is \$10.00. If there are four or more people in the picture, the cost will be \$15.00 per frame.

Each photo will be placed in a heart shaped frame and will appear with the person's name, age, parent's names, and grandparent's names.

There is no age limit for persons in the photograph.

Photos may be color, or black and white. Photos of any size will be accepted.

## Stock shows open Saturday

**LOCKNEY**--The Lockney Stock Show, sponsored by the Chamber of Commerce, will be held Saturday, January 8, beginning at 9:00 a.m.

Weights must be turned in by 6:00 p.m., Friday, January 7th.

Animals will be shown in the following order: pigs, lambs, and steers. The Lockney 4-H will have the concession stand.

**FLOYDADA**: The Floydada Livestock Show will also be held Saturday, January 8.

Weigh-in is Friday afternoon and weight cards must be turned in by 8:00 a.m. Saturday.

There will be a clinic Saturday morning at 8:30 a.m. and the show will start after the clinic.

The show is sponsored by the Floydada Chamber of Commerce. For more information call 983-3434.

## Floydada home damaged by fire

Arson suspected in blaze

A Floydada family's home was badly damaged by an arsonist's blaze on New Year's Day. A suspect has been arrested and is currently in the Floyd County Jail.

Police and firefighters were called to the house fire January 1, at 4:18 a.m.

According to Police Chief Darrell Gooch, "The house had been doused with gasoline and then set on fire at the back corner of the house. David Zavala, 37, was sleeping inside the house and awakened to smoke com-

ing into the house. "The attic area of the house was destroyed." The inside of the home was also heavily damaged by smoke and water damage.

A fireman and a police officer were also injured at the fire. "While fighting the fire inside the house," said Gooch, "a portion of the roof collapsed on Firefighter Chad Guthrie. He was transported to Mangold Memorial where he was treated and released.

"Police Officer Pete Vallejo was

also taken to Mangold Memorial suffering from carbon monoxide poisoning and smoke inhalation. He was also treated and released."

The suspect, Abel Aguilar, 23, of Floydada, was questioned by police earlier in the evening in regards to another fire.

According to Gooch, "Police found Aguilar standing in the middle of a grass fire at 12:15 a.m. New Year's Day. He was told to get out and became belligerent. He told police he

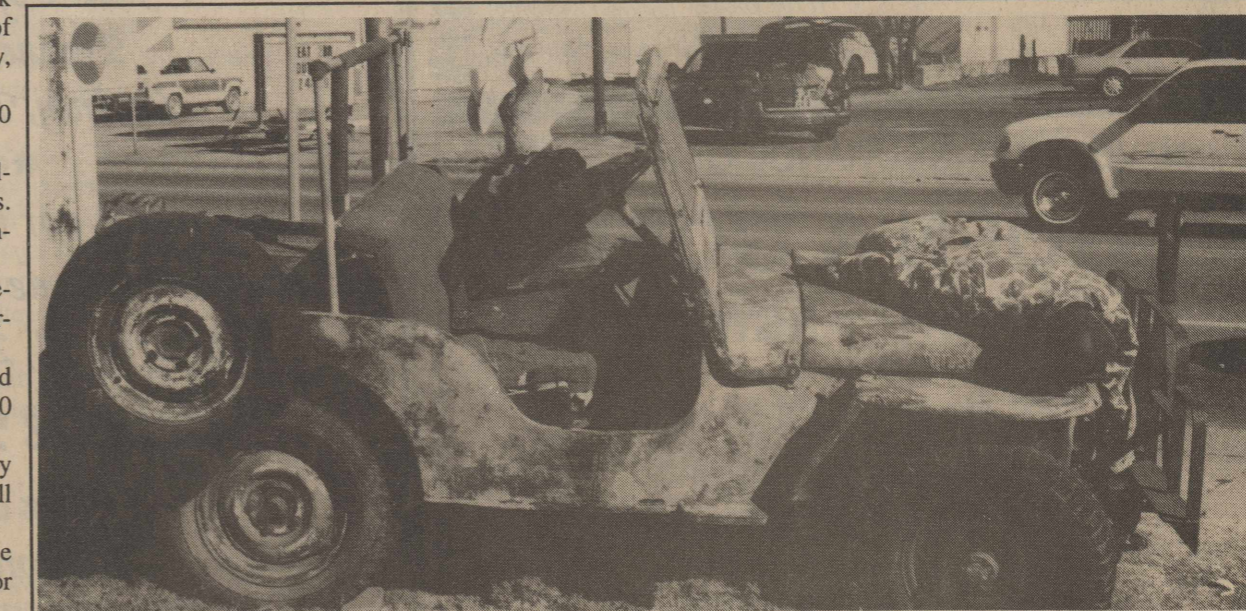
Continued On Page 2



**TURN ABOUT IS FAIR PLAY**--These photos were taken by our roving reporter while traveling through Brady, Texas last week, during the heart of "deer season". The jeep, driven by a buck, was parked in front

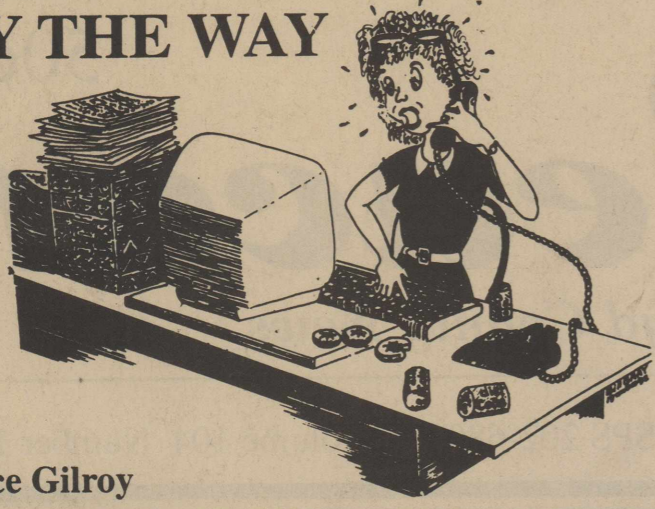
of a sporting goods store. The hunter draped across the front of the jeep showed a unique perspective from a deer's point of view.

Staff Photos





# BY THE WAY



By Alice Gilroy

Well New Years Day came and went.

The Y2K Bug never bothered me. We went to bed with water and lights and woke up to water and lights.

We spent our New Years Eve at Floydada's First Baptist Church enjoying the music of the Atkins and Newberrys. The New Year was ushered in by sharing Holy Communion with other Christians. I couldn't think of a better way to start the New Year than remembering the blood Jesus shed for me.

I wasn't ever worried about Y2K. Well O.K.--maybe I thought of a couple of ways to be prepared.

I did go and buy enough batteries for four flashlights--but I only have two flashlights.

I thought about filling up my bathtub in case of a water outage. I wanted to be able to flush the toilet.

Women always worry about whether there is going to be a flushing toilet anywhere close!

Anyway, I forgot to fill the tub before I left for church. It was already past the bug's Y2K hour when we got home.

I did buy a bunch of canned food when Lowe's had a Y2K sale one week. I was very proud of myself for that one. However by January 1, I had either eaten them or given them away in food drives.

I thought about filling up my car with gas, but since I only have to walk a few blocks to get anywhere in Lockney I dismissed that too.

By and large, I totally disregarded any kind of Y2K scare.

I was told it might be the end of the world--that Jesus was coming back.

I figured if fixing computers was going to prevent that from happening, I would just as soon they left the computers alone.

I also figured Jesus wasn't really coming back because so many people kept expecting Him. He said He would come "like a thief in the night".

He also said not to worry about your future. He's got it all under control. So I decided not to worry about it.

Now don't go thinking I don't worry about stuff. I spend so much time worrying over stupid everyday things, I have no time to worry over the end of the world. I figure I must be making progress with my "not going to worry" resolutions.

By the way, the newspaper is Y2K compliant. Our pens and pencils are working great.

There is one little glitch in our bookkeeping, but I've decided to ignore it.

Evidently the year 2000 is being read as 1900 and when we enter a program after January 1, the program puts the entry above the previous sales entry instead of the bottom where it should go. We worked with it and saw that the program was still adding and subtracting the entry just fine--it was just placing it in a strange place. We figured ya'll could live with it. We can.

I'm glad the Y2K scare is over. It leaves me a whole lot more time and energy to devote to worrying over the ozone layer.

## Letter To The Editor

Dear Editor, Wednesday, December 21st, my granddaughter, Barbara-Scott Kolb and I made the journey to Lockney to bring Mother to our house for the holidays. After supper Mom mentioned that the town was really decorated and that we should drive around and enjoy the lights.

WAS SHE EVER RIGHT ON THE DECORATIONS!! WOW!! The entire town was super impressive. A big thanks to all who took the time and effort to make such an enjoyable tour.

We were also impressed with the progress of the Unity Building. What a great idea, and example of cooperation between the two cities, for the

betterment of the citizens of the entire county.

Thanks also to you and your staff for the Christmas edition. It was a special joy to see the letter to Santa from sister-in-law Janice Hays. As you know she is now Janice Varnell and is the daughter of Edgar Hays longtime editor and publisher of the Beacon. As a devotee of the internet I always turn your column to see what you have learned that I have missed during the week.

Thanks to my Mom, Dorothy Merrell, for providing the subscriptions for the Merrell's, the Varnell's and my sister, Carolyn Jones. We all enjoy keeping up with the happenings of Floyd County.

Fred Merrell

## Local candidates throw their hats into the ring

Continued From Page 1

All candidates, except Constable Macha, filed as Democrats. Macha filed as a Republican

The winner of the J.P. race will be decided in the primary election unless someone files at a later date as a write-in candidate.

See You At The Stock Show Saturday!

**AFTER CHRISTMAS SALE**  
CHRISTMAS ITEMS  
**40% TO 50% OFF**  
OTHER ITEMS ALSO ON SALE  
Sale ends January 10th.

**Schacht**  
**Flowers, jewelry & Gifts**  
112 W. Poplar, Lockney 652-2385  
Open 8:30 to 5:30 Monday-Saturday

HAVE CROP INSURANCE QUESTIONS?

**GOEN & GOEN**  
HAS THE ANSWERS

Let us prove it to you.

Visit with Kyle Smith  
Gail Dubois or Pat Franklin

102 E. California 983-3524

## Construction Of Unity Center

Project Coordinator.... Gary Brown  
Site Foreman.....Jon LaBaume  
Floyd County Friends President....Nick Long

BUILDING ERECTION.....Ed Marks  
BUILDING SALE & OVERHEAD DOORS.....Walter Davis  
BLEACHERS.....Travis Thornton, Joe Marks  
BLOCKS FOR CONCESSION STAND/RESTROOMS..Beryl Vinson  
CONCRETE.....Alex Langehenning  
ELECTRICAL.....Weldon Emert Electric, Lubbock Electric, Brent Sanders, John Fortenberry, Randy Payne, Tad Terrell  
PLUMBING.....Campbell Plumbing, Holmes Plumbing  
HEATING, COOLING.....Hammond Sheet Metal  
LEGAL ASSISTANCE.....Joe Williams Surveying, Verne Lynn Stewart, Karen Houchin  
DIRTWORK.....Ben Mathews  
BORE HIGHWAY.....Kelly Williamson  
LAND PREPARATION...Mike Mathis, Craig Dubois, City of Floydada, Floyd County, Foster Bros., Septic Systems  
PIPE FOR UTILITIES.....Adams Well Service, Poole Well Service, Peerless Pump, Rhode Pipe, Martin Stoerner, Lindan Morris  
CALICHE.....Randy Hollums  
GRAVEL.....Mrs. A.B. Muncy Estate, Sally Shaw  
CONSTRUCTION EQUIPMENT...Craig Dubois, Brown Implement, Gooch Trucking, Kevin Nelson Backhoe, Danny Nutt, Asco of Lubbock, Ted Young, D&J Gin, Hulon & Gary Carthel, Mike Mathis, Jon LaBaume, Herman Graham, Byron Brock, Lindan Morris, Mike Hinsley, Bart Greer, Rick Heflin, Cantwell Irrigation  
LIVESTOCK PANELS...Mark Standlee, Kevin Kelly, Floydada FFA & fathers; Ted Young, Lockney FFA  
CONSTRUCTION SUPPLIES...Davis Lumber, Higginbotham Bartlett  
LAND... R.C. & Louise Fawver

## Arson suspected in fire

Continued From Page 1 was celebrating New Year's and that when the fire would start to go out he would pour more gasoline on it."

Aguilar was given a citation for "Unlawful Burning".

At 3:51 a.m. police were called to Friends Convenience Store in reference to a man harassing the clerk. A description was taken and the suspect, Abel Aguilar, was located in the Lowe's Pay-N-Save parking lot.

According to Gooch, "The man was

belligerent and told police they would have to take him by force. He was arrested for Public Intoxication and Resisting Arrest.

Shortly after Aguilar's arrest, police and firemen were dispatched to the house fire at 412 W. Jackson.

An investigation has led to the arrest of Aguilar on charges of Arson. Normally a 3rd degree felony, the offense has been upgraded to a 1st degree felony because of the injuries to the public servants.

## Tax rebates show increase in Floydada and Lockney

State Comptroller Carole Keeton Rylander delivered her final sales tax rebates for 1999 - a total of \$222.9 million to 1,105 Texas cities and 119 counties.

December's rebates bring the total sales tax allocated to local taxing entities in 1999 to \$3.5 billion, a new one-year record for local sales tax revenue and an increase of 7.1 percent compared to sales tax allocations in 1998.

"Local sales tax allocations for 1999 confirm the message I have been delivering across the state this year. The Texas economy is robust, consumer confidence is high, and the economic growth is creating paychecks and jobs for Texans," Comptroller Rylander said.

December allocations to counties of \$18.2 million are up 26.3 percent compared to last December's payments of \$14.4 million. During 1999 counties received \$200 million in sales tax allocations, up 1.4 percent compared to 1998 allocations.

December sales tax rebates include sales taxes collected by monthly filers in October and reported to the Comptroller in November.

Floydada: \$13,466.36 compared to \$10,687.49 in December 1998, an increase of 26.00%.

Lockney: \$4,429.27 compared to \$4,288.75 in December 1998, an increase of 3.27%.

Petersburg: \$1,873.85 compared to \$3,517.84 in December 1998, a decrease of 46.73%.

Abernathy: \$10,472.34 compared to \$8,058.11 in December 1998, an increase of 29.96%.

Silverton: \$1,808.46 compared to \$1,475.82 in December 1998, an increase of 22.53%.

Quitaque: \$1,874.59 compared to \$1,274.83 in December 1998, a decrease of 47.04%.

Lorenzo: \$1,854.26 compared to \$1,653.00 in December 1998, an increase of 12.17%.

Crosbyton: \$7,676.15 compared to \$5,398.97 in December 1998, an increase of 42.17%.

Ralls: \$6,477.72 compared to \$5,582.99 in December 1998, a decrease of 16.02%.

Idalou: \$4,653.99 compared to \$3,468.43 in December 1998, a decrease of 34.18%.

## Floydada Police Report

December 18th, Floydada Police stopped a vehicle on North Main after they observed the driver almost strike a parked car. The driver, Barrera Martinez, 25, of Mexico, was arrested for DWI and later released to the Border Patrol.

Also on December 18th, police were called to the 100 block of W. Marivena in reference to a burglary. Taken from the home were cordless telephones, compact disc, jewelry, and shoes. It is believed the burglary occurred between 6:40 p.m. and 9:45 p.m.

December 19th, a Floydada man reported someone stole his \$300 Rotweiler dog.

December 21st, a man told police that sometime during the night someone stole the radio out of his car parked in the front of his residence, in the 500 block of E. Missouri.

December 22nd, police stopped a vehicle for a traffic violation. Daphon Bates, 25, of Floydada, was arrested for Driving While License Suspended, and for Outstanding Warrants.

December 24th, police filed forgery charges against Terry Martin, 20, of Lockney, for several forged checks received by Floydada's Lowe's Pay-N-Save.

December 26th, police stopped a

semi-truck and the driver, Angel Castro, 40, of Lubbock, was arrested for outstanding DPS warrants.

December 26th, police stopped a vehicle on S. 4th. The driver, Quinn Fipps, 20, of Floydada, was arrested for Driving While License Invalid.

Also on December 26th, Edward Wickware, 26, of Floydada, was arrested for Parole Violations.

December 27th, Samuel Ochoa, 18, of Floydada, was arrested for Possession of Drug Paraphernalia.

December 29th, a man reported someone entered his residence in the 500 block of E. Ross and stole \$1,000 in cash, an alarm clock and popcorn.

December 31st, police stopped a semi-truck on S. Hwy 62. The driver, Jeffery Brinson, 21, of Memphis, was arrested for outstanding DPS warrants.

January 1, 2000, at 1:50 a.m. police found a vehicle parked at the intersection of Sunset and Price. According to Police Chief Darrell Gooch, "As police approached the vehicle, the operator drove away and drove into a bar ditch. The 16 year old driver was arrested for DWI and the passenger, Coy Holmes, 19, was arrested for Public Intoxication and Possession of Marijuana.

## Lockney Police Report

December 28, police stopped a semi-truck tractor on U.S. 70 for speeding. The driver, Jarrod Veitenheimer, 27, of Windthorst, Texas, was arrested for driving while his license was suspended and numerous outstanding warrants from Motley and Archer Counties. Veitenheimer was taken to the Floyd County Jail.

January 1, police stopped a green Dodge P/U for exhibition of acceleration. The driver of the vehicle,

Jeremiah Rodriguez, 23, of Lockney was arrested for Driving While His License Was Suspended. Sarah Ann Hernandez, 21, of Lockney, a passenger, was arrested for Public Intoxication.

Also on the 1st, police received a report of a business in the 200 block of S. Main Street about several money orders that were taken from the store and cashed at a business in Plainview. The investigation continues.

## Courtroom Activities

In District Court January 4, 2000: The probation of James Hernandez, 22, of Lockney, was revoked, and he was sentenced to 2 years in the State Jail. He had been placed on probation for Burglary of a Building.

Hernandez also pled guilty to a new charge of Burglary of a Building and was sentenced to 7 years in TDCJ.

Dale Minner, 34, of Floydada, had been placed on probation in 1992 for Burglary of a Building and Habitiation. He was sentenced to 10 years on both charges. His probation was revoked and he was sent to TDCJ for 10 years. Minner also had new cases against

him for Possession of Cocaine--a 3rd degree felony. He was sentenced to 8 years on those charges after he pled guilty.

Ricky Olivares, 25, of Floydada, had his probation revoked, and was sentenced to 10 years in TDCJ. He was on probation for Burglary of a Habitation. Probation was revoked because of criminal offenses in Lubbock County, and for failure to pay probation fees, court costs and restitution.

### THE FLOYD COUNTY HESPERIAN-BEACON (USPS 202-680)

Published weekly each Thursday at 111 East Missouri Street, Floydada, Texas 79235. Periodical postage paid at Floydada, Texas 79235. POSTMASTER: Send change of addresses to: The Floyd County Hesperian-Beacon, 111 E. Missouri, Floydada, Texas 79235.



1 - 10x13

(Wall Photo)

1 - 8x10

2 - 5x7

2 - 3x5

16 - King Size Wallets

8 - Regular Size Wallets

30 Color Photos

99¢ Deposit  
\$12.00 Due at Pick up (plus tax)

\$12.99



AT THE OLD BLUE QUILT BOX  
200 SOUTH MAIN ST.  
(ACROSS FROM ALLSUP'S)  
LOCKNEY, TEXAS. 79241  
TUESDAY JANUARY 11  
PHOTO HOURS 10-5

Group charge 99¢ per person

During this promotion

Come See Our Photo Millennium Calendars



Shugart's inc.

Visit Our Web Page  
www.shugartstudios.com

Appreciate your support thus far and would appreciate your vote in the March 14th, 2000 primary. Thank you!



**Michelle D. Araujo**  
Justice of the Peace  
Precincts 2 & 3  
Lockney, Texas 79241

\*\*\*

Doy gracias por todo el soporte del publico por favor de votar en el primario de Marzo 14, 2000. Gracias.

**Michelle D. Araujo**  
Juez de Paz  
Electoral 2 y 3  
Lockney, Texas 79241



Lockney J.V. Girls Basketball Report

LOCKNEY 27 SPUR 36

A cold third quarter by the Lockney Girls JV gave the game to Spur, November 22.

Leading scorers were Margaret Blanco and Leslie Cuellar with 6 points each.

Jett Gilly scored 5; Crystal Castro, 4; Amber Wood, 1; and Crystal Martinez, 5.

LOCKNEY 30 FRIONA 59

Lockney's JV girls were routed by Friona on November 23.

Jalee Dietrich led the scoring with 7 points.

Jett Gilly scored 5; Crystal Martinez, 6; Amber Wood, 2; April Dorman, 2; Ashlie Cuellar, 2 and Leslie Cuellar, 6.

LOCKNEY 32 HART 22

The game with Hart, November 30, put the Lockney JV girls back on the winning track.

Crystal Martinez led the scoring with 11 points.

Nine points were scored by Jett Gilly, Lucy Bernal, 2; Margaret Blanco, 5; Amber Wood, 1; Crystal Castro, 3; and Sara Davis, 1.

LOCKNEY 42 PETERSBURG 26

The Lockney Girls Junior Varsity Team defeated Petersburg 42-26 in a game played in the Longhorn Gym,

November 16th.

Holly Arjona led the scoring for the team with 15 points; Crystal Martinez scored 10 points; Amber Wood, 3; Laci Schumacher, 3; Janee Hrbacek, 5; and Leslie Cuellar 6.

LOCKNEY 41 HALE CENTER 59

The Lockney JV girls fell to Hale Center on their home turf November 18th.

Laci Schumacher led the scoring with 11 points. Holly Arjona scored 6 points, Janee Hrbacek, 5; Crystal Martinez, 5;

Amber Wood, 4; Jalee Dietrich, 4; April Dorman, 3; Leslie Cuellar, 4.

LOCKNEY 29 SPRINGLAKE-EARTH 52

The Lockney JV girls fell behind in their game with Springlake-Earth on December 7.

Leading the scoring with 9 points each were Janee Hrbacek and Crystal Martinez.

Scoring 7 points was Leslie Cuellar; Margaret Blanco, 2; Lucy Bernal, 1; and Sara Davis, 2.

LOCKNEY 35 RALLS 36

The Lockney JV girls lost a hard fought game by one point to Ralls on December 10.

Leading the scoring for the girls was Jett Gilly and Janee Hrbacek. They scored 8 points each.

Margaret Blanco scored 7 points; Crystal Martinez, 6; Holly Arjona, 2; Melinda Luna, 1; Leslie Cuellar, 2.

Lockney 8th Grade Girls Basketball Report

LOCKNEY 18 FLOYDADA 29

The eight grade Lady Shorthorns were defeated by the green and white from Floydada.

Leading the scoring for the Lockney girls were Cammy Lass and Melissa Hernandez.

Scoring were Mary Cruz Ramirez, 1; Laci Durham, 4; and Mandy Hancock, 2.

LOCKNEY 17 ABERNATHY 14

The Lockney 8th grade girls defeated the girls team from Abernathy 17-14.

Leading scorer for the team was Mandy Hancock with 13 points.

Also scoring were Gloria Fierros, 2; and Tiffany Taylor, 2.

Floydada Freshman Boys Basketball Report

By Coach Buchanan FLOYDADA 38 NEW DEAL 24

The FHS freshman boys basketball team traveled to New Deal on November 22 and won by a score of 38-24.

Brady Rainwater was the leading scorer for the game with 14

points. Other scoring were Andrew Arvizu with 7 points; Dustin Covington with 6 points; Bryce Bowley with 6 points; Ruddy Castaneda with 3 points and Jacob Morales with 2 points.

"This was a good first win", stated Coach Buchanan.

Floydada 8th Grade Boys Basketball Report

By Coach Trevino FJHS 28 RALLS 21

The FJHS 8th grade Breezers played Ralls on November 29 and came out on top by a score of 28-21.

Leading the scoring for the game was Gerald Henderson with 10 points.

Also scoring in the victory was Daniel Garcia with 8 points, Chris Wickware with 6 points and Todd Williams with 4 points.

Floydada 7th Grade Girls Basketball Report

FJHS 24 LOCKNEY 33

The FJHS 7th grade Lady Breezers played Lockney on December 6 in the Whirlwind Gym and lost by a score of 33-24.

Leading scorers for the game were Jessica Horn and Mandi Wood with 8 points each.

Also scoring for the game was Lauren Powell with 4 points and Whitney Williams and Katya Vega with 2 points each.

FJHS (B TEAM) 1 TRINITY CHRISTIAN 35

The FJHS 7th Grade Lady Breezers B-Team played Lubbock Trinity Christian on December 2 and lost by a score of 1-35.

"The girls played hard and did well for this being their first basketball game.

"Rachel Griffin was great saving us with her free throw," stated Coach Tyson.

FLOYDADA - LOCKNEY - FLOYDADA

LISD - FISD - LISD - FISD

FISD - LISD - FISD - LISD

LISD - FISD - LISD - FISD

FISD - LISD - FISD - LISD

LISD - FISD - LISD - FISD

FLOYDADA - LOCKNEY - FLOYDADA

LISD - FISD - LISD - FISD

FISD - LISD - FISD - LISD

LISD - FISD - LISD - FISD

FISD - LISD - FISD - LISD

LISD - FISD - LISD - FISD

FLOYDADA - LOCKNEY - FLOYDADA

LISD - FISD - LISD - FISD

FISD - LISD - FISD - LISD

LISD - FISD - LISD - FISD

FISD - LISD - FISD - LISD

LISD - FISD - LISD - FISD

FLOYDADA - LOCKNEY - FLOYDADA

LISD - FISD - LISD - FISD

FISD - LISD - FISD - LISD

LISD - FISD - LISD - FISD

LOCKNEY - FLOYDADA - LOCKNEY



DUNCAN ELEMENTARY ROPE JUMPERS-Over 100 kids participated in a \$3500 successful pledge drive for "Jump Rope for Heart". The A.B.Duncan Elementary kids gathered the pledges and the pledge winner was Mallory Graham who collected \$200. Thanks to all that helped by contributing. Staff Photo

THROUGH THE HALLS

Lockney Freshmen Girls Basketball Report

LOCKNEY 22 IDALOU 33

The Lockney Freshmen girls were defeated by Idalou 22-33.

Leading score makers in the game were Vanessa Luebano and Jalee Dietrich with 6 points each.

Tasha Powell scored 2 points; Katy Austin, 2; April Dorman, 3; Leslie Cuellar, 5.

girls were Margaret Blanco and Tasha Powell. Each had 8 points.

Also scoring were April Dorman, 3; Vanessa Luebano, 4; Jalee Dietrich, 7; Trisha Day, 2; and Ashley Cuellar, 5.

LOCKNEY 61 TRINITY 42

The Lockney Freshman girls defeated the girls from Trinity 61-42.

Leading the scoring in the game was Jalee Dietrich with 21 points.

Tasha Powell made 11 points; April Dorman, 3; Katy Austin, 6; Ashley Cuellar, 20.

LOCKNEY 35 ABERNATHY 34

The Lockney Freshmen girls defeated a tough Abernathy team by one point December 13.

Leading the scoring for the Lady Horns was Janee Hrbacek with 10 points.

Tasha Powell made 6 points; La Shay Pritchard, 1; Vanessa Luebano, 2; Jalee Dietrich, 2; Leslie Cuellar, 8; and Ashley Cuellar, 6.

LOCKNEY 31 FLOYDADA 29

The Lockney Freshmen girls defeated the Floydada Lady Winds 31-29 in a game that teetered back and forth.

Leading the scoring for the Lockney girls was Jalee Dietrich with 10 points.

Scoring 9 points each were Vanessa Luebano and Ashlie Cuellar; Katy Austin, 2; and April Dorman, 1.

LOCKNEY 35 OLTON 16

Lockney Freshmen girls rolled over Olton 35-16.

Leading the scoring for the Lockney



5TH GRADE SUBWAY WINNERS-The 5th grade class of Penny Taylor at R.C. Andrews Elementary was the Subway "Christmas Door Decoration" winners in their grade level. Staff Photo

Crosbyton Clinic Hospital Home Health

Home Oxygen & Medical Equipment

Friends: If you, your loved ones, or neighbors are ever admitted to a Lubbock Hospital and upon being discharged, need Home Health Services, please tell your Doctor and the hospital that you want Crosbyton Clinic Hospital Home Health to be your Home Health Provider. You must specifically tell your Doctor that you want Crosbyton Clinic Hospital Home Health. If you do not, you may be referred to a Lubbock based Home Health agency. You have a right to choose who takes care of you. Please ask for:

- Crosbyton Clinic Hospital Home Health
• Crosbyton Clinic Hospital Home Oxygen and Medical Equipment
• Crosbyton Clinic Hospital Skilled Nursing
• Crosbyton Clinic Hospital Physical Therapy
(We also provide an E.R., EMS, Assisted Living Center, diagnostic testing, provider services, etc.)

By utilizing the services of Crosbyton Clinic Hospital, you help insure that the hospital and clinic will remain open to serve you and your family. Crosbyton Clinic Hospital provides over 110 local jobs with over 2.5 million in local payroll annually.

We provide care to people living in six counties east of Lubbock. Communities without hospitals generally do not have an emergency room, clinic, or doctors

Brooks Ellison Chairman of the Board

710 West Main Street • Crosbyton, Texas, 79322 • (806)675-2352 • 1 (800)224-2352

Lockney Freshmen Boys Basketball Report

LOCKNEY 32 RALLS 52

The Lockney Freshmen boys lost to a tough team from Ralls.

Leading the scoring for the freshmen was Todd Cotham with 11 points.

Scoring were Ben Sherman, 3; Cody Lass, 2; Cody Bailey, 2; Landon Schumacher, 5; Matt McPherson, 1; and Brady Rasco, 2.

LOCKNEY 13 IDALOU 46

The Lockney Freshmen boys team fell to Idalou.

Leading the scoring was Jordan Martinez with 5 points.

Scoring were Cody Bayley with 2 points; Nathan Burson, 1; Landon Schumacher, 2; Brady Rasco, 1; Garrett Mathis, 2.

LOCKNEY 34 ABERNATHY 61

A tough Abernathy team rolled over the freshmen boys from Lockney.

Leading scorer for the Horns was Landon Schumacher with 11 points. Also scoring were Cody Bailey with 5; Nathan Burson, 2; Jordan

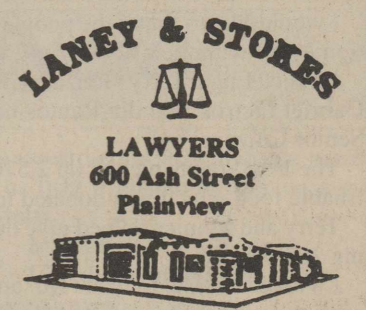
Martinez, 2; Matt McPherson, 10; and Brady Rasco, 1.

LOCKNEY 28 FLOYDADA 51

The Freshmen boys team were defeated by Floydada.

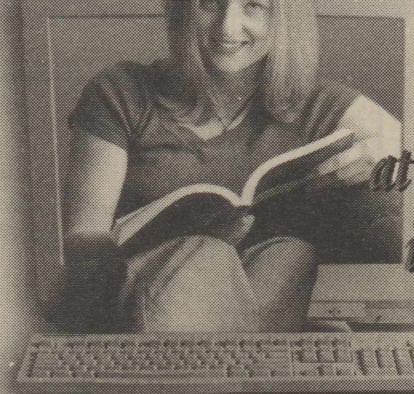
Leading the scoring was Cody Bailey with 8 points. Also scoring were Landon Schumacher, 6; Nathan Burson, 3; Jordan Martinez, 4; Garrett Mathis, 2; Matt McPherson, 3; and Brady Rasco, 1.

SHAKLEE 983-5246



KALEIDOSCOPE 110 S. Main Lockney 652-2960
25% OFF STOREWIDE
MANY ITEMS--REDUCED 40%
In-stock Items Only
OVER 300 CAPS--\$1.50

South Plains College



We're Looking at Education in a New Way

LEVELLAND • LUBBOCK • REESE CENTER

A quality faculty, first-class facilities and innovative educational programs give South Plains College its reputation for guaranteeing student success.

- Four Convenient Locations
• Small Classes
• Teachers Who Care
• Academic Transfer Courses
• Technical Programs
• Flexible Schedules
• Affordable Tuition and Fees
• Financial Aid

Spring Registration Begins Jan. 10

Classes Begin Jan. 18

Late Registration Jan. 18 - 24

Call 806-894-9611 in Levelland

or 806-747-0576 in Lubbock

FOR ENROLLMENT DETAILS

An Equal Opportunity Educational Institution.

Menu

Menu

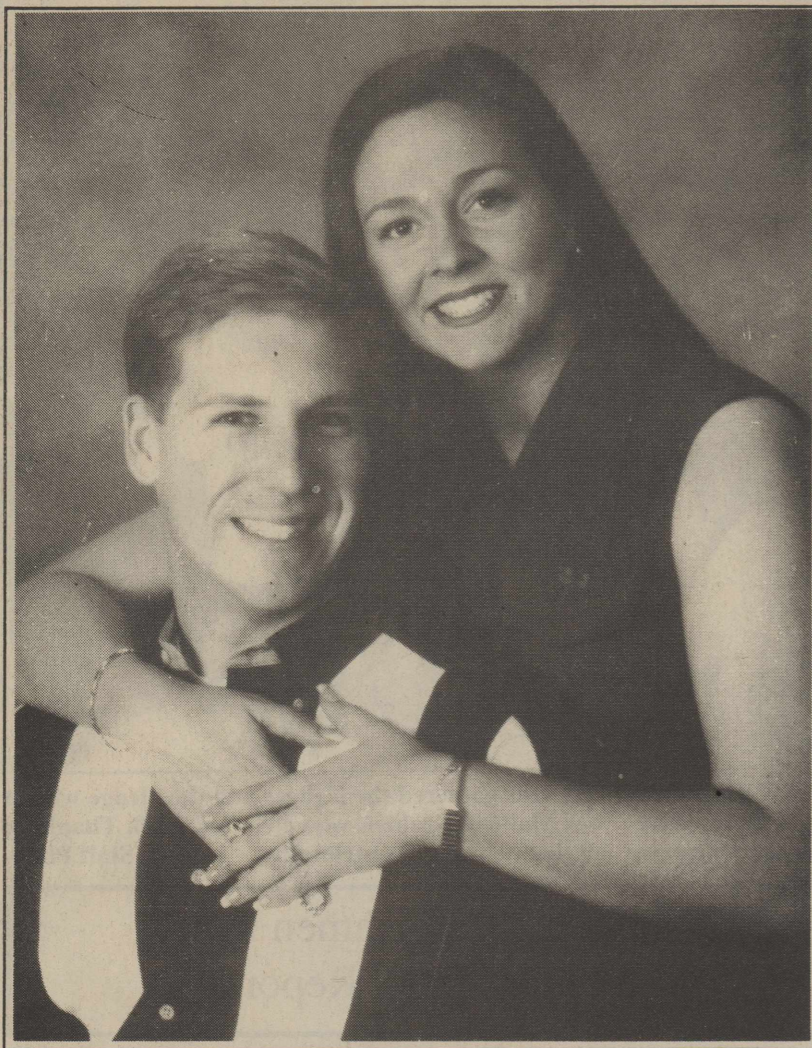
Mangold Memorial Hospital is now serving lunch every Monday.

- The menu for Monday, December 13th. is...
Chicken Taco Soup
Corn Bread
Tossed salad
Coconut Cream Pie

So that we may prepare for you please call W.J. Mangold Dietary Department at 806-652-3373 before 9:00 a.m. on December 13th.

320 N. Main, Lockney





Zachary S. Patton and Callie F. Shipp

## Patton and Shipp

George and Donna Patton of Abernathy would like to announce the engagement of their son, Zachary S. Patton of Houston, to Callie F. Shipp of Lubbock. She is the daughter of Donald and Ruth Shipp of Springtown. Callie is the granddaughter of Ruth Vedder. Zachary is the grandson of Edna Patton of Floydada and Vernie Jameson of Plainview.

The bride-elect will graduate in May with her master's degree in Environmental Engineering from Texas Tech University. Zachary received a Bachelor of Science degree in Engineering and a minor in M.I.S. from Texas Tech University. He is employed by OAO Corporation at NASA in Houston.

The couple plan to marry June 10, 2000, at the First Christian Church of Fort Worth.

I would like to thank the people who have helped the Lockney Salvation Army with their holiday gift giving.

Monica Luna, Terry Gonzales, Nena Gonzales, Carol, Stella Anthony, Gabriel Fierros, Pricilla Ramos helped with Christmas baskets for 125 Senior Citizens.

The Boy Scouts picked up 2,570 pounds of canned food and non-perishable food which was donated to the Salvation Army.

Terry and Monica helped give out Christmas baskets to families, totaling 262 persons.

I would also like to thank Mr. and Mrs. Gutierrez who visited the hospital and nursing home as Santa Claus.

The Salvation Army also distributed 188 gifts to children; 30 gifts to the hospital, and 40 gifts to the Nursing Home.

Special thanks also to the Boys Scouts and their leaders; Mr. and Mrs. Gordon Adams for his building and toy donation; churches, the Health Fair group, Nena Garza for her hot chocolate, and my volunteers.

I have been late with my thank-yous because of illness but I would like to say, God bless each and every one for your time and effort. If it wasn't for everyone that gave their time, our mission wouldn't have been completed.

I would like to recognize some of my new volunteers: Monica Luna, Pricilla Ramos, and Oscar Gonzales.

May this New Year be a very prosperous year for the whole community of Lockney.

Sincerely,  
Alicia Luna

## Francis and Fields united in afternoon ceremony

Aimee Jo Francis and Matthew Keith Fields were married at 2:00 p.m., Saturday, January 1, 2000 at the Rock Creek Church of Christ.

John Francis, great uncle of the bride, performed the ceremony.

The bride is the daughter of Danny and Donna Francis of Silverton. She is the granddaughter of Denny and Johnnie Quisenberry of Lockney and the great-granddaughter of Booger and Garnie Taylor of South Plains and E.A. and Velma Bonner of Lockney.

Parents of the groom are Keith and Shirley Fields of Groom. He is the grandson of Edward and Juanita Vincent of Lefores and Shirley and the late Billy Fields of Groom.

Honor attendant for the bride was Matt Francis, brother of the bride, of Dumas. Jennifer Sava, of Canyon, was bridesmaid.

Best man was Barry Sanders of Canyon. Dave Davis, of Pampa, was groomsmen.

Ushering guests were Matt Francis, brother of the bride, and Clint Babcock of Groom.

Stacy Fields, sister of the groom, sang "If That Isn't Love," and "As The Deer," as the parents and grandparents were seated. She played the professional and recessional. She also sang "From This Moment On" dur-



Mrs. Matthew Keith Fields  
(nee Aimee Francis)

ing the lighting of the unity candle.

The bride wore a candle light brocade floor length gown. It was princess seamed with buttons down the back that ran the length of the dress and train. The headpiece was made of matching fabric with a fingertip length veil.

The bride carried a bouquet of burgundy roses that she had saved from flowers that the groom had given her while they were dating. The bride also carried her great-grandmother, Velma Bonner's wedding band in her bouquet. This was designed by Mary Jane Patton.

The church was decorated with tulle and greenery, accented with the bride's chosen color of burgundy. A reception was held in the fellowship room of the church.

The bride's table was decorated with white lace and burgundy candles. A tiered wedding cake with burgundy roses along with banana punch were served by Amanda Breeden of Shallowater and Maria Marlin of Lubbock.

The groom's table was decorated in burgundy with candles and potpourri. Finger foods and coffee were served by Abbye Lovell and Sarah Quisenberry, cousins of the bride.

The couple will make their home in Groom.

## Floydada Senior Citizen News

By Margarette Word

Here it is 2000 and this is a good time to start over and forget the past and look to the future with excitement of good things happening in your life. Come and join us at the center.

Last Sunday afternoon many friends helped Benny Leibfried celebrate her 95th birthday. One of the friends attending was a student of Benny's when she was a teacher, she was Edna Patton. Mrs. Leibfried's daughter LaJuana Jackson of Perryton was also here.

Lorene Newberry spent Christmas in North Carolina. Her son Dale and his wife Pat of Lamesa were visiting Pat's mother in North Carolina.

Faye and William Bertrand had 16 family members in their home Christmas Day.

Charlene and Bob Alldredge had 16 family members in their home for Christmas. Their son Roger and his wife from California were here.

Marie and Thomas Warren had 24 family members during the holiday's.

Marie Tardy and LaNell Tardy spent Christmas with Dale and his wife in Lubbock.

I went to Big Bear Lake, California to spend Christmas with my youngest son Gordon Bond and family.

Grey Bond, my oldest son, and his family were here over New Years Holiday.

Betsy Dempsey spent Christmas in Las Vegas, Nevada with her daughter and family.

In the "Texas Highway" January 2000 issue on page 42 is a picture of "Goodnight" clan. In the picture you will see Bob and Evalene Goodnight who live here in Floydada and are relatives of Charles Goodnight.

Flora McNeill's daughter Janice and her husband Allen Moser of Wolforth and granddaughter Dr. Ronny and

Misty Ford and 2 children, of Lewisville spent Christmas here with Flora.

Flora McNeill spent New Years with Imogene Bethel in Lamesa.

On Tuesday December 28th, Jim and Marie Reeves from Wuanston, Wyoming visited Edna Patton.

On New Years eve Suzanne Patton and children, Haley and Cameron of Lubbock, and W.C. Patton visited Edna Patton.

Our sympathy to the family of Burt Lee Emert.

We do appreciate you remembering the center when you need to make a memorial donation.

In memory of **David Campbell**: Mr. and Mrs. Mac Smitherman, Nancy Bishop.

In memory of **Floyd Garrison**: Fay and Ruby Gooch, Son and Faye Jackson.

In memory of **Norma Lee**: Nancy Bishop.

In memory of **Jim Word**: Geraldine Callaway.

In memory of **Bert Lee Emert**: Alta Smith, Dale and Carolyn Smith, Mr. and Mrs. Bill Feuerbacher, Tom and Edwina Emert, Dot Botkin.

In memory of **Alvie Jackson**: Sherri West.

In memory of **Ethel Sawyer**: Mr. and Mrs. Kyle Glover.

In memory of **Kenneth Ring**: Tom and Edwina Emert.

In memory **Madge West**: Francis Gunter, Lorene Newberry, Mac and Charlene Smitherman, Mr. and Mrs. Delmas McCormick, Fay and Ruby Gooch, Ruth Hammonds, Mr. and Mrs. Lee Burton, Sue Moore, Tom and Edwina Emert, Kathryn Jackson, Son and Faye Jackson, Mr. and Mrs. Ricky Burns, Mr. and Mrs. Shorty Turner, Mr. and Mrs. Leroy Burns, Mr. and Mrs. Alton Higginbotham, Weldon

and Jane Pruitt, Paul and Vel Cooper, Nedra Pruett, Grace Jarrett, Rev. Ione and Vic Deding, Mrs. and Mrs. H.R. Gregory, Geraldine Callaway, Nancy Bishop, Judy Beedy, William and Faye Bertrand, Guy Garrison, Shelby and Margaret Calahan, Mr. and Mrs. James Cagle, Jr., Jim Pritchett, Ruby Higginbotham, E.P. Pritchett, Mr. and Mrs. Sylvan Kinnibrugh, Hollis and Jo Payne, John and Judy Dunlap, Sherri West, Mr. and Mrs. Bob Goodnight.

*Thought For The Week*

Every generation of Americans needs to know that freedom consists not in doing what we like, but in having the right to do what we ought.

Pope John Paul II

MENU  
January 10-14

**Monday**-Salisbury Steak, green peas, cauliflower, cheese sauce, wheat roll, pears.

**Tuesday**-Baked ham, navy beans, tossed salad, French dressing, cornbread, pineapple cobbler, cake.

**Wednesday**-Beef Roast, mashed potatoes, mixed vegetables, biscuit, brownie.

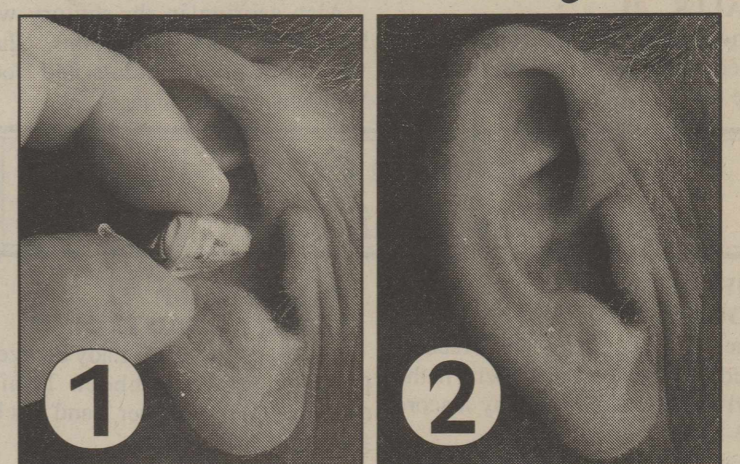
**Thursday**-Chicken Fried Steak, white gravy, mashed potatoes, wheat roll, gelatin.

**Friday**-Chicken a la King, creamed potatoes, vegetables, orange half, hot roll, lemon pie.

## SUBSCRIBE TO THE HESPERIAN-BEACON FOR A FRIEND

## New Fully Digital Hearing Aid

Now Available in Floydada



Digital hearing aid prescriptions are precisely matched to your hearing loss. Once inside your ear, it is hardly noticeable.

"The new Direct Digital Hearing Aid has been released. It samples sound one million times per second with more processing power than many desktop computers," said Patrick McCarty, hearing aid specialist with Livingston Hearing Aid Center.

"Sound is pre-processed and fed 32,000 times per second through the digital sound processor for statistical analysis and over 100 parameters are adjusted automatically."

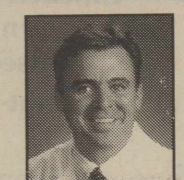
The Fully Digital hearing aid automatically and continuously analyzes the sound in the wearer's environment.

This new technology is capable of fitting mild to severe hearing losses and because of the ability to program this hearing aid, it can be modified to meet the needs of the user for many years. Livingston Hearing

Aid Center offers a 60-day money back satisfaction guarantee.

Call for a free demonstration: 1-800-828-0722. Livingston Hearing Aid Center is located at the Rural Nurse Resource Center in Floydada.

**ONE DAY ONLY**  
Mon., Jan. 10th



Come meet Hearing Aid Specialist, Patrick McCarty of Livingston

Hearing Aid Center. He will be demonstrating the new Direct Digital Hearing Aid one day only, Monday, January 10th at the Rural Nurse Resource Center in Floydada.

**Tobacco?** American Heart Association. Fighting Heart Disease and Stroke. **Don't get me started...** ©1997, American Heart Association

**Mary Kay Cosmetics**  
Susan Simpson  
Independent Consultant  
983-5325

**Adding On? Moving?**  
Measure your changing needs with a free State Farm Family Insurance Check-up.  
NICK LONG  
201 California, Floydada  
983-3441  
State Farm Insurance Companies  
Home Offices: Bloomington, Ill.-Iris

**Mangold Memorial is Proud to Announce their New Arrivals !!**

**Mariza Alyza Alonizo**, daughter of Michael and Adela Alonizo, of Lockney, was born December 3, 1999 at 11:59 a.m. She weighed 7 pounds and 6 ounces. Grandparents are Jose and Dominga Sustaita, of Lockney, and Jason and Mary Alonizo of Plainview.

**Jeremiah Lee Torres**, son of Linda Cork and John Torres, of Plainview, was born December 10, 1999 at 3:57 p.m. He weighed 6 pounds 8 ounces. Grandparents are Lonnie and Joyce Cork, of Plainview and Oseas and Olivia Torres of Lockney.

**Jordan C. Garza**, son of Eppie and Tara Garza, of Plainview, was born December 11, 1999 at 1:43 a.m. He weighed 6 pounds 15 1/2 ounces. Grandparents are Mary Toney Belcher of Rocky Mount, Virginia and Epifanio and Estelle Garza, of Kansas, Mo.

**Coy Wade Baird**, son of Russell and Krystal Baird, of Flomot, was born December 13, 1999 at 12:05 a.m. He weighed 8 pounds 10 1/2 ounces. Grandparents are Kaye Malone of Tulia and Carl and Vici Baird of Silverton.

**Juan Antonio Villarreal**, son of Juan Antonio and Rosa Belia Villarreal, of Quitaque, was born December 22, 1999 at 9:09 a.m. He weighed 6 pounds and 11 1/2 ounces. Grandparents are Roman and Luisa Hernandez

**W.J. MANGOLD MEMORIAL HOSPITAL**  
320 North Main, Lockney (806) 652-3373



# Floyd County Lifestyles



Amy Dianne Hardin and Ian Kreis McIntosh

## Hardin and McIntosh

Mr. and Mrs. R. Albert Hardin of Lubbock would like to announce the engagement of their daughter, Amy Dianne, to Ian Kreis McIntosh. McIntosh is the son of Kreis McIntosh of Floydada and Kathie McIntosh of Lubbock.

The bride-elect is a graduate of Texas Tech University with a degree in Business Administration. She is employed by G.E. Capital Simuflite of Dallas. The groom attended Texas Tech University and farms near Dougherty.

The couple plan a March 18, 2000 wedding at the Market Alumni Center in Lubbock.

## Hickerson and Emery joined in holy matrimony

Leslianne Hickerson and Clint Emery exchanged vows on Saturday, January 1, 2000 at 6:00 o'clock in the evening at First Baptist Church in Lockney with Travis Bennett of Tulia officiating.

The bride is the daughter of Randy and Julie Hancock of Lockney and Blake Hickerson and Carroll Donnell of Arlington. Grandparents of the bride are Wayland and Margaret Jones of Floydada, Mack and Gail Hickerson of Dallas and Dorothy Hancock of Plainview.

Parents of the groom are Ted and Debbie Emery of Hart. Grandparents of the groom are Doyle and June Davis of Hart and Lee and Laura Emery of Idalou.

Given in marriage by her parents the bride chose an elegant gown of candlelight Italian satin designed by Alfred Angelo. The vee neckline was complemented by a full length sleeve of Alencon lace. Alencon lace with pearls and sequins accented the bodice in an empire effect. Princess seams fell gracefully to the floor and swept into a semi-cathedral train. The gown was finished with Alencon hemlace. To complete her ensemble she chose tiana of Alencon lace accented with pearls and sequins finished with fingertip veiling. She carried a bouquet of white roses and gardenias accented with ivy and satin ribbon. Attached to the bouquet was a bible belonging to the bride's maternal grandmother. The bible was carried by her grandmother, mother, sister and all aunts of the bride in their weddings.

Rhanda Emery, sister of the bride, of Lockney was matron of honor. Maid of honor was Pepper Billington of Lockney. Bridesmaids were Jennifer Nance of Haslet, Mandy Hancock, sister of the bride,



Mrs. Clint Emery (nee Leslianne Hickerson)

of Lockney and Gretchen Quebe of Lockney.

The attendants wore mint green chiffon floor length gowns with scoop necklines and cap sleeves. Each carried a nosegay of white roses and gardenias accented with ivy and satin ribbons.

Mackenzie Dawson of The Woodlands, Haley Jones of Anna and

Skylar Jones of Levelland, cousins of the bride, were flower girls. Jake Ferguson and Josh Ferguson, both of Big Lake and cousins of the bride served as candlelighters.

Andy Bennett of Hart was best man. Groomsmen were Coby Emery, brother of the groom, of Lockney, Brady Nelson of Hart, Jay Davis of Hart and James Culp of Lubbock.

Ushers were John Emery, brother of the groom, of Hart, Nathan Hancock, brother of the bride, of Lockney, John Welps of Hart, P.J. Farley of Lubbock and Sergio Martinez of Hart.

Callie Wilson and Stacy Bigham both of Lockney registered guests.

Kristi Jones, aunt of the bride, of Anna, presented musical selections and pianist Zeldia Ellison of Lockney accompanied her.

A reception to honor the couple was held in the Garden Room of the church following the ceremony. Serving at the bride's table were Callie Wilson and Stacy Bigham both of Lockney. Shea Brattain and Ann Wilhelm served at the groom's table. Members of the houseparty were Karla Stapp, Karen Quebe, Cris Taylor and Willie Billington all of Lockney.

A rehearsal dinner hosted by the parents of the groom was held at the Golden Group in Hart, followed by a millennium celebration in their home. On the day of the wedding a bridal luncheon was held at Season's Way in Plainview and was hosted by the bride's aunts, Amy Ferguson of Big Lake, Channa Jones of Levelland, Kristi Jones of Anna, and Tolya Dawson of The Woodlands.

Other bridal courtesies were miscellaneous showers in Lockney hosted by Karen Quebe, and in Hart hosted by Ruth Bennett. A kitchen shower in Lubbock hosted by Amy McCord, Becky Bryant, Kailee Wheeler, Emily Lewis and Desiree Martin. Bridesmaids and friends of the bride gave a lingerie shower.

The couple will reside in Hart. The bride is a 1998 graduate of Lockney High School and attends Texas Tech. The groom is a 1995 graduate of Hart High School and is part owner and manager of Davis Aerial Spraying in Hart.

## Lockney Senior Citizens News

By Gladys Ragle

We are now several days into the new century and the old Y2K bug didn't get us. There was a lot of hullabaloo made over something that was just that-hullabaloo. We are on our way to what I hope is a good year for everyone.

Arla Copeland spent several days in the hospital last week but went home on Sunday. We wish her well.

Gladys Ragle and her daughter, Charlotte McCulloch went to Oklahoma City last week to visit Gladys' sister who is not well.

Last week, I forgot to mention that

Ann Morgan won the drawing for the popcorn can. Good eating Ann!

Our condolences go out to the family of Raymond Martin who passed from this life on Monday. Keep his family in your prayers.

"Weekly Words of Wisdom" If we have not quiet in our minds,

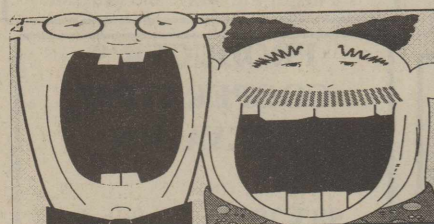
outward comfort will do no more for us than a golden slipper on a gouty foot.

Memorials: Lloyd Duval by: Mr. & Mrs. C.L. Henderson

Ora Collis by: Mr. & Mrs. F.L. Montandon

### Lockney Senior Citizen Menu for January 10-14

Monday-Fried Catfish, vegetable, salad, dessert  
 Tuesday-Hamburger Steaks, vegetable, salad, dessert  
 Wednesday-Chicken Fried Steak, vegetable, salad, dessert  
 Thursday-Meat Loaf, vegetable, salad, dessert  
 Friday-Roast Beef, vegetable, salad, dessert



### This Week's Announcements

#### BLOOD PRESSURE CLINIC

A free blood pressure clinic is held in the community room of the First National Bank in Floydada every Tuesday from 9 a.m. to 11 a.m. Everyone is welcome.

#### ALCOHOLICS ANONYMOUS

Alcoholics Anonymous and Al-Anons meet each Tuesday night in Floydada at 8:00 p.m. Anyone wanting the loving fellowship of men and women who can share their experience, strength and hope is welcome. Meetings are at 111 North Wall, a block north of the courthouse. Anyone interested can call 983-3635 or 652-3546.

#### BLOOD PRESSURE AND GLUCOSE TESTING

Free blood pressure and glucose testing is held every other Thursday from 9 to 11 a.m. at the Lockney Care Center. Everyone is welcome.

#### VETERANS SERVICE OFFICER AVAILABLE

Veterans Service Officer Ralph Jackson is available on Wednesdays, from 9:00 a.m. to 5:00 p.m. in Room 112 of the Floyd County Courthouse. Call 983-4933.

#### LOCKNEY AA

Open meetings of Alcoholics Anonymous in Lockney will be Fridays, at 8 p.m., at Grace Fellowship Church, across from the hospital. If you are worried about your drinking, or someone else's, we understand, we care, and we want to help. Phone 652-3546 or 652-2280.

#### SALVATION ARMY

The Salvation Army in Lockney needs winter clothing and shoes for adults and children. Preparing now for Thanksgiving and Christmas giving.

#### ABE, GED & ESL CLASSES

ABE, GED & ESL classes will begin in Lockney on Monday, September 27th. Sign-up will be from 6:30 p.m. - 9:00 p.m. Classes will meet in the ISS Building North, behind the Jr. High Gym. Anyone 17 or older is welcome. Regular classes will be on each Monday and Tuesday (except holidays).

#### WHIRLWIND BOOSTER CLUB MEETING

The Whirlwind Booster Club will hold a meeting on Thursday, January 13th at 7:00 p.m. in the Floydada High School Cafeteria.

Parents of all athletes are encouraged to attend as there will be several items discussed at this meeting.

#### LHS YEAR 2000 HOMECOMING

There will be a LHS Year 2000 Homecoming meeting in the lobby of the Longhorn Gym at 7:00 p.m., January 20th. Be thinking of a theme for this homecoming.

#### AMERICAN CANCER SOCIETY

The American Cancer Society, Floyd County Unit, will meet Monday, January 10th at 5:15 p.m. in the Community Room of the First National Bank of Floydada. Members are urged to be present at the first meeting of the new year.

#### 4-H PARENT/LEADER ASSOCIATION MEETING

The Floyd County 4-H Parent/Leader Association will meet to vote on the Floyd County 4-H Budget on Tuesday, January 11, at 7:00 p.m. at the meeting room of the First National Bank of Lockney. All parents are urged to attend.

## Hale's Department Store

**SUPER NEW YEAR clearance**

STARTS FRIDAY JANUARY 7TH AT 9:00 AM.

**SAVE UP TO 50 %**

#### Women's Clothes

Still a good selection!  
 Northern Isle Sweaters- 30% OFF  
 Dresses- Melissa- Nancy II 30% OFF  
 Separates- Northern Isle and On The Verge 30% OFF  
 Alfred Danner 30% OFF  
 Ivy 30% OFF  
 ICY Slacks  
 Fox Craft Blouses 30% OFF  
 Jackets  
 Pant Suits  
 Winter Robes 20% OFF

#### Men's

SPORTCOATS 1/4 to 1/2 Off,  
 Lots Regularly \$175- \$185 Now \$99.99  
 SUITS 1/4 to 1/2 OFF  
 All Wools regular \$292.00 Now \$217.00  
 ENRO DRESS SHIRTS  
 Button down or spread collar in white \$10.00 OFF  
 All colors 1/4 Off  
 Marquis white dress shirts \$5.00 Off  
 Long - Sleeve Sportshirts Solids, Plaids, Stripes, All Cotton, Perma- Press, Spread or Button down collars 1/4 to 1/2 OFF, Lots as low as \$9.99  
 Long & Short - Sleeve Knit Shirts  
 Regular \$90.00 to \$30.00  
 Now \$34.99 to \$9.99  
 Wrangler Western Shirts - Long & Short Sleeve, button or snap 1/4 to 1/2 OFF

#### Extra Large Group!

Blouses - T-Shirts - Vests - Sweaters - Shorts - Slacks - Dresses - Lingerie - Jackets - Coats -  
**50 % - 75 % OFF**

#### Men's Cotton Casual Pants

Haggar Cotton- Flex Regular \$39.00 Now \$24.99  
 Wrangler Riate Always \$29.99  
 Sansabelt Cotton Pro Spin Reg. \$55.00 Now 44.99

#### Men's velour warm-up suits

NOW \$39.99  
 Black or Silver

#### MEN'S JACKETS AND WINDBREAKERS SALE

ALL MEMBERS ONLY MICROFIBER STYLES 1/4 OFF  
 WALLS WORK JACKETS 20% OFF  
 DOWN - FILLED JACKETS \$42.50 - \$67.50  
 SOUTH CREEK WINDBREAKERS NOW \$19.99

#### Sansabelt Wool blend dress slacks regularly \$65.00 - \$75.00 NOW \$49.99

#### All Men's Underwear and sox 10% OFF

#### BOY'S

Cotton dress pants NOW 1/4 OFF  
 Twill designer shirt and Knits 1/4 to 1/2 OFF

#### CHILDRENS CLOTHES

BUSTER BROWN FOR GIRLS AND BOYS 30% OFF  
 JR CRAZE FOR GIRLS 7-16 30% OFF

#### SHOE SALE CONTINUES

LAST WEEK FOR MOST MEN'S SHOE & BOOT SPECIALS



## Agricultural access to world markets

By Agriculture Commissioner Susan Combs

When other countries want to shut out U.S. products from entering their markets agriculture is an easy target, and that is why reform of agricultural trade is a focus of World Trade Organization negotiations that start Nov. 30 in Seattle.

The future viability and livelihood of our farmers and ranchers is at stake in these negotiations as U.S. Trade Representative officials work to open up global markets to American food and fiber products. Because the outcome is so important, I will be joining the heads of some 13 other state agriculture departments in Seattle on Dec. 1-2 during the negotiations.

WTO is an international entity consisting of 135 member countries, including the United States, which works on reducing trade barriers among member countries. A crucial step in making China a WTO member was reached this month when China and the United States completed a bilateral trade agreement.

Exports are vital to U.S. and Texas agriculture because our farmers and ranchers are extremely efficient. We grow far more than the American population can consume, and as a result, every one in three U.S. farm acres now produces for foreign markets. Clearly, we need to be able to export our goods to the 96 percent of the world's population living outside our national borders, who want and need

U.S. products.

Texas is already making great gains from exports, but there is tremendous room for improvement. Nationwide, Texas ranks fourth in agricultural exports earning an estimated \$3 billion in 1998, up from \$2.5 billion in 1991. Texas agricultural exports support about 45,600 jobs both on and off the farm in food processing, storage and transportation. In other words, Texas agricultural exports employ almost as many people as Dell and Microsoft combined nationwide. As the nation's top cattle and cotton producer, we also raise commodities that are in high demand globally. Our state's top five agricultural exports are cotton; live animals and red meats; feed grains and products; feeds and fodders; and hides and skins. However, we must keep in mind that our competitors are also increasing their production of these commodities.

Using advice received nationwide during listening sessions this summer, including a July 8 forum in Austin that I hosted, the U.S. Trade Representative's office has developed the following agricultural objectives for this month's WTO talks:

- Completely eliminate and prohibit future agricultural export subsidies that allow countries to artificially lower the price of their products. The European Union's \$7 billion in agricultural export subsidies make up 85

percent of all world export subsidies. Governments should be allowed to support their farmers but not in a manner that distorts the common goals of free trade;

- Continue to lower tariff's or duty rates imposed on imported agricultural products. Countries began lowering their tariff's after the Uruguay Round negotiations in 1994. However, world agricultural tariffs continue to average 50 percent - five times higher than U.S. tariffs;

- Require exporting state-owned companies, known as state trading enterprises, to provide more information about their operations including monopoly activities and pricing policies that may subsidize agricultural products and undercut prices in export markets; and

- Establish common data requirements for the acceptance of trade in agricultural biotechnology products. WTO negotiators have set a three-year timetable to resolve these and other agricultural issues. Other countries' practices of keeping the door shut to U.S. and Texas agricultural products must end because new jobs and continued growth for the U.S. economy are at risk. Our farmers and ranchers must have fair trade and access to growing global markets. Texas agriculture will support free trade as long as our trading partners are willing to work toward the WTO agricultural objectives — a fairer and more equitable system for all.



## Floyd County Farm News

### 45 years of effort culminate in ag research resulting in new laboratory

By Tim W. McAlay

Forty-five plus years of effort by visionaries concerned about the future of agriculture on the Great Plains culminated this week with the official dedication of a state-of-the-art plant stress and water conservation laboratory here and announcement of a three-way agricultural research partnership.

The 64,000 square-foot laboratory houses research scientists-partners from the U.S. Department of Agriculture's Agricultural Research Service, Texas Tech University and Texas A&M University. The unique partnership was finalized at a summit meeting in December 1998 - giving each entity an equal stake in coordinating and developing new food and fiber research programs.

"We at Texas A&M are truly excited about this new partnership. It underscores our commitment to share campuses and research resources with other universities and agencies," said Dr. Jim Butler, Texas A&M's associate vice chancellor for agriculture and life sciences. "We are very pleased to be a partner in this effort at this new research facility."

Scientists at the lab will conduct fundamental and applied research on plant stress and molecular biology to improve crop yields and the quality

of commodity end-products. The facility includes offices, labs and greenhouses, and will house 20 researchers, technical support staff, and administrative and maintenance personnel when it is fully staffed.

"We can optimize shared use of equipment and other resources by placing USDA-ARS, Texas Tech and Texas A&M University researchers together at one site," explained Floyd Horn, USDA-ARS administrator. "This cooperative interaction will help scientists find solutions to crop production problems that are rooted in climatic and moisture stress."

The new facility replaces the USDA-ARS Plant Stress and Water Conservation Laboratory built north of Lubbock in the 1970's - the older facility will continue to house the Cotton Production and Processing Research Laboratory. The new building is one of 19 ARS research facilities on the southern Great Plains and will house the Plant Stress and Germplasm Development Unit and the Wind Erosion and Water Conservation Unit.

Researchers in those units are currently studying remote sensing to detect irrigation and crop nutrient deficiencies; how the behavior of confined livestock affects animal health and air quality; and ways to move stress-pre-

venting genes into plant germplasm. Part of the cotton research focuses on cleaner harvest methods to improve the fiber quality of stripper cottons, and developing precision yield monitors for cotton harvest equipment.

The need for the lab was first recognized by Congress following the drought years of the 1950's which renewed interest in the effects of erosion and the importance of water conservation in production agriculture.

"Senate Document 59, penned in 1959, laid the groundwork for this facility. Our funding effort faced a lot of highs and lows in the ensuing four decades, but we managed to get it done piece by piece," said U.S. Rep. Larry Combest, chairman of the House Agriculture Committee, who introduced 1987 legislation to actually build the facility. Combest was one of several dignitaries on hand at the facility's ribbon cutting.

"The 100th Congress authorized construction of the lab in 1988, but we didn't get full appropriation to build it until 1997. The taxpayer's tab for this state-of-the-art research facility is only about \$13.5 million - about half of its original projected cost...real proof that government can achieve fiscal responsibility when we work hand in hand to meet local needs."

## Winter/Spring mulching and how much

By J.D. Ragland

For most gardeners, mulching is a necessity that involves questions about what type to use, how much to use and when to mulch. According to Dr. Doug Welsh, a Texas Agricultural Extension Service horticulturist in College Station, there are many different kinds of mulches.

"Mulch is virtually any material laid on top of the soil to reduce evaporation," he said. Certain mulches have characteristics which make them desirable in particular situations. Cypress bark mulch is often preferred because it tends to mat down and does not blow in the wind or float. Larger bark chips will often float away if it rains heavily or the soil is over-watered, Welsh said.

"Red shredded pine bark, which is

often bought and sold at nurseries," Welsh said, "has done very well."

An economical way to mulch is to save grass clippings from the lawn. It is best to make sure they are dried before applying them as mulch.

"You can put them out on the driveway and let them dry for a day or so to let them dissipate," Welsh said. "Otherwise, you get a slimy mess and that is a problem in the vegetable garden."

Many people also use leaves from their backyard trees. They last a very long time and can be applied in a very thin layer to the ground, he said.

Where mulches are effective, the real question is how deep to mulch.

"In East Texas, where we have higher amounts of rainfall, two inches of mulch is fine," Welsh said.

Applying more may suffocate the

plants due to the combination of high soil moisture and plentiful rainfall, he said.

"As we go west towards El Paso," Welsh said, "that is where we need a thicker layer of mulch — about four to five inches."

This depth is an effective way to stop water from leaving the soil, and any water that is applied will filter down through the mulch and create a strong root system.

Another question continually asked by gardeners is when to mulch.

"Most landscape contractors will mulch in the winter season because there is less going on for them," Welsh said. That is also a good time for gardeners, but it is never too late to mulch, he added.

"Springtime is obviously a great time to garden and lots of vegetables and annual flowers are being planted," Welsh said, "this is obviously a great time to mulch."

It is also important for gardeners to periodically check on the condition of their mulch. It is critical to understand that mulch does break down.

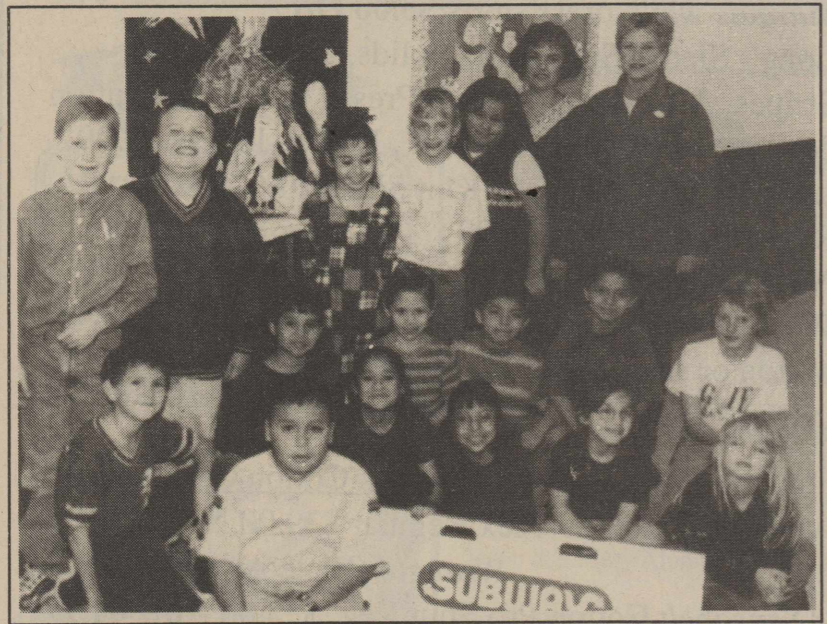
"Walk outside. Look at your mulch. See how deep it is," he said. "You may have a two inch layer of mulch out in your garden in the spring and by the end of the year it may be only one inch."

At that point, gardeners need to replenish that lost mulch.

"Check your mulch in your flowerbeds and if you don't have any you should put it out immediately."



4TH GRADE SUBWAY WINNERS-The 4th grade class of Jan Beedy at R.C. Andrews Elementary was the Subway "Christmas Door Decoration" winners in their grade level. Staff Photo



3RD GRADE SUBWAY WINNERS-The 3rd grade class of Sue Reeves at R.C. Andrews Elementary was the Subway "Christmas Door Decoration" winners in their grade level. Staff Photo

Caprock Community Action will start serving Floydada & Lockney on Comprehensive Energy Assistance Program (CEAP).

All potential clients will be rated according to priority. Applicants must meet program criteria eligibility.

For more information please contact:

Dalia Arvizu

701 East Lee, Floydada, Tx. 79235  
983-3141

**Have you checked your Term Life Insurance Rates lately?**

Male, 31, non-tobacco user  
**\$250,000 - \$27.34 month**  
guaranteed for 30 years

**Windmark**  
Insurance Agency, Inc.

P.O. Box 201 N. Main, Lockney 806-652-2241  
Fax 806-652-2426 • Mobile 983-1906 • 983-2906  
Clar Schacht June McGaugh

**Computer training coming to Floydada**

An "Essential Computer Skills" class will be presented in Floydada, on January 7th, by Dan Cowen of Accelerated Learning Center of Amarillo.

"This three hour class covers computer skills that everyone needs," says Mr. Cowen. "For reasons I fail to understand, very few computer users are learning the latest techniques developed by Microsoft to handle routine tasks such as downloading files from the internet, copying files, and organizing your files into folders and subfolders. That's what we teach, plus a whole lot more."

Accelerated Learning Center has taught thousands of computer students in over a dozen states. "We offer a full satisfaction, money-back guarantee. We provide hands-on training of important skills that few students learn elsewhere."

"Computer competency is so simple," Cowan claims. "it all boils down to understanding about a

dozen easy to learn techniques. Our class cuts to the core and teaches material that will take most computer users years to learn on their own. In just one session students learn techniques that they will use for a lifetime."

Two classes will be held in Floydada, an afternoon and an evening class, at the Massie Activity Center, 513 W. Georgia. The cost is \$69 per person, payable at the door. Group discounts are available. Call (888) 320-5552 to reserve your seat.

The class is suitable for all beginning and intermediate computer students. Each student will be given a laminated reference guide that will probably be the student's constant companion for all Microsoft applications. This permanent guide gives the simple keystrokes that separate the computer competent person from the person who lacks computer skills.

For more information about this class, call (888) 320-5552. Full details will be faxed or mailed to you.

### Gene therapy yields larger, healthier pigs

Baby pigs that received a growth hormone through gene therapy grew 40 percent faster and larger than untreated pigs. Because the larger pigs were healthier and ate less, the treatment offers several potential benefits to the agricultural industry.

Scientists at Baylor College of Medicine in Houston report their findings in the December issue of Nature Biotechnology.

Two-week-old pigs received injections of synthetic growth hormone releasing hormone (GHRH). This hormone, normally made in the brain, causes the pituitary gland to secrete growth hormone needed for maturation and development. The synthetic version of GHRH was inserted into a biodegradable piece of DNA and injected into a leg muscle of each pig.

The injection caused the leg muscle to secrete a protein that raised the level of GHRH in the blood. The increase in GHRH eventually triggered the pituitary to secrete higher levels of growth hormone for up to two months. "The pigs grow faster but eat less, which would enable the farmer to get them to market sooner and save money through the reduced quantity of feed," said Dr. Robert J. Schwartz, principal investigator for the study and a Baylor professor of molecular and cellular biology. "They also have less

body fat."

Further studies are needed to determine the safety of meat produced with this type of gene therapy, said Dr. Ruxandra Draghia-Akli, assistant professor of molecular and cellular biology, who co-directed the team of investigators. Both she and Schwartz are optimistic.

"Only a tiny amount of DNA is used for the injection, and because the synthetic hormone is biodegradable, it breaks down in the pig and cannot get into the human body," Schwartz said. "The growth hormone produced by the pigs is essentially the natural protein that they make anyway—they're just making larger amounts of it."

In the study, pigs that received growth hormone weighed 92 pounds 65 days after the injection and ate 2.1 pounds of feed per pound gained. Untreated pigs of the same age weighed 65 pounds and ate 2.37 pounds of feed per pound gained. "Theoretically, this approach could be used with other types of livestock to improve growth potential," Schwartz said. "By raising larger,

healthier animals faster, farmers would be able to cut costs and offer a better quality of livestock.

The study was funded by Baylor, the Children's Nutrition Research Center (CNRC), the National Space Biomedical Research Institute and private sources.

Other Baylor researchers who co-authored the Nature Biotechnology paper are Dr. Marta L. Fiorotto at the CNRC and Leigh Anne Hill and P. Brandon Malone, both in Baylor's Department of Molecular and Cellular Biology.

**A Glance At The MARKETS**

Closing Commodity Prices:  
COTTON . . . . Mar . . . . 50.73  
WHEAT . . . . Mar . . . . 1.98  
MILO . . . . . Mar . . . . 2.79  
CORN . . . . . Mar . . . . 3.90  
SOYBEANS . Jan . . . . 3.80

Sources: Producer's Coop Elevator & Floydada Coop Gin, Floydada  
Sponsored by Zimmatic Dealers:  
Rhoderick Irrigation  
800-878-2584

**Tye Drills & Paratills Grass Drills**  
• for sale or lease •

**Abell-Prewitt Co.**  
Ralls, Texas  
253-2243

**PRODUCER'S COOPERATIVE ELEVATOR**

983-2821 - Floydada  
983-3770 - Dougherty

**FIRST NATIONAL BANK OF FLOYDADA**

Floydada 983-3717  
Member F.D.I.C.

**FLOYDADA COOPERATIVE GINS, INC.**

Floydada 983-2884

**Oxygen & Acetylene Refills**  
Available at  
**FERGUSON SPRAYING, INC.**  
608 E. Houston, Floydada - 983-2474

**Ferguson Spraying**  
Larry Ferguson  
Office: 983-2474  
Mobile: 983-1820  
Home: 983-3820  
608 E. Houston, Floydada



# THE CLASSIFIEDS

Call 806-983-3737 or 806-652-3318

### AUTOMOTIVE FOR SALE

1977 FORD COURIER, new motor. \$1,500.00. Call 983-2138.

1-6c

### BUILDING MATERIALS

STEEL BUILDINGS, new, must sell. 30x40x12 was \$10,200 now \$6,990; 40x60x14 was \$16,400 now \$10,971; 50x100x16 was \$27,590 now \$19,990; 60x200x16 was \$58,760 now \$39,990. Call 1-800-406-5126.

1-6p

### FARM LAND FOR SALE

160 ACRE SEMI-IRRIGATED farm with dwelling. 6 1/2 miles southeast of Floydada. 106 S. Main, Floydada. 983-3261. Hale Insurance and Real Estate.

tfn

**POOLE WELL SERVICE**  
Complete Irrigation Well Service  
Simmons Pumps  
High Speed Bailing  
704 Matador Highway  
983-2285 983-5610  
Business Residence

**CRH SYSTEMS**  
116 W. California  
983-2445 983-3151  
"For All Your Computer Needs"  
Visit Our Showroom  
Everyday Low Prices

### ADAMS WELL SERVICE

Complete Irrigation Service  
5 Year Warranty, Domestic Pump  
High Speed Bailing  
720 N. 2nd  
983-5003

Equal Housing Opportunity  
Handicapped Accessible  
DUNCAN PLAZA  
1 & 2 BR Apartments for rent  
Apply at  
210 E. California St.  
983-5165

### FOR RENT OR SALE

FOR RENT OR SALE--House, trailer houses and apartment (with bills paid). Financed by owner. 100% to qualified buyers. Some rentals HUD qualified.

\* One full bedroom apartment with two baths. \* One - 3 bedroom apartment, central heating and air. \* One - 2 bedroom apartment. \* Two - 1 bedroom apartments. Call 806-983-5552.

1-6p

### HELP WANTED

EAT ALL DAY and melt away. 40 days/\$40 dollars. Call 1-800-647-3545.

1-13c

FARMHAND EXPERIENCED in irrigation. Must have references. Call 983-2470.

tfn

BUSY DENTAL OFFICE has immediate opening for full time chairside dental assistant. Energetic, friendly, organized and professional qualities required. Experience preferred but not necessary. Mail or bring resume with 2 letters of reference to 428 W. California.

1-6c

JANITORIAL - clean-up - make-ready person needed. Apply at City Auto or call 983-3767.

1-6c

HELP WANTED: Provider for the Floydada area for immediate hire. Call Freda Bartlett at 1-800-224-2352.

1-13c

FULL TIME LVN needed for 11-7 shift. Full benefits and comparable salary. Contact Linda Dewbre at 806-675-2382. Crosbyton Hospital.

tfn

ASSISTANT MANAGER TRAINEE needed. \$2,000 monthly, full time; \$1,000 monthly, part-time, if qualified. Call for information 766-7175.

tfn

### BNB MAINTENANCE & REPAIR

Electrical  
Plumbing  
Painting

### Free Estimates

Senior Discounts  
No Job Too Small

Floydada, Texas 79235  
806-983-8031

### HOUSES FOR SALE

Floydada

3-2-2 central ac/heat. Fireplace with heatolator. 902 S. Leonard. Call 983-3844.

1-13p

HOUSE FOR SALE BY OWNER--Three bedrooms, two baths. 24'x24' garage and storage building. Appraised at \$54,000.00. Call Tommie or Pat Rice at 806-675-1125.

1-6c

FOR SALE--Nice 3 bedroom, 2 bath house. Fireplace, double garage, big backyard. Good neighborhood. Call 983-2434.

1-6c

LET ME HELP YOU GET a home for 15-30 years. FHA/VA and Conventional loans available. Prequalifications are free. Competitive interest rates. We provide quality service. Remington Mortgage, Ltd. Shalane Wesley - 806-492-2219. Paducah, Texas.

tfn

FOR SALE--2 bedroom, 1 bath, 1 car garage. 311 W. California. Call 983-2714 (home) or 983-5063 (work).

tfn

FOUR - 2 BEDROOM HOMES and four Commercial Properties. Various parts of town. Call Sam Hale, Hale Insurance and Real Estate, 106 S. Main, Floydada, 983-3261.

tfn

Lockney

SPACIOUS BRICK HOUSE--Corner lot. 3-2-2. Whirlpool bath. Ask about other extras. 319 S.W. 7th Street. Call Laura 652-2456.

tfn

### Have A Nice Day!

### CAPROCK IRRIGATION SYSTEMS

Irrigation & Well Service  
\* Submersible  
\* New Gould Pumps  
983-8095

### LOST AND FOUND

LOST FEMALE Chihuahua, black, brown & little white. All most blind. Call 983-5028.

1-6p

### MISCELLANEOUS

FOR SALE: 1991 Yamaha YZ250 - \$1,200.00; 1982 Kawasaki 440 - \$700.00; Built-in oven - \$50.00; Kitchen sink and faucet - \$25.00; Garbage disposal - \$20.00.

1-13c

HOUSE SETTLEMENT? Cracks in brick or walls? Doors won't close? Call Childers Brothers Stabilizing & Foundation Leveling. 1-800-299-9563 or 806-352-9563. Amarillo, Texas.

8-19c

### PETS

FREE PUPPIES--2 Red Heeler/Border Collie mix; 3 Red Heeler/Chow mix. Call 983-3637.

12-30p

Advertising in this newspaper, benefits your community.

### CELLPHONES!!

Check our coupons - page 49  
Lubbock SWBell Phone Book!

Ask for Don Henderson

"Your CellularTOUCH, authorized

CellularONE, Agent," PH 292-0009, 983-7001

### SCRIPT PRINTING & OFFICE SUPPLY

\* Commercial Printing  
\* Office Supplies & Furniture  
\* Business Machines  
108 S. Main Floydada 983-5131

### ECONOMICAL STORAGE TRY BARKER'S

Jewel Box Mini-Storage and save your time and money  
Phone 652-2642  
Corner Main & Locust Lockney, Texas  
Barker Building

### PUBLIC NOTICE

CITY OF FLOYDADA § BEFORE THE CITY COUNCIL  
VS. § OF THE CITY OF  
JUANITA AGUIRRE § FLOYDADA, TEXAS

### ORDER

On the 21st day of December, 1999, a hearing was held before the City Council of the City of Floydada to consider matters concerning property owned by Juanita Aguirre. The property is further described as:

"515 S. Wall Street, Floydada, Texas, also known as Lot 9, Block 117, Original Town of Floydada, Floyd County, Texas."

The Hearing was first called to order and it was determined that a quorum was present.

The City of Floydada appeared through its duly authorized representatives.

Respondent, Juanita Aguirre, owner of the property was served by publication in a newspaper of general circulation within the County. Respondent failed to appear.

The City Council next proceeded to hear testimony and take evidence offered by the City of Floydada, including statements and photographs prepared and offered by city officials and inspectors.

Following the completion of the taking and receiving of evidence and testimony the City Council, after motion, second, and unanimous vote, found that the conditions existing on the property on the date of the hearing are in violation of the provisions of the City of Floydada Structural Standards Ordinance.

The City Council further found that the structure located at the above stated address is dilapidated, substandard, unfit for human habitation and a hazard to the public health, safety and welfare. Correction of the violation is hereby ORDERED:

- 1) The structure is to be secured by the owner within 10 days and kept secured.
- 2) The structure is to be repaired, or demolished and the property completely cleaned including the removal of trash, debris or any other form of material, within 30 days of the date of this order.
- 3) It is specifically ORDERED that prior to the owner causing repair, demolition or removal procedures to be begun, that any and all permits for such activities required by the City be obtained.

In the event that the order has not been complied with by the above stated date, the City Manager is hereby authorized, at his Discretion, to perform the above stated actions and assess the expenses thereof against the property upon which the actions were performed.=

It is further ORDERED that a true and correct copy of the Order of the City Council be forwarded postage prepaid, certified mail, return receipt requested to Respondents and that such action be taken immediately after entry of this Order.

Notice is hereby given that Respondents have the right to file an appeal of this Order in a court of competent jurisdiction within thirty (30) days of the date of this Order.

SIGNED on this 21st day of December, 1999.

Bobby Gilliland, Mayor

1-6c

### PUBLIC NOTICE

On December 21, 1999, a hearing was held before the City Council of the City of Floydada, Texas, to determine whether the following properties are in violation of the City of Floydada, Building Standards Ordinance. Following the hearing the Council entered the order described below regarding the properties:

Owner: Juanita Aguirre  
Location: 515 S. Wall Street, also known as Lot 9, Block 117, Original Town of Floydada, Floyd County, Texas.

Property was found to be in violation - Owner was ordered to secure property in 10 days, repair, remove or demolish the property within 30 days

Owner: Clora M. McCown  
Location: 739 W. Ross Street, also known as Lot "B" and Lot 2, Block "D", Andrews Addition to the City of Floydada, Floyd County, Texas.

Property was found to be in violation - Owner was ordered to secure property in 10 days, repair, remove or demolish the property within 30 days.

Owner: Modesta Adela Garcia  
Location: 715 W. Ross Street, also known as Lot 8, Block "D", Andrews Addition to the City of Floydada, Floyd County, Texas.

Property was found to be in violation - Owner was ordered to secure property in 10 days, repair, remove or demolish the property within 30 days.

Persons interested in these structures may obtain a copy of the orders from the City Secretary, City of Floydada, at City Hall, 114 W. Virginia Street, Floydada, Texas 79235.

1-6c

### NOTICE TO BIDDERS

Motley County Independent School District will receive bids for the purchase of:

OIL, GASOLINE AND DIESEL

For the remainder of the 1999-2000 School Year. All bids are to be submitted to the Superintendent's Office by 4:00 p.m. on January 7, 2000. The bids will cover service from January 11, 2000 through August 31, 2000. Please place bids in a sealed envelope, marked "BID". The School Board reserves the right to reject any and all bids.

Bids will be opened and awarded at the regular board meeting on January 10, 2000.

Jeff Thacker, Pres./School Board  
Rick Copp, Superintendent  
Motley County ISD  
P.O. Box 310  
Matador, Texas 79244

12-30, 1-6c

### JONES ENTERPRISES

107 S. Fifth  
Floydada, TX 79235  
983-2151

\*\* Unique, secure and unequaled living to any other home in Floydada. 2.5-2 with garden area and underground storm shelter. Included business leases frontage income for house payment.  
\*\* Beautiful, well maintained 3 or 4 bedroom home with 3 baths, lots of room and located near High School.  
\*\* COMMERCIAL HOTEL - A truly exclusive BED & BREAKFAST opportunity with 26 bedrooms and 13 baths. For exclusive sales information come by or call.  
\*\* Drive thru restaurant located with main highway frontage and good income potential for aggressive buyer.

\*\*SALES - APPRAISALS\*\*  
\*\*PROPERTY MANAGEMENT\*\*

Warren Mitchell 652-3613  
Larry S. Jones 983-2052

### ADAMSON REAL ESTATE

2703 24th Street  
Plainview, Texas 79072  
806-293-5212

http://www.texasonline.net/Adamson

418 S. MAIN, LOCKNEY--Central heat/air, 3-1-2, new roof, corner lot--\$49,900.00

1001 W. SHURBET, LOCKNEY--2 bedroom, 1 bath with double garage and utility.....\$36,000.00  
PEACEFUL COUNTRY LIVING--3-1-2 on 1.9 acres north of Aiken. Approximately 15 fruit trees. Barn and storage building.....\$49,500.00 - NOW \$48,500.00.  
634 ACRES IN FLOYD COUNTY --HOME AND BARN on property.

## Thanks for reading the newspaper Cards of Thanks

We would like to thank everyone who came to the hospital, called sent flowers while our Daddy and Husband was in the hospital and after his death. We will never forget all the love and kindness that was shown to our family. Thanks to Ione Sedinger, Robin Hoover, Wendell Horn, Bill Gilbreath and all the people who sent food to the church and our home, all the prayers that were sent our way and to anyone we might have missed. We feel so blessed to live in a town where everyone is always there when you need them.

God bless each of you.

Dolly Emert

Roger, Diane, Mandy & Zach Emert  
Don, Carolyn, Robby, Chad & Tali Green  
Steve & Scott Emert

The family of Malvin Jarboe expresses their appreciation for the many flowers, memorials, food, prayers and other expressions of love and concern.

We would also like to thank the Floydada EMS (Connie, Beverly and Placido), also Chris Houchin, Ricky Rose and Christina Muse for their acts going above and beyond the call of duty and the compassion that was extended to the family.

Malvin (Granddaddy) is going to be greatly missed by us, but caring people make this burden easier to bear. We love and appreciate you all.

Kellie & Larry William, Kortney & Kolby  
Kerris & Travis Sullivan, Kenna & Luke  
Tom Bob & Bettye Jarboe

I would like to thank everyone who did things for me before, during and after my stay in the hospital. I cannot remember everyone and everything but I certainly appreciate all of you.

Thanks again,  
Linda Heflin



# Obituaries

## LEROY DENISON

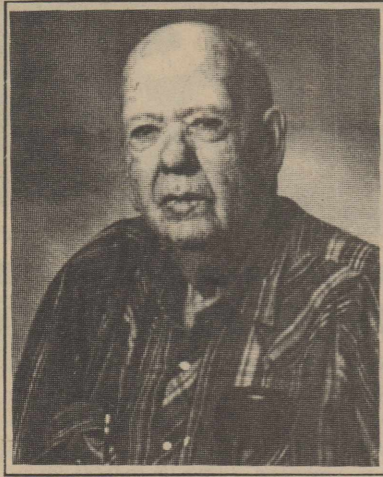
Services for Leroy Denison, 79, of Lubbock, were held at 2:00 p.m. on Tuesday, January 4, 2000 at Monterey Church of Christ. E.C. Leslie and Ray Bailey officiated. Burial followed in Resthaven Memorial Park under the direction of Resthaven Funeral Home.

He died on Saturday, January 1, 2000, at his residence.

Mr. Denison was born on May 10, 1920 in Woodland. He was raised in Floyd County and attended Floydada Schools. Her served in the U.S. Navy during World War II and was in the Pacific and Atlantic theaters. He married Tommie Ruth Jones in New York City on November 26, 1943. He was employed by the U.S. Postal Service for 31 years, retiring in 1978. He had been a resident of Lubbock since 1948 and was a member of Monterey Church of Christ.

Survivors include his wife: one son, Vick Dension of Idalou; one brother, Charles Dension of Lubbock; three sisters, Lorena McKinney and Mary Lewis, both of Floydada, Pauline Dension of Dallas; and two grandsons.

The family suggests memorials to Vista Care Hospice, the Lubbock Children's Home or the American Cancer Society.



## RAYMOND MARTIN

Services for Raymond Daniel-Wade Martin, 83, of Lockney were held at 1:30 p.m. Wednesday, January 5, 2000 at West College and 3rd Street Church of Christ in Lockney with J.W. Hamby of Plainview officiating. Burial was in the Flomot Cemetery in Flomot under the direction of Moore-Rose-White Funeral Home of Lockney.

Mr. Martin died Monday, January 3, 2000, at his residence.

Mr. Martin was born on February 8, 1916 in White Flat, to the late Mr. Robert Andrew Martin and Mrs. Myrtle Mae Weidman Martin. He attended schools in Flomot. He married Mildred Graves December 27, 1933 in Silvertown. She preceded him in death on August 25, 1991. He moved to Lockney from Deming, New Mexico in 1946. He was a retired farmer having farmed in the Prairie Chapel Community. He operated Germania Farm Mutual Insurance Company in Lockney until retirement. He was a member of West College and 3rd Street Church of Christ in Lockney. He was also preceded in death by a son Rayford Martin in March, 1973.

He is survived by two daughters and son-in-laws, Kay and Leo Phillips, and Patsy and Mike Patrick all of Plainview; two sisters, Edith Washington of Flomot and Gertrude Light of Amarillo; ten grandchildren; 12 great-grandchildren and three great-great-grandchildren.

## ROBERT MARTINEZ

Funeral Mass for Robert Martinez, 44, were held at 1:00 p.m. on Friday, December 31, 1999 in Sacred Heart Catholic Church in Plainview. Reverend Elbert A. Fadallan, pastor, officiated. Burial was in Plainview Cemetery by Bartley-Silva Funeral Home.

Mr. Martinez died Wednesday, December 29, 1999 in Mangold Memorial Hospital.

He was born May 11, 1955, in Knippa. Mr. Martinez married Selma Vilarreal on May 19, 1970 in Plainview. He was a welder for many years and was employed by the Hamby Co. He also worked as a landscaper for many years.

Survivors include his wife; two sons, Michael and Alford Martinez of Lubbock; a daughter, Julie Ann Martinez of Lockney; two brothers, Salomon Martinez, Jr. and Larry Martinez, both of Knippa; five sisters, Susie Ramirez of Corpus Christi, Barbara Orona of Uvalde, Frances Martinez and Elena Sandoval, both of Knippa, and Betty Alvaro of Farmers Branch; and two grandchildren.

Memorials are suggested to the American Heart Association.

## GENE D. MCKNIGHT

Services for Gene D. McKnight, 69, of Whitesboro, were held at 1:00 p.m. on Thursday December 30, 1999 at Huff Funeral Chapel in Whitesboro. Reverend Joe Patterson officiated. Burial followed at Dixie Cemetery in Grayson County under the direction of Huff Funeral Home in Whitesboro.

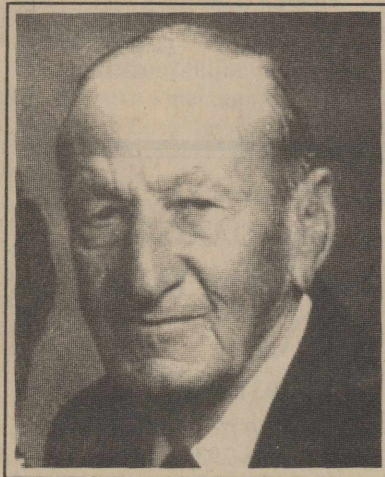
Mr. McKnight died on Tuesday, December 28, 1999.

He was born on September 21, 1930 in Dallas to the late James Franklin McKnight and Nora May Cason McKnight. He married Wanda McClanahan on May 2, 1958 in Hereford. He was a retired machinist, having retired from T.I. He was a member of Central Baptist Church in Whitesboro.

He is survived by his wife, Wanda McKnight; one son, David Gene McKnight of Cherokee Village, Arkansas; one daughter, Debra Lynn McKnight, of Plainview; one sister, Lois Walls of Plainview; and two grandchildren.



Survivors include his sons, Ray of Redmond and Kay of Powell Butte; his brother Guy of Floydada; six grandchildren; eleven great-grandchildren and four great-great-grandchildren.



## BERT LEE EMERT

Services for Bert Lee Emert, 72, of Floydada were held at 10:00 a.m. on Friday, December 31, 1999 at First Christian Church in Floydada. Reverend Ione Sedinger, pastor, officiated and Reverend Robin Hoover assisted. Burial was in Floyd County Memorial Park under the direction of Moore-Rose-White Funeral Home of Floydada.

Mr. Emert died December 29, 1999 at Covenant Medical Center in Lubbock.

Mr. Emert was born on March 25, 1927 in Floydada to Mrs. Lena Estelle Holladay Emert Hinkle and to the late Mr. W.W. Emert. He attended schools in Floydada. He married Dolly Graham on June 14, 1947 in Floydada. He was a retired carpenter. He was a lifelong resident of Floydada and a lifelong member of First Christian Church of Floydada where he was a deacon and a board member for about 30 years. He was a veteran of the United States Army. He was preceded in death by a grandson, Matthew Lee Emert in 1980.

Survivors include his wife, Dolly Emert of Floydada; his mother, Lena Hinkle of Floydada; two sons, Roger Emert of Floydada, and Steve Emert of Canyon; a daughter, Carolyn Green of Floydada; five grandchildren and a great-grandchild.

The family suggests memorials to the American Heart Association 3403 73rd Street, Lubbock, TX 79423.

## FLOYD BLAKELY GARRISON

Floyd Blakely Garrison, 92, of Metolius died at his home Monday, December 13, 1999.

Graveside services were held at 11:00 a.m. on Friday, December 17, 1999 at Mount Jefferson Memorial Park in Madras. Burial followed under the direction of Bel-Air Colonial Funeral Home of Madras.

Mr. Garrison was born to Walter and Flora (Wilkinson) Garrison on December 11, 1907 in Matador. He grew up in Floyd County and graduated from Floydada High School in 1926. He married Alma Clark on August 3, 1932, in Guymon, Oklahoma. She died in 1981.

Mr. Garrison moved to Metolius from La Pine in 1952. He worked as a heavy equipment operator and truck driver for the Oregon State Highway Department from 1944 until 1972. Mr. Garrison was a member of several organizations including the Oregon State Employees Association and the National Rifle Association. He was also a member of United Methodist Church in Madras.

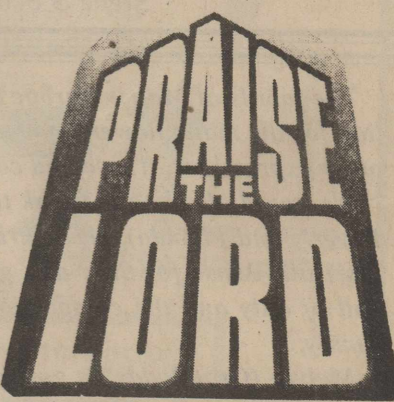
Survivors include his sons, Ray of Redmond and Kay of Powell Butte; his brother Guy of Floydada; six grandchildren; eleven great-grandchildren and four great-great-grandchildren.

# Floyd County Church Directory

- |                                                                                                                                                                                                                                                                                                                                                                                                                                                                                                                                                                                                                                                                                                                                                                                                                                                                                                                                                                                                                                                                                                                                                                                                                                                                                                                                                                                                                                                                                                                                                                                                                                                                                                                                                                                                                                                                                                                                                                                                                                                                                                                                                                                                                                                                                                                                                                                                                                                                                                                                  |                                                                                                                                                                                                                                                                                                                                                                                                                                                                                                                                                                                                                                                                                                                                                                                                                                                                                                                                                                                                                                                                                                                                                                                                                                                                                                                                                                                                                                                                                                                                                                                                                                                                                                                                                                                                                                                                                                                                                                                                                                                                                                                                                                                                                                                                                                                                                                                                                                                                                                                                                                                                                                                                                                                                 |                                                                                                                                                                                                                                                                                                                                                                                                                                                                                                                                                                                                                                                                                                                                                                                                                                                                                                                                                                                                                                                                                                                                                                                                                                                                                                                                                                                                                                                                                                                                                                                                                                                                                                                                                                                                                                                                                                                                                                                                                                                                                                                                                                                                                                                                                                                                                                                                                                         |                                                                                                                                                                                                                                                                                                                                                                                                                                                                                                                                                                                                                                                                                                                                                                                                                                                                                                                                                                                                                                                                                                                                                                                                                                                                                                                                                                                                                                                                                                                                                                                                                                                                                                                                                                                                                                                                                                                                                                                                                                                                                                                                                                                                                                                                                                                                                                                                                                                                                                                                                                                 |
|----------------------------------------------------------------------------------------------------------------------------------------------------------------------------------------------------------------------------------------------------------------------------------------------------------------------------------------------------------------------------------------------------------------------------------------------------------------------------------------------------------------------------------------------------------------------------------------------------------------------------------------------------------------------------------------------------------------------------------------------------------------------------------------------------------------------------------------------------------------------------------------------------------------------------------------------------------------------------------------------------------------------------------------------------------------------------------------------------------------------------------------------------------------------------------------------------------------------------------------------------------------------------------------------------------------------------------------------------------------------------------------------------------------------------------------------------------------------------------------------------------------------------------------------------------------------------------------------------------------------------------------------------------------------------------------------------------------------------------------------------------------------------------------------------------------------------------------------------------------------------------------------------------------------------------------------------------------------------------------------------------------------------------------------------------------------------------------------------------------------------------------------------------------------------------------------------------------------------------------------------------------------------------------------------------------------------------------------------------------------------------------------------------------------------------------------------------------------------------------------------------------------------------|---------------------------------------------------------------------------------------------------------------------------------------------------------------------------------------------------------------------------------------------------------------------------------------------------------------------------------------------------------------------------------------------------------------------------------------------------------------------------------------------------------------------------------------------------------------------------------------------------------------------------------------------------------------------------------------------------------------------------------------------------------------------------------------------------------------------------------------------------------------------------------------------------------------------------------------------------------------------------------------------------------------------------------------------------------------------------------------------------------------------------------------------------------------------------------------------------------------------------------------------------------------------------------------------------------------------------------------------------------------------------------------------------------------------------------------------------------------------------------------------------------------------------------------------------------------------------------------------------------------------------------------------------------------------------------------------------------------------------------------------------------------------------------------------------------------------------------------------------------------------------------------------------------------------------------------------------------------------------------------------------------------------------------------------------------------------------------------------------------------------------------------------------------------------------------------------------------------------------------------------------------------------------------------------------------------------------------------------------------------------------------------------------------------------------------------------------------------------------------------------------------------------------------------------------------------------------------------------------------------------------------------------------------------------------------------------------------------------------------|-----------------------------------------------------------------------------------------------------------------------------------------------------------------------------------------------------------------------------------------------------------------------------------------------------------------------------------------------------------------------------------------------------------------------------------------------------------------------------------------------------------------------------------------------------------------------------------------------------------------------------------------------------------------------------------------------------------------------------------------------------------------------------------------------------------------------------------------------------------------------------------------------------------------------------------------------------------------------------------------------------------------------------------------------------------------------------------------------------------------------------------------------------------------------------------------------------------------------------------------------------------------------------------------------------------------------------------------------------------------------------------------------------------------------------------------------------------------------------------------------------------------------------------------------------------------------------------------------------------------------------------------------------------------------------------------------------------------------------------------------------------------------------------------------------------------------------------------------------------------------------------------------------------------------------------------------------------------------------------------------------------------------------------------------------------------------------------------------------------------------------------------------------------------------------------------------------------------------------------------------------------------------------------------------------------------------------------------------------------------------------------------------------------------------------------------|---------------------------------------------------------------------------------------------------------------------------------------------------------------------------------------------------------------------------------------------------------------------------------------------------------------------------------------------------------------------------------------------------------------------------------------------------------------------------------------------------------------------------------------------------------------------------------------------------------------------------------------------------------------------------------------------------------------------------------------------------------------------------------------------------------------------------------------------------------------------------------------------------------------------------------------------------------------------------------------------------------------------------------------------------------------------------------------------------------------------------------------------------------------------------------------------------------------------------------------------------------------------------------------------------------------------------------------------------------------------------------------------------------------------------------------------------------------------------------------------------------------------------------------------------------------------------------------------------------------------------------------------------------------------------------------------------------------------------------------------------------------------------------------------------------------------------------------------------------------------------------------------------------------------------------------------------------------------------------------------------------------------------------------------------------------------------------------------------------------------------------------------------------------------------------------------------------------------------------------------------------------------------------------------------------------------------------------------------------------------------------------------------------------------------------------------------------------------------------------------------------------------------------------------------------------------------------|
| <p><b>AIKEN BAPTIST CHURCH</b><br/>Henry Martin, Pastor<br/>Sunday School . . . . . 10:00 a.m.<br/>Morning Worship . . . . . 11:00 a.m.<br/>Evening Worship . . . . . 6:00 p.m.<br/>Wednesday:<br/>Bible Study . . . . . 7:30 p.m.<br/>*****</p> <p><b>BETHANY BAPTIST CHURCH</b><br/>607 W. Lee St., Floydada<br/>J.D. Young, Pastor<br/>Sunday School . . . . . 10:00 a.m.<br/>Morning Worship . . . . . 11:00 a.m.<br/>Evening Worship . . . . . 6:00 p.m.<br/>Wednesday Evening<br/>Prayer Meeting . . . . . 7:00 p.m.<br/>*****</p> <p><b>BIBLE BAPTIST CHURCH</b><br/>810 S. 3rd, Floydada<br/>Darwin Robinson, Pastor<br/>983-5278<br/>Sunday School . . . . . 10:00 a.m.<br/>Morning Worship . . . . . 10:50 a.m.<br/>Prayer Meeting . . . . . 6:00 p.m.<br/>Evening Worship . . . . . 6:30 p.m.<br/>Wednesday:<br/>Evening Services . . . . . 7:30 p.m.<br/>*****</p> <p><b>CALVARY BAPTIST CHURCH</b><br/>Floydada<br/>Glenn Truett, Pastor<br/>Sunday School . . . . . 9:45 a.m.<br/>Morning Worship . . . . . 11:00 a.m.<br/>Bible Study . . . . . 6:00 p.m.<br/>Evening Worship . . . . . 6:00 p.m.<br/>Wednesday Evening . . . . . 7:00 p.m.<br/>*****</p> <p><b>CARR'S CHAPEL</b><br/>Service Every Sunday:<br/>Morning Worship . . . . . 9:00 a.m.<br/>Sunday School . . . . . 10:30 a.m.<br/>*****</p> <p><b>CHURCH OF CHRIST</b><br/>West College &amp; Third,<br/>Lockney<br/>Frank Duckworth, Evangelist<br/>Morning Worship . . . . . 10:30 a.m.<br/>Evening Worship . . . . . 5:30 p.m.<br/>Wednesday Service . . . . . 8:00 p.m.<br/>*****</p> <p><b>CITY PARK CHURCH OF CHRIST</b><br/>Doug Rainbolt - Minister<br/>Floydada<br/>Sunday:<br/>Bible Study . . . . . 9:30 a.m.<br/>Morning Worship . . . . . 10:30 a.m.<br/>Evening Worship . . . . . 6:00 p.m.<br/>Wednesday:<br/>Bible Study . . . . . 7:30 p.m.<br/>(Summer . . . . . 8:00 p.m.)<br/>*****</p> <p><b>FIRST ASSEMBLY OF GOD CHURCH</b><br/>701 W. Missouri, Floydada<br/>Vance Mitchell, Pastor<br/>Sunday School . . . . . 9:45 a.m.<br/>Morning Worship . . . . . 10:50 a.m.<br/>Sunday Evening<br/>Evangelistic . . . . . 6:00 p.m.<br/>Wednesday:<br/>Night Service . . . . . 7:00 p.m.<br/>*****</p> <p><b>GENE D. MCKNIGHT</b><br/>Services for Gene D. McKnight, 69, of Whitesboro, were held at 1:00 p.m. on Thursday December 30, 1999 at Huff Funeral Chapel in Whitesboro. Reverend Joe Patterson officiated. Burial followed at Dixie Cemetery in Grayson County under the direction of Huff Funeral Home in Whitesboro.</p> | <p><b>FIRST BAPTIST CHURCH</b><br/>401 S. Main, Floydada<br/>Anthony D. Sisemore, Pastor<br/>Michael Holster<br/>Education/Music<br/>Les Reed, Minister of Students<br/>Sunday:<br/>Instrumental Ensemble . . . 8:30 a.m.<br/>Church-wide Pre-Sunday School Fellowship . . . . . 9:00 a.m.<br/>Sunday School . . . . . 9:30 a.m.<br/>Morning Worship . . . . . 10:45 a.m.<br/>Discipleship Training, Nursery, Mission Friends, Team Kid, Bible Drill, Youth Drama and Adult Bible Study . . . . . 5:00 p.m.<br/>Evening Worship . . . . . 6:00 p.m.<br/>Celestial Ringers . . . . . 7:00 p.m.<br/>Wednesday:<br/>Children's Choir . . . . . 4:00 p.m.<br/>Evening Meal . . . . . 6:00 p.m.<br/>Prayer Time (All Ages) . . . 6:30 p.m.<br/>Nursery, Preschool Choir, RA's, GA's Sanctuary Choir, Youth Bible Study, Adult Bible Study . . . 7:00 p.m.<br/>Sanctuary Choir . . . . . 7:00 p.m.<br/>*****</p> <p><b>FIRST BAPTIST CHURCH</b><br/>Lockney<br/>Cecil Golden - Interim Pastor<br/>Phillip Oswald, Director of Music<br/>Rodney Hunt, Youth Minister<br/>Sunday:<br/>Sunday School . . . . . 9:45 a.m.<br/>Morning Worship . . . . . 10:45 a.m.<br/>Evening Worship . . . . . 6:00 p.m.<br/>Youth . . . . . 7:00 p.m.<br/>Wednesday:<br/>Prayer Meeting . . . . . 7:00 p.m.<br/>Youth Bible Study . . . . . 7:00 p.m.<br/>Adult Choir . . . . . 8:00 p.m.<br/>*****</p> <p><b>FIRST CHRISTIAN CHURCH</b><br/>Reverend Ione Sedinger<br/>Pastor<br/>Sunday Worship . . . . . 11:00 a.m.<br/>Monday Bible Study . . . . . 9:30 a.m.<br/>*****</p> <p><b>FIRST UNITED METHODIST CHURCH</b><br/>Floydada<br/>Wendell Horn, Pastor<br/>Sunday School . . . . . 9:45 a.m.<br/>Morning Worship . . . . . 11:00 a.m.<br/>Youth Fellowship . . . . . 5:00 p.m.<br/>Evening Worship . . . . . 6:00 p.m.<br/>*****</p> <p><b>FIRST UNITED METHODIST CHURCH</b><br/>Lockney<br/>Russ Byard, Pastor<br/>Sunday School . . . . . 9:15 a.m.<br/>Worship Service . . . . . 10:30 a.m.<br/>UMY . . . . . 5:00 p.m.<br/>Evening Worship . . . . . 6:00 p.m.<br/>United Methodist Women, Hill Circle, 3rd Tues. . . . . 9:30 a.m.<br/>Ruth Wesley Circle:<br/>2nd &amp; 4th Mondays . . . . . 10:30 a.m.<br/>*****</p> <p><b>FRIENDSHIP CHAPEL CME</b><br/>Floydada<br/>Rev. James Jenkins<br/>Sunday . . . . . 9:45 a.m.<br/>Morning Service . . . . . 11:00 a.m.<br/>Wednesday:<br/>Bible Study . . . . . 8:00 p.m.<br/>*****</p> <p><b>GRACE FELLOWSHIP CHURCH</b><br/>211 N. Main, Lockney<br/>Interdenominational Church<br/>Rev. Farril De Foor, Pastor<br/>Morning Worship . . . . . 10:30 a.m.<br/>Evening Worship . . . . . 6:00 p.m.<br/>Wednesday Service . . . . . 7:00 p.m.<br/>Christian Counseling Available<br/>*****</p> | <p><b>GRANT CHAPEL CHURCH OF GOD IN CHRIST</b><br/>Joe Bennett, Pastor<br/>Sunday School . . . . . 10:00 a.m.<br/>Monday Worship . . . . . 11:00 a.m.<br/>Evening Service . . . . . 7:30 p.m.<br/>Tuesday:<br/>Prayer Service . . . . . 8:00 p.m.<br/>Wednesday Service . . . . . 7:30 p.m.<br/>*****</p> <p><b>MAIN STREET CHURCH OF CHRIST</b><br/>Lockney<br/>Russell Harris, Minister<br/>Bible Study . . . . . 9:30 a.m.<br/>Morning Worship . . . . . 10:30 a.m.<br/>Evening Worship . . . . . 6:00 p.m.<br/>Wednesday:<br/>Ladies Bible Class . . . . . 9:30 a.m.<br/>Bible Study . . . . . 7:30 p.m.<br/>*****</p> <p><b>MT. ZION BAPTIST CHURCH</b><br/>Floydada<br/>Rev. Ralph Jackson<br/>Sunday School . . . . . 10:00 a.m.<br/>Morning Worship . . . . . 11:00 a.m.<br/>BTU . . . . . 6:00 p.m.<br/>Evening Worship . . . . . 7:00 p.m.<br/>Wednesday:<br/>Mid-Week Prayer . . . . . 7:00 p.m.<br/>Thursday:<br/>Bible Study . . . . . 7:00 p.m.<br/>*****</p> <p><b>NEW SALEM PRIMITIVE BAPTIST CHURCH</b><br/>Floydada<br/>Sunday: Congregational<br/>Singing . . . . . 10:30 a.m.<br/>Morning Worship . . . . . 11:00 a.m.<br/>Pastor Elder Ronnie Hedges<br/>Telephone (806) 585-6342<br/>*****</p> <p><b>POWER OF PRAISE FULL GOSPEL CHURCH</b><br/>Rev. Manuel Rendon, Pastor<br/>704 N. Main, Lockney<br/>652-3704<br/>Sunday Services . . . . . 10:00 a.m.<br/>Sunday Evening . . . . . 5:00 p.m.<br/>Wednesday . . . . . 7:30 p.m.<br/>Friday - Youth Service . . . . . 7:00 p.m.<br/>*****</p> <p><b>PRIMER IGLESIA BAUTISTA</b><br/>Lockney<br/>Pedro Villareal, Pastor<br/>Sunday School . . . . . 9:45 a.m.<br/>Worship Service . . . . . 11:00 a.m.<br/>Training Union . . . . . 5:00 p.m.<br/>Evening Service . . . . . 6:00 p.m.<br/>Wednesday Service . . . . . 7:30 p.m.<br/>G.A.'s . . . . . 7:30 p.m.<br/>Ambassadors . . . . . 7:30 p.m.<br/>Fellowship Luncheon - 1st Sunday of Month;<br/>Music Worship;<br/>Last Sunday with evening service<br/>*****</p> <p><b>PRIMERA IGLESIA BAUTISTA</b><br/>Floydada<br/>Rev. Lupe Rando<br/>Sunday School . . . . . 9:45 a.m.<br/>Morning Worship . . . . . 10:55 a.m.<br/>Evening Worship . . . . . 6:00 p.m.<br/>Wednesday Evening . . . . . 7:00 p.m.<br/>*****</p> <p><b>SAN JOSE CATHOLIC CHURCH</b><br/>Lockney<br/>Jim McCartney, Pastor<br/>Wednesday:<br/>Communion Service . . . . . 8:00 p.m.<br/>Sunday Mass . . . . . 11:30 a.m.<br/>*****</p> | <p><b>SOUTH PLAINS BAPTIST CHURCH</b><br/>Ernest Stewart, Pastor<br/>Sunday School . . . . . 10:00 a.m.<br/>Morning Worship . . . . . 11:00 a.m.<br/>*****</p> <p><b>SPANISH ASSEMBLY OF GOD TEMPLO GETSEMANI</b><br/>308 Mississippi<br/>Rev. Alejandro Ruiz Jr.<br/>983-2864 or 983-5286<br/>Sunday School . . . . . 10:00 a.m.<br/>Morning Worship . . . . . 11:00 a.m.<br/>Evening Evangelistic Service . . . . . 6:00 p.m.<br/>Wednesday:<br/>Family Night . . . . . 7:00 p.m.<br/>*****</p> <p><b>ST. MARY MAGDALEN CATHOLIC CHURCH</b><br/>Floydada<br/>Father John Olig<br/>Deacon Ricky Vasquez<br/>Sunday Mass . . . . . 11:30 a.m.<br/>Tuesday Mass . . . . . 6:30 p.m.<br/>Wednesday Mass . . . . . 6:30 p.m.<br/>Rosary recited 1/2 hour before each Mass<br/>Phone: 983-5878<br/>*****</p> <p><b>TEMPLO BAUTISTA SALEM</b><br/>Lockney<br/>Pedro Reyes, Interim Pastor<br/>Sunday School . . . . . 9:45 p.m.<br/>Worship Service . . . . . 11:00 a.m.<br/>Christian Training . . . . . 5:00 p.m.<br/>Evening Worship . . . . . 6:00 p.m.<br/>Wednesday:<br/>Prayer Meeting . . . . . 7:30 p.m.<br/>*****</p> <p><b>TEMPLO BETHEL SPANISH ASSEMBLY OF GOD</b><br/>Washington and 1st St.<br/>Lockney 652-1008<br/>Interim Pastor, Eliseo Ovalle<br/>983-6202<br/>Sunday School . . . . . 9:45 a.m.<br/>Morning Worship . . . . . 11:00 a.m.<br/>Evening Worship . . . . . 5:00 p.m.<br/>Wednesday Service . . . . . 7:00 p.m.<br/>*****</p> <p><b>TEMPLO EVANGELICO PENTECOSTAL CHURCH</b><br/>515 E. Missouri, Floydada<br/>Sunday School . . . . . 9:45 a.m.<br/>Evening Worship . . . . . 5:00 p.m.<br/>Wednesday Service . . . . . 7:00 p.m.<br/>*****</p> <p><b>TEMPLO LIBERTAD</b><br/>203 SE 2nd, Lockney<br/>652-2793<br/>Pastor Juan A. Gutierrez<br/>Wednesday Evening . . . . . 7:30 p.m.<br/>Sunday School . . . . . 10:00 a.m.<br/>Sunday Worship . . . . . 5:00 p.m.<br/>*****</p> <p><b>TEMPLO NUEVA VIDA</b><br/>Rev. Herman Martinez<br/>308 W. Tennessee, Floydada<br/>Sunday School . . . . . 10:00 a.m.<br/>Prayer Service . . . . . 2:00 p.m.<br/>Evening Worship . . . . . 5:00 p.m.<br/>Tuesday:<br/>Evening Service . . . . . 7:30 p.m.<br/>Thursday Service . . . . . 7:30 p.m.<br/>*****</p> <p><b>TRINITY CHURCH</b><br/>500 W. Houston Floydada<br/>Interdenominational Church<br/>Henry Russell, Pastor<br/>983-5499<br/>Sunday School . . . . . 9:45 a.m.<br/>Morning Worship . . . . . 10:40 a.m.<br/>Sunday Evening . . . . . 6:00 p.m.<br/>Wednesday . . . . . 7:00 p.m.<br/>4th Sunday Singing . . . . . 6:00 p.m.<br/>*****</p> |
|----------------------------------------------------------------------------------------------------------------------------------------------------------------------------------------------------------------------------------------------------------------------------------------------------------------------------------------------------------------------------------------------------------------------------------------------------------------------------------------------------------------------------------------------------------------------------------------------------------------------------------------------------------------------------------------------------------------------------------------------------------------------------------------------------------------------------------------------------------------------------------------------------------------------------------------------------------------------------------------------------------------------------------------------------------------------------------------------------------------------------------------------------------------------------------------------------------------------------------------------------------------------------------------------------------------------------------------------------------------------------------------------------------------------------------------------------------------------------------------------------------------------------------------------------------------------------------------------------------------------------------------------------------------------------------------------------------------------------------------------------------------------------------------------------------------------------------------------------------------------------------------------------------------------------------------------------------------------------------------------------------------------------------------------------------------------------------------------------------------------------------------------------------------------------------------------------------------------------------------------------------------------------------------------------------------------------------------------------------------------------------------------------------------------------------------------------------------------------------------------------------------------------------|---------------------------------------------------------------------------------------------------------------------------------------------------------------------------------------------------------------------------------------------------------------------------------------------------------------------------------------------------------------------------------------------------------------------------------------------------------------------------------------------------------------------------------------------------------------------------------------------------------------------------------------------------------------------------------------------------------------------------------------------------------------------------------------------------------------------------------------------------------------------------------------------------------------------------------------------------------------------------------------------------------------------------------------------------------------------------------------------------------------------------------------------------------------------------------------------------------------------------------------------------------------------------------------------------------------------------------------------------------------------------------------------------------------------------------------------------------------------------------------------------------------------------------------------------------------------------------------------------------------------------------------------------------------------------------------------------------------------------------------------------------------------------------------------------------------------------------------------------------------------------------------------------------------------------------------------------------------------------------------------------------------------------------------------------------------------------------------------------------------------------------------------------------------------------------------------------------------------------------------------------------------------------------------------------------------------------------------------------------------------------------------------------------------------------------------------------------------------------------------------------------------------------------------------------------------------------------------------------------------------------------------------------------------------------------------------------------------------------------|-----------------------------------------------------------------------------------------------------------------------------------------------------------------------------------------------------------------------------------------------------------------------------------------------------------------------------------------------------------------------------------------------------------------------------------------------------------------------------------------------------------------------------------------------------------------------------------------------------------------------------------------------------------------------------------------------------------------------------------------------------------------------------------------------------------------------------------------------------------------------------------------------------------------------------------------------------------------------------------------------------------------------------------------------------------------------------------------------------------------------------------------------------------------------------------------------------------------------------------------------------------------------------------------------------------------------------------------------------------------------------------------------------------------------------------------------------------------------------------------------------------------------------------------------------------------------------------------------------------------------------------------------------------------------------------------------------------------------------------------------------------------------------------------------------------------------------------------------------------------------------------------------------------------------------------------------------------------------------------------------------------------------------------------------------------------------------------------------------------------------------------------------------------------------------------------------------------------------------------------------------------------------------------------------------------------------------------------------------------------------------------------------------------------------------------------|---------------------------------------------------------------------------------------------------------------------------------------------------------------------------------------------------------------------------------------------------------------------------------------------------------------------------------------------------------------------------------------------------------------------------------------------------------------------------------------------------------------------------------------------------------------------------------------------------------------------------------------------------------------------------------------------------------------------------------------------------------------------------------------------------------------------------------------------------------------------------------------------------------------------------------------------------------------------------------------------------------------------------------------------------------------------------------------------------------------------------------------------------------------------------------------------------------------------------------------------------------------------------------------------------------------------------------------------------------------------------------------------------------------------------------------------------------------------------------------------------------------------------------------------------------------------------------------------------------------------------------------------------------------------------------------------------------------------------------------------------------------------------------------------------------------------------------------------------------------------------------------------------------------------------------------------------------------------------------------------------------------------------------------------------------------------------------------------------------------------------------------------------------------------------------------------------------------------------------------------------------------------------------------------------------------------------------------------------------------------------------------------------------------------------------------------------------------------------------------------------------------------------------------------------------------------------------|

This page is brought to you by the following sponsors:

<p><b>Barwise Gin</b> Barwise Community 983-2737</p>	<p><b>Goen &amp; Goen Insurance</b> 102 E. California 983-3524</p>	<p><b>Oden Chevrolet-Olds</b> 221 S. Main - Floydada - 983-3787</p>
<p><b>Cargill Hybrid Seeds</b> 652-3339, Aiken</p>	<p><b>Floyd County Hesperian-Beacon</b> 111 E. Missouri, Floydada - 983-3737 120 S. Main, Lockney - 652-3318</p>	<p><b>Pay-n-Save</b> 210 N. Main - Lockney 652-2293</p>
<p><b>City Auto</b> 201 E. Missouri - Floydada 983-3767</p>	<p><b>Lighthouse Electric Coop</b> Floydada - 983-2184</p>	<p><b>Payne Family Pharmacy</b> 200 S. Main, Floydada, 983-5111</p>
<p><b>Clark Pharmacy</b> 320 N. Main - Lockney 652-3353</p>	<p><b>Lockney Co-op Gin</b> Lockney - 652-3377</p>	<p><b>Schacht</b> Flowers, Jewelry &amp; Gifts 112 W. Poplar, Lockney, 652-2385</p>
<p><b>Davis Lumber</b> 102 E. Shurbet - Lockney 652-3385</p>	<p><b>Lockney Ins. Agency</b> 105 N. Main - Lockney - 652-3347</p>	<p><b>Sunshine Pump</b> Oliver Clark Box 266, Lockney, Tx. 79241 983-5087 Mobile 774-4412</p>
<p><b>Garcia's OK Tire Store</b> 308 S. Main - Floydada - 983-3370 511 1st - Olton, Tx. - 285-7796</p>	<p><b>Moore-Rose-White Funeral Home</b> 329 W. Calif., Floydada, 983-2525 402 S. Main, Lockney, 652-2211</p>	<p><b>American State Bank</b> Member FDIC 217 W. California - 983-3725</p>



Attend the Church of Your Choice on Sunday.