

## Stratford Cage Tourney Opens Jan. 4

### Freshman Wins Place On All-Tourney Team



Elaine Cummings

Elaine Cummings, freshman guard on the Stratford Elkettes team, was selected on the six-girl all-tournament team at Panhandle. She is the daughter of Mr. and Mrs. Ernest Cummings.

### Keep People Informed

To illustrate the importance of timely and accurate communications as essential to public understanding of a subject, J. M. Patterson of the American Oil Company said:

"Robert Fulton was credited with running the first profitable steamship in 1807. But by 1807 James Rumsey of Shepherdstown, West Virginia, had been running one on the Potomac River for 18 years. However, it was without benefit of the New York press enlisted by Fulton.

"Longfellow — another professional communicator, immortalized Paul Revere's midnight ride from Boston to Lexington. But how many people knew the British intercepted him enroute to Concord and that Paul had to walk back to Lexington? (The) same night, Israel Bissell started a four-day, six-hour ride from Watertown, Massachusetts, to Philadelphia to take news to the Continental Congress that the war had started.

"Attitude surveys show most people think everything is too high. But we were surprised to learn that the public thought that when it comes to raising prices, gasoline was second only to haircuts.

"Actually gasoline prices are at a 10-year low, but direct gasoline taxes are at an all-time high. Taxes went up 55 per cent in the last 10 years. Direct taxes alone add over 50 per cent to retail prices.

"Today's gasoline is of much better quality, and does 78 per cent more work at 24 per cent less cost than 30 years ago."

The foregoing shows the importance of continuous communications in the right places and at the right times if the people are to be informed.

### Stratford Plays At Spearman January 2

Stratford Elks, Elkettes, Boys and Girls B-Teams will play at Spearman Tuesday of next week. The games will start at 4:30 p. m.

Stratford's annual invitational basketball tournament will open at 9:00 a. m. Thursday, January 4, with 11 boys and 10 girls teams competing for trophy awards. The games will continue through Friday and Saturday with the finals being played at 7:45 and 9:00 p. m. Saturday.

Trophies will be awarded to teams winning first, second, third and consolation honors in the tournament in both boys and girls divisions. Sportsmanship trophies will be presented to both boys and girls teams. Ten all-tournament team medals will be presented to boys participating in the tournament and twelve all-tournament medals will be presented in the girls division. Plaque awards will be presented to the coaches of winning teams in both boys and girls divisions.

The tournament is set up to be played in three sessions of three games each during the Thursday, Friday and Saturday schedule with additional games being played on the opening day.

Outstanding visiting teams to play in the tournament will include the Hedley girls, one of the best class B school teams in the Panhandle, and Adrian and Channing boys teams, said to be strong contenders of class B schools.

#### Thursday January 4 Schedule

- 9:00 a. m. (Game 1) Texline and Channing girls.
- 10:15 a. m. (Game 2) Sunray and Texline boys.
- 12:00 Noon (Game 3) Sunray and Adrian girls.
- 1:15 p. m. (Game 4) Hartley and Hedley boys.
- 2:30 p. m. (Game 5) Hedley and Hartley girls.
- 3:45 p. m. (Game 6) Dalhart and Panhandle boys.
- 5:30 p. m. (Game 7) Tehoma and Dalhart girls.
- 6:45 p. m. (Game 8) Channing and Texhoma boys.
- 8:00 p. m. (Game 9) Stratford and Panhandle girls.
- 9:15 p. m. (Game 10) Stratford and Claude boys.

#### Friday January 5 Schedule

- 9:00 a. m. (Game 11) Losers of the Stratford and Panhandle girls game and winners of the Texline and Channing girls game.
- 10:15 a. m. (Game 12) Winners of the Hartley-Hedley boys game and the winners of the Sunray-Texline boys game.
- 12:00 Noon (Game 13) Winners of the Texline-Channing and Sunray-Adrian girls games.
- 1:15 p. m. (Game 14) Losers of the Stratford-Claude and Hartley-Hedley boys games.
- 2:30 p. m. (Game 15) Losers of the Hedley-Hartley and Texhoma-Dalhart girls games.
- 3:45 p. m. (Game 16) Winners of the Channing-Texhoma boys game and Adrian boys.
- 5:30 p. m. (Game 17) Losers of the Stratford-Panhandle and Texline-Channing girls and Sunray-Adrian girls games.
- 6:45 p. m. (Game 18) Losers of the Dalhart-Panhandle boys and Channing-Texhoma boys games.
- 8:00 p. m. (Game 19) Winners of the Stratford-Panhandle girls game meet the champion of the Texline-Channing and

### Feedlot Bull Gains 4.39 Pounds A Day In 56 Day Feeding Test

A bull belonging to Max A. Blau of Follett gained 4.39 pounds a day in the 56 day weight gaining feeding test conducted by the Texas Agricultural Experiment Station in a recent beef cattle improvement test. Other bulls in the same pen gained 3.86 and 3.59 pounds a day.

Bulls owned by Robert O. Andrews of Olney gained 3.70 and 3.59 pounds a day. A bull owned by Leon Noack of Rockdale, Texas gained 3.66 pounds a day.

All of these bulls were from Performance Registry International herds, and sired by high gaining P.R.I. registered feed lot bulls.

Nine pens of bulls made an average gain of 3 pound a day or more. The 2.72 pound average daily gain across the barn during the 56 day period, combined with the best average weight per day of age, indicates an outstanding set of bulls were used in the experiment.

Seven bulls gained more than 200 pounds during the 56 days. Bulls that made less than two

pounds average daily gain had one or more physical disturbances that required medication. One bull was removed from the test because of continued symptoms.

The next progress report will be the 112 day test weight. Field day and sale will be held March 22, 1962.

#### Fed Free Choice Ration

Sweet hulls (95% cotton seed hulls, 5% molasses) 39.5%.  
Hegari fodder 20%.  
Alfalfa hay 10%.  
Milo grain 10%.  
Cotton seed meal 10.5%.  
Wheat mixed feed 5%.  
Oats 5%.

Three bulls of Richard M. Buckles used in the feeding test, made daily average gains of 2.29 pounds. Their weight per day of age was 2.42 pounds. During the 56 day feeding test they gained an average weight of 128 pounds.

The University of Texas has a permanent fund which is increasing by approximately \$17 million a year.

#### Sunray-Adrian girls games.

9:15 p. m. (Game 20) Winners of the Stratford-Claude boys game meet the champion of the Hartley-Hedley and Sunray-Texline boys bout.

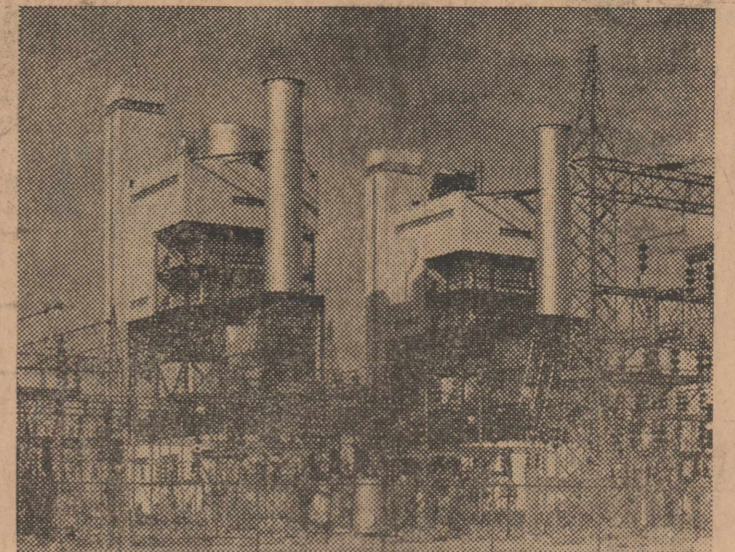
#### Saturday January 6 Schedule

Games will be played at 9:00 a. m., 10:15 a. m. and 11:30 a. m. in the Saturday morning session.

Saturday afternoon games are scheduled for 2:00 p. m., 3:15 p. m. and 4:30 p. m.

The evening games in which the third place winners of the boys division will be decided, and the finals in the girls and boys divisions will be played at 6:30 p. m., 7:45 p. m. and 9:00 p. m.

Coach Ronald Mills says that the Stratford tournament should provide some of the best basketball games which will be played at a Panhandle tournament during the current season.



Major addition to Southwestern Public Service Company's facilities in 1962 will be the second 112,500 kilowatt generator at Nichols Station, northeast of Amarillo. The new unit is pictured at right. The electric light and power company will invest approximately \$20,000,000 in this area in 1962 to meet expanded needs for electric power.

### Southwestern Public Service Co. Enlarging Electrical Production

#### Southwestern Public Service

Company will invest approximately \$20,000,000 in its service area in 1962, A. R. Watson, president of the electric light and power company, has announced.

1962 will be the second year of a five year expansion program, announced at the start of 1961, which anticipates the investment of \$117,000,000 of new money in the region by the end of 1965. At that time the company's investment in plant and equipment will be nearly \$400,000,000, or ten times greater than it was in 1942, when the company took its present form.

Two major generating station projects call for a large portion of the 1962 construction budget. The second unit at the company's Nichols Station, located northeast of Amarillo, will go into service in early summer, while, at Plant X, near Earth, Texas, construction will start this spring on the fourth unit at that station.

The number two unit at Nichols, a 112,500 kilowatt generator, will double the capability of that plant. Also, when it goes into service, the generating capability of the twelve plants in Southwestern's system, will pass the 1,000,000 kilowatt mark.

"There is no more accurate evidence of the growth of a region than the increase in the amount of generating capability necessary to meet its electric service needs. You can readily see the ten year growth in this area when you realize that our generating capability in 1951

was 354,000 kilowatts, or just a little more than one-third of what it will be when this second unit goes into service at Nichols," Watson pointed out in highlighting the significance of going over the 1,000,000 kilowatt capability figure.

The evidence is equally conclusive that the electric company does not anticipate a growth stoppage in the future. The generating unit for which ground will be broken at Plant X this spring, will have a generating capability of 210,000 kilowatts, the largest single generator in Southwestern's system.

"Nothing is as perishable as electric service. It is needed and used, the instant that it is created. But, we must plan from three to five years ahead to have the power available at that instant the customer requires it. This requires a faith in the future of our region, and we have it", Watson said.

Transmission lines construction and planning will call for a 1962 investment of nearly \$7-500,000. The majority of the projects are designed to provide additional transmission circuits for the region, and to have the facilities available for anticipated increasing loads in industrial, agricultural and commercial fields.

A transmission line investment in 1962 with a long-range view is the engineering and survey work and right-of-way purchase for additional lines capable of transmitting 230,000 volts. The company is in the process of increasing its major transmission voltage from 115,000 to 230,000 volts. Doubling the voltage of a line increases the amount of power that the line will carry by four times. At the present time, construction has been completed on line segments capable of carrying 230,000 volts from the Riverview Plant, at Borger, to Plant X and from Cunningham Station to Artesia, New Mexico. When the section from Plant X to Cunningham is completed and necessary substations are installed, the entire main transmission line extending from Borger, Texas, to Artesia, New Mexico, can be operated at the 230,000 volt capacity.

"We shall continue, as we have in the past to make the investment necessary to provide electric service for this growing area — well in advance of the actual need. And we shall make every effort, too, to keep electric service the biggest value in our customer's budgets. I think the fact that the unit cost of our service has decreased more than 20% in the last decade, while the cost-of-living has risen 23% is proof of our efforts to accomplish this goal," Watson said in conclusion.

The \$21 million Shamrock Hotel in Houston, Texas, contains 66 shades of green.

## HAPPY NEW YEAR



### Highlights And Sidelights From The State Capital At Austin

(By Vern Sanford)

"Operation Deathwatch," and ends at midnight New Years Day, is the most urgent business which began Saturday midnight

**Good Luck**  
and thanks for your patronage.

**Gulf Super Service**

## Want Ads

### Wanted

WANTED: Sewing to do in my home. Will also cover buckles, make button holes and belts. — Mrs. W. J. Lowe, Phone 396-4381. 36-tfc

### Help Wanted

ADVANCED AGE makes available Rawleigh Business in Sherman and Moore Counties. Good opportunity for industrious person to supply demand for well known products. Write at once to Rawleigh TXL-20-203, Memphis, Tenn. 1-2-4-c

### Lost

Five nice Hereford Steers strayed from my farm, branded "R" on right hip. — R. M. Trainham. Finder please call 396-1856. 52-2tc

LOST: One Childrens' size 13, red overboot. — Mrs. Phillip Bain, Phone 396-4156. 48-tfc

### Houses For Sale

FOR SALE: Two bedroom modern home with half-basement, wall to wall carpeting, built-in refrigerator and stove; on 2 1/2 lots on paved street. — Wayne Cummings, Phone 396-2066 or 396-5551. 48-tfc

FOR SALE: Three bedroom brick veneer home trimmed in stone. — Miss Minnie Laura Jackson. 51-tfc

FOR SALE: New modern three bedroom house on south Chestnut Street. Good loan value, small down payment. See V. O. Lasley, Phone 396-5911. 41-tfc

FOR SALE: Our home at Seventh and Maple, for immediate possession. — Joy D. Smith, Phone 396-3926. 41-tfc

FOR SALE: House on 2 1/2 lots, paved, across street from park. See Edward Brannan. 29-tfc

OUR HOME located at 8th and Poplar for sale. Priced considerably under appraised loan value. — E. A. McBryde, Phone 396-4106. 34-tfc

FOR SALE: Three bedroom house, located on seven lots, having paid for. — Roy Mitchell. 24-tfc

FOR SALE: Two Story 7-room house on four lots. House is insulated and has new roof. — C. C. Plunk. 15-tfc

FOR SALE: Income Property, one bedroom furnished house and two bedroom unfurnished house. Both modern. See F. L. Yates. 11-tfc

### Announcements

I WILL be in Stratford next week. Anyone needing pianos tuned, leave word at the Star office. — John Mauser. 1-2tc



STRATFORD LODGE 874

Grady R. Mullican, WM.

W. S. Frizzell Jr., Sec'y.

STATED COMMUNICATION

Third Thursday Every Month

7:00 P. M.

### For Rent

FOR RENT: Two room furnished apartment. — Mrs. Paul Aduddell, Phone 396-2846. 1-tfc

FOR RENT: Four room modern unfurnished house. — See Joe Walsh. 1-tfc

FOR RENT: Small modern house on pavement. — G. R. Garrison, Phone 396-2451. 52-tfc

### Special Services

COMPACT Vacuum sales and service, also used vacuums. Call W. D. Brannan, Phone 396-3741. 43-tfc

I TAKE Orders for Knapp Shoes. — Jim Farris, Phone 396-4136, Stratford. 36-tfc

FOR ALL kinds of commercial or home refrigeration service, call Russell Beal, phone 396-5121. 5-tfc

FOR THE BEST in house moving, call Chestnut 9-2084. — E. O. Matthews, Dalhart. 50-tfc

FREE Removal of dead stock. Call 396-3736 Stratford, or DI 9-2211 Amarillo Collect. — Amarillo Rendering Co. 49-tfc

### For Sale

SEVERAL Good used Living Room Suites. — McMahan Furniture Co. 43-tfc

We have a product for vinyl and other floors known as Seal Gloss acrylic finish. It's terrific. — McMahan Furniture Co. 1-tfc

FOR SALE: Used Westinghouse Clothes Dryer. — Mrs. Phillip Bain, Phone 396-4156. 48-tfc

FOR SALE: One-half Shetland pony; small saddle and bridle; One extra good kid pony; some used riding equipment. Try me, I'll trade. — Joe Flores. 51-2tc

HAY, Alfalfa and Prairie Hay. See J. I. Mooney. 36-tfc

CONDITION Your lawns with Fax Crabgrass killer and Turf Magic fertilizer. — Van B. Boston's Big Trading Post. 45-tfc

You can't get better Carpet Deals any where than you can at McMahan Furniture Co. 5-tfc

Stone-Field custom tailored suits, sport coats and slacks. Measured to fit. See Edward Brannan, Phone 3521. 46-tfc

FOR SALE: 24x130 foot building, double boxed walls, metal roof. — Robert Bolster, Phone 396-4726. 50-tfc

FOR SALE: Two corner lots across street from school; double garage and driveway, trees and shrubs. — Mrs. J. G. Cummings, Phone 396-3836. 50-4tc

For the best buys in Furniture and carpet, see Woody Furniture Co., Dumas, Texas, call WE 5-4811 collect for free estimate. 38-tfc

FOR SURFACE Pumps and submerged pumps, rotary water well drilling, well repair and septic tank pumping; for best prices contact Ralph L. York, Texhoma, Oklahoma, Phone Collect 3871. 40-tfc

"Enchanted Rock" between Fredericksburg and Llano, Texas, is a piece of granite some 500 feet high, and covering about a square mile.

# Your Invitation

"Come unto me, all ye that labour and are heavy laden, and I will give you rest." Matthew 11:28

At the time Jesus uttered these words the world was filled with hate and war and evil. Murder and robbery were common along the highways. Thousands starved and suffered while the rich feasted and the well-to-do were complacent.

To the great mass of suffering, weary, downtrodden, bleeding humanity Jesus offered this invitation, — the greatest ever offered man. Many accepted, many rejected it.

The invitation is still extended to humanity, even to our so-called modern, enlightened world. What does it offer?

It offers peace of mind and heart, a fathomless calm, an escape from tranquilizing pills and ulcers and nervous breakdowns. It offers everything that is so much in demand today.



Read your BIBLE daily and GO TO CHURCH SUNDAY

of the Governor's office today.

Gov. Daniel has written every Texas sheriff and chief of police, asking each law officer in Texas to help make the State's streets and highways safer for Texas drivers during the 10-day holiday season.

Governor Daniel said the anticipated toll of 88 holiday traffic deaths is the lowest estimate ever made, and stated "it pinpoints the progress of recent years in reducing Texas traffic tragedies during the year-end holiday. However, even more lives can be saved this year if the people obey the laws and drive safely."

Newspaper publishers, the Texas Press Association, broadcasters and billboard owners are cooperating in the campaign, urging Texans to take individual responsibility for traffic safety, and asking drivers to keep headlights burning during daylight hours as a reminder that safe and legal driving is the best way to avoid holiday crashes.

**Banks Still Balk**  
Most Texas banks balked at

the Legislative committee's request that they make their dormant accounts public.

Five of the 38 banks subpoenaed to appear before the committee filled out questionnaires by deadline time. Twenty-two banks were represented at the hearing. Eleven failed to show up.

Houston's City National Bank attorney Raybourne Thompson, speaking on behalf of all 22 banks present, and two others, requested that the committee get an opinion from the Attorney General as to whether it has the power to force testimony "that would destroy banker-depositors confidences."

Thompson said if the committee refused, the banks would testify "under protest."

The Committee had sent questionnaires to 469 national banks in Texas. Only 66 gave some or all information about the number of dormant accounts they hold and the amounts in the accounts.

Out of the 536 banks queried by the committee, only 100 furnished the information.

Prime reason for the specialty called session by Gov. Price Daniel is the enactment of laws to force banks to locate the owners or heirs of unclaimed depositories.

Governor Daniel feels that little effort is being made by the banks to find the rightful owners. He says that more than \$3,000,000 is being held unlawfully by the financial institutions. Some banks are even levying charges against the ac-

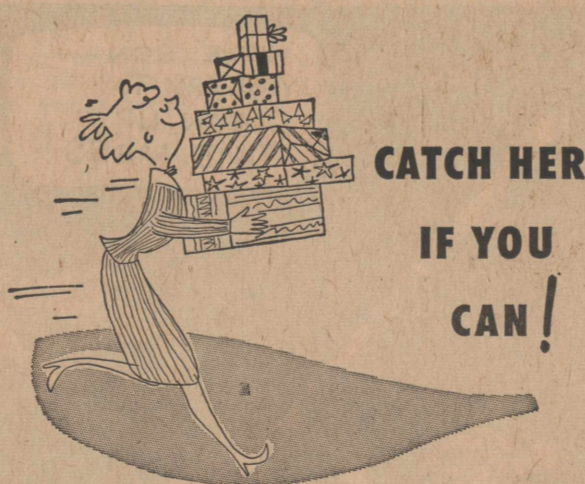
### The Stratford Star

Published Weekly By Brown Ross

Entered as second class matter at the Post Office in Stratford, Texas, under the act of March 8, 1879.

Subscription Rates \$3.00 per year in Sherman and adjoining counties. \$3.50 per year outside first zone.

Classified and Legal 3 cents per word first insertion, 50c minimum, 2 cents per word subsequent insertions. Display rates on application.



Football season may be shot but the "gol gol" season is just beginning for the housewife and mother.

Christmas is practically here. In addition to the accelerating list of things to be done in the kitchen and about the home, the average housewife still has to do the bulk of her Christmas shopping.

So, catch her if—and when—you can. She's on the run.

But, some don't run as hard as others—or as far. Some wise shoppers have learned to save time, money, steps; and at the same time realize guaranteed satisfaction with every purchase... simply by shopping locally where prices are best and folks most eager to please.

Trade at Home for Your own sake! and community progress

committee to adopt a resolution making the mailing list available to all Democratic candidates, for use in the party primaries. Wilson has accepted an invi-

tation to face opponent John Connally in a debate.

Weslaco attorney Jon Dee Lawrence extended the invitation to both gubernatorial candidates. (Continued on Page 7)

## DR. G. D. CLAYTON

### OPTOMETRIST

DALHART MEDICAL AND PROFESSIONAL BLDG.

HOURS: 9:00—12:00 1:30—6:00  
9:00—12:00 SATURDAYS

Phone 249-2841

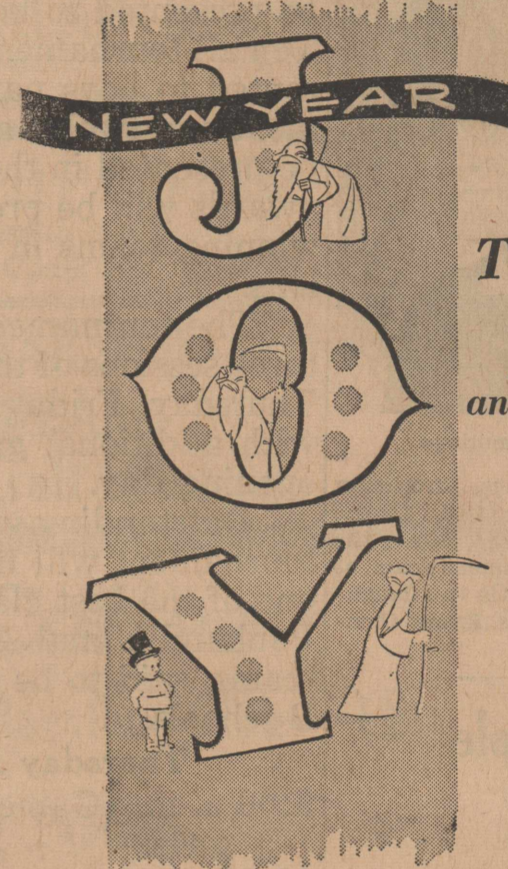
Dalhart, Texas

## WE HANDLE BUILDING MATERIALS

General Contractors

WE SUPPLY MATERIALS OR MATERIAL AND LABOR. We Build Cabinets, Gun Cases, Coffee Tables and End Tables to specifications.

Horne & Sons Builders Supply  
901 CHICAGO STREET DALHART, TEXAS PHONE 249-4306



Thank you for your good will and support last year.

1962

## Moore Implement Co.

Mr. and Mrs. Ed Moore

## Seasons Greetings

To all we extend warmest greetings and best wishes.



1962

## HAPPY NEW YEAR



Your gracious patronage has been much appreciated.

## THE JOY SHOP

Mr. and Mrs. Edward Brannan

## Plunk 66 Oil Co.

### New Labor Service Is Available

The Texas Employment Commission will inaugurate a new service to the farmers and farm workers of the Texas Panhandle beginning in January, 1962, according to a statement by Charles J. Warner, manager of the Borger office.

"The Borger office of TEC is intensifying its efforts to locate qualified domestic workers to

fill the needs of our farmers," Warner said, "and we have added a Farm Placement Interviewer to our staff. This young man, Jesse D. Young, will be at the Farm Bureau Office, 1122 South Main Street, Perryton, between the hours of 8:30 a. m. and 11:00 a. m.; and at the Legion Memorial Building, Gruber, between the hours of 1:00 p. m. and 3:00 p. m. on Thursday, January 4, 1962, and every other Thursday thereafter." Warner continued, "additional service will be scheduled for Dumas and Dalhart and information will be released as to times and dates during the coming week. All farm workers of the area who are unemployed and seeking work; and farmers having need for farm hands, are urged to contact us while we are in your locality."

"We plan to do everything possible to recruit the workers necessary to perform the required farm work and will continue this service on a two week basis to serve the agricultural workers and farmers of the Texas Panhandle. All unemployed

#### ALCOHOLICS ANONYMOUS

AA Group Meets in Dalhart Every Tuesday — 8:00 P. M.

Stratford Phone: 396-3533

Dalhart Phone: 249-4214 or 249-2040

## HALF-PAST TEEN



### Sponsor High School Science Symposium

Southwestern Public Service Company, along with 10 other investor-owned electric companies in Texas, will once again sponsor a nuclear science symposium for high school students and instructors in 1962, it has been announced by A. R. Watson, president of the electric light and power company.

The 1962 symposium will be held at the University of Texas from June 10 through 13. The Austin campus was also the scene of last year's meeting, attended by more than 400 students and instructors, including more than 30 from Southwestern Public Service Company's service area.

"The 1962 symposium is part

of the continuing program of the Texas Atomic Energy Research Foundation, of which we are members, to advance knowledge of nuclear science through research and education. It also provides an opportunity for our high school students and instructors to meet with outstanding scientists from across the country," Watson said.

Students and instructors selected to attend the June symposium will be announced during the second semester of the 1961-62 school year, Watson announced.

farm workers and farmers who will need workers, are urged to see us while we are here," he concluded.

of the continuing program of the Texas Atomic Energy Research Foundation, of which we are members, to advance knowledge of nuclear science through research and education. It also provides an opportunity for our high school students and instructors to meet with outstanding scientists from across the country," Watson said.

Students and instructors selected to attend the June symposium will be announced during the second semester of the 1961-62 school year, Watson announced.

### Greater PAMC Fund Is Growing Rapidly

GOODWELL — Contributions are beginning to come in for the "Greater Panhandle A. & M. Fund" according to Milton England, executive secretary of the Panhandle A. & M. Association, parent organization to the fund.

Melvin Ridley, Guymon, was named chairman of the fund at a recent meeting; Duane Schaffer, Texhoma, is vice chairman; Milton England, professor of animal husbandry at Panhandle A. & M. is secretary Dr. Marvin McKee, president of Panhandle A. & M. was named treasurer.

Moneys received in the fund will be administered by a board of directors and is to be used for an Endowment Fund, for student loans, and to purchase needed equipment for the various divisions of the college. Contributions are deductible for donors in the determination of federal income taxes and Oklahoma income taxes under section 170 (c) of the internal revenue code of 1954. Requests to the association are exempt from federal estate taxes and Oklahoma inheritance taxes; the latter includes exemption in (Continued on Page 7)

### Assembly Of God Church

(Rev. Leland Lewis, Pastor)  
 Sunday School 10:00 a. m.  
 Morning Worship 11:00 a. m.  
 Young People 6:00 p. m.  
 Children's Church 6:00 p. m.  
 Evangelistic Service 7:00 p. m.  
 Wednesday night service at 7:30 p. m.  
 The public is invited to all services.

### Christian Church

(Rev. H. Cecil Bever, Minister)  
 Sunday School 9:45 a. m.  
 Morning worship 10:45 a. m.  
 Junior youth fellowship 5:00 p. m.  
 Chi Rho youth fellowship 5:00 p. m.  
 C. Y. F. (high school) 5:00 p. m.  
 Evening worship 6:00 p. m.  
 Wednesday  
 Adult choir practice 8:00 p. m.  
 Mid-week prayer study and prayer meeting 7:30 p. m.  
 A friendly welcome awaits you at any service of the First Christian Church.

### Methodist Church

(Rev. Raymond T. Dyess, Pastor)  
 Sunday School 9:45 a. m.  
 Morning worship 11:00 a. m.  
 M.Y.F. 6:00 p. m.  
 Intermediate Fellowship 6:00 p. m.  
 Junior additional session 6:00 p. m.  
 Evening worship 7:00 p. m.  
 Wesleyan Guild meets second Wednesday of each month at 7:30 p. m.  
 Choir practice: First and third Wednesday of each month, 7:30 p. m.  
 Official board meetings and all commissions second Wednesday of each month, 7:30 p. m. at the church.  
 W.S.C.S. Meetings: Third Wednesday of each month at the church at 2:30 p. m.  
 Circles meet the first Wednesday of each month; Mary Ethel Circle at 9:30 a. m., Flora Foreman Circle at 2:30 p. m., Florence Mullins Circle at 9:30 a. m.  
 Methodist Men meet the fourth Wednesday night of each month at 7:00 p. m.  
 MYF council meetings: First Sunday of every third month at 5:00 p. m.

### Baptist Church

(M. E. Upchurch, Pastor)  
 Sunday School 10:00 a. m.  
 Morning Worship 11:00 a. m.  
 Training Union 6:30 p. m.  
 Evening Worship 7:30 p. m.  
 Mid-week prayer service 7:00 p. m. Wednesday.

### Church of Christ

(Arthur L. Golden, Minister)  
 Sunday Services  
 Bible Study 10:00 a. m.  
 Worship 10:55 a. m.  
 Evening Worship 6:00 p. m.  
 Tuesday  
 Ladies class 9:30 a. m.  
 Wednesday  
 Bible study 7:00 p. m.  
 A friendly welcome awaits you at all services.

### Catholic Church

(Rev. James W. Sonderman, Mission Pastor, Phone Dalhart, CH9-4128)  
 Sundays  
 Confessions: 7:30 to 8:00 a. m.  
 Mass: 8:00 a. m.  
 Catechism classes from 3:00 to 4:00 p. m. Saturday.

**NOTICE**  
 We Will Close Our Books For The Year  
 At 12 Noon on Saturday, Dec. 30.  
 THOSE CUSTOMERS DESIRING TO DO BUSINESS FOR THIS YEAR'S TAX PURPOSES SHOULD COME BY BEFORE THAT TIME.  
**STRATFORD GRAIN CO.**

**Happy New Year**

We pray each pealing New Year bell is heralding a year of great happiness and prosperity for you and all our friends.

1962

**Stratford Motor Co.**  
 (INCORPORATED)

**HAPPY NEW YEAR**

From all of us to all of you our best wishes. Thanks for your patronage.

1962

**CITY DRUG**

*New Year Cheer*

1962

We look to many hours of happy association with our good friends and patrons during the coming year. We hope the year will be a happy and prosperous one.

**Foxworth-Galbraith Lumber Co.**

**HAPPY NEW YEAR**

1962

Here's hoping your New Year will be a glorious one, sprinkled with good fortune and joy. Our sincerest best wishes to you.

**The Stratford Star**  
 Mr. and Mrs. Brown Ross, Martha and Crissy

We wish you contentment during 1962. Best Wishes!

**C&E Paint & Body Shop**  
CLYDE PITTMAN

**CANDY** by Tom Dorr

**Sorority Had Secret Pal Party Thursday**

The Nu Beta Chapter of Beta Sigma Phi held its annual secret pal party December 21 in the parlor of the First Methodist Church hosted by Mrs. Jack Vincent and Mrs. Alvin Engelbrecht.

Members brought food and clothing which were later presented to a needy family.

Plans for the Valentine Ball February 10 were discussed.

Following the business meeting members exchanged "secret pal" gifts and delicious refreshments were served.

Mrs. Charles Carter gave the program, combining "Your Social Poise and Grace" with a most entertaining presentation of "The Spirit of Christmas."

Those attending, in addition to those already mentioned, were: Mesdames Bruce Biddy, James Bradley, Paul Chesmer, Don Dietrich, Joe Flores, Don Gurley, Oran Howell, V. O. Lasley, Walter Lasley, Gail McDaniel, Bill Reed and Albert Zimmer.

*...about that time*

We wish you a New Year you will long remember as your happiest. Best wishes.

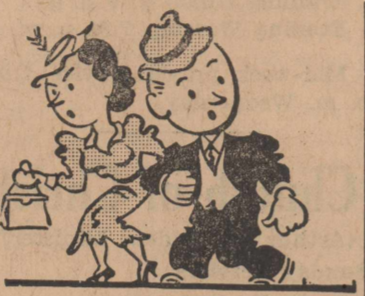
**Cotney Chevron Station**

HAPPY New Year

Here's wishing you a future of undimmed peace and happiness. Best of luck to all.

**Jack's 66 TIRE & SERVICE**  
JACK GOLLADAY

**Town Talk**



their son and daughter-in-law, Mr. and Mrs. Tony Maples and Craig of Amarillo, and their son-in-law and daughter, Mr. and Mrs. Forrest Ruegger and Karen of Plainview.

Dinner guests in the home of Mr. and Mrs. Bill French and Sandra at their home near Keyes, on Christmas Day were Mr. and Mrs. Walter Lee, Mr. and Mrs. Russell Garrison, Mr. and Mrs. Earl Phelps and Jimmy, Mrs. Bill Garrison, Rusty and Brenda, Mr. and Mrs. Harry Oquin, Mrs. N. D. Kelp, M. J. French, Mr. and Mrs. Cliff Goff and children, and Kenny and Jimmy Gupton.

Ben Tom James of Boise City spent this week visiting Charley Crabtree.

Mr. and Mrs. Russell Albert and Becky spent Christmas with his mother, Mrs. Mattie Albert in Colorado City, Texas.

Mr. and Mrs. Ralph Hampton were hosts at a dinner for the Newton Crabtree family in their home at Kerrick Saturday. Those present were Mr. and Mrs. Newton Crabtree, Charley and Joe, Mr. and Mrs. Don Ellison and children of the Spurlock Community, Mrs. Burton Olsen of the Oslo Community and Mrs. Charles Durr of Kerrick.

Joe Crabtree, student in Oklahoma State College in Stillwater, arrived home Wednesday evening of last week to spend Christmas with his parents, Mr. and Mrs. Newton Crabtree. He returned to Stillwater Tuesday morning.

**Among the Sick**

Little Jimmy Lee Penrod, seven year old son of Mr. and Mrs. J. L. Penrod, who has been in Wheatridge Hospital at Denver, Colorado, spent Christmas at home with his parents. Jimmy Lee has had dental work done, and now has both legs in casts. Mr. and Mrs. Penrod brought him home Friday night, and are to return him to the hospital Friday.

Mr. and Mrs. W. C. Maples spent Christmas with their son and daughter-in-law, Mr. and Mrs. Tony Maples and Craig, in Amarillo.

Miss Linda Riffe, student at SMU in Dallas, has been spending the holidays with her parents, Mr. and Mrs. Earl Riffe, and other relatives. Her roommate, Miss Susan Sheets of Spearman, spent Monday with her in the Riffe home.

Texas A. and M. College furnished more officers to the Army in World War II than did West Point.

Mr. and Mrs. Richard Albert and children of Anton visited relatives in Keyes and Stratford Christmas Eve and Christmas Day.

Mr. and Mrs. Newton Crabtree entertained on Christmas Day with a dinner in their home. Those present were Roger Crabtree and son, David, Mr. and Mrs. R. P. Crabtree, Mr. and Mrs. Lymon Potter and son, Gwynn and Ben Tom James, all of Boise City, Mr. and Mrs. Cal Wainscott and three daughters, Mr. and Mrs. Ralph Hampton and children, Nora and Ralph James, Mr. and Mrs. Kenneth Wells, Paul and Jan, all of Kerrick, Mrs. B. R. Crabtree of Dalhart, Mrs. Earl Leonard of West Fork, Arkansas, Mr. and Mrs. Don Ellison and children of the Spurlock Community, Joe and Charley Crabtree.

Paul Leroy Aduddell, Texas A & M student of College Station, is spending the holidays with his parents, Mr. and Mrs. Paul Aduddell.

Mr. and Mrs. Brown Ross, Mrs. Martha Johnson and Crissy were Christmas Eve guests in the home of Mr. and Mrs. Arthur Harryman in Keyes.

Mr. and Mrs. W. C. Maples had as week end guests recently.

**this week's patterns...** BY AUDREY LANE

3137 12 - 20

906

Dress Pattern No. 3137—Suit-ability—This is so easy to cut and sew, make it and you have a little suit that's always on the go. No. 3137 comes in sizes 12, 14, 16, 18, 20. Size 14 takes 3 3/4 yards of 39-inch fabric or 2 3/4 yards of 54-inch. Needlework Pattern No. 906. This 14-inch rag doll is so easy to make. He is cuddly and lovable. Pattern No. 906 contains complete instructions for making doll and clothes. Our Toy and Doll Catalogue is 25 cents. Send 35c for each dress pattern, 25c for each needlework pattern (add 10c for each pattern for first class mailing) to AUDREY LANE BUREAU, Box 1490, New York 1, New York.

HAPPY NEW YEAR 1962

Phillips 66 Tires and Batteries

**Midway Service Station**  
WAYNE CUMMINGS, Manager

**Season's Greetings**

Greetings to our friends everywhere. We hope to serve you during 1962.

**King Equipment Co.**

Arthur - Kathleen Archie - Gladys  
Lloyd - Gail - Jimmy - Ray - Ben

1962

*the happiest New Year to you all.*

**Van B. Boston's BIG TRADING POST**

**BEST WISHES**

*for the new year!*

1962

**Stratford Grain Co.**

# To The People Of The 18th District

(By Walter Rogers)

## The Budget

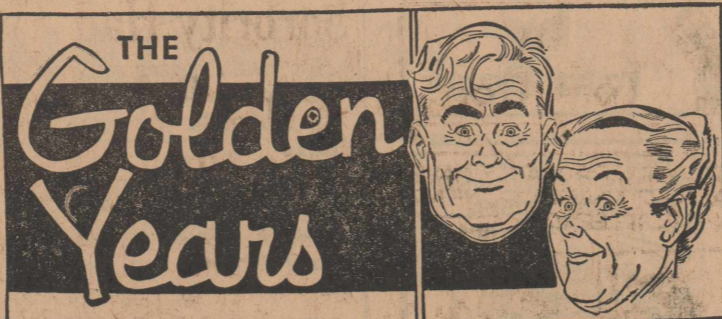
Soon after January 10, 1962, the President of the United States will submit his annual Budget Message to Congress.

### Bill Pendleton

Your Home Town AUCTIONEER

Box 406 — Stratford, Texas

This will be the first official Budget Message to be submitted to the Congress by President John F. Kennedy. The Budget Message for Fiscal Year 1962 was submitted to the Congress on January 16, 1961 by President Eisenhower, having been prepared by his Bureau of the Budget and other departments of the government. Fiscal Year 1962 began on July 1, 1961 and continues through June 30, 1962. The total budget request was \$30.9 billion. The estimated income or receipts during the period were \$28.3 billion. The word "estimated" is used because it is impossible to tell



### By THOMAS COLLINS WHAT YOU PLAN AT 65 — WILL IT BE GOOD AT 75?

"Forced retirement is a good thing, psychologically, if it impresses a man or woman with the truth that he or she must learn to adapt to change . . ."

(This is the view of an expert on retirement who has been watching the pattern of it for ten years. It is a view that many industries hold and one they use to justify their compulsory retirement policies at 65 . . . if a man knows he must retire at 65 he'll prepare; if he doesn't know he won't.)

"But," continued the expert, "when people, having made the initial adjustment to retirement, get to thinking that the problem is solved once and for all, many of them are in for a rude awakening later on . . . because retirement is apt to be only the first of the later-life adjustments a man and his wife may have to make."

(Retirement training programs and counseling services seldom get beyond the initial adjustment: how to collect the Social Security, where to learn a hobby, a road map to St. Petersburg, etc.)

"Even those couples who approach retirement confidently and enjoy the planning and adventure it entails may overlook or fail to face the further upheavals that older age inevitably brings . . ."

(The average couple planning retirement plan for the first six months. Everything beyond that is hazy.)

"Those who buy farms and businesses," the expert continued, "may find themselves able to work at 65, but unable to work later on . . ."

(Those who buy farms at 65 seem particularly blind to the future. Milking a cow twice a day can become an intolerable chore, and farming a field is a muscle job. Those who buy businesses seem to fare better. They can close the doors for a few days if the rheumatism acts up and all they lose is a few sales. Also a business can be sold easier than an old man's farm.)

"Those who plan to keep two places of residence may find, as they move on beyond 65, that they can no longer make semi-annual trips between them . . ."

(Those who hold to their old homes as they venture south to buy new ones—which is a smart thing to do—usually dispose of one home or the other in two to three years, because the traveling becomes too difficult for sure, but also because in that length of time they can know which home they prefer.)

"One piece of advice I would like to pass on to those who are retiring is to be sure that any property they buy can be readily sold without a serious loss in case it becomes necessary to abandon it . . ."

(It is common knowledge that if you want to buy a retirement home dirt cheap you should look up the wife of a retired man who bought one—and who has just died.)

For a copy of the new Golden Years booklet by Thomas Collins, send 35 cents in coin (no stamps) to Dept. NWNS, Box 1672, Grand Central Station, New York 17, N.Y.

just what the actual receipts will be, since these depend upon economic growth and many other factors.

It is not unusual for Presidents to present a budget which reflects that there will be a surplus. For instance, in 1958 the President's Budget Message made this statement: "The President's Budget proposes that the Federal government spend \$1.8 billion less than its estimated revenue in Fiscal Year 1958 — The Budget receipts from taxes and other sources are estimated to be \$73.6 billion in the next Fiscal Year. From this income, the 1958 Budget provides for expenditures totaling \$71.8 billion." When the smoke had all cleared away and actual figures could be found, there was a deficit in the year 1958 of \$2,819 million. This was so because the income of the government was not \$73.6 billion, as estimated, but was only \$69.1 billion.

In 1959, the Budget Message indicated that the budget receipts would be \$74.4 billion and that expenditures would be \$73.9 billion, leaving a surplus of \$500 million. However, in September of 1958 the President's office issued another Budget Message on the 1959 proposals, which was termed "The Mid-Year Review", in which it was stated: "A substantial deficit is now in prospect for Fiscal Year 1959". When the smoke had cleared and actual figures were available, the budget expenditures had amounted to \$80.7 billion as against the original estimate of \$73.9 billion. The income had amounted to \$68.3 billion as against the previous estimate of \$74.4 billion. Hence, instead of a surplus of \$500 million, the result was the largest deficit in peacetime history, to-wit: \$12.4 billion.

In the year 1953, the budget

mounted to \$71 billion, an increase of \$5 billion. However, instead of a \$5 billion surplus, it was discovered that the expenditures had been over-estimated and the taxpayers ended up with only a \$1.5 billion surplus instead of the \$5 billion. But, as you will see in the first part of this newsletter, this surplus was completely obliterated in 1958 because of a \$2.8 billion deficit. So it goes; it seem that the Bureau of the Budget, which is part of the President's official office, is not very good at guessing.

Hence, from reading above, you will not doubt surmise that the public debt has been increased. In Fiscal Year 1953 the public debt was \$266 billion. The debt had a few ups and downs, but in 1960 it reached a figure of \$284.9 (Continued on Page 6)

ANNOUNCING THE QUEEN 'O' CREME IS Open for Business UNDER NEW MANAGEMENT Stop In — And Get Acquainted Hamburgers, Sandwiches, Coffee and Homemade Pies Queen 'O' Creme TOBY AND JUNE CARAWAY

ANNOUNCING THE QUEEN 'O' CREME IS Open for Business UNDER NEW MANAGEMENT Stop In — And Get Acquainted Hamburgers, Sandwiches, Coffee and Homemade Pies Queen 'O' Creme TOBY AND JUNE CARAWAY

NEW YEAR GREETINGS  
It's time to wish our many customers well in the year just dawning.  
T. O. C. Motor Co.

HAPPY NEW YEAR  
FERN'S  
287 Truck Stop Cafe

A Very happy HOLIDAY to you!  
1962  
WITH sincere thanks for your good will and patronage, we wish you a very happy and prosperous New Year.  
Woolsey Appliances

1962  
happy NEW YEAR  
May the new year be kind to you.  
Phelps' Fashionette  
WILL BE CLOSED THROUGH NEW YEARS

## Pre-Inventory Sale

4 Ply 1300x38 Rear Tractor Tires . . . \$77.11  
6 Ply 1400x34 Rear Tractor Tires . . . \$132.95  
6 Ply 1500x34 Rear Tractor Tires . . . \$146.29  
(Plus Federal and State Tax)  
1 Rebuilt Adding Machine  
Plunk 66 Oil Co.

Happy New Year  
1962  
We hope the year gives you much joy.  
The Sewing Center and Saw Shop  
Gladys and Earl Kirkwood

to all of our friends  
HAPPY New Year  
The First State Bank OF STRATFORD  
Your Deposits Insured Up To \$10,000 By Federal Deposit Insurance Corporation

### Economic Highlights

If American businessmen employed the same initiative and drive in foreign markets as they use in their domestic business, the United States could out-sell any competitors in the world. That is the view of L. F. McCollum, who is chairman of the Export Expansion Committee of the U. S. Department of Commerce, and also president of Continental Oil Company. He adds: "The economies of most industrialized nations are booming, and the needs of the underdeveloped countries are tremendous. The European Common Market alone soon will represent a market almost as big as the U. S. today. In the past few years it has been growing at a rate at least twice as fast as that of the U. S."

The Common Market is a force that can, and in all probability will, bring about some-

thing resembling an economic revolution in the world. It began, with comparatively little fanfare, in 1957, the original partners being France, West Germany, the Netherlands, Italy, Belgium and Luxembourg. Now Great Britain is joining, with certain reservations, the principal one concerning her agriculture. Other advanced European nations, including the Norwegian countries, Switzerland, Austria and Ireland are expected to come in.

The purpose of the Common Market is the establishment, over a period of time, of a vast free trade area, with tariff barriers erected against non-member nations. Beyond that, the Market is designed as an increasingly potent weapon to meet the Soviet economic offensive against the West. And that brings up the question of what the role of the United States should be and is to be in this transforming world.

President Kennedy has asked for sweeping changes in the reciprocal trade law which will

## CANDY by Tom Dorr



permit him to reduce our own tariffs, and to stimulate trade among the friendly powers. Former Secretary of State Acheson recently said, as quoted by the AP, that "the United States must move toward free trade, particularly with the European Common Market, or run the danger of enhancing Soviet power by dividing the Western world." Many business leaders have said much the same thing.

This does not mean that the U. S. is going to become a formal, active participant in the Market in the foreseeable future, though, ultimately, that certainly could happen. It does mean that American producers, including those with factories abroad as well as here, are thinking in terms of new problems, new situations, and new opportunities.

There is opposition to the Common Market concept, just as there is to a reduction in our tariffs and an increase in our imports. It comes from several areas. Some businesses still would like a high, exclusive tariff policy. So would some labor spokesmen, who fear the effect of stimulated trade on our high-wage, high fringe benefit working force. Still a

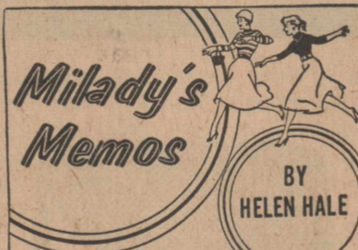
third is of a very different character, a fear, as a North-American Newspaper Alliance writer puts it, "that the great dream of a single and unified Europe, if a political and economic blessing, may turn out to be a cultural nightmare" by, little by little, making all the nations alike. The world will certainly become a drabber place if that should be the case.

On any event, the Common Market is here to stay, and is destined to become a major element in the material life of the Western world. And we, as the world's foremost single producer, must understand it and deal with it.

### School Cafeteria Lunch Schedule

#### January 2-5

- Monday  
New Year's Day.
- Tuesday  
Spanish rice  
Buttered peas and carrots  
Lettuce and tomato salad  
Cornbread, butter  
Apricots  
½ pint milk
- Wednesday  
Pork, gravy  
Mashed potatoes, corn  
Hot rolls, butter  
Apple cobbler  
½ pint milk
- Thursday



#### Holiday Food Tricks

Celery, onions, rice and mushrooms give a festive stuffing for the holiday bird. For moistening, use chicken bouillon cubes in water and poultry seasoning for flavor.

A good first course to serve for festive occasions use lemon sherbet with sweet cider poured over it.

**Helen's Favorite:**  
Sesame Olive Pastries  
(Makes 3 dozens)  
½ cup chopped ripe olives  
1 cup grated American cheese  
3 tablespoons mayonnaise  
½ teaspoon worcestershire sauce  
1 stick pastry mix  
1 egg  
1 tablespoon sesame seeds  
Blend olives, cheese, mayonnaise and worcestershire sauce. Prepare pastry, rolling to 14 x 9 inch rectangle. Cut into strips 3 inches wide. Spread olive mixture down center of each strip. Beat egg and use to moisten edges of strips. Fold pastry over filling, lapping edges slightly. Pinch edges together. Lift to baking sheet and turn lapped side down. Brush tops with egg and sprinkle with sesame seeds. Pierce tops in a few places. Bake 15 minutes at 400°F. Cut into small slices to serve.

Another good "first" is cranberry juice cocktail heated as it comes from the bottle with a bit of cinnamon sugar. Serve in demitasse cups with a cinnamon stick as stirrer.

Top any canned fruit with whole cranberry sauce or relish to garnish holiday salad or meat platters. Cut pimiento stars with fancy cutter and use these to garnish salads or bowls of creamed onions, green beans or coleslaw.

- Turkey, noodles
  - Sweet potatoes
  - Green beans
  - Hot rolls, butter
  - Peanut butter, syrup
  - ½ pint milk
- Friday  
Hamburgers  
Blackeyed peas  
Cherry cobbler  
½ pint milk

### To The People

(Continued from Page 5)  
billion. The estimates were that it would be reduced in 1961 and 1962, but it would appear from present information that the bad guessers are still at work.

**Here Is Where The Tax Dollar Comes From**  
55¢ individual income taxes.  
25¢ corporation income taxes.  
12¢ excise taxes.  
8¢ all other receipts.

**Here Is Where It Goes**  
57¢ major national security.  
11¢ interest.  
6¢ veterans.  
6¢ agriculture.

6¢ labor and welfare.  
4¢ commerce, housing, space technology.  
3¢ international.  
3¢ natural resources.  
2¢ general government.  
2¢ debt retirement.  
Until the budget is balanced, there cannot be a decrease in the public debt or a decrease in

**CARD OF THANKS**  
I wish to thank the members of the Naomi Sunday School class and all my other friends who sent gifts in the Christmas box brought to me by the class.  
Mrs. Jessie Wilson  
taxes. This must be accomplished.

Here's hoping you have a joyful New Year. Best of luck to all!

## Consumers Co.

Sherman County  
Abstract Co.  
ROYAL PENDELETON

Best Wishes  
We pause to tell all of our customers we enjoyed serving them during the past year and to wish them well in the New Year.  
1962  
YATES DRUG  
AND  
Robbie's Gift Shoppe

## Sherman Implement Co.

Highlights

(Continued from Page 2)

didates on behalf of the Weslaco Jaycees, but Connally hasn't replied.

Principal issue of the debate would be: "Is the Governor of Texas To Be a Number One Chief Executive — or somebody else's agent?"

The Business At Hand

The Attorney General's assistants have been busy writing opinions on everything from a major gas company dispute to a matter of land willed to the

Baptist General Convention. The Attorney General intervened in a case in the 43rd District Court at Parker County, making a motion to set aside a default judgment voiding conveyance of 1,000 acres of land to the Baptist General Convention.

Mr. and Mrs. W. H. Stocks Sr. willed the land in Parker and Hood Counties to the Baptists in 1955, but their son, John Stocks, alleges his parents were not legally competent at the time.

Wilson made his motion under a statute which said the Attor-

Sports Corner

JOHNNY SELLERS

DRIVING TO THE 1961 RIDING CHAMPIONSHIP

SETTIN' THE PACE...



THE 24-YEAR OLD SELLERS HAS BEEN RIDING FOR 7 YEARS. HIS CAREER HAS BEEN MARKED BY A STEADY CLIMB TO THE RANKS OF THE TOP JOCKEYS IN RACING...

MR. ARCADO MR. SHREVE MR. HARTMAN THE V. SELLERS



OF COURSE HIS MOST NOTABLE ACCOMPLISHMENTS WERE RIDING CARRY BACK TO KENTUCKY DERBY AND PREAKNESS TRIUMPHS...

ney General may be made a party to any suit to annul or impair any instrument creating or affecting a charitable trust.

As representative of the Texas Railroad Commission, the City of San Antonio, the City Public Service Board and Alamo Gas Supply Company, the Attorney General filed a motion with the Supreme Court asking it to compel 126th District Judge Jack Roberts of Austin to enter judgment in San Antonio's gas contract dispute.

Motion arises from a suit filed by United Gas, which is contracted to supply gas for San Antonio until April 1, when Alamo Gas is scheduled to take over.

Judge Roberts has said the case was out of his court's jurisdiction. Railroad Commission ruled that it has no jurisdiction in the dispute.

The Attorney General also has ruled that:

- 1. Failure to possess a valid poll tax does not disqualify a juror in any criminal case. 2. It's unconstitutional for a court to authorize a sheriff to destroy property seized from arrested persons in county jail, even if property is unclaimed for 90 days. 3. State Education Commis-

Stratford Takes 4 Games From Spearman

Stratford won four basketball games from Spearman in the contests played here Thursday night of last week with the Stratford Elks, Elkettes and boys and girls B-teams participating.

The Elks won 42 to 33. Doug McBryde was high point man with 16 points. This gave the Elks a record of winning 10 of 13 games.

The Elkettes won over the Spearman Lynettes by a score of 30 to 23, to run up a record of winning 14 of 15 games. Donna Boner was high point forward with 18 points. Guards Billie Robbins, Elaine Cummings and Shelia Donelson were credited with turning the tide of the game by holding down the Spearman forwards.

Stratford B-boys won by a score of 27 to 24. Stratford B-girls won by a score of 39 to 32. Joe Minkley was high point man for Stratford with 15 points.

Greater PAMC

(Continued from page 3)

other states with reciprocal inheritance tax laws, England said.

Former students and friends of PAMC are urged to make contributions during the remainder of the year if they wish to secure tax deductions for 1961. Checks should be made to "The Greater Panhandle A. & M. Fund" and mailed to Milton England, Goodwell, Oklahoma.

"Treaty Oak" in Austin, Texas, was selected by the American Forestry Association as the most perfect specimen of a tree in the United States.

score of 39 to 32. Joe Minkley was high point man for Stratford with 15 points.

B-team girls won over Spearman by a score of 27 to 24.

Advertisement for Orkin pest control service, featuring a cartoon of a man and a dog, and text: "PENNIES A DAY KEEP THE PESTS AWAY call Orkin for the sake of your home"



HAPPY NEW YEAR Stratford Abstract Co.

Correction

Mrs. Ed Hill is the sister of Mrs. Claude B. Evans of Amarillo, rather than Mrs. Jess Scarborough, as was reported last week.

Texas produces about 80 per cent of the nation's sulphur.

Texhoma To Play Here Friday Night

Stratford Elks, Elkettes and Boys B-Teams will meet the Texhoma teams in games opening on the local court at 5:30 p. m. Friday.

Large holiday greeting advertisement for Golden Spread Implement Co. featuring a large illustration of a Christmas tree and a church, with text: "Greetings Season's greetings to our many fine friends and patrons. 1962 Golden Spread Implement Co. Edward H. Smith"



Our sincere best wishes for a happy Holiday.



1962

Stratford Butane Co.

PAUL CHESMER

GREETINGS

With each hour of the New Year we wish you joy and extend our thanks for your past favors and patronage.



Garrison Motor Co.

Your Mobil Mileage Merchant

THE HANDY FAMILY

Comic strip panel showing Junior and Suzy talking about a shoe cleaner. Includes a diagram of a shoe cleaner made from a scrub brush.

BY LLOYD BIRMINGHAM

Diagram showing how to make a shoe cleaner by cutting an old scrub brush in half and mounting it on a wooden base.

THE HANDY FAMILY

Comic strip panel showing Junior and Suzy talking about a shopping list. Includes a diagram of a roll of adding machine paper.

BY LLOYD BIRMINGHAM

Diagram showing how to make a roll of adding machine paper from a roll of paper and a wooden base.

THE HANDY FAMILY

Comic strip panel showing Junior and Suzy talking about a book case. Includes a diagram of a book case made from a wooden box.

BY LLOYD BIRMINGHAM

Diagram showing how to make a book case from a wooden box, including instructions to saw the box in half and use the remaining halves for the base.



To you and our many patrons we send New Year greetings and best wishes. Also we send along a friendly note of thanks for your good will during the past year.

Stratford Department Store

### Bill Martin Appointed To Draft Board

William C. Martin Jr. of Stratford has been informed that he has been appointed a member of local draft board No. 25 at Dalhart.

Mr. Martin was appointed by President Kennedy after being recommended by Governor Price

### P-TA Christmas Program Pleases Large Audience

The large attendance at the annual Christmas program presented by the Stratford P-TA was evidence of the caliber of the production which is directed each year by the music director, Mrs. Lorraine Mehner.

In an operetta depicting Christmas customs in foreign lands, members of the fourth



LET ME ENTERTAIN YOU ... says Monique Van Vooren, Belgian night club entertainer, before her Chicago engagement, where she wore a skin-tight gold lame gown.

**LONG TERM LOW COST  
LAND LOANS FOR:**  
Irrigation Systems  
Improvements  
Land or Cattle Purchases  
Operating Expense  
Refinancing etc.

**FEDERAL LAND BANK  
ASS'N. OF DALHART**  
Dalhart, Texas

Daniel. He was advised of his appointment by Colonel Morris S. Schwartz, state director of Selective Service.

"I am sure your membership in this board will reflect great credit to yourself and the Selective Service System of Texas," Colonel Schwartz wrote Martin.

Local Board No. 25 has jurisdiction over Dallam, Hartley, Moore and Sherman Counties.

**CONTACT LENSES**  
DR. V. G. MARTIN  
AND  
DR. J. W. McCORMICK  
Optometrists  
Dumas, Texas  
Phone WE 5-4491

**GREETINGS**

Best wishes for the New Year.

**First Supply**  
Curtis Ritchey, Manager

**Coffman and Flores**

**THANK YOU**

FOR YOUR  
PATRONAGE

Since August 1 We Have Worked About  
12,500 Cattle In Our Chute  
Facilities At  
Carter Trucking Co.

**WE CERTAINLY  
APPRECIATE  
YOUR BUSINESS  
THE BEST TO EVERYONE**

Joe Flores -- Homer Coffman

and fifth grades carried the audience with them, as a group of American children rode with Santa Claus in his reindeer drawn sleigh, across the world. Attired in colorful costumes, the children brought the customs of each land alive in an educational and entertaining way.

Griff Lasley, as the announcer, gave a poem, "Everywhere, Everywhere, Christmas Tonight," by Phillip Brooks.

As Santa Claus, so kind and jolly, Kevin Parker gave a superb enactment. Fourth grade students were very good in their roles as people of far away lands, and the fifth grades, in snow white robes, sang beautifully, the familiar Christmas carols of this country, and those that have come to America from other countries, as well as some that were new.

Stage hands were: John Upchurch, Allan Ross, Randy Williams, Eddie Williams, Larry Puryear, Jeff Hart and Tommy Wright. Mark Lamb and Doug Taylor handled the spotlights.

Mrs. Mehner, the teachers who cooperated with her, the students and mothers who worked on the costumes are to be commended on a fine performance which added to the enjoyment of the holiday season for those who were there.

Refreshments were served during a social period following the program.

America's first billionaire was John D. Rockefeller.

**The WORLD OUTDOORS**  
By Mike Bennett

RELATIVELY speaking, hunting is a remarkably safe sport, particularly when one considers the great number who venture into the woods each season.

Firearms accidents of all types in the United States take an annual toll of 2,200 lives or 1.3 per 100,000 population, according to a recent study. Not all of these are hunting accidents; yet the fact that almost 40 per cent of these deaths occur in the three-month period from October through December indicates that increased emphasis on safety might greatly reduce the annual toll.

Arms manufacturers, the National Rifle Association, and wildlife departments in many states are working on the problem. Despite the fact that more and more new hunters take to the fields each year, we can hope for noteworthy results. This is because the interested groups above are aware that "hunting accidents don't have to happen."

Carelessness is the culprit where firearm accidents are concerned. Numerous deaths occur because weapons are carelessly pointed at a person. Some unthinking hunters shoot before they are certain of their target.

Some accidents, of course, occur when the victim is out of sight of the shooter. In these cases the victim frequently was wearing drab colored clothing, or ground cover was dense. In a recent year, one sixth of the accidents occurred when the shooter stumbled and fell.

If you are a hunter, take care, and remember that hunting accidents don't have to happen. Use caution. Remember that others may be hunting in the woods nearby. Be sure of your target before you shoot. Be careful that you are not a target for someone else.

*Happy New Year*

Better friends we wouldn't wish for. Good luck wherever you are.

**PRE-INVENTORY SALE**  
MOST EVERYTHING  
ON SPECIAL  
TWO DAYS LEFT TO BUY  
STOCK UP NOW  
ON OUR STORE-WIDE SALE  
OUR STORE WILL BE CLOSED  
ALL DAY  
SUNDAY AND MONDAY  
DOUBLE STAMPS TUESDAY

<b>Bacon</b> SWIFT PREMIUM 1 pound package	<b>49</b>	<b>Pecans</b> NEW CROP — HALVES OR PIECES 6 ounce package	<b>59</b>
<b>PORK STEAK</b> pound	<b>45</b>	<b>SALAD DRESSING</b> KIMBELL'S Quart Jar	<b>39</b>
<b>CHUCK STEAK</b> U. S. D. A. Good POUND	<b>49</b>	<b>POPCORN</b> KIMBELL'S 10 OUNCE CAN 2 Cans for	<b>29</b>
<b>A LUCK DISH</b> FOR YOUR NEW YEAR'S DINNER	<b>29</b>	<b>MARSHMALLOW CREAM</b> Kraft - Pint Jar	<b>19</b>
<b>BACON SQUARES</b> Real Hog Jewel — Pound	<b>29</b>	<b>Coffee</b> Maryland Club — Lb.	<b>65</b>
<b>Blackeyed Peas</b> KIMBELL'S GREEN FRESH SHELLED No. 300 Tin — 15¢	<b>99</b>	<b>2 POUND CAN . . . . .</b>	<b>\$1<sup>.29</sup></b>
<b>Blackeyed Peas</b> ELLIS PLAIN No. 300 Tin — 13¢	<b>\$1</b>	<b>FISHER'S PARTY PEANUTS</b> 14 OUNCE CAN	<b>69</b>
<b>BARBECUE SAUCE</b> HAASE'S LARGE 27 Ounce Bottle	<b>55</b>	<b>PEACHES</b> DEL MONTE NO. 303 TIN — 21¢	<b>99</b>
<b>CHILI</b> KIMBELL'S No. 2 Tin	<b>59</b>	<b>5 Cans for</b>	<b>85</b>
<b>BEEF STEW</b> KIMBELL'S No. 300 Tin	<b>29</b>	<b>Pineapple Grapefruit Juice</b> DEL MONTE 46 OUNCE TIN — 29¢	<b>85</b>
<b>TUNA</b> DEL MONTE — 26¢	<b>99</b>	<b>3 Cans for</b>	<b>69</b>
<b>JELL-O</b> assorted flavors	<b>25</b>	<b>DRIED PRUNES</b> DEL MONTE 2 Pound Box	<b>69</b>
<b>3 packages for</b>	<b>25</b>	<b>P-R-O-D-U-C-E CRANBERRIES</b> 1 lb. cello. bag	<b>25</b>
<b>DENTAL CREAM</b> COLGATE LARGE FAMILY SIZE Regular 83¢ size for	<b>69</b>	<b>CELERY</b> California Pascal LARGE STALK — EACH	<b>13</b>
<b>Palmolive Dandruff Remover SHAMPOO</b> LARGE 12 OUNCE BOTTLE	<b>59</b>	<b>APPLES</b> Fancy Delicious POUND	<b>15</b>
<b>LUSTRE CREAM SHAMPOO</b> REGULAR \$2.00 SIZE JAR FOR	<b>\$1<sup>.49</sup></b>	<b>TURNIPS</b> bulk — pound	<b>9</b>

**ALBERT'S GROCERY  
& MARKET - - Phone 396-4821**