

## Only Eight Days Until Texas Primary Elections

Candidates and their supporters have only eight days to secure the winning votes before the primary elections May 5.

Absentee ballots are available for both Democrats and Republicans who may be out of town on election day. Absentee voting will close May 1.

Democratic precinct conventions will be held at the polling places in each of the four precincts at 2:30 p. m. May 5. Delegates will be elected to the county convention to be held in Stratford. In precinct one, the convention will be held in the garage at the Bob Burgess farm. In precinct two, the convention will be held in the basement of the Spurlock Chapel. In precinct three, the convention site will be the Texhoma, Texas school building. The convention in precinct four will be held in the courthouse in Stratford.

Republican polls for all four precincts in the county will be open in the County Exhibit Building in Stratford. No precinct offices are listed on the Republican ballots.

## Band To Play In Festival At Enid

The seventy-nine piece Stratford High School Band is making its final preparations to attend the 30th annual Tri-State Music Festival in Enid, Oklahoma next week. The band will leave Stratford in three school busses on Wednesday morning and return early Sunday morning.

While there, the band will participate in field marching, parade marching, concert playing and sight reading. Also, individuals in the band will enter instrumental and twirling solo events. In addition to this, several members will participate in the Tri-State Band and Tri-State Chorus which are organizations made up of better players and singers from all the organizations participating in the festival.

The trip will be financed for the most part by funds raised by the band parents organization at the smorgasbord dinner held on March 6. These funds will pay for the cost of hotel accommodations and a portion of the meals for all of the students and the sponsors.

## May 1 Is Last Day To Destroy Excess Wheat

Excessive acreage of 1962 wheat being used for soil cover or for pasture, must be destroyed on or before May 1, it was announced this week by Vernon Bullard, manager of the ASCS office in Stratford.

If the farm has an excess of seeded acres, then there will be a charge of \$4.00 a farm. This amount should be deposited with the ASCS office before May 1.

### A BIG RELIEF

"Mother," said little Johnny, "today our teacher asked me whether or not I had any brothers or sisters, and I told her I was an only child."

"And what did she say?" asked his mother.

"She said, 'Thank goodness'."

## Riggs-Johnson Nuptial Vows Read In Pretty Church Service Friday



MR. AND MRS. LAWRENCE G. JOHNSON

Miss Jessie Jean Riggs became the bride of Lawrence G. Johnson in the First Baptist Church in Stratford April 20. The bride is the daughter of Mr. and Mrs. Everett Riggs of Stratford, and the bridegroom is the son of Mr. and Mrs. L. D. Johnson of Brown, California.

Rev. M. E. Upchurch, pastor, read the double ring ceremony before an arch of greenery decorated with white bows. Mrs. Kenneth Kendrick, organist, played a prelude of nuptial music and the traditional wedding marches. She accompanied Robert Alford of Grand Prairie, Texas, as he sang "Because" and "Whither Thou Goest". Candles were lighted by Hal Bennett and Charles Riggs.

Mr. Riggs escorted his daughter and gave her in marriage. She wore a short sleeved, floor length gown of white delicately patterned nylon lace with long matching gauntlets tapering to points over her hands. A scalloped scoop neckline enriched with miniature pearls and iridescent sequins complemented the fitted bodice which dipped in center front and back, then flowed into a sweeping skirt of unpressed pleats, accented with a self bow at the back.

The finger tip veil of silk illusion fell from a tiara type crown made of simulated seed pearls. She carried an arm bouquet of white carnations.

Miss Patsy White of Dumas was the maid of honor. She wore a sheath dress of blue cotton satin with an over skirt of blue nylon tulle, a matching hat, and carried an arm bouquet of white carnations.

Best man at the wedding was Jerry Nelson of Amarillo. Ushers were Charles Riggs, Hal Bennett, and Karl Kirkwood of

## Three Involved In Highway Accident

Mr. and Mrs. Lon Davis of Wichita Falls sustained bruises when their Volkswagon tangled with a 1962 Chevrolet pickup driven by Charles Wayne Brister north of Stratford on U. S. Highway 287 Sunday night.

According to Sheriff A. L. Wilson, Mr. and Mrs. Davis were driving south. Brister was driving north behind another car. He pulled into the left lane to pass and saw the Volkswagon directly in his path.

Brister veered to the left, the rear end of his pickup ripping the right side of the oncoming Volkswagon as he failed to drive out of its path in time to avoid a collision.

Charles Wayne Brister was given a ticket for failing to grant the right-of-way to an oncoming vehicle.

Mr. and Mrs. Davis were given first aid treatment in the Stratford Clinic.

Capt. Gene Marshall took Mr. and Mrs. Davis to Amarillo where they took a bus to Wichita Falls where Davis is stationed with the U. S. Air Force.

## Arthur Lewis Funeral Rites Held Friday

Funeral services for Arthur Lee Lewis, 48-year old farmer, who lived five miles northwest of Cactus, were held in the Cactus Methodist Church at 2:00 p. m. Friday by Rev. D. D. Creech, pastor. Mr. Lewis died at 10:00 p. m. Wednesday of last week in Moore County Memorial Hospital in Dumas. He had been in failing health for several months.

Arthur Lee Lewis was born August 7, 1913 in Durham, Oklahoma. He had lived in the county for five years and was a member of the Methodist Church.

Survivors are his wife, Eileen; three sons, Spence, Johnny Mac, and Roger Lee; two daughters, Joy and Sherri, all of the home; three sisters, Mrs. Georgia Cockrell of Durham, Oklahoma, Mrs. Dora Timmons of Mangum, Oklahoma and Mrs. Lucille Lenk of Oklahoma City; three brothers, Virgil and Albert Lewis of Dur-

ham, Oklahoma, and Carl of Oklahoma City.

Stratford. The guest book was presided over by the bride's sister, Miss Laurina Riggs of Stratford.

For the wedding, the bride's mother chose a light blue lace dress with blue accessories. Her

(Continued on Page 6)

## Storm Warning Siren To Be Sounded May 1

### Old Testament Stories Are Chosen Stratford Jamboree Parade Theme

"Stories of the Old Testament" has been chosen by the Jamboree Committee as the theme for the 1962 Jamboree Parade scheduled for Saturday, September 8. All organizations and business concerns wishing to compete for cash prizes should begin now to make plans and select themes.

The theme was chosen early in the year to enable organizations to plan floats and displays before adjourning for the summer months. Prizes of \$50 for first, \$40 for second, \$30 for third, \$25 for fourth and \$20 for fifth will be awarded in the organization class of floats.

Commercial float winners will receive \$40 for first, \$30 for second and \$20 for third place.

Children's prizes will range from \$7.50 for first place to \$2.50 for sixth place. Horsemen will receive \$5.00 each for the best cowgirl, cowboy, junior cowgirl and junior cowboy. Juniors are limited to entries 12 years of age and under.

The parade committee has purchased three books to help organizations and businesses construct and decorate floats and other displays. These books, "Vaughn's Complete Parade and Float Guide", and two copies of "Vaughn's Parade Ideas" may be borrowed without charge from the parade committee at any time by contacting Mrs. Bill Riffe.

The parade catalogue shows many ideas and themes and tells how and where to order materials of all types for all kinds of float constructions. This catalogue also has many float kits which may be purchased, easily assembled and disassembled to be used annually.

It is hoped that all organizations and businesses will take advantage of these excellent

ham, Oklahoma, and Carl of Oklahoma City.

The Sherman County storm warning siren was erected behind the courthouse in Stratford Monday. It will be tested at 11:00 a. m. Tuesday May 1.

An alert will be sounded with the first warning test. The take-over alert will be sounded a few minutes later.

These tests will be repeated at 11:00 a. m. each Tuesday for a period of four weeks, and afterwards once a month, according to County Judge F. M. Keener.

The sounding of the air raid siren is being repeated in order to enable citizens to distinguish its sound from the fire siren, and to distinguish the difference between the alert and the take-over signal.

An alert is sounded with a high pitch continuous dual tone in blasts of 3 to 5 minutes. The take-over alarm is a warbling tone of 3 minute blasts.

The siren was purchased by the county to avoid the delay and the red tape which would have been required if it had been acquired through federal grant.

With the sheriff's department and fire department vehicles equipped with short wave radios, stationed outside the city limits on all four highways, it will be possible to sound an alert in a few minutes should an approaching tornado be sighted.

An auxiliary electric plant has been installed at the courthouse to serve the building and the siren in the event power lines fail during a storm.



The 500-Pound Storm Warning Squawker

## Make Cancer Memorial Contributions

Memorial contributions to the American Cancer Society help in many ways: they support cancer research in hospitals, laboratories and clinics. They provide fellowships for doctors and scientists. They help train the manpower needed to carry out future research.

Voluntary support for the American Cancer Society makes possible the year-round programs of public education, which alert men and women to cancer's early symptoms and urge prompt diagnosis and treatment. These programs are saving thousands of lives today.

Memorial Gifts also make possible the service programs which provide dressings, comfort items, loan equipment, local volunteer transportation, information and professional services from tumor clinics.

The American Cancer Society is the only national health agency fighting cancer through programs of research, education and service. The Society seeks in this threefold way to fulfill one of mankind's greatest hopes — the ultimate triumph over cancer. A Memorial Contribution, large or small, brings the moment of final victory closer.

When a Memorial Gift is made, the family of the deceased is notified with a Memorial Card. This card carries the name of the person in whose memory the funds have been given and the name of the person who made the gift. The names of all persons in whose name a Memorial has been given will be entered in a permanent Memorial Book of the Texas Division. The donor receives an official receipt as memorial gifts are deductible by individuals and firms for income tax purposes.

Memorial Gifts may be given to Mrs. E. J. Massie Jr., Cancer Crusade Chairman.

The man at the top is usually someone who has been going to the bottom of things.

sources of ideas and material.

Theme registrations should be directed to Mrs. Bill Riffe, Box 702, Stratford, or she may be reached by phone at number 396-5431.

## Dennis Phelps Assigned Ship In The Pacific

Dennis L. Phelps, electrician's mate fireman, USN, son of Mr. and Mrs. Earl Phelps of Stratford, is serving aboard the dock landing ship USS Belle Grove in the Western Pacific.

The ship recently took part in the Southwest Asia Treaty Organization's Operation Tulungan, the largest amphibious exercise since World War II.

## Fire Department Fights Blazes

At 11:30 a. m. Friday the Stratford Fire Department fought a grass fire in the Arthur Mullins pasture southwest of Stratford.

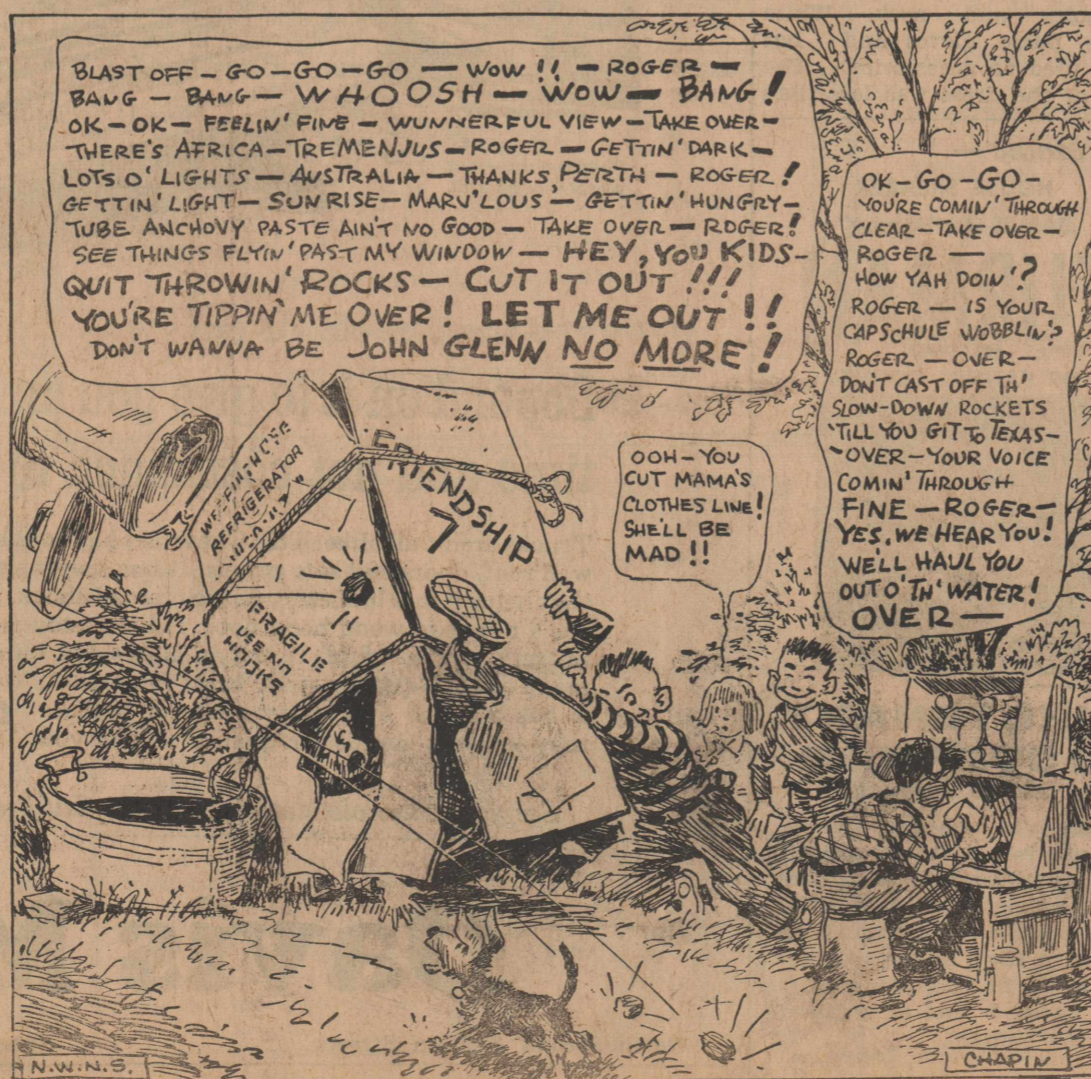
Saturday at 5:15 p. m. the Stratford Volunteer Fire Department fought a grass fire 13 miles northeast of Stratford along the Rock Island right-of-way which extended into pasture land.

At 4:55 p. m. Monday the fire fighters responded to a call to fight a fire on a section of grass land south of Chamberlain. Dalhart firemen notified the Stratford trucks by short wave radio that they had the fire under control when the trucks were about half-way to the blaze.

Tuesday at 10:35 a. m. the Stratford Volunteer Fire Department put out a grass and weed fire north of the Van B. Boston residence.

Wednesday at 9:15 p. m. Stratford Volunteer Firemen answered a two truck alarm to the Leroy Judd residence southwest of Stratford. Sparks from a barbecue pit ignited a blaze on the roof of the house. Johnny Brannan had put out the fire with a garden hose before the firemen arrived.

## BACKYARD ASTRONAUTS





## Cosden Gasolines

Our customers come from many states, and our reputation for friendly service is traveling far and wide. Enjoy it yourself - drive in soon and regularly.

**287 Truck Stop**  
WE HONOR ALL CREDIT CARDS  
**J. L. ADAMS**

"If you care Enough . . .  
to send the Best,"



SEND

**A. C. (Shorty) HALLMARK**  
State Representative

Candidate For  
92nd District

(Paid for by Friends of "Shorty" Hallmark)

## To The Voters

OF SHERMAN COUNTY, TEXAS

VOTE FOR

**Sara Lou Lasley**

(MRS. SAM LASLEY)

for Chairman of the County Democratic Executive Committee, in the Democratic Primary May 5, 1962.

Her name is not on the primary ballot and you will have to cross out the name of Kenneth Kendrick and WRITE IN the name of SARA LOU LASLEY, thus:

FOR COUNTY CHAIRMAN

Kenneth Kendrick

Sara Lou Lasley

(Political advertisement paid for by friends of Mrs. Lasley)

## This Is Her Work

Campaigning through Sherman County there are many questions asked, for instance, "Just what are the duties of the County and District Clerk?"

### The County And District Clerk

Types and records all legal instruments involving land transactions.

Serves as Commissioners' Court Clerk.

Is present at all District and County Court sessions.

Keeps minutes of all sessions of four courts: County, District, Commissioners' and Probate Courts.

Keeps Judges' dockets, may approve court or appeal bonds, is accountable for bills of costs and swears jury members into service.

Files for record all probate, criminal and civil matters in County and District Offices.

Makes transcripts of records concerning all actions taken by this court to any given case that is appealed to another court.

Collects and disburses all child support and adult probation moneys.

Issues marriage licenses.

Is accountable for trust funds, one for District Court and one for County Court. These funds are comparable to moneys placed in escrow.

I HEREBY PLEDGE TO YOU, that I am qualified to fulfill the above duties. I offer my training and experience in evidence.

TRAINING: Business Administration Degree, University of Texas, including Business Law, Real Estate Law and Insurance, Accounting, Typing, Shorthand, Office Management and others.

EXPERIENCE: Legal secretary, Underwood Law Firm, Amarillo, Texas. Secretary to Cashier, Bank of America, Los Angeles, California. Alternate secretary to President Painter, University of Texas, Austin, Texas.

**Mrs. Jeannie Davis**

Candidate for County & District Clerk  
SHERMAN COUNTY

(Paid Pol. Adv.)

## F.H.A. GIRLS MODEL CLOTHING AT P.A.M.C. SPRING FESTIVAL



Lorelei Harding

Lorelei Harding, president of the Stratford Future Homemakers of America chapter, served as narrator at the sixteenth annual Home Economics Festival at P.A.M.C. College in Goodwell Wednesday of last week as 10 local girls appeared as models.

Mary Joyce Worley, Linda Elms, Beth Naylor, Sherril Collins, Kathy Sneed, Sue Plunk, Senora Mullican and Judy Standefer modeled clothing they had made this year. Kim Knapp, daughter of Mr. and Mrs. Joe Knapp, modeled a dress made by Sue Plunk, and Vicki Bell, daughter of Mr. and Mrs. E. R. Bell, modeled a dress made by Sue Hudson.

Stratford girls attending the festival included: Louise Stone, Beverly Bolster, Mary Joyce Worley, Sherril Collins, Charlotte Eller, Cynthia Heil, Judy Hudson, Lanita Judd, Kathleen Leal, Loretta Lopez, Donna Moon, Marie Moore, Senora Mullican, Beth Naylor, Leona Newcomb, Sue Plunk, Carol Reeder, Linda Reesing, Billie Robbins, Mary Sanders, Judy Steinberger, Peggy Taylor, Wanda Weller, Gayle Newcomb, Judy Standefer, Linda Elms and Kathy Sneed. Mrs. Blanche Strother, home economics teacher, accompanied the girls to Goodwell.

Schools represented by girls at the fashion festival included: Stratford; Boise City, Balco, Keyes, Guymon, Forgan, Turpin and Beaver, Oklahoma; Elkhart, Hugoton and Rolla, Kansas, and Walsh, Colorado.

### Judy Standefer's Dress

The dress made by Judy Standefer was of dark polished cotton, with a soft round neckline, set-in sleeves, soft gathers in the skirt and included a self-made belt. For her accessories she chose a black hat, black shoes, black gloves and a black purse. The approximate cost of the garment was \$12.00.

### Senora Mullican's Dress

Senora Mullican modeled a dress of brown rayon linen. The tunic was lined with cotton. The dress was accented with a beige hat, shoes and gloves. Approximate cost of the dress was \$8.00.

### Sue Hudson's Dress

The dress made by Sue Hudson and modeled by Vicki Bell, was made of blue and white cotton bound with blue around the armholes and neck. White shoes, purse, gloves and hat were used as accessories. The cost of the dress was less than

\$3.00.

### Beth Naylor's Dress

Beth Naylor modeled an orange and white candy striped dress with soft pleats at the waistline, self-made belt and covered buttons. Set-in sleeves and a soft neckline added feminine lines to this dress which cost approximately \$4.50.

### Linda Elms' Dress

Linda Elms wore a brown dress of 100% cotton with self-made belt, and a combination round and v-shaped neckline. The eye-catching dress was accented with black accessories of shoes, hat, bag and gloves. Its approximate cost was \$4.00.

### Sherril Collins' Suit

Sherril Collins modeled her three-piece suit. The skirt and jacket were made of sacramento linen. The blouse and jacket

lining were of block print imitation silk. White heels, purse, short gloves, a pill box hat, and a white and gold pin were her accessories. The  
(Continued on Page 6)

### LONG TERM LOW COST

#### LAND LOANS FOR:

Irrigation Systems  
Improvements  
Land or Cattle Purchases  
Operating Expense  
Refinancing etc.

FEDERAL LAND BANK  
ASS'N. OF DALHART  
Dalhart, Texas

## Advance Pest Control Co.

10 Years of Experience

### TERMITE & PEST CONTROL

Ants, Silverfish, Roaches, Water Bugs, Fleas, Rats and Mice  
USING LATEST CHEMICALS AND EQUIPMENT

Guaranteed Tree and Lawn  
SPRAYING

**LEE JOHNSON**

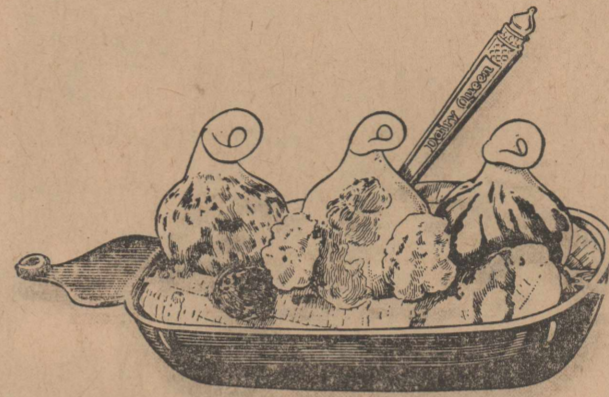
PHONE 935-4241 Collect

410 East Third

Dumas, Texas

# Phone 396-5541 for Dairy Queen

REFRESHMENTS



Your Order Will Be Ready When You Drive Up To Our Window.

## Dairy Queen

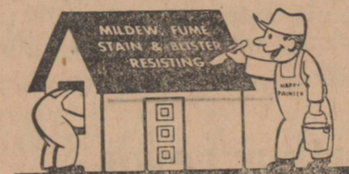
South On U. S. Highway 287

Bob and Joyce Aycock, Proprietors

Spring Open Hours — 9:00 a. m. until 11:00 p. m.

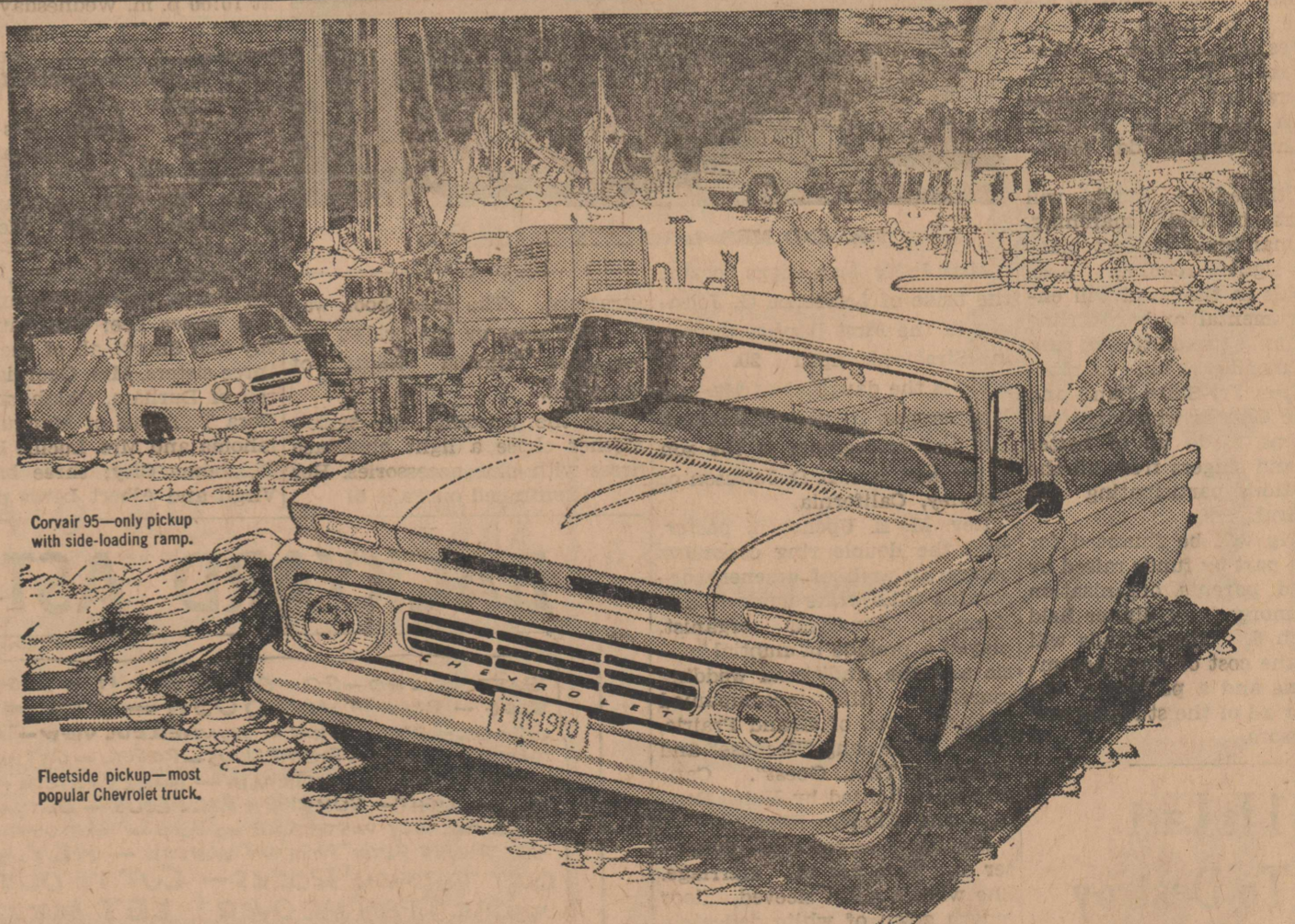
The Most  
**VERSATILE PAINT**  
IN THE WORLD  
(Rubber Base)  
Dries in 30 Minutes

USE IT INSIDE  
**DUR-X**  
The Durable Multi-use Latex Paint  
USE IT OUTSIDE



WOOD SIDING • TRIM • SHAKES  
SHINGLES • Brick • Concrete Block  
All Masonry Surfaces • Asbestos  
Siding and Shingles • Stucco  
GALVANIZED IRON AND  
ALUMINUM SURFACES

**GARRISON  
MOTOR CO.**



Convair 95—only pickup with side-loading ramp.

Fleetside pickup—most popular Chevrolet truck.

Depend on it to give you an honest day's work for a long, long time and not cost much to run or keep up. It's a Chevrolet.

Trucks aren't all alike. This Chevrolet has double-wall roof, doors and side panels. It has suspension that helps it last longer by reducing road shock. It has a non-skid wood body floor. It has as tough a tailgate as you'll find. It has an all-welded frame made of high-quality steel. Most important, it has a name everybody respects because they know it stands for quality. When you

make up your mind to buy, get this one. We know you'll be happy with it. **HAVE YOU LOOKED INTO CAMPER BODIES?** This is a fine way to enjoy the outdoors comfortably and at low cost. Many Chevrolet dealers are showing camper units now. Drop by and investigate this great way to make a truck do double duty. A strong Chevrolet is your best bet for work or play.

See your Chevrolet dealer for trucks that keep working and working and working and working!

# Davis Motor Co.

North Second & Main Streets

Stratford, Texas

Phone 396-3191

### Promote —

HOUSE SPEAKER

JAMES A. "Jimmy"

**TURMAN**

OF FANNIN COUNTY



TO —  
**LIEUTENANT GOVERNOR**

DEMOCRATIC PRIMARY

Leading in all Independent, Statewide, Impartial Polls • The only candidate with proven experience in organizing and conducting the day-by-day affairs of a legislative body • Son of a Tenant Farmer • Former Educator • Veteran • He has the background, education and training to make an outstanding lieutenant governor.

(Pd. Pol. Ad.)



Most every family would be improved if the parents would get back on spanking terms with their children.

**Foliage Feeding OF YOUR WHEAT With Liquid Fertilizer**

GIVES THE PLANT INSTANT AVAILABILITY TO THE NITROGEN

You Can Up To Double Your Yield For \$3.40 an Acre.

**INGRAM FLYING SERVICE**

BUSINESS PHONE 384-2400 DALHART, TEXAS  
RESIDENCE PHONES 249-2193 OR 249-2446

**To The Voters OF SHERMAN COUNTY**

I Solicit Your Influence, Support and Votes

IN THE COMING ELECTION FOR THE OFFICE OF County and District Clerk

If elected, I will devote my full time, energy, ability and support to the duties of the office and the people of Sherman County.

I assure you the obligation and trust placed upon me will be justified and deeply appreciated.

**Mrs. C. W. (Lela) Moon**

Candidate For County & District Clerk Of Sherman County

(Paid Pol. Adv.)

**Mrs. Borth Is Hostess To Friendship Club**

The Friendship Club met Thursday afternoon of last week in the home of Mrs. Kenneth Borth. Members present were: Mrs. Corda Pleyer, Mrs. Alfred Pronger, Mrs. Roscoe Dyess, Mrs. Ernie Dyess and Wayne, Mrs. P. J. Pronger Jr., and the hostess, Mrs. Kenneth Borth.

The next meeting will be in the home of Mrs. Robert Bolster on May 3.

**Grady Hazlewood Campaigns In Stratford**

Grady Hazlewood of Canyon was here Saturday working in the interest of his campaign for re-election as State Senator of the 31st district.

**THAT'S PRETTY BAD**

Pretty caller: "I'd like to see the superintendent".  
Chief clerk: "Why certainly, madam. The superintendent always has time to see pretty girls".  
Pretty caller: "Well, tell him his wife is here".

**VOTE for RAMSEY**

**1ST FOR TEXAS CONSUMERS**

**BEN RAMSEY**

FOR RAILROAD COMMISSIONER OF TEXAS


★ ABILITY  
★ FAIRNESS  
★ COMMON SENSE  
★ JUDGMENT

(Paid Pol. Adv.) by Ben Ramsey

**KEEP JUDGE ZOLLIE STEAKLEY**

On Your **TEXAS SUPREME COURT**

Ed. Pol. Ad.



Present, Associate Justice of the Texas Supreme Court • Endorsed by over 82% of the Lawyers of Texas voting in their official state-wide poll • General Practice of Law in Sweetwater and Austin • Assistant Attorney General, 1939-42 • Secretary of State, 1957-60 • Law graduate of U. of T., 1932 • Graduate of Hardin-Simmons of Abilene, 1929 • Member of the Judicial Section of the State Bar Assn. of Texas

**Cards of Thanks**

**CARD OF THANKS**

Words cannot adequately express our deep appreciation for the many kind expressions of sympathy in our recent sorrow. We wish to thank our neighbors and friends for their visits, food brought to our home and for the beautiful floral offerings. We wish to especially thank Dr. and Mrs. Smith for their care and efforts to save our baby. Your kindnesses have meant much to us.

Mr. and Mrs. Weldon Hall And Children.

**THANK YOU**

We want to thank all those who brought food, sent flowers, and who have shown kindness in other ways during the illness and passing of our loved one. A special "Thank You" to our loyal neighbors who have helped with the farming. Your love has been a source of strength during those trying hours. May God bless you.

Mrs. Arthur L. Lewis And Children.

**CARD OF THANKS**

I wish to thank my friends, neighbors and relatives for the cards, personal calls, flowers and prayers during my stay in the hospital and since my return home. Your thoughtfulness is deeply appreciated.

T. D. Chisum

**Cliches Of Socialism**

"The more complex the society, the more government control we need".

Argued a college president at a recent seminar: "Your free market, private property, limited government theories were all right under the simple conditions of a century or more ago, but surely they are unworkable in today's complex economy. The more complex the society, the greater is the need for governmental control; that seems axomatic".

It is important to expose this oft-heard, plausible, and influential fallacy because it leads directly and logically to socialistic planning. This is how a member of the seminar team answered the college president: "Let us take the simplest possible situation — just you and I. Next, let us assume that I am as wise as any president of the United States who has held office during your lifetime. With these qualifications in mind, do you honestly think I would be competent to coercively control what you shall invent, discover, or create, what the hours of your labor shall be, what wage you shall receive, what and with whom you shall associate and exchange? Is not my incompetence demonstrably apparent in this simplest of all societies?"

"Now, let us shift from the simple situation to a more complex society — to all the people in this room. What should you think of my competence to coercively control their creative actions? Or, let us contemplate a really complex situation — the 177,000,000 people of this nation. If I were to suggest that I should take over the management of their lives and their billions of exchanges, you would think me the victim of hallucinations. Is it not obvious that the more complex an economy, the more certainly will governmental control of productive effort exert a retarding influence? Obviously, the more complex our economy, the more we should rely on the miraculous, self-adapting processes of men acting freely. No mind of man nor any combination of minds can even envision, let alone intelligently control, the countless human energy exchanges in a simple society, to say nothing

of a complex one".

It is unlikely that the college president will raise that question again.

While exposing fallacies can be likened to beating out brush fires endlessly, the exercise is nonetheless self-improving as useful — in the sense that rear guard actions are useful. Further, one's ability to expose fallacies — a negative tactic — appears to be a necessary preface to influentially accenting the positive. Unless a person can demonstrate competence at exploding socialistic error, he is not likely to gain wide audiences for his views about the wonders wrought by men who are free.

Of all the errors heard about the "bargaining tables", or in classrooms, there is not one that cannot be simply explained away. We only need to put our minds to it. FEE seeks to help those who would expose fallacies and accent the merits of freedom. The more who outdo us in rendering this kind of help, the better. — Leonard E. Read, The Foundation For Economic Education.

**TOO SOON**

You will know your son has become a man when he walks around a puddle instead of through it.

He who does only what he is hired to do is a slave.

\*\*\* Re Elect \*\*\*

**JOHN C. WHITE**

TEXAS COMMISSIONER OF AGRICULTURE

EXPERIENCED  
QUALIFIED  
DEMOCRAT



**John C. White will keep Texas FIRST!**

(Paid Pol. Adv.)

**OPEN 24 HOURS A DAY For Guaranteed Repair Service Of Cars, Trucks and Tractors**

We Appreciate your patronage — You will be pleased with our service.

**QUALITY AUTOMOTIVE SERVICE**

On U. S. Highway 287 at the Intersection of North Second Street  
Phone 396-5391 Dave Olson, Mgr.

**The Sewing Center And Saw Shop**

Dress Making or Alterations  
SEWING OF ALL KINDS

Saws Sharpened, Retooled and Repaired

Let Us Sharpen Your Saws the Foley Way

**Gladys and Earl Kirkwood**

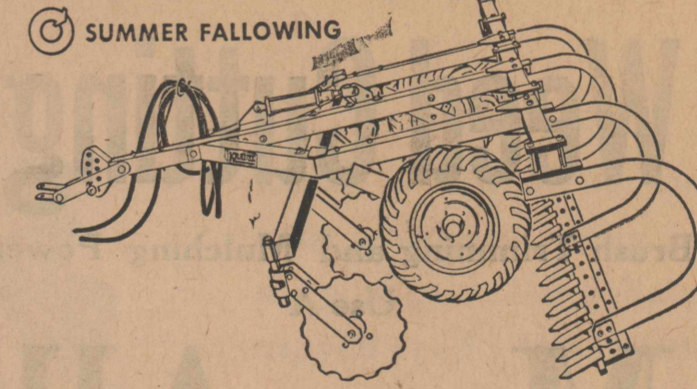
In the Slay Building  
Phone 396-5361

**KRAUSE**

**ROTO CHISEL**

PRIMARY TILLAGE  
SECONDARY TILLAGE  
SEED BED PREPARATION  
SUMMER FALLOWING

another new tool for you from Krause for better STUBBLE TILLAGE



**King Equipment Co.**

Best on the market...

**NK 310 HYBRID SORGHUM**

Northrup King 310 Hybrid Sorghum is one of the highest-yielding grain sorghums on the market in its adapted areas. Early seedling vigor and strong spring emergence give NK310 a jump on the weeds. Uniform plant height makes combining quick, clean and easy. NK310 is GREEN-TREATED to protect the seed against disease and insects. Order your supply of NK310 from our store... soon.



**VERNON MORRIS**

Sunray Phone 948-1432

MORE FROM EVERY ACRE... THROUGH CREATIVE SEED RESEARCH



100 PRIZES **Fish** 100 PRIZES

An Invitation Is Extended To All Trout Fisherman

**To Attend The Opening Of Lake Carl E. Etling**

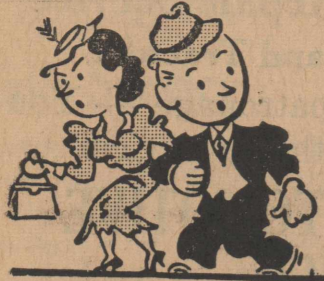
Saturday, April 28, at 1:00 P. M.

100 Prize Fish good for over \$800.00 in Cash and Merchandise — are now swimming in the lake. Prizes are given by the Merchants of Boise City and Keyes, Oklahoma in appreciation of your patronage.

Sponsored By **Boise City Chamber Of Commerce**



# Town Talk



Dinner guests Sunday in the home of Mr. and Mrs. L. S. DeBord were Mrs. DeBord's mother, Mrs. C. L. Harris of Hedley,

Mrs. Jack Peabody of Memphis, Mr. and Mrs. D. W. Peabody, Dawn, Danny and Debra of Phillips, Mr. and Mrs. Clarence DeBord, Kenny and Melvin.

Norveta and Nanfreda Bammes of Amarillo spent the Easter holidays visiting in the home of their father, Alfred Bammes.

Mrs. Harold Dearing and children of Muleshoe were

guests in the home of Mr. and Mrs. Weldon Hall Saturday and Sunday. Mrs. Dearing and Mrs. Hall are sisters.

Mr. and Mrs. Joy Smith spent Easter in Kansas visiting in the home of her parents, Mr. and Mrs. Phil Berghouse.

Mr. and Mrs. Jack Parker of Amarillo visited her parents, Mr. and Mrs. T. D. Chisum Saturday.

Mrs. Vera Jackson of Altus, Oklahoma spent Sunday visiting in the home of her son and daughter-in-law, Mr. and Mrs. Buddy Jackson.

Mr. and Mrs. W. H. Gaylord and sons and Mr. and Mrs. C. L. Gaylord and daughters visited Mr. and Mrs. C. E. Gaylord, parents of the Gaylord brothers, in Seiling, Oklahoma over last week end.

Mr. and Mrs. Dick Woolsey and children were week end guests of relatives in Canon City, Colorado.

Mrs. Dewey Taylor and children of Gruver visited in the home of her parents, Mr. and Mrs. C. E. Willmon Tuesday.

Mr. and Mrs. Ed Hill were Easter guests of Mr. and Mrs. W. F. Luker and children and Mrs. Leota Evans and Dickie of Amarillo. Bill and Gina Luker accompanied their grandparents home for a visit.

A. J. McDaniel and his son-in-law, Fedrowe Coulter, both of Tonkawa, Oklahoma were business visitors here Thursday and Friday of last week.

Mr. and Mrs. Gary Steinberger and baby, and Bill Steinberger of Canyon, spent the week end in Stratford visiting in the homes of Mr. and Mrs. Fritz Steinberger and Mr. and Mrs. Leonard Plunk.

Mr. and Mrs. E. L. Roberson of Amarillo visited Sunday with her parents, Mr. and Mrs. T. D. Chisum and her brother-in-law and sister, Mr. and Mrs. Homer Blake and Tommy.

Mr. and Mrs. Mac Martin spent the week end visiting with his mother, Mrs. C. G. Martin, who is a patient in Hamilton Hospital in Olney.

Mrs. Joe Creamers and son, David of Salinas, California visited Tuesday night in the homes of Mr. and Mrs. W. H. Gaylord and Mr. and Mrs. C. L. Gaylord.

Mrs. Jack Seig spent Easter in the home of her son-in-law and daughter, Mr. and Mrs. Felix Spears and children in Springdale, Arkansas. Mrs. Winifred Smith accompanied Mrs. Seig on the trip.

Mrs. Angie Ward and daughters spent the week end visiting in the home of Mr. and Mrs. L. A. Rhea in Amarillo.

Sharon Mullican and Mrs. Lennie Vickers of Amarillo were week end guests in the home of Mr. and Mrs. Grady Mullican.

Mr. and Mrs. J. B. Caraway and family, Mr. and Mrs. Iversen Leake and Virginia of Canyon, Mrs. W. P. Caraway of Hereford, and Mrs. Nellie Hinkle of Great Falls, Montana were week end guests in the homes of Mr. and Mrs. Toby Caraway and Mr. and Mrs. H. H. Caraway.

Mrs. Homer Blake and Tommy and Mrs. Frank Ross and Richard were business visitors in Amarillo Monday.

Mr. and Mrs. I. D. Wall were week end guests in Floydada.

Mr. and Mrs. Earl Shirk were Easter holiday guests in the home of Mr. and Mrs. B. H. Smith in Plains, Kansas.

Mr. and Mrs. Fred Childers and sons of Amarillo, and Russell Boney of Corpus Christi,

were guests in the home of Mrs. Lelah Boney Saturday. The group spent Sunday in the home of Mr. and Mrs. Fred Childers.

Mr. and Mrs. H. L. McMahan and Mrs. Phillip Bain and daughters spent Easter visiting in the home of Mr. and Mrs. Elwood Gillis and daughter in Pueblo, Colorado.

Joe Nesbit, Dalhart, was a business visitor in Stratford Monday.

Out of town relatives attending the funeral of Mrs. Earl

Garoutte in Stratford Tuesday of last week included: Rex French and Gene French of Raton, New Mexico, Mrs. Jack Frisroe of Clinton, Missouri, Mrs. Grover Mullins of Windsor, Missouri, Mrs. Jerry Johns of Sedalia, Missouri, Mrs. Dolly Garoutte of Windsor, Missouri, Mrs. Lloyd Harper of Hutchinson, Kansas, Mrs. Guy Armstrong of Springfield, Missouri, Mrs. Will Brock of Springfield, Missouri, Mr. and Mrs. Fred Garoutte of Dumas, Mr. and Mrs. Gary Steinberger of Canyon, Mr. and Mrs. Bill Garoutte of Liberal, Kansas, Mr. and Mrs. Theo

Wood of Guymon, Oklahoma, Mr. and Mrs. Emmitt Oldaker of Boise City, and Mr. and Mrs. Texhoma, Mrs. Ella Hale and Mrs. Mable Hale of Texhoma,

Mr. and Mrs. Dewey French of Boise City, and Mr. and Mrs. Jim Jones and son of Albuquerque, New Mexico.

## Breakfasts

AFTER 6:00 A. M.  
TASTY HOME SEASONED

Meals and Short Orders  
Fern's 287 Truck Stop Cafe  
WE CLOSE ON SUNDAYS

## Automotive Air Conditioner REPAIR SERVICE FOR ANY MAKE

Automotive Air Conditioner  
Sales and Service

DRIVE IN AND LET US EQUIP YOUR CAR  
FOR COOL SUMMER MOTORING

Stratford Body Shop  
ELBERT WILLIAMS, Mgr.  
Phone 396-5311

## For The Best Weed Cutting

Brush Trimming and Mulching Power  
Use A

## Moz-All Power Mower

It Cuts Tall Heavy Weeds and even light brush by removing the front shield. The MOZ-ALL is converted quickly into a rugged brush and weed cutter.

Handles nicely on rough and uneven ground —

Three-wheel design permits easy maneuvering in rough ground.

Mulches Leaves and Saves You Raking  
Efficiently mulches leaves and dried plants. Saves raking and burning.

Mows tight places as well as big areas  
Moz-All gets in close to trees, shrubs and fences. Eliminates hand-trimming.

A shock-absorber sulky is available as an attachment to convert the MOZ-ALL into a riding mower.

10-DAY FREE TRIAL

Sherman  
Implement Co.

Your John Deere Implement Dealer



TERMITES SWARMING?

call Orkin  
for the sake of your home

ANNOUNCING THE OPENING OF  
**54 DRIVE IN CAFE**  
UNDER THE MANAGEMENT OF  
**LUCY KELP**  
Serving Meals, Short Orders and  
Breakfasts  
**54 DRIVE IN CAFE**  
EAST ON U. S. HIGHWAY 54

NOW IS THE TIME TO  
GET WINTER OUT OF  
YOUR CAR

Our Spring Tune-Up

Will Give It Pep

New Spark Plugs and Points

Will Give It Power

DRIVE IN FOR A COMPLETE CHANGE OVER

**T.O.C. Motor Co.**

Increase sorghum yields with  
Monsanto Anhydrous Ammonia  
from

**CONSUMERS  
CO., Inc.**

Grain sorghum residue is low in nitrogen. That's why farmers in this area have been applying Monsanto Anhydrous Ammonia to their soil. Monsanto Anhydrous Ammonia starts right to work. You get more nitrogen (82.2%) per pound than from any other carrier. No money spent on bags or bagging. Monsanto Anhydrous Ammonia resists leaching... remains in the soil, goes to work when your sorghum needs it most. Improves moisture efficiency even during drought periods. Just watch your check strip. Let us give you a cost estimate on your next sorghum crop.



# Build Now

## While The Time Is Right!

If You Are Planning A New Home This Year - You Haven't A Minute To Lose.

For Assistance In Gathering Up All The Loose Ends That Are Necessary To Build Your Own Home

# See Cy Brown

He Offers Such Services As Use Of His Plan Books, Free Estimates On The Cost — And Assistance With Your Finance Problems.

Cy Brown Offers You More Than 25 Years Of Experience In Quality Home Construction.

Homes Remodeled - Improve Your Home For Better Living

## Brownbuilt Homes by Cy Brown

The Public Is Cordially Invited To Look Through The Homes We Build While They Are Under Construction.

Phone 396-5101

STRATFORD



**TOWN TALK**

Mrs. Rosemary Heydrick and children, Jami, Teri and Charles of Wichita Falls and Mr. and Mrs. W. C. Martin Jr. and child-

ren were Easter guests in the home of Mr. and Mrs. F. M. Keener.

Captain and Mrs. Eugene Marshall of San Antonio were Easter holiday guests in the

**Trans-WESTERN HOMES**

3 Miles South of Amarillo City Limits on West Side of Canyon E-Way — FL6-2960 — Box 2762 Amarillo, Texas

Quality built homes moved anywhere or built on location from your plans or ours. No house too small or too large. We sell completely finished homes (including fireplaces, sidewalks, brick, dishwasher, etc.) Have farm loans available and exceptionally good conventional loans. Call Frank (Wig) Wiginton COLLECT for more information about our homes.

homes of Mr. and Mrs. J. R. Marshall and Mrs. Ruby Hug-

Mr. and Mrs. Weldon Hall had as guests Sunday afternoon, Mrs. Hall's brother-in-law and sister, Mr. and Mrs. Harlie Burkham-

Mr. and Mrs. A. C. Willmon and baby of Merced, California arrived Friday night for a visit with his parents, Mr. and Mrs. C. E. Willmon.

Guest in the T. D. Chisum and Homer Blake homes Tuesday were Mr. and Mrs. R. A. Wilson

**New Arrival**

Mr. and Mrs. Joe P. Flores announce the arrival of a daughter, Theresa Annette, who was born in the Moore County Memorial Hospital in Dumas at 5:00 a. m. Friday, April 20. Theresa Annette weighed eight pounds seven ounces. She was welcomed by four brothers. Grandparents of the Flores children are Mr. and Mrs. J. W. Flores of Stratford and Mr. and Mrs. E. T. Kennedy of St. Louis, Missouri. Mrs. Flores and her little daughter were brought home from Dumas Wednesday evening.

**Among the Sick**

Royal Pendleton is able to be up in a wheel chair at intervals in the Midland Memorial Hos-

pital where he has been a patient since a traffic accident 4 weeks ago. W. L. Pendleton

visited his uncle in Midland Saturday. He reported his condition as good.

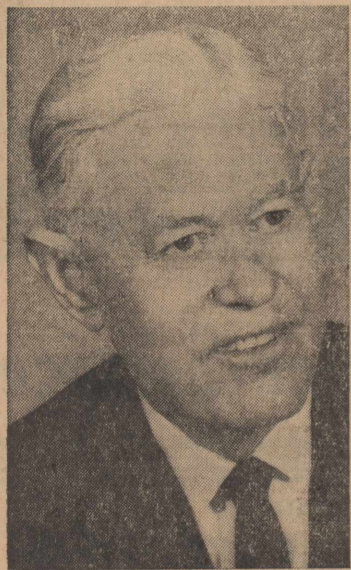
- English peas
- Hot rolls, butter
- Syrup
- ½ pint milk
- Thursday**
- Barbecued beef
- Buttered potatoes
- Carrots
- Hot rolls, butter
- Jello fruit salad
- ½ pint milk
- Friday**
- Chicken with noodles
- Sweet potatoes
- Green beans
- Hot rolls, butter
- Plum syrup
- ½ pint milk



**Give The Panhandle Senior Representation RE-ELECT GRADY**

**HAZLEWOOD**  
DEMOCRAT FOR  
**STATE SENATOR**

**Chester Logue**



**THE MAN WHO WANTS TO BE YOUR STATE REPRESENTATIVE**

**I WILL FIGHT FOR:**

1. A balanced budget.
2. Elimination of insurance "merit-rating" plan.
3. Correction of errors in state sales tax.
4. Bill to attract tourists to our area.
5. Equal rights for women.
6. Irrigation gas for farmers.
7. The interest of each person in my district.

**ELECT CHESTER LOGUE YOUR STATE REPRESENTATIVE**

(Paid Pol. Adv.)

**CWF Guild Meets With Mrs. Dovel**

The C.W.F. Guild of the Christian Church met Monday night in the home of Mrs. Bernard Dovel with four members and one visitor present.

Mrs. Tom Wakefield presided in the absence of the group leader. The meeting was opened with prayer by Mrs. Bernard Dovel. Mrs. Frank Sutton read the minutes of the last meeting.

Mrs. Tom Wakefield gave the devotional from Luke 22:61. Miss Minnie Laura Jackson gave the lesson study from the fourth chapter of Ephesians, and a discussion was held by the group. Mrs. Cecil Bever showed slides taken from a recent trip of Mrs. Bever's sister to Puerto Rico.

The meeting was dismissed with prayer by the group.

The next meeting will be with Mrs. Tom Wakefield May 28.

**School Cafeteria Lunch Schedule April 30 - May 4**

- Monday**
- Spanish rice, cheese
- Green beans
- Carrot sticks
- Hot rolls, butter
- Peach cobbler
- ½ pint milk
- Tuesday**
- Macaroni and cheese
- Blackeyed peas
- Pickled beets
- Hot rolls, butter
- Boisensberry cobbler
- ½ pint milk
- Wednesday**
- Fried chicken, gravy
- Mashed potatoes

of Dumas and Mrs. E. L. Robertson of Amarillo.



Belling Princess



3183 10-18

Crochet A Basket



Dress Pattern No. 3183. Belling Princess. A fabulous frock whose front panels give the princess look to its lovely contours. No. 3183 comes in sizes 10, 12, 14, 16, 18. In size 14 the dress takes 4½ yards of 44-inch fabric; the accompanying cape, 1 yard 44-inch. Needlework Pattern No. 1273. Crochet A Basket. This pretty work basket, or fruit bowl, makes a welcome gift and takes very little time with pattern No. 1273. It may also be used as a coaster for a bowl of flowers. Send 35c for each dress pattern, 25c for each needlework pattern (add 5c for each pattern for third class mailing and 10c for each pattern for first class mailing) to AUDREY LANE BUREAU, Box 1499, New York 1, N.Y.

**Vote Against**

THE PROPOSED

**Constitutional Amendment**

To Legalize

**Parimutuel Wagering**

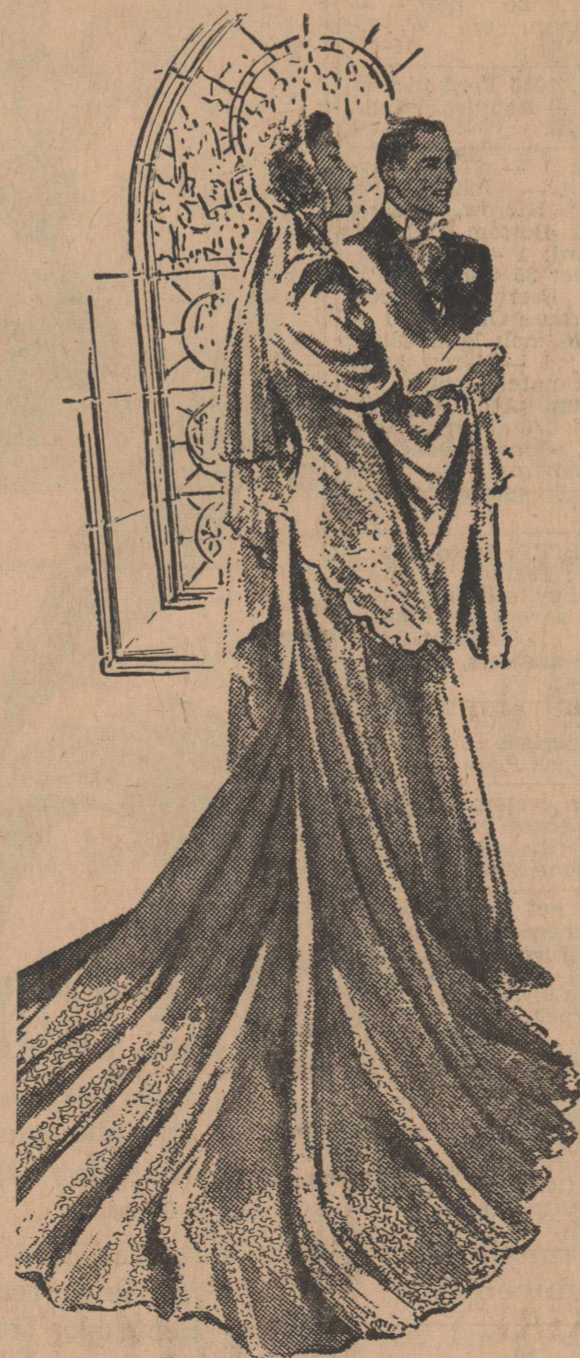
(WHOLESALE GAMBLING)

On Horse Races In Texas

**First Baptist Church**

M. E. UPCHURCH, PASTOR

**Spring Brides . . . . . Beware**



LOVE is said to be the most wonderful thing in the world . . . but believe us, you need a little money to enjoy it best. "You can't live on love alone!"

SO . . . better start saving as soon as you return from that ever-to-be remembered honeymoon.

WHY NOT start your married life the proper way?

OPEN a Checking account with us, keep a correct record of your expenses, and watch your savings grow.

**The First State Bank OF STRATFORD**

Your Deposits Insured Up To \$10,000 By Federal Deposit Insurance Corporation



### Light Tree On Display At Public Service

A yellow tree from which courtesy lights are hanging, is on display in the Southwestern Public Service Co. office this week. The tree was prepared by Joe Luscomb of the utilization department in preparation for a new sales campaign.

### • Riggs-Johnson

(Continued from Page 1)

The bridegroom's mother chose a beige lace dress with beige accessories. Her corsage was white carnations. A reception was held in the home of the bride's parents. The table covered with white nylon net over blue, was presided over by Laurina Riggs and Mrs. Oby Rist, aunt of the bride. For going away, the bride wore a green suit with match-

# The Key Word

"Come unto me, all ye that labor and are heavy laden, and I will give you rest." St. Matthew 11:28



TENSION is the key word in the description of our environment.

It builds up within the individual as the pace of living increases; it builds within one in making family, career and job decisions; it mushrooms in proportion to our ego.

Eventually it may reach a point that the individual explodes in violence or collapses in exhaustion.

One cannot live, however, without tension. Life is like a violin string. There is no music without tension. The problem is to achieve the proper balance.

The church offers you the moment to find this balance in prayer, meditation and faith.

Read your BIBLE daily and GO TO CHURCH SUNDAY

**GUARANTEED**  
**Automotive Repair Service**  
 Garage at 202 South Pearl Street  
 TELEPHONE 396-2261  
 Bring Your Automotive Troubles To Me  
**GROVER B. HAMPTON**

## Want Ads

**Wanted**  
 WANTED: Some one to make garden, share basis. — Mrs. B. I. Crutchfield. 18-2tp

WANTED: Sewing to do in my home. Will also cover buckles, make button holes and belts. — Mrs. W. J. Lowe, Phone 396-4381. 36-tfc

**Special Services**  
 NOTICE: For all of your Memorial work; slabs, curbing, markers, monuments. — Wallace Monument Co., Phone 396-2741. 18-tfc

Still waxing floors? Try the new Seal Gloss acrylic finish for vinyl and linoleum. — McMahan Furniture Co. 18-1tc

TRAVELERS Loans made on real estate for refinancing, irrigation wells, etc. — Minnie Laura Jackson. 10-tfc

COMPACT Vacuum sales and service, also used vacuums. Call W. D. Brannan, Phone 396-3741. 43-tfc

FOR ALL kinds of commercial or home refrigeration service, call Russell Beall, phone 396-5121. 5-tfc

IF YOU will call Cactus 966-3681 we will test your water free. Please call after 6:00 in the evening. Or Write Box 74, Etter, Texas, Dumas Route. — Frank Pepple. 17-4tp

FOR THE BEST in house moving, call 249-2084. — E. O. Matthews, Dalhart. 50-tfc

FREE Removal of dead stock. Call 396-3736 Stratford, or DI 9-2211 Amarillo Collect. — Amarillo Rendering Co. 49-tfc

LANDSCAPING Service: Will call at your home and furnish free plans. Will do all your planting from our complete stock. — Wally's Nursery, Dalhart, Texas, Phone 249-2431; Box 528. 10-10tp

### Houses For Sale

FOR SALE: My home on corner of North Chestnut and 8th, 2 bedrooms, double garage, across street from school. — Jack Vincent, Phone 396-3271. 17-tfc

FOR SALE: My equity in two bedroom brick home on pavement. New owner to take up payments. See Russell or Clara Albert. 16-tfc

FOR SALE: Three bedroom house; den, electric kitchen, carpeting, 1 3/4 baths; 1700 sq. ft. Contact Lance Harrington, Phone 396-3226. 16-tfc

FOR SALE: Modern House on three lots on South Chestnut. — Mrs. W. P. Brooks, Phone 396-4931. 15-tfc

FOR SALE: Three bedroom house, storm cellar and garage. Paved and curbed on 2 sides, fenced; large storage building. Bath newly tiled. Garbage disposal. One block from school. Loan approved. — Ed Smith, Phone 396-4981. 12-tfc

FOR SALE: House on 2 1/2 lots, paved, across street from park. See Edward Brannan. 29-tfc

OUR HOME located at 8th and Poplar for sale. Priced considerably under appraised loan value. — E. A. McBryde, Phone 396-3651. 34-tfc

FOR SALE: Three bedroom house, located on seven lots, paving paid for. — Roy Mitchell. 24-tfc

FOR SALE: Two Story 7-room house on four lots. House is insulated and has new roof. — C. C. Plunk. 15-tfc

FOR SALE: Income Property, one bedroom furnished house and two bedroom unfurnished house. Both modern. See F. L. Yates. 11-tfc

**For Rent**  
 FOR RENT: Furnished apartment. — Paul E. Smith, Phone 396-2351. 15-tfc

FOR RENT: Two bedroom unfurnished house. — Joe Walsh, phone 396-3181. 11-tfc

**Lost**  
 LOST: Two books, "The Thread that Runs So True" by Jesse Stewart, and "My American Heritage", a collection of poems. — Mrs. Peach Smith, Phone 396-4276. 14-tfc

**For Sale**  
 FOR SALE: Tomato plants, 5 different varieties. — Farmer's Supply. 18-3tc

FOR THE Best weed cutting, brush trimming and leaf mulching mower ever, get Moz-All. Free trial. — Sherman Implement Co. 18-4tc

ORTHO Chemicals, Pax, Turf Magic, garden supplies, custom cattle spraying. — Farmer's Supply. 14-tfc

SEVERAL Good used Living Room Suites. — McMahan Furniture Co. 43-tfc

FOR SALE: 120 foot corner lot in Sunrise addition. — Benton Noble, Phone 396-5841 17-tfc

FOR SALE: Cushman Super Eagle Scooter, like new. — Johnny Brannan, c/o W. D. Brannan. 16-tfc

FOR SALE: 1955 Ford pickup, V-8 3-speed. — Ronnie Pickens, Phone 396-3986. 18-tfc

FOR SALE: 1 — 27 ft. Mayrath loader; 1 — John Deere Off-Set disk harrow, nearly new; 1 — 2 Bottom flip-over IHC Moleboard; 1 — IHC Pickup; 1 — Oliver 35 Combine (55 model); 1 — Everman ditcher; 1 — 12 ft. Krause Oneway; 1 — Drag; 1 — 26 inch Disk Oliver Plow (10 ft); 1 — 4-row knife sled; Approximately 140 ft. 8-inch aluminum pipe; Approximately 800 ft. 3/8 inch cable. Property of Conde Donelson. See James Cameron, 2 1/2 miles east and 1 mile south of Stratford. 16-4tc

V. T. CORBITT Motors new & used House Trailers, cars and pickups. We buy, sell, trade and finance. You save \$ when trading with us. Located on U. S. Highways 87 and 385 South in Dalhart, Texas. 16-tfc

FOR SALE: One TD-14A Tractor, in perfect condition, \$2,500.00. — Jack Pugh. 11-tfc

Stone-Field custom tailored Suits, sport coats and slacks. Measured to fit. See Edward Brannan, Phone 396-3521. 46-tfc

You can't get better Carpet Deals any where than you can at McMahan Furniture Co. 5-tfc

For the best buys in Furniture and carpet, see Woody Furniture Co., Dumas, Texas, call WE 5-4811 collect for free estimate. 38-tfc

REPOSSESSED Spinnet piano. Just like new. Save \$300.00. For details write or call collect Clark Music Company, 409 N. 8th, Garden City, Kansas. Phone Bridge 6-7362. 18-tfc

**Announcements**

**STRATFORD LODGE 874**  
 Grady R. Mullican, WM.  
 W. S. Frizzell Jr., Sec'y.

**STATED COMMUNICATION**  
 Third Thursday Every Month  
 7:00 P. M.

ing hat, and beige accessories. Her corsage of white carnations was taken from the bridal bouquet. The couple is at home at 3408B, W. 15th, Amarillo, Texas. The bride is finishing her sophomore year at West Texas State College in Canyon. The bridegroom is working on his Master's degree at West Texas and is employed at Sears in Amarillo. Out of town guests at the wedding were: Mrs. L. D. Johnson, Brawley, California; Mrs. Bessie Howell, Keyes, Oklahoma; R. L. Riggs, Mrs. Avis Bates, Forgan, Oklahoma; Mr. and Mrs. Oby Rist, Mr. and Mrs. Howard Riggs, Perryton; Mr. and Mrs. Denzil Nelson, Jerry Nelson, Mr. and Mrs. Noble Nelson, Mr. and Mrs. Bill Nelson and Joe, Rev. Howard Jones, Amarillo; Robert Alford, Grand Prairie; Mrs. Dale White, Patsy and Anna Fay of Dumas. When we see two women kissing we always think of two boxers shaking hands before the fight starts.

### • FHA Girls

(Continued from Page 2)

cost of the suit was less than \$10.00.

**Sue Plunk's Dress**  
 Sue Plunk modeled a beige dress and jacket. The dress was of very fine cotton and the jacket was made of mottled raw silk. A self-made belt and flowing soft pleats gave added fullness around the waistline. The cost of the dress and jacket was less than \$10.00.

Kim Kay Knapp modeled a dress made by Sue Plunk. The yellow and white checked gingham dress was accented with yellow flowers on the collar. Yellow panties with the flowers placed on the "You know what", white shoes, a white purse and white gloves completed the costume. The cost of the dress was less than \$3.00.

**Lorelei Harding's Dress**  
 Lorelei Harding wore a beige and white dress of Arnel double knit cotton with a plain neckline and gathers around the waist to add a little fullness. Half-dollar size wooden buttons added a special touch to the gar-



## THE MONEY CROP 202 R 303 R

202 R: A Short Stalk of Uniform Height. Will Stand For Harvest. High Yielding for a Med-Early Hybrid. Also Good for Dryland.

303 R: A Full Season Hybrid. Tremendous Standability. Less Lodging Potential. YIELD — Over 8000 Lbs. at HALFWAY Test.

- Pre-Fertilized
- Mercurial Treated
- Heptachlor Treated
- 50-Lb. Bags
- Seedling Vigor
- Genetically Pure

Ask Your Dealer

**John's Store**

Phone 384-2124 Conlen, Texas

OR WRITE  
**T. H. DUVAL**  
 PHONE FO-1-2275 REPUBLIC, KANSAS

ment. Ice-blue hat and gloves and beige shoes were her accessories. The approximate cost of the dress was \$10.00. Kathy Sneed wore a 100% pure raw silk suit of lime green with a rayon blouse identical to the lining of her jacket. The sheath lined flared skirt displayed a touch of spring. She wore a flowered hat, beige shoes, gloves and purse. Mary Worley's Dress Mary Worley wore a dress of melon 100% dacron habitan (Continued on Page 7)

**You May Be A Winner**

**ATTENTION** Reader's Digest Subscribers

We have the list of WINNERS in the FIRESTONE \$500,000 PRIZE CONTEST come in and check YOUR COUPON... REMEMBER you may win a new car TOO... but you must bring in your coupon!

**Gulf Super Service**

LET'S COMPARE THE CANDIDATES

**BALLMAN vs. HAZLEWOOD**

**Insurance Merit Rating Plan**

**CHARLES L. BALLMAN** is for the IMMEDIATE removal of the inequities of the Insurance Merit Rating Plan.

**VERSUS—**

Hazlewood, in regard to this plan, has boomed in a "voice strong with promises in the Panhandle" but in Austin has done nothing! — has ONLY done this issue as a POLITICAL FOOTBALL!

In fact, Hazlewood FAILS TO TELL THE PEOPLE that HE WAS CHAIRMAN of the committee which ORIGINALLY RECOMMENDED this plan on Dec. 19, 1958 FOR ADOPTION (check the Records). Hazlewood CLAIMS that it was the big Insurance Companies and their Lobbyist who originated this PLAN... But ACTUALLY it was HAZLEWOOD, HIMSELF! The RECORD CANNOT BE CHANGED —

**Elect — CHARLES L. BALLMAN STATE SENATOR!**

(Paid Political Adv.)

It's hot...it's here...and only your Ford Dealer has it

**THE NEW-SIZE Ford Fairlane 500 Sports Coupe**

**lively new sizzle** in a class by itself

Swing into action with your choice of 3 engines, including the powerful, new Challenger 260 V-8\*

Bigger than compacts! Sportier than most big cars! Hotter than blazes! Thriftier than you'd dream! It's our just-out, just-right-size Fairlane 500 Sports Coupe! With sporty bucket seats, swank console! All this plus Ford's thrifty twice-a-year (or 6000-mile) maintenance. \*Optional at extra cost

MORE PROOF YOUR **Ford Dealer** HAS THE LIVELIEST BUYS IN EVERY SIZE

**STRATFORD MOTOR CO., Inc.**  
 Stratford, Texas

Bring your Ford back home to your FORD DEALER-SHIP for service!



LET US CHECK YOUR  
**Generator**  
 Before You Get Caught On The Road  
**WE REPAIR AND REBUILD GENERATORS**  
 IT'S TIME FOR A  
**SPRING TUNE-UP**  
 DRIVE IN TODAY  
**Quality Automotive Service**  
 On U. S. Highway 287 At North Second  
**Phone 396-5391 Dave Olson, Mgr.**

**ABSTRACTS**  
 WE HAVE A COMPLETE  
 ABSTRACT PLANT  
 Covering All Real Estate In  
 Sherman County  
 We Furnish Quick Efficient Service  
 On Short Notice  
**Sherman County Abstract Co.**  
 Royal Pendleton, Manager Stratford, Texas

**Aerial Spraying**  
 \* Experienced Personnel.  
 \* New Equipment.  
 \* 2-Way Radio Communication.  
 \* Satisfaction Guaranteed.  
 \* Competitive Prices.  
**Earl Willis**  
**Spraying Service**  
 CONTACT  
**STRATFORD GRAIN CO.**  
 Phone 396-2401

Now . . . everyone  
 can enjoy . . .  
**Economical Gas Cooling**  
 . . . using your present  
 warm-air ducts  
 Using a new, advanced but thoroughly tested principle — cooling with a gas flame — Bryant enables you to have whole-house, full-time comfort with this add-on unit. Ideal for small commercial use, too! There are no major moving parts to give you service trouble. Takes no floor space because the unit is outdoors. It carries a five-year warranty.  
 Take our word for it, this is the finest unit available for old and new homes and we guarantee your comfort. Let us survey your requirements. No obligation.  
  
 Liberal, long-time terms if you wish  
**WESTERN GAS SERVICE COMPANY**

**Beauty Spot Of The Week**  
 Stratford trees and flowers are really coming out this week. Everyone should drive around and enjoy the red bud trees. The beauty spot of the week is the tulips along Mrs. Emil Blanck's driveway.

**Two Homes Have New Owners**  
 Clinton Belcher has purchased the G. R. Garrison house in northeast Stratford.  
 Mr. and Mrs. Roscoe Dyess have purchased the W. N. Price house on Third Street.

**FHA Girls**  
 (Continued from Page 6)  
 print. Soft unpressed pleats accented the sleeveless, collarless garment. Her grey-beige accessories included bone shoes, hat, gloves and purse. The cost of the dress was \$6.00.

**Christian Church**  
 (Rev. H. Cecil Bever, Minister)  
 Sunday School 9:45 a. m.  
 Morning worship 10:45 a. m.  
 Junior youth fellowship 5:00 p. m.  
 Chi Rho youth fellowship 5:00 p. m.  
 C. Y. F. (high school) 5:00 p. m.  
 Evening worship 6:00 p. m.  
 Wednesday Adult choir practice 8:00 p. m.  
 Mid-week prayer study and prayer meeting 7:30 p. m.  
 A friendly welcome awaits you at any service of the First Christian Church.

**Baptist Church**  
 (M. E. Upchurch, Pastor)  
 Sunday School 10:00 a. m.  
 Morning Worship 11:00 a. m.  
 Training Union 6:30 p. m.  
 Evening Worship 7:30 p. m.  
 Mid-week prayer service 7:00 p. m. Wednesday.

**Church of Christ**  
 (Arthur L. Golden, Minister)  
 Sunday Services  
 Bible Study 10:00 a. m.  
 Worship 10:55 a. m.  
 Evening Worship 6:00 p. m.  
 Tuesday Ladies class 9:30 a. m.  
 Wednesday Bible study 7:00 p. m.  
 A friendly welcome awaits you at all services.

**Assembly Of God Church**  
 (Rev. Leland Lewis, Pastor)  
 Sunday School 10:00 a. m.  
 Morning Worship 11:00 a. m.  
 Young People 6:00 p. m.  
 Children's Church 6:00 p. m.  
 Evangelistic Service 7:00 p. m.  
 Wednesday night service at

7:45 p. m.  
 The public is invited to all services.

**Catholic Church**  
 (Rev. Kevin Hand)  
 Mission Pastor, Phone Dalhart, CH9-4128  
 Sundays Confessions: 7:30 to 8:00 a. m.  
 Mass: 8:00 a. m.  
 Catechism classes from 3:00 to 4:00 p. m. Saturday.

**Methodist Church**  
 (Rev. Raymond T. Dyess, Pastor)  
 Sunday School 9:45 a. m.  
 Morning worship 11:00 a. m.  
 M.Y.F. 6:00 p. m.  
 Intermediate Fellowship 6:00 p. m.  
 Junior additional session 6:00 p. m.  
 Evening worship 7:00 p. m.  
 Wesleyan Guild meets second Wednesday of each month at 7:30 p. m.  
 Choir practice: First and third Wednesday of each month, 7:30 p. m.  
 Official board meetings and all commissions second Wednesday of each month, 7:30 p. m. at the church.  
 W.S.C.S. Meetings: Third Wednesday of each month at the church at 2:30 p. m.  
 Circles meet the first Wednesday of each month; Mary Ethel Circle at 9:30 a. m., Flora Foreman Circle at 2:30 p. m., Florence Mullins Circle at 9:30 a. m.  
 Methodist Men meet the fourth Wednesday night of each

**Political Announcements**  
 (Subject to the action of the Democratic Primary Election Saturday, May 5)  
 For State Representative Of The 92nd Legislative District:  
 A. C. Hallmark  
 Chester Logue  
 For County and District Clerk:  
 Mrs. Jeannie Davis.  
 Mrs. Marguerite Terrell  
 Mrs. C. W. (Lela) Moon  
 For County Treasurer:  
 Mrs. Dorothy R. Slay  
 Mrs. Madge F. Lowe  
 For County Judge and Ex-Officio Superintendent Of Schools:  
 Chester Guthrie  
 Arthur Ross  
 Bill Frizzell  
 For Justice Of The Peace;  
 Precinct Four:  
 J. R. (Bob) Marshall  
 For County Commissioner;  
 Precinct Two:  
 E. W. Carter  
 For County Commissioner;  
 Precinct Four:  
 Tom Wakefield  
 For District Judge;  
 69th Judicial District:  
 Harry Schultz  
 For State Senator; 31st Senatorial District:  
 Grady Hazlewood

**Republican**  
 For State Representative of the 92nd Legislative District:  
 Darrel Cathey

month at 7:00 p. m.  
 MYF council meetings: First Sunday of every third month at 5:00 p. m.  
**ATHLETE'S FOOT GERM HOW TO KILL IT. IN 3 DAYS.**  
 If not pleased with strong, instant-drying T-4-L, your 48¢ back at any drug store. Watch infected skin slough off. Watch healthy skin replace it. Itch and burning are gone. Today at all Drug Stores.

**DR. G. D. CLAYTON**  
**OPTOMETRIST**  
 DALHART MEDICAL AND PROFESSIONAL BLDG.  
 HOURS: 9:00—12:00 1:30—6:00  
 9:00—12:00 SATURDAYS  
**Phone 249-2841 Dalhart, Texas**

**Vote For THE PROPOSED Constitutional Amendment To Legalize Parimutuel Wagering On Horse Races**

It will have a beneficial effect on the general economy of Texas:

It would provide an excellent source of revenue from taxes (both direct and indirect) for the State . . . and would NOT be an oppressive tax that would place further burden on those with a limited income.

It would stimulate the expenditure of tens of millions of dollars by private capital in construction of tracks . . . breeding farms . . . and numerous allied industries.

It would create thousands of jobs . . . helping to keep Texas' unemployment to a minimum.

It would keep money in Texas that is now being invested by Texans in horses, tracks, and breeding farms in other areas.

And, it would allow Texans to enjoy and spend their money in Texas in instead of having to go to the races out of state.

Racing is a tremendous tourist attraction, and would bring many thousands of additional tourists to our State.

Betting on race horses is now legalized in 26 of our States, and in nearly every major country in the world.

It is an extremely popular sport — outranking basketball, football and baseball in attendance. I understand that approximately 34 million people attended horse races last year in this country. There is no sport any more closely regulated and policed than present day major racing.

The tracks would be owned by citizens of Texas and could therefore be controlled by Texans.

What happens to the Parimutuel Dollar, according to authenticated statistics from the California Racing Board, is as follows:


86.25% is returned to Winning Ticket Holders.  
 8.26% goes to the Track.  
 5.49% goes to the State.

Very truly yours,  
**Texas Thoroughbred Breeders Association**  
 Frederic Wagner, President

**Stratford Abstract Co.**  
 Minnie Laura Jackson, President  
 Incorporated 1907 — 55 years of Satisfactory Service to Sherman County Land Owners  
**Let Us Make Your Abstracts**  
 WE SHOW THE RECORDS  
 OFFICE IN AMERICAN LEGION BUILDING

**RE-ELECT Judge Meade F. GRIFFIN to Supreme Court PLACE NO. 1**

Endorsed by the lawyers of Texas in their Bar Poll by a vote of 5,155 to 643. The lawyers in Judge Griffin's home county of Hale voted unanimously for him. Lawyers in his opponent's home county of Potter voted 75 to 17 in favor of Judge Griffin. Ask your attorney who is best qualified to serve on the Supreme Court.  
 Pol. Adv. paid for by friends of Judge Griffin





### Lake Etling Will Open Saturday

Lake Carl E. Etling will open Saturday at 1:00 p. m. with a fishing derby of over \$800.00 in cash and merchandise prizes. Trout fishermen are being invited to attend by the Boise City Chamber of Commerce, sponsors of the trout fishing contest.

Prizes for the tagged fish are being donated by business firms of Boise City and Keyes, Oklahoma.

### City Pet Rabies Shots Will Be Given May 12

Dr. C. A. Thompson, veterinarian, will be in Stratford May 12 from 9:30 a. m. to 12:00, and from 1:00 to 3:00 p. m. in the City Fire Department Building, and will vaccinate all dogs and cats brought to him.

Please keep this date in mind. Authority of the City Council, Dan Foreman, City Clerk.

#### WHAT POWER

A floorwalker, tired of his job, joined the police force. Several months later, a friend asked him how he liked being a policeman.

"Well", he replied, "the pay and the hours are fair, but one thing I like is the customer is always wrong".

### NEWS FROM

- Houston
- Texas
- The World

IN THE HOUSTON POST

Written and Edited to Merit Your Confidence

#### MAIL

Subscription Rates Daily and Sunday

DAILY AND SUNDAY  
 One Year .....\$21.00  
 Six Months .... 10.50  
 Three Months .. 5.25  
 One Month .... 1.75

#### DAILY ONLY

One Year .....\$15.60  
 Six Months .... 7.80  
 Three Months .. 3.90  
 One Month .... 1.30

Add 2% State Sales Tax to Above Prices

All Mail Subscriptions Payable in Advance

Springtime is value time...at our

**Double Stamps**  
**Tuesday**  
 With \$2.50 Cash Purchase or more.



**DEL MONTE®**  
**GARDEN SHOW**  
**Big 99c Sale**

## 8 Days To Buy

Sale Starts Friday, April 27, and Special Prices Are Good Through Saturday, May 5

Stock Up Now! - Watch For Other Inside Specials Throughout The Sale

**Shortening** **65**  
KIMBELL'S 5¢ OFF LABEL  
**3 pound tin**

**PEAS - Del Monte** **99**  
NO. 303 TIN - 21¢  
**5 Cans for**

**CORN - Del Monte** **99**  
Whole Kernal or Cream Style Golden, 303 Tin 17¢  
**6 Cans for**

**GREEN BEANS-Del Monte** **99**  
NO. 303 TIN - CUT - 26¢  
**4 Cans for**

**Wax Cut Green Beans** **99**  
DEL MONTE - NO. 303 TIN - 26¢  
**4 Cans for**

**SPINACH - Del Monte** **99**  
NO. 303 TIN - 15¢  
**7 Cans for**

**KRAUT - Del Monte** **99**  
NO. 303 TIN - 15¢  
**7 Cans for**

**Stewed or Whole Tomatoes** **99**  
NO. 303 TIN - 26¢  
**4 Cans for**

**PUMPKIN - Del Monte** **99**  
NO. 303 TIN - 13¢  
**8 Cans for**

**NEW POTATOES** **99**  
DEL MONTE - NO. 303 TIN - 15¢  
**7 Cans for**

**TOMATO JUICE** **85**  
DEL MONTE - NO. 46 OZ. TIN - 29¢  
**3 Cans for**

**PORK & BEANS** **99**  
JACK SPRAT - NO. 300 TIN - 10¢  
**11 Cans for**

**LUNCHEON MEAT** **39**  
KIMBELL'S  
**12 Ounce Tin**

**M-E-A-T**  
**BACON - Sunray** **98**  
**2 pound package**

**HAMS - Sunray** **42**  
18 TO 24 POUND  
**Whole or Half - Pound**

**FRYERS** **29**  
GRADE A  
**Fresh Dressed - Pound**

**ROUND STEAK** **79**  
U.S.D.A. Good POUND

**OLEO - Wilson** **93**  
GOLDEN BRAND  
**Colored Quarters, Lb. - 16¢**  
**6 pounds for**

**FRUIT COCKTAIL** **99**  
DEL MONTE - NO. 303 TIN - 21¢  
**5 Cans for**

**PEACHES** **99**  
DEL MONTE - NO. 303 TIN - 21¢  
**5 Cans for**

**PEARS - Del Monte** **99**  
NO. 303 TIN - 26¢  
**4 Cans for**

**APRICOTS** **99**  
DEL MONTE - NO. 303 TIN - 26¢  
**4 Cans for**

**PINEAPPLE - Del Monte** **99**  
SLICED OR CRUSHED - FLAT TIN - 17¢  
**6 Cans for**

**PINEAPPLE** **79**  
DEL MONTE CRUSHED - NO. 2 TIN - 27¢  
**3 Cans for**

**PINEAPPLE JUICE** **99**  
DEL MONTE - NO. 211 TALL TIN - 11¢  
**10 Cans for**

**Pineapple-Apricot Drink** **85**  
46 OUNCE TIN - 29¢  
**3 Cans for**

**Pineapple-Grapefruit Juice** **99**  
Pineapple-Pear - Pineapple-Apricot  
 Pineapple-Orange - 25 OZ. TIN - 26¢  
 DEL MONTE - 4 CANS FOR

**Pineapple-Grapefruit Juice** **85**  
DEL MONTE - 46 OZ. TIN - 29¢  
**3 Cans for**

**TOMATO JUICE** **99**  
DEL MONTE - NO. 300 TIN - 11¢  
**10 Cans for**

**POP-CORN** **25**  
KIMBELL'S - 10 OZ. TIN  
**2 Cans for**

**ANGEL FOOD CAKE** **39**  
Large Size EACH

**POTATO CHIPS** **49**  
MEAD'S - LARGE  
**59¢ Package**

**LIPTON TEA**  
**THE "BRISK" TEA**



**1/4 Lb. Box 39**

**48 Count Box 59**

**BISCUITS - Kimbell's** **99**  
**12 cans for 85¢**  
**14 cans for**

**SALAD DRESSING** **37**  
KIMBELL'S  
**Quart Jar**

**Kraft-PABST-ETT** **65**  
CHEESE SPREAD  
**2 Pound Box**

**CATSUP - Del Monte** **99**  
14 OZ. BOTTLE - 21¢  
**5 Bottles for**

**TUNA** **99**  
DEL MONTE - 26¢  
**4 Cans for**

**RAISINS - Del Monte** **99**  
15 OZ. PKG. - 26¢  
**4 Boxes for**

**PURE GRAPE JELLY** **99**  
KRAFT - 18 OZ. GLASS - 35¢  
**3 Glasses for**

**PURE APPLE JELLY** **85**  
KRAFT - 18 OZ. GLASS - 29¢  
**3 Glasses for**

### F-R-O-Z-E-N F-O-O-D

**ORANGE JUICE**  
Minute Maid - 6 OZ. TIN

**FISH STICKS**  
COASTAL - PKG.

**CUT OKRA**  
**CUT CORN**  
**CHOPPED BROCCOLI**  
**BUTTER BEANS**  
**SPINACH**  
**BIRD'S EYE - PKG.**

19

**STRAWBERRIES** **89**  
10 OZ. BOX - 23¢  
**3 Boxes for**

**COFFEE** **\$1.29**  
FOLGER'S - 1 POUND - 65¢  
**2 Pound Tin**

**25** **PRODUCE SPUDS** **69**  
WHITE  
**lb. Bag**

**FRESH CORN** **25**  
**4 ears for**

**GREEN ONIONS** **15**  
OR RADISHES  
**2 Bunches for**

**CARROTS** **9**  
**cello. pkg.**

# ALBERT'S GROCERY & MARKET