

## Haskell Board Rejects \$50,000 Tax Survey Bill

Equalization is still a very much in the side Haskell County Commissioners Court. The court rejected Monday a bill from Pritchard of Fort Worth, evaluating engineers, hired for a equalization program but not a month ago when applied the "heat." The court left the door further negotiation as to be paid P&A work done on the survey. A matter of was whether or not the done any work on a contract.

The court's meeting Monday of the commissioners spoken against P&A work here, one member little to say about the and the judge and one member indicated reinstatement of P&A's contract.

Commissioner Leon Weinert and Precinct Commissioner Francis Blake said.

Commissioner Louie did not speak out on Monday morning.

Judge Jim Alvis and Commissioner Claude indicated a preference to the contract.

The court also displayed an unkind attitude toward proposed salary raises and additional help sought by the county clerk.

Approved though, were \$25 per month salary raises for two deputy county clerks, and purchase of a new car for Sheriff Bill Pennington.

When Judge Alvis broached the matter of the \$50,000 bill from P&A, Newton said "as far as I'm concerned, we can forget about it."

Kuenstler said he was of the opinion "they ought to have some—but not that much."

Commissioner Blake, who said P&A "didn't do a thing they agreed to do," told the court that "for my part we can reject it."

Kuenstler was also in favor of rejecting the bill for \$5,000 but left the door open for negotiation as to an amount.

At the suggestion of Judge Alvis, a letter will be written Monday and inviting them to meet with the court probably at the next meeting two weeks away.

"What I want to know," Judge Alvis told the court, "is what are we going to about taxes."

He introduced at the meeting a survey showing that the average assessment of city and rural property in the county is 11.8 per cent while oil properties are assessed at 25 per cent of market value.

Oil operators in the area have protested the inequities and furnished the survey showing the discrepancies.

Judge Alvis advised the court that county finances wouldn't stand loss of "three or four million dollars" in valuations if oil and utility appraisals are equalized with other property.

During the meeting Monday, a bank note for \$20,000 was renewed by the court. The money was borrowed when additional funds were needed.

This prompted Commissioner Blake to speak out concerning future operations in the precinct. "This spending is gonna have to decrease," he declared, "until the deficit is wiped out."

He said that any bridge broken down in the future would be "patched up" until funds are available to repair them.

Judge Alvis told the court that two men had indicated interest in the job if the court should decide to hire other appraisers to assist the court in the equalization program. He said they were John Berry of Clyde, former City of Abilene landman; and Thomas R. Pickett of Fort Worth.

## Oil Well Drilled In Haskell Field

The Oil & Refining Co. of La Mesa has been drilled as the second well Harrison (5,100 Strawn) two miles northeast of Haskell County.

The well is a southeast of Humble's No. 4 Har-Estate, opener of the drawn pay in the Harrison Field. It is in 78. Block 1, H&C Survey.

The potential was 96.50 of 39 gravity oil, flow 1-4 inch choke and formations at 5,100-5,113.

The well was treated with 300 of acid. Casing pres- 50 pounds and gas- was 200-1. Casing was 1,160 feet and hole was back from 5,175 to 5,180.

## HHS Band Members Place High In All Region II Band

Some 450 area band members tried out for All-Region II Band Saturday at McMurry College in Abilene for a 100-piece All-Region II Band. J. D. Stacks, a Junior at HHS, placed third high out of 13 trying out on baritone horn, and Paul Merchant, a Senior at HHS, was fourth high out of 14 basses trying out. Both men made the select group.

Tryouts were conducted in the morning session, and a three hour rehearsal was conducted by six area band directors for the evening concert. Director Frank Porter was one of the conductors to work the select group. The day's events were climaxed by an evening concert, and awarding of emblems to the members of the band. The concert included contemporary works, and was well attended. Area directors describe the band as the finest All-Region II Band to date, and was an inspiration to all who participated.

## SINGING THURSDAY NIGHT

All singers of the Central Baptist Church are urged to meet at the church Thursday January 14 at 7:30. New Stamps and Stamps - Baxter song books have arrived. T. C. Cobb announced, and will be used Thursday night.

## Rev. Howell To Speak At Rule Baptist Church

Rev. Milford Howell will speak at both services in the First Baptist Church in Rule Sunday, Jan. 17. He is now on furlough from his foreign mission appointment in Africa.

Rev. Howell lived in Rochester and Rule before moving to Abilene. He is a graduate of Hardin-Simmons University.

A cordial invitation is extended to the people of this area to hear Rev. Howell.

Morning worship services begin at 11 a. m. and the evening services at 7:30.

## John R. Dunn Jr. Gets Promotion

John R. Dunn Jr., whose parents live in Rule, recently was promoted to specialist five at Fort Hood, Texas, where he is a member of the 2nd Armored Division.

Dunn, assigned to Headquarters Troop of the division's 15th Cavalry, entered the Army in August 1952.

The 28-year-old soldier attended Rule High School and is a 1956 graduate of Midwest Business College in Pueblo, Colorado.

Before entering the Army, he was employed by the Missouri Pacific Ry. in St. Louis, Mo.

## Final Rites Are Held For Mrs. Hodgkin

Final rites were held Wednesday, January 13, 2:30 p. m., from the Haskell Methodist Church, for Mrs. T. J. Hodgkin, 74, with Rev. Oscar Bruce, pastor, and Rev. L. D. Regeon and Rev. W. T. Priddy, officiating.

Mrs. Hodgkin, a resident of Haskell County since 1925, passed away Tuesday morning in the Haskell County Hospital. She had been in ill health for the past two years.

Born Lula Caroline Trout, to Mr. and Mrs. Ephraim Trout, November 23, 1885, Santa Ridge, Arkansas, she was married to T. J. Hodgkin, January 17, 1909. She was a member of the Methodist Church.

Survivors in the immediate family include her husband, T. J. Hodgkin, Haskell; three sons, Fred and Chester of Haskell, and Roy of Abilene; four daughters, Mrs. Hazel Kitchens, Cleburne, Mrs. Jessie Williams, Bovina, Mrs. Elsie Booe, Gainesville and Mrs. Minnie Pearl Kinney, Rule; one sister, Mrs. I. H. Hatrell, of Haskell; 14 grandchildren, 2 great-grandchildren, and a number of nieces and nephews.

Funeral services were held at the home of Mrs. J. M. Byrd, Delma Williams, E. E. Calloway, Harry Howard, Otis Elmore, and Wallace Cox, Sr.

## Haskell Stores Schedule \$ Day Tues. Jan. 19

A number of Haskell stores and business concerns have scheduled the monthly Dollar Day on Tuesday, Jan. 19.

Featured on this day will be drastic price reductions on merchandise throughout the various stores representing virtually all lines of retail business.

Special prices will be in effect for Dollar Day.

A 4-page circular advertising the event and listing many of the savings offered, will be mailed and distributed throughout the Haskell trade territory this weekend.

Stores cooperating in January Dollar Day are:

The Fabrich Shop, Boggs & Johnson, Elma Guest Ready-to-Wear, Neely Dry Goods, Fashion Fabrics, The Slipper Shoppe, Frazier's Radio & Record Shop.

Cofield's Department Store, W. A. Lyles Jeweler, The Personality Shoppe, Perkins-Timberlake, Lane-Felker, Wheatley's, Western Auto Store, C & B Store, Christene's Beauty Salon, Fouts Dry Goods, Sherman's Floor and Interior, Bynum's, Hassen's, Jones Cox and Co., and Perry's.

## Four Service Stations Are Burglarized Here

### The Annual Queen And Princess Coronation Slated At Rule High

The Annual Queen and Princess Coronation will be given at the Rule High School auditorium on Jan. 21 at 7:30 p. m. Minimum admission will be 25c per person, entitling them to vote for one Queen from High School and a Princess from grade school and a Princess from Junior High.

Jimmy Riggins will be master of ceremonies and Steve Denton and Johnny Estes will be heralds.

Crown carriers will be Ha. Hunt, Larry Simpson and R. Kittley. Flower girls will be Karla Hertel, Marsha Brass, Melinda Webb and Carol Ann Miller.

Mrs. Frank Campbell will play for the coronation and songs will be sung by Paula Pinkard; the Keys, Sherry Kille, Linda Higgs and Janet Hannsz, and a girl's trio, Martha Campbell, Nancy Turnbow and Kay Ball.

Grade school princess candidates and their escorts are: First grade, Marsha Moore, Robert Bishop; first grade, Debbie Rosinbaum, Mike Woodridge; second grade, Kathy Bailey, Sammy Simpson; second grade, Rhonda Carroll, Jimmy Hiale; third grade, Gayle Richards, Tommy Stryker; third grade, Carol Cloud, Charles Lott; fourth grade, Susan May, Johnny Westbrook; fifth grade, Edith Chambers, Chris Allison.

Junior High Princess candidates and their escorts are: sixth grade, Virginia Westbrook, Hal Ousley; seventh grade, Carol Gaun, Eddie Chambers; eighth grade, Elaine Elmore, Gary Shaw.

High School Queen candidates and their escorts: Freshman, Linda LeFevre, Mike Bailey sophomore, Jana Ulmer, Dudley Briles; junior, Linda Higgs, Paul Webb; senior, Judy Guinn, Jackie Colbert.

The personalities from Junior High and High School will be introduced. Junior High Personalities are: Football Sweetheart, Dolores Stryker, Football Hero, Eddie Jones.

Best All Round Boy and Girl, Dolores Stryker, David May.

High School Personalities to be introduced are: Mr. and Mrs. R.H.S., Judy Guinn and Glen Dale Schonerstedt.

Most Talented, Janet Hannsz.

## Area Lodges To Install Officers

Albert Schellenberg, Dallas, grand finance committeeman of the Sons of Hermann fraternal order, will be the installing officer at installation ceremonies for six West Texas Hermann Sons lodges at 2 p. m. Sunday, Jan. 17, at the Hermann Sons Home at Hermleigh.

Assisting Schellenberg will be Hardy Mosel, Fredericksburg, grand guide; and M. O. Gold, San Antonio, grand lodge district supervisor for West Texas. Home offices of the 50,000 member fraternal order are in San Antonio.

Officers will be installed for the coming year for the following: Lubbock Lodge No. 6, Lubbock; Brazoria Lodge No. 228, Old Glory; Paint Creek Lodge No. 241, Haskell; Roland Lodge No. 256, Hermleigh; Roscoe Lodge No. 257, Roscoe; and Pep Lodge No. 311, Pep. All are mixed lodges having both men and women members. Roland Lodge will be host group.

## Farm-Labor Meetings Are Scheduled Here

### Hospital Notes

The following persons have been listed as patients in the Haskell County Hospital during the past week:

Mrs. John Nanny, medical, Haskell.

Terry Don Chapman, accident, Haskell.

Robert Wood, surgical, Haskell.

Victoria Salinas, medical, Rule.

Mrs. John Rice, medical, Munday.

Lon Pate, medical, Haskell.

J. S. White, surgical, Weinert.

Mrs. J. W. Burrows, medical, Rule.

Mrs. E. S. Beene, surgical, Knox City.

Mrs. R. C. Montgomery, medical, Haskell.

Mrs. Maggie Halliburton, medical, Haskell.

Clay Smith, surgical, Haskell.

Miss Hallie Mae Parish, medical, Haskell.

Bobbie Collins, burns, Haskell.

Omega Villereal, surgical, Haskell.

Tommie Gene Wilson, medical, Weinert.

Dismissed

Mrs. O. P. Bryan, Rule; Mary Ferguson, Haskell; Vicky Caudillo, Haskell; Edward Joe Owens, Rule; J. W. Howeth, Haskell; Mrs. Wilton Welse, Haskell; W. H. Edwards, Haskell; Susan Baldree, Old Glory; Mrs. Royce Williams, Haskell; Tom Whitaker, Haskell; Mrs. Geo. Gray, Weinert; Birdie Lee Lewis, Haskell; Willie H. Baccus, Haskell; J. W. Rush, Rule; Ben Smith, Haskell; Mrs. G. D. Glenn, Stamford; Henry Carrion, Abilene; Mrs. Roy Swinson, Haskell; Mrs. Ida Corrine, Rule; E. W. Clark, O'Brien; Mrs. J. O. Merchant, Haskell; Mrs. Charlie Barton, Haskell; Mrs. John Clifton, Haskell; Mrs. G. T. Simmons, Odessa; Charite Harrell.

## Deposits Climb At The Haskell National Bank

According to a condensed statement of condition of the Haskell National Bank at the close of business December 31, 1959, deposits climbed to \$5130,289.04.

RESOURCES—

Loans and Discounts \$957,273.30; Overdrafts, \$2,888.96; Federal Reserve Bank Stock, \$6,000.00; Furniture and Fixtures, \$119,000.00; Other Assets, \$4,399.52; United States Bonds, \$2,120,726.94; Other Bonds and Securities, \$294,441.11; CCC Cotton, \$10,786.42; Bills of Exchange, \$26,933.46; Cash on Hand and on Deposit with Other Banks, \$1,972,029.04; Total Quick Assets, \$4,424,916.97; Total Resources, \$5,539,478.74.

CAPITAL ACCOUNTS AND LIABILITIES—

Capital Stock, \$100,000.00; Surplus, \$100,000.00; Undivided Profits, \$100,000.00; Reserve for Contingencies, \$87,193.04; Total Capital and Reserves, \$378,193.04; Other Liabilities (Income Collected, Not Earned), \$30,996.66; Deposits, \$5,130,289.04; Total Capital, Reserves and Liabilities, \$5,539,478.74.

## December Rains Send 1959 Total Above Normal

Rainfall amounting to 2.12 inches recorded here during December was nearly one inch above normal for the month, boosting the 1959 total rainfall to 23.99 inches. This is .44 inch above the annual average of 23.55 inches. Normal rainfall for December is 1.18 inches, according to records of local U. S. Weather Observer Sam Herren.

Rain was recorded here on six days during December. Heaviest precipitation was .82 inch on Dec. 17, while .72 inch was measured on Dec. 15.

Lowest temperature recorded during December was 25 degrees in Dec. 6. Three days previously, on Dec. 3, the mercury had soared to 74 degrees to bring the warmest day in the month.

## Conservation Practices Applied Haskell County During 1959

One hundred and eighty-two of the Haskell County area of the California and Wichita-Brasos Conservation Districts assisted in applying conservation practices on their ranches, according to a report released by the local Work Conservationist J. C. Koehler.

Two new cooperators assisted in developing conservation plans on their ranches. According to Harry G. Koehler, Conservation Aid, a basic plan key to the accomplishment of a sound and lasting conservation program. Koehler that in addition to the operators assisted, 25 ranches were assisted in the development of conservation plans which will be prepared at all possible. Koehler said four cooperators with

incomplete conservation plans were assisted in progressing their conservation plans into a sound and lasting conservation program.

Through the combined efforts of the Haskell County ASC office and the Haskell County Conservation Districts, farmers and ranchers in the Haskell portion of the two districts established 0.8 mile of diversion terraces, 107.4 miles of new field terraces, and 14.7 miles of old terraces enlarged according to annual report released by Work Unit Conservationist Yearly.

Twelve acres of land were leveled for more efficient use of irrigation water as well as 2.7 miles of underground irrigation pipelines being installed. Five farm livestock water ponds were constructed. 476 acres of farm land was utilized in the establishment of surface irrigation systems.

Other conservation practices applied during 1959 in the Haskell County work unit portion of California Creek and Wichita-Brasos Soil Conservation Districts were as follows: Conservation Cropping System, 2200

acres; contour farming, 3241 acres; cover cropping, 1400 acres; crop residue use (for wind erosion control, 2483 acres; rotation hay and pasture, 343 acres; stubble mulching, 2851 acres; brush control, 3283 acres; deferred grazing, 6899 acres; fertilizing, 311 acres; pasture planting, 183 acres; range pitting, 71 acres; range seeding, 389 acres; proper range use, 9780 acres; wildlife area improvement, 10 acres; windbreak planting (farmstead), 1 acre; improved water application, 288 acres; irrigation water management, 29 acres; sprinkler irrigation system, 1 on 44 acres; water development, 1 on 2.2 acres.

Emphasis will be placed on all phases of the agronomic program of conservation, Koehler stated, with special emphasis being placed on the development of sound conservation cropping system.

"We have plans for contacting all 691 farmers or ranchers now cooperating with the District Conservation Program," Koehler said.

## Visits Mr. and Mrs. Austin New

Recent guests in the home of Mr. and Mrs. Austin New and Doyle during the Christmas and New Year holidays were Mr. and Mrs. Roger Thibault and little daughter Tammy Sue from Camden, Delaware. Mrs. Thibault is the former Wanda Sue New. They also visited in the home of their grandparents, Mr. and Mrs. E. W. Andrews, and with other relatives and friends while here. They arrived here by plane Dec. 3. Mr. and Mrs. New took them to Haskell, Jan. 3 where they went by plane back to Dover, Delaware; Thibault is a member of the Air Corps, sergeant rating.

## Please Excuse!

If your Haskell Free Press is not up to standard this week, or if you fail to see a "certain news story"—please excuse, and lead a sympathetic ear.

The "big wheel" Jody Clark and wife, along with Dr. and Mrs. T. W. Williams are visiting their daughter and son, Dr. and Mrs. Temple Williams at Durban, North Carolina, and will be away some two weeks.

On top of that Lon Pate, veteran Haskell Free Press Editor, is in the local hospital suffering from pneumonia. Also this is the week of "Dollar Day" 4-page circular, so short-handed, and with the burning of midnight oil, The Free Press comes to you this week under trying conditions.

## Youth Evangelism To Be Theme of District Meet

The First Methodist Church of Haskell will be host to about 160 youth and adult counselors of the Stamford District this weekend. Registration will begin at 4:30 p. m. Saturday. Many of the youth will be guests in the homes of the Methodist members Saturday night.

The general theme for study and discussion of this retreat will be "Youth Evangelism." Ben Bue, president of the Stamford District Methodist Youth Fellowship, will preside over the business meetings of the group.

Rev. Albert Lindley, pastor of First Methodist Church in Aspermont, will preach Sunday morning at 11 o'clock to the youth and the local congregation.

## Nineteen Farmers or Ranchers Cooperating with the California Creek and Wichita-Brasos Soil Conservation Districts in Haskell County have developed and had approved by the State Conservationist of the Soil Conservation Service plans of operations for the Great Plains Conservation program.

The 19 units comprise a total of 21,035 acres of land and have \$60372.40 of Federal funds obligated for the purpose of cost-sharing needed land-use conservations and necessary land-use benefit practices, according to J. C. Yearly, local work unit conservationist.

Outstanding among all practices that are to be cost-shared, Yearly stated, was that rangeland renovation consisting of brush control, re-seeding, and fencing for more uniform grazing.

Allen Davis of Rule is being assisted by the work unit located at Aspermont. Davis' farm is located west of the Brasos River. A. A. Smith Jr.,

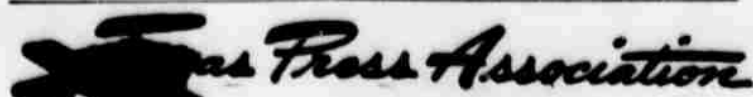
## Great Plains Conservation Program Well Received

of Munday, Dwight C. Key of Munday, George Mullino of Rochester, and L. E. Groves of Guthrie are being assisted by the work unit personnel at Knox City. Brooke Early of Abilene, W. B. Griffith and V. L. Griffith of Paint Creek, Norman Lovvorn of Stamford are being assisted by the SCS personnel at Stamford. W. L. Holt of Haskell (two contracts), Calvin Frierson of Haskell, R. K. Denon of Rule, L. W. Norman of Rule, Mrs. S. P. Keiler of Jud, J. E. Jetton of Weinert, H. W. Smith of Mattson, W. E. Lawson of Haskell and L. B. Jones of Paint Creek are assisted by the Haskell work unit conservationists.

James C. Alvis of Haskell and Felton Jackson of Goree have recently applied for assistance under the Great Plains Conservation program. Yearly stated. These two farmers or ranchers have already started preparing their plans of operation for a Great Plains Contract.

THE HASKELL FREE PRESS

Established January 1, 1886  
PUBLISHED EVERY THURSDAY



JETTY V. CLARE, Owner and Publisher  
ALONZO PATE, Editor

Entered as second-class matter at the postoffice at Haskell, Texas, under the act of March 3, 1879.

SUBSCRIPTION RATES

Haskell, Throckmorton, Stonewall, Jones and Knox Counties, 1 Year.....	\$2.50
6 Months.....	\$1.50
Elsewhere, 1 Year.....	\$3.75
6 Months.....	\$2.25

NOTICE TO THE PUBLIC — Any erroneous reflection upon the character, reputation or standing of any firm, individual or corporation will be gladly corrected upon being called to the attention of the publishers.

Ignorance Is A Weapon

Economic ignorance can be about as dangerous a weapon as an atom bomb. It leads to beliefs, attitudes and demands that could ultimately eat away the foundations on which this kind of country and this kind of government rest.

For instance, polls have shown that large numbers of employees have an unbelievably mistaken idea of what happens to the money taken in by corporations. They think that only 25 per cent of corporation income goes to employees—and 75 per cent to the owners.

The truth is that of all the money in a corporation going to employees and owners, the employees get 87 per cent and the owners 13 per cent.

A breakdown of total national income also produces some significant facts. Two thirds—66 2/3 per cent—is received by employees. Professional people, farmers, landlords and others get a share of the remainder. Owner-stockholders are well down the list, with six per cent. Then, of that six per cent, about 2 1/2 per cent on the average, is retained in the business for expansion, machinery and similar uses.

The people who use the tools of industry get the big share of industry's earnings. The people whose savings provide the tools get a far, far smaller share. And that is one of the reasons why capitalism has provided the highest mass living standards ever known.

Guide Posts

Shortly before the end of the year, Senator Byrd of Virginia made a speech in Chicago in which he urged a number of essential steps this country must take. He pledged his support to them to the fullest extent of his "capacity and energy."

Three of this distinguished Senator's "musts" are: "1. Stopping expenditures in excess of our income by eliminating nonessential spending.

"2. Reducing the federal debt; this would be a great deterrent to inflation for the present and lift some of the burden we are loading on generations of the future.

"3. Curbing the excesses indulged in by labor leaders, without destroying the right of collective bargaining."

In this, Senator Byrd has clearly laid out guide posts for the future which must be followed if we are to remain a strong, solvent and stable country—and if free and representative government is to be perpetuated in the United States.

Victory "Brand Wagon"



Haskell County History

50 Years Ago—Jan. 8, 1910 Miss Allen of Honey Grove is visiting Miss Florence Baldwin of this city.

Walter Robertson and family of San Angelo spent the holidays with Mr. Robertson's parents, Mr. and Mrs. S. L. Robertson of this city.

Gus Wilfong of Wichita Falls spent several days here this week. His father, Bob Wilfong, now deceased, built one of the first residences in Haskell.

R. G. Brazier of Whitney, Hill County, has moved to Haskell.

R. C. Montgomery, who is under treatment of Dr. Neathery for appendicitis, is improving rapidly. It is now thought an operation will be avoided.

Warren Fitzgerald has returned home after spending several months in Yoakum County.

Ollie Henderson left Tuesday for Gorman, where he will have charge of the clothing department of a large dry goods store in that city.

Mr. and Mrs. L. D. Morgan of the Boone Ranch visited Mrs. Morgan's parents, Mr. and Mrs. J. S. Boone several days this week.

Mrs. Austin and two children and Miss Addie Day of Baird, who have been visiting Mrs. E. D. English, have returned home.

There was a coating of sleet deposited on the earth and trees here Monday, but the cold was not very severe.

Miss Lettie Taylor, who has been visiting her friend, Miss Annice Fields, has returned to her home in Sherman.

Miss Lois McConnell has returned to Sherman, where she is attending Kidd-Key College.

Elam Gee of Winters spent Monday and Tuesday with the family of his uncle, E. F. Springer at this place.

J. L. Trammell is putting in a new farm nine miles southeast of town.

Miss Tommie Boone visited friends in Rochester last week.

60 Years Ago—Jan. 12, 1900 The vacant house a mile north of town, known as the Tanner place, was burned Wednesday night about eight

PAINT CREEK... COMMUNITY NEWS

BY MRS. GENE OVERTON

(Delayed from last week)

The Christmas card from the West Texas Rehabilitation Center this year had a picture of little Eldon (Pewee) Mickler on it. He is the son of Mr. and Mrs. E. W. Mickler of Stamford and the grandson of Mr. and Mrs. Bill Mickler. Mrs. Allen Isbell is his aunt. On the card he was in his pajamas looking at a Christmas tree and holding a huge Christmas candle. He was braced on his crutches.

The ladies of St. Ann's Catholic Church were hostesses for a lovely bridal shower for Delores Ann Pustejovsky Wednesday, Dec. 30th in the FHA cottage at Paint Creek. In the receiving line were the bride's mother, Mrs. Frank Pustejovsky, Delores Ann, the groom's mother, Mrs. Kolecek of Seymour and the bride-to-be's grandmother of Abilene. A lovely refreshment plate of cake squares and punch was served from a lace covered table with appointments in silver and crystal and a centerpiece of shrimp colored glads in a crystal bowl. Gifts were displayed on long tables in the sewing center of the cottage.

Miss Delores Ann Pustejovsky became the bride of Edwin Kolecek in a lovely ceremony at the St. Ann's Catholic Church in Stamford Saturday evening. But I'll have to tell you about it later because they had 16 attendants and it is too muddy to get to the Pustejovsky's and find out all their names. It was a beautiful wedding and the reception at the Armory lasted nearly all night, and was more fun.

Mrs. Joy Gay from Odessa sent me the address of another boy in the service. T-Sgt. Kenneth Eugene Perry, 301 High St., Dover, Delaware. Kenneth has been in the Air Force for almost 13 years, and he and his wife Pam have four little girls, Debbie, Cathy, Pam, and Jan. Kenneth is the son of Press Perry of Fort Worth and the grandson of Mr. and Mrs. Wayne Perry.

A Christmas card to the Ray Overtons from Miss Magnalina Clements said that she is attending school this semester at Chickasha, Okla., and taking upholstery and fur renovation. She commutes from her home in Hastings. Miss Clements was Homemaking teacher at Paint Creek during the 1955-56 term.

Woodrow Smith attended the funeral of a little niece in Houston last Thursday. She was his brother's little girl and died of a brain tumor.

Mr. and Mrs. Manley Sikes and Mary Beth spent the holidays at their home in Bangs.

Mr. and Mrs. W. C. Hughes and Jerry had their sons home for the Christmas holidays. S-IC Ray Hughes of New London, Conn., and Mr. and Mrs. Bill Hughes and children Kelly and Charles of Canadian were all here.

Scouts William Waller and Mike Overton attended the Order of the Arrow banquet

for members of the Kotsa Lodge at the Lytle Lake club house near Abilene on Dec. 28. Mike Overton was elected Vice Chief of the lodge and Danny Sample of Abilene was elected chief. Mrs. Gene Overton went to Abilene with them and visited with her aunt and uncle, Mr. and Mrs. J. A. (Andy) Anderberg.

Mr. and Mrs. Albert Bittner have a new Ford, the Allen Isbells have a new Chevrolet, the Garland Calloways have a new Corvair, the Ira Colemans have a new Pontiac, the Sonny Colemans have a Buick, the W. C. Hughes have a new Ford and the school has a new driver's education car, a white Chevrolet. Glenda Walton received a new Ford from her parents for Christmas and for graduation, too. She graduates this month from NTSC and in majoring in Homemaking, so she will have to have a car for her school work.

Gene gave me a new Baldwin piano for Christmas.

CORRECTION

In last week's issue of The Free Press an article stated the Fidelis Class of the First Methodist Church sent Christmas cards to each hospital employee. It should have read the Philathea Class instead of Fidelis.

**FOR CHIROPRACTIC CARE SEE . . .**  
**DR. A. D. STONE**  
1/2 Block East Highway 277  
404 S. 12th St.  
Phone UN 4-2234  
Haskell, Texas

**Courtney Hunt**  
**INCOME TAX SERVICE**  
311 N. 1st St.  
We have made a special study of Social Security laws and also offer you efficient service in making income tax returns.

**CLASSES IN CERAMICS**  
Beginning Monday  
January 11th  
Nell Royal  
UN 4-3072

REPORT OF CONDITION OF THE HASKELL NATIONAL BANK OF HASKELL, IN THE STATE OF TEXAS, AT THE BUSINESS ON DEC. 31, 1959. PUBLISHED IN RESPONSE TO CALL MADE BY COMPTROLLER OF THE CURRENCY, SECTION 5211, U. S. REVISED STATUTES.

Charter No. 14149 Reserve Disb.

ASSETS	
Cash, balances with other banks, including reserve balance, and cash items in process of collection.....	
United States Government obligations, direct and guaranteed .....	
Obligations of States and political subdivisions.....	
Corporate stocks (including \$8,000.00 stock of Federal Reserve bank).....	
Loans and discounts (including \$2,888.95 overdrafts).....	
Bank premises owned \$119,000.00, furniture and fixtures \$25,000.00 .....	
Other assets .....	
<b>TOTAL ASSETS .....</b>	<b>\$5,130,280.00</b>

LIABILITIES	
Demand deposits of individuals, partnerships, and corporations .....	
Deposits of United States Government (including postal savings) .....	
Deposits of States and political subdivisions .....	
Other deposits (certified and cashier's checks, etc.) .....	
<b>TOTAL DEPOSITS .....</b>	<b>\$5,130,280.00</b>
Other Liabilities .....	
<b>TOTAL LIABILITIES .....</b>	<b>\$5,130,280.00</b>

CAPITAL ACCOUNTS	
Capital Stock .....	
Surplus .....	
Undivided profits .....	
Reserves (and retirement account for preferred stock) .....	
<b>TOTAL CAPITAL ACCOUNTS .....</b>	<b>\$5,130,280.00</b>
<b>TOTAL LIABILITIES AND CAPITAL ACCOUNTS .....</b>	<b>\$5,130,280.00</b>

**MEMORANDA**  
Assets pledged or assigned to secure liabilities and for other purposes .....

I, C. E. Swinson, Cashier of the above-named bank, do hereby certify that the above statement is true to my knowledge and belief.

(s) C. E. Swinson, Cashier  
CORRECT—Attest: Oliver Cunningham, R. W. M. Turner, Directors.  
State of Texas, County of Haskell, ss: I do hereby certify that I am not an officer or director of this bank.  
(s) Pauline H. Baird, N. J. Seal  
My commission expires June, 1961.

Read Free Press Want Ads and

**W. L. FORE MOVING STORAGE**  
*Moving with Care Everywhere*  
FURNITURE - GRAIN - LIVESTOCK -  
NO JOB TOO LARGE or SMALL  
1026 North 6th — UNION 4-3072

**TRICE'S**  
For Your Everyday Needs — N. 14th & Ave. 1

Underwood's Frozen Full Pound	
<b>BAR-B-Q BEEF</b>	<b>79c</b>
Texan Box 1-lb. 10 oz.	
<b>TABLE SALT</b>	<b>2 for 15c</b>
Star Kist 6 1/2 Oz. Can	
<b>CHUNK TUNA</b>	<b>27c</b>
Foremost	
<b>BIG DIP</b>	half gallon <b>49c</b>
Canada Dry Large Bottle	
<b>GINGER ALE</b>	<b>25c</b>
Hunt's Large 46-Oz. Can	
<b>TOMATO JUICE</b>	<b>25c</b>
Pacific Gold or Hunt 2 1/2 Can	
<b>PEACHES</b>	<b>25c</b>
4-Pack	
<b>ZEE TISSUE</b>	<b>36c</b>
Dottie Can	
<b>BISCUITS</b>	<b>6c</b>

PRICES GOOD FOR JANUARY 15-16

When fire strikes your business remember, the loss to you not only includes replacement, but also loss of sales. Protect yourself with fire insurance.

**Insurance Is The Best Policy**  
**W. I. (SCOTCH) COGGINS**  
PHONE: UN 4-3301 Off. Home UN 4-2843  
South Side Square

**SURPRISE PRICE** The average car we've found, thinks Mercury costs hundreds of dollars more than it actually does. beautifully styled, so superbly built. It comes as a pleasant surprise that a Mercury so little more than the leading low-price name car—only \$36\* more for this Monterey sedan. No wonder Mercury sales are up more than any other car in its field—a

**60 MERCURY**  
LINCOLN-MERCURY DIVISION Ford Motor Co.

**BILL WILSON MOTOR CO.**  
209 South Avenue E

**OUTDOORS IN TEXAS**

**IN SANFORD** by the Gulf of Mexico. Each is loaded with fish. Development of Padre has been slow in coming about. Historically it is one of the oldest known spots on the Texas coast. Parts of the island were populated even before Texas became a republic. During the Civil War it was a hot spot. Since then however, it has fitted very little in either the

commerce or industry of Texas until a few short years ago when some development was begun. Padre now is reached by a causeway from Corpus Christi at the north end and from Port Isabel at the south end. However, it is not possible to drive the length of the island. From each end there is a paved strip for five or six miles into the center of the island. Along the beach at low tide it is possible to drive some distance along the gulf side of the island.

It isn't advisable, however, to attempt too great a distance unless you are familiar with the area. Current move to make a national park of Padre meets with mixed emotions. It is true that Padre is the last hard sand beach left in the United States that is undeveloped. Also, it is true that private capital and local tax units have done much to improve recreational facilities on the island. At the south end of Padre reached from Port Isabel, Cameron County has set up an

authority which built the causeway and has provided some excellent facilities for the benefit of recreation. Also a few private companies have built a number of nice motels. At Port Mansfield, 20 miles east of Raymondville, Willacy County has done considerable work on the mainland, providing some wonderful boating facilities. The county also cut a channel passage between Laguna Madre and the Gulf of Mexico.

This cut sanded up almost as quickly as it was cut. Steps are now being taken to re-open the channel and keep it open. This move is of particular interest to fishermen, some of whom have taken their skiffs through the present cut to some fabulous fishing in the Gulf just beyond the island. At the north end of Padre, Nueces County has spent considerable money on a toll bridge across the channel, to provide passage to the island. It also has built a large pier and T-head for fishermen. There are bath houses and cabanas for public use.

What will happen if Padre become a national park? That remains to be seen. There is no indication yet, as to the amount of development contemplated. It could draw tourist trade equal to Yellowstone or the Grand Canyon. But it will take a lot of development. On the other hand, private capital also has a right to get in on this same development if it will.

Whatever happens Padre must be reserved for recreation. To put a fence around Padre would be one of the sins of the generation. And it can come unless someone does something about it.

Laguna Madre, south from Corpus, is practically cut off on the mainland side. The huge King ranch touches the bay in much of this section. There is little chance that there ever will be any commercial or recreational development from the mainland.

Fishing along Padre from one end to the other is just about the best that can be found anywhere. The waters around Padre on the bay side are filled with drum, red fish, trout and most of the salt water game fish.

On the Gulf side there is an abundance of fish like the kings, mackerel and even jumping bill fish. Truly it is a fishing spot to be enjoyed.

Padre also offers some wonderful duck shooting. At the south end most of the Red Heads that come to Texas congregate in great rafts every year.

Then there are shore birds of all kinds. There are several small mud islands under control of the Audubon Society, where birds build their spring nests by the thousands.

All of these things need perpetual protection, whether it is by nationalization or by private enterprise.

**IN SAN ANGELO**

Jimmie Alley spent the holidays in San Angelo with his mother, Mrs. Goida Alley, his brothers Freddie and Jesse, and sister, Wanda.

**FINANCIAL STATEMENT OF HASKELL COUNTY**

For Period Oct. 1, 1959 To Dec. 31, 1959

On January 11, 1960 A.D., the Commissioners Court met in regular session, compared and examined the Quarterly Report for the Quarter ending December 31, 1959, and found the same to be correct and the respective amounts received and paid out to be correct for the Quarter.

Funds	Balance 10-1-59	Receipts Quarter	Disbursement Quarter	Balance 12-31-59
General Fund OD	\$ 9,499.96	\$ 71,059.78	\$ 39,182.88	\$ 22,376.94
Jury Fund OD	1,494.94	5,795.80	1,834.69	2,466.17
Courthouse & Jail	18,355.54	1,451.43	25.35	19,781.62
Officer Salary	2,347.05	29,207.59	17,636.13	13,918.51
Law Library	154.20	65.00	204.50	14.70
Road & Bridge No. 1	34,369.79	11,719.77	14,018.63	32,070.93
Road & Bridge No. 2	9,990.22	3,728.30	4,064.37	9,654.15
Road & Bridge No. 3	6,246.16	6,349.09	3,502.97	9,092.28
Road & Bridge No. 4 OD	2,620.06	4,794.25	5,753.83	OD3,579.64
Lateral Road No. 1	1,643.12	-	1,639.34	3.78
Lateral Road No. 2	3,363.53	-	3,363.29	.24
Lateral Road No. 3	2,811.22	-	2,809.81	1.41
Lateral Road No. 4	2,844.75	-	2,818.16	26.59
FM Lateral Road No. 1	356.52	19,548.50	3,133.29	16,771.73
FM Lateral Road No. 2	1,236.88	5,423.60	1,538.65	5,121.83
FM Lateral Road No. 3	436.52	9,415.84	980.31	8,872.05
FM Lateral Road No. 4	16.89	6,696.80	4,038.22	2,675.47
County Wide Road C	17,545.23	1,091.25	86.87	18,549.61
County Wide Road D	5,231.42	247.26	5.60	5,473.08
R&B Refunding	2,281.08	18,812.82	917.83	20,176.07
CH & Jail I&S	1,891.80	10,129.46	4,143.87	7,877.39
Hospital I&S	6,926.61	7,235.90	5,292.79	8,869.72
Park I&S	208.73	1,450.10	22.37	1,636.46
Social Security	7,906.76	2,930.27	2,950.92	7,886.11
Group Insurance	-	431.36	431.36	-
Available School Fund	335.97	3,352.90	307.56	3,381.31
Permanent School Fund	371.84	240.30	-	612.14
	\$113,256.87	\$221,177.37	\$120,703.59	\$213,730.65

**INVESTMENTS OF COUNTY FUNDS**

**COUNTY WIDE ROAD BOND SERIES C**

Government Bonds	\$47,000.00
Haskell County Jail Bonds, 1953	15,000.00
Haskell County Hospital Bonds, 1951	41,000.00
Haskell County R&B Warrants, 1951	19,000.00
Haskell County Park Warrants	12,000.00
	\$134,000.00

**COUNTY WIDE ROAD BOND SERIES D**

Haskell County Jail Bonds, 1953	\$ 5,000.00
Haskell County R&B Warrants, 1947	6,000.00
Haskell County R&B Warrants, 1955	14,000.00
	\$25,000.00

**ROAD AND BRIDGE I&S FUND**

Haskell County R&B Warrants, 1951	\$ 6,000.00
-----------------------------------	-------------

**TOTAL INVESTMENTS COUNTY I&S FUNDS** \$165,000.00

**PERMANENT SCHOOL FUND**

Government Bonds	\$31,000.00
Haskell County Hospital Bonds, 1951	14,000.00
Haskell County Jail Bonds, 1953	26,000.00
Haskell County Water Supply Dist., 1955	24,000.00
City of Rule Water Works, 1958	15,000.00
City of Abilene Schoolhouse Bonds, 1950	5,000.00
Fabens Independent School Dist., 1952	10,000.00
Arlington Independent School Dist., 1954	5,000.00
Floydada Independent School Dist., 1955	12,000.00
Birdville Independent School Dist., 1956	31,000.00
Claude Independent School Dist., 1956	8,000.00
	\$181,000.00

**BOND AND WARRANT INDEBTEDNESS** \$346,000.00

	Original Issue	Bonds Redeemed	Bonds Outstanding 12-31-59
County Wide Road Bond Series B	\$125,000.00	\$125,000.00	\$ -
County Wide Road Bond Series C	517,000.00	255,000.00	262,000.00
County Wide Road Bond Series D	243,000.00	215,000.00	28,000.00
Road & Bridge Refunding, 1930	66,926.57	66,926.57	-
Road & Bridge Refunding, 1947	46,000.00	40,000.00	6,000.00
Road & Bridge Refunding, 1949	70,000.00	42,000.00	28,000.00
Road & Bridge Refunding, 1951	25,000.00	-	25,000.00
Road & Bridge Refunding, 1952	31,000.00	23,000.00	8,000.00
Road & Bridge Refunding, 1954	60,000.00	20,000.00	40,000.00
Road & Bridge Refunding, 1955	40,000.00	26,000.00	14,000.00
Courthouse Refunding, 1937	111,000.00	103,000.00	8,000.00
Hospital Bonds, 1937	60,000.00	33,000.00	27,000.00
Hospital Bonds, 1951	100,000.00	3,000.00	97,000.00
Jail Bonds, 1953	80,000.00	12,000.00	68,000.00
Permanent Improvement Warrants	26,000.00	14,000.00	12,000.00
	\$1,600,926.57	\$977,926.57	\$623,000.00

**ROAD MACHINERY WARRANTS**

Road and Bridge No. 2	\$13,000.00	\$ 4,333.33	\$ 8,666.67
Road and Bridge No. 3	32,684.00	17,228.00	15,456.00
Road and Bridge No. 4	3,500.00	-	3,500.00
	\$49,184.00	\$21,561.33	\$27,622.67

**BANK LOAN STATUS**

General Fund	\$20,000.00	\$20,000.00	\$ -
Road and Bridge No. 4	20,000.00	-	20,000.00
	\$40,000.00	\$20,000.00	\$20,000.00

The requirements of Article 394 P. C. have been complied with and a tabular statement has been filed as required.

- |  |  |
|--|--|
| Claude L. Ashley<br>Commissioner Precinct No. 1        | Louie Kuenstler<br>Commissioner Precinct No. 3       |
| P. L. Newton<br>Commissioner Precinct No. 2            | F. C. Blake,<br>Commissioner Precinct No. 4          |
| James C. Alvis,<br>County Judge, Haskell County, Texas | Horace Oneal,<br>County Clerk, Haskell County, Texas |

**January Sale**

**COATS**  
Length coats. Included in this group are solids, tweeds and plaids, velvets and weather coats. All these are wonderful from 24.98 to 99.00.  
1-4 & 1-2 Off

**SUITS**  
In all fabrics.  
1-2 & 1-4 Off

**DRESSES**  
of dresses that will go on through spring.  
1-4 Off

**Weather Coats - Car Coats**  
are water repellent and warm as toast.  
1-4 & 1-2 Off

**DRESSES**  
should have several of these wonderful. They are in crepes, cottons, cotton and blends and light weight woolens and knits. and misses sizes and half sizes.  
2 for 1 plus \$1.00

**PARTY DRESSES**  
selection for you! Taffeta, silk organza, and satins. Some formal and some very al. While they last at  
1-2 Off

**BLOUSES**  
that have been added to this group that not been reduced before. Cottons, silks, and woolens. Come early and get yours.  
1-4 & 1-2 Off

**SKIRTS**  
to wear now and into late spring. Woolens, silks, plaids and tweeds, velvets, cottons and satins. Sizes 9 through 16.  
1-4 & 1-2 Off

**SWEATERS**  
Slip-overs, cardigans, bulky and orlons, sweaters as well as mohair. Sizes from 34 to 40.  
1-4 & 1-2 Off

**BAGS**  
Novelty bags in plastic coverings. Woolens, leather and suede. Any size from tiny clutch to large handle bags.  
1-3 Off

**ROBES**  
Included are brushed nylons, corduroy, cottons and quilts. Pastels as well as darks.  
1-4 & 1-2 Off

**HATS**  
All winter hats included in this group.  
1-2 Off

**TAPERED PANTS**  
1-4 & 1-2 Off

**COSTUME JEWELRY**  
Values to 10.95. One group \$1.00

**KNIT DRESSES**  
One piece and two piece knits priced from 29.95 to 49.00.  
1-4 Off

**LINGERIE**  
Broken sizes. Only a few of these in flannel, cotton challis. Cotton pajamas.  
1-2 Price

**PLAYTEX GIRDLES AND PANTIES**, values 8.95 and 10.95.  
\$6.98

**SILF SKIN GIRDLES**  
All new stock in all sizes and styles. For the month of January  
20% Discount

**Satisfy your sense of value...**



**GO OLDS '60!**

with Oldsmobile's dollar-saving Dynamic 88!

More miles-per-dollar! That's what you get with the Regular Rocket Engine—standard equipment on every Dynamic 88 Oldsmobile for 1960! Yes, this Olds thrives on the thrift of lower-cost, regular gasoline—you save about a dollar bill on every tankful over premium-cost fuels! And because of its unique characteristics, the Regular Rocket Engine gives you traditional Rocket get-up-and-go while reducing operating and upkeep costs. Your local Olds dealer has the money-saving facts on this car that makes it mighty easy and satisfying to Rocket out of the ordinary.

**SEE YOUR LOCAL AUTHORIZED OLDSMOBILE QUALITY DEALER!**

**Smith-Toliver Chevrolet Co.**  
517 North First Haskell, Texas Telephone UNion 4-2626

SEE THE DENNIS O'KEEFE SHOW • EVERY WEEK ON CBS-TV... HEAR LOWELL THOMAS AND THE NEWS • MONDAY THRU FRIDAY ON CBS RADIO

# NEWS OF INTEREST TO WOMEN

## Deborah SS Class Holds Social And Business Meeting

The Deborah Sunday School class of the First Baptist Church met Monday night in the home of Mrs. Scotch Coggins, with Mrs. Coggins and Mrs. Hallie Chapman as co-hostesses for the class business and social meeting.

Their regular meeting date is the first Thursday night of each month, but due to the bad weather it was postponed until Monday night.

The president, Mrs. Paul Cothern, called the house to order, and proceeded with the business meeting.

A song, "Love Lifted Me," was sung directed by Mrs. Jewel Cadenhead. A prayer was offered by Mrs. Tom Holland.

An inspirational devotional was then given by the associate teacher, Mrs. Gladys Merchant. She used as her text subject, "My Bible," reading from the 119 Psalms. Our Bibles should be handled with care, both religiously and reverently, some one sees us as we carry our Bibles to church. Our finger prints also show on our Bibles, as often as we read it, she said.

The group captains gave good reports. Mrs. Coggins and Mrs. McCurley, both gave good attendance reports for the month.

Mrs. A. C. Person reported on the sick and bereaved ones. They are to select a class song in the near future.

A number of cards were sent to the sick and bereaved ones. Also, food was sent to bereaved families. The business being concluded, Mrs. Cadenhead dismissed with prayer. A social hour was then enjoyed with games of 84.

## "Religion of The World", Theme of Magazine Club

Members of the Magazine Club met Jan. 8 at the club house to further pursue their theme of the year "Religion of the World." The meeting was opened with a prayer by Mrs. C. L. Lewis.

Mrs. J. U. Fields was program director. After Mrs. Fields introduced the study, "Islam," by discussing Mohammed, Prophet and Statesmen, she presented Miss Nettie McCollum who discussed "The Beliefs and Practices of Mohammedism." Mrs. Jack Pippin gave a resume of "The Widespread Growth of Mohammedism."

Mrs. S. Hassen concluded the study by telling of "The Culture Arts" and reading several quotations in Arabic.

Mrs. C. O. Holt, president, presided at the business session.

Hotesses were Mrs. C. L. Lewis and Mrs. E. M. Frier-son. The next club meeting will be Jan. 22. Subject, "Traffic Safety." Mrs. Richard Gaines will be moderator for the high school Traffic Safety panel.

Hostesses were Mrs. C. L. Lewis and Mrs. E. M. Frier-son.

The next club meeting will be Jan. 22. Subject, "Traffic Safety." Mrs. Richard Gaines will be moderator for the high school Traffic Safety panel.

The next club meeting will be Jan. 22. Subject, "Traffic Safety." Mrs. Richard Gaines will be moderator for the high school Traffic Safety panel.

The next club meeting will be Jan. 22. Subject, "Traffic Safety." Mrs. Richard Gaines will be moderator for the high school Traffic Safety panel.

## Weinert Matrons Club Hold Meet

Weinert Matrons Club met Thursday, Jan. 7 in the home of Mrs. W. B. Guess for a business meeting. Mrs. Bill King, chairman of the nominating committee, announced the same officers had been selected for the 1960-61 club year.

The are: president, Mrs. R. C. Liles; first vice president, Mrs. P. F. Weinert; second vice president, Mrs. J. A. Mayfield; secretary, Mrs. R. J. Rainey; treasurer, Mrs. H. W. Liles; executive board members: Mrs. R. H. Jones, Mrs. V. C. Derr. They were unanimously elected by acclamation.

Mrs. Bill King gave a parliamentary law drill and Mrs. R. C. Liles led the club in reading the constitution and by-laws. Mrs. Fred Monke dismissed the meeting by leading in reciting the club collect.

Eleven members attended. The next meeting will be Jan. 21 in the home of Mrs. J. W. Liles. Mrs. Bill King will direct a program on Constitutional Government. Miss Eudora Hawkins of Abilene will be guest speaker.

The hostess served cinnamon and cheese toast, coffee and tea to the members: Mmes. Fred Monke, M. W. Phemister, R. J. Rainey, C. G. Hammer, P. F. Weinert, J. W. and R. C. Liles, Bill King and W. B. Guess.

## Second Session Of African Study Held Tuesday

The second session of the African study was held in the Copley Classroom of the Methodist Church Tuesday, Jan. 12 at 4:00 p. m. The program included some movies which were taken by Mrs. George Hauser on a recent tour of Africa.

A report was given by Mrs. A. G. Dement on the Kindu Social Center which is a study project. Seven women participated in an interviewing period. The interviews were based on Emory and Myrta Ross's book, Africa Disturbed. The third session of the study Tuesday, Jan. 19 will feature a play, "The Edge of the Village" given by the High School Speech Department, a film, "Congo Christian Centers" and a summary of the work of the Methodist Church in Africa. The study is available to all interested persons.

## Methodist WSCS Celebrates 20th Birthday With Tea

The Woman's Society of Christian Service of the First Methodist Church celebrated their 20th birthday Wednesday, Jan. 13 at a Silver Tea.

The tea, held at the Fellowship Hall at 4:00, honored the charter members of the local church. The high school speech department provided an interesting program in keeping with the celebration. The offering which was taken will apply to the salaries of Methodist missionaries throughout the world.

Methodist women throughout the United States are celebrating the changing of the name of the Missionary Society to the Woman's Society of Christian Service which occurred in 1940.

## Miller-Garrett Wedding Vows Said In Home

Miss Frankie Jennene Miller, daughter of Mr. and Mrs. H. C. Miller of McCamey, became the bride of Weldon Garrett, son of Mrs. C. L. Garrett of Weinert, Jan. 1, at 6 p. m. in the Miller home. B. L. Coley, minister of the McCamey Church of Christ, officiated in the double ring ceremony. The date chosen for the wedding was the bride's grandfather's 64th birthday.

The home had been beautifully decorated for the wedding with a kneeling rail, greenery and several arrangements of gladioli.

The bride, given in marriage by her father, wore an ice blue nylon taffeta dress in ballerina length. Her veil was shoulder length French illusion net and she carried a nosegay made of white carnations.

Miss Wanda Jones of McCamey was maid of honor. She wore an ice blue nylon lace over net dress in ballerina length and her corsage was of white carnations.

Ralph Durrogo, friend of the bridegroom, was best man.

Following the ceremony Mr. and Mrs. Miller were hosts in their home for a reception. Following the ceremony the couple left for a short honeymoon trip to El Paso and New Mexico. For travel the bride chose a blue gabardine sheath dress. Her corsage was white carnations.

The couple are at home at 1642 Grape in Abilene.

The bride had lived in McCamey for 15 years. She attended school there and is now attending Scoggins Beauty Academy in Abilene.

The bridegroom lived in McCamey two years before going to Abilene, where he is employed by his brother in the butane business. He attended school in Weinert and Haskell.

Out of town guests were Mr. and Mrs. Bill Whitfield of Dublin, grandparents of the bride, and Mr. and Mrs. Lloyd J. Gilbert, Pamela and Rebecca of Winters, aunt and uncle of the bride. The bridegroom's mother was unable to attend due to illness.

## Presbyterian Ladies Honor Dist. Chairman

Mrs. Joe Clements, District Chairman, and Mrs. P. R. Warwick, both of Cisco, were honored with a luncheon Monday in the home of Mrs. Ed Hester by the Women of the First Presbyterian Church of Haskell.

Mrs. Clements held an informative discussion on the duties of each of the local officers and committee chairman. The Haskell church was honored to be the first church Mrs. Clements visited since she became district chairman. She was to visit the Women of the Church in Anson that afternoon. She plans to visit with the women of all ten churches in her district as soon as possible, giving them the information they need, since the church year will be only nine months this year, ending the last of September. Then the church year will be from October 1 to October 1, making it easier for all reports to be in on time instead of January 1.

The churches in this district are: Throckmorton, Haskell, Rule, Anson, Sweetwater, Roscoe, Cisco, and three churches in Abilene, First Church, St. Clombo and St. Stephens.

## Pinkerton Baptist Church of Rule Enters Achievement Program

The Pinkerton Baptist church of Rule has entered the 1960 Texas Baptist Achievement program. Pastor Roy Davidson said this week.

Sponsored by the Baptist General Convention of Texas, the program is designed to stimulate interest in small-church work by providing growth incentives. Outstanding achievements by pastors and churches in areas of church, community and world improvement are recognized locally and at the annual BGCT convention.

More than 450 Texas Baptist towns and country churches entered the program last year. Some of the churches recorded twice as many baptisms per member as the Southern Convention average. Others recorded outstanding increases in Sunday School attendance and gifts to missions.

Goals for achievement are adopted by each participating church for three improvement areas. Better Church, Better Community and Better World. Chairman of the Better Church committee is Buck Bland. Members are Albert Hannz, Helen Miller, Gladys Glover. Chairman of the Better Community committee is Jess Glover. Members are Chunky Tidwell, Juanita Miller, Agnes Stone, James Jones. Chairman of the Better World committee is Tom Paul Barnett. Members are Haskell Stone, Maria Townsend, Mrs. Raymond Saffel, Roy Casey. An inventory questionnaire "furnishes suggestions for projects, such as education, health, community recreation programs, citizenship training, race relations studies and world missions.

Pastors recognized in each of the denomination's 17 geographical districts receive parchment scrolls and the churches receive achievement certificates which may be displayed in a prominent position. Churches in the open country and in towns of up to 2500 population, and all Latin American churches and missions are eligible to enter the program. About two-thirds of the denomination's 2837 churches are classified as towns and country congregations. Records and scrapbooks of program progress are made under the basis of judging on the associational, district and statewide levels.

Darwin Farmer, district missions associate for the BGCT, Dallas, is in charge of the program. He said "the attainment of a church's total membership in active service" is the program's primary value.

## Rainbow Sewing Club Meets With Mrs. Edwards

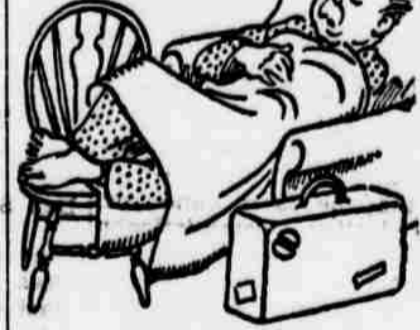
The Rainbow Sewing Club met in the home of Ethel Edwards Jan. 5. The home was decorated with pot flowers. The president, Florence Larned presided over the business meeting.

Flossie Rogers led the group in singing the club song, Let Me Call You Sweetheart.

A report on the sewing was given and Ethel Edwards won honors for the most sewing. Resolutions for the New Year were made by each one present. Annie Thomas drew the hostess gift. Flossie Rogers sponsored the recreation games. The thought for the day was given by Annie Thomas. Reading: "Another Year with God" by Ethel Edwards. A poem: "Reading Record Book" by Annie Thomas.

The club voted to accept

## A PLACE TO LIVE



Isn't easy to find these days. So if you have one, take good care of it. See that fire hazards are eliminated. Do not allow rubbish to accumulate in cellar or attic. Insure your home property to full value. Ask us about rent and rental value insurance which in case of a destructive fire will pay the rent for other quarters while repairs are being made. And don't overlook protecting your property with windstorm, hail, explosion and other forms of insurance coverage. Ask us about the new Comprehensive Personal Liability policy which protects you against lawsuits arising from accidents suffered by others, for which you might be held responsible. This agency is equipped to render you complete insurance service. May we serve you?

**Cahill & Duncan Agency**  
306 North 1st St.  
Phone UN 4-2646

## Annie Pearl Lusk as a new member in the Sewing Club to take the place of Mrs. Morgan who has moved away.

At the closing of the meeting J. B. Edwards walked in and the club sang Happy Birthday to him.

Refreshments were served to Flossie Rogers, Stella Josselet, Annie Thomas, Eddie Johnson, Florence Larned and the hostess.

The next meeting will be with Eddie Johnson.

Pay your poll tax before Jan 31 and qualify as a voter in the 1960 elections.

New Hampshire was the first independent state in this country, announcing its independence of Great Britain 3 weeks before the 12 other colonies declared their independence on July 4, 1776.

## Rochester Wins Mattson, 48-40

Rochester took a 14-B cage encounter with Mattson Tuesday night. Rochester boys nipped Mattson boys, 48-40. Rochester girls beat Mattson girls, 54-45.

In the boys' game from Rochester held all the way as Bruce paced the Steers with 12 while Danny Carroll nipped with 12. W. L. Ronnie Peiser split honors for Mattson as a piece.

Jean Turner dropped points to pace the girls to victory while Peiser led the losers.

Want Ads pave the way for quick sales and trades.

# INTRODUCTORY OFFER JANUARY

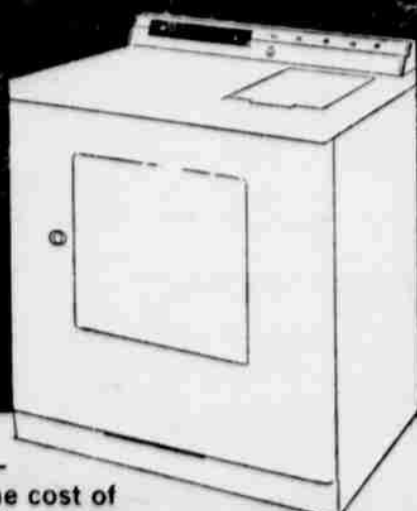
## 10% off

ON ALL PARTS AND LABOR ON MAJOR OVERHAULS All Makes and Models Factory Trained Personnel

## HASKELL IMPLEMENT COMPANY

D. E. LIVENGOOD, Owner  
Phone UN 4-2315 Haskell, Tex.

# FLAME-FAST GAS DRIES BEST FOR LESS AND FASTER TOO



Only gas heats instantly - dries for a fraction of the cost of non-flame drying. Safe, dependable gas gives gentle heat for fluffier, fresher, laundry. Costs less to maintain; no element to burn out, no expensive wiring needed. SEE NORGE GAS DRYERS with exclusive 4-way drying, guaranteed rust-proof and full 5-year warranty on all working parts (one-year on motor).

**\$179.95** cash price, or, \$1.00 down, 36 months to pay

LONE STAR GAS COMPANY

# Texas THEATRE

FRI.-SAT - DOUBLE FEATURE



SAT. NITE 11:00 P. M. - SUN.-MON.



# FORD'S ECONOMY TWINS FOR 1960

The Economy Choice of a lifetime - Two new Fords... Two new low-price fields



**THE 1960 FORD FALCON**  
Now there's both a new economy-size Ford and a large economy-size Ford. The new economy size is the Ford Falcon—America's lowest-priced 6-passenger car. It's up to \$124 less than other 6-passenger cars in the compact field. It goes up to 30 miles on a gallon of regular gas. Servicing is easy and repair costs are low. You can even save up to 15% on your insurance. And the Falcon is the one American compact car that is thoroughly proved for American driving. There's room for 6 people—luggage and all.

**THE 1960 FORD FAIRLANE 500**  
Now consider the large economy-size Ford, the Fairlane 500. Here is the most car per dollar ever built. The Fairlane 500 brings you fine-car styling, luxury and comfort, yet it offers Falcon economies like regular gas, 4,000-mile oil changes, double-life aluminum mufflers, and no more waxing. Like the Falcon, too, it brings you big price news: \$142 less than last year's popular Fairlane 500! Come see, come save, come pick the Ford economy twin that saves and serves you best. Visiting hours usual at your Ford Dealer's.

Economy choice of a lifetime in the wonderful New World of '60



## Bill Wilson Motor Company

208 SOUTH AVENUE E

HASKELL, TEXAS

Seeking  
on As  
nator

arge Moffett of  
authorized the  
Press to an-  
dandidacy for re-  
istrict, which  
Archer, Baylor,  
Foard, Harde-  
nox, Throckmor-  
Wilbarger, and  
s. In announcing  
Senator Moffett

thank the people  
enatorial District  
ence they have  
I have sincerely  
that confidence  
ound govern-  
ges in this state.  
I expect to con-

s rapidly grow-  
demands a con-  
sful and neces-  
sities without un-  
ation. The next  
st give thought-  
ion to the ex-  
s of our educa-  
including both  
and colleges.  
y should be high-  
among the states  
of public schools.  
In must also be  
growing needs of  
ospital system.  
uses over 25,000  
needs of our old-  
state highways,  
blic safety agen-  
wise be properly  
Apparently, the  
ce Commission,  
ged and ready  
proper insurance  
de some mistakes  
e early correct-

at by hard work  
ous service the  
re can properly  
blems. Although  
ill not be simple,  
very best. I will  
eciate your sup-  
porting Democratic  
ion, but also val-  
uel and advice in  
of better govern-  
ffett, a member  
Northwest Texas  
e first native of

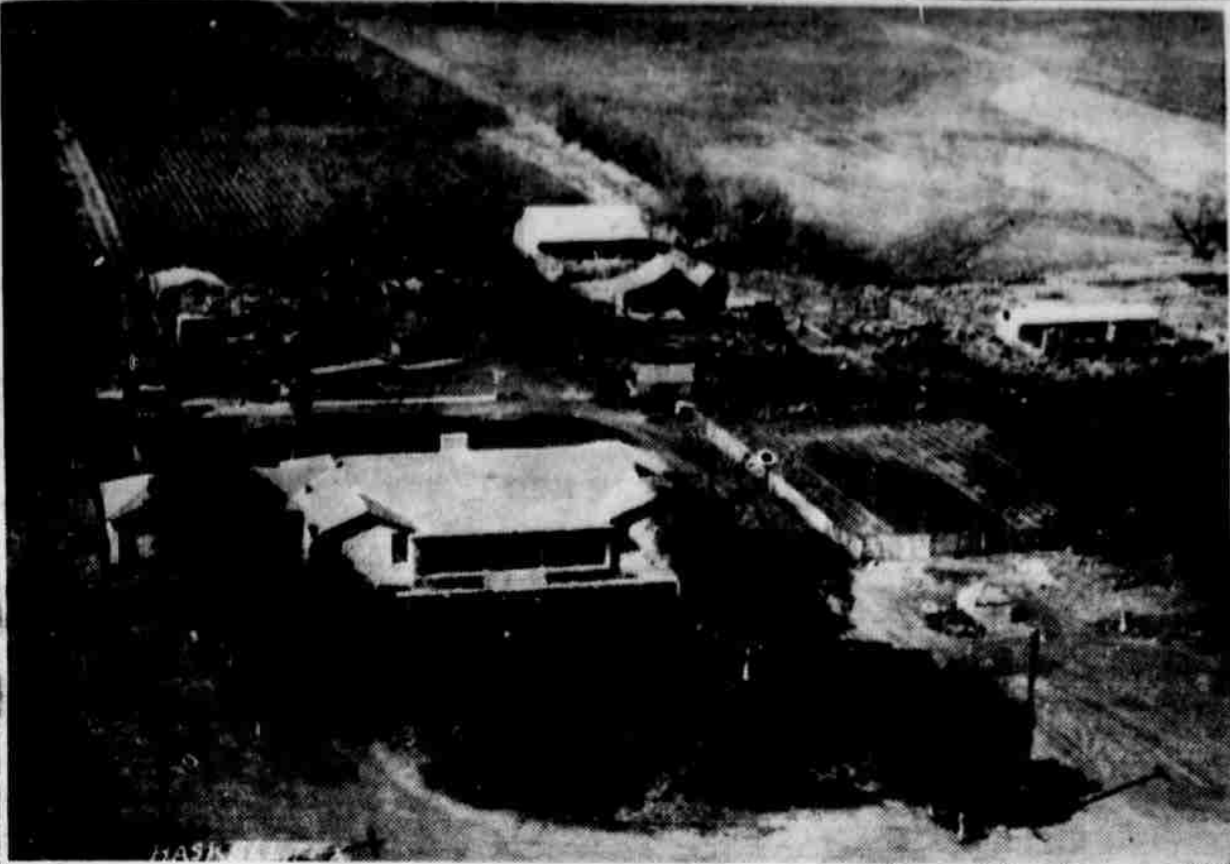
ing dermatologists agree that rough,  
pped hands indicate an acute, advanced  
dry skin.  
rent medical research reveals that dry  
kin lacking in moisture, not natural oils.  
e chemistry of moisturizing dry skin in-  
he use of humectants, amazing hydro-  
uids that prevent the evaporation of  
in moisture. Humectants actually humid-  
skin.  
pharmacists, trained in chemistry, we  
ze the utility of combating dry skin-  
ly, greasy, waxy preparations. We re-  
nd our own special Humectant, rich  
fizing Hand Cream Formula for softer,  
er, more youthful hands.  
available in Travel, Large and Economy  
Come in and get your sample trial size.

ASKELL PHARMACY  
221 Delivery Service

ASKELL PHARMACY  
221 Delivery Service

the Texas Cafe where friends  
and eat. We specialize in steaks  
sea foods, also lunches with  
e home made rolls and corn  
d. For an afternoon snack try  
home made pie and Folger's  
ee.

If you wish to rent or buy a  
e or farm see Stanley Furrh for  
new listings at Furrh Real  
te located in Texas Cafe.



AERIAL PHOTO OF ED HESTER FARM HOME

Mystery Farm No. 12 Identified As  
Ed Hester Place, North of Haskell

Louie Kuenstler  
Asks Re-Election  
Com. Precinct 3

Formal announcement  
was made this week by Louie Kuenstler,  
that he is a candidate  
for re-election, Commissioner  
Precinct 3, second elective  
term in that office, subject to  
the action of the Democratic  
Primaries.

Mr. Kuenstler expressed his  
appreciation for the past fa-  
vors at the hands of the voters,  
and for the fine cooperation  
extended him during the time  
he has been in office.

In speaking of his candidacy  
for re-election, Mr. Kuenstler  
said: "I have carried out the  
duties of the office as Com-  
missioner of Precinct 3, to the  
best of my ability, with fair-  
ness to all, and if re-elected  
will continue to devote my  
time and talents, to the fulfill-  
ment of the duties of the office.  
Mr. Kuenstler plans to see all  
of the voters in the precinct  
between now and the first pri-  
mary, and will appreciate  
your consideration and support  
of his candidacy.

S-S Tax May Be Due  
On Some Farm and  
Ranch Workers

Farmer-rancher employers  
with one or more employees  
are being asked two questions  
by Clarence B. Dixon, Admin-  
istrative Officer of Internal  
Revenue Service, Wichita  
Falls.

"Have you paid an employee  
\$150 or more in cash wages  
during 1959, or has the em-  
ployee performed agricultural  
labor for you on 20 or more  
days during 1959 for cash wages  
figured on a time basis?"

If your employees meet either  
of these two tests you must  
withhold social security tax  
from the cash wages paid to  
these employees at the rate  
of 2 1/2 per cent of such cash  
wages. This 2 1/2 per cent, to-  
gether with another 2 1/2 per  
cent representing your share  
as the employer, must be sent  
to the IRS district director in  
Dallas.

Mr. Dixon says that farm-  
ers and ranchers subject to  
this tax are required to file a  
return, Form 943, with their  
district director of Internal  
Revenue before Jan. 31 of the  
year following the year covered  
by the return.

IRS recommends Circular A  
for non-technical explanation  
of Uncle Sam's tax rules for  
withholding of social security  
tax from farm employee's  
Wages. It's available free at  
Internal Revenue's office 1000  
Lamar St., Wichita Falls.

Two Suggestions  
for January

Pay Your Poll Tax

So that you may exercise your privilege and  
fulfill your obligation of having a voice in  
the government of YOUR COUNTRY.

Discuss Your Insurance Needs  
With Us

So that you may fulfill your obligation to  
yourself by saving every dollar possible and  
still have the best protection available any-  
where.

BARFIELD-TURNER AGENCY

DIVIDEND SAVINGS  
Haskell, Texas Phone UN 4-2371

Farmers, Ranchers  
Offered Optional  
Tax Filing Dates

Farmers and ranchers are  
afforded optional filing dates  
with their Federal income tax  
returns, according to Clarence  
B. Dixon of Internal Revenue  
Service, Wichita Falls.

Uncle Sam's tax laws define  
a farmer or rancher as one  
who gets two-thirds or more of  
his gross income from farm-  
ing or ranching.

"Farmers and ranchers,"  
Dixon said, "have until Fri-  
day, Jan. 15, to file their es-  
timated Federal income tax re-  
turns for the year 1959, unless  
they choose to file their final  
return on or before Feb. 15.

The IRS representative said  
that farmers-ranchers who file  
an estimated return on Jan.  
15 and pay the tax due have  
until April 15 to file their final  
returns and pay any balance  
of tax due. Otherwise, they  
must file final returns and pay  
the full amount of the tax due  
by February 15.

"Those who filed Federal  
income tax returns last year  
should already have received  
by mail their necessary forms  
for 1959," Dixon said. Addi-  
tional tax forms are available  
at the IRS office 1000 Lamar  
Street in Wichita Falls or at  
local post offices and banks.

Everyone who had a gross  
(not net) income of \$600 or  
more during 1959 must file a  
Federal income tax return this  
year, whether or not any tax  
is owed.

Only exception to this rule is  
for taxpayers 65 or over at the  
end of the year, who are not  
required to file a return unless  
their gross income was \$1200  
or more.

Mr. Dixon said that farmers  
in this area with questions



Rex Allen, "Mr. Cowboy" of radio,  
movies, TV and recordings, and  
his horse KOKO will star in all 20  
of the exciting rodeo performances  
at the Southwestern Exposition and  
Fair Stock Show in Fort Worth,  
January 29 thru February 7, 300  
of America's top cowboys will com-  
pete in the rodeo events.

CARD OF THANKS

Once again we wish to ex-  
press our sincere thanks and  
appreciation to the doctors,  
nurses and women who pre-  
pare the meals in the hospital  
for their kindness to us during  
our illness. Thanks also to the  
Sunday School Classes for  
cards, letters and flowers. We  
will always remember Bro.  
Rexrode, Regeon and Priddy  
and our many friends for all  
they did for us. May God  
richly bless you all.—Mr. and  
Mrs. W. W. Quattlebaum. 2p

about their Federal income tax  
returns may get a copy of the  
IRS publication, "Farmers  
Tax Guide," by phoning 323-  
3165-66, or by writing his of-  
fice in Wichita Falls.

YOUR NEIGHBOR MAY ADVISE YOU  
HOW TO FIX A FLAT



... WHEN IT COMES TO SOCIAL SECURITY, GET THE FACTS  
FROM YOUR SOCIAL SECURITY OFFICE.  
If you want to know how the social security law protects people  
who have been disabled since childhood, see at your social security  
office.

YOUR NEIGHBOR MAY ADVISE YOU  
HOW TO BAKE A CAKE



... WHEN IT COMES TO SOCIAL SECURITY, GET THE FACTS  
FROM YOUR SOCIAL SECURITY OFFICE.  
If you want to apply for old-age, survivors, or disability  
benefits, find out how to go about it at your social security  
office.

GIGANTIC JANUARY SALE  
SAVE 20%  
as seen on TV  
Silf Skin  
ALL GIRDLES & PANTIE GIRDLES  
Lane-Felker

PERRY'S  
BIG JANUARY SUPER SAVINGS  
SALE

BEGINS THURSDAY MORNING  
JANUARY 14th.

BIG ASSORTMENT  
PIECE GOODS  
Drip and Dri Pants, Drip and Dri Solid Col-  
ors, Combed Prints, Everglaze Prints, Cham-  
brays, Shirtings and many other beautiful  
fabrics. These will go in a hurry so be here  
early. 29c YARD

CHILDRENS COTTON 5 Pcs.  
PANTIES SIZES 2 TO 6 YRS. 97c

BOYS COTTON BRIEFS 2 TO 12 YRS.  
4 PAIRS FOR 97c

13x40 WHITE OR ECRU VANITY OR  
DRESSER SCARVES  
27c and 37c

11 INCH ROUND DOLIES . . . . 9c

INFANTS PLASTIC PANTS  
GRIPPER STYLE BLOOMER STYLE  
3 Pcs. 77c 4 Pcs. 77c

Sturdy Plastic  
LAUNDRY BASKETS  
99c  
You can choose  
from Red, Yellow,  
or Turquoise. The  
quantity is limited  
so come early.  
You'll want two or  
three.

30x50  
HI-LO  
LOOP  
RUGS  
157  
12 COLORS  
TO CHOOSE  
FROM

24x40 CUT PYLE AND LUREX  
RUGS  
6 LOVELY COLORS  
TO CHOOSE FROM  
WHILE THEY LAST 97c

BIG ASSORTMENT  
GLASSWARE  
Handled Relish Dishes, Round, Bowls,  
Oval Bowls, Mixing Bowls, Dessert  
Dishes, Coffee Cups, Tumblers and  
many other items you'll be wanting at  
this low price. Hurry before the assort-  
ment is picked over. YOUR CHOICE 10c

3 PIECE MIXING  
BOWL SETS  
88c

3 PC. PRISCILLA  
MIXING BOWL  
SETS \$137  
With  
Decorated  
Rims

# SHOP HERE! SPEND LESS! SERVE BETTER MEALS!

KIMBELL'S  
**COFFEE**  
POUND CAN

**59<sup>c</sup>**

ADAMS SUGAR ADDED  
**ORANGE JUICE**  
46-OZ. CAN

**29<sup>c</sup>**

KIMBELL'S  
**PRESERVES**  
PEACH, APRICOT OR  
STRAWBERRY—16-OZ. JAR

**3** FOR **\$1**

TEXAS RUBY RED  
**GRAPEFRUIT**  
6 FOR

**39<sup>c</sup>**

DIAMOND  
**CATSUP**

**10<sup>c</sup>**

BETTY CROCKER

**Cake Mixes** **29<sup>c</sup>**

SWIFT'S PURE

**Ice Cream** 1-2 GAL. **59<sup>c</sup>**

CRACKER BARREL

**CRACKERS** POUND BOX **23<sup>c</sup>**

KIMBELL'S 303 CAN

**BLACKBERRIES** **19<sup>c</sup>**

KIMBELL'S SLICED

**APPLES** 3 FOR **59<sup>c</sup>**

DEL MONTE—26-OZ.

**Sweet Pickles** **49<sup>c</sup>**

CHUCK WAGON

**BEANS** **10<sup>c</sup>**

PATIO

**ENCHILADAS** FROZEN PKG. **49<sup>c</sup>**

**FREE**

**\$219.50**

VALUE

ATLAS  
SEWING  
MACHINE

TO BE GIVEN AWAY AT THIS  
STORE SATURDAY, JANUARY 16,  
7:30 P. M. NOTHING TO BUY. YOU  
DO NOT HAVE TO BE PRESENT  
TO WIN. EMPLOYEES AND THEIR  
FAMILIES NOT ELIGIBLE TO WIN.

REGISTER NOW!

Your Dollar Buys More In An  
M SYSTEM STORE

SERVED ALL DAY SATURDAY

**Penguin Cookies** POUND PKG. **39<sup>c</sup>**

29-OZ. Del Monte, Orange Apricot, Pineapple Orange, Pineapple Pear

**JUICES** 4 CANS **\$1.00**

**COFFEE** KIMBELL'S 6-OZ. INSTANT **69<sup>c</sup>**

KIMBELL'S LIQUID

**Detergent** LARGE CAN **49<sup>c</sup>**

18-OZ. KIMBELL'S REFRIGERATOR JAR

**Peanut Butter** **49<sup>c</sup>**

**CHILI** KIMBELL'S NO. 2 CAN **55<sup>c</sup>**

**KIM TISSUE** 4 ROLL PKG. **29<sup>c</sup>**

**FLOUR** PURASNOW 25-lb. Bag **\$1.79**

KIMBELL'S

**Shortening**

3-LB. CAN

**55<sup>c</sup>**

**BACON**

1-LB. DELITE

**39<sup>c</sup>**

**Pork Chops**

END CUTS  
POUND

**39<sup>c</sup>**

**Pork Chops**

CENTER CUTS  
POUND

**49<sup>c</sup>**

**OLEO**

WILSON'S GOLDEN

**3**

POUNDS

**49<sup>c</sup>**

LONGHORN

**CHEESE**

POUND

**49<sup>c</sup>**

WRIGHT'S

**FRANKS**

POUND

**45<sup>c</sup>**

KIMBELL'S

**SALT**

**9<sup>c</sup>**

DIAMOND 46-OZ.

**Tomato Juice**

**4**

CANS

**\$1**

DIAMOND 46-OZ.

**Pineapple Juice**

**4**

CANS

**\$1**

## "M" SYSTEM SUPER MARKETS

WE RESERVE THE  
RIGHT TO LIMIT  
QUANTITIES

### Highlights and Sidelights FROM YOUR STATE CAPITAL

**ERN SANFORD**  
Press Association

Texas—If you are the Christmas bills bring what all that has spent for, then the task of the Board

atively small state is personal shop-state agencies. Dur-last fiscal year it the goods and paid purchases totaling

illions went for more average citizen can Everyone realizes quires tons of paper, of filing cabinets, desks and chairs states business—

nder how much yet-it takes to put a m the highway from Brownsville.

Control staff knows much to get for a ch of road and sees the paint has little is ground up into it your auto headlights Just the other day nt \$100,000 worth of glass beads, alone.

Board of Control buys all the state's automobiles — as well as trucks, tractors, motor scooters, motor graders, snow plows and school buses (for schools receiving state aid). Last week they purchased \$326,000 worth of new Plymouths.

It buys the industrial machinery with which the state prison system makes the state license plates. It buys the paper for your drivers license and pays for the printing.

It also buys buttons and zippers, shoes and socks and surgical tools and skin diving suits.

"We buy practically every thing," says Executive Director Wm. J. Burke.

It's a list that sounds unbelievable until the use of each item is run down. Clothing and repair needs for the apparel of the thousands of persons in state hospitals and schools must be bought by the Board of Control. State hospitals use surgical equipment. Game and Fish Commission uses boats and skin diving equipment in its inspection work.

If the State Schools for Girls at Gainesville starts a pottery class, Board of Control buys

### FORT WORTH STOCK SHOW SET FOR 64th YEAR



The "stage" is set for the 1960 edition of the Southwestern Exposition and Fat Stock Show to be held in Fort Worth January 29 through February 7. Rex Allen (upper left), star of movies, TV and records, will be the featured performer in Fort Worth's world's original indoor rodeo. About 9,000 head of livestock will be exhibited in what is considered the world's finest livestock exposition plant. Winner of last year's grand championship in steer classes was "Silver", shown by Connie Swinford (pictured with parents at upper right).

## BATTERY SALE

Prices listed below plus your old battery)

Heavy Duty, 24 months guarantee for ..... **\$22.95**

For Olds '55, Buick, Packard, 36 months guarantee ..... **\$22.95**

For Chev., Pontiac, Dodge, etc., 6-months guarantee ..... **\$18.95**

For Chev., Pontiac, Dodge etc., 4-month guarantee ..... **\$15.95**

For Chev., Dodge, Plymouth or tractors, 36-months guarantee or ..... **\$12.95**

For Olds Chev., Plymouth, etc., months guarantee ..... **\$6.95**

Other Batteries Priced Accordingly

**CORLEY'S**  
E SHOP HASKELL, TEXAS

the clay. If the prison system builds a new prison building, Board of Control scouts around for the best buy in steel-barred doors.

Board of Control itself is a big user of paper. In the past fiscal year it processed 450,000 invoices. Nine employees handled these at the rate of 1,921 a day. It takes 15,000 envelopes to handle an average weekly mailing of bid invitations to suppliers.

It's all done according to a very businesslike system. Purchases are consolidated, standardized, scheduled, bid on and checked for specifications, value and performance.

Yet all this procedure does not kill the element of human enjoyment. Director Burke recounts with relish the million printed envelopes just bought for a large state department at \$2.80 a thousand. That's less than the usual cost of unprinted envelopes.

Comparable pleasure can be found in housewives who have

just found diapers at a dollar a dozen or tomato juice at five cents a can.

Board of Control is about to have its 40th anniversary. It began operation in 1920 after a statute passed in 1919 combined in one agency a number of state functions.

It is topped by a part-time policy making board whose three members serve overlapping six-year terms. They are appointed by the governor.

Present board members are E. E. McAdams of Austin, chairman; F. H. Flewellen of Austin and C. F. McAuliff of Dallas.

Burke, as executive director, is the top administrative officer. Under him are five divisions set up on what he terms "a check and balance system."

A specification division works out requirements for items to be bought. Purchasing division buys them. Administrative services division handles the clerical work. Inspection division has a team of "watchdogs" who go over the state to check new purchases to be sure they are what they should be.

A fifth division, building engineering and management, sees to a staggering list of housekeeping chores for the

Capitol and state buildings. When the buildings now under way or being planned around the Capitol are finished, the Board of Control anticipates operating a heating system that will put out 60,000 pounds of steam heat an hour and an air conditioning system of 2,750 tons.

It also sees to the upkeep of the governor's mansion, the

San Jacinto and Fannin State Parks and the State Cemetery. It handles the rentals for state offices outside of Austin which do not have state quarters. Last year this required 356,000 square feet of office space.

As to the state buildings going up in Austin, Burke feels sure they will save the state money over the old rental system. "Besides having to pay rent," he pointed out, "the state can only lease for two years at a time, and you never know when you may have to move, which is expensive."

In the course of their myriad chores, Board of Control staffers become expert on many

subjects. They learn the price of dairy cattle (for prison farms) or diamond drills, short wave radios and food mixers. Many know more about the comparative value of dishwashing detergents and floor waxes than most housewives. They make extensive tests to find out.

As Burke explained, if "Brand X" can be proved to serve as well as a more expensive one, in state institutions dishwashers, as much as \$30,000 can be saved on one purchase.

Specifications people spent hours, according to Burke, proving out a floor wax they felt would save money and

serve the purpose. They even applied and polished it, he said, and made periodic checks on its staying power.

"We try to be more careful with the state's money than with our own," says Burke. "I honestly wish I could take every Texas taxpayer on a guided tour of the whole operation."

**HASKELL COUNTY ABSTRACT CO.**  
Prompt and Efficient Service  
South Side Square - Haskell



No ordinary refrigerator is so convenient!

*fabulous*

## FOODARAMA

*by Kelvinator*

- ... A 12 CU. FT. DELUXE REFRIGERATOR AND A 6 CU. FT. UPRIGHT FREEZER ALL IN ONE CABINET
- ONLY 41" WIDE, 63" HIGH AND 25" DEEP
- Upright Freezer Shelf Convenience • Automatic Defrosting Refrigerator
- Single Refrigerating System • Beautiful "Style Mark" Design
- Costs much less than a separate deluxe refrigerator and upright freezer

## BOGGS & JOHNSON

EAST SIDE SQUARE UNION 4-2346

All kinds of cars are being traded in on the new Dodge Dart. Low first cost is a big factor... Dart's a real buy! Then there's the wonderful gas m-i-l-e-a-g-e of Dart's Economy Slant "6" ... up to 400 miles of cruising on a tankful of "Regular." And to top it off, Dart has the room, ride, comfort and looks that set it apart as America's 1st Fine Economy Car.

## It started a nationwide buying spree!



Come in today and find out for yourself what's causing the big swing to Dodge Dart. You'll find a complete range of body styles and models—priced right down with the lowest. You'll discover all-out operating economy teamed with family-sized room and comfort. You get in and out more easily, sit more naturally. You enjoy the solidness of Unibody construction—a one-piece fortress of steel that keeps Dart new far longer. It's all waiting for you at your Dodge Dealer's—the best automobile buy on the road today.

The Dodge Dart is priced model for model with other low-price cars

DODGE DART	Car	Car P	Car C
SENECA	Fairlane	Savoy	Biscayne
PIONEER	Fairlane 500	Belvedere	Bel Air
PHOENIX	Galaxie	Fury	Impala

DODGE DIVISION OF CHRYSLER CORPORATION

America's 1st Fine Economy Car!

# DODGE DART

Now Dodge Builds Two Great Cars: Low-priced Dodge Dart, Luxurious '60 Dodge

## Medford Motor Co.

200 North Avenue E

Telephone UN 4-3364

# NOTICE To Taxpayers

## YOUR 1959 TAXES MUST BE PAID BEFORE JAN. 31 TO AVOID PENALTY

JANUARY 31st IS ALSO THE LAST DAY TO PAY YOUR POLL TAX

Every person who will reach the age of twenty-one years after the first day of January, 1959 and before the day of a following election shall be entitled to vote at said election and it shall not be necessary that said person shall have paid his poll tax but should obtain an exemption certificate. But if they became 21 before January first 1959 they must pay poll tax before they can vote.

Those who were 60 years of age BEFORE JAN. 1, 1959 are entitled to vote without an exemption certificate.

# Elizabeth Stewart

TAX ASSESSOR-COLECTOR  
Haskell County



**REX ALLEN**  
"Mister Cowboy" OF RADIO, SCREEN, TV

IN PERSON AT FORT WORTH RODEO

SOUTHWEST'S FOREMOST INDOOR SPECTACLE  
JAN. 29 THRU FEB. 7

WORLD'S TOP COWBOYS  
WILD BULLS and BRONCS  
BIG PRIZE MONEY

All-Western Thriller Including Horse Show Will Rogers Coliseum

GET TICKETS NOW

Performances at 8 P.M. EVERY NIGHT, Jan. 29 thru Feb. 7, reserved seats \$3 and \$2.50. Morning matinee at 10 A.M. on SATURDAY, Jan. 30, reserved seats \$2.50 and \$2. Other matinee performances 2 P.M. EVERY DAY, Jan. 30 thru Feb. 7; reserved seats Monday thru Thursday afternoons \$2.50 and \$2; Friday, Saturday and Sunday afternoons \$3 and \$2.50. All prices include admission to Stock Show Grounds.

Mail orders filled as received. Send check or money order, specify exact and optional choices of performances. Address: STOCK SHOW, P. O. BOX 150, FORT WORTH, TEX.

330 LIVESTOCK EXPOSITION

## Diversity of Happenings Listed In News Headlines of Past Year

Many events and happenings made news in Haskell County during 1968. A brief review of some of the major occurrences, week by week, is given below as recorded in the files of The Free Press.

Jan. 1—"John Kimbrough Day" proclaimed in city as Haskell man joins Texas Sports Hall of Fame. Four new county and precinct officials began terms of office.

Jan. 8—Annual HHS Grid Banquet held. Little Pamela Ann Trussell in Haskell's "First Baby of 1969."

Jan. 15—Duffer Crawford, former Haskell man, goes to London, England, to supervise setting up an engineering branch for Air Products, Inc. Officers, directors of Haskell National Bank re-elected.

Jan. 22—Jim Byrd, Haskell lumber company manager, elected president of Haskell Chamber of Commerce. Area blanketed with one and one-half inches of snow and ice.

Jan. 29—County has raised \$3,200 toward goal of \$3,500 in annual March of Dimes. J. C. Yearly of Wellington transferred here as chief of local Soil Conservation Service work unit.

Feb. 5—Poll tax payments total 1,910, lowest total here in years. Dedication service scheduled for new colored school.

Feb. 12—Suits filed in Has-

kell and Knox County contesting the NCTMWA bond elections were dismissed at request of plaintiffs. Two small Negro children died when fire destroyed a small farm tenant house near Rochester.

Feb. 19—Commissioners Court contracts with Ft. Worth firm of Pritchard & Abbott to re-appraise all taxable property in Haskell County. Drive planned to raise \$6,000 for Youth Center here.

Feb. 26—Dates of May 14-16 set for annual Rice Springs Roundup. Red Cross approves \$4,800 goal in annual fund campaign.

March 5—Plan to pave downtown alleys being studied as joint project of property owners and city. New building of Haskell National Bank nears completion.

March 12—Alderman Myron Beard and Byron Frazier are unopposed candidates in the city election, while Wallace Cox Jr. and Lynn Pace Jr. are the only candidates listed for school trustee, as the deadline for filing in both elections passed.

March 19—Dedication of the new Haskell National Bank building, just completed at a cost of \$160,000, is scheduled Saturday afternoon and Sunday. Grand Jury returns 12 felony bills.

March 26—An Olney man has

**RETURN FROM VISIT**  
Mr. and Mrs. Dave Person returned last weekend after an extended visit with their daughter and family, Mr. and Mrs. C. F. Hunter of New Orleans, La. They also visited relatives in Houston.

**VISIT HERE**  
Mrs. Arthur Edwards has had as visitors in her home her sister and niece, Mrs. Edith Dobbs of Enid, Okla., and Mrs. Norman McEnroe of Salina, Kans. They came to Haskell by way of Fort Worth and visited Mrs. Dobbs and Mrs. Edwards mother. They have also visited in San Angelo, but returned Tuesday for another visit with Mrs. Edwards.

been charged with burglaries in Haskell and Weintert, the arrests coming a few hours after the thefts were committed.

April 2—Work to start next week on setting up tax rolls for North Central Texas Municipal Water Authority. Sealing to be applied to Highway 24 across Haskell County.

April 9—May 4 set as date for opening Little League Baseball season in Haskell. Spring rains revive outlook for grain crop.

April 16—Commissioners Court has approved a budget of \$435,175.16 for the current year. Banquet for Jaycees of Haskell, Seymour, Stamford and Anson to be held here.

April 23—City-wide Spring Clean-Up scheduled April 27-May 2. City prepares for annual singing convention Sunday.

April 30—Plans being studied by local group for enlarging Haskell County Hospital. Mattson School to end term May 7.

May 14—Guy Harris elected president of Lions Club. Dr. Evan Allard Rieff to speak at TTS commencement exercises.

May 21—Harvesting of wheat crop starts in county. Haskell schools to end current term May 25.

May 28—City Council took under study a plan to cut down sidewalks around the square, to provide more street parking space. Diplomas presented 38 graduates of Haskell High School.

June 4—Good rains fall over county. Hail damages crops in scattered areas. Annual audit shows city's operating cost was \$107,347 during the last fiscal year.

June 11—Announcement was made of the organization of a local corporation which plans to build cotton warehouses and a compress here. City buys new Ford tractor for sewer and street department use.

June 18—Burglars break into Haskell Clinic, secure approximately \$25 loot. Newly completed plane landing strip here being widely publicized.

June 25—Frank Campbell of Rule and R. A. Shaver of Rochester appointed directors of Haskell County Hospital. Jim Byrd re-elected chief of Haskell Fire Department.

July 2—Commissioners Court received a petition asking that an \$80,000 bond election be called, proceeds to be used for enlarging the Haskell County Hospital.

July 9—County's crop prospects termed brightest since 1950. Remodelling of Pierson and Lane-Felker buildings near completion. Haskell Sheriff's posse wins first place in Texas Cowboy Reunion parade.

July 16—Commissioners Court awarded contract for two new bridges and removal of a third. ....More

## Sagerton News

BY MRS. DELBERT LEFEVRE

Mr. and Mrs. N. E. Curtis of Hillsboro and Mr. and Mrs. Muielles of Bynum were guests of Mr. and Mrs. G. A. Lambert Sunday.

Mr. and Mrs. R. O. Gibson Sr. and Mrs. Wilson Gibson and son of Rochester were dinner guests of Mr. and Mrs. G. A. Leach and Mrs. Ethel Laughlin Sunday.

Mr. and Mrs. Delbert LeFevre and Jill visited in Rochester Sunday afternoon with Mr. and Mrs. John Nichols and Felix Mullino.

Miss Irene Stewart attended a teachers meeting in Austin Wednesday through Friday of last week.

Guests in the Charles Clark home Sunday evening for a quail fry were Mr. and Mrs. M. Y. Benton, Mrs. John Clark, Mr. and Mrs. Reece Clark, Joyce Sue Clark and Bro. Lyles of Abilene.

Mrs. Cliff LeFevre and Mrs. Reece Clark visited with Mrs. C. Harwell at Tuxedo Sunday.

Mr. and Mrs. Cleo Bush took their daughter, Norma to Houston Monday where she will have heart surgery. Several people of the community made donations to help with the expenses.

Guests of Mr. and Mrs. Reece Clark Saturday night were Mr. and Mrs. Gayle Baize of Tuxedo, Bogan Rhea of Stamford, Mrs. Juanita King of Haskell, Mr. and Mrs. Davis Jones of Rule, and Mr. and Mrs. M. Y. Benton, Mr. and Mrs. Joe Clark and family, Mr. and Mrs. Anton Teichelman and daughters, Mrs. John Clark, Whit Clark, Sue

Clark, Jimmy New and Mr. and Mrs. Cliff LeFevre and Mr. and Mrs. Charles Clark and sons, all of Sagerton.

Mr. and Mrs. Barney Ross and B. L. and Yvonne visited in Abilene Sunday with Mr. and Mrs. Barney Arnold and son.

Mrs. J. C. Spitzer entertained with a birthday party in honor of her son Gary, on his 9th birthday Sunday, Jan. 10. Present were Martha Kay Letz, Ricky Letz, Mike Summers, Johnny and Tommy Manske, Jerry Hahn, Steve Clark, Larry and Kent LeFevre, Carol and Wilhimmna Glenn of Houston, and the honoree, Mrs. Harvey Hahn and son of Old Glory were also guests, as well as Gary's little sister, Jana Gail.

Mr. and Mrs. Kenneth Reber and family of Stamford visited with Mr. and Mrs. Albert Stremmel and family Sunday.

Guests in the home of Mr. and Mrs. B. Kupatt Sunday, Jan. 10 were Mr. and Mrs. Fred Kupatt and Craig, Mr. and Mrs. August Angerman, Mr. and Mrs. Herbert Nierdieck and family, Mr. and Mrs. C. C. Bredthauer and Ernest. The occasion was Mrs. Kupatt's birthday.

There are a number of people on the sick list in this community with the flu and measles.

Carla Askew came home to her grandparents house, the

A. C. Knipping had a day after spending the Stamford holidays. Mrs. Knipping and daughters, Mrs. Knippings, they are visiting in Waco soon.

Mrs. Fred Glenn of Houston with Mr. and Mrs. zer.

Call Collect PProspect 3-3561

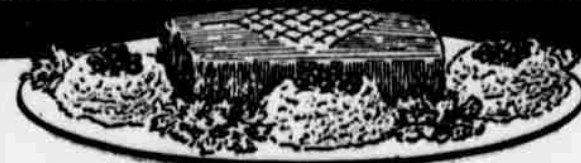
### CLEMONS VAN AND STORAGE

LOCAL and LONG DISTANCE MOVING  
NATIONWIDE SERVICE  
RAY CLEMONS  
Owner



## TASTY MEALS

TO PLEASE ALL APPETITES and BUDGETS



Flavor-Wright

**BACON**

2-lb. Pkg.

5

Fresh Pork

**STEAK**

Pound

4

Fresh Pork

**ROAST**

Pound

4

Pure Pork Store Made

**SAUSAGE**

Pound

3

Snider's, Big 14-oz. Size Bottle

**Catsup**

Bottle

**10¢**

Winter Garden, Peach, Apple or Cherry

**Pies**

Big Family Size

**39¢**

Del Monte, Pineapple-Grapefruit

**DRINK**

3 46-oz. Cans

**\$1**

Hunt's No. 300 Size Cans

**PEARS**

**19¢**

Hunt's Whole New

**Potatoes**

2 No. 300 Cans

**19¢**

Renown Vertical Pack, Whole Green

**BEANS**

2 No. 303 Cans

**49¢**

Our Darling, Cream Style

**CORN**

3 No. 303 Cans

**49¢**

Campbell's Tomato

**SOUP**

3 Cans

**29¢**

Mission or Kuner's "Mile High"

**PEAS**

3 No. 303 Cans

**49¢**

# POGUE'S

113 NORTH AVENUE

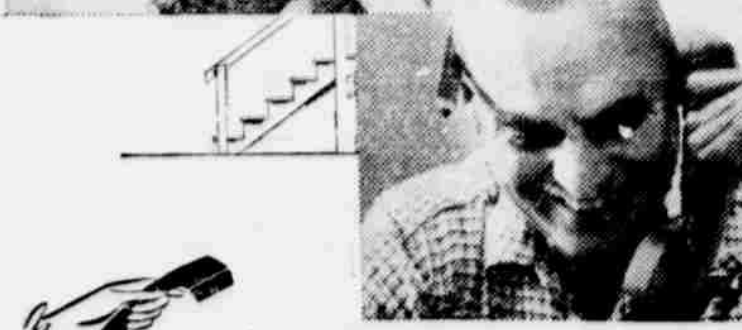


The Time To Start Your Savings Account Is Now

Your Savings Earn 3% Now

Open your savings account NOW to provide for your future.

**HOME STATE BANK**  
ROCHESTER, TEXAS



Always a phone at hand ... in a home that's telephone-planned!

The height of convenience... that's what you and your family will enjoy when there are telephone extensions strategically spotted throughout the house.

No more running, no more missed calls—not when there are extensions in the kitchen, the bedroom, the den, the workshop, the laundry, even out on the patio. All you have to do is reach... and there! your call is on the line.

For help in making your home telephone-planned, simply call our Business Office. Start enjoying the height of convenience soon by calling us today.

**GENERAL TELEPHONE**  
America's Largest Independent Telephone System

**FARM AND RANCH LOANS**

LOW INTEREST LONG TERMS

**Barfield-Turner Agency**

Haskell, Tex. Ph. UN 4-2371

**Horace Oneal Abstract Co.**

• TITLE WORK  
• PROMPT SERVICE  
ELAINE FOUGHT, Mgr.  
304 N. Ave. F Haskell  
Phone UN 4-3353 or 4-2451

For **COLDS** take **666**



# WANT ADS

### POULTRY

FOR SALE: White Leghorn laying hens. W. S. Pogue, Sr. 1-2p

### HOUSEHOLD FURNITURE

15 1/2 ft. G. E. upright freezer, excellent condition. Priced to sell. Phone UN 4-3034. 1-2c

FOR SALE: Good used refrigerators at bargain prices. Frazier's Radio & Record Shop. 1-2c

### ANTIQUES

Sherman's 14tfc

FOR SALE: Baby bed, good condition. \$10.00. Call Horace Oneal. 1-2p

FDR SALE: Breakfast table and four chairs in good condition. Call UN 4-3187. 1-2c

### PERSONAL

PERSONAL—If you have a drinking problem, write P. O. Box 213, Haskell, for a confidential talk. 15tfc

### EMPLOYMENT

WANTED: Experienced mechanic. Apply Perry Motor Co. 1tfc

\$\$\$ Can Be Yours. A few hours spent in friendly conversation selling Avon will provide a good income. If you are ambitious and over 30, write to Mrs. Morton P. O. Box 1898, Wichita Falls. 1-2p

BABY SITTING wanted, day or night in my home. Experienced. Mrs. James L. Smith, 504 N. Ave. B. Call UN 4-2141. 52-2p

### Smart Laundry

Speed Queen, Helpy-Selfy Wet and Dry Wash Pick-Up and Delivery Phone UN 4-2441

### MISCELLANEOUS

FOR SALE: New Quonset type buildings, at a used price. 21 ft. wide and any length desired. Jesse Seets, Throckmorton Highway. 2tfc

CARPENTER and repair work; 30 years experience. No job too small. Contact Homer Patterson, 1011 Ave. D or Brazelton Lumber Co. 1-2p

### LOST AND FOUND

LOST, Strayed or Stolen: From 1006 N. Ave. G. on Jan. 8, our pet dog named Puggie. Color brown, marked with four white feet; tip end of tail white and black streaks down back. He collar on with vaccination tag. Notify W. P. Curtis. 2tfc

DEALER in Watkins Products. Phone UN 4-2443. Call after 6 p. m. Guy E. Daniel. 2-5p

SEVERAL Used TV sets as low as \$25.00. Frazier's Radio & Record Shop. 2c

### REAL ESTATE

FURRH REAL ESTATE has three new listings of farms for sale. 1tfc

### FOR RENT

FOR RENT: 2 rooms and bath furnished apartment, bills paid. 1006 N. Ave. G. Dora Cook. 2tfc

### FARMS FOR SALE

FOR SALE: 136 acre farm, medium sandy. 40 acres irrigated, all can be sprinkler system. 29% down and will carry paper. 63 acre cotton allotment, 115 acres wheat. Further information see or write J. R. Graham, 1 1/4 miles N. W. Seymour. 2-4p

### BUSINESS SERVICES

Sulldozer, root plowing and dirt work. Call T. C. Redwine. Phone UN 4-3239. 14tfc

WE Vulcanize and recap any size tire. Wooten Oil Co. UN 4-2001, Haskell. 23tfc

FOR RENT: Concrete mixer by the hour for any length of time. 700 N. Ave. H. Leroy O'Neal. 29tfc

CLEAN OUT your septic tanks or grease traps. We have the equipment to serve you. Day or night call UN 4-3043. Otho Nanny Plumbing. 33tfc

WE DO radiator rebuilding, fix gas tanks, car heaters and re-coring for all kinds of radiators. All work guaranteed. Wooten's Radiator Shop. 2tfc

### NEWSPAPERS, MAGAZINES

FALL BARGAIN: Abilene Reporter-News, morning and Sunday, 7 days a week, \$13.75; morning only, 6 days a week, \$12.75. Haskell Free Press. 41tfc

### WANT TO BUY

WANT TO BUY: Used sheet iron roofing, large hammer mill, salvage small pipe. R. H. Astin, P. O. Box 149, Stamford, Texas. 1-2p

CLEAN out your garages! Clean out your attics! We buy or trade for anything of value. Call UN 4-2491. Sherman Bargain Dept. 43tfc

WANTED: Guns of all types. Will buy, sell or trade. See T. J. Ballard at 1005 North Ave. K. 7tfc

Classified Ads will buy, sell or trade for you.

### Political Announcements

The Free Press is authorized to make the following announcements for office in Haskell County, subject to action of the Democratic Primaries in 1960:

FOR STATE SENATOR DISTRICT NO. 23: George Moffett.

FOR DISTRICT ATTORNEY, 59th JUDICIAL DISTRICT: Royce Adkins. (Re-election)

FOR COUNTY ATTORNEY: Curtis F. Pogue.

FOR SHERIFF: W. H. (Bill) Pennington. For re-election.

G. T. (Garth) Garrett. Alfred Turnbow. Robert L. Dumas.

FOR TAX ASSESSOR-COLLECTOR: Elizabeth Stewart. (Second elective term).

FOR CONSTABLE, PREC. 1: Ace Davis (first elective term).

FOR COMMISSIONER Prec. 1: John Brock. Claude Ashley. (Re-election.) W. H. (Hut) Pitman. Roy L. Sellers. Lewis Hester.

FOR COMMISSIONER, PRECINCT 3: Louie Kuenstler.



State Certified LANKART COTTONSEED 57 or 611 Now in stock both Fuzzy and Delinted J. BELTON DUNCAN 206 North 1st Street UN 4-2646

Dr. Gertrude Robinson Chiropractic Clinic 506 N. Ave. E Haskell, Texas Closed Every Thursday

### FARM & GARDEN SEED

FOR SALE: Heavy Nortex seed oats, free of Johnson grass and weed seed. 90c per bu. C. L. Medford, Rule, Texas, Box 72. Phone 4377. 51-3p

FARMERS make more money. Plant better seed. I am now the agent for Qualla and Western Stormproof cotton seed, both fuzzy and delinted. Supercross hybrid maize seed. 607 N. 5th St. P. G. (Buck) Kendrick. 50-2p

### BLACKSMITHING

ALL POINTS brought in during Nov. and Dec. will be pointed for \$2.00 a point; sharpened for 75c point. L. L. Hise Blacksmith and Welding. 45tfc

FOR SALE: Boxer puppies, ears and tails trimmed. Co-vell Adkins, 501 N. Ave. D. 52tfc

The U. S. government first minted five cent pieces in 1794. Today Americans spend the equivalent of 68,000 five cent pieces a day for their newspapers.

### NOTICE TO BIDDERS

The Commissioners Court of Haskell County will receive bids until 10 a. m. Tuesday, Jan. 26 on one 1960 model automobile to be purchased for the Sheriff's Dept. Bids are desired on the following types: 235 HP engine Fairlane 500 Ford 4-door, foam rubber cushions. (Cruise-o-Matic), dual range, tinted glass, big heater, heavy duty generator. Bel-Air 4-door V-8, 230 HP. Single exhaust, EZI glass all around, air flow heater, power glide transmission, 40 amp generator, anti-freeze. Plymouth Belvedere, Torque-Flite, heavy duty generator, foam cushions front and back, tinted glass, large heater.

Cars on which bids are submitted must be on the floor and ready for immediate delivery. Bidders must make trade-in allowance on one 1958 Plymouth, now in use by the Sheriff's Dept. The Court reserves the right

to reject any and all bids. Dated at Haskell, Texas, Jan. 11, 1960. James C. Alvis, County Judge Haskell County, Texas. 2-3c

### LOCAL STUDENT CAST IN TWU PLAY

Miss Ann Foster of Haskell, senior student at Texas Woman's University, will appear in a TWU production of "The Madwoman of Chaillot" tentatively scheduled for March 4 and 15.

The two-act satire by Jean Giraudoux will be the first production in the University's new Rosebud auditorium which features one of the most modern stages in the Southwest. Miss Foster, a speech major, will play the part of Gabrielle. She is the daughter of Mr. and Mrs. C. A. Wood, 102 N. Ave.

Want Ads are thrifty workers. A 20-word ad costs only 60c, which means that each penny places your message before 35 readers!

### USE YOUR MOBIL COURTESY CARD

To Buy Your Tires and Batteries. No Down Payment, No Carrying Charges. Up to Six Months to Pay.

WE GIVE S & H GREEN STAMPS

HOWARD'S MOBIL STATION 201 N. Ave. E Phone UN 4-2551

USE FREE PRESS WANT ADS

# BEST BUYS

Texas

Oranges 5-lb. Bag 29c

Texas

Grapefruit 5-lb. Bag 29c

Armour's

Pure Lard 4-lb. Pail 65c

Hydrox

Cookies Package 33c

Banquet

Pears 2 1/2 Can 29c

Tomato Soup 2 For 21c

White Karo Pint Bottle 23c

Kimbell's

Pie Cherries 303 Can 19c

Instant Maxwell House

COFFEE Giant 10-oz. Jar \$1.19

Wednesday Is Double Stamp Day With the Purchase of \$2.50 or More.



Cut shopping costs by using your Green Stamps. Green Stamps don't cost—they pay!

### MEATS

Home Killed Whole Hog

SAUSAGE lb. 39c

Swift's Sweet Rasher

BACON lb. 33c

Decker's Pressed

HAM lb. 39c

SALT PORK

lb. 19c

# GHOLSON GROCERY

Phone UN 4-2929—We Deliver

is modern living



put your best food forward with a new Electric range

Electric cooking is precisely automatic. There's no fiddling... all you select the heat that's exactly what you need. The 1960 electric ranges come with top unit heat control, and heat ovens, motor driven griddles and thermostatically-controlled griddles that bring foods to the perfect... automatically.

your Electric appliance dealer

YOU GET THE REVOLUTIONARY PULL 'N CLEAN OVEN AND ALL THESE OTHER EXCITING FRIGIDAIRE FEATURES!

- Cook-Stop controls stop automatically
- Wide-tube Surface Brite control pans perfectly for deep, uniform cooking heat
- New "closed" infinite heat Retary controls are easy to use
- Two big storage drawers are like having an extra kitchen cabinet

FREE WIRING (220 Volt) INSTALLATION FOR RANGES, REFRIGERATORS, FREEZERS AND OTHER APPLIANCES. WEST TEXAS UTILITIES COMPANY

### Diversity Of—

(Continued on page 8)

to Frank Underwood of Bowie, Texas. Royce Adkins named president of newly-organized United Fund.

July 23—Haskell and Haskell County has been taken off the Mexican National's "black list" the C. of C. has been informed.

August 6—A 24-year-old Aspermont man, Norman Blackstock, drowned Sunday, Aug. 2, in Lake Stamford. Plans being made to celebrate completion of plane landing strip here.

Aug. 13—Invitations mailed for Haskell's fourth School Homecoming, to be held Sept. 25-26. Faculty for Haskell Schools complete for new term with exception of one vacancy.

Aug. 20—Registration for 19-59-60 school term set August 24-25. Harvesting of early maize crop nearly finished. City-wide blood typing program slated.

Aug. 27—Commissioners Court has set Sept. 19 as date for a county-wide \$80,000 hospital bond election. More than 100 planes expected here for air strip celebration Sept. 7.

Sept. 3—Work started on paving alleys in business section. Haskell Indians to open football season at Spur Sept. 4.

Sept. 10—City Council, in regular session this week, authorized purchase of new Ford car for the city police department. More than 150 visitors, traveling in 69 planes, attended the airstrip celebration here Monday.

Sept. 17—A light turn-out of voters is expected in the Sept. 19 bond election. Christmas program outlined for C. of C. directors.

Sept. 24—City readies welcome for record crowd of Homecoming visitors. County voters approved an \$80,000 Hospital bond issue Saturday by a majority of 44 votes.

Oct. 1—Plans being made for United Fund drive to raise budget of \$11,070. A rodent control program was scheduled in the business section.

Oct. 8—Slow rains amounting to over three inches halted cotton harvest, will benefit small grain. Tom Barfield named to head fund-raising campaign of the United Fund.

Oct. 15—Atomic Energy Exhibit will be shown in Haskell Nov. 5. United Fund campaign set for Oct. 20. Local firemen made a clean sweep of all contests at Mid-West Texas Fire-

men's Meet in Snyder.

Oct. 22—Water Authority considering sale of \$1,200,000 bonds of local water district. Cotton ginned from 1959 crop totaled 4,554 bales to date, Haskell's three gin plants reported.

Oct. 29—City Council has contracted for water rights on 100 acres of land about one and one-half miles southeast of town. Henry W. Smith was re-elected president of the Haskell County Farm Bureau.

Nov. 6—Week of science lectures scheduled in Haskell High School. All towns in the NSTM-WA have signed water purchase contracts with the district, effective when water is available from the Miller Creek project.

Nov. 12—A water district board of equalization has scheduled hearings on tax assessments in Rule Nov. 18-19, and in Haskell Nov. 20-21. More than \$13,000 in cash and pledges was raised in the United Fund drive.

Nov. 19—Fire destroys 11-room, two-story residence of Mr. and Mrs. J. A. Seets in East Haskell. Haskell and Throckmorton firemen meet in football game.

Nov. 26—Tax protests tapered off following water district equalization board hearings. Lucky Dollar Food Store here closes after operating only 10 weeks.

Dec. 3—East Side Baptist Church Homecoming planned Sunday. 4-H Club Show scheduled Dec. 5. Architect's plans for new hospital addition approved by Commissioners Court and hospital directors.

Dec. 10—Crowds through the streets around square to witness annual Christmas Parade. City Council approves pipeline project to new city water wells.

Dec. 17—Commissioners Court called off plans for a county-wide revaluation of real estate and personal property. City Council announces increase in water rates effective Jan. 15.

Dec. 24—Goodfellows plan to distribute Christmas food baskets to needy families of Haskell. Winners announced in annual Home and Yard Christmas lighting contest.

Dec. 31—County Judge Alvis fears tax revenue to drop unless taxable values are re-appraised. Electra man, an ex-convict, charged with armed hold-up of Lane-Felker store and theft of car belonging to Jack Pippin, Haskell drug-gist.

Your message in the Want Ads goes into more than 2,000 homes each week.

### Olney Man Shows Views of Europe At Rotary Club

A series of colored slides, showing a diversity of scenes in seven European countries, provided an interesting and entertaining program for members and guests of the Rotary Club at the meeting and luncheon last Thursday in the Highway Drive B.

Showing and commenting on the colorful views was Bob Thornton of Olney, president of Olney (Rotary Club, who was introduced by Thos. B. Roberson, who presided in the absence of the club president Hooper Wilkinson.

Mr. and Mrs. Thornton toured Europe last summer, visiting Scotland, England, Holland, Germany, Italy, Switzerland and France. The Olney couple made an "independent" tour, Thornton explained, visiting any points they desired, and spending as much time as they liked at any place suiting their fancy. As a result, Mr. Thornton brought back many interesting and unusual views, ranging from centuries old castles in Edinburgh, scenes in the Bavarian Alps, Naples and Rome, as well as views of the Catacombs and ruins of Pompeii. His interesting commentary added to the program.

Out-of-town guests at the meeting and luncheon were Raybon Lam of Durango, Colo., and School Supt. Connor Horton of Rule.

### School Lunch Menus

School menus for Jan. 18-22:

Monday: Tuna sandwiches, pimiento cheese sandwiches, potato chips, English peas, tossed vegetable salad, cinnamon rolls, milk.

Tuesday: Pork patties, potatoes in cream sauce, green beans, Waldorf salad, apricot cobbler, yeast biscuits, milk. Wednesday: Frito pie, pinto beans, buttered broccoli, onion rings, cabbage and pepper slaw, cornbread, apple crisp, milk.

Thursday: Pigs in blankets, mashed potatoes, buttered corn, grapefruit sections, rolls, oatmeal cookies, milk.

Friday: Cheese meat loaf, cream peas, Harvard beets, cabbage, carrots, apple salad, rolls, chocolate cake, milk.

### RECEIVES SAFE DRIVING AWARD

Frankfurt, Germany (AHTN C)—Army Pfc. Leonard C. Meredith, son of Mrs. Marie Meredith, 806 E. Hamilton St., Stamford, recently received a

safe driver award while assigned to the 3rd Armored Division in Germany.

Meredith won the award for driving military vehicles 10,000 miles without an accident or traffic violation.

The 22-year-old soldier, a member of Headquarters Co. of the division's 3rd Quartermaster Battalion in Frankfurt entered the Army in November 1957 and arrived overseas

the following... He attended School and was the Pioneer Ranger before enter

Impala Sport Coupe — one of Chevy's 18 fresh-minted models for '60. See The Dinah Shore Chevy Show in color Sundays, NBC-TV... the Pat Boone Chevy Show



Factories are turning out more new Chevrolets every day. More proud new Chevy taking to the road. Now's the time to see your dealer for fast delivery and a favorable

The pickings couldn't be better. All 18 of Chevrolet's sizzling new models for '60 are now rolling off the assembly lines again—in greater numbers than ever before. Your dealer's waiting with all the details, including a long list of pluses that will prove to you the only way to buy a car for less than this low-priced Chevy is to buy a lot less car: Roomier Body by Fisher—with a 25%

smaller transmission tunnel for more foot room. Pride-pleasing style—combines good looks with good sense. New Economy Turbo-Fire V8—gets up to 10% more miles on a gallon. Widest choice of engines and transmissions—no other car gives you a choice of 24 power teams to satisfy the most finicky driving foot. Hi-Thrift 6—the '60 version of the

engine that won its class in the Mobilgas Economy Run. Coil springs at all 4 wheels—kind of silent, satiny ride expect only in the most makes. Quicker stopping Safety brakes—built with Chevy's faithful dependability, they surer stops with less pedal pressure.

Now—fast delivery, favorable deals! See your local authorized Chevrolet dealer.

### SMITH-TOLIVER CHEVROLET CO.

517 NORTH FIRST

HASKELL, TEXAS

PHONE U

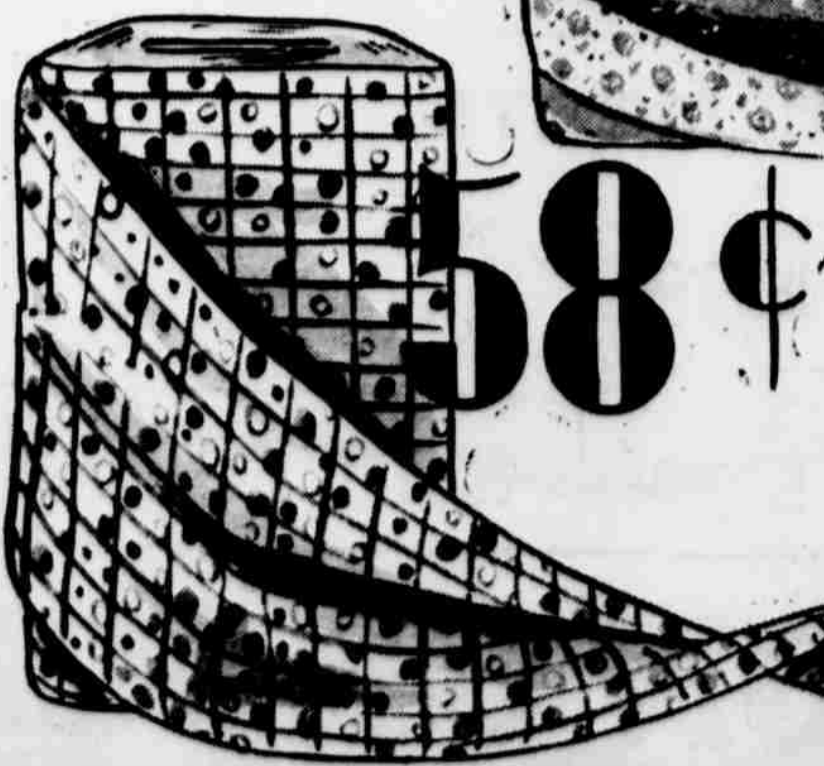
# Fabulous Fabric Fair

## SPRING AND SUMMER COTTONS

Yards and yards of beautiful fashions are here for your choosing! Sew the styles that are exactly right for you... the most flattering silhouette... the most becoming color! And all at once-a-season savings!

Polish cottons, jacquard weaves, prints, gingham, suitings... easy-care cotton with Arnelo in a rainbow range of colors!

100% Combed cotton brocades, jacquard woven piques, satin stripes, Lurex stripes and plaids, polished cotton prints and solids... denims, sailcloths, cotton tweeds and hopsackings... Cotton blends include Cupioni, Dacron® and Arnel® in prints, damasks and solids... All in rainbow range of colors!



Manufactured by: Galey & Lord, Ameritex, Triplex, Cohama, Burlington, Stevens, Springs and Onandoga.

