

Sherman County Museum 7 / 07
Box 1248
Stratford, TX 79084

The Stratford Star

75 cents

Published for over 100 years in Stratford, Sherman County, Texas 79084

usps 523

Number 32, August 10, 2006

Athletic Kick-Off

Stratford High School would like to invite the community to meet the Cheerleaders, High School Cross Country teams, and high school football teams at the football stadium Tuesday evening August 15th. The introductions will begin at approximately 7:00 p.m. following the hamburger supper.

Parents may be interested to know that group and individual pictures will be taken. Memory mates and buttons may be purchased at that time from the annual staff.

Memory Mates-\$10.00
Large Button-\$4.00
Pair of Small Buttons \$4.00
Payment must accompany the orders.

Tax Office Now Accepting Credit Cards

The Sherman County Tax Office is now accepting Visa and MC. These credit cards can be used for any motor vehicle transaction or Tax payment. The minimum fee for this convenience will be \$2.50, or 2.45% of the amount due whichever is greater.

Animal Issues Committee Meeting

Animal Issues Committee Meeting will be held Aug. 10, 2006 at 7 p.m. at Stratford fire Station.

BURN BAN TEMPORARILY LIFTED

Sherman County is temporarily lifting the burn ban as of 8/7/2006. The Commissioners and County Judge will continue to monitor drought conditions in the county. Even though we have received some moisture, the area is still drier than normal and we are asking that you use caution with any fire. Please monitor any fires and make sure fire is completely extinguished before leaving the area. The burn ban could be re-ordered as early as 8/14/2006 if we don't receive more rain.

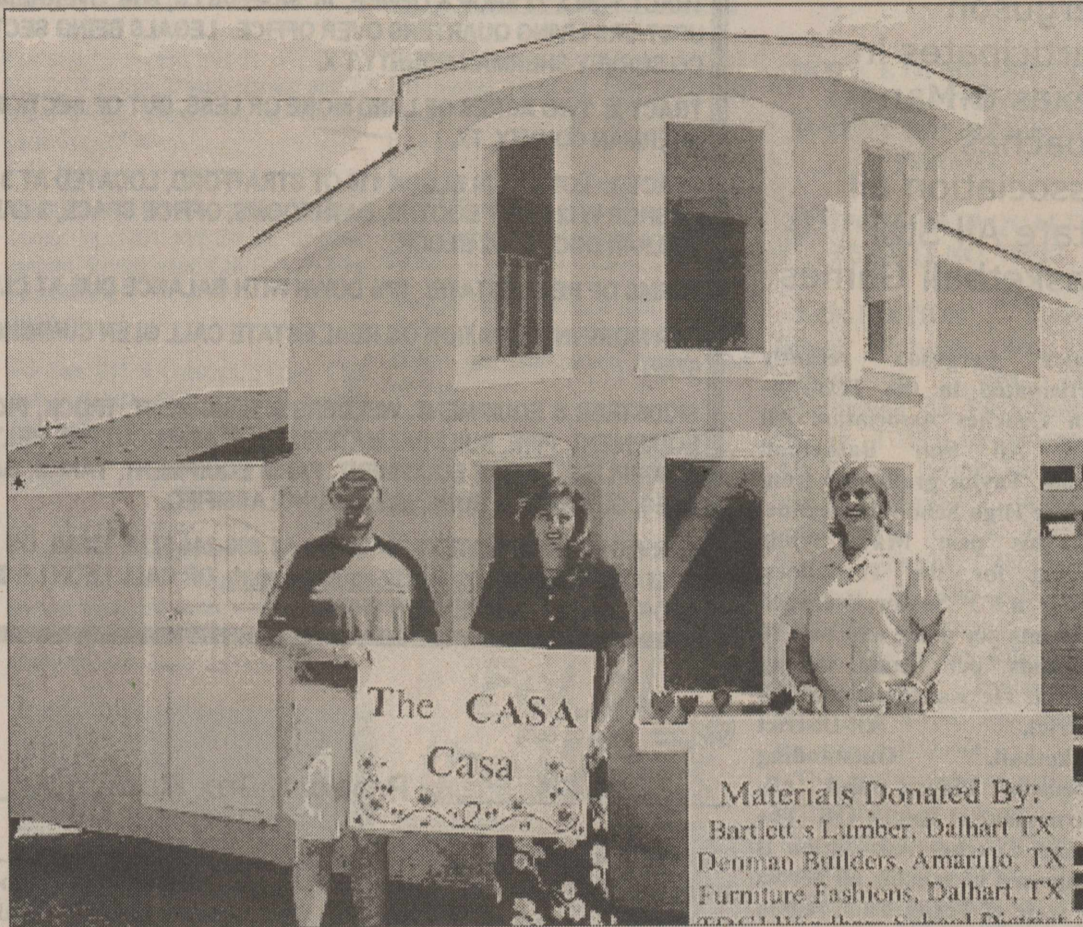
PUBLIC SERVICE ANNOUNCEMENT

Community Event / Community Calendar

On Wednesday Aug 9th from 6:00 - 7:30pm The Home and Land Owners Association of Texas will be hosting a free public forum with Rep. David Swinford, Rep. John T. Smithee and Rep. Warren Chisum

Every legislator representing the Panhandle in the Texas House will be present to discuss with their constituents issues important to local communities as well as the entire state. Topics will include - but not be limited to - recent changes in school finance, property taxes and business taxes in addition to education reform and appraisal district reform. There will be a brief discussion on these issues followed by a question and answer session with the audience. This Town Hall is completely free and entirely open to the public.

This event will be held at The Region 16 Education Service Center 5800 Bell Street ju Amarillo, TX 79109-6230



Pictured with the CASA Casa are Randy Sherrill - Manager at Bartlett's Lumber, Christine Olson - President of the Dalhart Area Chamber of Commerce, Ann Bookout - Executive Director of CASA 69, Inc.

CASA's Casa is on the Move

A beautiful two story playhouse built by the TDCJ Dalhart Unit was on display in Stratford last week and will be displayed at a variety of activities throughout the four counties serviced by the CASA 69th Judicial District (Dallam, Hartley, Moore and Sherman Counties).

This skillfully built playhouse measures out at 10 feet by 16 feet and also has a matching doghouse. This enchanting playhouse is two stories with a wooden staircase that leads up to a spacious carpeted room with a dazzling hanging chandelier. Downstairs are two carpeted rooms; the kitchen is complete with handmade cabinets, a table and two matching benches. The living area has a fantastic fireplace (artificial) and windows are draped with attractive curtains. The outside of the playhouse is of stucco with a red shingle roof and picturesque flower beds already filled with colorful flowers.

Materials used for construction of this "child's dream come true" playhouse were donated by Bartlett's Lumber in Dalhart, managed by Randy Sherrill, and Denman Builders in Amarillo. Carpet was supplied by Dalhart's Furniture Fashions. Joe Sangster, Construction Carpentry Instructor for TDCJ, did a superior job of supervising this project.

The first appearance of this extraordinary playhouse was in Stratford on July 28th & 29th, arriving in time for the Stratford

Jamboree and Ex-students Reunion. August 1st through the 6th the playhouse made the journey to Dalhart in time for the XIT Reunion and Rodeo. Sunray's Fun Day celebration will be on August 19th and the playhouse will make the trip to Moore County in time for the parade and outdoor activities. The Playhouse will be on the move again to be displayed at several locations in Dumas for the enjoyment its residents and to make tickets available through

Community Hamburger Feed

The Annual Community Hamburger Feed will be on Tuesday, August 15th from 5 to 7 p.m. at the High School Cafeteria. This is put on by the Board of Trustees. Everyone is Welcome.

August. For the last appearance of the playhouse, it will be moved to Cactus for their annual community fair on September 7th through 9th. The drawing for the lucky winner will be at the close of the celebration in Cactus on September 9th. You need not be present to win.

Tickets in Stratford are available at Brooks Video, First State Bank, Happy Bank, C & D Body Shop, and the Family Medical Clinic for a donation of \$5.00 each or 5 tickets for \$20.00. Tickets are available in Dalhart at the Chamber of Commerce, Bartlett's Lumber, First State Bank, Bowers Prescription Shop, Bank of America or the CASA 69 office in the basement of the Dallam County Courthouse. For more information about the playhouse or where to obtain tickets please call the CASA office at (806) 244-2684.

OUR MISSION: CASA 69, Inc. (Court Appointed Special Advocates) believes that a child's right to a safe, permanent home should be acted on by the court in a sensitive, expedient manner. CASA 69, Inc. is a non-profit organization that provides trained community volunteers to represent the child's best interest in the court. CASA 69, Inc. serves abused and neglected children from then 69th Judicial District (Dallam, Hartley, Moore, and Sherman Counties).

CASA 69, Inc. is a United Way agency.

Lunch and Learn Meeting August 17

By Susie Spurlock

Lunch and Learn TEEA will meet Thursday, August 17 at 12 noon in the educational room of the County Extension Office. The program will be "Medications and Memory". All members are invited and guest are welcome also.

Lunch will be served at a cost of \$5.00 per person. Interested participants are asked to call the Extension Office at 366-2122 by 5:00 p.m. Wednesday, August 16 so that adequate preparations can be made.

Educational programs conducted by the Sherman County Office of Texas Cooperative Extension are open to all citizens without regard to race, color, sex, disability, religion, age, or national origin.



FedEx Parking Area

FedEx leased parking area in Stratford on US 287 for turn around day/night drivers between Albuquerque, New Mexico and Wichita, Kansas. Could Stratford take advantage of other transportation economic opportunities?

EMT Class to Start August 23, 2006

August 23 — mark that date on your calendars now! This is the day the new Emergency Medical Technician (EMT) class will begin right here in Stratford. The class will run from August 23 - December 13. The Class meets

from 7 PM - 11 PM on Monday and Wednesday nights. After completing a designated amount of classroom time, you will be asked to spend some time in an Emergency Room (as an attendant, not as a patient) and to complete a few ambulance runs with us. This will be the first class

Cont. on page 6



King J.O. and Queen Oline

King J. O. Pulliam and Queen Oline Caraway and all present were welcomed by Cindy Jackson, president, GFWC/Prospectus Study Club, at the Old Tinier Reunion.

King J.O. Pulliam Queen Oline Caraway Honored

A large group of friends and family gathered at The First State Bank July 29 for the Old Timer Reunion and celebrating with Old Timer King J.O. Pulliam and Queen Oline Caraway.

There was visiting and

refreshments of Orange Juice and sweet breads provided by GFWC/Prospectus Study Club.

Cindy Jackson, Study Club President, welcomed all. Russell Spurlock and A. J. Riffe, Cub Scouts, presented the flag and led in the pledge.

The royal couple was crowned by Patti Vincent and Laurie Spurlock. Margaret Reed introduced special guests that included royal family members and past kings and queens.

Champions of Life stories were told on Queen Oline by daughters Ann Cummings, Mary Menduni and grand-daughter, Donann Mason.

Speaking about King J.O. was Karen Pulliam.

Cissy Yelek picked up the couple in front of the bank, took them to the start of the parade in a horse and buggy, then in the parade.

Old Timers enjoyed the barbeque at SCOT Hall, served by 4H members.

Mary Allen Elementary "Back to School" Night

Tuesday, August 15th

4:00 - 5:00 p.m. - Mary Allen Elementary
5:00 p.m. - Community Hamburger Supper, High School Cafeteria

Please join us to:

- Visit your child's new classroom
- Meet your child's teacher for the school year
- Bring your school supplies before the first day of school
- Get the school year off to a great start!

We will conclude the evening promptly at 5:00 to attend the Community Hamburger Supper at the High School Cafeteria.

Mary Allen Elemental "Volvemos a la escuela de noche"

El martes, 15 de agosto

4:00-5:00 p.m. - Mary Allen Elemental
5:00 p.m. - Hamburguesas por la comunidad en la cafeteria de la high school

Juntamos por favor a:

- Visitar la clase de su niño
- Reconocer la maestra de su niño por el año nuevo
- Traer sus cosas para la escuela antes el

primer día de escuela
- Obtener el año de la escuela lejos a un comienzo magnifico!
Concluiremos el anochecer inmediatamente a las 5:00 para asistir la cena hamburguesa de comunidad en la cafeteria de la high school.

OBITS



Laura Pipkin

Laura Pipkin, 101, of Stratford, died Monday, August 7, 2006 in Stratford. Services will be Thursday, August 10, 2006, at 11:00 AM in the Church of Christ with Ernie Maiwald, minister, officiating. Burial will follow in the Stratford Cemetery under the direction of Morrison's Funeral Directors.

Mrs. Pipkin was born February 3, 1905 in Rotan, TX to William Carol and Roxie Sanders. On December 10, 1924, she married W. L. "Bill" Pipkin in Bowie, TX, and he preceded her in death on September 22, 1976. She had been a resident of Stratford since 1929. She was a homemaker and a member of the Church of Christ in Stratford.

Survivors include several nieces and nephews.

The family will be at 702 N. Fulton in Stratford.

PUBLIC NOTICE

The heat and wind has damaged many flowers and decoration arrangements at the cemetery. Please check your flowers and arrangements and if they are no longer serviceable, please remove them. Plot owners are reminded to not place glass jars, vases, wooden objects or metal objects as decoration on graves. Also, please pick up any loose wire you may have used. When trimmers and mowers are used, these items are not always seen and they become flying objects and pose a hazard to equipment and personnel. Thank you for your cooperation.

Cotton Turn-Row Meeting Aug. 10

By Sherman Hammons

The Texas Cooperative Extension is having and update cotton turn-row meeting on August 10 at 10:00 a.m. This meeting will be held out at the research plot on FM 119 North of Sunray, or four miles south of 1573 on left side of FM 119. Cooperator Kerry Cartrite is using Roundup Ready Flex cotton and providing information for farmers North of I-40.

The speakers will be Dr. Randy Bowman, Texas Cooperative Extension Agronomist (Cotton), Dr. Mark Kelley, Texas Cooperative Extension Cotton Specialist, Dr. Roxanne Bowling, IPM Agent Moore, Sherman, Dallam/Hartley and Sherman Hammons, Sherman CEA-Ag/NR which will bring you updates on the varieties that we are using, the results as of now from the trial, and insects.

The Moore County Gin will be hosting lunch for all that attend. There will be 2 CEUs giving for this event. For more information please contact Sherman Hammons at 366-2122.

The Stratford Star

Published Every Thursday at 805 Purnell, Stratford, TX 79084

Martha (Marty) Robertson Editor & Publisher

Shari Hudson-Advertising & Photography

Subscription Rates \$25.00 per year in Sherman &

Adjoining Counties \$32.00 per year all others

\$20.00 per (9 months) College Rate

The Stratford Star Box 8

1-806-366-5885 FAX: 1-806-366-5885

Lamb & Goat Validation Tags Order

By Sherman Hammons

Well once again time is fast approaching for each of you to make decisions on how many tags you will need for the Major Stock Shows. If you are a 4-Her/FFA member and have a lamb or goat that you would like to exhibit at any Major Livestock Show for 2007 then you need to contact Sherman Hammons at 366-2122.

The deadline to order tags will be August 18, 2006 by 5:00 p.m. The cost of these tags will be \$7.00 each. We also need these numbers so we can order the nose printing material for lambs. Reminder these tags are not for the county show.

If you have any lambs or goats showing at the State Fair then you should already have your tag and this does not apply to you. Thanks for your help.

GIS 4-H Project Begins August 10

By Susie Spurlock

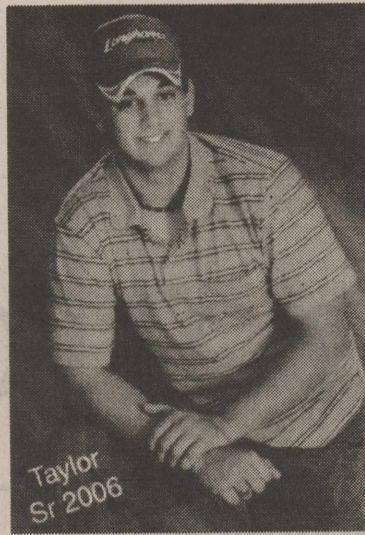
Come explore your world with GIS. Sherman County 4-H members in grades 7-12 are invited to come to the Imagination Station on Thursday, August 10 and learn about the Geographical Information System project. The project meeting will begin at 7:00 p.m. Parents are encouraged to attend also.

GIS (Geographical Information System) uses computers and software to explore the fundamental principle of geography - that "location" is important in people's lives. GIS technology provides powerful tools for geographical analysis for almost any academic discipline. GIS and three-dimensional technology can be used together to show concentrations of where events such as earthquakes, floods, or other natural disasters occur; where infectious diseases are spreading; or where agricultural crops produce the greatest yield.

Scott Buckles is the coordinator and instructor for the project. This project is possible due to a grant from the National 4-H Council that was awarded in March. The project will be hands on learning and FUN.

For more information, contact Scott Buckles at 769-4464 or the Sherman County Extension Office at 366-2122.

Extension programs serve people of all ages regardless of socioeconomic level, color, race, sex, religion, disability, or national origin.



Taylor Sr 2006

Ferguson Participates in Texas 6-Man Coaches Association all State All Star Basketball Games

Taylor Ferguson recently participated in the Texas 6-man Coaches Association All State All Star Basketball Games. Taylor graduated from Texline High School in Texline, TX this past May. While playing for the Tornados, Taylor, a 6'3" Senior, averaged 20 points per game and had 10 rebounds per game during district. He was Academic All District, All-District Outstanding Offensive Player, and All-tournament at Keyes, OK. The 6 man Coaches Association is comprised of schools all across the state of Texas. Each region of the state chose 10 players to participate. Taylor played for the North All-Stars whose team was made up of players from Lubbock on North in the Texas panhandle. Taylor's team lost their game by a score of 88-76. Taylor scored 7 points for his team including a 3 pointer that cut the East team's lead to 9 with 3 minutes to go in the game. The players all spent a week practicing at Texas Tech University in Lubbock. While there they were treated to many exciting activities. Taylor is the 18 year old son of Donavan and Ann (Petree) Ferguson of Texline. He is the grandson of Ronny and Esther Ferguson of Dumas, Texas. He is also the grandson of Mertie Boatman of Camargo and John Petree of Rancho Viejo, TX. Taylor is the great-grandson of Rosa Petree of Taloga and Luella Boatman of Camargo. He also has many aunts, uncles and cousins in the surrounding areas

Many a true word is spoken in jest.
—English Proverb

Mitchell Theatres
NCS
GUYMON, OKLAHOMA

Guymon, Okla

Movies Beginning August 11

World Trade Center
PG-13 Nicholas Cage

Zoom
PG Tim Allen

Step Up
PG-13 Channing Tatum

Pulse
PG-13 Kristen Bell

Talladega Nights
PG-13 Will Ferrell

Barnyard
PG Animated

The Descent
R Shauna MacDonald

John Tucker Must Die
PG-13 Jenny McCarthy

FRESH POPCORN EVERYDAY
Party Room & Arcade

Showtimes 580-338-3281
Off. 580-338-8969
www.northridge8.com
Cash & Credit cards only

50-179 (Rev. 05-06/2)

Statement of Increase/Decrease

If SHERMAN COUNTY adopts a 2006 tax rate equal to the effective tax rate of \$.37520 per \$100 of value, taxes would INCREASE compared to 2005 taxes by \$ 1823.

Schedule A - Unencumbered Fund Balances

The following estimated balances will be left in the unit's property tax accounts at the end of the fiscal year. These balances are not encumbered by a corresponding debt obligation.

Type of Property Tax Fund	Balance
GENERAL FUND -	\$720,000.00
RECORDS MGMT -	\$ 6,000.00

Schedule B - 2006 Debt Service

The unit plans to pay the following amounts for long-term debts that are secured by property taxes. These amounts will be paid from property tax revenues (or additional sales tax revenues, if applicable).

Description of Debt	Principal or Contract Payment to be Paid from Property Taxes	Interest to Be Paid from Property Taxes	Other Amounts to be Paid	Total Payment
(expand as needed)				
Total required for 2006 debt service	\$	\$	\$	\$ -0-
- Amount (if any) paid from funds listed in Schedule A	\$	\$	\$	\$ -0-
- Amount (if any) paid from other resources	\$	\$	\$	\$ -0-
- Excess collections last year	\$	\$	\$	\$ -0-
= Total to be paid from taxes in 2006	\$	\$	\$	\$ -0-
Amount added in anticipation that the unit will collect only % of its taxes in 2006	\$	\$	\$	\$ -0-
= Total Debt Levy	\$	\$	\$	\$ -0-

Schedule D - State Criminal Justice Mandate (For Counties)

The SHERMAN County Auditor certifies that SHERMAN County has spent \$ -0- in the previous 12 months beginning JULY 1, 2005, for the maintenance and operations cost of keeping inmates sentenced to the Texas Department of Criminal Justice. SHERMAN County Sheriff has provided information on these costs, minus the state revenues received for reimbursement of such costs.

This notice contains a summary of actual effective and rollback tax rates' calculations. You can inspect a copy of the full calculations at SHERMAN COUNTY TAX OFFICE

Name of person preparing this notice VALERIE MCALISTER

Title SHERMAN COUNTY TAX ASSESSOR-COLLECTOR

Date prepared 080406

REAGAN & BROWN AUCTIONEERS
AUCTION
J.L. MAINTENANCE CO.
DATE: AUGUST 17, 2006
TIME: 10:00 A.M.

LOCATION: GO WEST 2 BLOCKS FROM 4 WAY STOP IN STRATFORD, TX ON HWY 54
WATCH FOR AUCTION SIGNS

REAL ESTATE

REAL ESTATE WILL SELL AT 1:00 P.M.

TRACT 1 & 2 APPROX. 4.48 ACRES OF ACREAGE, HIGHWAY FRONTAGE

TRACT 1- 80 X 73 SHOP & OFFICE, 16' SIDEWALLS, 2-16' OVERHEAD DOORS, 4 WALK-IN DOORS W/ UPSTAIRS LIVING QUARTERS OVER OFFICE. LEGALS BEING SECTION 179 BLOCK 1-T, T & NO RY CO SURVEY SHERMAN COUNTY, TX.

TRACT 2: TWO ACRES OF LAND MORE OR LESS, OUT OF SECTION 179 BLOCK 1-T, T & NO RY CO SHERMAN COUNTY, TX.

TRACT 3: LOTS 11-20 BLOCK 116 OT STRATFORD, LOCATED AT 319 POPULAR. APPROX 8000 SQ. FT SHOP W/ 2 PAINT BOOTHS, BATHROOMS, OFFICE SPACE, 3 LARGE OVERHEAD DOORS, 4 WALK-IN DOORS, 1/2 BLOCK.

TERMS OF REAL ESTATE: 10% DOWN WITH BALANCE DUE AT CLOSING IN 30 DAYS.

FOR MORE INFORMATION ON REAL ESTATE CALL GLEN CUMMINGS REAL ESTATE AT 806-249-6759.

SKIDSTEER & EQUIPMENT, WELDERS & EQUIPMENT, TRUCK, PICKUPS, PARTS, TRAILERS, SHOP EQUIPMENT, PIPE, BUILDING MATERIALS, PLASMA CUTTER, BELTING, LARGE METAL EQUIPMENT & SUPPLIES, OFFICE EQUIPMENT, FARM EQUIPMENT, TANKS, GARDEN TRACTOR, RADIOS, SADDLES, GUN SAFE & GUNS, MISC. & UNCLASSIFIED.

FOR MORE INFORMATION CALL US AT 806-244-6776, EMAIL US AT rbauca@att.net, OR VISIT OUR WEB SITE AT www.texasauctionguide.com/rb, OR CALL LEON LANEY AT 806-333-2738. LEON LANEY TXS LICENSE # 16071

50-211 (Rev. 05-06/8)

2006 Property Tax Rates in SHERMAN COUNTY

This notice concerns 2006 property tax rates for SHERMAN COUNTY

It presents information about three tax rates. Last year's tax rate is the actual rate the taxing unit used to determine property taxes last year. This year's effective tax rate would impose the same total taxes as last year if you compare properties taxed in both years. This year's rollback tax rate is the highest tax rate the taxing unit can set before taxpayers can start tax rollback procedures. In each case these rates are found by dividing the total amount of taxes by the tax base (the total value of taxable property) with adjustments as required by state law. The rates are given per \$100 of property value.

	General Fund	Farm to Market/ Flood Control Fund	Special Road/ Bridge Fund
Last year's tax rate:			
Last year's operating taxes	\$ 2,372,579	\$	\$
Last year's debt taxes	\$ -0-	\$	\$
Last year's total taxes	\$ 2,372,579	\$	\$
Last year's tax base	\$ 549,475,257	\$	\$
Last year's total tax rate	\$.43179 /\$100	\$ /\$100	\$ /\$100

This year's effective tax rate:

Last year's adjusted taxes (after subtracting taxes on lost property)	\$ 2,377,064	\$	\$
+ This year's adjusted tax base (after subtracting value of new property)	\$ 633,532,326	\$	\$
= This year's effective tax rate for each fund	\$.37520 /\$100	\$ /\$100	\$ /\$100
Total effective tax rate	\$.37520 /\$100		

(Maximum rate unless unit publishes notices and holds hearings.)

This year's rollback tax rate:

Last year's adjusted operating taxes (after subtracting taxes on lost property and adjusting for any transferred function, tax increment financing, state criminal justice mandate, and/or enhanced indigent health care expenditures)	\$ 2,377,064	\$	\$
+ This year's adjusted tax base	\$ 633,532,326	\$	\$
= This year's effective rate	\$.40521 /\$100	\$ /\$100	\$ /\$100
x 1.08 = this year's maximum operating rate	\$.40521 /\$100	\$ /\$100	\$ /\$100
+ This year's debt rate	\$ /\$100	\$ /\$100	\$ /\$100
= This year's rollback rate for each fund	\$ /\$100	\$ /\$100	\$ /\$100
This year's total rollback rate	\$ /\$100		

The kind of humor I like is the thing that makes me laugh for five seconds and think for 10 minutes.

—William Davis



Past Royalty of Old Timers

Past Royalty of Old Timers present for picture were from left, Betty Brown, J. E. Brannan, King J. O. & Queen Oline, Elsie Lasley, Joyce Ann Lasley, Homer Blake.



Class of 1956

CLASS OF 1956: Front Row: L/R: Paul Howard, Harold (Poe) Keener, Pat Taylor Johnson, Joy Armstrong Keener. Back L/R: LeRayne Mitts Donelson, Ernestine Palmer Almquist, Ray Fisk, Billie Plyer Terrell, John Wilson.

STEVENSON & SONS
PEST CONTROL
Termite & Pest Control • Rat Control • Bird Control
Yard & Tree Spraying

Residential • Commercial Farms • Ranches
"Professionals in Pest Control Technology"

249-4202 Jim Stevenson
Owner

Dalhart • Stratford • Hartley
Licensed & Insured

You are your own raw material. When you know what you consist of and what you want to make of it, then you can invent yourself.

—Warren B. Bennis

Cimarron Memorial Rural Health Clinic
102 S. Ellis
Boise City, OK 73933
1-580-544-3008

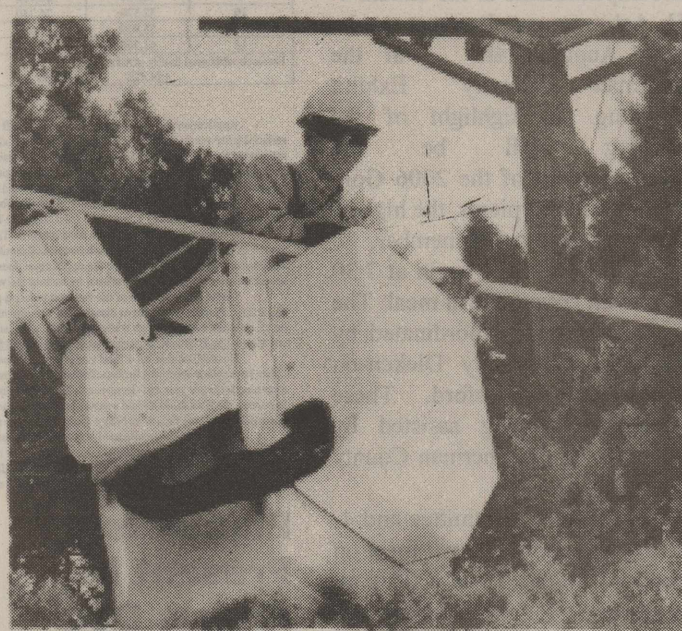
Office Hours Monday thru Friday
9 a.m. to 12, 1 p.m. to 5

School Sport Physicals \$10.00

Two Providers
Dr. Gary Mathews, MD
Dr. J.L. Wheeler, MD

Dr. Gary Mathews' office hours
Monday, Wednesday and Friday
9-12 and 1-5
Tuesday & Thursdays
9 to 12

Dr. J.L. Wheeler's office hours
Tuesday & Thursdays
9 to 12 and 1 to 5



Every time you flip a switch or turn a dial, you tap into the energy of over 12,000 people working to make your life better. Xcel Energy. You get all of our energy.

"STAY SAFE AND KEEP YOUR DISTANCE FROM POWER LINES. AROUND 10 FEET TO BE EXACT."

"Overhead power lines are dangerous. So stay away. Tools, ladders, fishing poles, a kite — any object that touches a power line can be fatal. Stay at least 10 feet away from the power lines around your house and yard. And if your kids want to climb a tree, make sure it's not around power lines. High winds or a storm can bring down lines as well. So if you see a downed power line, contact our Emergency Line immediately at 1-800-895-1999. In case of fire or injury, call 911. Remember: Stay away. Stay alive."

Robby, Lineman
For more safety tips, visit our website at xcelenergy.com.



Get Rewarded

Reward Checking

Start earning today.
You deserve it!

Earn Free ATM Use.

Anytime. Anywhere.

That's right! First State Bank will refund any fees that are charged to your account for using another bank's ATM. You can now use your debit card anywhere in the world for free.



Stratford
302 N. Main
806-396-5521

Dumas
500 E 1st
806-935-4184

Dalhart
322 Denver
806-249-5513

www.firstclassbanking.com



First Assembly of God

Kevin Anderson, Pastor
921 Fulton

Sunday School 9:45 am
Morning Worship 10:45 am
Evening Worship 6:00 pm
Wed. Bible Study 7:00 pm

First Christian

Rev. Walter Reed
5th & Main

Sunday School 9:45 am (nursery)
Morning Worship 10:45 am (nursery)
No Sunday Evening Worship Service
Wed. : Youth Choir 3:45 pm, Chi Rho 5 p.m.,
CYF 6 p.m., Bell Choir 6:50 p.m., Adult Choir 8 p.m.

First United Methodist

Rev. Gene Weinette
520 N. Main

Sunday School 9:20 am
Morning Worship 10:30 am
Junior High UMY 5:00 pm
Senior High UMY 6:00 pm

St. Joseph Catholic

Rev. Dr. Johnson, Reiki Master
6th & Pearl

Rectory - 366 - 5687
Sunday morning: 8:00a.m. (English), 12 noon. (Spanish)
Sacrament of Reconciliation: Before Mass. or by appt.
Christian Formation Classes: K-6th Grade, Wed. afternoon
Jr. & Sr. High, Wed. - 6:30-8:30 p.m.

Church of Christ

Ernie Maiwald
N. 3rd & Chestnut

Sunday School 9:30 am
Morning Worship 10:30 am
Evening Worship 5:00 p.m.
Wednesday Bible Study - 7:00 p.m.

Calvary Baptist

James Washburn
302 S. Main - 806-396-5335 lv. message

Morning Worship - 11 a.m.
Evening Service 6 p.m.
Wed. Service - 7:30 p.m.

First Baptist

Pastor Billy Chambers
702 N. 3rd

Sun.—Coffee - 8:30 Sunday School - 9:30
Worship Service - 10:30
Wed. -Children—6:00, youth—7:00

La Mision Bautista

Mision Bautista
401 S. Wall 396-5376

Domingo-(Sunday)
Estuela Dominical 9:45 am

Miercoles (Wednesday)
Servicio De Adoracion 11:00 am
& Servicio De Oration 6:00 pm
Servicio De Adoracion 6:00 pm

Estudio Biblico

Se Cuidamos Susninos Durante El Servicio.

The Churches of Stratford Welcome You

GOD'S TRAINING AID

The Bible was written over a period of 1600 years. Many different men produced the content of the Bible. They all had the same primary theme. They did not contradict each other. How could this be? Why is there such a thing as the Bible? God chose to speak to us by means of a book. The words of the Bible were actually written by men. However, not a word of the Bible "was ever made by an act of human will, but men moved by the Holy Spirit spoke from God" (2 Peter 1:21). The words of the Bible did not originate in the minds of men. They originated in the mind of God. The result is simple. We find God's word in writing on the pages of the Bible. When you read the Bible, God is speaking to you.

So why does the Bible exist? It is God's primary training aid. When you go into any classroom, you are given textbooks. The teacher uses training aids. God's textbook, God's aid to give you training, is the Bible. If you are going to learn anything at all about God, you must read the Bible. If you are going to learn what God expects of you and if you are going to understand Jesus as the way of salvation, you must read the Bible.

Sponsored by;

Stratford Grain 396-5541
Lautz 769-4485
Stratford Star 396-5885
Walter Lasley & Sons, INC.
753-4411

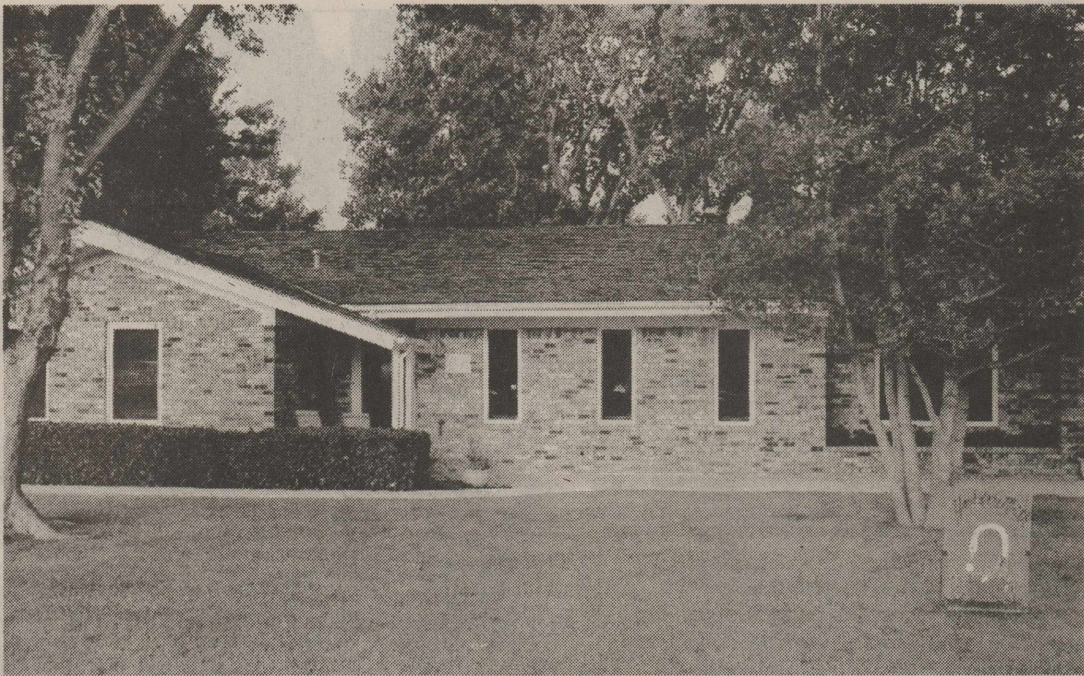
Templo Hispano Eben-Ezer

Pastor Roberto Frescas
205 N. Poplar - Hwy 287
Escuela Dominical 10 a.m.
Servicio De Adoracion 5 p.m.
Meir Co Les Serv De Ador 5 p.m.

Kerrick Community Church

Pastor Roy Harris
Community Building
Sunday Morning - 11:00 a.m.
Sunday Evening - 6:00 p.m.
Prayer Meeting - 7:00 p.m. Wednesday





August Yard of the Month

August Yard of the Month Doug and Joyce McBryde at 1213 Butler in Stratford.

CARDS OF THANKS

Dear friends,
We cannot thank you enough for the generous gifts, delicious meals, and the wonderful outpouring of support at the death of our dear husband and father. We appreciate your many calls, visits, and especially your prayers for our family at this time. We are so thankful for such a caring community to call home.

Shirley Durham,
Barry & Caroline Durham
Brian & Kathy Carpenter
Tim & Michelle Miller
Mark & Anissa Durham

Thank you so much to all the Stratford people who helped and encouraged me in my try out for the Rodeo Queen. A special thanks to Steve McAdams for use of the trailer. It was especially nice during the rain on Thursday! Thanks once again to Bobby and Karla Edmond for the "horse help" and just being such great friends. Thanks to Brent Reed for feeding my other animals and the moral support. Thank you to everyone else for the words of encouragement and support.

Bailey Bryson

We would like to thank everyone for coming by Elk Pharmacy on Friday, July 28th for our 25th Anniversary Celebration. The twenty five years have seemed to fly by. We have appreciated the community's support for the past 25 years and are blessed with many loyal customers and friends. Winners of the hourly door prizes were, Roy Conway, Gladys Arnold, Sharon Perkins, Shirley McGinnis, Marty Robertson, Julie Kendrick, Sonja Guel and Penny Boyd. Winner of the Arthur Court tray was Doak Crabtree. Again, thank you for making our day special.

Gayland & Debbi Vandiver

4-H Achievement Banquet Monday, August 14th

By Susie Spurlock

Sherman County 4-H'ers will be recognized for their accomplishments at the annual 4-H Achievement Banquet to be held August 14th at the Sherman County Exhibit Building. A highlight of the evening will be the announcement of the 2006 Gold Star Award recipients, the highest honor given to a 4-H member.

The banquet will begin at 7:30 p.m. with covered dish meal. The banquet is being coordinated by adult leaders Cindy Dickenson and Dinah Horsford. These leaders are being assisted by members of the Sherman County 4-H Council.

The planning committee and 4-H Council members will meet on Sunday, August 13 at 1:00 p.m. to decorate for the banquet. For more information, contact Susie Spurlock at the Sherman County Extension Office at 366-2122.

Company Plans "Job Recruiting Fair" in Pampa

A national customer service company will conduct a "Job Recruiting Fair" in Pampa, Texas, on Tuesday and Wednesday, August 8-9, 2006. The employer is considering expanding to the Pampa area and will base its expansion decision on its ability to attract qualified personnel to provide customer service for its clients. The company plans to hire up to 750 people over the next year.

The Job Recruiting Fair will take place Tuesday evening, August 8, from 4-8 PM and Wednesday, August 9, from

8AM-8PM. The location for the job recruiting fair will be the Pampa Center, Clarendon Collect, 1601 W. Kentucky.

Positions will be available at all levels, from entry to management. Wages begin at \$8.50 per hour plus benefits and bonuses. Qualified applicants should have good customer service, communications, and people skills.

Interested individuals may contact the Pampa Chamber of Commerce at 806-669-3241, Panhandle WorkSource at 806-665-0938, or Innovative Staffing at 806-665-2991.



July Yard of the Month

July Yard of the Month Mark & Stephanie Hartman-1207 NW 2nd Street in Stratford.

STRATFORD ISD

503 N. 8th PO BOX 108

STRATFORD, TEXAS 79084

Stratford Independent School District has announced its policy for providing free and reduced-price meals for children served under the National School Lunch program and/or School Breakfast Program. The cafeteria has a copy of the policy, which may be reviewed by any interested party.

The household size and income criteria identified below will be used to determine eligibility for free and reduced-price benefits. Children from households whose income is at or below the levels shown are eligible for free or reduced-price meals. Foster children who are the legal responsibility of a welfare agency or court may also be eligible for benefits regardless of the income of the household with whom they reside. Eligibility for the foster child is based on the child's income.

FAMILY SIZE	ANNUALLY		MONTHLY		WEEKLY	
	FREE	REDUCED	FREE	REDUCED	FREE	REDUCED
1	\$12,740	16,130	1,062	1,511	245	349
2	17,160	24,420	1,430	2,035	330	470
3	21,580	30,710	1,799	2,500	415	591
4	26,000	37,000	2,167	3,084	500	712
5	30,420	43,290	2,535	3,608	585	833
6	34,840	49,580	2,904	4,132	670	954
7	39,260	55,870	3,272	4,656	755	1,075
8	43,680	62,160	3,640	5,180	840	1,196
9	48,100	68,450	4,009	5,705	925	1,317
10	52,520	74,740	4,378	6,230	1,010	1,438
11	56,940	81,030	4,747	6,755	1,095	1,559
12	61,360	87,320	5,116	7,280	1,180	1,680

For each additional family member add:
+\$4,420 +\$6,290 +\$369 +\$525 +\$85 +\$121

Application forms are being distributed to all households with a letter informing households of the availability of the free and reduced-price meals for their children. Applications also are available at the principal's office in each school. To apply for free and reduced-price meals, households must fill out the application and return it to the school. Applications may be submitted anytime during the school year. The information households provide on the application will be used for the purpose of determining eligibility and verification of data. Applications may be verified by the school officials at any time during the school year.

For school officials to determine eligibility for free and reduced-price benefits, households receiving food stamps or TANF only have to list their child's name and food stamp or TANF case number. An adult household member must sign the application.

Households that do not list a food stamp or TANF case number must list the names of all household members, the amount and source of the income received by each household member and the social security number of the adult household member who signs the application. If the adult who signs the application does not have a social security number, the household member must indicate that a social security number is not available by writing the word "NONE". An adult household member must sign the application.

Under the provisions of the free and reduced-price meal policy, the Business Manager will review application and determine eligibility. Parents or guardians dissatisfied with the ruling of the official may wish to discuss the decision with the reviewing official on an informal basis. Parents wishing to make a formal appeal for a hearing on the decision may make a request either orally or in writing to Tim Gilliland, Superintendent, P.O. Box 108, Stratford, TX 79084, Phone (806) 366-3303.

Households that list a food stamp or TANF case number must report when the household no longer receives these benefits. Other households approved for benefits based on income information must report increases in household income of over \$50 per month or \$600 per year and decreases in household size. Also, if a household member becomes unemployed or if the household size increases, the household should contact the school. Such changes may make the children of the household eligible for benefits if the household's income falls at or below the levels shown above.

In accordance with Federal law and U.S. Department of Agriculture policy, this institution is prohibited from discriminating on the basis of race, color, national origin, sex, age or disability.

To file a complaint of discrimination, write USDA, Director, Office of Civil Rights, 1400 Independence Avenue, SW, Washington, D.C. 20250-9410 or call (800)795-3272 or (202)720-4382 (TTY). USDA is an equal opportunity provider and employer.

Plague is Present in Prairie Dog Population of Sherman County

Surveillance has determined that plague (*Yersinia pestis*) is present in the prairie dog population of Sherman County. A fairly large die-off of prairie dogs is occurring in western Moore and Sherman Counties. While plague is suspected as the cause of the die-off, only the one sample has been confirmed. People living, working or hunting in or near prairie dog towns should assume plague may be present and take appropriate precautions, as described below.

Please call the Texas Department of State Health Services' Zoonosis Control Group to report a suspected or confirmed case of plague, at 806-655-7151 Canyon, or 806-767-0427 in Lubbock during normal work hours (8 to 5 M-F). To report a suspected or confirmed case of plague after hours, call the Texas Department of State Health Services at 1-888-847-6892.

Plague is a zoonotic disease caused by the bacterium *Yersinia pestis* and is transmitted from rodent to rodent by infected fleas. The bacteria cycles through the wild rodent population in the Western U.S. and periodically produces outbreaks with high death rates in infected rodents. Rodents typically involved in plague outbreaks include rock and ground squirrels, prairie dogs, wood rats, and chipmunks. Deer mice and voles are thought to maintain the disease in the animal population. Other less frequent sources of infection include wild rabbits and wild carnivores. In domestic pets, cats are much more susceptible to plague than dogs.

Diagnosis is typically made by the characteristic swollen and very tender lymph gland (bubo) combined with fever, chills, headache, extreme exhaustion and a possible history of exposure to infected rodents, rabbits, or fleas 2 to 6 days before the development of symptoms.

Primary prevention is directed toward reducing the threat of infection to humans in high-risk

S.P.I.R.I.T. PRESS RELEASE

July 29, 2006
August 14, 2006, at 11:00 a.m. will be an exciting time for all those who have waited many years to see the start of construction on a new four-lane highway on the four miles of U.S. Highway 54 from the west city limits of Liberal to a point beyond the Oklahoma State line. S.P.I.R.I.T., cooperating with KDOT, will host a groundbreaking to celebrate the beginning of this project.

Many crashes have occurred and many lives have been lost on the present highway, and this new highway will make traveling safer and hopefully will bring more people to the area to shop, dine, attend schools, receive medical treatment and visit our fine tourist attractions. J & R Sand was awarded the contract for this project, so we know it will be done well and the money will be spent in our area to benefit our economy.

Dirt work will already be in progress when the groundbreaking takes place on August 14, but that will make a great backdrop for photos. Congressman Jerry Moran made Federal funds available to KDOT quite a few years ago to build this stretch of road with the idea of starting a project in the Western edge of the State going East - rather than the reverse. It is now going to happen and he will be here with several other dignitaries from both States, to turn the first shovels-full of dirt. This is a terrific cooperative effort of two neighboring states.

Please join S.P.I.R.I.T. and KDOT and others at the tent and the blue butler-type building, two miles west of Liberal on U.S. Highway 54 to officially kick-off this terrific project. We hope to see you there.

Cont. on page 6

15 Years, 4500 Babies In Dumas

Women's Health Center

Normal and high risk pregnancies
Gynecologic cancer screening
Breast cancer screening
Infertility and family planning
Menopause and hormone problems

Dr. Turhan I. Baykan, M.D.
Specializing In
OBSTETRICS-GYNECOLOGY
Monday - Saturday 9 a.m. - 6 p.m.

110 S. Bliss

Stratford Auto Electric
119 S. Wall, Stratford, Texas 79084
Phone 366-5941 366-5857
Alternator, Starter, Magneto Repair
Since 1964

Betty Brown's Medical Claim Service
605 S. Main P.O. Box 7
Stratford, TX 79084 806-396-2623

This space available

Jesse's Gun Shop
Gun Repairs • Sales • Cleaning
Hours: Mon. - Fri. - 1730 - 2000
Sat. - 0800-1600
(806) 767-4454 111 S. Maple
(806) 366-3134 Shop Stratford, TX 79084

This space available

Business Directory

WALTER LASLEY & SONS INC.
THE Feedyard
Since 1953
753-4411

Stratford Hospital District
Coldwater Manor
Stratford Family Medical Clinic
Stratford EMS
Proudly serving the medical needs of Stratford and Sherman County

TRCC # 11427
PALMER CONSTRUCTION
New Construction
Remodeling
Roofing
Free Estimates

610 E. Taylor
P.O. Box 217
Texline, TX 79087
806-333-4253 806-362-4253

A & I PARTS CENTER
AUTOMOTIVE AND INDUSTRIAL PARTS - THE CAR CARE PEOPLE

Jerry Ewers
Manager
P.O. Box 1146
201 N. 2nd-Stratford, TX 79084

Your Home Town Pharmacy
ELK PHARMACY
317 N. Main
P.O. Box 380
Stratford, TX 79084
806-396-4505
Major Prescription Plans Accepted

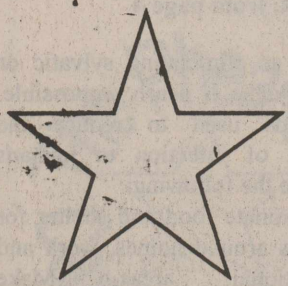
Gayland Vandiver, R.Ph.
Debbi Vandiver/ Owners
Carlton Cards, Millionaire Candy, Gifts
Cookie and Balloon Bouquets

Stratford Grain Co.
Stratford 396-5541
Lautz 769-4485
4 North Main

Joe Taylor, Photography
PO Box 27
1305 N Chestnut
Stratford, TX 79084
806-366-2459
Weddings, Portraits, Etc.

TO BUILD OR REPAIR, CALL SANDY'S ROUN-TO-IT
SANDY TILLERY
806-753-7354 806-727-4340
SEWER CLEANOUT AND REPAIR
Carpentry, Plumbing, Painting, Welding
No job too large or small

This space available



It Pays To Look In The

Star Classifieds

..The Best Salesperson Around

Phone 366-5885

For Sale

Used tire sale: Duncan Chevrolet-366-5557.

7-28-tfn
For Sale or Lease-212 N. Poplar-40' x 60' office building. Call 806-679-5585

4-1-tfn
For Sale: Lawn Mowers
1-EX Mark zero radius turn very good condition
2-Ranch king 42" cut
3-walk behind Snapper mulching mower. Call 366-5388
6-22-tfn

For Sale or Lease-Morten Building, 54' x 72' x 16. 396-2305
6-22-tfn

For Sale: Yamaha 4-Wheeler, Just like new. For more information call 396-5993.
8-10-p

For Sale: dining/game table w/leaf, 4 chairs, Good Condition Call 396-2051.
8-17-c

For Sale: Metal American Cabinets, Formica cabinet top and sink. Appliances, Bar bell set. Call 366-2053.
8-10-c

For Rent

2 Bedroom house for rent at 609 N. Grace. Call 303-618-0060
8-3-tfn

For Rent: Office space on Main Street for rent. For information call (806) 396-5541.
11-27-tfn

For Rent: 1 Bedroom furnished Apt., 6th & Fulton. Call 396-5541 daytime, 396-5692 nights.
1-28-tfn

Small 2 bedroom house, fenced backyard and garage. Call 396-2125.
4-13-tfn

PHEASANT RIDGE APARTMENTS

1319 & 1320 N. Chestnut
Stratford, TX

HAS OPENINGS "2 BEDROOMS"

Great for Senior Citizens and HUD Approved.

Call we have a home you.

806-244-3418

House for Rent: 3-Bedroom, kitchen 1-single one car garage, central air-condition and heating. Call 366-2493 or cell 930-1985.
8-17-p

Help Wanted

Subway accepting applications 20-30 hours. Weekly, mostly lunch runs and closing. Apply in person.
8-17-c

Counter Sales person needed at A&I Parts in Stratford. Applicants must be dependable. Benefits include Health Insurance, vacation and holiday pay. Contact Jerry at 806-366-5592. We are an Equal Opportunity Employer
6-22-tfn

NOW HIRING! NEED IMMEDIATELY!

Apply at Dumas Office:
(806) 934-0150

General Labor Positions in Kerrick

Dumping/Loading Trucks, General Housekeeping Of Elevators, Dusting, Cleaning, Ability to Climb a Ladder and Lift 40 lbs, Must be 18, Cleaning Roller Conveyers, Using a Broom, Dust mask Provided

No Fee to Applicants!

Innovative Staffing Solutions, LLC

All Inquiries Go To

Lisa Cooper - Staffing Coordinator
Dumas Office
500 E 1st St. Suite 213
806 934-0150



Services

Will baby-sit in my home. Call Mandy Bench @366-3088.
8-31-c

Need Help? Small repairs, minor plumbing, and fix it ups. *CATER TO THE ELDERLY* For more information call Dick Bachman 366-7679.
5-18-tfn

Houses for Sale

For sale by owner: 901 N. 3rd, 1476 Sq. ft., 3 Bdrm, 2 bath, garage and 2 small decks. Corner lot, lg. fenced yard. 366-2576.
5-11-tfn

REDUCED: 3 Bdrm, 1 1/4 bath on large corner lot, 1201 NW 2nd St. Sprinkler system, fenced yard. Call 366-2153 for appointment.
10-21-tfn

For Sale: 611 N. Chestnut, 3 Bdrm, 1 full bath-2 1/2 bath, CH/A detached garage, Big back Yard with storage building, close to school. Call 366-2401.
5-5-tfn

For Sale by Owner: 915 N. Maple, 1404 sq. ft 3 bdrms, or 2 big bdrms, and office, 1 bath, large utility. Large fenced backyard with storage bldg. 366-2576 or 366-3575
4-20-tfn

Garage Sales

Garage Sale: Sat. Aug. 12 from 8:30 to 7:00 Purnell. Furniture, baby items and misc.
8-10-c

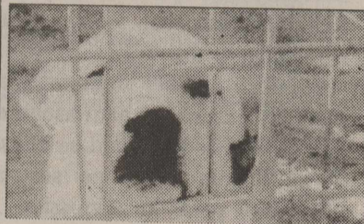
Brownlee & Hudson Garage Sale: Sat. Aug. 12th at 1210 Olive, 8 a.m. till 12 noon. Back to school clothes and misc.
8-10-c

Garage Sale: 820 N. 3rd-Sat. Aug. 12. 8:30 to 7:00 Lots of baby stuff, (swing, stroller car seat combo, Walker and clothes.
8-10-c

Garage Sale: "Everything Must Go" 712 N. Pearl. Saturday, August 12-8 a.m. to?
8-10-c

Backyard Sale: Sat. Aug. 12th 8 to 5. 109 S. Pearl. School clothes, decorating items, brass, etc.
8-10-c

Pet of the Week



The Dalhart Animal Rescue Shelter needs your old blankets, towels, & rugs for the dogs and puppies. If you have any that you would like to provide them, please contact Linda Reimer at 244-6326 (leave message) or 249-5333. You can also drop them off at the shelter.

The Dalhart Animal Rescue Shelter ("no kill" facility) currently has over 100 dogs and puppies available for adoption. These dogs are all sizes and range in age from 4 weeks on up. The older dogs have been spayed and/or neutered & have their shots. These dogs need a good home.

We are also seeking responsible individuals to provide foster care for the dogs. If you feel you would like to take one or two and care for them for a couple of months, we will provide the food. All of these dogs have had their shots and are looking for lots of love. Please contact Diane Trull at 244-3216 for additional information.

Legal Notices

NOTICE OF RECEIPT OF APPLICATION AND INTENT TO OBTAIN AIR PERMIT

PROPOSED AIR QUALITY PERMIT NO. 79527

APPLICATION Texhoma Wheat Growers, Inc., has applied to the Texas Commission on Environmental Quality (TCEQ) for issuance of Air Quality Permit No. 79527 which would authorize construction of a Fertilizer Storage Facility located at Highway 54 and 6th Street, Texhoma, Sherman County, Texas. The facility will emit the following air contaminants: particulate matter less than 10 microns in diameter.

This application was submitted to the TCEQ on August 1, 2006. The application is available for viewing and copying at the TCEQ central office, the TCEQ Amarillo regional office, and the Texhoma City Hall, 1020 South 6th Street, Texhoma, Sherman County, Texas. The facility's compliance file, if any exists, is available for public review in the Amarillo regional office of the TCEQ.

The TCEQ executive director has determined the application is administratively complete and will conduct a technical review of the application.

PUBLIC COMMENT/PUBLIC MEETING You may submit public comments, a request for a public meeting, or request a contested case hearing to the Office of the Chief Clerk at the Address below. The TCEQ will consider all public comments in developing a final decision on the application. The deadline to submit public comments is 30 days after newspaper notice is published.

The purpose of a public meeting is to provide the opportunity to submit comments or ask questions about the application. A public meeting about the application may be

held if the executive director determines that there is a significant degree of public interest in the application or if requested by a local legislator. A public meeting is not a contested case hearing.

If only comments are received on the application, the response to comments, along with notice of the executive director's action on the application, will be mailed to everyone who submitted comments or is on the mailing list for this application.

If a hearing request is timely filed, the executive director will complete the technical review, issue a preliminary decision on the application, and a Notice of Application and Preliminary Decision will be published and mailed to those who are on the mailing list for this application. That notice will contain the final deadline for submitting public comments.

After the final deadline for public comments following any required Notice of Application and Preliminary Decision, the executive director will consider the comments and prepare a response to all relevant and material, or significant public comments. If comments are received, the response to comments, along with the executive director's decision on the application, will then be mailed to everyone who submitted public comments or is on a mailing list for this application.

OPPORTUNITY FOR A CONTESTED CASE HEARING

You may request a contested case hearing. A contested case hearing is a legal proceeding similar to a civil trial in state district court. Unless a written request for a contested case hearing is filed within 30 days from this notice the executive director may approve the application. If no hearing request is received within this 30-day period, no further opportunity for hearing will be provided. A contested case hearing will only be granted

based on disputed issues of fact that are relevant and material to the Commission's decision on the application. Further, the Commission will only grant a hearing on those issues raised during the public comment period and not withdrawn.

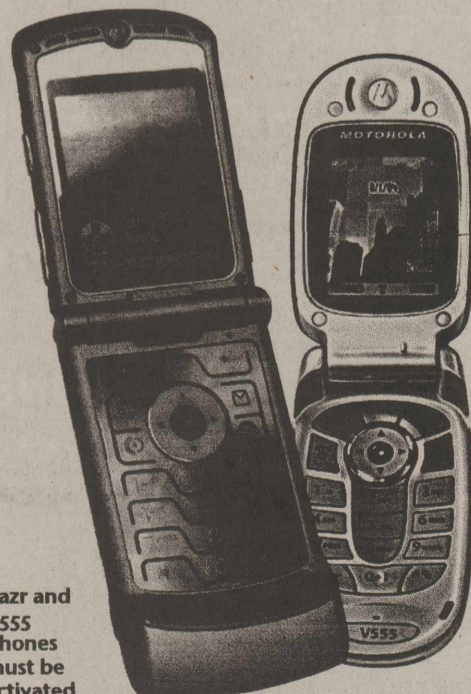
A person who may be affected by emissions of air contaminants from the facility is entitled to request a hearing. If requesting a contested case hearing, you must submit the following: (1) your name (or for a group or association official representative), mailing address, daytime phone number, and fax number, if any; (2) applicant's name and permit number; (3) the statement "[I/we] request a contested case hearing;" (4) a specific description of how you would be adversely affected by the application and air emissions from the facility; in a way not common to the general public; (5) the location and distance of your property relative to the facility; and (6) a description of how you use the property which may be

impacted by the facility. If the request is made by a group or an association, the one or more members who have standing to request a hearing, and the interests which the group or association seeks to protect, must also be identified. You may also submit your proposed adjustments to the application permit which would satisfy your concerns. Requests for a contested case hearing must be submitted in writing within 30 days following this notice to the Office of the Chief Clerk at the address below.

If a hearing request is timely filed, additional notice may be provided. Following the close of all applicable comment and request periods, the executive director will forward the application and any requests for contested case hearing to the TCEQ Commissioners for their consideration at a scheduled Commission meeting. If a hearing is granted, the subject of a hearing will be limited to disputed issues of fact relating

Cont. on page 6

XCELLENT SALE ... XCEPTIONAL PRICE!



Motorola Razr V3

\$228.00 VALUE Only \$89.95

Motorola V555

\$159.00 VALUE Only \$49.95

20% OFF ON ALL BLUETOOTH HEADSETS



Communications: Made Simple.

Dalhart
244-3355
1624 Tennessee Ave.

Stratford
366-3355
401 North 3rd Street

Dumas
935-8777
1545 South Dumas Ave.

Hereford
364-1426
809 South 25 Mile Ave.

Legals
Cont. from page 5

to relevant and material air quality concerns raised during the comment period. Issues such as property values noise, traffic safety, and zoning are outside of the Commission's jurisdiction to address in this proceeding.

MAILING LIST In addition to submitting public comments, you may ask to be placed on a mailing list to receive future public notices for this specific application mailed by the Office of the Chief Clerk by sending a written request to the TCEQ Office of the Chief Clerk at the address below.

INFORMATION Written public comments ore requests for a public meeting of contested case hearing should be submitted to the Office of the Chief Clerk, MC-105, TCEQ, P.O. Box 13087, Austin, Texas 78711-3087. For more information about this permit application or the permitting process, please call the Office of Public Assistance, Toll Free, at 1-800-687-4040. Si desea informacion en Espanol, puede llamar al 1-800-687-4040. General information regarding the TCEQ can be found at www.tceq.state.tx.us

Further information may also be obtained from Texhoma Wheat Growers, Inc. P.O. Box 250, Texhoma, Oklahoma 73949 or by calling Mr. Gary D. Larson, General Manager at (806) 827-7261

Issuance Date: August 7, 2006
 Published in The Stratford Star, Thursday, August 10, 2006.

Sherman County Sheriff's Office Notice of Impoundment of Estray

On the 4th day of August, 2006, I impounded the following estray:

Kind Bovine
 Breed Mixed
 Color Black baldie
 Sex Heifer
 Age Yearling Size 575 #
 Brand, earmark or other identifiers old brand of either TRV or TRY on the left hip.
 and on the 4th Day of August, 2006, I filed a Notice of Estray in the Estray Book of Sherman County, Texas,
 I have made a diligent search of the register of recorded brands in Sherman County, Texas for the owner of said estray, but the search did not reveal the owner, Notice is hereby given that, if the ownership of said estray is not determined by the 31st day of August, 2006, said estray will be sold at public auction at Dalhart, Texas,
 Witness my hand this 4th Day of August, 2006.
 Jack Haile- Sheriff of Sherman County, Texas
 Published in The Stratford Star, Thursday, August 10, 2006, Thursday, August 17, 2006 and Thursday, August 31, 2006.

PUBLIC NOTICE

The annual report of Sherman County Older Texans (SCOT) is available for inspection during normal business hours at First State Bank of Stratford, 302 N. Main Street, Stratford, Texas.

Published in The Stratford Star, Thursday, August 10, 2006.

Sheriff's Sale

The State of Texas
County of Sherman

NOTICE IS HEREBY GIVEN That by virtue of a certain Writ of Execution issued out of the Honorable 69th District Court of Sherman County, on the 15th day of May, 2006, by Gina Jones District Clerk of said 69th District Court of Sherman County for the sum of \$10,162.77 plus post judgment interest in the annual rate of 5% plus annum, plus costs of suit of \$1,557.00, in a certain cause in said Court No. 4534 and styled *Chaparral Energy, L.L. C., an Oklahoma Limited Liability Company vs. Viola Production, Inc.*, placed in my hands for service, I Jack Haile as Sheriff of Sherman County, Texas, did on the 26th day of June, 2006 levy on certain Real Estate, situated in Sherman County, Texas, described as follows, to wit:

An undivided 31.33875% oil and gas leasehold working and 26.585706% net revenue working interest, and an and all overriding and mineral interests owned by Viola Production, Inc in the Ross 1-72 Well and, in the Oil and Gas lease dated September 16, 1975, which is recorded in the Oil and Gas Lease Records at volume 140, at page 310, of the records of Sherman County, Texas, from Samuel Brown Ross and Myrtle Elizabeth Ross to George W. Arrington Oil Co. and Wm. L. Arrington covering Section 72, Block 1-T, T&NO RR Co. Survey, Sherman County, Texas.

Sold subject to any and all liens,

May include any and all delinquent taxes.

And levied upon as the oil and gas leasehold working and net revenue working interest, overriding royalty and mineral interest of Vila Production, Inc., and that on the first Tuesday in September, 2006, the same being the 5th day of said month at the Courthouse door of Sherman County, in Stratford, Texas at 10:00 a.m. by virtue of said levy and said Writ of Execution I will sell said above described oil and gas leasehold, overriding royalty and mineral interest at public vendue, for cash, to the highest bidder, as the property of said Viola Production, Inc.

And in compliance with law, I give this Notice by Publication, in the English language, once a week for three consecutive weeks immediately preceding said day of sale, in the *Stratford Star*, newspaper published in Sherman County.

WITNESSED MY HAND this 26th day of June, 2006.

Jack Haile
 Sheriff Sherman County, Texas
 Published in The Stratford Star, Thursday, August 10, 2006, Thursday, August 17, 2006, Thursday, August 24, 2006 and Thursday, August 31, 2006.

Public Notification of Nondiscrimination in Career and Technology Education Programs

Stratford ISD offers career and technology education programs in Vocational Agriculture and Homemaking, Computer Application, diversified Career Preparation, Internetworking Technology, Accounting, Anatomy and Physiology.

It is the policy of Stratford ISD not to discriminate on the basis of race, color, national origin, sex, or handicap in its vocational programs, services or activities as required by Title VI of the Civil Rights Act of 1964, as amended; Title IX of the Education Amendments of 1972; and Section 504 of the Rehabilitation Act of 1973, as amended.

It is the policy of Stratford ISD not to discriminate on the basis of race, color, national origin, sex, handicap, or age in its employment practices as required by Title VI of the Civil Rights Act of 1964, as amended; Title IX of the Education Amendments of 1972; the Age Discrimination Act of 1975 as amended; and Section 504 of the Rehabilitation Act of 1973, as amended.

Stratford ISD will take steps to ensure that lack of English language skills will not be a barrier to admission and participation in vocational programs.

For information about your rights or grievance procedures, contact the Title IX Coordinator, Tim Gilliland, Supt. At 503 N. Eight, 806-366-3300, the Section 504 Coordinator, Jessica Sutterfield, at 503 N. 8th or 806-366-3322.

Forma De Muestra

Stratford ISD ofrece prgramas vocacionales en agricultura y enonomomnisme de case, computadora de negocio aplicacion y diversificad carrer tecnologia y internetworking technology. La admission a estos prgramas see basa en estudiante y la minima edad.

Es norma de Stratford ISD no discriminar por motivos de raza, color, origen nacional, sexo o impedimento, es sus programas, servicios o activades vocacionales, tal como lo requieren el Titulo VI de la Lay de Deprechos Civiles de 1964, seguin enmienda; el Titulo IX de las Emmiendas en la Educacion, de 1972, y la Seccion 504 de la Lay de Rehabilitacion de 1973, seguin enmienda.

Es norma de Stratford ISD no discriminar por motivos de raza, color, origen nacional, seco, impedimento o edad, en sus procedimientos de empleo, tal como lo requieren el Titulo VI de la Ley de Derechos Civiles de 1964, segun enmienda; el Titulo IX de las enmiendas en la Educacion, de 1972, la ley de Discriminacion por Edad, de 1975, segun enmienda, y la Seccion 504 de la Ley de Rehabilitacion de 1973, segun enmienda.

Stratford ISD tomara las medidas necesarias para asegurar que la falta de habilidad en el uso de la lengua ingles no sea un obstaculo para la admission y participacion en los programas vocacionales.

Para informacion sobre sus derechos o procedimientos para quejas, comuniquese con el Coordinador del Titulo IX, Tim

Gilliland, Supt., en 503 N 8th, PO Box 108, Stratford, Tx 79084, 806-366-3300, y/o el Coordinador de la seccion 504, Jessica Sutterfield, Counselor, en 503 N. 8th, PO Box 108, Stratford, TX 79084, 806-366-3322.

Published in The Stratford Star, Thursday, August 10, 2006.

Emt
Cont. from page 1

where the new CPR guidelines will be implemented.

Learn bandaging/splinting skills, assessment skills, how to handle medical emergencies, how to handle traumatic situations, and so much more. Can you correctly identify a tensionpneumothorax and then properly treat it? Can you use a sphygmomanometer? What are the indications for applying a Hare Traction Splint? The exciting answer to these and loads of other questions I know you have burning in the back of your mind will be discussed in this class. All the skills learned in class are life-skills that can come in handy throughout your lifetime — not just in an ambulance setting.

The cost of the class is \$350 (including book). The Stratford Hospital District has agreed to offer scholarships for local residents who meet the guidelines for receiving such financial aid.

We need you for this class — not your grandmother, Aunt

Bessie, or your neighbor down the street. We need YOU. Seriously, give it some real thought, and iffen you have any inkling a'tall, give Jimmy or Larry a call at 396-2844 (or contact any current EMT) and reserve your front-row seat today.

Oh, by the way, iffen your grandmother, Aunt Bessie, or your neighbor down the street wants to enroll, we'll sign them up also.

Plaque
Cont. from page 4

areas, as eliminating sylvatic or wild plague is nearly impossible. Methods used to reduce the spread of infection to humans include the following:

1. Eliminate food and shelter for rodents around homes, work and recreational areas. Make buildings rodent proof and remove brush, rock piles, junk, and food sources from the property.
2. Report large die-offs of rodents to public health agencies.
3. Use appropriate safe insecticides to kill fleas around your property and around any areas where rodents may live during wild plague outbreaks. Remember if a rodent dies either from infection with plague or from other causes such as poison baits the fleas will leave the animal to find a new host to feed on.
4. If you expect to be out in the brush where you may be exposed to rodent fleas be sure and apply repellent (i.e. DEET-containing products) to the skin and clothing.
5. Wear gloves when handling potentially infected animals.
6. Treat pets with long acting flea control products (i.e. Advantage, Frontline) to keep infected fleas off.
7. Do not allow your pets to roam free.
8. If cleaning up rodent infested areas follow all these precautions and avoid the potential risk of hantavirus infection by:

- a. Airing out spaces before cleanup
- b. Spraying/wetting down nesting areas, droppings and other materials with 10% bleach solution before cleaning up so as not to stir up dust. Be sure to wear gloves and place all potentially contaminated material in sealed bags before disposal.

BIG SPEED ON CAMPUS. WE BRING IT ALL HOME.

BROADBAND

\$14.99 FIRST 3 MONTHS
PER MONTH

GREAT VALUE!

OFFER INCLUDES:

- FREE MODEM (AFTER REBATE)
- FREE ACTIVATION
- FREE SELF-INSTALL KIT
- FREE E-MAIL VIRUS & SPAM PROTECTION

30-DAY MONEY BACK GUARANTEE

LIMITED-TIME OFFER.
HOP ON TODAY.

PHONE
BROADBAND
DIGITAL TV

windstream.
communications
grow places

1.800.978.2567 | WINDSTREAM.COM

Limited-time offer. Subject to availability in certain locations. Broadband price shown requires a qualified service and does not include taxes, fees and other surcharges. In areas where a Windstream Value Line is available, the referenced Broadband price reflects Broadband packaged with a Value Line. After first 3 months, Broadband price will revert to standard monthly pricing. Offer does not guarantee service availability on your individual phone line. Broadband price shown reflects up to 8M upload speed and up to 128 Kbps download speed; Broadband speeds may vary based on throughput conditions. Free Broadband modem after instant credit of \$49.95 and \$50 mail-in rebate. To qualify for free modem, you must: (1) activate new Windstream Broadband service with a 12-month service agreement (2) maintain your Broadband service for at least 30 days from service agreement start date and (3) submit a fully completed rebate form by postmark date of 45 days from Broadband service activation date to the address shown on the rebate certificate. Applicable Broadband modem charges, sales tax, shipping and handling fees added to bill statement. Other restrictions and conditions may apply. 30-day Satisfaction Guarantee applies to monthly Broadband service charges, exclusive of taxes, fees and surcharges. Customer must return modem in order to receive money-back credit. A \$100 fee will be assessed to Windstream accounts if Broadband service is terminated after the first 30 days of service and before the 12-month term. Broadband service and Broadband modem provided by Windstream Broadband Services. Additional Information: Credit approval required, & pre-payment may be required. Taxes, fees & other charges, including Universal Service Fund, apply. Windstream reserves the right to cancel or discontinue service at any time. If any required bundle component is disconnected, all remaining components convert to the regular tariffed monthly rate. Other restrictions may apply. Offers are subject to the Windstream Terms and Conditions for Communications Services available at any Windstream store or at windstream.com. Contact a Windstream representative for details.