



Sherman County Museum 7 / 07
Box 1248
Stratford, TX 79084

The Stratford Star

75 cents

Published for over 100 years in Stratford, Sherman County, Texas 79084

usps 523

Number 33, August 9, 2007

High School Summer Band

I hope you have enjoyed your summer and are ready for summer band. I look forward to seeing you! Please meet at the band hall on Monday, August 13th at 2:00 p.m. Rehearsals will last from 2:00 p.m. to 4:00 p.m.

Thank you
Eldric Shanks

Whips and Wheels

September 22

A day of traditional driving of horse drawn vehicles will be a special treat for Stratford. Whips and Wheels will hold their third annual Day of Traditional Driving on Saturday, September 22 with a clinic to follow on September 23. At least twelve vehicles (carts, wagons, buggies, etc.) are expected to participate in the day to begin with the presentation and instructions, Country Drive, Tests, Cones and Games. An awards dinner, public invited, will be held on Saturday evening.

The event will be held mostly at the Rodeo Arena complemented by a Craft Show at the Exhibit Buildings. Make plans to see something different.

The Imagination Station News

By Gaynelle Riffe

The Imagination Station Computer Lab has been busy all summer. The lab will be on vacation August 7 through August 27. The Lab will be open to the public on Tuesday, Wednesday, Thursday and Sunday beginning August 28. What do you know about My Space? The Sherman County Extension will be holding a class on Internet Security and My Space at the Imagination Station September 24th. What should you watch and be aware to keep your family safe.

The Imagination Station will hold the final summer Main Street Art session, Friday August 17 from 10:00 to Noon. Bobby Strong and Kay Payne will be instructing One Stroke Painting to young people 5 to 50 or above. The cost is \$2.00 per person to help pay the air conditioning bill.

Whale of a Sale will be held Saturday, September 15. Watch for notice of "Sneak a Peek". All items not sold will be sent to appropriate not for profits. (The Imagination Station has acquired useful items from this sale and we thank you.)

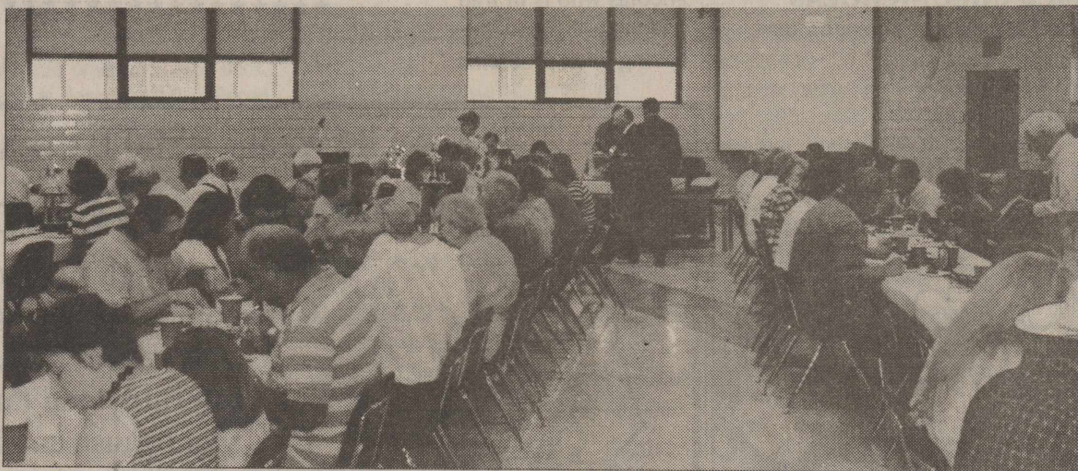
Ceiling fans and additional wiring are the next additions to the building.

Main Street Art Friday August 17

The Imagination Station will hold the summer's final Main Street Art session, Friday August 17 from 10:00 to Noon. One Stroke Painting taught by Bobby Strong and Kay Payne. Daisies and hummingbirds will stroke the imagination to ages 5 to 50 or above. The cost of the session is \$2.00.

Weather Line
366-2000
Sponsored by
Stratford Grain &
ADM/Alliance
Nutrition

Greg Wright - 7 days a week, updating as needed



IMPORTANT NOTICE TO STRATFORD CITIZENS

NOTICE

THE SHERMAN COUNTY COURTHOUSE IS NOT A STORM SHELTER

The Sherman County Courthouse is not a public shelter and is not intended to be available to the public for protection from disasters or storms (such as tornados). The Courthouse is not structurally sound, has a great deal of exposed glass, and not designed to be a safe refuge in case of storms or disasters.

If you seek shelter at the Courthouse during a storm or disaster, you do so **AT YOUR OWN RISK**. Sherman County has no liability for any injuries or deaths that occur to any persons seeking shelter at the Courthouse during a disaster or storm.

If a storm or other disaster occurs after business hours, the only door open to the public will be the west basement door by the tax office.

AVISO

EL PALACIO DE JUSTICIA DEL CONDADO DE SHERMAN NO ES UN REFUGIO DE LA TEMPESTAD

El Palacio de justicia del Condado de Sherman no es un refugio publico y no es pensado estar disponible al publico para la proteccion de desastres y tempestades (tal como tornados). El palacio de justicia no es estructuralmente solido, tiene mucho vidrio expuesto, y no es disehado para ser un refugio seguro en caso de tempestades ni desastres.

Si usted busca refugio en el palacio de justicia durante una tempestad o un desastre, usted hace asi **BAJO SU PROPIA RESPONSABILIDAD**. El Condado de Sherman no tendra obligacion para ningunas heridas o muertes que ocurran a ninguna persona quien busca refugio en el Palacio de justicia durante un desastre o tempestad.

Si una tempestad u otro desastre ocurre despues de horas de oficina, la unica puerta abierta al publico sera la puerta occidental del sotano al lado de la oficina de impuestos.

ATTENTION LAMB AND GOAT EXHIBITORS

By Susie Spurlock

Sherman County 4-H and FFA members who plan to exhibit a lamb or goat project at the state-wide livestock shows during the winter months of 2008 need to order validation tags.

Tags are \$7.00 each and must be pre-paid before ordering. Orders must be received in the Sherman County Extension Office by 12 Noon on Monday, August 27, 2007.

For more information, contact the Sherman County Extension Office at 366-2122.

SHS Pre-Registration

Stratford High School Pre-Registration:

Tuesday August 14th and Wednesday August 15th.
August 14th Seniors 1:00 -2:30
August 14th Juniors 2:30-4:00
August 15th Sophomores 1:00-2:30
August 15th Freshman 2:30 - 4:00 p.m.

TRI-STATE FAIR ENTRY DEADLINE

By Susie Spurlock

Sherman County 4-H members planning to exhibit animals at the Tri-State Fair junior livestock show need to make plans to submit their entries no later than August 10, 2007. Entry forms are available at the Sherman County Extension Office. Sherman County 4-H entries will be mailed on August 13th.

For more information, contact the Sherman County Extension Office at 366-2122.

The fact is that censorship always defeats its own purpose, for it creates, in the end, the kind of society that is incapable of exercising real discretion.
—Henry Steele Commager

★ If you have ads or pictures ★
★ for the next addition of the ★
★ paper—if at all possible, ★
★ please get them to the Star ★
★ on Thursday, August 9, ★
★ 2007! ★
★ THANK YOU!!!! ★



Comets' tails point away from the sun at all times. When a comet is moving away from the sun its tail is actually leading.



Ex-Student Banquet well attended

Bill Flores and his wife Gina Bass Flores recently made a nice donation to the Stratford Education Foundation. There were about 150 people present at the Ex-Student Banquet, which Bill was the speaker for the evening. Shown above (left) are just a few of the folks who were at the Banquet on Saturday night, July 28, 2007. Shown above at right (left to right) BA Donelson, Bill and Gina Flores.

BAKE SHOPPE WORKSHOPS AUGUST 15 & 20

By Susie Spurlock

Sherman County youth entering the 3rd grade and older are invited to come join the fun of "4-H Bake Shoppe". "4-H Bake Shoppe" is a series of food preparation workshops that will focus on baking skills.

Muffins and Quick Breads will be prepared at the second session on August 15th. The workshop will be conducted by Jill Killian and Katie Killian beginning at 9:30 am at the Sherman County Exhibit Building in Stratford.

Bread in a Bag will conclude the three part series on Monday, August 20th. Beginning at 9:30 am, youth will learn how to make a loaf of whole wheat bread in a plastic food bag. Susie Spurlock and Jennie Spurlock will be leading this session. This session will also be held at the Sherman County Exhibit Building in Stratford.

Following the "4-H Bake Shoppe" series, youth will be invited to attend 4-H Food and Nutrition project group sessions. These project meeting date and times will be announced soon. Youth will learn food preparation, nutrition, food buying, food safety, and nutrition and health relationships in the project. In addition, Nutrition Quiz Bowl will be introduced to youth and adult participants.

For more information about "4-H Bake Shoppe" or the 4-H Food and Nutrition Project, contact Texas Cooperative Extension-Sherman County at 366-2122 or come by the Annex of the Sherman County Courthouse located at 701 N. Third Street in Stratford.

Educational programs of Texas Cooperative Extension are open to all citizens without regard to race, color, sex, disability, religion, age, or national origin.



Picnic Hosted by SHD Board

Stratford Hospital District Board of Directors hosted a picnic on July 10th for the District's employees. It was held at B.A.'s park with the Allen's cooking hamburgers and hot dogs. Photos are shown above

OBITS

Steven Griffith

Steve Griffith age 58 died Sunday, August 5, 2007. No details were available at press time.

Did You Know?

(NAPS)—A growing number of Americans are discovering that river and coastal cruising can provide an unforgettable way to experience the natural beauty and distinct regional cultures of the United States. To learn more about American river and coastal cruises, visit www.MajesticAmericaLine.com or call (800) 434-1232.

A jewel called moissanite, created from silicon carbide, a compound discovered by a Nobel Prize-winning French scientist back in 1893, is sparking a lot of interest among women today, and is now considered the "little black dress" of accessories. To learn more, visit www.moissanite.com.

Don't leave matches, candles, fireworks or grill lighters within kids' reach. If you buy any new upholstery, make sure it has the Upholstered Furniture Action Council (UFAC) hangtag, which ensures it was manufactured to meet the industry's voluntary fire safety standards.

The CDC reports that most of the 12 million annual cases of head lice occur in preschool- and elementary school-aged children. Fortunately, parents can control head lice without using over-the-counter treatments that contain chemicals and pesticides. To learn more, visit www.lice-prevention.com.

Fitness guru Minna Lessig's

new book and DVD, titled "Tank Top Arms, Bikini Belly, Boy Shorts Bottom" (Rodale, Inc.), highlights a sculpting program that she says tones trouble spots and can get results in 10 days. Visit www.tanktoparmsbikinibelly.com.

A product known as Humidex replaces a home's moist air with dry, fresh air. Unlike conventional humidifiers, Humidex uses only 38 watts of power and does not require daily maintenance, such as emptying buckets or changing filters. For more information, visit www.humidexhome.com.

An electric car called the Xebra, made by ZAP (stands for Zero Air Pollution), has become popular. The car costs just 1-3 cents per mile to operate and never needs gas or produces any polluting emissions. Visit www.zapworld.com.

As part of its "Blow the Whistle" campaign against software piracy, the Business Software Alliance is offering up to a \$1 million reward to "whistle-blowing" employees. To learn more or to submit a confidential report, visit www.bsa.org or call (888) NO PIRACY.

Parents can help their youngsters learn Spanish and gain an understanding of Hispanic culture through dolls that sing traditional Spanish songs, available from Baby Abuelita. For more information, visit www.babyabuelita.com.

The Stratford Star

Published Every Thursday at 805 Purnell, Stratford, TX 79084
Martha (Marty) Robertson Editor & Publisher
Shari Hudson-Advertising & Photography
Subscription Rates \$25.00 per year in Sherman & Adjoining Counties \$32.00 per year all others
\$20.00 per (9 months)
College Rate
The Stratford Star
Box 8
1-806-366-5885
FAX-1-806-366-5885

Ninth Annual Tournament Set for Aug. 27

Coffee Memorial Blood Center will host its Ninth Annual Golf Tournament, sponsored by Amarillo National Bank, Monday, Aug. 27, at La Paloma Golf Club. Cost is \$300 per foursome and includes dinner catered by La Paloma.

The tournament begins with a 1:30 p.m. shotgun start. Player registration deadline is Aug. 21. The tournament is limited to the first 32 teams to sign up. Last year the tournament was full, so players are encouraged to pre-register as soon as possible.

Major sponsors include Jill Mathews Insurance, AMATech Tel, ATMOS Energy, Saturn of Amarillo, Amarillo Community Federal Credit Union and HRH Insurance of Amarillo. Numerous area merchants have donated door prizes.

Sponsorships ranging from \$75 to \$200 are available. Deadline for sponsorships is Aug. 15. All proceeds go into CMBC's Building Fund to retire the debt on the new blood center. Coffee Memorial Blood Center is the sole supplier of blood and blood components for 27 counties in the Texas and Oklahoma panhandles.

CMBC is a nonprofit organization. Donations are tax deductible as allowed by law. To sign up to play or to become a sponsor, contact Judy Neill, CMBC development director, at (806) 331-8853.

ATTENTION READERS

Editors Note: If you have someone serving in the military and would like to have someone's picture and address put in the paper, please leave it with us and we will put it in for you. We will start putting addresses in and they will stay in every week. Call 366-5885 or fax to same number or e-mail stardm@xit.net

Nicholas McDaniel
Nicholas McDaniel is stationed in Iraq. If you would like to send Nicholas a card or letter
His address is
BALAD IRAQ PVT
MCDANIEL NICHOLAS
ABTRY (all of above on one line)
1st PLT 1/9 FA
APOAE09391

Kerrick News

By Marylou McDaniel

Bill & Pat Boren, Leo & Elaine Home recently took a trip around Colorado. Saturday Pat and Sisty Vincent went to the 60th Anniversary of Joyce & Bernie Ford at Wheeler. They had been friends during their horse showing days. Also there was Connie Shelite of Hugoton, KS. There was a large crowd.

Jo June McDaniel went to the Red Hats meeting Aug. 2 in Stratford. Sunday she had a phone call from grandson Nicolas who is in Iraq.

Donna Gillenwaters is still having back problems.

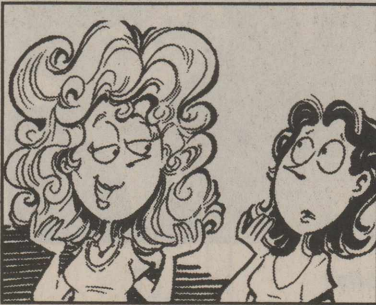
★
★ If you have ads
★ or pictures for
★ the next addition
★ of the paper—if
★ at all possible,
★ please get them
★ to the Star on
★ Thursday,
★ August 9, 2007!
★ THANK YOU!!!!
★ *****

Sherman Co. Child Welfare Board

To report Suspected Child Abuse, call

Kathie Altman-366-5611
Paula Everett-966-5445
Leonda Fedric-366-5992
Patsy Harland-827-7568
Belinda Hamilton-827-7728
Jesse Resendes-366-3134
Ernie Maiwald-366-5546

Austin Hotline
1-800-252-5400
ALL CALLS
CONFIDENTIAL



Blondes have more hair than dark-haired people.

15 Years, 4500 Babies In Dumas
Women's Health Center
Normal and high risk pregnancies
Gynecologic cancer screening
Breast cancer screening
Infertility and family planning
Menopause and hormone problems
Dr. Turhan I. Baykan, M.D.
Specializing In
OBSTETRICS-GYNECOLOGY
110 S. Bliss Monday-Thursday 8 a.m. - 5 p.m. Friday 8 a.m. - 12 noon

50-212 (Rev. 05-06/8)

2007 Property Tax Rates in SHERMAN COUNTY

This notice concerns 2007 property tax rates for SHERMAN COUNTY. It presents information about three tax rates. Last year's tax rate is the actual rate the taxing unit used to determine property taxes last year. This year's effective tax rate would impose the same total taxes as last year if you compare properties taxed in both years. This year's rollback tax rate is the highest tax rate the taxing unit can set before taxpayers can start tax rollback procedures. In each case these rates are found by dividing the total amount of taxes by the tax base (the total value of taxable property) with adjustments as required by state law. The rates are given per \$100 of property value.

Last year's tax rate:

Last year's operating taxes	\$ 2,543,379.
Last year's debt taxes	\$ -0-
Last year's total taxes	\$ 2,543,379.
Last year's tax base	\$ 633,532,326.
Last year's total tax rate	\$.40146 \$/100

This year's effective tax rate:

Last year's adjusted taxes (after subtracting taxes on lost property)	\$ 2,549,529.
+ This year's adjusted tax base (after subtracting value of new property)	\$ 625,683,550.
= This year's effective tax rate	\$.40747 \$/100
(Maximum rate unless unit publishes notices and holds hearings.)	

This year's rollback tax rate:

Last year's adjusted operating taxes (after subtracting taxes on lost property and adjusting for any transferred function, tax increment financing, state criminal justice mandate, and/or enhanced indigent health care expenditures)	\$ 2,549,529.
+ This year's adjusted tax base	\$ 625,683,550.
= This year's effective operating rate	\$.40747 \$/100
x 1.08 = this year's maximum operating rate	\$.44006 \$/100
+ This year's debt rate	\$ -0- \$/100
= This year's total rollback rate	\$.44006 \$/100

50-179 (Rev. 07-07/3)

Statement of Increase/Decrease

If SHERMAN COUNTY adopts a 2007 tax rate equal to the effective tax rate of \$.40747 per \$100 of value, taxes would INCREASE compared to 2006 taxes by \$ 2958.

Schedule A - Unencumbered Fund Balances

The following estimated balances will be left in the unit's property tax accounts at the end of the fiscal year. These balances are not encumbered by a corresponding debt obligation.

Type of Property Tax Fund	Balance
GENERAL FUND:	\$ 740,000.
RECORDS MGMT:	\$ 5,800.

Schedule B - 2007 Debt Service

The unit plans to pay the following amounts for long-term debts that are secured by property taxes. These amounts will be paid from property tax revenues (or additional sales tax revenues, if applicable).

Description of Debt	Principal or Contract Payment to be Paid from Property Taxes	Interest to Be Paid from Property Taxes	Other Amounts to be Paid	Total Payment
	\$ -0-	\$ -0-	\$ -0-	\$ -0-
(expand as needed)				
Total required for 2007 debt service			\$ -0-	\$ -0-
- Amount (if any) paid from funds listed in Schedule A			\$ -0-	\$ -0-
- Amount (if any) paid from other resources			\$ -0-	\$ -0-
- Excess collections last year			\$ -0-	\$ -0-
= Total to be paid from taxes in 2007			\$ -0-	\$ -0-
Amount added in anticipation that the unit will collect only (line 35) % of its taxes in 2007			\$ -0-	\$ -0-
= Total Debt Levy			\$ -0-	\$ -0-

This notice contains a summary of actual effective and rollback tax rates' calculations. You can inspect a copy of the full calculations at (insert address) 701 N. 3RD ST. COURTHOUSE

Name of person preparing this notice VALERIE McALISTER
Title SHERMAN COUNTY TAX ASSESSOR-COLLECTOR
Date prepared 080607

MITCHELL THEATRES
NCS
GUYMON, OKLAHOMA
Guymon, Okla
Movies Beginning August 10
Rush Hour 3 PG-13 Jackie Chan Chris Tucker
Stardust PG-13 Michelle Pfeiffer Robert DeNiro
The Bourne Ultimatum PG-13 Matt Damon
Underdog PG Jim Belushi
Bratz PG Nathalia Ramos
Hot Rod PG-13 Adam Samburg
The Simpsons PG-13 Animated
I Pronounce You Chuck & Larry PG-13 Adam Sandler Kevin James
FRESH POPCORN EVERYDAY
Party Room & Arcade
Showtimes 580-338-3281
Off. 580-338-8969
www.northridge8.com
Cash & Credit cards only

STEVENSON & SONS

PEST CONTROL

Termite & Pest Control • Rat Control • Bird Control
Yard & Tree Spraying

Residential • Commercial Farms • Ranches

"Professionals in Pest Control Technology"

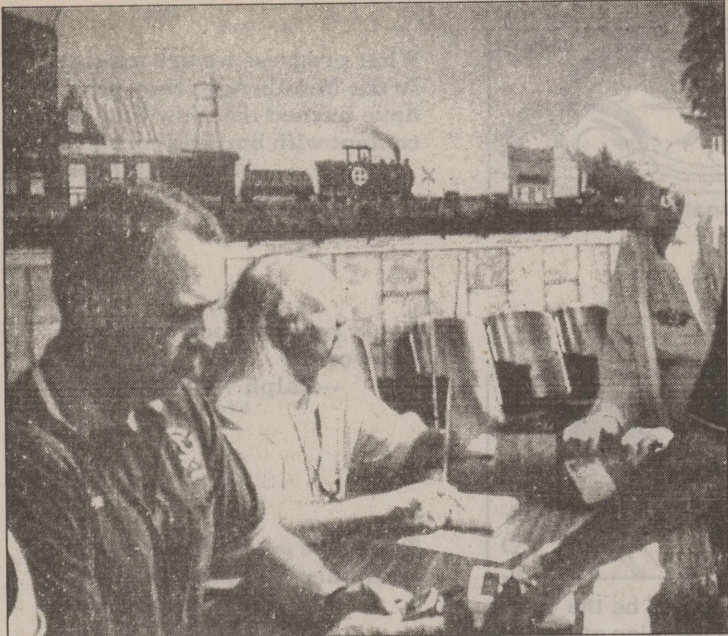
249-4202

Jim Stevenson

Owner

Dalhart • Stratford • Hartley
Licensed & Insured





Special Program Held at SCOT

Sherman County Emergency Management, Judge Terri Carter, Kay Aston and the National Weather Service sponsored a Weather Awareness & Weather Radio Program Monday, July 30, 2007 at SCOT Hall. Approximately 25 interested citizens attended the event. Steve Drillette with the NWS presented a program on historical weather events for the Panhandle and the effectiveness of early warning systems and the need for personal preparedness.

The Dumas, Texas United Supermarket store had representatives on hand with Midland Weather Radios for those persons interested in purchasing a weather radio. Steve Drillette, Steve Bilodeau of the NWS and Soylo Cooper and Nathan Ellison of United Supermarkets programmed radios.

We would like to thank Mr. Cooper and Mr. Ellison for taking time to bring this service to our community. Anyone wishing to purchase a weather radio may do at any United Supermarket Store where they will also program the radio for you. Thank you to Steve Drillette and Steve Bilodeau for



Summary of 2007 Weather Conditions in Amarillo

The following is a summary of the summer 2007 weather conditions in Amarillo with comparisons to normal and to last year. The data was based on daily temperature and precipitation records from 1892-present with normal values based on the period 1971-2000.

The year 2007 has been cooler than normal so far, and much cooler than 2006. Amarillo experienced its 11th coldest January on record for high temperatures (41.5 degrees, 7.4 degrees below normal), and the coldest since 1977. Since that time, each month so far this year in Amarillo has been cooler than normal with the exception of March. In particular, daily high temperatures have been very cool and summer temperatures have remained relatively mild. For the period May 1 thru August 5, 2007 the average high temperature has been 83.6 degrees. This is 2.2 degrees below the normal of 85.8 degrees for this period, and 5.5 degrees below the average high temperature of 89.1 degrees for the same period in 2006. The average low temperature has been 59.5 degrees in 2007 (0.1 degrees above the normal of 59.4) which is 1.0 degree cooler than the average low temperature of 60.5 degrees for the same period in 2006. Total precipitation from May 1 thru August 5, 2007 has been 10.38 inches (1.26 inches above the normal of 9.12 inches) which is 2.16 inches above last year's total of 8.22 inches. This above normal precipitation may be one factor in why 2007 has been cooler than normal.

Not only have average temperatures for the year 2007 been cooler than normal and much cooler than 2006, but 2007 has also not seen as many days with extreme heat. So far in 2007 there have been only 28 days with maximum temperatures 90 degrees or hotter (average thru August 5 is 40.1 days). The last time Amarillo saw 28 days or fewer with 90 degrees or above through August 5 was in 1999 (21 days). The year 2006 had already seen 63 days with high temperatures 90 degrees or hotter at this point. There have only been 3 days so far in 2007 with high temperatures 95 degrees or hotter (average thru August 5 is 17.5 days), while 2006 saw 30 days 95 degrees or hotter so far. This is the fewest 95 or hotter days so far since 1988 (2 days). Amarillo has yet to reach the 100 degree mark in 2007 (average is 4.3 days thru Aug 5) while 2006 reached 100 degrees on two occasions. The last time Amarillo went an entire summer without hitting 100 degrees was in 2002.

Amarillo was slow to warm up in 2007. The average first date of 90 degrees or warmer is May 9 (earliest Mar 10, 1989...latest Jun 23, 1999) but Amarillo did not reach 90 degrees until June 6 this year. The year

2006 was very warm for the first part of the summer, with the first 90 degree day occurring on April 13. The average first 95 degree day is May 31 (earliest Mar 19, 1907...latest Sep 5, 1895...did not occur at all in 1904) but Amarillo did not reach 95 degrees until July 10 this year. The first 95 degree day in 2006 was May 19. The average first 100 degree day is June 21, and this threshold has not yet been reached in 2007. Since 1892 there have been 32 years where the temperature did not reach 100 degrees, with the most recent being 2002. The highest temperature at Amarillo so far in 2007 has been 96 degrees which occurred yesterday, August 5. The forecast for the next week is for a warming trend with high temperatures reaching the mid to upper 90s every day.

Here is a review of some Amarillo climate vs. 2007 statistics in tabular format:

2007 Monthly Temperature Departures from Normal:

	JAN	FEB	MAR	APR	MAY	JUN	JUL
Maximum	-7.4	-0.7	+4.3	-5.5	-2.9	-2.9	-1.2
Minimum	-1.2	-1.5	+6.7	-1.0	+1.4	-1.0	-1.0
Average	-4.3	-1.2	+5.5	-3.3	-0.8	-2.0	-1.2

2006 Monthly Temperature Departures from Normal:

	JAN	FEB	MAR	APR	MAY	JUN	JUL
Maximum	+10.1	+2.1	-0.6	+6.2	+5.8	+4.4	+0.2
Minimum	+3.8	-4.6	+1.2	+2.9	+2.5	+0.3	0.0
Average	+6.9	-1.3	+0.3	+4.5	+4.1	+2.3	+0.1

Days 90 Degrees or Greater

	APR	MAY	JUN	JUL	TOTAL (thru Aug 5)
2006	3	16	19	23	63
2007	0	0	5	20	28
NORMAL	0.7	4.0	12.8	19.9	40.1
YEAR WITH FEWEST:	21 in 1894				
YEAR WITH MOST:	105 in 1953				

Cont. page 4

bringing the educational program to Stratford as well. We appreciate SCOT for offering the use of their facility.

Pictures: Top Picture-Steve

Drillette and Steve Bilodeau, Oline Caraway and Joan Palmer. Bottom- in back Soylo cooper and Nathan Ellison-in front Steve Drillette and Steve Bilodeau.

THE STRATFORD STAR
Thursday, August 9, 2007
Page 3

YANKEE CANDLES

August Featured Fragrances

Sage & Citrus, Vanilla Cup Cake & Mandarin Cranberry

Buy 1 - Get 1 Half - Off!!



309 North Main Street
Stratford, TX
806-366-3577
Offering wire services with TeleFlora

Call First State Bank for a No Closing Cost Home Loan today



Member FDIC

Contact your local bank for more information
Stratford 806-396-5521 • Dumas 806-935-4184 • Dalhart 806-249-5513
www.firstclassbanking.com

First Assembly of God

Kevin Anderson, Pastor
921 Fulton
Sunday School 9:45 am
Morning Worship 10:45 am
Evening Worship 6:00 pm
Wed. Bible Study 7:00 pm

First Christian

Rev. Walter Reed
5th & Main

Sunday School 9:45 am (nursery)
Morning Worship 10:45 am (nursery)
No Sunday Evening Worship Service
Wed. : Youth Choir 3:45 pm, Chi Rho 5 p.m.,
CYF 6 p.m., Bell Choir 6:50 p.m., Adult Choir 8 p.m.

First United Methodist

Rev. Gene Weinette
520 N. Main

Sunday School 9:20 am
Morning Worship 10:30 am
Junior High UMY 5:00 pm
Senior High UMY 6:00 pm

St. Joseph Catholic

Father Aleksy Kowalski
6th & Pearl

Rectory - 366 - 5687
Sunday morning: 9:00a.m. (English), 12 noon. (Spanish)
Service. Wed. Thurs. Fri.—6 p.m. Sat. 5 p.m.
Sacrament of Reconciliation: Before Mass. or by appt.
Christian Formation Classes: K-6th Grade, Wed. afternoon
Jr. & Sr. High, Wed. - 6:30-8:30 p.m.

Church of Christ

Ernie Maiwald
N. 3rd & Chestnut

Sunday School 9:30 am
Morning Worship 10:30 am
Evening Worship 5:00 p.m.
Wednesday Bible Study - 7:00 p.m.

Heritage Bible Baptist

Pastor Rick Carter
302 S. Main - For More Info—call 396-2212

Morning Worship - 11 a.m.
Evening Service 6 p.m.
Wed. Service - 7:30 p.m.

First Baptist

Pastor Jason Stone
702 N. 3rd

Sun.—Coffee - 8:30 Sunday School - 9:30
Worship Service - 10:30
Wed. -Children—6:00, youth—7:00

La Mision Bautista

Mision Bautista
401 S. Wall 396-5376

Domingo-(Sunday)
Estuela Dominical 9:45 am

Miercoles (Wednesday)
Servicio De Adoracion 11:00 am
& Servicio De Oration 6:00 pm
Servicio De Adoracion 6:00 pm
Susninos Durante El Servicio.

Estudio Biblico
Se Cuidamos

The Churches of Stratford Welcome You

There is a Spirit in me that turns the Darkness before me into light

Sometimes we cannot see our way out of some situation. Sometimes we are blind to solutions that are right at hand. Sometimes we think that there is only one answer, one way, and that way seems blocked to us. With God there is always a way, with God there are no limitations, no obstacles. With God no situation is impossible of solution. We can trust God to lead us and guide us. We can trust the directing intelligence of Spirit in us to reveal to us ways of which we have had no previous knowledge, to open up ways where there has seemed to be no way, to reveal answers where there has seemed to be only darkness. Even when we cannot see our way, there is a Spirit in us that knows the way, that turns the darkness before us into light.

In paths that they have no known I will guide them. I will turn the darkness before them into light
-Isa. 42:16

Editors Note: the above was taken out of Daily Word September 1, 1978

Sponsored by: STRATFORD GRAIN

396-5541

LAUTZ

769-4485

STRATFORD STAR

366-5885

WALTER LASLEY &

SONS, INC.

753-4411

Templo Hispano Eben-Ezer

Pastor Roberto Frescas
205 N. Poplar - Hwy 287
Escuela Dominical 10 a.m.
Servicio De Adoracion 5 p.m.
Meir Co Les Serv De Ador 5 p.m.

Kerrick Community Church

Pastor Roy Harris
Community Building
Sunday Morning - 11:00 a.m.
Sunday Evening-6:00 p.m.
Prayer Meeting - 7:00 p.m. Wednesday



Weather
Cont. from page 3

Days 95 Degrees or Greater

	APR	MAY	JUN	JUL	TOTAL (thru Aug 5)
2006	0	8	13	9	30
2007	0	0	0	2	3
NORMAL	0.0	1.6	5.6	9.3	17.5
YEAR WITH FEWEST:	0 in 1904				
YEAR WITH MOST:	69 in 2000				

Days 100 Degrees or Greater

	APR	MAY	JUN	JUL	TOTAL (thru Aug 5)
2006	0	0	1	1	2
2007	0	0	0	0	0
NORMAL	0.0	0.3	2.2	1.7	4.3
YEAR WITH MOST:	26 in 1953				

First 90 degree day

AVERAGE May 9
EARLIEST Mar 10, 1989
LATEST Jun 23, 1999

2006	Apr 13
2007	Jun 6

First 95 degree day

AVERAGE May 31 (did not occur at all in 1904)
EARLIEST Mar 19, 1907
LATEST Sep 5, 1895

2006	May 19
2007	Jul 10

First 100 degree day

AVERAGE Jun 21 (did not occur at all in 32 years)
EARLIEST May 15, 1996
LATEST Aug 17, 1909

2006	Jun 5
2007	Has not occurred yet

Thank you for your question. The research has been very informative for me, and I hope that I was able to answer all of your questions. If you need any further information give us a call at 806-335-1121 and someone will be happy to assist you.

Chris Kimble
NWS Amarillo - Climate Program

Exercise Saves Dollars as Well as Lives

Writer: Linda Anderson, 979-862-1460, lw-anderson@tamu.edu Contact: Dr. Carol Rice, 979-845-3850, ca-rice@tamu.edu Janet Pollard, 979-845-3850, jm-pollard@tamu.edu
COLLEGE STATION Regular physical activity is good for physical and fiscal health, said Dr. Carol Rice, Texas Cooperative Extension health specialist. That's because the lack of exercise can be expensive for both individuals and communities. Physical inactivity helps increase the risk of coronary heart disease, colon cancer, osteoporotic fractures, diabetes and high blood pressure, and breast cancer to the tune of about \$24 billion per year, according to the Task Force on Community Preventive Services in the American Journal of Preventive Medicine.

Healthful habits can be established one step at a time, said Janet Pollard, Extension associate for health. Because family is so important when it comes to influencing children's activity levels, these efforts need to start at home, she added.

She recommends starting with small but significant goals, such as:

- Setting goals for increasing regular physical activity and monitoring personal progress.
- Building social support for these new behaviors, such as establishing a "buddy" system or group for exercising.
- Providing rewards and positive feedback for goals met.
- Establishing methods to maintain these changes.
- Guarding against relapses into old behaviors.

Healthful physical practices are important for the community too, Rice said, but establishing these practices takes time, coordination and cooperation. "Community efforts are essential to create a social environment that promotes physical activity as well as healthy behaviors," she said.

Some of these community efforts that can help spread the word are:

- Information such as signs near elevators or escalators that encourage use of the stairs, and television and radio spots touting the benefits of healthful physical activity.
 - Behavior and social methods including school-based physical education classes and individual exercise as daily activity.
 - Environmental and policy approaches including easier access to parks, walking trails and pedestrian-friendly sidewalks.
- The greatest benefit throughout the community will be among those people who aren't already physically active, Rice said.

"So if you're already active, consider helping implement some of the listed interventions, getting involved in community action or grabbing a buddy or two and helping them get active with you," she said. "The results could be a healthier America."

For more information on this and other health issues, visit Extension's Family and Consumer Sciences Web site at <http://fcs.tamueds/> and click on the link to "Health." Also look for Health Hints newsletter on the "Health" link.

Families On The Go

The New Take On Takeout: Phone It In

(NAPS)—The "traditional" family meal may be less traditional than many think.

Experts say that prepared meals and takeout—often considered a modern development and the opposite of a "traditional" meal made from scratch—date as far back as the days of ancient Pompeii. It seems that even then, people were busy and rarely had time to cook complete meals.

And while it's true that we hit the takeout counter and grocery freezer more now than we did in the past decade (an increase of 24 percent), at least we're following some famously cuisine-conscious footsteps. The French have enjoyed takeout since the 16th century, when prepared foods were available from roasters and pastry cooks.

Research shows the meals were specifically intended for "consumption on the premises or to take out to consume elsewhere."

A Tasty Tradition
It's estimated that in five years, prepared meals are likely to overtake meals made from scratch when it comes to what we most frequently eat. But that doesn't mean Americans will be tabling taste.



Phone in your order and it will be ready to go when you arrive.

Many premier steak houses and casual-dining restaurants have call-ahead service, and even IHOP, one of America's most popular restaurants, has launched its IHOP 'n Go takeout program for families on the go.

People can now phone in any order off the restaurant's regular menu and pick it up at the register when they arrive.

"Families through the ages have been juggling schedules and looking for convenience when it comes to meals, and our guests are no exception," said Carolyn O'Keefe, chief marketing officer for IHOP Corp.

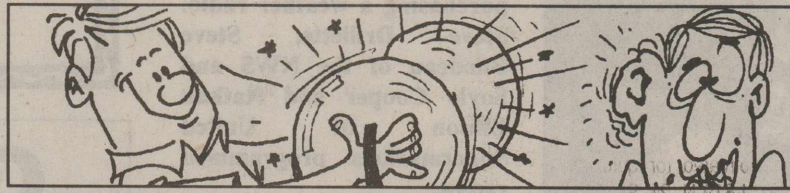
For more information, visit www.ihop.com.



The minimum pool depth required for international water polo matches is six feet.



Many historians consider Japan's ruling dynasty to be the oldest in the world. Legend assigns the date 660 B.C. to the reign of the first emperor.



Unlike many other instruments which can be tuned, no two cymbals sound exactly alike.

What progress we are making. In the Middle Ages they would have burned me. Now they are content with burning my books.
—Sigmund Freud

Every burned book enlightens the world.
—Ralph Waldo Emerson

To choose a good book, look in an inquisitor's prohibited list.
—John Aikin

To limit the press is to insult a nation; to prohibit reading of certain books is to declare the inhabitants to be either fools or slaves.
—Claude-Adrien Helvétius

<h3>Business Directory</h3>	<p>Stratford Hospital District Coldwater Manor Stratford Family Medical Clinic Stratford EMS Proudly serving the medical needs of Stratford and Sherman County</p>
<p>WALTER LASLEY & SONS INC. THE Feedyard Since 1953 753-4411</p>	<p>TRCC # 11427 PALMER CONSTRUCTION New Construction Remodeling Roofing Free Estimates 610 E. Taylor P.O. Box 217 Textline, TX 79087 806-333-4253 806-362-4253</p>
<p>Stratford Grain Co. Stratford 396-5541 Lautz 769-4485 4 North Main</p>	<p>Joe Taylor, Photography PO Box 27 1305 N Chestnut Stratford, TX 79084 806-366-2459 Weddings, Portraits, Etc.</p>
<p>Stratford Auto Electric 119 S. Wall, Stratford, Texas 79084 Phone 366-5941 366-5857 Alternator, Starter, Magneto Repair Since 1964</p>	<p>Ivy Insurance Agency Joanie Ivy Auto • Home • Life • Commercial Bus: (806) 396-5810</p>
<p>Betty Brown's Medical Claim Service Located at 8306 Pomona, Amarillo, TX Phone 806-367-5617 Cell 806-753-7569</p>	<p>P.O. Box 510 Stratford, TX 79084 Phone 806-366-5557 Duncan Chevrolet www.duncanchevrolet.com E-mail duncanch@xit.net</p>
<p>Dalhart Maintenance Services Carpet & Upholstery Cleaning Residential - Commercial Clark Schafer - Owner/Operator IICRC Certified 806-244-0534 806-220-4047 "Helping you maintain both your home & business"</p>	<p>Jesse's Gun Shop Gun Repairs • Sales • Cleaning Hours: Mon. - Fri. - 1730 - 2000 Sat. - 0800 - 1600 Jesse Resendes (806) 763-4454 (806) 366-3134 Shop 111 S. Maple Stratford, TX 79084</p>
<p>A & I PARTS CENTER AUTOMOTIVE AND INDUSTRIAL PARTS - THE CAR CARE PEOPLE Jerry Ewers Manager P.O. Box 1146 201 N. 2nd-Stratford, TX 79084</p>	<p>Your HomeTown Pharmacy.. ELK PHARMACY 317 N. Main P.O. Box 360 Stratford, TX 79084 806-396-6505 Major Prescription Plans Accepted Gayland Vandiver, R.Ph. Debbi Vandiver/ Owners Carlton Cards, Millionaire Candy Gifts • Cookie and Balloon Bouquets</p>
<p>WINDSHIELDS • LOCKOUTS • CUSTOM & COLLISION WORK DONS COLLISION CENTER Owner - Don Aduddell 319 S. Poplar Office 806-396-2812 • After hours 806-366-3233</p>	<p>MARY KAY® Mayrene K. Aduddell Independent Beauty Consultant Email: makasp@xit.net Hm 366-3233 Mobile 930-7366 420 N. Chestnut / P.O. Box 33 Stratford, TX 79084 www.marykay.com/maduddell</p>

FREE PREMIUM CABLE CHANNELS - A \$30.95 VALUE!



Not good with any other offer. Limited time offer. Some restrictions apply. Some services not available in all locations.

Beat the heat with XITv! All new XIT Cable TV activations will receive 1 month of FREE premium channels. You'll get HBO, CINEMAX, SHOWTIME, STARZ, THE MOVIE CHANNEL and much more - FOR FREE!

So beat the heat with this cool deal from XITv. Hurry to a Customer Care Center near you.



Stratford | 366-3355 | 401 N 3rd Street



It Pays To Look In The

Star Classifieds

Phone 366-5885

..The Best Salesperson Around

Help Wanted

Counter Sales person needed at A&I Parts in Stratford. Applicants must be dependable. Benefits include health insurance, vacation and holiday pay. Contact Jerry at 806-366-5592. We are an equal opportunity employer. 4-12-tfn

Coldwater Creek Cattle Company, a feed yard located 3 miles west of Stratford is seeking a full time employee. Duties include working with cattle and yard maintenance. Applicants must be dependable and responsible! References are required. For more information, please call (806) 727-4646. 8-9-c

Lollipop Junction is searching for a new director. Also need dependable adult. Must be 18 years of age w/high school diploma or equivalent. Must love children. Hours may vary. Send resume to Box 411 or contact Wesley Spurlock-Board present at 753-7215. 6-7-tfn

NOW HIRING!

NEED IMMEDIATELY!

Apply at Dumas Office:

(806) 934-0150

General Seasonal Labor

Positions in Kerrick Hugoton

Clean-Up, Maintenance, and

Operation of Grain

Elevators.

Outside Work, Drug

Screen/Background

Check/Physicals

Required

No Fee To

Applicants!

Innovative Staffing

Solutions, LLC

All Inquiries Go To

Lisa Cooper - Staffing

Coordinator

Dumas Office

500 E 1st St. Suite 213

806 934-0150



Elevator and office help wanted at Stratford Grain. Apply in person or call 396-5541 FMI. 8-9-c

Now hiring presser position. 18 or older. 30-60 hrs. per week. Come by The Cleaning Station for application. 8-16-2x's

Part time silage help needed. Mostly evenings and weekends. Flexible hours w/above average pay. Stratford Feedyard 806-396-5501 leave message for Tres Hess. 8-16-2x's

Wanted

Looking for an interested person to mow yards. Call 333-7418. 7-5-tfn

Services

Need a pet sitter? Dependable! Will check, feed and walk pet several times a day. Call Mark Hand at 366-3678 to make your appointment. 7-26-tfn

Land for Sale

SHERMAN COUNTY SECTIONS- three sections, 3 phase electricity, two nice homes and landscaping, Quonset barn, irr. wells, sprinklers, 3 miles hwy front, +caliche-WILL DIVIDE!

HORSEMAN'S PLEASURE/CATTLEMAN'S DELIGHT-NW of GRUVER-80 acres +/-, nice 4,000+/-sq. ft. brick home, metal roof, fireplace, two car garage, irr. well, 1/2 mile sprinkler, quonset barn, pipe-rail pens, covered working area.

HWY. 152 BETWEEN STINNETT & DUMAS-767 acres +/-, 4,000 sq ft +/-home & a 1,700 sq ft +/-home, beautiful homes and landscaping, large metal barn with office, irr. wells, sprinkler, strong water, hwy front. +caliche road-CONSIDER DIVIDING!

SHERMAN COUNTY 1/2 SECTION WITH PERMIT-plus 1 1/2 sections, hwy front, nice brick home, quonset barn, pens, irr. wells, sprinklers.

Choice milk processing and dairy sites available in Dallam, Hartley, Moore, Oldham, Sherman and Hutchinson Counties. See our website or give us a call! www.scotlandcompany.com Ben G. Scott-Broker 800-933-9698

Houses for Sale

NEW LISTING! For sale by owner. 314 S. Fulton. 1662 total sq. ft. 3 bed/2 bath. CH&A. Single garage/double driveway. Large deck. Cash back at closing incentive. Priced to sell! \$71,500.00 will show by appt. 806-683-2553. 8-9-tfn

HOUSE FOR SALE BY OWNER-\$38,710. Owner motivated for quick sale! Bring all offers! 819 N. 2nd St., 2 story stucco house, 4 bedroom, 2 1/2 bath, 5 lots on corner, has attached garage and 3 detached garages, basement. Call 806-930-8555 for appointment. 11-2-tfn

House for sale by owner-1210 N. Division, 3 bedrm, 2 bath, fenced yard, storage building, sun porch, close to schools. 396-2484 7-19-c

For Sale: 816 N. Maple, 3 bedroom, 1 bath, 2 story home. Call 753-6677 or 366-7664-iv message 5-17-tfn

For Sale: Country Living, 15 miles from Stratford. 25 from Dalhart, 4000 plus living, 4 bedrooms, 3 bath, formal dining, oak flooring, basement, 40 x 50 insulated shop. All rooms extra large. Call 366-3233 for appointment. See pictures @ Shermancountytx.org 6-28-tfn

REDUCED: 3 Bdrm, 1 1/2 bath on large corner lot, 1201 NW 2nd St. Sprinkler system, fenced yard. Call 366-2153. 10-21-tfn

House for Sale: 3 bdrm, 2 1/2 bath, 2 car garage, 2250 sq. ft. Close to schools-1216 Olive. Will show by appt. Call Johnny or Nita Hudson 806-290-2238. 5-24-tfn

For Sale

For Sale: 2004 Colorado-\$11,900.00 2000 4 x 4 Suburban-\$12,900.00 2003 Ford Pickup-Power Stroke-\$16,900.00 2001 Pontiac Grand Prix-\$7900.00 Duncan Chevrolet 366-5557 103 S. Poplar 7-25-c

Used Tire sale: Duncan Chevrolet 366-5557 7-28-tfn For Sale or Lease-212 N. Poplar-40' x 60' office building. Call 806-679-5585 4-1-tfn

For Sale or Lease-Morten Building, 54' x 72' x16. 396-2305. 6-22-tfn

For Sale: BBQ Grill-Single Axle 2' ball hitch. Call 366-2586. \$650.00 FIRM. 8-9-c

For Sale: 12' x 15' Mueller Steel Building (Unassembled), Pickup Bed trailer, 10' Electric table saw. Call 366-2202. 8-9-c

For Sale: 2005 Dodge 3500 4 x 4 diesel. 2002 4x4 Yukon. Call 580-543-6431 or cell 580-519-1953. 8-30-4x's

For Sale Feed, Seed Or Hay

Winter Wheat & Fall Forage Seeds

WHEAT

TAM 111, TAM 112

Cutter, Jagalene

BEARDLESS WHEAT

Deliver, Longhorn, Russian

Beardless, Weathermaster 135

TRITICALE

Bobcat, Beardless Blend

Presto, Pika, T-28, Full Season

Trit Blend, Tamcale 5019, Jenkins

GRAZING BLENDS

Bobcat Beardless Trit Blend

Triple B Beardless Blend

BARLEY

P919 Beardless Barley

RYE

Maton, Elbon, Strain Cross, Oklon

OATS

Troy, Hy-test, Jerrys

Bagged or Bulk, Delivery available

800-299-9273 *806-258-7394

GAYLAND WARD SEED

Hereford, Texas

9-27-8x's

Garage Sales

Multiple families' garage sale-Sherman County Barn-500 Block S. Maple. Friday 4 p.m. to 7 p.m. and Saturday 8 a.m. to 1 p.m. Lots of stuff. A 2-horse trailer. QH-13 yr. mare and 18 yr. gelding (food 4-H or trail), Misc. horse tac. Homemade utility trailer (enclosed). Brush Guard/Step side bars for 2002-2006 Chev. Pickup bed tool box. New heavy duty rolls of tar paper (for roofing). Misc. furniture, pots, pans, dishes, linens. Call 806-662-4771 for info on any items before sale. 8-9-c

Garage Sale: 1213 Putman. Treadmill, clothes, chairs, desk and lots of great stuff!!! Friday Aug. 10 6-8 p.m. and Sat. Aug. 11 8-10 a.m. 8-9-c

Garage Sale: Sat. Aug. 11-9 to 1 p.m.-511 N. 2nd. Clothes from Children's 6 to Men's XL. "Tons of Good Stuff" 8-9-c

Backyard Sale sat. Aug. 11. 702 N. Pearl from 8:00 a.m. to? 8-9-p

Garage Sale: Sat. Aug. 11-8 a.m. to? 1207 Beaver Road. Furniture, electric guitar, clothes, other misc. stuff. 8-9-c

To Give Away

To Give Away-King size Top mattress. Call 727-4337. 8-9-c

Lost & Found

Lost: Black and white 4 month old kitten. Disappeared on Saturday, August 4th from 805 Putnell. Call 396-5373 or cell 753-7373. 8-9-p

Legal Notice

Stratford Independent School District Legal Notice

The Stratford Independent School District requests proposals from interested contractors for Special Education Physical Therapy/Occupational Therapy. Specifications may be obtained by contacting the Administrative Office at (806) 366-3302.

The proposals will be accepted until 2:00 PM August 28, 2007. Any requests for proposals after this date will not be accepted. The proposals may be mailed to Stratford ISD, PO Box 108, Stratford, TX 79084, or Faxed to 806-366-3304, or delivered to the Superintendent office at 503 N 8th Street, Stratford, TX. The requests for proposals will be opened on August 28, 2007 at 2:00 PM. We reserve the right to accept or reject any and/or all proposals.

Published in The Stratford Star, Thursday, August 9, 2007 and Thursday, August 16, 2007.

Cards of Thanks

Thanks to everyone who has called to check on me, prayed for me and sent cards. Everything is much appreciated. Special thanks to my Secret Pal for the beautiful get well gift. Thanks again & May God Bless you.

MariHoward

I want to especially thank my husband Bill and Gene Weinette for being there during my surgery. Also to Bill for taking care of me. Thanks for all the Prayer Chains, get well cards, food and calls to help me feel better. I sure appreciate all of this during this long struggle.

Donna Gillenwaters

Thank you to everyone in Stratford that worked so hard to make the reunion weekend such a success. You made it a wonderful time for those of us that attended. Having the Stratford Jamboree on the same weekend makes it a double pleasure.

Sincerely,
Dallas Foreman Boggs
Class of '67

* If you have ads *
* or pictures for *
* the next addition *
* of the paper—if *
* at all possible, *
* please get them *
* to the Star on *
* Thursday, *
* August 9, 2007! *
* THANK YOU!!!! *



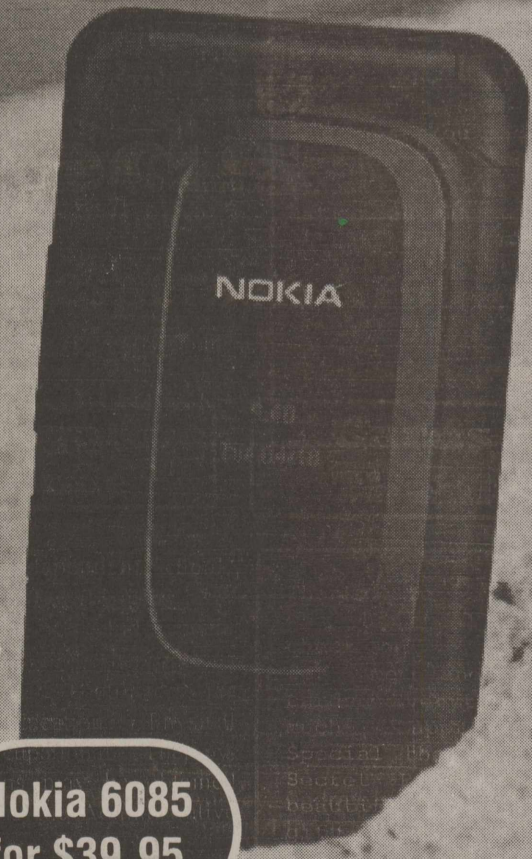
Audrey Hepburn's given name originally was Andrey. Andrey is a feminine form of Andrew. Belgian-born Hepburn changed the n to a u to become Audrey.

End of Summer Sale!

Hurry in, like summer this sale won't last!



Nokia 6126
for \$59.95



Nokia 6085
for \$39.95

Dalhart 244-3355 1624 Tennessee Ave.	Stratford 366-3355 401 N 3rd St.	Dumas 935-8777 1545 S Dumas Ave.	Hereford 364-1426 809 S 25 Mile Ave.
--	--	--	--

Not good with any other offer. Limited time offer. Some restrictions apply. See store for details. Some services not available in all locations.



2007 Stratford Elks Football Schedule

Aug. 18	Borger (Scrimmage)	Here	10:00
Aug. 23	Texhoma (Scrimmage)	There	5:00
Aug. 31	Levelland	Amarillo	4:30
Sept. 7	Childress	Here	7:30
Sept. 14	Floydada (Homecoming)	Here	7:30
Sept. 21	Perryton	Here	7:30
Sept. 28	Open		
Oct. 5	Dalhart	There	7:30
Oct. 12	Spearman	There	7:30
Oct. 19	Panhandle	There	7:30
Oct. 26	Canadian	Here	7:30
Nov. 2	West Texas	There	7:30
Nov. 9	Fritch	Here	7:30

7th, 8th, and JV Schedule

Sept. 6	Spearman	There	6:00	JV
Sept. 13	Panhandle	There	4:30	7,8,JV
Sept. 20	Canadian	Here	5:00	7,8,JV
Sept. 27	West Texas	There	4:00	7,8,JV
Oct. 4	Perryton	Here	5:00	7&8
Oct. 4	Dalhart	Here	7:00	JV
Oct. 11	Spearman	Here	5:00	7,8,JV
Oct. 18	Panhandle	Here	5:00	7,8,JV
Oct. 25	Canadian	There	5:00	7,8,JV
Nov. 1	West Texas	Here	5:00	7,8,JV
Nov. 8	Sanford Fritch	There	5:00	7,8,JV

Protecting Our Children

Important Tips From The AmberWatch Foundation's "Be Safe!" Program

(NAPS)—It's important to teach children ways to avoid potentially dangerous situations—particularly when school is out and when parents aren't always around.

According to the Crimes Against Children Research Center at the University of New Hampshire, children and adolescents are among the most common groups to be affected by crime.

The following tips from the AmberWatch Foundation's "Be Safe!" education program could help keep kids safe. The Foundation is a national not-for-profit organization dedicated to keeping kids safe through preventative education programs. The goal of the "Be Safe!" curriculum is to teach children and families how to identify and arm themselves against potentially dangerous situations, such as abduction and molestation.

1) Know what emergency numbers to call if you're home alone and you need help.

2) Never give out your name, age, address and phone number on the Internet.

3) Don't get close to any car that slows down or stops near you and never get in the car. No adult should ever need a child to help with directions or to find a lost animal. If a driver tries to get your attention, run in the opposite direction and find a trusted adult.

4) No one should ever touch you where your bathing suit covers. These are NO TOUCH Zones. If this occurs, tell a trusted adult.

5) Keep doors and windows locked when you're alone. Don't let anyone in without your parents' permission.

6) Stay with your parents or a trusted adult when you are in



Reviewing safety tips with children can help keep them safe.

public. If you lose them, go to the nearest security officer or store clerk with a nametag.

7) Never take shortcuts. Always walk along well-traveled streets and follow the route that your parents planned out for you.

8) Don't tell anyone on the phone that your parents are not at home. Just say, "They can't come to the phone right now."

Home Alone

Check local laws before leaving children home alone. Be certain you are not violating child welfare laws by leaving kids unattended. Then review "home-alone rules" with youngsters. Spot checks are recommended as well.

What Else You Can Do

Parents can subscribe to AmberWatch Mobile, an easy-to-use service with GPS capabilities designed for wireless service to keep loved ones safe from harm. The application empowers users faced with threatening situations by allowing them to reach out to loved ones in innovative ways, including an e-mail alerting system, location views and schedule checks.

For more information, visit www.amberwatchfoundation.org.

Golf is a sport in which the ball lies poorly but the player well
—Unknown

They say golf is like life, but don't believe them. It's more complicated than that.
—Gardner Dickinson

Golf is like marbles for adults
—Unknown



The words to the Battle Hymn of the Republic were written by Julia Ward Howe in 1861 after visiting army camps around Washington.



The diesel engine is named for Rudolf Diesel, a German engineer who developed the device in 1897. In 1913, he mysteriously disappeared aboard a ship bound for London.



NOTICE OF PUBLIC MEETING TO DISCUSS BUDGET AND PROPOSED TAX RATE

The Stratford Independent School District will hold a public meeting at 7:00 A.M. August 30, 2007 in the High School Library

503 N 8th Street, Stratford, Texas. The purpose of this meeting is to discuss the school district's budget that will determine the tax rate that will be adopted. Public participation in the discussion is invited.

The tax rate that is ultimately adopted at this meeting or at a separate meeting at a later date may not exceed the proposed rate shown below unless the district publishes a revised notice containing the same information and comparisons set out below and holds another public meeting to discuss the revised notice.

Maintenance Tax	\$ 1.040000 /\$100 (Proposed rate for maintenance and operations)
School Debt Service Tax	
Approved by Local Voters	\$ 0.061000 /\$100 (proposed rate to pay bonded indebtedness)

Comparison of Proposed Budget with Last Year's Budget

The applicable percentage increase or decrease (or difference) in the amount budgeted in the preceding fiscal year and the amount budgeted for the fiscal year that begins during the current tax year is indicated for each of the following expenditure categories:

Maintenance and operations	% increase	or	24.00	% (decrease)
Debt service	1.00	% increase		% (decrease)
Total expenditures	% increase	or	23.00	% (decrease)

Total Appraised Value and Total Taxable Value (as calculated under Section 26.04, Tax Code)

	Preceding Tax Year	Current Tax Year
Total appraised value* of all property	\$ 555,674,355	\$ 562,244,537
Total appraised value* of new property**	\$ 353,430	\$ 903,770
Total taxable value*** of all property	\$ 400,236,149	\$ 396,765,979
Total taxable value*** of new property**	\$ 353,430	\$ 903,770

* "Appraised value" is the amount shown on the appraisal roll and defined by Section 1.04(8), Tax Code.
** "New property" is defined by Section 26.012(17), Tax Code.
*** "Taxable value" is defined by Section 1.04(10), Tax Code.

Bonded Indebtedness

Total amount of outstanding and unpaid bonded indebtedness* \$ 1,937,922

* Outstanding principal.

Comparison of Proposed Rates with Last Year's Rates

	Maintenance & Operations	Interest & Sinking Fund*	Total	Local Revenue Per Student	State Revenue Per Student
Last Year's Rate	\$ 1.299110	\$ 0.060000 *	\$ 1.359110	\$ 8,436.00	\$ 1,463.00
Rate to Maintain Same Level of Maintenance & Operations Revenue & Pay Debt Service	\$ 1.326960	\$ 0.079950 *	\$ 1.406910	\$ 5,969.00	\$ 3,099.00
Proposed Rate	\$ 1.040000	\$ 0.061000 *	\$ 1.101000	\$ 6,139.00	\$ 3,050.00

* The Interest & Sinking Fund tax revenue is used to pay for bonded indebtedness on construction, equipment, or both. The bonds, and the tax rate necessary to pay those bonds, were approved by the voters of this district.

Comparison of Proposed Levy with Last Year's Levy on Average Residence

	Last Year	This Year
Average Market Value of Residences	\$ 41,380	\$ 44,690
Average Taxable Value of Residences	\$ 26,380	\$ 29,690
Last Year's Rate Versus Proposed Rate per \$100 Value	\$ 1.359110	\$ 1.101000
Taxes Due on Average Residence	\$ 358.53	\$ 326.88
Increase (Decrease) in Taxes		\$ (31.65)

Under state law, the dollar amount of school taxes imposed on the residence homestead of a person 65 years of age or older or of the surviving spouse of such a person, if the surviving spouse was 55 years of age or older when the person died, may not be increased above the amount paid in the first year after the person turned 65, regardless of changes in tax rate or property value.

Notice of Rollback Rate: The highest tax rate the district can adopt before requiring voter approval at an election is 1.101. This election will be automatically held if the district adopts a rate in excess of the rollback rate of 1.101.

Fund Balances

The following estimated balances will remain at the end of the current fiscal year and are not encumbered with or by a corresponding debt obligation, less estimated funds necessary for operating the district before receipt of the first state aid payment:

Maintenance and Operations Fund Balance(s)	\$ 1,244,043
Interest & Sinking Fund Balance(s)	\$ 22,185