

Sherman County Museum 7 / 08
 Box 1248
 Stratford, TX 79084

The Stratford Star

75 cents

Published for over 100 years in Stratford, Sherman County, Texas 79084

usps 523

Number 5, January 31, 2008



Grand Champion Steer exhibited by Jordan Johnson, buyer James Spurlock.



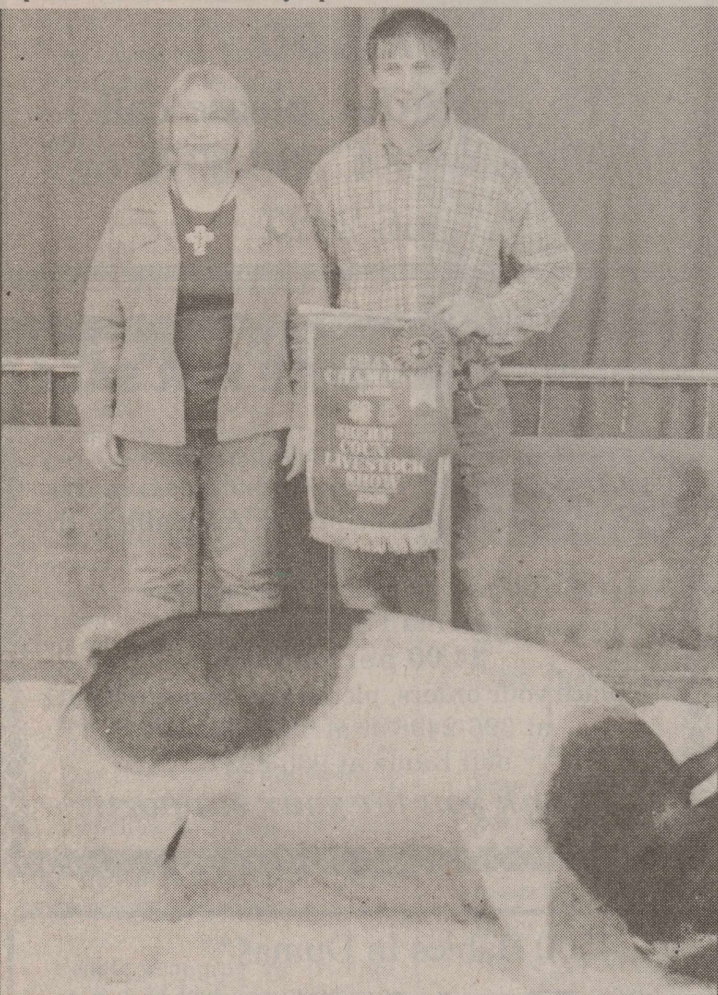
Grand Champion Lamb exhibited by Trevor Christian, buyer Happy State Bank—Doak Crabtree representing.



Ransom Lermon exhibited Grand Champion Goat, buyer Spurlock Farms—Wesley Spurlock.



Grand Champion Heifer exhibited by Braden Hamilton, buyer Cimarron Feeders—James Smith representing.



Grand Champion Swine exhibited by Craig Kautz, buyer Leroy Kautz—Lynette Kautz representing.

Sherman County Livestock Show Filled with Excitement and Emotion

By Bailey Naugle

The 2008 Sherman County Livestock Show is one that everyone who attended will never forget.

A feeling of excitement and anticipation hung in the air as 4-H and FFA members busily prepared their livestock projects for competition. An incredible amount of time and effort is put into training and conditioning each animal for the show.

Cole Sellers, 11, estimated that for the past few months he spent about six hours a week feeding, watering and working with his pig. Cole and his brother Dillan figured out that their pigs like animal crackers. They spent time in the pen hand feeding the pigs the cookies so they would learn to trust them. Cole remembered one particularly exciting day at the pens. "We had the pigs out so we could put new bedding in, and when we were trying to get them back in one went between my legs and knocked me off my feet. It took me for a ride down the alley," he laughed.

This was the first year for Mary Ann Spurlock to show an animal, and she is excited to do it again next year. Mary Ann learned a lot through her livestock project, including that getting a little dirty is not so bad. "Originally I was worried that it would be too gross, but when I found out how fun it was I didn't really care about getting dirty. I realized that you can always just go home and take a bath and get clean again," she said. Rae Leigh Willborn also showed for the first time this year, and she would definitely recommend it to her friends because she learned so much and had so much fun.

Show attendees got to see some of what she learned during the lamb show, Rae Leigh's lamb, Wilbur, outweighed her by more than ten pounds. As the judge approached Wilbur to give

Cont. on page 3

2008 Showmanship Sherman County Stock Show

Rowdy Lermon	Goats	Senior
Ransom Lermon	Goats	Junior
Blaine Killian	Heifer	Junior
Trevor Christian	Lambs	Senior
Rae Leigh Willborn	Lambs	Junior
Jordan Johnson	Steers	Senior
Ransom Lermon	Swine	Junior
Kyle Horsford	Swine	Senior

Congratulations!

Hospital District Election

STRATFORD HOSPITAL DISTRICT has three openings in the upcoming election. Applications may be picked up at the Business Office at Coldwater Manor. Application sign up time will be February 11th through March 13th, 8:00 a.m. to 5:00 p.m. Elections will be May 10th. Board members whose terms will expire are Kathy Allen, LeRayne Donelson and Kenton Kimball. Holdover members are Kathie Altman and Billy Bell.

Manor Friends to Meet Feb. 4th

Manor Friends will meet on Monday, February 4, 2008 at 10 a.m. at Coldwater Manor.

Miss Kenzie's Classes to Perform

Girls ages 4-18 of Miss Kenzie's Cheerleading will be performing cheerleading and dance routines during the halftimes of the girls and boys games on February 1, 2008.

Set up as an ideal the facing of reality as honestly and as cheerfully as possible.

—Dr. Karl Menninger

ATTENTION VOTERS

Gina Jones the County & District Clerks wants to remind you about Early Voting and inform you about a couple of changes with regard to voting in the upcoming primary.

For you voters who vote in Precincts 102, 201, and 301 the polling places have been moved to the Courtroom in the Courthouse in Stratford. In other words if you previously voted at the county exhibit building, the library, SCOT HALL or the Stratford Ambulance Building, you will all vote now at the court house, in the Courtroom if you wait until Election day to Vote. This applies whether you vote Democratic or Republican. If you vote early everyone will still vote in the COUNTY & DISTRICT CLERKS OFFICE as always. This move will save the taxpayers a great deal of money and make for better utilization of the voting machines and be more convenient and less confusing for the voters to be able to have one place for you to vote in all elections. The elections for City and School will also be held in the Courtroom, with early voting also in the COUNTY & DISTRICT CLERKS OFFICE.

Cont. on page 3

Presley Fund Set Up At Bank

A medical fund for the son of J.B. & Amanda Presley has been set up at the First State Bank of Stratford. For more information contact the First State Bank 396-5521.

Wildfire Danger.

Dry conditions have created another dangerous wildfire season. Please use caution with any outdoor burning, disposal of fireplace ashes, welding, cigarettes, etc. Under the current dry conditions, wildfires can ignite easily and spread quickly.

IRS Forms

The Sherman County Public Library will no longer carry paper copies of IRS forms. Most forms are available online at www.irs.gov. Library patrons may use the public computers at the library to print any forms at a cost of \$.10 per page. If you have any questions regarding this matter, please contact the library at 366-2200.

Weather Line
366-2000

Sponsored by
Stratford Grain &
ADM/Alliance
Nutrition

Greg Wright - 7 days a week, updating as needed

German Sausage for Sale

Craig Kautz has been invited to participate on our state's football team in the Down Under bowl to be held in Australia in the summer of 2008. He will be selling homemade German Sausage for \$4.00 per pound. To place your orders please contact Lynette Kautz at 396-2498 or 366-3302 or Jeff Kautz at 930-0937.

Obits



M. E. Cleavinger

M.E. Cleavinger, 92, of Amarillo died Monday, Jan. 21, 2008.

Services were held at 2 p.m. January 23, 2008 in St. Paul United Methodist Church with the Rev. Perry Hunsaker and the Rev. Rusty Derkerson officiating. Arrangements were by Schooler Funeral Home, 4100 S. Georgia St.

M.E. Cleavinger departed this life Jan. 21, 2008. He was born to Ella Ruth and M.E. Cleavinger Sr. on June 10, 1915, in Plainview. His brothers and sisters are Norman, Jesse, Gene, Dutch, Beulah and Ellen Lois - all deceased. His early childhood was spent in Springlake. In 1927, the family moved to Canyon, where he graduated from high school in 1931. He graduated from West Texas State Teachers College in 1935. While there, he played varsity basketball and also sang with the Madrigal Club. He attended graduate school at the University of Southern California.

After college graduation, he taught school for a year at Darrrouzett, where he was also a coach and principal. The remaining 11 years of his teaching career were in Stratford, where he was a teacher, coach, principal and superintendent. It was there that he met Marjorie "Marge" Hitchcock. They were married on June 7, 1938, and had 53 beautiful years raising the family, playing golf and traveling extensively until Marge's death in August 1991.

After M.E.'s joyous years of teaching, he joined with other family members in a John Deere dealership in Canyon for two

years. The family moved to Dimmitt to form C & S Equipment Co., another John Deere dealership. While in Dimmitt, M.E. was an active member of First Methodist Church, The Lions Club and Chamber of Commerce. In the church, he was very active in the choir, taught Sunday school and served in many leadership positions. He served on the school board for nine years, six of them as president. From its inception, he served 22 years on the board of the Region 16 Education Service Center in Amarillo. He closely followed his children's sports, music and academic activities. He was active in the John Deere business until his retirement in 1978, after which a move to Amarillo added new friends and activities.

He especially enjoyed his hobbies. He wrote an autobiography that left a beautiful family history describing life in the Cleavinger family dating back to his grandparents, who were born before the Civil War. He wrote many historical essays and tributes to special family members. He was an avid golfer, and he learned to swim at the age of 80 - thus having a sport to enjoy, rain or shine.

M.E. met Louise Kennedy while they served as hospital volunteers at BSA Hospital. Both enjoyed their activities at St. Paul United Methodist Church after their marriage in 1998. M.E. taught the Caring Christians Sunday School Class for many years. He also sang in the choir until he was 90 years old. M.E. and Louise enjoyed gardening, and they were quite skilled at growing beautiful flowers and vegetable gardens as they shared life together.

The family extends special gratitude to the staff at Riverstone Assisted Living Center who provided such loving and compassionate care during his final illness.

M.E. is survived by their children, Mark Cleavinger and wife Sarita and their children, Kippi Cleavinger and Michael and Kari Cleavinger and two grandchildren, Sydney and Maddox, all of the Houston area, daughter, Jane Stollings and husband Roy of Perryton and their sons, Darin of Amarillo and Ryan Stollings and wife Katie and grandson Harris of Frisco, daughter, Judith and husband Tommy Roberson of Oklahoma City and their children, Andy and Amy Roberson and their sons, Gant, Ben and Trevor of Bartlesville, Okla., and Krista and Craig Meier, granddaughter Tara and great-granddaughter Leila of Lafayette, La.; and a host of nieces and nephews, who have been so kind and attentive during his later years and especially during his illness. M.E. is survived by his loving wife, Louise Kennedy and three stepchildren, Tim Kennedy of Amarillo, Steve Kennedy and

wife Susan of Cambriels, Spain, and Susie Litfin and husband Dick of Columbus, Ohio, along with Louise's four grandsons and her great-grandchild.

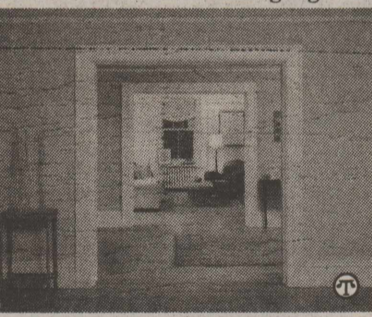
In lieu of flowers, the family suggests memorials be to Music Ministry, St. Paul United Methodist Church, 4317 W. Interstate 40, Amarillo, TX 79106; Hospice Care of the Southwest, 1301 S. Coulter St., Suite 404, Amarillo, TX 79106; or a favorite charity.

A Fresh Coat

(NAPS)—Choosing colors to help decorate your home is easier with some advice from the experts.

That's why Shannon Kaye from the DIY network's "Fresh Coat" has teamed up with residential painting service CertaPro Painters to offer a few tips:

- Neutrals are a fun and easy way to create a crisp, clean feeling while allowing other colors to pop. Sherwin Williams has gorgeous



When decorating, don't forget to use your favorite accent color for a personal touch.

neutral colors such as Dorian Gray, Harmonic Tan and Tony Taupe.

- Mixing neutral colors in the home with bolder shades gives dimension to any room. Don't forget to bring in your favorite accent color for a very personal touch.

- Natural colors and organic-inspired accessories suit this season's home decor palette. Glamour can be achieved with rough-hewn wooden furnishings joining the silk drapes. Tie it together with an easy color such as Sherwin Williams' Compatible Cream on the trim and something more opulent like Gladiola, a gorgeous red for the walls.

Learn more painting tips at www.certapro.com.

Ask the Geek

By Kevin McDonald

Cleaning Up After Messy Programs

Windows programs can be messy. I don't think they intend to be, but they tend to act like children at times. Microsoft Word has a bad habit of running out the door and forgetting to delete the temporary files it made as backups of the document you were typing. Adobe Acrobat unloads a whole toy box full of goodies into your personal temporary folder every time you download a new version. Internet Explorer - well, that kid's just a pack rat. *Every single time* you hop onto the Internet - even if it's just for a quick spin around the news sites - he's furiously scribbling down copies of everything he sees and storing them on your hard drive, just in case you might ever need to trot something out and look at it again.

What you need is a nanny to clean up after all those messy programs. Times are tough, though, so you need one that will do all that hard cleanup work fast, but for free. Oh, and if the new nanny could also fix up a few things around the house and make the place run a little more smoothly, that'd be great too.

Luckily, I've got just the nanny for the job. It's called "CCleaner," and it's from a company called Piriform. Here's their own description: "*CCleaner is a freeware system optimization and privacy tool. It removes unused files from your system - allowing Windows to run faster and freeing up valuable hard disk space. It also cleans traces of your online activities such as your Internet history. But the best part is that it's fast (normally taking less than a second to run) and contains NO Spyware or Adware!*"

I've used CCleaner for a long time, and I love it. I use it on almost every computer that I work on because it's fast, it's easy, it does the job perfectly and it's free. Simply install the program, run it, click "Analyze" (and wait for a while if your system is really jammed with junk), then click "Run Cleaner." Customize it a bit if you wish, but the default settings are usually just right. You can download the program yourself at: <http://www.ccleaner.com>

One little note: If you race through the "Next" buttons during the install process, you'll miss an opportunity to un-check a box that installs the Yahoo! Toolbar. I'm not a big fan of browser toolbars, so my recommendation is to un-check this box when you see it.

CCleaner has other nice features, too. You can use it to check your Registry for errors, and then fix them. Sometimes this can really help a system that takes forever to start up. **Important note:** If CCleaner prompts you to make a backup of the registry changes it is making, do it. If something goes awry, that one little backup file will be gold. You can also use CCleaner to remove installed programs rather than going to "Add/Remove Programs" like you usually do.

Now that your computer is all spic-and-span you can get back to the real fun - smacking those lazy programs around and getting some real work out of them for a change.

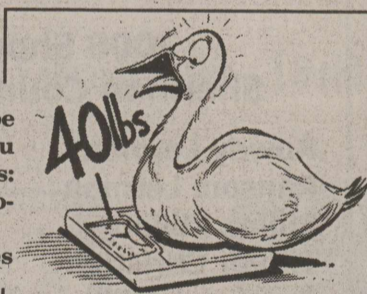
Kevin McDonald is a professional computer technician and novelist. He lives in Stratford with his wife children. He owns and operates Definition Computers: 806-366-7637. Email Kevin at askthegeek@definitioncomputers.com with your questions.

SCOT Members invited to see "Texas Mudd"

Scot Hall members are invited to see "Texas Mudd" a talented group from Branson which will be performing at the Hereford Senior Citizens on Saturday, Feb. 23. Leave SCOT Hall 11:30 a.m. Performance at 2:30 p.m. Tickets \$5.00. Sign up deadline Feb. 1. Contact Connie Oquin at 396-2450 for more information.

Mystery Dinner Saturday, Feb. 2

The Imagination Station will host a Chinese New Year Mystery Dinner "Hoo Hung Woo", Saturday, February 2, at 6:00 p.m., \$25.00 per person. Reservation will be accepted until January 30 by calling Gayl Harding 366-2206, Laurie Spurlock 366-2772, Gaynelle Riffe 396-5303. This is a fund raiser to help solve the mystery of paying the insurance!



The Trumpeter Swan is North America's heaviest bird. It weighs 40 pounds

Five years from now you will be pretty much the same as you are today except for two things: the books you read and the people you get close to.
—Charles Jones

The Stratford Star
Published Every Thursday at 805 Purnell, Stratford, TX 79084
Martha (Marty) Robertson Editor & Publisher
Shari Hudson-Advertising & Photography

Subscription Rates
\$25.00 per year in Sherman & Adjoining Counties
\$32.00 per year all others
\$20.00 per (9 months)
College Rate
The Stratford Star
Box 8
1-806-366-5885
FAX-1-806-366-5885

Sherman County 4-Hers Exhibit Heifers Downstate

By David Graf

Sherman County 4-Hers recently returned from the Ft. Worth Stock Show and competing in the junior heifer show, said David Graf, Texas AgriLife Extension agriculture and natural resources agent for Sherman County. These youngsters competed with the following results: Kavan Killian-2nd place Horned Hereford Heifer, Katie Killian- 3rd place Horned Hereford Heifer, Braden Hamilton- 4th place February Angus Heifer, and Blain Killian-5th place Horned Hereford Heifer.

Agriculture agent Graf stated, "We are proud of these kids and know they represented Sherman County well at the show. The competition is always tough; in fact there were 29 head in Braden's class. Congratulations to these kids."

The youngsters were accompanied by parents and leaders Jill Killian and Glen Hamilton.

MITCHELL THEATRES
NGS
GUYMON, OKLAHOMA
Guymon, Okla
Movies Beginning February 1

The Eye
PG-13 Jessica Alba
Veggie Tales: The Pirates
G Animated
Michael Clayton
R George Clooney
Rambo
R Sylvester Stallone
Meet the Spartans
PG-13 Kevin Sorbo
Untraceable
R Diane Lane
27 Dresses
PG-13 Katherine Heigl
Mad Money
PG-13 Diane Keaton Queen Latifah
The Bucket List
PG-13 Jack Nicholson Morgan Freeman

FRESH POPCORN EVERYDAY
Party Room & Arcade
Showtimes 580-338-3281
Off. 580-338-8969
www.northridge8.com
Cash & Credit cards only
Thank You

STEVENSON & SONS
PEST CONTROL
Termite & Pest Control • Rat Control • Bird Control
Yard & Tree Spraying

Residential • Commercial Farms • Ranches
"Professionals in Pest Control Technology"
249-4202 Jim Stevenson
Owner
Dalhart • Stratford • Hartley
Licensed & Insured

Re-Elect
Steve Pemberton
County Commissioner, Precinct 1
Primary March 4, 2008
Republican Primary
Early voting February 19 to 29 at Courthouse
Pol. Ad Pd. For by Steve Pemberton, Box 1144, Stratford, TX 79084

Down Under Bowl
Fundraiser for SANDRO GOMEZ
Rack of Ribs
\$20.00
To pre-order, please call
806-930-4684, 396-2073 or
366-2427

GERMAN SAUSAGE FOR SALE

Craig Kautz has been invited to participate on our state's football team in the Down Under Bowl to be held in Australia in the summer of 2008. He will be selling homemade German Sausage for \$4.00 per pound. To place your orders, please call Lynette Kautz at 396-2498 or at 366-3302 or Jeff Kautz at 930-0937.
Thank you for your support!

Angel Resendes is a junior at Stratford High School. He is a member of the Elk football, basketball and track teams. He is also a leader in Stratford's FCA Huddle.

Duncan Chevrolet
PERFORMANCE
Student of the Week
www.duncanchevrolet.com

15 Years, 4500 Babies In Dumas
Women's Health Center
Normal and high risk pregnancies
Gynecologic cancer screening
Breast cancer screening
Infertility and family planning
Menopause and hormone problems
Dr. Turhan I. Baykan, M.D.
Specializing In
OBSTETRICS-GYNECOLOGY
110 S. Bliss Monday-Thursday 8 a.m. - 5 p.m. Friday 8 a.m. - 12 noon



McDaniel Arrives Home

Nicholas McDaniel, center, arrived home Thursday from Iraq for an all too brief furlough. He will be returning to Iraq Feb. 12. A dinner was held at Kerrick Community Center Sunday. Pictured from left are Shelby McDaniel, Terry McDaniel, Nicholas, John McDaniel, Jo June McDaniel.

Stock Show
Cont. from page 1

him a closer look he lunged forward, knocking Rae Leigh back. It only took a few seconds for her to regain control and she kept a smile on her face the whole time. Her composure and good attitude is what won her the Junior Lamb Showmanship award. "I don't get disappointed if I don't win. I just try my best and have fun," she said.

Along with hard working kids and impressive livestock, this stock show featured a lot of emotion.

A few months ago Sherman County lost one of its top exhibitors, Clayton Johnson. Throughout the stock show weekend exhibitors and attendees wore red ribbons in his memory, and his brother Jordan exhibited his steer, which was awarded Grand Champion. As the crowd gathered for the premium sale on Saturday evening, an announcement was made that Clayton's steer would be auctioned off with the proceeds going to a memorial scholarship fund.

It was with teary eyes that Jordan led the steer into the ring. Sniffles floated down from the stands as bidding commenced. Buyers generously purchased the steer and repeatedly asked for it to be sold again. Sale proceeds along with several personal donations from Clayton's friends raised over \$8,000 for the scholarship fund.

Grand and Reserve Champion Results*

Swine - Craig Kautz, Grand Champion; Jennie Spurlock, Reserve Grand Champion
Lamb - Trevor Christian, Grand Champion; Craig Kautz - Reserve Grand Champion
Goats - Ransom Lermon, Grand & Reserve
Steers - Jordan Johnson, Grand Champion; Trevor Christian - Reserve Grand Champion
Heifers - Braden Hamilton, Grand Champion; Sunny Russell, Reserve Grand Champion
*Full results are available at the Sherman County Extension Office.

ELK TALES

By Lynda Hauser

Some of our students are in Ft. Worth attending the Stock Show there. Progress reports went out Tuesday. Basketball games continue all week. The junior high Solo & Ensemble contest will be held on Friday, and the high school Solo & Ensemble contest will be on Saturday. Both contests will be at WTAMU, Canyon.

Mrs. Riffe's speech classes have been using the library computers to research topics for their speeches. Coach Metcalf's classes use the library computers to check on their stocks.

Sorry Elk Tales are so short this week. Nobody sent me anything. Being out of school last Friday probably had something to do with it.

Quote of the week: "There are only two options regarding commitment. You're either in or out. There's no such thing as life in-between." - Pat Riley

it on the ballot for this election. It won't be there. Now let me remind you also to bring either your voters registration card or your drivers license with you when you come to vote, even though we know most of you we still HAVE TO SEE some sort of identification to let you vote, (it is the law). And remember this is the primary and you either have to vote republican or democratic in this election so you will need to study the ballot to see which one you want (and I will put the sample ballots in the paper as soon as possible) and if you don't see who you want to vote for on the ballot on the machine please tell us before you touch the cast ballot button on the machine and we can get the other ballot for you but if you hit the Cast ballot button then it will be too late for us to fix it.

I can be reached at 366-2371 if you have any questions or would like to curbside vote.

Since there is nothing so well worth having as friends, never lose a chance to make them.
-Francesco Guicciardini

Kerrick News

By Marylou McDaniel

A large group of friends gathered at the Community Center to welcome Nicholas McDaniel home from Iraq. He arrived Jan. 24 and will return to Iraq Feb. 12.

He was welcomed home by his dad, John his mother Terry, sister Shelby and grandmother Jo June and other friends.

Enjoying a bountiful meal along with the visiting were from Stratford Claude & Leonda Fedric, Margarette Pate, Kay Young, Twyla Young, Ann Johnson, Lynn Wells.

Also Terry & Gail Wells, Geneva & Joyce Wells of Griggs, Arlie Boudns of Dumas, Shorty, Anessa & Cory Peters of Amarillo, Penny & Linda Whitson of Clayton, Clifford Abbott of Lubbock.

From Kerrick were Bill & Pat Boren, Mike & Marylou McDaniel, Bill & Donna Gillenwaters, Roy & Ciccy Harris,

White Iced Tea
Makes 4-6 glasses

- 1 quart boiling water
- 4 Salada 100 percent Pure White Tea or 100 percent White Tea Asian Plum White tea bags
- Fresh raspberries, orange slices or lemons

Place tea bags in a glass pitcher. Add boiling water. Steep for five minutes. Pour into ice-filled glasses. Add fresh raspberries, orange slices or lemons for natural flavor and sweetness.

For more recipes and further information regarding white tea, please visit www.green-tea.com.

JOHN S. KILLIAN, D.V.M.
Large Animal Veterinary Services
5630 CR M • Stratford, TX 79084
Office: (806)366-7550
Cell: 806-753-7760
Clinic is now open for small animal care.
Call for Appointment

Stratford & Sherman County are losing one of their best friends.
Kathie Altman is moving to Amarillo to be closer to her children, and to help out with that wonderful little grandson. So some of her friends are giving her a "Going Away" Reception and you're invited!
Thursday - February 7th 4-6 p.m.
The Fellowship Hall at the First United Methodist Church
Please drop by and help us thank Kathie for 25 years of service in the community as a teacher, as a board member, and as a volunteer.



- Feed yard operating loans
- Dairy operating loans
- Crop and livestock production loans
- Real estate loans

Did You Know?

(NAPS)—Students are learning that the college application is a key opportunity to make a lasting impression on the people who count: those at the college admissions office. Sallie Mae's College Answer Web site at www.colleganswer.com provides a number of helpful resources and information on the college application process.

A promising alternative to sugary foods is a fruit extract known as Luo Han Guo syrup, which is grown exclusively in Asia. Besides its incredible sweetness, the syrup is also known for its curative powers. For more information, visit www.newaynatural.com.

People shopping for art supplies should look for materials certified by the Art & Creative Materials Institute (ACMI). All ACMI-certified children's products are tested for lead as a requirement for initial certification and later reviews. Visit www.acminet.org.

A baby can experience extreme dry skin, say experts at American Baby magazine. Products such as Desitin Clear are not only great for diaper rash but can also be used as an all-purpose skin moisturizer. For more information, visit www.baby.com and www.parents.com.

Generous Patronage Sets Us Apart

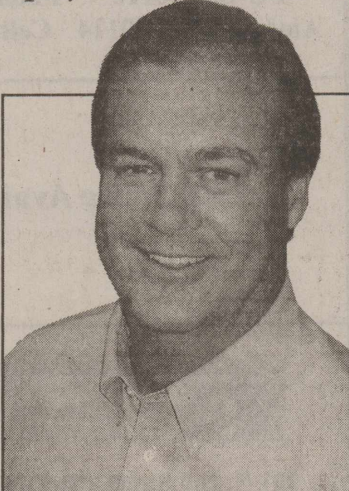
"Unlike traditional lenders, we offer generous patronage payments back to our borrowers."

We don't have to get all your business, just the part where you'd like to save money. We're experts at real estate and other ag-related loans. We've got rates that will compete with anybody in this area, plus you get money back!

Johnny Schmucker, Great Plains Loan Officer

1315 E. 1st Street
Dumas, Texas
(806) 935-6851

greatplainsagcredit.com



GREAT PLAINS...GOOD PEOPLE

- First Assembly of God
Kevin Anderson, Pastor
921 Fulton
Sunday School 9:45 am
Morning Worship 10:45 am
Evening Worship 6:00 pm
Wed. Bible Study 7:00 pm
- First Christian
Rev. Walter Reed
5th & Main
Sunday School 9:45 am (nursery)
Morning Worship 10:45 am (nursery)
No Sunday Evening Worship Service
Wed. Youth Choir 3:45 pm, Chi Rho 5 p.m., CYF 6 p.m., Bell Choir 6:50 p.m., Adult Choir 8 p.m.
- First United Methodist
Rev. Gene Weinette
520 N. Main
Sunday School 9:20 am
Morning Worship 10:30 am
Junior High UMY 5:00 pm
Senior High UMY 6:00 pm
- St. Joseph Catholic
Father Aleksy Kowalski
6th & Pearl
Rectory - 366 - 3687
Sunday morning: 9:00 a.m. (English), 12 noon. (Spanish)
Service - Wed. Thurs. Fri.-6 p.m. Sat. 5 p.m.
Sacrament of Reconciliation: Before Mass, or by appt.
Christian Formation Classes: K-6th Grade, Wed. afternoon
Jr. & Sr. High, Wed. - 6:30-8:30 p.m.
- Church of Christ
Ernie Maiwald
N. 3rd & Chestnut
Sunday School 9:30 am
Morning Worship 10:30 am
Evening Worship 5:00 p.m.
Wednesday Bible Study - 7:00 p.m.
- Heritage Bible Baptist
Pastor Rick Carter
302 S. Main - For More Info—call 396-2212
Morning Worship - 11 a.m.
Evening Service 6 p.m.
Wed. Service - 7:30 p.m.
- First Baptist
Pastor Jason Stone
702 N. 3rd
Sun.—Coffee - 8:30 Sunday School - 9:30
Worship Service - 10:30
Wed. -Children-6:00, youth-7:00
- La Mision Bautista
Mision Bautista
401 S. Wall 396-5376
Domingo-(Sunday)
Estuela Dominical 9:45 am
- Miercoles (Wednesday)
Servicio De Adoracion 11:00 am
& Servicio De Oration 6:00 pm
Servicio De Adoracion 6:00 pm
Susninno Durante El Servicio.

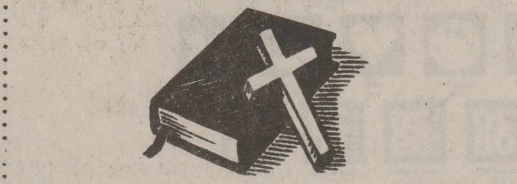
The Churches of Stratford Welcome You

1st Corinthians 6:20
For ye are bought with a price; therefore glorify God in your body, and in your spirit, which are God's.

This page Sponsored by
STRATFORD GRAIN 396-5541
LAUTZ 769-4485
STRATFORD STAR 366-5885
WALTER LASLEY & SONS, INC. 753-4411

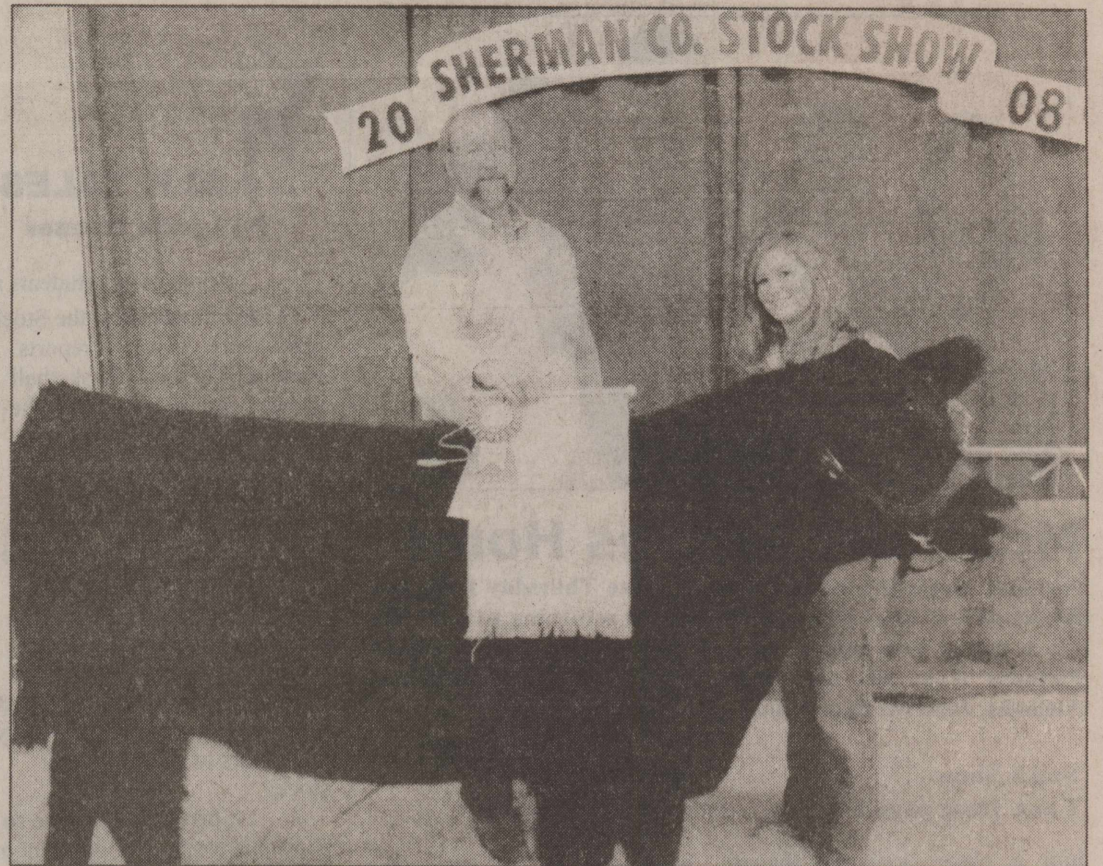
Templo Hispano Eben-Ezer
Pastor Roberto Frescas
205 N. Poplar - Hwy 287
Escuela Dominical 10 a.m.
Servicio de Adoracion 5 p.m.
Meir Co Les Serv De Ador 5 p.m.

Kerrick Community Church
Pastor Roy Harris
Community Building
Sunday Morning - 11:00 a.m.
Sunday Evening-6:00 p.m.
Prayer Meeting - 7:00 p.m. Wednesday





Reserve Grand Champion Steer exhibited by Trevor Christian. Shown with Trevor is John Weathers, judge from Lubbock, TX.



Sunny Russell exhibited Reserve Grand Champion Heifer, buyer Moore County Gin - Wesley Spurlock representing.

2008 TREE SALE

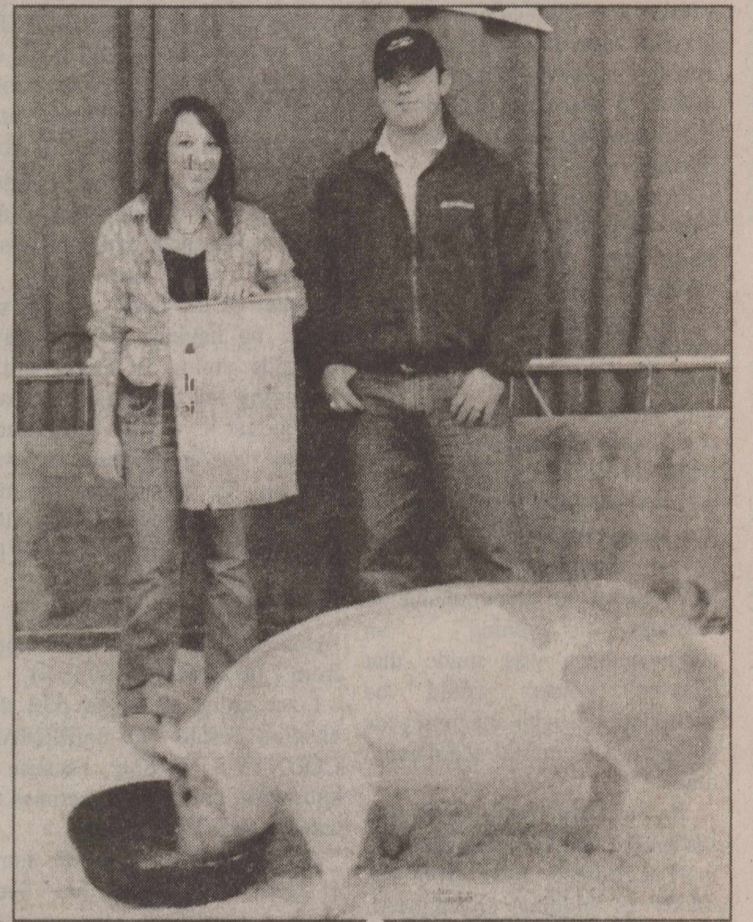
Time is here once again for Sherman County Soil and Water Conservation District's annual Tree Sale. If you have any special wants or wishes as far as trees go this year, please call the office at 396-5517 ext. 3 and we will be happy to try and find what you need. We have added a lot of different species of 5 gallon potted trees this year as well as several 10 gallon potted trees, which should keep the landscape interesting. Please keep in mind, that as in years past, several species of evergreen seedlings are in VERY SHORT SUPPLY OR ARE NON EXISTENT and orders should be made as soon as possible. We will do everything possible to see that you get the trees that you want for your specific needs. Order forms can be picked up if you come by, or we can mail it if you give us a call. We can also email the order form if you supply us with an email address. Just call us or email us at swcd@xit.net.

The District can also fill requests for drip irrigation supplies. We do not keep this in stock, but will help in the design of your system and order exactly what is needed for you. Delivery is usually within three working days. You can help your investment with the installation of weed barrier. We have this available also. This is especially important in windbreaks because we do not want the newly planted seedlings to have to fight with weeds and grass for water. The barrier will help prevent the growth of weeds and grass and keep the moisture in the ground. The four and six foot squares are also helpful in the garden for newly planted flower beds and around newly planted landscape trees.

If you need a Tree Order Form, want to place an order for trees, have any questions regarding trees or need help planning for your particular needs, please do not hesitate to contact the District or the NRCS at 396-5517 ext. 3. Thank you for your continued support of conservation in Sherman County.



Reserve Grand Champion Lamb exhibited by Craig Kautz.



Reserve Grand Champion Swine exhibited by Jennie Spurlock - buyer Duncan Chevrolet - Corey Naugle representing.

He is happiest, be he king or peasant, who finds peace in his home.
—Johann von Goethe

Stratford High School
2007-2008
Yearbook Order Form
DEADLINE TO ORDER MARCH 14, 2008
AFTER DEADLINE ALL BOOKS ARE \$55.00

Name of Student _____
Grade _____ Phone _____
Date _____ Ordered by _____

	Quantity	Total
2007-2008 Yearbook @ \$50.00		
Personalization One Line @ \$5.00		
Icons @5.00 each (Limit 4)		
Total \$		

Personalization (One line, 25 spaces maximum)

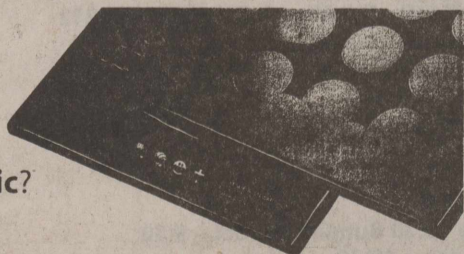
Must order one line of personalization to order Icons

Icons: 1 _____ #2 _____ #3 _____ #4 _____

Paid by Check# _____ Amount \$ _____

Please return to campus secretary or give to
Mrs. Shari Hudson @ SHS Library
Any questions, please contact Mrs. Hudson @ 366-3347

Let's get personal.
Who are **you**?
What are your **hobbies**?
Do you play **sports**?
Are you involved in **music**?
What do you **believe**?



Your answers to these questions have helped you make your mark in your school. Now, with cover personalization, leave your mark on a souvenir from these years: your yearbook.

Choose up to one line of text with up to 25 characters per line to declare who you are and what you're about. Then, choose up to four icons from our collection that best represent you.

get personal



012719 7420 3007

Icons shown actual imprint size.

Business Directory

WALTER LASLEY & SONS
INC.
THE Feedyard
Since 1953
753-4411

Stratford Grain Co.
Stratford 396-5541
Lautz 769-4485
4 North Main

Stratford Auto Electric
119 S. Wall, Stratford, Texas 79084
Phone 366-5941 366-5857
Alternator, Starter, -Magneto Repair
Since 1964

Betty Brown's
Medical Claim Service
PO Box 20118 Phone 806-367-5617
Amarillo, TX 79114 Cell 806-367-0070

This Space Available

A&I PARTS CENTER
AUTOMOTIVE AND INDUSTRIAL PARTS
201 N. 2nd Street - Stratford, TX 79084
Tele (806)366-5592 * Toll-free 800-624-5494
Fax(806)366-2583

WINDSHIELDS • LOCKOUTS • CUSTOM & COLLISION WORK
DON'S COLLISION CENTER
Owner - Don Aduddell
319 S. Poplar
Office 806-396-2812 • After hours 806-366-3233

Stratford Hospital District
Coldwater Manor
Stratford Family Medical Clinic
Stratford EMS
Proudly serving the medical needs of Stratford and Sherman County

TRCC # 11427
PALMER CONSTRUCTION
New Construction
Remodeling
Roofing
Free Estimates
610 E. Taylor
P.O. Box 217
Texline, TX 79087
806-333-4253 806-362-4253

Joe Taylor, Photography
PO Box 27
1305 N Chestnut
Stratford, TX 79084
806-366-2459
Weddings, Portraits, Etc.

Ivy Insurance Agency
Joanie Ivy
Auto • Home • Life • Commercial
Bus: (806) 396-5810

P.O. Box 510
Stratford, TX 79084
Phone 806-366-5557
Duncan Chevrolet
www.duncanchevrolet.com
E-mail duncanchev@xit.net

Jesse's Gun Shop
Gun Repairs • Sales • Cleaning
Hours: Mon. - Fri. - 1730 - 2000
Sat. - 0800-1600
Jesse Resendes
(806) 763-4454
(806) 366-3134 Shop
111 S. Maple
Stratford, TX 79084

Your Home Town
Pharmacy..
ELK PHARMACY
317 N. Main
P.O. Box 380
Stratford, TX 79084
806-398-5505
Major Prescription
Plans Accepted
Gayland Vandiver, R.Ph.
Debbi Vandiver/ Owners
Cotton Cards...Millionaire Candy...Gifts
• Cookie and Balloon Bouquets

FARM BUREAU INSURANCE
National Quality Award—35 Year Member
JOE FLORES
AGENT
P.O. Box 25
Hwy 287S.
Stratford, TX 79084
Office Phone/806-396-5538 Bus. Phone/806-396-2422
Residence/806-396-5389 Fax/806-396-2113



It Pays To Look In The

Star Classifieds

Phone 366-5885

..The Best Salesperson Around

Help Wanted

Cimarron Feeders needs a part time member to join the Doctor Crew. Excellent facilities, team atmosphere & respect for refined skills and quality performance. Must be able to work weekends and some weekdays. Questions? Call: Garrett @ 580-543-6383 ext. 1646. Must pass physical and drug test. EOE
2-7-c-08

XIT Rural Telephone Cooperative, Inc. has the following opportunity currently available for qualified applicants in the Stratford area: Customer Service Clerk position in the Stratford Customer Care Center. Applications may be picked up at any of the XIT Customer Care Centers. XIT is an Equal Opportunity Employer.
1-31-c-08

COLDWATER MANOR has an opening for C.N.A., L.V.N. or R.N. and a Maintenance Mgr. Apply in person. EOE
2-7-c-08

Houses for Sale

For Sale: Country Living, 15 miles from Stratford. 25 from Dalhart, 4000 plus living, 4 bedrooms, 3 bath, formal dining, oak flooring, basement, 40 x 50 insulated shop. All rooms extra large. Call 366-3233 for appointment. See pictures @ Shermancountytx.org
6-28-tfn

Ad Rem Land Co., LLC Real Estate
803 Bliss - Dumas, Texas 79029
MLS Se Habla Español
935-7364
E-mail: adrem@adremland.com
Website: www.adremland.com

Commercial Property, 207 Texas Ave., Stratford 80 x 80 shop with 4.4 acres located on Dalhart Highway. 2 16' overhead doors with office space. \$129,000.

For Sale

For Sale or lease 212 N. Poplar 40' by 60' office building. Call 806-679-5585.
11-1-tfn

DEKALB
Bar Double Diamond Seed
1580-544-2545-1-580-517-1700
1-24-08-tfn

Beautifully Hand crafted Twin Loft Bed for sale. If interested contact 396-2013.
1-31-p

For Rent

House to Rent: 609 N. Grace. Call 303-618-0060.
1-10-tfn

ATTENTION READERS

Editors Note: If you have someone serving in the military and would like to have someone's picture and address put in the paper, please leave it with us and we will put it in for you. We will be running the addresses and they will stay in every week. Call 366-5885 or fax to same number or e-mail stardm@xit.net

PFC Rendon, Cory
E/3-7 IN (4-3 BTB),
4BCT, 3ID
(Line 2 & 3 on same line)
Unit 40622
FOB Kalsu
APO AE 09312

LCPL CROWL, CHANCE
B BTRY
1st BN 10th MAR
UNIT 73330
FPO AE 09509-3330

Brian Husmann
PT RP 4/3 ACR
Unit #6061
APO AE 09378

Gardening

(NU) - Container gardens are one of the fastest-growing trends in gardening, thanks to their ease of planting, portability and low maintenance. The container options are endless, so feel free to be creative; just remember that roots need room to grow, and drainage is your key to success. You can either plant from seed or cut a portion of your outdoor plants. Seeds generally germinate within a week, and many outdoor plants will rebound quickly by simply removing two-thirds of their top growth. It's important that the content of the soil is nutrient-rich. Growing plants require nutrients to reach their peak, and the correct balance might not be found in your local soil. At planting time, mix controlled-release fertilizer granules into the soil mixture, or apply a diluted liquid fertilizer with every other watering.

Lindahl Realty, LLC
701 S. Bliss/ PO Box 572
Dumas, Texas 79029
(806)935-7300 or
toll free (866)935-7300

Residential Property
14433 Hwy 287 Stratford \$127,500
4/2 1997 Saturn Manufactured Home on 24 acres. Cthdl. Ceiling, wood burning f.p. in Living room. Kitchen has island with eating bar, pantry, and built-in desk. Master bath has walk-in shower, dbl. sinks, and garden tub. 4 car Quonset garage w/ elec. Barn with 220, & 2 addtl. Quonsets on concrete slabs.

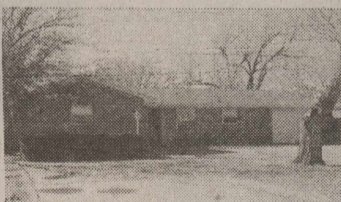
408 N. 8th Stratford \$85,000
Room & more Room! In this 3/1.75/1 home w/ office or 4th bedroom. Dining w/built-in corner hutch. Bedrooms with walk-in closets. Vinyl & carpet throughout home. Utility room. Fenced backyard, Wood deck, storm windows & doors, and storage building.

402 N. 8th Stratford \$20,000
2/1 Home on Lg corner lot. Wall heater, evaporative cooler, and gas stove in kitchen.

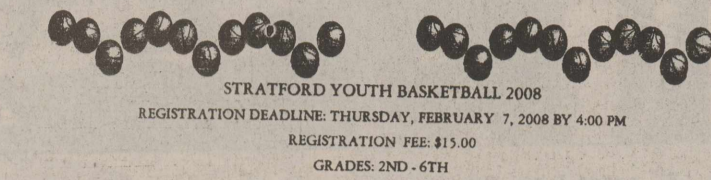
Commercial Property
501 S. Poplar Stratford \$29,900
Commercial Building with lobby area, 3 offices, 2 bathrooms, & shop With 10x12 overhead door. It has approx. 1,776 sq. ft.

301 N. Poplar Stratford \$275,000
NICE! NICE! NICE! 60x100 Commercial Building on huge lot. Building has several overhead doors, showroom, office, and handicap accessible restroom.

Acreage \$640,700
Approx. 640.7 Acres w/ dbl. wide mobile home and 2 car detached garage just South of Stratford.



911 N. Chestnut \$89,000
TAKE A LOOK AT
THIS!!!!3/2.75/1 Brick home with steel trim. Kitchen w/stove, d.w., pantry & dining area w/carpet. Mtr. Bedroom with wall closet and drawers below and 1.75 baths. Fireplace in living room with gas starter. Walls have wood paneling and sheetrock. Second bdrm. W/.75 bath and walk-in closet. Cabinets in utility room w/built-in ironing board. Heat pump. Third bdrm & office built in bookcases and cabinets.



STRATFORD YOUTH BASKETBALL 2008
REGISTRATION DEADLINE: THURSDAY, FEBRUARY 7, 2008 BY 4:00 PM
REGISTRATION FEE: \$15.00
GRADES: 2ND - 6TH

NAME _____
PARENTS NAME _____
ADDRESS _____
PHONE # _____
GRADE _____ BOY _____ GIRL _____

Shirt Size
YS(6-8) YM(10-12) YL(14-16) AS AM AL AXL

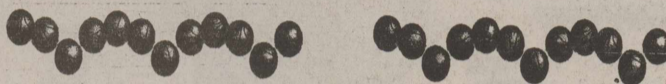
Waiver of Liability: I as a parent or guardian, hereby give permission for my child to fully participate in the Stratford Youth Basketball Association. I warrant that my child is physically able to fully participate in the said program. I hereby release any claim(s) for damages that my child or I, on my child's behalf, have against the Stratford Youth Basketball and any of their representatives in case of injury to my child. In the event that my child is injured during a Stratford Youth Basketball Association activity (games or practices) and not being available to be notified, I hereby authorize the Stratford Youth Basketball Coordinator or coach to take appropriate medical action as needed.

Signature of Parent/Guardian: _____ Date _____

I would like to coach a 2-4 OR 5-6 Girls OR Boys - Please Circle.
If you would like to help officiate games,
please call Kendra Mungia 366-2401 or 366-3340.
Every parent will be asked to help with the clock, book, clean-up, etc.
It will be YOUR responsibility to find a replacement if you are unable to fulfill your obligation.

A VOLUNTEER PROGRAM MUST HAVE VOLUNTEERS TO BE SUCCESSFUL!!

Please return this form and your fee to Kendra Mungia or JH/MAE office.



Acquisitions...

JANUARY CLEARANCE SALE!!!
Beginning Jan. 19th, save 25-50% on merchandise throughout the store**, including decorative iron, tables, chairs, buffets, chests, oil paintings, lamps, mirrors, beds, hooks, crosses, stars, picture frames, chandeliers, purses**, scarves, hats, and SO MUCH MORE!

Acquisitions...
Open Monday-Saturday from 10:00 am.-6:00 p.m.
at the corner of Hwys 54 & 287
in Stratford, Texas
(**excluding jewelry, candles, and Two Bar West purses)

Automotive

(NU) - Many drivers, including responsible ones, often overlook tire maintenance - a crucial component of car care. Firestone Complete Auto Care offers these tire-maintenance tips to keep you safely rolling.
• **Air up:** While you're waiting for your vehicle's gas tank to fill up, take those extra few minutes to grab your tire gauge and check the pressure of your tires.
• **Tread check:** Examine the tread on your tires once a month - your tread should be at least 2/32 inch.
• **Rotate regularly:** Your tires should be rotated on a regular basis according to the vehicle manufacturer's scheduled maintenance recommendations.
For more information or tire maintenance tips, visit www.firestonecompleteautocare.com.

Severe Weather Awareness Week is February 24 - March 1, 2008. Sherman County Emergency Management will publish articles over the next weeks to raise public awareness of planning ahead for severe weather hazards.

SEVERE WEATHER PLANNING FOR TEXANS

Straight-line windstorms, downburst rains and tornadoes can occur at any time of year in Texas. So it pays for individuals and families to plan what to do well in advance.

Basic preparedness plans should be in place at home, at work and at school and each family member or employee should understand the plan. When a severe storm or tornado strikes, there may be only a few seconds to react and find shelter.

The first step in preparedness is to ensure you have a reliable method of receiving weather information including TV, radio and NOAA weather radio, plus a back-up system is one goes out. Battery powered equipment and extra batteries should be a part of the plan.

For home, work or school, shelters areas should be designated, whether they are in basements below ground level, ground level windowless rooms, or interior hallways on the lowest floor. Protect yourself from flying debris with thick blankets, sleeping bags or mattresses.

If you are in a vehicle, mobile home or portable classroom, move quickly to a strong building for shelter. If there is not shelter, lie flat in the nearest ditch or depression. Do not take shelter in a structure with a high, wide roof such as an auditorium, gym or shopping mall.

Choose a person to telephone outside your city to let others know you are safe and choose a place for family members to meet if your neighborhood and home are damaged or destroyed.

Emergency Supply Kit:

The Governor's Division of Emergency Management urges Texans to prepare for severe storms before they strike. Your family should have an emergency supply kit on hand. Your supplies should be kept in water resistant, easy-to-lift containers that you can move rapidly if necessary. This supply kit is appropriate for severe weather events as well as other emergencies. It should include:

- 1 First-aid kit
- 2 Cash (power outages mean banks and ATMS may be unavailable)
- 3 Road maps
- 4 Battery-operated radio and flashlight with extra batteries
- 5 Important documents and records, photo IDs, proof of residence
- 6 Three-day supply of non-perishable food, one gallon of bottled water per person per day, coolers for food and ice storage
- 7 Fire extinguisher
- 8 Blankets, sleeping bags and extra clothing
- 9 Extra medications and prescriptions, hearing aid and other special medical items
- 10 Eyeglasses and sunglasses
- 11 Toilet paper, clean-up supplies, duct tape, tarp, rope
- 12 Can opener, knife, tools, booster cables
- 13 Special supplies needed for babies, older adults or pets
- 14 Remember to change perishable supplies and water every six months.

Cards of Thanks

Sherman County 4-H would like to extend appreciation to everyone who supported the concession during the County Livestock Show and Sale. Thanks to Connie Burton and Cindy Russell for coordinating the concession. A big thank you is also extended to all members and parents who donated food and worked the activity. Thanks to Moore's Food Pride, Brown's Meat Locker, Miller Paper Company, Express Lanes, Stratford High School Student Council and First Ag Credit for their donations to this successful fund raiser.

Many thanks for the calls, cards, words of condolence and good food that came our way at the passing of our loved one, Bessie Chesher. What a wonderful community we live in. Your thoughtfulness is appreciated.

Jim & Ineta Chesher
Jacque Bierschenk & family
Carol Chesher
Bobby Chesher

Faith is raising the sail of our little boat until it is caught up in the soft winds above and picks up speed, not from anything within itself, but from the vast resources of the universe around us.
-W. Ralph Ward, Jr.

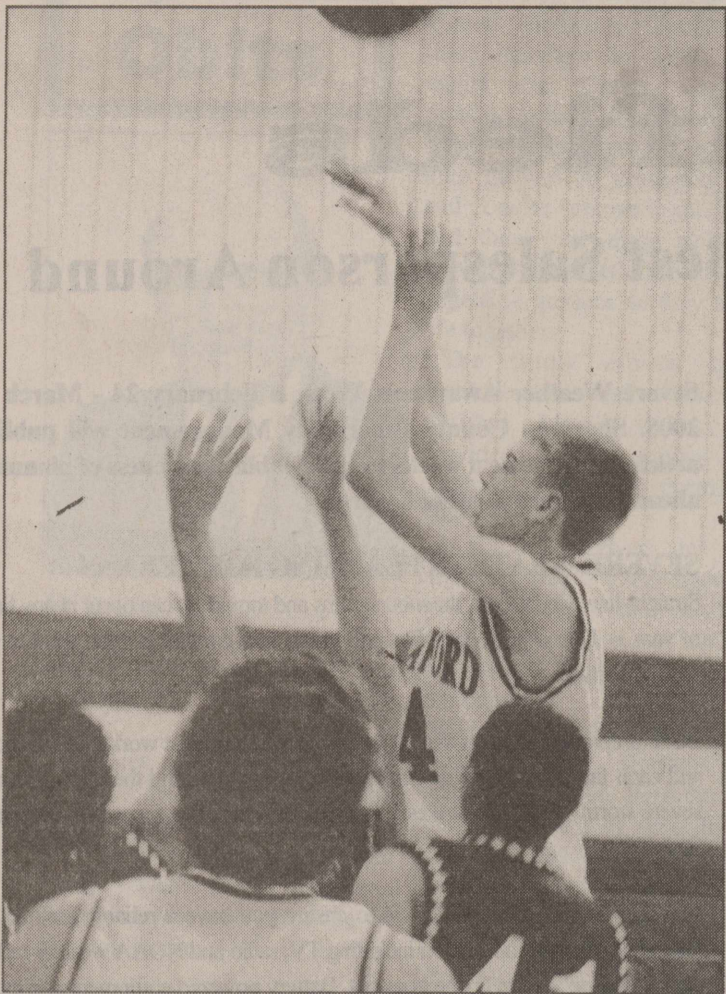
★★★★★★★★★★★★

Driver

RUAN

Expanding Our Business!

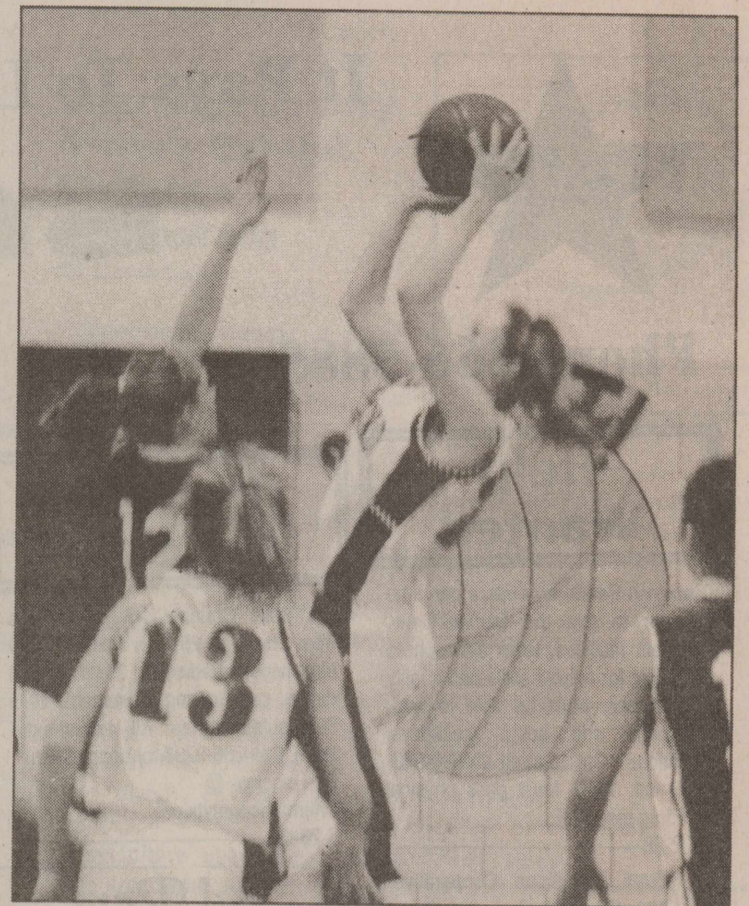
* Tanker Drivers Needed
* All Food Grade
* Home Each Day
* 5 Day Work Week
* Medical, Dental & Vision
* Excellent 401k Plan
* Paid Holidays & Vacations
CDL-A w/ tank end. and 1 yr. exp.
800-879-7826
www.ruan.com
Dedicated to Diversity EOE
★★★★★★★★★★★★



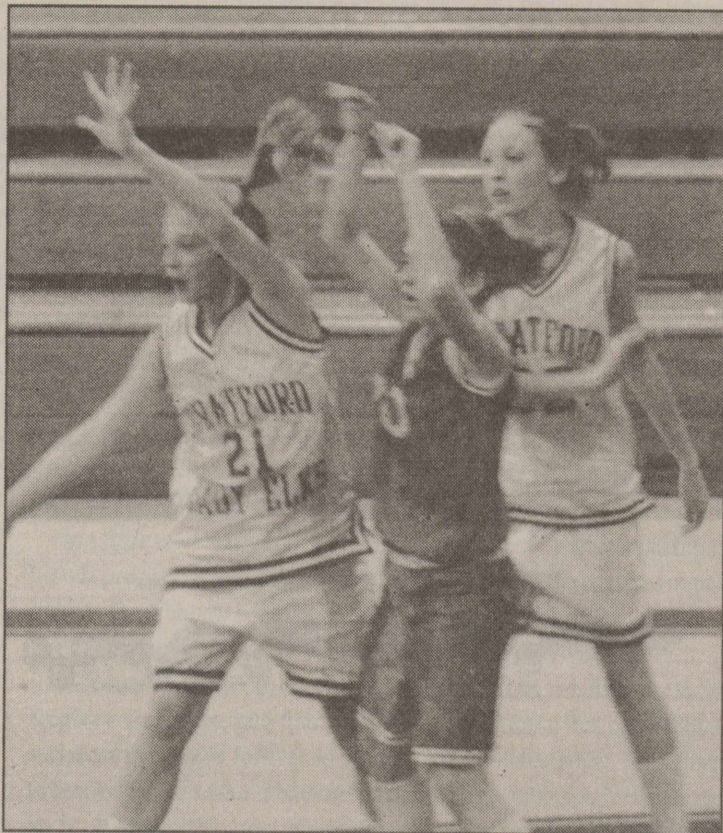
J.V. Elk Trevor Christian put the ball up for two points in the Elks win against Spearman on Tuesday, January 22.



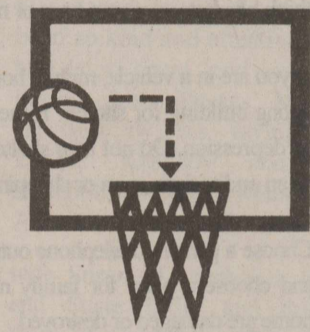
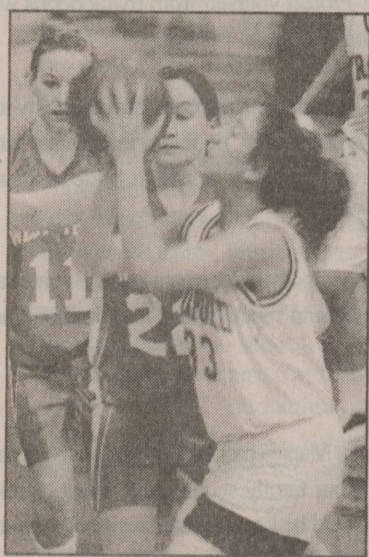
8th grade Lady Elk Shannon Maiwald passes the ball back out on offense. Also shown, #25 Perla Reta in the Lady Elks loss to West Texas on Monday, January 21.



J.V. Lady Elk Lindsy Confer goes up for two in the Lady Elks win against Spearman on Tuesday, January 22, 2008.



7th grade Lady Elks #21 Meghan Brooks and Alex Asher defend West Texas player.



8th grade Lady Elk Monica King looks at the basket for a shot.



7th grade Lady Elk Kaylee Mungia looks for a teammate to pass to on Monday, January 21, 2008.



Lady Elk #31 Kristen Crabtree on defense against Spearman.



Stratford Elk Tyler Wright defends the basket against Spearman on Tuesday, January 22.

Health

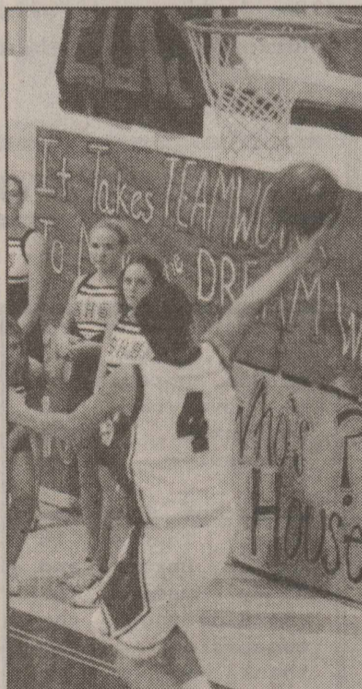
(NU) - According to a recent study, 50 percent of those who set a New Year's resolution for themselves abandon it by the end of January - and 90 percent stop by the end of the year's first quarter. Reaching your goal of getting in better shape is often difficult, but it's never impossible.

- **Get a good night's sleep.** Shirking on sleep actually increases weight gain.
- **Workout at home.** Home gyms like HOIST's V Select Series allow the user to utilize 36 different gym configurations with minimal floor space required.
- **Nutrition, nutrition, nutrition.** Cut out bad fats, sugars and salts and incorporate more fruits and vegetables into your diet.

The J.V. Lady Elks beat Spearman 28-19 on January 22, 2008. Kelsie Keener led with 8 points followed by Rubi Rueda with 7 points. On Friday, January 25, the Lady Elks lost to Panhandle 26-31. Lindsy Confer and Jessica Ibarra led with 6 points each followed by Rubi Rueda with 5 points.

The J.V. Elks beat Spearman on January 22, 2008 35-29. Justin Lanning was high point with 11 points followed by Bryce Cummings, Trevor Christian, Michael Ortega and Byron Deanda with 4 points each. On Friday, the -J.V. Elks beat Panhandle 36-24 with Trevor Christian and Bryce Cummings leading the scoring with 9 points each followed by Klinton Keener with 7 and Justin Lanning with 6. The J.V. Elks are 5-0 in District play and 11-2 overall.

The Stratford Elks beat Spearman on January 22, 2008 51-50. Hunter Buckles led in scoring with 15 points followed by Kyle Horsford with 12 points. On Friday, January 25, the Elks lost to Panhandle 42-46. Luis Ortega led with 14 points followed by Hunter Buckles with 8 and Kaleb Horsford with 7 points. The Elks are 3-2 in District play and 12-6 overall.



Stratford Elk Luis Ortega scores on a lay-up against Spearman on Tuesday, January 22.

Be faithful to that which exists nowhere but in yourself—and thus make yourself indispensable.

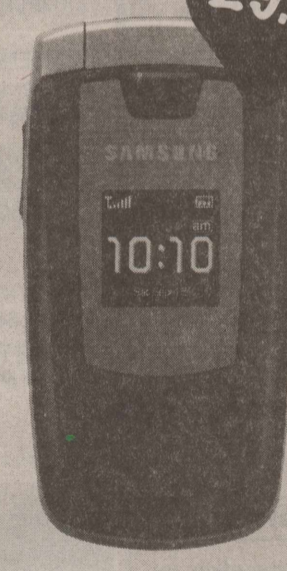
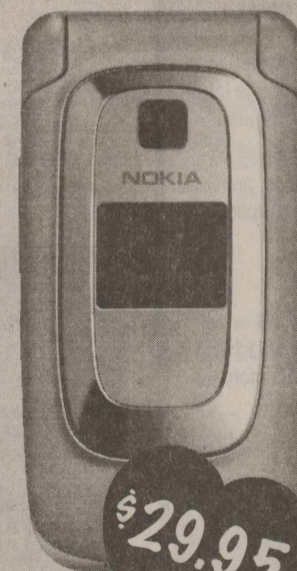
—Andre Gide

I think I should have no other mortal wants, if I could always have plenty of music. It seems to infuse strength into my limbs and ideas into my brain. Life seems to go on without effort, when I am filled with music.
—George Gershwin



The fall is a traditional unit of distance, equal to about 18.6 feet.

Hurry! Sale starts February 1st - 15th!



Sweet Deals!

Get a Samsung A436, Nokia 6085 or Nokia 2660 for only \$29.95!

Dalhart 244-3355 1624 Tennessee Ave.	Stratford 366-3355 401 N 3rd St.	Dumas 936-8777 1545 S Dumas Ave.	Hereford 364-1426 809 S 25 Mile Ave.
--	--	--	--

XIT
Wireless

Not good with any other offer. Limited time offer. Some restrictions apply. See store for details. Some services not available in all locations.