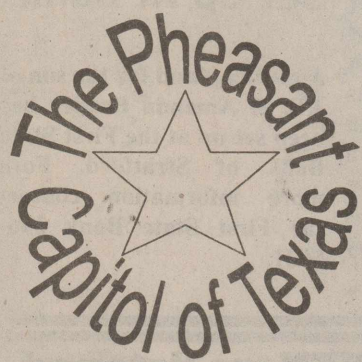


Sherman County Museum 7 / 08  
Box 1248  
Stratford, TX 79084



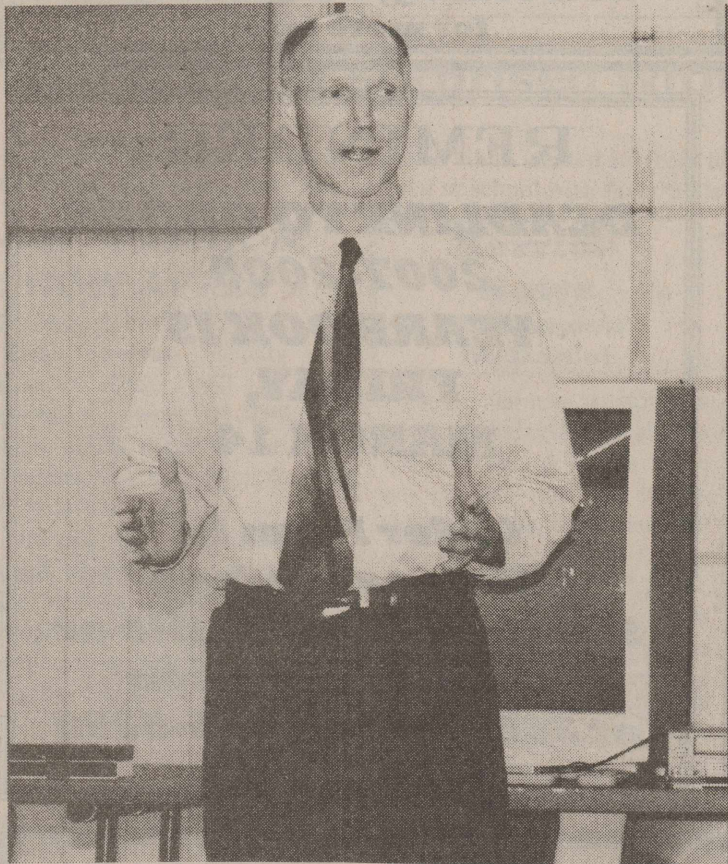
# The Stratford Star

75 cents

Published for over 100 years in Stratford, Sherman County, Texas 79084

usps 523

Number 11, March 13, 2008



## "Doppler" Dave Visits

Weatherman Doppler Dave Oliver of KFDA TV in Amarillo spoke to the folks that attended the lunch provided by Ivy Insurance on Tuesday, March 4, 2008. Everyone enjoyed watching his footage of tornados and hail that have been in our area the past few years.

## New multi-use exemption applies to some self-employed taxpayers.

The passage of Proposition 6, which amended the state constitution under House Bill 1022, provides for an individual to exempt one passenger car or light truck from personal property taxes if the vehicle is used for both business and personal purposes.

Initially the Sherman County Appraisal District thought the law would not affect Sherman County, because unlike many areas of the state, most local entities tax vehicles for personal use.

To qualify for the exemption individuals need to fill out an application form available from the appraisal office at 402 N. Third Street in Stratford. Individuals who want to apply for the 2007 tax year must file the form by April 1, 2008. For taxing years 2008 and future, the exemption form must be filed prior to April 30 each year. A vehicle is not eligible:

1. If you work for someone else.
2. If you use your vehicle to commute to and from work.
3. If you are a retired person with no production of income.
4. If it is registered in a business name.

Income producing vehicles are and continue to be taxable. The law allows the local taxing jurisdictions to choose to tax personal vehicles. The legislature did not exclude the multi-use exemption in jurisdictions that tax vehicles for personal use.

**Weather Line**  
366-2000

Sponsored by  
**Stratford Grain & ADM/Alliance Nutrition**

Greg Wright - 7 days a week, updating as needed

**National Weather Service**

Spotters Training will be March 25, 2008 at 7 p.m. at Stratford Fire Station, 101 N. Pearl. Any interested persons are invited to attend.

**ATTENTION: All Junior class parents are needed to help build decorations for the Jr/Sr Prom. The Prom is April 5<sup>th</sup>. We will meet every Friday night at 6:00 p.m. in the upstairs of the High School.**

**TUXEDO'S**

at  
Hair Creations  
Free vest with any  
Tuxedo Rental

216 N. Main  
396-2809



## Cindy Miller Wins the Gator

Joanie Ivy presented Cindy Miller with the keys to her new Gator. Cindy won this at the 2<sup>nd</sup> Annual Farmers and Ranchers Appreciation Lunch given by Ivy Insurance Agency. Joanie, Diane and Patty would like to thank all those who attended the lunch. We had a good crowd with great food and fellowship.

## SCDC SCHEDULES FOLLOW-UP MEETING ON WIND ENERGY

SCDC will hold another meeting concerning Wind Energy for landowners. The meeting last week on Wind Energy Leases for Landowners was a great success and has spurred interest from several landowners in forming groups to approach the energy companies. If you have questions or you are interested in signing up to be included in a possible wind energy development, you will want to attend this meeting. March 25th is the date for the meeting so mark your calendars. Be sure and watch for more details coming in the Stratford Star in the next few weeks.

## SCHOOL BOARD ELECTION

The Stratford Independent School District will hold a Trustee Election on May 10, 2008. Anyone interested in applying for a place on the ballot may do so from February 9 through March 10, 2008. You may apply at the Superintendent's Office, 503 N. 8th Street, from 8:00 A.M. until 4:00 P.M., Monday through Friday. On March 10th the Office will be open until 5:00 P.M.

Board members whose term will expire are Joe Reinart and Barney Wellborn. Holdover members are, Patti Vincent, Brent Spurlock, Greg Wright, Steve Hays and DeWain Traylor.

Don't Miss It  
Sherman County  
Ag Day  
March 13th

## American Legion Post 262 Schedules Meeting

The Howard Norvell Green Post 262 of the American Legion will hold its monthly meeting on Thursday, March 13, 2008 at 7:00 p.m. The meeting will be held at the SCOT Hall in Stratford. All members are encouraged to attend. If you are a veteran and are interested in the American Legion, please contact Dennis Phelps 396-5316 or Wayne Smith at 366-3566.

## Stratford High School Dinner Theatre March 13

Stratford High School Dinner Theatre will be Thursday, March 13<sup>th</sup> at the Mary Allen Cafeterium. Dinner at 6:00 followed by a performance of this year's One Act Play.

My Son is Crazy...But Promising is the name of the play. Adults \$12.00 and Students \$7.00 Tickets available at the door.

## Stratford Hospital District to Have Election

STRATFORD HOSPITAL DISTRICT has three openings in the upcoming election. Applications may be picked up at the Business Office at Coldwater Manor. Application sign up time will be February 11<sup>th</sup> through March 13<sup>th</sup>, 8:00 a.m. to 5:00 p.m. Elections will be May 10<sup>th</sup>. Board members whose terms will expire are Kathy Atten, LeRayne Donelson and Kenton Kimball. Holdover members are Kathie Altman and Billy Bell.

## Stratford Youth Baseball Association Organizational Meeting

The Stratford Youth Baseball Association will be holding its' annual organizational meeting on Wednesday, March 26th at 6:00 p.m. in the Mary Allen Elementary cafeteria. Boys and girls who will be six years old on or before September 1, 2008 are eligible to play. Anyone who has input or questions concerning the baseball association should plan on attending. Volunteers are needed to fill the following roles this year: registration night, kick-off fundraiser, community correspondence and team pictures. If these roles are not filled, those aspects of the association will not function.

All those who are interested in coaching a team in T-Ball, Machine Pitch or Little League this year, need to contact Gared McBryde at 366-5307 before the meeting. Coaching slots will be filled on a first come, first serve basis and coaches attendance will be required at the organizational meeting on the 26th. If you have any questions, please call 366-5307.

Needed: White Christmas lights, extension cords, spotlights, staple guns with names marked on items. Please contact Dinah if you have these items and if they can be used. 806-366-3300.

## Wildfire Danger.

Dry conditions have created another dangerous wildfire season. Please use caution with any outdoor burning, disposal of fireplace ashes, welding, cigarettes, etc. Under the current dry conditions, wildfires can ignite easily and spread quickly.

## AG DAY THIS THURSDAY

By David Graf

Final plans have been made for the 2008 Sherman County Ag Day, this Thursday, March 13th at the County Exhibit Building. "The Ag Committee and other volunteers have been working hard to get prepared for what should be an informative and educational day," said David Graf, Texas AgriLife Extension agriculture and natural resources agent for Sherman County. "We are fortunate to have such strong community support in that numerous donors have made possible a free catered lunch."

Registration begins at 8:30 a.m. and speakers will commence at 9:00, with the lunch speaker being Lewis Britt of Representative Mac Thornberry's office, who will provide an update on the farm bill. The meeting will adjourn at 2:00 with receiving CEU certificates as needed.

Those who have attended the day's meetings will receive two CEU's for General and 1 CEU for Laws and Regulations.

The Texas AgriLife Extension Service's Ag Committee of Sherman County is hosting the day and co-sponsoring it with the FSA office of Sherman County and the Sherman County Development Committee.

March 13<sup>th</sup>  
Ag Day Schedule  
on page 4

## USDA RURAL DEVELOPMENT ANNOUNCES AVAILABILITY OF HOUSING PRESERVATION GRANT FUNDS

TEMPLE, TEXAS, March 6, 2008 -Scooter Brochette, USDA Rural Development Acting State Director announced today the availability of Housing Preservation Grant funds. The program provides financial assistance to eligible entities to assist in the repair or rehabilitation of single-family and rental residences located in rural communities.

Eligible entities who would administer the grant funds can include state agencies, units of local government, Native American tribes, and nonprofit organizations. The Agency's Housing Preservation Grant Program can also provide assistance through eligible entities to rental property owners to repair and rehabilitate their units providing the owners agree to make the units available to very low\* arid low-income families. Individual homeowners and rental property owners are not eligible entities for these competitively awarded grants. The USDA Rural Development Housing Preservation Grant Program provides assistance to residential projects located in eligible communities with a maximum population of 20,000.

Applications must be submitted no later than 5 p.m. on April 21, 2008 to USDA Rural Development, Federal Building, Suite 102, 101 South Main,

Temple, Texas 76501 or submitted online at <http://www.grants.gov> by 4 p.m. CST on April 21, 2008. For more information on the Housing Preservation Grant Program, please contact our Local Office at \_\_\_\_\_, Extension 4 or visit the website at [http://www.rurdev.usda.gov/mfh/brief\\_mfh\\_hpg.htm](http://www.rurdev.usda.gov/mfh/brief_mfh_hpg.htm)



## New Elk at the School

A 'New Elk' for Stratford High School made its entrance by tractor driven by Travis Melton last week. The Elk was found by Joe Reinart in Taos, N.M and purchased by Stratford ISD and the Class of 2008.

### Junior High Girls Track Results

The 7<sup>th</sup> & 8<sup>th</sup> grade girls competed at the Spearman Track Meet held Friday, March 7. The 7<sup>th</sup> grade girls placed 5<sup>th</sup> with 70 points and the 8<sup>th</sup> grade girls placed 5<sup>th</sup> with 53.3 points. Individual results as follows:

7<sup>th</sup> grade: **Shot:** Tera Harris-2<sup>nd</sup>-26'10"; Veronica Lemus-3<sup>rd</sup>-25'10"; **Long Jump:** Erika Robles-4<sup>th</sup>-13'1.5"; **400 Dash:** Erika Robles-3<sup>rd</sup>-74.26; **1600 M Run:** Stephanie Jacquez-2<sup>nd</sup>-7:02; Elizabeth Reyes-5<sup>th</sup>-7:21; **Discuss:** Veronica Lemus-4<sup>th</sup>-49'1"; **400 M Relay:** 5<sup>th</sup>-63.43; **300 Hurdles:** Karen Lozoya-5<sup>th</sup>-62.55; **1600 M Relay:** 3<sup>rd</sup>-5:13.00; **800 M Run:** Erika Robles-3<sup>rd</sup>-2:56; Stephanie Jacquez-6<sup>th</sup>-3:12.00; **800 M Relay:** 4<sup>th</sup>-2:12.81.

8<sup>th</sup> grade: **2400 M -** Tori Rouse-2<sup>nd</sup>-10:42.00; **1600 M Run -** Tori Rouse - 1<sup>st</sup>- 6:33; **400 M Relay -** 4<sup>th</sup>-63.51; **300 M Hurdles- Carina Michel -** 5<sup>th</sup>-65.92; **Adriana Ibarra-6<sup>th</sup>-66.9;** **Pole Vault -** Tori Rouse - 3<sup>rd</sup>-5'6"; **High Jump -** Tori Rouse - 4<sup>th</sup>-4'2"; **800 M Relay -** 4<sup>th</sup>-2:11.40.

(NAPS)—The Straight Talk on Women's GI Health campaign educates women age 40 and older about digestive health problems and provides them with the tools for an ongoing dialogue with their physicians. Visit [www.GIStraightTalk.com](http://www.GIStraightTalk.com) to learn more.

There's now a natural, drug-free way to get a good night's sleep. NutraMist Sleep Now is an oral spray that contains such sleep-inducing ingredients as valerian and melatonin to help people get the rest they need. To learn more, visit [www.NutraMistProducts.com](http://www.NutraMistProducts.com).

To learn about diabetes, its link to heart disease, and how to help a loved one, order free copies of *Tips for Helping a Person with Diabetes* by contacting the National Diabetes Education Program at [www.YourDiabetesInfo.org](http://www.YourDiabetesInfo.org) or (888) 693-NDEP (6337).

### REVERSE MORTGAGE PROGRAM MARCH 27

By Susie Spurlock

SCOT members and other interested Sherman County residents are invited to gain a better understanding of Reverse Mortgages on Thursday, March 27 in Stratford. This special educational program will begin at 1:30 p.m. at SCOT Hall following the March luncheon.

Marc Adams, First State Bank Vice-President- Bank Manager and Mortgage Loan Officer will be presenting information on Reverse Mortgages. Mr. Adams will inform program participants on how reverse mortgages works, who qualifies, tax implications, and how proceeds from mortgages can be used. In addition tips for determining if Reverse Mortgage is for you and what to consider when shopping this financial product.

The program will be repeated at 5:30 p.m. at SCOT Hall.

For more information, contact Susie Spurlock, Texas AgriLife Extension Agent for Sherman County at 806-366-2122 or Lynn Wells, SCOT President at 396-2011.

Educational programs of the Texas AgriLife Extension Service are open to all persons without regard to race, color, sex, disability, religion, age, or national origin.

\*\*\*  
The first duty of love is to listen.  
—Paul Tillich  
\*\*\*

### Women's Forum Distinguished Service Awards April 26, 2008

Amarillo Area Women's Forum will recognize area women who have made contributions in leadership to their communities in the arts, business, civic leadership and public service at an awards ceremony luncheon at the Amarillo Country Club, April 26, 2008.

The guest speaker will be Dr. Claire Gaudiani, an expert on the history and economics of American philanthropy at New York University. She has authored several books including the best seller, "The Greater Good" and recently "Generosity Rules! A guidebook to Giving". Past recipients of the Distinguished Service Award from Stratford are Marilyn Albert Harkins, Timmie Brown, MariHoward Engelbrecht, Gaynelle Riffe, Margaret Reed, LeRayne Donelson, and Laurie Spurlock.

\*\*\*  
Laughter is wine for the soul—laughter soft, or loud and deep, tinged through with seriousness... the hilarious declaration made by man that life is worth living.  
—Sean O'Casey  
\*\*\*

\*\*\*  
I distrust those people who know so well what God wants them to do, because I notice it always coincides with their own desires.  
—Susan B. Anthony  
\*\*\*

\*\*\*  
Facts are stubborn things; and whatever may be our wishes, our inclinations, or the dictates of our passions, they cannot alter the state of facts and evidence.  
—John Adams  
\*\*\*

MITCHELL THEATRES  
**NGSP**  
GUYMON, OKLAHOMA  
Guymon, Okla  
Movies Beginning March 14

Horton Hears a Who  
G Animated (Jim Carey)

There Will Be Blood  
R Daniel Day-Lewis

10,000 B.C.  
PG-13 Steven Strait Camilla Belle

College Road Trip  
G Martin Lawrence

Semi-Pro  
R Will Ferrell Woody Harrelson

Witless Protection  
PG-13 Larry the Cable Guy

Vantage Point  
PG-13 Dennis Quad Sigourney Weaver

Fool's Gold  
PG-13 Kate Hudson Matthew McConaughey

FRESH POPCORN EVERYDAY  
Party Room & Arcade  
Showtimes 580-338-3281  
Off. 580-338-8969  
[www.northridge8.com](http://www.northridge8.com)  
Cash & Credit cards only  
Thank You

### IRS Forms

The Sherman County Public Library will no longer carry paper copies of IRS forms. Most forms are available online at [www.irs.gov](http://www.irs.gov). Library patrons may use the public computers at the library to print any forms at a cost of \$.10 per page. If you have any questions regarding this matter, please contact the library at 366-2200.

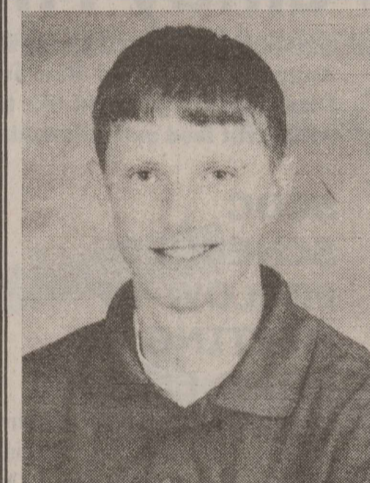
### Presley Fund Set Up At Bank

A medical fund for the son of J.B. & Amanda Presley has been set up at the First State Bank of Stratford. For more information contact the First State Bank 396-5521.

**REMEMBER WHEN we listened to Eloy and The Troubadours? He is coming, watch this spot for more info.**

**REMINDER:  
DEADLINE TO ORDER  
2007-2008  
YEARBOOK IS  
FRIDAY,  
MARCH 14**

**Order Form in  
Newspaper & on  
Stratford ISD Website or  
Call Shari Hudson  
at 366-3347 or 366-5398**



Tyler Gilliland

Tyler is a sophomore at Stratford High School. He is a member of the Elk football, basketball and golf teams. He is also a member of the student council.

**Duncan Chevrolet**  
**PERFORMANCE**  
Student of the Week  
[www.duncanchevrolet.com](http://www.duncanchevrolet.com)

**The Stratford Star**  
Published Every Thursday at 805 Purnell, Stratford, TX 79084  
**Martha (Marty) Robertson Editor & Publisher**  
**Shari Hudson-Advertising & Photography**

Subscription Rates  
\$25.00 per year in Sherman & Adjoining Counties  
\$32.00 per year all others  
\$20.00 per (9 months)  
College Rate

The Stratford Star  
Box 8  
1-806-366-5885  
FAX-1-806-366-5885

**ALLSUP'S**  
Prices Good Thru 3/22/08

**NOS HIGH PERFORMANCE ENERGY DRINK**  
16 OZ. / \$1.69 EACH OR  
**2 FOR \$3.00**

**MEXI-BURGER & A 32 OZ. TALLSUP**  
**\$1.99**

Store No. 52  
101 S. Poplar  
Stratford, TX  
806-396-5334

**TOM'S ASSORTED POTATO CHIPS**  
\$1.99 EACH OR  
**2 FOR \$3.00**

**"MOO"  
BUY 12 GALLONS OF FRESH ALLSUP'S MILK... GET ONE FREE!**

**BEEF, CHICKEN OR SHRIMP 3 OZ.  
TOP RAMEN NOODLES**  
**8 FOR \$1.00**

**BLUE BUNNY BIG ICE CREAM SANDWICHES**  
**3 FOR \$2.00**

**HERSHEY'S, HERSHEY'S WITH ALMONDS, KIT KAT OR PAYDAY  
HERSHEYS CANDY BAR**  
**79¢**

**MORE SPECIALS**

|  |                      |
|--|----------------------|
| VITAMIN WATER<br>20 OZ. / \$1.49 EACH OR               | <b>2 FOR \$2.22</b>  |
| FULL THROTTLE ENERGY DRINKS<br>16 OZ. / \$2.39 EACH OR | <b>2 FOR \$3.00</b>  |
| BLUE BUNNY ICE CREAM ASSORTED<br>56 OZ.                | <b>\$4.59</b>        |
| AMERICAN FINEST SANDWICH SLICES<br>12 OZ.              | <b>99¢</b>           |
| ALLSUP'S WHEAT BREAD<br>24 OZ. / \$1.09 EACH OR        | <b>2 FOR \$1.89</b>  |
| ALLSUP'S SANDWICH BREAD<br>24 OZ. / 99¢ EACH OR        | <b>2 FOR \$1.69</b>  |
| ROMA TOMATOES<br>MEDIUM SIZE                           | <b>10 FOR \$1.00</b> |
| TALLSUP'S<br>32 OZ.                                    | <b>59¢</b>           |
| GRAPEFRUIT   | <b>3 FOR \$1.00</b>  |

**COMBO MEALS**

|  |               |  |               |
|--|---------------|--|---------------|
| <b>COMBO NO. 1</b><br>BACON/EGG BISCUIT & 16 OZ. COFFEE          | <b>\$1.99</b> | <b>COMBO NO. 6</b><br>3 TAMALES, HOWLERS & 32 OZ. TALLSUP      | <b>\$2.59</b> |
| <b>COMBO NO. 2</b><br>SAUSAGE/EGG BISCUIT & 16 OZ. COFFEE        | <b>\$1.99</b> | <b>COMBO NO. 7</b><br>2 HOT LINKS WITH BREAD & 32 OZ. TALLSUP  | <b>\$2.49</b> |
| <b>COMBO NO. 3</b><br>BBQ SANDWICH & 32 OZ. TALLSUP              | <b>\$1.99</b> | <b>COMBO NO. 8</b><br>2 CORN DOGS & 32 OZ. TALLSUP             | <b>\$2.59</b> |
| <b>COMBO NO. 4</b><br>HOMESTYLE POPCORN CHICKEN & 32 OZ. TALLSUP | <b>\$2.69</b> | <b>COMBO NO. 9</b><br>CHIMICHANGA & 32 OZ. TALLSUP             | <b>\$2.39</b> |
| <b>COMBO NO. 5</b><br>SPICY POPCORN CHICKEN & 32 OZ. TALLSUP     | <b>\$2.69</b> | <b>COMBO NO. 10</b><br>2 BEEF & BEAN BURRITOS & 32 OZ. TALLSUP | <b>\$2.59</b> |



## Janeal Hand Surprised with "50" Party

The Jr. High faculty surprised Janeal Hand (seated 3<sup>rd</sup> from left) with a "50<sup>th</sup>" Birthday Party on Friday, March 7. They also arrived at school with their "50's" attire on.

## 4-H FASHION SHOW APRIL 7

By Susie Spurlock  
The Sherman County 4-H Fashion Show will be held Monday, April 7, 2008. The achievement event will be at the Sherman County Exhibit Building in Stratford.

Judging of contestants will begin at 5:30 p.m. followed by the Fashion Show and Awards program at 7:00 p.m. 4-H project members from the Stratford area are learning skills in the areas of clothing construction, clothing care, grooming and modeling, textile art, knowledge of fibers and fabrics, and participated in educational tours.

4-Hers and families are reminded that Fashion Show Entry Forms are due in the County Extension Office on Tuesday, April 1, 2008. The Fashion Show is the achievement event of the clothing and textiles project meeting. Guidelines for the Fashion Show are available at the Texas AgriLife Extension Service Sherman County office.

Community members are invited to the Fashion Show to show their support of youth and view the accomplishments of members. Sponsors of the Sherman County 4-H Fashion Show are the Sherman County 4-H Parent & Leaders Association, and Texas AgriLife Extension Service. For more information, contact Susie Spurlock, Texas AgriLife Extension Agent in Sherman County at 366-2122.

Educational programs sponsored by the Texas AgriLife Extension Service serves all people of all ages, regardless of socio-economic level, race, color, sex, religion, disability, or national origin.

## Kerrick News By Marylou McDaniel

Set the alarm so wouldn't be late for Sunday school and no water! Smith & Smith came out but was too late to go. Luckily it was minor but still too late.

Fern McDaniel Allen, formerly of Wheelers, who makes her home in Amarillo now, celebrated her 93 birthday this week. There will be a family party Sunday.

John McDaniel has heard from son Nicholas in Iraq. He says it is "boring" but thank goodness!

Pat Boren and Jo June McDaniel were hostesses at the Red Hat Society meeting last week. Donna Gillenwaters attended.

Sure been a lot of people not feeling well.

## Prospectus Study Club News

GFWC/Prospectus Study Club met March 5 at Sherman County Library.

Barbara Dawkins of Dalhart gave The Arts program and showed some of her different kinds of art.

Cindy Jackson, president, announced that District meeting will be April 5 in Dalhart.

Susan Traylor was a guest. Members present were Mattie Baskin, Dorothy Haile, Patti Vincent, Oline Caraway, Pat Hartman, Marty Bain, Barbara Haile, Laurie Spurlock, Marylou McDaniel, and Michelle Lutes.



## McDaniel Honored with Bridal Shower

Shawnda McDaniel bride-elect of Scott McAlister was honored with a bridal shower on Saturday, March 8, 2008 in the home of Nancy Kimball. Shown above seated are Britni McDaniel, Bride elect Shawnda McDaniel and Lory McDaniel. Standing Valerie McAlister, Billie McAlister, Bess Stone and Martha Mitts.

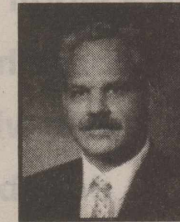
## Stratford EX-Student Reunion July 25-26 .2008

Did your Stratford Graduating Class end in an 8? It is your reunion-year!

Stratford Ex-Students will enjoy the Friday night, July 25, Hamburgers and Visit with friends and class mates. If plans continue as before, the Stratford Jamboree Parade and Lions Club Barbeque will be held Saturday Noon. Saturday evening has been open for the Ranch Rodeo, however, last year, The Education Foundation sponsored a dinner on Saturday evening. All reunion classes are asked to update their mailing lists.

crop revenue coverage to  
**PROTECT**  
your crops

Let us tell you how multi peril crop insurance can be a lifesaver for your farming operation.



**Jim D. Hubbard, CIC**  
114 S. Trice  
Claude, TX 79019  
cell 806.679.9457  
office 800.658.2122  
jhubbard@neely.com

**NEELY, CRAIG & WALTON L.L.P.**  
INSURANCE SINCE 1926

**There are a few spots open for cheerleading classes in the 7-9 year old age group. Those interested in this class can sign up for free for a limited time. Sign up before April and all registration & sign-up fees will be waived!**

**CALL 806-570-8542—ASK FOR MISS KENZIE!**

**STEVENSON & SONS**  
PEST CONTROL  
Termite & Pest Control • Rat Control • Bird Control  
Yard & Tree Spraying

Residential • Commercial Farms • Ranches  
"Professionals in Pest Control Technology"

**249-4202** Jim Stevenson Owner

Dalhart • Stratford • Hartley  
Licensed & Insured

## Recycling Helps Communities

(NAPS)—Recycled aluminum saves billions of dollars annually in energy costs, reduces greenhouse gas emissions by millions of



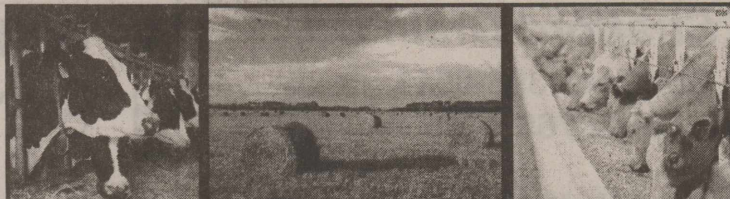
tons, conserves national resources and helps save landfill space. Need more reasons to recycle?

It also pays for many municipal recycling programs, creates thousands of jobs and generates tax dollars in the collecting and processing industries.

Many people recycle aluminum cans but forget about the more than 8 billion aluminum foil containers such as foil pie pans, roasters, TV dinner containers and bakery pans sold annually in North America. All you have to do is rinse and place used foil containers in a recycling bin or take them to a recycling outlet.

Aluminum is the only packaging material that more than covers its recycling cost and is so economical it subsidizes the recycling of other materials such as plastic and glass. Recycling even helps support such projects as Habitat for Humanity.

Now may be a good time to start recycling your aluminum foil containers. For more information, visit the Aluminum Foil Container Manufacturers Association at [www.afcma.org](http://www.afcma.org) or phone (501) 922-7425.



- Feed yard operating loans
- Dairy operating loans
- Crop and livestock production loans
- Real estate loans

## Generous Patronage Sets Us Apart

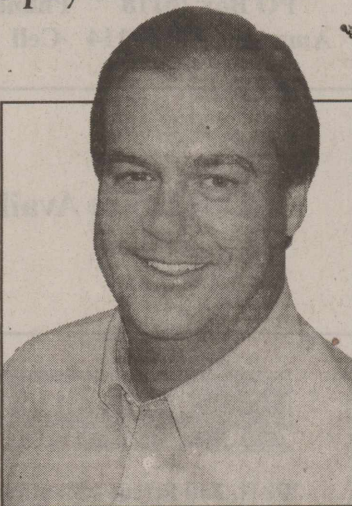
"Unlike traditional lenders, we offer generous patronage payments back to our borrowers."

We don't have to get all your business, just the part where you'd like to save money. We're experts at real estate and other ag-related loans. We've got rates that will compete with anybody in this area, plus you get money back!"

Johnny Schmucker,  
Great Plains Loan Officer

1315 E. 1st Street  
Dumas, Texas  
(806) 935-6851

[greatplainsagcredit.com](http://greatplainsagcredit.com)



**GREAT PLAINS**  
AG CREDIT

GREAT PLAINS...GOOD PEOPLE

## First Assembly of God

Kevin Anderson, Pastor  
921 Fulton

Sunday School 9:45 am  
Morning Worship 10:45 am  
Evening Worship 6:00 pm  
Wed. Bible Study 7:00 pm

## First Christian

Rev. Charles F. Fisch, Interim Pastor  
5th & Main

Sunday School 9:45 am (nursery)  
Morning Worship 10:45 am (nursery)  
No Sunday Evening Worship Service  
Wed. : Youth Choir 3:45 pm, Chi Rho 5 p.m.,  
CYF 6 p.m., Bell Choir 6:50 p.m., Adult Choir 8 p.m.

## First United Methodist

Rev. Gene Weinette  
520 N. Main

Sunday School 9:20 am  
Morning Worship 10:30 am  
Junior High UMY 5:00 pm  
Senior High UMY 6:00 pm

## St. Joseph Catholic

6th & Pearl

Rectory - 366-5687  
Sunday morning: 8:00 a.m. (English), 9:30 (Spanish)  
Sacrament of Reconciliation: Before Mass, or by appt.  
Christian Formation Classes: K-6th Grade, Wed. afternoon  
Jr. & Sr. High, Wed. - 6:30-8:30 p.m.

## Church of Christ

Ernie Maiwald  
N. 3rd & Chestnut

Sunday School 9:30 am  
Morning Worship 10:30 am  
Evening Worship 5:00 p.m.  
Wednesday Bible Study - 7:00 p.m.

## Heritage Bible Baptist

Pastor Rick Carter  
302 S. Main - For More Info—call 396-2212

Morning Worship - 11 a.m.  
Evening Service 6 p.m.  
Wed. Service - 7:30 p.m.

## First Baptist

Pastor Billy Chambers  
702 N. 3rd

Sun.—Coffee - 8:30 Sunday School - 9:30  
Worship Service - 10:30  
Wed. -Children—6:00, youth—7:00

## La Mision Bautista

Mision Bautista  
401 S. Wall 396-5376

Domingo-(Sunday)  
Estuela Dominical 9:45 am

Miercoles (Wednesday)  
Servicio De Adoracion 11:00 am Estudio  
Biblico & Servicio De Oration 6:00 pm Se Cuidamos  
Servicio De Adoracion 6:00 pm  
Susninios Durante El Servicio.

## The Churches of Stratford Welcome You

**Mark 7:15** There is nothing from without a man, that entering into him can defile him: but the things which comes out of him, those are they that defile the man.

## This page Sponsored by

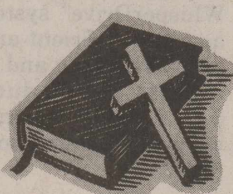
Sponsored by;  
Stratford Grain 396-5541  
Lautz 769-4485  
Stratford Star 396-5885  
Walter Lasley & Sons, INC.  
753-4411

## Eben-Ezer Templo Hispano

Asambleas De Dios  
Pastor: Juan M. Valenzuela 806.366.3071  
205 N. Poplar - Hwy 287 806.268.2188  
Escuela Dominical 10 a.m.-12:00 p.m.  
Servicio De Adoracion 5 p.m.-7:00 p.m.  
Miercoles: Servicio De Adoracion 6-8 p.m

## Kerrick Community Church

Pastor Roy Harris  
Community Building  
Sunday Morning - 11:00 a.m.  
Sunday Evening-6:00 p.m.  
Prayer Meeting - 7:00 p.m. Wednesday





**ELK TALES**

By Lynda Hauser

Our new Elk is here!! They set him in place last Thursday and he's standing tall and proud! Be sure and take a look. The first part of the TAKS is behind us. More TAKS test will come later. Junior high and high school Open House was held on Monday, and Mary Allen Open House was on Tuesday. The high school golf teams had meets on Monday and Tuesday.

Remember to buy your yearbook this week. Friday is the last day to purchase one.

The junior high has a track meet on Thursday, and high school has a meet on Friday. Also on Friday, high school cheerleader tryouts will be held.

This week the second graders finished up their Terra Nova tests in math and reading. We have also been working very hard on Open House projects for next week. The Carson County Square House Museum in Panhandle, Texas brought an art trunk show for the second graders. The students learned about secondary and primary colors. They mixed paint with shaving cream to create unique works of art. This project was funded through Windows on the Wider World. In math, the students have learned to round numbers to the nearest ten, subtract two-digit numbers with borrowing, read pictographs, and use comparison symbols.

In Biology, Mrs. Everett's classes are covering bacteria and virus. We will do our bacteria cultures this week.

Eleven lucky 8th grade reading students of Stratford Junior High were treated to a special lunch on Friday in the beautiful home of Mr. and Mrs. B.A. Donelson. Mrs. Donelson gave the students a lesson in etiquette before serving them a delicious meal. These students of Cindy Seward and Kaci McBryde are preparing to take a trip to Amarillo for a tour of Barnes and Noble Bookstore and lunch at the Amarillo Club. Thank you to the Stratford Education Foundation for making this possible!

Some future events: Spring Break - March 17-21; Golf meets - March 24-25; District One Act Play - March 26; District UIL Academic Meet - March 27; high school track meet - March 28 & junior high track meet - March 29.

Quote of the week: "An investment in knowledge always pays the best interest." -Benjamin Franklin

**4<sup>th</sup> 6 Weeks  
High School  
Honor Roll**

- Alcala, Christian
- Arisano, Catheryn
- Armendariz, Carlos
- Armendariz, Cynthia
- Barnard, Brooke
- Brooks, Heidi
- Burton, Eric
- Carrillo, Raquel
- Chaffee, Matthew
- Chavoya, Brianda
- Confer, Jordan
- Crabtree, Kristen
- Crabtree, Morgan
- Cummings, Bryce
- Dennis, Kelsi
- Duran, Roberto
- Everett, Sinead
- Frizzell, Michael
- Haile, Lucius
- Hamilton, Braden
- Hawkins, Chandra
- Horsford, Kyle
- Ibarra, Yesenia
- Kautz, Craig
- Killian, Katherine
- Long, Hailey
- Maiwald, Trenda
- Martinez, Alex
- Molina, Deborah
- Niave, Eduardo
- Ortega, Lucero
- Peregrino, April

**NOTICE**  
**THE SHERMAN COUNTY COURTHOUSE IS NOT A STORM SHELTER**

The Sherman County Courthouse is not a public shelter and is not intended to be available to the public for protection from disasters or storms (such as tornados). The Courthouse is not structurally sound, has a great deal of exposed glass, and is not designed to be a safe refuge in case of storms or disasters.

If you seek shelter at the Courthouse during a storm or disaster, you do so **AT YOUR OWN RISK.** Sherman County has no liability for any injuries or deaths that occur to any persons seeking shelter at the Courthouse during a disaster or storm.

If a storm or other disaster occurs after business hours, the only door open to the public will be the west basement door by the tax office.

**AVISO**

**EL PALACIO DE JUSTICIA DEL CONDADO DE SHERMAN NO ES UN REFUGIO DE LA TEMPESTAD**

El Palacio de justicia del Condado de Sherman no es un refugio público y no es pensado estar disponible al público para la protección de desastres y tempestades (tal como tornados). El palacio de justicia no es estructuralmente sólido, tiene mucho vidrio expuesto, y no es diseñado para ser un refugio seguro en caso de tempestades ni desastres.

Si usted busca refugio en el palacio de justicia durante una tempestad o un desastre, usted hace así **BAJO SU PROPIA RESPONSABILIDAD.**

El Condado de Sherman no tendrá obligación para ningunas heridas o muertes que ocurran a ninguna persona quien busca refugio en el Palacio de justicia durante un desastre o tempestad.

Si una tempestad u otro desastre ocurre después de horas de oficina, la única puerta abierta al público será la puerta occidental del sótano al lado de la oficina de impuestos.

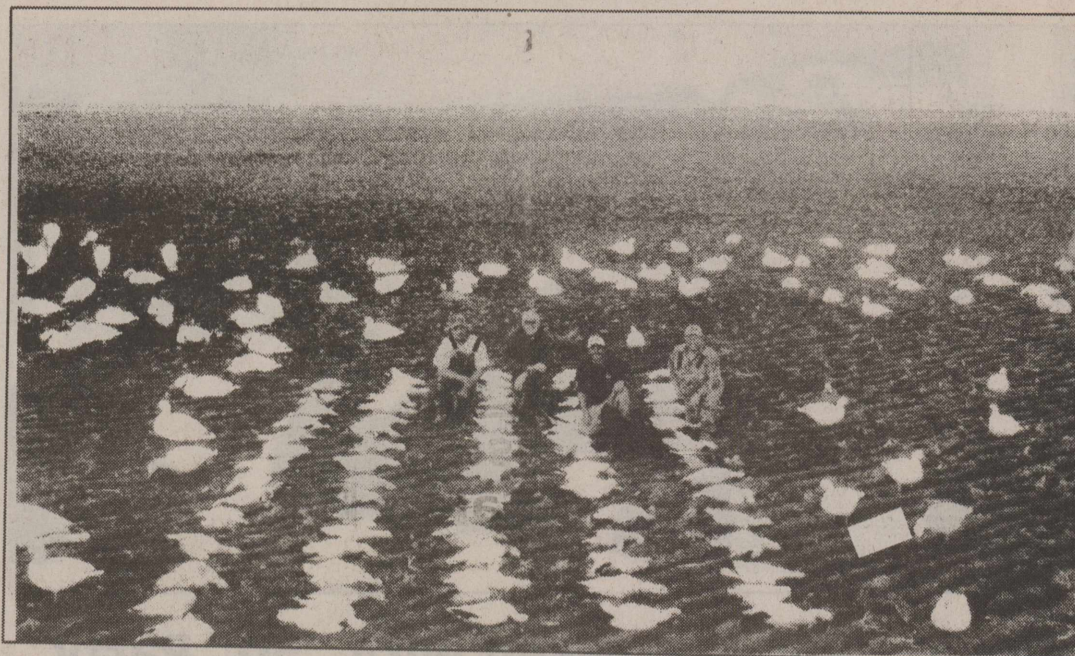
- Pickens, Britten
- Reese, Whitney
- Reinart, Michael
- Reyes, Janeth
- Riffe, Austin
- Rocha, Margarita
- Rosales, Becky
- Ruiz, Anthony
- Ruiz, Erik
- Russell, Sunny
- Ruvalcaba, Daisy
- Sell, Courtenay

- Smith, James
- Solano, Noelia
- Spurlock, Jennie
- Stein, Kelsey
- Terrañas, Oswald
- Woodburn, Kristina
- Wright, Tyler
- Zieman, Channing

(NAPS)—Georgia peaches are especially filling, making them a good snack choice. They also provide a natural plant compound called flavonoids, which research suggests may help prevent cancer and heart disease. For peach recipes, visit [www.gapeaches.org](http://www.gapeaches.org).

A new book called "The Words of War" (History Publishing Company, \$24.95) compares opposing coverage by Northern and Confederate newspapers to create a unique historical record of the American Civil War. Visit [www.HistoryPublishingCo.com](http://www.HistoryPublishingCo.com).

The Echelon™ 5T Series 15+ SEER air conditioner has an attractive exterior, internal energy-saving features and a WhisperDrive™ system, providing a stylish, efficient and quiet heating, ventilating and air conditioning (HVAC) product, all in one package. To learn more, visit [www.colemanac.com](http://www.colemanac.com) or call (877) 874-7378.



**Local Hunters Whack & Stack Snow Geese on March 2, 2008**

Gayland Vandiver from Stratford, Ben Pigman and Gary Johnson from Dalhart were guided on a late season snow good hunt by Darrell Dickenson, with High Flying Outfitters out of Dumas, TX. Total for the morning were "80" snow geese! Awesome job guys!!!

*Let's Make Arrangements Floral*  
can help make Easter a special occasion for you & your family. Come by 211 N. Main and see our Beautiful Easter Lilies, Spring Arrangements & Easter Decorations.

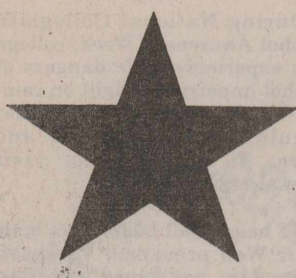
or

Build a Basket filled with Candy-Bunnies, Marshmallow Eggs, Chicks, Ducks, Lambs & Eggs filled with Candy!



William H. Harrison, the ninth President of the United States, served the shortest term. He died from pneumonia 30 days after he was inaugurated in 1841.

|   |   |
|---|---|
| <p><b>Business Directory</b></p> <p>WALTER LASLEY &amp; SONS INC.<br/>THE Feedyard<br/>Since 1953<br/>753-4411</p>  | <p><b>Stratford Hospital District</b><br/>Coldwater Manor<br/>Stratford Family Medical Clinic<br/>Stratford EMS<br/>Proudly serving the medical needs of Stratford and Sherman County</p>   |
| <p><b>Stratford Grain Co.</b><br/>Stratford 396-5541<br/>Lautz 769-4485</p> <p>4 North Main</p>   | <p>TRCC # 11427<br/><b>PALMER CONSTRUCTION</b><br/>New Construction<br/>Remodeling<br/>Roofing<br/>Free Estimates</p> <p>610 E. Taylor<br/>P.O. Box 217<br/>Texline, TX 79087<br/>806-333-4253 806-362-4253</p>   |
| <p><b>Stratford Auto Electric</b><br/>119 S. Wall, Stratford, Texas 79084<br/>Phone 366-5941 366-5857<br/>Alternator, Starter, -Magneto Repair<br/>Since 1964</p>   | <p><b>Joe Taylor, Photography</b><br/>PO Box 27<br/>1305 N Chestnut<br/>Stratford, TX 79084<br/>806-366-2459<br/>Weddings, Portraits, Etc.</p>  |
| <p><b>Betty Brown's Medical Claim Service</b><br/>PO Box 20118 Phone 806-367-5617<br/>Amarillo, TX 79114 Cell 806-367-0070</p>  | <p><b>Ivy Insurance Agency</b><br/>Joanie Ivy<br/>Auto • Home • Life • Commercial<br/>Bus: (806) 396-5810</p>   |
| <p><b>A&amp;I PARTS CENTER</b><br/>AUTOMOTIVE AND INDUSTRIAL PARTS<br/>201 N. 2nd Street - Stratford, TX 79084<br/>Tele (806)366-5592 * Toll-free 800-624-5494<br/>Fax(806)366-2583</p>   | <p><b>Duncan Chevrolet</b><br/>www.duncanchevrolet.com<br/>E-mail duncanchev@xit.net</p>  |
| <p><b>Don's Collision Center</b><br/>Owner - Don Aduddell<br/>319 S. Poplar<br/>Office 806-396-2812 • After hours 806-366-3233</p>  | <p><b>Jesse's Gun Shop</b><br/>Gun Repairs • Sales • Cleaning<br/>Hours: Mon. - Fri. - 1730 - 2000<br/>Sat. - 0800-1600<br/>Jesse Resendes (806) 767-4454<br/>111 S. Maple Stratford, TX 79084</p>  |
| <p><b>Yours Home Town Pharmacy</b><br/>ELK PHARMACY<br/>317 N. Main<br/>P.O. Box 380<br/>Stratford, TX 79084<br/>806-396-4505<br/>Major Prescription Plans Accepted<br/>Gayland Vandiver, R.Ph.<br/>Debbi Vandiver/ Owners<br/>Carton Cards...Millionaire Candy.Gifts<br/>Cookie and Balloon Bouquets</p> | <p><b>FARM BUREAU INSURANCE</b><br/>National Quality Award—35 Year Member<br/><b>JOE FLORES</b> P.O. Box 25<br/>AGENT Hwy 287S. Stratford, TX 79084<br/>Office Phone/806-396-5538 Bus. Phone/806-396-2422<br/>Residence/806-396-5389 Fax/806-396-2113</p> |



It Pays To Look In The

# Star Classifieds

Phone 366-5885

THE STRATFORD STAR  
Thursday, March 13, 2008  
Page 5

..The Best Salesperson Around

## Help Wanted

Counter Sales Person needed at A&I Parts in Stratford. Applicants must be dependable. Benefits include Health Insurance, vacation and holiday pay. Contact Coby at 806-366-5592. We are an equal opportunity employer.  
3-6-tfn

Cleaning Station needs a presser. 4-Day work week. Wages-negotiable. Must be able to speak some English. Pick up application at 410 N. 4th.  
3-13 & 3-20-c

Coldwater Manor has openings for C.N.A., PRN-L.V.N. and Maintenance person. Apply in person. EOE  
3-13 & 3-20-c

Office help for Aurora Organic Dairy. Phone: 806-769-4447.  
3-13 & 3-20-c

Full time child care worker wanted at Lollipop Junction. Please call 366-5886. 3-13- & 3-20-c

A&I Parts Center in Stratford is looking for a full time warehouse employee, job duties include stocking parts and pulling orders as well as other duties. Must be able to lift 50 lbs. Applicants must be dependable. Benefits include health insurance, vacation and holiday pay. Contact Bryan at 806-366-5561. We are an equal opportunity employer.  
3-13-tfn

## For Sale

Mattress Set-Queen orthopedic \$140 Must Sell, Still in plastic. 806-341-6233.  
2-7-08-tfn

Solitaire Mobile Home 16 x 80. Very nice shape. Must be moved 806-753-7797.  
3-6-08-c2x's

BED-\$250-Brand Name King PT Mattress Set. NEW in plastic, warranty 806-341-6233.  
2-7-08-tfn

NEW QUEEN Pillow Top mattress set. Unopened, w/warranty. Sacrifice \$150 806-341-6233.  
2-7-08-tfn

Full size mattress set-Brand new, still in package. Sell for \$125. 806-341-6233.  
2-7-08-tfn

For Sale or lease 212 N. Poplar 40' by 60' office building. Call 806-679-5585.  
11-1-tfn

NASA VISCO memory foam mattress set, never used, must move \$350. 806-341-6233.  
2-7-08-tfn

**DEKALB**  
Bar Double Diamond Seed  
1580-544-2545-1-580-517-1700  
1-24-08-tfn

A brand new twin mattress and box. Sealed in plastic w/warranty \$100-806-341-6233.  
2-7-08-tfn

## For Rent

For Rent: 2BR, 1 bath Apartments at 1319/1320 N. Chestnut. Newly Remodeled, spacious, kitchen appliances included. \$435-\$450 month. 806-244-3418  
2-5-08-c

## Houses for Sale

Ranch style home for sale by owner. 619 N. 5th. 2354 total sq. ft. 1980 sq. ft ground level plus an additional 374 sq. ft. basement. 3 bedroom, 3 1/2 baths. Master suite w/large master bath. 2 fireplaces plus central heat/air. Sits on 3 1/2 lots, detached two car garage, covered patio, and privacy fence. 24 x 30 additional shop. Basement has one bedroom plus a large media room. Sprinkler system front/back. A home you must see! Call 753-7315 or 753-6484 for appointment.  
2-28-tfn

## Garage Sales

Moving Sale!  
1206 N. Olive March 12 & 13th 1 p.m. to dark each day!  
3-13-c

Garage Sale: March 14 & 15, Friday 2-6 and Sat. 9-2. Cabinets, stove, furniture & great stuff  
3-13-c

## Houses for Sale

**Lindahl Realty, LLC**  
701 S. Bliss/ PO Box 572  
Dumas, Texas 79029  
(806)935-7300 or  
toll free (866)935-7300

Residential Property  
**14433 Hwy 287 Stratford**  
\$127,500  
4/2 1997 Saturn Manufactured Home on 24 acres. Cthdl. Ceiling, wood burning f.p. in living room. Kitchen has island with eating bar, pantry, and built-in desk. Master bath has walk-in shower, dbl. sinks, and garden tub. 4 car Quonset garage w/ elec. Barn with 220, & 2 addtl. Quonsets on concrete slabs.

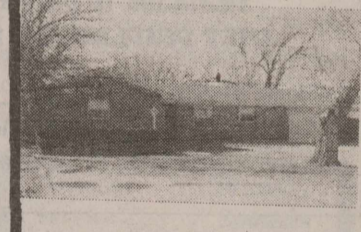
**408 N. 8th, Stratford**  
\$85,000  
Room & more Room! In this 3/1.75/1 home w/ office or 4th bedroom. Dining w/built-in corner hutch. Bedrooms with walk-in closets. Vinyl & carpet throughout home. Utility room. Fenced backyard, Wood deck, storm windows & doors, and storage building.

**402 N. 8th Stratford**  
\$20,000  
2/1 Home on Lg corner lot. Wall heater, evaporative cooler, and gas stove in kitchen.

Commercial Property  
**501 S. Poplar Stratford**  
\$29,900  
Commercial Building with lobby area, 3 offices, 2 bathrooms, & shop With 10x12 overhead door. It has approx. 1,776 sq. ft.

**301 N. Poplar Stratford**  
\$275,000  
NICE! NICE! NICE! 60x100 Commercial Building on huge lot. Building has several overhead doors, showroom, office, and handicap accessible restroom.

Acreage  
\$640,700  
Approx. 640.7 Acres w/ dbl. wide mobile home and 2 car detached garage just South of Stratford.



**911 N. Chestnut**  
\$89,000  
TAKE A LOOK AT THIS!!! 3/2.75/1 Brick home with steel trim. Kitchen w/stove, d.w., pantry & dining area w/carpet. Mtr. Bedroom with wall closet and drawers below and 1.75 baths. Fireplace in living room with gas starter. Walls have wood paneling and sheetrock. Second bdm. w/.75 bath and walk-in closet. Cabinets in utility room w/built-in ironing board. Heat pump. Third bdm & office built in bookcases and cabinets.

N. Hwy 287 Approx. 5.5 ACS Sherman Co., Cactus, Texas \$179,500  
Country Living Close to Town 3/1.75/2 Brick Home w/steel trim. Open floor plan. Liv. Rm. W/rock f.p. & recessed lighting. Kit. /eating bar, d.w., gas cook top, built-in oven, & pantry. Dining area. Office. Lg. utility room w/sink, washer & dryer. Master bath w/dbl. sinks, & Jacuzzi tub. Ample storage throughout. Oversized two car garage. Well house & cert. septic system. New metal barn w/overhead door, water, & electric.

\*\*\*  
Facts are stubborn things; and whatever may be our wishes, our inclinations, or the dictates of our passions, they cannot alter the state of facts and evidence.  
—John Adams  
\*\*\*

## Public Notice

### PUBLIC NOTICE OF PUBLIC MEETING AND PUBLIC HEARING

Region A Panhandle Water Planning Group will hold a public hearing and a public Meeting starting at 10:00 am on April 16, 2008 and at 1:30 pm on May 14, 2008 at the offices of the Panhandle Regional Planning Commission located at 415 W, 8th Ave Amarillo, Potter County, Texas.

1. Notice is hereby given that the Region A Panhandle Water Planning Group is seeking public input on the scope of work for the third round of regional water planning at 10:00 am on April 16, 2008. Written and oral comments regarding the scope of work will be accepted at the public meeting. Written comments may also be received by mail by 5:00 pm on April 22, 2008.

2. Notice is also given that the Panhandle Regional Planning Commission (PRPC) will submit, on or before June 13, 2008, a grant application for financial assistance to the Texas Water Development Board (TWDB) to carry out the scope of work. The public hearing and meeting for this item will be at 1:30 pm on May 14, 2008. Copies of the grant application may be obtained from the PRPC when it becomes available. Written and oral comments regarding the grant application will be accepted at the public hearing. Written comments regarding the grant application may be submitted by mail to the PRPC by 5:00 pm May 14, 2008 and to the TWDB, Attn: Kevin Ward, Executive Administrator, P.O. Box 13231 Austin, TX 78711-3231

The Region A Panhandle Water Planning Group (PWPG) includes all of the following counties: Dallam, Sherman, Hansford, Ochiltree, Lipscomb, Hartley, Moore, Hutchinson, Roberts, Hemphill, Oldham, Potter, Carson, Gray, Wheeler, Randall, Armstrong, Donley, Collingsworth, Hall and Childress Counties.

For additional information, submission of written comments, requests and nominations, please contact the PRPC, Chris Sharp, Local Government Services Director, P.O. Box 9257 Amarillo, TX 79105 or call 806-372-3381. csharp@theprpc.org  
Chris Sharp  
Published in the Stratford Star, Thursday, March 13, 2008

## Cards of Thanks

The Board Members of The Sherman County Depot Museum would like to say Thank You to all who participated in the Hamburger Dinner last Sunday which is our Annual Spring Fund Raiser. The Museum is dedicated to the preservation and presentation of Sherman County History. With your help we can stay open and free to the public.

Donors included Happy State Bank, First State Bank, Stratford Grain, Lasley Feedlot, Stratford Feedlot, Dettle Feedlot, Everett Feedlot, Brown's Meat Locker, A & I Parts, Moore's Food Pride, Express Lane and Long's Ben Franklin. People who helped us with the meal were Jeff Kautz, Marty Bain, Kathie Altman, Cece Yelek, Dorothy Haile, JA Lasley, Jim, Kurt and Mark Hartman, and Jill, Katie, Kavan and Blain Killion. Our faithful Volunteers brought deserts and all the guests who attended made this year a big success. Thanks to all of you. Look for some new exhibits. Mary Jo Lewis from Borger has graciously permitted us to exhibit her antique sewing machines and invalid cups. Before Nursing Homes, the older members of the family lived at home. The invalid cups were used to feed these family members and they look somewhat like a gravy boat. Some matched the sets of china that the family used, but all are interesting. We plan to have an open house to show these exhibits.

Thanks, Sherman County Depot Museum Board Members

\*\*\*  
Laughter is wine for the soul—laughter soft, or loud and deep, tinged through with seriousness ... the hilarious declaration made by man that life is worth living.  
—Sean O'Casey  
\*\*\*

Stratford is an incredible place. A place that stands as an amazing example of what it means to "love your neighbor as yourself." We would like to thank all the people who have poured out their love and affection on our family during this difficult time. Thank you for the excellent food, for helping to take care of all the things that needed to be done, and thank you for your donations to the Stratford Foundation in Joan's name. Most of all we would like to thank you for your company; difficult times are always easier to go through when you don't have to go through them alone. We are so thankful that Joan and E.R. live in such a special place and have enjoyed a lifetime of great people. We would also like to thank the caregivers and people at Coldwater Manor, thank you for giving Joan and E.R. the best quality of life they could have during these difficult years. Thank you Stratford for making us a part of your lives and giving us all a place to call home. We love you very much. "May the Lord bless and keep you; may the Lord make His face to shine on you and be gracious to you; may the Lord turn his face toward you and give you His peace." Love The E.R. Bell Family

\*\*\*  
I distrust those people who know so well what God wants them to do, because I notice it always coincides with their own desires.  
—Susan B. Anthony  
\*\*\*

\*\*\*  
The first duty of love is to listen.  
—Paul Tillich  
\*\*\*

Thank you to all who voted in the March 4 Primary. I will do my best to represent and serve the residents of Sherman County and especially those in Precinct 1.  
Dana Buckles

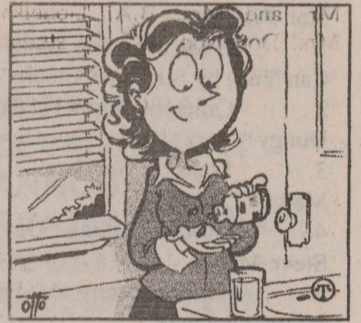
We would like to thank all of those who came to eat during the wind energy meeting. It is deeply appreciated and will help us get to Australia. We would also like to thank Happy Bank, Stratford Feedyard and Moore's Food Pride for their donations again. Thank you.  
Hunter Buckles & Sandro Gomez

## Health Awareness

### Spina Bifida Risk

(NAPS)—An estimated 65 million American women are of child-bearing age—and all of them are at risk for having a baby born with Spina Bifida, a birth defect of the spine.

Taking a multivitamin with folic acid every day reduces the risk by up to 70 percent. Yet even women who take folic acid every day may still be at risk. Folic acid cannot guarantee a healthy baby, but it will help reduce the risk of neural tube defects.



Taking folic acid helps reduce the risk of having a pregnancy affected by Spina Bifida; this is especially important if you've had a previously affected pregnancy.

A previous Spina Bifida pregnancy, like the condition itself, increases the chances of a second affected pregnancy by approximately 20 times. Women with a previous affected pregnancy need a higher prescription dose of folic acid to reduce the risk of having another one.

If you know any women of childbearing age, encourage them to make folic acid part of their day, every day. To learn more, visit the Spina Bifida Association at www.sbaa.org or call (800) 621-3141.

**FOR SALE**  
2004 Mercury Grand Marquis LS  
Joe Flores  
Work 396-5538  
Home-396-5389

**DISTRIBUTORSHIP AVAILABLE**  
  
Local Independent Distributorship Opportunity in the Dumas, Dalhart, Clayton & Stratford area. Established producer of Little Debbie and Sunbelt snack products offers orientation & marketing support. Investments and a Good Credit rating required. Equal Opportunity M/F  
For information, Call 806-206-8902

\*\*\*\*\*  
Driver  
**RUAN**  
Expanding Our Business!  
  
\* Tanker Drivers Needed  
\* All Food Grade  
\* Home Each Day  
\* 5 Day Work Week  
\* Medical, Dental & Vision  
\* Excellent 401k Plan  
\* Paid Holidays & Vacations  
CDL-A w/ tank end. and 1 yr. exp.  
**800-879-7826**  
www.ruan.com  
Dedicated to Diversity EOE  
\*\*\*\*\*

**New York Times  
Best Sellers @  
Your Library**

By Sandy Baskin-Librarian

**Fiction**

1. The Appeal by John Grisham
2. Remember Me? By Sophie Kinsella
3. 7th Heaven by James Patterson
4. Strangers in Death by J.D. Robb
5. Honor Thyself by Danielle Steel
6. Lady Killer by Lisa Scottoline
7. 'Duma Key by Stephen King
8. A Thousand Splendid Suns by Khaled Hosseini
9. World Without End by Ken Follett
10. The Killing Ground by Jack Higgins
11. Deep Dish by Mary Kay Andrews
12. Stranger in Paradise by Robert B. Parker
13. Plum Lucky by Janet Evanovich
14. The First Patient by Michael Palmer
15. The Senator's Wife by Sue Miller
16. Sizzle and Burn by Jayne Ann Krentz
17. Blasphemy by Douglas Preston
18. Double Cross by James Patterson
19. The Choice by Nicholas Sparks
20. The Other Boleyn Girl by Philippa Gregory
21. Pillars of the Earth by Ken Follett
22. Water for Elephant by Sara Gruen
23. The Friday Night Knitting Club by Kate Jacobs
24. Atonement by Ian McEwan
25. Someday by Karen Kingsbury

**Non-Fiction**

1. I Am America (And So Can You) by Stephen Colbert
2. Quiet Strength by Tony Dungy
3. Lone Survivor by Marcus Luttrell
4. Born Standing Up by Steve Martin
5. The Audacity of Hope by Barack Obama
6. Eat, Pray, Love by Elizabeth Gilbert

7. 90 Minutes in Heaven by Don Piper
8. The Innocent Man by John Grisham
9. Into the Wild by Jon Krakauer
10. John Adams by David McCullough
11. The Tipping Point by Malcolm Gladwell
12. The World is Flat by Thomas Friedman
13. Chosen by a Horse by Susan Richards
14. The Secret by Rhonda Byrne
15. Women & Money by Suze Orman
16. Become a Better You by Joel Osteen
17. You: Staying Young by Michael Roizen
18. The 4-Hour Workweek by Timothy Ferriss
19. The Dangerous Book for Boys by Conn Iggulden
20. Rich Dad, Poor Dad by Robert T. Kiyosaki
21. Your Best Life Now by Joel Osteen

To check the availability of these items go to [www.hlc-lib.org/stratford](http://www.hlc-lib.org/stratford). Next click on "Search the catalog" and search Sherman County Library. Call 366-2200 and we will be happy to place a hold on the item for you.

**Texas Farmer to Lead National Wheat Organization**

AMARILLO, Texas, March 7, 2008 - David Cleavinger, a fifth-generation farmer of Wildorado, Texas, was selected as the new president of the National Association of Wheat Growers. Cleavinger assumed his role during the Commodity Classic March 1, 2008, in Nashville, Tennessee.

Cleavinger began his leadership in the agricultural community in 1992 with the Texas Agriculture Lifetime Leadership (TALL) program. This two-year program allowed him to study agricultural enterprises and local economies throughout Texas, giving him the opportunity to also travel to Mexico, Argentina, California and Washington, DC. With his continued dedication to his home state economy, Cleavinger also served as chairman of the Texas Rural Communities Board, providing grants and loans to start-up businesses in rural Texas.

With his passion for agriculture at the helm, Cleavinger has been an advocate for this industry for more than 15 years. During this time, he has been a member of the Texas Wheat Producers Board, serving as chairman in 2000, and

also serving on NAWG's Domestic Policy Committee during the 2002 Farm Bill negotiations. In 1996, he expanded his advocacy even further as a member of the U.S. Wheat Associates Board, traveling to Europe and the Middle East to promote U.S. wheat products to foreign buyers.

Cleavinger operates his 4,500-acre irrigated family farm and ranch in Wildorado, near Amarillo, Texas. Over the seasons, his family has produced wheat, corn, grain sorghum, seed milo, sorghum silage, cotton and sugar beets, along with raising stocker cattle. He graduated from West Texas A&M University in 1979 with a degree in agriculture

business and economics.

Cleavinger's wife of 29 years, Jackie, serves as business manager for Wildorado Independent School District, and David served as a board member. They have two children, Kent, who has returned home to the family farming operation, and Kelly, who is a sales representative in Amarillo.

The National Association of Wheat Growers also welcomed to their officer team: Karl Scronce, first vice president, Klamath Falls, Oregon; Jerry McReynolds, second vice president, Woodston, Kansas; Wayne Hurst, secretary-treasurer, Burley, Idaho; and John Thaumert, immediate past president, Sylvan Grove, Kansas.

During National Collegiate Alcohol Awareness Week, college kids experienced the dangers of alcohol impairment right on campus—with interactive tools that simulate drunk driving and more. To learn more, visit [www.alcohol101plus.org](http://www.alcohol101plus.org).

To help small businesses build their Web presence, Microsoft Office Live has joined with Best Buy to provide access to experts trained to address the technology needs of small-business owners. For more information, visit a Best Buy store or [www.officeliveoffers.com/bestbuy](http://www.officeliveoffers.com/bestbuy).

August 3-5 will mark the 20th anniversary of the Dublin Irish Festival in Dublin, Ohio. Performers appearing on the festival's seven stages include Black 47, Flogging Molly, Tommy Makem, Celtic Tenors and Gaelic Storm. To learn more, visit [www.DublinIrishFestival.org](http://www.DublinIrishFestival.org).

15 Years, 4500 Babies In Dumas

## Women's Health Center

Normal and high risk pregnancies  
Gynecologic cancer screening  
Breast cancer screening  
Infertility and family planning  
Menopause and hormone problems

**Dr. Turhan I. Baykan, M.D.**  
Specializing In  
**OBSTETRICS-GYNECOLOGY**

110 S. Bliss Monday-Thursday 8 a.m. - 5 p.m. Friday 8 a.m. - 12 noon

### ANNUAL ST. PATRICK'S DAY PARTY

MARCH 17, 2008

LET'S MAKE ARRANGEMENTS FLORAL AND GIFT

215 N. MAIN

Refreshments  
Hourly Sales  
Door Prizes

Register for Special St. Patrick's Day Surprise

\*\*\*  
Kind words do not cost much.  
Yet they accomplish much.  
—Blaise Pascal  
\*\*\*

\*\*\*  
You can accomplish by kindness  
what you cannot by force.  
—Publius Syrus  
\*\*\*

\*\*\*  
Our deeds determine us as  
much as we determine our  
deeds.  
—George Eliot  
\*\*\*

\*\*\*  
Success in life has nothing to  
do with what you gain in life or  
accomplish for yourself. It's  
what you do for others.  
—Danny Thomas  
\*\*\*



The anti-malarial drug quinine comes from the bark of the cinchona tree, a South American evergreen.

## Ag Day Meeting & Lunch Thursday, March 13th Sherman Co. Barn Stratford, TX

### AGENDA

- 8:30 Registration
- 9:00 Welcome & Updates  
Texas Agrilife Extension Update  
Dr. Galen Chandler, North Region Extension Administrator  
Dr. Darrell Dromgoole, North Region Program Director  
David Graf, Ag/Natural Resources Agent, Sherman County
- 9:30 Dairy Industry Overview and Business Opportunities  
David Ahlem, Hilmar Cheese, Dalhart, Tx.
- 10:15 Dairy Feedstuffs and Sherman County Ag Producers  
Dr. Dwain Bunting, Trouw Nutrition, Lubbock, Tx.
- 11:15 Ethanol's Impact on the High Texas Panhandle  
Arles Graham, Panda Ethanol, Hereford, Tx.
- 12:00 Lunch  
Guest speaker, Lewis Britt, office of U.S. Rep Mac Thornberry  
Update on the 2007 Farm Bill
- 1:00 Wheat and Feedgrains Outlook & Marketing Strategies  
Dr. Steve Amosson, Texas Agrilife Extension, Amarillo, Texas
- 2:00 CEU certificates (for 3 CEU's)

Sponsorship booths are available.

Stratford High School  
2007-2008  
Yearbook Order Form  
DEADLINE TO ORDER MARCH 14, 2008  
AFTER DEADLINE ALL BOOKS ARE \$55.00

Name of Student \_\_\_\_\_  
Grade \_\_\_\_\_ Phone \_\_\_\_\_  
Date \_\_\_\_\_ Ordered by \_\_\_\_\_

|                                   | Quantity | Total          |
|-----------------------------------|----------|----------------|
| 2007-2008 Yearbook @ \$50.00      |          |                |
| Personalization One Line @ \$5.00 |          |                |
| Icons @ \$5.00 each (Limit 4)     |          |                |
|                                   |          | Total \$ _____ |

Personalization (One line, 25 spaces maximum)

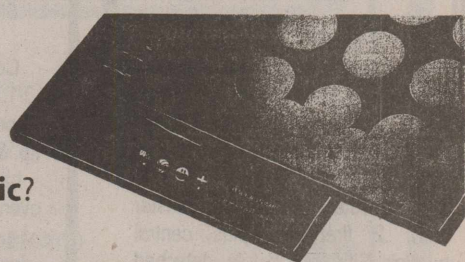
Must order one line of personalization to order Icons

Icons: 1 \_\_\_\_\_ #2 \_\_\_\_\_ #3 \_\_\_\_\_ #4 \_\_\_\_\_

Paid by Check# \_\_\_\_\_ Amount \$ \_\_\_\_\_

Please return to campus secretary or give to  
Mrs. Shari Hudson @ SHS Library  
Any questions, please contact Mrs. Hudson @ 366-3347

Let's get personal.  
Who are you?  
What are your hobbies?  
Do you play sports?  
Are you involved in music?  
What do you believe?



Your answers to these questions have helped you make your mark in your school. Now, with cover personalization, leave your mark on a souvenir from these years: your yearbook.

Choose up to one line of text with up to 25 characters per line to declare who you are and what you're about. Then, choose up to four icons from our collection that best represent you.

## get personal

Icons show actual imprint size.

Emily inherited her father's smile. Thanks to USDA Rural Development, she can inherit the family business.

Across the country, USDA Rural Development has been a valuable resource for guaranteed business loans and other programs that help people build stronger rural communities and brighter futures. For more information, contact your local USDA Rural Development Office or visit [www.rurdev.usda.gov](http://www.rurdev.usda.gov)

Committed to the future of rural communities.

USDA Rural Development  
Amarillo Local Office  
6565 Amarillo Blvd West  
Suite C  
Amarillo, TX 79106  
806-468-8600 ext. 4  
M - F 8:00 am-5:00 pm

USDA is an equal opportunity provider and employer.