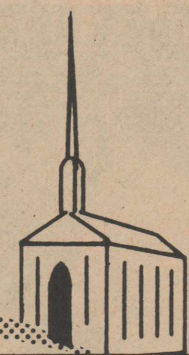


"Thou wilt shew me the path of life:
in thy presence is fulness of Joy..."

PSALM 16-11

HERE IS THE PATH



Don's Super Market
Hwy 287 North

B&W Feed & Mineral
Box 1037, 820 Texas 396-2368
Mormans Purina Chow

Eddie Williams
Upholstery
396-5330

W.D. Brannan & Sons
Complete Flight Services
396-2157

Brown's Meat Locker
Baskin & Betty
Brown's Pharmacy
396-2281-Day or Nite

C&C Texaco Products
Box 125 Stratford

Cimarron Feeders Ltd.
Gateway to Better Feeding
Griggs, Okla. 543-2411

Consumers Company

COMPLIMENTS OF

Corral Ford Inc.
396-5511

Cut Rate Grocery of Stratford
Hwy. 54 East 396-5586

Elk Pharmacy

Phones 396-5631-396-5975 Nite
Bill & Kay Hammons

COMPLIMENTS OF

The First State Bank of Stratford

Foxworth-Galbraith Lbr. Co.
Harold Roberts, Mgr.

Hubbard & Poole Electric

Ernest Hubbard & Mike Mathews
396-2231

J Cattle Co.

Box 888-Stratford-396-5576

Stratford Implement Co.

Minneapolis-Moline Dealer
396-2271

Kerrick Farm Supply

Conoco Gasoline
Kerrick, Texas 367-9221

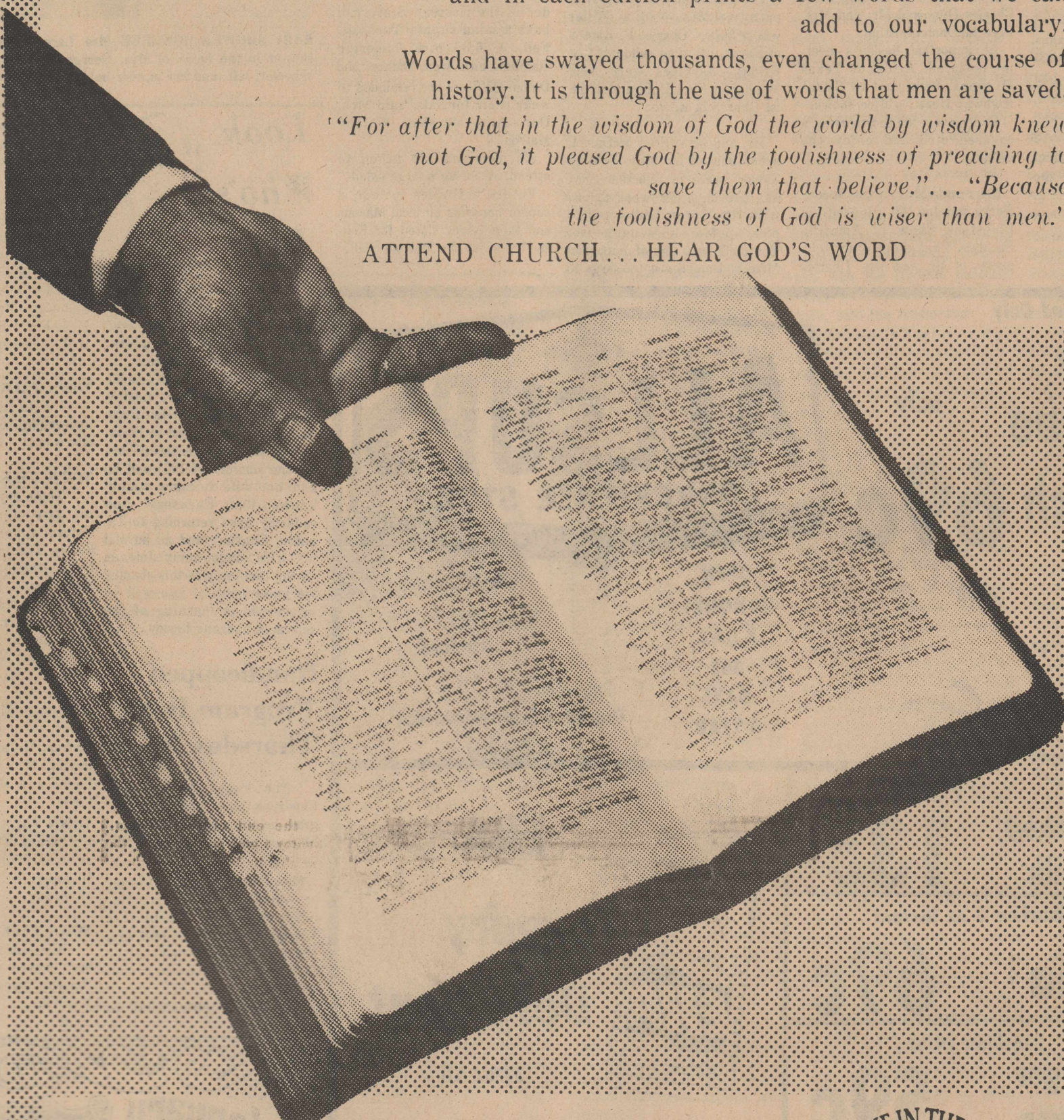
WORD POWER!

One of our popular publications, encourages the learning of new words, and in each edition prints a few words that we can add to our vocabulary.

Words have swayed thousands, even changed the course of history. It is through the use of words that men are saved.

"For after that in the wisdom of God the world by wisdom knew not God, it pleased God by the foolishness of preaching to save them that believe..." "Because the foolishness of God is wiser than men."

ATTEND CHURCH... HEAR GOD'S WORD



The Church is God's appointed agency in this world for spreading the knowledge of His love for man and of His demand for man to respond to that love by loving his neighbor. Without this grounding in the love of God, no government or society or way of life will long persevere and the freedoms which we hold so dear will inevitably perish. Therefore, even from a selfish point of view, one should support the Church for the sake of the welfare of himself and his family. Beyond that, however, every person should uphold and participate in the Church because it tells the truth about man's life, death and destiny; the truth which alone will set him free to live as a child of God.

Coleman Adv. Serv.



King Equipment Co.

Your International Harvester Dealer

Walter Lasley & Sons, Inc.
Custom TLC* Cattle Feeding
*Tender Loving Care
Box 147 396-5961 or 367-2411.

McDonald Concrete & Insulating, Inc.
396-5659

McGavock Pump & Machine
Sales-Service-Water Well Drilling
Machine Shop Welding
396-5601 or Nights 396-5976

Monsanto Farm Store

For All Your Needs
Kerrick

367-2347

Nortex Feedlot Co.

384-2311

Dalhart

North Plains Savings & Loan

396-5534

Oakley's Floral & Nursery

AFS FTD
George & Gaynelle Oakley
Florifax Wire Service 396-2521
Hwy. 54 East 396-2092

Riverside Chemical Co.

Bill Blount, manager
Stratford
Ted Roberts

396-5517

Stratford Cablevision

Jerry Ford, Mgr.
305 N. Main 396-2020

Sherman Implement Co.

Your JOHN DEERE Dealer
396-5561 - Hwy. 54-E

Stratford Auto Electric

119 Wall

396-5941

Stratford Bi-Products

Your Local Used Cow Dealer

396-5350

Gene Romero, Mgr.

COMPLIMENTS OF

Stratford Butane Co.

COMPLIMENTS OF

Stratford Grain Co.

Stratford Welding Shop

COMPLIMENTS OF

TOC Motor Co.

396-2038

Western Auto Associate Store

219 N. Main

396-5510

The Churches Of Stratford

Welcome Your Family

ASSEMBLY OF GOD

North Wall at Third Street
Sunday School 9:45 a.m.
Morning Worship 11:00 a.m.
Evening Worship 8:00 p.m.
Wednesday Services 8:00 p.m.
Rev. J.M. Ashley

CHURCH OF CHRIST

Third at Chestnut Street
Sunday Bible School 10:00 a.m.
Morning Worship 10:55 a.m.
Ladies Bible Class (Tuesday) 9:30 a.m.
Wednesday Bible Classes 8:00 p.m.
Minister Bob Beaty

FIRST BAPTIST

Third at Fulton Streets
Sunday School 10:00 a.m.
Morning Worship 11:00 a.m.
Church Training 6:00 p.m.
Evening Worship 7:00 p.m.
Wednesday Services 7:30 p.m.
Rev. Bruce Mitchell

FIRST UNITED METHODIST

Main at Sixth Street
Church School 9:40 a.m.
Morning Worship 10:50 a.m.
Youth Activities 5:30 p.m.
Evening Worship 6:30 p.m.
Rev. Cecil Hardaway

FIRST CHRISTIAN

North Main at Fifth Streets
Church School 9:50 a.m.
Morning Worship 10:50 a.m.
Evening Worship 6:00 p.m.
Wednesday Bible Study 7:00 p.m.
Choir Practice 8:00 p.m.
Rev. David Harker

INDEPENDENT BAPTIST

Sunday School 10 a.m.
Church Services 11 a.m.
Wednesday Nites 7:30 p.m.
Sunday Nite 7:00 p.m.
Training Union 6:00 p.m.
Elder Earnest Vanover

ST JOSEPH CATHOLIC

519 South Pearl Street
Schedule of Masses:
Sunday 9:00 and 11:00 a.m.
Saturdays 7:30 p.m.
Holy Days 7 a.m. and 7:30 p.m.
Wednesdays 7:30 p.m.
Confessions Before Saturday
and Sunday Masses
Father Lynch

This Series of Church Ads Is Being Published Through the Cooperation of the Local Ministerial Alliance and Is Sponsored By The Undersigned Individuals and Business Institutions

Bill Sladeks Surprised On 25th Anniversary

Mr. and Mrs. Bill Sladek were honored on their Twenty-Fifth Wedding Anniversary Monday evening in the Fellowship Hall of the Methodist Church.

The surprise event was hosted by their children, Rex, Blake, Belinda and Craig Sladek and Mr. and Mrs. Pete Wall, Sonja Ragsdale and Janet Riffe. The serving table was centered with a three-tiered white

cake and a silver footed punch bowl. Silver appointments were used in serving the cake, coffee and punch.

TOWN TALK
R.E. Florida was rushed to Dumas Memorial Hospital last Friday.

TOWN TALK
Donald Moon is now home from the hospital following a heart attack.



HONORED ON ANNIVERSARY—Mr. and Mrs. Bill Sladek was honored on Monday evening with a surprise event celebrating their twenty-fifth wedding anniversary. The event was held in the Fellowship Hall of the Methodist Church and was hosted by the couple's children and friends.

TCU Scholarship Established By Mrs. Buckles

Mrs. R.C. Buckles of Stratford established the Buckles Memorial Ministerial Scholarship Fund with a donation recently to the Brite Divinity School of Texas Christian University with a gift of \$10,000.

The gift was given by Mrs. Buckles in memory of her husband the late R.C. Buckles, her son and daughter in law, Mr. and Mrs. R.M. Buckles. The fund was created to aid students preparing for the ministry at Brite Divinity School.

Earnings for the gift will provide half of a full tuition scholarship each year.

This year's recipient of the scholarship is Edwin R. Allen Jr., a senior student at Brite. He is a graduate of Ball State University in Indiana and currently serves as a ministerial intern at Central Christian Church in Dallas.

HAIR Facts & Fancies

You may not notice the tiny hairs that line most of the seemingly "hairless" parts of your body, but the really hairless areas of the human skin are basically the palms of the hands, soles of the feet, undersides of toes and fingers, and the margin of the lips.

In Europe it's sometimes considered appealing not to shave body hair, but women in America have long preferred the smooth, hairless look. With evening and beach fashions becoming more revealing, it's more important than ever to have perfectly smooth skin.

A revolutionary technique to effectively remove body hair easily, quickly, and painlessly has been introduced into this country. It's called Depilatron, and uses medically approved radio-frequency energy. No needles are used and nothing ever punctures or touches the skin to cause scarring or infection. More information is available by sending a self-addressed, stamped envelope to: Depilatron, Inc., 15 June Street, Woodbridge, Connecticut.



FEB. 2-6

MONDAY-Hamburger steaks, mashed potatoes, creamed gravy, green beans, hot rolls, butter, peanut butter cookies, milk.

TUESDAY-Kraut/ weinners, buttered steamed potatoes, w/k corn, hot rolls, butter, brownies, milk.

WEDNESDAY-Beef stew/ vegetables, tossed green salad, hot biscuits, butter, peanut butter, peach cobbler, milk.

THURSDAY-Chalupas/ beef-brown beans, lettuce, tomatoes, mixed vegetables, fruit, milk.

FRIDAY-Hamburgers, cheese, onions, lettuce, pickle slices, french fries, catsup, yeast doughnuts, milk.

The paper money we use today developed from a custom that began in England during the 1600's according to World Book Encyclopedia.

Cook of Week



COOK OF THE WEEK—Mrs. Ed (Edith) Staston is a working mother, employed by North Texas Wholesale. She has lived in Stratford since June and enjoys tole painting and bowling.

A Busy Mother

Our cook for this week is Mrs. Ed (Edith) Staston. Edith and Ed have been married since June 7 and are members of the First Baptist Church.

They have four children, Donna Staston, 10 years old; John Warton, who is 14 years old; a married daughter who lives in Dumas, Mrs. Chester (Terri) Leach; and a son who lives in Amarillo, Brent Warton. Edith has one granddaughter, Misty Don, who is one-year old.

Edith is employed by North Texas Wholesale and Ed is the manager of Cut Rate Grocery.

Our cook enjoys tole painting, knitting and she and Ed bowl on a league in Dalhart.

MEXICAN CASSEROLE

Brown together 2 lbs. hamburger and 1 chopped onion. Add garlic salt to taste and 1 t. chili powder.

Mix in blender

- 1 can cream of celery soup
- 1 can cream of chicken soup
- 1 can rotel

STRAWBERRY PIE

- 1 can Eagle Brand Milk
- 1 large carton Cool Whip
- 1-12 oz. pkg. frozen strawberries, whole without sugar
- 3 T. lemon juice
- 1 c. chopped nuts

Slice strawberries and mix with cool whip, Eagle Brand and nuts. Pour into graham cracker crust. Makes 2 pies.

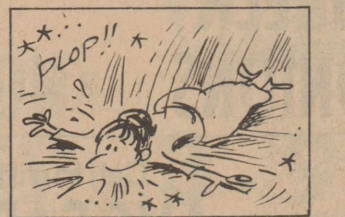
PINEWOOD DERBY SLATED FOR SATURDAY HERE

Cub Pack 38 will hold it's Annual Pinewood Derby Saturday at 7 p.m. in the high school gym.

Cars will be entered by Cubs in divisions of 8-year olds, 9-olds, and 10-year olds.

A Pinewood Derby Queen will be selected from ladies present and she will present the trophies to the winners in each division.

A free will donation will be taken at the door and the public is cordially invited to come and see Cub Scouting in action.



In 1913 it was fashionable for women's skirts to be worn so tightly about the ankle that many women had trouble walking.

TOWN TALK
Butch, Karen and Cindy Stovall and Jeff Wiley skied at Angel Fire over the weekend.

You're Invited

Plant Potpourri

Monday Feb 2
1 p.m. - 7 p.m.

Mike Barra, professional plant grower will be in the store from 1:00 p.m. to 7:00 p.m. to answer your plant care questions. He will demonstrate planting of terrariums, potting & repotting of plants.

Complete Selection of plants and Containers will be available.

The Bumble Bee

301 N. Main Stratford

RCA XL-100
100% Solid State
Color TV
15" diagonal

Model ET353
15" diagonal

\$399⁹⁵

RCA XL-100
100% solid state.
Don't settle for less.

Western Auto Store

Leland Lewis, Owner

3rd & Main Stratford

Prices Slashed for Final Sale Week!

Bedspreads	one group Sheets
25 % off	20 % off
Bathroom Accessories	Electric Blankets
20 % off	20 % off

Twin Blankets	\$17.75
King Blankets	\$18.00
Full Blankets	\$4.88

See Our Bargain Table

6 Wash Cloths	\$4 ⁰⁰
3 Hand Towels	\$3 ⁹⁰
2 Bath Towels	\$6 ⁰⁰

Something special

218 N. Main Ph 396-2570

Dee's Dance Studio

XIT Ranger Clubhouse

Rita Blanca Lake Rd., Dalhart

Classes twice a month \$15 month
Monday & Wednesday

Class One a week \$10 month
Monday Only

Ballet **Twirling**

Tap **Gymnastics**

Classes Available for Pre-schoolers, 3 & up, Intermediate & Advanced

753-4434 or 373-6167
9a.m. to noon

Thank You All

A heartfelt Thanks to everyone who contributed toward making our 1976 Pancake Supper a success. To those who came and ate, to those who donated food, to the Boy Scouts for their help, and for everyone who helped us in this endeavor a big Thank You. A special word to Don Owens at Dons Supermarket for the syrup, sugar and coffee; to Willie Price at Cut Rate Grocery for the pancake mix and napkins; and to the local Allsup's Convenience Store for their contribution of the oleo.

Stratford Lions Club

SPECIALS FOR THE WEEK

Thursday	Hamburger & small drink	99c
Friday	Fish sandwich & medium drink	1⁰⁰
Saturday	BBQ Sandwich & small drink	59c
Sunday	Quarter Fried Chicken, green salad, onion rings, toast & honey, drink	1⁹⁸

Open Weekdays 11 a.m. - 9 p.m.
Open Sundays 11:30 a.m. - 9 p.m.

Phone 396-2433 Phone 396-2433

Dairy Queen

Hwy 54 at Main in Stratford

Register For Free Meal Every Week!

PRODUCE SPECIALS

California **GREEN ONIONS** 2 Bunches **25¢**

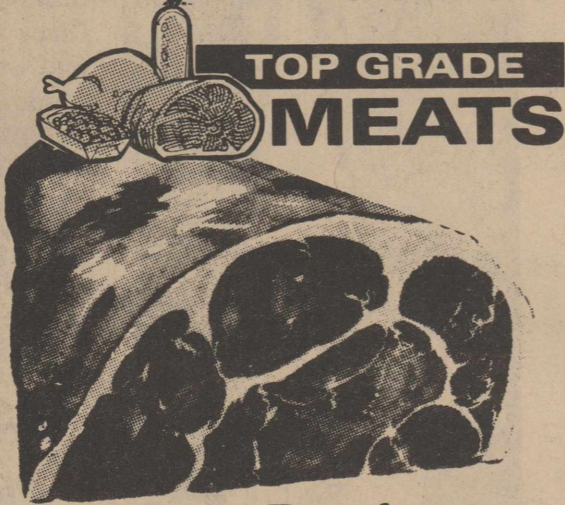
California **AVOCADOS** 4 for **\$1**

California **LEMONS** 4 Pounds **\$1**

Colorado Rome **APPLES** 4 Pounds **\$1**

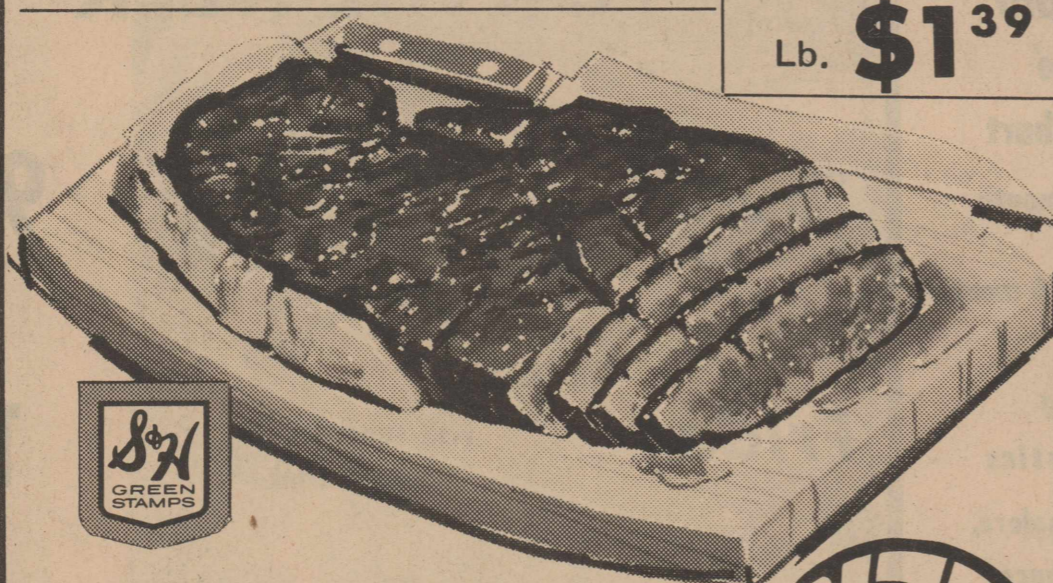


Florida **RADISHES** 6 Oz. Cello 2 Pkgs. **21¢**



Pike's Peak Roast

Lb. **\$1³⁹**



ROUND STEAK

Bone In Lb. **\$1²⁹**

Boneless Lb. **\$1³⁹**



Shurfresh **TURKEYS** While They Last Lb. **69¢**

Shurfresh **SLICED CHEESE**

1 Lb. **\$1⁴⁹**



Gooch **FRANKS** 12 Oz. **79¢**

STOCK UP AND SAVE

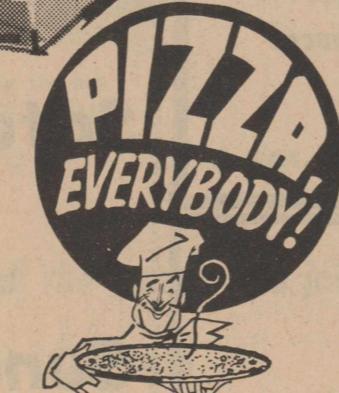


CHEER Family Size Box **\$4³⁹**



Zee **PAPER TOWELS** Jumbo Roll **2.99¢**

Boneless **RUMP ROAST** Lb. **\$1³⁹**



Tony's **FREE SAMPLES ALL DAY FRIDAY & SATURDAY** Cheese

Each **\$1⁰⁹**
Sausage - Hamburger - Pepperoni
Each **\$1⁴⁹**
Canadian Bacon Sausage Pepperoni
Each **\$1⁶⁹**

BIG CANNING

AT YOUR CUTRATE SUPERMARKET
PLUS THE EXTRA VALUE OF S&H GREEN STAMPS

Gebhardt Plain **CHILI** No. 2 Can **77¢**

FOOD STAMP CUSTOMERS WELCOME

Bow Wow **DOG FOOD** 25 Lb. Bag **\$3⁹⁹**



PEPSI COLA Returnable Btls. 32 Oz. **6 for \$1⁴⁹**



Del Monte **CATSUP** 14 Oz. Btl. **3 for \$1**



Bakerite **SHORTENING** 3 Lb. Can **\$1⁰⁹**



Northern Assorted **NAPKINS** 140 Ctn. Pkg. **44¢**



Shurfine **SUGAR** 5 Lb. Bag **\$1¹⁵**



Folgers Crystals **INSTANT COFFEE** 10 Oz. Jar **\$2⁸⁹**



Del Monte Seedless **RAISINS** 15 Oz. Box **59¢**



Quick Quaker **OATS** Small Box **2/89¢**

Winu Cherry **PIE FILLING** 21 Oz. Jar **\$1**



Gold Medal **FLOUR** 5 Lb. **79¢**



WE WELCOME FOOD STAMP CUSTOMERS

Cut Rate

GROCERY AND FAMILY CENTER
OPEN SEVEN DAYS A WEEK

Prices effective Thursday, January 29 thru Wednesday, February 4

HIGHWAY 54 EAST
STRATFORD, TEXAS

604 MAIN STREET
SUNRAY, TEXAS

FOOD SALE

DOUBLE S & H GREEN STAMPS WEDNESDAY WITH PURCHASE OF \$2.50 OR OVER

FROZEN FOOD SPECIALS



ONION RINGS 7 Oz. **3 for 99¢**

Minute Maid ORANGE JUICE 6 Oz. **3 for 89¢**

MARKET GREEN STAMPS



STAINLESS FLATWARE

There's never been a smarter way to get a set of beautiful stainless flatware. We even give you your choice of pattern! Pick up the featured place setting piece of the week each time you shop—and before you know it, you'll have collected a complete service at great savings just for buying the groceries you need!

Each place setting piece ONLY

22¢



Morton Powdered Sugar DONUTS 11 1/2 Oz. **69¢**



Del Monte Yellow Cling PEACHES Halves or Slices No. 2 1/2 Can **2 for \$1**



Del Monte Whole Kernel or Cream Style CORN 303 Can **3 for \$1**

Downy FABRIC SOFTENER

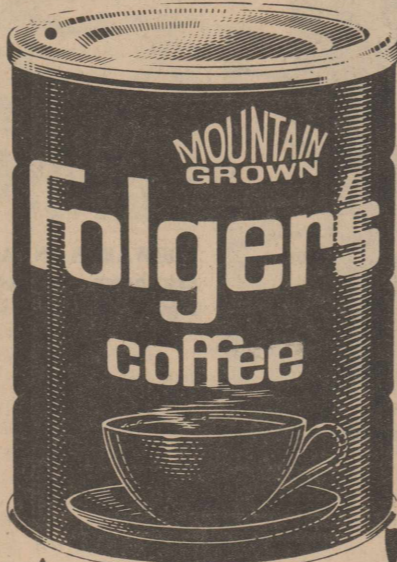


96 Oz. Btl. **\$2³⁹**

Keebler Deluxe Graham COOKIES



13 1/2 Oz. Box **77¢**



Folgers COFFEE All Grinds 2 Lb. Can **\$2⁵⁹**



Del Monte PUDDINGS OR FRUIT CUPS 5 Oz. 4 Pak. **66¢**

Betty Crocker FROSTING MIXES

Chocolate - White - Cherry 7 Oz. Box **79¢**

Shurfine Pink GRAPEFRUIT JUICE



46 Oz. Can **2 for \$1**

Betty Crocker CAKE MIXES

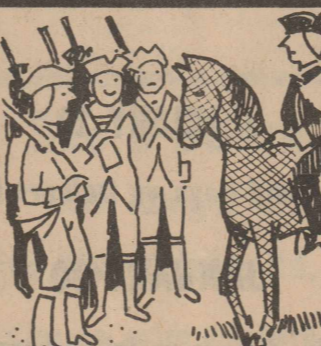
18 Oz. Box **59¢**



Bama PEACH PRESERVES

18 Oz. Jar **79¢**

The Amazing BEN FRANKLIN



When Ben was postmaster general, he gave his entire salary to the relief of the Continental soldiers!



© 1975 BEN FRANKLIN STORES



Del Monte TOMATO JUICE 46 Oz. Can **2 for \$1**



Del Monte FRUIT COCKTAIL 303 Can **2 for 79¢**

Del Monte SWEET PEAS



303 Can **3 for \$1**

BONUS SPECIAL

Glad Sandwich BAGS

80 Ct. Pkg. **1¢**

WITH 1 FILLED BONUS SPECIALS BOOKLET

BONUS SPECIAL

Shurfresh Soft OLEO

1 Lb. Pkg. **1¢**

WITH 1 FILLED BONUS SPECIALS BOOKLET

BONUS SPECIAL

AURORA BATHROOM TISSUE 2 Roll Pkg. **1¢**

WITH 1 FILLED BONUS SPECIALS BOOKLET

BONUS SPECIAL

Birdseye AWAKE 12 Oz. Can **1¢**

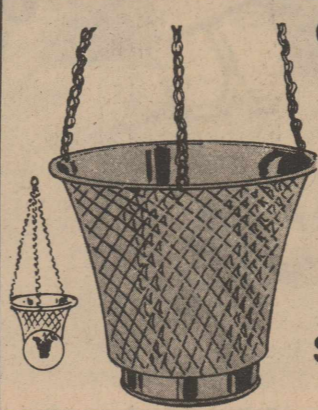
WITH 1 FILLED BONUS SPECIALS BOOKLET



Arthritis BUFFERIN

Reg. \$1.29

40's **99¢**



Ceramic Hanging PLANTERS

Reg. \$1.49

Sale **\$1¹⁹**

COFFEE MUGS

Stacking

37c Each

Sale **29¢**



Congespirin TABLETS

Reg. 87c

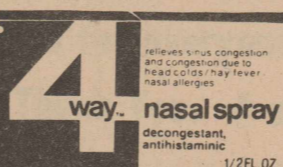
36's **69¢**



Ultra Ban 5000 DEODORANT

Reg. Unscented Powder

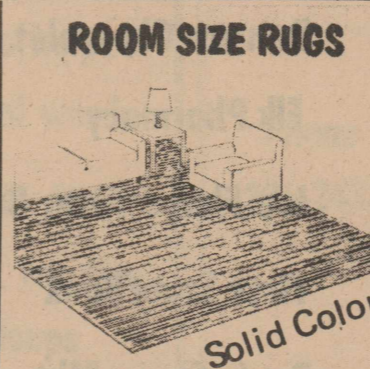
Reg. \$1.50 5 Oz. **\$1¹⁵**



4-Way NASAL SPRAY

Reg. Or Menthol Reg. \$1.25

1/2 Oz. **99¢**



ROOM SIZE RUGS

8 Foot 6 Inch x 11 Foot 6 Inch Reg. \$24.99

Sale **\$19⁹⁹**



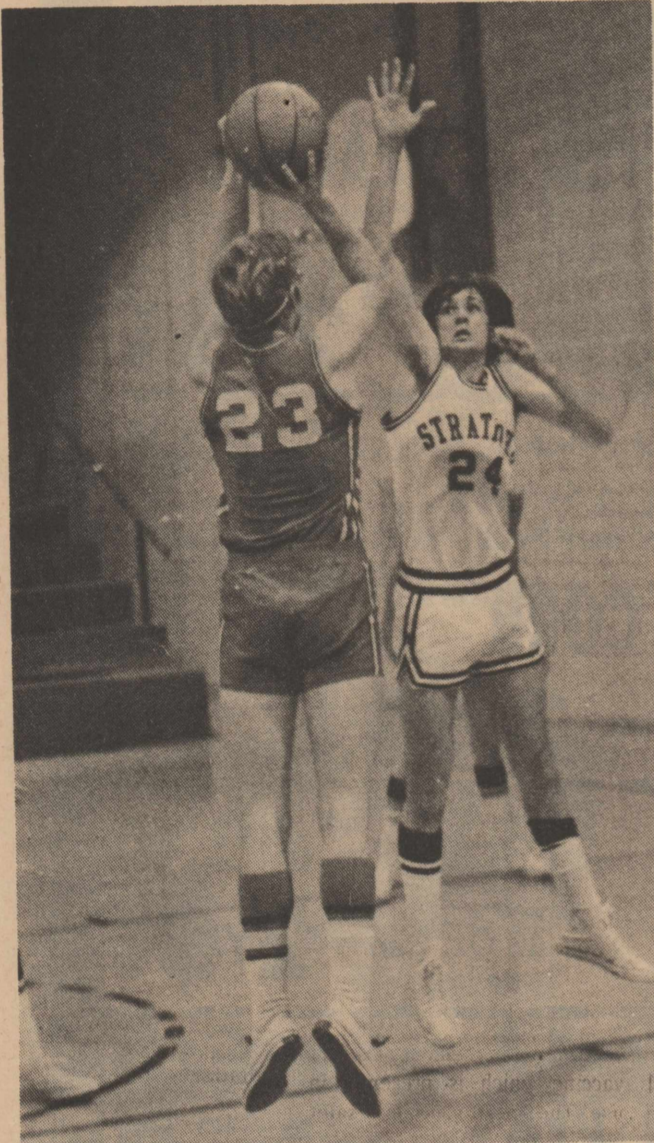
20 Gal. TRASH CAN

Heavy plastic with snap-on cover. Contrasting colors.

Reg. \$4.98

Sale **\$3⁹⁸**

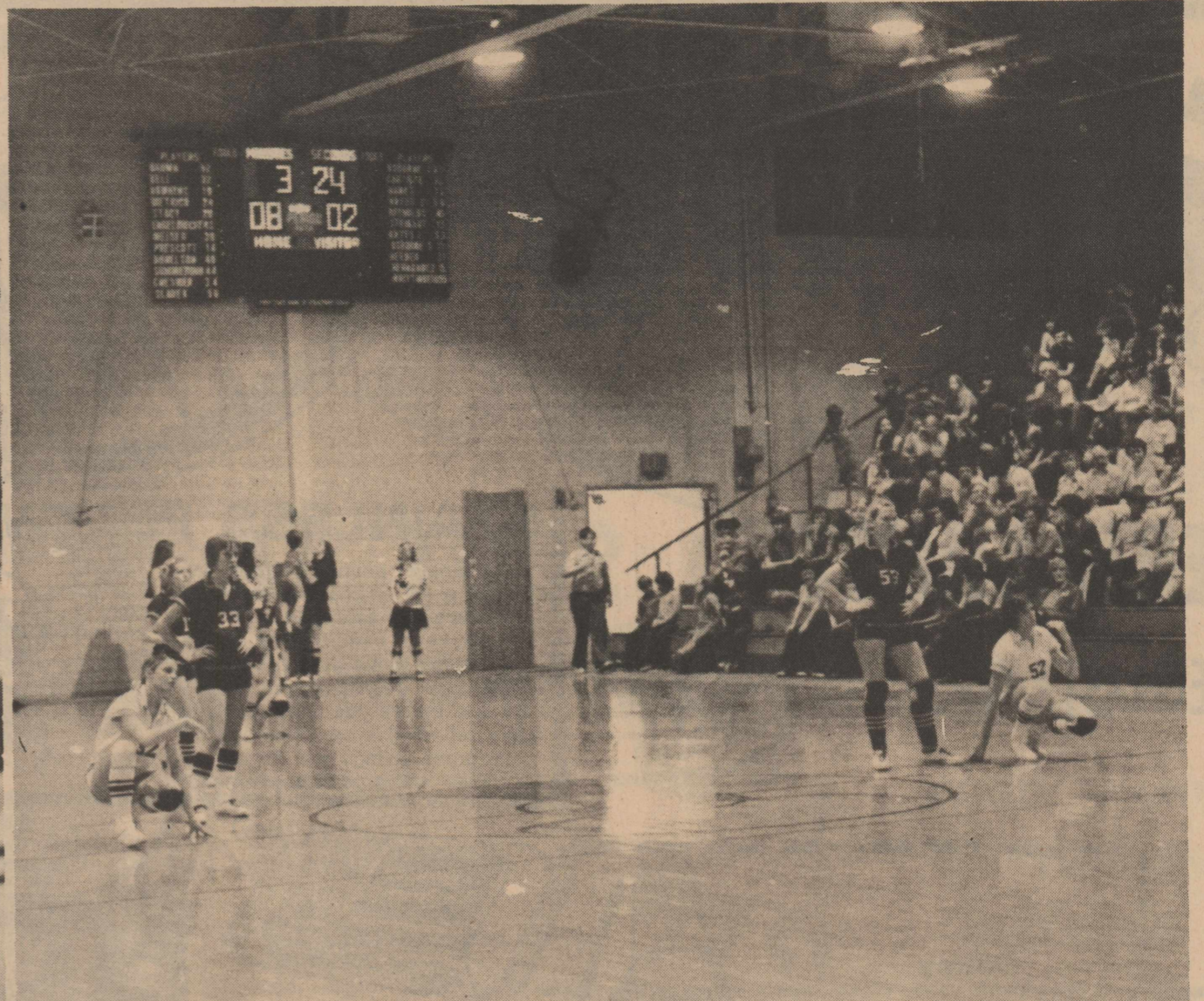
Support Your Elks and Elkettes all season long



BLOCK THAT SHOT-Wayne Garoutie is shown as he attempts to block a shot by Layton of Sunray. The Elks won the contest 60-48.

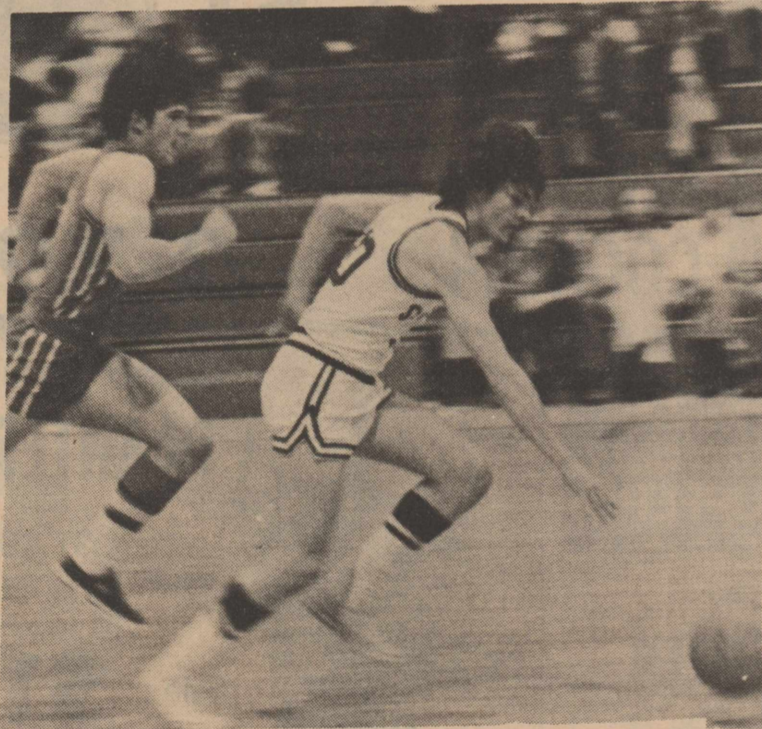


HERE'S TWO- Joel Hart is shown as he puts up two points against Sunray Friday night in a contest that saw the Elks win 60-48.



FORWARDS IN 'ACTION' WITH SUNRAY-Elkette Forwards are shown in an 'action' shot during the Sunray game Friday night. Sunray stalled the ball throughout the game but the

Elkettes won 19-9. All three forwards are sitting on the floor waiting for a break on the other end of the court where Sunray gave their dribbling exhibition.



FAST BREAK-Darrell Doshier is shown after stealing the ball making a fast break upcourt in action Friday night against Sunray. Doshier is being pursued by Hunnicutt.

**Come to the games
and help us
Boost Our
Teams
This Year**

JANUARY 29

7,8 girls and boys vs Dalhart here 4 p.m.

JANUARY 30

A,B girls, A boys vs Fritch here 5:30 p.m.

JANUARY 29,30,31

Fritch JV Tourney

FEBRUARY 2

7,8 girls and boys vs Fritch here 4 p.m.

FEBRUARY 3

A girls, A and B boys vs White Deer there 5:30 p.m.

Come to all the games and join these local businesses in rooting for the Elks & Elkettes this season!

- Bill's Men & Boys
- Brown Meat Locker
- Brown's Discount Pharmacy
- Buckle & Bow
- Buster's Boot Shop
- C & C Farm Store Inc.
- C&D Body Shop, Inc.
- Cimarron Feeders Ltd
- Consumers
- Corral Ford Inc.

- Cut Rate
- Dairy Queen
- Delta Trucking Inc.
- Duncan Chevrolet
- Elk Pharmacy
- Joe Flores Farm Bureau Insurance
- First State Bank
- Don's Super Mkt.
- Golden Spread Imp Co
- Hi Plains Farm Supply

- J Cattle Company
- JA's
- Walter Lasley & Sons Feedlot
- Lou's Fabrics
- North Plains Savings & Loan
- Nortex Feedlot Co,
- Oakley Floral
- Olson Automotive & Supply
- Plunk 66 Oil Co
- Sherman Implement Co

- Stratford Cablevision
- Gifford Hill & Co., Inc.
- Stratford Grain
- Stratford Implement Co
- Stratford Printing Service
- The Stratford Star
- TOC Motor Co
- Ulysses Irrigation Pipe Co.
- Western Auto Store

STATE CAPITAL Highlights AND Sidelights

by Lyndell Williams
TEXAS PRESS ASSOCIATION

AUSTIN — The Texas Veterans Land Program, temporarily shut down December 31, may re-open soon.

A meeting of the Veterans Land Board has been scheduled February 11 to review the bond market for a possible bond sale.

Land Commissioner Bob Armstrong said financial advisors report interest rates are beginning to come down slowly and that favorable rates may be obtainable in March.

Armstrong also claimed the temporary halt in the program may have helped stem inflation of land prices.

"Our chief appraiser tells me that land prices are settling down in every area of the state except in the Houston vicinity," said Armstrong. "This means the delay may actually benefit those veterans who intend to make land purchases under the program in the future."

A total of 1,771 applications for loans were received in the last two weeks of December. Land Office staff members are trying to process more than 4,700 completed applications before the Veterans Land Program is re-opened.

\$2 Billion Topped

Oil and gas income to the Permanent School and Permanent University Funds now tops \$2 billion.

Land Commissioner Armstrong said deposits reached \$2,003,638,403 with the aid of \$24.7 million in new income from settlements of "in-kind" gas pricing lawsuits.

The suits forced some gas producers to pay the state current market value for gas royalty from production on state lands.

Armstrong said the

Permanent School Fund totals \$1.23 billion and the University Fund \$772.3 million. Both funds received \$16.3 million in royalty payments for the month of December alone. Of the latter, nearly \$2.5 million came from settlements between the state and 18 gas producers. Twenty-seven lawsuits have been filed by the attorney general against major gas producers on state lands.

Parts Rates Up

Insurance Board Chairman Joe Christie charged Detroit automakers with pushing up prices on auto parts to make up for declining new car sales.

Christie told a traffic safety conference here parts prices jumped 32 percent in a single year.

The board chairman advised that safe driving is still the best way to hold down the cost of auto ownership, including insurance premiums.

Crime Program Pledged

Gov. Dolph Briscoe has pledged to offer far-reaching recommendations to the next legislature for curbing crime.

A new report by the Governor's Executive Committee on Criminal Justice Standards and Goals already has proposed ambitious objectives for the Texas criminal justice system.

Briscoe said his program will seek to restrain repeat offenders, including those who commit a crime while on bail. The governor said he thinks there should be a procedure for denial of bail. And he said the death penalty has served as a deterrent to crime.

Courts Speak

Texas Supreme Court

took under study a Gonzales case involving whether so-called "front-end loan fees" on real estate loans are in fact additional interest.

Court of Criminal Appeals reversed the conviction resulting from the third trial of a Bowie County man on a robbery by firearms charge.

The Supreme Court stuck by its finding of last month that the governor overstepped constitutional authority in vetoing more than 130 college building projects in June 1975.

Third Court of Civil Appeals upheld a trial court finding that a mother gave up her parental rights to her nine-year-old son by a divorce agreement.

Court of Criminal Appeals reversed a mother's murder conviction in the fatal death of a two-month-old daughter on grounds of insufficient evidence.

AG Opinions

Payment of one-half of accumulated sick leave on termination of state employment is applicable to higher education institutions, Atty. Gen. John Hill held.

In other recent opinions, Hill concluded:

Independent school districts not holding elections for their district trustees on the day set for county school trustee elections (in counties over 500,000) must hold county trustee elections.

A justice of the peace with an unexpired term of more than a year automatically resigns on announcing candidacy for water district director.

Military service should be credited in judicial retirement computation.

Physical therapy license applicants must pay prescribed examination fees.

Industries Increase

Twenty-two new industries with an annual economic impact of nearly \$16.5 million and payrolls of 383 registered in Texas during December.

The increase was the largest for a single month

THE STRATFORD STAR

in more than two years. Jim Harwell, executive director of Texas Industrial Commission, said the industries will generate an additional 291 jobs.

Harwell said the increase had been expected, due to the upswing in the number of inquiries to the commission on the Texas economic climate.

Short Shorts

Texas farmers are expected to plant 1.35 million acres in corn — a 13 percent increase over 1975. Projected upland cotton acreage is up 10 percent, to 4.8 million acres.

Jon P. Newton of Beeville entered the Texas Railroad Commission race. There are now four Democratic candidates and one Republican.

State representative filing deadlines have been increased in 15 districts — in Fort Worth, Port Arthur and Corpus Christi pending a ruling on a redistricting bill.

Texas Utilities Commission set hearings starting in mid-February on territorial claims for service.

Gov. Briscoe has recommended mandatory license suspension for drunk driving convictions.

The Speaker Reports



by Bill Clayton

Government will continue to be a major force in our lives but it is becoming apparent many people believe there are opportunities to cut back and restructure.

I believe we in Texas have been well served by state government, but there are countless areas where savings might be realized without taking the initiative from programs.

We must undertake now to pick and choose those things that are most important for our future. We must understand the limits and value of money. Close observation and monitoring of spending requirement at every level.

Disabled Vets Get Exemption From Taxes

Beginning in 1976, certain disabled veterans will be eligible for property tax exemptions in Texas. According to information furnished by Max Stephenson Veterans Service Officer for Sherman County, the tax exemptions are also to be made available to the widows of some veterans as well as the widows of persons who died while in military service. These special tax exemptions were made available through the provisions of House Bill 546, which was enacted by the 1975 Texas Legislature and signed into law by Governor Dolph Briscoe.

Veterans eligible for the exemption are those who have service-connected disabilities which were incurred during military service and are so rated by either the Veterans Administration or a branch of the Armed Forces. If a disability is rated less than 10 percent disabling, the veteran receives no exemption. If his disability is rated from 10 percent through 30 percent he is entitled to an exemption of the first \$1,500 of assessed value of his property. For those rated more than 30 percent to 50 percent, the exemption is on the first \$2,000 of the assessed value; more than 50 percent to 70 percent, it is \$2,500 of the assessed value; more than 70 percent, it is \$3,000 of assessed value. If a veteran has a disability rated 10 percent or more and is 65 of age or older, he is entitled to the exemption on the first \$3,000 of assessed value.

The widow of a deceased veteran is entitled to the exemption which her husband would have been entitled to at the time of his death. The widow of a person who died while on active duty is entitled to \$2,500 of the assessed value of her property which is subject to taxation. Also covered by the law are the minor children of certain deceased veterans and active duty personnel.

All tax collectors in the State have been furnished with instructions showing how the law is to be administered. Anyone who believes they are entitled to a tax exemption under the law should contact their local tax offices and determine what evidence will be required to establish their eligibility.

When cooking with cheese, remember to keep it at a low temperature. Overcooked cheese becomes stringy and gluey.

Soybean Yield Trial Results Announced

Results of 1975 soybean yield trials released by the Texas Agricultural Experiment Station at Lubbock show that while little gain can be expected in yields, new lines being developed will have improved plant characteristics.

Dr. Raymond Brigham, Experiment Station oilseed scientist, said data from promising experimental lines were compared to selected released varieties. Overall, he concluded, some of these lines will have more disease resistance, better seed quality, improved plant type, and will be less vulnerable to shattering.

Soybean varieties are divided into maturity groups which allow producers alternate maturity times. They include maturity groups 00 through IX, with group 00 being earliest in maturity. In all, Brigham evaluated 178 entries in eight different trials at Lubbock, ranging from group IV to group VI maturities, including advanced and preliminary experimental lines. In group IV-N (soybean production area from Panhandle northward), Columbus was the highest yielding entry with 54.4 bushels per acre, said the researcher.

Columbus, a Kansas variety, was followed by four experimental lines also from the Kansas soybean breeding program. Yields for the experimental lines ranged from 52.2 to 50.4 bu/A.

"Usually dry weather after maturity allowed excellent evaluation for resistance to seed shattering, and the Columbus variety continued to top the list for ability to hold seed after maturity," said Brigham.

"Plant height of Columbus also allows efficient harvest, since pods are set well above the soil line," he added.

"Essex continues to be outstanding in yield, seed holding ability and has desirable plant type," said Brigham. "It has been slightly higher in yield than York over the past four years, but has averaged four bu/A more than Hill."

Dry weather during early fall was less favorable to late soybeans, and yields of varieties in maturity group VI were generally lower than earlier varieties, noted the TAES scientist. Lee 68 with 42.7 bu/A continues to be the most productive released variety in group VI, he said, but was surpassed in yield by four experimental lines with yield ranges of 47.6 to 43.5 bu/A. This would suggest that better varieties may be on the market in the near future.

The top yielding line, TS

72-824, is from a cross of Bethel X Clark 63 which was made at Lubbock in 1970. Brigham said this line will undergo further testing in 1976, and could possibly become a desirable variety for the Texas High Plains area.

New genetic combinations continue to be generated in the soybean research program at Lubbock, he concluded. Over 2,600 pollinations were made in 1975, and over 3,000 single plant selections were made in segregating generations of promising crosses.

Brigham said F2 selections (first segregating generation after a cross) were sent to Puerto Rico for a winter nursery planting which will allow two generations a year to be grown instead of one, which speeds up the process of varietal development.

Brucellosis Talks Settled In Washington

Texas Farm Bureau President Carrol Chaloupka said agreements reached in a meeting with Secretary of Agriculture Earl Butz "seem to satisfy many of the objections of the Texas cattle industry to U.S. Department of Agriculture Brucellosis regulations."

Chaloupka met in Washington, D.C., Jan. 22 with Secretary Earl Butz and animal health officials of the USDA to try to work out a settlement on the Brucellosis program in Texas. At present, the Texas Animal Health Commission is complying with federal regulations in response to a court order, thus avoiding for the time being, a quarantine on Texas cattle.

"USDA officials agreed to being a program of calfhood vaccination in areas where Brucellosis is a problem," the TFB president said. "They also agreed to have the American Academy of Sciences monitor the USDA Brucellosis research program provided that funds are made available."

The state farm leader said USDA also agreed to "explore the possible release of the 45/20 vaccine to complement Strain 19 vaccine which is presently in use. The 45/20 vaccine is safer to handle, can be used safely in adult cattle, but requires annual vaccinations. Strain 19 vaccine has been shown to provide protection for at least seven years."

Chaloupka was accompanied to the Washington meeting by Robert A. Faseler of Hondo, chairman of the TFB animal health committee; Warren Newberry of Waco, TFB executive director; and Joe Fields, Waco, radio/television news director for the farm

organization.

Under the court order in Texas, which is in effect indefinitely, the Animal Health Commission now requires the S-branding of cattle exposed to Brucellosis to prevent them from being diverted from shipment to slaughter, and also requires tighter controls of cattle entering Brucellosis-free areas of the state.

USDA officials said after the injunction was issued that they would continue cooperating with Texas in carrying out a Brucellosis eradication program, including the payment of indemnities to owners of infected cattle.

The Texas animal Health Commission will meet Feb. 19 to propose regulations that are expected to comply with Uniform Methods and Rules of USDA. At that time the Commission is expected to announce a hearing to be set for March 30. The Commission has ten days after that to act on any objections. Then it can type up the regulations in the form of a proclamation which would establish the effective date of the new regulations.

GOOD CITIZENSHIP

Hiring The Handicapped

Corporations, like people, can be good neighbors. And they can show their concern in many different ways. One is by hiring the handicapped.



Especially aware of how much private business is doing for the handicapped is a non-profit organization called Contemporary Guidance Services, Inc., of New York City. It trains physically disadvantaged young adults in skills that can lead to good jobs. It also keeps watch on who is extending a helping hand. That's why it awarded a scroll to Union Carbide Corporation.

The award commended the company's sympathetic reception, cooperation, and willingness to help prove that handicapped young adults are not only employable, but also make good employees.

By instituting employment policies such as these, America's businesses are showing they are good citizens and an important part of the community in which they function.

GREETINGS TO ALL LADIES AND GENTLEMEN IN THE CATTLE INDUSTRY THURSDAY, JANUARY 22, WAS THE REGULAR DAY FOR THE "CATTLE AUCTION WITH ACTION IN TEXHOMA. THE SELLING BEGAN AT 9 AM (CST) AND WAS COMPLETED AT 9:30 PM. 4542 CATTLE AND CALVES WERE SOLD THROUGH THE ARENA.

WE ARE NOW TAKING CONSIGNMENTS FOR JANUARY 29 AND EVERY THURSDAY IN FEBRUARY. ADVISE US IN ADVANCE OF YOUR PLANS. IT HELPS US WITH OUR EXTENSIVE ADVERTISING AND INDIRECTLY HELPS YOU. YOUR DEPENDABLE CATTLE AUCTION EVERY THURSDAY TEXHOMA LIVESTOCK COMMISSION COMPANY, INC. TEXHOMA, OKLA. 73949

Phone 405-423-3251

P.O. Box 70

Thanks A Million and a Half

In 1975 the people of Stratford and Sherman County purchased over

\$1,500,000 of new new Southern Farm Bureau Life Insurance from me personally.

This is the 12th consecutive year that Sherman County Farm Bureau members have purchased over \$1,000,000 of new Life Insurance from The Southern Farm Bureau

Life Insurance Company. I am very grateful for your confidence in our Company.

We promise to do our very best to look after the estates and security you have created.

We consider it the highest privilege to have been of service to you.

JOE P. FLORES

Thank you so very much.

Your Farm Bureau Agent

Letter to Editor

[ED NOTE: The following letter was written to us by Dr. Patterson, and as it would be of interest to everyone we include it for your reading enjoyment. Many thanks to Dr. Patterson for his complimentary letter.]

As a young man just out of college, my first exposure to Stratford was in the fall of 1926. I came there as High School Principal and Basketball Coach, an assignment which I held through December 1927. The exposure from both the Student Body and members of the Basketball Squads was tremendous, worth more than all the efforts expended on both responsibilities.

In January 1928, the School Board asked me to accept the Superintendency of the School District, in which capacity I

remained until June 1929. There again the co-operation from both the student body and the Community was most gratifying. Many of the small rural school districts sent their students to Stratford for their High School program. Forrest Mullins who was County Judge and Ex-Official County Superintendent supplied splendid leadership for the County of Sherman in this arrangement...

At that time Stratford Independent School District operated no bus transportation system, so interested parents and friends provided transportation to all extra-school functions and athletic events. The sports program consisted primarily of basketball with a little baseball, track and tennis.

In the Mid and late Twenties Stratford was a town of about 500 population. There were no paved streets and very few if any brick homes in the town. When it rained or snowed, both men and women wore four-buckle overshoes in order to

cross the streets. The population of the town was made up of many fine people, God, Grass and Grit brings back many pleasant memories of people and happenings of Yester year. It also brings nostalgia for it mentions many wonderful friends who are no longer with us.

Last summer, members of the high school classes of 1927-28-29 and 30 invited us back to Homecoming in which they featured a Re-union of the Basketball Squads of 1927 and 1928. I've experienced very few as warm and friendly receptions as we received. They also invited my brothers and three sisters as well as our daughter, all of whom expressed the same sentiments. It was the Stratford that I had known years ago, in action again.

I congratulate the people of Stratford on the delightful little city that they have developed. Even though it is five or six times as large as the town that I knew in the Twenties, it has retained the same warm friendliness and civic pride.

Dow Patterson, Ed. D.

Griggs News

The Marella United Methodist women met in the church Wednesday afternoon for the week of Prayer and Self-Denial meeting. Maurine Warren led the very impressive lesson entitled "And All These Things Shall Be Added." Ralph Warren assisted with the music by playing his guitar. Those attending were Ruby Lowery, Opal Cavis, Cherrie Brown, Eileen Tevebaugh, Minnie Cox, Geneva and Joyce Wells, Myrie and Hazel Hitchings, Reba Goff, Hannah Yanke, Mildred Grabeal and Maurine Warren.

A group of young people from the Apostolic Youth Center in Goodwell sang a number of religious songs as the entertainment for the Goodfellowship Club which met Thursday evening. Their singing was appreciated by all those in attendance. Miss Rita Ferguson was one of the singers.

The Felt Junior High Basketball teams met the Plainview teams Thursday afternoon in the Plainview gym and the Felt Teams went home victorious but only after a struggle. We're proud of our teams.

Jeff Goff called last Sunday evening in the Lawrence Wells home. Tuesday visitors in their home were Mr. and Mrs. Norval Wells of Guymon and Julius Cox.

Mr. and Mrs. Mace Pugh, Mr. and Mrs. George Twombly and Mr. and Mrs. Howard Warren from this community attended the Quarterly Meeting of the Farm Bureau Saturday night in Boise City.

Friday Mr. and Mrs. Carl Kunselman and Karla of Spearman visited her parents, Mr. and Mrs. Clifford Goff and Jeff.

Betty Grabeal of Ulysses came home Friday and Saturday. She was accompanied by her parents, Mr. and Mrs. Joe Grabeal, on a shopping trip to Amarillo.

Mrs. Ruby Lowery visited Mrs. Devora Kincannon Sunday afternoon.

Mr. and Mrs. Robert Yanke were in Amarillo Saturday and Sunday visiting with their daughter and family, Mr. and Mrs. Craig McKisson and Shawn, and their son and family, Mr. and Mrs. Vernon Yanke and Kimberly.

Mr. and Mrs. Maurice Hitchings visited Mr. and Mrs. Herbert Hitchings Sunday in Amarillo and came home Monday morning.

Miss Ann Pronger and Terry Wells were guests for supper in the Lawrence Wells home Saturday evening.

The Plainview 4-H Clubs met Friday afternoon. Beth Grabeal gave a talk while Todd Hitchings and Kenny Rhoton gave a demonstration on pointers in applying varnish. Howard Henderson, assisted by Lane Smalts. Lane demonstrated how to load a rocket and took the group to the ball diamond to launch the rocket, which was quite spectacular.

The JV Elks won the contest 41-34 paced by Donovan Ferguson with 13 followed by Terry Bilbrey, Chet Everett and Toby Wisdom with 8 each. Taylor Johnson and Noel Chesmer each added 2 to the winning effort.

In the clash with Sunray Friday night, Stratford trailed 11-10 in the first; 20-17 at the half; 28-27 in the third and lost 41-37.

Matthews was high for Sunray with 15 while Donovan Ferguson paced Stratford with 14 followed by Terry Bilbrey with 12. Chet Everett added 6 with Noel Chesmer and Toby Wisdom adding 2 each.

Our teams played in the Felt Basketball Junior High Tournament this week. The boys played at 4 p.m. and the girls at 7 p.m. Thursday.

Mr. and Mrs. Robert Thrash, Mr. and Mrs. David Dunn of Felt and Mr. and Mrs. Richard Grey visited in the Jerrie Thrash home Thursday afternoon.

Mr. and Mrs. Terry Twombly and Monty of Tyrone visited in the Alva Twombly home Saturday.

A group of young people from the Griggs Church of God attended the Youth Rally in Elkhart Sunday.

Mr. and Mrs. Warren Oetken of Burlington, Iowa visited Thursday and Friday in the J.C. Henderson home.

CUB SCOUT DEN 3 VISITS STAR OFFICE

Members of Cub Scout Den 3 visited in The Stratford Star office Monday seeing how their local newspaper is published.

Members attending the visit included, John Riffe, Tim Cummings, Scott Riffe, Mike Billingsley, Tonya Billingsley, Paul Lundberg, Doug Pickens and Shawn Meidinger. They were accompanied by Den Leader Gay Billingsley.



VISITS STAR OFFICE--Cub Scout Den # 3 visited in the Stratford Star office on Monday. Mrs. Gay Billingsley is the den leader and is pictured with daughter, Tonya. Kneeling is Doug Pickens and Shawn Meidinger. Left to right is Tim Cummings, Paul Lundberg, John Riffe, Scott Riffe, Mike Billingsley.

JV Teams Play Games This Week

Stratford's JV Elkettes won over Sunray last week while the JV Elks won over Canadian and lost to Sunray.

In action against Sunray here Friday night the JV Elkettes led 19-9; 31-16; 39-18 and won 43-22.

Len Garouette and Patty Pool shared high point honors with 10 each followed by Jana Wiley with 9. Honey Hart added 6; Glyna Beaty put 4 and Connie Moore and Jacque Chesher got 2.

Julie Keith was high for Sunray with 15. Stratford pulled out in the third leading 27-15 as they added 12 while Canadian got only 4.

The JV Elks won the contest 41-34 paced by Donovan Ferguson with 13 followed by Terry Bilbrey, Chet Everett and Toby Wisdom with 8 each.

Taylor Johnson and Noel Chesmer each added 2 to the winning effort.

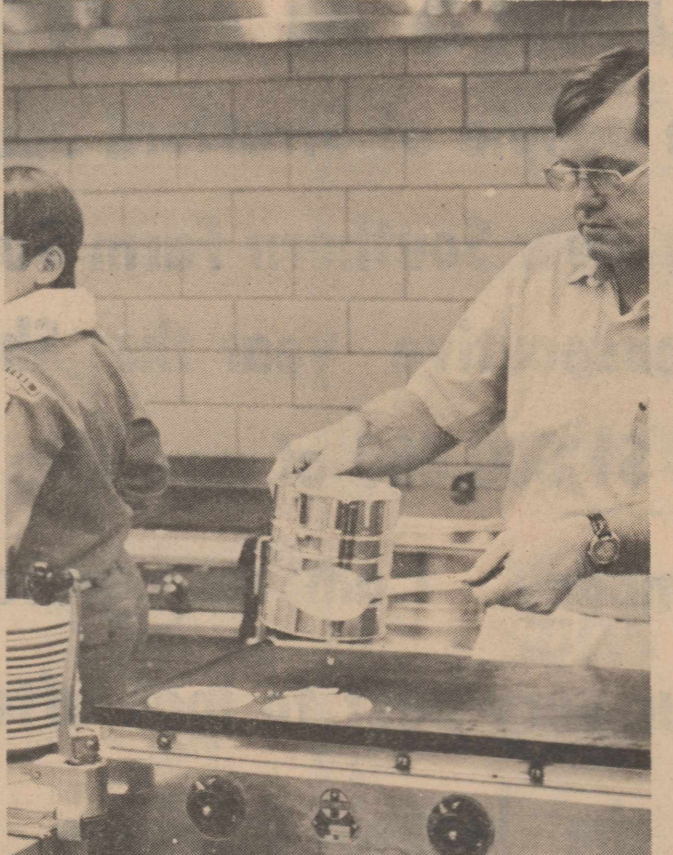
In the clash with Sunray Friday night, Stratford trailed 11-10 in the first; 20-17 at the half; 28-27 in the third and lost 41-37.

Matthews was high for Sunray with 15 while Donovan Ferguson paced Stratford with 14 followed by Terry Bilbrey with 12. Chet Everett added 6 with Noel Chesmer and Toby Wisdom adding 2 each.

Jr High Teams Busy This Week

Stratford's seventh and eighth grade girls both had wins over Sunray last week. Stratford's seventh grade girls led throughout the game 6-2, 10-8 and won 16-8. Emily McReynolds paced Stratford with 6 followed by Renee Hager with 5 and Susan Stokes with 4.

The eighth grade girls were paced by Lisa Albert with 21 points followed by Jonetta Hawkins with 11, Melton with 5 and Preston with 1.



PANCAKES A'COMING--B.A. Donelson pours pancakes on the griddle as Boy Scout Bruce Moore gets ready to deliver some of the meal to the tables during the annual Lions Club Pancake Supper last Friday evening.

They led 22-2, 31-4, 33-9 and blew Sunray off the court 38-17. Raymond was high for Sunray with 15.

Stratford's seventh grade boys fell to Sunray in a close game last week, 26-22.

Stratford led 6-2, at the first and went in at the half leading 10-6. Sunray came back in to lead 16-14 at the third and win by 4 points.

Baker was high for Sunray with 7. Tommy Guthrie led Stratford with 12 followed by Frank Dietrich with 6 and Lee Riffe and Darryl White with 2 each.

In eighth grade boys' action, Stratford trailed in the first 6-2 and took the lead in the second to go in at the half 12-8.

Stratford continued to lead 24-18 and won the game 28-23. Matt Vincent led Stratford with 10 followed by Leonard Hawkins with 8; Powers with 6 and Bass and Reed with 2 each.

In action Monday night against Canadian, the seventh grade girls led 6-4, 14-10, 19-12 and won 30-12.

Susan Stokes was high for Stratford with 15 followed by Emily McReynolds with 10 and Renee Hager with 4. D'Aun Oquin added 1 to the winning effort.

The seventh grade boys led 9-2, 21-10, 25-16 and won 25-23. Tommy Guthrie was high for Stratford with 12 followed by Lee Riffe with 7 and Frank Dietrich with 6. Hubbert was high for Canadian with 6.

Stratford's eighth grade girls found an easy win over Canadian leading 4-2, 12-8, 20-12 and won 26-16. Lisa Albert was high point with 16 followed by Shana Summerour with 10.

Stratford's eighth grade boys

suffered the only loss of the night as Canadian overpowered them 23-14. Stratford led in the first 2-1 with Canadian jumping out in the second to lead 10-4. Canadian continued to lead 14-6 and won by 9 points.

Vincent, Hawkins and Ingham shared high point honors for the losers with 4 each while Reed added 2. Hardin was high for Canadian with 9.

HEREFORD SALE SLATED APRIL 3 IN GUYMON

Pronger Brothers of Stratford will be among the 24 purebred Hereford and Polled Hereford breeders from Northwestern Oklahoma, the Texas Panhandle and Southwestern Kansas consigning cattle to the 32nd Annual Great Plains Hereford Association sale.

The sale will be held in Guymon on April 3 at the Panhandle Livestock Commission Co. yard northeast of the city.

Offered in the sale will be 100 head of service age registered bulls and 30 registered females.



In the sixteenth century, Queen Catherine de Medici decreed that the standard waist measurement for ladies of the French court was 13 inches!

By 1775 there were 37 newspapers in the American colonies and the weekly circulation of all papers was 3,500!

Wheat Protein Improvement Study Subject

Dr. Ron Thomason, professor of plant science at West Texas State University, is working on a research project to try to improve the quality and quantity of proteins in wheat.

Dr. Thomason has been working on his project since 1971 and he will not complete it for another four or five years.

"Wheat is grown on the largest acreage in the world," Dr. Thomason said. "Protein is the most limiting nutritional factor in the world today."

Various aspects of the project include genetic improvement of grain protein through plant breeding and improvement by the use of nitrogen fertilizers.

In 1971 Dr. Thomason made approximately 100 crosses with high protein lines of wheat from Kansas and Nebraska. Each year selections are made based on protein content and other agronomic traits. Selections are made on types of most adaptable to the High Plains region.

Experiments are now in the fourth generation and will not be completed until the twelfth or fourteenth generation, he said.

Watts

Start a savings program... join the Watt Watchers.

WeatherKing's Golden 800 high efficiency air conditioning series is designed to give you more cooling (Btu/h), per watt than standard cooling equipment; that means it uses less energy per Btu/h than the less efficient kinds of central air conditioning, and that saves money!

The best part of all is that you'll find our air conditioning and heating product line is reasonably priced, easy to service and designed for years of trouble-free operation. Contact your WeatherKing dealer . . . start a cool savings program of your own . . . the WeatherKing way.

WeatherKing
...whatever the season.

call **TECO**
for your heating & air conditioning needs

Charles Harbour Ph 396-2300

STRATFORD INDEPENDENT SCHOOL DISTRICT
STRATFORD, TEXAS

LIST ALL CHILDREN WHO WILL BE 6 YEARS OLD ON OR BEFORE SEPTEMBER 1, 1972

LAST NAME	FIRST NAME	MI	MO	DAY	YEAR	SEX

LIST ALL CHILDREN WHO WILL BE 5 YEARS OLD ON OR BEFORE SEPTEMBER 1, 1972

LAST NAME	FIRST NAME	MI	MO	DAY	YEAR	SEX

FATHERS NAME

MOTHERS NAME

PARENTS ADDRESS AND PHONE NO.

PLEASE COMPLETE THIS FORM AND RETURN TO SCHOOL IMMEDIATELY

All children entering school in 1976 will be required to have the following shots: 3 Oral Polio and 3 Diphtheria-Tetanus (DPT or TD) (At least one of these doses since their 4th birthday.)

And 1 Measles (Rubeola), 1 Rubella, and 1 Tuberculin Test. All children must also have a copy of their birth certificate showing that they will be 6 on or before September 1, 1976, before they can enter school. The hospital birth certificate will not be acceptable.

New Service

We are now equipped to apply and incorporate your herbicide in one combined operation. We will apply your herbicide, or furnish herbicide, at competitive prices. We offer this service at \$2.25 per acre for application. Contact Mervin Meidinger at 396-2358; Howard Shelley at 727-4248 or Von Haggard at 396-2402.

SHELLEY SEED & SUPPLY

Howard Shelley
[Phone] 727-4248

Von Haggard
[Phone] 396-2402



WANT TO SELL...BUY...RENT...HIRE? USE THE CLASSIFIED ADS

PUBLIC NOTICES
BECAUSE THE PEOPLE MUST KNOW

Editor's Note: Public Notice advertising plays a unique role both in American history and in the process by which this country's democracy is preserved. Its one premise is that people must be informed if they are to govern themselves competently. Public Notice advertising first came into being with the Congress of 1792. That body, recognizing its responsibility to the people, required the Postmaster General to advertise for bids for the construction of new post offices. From that inauspicious beginning to the complex publication requirements in federal, state and local laws today, government officials have come more and more to understand their obligations to inform the public through Public Notice advertising. Newspapers over the years have been the vehicle by which these obligations have been fulfilled. They will continue to be as long as the public demands that it be informed frequently and by the best means possible.

Social Security News

- 1-13 Bobby and Karla Edmond 75 Pontiac Floyd Mtr. Co.
- 1-13 Bill Lasley 75 Mazda Mazda of Amarillo
- 1-14 Darrell and W.R. Fish 76 Chev. Panhandle Chev.
- 1-15 Martha Stone 67 Chev. Lucille Philly
- 1-16 Wendell Stacy 63 Chev. Blake's Used Cars
- 1-19 Ernest and Natacha Dyess 76 Chev. Duncan Chev.
- 1-20 Terry Mathews 70 Chev. Duncan Chev.
- 1-20 Mrs. Bob D. Evans 76 Lincoln Bradley Lincoln Mercury.

NO 194 AN ORDINANCE ESTABLISHING A SCHEDULE OF MONTHLY RATES AND CHARGES FOR WATER SERVICES FURNISHED BY THE CITY OF STRATFORD, TEXAS.

BE IT ORDAINED BY THE CITY COUNCIL OF THE CITY OF STRATFORD, TEXAS.

(1) The following schedule of monthly rates and charges for residential water services through one meter in the City of Stratford, Texas, is hereby adopted and established as follows:

First 2,000 gallons used per month at \$2.50
Next 4,000 gallons used per month at 1,000 gallons .75
Next 4,000 gallons used per month at 1,000 gallons .60
Next 10,000 gallons used per month at 1,000 gallons .28
Over 20,000 gallons used per month at 1,000 gallons .25

that use by the City of Stratford itself, shall be .20 per 1,000 gallons.

(4) The schedule of monthly rates and charges for water service for water delivered into water tank trucks or water wagons in the City of Stratford, Texas, shall be .50 per 1,000 gallons; with no minimum charge.

(5) The schedule of rates and charges as provided for above are based on consumption during each monthly billing period and any bill shall be due and payable in the office of the City Secretary on or before the 20th day following the date of mailing of said bills. In the event that such rates or charges are not paid in full by such due date, a penalty of 10 percent will be added to such rates and charges.

(6) In the event that any consumer of water services furnished by the City does not pay the rates and charges, plus penalty as assessed, on or before the second month after the same are due, the City Secretary shall have the authority to disconnect or terminate or cause to be disconnected or terminated, all water services or other utility services furnished such consumer.

(7) Any consumer of utility services furnished by the City, whose utility services have been disconnected or terminated for non-payment of rates and charges, therefore, may have such utility services resumed by paying all rates, charges and penalties due by him to the City, and in addition thereto, a reconnection fee of 5.00 is hereby prescribed by the City Council.

Q. Both my husband and I have worked on jobs covered by social security and both of us have had maximum earnings reported for all years after 1955. I am now told that we can draw benefits on only one account. This is not fair.

A. It would not be fair if it were true. It is not correct. If both of you retire this year and both are 65 this year with maximum covered earnings through 1975, each of you would receive \$364 a month on your respective records, or a total of \$728 a month. The fact that you are married to each other does not affect your benefits. Your question represents one of the most persistent misconceptions about social security we have to deal with. We have a booklet entitled "A Woman's Guide to Social Security" which all women should read. This booklet is available at your nearest social security office.

Q. When my husband was laid off from work last month, I took a job as a waitress. My boss just told me that I have to pay social security contributions on my tips. Is this true?

A. If your cash tips add up to \$20 or more in a month in work for one employer, they are covered by social security and you are required to give your employer a written report of your tips. The report is due within 10 days after the end of the month in which you receive the tips. Your employer will collect from you the social security contributions due on the tips you report to him. For more information, call any social security office and ask for a copy of "Social Security and Cash Tips."

FOR SALE--1976 Monte Carlo, equity and balance, 3,000 miles, contact 396-2547 after 6 p.m. ask for Jerry Blazier. 5-4tp

FOR SALE--Maple dinette set, maple bedroom suite, ranch oak bedroom suite, one set box springs & mattress, call 396-2159 after 5 p.m. or 396-2570 days. 5-1tc

ATTEND OUR WELDING CLINIC--to be held at Hi School Ag Shop beginning at 7 p.m. on Feb. 2 sponsored by Consumers Co. Phone 396-2261 to register. 5-1tc

Watch for Valentine Day ideas. B&W Feed & Mineral. 5-2tc

HELP WANTED

NEED CUSTOM FARM WORK for new 1975 Allis Chalmers tractor. # 7050. Call 258-7340; 364-0438 or 258-7350. 5-3tc

Stores close before you get off work? The plant parenthood at **The BumbleBee** will be open until 7 p.m. for your convenience, Monday, Feb. 2. 5-1tc

STRATFORD & SURROUNDING AREA, need 2 ladies with cars 5 days/ 15 hrs. per week. Pay \$75 weekly, Stanley Home Products Ph. 396-2045 after 6 p.m. 5-3tc

JANTORIAL SERVICES: Office Buildings Call 396-2175 after 5:30 p.m. or Sat. afternoon. 4-2tc

HELP WANTED--Part or full time. Apply at the Dairy Queen. 18-tfc

WANTED--November 1975 copy of Motion Picture magazine. Please leave at Stratford Star, will pay \$3.00 for magazine. 5-3tp

TO GIVE AWAY--one Cocker Spaniel, and one German Shepherd, Call 396-5311 or 396-2050. 5-2tp

SERVICES

Does Your Tall Water Pit Look Like A Mud Hole? Let Us Clean It Out Or Build A New One. Lee Roy Mitchell, Dirt Contractor, Ph. 806-733-2384. Gruver, Tex. 46-tfc

GOT PLUMBING PROBLEMS? Call Bob Garoutte Plumbing, 396-2490, for all your plumbing repairs and new installations. 26-tfc

ALL CABINET WORK--Custom built. Leo L. Scott, across alley from Stratford of Texas. Ph. 396-2219. 11-tfc

SADDLE SHOP at B&W Feed & Mineral. 34-tfc

REDUCE SAFE and fast with GoBese Tablets & E'Vap "water pills" at Brown's Pharmacy in Stratford. 45-12-tp

DRY OUT your tailwater pit, then call 396-2410 for expert pit cleaning. **MAX BROWN,** Stratford. 44-tfc

GOD, GRASS & GRIT--copies of Sherman County History First Edition books still available at THE STRATFORD STAR, \$13.13 each while they last. Only few of these first books still available, make sure your family has one of these for your children. Send check or money order payable to THE STRATFORD STAR and we will mail your copy to you, or stop by our office Mondays-Fridays. 23-tfc

PRETTY PLEATS DRAPERY SHOP, 709 N. Main, Stratford, Custom made drapes, tablecloths, accent pillows, bed spreads, roll shades, roman shades, cornices and etc. Call 727-4855 or 396-5664. 36-tfc

SAND FREE GRAVEL PACKED domestic wells, plastic or steel casing. Have spudder for deepening existing wells. Also will drill irrigation wells if water furnished. Call nites 935-4088, W.V. BLOCK DRILLING, Dumas. 44-tfc

LAMPS, LAMP PARTS, ALL LIGHT BULBS--House of Shades & Lamp Repair, 2613 Wolflin Ave., Wolflin Village, Amarillo, Texas 79109. 8-52p

FOR ALL YOUR electrical service needs, call Brandin' Iron Electric, day or night, 396-2003, work and service guaranteed. 4-3tc

Do you talk to your plants? Come to the BumbleBee Monday, Feb. 2 after 1 p.m. -- the plants will be doing the talking then. 5-1tc

FOR SALE--1974 Vega GT, Hatchback, 4 speed, AC, good tires, 28,000 miles. Metallic blue with white stripe. 405-544-2792 Boise City. 3-2tc

FOR SALE--1974 JDX8 Snowmobile w/ John Deere trailer. Call 396-5625. 5-tfc

FOR SALE--AKC Registered Beagle pups--good farm dogs, good pets, rabbit hunters. Shots, wormed, ready to go. Bates K-J Kennels, Garden City, Ks. AC 516-276-3170. 5-2tp

PINTO BEANS FOR SALE--50 lbs. \$15. After 5 p.m. Call 396-2058. Leroy Kautz. 4-tfc

CESSPOOL PUMPING--Phone 384-2124 or see Bob Bradford in Conlen. 23-tfc

Large selection of new plants. B&W Feed & Mineral. 5-1tc

MIS. FOR SALE

UPRIGHT PIANO for sale, call 396-2539 after 5 p.m. 5-2tp

FARM BUREAU TIRES AND BATTERIES--Steel Radial M&S now available. Alvin's Fina Station, 396-5980. 3-tfc

AKC Registered Tiny Toy Poodles for sale--black and grey. Ph. 769-4419 days; after 5 p.m. 396-2139. 4-3tc

FOR SALE--used lumber, 2x4's, 2x8's, 14 to 16 feet lengths. Contact J.B. Rector at Cactus, 966-5343. 4-3tp

FOR SALE--1968 Grand Mobile Home, 3 bedroom, 2 baths. Call Bonnie Borth at 396-2542. 2-tfc

FOR SALE: Coldspot Gas Refrigerator, Good condition. Joe Flores 3-tfc

FOR SALE--Country Club membership, phone 396-2188 after 5 p.m. 51-tfc

FOR SALE--1973 Jeep Wagoneer, power, air, automatic transmission, 38,000 miles. \$2,650. Call 396-5906. 3-tfc

FOR SALE--1974 Vega GT, Hatchback, 4 speed, AC, good tires, 28,000 miles. Metallic blue with white stripe. 405-544-2792 Boise City. 3-2tc

FOR SALE--1974 JDX8 Snowmobile w/ John Deere trailer. Call 396-5625. 5-tfc

FOR SALE--AKC Registered Beagle pups--good farm dogs, good pets, rabbit hunters. Shots, wormed, ready to go. Bates K-J Kennels, Garden City, Ks. AC 516-276-3170. 5-2tp

FOR SALE--1974 Vega GT, Hatchback, 4 speed, AC, good tires, 28,000 miles. Metallic blue with white stripe. 405-544-2792 Boise City. 3-2tc

Does your alovera look sick? Is your philodendron complaining? Attend the plant clinic, Monday Feb. 2 at **The BumbleBee.** 5-1tc

FARM BUREAU TIRES & BATTERIES--Steel radial M&S now available. See Alvin's Tire Service or call 396-5980. 5-tfc

REAL ESTATE

WANTED--Land Listings--Irrigated, dry or grass. HAMBLY REAL ESTATE, Hwy 287, Dumas, Tx. Office 935-5651, Res. 935-3566. 48-tfc

FORMER EARL GAROUTTE HOME for sale, contact G.R. Garrison. 40-tfc

FOR SALE--Three bedroom house, nice. Roy Lusk Real Estate, Nell Wall, Stratford 396-5588. 40-tfc

FOR SALE--Two bedroom house, 2 1/2 lots, 308 South Main. Priced to sell at \$3,750. Call 249-5177, Dalhart, Texas. 32-tfc

NICE HOME for sale in the Casa Bonita Addition-3 BR, 1 3/4 baths, on large lot. Contact Carole Smith, agent for Johnson Land Co., Ph. 396-5314. 4-4tc

FOR SALE--Large modular home, 1900 sq. ft. living space. Contact Carole Smith, agent, Johnson Land Company, 396-5314. 4-4tc

FOR SALE BY OWNER, nice 3 bedroom home, good lot with cedar fence. Call 396-2276. 4-2tc

FOR SALE--Three bedroom, 2 bath home with large dining room. 306 S. Wall. Call 396-2369. 5-tfc

SPECIAL TREAT for plant lovers. On the spot advise and assistance. From 1 p.m. to 7 p.m. Monday February 20. **The BumbleBee.** 5-1tc

FOR RENT--Two bedroom unfurnished apartment, all electric. Call 5659; after 5:30 p.m. call 2378. 5-tfc

LOOK!!! Place mats, napkins, tablecloths and etc. are here at **THE BUMBLE BEE,** Buzz on over. 5-1tc

BUSINESS OR OFFICE SPACE FOR RENT--carpeted office space, refrigerated air, central heat. Phone 396-2149. 38-tfc

Drag Line Service
call **Roy Harper**
Dumas

IF YOU WANT TO DRINK-- THAT'S YOUR PROBLEM!!
IF YOU WANT TO QUIT-- THAT'S OURS!!
A.A. & AL-ANON meets each Thursday evening at 8 p.m. in Methodist Fellowship Hall

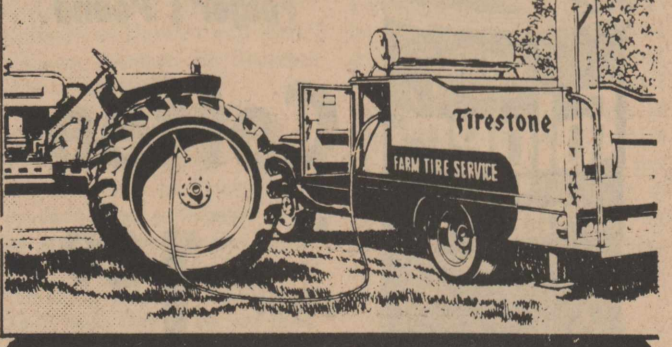
Thurs. 11:30-5:00 pm
Fri. 10:30-5:00 pm
OFFICE HOURS
DR. V.G. MARTIN, OPTOMETRIST

3rd & Main in Stratford
For Appointment call 396-5516 or Dumas 935-6491

Real Estate... Machinery... Livestock SALES LARGE OR SMALL

LEE R. JOHNSON
Goodwell, Okla. 73939 RR#1 Box 3

TRACTOR OWNERS!
We're Firestone equipped for **IN-THE-FIELD** service



Our up-to-date Firestone farm service truck delivers fast on-the-spot tire repairs, replacements and expert Hydro-Flation... when and where you need it.

... JUST CALL US!

BAIN EXXON SERVICE

Stratford Ph 396-5341

Kirby Co. of Dumas
Authorized Sales And Service
New & Rebuilt **D.A. FLEMING**

800 Dumas Ave
Box 953, Dumas
Ph 935-2524

VALLEY CENTER PIVOT

TRAMMELL IRRIGATION CO.

CARROLL WISDOM SALES REP. Res. 806-396-5990
301 East 4th DALHART, TEXAS 806-249-5651

Your local Used Cow Dealer is Stratford Bi - Products

farmers ranchers
Gentlemen:
Seven days a week dead stock removal please call as soon as possible

Thank you
396-5350

Stratford Lodge 874
Owen Hudson, W.M.
W.S. Frizzell, Sec'y
Stated Communication
3rd Thursday monthly
7 p.m.

Shoe Repair
Boots - Saddles
Leather Goods
Buster's Boot Shop
103 W. 3rd Stratford

CARD of THANKS

We would like to thank all of the wonderful people who helped promote our Beef Gift Certificates, which are good on any occasion. Your help and support is appreciated.
Stratford CowBelles

5-1tc

CARD of THANKS

We would like to take this opportunity to say thank you to the Stratford Merchants who sponsored the trip to Disney World. It was a lovely trip and one we will never forget. Also a special thanks to Greg Pye and Johnny West for making the additional arrangements for the children. Last but not least to Marcella and David for giving the trip to us.

Doug & Joyce McBryde
1tp

GIFFORD-HILL

Jerry Wakefield
Sales Engineer
Ask about our Sprinkler Lease Plan
Phone 396-2350, Stratford
Box 395, Dumas, Tex. 79029
Home 806-935-6129 or Dumas 935-4148



DON'S SUPER MARKET

Hwy 287 North in Stratford

We Give Gunn Bros Stamps



WE WELCOME
FOOD STAMP
CUSTOMERS



Double Gunn Bros. Stamps on Wednesdays on Purchases Over \$2.50

Open Monday thru Saturday 8 a.m. until 8 p.m. CLOSED ON SUNDAYS Specials January 29-30-31

Longhorn Brand
PICNIC HAM lb **89¢**

Arm Cut
SWISS STEAK lb **1¹⁹**

Boneless
Chuck Steak lb **\$ 1¹⁹**

Wilson's Your Choice Bologna
Lunch Meat Beef & Bologna Pickle & Pimento Liver Cheese **49c**

Family Size 32 oz
COKES

6 Bottle Carton

1⁷⁹

plus deposit



RIB STEAK Pound **1¹⁹**

Hormel 12 oz Pkg
Little Sizzlers **89c**

Grade A Medium

EGGS doz **79¢**

Kraft
Miracle Whip Quart **1⁰⁹**



Nestle's 12-1 Oz Pkg
Hot Cocoa Mix **1¹⁹**

Plains Half Gallon Round Ctn
Ice Cream **\$ 1¹⁹**

Plains Diet 16 oz
Cottage Cheese **69c**

Plains 8 oz
Sour Cream or Dips 2 for **89c**

Plains All Flavors 8 oz
YOGURT 2 for **59c**

Kounty Fresh 10 Count
Biscuits

7 cans **1¹⁹**

Armour 3 lb Can
Shortening **1¹⁹**

Shasta Low Calorie 12 oz
POP **10¢**

Quaker Instant 10 Oz
Oatmeal **69¢**
Thermo Kups Crown Jewel Pack of 20 Cups **27¢**

CANDY BARS
6 Count Package Reg 90c **75c**

Charmin 4 Roll Pack
Toilet Tissue **79¢**

Swanson Boned 5 oz Can
Chicken **49¢**

Pillsbury 20 oz
Cake Mixes **59¢**
Dynamo Liquid
Detergent 28 oz **1⁰⁹**

Zee Jumbo Roll
TOWELS Each **53¢**

Kraft Parkay Pound Quarters **49c**



Folger's Pound
Coffee All grinds **1²⁹**



Jeno's 13 oz All Flavors
Pizza **89¢**



Starkist Chunk
TUNA flat can **59¢**

Imperial Pure Cane
SUGAR 5 lb bag **1²⁹**

Gladiola
FLOUR 5 Pound Bag **79¢**

Arizona cello wrapped Each **31c**
Vine Ripened lb **41c**
Medium Yellow
Onions 2 lb **31c**
Washington Red Delicious
Apples 4 lb **\$1**
Texas Grown
Cabbage 2 lb **21c**
Sunkist Navel
Oranges 4 lb **89c**

