

Melvin Mitts 06/15
PO Box 523
Stratford, TX 79084

The Stratford Star

75 cents

Published for over 100 years in Stratford, Sherman County, Texas 79084 usps 523 Number 50 December 11, 2014



Stratford Elk and Lady Elk teams win Vega Tournament

The Stratford Elk and Lady Elk teams won the Vega Tournament held December 4-6, 2014. Elks in back from left, Jack McBryde, Ty Hess, Gage Brooks, Russell Spurlock, Fernando Jacquez, John McBroom, Jiovani Romero, Parker Hanna, Tanner Stone, Trevor Melton, and Rett Schoonover. In front Lady Elks from left, Laynee Burr, Bethany Everett, Allie James, Nicolle Law, Samantha Gonzalez, Brittany Law, Yadhira Chavoya, Madison Mungia, and Desinya Garza. Receiving All-Tournament awards were Yadhira Chavoya, Allie James, Tanner Stone, Trevor Melton and receiving MVP Ty Hess and Laynee Burr.



SHERMAN COUNTY
CHRISTMAS PARADE
Sat. Dec. 13th, 2014
1:00 p.m.

THEME: "What does Christmas mean to you?"
PRIZES: Most Original
Best Decorated
Best of the Walkers, Camel/Donkey, Horse Back
Riders, Bicyclist
If you would like to plan an entry into the
Parade, please call:
Penny: (806) 930-6920
Sponsored by:
Sherman County Sheriff's Office
Stratford City Hall
Stratford Police Department

Imagine That at The Imagination Station

The Imagination Station "Mexico" Exhibit had over 100 visitors.

"Breakfast with Santa" Saturday, December 13 was sold out by the 1st of December.

Looking ahead.....
January 18, Sunday "Italian Dinner" fund raiser for ceiling insulation.

March 21 "Mother and Daughter" Dress Up Brunch

April 13-15 Week of Young child "Dr. Seuss"

The Imagination Station is always seeking ideas for exhibits and programs and volunteers to help with activities.

Help light up Lollipop

The LIGHTS FOR LOLLIPOP campaign continues and the board of directors invites everyone to help LIGHT UP the childcare center.

Lollipop Junction, Stratford's non-profit childcare center is currently raising funds for its capital improvement project of updating the lighting system in its facility. This project will entail removing 31 fixtures and retrofitting 53 fixtures with all new T8 lamps and electronic ballast, upgrading from incandescent to compact fluorescent lamps, replacing any broken or stained lens covers, and replacing acoustical ceiling tiles in the building. The estimated cost of the project is \$8500. The board's goal is to complete the project before the end of February 2015.

Individuals and/or businesses who would like to help LIGHT UP LOLLIPOP may contact either Susie Spurlock, 396-2864 or 753-7214, Valarie Naugle at 366-2862 or Martha Duncan at 366-5557. Donations for this project may be made by contacting one of the individuals mentioned or with Suzanne Ashley at First State Bank of Stratford. Donations may be given to Julie Ortega or Erika Duran at Lollipop Junction.

THANK YOU to everyone who supported Lollipop Junction by purchasing cheese and other holiday goodies during the recent fundraiser. Proceeds from the sales will go towards the building lighting improvement project.

4Given concert at the
First United Methodist
Church on Sunday
December 14th at 3 p.m.

Support Your Library
Donate to
Project Christmas Card
Deadline Friday, Dec. 12th
Donations accepted at
First State Bank
Sherman County Public Library
Call 366-2200 for more details

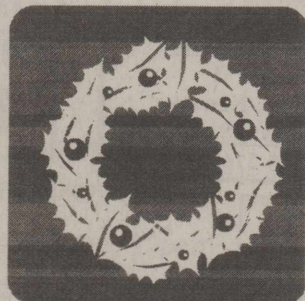
MEDICAL FUND FOR JACK GORE HAPPY STATE BANK

A medical fund has been set up for Jack and Vicki Gore at Happy State Bank

A Pauline Griffin fund has been set up for help with funeral expenses at The First State Bank of Stratford.

A medical fund has been set up for Gerardo Romero at Happy State Bank to help pay for his shoulder surgery. Your help will be appreciated!

Un fondo medico se ha creado para Gerardo Romero en Happy State Bank para ayudar a pagar por su cirugia de hombre. Su ayuda sera apreciada!



December Peanut Butter Drive for Snack Pak

During the first three weeks of December, Mary Allen Elementary is joining forces with Snack Pak 4 Kids Stratford in asking for donations of 16 ounce jars of peanut butter which will help hungry children in Stratford make it through the long holiday breaks without school meals.

Donations can be dropped off at the Mary Allen Elementary Office. Our goal for this drive is 250 jars.

School meals are the primary source of nourishment to some little ones in our community, and during the long holiday breaks these children receive little to no food for days at a time.

The peanut butter along with a sleeve of crackers will be added to Snack Paks that are distributed just before the upcoming holiday breaks. Please note the 16 ounce jars are best as they are easier for a young child to carry home in their backpack.

Please join us in working to make sure that no Stratford child goes hungry!



Directors Earn Certificates

The National Rural Electric Cooperative Association recently recognized Brad Green and Shad McDaniel from Rita Blanca Electric Cooperative, Inc. for furthering their education as board directors. Brad Green received the Credentialed Cooperative Director certificate and Shad McDaniel received the Board Leadership Director certificate. Green has served on the Board of Directors since 2010 and farms in Hartley County. McDaniel was first elected to the board in 2013 and farms in Dallam County.

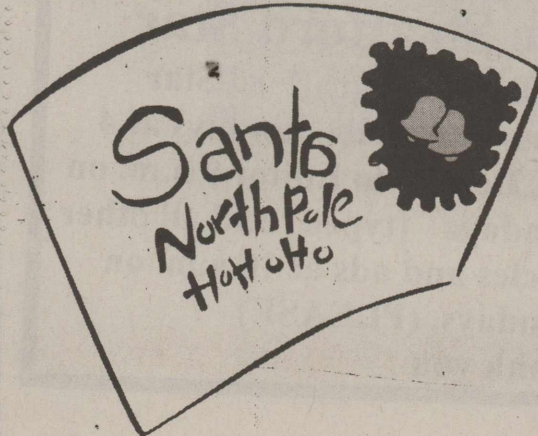
The Credentialed Cooperative Director (CCD) certificate program focuses on basic governance knowledge and the skills required of cooperative directors. It provides the important foundation directors require to effectively oversee the business of their cooperative. The CCD is earned by attending all five required courses and successfully completing a learning assessment for each.

The NRECA Board Leadership Certificate recognizes individuals who continue their professional development after becoming a Credentialed Cooperative Director, a certification that requires a director to attend meetings and demonstrates understanding of the basic competencies contained in five core courses. Directors who have attained the certificate have completed an additional 10 credits in advance, issues-oriented courses.

Today's electric utility environment imposes new demands on electric cooperative directors, particularly for increased knowledge of changes in the electric utility business, governance skills and a working knowledge of the cooperative principles. The board of directors of Rita Blanca Electric has made a commitment to work through the NRECA to sharpen this body of knowledge for the benefit of their electric cooperative consumer-owners.

The NRECA is a national service organization that represents the nation's more than 900 private, not-for-profit, consumer-owned electric cooperatives, which provide service to 42 million people in 47 states.

Shown above are Shad McDaniel and Brad Green



Letters to Santa to be mailed by The Stratford Star and also will be printed in the Christmas edition are due by Friday, December 12th, 2014. Christmas Edition will be in Thursdays, December 18, 2014 Christmas Edition. There will be no paper printed on Thursday, December 25th Christmas Day. Letters can be mailed to PO Box 8, Stratford, TX 79084 or left at Farmers Insurance (Next to Post office) or brought to Shari or myself. There are mail boxes outside both of our houses. Thank you and get to writing.

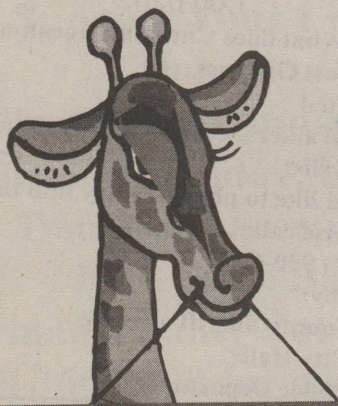


Nettie Mae Isham Harding
Dec. 11, 1914-2014

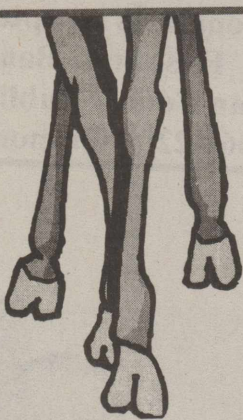


Reed honored with Baby Shower

Alexa and Brent Reed were honored with a Baby Shower on Sunday, November 30, 2014 in the home of Tami King. Shown above back left to right are Tammy McMillan, Jo Nell Roberts, D'lynn Reed. Next Row Rhespy Wyman and Katelyn Reed. Bottom row Alexa Reed, Patricia Wyman, ViAnn Reed, Rachael Reed, Barbara Roberts, Margaret Reed and Esther Ferguson.



The Punch family is happy to announce they are blessed to be moving into their new home. Thanks for all the loving prayers and concern during this difficult time. We are rejoicing because God has graciously answered your prayers.



Imagination Station exhibit on Mexico

Sunray 3rd grade and the story teller, Yvonne Pittman at The Imagination Station exhibit on Mexico. Stratford 3rd & 4th grade also attended. Did you know. The rubber ball and chocolate originated in Mexico. What is this about the Eagle, the snake, the cactus in the middle of a lake?

Stratford Ex-Student Reunion July 24 & 25.

Honored Classes ending in a 5... 1945, 55, 65, 75, 85, 95, 2005
Update class mailing list. (The postal department will not deliver mail to facebook)

Mitchell Theaters

Northridge 8
Guyton, OK
www.northridge8.com
580-338-3281
Southgate 6
Liberal, Kansas
www.southgate6.com
620-624-5573
Garden City, Kansas
www.sequoyah8.com
620-275-2760

PROFESSIONALS IN PEST CONTROL TECHNOLOGY

Serving the area since 1965

Stevenson & Sons Pest Control OF DALHART

- TERMITE, RODENT & PEST CONTROL FOR YOUR HOME & BUSINESS
- YARD & TREE SPRAYING

DALHART PH. 249-4202
JIM STEVENSON

BOX 192
DALHART, TEXAS

Stratford Hospital District

"Proudly serving the medical needs of Stratford and Sherman County"
Stratford Family Medical Clinic

Stratford Family Medical Clinic

Mon. - Thurs 8 a.m. - 5 p.m. Fri, 8 a.m. - 3 p.m.
396-5583 Tommy Brian, ANP

Elk Pharmacy

Mon.-Fri. 9 a.m. - 5:30 PM
"Check our Competitive pricing"
"Compounding Available"

366-5505

Coldwater Manor Nursing Facility

396-5568 Laura Davis, LNFA

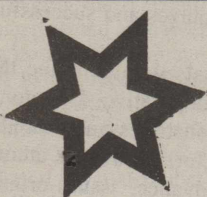
Stratford EMS

9-1-1 or 396-2844 Jimmy Lanning, Director

The Stratford Hospital District operates on a non-discriminatory basis, giving equal treatment and access to services without regard to sex, race, religion, age or ethnicity.

TO ALL INTERESTED PERSONS AND PARTIES:

DCP Midstream, LP has applied to the Texas Commission on Environmental Quality (TCEQ) for renewal of Air Quality Permit No. 73374, which would authorize continued operation of the Tex Booster Station. The applicant has provided the following driving directions: From US 287 (Poplar Street) and US 54 on the west side of Stratford, drive 5 blocks southeast on Poplar Street. Turn east and drive 21.8 miles on SR 15. Turn north and drive 4 miles on CR 28. Turn east and drive 0.6 miles on RR 377 to the booster station on the right, Stratford, Sherman County, Texas 79084. Additional information concerning this application is contained in the public notice section of this newspaper.



The Stratford Star (USPS 523-108)

Published for over 100 years
805 Purnell
Stratford, TX 79084
Telephone: 806-366-5885
Fax: 806-366-5884
E-Mail: stardm@xit.net

The Stratford Star is published weekly
Editor & Publisher Martha Robertson
Advertising & Photographer Shari Hudson

Subscription rates
\$33.00 per year in Sherman & Adjoining counties
\$40.00 per year all others
\$27.00 per (9 months) College rate

The Stratford Star-PO Box 8-Stratford, TX 79084
Periodicals postage paid at Stratford, TX
POSTMASTER: Send address changes to Stratford Star,
PO Box 8-Stratford, TX 79084

Attention to all subscribers!! Rate change

The Stratford Star is no longer sending out notices when your paper is due. Check the label on the paper and see what month your subscription expires. I will be putting "Stars" on the current month" If you have a Star on your label it means that your sub expires that month. If you are not sure the amount you owe if you live out of the area call 753-7373 and double check. Locally is \$33.00 and out of the area \$40.00. If you are paying for someone else's sub, you will be billed for that person. The Stratford Star, PO Box 8, Stratford, TX 79084
Thanks-Marty

Deadline for The Stratford Star

Deadline for Stratford Star items. Photos by Sundays at 4 p.m. Letters to Editor 9 a.m. on Mondays (typed) and all other articles and ads at 10 a.m. on Mondays. (PLEASE)
Thank you

Pursuit of Happiness: The agape and philo love of Jesus

God placed phenomenal value on brotherly love and friendship. "This is my commandment, that ye love one another, even as I have loved you. Greater love hath no man than this, that a man lay down his life for his friends. Ye are my friends, if ye do the things which I command you." (John 15:12-14). God is love. His love is perfect. It is unconditionally and endlessly endures. It fastidiously forgives. Agape love originates from God. Jesus is the expression of God's agape love for mankind. In order for us to fully experience God's agape love we must unite our spirit and soul with his spirit through Jesus. If we accept Jesus, God's gift of love, we become his friends. We are united to Jesus as his friends.

"Beloved, let us love one another: for love is of God; and every one that loveth is begotten of God, and knoweth God. Herein was the love of God manifested in us, that God hath sent his only begotten Son into the world that we might live through him. Herein is love, not that we loved God, but that he loved us, and sent his Son to be the propitiation for our sins." (1 John 4:7, 9-10 ASV). Whosoever shall confess that Jesus is the Son of God, God abideth in him, and he in God. (1 John 4:7, 9-10, 15 ASV)

God desperately wants mankind reconciled with him through total commitment and obedience demonstrated through loving actions towards others. God's word repeatedly pleads with us, as disciples of Christ, to signify our love for God through brotherly love: "A new commandment I give unto you, that ye love one another; even as I have loved you, that ye also love one another. By this shall all men know that ye are my disciples, if ye have love one to another. (John 13:34-35 ASV). Finally, be ye all likeminded, compassionate, loving as brethren, tenderhearted, humbleminded: (1 Peter 3:8 ASV). "Let love of the brethren continue." (Hebrews 13:1 ASV). "But now abideth faith, hope, love, these three; and the greatest of these is love." (1 Corinthians 13:13 ASV). "Love each other in a way that makes you feel close like brothers and sisters. And give each other more honor than you give yourself." (Romans 12:10 ERV)

To become a true friend of Christ I must continuously push toward forsaking myself to show consideration for the well being of others. Opportunities to grow in love present themselves daily. There are numerous circumstances where I can choose to step back and allow another person to be first. Although I admire those who do this, I'm realizing I don't have to go serve in a far away or third world country to show love for others. There are those who cross my path right at home that are desperately seeking love. I simply must open my eyes to the possibilities and become willing to demonstrate God's love. My struggle is to ignore supercilious self seeking behavior and consciously choose philanthropic concern for others. Philanthropic comes from the Greek philo for love and antropos for mankind. It describes altruistic (unselfish dedication) acts of giving

money or time in caring for the welfare of humankind. My pursuit of happiness must include seeking and gaining an appreciation of God's agape love through personal acts of philanthropy towards fellow humans.

Meditation: Do I seek opportunities to show love?

1 John 3:15-17 Romans 12:9-10 1 John 4:17-20 1 Corinthians 13

Feedback welcome.



Baby Shower held Sunday, Dec. 7 for Sierra Schoonover

A Baby Shower was held for Sierra Schoonover on Sunday, December 7, 2014 in the home of Tami King. Shown above back row Judy Leatherman, Barbara Schoonover, Linda Keener, Ellen Tillery, Kelsie Keener, Madison Mungia and Kendra Mungia. Sitting- Rese Schoonover, Trisha Keener, Sierra Schoonover, Apryl Burselson and Betty Burselson.



Baby Shower held Dec. 6th for Miranda Olivas

A Baby Shower was held on Saturday December 6th at 2 p.m. for Miranda Olivas & Haden Long in the home of Amy Long. Shown above are Stella Rivera, Noemi Olivas, Delinda Olivas, Miranda, Amy Long, Hailey Girdner and Brenda Long.

**4Given concert at the
First United Methodist
Church on Sunday
December 14th at 3 p.m.**

Santa Letters in Christmas Edition Next Week

The Churches of Stratford Welcome You

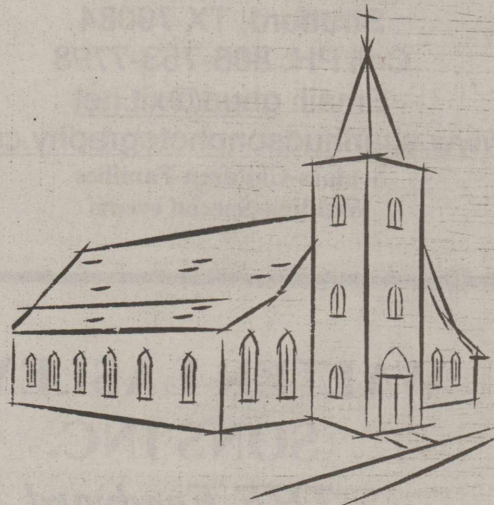
First Assembly of God
Kevin Anderson, Pastor
921 Fulton
Sunday School 9:45 a.m.
Morning Worship 10:45 a.m.
Evening Worship 6:00 p.m.
Wed. Bible Study 6:30 p.m.

First Christian Church
Pastor Gary Smith
5th & Main
Sunday School 9:45 a.m. (nursery)
Morning Worship 10:45 a.m. (nursery)
No Sunday evening Worship Service

First United Methodist
Rev. Steve Ulrey 396-2178
520 N. Main
Sunday School 9:20 a.m.
Morning Worship 10:30 a.m.
Junior & Senior High UMY 6:00 p.m.

St. Joseph Catholic Church
6th & Pearl
Rectory 366-5687
Sunday morning 8:00 a.m. (English) 9:30 (Spanish)
Sacrament of Reconciliation Before Mass or t.
Christian Formation Classes K-6 Grade Wed. Afternoon
Jr. & Sr. High. Wed. 6:30-8:30 p.m.

First Baptist Church
Pastor Ron Whitt
702 N. 3rd
Sun.-Coffee 8:30 a.m.
Sunday School 9:30 a.m.
Worship Service 10:30 a.m.
Wed. Children 6 p.m. youth 7 p.m.



This page sponsored by
Stratford Grain 396-5541
Lautz 769-5541

Walter Lasley & Sons, Inc.
753-4411

Stratford Star
366-5885

Church of Christ
Iglesia De Cristo
Brad Beckett
Juan Campos
N. 3rd & Chestnut
Sunday School 9:30 a.m.
Morning Worship 10:30 a.m.
Evening Worship 5:00 p.m.
Wednesday Bible Study 7:00 p.m.

Heritage Bible Baptist
Pastor Mark Looney
302 S. Main
For more info-call 396-2212
Morning worship 11:00 a.m.
Evening Service 6 p.m.
Thurs. Service 7:00 p.m.

Eben-Ezer Templo Hispano
Asambleas De Dios
Pastor: Juan M. Valenzuela
806 366-3071
205 N. Poplar-Hwy 287 268-2188
Escuela Dominical 10 a.m. - 12 noon
Servicio De Adoracion 5 p.m.-7 p.m.
Miercoles: Servicio De Adoracion 6-8 p.m.

Kerrick Community
Pastor Roy Harris
Community Building
10 a.m. Worship Service

La Mision Bautista
Mision Bautista
401 S. Wall 396-5376
Domingo (Sunday)
Estuela Dominical 9:45 a.m.
Miercoles (Wednesday)
Servicio De Adoracion 11 a.m. Estudio
Biblico & Servicio De Oracion 8 p.m.
Servicio De Adoracion 6 p.m. se Cuidamos
Susunos Durante El Servicio

Schedule of all 2014-2015 4-H & Clover Meetings

**Dates are subject to change with weather or AgriLife mandatory meetings
All meetings for both clubs are at 6pm*

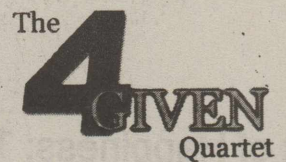
4-H Meetings

November 10
December 8
January 12
February 9
March 16
April 13
May 4

Clover Kid Meetings

November 24
December 15
January 26
February 23
March 30
April 27
May 18

**4Given Christmas Concert & Piano
Recital, Sunday, Dec. 14, 2014**



Stratford's own Gospel Quartet, 4Given, will be performing a special Christmas concert this Sunday, Dec. 14th, at 3 p.m., at the First United Methodist Church. It is an event you won't want to miss if you are in the Stratford area this weekend.

The quartet is comprised of founder Greg Wright, former Big Blue band director Randy Hunsaker, former Elk coach and current Amarillo ISD AD Brad Thiessen, and Amarillo resident Mike Cummings. The quartet has recorded several CDs, and they are a favorite Gospel group in the Texas panhandle.

Also, MariHoward Engelbrecht's piano students will be performing a Christmas recital at the First Christian Church at 1:30 p.m. that same day. You will be filled with the Christmas spirit by the end of the day!

Christmas is just around the corner -



Structured Touch Massage

Open House on Dec. 16th, 11 a.m. till 2 p.m.

In the XIT Bldg 806/290-3655



Wild Child Nails & Spa - now through Christmas, mani-pedi combo is \$30!

We also offer microdermabrasion, facials, waxing & massage. 806/268-3201



Ring in the with Spark® for weight loss or trying to get fit! All Advocate®

offered at distributor prices in December! Contact Jode @ Hair Creations 806/396-2809.



Great Lengths Salon Call Rocio Torres for Haircuts, Color,

Perms & all your grooming needs. *SE Habla Espanol*

806/396-5004 806/930-7231

Please SHOP LOCALLY - your patronage is appreciated!!

This public service announcement is brought to you by SCDC.

Business Directory

**Vincent Insurance
Agency**
Sabrina Melton

PO Box 739 Office: 806-396-2456
Stratford, TX 79084 Home: 396-2512
Email: vincins@xit.net

THIS SPACE
AVAILABLE
CALL 366-5885
E-mail stardm@xit.net
Fax: 366-5884

**Stratford Auto
Electric**

119 S. Wall, Stratford, TX 79084
Phone-366-5941 or 366-5857
Alternators, starters, Altronic Repair
Since 1964
Roy McAlister

A & I Parts Center
Automotive and Industrial Parts
201 N. 2nd Street-Stratford, TX 79084
Tel: (806) 366-5592
*Toll-free 800-624-5494
Fax: (806) 366-2583

**Stratford Grain
Company**
Stratford 396-5541
Lautz 769-4485

4 North Main

THIS SPACE
AVAILABLE
CALL 366-5885
E-mail stardm@xit.net
Fax: 366-5884

**Structured Touch Massage
Therapy Clinic**
Cece Yelek, CMT, LMT
401 N. Third #11. or 7199 Co. Rd P
Stratford, TX - Sunray, TX
Office 806-366-ahhh (2444)
Cell 806-290-3655
9-5 M-F-Sat. by apt

Shari Hudson Photography
PO Box 243
Stratford, TX 79084
Cell PH: 806-753-7798
Email: ghud@xit.net
www.sharihudsonphotography.com
Seniors-Children-Families
Wedding-Special events

**The Stratford Star
Duane & Marty Robertson**

PO Box 8 Office: 806-366-5885
Stratford, TX 79084 Fax: 366-5884
Email: stardm@xit.net

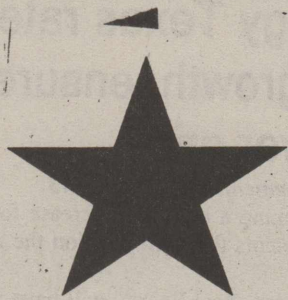
PO Box 510
Stratford, TX 79084
Phone: 806-366-5557

Duncan Chevrolet
www.duncanchevrolet.com
E-mail duncanch@xit.net
AN AMERICAN REVOLUTION

**WALTER LASLEY &
SONS INC.**
THE Feedyard

Since 1953
753-4411

THIS SPACE
AVAILABLE
CALL 366-5885
E-mail stardm@xit.net
Fax: 366-5884



It Pays To Look In The

THE STRATFORD STAR
Thursday, December 11, 2014
Page 5

Star Classifieds

Phone 366-5885

..The Best Salesperson Around

Classifieds

Houses for Sale

Newly renovated. Move-in-ready, 2500 sq. ft., 4 b/r, 3 bath, 2 living areas, 1 car garage and 2 car carport. 602 N. 4th. Large corner lot, nice neighborhood, in-ground storm shelter, \$139,000. Lots of extras. Call for appointment 806-753-7411.

Services

Will babysit Saturday day or night. 366-2586 Linda Forthman. 8 hr. \$12.00

Painting & Home Repairs

Keith King

1-580-817-1489 or
396-2047

For Sale

Tri corner artist will have items on display from 10 a.m. - 4 p.m. on Tuesdays at the Sherman County barn until Christmas-come and browse.

For Sale: Tall TV armoire with two door cabinet beneath. Looks brand new. Asking \$150.00 Call 753-6709

Help Wanted

Part time housekeeper needed, please apply at Coldwater Manor 1111 Beaver Road, Stratford, Texas 79084

Job Opening-Director of Nurses. Coldwater Manor in Stratford, TX is now seeking a full time RN for the position of Director of Nurses. If interested please come by 1111 Beaver Road in Stratford, TX. EOE

Cimarron Feeders is accepting applications for the following positions:

*Feed Mill Maintenance Team Member
*Mill Laborer
*Mechanic

17 miles S. Keyes, OK on HWY 171
15 miles N. of Stratford, TX on HWY 287
Then right 5 miles on HWT 171

Apply in person: M-F 8a.m.-3p.m. or call (580) 543-6383

Great benefits for full-time positions that include:
Medical, Dental & Vision insurance as well as 401 K and paid time off. Pre-employment drug screen required. EOE M/F

JBS Five Rivers Cattle Feeding is an equal opportunity Employer
11-6-tfn



Santa shops at Acquisitions and so should you!

For the latest in jewelry and accessories or one of a kind furniture and home décor, come and shop with us this holiday season. Open Mon. through Sat. from 10 a.m. to 6 p.m. at the corner of Hwys 54 & 287 in Stratford, Texas.

More economical!

Differences between electric and hydraulic-driven systems

Reinke Dealer-Professionals are ready to share other eye-opening reasons why more and more producers are choosing Reinke irrigation systems.

Talk with a Reinke Dealer today.

TEXAS ELECTRIC CO.
Stratford, TX 79084
Charles & Chuck Harbour
301 N. Poplar
Office 806-396-2300

Reinke

Legal Notices

NOTICE OF RECEIPT OF APPLICATION AND INTENT TO OBTAIN AIR PERMIT RENEWAL

PERMIT NUMBER 73374

APPLICATION DCP Midstream, LP has applied to the Texas Commission on Environmental Quality (TCEQ) for renewal of Air Quality Permit Number 73374, which would authorize continued operation of the Tex Booster Station. The applicant has provided the following driving directions: From US 287 (Poplar Street) and US 54 on the west side of Stratford, drive 5 blocks southeast on Poplar Street. Turn east and drive 21.8 miles on SR 15. Turn north and drive 4 miles on CR 28. Turn east and drive 0.6 miles on RR 377 to the booster station on the right, Stratford, Sherman County, Texas 79084. This link to an electronic map of the site or facility's general location is provided as a public courtesy and not part of the application or notice. For exact location, refer to application. <http://www.tceq.texas.gov/assets/public/hb610/index.html?lat=36.383888&lng=-101.668055&zoom=13&type=r>. The existing facility and/or related facilities are authorized to emit the following air contaminants: organic compounds, sulfur dioxide, nitrogen oxides, carbon monoxide, hydrogen sulfide, hazardous air pollutants, and particulate matter including particulate matter with diameters of 10 microns or less and 2.5 microns or less.

This application was submitted to the TCEQ on November 12, 2014. The application will be available for viewing and copying at the TCEQ central office, TCEQ Amarillo regional office, and the Sherman County Library, 719 North Main Street, Stratford, Sherman County, Texas, beginning the first day of publication of this notice. The facility's compliance file, if any exists, is available for public review in the Amarillo regional office of the TCEQ.

The executive director has determined the application is administratively complete and will conduct a technical review of the application. In addition to the renewal, this permitting action includes the incorporation of the following authorizations or changes to authorized facilities related to this permit: alterations and amendments. The reasons for any changes or incorporations, to the extent they are included in the renewed permit, may include the enhancement of operational control at the plant or enforceability of the permit. For more information about this permit application or the permitting process, please call the Public Education Program toll free at 1-800-687-4040. **The TCEQ may act on this application without seeking further public comment or providing an opportunity for a contested case hearing if certain criteria are met.**

PUBLIC COMMENT You may submit public comments, or a request for a contested case hearing to the Office of the Chief Clerk at the address below. The TCEQ will consider all public comments in developing a final decision on the application. **The deadline to submit public comments is 15 days after newspaper notice is published.** After the deadline for public comments, the executive director will prepare a response to all relevant and material, or significant public comments. Issues such as property values, noise, traffic safety, and zoning are outside of the TCEQ's jurisdiction to address in the permit process.

After the technical review is complete the executive director will consider the comments and prepare a response to all relevant and material, or significant public comments. If only comments are received, the response to comments, along with the executive director's decision on the application, will then be mailed to everyone who submitted public comments or who is on the mailing list for this application, unless the application is directly referred to a contested case hearing.

OPPORTUNITY FOR A CONTESTED CASE HEARING You may request a contested case hearing. The applicant or the executive director may also request that the application be directly referred to a contested case hearing after technical review of the application. A contested case hearing is a legal proceeding similar to a civil trial in state district court. Unless a written request for a contested case hearing is filed within 15 days from this notice, the executive director may act on the application. **If no hearing request is received within this 15 day period, no further opportunity for hearing will be provided.** According to the Texas Clean Air Act § 382.056(o) a contested case hearing may only be granted if the applicant's compliance history is in the lowest classification under applicable compliance history requirements and if the hearing request is based on disputed issues of fact that are relevant and material to the Commission's decision on the application. Further, the Commission may only grant a hearing on those issues raised during the public comment period and not withdrawn.

A person who may be affected by emissions of air contaminants from the facility is entitled to request a hearing. If requesting a contested case hearing, you must submit the following: (1) your name (or for a group or association, an official representative), mailing address, daytime phone number, and fax number, if any; (2) applicant's name and permit number; (3) the statement "[I/we] request a contested case hearing;" (4) a specific description of how you would be adversely affected by the application and air emissions from the facility in a way not common to the general public; (5) the location and distance of your property relative to the facility; and (6) a description of how you use the property which may be impacted by the facility. If the request is made by a group or association, the one or more members who have standing to request a hearing and the interests the group or association seeks to protect must also be identified. You may also submit your proposed adjustments to the application/permit which would satisfy your concerns. Requests for a contested case hearing must be submitted in writing within 15 days following this notice to the Office of the Chief Clerk at the address below.

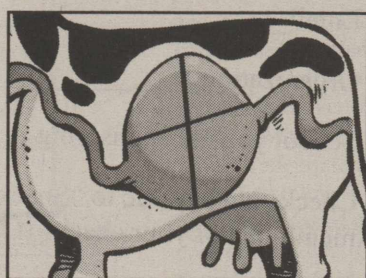
If any requests for a contested case hearing are timely filed, the executive director will forward the application and any requests for a contested case hearing to the Commissioners for their consideration at a scheduled Commission meeting. Unless the application is directly referred to a contested case hearing, the executive director will mail the response to comments along with notification of Commission meeting to everyone who submitted comments or is on the mailing list for this application. **If a hearing is granted, the subject of a hearing will be limited to disputed issues of fact relating to relevant and material air quality concerns raised during the comment period.** Issues such as property values, noise, traffic safety, and zoning are outside of the Commission's jurisdiction to address in this proceeding.

MAILING LIST In addition to submitting public comments, you may ask to be placed on a mailing list for this application by sending a request to the Office of the Chief Clerk at the address below. Those on the mailing list will receive copies of future public notices (if any) mailed by the Office of the Chief Clerk for this application.

AGENCY CONTACTS AND INFORMATION Public comments and requests must be submitted either electronically at www.tceq.texas.gov/about/comments.html, or in writing to the Texas Commission on Environmental Quality, Office of the Chief Clerk, MC-105, P.O. Box 13087, Austin, Texas 78711-3087. If you communicate with the TCEQ electronically, please be aware that your email address, like your physical mailing address, will become part of the agency's public record. For more information about this permit application or the permitting process, please call the Public Education Program toll free at 1-800-687-4040. Si desea información en Español, puede llamar al 1-800-687-4040.

Further information may also be obtained from DCP Midstream, LP, 370 17th Street, Suite 2500, Denver, Colorado 80202-5604 or by calling Mr. Daniel Artzer, Environmental Engineer at (303) 605-2009.

Notice Issuance Date: November 20, 2014
Published in The Stratford Star, Thursday, December 11, 2014



You may have heard that a cow has four stomachs. Not true. A cow has only one stomach, which contains four digestive compartments. Each compartment performs a different function.

Legals cont. on page 6

Environment

(NU) - Natural cork is one of the planet's most versatile and useful materials. It is used to make everything from wine stoppers, to high-fashion items, to building materials. Natural cork was even used as insulation on space shuttles.

Despite cork's many uses, there is still much confusion about the supply of cork and where it comes from. Contrary to widely held misperceptions, there is no shortage of cork. Nor are the trees cut down in the harvesting process. Like sheep, whose shorn wool grows back over time, the bark from a cork oak regenerates every nine years.

Learn more at <http://100percentcork.org>.

Continued Legal notices from page 5

NOTICE TO ALL PERSONS HAVING CLAIMS AGAINST THE ESTATE OF LESLIE DUANE DODSON, DECEASED

Notice is hereby given that original Letters Testamentary for the Estate of LESLIE DUANE DODSON, were issued on the 14th day of November, 2014 in Cause No. 2330, pending in the County Court of Sherman County, Texas, as joint Independent Executors to:

Dena Lee Ammons
5100 White Oak Drive
Amarillo, TX 79110

Brenda Hope Forehand
3010 SW 28th
Amarillo, TX 79109

The attorney representing such Estate is as follows:

William Hunter
Hunter & Oelke, PC
507 Denrock Ave.
P. O. Box 792
Dalhart, Texas 79022
Telephone (806) 244-5632
Telefax (806) 244-2863

All persons having claims against the Estate which is currently being administered are required to present them within the time and in the manner prescribed by law.

DATED this the 4th day of December, 2014.

HUNTER & OELKE, PC

BY: WILLIAM HUNTER
STATE BAR CARD NO. 10304000

Published in The Stratford Star, Thursday, December 11, 2014

Proposed Xcel Energy Texas rate increase to support growth, ensure vital and flexible power grid

\$872 million invested in area grid improvements since July 2013

AMARILLO, Texas - Xcel Energy is seeking a base rate increase for Texas retail customers to support grid improvements that will position the regional economy for decades of growth.

From July 2013 through the end of this year, Xcel Energy will have invested almost \$872 million in new and upgraded power lines, substations and generating units in response to strong economic growth and the need to tap new sources of power to sustain that growth, said David Hudson, president and CEO of Southwestern Public Service Company, an Xcel Energy company.

A proposal presented today to the 80 Texas towns and cities served by the company, and to the Public Utility Commission of Texas (PUCT), seeks to increase revenue by a net of \$64.75 million per year. Impacts on each customer class vary, but for residential customers using 1,000 kilowatt-hours per month, the increase would average \$9.14 per month, or 8.2 percent, with fuel costs factored in. For all customer classes combined, the total increase is 6.7 percent accounting for base rates and fuel costs.

"Since we moved into Texas in 1925, our communities have depended on us to make investments in critical infrastructure to maintain reliability and sustain economic growth," Hudson said. "These investments tend to drive up costs in the short-term, but because these improvements lead to greater efficiency, the pricing will stabilize over the long term and our region will remain a great place to live and do business."

New federal mandates on power plant emissions are leading the company to seek alternative power sources that require better transmission connections to a wider market. Since 2013, the company completed two 345-kilovolt transmission lines to Woodward, Okla., a power hub within the Southwest Power Pool. These investments alone totaled almost \$270 million.

"We are already realizing savings from these new transmission lines in the form of cheaper energy imports, but the cost of the new lines are not yet included in customer rates," Hudson said.

Even with higher base rates, total Xcel Energy bills remain below the national average, Hudson said. A key strategy in holding down rising costs is to manage fuel costs, which can account for up to half a typical residential bill. The company maintains a diverse mix of generating resources, and new wind energy acquisitions will save an estimated \$590 million in fuel costs over the next 20 years.

Customers also have a role in making energy usage more efficient and helping hold down costs by taking advantage of energy-efficiency programs and tips offered by Xcel Energy. These measures can reduce bills by as much as 10 percent or more. Information on energy efficiency tips and programs can be found at www.xcelenergy.com on the "Save Money & Energy" tab.

Xcel Energy (NYSE: XEL) is a major U.S. electricity and natural gas company with regulated operations in eight Western and Midwestern states. Xcel Energy provides a comprehensive portfolio of energy-related products and services to 3.5 million electricity customers and 1.9 million natural gas customers through its regulated operating companies. Company headquarters are located in Minneapolis. More information is available at www.xcelenergy.com.

This news release includes forward-looking statements that are subject to certain risks, uncertainties and assumptions. Such forward-looking statements are intended to be identified in this document by the words "anticipate," "estimate," "expect," "projected," "objective," "outlook," "possible," "potential" and similar expressions. Actual results may vary materially. Factors that could cause actual results to differ materially include, but are not limited to: general economic conditions, including their impact on capital expenditures; business conditions in the energy industry; competitive conditions in the marketplace, etc.

Support Your Library
Donate to
Project Christmas Card
Deadline Friday, Dec. 12th
Donations accepted at
First State Bank
Sherman County Public Library
Call 366-2200 for more details

Health

(NU) - When illness or injury strikes, home health care is oftentimes not only preferred, but statistically shown to rapidly improve healing and give peace of mind. So, how do you sift through the many choices?

To begin the process, make a list of what you think your loved one will need. Next, ask for referrals from your loved one's physician or a family member or friend. If your loved one has been hospitalized, ask a social worker or nurse at the hospital. Another good place to look is the Internet. Once you've identified the type of care needed, narrow the search to a few agencies.

For more information, visit www.axxess.com.



On November 5th in Ottery Saint Mary in Devon, England, people carry huge burning barrels of tar on their backs. They run with the burning barrel until the heat and weight become too much or the barrels break up.

Health

(NU) - Acetaminophen is the most common drug ingredient in America, found in more than 600 different prescription (Rx) and over-the-counter (OTC) medicines. While it is safe and effective when used as directed, there is a limit to how much can be taken in one day: 4,000 mg for most adults. Taking more acetaminophen than directed is an overdose and can lead to liver damage. According to the Acetaminophen Awareness Coalition, sometimes people may unintentionally exceed the 4,000 mg daily dose because they don't realize that several medicines they take may all contain acetaminophen. Learn more at www.knowyourdose.org.



Giving a Voice to Hungry Kids

We all know that there are children who have free breakfast and lunch provided for them at school Monday through Friday. Have you ever stopped to think what these children do for food on the weekends? Have you ever eaten lunch on Friday and then not had another actual meal until Monday morning? Can you imagine trying to listen to your teacher on Monday morning when all you can do is watch the clock and count the seconds until lunchtime? Unfortunately, there are children in Stratford and the surrounding towns in the Texas panhandle who face this struggle every weekend and during school holidays. Snack Pak 4 Kids is a program that provides food for children in these situations every weekend of the school year. 100% of all money is used for food only.

YES!!! I want to adopt a child for: **Stratford ISD**

___ 1 year- \$133 (number of children ___)
___ 1 month-\$14 (number of children ___)
___ 1 week- \$3.50 (number of children ___)
___ other- \$ _____

Name _____

Address _____

Phone _____

Email _____

Organization _____

School you are sponsoring _____

Checks are payable to "Snack Pak 4 Kids." Please designate Stratford in memo line of your check.

Snack Pak 4 Kids
701 Park Place Ave
Amarillo, TX 79101
806-337-5252