

Melvin Mitts 06/15  
PO Box 523  
Stratford, TX 79084

# The Stratford Star

75 cents

Published for over 100 years in Stratford, Sherman County, Texas 79084 usps 523

Number 8

February 19, 2015



## Scholarship winners announced

Scholarships winners announced at the Sherman County Livestock Show were Lambs-Abby Law, Goats-Olivia Merry and Blakelee Sladek; Pigs-Benjamin James, Klaire Walden, Slate Anderton, Angel Guerra, Ashton Lavake, Dempsey Collums, Kade McBryde, Trever Bell, Bret Barnard, Allie James, Kenlee McBryde, Kaytly Clift, & RaeLeigh Willborn. Cattle-Reid Rouseer, Rhett Rouser, Payton Berry, and Katelin Berry. Congrats to all!

## Farm Bill Safety-Net Deadlines Approaching for Texas Farmers

COLLEGE STATION, Texas, Feb. 13, 2015 —U.S. Department of Agriculture's (USDA) Farm Service Agency (FSA) Judith A. Canales today reminds producers of upcoming important deadlines for the new safety-net programs established by the 2014 Farm Bill, known as Agriculture Risk Coverage (ARC) and Price Loss Coverage (PLC). The final day to update yield history or reallocate base acres is Feb. 27, 2015, and the final day for farm owners and producers to choose coverage is March 31, 2015.

"These programs provide financial protection against unexpected changes in the marketplace, so now is the time to have those final conversations, to ask any remaining questions, and to visit the Farm Service Agency to make these decisions," said Canales. "For the first time in many years, farmers have the opportunity to update yields or reallocate base acres, but if no changes are made by February 27, the farm's current yield and base will be used," said Canales. "If no program election occurs by March 31, then there will be no 2014 payments for the farm and the farm will default to PLC coverage through the 2018 crop year."

Nationwide, more than 3,500 training sessions have been conducted on the new safety-net programs, including nearly 200 in Texas. The online tools, available at [www.fsa.usda.gov/arc-plc](http://www.fsa.usda.gov/arc-plc), allow producers to explore projections on how ARC or PLC coverage will affect their operation under possible future scenarios.

Covered commodities include barley, canola, large and small chickpeas, corn, crambe, flaxseed, grain sorghum, lentils, mustard seed, oats, peanuts, dry peas, rapeseed, long grain rice, medium grain rice (which includes short grain rice), safflower seed, sesame, soybeans, sunflower seed and wheat. Upland cotton is no longer a covered commodity.

To learn more, farmers can contact their local Farm Service Agency county office. To find your local office visit <http://offices.usda.gov>.

The Farm Bill builds on historic economic gains in rural America over the past six years, while achieving meaningful reform and billions of dollars in savings for the taxpayer. Since enactment, the U.S. Department of Agriculture has made significant progress to implement each provision of this critical legislation, including providing disaster relief to farmers and ranchers; strengthening risk management tools; expanding access to rural credit; funding critical research; establishing innovative public-private conservation partnerships; developing new markets for rural-made products; and investing in infrastructure, housing and community facilities to help improve quality of life in rural America. For more information, visit [www.usda.gov/farmbill](http://www.usda.gov/farmbill).

USDA is an equal opportunity provider and employer. To file a complaint of discrimination, write: USDA, Office of the Assistant Secretary for Civil Rights, Office of Adjudication, 1400 Independence Ave., SW, Washington, DC 20250-9410 or call (866) 632-9992 (Toll-free Customer Service), (800) 877-8339 (Local or Federal relay), (866) 377-8642 (Relay voice users).

## Landscape needs irrigation during the winter season

On February 2, 2015, the Groundhog predicted 6 more weeks of winter. As we know, Sherman County has seen some snow and freezing temperatures throughout this winter. While homeowners and gardening enthusiasts may want to stay bundled up indoors, it is important not to forget about your landscape.

It is not uncommon to go several weeks without precipitation during the winter months, said David Hillock, Oklahoma State University Cooperative Extension consumer horticulturist.

"Although most plants are in a dormant state, they still use water, especially evergreens. Lack of adequate soil moisture is often a major cause of winter damage," Hillock said. "If a cold front with freezing temperatures is forecast, water the landscape at least a couple days in advance. Moist soil is better able to provide plant roots protection from sudden drops in temperatures than dry soils. Be sure to water only when the temperature is well above freezing during the day."

He also suggests being careful to avoid overspray or runoff onto streets and sidewalks as the water could freeze at night and become a hazard to motorists and pedestrians.

Pay particular attention to plants in raised beds, plants in areas protected from precipitation such as under large overhangs and broadleaf evergreen plants. During dry winters, broadleaf evergreens should be watered once a month.

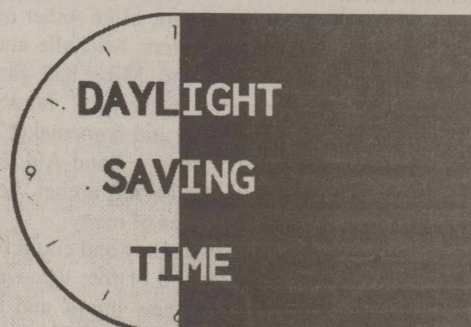
When there is little or no soil moisture present, plants can become desiccated. In addition, it is more likely root damage will occur.

"Take advantage of bright, sunny days. A sunny day on moist soil helps warm the soil and root area, which in turn reduces the amount of time the roots will be exposed to cold, winter temperatures," he said. "Keep in mind moisture must be available below the frost line or frozen soil. When the soil freezes, if moisture isn't present in soil pore spaces, moisture is pulled from plant roots to form the ice crystals. This results in desiccated roots, or what some would refer to as 'winter kill.'"

Hillock noted too much water can cause problems in the winter as well. Cold, wet soils can lead to rotting roots. In addition, very wet soils can encourage winter weeds to germinate and flourish. It is best to water only every two to three weeks and apply just enough water to moisten the top 6 inches of soil. "If you have potted plants under a porch or patio covering or the eaves of your home, remember these plants will need watering since they often receive little natural precipitation," he said.

Story By: Trisha Gedon, Oklahoma State University. For more information contact Alexa at the Texas AgriLife Extension office. Agent Ag/Natural Resources, Texas A&M AgriLife Extension Service, PO Box 540, Stratford, TX 79084

P: 806-366-2081 Fax: 806-366-2489, alexa.reed@ag.tamu.edu



Will change Sunday March 8<sup>th</sup>, 2015

## What's Happening In Stratford

Check in paper for complete information

Fresh Hot Tamales, deadline to order February 28<sup>th</sup>

Annual Boys and Girls state Hamburger Feed, Sunday March 8<sup>th</sup> at County Barn

Annual Sausage Dinner, Sunday, Feb 22<sup>nd</sup> at Sherman County Barn

**LAND AUCTION**  
**N.W. TEXAS IRRIGATED FARMLAND**  
 HARTLEY & MOORE COUNTIES  
 15± miles Northwest of Dumas, TX • 20± miles Southeast of Dalhart, TX

**10,560± ACRES**  
 IN 10 TRACTS

**THURSDAY, MARCH 26 • 10AM**

Held at the Rita Blanca Coliseum - Dalhart, TX  
 Buy any tract, combination of tracts or buy the entire property!  
 A rare investment opportunity with 10,560± acres. The portfolio includes a high percentage of tillable acres with excellent soils and a high percentage of irrigated acres.

- Over 10,000 FSA Cropland Acres
- Nearly 7,000 Irrigated Acres
- 21 Irrigated Circles
- Great Opportunity to Buy At Auction!

**POSSESSION FOR THE 2015 CROP YEAR!!**

**SCHRAMMER**  
 Real Estate and Auction Company, Inc.  
 Rex D. Schrammer II, Texas Auctioneer #17409

**INSPECTION DATES:**  
 Mon., Feb. 23<sup>rd</sup> • 10am-12noon  
 Thurs., Mar. 12<sup>th</sup> • 10am-12noon  
 Meet a Schrammer Representative at the Hampton Inn - 2010 S. Dumas Ave. Dumas, Texas

**Paul A. Lynn & Associates, LLC**, Texas Real Estate Broker #9000489

3% Buyer's Premium **ONLINE BIDDING AVAILABLE!**

**CALL FOR BROCHURE OR VISIT OUR WEBSITE**  
**800-451-2709 • SchrammerAuction.com**

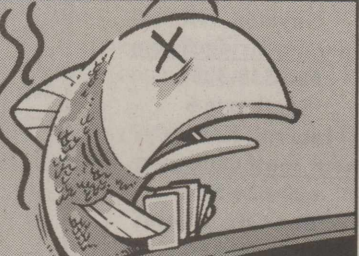
## Orders for fresh, hot tamales ends soon

February 28 will be the last day to pre-order fresh, hot tamales from Lollipop Junction. The tamales will be delivered to your door on Sunday, March 8, 2015.

Staff members of Lollipop Junction, Stratford's non-profit childcare center, will be making the red chili tamales. Tamales will be sold by pre-order for \$15.00 a dozen by placing an order between now and February 28.

To order tamales, call either Julie or Erica at Lollipop Junction 366-5886 or stop by the child care center located at 210 N. Main Street, Stratford.

Don't delay, order today!!! And thank you for supporting Lollipop Junction.



Small-time gamblers who place a small bet in order to prolong the excitement of a game are called "dead fish" by game operators because the longer the playing time, the greater the chances of losing.

## American legion announces boy's state/girl's state fundraiser

The Howard Norvell Green Post 262 will conduct the annual Boys State/Girls State Hamburger Feed on Sunday, March 8, 2015 from 11:30 to 1:30 at the Sherman County Barn. This is a Free Will Donation event to raise funds to send our Boys State and Girls State representatives to their respective programs this summer. This year our Boys State rep is Juan Carlos Camberos and our Girls State rep is Alexie Wright. The entire community is invited to attend. Come out and enjoy a burger and meet these two fine young people.

**SAVE THE DATE:**  
**St. Joseph's Catholic Church**  
**ANNUAL SAUSAGE DINNER**  
 Sun. February 22<sup>nd</sup>, 2015  
 At the Sherman County Barn  
 From 10:00am - 3:00pm  
 Adults: \$8.00 & Children (5-12): \$6.00  
 Children 4 & under eat free!!  
 Sausage (reg. & spicy) by the lb. will be available: cooked & uncooked  
 Call for pre-orders to:  
 Jasmin Rios: (806)339-4842- habla español  
 Annie Duran: (806)570-4744- habla español  
 Heather Braden: (806)366-3224

PROFESSIONALS IN PEST CONTROL TECHNOLOGY  
 Serving the area since 1965

**Stevenson & Sons**  
 Pest Control OF DALHART

- TERMITE, RODENT & PEST CONTROL FOR YOUR HOME & BUSINESS
- YARD & TREE SPRAYING

DALHART PH. 249-4202  
 JIM STEVENSON

BOX 192  
 DALHART, TEXAS

CASA 69 Is Having an Open House at the Dallam County Courthouse on Monday, February 23, 2015 from 5-6 p.m. to provide information about how you can become a CASA volunteer. Please call 806-244-2684 or send an email to [edye@casa69.org](mailto:edye@casa69.org) if you plan on attending.  
**Become a CASA Volunteer**  
 And make a difference in a child's life.

# Obituaries

## Beverly K. Asher

September 30, 1945-February 3, 2015

Beverly K. (Brown) Asher was born on September 30, 1945, Boise City, Oklahoma to J. Fred and Ethel Walton Brown. Her father promptly attached the nickname, "Bunny" to his golden haired little girl. She was affectionately addressed as "Bunny" by her siblings and would be known as "Aunt B", to her many nieces and nephews. She would remain a resident of the Griggs Community her entire life.

Beverly married her high school sweetheart, Mike Asher on December 16, 1962. Two beloved daughters, Michelle and Melissa completed their family. She and Mike had just celebrated their 52<sup>nd</sup> Anniversary. Beverly's family considers her the "best stay at home Mom and homemaker", always there to wipe away the tears, apply a Band-Aid, or just listen. Although she didn't consider herself a chef, her pecan pie and cheese grits became favorites of many.

Beverly never met a stranger, comforted many and could be counted on to assist anyone, family, friend or foe, whoever was in need. She dearly loved learning new things and in 1997, she enrolled in college at OPSU, Goodwell, OK.

Her favorite memories were of the many trips to Cimarron Canyon with cousins, going to Tennessee to visit her family and the trips to Las Vegas and Alaska with her girls:

Beverly departed this life at BSA Hospice in Amarillo, Texas on February 3, 2015.



## From the Desk of Sheriff Powell

This week, we recognize Jailer/Dispatcher/911 Operator, Jennifer Spurlock.

Jennifer Spurlock has lived in Stratford for 36 years. She attended Stratford High School until her sophomore year and received her GED in 1996. She has worked in customer service, security, and in the oil and gas industry. Jennifer was brought on board in 2012 and has been an asset to this agency.

Quote: "In 2012 I became part of the Sherman county sheriff's office as a dispatcher, jailer and 911 operator. After working here for almost 3 years I can honestly say it takes a certain type of person to do this job. It's not perfect, and it's scary at times and heart breaking at others, it's a job that can change in a blink of an eye. We are behind the scene people with just enough hardness to get the job done and just enough softness that cries unseen and unheard tears with you and whispers prayers of safety and God's blessing at the end of a call." She says that in her down time, she enjoys fishing, camping, reading, and most of all, spending time with her family. Please join me in thanking Jennifer Spurlock for her service to the Office of the Sheriff and to her community!!

I will be visiting our Capitol this week along with the other 253 County Sheriffs of Texas. There are several issues our legislative committee will be addressing as we will be meeting with our representatives individually, concerning past, present and future bills / laws. We were there in 2013 and made quite an impression. As always, I look forward to representing the Office of the Sheriff and the citizens of Sherman County, Texas. Have a GREAT week and stay warm.....spring is just around the corner!!

-Sheriff Joe Powell-



## Learn The Factors That Influence Prices At The Pump

(NAPS)—Over the next two weeks, millions of Americans are expected to make this holiday season one of the busiest for travel on record. Many drivers will take longer road trips than last year, due in no small part to major relief at the pump. Across the U.S., consumers are currently paying less than \$2.40 per gallon for regular gasoline, the lowest average price since May 2009.

Why was there such a steep plunge in gas prices after they were so high last summer? In order to understand why, you need to consider the series of factors that influence the price of oil, the commodity from which gasoline is produced.

Futures Fundamentals (www.futuresfundamentals.com), the new online resource brought to you by CME Group—the world's leading and most diverse derivatives marketplace—now provides visitors with an easy-to-follow infographic titled "The Facts Behind Oil Prices" to explain the many components that determine the price of fuel: from global demand to the changing supply landscape to geopolitical issues to others.

This diagram follows the release of Futures Fundamentals' video tutorial, "The Story of Oil," which takes viewers on a journey from the ground to the pump, explaining the extraction of crude from underground wells to price discovery at the exchange, and finally to the gas station.

"The Facts Behind Oil Prices" and "The Story of Oil" are just a few of the concepts made simple on the site, which also tackles complex topics like food prices and mortgage rates.

"In an increasingly interconnected world, we've seen growing interest among consumers and businesses for easy-to-understand information about what factors cause commodity prices to fluctuate and how to manage that risk," said Anita Liskey, CME Group Managing Director, Corporate Marketing & Communications. "Our educational website addresses these questions and demonstrates through simple images, videos and examples how futures and options can help people and businesses manage price risk."

Visit Futures Fundamentals today to uncover the reasons behind oil prices and start learning how the marketplace impacts the world around you.



## 2<sup>nd</sup> grade girls participate in Amarillo Kids Inc.

These 2nd grade girls participated in the Amarillo Kids Inc. league for the past 4 weekends and did a fabulous job! Jasmine Moczygemba, Alli Jo Roberts, Faith Tims, Dane'ja Agu-White, Lynley Albert, Addison Bell, Makenzie Bell and Mireya Zapata.

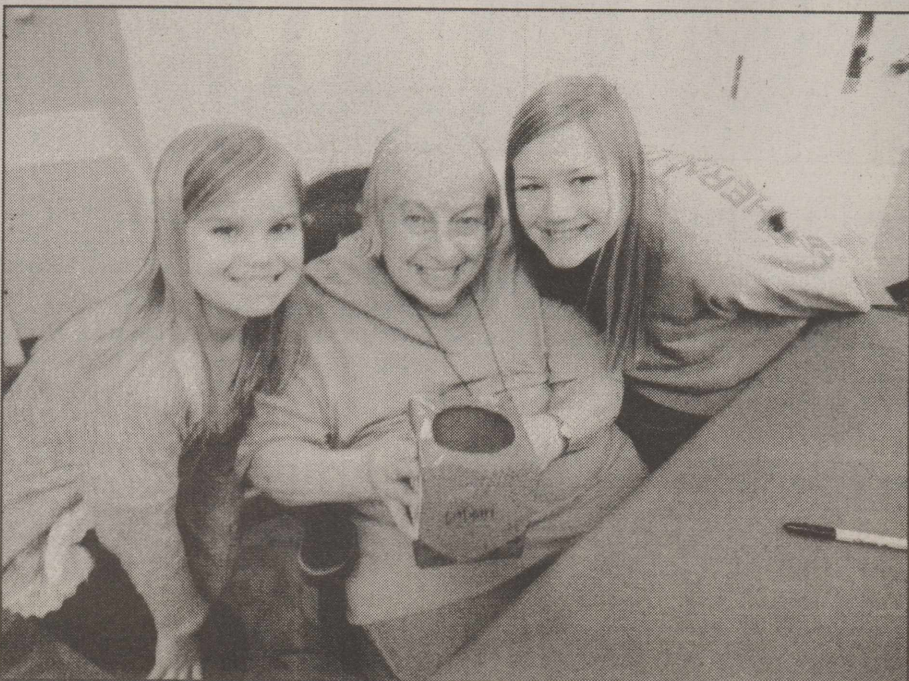


Photo by Paula Nusz- Shown LaDean Stewart with granddaughters making Valentine Box.

## Cupid Visits at Legacy

By Paula Nusz

Cupid made multiple stops at Legacy in the month of February. The week of February 8th began when the Dallam/Hartley Counties 4-H Clothing Project youth came to help residents decorate boxes for their Valentine collections. The youth also brought winter survival kits containing lotion bars, lip balm, and bottled lotion. The 4-H Youth Council brought Valentine cards for the residents.

Cindy Ballard and Lisa Massey came on Tuesday, to make special Valentine cards with the residents. They brought an assortment of stickers, ink stamps, colored pens, and cardstock to make that special homemade card. The participating residents made between 2-6 cards each for their loved ones. Many stories and laughs were shared.

The residents were invited to attend the dress-rehearsal of this year's Valentine play, Harmony Romance, performed at the La Rita Theater. Thursday brought along Valentine Bingo with special prizes available.

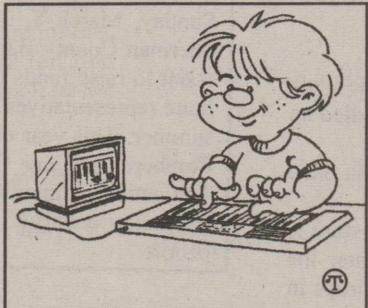
The Valentine party was held on Friday. Cherry Chocolate Cheesecake was served using holiday party ware. The program was a game of connect the famous verses to the correct speaker. The topic, of course, was love and Valentine thoughts. Each resident received a goody bag filled with candy.

## Mitchell Theaters

Northridge 8  
Guyton, OK  
[www.northridge8.com](http://www.northridge8.com)  
580-338-3281  
Southgate 6  
Liberal, Kansas  
[www.southgate6.com](http://www.southgate6.com)  
620-624-5573  
Garden City, Kansas  
[www.sequoyah8.com](http://www.sequoyah8.com)  
620-275-2760

## Did You Know?

(NAPS)—There is a program designed to help children in low-income families get connected to the Internet at home. Called Internet Essentials, it costs \$9.95 a month. To learn more, visit [www.InternetEssentials.com](http://www.InternetEssentials.com) or call 1-855-846-8376.



\*\*\*  
According to a survey by Expedia, people 30 and under take an average of 4.2 leisure trips a year, more than any other age group. With this commitment to travel, the timeshare industry is seeing a surge in younger buyers.

\*\*\*  
You can utilize clean, affordable energy today by paying less for solar

power than you do for current utility rates. SolarCity can provide a free assessment of your home's readiness for solar and offers free installation, too. To learn more, visit [www.solarcity.com](http://www.solarcity.com).

## Stratford Hospital District

"Proudly serving the medical needs of Stratford and Sherman County"  
Stratford Family Medical Clinic

### Stratford Family Medical Clinic

Mon. - Thurs 8 a.m. - 5 p.m. Fri, 8 a.m. - 3 p.m.  
396-5583 Tommy Brian, ANP

### Elk Pharmacy

Mon.-Fri. 9 a.m. - 5:30 PM  
"Check our Competitive pricing"  
"Compounding Available"  
366-5505

### Coldwater Manor Nursing Facility

396-5568 Laura Davis, LNFA

### Stratford EMS

9-1-1 or 396-2844 Jimmy Lanning, Director

The Stratford Hospital District operates on a non-discriminatory basis, giving equal treatment and access to services without regard to sex, race, religion, age or ethnicity.

**The Stratford Star**  
(USPS 523-108)  
Published for over 100 years  
805 Purnell  
Stratford, TX 79084  
Telephone: 806-366-5885  
Fax: 806-366-5884  
E-Mail: [stardm@xit.net](mailto:stardm@xit.net)

The Stratford Star is published weekly  
Editor & Publisher Martha Robertson  
Advertising & Photographer Shari Hudson

Subscription rates  
\$33.00 per year in Sherman & Adjoining counties  
\$40.00 per year all others  
\$27.00 per (9 months) College rate

The Stratford Star-PO Box 8-Stratford, TX 79084  
Periodicals postage paid at Stratford, TX  
POSTMASTER: Send address changes to Stratford Star,  
PO Box 8-Stratford, TX 79084

More economical!

Differences between electric and hydraulic-driven systems

Remke Duster-Professionals are ready to share other eye-opening reasons why more and more producers are choosing Remke irrigation systems.

Talk with a Remke Dealer today.

**TEXAS ELECTRIC CO.**  
Stratford, TX 79084  
Charles & Chuck Harbour  
301 N. Poplar  
Office 806-396-2300

\*\*\*\*\*

**Attention to all subscribers!!**

**Rate change**

The Stratford Star is no longer sending out notices when your paper is due. Check the label on the paper and see what month your subscription expires. **I will be putting "Stars" on the current month" If you have a Star on your label it means that your sub expires that month.** If you are not sure the amount you owe if you live out of the area call 753-7373 and double check. Locally is \$33.00 and out of the area \$40.00. If you are paying for someone else's sub, you will be billed for that person. The Stratford Star, PO Box 8, Stratford, TX 79084

Thanks-Marty

## A New Creation: What is Putting on the New?

"Put on your new nature, and be renewed as you learn to know your Creator and become like him." (Colossians 3:10 NLT)

I sometimes like to watch those TV makeover shows. A poor frumpy looking victim enters the arena. The experts strip off their old, baggy, T-shirt and jeans. They break out the perming solution, hair coloring, scissors, and a stylish new outfit. In a short while we see an amazing transformation brought about by new makeup, hair style and outfit. Everyone oohs and aaahs this new creation. It's like a miracle has happened before our very eyes. The happy makeover recipient smiles and struts, basking in the glow of everyone's applause. They are looking good and feeling good. Walking on air, they exit the arena and return home.

Once the new creation reaches home, that's when all the trouble begins. Questions arise. How do I keep my new look? What do I need to do to keep this sharp looking hair-do? Where will I get a supply of spiffy looking duds to wear? Who is going to help maintain the new me?

They find themselves in a dilemma. The reality hits them—maintaining their appealing new look will require considerable lifestyle changes and effort on their part. There are no friendly, smiling, eager experts (ready to work daily magic) at their disposal. The makeover recipient must learn to care for hair, nails, and wardrobe for themselves in order to maintain their new look. They must first develop a mindset that desires to hold on to the new look. Then, effort must be put forth to acquire a fitting wardrobe that matches this new attitude. Then, the daily effort must be put forth to keep it all together.

When we are born again, Jesus cleanses, purifies and calls us his new creation. He gives us a new life. However, just like the makeover recipient, our appealing new look will require considerable lifestyle changes. Fortunately for us, we have an owner's manual (the Bible) to use as a daily guide for maintaining our makeover. It teaches us how to resist the temptation to return to our old ways of thinking and acting. We think about pleasing God. We learn to despise what God despises. We learn to desire what God desires for us. We "put off the old man with his deeds" (Colossians 3:9), and put on the "new self, created to be like God in true righteousness and holiness" (Ephesians 4:24). We change our thinking and resist thoughts that lead to wrong doing (our mind). We learn to present our bodies as sacrifices to God (our body). We learn to depend on the guidance of God's Holy Spirit: Christ mighty power at work within us (our spirit) (Colossians 1:29 NLT). To maintain my new "makeover," I must study God's word and pursue its wisdom for continuous edification, purification and sanctification of my mind, body, and spirit.

Meditation: Do I study the Bible and seek God to maintain his new creation?

Isaiah 55:7 Romans 12:12 Corinthians 5:17 Colossians 3:9-10 Ephesians 4:24

Feedback welcome. joniahhyssop@igmail.com



## Garza honored with Bridal Shower

Nicole Garza, bride-elect of Walter Spurlock was honored with a Bridal Shower Saturday, February 14, 2015 in the home of Kaci McBryde. Shown above left to right are Joan Nail, Jennie Spurlock, Trina Garza-Rueda, Nicole Garza, Susie Spurlock, Bobbie Ehmann, and Katie Krienke

### Schedule of all 2014-2015 4-H & Clover Meetings

*\*Dates are subject to change with weather or mandatory meetings*

All meetings for both clubs are at 6 p.m.

#### 4-H Meetings

February 9  
March 16  
April 13  
May 4

#### Clover Kid Meetings

February 23  
March 30  
April 27  
May 18

## Did You Know?

(NAPS)—You can get paid to collect empty drink pouches to be upcycled or recycled through the Drink Pouch Brigade. Supported by Capri Sun and TerraCycle, it rewards participants and their schools with points and cash donations for mailing in the drink pouches. Learn more at [www.TerraCycle.com](http://www.TerraCycle.com).



\*\*\*  
How well American children do in school could depend on what teachers and school administrators learn at the 70th ASCD Annual Conference and Exhibit Show—"Challenging Convention: Leading Disruptive Innovations." Educators can register at <http://annualconference.ascd.org> and learn more at [www.ascd.org](http://www.ascd.org).

\*\*\*  
Part detective story, part emotional journey, "Genealogy Roadshow" (running as of January 13 on PBS and also available at

PBS.org) combines history and science to uncover the fascinating stories of diverse Americans. Each individual featured finds that his or her past links to a community history, revealing the rich cultural tapestry of America.

## Attention All Producers of Groundwater in the North Plains Groundwater Conservation District

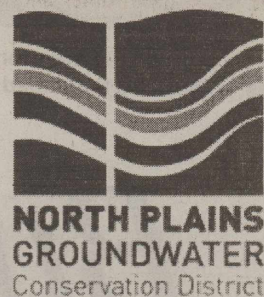
Your 2014 production reports are due in the Dumas office by 5 pm on March 2, 2015

Only producers who submit their completed reports by the March 2nd deadline will qualify for the District's Groundwater Conservation Reserve for 2014. The District's Groundwater Conservation Reserve will allow you I reserve unused allocation from 2014 and apply it to future production years.

Send completed reports to:

North Plains Groundwater Conservation District  
P0 Box 795, 603 E 1st Street Dumas, TX 79029  
By 5 pm on March 2<sup>nd</sup>

For more information about 2014 production reporting, call the office at 806-935-6401 or log on to [www.northplainsged.org](http://www.northplainsged.org)



## The Churches of Stratford Welcome You

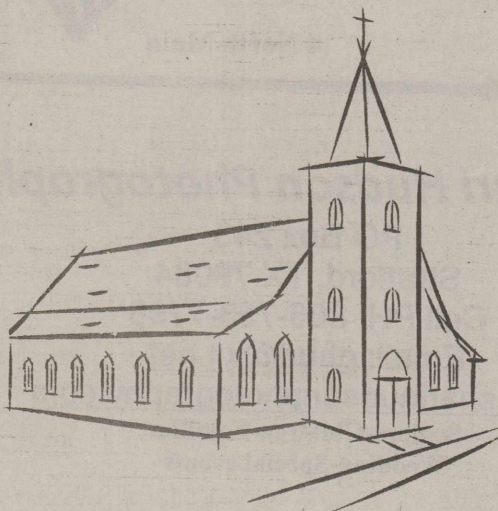
**First Assembly of God**  
Kevin Anderson, Pastor  
921 Fulton  
Sunday School 9:45 a.m.  
Morning Worship 10:45 a.m.  
Evening Worship 6:00 p.m.  
Wed. Bible Study 6:30 p.m.

**First Christian Church**  
Pastor Gary Smith  
5<sup>th</sup> & Main  
Sunday School 9:45 a.m. (nursery)  
Morning Worship 10:45 a.m. (nursery)  
No Sunday evening Worship Service

**First United Methodist**  
Rev. Steve Ulrey 396-2178  
520 N. Main  
Sunday School 9:20 a.m.  
Morning Worship 10:30 a.m.  
Junior & Senior High UMY 6:00 p.m.

**St. Joseph Catholic Church**  
6<sup>th</sup> & Pearl  
Rectory 366-5687  
Sunday morning 8:00 a.m. (English) 9:30 (Spanish)  
Sacrament of Reconciliation Before Mass or t.  
Christian Formation Classes K-6 Grade Wed. Afternoon  
Jr. & Sr. High. Wed. 6:30-8:30 p.m.

**First Baptist Church**  
Pastor Ron Whitt  
702 N. 3<sup>rd</sup>  
Sun.-Coffee 8:30 a.m.  
Sunday School 9:30 a.m.  
Worship Service 10:30 a.m.  
Wed. Children 6 p.m., youth 7 p.m.



This page sponsored by  
Stratford Grain 396-5541  
Lautz 769-5541

Walter Lasley & Sons, Inc.  
753-4411

Stratford Star  
366-5885

**Church of Christ**  
Iglesia De Cristo  
Brad Beckett  
Juan Campos  
N. 3<sup>rd</sup> & Chestnut  
Sunday School 9:30 a.m.  
Morning Worship 10:30 a.m.  
Evening Worship 5:00 p.m.  
Wednesday Bible Study 7:00 p.m.

**Heritage Bible Baptist**  
Pastor Mark Looney  
302 S. Main  
For more info-call 396-2212  
Morning worship 11:00 a.m.  
Evening Service 6 p.m.  
Thurs. Service 7:00 p.m.

**Eben-Ezer Templo Hispano**  
Asambleas De Dios  
Pastor: Juan M. Valenzuela  
806 366-3071  
205 N. Poplar-Hwy 287 268-2188  
Escuela Dominical 10 a.m. - 12 noon  
Servicio De Adoracion 5 p.m.-7 p.m.  
Miercoles: Servicio De Adoracion 6-8 p.m.

**Kerrick Community**  
Pastor Roy Harris  
Community Building  
10 a.m. Worship Service

**La Mision Bautista**  
Mision Bautista  
401 S. Wall 396-5376  
Domingo (Sunday)  
Estuela Dominical 9:45 a.m.  
Miercoles (Wednesday)  
Servicio De Adoracion 11 a.m. Estudio  
Biblico & Servicio De Oracion 6 p.m.  
Servicio De Adoracion 6 p.m. se Cuidamos  
Cuidamos Durante El Servicio

## Texas History

1823 Stephen F Austin received a grant from Mexico to colonize a region on the Brazos River with land grants to encourage the growth of Texas

1824 The Mexican Constitution combined Texas with the Province of Coahuila to form the Mexican state Coahuila y Tajas

1827 President John Q Adams offered \$1 million for Texas.

1829 President Andrew Jackson offered \$1 million for Texas

1830 Mexico prohibited immigration from US to Texas and increased tariffs of goods from US.

Sherman County Historical Commission

1830 Mexico granted a small cannon to colony of Gonzales for protection against Indians

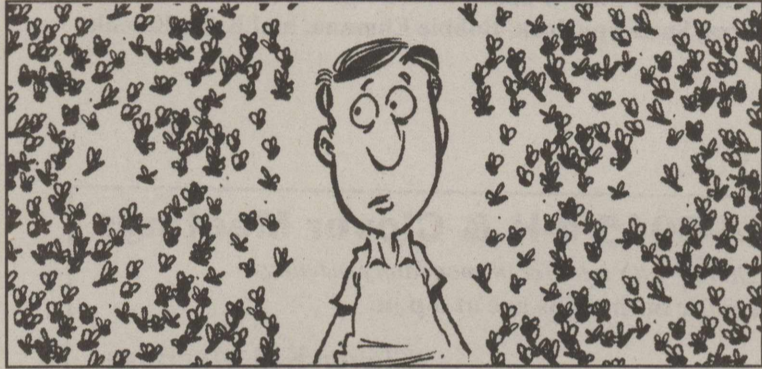
1832 Texas Colony ask for a separate Mexico State

1833 Texas drafted a constitution for Mexico of Texas urging Mexico to lift The ban of settlement of Texas

1834 Stephen Austin presented the Texas Constitution to Mexico City and was arrested for treason. He was released in 1835

1835 "Texas Committee" in the United States was organized to send money and Volunteers to Texas

1835 Sept. Mexican dragons arrived in Gonzales to force settlers to return the cannon. Settlers said "Come and take it" First Battle for Texas Independence



Insects outnumber humans 100,000,000 to one.



"Happy as a clam" derives from the expression "happy as a clam at high tide." Clams are harvested only at low tide.



## Young & Tatum exchange vows December 18, 2014

Jessica Dawn Young and Ryan Tatum were married December 18, 2014 in Canyon, TX with Jerry Bell officiating. Jessica Young is the daughter of James Young and Susie Hale, both of Stratford. She is a 1002 Graduate of Stratford High School. A 2007 graduate of Iowa State University with a Bachelor of Science degree in Health & Human Performance. She is a 2014 graduate of Frank Phillips LVN Nursing School. She is currently employed as a nurse at Dalhart Family Medical Center in Dalhart. The groom is the son of Eddie & Kathy Tatum of Canyon, TX. A 2001 Graduate of Canyon High School. He earned his Bachelor of Science in Exercise and Sports Science in December 2005 from WTA&M in Canyon. In December 2007 he earned his Masters in Science in Sports Management. He is currently employed at Stratford High School as a Teacher and Coach.

Age—that period of life in which we compound for the vices that we still cherish by reviling those that we no longer have the enterprise to commit.

—Ambrose Bierce

# Business Directory

### Vincent Insurance Agency

Sabrina Melton

PO Box 739 Office: 806-396-2456  
Stratford, TX 79084 Home: 396-2512  
Email: vinceins@xit.net

THIS SPACE AVAILABLE  
CALL 366-5885

E-mail [stardm@xit.net](mailto:stardm@xit.net)  
Fax: 366-5884

### Stratford Auto Electric

119 S. Wall, Stratford, TX 79084  
Phone-366-5941 or 366-5857  
Alternators, starters, Altronic Repair  
Since 1964  
Roy McAlister

### A & I Parts Center

Automotive and Industrial Parts  
201 N. 2<sup>nd</sup> Street-Stratford, TX 79084  
Tel: (806) 366-5592  
\*Toll-free 800-624-5494  
Fax: (806) 366-2583

### Stratford Grain Company

Stratford 396-5541  
Lautz 769-4485

4 North Main



THIS SPACE AVAILABLE  
CALL 366-5885

E-mail [stardm@xit.net](mailto:stardm@xit.net)  
Fax: 366-5884

### Structured Touch Massage Therapy Clinic

Cece Yelek, CMT, LMT  
401 N. Third #11. or 7199 Co. Rd P  
Stratford, TX - Sunray, TX  
Office 806-366-ahhh (2444)  
Cell 806-290-3655  
Open 9-5 by Appointment Only

### Shari Hudson Photography

PO Box 243  
Stratford, TX 79084  
Cell PH: 806-753-7798  
Email: [ghud@xit.net](mailto:ghud@xit.net)  
[www.sharihudsonphotography.com](http://www.sharihudsonphotography.com)  
Seniors-Children-Families  
Wedding-Special events

### The Stratford Star

Duane & Marty Robertson  
PO Box 8 Office: 806-366-5885  
Stratford, TX 79084 Fax: 366-5884  
Email: [stardm@xit.net](mailto:stardm@xit.net)

PO Box 510  
Stratford, TX 79084  
Phone: 806-366-5557

### Duncan Chevrolet

[www.duncanchevrolet.com](http://www.duncanchevrolet.com)  
E-mail [duncanch@xit.net](mailto:duncanch@xit.net)  
AN AMERICAN REVOLUTION

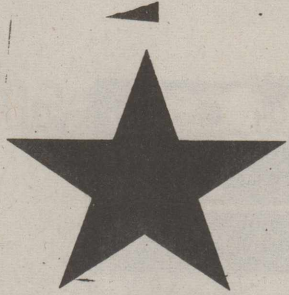
### WALTER LASLEY & SONS INC.

THE Feedyard

Since 1953  
753-4411

THIS SPACE AVAILABLE  
CALL 366-5885

E-mail [stardm@xit.net](mailto:stardm@xit.net)  
Fax: 366-5884



It Pays To Look In The

# Star Classifieds

Phone 366-5885

..The Best Salesperson Around

## Help Wanted

Dollar General in Stratford is now hiring for all positions available. Call or come by FMI 806-396-1092 4 x's paid 29-5-12-19-

Stratford ISD is seeking a custodian. Applications available on school website or in the administration office. For more information, please call (806) 366-3300.

Cimarron Feeders is accepting applications for the following positions:  
\*Mechanic  
17 miles S. Keyes, OK on HWY 171  
15 miles N. of Stratford, TX on HWY 287  
Then right 5 miles on HWT 171  
Apply in person: M-F 8a.m-3p.m. or call (580) 543-6383  
Great benefits for full-time positions that include:  
Medical, Dental & Vision insurance as well as 401 K and paid time off. Pre-employment drug screen required. EOE M/F  
JBS Five Rivers Cattle Feeding is an equal opportunity Employer  
11-6-11n

## For Rent

Close to school, nice 2BR, 1 bath apartment. Furnished with stove and fridge. CHIA. No pets. Tenant pays electric and water. \$550 month on 6 month lease. Call 806-244-3418 or go to westtexasrentals.com to see and send in application. 1-8-11n

## Houses for Sale

Newly renovated. Move-in-ready, 2500 sq. ft., 4 b/r, 3 bath, 2 living areas, 1 car garage and 2 car carport. 602 N. 4th. Large corner lot, nice neighborhood, in-ground storm shelter, \$139,000. Lots of extras. Call for appointment 806-753-7411.

## For Sale

For Sale-2000 Nissan Frontier Stretch Cab pickup, 118,000 miles, V-6-4-wheel drive, automatic, tool box, rhino lining, excellent interior. Call 366-2459 or 753-7046  
4x's 2-19-c

## Card of Thanks

The Beverly K Asher family would like to say "THANK YOU" to all the neighbors, Stratford EMS Crews, the many phone calls, prayers, flowers and visits to Amarillo. Beverly's illness was a rapid one and she will be greatly missed by many but never forgotten.

Mike Asher, Griggs Community, Texhoma, OK.,  
Michelle, Miles Clay, Mikyla & Morgan Smith,  
Los Alamos, NM,  
Melissa Asher & Dr. Lisa Beighle, Wallard, TN

## Card of Thanks

The family of Karen Pulliam would like to extend its deepest appreciation to all those who have helped the family in their time of loss. Thank you to the First Christian and Heritage Bible churches and pastors, those who contributed time and food for the family meal, as well as those who have supported us through cards, food, flowers and coming to the memorial. The whole community of Stratford has been a blessing not only while Karen was with us, but also in the days that have followed.

## Card of Thanks

The Stratford High School Student Council would like to thank everyone who supported our Chili Lunch fundraiser. The weather didn't quite cooperate with chili eating but we appreciate those who came out anyway! We live in a generous community and we are proud to represent Stratford High School. Thank you again!

Stratford High School "STUCO"

## Orders for fresh, hot tamales ends soon

February 28 will be the last day to pre-order fresh, hot tamales from Lollipop Junction. The tamales will be delivered to your door on Sunday, March 8, 2015. Staff members of Lollipop Junction, Stratford's non-profit childcare center, will be making the red chili tamales. Tamales will be sold by pre-order for \$15.00 a dozen by placing an order between now and February 28. To order tamales, call either Julie or Erica at Lollipop Junction 366-5886 or stop by the child care center located at 210 N. Main Street, Stratford. Don't delay, order today!!! And thank you for supporting Lollipop Junction.

THE STRATFORD STAR  
Thursday, February 19, 2015  
Page 5

## Legal Notice

### PUBLIC NOTICE CITY OF STRATFORD TEXAS COMMUNITY DEVELOPMENT PROGRAM

The City of Stratford is giving notice of the City's intent to submit a Texas Community Development Block Grant (CDBG) application for a grant from the Texas Community Development Program through the Texas Department of Agriculture for Water System Improvements for the central and northeast portion of the City of Stratford. **The grant application request is for \$275,000 of CDBG funds for water system improvements in the City of Stratford.** The application is available prior to February 26, 2015 for review at City Hall during regular business hours. Para obtener una copia en español, comuníquese con Tommy Bogart al (806) 366-5581.  
Published in The Stratford Star, Thursday, February 19, 2015

### NOTICE TO BIDDERS

Sealed proposals addressed to Terri Carter, County Judge, Sherman County, for the reconstruction of approximately 2,000 linear feet of a section of County Road CC entitled: **RECONSTRUCTION OF 2,000 FEET OF COUNTY ROAD CC**  
**FROM APPROXIMATELY 6,470 FEET WEST OF FM 119 TO THE WEST 2,000 FEET**  
will be received at the office of the Sherman County Judge in the Sherman County Courthouse, 701 North 3rd Street, Stratford, Texas 79084 until:

2:00 P.M.  
March 5, 2015

A cashier's check, certified check or acceptable bidder's bond, payable to the Owner an amount equal to not less than five percent of the bid submitted, must accompany each bid as guarantee that, if awarded the contract, the Bidder will, within fifteen days after receipt of Contract Documents, enter into a contract with the Owner and will execute bonds on the forms provided in the Contract Documents. Any bid received after the time and date listed above will be returned unopened and will not be considered.

Bidders are expected to inspect the site of the work and inform themselves regarding all local conditions. Contract Documents are on file and may be examined in the office of the Sherman County Judge, at the Sherman County Courthouse, 701 North 3rd Street, Stratford, Texas 79084, phone (806) 366-2021 and the offices of Brandt Engineers, Consulting Engineers, 4537 Canyon Drive, Amarillo, Texas 79110, telephone (806) 353-7233. Plans and Specifications may be obtained from the Engineers, Brandt Engineers, 4537 Canyon Drive, Amarillo, Texas 79110, phone (806) 353-7233 in the following manner:

Cost: One hundred dollars (\$100.00), non-refundable, for each set of paper plans and specifications or fifty dollars (\$50.00), non-refundable, for each set of digital plans and specifications on CD.

Performance and Payment bonds shall be set forth in the Contract Documents.

The Owner reserves the right to reject any or all bids and to waive any informalities in the bidding. In case of ambiguity or lack of clearness, the Owner reserves the right to adopt such interpretations as may be most advantageous or to reject the bid as informal. No bid may be withdrawn until the expiration of 30 days from the bid opening date.

SHERMAN COUNTY  
TERRI CARTER, COUNTY JUDGE

Published in The Stratford Star, Thursday, February 19, 2015

### NOTICE TO CREDITORS

Notice is hereby given that original Letters Testamentary for the Estate of Mary Patricia Williams, Deceased, were issued on February 10, 2015, in Cause No. 2234, pending in the County Court of Sherman County, Texas, to: Randy Williams.

All persons having claims against this Estate which is currently being administered are required to present them to the undersigned within the time and in the manner prescribed by law.

c/o: **Randy Williams**  
P.O. Box 901  
Stratford, Texas 79084

DATED the 10th day of February, 2015.

Kimberly L. Allen  
Attorney for Randy Williams  
State Bar No.: 12199270  
507 Denrock, P.O. Box 792  
Dalhart, TX 79022  
Telephone: (806) 366-2270  
Facsimile: (806) 366-3130  
E-mail: [wkallen@xit.net](mailto:wkallen@xit.net)  
Published in The Stratford Star, Thursday, February 19, 2015

### NOTICE TO CREDITORS

Notice is hereby given that original Letters Testamentary for the Estate of Beatriz Alondra Chavira, Deceased were issued on February 10, 2015, in Cause No. 2233, pending in the County Court of Sherman County, Texas, to: Norma Chavira.

All persons having claims against this Estate which is currently being administered are required to present them to the undersigned within the time and in the manner prescribed by law.

c/o: **Rick L. Russwurm**  
Attorney at Law  
PO Box 718  
Dumas, Texas 79029-0718

DATED the 10th day of February, 2015.

Rick L. Russwurm  
Attorney for Norma Chavira  
State Bar No.: 17443550  
PO Box 718  
Dumas, TX 79029-0718  
Telephone: (806) 935-9272  
Facsimile: (806) 935-9354  
E-mail: [rrusswurm@mir-lawfirm.com](mailto:rrusswurm@mir-lawfirm.com)  
Published in The Stratford Star, Thursday, February 19, 2015

### NOTICE OF APPLICATION AND PRELIMINARY DECISION FOR AN AIR QUALITY STANDARD PERMIT FOR CONCRETE BATCH PLANT REGISTRATION

PROPOSED REGISTRATION NUMBER: 93620L003

**APPLICATION AND PRELIMINARY DECISION.** Bobby Thompson, P.O. Box 825, Gruver, Texas 79040-0825, has applied to the Texas Commission on Environmental Quality (TCEQ) for an Air Quality Standard Permit for a Concrete Batch Plant Registration Number 93620L003, which would authorize construction of a temporary concrete batch plant under Title 30 Texas Administrative Code § 116.611 (30 TAC § 116.611) located approximately 2 miles east and 3 miles south from Stratford in the southeast corner of the intersection of County Road 9 and County Road P, Stratford, Sherman County, Texas 79084. This application was submitted to the TCEQ on December 9, 2014. The proposed facility will emit the following air contaminants: particulate matter including (but not limited to) aggregate, cement, road dust, and particulate matter with diameters of 10 microns or less and 2.5 microns or less.

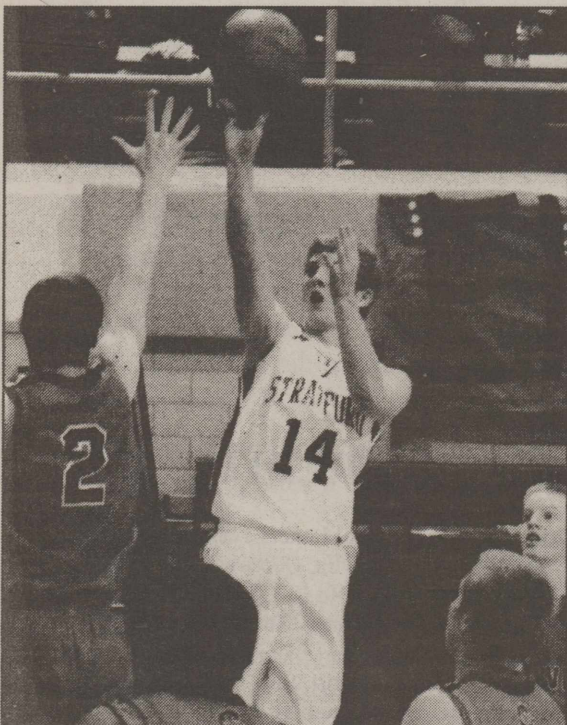
The executive director has completed the technical review of the application and determined that the application meets all of the requirements of a Standard Permit authorized by 30 TAC § 116.611 which would establish the conditions under which the facility must operate. The executive director has made a preliminary decision to issue the registration because it meets all rules and regulations. The permit application, executive director's preliminary decision, and standard permit will be available for viewing and copying at the TCEQ central office, the TCEQ Amarillo regional office, and at the Sherman County Library, 719 North Main Street, Stratford, Sherman County, Texas, beginning the first day of publication of this notice. The facility's compliance file, if any exists, is available for public review at the TCEQ Amarillo Regional Office, 3918 Canyon Drive, Amarillo, Texas.

**PUBLIC COMMENT/PUBLIC MEETING.** You may submit public comments or request a public meeting about this application. The purpose of a public meeting is to provide the opportunity to submit comment or to ask questions about the application. The TCEQ will hold a public meeting if the executive director determines that there is a significant degree of public interest in the application or if requested by a local legislator. A public meeting is not a contested case hearing. **You may submit additional written public comments within 30 days of the date of newspaper publication of this notice in the manner set forth in the AGENCY CONTACTS AND INFORMATION paragraph below.**

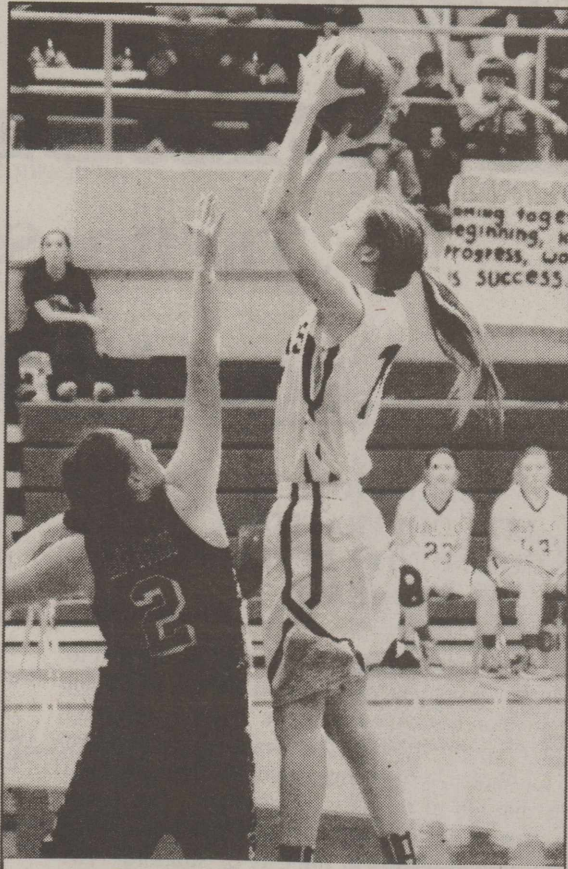
**RESPONSE TO COMMENTS AND EXECUTIVE DIRECTOR ACTION.** After the deadline for public comments, the executive director will consider the comments and prepare a response to all relevant and material or significant public comments. Because no timely hearing requests have been received, after preparing the response to comments, the executive director may then issue final approval of the application. **The response to comments, along with the executive director's decision on the application will be mailed to everyone who submitted public comments or is on a mailing list for this application, and will be posted electronically to the Commissioners Integrated Database (CID).**

**INFORMATION AVAILABLE ONLINE.** When they become available, the executive director's response to comments and the final decision on this application will be accessible through the Commission's Web site at [www.tceq.texas.gov/goto/cid](http://www.tceq.texas.gov/goto/cid). Once you have access to the CID using the above link, enter the registration number for this application which is provided at the top of this notice.

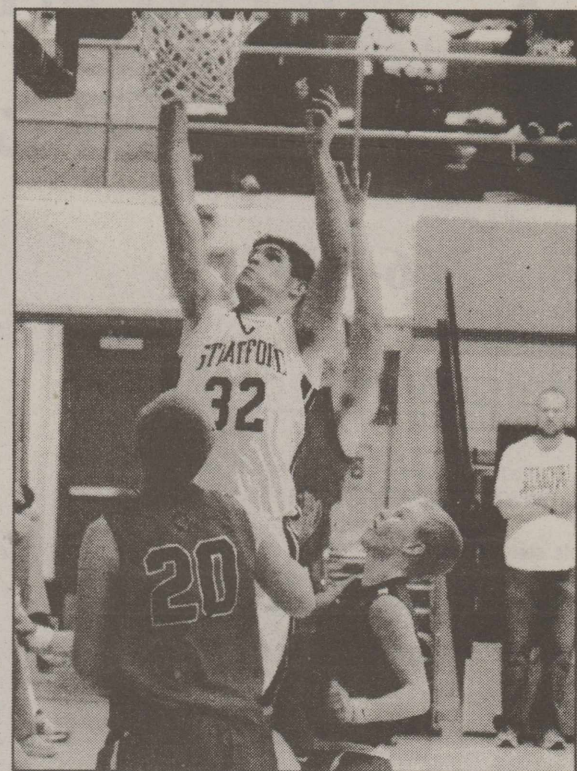
Cont. on page 6



Stratford Elk #14 Jack McBryde goes up for two points in their win over Gruver on Tuesday, February 10, 2015.

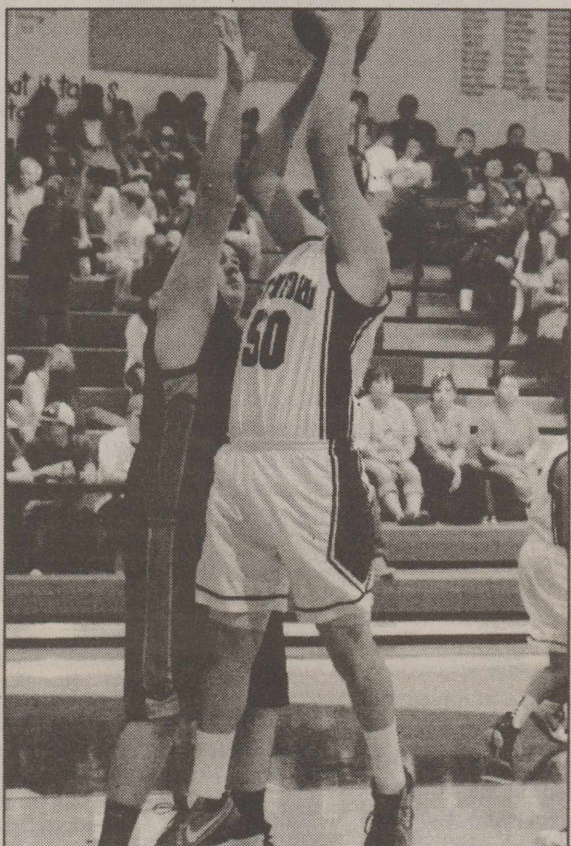


Lady Elk Allie James goes up for the shot in the Lady Elks loss to Gruver on February 10, 2015.

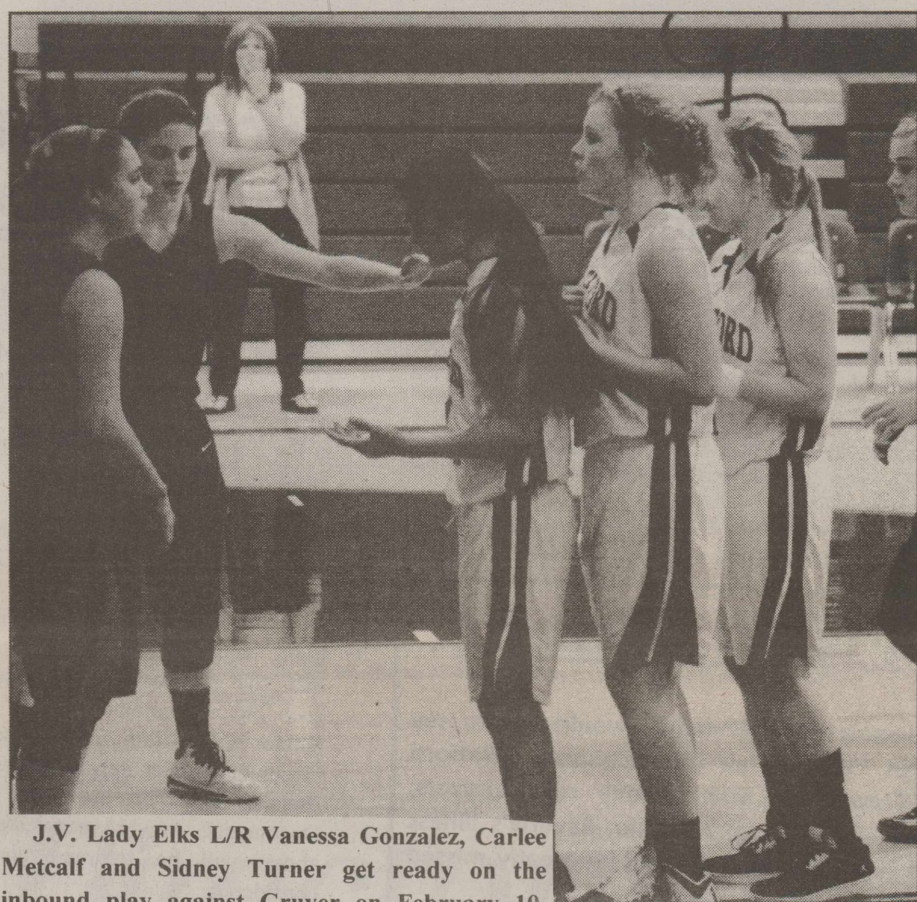


Stratford Elk #32 Trevor Melton goes up strong with the shot for the Elks in their win over Gruver.

The J.V. Lady Elks lost 22-30 to Canadian on February 3, 2015. Vanessa Gonzalez was high point with 9 points followed by Sidney Turner with 6 points. On February 6, 2015, the Lady Elks beat Sunray 35-34 with Vanessa Gonzalez leading the scoring with 14 points followed by Sidney Turner and Taylor Aduddell each with 7 points. The J.V. Lady Elks wrapped up their season on February 10, 2015 with 23-27 loss to Gruver. Vanessa Gonzalez was high point with 13 points. The J.V. Lady Elks finished the season 9-8.



J.V. Elk #50 Noah Harris goes up for two points in their win over Gruver on Tuesday, February 10, 2015.



J.V. Lady Elks L/R Vanessa Gonzalez, Carlee Metcalf and Sidney Turner get ready on the inbound play against Gruver on February 10, 2015.

**Legals**  
Cont. from page 5

This link to an electronic map of the site or facility's general location is provided as a public courtesy and not part of the application or notice. For exact location, refer to application.  
<http://www.tceq.texas.gov/assets/public/hb610/index.html?lat=36.284167&lng=-102.025833&zoom=13&type=r>  
**MAILING LIST.** You may ask to be placed on a mailing list to obtain additional information on this application by sending a request to the Office of the Chief Clerk at the address below.

**AGENCY CONTACTS AND INFORMATION.** Public comments and requests must be submitted either electronically at [www.tceq.texas.gov/about/comments.html](http://www.tceq.texas.gov/about/comments.html), or in writing to the Texas Commission on Environmental Quality, Office of the Chief Clerk, MC-105, P.O. Box 13087, Austin, Texas 78711-3087. If you communicate with the TCEQ electronically, please be aware that your email address, like your physical mailing address, will become part of the agency's public record. For more information about this permit application or the permitting process, please call the Public Education Program toll free at 1-800-687-4040. Si desea información en Español, puede llamar al 1-800-687-4040.

Further information may also be obtained from Bobby Thompson at the address stated above or by calling Mr. Shane Self, P.E., Enviro-Ag. Engineering Inc., at (806) 350-5456.

Notice Issuance Date: February 6, 2015  
Published in The Stratford Star, Thursday, February 19, 2015

**Legal notice**

Celco Partnership and its controlled affiliates doing business as Verizon Wireless (Verizon Wireless) proposes to build a 310-foot Self-Support Communications Tower. Anticipated lighting application is medium intensity dual red/white strobes. The Site location is 200 Rose Street, Stratford, Sherman County, TX 79084, latitude 36° 19' 52.85"N and longitude 102° 4' 51.95"W. The Federal Communications Commission (FCC) Antenna Structure Registration (ASR, Form 854) filing number is A0935761. **ENVIRONMENTAL EFFECTS** -Interested persons may review the application ([www.fcc.gov/asr/applications](http://www.fcc.gov/asr/applications)) by entering the filing number. Environmental concerns may be raised by filing a Request for Environmental Review ([www.fcc.gov/asr/environmentalrequest](http://www.fcc.gov/asr/environmentalrequest)) and online filings are strongly encouraged. The mailing address to file a paper copy is FCC Requests for Environmental Review, Attn: Ramon Williams, 445 12th Street SW, Washington, DC 20554. **HISTORIC PROPERTIES EFFECTS** - Public comments regarding potential effects on historic properties may be submitted within 30 days from the date of this publication to: Dawn Fields, Benchmark Environmental Consultants, 5307 E. Mockingbird Ln. #650, Dallas, TX 75206, 214-363-5996, [dawn@benchmarkenviro.com](mailto:dawn@benchmarkenviro.com).  
Published in The Stratford Star, Thursday, February 19, 2015



**Thursday ~ March 5, 2015**

Panhandle Research & Extension Center  
Goodwell, Oklahoma

- 8:30am Registration: **Donuts & Coffee - OK Wheat Commission**
- 9:00am - 9:30am **Irrigation Energy Use and Conservation**
- 9:30am - 10:00am **Deficit Irrigation Management for Corn and Sorghum**
- 10:00am - 10:30am **Waste Water Management**
- 10:30am - 10:45am **BREAK**
- 10:45am - 11:15am **UAV Date. Can It Be Useful**
- 11:15am - 11:45am **First Hollow Stem Update**
- 11:45am **LUNCH**
- 12:45pm - 1:15pm **Herbicide Management**
- 1:15pm - 1:45pm **Irrigation Water Quality Testing and Interpretation**

There are 3.5 Certified Crop Adviser CEU's approved, including .5 IPM, 1 Crop Mgt., and 2 Soil & Water Mgt.

**Please RSVP for meal by March 2<sup>nd</sup>**

**If you have questions or to pre-register, call (580) 349-5440**



Oklahoma State University, U.S. Department of Agriculture, State and Local Governments cooperating. Oklahoma Cooperative Extension Service offers its programs to all eligible persons regardless of race, color, national origin, religion, sex, age or disability and is an Equal Opportunity Employer.