

The Ph
Capitol of Texe

Melvin Mitts 06/16
PO Box 523
Stratford, TX 79084

The Stratford Star

75 cents

Published for over 100 years in Stratford, Sherman County, Texas 79084 usps 523 Number 36 September 3, 2015



Marylou Nell Leedy McDaniel October 10, 1927 - August 27, 2015

Marylou Nell Leedy McDaniel, 87 of Kerrick, passed away on Thursday, August 27, 2015 in Dumas, Texas. Funeral Services were held at 2 o'clock in the afternoon on Monday, August 31, 2015, at the First United Methodist Church in Stratford with Rev. Steve Ulrey, pastor of the church, officiating. Family visitation was at the funeral home from 4 to 6 pm on Sunday August 30th. Interment followed at Stratford Cemetery. Arrangements were entrusted to Morrison Funeral Directors of Stratford.

Marylou was born in Nevada, MO at the home of her maternal grandparents, October 10, 1927. She was the only child of Myron (Mike) and Berniece (Turk) Leedy. She graduated from Junction City High School (Kansas) in 1944 and worked at the family drug store until her marriage.

Marylou married Fred R. McDaniel August 22, 1948, in Junction City. They moved into the Kerrick home built during their engagement where she resided until moving to the Memorial Nursing & Rehabilitation Center in January 2014.

She was active in Kerrick, Stratford, and Dallam county organizations including: Prospectus Study Club, lifetime member -Order of the Eastern Star, Stratford Federated Music Club, terms on the Depot Museum Board & Stratford Area Foundation, County fair boards in Sherman & Dallam counties, Band Boosters, and the First United Methodist Church. Marylou took pictures for organizations, weddings, school annuals, junior high and high school proms & banquets, winning several awards for photography. For years, she reported the Kerrick News for the Dalhart Texan and Stratford Star newspapers and served as reporter for nearly every organization she belonged. While society editor for the

Stratford Star, she was awarded Best Women's Page Feature by the Panhandle Press Association. She compiled and edited the first volume of the Sherman County History, "God, Grass, & Grit" Vol. 1. In the Home Demonstration days, she was the Dallam County Woman of the Year; TFWC, Top of Texas Outstanding Clubwoman twice and Outstanding Volunteer; Beta Sigma Phi Woman of the Year; Stratford Chamber of Commerce Good Guy of the Month & honored by them for her volunteer service.

Marylou enjoyed traveling, her bowling team of over 40 years, theater, music, fishing, sports events (especially the Colorado Rockies), and the family's Colorado cabin. Fred was an amateur radio operator and he and Marylou made numerous "ham" friends. Following his death, Marylou became a licensed technician and took Fred's call letters, W5ZTW.

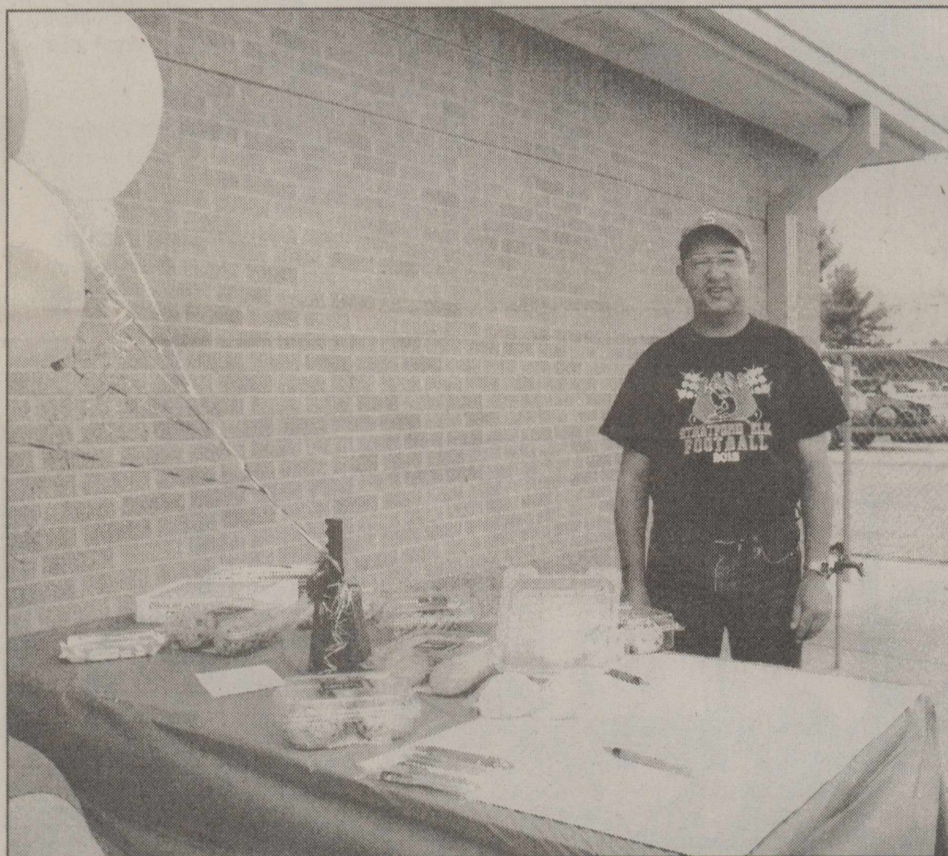
Marylou was preceded in death by her husband and parents.

Survivors include daughter, Patti McDaniel, Aurora, Co; son, Mike McDaniel, Kerrick; granddaughter, Merilee McDaniel, San Antonio; sister-in-law, Thelma Smith, Dumas; niece, Sherri Hutchison, Arnold, MO; nephews, Ron Hutchison (Lana), Longview and Scott Hutchison (Nita), Lubbock; 7 great-nieces and their families; and special friend, Clifford Abbott, Canyon.

The family wishes to express their thanks for the care, concern, and assistance of Kenna Collums and the staff of Memorial Nursing & Rehabilitation Center in Dumas.

The family suggests in lieu of flowers that memorials be made to the First United Methodist Church of Stratford, P0 Box 1289, Stratford, TX 79084, or Kerrick Historical Community, P0 Box 518, Kerrick, TX 79051-0518, or The Fred R. McDaniel Memorial Scholarship, c/o ARRL Foundation, 225 Main Street, Newington, CT 06111-1494.

Editor's Note: I had the pleasure with working with Marylou for many many years. I loved having her writing for the paper; we would get so many comments from our readers from far off on how they could keep up with their home area. College students were always amazed when they saw a small weekly paper, for a lot of them they had never seen one. So I thank Marylou for her friendship and for helping me out for too many years to count. You are missed lady and it was a pleasure! And she truly was a "Lady".



Plunk honored with "going away party"!

Wade Plunk was honored with a "Going Away" party on Friday August 28th before the football game. Good luck Wade in the next chapter of your life.

LOLLIPOP JUNCTION FALL FUND RAISER BEGINS SEPT 8

Lollipop Junction will begin its Fall Fund Raiser with sales of Deli International Family Favorites Frozen Foods on September 8, 2015. Food selections offered to help busy families with everyday meals and special occasions include a variety of pizzas, garlic breadsticks, assortment of cookie dough, cinnamon rolls, pumpkin and red velvet cake rolls, and main dishes. Many of these items may be ordered in large or bulk quantities that could be a bonus for those who will be making meal plans for feeding Fall harvest workers.

Sale brochures will be available from parents of children who utilize Lollipop Junction for childcare along with staff and board members of the non-profit center. Brochures may also be viewed at the Child Care Center and Stratford Grain. Prepaid orders may be placed anytime during the time period of September 8 through September 18. Orders will be available for delivery the first full week of October.

Proceeds from this fundraiser will be used to replace toys, educational supplies, and equipment used on a daily basis, along with maintenance of the building and playground facilities. Lollipop Junction cares for 35 to 39 children daily and offers a Pre-School program for children in the community.

Persons interested in supporting the center by ordering frozen food items may contact Lollipop Board members, Valarie Naugle (366-2862), Martha Duncan (366-3557), Christina Brown (366-3001), Koreley Whittington (432-693-6224), Brent Reed (753-7584) or Susie Spurlock (396-2864). In addition, individuals may contact Lollipop Junction at 366-5886.

To learn more about Lollipop Junction stop by the center located at 210 N. Main and see what all the children are doing through activities offered.

**A Medical Benefit Account
for Cece Yelek has been set
up at Happy State Bank**

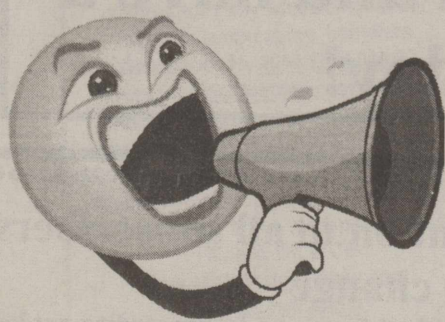
**A Medical Benefit Account
for David Acosta has
been set up at
Happy State Bank**

Stratford ISD "Gold Card" Available to those 62 Years of Age & Above

Stratford ISD is proud to offer a "Gold Card" for all citizens who are 62 years of age or older. This card will admit one person to all "home" UIL events. You may pick up a "Gold Card" in the Office of the Superintendent Monday-Friday from 8:00 am to 4:00 pm. If you would like one mailed to you, call Penny at 366-3305. For previous card holders, there is no need to renew each year as "Gold Cards" are good for a lifetime, unless lost or damaged. Gold Cards are NOT for the Reserved Seating Section at the Football Stadium, those tickets must be purchased in advance for the season. The Stratford ISD appreciates your support of the students and faculty of this district. We look forward to seeing you this year.

Andy Crocker to present program at Scot Hall Monday, Sept. 14th

Andy Crocker of the Texas A&M AgriLife Extension Service will be in Stratford to speak on "Medicare Preventative health Screenings and Other benefits to which you are entitled as well as preventing Medicare Waste, Fraud and Abuse". The program will be held at SCOT Hall on Monday, September 14th at 2:00 p.m. The program is sponsored by SCOT and The Sherman County AgriLife Extension Service. For more information contact Jill Killian, Sherman County Extension Agent Family and Consumer Science at 806-366-2081



THE OLD BIDDY CAFÉ HAS NEW HOURS!!

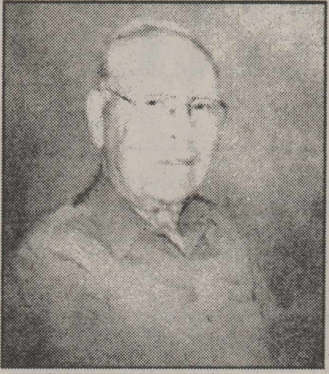
Beginning Sept. 8th, we'll only be open for Breakfast on Sunday from 8-11 a.m., and that great Sunday Buffet will still be available 11 a.m.-2 p.m. Monday-Friday, we'll be for open for Lunch 11 a.m.- 2 p.m. and then on Thursday & Friday the limited Dinner menu will be served from 5-8 p.m. We will be closed Sept. 5th-7th for Labor Day.

Your patronage is always appreciated & we look forward to seeing you soon!!

Connie, Shannon & the Staff

**Good
Luck
Elks**

Obituaries



J.E. Brannan

August 28, 1922 - August 23, 2015

J.E. Brannan, 92, passed away into the arms of his Savior Jesus Christ on Sunday, August 24, 2015 at Coldwater Manor in Stratford, Texas with his wife of 68 years by his side. Funeral services were held at the Stratford Church of Christ on Thursday, August 27, 2015 at 11:00 a.m. with Brother Jim York officiating and Dick Davenport assisting. Visitation was held at Morrison Funeral Home in Stratford from 5:00 to 7:00 pm on Wednesday, August 26. Burial followed at the Stratford Cemetery. Arrangements were entrusted to Morrison Funeral Directors of Stratford.

J.E. Brannan was born on August 28, 1922 in Baylor County, Texas to Thomas Sigsbee and Naomi Brannan. He graduated from Stratford High School in 1941. While in school, J.E. played the guitar and harmonica in a string band called "Dirty Half Dozen". After graduation, he attended Draughon's Business College in Lubbock. His college days were interrupted by World War II and J.E. was drafted into the Army January 12, 1943. He was promoted to Corporal and served in Guam, Hawaii and the Gilbert Islands. For his willing service to his country, he was awarded the American Theater Campaign Medal, the Asiatic-Pacific Campaign Trail Medal, Good Conduct Medal and the World War II Victory Medal before being honorably discharged on January 19, 1946.

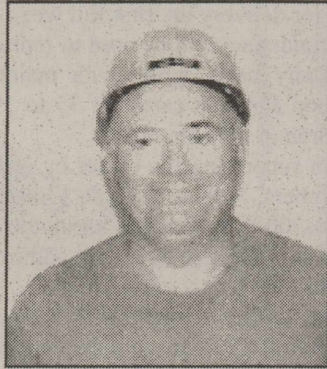
J.E. returned to Stratford where he met and married Mary Ella Robbins on December 22, 1946. They raised three daughters together; Pat, Teresa, and Joy.

J.E. worked for Phillips Conoco for 35 years before retiring in 1982. J.E. and his wife Mary were very active members of Stratford Church of Christ for over 60 years. J.E. served as a deacon, song leader and Bible teacher. He was also a member of the American Legion and Scot Hall. He was distinguished as a willing helper and servant to many people throughout Sherman County. He was also an avid fisherman. He was named the 2005 Old Timer's King in Stratford.

J.E. is preceded in death by his parents, two grandsons John Michael Naylor and Jody Witten and his sister, Jane Willey. He is survived by his wife Mary, a resident of Coldwater Manor.

Additionally, he is survived by Pat Lambert and her husband, Bob, from McPherson, Kansas; Teresa Rambo and her husband, Jim, from Waco, Texas and Joy Naylor and her husband, John from Tulsa, Oklahoma. He is survived by seven grandchildren, eleven great grandchildren and eleven great-great grandchildren.

In lieu of flowers memorials can be made to High Plains Children's Home, P.O. Box 7445, Amarillo, TX 79114.



Jack Slover

May 14, 1934-August 29, 2015

Jack Slover, 81 of Stratford, died Saturday, August 29, 2015. Graveside services were held at 10:30 A.M. on Monday, August 31, 2015 at the Stratford Cemetery with Rev. Steve Ulrey, pastor at the First United Methodist Church in Stratford, officiating. Arrangements were by Boxwell Brothers at Stratford.

Jack was born on May 14, 1934 in Tahoka, Texas to Rufus and Ina Slover. He served with the U.S. Army. He had worked as a field operator for Phillips Petroleum for over 40 years. He married Wanda Anthony on November 17, 1961 in Borger, Texas. He was a huge supporter of the Stratford Elks. He attended the First United Methodist Church in Stratford.

He was preceded in death by his parents; a son, Ricky Dale Slover; a brother, Steve Slover; and a son in law, Rick Danklefs.

He is survived by his wife, Wanda Slover of the home; two sons, Johnny Slover and wife Rebecca of Oologah, Ok. and Anthony Slover and wife Julie of Amarillo; a daughter, Sherri Danklefs of Amarillo; a brother, Jerry Lee Slover of Tahoka; four grandchildren, Kyle Slover, Jerod Adams, Anthony Adams and wife Amanda, Jacob Slover; and five great-grandchildren, Paige, Brayden, Kadin, Cameron, and Keagan.

The family suggests memorials be sent to Hospice care of the Southwest, 6600 Killgore Dr #110, Amarillo, TX 79106

Happy State Bank T-shirt proceeds benefit David Acosta Medical Fund

On Thursday August 27th a line of people wrapped around the side of Happy State Bank, eager to pick up an Elk T-shirt. The T-shirt giveaway has become an annual tradition at Happy State Bank – a way for us to give back to the community while celebrating the start of a new school year and the kickoff of football season.

But this year the T-shirts were about much more than just supporting our beloved Stratford Elks. Each shirt was given away for a \$3 donation and all proceeds went to the David Acosta Medical Benefit fund at Happy State Bank.

David Acosta, a 2012 graduate of Stratford High School, was seriously injured in a car accident on July 27th. Since the accident David has been hospitalized in Lubbock, TX where he has been fighting to overcome injuries including severe trauma to his left leg, a crushed pelvis, a skull fracture and damage to several internal organs. After multiple surgeries to save his leg and repair his pelvis there is hope that David will be able to go home soon.

Happy State Bank would like to extend a huge thank you to the community. More than 350 T-shirts were gone in a matter of 30 minutes, and because of your support a contribution of nearly \$1,200 has been made to the David Acosta Medical Benefit fund to assist this remarkable young man in his recovery.

T-shirts by The Spirit Shop | 5690 HWY 15 Stratford, TX | 806-366-4536



The Stratford Star will be closed on Monday, September 7, 2015 Labor Day
Deadline is Friday, Sept. 4th at 3 p.m. Thank you and have a safe holiday!

Good Luck Elks

Mitchell Theaters

Northridge 8
Guymon, OK
www.northridge8.com
580-338-3281
Southgate 6
Liberal, Kansas
www.southgate6.com
620-624-5573
Garden City, Kansas
www.sequoyah8.com
620-275-2760



The Stratford Star
(USPS 523-108)
Published for over 100 years
805 Purnell
Stratford, TX 79084
Telephone: 806-366-5885
Fax: 806-366-5884
E-Mail: stardm@xit.net

The Stratford Star is published weekly
Editor & Publisher Martha Robertson
Advertising & Photographer Shari Hudson
Subscription rates
\$33.00 per year in Sherman & Adjoining counties
\$40.00 per year all others
\$27.00 per (9 months) College rate
The Stratford Star-PO Box 8-Stratford, TX 79084
Periodicals postage paid at Stratford, TX
POSTMASTER: Send address changes to Stratford Star,
PO Box 8-Stratford, TX 79084

Attention to all subscribers!!
Rate change**

The Stratford Star is no longer sending out notices when your paper is due. Check the label on the paper and see what month your subscription expires. **I will be putting "Stars" on the current month" If you have a Star on your label it means that your sub expires that month.** If you are not sure the amount you owe if you live out of the area call 753-7373 and double check. Locally is \$33.00 and out of the area \$40.00. If you are paying for someone else's sub, you will be billed for that person. The Stratford Star, PO Box 8, Stratford, TX 79084
Thanks-Marty

SCOT News

Good Luck Elks

Scot members were met with leis and "Aloha" when they gathered for their monthly noon luncheon, August 27. Theme for the luncheon was Hawaii and the food and table decoration reflected that theme. Host and hostesses for the luncheon were Don and Gaynelle Rife, Janice Sladek, and Susie Spurlock. Pat Johnson assisted them. Musical entertainment was provided by Darla Looney.

The next Scot outing is planned for Tuesday, September 8. This will be a dinner outing at The Chicken House. Members will meet at Scot Hall at 6pm and leave from there. There is a sign-up sheet on the bulletin board at Scot Hall for names and phone numbers for those members wishing to go, or members may call Lynn Wells to RSVP.

Plans for 50/50 Bingo have been finalized. Bingo will be held twice a month, once in the afternoon and once in the evening. Winners will split the purse 50/50 with Scot. Bingo is planned for September 15 at 7pm and then again September 24 right after the monthly luncheon. This is not limited to Scot members, invite a friend to come play Bingo with us.



Looney entertains at August SCOT Luncheon

SCOT member Susie Spurlock presented Darla Looney with an appreciation gift for providing the entertainment at the August SCOT Luncheon held Thursday, August 27th. Darla shared her musical talents of playing the piano and singing for the membership. SCOT members present thoroughly enjoyed listening to Darla and getting the opportunity to meet her and her husband pastor Mark Looney of the Stratford Heritage Bible Church. Shown at left Susie and Darla Looney



Participants of the Legacy Bible Study.

Bible Study and Salad Luncheon

By Paula Nusz

Legacy Assisted Living of Dalhart, Texas, concluded their summer Bible Study of the book of James on Wednesday, August 26, 2015. Legacy residents and members of the Women's Missionary Guild of the First Christian Church had met bi-weekly to hold this study. Average attendance for any meeting was 10 participants. The study was led by Resident Services Coordinator, Paula Nusz.

A salad luncheon was enjoyed after the study time. Salads included: potato, pasta, cornbread, taco, grape and Snickers. Just one spoonful of each salad filled a plate! Everyone stayed and visited while they ate. Several residents (Margie Cleavinger, Wid Stevenson, and Fleta Parker) had worked on the Tuesday before the luncheon to prepare the Cornbread and Snickers salads.

The Missionary Guild will bring the next study in September for the fall/winter/spring series. Legacy residents thoroughly enjoyed having the Missionary Guild ladies join the summer sessions. Many new friendships have been forged between members; brought together by the Bible Studies.

Pursuit of happiness- Mental, Physical, Spiritual

With all of life's problems, how can one have internal contentment? Paul explains in Philippians 4:12 that he knew what it was like to have barely enough (abased) and what it was like to have plenty (abound). He had to learn the secret of being content in every situation. His joy came from within. In his heart he knew God was always with him, looking out for his well-being. He didn't upset his peace of mind with worry over how much or how little he had. My own spiritual awakening to the peace of contentment began with the realization that LIVING a happy life didn't come from external stimuli but resulted from an internal state of being content. For me, finding contentment began with honest and sincere soul searching--a serious introspection into the hidden recesses of my heart and mind. I began this self-examination by listing everything I thought was making me miserable. A few things were at the root of my sadness and depression. There were family issues and finances. I was obese with a poor self-image and low self-esteem. And my life lacked meaning. Clearly, I needed God's intervention to pull me from the brink of suicide. He sent someone to me who listened to my story of despondency and not only invited me to church, but came by my house for me on Sunday morning. The minister prayed with me and I started to regularly attend church. I accepted Christ as my savior and with his guidance, gradually peeled back the layers of life's disappointments threatening to suffocate me.

This would be no easy journey from hopelessness to happiness. I separated my list of grievances into three categories. Family problems weighed heavily on my MIND. Obesity was a BODY issue. A life without purpose made me poor in SPIRIT. Obviously there were things on my list I could not change. But I made a firm commitment to change the things I could. It became a daily habit to present to God my issues of MIND, BODY, and SPIRIT. It seemed to bring relief just making a daily listing of all the things on my mind. These are things that I used to pile in a worry box and carry around in my head. I made a daily plan for my body to exercise and eat healthy. For healing in my spirit, I scheduled time for reading God's word and praying. I call this my pursuit of happiness through days of purpose (DOP). I try to live each day on purpose or with purpose. My daily purpose is putting God first.

Making God the center of my life is simple. But KEEPING God at the center of my life is NOT easy. It is a daily struggle. God is separating me from the love of those things that give temporary happiness but lead to permanent wailing and gnashing of teeth. "Love not the world, neither the things that are in the world. If any man loves the world, the love of the Father is not in him. For all that is in the world, the lust of the flesh, and the lust of the eyes, and the pride of life, is not of the Father, but is of the world. And the world passeth away, and the lust thereof; but he that doeth the will of God abideth forever." (1 John 2:15-17 KJV). I make a Conscious effort to save my deepest passion for Christ and to separate myself from the love of popular culture. I seek not to be mesmerized by the stars of Hollywood or rock star. I reject the godless lifestyles presented in books, movies, television and other media. I refuse fanaticism that worships any person or thing. I refrain from deliberate violation of godly principles or making lifestyle choices that pull me away from the love of God. This is my Pursuit of happiness through Days of Purpose (DOP). Meditation: How do I live a life of contentment?

Proverbs 11:28 1 Timothy 6:6-8 & 6:18-19 Proverbs 15:16 Proverbs 16:8 Proverbs 28:6 Luke 12:15 1 John 2:15-17 Romans 12:1 Matthew 6:34 Galatians 5:22 Philippians 4:11-13 Feedback welcome joniahhyssop@gmail.com

Stratford Hospital District

"Proudly serving the medical needs of Stratford and Sherman County"
Stratford Family Medical Clinic

Stratford Family Medical Clinic

Mon. - Thurs 8 a.m. - 5 p.m. Fri, 8 a.m. - 3 p.m.
396-5583 Tommy Brian, ANP & Krista Brown ANP

Elk Pharmacy

Mon.-Fri. 9 a.m. - 5:30 PM

"Check our Competitive pricing"

"Compounding Available"

366-5505-Randall Orcutt, RPH

Coldwater Manor Nursing Facility

396-5568 Mark Moore, LNFA

Stratford EMS

9-1-1 or 396-2844 Jimmy Lanning, Director

The Stratford Hospital District operates on a non-discriminatory basis, giving equal treatment and access to services without regard to sex, race, religion, age or ethnicity.

The Churches of Stratford Welcome You

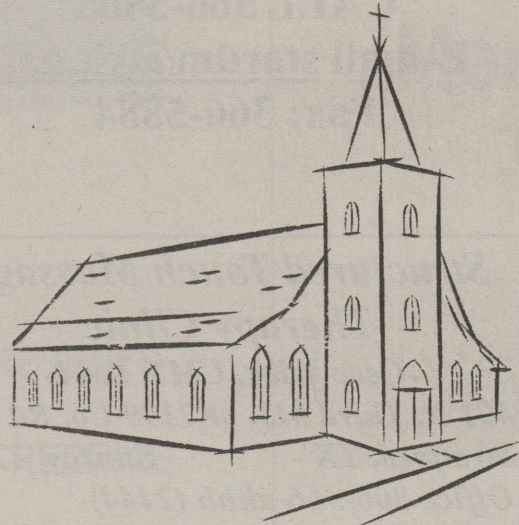
First Assembly of God
Kevin Anderson, Pastor
921 Fulton
Sunday School 9:45 a.m.
Morning Worship 10:45 a.m.
Evening Worship 6:00 p.m.
Wed. Bible Study 6:30 p.m.

First Christian Church
Pastor Gary Smith
5th & Main
Sunday School 9:45 a.m. (nursery)
Morning Worship 10:45 a.m. (nursery)
No Sunday evening Worship Service

First United Methodist
Rev. Steve Ulrey 396-2178
520 N. Main
Sunday School 9:20 a.m.
Morning Worship 10:30 a.m.
Junior & Senior High UMY 6:00 p.m.

St. Joseph Catholic Church
6th & Pearl
Rectory 366-5687
Sunday morning 8:00 a.m. (English) 9:30 (Spanish)
Sacrament of Reconciliation Before Mass or t.
Christian Formation Classes K-6 Grade Wed. Afternoon
Jr. & Sr. High. Wed. 6:30-8:30 p.m.

First Baptist Church
Pastor Ron Whitt
702 N. 3rd
Sun.-Coffee 8:30 a.m.
Sunday School 9:30 a.m.
Worship Service 10:30 a.m.
Wed. Children 6 p.m. youth 7 p.m.



This page sponsored by
Stratford Grain 396-5541
Lautz 769-5541

Walter Lasley & Sons, Inc.
753-4411

Stratford Star
366-5885

Church of Christ
Iglesia De Cristo
Raymond Glendinning
Juan Campos
N. 3rd & Chestnut
Sunday School 9:30 a.m.
Morning Worship 10:30 a.m.
Evening Worship 5:00 p.m.
Wednesday Bible Study 7:00 p.m.

Heritage Bible Baptist
Pastor Mark Looney
302 S. Main
For more info-call 396-2212
Morning worship 11:00 a.m.
Evening Service 6 p.m.
Thurs. Service 7:00 p.m.

Eben-Ezer Templo Hispano
Asambleas De Dios
Pastor: Juan M. Valenzuela
806-366-3071
205 N. Poplar-Hwy 287 268-2188
Escuela Dominical 10 a.m. - 12 noon
Servicio De Adoracion 5 p.m.-7 p.m.
Miercoles: Servicio De Adoracion 6-8 p.m.

Kerrick Community
Pastor Roy Harris
Community Building
10 a.m. Worship Service

La Mision Bautista
Mision Bautista
401 S. Wall 396-5376
Domingo (Sunday)
Estuela Dominical 9:45 a.m.
Miercoles (Wednesday)
Servicio De Adoracion 11 a.m. Estudio
Biblico & Servicio De Oracion 6 p.m.
Servicio De Adoracion 6 p.m. se Cuidamos
Susunos Durante El Servicio

Dove Hunting Season is here!

Across the state, Dove hunting seasons have kicked off yesterday, Tuesday, and there are numerous rules and regulations all hunters should be aware of.

Most of Sherman County is private property; in which you must have permission to be on the property you are planning to hunt on. If a hunter is caught hunting on private property, without permission, they could go to jail for up to a year -- it is a Class A misdemeanor.

There is also a limit this year on the number of doves you can bag. Hunters can only bag 15 birds per day and can legally carry three times that many. "Therefore, you cannot hunt 15 in the morning and 15 at night," Texas Game Warden Ryan Hunter said, "and if you are staying in a motel or have a cooler in the back of your pickup, you may not have more than 45 birds in it at any given time. This was a new rule last year, which will continue to be enforced."

Please keep in mind that hunting on a public road is illegal and as well as hunting from a moving vehicle.

All hunters are required to have a hunting license with a migratory bird stamp, and most hunters these days will be required to have proof of hunter's education certification. If you are caught hunting without a license you could face anywhere between a \$150 to a \$200 fine, and the game warden will confiscate your catch.

Keep these Ten Commandments of Shooting Safety in mind:

1. Always point the muzzle in a safe direction
2. Treat every firearm or bow with the same respect you would show a loaded gun or nocked arrow
3. Be sure of your target and what is in front of and beyond your target
4. Unload firearms and unstring conventional bows when not in use
5. Handle firearms, arrows, and ammunition carefully
6. Know your safe zone-of-fire and stick to it
7. Control your emotions when it comes to safety
8. Wear hearing and eye protection, as well as bright colored clothing to be visible
9. Don't drink alcohol or take drugs before or while handling firearms or bow and arrows
10. Be aware of additional circumstances which require added caution or safety awareness

Dove hunting, or any hunting for that matter, can be a fun and a great experience for any age of hunter. Please keep these rules, guidelines, and commandments in mind to have a great season! And, Good Luck!

Written by Alexa Reed, Sherman Co. Extension Agent Ag/NR

Stratford Community Tailgate Party and Dance
 Saturday, September 12, 2015
 Cook Application

ALL APPLICATIONS ARE DUE
 TUESDAY, SEPTEMBER 8, 2015

NAME: _____
 ADDRESS: _____
 PHONE: _____

EMAIL: _____

FOOD YOU WILL
 COOK: _____

AMOUNT: _____

WHAT TIME YOU WILL NEED TO SET
 UP: _____

SIZE OF SPACE NEEDED: _____

CASH PRIZE TO TOP 3 ENTRIES

RETURN COMPLETED APPLICATION TO:

Larry Sims
 P.O. Box 422
 STRATFORD, TEXAS 79084
 806-930-0588
 OR
 EMAIL TO: rooster_sims@yahoo.com

Good Luck Elks

Warren Cat is seeking Service Technicians that have experience with engine powertrains, hydraulics, electrics and have a general mechanical background. To apply go to warrencat.com>current job openings. Equal Opportunity Employer Minorities/Women/Veterans/Disabled Gina Lawson, PHR Human Resources Generalist-WEC Office: 918-660-2321 Fax: 918-856-3749 or Cell: 918-284-7638

Business Directory

PO Box 510
 Stratford, TX 79084
 Phone: 806-366-5557

Duncan Chevrolet

www.duncanchevrolet.com
 E-mail: duncanch@xit.net
 AN AMERICAN REVOLUTION

Stratford Auto Electric

119 S. Wall, Stratford, TX 79084
 Phone-366-5941 or 366-5857
 Alternators, starters, Altronic Repair
 Since 1964
 Roy McAlister

Stratford Grain Company

Stratford 396-5541
 Lautz 769-4485

4 North Main

THE STRATFORD STAR

Duane & Marty Robertson

PO Box 8 Office: 806-366-5885
 Stratford, TX 79084 Fax: 366-5884
 e-mail: stardm@xit.net

A & I Parts Center

Automotive and Industrial Parts
 201 N. 2nd Street-
 Stratford, TX 79084

Tel: (806) 366-5592
 *Toll-free 800-624-5494
 Fax: (806) 366-2583

Shari Hudson Photography

PO Box 243
 Stratford, TX 79084
 Cell PH: 806-753-7798
 Email: ghud@xit.net
www.sharihudsonphotography.com
 Seniors-Children-Families
 Wedding-Special events
 Engagements



Vincent Insurance Agency

Sabrina Melton

PO Box 739 Office: 806-396-2456
 Stratford, TX 79084 Home: 396-2512
 Email: vincins@xit.net

THIS SPACE
 AVAILABLE

CALL 366-5885

E-mail stardm@xit.net

Fax: 366-5884

Structured Touch Massage Therapy Clinic

Cece Yelek, CMT, LMT
 401 N. Third #11. or 7199 Co. Rd P
 Stratford, TX - Sunray, TX
 Office 806-366-ahhh (2444)
 Cell 806-290-3655
 Open 9-5 by Appointment Only

THIS SPACE
 AVAILABLE

CALL 366-5885

E-mail stardm@xit.net

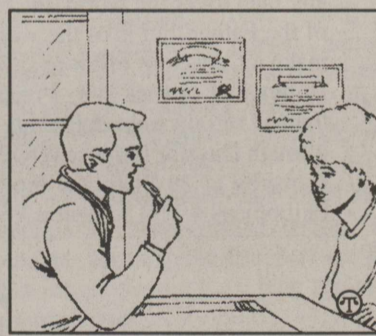
Fax: 366-5884

Deadline for The Stratford Star

Deadline for Stratford Star items. Photos by Sundays at 4 p.m. Letters to Editor 9 a.m. on Mondays (typed) and all other articles and ads at 10 a.m. on Mondays. (PLEASE) Thank you

Healthy Ideas

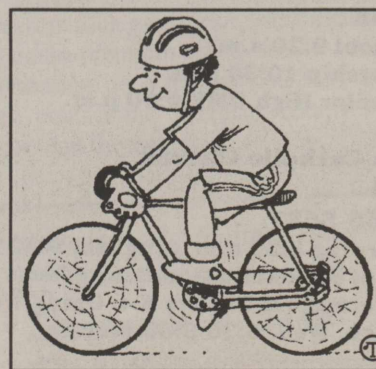
(NAPS)—Mental health problems can affect mood, relationships, work and health. For information on where to get mental health or substance abuse treatment, visit the



Substance Abuse and Mental Health Services Administration (SAMHSA) at <https://findtreatment.samhsa.gov> and www.mentalhealth.gov.

Did You Know?

(NAPS)—The skin and hair care company Kiehl's Since 1851 is raising money for AIDS research with its sixth annual Kiehl's LifeRide for amfAR and by contributing the net profits from



the sale of Kiehl's Limited Edition Ultimate Strength Hand Salve. Learn more at www.Kiehls.com/liferide.

Please, no excuses -- get your flu vaccine this fall

By Bob Moos, Southwest public affairs officer for the U.S. Centers for Medicare and Medicaid Services

It's that time of year when people come up with all sorts of excuses for not getting a flu shot. Often, though, the excuses catch up with them. So, for the benefit of the naysayers, let's do a reality check and clear up some mistaken notions.

"Why worry? It's just the flu."

Every year, almost 300,000 Americans land in the hospital as a result of the flu and its complications, and more than 20,000 die from flu-related illnesses. Older adults should be especially wary. They will account for 60 percent of the hospital stays and 90 percent of the deaths.

"I got a shot last year. I don't need another."

Even if you were vaccinated last year, you still need another shot this year, since your immunity to flu viruses wanes after a year. Also, the types of viruses usually change from season to season, so a new vaccine is made each year to fight that season's most likely strains.

"Last year's vaccine was ineffective; why should I think this year's will work?"

The strains of virus in last year's vaccine weren't a good match with the strains that were circulating. So, the vaccine was less than ideal. The government expects that the strains in this year's vaccine will be a better match and that the vaccine will be more effective.

"I'll do it later -- like after the first of the year."

The flu season typically begins in October, peaks in January or February and runs through May. If you wait too long, you only increase your risk of catching the flu. Now is the best time to get your vaccination. The vaccine will protect you within two weeks.

"The vaccine will give me the flu."

If you're concerned about a serious allergic reaction or some other medical condition that may make the vaccine unsafe for you, you should consult your doctor. Otherwise, it's important to remember that you can't get the flu from the flu shot.

Side effects are rare. Most people notice nothing afterward. A few may have sore muscles or a slight fever, but those side effects usually last just a day or two.

"I just don't like shots."

There are more ways than ever to get the vaccine, including an intradermal injection that barely punctures the skin and a nasal spray that involves no shots at all. Not all kinds of vaccines can be used in all patients, but your doctor can suggest one that's a good fit for you.

As flu season gets underway this fall, you'll want to wash your hands and stay away from sick people to reduce the spread of germs. But as useful as those preventive steps are, the annual vaccine remains the best way to protect yourself against flu viruses.

Vaccine is now available at doctor offices, health clinics, public health departments, pharmacies, college health centers, many employers and some schools.

If you're enrolled in Medicare Part B, your flu vaccine won't cost you anything, as long as your doctor, clinic or pharmacy agrees not to charge you more than Medicare pays. There's no deductible or co-payment for the vaccination.

Older adults are at increased risk of the flu. As people age, their immune system typically weakens and their ability to ward off diseases declines. Moreover, the flu can cause complications for those already struggling with chronic health problems.

Besides the standard-dose vaccine, adults 65 and older now have the option of a higher dose specifically designed to address their age-related declining immunity. The higher-dose vaccine triggers the body to produce more antibodies against flu viruses.

However you choose to be vaccinated, don't delay. You'll be protecting not only yourself but also those around you. By avoiding the flu this season, you'll avoid giving it to your family and friends.

NOTICE OF 2015 TAX YEAR PROPOSED PROPERTY TAX RATE FOR CITY OF STRATFORD

A tax rate of \$.890 per \$100 valuation has been proposed for adoption by the governing body of City of Stratford. This rate exceeds the lower of the effective or rollback tax rate,

and state law requires that two public hearings be held by the governing body before adopting the proposed tax rate.

PROPOSED TAX RATE	\$ <u>.890000</u> per \$100
PRECEDING YEAR'S TAX RATE	\$ <u>.879580</u> per \$100
EFFECTIVE TAX RATE	\$ <u>.836503</u> per \$100
ROLLBACK TAX RATE	\$ <u>.900402</u> per \$100

The effective tax rate is the total tax rate needed to raise the same amount of property tax revenue for City of Stratford from the same properties in both the 2014 tax year and the 2015 tax year.

The rollback tax rate is the highest tax rate that City of Stratford may adopt before voters are entitled to petition for an election to limit the rate that may be approved to the rollback rate.

YOUR TAXES OWED UNDER ANY OF THE ABOVE RATES CAN BE CALCULATED AS FOLLOWS:

$$\text{property tax amount} = (\text{rate}) \times (\text{taxable value of your property}) / 100$$

For assistance or detailed information about tax calculations, please contact:

Teresa Edmond

City of Stratford

tax assessor-collector

PO Box 239, 402 N. 3rd, Stratford, TX 79084

806-366-5566

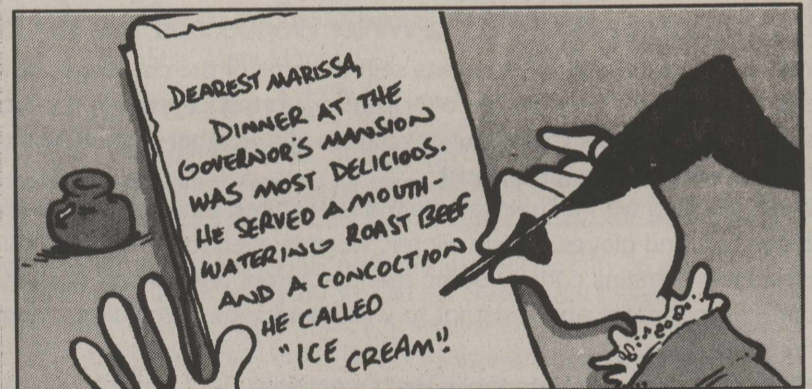
shercad@xit.net

You are urged to attend and express your views at the following public hearings on the proposed tax rate:

First Hearing: 09/08/15 at 12 noon at City Hall Council Chambers
Second Hearing: 09/11/15 at 12 noon at City Hall Council Chambers

It is cruel, you know, that music should be so beautiful. It has the beauty of loneliness and of pain: of strength and freedom. The beauty of disappointment and never-satisfied love. The cruel beauty of nature, and everlasting beauty of monotony.
—Benjamin Britten

Give me odorous at sunrise a garden of beautiful flowers where I can walk undisturbed.
—Walt Whitman



The first written mention of ice cream in this country can be found in a letter from 1744, which admiringly describes the ice cream and strawberry dessert served at a dinner party hosted by Governor Thomas Bladen of Maryland.

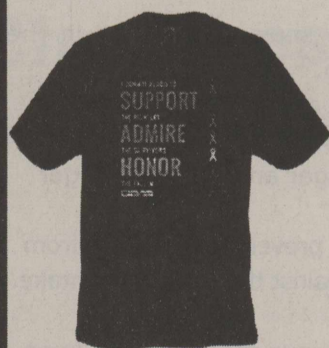
I DONATE BLOOD TO

SUPPORT
THE FIGHTERS

ADMIRE
THE SURVIVORS

HONOR
THE FALLEN

COFFEE MEMORIAL BLOOD CENTER



EVERY ELIGIBLE DONOR WHO PRESENTS
TO DONATE IN SEPTEMBER WILL RECEIVE
A FREE FIGHT CANCER T-SHIRT!

A cancer diagnosis can be devastating and often leaves friends and family members searching for ways to help. Coffee Memorial Blood Center provides an opportunity for you to help those battling cancer through blood and platelet donations. Cancer patients often receive multiple transfusions during the course of their treatment. That's why your regular donations could make a lifesaving difference for someone with cancer! This September, register to give blood or platelets and you will receive this special t-shirt to wear and show your support.

Stratford Community BLOOD DRIVE

Monday, Sept. 21st
3:00 pm - 7:00 pm
County Barn
5th and Maple

Photo ID or Donor ID card required
Must be at least 17 years old; 16 year olds may donate with signed parental consent.

Ask about giving Auto Reds to maximize your donation!

Call 331-8800 or visit donate.thegiftoflife.org
for appointments. Walk-ins welcome!



7500 Wallace Blvd., Amarillo, TX

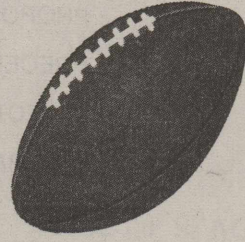
"JV Football"

National Preparedness Month

September is National Preparedness month. How prepared are you and your family and loved ones for emergencies of all kinds? Are you as prepared as you can be for a possible evacuation of your home during a fire or tornado? Have you talked to each member of your household about escape routes and gathering places? How about who is responsible to get the kids, Grandma, and the family pet? Have you put together an emergency supply kit in case of a power outage or in the event of a forced evacuation due to a toxic spill or explosion from a truck or a train? Officials and relief workers often times cannot immediately reach everyone in the aftermath of a disaster. It may take hours or even days for help to arrive. An emergency supply kit contains tools that your family will need to survive during that period. Do you have a list of emergency contact numbers handy in case you have to grab it and run? How about those important documents? Do you try to make sure there's enough gas in the tank, just in case?

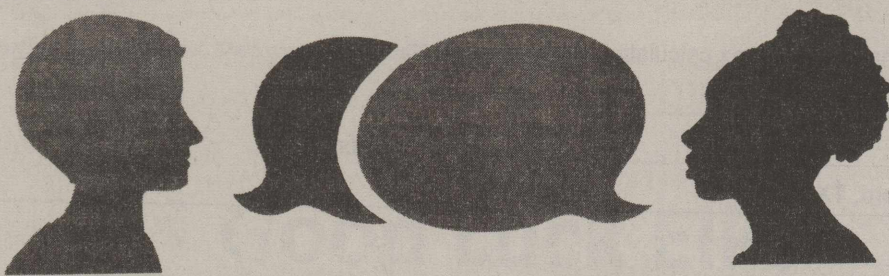
Preparedness is everyone's responsibility. It requires thought and planning. Preparedness thinks and looks ahead. It goes without saying that we hope and pray that an emergency will never occur in our community, but being prepared and having a plan will provide peace of mind in an often chaotic and unsettling situation.

We are always looking for volunteers! If you are interested or if you would like more information, please contact Margaret Ewers - Sherman County Emergency Management Coordinator at 366-2021 or come by the Emergency Management Office or the Sherman County Judge's office in the Sherman County Courthouse.

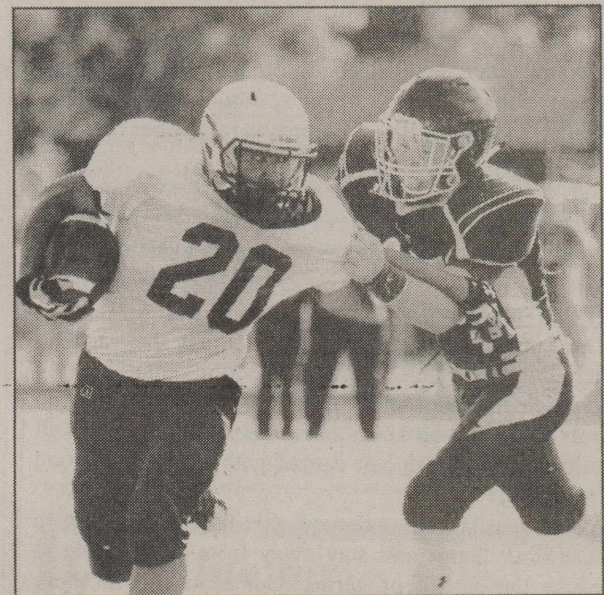
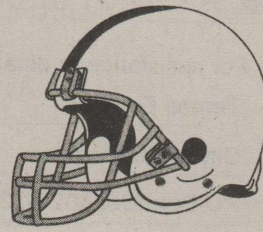


J.V. Elk #22 Shay Hess scores for the Elks in their 12-6 loss to Sunray on Thursday, August 27.

DON'T WAIT. COMMUNICATE. MAKE YOUR EMERGENCY PLAN TODAY.



SEPTEMBER IS NATIONAL PREPAREDNESS MONTH!



J.V. Elk #20 Luis Mendoza evades Sunray defense on Thursday, August 27.



AMERICA'S
PrepareAthon! Ready

Careful Cutting—Working in a Winter Wonderland Tips for Cold Weather Chainsaw Operation

With the onset of winter, thoughts shift to some of the challenges of winter chainsaw operation. With a little extra care, your chainsaw can offer peak performance even in the face of extreme cold temperatures. You will also need to take extra precautions for specific weather-related hazards.

Personal Protective Equipment

While working with a chainsaw during the winter, as always, wear protective apparel, such as chaps, hearing protection and gloves. In the winter, wood is even more likely to splinter, so the use of a helmet and eye protection remains critical. Some manufacturers offer winter protective pants made with materials that are both cut retardant and resistant to water and snow, providing an option to the protective leg wear you would normally wear.

Winter Chainsaw Maintenance and Operation

The first thing to do to prepare your chainsaw for use in temperatures under ⁴⁰⁰ F is to switch the winter/summer shutter on your saw to "winter" to activate the carburetor pre-heater system, if your chainsaw has this feature. Leaving the shutter on the summer position could result in carburetor icing, causing the machine to perform poorly, idle erratically, and even run lean, which could eventually cause major engine failure.

Your chainsaw will require some extra maintenance during winter. The following are some basic recommendations:

- Be sure to keep the sprocket cover clean to prevent snow and moisture from freezing with sawdust and oil that normally collect around the sprocket area.
- Clean the chain brake more often, especially with chainsaws that have the chain brake in the sprocket cover.
- Remove snow from around the fuel tank opening before refueling, so snow doesn't fall in the tank; water and moisture in the fuel can cause unnecessary aggravation.
- Keep the anti-vibration system free from snow and ice that could freeze and affect operation of the anti-vibration system, resulting in increased operator fatigue.
- Wipe away any snow, ice or water droplets from around the throttle trigger and throttle trigger interlock to ensure they remain operational.
- Also keep the cooling air intake clean and free from snow, ice and sawdust to prevent your engine from overheating. Take care that bulkier winter clothing does not get sucked up against the cooling air intake. This can restrict air flow and cause major engine failure.
- Be extra attentive to risk-reducing features and control mechanisms on your chainsaw and keep them clean.

Special Weather-Related Precautions

Be aware that the ground might be frozen and slippery. You will need solid footing with good traction. With all your winter tree work, take extreme care in the freezing weather. When it's windy, stormy or rainfall is heavy, consider delaying the work to avoid hazards.

Since frozen wood is harder than non-frozen wood, you may want to decrease the saw chain's filing angle by five degrees. Decreasing the chain's angle increases cutting performance in frozen woods and decreases the wear to your guide bar and saw chain.

Keep ice from building up on the handles of your chainsaw to prevent your hands from slipping off the machine.

Before you start felling, try to remove the snow around the trunk of the tree and knock off as much snow and ice as possible from low hanging limbs, which pose an increased risk of distraction from falling snow while you are cutting the tree.

As you face the challenges of winter work, taking a few extra maintenance steps and being extra alert to potential hazards can increase the productivity of your equipment and reduce the risk of injury.

Randy Scully is product service manager for STIHL Inc., based in Virginia Beach, Virginia. Alexa Reed Texas AgriLife CEA Ag/NR (806)366-2081

Sherman County Producers Urged to Consider Risk Protection Coverage before Fall Crop Sales Deadlines

(Stratford, Texas), August 26, 2015 - Sherman County USDA Farm Service Agency (FSA) Executive Director **Rebecca Lowe**, reminds producers to review available USDA crop risk protection options, including federal crop insurance and Noninsured Crop Disaster Assistance Program (NAP) coverage, before the fall-seeded crop deadline of September 1. Federal crop insurance covers crop losses from natural adversities such as drought, hail and excessive moisture. NAP covers losses from natural disasters on crops for which no permanent federal crop insurance program is available, including forage and grazing crops, fruits, vegetables, mushrooms, floriculture, ornamental nursery, aquaculture, turf grass, ginseng, honey, syrup, bioenergy, and industrial crops. The following crops in Sherman County have a NAP application deadline of **September 1, 2015**: wheat, oats, triticale.

"NAP policies allow producers to protect their investment by purchasing coverage for noninsurable crops," said **Lowe**. "Natural disasters are an unavoidable part of farming and ranching and FSA programs like NAP help producers recover when they experience a loss."

USDA has partnered with Michigan State University and the University of Illinois to create an online tool at www.fsa.usda.gov/inap that allows producers to determine whether their crops are eligible for federal crop insurance or NAP and to explore the best level of protection for their operation. NAP basic coverage is available at 55 percent of the average market price for crop losses that exceed 50 percent of expected production, with higher levels of coverage, up to 65 percent of their expected production at 100 percent of the average market price available, including coverage for organics and crops marketed directly to consumers. Crops intended for grazing are not eligible for additional NAP coverage.

Federal crop insurance coverage is sold and delivered solely through private insurance agents. Agent lists are available at all USDA Service Centers or at USDA's online Agent Locator:

<http://prodwebnib.rma.usda.gov/apps/AgentLocator/#Producers> can use the USDA Cost

Estimator,

<https://ewebapp.rma.usda.gov/apps/costestimator/Default.aspx> to predict insurance premium costs.

For more information on NAP, service fees, premiums and sales deadlines, contact the Sherman County FSA office at 806-396-2211 or visit the web at

PROFESSIONALS IN PEST CONTROL TECHNOLOGY
Serving the area since 1965

Stevenson & Sons
Pest Control OF DALHART

- TERMITE, RODENT & PEST CONTROL FOR YOUR HOME & BUSINESS
- YARD & TREE SPRAYING

DALHART PH. 249-4202
JIM STEVENSON

BOX 192
DALHART, TEXAS



It Pays To Look In The

Star Classifieds

Phone 366-5885

THE STRATFORD STAR
Thursday, September 3, 2015
Page 7

..The Best Salesperson Around

Help Wanted

Dependable employee needed to fill the position of Feedmill Manager. Previous feedmill experience with flakers and boilers is necessary. Employment history w/references is required. The successful candidate must possess a strong work ethic, be detail oriented & have excellent mechanical ability. Hourly wage BOE. We offer a competitive benefit package including paid family health insurance, retirement plan & other benefits. EOE Sublette Feeders, PO Box 917, Sublette, KS. Contact: Eric Ferrell 620-668-5501 9-3-tfn

Cimarron Feeders is accepting applications for the following positions:
-Mechanic
-Mill Laborer
17 miles S Keyes, OK on HWY 171
15 miles N of Stratford, TX on HWY 287
Then right 5 miles on HWY 171
Apply in person: M-F 8a.m-3p.m. or call (580) 543-6383
Great benefits for full-time positions that include: Medical, Dental & Vision insurance as well as 401K and paid time off. Pre-employment drug screen required.
EOE/M/F/et/Disabled
JBS Five Rivers Cattle feeding is an equal opportunity Employer 5-7-21 tfn

Coldwater Manor is taking applications for RN's, LVN, Dietary Assistant and Housekeeping. Apply in person. From 8 a.m. to 5 p.m. Monday thru Friday. EOE 7-16-tfn

CDL driver, CDL-need for 2 years+, Must be at least 25 years old for Insurance purposes, clean driving record. Texas Agri Plex Apply in person at 109 Pine Street in Hereford, TX 79045 8-6-c

Stratford Grain company is hiring both office and elevator help. Apply in person at 4 N. Main 8-6-tfn

Stratford Hospital District is now taking bids for lawn care for local properties. If interested please submit references to Coldwater Manor. 8-27 & 9-3 c

Stratford ISD is seeking a custodian. Applications available on school website or in the administration office. For more information, please (806) 366-3300-8-27&9-3

SECURITY OFFICERS
Full/Part Time all shifts
Cactus area
\$8.00/HR/Benefits
After 90 days \$8.25 another 90 days \$8.50
Clear Criminal Record/Pre-Drug Screening
Apply with ABM Security on line
You must have an email address to apply
Go to www.abm.com
Click on "Careers" Click on "Career Search"
Select Location by clicking on TX/Cactus
Select "Job Category" by clicking on "Security/Protective Services"
Mark 806-966-8202
EOE/M/F/D/V
8-27 & 9-3

For Rent

Office Space-305 N. Main, across from bank. Call 806-570-0441 (7-30-tfn)

Houses for Sale

919 N. 5th St. - 1504 Sq. Ft. home (According to SCAD)
* 3 bedrooms and 1 full bath
* Large family room
* Kitchen/dining room combo
* Bonus mudroom/laundry area
* Large corner lot with metal fence.
* Priced at \$75,000.
Jana Clift • 806.679.7414
www.CliftLandBrokers.com
Stratford Office 401 S. Poplar • 396-1085
3430 S-40 West • Amarillo, TX 79102 • 806.395.0856

NEW CONSTRUCTION-Gruver, TX- One blk. From Exemplary School District! 3/2/2, brick, granite countertops, stainless steel appliances, E5 Storm shelter, turn Key w/sod & sprinkler system, landscaping, complete September 15, 2015-\$254,000.00
Please view our websites for details on these properties, choice NM ranches (large & small), choice ranches in the high rainfall areas of OK, irr./drylandCRP & commercial properties. We need your listings on any types of ag properties in TX, NM, OK & CO
www.scottlandcompany.com
www.texascrp.com
Ben G. Scott-Krystal M. Nelson-Brokers
800-933-9698

Country home for sale located just outside city limits sitting on 11 acres. 4 bedrooms, 2 bath, fireplace, sprinkler system, 2 car oversized garage with shop area, 2,731 sq. ft. including garage. Property includes horse barn with tack room, stalls and pens, garden shed, updates throughout, lots of storage, great location! Motivated seller \$239,000. Call 806-753-7556. 8-13-tfn--

Legal Notice

Application has been made with the Texas Alcoholic Beverage Commission for a Wine Only Package Store Permit and Beer Retail Dealer's Off Premise License by Round Quonset LLC dba El Patron to be located at 400 S. Poplar, Suite A, Stratford, Sherman County, Texas. Officers of said LLC are Abraham Diaz Tapia, manager.
Published in The Stratford Star, Thursday, August 27, 2015 and Thursday, September 3, 2015

Legal Notice

Application has been made with the Texas Alcoholic Beverage Commission for a Package Store Permit and Beer Retail Dealer's Off Premise License by Round Quonset LLC dba El Patron Liquor Store to be located at 400 S. Poplar, Suite B, Stratford, Sherman County, Texas. Officers of said LLC are Abraham Diaz Tapia, manager.
Published in The Stratford Star, Thursday, August 27, 2015 and Thursday, September 3, 2015.

NOTICE TO ALL PERSONS HAVING CLAIMS AGAINST THE ESTATE OF REX JOSEPH CHRISTIAN, DECEASED

Notice is hereby given that original Letters Testamentary upon the Estate of Rex Joseph Christian, deceased, were issued to us, the undersigned, on the 23rd day of July, 2015, in the proceeding indicated below by our signatures hereto, which is still pending, and that we now hold such Letters. All persons having claims against said estate, which is being administered in the County of Sherman, are hereby required to present the same to us at the address below given, before suit upon same are barred by the general statutes of limitation, before such estate is closed, and within the time prescribed by law. The address of Rexan Gerard is 506 N. Ridgewood Road, Ulysses, Kansas 67880 and the address of max Christian is P.O. Box 711, Stratford, Texas 79084.
DATED this 23 day of July, 2015.

Rexan Gerard, Independent Co-Executor of the Estate of Rex Joseph Christian, Deceased, Cause No. 2238 in the County Court of Sherman County, Texas

Max Christian, Independent Co-Executor of the Estate of Rex Joseph Christian, Deceased, Cause No. 2238 in the County Court of Sherman County, Texas.

Published in the Stratford Star, Thursday, September 3, 2015

More economical!

Differences between electric and hydraulic systems

Hydraulic Dealer-Professionals are ready to share other eye-opening reasons why more and more producers are choosing Reinke irrigation systems.

Talk with a Reinke Dealer today.

TEXAS ELECTRIC CO.
Stratford, TX 79084
Charles & Chuck Harbour
301 N. Poplar
Office 806-396-2300

Reinke

The art of being wise is the art of knowing what to overlook.
—William James

Don't argue with a fool. The spectators can't tell the difference.
—Charles Nalin

Courage is the first of human qualities because it is the quality which guarantees all others.
—Winston Churchill

We must travel in the direction of our fear.
—John Berryman

SNACK PAK 4KIDS

Giving a Voice to Hungry Kids

We all know that there are children who have free breakfast and lunch provided for them at school Monday through Friday. Have you ever stopped to think what these children do for food on the weekends? Have you ever eaten lunch on Friday and then not had another actual meal until Monday morning? Can you imagine trying to listen to your teacher on Monday morning when all you can do is watch the clock and count the seconds until lunchtime? Unfortunately, there are children in Stratford and the surrounding towns in the Texas panhandle who face this struggle every weekend and during school holidays. Snack Pak 4 Kids is a program that provides food for children in these situations every weekend of the school year. 100% of all money is used for food only.

YES!!! I want to adopt a child for: **Stratford ISD**

1 year- \$133 (number of children _____)

1 month- \$14 (number of children _____)

1 week- \$3.50 (number of children _____)

other- \$ _____

Name _____

Address _____

Phone _____

Email _____

Organization _____

School you are sponsoring _____

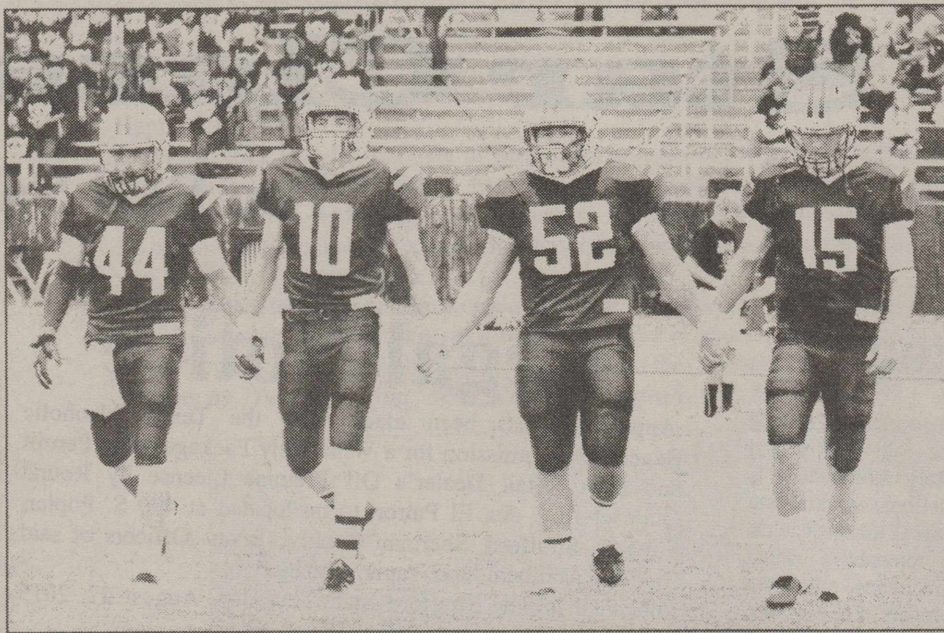
Checks are payable to "Snack Pak 4 Kids." Please designate Stratford in memo line of your check.

Snack Pak 4 Kids
701 Park Place Ave
Amarillo, TX 79101
806-337-5252

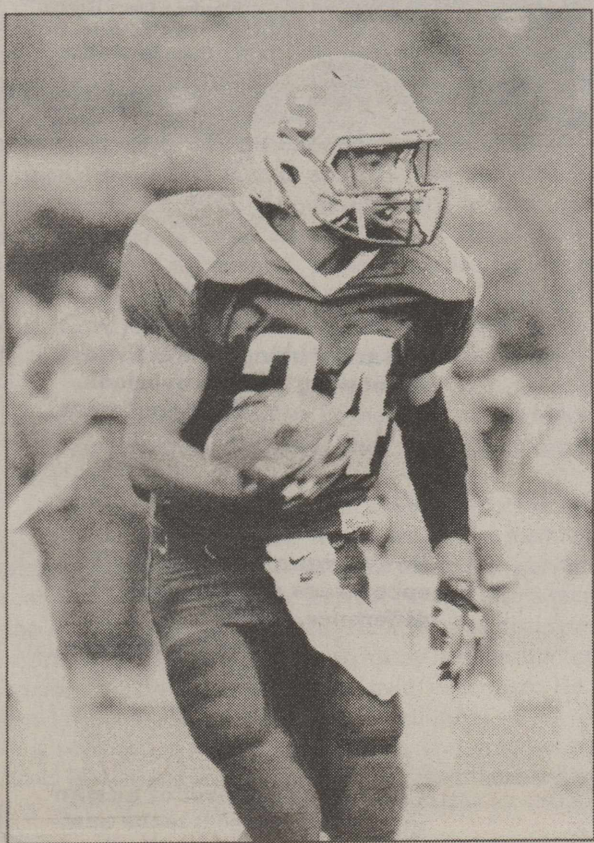
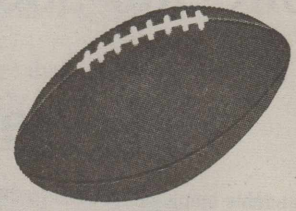
"Friday Night Lights"



New head coach Matt Lovorn and the Elks kicked off the season with a 41-13 win over Sunray on Friday, August 28, 2015.



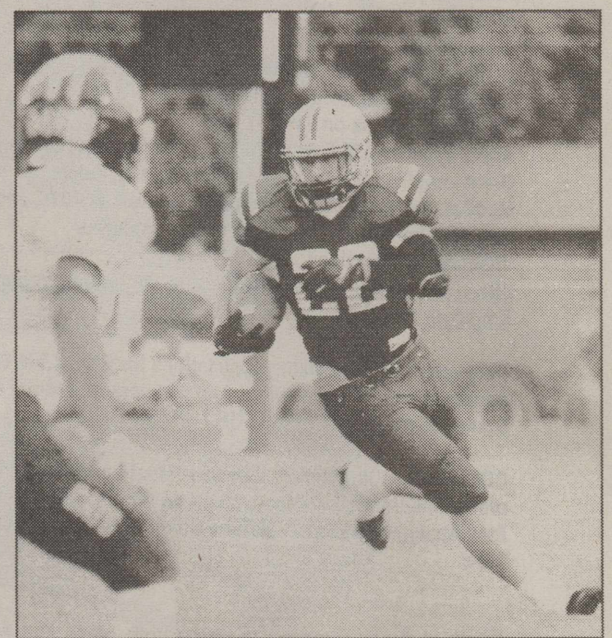
Stratford Elk Captains #44 Blake Griffin, #10 Ty Hess, #52 Tanner Stone and #15 Jack McBryde take the field in their first game of the season.



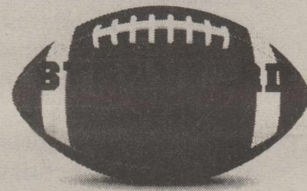
Stratford Elk #24 Kevin Hernandez picks up some yards on the carry.



Stratford Elk John McBroom #13 catches the pass from Jack McBryde and picks up some yards for the Elks.



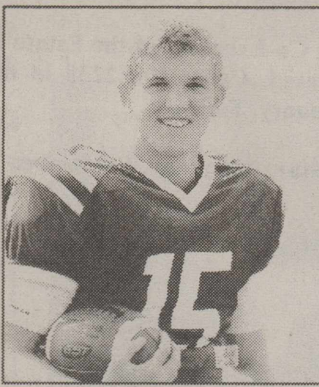
Gage Brooks #22 carries the ball for the Stratford Elks in their win over Sunray.



**PLAYERS
OF THE
WEEK**



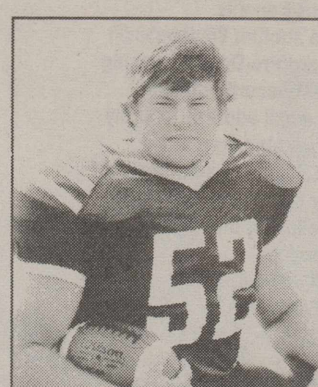
High School Principal Mr. Hanna gave the pep talk at the Pep Rally.



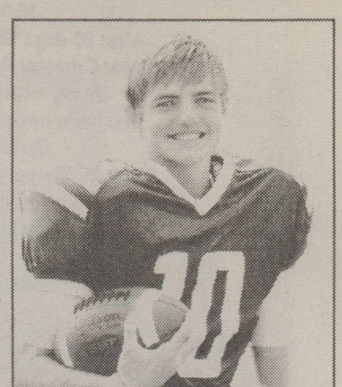
Jack McBryde



Parker Hanna



Tanner Stone



Ty Hess



Jorge Ramirez

Players of the Week: Offensive Back - Jack McBryde; Offensive Line - Parker Hanna; Defensive Line - Tanner Stone; Defensive Back - Ty Hess and Special Teams - Jorge Ramirez.

The Stratford Elks under new Head Coach Matt Lovorn beat Sunray 41-13 to kick off the season on Friday, August 28, 2015. Quarterback Jack McBryde completed 9 of 12 passes for 135 yards and one touchdown, pass to Gage Brooks. McBryde also picked up 82 yards on 4 carries and scored 2 touchdowns on the carry. Fernando Jacquez carried the ball for 105 yards on 10 carries followed by Kevin Hernandez with 88 yards on 8 carries. Gage Brooks carried the ball for 86 yards on 10 carries. John McBroom led in reception yards with 50 yards on 3 catches followed by Blake Griffin with 41 yards on 1 catch. Joaquin Gutierrez scored 5 PATs for the Elks. Tanner Stone led the Elk defense with 9 tackles followed by Andy Reyes with 8 and Ty Hess with 7.

Time Out With Roger



Well different driver but same results! Stratford Elks played the opening game against Sunray Bobcats and won Big, 41-13. Stratford lead in every department, total domination! We had 4 players rushed over 80 yards a piece, that means the Hogs were making some Huge Holes!!!! Hey BM the game started at 7:00 sharp not 7:41, please!!!! What a way to start the season off, good work! This week the Ole' Elks travel to the Hornets Nest, Tulia! Let's all go down to cheer our great team on! BM the game is in Tulia at 7:00 p.m. For your information! Bring home a big W! Thanks to KW for the tailgate food it was good Thank you Lord for everything you give us! Once an Elk always an Elk

Roger Malon Allen

Week One Winner Eddie Metcalf

Keri Walden Class of 2000
Lubbock Cooper vs Canyon
Wichita Falls Rider vs Amarillo High
Childress vs Perryton
Stratford vs Tulia
Hollis, OK vs Wellington
Abernathy vs Friona
Bovina vs Smver
Southland vs Nazareth
Sam Houston St. vs Texas Tech
BYU vs Nebraska
Arkansas St vs USC
Arizona St. vs Texas A&M
Louisville vs Auburn
Colgate vs Navy
Tie Breaker Texas 0 vs Notre Dame 21

Roger Allen Class of 1981
Lubbock Cooper vs Canyon
Wichita Falls Rider vs Amarillo High
Childress vs Perryton
Stratford vs Tulia
Hollis, OK vs Wellington
Abernathy vs Friona
Bovina vs Smver
Southland vs Nazareth
Sam Houston St. vs Texas Tech
BYU vs Nebraska
Arkansas St. vs USC
Arizona St. vs Texas A&M
Louisville vs Auburn
Colgate vs Navy
Tie Breaker Texas 29 vs Notre Dame 25