

W.G. Hart
Box 3
Stratford, TX 79084

12/92

Serving the Pheasant Capitol of Texas

The Stratford Star

NUMBER 48 35 Cents Publishing for 96 Years in Stratford, Sherman County, Texas 79084

USPS 523-108 NOV. 26, 1992



Local News

Basketball Action

Basketball action started last week kicking off on Tuesday, Nov. 17th here in Stratford against Dalhart. The JV girls lost to Dalhart by a score of 35 to 26. Individual scoring was Anita Rapp-6; Ashley Parsons-6; Mandy Mires-3 and Chancey Rhoades 11.

Varsity girls played Dalhart and lost 46 to 41. Individual scoring for that game was Kelli Wight 3; Shannon Burkhalter 2; Elly Rhoades 9; Jalane Rhoades 2; Jolina Garoutte 17; and Courtney Dettle.

Friday Night the teams played River Road. JV girls won 39 to 7.

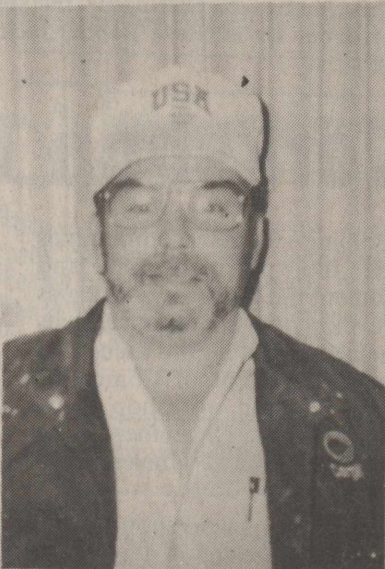
Individual scoring was Anita Rapp 6; Autumn Woolsey 4; Ashley Parsons 2; Pati Porras 2; Mandy Mires 16 and Chancey Rhoades 9.

Varsity Girls lost to River Road by a score of 54 to 39. Individual scoring was Kelli Wight 3; Sarah Ortega 2; Lea Shuping 6; Elly Rhoades 1; Sunny Lasley 10 and Jolina Garoutte 17.

JV boys Friday, Nov. 20th lost to River Road by a score of 34 to 13. Individual scoring was Clint McAdams 1; Santos Madrid 2; Ben Pigman 4 and Trew James 6.

Stratford Varsity Boys lost a close one to River Road by a score of 43 to 42 Friday Nov. 20th.

Local Hero



Roger Jeffries recently stopped and helped a little girl that was choking on a piece of candy. Little Siearra Valenzuela was choking and Roger stopped to rendered aid, and consequently saved the little girls life, Roger we are very proud of you.

Individual scoring Donny Gray 2; Marcus Lavake 10; Clint Vincent 5; Matt Brotherton 4; Heath Starnes 4; Albert Aguilera 12 and Colby Wheeler 5.

Ribbon Cutting



All Seasons Car Wash held their Ribbon Cutting last Wednesday, Nov. 18th. Shown above are the folks that braved the cold and dreary day to come out and welcome Mrs. Weaver and her children. Left to right is J.E. Brannan, David Stites, Mary Brannan, Max Stephenson, Terri Weaver and her children Brenda age 5 and Barbara age 2, Molly Griffin and J.A. Lasley.

CORRECTION

Editors Note: Correction: Max Stepensons name was left off of the Cemetery Board Members in last weeks issue of the Star.

Scot Dance

Scot Dance Sat. Nov. 28 from 8 to 11. with the Music Makers.

The Stratford Star Newspaper office will be closed Wednesday Afternoon, Thanksgiving day and Friday for the holiday. Thank you.

Final Market Craft Days

Final Market/Craft Days for 1992, Saturday, December 5, sponsored by the Chamber of Commerce. It will be held in the Old County Barn 1 block East off of South 287 or off of Farm to Market Road #15 East to Gruver. There will be lots of neat items for the Christmas season. 9 a.m. to 5 p.m. Concession Stand sponsored by the Women's Division of the Chamber. For further information contact the Stratford Chamber (806) 396-2260.

Meeting of Stratford Fair Board of Directors

Sherman County Fair and Stratford Jamboree Board of Directors met Tuesday, November 17th. Plans for the 1993 Celebration, Sept. 9,10,11,12 are beginning to take shape.

Contests choosing the theme for the 1993 Fair and Parade and a contest for the designing the Fair Book Cover will be held in February or March. So put on your thinking caps.

The Fair and Jamboree Board is still asking and encouraging county organizations to take the responsibility of individual events such as Lions Club-Bar-B-Que, Study Club-Old Timers Program, and 4-H Parents-Rodeo. Activities needing a contestant organization are Community recreation, Parade, Fair Superintendents and Roping. Some of these events have persons agreeing to chair these events for this next year but they need assistance. Sam Brite is Parade Chairman, Darren and Shanda Boles directing Community recreation and Ray Lerman organizing the Sherman County Roping.

Any individual having an interest in a particular department of the Fair or in Jamboree event, please contact the County Extension office or Gaynelle Riffe, Chairman, Bill Blain, Vice-Chairman or Secretary-Treasurer, Sandy Baskin can be contacted at the Sherman County Judges office. Next Fair and Jamboree meeting Tuesday, January 19th, 5:30- Let's make this 1993 Community Celebration something special.

Teachers Honored

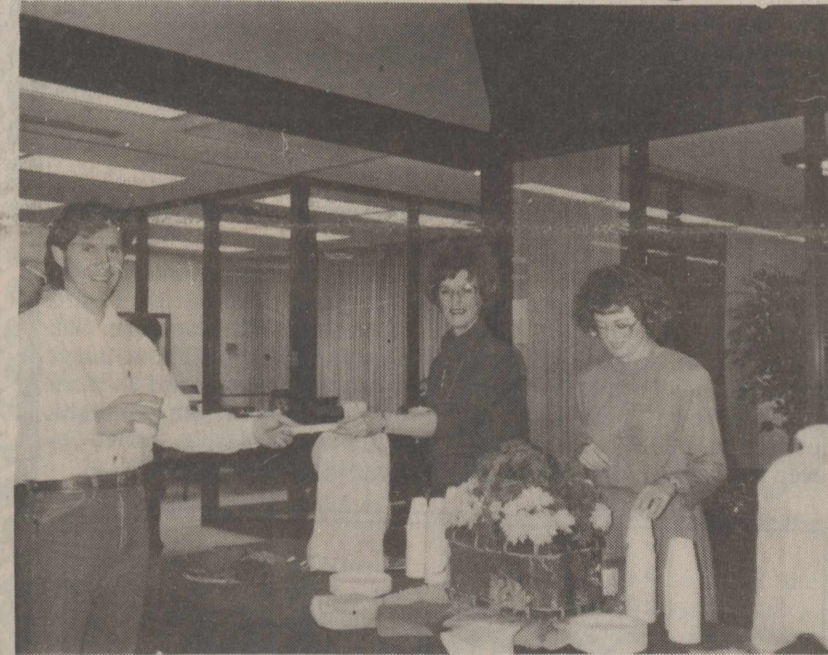


The Stratford School Employee Appreciation Banquet was held November 16th at the High School Cafeteria. Master of Ceremonies was Ken Wight, Welcome was by Rusty Craig. Meal was catered by Johnny Rib's and Sasha Browning had a very funny reading about a "Schoolteacher". A 10 year service award was given to Velma Martinez, Correlated Language Arts, ESL, Chapter 1, 15-year service award went to Linda Haynes, Kindergarten and Charlene Dyess, Teacher Aide/Librarian.



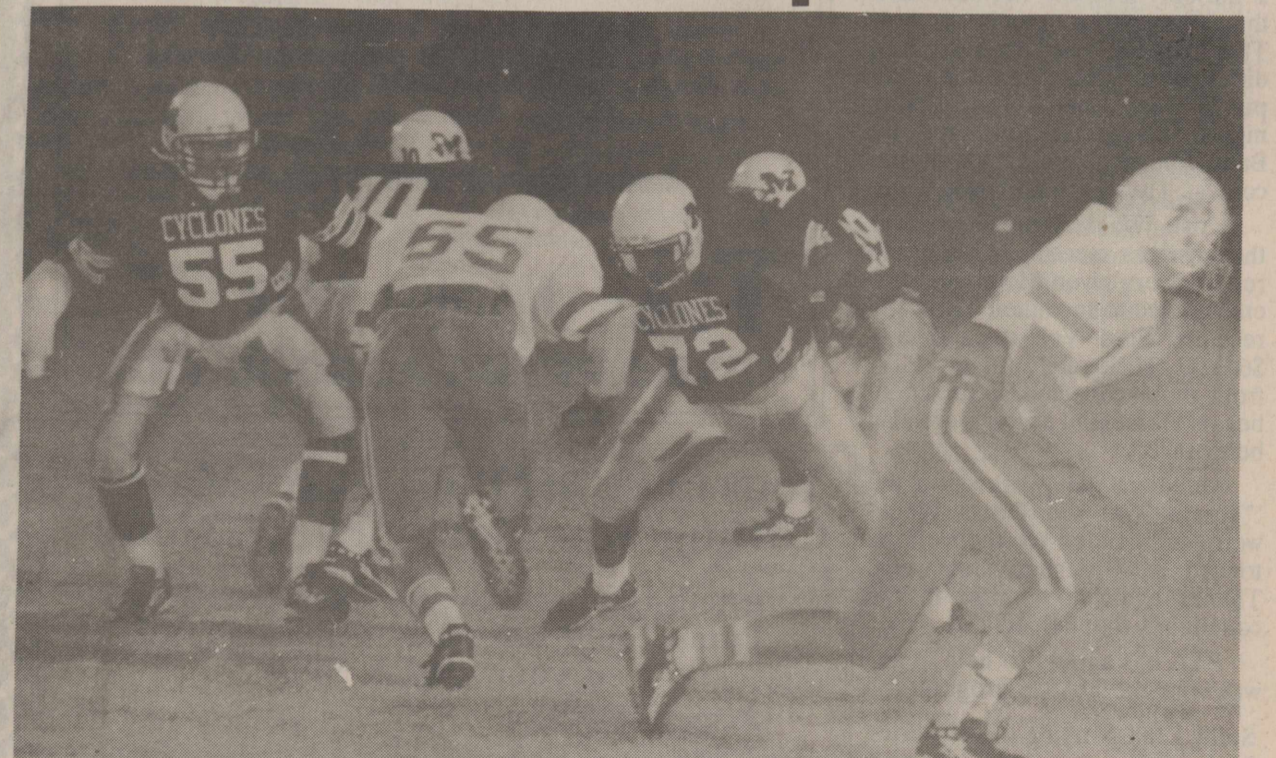
5-Year Service awards went to Kandi Nittler, 4th grade; Kathie Altman 1st grade, David Brown, Bus Driver and Rita Harker French, English.

Kenneth Wyatt Showing



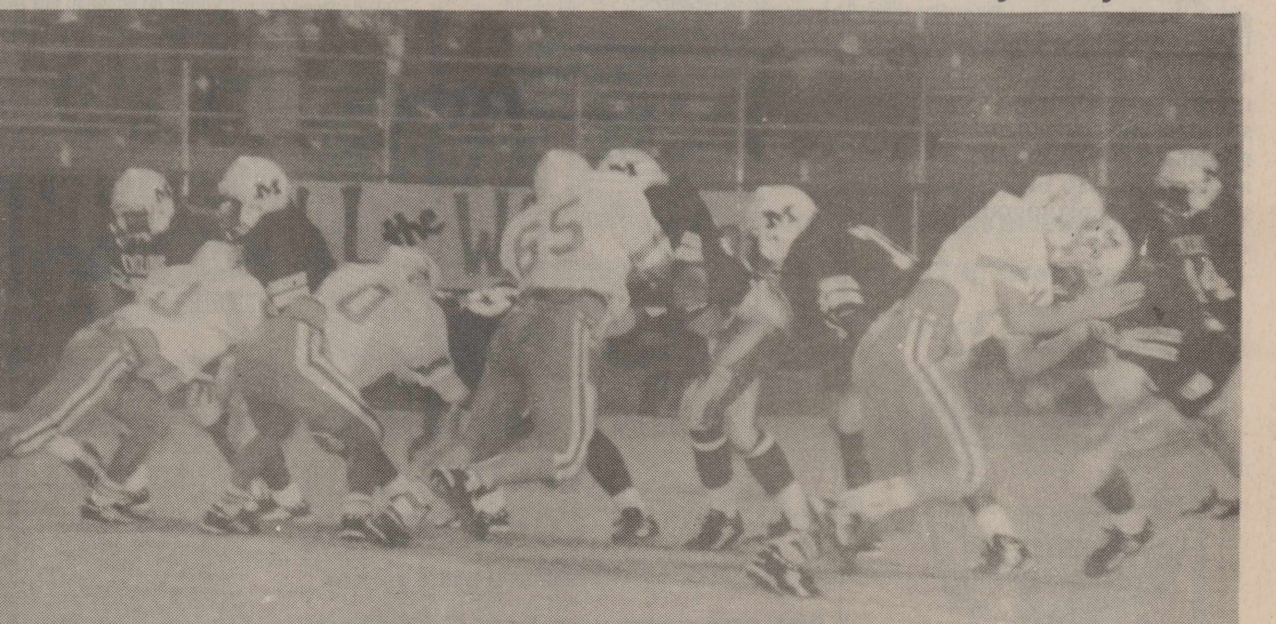
The First State Bank of Stratford had their Open House Friday, Nov. 20, 1992. Also a Kenneth Wyatt showing was in progress. Shown above is Kenneths son-in-law, Matt Marshall, being served by Linda Cloyd and Penny Boyd.

Stratford vs Memphis

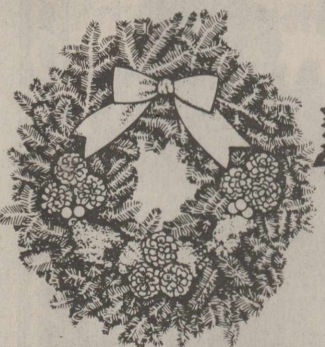


Todd Lemons & Marcus Lavake.

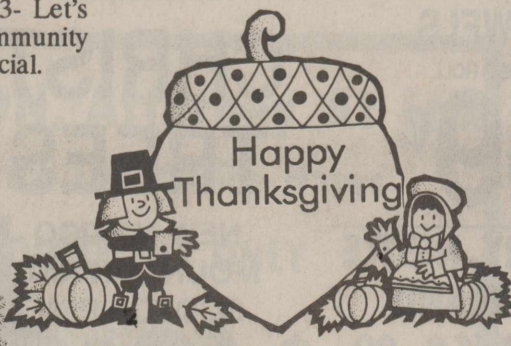
Photos by Becky Asher



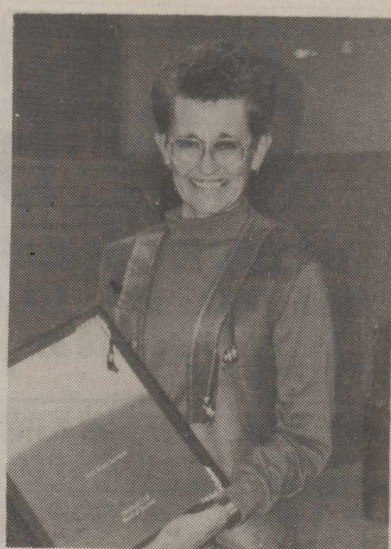
Adam Gonzales, Clint Parsons, Todd Lemons and Marcus Lavake.



29 Shopping Days Until Christmas "Shop At Home"



Pat Pentland is home. Dena Davis is still in hospital.



Mrs. Gilley was honored for 25 years of service in the Stratford High School.

Macias Attends Meeting



The 41-member Texas Farm Bureau Resolutions Committee met here this past week to edit and consolidate state resolutions and national recommendations for the voting delegates to consider Nov. 29-Dec. 2 at the 59th annual TFB convention in Corpus Christi. The 619 resolutions were submitted by 105 county FBs. Shown in the photo are the state and county FB leaders who served on the committee: Front row, l-r: TFB Vice President Bob Stallman, Columbus; the committee chairman; state directors Leland White, Tahoka; Tryne Mengers, Tynan; Billie Ray Huddleston, Celina; Bill Tullos, San Angelo; Harlan Huffman, McGregor; Tommy C. Walker, Uvalde; Tom Wolter of Bishop, chairman of the TFB Young Farmer and Rancher Advisory Committee; Bob Bingham, Kosse; and Charles Ellis, Sinton. Second row, l-r: Allen Smyer, Muleshoe; James Miller, Sulphur Springs; Roy Kneupper, Boerne; Lewis W. Menn, Runge; David Appling, Floydada; Jack Ray, Caldwell; E.G. Furgin, Canton; and Gaylon L. Johnson, Moran. Third row, l-r: Joe Doby, Washington; Claude Spence, Sminiole; Shirley Lance, Mission; James Maxton, Mount Pleasant; Jack Williams, Tennessee Colony; Elmo Dahl, Gruver; Bill McCluer, Seagoville; Tommy Hays, Bowie; and Ab Hunter, Merkel. 4th row l-r: J.B. Taubert, Rio Hondo; Mike Howett, Batesville; Henry Corbell, Jacksonville; David Murrell, Winnie; Paul Macina, Shamrock; Stanley Macias, Stratford; and Neely Tipton, Jacksboro. Top row, l-r: R.E. Handy, Beeville; Lonnie Hodgins, Haskell; Doyle Condra, Talpa; Joe Sinkule, Jr., Abott; Bob Currie, and Charles Halfmann, Vancourt.

The Texas Farm Bureau Resolutions Committee has completed its work and now its the voting delegates' turn to give final approval to the state resolutions and national recommendations at the 59th annual TFB Convention in Corpus Christi according to Stanley Macias.

"As always, the 41-member Resolutions Committee has done an excellent job of taking the vast number of proposals (more than 600 from 105 county Farm Bureaus) and preparing them in a concise manner for our delegates to consider the two days we will have at our Corpus Christi convention," Macias states.

Stanley Macias noted that county Farm Bureaus are becoming more involved in governmental affairs as seen through the large number of issues

surfaced recently at the Committee's meeting in Waco.

"Infringement on private ownership of land by non-profit organizations and government entities will be one issues that delegates will be giving serious consideration to (on Dec. 1-2," Macias observed.

Stanley also pointed out that County Farm Bureaus expressed a serious concern about "fiscal responsibility" by state and federal governments.

"Runaway spending at both the state and national level is of grave concern to all of us," Macias added.

Finding the means to finance public education while at the same time curbing rising administrative costs will be of major interest to the delegates," Macias pointed out.

Stanley Macias cited the following issues as among the many proposals delegates will consider at Corpus Christi:

- *Term limits
- *High speed rail.
- *The North American Free Trade Agreement with Mexico.
- *GATT Negotiations.
- *Taxes
- *Plant variety protection act.
- *animal health care.

State resolutions adopted in Corpus Christi will become policy for the TFB membership in 1993. National recommendations are forwarded to the American Farm Bureau Federation for consideration at the 73rd annual meeting Jan. 10-14 at Anaheim, Calif.

Lollipop Junction Holds Open House



These men were putting up the sign At Lollipop Junction recently. Shown from l-r is Steve Booth, Jack Haile, Butch Ellison and Lynn Allen.

Lollipop Junction's Open House, held Thursday, November 19th, was a huge success. The staff and Stratford Area Youth Care Agency, Inc. board of Directors were thrilled to greet more than seventy guests who called during the day. The children performed beautifully by singing several of the songs they have learned at the center.

We really appreciate all the homefolks who came by, after all, this is YOUR day care center. We are doing our best to make it something everyone in Stratford can be proud of. Several out of town guests including Jim Allison, and Evelyn Solonyka of the Amarillo Area Foundation, and Mr. and Mrs. Joe Bryant, TAEX Lubbock, were here for the day, and were very complimentary of the center and left with a good impression of Lollipop Junction and the people of Stratford.

The staff, which now includes Trisha Schoonover, Sheila Stites, Tammie Helmuth, Elisa Bacca, Lana Keener, and Susie Harlow, invite you to drop in anytime.

Workshop To Be Held

Helping Texas communities assess the potential for, and implement the necessary strategies to develop tourism opportunities in their area will be the focus of a Texas Department of Commerce tourism Division workshop to be held Tuesday, December 1 at West Texas State University in Canyon.

The day-long workshop is open to anyone interested in developing tourism opportunities in their community, from public and private organizations, to local

governments.

Topics to be covered during the workshop will include assessing the potential for tourism development, how to carry out basic tourism planning, an overview of innovative tourism initiatives, and an review of available resources for assistance and financial planning.

"What's important from an economic development standpoint is to realize that you must have a tourism 'product' in order to successfully develop and market tourism for your community. If

that potential exists, this workshop will help communities through that planning process, and show how to successfully develop programs that will contribute dollars and jobs to their community," said Dianne Mendoza-Freeman, Director of the Texas Department of Commerce Tourism Division.

Tourism is Texas' fourth largest industry, and figures for 1990-91 show that domestic and international tourism spending amounted to approximately \$21 billion.

Stratford PTA Holds Meeting

Stratford PTA met on Nov. 19th in the High School Auditorium at 7 p.m. Mrs. Hudsons drama class performed 3 skits they wrote for the Texans War on Drugs Week. The students did a wonderful job and they were very proud of their efforts.

The group moved to the Band Hall and Mr. Hunsaker showed how he taught the band students marching positions. He then played the video of the High School Band's performance Marching Contest in Borger. This is the only time the full band had the opportunity to march together. They looked great! It sure is a different looking band than the public sees march on Friday nights. Congratulations to the Band for receiving all 1's at the contest. They were well deserved.

Kristi Walden presided over the business meeting. Committee reports were given. Members were encouraged to save their Thriftway receipts. Fred Velasquez] has a \$643.00 check ready for the PTA from those collected since school began. Homeland receipts are also being saved.

Members that worked on the "Texans War On Drugs Week" were commended for their efforts toward a very successful week. Thanks again to those in the community that helped also.

PTA has agreed to help in any way with the DARE program the Study Club is trying to get started here.

A donation of \$100 will be given to the Imagination Station. PTA will be appointing a cultural arts chairperson to begin a reflections program. It will give students the opportunity to be recognized for their talents in four areas, which are music, literature, visual art and photography.

A PTA Newsletter will be sent out before the next meeting. If you have any news concerning happenings at school, Call Kristi Walden. We are doing this to help shorten our meetings and it must have worked because we adjourned at 8:30. We are hoping to even cut it down more. Our next

meeting will be Feb. 19, 1993. Claudia Sturtart from Amarillo will be our speaker. She is the Texans War on drugs Spokesperson. She will speak to parents about things they can do to keep their children Drug-Free. Hope to see you there, the public is always invited to come to any of our meetings.

The Stratford Star

Second class postage paid at Stratford, Texas, 79084. Subscription rates are \$13.00 per year in Sherman & adjoining counties; all others \$20.00 per year.

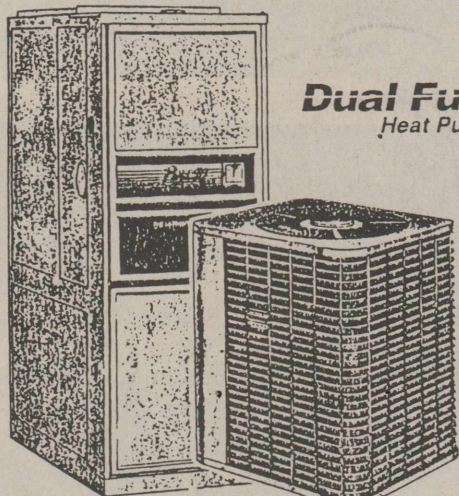
Published Weekly

Martha Robertson Editor & Publisher

Member 1992
TEXAS PRESS ASSOCIATION

Your Old HEATING Unit May Be Costing You Money Every Month.

Installing a new Bryant Dual Fuel Heat Pump could save you as much as 30% on your HEATING bills.



Dual Fuel Heat Pump



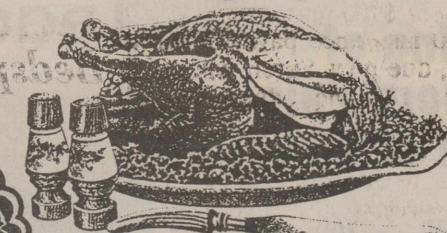
MUNGIA'S HEATING & AIR CONDITIONING
Stratford, Texas

806-396-2007 Licensed & Bonded No. TACL8009445C 806-396-2403

ALL TYPES
PEPSI-COLA
12 OZ. CANS
6 PAK \$1.69

CARRIZOZO ORCHARD
CHERRY, RASPBERRY OR
APPLE CIDER
12 OZ. BOTTLE
79¢

SHURFINE 10 TO 14 LB.
WITH POP-UP THERMOMETER
YOUNG TURKEY HENS
PER POUND
59¢



Terrific Thanksgiving Values

PRICES EFFECTIVE
THRU NOV. 28, 1992

YOUR HOLIDAY SHOPPING
HEADQUARTERS
OPEN THANKSGIVING DAY FOR
YOUR SHOPPING CONVENIENCE



COMBO OF THE MONTH
2 SAUSAGE, EGG & BISCUIT AND
A 22 OZ. CUP OF COKE
FOR ONLY
\$1.59

Allsup's 52
STRATFORD, TEXAS
(WHILE SUPPLY LAST)

SAUSAGE & BISCUIT EACH	MADE TO ORDER BBQ BEEF SANDWICH EACH
69¢	89¢

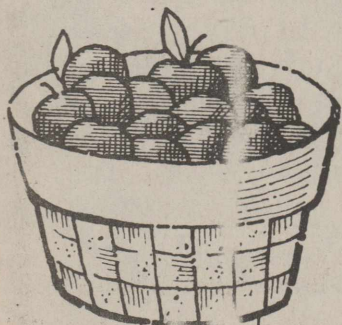
BATHROOM TISSUE NICE 'N SOFT 4 ROLL PKG.	SHURFINE PAPER TOWELS JUMBO ROLL
99¢	69¢

CHRISTMAS TREES

NEW MEXICO MOUNTAIN AND SCOTCH PINE
\$10.99
AND UP



BABY RUTH, OH HENRY, NESTLE MILK CHOCOLATE, 100GRAND CANDY BARS REG 55¢ **4/\$1.00**
DECKER OR CORN KING BACON 12 OZ. PKG. **49¢**
WILSON'S JUST FOR US HAMS 2 LB. **\$4.99**





Scot Notes

by Timmie Brown

Happy Day to you, Sherman Co. Older Texans, Friends, Neighbors, Scotters this cloudless Monday A.M. Nov. 23, 1992. The temperature at 7 o'clock this a.m. is 27 degrees F., the wind is calm and humidity is high. Yesterday, a sunny crisp Sunday was welcome because most of the preceding week was overcast, and cool. Friday 20 was cloudy, really threatening and disagreeable followed by light snow and heavy wind on Saturday. Prospects for today seem okay for Sr. Citizens to be out and around. Comfortability.

Congratulations to Director Jack Gore for a successful year with Scot organization Dec. 1991-Dec. 1992. Other interesting items about Scot Organization 1. Dorothy Robbins completes 3 year tenure with Scot, In Dec. 1992. Dec. 1989-1992. 2. Retiring Scot Board members are LaVerne Lasley, Max Stephenson, Daina Starnes, Arthur Judd, Paul Aduddell, Bobbie Cummings, Odel Arnold, Bill Blain, Betty brown, and Katie Allen. A heart-felt thanks to these retirees and to the other 20 members remaining. There are 30 members on Scot Board of Directors. Ten new members elected at Scot meeting, Nov. 19, 1992 are Sharon Blain, Doris Hughes, Bess Stone, Alda Mitts, Elsie Pickens, Connie Oquin, Zeldia Pickens, Margaret Reed, Mattie Baskin, Timmie Brown. Turning to Scot Calendar for the remaining time in November ALL regular activities will continue. Let's all Scotters and Senior Citizens note carefully the things we are thankful for and have a wonderful THANKSGIVING holiday!

Remember: Depression Supper date is Sat. Dec. 5, 1992 Time 6 p.m. At Scot Hall. Tickets for donation of \$3.00 per adult.

The week of Nov. 16-21, 1992 was a delightfully busy, successful one for Scotters, Ellies Open House and Style Show benefiting Scot on Monday Nov. 16 and Bake Sale donations on Sat. Nov. 21 netted about \$700 to help pay for the \$2,000 insurance payment on Scot Hall, due now. Surely will be profitable IF the depression supper will produce \$2500.00 in donations! Scotters and Senior citizens, let us give the Depression Suppers success our undivided community attention! The supper offers wonderful fellowship and food.

Opal Bryant and Wanda Riffe are returned from Cal. where they visited relatives including former Stratfordites Bertie and Ruby Bryant (formerly) and Opal's brother John Ellison, Norwalk, Ca., John sent an interesting obituary of Nurse Millie Edwards. The obit stated that Millie was born June 14, 1910 in Stratford, Texas and died at the age of 82. No where was the names of her parents given, In 1910 Bob Pendleton was probably away from Stratford in School and Timmie Baskin was 12 years old. We can find no clue as to WHO Millie Edwards was, very frustrating!! Millie Edwards blessed the world with her talents and traveled widely, Russia, Scandinavia, Italy. Too bad we can not find a clue linking her with Stratford.

One hundred forty five (145) people attend Scot Thanksgiving dinner Thurs. Nov. 19, 92. Everyone was smiling, talking, listening, enjoying every minute. When the 40+3rd graders who gave a patriotic, musical program and teaches from Mary Allen School arrived, Scot Hall space was "NIL" The tables were decorated with brown paper 2 ft. x 5 ft. strips on which were greetings from Brownie Troops and pine cone turkeys made by them. Christmas Tree ornaments gifts from First State Bank an ornament for each person added to the decor. Thank you, Brownies and Bank. Miss Amy Sladek, gave

a reading and played two selections on the piano. Many prizes were given, winners chosen by registration number. grouped near us at the table were Mae Plunk, Minnie Reeder, Lois Fedric, Lillie Galloway, Cecil Paige, Irene Butler, Wendell Flores, Berniece Stubblefield, who stated she is so thankful her son, Darrell Stubblefield is finally located in San Angelo, Texas.

Among special guests were Jim and Bobby Dick Farris, Dumas; Jim Allison, Evelyn Solonyk and Don Riffe representing the Amarillo Area Foundation. To other guest not recognized you were welcome and appreciated.

Mae Plunk lately visited son Chas and Myrna plunk, Arlington. There she met her newly arrived great grandson, Joseph Charles Primervera, son of Tonya and Joe Primervera.

We extend Senior Citizens, Scotters and personal "welcome to America" to little Miss Maggie Elayne Breed, daughter of Barrie and Jeff Breed, San Marcos, Texas (Maggie is a 4th generation person of the Sherman Co. Mitts family and a 5th generation Donelson-Butler families) Maggie's grandparents LeRayne & BA Donelson are spending a quiet Thanksgiving at home since they have already visited Maggie, Bradley, Barrie and Jeff.

Friday we enjoyed viewing the Kenneth Wyatt Art Display at the First State Bank and visiting Lollipop Junction Open house. In the rounds we greeted Mary Riffe,

Mary Peach Smith, Doris Dyess, Penny Bennett, Bill and Selma Pendleton, and met Shalene Jines, a nurse at Coldwater Manor, and Michelle Lutes, daughter of law of the late Merla Burrough Lutes, Dalhart and Conlen community.

Delvin Howard and Don Riffe were among co-workers and friends who attended the Jonette Bass funeral.

H.L. and Geneva Haile attended the funeral of Roy Meadows, Wheeler, Texas on Sunday Nov. 223. Lois Meek, a former Home Making teacher in SHS and Roy Meadows were married in 1946. We send love and prayers of Stratford Friends and personal ones to lois and her family.

To all from Us. Wishes for a wonderful Thanksgiving, shoulder pats and luv to pass on!



Births

Deana and Kent of Houston, Texas Holman are proud to announce the arrival of their son Taylor Lane Holman, born October 25, 1992 and weighed 7 lbs. and 11 ozs. and was 19 1/2 inches long. He was born in Houston.

Maternal Grandparents are Jay and Armita Lane and paternal grandparents are Pat and M.L. Salmon all of Stratford.



The Texas Maid
Dry Cleaners & Coin-op Laundromat
 The Texas Maid and Doche Cleaners of Amarillo
 have teamed up to better serve our customers with all your
 Leather and Fur cleaning needs.
 Please see us about details and prices.

Specials
 Nov. 23 - 27 **1/2 PRICE** Bedspreads
 Nov. 30 - Dec. 4 **1/2 PRICE** Dresses

Holiday Specials
1/2 PRICE Nov. 23 - Dec. 19
 On all Table Cloths, Curtains,
 Place Mats & Napkins

Happy Holidays!
Ole Olson at Olson Automotive, Hwy 54
 West would like to wish everyone a
 happy holiday season and invite you to
 his store for all your Auto and Winter
 maintenance needs. With each \$10.00
 purchase you make, it will qualify you
 to enter the Christmas drawing.
 This year the drawing will be for a
 19" Sharp portable color TV with
 remote control and added features.
 The drawing will be held Wednesday,
 Dec. 23rd at 4:00 pm and you do not
 have to be present to win.
 Thank You and We Appreciate
 your support.



Kerrick News

by Marylou McDaniel

It was a bountiful table for 72 who attended Kerrick Thanksgiving Supper. There was turkey, dressing, gravy, sweet potatoes, mashed potatoes, green beans, corn, a variety of salads and desserts!

Beautiful harvest arrangements decorated the tables. Barbara Schoonover and Jo June McDaniel did their usual great job!

Among the guests were Rev. and Mrs. David Harker, Rev. Brian Adams of Stratford; Lyall & Ruth Murdock, Mission, Tx.; Henry, Sue & Dale Alderete, Keyes, Ok.

Also Russell, Tina, Ashley Brooks, Mary Brooks, Jim and Helen Taylor, R.J. & Mary Hill, Mark, Debbie & Nicole Rouse, all of Stratford.

And Steve & Teresa Cryer, Paul, Sandy, Ashley & Colter Wells, Kevin and Misty Hightower, Jerry Allen, Damion, Jackie, Brailey and Sdyler Groves, Leonard, Peggy, Kenna & Chandra Hawkins, Robin Rish, Brady & Trisha Schoonover, Hank & Mabel Rogers, Ian Weems, Nita Taylor, Virgie Mathews, Jake Robinson, Levi Srader, Terry & Brabra Schoonvoer, Kayo and Jo June McDaniel, Mike & Merilee McDaniel, Myron Leedy, Fred & Marylou McDaniel, Bill & Pat Boren, George & Barbara Avent, Bevin, Donna, April & Kodie Avent, Franny Taylor, Ted & Joyce Irlbeck, Doug Taylor, Kenneth & Lynn Wells, Derrek Wells.

Kevin & Misty Hightower are new area residents. They live on David McBryde's place.

Overnight guests with Hank & Mabel Rogers were her brother Lyall Murdock and his wife, Ruth. They were on their way to Red River, N.M. from Mission, Texas.

Bill and Pat Boren enjoyed a

First Christian Church
 10:45 a.m. Advent Wreath
 7:00 p.m. Hanging of the Greens
 Fellowship Time

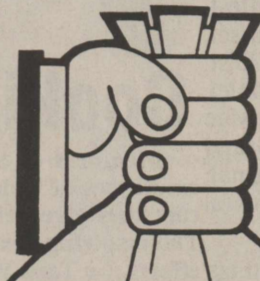
Thanksgiving Holiday Tips

"As we approach Thanksgiving Day Weekend, all of us are making plans for observance of this traditional season of the year stated Major V.J. Cawthon, Commander of the Texas Department of Public Safety Region 5. Many Department of Public Safety Officers will be making plans of a different kind, they will be on duty to stimulate safety consciousness throughout this festive holiday.

Major Cawthon also said, "the Department of Public Safety wants you to have a safe and pleasant holiday. If you are planning a trip out of town check your car, the road conditions, the weather conditions, and your driving habits." Remember, that the early darkness and heavy traffic calls for more caution and less speed. If we think safety first and drive defensively, then a safe and pleasant Thanksgiving is almost certain. The Major urges Texas motorists to use safety belts on all occasions when operating a motor vehicle.

Remember, no matter how good a driver we may be, we cannot control the driver that we are meeting. We have no guarantee that the driver is not tanked up on booze or hopped up on pills. Let's drive as if each driver will always do the unexpected and in this manner we can enjoy another holiday.

Have A Safe Thanksgiving Holiday



Health Care Bills

"Just a computer error,"

and insurance procedures can cost you money.

Don't take chances
 Call, write or stop by in person.

Medical Claims Service

401 N. 3rd, Suite 1 P.O. Box 7,
 Stratford, TX 79084 806-396-2373

Attend Services

The Churches of Stratford Welcome Your Family

ASSEMBLY OF GOD
 Rev. Mike Leonard

Sunday School 9:45 a.m.
 Super Church 10:45 a.m.
 Morning Worship 10:45 a.m.
 Telecast Sunday 4:00 p.m. Channel 3
 Evening Worship 6 p.m.
 Wednesday-Youth Service 6:30 p.m.
 Wednesday Bible Study 7 p.m.

CHURCH OF CHRIST
 David Stires

N. 3rd & Chestnut St.
 Sunday School 10:00 a.m.
 Morning Worship 11:00 a.m.
 Evening Worship 6:00 p.m.
 Wednesday Bible Study 7:30 p.m.

CALVARY BAPTIST
 Tony Roc

302 S. Main St.
 Sunday School 10:00 a.m.
 Morning Worship 11:00 a.m.
 Evening Worship 6:00 p.m.
 Wednesday Prayer Service & Bible Study 7:30 p.m.

FIRST BAPTIST
 Dr. Derrel Lewis

702 North 3rd
 Sunday School 9:45 a.m.
 Morning Worship 10:50 a.m.
 Church Training 6:00 p.m.
 Evening Worship 7:00 p.m.
 Wednesday Bible Study 7:30 p.m.

FIRST CHRISTIAN
 Rev. David Harker

5th & N. Main St.
 Sunday Coffee Fellowship 9:00 a.m.
 Sunday School 9:45 a.m.
 Morning Worship 10:45 a.m.
 Evening Worship 6:00 p.m.
 Wednesday, Adult Choir 8:00 p.m.

FIRST UNITED METHODIST
 Rev. John Wagoner

520 N. Main
 Sunday School 9:40 a.m.
 Morning Worship 10:50 a.m.
 Junior High UMY 5:30 p.m.
 Senior High UMY 6:00 p.m.
 Evening Worship 6:00 p.m.
 6 p.m. Cable Channel 3
 Morning Worship Service

ST. JOSEPH CATHOLIC

Father Richard Scully
 No Saturday Mass
 Sunday 9 a.m. English Mass
 CCD 10 to 11 a.m. Sunday
 Sunday 11 a.m. Spanish Mass

"THIS IS MY BELOVED SON: HEAR HIM" Mk 9:7

CHRIST for EVERYONE

"The hour cometh, and now is, when the true worshippers shall worship the Father in spirit and in truth: for the Father seeketh such to worship him."
 —John 4:23

Women's Health Center

Normal and High Risk Pregnancies
 Gynecologic cancer screening
 Breast Cancer screening
 Infertility and family planning
 Menopause and hormone problems



Dr. Turhan I. Baykan M.D.
 Specializing In
OBSTRETRICS-GYNECOLOGY

110 South Bliss

Monday-Friday 9 a.m. to 6 p.m.

Appointments 935-6599
 Emergencies 935-7171

Stratford Grain Co. 396-5541
 Lutz 769-4485
 Thriftway 396-5586
 Elie M's 396-2092

Stratford Star 396-5885

North Plains Savings & Loan 396-5534

Walter Leaky & Sons, Inc. 753-4411

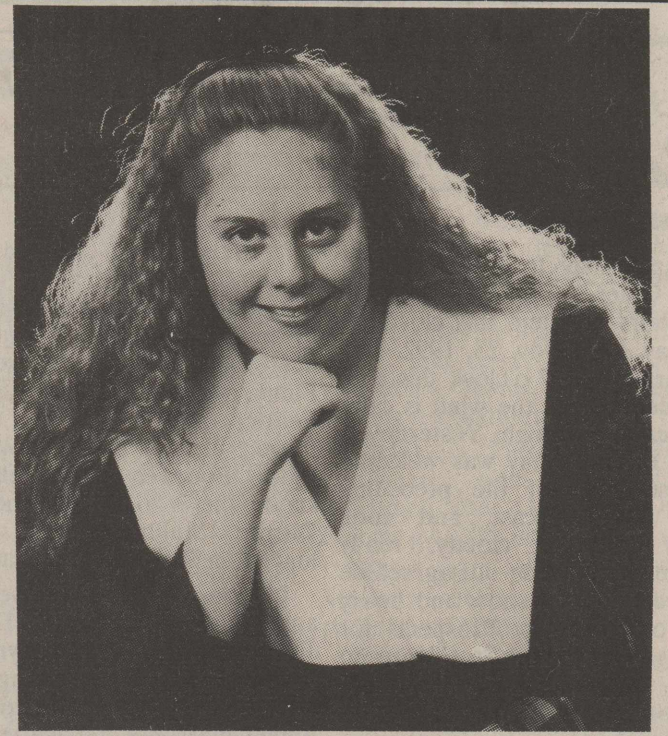
Smith & Smith Well Co. Inc. 396-2111



Ruth Kempson, DGM, Dist. 2, Sec. 2, O.E.S., of Dumas, made an official visit to Stratford Chapter 960, Nov. 17th. She was welcomed by LaVell Haggard and Dick Woolsey, Worthy Matron and Worthy Patron of the local Chapter.



Shelene Turner bride elect of Rocky Jines was honored with a shower Saturday, Nov. 21 out Coldwater Manor. Shown above is Shelene's sister Connie Walker and her daughter Courtney, Shelene's mother Hershelene Turner and Shelene.



Bouldin Honored

Kimberly Bouldin was honored at the District I 4-H Gold Star Banquet held recently at the Borger Country Club.

The Sherman County 4-H Gold Star recipient is the 17 year old daughter of Ted and Judy Bouldin. Kimberly participates in Food and Nutrition, Breads, Consumer Decision Making, Sheep, 4-H Cattle Company and has competed in the Santa Fe Awards Program. The Bouldin family has been involved in the LABO program as a host family and Kimberly has spent six weeks in the home of a Japanese family. The LABO exchange and being

named 1992 District 4-H Bake Show Senior Winner are some of the highlights of her eight years of participation in Sherman County 4-H.

Attending the banquet, held at the Borger Country Club, November 9, from Sherman County included Ted and Judy Bouldin, Jim and Rinda Allison and Susie Spurlock.

The District I 4-H Gold Star Banquet was sponsored by the Deaf Smith, Rita Blanca, North Plains, Greenbelt, Swisher, and Lighthouse Electric Cooperatives and the Texas Agricultural Extension Service.

Stratford Chapter 960, Order of the Easter Star, welcomed Ruth Kempson, Dumas, Deputy Grand Matron, Dist. 2, Sec. 2 at their meeting on Nov. 17th. A salad supper preceded the meeting. Guests came from Amarillo, Dumas and Dalhart.

Other Grand Officers introduced were Maurine Skipper, Grand Representative of British Columbia & The Yukon, Milton Skipper, Mountain Movers, both of Amarillo; Vernnie Day, Credentials Committee; Norma Graham, Museum; Ross Errington, Founder's Day, Marjorie Errington, Friendfest, Amarillo and Wanda Cassel, Dumas, Reba Black Dumas, Dist. 2 Chairman, Marylou McDaniel, Faithful Volunteers; Pearl Mae Stauber, Dumas, General Grand Chapter Eastern Star Journal; Evelyn Turner, Amarillo, Joyful Roads.

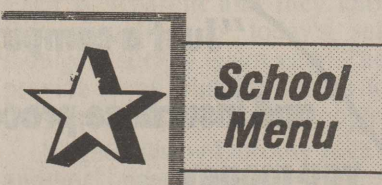
The Deputy brought greetings from the Worthy Grand Patron Raymond Dyess, Andrew Hernandez, Miguel Rosales, Susie Jefferies, Dennis Robertson, and Church members Gaynelle Riffe, Mary Hill, B...

The next meeting will be Dec. 1, 7:30 p.m. at the Hall. Local members are encouraged to attend.

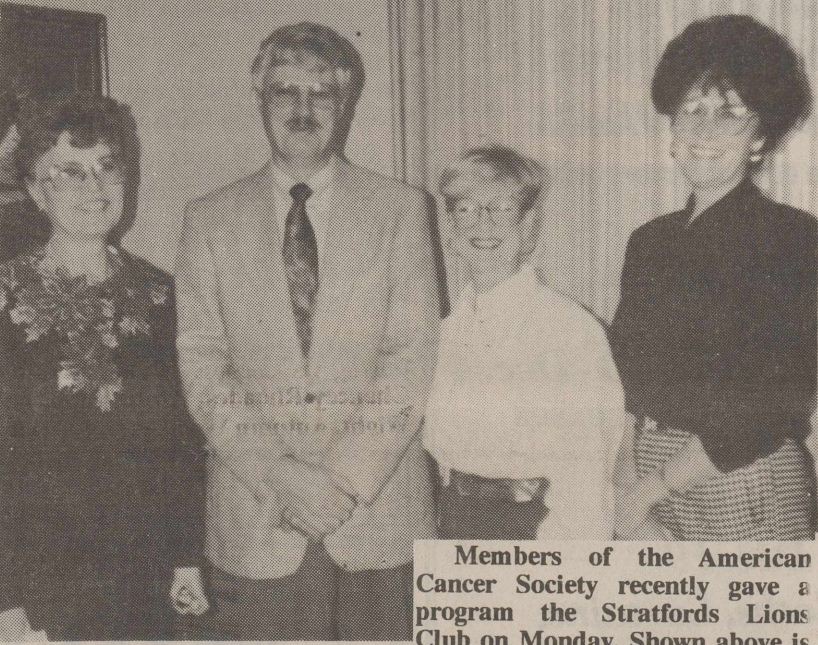


Cookies Given To Coldwater Manor

Members of Stratford First United Methodist Church are presenting trays of cookies for each of the employees of Coldwater Manor as a gesture of appreciation for the faithful, loving, tedious, back-breaking care they give daily to many of our loved ones and friends who can no longer care for themselves. At this Thanksgiving season we want them to know that we are aware of, and grateful for, their time, energy and efforts. I-r Tara Weavers, Laura Ray, Diane Alacron, Anita Henry, Janice Vaughn. Back is Church Member Raymond Dyess, Andrew Hernandez, Miguel Rosales, Susie Jefferies, Dennis Robertson, and Church members Gaynelle Riffe, Mary Hill, B...



- Monday-Steak fingers, mashed potatoes, gravy, w/k corn, salad, rolls, sugar cookies, milk.
- Tuesday-Chili beans, cole slaw, corn bread, peach cobbler, milk.
- Wednesday- Fried Chicken, mashed potatoes, gravy, english peas, salad, rolls, jello fruit, milk.
- Thursday- hamburgers, lettuce, tomatoes, onion, pickle slices, tator tots, cinnamon rolls, milk.
- Friday-Spaghetti, tossed salad, green beans, rolls, chocolate cake, milk.



Members of the American Cancer Society recently gave a program the Stratfords Lions Club on Monday. Shown above is Molly Griffin, Rick Reinart, Joyce McBryde and Linda Spurlock. They indicated they needed volunteers for some men to take to men for their treatments, etc. If you would like to do this, please contact one of the members of the American Cancer Society.

Nu Beta Sorority

Thursday, Oct. 22nd Sorority had their Halloween Party in the barn of Ted & Judy Bouldin. We went on a hay ride, afterwards we served tacos with all the trimmings. Those attending were Ted (the farmer) and Judy (Jester) Bouldin, Andy Bolf (Chicken, Lauri Ewers (Hippie), Brent and Tallie (Cow) Cummings, Blake & Marie Sladek, Jan Sell (magician assistance, Gail Schafer, Jolene Skaggs (Gypsy), Mark & Deb (Hobo) Rouse. Our guest were Kevin and Angela Long, Malcolm and Amy Long, Brady and Trisha Schoonover. Winner of the most original costume was Laurie Ewers and best costume winner was Andy Bolf.

On Thursday, Nov. 5th at 6:30 p.m. we had a salad supper in the fellowship hall of the First Christian Church. Following supper we had our regular business meeting in the parlor.

The meeting was called to order by President Marie Sladek. Minutes were read by Keri Knight and treasurer report given by Andy Bolf. Sherry Phelps with the First State Bank presented a very interesting program on credit for women other member present were Tallie Cummings, Lauri Ewers, Gail Schafer, Jan Sell, Deb Rouse and Jolene Skaggs. Our guest attending were Tina Brooks, Amy Long, and Trisha Schoonover.

Pantry item for the month of October was canned meat. The drawing for a hundred dollars worth of groceries will be held Wednesday Nov. 18th. Proceeds from this event will go towards our Scholarship fund which benefits a graduating senior.



Discovery Toys
Developmental Toys, Books & Games for all ages
Home Demonstrations · Catalog & Phone Orders
The New Book of Knowledge Encyclopedia Set
Chris McAdams 753-4456

INTRODUCING
Weight Watchers
COMMUNITY MEETINGS

LOOK! IT'S THE PERSONAL CHOICE PROGRAM!	AND IT'S RIGHT NEARBY!	I CAN EAT EVERYDAY FOODS AND ENJOY LIFE!
SPECIAL MEETINGS ARE STARTING SOON!	SAVE MONEY BY PREPAYING 8 WEEKS FOR ONLY \$59!	I'M OFF TO JOIN NOW!

NOW MEETING IN STRATFORD!
8 - week Session begins
Thursday, Dec. 3rd 5:30 P.M.
First United Methodist Church Youth Cottage
520 N. Main

It's here! Weight Watchers brings its Personal Choice Program closer to you with Community Meetings. It's our easiest program ever. With the Personal Choice Program you can enjoy your favorite foods when and where you like - right from Day One!

Call 1-800-359-3131 for more information.
Weight Watchers
©1992 Weight Watchers International, Inc. All rights reserved. Offer valid in areas 37, 96 and 107 only.

The Imagination Station Presents
A Christmas Tour of Homes
Sunday, December 6, 1992
2 - 5 p.m.

Mr. & Mrs. Scott Buckles
620 N. Main

Mr. & Mrs. Raymond Albert
319 N. Chestnut

Mr. & Mrs. Gary Lundberg
305 Kay

\$3.00 Admission

Money Matters

A Series Of Informative "Plain Talk" Thoughts Regarding Your Money Matters

Auto Loans Borrow, Then Buy

First you get an idea of how much you would like to finance on a car purchase. Then you come in and see us and line up your money. Now you're ready to "kick tires," "kick salesmen," or do whatever you have to do in order to get the best deal on a car. It's much easier to bargain when financing is already handled.



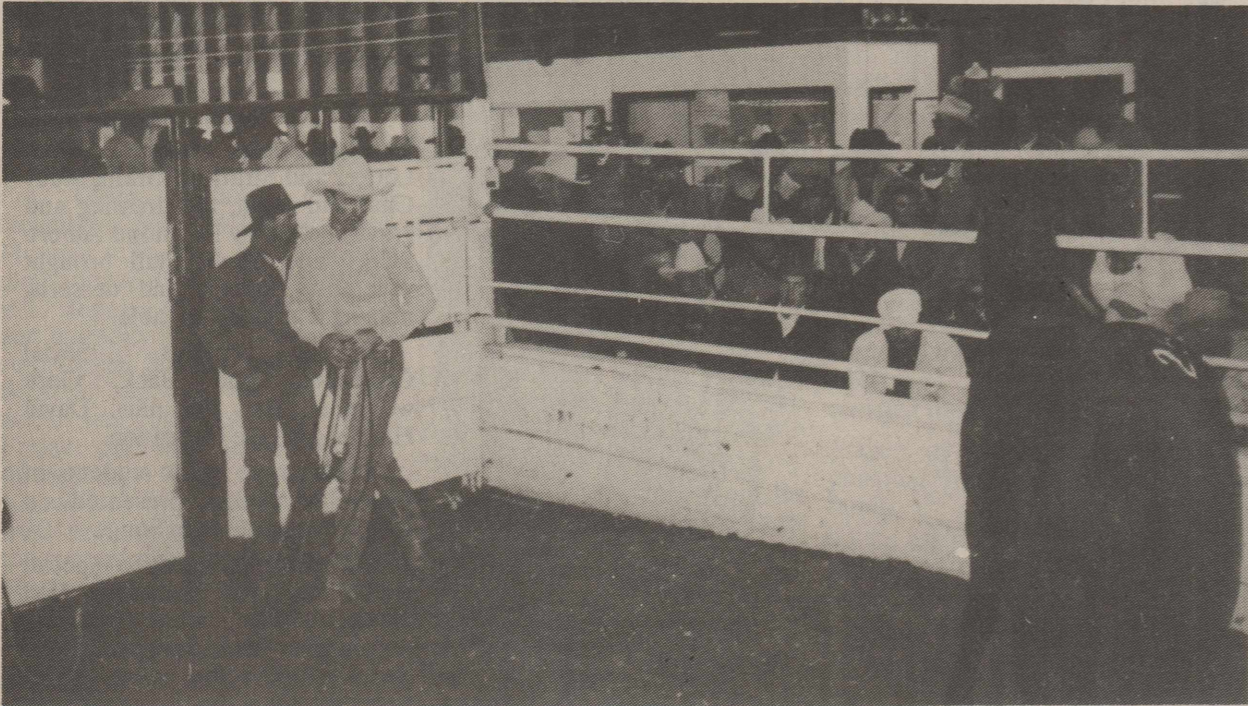
Some of the car companies offer low interest financing in order to move their cars but when you stop to think about it — if they are that anxious to sell the cars by lowering their interest rates, they are probably just as anxious to make a deal with a cash buyer.

See us about an auto loan.

We Think Money Matters!

The **FIRST** State Bank of Stratford
STRATFORD, TEXAS 79084
MEMBER FEDERAL DEPOSIT INSURANCE CORPORATION

Business Review



Steve McAdams-Looks One Over. Also Kevin Stephens.

Want to park your boots at the largest horse auction in the Panhandle area—point your pony South along Highway 287 and don't stop until you hear the sound of the auctioneer crying "sold to the highest bidder". Rein-up, pardner...you're there—the Bobby Edmond Horse Sales monthly auction. Come on in, this is no tailgate swap-meet, but where buyers and sellers from a wide area meet face-to-face right here in Stratford, Texas.

Anyone that has been in the horse business very long is sure to recognize the name of sale barn owner Bobby Edmond. He has been in the horse business all of his life. It's only natural since his father was the well known horseman, Booker T. Edmond. Raised in San Angelo, Texas, Bobby learned the ins and outs of horses and the horse business and has focused on little else. Bobby and wife, Karla, also of San Angelo, have been living in Stratford since 1972. Bobby

considered this area to be a good location for his horse business.

Bobby spent several years trading horses while working at various cattle outfits and area feedyards. Karla worked for Stratford of Texas, Feedyard Division, and Stratford Feedyard from 1972 until 1978 when she was retained by Lawrence Systems, Inc., a San Francisco based collateral control company.

In September of 1985 they started their own horse sale. Since that time, the sale has grown into the largest horse sale in the panhandle, featuring a regular sale each month, and special gelding sales held quarterly in March, June, September and December. In 1990, the operation was expanded to include sales at the Amarillo Livestock Auction, Amarillo, and the Heart of the Panhandle Classic consignment sale, also held in Amarillo. Karla resigned her job with Lawrence on December 31, 1990 to devote full time to the horse sale business.

Patrons come to Bobby's sale for many reasons, but the biggest one is class, the kind that can only come from hard work and personal attention. Bobby and Karla run the sale themselves with the help of 12 to 15 part time employees on sale days. A big majority of these are local residents, some of whom have been with them since the very first sale. A good staff that knows what they are doing is a definite plus in the horse auction business. This dedication contributes to the success the sale has had over the last 7 years.

People come to Bobby's sales from as far away as California and South Carolina and South Carolina, and all points between, including Canada. The Special Gelding Sale contains broke to ride geldings only. In September, he had 129 geldings in this sale, a number that would only be found in sale containing at least 250 head of assorted horses. He attracts these high numbers because of the

high quality standards with which his sales are conducted. Bobby checks each horse himself and calls any defects he can see. Honesty on the part of the consignee is virtually guaranteed. Another important point to note is once the starting price is set on a horse, the bid won't get any cheaper. This method assures a fair price for the horse and if the bid goes no higher, Bobby will own the horse himself. This may sound risky for Bobby but in actuality it is a sound business practice.

Everyone should make a note to attend one of the sales. Even if you are not in the horse business, it is a good place to meet old and new friends and possibly new business contacts. Registered and bonded with the USDA Packers and Stockyards Administration, you won't find a better operation anywhere around.

For more information, call or write:

Bobby Edmond Horse Sales:
P.O. Box 1277
Stratford, Texas 79084
Office: 396-2880
Home: 396-5828

Cross Country Girls



A very proud Coach Brownlee at the State meet held recently in Georgetown, where the Girls Cross Country came in second in State.



The Girl's Cross Country teams and Coach Brownlee would like to thank everyone for their support during the season. It helped to make our season a success. Pictured front, Sarah Ortega, Lea Shuping, Chancey Rhoades, Anita Rapp, back Wendy Palmer, Sunny Lasley, Jolina Garoutte, Elly Rhoades, Kelli Wight, Autumn Woolsey and Coach Brownlee. (Photos by J.A. Lasley taken at State Meet).

Happy Thanksgiving



Shown above and below are some of the models that modeled at Ellies Open House and Style Show held last Monday Nov. 16th.



1992-93 JV - VARSITY BASKETBALL								7th - 8th 1992-93 BASKETBALL					
DATE	OPPONENT	PLACE	TIME	JVG	JVB	VG	VB	DATE	OPPONENT	7thG	7thB	8thG	8thB
Nov. 17	Dalhart	H	4:00	X	X	X	X	Nov. 23	Highland Park	T	H	T	H
Nov. 20	River Road	H	4:00	X	X	X	X	Nov. 30	Sunray	H	T	H	T
Nov. 24	Sanford Fritch	T	5:00	X	X	X	X	Dec. 3-4-5	Dalhart Tourney	T	T	T	T
Dec. 1	Texhoma	T	4:00	X	X	X	X	Dec. 7	Gruver	T	H	T	H
Dec. 3-4-5	Vega Tourney					X	X	Dec. 10-11-12	Gruver Tourney	T	T	T	T
Dec. 8	Sanford Fritch	H	4:00	X	X	X	X	Dec. 14	Spearman	H	T	H	T
Dec. 10-11-12	Sunray Tourney					X	X	Jan. 7	Boys Ranch	T	H	T	H
Dec. 18	Highland Park	T	5:00	X	X	X	X	Jan. 11	West Texas	H	T	H	T
**Dec. 19	Dalhart	T	5:00	X	X	X	X	Jan. 18	OPEN				
Dec. 31- Jan. 1-2	Stratford Tourney					X	X	Jan. 25	Highland Park	H	T	H	T
**Jan. 5	Sunray	H	4:00	X	X	X	X	Feb. 1	Sunray	T	H	T	H
**Jan. 8	Gruver	T	5:00	X	X	X	X	Feb. 8	Gruver	H	T	H	T
**Jan. 12	Spearman	H	4:00	X	X	X	X	Feb. 15	Spearman	T	H	T	H
**Jan. 15	Boys Ranch	T	6:00	X	X	X	X						
**Jan. 19	West Texas	H	4:00	X	X	X	X						
Jan. 22													
**Jan. 26	Highland Park	H	4:00	X	X	X	X						
**Jan. 29	Sunray	T	4:00	X	X	X	X						
**Feb. 2	Gruver	H	4:00	X	X	X	X						
**Feb. 5	Spearman	T	5:00	X	X	X	X						
**Feb. 9	Boys Ranch	H	6:00	X	X	X	X						
**Feb. 12	West Texas	T	5:00	X	X	X	X						

ALL GAMES START AT 5:00 PM EXCEPT FOR TOURNAMENTS

This Page Sponsored
by The Following
Business

THIS SPACE AVAILABLE
Call 396-5885

For Your Moorman Mineral
& Feed Products Come by
THE General Store or
call Ronnie at 396-5308

WATER RIGHT IRRIGATION
HWY 87 S DALHART, TEXAS
HWY 54 E TEXHOMA, OKLAHOMA
REINKE IRRIGATION SYSTEMS
SALES CHARLIE CANSLER
TERRY HAGER
OH (405) 423-7719
Mobile 333-2363

TEXHOMA FAMILY CLINIC
Mon., Tues., Thurs. & Fri. - 9:00 - 5:00
Wed. 9:00 - 12:00
201 N.2nd 405-423-7551

THRIFTWAY
Big Town Selection ★ Small Town Friendliness
Wide Selection Frozen Food
Quality Foods Fresh Produce
Hwy 54 East 396-5586

Full Service Salon
Juanice Harbour
J's Cut & Curl
Shop - 396-2520 Res. 396-2139

North Plains Savings & Loan
Stratford - 396-5534
Dumas 935-4184
Dalhart 249-5513
401 N. 3rd

Stratford Grain Co.
Stratford 396-5541
Lautz 769-4485
4 North Main

COUNTRY CUTS
301 N. Main
396-2424
Leah Oakley
Tues - Sat 9:00 - 6:00
Late appointments also

BROOKS MOTOR COMPANY
396-2470
802 S. 1st

WALTER LASLEY & SONS INC.
THE Feedyard
Since 1953
753-4411

Ellie's and M's Meet & Eat
For all your gift and floral needs
Baby & Bridal Registry
209 S. Main 396-2092

Brown's Meat Locker
Custom Wholesale & Retail Meat
Federally Inspected
Hwy 287 South 396-2513

THIS SPACE AVAILABLE
Call 396-5885

ELK PHARMACY
317 N. Main
Stratford, TX 79084
806-396-5505
We Honor . . . P.C.S. P.A.I.D. BC/BS Texas Medicaid
Gifts & Decorative Accessories ● Helium Balloons
● UPS Shipping Center ● Bridal Registry
● One-Day Photo Processing ● Baby Shower Registry
Visa and MasterCard Welcomed ● Toys

Chamber Chatter

by J. A. Lasley

The Chamber of Commerce is again sponsoring the best Christmas promotion ever. This is under the capable hands of Martha Ellison, Business chairperson for the Chamber. All businesses are encouraged to have their windows and store decorated for Christmas, for the Friday after Thanksgiving buckets have been placed in each of the participating businesses, with each \$1.00 purchase you will be given a ticket, whereby you will put your name on the back and drop it in the bucket. On each Friday before the drawing on Saturday afternoon, at the Chamber office the 5th, 12th and 19th there will be a drawing for 3-\$20.00 Tip Top Bucks and 2 \$50.00 Tip Top Bucks.

That's not all, the merchants will have 400 tickets to sell. You can buy one for \$5.00 or 2 for \$8.00. On the 19th we will be drawing a winner from these sales for 1-\$200 Tip Top Bucks and 1 more for \$300.00 Tip Top Bucks.

There is more, for that individual who does all of his Christmas shopping in Stratford and keeps his or her receipts, brings them to the Chamber office they will be tallied and on the 19th we will be giving a weekend trip for Two to Las Vegas Nevada. They will fly out of Amarillo Friday evening at 6 p.m. arriving in Las Vegas, at 9:20 p.m. Nevada time, staying at the Imperial Palace, returning home on Sunday afternoon at 1:20 p.m. arriving in Amarillo at 6:50 p.m. The scheduled date for this weekend is Feb. 26th. The Chamber has insured this package with All Points Travel and if this date is not suitable or the spot not, it can be changed.

Sounds like a heck of a good reason to shop Stratford, Wouldn't you think????

Tip Top Bucks can be redeemed in the stores that have a sign saying they are members of the Stratford Chamber of Commerce and will redeem Tip Top Bucks. This entitles the holder to merchandise equal to the value of the certificate. This certificate is good for merchandise and services only. Stratford merchants who are Chamber members can redeem the certificate by contacting the Stratford Chamber of Commerce. These "Tip Top Bucks" are one way of helping keep our money working for us.

It seems as my office is the sifting place so to speak, perhaps I act like a know it all and people take that as an indication and call to ask about any number of things. Last week I was asked a number of times about flags out on Armistice Day or Veterans Day as it is called now. Well I did not know the answer but I contacted a Veteran and his explanation was this: on Memorial Day flags at the cemetery and elsewhere is to commemorate the dead. On Veterans day it is not necessary to again hang flags as that day commemorates the ending of hostilities (or the end of a war). This practice was began back during the Civil War, of course as my source commented, anytime; you want to hang out the American flag and it is hung correctly, that is fine. On July 4th we have the flags out because it is celebrating the birth of our great nation.

I have also been asked why were the Christmas decorations hung out so early. Our City Manager was in the office to inquire as to when the fall foliage, hay, pumpkins and so fourth was to be picked up and who did the picking up. I was quick to say the City picked the foliage up last year and The Women's Division of the Chamber was most grateful. We agreed the day after Thanksgiving would be the time to pick up the foliage. Now to the reason that the Christmas ornaments were hung, for each other and have a desire to the City had some new ones to add help their fellow brother. to the community. They had just Residents of this area are also come in and rather than take and interested in how they can make a store them and then in two weeks difference in their own lives and get them all out and hang they improve the quality of life offered decided to go ahead and hang by the community. I am thankful them. Sounds like a reasonable for this community's response to reason, Right? Besides if you have the need for a child day care been in any other town and most center and how it has mobilized to of their stores were loaded with make this need a reality.

Christmas hardly before we were through with Halloween. The city need child care so they may be people did choose some pretty gainfully employed, or so they may days to hang, and we thank them. be able to receive education and training to enhance their send letters to the Governor, our employment opportunities, or for senator and representative on the whatever reasons parents need "Fair Share" School Bill. We are child care, THANK YOU for your definitely in the Minority when it encouragement and support of comes to Harris County, El Paso, Lollipop Junction.

Sincerely,
Susie Spurlock

by writing and letting them know in no certain terms that unless "they can fill the till-don't pass the bill." One of Ann Richards expression. Those addresses are: Governor Ann Richards, P.O. Box 12428; Senator Teel Bivins, P.O. Box 12068; Austin, Texas 78711; Representative John Smithee; P.O. Box 2910, Austin, Tx. 78769; Representative Warren Chisum P.O. box 2910, Austin, 78769 and Representative David Swinford, P.O. 2910, Austin, Texas 78769. Never say anything I would have to say would they pay any attention to stand up and be heard. A few brave souls was at the new All Seasons Car Wash, South's Ribbon Cutting last Wednesday. The weather was not conducive, but I was a little embarrassed when Mrs. Jim Weaver and her two small children came all of the way from Boise City and such a few of our citizens were present to make this new fine business feel that we cared.

Our hunters are definitely lagging. It is terribly frustrating to the Hunter chairman to send out cards and then have no one to show. We are glad that the Weavers put in such a nice car wash, aren't we?

To all of you I would wish each and all a wonderful Thanksgiving. I am indeed thankful to live in this great country and to be a part of this community. Have a good day!

Check Out The Library

By Dorothy Haile

Raising Self-Reliant Children In A Self-Indulgent World has been written by H. Stephen Glenn and Jane Nelsen. The authors are real people with real answers. Each is a parent and they know that parenting in today's self-indulgent society is not easy. They provide seven building blocks for developing capable young people.

MegaSkills by Dorothy Rich is another new title for those interested in helping their family achieve their goals. This work shows how to teach the values we all hold dear, the ones we are worried about and may have thought could not be taught.

These two books were recommended by Dr. Martha Couch, Extension 4-H and Youth Development Specialist at the recent meeting held on Enhancing Self Perception of Youth, The Sherman County Family Living Committee and Partners for Parenting Coalition were responsible for Dr. Couch's presentation.

The library has a number of books that have been written and illustrated by children. The unique stories will be of special interest to those who are creative writers and like to illustrate stories. There is a manual that provides help for those interested in writing an original work. Landmark Editions, Ins. is the publisher that works with the author to get the manuscript ready for publication. Your children will enjoy these stories even if they are not interested in creating an original work.

Letters To The Editor

Dear Editor:
The Thanksgiving Season is here and it is a blessing to reside in a country which allows the freedom for observing this very special time each year.

I am thankful for an abundant food supply, good health, ability to lead a productive life and a family what cares for and supports it's members in their various walks of life.

I am also thankful to reside in Stratford and Sherman County; it is an area where people truly care for each other and have a desire to the City had some new ones to add help their fellow brother. to the community. They had just Residents of this area are also come in and rather than take and interested in how they can make a store them and then in two weeks difference in their own lives and get them all out and hang they improve the quality of life offered decided to go ahead and hang by the community. I am thankful them. Sounds like a reasonable for this community's response to reason, Right? Besides if you have the need for a child day care been in any other town and most center and how it has mobilized to of their stores were loaded with make this need a reality.

On the behalf of families who need child care so they may be people did choose some pretty gainfully employed, or so they may days to hang, and we thank them. be able to receive education and training to enhance their send letters to the Governor, our employment opportunities, or for senator and representative on the whatever reasons parents need "Fair Share" School Bill. We are child care, THANK YOU for your definitely in the Minority when it encouragement and support of comes to Harris County, El Paso, Lollipop Junction.

Annual Thanksgiving-Christmas Dinner



These third grade students sang at SCOT Thanksgiving Dinner Nov. 19th. Their music teacher is Marietta Ricks.



More third grade students who sang a medley of American Songs for SCOT. The program was arranged by GFWC/Prospectus Study Club.



Folks enjoying the delicious meal and entertainment at the Annual Thanksgiving Dinner At Scot Hall.



Filling up their plates at the Kerrick Annual Thanksgiving Supper held Friday night in Kerrick.

Sherman County Older Texans and GFWC/Prospectus Study Club again joined in an annual Thanksgiving-Christmas dinner at SCOT Hall on Thursday, Nov. 19th.

Turkeys were provided by General Store, Brown's Meat Locker and Stratford Grain. Study Club had them, the dressing and gravy cooked by Raymond Albert. SCOT and Study Club brought vegetables, salads, and desserts, making it a bountiful table.

Zelda Pickens, Social Chairman, and Jack Gore welcomed the 130 plus. David Harker gave the invocation.

Third grade music students of Marietta Ricks presented a program of American Songs.

Daisy Scouts made a special poster for the occasion. Girl Scouts made table runners, decorations and provided some door prizes. Other door prizes were provided by Sue Harrison and Billie Osborn and Study Club members.

Favors were Silk Christmas tree ornaments with the silhouette of Stratford on it. They were from First State Bank.

Special guests were 16 from Coldwater Manor. B.A. Donelson introduced Jim Allison and Evelyn Solanyka, Amarillo Area Foundation. Don Riffe is a member of that Board.

Melba Keener provided delightful piano music before and after the dinner.

Brenda Brownlee told of the Adopt-a Grandparent program involving SCOT and the third grade. They were given the opportunity to meet each other.

Jennifer Sladek thanked the group for their support on her attendance at the Lake Meredith contest. She was second runner-up in the Junior Miss division. She played a piano selection.

Study Club members in attendance were Zelda Pickens, Mattie Baskin, Betty Brown, Sharon Blain, Lore Dietrich, Oline Caraway, Patti Vincent, Marylou McDaniel, Joyce Ann Lasley, Becky Crockett, Mary Peach Smith, Margaret Reed, Helen Taylor, Jimmie Pronger.

Holiday Hints

Helpful Stocking Stuffers

(NAPS)—What's a perfect holiday gift for the person who has everything? Audio or video cassettes as well as blank computer diskettes for personal computers can make great stocking stuffers.

Blank audio cassettes can be used to record music, lectures, meetings or dictation.

Blank video tape cassettes offer limitless possibilities for any home recording library. Popular uses include:

- taping favorite television programs or movies for later viewing;
- taping historic sporting events;
- creating a family video album of weddings, holidays, birthdays, vacations, and graduations.

Diskettes, also called floppy disks, are by far the most widely used storage units for computers. They come in two sizes, high or low density:

- five and one-quarter inches
- three and one-half inches

Be sure to give the size and density that fits the computer-disk drive of your computer whiz.

Blank tapes and disks—or blank media, as they are called in the consumer electronics industry—could help you get through your gift list in record time.

To receive a free copy of "Consumers Should Know: How to Choose, Use and Care for Audio and Video Tape" send a self-addressed envelope with 29¢ postage to: EIA/Consumer Electronics Group, C.O. Pamphlets, P.O. Box 19100, Washington, D.C. 20006.

The difficulty in life is the choice.

—George Moore

AUCTION

Sale: Sat. Dec. 5, 1992 1:00 p.m.
Hwy 54 & 287 (Boston Building) Stratford, Texas
APPLIANCES, FURNITURE, LINENS, SPORTS & EXERCISE EQUIP, ANTIQUES, SHOP EQUIPMENT & TOOLS, CAMERAS, LOTS OF MISCELLANEOUS ITEMS

KEITH WATERS
Auctioneer
 P. O. Box 1185
 STRATFORD, TX 79084
 806-396-5391 (Office) 806-396-5801 (Home)
 License TXS 6477

Catherine D. Taylor
 Certified Public Accountant
 North Plains Building
 401 N. 3rd 396-2435
 Monday - Friday 9 a.m. - 5 p.m.

Ann Nelson Parker, M.Ed., LPC
 Licensed Professional Counselor
Licensed by the Texas Board of Examiners of Professional Counselors



Individual, Group, Family
 Adult, Adolescent, Children
 Play Therapy
 Marriage Counseling
 Parenting Consultations


1123 Dentrock Ave. (806) 249-8681 Dalhart, Tx., 79022
Private Parking Available

THE GENERAL STORE

806-396-5308

519 N. Poplar
 Authorized Dealer

SALES & SERVICE



XIT XIT CELLULAR



It Pays To Look In The



Star Classifieds

PHONE 396-5885

....The Best Salesperson Around



FOR SALE

HEGARI Seed \$10.50 per bag. Call 806-249-6531, 8 to 5 Monday thru Friday, ask for Jim.

For Sale: 1985 3/4 ton GMC Pickup. Joe Flores, 396-5538 office. 396-5389 home.

New Arrival of Insulated Walls Coveralls and Childrens snow boots at THE General Store.

Official full service Altonic Dealer, winter specials, Carson Engine and Supply, Dalhart, Texas 384-2186.

Ask about our Christmas Layaway plan at THE General Store.

ARBONNE SKIN CARE, NEW COLORS, BLUSH, EYE SHADOWS, PENCILS. BEAUTIFUL GIFT SETS FOR CHRISTMAS. CALL MARTY BAIN 396-2053.

LUMBER is now available. THE General Store.

Christmas Layaways available at Ellices.

For Sale: Lone Star Motel, 54 East, \$35,000 total price. Call 249-4589.

For Sale: 1978 Jeep Wagoneer 4 x 4 Call Arrieta Lane 396-5521.

Shop early for your Christmas Decorations at THE General Store. See our new Christmas Silhouettes. Prices start at \$22.95. Great gift ideas available too.

Mary Kay Cosmetics, Sheri Fiene, 396-2514, Independent Beauty Consultant.

For Sale: Coffee Table and beautiful, large Thomasville buffet. Phone Lore Dietrich, 396-2587.

For Sale: Westinhouse Electric Golf Cart, new battery, shed at Country Club. Call 396-2439.

Christmas Trees and Wreaths available at THE General Store. Decorated or undecorated. Sale Prices on light sets and replacement bulbs.

Baby Shower selections for Honey Hutson at Ellices. Free delivery Dec. 5th.

Baby Shower selections for Honey Hutson are at the Elk Pharmacy. Free delivery to the Shower Dec. 5th.

Yellowstone National Park, which covers over two million acres in Wyoming, Idaho and Montana, has more geysers and hot springs than any other area in the world.



Services

Decorated Cakes by Janis Tillery. Call 396-2508.

Call your Local Used Cow Dealer for 7 day a week dead Stock removal. Call Toll Free 1 (800) 692-4043. 20 years of service to the Texas Panhandle.

For Termite Control Call Leo Russell at 1-383-7075 Amarillo. Have been working Stratford for 28 years. Have City and State License for the City of Stratford.

Come to "Susanah's The Mini-Mall at Kerrick Beer-wine to Go Gifts and Lunch Antiques Starting Sept. Hours will be Monday-Saturday 10 a.m. to 7 p.m.

Free estimates, carpet laying and repairs of all types, remodeling and flatwork. Call Randy Godsey 396-2332. Local references

Satellite Systems Special. Complete system with 1 yr. Program for as little as \$50.00 per month. Jay D. Satellites, Call 1-800-952-9634.

VETERANS-You can still qualify for low interest loans on homes and land. For assistance in applying for these and other VA Benefits, contact Max Stephenson/CSO at 396-5348.

National Farm Life Insurance Company Rate A (Excellent)
Life Insurance, Annuities, Burial Insurance
Molly Griffin 396-5612
Independent Insurance Agent
"Ask me about Universal Fidelity Medicare Supplement Insurance"

Escorted shopping and sightseeing trip to Hong Kong in February. Only \$1520.00 includes round trip air from Amarillo-6 nights at hotel-breakfast each day-tour of Hong Kong Island and transfers. Don't miss this exciting trip. Call Joan Bell, 396-5958 or 1-800-753-2792.

Top Hat Hair Salon
Open Monday, Tuesday, Friday & Saturday 9 to 6.
Open on Wednesday, Thursday 4 to 8.
Call 396-2392 or 396-5568 and ask for Hair Salon.
302 Texas Avenue.

Sewing, alterations, custom sewing. Call Vicki Gore 396-2326.



Help Wanted

Career Sales

We're looking for honest, hard working reliable men and women who want to build sales careers. We will make a substantial investment to train you. Excellent income while you receive classroom & on the job training. For personal interview call or write stating qualifications. Kevin D. Felix, FICF, Box 96, 22 6th Ave. S.E. Puyton, TX 79071 or phone 806-435-6606 or 806-435-3394.



Homes For Sale

Reduced: 602 N. Pearl, 3 BR, 1 1/2 bath, dishwasher, stove, utility area, central heat, efrig. air \$28,000.00, or FMHA Assumable loan. Shown by apt. Call Justin Coaly 396-2881.

FOR RENT

Small 2 bedroom house for rent 7 miles SW of Stratford. Call Ernie Dyess after 6 p.m. 396-5331.

1 and 2 bedroom apartments for rent, water and gas paid. No children please. 101 N. Main, Gillis Apartments. 396-2386 ask for Joan Palmer or come by Apt. #2.

For Rent: 2 bedroom unfurnished apartment on North Chestnut. Call 396-5656. Steve or Mike O'Brien.



Wanted

Trampoline Wanted: Call after 6 p.m. 396-2019.

Carpentry work wanted, Call 396-2265.

Work Wanted: I will do housecleaning. I am also a certified nurses aid and will sit with elderly 396-2265.



Miscellaneous

I will not be responsible for any debts other than my own as of Nov. 9, 1992. Barbara Wilkinson.

To keep rolls hotter longer, put a piece of aluminum foil in the basket under the napkin.

Safe Place Hotline

By Phyllis Melton

Today there are many resources available for spouses who are battered. There have been significant changes in the way law enforcement, social services, judicial and counseling agencies respond to the need of battered women (95% of reported victims of domestic violence are female) for assistance. Over the past ten years, a more favorable atmosphere has been created for victims who must seek help to end violence in their homes.

The ultimate choice that you face is whether to stay with your abusive partner or to leave. You may have separated on more than one occasion in the past only to change your mind and return. You may have felt like you were weak, stupid or asking for punishment because you decided to come back and later found yourself being abused again. Research statistics state that an abused spouse (battered woman) usually leaves her partner 7 or more times before she leaves the abuser for good. Often, the decision to return to an abuser is a result of his skillful manipulation or staying for the children's sake, financial reasons, not having a strong support system in place, insecurities (low self-esteem, lack of self-confidence, feelings of hopelessness and helplessness), etc., etc.

Most importantly, no matter what you have done in the past, you have the right to make new choices based on your experience and the new information you have received.

Before you make a decision to stay and give it one last try in a relationship where you are being abused, please consider these facts about spouse abuse:

We know that battering, without outside help, becomes more severe and more frequent as time goes by. The idea that spouse abuse is a private matter which can be dealt with effectively without outside intervention is a myth.

Batterers are not permanently able to keep their promises to stop abusing. Promises are a form of manipulation designed to keep you in line and to prevent you from leaving.

There is no guarantee that even with the best counseling your abuser will ever change his or her behavior. Most batterers resist counseling and deny their need for professional help. Many will not follow through with counseling for a long enough time to make

lasting changes in their attitudes, feelings, and behavior.

Every member of the family-victim, witnessing children and abuser-deteriorates mentally, emotionally and physically everyday that the abuse continues.

Thousands of women are killed by their abusive partners each year.

You deserve the love, fulfillment and happiness that a healthy, nurturing relationship can bring.

Finally, remember that **YOU CAN CHANGE YOUR MIND!** Perhaps, today, your decision to say is a good one. But if that changes, do not hesitate or feel

guilty. When you are in danger, **GET OUT!!!** You can always go back the next day if you wish. But when the tension begins to build, protect yourself and your children by putting distance between yourself and the abuser.

Help is only a phone call away. Safe Place, Inc. maintains a 24 hour a day crisis hotline. In Dumas that telephone number is 935-2828. Out-of-town call (800) 753-7553. We can inform you of options, provide counseling, legal referrals, court accompaniment, referrals to social services, employment aid, and shelter you in a safe place. All of which are available to you at no cost and in strict confidence. **YOU ARE NOT ALONE!!!!**



Tips & Topics

by Susie Spurlock - County Extension Agent

Week of the Family

During recent years, the week of Thanksgiving has been traditionally recognized as the Week of the Family.

The theme of this year's family focus is "Take Time For Family." The Sherman County Family Living committee had planned to focus several Sherman County families during the month of November through feature news articles depicting major qualities of strong families. Although this activity did not materialize as planned, one organization reported that the topic sparked a very interesting discussion among their members. That particular organization stated many of the members expressed that present day stresses on our society have made it difficult to stay focused on values and several members pledged to return to the more meaningful traditions established by their family.

Research shows some of the major qualities of strong families. Each of the qualities listed below and others found in successful families, takes time to foster. Take time to encourage these family characteristics to help your family succeed.

*** Appreciation** is feeling good about the family and what family members do for one another. Parents make a concentrated effort to be certain all children feel good about themselves.

*** Spending time together** means families enjoy being together and doing activities together. Togetherness does not just happen-it is planned. Eating meals, recreation, and work are all part of planned togetherness.

*** Good Communication** patterns are open and permit spending time together. Good listeners convey the message, "I respect you enough to listen to what you have to say."

*** Commitment** to each other and the family unit strengthens families. Strong families value the happiness and welfare of family members even though demands of everyday living may pull them in different directions.

*** Devotion to a set of values** and spiritual concerns also strengthens families.

*** The ability to deal with crisis** exists in strong families. Even in the darkest of situations, they look at the situation and see some positive element, no matter how tiny it is, and focus on that aspect.

These traits are not a magic prescription for families. Likewise, it would be incorrect to say only successful families have these six characteristics. Most families in our society have many of these traits. A problem-free family does not exist. Because of present day stresses in our society, it is difficult for even strong families to function effectively all the time.

In today's turbulent world, however, maintaining or increasing family strengths is more important than ever. Family members need to know who they are and why they believe in. Families must show concern, understanding and a willingness to take the time to be there for each other. Consider the characteristics of strong families and try to develop some new skills in each area for your family.

Have a Happy Thanksgiving Holiday!

Member



American Optometric Association
Hours:
Mon.-Thur. - 9:00 - 5:30
Fri. 9:00 - 12:00 Noon
1-800-765-8253
Dumas 935-6491
396-5516

Family Vision Care Specialists

Dr. J.W. McCormick
Dr. David Riddlespurger
OPTOMETRISTS

Call our toll free number for appointments

JOBS AVAILABLE
Salaries range between \$50-\$385 Weekly)
Full or Part time

Due to the high cost of factory space, insurance, worker's compensation, and other company expenses, many companies can save thousands of dollars in production time with people assembling very simple products at home for them. Special skills or experience not needed because instructions and materials are sent to you. After you complete work, send it back for payment. The more work you do the more you earn. Just 20-45 minutes a day working at home you can earn some very impressive wages. Kreger Publishing has a listing of a variety of different work that suits both men and women. Best of all, you work when you want. (One company is paying \$342.00 per week to assemble simple plant hangers.) For more information and a FREE listing of over 60 opportunities, write to

KREGER PUBLISHING
309 Lothrop Street, OHMH
Taunton, MA 02780

Kreger Publishing does require \$3.90 for postage and handling for listing. Orders cannot be filled without postage and handling. Allow 3-4 days.

FmHA
FARMERS HOME ADMINISTRATION

Investment Buy of the Month
FORECLOSURE SALE

314 Kendrick Avenue
Dalhart, Texas 79022

GOVERNMENT BID WILL NOT EXCEED — \$23,000.

This attractive brick veneer house offers ample space for a growing family. 1,494 Sq. Ft. 3/2/0/ floor plan. R/O, DW, GD and carpeting. Lot size: 65' X 130'

Sale to be held at 10:05 a.m. on December 1, 1992 on the South steps of the Dallam County Courthouse.

CONTACT FmHA at
(806) 249-5647

JACK BARTON, Attorney At Law
Private Practice Law Office Hours
BY APPOINTMENT ONLY

For Appointment Call
8 TO 5

MONDAY — FRIDAY 396-2270
EVENINGS & WEEKENDS 396-2140

PRICE REDUCTION
CATTLE STORM INSURANCE

Premiums have been substantially reduced on our Cattle Insurance

You will like our simplified claims service
Come by the Farm Bureau Office
or call 396-5538

Joe Flores Home 396-5389
Leonda Fedric Home 396-5992

Meet Mary Allen Teachers & Students



Back row is Mary Pat Williams, Ivonne Hernandez, Aaron Rhoades, Jessica King, Beau Brown, Rene' Vital. Middle Row is Justin Wright, Stephanie Reinart, Crystal Garza, Shiloh Dearing, Jayme Lunt, Michael Herring, Carlos Ortega. Front row is Amanda Smith, Kara Brownlee, Tommy Keener, Blaine Goodwin.

Mary Pat Williams is a 4th grade teacher at Stratford High School. She is married to Randy and they have one son Brad.

Mary Pat was born in Dumas and got a BS from Panhandle State and MED from Wayland Baptist. She is a member of First Christian Church. She enjoys her family, reading and golf.

Kandi Nittler was born Feb. 28, 1965 in Lamar, Colorado. She is married to Bruce since August 19, 1989.

She went to school and graduated from Kin High School in 1983, graduated from Panhandle State University in 1987.

She is a member of Church of Christ. She enjoys watching sports, especially rodeo and volleyball.

Kandi said "I decided to become a fourth grade teacher when I was in 4th grade. Both my grandmothers were teachers and my mom is a teacher. I have taught at Mary Allen for five years. I enjoy watching students successfully learn new things. It is a pleasure to teach in the fine school system here at Stratford".



Back row is Kandi Nittler, Gilbert Gutierrez, Brenda Aguilera, Lindsey Sims, McLain Pool, David Cochran, Zulema Torres, Jarrett Ricketon. Front row is Sara Velasquez, Thea James, Johnny Larance, Edgar Ortega, Corey Naugle, Sid Resendes, Christina Navarrete, Shelli McCarver, April Whatley. Not pictured is Elena Aguilar.

Butts Completes Basic Training

Navy Airman recruit Stormy T. Butts, son of Vicky L. Butts of Texhoma, Ok. recently completed basic training at Recruit Training Command, San Diego.

During the cycle, recruits are taught general military subjects designed to prepare them for further academic and on-the-job training in one of the Navy's 85 occupational fields.

Studies include seamanship, close-order drill, naval history and first aid.

The 1992 graduate of Texhoma High School joined the Navy in July 1992.

Meet Your Stratford Fire Department

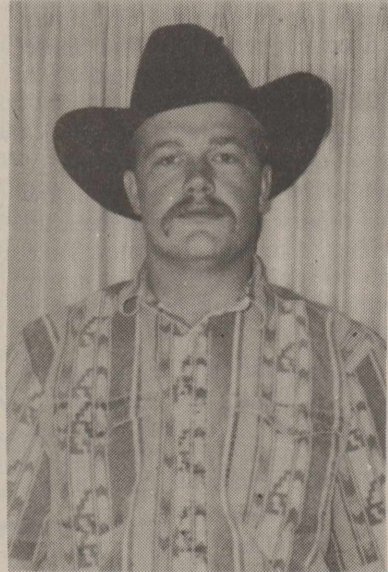


Cindy J. Larance was a note teller at First State Bank of Stratford. She was born June 5, 1959 in Lubbock, Texas. She is married to W.R. Larance and they have 2 sons Jackie Larance age 13, Johnny Larance age 9 and a daughter Amber age 6.

She went to Lorenzo Elementary, Idalou Jr. High, Roosevelt High School and has taken night classes at Texas Tech and Frank Phillips College and various Fire schools.

She is a Church of Christ member. Belongs to the Volunteer Fire Dept. Aux., PTA and 4-H Parents.

She worked at First National Bank in Lubbock, Reagon State Bank in Big Lake and has been employed at First State Bank in Stratford for 8 years. She has been a volunteer Firefighter for two



Malcolm Long

years. Her hobbies are camping and firefighting.

Cindy says "I love my job, I love being in contact with the public. I love being a Volunteer Firefighter, I don't think I'll ever learn it all, but I love the challenge."

Malcolm Charles Long is a Pen rider at Walter Lasley and Sons Feedyard, has been there about two years.

He was born June 23, 1971 in Dumas. He is married to Amy and they a daughter Hailey two years old.

He went to Stratford High School, is a Baptist and a member of Stratford Fire Dept.

His hobby is roping.



County Agent

by Jim Allison

8th Annual Symposium

The 8th Annual Panhandle Farm Management Symposium coordinated by the Texas Agricultural Extension Service will be held on the middle day of the Farm and Ranch Show, Wednesday, December 2nd. This years symposium contains segments for crop and livestock producers, homemakers and people seeking continuing education unites for either agricultural or structural pest control.

The symposium begins at 9:00 a.m. with a session designed for crop producers. Dr. Ashley Lovell, Professor and Extension management economist, will begin the session with a discussion of the expert system CIRMAN. This computer program assists producers in determining optimal crop insurance coverage given their situation. Data on the relationship between wheat variety selection and milling quality will then be presented by Dr. Travis Miller, Professor and Extension small grains specialist. The session will conclude with a discussion on the potential use of ridge-till in designing a cost effective residue management plan.

Following a break, a program for cattle producers will begin at 10:45 a.m. Dr. John McNeill, Professor and Associate Animal Science Department Head, Texas A & M, will present the results of the highly successful Ranch to Rail project. This program involves ranchers retaining ownership of their cattle through the feedlot and seeing how they cut out after being hung on the rail in the packing plant. Burt Rutherford, TCFCA communications director, will follow with a discussion of retained ownership of stockers and calves through the feedlot. The morning will conclude with

how beef check-off dollars are being spent and what new projects are being considered with these dollars by Jennifer Finch of the Texas Beef Industry Council.

Concurrent to morning agriculture program, a session for homemakers will be held beginning at 9:00 a.m. After a Christmas coffee, Natalie Bursch and Debbie Ferguson will give a presentation on the history of homesteading in the Panhandle. This will be followed by tips for holiday beef dishes. Linda Hawkins of Creative Needle will then illustrate the creative use of duplicate stitching. The program will conclude at 11:30 a.m. with a door prize drawing sponsored by Sunray Co-op and the Women's Division of the Amarillo Chamber of Commerce.

The afternoon program will feature concurrent sessions with continuing education (CEU) units for agricultural and structural pest control. Beginning at 1:30 p.m. three CEU's will be offered for commercial, non-commercial or private agricultural applicators. Lavon Harman, TDA, will explain the rules and regulations for applicators. Dr. Travis Miller will discuss wheat diseases and Dr. Carl Patrick, Professor and Extension entomologist will talk about insect control in feed grains.

Two CEU credits will be offered in structural pest control at a session beginning at 1:30. Dr. Brent Bean, Assistant Professor and Extension agronomist, will discuss commercial weed control. Ways of controlling insects in urban horticulture will be addressed by Dr. Mike Merchant, Extension urban entomologist.

The Panhandle Farm Management Symposium is coordinated by the Texas Agricultural Extension Service and the Potter County Program Building Committees.

everything from practical tips on child restraint systems to how to buy a child safety seat, is available free

by writing to: NADA, 8400 Westpark Drive, McLean, Virginia 22102.

PUBLIC NOTICE

GTE Southwest Incorporated (GTE-SW) and Contel of Texas Inc. (Contel) have filed an application with the Public Utility Commission of Texas to seek approval to provide two new private line services and to change rates for existing services. GTE's intraexchange DS1 Service will be offered pursuant to the rates proposed with this filing and will no longer be available through concurrence with GTE's interLATA access tariff rates which are lower. Contel's intraexchange DS1/DDS Service will be offered pursuant to the rates proposed with this filing and will no longer be available through Contel's current private line tariff rates. Existing customers with DS1/DDS Services will not be affected by these rate changes. DS1 1.544 Megabits per second (Mbps) Service and Digital Data Service (DDS) will normally be used for the transmission of data communications or large volumes of voice communications between two locations. These services are optional and will not affect the existing rates of customers who do not order these services. The estimated annual effect on GTE-SW's revenues in the first year is \$1,080,567. The estimated annual effect on Contel's revenues in the first year are \$42,383.

DS1 Service

DS1 Service is an intraLATA Private Line Service which provides a dedicated, high capacity channel which may be used for simultaneous two-way transmission of voice data or other digitally encoded customer information signals. DS1 Service provides a transmission speed of 1.544 Mbps and is designed to provide an average performance of at least 95 percent error-free seconds of transmission over a continuous 24-hour period.

DS1 Service is available in and between all exchanges of GTE-SW and Contel where digital facilities exist. DS1 Service is available on a point-to-point intraLATA basis between two Customer Designated Locations (CDL), between a Serving Wire Center (SWC) and a CDL, between a CDL and a point of connection with another service provider or between two SWCs.

IntraLATA DS1 Private Line Service is comprised of three rate elements: DS1 Local Loop, DS1 Transport and DS1 Transport Termination. Each element is described below.

DS1 Local Loop

This rate element is for the cable facilities from the CDL to the SWC. The customer has two payment options for the purchase of DS1 Local Loops. There is a month-to-month plan or term contract Optional Payment Plan (OPP).

The month-to-month payment basis allows the customer to establish and disconnect DS1 Services, without penalty, other than to meet the minimum service interval of one month's service, as needed. Under the month-to-month service, the additional DS1 Local Loop rate applies only when the additional DS1 Local Loop (s) is (are) ordered at the same time and between the same two CDLs as the first DS1 Local Loop.

The OPP plan allows the customer to select a term of service (1 YR, 3 YR and 5 YR) with lower monthly rates associated with longer term contracts. If the customer selects an OPP, additional DS1 Local Loops may be ordered and installed at the Additional DS1 Local Loop rate between any SWC and CDL covered by the OPP, at any time during the term of that OPP.

DS1 Transport

This rate element is for the mileage sensitive charges for transporting a DS1 signal between Serving Wire Centers. Transport occurs only when the two CDLs being connected are served by two different SWCs.

DS1 Transport Termination

This rate element is for the equipment to terminate DS1 Transport at the SWCs. This charge applies only when DS1 Transport is required for the service configuration of the customer. One transport termination charge applies at each end of the DS1 Transport.

Proposed Rates and Charges for DS1 Service are as follows:

	Nonrecurring Charge	Monthly Rates
DS1 Local Loop		
Month-to-Month First System	\$ 1,000.00	\$ 298.00
12-month term First System	-0-	\$ 283.00
36-month term First System	-0-	\$ 255.00
60-month term First System	-0-	\$ 226.00
Additional System	\$ 130.00	\$ 130.00
DS1 Transport		
Per airline mile	-0-	\$ 16.00
DS1 Transport Termination		
Per Termination	-0-	\$ 40.00

Digital Data Service

Digital Data Service (DDS) is an intraLATA Private Line service which supports synchronous, full-duplex transmission between the CDL and the SWC or the point of connection with another telephone company at transmission speeds of 2.4, 4.8, 9.6, 19.2 and 56 kilobits per second (Kbps). DDS provides a transmission path for digital data signals within the same LATA.

DDS Service is available in and between all exchanges of GTE-SW and Contel where digital facilities exist. DDS Service is available on a point-to-point intraLATA basis between two CDLs or between a CDL and a point of connection with another service provider.

IntraLATA DDS Private Line Service is comprised of three rate elements: DDS Local Loop, DDS Transport and DDS Transport Termination. Each element is described below.

DDS Local Loop

This rate element is for the cable facilities from the CDL to the SWC. The customer may establish and disconnect DDS Local Loops without penalty other than the minimum service interval of one month's service, as his/her needs demand.

DDS Transport

This rate element is for the mileage sensitive charges for transporting a DDS signal between SWCs. Transport occurs only when the two CDLs being connected are served by two different SWCs.

DDS Transport Termination

This rate element is for the equipment to terminate DDS Transport at the SWCs. This charge applies only when DDS Transport is required for the service configuration of the customer. One transport termination charge applies at each end of the service.

Proposed rates and charges for DDS are as follows:

	Nonrecurring Charge	Monthly Rates
DDS Local Loop		
2.4, 4.8, 9.6, & 19.2 Kbps	\$ 85.00	\$ 85.00
56 Kbps	\$ 85.00	\$ 95.00
DDS Transport		
Per airline mile	-0-	\$ 1.60
2.4, 4.8, 9.6 & 19.2 Kbps	-0-	\$ 3.20
56 Kbps	-0-	\$ 3.20
DDS Transport Termination		
2.4, 4.8, 9.6, 19.2 & 56 Kbps	-0-	\$ 20.00
Per Termination	-0-	\$ 20.00

This filing has been assigned Consolidated Docket Nos. 11408/11435. The deadline to intervene in this docket is January 1, 1993.

Persons who wish to intervene or otherwise participate in these proceedings should notify the Commission. A request to intervene, participate, or for further information, should be mailed to the Public Utility Commission of Texas, 7800 Shoal Creek Boulevard, Suite 400N, Austin, Texas, 78757. Further information may also be obtained by calling the Public Information Division of the Public Utility Commission at (512) 458-0256, or (512) 458-0221 teletypewriter for the deaf.



Pointers For Parents Give Your Child A Lifetime Seat Belt Habit

North American Precis Syndicate

Four of every five children who have died in automobile accidents would still be alive if they were riding in child safety seats or wearing seat belts. Here, from the safety experts at the National Automobile Dealers Association (NADA), are three "nevers" to remember if you are transporting children in a car or light truck:

1. Never let your child ride unrestrained in the car. A sudden stop at only 20 mph throws an unrestrained child toward the dashboard with a force of 400 pounds.
2. Never let a child ride on an adult's lap. A sudden stop at 30 mph turns an adult who's not wearing a seat belt into a two-ton crushing machine.
3. Never let your children ride in the bed of a pickup truck or in the cargo area of a station wagon or a van.

An informative booklet called *Buckle Up Baby*, which contains