

BURKBURNETT

INFORMER STAR

VOLUME 63

BURKBURNETT, WICHITA COUNTY,

Thursday, December 17, 1970

NUMBER 15

Editor's Viewpoint

Raymond Greenwood

Russell Duvall told me Tuesday that the deadline is December 23 for toys for the underprivileged children. Russell and his wife have been buying new toys and repairing old ones to be given to children that might not otherwise receive a gift at Christmas for the past 22 years. There are very few that cannot afford to give a small toy or a small contribution to Mr. Duvall to pass on to the underprivileged children in Burk Burnett. Let's get the Christmas spirit and help all we can with this project.

The Informer/Star will be publishing Christmas letters in next week's Christmas edition, so all of you kiddos be sure to send in your letter to Santa to us no later than Monday afternoon.

I understand the homes in Burk Burnett are better lighted for Christmas this year than they have ever been. This could make for a close Lighting Contest. The contest began Tuesday and will continue until Dec. 24. If you have any questions concerning the contest give Janet DiMarzio a call. Her telephone number is 569-3158. The Community Service Council is sponsoring the contest this year.

With the holiday season upon us, I would like to offer the following concerning the famed mistletoe.

If one takes a cold and clinical look at mistletoe, he sees a rather lackluster parasite with tiny flowers, sticky berries and a reputation for hanging around where the action is during the holiday season.

But hardly any society which ever functioned beneath trees infested with mistletoe has taken the stuff in such a light vein.

Flower power wilts when placed beside the magical qualities attributed through the ages to mistletoe.

A botanist could drone endlessly about how mistletoe is a parasite which gathers some food through its aerial green leaves but derives most of its nourishment through its root system under the bark of the host tree and whose small flowers attract insects which carry pollen from other mistletoe sprigs.

But a student of history or mythology sees mistletoe in see Editor, page 2



SANTA WAVES AS HE PREPARES FOR THE TRIP TO BURKBURNETT

SANTA CLAUS TO ARRIVE IN BURKBURNETT SATURDAY MORNING

That jolly ol' man in the red suit will again be in Burk Burnett this year. For the twenty-second time in as many years, Santa Claus will come to Burk Burnett for the enjoyment of the young and old alike.

Gene Allen, manager of the Burk Burnett Chamber of Commerce, said that all arrangements have been completed for Santa Claus to spend from 10:30 a.m. until 4:00 p.m. here this Saturday.

Santa with his sleigh and reindeer will be located on Ave. B in front of Gill's Grocery and Market for the six hour period.

Goodie bags for all the children will be given out at 3:00, according to Santa, with sleigh rides both before and after.

In an interview with the Informer/Star Tuesday, Santa stated that he had been working on loads and loads of toys for all good girls and boys all year long. "We almost have all the toys built by now," stated Santa, "so I'm taking some time off from my work to visit the boys and girls in Burk Burnett Saturday so that I can learn what they want for Christmas." For the kiddos who can't come to see

Santa Saturday, they can write a letter to Santa and mail it in the special Christmas box outside of the Burk Burnett Post Office or bring it to the Informer/Star. All letters to Santa will be published in the Informer/Star and a copy of the paper will be sent to Santa early enough

for him to get it by Christmas eve. But the best way for Santa to know what you want for Christmas is to tell him yourself. Don't forget to come to Burk Burnett Saturday and tell Santa what you want for Christmas and receive your bag of goodies.

Local Police Busy With Vandalism, Malicious Mischief

Vandalism and malicious mischief as well as destruction of private property seemed to keep the local police department busy this past week.

Tuesday the local police investigated an incident of breaking in and vandalism at the Burk Burnett High School. Monday night a group of juveniles broke into the band hall, damaged three bass horns and scattered and damaged a large quantity of music. The boys were apprehended and adjustments have been made.

A house at 317 Buckner, owned by the First National Bank, was heavily vandalized sometime prior to Dec. 6. The intruders tore out sections of paneling, took out the kitchen sink, ripped off the cabinet toppling, and stole the drawers from the bathroom and several light fixtures. Sgt. Newton stated that they have a prime suspect concerning the incident.

Police answered a call of burglary

to the R. D. Cook home at 1016 E. Beverly Loop last Friday. Stolen from the home were a coin collection valued at \$200, several pieces of fishing equipment and a Craftsman 1/2" electric drill. The intruders gained entrance through an unlocked door.

Sunday, local police apprehended a subject believed to have stolen a small number of pop bottles from Les Landers Texaco Service Station.

A 1966 Comet and a 1964 Dodge owned by Ross Watson of 1115 Bishop and a chain link fence at his residence were damaged when a farm stock trailer being pulled by Jess D. Ashton of R. 1 came loose from Ashton's pickup. The trailer ran through the fence and struck the rear of the Watson cars, which were parked in a carport.

Damages to the Watson vehicles were estimated at \$250, while the trailer was undamaged.

Saturday police investigated an accident involving a 1966 Pontiac driven by Doris McCain McCoy of 304 Kirk St. and a 1966 Chevrolet driven by Annie see Police, page 2

Businesses To Close Dec. 26

Several Burk Burnett businesses have notified the Burk Burnett Informer/Star that they will be closed both December 25 and December 26. If you are planning to close those days notify the Burk Burnett Informer/Star no later than noon Tuesday and your business will be listed with the others.

Those that will be closed that Friday and Saturday are: White Auto Store, Western Auto Store, Lippard Insurance and Furniture, Beavers Furniture, Bill's TV & Appliance, Famous Department Store, Manhattan Dept. Store, The Gun Shop, First National Bank, O.D. Worthan Radiator Shop, Roy's TV, The Burk Burnett Bank, Reed Barber Shop, First Savings & Loan, Barbara's Fashions, City of Burk Burnett, Burk Insurance, Comelius Insurance, Coy's Jewelry, Elliott Auto Supply, Texas Electric Service Co., Clemmer Lumber Co., Burk Sweet Shop, Quality Drive-In Cleaners, Ideal Drive-In Cleaners, Wampler Insurance Agency, Thornton's Repair Shop, Henry's Bakery, Lone Star Gas, The Burk Burnett Bank, the Christian Book Store, Mullins Butane and Ada's Fabrics.

All other businesses that are regularly open on Saturdays will be open as usual.

BOB LIPPARD, ALLEN COLE AWARDED EAGLE SCOUT RANK

State Representative Vernon Stewart conferred the rank of Eagle Scout on two members of Boy Scout Troop 155 in an impressive ceremony Friday evening at the First United Methodist Church in Burk Burnett. Recipients of the Eagle Scout rank were Bob Lippard and Allen Cole.

Troop 155 of the Boy Scouts of America is sponsored by the First United Methodist Church. Tom Evans is Scout Master. The troop was chartered in 1953. During the seventeen years of its existence, thirty-three scouts of that troop have attained the rank of Eagle Scout. There are forty-two scouts presently in the troop.

Lippard, 15, who is a sophomore in Burk Burnett High School, has been a member of the troop for five years. Bob is the son of Mr. and Mrs. C.J. Lippard.

Cole, 14, a freshman in Burk Burnett High School, has been a member of the troop for four years and is the son of Mr. and Mrs. Loren Cole.



BOB LIPPARD

COMMUNITY BASKET PROJECT END NEARS

Local organizations working on the community Christmas basket project will have the project completed by Wednesday.

The names of those who should receive a basket must be turned in by next Tuesday at 5 p.m. If you know of someone who should receive a basket write their name, address, number in their family, ages and sex of their children and also your name on a letter and mail it to Box 355, Burk Burnett, Texas.

The information can also be turned in by telephoning 569-1434 between the hours of 8:30-12 and 1:00 - 5:00 Monday through Friday.

Remember, TUESDAY, December 22, is the last day names of those who should receive a basket can be turned in.

Christmas Cantata At JanLee Church

The JanLee Baptist Church choir will present a Christmas cantata, "Night of Miracles," by John W. Peterson, Sunday night at 6:00 p.m.

The church choir will be directed by Rusty Stowe. Soloists are Mrs. Wes Bartlett, soprano; Lewis Burks, baritone; Dan Flecher, tenor; and Don Burks, bass. The public is invited to attend.



ALLEN COLE

BURK BULLDOGS TAKE SECOND PLACE

The 1970 Burk Burnett Bulldog basketball team, one of the most thrilling teams ever, came out with a second place trophy in their own tournament and will be headed for the Wichita Falls tournament this weekend.

"I was real proud of the way our boys played in each game during the tournament," stated Coach Owen. In the first game of the tournament, the Bulldogs swamped Seymour 65-54. In the second game they handed Quannah an impressive 56-41 defeat. In their third game, which was for first place in the tournament, they were outscored by only one point by the Wichita Falls Coyotes. The Coyote game was a crowd thriller

from the first jump. The Coyotes went quickly out in front by two points, only to be tied by the Bulldogs. This is the way it went for the entire game. The largest point spread during the game was eight points midway in the fourth quarter with the Coyotes out in front. With over a minute remaining in the game, the score was tied 58-58. The Coyotes went into a stall and controlled the ball until only ten seconds remained on the clock. With three seconds remaining in the game, a Coyote went in for a lay-up but was fouled as the shot was blocked.

The Coyotes had two free throws coming; they missed the first, but made the second. With only three seconds left to play and behind one point, the Bulldogs made one last shot, which missed by inches.

This game is typical of the basketball the Bulldogs play every game; aggressive, hard fighting, hustling basketball.

The results of the tournament were Coyotes first, Burk Burnett second, Duncan third, Childress consolation and Quannah fourth.

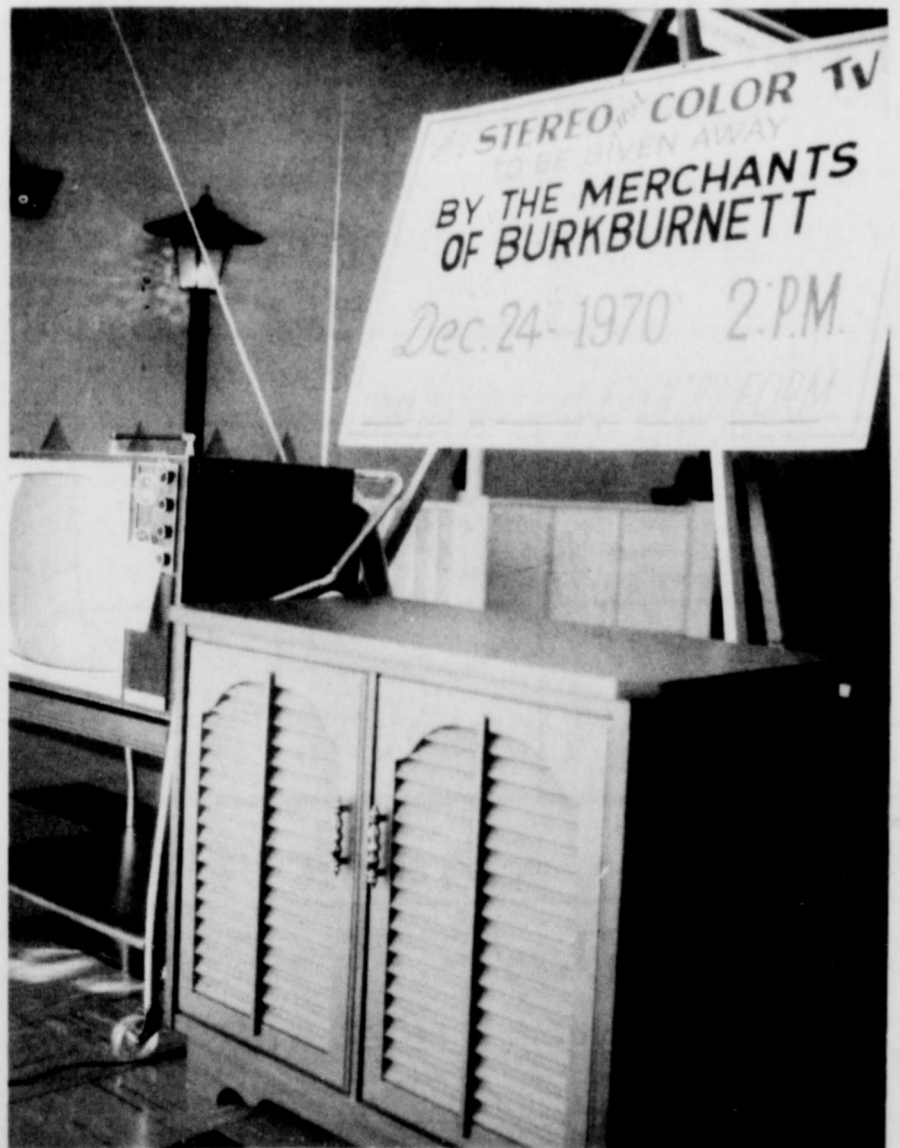
The Bulldogs will travel to Wichita Falls Friday to battle the Coyotes in a tournament to be held in the Midwestern Coliseum. The first Bulldog game is set for 8:30. The winner of that game will play the winner of the Vernon-Quannah game at 12:30 Saturday. The loser will play the losing team of the Vernon-Quannah game at 9:30 Saturday morning.

Burk Burnett will play its first district game next Tuesday night at Burk Burnett. They will take on the Yellowjackets from Stephenville.

"We appreciate the parents that invited the Perryton players to spend the night in their homes while they were here for our tournament and also the Burk Burnett businessmen who helped us with our tournament," stated Coach Owen.

Band Parents Meeting Scheduled For Mon. Night

Due to the Christmas holidays the local Band Parents meeting will be Monday at 7:30 p.m. in the Jr. High Band Hall. All band parents are urged to attend.



BE SURE TO REGISTER FOR FREE CONSOLE STEREO AND COLOR TV TO BE GIVEN AWAY DECEMBER 24 IN BURKBURNETT.



PART OF THE LARGE GROUP THAT ATTENDED THE FORMAL OPENING OF THE NEW VO-AG BUILDING

BURKBURNETT
INFORMER STAR

Informer News Corporation
Raymond Greenwood
Vice President & Editor

TEXAS PRESS ASSOCIATION
Member **1970**

Printed weekly at Burkburnett, Wichita County, Texas. Entered as second-class matter at the post office at Burkburnett, Texas, August 19, 1907 under the Act of Congress of March 3, 1879.

NOTICE TO THE PUBLIC: Any erroneous reflection upon the character, standing or reputation of any person, firm or corporation, which may appear in this newspaper will be gladly corrected as soon as it is brought to the attention of the publisher.

Guidelines Of Life

The approach of Christmas by itself does not solve serious family problems. During this year, which of us pastors has not had several occasions to meditate and try to solve serious family problems? Like taxation and death, they go on and on.

Many of us in Burkburnett might be surprised if we actually knew about the number of families in our city that are contemplating separation and/or divorce as the solution to their problems. It is December, 1969—one year ago. A husband is leaving. He is leaving, he thinks, because he wants his "freedom." He leaves a wife and several children penniless, without transportation, WITHOUT CHRISTMAS. Tragic? Of course; but all too commonplace.

Lord God in heaven, why is it that families cannot dwell in happiness, cannot have a "little heaven on earth"? Why can we not put aside our petty differences, our selfish desires, our subjective reasoning and think more intelligently about our RESPONSIBILITIES to You and our loved ones? Your answer is clear enough. We have turned away from You and Your Word, and as a consequence we have darkness of the soul, subjectivity of the soul, blindness of the soul, sin-sickness of the soul. We are lesser men than we should be and could be.

One Person of the Trinity is called "Father." We become his children through the New Birth, provided by His Son and secured by personal faith. Without this relationship, how can we relate properly to our own family?

But, of course, Christians also have family problems. And why? Because all too often we ignore what God has said. Your own family problem may be complex, and you may not want to share it with anyone. Remember, please, that there is One who can help you. In family problems, the blame usually must be shared by all, and He will help you to see this. He will show you the way to forgiveness and resolution. He and He alone can salvage the mess that possibly you are in. His name is Jesus Christ, God's only Son. If you have tried everything else, why not try Him?

Don Lewis Burks
Janlee Baptist Church

William Arthington Receives Air Medal

Army Specialist Four William B. Arthington, 21, son of Mr. and Mrs. Charles E. Arthington, 1019 Francis St. recently received the Second Air Medal in Vietnam.

Arthington earned the award for meritorious service while participating in aerial flight in support of ground operations in Vietnam.

During the same ceremony, he received the Army Commendation Medal for meritorious service in the Recon. 1/26 Infantry, First Infantry Division.

He entered the Army in January, 1969, and completed basic training at Ft. Bliss. He also holds the Combat Infantryman Badge, the Purple Heart, and Bronze Star.

Bill is presently visiting his parents while on leave. He will report to Ft. Myers, Virginia, January 4.

cont. from Page One

Roberts Moon, also of Burkburnett. The accident occurred as both women were backing from their driveways. Estimated damages to the McCoy vehicle were \$200. The Moon vehicle received no damages.

A 1968 Cadillac driven by Betty G. MacPherson of 135 Highland Dr. was hit in the rear by a 1970 Chevrolet driven by William B. Arthington of 611 E. 6th St., when it stopped at a Yield Right of Way sign Sunday. The accident resulted in approximately \$150 damages to the Arthington vehicle and no damage to the MacPherson vehicle.

SPORTS SIDELIGHTS



by Robert Sturges

If there's one thing I enjoy more than anything else, it's being proved wrong about fans. Last week I was rather harsh about the lack of attendance at basketball games. This week I have nothing but praise for the fans. Not only were the stands full during our games, they were full of high-spirited fans. There was also a constant contingent of spectators during other games of the three day contest. Those who attended saw a fine exhibition of basketball by several of the teams.

Burk did well in the tournament. We played some good teams. One thing I did notice was the constant drive of our players. They were always eager to start a game. Once they started, the players kept up a constant head of steam and never let down. They were quick and agile, even after playing tough teams. Their endurance is to be commended.

Tom Bloodworth and Steve Creemeens were certainly major factors in the victories of Burk. Tom proved a pain in the side of Burk opponents as he made numerous attempts to steal balls. Creemeen's high scoring was also a factor in the wins, of course. Generally, all the games were excellent and the Bulldogs played well. Next week they will play in the Wichita Falls Tournament. Try to attend if you can.

ally, all the games were excellent and the Bulldogs played well. Next week they will play in the Wichita Falls Tournament. Try to attend if you can.



RANDY AARON SINKS TWO POINTS

Burk Takes Second In Tournament

The Burkburnett Bulldogs took second place in their invitational tournament last week end. The Wichita Coyotes took the top position with a narrow one-point victory in the championship game.

Burk played Seymour in their first game of the Tourney. The Bulldogs took an early lead of 5 points in the first quarter, but Seymour dominated the 2nd and 3rd periods. Then Tom Bloodworth's free throws and Steve Creemeens' field goals gave the Bulldogs a substantial 11 point edge in the 4th period to take a 65-54 victory. The rebounds of Randy Aaron were also an important factor in the win.

With the Seymour game behind them, the Bulldogs met the Quannah Indians. The Indians scored the first two points of the game and lead the Bulldogs for the first minute of the period. However, after that Burk held the lead during the rest of the game. Quannah was unable to regain its stability even though Burk passed badly several times. Finet team coordination and the hustle of the Bulldogs proved to be the downfall of the Indians. The final score was 56-41.

As the tournament entered its final stages, the two teams

The outer shells of nuts may give hints as to the quality inside. Pick clean, bright shells; they are most likely to contain good kernels. Shells that are dirty, dull, stained or cracked are sometimes indicative of defective kernels. The heavier the nuts, the meatier the kernel. Unshelled nuts, often marked with lower prices, require about two pounds to yield one pound of nutmeats. Shelled nuts, however, save time, labor and storage space. Shelled nuts keep best in airtight containers in the refrigerator, or even up to a year in the freezer.



A GROUP OF CHAMBER OF COMMERCE MEMBERS AND BUSINESSMEN MET MONDAY AT CLOYD'S MEAT MARKET FOR RIBBON CUTTING CEREMONIES.

CLOYD'S MEAT MARKET

200 N. Berry Phone 569-0222

Old Fashioned Market With Modern Service

Semi Boneless Pork Steak LB. 49¢	Center Cut Chuck Roast lb. 59¢
Bar-B-Q RIBS Cooked lb. 89¢	Sliced Slab BACON 59¢
Shop Made Sausage lb. 49¢	Order Your Turkeys, Ham Fresh Hens For Christmas
Pork Chops 79¢	We Honor MASTER CHARGE AND BANK AMERICA CARDS

200 NORTH BERRY 569-0222 Open 8:00 a.m. 7:00 p.m.

in contention for the championship were Burkburnett and the Wichita Falls Coyotes. Burk kept its spirit high, but was unable to counter the shooting attack of the Coyotes from the field. Burk was not swamped however, as they came back strong in the second half to give the Coyotes an excellent fight. The final score was 58-59, with the Coyotes out ahead.

Kiddie Kollege Play School

Now state licensed to care for your little ones. Transportation available for after schoolers.

For information call 569-3532

Open 7 a.m. To 5:30 p.m. Mon.-Fri.

J & L Electronic's Has Moved

305 E. 3rd Next to Texas Electric
8 A.M. - 6 P.M. daily--Sat. 9 A.M. - 4 P.M.
TV Repair On All Makes Color & B&W
Sales - EMERSON Color TV
Stereo - Radio - Tape Players

For Service Call 569-1628

THE COMMUNITY CALENDAR

ANOTHER COMMUNITY SERVICE OF THE BURKBURNETT BANK

Attention Clubs, Churches, Organizations: Ask for your Free Blank Calendars at our bank or at the Newspaper office. Fill out your club's activity for the month and we will place on the community calendar Free!

SUN	MON	TUES	WED	THURS	FRI	SAT
			December	Senior Citizens Town Hall - 10 AM Youth Center Twirling - 2:00 Girl Scout Troop 40 Cadet Troop 48	Brownie Troop 52 "Curious Savage," play at High School	Youth Center - 1-4 PM Game Room
		See us for your home improvement loans.		17	18	19
Attend Church in Burk Today Youth Center - 1-4 PM Game Room	Senior Citizens trip to see Burns Display, 6:30 p.m. from Town Hall	Lions Club, 7 PM Rotary, 12 Noon Youth Center Twirling - 2:00	Lions Club, 12 Noon Youth Center Dance Class - 2:00 Brownie Troop 29			
20	21	22	23			

Ask About Our Save - A - Check Plan
Any Day . . . Is . . . A Good Day . .
- To Open An Account At

THE BURKBURNETT BANK

We've Moved

Nixon Deep Rock Service Station

For All Of Your Kerr McGee Products

Has Moved From Okla. Cut

Off To 404 E. 3rd.

Mullins Butarfe Co.—Jobber

A proprietor of a traveling medicine show must have tabulated the list of ailments which mistletoe is supposed to cure. Infertility, epilepsy, palsy and ulcers are just a few of the maladies which allegedly can be treated with mistletoe. But a word of caution is due here for folk-cure buffs. At least one of the 10 species of mistletoe in the U.S. is toxic to man.

These days the most common use of mistletoe is inducing persons who wouldn't ordinarily touch you with a ten-foot pole to kiss you. If this isn't appealing, the Texas Parks and Wildlife Department reports a second use—as deer feed. Deer reportedly become somewhat less cautious in the presence of mistletoe. Unless they somehow learn to climb trees, deer miss out on this rare treat.

One biologist for the Department reports deer on one brush clearing project were sometimes in danger of being run over by the bulldozer because they pounced on the mistletoe as soon as the trees fell.

So, whatever your preferences, kissing, hunting or both, mistletoe can be used to your advantage over your quarry.

ROUND THE TOWN

by Sylvia Lohofner

Mrs. Beaver, who underwent surgery last week in the Wichita General Hospital, is home and doing fine.

Mr. and Mrs. Aubrey E. Waldrop of Jefferson, Texas, were in town last week on business and to visit friends. They are former residents of Burk.

Mr. and Mrs. Dale Cropper of Fort Worth visited their uncle and aunt, Al and Sylvia Lohofner, Saturday evening. They spent the weekend with her sister, Mrs. Thelma Dudenhofer, in Grandfield.

Mr. and Mrs. Wyke Turpin of Jacksboro visited friends here for several hours Saturday. The Turpins lived in this city for several years some time ago.

A baby daughter, Amy Lee, was born Saturday, Dec. 5, to Mr. and Mrs. Jerry L. Warren of 122 Hardin. The grandparents of the new arrival are Mr. and Mrs. Hershel Warren of Burk and Mr. and Mrs. Harold Brown of Santa Paula, Calif.

Mrs. Elsie Lauderdale, her son Gene, and his wife and baby of Sunset, Tex., visited Mrs. Lauderdale's sister-in-law, Mrs. T.A. Banning, and Mr. Banning in this city last week.

Mrs. Al Shillings of Denver, Colo., has been a house guest

of Mrs. Ralph White for the past week.

Mrs. Sue Revier Harsh and daughter of Mesquite, Tex., are visiting Mr. and Mrs. Lee Harsh and Mrs. R.D. Revier here for several days.

Dr. and Mrs. Bill Boardman attended the national meeting of the American Dental Association in Las Vegas in November.

Terry Stevens of Shreveport, La., visited his grandparents, Mr. and Mrs. Hershel Warren and Mr. and Mrs. Paul Stevens here last week.

Mr. and Mrs. Wylie Bloxom of Electra and Mr. and Mrs. Berl Duncan of Gladewater, Texas, visited Mrs. Ida Willis in Burk over the weekend. Mrs. Willis is a sister of Mrs. Bloxom and Mr. Duncan.

Mr. and Mrs. B. A. Lemece of Berger spent last weekend here visiting her mother, Mrs. W.J. Wright, and sisters, Mrs. Hershel Warren and Mrs. Harold Landes.

Dr. Bill Boardman, DDS, recently attended a post-dental course on Orthodontics in Milwaukee, Wisc. He feels that the knowledge he gained will greatly benefit him.

Mrs. Bertha Majors and Mrs.

Bessie Shrum drove to Vernon Sunday to visit in the home of Mrs. Majors daughter and son-in-law, Mr. and Mrs. Garland Johnston. They also enjoyed a visit with Garland's parents Mr. and Mrs. R. R. Johnston of Eunice, N.M., who were also visiting in Garland and Jonita's home.

Mr. and Mrs. G.E. Kress, of El Reno, Okla., and Dr. and Mrs. R. M. Brumage of Dallas, were weekend visitors of their mother, Mrs. O.H. Buzbee. The Kress's spent the entire weekend with Mrs. Buzbee, while the Brumages were here only for the day Sunday.

Among the recent visitors in the home of the Lester Coats were: their son Joseph of Chicago, Ill., a daughter and son-in-law, Mr. and Mrs. H. E. Thomas and daughters Joan of Abilene and Mrs. James Rector and two sons of Del Rio; and Mr. and Mrs. Dexter Parnell and sons of Wichita Falls.

Mrs. Willett Pace of Sherman is visiting her sister, Mrs. Roy Anderson, and her brother and sister-in-law, the Ralph Englands. She will be with them through the holidays.

Mrs. Wynema Caswell of Norman, Okla., visited her mother, Mrs. E. R. Burns, over the past weekend.



Ssgt. Robert Pitts Speaks To Burkburnett Lions Club

SHEPPARD AFB, TEXAS--Ssgt. Robert E. Pitts, aircraft loadmaster instructor at Sheppard Air Force Base spoke to members of the Burkburnett Lions Club Tuesday night at 7 p.m. in the Town Hall.

He spoke on loadmaster duties and responsibilities and showed a film entitled "Tactical Airpower--Modes of Aerial Delivery."

Sergeant Pitts is assigned to the Department of Transportation Training, 3750th Technical School at Sheppard. He came to Sheppard in 1969 from Langley AFB, Va. He was in aircraft loadmaster training in 1960 at Sheppard. Sergeant Pitts' decorations

include the Air Medal with six Oak Leaf Clusters, for operations in the Republic of Vietnam, the Air Force Commendation Medal for duty as a flight examiner, the Vietnam Service Medal, Vietnam Campaign Ribbon, two expeditionary medals, and the Combat Crew Member medal for four years on combat ready status.

MU SPRING SCHEDULE ANNOUNCED

Midwestern University's fall semester this year ends before the Christmas holiday break Dec. 22. Students have been preparing for final examinations, which run from Dec. 15 to Dec. 21.

Classes were dismissed at 11 a.m. Tuesday, Dec. 15, for the traditional Christmas program in the auditorium. Dr. Gene Brooks directed the program, which consisted of an address by the University president, Dr. Travis A. White, and a selection of yuletide carols sung by the choir.

Tuesday was the final day of classes, and students with night courses had the first finals that evening.

The holidays for university administrators and staff extend from Wednesday, Dec. 23, through Sunday, Jan. 3, 1971.

MU's library closes at 5 p.m. Dec. 22 and remains closed until 8 a.m. Jan. 4. It will be open between Jan. 4 and 17 from 8 a.m. to 5 p.m. Mondays-Fridays, 8 a.m. to 1 p.m. on Saturdays, and closed on Sundays.

Students and faculty with special needs may contact James L. Mayfield, libraries director, for special considerations during this period.

The spring semester begins Jan. 12-13 with student orientation. Registration is Friday and Saturday, Jan. 14-15.

Curious Savage Tonight

"The Curious Savage," a comedy by John Patrick, will be presented tonight at 8 p.m. in the Burkburnett High School Cafeteria. Tonight will be the first of two showings of the play, sponsored by the Theatrical Society of the High School. Miss Grace McLain, director of the production, summarized the play in the following manner:

"It's the story of Mrs. Savage (played by Debbie Cummings) and her commitment to the Cloister (an asylum) by her stepchildren. In the Cloisters, you will find someone you can identify with. Each guest has his own reason for being there. Fairy May (Terri Garland) is not accepted by the outside world because of her plain appearance, even though a beautiful personality is hidden underneath. Hannibal (Robert Sturges) is driven to insanity because the world gives him a brain and then refuses to let him use it. Jeffery (Steve McGraw) has something to give the world in the way of entertainment and then has his plans interrupted by the war. Florence (Debi Goddard) cannot accept that her child was taken from her. Even the medical staff (Debi Zaloski and Dennis Cotton) play a part as they watch from outside the confrontation of 'insane' and 'sane' people. The family of Mrs. Savage represents the gains which the world has placed as desirable.

"The play is best directed to young adults. It's how one man (Patrick) viewed life. He tries to show us how difficult it is to say where reason ends and insanity begins."

The remainder of the cast includes: Kathy Brookman as Mrs. Paddy, with Bobby Jones, Eva Gatton and Ronnie Harper as the Savage family. The crews are as follows: Set, James Richter, Rick Ralston, Richard Mallory, Diana Ralston and Ralph Ware; Sound, Mike Collins; Lights, Bill Brice, David McGraw, Richard Mallory, Chris Amburn and Rusty Shepard; and Props, Rhonda Roe, Pat Green and Dwight Caldwell. The costume



"For, as Byron says, 'And if I laugh at any mortal thing-- 'Tis that I may not weep.'"

crew is made up of Joyce Linfield and Theresa Parks. Tickets are being sold by the publicity crew of Debbie Bodine, Brenda Winkler, Carla White in the cafeteria, Bill Newcomb, Glen Montgomery, Rita Gorham, Cathy Willis, Becky Sparks, Vicki Littlejohn, Terry Doten and others. Prices will be \$1.00 for adults and 75¢ for students. Privilege cards will be honored. Tickets will be on sale at the door. While in the cafeteria, Bill Key (house manager), Alicia Ellis and Terry Boten will act as guides. It should prove to be a very enjoyable evening.

Carbon Tet Prohibited

Carbon tetrachloride, a common ingredient in many cleaning fluids and fire extinguishers, has been banned from sale by the federal government as an extreme health hazard, announces Doris Myers, home management specialist at Texas A&M University.

The chemical has a high toxicity and may cause extensive damage to the liver, kidneys, lungs, heart and nervous system. It can be fatal if swallowed or inhaled.

Carbon tetrachloride is a nonflammable grease solvent, and has been used in cleaning fluids and fire extinguishers for many years.

USDA first warned consumers about the dangers of carbon tetrachloride for household chores in 1968. The present ban includes its use in fire extinguishers. When the chemical is exposed to a flame, the solvent changes into phosgene gas, a deadly poison.

Check labels on cleaning supplies and fire extinguishers for carbon tetrachloride. If included in any of these products, dispose of them immediately.



CHRISTMAS TREE ORNAMENTS TELL STORY OF CHRIST

"One picture is worth a thousand words," they say. With beautiful hand-made Christmas tree ornaments, Mr. E.H. Boatright tells the story of God's love for man. Mrs. Boatright, who has over 100 displays, has been constructing these ornaments for only one year.

Mrs. Boatright brought the ornaments to the First Baptist Church during one night of their revival this past fall. The ornaments are made of felt, velvet, styrofoam, ribbon and sequins.

Mrs. Boatright uses the ornaments as visual aids to tell the story of the Bible, from Genesis through Revelations. Her desire is that women will copy them, putting Christ back

into Christmas and back into our daily lives. Young and old alike love a Christmas tree. What greater gift to Christ on His birthday than a tree laden with realistic Bible stories that will refresh all memories and paint an unforgettable picture on the mind of each child.

Unlike other Christmas tree ornaments these can be used all year long because they make wonderful and different teaching aids. Mrs. Boatright shows how a delightful and meaningful devotion can be given using one of the ornaments.

If anyone is interested in contacting Mrs. Boatright, her address is 321 N.W. 35, Lawton, Oklahoma 73501.

Send Your Santa Letters To The Informer Star

NOTICE.....

Our Drive In Window Service
Will Be Closed

Saturday
December 26

The First National Bank
The Burkburnett Bank

Hardin Grade School Honor Roll Told

GRADE 3
Section 1, Reed: Frances Benson, Johnny Cook, John Ezzell, Jay Howell, Maryke McPheeters, Barry Nations, Randy Parker.

Section 2, Monson: Jeff Barber, Tanya Meaders, John Sawyer, Aaron Skinner, Anita Sykes.

Section 3, Leitner: Robert Davis, Annette Egnoto, David Fahay, Chris Hogan, Cynthia Keown, Janet Orman, Lori Park, Duane Pool, Frankie Seabee.

Section 4, Mays: Sharon Anderson, Deanna Bartley, Charles Dilbeck, Tammie Calvin, Sandra Iveson, Craig O'Hair, Tracy Strigfield, Perry Thomas.

Section 5, Cooper: Randy Burchett, Monty Chumley, Kevin Dunn, Curtis Gibson, Michele Gilbert, Neal Howard, Karen Koons, Curtis Murphy, Dean Sullivan.

Section 6, Clark: Ronald Chapman, Wayne Greenlee, Teresa Jenkins, Royce Slayden, Sarah Weers, Ronnie Yates.

GRADE 4
Section 1, Burris: Sherri Sawyer, Christine Smith, Franz Stephens, Pamela Wheeler.

Section 2, Reynolds: Jimmy Boardman, Vernine Frey, Brian Roark, Donna Wright.

Section 3, Olson: Carol Martin, Troy Mills.

Section 4, Dunn: James Brown, Tammie Lain, Matthew Milam.

Section 5, Smart: Jimmy Camp, Margaret D'Entremont, Tina Earhart, Kenny Park, Bob Powell.

Section 6, Wilson: Susan Bails, Ronnie Clemmer, Richard Riley, Angela Thornton, Tracey Wofford.

GRADE 5
Section 1, Grady: Christie Key, John Spanable, Keith Trull.

Section 2, Anderson: Anita Pool, Dale Thomas.

Section 3, Beard: Mikel Austin, Diane Evans.

Section 4, Bratina: Mindy McClure, Rhonda White.

Section 5, Kerr: James January, Bill Patty, Kevin Schroeder, JoAnn Smith.

Section 6, McSpadden: Kathy Scripps.

YOUR DEALER'S SPECIAL WIRING OFFER ENDS DECEMBER 31

Hurry on down for the
GREAT DAYS ELECTRIC DRYER OFFER

Buy a new electric dryer now and save money with your dealer's special installation wiring offer.

Then, in the great days ahead, you'll find yourself working a lot less. Or getting more things done in the same amount of time.

You can save hours of ironing time every month by drying permanent press things electrically.

Permanent press clothes come out of an electric

dryer ready for the hanger, ready to wear. It's like getting your clothes dried and ironed in one near-effortless step.

Electricity does the big jobs best. And People Power makes sure you live just a little bit better Texas Electrically.

See your dealer right away—before his special wiring offer ends.



TEXAS ELECTRIC SERVICE COMPANY
People power... at work for you.
B. J. VINCENT, Manager Phone 569-3373

Society

Local Girl Scout News

A Service Unit 23 meeting was held Dec. 9 at 7:30 p.m. in the Community Room of the Burkburnett Bank. There were nine members present and one guest, Area Association Chairman for Area Two.

Among those things discussed was the all-troop Christmas Party to be held Dec. 20 at 7 p.m. in the Youth Center. The tree will be decorated with hand-made decorations donated to the Evergreen Manor Nursing Home. Food gathered from all the girl scouts in Burkburnett will be donated to the Community Service Center for needy people in the near future. Recognition and awards were discussed and also the possibility of troops' adopting a grandmother and grandfather. It was announced that volunteers are needed to work in the Reat coffee stand at the rest stop between Wichita Falls and Burkburnett through the Christmas holidays.

An Investiture and Rededication Ceremony was held Wednesday night for leaders and new leaders. It was also announced that Mrs. Ann Bacon has accepted the temporary position of Troop Organizer for the Service Unit.

On December 21 from 7 to 8 p.m., all Burkburnett Girl Scouts will gather at Burk Royal Park to go Christmas caroling.

Brownie Troop 40 met this week and made gifts for their mothers. They played a new action game and listened to Christmas records. They collected food for a needy family at the meeting.

Junior Troop 25 will be having a Christmas party during the holidays. There will be games, songs and a gift exchange. One of the troop members is taking a home made cake for the occasion. They will present a gift to the custodian of the church where the troop meets.

Burk Garden Club Holds Xmas Party

The Burkburnett Garden Club held their December meeting and Christmas party in the attractively decorated home of Mrs. Jim Kincaid.

Mrs. A.T. Nice, president, conducted a short business meeting. The secretary, Mrs. Newton Crane, read the minutes of the last meeting and called the roll, which each member answered with the name of a flower of the Bible.

Mrs. D.C. Dodson had a very interesting and informative paper on Poinsettias. Mrs. Crane read a Christmas story and poem. Following the program, Mrs. Dodson played Santa's helper and delivered the gaily wrapped packages from under the beautifully decorated tree.

Mrs. Kincaid served a delicious plate of Christmas dainties to the following members: Mmes. J.C. Adams, Glen Bear, A.R. Bunstone, J.L. Caffee, N. T. Crane, Chas. Begeman, Carl Morrison, J.M. Pogue, Joy Seesums, B.N. Cauthorn, Al Lohofener, Sam Shrum, Frances Shrum, Frances Raines, A.T. Nice and D.C. Dodson.

Clara-Fairview Community Honors Outstanding Persons

The Clara-Fairview community met for their annual achievement banquet at Luby's Cafeteria. Elmer Klinkerman, community agriculture commissioner, was in charge. Forty-three members and guests enjoyed the delicious meal.

Dr. Travis White, President of Midwestern University, was speaker for the occasion. Dr. White gave a wonderful talk deprecating "Little Jack Horner."

The following were honored with certificates for outstanding achievement in the community. Outstanding Farmer: Elmer

Klinkerman. 1st runner-up, Raymond Schroeder. Outstanding Home-maker: Mrs. Newton Crane. 1st runner-up, Mrs. Jesse Bills. Outstanding Youth: Judy Klinkerman. 1st runner-up, Vernon Smith.

Outstanding in Home Improvement: Mr. and Mrs. Frank Kelly. 1st runners-up, Mr. and Mrs. Jesse Bills.

Outstanding in Wheat Production: Elmer Klinkerman. Second, Raymond Schroeder. First in Oats Production: Elmer Klinkerman. Second, Newton Crane.

First in Hay Production: Raymond Schroeder. Second, Jesse Bills. First in Hog Production: E.W. Rodrick. Second, James Rodrick.

First in Cattle Production: Raymond Schroeder. Second, Charles Goins. First in Pasture Improvement: Frank Kelly.

Outstanding in Community Participation: Mrs. James Rodrick and Mrs. E.J. Simons. Outstanding Members of the Community: Mr. and Mrs. Joe McDonald.

Junior University Study Club Holds Christmas Party

Mrs. Wayne Lax was hostess for the Christmas party of the Jr. University Study Club, held Dec. 10th in her home.

The Christmas tree was featured on a round table covered with a lovely Christmas tablecloth on which the gifts of the member were placed until the gift exchange later in the evening.

Short business meeting was held, with reports given on the Christmas projects which included money presented to the Fowler Children's Home and the North Texas Rehabilitation Center, clothes donated to the Wichita State Hospital, and collection of canned goods and other foodstuffs to be used in Christmas baskets for the needy.

Co-hostess Mrs. Finis Taylor served a lovely refreshment plate to seventeen members including: Mmes. Bill Vincent, Irving Smith, Gary D. Moore, James Pearson, Billy Smith, Gene Robertson, Bill McLean, Reid McCandless, Floyd Martin, C. D. Landrum, W.C. Koller, Ray Hatcher, J.R. Cummings, Max Carlwell, B.H. Alexander, and the two hostesses.

As Santa Claus has other engagements for Sunday night, Dec. 20, the First Christian Church will hold their Christmas program early at 5:30 p.m. so they can be ready for Santa's visit at 6:30. The program is being rehearsed this week. There will be a tree and treats for the children when Santa arrives.

Rev. and Mrs. David Stout, Brenda and Brian will leave for North English, Iowa, Dec. 24 for a week's visit with their parents and other relatives. We wish them a happy and joyous visit.

First Christian Church Christmas Party Planned

As Santa Claus has other engagements for Sunday night, Dec. 20, the First Christian Church will hold their Christmas program early at 5:30 p.m. so they can be ready for Santa's visit at 6:30. The program is being rehearsed this week. There will be a tree and treats for the children when Santa arrives.

Rev. and Mrs. David Stout, Brenda and Brian will leave for North English, Iowa, Dec. 24 for a week's visit with their parents and other relatives. We wish them a happy and joyous visit.

Brenda Powers Wins Contest

Brenda Powers, a former student at Hardin Grade School, was selected as one of the winners in her area for her letter in the "Frostie for the Teacher" contest. Brenda won a case of Frosties for her teacher, Miss Clark, and on case for her class.

Ernest S. Stoneciphers Celebrate Anniversary

Mr. and Mrs. Ernest S. Stonecipher of Randlett will be honored December 19 with a reception observing their golden wedding anniversary. Open house, hosted by children of the couple, will be at the community house in Randlett from 6 to 8 p.m.

Mr. and Mrs. Stonecipher were married December 19, 1920, in Ada, Oklahoma. In 1924 they moved to Wichita Falls, and to Burkburnett in 1952. Since 1955 they have lived in Randlett. Stonecipher is a retired refinery worker.

Children of the couple are Olen Stonecipher, Mrs. Everett Hackett, Mrs. Melvin Wink-

ler, all of Wichita Falls; Harold, of Corpus Christi; and Donald, of Oklahoma City. The couple has 14 grandchildren and 8 great grandchildren.

Hardin PTA Membership Open

Hardin PTA held its monthly meeting Tuesday, December 15, at 7:30 p.m. The meeting was held in the auditorium of Hardin School, where the annual Christmas program was presented by Mrs. Boles.

Hardin Skate Night will be Thursday, December 17, at the Orbit Skate Rink from 7 to 9:30 p.m. Admission will be 50¢ with a pass. This includes skates. Passes may be obtained from the children's teachers or at the door. Come out and join in the fun. See you there.

The membership drive, which ended in October, brought the membership to a total of 238. This is below last year's number of 300. The drive is over but the group is still working for more members. PTA membership is open to any parent who is interested in school happenings and the youth of today.

Unity Garden Club Meets

The Unity Garden Club met at the home of Mrs. Herman Miller for their Christmas party. The rooms were decorated in the Christmas motif.

Roll call was answered by each member relating her method for making a Christmas wreath.

Mrs. Lee Beckham gave a program on the flowers and herbs in the Holy Land. She stated that many of the flowers and herbs that we have today were growing there in the time of Christ and he made many references to them in His parables.

Mrs. Carl Sutherland gave a demonstration on how to make a Christmas wreath beginning with the basic wreath and then original variations on this.

Stuffed toys, made by the club, were given to the Fowler Children's Home in Wichita Falls, and to Russell Duvall, to be given to children here.

There were eleven members present and on visitor, Mrs. Orval Ashton.

The club was adjourned and will meet in January at the home of Mrs. J. S. Vanderburg.



Record Turnout For Annual Senior Citizen X-mas Party

The Christmas party of the Senior Citizens at Town Hall Thursday, Dec. 10, had 105 present for a gay and happy day. The luncheon tables were laden with an abundance of all kinds of Christmas delicacies. They were decorated with candles, red berries and evergreens.

The program started off with Rev. Lamoin Champ leading the group in singing "O Come All Ye Faithful" and "Joy to the World." He followed this with a talk on the true meaning of Christmas, as a time of showing God's love for us and of showing our love for each other. It was an elo-

quent enlargement on John 3:12. Mr. and Mrs. C.J. Lippard sang two duets, "How Great Thou Art" and "In Times Like These." These were followed by all singing "Away In A Manger." Gary Bean then sang "Rock Island Line" and "Hick Town" and, by request, "Someone Who Cares For You." The program was finished by all singing "Merry Christmas to You" and "Silent Night."

Most of the 26 guests left before the business session. As the nominating committee was unable to secure a suggested list of officers, nominations were from the floor. Will Teal was the only nominee for president and was elected by acclamation. A.H. Lohofener was elected vice-president; Mrs. R.H. Henry, secretary; Mrs. Sid Askins, asst. secretary; and Mrs. Arthur Houser, treasurer.

There was standing vote of appreciation for Ray Stimpson, the outgoing president.

Mr. Teal informed members that he will get the appointive offices and committees filled soon. Those already filled are: Charles Billens, greeter at the door; Miss Florencia Trevena, historian and program chairman; and Mrs. Neal Hall, reporter.

More than 20 members signed up for the trip to Wichita Falls.

Club Christmas Meeting Held

A beautiful Christmas meeting was held by the Current Literature Club Thursday, Dec. 10, in the home of Mrs. J.L. Caffee with Mrs. E.K. Kennedy as joint hostess.

The president, Mrs. E. C. Mallett, held a brief business session asking for reports from the secretary, treasurer and committees. Roll call was answered by naming a Christmas custom in other lands.

Mrs. Ralph White was program leader and presented Mrs. F.M. McMurtry, who gave a very interesting devotional story. Mrs. Larry Stringfield was introduced and delighted the members with a number of vocal selections, accompanied by Mrs. Wm. Geer on piano, who also joined Mrs. Stringfield in singing several numbers. They led the members in a Christmas songsong.

The meeting was dismissed by giving the Club Collect in unison.

Numbers were drawn and gifts were distributed from the beautifully lighted tree. Members also brought gifts for children who are cared for at the Community Service Center.

Those attending the meeting were: Mmes. C.M. Archer, J. L. Caffee, W. W. Chambers, L.J. Foster, Sid Gambin, Carl E. Hardaway, Fred Hunt, F.G. Jeffers, Kennedy, A.H. Lohofener, H.D. Mabry, Roy T. Masters, Mallett, McMurtry, E.W. Rodrick, J. S. Vandenburg, Ralph White and two guests. Mmes. Stringfield and Geer.

Fruits Popular For Holiday

Busy holiday shoppers can save time and money in the food store with these tips from Gwendolyn Clyatt, Extension consumer marketing specialist.

At retail meat counters, best beef values include chuck roasts and steaks, ground beef, round steaks and roasts, and beef and calf liver. Pork values include picnics, hams, end-cut loin roasts and chops, shoulder roasts and steaks.

Plenty of frozen turkeys are still available at about the same prices as those during Thanksgiving. Fryers remain a bargain in most meat departments, and grade A large size eggs continue to offer the best combination of quality and economy.

Fresh fruit and vegetable items in good supply at the most economical prices include apples, bananas, cranberries, pears, potatoes, corn, celery, cabbage, carrots, sweet potatoes, collards, mustard greens, turnips, yellow onions, radishes and green onions.

Fruits that are especially popular for the holiday season are oranges, tangerines, tangelos and grapefruit. Citrus supply and availability usually reach a peak during the holidays.

Turkey, Pork Best Buys

Include both turkey and pork in your Christmas plans. These popular meats are included on the U.S. Department of Agriculture's plentiful foods list, according to Texas Agricultural Extension Service.

Eggs are also plentiful, as well as such standard table items as potatoes, onions and rice. Christmas wouldn't be the same without the cranberries -- and cranberries and cranberry sauce are abundant. You can also plan to fill Christmas stockings with apples, oranges, grapefruit and tangerines, as marketings of these fruit favorites will be heavy during December.

Too, there'll be lots of applesauce and apple juice, frozen concentrated orange juice and walnuts, completing the December lineup of plentiful foods reported by USDA's Consumer and Marketing Service.

Apple juice will come in handy for holiday beverages. Serve hot or cold; it's a real flavor treat.

Ruth Class Yule Party

Mrs. Clifford Willmon, 800 Antec Drive, was hostess for the annual Christmas party of the Ruth Sunday School Class of the First Baptist Church on Tuesday, Dec. 8, 1970.

Mrs. Cliff Eubank, president, conducted the meeting. Mrs. J.V. Looney called roll and read the minutes of the November meeting.

The devotional was given in song, with a number of Christmas carols sung by Mmes. Wayne Bowles, C.W. Norris, John Parrish, Bob Tisdale and Elvie Welborn. Cindy Parrish, a guest, accompanied the group.

For class ministry, the group was encouraged to visit prospective members for the class. Mrs. Lonnie Hoffman lead the group in prayer.

Gifts were exchanged, and a special gift was given to the teacher, Mrs. Willmon.

Delicious refreshments were served to the following: Miss Parrish, Mmes. Bowles, Norris, Parrish, Tisdale, Welborn, Eubank, Hoffman, Looney, Russell Lewis, M. L. Patterson, Tom Pierce, C.D. Prestwood, C.W. Ramsey, Art Roper, P.A. Schelter, T. C. Shaw, Grady Walker, Hugh Williams, Harry Mayes, and Willmon.

Mrs. Welborn gave the closing prayer.

Get off to a Flying Start in 1971!

JOIN OUR CHRISTMAS CLUB NOW

<p style="text-align: center; font-size: small;">PLEASE DETACH BEFORE PRESENTING CHECK FOR PAYMENT</p> <p style="text-align: center;">A Cordial Invitation to Join our New Club</p> <p style="text-align: center; font-size: x-small;">(Please fill out this form and return to us)</p> <p>Payment Class \$ _____ No. _____ <small>(we will cover above)</small></p> <p>Print Name _____</p> <p>Your Address _____</p> <p>Your Signature _____</p>	<p>\$.50 Club earns \$25.00</p> <p>\$1.00 Club earns \$50.00</p> <p>\$2.00 Club earns \$100.00</p> <p>\$3.00 Club earns \$150.00</p> <p>\$5.00 Club earns \$250.00</p>
---	---

A total of \$20,778.00 in Christmas Club funds will be mailed to 161 savers this week.

If you would like to join our club for next year--fill out and return an application to us.

If requested we will automatically deduct weekly amounts from your checking account without any service charge.

1st

THE NATIONAL BANK

BURKBURNETT, TEXAS

A FULL SERVICE BANK

Stays Fresh Longer

Flowers Are For Every Occasion!

JUANITA'S FLOWERS

569-3197

Jr. High Six Week Honor Roll Announced

GRADE 6
 Section 1, Mrs. Lawrence: Theresa Howard, David Lemley.

Section 2, Mrs. Henderson: Robert Dzubanek, Sherri Gorham, Steve Hamilton, Steve Hamilton, Bill Hromas, Amy Ludeke, Dathy Phillips, Becky Rine, Mark Schroeder, Tammi Shepperd, Sharon Stafford, Wanda Turner.

Section 4, Mrs. Simon: Debbie Hartwell, Gary Lisk.

Section 5, Mr. Ray: Alan Kinnaman.

Section 6, Mr. Pate: Betty Balls, Tova Rutch, Beverly Smith, Chris Thomas.

Section 7, Mrs. Baggs: Satey Allmon, Jana Barnes, Cathy Cray, Richard Dale, Mike Darden, Lauri Davis, Debra Dunn, Diane Evans, Sherry McCall, Andrea Orman, Mike Penn, Becky Snow, Julia Spanable, John Spurlock, Doug Wineinger, Wes Wofford.

Section 8, Mrs. Hill: Michelle Bisson, James Lupori.

Section 9, Mrs. Morton: Arnonia Cox, Jr., Daren Gibson, Patricia Schrage, Donald Wilson.

GRADE 7
 Section 1, Mr. Wilkerson: Teresa Gay Allen, Teresa Deutsch, Jeanne Lanata, John Ludeke, Diane Miller, Caroline Pugliese, Michael Shallenberger, Pamela Smith, Stan Prescott.

Section 2, Mrs. Simonson: Larry Champ, Clifford Graham, Wade Meaders, Kathy Odell, Dan Roberts, Lynn Smith, Cynthia Myhand.

Section 3, Mrs. Roberts: Mark Milam, James Pewitt, Martin Pinaud, Howard Hunter.

Section 4, Miss Keeler: Frank Andrajack, Teri Baddour, Tammy Norwood, Diane Williams.

Section 5, Mrs. Sjolind: Diane Fabre, Janice Wettstein, Ruth

Radloff.
 Section 7, Mrs. Coppage: Race Bennett, Naomi Collison, Kathy Roysden.

Section 8, Mrs. Burrows: Robin Knobel, Paula Masters, Valerie Schnitker, Barry Wilkinson, Cynthia Rife, Zoann Lucas.

Section 9, Mrs. Blackburn: Terry Austin, Jay Beahm, Keith Edwards, Richard Mead, Sharon Pigeon, Joe Bryan.

Section 10, Mrs. Buck: Debbie Filippo, Karen Payton.

Section 11, Mr. Beard: Kay Alvey, Marla Divine, Jeanie Hamilton, Vickie Riley, Jeffery

Sitzman, Cynthia Craig.

Section 12, Mr. Newell: Helena Hendley, Kendra Riley.

GRADE 8
 Section 1, Mr. Cost: Diana Barrett, Lewis Burks, Kevin Collier, Debbie Dempsey, Robert Felty, James Griffith,

Randy Jones, Brickly Sjolind, Gregg Swaim, Linda Welch, Brenda Yates, Steve Marsh.

Section 2, Miss Reed: William Behrens, Alfred Claycamp, Tracy Janek, Lavonne Rittenhouse, Connie Smith, Patty Todd, Lauren Pearson,

Connie Hale.

Section 7, Mrs. Park: Dickey Shaw, Gronda Ward, David Williamson, Pamela Allison.

Section 8, Mr. Baggs: Jerry Beckett, Laura Bloodworth, Patti Darden, Diane Watkins, Karen Whitaker, William Bacon.

Section 9, Miss Starnes: Mark Cummings, JoAnna Dale, Shannon Dwyer, Sherree Dzulanek, Ricky Hill, Phillip January, Cindy Lee, Mary Smith, Cynthia Sullivan, Cathy Tipton, Robin Burke.

Section 10, Mr. Radke: Cretia Arthur, Donna Creekmore, David Meyer, David Schroeder, Tony Silva, Colleen Murphy.

Section 11, Mr. Hogue: Virlyn Davenport, Sharon Greshed, Ella Ladwig, Lynn McGraw, Bruce Reeves, Patti Scobee, Debbie Thompson, Janette Wilson, Danny Knox.

Section 12, Mrs. Sampson: Marty Hudson, Jimmy Koulovatos, Kermit Olson, Lee Ann Thomas, Mary Williams.

* denotes straight A's.

Navy To Cachet Apollo 14 Covers

Manned Spacecraft Recovery Forces of the U.S. Navy will provide commemorative cachet and cancellation services for the upcoming Apollo 14 manned flight to the moon.

Philatelic coordinators designated for the Atlantic and Pacific Fleet Recovery Forces (Task Force 140 and 130) will receive all such covers and make distribution to assigned recovery ships.

To permit adequate time for handling of covers, collectors should send pre-stamped, self-addressed envelopes to the appropriate coordinator at least three weeks prior to the scheduled launch of Apollo 14, covers should be received prior to 8 January.

In accordance with U. S. Postal regulations, only United States postage may be used on covers submitted. Stamps (postage) of other countries or the United Nations cannot be used. Cash, money orders or checks in lieu of postage cannot be accepted. It is requested that collectors furnish standard size covers, 3 5/8" by 6 1/2", with a filler inserted to simplify handling.

Due to the popularity of the cancellation service and the limited postal facilities on recovery ships, each recovery force coordinator will accept a maximum of two covers from an individual collector.

When more than the authorized number of covers is received, they will be returned unprocessed. Covers received too late for distribution to Recovery Force units will also be returned unprocessed.

Addresses for the Atlantic and Pacific area Coordinators are: Apollo 14 Covers, Task Force 140, Naval Air Station, Norfolk, Va. 23511; and Chief in Charge (Apollo 14), Task Force 130, Navy Terminal Post Office, FPO San Francisco, Calif. 96610.

Four Men Honored For Performances

SHEPPARD AFB, TEXAS--Four Sheppard men were recently honored for outstanding performance of duties with their respective organizations.

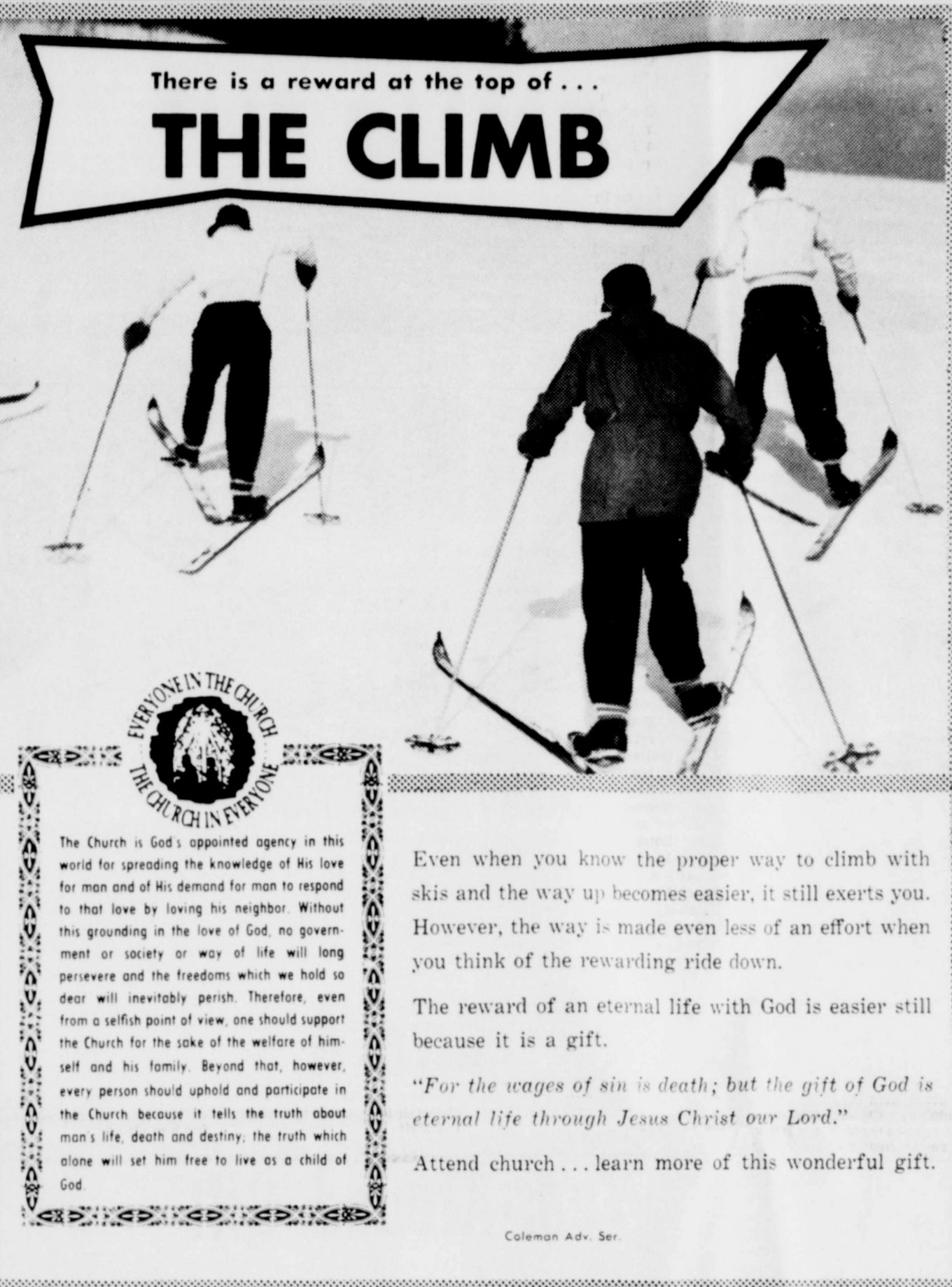
First Lieutenant John J. Brennan was selected as Instructor Pilot of the Month of November for the 3630th Flying Training Wing.

Airman of the Month for December from 3750th Air Base Group is Sgt. David V. Faulkner of the Security Police Division. Sgt. John D. Gast is Airman of the Month from 4750th Maintenance and Supply Group. He is a reject monitor with the group.

Airman Joseph B. Rankin was named Airman of the Month for the 3761st Student Squadron of the 3750th Technical School. He is a student in the Refrigeration and Air Conditioning Specialist course of the school's Department of Civil Engineering Training.

There is a reward at the top of . . .

THE CLIMB



EVERYONE IN THE CHURCH
THE CHURCH IN EVERYONE

The Church is God's appointed agency in this world for spreading the knowledge of His love for man and of His demand for man to respond to that love by loving his neighbor. Without this grounding in the love of God, no government or society or way of life will long persevere and the freedoms which we hold so dear will inevitably perish. Therefore, even from a selfish point of view, one should support the Church for the sake of the welfare of himself and his family. Beyond that, however, every person should uphold and participate in the Church because it tells the truth about man's life, death and destiny, the truth which alone will set him free to live as a child of God.

Even when you know the proper way to climb with skis and the way up becomes easier, it still exerts you. However, the way is made even less of an effort when you think of the rewarding ride down.

The reward of an eternal life with God is easier still because it is a gift.

"For the wages of sin is death; but the gift of God is eternal life through Jesus Christ our Lord."

Attend church . . . learn more of this wonderful gift.

Coleman Adv. Ser.

Church of Christ
 First and Avenue C
 Ed Morris, Minister
SUNDAY
 9:45 a.m. - Bible Study
 10:45 a.m. - Worship
 5:00 p.m. - Young People Class
 6:00 p.m. - Worship
WEDNESDAY
 10:30 a.m. - Ladies' Bible Class
 7:30 p.m. - Bible Study

First Christian Church
 Second and Avenue D
 Phone 569-2062 Res. 569-1236
 Rev. David Stout, Pastor
SUNDAY
 9:45 a.m. - Church School
 10:50 a.m. - Morning Worship
 6:00 p.m. - Christian Youth Fellowship and Chi Rho
 7:30 p.m. - Evening Worship
First Mondays
 Christian Women's Fellowship - 7:30 p.m.
WEDNESDAY
 7:00 p.m. - Choir practice
 Nursery provided for Sunday morning worship.

Grace Lutheran Church
 Third and Avenue E
 Daniel Piel, Pastor
 The Church of the Lutheran Hour, TV's, "This Is the Life"
SUNDAY
 9:15 a.m. - Sunday School
 10:30 a.m. - Worship Service

Pentecostal Church of God
 Berry Street
 Rev. Eanos Nicholas, pastor
SUNDAY
 10:00 a.m. - Sunday School
 11:00 a.m. - Morning Worship
 7:00 p.m. - Evangelistic Service
WEDNESDAY
 7:30 p.m. - Young Peoples Service
SATURDAY
 7:30 p.m. - Night Fellowship

Central Baptist Church
 814 Tidal St.
 (Southern Baptist)
 Rev. Max Dowling, Pastor
SUNDAY
 9:15 - 9:45 - Training Union
 9:50 - 10:50 - Sunday School
 11:00-12:00 - Morning Worship
 6:30 - 7:30 - Evening Worship.
WEDNESDAY
 6:45 - 7:30 - Church Visitation
 7:30 - 8:00 - Mid-Week Service
 8:05 - 8:45 - Sunda School Officers & Teachers Meeting
 Nursery provided for all services - Adequate off-street parking.

Episcopal Church of St. John The Divine
 1000 S. Berry Street
 855-3376 723-7418 569-3558
 The Rev. R.E. McCrary, Vicar
SUNDAY
 9:00 a.m. - Choral Holy Communion
 10:30 a.m. - Sunday School
 7:30 p.m. - EYC
TUESDAY
 7:15 p.m. - Choir Practice
 8:00 p.m. - Christian Orientation
WEDNESDAY
 6:00 p.m. - Holy Communion

St. Jude Catholic Church
 600 Davey Drive
 Phone 569-1222
 Father Richard Beaumont
ST. JUDE CATHOLIC SATURDAY
 5:30 to 6:30 p.m. - confessions
SUNDAY MASSES
SATURDAY - 7:00 p.m.
SUNDAY - 10:00 a.m.

Janlee Baptist Church
 (Southern Baptist)
 Opposite Burkburnett High
 Don Lewis Burks, Pastor
SUNDAY
 9:45 a.m. - Sunday School
 11:00 a.m. - Morning Worship
 6:00 P.M. - Evening Worship
WEDNESDAY
 6:30 P.M. - Junior Choir & Visitation
 7:30 P.M. - Bible Study
 8:15 P.M. - Adult Choir
 Nursery Provided.

Calvary Baptist Church
 College and Ave. B
 Ray C. Morrow, Pastor
 An Independent Southern Baptist Church
 We use the Bible as our only literature.
SUNDAY
 10:00 a.m. - Sunday School
 11:00 a.m. - Song, Preaching Service
 7:00 p.m. - Young Peoples Services
 5:30 p.m. - Young Peoples Services and Teachers Meeting.
 6:00 p.m. - Night Preaching Services
WEDNESDAY
 7:00 p.m. - Prayer Meeting.

First United Methodist Church
 Avenue C and 4th Street
 Phone 569-3778
 Rev. William Penn, Pastor
SUNDAY
 9:30 a.m. - Sunday School
 10:30 a.m. - Morning Worship
 5:30 p.m. - Methodist Youth Fellowship
 6:00 p.m. - Evening Worship
WEDNESDAY
 7:30 p.m. - Bible Study
 Nursery provided for all Church services

Church of The Nazarene
 Main at Holly
 R.B. Fitzgerald, Pastor
SUNDAY
 9:45 a.m. - Sunday School
 11:00 a.m. - Morning Worship
 6:15 p.m. - Young Peoples Service
 6:15 p.m. - Junior Society
 7:00 p.m. - Evening Worship
WEDNESDAY
 7:00 p.m. - Prayer Service

Trinity Lutheran Church at Clara
 (Missouri Synod)
 8 Miles West on Hwy. 240
 Walter Stretcher, Pastor
SUNDAY
 9:30 a.m. - Sunday School and Bible Study
 10:30 a.m. - Worship Service
 6:30 p.m. - Youth Society
WEDNESDAY
 6:30 to 8:30 p.m. - Weekday School

THIS SERIES OF CHURCH ADS IS BEING SPONSORED BY FOLLOWING BURKBURNETT BUSINESSMEN IN THE INTEREST OF FURTHERING THE SPIRITUAL GROWTH OF THIS COMMUNITY

Wampler Insurance Agency
 For Insurance Of All Kinds
 203 N. Ave. D Ph. 569-1461
 Burkburnett, Texas

WOLFE FORD COMPANY
 Complete Service and Sales
 Sheppard Road
 Phone 569-2275

CORNER DRUG STORE
 DRUGS - PERSCRIPTIONS
 JOE GILLESPIE CLIFF CANNON
 320 E. Third St.
 Burkburnett, Texas

ROARK OFFICE SUPPLY
 Everything for the office worker
 Western Union Telegraph
 305 1/2 West Third
 Phone 569-3741

Famous Department Store
 Phone 569-2441
 Burkburnett, Texas

THE Manhattan
 BURKBURNETT'S LEADING DEPT. STORE
 We Give S&H Green Stamps

PIGGLY WIGGLY
 We Give S&H Green Stamps
 Parker Plaza Burkburnett
 Greater Variety Lowest Prices

ELECTRIC SERVICE COMPANY
 People power... at work for you
 Bill Vincent, Manager

SNOW UNITED SUPER MARKET INC.
 "The Finest In Groceries"
 Fred Snow Manager
 Wichita Highway and Tidal Street

BURKBURNETT INFORMER
 "More Than A Newspaper, A Community Legend. . ."
 "QUALITY PRINTING IS OUR SPECIALTY"
 Phone 569-2191 Burkburnett, Texas

LLOYD CLEMMER LUMBER CO.
 Your Business Appreciated
 See Us For Prices Before You Buy
 Okla. Cutoff Ph. 569-2911

Farm Review & Forecast

COUNTY AGENT NEWS



B. T. Haws
Wichita County
Agricultural
Agent

To get the most from beef purchases, B.T. Haws, County Agent, suggests that buyers use both the USDA quality grades, which have been in use for many years, and the newer yield grades. The quality grades indicate the palatability of the meat, while the yield grades indicate the yield of the meat that can be used for cooking.

Pork is plentiful and a good meat buy. Due to breeding programs, started in the mid 1950's, producers are now making available to consumers the finest quality pork ever available. It contains 22 percent more protein, 57 percent less fat and 36 percent fewer calories. It's a good buy and good for you.

It's twice as costly to market farm products as to produce the food in the first place, surprising though this may seem. When they left the farm, raw food materials produced by U.S. farmers in 1969 were worth \$32 billion. By the time they reached the consumer, their cost had soared to \$96 billion.

The dry and windy weather has created conditions very favorable for grass fires. Hunters are urged to be doubly careful with fires while in the field.

Grain sorghum in 1970 is projected at around 708 million bushels—5 percent below the 1969 production level. Carryover stocks as of October 1 indicate almost 245 million bushels, about 15 percent below 1969 levels on October 1.

Oats production in 1970 is forecast at 891 million bushels, about six percent less than 1969 production. Carryover stocks on October 1, 1970, indicate slightly over one billion bushels, about 5 percent above the 1969 October 1 level.

Many Texas dairymen have been limited in their herd improvement programs because of a lack of accurate identification records. For years, most better dairymen have kept a calf book with sire and dam identification and the birth date for each calf. Ear tags, tattoos, sketches and other methods of identification have been used. While production testing programs accept only registration numbers or ear tags, dairymen

Altus Cotton Division Classing Office Reports

The USDA Cotton Division Classing Office at Altus reported 43,130 samples of cotton graded during the week ending December 11. The season total stood at 123,000, which compared with 173,000 to the same date last year.

"This will be the peak week of this classing season," reported C. E. Cox, officer in charge at Altus. "Largest single week last year was 47,000 samples."

Grade distribution on the cotton classed during the week indicated 23 percent in the White grades, 70 percent Light Spotted and seven percent Spotted.

Predominant quality in the White grades was Strict Low Middling, about evenly distributed in staple lengths of 15/16 to 1-1/16 inches. Light Spotted grades were primarily Strict Low Middling Light Spotted, mostly 15/16 and 31/32 inch.

Micronaire readings for the week showed 84 percent in the premium range of 3.5 to 4.9. Eleven per cent were high mike and five per cent low mike. Pressley readings showed fiber strength falling mostly in the ranges from 80,000 to 94,000 pounds per square inch, with the average at 87 thousand pounds.

The Consumer and Marketing Service reported that prices to farmers leveled off and began to show a rising trend. Demand was strongest on the lower grades and shorter staples. Farmers received an average of \$10.00 to \$14.25 per bale above the government loan on predominant qualities. Strict Low Middling Light Spotted 15/16", premium mike, averaged 19.15 cents per pound.

still need their own "easy to read" system.

Freeze branding is just another approach to animal identification. It utilizes extreme cold to selectively destroy the melanocytes (pigment-producing cells) resulting in the growth of white hair in the branded area. This provides a ready means of identification except on white animals. In the case of white-haired animals, the application of extreme cold for longer periods of time will destroy the hair cells, leaving a bare skin brand. Freeze branding is preferred to "hot" branding because there is less hide damage, less pain to the animals, and the regrowth of white hair in the brand area can be seen over long distances.

How long will the freeze brand last? USDA researchers say that freeze brands are as good after three years as after six weeks, if the brands are applied properly.

In further studies to determine the best procedure, cattle are being branded at three, six and 12 months of age and, at 10, 20, and 30 seconds exposure time. The brands are applied on the neck, shoulder, rib cage, rump, and thigh areas of the body and in the spring, summer and fall. Hereford, Angus, Brangus, Hereford-Angus crosses, purebred Holstein, Guernsey and Jersey cattle are used in the study. Irons chilled in liquid nitrogen are applied on the left side of the animal in these tests; irons chilled in dry ice and alcohol on the right side.

Animals can be branded at any age, but best results have been obtained on calves from three to six months of age. Also, calves at this age are easier to restrain than older animals. For best results branding should be done during the spring or fall months, when the hair is growing. Current results indicate that when dry ice and alcohol are used to chill the irons, the resultant brands are superior to liquid nitrogen brands. At similar time exposure, liquid nitrogen brands cause more extensive damage to hair follicles and hide.

County H D Agent



Thelma Wirges
County Home
Demonstration
Agent

homemakers shopping for turkey often ask how much to buy. Thelma Wirges, County Home Demonstration Agent, offers some suggestions on this problem.

Small turkeys have a larger percentage of bone than do the larger birds. Allow 3/4 to 1 pound of ready-to-cook turkey for each person if the bird weighs less than 12 pounds. Allow 1/2 to 3/4 pound per person if the bird weighs 12 pounds or more.

For each serving of roasted turkey quarter or half, or braised drumsticks or thighs, cut from the large bird, allow 1/2 to 3/4 pound of ready-to-cook weight.

If you are expecting your family and guests to have big appetites you may need to allow more than one serving per person.

Also, you may want planned left-overs to take care of some extra holiday meals. If so, make allowances as you shop.

Do you feel your family is too small for a big Christmas turkey? Try a half or a quarter this year. Thelma Wirges says it will cut down roasting time and you won't have the problem of leftovers.

Here are the directions for roasting a half or quarter of a turkey:

Rub the cut side with salt. Skewer skin to meat along cut edges to hold the skin and meat together during roasting. Tie the leg to the tail piece and tie a cord around the breast to hold the wing flat.

Place the bird, skin side up, on a rack in a shallow pan. Grease with cooking fat and cover with a fat-moistened cheesecloth. Bast during roasting.

Set oven for 325 degrees. Here is a guide for roasting times:

3-1/2 to 5 lb. . . . 3 to 3-1/2 hr.
5 to 8 lb. . . . 3-1/2 to 4 hr.
8 to 12 lb. . . . 4 to 4-1/2 hr.

Care Should Be Given In The Purchasing of Toys For Gifts

Christmas toys are always the easiest and most fun to shop for because they don't require careful consideration. Right? Wrong!

Selecting play materials for children requires the same selectivity as any other Christmas item, reminds Jane Fleischer, Extension family life education specialist at Texas A&M University.

Toys, of course, should be safe. Safety requires toy construction so that no items can be pulled off and swallowed, or that none can be broken off, leaving sharp edges.

Toys should have non-conducting cord material, such as cotton. However, any string will carry electricity when wet. Toy hammers and mallets should have securely fastened handles, and wheels on wooden toys should be fastened well, preferably with screws.

Toys with keys should not revolve when the toy is working. Since toys are for children, select ones that the child can manage himself. A toy for any age should give the child a feeling of adequacy and should set the appropriate standard for physical and mental development. For example, most mechanical toys may be too intricate for children under four years old.

But toys should not be too restrictive. Choose one that offers variety for the child's needs. It should stimulate imagination and make-believe, encourage quiet play or vigorous body activity, apply both to playing alone and group activity. Pets or toy gardening equipment fit this category.

Toys should suit the child's stage of development. Usually, the toys are marked with an age range, but these ages vary with the individual child's development.

Pre-schoolers need activity for developing large muscles. Their toys should stimulate imaginative play and should require use of hands.

Young elementary children need toys that develop large muscles and that encourage social development, as do stories. Arts and crafts help

the child to coordinate fine muscles. Older elementary children require group development through team sports. And, they may acquire skills through hobby, paint or musical toys. Toys, of course, must be suitable for the play space and storage facilities available in your home. A big play house wouldn't fit into small apartment living. Or, would you have room to store a hundred piece farm set?

Children of all ages are especially fond of puppets, dolls,

dress-up clothes and house-keeping kits which enable them to practice role playing. Learning rules is very important for the child because he must learn to identify with his parents, the policeman on the corner as well as the shop keeper. Role playing is particularly important for boys, who need to identify with men and men's occupations. When Dad leaves the house and goes to an office, the son is often unaware of just what his father's job is. So it is more difficult for him to identify with his father, ex-

Local Agent Urges Less Fat For Flaky, Tender Pie Crust

Will you be making pies for Christmas this weekend? If so, Thelma Wirges suggests you try using less fat. Many expert cooks are convinced the only way to make flaky tender pastry is to use a lot less fat.

But U.S. Department of Agriculture scientists, seeking ways to reduce fat in baked products, announced two methods of mixing pastry dough that make high-quality pastry with less than the usual amount of fat. And the methods are not difficult. One of the mixing methods uses liquid cooking oil; the other, solid fat.

WITH LIQUID OILS
Ingredients for a two-crust pie pastry using liquid oil are: 1/2 cup minus 1 tablespoon cooking oil, 1/4 cup water, 2 cups all-purpose flour, and 3/4 teaspoon salt.

cept, perhaps, through role-playing toys.

Shake together, water and oil (both at room temperature). Sprinkle this into the dry ingredients while blending with an electric mixer at lowest speed for three minutes. Or you can stir it in with a fork. The dough will appear dry but it can be easily molded by hand. Shape the dough into a ball, roll out between waxed paper. Place the pastry in the pie pan and bake.

Researchers explain that sprinkling the oil and water into the dry ingredients evenly distributes them throughout the mixture and it's this even distribution that makes melt-in-the-mouth pastry. Corn, cottonseed, soybean, and safflower oil work equally well.

WITH SOLID FAT

Even distribution of fat and water is also responsible for the success of the solid fat method which allows you to use less fat than usual. With this

method the water is not added until after the fat has been blended with the dry ingredients. Ingredients for a two-crust pie pastry are 1/2 cup solid fat, 3 tablespoons water, 2 cups all-purpose flour, and 3/4 teaspoon salt.

Using an electric mixer, on the lowest speed, blend room-temperature fat into dry ingredients for 2 minutes, then sprinkle in the water and blend one minute. By breaking the solid fat finely and adding water by sprinkling, you should get an even distribution of water and fat in the pastry. The dough will look dry and crumbly, but it will hold together in a ball. Rolling between sheets of waxed paper is also suggested for solid-fat pastry. The result will be a flaky, tender pie crust.

For Those You
Really Care About
Give A
Year-Around Gift
A Gift Subscription
to the
Burkburnett Informer Star
Only
\$5.00 per year

P. O. Box 906 Phone 569-2191 or 569-0021

3-1/2 lb. 3 to 3-1/2 hr.
5 to 8 lb.

3-1/2 to 5 lb. ... 3 to 3-1/2 hr.
5 to 8 lb. 3-1/2 to 4 hr.
8 to 12 lb. 4 to 4-1/2 hr.

Prepare your favorite stuffing as usual and bake in a greased pan or casserole during the last one or one and one-half hours of roasting time. To perk up the stuffing, baste with pan drippings or giblet broth.

Some homemakers seem to have real problems when it comes to making creamy, smooth, delicious turkey gravy. Many questions are asked on this subject.

To make good turkey gravy, be careful not to use too much fat. Begin the process by skimming the fat from the roasting drippings. Then measure one tablespoon of the turkey fat, 1-1/2 to 2 tablespoons of flour, 1 cup liquid (juices from pan, broth, water), and 2 tablespoons chopped, cooked giblets. Put measured fat in pan, blend in the flour and add liquid. Cook gently until thickened. Season to taste and add giblets.

This is a good time to buy cooking greens. Green vegetables are a must along with all the holiday season goodies.

Choose from locally grown collards, turnips and greens, mustard greens and spinach; all with attractive price tags.

These greens have good nutritive value so we are ever willing to encourage their wider use. These greens are at their best when fresh purchased and when cooked quickly. It is possible to ruin the finest greens by cooking them incorrectly.

Trim green sparingly, remove any of the tough mid-ribs. Cook in just enough boiling water to keep them from burning. Start cooking them just before they are to be served and restrain that impulse to overcook.

Try some of these serving suggestions: Fresh collards Italian style are dressed with fresh tomatoes, seasonings and Parmesan cheese. Fresh mustard or turnip greens may be cooked with a little bacon fat, chopped onion and a pinch of marjoram.

Don't let the holiday season ruin good eating habits.

We Salute SHEPPARD AIR FORCE BASE



SHEPPARD AFB, TEXAS--HELICOPTER TOUR--Maj. Richard Van Allen, instructor, explains the operation of a helicopter to two wives of officers attending the helicopter flying school at Sheppard. The two are Mmes. Richard Fasley and Fred E. Sparks. Wives of all the new helicopter student pilots at Sheppard attended the tour to become acquainted with the school their husbands will attend and the aircraft they will learn to fly.

Three SAFB Airman Sending Holiday Cheer Around The World

By Joe Calvit, Lt. Col., USAF Reserve.

SHEPPARD AFB, TEXAS--Three young airmen are helping to spread good cheer this Christmas season from a small high frequency radio station at Sheppard AFB that literally puts the world at their fingertips.

Messages--some with high priority status but most of a personal nature--flow out over the airways from AG4BV, call letters of Sheppard's Military Affiliate Radio Station (MARS), going to distant points on the opposite side of the globe or merely down the line to the next Air Force base.

Already the approach of the yule is quite apparent in the exchange of messages through MARS.

Primarily, MARS serves in a communications backup capacity, and recently it responded in such a role when Sheppard was cut off for a few hours from the Automatic Voice Network (AUTOVON) during a breakdown in facilities.

Long distance phone calls normally placed over AUTOVON had to be cycled through MARS and relayed by radio. During the first hour of the emergency the Sheppard station handled 73 messages, recalled AIC George Slavick, MARS supervisor here.

But such emergencies are infrequent and the MARS staff devoted most of its time to sending and receiving such messages as "Dear Mom, I'm at Sheppard and you can write to me at..." and "Will be home for Christmas. Please reserve the car."

Airman Slavick, who has been assigned to the station since

January 1970, explained that "most of us send welfare messages... for the welfare of the troops." The service is open to all military personnel and dependents. A limit of 25 words is put on ordinary messages, but those carrying a priority label can be any length.

Recipients are not limited to members of a serviceman's immediate family. Quite frequently a lonely airman uses the service to communicate with an equally lonely girl friend. There is one hitch, however; the MARS operators have to read the messages. Consequently, most messages are of a general nature and to the point. The MARS staff reserves the right to edit them, mostly for the sake of brevity but also because profanity and classified information are banned.

Airman Slavick, backed up by Airmen first class Scott Thorne and Harold Shannon, invite use of the radio service. They offer assistance in preparing messages; forms are available at Building 846. Complete names, addresses, ZIP codes and/or phone numbers are required.

Persons receiving messages and living within the immediate vicinity of a MARS outlet are telephoned and the message read to them. If contact is not made within two hours after receipt, MARS mails the message.

The Sheppard Station is within Region 4 (there are four regions in the continental United States), which has headquarters at Tinker AFB, Okla. Tinker acts as controller for the region. Sheppard may transmit within Region 4 but offers phone patch service within seven

states--Texas, Oklahoma, Kansas, Missouri, Arkansas, Louisiana and Mississippi.

For more distant messages, a worldwide military teletype service is utilized. Recently, the Sheppard staff was able to get an emergency message to a serviceman in the Vietnam bush country after Red Cross had been unsuccessful for two days. The man's wife made a personal call on the MARS staff to express thanks.

During time of natural disaster--like the Corpus Christi and Lubbock storms--MARS serves as a communications link between families, inquiring about injuries, destruction and other information that will ease the mind of some worried military family.

This, however, is a rare type of service, requiring special permission. Most messages are the common garden variety--and 123 of these were handled in November.

3631st Squadron Entertained With Fish Fry

SHEPPARD AFB, TEXAS--Members of the 3631st Pilot Training Squadron were entertained by the squadron sponsor, Foster Cathed Company of Wichita Falls, with a fish fry at Pleasant Valley Community house Saturday night, Dec. 12.

J. Lewis Foster, president of the company, and his wife were host and hostess for the event.

About 300 persons, including the company families and the Air Force families, attended the squadron adoption party. Entertainment consisted of movies.

UP, UP & AWAY

Every so often one can read news stories carrying the words "the plane flew into an air pocket." The articles then go on to explain that the ship fell some 1,500 feet (the greatest distance I have read, with some estimating 200 to 500 foot drops) in the AIR POCKET. The words "air pocket" imply that there are places in the air which are void of air (as a vacuum or partial vacuum) and the plane's wings have no means of supporting the weight they have been carrying.

Any high school physics student knows that nature hates a vacuum, and such a thing can not exist. (Excepting a partial vacuum in the center of a swirling cyclone.) Readers, imagine an air tight box that measures five moles on each of the three dimensions. Attach an air pump and draw all the air out. If the walls were strong enough to withstand the pressure of the air on the outside trying to get inside and equal the pressures, then you would have a five-cubic-mile air pocket. Unless the plane was powered

Suggestions Pay \$17,338.15 At Sheppard AFB

SHEPPARD AFB, TEXAS--Total tangible benefits of \$17,338.15 resulted from 21 recently adopted suggestions in Sheppard's Air Force Suggestion Program.

Of the 21 suggestions, 11 suggesters received cash awards totaling \$1,105 and 11 received certificates. One cash award was for a joint suggestion. Benefits validated by the Resources Conservation Program amounted to \$14,847.61.

Earning the greatest cash award was Betty L. Barfield of Comptroller, Accounting and Finance. Her suggestion earned \$400 based on Air Force wide adoption with intangible benefits derived from improved daily operations.

Others receiving as much as \$100 in cash awards were Freddy G. Moore of 3750th Civil Engineering Group (CEG), Operations and Maintenance Division, earning \$285, and Sgt. Gilbert D. Constanco of USAF Regional Hospital Sheppard, Dental Service, earning \$100. Sergeant Moore's suggestion was based on tangible benefits of \$4,618.01. Sergeant Constanco's was based on intangible benefits from improved daily operations.

Other cash award winners, award amount and organization were Maj. Sherwood S. Hill, \$75, Hospital; CWO James W. Summers, \$75 and \$50, 2054th Communications Squadron; 2nd Lt. Kahikina D. Akana, \$45, 3750th Technical School; Patricia A. Magdefron and SSt. Douglas G. Lloyd, each \$25, CEG; and SSt. Tommy J. Deeds and SSt. Charles W. Culp, each \$12.50 on a joint suggestion, Tech School.

Those earning suggestion certificates by organization were Marl J. Meaders, MSgt. James W. Moore, Hayden H. Carter, and CMSgt. Donald L. Waterworth, CEG; Sgt. Denis A. Rubingh, AIC William C. Fuller Jr. and MSgt. Howard D. Garrison, Tech School; Capt. Albert L. Haggard and 2nd Lt. Jack A. Gupton, Hospital; Ira M. Sterling, Communications Squadron; and Capt. John B. Probst, Sheppard Technical Training Center.

731st A F Band To Present X Mas

SHEPPARD AFB, TEXAS--The 731st Air Force Band will present Christmas selections in several areas in Wichita Falls and Sheppard Air Force Base. Santa Claus will appear with the musicians.

The bandsmen will visit Episcopal Day School, 3801 Milby Street, Holland Home, 205 Jalonic, and all wards of the Bethania Hospital Thursday, Dec. 17.

Friday, Dec. 18, the musical group will visit the University Methodist Day School, 3405 Taft Street, and El Buen Pastor Day School, 300 Fifth Street.

The men's chorus from the band will be joined by the Skylarks, a vocal group from the Sheppard Officers Wives Club, for a tour of the U.S. Air Force Regional Hospital at Sheppard.

First Air Force Cross Presented At SAFB

SHEPPARD AFB, TEXAS--The first Air Force Cross ever to be presented at Sheppard Air Force Base was awarded Friday to Maj. Travis Wofford of the 3630th Flying Training Wing at Sheppard.

This decoration, given for extraordinary heroism, is the second highest medal given by the United States Air Force and is exceeded only by the Medal of Honor in importance.

Lt. Gen. George B. Simler, commander of Air Training Command at Randolph AFB, Texas, made the presentation during ceremonies held at noon Dec. 11 in the auditorium of 3630th Flying Training Wing headquarters.

General Simler came to Sheppard Thursday night for a visit at the Board of Commerce and Industry in Wichita Falls and made his first visit to Sheppard Technical Training Center Friday after becoming ATC commander in September, 1970.

A UH-1 Huey helicopter instructor pilot at Sheppard, Major Wofford received the award for heroism in military operations against an opposing armed force as a rescue helicopter co-pilot near Dak Nay Puey, Republic of Vietnam, on April 15, 1970.

"On that date," the citation stated, "Major Wofford was engaged in the rescue of a crew of a United States Army helicopter which was shot down by enemy ground fire. Although Major Wofford was wounded by enemy ground fire during two earlier rescue attempts, he chose to continue with the rescue operations."

On the third attempt, the helicopter was severely damaged by an intense burst of heavy automatic weapons fire. When the helicopter lost power and crashed, Major Wofford,



SHEPPARD AFB, TEXAS--IN THEIR FOOTSTEPS--Second Lt. Richard B. Lohman, right, talks with Maj. Gen. Jerry D. Page, commander of Sheppard Technical Training Center, over a picture of Lieutenant Lohman's grandfather, Col. Eugene A. Lohman, former commander of Sheppard from December 1944 to November 1945. Col. Eugene A. Lohman Jr., the lieutenant's father, was once at Sheppard for pilot training; he is presently Air Base Group commander at Lowry AFB, Colo. Lieutenant Lohman is at Sheppard's 3750th Technical School enrolled in the computer systems operation officer course.

Garden Club Provides X-Mas Decorations For Wives Club Meet

SHEPPARD AFB, TEXAS--Christmas candles, stockings, centerpieces and other ideas for Christmas decorations were featured at the coffee held Thursday morning by the Sheppard Officers Wives Club at the Sheppard Officers Open Mess. These items were provided by members of the Garden Club, including Mmes. Franklin Davis, Robert Desjardins, Manuel Thomas, John Phillips, Jesse Green, Ted Smith, Joseph Lemieux, Thomas Smith, Maynard Hamilton, Walter Ladd and Albert Allen.

Ceramic soap dishes filled with miniature fruit carved from lye soap and painted various colors were one of the displays; a pine centerpiece made of pine cones and pine needles and miniature figurines was another highlight. Alighted Christmas tree picture and many other novel ideas were featured.

Mrs. Albert Allen, Garden Club president, greeted the members and guests from Wichita Falls who attended.

with complete disregard for his personal safety and despite his painful injuries, freed himself from the wreckage and then attempted to free the pilot, who was killed instantly on impact. He then observed the other members of the crew engulfed in flames and, with sheer determination and a deep concern for his fellow men, he rushed to their aid, extinguished the flames and then dragged the

aircrew members to a place of safety from which they were rescued. Through his extraordinary heroism, superb airmanship and aggressiveness in the face of an opposing armed force, Major Wofford reflected the highest credit upon himself and the United States Air Force."

The Air Force Cross was established by Congress July 6, 1960.



All Accounts Will Earn Dividends Based On Daily Compounding

Where You Save DOES Make A Difference



First Savings & Loan Association

314 E. 3rd. Street Phone 569-2206 Burkburnett, Texas

A Trusted Family Friend . . . in a time of need



OWENS & BRUMLEY FUNERAL HOME

Serving you since 1921

Phone 569-3361

All Insurance is the same 'til you have a claim!

BURK INSURANCE AGENCY
HOWARD CLEMENT
303 Ave. C Phone 569-3333

CLASSIFIED ADS

Burkburnett INFORMER/STAR
Effective December 1, 1969

Per Word 7¢
Per Line 35¢
Minimum Charge \$1.00

For Rent

FOR RENT - Nice, Clean, 2 bedroom furnished house. See at 521 Berry Street 569-1169.

SHEDS FOR RENT - Reasonable Rates. Protect your Boat, Camper or Camper Trailer. Contact Tom Noel. We also have some used lavatories, commodes, windows and lumber for sale. FARMER'S FEED & SUPPLY. 6-tfc

FOR RENT - Furnished cottage in rear. 406 W. Third. No Pets. 855-3520. 2-tf

FOR RENT - One unfurnished 3 bedroom house. Water paid. Furnished one bedroom house \$80 bills paid. 569-1320. 12-tfc

FOR RENT - 2 bedroom mobile home. See at 405 Kelley; Also will rent trailer space at same location. Call 569-3008 after 5 p.m. 14-tfc

FOR SALE OR RENT - Large 3 room modern furnished house. Phone 569-2567. 114 Ave. D. 6-tfc

FOR RENT - Mobile home space. Private lot. Large yard. Water and gas paid. Washer-dryer service. 1000 E. Sycamore 569-0295 or 767-4472. First month free then \$35 monthly. 3-tfc

LA MAISON
FOR RENT - 2 bedroom brick, air conditioned, nicely furnished, fenced, gas and water paid. Washer, dryer. 1000 E. Sycamore. 569-0295 or 767-4472. 15-tfc

FOR RENT - Furnished 3 rooms and bath. Couple; no pets. 126 Ave. C. 569-3183. 5-tfc

FOR RENT - Nice 2 bedroom frame 210 S. Ave B. Within walking distance of Elementary and Junior High schools. Small storage house also on property. \$70 monthly. Call 569-2205 or 569-1369 after 5 p.m. 14-tfc

FOR RENT - 2 nicely furnished houses. Phone 569-1240 or 322-0481. 14-2tp

FOR RENT - Furnished 2 bedroom house. Fenced yard. Children welcome. 717 Glen-dale. 569-3493. 12-tfc

FOR RENT - Two rooms and bath. Furnished. Bills Paid. McNeil Apts. 404 E. 3rd. No Pets. 569-3753. 13-tfc

FOR RENT - 3 bedroom furnished house. Available December 15th. Call after 5:30 p.m. 569-3726. 14-tfc

FOR RENT - Large 3 bedroom house furnished 706 So. Berry; Also, 3 bedroom furnished house 708 1/2 So. Berry. Ph. 569-3446. 15-tfp

FOR RENT - 2 bedroom unfurnished house corner Shepard Road and Bishop. \$55 monthly Call 569-3177 or 569-3888. 15-2tc

FOR RENT - One 2 bedroom furnished apt; Small one bedroom furnished house 569-2755. 15-tfc

FOR SALE MISCELLANEOUS

FOR SALE - 1969 12 x 60 2 bedroom mobile home 1 1/2 baths completely furnished. Washer - dryer. Central air and heat. Located in Henrietta. Equity and take up payments 723-9292. 15-tfc

FOR SALE - tv. antenna with 40' telescope pole, 140 new various tv tubes, tv and radio tube tester. 4236 Burk Road. 723-9202. 15-tfc

FOR SALE MISCELLANEOUS

FOR SALE - 1964 Dodge sedan, air conditioned, good condition \$450 Maple upright piano with carved decoration and stool \$100. Grundig console hi-fi, radio/record player \$40, Maytag automatic washer \$10, Electric driver \$15, Good strong car luggage rack \$15, dining table and 6 chairs, \$10, Round antique dining table \$40, 569-3972. 14-2tc

ROLLS, DONUTS, TURNOVERS Fresh daily. Henry's Bakery 311 E. 3rd. Ph. 569-3201. 5-1t

For Sale - 3 bedroom mobile home with central heat, refrigerated air. Carpet throughout 569-2414. 9-tfc

FOR SALE - Camper and head-cake rack. Can be seen 711 Ave. D. or call 569-1591. 14-2tp

FOR SALE - 1970 Touch 'n' Sew. Automatic zig-zag. Beautiful walnut console, button-holes, blindstems, designs, automatic bobbin winder, Garamond. \$69.00 Cash or small payments. Petrolia, 324-3452. 13-4tp

FOR SALE - Velma's Cafe. Must sell because of illness. Make offer. See Velma at cafe or call 569-3970. tfc

GOING OVERSEAS - Will sacrifice 1970 12 x 50 mobile home, fully furnished. Central air. No equity. Balance \$4,000. 569-2872 or 569-0036.

...MONUMENTS...
Nationally Advertised Stones Mrs. D.C. McNeill 404 E. 3rd Street Phone 569-3753. 12 -CZ

JUST ARRIVED
New supply synthetic wigs. Bessie's Beauty Shop, 406 E. 8th St. Operators Tiney Richards, Ruth Ann Ruday, Pauline Morris, Linda Adams, Bessie Hodges. 15-2tc

FOR SALE - New Slim-Gym Sells for 99.50 Will sell for 75.00. Ph. 569-3307. 15-1tp

HAND KNITTING and crocheting done to order. Yarn samples available. Mrs. Albert Clark, Jr., Devol, 405-299-3361. 15-7tp

FOR SALE
1969 Impala custom, 2 door hardtop, 396, V-8 engine, power steering power brakes, automatic, Factory air, AM-FM radio, premium tires, Yellow with white vinyl top and white vinyl interior. Extra nice \$2500. 569-1853. 15-tfc

FREE - Part pointer puppies for a good home Good disposition Love children. 901 N. Ave. D. 15-1tp

OPEN NOW
DeWayne Music Shop, 319 Ave. C. We buy and sell musical instruments, tapes and records, tape recorders, and stereos. Guitar lessons. 14-2tp

ORBIT SKATE CLUB
CHRISTMAS BAZAAR
Fri., & Sat., December 17 & 18 Next door to Western Auto
ALL ITEMS REDUCED!
Also, Baked Goods, Skating Outfits, and Rummage Items. 15-tfc

NOTICE
All pictures by our staff photographers appearing in the Burkburnett Informer/Star may be purchased for only 49¢ each. No reprint orders will be accepted.

REAL ESTATE

FOR SALE - 10' x 20' office bldg. with 2 windows and door. Insulated with paneling inside and aluminum outside. Rug on floor. \$680.00 569-2950. 13-tfc

FOR SALE - Rent house. Must be moved at your expense. Call 569-2011 for appointment. 13-4tp

FOR SALE

MERCY - \$350 moves you into nice 3 bedroom brick; 1 3/4 baths. Double garage, New carpet.

FIRST COME, FIRST SERVED
Only \$1000 moves you into four bedroom, air conditioned, large kitchen with built-ins, 1 3/4 baths Carpet. Fenced.

IMMACULATE - Assume loan on lovely 3 bedroom brick Fully carpeted. Entry Hall Beautiful kitchen - den. Covered patio. Equity, \$19 monthly.

MIMOSA HEIGHTS - Only 10 years left on loan at 3 1/4% interest. Three bedroom frame. Den. Large kitchen with many cabinets. Air conditioned. Fenced. Only \$87.00 monthly. Equity. Shown by appointment.

We have "235's". Do you qualify? Come by and check with us!!

Alexander Agency
569-2831 Phone 569-3434

FOR SALE

ASSUME LOAN - Nice 3 bedroom frame, 1 1/2 baths, carpet, drapes, patio, fenced yard. Near school.

LARGE - 2 bedroom with utility room. Large lot.

ASSUME LOAN - 3 bedroom brick 1 3/4 baths, all built-ins, central heat-air, high wood fence, cellar. Fruit trees.

REDUCED FOR QUICK SALE
2 bedroom frame, carpeted living room. Lot 85 x 495.

200 ft. fenced-in with 6 ft. cyclone fence. Peach trees. \$4,000.

PRESTON STREET - Assume loan. 3 bedroom brick. Central heat-air; Stove; Sliding doors to private patio; \$91.00 monthly. Equity.

NICE - 3 bedroom frame. Walk-in closets. Built-in stove. Hardwood floors. 1148 sq. ft. Near school.

Loise Bean Realty
569-2321 Phone 569-3996

ROOFING

24 years in roofing. All types repaired. Also hot tar and gravel.

Call J. E. KING
569-1634. 27-CZ

CALL 569-1461 FOR Auto - Business Home - Life INSURANCE CLIFF WAMPLER 203 N. Ave. D.

Services

SEWING MACH REPAIR
All makes and models. All work guaranteed. Free pick-up and delivery. Call Mahers Mobile Sew. Mach. & Vac. Clnr. Service, Petrolia, 524-3452. 13-4tp

When you RENT a A TO Z RENTAL in Wichita Falls, you don't have to buy it, repair it, fuel it, store it, maintain it, or loan it. 4214 Kemp. 692-6500. 7-10t

For The BEST In PEST CONTROL

Call
Ph. 569-3265
Key Pest Control
501 E. 6th St.
Burkburnett, Texas. 2-C3

WANTED - Baby-sitting in my home. 569-1815. 12-4tc

CHECK YOUR TV TUBES FREE AT BEAVER FURNITURE 222 E. 3rd. Phone 569-2801

Milstead & Parker
Washer - Dryer Repair on all models
MAYTAG
- Sales, Service, Repair -
Retape Veatetan Blinds
QUICK SERVICE
Office Ph. 569-3221
Home Ph. 569-3441

WANTED

WANTED - used small safe. Will buy or make offer on anything of value 569-131615-tfc

WANTED
Kitchen help and waitress for evening shift. Apply in person. Mr. Robbins, Robbins Cafe, Okla. Cut-off. 14-2tc

Card of Thanks

CARD OF THANKS
We thank everyone who sent J.M. Dunn, Jr., a birthday card on December 10. We appreciated it so very much.
J.M., Jr., Jotke, and Inez Dunn

CARD OF THANKS

Words cannot express the thanks in my heart so our

thanks in my heart to our many friends and neighbors for the many cards and every deed which showed your affection for us while I was hospitalized. Special thanks go to Rev. Max Dowling, pastor Central Baptist Church, and to the First National Bank.
God bless each of you is my prayer.
B. F. Rush

Northwest Texas Council Hold PowWow

The 1970 Northwest Texas Council, Boy Scouts of America "Cub Leaders' Pow Wow" was held Saturday, at Hirsch High School in Wichita Falls. Following a luncheon, the group of Cub Scout workers spent three hours learning about Pack Administration, skits and puppets, games, crafts, and Webelos Den operations.
The General Chairman was Joe Tom White, assisted by Bob Brown, Physical Arrangements Chairman; Walter Hallett, Blue & Gold Chairman; Donald Kruger, Midway Chairman; Mrs. Faye Ebert, Exhibits Chairman; Jim Richard, Webelos Den Chairman; Mark Wittinger, Skits & Puppets Chairman; Jim Cox, Crafts Chairman; Dr. Thomas Lindsey, Administration Chairman; William W. Schultz, Games Chairman; Mrs. Harold Collins and Cadette Troop 81 of the Girl Scouts of America, Baby Sitter Service; and Alpha Phi Sorority Members from Midwestern University, who were in charge of registration.
This Cub Leaders Pow Wow is an annual Council-sponsored training event, giving specialized help to all Cub leaders.

Lost & Found

LOST - \$10 dollar bill 2 weeks ago on Friday in front of United Supermarket. Mrs. T.P. Dickey, 569-2613. 15-tfc

HENRY'S PASTRY SHOP
Dnuts - Cookies
Wedding or Birthday
Cakes - Pastries

Foremost In Fine
Pastries For 22 Years

311 E. 3rd Downtown Burk
569-3201

FRIDAY, SATURDAY AND SUNDAY
DECEMBER 18TH-19TH- 20TH

sabata-
THE MAN
WITH GUNSIGHT EYES
COMES TO KILL!

LEE VAN CLEEF
WILLIAM BERGER
Palace Theatre

Randlett News

Mr. and Mrs. Dale Killingworth and two daughters of Canyon, Mr. and Mrs. Wayne Boles of Wichita Falls, Mr. and Mrs. E.L. Due, Mrs. Jerry Gregston and daughters of Duncan, Okla., and Miss Marsha Due of Lawton, Okla., visited Mr. and Mrs. A.S. Nason last weekend.

Franky Miller of Chicago, Ill., flew to Dallas on business last Saturday, and from there went on to spend Saturday night and Sunday morning with his parents, Mr. and Mrs. Lee Miller.

Mrs. Burk Triklett and 3 sons of San Antonio visited her mother, Mrs. Flora Hatcher, last week. Saturday morning they all went to Oklahoma City to spend the day with Mr. and Mrs. Oscar Anderson and children and Mr. and Mrs. Jay Jeffries. Mrs. Triklett and sons returned home Sunday afternoon.

Mr. and Mrs. Roy Williams were accompanied by Mrs. Lena Shinn and Mrs. Mary Belle Terry of Burkburnett in attending funeral rites Sunday of last week for a cousin, Mrs. Ethel West of Bochita, Okla.

Mr. and Mrs. Wayne Fowler and son of Wichita Falls dropped in on his parents, Mr. and Mrs. Ted Fowler, Sunday.

Mrs. George Kirksey of Walters, Okla., spent Wednesday night with Mr. and Mrs. A.L. Patterson.

Mr. and Mrs. Jimmy Baber of Greenville announced the birth of a daughter Saturday. Paternal grandparents are Mr. and Mrs. T.J. Baber of Randlett. Mrs. Baber left early Sunday morning to visit her son's family and to help take care of her new granddaughter and the Baber's older daughter.

Mr. and Mrs. Mahlon Turner announce the birth of a son on Dec. 6th in a Wichita Falls hospital. They have named the boy Robin Lynn. Grandparents are Mr. and Mrs. Vaud Grief of Wichita Falls and Mr. and Mrs. Carl Turner of Randlett.

Those who recently went to visit the former M. E. pastor, who now lives in Sterling, Okla., were Mr. and Mrs. Carl Thompson, the Raymon Hales, Mr. and Mrs. David Hooker, the B.L. Ressels, Mrs. Guy Davis and Mrs. Paul Hooker.

Mr. and Mrs. Melvin Riddle and children of Wichita Falls and Thurl Riddle of West Texas spent Saturday night with their mother, Mrs. T. E. Riddle, and Pete.

Gregg, little son of Mr. and Mrs. Jerry Wilkinson underwent a tonsilectomy at the University Hospital in Oklahoma City last week. He is recovering nicely at home.

Mr. and Mrs. John Chapman have purchased the Don McCasland residence on north Main Street and plan to make Devol their home.

Mr. and Mrs. Marshall Charboneau, Mr. and Mrs. Ron Chapman and baby and Mr. and Mrs. Ronny Chapman and daughter, all of Ft. Worth, were weekend guests of parents, Mr.

Mr. and Mrs. John Ruke and Mrs. Willie Mae Otis of Walters, Okla., and Gene Wilkinson of Burkburnett visited the B.B. Menz's Sunday.

A birthday dinner was held Sunday for A.L. Anderson of Burkburnett and Howell Anderson of Burkburnett at the A.L. Anderson home. Guests were Mr. and Mrs. Edwin Anderson and family and Mr. and Mrs. Max Anderson and family of Duncan; Mr. and Mrs. Larry Martin and sons also of Duncan; and Mr. and Mrs. Travis Anderson of Randlett.

Those who recently went to visit the former M. E. pastor, who now lives in Sterling, Okla., were Mr. and Mrs. Carl Thompson, the Raymon Hales, Mr. and Mrs. David Hooker, the B.L. Ressels, Mrs. Guy Davis and Mrs. Paul Hooker.

Mr. and Mrs. John Ruke and Mrs. Willie Mae Otis of Walters, Okla., and Gene Wilkinson of Burkburnett visited the B.B. Menz's Sunday.

A birthday dinner was held Sunday for A.L. Anderson of Burkburnett and Howell Anderson of Burkburnett at the A.L. Anderson home. Guests were Mr. and Mrs. Edwin Anderson and family and Mr. and Mrs. Max Anderson and family of Duncan; Mr. and Mrs. Larry Martin and sons also of Duncan; and Mr. and Mrs. Travis Anderson of Randlett.

SALE
ZENITH COLOR TV's
ALL MODELS-ALL SIZES
SAVINGS ARE GREAT-SERVICE INCLUDED
Bills T.V., Furn. & Appl.
301 N. Ave. D Burkburnett

Phone 569-1461
203 N. Ave. D
BUSINESS HOME
AUTO
Cliff Wampler
General Insurance

Would You Like An Apartment With
Private Bath - Lavatory,
Comode and Tub...?
Large Kitchen With Refrigerator and Stove...?
Water, Sewer and Garbage Furnished...?
And Would You Believe Rents Start At.....
\$18.50 Mo.
And Up.....
Based On Income
Bark Haven Homes Burkburnett, Texas R. E. Browning 569-2165 - Phones - 569-3211

Let the Holidays Go to Your Head

If you were twisted, pinched, squeezed, tinted and baked over and over again, how would you feel? Like Scrooge, undoubtedly.

"Yet, this is the way women treat their hair—and they expect it to be as shiny as a tinsel-trimmed package," explains Alberto Rottura, leading New York hair stylist. For holiday parties, he decks coiffures with ornaments.

To create his style (left), you comb back all shoulder length hair except short cheek curls, and pull it through a pony-tail holder decorated with imitation holly berries and leaves. Roll hair under and pin into a bun.

Rottura has more than festive styling on his mind. He is concerned with the damage women do to their hair and he suggests a solution to this problem. The stylist advises shampooing as often as needed followed by conditioning for all hair types. "Many women overlook conditioning because they think it has to be extra time-consuming, but this need not be so," he says.

The stylist explains that "Twice As Nice," a new liquid shampoo and conditioner in one, with a visible layer of golden conditioner on top, accomplishes both steps in one process. Custom-formulated by Lever Brothers in three different colors for dry, normal and oily hair, this new shampoo pampers hair abused by too many settings and gadgets and makes up for the loss of precious oils from exposure to the elements. It is safe for tinted hair.

"Clean, super-manageable hair is essential for pretty holiday hairdos and for creating new natural-looking styling at all times," says Rottura. These are easy to achieve with a shampoo and conditioner that leaves hair tangle-free when wet, lustrous and without frizziness when combed into a sleek style. Happy Holidays!

John Henry Hyall of Denver, Colo., spent Wednesday night with his parents, Mrs. and Mrs. H.M. Hyatt.

Mrs. Jackie Alexander of Odessa visited Mr. and Mrs. A.L. Patterson and Mr. and Mrs. Herbert Kiesling Saturday.

John Henry Hyall of Denver, Colo., spent Wednesday night with his parents, Mrs. and Mrs. H.M. Hyatt.

Mr. and Mrs. John Ruke and Mrs. Willie Mae Otis of Walters, Okla., and Gene Wilkinson of Burkburnett visited the B.B. Menz's Sunday.

A birthday dinner was held Sunday for A.L. Anderson of Burkburnett and Howell Anderson of Burkburnett at the A.L. Anderson home. Guests were Mr. and Mrs. Edwin Anderson and family and Mr. and Mrs. Max Anderson and family of Duncan; Mr. and Mrs. Larry Martin and sons also of Duncan; and Mr. and Mrs. Travis Anderson of Randlett.

Those who recently went to visit the former M. E. pastor, who now lives in Sterling, Okla., were Mr. and Mrs. Carl Thompson, the Raymon Hales, Mr. and Mrs. David Hooker, the B.L. Ressels, Mrs. Guy Davis and Mrs. Paul Hooker.

Mr. and Mrs. Melvin Riddle and children of Wichita Falls and Thurl Riddle of West Texas spent Saturday night with their mother, Mrs. T. E. Riddle, and Pete.

Gregg, little son of Mr. and Mrs. Jerry Wilkinson underwent a tonsilectomy at the University Hospital in Oklahoma City last week. He is recovering nicely at home.

Mr. and Mrs. John Chapman have purchased the Don McCasland residence on north Main Street and plan to make Devol their home.

Mr. and Mrs. Marshall Charboneau, Mr. and Mrs. Ron Chapman and baby and Mr. and Mrs. Ronny Chapman and daughter, all of Ft. Worth, were weekend guests of parents, Mr.

Mr. and Mrs. John Ruke and Mrs. Willie Mae Otis of Walters, Okla., and Gene Wilkinson of Burkburnett visited the B.B. Menz's Sunday.

A birthday dinner was held Sunday for A.L. Anderson of Burkburnett and Howell Anderson of Burkburnett at the A.L. Anderson home. Guests were Mr. and Mrs. Edwin Anderson and family and Mr. and Mrs. Max Anderson and family of Duncan; Mr. and Mrs. Larry Martin and sons also of Duncan; and Mr. and Mrs. Travis Anderson of Randlett.

Those who recently went to visit the former M. E. pastor, who now lives in Sterling, Okla., were Mr. and Mrs. Carl Thompson, the Raymon Hales, Mr. and Mrs. David Hooker, the B.L. Ressels, Mrs. Guy Davis and Mrs. Paul Hooker.

Mr. and Mrs. Melvin Riddle and children of Wichita Falls and Thurl Riddle of West Texas spent Saturday night with their mother, Mrs. T. E. Riddle, and Pete.

Gregg, little son of Mr. and Mrs. Jerry Wilkinson underwent a tonsilectomy at the University Hospital in Oklahoma City last week. He is recovering nicely at home.

Mr. and Mrs. John Chapman have purchased the Don McCasland residence on north Main Street and plan to make Devol their home.

BUY AUTO LIABILITY From The TRAVELERS INSURANCE CO. IT DOESN'T COST ANY MORE TO BE SURE HOWARD CLEMENT, Agent 303 AVENUE C. PHONE 569-3333

BURKBURNETT
INFORMER STAR

SHOPPER

GIFTS

for Everyone!



AND YOU CAN

SAVE

SAVE

WHEN YOU

SHOP IN BURKBURNETT

REGISTER TODAY

FOR THE

PORTABLE COLOR TELEVISION & CONSOLE STEREO

to be given away in separate drawings

THURSDAY - DECEMBER 24

You can register at any of the following "Build Burk" Merchants.

Monaghan Furniture & Appliance Co.
Mathis Chevrolet-Pontiac- Oldsmobile
Triple D Discount Center
Roark Office Supply
Gill's Grocery & Market
The Gun Shop
Hofacket Enco Service Station

White's Auto Store
Beaver Furniture & Appliance
Quality Drive-In Cleaners
Western Auto Associate Store
Boomtown Bowl
Corner Drug Store

Alexander Service Station
Helen's House Of Hallmark
Harry Elliott Auto Supply
Bills TV Furniture & Appliance
Wolfe Ford Co. Inc.,
The Famous

The Manhattan
Barbara's Fashions
Underwoods Foods
Preston Dairy Products
City Pharmacy
Ben Franklin Store
Elite Dress Shop

No Purchase Necessary

You Do Not Have To Be Present To Win

WE ARE READY TO
SERVE YOU WITH ALL
YOUR CONCRETE NEEDS
IN THE BURKBURNETT-
OKLAHOMA AREA.



READY MIX CONCRETE CO.

101 E. College

569-0261

569-2191
To Report Your
Local News

Biologist Work In Outdoor Laboratory

Scientists at this laboratory don't wear white smocks, and the animals they study don't bear any resemblance to white mice.

But Texas Parks and Wildlife Department biologists at the 6,493-acre Kerr Wildlife

Management Area are nevertheless operating a genuine outdoor laboratory which is providing vital scientific information for Texas landowners who want to know how to combine livestock grazing and wildlife management in to a profitable overall program.

In states with vast tracts of public land, experimentation with game management techniques is relatively simple. But in Texas most deer habitat is privately owned, making controlled studies more difficult.

Research on the Kerr Area is vital to game management in the area because of the

extremely high concentrations of deer in the Edwards Plateau region. The importance of wild game to the economy of the region was demonstrated in early studies at the area when biologists found cattle and deer were, with proper management, compatible on the same range.

This meant ranchers could have a double crop on which to make a profit--cattle for market and deer for hunters. Biologists were able to determine the optimum number of cattle for a given range so that deer and cattle will stay healthy.

In other research, biologists found deer to be in direct com-

petition for food with sheep and goats, competing with sheep for forbs and goats for browse. As the result of this research, ranchers are advised to be judicious in stocking goats and sheep if they desire a healthy deer herd.

Conflicts between domestic livestock and wildlife are predictable, and the need for research is clearcut. But recent years have brought the Kerr Wildlife Management Area into another dimension of wildlife management to study--exotic species.

Texas landowners have obtained offspring from zoo animals from widespread areas

of the world. Biologists are now trying to determine the impact of these exotics on native wildlife populations, and much of the research is being carried out on the Kerr Area.

Biologists at the area say research will increase in the years to come to yield information for sensible management of all wildlife, vegetation and domestic animals by landowners.

They hope this management will produce habitats where exotics, native wildlife and domestic animals can blend harmoniously and provide benefits for hunters as well as landowners.



WE GIVE **S&W** GREEN STAMPS
Double STAMPS WED.
with PURCHASE of \$2.50 or more



KERN STRAWBERRIES

FROZEN SLICED

3 10 OZ. PKG

68¢ 48¢



FROZEN TOPPING

9oz crtn

SHOP EARLY!
UNITED SUPER MKTS
WILL BE CLOSED
CHRISTMAS DAY

5-MIN. FUDGE

2 tablespoons butter
2/3 cup undiluted Carnation Evaporated Milk
1 1/2 cups sugar
1/2 teaspoon salt
2 cups (4 oz.) miniature marshmallows
1 1/2 cups (1 1/2 6-oz. packages) semi-sweet chocolate pieces
1 teaspoon vanilla
1/2 cup chopped nuts

Combine butter, Carnation, sugar and salt in saucepan over medium heat. Bring to boil. Cook 4 to 5 minutes, stirring constantly. (Start timing when mixture starts to "bubble" around edges of pan.) Remove from heat. Stir in marshmallows, chocolate, vanilla and nuts. Stir vigorously for 1 minute until marshmallows melt and blend. Pour into 8-inch square buttered pan. Cool. Cut in squares. Makes about 2 pounds.

THE SECRET IS
VELVETIZED
CARNATION
EVAPORATED
MILK



18¢

TIDBIT CHUNK CRUSHED
DEL MONTE PINEAPPLE 4... NO. 211 CAN
HAWAIIAN PUNCH ROSEY RED 3... 46 oz. CAN

SHILLINGS PURE
BLACK PEPPER 4 oz. CAN **39¢**
VANILLA SHILLINGS PURE 2 oz. BTL. **49¢**
JELLO ASST. FLAVORS 3 oz. PKG. **10¢**
BROTH SWANSON CHICKEN 14 oz. CAN **19¢**
CHERRIES SHURFINE MARASCHINO 4 oz. CAN **29¢**

MARSHMALLOW
CREME HIP-O-LITE 9 oz. CRTN **25¢**
HERSEY
CHOC. CHIPS 6 oz. PKG. **25¢**
KRAFT MINATURE
MARSHMELLOWS 10 1/2 oz. PKG. **25¢**
SHELLED
PECANS LEONARDS NEW CROP 10 oz. PKG. **98¢**
PECANS ELLIS 6 oz. PKG. **69¢**

CHRISTMAS FIXINGS

IMPERIAL C&H OR HOLLY
SUGAR
57¢
5-lb. BAG.

SHOP United

NORTHERN TOWELS
PAPER TOWELS
25¢
JUMBO ROLL

WE GIVE **S&W** GREEN STAMPS

CRISCO
79¢
3 LB. CAN

BLUE LAKE
GREEN BEANS VERTICAL PACKED 303 CAN **3**
ASPARAGUS ALL GREEN CUT 300 CAN **1**
PEAR HALVES BARTLETT 303 CAN **1**
SOFT OLEO MEADOWLAKE 16 oz. TUB **1**
BATH TISSUE SOFLIN ASST. COLORS 10 ROLL PKG. **79¢**
PEACHES WHOLE SPICED NO. 2 1/2 CAN **39¢**

SHURFINE
POTATOES SWEET WHOLE 303 CAN **4**
FRUIT COCKTAIL 303 CAN **1**
ORANGES MANDRIN 11 oz. CAN **1**
SWEET PEAS 3 Sv. 303 CAN **5**
GREEN BEANS CUT 303 CAN **1**

PLAY UNITED'S
BONUS SHIELDS
GET **1,000**
EXTRA **S&W** Green Stamps

Gold MEDAL
ENRICHED FLOUR ALL PURPOSE
5 LB. BAG
FLOUR
49¢

PILLSBURY
CAKE MIXES ASSORTED FLAVORS **3 FOR \$1**
GLADIOLA BLUEBERRY
MUFFIN MIX 10 OZ BOX **2 for 89¢**
300 CANS CRANBERRY SAUCE
19¢ Ocean spray **25¢**

Winterizing Irrigation Equipment Saves Problems & Repairs

A little effort in winterizing irrigation equipment can save problems and repairs next season, says Wayne Keese, Extension agricultural engineer at Texas A&M University. He advises producers to cover the discharge pipe of turbine pumps to keep rodents out and store portable pumps with other machinery. Water should be drained from centrifugal pumps to prevent freezing and rusting; and the openings

should be covered with canvas or tarpaulin to keep out dirt and leaves. Gearheads should be drained while warm and then refilled with rust-preventive turbine oil. Lubricate drive shafts and store drive belts in a cool, dry place. Aluminum pipe should be stacked on inclined racks to prevent damage by high winds and to provide drainage and air circulation. If the pipe is left in the field for the winter, be sure to have the section completely drained and protected from possible wind damage. Sprinklers and risers should

be removed and inspected with a drill bit to check for wear. After separating the sprinklers with broken springs and worn bearings or nozzles, store the usable ones in boxes or bins. Remove the rubber gaskets on portable pipe and inspect them for cracks or other signs of damage. Store the usable gaskets in a dry place protected from rats, sunlight and petroleum products. Do not hang the gaskets on a nail or wire because they will lose their shape. Put rodent screens on the openings of electric motors and seal conduits and circuit boxes; but do not use material that

cuts off circulation and causes condensation of moisture. Change the oil and filter on engines; then run the engine to circulate the fresh oil. Either drain the cooling system and block or use an ethylene-glycol base permanent anti-freeze. Pour about two tablespoons of engine oil into each spark plug hole and turn the engine over a few times to spread oil over the upper part of the cylinders; then replace sparkplugs. Remember to cover the exhaust pipe and crankcase breather to prevent moisture entry. Make sure the batteries are fully charged and then store in a dry place. Shut off and drain fuel lines and drain the

carburetor. On liquid petroleum gas engines, drain the vaporizer-regulator fuel and water lines. Keese adds that now is the time to order replacement parts instead of next season when you need to use the irrigation equipment.

T. V. Repair Color or Black and White

ALL MAKES AND MODELS

SERVICE CALLS MADE SAME DAY YOU CALL

Financing on repairs of \$25.00 or more available in you qualify.

J & L Electronics

305 E. Third

"HAVE TUBES----WILL TRAVEL"

569-1628

Mama Underwood's

FRIED CHICKEN

Big buckets include 12 pieces of delicious chicken with gravy and rolls. **\$2.69**

UNDERWOOD'S PIT BAR-B-Q

Parker Plaza

Wright's Brand

DRY CURED SMOKED

HAMS 49¢

SHANK PORTION LB.

BUTT OR WHOLE lb. 59¢

DELICIOUS A GRADE

TURKEYS

16 TO 22 LBS. AVERAGE

35¢

Honey Suckle WHITE TURKEYS

PRIME 10-TO 20 LBS. AVG.

LB. 49¢

SWIFTS PREMIUM

HAMS

Boneless! Fully Cooked! 3 LB. CAN \$2.98

5 LB. CAN \$4.69

UNITED OR SWIFT'S PREMIUM

BACON

1-LB. PKG. **59¢**

ROUND STEAK

SWIFT'S PREMIUM PROTEN LB. **87¢**

GROUND BEEF FRESH 100% ALL BEEF LB. **49¢**

RUMP ROAST SWIFT'S PREMIUM PROTEN LB. **87¢**

RIB STEAKS SWIFT'S PREMIUM PROTEN FINE FOR BROILING LB. **87¢**

BAKING HENS 5 TO 6 LB. AVERAGE LB. **45¢**

WHOLE FRYERS SWIFT'S TENDER GROWN CUT-UP LB. .35 LB. **29¢**

UNITED...where people who like to eat, like to SHOP!

Farm Fresh United Produce

FRESH TEXAS NEW CROP FULL OF JUICE

ORANGES 5 LB BAG **29¢**

FRESH NOI RUSSETT

POTATOES **29¢**

FRESH CRISP CARROTS 16 oz. CELLO BAG **9¢**

FRESH COCONUT LARGE SIZE **25¢** EACH

CHERRY RED RADISHES OR FRESH GREEN ONIONS BUNCH **9¢**

UNITED SUPER MARKETS

WE GIVE 87¢ GREEN STAMPS Double STAMPS WED. with PURCHASE of \$2.50 or more

WE GIVE 87¢ GREEN STAMPS

PRICES IN THIS AD GOOD THRU DEC. 20

**Maj. Deviney Receives
Mertorius Service
Medal Monday**

SHEPPARD AFB, TEXAS--
Maj. Alton H. Deviney, heli-
copter instructor pilot with
Sheppard's 3630th Flying Train-
ing Wing, Deputy Commander

for Operations, Helicopter
(DCOH), received the Merit-
orious Service Medal Monday
in ceremonies at DCOH.
Making the presentation was
Lt. Col. Charles O. Smith, de-
puty commander for Operat-
ions, Helicopter.
Major Deviney distinguished
himself in the performance of
outstanding service to the Uni-
ted States as base operations
officer and wing helicopter pi-
lot, 6100th Support Wing, Tach-

ikawa Air Base, Japan, and as
base operations and training
division administrative officer
and wing helicopter pilot with
the 347th Fighter Wing, Yokota
Air Base, Japan, from Nov. 6,
1967, to July 27, 1970.
The citation read, "Major
Deviney's professionalism,
wide ranging expertise, and de-
votion to duty contributed sig-
nificantly to the mission of the
6100th Support Wing and the
347th Tactical Fighter Wing..."

TAKE THE GUESS WORK OUT OF GIFT BUYING

GIFT CERTIFICATE
Manhattan
DEPARTMENT STORE

To _____

Present this Certificate to us for merchandise of your selection
to the value of _____ Dollars

With all good wishes from _____

No. _____ AUTHORIZED BY _____

STORE HOURS - OPEN 8 a.m. - 8 p.m.
EVERY NIGHT UNTIL CHRISTMAS!

WE GIVE  GREEN STAMPS

Manhattan
DEPARTMENT STORE


WE GIVE  GREEN STAMPS

Christmas Suggestions

Photo Albums
Vinyl Legal Pad Holders
Parker Desk Pen Sets - Black & Walnut
by Eldon
Esterbrook Desk Pen
Pocket Pen & Pencil Sets by Cross
Gold and Chrome
Kreislner Pocket Pens, 12K Gold
Attache Cases - Excellent for the
College Student
Dymo Labelmaker
"Seewell" Hi-Power Reading Glasses
Success Desk Calendars
& 1971 Refills for your present rack
Autopoint Date-Blocks
-- Perpetual Desk Calendar
Eaton's Address & Appointment Books
1 Kohinor Drawing Pen Set
Desk Blotter & Pad - Doodle Pads
Tensor Lamps
Pencil Cups for the Desk
1 Eldon 5-Piece Decorator Desk Pack
1 Late Model Royal Upright Typewriter

Roark Office Supply

Gifts UNLIMITED



Please
Everyone
ON YOUR
Christmas
List

**BREEZE THRU
CHRISTMAS
SHOP
EARLY**

DRUG CORNER STORE
PRESCRIPTIONS

320 East Third St. Phone 569-2251

Every "Body" needs a "SLIM-GYM"
EVEN ME!

TRIM INCHES
Relieve Tension
FEEL AND LOOK BETTER

Give Health This Christmas - Order Today
Pat Leeper Slim-Gym Dealer 569-1929



Christmas Shop
Where You Can
TRADE
For A New or Used Gun
The Gun Shop

Christmas Gifts
1/3 to 1/2
Off Dresses

Ladies, Junior & Jr. Petite

Famous Brand Hose 89c

Good Selection of Pant Suits and
Dresses for the perfect Christmas
Gift.

Barbara's Fashions
Park Plaza



**Mathis Chevrolet-Pontiac-Oldsmobile
IS BACK IN BUSINESS**



**New 1971 Chevrolets, Pontiacs, & Oldsmobiles
Are Arriving Almost Daily**

 JIM GOFF	 PHIL TRIGONA	 WALLACE COLEMAN	 JAMES STANDLEE	 MARVIN WILBURN
 BOB HOUGE	 JERRY KEMP	 T. C. PARKER	 DAVIS KELLEY	

The No. 1 Team





Expressway at Sheppard Drive Burkburnett, Texas 569-3881
OPEN EVENINGS TIL 8 PM

UNBEATABLE STAMPS and UNBEATABLE PRICES ... GET THEM BOTH EVERYDAY at PIGGLY WIGGLY!



UNBEATABLE PRICE
CRANBERRY SAUCE
Ocean Spray or Carol Ann, Jelly No. 300 Can
23¢
PLUS STAMPS

UNBEATABLE PRICE
7-Up or Pepsi Cola
10 Ounce Bottles Plus Deposit 6 Bottle Carton
39¢
PLUS STAMPS

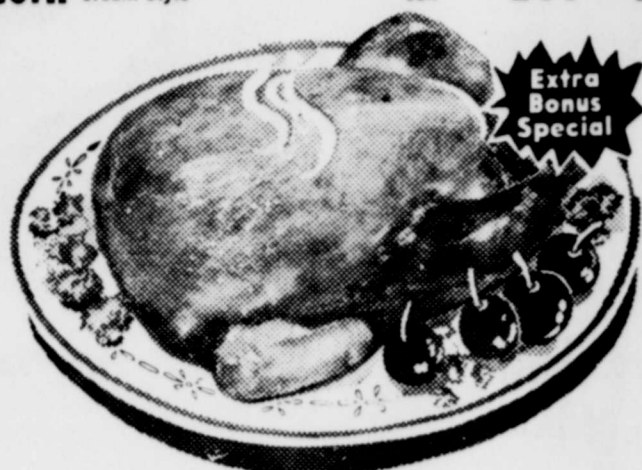
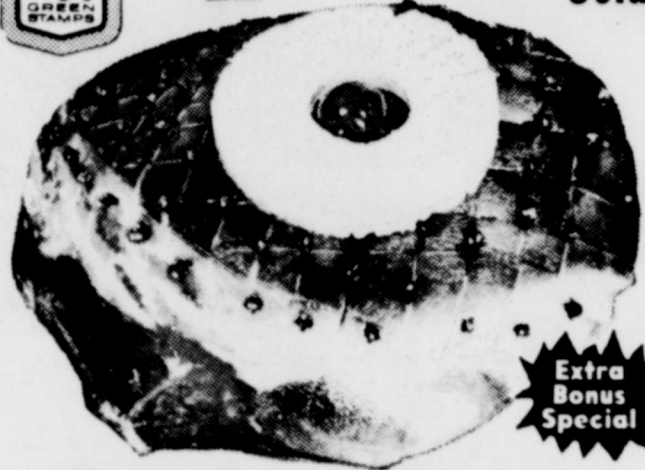
UNBEATABLE PRICE
GREEN BEANS
Carol Ann, Whole, Blue Lake
25¢
PLUS STAMPS

UNBEATABLE PRICE
FRUIT COCKTAIL
Del Monte, Choice Fruits No. 303 Can
23¢
PLUS STAMPS

Marshmallows Kraft, Jet Puff 10-Ounce Package **23c**
Golden Corn Carol Ann, Whole or Cream Style No. 303 Can **20c**

Paper Napkins Kleenex Deep Tone 140 Count Package **29c**
Buttermilk Bell's, Quality Chek 1/2-Gallon Carton **49c**

Chip Dips Bell's, Assorted 8-Ounce Cup **41c**
Sour Cream Bell's, Quality Chek 8-Ounce Cup **41c**



More Low Prices!

Margarine Kraft Parkay, Corn Oil Pound Carton **47c**
Crescent Rolls Pillsbury's, Dinner 8-Ounce Can **38c**
Biscuits Pillsbury's, Flaky, Buttermilk or Sweetmilk 4-Ounce Cans **14c**
Butterflake Rolls Pillsbury 8-Ounce Can **38c**
Instant Coffee Folger's, Crystals 6-Ounce Jar **\$1.10**
Waffle Syrup Log Cabin, Country Kitchen 36-Ounce Bottle **79c**

BONUS
100 EXTRA S & H Green Stamps
With \$5.00 Purchase or More
OR 200 EXTRA S & H Green Stamps
With \$10.00 Purchase or More
OR 300 EXTRA S & H Green Stamps
With \$15.00 Purchase or More
—Excluding Beer & Cigarettes
Coupon Expires 12-22-70
Redeemable only in Piggy Wiggly stores operated by Shop Rite Foods, Inc.

Baking Hens Swift's Premium, 5 to 7 Pound **43c**
Farmbest, Lean Boneless Fully Cooked
Canned Hams 3 Lb. Can **\$2.99**
Farmer Jones For Your Favorite Recipe
Cheese 8oz. pkg. **33c**
Roast Loin Half 5 to 7 Pound Average **59c**

Hams Decker's Hickory Smoked 16 to 20 Pound Average Shank Half or Whole **55c**
Turkeys Buttergold U.S.D.A. Grade A 10 lb. AND up **49c**
Duckling Tyson's Pride, U.S.D.A. Grade A 3 1/2 Lb. Average **59¢**

Cooked Hams Rath's Black Hawk Half or Whole 12 to 15 Pound Average **69c**
Tyson's Pride For that Extra Giblet grave
Chicken Livers 8 oz. etc. **39c**
Rath's Chef Prepared Lean Boneless Fully Cooked
Baked Hams 8 to 10 lb average Half or whole pound **\$1.39**
Fresh Louisiana Select Excellent for Dressing
Oysters 12 oz. Jar **99c**

Compare these Unbeatable Bargains

Hi-Ho Crackers Sunshine 16-Ounce Box **49c**
Purex Bleach Liquid, 4c Off 1/2-Gallon Bottle **35c**
Trend Detergent Powdered 2-Pack Package **45c**
Baggies Food Wrap Bags 50-Count Package **79c**
Mandarin Oranges 24c
Maraschino Cherries Towie, Red 8-Ounce Jar **49c**
Stuffed Olives Towie, With Pimentos 5-Ounce Jar **49c**
Corn Chips Farmer Jones 49c Size **39c**
Ripe Olives Libby, Family Pitted No. 300 Can **53c**
Sweet Crispy Pickles Rainbo 12-Ounce Jar **53c**
Sweet Relish Heinz 9-Ounce Jar **33c**
Miracle Whip Kraft, Salad Dressing Quart Jar **53c**
Hunt's Catsup Family Size 32-Ounce Bottle **59c**
Dog Food Friskies All Flavors 15 1/2 Ounce Can **12c**

Unbeatable Frozen Foods!

PUMPKIN PIES Morton's 20-Ounce **25¢**
Silverdale
Green Peas 10-Ounce Package **20c**
Birdseye
Orange Plus 9-Ounce Can **54¢**
Kounty Kist
Cut Corn 20-Ounce Bag **39c**
Trophy
Strawberries 10-Ounce Package **24¢**
PIE SHELLS WELDON'S 4 Pack of 2 **\$1**

UNBEATABLE PRICE
CANNED YAMS
Sugary Sam, Louisiana No. 3 Squat Can
25¢
PLUS STAMPS

UNBEATABLE PRICE
INSTANT POTATOES
Carol Ann, Mashed 15-Ounce Package
39¢
PLUS STAMPS

UNBEATABLE PRICE
PAPER TOWELS
Kleenex, Deep Tone or Print Jumbo Roll
39¢
PLUS STAMPS

UNBEATABLE PRICE
MINCE MEAT
Borden's, None Such 18-Ounce Jar
39¢
PLUS STAMPS

UNBEATABLE PRICE
PITTED DATES
Bordo, For Holiday Baking 16-Ounce Package
49¢
PLUS STAMPS

Unbeatable Produce!

APPLES Golden Delicious, Washington Extra Fancy Pound **19¢**
POTATOES Russets, All Purpose 5-Pound Bag **29¢**
Parsley California, Large Bunches Each **9c**
Artichokes California, Large Size Each **25c**
Brussels Sprouts 1-cup **39c**
CELERY ea. **19c**
ORANGES Texas Juicy lb. **10c**
Bananas Golden Ripe Pound **10c**

Non Food Specials!

PEPTO BISMOL Liquid, Manufacturer's Suggested Price \$1.09 **79¢**
8-Ounce Bottle
Manufacturer's Suggested Price \$2.19
Chocks Vitamins Bottle of 60 **\$1.69**
Liquid Cleanser, Manufacturer's Suggested Price \$1.19
Moisturelle 6-Ounce Bottle **89c**
Regular or Mint, Manufacturer's Suggested Price \$1.05
Crest Dental Cream Family Size **79c**
Shave Lotion, Manufacturer's Suggested Price \$1.29
Aqua Velva 6-Ounce Bottle **97c**
Hair Set Gel, Regular, Super or Blonde, Manufacturer's Sugg. Price \$1.35
Dep 12-Ounce Size **87c**
Chocolate Laxative Manufacturer's Suggested Price \$1.25
EX-LAX Package of 48 **99c**



Shop Rite...Shop Piggy Wiggly!

**Why Not Get Her
A Gift From
Helen's House Of Hallmark?**



Merle Morman

Wigs

Cosmetics

Perfume



Decorator Candles

Candle Wreaths

Candle Holders

Helen's House Of Hallmark

Downtown Burk Burnett

**Higher Horsepower
Needed For Electric
Motors On Farms**

As farm units become larger, the need for higher horsepower electric motors increases as operators continue to try and find replacements for needed labor.

But, points out W.S. Allen, Extension agricultural engineer, there are some problems associated with the farm use of large motors of 10, 20, 30 or higher horsepower. First, he says, there is likely to be only a single phase power line close-by. Uncontrolled use of large motors on single phase lines might cause a severe drain of amperage from the line and thus affect the supply of electricity to many people, explains the engineer.

The objectional characteristic of commonly-used electric motors is high starting current, which may be as much as five times the running current, notes Allen. In some cases, phase converters have been used to operate large three-phase motors on single phase lines. Even in this case, he says, the power supplier must consider how the use of large equipment will affect other people served by the line. Recently, notes Allen, some large single phase motors have been developed to overcome the objections of commonly-used electric motors. They are used for special operations such as crop dryers or other easy to start loads. The characteristics of these high horsepower single phase motors are their low starting current and low starting torque.

With a low starting current, they do not put a high instantaneous drain on the line. With the low starting torque, they will not start a load which requires considerable starting power.

Farmers who may need a high-power electric motor and automatic control should, suggests Allen, check with their power supplier to make sure that one of the new single-phase higher horsepower motors can be used for a particular job.

Pre - Christmas Sale Continues

Men's Sports Coats
Men's Suits



Come By And Check
Our Reduced Prices

Check Our Large Selection
Of Shirt & Tie Coordinates
For That Special Christmas Gift

Ladies Dresses
& Coats



We Will Be Open Until 8:30
Each Night Until Dec. 23

WE WILL CLOSE AT 6:00 p.m.
Christmas EVE

All Christmas Lay-away Must Be
Picked Up No Later Than 6:00
p.m. Dec. 24

We will be closed December 26th where our employees can have a longer Christmas

THE Famous Downtown Burk
DEPARTMENT STORE

TRIPLE 'D' DISCOUNT Center

Three Of Santa's Top Helpers
OPEN UNTIL 8:30 SAT & WED.

100's ANACIN \$1.59 Value **87¢**

Deep Heat 98¢ Value **57¢**

Alka Seltzer Plus 98¢ Value **63¢**

Schick Aersol Shave Cream 79¢ Value **29¢**

Rockinham Triger Mugs 97¢ Value **83¢**

Scotch Pine Xmas Trees \$9.95 Value **\$6.97**

Panty HOSE 99¢ Value **53¢**

Kindness Underarm Shaver **\$8.88**

Colgate \$1.03 Value **67¢**

Ice Blue Sets Aqua Velva \$1.78 Value **\$1.17**

Maalox \$1.59 Value **93¢**

250 mg. Vitamin C \$1.29 Value **77¢**

Baby Go Bye Bye \$11.97

Claroil Loving Care \$2.00 Value **\$1.19**

Chilton Aluminum Oval Roaster \$4.95 Value **\$2.97**

Cookie Cutters 10¢ Value **05¢**

Wind Breakers \$4.95 Value **\$3.98**

Men & Women Vinyl Raincoats \$2.49 Value **\$1.83**

Fur Trim Ladies House Slippers \$2.99 Value **\$1.96**

J & J Baby Powder \$1.19 Value **73¢**

White Rain Shampoo \$1.09 Value **73¢**

with Traning Wheels Mini Byke **\$10.77**

Stereo Albums \$4.98 Value **2 \$6.00**

Color Pk. Carring Cases **\$4.77**

Color Pk. II Camera \$29.95 Value **\$19.88**

TRIPLE 'D' DISCOUNT Center

Shop & Save

CHILDRESS - BRECKENRIDGE - BOWIE
BURKBURNETT - MEMPHIS - BRIDGEPORT
GRAHAM - BONHAM - CUSHING