

BURKBURNETT

INFORMER STAR

MORE THAN A NEWSPAPER . . . A WICHITA COUNTY LEGEND SINCE 1908 . . .

VOLUME 64

BURKBURNETT, WICHITA COUNTY, TEXAS 76354

THURSDAY, FEBRUARY 3, 1972

NUMBER 22

Editor's Viewpoint



RAYMOND GREENWOOD

I ran across the following in the Graham News recently and I suspect that it fits just about all newspapers, I know that at one time or another we have heard these questions here at the Informer/Star. "Please put it on the front page."

"Use the story just as I have written it. The club wants it that way for the scrapbook."

"How come it wasn't in the paper? It was? Well I didn't see it. Will you please go through the back copies and tear it out for me?"

"We voted to make you our club publicity chairman."

"I know you have a deadline, but couldn't you just squeeze this little item in?"

"My husband has never been in trouble before, so I don't think his name should appear in the paper for drunk driving and hitting that nasty policeman. Besides, he had only a couple of beers. And there are the children to think about."

"My uncle's brother is one of your biggest advertisers, and I was wondering if..."

"You ran the car wreck picture, but you didn't run my first wedding anniversary picture."

"If there wasn't any room for the other picture, why couldn't they run it on another page?"

"I know that this is a public meeting, but I would like to talk off the record."

"I'm in the market for some used furniture. Is there any way I can get the classified section Tuesday night?"

"I'm opening a new business and I'd like to have a story on it in the society section. I can't afford any advertising right now."

"I want to read the story before you publish it."

A letter published in the Hyatt, Missouri, Herald makes this point and illustrates, as the editor put it, "...one of the better days in the life of a weekly newspaper publisher."

The letter says, "Dear Editor: Please send me a free copy of your newspaper containing the obituary of my aunt. Also publish the enclosed clipping of the marriage of my niece. And I wish you would mention in your column, if it doesn't cost anything that I have two calves for sale and that our church is having a chili supper Friday night and the tickets are only 75 cents. As my subscription has expired, please stop the paper as I can't waste money on newspapers. Ex-Subscriber."

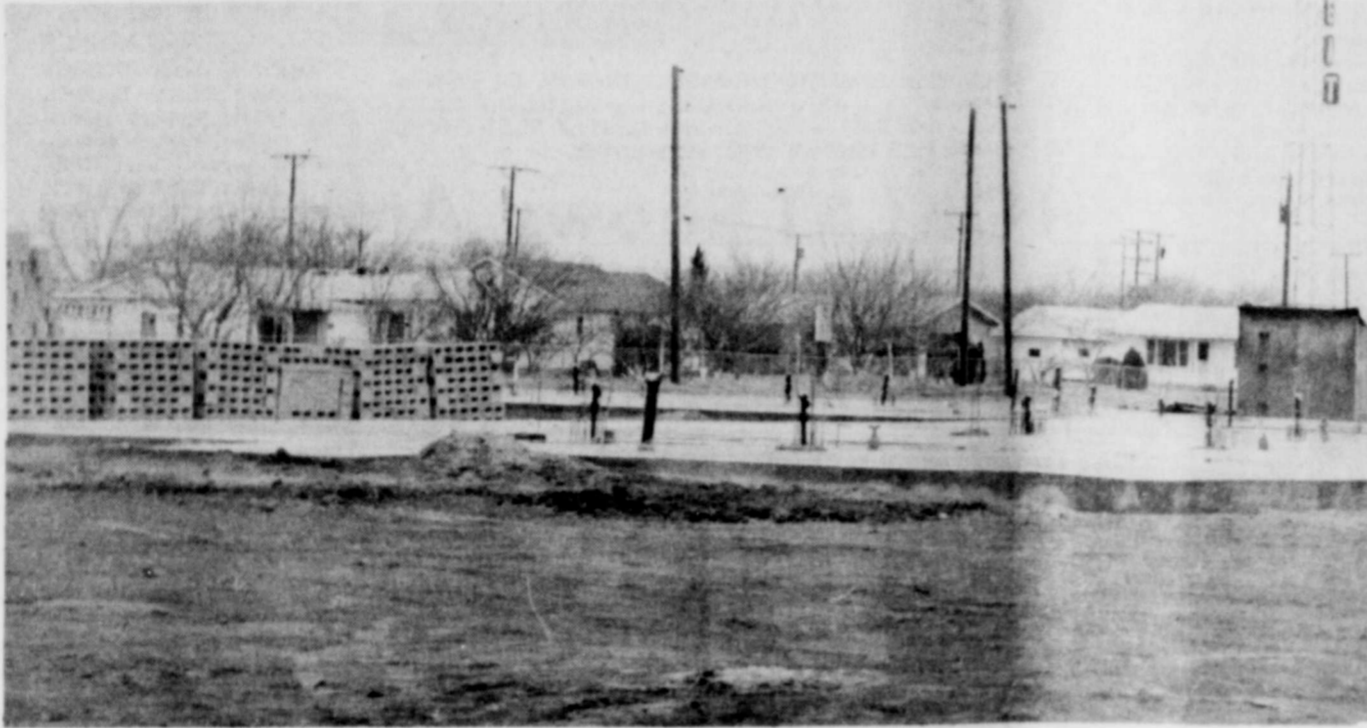
Little League Registration Begins Sat.

Little league registration begins this Saturday at 12:00 noon at Hayes Field according to J. E. Larson, player agent. Registration will be held from 12:00 until 4:00 p.m. on each of the first Saturdays of this month--Feb. 5, Feb. 12 and Feb. 19.

All boys in ages from 6 years through 18 are urged to register.

Boys who do not sign up on these dates will be handled by the player agents. J. E. Larson will serve as player agent for boys 8 through 12 years of age and Dink Hudson for boys 6 to 8 and boys 13 through 18 years of age.

The week of February 27 will be spent in arranging boys to age groups and getting them See BASEBALL, Page Two



WORKED STOPPED AT PRESENT--Work progress on the Hickory Elm Convalescent Center has stopped or at least proceeding slowly due mainly to unsatisfactory weather. The

new home which is owned by Grady K. Stowe of Wichita Falls is expected to reach completion near the first of July.

Initial Registration Figure Low For County

Although the final total of the initial registered voters for 1972 wasn't available late Tuesday afternoon, it was estimated by Bill Carnes, Wichita County Tax Assessor-Collector, that the total would fall into the

38,000-40,000 category.

If this figure is accurate then it will fall short of the 55,447 registered voters in Wichita County during the 1972 elections that the county Democratic executive committee had set as their goal. Monday

was not, however, the final day for voter registration for this year--only the final day for registration on the initial list.

Bob Bullock, secretary of state, reported earlier this week, "Voter registration will not cease on Jan. 31, as it has in the past years. Those persons who have registered by that time will appear on the initial list of registered voters. Those persons registering after Jan. 31 will appear on supplemental lists, which will be prepared 20 days prior to an election."

"Every person who submits an application to the Tax Assessor-Collector or a duly appointed deputy at least 30 days prior to an election will appear on either the original or supplemental lists which will be sent to the polls," Bullock stated.

None Injured In Four Car Accident Mon.

A four car accident at the intersection of Kramer and Comanche Monday afternoon produced no injuries but considerable damage to the vehicles involved.

David D. Stockwell of 204 B Thor Sheppard AFB, driving a 1959 Rambler, reportedly came off Comanche and lost control of his vehicle. The Stockwell vehicle went across Kramer and hit a parked 1969 Chevrolet owned by Rosa J. Gregory of 907 Mimosa. The impact knocked the Gregory vehicle into a 1971 Maverick owned by Opal S. Kennedy of Burk Burnett, which in turn was pushed into a 1971 Ford LTD owned by Pauline W. Smith of Wichita Falls. Both the Kennedy vehicle and the Smith vehicle were also parked.

Damages to all vehicles involved was expected to be nearly \$1500. It was reported that the accelerator on the Stockwell car stuck and its driver lost control of the vehicle.

The only other accident of the week occurred Tuesday morning at the intersection of South Ave. D and Williams Drive.

The 1965 Volkswagen driven by Stephen J. Rarabaw of 706 Sycamore was travelling west on Tidal Street and was entering Williams Drive when it was hit by the 1965 Chevrolet driven by Sue A. Beaver of 213 Beech. The Beaver vehicle reportedly was traveling east on Williams Dr. making a left hand turn on to South Ave. D and failed to

See POLICE, Page Two

No Longer Stand In Line For Vehicle Tags

You don't have to stand in line anymore if you don't want to in order to register "Old Betsy" --or whatever you call the faithful family car.

Texas motorists can get their 1972 license plates by mail if they send in the three-part renewal form, the registration fee and one dollar to their county tax officer prior to March 1.

This allows for the 30 days that are necessary for the application to be processed and the license plates delivered before the April 1 deadline. The plates themselves became available at the tax office or the sub station in the Burk Burnett Chamber of Commerce office Tuesday.

If the motorist prefers, he may register his vehicle in person by taking the handy three-part form to the county tax office. It takes the clerk only a fraction of the time it used to take to process the form, collect the fee and send the motorist on his way with new plates.

Whether the driver uses the mail or applies for his license in person--the important thing for him to remember is to be very careful NOT to separate

the three-part application form.

Even though the three-part renewal form carries the warning DO NOT Separate or Detach Any Parts of This Notice" in large letters on the reverse side, some motorists do just that.

Department officials stress that the entire form must be mailed in or brought to the county tax office or substation. A stick down strip showing the new license number is attached to all sections of the form and then the tax office separates the form, returning the license receipt to the owner.

Applications for license plates should only be sent to the county tax office. Motor-

ists should NOT send their

payments to the Texas Highway Department because this will delay their registration.

During the month of March, it will be necessary for owners to apply in person at the county tax office or substation to obtain the 1972 license plates. In any event, owners will save themselves time and trouble by using the new computerized forms in this third year under the new system.

With the form, a certificate of title and last year's registration receipt is not needed.

So register now and display your new plates. This will remind your neighbor it is time for him to do the same.

First Meeting Of Year Mon. For Local CofC

The Regular Monthly Chamber of Commerce Luncheon will be held Monday in the new Community Center Building at 12:30 Noon.

The program for this meeting will be brought by the Community Development Committee and will feature representatives of the North-Central Girl Scout Council. Senior Scout, Rhonda Mickelson, will speak on the basic scouting program and what scouting has meant to her. Rhonda is a senior in high school, is a member of the Council's Board of Directors and works with the Program Committee.

A short summary on what her troop has been doing will

be given by Miss Debbie Osborne, a Senior Girl Scout from Troop 70 in Burk Burnett.

The young ladies will be introduced by Mr. Edward McRae, who is Public Relations Director for the North-Central Council and also serves on its Board of Directors.

Mrs. Edward McRae, President of the Council since March, 1971, will be available to answer any questions which might be asked by those present.

"Make plans now to attend. Price per plate will be \$2.50. This increase in price is due to an increase in facility rental and change in cooks," stated a Chamber official.

Show Date Feb. 26 For Local Assn.

The Burk Burnett Jr. Livestock Association will hold its annual Jr. Livestock Show Saturday, February 26. The show will be financed by the Association from the sale of annual membership cards which entitle the holder to a vote in all meetings and to be eligible to serve as a director of the organization.

These membership cards sell for \$5.00 each and may be purchased from any of the following: The Burk Burnett Chamber of Commerce office, either of the local banks or from any of the listed Association Directors: Charles Goins, James Roderick, Willie Morton, Frank Morton, Jack Aaron, Vernon Duncan, Floyd Marten, Bill Darland, Jake Fite or James Easter.

There will be approximately 100 animals in competition for top honors in three major classes: Barrows, Lambs and Steer. Trophies will be awarded to the Grand Champion of each division, with a showmanship award to the best showman in each class.

Registration applications of 17-year-olds who will be 18 in 1972 are also being taken.

New Telephone Books To Go Out This Week

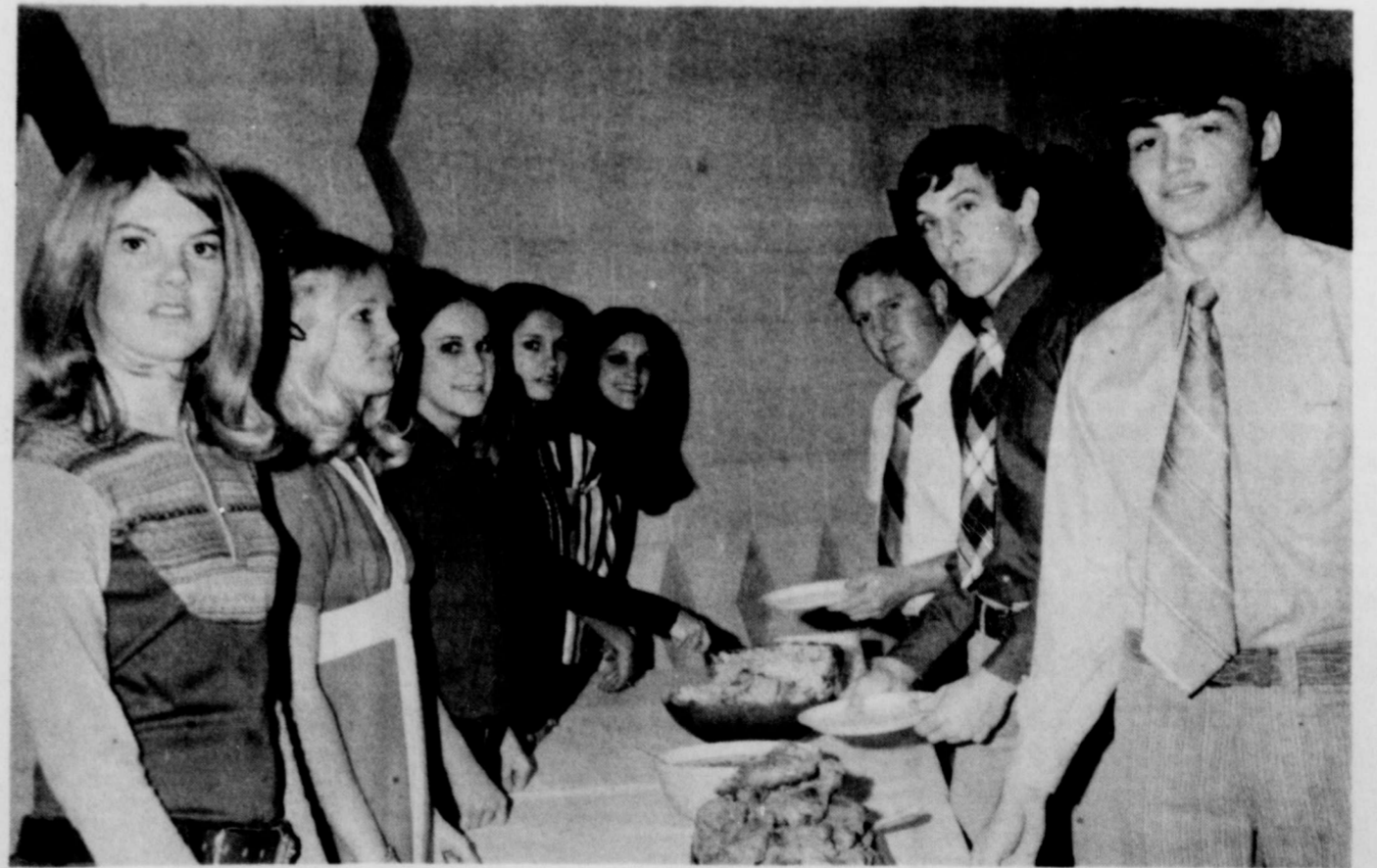
Southwestern Bell's latest contribution to the literary world, the 1972 Burk Burnett Telephone Directory, will begin making its appearance here this week along with the Wichita Falls telephone directory.

Featured on the cover of the colorful book is a painting by Dallas artist Bud Biggs. The picture depicts a typical, early-day Texas ranch complete with barbed-wire fence and a windmill in the background.

Along with Burk Burnett listings, users will find listings for telephones in Devol and Randlett, Oklahoma also included in the directory.

"The new book contains over 3,900 alphabetical listings and 40 pages of classified or "yellow page" listings," noted C. A. (Dub) Deuschle, manager for Southwestern Bell.

The directory provides information which will enable Burk Burnett customers to See TELEPHONE, Page Two



HONOR THE TALENTED--The Jr. Varsity Cheerleaders honored the Jr. Varsity Basketball team with a fried chicken lunch Saturday in the Reddy Room. The boys, except for one loss to Rider in tourney play, boast of an unbeaten season

thus far. Shown above (clockwise) Cheerleaders: Judy Frye, Teresa Sossaman, Donna Bankhead, Connie Dolan and Debbie Fleming; Coach Cecil McCoy, and Danny Nix and Larry McMahlili, two of the players of the squad.

Obituaries

A.H. "Andy" Bazell

A. H. "Andy" Bazell, 76, a resident of Burkburnett since 1920, died Saturday in a Wichita Falls hospital. Services were Monday in Owens & Brumley Funeral Home with the Rev. William Penn, pastor of the First United Methodist Church, officiating. Burial was in the Burkburnett Cemetery. Bazell, a retired supervisor for Skelly Oil Co., was born Jan. 29, 1896, in Dauphin Island, Ala. He was employed by Skelly 38 years. Survivors include a step-son, Fritz Ladd of Wichita Falls; a step-daughter, Mrs. Vivian Hayes of Burkburnett; two sisters, Mrs. Katie Stine of Mobile, Ala., and Mrs. Mary Bosarge of Bayou La Batre, Ala.

Southside Elem. HONOR ROLL

- GRADE 3
 Section 1, Skipp: Jackie Alexander, Terry Boswell, Diana Chavis, Robert Collins, Kelly Easter, Shirley Froman, Kathy Fullerton, Cheryl Heptner, Tamara Hill, Trach Hudson, Scott Lowry, Mary Robinson, James Schmitker, Penny Wineinger.
 Section 2, Nitzel: Alvey Tiffany, McGrath
- Section 2, Koller: Maura Dennis, Billy Eanes, Keith Easter, Heather Good, Chris Hanks, Nancy Hennis, Marion Umah, Robert Thibodeau, John Burtt.
 Section 3, Steele: Tommy Darland, Todd Dillard, Thomas English, Rocky Hatcher, Greg Hrazdil, Kelly Krauss, Terry Moore, Becky Reed, Kathryn Schroeder, Lynda Weiss.
- GRADE 5
 Section 1, Talliferro: Tamara Darland, Kol Garland, Eddie Greschel, Rodney Horn, John MacPherson, Duncan McCall, Jeff Oliver, Ted Robertson, Jon Schmitker, Jeanne Shirley.
 Section 2, Gariand: Fred Anderson, Krista Grant, Brenda Nelson, Malinda Mullins.
 Section 3, Fore: Susan Ballis, Brenda Chancellor, Michele Mead, Joel Flake, Dwain Rutledge, Dianna Wilson.
- GRADE 4
 Section 1, Owen: Julie Egan, Dana Donberger, Brian Patterson, Royce Slayden, Shirley Sparlock, Blinda Wilson.

Informer-News Corporation, Publishers
 Raymond Greenwood, President-Publisher

Entered as second class matter at the Post Office at Burkburnett, Texas, 76354, under the Act of March 30, 1879.

SUBSCRIPTION RATES
 \$5.00 per year in Wichita, Cotton, Tillman Counties
 \$6.00 per year elsewhere

NOTICE TO THE PUBLIC: Any erroneous reflection upon the character, standing or reputation of any person, firm or corporation, which may appear in this newspaper will be gladly corrected as soon as it is brought to the attention of the publisher.



Accident

Continued from page one

And I can't believe it either. Please don't bury me! I'm not dead! I have a lot of living to do! I want to laugh and run again. I want to sing and dance. Please don't put me in the ground. I promise if you give me just one more chance, God, I'll be the most careful driver in the whole world. All I want is one more chance. Please, God, I'm only 17.

Memo: Reprinted from the Tiger Tattler school paper in Lawrence, Kansas.

Telephone Baseball

Continued from page one

make even better use of their telephone service. In addition to emergency listings for fire, police, sheriff and ambulance services, the directory contains an alphabetical index to its "yellow pages" classified section and a complete call guide for placing local and Long Distance telephone calls. Deuschle pointed out that using the directory to look up unknown numbers makes sense. It is faster than calling directory assistance and aids Southwestern Bell in holding down the cost of providing service.

Continued from page one

ready for the draft try outs, stated Larson. All teams are expected to be ready for practice the last week in March. For further information regarding the signing up of boys you can contact either J.E. Larson at 569-2500 or Dink Hudson at 569-3954.

Police

Continued from page one

yield right of way. No one was injured in the accident. In other police activities, Chief Abbott reported only routine duties occurred.

TEEN TALK

By Laura Allison

One of the biggest honors a student can receive in high school is to be selected by the faculty as a member of the National Honor Society. Each student's selection is based on service, scholarship, leadership, and character. The Burkburnett High School Chapter of NHS, besides being a scholastic club, is a service organization. The NHS has participated in previous campus clean-ups and presents an academic assembly to the student body annually.

This year's program, which was presented Monday, January 31, was based on the Space Age. Thomas J. Hill, space science education specialist at Oklahoma State University, presented the program describing the NASA program. He explained that most of the actual rocket building is not done by NASA, but by private businesses. One of the most unusual and astounding explanations he gave was about the Saturn V rocket. The Saturn V, Mr. Hill explained, has 7 1/2 million pounds of thrust which equals 180 million horsepower. This equals one million automobiles or 154 Hoover Dams. The rocket stands 36 stories tall and weighs 6 1/2 million pounds. It seems almost too much to comprehend.

In conjunction with the National Honor Society, the National Association of High School Principals is giving two hundred \$1,000 scholarships to graduating seniors. The two students picked from Burk's Honor Society are Janice Harris and Mark Lax. These selections were made by the BHS principal and guidance counselors. They were based on the same requirements as membership into the NHS: Service, scholarship, leadership, and character.

We finally finished voter's registration at the high school January 31. The results were rewarding--164 registered voters in the high school alone. To an extent this shows how concerned the kids are. The real test will be to see how many registered voters vote.

Bulldogs Edge Iowa Park 67-65

Donald Patty and Skip Dean also added 10 apiece.

Essay Contest During Feb. At Library

Friends of the Library will sponsor an essay contest during the month of February. Essays must be on the subject of "ecology" and entrants from the sixth through the eighth grades will be classed in the junior division with ninth to twelfth graders in the senior division.

Essays may be turned in at the library any time from now to February 29. Savings bonds will be awarded as prizes in each division.

The Bulldogs were nearly overpowered by the Iowa Park Hawks last Tuesday night but pulled it out in the last quarter to win by a score of 67-65. The Hawks pulled out in front early in the game to have a 37-30 lead at the half, but were held to a 18-6 count in the fourth quarter by the determined Bulldogs.

Steve Creemeens led the 'Dogs with 21 points and Greg Leonard finished with 18. Skip Dean added 13 more.

Friday night the Bulldogs came back strong and completely out shot, out rebounded, out ran, and out played the Stephenville Yellow-jackets. By this 74-54 victory, Burk retains its bid for the second half title with a 2-0 record.

Steve Creemeens and Greg Leonard led the Bulldogs with 20 and 17 points in that order.



AMERICA'S LAST HUNTERS/SCAVENGERS, the coyotes, are featured in a minor role in the new Sun International release, "TOKLAT" -- a film with a GENTLE PLEA TO SEE THE ANIMAL'S VIEW OF THE WILDERNESS.

TOKLAT Shows At Palace Saturday

What's it like to make a wildlife movie where your production schedule is dictated by the whim of the animals you're filming? According to Gordon McLaughlin, young professional animal expert who worked with "Willie" the grizzly bear star of "TOKLAT", it's a lot like the military--hours of preparation followed by hours of waiting for the animal stars to "go their thing" and then a few frantic moments of camera hyperactivity.

TOKLAT was shot in the wilderness areas of Utah, Alaska and Wyoming, with the result that cameramen and directors hefting 60 to 80 pounds of equipment would have to chase their "stars" all over the wilds. What happens when the "stars" chase back? "With bears you run in a circle," says McLaughlin, "bears are not that fast and they'll tire after awhile" (or pick on something else, like the equipment--two complete cameras were devoured by Willie during the filming of "TOKLAT"). "With cougars", which appear abundantly in "TOKLAT", Gordon continued, "never turn your back on them, NEVER RUN--if he does attack, you must face the cat, crouch as low as you can, then get up and catch him by the tail." Try that some Sunday afternoon--no, better still don't--let Gordon McLaughlin do the dangerous work. You can see the results of "TOKLAT" coming Saturday to the Palace Theatre for one day only. Rated "G".

LIBRARY CORNER

New fiction takes a front seat this week. You have been waiting for Herman Wouk's new novel, THE WINDS OF WAR. We also have MESSAGE FROM MALAGA, by Helen McInnes; THE JUNGLE, by Charity Blackstock; and THE HEIRS OF THE KINGDOM by Zoe Oldenbourg. Mystery and science fiction buffs will find a few new titles too.

America's history is told in terms of its most significant houses in the American Heritage HISTORY OF NOTABLE AMERICAN HOUSES. Also, there is a companion volume, A GUIDE TO HISTORIC HOUSES OF AMERICA, which is a state-by-state compilation of virtually every historic house in the USA that is open to inspection. Visiting hours, owners, addresses, and brief descriptions of some 1800 houses are listed, with many illustrations.

LIFE AND DEATH IN THE CORAL SEA, by Jacques-Yves Cousteau, describes an underwater world of the Indian Ocean and the Red Sea.

Marianne Alreza has written the story of her twelve years in a harem. AT THE DROP OF A VEIL tells of an American girl married to an Arabian man and divorced by one sentence spoken before an official from the Saudi-Arabian consulate in New York.

DON'T YOU KNOW THERE'S A WAR ON?, by Richard R. Lingeman, is a portrait of everyday life in America in a time of national emergency. It is a classic of significant popular history--the time between Pearl Harbor and V-J Day.

Other non-fiction: YAZOO; INTEGRATION IN A DEEP SOUTHERN TOWN, by Willie Morris; MADAME--biography of Helena Rubinstein, by Patrick O'Higgins; and FORT SUPPLY, INDIAN TERRITORY, by Robert C. Carriker.

NOTICE

The Burkburnett Riding Club will have a business meeting Thursday night, Feb. 6, in the community room of the Burkburnett Bank beginning at 7:30 p.m. All members and other interested persons are encouraged to be present.



ENTERTAIN ROTARY CLUB--Beverly Riley, Carolyn Gray and Jerry Mosser, left to right, provided excellent entertainment for the local Rotary Club during its Tuesday meeting. The group presented a musical revue of "Funny Girl."



SHEPPARD AFB, TEXAS--EDUCATION OF THE RUNWAY--Capt. Arthur F. Michado, a helicopter pilot with Detachment 15, 43rd Aerospace Rescue and Recovery Service at Sheppard AFB demonstrates the diligence that earned him a bachelor degree. He recently received a degree in general studies with a major in English literature from the University of Nebraska at Omaha. (OFFICIAL USAF PHOTO)

Jr. Class Game Set For Tonight
 The junior class is sponsoring a basketball game starring the men faculty playing the KTRN Drizzling Drops. The women teachers will be featured as the cheerleaders. The game will be played this Thursday night at 7:30 p.m. in the high school gym. Tickets which are priced at \$1.00 for adults, 75¢ for students, and 50¢ for children under 12, are being sold by the junior class members at the door. The game is promised to be both exciting and hilarious.

Randlett Seniors To Feed Chili
 The seniors of Big Pasture High School will sponsor a chili supper Friday night in the school cafeteria from 5:00 to 7:00 p.m. The complete menu will include chili, beans, crackers, chocolate cake, coffee, tea, and milk. Tickets for the "all-you-can-eat" fest are 75¢ for children and \$1.00 for adults. The supper will serve as another money-raising project for the seniors' class trip.

Ag Tips
 FOOD-WASTE CHAIN--A small farm in Sydney, Australia is showing that an interlinked food-waste chain is possible, points out Dr. David Mellor, Extension poultry marketing specialist. The food cycle on the farm works its way down through turkeys, cattle, hogs, ducks and fish. The fish are finally ground up and fed back to turkeys and hogs. The farm annually produces 4,000 turkeys, 250 hogs, 25 head of cattle and 500 ducks on 10 acres of land. Poultry fits in well in the food-waste chain as the feed to food conversion for all poultry is among the best of any animal species.



INTEREST GREAT IN CONTEST--Laura Allison turns in her idea of a "Can You Top This" pickup to Jack Mathis of Mathis Chevrolet which is sponsoring the contest. Open only to students at Burkburnett High School, the winner of the contest will drive the above pictured 1972 "Can You Top This Pickup" for one week. All students must do to enter is simply draw their idea of a "Can You Top This Pickup" on an entry form available at the school and then turn the form into Mathis Chevrolet not later than Thursday, Feb. 10. Further details concerning the contest are available in an advertisement in this issue of the Informer/Star or at the High School.



NEW MEMBERS--Rotary President Rev. Lamoin Champ (center) inducts Dale Mortland, left, and Royce Miller into the Rotary club during their Tuesday noon meeting.

Local Man Retire

SHEPPARD AFB, TEXAS--CMSgt. Garret W. Buck, a Security Police supervisor with the Security Police Division, 375th Air Base Group, headed the list of military people receiving retirement certificates in ceremonies at Sheppard AFB Saturday morning.

Sergeant Buck will retire in Wichita Falls following 28 years of service.

Others receiving certificates were MSgt. Melvin E. Alves, retiring in Chico, Calif., with 20 years of service; MSgt. James Goforth, Burkburnett, 20 years; and MSgt. William C. Vogt, Wichita Falls, 22 years.

Col. Anderson W. Atkinson, vice commander of Sheppard Technical Training Center, presented the retirement certificates.



Darrell Brown Wins Third In Skating

The Orbit Skate Club held a meeting Jan. 20, 1972. President Edgar Fulcher presided. It was announced that the picture display of the competitive skaters was completed. Anyone desiring to order more pictures was advised to do so after the meeting.

Toni and Kathy Savage are designing a special patch for their sweaters so that they can be identified as instructors from this rink.

Preceding the business meeting, a Good Luck Party was held for all skaters and their parents attending the skate meet in Garland Jan. 22 and 23.

The skaters attending the meet pictured above are

Bill Savage skated in Open Dance Semi-Finals. The next meeting is scheduled for Feb. 20th at 4:30.

Bill Savage skated in Open Dance Semi-Finals. The next meeting is scheduled for Feb. 20th at 4:30.

Bill Savage skated in Open Dance Semi-Finals. The next meeting is scheduled for Feb. 20th at 4:30.

White Elephant Sale Held At Local Club

Mrs. Al Lohofener was hostess to the Burk Burnett Garden Club Wednesday, Jan. 26.

Mrs. Cauthorn, president, gave a very appropriate meditation, verse and a Garden Prayer.

The Treasurer, Mrs. Dodson, reported a good financial balance with all bills paid. Mrs. Caffee, secretary, read the minutes of the last meeting and both old and new business was discussed.

The program on bulbs was postponed until the next meeting for reason of the leaders sickness.

A white elephant sale was conducted with Mrs. Puga as auctioneer, which proved both entertaining and beneficial.

Roll call was answered by the naming of a favorite bulb. It was also stressed to "Give all bulbs a deep watering this month."

The election of officers for 1972-73 was held with the following being selected: Mrs. B. N. Cauthorn was re-elected president; Mrs. Joy Sessum, vice-president; Mrs. Jim Kin-

caid, secretary; and Mrs. D.C. Dodson, treasurer.

Refreshments were served to Mesdames J. C. Adams, A.R. Bunstine, J.L. Caffee, B.N. Cauthorn, N.T. Crane, D.C. Dodson, Grady Fuqua, Jim Kincaid, Carl Morrison, J.M. Pogue, Walter Riley, Joy Sessum, Sam Shrum, Al Lohofener and one guest, Mrs. F. A. Wilkinson.

The next meeting will be Feb. 23 with Mrs. Sam Shrum.

Mrs. Briscoe Hosts Local Sorority

Members of Theta Epsilon Chapter of Epsilon Sigma Alpha Sorority met in the home of Jimmie Briscoe Monday evening, January 24.

President Kathleen Brammer gave the opening ritual. Jimmie Briscoe presented a message from the book, "I Have To Talk To Somebody, (God)." Roll call was answered by members and pledges.

Correspondence was read from International and local. Kathleen Brammer read correspondence for the vice-president. Corresponding secretary, Shirley Spinks, re-

ported to Bobbie Shaw the chapters interest on the ESA Home Board fund. Educational Director, Dana Goff, mailed all copies of the news and programs that were due. Publicity chairman mailed copies to the Tesan.

Nona Lemley, social and refreshment chairman, conducted the voting on the chapters Valentine Sweetheart. The results will be given at the Valentine Social. Welfare chairman, Romona Vaughan, sent the welfare report in and will make up a list for workers at the Fowler Home. Chaplin Jimmie Briscoe reported she had mailed names to district and state chaplains.

Outstanding First Year Member was voted on and Romona Vaughan was elected. Nona Lemley presented the program on "The Essence of You". She explained how perfume was made and had many different fragrances to present to the members.

Delicious refreshments were served to Mesdames Brammer, Briscoe, Lemley, Spinks, Goff, Bridges, Vaughan, Drake, and Glover.

Introducing . . .



PAULA MARIE IRWIN, the 14 month old daughter of Doyle and Kathy Irwin of 1100 Sheppard Road. Paula's grandparents are Mr. and Mrs. W. E. Varner and her great grandparents are Mr. and Mrs. J. L. Stubblefield, all of Burk Burnett.

News Of Interest To Women

Engagement Revealed For Elaine Mills

Mrs. Edna J. Mills is announcing the engagement and approaching marriage of her daughter Elaine, to Donald Schufft of Chamute Air Force Base. Miss Mills is also the daughter of Mickey D. Mills of Frederick, Okla. and Schufft is the son of Mr. and Mrs. Ralph W. Schufft, former Burkites, now of Lebanon, Mo.

Miss Mills is a senior at Burk Burnett High School and is employed at Sheppard Air Force Base.

Schufft, a 1970 graduate of BHS is an airman in Tech School at Chamute.

The wedding date has been set for February 19, 1972.



PENNEY BROWN

Engagement Announced

Mr. and Mrs. George E. Brown of Burk Burnett are announcing the engagement of their daughter, Penny Jo, to Richard Keith Smith, son of Mr. and Mrs. Howard Eugene Smith of 700 Sunset, Burk Burnett.

Miss Brown was a recent mid-term graduate of Burk Burnett High School. Smith graduated from Burk Burnett High School in 1969 and is presently employed as an Assistant Department Manager of National Hardgoods.

The wedding date is set for May 27, and will be performed at St. Jude Catholic Church in Burk Burnett. The couple will reside in Tuscaloosa, Alabama, where the groom will accept a position as Department Manager of National Hardgoods.



ELAINE MILLS

Lois--Jewel Hosts Alma Local Circle

The Alma Jackson Circle of the First Baptist Church met Monday night, Jan. 23, with Misses Lois and Jewel Reed.

The chairman, Mrs. Beldon, opened the meeting with prayer. The secretary, Mrs. Whiteside, read the minutes of the last two meetings.

Mrs. Miller reported on the box of clothing and magazines taken to the State Hospital. Reports were given by several of the members of visits to the Rest Home, cards sent, alos of food and flowers given.

Mrs. Lohofener gave the meditation and Scripture. She also read the names of the Missionaries who had birthdays on the 23rd; and then led in prayer.

The Royal Service Bible Lesson from Acts 2, was very well given by Jewel Reed, the Bible Chairman.

After dismissal and prayer, refreshments were served to Mesdames Ruth Beldon, Helen Turner, Alice Goodwin, Artie Whiteside, Grace Anderson, Viola Reynolds, Lena Houser, Sylvia Lohofener, Mittle Miller, Nomie Wilkinson, Lois and Jewel Reed, and one visitor, Mrs. R.P. Thaxton.

Engagement Announced

The engagement and approaching marriage of Kathryn Lynne Reed to John Vail Winter of New Orleans has been announced by her parents, Mr. and Mrs. Jack N. Reed of 612 East 6th Street.

Winter is the son of Mrs. Ruth B. Winter of El Paso, and C. R. Winter of El Paso.

Miss Reed, a 1968 graduate of Burk Burnett High School and Dallas Fashion and Merchandising College, is employed by Blue Cross Insurance in New Orleans.

Winter is a 1964 graduate of John McDonogh High School and attended Southeastern College in Hammond, La. He is employed by A. C. Cross Incorporated.

The wedding date has been set for February 9, in New Orleans.

Musical Set At Wichita Falls

The past, the present, and the future, . . . Presented with the sensitive touch of Fred Waring and his Pennsylvanians in a musical bridge of the generation gap will be presented by the Wichita Falls Downtown Rotary Club at Municipal Auditorium at eight o'clock, Saturday night . . . February 19th.

Fred Waring, unlike many other musical organizations that have come and gone, remains relevant to today while also borrowing on the nostalgia of a by-gone era. The knack of combining the old, the new, and the possibilities of the future in music has been one of the secrets that has kept this musical group alive and healthy for fifty-five years.

Tickets for the Fred Waring show are priced at \$5.75 for the main floor and \$4.50 for the balcony, and are available at pier one imports, Sears, Piccadilly Cafeteria, North Texas Federal Savings and Loan, West Card and Specialty Shop, and English Pharmacy in Parker Square.

For an evening of "Like It Is" and "Like It Was" . . . Be sure to see the Fred Waring show at 8 o'clock Saturday night, . . . February 19th in Memorial Auditorium, brought to Wichita Falls by the downtown Rotary Club.

Local Church Organizes WMU Group

The ladies of the JanLee Baptist Church met Tuesday evening at 7:00 to organize a Women's Missionary Union within the church. Elected to offices of the organization were Mrs. Gayle Glazener, president, Mrs. Mickey Bartlett, vice-president; Mrs. Edith Holman, secretary, treasurer; Mrs. Noble Doufy, mission action chairman; Mrs. Wilma Sykes, mission support chairman, and Mrs. Jeniece Skelton, mission study chairman.

The W.M.U. ladies of JanLee will have two circles, one day circle and one evening circle. The next day meeting will be Wednesday, February 9th, at 9:30 a.m. in the home of Mrs. Lila Smith, 804 Preston Avenue. The evening circle will meet Tuesday, February 22, at 7:00 p.m. at the church. This meeting will be followed by a meeting of both circles at 7:30.

Cook of the Week



LEMON CURD

2 lemons
6 eggs
3 1/2 oz. (7 tablespoons) butter or margarine
1 cup plus 2 tablespoons sugar



Grate rinds of lemons finely and place in top of a double broiler with the strained juice. Add the well-beaten eggs, the butter cut into small pieces and the sugar. Place over gently boiling water making sure bottom of pan doesn't touch the water. Stir constantly until mixture thickens, 20-30 minutes. DO NOT ALLOW TO BOIL. Pour into warm jars. Will keep several weeks in refrigerator. Use as a filling for pastries and as a spread.

This week's cook is Mrs. Susan Wuidenbach. Her recipe is lemon curd which is an authentic English recipe as

she is originally from Norfolk, England.

She resides at 1400 Kay Drive with her husband Guy, who is with the United States Air Force at Sheppard Air Base. They have two children, Kara, 8 and Jason, 6 months and have been in Burk Burnett for four months.

When asked about her hobbies or special interests, she just stated that the children keep her busy . . . but cooking must be of some significance with such a delicious recipe as Lemon Curd.

Clip and Save

SCHOOL MENU

MONDAY--Barbecue pork on bun, potato chips, bun, pickle circles, butter, spinach, milk, brown sugar pudding.

TUESDAY-- Fish, tartar sauce, pinto beans, cole slaw, corn bread, butter, milk, peanut butter cookies and fruit.

WEDNESDAY--Texas hash, buttered corn, green beans, hot rolls, butter, milk, jello with whipped topping.

THURSDAY-- Hamburger, onion, pickle, mustard, french fries, baked beans, bun, butter, milk, pineapple cake.

FRIDAY--Fried chicken, buttered peas, creamed potatoes, hot rolls, butter, milk, ice cream bar.

Mr. and Mrs. Howard Clement just returned from a five day Mid-Winter Business Meeting of the National Association of Realtors in Las Vegas, Nevada.

Educational seminars conducted during the convention concerned property tax studies, commercial real estate investments, trends and costs of construction, and the energy crisis.

Flowers Are For Every Occasion
JUANITA'S FLOWERS
569-3197

OPEN TUESDAY THRU SATURDAY - 9 a.m. to 6 p.m.
Open late evenings by appointment.

Crane Hairstyling
On Reagan St. north from Parker Plaza

COMPLETE BEAUTY SERVICE
Specializing in creative styling,
Tinting - Bleaching - Frosting
Penegen Skin & Hair Care Program

KATHARINE CRANE, Owner
GUSTENA CASH
LINDA GREEN
JAN JONES

Phone 569-1141

At your service:

It's people power that makes Reddy Kilowatt run.

You take dependable electric service pretty much for granted, of course. And for good reason. Your electric service has become so commonplace, so much a part of your everyday life, that you have no occasion to give it a second thought. But did you ever wonder what makes Reddy Kilowatt run, so that you take him for granted? Reddy runs because of the people and things behind your electric switch. Technically-trained, experienced and dedicated people who work in power plants and substations, in offices and outdoors, with complex



equipment such as computers and microwave communications systems. Their job is to assure that when you flip a switch in your home or where you

work, electric service is produced at that instant - at the moment of use. Electricity, unlike other things you use, cannot be stored. You decide when you want it, and Texas Electric provides it - right there and right then. It's all part of a Texas Electric style of service we call "People Power." It helps all of us do a better job of serving you, our customers. On the other side of your electric service switch, there's a whole world of people committed to helping you live better. Texas Electrically. It's what we mean when we say we're "at your service."

TEXAS ELECTRIC SERVICE COMPANY
People power... at your service
B. J. VINCENT, Manager, Phone 569-3373

Tookkat

The stirring saga of a Grizzly Monarch's conflict with man

featuring **Leon Ames** as the old man of the mountain

Produced by MHP Studios Inc. Sun International Productions Inc.*
*Wholesome Family Entertainment Always

Coming SATURDAY Only

PALACE THEATRE

Burk Burnett

Boomtoun Photo

414 Ave. C
WEDDINGS-PORTRAITS-ADVERTISING
569-0511
3 Photographers to Serve

STUDIO & LOCATION
Reasonable prices and outstanding quality.

GIL - 855-2353 DON - 569-0511

BURKBURNETT
INFORMER STAR

covering

- * SHEPPARD AIR FORCE BASE
 - * RANDLETT * DEVOL
 - * GRANDFIELD * BURKBURNETT
- INFORMER READERS

SHOPPER

— Reaches Approximately 20,000 People —

Valentine's Day Gift Guide

From Your Friendly
Burk Merchants

BIG DAY SAVINGS
THURSDAY FRIDAY SATURDAY

Men's & Women's
Pro Hair Brushes
Asst.
30% OFF

Cosmetic Sale
Nail Enamel
Compact Makeup
Lipstick, Eye Shadow
2 / \$1

POLY VI SOL VITAMINS
\$2.10
\$3.09 Value

Tylenol Tabs
100's
\$1.59
Reg. 3.89

SAVINGS EVERY DAY On Prescriptions

City Pharmacy

When You Are In A Hurry Or The Weather Is Bad, Use Our Convenient Drive-Up Window.

VALENTINE'S DAY FEBRUARY 14th

Give Something Special To Your Valentine This Year... You'll Probably Enjoy It As Much As She Will.

Plus Great Savings On These Items.

NEW! GE 25" COLOR TV

The Standish
\$589

one touch color SYSTEM

New Exclusive GE ONE TOUCH Color System
Featuring: GF Customatic Tint Lock, AFC—Automatic Fine Tuning Control, GE 25" Spectra-Brite Picture Tube

- New Tilt-Out Control Bin
- Decorative Early American Doors
- GE Insta-Color Picture
- GE Reliacolor Chassis
- GE Sensitronic Tuning System Featuring: VHF "Pre-Set" Fine Tuning, UHF Solid State Tuning
- GE Crystal Color Filter
- Illuminated Channel Numbers UHF-VHF
- GE Cable-Ready Antenna Connector
- 25" Diagonal 315 sq. inch viewing area

Antique Green Only

5 Wash Cycles... with exclusive
POWER SCRUB

Yes, there is a cycle that will wash pots, pans and casseroles, even the baked on kind, sparkling clean. Power scrub's the one, and only GE has it.

\$219

MODEL GGSM 430 N

End Your Step Troubles
NAPE PRECAST CONCRETE STEPS
LAST A LIFETIME

LIGHT WEIGHT STEEL REINFORCED
ECONOMICAL INSTALLED IN
BEAUTIFUL MINUTES

One Tread - \$6.75 Two Tread - \$13.75 Three Tread - \$20.75

Four Tread - \$27.50 Five Tread - \$34.50

Several Sizes and Styles To Choose from

C. D. SHAMBURGER LUMBER CO.

Jerry Brooks, Mgr. 569-2242 211 N. Ave. B

SPANISH DECOR TV

18" DIAG. PORTABLE COLOR
\$388

one touch color SYSTEM

The Cortez

- GE Reliacolor Chassis
- GE Sensitronic Tuning System Featuring: VHF "Pre-Set" Fine Tuning, UHF Solid State Tuning
- GE Insta-Color Picture
- AFC—Automatic Fine Tuning Control
- UHF Slide Rule Tuning
- GE Spectra-Brite Picture Tube
- GE Reliacolor Chassis
- GE Sensitronic Tuning System Featuring: VHF "Pre-Set" Fine Tuning, UHF Solid State Tuning
- Automatic Skintone Stabilizer
- Automatic Color Purifier
- Color Keyed Tuning
- Stand Optional Extra

BIG 25" DIAG. COLOR TV

one touch color SYSTEM

- New Exclusive GE ONE TOUCH Color System Featuring: GE Customatic Tint Lock, AFC—Automatic Fine Tuning Control, GE 25" Spectra-Brite Picture Tube
- GE Reliacolor Chassis
- GE Sensitronic Tuning System Featuring: VHF "Pre-Set" Fine Tuning, UHF Solid State Tuning
- New Tilt-Out Control Bin
- Decorative Spanish Doors
- GE Insta-Color Picture

The Sierra
REG. \$699 **\$589**

On Display in Burk Burnett Bank

Lippard Furniture

VALENTINE'S DAY FEB. 14

WACKER'S

Cupid's Gift Headquarters

Deran's 2 pound Heart Box CHOCOLATES
A BEAUTIFUL SATIN FOIL BOX WITH AN ARTISTIC FLOWER ON A BIG, GOLD EDGED BOW.
\$3.88 EACH

Valentine Cards
Forget me not Cards
to remember someone too nice to forget
A WIDE SELECTION OF VALENTINE GREETING CARDS
PRICED FROM **10¢**
\$1.00 EACH

Brach's Heart Box CHOCOLATES
A DELICIOUS ASSORTMENT
1/4 pound
63¢ EACH

VALENTINE
Napkins 49c
Plates 49c
Hot Drink Cups 49c
Cold Drink Cups 49c
Valentine TABLE COVER
54" X 104" 79c

BAKING & NUT CUPS
PKG. OF 18 NUT CUPS
OR 85 BAKING CUPS
19¢ PKG.

POLYESTER DOUBLE KNITS
Textured Solids - Screen Prints - Jacquards and Fancies. First Quality. Machine Washable. 58 & 60" Wide. Values to \$5.98 Yd.
Sale Price **\$2.99** Yard

Packaged VALENTINES
HERE YOU WILL FIND THE RIGHT VALENTINE FOR EVERYONE YOU KNOW! ALL WITH GUMMED ENVELOPES.
29¢-89¢

Velvetex CREPE PAPER
YOUR CHOICE OF RED, PINK OR WHITE 10" X 20"
39¢ EACH

A Choice selection of many other VALENTINE GIFTS to choose from.

HEART SHAPED DOILIES
YOUR CHOICE OF RED OR WHITE
39¢ PKG.

SWEETHEART Conversation Heart Shaped CANDY
CHILDRENS FAVORITE **5¢ BOX**

45 Piece DINNERWARE SET
45 Piece Melamine Dinnerware Set In Beautiful Acapulco Pattern. Complete Service For 8. Dishwasher and Detergent Safe. Stain Resistant. Guaranteed 2 Full Years Against Breakage.
\$11.88 SET

WE'VE MOVED!!!

Just Up The Oklahoma Cutoff to the Old Derrick Cafe Building

Come See Us At Our New Location And Take A Look At Our Fantastic Stock Of:

- ★ Boots ★ Tack ★ Saddles
- ★ Men's & Women's Western Wear
- ★ Custom Made Belts
- ★ Sam Brown Belts ★ Hyer Boots
- ★ Custom Made Holsters

Jim Houston Rodeo Equip.,
Saddlery & Western Wear
(Located In The Old Derrick Cafe Building)



Waiting For You At
Roark Office Supply
305 1/2 E. 3rd Burk 569 3741

Ted Roark displays his new low cost Filing Cabinets. "Don't wait any longer to set up the New Year's records -- Begin Today!"

- Full Line Of Cards
Contemporary Cards from Happiness Creations of Kingman, Kansas.
- Complete Office Supplies
Including low cost aluminum reinforced file drawers.
- Art Supplies
Including Grumbacher Oils, Tempera Poster Paints, Pastel Colors, Acrylics and related art supplies.

1/2 PRICE Shoe SALE

Ladies' Shoes & Boots Odds & Ends Broken Sizes Values to \$22.95	Ladies' Velveteens Black, Brown, Navy & Red Broken Sizes Values to \$8.95	SELECT GROUP Men's & Boys' Shoes Odds & Ends Broken Sizes Values to \$22.95	Girls' Shoes & Boots Odds & Ends Broken Sizes Values to \$9.95
---	--	--	---

FURTHER REDUCTIONS

ON WINTER MERCHANDISE

Men's & Boys' Jackets 1/2 PRICE Values To \$12.00	ONE RACK Men's Sport Shirts 1/2 PRICE Values To \$12.00	Ridiculous -- But True!! SELECT GROUP MEN'S Suits & Sport Coats Broken Sizes Values To \$65.00
---	---	---

1/2 PRICE

THE Famous DEPARTMENT STORE

Piggly Wiggly PORK SALE!

 <p>Family Pack Pork Chops 9-12 Chops Quarterloin 68¢ Lb Lean Center Cut T-Bone Cuts Pork Chops \$1.09</p>	 <p>Country Style Pork Ribs Serve with Baked Yams! 68¢ Lb Small, Lean & Meaty Spare Ribs 68¢</p>	 <p>Semi Boneless Pork Roast Lean Boston Butts 59¢ Lb Fresh, Shop Made Pork Sausage 69¢</p>	 <p>Lean Center Cut Rib Pork Chops Lb Serve Stuffed with Dressing Rib Chops Thick 99¢</p>	 <p>Fresh Picnic Cuts Pork Roast Lb Loin Roast Pork Loin Half 78¢</p>
---	---	---	---	---

Lean Boston Butt Cuts
Pork Steak Lb 68¢
Fresh Lean Half or Whole
Pork Ham Lb 79¢
Fresh Center Slices
Pork Ham Lb \$1.29

Water Toss
Breakfast Chops Lb \$1.19
Excellent for Chicken Fried & Cream Gravy
Pork Cutlets Lb \$1.09
Picnic (First Cut)
Pork Roast Lb 55¢

Pork Hamlet Little Sizzlers
Link Sausage 12 Oz 59¢
Fresh Sliced
Pork Liver Lb 39¢
Pork
Neck Bones Lb 29¢

Fresh Pig Feet Lb 29¢
Farmer Jones, 1st Quality
Sliced Bacon Lb Pkg 68¢
Farmer Jones, 1st Grade Quality
Sliced Bacon 2 Lb Pkg \$1.35

Home-Cure '81 The Only Registered Ham Fully Cooked Lb \$1.53
Boneless Ham Lb \$1.53
Fresh Frozen Channel Brand
Ocean Perch Lb Pkg 69¢
Breaded Fisher Boy
Shrimp 8 Oz Pkg 69¢

Gorton's Pre-Cooked
Fish Sticks 24 Oz Pkg \$1.39
THESE PRICES ARE GOOD
IN BURKHEARNETT
FEB. 3, 4, 5, 6, 1972.

Clip and save 27¢
Detergent
OXYDOL
10¢ Off Label
59¢
49 Oz Box
Limit one with coupon & purchase of \$5.00 or more (excluding cigarettes)
Coupon good only at Piggly Wiggly thru Feb. 5, 1972

Hunt's
Tomato Ketchup
3 \$1
20 Oz. Bottle

Heinz
Tomato Sauce
9 \$1
8 Oz. Can

Kounty Kist, Green Peas
Cut Corn Mixed Vegetables
Frozen Vegetables
3 \$1
20 Oz. Pkg.

Whitehouse
Apple Sauce
39¢
25 Oz Jar

Clip and save
CRISCO
Shortening
All Vegetable
3 Lb Can **79¢**
or
Shortening
Piggly Wiggly
3 Lb Can **69¢**
Limit one of these shortenings with coupon & purchase of \$5.00 or more (excluding cigarettes)
Coupon good only at Piggly Wiggly thru Feb. 5, 1972

Whole Tomatoes 3 Hunts 14 1/2 Can **69¢**
Wolf Chili No Beans 19 Oz. Can **69¢**
Tomato Paste Hunts 6 Oz. Can **19¢**
Stewed Tomatoes Hunts 14 1/2 Oz. Can **29¢**
Boned Chicken College Inn 3 5 Oz. Can **\$1**

Piggly Wiggly Assorted colors
Facial Tissue
4 \$1
200 Ct. Box

Oranges
Texas Full of Juice
5 Lb. Bag 39¢
Red Delicious or Golden Washington State
Apples Lb **25¢**
Sweet Yams Lb **19¢**

Potatoes
20 POUND BAG
U.S. No. 1 Russet **99¢**

Fresh Frozen Foods!
Frozen Dinners Morton's All Varieties Except Beef & Ham 11 Oz Pkg **38¢**
Strawberries Trophy Sliced Frozen 10 Oz Pkg **25¢**

Bonne Assorted colors
Paper Towels 3 Jumbo Roll **\$1**
Bonne
Bath Tissue 2 Ply Twin Pak **25¢**

Cookies & Crackers
Carol Ann Saltine Crackers Lb 25¢
Carol Ann Snack Crackers 11 Oz 29¢
Sugar Plain or Peanut Butter Wafers Carol Ann 12 Oz 39¢
Sandwich, Carol Ann Chocolate or Oatmeal, Carol Ann Tray Pak Cookies 10 Oz 35¢

All items
Flamenco Cookware
now available at Piggly Wiggly

50 EXTRA
With This Coupon And Purchase of One (1) 25 Ct Bottle
Alka Seltzer
Coupon Good Only at Piggly Wiggly thru Feb. 6, 1972

50 EXTRA
With This Coupon And Purchase of One (1) 32 Oz Bottle
Joy Liquid Detergent
Coupon Good Only at Piggly Wiggly
Coupon Expires Feb. 6, 1972

50 EXTRA
With This Coupon And Purchase of One (1) 2 Lb Bag
Simplot Frozen Tater Gems
Coupon Good Only at Piggly Wiggly
Coupon Expires Feb. 6, 1972

50 EXTRA
With This Coupon And Purchase of Two (2) Pkgs of
DAK Chopped Ham
Coupon Good Only at Piggly Wiggly
Coupon Expires Feb. 6, 1972

50 EXTRA
With This Coupon And Purchase of One (1) 10 Ct Pkg
Glad Trash Can Liners
Coupon Good Only at Piggly Wiggly
Coupon Expires Feb. 6, 1972

50 EXTRA
With This Coupon And Purchase of One (1) Gal Jug
Texize Fabric Softener
Coupon Good Only at Piggly Wiggly
Coupon Expires Feb. 6, 1972

50 EXTRA
With This Coupon And Purchase of One (1) 100 Ct Pkg
Dixie Cup Refills
Coupon Good Only at Piggly Wiggly
Coupon Expires Feb. 6, 1972

50 EXTRA
With This Coupon And Purchase of Two (2) Pkgs of
RODEO All Meat or Pure Beef Franks
Coupon Good only at Piggly Wiggly
Coupon Expires Feb. 6, 1972

WE RESERVE THE RIGHT TO LIMIT QUANTITIES PURCHASED.
PIGGLY WIGGLY
You Can Save More!

BURKBURNETT

BULLDOGS

★ SCHEDULE.....



Date	Place	Team	Time	BURK	OPP.
NOV 23	THERE	SEYMOUR	6:30	58	46
NOV 26	HERE	QUANAH	6pm	62	33
NOV 30	THERE	BOWIE	6pm	60	47
	THERE	PAMPA TOURNAMENT	DEC 2-3-4		
DEC 7	THERE	QUANAH	6pm	69	46
	HERE	BURK TOURNAMENT	DEC 9-10-11		
DEC 14	HERE	NOTRE DAME	6pm	85	72
	THERE	WICHITA FALLS TOURNEY	DEC 16-17-18		
DEC 21	HERE	BOWIE	6pm	71	68
DEC 23	HERE	SEYMOUR	6pm	70	58
DEC 28	THERE	NOTRE DAME	6pm	58	64
DEC 30	HERE	STEPHENVILLE	6pm	85	40
★ JAN 4	THERE	IOWA PARK	6pm	84	71
★ JAN 7	THERE	BROWNWOOD	7:30	57	66
★ JAN 11	HERE	HIRSCHI	6pm	76	72
★ JAN 14	THERE	GRAHAM	6pm	53	55
★ JAN 18	HERE	VERNON	6pm	73	62
★ JAN 21	THERE	WEATHERFORD	6pm	68	57
★ JAN 25	HERE	IOWA PARK	6pm		
★ JAN 28	THERE	STEPHENVILLE	6pm	74	54
★ FEB 1	THERE	HIRSCHI	6pm	61	60
★ FEB 4	HERE	BROWNWOOD	6pm		
★ FEB 8	THERE	VERNON	6pm		
★ FEB 11	HERE	GRAHAM	6pm		
★ FEB 15	HERE	WEATHERFORD	6pm		

★ AND SCOREBOARD ★

ALEXANDER SERVICE STATION

 GOODYEAR TIRES
 MOBIL PRODUCTS
 324 E. 3rd. 569-2381

THE Manhattan
 BURKBURNETT'S LEADING DEPT. STORE
 218 East 3rd. Ph. 569-2651

Wolfe Ford Co.

 COMPLETE SALES AND SERVICE
 1007 Sheppard Rd. 569-2275
 Burkburnett

CAMPBELL AUTO SUPPLY
 Complete Automotive & Tractor Parts
 PAINT AND SUPPLIES
 "Your NAPA Jobber"
 223 East 3rd. St. BURKBURNETT, TEXAS ph. 569-3391

BELL STATIONS, INC.
 "BACKING THE BULLDOGS"

LLOYD CLEMMER LUMBER COMPANY

 Call 569-2911
 "For All Your Building Needs"

BEAVER FURNITURE & APPLIANCE
 RCA & PHILCO
 Sales & Service
 569-2801 222 E. 3rd.

GO BULLDOGS!

LEER
 Commercial Refrigeration Manufacturer

The BURKBURNETT Bank
 Member of Federal Deposit Insurance Corporation

WILLIAMS PETROLEUM

 Williams Drive
 Burkburnett, Texas

TULLIS SUBARU
 Where you can buy a new car for only 1896.97
 SALES, PARTS, SERVICE
 Good Selection of Clean Used Cars
 YOUR **DORAL** TIRE DIST.
 For North Texas
 Ph. 569-1454 Ph. 569-1455

Western Auto Associate Store
 203 E. 3rd Burkburnett

SUPPORT THE BURKBURNETT BULLDOGS

CORNER DRUG STORE
 Drugs - Prescriptions
 Joe Gillespie 320 E. THIRD ST. BURKBURNETT, TEXAS
 Cliff Cannon PHONE 569-2251

Lippard
 Furniture & Appliances
LIPPARD INSURANCE AGENCY
 Burkburnett

GO BULLDOGS

BUNGE ELEVATOR CORPORATION
 Wanda Young, Mgr.

IDEAL DRIVE-IN CLEANERS
 569-2847
 407 E. 3rd.

Gifts of Jewelry
 THEY'LL ALWAYS CHERISH!
Coy's JEWELRY
 BURKBURNETT

BURKBURNETT INFORMER STAR

District 4-AAA

BASKETBALL



CITY PHARMACY



300 S. Ave. D
569-1491

CORNELIUS INSURANCE AGENCY

Life - Hospitalization
T.M. and MICKEY CORNELIUS
308 E. 3rd 569-3498



569-3373 Burkburnett 301 E. 3rd. St.

DAIRY MART

CORN DOGS
SANDWICHES - HAMBURGERS
HAM - STEAK - BARBECUE
FISH BURGER
CHICKEN & SHRIMP BASKETS
CALL YOUR ORDERS IN 569-8114

Spinks Texaco Service Station



Mechanic On Duty
Tune Ups
400 S. Ave. D Burkburnett, Texas

C.D. Shamburger Lumber Co.

Jerry Brooks, Manager

WACKER'S



PARKER PLAZA
BURKBURNETT



ROARK OFFICE SUPPLY

"Everything for the Office Worker"

569-8741 305 1/2 East 3rd.



Ed O'Mealey
Manager

569-2541

Wichita Highway
and Tidal Street
Burkburnett



It doesn't cost
any more to
BE SURE

Burk Insurance

Berend Bros.

PURINA CHOWS & SEEDS
510 Ave. B Burkburnett 569-2811

White's Auto Store

WELDON NIX, Owner

401 East 3rd Street Phone 569-2271
BURKBURNETT, TEXAS

MATHIS

Chevrolet
- Pontiac -
Oldsmobile



SALES AND SERVICE

THE GUN SHOP

REID McCANDLESS, The Gun Trader
Phone 569-8149 219 East Main
DOWNTOWN BURKBURNETT

Help Stamp Out
LAZY MONEY! !

FIRST SAVINGS and LOAN BURKBURNETT



HUNT OIL FIELD SUPPLY



569-3201 311 E. 3rd

VIRGIL MILLS CONSTRUCTION CO.

Red River Expressway
569-1131

B&G CONSTRUCTION CO.

M.E. (BILL) BEAN

Loise Bean, Realtor
Burkburnett

R. B. JOHNSTON

THE Famous DEPARTMENT STORE

569-2441 Burkburnett

WAMPLER INSURANCE AGENCY

CLIFF WAMPLER
General Insurance

Phone 569-1461 Burkburnett, Texas 208 N. Ave. D

B & R



STATION
569-0212

PRESTON DAIRY



& Preston Milk Store

BURKBURNETT, TEXAS

TwiLite Inn Motel

George Lane, Owner
Pho. 569-2201

Sheppard Rd. Burkburnett, Tex.



Burk's Wholesale and Retail Parts House

HARRY ELLIOTT AUTO SUPPLY



200 East 2nd Burkburnett

"Serving Burkburnett Since 1907"



MEMBER FDIC

FROM YOU WITH LOVE



Perfect Gift Items For Your Favorite Valentine.....
And You Can Save Money Too, During Our

1/2 Price Sale

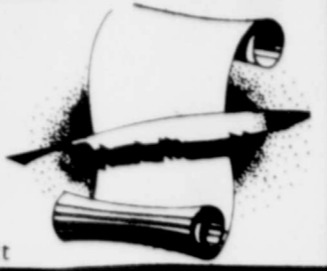
On Our Large Selection Of
Dresses Pant Suits
Lingerie Coordinates

Barbara's Fashions
Parker Plaza



RANDLETT NEWS

By Mollie Elliott



Mr. and Mrs. R. P. Canette of Augusta, Ga. are visiting their son, Bro. Bob and Mrs. Camette and daughter.

Week-end guests of Mrs. Maud Underwood were Mr. and Mrs. Herman Eggerstabb, Mr. and Mrs. Ronald Robbison Antonia and Ronnie of Lubbock, and Mrs. Sonya Maddox of Burkburnett.

Mrs. C. O. Wilson became ill while visiting Mr. Wilson in a Veterans Hospital at Sulpher, Okla. Mr. and Mrs. I. L. Smith of Burkburnett were called to come get Mrs. Wilson. On Saturday, she entered a Wichita Falls Hospital.

Mr. and Mrs. Larry Martin and sons of Duncan visited their parents, Mr. and Mrs. A. L. Anderson and Mr. and Mrs. E. L. Martin, Saturday.

Mr. and Mrs. Frank Eter visited Mr. Chick Parrick in a Walters, Okla. Rest Home Saturday.

Mrs. Howard Baggs returned to her home from a Wichita Falls hospital last week.

Mrs. Joe McCluskey reported ill with the flu at her

home last week.
Mrs. Clarence Belsch was ill at her home with the flu last week.

Mrs. Bill Harrison and little daughter, Johnette, are ill at their home with the flu.

Mrs. Jonella Fielding and children of Wichita Falls visited her parents, Mr. and Mrs. T. J. Baber over the week-end.

U. Col. and Mrs. Eugene Rhoads and Daughters of Altus AFB, Mr. and Mrs. Frank Bohac and Daughters of Fort Worth, Mr. and Mrs. Bill McGarry and Children of Burkburnett were Saturday guests of Mr. and Mrs. R.H. Rhoads.

Mr. and Mrs. E. L. Due of Duncan, Okla. were Saturday dinner guests of her parents, Mr. and Mrs. A.S. Nason.

Mr. and Mrs. Jason Spangnel and Children of Cement, Okla. visited his parents, Mr. and Mrs. T. E. Spangnel Sunday.

Dr. Clyde and Mrs. Parsons of Wichita Falls, accompanied by Mrs. Flora Hatcher, spent Sunday with Mr. and Mrs. Joy Jeffertes and son, and Mr. and Mrs. Oscar Anderson and children of Oklahoma City, Okla.

Mr. and Mrs. David Elliott of Lawton visited her parents, Mr. and Mrs. Ted Clark, and his mother, Mrs. Mollie Elliott, Sunday.

Popular Gifts for Dad

Father's Day, now second only to Christmas as the biggest gift-giving day of the year, will see over \$1 billion spent on presents for Dad, and more than 75 per cent of the purchases will be made by women, according to the research department of Black & White Scotch.

Local Students In Program

WICHITA FALLS -- The first meeting of Midwestern University's Five Spheres of Science program is Saturday, Feb. 5 in Science room 213 at 9 a.m. Dr. Travis A. White, MU president and Lynn Morrison, district manager for Southwestern Bell Telephone Company will welcome the high school students, and after lunch the group will hear information in the field of biology through MU department faculty members.

Approximately 30 students have been selected to attend this series of programs. Each student is recommended by his or her high school faculty and principal, and most are juniors or seniors. Different students are selected each year in order to provide a wider range of coverage by the program.

This series of programs provides the group of science students with lectures and demonstrations in the various fields which include business administration, biology, chemistry, geology, mathematics, nursing, physical education, physics and psychology. The group also tours Sheppard Technical Training Center.

This is the eighth year for this Midwestern program according to Dr. Arthur F. Beyer, program director. Lunches and speakers are hosted by Southwestern Bell Telephone Co., and the lunches are usually in Midwestern's Center cafeteria.

Bowie--Kathy Beane, Anita Duncan and Donna Winingham. Burkburnett-- Paula Jameson, and Barry Steele

Electra -- Theresa Helzlsouer and Scott Isbell
Henrietta--Carla Butler and Joe McKay

Iowa Park--Kenneth Griffin and Evan Lington
Seymour--Vernette Floyd and Nancy Ann Novak

Vernon -- Jeanette Brooks and Linda Lehman
Winthorst-- Donna Lindeman and Howard Neeb

Wichita Falls Hirschi -- David Holder, Deborah Thomas and Robert Young
Notre Dame--Elizabeth Coles, Alan Martin and Marshal Voris

Rider--Ann Haeddicke, Mark Pierce and Bill Warren
WFHS - - John McBride, Raymond Owen and Pat Shrewsberry.



Devol Doings

By Ethel McCasland

Mrs. Dollie Hardin was admitted to the General Hospital last week for treatment of a severe case of the flu. She is reported to be some improved at this time.

Mr. and Mrs. Bobbie Gaston and children of Dallas and Mrs. George Flacher of Amarillo are here to be at the bedside of their Mother, Mrs. Hardin.

Mr. and Mrs. Clarence Crocker of Shohomish, Washington were here visiting his brother and sister-in-law, Mr. and Mrs. Melvin Crocker and other friends in the community this past week. They left Sunday for Arlington, Texas to spend a few days.

Week-end and Sunday company in the F.G. McClelland home included Mr. and Mrs. Ralph Baumhardt of Weatherford, Texas; Mr. and Mrs. Earnest Webb of Cabool, Missouri; Mr. Rob Baumhardt and Mrs. Betty Howell and daughters Tommi and Jodi all of Burkburnett; and Mr. and Mrs. Lewis Payne and daughter Jina, and Kathy Daugherty all of Grandfield.

Devol welcomes four new residents to our town, Mr. and Mrs. Ed Walker from Itaska, Texas, who occupy the Mays house; Mr. and Mrs. C. B. Nunn, who have moved in a trailer house; Mrs. Ann Atner and children who are residing in the church parsonage; Mr. Dan Fuller has just completed construction on his new brick home and has moved into it. Also welcome the Donnie McGill family back.

A baby daughter was born Jan. 26th to Mr. and Mrs. Wayne Derby of Grapevine, Texas. Mr. and Mrs. L.E. Jeffery are the maternal grandparents and Mrs. Ora Stevens is the great grandparent. Mr. and Mrs. L.E. Jeffery are visiting in Grapevine this week.

A covered dish dinner was served in the dining room of the First Baptist Church Sunday by members of the church in honor of the pastor, Rev. Laine Crow, who has rendered his resignation to become effective Jan. 30. Bro. Crowe has been pastor here for past two years.

Make a Good Impression



Pamphlets, booklets, brochures that get results are printed in good taste on fine stock. We have the skill and experience to help sell your ideas.

BURKBURNETT
INFORMER STAR

All Sizes
VALENTINE HEARTS
Russell Stover and Pangburn's

Sillisculps
"I Love You This Much"
and Many More

Valentine Cards
by American Greetings
Wide Assortment

The **DRY LOOK**

Men's Hairspray
4 oz.
Reg. 1.00
NOW **69¢**

RIGHT GUARD

DEODORANT
with 1/3 Extra Free
Reg. 1.59
NOW **1.19**

Breck
Basic "Texturizing"
Shampoo 6 oz.
Reg. 1.49
NOW **99¢**

Protein 21
Conditioner 7 oz.
Reg. 2.25
NOW **1.50**

Sheer Strip
Band-aids
Reg. 85¢
NOW **55¢**

Nyquil 6 oz.
NOW **1.19**

Maalox
Liquid
12 oz.
NOW **1.09**

INTRODUCTORY



We have added the high quality Airmaid Hosiery line to our stock and are currently offering Fabulous Savings During Our Introductory Sale.

Panty Hose

Reg. 1.79
NOW **1.19**
Reg. 1.49
NOW **99¢**
Reg. 1.39
NOW **89¢**

Support Panty Hose

Reg. 4.95
NOW **3.49**

Large Selection Of
Shades In Both Styles

Corner DRUG STORE
320 EAST 3rd STREET

PHONE 569 2251 - BURKBURNETT TEXAS

FREE!


AUTOMATIC CAR WASH

WITH GASOLINE FILLUP Wax 50¢ Extra

Wash \$1.00., Wax 50¢ Without Fillup

Les Landers Texaco

918 Sheppard Road
Burkburnett, Texas



Turn in at the sign for the best in service and a FREE car wash with each fill up.

FINAL DAYS
ABSOLUTELY SUPER SAVINGS
IN EVERY DEPT. DURING OUR
MID-WINTER
CLEARANCE SALE

Women's COATS
Men's SWEATERS
Men's ALL-WEATHER COATS
Men's SHIRTS
Men's COATS & JACKETS
Men's KNIT SHIRTS
Boys' KNIT & DRESS SHIRTS

1/4 OFF

1/3 off SELECT GROUPS
WOMEN'S DRESSES & SHOES

1 LARGE TABLE
REDUCED Women's LORRAINE
LINGERIE & LOUNGEWEAR
1/4
*GOWNS *SLIPS
*PAJAMAS *PANTIES *ROBES
*BED JACKETS *SHORTIE PAJAMAS

Select Group
BRASSIERES REDUCED **1/4**

44 inch SHORT LENGTH **Corduroy 3 \$1**
Yds.

54 and 60 inch **BONDED KNITS \$1**
YARD

JUST A FEW MORE DAYS FIELDCREST
Bright White Sale

MANY, MANY OTHER ITEMS ON SALE

We Give S&H Green Stamps
Manhattan
DEPARTMENT STORE
We Give S&H Green Stamps



For your
Valentine
Large Selection Of
Valentine Candy
by Pangburn's
CITY PHARMACY
300 S. Ave. D

JUST ARRIVED
2,000 YARDS
Of New Spring Material

Beautiful Colors and Patterns
Spring Knits
For Only **49¢ yd.**

Complete Stock Of Seam Bindings & New Sewing Accessories. Full Line Of Authentic Western Patterns.

ADA'S FABRICS
DOWNTOWN BURKBURNETT



CLEARANCE PRICES

On Discontinued Items

Pot Cleaners 9¢
Juice Glasses 9¢
Dessert Dishes 9¢
Packaged Notes 9¢
Envelopes 9¢

Selection **1/2 PRICE**
Purses

1,000 Yds. Lace
7¢ YARD

BEN FRANKLIN STORE
DOWNTOWN BURKBURNETT

Papa Underwood's Sausage Special

FREE!

1 Pound of Underwood's

(famous hickory smoked)

BAR-B-Q SAUSAGE

With Each Pound You Buy!

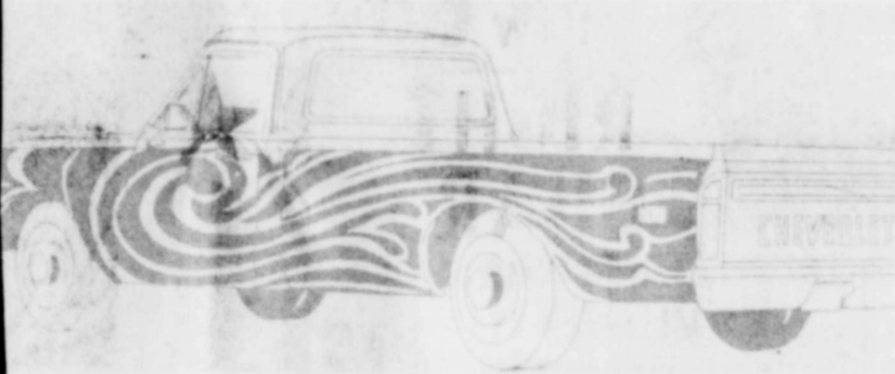
No Limit . . . Pound for Pound

2 FOR 1 SALE SOCK IT IN THE FREEZER
(2-4-1)

Underwood's PIT BAR-B-Q
Parker Plaza

ROBUST BUT IT'S TRUE

MATHIS CHEVROLET Has Begun A "Can You Top This" Campaign For Its 1972 Pickups, With the Younger Generation in Mind. All You Have to Do Is Draw Your "Creation" (Way-Out Design) of How You Would Like To See A "Mod Pickup" Painted & Send It In To MATHIS CHEVROLET.



Use this illustration as an example -- Create your own. If your design is judged No. 1 by a panel of judges YOU WILL

WIN The Use Of A 1972 Chevrolet "Can You Top This" Painted Pickup For One Week

IN ADDITION TO THIS -- Your Design Will Be Painted On A 1972 Chevrolet Pickup Which Will Be Displayed In The MATHIS Showroom.

CONTEST OPEN ONLY TO
Burkburnett High School Students

Begins Monday, Jan. 31—Ends Thursday, Feb. 10

Official Entry Forms Available In The Hall At The High School, Along With Complete Details Of The Contest.

—ON DISPLAY—

The 1972 Pickup that you could drive for a week will be on display throughout the contest on the church parking lot across from the High School.

Contest Limit: One entry per person.
Only three colors may be used on the entry form. Model pickup will be white.



AVAILABLE NOW AT ALL
UNITED SUPER MKTS.

Assemble your set a
different piece each week.
• Dinner Plate • Dessert Dish
• Saucer • Cup • Bread & Butter

THIS WEEK'S
BASIC PIECE
FEATURE ITEM
DESSERT DISH

FINE IMPORTED
PORCELAIN CHINA
Lovelace
BY CROWN VICTORIA



A different completer piece featured each week

2 Soup Plates	2.99	10" Oval Bowl	3.79	Coffee Pot	4.99
2 Salad Plates	2.49	9" Vegetable Bowl	2.99	Tea Pot	4.99
2 Cereal Bowls	2.49	14" Platter	4.99	Covered Butter Dish	2.99
2 Luncheon Plates	2.99	12" Chop Plate	3.99	Salt & Pepper Shakers	1.99
Covered Sugar Bowl	1.99	Covered Casserole	5.99	2 Pc. Coaster Set	1.99
Creamer	1.99	Gravy Boat and Stand	3.99	2 Pc. Mug Set	2.49

WITH EACH \$5
PURCHASE

39¢
EACH

BIG "U" PURE PORK
SAUSAGE 2 LB BAG **88¢**
SWISS STEAK ROUND BONE CUTS **98¢**
UNITED PREMIUM QUALITY

LITTLE OSCAR SAYS:
"Get Your Little Oscar Ring"
IN EVERY PACKAGE OF 1 LB. PKG.
ALL MEAT PURE BEEF
FRANKS 88¢

PORK ROAST
FRESH PICNIC CUTS
LB. **48¢**

FRESH LEAN PORK STEAK
SEMI-BONELESS
LB. **68¢**

TEXAS BONELESS STEAK
UNITED PREMIUM QUALITY
LB. **98¢**



RANCH STEAK
UNITED PREMIUM QUALITY
USDA CHOICE LB. **68¢**

QUANTITY RIGHTS RESERVED

Farm Fresh United Produce

RUSSET **POTATOES**
20 78¢
LB. BAG

PATIO ENCHILADA OF MEXICAN
DINNERS 39¢

UNITED ASSORTED FLAVORS
ICE CREAM
Half Gal **59¢**

FRESH RED RIPE STRAWBERRIES
3 PINT BOXES **1 12¢**

FRESH GREEN ONIONS OR RADISHES
BUNCH **12¢**

LIBBY FROZEN LEMONADE 6 OZ. CAN **10¢**

GRADE "A" LARGE CAGED EGGS Doz. **38¢**
UNITED PREMIUM QUALITY

California AVOCADOS EA. **29¢**
LARGE SIZE

AMERICAN BEAUTY ELBO-RONI 10 OZ. PKG. **19¢** | SUPER GIANT BOX SUDS **49¢**

UNITED SUPER MARKET
Delta BATHROOM TISSUE
4 ROLL PACKS **29¢**

ELLIS FINE FOODS
• BLACKEYED PEAS
• LARGE LIMAS
• BABY LIMAS
• PINTO BEANS
• CHILI BEANS
• GREAT NORTHERN VIENNA SAUSAGE
• POTTED MEAT
9 300 SIZE CANS \$1 19
5 CANS \$1 9 3 OZ. CANS \$1 19

SHOP United
Gladiola FLOUR
5 44¢
LB. BAG
25-LB. BAG \$1 79

MEMBER OF AFFILIATED
U PRICES GOOD THRU FEB. 5th

5 lb. BAG PURE CANE SUGAR **49¢**
Shurline OF IMPERIAL
— WITH \$5+ PURCHASE OR MORE EXCLUDING CIGARETTES —

UNITED SUPER MARKETS
WE GIVE S&H GREEN STAMPS
QUANTITY RIGHTS RESERVED

RE
SI
COLI
"Redu
Texas
state's
of dolla
bert, g
1st wil
tural E
"The
being f
industr
the ha
exporte
situatio
balance
Most
takes t
when e
Selbert
ed at t
his pr
counte
This re
in the r
"Gra
during
of 1971
30 mil
same li
the spe
revenu
winter
off 16
the las
in a 1
million
Selbe
tors of
duction
First,
plies of
petitio
grains,
with ex
along
Tip:
Foot
COLI
"When
store,
prove
ciency
food it
Gwend
market
Texas
Servic
Mrs.
these l
list thi
tatoes,
rots, t
hard
and ca
"Son
cost a
than th
claim
ces are
Citri
counte
grapef
accord
"Grap
sold by
fers th
tangelo
banana:
good ch
CC
Sat
*
Cons
Terr
S
RE
Rt.
(817)

Reduced Grain Exports Hit State Grain Industry Hard

COLLEGE STATION -- "Reduced grain exports from Texas ports are costing the state's grain industry millions of dollars," says John J. Seibert, grain marketing specialist with the Texas Agricultural Extension Service.

"The impact is already being felt throughout the total industry, from the producer to the handler, transporter and exporter. Furthermore, the situation will contribute to our balance of payment deficit."

Most often the producer takes the brunt of the load when exports decline, explains Seibert. He is not represented at the bargaining table, so his price is generally discounted at the time of sale. This reflects reduced demand in the marketplace.

"Grain sorghum exports during the last three months of 1971 were down more than 30 million bushels from the same 1970 period," points out the specialist. "This reduced revenue by \$19 million. Hard winter wheat exports were off 16 million bushels during the last six months, resulting in a loss of more than \$25 million."

Seibert lists several factors contributing to the reduction in grain exports. First, the large world supplies of grain offer stiff competition to U.S. produced grains. Price relationships with competing U. S. grains, along with prices of grains

from other countries, are also a factor. A third cause is dock strikes. These have reduced sales in addition to prompting our stable customers to look elsewhere for reliable supplies, notes the specialist.

"The recent dollar devaluation has created a favorable competitive position for

our grains when compared with other suppliers," he adds. "Yet some competing suppliers abroad are devising tactics to nullify any gains made in this financial arena. These include increasing import duties, tariffs and import restrictions."

"As a major supplier of world food and feed grains, this country cannot afford to be out-manuevered, regardless of the cause," contends Seibert. "Continued emphasis on market promotion and development is a must! Restrictions imposed at U. S. ports must be removed otherwise we can expect lower incomes to our grain industry!"

Screwworm Cases Up In Texas For 1971

COLLEGE STATION -- Texas recorded 444 screwworm cases in 1971, making the year the worst since 1968, according to officials of the Southwest Screwworm Eradication Program at Mission. However, in 1969 and '70, the state had recorded the fewest cases on record.

Fifty-six counties had screwworm outbreaks in 1971, with Val Verde County leading with 67 cases. Other counties with heavy incidences were Kinney with 44; Bowie, 31; Lampasas, 27; Brewster, 26; Webb, 23; and Fort Bend, 21.

Outside of Texas, only Arizona and Arkansas confirmed screwworm cases. Arizona had four infestations and Arkansas recorded 25, of which 22 were in Little River County. States in the screwworm eradication area that recorded no cases were California, New Mexico, Oklahoma and Louisiana.

A total of 255 screwworm cases were chalked up in Texas in September and October of last year. This was in contrast to the two previous years when screwworms were most active in May, June and July. January was the only month last year without a case although February had but one.

The seven states in the program submitted a total of 2,584 non-screwworm samples to the Mission Lab in 1971. Of these, 2,133 samples came from Texas, the second lowest total since the

program got underway in 1962. More than seven billion sterile flies were released last year with some 5.2 billion being dropped on northern states in Mexico. More than 1.6 billion were dropped on Texas.

Officials at the Mission Lab continue to urge all livestock producers to be on the alert for worms, pointing out that

no months really are entirely free of this livestock blight. In fact, six cases have already been reported in Webb County.

Producers noting worms in open wounds on their livestock are encouraged to submit a sample to the Screwworm Eradication Program, Box 969, Mission, Texas. Collection kits are available at any county Extension office.

COUNTY AGENT NEWS



B.T. Haws
Wichita County
Agricultural
Agent

The pink bollworm does not generally cause damage to cotton in Wichita County but infestations of this insect were found in several Rolling Plains counties this past year. Heaviest infestations were also found as far north as Wichita County during the growing season.

The pink bollworm larva is the overwintering stage of this insect. Should larvae be allowed to overwinter in cotton bolls left on the turn row or in cotton left in the field, infestation could cause considerable damage to the 1972 cotton crop. To reduce this threat, boll piles left on the turn row should be taken to the gin for processing or

early, even though delivery is usually made to the field at the time of its use. When storing early-ordered bag fertilizer, be sure to give it room to breathe. Leave air space between each stack of bags. Always store fertilizers in a dry place. Don't lay bags on concrete floor because they'll pick up moisture, get lumpy and cake up.

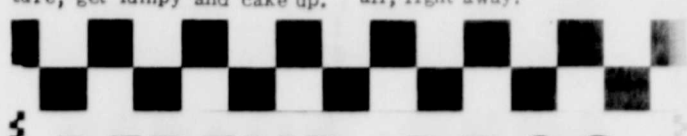
The Beautify Texas Council is boosting its efforts to improve nearly all phases of the environment. Formed about five years ago, the council's main aim was to reduce litter. Now its efforts include work against nearly all kinds of pollution. The BTC cooperates in sponsoring the Governor's Community Achievement Award.

Fertilizer should be ordered early to insure having the correct type and amount. The fertilizer supply for the 1972 crop year looks good at the moment. However, demand for it is at an all time high. Although the supply is good, difficulty arises in getting the fertilizer to the farmer when he needs it.

The agent advises contacting dealers early to take advantage of discounts on early ordered supplies. Bulk fertilizer should be ordered otherwise destroyed. Residue left in the field should be turned under to a depth of at least four inches or this residue should be left on top of the soil. Turning soil under only one or two inches only protects the pink bollworms from cold temperatures.

Cotton at the gin in the green boll pile should be ginned at the end of the season and the equipment should be cleaned to make sure all sites where pink bollworms might overwinter have been removed. It will take the cooperation of producers and ginners to make sure the pink

It's a good idea not to stack fertilizer more than eight bags high. Keep fertilizer and animals separated. Fertilizer is food for plants; to animals it would be disastrous. It's just good business to figure how much fertilizer you'll need for the coming crop season and to order it all, right away.



BEREND BROS. Complete Farm Store

NOW - NEW STOCK

Fruit & Shade Trees
Hedge & Shrub Plants
Onion & Cabbage Plants
Bulk Garden Seed

Feeds & Supplies For All Animals
From Birds & Cats
To Horses & Cattle

COME SEE US
Your Purina Store
510 Ave. B 569-2811

PURINA CHOWS

Tips For Food Buyers

COLLEGE STATION -- "When going to the grocery store, most people can improve their shopping efficiency by making a list of food items they need," said Gwendolyn Clyatt, consumer marketing specialist for the Texas Agricultural Extension Service.

Mrs. Clyatt said to include these items on your shopping list this week: cabbage, potatoes, dry yellow onions, carrots, bulk turnips, rutabagas, hard shell squash, eggplant and cauliflower.

"Some salad ingredients cost a little less this week than they have," Mrs. Clyatt claimed. "Head lettuce prices are down a bit."

Citrus fruits dominate fruit counters, with Texas-grown grapefruit an excellent choice, according to Mrs. Clyatt. "Grapefruit of medium size, sold by the bag generally offers the best value. Oranges, tangelos, tangerines, apples, bananas and pears are also good choices price-wise.

FARM REVIEW

Care Noted For Damaged Plants

COLLEGE STATION -- "Plants damaged by a severe freeze should not be pruned until new growth starts," advises Everett Janne, landscape horticulturist with the Texas Agricultural Extension Service.

This is especially true in south central and southern regions of Texas where cold weather frequently damages the many subtropical plants used in the landscape. These plants include hibiscus, poinsettias, citrus and similar plants.

"New growth will pinpoint the dividing line between live and damaged tissue so you can tell where to cut without removing too much wood," explains Janne. "Pruning soon after a freeze may remove healthy wood. Also, if enough wood is not removed the first time, the job will have to be redone later."

According to the horticulturist, a typical sign of severe cold damage is ruptured bark, with the breaks opening along small limbs and the trunk immediately after the freeze. The plant must not only overcome the freeze damage; it is also subjected to further drying due to exposure of the cambium layer beneath the bark.

Less severe frost damage to trees and plants normally shows up as "burned" or "scorched" leaves, says Janne. The first sign of frosted leaves is a wilting and rolling of the leaves, then browning in a few days. If the plant was actively growing when the frost occurred, leaves may not fall immediately. A frosted plant may take on a "water-soaked" appearance before leaves turn brown.

"Homeowners with frost or freeze damaged woody plants should be prepared to give them extra care this spring," points out the specialist. "Such plants should not suffer from lack of moisture if possible. Also, a high nitrogen fertilizer should be applied about the time regrowth begins. This will help stimulate regrowth and lessen danger of sunscald to exposed inner branches."

Janne recommends a pound of ammonium sulfate per 100 square feet of root area. The upper five to six inches of soil should be moist before applying fertilizer.

A pound coffee can should not be used to measure the fertilizer since a coffee can full of ammonium sulfate is three to four times heavier than a pound of coffee.

Weigh the fertilizer carefully as too much nitrogen can severely damage and may even kill certain plants, cautions the specialist.

Young Farmers Elect Officers

San Antonio, Texas -- The 1,200 delegates and guests attending the Annual Meeting of the Young Farmers and Young Homemakers of Texas selected their leadership for 1972 as their final act Saturday.

Elected President of the Young Farmers of Texas was Stanley White of Stephenville. White has been involved with the Young Farmer program for 11 years. He first held offices in the local chapter and the Area while living in Lamesa; and, after moving to Stephenville, he again moved through the various leadership ranks to enable him to compete for the President of the state organization.

Rita Travis of Beaumont, representing Area III, was named President of the Young Homemakers of Texas. General emphasis of the Young Homemaker session was the celebration of the tenth anniversary.

Starting two year terms as state officers of the Young Farmers are Jimmy Myers, Silverton; Preston J. Ruffino, Jr., Bryan; Ray Raymond, Kaufman; R. G. Kurz, Von Ormy; and Wayne Frederick, Mauriceville. Starting their two year terms for the Young Homemakers will be Eileen Cowan, Mohanans; Kay Hallman, Rowena; Linda Swanner, Winnsboro; Betty Jones, Waxahachie; and Barba Patton, Victoria.

The two organizations operate under the sponsorship of the Vocational Agriculture and Homemaking Divisions of the Texas Education Agency.

PUBLIC AUCTION
CONSIGNED FARM EQUIPMENT
6 Miles East of Wichita Falls on Hwy. 79 (Waurika Hwy.) at Dean, Texas
Saturday, Feb. 5, 10:00 a.m.

- *Tractors *Hay & Feeders
- *Equipment *Tanks
- *Trailers & Auto *Tires
- *Livestock *Miscellaneous Items

Consignments Accepted Until Sale Date
Terms: All Purchases Must Be Paid For On Sale Day

SALE CONDUCTED BY
RED RIVER AUCTION SERVICE
Rt. 1, Box 351-A Wichita Falls, Texas 76301
(817) 767-3006 (817) 692-1940 (817) 322-6904

A Trusted Family Friend . . . in a time of need

OWENS & BRUMLEY FUNERAL HOME
Serving you since 1921
Phone 569-3361

IMPROVING ENVIRONMENT--The Beautify Texas Council is boosting its efforts to improve nearly all phases of the environment. Formed about five years ago, the council's main aim was to reduce litter. Now its efforts include work against nearly all kinds of pollution, according to Jack Jones, Extension resource development specialist and executive secretary of the council. The BTC annually cooperates with the Office of the Governor in sponsoring the Governor's Community Achievement Awards.



Where we say our school, not the school

Big city schools have little school spirit. Little sense of belonging. Little pride. School is a job at a very early age. Out schools are important. We take a special interest in our children, their friends and their teachers. We keep track of our graduates. We like to share in their successes and like to have them feel they always have a home community. Our community is proud of them. Because they belong to us. Good school spirit is an important part of good community spirit. It makes everything more worthwhile.



COMMUNICATE CONFIDENCE, SHOP AT HOME

1st THE NATIONAL BANK
BURKBURNETT, TEXAS
569-2221 300 E. 3RD

CLASSIFIED ADS ARE EXCITING TO READ ADVENTURE wishes to share excitement on your boat for exploring up through Key. See XXX.
SOMETIMES THEY ARE FUNNY MAC has quit smoking. Please do not offer cigarettes. See.
OR SAD MISS my family abandoned me after my leg was cut off. I run like a deer. I'm a happy young dog reading love. XXX.
OR HEARTWARMING MARRI, miss you more each day. Please call me, Jerry. Phone at the old number.
THEY HELP MOTHERS EXCELLENT child care, day or night, room for mother. XXX.
AND FATHERS

AND FAMILIES DOCTORS office available. Good clientele established. Excellent for young medical (M.D.) doctor beginning. XXX.
AND CHILDREN MAGICIAN or clown for kids parties. \$18. Banquets etc. XXX.
AND STUDENTS JUST a pinch and a punt from the golf course. 3 bedrooms, 2 bath, divided floor plan, cut-in kitchen, double garage. Priced in the \$50's. XXX.
AND SICK PEOPLE HIGH school teacher departing high school students to Europe this summer. XXX.

AND LOVERS MARRIAGES, anytime, place, faith, civil dignified, quiet. XXX.
AND SUSPICIOUS PEOPLE ULCER? Hurry stomach? Get new P.S. Tablets. Works fast on liquids. Only 95c at XXX.
AND START PEOPLE ON EXCITING CAREERS PRIVATE detective. Let your problem be over. XXX.

THEY HELP BIG PEOPLE WE shoot movies, edit, sell ads, cartoons, etc. and need a smart, creative girl who can handle people, our books, daily press, details, typing and still edit. XXX.
AND WELL DRESSED PEOPLE HAULING - cleanup, Man with 18 kids. Call anytime. XXX.
AND OUTDOOR PEOPLE MINK stoles, royal postal, services, mink jacket. XXX.

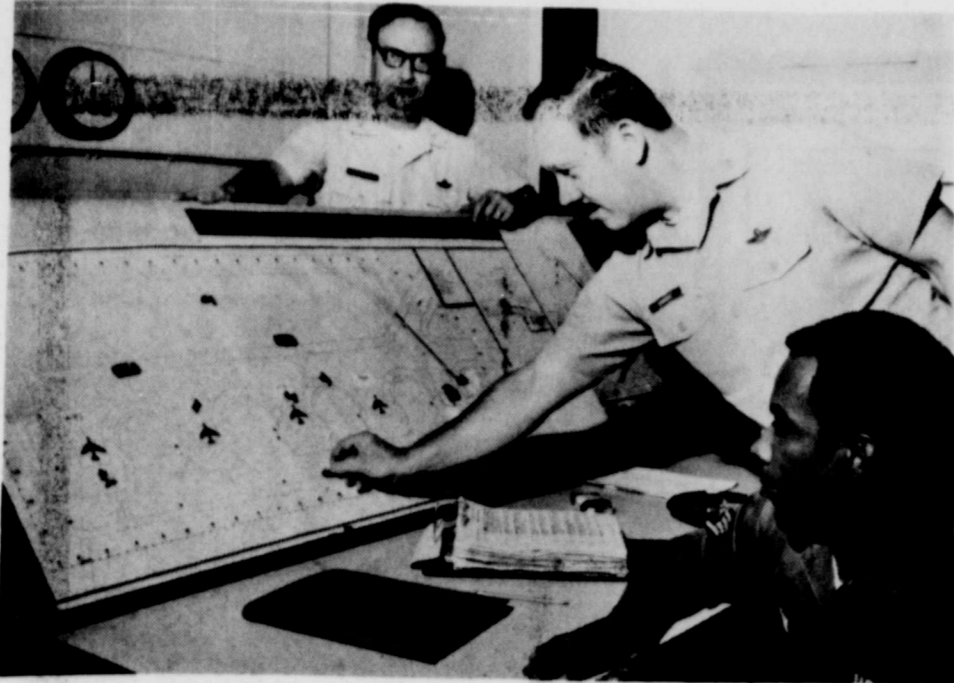
AND CONNOISSEURS A WONDERFUL opportunity for the connoisseur. Super drawings by Raphael and Becher with certificates. XXX.
CLASSIFIED ADS SOLVE ALL KINDS OF PROBLEMS FOR ALL KINDS OF PEOPLE.

...We Can Help Solve Your Problems, Too!
With An



Classified Ad - Call 569-2191

Today!



SHEPPARD AFB, TEXAS--SAC COMMAND POST--Lt. Col. Arthur J. Rupert, left, commander of Detachment 1, 2nd Bomb Wing, Strategic Air Command at Sheppard AFB, watches as Maj. Richard A. Dinwiddie, operations officer, explains the deployment of SAC aircraft to SSgt. Ray M. Newton, Security Police communicator plotter. The equipment is part of a new automated command post at the detachment. Sheppard was the testing unit within SAC for the equipment. (OFFICIAL USAF PHOTO BY SGT. TIM MULLEN)

Automated Command Post Important To SAC

By Sgt. John Clark SHEPPARD AFB, TEXAS--The automated age has affected yet another job, formerly done by military people at Sheppard AFB.

A new automated Command Post at Detachment 1, 2nd Bomb Wing, Strategic Air Command, has been in operation at Sheppard since July 1971.

The detachment at Sheppard acted as the testing unit within SAC for the new system.

The automated command post became necessary to solidify the reaction of the SAC aircraft and pilots that were dispersed to different command bases when SAC set up the "satellite" system.

Began in July 1969, the purpose of a satellite is to compound an enemy's target problems by spreading the alert force from one base to several.

"The reason for Sheppard's selection were twofold," stated Maj. Richard A. Dinwiddie, operations officer for the detachment, "One: Sheppard is an outstanding satellite installation, and two: Second Air Force

Headquarters is co-located with the main operating base at Barksdale AFB, La."

The men who are on alert status in underground living quarters come to Sheppard from the 2nd Bomb Wing, Second Air Force at Barksdale. They are on alert 24 hours a day during their seven day tour.

Previously it took a five officer, five noncommissioned officer crew to continually man the command post, where vital information and alerts are first received.

When the test began, many planners were concerned that the new system would encounter problems with the reliability of the transmission facilities.

The telephone equipment needed to operate the new system as well as several backup devices in the communications center were installed by the Southwestern Bell Telephone Company in Wichita Falls. The backup devices are to insure that all systems will operate, regardless of circumstances. Each of the two transmitters

in use are backed up by a standby system in the event of mechanical failure. Additionally, each transmitter has a separate frequency. Batteries, in peak condition, are always on hand to generate enough power to operate the transmitters and the electrically operated klaxon.

A tape recorder duplicates the telephone messages if the radio should fail.

"We received outstanding support from local telephone people who installed the remote equipment," stated Major Dinwiddie.

When an exercise is called, or in the event of an actual alert, the warning system is activated by the 2nd Bomb Wing at Barksdale. A loud remote controlled klaxon sounds, and the pilots are in their aircraft within minutes.

In addition to these measures, the capability exists for the command post at Barksdale to communicate with the Sheppard detachment and control tower. Hot lines are also connected between the communication center, the weather bureau and the fire department.

Headquarters, Second Air Force, and Headquarters, SAC, can speak with the air crews in the aircraft after an alert has been sounded. This saves considerable time in getting the message to the crews.

Another potential problem given careful consideration was developing procedures to replace the commandpost controller duties. The monitoring duties are now handled by enlisted men, acting as a communications link between Sheppard and Barksdale, fielding incoming and placing outgoing calls.

Major Dinwiddie said that the new facilities were "testimony to our improved communications systems. They've been almost 100 per cent reliable."

"The new automated system has exceeded all of our expectations," said Lt. Col. Arthur J. Rupert, commander of the detachment. "This innovation has contributed to the overall improvement of our control function."



SHEPPARD AIR FORCE BASE

Six Courses Affected By 7 Hr. Academic Day

SHEPPARD AFB, TEXAS--Students and instructors from six courses of the 3750th Technical School and the School of Health Care Sciences at Sheppard AFB will be affected by a seven-hour academic day service test to be initiated by Air Training Command March 1.

Courses to be affected are Turbo-Prop Aircraft Maintenance; Reciprocating Engine Mechanic; Electrical Power Production; and Corrosion Control in the Technical School and Medical Material and Dental Laboratory in the School of Health Care Sciences, USAF.

The servicetest will be used to study the effects of seven hours of academic study per day on the students in these courses. The study will affect only A and B shift students enrolled in the six selected courses. No C shift students or instructors will be involved.

The test will run through September 1, 1973. It is designed to reduce the cost of training by reducing training time and thus getting the airman into a productive capacity sooner.

The test will also allow the compiling of data on how seven hour training will affect grades in the course and working knowledge on the job after graduation. Another reason for the test is to make better use of the student's time while in training at Sheppard and other ATC bases.

The test will be conducted throughout ATC and will include a total of 19 airman courses.

The seven-hour schedule will eliminate one day of training in each six as compared with the present six-hour training day.

Additional guidance will be

forthcoming after a Feb. 8 meeting at Headquarters ATC.

In a Jan. 20 meeting of representatives of the affected organizations, the present status of the test was discussed and the basic information was presented by Merton L. Jessel of Plans and Operations of Sheppard Technical Training Center.

Technical School modified A shift will begin class at 6 a.m.; break for lunch at 11 a.m., begin class at 1 p.m., and end the academic day at 3 p.m. Modified B shift will begin class at 11 a.m., resume class at 3 p.m. and end the day at 8 p.m.

The School of Health Care Sciences course, Medical Materiel modified A shift will begin class at 6 a.m., break for lunch at 10:30 a.m., begin class again at 12 noon and end the academic day at 2:30 p.m. Modified B shift will begin class at 2:30 p.m., break for supper at 6 p.m., resume classes at 7:30 p.m. and end the academic day at 11 p.m.

The Dental Laboratory course modified A shift will begin class at 6 a.m., break for lunch at 11 a.m., begin class again at 12 noon and end the academic day at 2 p.m. Modified B shift will begin at 10 a.m., break for lunch at 12 noon, begin class again at 1 p.m. and end the academic day at 6 p.m.

These schedules will allow the two shifts to use the same classrooms as in the present situation. The time scheduled for lunch will allow students to eat and also take care of personal business. Those on the new B shift would not be released from class in time to take care of business in activities that follow normal operating hours. This test program is des-



SHEPPARD AFB, TEXAS--VOLUNTEER OF QUARTER--Mrs. David Holder works in the office of the Family Services Center at Sheppard Air Force Base. She was named Volunteer of the Quarter for the September-December period. With more than 1,200 volunteer hours, Mrs. Holder has been loaned closed chairman several times at Sheppard, but now limits her work to the office committee. (OFFICIAL U. S. AIR FORCE PHOTO)

WE ONLY

ACCEPT CERTAIN TYPES OF PEOPLE AS OUR CUSTOMERS...



- *TALL People
- *SHORT People
- *FAT People
- *SKINNY People
- *COUNTRY People
- *CITY People
- *YOUNG People
- *OLD People

....And YOU!

FIRST

SAVINGS & LOAN ASSOCIATION

"Where you SAVE - - DOES Make a Difference"



314 E. 3rd. St. 569-2206 Burkburnett, Tex.

FRIDAY & SUNDAY ONLY--FEB. 3RD & 5TH
SPECIAL ROADSHOW--SATURDAY--"TOKLAT"

JULES VERNE
TAKES YOU OVER THE
EDGE OF THE WORLD!

KIRK DOUGLAS
YUL BRYNNER
SAMANTHA EGGAR

THE LIGHT AT THE EDGE OF THE WORLD
PALACE THEATRE

OPEN 7 DAYS!

G. I. TAX SERVICE

FEDERAL RETURNS..... 3.00 UP
STATE RETURNS..... NO CHARGE
(With Federal)

"House Calls Available"

ASK ABOUT OUR BOOKKEEPING SERVICE:

Weekly or Monthly Service.....\$15.00 up
Quarterly Report Service.....\$5.00 up
Photo Copy Service.....10¢ page

1620 LONGVIEW Ph. 855-2381

NO APPOINTMENT NECESSARY

Minority Companies Receive Contracts

Federal contracts worth \$186,014 have been awarded to three minority-owned companies under provisions of the Small Business Act, the General Services Administration announced today.

GSA Acting Administrator Rod Kreger, said, "The contracts are examples of President Nixon's commitment to increase the stability of minority group firms and bring them into the mainstream of national economy."

According to Kreger, the largest contract, for \$154,631, was awarded to the Sheet Plate Corporation of Los Angeles to manufacture 607,500 fibre-board shipping boxes in six assorted sizes for GSA stock. Alfred Hollingsworth, the black firm's president, said the four-month contract will enable the company to expand plant facilities.

Other contracts went to: --William L. Ford Jr. of Fort Worth, a black-owned firm--

\$25,000 to install carpeting and provide carpet-cleaning service at Sheppard Air Force Base in Wichita Falls, Texas. The contract runs through Jan. 14, 1973.

Therman Services Company Inc., of Greeley, Colorado, a Spanish - American firm -- \$6,383 to install laboratory fume hoods in Federal Building No. 25 and the Federal Center in Denver. Section 8(a) of the Small Business Act permits the Federal Government to negotiate contracts with minority firms on a noncompetitive basis to help such firms become viable enterprises. The contracts are awarded to the Small Business Administration which submits them to the individual concerns.

For the first half of Fiscal 1972, the Government awarded 424 8(a) contracts amounting to \$44.4 million. GSA awarded 167 of these contracts for a total value of \$12.8 million.

Three New Squadrons Activated Soon

SHEPPARD AFB, TEXAS--Three new squadrons will be activated soon by the 3750th Student Group of the 3750th Technical School at Sheppard Air Force Base according to the group commander, Col. Francis L. Jones.

"This is being done to reduce the size of the squadrons to 350 persons. This enables each squadron to have a better ratio of training personnel to students and to achieve a uniform size of squadron within Air Training Command," explained Colonel Jones.

The 3765th Student Squadron will be activated Feb. 15, and will be located in Building 678, now occupied by the 3763rd Student Squadron. The 63rd is being moved to Buildings 1640 and 1632 which were occupied by the 3762nd and 3780th Student Squadrons. Those squadrons have moved into the third, 1,000-man dormitory at Sheppard, the second to be used by 3750th Technical School.

First Lieutenant William Murphy is to command the newly activated 3765th Student Squadron.

The 3753rd and 3779th Student Squadrons are to be activated April 1 and will be housed in the fourth 1,000-man dormitory which is expected to be opened by that time.

Capt. David L. Reed will be commander of the 3753rd Squadron, and Capt. Timothy Hay, the 3779th.

Two additional squadrons will be activated this summer according to present plans. This will bring the total from 13 to 18 student squadrons in Tech School. To fill vacancies caused by the reassignment of the new commanders, 1st Lt. Richard J. Joyce will assume command of the 3761st Student Squadron, and 1st Lt. Joe Rhodes will command the 3778th Student Squadron. These officers will assume command April 1.

