



Andrea Orman

Evening Lions Select 1974-75 Sweetheart

Miss Andrea Orman, daughter of Mr. and Mrs. William M. Orman of Burkburnett, was recently chosen to be the Sweetheart for the Evening Lions Club this coming year.

Andrea is a sophomore at Burkburnett High School, where she is a member of the FHA and the choir. She is secretary of the Youth Choir of the First Baptist Church in Burkburnett and is a member of the Re-Generation Singers.

SAFB Vice Commander Winn Leaving

Brigadier General David W. Winn, who has served as vice commander of Sheppard Technical Training Center since August 1973, is being reassigned to North Bay Canadian Forces Base, Canada, as vice commander of the 22nd North American Air Defense (NORAD) Region.

Announcement of the reassignment was made Friday morning in Washington, D.C. At his new assignment, in the joint United States-Canadian defense organization, General Winn will succeed Brigadier General Grant R. Smith, who is

being reassigned. General Winn, who was a prisoner of war in North Vietnam for about four and one-half years, is being succeeded as vice commander at Sheppard by Colonel Carl L. Brunson, commander of the USAF School of Applied Aerospace Sciences (USASSAAS).

General Winn is to arrive at his new assignment in mid-August and Colonel Brunson will assume his new duties at that time. A replacement for Colonel Brunson has not been named.

Impressions by Leon Smith. Thoughts of A Newsmen. Includes a small photo of a man writing.

Now that the man in the moon has been replaced with man on the moon, it is noted that the fifth anniversary of man's first steps on the moon's surface is Saturday, July 20, known as Moon Walk Day.

It was on this date in 1969 that Neil Armstrong and Edwin Aldrin, Jr. did what had been labeled an impossibility for centuries—they landed on the moon's surface and completed a lunar exploration. During that time, Pilot Michael Collins orbited the moon in the command module, "Columbia."

This major historical accomplishment proves that a concentrated effort on a problem is the key to its solution.

There are many problems on planet Earth which have been without solutions for years. Maybe if we follow the examples of NASA and work diligently toward a better world, we can say some day that our ventures proved successful.

Speaking of success, we'd like to note that the Burkburnett Chamber of Commerce sponsored two very successful events the past two weeks—namely the July 4 Celebration and the Boomtown Golf Tournament. In each of the two programs there was a large amount of participation by local citizens, which proves that residents are out to promote Burkburnett. This is a good thing since Burkburnett is a fastly developing community.

Sports remains a major recreation in Burkburnett during the summer. Along with baseball and softball, there has been plenty of golf, tennis, swimming, skating, bowling, hiking, fishing, skiing, and many more. There have also been programs provided by the

Atchley-Darland Win Boomtown Golf Tourney

Winners in the championship flight of the third annual Boomtown Golf Tournament Sunday were Jerry Atchley of Frederick and Bill Darland of Burkburnett. Their 36-hole total was 104 (four under par) at the Hidden Valley Golf Course in Burkburnett.

Thirty teams competed in the tournament and \$1110 in gift certificates were awarded. The certificates can be spent anywhere in Burkburnett (merchants are urged to bring the spent certificates to the Chamber office for a refund at face value in cash).

Also in the championship flight, Jimmy Bird and Gene Franklin of Henrietta placed second with 105. Zac Henderson of Burkburnett and Bobby Henderson of Wichita Falls were third with 107, and the team of McDaniel-Pate of Burkburnett won consolation with 61.

In the first flight, John Broomkan of Burkburnett and Willie White of Wichita Falls

placed first with 167; James Pearson and Jim McClain of Burkburnett were second; and the team of Carpenter-Little placed third. Jim Standley - Randy Clements of Burkburnett were consolation winners with 58.

Winners of the second flight were Tom Huntman and Larry Adair of Lawton with 175. Placing second were Bob Carter and Jay Darland of Burkburnett

with 181, with third place going to the team of Gene Bankhead - Caulfield. Winning the consolation prize was the team of Mooney-Mooney with 58.

Hugh McDaniel of Wichita Falls was awarded the closest-to-the-pin prize on the No. 9 hole.

According to Chamber Manager Jim Lemley, the tournament was "very successful".



CHAMPIONSHIP WINNERS - Jim Lemley, [left], Burkburnett Chamber of Commerce Manager, and Larry Doerre, Hidden Valley Golf Course scorekeeper, are shown presenting the first place prize to the team of Bill Darland of Burkburnett and Jerry Atchley of Frederick, at the end of the third annual Boomtown Golf Tournament sponsored by the local Chamber. Darland and Atchley finished with a 36-hole total of 104 [four under par] to win the championship flight. See related story.

Staff Photo by Ricky Stevens

United Way Campaign Begins In Burkburnett

The Burkburnett campaign to kickoff the 1974 Greater Wichita Falls-Burkburnett United Way Drive got underway Tuesday morning as the group in charge met to draw up preliminary plans.

Jack Aaron, Chairman of the United Fund, talked about the advantages of the combined Wichita Falls-Burkburnett drive. He said, "We have many needs in Burkburnett, the same as any small community. In an effort to fill some of these needs, a group of people got together and have attempted to begin to try to solve some of these needs."

"For many years now people living in Burkburnett connected with SAFB and Wichita Falls firms have contributed to the Wichita Falls United Fund, in which we received no credit. We

discussed the possibility of organizing our own United Fund, and decided this would not solve the problem of people living in Burkburnett and working in Wichita Falls. Therefore, we contacted Wichita Falls' United Fund about the possibility of forming a county United Fund. They agreed to this and already we find ourselves involved in a United effort to make this one of the best years ever for the United Fund."

According to Aaron there will be no additional expense in running the campaign, and Burkburnett will also receive help from Bill Link (Executive Director) and his staff to get the drive underway.

Aaron noted that there are several organizations and See UNITED WAY Page 8

Summer Reading Club To Have Award Party

Children who have completed their required twelve books for the Texas State Library Reading Club summer reading list will be entertained by the Friends of the Burkburnett Library on Thursday, July 18, at 10 a.m.

At this time they will receive certificates from the Texas State Library.

Tennis Clinic Slated By Recreation Program

Beginning Monday, July 22, there will be a Junior Tennis Clinic sponsored by the City Summer Recreation Program. Lessons will begin at 2 p.m. each day at the high school tennis courts, ending on Friday, August 2. The clinic will be for beginners and intermediate aged youngsters ages 8-16.

There will be a \$1.00 enrollment charge to pay for tennis balls, and the clinic is open for boys and girls.

For more information contact Gail Cullison at 569-1225 or Thomas Sturgess at 767-7552. According to Bob Carpenter,

Discusses Park, Water, Tractor

City Council Hears From CAC Representative

The Burkburnett City Council met Monday night at 7 p.m., and heard from a community service center representative, Miss Willie May Jones. Miss Jones said, "What we're asking is if the city could allow the funds to hire another outreach person full time or part

time". She continued, "We need someone in the office at all times to receive calls."

The program is sponsored by the Community Action Corp. (CAC) and is set up to help persons who come to town find housing, medical care, and work. She said that many people only need to know who to contact or the methods to obtain help.

Although volunteers assist with the program, Miss Jones said that another paid worker is needed to adequately carry out its responsibilities. She added that Annie Bell Harris is currently working with some 261 active files of families and needs assistance in carrying out the expanding program.

The council unanimously passed a motion to give Gary Bean, City Manager, the authority to meet with Annie Bell Harris and see that a part-time employee is hired to assist with the CAC program in Burkburnett.

In other action the city council agreed to pay accounts payable totaling \$21,567.58.

Bids concerning city maintenance work tractors were opened and reviewed. Councilmen noted price, horsepower, and added equipment of the tractor descriptions. A committee of Reid McCandless, Brack Preston, and John Musick was appointed to meet with the city manager and investigate these and other tractors in the area to find one which meets specifications.

It was noted that the Walton lawsuit hearing is set for Sept. 9 and that the municipal jail will be completed soon and open to the public for viewing.

City Manager Gary Bean

announced that so far the city's peak use of Wichita Falls water is set at 400,000 gallons per day. This figure (if it is the largest amount for the year) will be priced retroactively back to January.

It was also announced that the park located on the Red River needs a name and a list of rules and regulations (made in the form of a city ordinance). The Jaycees will give a picnic for Sheppard AFB personnel who operated heavy equipment at the park, and the lights at the

local tennis courts will be left on one hour later each night.

The council agreed to donate \$1,500 to Burkburnett Little League teams, as was done last year.

It also made the resolution to pay tribute to the late A.H. "Al" Lohofener, who was a city councilman, past mayor, postmaster, and civic leader, and present his city commissioner nameplate and a copy of the resolution to his wife, Sylvia. Lohofener died last week.



PPG SPEAKER-Jeep Ellett [center], assistant plant manager at PPG Works #4, presented a program on PPG Safety Precautions to the Burkburnett Rotary Club Tuesday. Pictured are [from left] Joe Gillespie [Rotary president], Jeep Ellett, and T.M. Cornelius [in charge of program]. Informer/Star Photo

Rotarians Learn Of PPG Safety Programs

"Jeep" Ellett, assistant plant manager of PPG Industries' Float Glass Plant located south of Burkburnett, presented a program on safety to Burkburnett Rotarians at the luncheon Tuesday.

Ellett told the group of

approximately 35, "We do everything we can to keep employees from injuring themselves." He said that PPG plants have a very good record of minimal injuries due to frequently stressed safety precautions.

According to Ellett, there are around-the-clock nurses at the plant, but they mainly do administrative work since there aren't very many injuries. He said that PPG follows the requirements of OSHA, and that safety inspections occur often by government agencies and by PPG inspectors.

Noting that PPG plants are often much safer than homes or highways, Ellett introduced Charlie Craft, who is PPG safety supervisor and in charge of conducting safety programs.

Craft showed the Rotarians a slide presentation of safety programs at PPG. The presentation illustrated that good housekeeping and cleanliness are two major factors in the plants safety. Another main point was education. It was emphasized that employees learn to "Think Safety."

In closing, Ellett said, "We are very safety conscious at PPG and are very enthusiastic about it. We promote this kind of atmosphere at the plant."

Ellett was introduced by T.M. Cornelius, program chairman for the week.

drive friendly logo with text: Governor's Office of Traffic Safety



KICK-OFF CAMPAIGN--Chairmen kicked off the first annual 1974 Greater Wichita Falls-Burkburnett United Way Campaign in Burkburnett Tuesday as they made preliminary plans for the project. Shown [from left] are Bill Link, Executive Director for the

Greater Wichita Falls-Burkburnett United Way; Alvin Hill, Advance Gift Division Chairman; and Jack Aaron, Burkburnett Chairman as they make preparations for the drive.

Informer/Star Photo

State Baseball Tourney To Be Played In Burk

A Division I State Baseball Tournament will be held in Burkburnett July 29 through August 1. The tourney will consist of 12 games to be played in Hayes Park, with teams practicing at the high school and at Sheppard AFB.

There are four sections in Division I where games will be played in the state tournament. They include the game sites of Burkburnett, Beaumont, Houston, and San Antonio. After this the regional tournament will be in Charleston, West Virginia. Then the world series will be in Ft. Lauderdale, Fla.

Burkburnett, which is one of the newest members of Division I, is holding its second state tournament here, since one was held in Burk last year also. After this year, though, state tournaments will be held in Waco.

According to Ken Sullivan, district administrator, games will begin at 6:30 p.m., with opening ceremonies at 6 p.m. on the night of July 29.

For more information contact the Burkburnett Chamber of Commerce or Ken Sullivan, 121 W. Park, Iowa Park 76367 (592-4681).



PREPARE FOR STATE EVENT--Looking over the schedules of events for the Big League Division I State Baseball Tournament to be held in Burkburnett beginning on July 29 are Gregg Williams, Chief Umpire; J.E.

Larson, Coach of the Burkburnett Team; Ken Sullivan, District Administrator; and Vic Fore, President of the Burkburnett League [in charge of tournament].

Informer/Star Photo

Classified Ads Get Results Fast! with star graphic

**BURKBURNETT INFORMER STAR**

Published each THURSDAY at 417 Avenue C, Burkburnett, Texas by

**SMILS Communications, Inc.**  
S. J. McBeath, Publisher

Entered as second class matter at the Post Office at Burkburnett, Texas, 76354, under the Act of March 30, 1879.

Subscription Rates  
\$5.00 per year in Wichita, Cotton, Tillman Counties  
\$6.00 per year elsewhere  
(Above rates plus tax where applicable)

NOTICE TO THE PUBLIC: Any erroneous reflection upon the character, standing or reputation of any person, firm, or corporation, which may appear in this newspaper will be gladly corrected as soon as it is brought to the attention of the publisher.

**TEXAS PRESS ASSOCIATION**  
Member 1974

**FIRST PLACE, FIRST FLIGHT**--The team of Willie White and John Brookman won first place in the first flight at the third annual Boomtown Golf Tournament Sunday. Making the presentation of a gift certificate to the team are Jim Lemley (left) and Larry Doerre (2nd from left). (Staff Photo by Ricky Stevens)

**19 Accidents Investigated**

The Texas Highway Patrol investigated 19 accidents on rural highways in Wichita County during the month of June, 1974, according to Sergeant D.S. Lawson, Highway Patrol supervisor of this area. These crashes resulted in no persons killed and 11 persons injured. The rural traffic accident summary for this county during the first six months of 1974 shows a total of 86 accidents resulting in four persons killed and 49 persons injured.

**J. C. HOLDER GARAGE**  
102 N. Berry Phone 5691951

Honest - Qualified - Dependable  
Domestic - Foreign

OPEN Monday thru Saturday Noon  
CUSTOMER SERVICE LOUNGE WHILE YOU WAIT

**GAS**  
  
**OIL**  
  
**LIGNITE COAL**  
  
**NUCLEAR**

**We're building power plants that use different fuels so you'll continue having the electricity you need.**

Natural gas is the major fuel we use in our generating plants, and will be for several years. Oil is used on a standby basis. But new supplies of these fuels are extremely difficult to obtain and increasingly expensive. To reduce our dependence on them, we've begun using lignite coal. We now have one lignite plant in operation, and two others under construction. We have adequate supplies of lignite for the operating life of these plants and for some additional planned units. Even so, we will need another dependable fuel source for the future. That's why we're planning to have a nuclear-fueled plant in operation by 1980. The use of lignite and nuclear fuels is necessary to provide enough electricity in the years ahead. Supplies of these fuels are more abundant and neither is

**STATE CAPITAL Highlights AND Sidelights**  
by Lyndell Williams  
TEXAS PRESS ASSOCIATION

**AUSTIN, Tex.**--Fitting together an acceptable constitutional revision package proved to be fully as thorny a job as the most pessimistic forecasters maintained. Constitutional Convention delegates limped back to Austin this week to try again for a showdown two-thirds majority vote after rejecting 91-86 the initial submission proposal which they had stitched together piece-by-piece earlier. Hang-ups ranged over a wide area--from the separate right-to-work proposition (which is bitterly opposed by organized labor) to internal provisions of the basic revision document. Some persistent critics argued special interests had too big a hand in drafting the revision. Members of all factions disagreed over sections of the education article--including guaranteed equal opportunity and earmarked college building funds. First approaches at compromise centered on efforts to eliminate some of the five "separate submission" items--that is, proposals not included in the basic revision.

**TEXAS DOMINANT**--Texas still dominates the livestock industry on the basis of 1973 statistics. Texas Agriculture Commissioner John C. White said Texas last year produced more than twice as many cattle and calves as the second place state, Iowa--16,250,000 head, compared to Iowa's 7,660,000. Sheep and lamb production in Texas also topped the nation, and Texas ranked among the nation's top 10 dairy cattle states. Hog production in the state totalled 1,050,000 head in 1973.

**HEARINGS BEGIN**--First of 14 Texas Water Quality Board hearings began in Fort Worth and Dallas last week in an effort to find a suitable way to dispose of toxic industrial wastes. Testimony will also be taken in Beaumont, Port Arthur, Mexia, San Antonio, Pasadena, Corpus Christi, Brownsville, El Paso, Midland, Amarillo, Longview and Austin.

**APPOINTMENTS**--Gov. Dolph Briscoe appointed Jerry W. Woodlock of Gainesville district attorney of the 235th district replacing Jim J. Hatcher of Gainesville who resigned. The district includes Jack, Wise and Cooke counties. Briscoe named Sister Austin Cusimano of Waco and David A. Garrett of San Antonio to the Advisory Hospital Council and reappointed four present members.

**\$72 MILLION TEXAS SHARE**--Texas received \$72 million in federal revenue-sharing funds for the final quarter of fiscal 1974. The state government's share is \$24,260,347--the same as third quarter of fiscal '74. Checks will go to all levels of government which are eligible for revenue-sharing funds. About \$48 million will benefit cities, counties and other local units.

**Dr. Foster Treats Capitol Legislators**

Dr. Eugene Foster, general practitioner from Burkburnett, was recently called on by the Academy of General Practice (AGP) to take his turn serving Texas legislators at the state capitol in Austin from 8:30 a.m. to 5:30 p.m. last Thursday. The AGP provides a general practitioner every day to serve the state capitol in case of emergencies. The academy contacted Dr. Foster, a member of the AGP, several weeks ago and informed him that his shift of duty would be July 11. The "Clinic" is located in the west wing of the Capitol and provides a registered nurse and necessary equipment. Dr. Foster is a graduate of the University of Texas at Galveston Medical School. He opened a full-time practice in Burkburnett in April, after operating a night clinic here earlier.

**Assembly Of God To Host "Galilleans"**

The Galilleans, a Latin American Gospel Singing Group that has traveled throughout the United States, will appear at the First Assembly of God Church, College and Avenue B, on Tuesday, July 23, at 7:30 p.m. There will be no admission charge. Pastor John Hocker invites all to attend.

**TEXAS ELECTRIC SERVICE COMPANY**

**Obituaries**

**A. H. "Al" Lohofener**

Funeral services for A.H. "Al" Lohofener, 78, were at 3 p.m. Thursday in the First Methodist Church in Burkburnett with the Rev. William Penn, pastor, officiating, assisted by the Rev. Lamoin Champ, pastor of the First Baptist Church. Burial was in the Burkburnett Cemetery under direction of Owens & Brumley Funeral Home. Born Jan. 22, 1896, in Oberlin, Kansas, Lohofener came to Burkburnett on Jan. 21, 1909, and was postmaster here for 28 years. He married Sylvia McCalla on July 17, 1921 in Oberlin. Lohofener, who was active in several civic organizations, was mayor of Burkburnett in 1967-69, and was presently a member of the City Council. He was also a member of the Burkburnett Chamber of Commerce, former president of the Rotary Club, State Postmasters Association, American Red Cross for 35 years, Texas League of Municipalities, and Burkburnett Senior Citizens Club. He was a former president of the Senior Citizens Club, and was named Outstanding Senior Citizen in Wichita County in 1971. During World War I he was a second lieutenant in the U.S. Army and was discharged in 1919. He attended Texas A&M University and was a registered pharmacist. He served as executive chairman of the local Red Cross group and was a 45-year member of the First United Methodist Church, where he served on various boards and committees during the past 40 years. Lohofener was a 50-year member of A.F.&A.M. No. 1027 at Burkburnett and was presently vice-president of the Burkburnett Senior Citizens Club. Survivors include his wife; a son, Don of Austin; a daughter, Mrs. Carol White of Abilene; three brothers, A.W., Oscar, and Waldo, all of Oberlin; a sister, Mrs. Bertha Cropper of Fort Worth; and two granddaughters.

**Willie Thomas Pruett**

Funeral services for Willie Thomas Pruett, 68, a former Burkburnett resident, were at 2 p.m. Tuesday in Airport Assembly of God Church in Oklahoma City under the direction of Watts Funeral Home. Pruett died Saturday in Madill, Oklahoma. He was born Feb. 19, 1906, in Mansville, Okla. and lived in Burkburnett from 1936-1954. A resident of Madill three years, he was a retired contractor and member of the Assembly of God Church. Survivors include his wife; four sons, John Paul of Edmond, Okla., J.D. of Piedmont, Okla., and Albert and Bobby, both of Austin, Texas; four daughters, Mrs. Helen McLean of Wrightsville, Ga., Mrs. Hubbard Jo Frisby of Eldorado, Ark., Mrs. Jim Shirley Johnston of Oklahoma City, and Mrs. Darlene Turnbow of Moore, Okla.; two brothers, Jay of Randlett, Okla., and Jessie of Durant, Okla.; two sisters, Mrs. Bertie Green of Randlett and Mrs. Addie Vaughn of Azle, Texas; 32 grandchildren and nine great-grandchildren.

**James Neal Hall**

Funeral services for James Neal Hall, 82, of Burkburnett were at 10 a.m. Wednesday in Owens & Brumley Funeral Home Chapel with the Rev. John White, pastor of First Christian Church, officiating. Hall died Monday in a Wichita Falls hospital. Burial was in the Burkburnett Cemetery. Hall was born July 15, 1892, in Hayesville, N.C. and had resided here since 1919. He was a veteran of World War I and a retired Civil Service employee. Survivors include a daughter, Mrs. Polly Carruthers of Bloomfield Hills, Michigan; a son, James Neal Jr. of Fort Worth; and five grandchildren.

**Mrs. Ida J. May**

Funeral services for Mrs. Ida J. May, 88, who died at her Burkburnett home Friday, were at 10 a.m. Monday in Owens & Brumley Funeral Home with Ed Morris, minister of the Burkburnett Church of Christ officiating. Burial was in Burkburnett Cemetery. Mrs. May, born Dec. 18, 1885 in Pope County, Arkansas, was a 52-year resident of Burkburnett. Survivors include a son, H.B. and a sister, Mrs. Sarah Lee May, both of Burkburnett; three grandchildren; three great-grandchildren; and two great-great-grandchildren.

**James Neal Lawson**

Services for James Neal Lawson, 90, of Burkburnett, were at 2 p.m. Tuesday in Owens & Brumley Funeral Home chapel with the Rev. Ray Morrow officiating. Lawson died Monday in a Wichita Falls hospital. Burial was in Burkburnett Cemetery. Lawson, a welder, is a native of Rogersville, Tennessee, but lived in Burkburnett more than 80 years. Survivors include three sons, James W. of Fort Worth, and Eugene and Warren, both of Burkburnett; six daughters, Mrs. Otis Waddell of Burkburnett, Mrs. Francis Wilson of Cleburne, Mrs. Juanita Rozzell and Mrs. Lawrence Evert, both of Fort Worth, Mrs. Lucille Tilson of Denver, and Mrs. Floyd Davis Sutherland of Oregon; 20 grandchildren; 46 great-grandchildren; and three great-great-grandchildren.

**33 Frye-Vaughn Delegates To Attend State Convention**

The Texas American Legion 56th Annual State Convention to be held in Laredo, Texas on July 18-21, will be well represented by Boomtown, Texas as thirty-three Legionnaires and Auxiliary Ladies from the local Post 264 plan to attend. Delegates from Frye-Vaughn Post 264 have chartered a bus and will depart Burkburnett Wednesday night, July 17, at 10 p.m. Commander Pulliam released the names of the Auxiliary and Legion delegates who will attend. They are Irma Stayton, Helen Fleming, Mr. and Mrs. E.K. Kennedy, Alex Missman, Mr. and Mrs. Charlie Pulliam, Jr., Mr. and Mrs. J.R. Tyler, Mr. and Mrs. Floyd Wilson, Mr. and Mrs. Scott Newton, Jess Carlilie, Jim Seibert, Jim Lemley, Waldo Huddleston, Mr. and Mrs. Jim Cozby, Mr. and Mrs. Joe Alvey, Mr. and Mrs. Joe Jancke, Mr. and Mrs. Paul Drake, Mr. and Mrs. Robert Keene, Mr. and Mrs. Pete Negri, Mr. and Mrs. M.D. Glover, and Carl Sjolin.

**Front Drive Subaru**

Subaru offers 12 mos. unlimited mileage warranty plus our **5 YRS-50,000 Mile Extended Warranty**

But there's so much more in '74. For details call anytime for a recorded message. **569-3872**

**Presenting some of the girls who participated in the Girls Golf Clinic sponsored by the City Summer Recreation Program.**



**OUR DRIVE-IN WINDOWS PROVIDE REAL CONVENIENCE FOR YOU -- TRY THEM SOON!**

Since 1907

**1st NATIONAL BANK**  
BURKBURNETT, TEXAS  
**'100% Interest In You'**



**FIRST PLACE, 2ND FLIGHT**—Pictured [from left] are Chamber Manager Jim Lemley, Thomas Huntman, Larry Doerre, and Larry Adair. Huntman and Adair of Lawton placed first in the second flight at the third annual Boomtown Golf Tournament Sunday at Hidden Valley Golf Course. Lemley is presenting them the gift certificate they won. [Staff Photo by Ricky Stevens]

**News From Hickory Elm**

**by Helen Mooney**  
An inspiring message was brought by Frank Mallory at Sunday School July 14 with 26 present. Gene Breeden led the singing with Ruth Anderson at the piano.

Mr. Joe Howard and Mr. Ed Bruner attended the Senior Citizens Meeting Thursday.

**NEW PATIENT:** Mrs. F.B. (Pearl) Gibbs of 408 Vaughn, Burkburnett.

**NEW EMPLOYEE:** Jewel Ervin, LVN.

Mr. O.J. Cooper, Sr. has returned from the Wichita General Hospital where he has been for the past week undergoing tests and X-rays. We are happy to have him back at Hickory Elm.

Mrs. Cox and Cheryl volunteered with the games last Wednesday, assisting Eloise Stubblefield, Social Director.

Visiting Mrs. Kate Kennedy was Mrs. Leo Foster and Mrs. Ralph Swinford.

W.H. Peery was visited by Mr. and Mrs. J.T. Peery and Mrs. Opal L. Gill.

Visiting Oscar Klinkerman were H.B. and Esther Klinker-

One of the residents of the home, W.H. Peery, is in Wichita General Hospital, Room 570. He has had surgery from a broken hip. He is missed by all of the employees and residents of the home.

Mr. and Mrs. John E. Arthur and children, Larry and Mickey, have returned from a wonderful week's stay at Puerto Vallarta, Mexico. Mr. Arthur landed an 8 1/2 ft. sailfish, which will soon be displayed on the wall at Hickory Elm for all to see.

Now on display at Hickory Elm are beautiful paintings of Pinky and Blue Boy presented to Hickory Elm by children of Dolly C. Hanks in her memory. We are very proud of this generous contribution.

**Lions Elect New International President**



**SAN FRANCISCO, CALIFORNIA**—Johnny Balbo of Oak Brook, Illinois, was elected President of the International Association of Lions Clubs at their 57th Annual Convention in San Francisco, California. Lions International is the largest humanitarian service club organization in the world. It is a non-political, non-sectarian association with over one million members in 146 nations and geographic areas.

A former professional wrestler and World Light-Heavyweight Champion from 1947-49, Balbo has been a member of the La Grange, Illinois, Lions Club since 1952. Now a mobile home park owner, Balbo is a director of the Illinois Society for the Prevention of Blindness and a trustee of Leader Dog School for the Blind, Rochester, Michigan, and Hadley School for the Blind in Winnetka, Illinois.

**Ella Mentry**

WHICH PRESIDENT WROTE A HISTORY OF THE U.S. IN 500 WORDS?



The Words in The MULTIPERIL INSURANCE We Wrote For MANY BUSINESSES, PREVENTED SERIOUS LOSSES...Let Us CHECK YOUR COVERAGE Before A DISASTER Crosses You Up And MAKES HISTORY! The answer is Collidge.

**Lindenborn Insurance Agency**  
416 Ave. C  
Office 569-1291 - Res. 569-0374

**"Nations of the World" REVIVAL!**

Is this the generation that Christ will return? Is the world actually about to come to an end? Will the Roman Empire be revived? Are we in the real shadow of the Great Tribulation and the Mark of the Beast? What about the Mid-East Crises? These and many other questions answered in the sermons by

**EVANGELIST JACK KEE, MINISTER OF PROPHECY**

Place: **CHURCH OF GOD**  
121 S. Ave. E

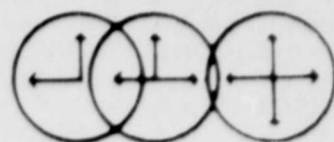
Date: July 14 till ?

Time: 7:30 p.m.

**EVERYONE IS WELCOME**

**GOD'S FIVE MINUTES**

"THERE IS A TIME FOR EVERYTHING..." Ecclesiastes 3:1, The Living Bible, Tyndale House



**First Christian Church**

Second & Avenue D  
Rev. John White, Pastor  
Sunday Morning Worship, 10:30

**Church of Christ**

First and Avenue C  
Ed Morris, Minister  
Sunday Morning Worship 10:40

**Church of God**

121 S. Avenue E  
J. W. McNeece, Pastor  
Sunday Morning Worship, 11:00

**Grace Lutheran Church**

Third and Avenue E.  
Rev. Albert C. Lindemann  
Sunday Morning Worship, 10:30

**Trinity Lutheran Church**

8 Miles West on Highway 240  
Lawrence Boye  
Worship 9:30, Sunday School 10:45

**First United Methodist Church**

Avenue C and 4th Street  
Rev. William W. Penn, Pastor  
Sunday Morning Worship, 10:30

**Church of the Nazarene**

Third and Holly  
Rev. M. Alsbrook, Pastor  
Sunday Morning Worship, 10:30

**Penecostal Church of God**

415 N. Berry Street  
Rev. R. F. Wheeler, Pastor  
Sunday Morning Worship, 11:00

**Episcopal Church of St. John the Divine**

1000 S. Berry Street  
Father David A. Jones, Vicar  
Choral Eucharist, 10:00 Sunday



**PLAYING THE GAME OF LIFE**

Reaching 40—or even 50—doesn't have to mean the beginning of the end for you. What it may mean is that from here on, you will become more skillful in playing the game of life.

As in tennis, "court position" and "tactics" become more important to the older player.

As one passes the 40 to 50 mark, he quits chasing every ball beyond reach. He saves his energy for the important plays, and he learns all over again the importance of the follow through in serving.

God's presence becomes more real to the man or woman at this stage of the game of life, and often the score turns out to be "Love All."

Tennis anyone?

\*\*\*\*\*  
ATTEND CHURCH THIS WEEK  
\*\*\*\*\*

This column belongs to our readers. We will accept printable items and pay \$1.00 for each item published. In the case of quotations, the name of the author and the title and publisher of the book must be given. Address items to "God's Five Minutes," Box 12157, Fort Worth, Tex. 76116

**Apostolic Church of the Lord Jesus Christ**

703 Magnolia  
Rev. Donald P. Hodgson, Pastor  
Sunday School 10:00

**Assembly of God**

Corner of College and Ave. B.  
Rev. J. W. Hocker, Pastor  
Sunday Morning Worship, 11:00

**Calvary Baptist Church**

College and Avenue B  
Ray C. Morrow, Pastor  
Sunday Service, 11:00

**Cashion Baptist Church**

Wichita Highway  
Rev. Ed Newhouse, Pastor  
Sunday Church Service, 11:00

**Central Baptist Church**

814 Tidal Street  
Rev. Max Dowling, Pastor  
Sunday Morning Worship, 10:40

**First Baptist Church**

Corner of Avenue D and 4th  
Rev. Lamoin Champ, Pastor  
Sunday Morning Worship, 10:40

**JanLee Baptist Church**

Opposite Burkburnett High School  
Rev. Wayne S. Glazener, Pastor  
Sunday Morning Worship, 11:00

**Providence Baptist Church**

Floyd & W. 6th Street  
Rev. T. L. Longmire, Pastor  
Sunday Morning Worship 10:30

**St. Jude Catholic Church**

600 Davey Drive  
Confession, 5:30 - 6:30 Saturday  
Masses, 7:00 p.m. Saturday,  
9:00 a.m. Sunday  
Father Harry W. Fisher

This Church Directory Is Sponsored By The Following Burkburnett Merchants In The Interest Of The Spiritual Growth Of This Community:

<p><b>Wolfe Ford Company</b> COMPLETE SALES AND SERVICE SHEPPARD ROAD PHONE 569-2275</p>	<p>"Serving Burkburnett Since 1907" <b>THE NATIONAL BANK</b> BURKBURNETT, TEXAS DRIVE IN AND WALK UP WINDOW BANKING</p>	<p><i>Famous</i> <b>Department Store</b> 569-2441 Burkburnett, Texas</p>	<p><b>GABE'S</b> 211 EAST THIRD Instructions on: Drums-Piano-Guitar-Accordian &amp; Voice Popular &amp; Sacred 211 East Third 569-8138</p>
<p><b>Lippard Furniture</b> 200 E. 3rd 569-3112</p>	<p>211 West 3 <b>SHAMBURGER BUILDING CENTERS</b> 569-2242 Burkburnett</p>	<p>New Homes - Equities - Rentals Property Management <b>G-and-H Real Estate Co.</b> 569-0362 1308 Sheppard Rd.</p>	<p><b>Burk's Sweet Shop</b> Arlieth &amp; Patricia Franklin 512 Sheppard Rd. 569-3643</p>
<p><b>UNITED SUPER MARKET INC</b> "The Finest In Groceries" Wichita Highway and Tidal Street</p>	<p><b>CITY PHARMACY</b> Kenneth Hasting Larry Pribble 569-1491 300 S. Ave. D</p>	<p><b>HICKORY ELM CONVALESCENT CENTER</b> YOUR RECOVERY IS OUR REWARD 800 Red River Expressway 569-1466</p>	<p><b>SPINKS TEXACO SERVICE CENTER</b> 400 S. Ave. D 569-8122</p>
<p><b>Lloyd Clemmer Lumber Co.</b> YOUR BUSINESS APPRECIATED SEE US FOR PRICES BEFORE YOU BUY 569-2911</p>	<p>The <b>BURKBURNETT Bank</b> BEST BRAND OF BANKING 569-1444</p>	<p><b>GIBSON'S DISCOUNT CENTER</b> Where you always buy the best for less. 1,000 Red River Expressway 569-1437</p>	<p><b>The Sewing Box</b> FAYRICS-NOTIONS- PATTERNS DRESSMAKER SEWING MACHINES 201 E. 3rd 569-0522</p>
<p><b>TEXAS ELECTRIC SERVICE COMPANY</b> People power... at your service Bill Vincent, Mgr.</p>	<p><b>Manhattan DEPARTMENT STORE</b> WE GIVE S&amp;H GREEN STAMPS</p>	<p><b>GREENWAY FINA SERVICE STATION</b> 418 Ave. D 569-2942</p>	<p><b>Burk Insurance Agency</b> Auto Insurance - Home Owners HOWARD &amp; RANDY CLEMENT</p>
<p><b>Wampler Insurance Agency</b> For Insurance Of All Kinds 203 N. Ave. D 569-1461 Burkburnett</p>	<p><b>Pat's Electric</b> 104 Linden 569-1331</p>	<p><b>BURKBURNETT INFORMER STAR</b> "MORE THAN A NEWSPAPER, A COMMUNITY LEGEND..." 569-2191 569-0021</p>	<p><b>Darter Insurance Service</b> Reeford &amp; Peggy YOUR BUSINESS APPRECIATED</p>

# Crippled Children's Livestock Auction Set

"It will be tough," said Joe Parker of this year's Crippled Children's Livestock Auction, "but we can do it if we just work harder."

Parker, a Byers rancher who is general chairman of the auction which benefits handicapped children and

adults at the North Texas Rehabilitation Center in Wichita Falls, said this year's sale will be held August 7.

This sixth annual sale will be at the Wichita Livestock Auction in Wichita Falls.

Parker, in saying "It will be tough," meant it will be difficult

for this year's auction to be as successful as was the 1973 sale. "Last year was the best year in agriculture in the history of this nation and also was our best year for the . . . auction," he said.

"We took in \$67,718 and one thin dime," Parker related,

adding, "The beauty of this was that our expenses were just a crumb over \$500."

Parker said that "Everyone who makes a living from the soil" realizes 1974 is not a good year for the cattle business and that he is aware it is going to be harder to get contributions of

livestock for the auction. "But by working twice as hard as we worked last year we can do a job of which we'll all be proud," Parker said.

All profits from the sale go to support the rehabilitation center which provides needed therapy for children and adults through-

out the North Texas-Southern Oklahoma area.

"A number of ranchers and businessmen have volunteered their time to serve on the auction committee," Parker said, "and this is no easy job." They will be contacting cattlemen in their areas, seeking

pledges of cows, calves, public steers, horses, lambs, goats, and all other livestock. "Cash donations also will be accepted," Parker said.

In Wichita County, the auction committee member is Stanley Williamson.

"When Williamson calls on

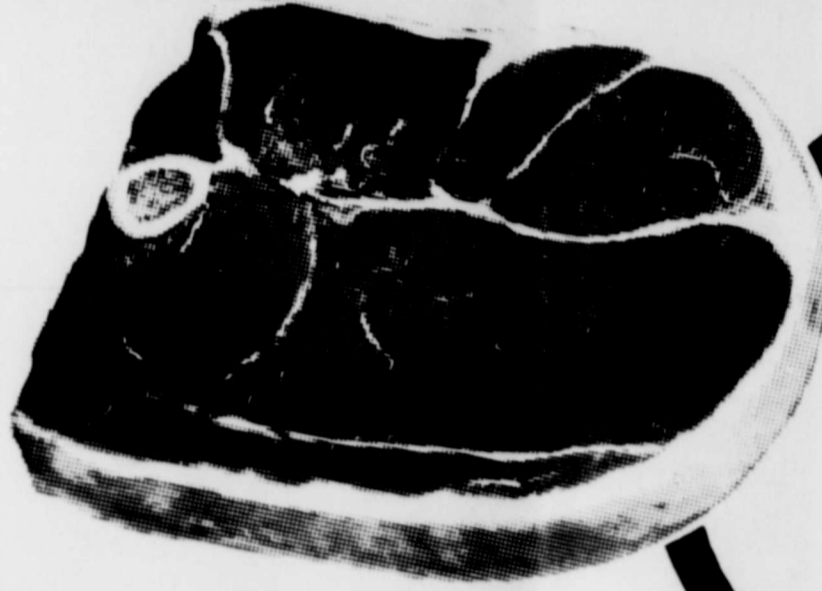
you in the next few weeks, please remember that hundreds of handicapped children and adults are depending on you to be generous," Parker urged.

"You will prove your greatness," he said, "when you give to help a handicapped boy or girl."



The people pleasin store

## We Welcome Federal Food Stamp Customers



USDA Choice, Superb Valu-Trim, Full Cut

# Round Steak

## \$1.29

Lb.

### MEAT GUARANTEE

#### DOUBLE YOUR MONEY BACK

We are so confident of the superior quality of our meats that we offer an extraordinary guarantee. You must be completely satisfied with all the fresh meats you buy at Piggly Wiggly or your money will be cheerfully refunded...DOUBLE!

Fresh, Boston Butt Cut

<b>Pork Roast</b>	Lb.	<b>79¢</b>
Farmer Jones		
<b>Sliced Bologna</b>	12-oz.	<b>79¢</b>
Full Quarter, Sliced into Chops		
<b>Porkloin</b>	Lb.	\$1.19
Cut from Lean Boston Butt		
<b>Pork Steak</b>	Lb.	89¢
Thick Center Cut		
<b>Pork Chops</b>	Lb.	\$1.39
Country Style		
<b>Spareribs</b>	Lb.	\$1.19
Center Cut		
<b>Pork Chops</b>	Lb.	\$1.29
USDA Inspected, Grade A, Yearling		
<b>Turkeys</b>	Lb.	49¢

- |  |                      |     |        |
|--|----------------------|-----|--------|
| USDA Choice, Superb Valu-Trim, Top or Bottom Cut | <b>Round Steak</b>   | Lb. | \$1.69 |
| USDA Choice, Superb Valu-Trim, Eye of            | <b>Round Roast</b>   | Lb. | \$1.99 |
| USDA Choice, Superb Valu-Trim                    | <b>Sirloin Steak</b> | Lb. | \$1.59 |
| USDA Choice, Superb Valu-Trim                    | <b>T-Bone Steak</b>  | Lb. | \$1.95 |
| USDA Choice, Superb Valu-Trim, Bone In           | <b>Strip Steak</b>   | Lb. | \$2.29 |
| USDA Choice, Superb Valu-Trim, Blade Cut         | <b>Chuck Roast</b>   | Lb. | 79¢    |
| USDA Choice, Superb Valu-Trim, Oven Ready        | <b>Rib Roast</b>     | Lb. | \$1.29 |
| USDA Choice, Superb Valu-Trim, Center Cut        | <b>Chuck Steak</b>   | Lb. | \$1.19 |

Breakfast

# Sausage

## 59¢

Lb.



- |   |                     |     |        |
|---|---------------------|-----|--------|
| USDA Choice, Superb Valu-Trim, Boneless | <b>Rib Steak</b>    | Lb. | \$1.79 |
| USDA Choice, Superb Valu-Trim           | <b>Shortribs</b>    | Lb. | 59¢    |
| USDA Choice, Superb Valu-Trim, Arm Cut  | <b>Chuck Roast</b>  | Lb. | \$1.29 |
| Lean, Boneless                          | <b>Stewing Beef</b> | Lb. | \$1.19 |

USDA Choice, in Cry-O-Vac Superb Valu-Trim, Boneless

# Brisket

## 99¢

Lb.



### Dawn Fresh Dairy

Farmer Jones

# Butter

## 79¢

Lb. Ctn.

<b>Parkay Oleo</b>	16-oz. Ctn.	45¢
Piggly Wiggly	<b>Cinnamon Rolls</b>	10-Ct. Can 29¢
Piggly Wiggly, Sweetmilk or Buttermilk	<b>Biscuits</b>	10-Ct. Can 14¢
Pillsbury, Butterflake Dinner	<b>Rolls</b>	8-oz. Can 49¢
Piggly Wiggly	<b>Cottage Cheese</b>	Lb. Ctn. 49¢

- |                               |                     |        |        |
|-------------------------------|---------------------|--------|--------|
| Farmer Jones Boneless         | <b>Ham Halves</b>   | Lb.    | \$1.91 |
| Mr. Boston Codfish            | <b>Sticks</b>       | Lb.    | 69¢    |
| Blue Marrow Cooked & Breaded  | <b>Choppettes</b>   | Lb.    | \$1.03 |
| Decker's Summer Sausage       | <b>Cervelat</b>     | Lb.    | 99¢    |
| USDA Choice, Superb Valu-Trim | <b>Rump Roast</b>   | Lb.    | \$1.19 |
| Farmer Jones, Tender and      | <b>Juicy Franks</b> | 12-oz. | 59¢    |

Coke, Sprite, or Tab

# \$1.49

Plus Deposit

32 oz. 6 Blt. Ctn.

- |                               |                     |             |        |
|-------------------------------|---------------------|-------------|--------|
| Gooch's                       | <b>Meat Franks</b>  | 12-oz. Pkg. | 79¢    |
| Skinned and Sliced            | <b>Beef Liver</b>   | Lb.         | 69¢    |
| Oscar Mayer, All Meat and All | <b>Beef Wieners</b> | Lb.         | 99¢    |
| Farmer Jones 2 lb.            | <b>Bacon</b>        | Lb.         | 89¢    |
| Rath's Sliced                 | <b>Cooked Ham</b>   | 5-oz.       | \$1.05 |

- |                     |                               |            |     |
|---------------------|-------------------------------|------------|-----|
| Punch.              | <b>Powder Detergent</b>       | 49-oz. Box | 69¢ |
| Nabisco, Chips Ahoy | <b>Chocolate Chip Cookies</b> | 14-oz. Bag | 79¢ |

Piggly Wiggly Medium

# Fresh Eggs

## 45¢

Doz.

50 VALUABLE COUPON

### Free 50 Bonus S&H Green Stamps

with this coupon and purchase of two (2) Heads

#### Lettuce

Coupon Expires July 20, 1974.

100 VALUABLE COUPON

### Free 100 Bonus S&H Green Stamps

with this coupon and purchase of any

#### Boneless Ham

Coupon Expires July 20, 1974.

100 VALUABLE COUPON

### Free 100 Bonus S&H Green Stamps

with this coupon and purchase of 1-Lb. Oscar Mayer's, Pear Shaped

#### Ham Steaks

Coupon Expires July 20, 1974.

50 VALUABLE COUPON

### Free 50 Bonus S&H Green Stamps

with this coupon and purchase of any Piggly Wiggly 1-Lb.

#### Fish Fillets

Coupon Expires July 20, 1974.

- |   |                     |                |        |
|---|---------------------|----------------|--------|
| Wagner, All Flavors                     | <b>Fruit Drinks</b> | 32-oz. Btl.    | 34¢    |
| Pee Wee, Daytime Disp.                  | <b>Diapers</b>      | 30-Ct. Pkg.    | \$1.59 |
| Heinz, Strained Fruits or Vegetables    | <b>Baby Food</b>    | 4 1/2-oz. Jar  | 29¢    |
| Betty Crocker, All Varieties, Hamburger | <b>Helpers</b>      | 5 1/2-oz. Pkg. | 65¢    |
| American Beauty, Long                   | <b>Spaghetti</b>    | 10-oz. Pkg.    | 37¢    |
| Welch's                                 | <b>Grape Jelly</b>  | 20-oz. Jar     | 71¢    |

# PPG Industries Reports Highest Earnings Ever

PPG Industries reports that sales and operating earnings for the second quarter of 1974 were the highest for any quarter in company history.

increase over the record \$24.2 million, or \$1.17 per share of a year ago. Sales for the period were \$448 million, compared with \$385 million in the comparable 1973 quarter.

Income taxes for the second quarter and first half of 1974 were \$13.6 million and \$24.2 million, respectively. Comparable figures for 1973 were \$15.1

million and \$29.9 million. Robinson F. Barker, board chairman, said chemical prices have been substantially higher, and have helped to offset some softness in the original equipment automotive market, which accounts for about 13 per cent of total PPG sales.

"Despite a softness in the automotive and residential construction markets, the energy shortage and the resulting high cost of energy are having a positive effect upon our glass business through sale of energy-saving glass products," Barker said.

To help meet the spiralling demand for energy-efficient glass building products, PPG recently announced construction at Marshall, Minn., of a new plant to fabricate Glass-edge Twindow insulating units.

Barker said PPG is involved deeply in the home remodeling and repair markets, and that this business continues to be strong. The company's coatings and resins business is very healthy, he said, and the fiber glass business continues to be quite strong.

for the balance of the year. I believe more than ever that 1974 will be one of PPG's better years," Barker said.

BUY-SELL-RENT-HIRE...  
**Classified Ads**  
**DO IT BETTER**



**PIGGLY WIGGLY**

## Dollar Day Values from Piggly Wiggly

Prices good thru July 21, 1974 in Dallas County. We reserve the right to limit quantities. None sold to dealers.

Piggly Wiggly, 3 to 5 Lb. Chub Pack, Fresh

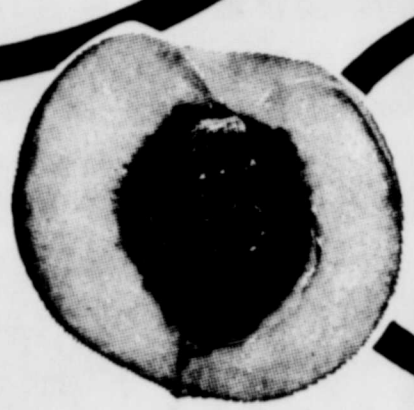
# Ground Beef

Lb. **79¢**



**STORE HOURS**  
7 - 9 Sunday  
7 - 11 Monday - Sat.

- Fresh Crisp Radishes 2 Cello Pkg. 27¢
- Flavorful Bell Peppers Ea. 59¢
- Colorful Fresh Carrots Cello Pkg. 25¢
- Delicious Celery Hearts Pkg. 69¢
- Crisp Red Cabbage Lb. 25¢



Ripe Peaches  
**3 for \$1**

**Frozen Foods**  
Pepper Pine, Frozen, Shoestring

# Potatoes

20-oz. Bags **3 \$1**

Substitute 2 Pk. \$1.07

Waffles 10-oz. Pkg. 57¢

Honey Buns 9-oz. Pkg. 55¢

Pound Cake 16-oz. Pkg. \$1.01

Pizza 21-oz. Pkg. \$2.17

Grape Juice 6-oz. Can 37¢

Cool Whip Topping 4 1/2-oz. Ctn. 45¢

Orange Juice 6-oz. Can 29¢

Dinner 16-oz. Pkg. 97¢

Pot Pies 9-oz. Pkg. 39¢

Cut Okra 16-oz. Pkg. 67¢

Punch 64-oz. Btl. 81¢

Tater Gems 16-oz. Pkg. 69¢

Orange Juice 1/2 Gal. Btl. **99¢**

Lemonade 6-oz. Can **11¢**

Crispy-Fresh Produce from Piggly Wiggly

Bag, Russet Potatoes

# 8 lbs. For \$1.29

- Creamy Ripe Avocados Lb. **43¢**
- Colorful Green Onions 2 For **35¢**
- July, Homegrown CANTALOUPE 3 For **\$1**

Vine-Ripe Tomatoes

# 3 lbs. For \$1

- Valencia Oranges Lb. 25¢
- Fresh Grapefruit Lb. 19¢
- Red Delicious Apples Lb. 43¢
- Italian Squash Lb. 39¢
- Yellow Onions Lb. 17¢
- Juicy Pineapple Ea. 59¢
- Nutritious Turnips Lb. 29¢
- Baking Potatoes Lb. 33¢
- Head Cauliflower Lb. 69¢
- Frozen Ice Bag 69¢
- Tart Lemons Lb. 39¢
- Tangy Limes 3 for 29¢

Del Monte, Cut Green Beans

# 16-oz. Can 25¢



- K-V, Allwood, Charcoal Briquets 10-Lb. Bag **69¢**
- Charcoal Starter Gulf Lite 32-oz. Can **39¢**

The Complete Family  
**Recipe Card Collection**  
Final Week To Complete Series **39¢**

- Alpo, Beef or Broiled Bits Dog Food 5 6 1/2-oz. Cans **\$1.00**
- Heinz, Onion, Smoked or Mushroom Bar-B-Q Sauce 16-oz. Btl. **\$1.57**

- Borden's, Instant Potatoes 16-oz. Box **59¢**
- Lipton, Family Size Tea Bags 24-Ct. Box **99¢**

**Beauty & Health Aids**  
Crest, Regular or Mint

# Toothpaste 59¢

7-oz. Tube

Rapid Shave 6-oz. Can **49¢**

Knee Highs 59¢

Sponge Mop \$2.99

Secret, Anti-Perspirant Deodorant 6-oz. Can **59¢**

Head & Shoulders Shampoo **\$1.39**

**50** VALUABLE COUPON  
**Free 50 Bonus S&H Green Stamps**  
with this coupon and purchase of one (1) 1/2-Gal. Ctn., Piggly Wiggly  
**Low Fat Milk**

**25** VALUABLE COUPON  
**Free 25 Bonus S&H Green Stamps**  
with this coupon and purchase of one (1) 9-oz. Bag, Piggly Wiggly  
**Potato Chips**  
Coupon Expires July 20, 1974.

**100** VALUABLE COUPON  
**Free 100 Bonus S&H Green Stamps**  
with this coupon and purchase of one (1) 2-Lb. Box, Swanson, Frozen  
**Fried Chicken**  
Coupon Expires July 20, 1974.

VALUABLE COUPON  
Keebler Old Fashioned COOKIES  
**2 For \$1.00**

# News From RANDLETT

by Mollie Elliot

Ross Solomon of Odessa visited his mother, Mr. and Mrs. Herbert Kiesling, Saturday night.

Mrs. Laura Mae Hopkins, accompanied by Alta Mae Braden and Mrs. Ida Green of Devol were Sunday afternoon visitors of Mr. and Mrs. Ed Hopkins in Lawton. They stopped at the hospital to visit Mrs. Lonnie Bowles, but only the family and pastor were allowed to visit Mrs. Bowles at that time.

Mr. and Mrs. Lewis Williams, accompanied by Mrs. Bob Williams and Mrs. Bessie Stithe of Nevada visited relatives in Bochita, Okla. over the weekend.

Mrs. Helen Hartwig of Davenport, Iowa and Mr. and Mrs. Lewis G. Hartwig and son Brian of Eldorado, Kansas spent Saturday night with her sister, Mr. and Mrs. John Penick.

Mr. and Mrs. Kenneth Kirkpatrick and sons, Randy and John and Mr. and Mrs. Steve Kirkpatrick and daughters returned home Friday of last week from a week's fishing trip in Colorado.

Mr. and Mrs. Clarence Beish and grandson Timmy returned home Monday evening after a week's visit in Colorado and Arizona.

Mollie Elliott visited in the home of Mr. and Mrs. J.W. Hicks and Mr. and Mrs. C.M. Morrow of Burk Burnett. Emma Ford, Mrs. Morrow's sister, from San Diego, Calif. is visiting them for two weeks. She is a former resident of Randlett.

Miss Kathy Rhoads of North Little Rock, Arkansas is visiting her grandparents, Mr. and Mrs. R.H. Rhoads and other relatives.

Mrs. Mary Sells fell at her home Tuesday of last week and was taken to the Burk Burnett Clinic for treatment.

Mr. and Mrs. Carl Shields returned to their home in California after spending 10 days with her mother, Mrs. Zaida Bryant and other relatives.

Mrs. Lonnie Boles was taken to a Lawton hospital and underwent emergency surgery Friday evening. She is reported to be doing well at this time.

Mr. and Mrs. Elmer Beisch and daughter returned home Thursday after a week's visit in Colorado and Arizona.

Mr. B.L. Ressel spent the weekend with his son, Mr. and Mrs. Dennis Ressel and daughter in Paris, Texas.

Sunday dinner guests of Mr. and Mrs. C.B. Ressel were Mrs. Faye Postelwaite and Mr. B.L. Ressel.

Mr. and Mrs. Herman McAdoo and Dale returned home Sunday of last week after a weeks visit with relatives in Crowder, Muskogee and Eufaula, Oklahoma.

Mr. and Mrs. Neal Taylor announce the birth of a daughter, born July 8th in a Wichita Falls hospital. They have chosen the name Miranda DeAnn.

Paternal grandparents are Mr. and Mrs. J.D. Taylor. Maternal grandparents are Mr. and Mrs. Leroy Laminack of Randlett.

Geoffrey Don Wynn of Norman, Okla. was a guest last week of Mr. and Mrs. Herman McAdoo.

There was a fire Wednesday night at J.M. Butler's barn. He lost several bales of hay. The fire was caused by welding.

Mr. and Mrs. Claude Beisch of Farmers Valley visited their brother and sister, Mr. and Mrs. Clarence Beisch, Friday morning.

Mrs. Flora Hatcher returned home Tuesday of last week after spending five weeks with relatives in California.

Mrs. Mollie Elliott, accompanied by Mrs. Tommy Colbert of Walters visited Mrs. Cathy Frankey and Mr. and Mrs. David Elliott of Lawton Monday

## Former Ag Teacher Becomes Supervisor

Walton Holt, former agriculture instructor at Big Pasture High School, has been named welding supervisor for the new Autoquip Company in Guthrie. Holt resigned as agriculture

instructor at Guthrie High School to take on the new position. Autoquip manufactures hydraulic lift equipment and has built a \$3 million plant which will eventually employ 200 people.

Holt taught for six years at Thackerville before teaching 11 years at Big Pasture in Randlett. He then taught three years at Guthrie where his FFA judging teams won four state championships this year and was the top chapter in the state for multi-teacher departments.

Holt and his wife Gladys have five children: Ron, sports editor of the Stillwater (Okla.) News-Press; Randy, who recently received his degree from Oklahoma State University in broadcasting; Clarita, who is married and living in Oklahoma City; Rex, a sophomore at



Walton Holt

Oklahoma State; and Tony, a junior at Guthrie High School. They also have two grandchildren.

Their son, Ron is married to the former Rebecca Turner, daughter of Mr. and Mrs. Sam Turner, Jr., of Devol, Okla.



SECOND PLACE WINNERS--Jim Lemley (left) and Larry Doerre present gift certificates to Jay Darland and Bob Carter of Burk Burnett who placed second in the second flight at the third annual Boomtown Golf Tournament Sunday at Hidden Valley Golf Center here. (Staff Photo by Ricky Stevens)

## Red River Information Sessions Scheduled

A University of Oklahoma engineering professor has received a contract from the Corps of Engineers to design, arrange, and analyze public information sessions for a proposed chloride control project for the Red River.

Dr. L.W. Canter, director and associate professor of civil engineering and environmental science at OU, has received a \$16,000 grant from the Tulsa District of the U.S. Army Corps of Engineers. Under the contract, Canter will schedule six public information sessions in cities in Louisiana, southwestern Oklahoma, and in north Texas near tributaries which are adding chloride to the fresh water of the Red River.

"Natural salt sources in the upper reaches of the Red River basin are degrading the water downstream, making it unsuitable for many uses," Canter explained. Congress is considering structural control measures such as brine dams or

evaporation reservoirs which would capture the salt water from flowing into the Red River. "This project fits with the general trend of the times to get the public involved in decision making," Canter said of his role of organizing the six information sessions.

Canter will compile all the data from the six public sessions and will write a final report including the data, citizen views, and recommendations for the project. This report will be used by the Corps of Engineers in implementing the chloride control project.

Canter and the Corps of Engineers will hold public participation meetings in Vernon, Texas on Thursday, August 29, at 7:30 p.m. in the Wilbarger Auditorium; and in Wichita Falls on Tuesday, Sept. 10, at 7:30 p.m. in the Ramada Inn. Meetings are open to the public.

# SHOP UNITED

PRICES GOOD THRU' JULY 20TH

**RANCH STEAK** CENTER CUT 7-BONE CHUCK ..... LB. \$1.19

**T-BONE STEAK** ..... LB. \$1.59

**SIRLOIN STEAK** BONELESS WASTE FREE ..... LB. \$1.59

**FRESH FROZEN TYSON'S PRIDE CHICKEN BREASTS** 2 LB. BOX \$1.49

**FRESH FROZEN TYSON'S PRIDE DRUM-STICKS** 2 LB. BOX \$1.39

**BIG "U" PURE PORK SAUSAGE** 2 LB. BAG \$1.19

**ROUND STEAK** LB. \$1.29

**FOOD KING SOLID OLEO** ..... LB. 25¢

**"SHURFINE DOLLAR SPECIALS"**

CORN WHOLE KERNEL OR CREAM	4 303 CANS
BEANS GREEN CUT	4 303 CANS
PEAS EARLY HARVEST	4 303 CANS
SPINACH	4 303 CANS
WHOLE PEELLED TOMATOES	4 303 CANS

**EXCEDRIN TABLETS** 60 CT. BTL. 89¢

**PEPSODENT TOOTHPASTE** 7 OZ. TUBE 69¢

**TALCUM PONDS** 6 1/2 OZ. CAN 49¢

**AJAX CLEANSER** 24 OFF 14 OZ. 17¢

**GT. BOX AJAX POWDERED DETERGENT** 79¢

**VAN CAMP GRATED TUNA** 3 FLAT CANS \$1

**SHURFINE POP ASSORTED FLAVORS** 12 OZ. CANS 2.25

**SHURFINE SALT** 26 OZ. BOX PLAIN OR IODIZED 10¢

**FARM FRESH PRODUCE**

**FRESH TOMATOES** 4CT. CRTN. 39¢

**SANTA ROSA PLUMS** LB. 39¢

**CRYSTAL WHITE ONIONS** LB. 15¢

**PREMIUM SIZE RUSSET POTATOES** LB. 19¢

**VINE RIPE CANTALOUPE** PERSIDIO LARGE SIZE LB. 15¢

## Devol Doings

Mr. and Mrs. J.P. Eley spent the weekend in Altus visiting relatives. \*\*\*\*\*  
The Out Reach Prayer Service of the First Baptist Church met in the home of Grace McClurkan Monday with nine members

present. The next regular meeting will be Monday, July 22, in the home of Inez Spier. \*\*\*\*\*

Mr. and Mrs. A.D. Green attended a family reunion Sunday, July 7 held at the Redondo Inn in Lawton. This marked the third year for the family observance for the reunion. A basket dinner was served at noon to about 50 relatives and friends.

Mr. and Mrs. Green also attended the Perry reunion, relatives of Mrs. Green in Lawton. \*\*\*\*\*

Visiting Mr. and Mrs. A.D.

Green Friday were Mr. and Mrs. Teddy Pierce and family of Commerce, Texas, Mr. and Mrs. Bobby McCoy and family of Oklahoma City and Mr. and Mrs. A.D. Green, Jr. of Lawton. \*\*\*\*\*

Rain! Rain! Rain! THINK RAIN! \*\*\*\*\*

A wedding shower honoring Vickie Crowe and Don Sykes was held Sunday, July 15, after church services in the dining room of the First Baptist Church.

The refreshment table was covered with a yellow cloth and set with crystal appointments.

Hostesses for the occasion were members of the church with Mrs. Sam Turner, Jr. serving punch, assisted by Mrs. R.L. Wyatt and Mrs. Lin Harms.

Special guests were the bride-elect's mother, Mrs. Laine Crowe of Wichita Falls and the prospective groom's parents, Mr. and Mrs. Tallie Sykes of Burkburnett.

The couple will be married July 26, and will make their home in Fort Worth, Texas. \*\*\*\*\*

Mrs. Nora Morman of Walters spent last week with her sister, Mrs. Nevada Turner. \*\*\*\*\*

Mr. and Mrs. Jim George stopped for a visit with Dollie Hardin and other friends in Devol last week as they were passing through. Mr. George was Superintendent of the Devol School during the middle 40's. Mr. and Mrs. George now reside in Borger, Texas. \*\*\*\*\*

Mary Beth Eley returned to her home in Covington, Texas Friday of last week after spending a month with her

parents, Mr. and Mrs. J.P. Eley. Mary Beth will attend The Little People Convention held in Asheville, N.C. this week. \*\*\*\*\*

Rev. Laine Crowe, pastor of the First Baptist Church here, received painful burns to his eyes while welding some pipe on the job. Bro. Mike Strong of Lawton filled the pulpit and delivered the Sunday message. \*\*\*\*\*

Mr. and Mrs. Jammie Inman of Wichita Falls spent the day Friday with their grandfather, K.L. Smith. \*\*\*\*\*

Bryan Harrison, accompanied by Mr. and Mrs. Frank McClendon spent the weekend in Tulsa visiting the Vernon Lagrons. \*\*\*\*\*

Mr. and Mrs. Ron Holt have spent the last week with her parents, Mr. and Mrs. Sam Turner, Jr. and other relatives here. \*\*\*\*\*

Mrs. A.D. Green and Mrs. Charles Renegar attended the wedding ceremony of Johnnie Rupe and Sherry Terrell in

Graham, Texas. Sherry is the daughter of Rev. and Mrs. Robert Terrell, a former pastor here, and Rupe is the son of Mrs. Charles Renegar, formerly of Walters. \*\*\*\*\*

Mr. and Mrs. A.D. Green attended the funeral services of Mrs. Green's uncle, A.A. Smith, in Comanche, last week. \*\*\*\*\*



THIRD PLACE--Jim Lemley and Larry Doerre present a third place gift certificate to Zac Henderson of Burkburnett who, along with his partner Bobby Henderson (not shown) placed third in the championship flight at the third Annual Boomtown Golf Tournament Sunday. [Staff Photo by Ricky Stevens]

## Need An Electrician Now?

**E & V ELECTRIC**  
We do all types of electrical repair work.

CALL

Karry Elliott 569-2897  
Eddie Viavattene 569-0345

Residential-Commercial  
Mobile Home-Window Units

**Eddins**

AIRCONDITIONING & HEATING CO.

2514 Jacksboro Hwy. Ph- 767-6153



SALES  
SERVICE  
INSTALLATIONS

WE SERVICE ALL BRANDS

# SAVE DOLLARS!

**BEEF RIBS** THICK & MEATY .....LB. **69¢**  
**RUMP ROAST** .....LB. **\$1.19**  
**ROAST** BONELESS SHOULDER .....LB. **\$1.29**

**BONELESS STEW**  
EXTRA LEAN CUBES OF BEEF .....LB. **\$1.19**

PLAY **BOBBS** "BLACK-OUT" **DRINGO**  
GET 1000 EXTRA S&H GREEN STAMPS

GROUND **BEEF**  
WITH TEXTURED HYDRATED VEG. PROTEIN  
**79¢** LB.

BIG "U" **BACON**  
12 OZ. PACK  
**79¢**

**BEEF ROAST**  
BLADE CUT CHUCK  
**89¢**



**RIB STEAK** .....LB. **\$1.29**

MERICO **BISCUITS** TEXAS SIZE BUTTERMILK 12 OZ. CAN **19¢**  
BEST MAID  
**PICKLES** DILL • KOSHER DILL OT. JAR **49¢**  
POLISH DILL  
SHURFINE HAMB. SLICED  
TRAPPEY'S JALEPENO **PINTO BEANS** WITH BACON 3 300 CANS **\$1**  
HUNT'S **CATSUP** 32 OZ. BOTTLE **59¢**  
MOUNTAIN PASS **TOMATO SAUCE** 7 8 OZ. CANS **\$1**  
SOFLIN **PAPER TOWELS** 3 JUMBO ROLLS **\$1**

WORTH 25¢ VALUABLE COUPON TOWARD PURCHASE OF 1 LB. CAN MARYLAND CLUB COFFEE **94¢** WITHOUT...\$1.19 #02 EXPIRES 7-20-74

**CARNATION COFFEEMATE** CREAMER 11 OZ. JAR **79¢**

WILSON VIENNA **SAUSAGE** 3 FOR **89¢**

WILSON **MOR** LUNCHEON MEAT 12 OZ. CAN **69¢**

WILSON POTTED **MEAT** 5 3 OZ. CANS **89¢**

"FROZEN FOODS" SPARE TIME **POT PIES** CHICKEN OR TURKEY **6 FOR \$1**  
MORTON **DINNERS** FRANKS & BEANS SPAGHETTI & MEATBALLS MAC & CHEESE MAC & BEEF **39¢**

GLADIOLA **FLOUR** 5 LB BAG **69¢**

MARYLAND CLUB **COFFEE** **94¢** WITH 25¢ COUPON 1 LB. CAN



PRICES GOOD JULY 18, 19, & 20

**UNITED SUPER MARKETS**  
WE GIVE S&H GREEN STAMPS

## News From Evergreen Manor

by Artie Mullins  
Mrs. U.V. Daniels from Wichita Falls visited her mother, Mrs. Baker. \*\*\*\*\*

Mr. and Mrs. George Hill and family of Wichita Falls visited his mother, Minnie Hill, Friday. \*\*\*\*\*

Mrs. Ruth Woods of Wichita Falls visited her mother, Mrs. Bertha Matthews and Mr. and Mrs. C.D. Mullins. \*\*\*\*\*

Mrs. W.W. Chambers, who was in the hospital, is back with us and feeling better. \*\*\*\*\*

Mr. and Mrs. Louis Hardman and children from Georgetown, Texas visited her grandparents, Mr. and Mrs. C.D. Mullins. \*\*\*\*\*

Mr. and Mrs. George Warren from Randlett, Okla. visited Mr. and Mrs. Floyd Dickerson and Addie Dickerson. \*\*\*\*\*

Mr. and Mrs. Lloyd Rush of Wichita Falls visited his parents, Mr. and Mrs. B.F. Rush, Sunday. \*\*\*\*\*

Mrs. Bentley spent the day Saturday in her son's home. \*\*\*\*\*

Mr. and Mrs. Mike Germany and son, Keith, of White Deer, Texas visited his grandparents Sunday. \*\*\*\*\*

Visiting Winnie Auston were her sister, Myrtice Evans of Electra and Mr. and Mrs. A.A. Auston and son of Lawton. \*\*\*\*\*

Mr. Bill Evans of Houston returned home Friday after spending two weeks here with his sister, Winnie Auston, who has been ill. \*\*\*\*\*

Mr. Lawson is back in the hospital. \*\*\*\*\*

Mrs. Alston is back with us and feeling better after spending some time in Wichita General Hospital. \*\*\*\*\*

Mr. and Mrs. Keeble Jones of Duncan, Okla. visited her mother, Mrs. Pruett. \*\*\*\*\*

Dorothy Dickey of Wichita Falls visited her mother, Mrs. Mayse, this week. \*\*\*\*\*

Mr. and Mrs. H. Pierce of Bowie, Texas visited Joe Dorman. \*\*\*\*\*

The patients were all glad to see Dr. Carpenter back after a two-week vacation. \*\*\*\*\*

Walter Preschel was taken to Wichita General Saturday. We hope he will return soon. \*\*\*\*\*

We want to thank the Lohofeners for the flowers from Mr. Lohofener's funeral. We extend our love and deepest sympathy to the family. \*\*\*\*\*

Mrs. Myral Davis of Iowa Park visited her father, Jess Kilgo, Sunday. \*\*\*\*\*

We had 20 in Sunday School. Mr. Wortham brought a good lesson assisted by Mr. West, who led the singing. Mrs. West was at the piano. The patients enjoy the singing so much. The evening services were conducted by Rev. Penn of the First United Methodist Church. He brought a good message and everyone enjoyed the singing.



**NEW STOP SIGNS**--According to City Engineer Paul Drake, Burk Burnett is getting some 332 new stop signs. The city street department has been placing these signs throughout town and the project is about 75 per cent complete as of last week. The total cost of the project is approximately \$11,000, with the reflective signs being raised in height

**Mrs. Standlee Named 'Breath Of Life' Campaign Chairman**

Mrs. Jim Standlee has been named chairman in Burk Burnett, of the September Breath of Life Campaign to fight children's lung-damaging diseases, according to Kenneth J. Mackintosh, president of the Dallas Area Chapter, National Cystic Fibrosis Research Foundation.

Mrs. Standlee will lead local volunteers in raising funds to support research and care programs for children affected by lung-damaging diseases like cystic fibrosis, severe asthma, chronic bronchitis, and bronchiectasis.

Mrs. Standlee is a member of the Grace Lutheran Church of Burk Burnett, the Southside P.T.A., and the Modern Study Club.

Approximately one of every 1,500 babies is born with cystic fibrosis, which is still incurable. C/F is inherited when both parents carry the recessive gene for C/F. It is believed that one in twenty persons, or a total of ten million Americans, is a symptomless carrier of this gene. Current research funded by the National Cystic Fibrosis Research Foundation is seeking a practical test to identify these carriers, as well as a cure for C/F and better methods of treatment for all lung-damaging diseases.

Because of improved treatment developed through research, many C/F patients are now living into their teens and young adulthood. This same treatment is also benefiting and often curing children suffering from other lung-damaging diseases.

"Most people don't realize that there are millions of children in the U.S. affected by lung-damaging disease," said Mrs. Standlee. "For some of these children breathing is a struggle, rather than the natural function we, who are lucky, take for granted."

The Breath of Life Campaign supports not only research, but diagnosis and treatment of children with lung-damaging diseases in C/F Centers across the country. There are more than 110 of these Centers, which also provide for educational programs and research.

**Grace Lutheran Bible School Is Underway**

Grace Lutheran Church, Third and Avenue E. Burk Burnett, is holding its Vacation Bible School from 9 a.m. to 11:30 a.m., July 15 to 25.

The bible school will consist of puppets, songs, games, stories, filmstrips, puzzles, punch-outs, and crafts.



**CHEERLEADER INSTRUCTION**-- 1974-75 Burk Burnett High School cheerleaders were instructors of a cheerleader clinic last week at the high school as part of the City Summer Recreation for youngsters in Burk Burnett. Pictured is a group of the girls as they watch one of the cheerleaders explain and show how to perform a yell. [Staff Photo by Ricky Stevens]

**Summer Fun... Egg-Painted Raisin Cookies**



Baking raisin cookies is one thing. Painting them is another. That makes two great summer activities for youngsters. Saucer-size cookies are cut out with a two-pound empty coffee can which definitely adds to the drama.

The big plump California raisins are inspirational, artistically as well as gastronomically. They make an eye here, a nose there, and maybe the sly grin or scary scowl. Simply mix egg yolk with food colors for the paints and set them on the half-shell in the egg carton. You'll probably need some shaggy and sparkly cake decorations, too.

- RAISIN EGG-PAINTED COOKIES**
- 1 cup butter
  - 2 cups sugar
  - 2 eggs
  - 4 cups sifted flour
  - 2 teaspoons baking powder
  - 1/2 teaspoons salt
  - 1 1/2 cups California raisins
  - 2 teaspoons vanilla extract
- Cream butter and sugar; add eggs one at a time. Sift flour, baking powder, and salt into butter mixture and blend. Stir in raisins and vanilla. Chill dough. Roll dough about 1/2-inch thick. Cut out cookies with an empty 2-pound coffee can. Bake at 375 degrees for 15 minutes. Makes 10 cookies.

**THOUGHTS**

From The Living Bible

"Who was this fellow?" the king demanded. "What did he look like?" "He was a hairy man," they replied, "with a wide leather belt." "It was Elijah the prophet!" the king exclaimed. Then he sent an army captain with fifty soldiers to arrest him. They found him sitting on top of a hill. The captain said to him, "O man of God, the king has commanded you to come along with us." But Elijah replied, "If I am a man of God, let fire come down from heaven and destroy you and your fifty men!"

II Kings 1:7-10  
Religious Heritage of America

**UNITED WAY**  
Cont. From Page 1

groups in Burk Burnett which will be eligible to draw from United Fund. He added that it is possible that Burk Burnett might have a branch Boys' and Girls' Club, with many other possibilities also existing.

He stressed, "We must remember too, that all of the services in Wichita Falls will be available to us." "We are very fortunate in this area to have a strong local economy. I hope that we will all consider making an investment back to our community. Let's make this first year the best," concluded Aaron.

The goal for the 1974 campaign is \$774,000 for the Greater Wichita Falls-Burk Burnett area, with an estimated \$5,000 coming from Burk Burnett. This goal is the highest ever due to inflation.



**Michael Orandoff**  
INTRODUCING... Michael Shane Orandoff, great grandson of Mr. and Mrs. Minyard Nixon of 213 West Fourth, Burk Burnett. He is the son of Mr. and Mrs. Randy Orandoff of Killeen, Texas. Grandparents are Mrs. Perlene Italian of Burk Burnett, Mr. Fred Italian of Schertz, Texas, and Mr. and Mrs. Orandoff of Dilly, Texas.  
Michael was born June 26, 1974.

**USE WANT ADS**

From 9 a.m. to 4 p.m.  
THURSDAY, FRIDAY, & SATURDAY

**SCISSORS**  
**Sharpened**  
**FREE!**  
WITH THIS COUPON  
One pair sharpened FREE.  
50¢ for each additional pair.  
NO PINKING SHEARS

**Hancock Fabric** WEST  
2702 Iowa Park Rd. - Wichita Falls

**Vacation Church School Starts Monday, July 22**

The First United Methodist Church will hold its Vacation Church School during the week of July 22. According to Mrs. Bill Wood, director of the Vacation Church School, the public is invited to attend.

Classes will meet in the sanctuary at 9 a.m. each morning, with individuals going to their prospective classes from there. Hours are from 9 a.m. to 11 a.m. Monday through Friday and will be concluded with a program at the Sunday night services July 28. The classes provided will include children through 6th grade.

Mrs. Wood said, "If you have children who would like to come, we cordially invite them to attend."

**WEEKLY MARKET REPORT**

Beef counters continue to be well stocked and forequarter cuts show most attractive prices, according to one consumer marketing education specialist.

"Greater consumer demands for beef hindquarters have raised prices on those cuts while lowering prices on forequarters," Mrs. Gwendolyn Clayatt, Texas Agricultural Extension Service, The Texas A&M University System, said this week.

"Look for best beef buys on ground beef, round steaks, chuck roasts and steaks, and liver."

"Pork supplies are usually lower in summer and the higher prices reflect this condition now. However, several pork cuts -- smoked hams, loin cuts and the Boston butt--are among the better meat values," the specialist noted.

Poultry is another good buy. Whole and cut up fryers are priced low and the quality of the birds on the market is excellent, the specialist reported.

Fresh fruit items in best supply at most economical prices include oranges, bananas, nectarines, peaches, pineapples, plums, cantaloupe, honeydew melons and watermelons.

Best vegetable buys are cabbage, carrots, squash, okra,

corn, radishes, green onions and dry yellow onions, the specialist said.

**CONSUMER WATCHWORDS:** Cheese is a good bargain now because prices have dropped as a result of larger than usual supplies.

Try combining cheese with small portions of leftovers for a tasty and economical meal.

**Piano Lessons**  
Now enrolling students for both beginner and advanced lessons  
Yearly recital given. 569-1695

Consolidated Report of Condition of **The Burk Burnett Bank**  
of Burk Burnett in the State of Texas and Domestic Subsidiaries at the close of business on June 28, 1974.

	DOLLARS	Cts.
<b>ASSETS</b>		
1. Cash and due from banks (including \$ <sup>100,000.00</sup> unposted debits)	1,090,585	17
2. (a) U.S. Treasury securities	450	07
(b) Obligations of Federal Financing Bank	1,150,000	00
3. Obligations of other U.S. Government agencies and corporations	399	84
4. Obligations of States and political subdivisions	2,9	00
5. Other securities (including \$ <sup>0.00</sup> corporate stocks)	1,200	00
6. Trading account securities	4	12
7. Federal funds sold and securities purchased under agreements to resell	125	23
8. Other loans	125	23
9. Bank premises, furniture and fixtures, and other assets representing bank premium	125	23
10. Real estate owned other than bank premises	0	00
11. Investments in subsidiaries not consolidated	0	00
12. Customer's liability to this bank on acceptances outstanding	0	00
13. Other assets (Item 6 of "Other Assets") (including \$ <sup>0.00</sup> direct lease financing)	6,437	19
14. TOTAL ASSETS	3,920,393	26
<b>LIABILITIES</b>		
15. Demand deposits of individuals, partnerships, and corporations	2,961,503	69
16. Time and savings deposits of individuals, partnerships, and corporations	3,936	15
17. Deposits of United States Government	48	70
18. Deposits of State and political subdivisions	738	04
19. Deposits of foreign governments and official institutions	0	00
20. Deposits of commercial banks	12	50
21. Certified and officers' checks, etc.	0	00
22. TOTAL DEPOSITS	1,728,474	29
(a) Total time and savings deposits	3,319,345	22
(b) Total demand deposits	4,403,402	74
23. Federal funds purchased and securities sold under agreements to repurchase	0	00
24. Other liabilities for borrowed money	0	00
25. Mortgage subsidiaries	0	00
26. Acceptances exercised by or for account of this bank and outstanding	0	00
27. Other liabilities	636	71
28. TOTAL LIABILITIES	6,819,233	28
29. MINORITY INTEREST IN CONSOLIDATED SUBSIDIARIES	0	00
<b>RESERVES ON LOANS AND SECURITIES</b>		
30. Reserve for bad debt losses on loans (set up pursuant to Internal Revenue Service rulings)	47	40
31. Other reserves on loans	0	00
32. Reserve on securities	0	00
33. TOTAL RESERVES ON LOANS AND SECURITIES	47	40
<b>CAPITAL ACCOUNTS</b>		
34. Capital stock and debentures	0	00
35. Equity capital, total (specify interest rate and maturity of each issue outstanding)	0	00
36. Preferred stock-total par value	0	00
(No. shares outstanding)	0	00
37. Common stock-total par value	125,000	00
(No. shares authorized, 10,000; No. shares outstanding, 10,000)	0	00
38. Surplus	125,000	00
39. Undivided profits	349,233	76
40. Reserve for contingencies and other capital reserves	0	00
41. TOTAL CAPITAL ACCOUNTS	529,233	76
42. TOTAL LIABILITIES, RESERVES, AND CAPITAL ACCOUNTS	8,457,199	17
<b>MEMORANDA</b>		
1. Average of total deposits for the 15 calendar days ending with call date	7,552,972	08
2. Average of total loans for the 15 calendar days ending with call date	4,140,463	05
3. Unearned discount on installment loans included in total capital accounts	0	00

I, Gary Owen, Vice Pres. & Cashier, of the above-named bank, do solemnly [SWORN] affirm that this report of condition is true and correct, to the best of my knowledge and belief.

Corrected Attest: [Signature]

[Signature]

State of Texas, County of Wichita, ss. I, [Name], Notary Public, do hereby certify that I am not an officer or director of this bank.

My commission expires 0-1-76, 19 [Year]

Wendlyn Cornstubble

**Circle B Hair Fashions**  
569-1387  
Corner of College & Bradley  
Hours: Tuesday thru Saturday  
Specializing in Long Hair  
We will take late appointments

**OWENS & BRUMLEY FUNERAL HOME**  
Serving you since 1921  
Phone 569-3361

A Trusted Family Friend... in a time of need

**Summer Sale**  
**Irene's Dress Shop**  
110 North Commercial Temple, Oklahoma

1/3 OFF | 1/3 OFF  
Ladies Pants Suits, Jr. Pant Suits, Dresses, Suits, & Dresses, & Pant Dresses, Shorts

ALSO Tops, Pants, Lingerie, Shoes, & Purses

**Fine PRINTING**  
*Rapid Delivery*

Operate In Top Form...

Whatever forms you need for your business... bills, ledgers, labels, work sheets, envelopes, letterheads, file cards... count on us for expert help. We'll be happy to give you suggestions.

Ask For Free Estimates  
**Ed's Commercial PRINTING**  
TELEPHONE 569-2191





Mrs. John James Divine, Jr.

## Pierce-Divine Marry In Burk

Dale Aunee Pierce was married to John James Divine, Jr. in an evening garden ceremony on the lawn of the First Methodist Church July 3.

The bride wore a long gown of white organza edged in lace featuring a ruffled sweetheart neckline. She wore a wreath of flowers in her hair with a long veil and carried a bouquet of spring flowers.

The bride is the daughter of Dr. and Mrs. Carl L. Pierce. The bridegroom is the son of Mr. and Mrs. John James Divine.

Attendants were Mrs. Betty Blankenship, matron of honor, who wore a long eyelet floral gown in shades of blue over a royal blue sheath, and the maid of honor, Miss Marla Divine, sister of the groom, wore the same design dress in shades of yellow-orange over a golden-orange sheath. Each had a crown of flowers and carried a bouquet of carnations matching their dresses.

Robert Halverson was best man, Alan Nunn was groomsmen, and Mark and Keith Pierce, brothers of the

### Newcomers

David Shinkle  
George M. Bryant  
Dale Browning  
Paul W. Bellaire  
Arthur Ray Ener  
John A. Fields  
Pat Yarmoski  
William R. Allen  
Douglas Green  
Emmett D. Weatherford, Jr.

## TFWC District Chairmen Named

Mrs. Ben Fulton of Quannah, Santa Rosa District president, Texas Federation of Women's Clubs, recently announced the department chairmen of the district.

Mrs. Sam Hampton of Seymour will be chairman of the Public Affairs Department, with Lt. Col. (Ret.) Jane Sewell of Burk Burnett in charge of the Veterans Division.

Mrs. Frank Miller of Burk Burnett will be chairman of the Arts and Crafts Department and Mrs. R.E. Hatcher of Henrietta will head the Texas Heritage Department.

Special appointments of Burk Burnett women include Mrs. Phillip Carpenter, Bicentennial and American Heritage; Mrs. Marjorie Kauer, Leadership and Public Relations; and Mrs. Albert Dillard, Junior Membership.

Burk Burnett women who were named as chairmen for contests and projects include Mmes. Fred Hunt, State Federation Finance Funds, assisted by Mrs. M.E. Bean; E.C. Mallett, CITGO Program; Frank Miller, Fashion Designs for the Handicapped; Robert Norris, Federation Day Program; and Harry Elliott, Outstanding Clubwoman.

## Engagements Announced

### Williams-Fowler



Gayla Williams

Mr. and Mrs. Darold Williams announce the engagement and approaching marriage of their daughter, Gayla Williams, to Paul Fowler, son of Mr. and Mrs. Curtis Fowler, all of Burk Burnett. The wedding will be August 18, 1974, at Cashion Baptist Church.

The couple are 1974 graduates of Burk Burnett High School. Miss Williams has been enrolled in the Nursing Program at Midwestern University and Mr. Fowler is enrolled at Midwestern University and is employed at Sheppard Air Force Base.

### Chambers-Hamilton



Sandra Chambers

Mr. and Mrs. Alfred Duggan of 119 Smith, Burk Burnett, announce the engagement of their daughter, Sandra Chambers, to Jerry Hamilton, son of Mrs. Opal Hamilton, of Nocona, Texas.

The wedding will be held in the First Baptist Church of Burk Burnett on August 10, at 7:30 p.m., with the Rev. Lamoin Champ officiating.

The bride-to-be and her fiancé are both employed by Webster's Contractors Base.

### Rogers-Greenway

Mr. and Mrs. Raymond Rogers of 520 Sheppard Road announce the engagement of their daughter, Barbara Ann, to Larry Carlton Greenway, son of Mr. and Mrs. Marion Greenway of 519 Sheppard Road.

The wedding date has been set for August 3, in the Burk Burnett Church of Christ.

Both attended Burk Burnett High School.



Barbara Ann Rogers

### Landers-McMahon



Linda Landers

Mr. and Mrs. Kenneth Herve of 512 Harriet announce the engagement of their daughter, Linda Landers, to David McMahon, son of Mr. and Mrs. Paul W. McMahon of Ardmore, Oklahoma.

A late August wedding is planned.

Both are seniors at Midwestern University. Linda is a graduate of Burk Burnett High School and is employed by a discount store in Wichita Falls. McMahon is employed by a Wichita Falls clothing store.

### Lemley-Beaver

Mr. and Mrs. Jimmy D. Lemley of 703 Tidal announce the engagement of their daughter, Donna Kay, to Glen Francis Beaver, son of Mr. and Mrs. Robert H. Beaver of 213 Beech Street.

The wedding date of October 5 has been set. Donna attended Burk Burnett High School. Beaver is a graduate of Burk Burnett High School and is employed by Precinct 2, Wichita County.

### PERSONAL

Mrs. Howard Smith, Carol, and Mrs. Smith's sister, Mrs. Maude Fowler of Troy, Texas entertained with a luncheon in honor of Mrs. Lena Hinkle, who celebrated her birthday.

Those who attended and enjoyed the meal and fellowship were Mmes. Carl Miller, Lena Hinkle, Ruth Beldon, and Ruth's sister, Bea Burrows.

Ruth Beldon visited Mrs. Chrystella Dameron and Mr. and Mrs. Jess Simon in Oklahoma City during the last part of June and attended the stage show "Stars and Stripes", which was televised there and shown on TV on July 4.

Mrs. Beldon said, "We really enjoyed it and had a most wonderful time seeing many things of interest, spending part of one day in the recently built mall, The Crossroads."

Mrs. C.S. Polson of Goree, Texas, a former resident of Burk Burnett, lost a sister last week, Mrs. Naomi Glasco, of Goree.

Mrs. Carl Miller, Ruth Beldon, and Ruth's sister, Bea Burrows drove to Goree Saturday and spent a few hours with Mrs. Polson and members of the family. The funeral was Sunday, July 7, at 3:30 p.m. in Goree.



### Sue Chumley

is now at Jeanene's Hair Styling. Sue has just completed advance training in Wichita, Kansas. She invites all her previous customers to Call and Come By.

215 Wigham (in rear) 569-2015

Say It With JUANITA'S FLOWERS 569-3197

## DIRECT FASHIONS

IS HOLDING A GIGANTIC 1 DAY SALE OF LADIES READY TO WEAR

1 DAY ONLY - Saturday, July 20th - 9:00 a.m. - 3:00 p.m.

**DIRECT FASHIONS OPERATES (7) SEVEN READY-TO-WEAR STORES IN DALLAS**

WE HAVE BUILT A REPUTATION FOR OFFERING NEW FIRST QUALITY FASHIONS FOR LESS THAN MOST RETAILERS IN THESE SEVEN STORES

Saturday, July 20 **Spring & Summer Clearance** FINAL CLEARANCE

We have made some fantastic buys on new merchandise and are also clearing our stocks of summer merchandise. This adds up to fantastic savings at "New First Quality Fashions"...

<p>Famous Maker 3 pc. Pant Suits Special Purchase Reg. \$42.00 100% Polyester Sizes 8 to 18 <b>\$19<sup>88</sup></b></p>	<p>SPECIAL GROUPS SUMMER BLOUSES Shells &amp; Short Sleeves Sizes 8 to 20 Reg \$12.00 value <b>\$4<sup>99</sup></b></p>	<p>MISSY &amp; JUNIOR Entire Stock Shorts <b>\$2<sup>99</sup></b></p>	<p>SPECIAL PURCHASE Missy Dresses 10-18 100% Polyester Up to \$30.00 Value <b>\$5<sup>99</sup></b></p>
<p>Special Purchase Jr. Pants Sizes 3-13 Machine Washable <b>\$4<sup>99</sup></b></p>	<p>SPECIAL PURCHASE Embroidered Cotton Interlock Tops Reg. \$10 &amp; \$12 Value Jr. Sizes <b>\$5<sup>99</sup></b></p>	<p>All Summer Pants Suits Sizes 6-20 and 3-13 <b>50% off tag price</b></p>	
<p>SPECIAL PURCHASE 1 pc. Jump Suit 100% Polyester in 4 Styles Reg. \$26.00 value for <b>\$14<sup>88</sup></b></p>	<p>Missy Pants 100% Polyester Sizes 6-20 Entire Stock Of Summer Colors Values up to \$17.00 <b>\$6<sup>99</sup></b></p>	<p>WHEN: Sat., July 20th 9:00 a.m. - 3:00 p.m. COME EARLY We Start Loading At 3:00 WHERE: VFW Club MB Corral Wichita Falls</p>	

**6 BIG HOURS**

Sheppard AFB MB CORRAL

The BURKBURNETT Bank Announces

BEST BRAND OF BANKING

## Another First For Wichita County

# BAN CLUB™ YOUR BEST VALUE IN BANKING

AND HERE'S WHAT YOU GET.....

**1**

\$10,000

50,000 ACCIDENTAL DEATH INSURANCE - \$10,000 under 70 years, \$5,000 ages 70 and over. On and off the job blanket coverage by Life Insurance Company of North America. Coverage divided equally by joint account members.

**2**

20 PERCENT DISCOUNT ON CAR RENTALS from National Car Rental Systems Inc. ALSO: 10 Per Cent discount, rounded to the nearest dollar, on Room Rates at ROADWAY INNS.

**3**

SPECIAL DISCOUNTS ON SUPER-TRAVEL PLANS to be announced. BUT THAT'S NOT ALL!

**4**

MEMBERSHIP IDENTIFICATION CARD - When you show us this card it tells us that you are a privileged customer entitled to the benefits of the BAN CLUB.

**5**

A PERSONALIZED CHECKING ACCOUNT WITH NO CHECK CHARGE, NO MINIMUM BALANCE, UNLIMITED CHECK WRITING.

**6**

FREE PERSONALIZED CHECKS with your name and address. As many as you need.

**7**

UNLIMITED TRAVELER'S CHECKS, MONEY ORDERS, AND CASHIERS CHECKS FREE OF SERVICE FEE. AUTOMATIC SAVINGS: We will transfer a specified amount automatically from your checking account to your savings account each month.

**8**

DISCOUNT ON INSTALLMENT LOANS WHEN PAID AS AGREED.

**ALL THIS FOR ONLY \$3 PER MONTH**

**BURKBURNETT BANK** MEMBER FDIC

# OPPORTUNITY SAVINGS PROFITS RESULTS THEY'RE ALL IN CLASSIFIED

AN AD COST  
7¢ Per Word  
\$1.00 Minimum

**RENTALS**  
**FOR RENT**--Two bedroom mobile home. Fenced yard and patio. Children and pets welcome at 313 1/2 Buckner. Call 569-3995 or 569-1647. 45-tfc  
**FOR RENT**--Three rooms and bath; also 2 rooms and bath apartments. Utilities paid. 404 E. 3rd. 569-3753. 40-tfc  
**FOR RENT**--Furnished, nice clean apartment. Central cooling and heat. Electric kitchen. Carpet. No pets. 625 South Harwell. 569-2828. Inquire at Apartment A. fc  
**FOR RENT**--Bedroom and bath Utilities furnished. 404 E. 3rd. 569-3753. 23-tfc

**Neville Apts.**  
Furnished and unfurnished one, two and three bedrooms. Swimming pool. Call 569-0087. Manager, Apt. 6, Mrs. Opal Sykes. 10-tfc

**FOR LEASE OR RENT**--2 office spaces. One can be used for barber shop. Come see at 917 Oklahoma Cut-Off or call 569-3995. 41-tfc  
**FOR RENT**--Clean one bedroom furnished house. Air conditioned, carpeted. Carpet. One child accepted. No pets. Phone 569-2519. 609 E. 4th. 42-tfc  
**FOR RENT**--Furnished two bedroom trailer. 422 Tidal. 569-3269. \$100.00 per month plus utilities. 46-1tp  
**FOR RENT**--Two bedroom furnished house. No pets. 569-1240. 46-2tp  
**FOR RENT**--Large 3 bedroom mobile home. Phone 569-1792. 46-2tc  
**FOR RENT**--Nice two bedroom house. Completely furnished. Water paid. 710 Glendale. 569-3144. 46-tfc

**OFFICE SPACE FOR LEASE**  
Come by Pioneer Real Estate at 302 N. Avenue D to see the offices or call 569-1494. 19-tfc

**FOR RENT**--La Maison Apartments. Two bedroom brick apartments. Air-conditioned, nicely furnished. Fenced. Gas and water paid. Washer and dryer facilities. 1000 East Sycamore. Call 569-3289 or 723-1093.  
**GARAGE APARTMENT FOR RENT**--clean two rooms and bath. Refrigerated air. \$45.00 per month, water paid. 201 S. Avenue D and Ellis. 46-1tc

**UNFURNISHED HOUSE FOR RENT**--Two bedrooms, carpet, drapes, built-in oven and range. Central heat. Air conditioning. Phone 569-2831 or 569-2778. 46-1tp

**FOR RENT**--Clean 3 Room furnished duplex. Good location. Water paid. Adults. \$65.00 per month. 569-3476 after 6 p.m. 45-1tc

**WANTED**  
**IRONING DONE** for \$1.65. Call 569-1047. 610 S. Harwell. 46-1tc

**WILL BABYSIT** at any time. Phone 569-1954 or 569-0202. 46-3tc

**WANTED**--Babysitting job in your home. Day or night. Have experience. 569-0490. 46-1tc

**WANTED**--Two waitresses. Must be experienced. Apply in person. Ruth's Coffee Shop, Oklahoma Cutoff. 45-tfc

## WANTED

**WANTED TO BUY**--Volks-wagens and other foreign cars for salvage. Foreign Auto. 103 E. Third. 569-0411. 48-tfc

**BABYSITTING**, day or night, weekly or hourly. Call 569-0043. 45-tfc

**WANTED**--Several production positions available. Full time or part time. Good salary. Apply: Preston Dairy, 219 E. Second. Equal Opportunity Employer M.F. 45-2tc

**Cecil Josefy WHEAT CLEANING**. Orders now being taken. Call after 8 p.m. 405-479-3325. 45-2tc

**BOOKKEEPER**--Receptionist Position available in Burkburnett. Typing required. Must have experience. Send resume stating qualifications and salary desired to: P.O. Box 906, Burkburnett, Texas 76354.

**WANT GRASS CUTTING JOB**. Call 569-3601. 46-1tc

## REAL ESTATE

**FOR SALE BY OWNER**--3 bedroom home, frame with brick trim. Garage, fenced back yard. Water well. Central heat, refrigerated air conditioner. Call 569-2555 or 692-2645. 45-2tc

**FOR SALE**  
**FOR QUICK SALE--LIST YOUR PROPERTY WITH US.**

**OLDER** spacious three bedrooms and den, 2 baths, well constructed. Lots of pecan and shade trees. Connections for mobile home. 104' x 150' lot. Only \$8,950.

**3 BEDROOME FRAME**, brick trim. Central heat. Refrigerated air conditioner. Fenced. Near schools. Immediate possession.

**Jo Smith Realty**  
Phone 569-3490

## REAL ESTATE

**Nor-Tex Realty**  
569-2411  
**HOUSES FOR SALE**

**PRESTON STREET**--Three bedroom brick, can be four. Double garage. Central heat/air. Carpet, nice fenced yard. Appointment. Priced at \$25,500.

**MIMOSA**--Three bedrooms, 2 baths, den, central heat/air. Carpet, dishwasher, fenced yard. Appointment. \$24,500.

**EAST COLLEGE**--Two bedroom frame, can be three. Carpet. \$6,500.

**PARK STREET**--Two bedroom brick. Central heat, two refrigerated air conditioners. Carpet. Fenced. Priced for \$8,000.

## FOR SALE

**FOR SALE--LIVING ROOM SUITE**, good condition, wanut coffee and end tables, \$125.00. Hide-a-bed sofa, \$25.00, 904 Cropper Road. 46-1tc

**FOR SALE**--'63 Ford, Radio, heater. All new tires and new battery. \$295.00. Call 569-3446. 46-1tc

**FOR SALE**--'68 Cutlass S Sport Coupe. Loaded and the nicest anywhere!!! 569-1853. 46-1tc

**FOR SALE**--1966 two bedroom 10x50 Mobile Home; fully furnished, including air cond., central heat, shag carpet, washing machine, other extras. Located in Burkburnett, priced low. Being sold by owner who works odd hours. Send telephone number to Box 476, Burkburnett for more information. 46-1tc

**FOR SALE**--Used refrigerator with freezer; washer and dryer; like new air conditioner. See at 900 Kiowa or call 569-1015. 46-1tc

**FOR SALE**--1500 watt electric generator, practically new. Perfect for camping or emergency power. See at 614 Park Street or phone 569-2475, Burkburnett, Texas. 45-2tc

**FOR SALE**--'64 LeMans Sport Coupe. Small V8, automatic. Cold air. Clean. 569-1853. 46-1tc

**FOR SALE**--Kenmore automatic washing machine. Good condition. \$40.00. 569-2459. 46-1tc

**FOR SALE**--Kawasaki 100 with helmet. \$395.00. Yamaha 60 with helmet. \$195.00. 1118 Bishop Road. 569-1255. 46-1tp

**SUPER CLEAN** your carpets with Trexaw Rug Shampoo. Pre-spot with Trexaw Up & Out - Rent Electric Shampooer, \$1. Shamburger Building Center, across from Post Office, Burkburnett, Texas. 569-2242. 46-1tc

**FOR SALE**--1964 Chevrolet. 6 cylinder, standard, 4-door, new tires. ALSO: Garage door. Call after 5 p.m. 569-2646. 46-1tp

**FOR SALE**--'72 Mustang. 351 engine, air conditioning, radio, mag wheels, automatic. Like new. \$2,400. Call 569-0683. 1003 Preston. 46-1tc

**Overweight?** Lose ugly fat with the Diadax plan - Reduce excess fluids with Fluidex at City Pharmacy. 40-12tp

**FOR SALE**--Alaskan Camper for long wheel base pickup. Self contained. Lowers and raises. 12 Williams Drive. 46-1tp

**FOR SALE**--Pair of G 70x15 4-ply polyester raised white letter tires. Low miles. \$40.00. Call 569-1126 after 3:00 p.m. 46-1tp

**LOST** bright carpet colors... restore them with Blue Lustre. Rent electric shampooer, \$1. Wacker's in Parker Plaza. 46-1tp

**MARY KAY** and Mr. K Cosmetics. Bennie Mills, 1109 E. Sycamore. 569-3534 before 9 or after 6 p.m. 45-4tc

**USED PIANOS FOR SALE** \$75 UP ABE MUSIC 211 E. 3RD--569-8136. OPEN UNTIL 9 P.M.

**FOR SALE**--Electric range, \$25.00. Call 569-2555. 45-2tc

**FOR SALE**--Monuments, nationally advertised stones. Dates cut. Mrs. D.C. McNeill. 404 E. 3rd, phone 569-3753. 27-tfc

**LOSE WEIGHT** safely & fast with X-11 Diet Plan \$3.00. REDUCE Excess Fluids with X-Pel \$3.00. Money Back Guarantee Gibson Products. 33-15tc

## FOR SALE

**FOR SALE**--4000 CFM 2-speed evaporative cooler. Runs good. \$35.00. ALSO: American Standard Furnace. 75,000 BTU. Good condition. \$30.00. Call 569-1126 after 3:00 p.m. 46-1tp

**FOR SALE**--Enterprise meat grinder in excellent condition. See at 614 Park Street, Burkburnett, Texas. Phone 569-2475. 45-2tc

**FOR SALE**--1969 Honda CB 175. Electric start, carrying rack and back rest. Good condition. 569-1614 or 569-3661. 45-2tc

**FOR SALE**--6-months-old black male Poodle. Registered. Loves children. Call 569-0137. 46-1tp

**FOR SALE**--'68 Chevrolet Pickup. Custom cab, long-wide bed. Loaded. Home-made camper shell. Bargain!!! 569-1853. 46-1tc

**FOR SALE**--'71 Olds 442. Air conditioning. Good condition. Call 569-0224. 46-1tc

**FOR SALE**--1970 Hillcrest Mobile Home. Excellent condition. Two bedrooms, appliances, drapes throughout. Central air, carpeting, 10' x 20' awning, full skirting, storage shed. Insurance paid to February 75. \$5,500. 401 East Fifth. Call 569-0278. 46-1tp

**I'M KATRINA HORN, YOUR NEW ACTIVE MARY KAY CONSULTANT.** Call for Free Facial or any cosmetic needs at 569-2498. 45-tfc

**FOR SALE**--1963 Chevy Nova. Good condition. 509 Oak. 569-3531. 45-4tc

**WATER WELL DRILLING** Wells installed with air pumps cleaned. Richard Jeter 723-8953 42-6tc

**THOMPSON BICYCLE SHOP**, 908 MIMOSA PHONE 569-1014. Major repair--Adjustment Hours: 5 P.M.--10 P.M. ALL DAY SATURDAY. 34-tfc

**Fill Sand & Top Soil BACKHOE WORK** COTTON COZBY 569-3962

**THORNTON'S** Maytag Sales & Service, new washer, dryers, dishwashers, disposals. Service & Repairs on all makes. Keys made. Scissors & Hoes Sharpened. 415 North Ave. B, 569-3155.

**FILL SAND TOP SOIL** Driveway Material Yard Leveling Backhoe work, dump trucks, tractor mowing and gardens plowed. Also light hauling. A. L. Elliott 569-1310

**EWELL'S HOME REPAIR SERVICE** QUALITY WORK-FREE ESTIMATES Carpentry, Concrete Painting-Roof Repair 1102 Cheryl Cr. Ph. 569-0600

**WATER WELLS DRILLED PUMPS REPAIRED** RICHARD WISEMAN 723-5209 LICENSED 205 Valley View Road Wichita Falls, Texas 40-12tc

## SERVICES

Leonard E. Keen Agent 569-1849  
**Specializing in HOSPITAL DISABILITY INCOME LIFE INSURANCE**  
Mutual of Omaha United of Omaha  
COLLINS AGENCY  
1418 Eight St., Wichita Falls Ph. 723-1451

**FOREIGN AUTO**  
New & Used Volkswagen Parts  
PHONE 569-0411  
103 E 3RD ST.

**HOME REPAIR**  
Roof repair, carpenter, tile, floor tile, paneling. How may we help you? Call 569-3280. Ask for Larry. 7-tfc

**ROOFING**. Build-up or composition siding, remodel, add-ons, garages, carports. Quality Work. Quaranteed. H & B Construction. 855-5449. 43-tfc

**Child Care**  
By the Day, Hour, or Week  
Ages: Infants to 9 years  
**ARTS BOOKS CRAFTS**  
627 E. 4th  
State Licensed  
Planned program, fenced yard, balanced diet, experienced workers, constant supervision.  
Call 569-0361 or 569-3646 after 5:30  
HOURS: 7 a.m. to 5:30 p.m.  
MONDAY thru FRIDAY

**NEED A PLUMBER?**  
For New and Repair Plumbing Licensed and Bonded Also Backhoe Service Call 569-3567 H&B PLUMBING

**Like A Good Neighbor, State Farm Is There.** For all your insurance needs see Bob Carter  
569-2902  
410 Ave. C  
State Farm Insurance Companies Home Office Bloomington, Illinois

**Weekly Health Tip**  
from JOE GILLESPIE  
Parents should be sure to caution children against the dangers of fire. In case of a clothing fire, warn them not to run or remain standing, but to drop down and roll on the ground. If indoors, drop to the floor and roll into a rug to smother the flames. If no rug is handy, a heavy coat or wool blanket will do. Jumping under the shower or spraying with a garden hose is effective. It is wise to keep a garden hose attached and coiled both indoors and outdoors, for emergency fire use.

**Corner DRUG STORE**  
302 E. 8th St.  
BURKBURNETT PH. 569-2251

## SERVICES

**HOUSER'S MOWER SHOP**  
Tune ups and repairs on all makes. Crankshafts straightened. Scissors sharpened. 507 East 4th St.



**"You Insured That?"**  
You may be surprised to know that dentures and contact lenses are insurable. Some dancers have insured their legs - singers have insured their voices. Whatever is vital to earn your living can usually be insured. Give us a try, at Wampler Agency.

**WAMPLER INSURANCE AGENCY**  
SECURITY & SERVICE  
203 NO. AVE 'D'  
BURKBURNETT PH. 569-1461

**CARD of THANKS**  
The family of Al Lohofener acknowledges with deep appreciation the many expressions of sympathy and friendship during our recent bereavement.  
The Al Lohofener Family

**CARD of THANKS**  
The family of Al Lohofener acknowledges with deep appreciation the many expressions of sympathy and friendship during our recent bereavement.  
The Al Lohofener Family

**CARD of THANKS**  
The family of Al Lohofener acknowledges with deep appreciation the many expressions of sympathy and friendship during our recent bereavement.  
The Al Lohofener Family

**CARD of THANKS**  
The family of Al Lohofener acknowledges with deep appreciation the many expressions of sympathy and friendship during our recent bereavement.  
The Al Lohofener Family

**CARD of THANKS**  
The family of Al Lohofener acknowledges with deep appreciation the many expressions of sympathy and friendship during our recent bereavement.  
The Al Lohofener Family

**CARD of THANKS**  
The family of Al Lohofener acknowledges with deep appreciation the many expressions of sympathy and friendship during our recent bereavement.  
The Al Lohofener Family

**CARD of THANKS**  
The family of Al Lohofener acknowledges with deep appreciation the many expressions of sympathy and friendship during our recent bereavement.  
The Al Lohofener Family

**CARD of THANKS**  
The family of Al Lohofener acknowledges with deep appreciation the many expressions of sympathy and friendship during our recent bereavement.  
The Al Lohofener Family

**CARD of THANKS**  
The family of Al Lohofener acknowledges with deep appreciation the many expressions of sympathy and friendship during our recent bereavement.  
The Al Lohofener Family

**CARD of THANKS**  
The family of Al Lohofener acknowledges with deep appreciation the many expressions of sympathy and friendship during our recent bereavement.  
The Al Lohofener Family

**CARD of THANKS**  
The family of Al Lohofener acknowledges with deep appreciation the many expressions of sympathy and friendship during our recent bereavement.  
The Al Lohofener Family

**CARD of THANKS**  
The family of Al Lohofener acknowledges with deep appreciation the many expressions of sympathy and friendship during our recent bereavement.  
The Al Lohofener Family

**CARD of THANKS**  
The family of Al Lohofener acknowledges with deep appreciation the many expressions of sympathy and friendship during our recent bereavement.  
The Al Lohofener Family

**CARD of THANKS**  
The family of Al Lohofener acknowledges with deep appreciation the many expressions of sympathy and friendship during our recent bereavement.  
The Al Lohofener Family

**CARD of THANKS**  
The family of Al Lohofener acknowledges with deep appreciation the many expressions of sympathy and friendship during our recent bereavement.  
The Al Lohofener Family

## Home Demonstration News

By Dee James  
County Extension Agent

Jellies, jams, preserves, and marmalades are easy to make at home and add variety to family meals. Most of them provide a good way to use fruit not at its best for canning or freezing, the largest or smallest fruits and berries, and those that are irregular shaped.

Basically these products are much alike. All are fruit that are preserved with sugar and usually all are jelled to some extent.

Jelly is made from fruit juice and is clear and firm enough to hold its shape when turned out of the container.

Jams are made from crushed or ground fruit and tends to hold its shape but generally is less firm than jelly.

Preserves are whole fruits or large pieces of fruit in thick syrup, often slightly jellied.

Not all fruits have the properties needed for making satisfactory jelled products, but with the commercial pectins now on the market, you need not depend on the jelling quality of the fruit for successful results. Jellies not only make taste treats for your family, but your friends will love them as gifts.

Dewberry and blackberry jelly is an all time favorite of Texans. Do you have these berries growing in your garden? Or can you buy them at a reasonably low price? Why not try your hand at making jelly at home.

This is the way you can make the berry jelly successfully.

Sort and wash three quarts of dew or black berries to get about four cups of juice. Wash the berries and remove any stems or caps. Very ripe berries may be crushed and the juice pressed out without heating. Otherwise add a small amount of water and bring to a boil on high heat.

Put the prepared fruit in a bag made from a clean, white cloth and then twist and press to remove the juice.

Put four cups of juice in a large pan. Add seven and one-half cups sugar and place on high heat stirring constantly. Bring quickly to a full rolling boil that cannot be stirred down.

Add one bottle liquid pectin and heat again to a full rolling boil. Boil hard for one minute. Remove from heat and skim off the foam quickly. Pour jelly immediately into hot, dry jars or glasses that have been sterilized by boiling them in water for fifteen minutes. Fill to within one-eighth inch of top of containers.

Seal jars immediately with a lid according to the manufacturer's directions. Fill glass to within one-half inch of top and cover with melted paraffin. Add enough paraffin to make a layer one-eighth inch thick. Prick air bubbles in the paraffin. This recipe makes eleven or twelve six ounce jars of jelly.

Strawberry jelly is made the same way as dewberry or blackberry jelly.

Dewberry and blackberry jam made at home adds a flavor

to family meals and your friends will love it as a gift. It is easy to make at home. Here's how: Sort and wash three quarts of fully ripe berries to make six cups of juice. Remove any stems or caps and crush the berries. If they are very seedy, put part of all of them through a sieve or food mill. To the six cups of crushed berries, add one package of powdered pectin and stir well. Place on high heat and stirring constantly, bring quickly to a full boil with bubbles on the entire surface.

Add eight and one-half cups sugar, continue stirring and heat again to a full bubbling boil. Boil hard for one minute, stirring constantly. Remove the jam from the heat and skim.

Fill hot, dry jars that have been sterilized by boiling in water for fifteen minutes. Fill to within one-eighth inch of jar. Seal standard jars with lids according to the manufacturer's directions. Or fill glasses at one-half inch of top and seal with an eighth-inch layer of melted paraffin.

**Freezing Food at Home**  
A meal on a moment's notice; fresh corn in December; deer from last fall's hunt—all compliments of the home freezer.

Freezing is one of the simplest, most popular methods of preserving foods at home. It retains the natural color, flavor, texture and food value of most fruits and vegetables, meats and baked goods.

The quality of the food frozen can vary with freshness of product used, methods of preparation, packaging and conditions of freezing.

For successful freezing, select good-quality products. Freezing will not improve low grade food.

Frozen meat, poultry, fish and eggs equal the fresh products in nutritive value. Retaining this value of fruits and vegetables depends largely on the treatment before freezing, storage temperature and method of cooking and serving.

Handling the food promptly also retains quality.

Improper packaging can cause undesirable flavor and appearance. The selection of containers depends on the type of food and personal preference.

But all materials should be moisture - vapor proof to prevent evaporation and retain the highest quality in frozen foods.

Glass, metal, rigid plastics, freezer wrapping materials, waxed cartons, and most bags are recommended because they are moisture - vapor proof or at least moisture-proof resistant.

But, do not use ordinary waxed papers, household aluminum foil and cottage cheese or ice cream cartons.

All packages should be airtight. Freezer burn, a surface discoloration on meat and poultry, often results when meat or poultry dry due to improper

packaging.

Give special care to foods which may become rancid, a result of natural fats and oils being exposed to atmospheric oxygen. These foods include fish, shellfish, beef, pork, meat, poultry.

Freeze fruits and vegetables at 0 degrees F. or below. Meat should be frozen in a commercial plant at -5 to -10 degrees F. for best results.

Space packages of unfrozen food at least one inch apart since heat must be given off in order for them to freeze. Put no more unfrozen food into a freezer than will freeze within 24 hours.

For quickest freezing, place packages against freezing plates or coils.

Storage temperature matters. For example, many foods noticeably lose quality and vitamin content when stored at about 25 degrees F. in an "open-at-one-end" household refrigerator freezer.

Frozen foods undergo slow changes in storage and will not retain quality indefinitely. Store them at 0 degrees F. or below.

Freezing does not sterilize the product, but the low temperature prevents the growth of harmful yeasts, molds and bacteria. Some micro-organisms are killed by freezing but many survive.

**Freezing New Potatoes**  
Select smooth new potatoes (about the size of walnuts). Wash thoroughly, peel or scrape, wash. Blanch 3 to 5 minutes depending on size. Cool, drain and package.

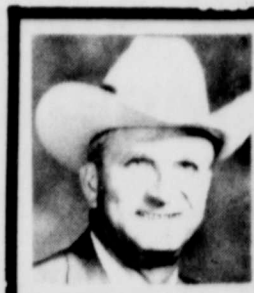
**Biggest Lettuce Slice Goes To Retailers**  
Lettuce doesn't put as much green stuff in the farmer's pocket as it does in other people's.

A recent study, done by USDA's Economic Research Service at the request of Congress, gives a breakdown of what the consumer's food dollar goes for.

When it comes to lettuce, the study shows the farmer gets the lowest share of any one involved. His share of a 43-cent head of lettuce is 3.7 cents.

Harvesters and field packers' share is 6.3 cents, wholesalers' 15.8—including 6 cents for transportation—and retailers' 17.2.

The success of 4-H members is living proof that the 4-H program can and does make a big difference in the lives of young people. Many former



B.T. HAWS

## County Agent News

4-Hers today are successful in business and civic and community affairs. They all joined in learning experiences that they have been able to apply to everyday living.

The 1973 REAP limitation for cost-share has been raised from \$750.00 to \$1,500. All practices are involved except aerial spraying and subsoling. If you have any conservation work that needs to be done and can get it done by December 31, 1974 see your ASCS office in Iowa Park.

Cotton and grain sorghum are suffering from lack of moisture in the county. Generally insect activity remains light in cotton and grain sorghum. Horn flies continue to be a problem for cattle producers.

Much of the cotton in the area will be producing 1/3 grown squares during the first two weeks of July. Boll weevils are not able to lay viable eggs until squares are 1/3 grown or approximately 1/4 inch in diameter. Early season boll weevil control measures should be carried out in those fields that are infested with overwintered boll weevils just prior

to the time that 1/3 grown squares will be present in the field. Control measures applied at this time will greatly reduce the number of first generation boll weevils and allow cotton to set a good crop before heavy numbers of boll weevils will be present. In cases where overwintered boll weevil populations continue to be found, after an insecticide has been applied, a second application should be made five to seven days later.

Results of a recent summary of soil samples tested for pasture fertilization indicates that pasture soils are usually lower in native fertility than cropland soils. Nearly all pasture soils need nitrogen to enhance forage growth and quality. Nitrogen also improves drought tolerance and water efficiency.

Phosphorus is needed on most pasture soils; however, the need for potassium varies throughout Texas. The main reason for low fertility pasture soils is that many pastures are going on abandoned cropland. When cropland soils become infertile or unprofitable for cultivation, the tendency is to turn the soils into permanent pasture. Also, pasture soils may have limited water holding capacity.

The size of an average Texas farm is 678 acres, twice the size of its average U.S. counterpart, Agriculture Commissioner John C. White said recently.

Container plants need a little special care during the hot summer months. Heat from the sun can inhibit plant root growth in containers and can even cause the loss of choice container plants. Provide shade for container plants and group them together so that they will shade one another. Check plants daily to determine their water needs. Daily watering is often necessary during hot days. Light colored and wood containers absorb less heat.

Container plants need a little special care during the hot summer months. Heat from the sun can inhibit plant root growth in containers and can even cause the loss of choice container plants. Provide shade for container plants and group them together so that they will shade one another. Check plants daily to determine their water needs. Daily watering is often necessary during hot days. Light colored and wood containers absorb less heat.

## Bill Lucas Reports

Extension Director  
Walters

Blossom-end rot in tomatoes occurs when nitrogen, calcium, total salts and the moisture supply are not balanced. Thus, the disease can't be treated with insecticides or fungicides. Blossom-end rot is more severe when the calcium level is too low and the moisture level drops below a safe level.

Prevent or reduce the problem by keeping the calcium level high in the soil. Calcium sulfate "gypsum" is perhaps the best calcium source to use often during the fruiting season. Use 25 lbs. of gypsum per 100 square feet before planting. Avoid excessive use of nitrogen or mixed fertilizers to keep the soluble salts supply reasonable. Apply water during dry seasons when possible.

Mulching the soil will help maintain uniform soil moisture conditions. For temporary relief spray the tomato vines with calcium chloride at the rate of 4 pounds per 100 gallons of water or 3 tablespoons per gallon of water. This will not cure but will help until you can remedy the cause.

If you find termites in woody trees and shrubs—especially in those growing in sandy soils—treat trunks with Dieldrin to the point of run-off sure to treat soil

around these plants. Pruning trees and shrubs after mid-August can harm trees later when freezing weather comes. Pruning invigorates landscape plantings. Too much new growth late in the season can result in severe freeze damage.

Buy and divide German Iris during August. In an Iris bed, good drainage is necessary. Before planting, add one pound superphosphate per 100 square feet of bed. Prepare the soil to a depth of 8 to 12 inches. Plant the tuber (rhizome) shallow and leave the tuber top exposed.

If building a home on clay soils, have the pier digging machine dig extra holes for well placed shade trees. Fill the holes with river gravel and sand until you plant the trees. Hundreds of new trees die each year from waterlogged spils in Oklahoma.

Digging extra holes through the clay will let internal water percolate and will protect the tree roots from drowning. If your trees drop clear yellow leaves in July, nature is equalizing the supply and demand of water.

WANT ADS  
A WORLD OF RESULTS

\*\*\*\*\*

\*\*\*\*\*

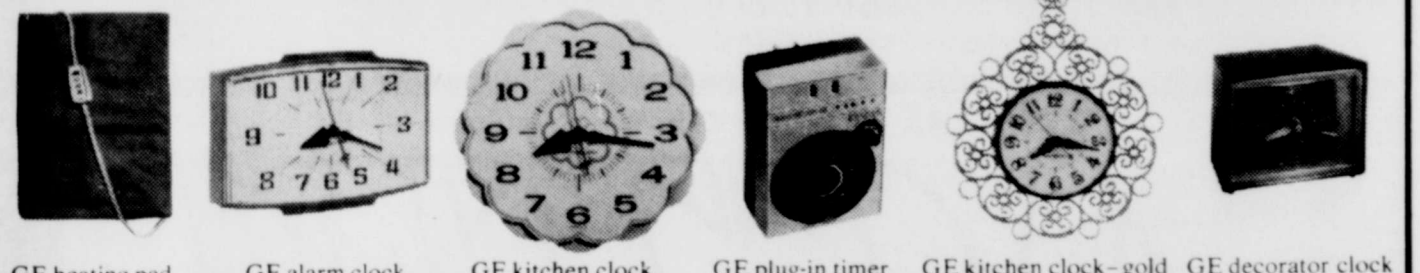
# It's "on the House"!

## Free GE Gifts at First Savings & the Orchid Branch!



Save now for your famous GE gift-free, at First Savings of Burkburnett or the Orchid Branch! Hurry, offer is limited to supplies on hand at each office—one gift per customer please.

Open or add to your savings account with \$1,000 or more and choose one of these free gifts!



GE heating pad GE alarm clock GE kitchen clock GE plug-in timer GE kitchen clock-gold GE decorator clock

Open or add to your savings account with \$5,000 or more for any gift of your choice by GE!



GE coffee maker GE steam & dry iron GE can opener GE slicing knife GE electric kettle GE marble clock  
GE hand mixer GE toaster GE cordless toothbrush GE shave dispenser GE styling comb GE digital clock

If you prefer, instead of a GE gift—you may choose three S&H Green Stamps per dollar up to 1750 stamps. On \$5,000 or more accounts, you may receive a maximum of 3500 stamps.

Annual Dividend Rates	Annual Yield With Daily Compounding
5 1/4%	Passbook Account 5.39%
5 3/4%	6-month Certificate \$1,000 minimum 5.92%
6%	12-month Certificate \$1,000 minimum 6.18%
6 1/2%	12-month Certificate \$5,000 minimum 6.72%
6 3/4%	30-month Certificate \$5,000 minimum 6.98%
7 1/2%	48-month Certificate \$10,000 minimum 7.79%

All accounts compounded daily, paid or credited quarterly. A substantial penalty is required for early withdrawal on certificates.

# First Savings & Loan of Burkburnett and the Orchid Branch

1006 Holiday, Wichita Falls

## FARM & HOME CENTER



**the Specific!**

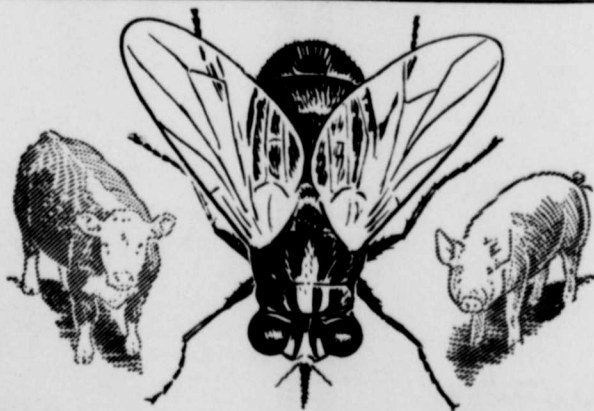
Systemic action kills aphids on ornamental shrubs, roses, flowers and shade trees. Effective and economical.

**Irresistible**

Your most effective way to eliminate snails, slugs, pill bugs and sow bugs from foundations, flower beds, patios and sidewalks.

**ferti-lome ferti-lome**  
your ECOLOGICAL choice

Plants, Shrubs, Seeds & Sprays  
And All Your Yard and Garden Needs!



We Have All Fly Control Needs:

BAITS, SPRAYS, POWDERS  
Also - Vaccines, Livestock Supplies,  
Insecticides, Rat Killers  
FIELD SEEDS  
**BEREND BROS.**  
Feed - Seed - Grain

510 N. Ave. B Phone 569-2811



## SUMMER SALE

Room Air Conditioners  
ALL SIZES OF UNITS IN STOCK - ALL WILL BE SOLD at Regular Dealer Cost!

INSTALLATION AVAILABLE IF NEEDED

Sale Starts Friday, July 19  
WE WILL BE OPEN FROM 8 A.M. TO 9 P.M. FRIDAY AND ALL DAY SATURDAY



With Purchase of Unit!  
All Carry 5 Year Parts Warranty

Eddins Air Conditioning & Heating Co.  
2514 Jacksboro Hwy.  
Wichita Falls 767-6153



**MAJOR LEAGUE CHAMPS**--Pictured are members of the Burk Burnett Bank team of the major league, Burk Burnett Little League. These fellows ended the season with a 14-2 record and captured first place. Members include (bottom from left) Joe Deutsch, Charles Cerveny, Micky Padron, and Richard

Cerveny; (middle row from left) Jimmie Gant, Shannon Guthrie, Jack Stine, and Charlie Dilbeck; (and top from left) Coach Hubert Smith, Eddie Gant, James Bill, David Sherman, Richard Dean, Les Schroeder, James Reed, and assistant coach Ed Chavis.

## Region 8 Amateur Track Meet Set

The Wichita Falls Parks and Recreation Department will host the Region 8 Texas Amateur Athletic Federation State Qualifying Track Meet, Saturday, July 20. The meet will begin with registration at 7:00 a.m. at Wichita Falls High School Track, Ave. J and Taft. Events will begin at 7:30 a.m. The meet is free of charge and award ribbons will be presented to the winners. Birth certificates will be required on all entrants at registration. As this is a State qualifying meet participants will

not be allowed to enter more than five events (either 3 field and 2 running events or 3 running and 2 field events.) This meet will qualify participants from the 21 county TAAF Region 8 area who may enter the State TAAF Track Meet in Ft. Worth July 26 & 27. The counties included in Region 8 are: Wichita, Wilbarger, Young, Montague, Hardeman, Baylor, Jacksboro, Clay, Knox, Archer, Foard, Throckmorton, Taylor, Nolan, Stephens, Mitchell, Jones,

Haskell, Fisher, Shackelford, and Stonewall.

The following events will be held: **BANTAM DIVISION [9 and under]**--BOYS & GIRLS: 50 yard dash, 100 yard dash, 440 yard relay, Long Jump, and High Jump.

**MIDGET DIVISION [10-11]**--BOYS & GIRLS: 50 yard dash, 100 yard dash, 440 yard relay, High Jump, and Long Jump.

**JUNIOR DIVISION [12-13]**--BOYS: 100 yard dash, 220 yard dash, 440 yard dash, 440 yard relay, Long Jump, Shot Put (8 lbs.), 120 yd. low hurdles, 880 yard run, and High Jump. GIRLS: 100 yard dash, 220 yard dash, 440 yard dash, 440 yard relay, High Jump, Long Jump, and 50 yd. low hurdles.

**INTERMEDIATE DIVISION [14-15]**--BOYS: 70 yd. high hurdles, 330 yd. low hurdles, 100 yd. dash, 220 yd. dash, 440 yd. dash, 880 yd. run, 440 yd. relay, 880 yd. relay, Long Jump, High Jump, Discus (Junior), Shot Put (8 lbs.) and Mile Run. GIRLS: 60 yd. low hurdles, 220 yd. dash, 100 yd. dash, 440 yd. relay, High Jump, Long Jump, 440 yd. dash, and 880 yd. run.

**SENIOR DIVISION [16 - Retaining High School Eligibility]**--BOYS: 120 yard high hurdles, 330 yard intermediate hurdles, 100 yard dash, 220 yard dash, 440 yard dash, 880 yard run, 440 yard relay, Mile Relay, Mile Run, High Jump, Shot Put (12 lbs.), Discus (regular), and Long Jump. GIRLS: 80 yard low hurdles, 100 yard dash, 220 yard dash, 440 yard dash, 440 yard relay, High Jump, Long Jump, Shot Put (8 lbs.), 880 yard run, and Mile Run.

**OPEN DIVISION [MEN]**--100 yard dash, 220 yard dash, 440 yard dash, 880 yard run, Mile Run, Shot Put (16 lbs.), Mile Relay, Long Jump, High Jump, Discus, and 440 yard relay. All events will be final.

For further information contact the Parks and Recreation Department, 322-S611, (Ext. 265). Alan Whitmire, TAAF Director of District 4, will be the Tournament Director.



**CONSOLATION**--Winning the consolation prize in the championship flight at the third annual Boomtown Golf Tournament were Donald Pate and Hugh McDaniel (shown right). Jim Lemley and Larry Doerre presented the gift certificate [shown left]. [Staff Photo by Ricky Stevens]

## Vern Smith Wins Bull Riding

Vern "Dude" Smith of Burk Burnett emerged the winner of the tough one head bull riding at the Frontier Days Rodeo in Prescott, Arizona, according to the Rodeo Cowboys Association, Denver. Smith, one of only seven bull riders to qualify out of 66

entered, topped the event with 69 points to win \$847 and the trophy buckle at the rodeo ending over the weekend. The Frontier Days Rodeo was one of some 30 rodeos held over the Fourth of July that payed out over a quarter of a million dollars in prize money.

## Boomtown Jaycees Host Softball Tournament

The first annual Boomtown Softball Tournament is scheduled for August 21st through August 25th to be held at Hayes Field in Burk Burnett. The Slow Pitch Tournament will be ASA sanctioned. Entry fee for the 24 Team Double Elimination Event will be \$40.00 per team. The Jaycees will furnish the ball and there will be no charge to the public. The tournament is designed to raise

money to support youth programs the Jaycees are planning. There will be trophies for 1st, 2nd, 3rd, and 4th places, with MVP trophies and individuals for the winning team. The tournament committee will also pick an ALL STAR Team and present them with trophies.

Teams wishing to enter, or for more information should contact Greg Williams at 569-3876. Deadline for entry is August 10.



**SECOND PLACE CHAMPS**--The team of Jimmy Byrd and Gene Franklin of Henrietta place second in the championship flight of the third annual Boomtown Golf Tournament Sunday. They are shown (right) as they accept second place gift certificates from Jim Lemley, Chamber Manager, and Larry Doerre, scorekeeper. [Staff Photo by Ricky Stevens]

## TESCO Water Hearing Slated For August 5

Representatives for Texas Electric Service Co., Dallas Power & Light Co. and Texas Power & Light Co. will appear at a public hearing of the Texas Water Rights Commission Aug. 5 seeking approval to construct two new water reservoirs to supply cooling water for future power plants in East Texas.

Creek in Limestone County and the other on Duck Creek in Robertson County.

A TESCO spokesman said the plants would be fueled by lignite coal, and land with lignite supplies has been leased or purchased in the areas where the reservoirs are planned.

The two plants would not be available for service until the 1980s. The three power

companies already have one lignite-fueled plant in operation in Freestone County near Fairfield, another is nearing completion in Titus County near Mount Pleasant and a third is under construction in Rusk County near Henderson. A nuclear-fueled plant also is proposed for construction in Somervell County near Glen Rose.

The TESCO spokesman said that because new supplies of natural gas and oil are extremely difficult and expensive to obtain the companies are building and planning power plants that use more abundant lignite and nuclear fuels in order to provide an adequate supply of electricity for their customers in the future.

## Chisholm Trail Rodeo Scheduled

The 22nd Annual Chisholm Trail Roundup Rodeo will be held in Nocona, Texas July 18, 19, and 20, 1974. This rodeo is sponsored by the Nocona Jaycees and will be held nightly at 8 p.m. at the Chisholm Trail Rodeo Arena on Highway 175 in Nocona. Performances will be followed nightly by dancing to the music of Corkey and the Del Rays.

For information about any phase of the celebration, contact the Nocona Chamber of Commerce Office, P.O. Box 27, Nocona, Texas 76255 or call (817) 825-3526 between 9:30 and 4:30 daily Monday through Friday.

**Palace Theatre**  
NEW OWNER & MANAGER

Walter Matthau / Carol Burnett  
"Pete 'n' Tillie"  
All about love and marriage!

Friday  
July 12  
TWO SHOWINGS  
7:30 & 9:30 p.m.

Saturday  
ONE SHOWING  
BONUS 7:30 p.m.  
FEATURE AT 9:30

Sunday  
ONE SHOWING  
7:30 p.m.

Matinee  
JERRY LEWIS MOVIE  
At 2:30 p.m. on Saturday & Sunday

**Rock and Roll DANCE**  
"The Midnight Mass"  
Saturday, July 20, 1974 10 - 1 a.m.  
Admission \$1.75

**Funtime Roller Rink**  
909 Bishop Rd. 569-1721

SAVE... AS YOU NEVER CAN AGAIN... COME ON OVER TO...

Where The **ACTION** Is...

...Texhoma's Largest Inventory Of New 1974  
Chevrolets • Pontiacs • Oldsmobiles Priced  
Before The Last Two Price Increases!!!

MORE THAN 200 NEW CARS AND TRUCKS FOR IMMEDIATE DELIVERY!  
• ALL COLORS • ALL BODY STYLES  
• ALL OPTIONS...

Choose Yours Today!!

NEW CARS WILL NEVER BE ANY CHEAPER... YOUR TRADE-IN WILL NEVER BE WORTH MORE!

SEE THE NO. 1 ACTION TEAM:  
Jim Goff, Phil Trigona, Bob Hogue, T. C. Parker, Davis Kelley, T. E. Austin, Harold Kephart, Marvin Wilburn, Jimmy Davis, Used Car Mgr., Charlie Hickman, New Car Sales Manager

**MATHIS CHEVROLET PONTIAC OLDSMOBILE**

EXPRESSWAY AT SHEPPARD DRIVE BURKBURNETT **569-3381**

**FLOOR SAMPLE CLEARANCE**

**SALE ON MAYTAG** ONE WEEK ONLY

SAVE NOW ON DEPENDABLE MAYTAG WASHERS, DRYERS, DISHWASHERS

**MAYTAG SCOTSMAN WASHER**  
• All fabric washer with Permanent Press cycle -- practically ends ironing • Choice of 3 water levels • 3 water temps • Zinc-coated steel cabinet protects against rust • Famous Maytag dependability.  
SAVE \$136

**MAYTAG SCOTSMAN DRYER**  
• Permanent Press cycle with automatic cool-down, virtually eliminates ironing • Perfect drying for all fabrics including knits • A genuine Maytag Halo-of-Heat™ Dryer. No hot spots. No uneven drying.  
SAVE \$96

**MAYTAG SCOTSMAN DISHWASHER**  
• Sprays dishes from the top, center and bottom--gets them Maytag-clean without pre-rinsing • Huge capacity. Easy-loading racks • Exclusive anti-cleaning Micro-Mesh™ filter.  
SAVE \$100

Our convenient credit plans make it easier than ever to move up to Maytag.

**Sale Starts Thursday, July 18th For One Week Only**

"THE FINEST IN SERVICE FOR OVER 17 YEARS"

**Thornton's Repair Shop**  
415 North Ave. B Phone 569-3155

**BUY AUTO LIABILITY** From The **Travelers Insurance Co.** It Doesn't Cost Any More To **BE SURE**  
HOWARD CLEMENT - Agents - RANDY CLEMENT