

## Legislature Asked For Oyster Work Continuation Sixty-Dollars Cash Offered In Rockport Tarpon Contest

### Now a Major



Captain James H. Sorenson, Jr., was promoted to the rank of Major in the U. S. Army on February 15. He is now serving as Chief Training Liaison Officer in the Army Air Forces, Training Liaison Office, with headquarters in Omaha.

Captain Sorenson enlisted in the Army October 27th, 1941. In April 1942 he was commissioned as a second lieutenant at the Officer Candidate Training School in Miami, Fla. In September, 1942 he went overseas with the 12th Air Force and participated in the African Invasion. In the Battle of Tebessa he was wounded and received the Purple Heart. He was returned to duty in the continental U. S. after nineteen months abroad.

### Piloting

Fishing, both commercial and sports is one of those between the season doldrums. The bait situation is bad, and there "just ain't many fish to catch."

An exception to the rule, and there is always one, was a landing of 65 pounds of trout by A. O. Freeman, local contractor. He made his catches in the yacht basin, or "fish bowl" as we would prefer to call it.

That blue sail boat with the yellow mast down there by the basin belongs to Tom O'Connor. It will probably be in the water soon.

Fishing or no fishing, though things are going on at the bayfront just the same.

John Peres is building himself and Johnny Chupe two of the prettiest work boats that have been built around here in a long time. They will be about 42 feet long, with model hulls, and will have Caterpillar Diesels for power. Let us know when the launchings come off, boys.

Down at Jackson's ways we saw Phil Hart hard at work repairing Morrison's 28-foot shrimper, the "Louise". Hugh just launched the "Julia" after a general repair job.

Also at the Jackson ways, Tim Haynes had his "Skipper", another nice shrimper, out of the water for repairs.

Will Frandolig is still working patiently, in the old Frandolig tradition, on his two jobs for Travis Johnson. The gossip has it that there is a big bet on to see if Will is going to beat John Peres to the water.

Alvin Brundrett is chief engineer and doctor at Jackson's ways.

Over at Johnson's fish house, Somer Smith has everybody and the dog and cats helping him hang his new 200-fathoms of trammel net.

Henry Camehl says boat and fishing supplies are coming in better now, but he "just can't get no lumber for shelves" to put them on. That's okay, Henry, just stack 'em on the floor and whistle.

(Continued on Page 4)

### Prizes Offered For First and Biggest Tarpon

#### Chamber of Commerce Sponsored Contest Open Now, Closes Labor Day

The old man at the corner cast his weather eye upward and said that there would be an early spring. The Rockport Chamber of Commerce agrees and announces the first Tarpon Contest to be staged by this city, offering \$60 in cash prizes.

The contest opens this day, February 22, and its anybody's chase until 6 p. m. on Labor day. There should be lots of Tarpon caught between now and then. They have already been seen in Aransas Bay, and no doubt will be very, very hungry soon, if not now.

There are lots of those strong spring winds to blow yet, but that will not discourage a Tarpon fisherman very much, especially for Aransas Bay, because the best Tarpon fishing can be had in these protected waters. Large Tarpon have been caught right in the yacht basin, for that matter.

Nor is bait such an awful problem either, for believe it or not, the Trout Fishermen have all had their artificial lures carried away by this King of game fish. So why not put a lure on a Tarpon rig and take a try at it.

The rules of the contest are as follows: Fishing Grounds: Bounded on the South by an East and West line through the southern tip of Mud Island; and bounded on the North by a line running East and west through the center of Dunham's Island.

Registration: Any tarpon caught can be registered either at Mill's Wharf or Morrison's Boat Houses. To be registered the fish must be photographed by a staff photographer from the local newspaper.

Prizes: For the first Tarpon four feet in length or over there will be a cash prize of \$25.00.

For the largest Tarpon registered for the duration of the contest there will be a cash prize of \$35.00.

So, there it is Tarpon men, go and get 'em and come and get it.

### More Help Needed On Red Cross Emergency Sewing

The local Red Cross Chapter needs more help in completing its assignment of 300 emergency replacement bags. Only a short while remains to meet the deadline and those who will take one or more of the bags to make are requested to go to the Red Cross rooms or call Mrs. John C. Sorenson at 3081.

### Two Old Pilot Skippers Answer "30" Call Within Week's Time

#### New Constable



WALTER PAUGH  
Appointed by Court

Walter Paugh was appointed as constable of Prec. 1 at a meeting of the County Commissioners Court last Friday. He has qualified and is now constable. The appointment runs for two years. There were no announced candidates for constable at the last election and those elected by writ failed to qualify.

### Rockport Loses Good Fire Record Credit

#### Decorated



LT. M. L. ABRAHAMS  
... Gets 3rd Oak Cluster

An Eighth Air Force Bomber Station, England. — Lieutenant Maynard L. Abrahams, 21, navigator of "Mugwump", a B-17 Flying Fortress of the 452nd Bombardment Group, has been awarded a 3rd Oak Leaf Cluster to the Air Medal for "meritorious achievement" while taking part in Eighth Air Force bombing attacks on vital German industrial targets, and on Nazi military strong points, in support of advances by Allied ground forces. The presentation was made by Lieutenant Colonel Burnham L. Satson of Manchester, Conn., group commander.

Lt. Abrahams is a member of the Third Air division, which was cited by the President for its historic England-to-Africa shuttle bombing of Messerschmitt aircraft factories at Regensburg, Germany. Flying in what is considered the toughest theatre or aerial warfare, he has helped his bomber fight its way through severe enemy opposition to attack such objectives as aero engine plants at Berlin, synthetic oil refineries at Merseburg and the marshalling yards at Cologne, Germany.

His wife, the former Miss Anne Ruth Jackson lives at Rockport, Texas. Lt. Abrahams entered the Army Air Forces in July 1942. He had graduated from the Kansas State College at Mahattan, Kansas, before entering the service.

### Policy Holders To Pay \$12,000 More In 5 Years

#### Insured Losses Causing Rate to Jump, Totaled Over \$25,000

Due to losses from recent bad fires the citizens of Rockport will pay 46 per cent more for their fire insurance policies for the next five years than they have for the past five year period. The new rates go into effect March 1, as announced by the State Fire Insurance Commission.

This rate is based on a differential between premiums collected and benefits paid within the corporate limits of Rockport. The insured losses which caused the rate jump amounted to \$25,400. This figure covers the Smith Boat House fire and the school fire.

A. C. Glass, local insurance representative, estimated that fire insurance representative estimated that fire insurance policy holders will pay a total of about \$12,000 in premiums for the next five years over what they would have paid if fire losses could have been held down.

### Seahorse Caught In Lieu of Trout At Fish Bowl

W. A. Nelson was conscientiously fishing for trout on February 12, in the Yacht Basin, and while so doing caught a Seahorse. A Seahorse is a bizarre looking little animal whose head looks like a horse and whose tail is like that of a monkey. With all that, it is classed technically as a fish.

Nelson reeled in his line and Mr. Seahorse was hanging onto the lead with that curly tail of his. On coming out of the water the seahorse was caught on the hook in such a way that it was not injured.

The seahorse was still living Wednesday in a jar at Morrison's Boat House. It can be seen any time.

### District Court Closes Session For February

District court closed its February session here this week. Among cases disposed of were the following:

Trinidad Reyes, failure to stop and render aid, dismissed on state's motion.

J. E. Moore and Pete Ramirez, suit for damages against H. F. Borders. Judgement for \$600 awarded Moore and \$900 awarded Ramirez.

C. K. Thornton vs. United Fidelity and Guaranty Co., damages. Judgement for plaintiff for \$1,000.

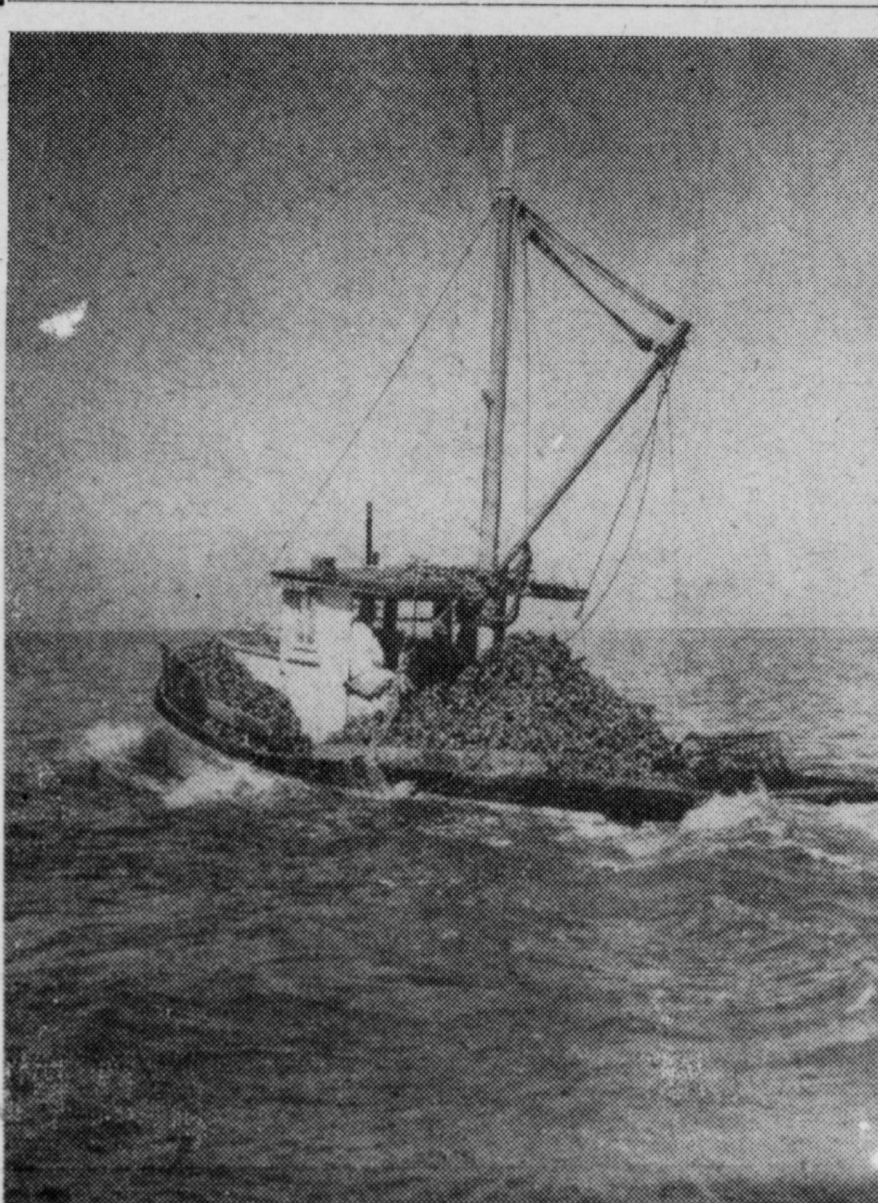
Traders and General Insurance Co. vs. Edric Deason, damages. Judgement awarding Deason \$600.

Guaranty Title and Trust Co., trustees and Independent Executors of the estate of W. H. Baldwin, deceased, vs. John H. Wood and Viggo Kohler, et al, trespass to try title and damages. Judgement for plaintiff.

### Funeral Held Wednesday For Omer McLead

Omer McLead died at the age of 67 in his home here last Monday. He was a veteran of the Spanish American War and the first World War. Services were held Wednesday morning at 10:00 at the First Baptist Church with Reverend E. J. Meyers officiating. Burial was in the Rockport Cemetery.

McLead is survived by his wife, two daughters, and five sons. The daughters are: Mrs. Lonnie Wright of Rockport, and Mrs. Patsy Sigmond of Corpus Christi. The sons are: Homer, Frank and Bill, all of whom are in the armed forces; and Norman and Charles of Rockport.



MOVING OYSTERS TO NEW LOCATION—Above is pictured one of the contract boats moving a big load of seed oysters from Copano Bay to Aransas Bay where they are being replanted under the State's oyster rehabilitation program. Bottom picture shows the oysters being scattered on an approved reef. There they will have room to grow and within a year or so will be number one oysters and find their way to the tables of many throughout the country.

### Old-Fashioned Box Supper Set Friday Night

An old-fashioned Box Supper is slated on the calendar for Friday night at 7:30 o'clock sharp and is open to the entire public. Members of the Junior Class are giving the affair at the school auditorium under the direction of their sponsor Miss Mona Ruth Butcher.

Each lady attending is to bring a box decorated with paper, ribbons and bows and filled with her favorite sandwiches, cakes, etc. A prize will be given for the prettiest box. Then the boxes will be auctioned off with the men doing the bidding. The men will have the privilege of sharing their boxes with the ladies preparing them.

After supper, entertainment will be provided for everyone. There will be forty-two, dominoes, card games, and dancing.

Money derived from the raffling will go to the Junior Class and will be used to help pay for the Junior-Senior Banquet held each year before school is dismissed.

#### CORRECTION

In a picture of the Thompson tacky party the name of one of the orchestra members was given as Lee Lico. It should have been Lee Farris.

### City Workers Named for Red Cross Canvass

Mrs. Fred Booth and Mrs. Fred B. Hunt this week announce the names of their co-workers in the Red Cross War Fund Drive to get underway March 1 in Rockport.

Those to canvass the north section of the city are: Mrs. Fred Booth, chairman, Mrs. Henry, Balou, Mrs. Jack Davis, Mrs. Travis Bailey, Mrs. A. C. Shivers, Mrs. Chas. T. Picton, Miss Vivien Picton, Miss Mabel Bracht.

South section workers are: Mrs. Fred B. Hunt, chairman, Mrs. J. P. Hanway, Mrs. Hugh Morrison, Mrs. Travis Johnson, Mrs. S. F. Jackson and Mrs. Richard Fox.

Miss Lola Steck and Miss Lucille Kreuger of Belleville returned home Wednesday after spending a few days here in the home of Mr. and Mrs. Chas. L. Landrum. Miss Steck is a sister to Mrs. Landrum.

A FINE is an assessment for doing something wrong, a TAX is the same for doing something right.

### \$50,000 Sought To Carry On Oyster Program

#### Game Commission Now Doing Rehabilitation Work In Aransas Bay

Legislative aid is being sought to bring oysters back into peak production along the Texas coast to bolster a big money industry that has been on a decline for many years.

J. B. Arnold, coastal director of the Game, Fish and Oyster Commission, said that an appropriation of \$50,000 was being sought to carry on the oyster rehabilitation program that is now underway.

Reports of the Commission show that oyster production in 1944 was nearly 40,000 pounds under the previous year. Years ago the oyster crop produced many hundreds of thousands of dollars in cash for the thousands of persons involved in the industry. Statistics show that the oyster crop has fallen off 75 per cent within the past 40 years.

Work to rebuild the beds has been started by the Game, Fish and Oyster Commission with funds from that commission, but to carry out the rehabilitation program an appropriation is needed.

Dr. Gordon Gunter, former marine biologist for the commission, did much of the preliminary work in getting rehabilitation started. He is now affiliated with the University of Texas, but is giving his assistance in the program.

The rehabilitation program, designed to bring a greater volume of better oysters in this area, will be under the direction of Joel Hedgpeth, a new marine biologist, replacing Dr. Gunter.

According to a schedule laid out by Dr. Gunter, four reefs in Aransas Bay will be replanted with stock taken from prescribed areas in Copano Bay.

Transplanting of the live oysters from one location to another is to be done during the cooler months, and during the warm months, when oysters are spawning, shells are to be planted on the reefs to provide attachment for the young oysters.

About the transplanting of the live oysters, Dr. Gunter says in a memo to the Director of the Coastal Division:

"It will be conducted in a way that takes advantage of the general knowledge that oysters reproduce well and grow thickly in brackish waters, thus crowding and starving each other, but grow well where the crowding is less or non-existent."

The reefs on which the oysters are planted will be closed for at least one year, and perhaps longer depending on the progress and health of the oysters.

"As outlined here," Dr. Gunter continued, "the planting program is not broad enough to answer the serious questions concerning oyster reproduction that now confront the Game, Fish and Oyster Commission. It is not a complete program. However, since all of the necessary information has not been gathered and the need for action is immediate, it is necessary to proceed with the planting program which can be run in conjunction with a research program and at a saving in expense.

"Knowledge of what factor or factors have been responsible for the decline in oyster production are an absolute necessity in planning a program of action for stopping the decline and starting it on the upgrade. Other facts, part of them of a biological nature, not directly related to oyster production decline must also serve as a background for a program of action. The following outline explaining how this basic information must be gathered.

"All known important facts relating to the Texas Oyster industry should be ascertained and organized with respect to each other. For example, the past history of the oyster industry should be reviewed carefully. This should include a complete survey of the statistics of past production and the ways of handling oysters.

(Continued on Page 3)



# \$50,000 Sought to Carry Out Oyster Program On Texas Coast

## Aransas Bay Scene of First Oyster Work

—(Continued from Page 1)

"Information on where, when and how the oysters were taken and how these methods changed throughout the years should be gathered. The date that hand dredges, power dredges and power boats were introduced should be considered in relation to the changes in production statistics. The annual production statistics should also be examined in connection with drought years, flood years, improvements in transportation, rise and fall in prices and other factors.

"Changes in seasonal flow of Texas rivers and their influence on the salinities and silting of the bays should be ascertained. The history of canals, ship channels, breakwaters and dykes and their influence on reefs and the amount of reefs destroyed in their construction should be determined wherever possible. The history of industrial and municipal wastes put in the bays and their effects should be summarized.

"From these facts, it should be possible to derive certain valid conclusions relating to the decline of oyster production on the Texas Coast. The known important biological facts about the Texas oyster should be summarized and related to the facts ascertained above for the purpose of planning what further facts are needed for the rehabilitation program. This phase of the work involves a summary of all pertinent facts in the literature.

"Furthermore, the unrecorded experience of oyster growers in other states, especially Louisiana, should be utilized to the fullest possible extent.

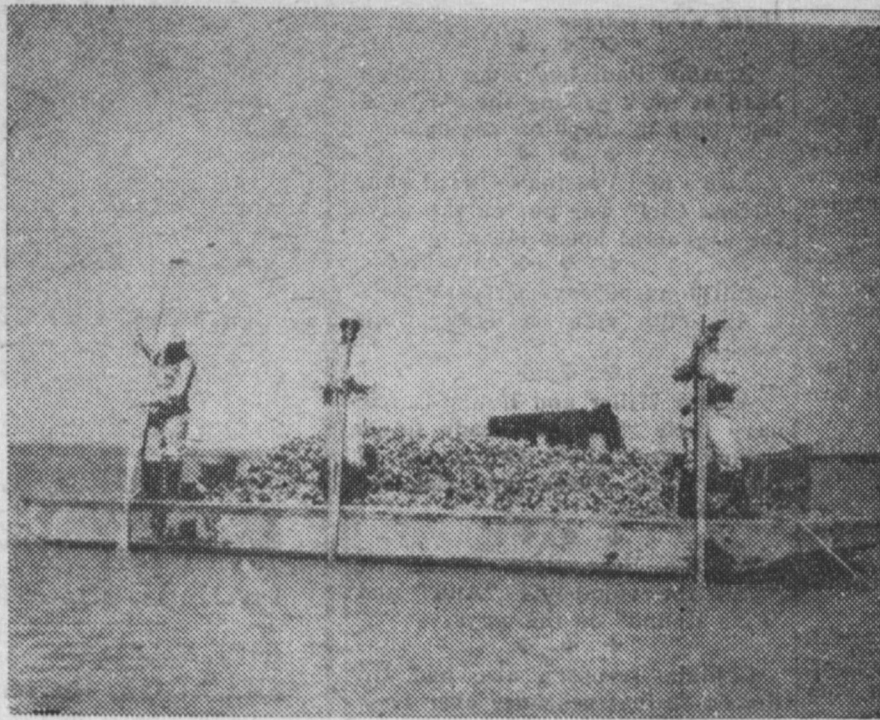
"A survey of all reefs and a comparison of their condition with the condition and extent of the reefs in the past, so far as this is known, should be made. In connection with this, a geological survey of the extent and depth of mud-shell deposits would be of interest and value to various industrial enterprises. This is a large program within itself and should be carried on by a geologist.

"A laboratory and a boat with a crew of two men and two biologists working full time on this program alone and with no other extraneous duties will be needed to carry it out. The boat, the crew and one biologist are already available, working in connection with the oyster planting program. A laboratory can be constructed for approximately \$5,000. Additional expenses of \$5,000 a year for salary of the second biologist, his travel expense and laboratory expenses will be needed if the research is carried on in connection with the planting program.

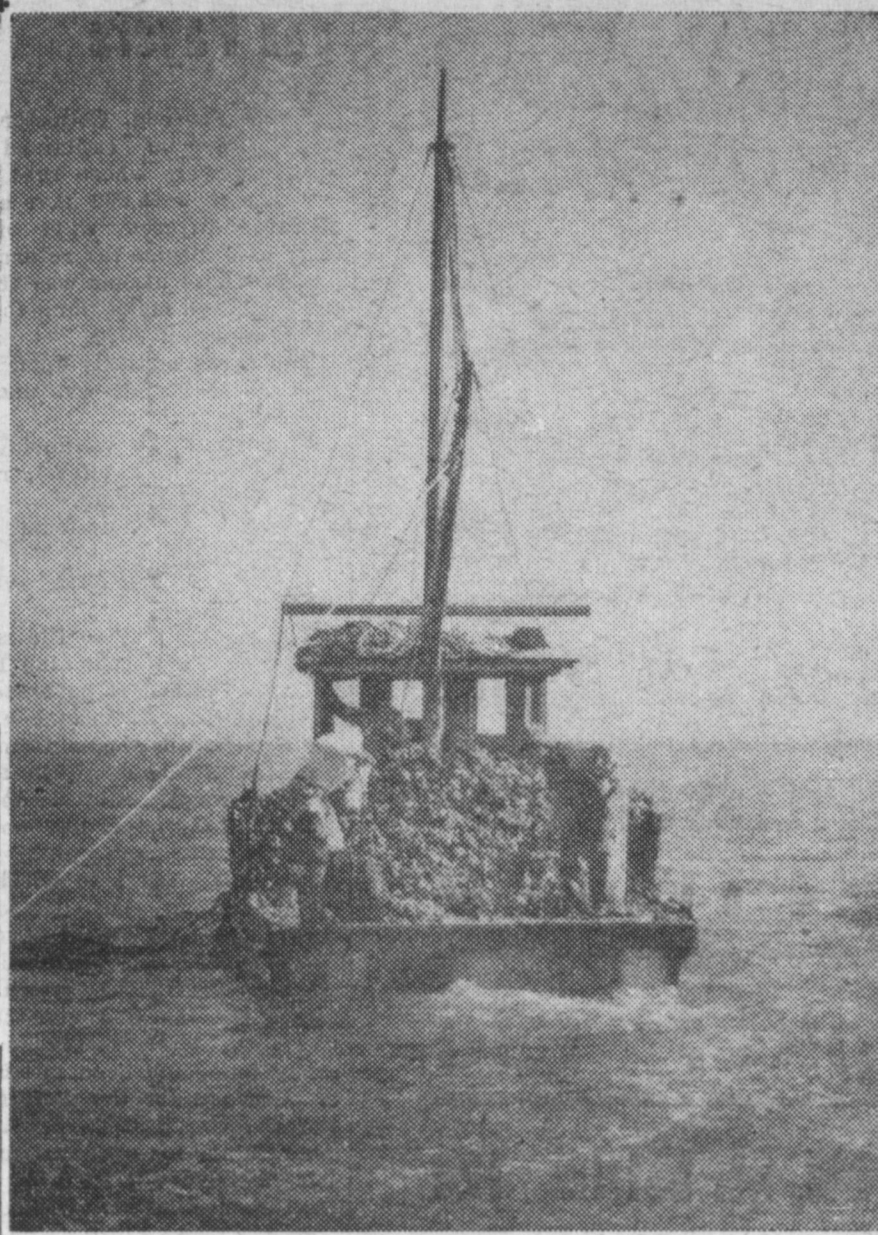
"With this staff and working facilities, a thorough oyster program designed to answer the questions and solve the most important problems of oyster rehabilitation in Texas could be carried on in connection with the oyster planting program and completed in approximately five years at a cost of \$30,000, in addition to the money expended on the rehabilitation program as it is now planned.

"If this research were carried on alone and there were no planting program, much of the work would duplicate what is to be done in the program already started, and the total expense for a five-year period would be in the neighborhood of \$60,000.

"The research work plus the planting work, as it is now planned, amounts to a total program. Without the research program the oys-



**TONGING OYSTERS**—Some of the oysters are in water too shallow to be reached by a boat capable of operating a dredge. In this case the oysters must be taken up with tongs. Oyster tongs are simply two rakes crossed to work like a pair of scissors. The oysters are worked up into small heaps by feel with the tongs, and then the tongs are closed under them and the whole lifted out of the water onto the barge. This barge and its tow boat belong to the Game, Fish and Oyster Commission and were fitted out especially for this work.



**DREDGING SEED OYSTERS IN COPANO BAY**—This boat is working under contract on the State's oyster rehabilitation program. This work requires considerable skill in locating suitable oysters for transplanting. After the oysters are taken aboard the vessel all dead shell, mussels, conchs, seaweed, and debris are cleaned out and thrown overboard. The large clusters of oysters are broken into small clusters for planting purposes. Careful watch is kept for the possibility of transferring oyster pests to the new territory.

### Anti-Discrimination Hearing To Be Held Monday, March 5

AUSTIN, Feb. 21.—A Senate committee hearing on the so-called anti-discrimination bill by Franklin Spears of San Antonio will be held Monday, March 5, not Wednesday, Feb. 21.

The bill will make it unlawful to discriminate against persons of Mexican or Latin American origin in business catering to the public.

The public hearing March 5 will be before the Senate State Affairs

### White Men's Primary Bill Introduced

AUSTIN, Feb. 21.—A bill to permit retention of the white men's primary elections in Texas was filed in the state legislature today by Sen. Weaver Moore, Houston.

The bill seeks to repeal the numerous state laws, both civil and criminal, dealing with party primaries in so far as they relate to who may participate.

Repeal would leave the matter of party membership to be settled entirely by party regulation.

Senator Moore explained: "It's just a white primary bill that's all."

A preamble recited the right of American citizens to make agreements among themselves as to whom they will support for office and the right to choose with whom such agreements will be made and said that the supreme court of the United States decision against the present white primary held, in effect, that so long as the state has laws governing political parties that citizens are not free to choose with whom they will associate politically.

ter planting work will be a piecemeal attempt and with the present staff there will not be time for the marine biologist to analyze and experiment as we go along. The result will be that either in the case of success or failure we will not be able to show why. Therefore, the complete program will be the cheapest in the long run and it should be started at the earliest possible time, for the oyster problems in Texas are acute.

## Let's Eat Out . . .



. . . HINTON'S OF COURSE

For finer food in most pleasant surroundings. Hinton's answers every time!

Regular Dinners and a la Carte Specials

## HINTONS CAFE

Lincoln made five written copies of his Gettysburg Address. Two of them are on exhibition in the Congressional Library in Washington D. C.

Had the Confederate Army followed up its victory in the famous Battle of Bull Run the Confederates might have taken Washington without firing a single shot.



"My dad's calling me up tonight"



"I haven't seen him for some time.

"If you are not in the service, would you mind going easy on Long Distance between 7 and 10 tonight so his call can get through quicker?"

"Pop and I will be mighty grateful."

SOUTHWESTERN BELL TELEPHONE COMPANY



In an office that's never closed . . .

"Dispatcher speaking . . ."

"Generated 40,300 . . . indicating 36,800 . . . 14,100 volts . . ."

P.F. 92 lag . . . okay, much obliged."

That's the everyday jargon of CPL dispatchers in action . . . the men who see to it that there's plenty of electricity available and that it gets to you when and where you need it.

Dispatchers are constantly on the job night and day . . . working through fires, floods and storms . . . through times of emergency when a sudden flash of lightning plays mischief with the power lines and puts grey hairs in the dispatcher's head. Calm, quick-thinking, alert, these men are capable of handling any emergency to assure you and Uncle Sam of dependable electric service.

These dispatchers are no amateurs. They've spent years acquiring the "know-how" it takes to see that there's plenty of power and to keep it flowing.

You can count on the dispatchers, along with the many other experienced employees of business-managed CPL, to bring ample, dependable electric service to the homes, farms and businesses of South and Southwest Texas in war or in peace.

• Don't waste electricity, just because it isn't rationed!

The Sign of Good Service



CENTRAL POWER AND LIGHT COMPANY—A SELF-SUPPORTING, TAX-PAYING BUSINESS



### GUARD Against Fire!

Take every precaution to guard your property against fire, but to be doubly secure, see us and insure your home and business property.

For Information See

**A. C. GLASS INSURANCE**



# SERVE YOURSELF for TOP POINT VALUES AT BOTTOM PRICES

Specials for Friday and Saturday, Feb. 23 and 24

D RIP OR REGULAR GRIND C. H. B.  
**H. & H. Coffee, lb pkg. 28c** **Tomato Juice No 2 can 12c**  
 HERSHEY'S PANTRY IMITATION VANILLA  
**C O C O A, 8 oz. pkg. 11c** **EXTRACT, 8 oz. bottle 8c**

SHEFFORD'S OLIVE PIMENTO  
**Cheese Spread 5-oz. Jar 15c**

**THREE - MINUTE OATS FAULTLESS STARCH**  
Small 12c; Large 28c 5c pkg. 4 1/2c 10c pkg. 9c

FRUIT CAKE SEEDLESS  
**Raisins 15-oz. pkg. 13c**

20 MLUE HY-PRO  
**BORAX, 10 oz. pkg 10c** **BLEACH, qt. bottle 12c**  
**Sani-Flush, lge. can 18c** **Camay, 3 bars 19c**

RED and WHITE FLAT-SLIVERLESS  
**Tooth Pics, box 4c**

MADE WITH COLD CREAM — LADY PALMOLIVE  
**Godiva Soap, 3 bars 15c** **Soap, 3 bars for 19c**

RED and WHITE FANCY PATENT  
**FLOUR, 10 lb. bag 52c; 25-lb. bag 1.21; 50 lbs. 2.34**

## RED & WHITE

WE RESERVE RIGHT TO LIMIT QUANTITY

TELEPHONE 241

### SPARKS DRY GOODS STORE

A Good Place to Trade

Quality AND Value  
+ Personal Service



SPECIALS FOR FRI. and SAT., FEB. 23 and 24  
**SOAP, Champion Vegetable, 9c**  
**PEAS, IGA sweet, No. 2 can 16c**  
**PIE CRUST, 8 ouncepkg. 10c**  
**APRICOTS, Flothill No. 2 1/2 can 28c**  
**FLOUR Gladiola, W.W. 10 lbs. 48c**  
**SYRUP, Staleys Golden, 5 lbs. 40c**  
**GRAPE JAM, 2 lb. jar 46c**  
**ORANGES, Texas, pound 6c**  
**GRAPE FRUIT, pound 5c**  
**TOMATOES, 19c**

### KELLY'S CASH GROCERY

Rockport

Dial 3221

### Advice Given For Income Tax Payers

Frank Scofield, Collector of Internal Revenue, explained today that taxpayers whose 1944 income was less than \$5,000 have a choice of three different ways of filing their 1944 income tax returns. Taxpayers whose income was \$5,000 or more must all make "long-form" returns on Form 1040.

The three methods open to persons whose income was under \$5,000 are as follows:  
 1. Fill out the Withholding Receipt, Form W-2 (Rev.), received from their employers.  
 2. Make a "short-form" return on Form 1040.

3. Make a "long-form" return on Form 1040.  
 The easiest way to file is to fill in and mail a Withholding Receipt, but this method is permitted only if the taxpayer's income was virtually all from wages from which tax was withheld. If, in addition to his wages subject to withholding, a taxpayer had more than \$100 of dividends, interest and wages not subject to withholding, or he had any income from any other source, he would have to use Form 1040. If the Withholding Receipt is used, the collector will figure the tax and give the taxpayer credit for the tax he has already paid, and send either a bill or a refund for the difference. If Form 1040 is used the taxpayer must figure his own tax and if he owes a balance it must be paid at the time he files his return.

In choosing which form to use (for incomes under \$5,000), Collector Scofield, said taxpayers should ask themselves this question: "Did my allowable deductions for charitable contribution, interest, taxes, casualty losses, medical and dental expenses, and other deductible items amount to more than 10 per cent of my income last year?"  
 If the answer to this question is "yes", the taxpayer should make a "long-form" return on Form 1040 so that he can itemize and claim the actual amount of his deductions.

If the answer is "no", the taxpayer should consider filing on his Withholding Receipt or on a "short form" Form 1040. Both these methods of filing give the taxpayer a standard allowance of about 10 per cent of his income for the type of deductions mentioned in the question. The 10 per cent allowance is made through a tax table. This tax table is arranged according to brackets of income; for instance, one line in the table is for incomes from \$2,300 to \$2,325, another line is for incomes from \$2,325 to \$2,350, and so on. Collector Scofield explained that the 10 per cent standard allowance is figured at the middle of each bracket and therefore the allowance is somewhat less than 10 per cent below the middle of the bracket and somewhat higher than 10 per cent above the middle of the bracket.

In most cases, Collector Scofield commented, taxpayers spend far less than 10 per cent of their income for deductible items, and therefore such taxpayers will benefit by filing either a Withholding Receipt or a short-form return on Form 1040.

Mr. Scofield added that persons who had more than one job during 1944 and wish to file on Withholding Receipt need to fill out only the last receipt received, but should be sure to attach all their other Withholding Receipts (keeping, of course, the duplicate when the employer furnished two copies.)

Also, the collector explained that if wage earners file form 1040, they need not fill in their Withholding Receipts but must attach their receipts to their Form 1040 returns. Taxpayers who wish to use Form W-2 (Rev.) for the filing of their return must file Form W-2 (Rev.) on or before March 15, 1945. The use of this form after March 15, 1945, for filing a return is not permissible. All returns after that date must be filed on a Form 1040.

The Field Offices for the First Collection District of Texas are located in the following cities: Alice, Alpine, Austin (321 West 6th Street,) Bay City, Beaumont, Beeville, Brady, Brenham, Bryan, Cameron, Corpus Christi, Del Rio, Edinburg, El Paso, Fort Stockton, Fredericksburg, Galveston, Harlingen, Hillsboro, Houston, Huntsville, Kerrville, Laredo, Mexia, Port Arthur, Richmond, San Antonio, Temple, Uvalde, Victoria, Waco, and Yoakum.

### Bird Authorities Consult Here

Mr. Norman Hill of Harvard University was sent by Ludlow Griscom, curator of the Harvard Museum, to check with Mrs. Jack Hagar, local ornithologist, on the birds to be found in the Rockport area at this time of the year.

At the same time Dr. Edward Fleisher of Brooklyn College was here with Mr. Ralph Freedman of the University of New York City visiting with Mrs. Hagar and making a field check on winter birdlife of this area.

### PILOTING --

(Continued from Page 1)  
 Mr. Jackson says that the oyster tongs might do better if there were tongs.

Preston Paul has John Johnson hard at work getting the old "Viking" back in shape for sea again.

Also in Preston's yard the "Greek Girl" was put on the ways for a general house cleaning.

Bill Johnson says Ernest Garcia is his high man on oysters this week.

Arthur Miller and Henry Garcia have their "Tomcat" ready to go fishing after about two weeks of repair work. These men fish for Bill Johnson.

At the Bass Boat Works we found the runabouts "Ann" and "Fish Hound" on the ways.

Captain Jacobsen also had Dr. Blair's 38-foot schooner over from Corpus for repair. The Coast Guard has just returned her from its service.

Mr. Jackson says Frank Roope is doing very well trot lining for Red Fish these days.

Bass Boat Works is building a 20-foot runabout for T. Noah Smith. She will have a 90 h. p. Chris Craft Motor.

Goldy Rowe takes the prize for haul-outs — in fact he's in the market for ways grease. Up until noon Wednesday he had hauled out three times on Wednesday to remove, nets, ropes, and assorted debris from his wheel. Maybe he ought to try running in reverse.

Arthur Davis went out to get rich tonging oysters. After two days he was in bed.

Cecil Casterline produced 1400 gallons of oysters last week. He is working nine boats, and is using oyster openers from Palacios.

### Singing School At Fulton Closes Saturday

A two weeks singing school that has been in progress at the Fulton Community church under the auspices of the Aransas County Singing Convention will close with a big program Saturday night. Everybody is cordially invited to attend.

Those desiring transportation should meet in front of Sorenson's store at 7:45 Saturday night. They will be given rides to Fulton and back, according to Rev. Frank Walker.

### Painter of Rockport Landscapes Dies

Mrs. Florence Glyn-Wells MacFadden, who recently died in her home in San Antonio was a well known part time resident of Fulton and Rockport. For the past fifteen years she has been coming to Fulton for the summer, and two years ago she built a home in Rockport.

In San Antonio, she was active in the St. Mark's Auxiliary, the History Club of San Antonio, the Conservation Society and the Gold Star Mothers. She was a member and founder of the Palette and Chisel Club.

In Rockport she was active in the Guild of St Peter's, and was well known for her many paintings of scenes about Rockport.

She was 78 at the time of her death, was a native of London, England and lived in San Antonio for 44 years.

### Classified

TYPEWRITER SERVICE—For limited time only. Cleaning, Oiling and Repairing. Will call. Write Box 82, Rockport, or call at Spencer Cabin No. 1, Samuel E. Gant.

FOR SALE—Magnetic belt for health purposes, same as new. Leon Carleton, P. O. Box 685, Rockport, Texas. 2-22 1tp.

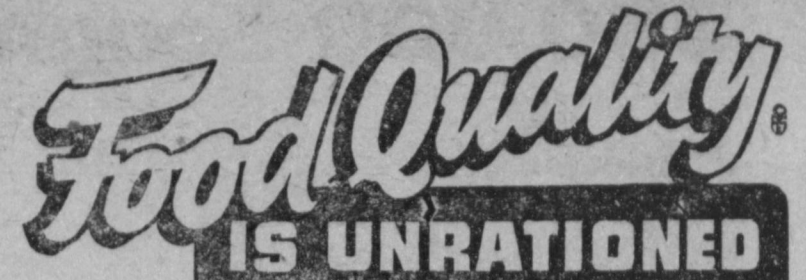
FOR SALE—One 16-foot sailboat, one 14-in. power hand saw, one 6-in. power rip saw, one 6-in. planer. To be seen next to Aransas Drive-In, Aransas Pass, W. E. Ferguson. 2-22 1t.

FOR SALE: — Table-top Oil Range; also 5-tube Philco radio. Call 478. 2-22 1t.

FOR SALE—One 1-2 h. p. gas engine with high tension mag, one 16-foot tunnel skiff, 1 two-burner gas stove, 1 two-burner oil stove, one 4-burner oil stove. Mr. and Mrs. E. B. Crawford. 2-22 1t

FOR RENT:—1 five-room house with bath, water, lights and gas. Known as the Milton Sparks home three miles from town. Phone 3541.

FOR SALE—1935 Chevrolet, 4-door, master deluxe, good body, tires and motor. Ceiling price. Phone 3524.



- TOMATOES, Home Pack, No. 2 cans ..... 10c
- VALLEY PACK No. 1 Tomatoes, 2 cans ..... 15c
- TOMATO PUREE, K.B. Valley Pack, 4 cans 15c
- SAUCE, Calif. Spanish Style, 7-oz., 2 for ..... 15c
- FIG JUICE, Calif., pints, 15c value, bottle ..... 5c
- APPLE JUICE, White House, quarts ..... 25c
- RAISINS, Sultana Seedless, 2 lb. pkg. .... 30c
- PRUNES, Santa Clara Large, 2 lbs. .... 35c
- MEXICO TOMATOES, Fancy, 2 lbs. .... 35c
- SAUSAGE, Raths or Star Pure Pork, lb. roll 35c
- LARGE SELECT EGGS, guaranteed, doz. .... 35c
- POTATOES, Certified Triumph, Cobbler Seed, 6c
- PURE CANE SYRUP, La. Evangeline, gal. 95c
- EAST TEXAS Pure Cane Syrup, gal. .... 1.15
- HONEY, South Texas Extracted, 10 lb. can 1.75
- PANCAKE FLOUR, Pillsbury, Light Crust or Robin Hood, 2 pkgs. for ..... 25c
- ALASKA PEAS, New Crop, 2 lb. pkg. .... 30c
- LENTILS, New Crop Imported Fancy, .... 40c

## BRACHT BROS.

Your Neighborhood Grocery

### LARGE CROWD SEE Big Launching

H. H. High of Galena, Kans., Launches the Anna Mae.  
 BEN PIERSON, Pilot of Rockport  
 BILL MARTIN, Engineer

CARD OF THANKS  
 We wish to express our appreciation to all those who gave us assistance during the last illness and death of our father and husband, and for the many kind expressions of sympathy.  
 Mrs. O. E. McLead and Children

**YOUR 1944 Income Tax Report**  
 If You Need Help, See Me  
**H. E. BAHR**  
 Notary Public  
 Phone 227  
 Rockport, Texas

**Chas. T. Picton LUMBER CO.**  
 A Complete Line of LUMBER  
 Paints and Builders' Supplies  
 Let us figure on your building needs, large or small

**B. and R. ELECTRIC COMPANY**  
 PETE BRACHT PHONE 292 R. R. ROBERTS  
**FOR SALE!**  
**One Delco Water Pump** complete with electric motor and 80-gallon galvanized tank  
**One 3-Burner Oil Stove with Oven**  
**BRING US THAT BURNED-OUT IRON!**  
 We have Iron Elements  
**One Electric Toaster**  
**Is Your Electric Stove Giving You Trouble?**  
**Let Us Re-Wire It Now — Before Its Too Late!**  
**PROMPT SERVICE ALWAYS**

**KEEP IT RUNNING!**  
 Day by Day your car becomes more important, more vital to the War Effort—to the conduct of your business and the welfare of your family. Let us keep your car in good condition. It will be easier and cheaper to keep it up than to fix it later.  
**S. L. SORENSON GARAGE**

**WHEN YOUR DOCTOR WRITES**  
 When the doctor in whom you have so much confidence, writes a prescription for you ... bring it here for filling. You can have confidence, too ... in our careful, accurate pharmaceutical methods.  
**A. L. BRUHL, Druggist**



**Program**  
 SUNDAY & MONDAY  
 Feb. 25 and 26  
**Barbary Coast Gent**  
 WALLACE BEERY  
 TUESDAY & WEDNESDAY  
 Feb. 27 and 28  
**Take It or Leave It**  
 PHIL BAKER  
 THURSDAY & FRIDAY  
 Mar. 1 and 2  
**Our Hearts Were Young and Gay**  
 DIANA LYNN  
 SATURDAY  
 March 3  
**Saddle Leather Law**  
 Phantom

**Hooper Bros.**  
 Fancy and Staple GROCERIES  
 Tinware, Feed and Crockery  
 Phone 37 — Rockport, Texas

The Stewart-Wendell Post Veterans of Foreign Wars holds regular meetings on each First and Third Wednesday nights at 8 o'clock at I.O.O.F. Hall. Visiting members cordially invited. O. V. Dye, Commander.