

WEATHER

	Bar.	rain	wind	temp.
Nov. 6	30.62	0	15	55-41
Nov. 7	30.48	0	13	53-38
Nov. 8	30.36	0	1	60-39
Nov. 9	30.36	0	2	63-40
Nov. 10	30.20	0	2	69-45
Nov. 11	30.04	0	2	74-57
Nov. 12	30.02	0	2	---

The Rockport Pilot

THE ONLY NEWSPAPER PUBLISHED IN ARANSAS COUNTY

Vol. No. 90

ROCKPORT, ARANSAS COUNTY, TEXAS, THURSDAY, NOVEMBER 12, 1959

No. 32

Along The Waterfront



South Texas dove season will close November 19, according to the director of law enforcement of the Texas Game and Fish Commission. The season will close three days earlier, however, on November 16, in counties in the Rio Grande Valley, where there was whitewing hunting.

Juanita and Burl Wagley fished less than two hours late Monday afternoon in the Rockport basin and with only 50 live shrimp landed 38 trout.

Tuesday Juanita and Burl Wagley (Continued on page 8)

School Board Opens Bids On Old Gym

At the regular meeting of the Board of Trustees of the Aransas County Independent School District Tuesday night, bids were opened for the sale of the old gymnasium building at Rockport Elementary. The trustees also listened to the reports of Superintendent J. D. Gray and Treasurer Katherine McLester.

The bids received were from Fulton Lumber Company, Chester Johnson, and from a Columbus contractor, J. L. Grymalla. Grymalla wanted \$800 and all salvaged material to dismantle the building and clean the site, which is to be used for a new school cafeteria.

Chester Johnson offered to do this for the material he might salvage, and offered to leave between 2000 and 3000 board feet of lumber for the school to use for forms, etc., during construction of the cafeteria, which will be done largely under direction of School Maintenance Foreman Glen Martin.

Fulton Lumber Company offered \$20 for the building and salvaged material, for which they would demolish the gymnasium and clean the concrete slab on which it was built.

The Board rejected all bids, and Board President Dr. H. F. Elliot appointed a committee to seek new bids for removal of the building, consisting of Superintendent Gray and Martin.

In other business the Board approved the annual audit and, after discussion, authorized Gray to write Austin a letter, Ross Terry, employed to collect delinquent taxes for the district, asking for a report on his work during the past week.

Superintendent Gray reported that attendance of children belonging to personnel at the 13th AC&W Squadron at Aransas County Airport has exceeded the amount necessary to qualify for some \$4000 in Federal aid, and that an investigation was being made to see whether this can be obtained.

A petition signed by the commissioned officers at the base, asking for bus service to the housing development there was discussed. Gray told the Board that houses at the base were not far enough from Highway 35 to allow this under state regulations.

If reimbursement for the mileage was made, at the rate of 25 cents per mile, rules of the State Education Board would permit the bus to digress from its regular route, and to stop at the housing site.

The Board agreed to furnish such service if such payments were made by the base, as 17 children from the site are attending.

In a report made by Mrs. Katherine McLester, tax collector-assessor for the district, she said that approximately 88.96 percent of the 1959-60 taxes had been collected, for a total of \$355,331.26.

FIRE AT STEELE HOME

Fire broke out from a faulty heater at the Seth Steele home Tuesday morning, doing very little damage, and was quickly controlled.

Rockport Electric Celebrating Its Fifteenth Year

Rockport Electric is celebrating its fifteenth anniversary in Rockport.

B. W. (Bob) and Mabel Hamblin moved to Rockport in 1939 and in 1944 opened an electrical shop in the little building across the street from their present location.

They have raised a family of three girls here and have been prominent in both church and civic circles.

Their sincere endeavor to give both personal and business service has enabled the Rockport Electric Company to develop from a very small beginning to the fine retail store and contracting business of today. They now represent more than 25 of the fine Name Brand products available to the public.

They have always counted their customers as their friends and are appreciative of the fact that they are now doing business with residents not only of Rockport but with folks from Fulton, Port Aransas, Aransas Pass and the surrounding counties.

They express the hope that in the years to come they will be able to give wider and better service to this growing Coastal Bend.

One of their greatest joys has been that so many of the children of years past, who bought little gifts, are still customers and buying the necessities for home and family. The advertisement in this issue of their 15th anniversary celebration and another Coffee Time Friday and Saturday, November 13-14, shows their appreciation of this happy association with the finest customers in the world.

Duck Season Opens Friday

Two major hunting seasons will get under way in Texas within the next ten days.

The duck hunting season will open noon, November 13. The bag limit will be four ducks daily, but not more than one can be a canvasback or redhead. The duck inventory in Texas at the present time is very good, according to waterfowl biologists, who have been making surveys throughout the state. Many of the ducks are young ones, however, indicating the late hatch in the nesting grounds.

Goose season already is underway, having opened at sunrise, October 26. The duck season will end January 1, and the goose season will end January 8.

Waterfowl hunters are required to have a \$3 Federal duck stamp, which can be bought at the Post Office.

The white-tailed deer season will open in most counties in Texas November 16. The mule deer season will open December 1 west of the Pecos. There will be deer seasons in many other counties in Texas under regulatory control. It is advised that you check with your local game warden on these areas.

The basic bag limit is on two bucks. However, doe shooting will be permitted in a number of Texas counties again this year, which will permit hunters to take either bucks or doe.

LOCAL MERCHANT GIVING DOLLAR AND DIME FOR DOLLAR

The Rockport Electric Company, for the two days of its anniversary sale and coffee time, is giving a silver dollar and a silver dime for a dollar bill. As a matter of curiosity and information, other local merchants are asked to note how many of these circulate throughout the town.

SACRED HEART TO HOLD COVERED DISH SUPPER

Members of the Sacred Heart Church will give a covered dish supper at the Parish Hall on Saturday, November 14, starting at 5:30 p. m. Everyone is invited. Admission is \$1 per plate.

TB MAN TO SPEAK TO LIONS

R. R. Ryan, executive director of the Coastal Bend Tuberculosis Association will be speaker at the Lions Club meeting to be held at the Silver Derrick at noon, Thursday, Nov. 19.



SUBSTITUTE HAND—Although he has only one hand, Gene Henderson Jr., of Dallas, Tex., is an ardent handball enthusiast. A.A.U. officials granted him permission to play in tournaments with a piece of steel covered with foam rubber and mitt as a left hand.

ACHS Pirates Meet Kenedy Lions In Bi-District Game, Friday Nov. 20

Win, lose or draw Friday night when Aransas County High School plays Mathis, the local boys are headed for the playoffs with Kenedy in a bi-district tussle at Kenedy on Friday night, November 20, with game time scheduled for 8 p. m.

Superintendents, principals and

coaches of both schools met Tuesday and decided that they would rather play the game on one of the home fields rather than on a neutral gridiron. Several factors entered into this choice, Superintendent J. D. Gray said.

However, the basic reason was that there was no assurance that fields at Sinton, Refugio, and Beeville, suggested sites, would be available, as all these schools have a chance to win their own playoffs, and might need their field. This information would not be available until too late, hence ACHS and Kenedy fields were the only remaining choice.

Kenedy won the toss and the site.

Team standings at present are equal. Kenedy has one game left with Poth this week, and should it lose will fall into a tie with George West for district honors, but since the Lions defeated the Longhorns in their meeting, Kenedy will still represent the district.

Rockport is in the same boat, with one game yet to be played, with Mathis tomorrow night. Should the Pirates lose, they will be tied with Ingleside, whom they defeated earlier, thus giving ACHS the right to the playoff berth.

Bandmen and pep squad members in uniform will be admitted free to the game.

Officials will be furnished by the Corpus Christi and Beeville chapters of the Southwestern Football Officials' Association. From the Corpus Christi group will come the referee and the umpire; the Beeville chapter will furnish the field judge, head linesman and statistician.

Time will be kept by one of the officials on the field, and his decision is final.

The proceeds of the game will be split 50-50 between the two schools, after costs of the officials and of printing the tickets have been deducted from the gate receipts.

School in Rockport and Fulton will be closed at 2 p. m. on the Friday of the big game, in plenty of time for people to drive to Kenedy.

The distance from Rockport to Kenedy is 100 miles, give or take a mile or so, depending on which route you take.

The simplest, for those not familiar with the country, is to go west out Market Street and FM881, directly into Sinton, and from there to follow the San Antonio road through Beeville and Pettus to Kenedy.

Another route leads through Bayside and Woodsboro. At Woodsboro, cross the railroad track and the highway by the barbecue stand, and take the paved road that leads west. This leads into the Refugio-Beeville road, and from there the route is the same.

This route is probably a little shorter than the first.

A third route, about as long as the second is from Bayside through Woodsboro, Refugio and Goliad. From Goliad there is a direct shot into Kenedy over State 239.

The best route is probably through Sinton. There will be less traffic over the other two routes.

Football Dope Prepared by Coach Borchert

For those Pilot readers who want to figure out what will happen if Mathis beats Aransas County High (which we hope won't happen) Friday night, the following schedule of District 30A results has been prepared by Coach Melvin Borchert.

Team	W	L	T	Pct.	Pts.	Opp. Pts.
Aransas	5	3	1	.611	204	111
Ingleside	4	5	1	.450	196	134
(Completed season)						
Mathis	3	6	0	.333	80	225
Gregory	2	6	1	.277	79	212
Woodsboro	1	7	1	.167	68	167

District Standing	W	L
Aransas County	3	0
Ingleside	3	1
Mathis	1	2
Woodsboro	1	2
Gregory	0	3

Games on Nov. 13—Mathis at Aransas County; Woodsboro at Gregory.

Aransas County is cinched to represent District 30-A for the State Championship ladder playoffs. Will play Kenedy in the first round. This is the first time in 18 years that the Pirates have represented a district in the State playoff race and if the Pirates beat Mathis Friday night this will be the first time since 18 years ago that a Pirate team won the district championship.

Teams that defeated the Pirates this season have the following records:

Palacios—Won 9 and lost 0 (class AA) District 28-AA champ).

Aransas Pass—5 and lost 4 (class AA and still District 29 AA contention).

Bishop—Won 9 and lost 0 (District 31-A champ).

Flour Bluff—Tied—Won 6 lost 1, tied 2 (District 31-A contention).

Mathis has a good backfield led by Quarterback David Coffin and Halfback Hollis London. They run off of the winged-T.

Pirates will have 13 seniors playing their last regular district game Friday night. They are as follows: Centers—Guy Clark and Ronnie Simpson.

Guard—Gene Gregory. Tackles—Jim Weatherly, Leah Predam, Roger Ayers.

Ends—Monte Rouquette, Carl Snyder, Gains Gardner.

Backs—Mike Johnson, Hayes Warden, Daie Barnard, Richard Happer.

The Pirates are still mad over Mathis' 13 to 0 upset of Pirates last season when the Pirates were handicapped with injuries.

Agricultural Census Of Aransas County Nears Completion

The agricultural census of Aransas County is over 80% complete, according to Jack Baughman, who has been making the five-year count of horses, mules, cows, chickens, pigs and crops. Only a few of the big ranches in the area and perhaps half a dozen individuals remain to be contacted, he said.

One trend is already apparent, Baughman said. Land that was used for grazing five years ago, when the census was made, is rapidly being subdivided, and there are a lot of people living where formerly stock roamed almost at will in Aransas County.

Much of the land west of Rockport is dotted with acre, five acre, and ten acre tracts, Baughman said, and a number of these, under the Department of Agriculture definition, can be counted as farms or agricultural establishments. As a consequence, he stated, where 99 farms and ranches were listed five years ago, there will probably be around 115 or 120 this time.

Livestock populations are about the same, the census taker said, except for one thing. There are many more donkeys in the county than on the previous count. However, these are not recorded by the Department of Agriculture.

The parakeet population has also suffered a sharp upswing, although here again the Federal government evinces no interest, and these are not counted. There are several parakeet ranches, however, if you use the California definition of a ranch.

Council Approves New Street Lights

Thirty-Three New Lights and Replacements Of Seven Old Ones With Higher Powered Lights Will Give Rockport White Way

The City Council, at its regular meeting, approved Central Power and Light plans for better street lighting, particularly along Loop 70, the Highway 35 business route through Rockport.

Under the plan approved by the Council, there will be 33 new mercury vapor lights of 20,000 lumens each installed, and seven of the present lights, of 2500 lumens each will be replaced by the new and much more powerful lights.

Gray Chairman Of District 31A

School Superintendent J. D. Gray of the Aransas County Independent School District, is chairman of the newly-reorganized 31A football district, and A. B. LeFevre, principal of Aransas County High School, is the secretary.

The 1960 district schedule, broadened next year by addition of two schools—Calallen and Bloomington—to the old five-team District 30A, is as follows:

September 30: Mathis at Bloomington, Calallen at Woodsboro, and Gregory-Portland at Rockport, with Ingleside having a non-district game.

October 6, Woodsboro non-district; Bloomington plays at Rockport; Ingleside plays at Portland-Gregory; and Mathis plays at Calallen.

October 14, Gregory-Portland non-district; Rockport at Calallen; Woodsboro at Mathis; Bloomington at Ingleside.

October 21, Mathis, non-district; Calallen at Ingleside; Gregory-Portland at Bloomington; Rockport at Woodsboro.

October 28, Bloomington, non-district; Ingleside at Woodsboro; Mathis at Rockport; Calallen at Gregory-Portland.

November 4, Rockport, non-district; Woodsboro at Gregory-Bloomington at Calallen; Ingleside at Mathis.

November 11, Calallen, non-district; Gregory-Portland at Mathis; Rockport at Ingleside; and Woodsboro at Bloomington.

Non-district games schedules will be announced by the various schools at a later date.

Junior high schedules are the opposite of the senior teams, as each team will play at the opposite place on Thursday night from where the high school teams play on Friday. Eight minute quarters will be used in these games.

Gate receipts are to be split fifty-fifty after expense for hire of officials is reduced. Four Southwestern Football Official Association members will be used as officials in each game. The home team is responsible for securing these, and for notifying opposing teams at least two weeks before game time as to the identity of the officials. If there is any dissatisfaction over any official, the opposing team must make its protest not later than one week before game time.

General admission to all games will be \$1 for adults and 25 cents for students. Each visiting team will be sent ten complimentary passes, and two scouting passes are to be sent to each member school in the district.

Band members, pep squads, sponsors and bus drivers will be admitted free.

A \$100 forfeiture clause has been inserted in all contracts, where, if a member school fails to show and play, it shall forfeit \$100 to the other school, unless the two schools had agreed to drop the scheduled game.

Admission to junior high games will be fifty cents for adults and 25 cents for students. Home teams will retain all such receipts from junior high games.

BUSINESS & PROFESSIONAL WOMEN TO HOLD MEETING

The Business and Professional Women's Club meeting will be held Monday night at the courthouse at 7:30.

Tom Wilson, representing the Social Security office of Corpus Christi, will be the guest speaker. All ladies, whether members of the club or not, are invited to attend.

Starting at the intersection of Maple Street and Highway 35, two of the older lights will be replaced, a new one will be installed at the intersection of Cherry Street and the highway and another will be placed on the Highway where it forks to go to Fulton.

Between there and the highway intersection with Victoria Street there will be eight more of the 20,000-lumen lights installed, lighting a stretch of the highway that has hitherto had no lights.

From Victoria Street to the intersection of Highway 35 and Nopal Street will be nine new lights, as the northern end of Loop 70 begins in this area with an esplanade, both lanes of which must be lighted.

From Nopal to the intersection of Highway 35 and Loop 70, three old lights will be replaced with new ones, and an additional five 20,000-lumen lights will be installed, plus two of 15,000 lumens each.

From this point south to Market Street the present lights will remain along Austin Street, then the white way will continue along Market to Church Street and down Church Street to Bay, where the old 2500-lumen light will be replaced by another of higher power.

Continuing south, there will be new, high-powered lights at the intersections of Loop 70 with Morgan, Hackberry, Murray, James, King, Lamar, Corpus Christi and First Streets, with an odd one here and there where needed along the route.

In additional business, the Council voted to designate two blocks of Laurel Street, between Live Oak and Pearl, as a one-way street, after hearing A. R. Griffith, Jr., principal of the Rockport Elementary School, explain how this would minimize the danger to small children going to and from school. This designation is only for those months when school is in session.

Councilmen also formally adopted a policy in regard to extension of water lines away from the city mains, stating that the city will pay one-half such cost, and that the property owner must bear the other half.

The First National Bank of Rockport was designated as the city depository during the next two years.

Besides this, councilmen approved attendance of Mrs. Jeanne Tuer at a tax assessor-collector school to be held in Austin on December 7-8 at city expense.

Homecoming Ceremonies Planned

Aransas County High School will crown three sweethearts this Friday night, in ceremonies before the football game between ACHS and the Mathis Pirates.

The program will get under way at 7:40 p. m. with the coronation of the football, band, and pep squad choices, and with other pre-game activities.

Game time is at 8 p. m., and the Aransas County and Mathis bands will perform at half time.

On Thursday night a bonfire and pep rally will be held on the beach at Rockport, at 5:45 p. m.

The Rockport Fire Department will handle traffic at all these events.

Mr. and Mrs. Frank Cook, of Wichita, Kansas, are guests in the home of Mr. and Mrs. A. L. Bachman. Mrs. Cook is Mrs. Bachman's niece.



ANGEL IN GLASS—With delicate artistry, John Hutton engraves a figure of an angel on a glass panel in his London, England, studio. The panel is one of 90 which will form a glass wall at the new Coventry Cathedral, smashed by German bombs during World War II.

ROE'S FOOD STORE *is KNOWN...*



To be given away **Free!** on Tues., Nov. 17
10 A. M.
ONE **TRICYCLE** With Dump Bed
A \$17.95 VALUE

No Purchase Necessary to Register. Just Come Into ROE'S and Fill Out Registration Blank

Specials
THURSDAY
FRIDAY
SATURDAY
NOV. 12-13-14

by the CUSTOMERS it keeps!

Puritan THICK SLICED
BACON
2 Lbs. **75¢**

Bar-S
FRANKS
lb. . . . **55¢**

Finest Quality
MEATS

Auge's
PICNIC HAMS
SMALL SIZE
lb. . . . **35¢**

Rath's
SMOKIES
12 oz. pkg. **49¢**

Rath's
Blackhawk Bacon . . . lb. **45¢**

Good Veal
Brisket Stew lb. **35¢**

Good Veal
Sirloin Steak lb. **69¢**

Good Veal
Crown Roast lb. **55¢**

Good Veal T-BONE or
ROUND STEAK lb. **79¢**

Snowdrift 3 lbs. **59¢**

Good Veal
CHUCK ROAST lb. **49¢**

First Choice
FLOUR . . . 5 lbs. **39¢**

FOLGER'S lb. **69¢**

Quick, Convenient **Frozen Foods**

- Treesweet 6 oz. **ORANGE JUICE** . . . 2 for **45¢**
- Libby's Whole 10 oz. **BABY OKRA** **21¢**
- Libby's **MIXED VEGETABLES** . . . **19¢**
- Gladiola **ROLLS** pkg. **29¢**
- Harris **ICE CREAM** 3 qts. **1.00**

- Light Crus: 5 lbs. **FLOUR** **49¢**
- First Choice lb. **OLEO** **19¢**
- WESSON OIL **49¢**
- CHEER **69¢**
- CAMAY 2 for **25¢**
- SCOT TISSUE 2 rolls **25¢**
- Northern roll **JUMBO TOWELS** **29¢**
- Reynolds regular roll **FOIL** **33¢**
- Austex 300 can **TAMALES** **25¢**
- Austex Plain 300 can **CHILI** **43¢**
- Toothpaste with free cup or all purpose brush Economy Size Large Size **GLEEM** **65¢ 49¢**

- lb. First Choice **MARYLAND CLUB** **69¢**
- 4 oz. **INSTANT SANKA** **79¢**
- Comstock No. 2 can **PIE APPLES** **23¢**
- Libby's, Cut 303 can **GREEN BEANS** **19¢**
- Le Grande, Cream Style 303 can **GOLDEN CORN** 2 for **25¢**
- Instant box **MINUTE POTATOES** **25¢**
- All Flavors **JELLO** 3 for **25¢**
- Kraft's lb. bag **CARAMELS** **35¢**
- Nabisco Premium lb. box **CRACKERS** **27¢**
- Borden's qt. **CHOCOLATE MILK** **29¢**
- Delight **DOG FOOD** 3 for **25¢**

- 303 can **TOMATOES** **10¢**
- 46 oz. can **GRAPEFRUIT JUICE** **29¢**
- Bar-T-Ranch Elberta 2 1/2 can **PEACHES** **27¢**
- 300 can **HOMINY** 2 for **15¢**
- 303 can **PEAS** **15¢**
- Northern **NAPKINS** box **10¢**

Garden Fresh **Vegetables**

- Fresh, Crisp **CARROTS** 2 bags **15¢**
- Paschal **CELERY** stalk **13¢**
- Juicy Texas **ORANGES** 5 lb. bag **39¢**
- No. 1 Idaho Russet **POTATOES** 10 lb. bag **49¢**

ROE'S SUGAR TIDE

.. 5 LBS. WITH ORDER **39¢**
Otherwise 5 lbs. 51¢

RAINBOW SUPER MARKET

Reguar size with order **25¢**
Otherwise 29¢

We Reserve the Right to Limit Quantity

Featuring the Finest
In Fresh
POULTRY
and
MEATS

RUM CAKE
Reg. 59c
49c

Star-life
Brown & Serve Rolls
Pkg. of 12
25c

Towie, 21 oz.
Salad
OLIVES .. 59c
Pic-L-Barrel, quart
Sweet
PICKLES .. 45c
Pic-L-Barrel, pint
Sweet Cucumber
Pickles 29c

8 oz. pkg. Kraft
Sliced American
or Pimiento
CHEESE
29c

FREE
1 qt. size
Texize
STARCH
With
Purchase
of 1 qt.
TEXIZE

69c

**Mix or Match
DEL MONTE**

Cream Style Golden 303 can
CORN 5 \$**1**
303 can
Fruit Cocktail 4
Seasoned 303 can
Green Beans 4
303 can
Pear Halves 4
1

Del Monte 303 can
Sliced Peaches 5 For **1⁰⁰**

Hunt's 46 oz.
Tomato Juice 3 \$**1**

Qt. Grape
Welchade 3
1/2 Gal. Jus-Made
Orange Drink 3
1

Hunt's
Tomato Sauce 3 For **25c**

Steele Jumbo
Butter Beans 10 \$**1**

Texas Short Cut
Green Beans 10

Texas
Cut Beets 10

Red & White
Hominy 10
1

Banner
OLEO Lb. **15c**

Heinz Campside, 16 oz.
BEANS 5 \$**1**

Van Camp, No. 2 can
Pork and Beans 5
Van Camp Grated
TUNA 5
1

PRODUCE

Golden Yellow
BANANAS Texas
2 lbs. 25c 5 lb. bag 35c

U.S. No. 1 Russet
POTATOES U. S. No. 1
10 lbs. 49c LOUISIANA YAMS
2 lbs. 15c

Fancy
BELL PEPPERS Lb. **10c**

FROZEN FOODS

Pet Ritz—Apple, Peach or Cherry
PIES **45c**

Treesweet, 6 oz.
ORANGE JUICE Sparetime
2 for 43c Chicken or Turkey
POT PIES
19c

Patio
MEXICAN DINNERS . . . **49c**

Eggs
Grade
A
Large
All
White

49^c
Doz

FREE

1 Can Patio
TAMALES

With Purchase
of 1 can

Patio
CHILI

49c

MEAT DEPT.
ROUND STEAK 79^c
lb.

U. S. Good
Baby Beef

Armour's Star — Slab
BACON lb. **39c**
by the piece

Boston Butt
PORK ROAST .. lb. **39c**

U. S. Good
Baby Beef

RUMP ROAST 69^c
lb.

Northern Corn Fed Pork
SPARE RIBS lb. **39c**

All Meat
BOLOGNA lb. **49c**

Lakewood Roll
SAUSAGE lb. **35c**

Fresh Ground
HAMBURGER .. lb. **49c**

Mohawk Thick Sliced
BACON 2 lbs. **79c**

Big Tex
BACON lb. **45c**

Longhorn
CHEESE lb. **49c**

Samuel's Loose
FRANKS lb. **39c**

HAMS 4 lbs. 2⁶⁹
Morrell Pride Canned Picnic
Large Can
Red & White

MILK 2 For 25c

Northern Toilet
Tissue, 3 for 25c

Delight
Dog Food, 3 - 25c

1/2 Gal.
CLOROX . . 35c

3 Minute 10 oz.
Popcorn 2 for 37c
yellow or white

Northern—Reg. Size
Towels, 2 for 35c

Sta-Flo 1/2 gal.
Starch . . 45c

Starlite 3 lb. can
Shortening 65c

Nabisco Honey
Grahams . . 34c

Del Monte
Peas . . 303 can **15c**

Del Monte 303 can
Spinach 2 For 29c

Lightcrust
Flour 5 Lb. **45c**
Box

Regular, Super or Junior
Kotex. 33c

Bama, 20 oz.
Grape **31c**
Jam

Your Choice
CANNED
Biscuits 2 For 19c

COFFEE
FOLGER'S . . . lb. 69c
ADMIRATION . . lb. 63c

Skinner's Macaroni or
SPAGHETTI . . 2 for 23c

Golden 3 Lbs.
Fluffo 65c

Regular
Tide. 27c

18 oz. Refrigerator Jar
Bama Smooth
PEANUT
BUTTER
49c

5 lbs. **SUGAR . . . 51c**

- Home Center -

Girl's Cotton size 4-14
PANTIES 3 pr. **1.00**

White and Assorted Colors
Package of 10
Handkerchiefs **1.00**

BOW TIE and
HANDKERCHIEF SET **1.00**

Tie and Sox Set **1.98**

Drug Department
Save 36c — Family Size
COLGATE DENTAL CREAM **83c**
25c Comb Free plus tax
WILDROOT CREME OIL **59c**

SWANSDOWN
White or Devils Food

CAKE MIX 4 For 99^c

WEST'S SUPER MARKET

ROCKPORT ELECTRIC CO. 15th

Serving the Finest Customers in the World with Name Brand

REFRESHMENTS FOR ALL FRIDAY & SATURDAY

Introducing All New 1960

ZENITH
with
SPACE COMMAND
remote TV tuning

Relax! Tune TV from across the room with silent sound

New Slim, Trim, Styling
★
SOUND OUT FRONT SPEAKER for richer, fuller sound



THE TRINIDAD Model D2010C
17" overall diag. meas. 155 sq. in. rectangular picture area. In two tone Gray and White.

Only **\$239.95** Plus Tax

HANDCRAFTED HORIZONTAL CHASSIS

- 15,500 volts
- power transformer
- "capacity-plus" components for longer life
- Spillite Dial
- Dipole Antenna
- Cinelens[®] picture glass
- Sunshine Picture Tube

Anniversary Special

- Zenith Stereophonic Player SF 119.....\$209.95
 - With Extra SRS 10 Speaker.....125.00
 - Record Album.....25.00
- \$359.95**

All for **299⁹⁵**

Cooks complete meals... plugs in anywhere

WESTINGHOUSE CUSTOM ROASTER OVEN



Big 18 quart capacity... bakes, roasts, cooks complete meals.

Picnic Basket and Dishes FREE

Anniversary Special 37⁵⁰

SOME OF THE NAME BRANDS WE REPRESENT

- Appliances
- Stoves — Heaters
- House Wares
- Lighting Fixtures
- Gifts

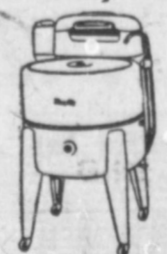
- Westinghouse
- Hot Point
- Maytag
- Zenith
- Mathes
- Sunbeam
- Mirro Aluminum
- Presto
- Universal
- Pyrex
- Flintware
- Oster
- West Bend
- Hoover
- Prescolite
- Virden
- Progress
- Moe
- Toast Master
- Arvin
- Electromode
- Temco
- Electrend and Others

There is a

MAYTAG

Model

WASHER and DRYER For Every Purse



Maytag Chieftain Famous Maytag quality and features... yet it costs scarcely more than lowest-priced washer. As low as

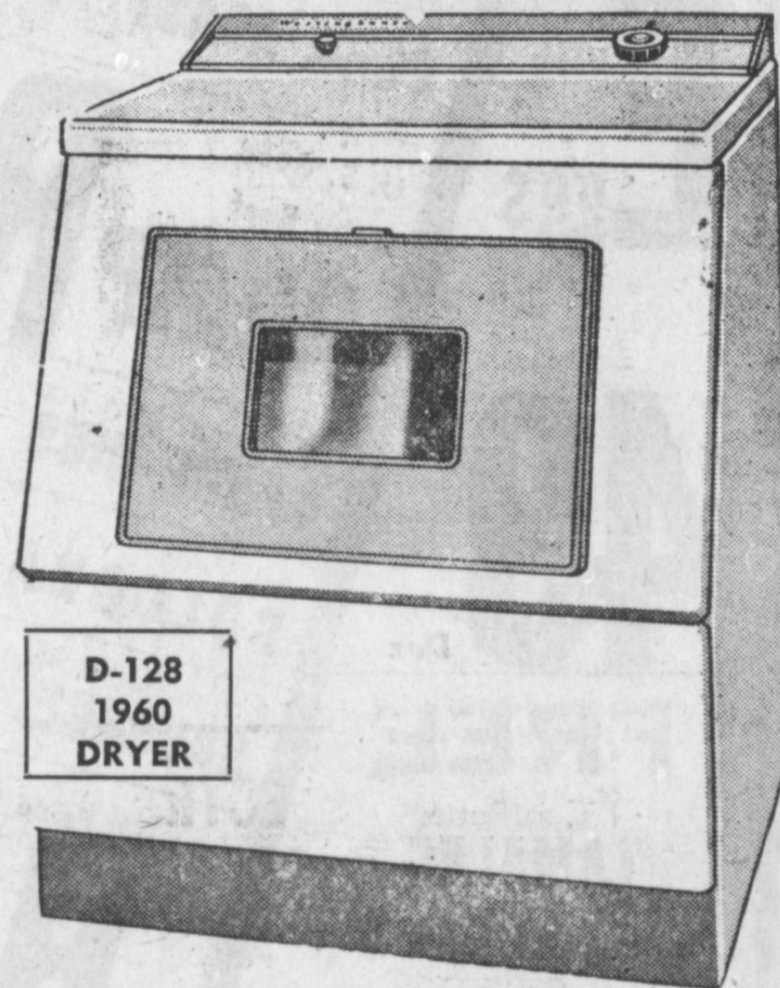
149.95

Westinghouse

Westinghouse Dryer

MODEL D-128

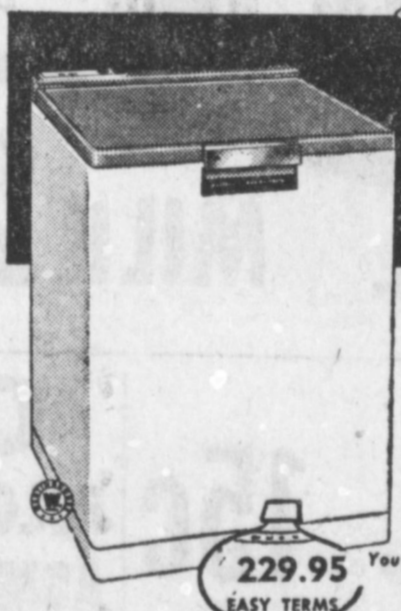
- BUILT-IN LINT TRAP
- AUTOMATIC SHELF DRY STOP CONTROL
- DRY SELECTOR FOR FINE FABRICS — DAMP IRON — WASH 'N' WEAR — TIME AND TEMPERATURE SETTINGS FOR RUBBER — PLASTIC AND AIR FLUFF DRYING
- DIRECTAIR FLO — 20% FASTER AND COOLER



D-128 1960 DRYER

Anniversary Special 128⁴⁰

for only **65c** a day



You can give her a brand new

WESTINGHOUSE ROLL ABOUT DISHWASHER

Wash, washes and power-dries service for 10... automatically. Ends her dish washing drudgery forever.

*** AND THIS IS ALL YOU PAY!**
No installation costs
No special plumbing
No extra wiring

How you can give her the gift she's always wanted, for Christmas... a Westinghouse ROLL ABOUT Dishwasher... and pay only pennies a day! Rolls everywhere... to dining table, to sink, to storage cabinets. Will save her dozens of steps each day... cuts dishwashing time to minutes. Ends stacking and carrying dishes. Just snap hose to faucet... plug in cord... set it and forget it! Only 22 inches wide... stores easily under counter-top.

You can take it with you when you move! Come in and see why a ROLL ABOUT is the perfect Christmas gift... yet cost only pennies a day!

229.95

EASY TERMS

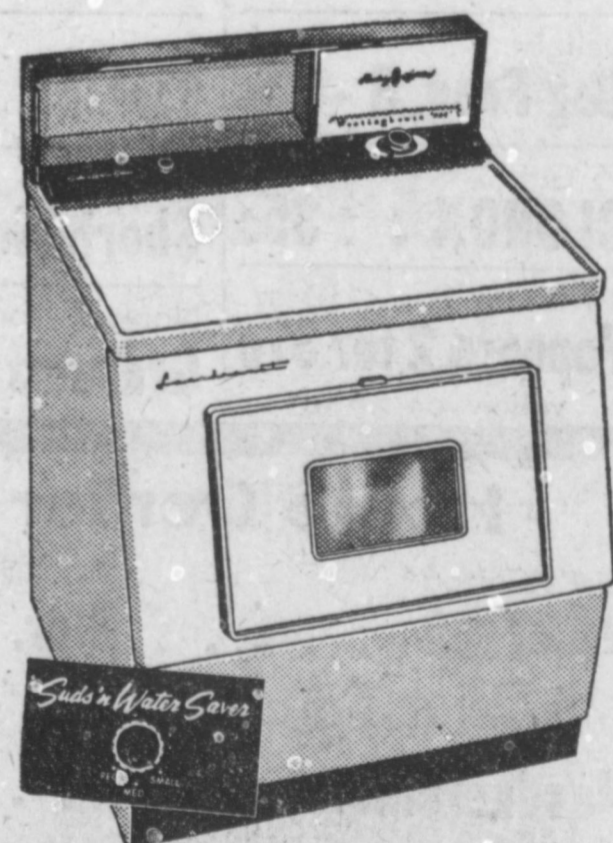
YOU CAN BE SURE... it's Westinghouse
WATCH "WESTINGHOUSE LUCILLE BALL BEST APPEAR SHOWS" CBS TV FRIDAYS

Anniversary Special A REAL WORK SAVER

Westinghouse Laundromat

MODEL L-124

- 4 PROGRAM CONTROL DIAL — REGULAR — FINE FABRICS — WASH 'N' WEAR — AND COLD WATER
- SUDS AND WATER SAVER
- PORCELUX ENAMEL FINISH
- SHELF LOADING DOOR
- AUTOMATIC SAFETY SWITCHES
- LINT EJECTOR — TAKES LINT DOWN THE DRAIN



Anniversary Special 219⁴⁰

(With Trade)

COME IN AND VISIT

IT'S ONLY

25

DAYS TO XMAS

IT'S COFFEE TIME

AGAIN

Join Us for a Cup and Some of Mabel's Home Made Cookies

REGISTER EACH DAY DOOR PRIZES

Given at

5:30 p. m. Saturday

You Do Not Have to Be Present to Win

**Mesdames Wood, Faber, Hansen
Host Party at Silver Derrick**

Mrs. A. H. Hansen, Mrs. L. G. Wood, and Mrs. Homer V. Faber were joint hostesses to a bridge party of fifteen tables last Tuesday afternoon at the Silver Derrick. Arrangements of chrysanthemums and autumn leaves were used as decoration, and a desert course was served.

High score winner was Mrs. W. L. Campbell of Pampa; Mrs. Charles T. Picton was second; and Mrs. A. R. Curry was low. Mrs. Travis Johnson won the bingo prize and Mrs. F. L. McCord the door prize.

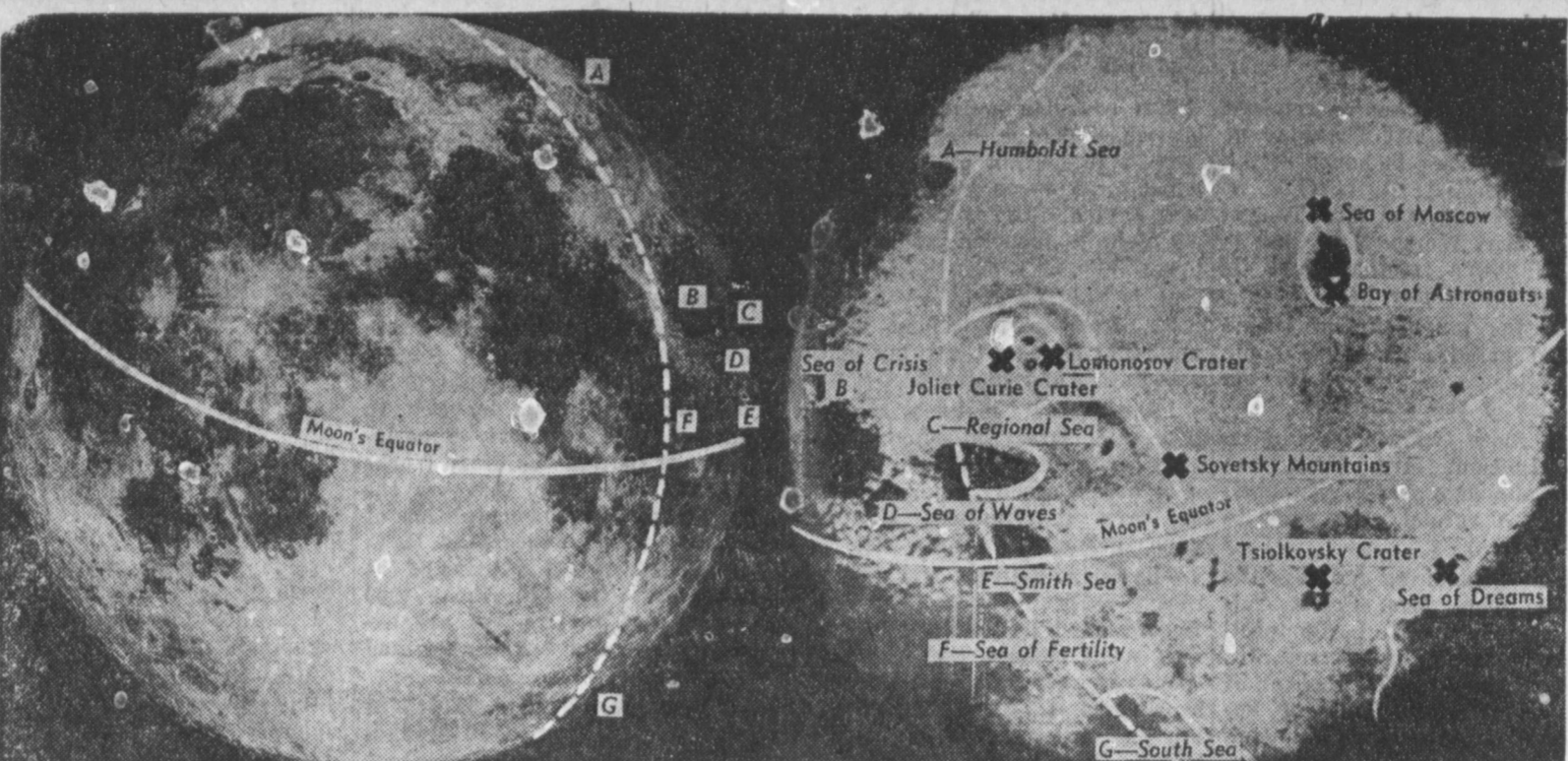
Guests attending were Mrs. Birch Addington, Mrs. W. M. Blevins, Mrs. M. H. Borchert, Mrs. Arthur Bracht, Misses Mabel and Genevieve Barcht, Mrs. Fred A. Bracht, Mrs. Fred Christilles, Mrs. Charles Cleveland, Mrs. A. G. Collin, Mrs. John A. Cox, Mrs. A. R. Curry, Mrs. H. H. Dick, Mrs. Russell Eldridge, Mrs. H. F. Elliot, Mrs. E. F. Everett, Miss Lillie Fahr, Mrs. J. V. Ferguson, Mrs. J. D. Griggs, Mrs. Ted Giese, Mrs. J. D. Gray, Mrs. C. S. Heath, Mrs. Fred B. Hunt, Mrs. James W. Hunt, Mrs. Travis Johnson, Mrs. Frank O. Lenoir, Mrs. C. O.

Lutz, Mrs. F. L. McCord, Mrs. W. H. McCoy, Mrs. Harry McDow, Miss Winona McFall, Mrs. E. W. Means, Mrs. Harry L. Mills, Mrs. J. H. Mills, Sr., Mrs. R. C. Naper, Mrs. C. E. Nickerson, Mrs. E. E. Anderson, Mrs. Charles T. Picton, Mrs. F. H. Prescott, Mrs. Tom Roper, Mrs. C. F. Rozzell, Mrs. W. N. Sanders, Mrs. Matt Scott, Mrs. Alex Scott, Mrs. Joe H. Slocum, Mrs. H. D. Smith, Mrs. A. I. Smith, Mrs. J. R. Stapler, Mrs. Randal Stivers, Jr., Mrs. H. J. Templeton, Mrs. C. L. Thomas, Mrs. C. H. Whiteley, Mrs. Frank Culbertson and Mrs. W. L. Campbell of Pampa; Mrs. A. D. Dodson of Snyder; Mrs. E. T. Page of Poteet; Mrs. Thomas Yarell, Jr., of Belton; Mrs. R. L. Gum of Arriba, Colorado; Mrs. Tom Mingus of Albion, Michigan, and Mrs. Winn Smith of Edmond, Oklahoma.

ARANSAS PASS LADIES MEET WITH W.S.C.S.

The following ladies from First Methodist Church of Aransas Pass met with the W.S.C.S. of Rockport Thursday, Oct. 5, for their meeting: Mrs. Floyd Mathews, Mrs. H. P. Bertoch, Mrs. Homer Campbell, Mrs. Oscar Shepherd, Mrs. E. W. Hale, Mrs. Eddie Gildea, Mrs. Garnet Saint, Mrs. Jerry Mills, Mrs. Nancy Wagner and Mrs. Dale Hasson, wife of Rev. Dale Hasson, pastor of First Methodist Church in Aransas Pass.

CONGRATULATIONS
Mr. and Mrs. Joe Neel of San Antonio are the proud parents of a son, Jeffrey Scott Neel, born this week, weighing eight pounds and six ounces. Mrs. Neel is the former Sheena Currie.



MOON'S HIDDEN HEMISPHERE — At right is the first photo released by the Soviets showing the hemisphere of the moon that hitherto has been hidden from man's eyes. The photo was taken remotely from the Russian satellite Lunik III, and relayed automatically to a receiving station in the Soviet Union. Russian astronomers have named many of the newly discovered craters, seas (believed to be dry), and mountains. At left is a conventional telescopic photo of the moon. Overlapping section of the Russian photograph is indicated by dotted lines. Previously named landmarks are indicated on both photos in italics. New Russian names on the "hidden" side are generally to the right of the dotted line.

Letter to the Editor

NAF McMurdo Sound
29 October 1959
Dear Editor:

A letter to my friends in Rockport—
Since leaving the Rockport and Aransas Pass area in April of this year, I went to Quonset Point, R. I., for assignment to Air Development Squadron Six. This squadron operates in the Antarctic during the months of October through February each year in support of Geologists and Scientists from 12 nations.

At Quonset Point, members of our squadron were lectured on the many problems of survival and learned as a team to operate in this remote area at the bottom of the world. During this time, tons of equipment, aircraft spares, survival equipment and special clothing was readied for shipment south to Christchurch, New Zealand, which is the final staging area for the fly into NAF McMurdo Sound, located on the edge of the Ross Sea.

In August and September, the Squadron deployed aircraft and ground personnel to the West Coast, Hawaii and south to New Zealand. The first aircraft flew into McMurdo on the first of October to relieve a small group of personnel that had lived here for the past eight months with no outside contact, except by radio. They had worked and prepared data dur-

ing the cold winter with high winds and low temperatures of 70 degrees below zero or colder. These men are being returned to the states, and a larger group, including Air DexRon Six, have moved in for the Summer Support of full operations. Additional scientists have flown in and are moving on to many different points for observing weather, glaciers and ice movements.

The Antarctic Continent, or Antarctica, as it is called, contains about 5 1/2 million square miles. This makes it about the size of Europe and the United States combined. It is also the highest of all continents, averaging some 6,000 feet above sea level. One thing everybody knows about the Antarctic weather, it is cold. In fact, the Antarctic is the coldest area in the world, even colder than the Arctic. Another feature of Antarctic weather is the wind that blows almost constantly. Air, cooled by the ice-cap, flows down from the plateau much as water flows down hill. Winds as high as 200 miles per hour have been recorded.

In appearance, Antarctica is like a great white desert. Here and there mountain tops poke through the ice and spots have been found along the coast which are bare during the summer. These mountains, which are found all around the edge of the continent, rise as high as fifteen thousand feet, some may be even higher. One of them, Mount Erebus, is an active volcano and located only a short distance from NAF McMurdo.

Antarctica has no polar bears, no reindeer, in fact no four-footed animals at all. It has no trees, no flowering plants, and for the most part, only a few mosses and lichens which cling to exposed rocks.

Antarctic travel remains difficult and dangerous. Great blizzards blow up quickly and last for days, bringing the tractors and snow weasels to a halt. Then there is always the danger that a tractor may fall into a crevasse. A crevasse is a crack in the ice. It may

be from a few inches to many feet wide and over a 100 feet deep. Crevasses are particularly numerous when the ice spills down from the polar plateau to form the great ice shelves that surround much of the coast. They would not be so bad if they could be seen, but often not. The blowing snow forms bridges over the top, and, if much weight is applied, these bridges give way. These unseen crevasses are a danger to personnel walking as well, and only established and marked trails are used by us there on the ice.

For a person from Texas, I'm still having a time here as the conditions are much different than I'm used to. However, with the present daily temperature around 10 to 20 degrees below zero, it

still doesn't feel as uncomfortable as a fresh Texas norther. For us working here in camp at McMurdo, conditions in general are good. However, for the trail parties that are out for two and three months mapping new areas, the going gets pretty rough. They don't have the warm heated buildings, hot cooked meals from the galley and relaxing periods. They must be on guard 24 hours a day against this remote and treacherous land of ice

and snow. Part of our squadron will commence returning to the states around Christmas, but some of us will remain here until the end of the summer operations. I expect to depart from here around the end of February. Inasmuch as the aircraft will have ceased flights, due to the melting ice cap where the runway is, will depart from here on the ice breaker as it pulls out for New Zealand.

Would enjoy receiving notes or cards from the folks at home, telling of any local news or happenings.

Best of luck to all—
A. L. Roberts AKC USN
AirDevRon SIX (VX-6)
Navy No. 20 Box 831
FPO San Francisco, Calif.

W.S.C.S. MEETS

The general meeting of W.S.C.S. was held Nov. 5th with 34 present. Mrs. A. H. Bankert opened the meeting with prayer. A short business meeting was presided over by the President, Mrs. I. E. Allemang. Mrs. Floyd Mathews of Aransas Pass gave the devotional and program. She was assisted by Mrs. Garnet Saint, Mrs. Homer Campbell and Mrs. Jerry Mills.

Their pastor's wife, Mrs. Dale Hasson, gave a review of the Ten Commandments from the Interpreters' Bible. A social hour was held, the refreshment table was covered with pink linen cloth, the centerpiece of autumn flowers and leaves was surrounded by colorful winter vegetables. Pumpkin pie, topped with whipped cream, and coffee was served by Mrs. H. A. McDonald and Mrs. E. E. Anderson. Fannie Townsend Circle was hostess.

Watch the
COLOR TV
Programs Every Nite
at
VAN ETEN'S
TV SERVICE
Phone SO 4-8542
Highway 35 No. Fulton
Check TV Guide for Time
ctf

For Your Protection Phone SO 4-2152 or SO 4-2459
Beasley Insurance Agency
HOME — BUSINESS — AUTOMOBILE
LIFE — HOSPITALIZATION — POLIO — CANCER ctf

This Ad Worth
\$2.00
On Any TV or Radio Repair
GOOD UNTIL 1st OF DECEMBER
Auto Radios Repaired
All Work Guaranteed for 90 Days
BAYSIDE TELEVISION SERVICE
Phone SO 4-6561
Rockport c34

BE WISE
SEE US FIRST!
—
Wilborn
Shoe Repair
504 AUSTIN ST.
ROCKPORT p35

CUT THE COST OF HOME REPAIR . . .

FOR ESTIMATES, PLANS, LABOR, MATERIALS

CONSULT WITH US FIRST

Plans, materials and building know-how are all available here! For home improvements of any kind, use our popular, and convenient payment plan that allows for material and labor up to \$2,500, nothing down — and up to three years to pay! Have the kind of home you want — and pay for it while you are enjoying it! Come in today!

CHAS. T. PICTON LUMBER CO.
LUMBER AND BUILDING SUPPLIES
Phone SO 4-2331 Rockport

COVE
DRIVE-IN THEATRE
Rockport

FRIDAY and SATURDAY
Nov. 13-14
HAVE ROCKET WILL TRAVEL
With the 3 Stooges

SUNDAY and MONDAY
Nov. 15-16
THE FIVE PENNIES
Starring Danny Kay and Barbara Bel Geddes
Adm. 75c

TUESDAY ONLY
Nov. 17
GUITARRAS DE MEDIANOCHE
Spanish

WEDNESDAY and THURSDAY
Nov. 18-19
Brigitte Bardot in
THE BRIDE IS MUCH TOO BEAUTIFUL
- plus -
NAUGHTY NEW ORLEANS
— Adult Entertainment —

RIALTO
THEATRE
Aransas Pass

Enjoy Your Movies In Air Conditioned Comfort On Our New Wide Screen

THURSDAY and FRIDAY
Nov. 12-13
Susan Cabot and Fred Easley in
The Wasp Woman
- also -
Michael Forest and Sheila Carol in
Beast from Haunted Cave

SATURDAY ONLY
Nov. 14
Richard Widmark and Felicia Farr in
The Last Wagon
- also -
David Ladd and Chill Wills in
The Sad Horse

SUN., MON., TUES., WED.
Nov. 15-16-17-18
Bing Crosby and Debbie Reynolds in
Say One for Me

WATCH TROUBLES?
QUICK, EFFICIENT SERVICE
TO ALL MAKES
24 to 48 Hour Service on Most Jobs
REASONABLE PRICES
Manning's Jewelers
Next to Rialto Theatre Phone PL 8-3422 - Aransas Pass

Announcing the
Opening
- of -
Yacht Club Cafe
Mr. and Mrs. R. B. Allen, Proprietors
Formerly Operated La Quinta Club

Specializing In
BARBECUE
- and -
Home Cooked Meals

Located at the Yacht Basin
on Austin St., Next to Sea Shell Shoppe

OPEN 4 A. M. TO 7 P. M. c32

Who? Where? What'd you say?

STAMPEDES, MASSACRES, GUN SMOKE needn't mess up your phone conversations. With conveniently located extension telephones around the house, you just shut a door, shut out noise when you want to talk. Black or choice of 9 decorator colors (one-time-only charge for color). Call the telephone business office.

EXTENSION PHONES COST \$1.00 A MONTH PLUS INSTALLATION
Call by number... it's twice as fast!

Mrs. Homer Faber Hostess at Bridge

Mrs. Homer V. Faber was hostess to her bridge club last Thursday afternoon at her home. High score winner was Mrs. Russell Eldridge; Miss Winona McFall was second; and Mrs. George E. Dickey won low.

Engagement Announced

Mr. and Mrs. Lonnie F. Wright announce the engagement and forthcoming marriage of their daughter, Patsy Jeraldne Wright, to Eugene I. Stasky, the son of Mr. and Mrs. I. P. Satsky, on November 27, at the First Baptist Church. The Reverend Wilson Brumley will perform the ceremony. Both are graduates of Aransas County High School.

Mrs. Hansen Has Bridge Luncheon

Mrs. Arlo H. Hansen entertained with a luncheon last Thursday at the Silver Derrick in honor of the birthdays of Mrs. R. L. Gum of Arriba, Colorado, and Mrs. Theron Funk of Fort Worth. Mrs. Gum is Mrs. Hansen's mother and is spending the winter here.

After the luncheon the guests convened at Mrs. Hansen's home where bridge was enjoyed for the remainder of the afternoon.

High score winner was Mrs. A. D. Dodson; Mrs. Funk was second; and Mrs. W. L. Campbell was low. A special prize went to Mrs. Gum.

Guests attending, besides the honorees, were Mrs. Frank Culbertson and Mrs. W. L. Campbell of Pampa; Mrs. Tom Yarrell, Jr., of Belton; Mrs. A. D. Dodson of Snyder; Mrs. Elton Page of Poet; Mrs. Winn Smith of Edmond, Oklahoma; Mrs. H. J. Templeton, Mrs. J. D. Griggs and Mrs. Gladys Michael of Rockport.

Use Classified Ads for Results

Metropolitan Mail Service Becomes Worse

The so-called metropolitan mail service, which is supposed to deliver mail within 24 hours, and which was recently instituted in this part of Texas, has fouled up an already poor service to Rockport.

It is not the fault of the local post office which cannot deliver mail that it doesn't get, but of the scheduling and delivery.

Papers from Victoria are now two days late. Saturday's paper gets here Monday; Sunday's paper gets here Tuesday, and, then just to vary the matter, Monday's paper got here Tuesday also.

The Cuero delivery is a disgrace in any civilized country. The Cuero Record which is a daily, comes and goes as it pleases. Sometimes the Monday paper gets here Tuesday; sometimes it doesn't get here at all, and other issues are just as bad.

The Yorktown News, which used to get here Thursday, now comes Saturday; the Beeville Picayune, which is published on a Thursday, shows up in Rockport on Saturday, instead of Friday, as it used to do, and other area papers are just as bad.

Parcel post delivery, since the so-called metropolitan system has been inaugurated, takes a day longer than it used to, and for several days the Houston Chronicle, which used to be delivered in the morning mail, showed up in the afternoon.

If papers and parcel post take this kind of beating under the new schedules, we shudder to think of the time it takes to deliver a letter. We have long known that delivery in Houston from Rockport sometimes does not take place until the second day following. For instance, a letter mailed Monday was not delivered until Wednesday in the old days. Now, under the accelerated metropolitan system, it'll probably be two or three days late instead of one.

What Rockport needs isn't a new post office, it needs better mail delivery, and this goes for a lot of this area.

Mustang Scout District Announces Fall Schedule

A schedule of events for the Mustang Boy Scout District was announced today by Richard Wright, District Chairman. First even in the schedule is the annual dinner meeting of the District to be held Thursday, November 12, 7:00 p. m. at the E. Marle Smith Junior High Cafeteria in Sinton. Featured on the program will be the principal address by Ben H. Sloan of Port Comfort, Superintendent of the Port Comfort Works of Alcoa Aluminum. Also on the program will be the installation of the new district officers by R. C. Williamson, Scout Executive of the Gulf Coast Council. Some 200 Scouters and their wives are expected to attend the dinner and program.

On Thursday, November 18th, at the Sinton High School, Roundtable for Cub leaders, Boy Scout Troop Leaders and Explorer Leaders will be held. Directing the roundtables will be Ken Edwards, Joe Benson and Roy McCammon, all of Sinton. They will be assisted by unit leaders from Refugio, Portland, Ingleside and Rockport. The roundtables start at 7:30 p. m.

Mustang District Explorer Scouts and their leaders will tour the Rob and Bessie Wildlife Refuge on Saturday, November 21, in a special district-wide Explorer program. Explorers and their leaders will gather at the Refugio gate 9:30 a. m. and will be led through the Refuge and all the other facilities by Dr. Clarence Cottam and Caleb Glazner, Director and Assistant Director of the Refuge. The tour will halt for lunch which will be followed by some personal visits with some of the men who are doing research work at the Refuge. Directing the entire program will be Roy McCammon, Explorer Chairman of the Mustang District. The tour will end about 4:00 p. m. that same day.

Achievement Day Held by Aransas County H-D Club

"Achievement day is the fellowship of members of the Home Demonstration Club women, when they observe the work of other clubs and are stimulated by their accomplishments," said Mrs. Owen Drago, at the opening of the achievement day program held in the VFW Hall at Sinton. Mrs. Drago also gave an account of the H-D meeting in Galveston late last month.

The club prayer was led by Mrs. Martin Wheeler of the Copano H-D Club.

Group singing was led by Mrs. Marie Moore of Sinton, with Mrs. Ed Schlutt furnishing the piano accompaniment.

Mrs. Roy Rentz made a short talk, illustrated with colored slides on "Let's Tour Europe." In the slides she showed pictures of customs, dress, modes of travel, home conditions, and things that make the cost of living higher in America than in Europe.

Mrs. O. R. Stewart, Ingleside, acted as commentator for the style

snow. The following members modeled dresses:

Mrs. Cecil Shipp and her children, David, Linda and Mary Ruth; Mrs. L. L. Skoruppa, dresses she had made for two of her daughters; Sylvia Shipp, a dress she had made for herself; all from the Copano Club.

Mrs. Merrill Manship, Mrs. Owen Drago, and Mrs. O. R. McQuary modeled dresses, and Mrs. Marie Moore a dress and coat. These were from the Eads H-O Club of Sinton.

Mrs. Ed Schlutt sang two selections, accompanied by Mrs. Schlutt.

A recreation program was di-

rected by Mrs. Owen Drago, and this was followed by a cake walk.

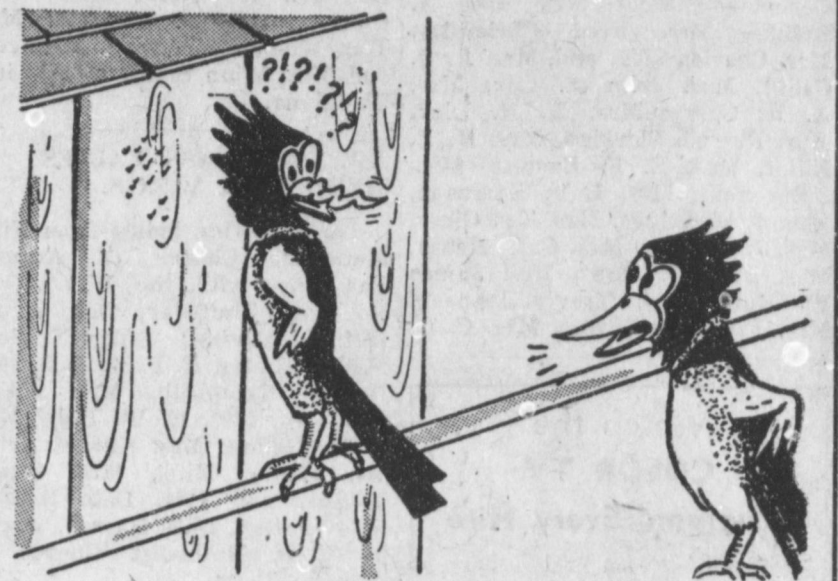
The building was decorated by the Alpha Club of Sinton, and by the Copano Club.

WESLEYAN SERVICE GUILD SPONSORS DINNER

The ladies of the Wesleyan Service Guild will give a chicken spaghetti dinner in Methodist Fellowship Hall on Saturday, November 14, from 11 a. m. to 2 p. m. Admission is \$1 for adults, 50c for children.

Mrs. Henrietta Wooten who has been ill is better now.

"KNOTHEADS" By Seth and Randy



You'd just as well give up, Joe . . . that wood is the best hard lumber from Fulton Lumber Co.

We Give You MORE for Your Old TV . . . up to \$125⁰⁰

ON A NEW WESTINGHOUSE

CONSOLE MODELS



A COMPLETE SELECTION TO SUIT YOUR NEEDS

EASY TERMS AVAILABLE OR USE OUR LAY-AWAY PLAN

VAN ETTEN'S TV

Where SERVICE is a MUST . . . Not a Promise

WHERE PRICES ARE LOW

Highway 35, North —FULTON— Phone SO 4-8542 c35

BEAR



Wheel & Steering Alignment Service for ALL CARS

FREE MUFFLER CHECK

FAST MUFFLER AND TAIL PIPE INSTALLATION


SEAT COVERS INSTALLED FREE

Free Pick-up and Delivery

Western Auto

ASSOCIATE STORE

MITCHELL'S JEWELRY



PHONE SO 4-6542

Watches, Diamonds Jewelry Engraving Rockport

FULTON LUMBER CO., INC.

Phone SO 4-6462

— PITTSBURGH PAINTS —

TEXAS CHAMPIONS OF FREEDOM

ERASTUS "DEAF" SMITH

Scout, Soldier and Hero of San Jacinto

In 1821 people did not usually come to the untamed Texas Territory for their health. But one man did just that — Erastus Smith, from New York by way of Natchez. He wandered over the wild frontier country, learned its topography, made friends with Anglos, Mexicans and Indians. He grew strong and well, but never regained his hearing. When Texans began their fight for independence from Mexico, "Deaf" Smith — scout and soldier — took his place with Fannin, Bowie, Travis, Milam, Sam Houston and the other champions of freedom. His best known service to his chosen country was the destruction of Vince's Bridge, just before the battle of San Jacinto. Bridging Vince's Bayou, then it flooded, it offered the only means of communication between the Texan and Mexican armies and the remainder of Texas. When Deaf Smith destroyed it, on the morning of April 21, 1836, he effectively isolated the Mexicans from reinforcements and prevented an orderly retreat. The fact that it also isolated the Texans was of no importance to Smith. He and his people would win. They were fighting for liberty and the right to live as they chose.

Today Texans still demand and get their right to choose the way they want to live. In this vigorous and freedom-minded homeland — "Beer Belongs" and this is why the United States Brewers Foundation works constantly, in conjunction with brewers, wholesalers and retailers, to assure the sale of beer and ale under pleasant, orderly conditions. Believing that strict law enforcement serves the best interest of Texans, the Foundation stresses close cooperation with the Armed Forces, law enforcement and governing officials in its continuing Self-Regulation program.

Texas Division, United States Brewers Foundation, 206 VFW Building, Austin, Texas

THINK OF ALL THE GROCERIES THIS WOULD BUY!



You could do a lot of wise shopping with \$300 or so. But wouldn't you hate to see that much of your money being spent unnecessarily by someone else?

Sad to relate, that's just about what will happen if the lobbyists for federal "public power" have their way. They are after some \$10,000,000 of tax money to put the federal government farther into the electric business.

This would cost each American family about \$200 on the average. And this on top of \$100 per family already spent for so-called "public power"!

Of course, you don't begrudge necessary taxes. But this "public power" spending by the government is quite unnecessary. For independent electric light and power companies like CPL are ready and able to supply all the low-priced electric service people will need — without depending on your family's taxes.

Unnecessary "public power" spending goes on simply because most people don't know about it. So spread the word among your friends and neighbors. As soon as enough people know, you can be sure it will be halted.

CPL CENTRAL POWER AND LIGHT COMPANY

ANNIVERSARY Sale

Merchandise and Electrical Construction Since 1944

NOVEMBER 13th & 14th

GIFTS EACH DAY

Celebrate with Us . . . Our 15th Anniversary with

Hotpoint Silver Dollar Days

SPECIAL PRICES
GOOD FOR 10 DAYS

HOTPOINT SUPER-STOR REFRIGERATOR

MODEL 9EA8

- 44 lb. Capacity Freezer
- Aluminum Freezer



- 13.2 sq. ft. Shelf Space
- Porcelain Interior

SILVER DOLLAR SPECIAL

168.00

HOTPOINT ELECTRIC RANGE

MODEL RC232



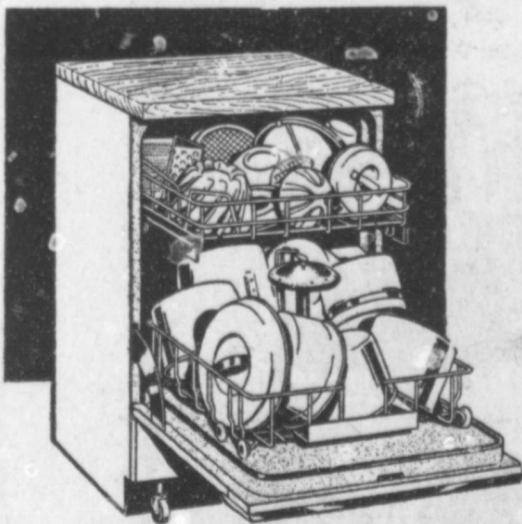
- Fully Automatic Timed Oven
- Full Width Storage Drawer
- All Porcelain
- Wide Super-Oven

SILVER DOLLAR SPECIAL

163.00

HOTPOINT MOBILE DISHWASHER

DCM-1



- Not a midget, but a full size dishwasher
- Maple chopping block
- Converts easily for under counter use.
- Separate roller racks for easy loading and unloading

SILVER DOLLAR SPECIAL

248.00



- No Spill ICE TRAY . . . 98c
- Brass Finish WASTEBASKET . 98c
- ICE SAVER . . . 98c
- Parker PENCIL 98c

NO DOWN PAYMENT

WITH TRADE-IN

Terms to Suit Your Budget

HOTPOINT WASHER AND DRYER



LW030



LD030

- All porcelain inside and out
- Three cycle for light, medium and heavy wash
- Water saver control
- 5 yr. written warranty
- Full fiberglass insulation
- Porcelain drum
- Calrod units - No open coils
- Push button temperature selection

Silver Dollar Special

Silver Dollar Special

198.00

158.00



DON'T MISS THESE

TRADE IN
YOUR DOLLAR BILL
FOR A
Silver Dollar

And Get a Silver Dime Free ONE TO A FAMILY

HOTPOINT REFRIGERATOR

MODEL 9EB11

- 66 lb. Freezer and Chiller Tray
- Full Width Crisper — Holds 2/3 Bushel



- 11.6 Cu. Ft. Capacity
- 5-Year Written Warranty

SILVER DOLLAR SPECIAL

198.00

HOTPOINT ELECTRIC RANGE

MODEL RC292

- Super 2600 Calrod Unit
- 6-qt. Deep Well with Raisable Unit
- Fully Automatic Timed Oven
- Deluxe Push Button Controls with Lighted Back Panel

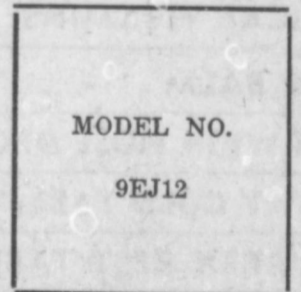


SILVER DOLLAR SPECIAL

243.00

HOTPOINT DELUXE REFRIGERATOR

- Swing Out Shelves
- 75 lb. True Food Freezer
- Automatic Defrost (No Pans to Empty)
- Full Width Dairy Store for Butter, Eggs and Cheese



MODEL NO. 9EJ12

SILVER DOLLAR SPECIAL

348.00

Trade at Home for Quicker Guaranteed Service . . .

Your Dollars Will Work for You -- Spent In Rockport

ROCKPORT ELECTRIC COMPANY

HOTPOINT SPECIALISTS

COUNTRY CLUB NEWS



November
Sunday, 15th-1:30 p. m.—Mixed Foursome and Covered Dish Supper. YOU ALL COME!!!

December
Thursday, 3rd-1:30 p. m.—LADIES' DAY—Business meeting, golf, and bridge (bring your own foursome).

ALMA ROEHM CIRCLE MEETS
The Alma Roehm Circle of the First Baptist Church met at the home of Mrs. Mabel Bryant Tuesday, with eleven present.

CHURCH OF CHRIST HAS MANY VISITORS
Recent guests at the local Church of Christ include Mr. and Mrs. Errett Hines, San Antonio; D. Lamb, Freeport; Mr. and Mrs. Elmer Adams, Richardson; Mrs. T. R. Meadow, Eldorado; Mr. and Mrs. R. M. Warren, Corsicana.

CHURCH OF CHRIST HAS MANY VISITORS
Recent guests at the local Church of Christ include Mr. and Mrs. Errett Hines, San Antonio; D. Lamb, Freeport; Mr. and Mrs. Elmer Adams, Richardson; Mrs. T. R. Meadow, Eldorado; Mr. and Mrs. R. M. Warren, Corsicana.

Hissong Addresses Woman's Club on Minerals and Gems

Joe Hissong, local rock hound, was the guest speaker at the regular meeting of the Aransas County Woman's Club Tuesday afternoon, and gave a most informative illustrated talk on the origin of rocks, and particularly those found in Texas.

Most of those present were greatly surprised to learn that there is a hill full of opalite and other semi-precious gem stones near Seven Sisters, in the north end of Duval County.

There are approximately 600 rockhound clubs in the United States, Hissong said, with 25 in Texas. He belongs to the Rolling Rock Club, with membership of over 400 persons.

Hissong told the ladies that approximately \$1 billion worth of gem stones are sold in the U. S. each year.

In the business meeting, Mrs. W. C. Cutcher introduced a new member, Mrs. David Black.

At the end of Hissong's talk, refreshments of coffee and cake were served from a tea table beautifully decorated with a centerpiece of greenery, fruit and nuts, carrying out a Thanksgiving theme.

Band Boosters Hold Meeting

The Band Boosters met Tuesday, November 9, with fifteen members present and President Corrine Webb presiding.

After the usual reports Mr. Randow announced that the Birthday Calendars would be ready right after the Thanksgiving Holidays. He asked that the band students be at the band hall promptly at 7:00 on Friday, the 13th, before the homecoming game with Mathis.

The students winning the prizes for selling the most calendars and listings were: Robert Reed, Mary Katherine Grey, Mary Johnson, and Margaret Pena.

The Band Boosters meet the second Monday of every month and invite all parents to join and support the band.

Members of the T.E.L. Class of the First Baptist Church met in Baptist Fellowship Hall for a covered dish supper and their monthly class meeting.

The meeting was called to order by class president Mrs. Lillie Calvert. Mrs. John Tilley led the opening prayer.

In the business meeting the treasurer's report was read and approved, and the group captain's reports for the month showed an average attendance of fourteen.

GO TO CHURCH SUNDAY

ST. PETER'S EPISCOPAL CHURCH

Harry Carter, Minister in Charge
Holy Communion and Sermon, first Sunday each month, at 7:30 p. m., other Sundays, Morning Prayer and Sermon at 9:00 a. m. Church School each Sunday at 10:15 a. m. Choir rehearsal is each Wednesday at 7:30 p. m.

The Women's Auxiliary meets the first Thursday at 8:30 p. m., and the Bishop's Committee on the second Thursday at 7:30 p. m.

SACRED HEART CATHOLIC CHURCH

Fr. G. J. O'Doherty, Pastor
Masses: Sunday, 7 a. m., 9 a. m., 6 p. m.; Holy Days, 8 a. m., 7 p. m. Weekdays, 6:30 a. m. every day, also 8 a. m. Monday, Tuesday, Friday, Wednesday 5 p. m., Thursday, 11:30 a. m. Friday night Novena devotions at 7 p. m. Confessions, Saturdays from 4:30 to 6 and 7 to 8 p. m. Vigil before Holy Days and Thursdays before First Fridays, 4:30 to 6 p. m.

FIRST BAPTIST CHURCH

Rev. C. Wilson Brumley, Pastor
Sunday School, 9:45 a. m.; preaching service 10:45 a. m. and 7:30 p. m.; Training Union, 6:30 p. m.; prayer service, Wednesday, 7:45 p. m.; Sunday School workers meeting, Wednesday, 7 p. m.; Women meet every Monday.

CHURCH OF CHRIST

N. E. Hicks
Bible class, 10 a. m.; morning worship, 10:50 a. m.; Sunday evening class, 8:30; Sunday evening worship, 7:30; Wednesday night service, 7:30; ladies Bible class, Thursday, 9:30 a. m., and men's Bible class at 7:30 p. m.

FULTON BAPTIST CHURCH

Rev. Eunon Mills
Sunday school, 9:45 a. m.; preaching service, 11 a. m.; Training Union, 7 p. m.; evening service, 8 p. m.; mid-week prayer service, Wednesday, 7:45 p. m.

FIRST ASSEMBLY OF GOD

M. R. Crawford, Pastor
Sunday school, 9:45; Preaching service, 11 o'clock; Evening Evangelistic service, 7:30; Week night service Wednesday, 7:30 p. m.

FIRST PRESBYTERIAN CHURCH

Sunday School, 9:30 a. m.; Worship Service, 11:00 a. m.; Senior Young People and Pioneer Young People, 6:00 p. m.; Deacon's meeting, third Tuesday, 7:30 p. m.; Choir Rehearsal Wednesday, 7:30 p. m.; Men of the Church, first Thursday of each month, 6:30 p. m.; All Circles meet second Thursday morning at 9:30 a. m., afternoon at 3:00 p. m. Evening at 7:30 p. m.; Session meeting second Thursday at 7:30 p. m.; Women of the Church, fourth Thursday at 3:00 p. m.

METHODIST CHURCH

Rev. A. H. Bankert, Pastor
Sunday school, 9:30; morning worship, 10:50; evening worship, 7:50; Methodist Men, 2nd Thursday, 7:30; W.S.C.S. general meeting, 1st Thursday, 3 p. m. The Wesleyan Service Guild First Methodist will meet regularly each second and fourth Tuesdays of each month. MYF, Sunday, at 6:00 p. m.

CALVARY BAPTIST CHURCH

Pastor, Boyce L. Laqua
Sunday school, 9:45 a. m.; preaching, 10:45 a. m. and 7:00 p. m. Prayer meeting, 7 p. m. Wednesday.

ROCKPORT BAPTIST MISSION

Juan V. De Cruz, Pastor
Sunday School, 9:30 a. m.; morning service, 11:00 a. m.; training union, 7:00 p. m.; evening service, 8:00 p. m.; prayer service, Wednesday, 7:00 p. m.

FIRST CHRISTIAN CHURCH

Aransas Pass
Rev. George A. Civey, Pastor
Bible school, 9:45; morning worship, 10:50; evening worship, 7:30; prayer and Bible study, Wednesday, 7:00 p. m.

PENTECOSTAL CHURCH OF GOD

Rev. L. C. Barnett, Pastor
1 block north of Joe's Trailer Park
Sunday School, 10 a. m. Morning Worship, 11 a. m. Night Service, 7:30 p. m. Prayer Meeting, Wednesday, 7:30 p. m. Young People's Service, Saturday, 7:30 p. m.

SMU-ARKANSAS TELECAST, FIVE BROADCASTS, SATURDAY, NOVEMBER 14

A regional live telecast of the SMU-Arkansas game and five broadcasts of games played by Southwest Conference teams will highlight The Humble Company's football coverage Saturday.

The SMU-Arkansas game will be telecast from Dallas with Kern Tips and Alec Chessler at the microphone. TV time will be 1:45 p. m. over KRIS-TV, Corpus Christi.

The Texas-TCU game will be broadcast from Austin by Bob Walker and Dave Smith. Radio time will be 1:45 p. m. over KRRS, Corpus Christi.

The Texas Tech-University of Houston game will be described from Lubbock by Dave Russell and Jack Dale. Broadcast time will be 1:45 p. m. over KITE, San Antonio.

The Baylor-USC game will be broadcast from Los Angeles by Eddie Hill and Jim Wiggins. Radio time will be 3:45 p. m. over KATR, Corpus Christi.

ORGANIZATIONAL MEETING TO BE HELD BY MEN OF THE FIRST METHODIST

An organizational meeting of the men of the First Methodist Church will be held in Methodist Fellowship Hall Thursday, November 9, at 7 p. m. Two short talks are scheduled, and plans for the future will be made at the meeting, to which all men of the congregation are invited. Jack Horton, men's representative on the Official Board of the Church will preside. Refreshments will be served.

CUB SCOUT NEWS

Den 4 held its weekly meeting Tuesday, Nov. 10, at the home of Den Mother Mrs. N. F. Jackson, assisted by Mrs. R. W. Willis. Johnny Jackson led the opening flag ceremony. Cubs answering to roll call were Johnny Jackson, Bobby Jackson, David Roaten, Mark Johnson, Craig Taylor, Rocky Rouquette and Robert Willis.

As a Den activity the Cubs enjoyed a taffy pull, in keeping with their theme for the month, "The Old Country Store." Robert Willis served refreshments. The Den joined in the "Grand Howl" as a closing ceremony.

MANY THANKS

The members of the Pirate Log Staff would like to thank the Rockport Pilot for printing our school paper in The Rockport Pilot for the last four weeks free of charge. Our school news will not appear in the Pilot again as we are in the process of printing our own newspaper. And many thanks to the local merchants that are helping finance our school paper by buying ads.

MR. AND MRS. HINTON RETURN FROM VISIT

Mr. and Mrs. Roy Hinton returned from a visit with Mr. Hinton's parents, Mr. and Mrs. O. J. Hinton of Austin. They celebrated both their birthdays and the 53rd wedding anniversary of Mr. and Mrs. O. J. Hinton at their Lake Travis home. Returning they attended the South Texas Hereford Association celebration with Mr. and Mrs. Chas. Thompson in Beville.

MRS. HINTON GIVES LUNCHEON

Luncheon guests of Aransas County Chairman Mrs. Roy Hinton, of the Coastal Bend Tuberculosis Association, were Mr. Dick Ryan, Executive Director of Corpus Christi, Mrs. Thelma Outlaw, State TB Representative, and Mrs. Emily Boyd, State and District Director of Austin. Plans for the forthcoming TB Christmas Seal campaign were completed. Mr. Ryan was guest speaker for the Rockport P-TA Association.

FRIENDSHIP CLASS HAS MONTHLY PARTY

The Friendship Class of the First Methodist Church had their monthly party at the home of Mr. and Mrs. H. A. McDonald with 19 members and one visitor, Charlie Foster, present. Plans were made for a Christmas party to be held December 14 at Fellowship Hall of the Methodist Church.

Bridge and forty-two were enjoyed by the guests.

ROTARY MEETING

Arthur Bracht was in charge of the program at Rotary Wednesday and he presented his brother, Dudley Bracht, who gave the highlights of the recent Victoria meeting.

Visitors were Jim Charles of Lindsey, Oklahoma; Don Bennett, Dallas; and Dr. J. E. Habluetzel, Ingleside. A new member, presented by Pat Greene was Pug Herron, of Marineland.

MRS. J. D. GRIGGS HOSTESS AT BRIDGE

Mrs. J. D. Griggs was hostess to the Tuesday Bridge Club this week at her home.

High score winner was Mrs. W. H. McCoy; Mrs. L. G. Wood was second and also grand slam winner; and Mrs. Randa. Stivers, Jr., won bingo.

Members present were Mrs. M. H. Borchert, Mrs. Homer V. Faber, Mrs. Arlo H. Hansen, Mrs. Earle Thomas, Mrs. L. G. Wood, and Mrs. Randal Stivers, Jr. Mrs. W. H. McCoy was a special guest.

Rockport Fraternal and Civic Organizations Welcome Visiting Members

I.O.O.F. No. 342
Tuesday, 7:30 p. m.
Odd Fellow Hall

Rebekah Lodge No. 88
Thursday, 7:30 p. m.
Odd Fellow Hall

Sea Breeze No. 42
Theta Rho Girls
Monday, 5:30 p. m.
Odd Fellow Hall

Rockport Lions Club
1st and 3rd Thursdays, 12:00
Silver Derrick Cafe

Aransas County Emergency Corps
Thursday, 7:30 p. m.
Rockport Fire Station
Fulton Fire Station

Rotary Club
12:05 p. m., Wednesday
Woman's Club

Sponsored This Month By
MILLER REALTY CO.
REALTORS
So 4-6473 Rockport

JOHNSON'S PEXALL DRUG STORE
LOW PRICED SPECIAL DRUG NEEDS
Specials Thursday, Friday & Saturday
PHILLIPS MILK MAGNESIA 57c 37c
UNICAP VITAMINS, 100 3.11 1.98
BUG BALM 1.98 1.29
NORWICH NOSE DROPS 75c 49c
4-WAY COLD TABLETS 59c 37c
DEVAREX REST TABLETS 1.98 1.19
PEPTO-BISMOL 59c 37c
BAYER ASPIRIN 39c 25c
LUSTRE CREME SHAMPOO 1.00 69c
COTY FACE POWDER 1.35 98c
THONGS 98c 69c
VAM HAIR DRESSING 69c 43c
PLAYTEX GLOVES 1.39 89c
NOTE BOOK PAPER 10c 7c
BENZEDREX INHALER 75c 49c

NOTICE TO CREDITORS OF THE ESTATE OF PETER C. NIELSEN, DECEASED
Notice is hereby given that original Letters of Administration upon the Estate of PETER C. NIELSEN, Deceased, were granted to EARL SNODGRASS, on October 26, 1959, by the County Court of Aransas County, Texas.

CLARK AND BONNER
Attorneys-at-Law
P. O. Box 867
Rockport, Texas
By: LOLA L. BONNER
Attorneys for Earl Snodgrass, Administrator of the Estate of Peter C. Nielsen, Deceased. c32

NOTICE TO BIDDERS IN COMPLIANCE WITH ARTICLE 2368a
Sealed bids addressed to COUNTY JUDGE, ARANSAS COUNTY, Rockport, Texas, will be delivered at the office of COUNTY JUDGE, until 10:00 o'clock A. M., December 14, 1959, for One (1) car for the Aransas County Sheriff's Department. Specifications are available at the County Judge's Office.

Sealed bids addressed to COUNTY JUDGE, ARANSAS COUNTY, Rockport, Texas, will be delivered at the office of COUNTY JUDGE, until 10:00 o'clock A. M., December 14, 1959, for One (1) car for the Aransas County Sheriff's Department. Specifications are available at the County Judge's Office.

Sealed bids addressed to COUNTY JUDGE, ARANSAS COUNTY, Rockport, Texas, will be delivered at the office of COUNTY JUDGE, until 10:00 o'clock A. M., December 14, 1959, for One (1) car for the Aransas County Sheriff's Department. Specifications are available at the County Judge's Office.

NOTICE TO BIDDERS IN COMPLIANCE WITH ARTICLE 2368a
Sealed bids addressed to COUNTY JUDGE, ARANSAS COUNTY, Rockport, Texas, will be delivered at the office of COUNTY JUDGE, until 10:00 o'clock A. M., December 14, 1959, for One (1) car for the Aransas County Sheriff's Department. Specifications are available at the County Judge's Office.

NOTICE TO BIDDERS IN COMPLIANCE WITH ARTICLE 2368a
Sealed bids addressed to COUNTY JUDGE, ARANSAS COUNTY, Rockport, Texas, will be delivered at the office of COUNTY JUDGE, until 10:00 o'clock A. M., December 14, 1959, for One (1) car for the Aransas County Sheriff's Department. Specifications are available at the County Judge's Office.

NOTICE TO BIDDERS IN COMPLIANCE WITH ARTICLE 2368a
Sealed bids addressed to COUNTY JUDGE, ARANSAS COUNTY, Rockport, Texas, will be delivered at the office of COUNTY JUDGE, until 10:00 o'clock A. M., December 14, 1959, for One (1) car for the Aransas County Sheriff's Department. Specifications are available at the County Judge's Office.

NOTICE TO BIDDERS IN COMPLIANCE WITH ARTICLE 2368a
Sealed bids addressed to COUNTY JUDGE, ARANSAS COUNTY, Rockport, Texas, will be delivered at the office of COUNTY JUDGE, until 10:00 o'clock A. M., December 14, 1959, for One (1) car for the Aransas County Sheriff's Department. Specifications are available at the County Judge's Office.

NOTICE TO BIDDERS IN COMPLIANCE WITH ARTICLE 2368a
Sealed bids addressed to COUNTY JUDGE, ARANSAS COUNTY, Rockport, Texas, will be delivered at the office of COUNTY JUDGE, until 10:00 o'clock A. M., December 14, 1959, for One (1) car for the Aransas County Sheriff's Department. Specifications are available at the County Judge's Office.

GLASS, SORENSON & McDAVID
- INSURANCE -
Since 1928
First National Bank Bldg.
Phone SO 4-2471
Rockport

Building a Home?
No matter what style of house you are building — all home plans call for the best in building materials! Come in, let us give you free estimates and friendly assistance.
CALL US FOR INFORMATION ON ABC HOME REPAIR
LOANS UP TO \$2,500.00 — NO DOWN PAYMENT
Rockport Lumber Co.
Member of Texas Lumbermen's Association

ROCKPORT

ROCKPORT, FORMERLY KNOWN AS ROCKY POINT AND ARANSAS PASS, IS LOCATED WHERE THE SOUTHWEST'S GREAT CATTLE INDUSTRY BEGAN, AN AREA WHICH ORIGINALLY CONTROLLED THE MILITARY AND ECONOMIC DESTINY OF TEXAS.

This coastal section was part of Refugio County, one of the twenty-three original counties of the Republic of Texas, and at one time was a part of Irish Refugio Colony of Empresarios Col. James Powers and Dr. James Hewetson.

During the colonization period the two principal approaches to the territory of Texas from seaward were Paso Caballo and Aransas Pass Colony to El Copano. A third approach, through Cedar Bayou, was monopolized by the pirate Jean LaFitte.

Although the Spanish carefully explored and charted the area in 1519, French colonization attempts which began in 1719 met with fierce resistance from the Karankawan Indians. Spanish colonization began in 1746 when the Fort of Aranzazu was built at Live Oak Point, and another fort was built at the Aransas Pass end of St. Joseph's Island. Many Spanish ranchers existed in this section as early as 1766.

Aransas City was founded on Live Oak Point by the empresario Col. James Powers in 1837. Henry M. Smith, first American Governor of Texas, had his home there then, and Col. Henry L. Kinney, founder of Corpus Christi, lived there in 1838-9.

In 1866 Col. John H. Wood, one of the early cattle kings of the Southwest, his son, Richard H. Wood, and James M. Doughty, built the first cattle pens and some shipping facilities at Rockport. T. M. and J. M.

Mathis came to the town in 1867 and purchased the Wood interests in such, and Doughty remained a one-third owner with the Mathis's.

In 1868 Joseph F. Smith and Col. John H. Wood built a large live-stock shipping wharf into Aransas Bay.

Col. Geo. W. Fulton, son-in-law of Governor Henry M. Smith, for whom the town of Fulton was named, returned to Rockport in 1869, and in partnership with Tom M. Coleman and T. H. Mathis, acquired the original Wood and Doughty properties which were then enlarged. This partnership also built another larger wharf in the bay.

Ashore, Joseph F. Smith and Col. John H. Wood laid out the northern portion of Rockport on 640 acres of land, while the south half of the town was platted by J. M. Doughty and T. H. Mathis. David Rockport Schrivner, Rockport's first child, was born on February 2, 1868.

During the period from 1867 to 1875 Rockport was the capitol of the hide, tallow, packing and cannery industry, and for several years was the county seat of Refugio County. At its rocky ledge General Zachary Taylor encamped his Army which passed from St. Joseph's Island to the mainland in August, 1845.

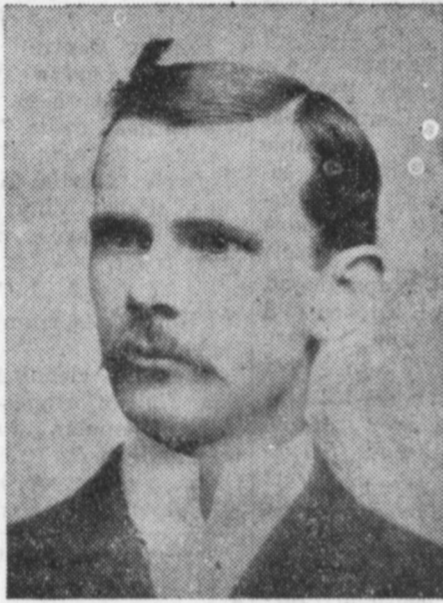
Today huge cattle ranches, prosperous seafood packeries and flourishing ship building and repair yards share prominence with the development of the oil and gas industry in the area.

FOUNDERS OF ROCKPORT



THOMAS HENRY MATHIS

was born in Stewart County, Ky., on July 14, 1834. During the Civil War he fought in Duff's Regiment, Company E. In 1867 he moved to Rockport and became one of its co-founders. In 1869 he and his cousin, J. M. Mathis, built there the first wharf and docking facilities which would accommodate large ships. The Mathis cousins and J. M. Doughty laid out and developed the Doughty and Mathis division of Rockport. He was a partner in the great cattle firm of Coleman, Mathis and Fulton which operated some of the richest land in Texas. Later he acquired a large ranch near the present town of Mathis, which is named for him.



JAMES MURRAY DOUGHTY

was born Dec. 27, 1824. He was a pioneer rancher and co-founder with T. H. Mathis and his cousin, J. M. Mathis of the south one-half of Rockport. In partnership with Col. J. H. and R. H. Wood, he built the first cattle pens and shipping wharf at Rockport in 1866. At this time Doughty and R. H. Wood also operated a cattle raising business, and they worked together in promoting the founding and later, the development, of present day Rockport, and ranched with the Mathis cousins. He and the Mathis's established a steam ferry between Live Oak Point and Lamar in 1871. Doughty became first superintendent of the King Ranch where he died in its service on Jan. 6, 1892.



JOSEPH F. SMITH

was born in Fulton, County, Ky., in 1808. Around 1830 he came to Texas and became a partner with his uncle, Governor Henry Smith. He became a great lawyer in order to personally prosecute his successful suit challenging the legality of the empresario land grants to Col. James Powers. Along with the other members of the ill-fated Miers Expedition into Mexico, he was captured by the Mexicans, but fortunately drew a white bean instead of a black one which won his life. A co-founder of the towns of St. Marys and present day Rockport with Col. J. H. Wood, he owned and was operating the "Lapatul" Ranch near Taxpan, Mexico, where he died.



COL. JOHN HOWLAND WOOD

was born Sept. 16, 1816, at Hyde Park, N.Y. He was a veteran of the Texas Revolution under Gen. Rusk and was a pioneer frontier and Indian fighter. He was Army Quartermaster for the Texas Republic and served under Gen. Zachary Taylor in 1845-58. He was co-founder with Joseph F. Smith of St. Marys, and later, of Rockport with Smith and his son, R. H. Wood. Col. Wood built one of the largest cattle empires in the Southwest. The firm of Wood and Allyn operated St. Joseph Island and other large areas of land as cattle ranches from 1869 to 1922. Woodsboro was named for him and his son, T. D. Wood. He died on Jan. 16, 1904, in Rockport.

The above short history of Rockport's founders was prepared by a member of the Wood family, and is used here under a permission from them, as an adjunct to the history of Rockport and the surrounding towns now running in the Pilot. This contains the only

known portrait of Joseph Smith, and is published here in line with the Pilot's policy of attempting to ferret out as much of the area history as is possible. Other historical sketches and pictures will appear from time to time, and the next item scheduled for publica-

tion is Hobart Huson's masterly piece of research on the "Two Sea Captains Johnson" which tells of the antecedents of a number of present residents of Rockport and Refugio, and much of the early history of the lonr islands—Mata-gorda and St. Joseph's—that par-

allel this coast. Anyone having such material that they think might be of interest and that is in shape to publish as a public service should contact the Pilot. It is hoped that permission of the Mercer family may be obtained to publish the Mercer logs

at a later date, as these, kept for a period of almost 40 years by members of that family, tell much of the early maritime history of Rockport, Aransas Pass and Corpus Christi, and are invaluable as source material for historians in this region.

for the same purpose, but just where his influence lay is not clear. Both contracts appear to have been soon abandoned and forgotten.

While no deeds to town property bearing dates earlier than 1857 seems to have been made, a number of persons and families were on the townsites prior to that time. Smith seems to have had the policy of giving lots to those who would actually build and live upon them; at least, such was being done during the infancy of the town. Among those who were in the town prior to the issuance of deeds to lots were: Dr. Rufus Abram Nott, who built a two-story drug store and doctor's office; James M. Crandal, who had sold his wharf on St. Joseph's Island and moved to Lamar, but who was here on the ground floor at St. Mary's. Crandal first contemplated a wharf, but finally built a two-story shell-concrete opera house as well as a dwelling house. Numerous artisans, workmen and men of the sea sojourned at the townsites, and some remained to become permanent citizens.

The port of St. Mary's almost immediately became the largest lumber and building materials center in Western Texas. In that period Florida long leaf pine was staple in this part of Texas, and many buildings constructed of that material are standing today. Notably among these is Major Wood's once palatial home, now towering over the picturesque village of Bayside. The lumber was brought from Florida to St. Mary's in large three-masted schooners. J. I. Cottingham established the first lumber yard at St. Mary's and for many years did a large importing business. Later other large lumber yards were established at St. Mary's raising her to the pre-eminence which was hers for almost two decades. Besides lumber a large volume of manufactured goods flowed through this port. There was a small export business in cattle and livestock.

Lumber and other imports coming in to St. Mary's were carted long distances to the interior, principally to Refugio, Beeville, Goliad, San Antonio and Uvalde. Trains and carts or wagons were hauled regularly between St. Mary's and the interior, and within a short time considerable traffic of all kinds radiated from the port. This condition led to improvement of highway facilities and the opening of new roads and ferries. A well-traveled road between St. Mary's and Corpus Christi was early established. The old road between Black Point and Refugio was improved, and a ferry established on the Mission River below the mouth of Saus Creek by Thomas B. Kimball. A new road between St. Mary's and Refugio was opened by way of Mission Lake, and James B. McCarty established a ferry on the river on this road. A direct road was opened between St. Mary's and Beeville, and from St. Mary's to the Aransas Crossing of the Refugio-San Patricio road. Major Egery, James R. McCarty and Joseph F. Smith were early road overseers.

Smith was indefatigable and energetic in obtaining additional shipping facilities for St. Mary's. On June 23, 1858, he made a contract with John W. Vineyard whereby the latter agreed to build another wharf and warehouse in front of a 263.44 acre bayshore tract adjoining the townsites on the southwest. Vineyard was to have a fourth interest in the acreage and a half interest in the wharves and warehouses he should build. In the summer of 1860 Smith contracted with Gilbert B. Willett to build a warehouse "suitable for doing a founding and commission business." This warehouse was to be located 80 feet west from the Williamson warehouse and abutting their wharf. Willett completed this improvement in 1861. It later passed to the St. Mary's Wharf and Warehouse Company. There is a conflict of authority as to whether or not Vineyard built the second wharf.

Contemporaneously on Smith's agenda was the procurement of regular boat service, passenger and freight, into St. Mary's. In 1857 or 1858 he made a deal with Captain Peters and Theodore Johnson to make regular calls with their two large schooners, and these brought the mails to the town, and provided a regular freight and passenger service. In 1860 he induced Captain Elisha Leonard of Bonding, Maine, to settle at St. Mary's and run a schooner between that port and Pensacola. Captain E. L. Snow,

who settled the town, operated a scow or barge and engaged in intercoastal traffic. Captain Marion Seward also operated his vessels into the port at an early date, as did Captain Frederick Augustine.

The townsites began to be built up with store buildings and residences, a few of them quite pretentious. Smith donated a building lot to each important religious denomination of that period, but only one—the Presbyterian—ever erected a church edifice; and even it was used for schoolhouse purposes. The Methodists eventually built a two-story building at Well Mott, which was used principally as a public school. The two-story drug store of Mr. R. A. Nott was mentioned as has been Crandal's two-story shell-concrete "opera house." Post & Hobby and Samuel S. Mapes each built two-story wooden store buildings. The upstairs of the Hobby building was used by the Masonic Lodge, Loftin & Ellis, William D. Campbell, H. C. Jordan, George S. Sherman, Berry Merchant and Captain John Low were original merchants of the town. Sherman conducted what was known as a "barrel-house," a combination grocery and liquor establishment. A two-story wooden hotel, the Neel House, was the first hostelry in the new town. It was built by P. M. Neel and later operated by his wife, Mrs. Isabella Neel. A second hotel was built by Francis M. Ellis, who later replaced it with the famed three-story Ellis Hotel, which after the decline of St. Mary's was moved to Beeville. A portion of the Neel house is still standing at St. Mary's, being the home of the Brightman boys.

The Hobby family consisted of the widow, Anne E. Slade Hobby, and her sons—Alfred Marmaduke Hobby, Edwin M. Hobby and Harney Hobby. They came to St. Mary's in 1857 and established the general mercantile business of Post & Hobby. Post appears to have been a resident of New Orleans and never lived at St. Mary's. Alfred M. Hobby was immediately appointed notary public for Refugio County. He is said to have been a silver-tongued orator. He was sent to the legislature at the next election and represented this district in the Secession Convention. He organized at St. Mary's the 8th Texas Infantry Regiment, of which he was Colonel and his brother, Edwin, Captain. Edwin M. Hobby, who was the father of former governor William Pettus Hobby, became a distinguished lawyer, text-writer and jurist of Texas.

Captain John Low has been in connection with the Battle of Salado (1842), where he personally ended the career of Vicente Cordova. He continued to serve with Captain Hays' famous Rangers and during the Mexican War was a lieutenant in that distinguished command. After the war he left the Rangers and settled at Corpus Christi, where he was elected assessor-collector of Nueces County. We will see more of him during the Civil War.

(Continued next week)

Zack Murry of San Angelo and Walter Stephens of Eden, staying at the South Beach Lodges Sunday and Monday, had nice catches both days. On Sunday they came in with 97 rat reds, ten bull reds, and six drum, and on Monday they caught three bulls, 7 trout, and 14 rats. Mrs. Tullie Frye, genial proprietor of the lodges, said that the bulls were almost as large as some bovine ones.

A HISTORY of Rockport, Fulton, St. Mary's, Lamar and El Copano By Mrs. Will W. Wood

After Smith prevailed in the litigation with Power, he lost no time in taking steps to get the St. Mary's project underway. Captain Frederick Augustine with his boat, Waterloo, was engaged to make soundings of the bay, and mark out the most practical channel to the gulf. The result of Augustine's findings, together with other considerations, determined Smith to locate his townsites about two miles up the bay from Black Point. Smith's original intention had been to build the town at Black Point (site of present day Bayside) on the Joseph F. Smith survey. Because of change of plan, the townsites were platted on what was thought to be the Elisha Maxey Survey (owned by Joseph F. Smith), but it later developed that about a quarter of the townsites lay in the T. T. Williamson survey (which was not owned by Smith). The new townsites were named Saint Mary's of Aransas.

Smith, never doubtful that his junior surveys would prevail, had part of the land between Black Point and Mission Bay subdivided into farm lots, prior to 1856. The townsites of St. Mary's were platted

later—in 1856 or 1857. Pending this termination of the title suits, Smith sold a number of farm lots and acreage tracts to families who settled thereon (many prior to 1855), on Smith's agreement of indemnity. Some of the settlers were newcomers to the county, while some were already citizens. Thus it was that the farm lots and acreage tracts were settled considerably in advance of the townsites.

John Linney, who was a son-in-law of Pedro W. Curbello, came with his large family to this county in 1855. The first land holding of this patriarch was a 50-acre tract at the Aransas reef, purchased from Thomas Welder. The land had been formerly a part of the Captain Phillip Dimmitt ranch on the Aransas. In time John Linney became an extensive landowner in Refugio and Goliad counties and one of the largest ranchers in the section. On one occasion he gave a good personal check for \$250,000 in a single business transaction. The Linneys were colonial settlers of Liberty County.

By 1852 a sufficient population had accumulated at Black Point to induce the establishment of an election precinct there. This was ordered by the commissioners' court on February 16, 1852. John Clark was presiding officer for several years. An early road had existed between Corpus Christi and Refugio, via Black Point; and in 1853 Festus Doyle was appointed overseer of this road, with instructions to improve it. The Commissioners' records indicate that the Aransas Road Company's turnpike and bridges were extended across the Aransas Reef about this time, but other records

are silent on the subject.

A public school district (No. 2) was established at Black Point in 1854, and Cyrus W. Egery was appointed presiding judge to hold the necessary elections. Miss Sarah E. Ellis taught this school in 1855. Another school house was built on Quo Warranto Bayou about 1857. The Black Point school was moved to St. Mary's as soon as that town became an actuality, and by 1860 it had been increased to a three-teacher school.

The townsites of St. Mary's was surveyed and platted in 1856 or 1857 probably by Lyman H. Ward. The plat was not placed of record until 1938, when three copies came to light, one being among the John H. Wood papers, another among the Charles A. Russell papers, and the third in possession of Frank B. Rooke. All copies agreed in the main, but the Wood copy being slightly more comprehensive than the others, was selected by the author for record as a monument of history. The plats show the townsites to have contained seven tiers of thirteen blocks each, the blocks being 400 feet square, divided into sixteen lots with a 20-foot alley running parallel to the bayshore through each block. Four of the blocks were dedicated to public use, three as parks, and one ominously enough, as the "court house square."

Joseph F. Smith reserved the whole of Block 4 for his personal use. This block had bayshore frontage, and on it Smith built a fine three-story shell-concrete house, in which he had his home and office. This was one of the first houses, if not the first, built in St. Mary's. Unfortunately for him, block 4 was subsequently

found to be in the Williamson survey No. 100; and as a consequence, Smith lost his fine home, much the same as Colonel Power's family lost their historic Live Oak Point home.

General Thomas Taylor Williamson was a promoter at heart. He came of a distinguished South Carolina family and is said to have been educated both for the law and medicine. His wife, Tirzah Ann, was a sister of Governor McWille, of Mississippi. The Williamson family came west to Aransas territory in 1829. There it became acquainted with Governor James W. Robinson, Joseph F. Smith and Henry Miller Shreve. Williamson was one of Williamson's syndicate which founded the City of Shreveport and was legal advisor to the syndicate. In 1841 Williamson had the War Department contract to complete the removal of obstructions to the navigation of the Red River. Williamson had the finest connections, business and social, in Louisiana, and appears to have been a man of some means when he came to Black Point.

Williamson was active from the beginning in the promotion of St. Mary's and particularly in developing its navigation potentialities. He was in Refugio County as early in 1855. He spent considerable time at St. Mary's between 1857 and 1861, but did not remove his family to the county until after the end of the Civil War. The first wharf and warehouse at St. Mary's was built by General Williamson in 1857. The wharf was located at the foot of Centre Street, and was an elaborate affair, flanked on its landward ends by large warehouses.

Block seven, on the bluff above, was donated to Williamson, and was equipped as a cattle shipment pen.

After completion of this improvement, John W. Vineyard, founder of Ingleside, became interested in the development of St. Mary's and acquired acreage in the environs of the townsites. On March 22, 1858, he purchased from Williamson a quarter interest in the wharf, warehouses and appurtenant properties. The properties were jointly held by these men until October 1, 1867, when it was decided to transfer them to Charles F. Bailey, as trustee for a corporation to be formed, known as the St. Mary's Wharf and Warehouse Company.

The proprietors did not overlook the advantages of having St. Mary's used officially as a port of debarkation of supplies for the United States army stationed at San Antonio and at the numerous outposts of West Texas and the Rio Grande. Captain Marcy, as has been related, had surveyed the Gulf Coast and had given a favorable report as to Black Point. Marcy, however, had identified himself with the development of Lamar. James Vance, of San Antonio, at that period was a man who was reputed to have great influence in army circles. In 1857 Smith made contacts with Vance and with A. C. Meyers, of New York City, by which Smith agreed to give each a quarter interest in his townsites. In the Vance contract the latter "promises to use his influence to make said town a shipping port so far as his influence may extend for the upper section of the country." Meyers also agreed to use his "influence"

COME IN REGISTER FOR FREE

WHIRLPOOL DISHWASHER To Be Given Away

DEC. 24 5 P. M.

RATLIFF AND JOHNSON INC.

Phone SO 4-6121



301 VICTORIA BANK AND TRUST BUILDING Phone HI 3-6731

Victoria, Texas

Kemper Williams Insurance Agency



WANT ADS

WHERE MORE PEOPLE DO MORE BUYING AND SELLING!



MISCELLANEOUS

EARL'S DRIVE IN Grocery and ice house, open until midnight. Boat stalls. Business route, Highway 35, South. ctf

DIRT HAULING—Shell, Sand and gravel. Tractors and dozers. "Judeley" Bracht Trucking Co. Phone SO4-2169. ctf

CHILDREN'S and girls' wavy and wear buckskin jackets. Very reasonably priced. J. M. Sparks and Son. 16ctf

BULLDOZER—Dragline excavating, clearing, leveling. W. F. Bartlett, Phone PL 8-2825, Aransas Pass. ctf

PIERSON MASONRY CO., concrete finishing, block, plastering and form work. Call SO 4-6106 for free estimate. Bill Pierson. ctf

SEPTIC TANK SERVICE. Reasonable rates. Call PL 8-2508, Aransas Pass, collect. ctf

SHOP OUR baby counter for diaper suits, blankets, booties, caps and other infant needs. J. M. Sparks & Son. 19ctf

ONE COAT FLAT OIL PAINT, close out sale, \$2.25 per gallon. Rockport Lumber Co. ctf

ST. AUGUSTINE GRASS for lawns. See J. E. Tedford Nursery. ctf

SLOGUM ELECTRIC SERVICE: Anything electrical. Contracting and service work. Call SO4-2605 for immediate service. ctf

GUNS REBUILT, immersion method. J. M. Points. Phone 270, Ingleside, Texas. ctf

JUST RECEIVED: Shipment of men's and boys' cowboy boots. J. M. Sparks & Son. 14ctf

HOOVER RADIO-TV SERVICE. Phone SO 4-6202. Three miles west on Farm Road 881. 12ctf

SANDY LOAM Black dirt, fill dirt, dragline to let on contract or rent, also dump truck service. Call PL 8-2508, Aransas Pass. 22ctf

COTTON and linen maternity dresses now in stock. J. M. Sparks & Son. 13ctf

DELICIOUS homemade pastries for weddings, birthdays and other occasions, baked to your order. SO 4-2249. c33

WANTED: Experienced male cook to live on ranch near Victoria, quarters furnished, excellent salary, best working conditions. Couple considered. Write P. O. Box 604, Victoria, or call Hillcrest 3-4871, Victoria, collect. 31c32

WORK WANTED: Any kind, house work, nursing, baby sitting. Mrs. Von Heuvel, north of Joe's Trailer Park. c32

LOST: At Fulton, light brown female dog named "Ginger." Call SO 4-2846. c32

IF YOU ARE having trouble with your drinking write to Alcoholics Anonymous, Box 326, Rockport, or phone SO 4-2892, SO 4-6488. p39

CATTLEMEN: For better sales consign your livestock to the Robstown Livestock Comm. Co. Sales every Wednesday. p47

COLORED WOMAN wants maid work, experienced, or housekeeper. For reference call Mr. Magee, SO 4-6241. p32

LOST OR STRAYED: One brown and white Beagle, answers to name of Ringo. Identification on collar. Child's pet. Please call SO 4-2153. p32

FOR SALE

North of Fulton, on Aransas Bay. Attractive residence. Riparian rights, pier, large live oak trees. Shown by appointment only.

Three bedroom house in North Rockport. Excellent buy, \$13,250. Terms.

Three-bedroom house, six months old, in Little Bay Shores. Requires \$1200 down payment, \$77.00 a month, no closing costs. 8.5 acre tracts west of Fulton. \$2500 with 1/2 minerals.

Waterfront property on Aransas and Copano Bays.

Two 50-foot beach road lots in Fulton, \$5,500.00.

Seven 60 ft. building sites in Denver Hgts., north of High School, \$4,200.00 including minerals and title guarantee.

FOR RENT

Room with bath for bachelor, \$25 per month.

Large one bedroom and combination living room cottages, furnished, bills paid, Fulton.

Waterfront cottage for couple, furnished, \$100.00.

We have listings without "For Sale" signs.

COCHRAN REALTY CO.

On Highway 35, Fulton
Phones SO 4-6335 and
SO 4-2977, Rockport

GOOD USED AUTOMATIC washers, refrigerators, used TV's. Rockport Electric Co. ctf

FOR SALE: Antique Duncan Phyte sofa. Upholstered in lipstick red frieze, like new. Call SO 4-2163. tf

FOR SALE: 17-ft. Cadillac hull, plastic canopy, tailored cockpit cover, all controls and accessories, 50 h.p. Johnson electric with brass wheel, two 12 gallon tanks, Mastertcraft tipper trailer. Complete rig less than 4 months old. Reasonable. See at Fulton Lumber Co., Inc. SO 4-6462. 43ctf

FOR SALE: Six lots, \$1,800. Call SO 4-6570. ctf

FOR SALE: German shepherd puppies, black and silver beauties. Sire and dam from a long line of champion and companion dogs. Can see both. AKC registered. SO 4-2503. 27ctf

FOR SALE: Fulton, next to school, 83 1/2 x 400', \$2,500. Call SO 4-2464. ctf

FOR SALE: 252' on Highway 35, directly in front of high school, \$3,500. Call SO 4-2464. ctf

FOR SALE: Used stove, used TV, repossessed living room suite, small refrigerator. Ratliff & Johnson Furniture, Inc. SO 4-6121. ctf

FOR SALE: 41 ft. shrimp boat, fully equipped, ready to fish. Contact J. L. Smith, SO 4-6223 or Rouquette & Wendell fish house. 23ctf

FOR SALE: Registered Landrace pigs, 12 weeks old. See or call Otis Rouquette. c33

FOR SALE: 1958 Chevrolet Impala, deluxe throughout, with factory air. SO 4-2517. c33

DON'T BUY any mobil home until you see! Mobil Homes, Inc., 2817 Leopard St., Corpus Christi. "Your Volume Dealer." c32

FOR SALE: Full size electric range Frigidaire, like new. SO 4-2515. c32

FOR SALE

ROCKPORT

NEW FHA or GI, 3 bedroom home, lots of extras—Beautiful lot—Shadyside Subdivision.

3 bedroom homes—brick, brick trim, or asbestos siding—FHA or GI, choose from plans—any price.

2 bedroom home, \$500 down, 50' lot. This one a bargain!

2 bedroom home, owner must sell, large trees, restricted area—large screened porch—like new—**MAKE OFFER.**

FULTON

2-bedroom home, den, 100' lot, large trees, excellent neighborhood—\$12,500.00.

3-bedroom home, 2 baths like new, 100' lot, beautiful trees, over 2700 sq. ft., \$31,500.00—terms.

Triplex apartment home—4 lots—excellent return for investment—See to appreciate.

New, 3-bedroom home, two baths, brick trim, Sylvan Heights addition, restricted.

Waterfront, over 100' frontage, 2 cottages, \$25,000.00. This is a good buy.

Waterfront, nice home, private pier and beach—on the bluff, large leaning oaks—\$37,500.00.

LOTS

Beautiful lot in North Rockport, nice neighborhood—extra large trees—97 1/2' frontage.

5 lots on Hiway, Fulton, \$5,900.

6 lots on Hiway 35, South Rockport, \$5,000.

Exclusive Subdivision "Shady-side, Rockport, all city utilities, curb and gutter, close to school." Buy while you can—terms available.

Exclusive Subdivision "Sylvan Heights," Fulton, as low as \$1500. Terms available.

Waterfront lots—south of Rockport.

12 acres—Lamar.

BUSINESS PROPERTY—Trailer park, including used home and apartments. Tourist Court—recently remodeled. Cafe. Liquor Store.

Listings appreciated
MILLER REALTY
Phone SO4-6473
Office Downtown
Rockport

FOR SALE: 24-inch boys English bicycle. SO 4-2388. ctf

FOR SALE: 1956 All-State scooter. Good running condition. SO 4-2459. ctf

FOR SALE: Tackle shop and package store. Box 565, Aransas Pass, Texas. p35

FOR SALE: Used 17-ft. New Moon house trailer, not modern, stove with oven. Two butane gas tanks. Electric refrigerator. Duo Therm heater. New mattresses, new tires. Clean trailer. Price \$575.00. See Mr. Richardson, Edgewater Trailer Park, Rockport, Texas. p32

FOR SALE: AKC registered Boxer pups, 8 weeks old. SO 4-6354. p32

CONGRATULATIONS

Mr. and Mrs. Tommie Jo Martin are proud parents of a daughter, Debora Rene, born Nov. 5, in Bayview, weighing 7 pounds and 10 ounces.

FOR SALE

ROCKPORT

Nice 2-bedroom home, 2-bath, den, screened porch, in setting of large trees.

Bayfront, 3-bedroom, 2-bath house. See to appreciate.

3-bedroom home on large tract of land, business location. 6 business lots.

7 lots and house on Highway 35. Furnished house and large shop. Can be sold separately.

2-bedroom house, north Rockport. Terms.

New 2-bedroom house on large lot.

Large lot, all utilities, \$1,500.00. Lots of lots—\$300.00 Each—Terms

Tracts of Land—Acreage
FULTON

6 lots near Fulton basin, motel site.

2-bedroom house, nice location.

Lots near school, \$750.00 each. Terms.

Wooded lots, lovely home sites.

Large waterfront lots at Lamar with riparian rights.

COPANO

Copano Ridge Subdivision, waterfront lots, riparian rights, \$1,500 each, terms.

List your property with
MRS. R. B. SIPE
Phone SO 4-2603 Rockport
1/2 block north of Market Street
on Highway 35.

FOR SALE OR TRADE: 26 ft. Richardson cabin cruiser, 140 h.p. Chrysler 8 marine motor, bottom glassed, good condition throughout. Will accept smaller boat or good used car in trade. Priced at \$2,250.00. John A. Cox, Gulf Service Station. SO 4-2623. 40ctf

FOR SALE: Stevens 12-gauge shotgun, like new. See J. H. Schleider. SO 4-6374. ctf

FOR SALE: 1954 Ford Ranch Wagon, radio and heater. Cheap. Two-wheel trailer, \$30.00. SO 4-2370. ctf

The Story Behind The Christmas Seal

Far across the sea in Denmark a kindly man, Einar Holboell, worked in the post office. Being a good-natured person who was fond of children, it hurt him to see the suffering caused by sickness and he wished that he knew something to do about it.

One year, as he sorted the heavy Christmas mail, a thought struck him: Suppose we could get people to buy a special Christmas stamp while the holiday spirit of giving is strong. There are so many letters and packages—just a penny seal on each one would bring a lot of money to help the sick and needy.

Thus the first Seal Sale in the world took place in Denmark in 1904—the same year that the National Tuberculosis Association was formed in this country. Some of these first Christmas seals came across the sea on letters and packages to this country.

A group of doctors had built a small shack to be used as a tuberculosis hospital in Delaware. Near the end of 1907 it seemed that the Brandywine Shack would have to close. The money to keep the hospital open was gone. It was then that one of the doctors, Joseph Wales, thought of his cousin, Emily Bissell. Miss Bissell was a kind hearted and forceful person.

To her Dr. Wales told his story, ending:

"Well, Emily, see what you can do. The poor patients will have to be sent home to die . . . and perhaps to spread the disease to others." After some deep thought—suddenly she remembered about the Christmas Stamps in Denmark. If far-off Denmark could fight TB with Christmas Seals, Delaware, U.S.A., could do the same.

Miss Bissell set to work without delay in 1907. Each setback, and there were many, made Emily Bissell work harder. She drew the design for the first Christmas Seal herself. . . . Two friends loaned money to make a start. A printer supplied 50,000 of the bright red "MERRY CHRISTMAS" stamps on credit.

Volunteer workers put the stamps in envelopes. On these in bright red letters were the words: "25 Christmas Stamps one penny apiece issued by the Delaware Red Cross to stamp out the White Plague."

Put this stamp with message bright

On every Christmas letter; Help the tuberculosis fight, And make the New Year better.

These stamps do not carry any kind of mail but any kind of mail will carry them."

Soon Aransas County citizens will be receiving their TB Christmas Seals. "Thank you for your forthcoming support in fighting TB," says Mrs. Hinton, Aransas County campaign manager.

WATERFRONT—

(Continued from Page 1)

ley were joined by Steve Clark and the three, fishing inside the basin from a small boat, strung 222 nice trout weighing up to 3 pounds each.

From Rattlesnake Point Mrs. Faucett reports:

Sgt. Frank Gomez, Sgt. Lopez and A/C Cesar Zengotita of Rockport AFB caught 101 trout.

Mr. and Mrs. Bill Shogren of Chicago, caught 51 trout and sheephead. John Pittman and John Hoffman of San Antonio, 44 trout.

Mr. Day and Scoots Roberson of Odem caught 96 red, drum, sheephead and trout.

Edwin Beaty of Floris, Okla., caught 108 trout, fishing several days. A. J. Kolodzie, O. A. Niestroy and Sylester Niestroy of Falls City, 111 drum and trout.

George Hicks of Violet caught 40 trout. Carl Krueger, Fred Strowl, San Antonio, 5 reds, 6 sheephead, 5 drum.

Ed and LeRoy Caro and Frank Munoz of Floresville, 45 trout. Dan Haideek of Floresville had 150 trout. Morris Ham of Robstown and George Hicks of Violet, 49 trout.

Harry Zunker and Neil Schmalstick of Floresville, 155 trout.

Fishing two days Norman Ohlenberger and George Eckert of San Antonio, caught 85 reds, 49 drum, 78 sheephead and 60 trout.

Scoots Roberson of Odem had 2 reds, 4 drum, 5 sheephead and 6 trout.

Frazier Cantrell reports:

Arnold Larson and Fred Morris, San Antonio, 10 trout 23 sheeps head up to 7 pounds.

Ruth Shelton, Midland; Mabel Grumble, Marlin, and Anne Blewins, Palm Village, 259 trout. Wednesday same party had 185 good trout.

Fishing bits from Sea Gull Cottages:

The fish cleaning unit at the Sea Gull Cottages has been a rather popular place the past week. Herbert Thiessen of Corn, Okla., together with Rudy Meget of Cordell, Okla., and John Meget

of Clinton, Okla., caught and dressed over 300 fish. Most of them were good sized trout along with some flounder, sheephead, drum, and a number of big reds. Mr. Meget says "Next time we will bring a boat and maybe we will really catch 'em."

Earl Light has been keeping up the good work with his catches of sheephead, and Bud Calhoun managed a bit of fishing after school hours.

Mr. and Mrs. Bill Wirtz of Renfro, Okla., caught a few trout before their young son became ill and they had to return to Oklahoma sooner than they planned.

Early Egyptian books were not only elaborately ornamented, but written on perfumed paper.

Seventeenth century courtiers wore boots with pointed toes so long they had to be attached to the knee.

Car Radios
Home Radios
Record Players
Tape and P.A. Systems
Repaired by
Van Etten's TV
SO 4-8542 ctf

BUILT ON YOUR LOT!

2 Bedroom Home
Completely Finished
Only \$4,950
\$43.13 per month
or
3 Bedroom Home
Completely Finished
Only \$5,950
\$51.84 per month

FRED A. BRACHT, Jr.
SO 4-6232 Rockport

SPECIALS
THURSDAY, FRIDAY and SATURDAY
Nov. 12-13-14

AT OUR FOUNTAIN
Regular 15c
ICE CREAM BOWL
9c

Regular \$1.19
DRISTAN NASAL MIST 79c

69c Po-do
PRE-ELECTRIC SHAVE LOTION 47c

25c B-C POWDERS 2 for 35c

98c BEN-GAY 69c

Regular \$1.96
ONE-A-DAY MULTIPLE VITAMINS 1.36

Regular \$29.95
DORMEYER ELECTRIC TOASTER 17.50

\$1.59 PEPTO-BISMOL 1.09

98c CHERACOL COUGH SYRUP 69c

\$2.95 INSTA-PEP TABLETS 2.09

Regular 45c Corn, Callous, Bunion, Soft Corn
DR. SCHOLL'S ZINO-PADS 31c

Regular 39c Creozets
COUGH AND THROAT LOZENGES 29c

Regular 98c Cepacol
ANTISEPTIC MOUTH WASH 69c

53c JOHNSON'S BABY LOTION 38c

\$2.55 PHISO-HEX SKIN CLEANSER 1.79

Regular 89c plus tax
O.J.'s BEAUTY LOTION 59c

Regular 63c plus tax
MUM CREAM DEODORANT 43c

Regular \$1.50
UNGUENTINE RECTAL SUPPOSITORIES 97c

65c CO-RE-GA DENTURE POWDER 43c

\$1.25 Size
ABSORBINE, JR. 83c

Regular \$2.50 Hudnut Fashion Plus Tax
QUICK HOME PERMANENT 1.69

YOUR PRESCRIPTION STORE
ROATEN WALGREEN DRUG
Phone SO 4-2311
Member Chamber of Commerce

HUNTERS: Don't Shoot any Large White Bird!

WHOOPING CRANE

7 1/2 foot wingspan
Stands erect over 4 feet tall
Legs extend beyond tail in flight

Travels singly or in small family groups
Young are rusty brown

WHISTLING SWAN

7 foot wingspan
Sits low in water
Legs do not extend beyond tail in flight

Travels in flocks—V formation

WHITE PELICAN

8 foot wingspan
Sits low in water
Legs do not extend beyond tail in flight

Travels in flocks

THESE BIRDS PROTECTED BY LAW
National Audubon Society

West Terrace
Acres
SUBDIVISION

West of Highway 35 on Market St.

LOTS and ACREAGE
Terms If Desired

IDEAL HOME SITES
Business Lots Facing Market Street

See or Call
Mrs. R. B. Sipe
1/2 Block North of Market St.
On Highway 35
Phone SO 4-2603 Rockport ctf