

Serving the Pheasant Capitol of Texas

# The Stratford Star

Number 34 35 Cents Publishing for 86 Years in Stratford, Sherman County, Texas 79084

USPS 523-108 Aug. 20, 1987

## Miss Stratford



The Miss Stratford Scholarship Pageant was held Saturday, August 15. The winners are left to right, Kristi Blake, 1st runner-up and winner of the Talent Award of a \$200.00 Scholarship. Stefanie Harrison the New Miss Stratford, Trisha Tillery, Jr. Miss Stratford and Leigh Bass, Miss Congeniality.

## Commissioners Court Minutes

On this the 10th day of August 1987, the Commissioners Court of Sherman County convened in regular session being open to the public, at the regular meeting place in the Courthouse in Stratford, Texas, with the following members of the Court present: W.S. Frizzell, Jr., County Judge; Wayne Cummings, Comm. Prec. 1; Boyd Spurlock, Comm. Prec. 2; Dale Hamilton, Comm. Prec. 3; Darrell Cotney, Comm. Prec. 4; M.L. Albert, County and District Clerk; and Tom Wade, Sheriff, Absent; None.

The above constituting a quorum, the following proceedings was had to wit:

It is ordered by the Court that the monthly reports of M.L. Albert, County & District Clerk; Linda R. Keener, County Treasurer; Robert Pierce, Justice of the Peace Prec. 3; John Woods, Justice of the Peace Prec. 4; Tom Wade, Sheriff; Zelda Pickens, Tax Assessor/Collector; be approved and all proper claims examined, approved and ordered paid. Fore going minutes read and approved.

Motion by Commissioner Boyd Spurlock seconded by Commissioner Darrell Cotney that Judge Frizzell be authorized to sign on behalf of Sherman County a tax deed involving lots 11 & 12, Block 129 original township of Stratford. All ayes.

## City Council Minutes

Stratford City Council met in regular session Thursday, Aug. 6, 1987 at 7:30 p.m. with Mayor Pro-tem Ronnie Pickens presiding and the following Council members present: Wanda Riffe, Bill Roberts, Eddie Haggard and Don Williams. Kyle Lewis, City Attorney, was also present.

Minutes of the last meeting were read and approved as read.

Chase Griffin met with Council to request permission to paint parking lanes from N. Second to N. Fourth St. on Main Street to earn an Eagle Scout Badge. Chase will furnish labor and paint and will meet with the City Manager's approval. A motion was made by Wanda

Motion carried.

Rate of pay for Sherman County Juries was considered. No changes were made.

Danny Cutrell and Jan Dressler representing Diamond Shamrock Corp. met with the Court to discuss the setting of the County Tax rate. Action on this matter will be taken later today.

Pat Nolen representing Valu-Line presented to the Court the needed changes for telephone service with their company. The cost would be paid for by Valu-line. Court approved work order.

Motion by Commissioner Dale Hamilton seconded by Commissioner Wayne Cummings that Commissioner Darrell Cotney be appointed on the Sherman County Appraisal Board representing the Commissioners Court All ayes. Motion carried.

Motion by Commissioner Boyd Spurlock seconded by Commissioner Darrell Cotney that the following Election Judges and Alternate Judges be appointed and recorded in the election book. All ayes. Motion carried, Election Judges, Pct. 1 Mary Lou Walden; Pct. 2, Mrs. Ruth Morris; Pct. 3, Clarence Thrasher; Pct. 4 Millie Hacker; Pct. 5 Jeanne Knight; Pct. 6 Marty Bain; Pct. 7 Mrs. M.W. Terrell, Absentee Don Riffe. Alternates are Pct. 1 Mrs. Don Gurley; Pct. 2 Mrs. Kathryn Christian Brandvik; Pct. 3 Mrs. J.H. Hall, Mrs.

Ralph Vigil; Pct. 4 Terry Flores Kennedy; Pct. 5 Irene Wakefield; Pct. 6 Arlene Baker; Pct. 7 Georgia Lavake, Absentee W.N. Bridwell, A.E. Pronger.

Motion by Commissioner Dale Hamilton seconded by Commissioner Darrell Cotney that the optional \$5.00 fee for the Road and Bridge Fund be not imposed for the 1988 Tax Year in Sherman County. All ayes. Motion carried.

Motion by Commissioner Boyd Spurlock seconded by Commissioner Darrell Cotney that the following tax rate be approved and adopted at the same total as last year. All ayes. Motion carried.

It is suggested by the Court that there shall be levies assessed and collected for the year 1987 for Sherman County, Texas on all taxable property real, personal and mixed in said County on January 1, 1987 based on the real or true value of such property a tax as follows: Ad-valorem Tax of and at the rate of .30823; Road and Bridge Tax of .09423; Road & Bridge Special Tax of .03; General Tax of .18cents; Jury Tax of .002; Permanent Improvement Tax of .002 on the one hundred dollar valuation of all taxable property in Sherman County, Texas. There shall be levied a tax out of Road District No. 1-.00cents, Road District No. 2p.00Cents, Road District No. 3, .00cents and Road District No. 4, 00cents.

and second by Don to allow Chase to paint the parking lanes. Motion carried.

Richard Kelly, GTE Operations Manager, met with Council to give an update of the telephone services and to answer any questions.

Howard Naugle met with Council to request permission to cross the alley with buried gasoline lines. Mr. Naugle wants to tie the pumps in front of Duncan Oil to the storage tanks in back. Eddie made a motion and Don second to allow Mr. Naugle to cross the alley with the gas lines and have them marked. Motion carried.

Marilyn Albert met with Council to discuss the tax deed on Lots 11 and 12 Blk.

129, Stratford. The lots were auctioned at a tax sale, Jeff Flores bought the lots after the sale was over. A motion was made by Wanda and second by Eddie to sign the deed to Jeff Flores. Motion carried.

A motion was made by Wanda and second by Bill to set the City tax rate for 1987 at .58821. Motion carried.

Police Chief Dennis Davis met with Council to discuss a resolution for participation in the Regional Drug Task Force. A motion was made by Bill and second by Eddie to pass the resolution for participation in the Regional Drug Task Force. Motion carried.

Ramps for the handicap was discussed. Wayland is to

## Football Season Tickets Now On Sale

Season tickets for the 1987 Elk football home games are now on sale at a price of \$12.00 for adults and \$8.00 for students, announced Mr. Bass, Superintendent.

All those who held reserved seats last season will be given preference until

September 4, 1987. After September 4, season tickets will be on sale on a first come, first serve basis.

Home games for the Elks include: Dalhart, Sept. 11; Spearman, Sept. 25; Stinnett Oct. 9; Highland Park, Oct. 23.

## Annual Award Presentation

Thursday, August 20th at 7:30 p.m. is going to be a fun time at the park! The Stratford Little League Association will be presenting trophies and certificates

to our players plus a few extra surprises. We would like to invite all friends and family of our great players to join us. Ice cream will be served.

## 10th Annual Collector's Show & Sale

Dealers from five states will be participating in the tenth annual Collector's Show and Sale sponsored by the Stratford Chamber of Commerce on August 29 and 30. The show will be held in the Sherman County Exhibit Building and will be open from 9 to 6 on Saturday and 11 - 4 on Sunday. There will be no admission charge.

Dealers will be selling, buying and trading a wide selection of goods which include books, antiques, earthenware, coins, gold, glassware, guns, buckles, stamps, minerals and arts and crafts items.

Drawings for door prizes to be given to those registering their attendance, will be held numerous times

throughout both days. A special grand prize drawing will be held Sunday at 4 p.m. for a 13 inch Emerson Color TV.

Concessions will feature baked ham, scalloped potatoes, green beans, fresh fruit salad and homemade bread. Also available will be sweet rolls, homemade ice cream, ice tea and coffee. The concession stand is operated by Sherman County 4-H Parent Leaders Association and proceeds go to the Gold Star Scholarship Fund.

Individuals interested in renting display space during the Collector's Show and Sale should contact the Stratford Chamber of Commerce at 806-396-2260.

## Stratford Fair & Jamboree Starts September 10

Sherman County Fair and Stratford Jamboree will be held beginning Thursday, September 10 with final activities on Saturday, September 12th. It promises to be a fun-filled and exciting weekend!

This year's theme is "Hey-Look Us Over!" and will be carried through the parade which will begin at 11:00 a.m. on Saturday,

September 12th. Cash prizes will be given in theme and non-theme classes. Prizes are 1st-\$100.00; 2nd-\$80.00; and 3rd-\$65.00.

We invite you and your organization to join us for a fun-filled morning on Saturday the 12th. Contact Eddie Williams at 396-5330 or Leonda Fedric at 396-5538 work, or 396-5992 home to place your entry.

## SPS Board Of Directors Elects Two As Executive Vice Presidents

The Board of Directors of Southwestern Public Service Company (SPS) today elected Doyle R. Bunch II and Bill D. Helton as executive vice presidents of the Company. Bunch joined SPS in 1976 as executive assistant. He later held positions as

assistant secretary and assistant treasurer, and as secretary and treasurer from 1979 to 1986, when he was elected financial vice president and secretary. He has a bachelor's degree in business administration from Texas Tech University.

make a request to the Area Foundation for assistance to put in the ramps from N. Second to N. Fourth Streets.

The catholic protection system was tabled until next meeting.

Council decided not to move the REA electrical poles.

The new water well was tabled until next meeting.

The 1987/88 proposed City budget was discussed.

A motion was made by Wanda and second by Eddie to adopt provisionally the 1987/88 City Budget. Motion carried. A budget hearing will be held on Sept. 3, 1987.

The cleanup program was discussed. There are several

property owners still not in compliance with the ordinance. The Council was in agreement to follow the next step.

The fire pagers will be discussed at the next meeting.

City bills were reviewed for payment. A motion was made by Wanda and second by Eddie to pay all bills. Motion carried.

A motion was made to adjourn, motion carried, meeting adjourned.

Ronnie Pickens Mayor Pro-tem  
City of Stratford  
Wayland E. Brown City Secretary

## STAR DEADLINE

THE DEADLINE IS MONDAY AT NOON TO GET EVERYTHING IN TO THE PAPER FOR THAT WEEKS EDITION. WE MUST HAVE THIS TO MAKE OUR DEADLINE AT THE PRINTERS ON TUESDAY. THANK YOU.

## Notice

The Sherman County Sheriff's Department will test the Fire Siren and Civil Defense Siren the second Tuesday of every month between 7:00 and 7:30 p.m.

## NOTICE

The First Football scrimmage will be August 21st at Pampa at 6:00 p.m. On Aug. 28 River Road, no time has been set yet.

## NOTICE

The Fair Books are at the Extension Office if you would like to stop by and get one while they last.

The Cheerleaders will be having their Ice Cream Social for the coaches, football players, parents and spectators Thursday, August 27 at 7:30 p.m. at the High School Cafeteria.

There will be a swimming party August 23 for Kerrick residents at 4-6 p.m. There will be a sandwich supper following the swimming at the Community Center.

## Johnny Ray

### Watson Tapes

### To Be Available

A NEW CASSETTE TAPE OR RECORD ALBUM OF MUSIC BY JOHNNY RAY WATSON IS AVAILABLE FOR \$9.00, and can be ordered now with delivery in September. Bring your check by the office of the First United Methodist Church (9 to 12 a.m. weekdays) or give your check to Sue Hudson. You will be notified when the tapes/albums arrive.



Doyle Bunch II

In his new position, Bunch is responsible for the Company's regulatory affairs and its three division operations, along with his present corporate secretary and financial responsibilities

Helton joined SPS in 1964 as an engineer. He subsequently held positions in marketing and finance. He was financial vice president from 1983 to 1986, when he was elected vice president-corporate services. He has a bachelor's degree in electrical engineering from Texas Tech University.

In his new position, Helton will continue his corporate services responsibilities in

Cont. on pg. 7

## Legal Notice

### LEGAL NOTICE

#### NOTICE OF EXECUTION SALE OF REAL PROPERTY

1.

By virtue of an execution issued out of the District Court of Sherman County, Texas, on a judgment rendered in that Court on the 27th day of March, 1987, in favor of 4B Elevator Components, Ltd. and against Catalina, Inc., d/b/a Empire Construction Company, in Cause No. 2730, styled 4B Elevator Components, Ltd., Plaintiff vs. Catalina, Inc., d/b/a Empire Construction Company, Defendant, on the docket of the Court, on July 31, 1987, I levied upon the following described real property situated in Sherman County as the property of Catalina, Inc., d/b/a Empire Construction Company:

#### DESCRIPTION

A parcel of land out of survey 179, Block 1-T, T.&N.O.R.R. Co. Survey, Sherman County Texas described as follows:

Commencing, at the S.E. Corner of said Survey 179.

THENCE: N. 00 degrees 12' 20" W. along the East line of Survey 179, a distance of 2095.61' to a point.

THENCE N. 36 degree 08' 33" W. with the northeasterly Line of Spruce Street, at 495.38' pass a 1/2" pipe, in all 595.38' to a 60d. nail driven in the asphalt for the most Southerly Corner and point beginning this tract.

THENCE: N. 36 degree 08' 33" W. a distance of 420.6' to a point for the most Westerly Corner this tract.

THENCE: N. 53 degree 28' 19" E. a distance of 365.18' to a 1" pipe for the most Northerly Corner this tract.

THENCE: S. 36 degree 08' 33" E. a distance of 423.06' to a point for the most Easterly Corner this tract.

THENCE: S. 53 degree 51' 27" W. a distance of 365.17' to the point of beginning containing 3.5363 Acres of land more or less.

said property being at 119 S. Spruce in the City of Stratford and commonly known as the Empire Construction Company property.

2.

On September 1, 1987, which is the first Tuesday of the month, between the hours of 10:00 a.m. and 4:00 p.m. at the Courthouse door of Sherman County, Texas, I will offer for sale and sell at public auction, for cash, all of the right, title and interest of Catalina, Inc., d/b/a Empire Construction Company in and to the described property.

DATED on July 31, 1987.

TOM WADE, Sheriff, Sherman County, Texas

Published in The Stratford Star, Thursday August 6, 13 and 20, 1987.

### LEGAL NOTICE

The County of Sherman, Texas invites qualified bidders to submit proposals for the lease of all oil, gas and other minerals on or under the following described tracts of land in the Original Townsite of Stratford, Sherman Co., Tex, Block 1;T, T. and N.O. Ry. Co. Survey Section 179: Lots 1 thru 20 of Block #133 of the original Townsite of Stratford, Sherman Co., Tex. including all adjacent streets and alleyways and containing 2.9769 acres, more or less.

Any and all bids must be in the offices of the County Commissioners by 3:00 p.m. on the 21st of August. The County offices are located at 710 N. 3rd Stratford, Texas. Bids will be opened for a

public hearing for that purpose. The time for the special session will be Aug. 21 at 7:30 p.m. The County reserves the right to waive any and all formalities of bidding, to reject any and all bids, and does not bind itself to accept the best bid or any proposal, and the county shall have the right to ask for new bids should it desire to do so.

Signed this 3rd day of August, 1987.

The County of Sherman  
W.S. Frizzell, Jr.  
County Judge

Published in The Stratford Star, Thursday, August 6, 13, and 20, 1987.

### BID NOTICE

Sherman County will receive bids for bull dozer work. To rip and stock pile caliche. Must state size of tractor in bid. Bid to be on working hourly scale.

Bids will be opened on August 24, 1987 at 10:00 a.m. Bids to be submitted to the County Judge. Sherman County reserves the right to reject any and all bids. Contact Commissioner Wayne Cummings on any details.

Wayne Cummings  
PCommissioner Pct. 1

Published in the Stratford Star August 13 and 20, 1987.

### LEGAL NOTICE BUDGET HEARING

NOTICE OF THE CITY OF STRATFORD, TEXAS BUDGET HEARING. In accordance with the State of Texas and provisions of the City of Stratford Charter, notice is hereby given that a Public Hearing will be held on the 1987/88 budget for the City of Stratford, Texas on September 3, 1987 at 7:30 p.m. The hearing will be held in the City Council Meeting Room of the City Hall in Stratford, Texas.

Dwight D. Reese, Mayor  
City of Stratford

Published in the Stratford Star Aug. 20 and Aug. 27, 1987.

### LEGAL NOTICE

The Stratford Fire Dept. will receive bids on the following:

1-1980 Magirus 2 1/2 ton Fire Truck with 1,000 gallon water tank with bed.

Can be seen by contacting City Hall at 806-396-5581, located at 520 N. Third.

Any and all bids must be in the offices of the City of Stratford by 5:00 p.m. on September 8, 1987. The City Offices are located at 520 N. Third, P.O. Box 188, Stratford, Texas 79084. Bids will be opened on September 8, 1987 at 8:00 p.m. in the Stratford Fire Hall Meeting Room of Stratford City Hall. The Stratford Fire Dept. reserves the right to accept or reject any and all bids.

Eddie Williams  
Fire Chief

Published in The Stratford Star Thursday, August 20, August 27 and September 3, 1987.

### LEGAL NOTICE

#### NOTICE OF TEXHOMA INDEPENDENT SCHOOL DISTRICT BUDGET HEARING

In accordance with the provisions of the law of the State of Texas, notice is hereby given that a public hearing will be held on the proposed 1987-88 budget for the Texhoma Independent School District on Monday, August 31st, 1987.

The hearing will be held at the Texhoma (Texas) Elementary School at 8:00 p.m.

Signed: Gary Unruh  
President Board of Trustees  
Published in The Stratford Star, August 13, Aug. 20 and Aug. 27, 1987.

## The Stratford Star

Second Class postage paid at Stratford, Texas, 79084. Subscription rates are \$13.00 per year in Sherman and adjoining counties; all other \$20.00 per year.

M. Robertson  
Janis Tillery

Editor & Publisher  
Darkroom & Advertising



MEMBER 1987

TEXAS PRESS ASSOCIATION

## Letter To Editor

8-14-87

The Stratford Star  
Stratford, Texas 79084

Dear Editor:

In the Star's August 12 edition, was a letter from Frances Watson, extolling the benefits of legalized gambling on horse racing in Texas. In spite of all the evidence that has been gathered and presented, some still persist in their pipe-dream.

On November 3, we will go to the polls to say "yes" or "no" to Pari-mutuel gambling in our state. I would at least like for people to have the full information on which to base their decision.

First; be sure the issue is not horse-racing. That is already legal. The issue purely and simply is legalized gambling. Is gambling going to cure the financial ills of Texas? Let's let the record in other states tell us what it will do to our state. According to the National Racing Commissioners, the state revenue in gambling states is in a decline. From 1980 to 1983 those states revenue from race-track gambling decreased by \$71 million. It is a fact that not one single state has realized even close to the projected revenue from Pari-mutuel taxes including our neighbor to the north who entered the fray some two years ago. Less than 3% of any state's budget is funded by pari-mutuel taxes and less than 1/2 of 1% in the majority of them. In 1983 the Texas Horse Racing Association was projecting taxes of \$200 million per year, now they and Mrs. Watson lower that to \$100 million which many experts say is still far too high. In Texas, less than 1% of the state budget would be raised by gambling taxes. That does not take into account higher welfare costs, policing costs, costs to business when gamblers lose money at the track rather than pay bills, increased crime and further stress on Texas homes.

Second; on the issue of jobs, figures are grossly distorted. Of the 8000 promised construction jobs, a more realistic figure is probably 5000 jobs and many of them taken by out of state workers already familiar with track construction from gambling states. Those jobs will end when tracks are built which offers jobs for less than one year. The 7000 promised farm jobs is grossly inflated. Most farms could handle any realistic increase with the employees they already have. The jobs gained would be far outweighed by increased crime and welfare from gambling by those who could least afford it.

When Mrs. Watson claims \$500 million annually put into the farm economy, quoting the Texas Department of Agriculture, She needs to check her facts which actually project \$137 million in 1990. Gambling supporters have been notorious for greatly exaggerating benefits from legalization. The amount quoted is miniscule when compared to the total agricultural economy. The problems and costs outweigh the benefits. An example of claims that never materialize is the Canterbury Downs track in Minnesota which was projected to earn \$10 million for the state and actually lost \$7.9 million. In Nebraska, Massachusetts, Illinois, and Oklahoma, highly paid lobbyists are pressuring those states

legislature to lower gambling taxes because of problems making a profit. Where are all the promised millions of dollars?

In most states by their actual figures, costs of collecting, bookkeeping, increased staff, and policing gambling; takes from 35 to 40% of tax money collected. Of the states supposed 5% take, 2% is available to track investors for construction and renovation for 15 years. Of the total money spent at tracks by the Texas Horse Racing's own paid study, 84% would go as winner's prizes, 6 to 8% to the tracks, 5% to horse owners, and 5% to the state (less the 2% you can be sure investors will use). Only a select few will profit and that at the expense of all the citizens of Texas. Gambling Industry expert Larry Braidfoot testified before the state legislature that 90% of the horse owners will lose money, 50% of the breeders will lose money, and the price of horses continues to decline.

Organized crime historically always moves in when and where gambling is legalized and the illegal gambling flourishes because of its higher payoffs than the legal and because it extends credit to gamblers. By Internal Revenue Service's figures, some \$3.6 billion is kept from the United States because illegal gambling does not pay taxes. Where are most of these illegal gambling centers? In the states and cities where Parimutuel gambling is legal. Gambling is not an industry and it does not solve problems. It simply plays 'musical chairs' with Texas money and that at a

## Star Dates

### Thursday, August 20

2:00 p.m. Country Club Ladies Bridge  
2:30 p.m. Happy Hour Extension Homemakers  
7:30 p.m. City Council  
8:00 p.m. Masonic Lodge  
8:00 p.m. AA-AI-Anon

### Friday, August 21

9:00 a.m.-4:30 p.m. All day SCOT Quilting Scrimmage Clarendon at Pampa

### Saturday, August 22

6:00 p.m. Coldwater Manor Luau

### Sunday, August 23

2:00 p.m. Country Club Men's Horserace

### Monday, August 24

Stratford School in Service 1:00 p.m.-4:30 p.m. SCOT Quilting SCOT Dance Practice

### Tuesday, August 25

8:00 a.m. TOPS 897  
10:00 a.m. SCOT Board Meeting Women's Division Luncheon Southside  
2:00 p.m. Extension Homemakers  
7:30 p.m. Fire Dept. Meeting

### Wednesday, August 26

1:00-4:30 p.m. Scot Quilting



Shelli Ann McCarver  
Age 4



The brilliant colors of fireworks come from bright-burning metallic salts.

enough to show any honest person that pari-mutuel gambling is not the panacea its supporters claim. I hope our state has the good sense to say "no" again as it did in 1962, 1968, 1974 and 1978.

Yours Truly  
Derrel D. Lewis  
Pastor, First Baptist Church

## Coupon

Clean-Rite Professional Carpet & Industrial Floor Care

With This Coupon \$20.00 off  
Reg. \$69.50 Special \$49.50

Living Room, Dining Room & Hall

249-5810 or 249-2332

Dalhart

★ NO MILEAGE CHARGE ★

### FALL REGISTRATION

## "I GOT MY START AT AMARILLO COLLEGE!"

You can too, by registering for fall classes Monday, August 24, 1987 from 7-8 p.m. in the Dumas High School Cafeteria. Classes start August 31, 1987. Use a major credit card to pay for tuition and books. All classes meet in the Dumas High School. For information contact Mrs. Christine Loftberg, (806) 935-2011.



COURSES	TIME	DAY
Accounting Principles I	6:30-10:00	M
Law & Banking Applications	6:30-9:15	Tu
Business Mathematics	7:00-9:45	M
Computer Concepts	7:00-9:45	Tu
Basic for Microcomputers	7:00-9:45	Th
Freshman Composition I	7:00-9:45	Tu
Government of the U.S.	7:00-9:45	Tu
History of the U.S. I	7:00-9:45	M
Functions of a Supervisor	6:30-9:00	Th
Mid-Management Seminar	9:10-10:00	Th
Real Estate Law Contracts	7:00-9:45	Tu

Late registration Thursday, September 3, 1987  
Dumas High School Cafeteria. 6:00-7:00 p.m.

An Equal-Opportunity Community College.



# SCOT Notes

Good morning, Scotters and Friends. Are we ready for the third week of August 1987? Its here! and the following listed activities are before us. Dance practice on Monday (past when this is read) and all day quilting on Friday, August 21, 9-4:30 p.m. Then there is dance practice Monday 24 at 8 p.m.; S.C.O.T. Board Meeting August 25, at 10:00 and on Aug. 27, Scot's regular meeting and noon day meet at 12:00 noon. Oline Caraway handed us the following announcement: SCOT Program for Aug. 27-12 noon vocal selections by Mrs. James Taliáferro slide presentation by Susie Spurlock and Jim Allison, County Extension agents and by 2 4-H Members. A valuable door prize will also be given! So this time let's bring with us a keen sense of appreciation as well as our usual enthusiasm for greeting each other and good food. Let's make it a great day for S.C.O.T.!

Looking backward, the Birthday Party was an enjoyable event for birthday folks Delores Bunch, Clarence Willman and Timmie Brown. Well wishers were Kathleen King, Leona Woods, Ernest and Mrs. Goule, Opal Bryant, Dicy Stephenson, Minnie Reeder, Ethel Hampton, Elsie Pickens, Gladys Arnold, Rowena Williams, Eskie Ritchie, Corda Pleyer and Jewel Dovel and John Woods, who arrived at just the right time with the treat of delicious popcorn. The birthday cake was decorated with beautiful yellow roses-"Texas" ones no doubt.

We had a wonderful visit with Claudine McQueen Allen Saturday. We had a happy time identifying people in some kodak pictures taken back when-naturally we asked for an update on the Allen family affairs and learned that Claudine and George will soon be moving into their new home. Yes, it is on the farm!

Max Stephenson is attending a family reunion in Missouri, Maurine Plunk is enjoying a pre-school visit with grand-daughter Jamie in Snyder, at Jamie's special request. We are sure Maurine will enjoy visiting with the rest of the Burleson family.

A note of sadness enters our SCOT report because of Lester Lollis'es failing health Alice says that Lester is now in Coon Memorial Home in Dalhart, and asks for our prayer support for them at this trying time. We assure you, Alice, of our Love, Concern, and Prayers. How we wish Lester could be at Coldwater Manor in Stratford but there is no space available.

We have always heard the expression "Mind over Matter" stated. Permit us to suggest "Action Over Inclination" for practice. Saturday we MADE ourself get out and about. The result? We visited and lunched with Pauline Martin, J.A. Lasley, Karen Woolsey, and Connie Reinart; enjoyed the chatter of a group of girls who had been thru' a work-out preparing for the beauty pageant. They were chaperoned by Kay Harris and Michael.

It was such a pleasant surprise to recognize Victor Plunk and Glenn Lovelace because they resemble in appearance their fathers, Eldon Plunk and Ernest Lovelace. Victor and Penny, who was with them are from Amarillo and Glenn from Japan. The result was that several people had a pleasant visit with fellows coming home. See what we mean? It made our day!

Vera and Ernest Lovelace, Sun City, Arizona and Glenn Lovelace and son Makota (Ernest) of Asaka, Japan are visiting Shirley Plunk and other friends. They came to Stratford via Denver where they visited Bob and Barbara Plunk. Leaving here Vera & Ernest return home but Glenn and Makota continue to Washington, D.C. where

by Timmie Brown

they will visit Bill and Rose Plunk and do a round of sight-seeing.

Glenn Lovelace (we think Dr. Glenn Lovelace) lives in Osaka Japan. He holds an Assistant Professorship in the Otani Woman's Junior University, Osaka, where he teaches English. Several years ago a young lady, Takako, enrolled in his class for the purpose of improving her use of the English language which she already knew and spoke. Cupid is on the alert in Japan, too, so after a period of time Takako and Glenn were married and became the parents of four children. Glenn and 16 yr. old Makota are visiting in America in order that Makota can practice English vernacular with grand-parents, cousins and American family as well as see the U.S. Glenn's hobby is music; piano playing and Western Music plus guitar. Can't take "Texas-Panhandle" out of our boys! Glenn read in a Japanese newspaper of the tornado in May, 1978, that went west of Stratford. He reported it in a letter to the Editor of the Star but we are told his report was never in the Stratford Star. How come? Marty sure enough wasn't the Editor or we would have had his report.

Marillyn Albert has been visiting her son Jeff Harryman and family, Rock Springs, Wyo. She also attended her mothers family reunion at Livingston, Mont. and enjoyed visiting Yellowstone Nat'l Park.

Again, representing the First Baptist Church, our Celebration of the 85th Anniversary is next Sunday, Aug. 23, 1987. Neighbors,

## 85th

### Anniversary



Class of 1967

1st Row [l to r] Sharon Wilson, Stephanie Lovett Folley, Dallas Foreman Donelson, Jean Ann Ross Smith, Sherri Murphy Colquitt. 2nd row, Jana Pronger, Lynda Sutton Hauser, Joyce Hodges McBryde, Teresa Brannan Rambo, Sharon Martensen Powell. 3rd Row, Gregory "Punkin" Keener, George Williams, Kenny Palmer, Wesley Willey, Ted Martin, Rusty Garrison, Steve Dettle.

### Bundy Completes Training

Army Private Vernon P. Bundy, son of Cleve R. and Barbara F. Bundy of Texhoma, Okla., has completed a combat engineer course at the U.S. Army Training Center at Fort Leonard Wood, Missouri.

During the course, students were trained in the



Cattle branding was practiced 4,000 years ago. Old tomb paintings show Egyptians branding their cattle.

come help us celebrate and enjoy the Birthday Cake!

Scotters pass along Scot shoulder Pats and Luv u's.

techniques of road and bridge building, camouflage and demolition. They also received instruction in combat squad tactics as well as in the use of infantry weapons.

He is a 1979 graduate of Auburn High School, Wash.



During the Middle Ages, the year began at various dates in different times and places. In England it was not until 1751 that January was restored to its place as first month, as it had been during the Roman era.



It's out of this world—a nebula, that is. These masses of glowing gas, millions of miles across, are visible from 900,000 light years away. Each is as large as an entire galaxy like our own.

# Golf News

Women's Golf Association met August 11. Present were Reba Pittman, Judy Oquin, Shorty Albert, Chris Etheridge, Aline Judd, Joyce Brooks, Martha Duncan, Charlene Dyess, Yvonne Pittman, Mary Brooks, Karen McMillion, Linda Haynes.

Play day balls were given to Aline Judd one, Joyce Brooks, four, Reba Pittman, two and Judy Oquin, one.

We played a Scramble with Shorty Alberts team winning. Reba Pittman, Judy Oquin, Chris Etheridge each won a ball.

We planned our Club Tournament, it will be Aug. 29. Tee off time is 9 a.m. We will play 18 holes. If you can play call Charlene Dyess by Fri. night August 28 Call 396-5639. Bring a sack lunch. A covered dish meal was enjoyed by all.

Judy & Reba Pittman went to Guyton and played in the Scramble tournament. They won first flight.

# Style Show

It'll soon be Style Show time as GFWC/Prospectus Study Club members will model fashions from Mr. G's of Amarillo. The noon luncheon and show will be Sept. 19 at Dumas Country Club.

Co-chairmen for the event are Margaret Reed and Betty Brown. Tickets will be available from club members with no tickets sold at the door. They are \$12 and proceeds go toward scholarships and other club projects.

# Tops 897

Tops #897 met on Aug. 11th with 8 members present. We showed a loss of 4 1/2 lbs. Elsie Lasley gave the program this week on Americans Devise Clever Array of Games for Dieters.

## LET'S JOIN IN PRAYER

### The Churches of Stratford Welcome Your Family

#### FIRST UNITED METHODIST

Rev. Bill Watson  
520 N. Main  
Sunday School 9:40 am  
Morning Worship 10:50 am  
Junior High UMY 5:30 pm  
Senior High UMY 6:00 pm  
Evening Worship 6:00 pm

#### ASSEMBLY OF GOD

Rev. Lonny Robbins  
Corner of Purnell & Fulton  
Sunday School 9:45 am  
Morning Worship 10:45 am  
Evening Worship 6:00 pm  
Wednesday Bible Study 7:30 pm

#### FIRST CHRISTIAN

Rev. David Harker  
5th & N. Main St.  
Sunday Coffee Fellowship 9:00 am  
Sunday School 9:45 am  
Morning Worship 10:45 am  
Evening Worship 6:00 pm  
Wednesday, Adult Choir 8:00 pm

#### CALVARY BAPTIST

David Jones  
302 S. Main St.  
Sunday School 10:00 am  
Morning Worship 11:00 am  
Evening Worship 6:00 pm  
Wednesday Prayer Service & Bible Study 7:00 pm

#### ST. JOSEPH CATHOLIC

Monsignor Kevin Hand  
515 S. Pearl St.  
Sunday Mass 8:30 am  
Saturday Evening Mass 6:30 pm  
Mass in Sunray 11:00 am

#### DUNCAN CHEVROLET & OIL COMPANY

396-5557 396-2835

#### WILLIAMS REPAIR SERVICE

396-5330 396-2322

#### A & I PARTS CENTER

396-5593

#### STRATFORD GRAIN CO.

396-5541 Lantz 769-4485

#### OLSON AUTOMOTIVE

396-5572

#### FIRST BAPTIST

Dr. Derrel Lewis  
702 North 3rd  
Sunday School 9:45 am  
Morning Worship 10:50 am  
Church Training 6:00 pm  
Evening Worship 7:00 pm  
Wednesday Bible Study 7:30 pm

#### Where Art Thou? By Derrel Lewis

In Genesis 3:9 after Adam's and Eve's disobedience to God and after they had hid from God's presence, God "called unto Adam and said unto him, where art Thou?" This is the first recorded question God ever asked of man. We know from the Scriptures that God knows all things therefore God already knew the answer. Why then did He ask the question? Because he wanted Adam to realize the answer. God's question is valid to each of us and though He is well aware of the answer, he wants us to be aware of it. There are three possible answers.

[1] Some are in sin, separated from God as Adam was. "All have sinned and come short of the glory of God" [Rom 3:23]. Unless they have trusted Christ as Savior they are in sin, separated from God. Many, like Adam, try to hide. Some hide behind church membership, religious rituals and activities. Some hide behind benevolent community activities and some try to hide behind someone else. God always knows where we are but we also need to realize where we are.

[2] Some are in Christ but living with one foot in sin. This is the lukewarm Christian who wants all the benefits of Christianity but not its guidelines for living. They are in a state of being a rebellious child. Many folks claim they are "inactive" Christians. There is no such thing! We are active for Christ or against him [Matt. 12:30].

[3] Some are in Christ, serving, pressing toward the finish. This is to be a Christian, faithful in service to God and running the race of life on the course God charts. This is the place of satisfaction, peace and fulfillment and the place of readiness to receive the prize of our running. This is the place of God's will and God's Word and God's way. Time is not ours to do as we please. We have no guarantees of tomorrow. Now is the only time we have. In our relationship to God, the question is still vital, "Where art Thou?"

#### NORTH PLAINS SAVINGS & LOAN

396-5534

#### CIMARRON FEEDERS, INC.

1-405-543-6383 Griggs

#### HEADQUARTERS RESTAURANT

396-2120

#### ZANADU VIDEO

396-2845

#### WALTER LASLEY & SONS, INC.

753-4411

#### ALBERTS GROCERY & MARKET

396-2330

#### C & C TEXACO STATION

C & C TEXACO PRODUCTS

396-2547 396-2131

#### CONSUMERS CO.

396-2261

#### THE GIRLS NEXT DOOR

C'S MALE BOX

396-5971

#### TECO

396-2300

#### STRATFORD STAR

396-5885

## First Baptist Church

STRATFORD, TEXAS

SUNDAY, AUGUST 23, 1987

WILL BE COMMEMORATING THE CONSTITUTING OF THE LOCAL CONGERATION INTO A CHURCH ON AUGUST 24, 1902.

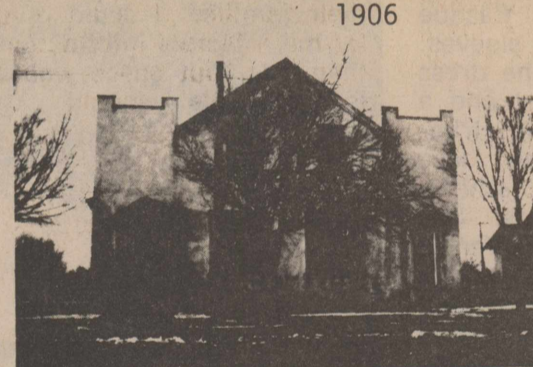
REGISTRATION WILL BEGIN AT THE CHURCH AT 9:00AM, ALSO, WE WILL HAVE SERVICES AT COLDWATER MANOR AT 9:00AM; SUNDAY SCHOOL WILL BE AT 9:45AM; THE MORNING WORSHIP SERVICE WILL BEGIN AT 10:50AM, WITH OUR PRESENT PASTOR PREACHING.

AFTER THE MORNING WORSHIP SERVICES, THERE WILL BE LUNCH AT THE CHURCH, WITH LOTS OF FOOD AND VISITING.

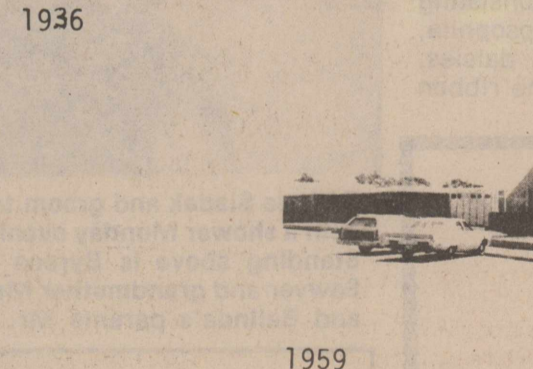
AT 2:30PM, WE WILL REASSEMBLE IN THE SANCTUARY FOR A PROGRAM WHICH WILL END AT 4:00PM OR THERE ABOUT.

ALL MEMBERS AND PERSONS WHO HAVE BEEN MEMBERS ARE INVITED, AS WELL AS ARE ALL THE DEAR FRIENDS AND CO-WORKERS IN CHRIST, IN OUR COMMUNITY.

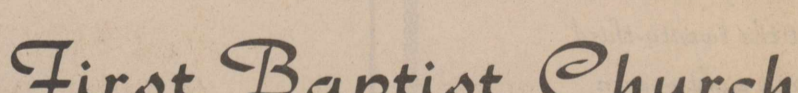
THERE WILL BE NO EVENING SERVICES.



1906



1936



1959

To God  
Be  
The Glory

# Star SOCIETY

## Vows Exchanged



Jan Spere and David O. White exchanged vows July 11, during a formal, double-ring ceremony at First Baptist Church in Alamogordo, New Mexico. Officiating the ceremony was the Rev. Francis Wilson. The bride is the daughter of Louis and Lynne Spere of High Rolls and the groom is the son of Glenn and Carolyn White of Stratford, Texas.

The church was decorated with brass candelabra, potted plants, carnations and gladiolas. Bows and baby's breath adorned the pews.

Serving as organist was Karen Amison, and Darrel White served as pianist. Soloists included Tracy Holcomb, Gayle White, Lisa White and Paul White. Special music was comprised of the selections "Household of Faith," "Flesh of my Flesh," "Together," "As for me and my House, We will serve the Lord," and "People Need the Lord". The bride's father gave her away.

Miss Spere wore a white satin gown with a dropped waistline, puffed short

sleeves and a chapel length train. The gown was tied at the sleeves with bows, and featured an embroidered front. The gown was also covered with organza.

She wore white satin hat, designed by the bride with both a fingertip and illusion veil. Her bouquet centered around a white bride's Bible, and featured a cascade of peach roses, daisies and white carnations. Ivy to plant, was also mixed into the bouquet.

For something old, Spere carried a peach "tatted" Bible marker, made by Candi Mills. The marker was tatted with 95 year old thread. For something new, she wore a pearl necklace and earrings a gift to the bride from the groom. Something borrowed was a gold bracelet, borrowed from Denise Bailey, a special friend of the bride. Something blue was a blue satin garter, made by the bride's mother.

Maid of honor was Stephanie Barnes, from Denver, Colo. Bridesmaids included: Sharlett Taylor of Clovis, N.M., Denise Bailey

of Holloman, Lisa White of Stratford, Texas and Sandra Sparks of High Rolls. All wore a peach taffeta tea length dress with a ruffled neckline and dropped waist with a bow. Junior bridesmaids, Cynthia Miller of Alamogordo and Victoria Mills of Cloudcroft, wore similar dresses except in a darker peach color.

Best man was Kevin Stanely. Groomsmen were Darryl White of Irving, Texas, and Paul White of Stratford, brothers of the groom; Glenn White, father of the groom; and Lance Spere of High Rolls, brother of the bride. All wore gray tuxedos with peach accessories.

Candlelighters were Donald Rhoads of Ropesville, Tex. and Dub White of Stratford. Ringbearers included Brian Bailey of Holloman and Mark Rhoads of Ropesville, Tex. Flower girl was Christine Probasco.

An afternoon buffet at the church's fellowship hall followed the ceremony. White candelabras, potted plants, country hats and carnations decorated the reception area.

Serving as guest book attendant was Cynthia Miller, and a three-tiered cake was served to guests. The cake was white with peach bows, and a miniature bride's bouquet. Ribbons fell from the top cake layer to two single cakes on the sides. A precious moments bride and groom topped the cake.

Special guests for the ceremony included: Mr. and Mrs. Bill Reed of Odessa, Texas, maternal grandparents of the bride; Mr. and Mrs. Clyde Sparks of Clovis, maternal grandfather of the groom; Mr. and Mrs. Pat Cadwell of Slaton, Texas, maternal grandmother of the groom; Mr. and Mrs. Howard White of Stratford, paternal grandparents of the groom; Otey Enoch of Portland, Ore. and Wanda and Stephanie Barnes of Denver, Colo.

The couple spent their honeymoon in Canada before moving to their home in Portland, Ore. They are both serving a two-year commitment as missionaries through Mission Service Corps a division of the Home Mission Board of the Southern Baptist Convention.



Theresa Marie Perrin daughter of Mr. and Mrs. Deryll Perrin of Stratford and Todd Alan Walsh, son of Mr. and Mrs. James Walsh of Desota, Texas, formerly of Canyon, were united in marriage Saturday, August 15 at 2 p.m. at The First Baptist Church in Canyon, Texas. The Rev. Jim Hancock of First Baptist Church and Ken Murray, First Church of the Nazarene LA, uncle of the groom, officiated at the double ring ceremony.

The bride was given in marriage by her father. Miss Perrin's gown was a full length gown of taffeta with Venise lace trim. The dress was accented with a Venise lace collar, a Basque waistline and melon sleeves. Other features of the dress were an A-line skirt and a semi-cathedral train trimmed with Venise lace medallions and schiffle embroidered cameos. She wore an Ascot hat of Venise lace and seed pearls with a floral side trim with a pouf and veil. The bride carried an arm bouquet of mixed summer flowers consisting of alstramaria, gypsophila, dutch iris, gerhera, daisies, and English ivy. The ribbon

on the bouquet was cross-stitched by the bride.

Matron of Honor was Keri Knight, Stratford, sister of the bride. Bridesmaids were Kathy Adams of Canyon and Tonda Julian of Duncanville, sister of the groom. They wore pink tea length dresses with scallop-edged lace over acetate satin, satin cummerbund and back bow. They carried arm bouquets that were a smaller version of the bride's bouquet.

Best man was Randal May of Canyon, groomsmen were Kent Walsh, Desota, brother of groom and Doug Kear of Canyon. They wore black

satin peak tuxes with pink ties and cummerbunds.

Candlelighters were Jeff Julian and Pat Murray. Ushers were Jeff Julian, Pat Murray and Doug Kear.

Registering the guests was Marla Murray, cousin of the groom.

Vocal selections of "This Is The Day", "Long Line Of Love", "Such is the Mystery" and "You, Me & Jesus" were sung by Kent Walsh, brother of groom and Kelli Campbell. Organist was Robin Stout and pianist was Kelli Campbell.

The church was decorated with baskets of mixed summer flowers on either side of candelabras covered with greenery. A traditional archway entwined with Jade foliage was in the center.

A reception was held at the First Baptist Church Fellowship Hall. Serving the bride's table were Linda Beaty, cousin of the bride, Donna Kays, cousin of bride and Melanie York. The table was covered with white eyelet over a pink tablecloth. The bride's bouquet was the centerpiece. It was the traditional white wedding cake with pink roses. The bottom layer of cake consisted of 4 hearts, 3 additional tiers.

Serving at the groom's table was Linda Herbert of Canyon. The table was covered with a white tablecloth, the centerpiece was ivy in a white wicker basket. The Italian cream cake was made by the bride as a surprise anniversary cake for her sister's 5th anniversary.

After a wedding trip to east Texas the couple will be at home in Canyon.

The bride graduated from Stratford High School. Graduated from WTSU with a Bachelors of Science in Education. She is currently employed by Canyon ISD.

The bridegroom graduated from Canyon high school. He graduated from WTSU with a Bachelors of Business Administration. He is currently employed by TUFTS, Inc.



Belinda Sladek and groom to be Byron Sawyer were honored with a shower Monday evening at the Stratford Country Club. Standing above is Byrons parents Mr. and Mrs. Billy L. Sawyer and grandmother Mrs. Bill Ratliff. Byron and Belinda and Belinda's parents Mr. and Mrs. Bill Sladek.



*Peggy Green Career & Modeling*  
**Congratulations to our student,**  
**Trisha Tillery**  
**Jr Miss Stratford, 1987 - 1988**  
 1813 Monte Vista Dalhart, Texas 79022  
 806-249-8036

*The Family of  
 Elsie Hamilton*  
 request the pleasure of your company  
 at the  
*One Hundredth Birthday Celebration*  
 on Sunday, August the twenty-third  
 nineteen hundred and eighty-seven  
 from 2:30 to 4:00 o'clock  
 Blue Room, Coon Memorial Home  
 Dalhart, Texas

*No gifts please*

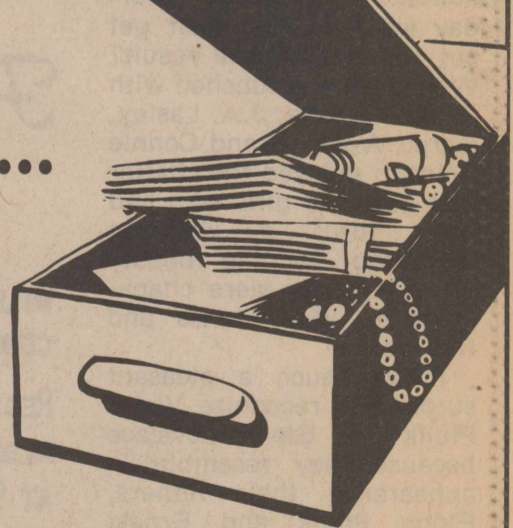
**We Want to be Your  
 Insurance Agent!**

**Very Competitive Rates**  
 Crop Hail, Auto, Home, Boats

**Call or Come By  
 Smith Agency  
 Stratford Texas**

**806-396-2031      806-396-2379**

**Be Safe...  
 Not  
 Sorry!**



**A Safe Deposit Box in our vault  
 means many things:**

- True Security for your valuables
- Privacy
- Peace of Mind

**The FIRST State Bank**  
 OF STRATFORD  
 STRATFORD, TEXAS

MEMBER FEDERAL DEPOSIT INSURANCE CORPORATION

**ARE YOU TIRED OF PAYING HIGH  
 HEALTH PREMIUMS?**

**Come In & See Me**

**Benefit Insurance Specialists**  
**Carolyn A. Tarver**  
 First State Bank Building  
**396-5810**

## Cards of Thanks

Hoy and I want to say a big "THANK YOU" to everyone for the prayers, phone calls, cards, flowers, visits, and food brought in during my stay in the hospital and since my return home. A special "thank you" to Dr. Harlow for getting out in the middle of the night and to Rev. Bill Watson for his prayers and visits. I'm sure the most caring people live right here in Stratford, Texas! Your thoughtfulness is greatly appreciated.

Sue Harrison

Just a note to say a big THANKS to the Women's Division of the Chamber of Commerce for the best ran pageant I've ever been associated with. I'd also like to thank Thriftway for sponsoring me, the person[s] responsible for the \$200 anonymous scholarship I received for Talent and the merchants who donated for the \$250.00 scholarship for First Runner-up. The money will REALLY come in handy. Thanks also to Cindy Crabtree for the wardrobe allowance and Penny Boyd, Louise Dettle, Andy Norris, Joyce McBryde, Sharon McCarver and Carolyn Tarver. Thank Goodness for Jode, Shanda and Orlanda to. Everything was great. Good Luck "Steph" in your next pageant.

Kristi Blake

I want to thank my friends and relatives who visited me or sent cards to me on my birthday. You made me glad to be 80. It was a fun day! I love you for giving me a memory I will always cherish.

Audrey Gamble

## Stratford Collegians Receive WTSU Scholarships

Four soon to be West Texas State University freshmen from Stratford have received Don and Sybil Harrington Honor Scholarships based on their membership in the National Honor Society.

Lani K. Merrill, Stefanie Harrison, Melissa J. Phelps and Jennifer R. Brite will receive the scholarships for the 1987-88 academic year.

Scholarship recipients have received awards beginning at \$200, with higher amounts determined by their academic achievement level. Awards will be automatically renewed for subsequent semesters for those students who maintain a 3.0 grade point average.

The Don & Sybil Harrington Honor Scholarship was established in 1979 with an endowment from the Don & Sybil Harrington Foundation. "The interest from the endowment currently provides approximately \$175,000 annually to make the scholarship possible," Director of Admissions Lila Vars said.

The Don & Sybil Harrington Foundation, which is based in Amarillo, began as a trust in 1951 and was incorporated in 1971. From 1927 until his death in 1974, Mr. Harrington worked a successful oil and gas partnership. Mrs. Harrington still serves as chairman of the foundation's board.

## Ingham Graduate Of 9-Month Ranch Management Program

James K. Ingham of Pecos and Stratford was one of 31 recent graduates of Texas Christian University's nine-month Ranch Management Program.

The unique TCU program is dedicated to educating men and women specifically to operate ranches profitably.

A rancher cannot afford to experiment, says program director John L. Merrill. He must know how to be a combination accountant-veterinarian-farmer-broker-salesman-executive-laborer, and the TCU Ranch management Program seeks to turn out just such a product.

Merrill points out that the

TCU program is in no way intended to compete with courses at agricultural colleges. Instead, it offers each student a chance to concentrate totally on ranch management for nine months without the distraction of other classes.

Ranch Management faculty members also are highly selective in their choice of students. No more than 35 students are accepted each year, and a successful applicant must have had enough previous farming or ranching experience to be dedicated to the profession, aware of its problems, and able to relate the course information to everyday situations.

# What's Happening !!

## Business Spotlight



Betty Carter, Dorothy Rolan and Evelyn Kirkwood were on hand for pictures Friday.

The Ranger Motel is owned by Frank and Sarah Reaves of Hudson, Colorado.

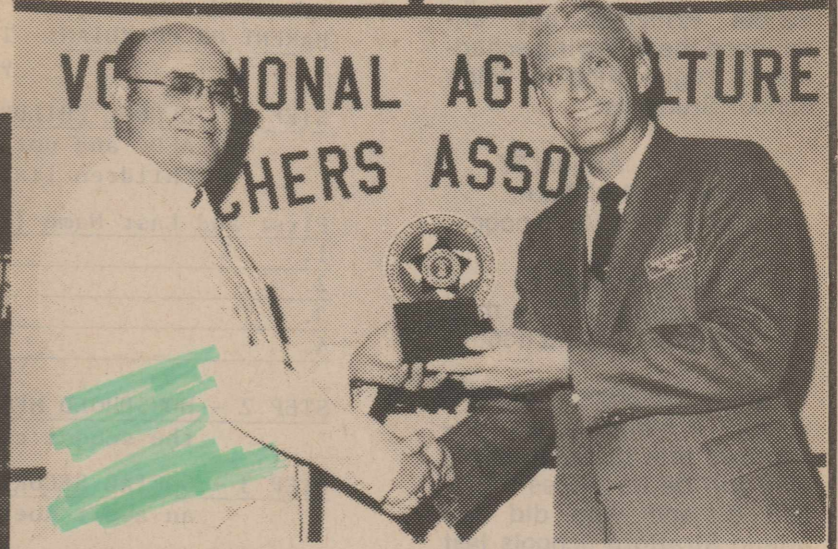
The Ranger Motel was opened as a new business in 1952 by Mr. Phil Harvey and then was sold to Mr. Culley who added nine rooms to the existing building. Jane and Leon Guthrie purchased the Motel in 1963 and operated it for 15 years, until Pat and Cecil Wright leased it in 1978 and later in 1980 purchased it. Pat and Cecil then moved to Abilene, Kansas and sold the motel to the present owners, Frank and Sarah Reaves, who have totally remodeled all the

rooms.

The Ranger Motel located on highway 54 is managed by Ardith and Dorothy Rolan and employs four which include: Betty Carter, Wilma Ireland, Evelyn Kirkwood and Eunice Vaughn.

Ardith and his wife, Dorothy, have three children Dorothy Owens, Stacy and Vickie. Ardith and Dorothy are members of the First Assembly of God Church and the Stratford Chamber of Commerce.

Dorothy says the Motel business is a 24 hour a day job and leaves no time for hobbies.



Richard Carter of Stratford, receives the 30 year gold engraved watch of the vocational agriculture teachers association from the organization's president, Jesse L. Bradford of Diboll. The award was presented at the annual awards program for the association in recognition of the dedicated service rendered to vocational agriculture.



Class Of 1962

Gary Garoutte, Sharon Smith Brown, Sam James, Shiela Donelson Cates, Judy Willey Williams, Ronnie Pickens, Bobbie Burgess Corbitt, Angela Teague Lamb, Keith Borth.



Coldwater Manor birthdays for August are left to right, Guest Pete Wall, Residents, Nell Roberts, Bernice Dortch and Madge Lowe.

## Thurman Promoted

Marine Lance Cpl. Edwin T. Thurman, son of Billy L. Thurman of Kerrick, Tex. has been meritoriously promoted to his present rank upon graduation from recruit training at Marine Corps Recruit Depot, San Diego.

Thurman received the early promotion for his

superior performance during all phases of the 11-week training cycle, which emphasized physical conditioning, self-discipline and teamwork.

A 1983 graduate of Stratford High School, Stratford, he joined the Marine Corps in December 1986.



Stratford Thriftway held their ribbon cutting with representatives from the Chamber of Commerce on hand. Pictured here are Judy Griffith, Sherry Phelps, Wanda Riffe, Hunter's Chairman, with new owners Johnny and Freddy Velasquez, and Chamber Manager, Sharon McCarver. Johnny and Freddy would like to invite everyone to come to the Grand Opening all this week and see the new remodeling. Freddy and his wife, Melody have two children, Jennifer and Sarha and live here in Stratford at 1308 Putnam.

**STRATFORD FEEDYARD**  
is contracting  
**HI MOISTURE CORN**  
for trade details  
please call or come by  
**CACTUS FEEDERS INC.**  
CORP. OFFICE  
110 E. 6th ST.  
DUMAS, TEXAS 79029  
935-7176

Zanadu Video 396-2845	Thriftway 396-5586	Main Video Plus 396-2882	Albert's Grocery & Market 396-2330
North Plains Savings & Loan 396-5534	Le's Unicuts Barber Shop 396-5337	Benefit Insurance Specialist 396-5810	The Girls Next Door & C's Male Box 396-5971
Consumers Company 396-2261	TECO 396-2300	Olson Automotive 396-5572	Brooks Motor Company 396-2470
Elk Pharmacy 396-5505	Coldwater Manor 396-5568	Stratford Star 396-5885	A & I Parts Center 396-5593
Stratford Grain Co. Stratford 396-5541 Lantz 769-4485	Cimarron Feeders, Inc. 1-405-543-6383 Griggs	Walter Lasley & Sons, Inc. 753-4411	

## School Starts Sept. 1

Sam Brite, High School Principal has announced the following schedule for registration for High School Students:

Thursday, August 27  
Seniors 9-10:30 a.m.  
Juniors 10:30-12:00 noon

Friday, August 28  
Sophomores 9-10:30 a.m.  
Freshman 10:30-12 noon

James Taliadro, Middle School Principal, has announced that those students who will be in grades 5,6,7, and 8, and who did not attend Stratford Schools last year, may begin registration on August 17. This may be done in the Middle School Principals office from 9:00 a.m. to 12:00 noon, and from 1:00 to 3:00 p.m. any week day. Returning students from last year will report to school on September 1 at the regular time.

Steve Haynes, Mary Allen Principal, has announced that students who will be in grades K-4, and did not attend Stratford Schools last year, may begin their registration at the Mary Allen Elementary School on August 17 from 9:00 a.m. to 12:00 noon, and from 1:00 to 3:00 p.m. Students may register any week day during these times. Returning students from last year will report to school on September 1 at the regular time. If you have any questions, please do not hesitate contacting the building principals. The respective numbers are as follows: High School, 396-2341, Middle School, 396-5690; and Mary Allen 396-5305.

## District 1 Miss Texas Farm Bureau & Talent Find Contest

The District 1 Miss Texas Farm Bureau and Talent Find Contests will be held on Thursday, August 20, 1987 in Stratford, Texas at 8:00 p.m. at the Mary Allen Elementary School. Contestants for Miss Texas Farm Bureau is Lori Wiley from Stratford-Sherman County, Julie Latta from Spearman-Hansford County, and Anne Mulner from Dalhart-Dallam County. Contestants for Talent Find Contest is Leigh Bass from Stratford-Sherman County, and Cindy Womble-Morse-Hansford County. The winner of each of these contests will win a \$500.00 college scholarship. The district winners will compete at the Texas Farm Bureau Convention in Lubbock, Texas November 28-30, 1987. The State winners will receive a college scholarship of \$1,500.00 for the winner, and \$1,000.00 for first runner-up. LETS HAVE A GOOD ATTENDANCE AND SUPPORT THESE YOUNG PEOPLE!!!

## "DEER" Puppet Show Aug. 29-10:30

Boys and girls are invited to the Sherman County Library on Saturday, Aug. 29 from 10:30 to 11:30 a.m. for a puppet show while their parents visit the collectors show.

Chris McAdams, assisted by Cara Dawn Macias, entertained the boys and girls on August 12 at the Sherman County Library. She used "Sharing Sam" to tell how to care for pets. On August 29 she will tell the story of "rags" and probably retell the "Sharing Sam" flannel board story. These stores are sponsored by GFWC Prospectus Study Club as an education project.

Young readers are urged to read 5 animal story books by August 29-so they can receive a "DEER" certificate.

Oline Caraway, Prospectus Education Club taught the children 2 animals songs which she had learned 66 years ago from her Aunt's phonograph record.

# Free & Reduced Meals

STRATFORD INDEPENDENT SCHOOL DISTRICT

APPLICATION FOR FREE AND REDUCED-PRICE SCHOOL MEALS

**PARENT OR GUARDIAN:** To apply for free or reduced-price meals, complete, sign, and return this application to school. If you need help, please call the school.

**STEP 1 - SCHOOL CHILDREN:** Complete for each child you want to receive free or reduced-price meals. If the child is receiving AFDC and not food stamps, report the AFDC case number. If your family is not receiving food stamps, and if all children listed below are not receiving AFDC, you must list income in Step 5 below.

First and Last Name (Print)	School & Grade	AFDC No.	First and Last Name	School & Grade	AFDC No.
1.			5.		
2.			6.		
3.			7.		
4.			8.		

**STEP 2 - HOUSEHOLD MEMBERS:** List below the names and ages of everyone living in your household including yourself. Do not list the school children listed above.

**STEP 3 - SOCIAL SECURITY NUMBERS:** Print the Social Security Number of each adult age 21 or older that you listed below. If an adult does not have a Social Security Number, print "NONE" next to their name. (See back of form).

**STEP 4 - FOOD STAMP HOUSEHOLDS:** If your household is now receiving food stamps, you may give your food stamp case number and skip the income questions on this form. You still must list all household members and their Social Security Numbers. Yes we received food stamps this month and want school meals. Our food stamp case number is: \_\_\_\_\_

**STEP 5 - INCOME:** If you did not list your food stamp case number above, list ALL income received last month on the same line with the person who received it. List each amount of income under the correct title. You must list the gross income BEFORE all deductions for taxes, social security, etc. (See back of this page for the kinds of income to report.)

DO NOT LIST BELOW THE CHILDREN IN SCHOOL YOU LISTED ABOVE.				Social Security Number	Salary Before Deductions (1st Job) Monthly Salary	Monthly (2nd Job) Monthly Salary	Monthly Welfare Pymts. Unemployment Child Sppt.	Monthly Pensions, Retirement, Soc. Security	All Other Monthly Income
Last	First	Age	Name	Number	Salary	Salary	Child Sppt.	Soc. Security	Income
					\$	\$		\$	\$
					\$	\$		\$	\$
					\$	\$		\$	\$
					\$	\$		\$	\$
					\$	\$		\$	\$
					\$	\$		\$	\$
					\$	\$		\$	\$
					\$	\$		\$	\$

**SIGNATURE:** I understand that all of the above information is true and correct and that all income is reported. I understand that this information is being given for the receipt of Federal funds, that school officials may verify the information on the application and that deliberate misrepresentation of the information may subject me to prosecution under applicable State and Federal laws.

TOTAL HOUSEHOLD, MONTHLY INCOME \$ \_\_\_\_\_

PRINT NAME \_\_\_\_\_  
STREET \_\_\_\_\_ APT. NO. \_\_\_\_\_  
CITY \_\_\_\_\_ ZIP CODE \_\_\_\_\_  
Home Telephone \_\_\_\_\_ WORK TELEPHONE \_\_\_\_\_

SIGNATURE OF PARENT OR ADULT FAMILY MEMBER \_\_\_\_\_ DATE \_\_\_\_\_

ATTACHMENT A

INCOME ELIGIBILITY GUIDELINES

1987-88

FAMILY SIZE	ANNUAL		MONTHLY		WEEKLY	
	FREE MEALS	REDUCED-PRICE MEALS	FREE MEALS	REDUCED-PRICE MEALS	FREE MEALS	REDUCED-PRICE MEALS
1	\$ 7,150	\$10,175	\$ 596	\$ 848	\$136	\$196
2	9,620	13,690	802	1,141	185	264
3	12,090	17,205	1,008	1,434	233	331
4	14,560	20,720	1,214	1,727	280	399
5	17,030	24,235	1,420	2,020	328	467
6	19,500	27,750	1,625	2,313	375	534
7	21,970	31,265	1,831	2,606	423	602
8	24,440	34,780	2,037	2,899	470	669
Each Additional Family Member	2,470	3,515	206	293	48	68

**WHAT INCOME MUST YOU LIST ON THIS APPLICATION:** List all income received last month by each person. You must list: all wages from all jobs (the total earned BEFORE deductions for taxes, social security, etc.); retirement or pension income for anyone in your household receiving this income; and the other income types listed below. If you or anyone else in your household received disability, unemployment compensation, workman's compensation, or strike benefits last month, it must be listed as other income on the application. If you have household members for whom last month's income was higher or lower than usual, please list that person's expected average monthly income for this year. For example, self-employed people like farmers and seasonal workers should list average monthly income.

**RACE:** Please check the racial or ethnic identity of your child. You are not required to answer this question. We need this information to be sure that everyone receives benefits on a fair basis.

- White, not of Hispanic origin
- Black, not of Hispanic origin
- Hispanic
- Asian or Pacific Islands
- American Indian or Alaskan Native

No child will be discriminated against because of race, sex, color, national origin, age, or handicap.

**FOSTER CHILDREN:** In certain cases foster children are eligible for free or reduced-price meals regardless of your household income. If you have such children living with you, please contact the school for special instructions on how to complete this application.

**PRIVACY ACT INFORMATION - SOCIAL SECURITY NUMBERS:** Federal law (P.L. 97-35) requires you to list social security numbers of all adult household members before your child may receive free or reduced-price meals. You do not have to give social security numbers, but if you refuse your child cannot receive free or reduced-price meals. The social security numbers may be used to identify you for verifying the information you report on this application. Verification may include audits, investigations, contacting the State employment office, food stamp or welfare office, and employers, and checking the written information provided by the household to confirm the information received. If incorrect information is discovered, a loss of benefits or legal action may occur. These facts must be told to all household members whose social security numbers are reported on this form.

FOR SCHOOL USE ONLY — DO NOT WRITE BELOW THIS LINE

ELIGIBILITY	Total Household Size: _____	Total Income: \$ _____	<input type="checkbox"/> Monthly <input type="checkbox"/> Annual OR <input type="checkbox"/> Food Stamp Household
	Eligibility Determination: <input type="checkbox"/> Approved Free <input type="checkbox"/> Approved Reduced Price <input type="checkbox"/> Denied		
	Reason for Denial: <input type="checkbox"/> Income Too High <input type="checkbox"/> Incomplete Application <input type="checkbox"/> Other (Reason) _____		
	Date Notice Sent: _____ Signature of Determining Official: _____ Date: _____		
VERIFICATION	Date Selected For Verification: _____	<input type="checkbox"/> Food Stamp Eligibility <input type="checkbox"/> Income: \$ _____	Sample Selection: <input type="checkbox"/> No Change <input type="checkbox"/> Ineligible <input type="checkbox"/> Free to Reduced Price <input type="checkbox"/> Reduced Price to Free
	Response Due From Household: _____	<input type="checkbox"/> Not Confirmed <input type="checkbox"/> Confirmed <input type="checkbox"/> Monthly <input type="checkbox"/> Yearly <input type="checkbox"/> Wage Stubs <input type="checkbox"/> Focused <input type="checkbox"/> Written Documents <input type="checkbox"/> 100% <input type="checkbox"/> Other	Reason For Eligibility Change: <input type="checkbox"/> Income <input type="checkbox"/> Household Size <input type="checkbox"/> Refused to Cooperate
	Second Notice Sent: _____	<input type="checkbox"/> Notice of Eligibility <input type="checkbox"/> Collateral Contact <input type="checkbox"/> Other	<input type="checkbox"/> Other _____
		<input type="checkbox"/> ATP Card Issued monthly (not ID card w/o expiration date) <input type="checkbox"/> Agency Records <input type="checkbox"/> Other _____	Date Adverse Notice Sent: _____ Signature of Verifying Official: _____ Date: _____
Space for notes about the Eligibility/Verification below _____			

## Stratford Day Roping-Sept. 6

The Stratford Day Roping will be held at the Youth Arena on Sunday, Sept. 6. This year the Roping will be dedicated to Clois Osburn, a long time friend and associate of the Roping and other Fair activities. The books this year will be in the concession stand and will open at 12:30 with the Roping starting at 1:00. Events will include Open Calf Roping, Steer Daubing for Children 14 and under, Barrell Racing, Ribbon Roping, Mixed team Roping. All contestants must now reside in Sherman County or

the Stratford Independent School District. Gist belt buckles will be given to the winner of each event and prize money paid for 1st, 2nd and 3rd in the average. Buckles were generously donated by Cimarron Feeders, Worsham Int. Stratford Grain, First State Bank of Stratford, Coronado Feeders, Larry Parsons Cattle, Stratford Feedyard and Kerrick Elevators Co. For additional information about the roping check your Fairbook pages 32 and 33.

## DPS News School Safety

Texas Department of Public Safety officials are asking all drivers to begin thinking about the safety of our school children as the beginning of a new school year commences. The first few weeks of school are the most dangerous, according to Major V.J. Cawthon, Regional Commander for the Texas Department of Public Safety. "This time of year presents safety problems for both the school children and the driver," Major Cawthon explained. "Many youngsters are attending school for the first time and others might be going to a different school where they are unfamiliar with local traffic conditions."

Another problem is that during the summer vacation some drivers have gotten out of the habit of being alert for both school zones and school buses. "Every year there appears to be an unnecessary rash of accidents caused by drivers who fail to follow safe driving habits for a stopped school bus," Major Cawthon stated.

Texas state law requires drivers on the same roadway as a school bus that is stopped to load or unload students, to also stop until the bus driver has turned off the flashing red lights. This law applies unless the vehicle is separated from the bus by a divided highway with a median strip.

Let's all work together to make this a safe school year for our children by observing the speed limits in school zones and be alert for increased pedestrian traffic in neighborhoods at the beginning and ending of each school day.



The world's smallest flower is the duckweed, no larger than a tack-head.

## Sherman County Residents Attend Electricity Camp



Seven Sherman County youths and a county agent participated in an electricity camp sponsored June 15-19 by Southwestern Public Service Company (SPS). They were among 99 4-H'ers from throughout the Panhandle who attended the camp in the Sacramento Mountains south of Cloudcroft, N.M. Left to right, front row: Bryan Mungia, Gregg Larson, Travis Willey and Renne Allen. Back row: SPS Manager of Agricultural & Industrial Power Seth Thomason, Katrina Plunk, Charissa Bryson, Kim Thompson and county agent Jim Allison.

## Tips & Topics

### By Susie Spurlock County Extension Agent Stores To Feature Nutritious Snacks

Back to School Snacks will be featured at in-store learning centers this week. Susie Spurlock, County Extension Agent, will be at Thriftway in Stratford on Wednesday, August 19 from 3:30 p.m. to 6:00 p.m. with information on how to plan and serve easy, low-sodium snacks that provide needed nutrients for growing boys and girls.

Mrs. Spurlock will be at Norris' Foodarama in Texhoma on Friday, August 21, from 10:00 a.m. to 12 noon with the same information for Texhoma residents.

Mrs. Spurlock will be providing written information and samples of snacks. Educational Programs conducted by the Texas Agricultural Extension Service people of all ages regardless of socio-economic level, race, color, sex, religion, or national origin. References to commercial products or trade names are made with the understanding that no discrimination is intended and no endorsement by the Texas Agricultural Extension Service is implied.

### Two Farmers Markets Open 1987 Season In TDA's Amarillo District

For the first year, consumers in the Pampa and Dalhart areas can buy fresh farm produce directly from the people who produce it, with the opening of two new farmers markets in the Panhandle on Saturday, announced Texas Department of Agriculture Amarillo District Supervisor Angela Lamb.

The Top O'Texas Farmers Market located at M.K. Brown Auditorium on Hobert Street in Pampa, will operate from 8 a.m. until sell-out on Saturdays and Wednesdays.

Located at 01 Smoky Barbecue on Highway 87 South in Dalhart, the Dallam and Hartley Counties Farmers Market will operate from 9 a.m. until sell-out on Saturdays and from 4 p.m. until sell-out on Wednesdays

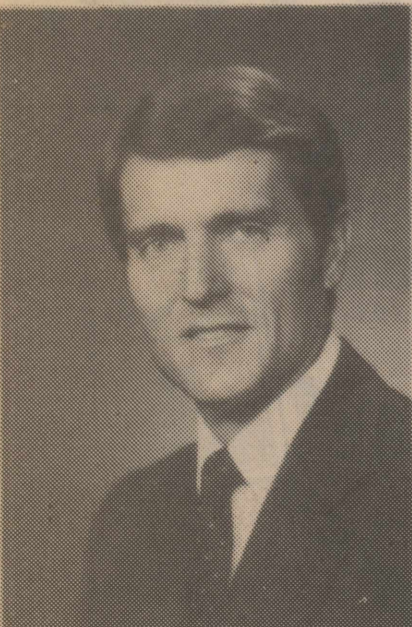
Statewide this year, TDA expects to assist with organizing, operating and promoting farmers markets in over 70 Texas towns and cities of all sizes. TDA-assisted farmers markets are expected to have sales of over \$10 million this year.

For more information about Pampa's Top O'Texas Farmers Market contact Gray County Extension Agent Joe VanZandt at 806-669-7429.

Information about the Dallam and Hartley Counties Farmers Market is available from Dallam County Extension Agent Brent Crossland at 806-249-4434.

Additional information about any of the farmers markets in the Panhandle is available by calling TDA's Amarillo District Office at 806-358-7285.

SPS  
Cont. from Pg. 1



Bill Helton

addition to production, personnel and marketing areas.

Southwestern Public Service Company primarily provides electric service to a population of about one million in a 52,000 square mile area comprising much of eastern and southeastern New Mexico, the South Plains and Panhandle of Texas, the Oklahoma Panhandle and southwest corner of Kansas. Corporate headquarters is in Amarillo, Texas.

Wild flowers have been known to bloom in the Arctic—even at the edge of glaciers.

## Multiple Sclerosis Survey

The Panhandle Chapter of the National Multiple Sclerosis Society is preparing to send out a needs assessment survey to all the men and women in the Texas and Oklahoma Panhandles who have been diagnosed with multiple sclerosis.

Of great concern to the chapter is the high incidence rate of MS in the area. The Panhandle Chapter needs your help not only to identify those people who are unregistered with the chapter but also to update addresses. If you or someone you know has MS, please contact, Susie Ratliff, at 935-6820 Dumas or the MS office, 806-372-4429 or write to Fredricka Gens, MS, 1416 West 8th, Amarillo, Tx. 79101. All information is confidential.



Nothing fishy about it—one of the flounder's eyes travels to the other side of its head as the fish develops. The winter flounder's eyes are on its right side, while the summer flounder's eyes are on its left.

## 1600 Acres Farm and Ranchland

Southwest Quarter of Section Sixteen, Township One, Range Twelve (SW $\frac{1}{4}$  16-1-12) 74 acres in cultivation, balance in native grass  
North Half and the Southwest Quarter of Section Twenty-eight, Township One, Range 12 (N $\frac{1}{2}$  & SW $\frac{1}{4}$  28-1-12) Farm headquarters with small home, double garage, and 40'x100' Steel Building. This unit has been pledged to the CRP Program with 296.2 Acres.

Northwest Quarter of Section Twenty-seven, Township One, Range Twelve (NW $\frac{1}{4}$  27-1-12) 155.6 acres pledged to CRP.

East Half of Section Seventeen, Township One, Range Twelve (E $\frac{1}{2}$  17-1-12) also 17.9 acres in the Northeast of Northwest Quarter of Section Seventeen, Township One Range Twelve (NE of NW $\frac{1}{4}$  17-1-12)

Above four tracts are in Texas County, Oklahoma  
Southeast Quarter and North Half Section One Hundred Forty-eight Block One-C GH&H R Co. Sur. Located in Sherman County, Texas. Northeast Quarter is native grass. Southeast Quarter and Northwest Quarter are in the CRP

## FARM MACHINERY

TRACTORS & COMBINES  
TRUCKS & PICKUPS  
IMPLEMENTS

TANKS & TRAILERS  
RANCH & CATTLE EQUIPMENT  
SHOP EQUIPMENT & TOOLS

For detailed brochure call 405 545 3486

## RALPH WHITEHAIR ESTATE — OWNER

HAROLD OQUIN — Personal Representative. Stratford, Texas Ph. (806) 396-2384



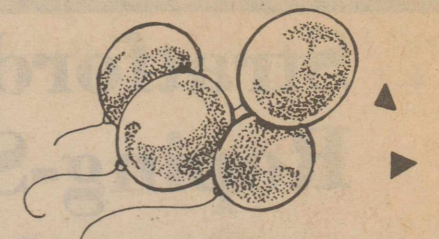
Licensed in  
Oklahoma, Texas and Kansas

LEE R. JOHNSON and ASSOCIATES

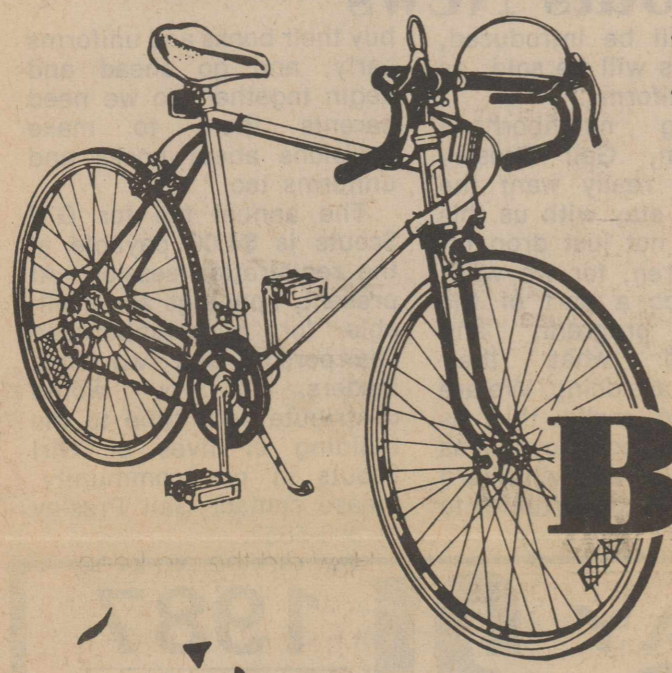
R. R. #1, BOX 3 — GOODWELL, OKLAHOMA — (405) 648-3486

Oks -028-006883

# Grand Opening *All Week*



<p><b>Mitey Mizer</b></p> <p>BATHROOM TISSUE <b>CHARMIN</b></p> <p>4 ROLL PKG. <b>19¢</b></p> <p>WITH ONE FILLED MITEY MIZER SAVER CARD 1</p>	<p><b>Mitey Mizer</b></p> <p>ASSORTED CRISP 'N TASTY <b>JENO'S PIZZA</b></p> <p>10 OZ. PKG. <b>5¢</b></p> <p>WITH ONE FILLED MITEY MIZER SAVER CARD 2</p>	<p><b>Mitey Mizer</b></p> <p>ALL FLAVORS PRICE SAVER <b>SODA POP</b></p> <p>2 2 LTR. BTL. <b>25¢</b></p> <p>WITH ONE FILLED MITEY MIZER SAVER CARD 3</p>
<p><b>Mitey Mizer</b></p> <p>PRICE SAVER <b>Flour</b></p> <p>5 LB. BAGS <b>29¢</b></p> <p>WITH ONE FILLED MITEY MIZER SAVER CARD 4</p>	<p><b>Mitey Mizer</b></p> <p>MARGARINE QUARTERS <b>PARKAY</b></p> <p>1 LB. BOXES <b>19¢</b></p> <p>WITH ONE FILLED MITEY MIZER SAVER CARD 5</p>	<p><b>Mitey Mizer</b></p> <p>TENDER CRUST SPLIT TOP <b>WHITE BREAD</b></p> <p>1 1/2 LB. LOAVES <b>19¢</b></p> <p>WITH ONE FILLED MITEY MIZER SAVER CARD 6</p>
<p><b>Mitey Mizer</b></p> <p>100% INSTANT TEA <b>NESTEA</b></p> <p>3 OZ. JAR <b>\$1.49</b></p> <p>WITH ONE FILLED MITEY MIZER SAVER CARD 7</p>	<p><b>Mitey Mizer</b></p> <p>STAIN REMOVER <b>SPRAY'N'WASH</b></p> <p>22 OZ. BTL. <b>39¢</b></p> <p>WITH ONE FILLED MITEY MIZER SAVER CARD 8</p>	<p><b>Mitey Mizer</b></p> <p>BREAST'O'CHICKEN WATER OR OIL PACK <b>CHUNK TUNA</b></p> <p>6 1/2 OZ. CANS <b>59¢</b></p> <p>WITH ONE FILLED MITEY MIZER SAVER CARD 9</p>



**Register to Win** **August 22, 1987** **at 4:00 p.m.**

**Dr. Pepper 10-Speed Bicycle**

**You Need Not Be Present To WIN!**

To Be Given Away Saturday

BUY ONE 10 OZ. PKG. AMERICAN BEAUTY  
**Long Spaghetti**  
GET ONE 10 OZ. PKG.  
**Free!**

BUY ONE 7 OZ. BAG  
**Ruffles® Potato Chips**  
GET ONE 7 OZ. BAG  
**Free!**

BUY ONE 8 OZ. PKG. BEEF OR CHICKEN  
**Rice-A-Roni**  
GET ONE 8 OZ. PKG.  
**Free!**

BUY ONE 16 OZ. PKG.  
**Oscar Mayer Franks**  
GET ONE 16 OZ. PKG.  
**Free!**

BUY ONE 6 OZ. POUCH  
**GLADIOLA WHITE/YELLOW**  
**Cornbread Mixes**  
GET ONE 6 OZ. POUCH  
**Free!**

BUY ONE 16 OZ. JAR  
**Bama Grape Jelly**  
GET ONE 16 OZ. JAR  
**Free!**

BUY ONE 8 CT. PKG.  
**Gingham Girl Cinnamon Rolls**  
GET ONE 8 CT. PKG.  
**Free!**

BUY ONE 12 OZ. PKG.  
**Wilson Bologna**  
GET ONE 12 OZ. PKG.  
**Free!**

BUY ONE 1.4 OZ. PKG. AMERICAN BEAUTY  
**Spaghetti Sauce Mix**  
GET ONE 1.4 OZ. PKG.  
**Free!**

Many More In-Store Specials!

BUY ONE 2 LITER BTL.  
**Coca-Cola**  
GET ONE 2 LITER BTL.  
**Free!**

**AF AFFILIATED FOODS INC.** *This Country's Best!*

WE ACCEPT FOOD STAMPS  
WE RESERVE THE RIGHT TO LIMIT QUANTITIES

PRICES EFFECTIVE AUG. 16-22, 1987

# THRIFTWAY



# IT PAYS TO LOOK IN THE

# Star

# CLASSIFIEDS

'THE BEST SALESPERSON AROUND'

Phone 396-5885 to place your Star classified ad

### ★ FOR SALE ★

Come by Zanadu Video-located in backroom of Thriftway Grocery and ask about our "Crocodile Dundee" T-Shirt give-away. Hours 10-8 Monday thru Sat. 1-6 on Sunday.

7-23-tfn

Lawn mowers and more lawn mowers, we have what you want in stock.

**WESTERN AUTO**  
405-423-7255  
Texhoma

4-30-tfn

Saturday night Out at M's Meet and Eat. Specials on Mexican Food and Steak Dinners.

8-13-tfn

London Fog coats are in-Layaway now. Girls Next Door.

8-20-c

Fresh Vegetables for Sale. Blackeyed peas, Green Beans and Okra. Call 396-2472.

9-3-c

New shipment of Sagebrush Pottery at The Girls Next Door.

8-20-c

We have extra long twin sheets and mattress pads-perfect for dorm room beds at Girls Next Door.

8-20-c

For Sale: Used carpet-good condition. 150 to 160 sq. yards, shag, gold/burnt orange. 50 sq. yard, plush, red. Also used drapes-several sizes and colors. Call 384-3096 after 1:00 p.m.

8-20-c

For Sale: 1976 White Cordova. Excellent condition 4 new Michelin tires. Call 396-5388.

8-13-tfn

**BRIDAL SELECTIONS**  
For  
Chris Emerson  
&  
Guy Jones  
at the  
Girls Next Door  
We deliver gifts!

8-20-c

For Sale: 48" X 30" formica and metal computer table. Call 396-2417.

8-20-p

For Sale: Used Mattress and Boxsprings-good condition. \$50.00 Record player-\$25.00 396-2159. 301 N. 3rd. Rene Plunk.

8-20-p

For Sale: 65 Round Bales, wheat hay, call 727-4263.

8-27-c

For Sale: King Coronet. Good Condition. Call 396-5394.

8-26-c

For Sale: Ford Ranger Pickup flush mount bed cover and fitted rubber bed mat. Doak Crabtree at 396-2491.

8-27-c

For Sale: Apple Macintosh Computer 512K with external drive, imagewriter printer, software, carrying case, dust covers, surge protector. Excellent condition, ready for college. Doak Crabtree at 396-2491.

8-27-c

What could you call a cookie-eating ground squirrel? a **CHOCOLATE CHIPMunk**

What kind of candy did the young dog like? **PUPpermint patties**

What do you get when you cross a dog and a frog? a **polyWAG**

### ★ SERVICES ★

Mercantile  
Kerrick, Texas  
Richardson & Gold Harvest  
Seed Dealer  
CRP Cover Crop  
Bale Twine  
Mystic Hydraulic Fluid  
Miscellaneous Farm Needs  
806-727-4621

6-4-tfn

Durans Disc  
Rolling Service  
35 years experience  
No Mileage charged  
405-423-7238

2-5-9-tfn

**PIZZA SMORGASBOARD**  
M's Meet & Eat  
Friday 5 p.m. - 8:30 p.m.  
3-26-tfn

For Termite Control  
Call Leo Russell  
at 1-383-7075 Amarillo. Have been working Stratford for 28 years. Have City and State License for the City of Stratford.

4-24-tfn

Come by for a free demonstration of a HALON fire extinguisher. Bill Riffe 396-5541

4-9-TFN

We are now associated with Palo Dura travel out of Amarillo and can make all your travel arrangements. Call Pat at 396-2243 or Joan at 396-5561 or 396-5958.

7-30-tfn

**VETERANS--**Needing assistance in filing Eligible Verification Reports [EVR], applying for pensions, compensation, schooling, hospitalization, land and housing purchase, contact Max Stephenson, CSO, at 396-5348.

8-28-p

If you don't have time to do the laundry, try our custom service. We iron shirts, pants and guarantee our work. Stratford Poly Clean 396-2151.

7-9-tfn

**CUSTOM**  
Grass Seed Cleaning-cleaner fully mobil. Grass Seed Bagged and tagged. David Meller, Shattuck, Okla. Phone 405-938-2130, after 7:00 p.m.

12-31-p

Ellie M's Has  
Bridal Selections  
For  
Sheila and Brett Bates  
Nee Sheila Robertson  
We deliver to the Shower

8-20-c

Serving Breakfast from 7:30 a.m. Breakfast croissants our specialty at M's Meet and Eat.

8-13-tfn

Aerobics in the morning?  
Aerobics in the evening?  
Aerobics at Noon?  
Which works for you--Now is the time to fix the fall schedule. Call Gara, Jode or Orlanda at 2570 or 2809 to let us know.

8-27-c

Homemade Hamburgers on our special buns--We also have carry out service. Ms Meet and Eat.

8-13-tfn

**BRIDAL SELECTIONS**  
ELK PHARMACY  
FOR  
Sheila Robertson Bates  
&  
Brett Bates

Call us to help you with your gift selections and delivery to the shower August 25th.

8-20-c

I have room for 1 possibly 2 more children. Monday-Friday 8-5. Call Tammie Helmuth at 396-5975 for rates.

8-27-c

What is a feather storm? a **DOWNpour**

### ★ MISC ★

Headquarters  
Fish Fry Friday Night  
5:30 to 9:00 P.M.  
All You Can Eat  
We are now open on Mondays 6:00 A.M. to 9:00 P.M.

5-14-tfn

Catfish Fry, All you can eat \$4.00 Thursday nights 6-9 p.m. Homemade Pizza anytime. Special on Friday nights. Dine in or carry out. Queen O' Creme 396-2311.

4-30-tfn

To Give Away: 2 Labrador Retriever puppies. Black and full-blooded. Call 396-2875 after 5 p.m.

8-27-c

THE General Store now has Nicholes 5 ft. sweep plow blades. Smaller sizes are also still available. Come check our prices.

6-25-tfn

**BRIDAL SELECTIONS**  
FOR  
Sheila [Robertson] Bates  
&  
Brett Bates  
at the  
Girls Next Door  
We deliver!

8-20-c

**BRIDAL SELECTIONS**  
ELK PHARMACY  
FOR  
Chris Emerson  
&  
Guy Jones

Call us to help you with your gift selections and delivery to the shower August 23rd.

8-20-c

We still have boys button-down shirts-sizes 8-20. 1/2 price.  
C's Male Box

8-20-c

Ellie M's Has  
Bridal Selections  
for  
Holly McKinney  
and  
Soren Gibson  
Free delivery

8-13-tfn

The flying fish, when pursued by enemies, can soar above the water from two to 15 seconds and cover distances of 45 to 200 yards.

### ★ FOR RENT ★

Apartments for Rent: 1 bedroom furnished, all bills paid. Mike O'Brien at 396-5656 or 396-2261.

8-13-tfn

For Rent: 2 bedroom house. Kitchen with stove and yard to take care of. \$250. per month and \$100 deposit. Call 1-384-2160.

5-14-tfn

**HOUSE FOR RENT:** 3 Bedroom house, recently redecorated. Central location Call from 9-6 396-5501 after 6 p.m. 396-5603.

9-10-c

Gillis Apartments for rent. Call 396-5564 or 396-2264. George Jeffcoat. Garrison at 396-5657.

5-21-tfn

Apartments for Rent: "Fulton Hilton" (We call it that) New carpet, new paint, clean and neat. One bedroom, furnished or unfurnished. 6th and Fulton. Call Bill Riffe to look it over, 396-5541 or 396-5692 nights.

2-5-tfn

**HOUSE FOR RENT:** Nice Clean, carpeted, one bedroom with twin beds, utilities paid, linens supplied, cable T.V. \$60.00 a week, camper hookups also available. 396-2545 Sunset Motel.

8-27-c

For Rent: Small two bedroom house and one bath at 420 South Wall. \$175.00 a month. \$175.00 Deposit. Call 1-800-827-7612 or 1-405-423-7618 ask for Margaret.

8-27-9-tfn

### ★ Garage Sales ★

Garage Sale: August 22nd, next to King Equipment on Main Street. This sale will be to raise money for the speech clubs debate camp. If you have donation for the sale call Brenda at 727-4610 or Kathy at 5611 and we will pick them up.

8-20-c

Large 4 family garage sale. Furniture-Tiera glassware-miscellaneous. Saturday 8-6 519 N. Chestnut.

8-20-p

**ALCOHOLICS ANONYMOUS and AL-ANON meet each Thursday at 8:00 p.m. in the old County Barn**

### ★ Classified Ad Rate ★

16' per word after 25 words  
\$4.00 minimum up to 25 words  
16 cents each additional word first week  
8' per word on subsequent insertions  
\$1.00 discount if paid in advance

### ★ Deadline Noon Mondays ★

### ★ HOUSES FOR SALE ★

Must Sell, 3 bedroom, brick in nice, quiet neighborhood, 2 bath, breakfast room, fireplace, garage, hobby room, storage shed with cement floor and electricity, fenced in patio, fruit trees. Call 396-2508 after 5:30 p.m. 602 South Pearl. Priced to sell.

Ruth Adams home for sale. Make an offer by mail to Alta Anderson, 1721 Melody Dr., Midwest City, Okla. 73130 or call in Stratford 396-2148.

Very nice Duplex and 3 room furnished house. Call Ad-Rem Land Co. 935-7364 or Marty Bain 396-2053 or Pat Johnson. 396-2243.

For Sale or Lease: 3 bedroom, 2 baths. Just painted and carpets cleaned. Permanent storage building. 501 S. Main. 396-2054.

**BUY ME:** House for sale. \$15,000, a give away price for so much house. Two story, basement, 4 bedroom, fenced yard. Call 335-3213.

### ★ MANUFACTURED HOMES ★

**ABANDONED HOMES**  
Take up payments. 806-381-1352. call collect.

**CREDIT PROBLEMS? DOWN PAYMENT PROBLEMS?**  
For Sincere Help. Call 806-381-1352, call collect.

**Stratford Lodge**  
No. 874  
**RONALD TILLERY**  
Third Thursday  
8 p.m.

**Stratford Lodge**  
No. 874  
**RONALD TILLERY**  
Third Thursday  
8 p.m.

**Stratford Lodge**  
No. 874  
**RONALD TILLERY**  
Third Thursday  
8 p.m.

### ★ Catherine D. Taylor ★

**Certified Public Accountant**

**North Plains Building**  
401 N. 3 rd 396-2435  
Monday - Friday 9 a.m. - 5 p.m.

**Family Vision**  
Care  
Specialists  
**Dr. J.W. McCormick**  
**Dr. David Riddlespurger**  
**OPTOMETRISTS**  
Hours  
Mon-Fri. 8:30-5:00  
Sat. 9-12  
Dumas - 935-6491  
: Eyewear  
Visual Analysis  
Contact Lenses  
and Supplies  
The Stratford Office will be closed until August 27th  
Call 935-6491 for appointment in Dumas office

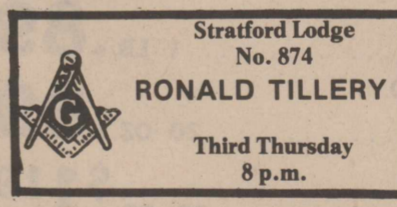
**HOME (806) 381-2212**  
**DAN H. LOVING, D.D.S., M.A.G.D.**  
**GENERAL DENTISTRY**  
Wednesday in Stratford  
P.O. BOX 556  
212 S. BLISS  
DUMAS, TEXAS 79029  
(806) 935-9212  
P.O. BOX 779  
212 N. POPLAR  
STRATFORD, TEXAS 79084  
(806) 396-5665

**TURHAN BAYKAN, M.D.**  
Specialist In  
**Obstetrics-Gynecology**  
Monday-Friday 9 a.m. - 6 p.m.  
201 S. Bliss Avenue, Dumas  
Appointments 935-6599, Emergencies 935-7171

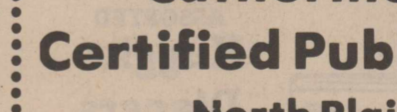
**Williams Repair Service**  
Phone 396-2429  
For Plumbing and Heating trouble  
Roof Repair and Home Remodeling  
Residential and Commercial  
We Sell  
Smith Water Heaters  
Cozy Wall Heaters  
Heat Tape  
Kohler Fixtures  
Plumbing Supplies  
Cozy Floor Furnaces  
Delta Faucets  
Don Williams  
Res. 396-2322  
Eddie Williams  
Res. 396-5330



Cargo floating on the water from a sinking ship is called flotsam, while the debris washed ashore is called wreck.



What do you call a hippo with bad table manners? a hippopotamESS



What germs could a male deer catch? BUCKteria

# ALBERT'S PRODUCE

# ALBERT'S MEAT

SPECIALS GOOD AUGUST 19-25 1987.

LARGE  
**Ripe  
Tomatoes**

LB. ONLY

**.59**



SPICY  
**Jalapeno  
Peppers**

LB. ONLY

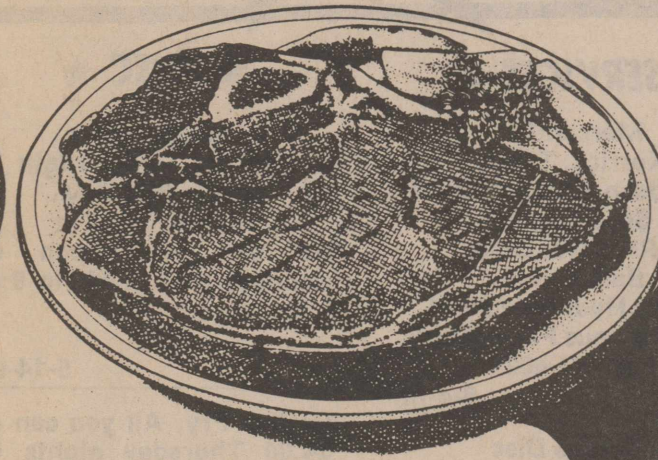
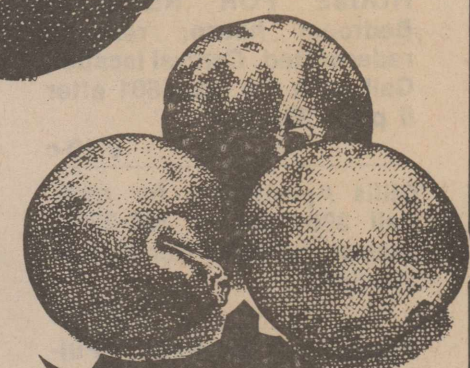
**.49**



JUICY  
**Red  
Plums**

LB. ONLY

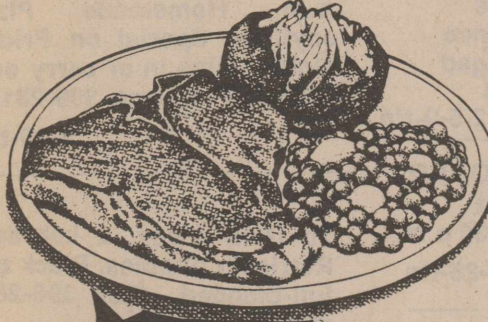
**.49**



DELICIOUS  
**Sirloin  
Steak**

LB. ONLY

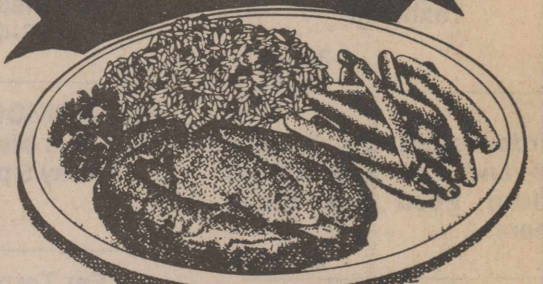
**\$1.99**



GREAT GRILLED  
**T-Bone  
Steak**

LB. ONLY

**\$2.99**



STEAK EATER FAVORITE  
**Rib Eye  
Steak**

LB. ONLY

**\$3.98**

TEXAS NEW CROP

**Yams** ..... LB. **.59**

YELLOW OR ZUCHINNI

**Squash** ..... LB. **.39**

JUICY

**Oranges** ..... 4 LB. **\$1.19**

BARTLETT

**Pears** ..... LB. **.59**

BUNCH

**Radishes** ..... EACH. **.49**

WHOLE (COLD .19 PER LB.)

**Watermelons** ..... LB. **.17**

FAMILY PACK

**Pork Chops** ..... LB. **\$1.79**

COUNTRY PRIDE THIGHS OR

**Drumsticks** ..... LB. **.69**

COUNTRY STYLE

**Pork Ribs** ..... LB. **\$1.79**

CENTER CUT

**Pork Chops** ..... LB. **\$2.39**

HORMEL LITTLE

**Sizzlers** ..... 12 OZ. **\$1.29**

ORANGE ROUGHY

**Filletts** ..... LB. **\$4.99**

ALL GRINDS  
**Folgers  
Coffee**

1 LB. CAN

**\$2.39**



TOMATOES/GREEN BEANS/PEAS  
**Rainbow  
Vegetables**

16 OZ. CANS

**3.99**

FOR

DEPENDABLE  
**Rainbow  
Bath Tissue**

4 ROLL

**.59**

45¢ OFF LABEL

**Snuggle**

Liquid

64 OZ. JUG

**\$1.69**



ALL VARIETIES  
**Dorito  
Chips**

1 LB. BAG

**\$1.79**



PURINA  
**Tender Vittles** ..... 18 OZ. **\$1.29**

KEEBLER  
**Saltines** ..... 1 LB. **.89**

SUN VALLEY ASSORTED  
**Cookies** ..... 20 OZ. **.99**

GEBHARDT'S  
**Tamales** ..... 28 OZ. **\$1.19**

SWEET-N-LOW  
**Sweetener** ..... 100 CT. **\$1.19**

ASSORTED  
**Huggies  
Diapers**

ASST'D  
**\$8.99**

DOUBLE S&H GREEN  
**STAMPS-WEDNESDAYS**

**FRIDAY & SATURDAY**

DOUBLE S&H GREEN  
**STAMPS-WEDNESDAYS**

**FRIDAY & SATURDAY**

## FROZEN-DAIRY

BORDEN  
**Buttermilk** ..... 1/2 GAL. CTN. **\$1.05**

BORDEN  
**Cottage Cheese** ..... 12 OZ. CTN. **.59**

BANQUET  
**Fried Chicken** ..... 32 OZ. BOX **\$2.99**

WELCH'S FROZEN  
**Grape Juice** ..... 12 OZ. CAN. **.69**

## GENERAL MERCHANDISE

VASELINE INTENSIVE CARE  
**Bath Beads** ..... 15 OZ. **\$1.69**

AURORA  
**Tea Glasses** ..... 4 16 OZ. GLASSES **\$1**

DOUBLE S&H GREEN STAMPS  
**WITH PURCHASE**

**OF SCHOOL SUPPLIES**

# ALBERT'S

DOUBLE  
COUPONS  
Wednesday  
& Saturday  
See store  
for details.

## GROCERY & MARKET

HOME OWNED & OPERATED

You've Shopped The Rest, Now Shop The Best!

N. Hwy 287  
Stratford, Texas

We Honor Food Stamps,  
Sell Postage Stamps,  
Sell Money Orders,  
& Cash Payroll Checks