

## Cattle

AL HINDS



has said that drive-  
was invented so cars  
see their real own-

the average Am-  
can't take a joke,  
at the average bus-

o-o-o  
want to list your  
try to test the

relationships are in  
up of two things...  
criticism. Praise in-  
fection, respect, and  
and criticism, fault-finding  
and very often lack of  
it would seem that  
there are more  
than critics in the  
it would seem that  
are on the increase.  
eritic of institutions,  
and methods wins our  
we know that his mo-  
ty, and that he seeks  
a better and brighter  
wreongs, exposing  
bringing rogues to  
him continue and  
to him.

o-o-o  
relationships are in  
up of two things...  
criticism. Praise in-  
fection, respect, and  
and criticism, fault-finding  
and very often lack of  
it would seem that  
there are more  
than critics in the  
it would seem that  
are on the increase.  
eritic of institutions,  
and methods wins our  
we know that his mo-  
ty, and that he seeks  
a better and brighter  
wreongs, exposing  
bringing rogues to  
him continue and  
to him.

o-o-o  
relationships are in  
up of two things...  
criticism. Praise in-  
fection, respect, and  
and criticism, fault-finding  
and very often lack of  
it would seem that  
there are more  
than critics in the  
it would seem that  
are on the increase.  
eritic of institutions,  
and methods wins our  
we know that his mo-  
ty, and that he seeks  
a better and brighter  
wreongs, exposing  
bringing rogues to  
him continue and  
to him.

o-o-o  
relationships are in  
up of two things...  
criticism. Praise in-  
fection, respect, and  
and criticism, fault-finding  
and very often lack of  
it would seem that  
there are more  
than critics in the  
it would seem that  
are on the increase.  
eritic of institutions,  
and methods wins our  
we know that his mo-  
ty, and that he seeks  
a better and brighter  
wreongs, exposing  
bringing rogues to  
him continue and  
to him.

o-o-o  
relationships are in  
up of two things...  
criticism. Praise in-  
fection, respect, and  
and criticism, fault-finding  
and very often lack of  
it would seem that  
there are more  
than critics in the  
it would seem that  
are on the increase.  
eritic of institutions,  
and methods wins our  
we know that his mo-  
ty, and that he seeks  
a better and brighter  
wreongs, exposing  
bringing rogues to  
him continue and  
to him.

o-o-o  
relationships are in  
up of two things...  
criticism. Praise in-  
fection, respect, and  
and criticism, fault-finding  
and very often lack of  
it would seem that  
there are more  
than critics in the  
it would seem that  
are on the increase.  
eritic of institutions,  
and methods wins our  
we know that his mo-  
ty, and that he seeks  
a better and brighter  
wreongs, exposing  
bringing rogues to  
him continue and  
to him.

o-o-o  
relationships are in  
up of two things...  
criticism. Praise in-  
fection, respect, and  
and criticism, fault-finding  
and very often lack of  
it would seem that  
there are more  
than critics in the  
it would seem that  
are on the increase.  
eritic of institutions,  
and methods wins our  
we know that his mo-  
ty, and that he seeks  
a better and brighter  
wreongs, exposing  
bringing rogues to  
him continue and  
to him.

o-o-o  
relationships are in  
up of two things...  
criticism. Praise in-  
fection, respect, and  
and criticism, fault-finding  
and very often lack of  
it would seem that  
there are more  
than critics in the  
it would seem that  
are on the increase.  
eritic of institutions,  
and methods wins our  
we know that his mo-  
ty, and that he seeks  
a better and brighter  
wreongs, exposing  
bringing rogues to  
him continue and  
to him.

o-o-o  
relationships are in  
up of two things...  
criticism. Praise in-  
fection, respect, and  
and criticism, fault-finding  
and very often lack of  
it would seem that  
there are more  
than critics in the  
it would seem that  
are on the increase.  
eritic of institutions,  
and methods wins our  
we know that his mo-  
ty, and that he seeks  
a better and brighter  
wreongs, exposing  
bringing rogues to  
him continue and  
to him.

o-o-o  
relationships are in  
up of two things...  
criticism. Praise in-  
fection, respect, and  
and criticism, fault-finding  
and very often lack of  
it would seem that  
there are more  
than critics in the  
it would seem that  
are on the increase.  
eritic of institutions,  
and methods wins our  
we know that his mo-  
ty, and that he seeks  
a better and brighter  
wreongs, exposing  
bringing rogues to  
him continue and  
to him.

o-o-o  
relationships are in  
up of two things...  
criticism. Praise in-  
fection, respect, and  
and criticism, fault-finding  
and very often lack of  
it would seem that  
there are more  
than critics in the  
it would seem that  
are on the increase.  
eritic of institutions,  
and methods wins our  
we know that his mo-  
ty, and that he seeks  
a better and brighter  
wreongs, exposing  
bringing rogues to  
him continue and  
to him.

o-o-o  
relationships are in  
up of two things...  
criticism. Praise in-  
fection, respect, and  
and criticism, fault-finding  
and very often lack of  
it would seem that  
there are more  
than critics in the  
it would seem that  
are on the increase.  
eritic of institutions,  
and methods wins our  
we know that his mo-  
ty, and that he seeks  
a better and brighter  
wreongs, exposing  
bringing rogues to  
him continue and  
to him.

o-o-o  
relationships are in  
up of two things...  
criticism. Praise in-  
fection, respect, and  
and criticism, fault-finding  
and very often lack of  
it would seem that  
there are more  
than critics in the  
it would seem that  
are on the increase.  
eritic of institutions,  
and methods wins our  
we know that his mo-  
ty, and that he seeks  
a better and brighter  
wreongs, exposing  
bringing rogues to  
him continue and  
to him.

o-o-o  
relationships are in  
up of two things...  
criticism. Praise in-  
fection, respect, and  
and criticism, fault-finding  
and very often lack of  
it would seem that  
there are more  
than critics in the  
it would seem that  
are on the increase.  
eritic of institutions,  
and methods wins our  
we know that his mo-  
ty, and that he seeks  
a better and brighter  
wreongs, exposing  
bringing rogues to  
him continue and  
to him.

o-o-o  
relationships are in  
up of two things...  
criticism. Praise in-  
fection, respect, and  
and criticism, fault-finding  
and very often lack of  
it would seem that  
there are more  
than critics in the  
it would seem that  
are on the increase.  
eritic of institutions,  
and methods wins our  
we know that his mo-  
ty, and that he seeks  
a better and brighter  
wreongs, exposing  
bringing rogues to  
him continue and  
to him.

o-o-o  
relationships are in  
up of two things...  
criticism. Praise in-  
fection, respect, and  
and criticism, fault-finding  
and very often lack of  
it would seem that  
there are more  
than critics in the  
it would seem that  
are on the increase.  
eritic of institutions,  
and methods wins our  
we know that his mo-  
ty, and that he seeks  
a better and brighter  
wreongs, exposing  
bringing rogues to  
him continue and  
to him.

o-o-o  
relationships are in  
up of two things...  
criticism. Praise in-  
fection, respect, and  
and criticism, fault-finding  
and very often lack of  
it would seem that  
there are more  
than critics in the  
it would seem that  
are on the increase.  
eritic of institutions,  
and methods wins our  
we know that his mo-  
ty, and that he seeks  
a better and brighter  
wreongs, exposing  
bringing rogues to  
him continue and  
to him.

o-o-o  
relationships are in  
up of two things...  
criticism. Praise in-  
fection, respect, and  
and criticism, fault-finding  
and very often lack of  
it would seem that  
there are more  
than critics in the  
it would seem that  
are on the increase.  
eritic of institutions,  
and methods wins our  
we know that his mo-  
ty, and that he seeks  
a better and brighter  
wreongs, exposing  
bringing rogues to  
him continue and  
to him.

o-o-o  
relationships are in  
up of two things...  
criticism. Praise in-  
fection, respect, and  
and criticism, fault-finding  
and very often lack of  
it would seem that  
there are more  
than critics in the  
it would seem that  
are on the increase.  
eritic of institutions,  
and methods wins our  
we know that his mo-  
ty, and that he seeks  
a better and brighter  
wreongs, exposing  
bringing rogues to  
him continue and  
to him.

o-o-o  
relationships are in  
up of two things...  
criticism. Praise in-  
fection, respect, and  
and criticism, fault-finding  
and very often lack of  
it would seem that  
there are more  
than critics in the  
it would seem that  
are on the increase.  
eritic of institutions,  
and methods wins our  
we know that his mo-  
ty, and that he seeks  
a better and brighter  
wreongs, exposing  
bringing rogues to  
him continue and  
to him.

o-o-o  
relationships are in  
up of two things...  
criticism. Praise in-  
fection, respect, and  
and criticism, fault-finding  
and very often lack of  
it would seem that  
there are more  
than critics in the  
it would seem that  
are on the increase.  
eritic of institutions,  
and methods wins our  
we know that his mo-  
ty, and that he seeks  
a better and brighter  
wreongs, exposing  
bringing rogues to  
him continue and  
to him.

o-o-o  
relationships are in  
up of two things...  
criticism. Praise in-  
fection, respect, and  
and criticism, fault-finding  
and very often lack of  
it would seem that  
there are more  
than critics in the  
it would seem that  
are on the increase.  
eritic of institutions,  
and methods wins our  
we know that his mo-  
ty, and that he seeks  
a better and brighter  
wreongs, exposing  
bringing rogues to  
him continue and  
to him.

o-o-o  
relationships are in  
up of two things...  
criticism. Praise in-  
fection, respect, and  
and criticism, fault-finding  
and very often lack of  
it would seem that  
there are more  
than critics in the  
it would seem that  
are on the increase.  
eritic of institutions,  
and methods wins our  
we know that his mo-  
ty, and that he seeks  
a better and brighter  
wreongs, exposing  
bringing rogues to  
him continue and  
to him.

o-o-o  
relationships are in  
up of two things...  
criticism. Praise in-  
fection, respect, and  
and criticism, fault-finding  
and very often lack of  
it would seem that  
there are more  
than critics in the  
it would seem that  
are on the increase.  
eritic of institutions,  
and methods wins our  
we know that his mo-  
ty, and that he seeks  
a better and brighter  
wreongs, exposing  
bringing rogues to  
him continue and  
to him.

o-o-o  
relationships are in  
up of two things...  
criticism. Praise in-  
fection, respect, and  
and criticism, fault-finding  
and very often lack of  
it would seem that  
there are more  
than critics in the  
it would seem that  
are on the increase.  
eritic of institutions,  
and methods wins our  
we know that his mo-  
ty, and that he seeks  
a better and brighter  
wreongs, exposing  
bringing rogues to  
him continue and  
to him.

o-o-o  
relationships are in  
up of two things...  
criticism. Praise in-  
fection, respect, and  
and criticism, fault-finding  
and very often lack of  
it would seem that  
there are more  
than critics in the  
it would seem that  
are on the increase.  
eritic of institutions,  
and methods wins our  
we know that his mo-  
ty, and that he seeks  
a better and brighter  
wreongs, exposing  
bringing rogues to  
him continue and  
to him.

o-o-o  
relationships are in  
up of two things...  
criticism. Praise in-  
fection, respect, and  
and criticism, fault-finding  
and very often lack of  
it would seem that  
there are more  
than critics in the  
it would seem that  
are on the increase.  
eritic of institutions,  
and methods wins our  
we know that his mo-  
ty, and that he seeks  
a better and brighter  
wreongs, exposing  
bringing rogues to  
him continue and  
to him.

o-o-o  
relationships are in  
up of two things...  
criticism. Praise in-  
fection, respect, and  
and criticism, fault-finding  
and very often lack of  
it would seem that  
there are more  
than critics in the  
it would seem that  
are on the increase.  
eritic of institutions,  
and methods wins our  
we know that his mo-  
ty, and that he seeks  
a better and brighter  
wreongs, exposing  
bringing rogues to  
him continue and  
to him.

o-o-o  
relationships are in  
up of two things...  
criticism. Praise in-  
fection, respect, and  
and criticism, fault-finding  
and very often lack of  
it would seem that  
there are more  
than critics in the  
it would seem that  
are on the increase.  
eritic of institutions,  
and methods wins our  
we know that his mo-  
ty, and that he seeks  
a better and brighter  
wreongs, exposing  
bringing rogues to  
him continue and  
to him.

o-o-o  
relationships are in  
up of two things...  
criticism. Praise in-  
fection, respect, and  
and criticism, fault-finding  
and very often lack of  
it would seem that  
there are more  
than critics in the  
it would seem that  
are on the increase.  
eritic of institutions,  
and methods wins our  
we know that his mo-  
ty, and that he seeks  
a better and brighter  
wreongs, exposing  
bringing rogues to  
him continue and  
to him.

o-o-o  
relationships are in  
up of two things...  
criticism. Praise in-  
fection, respect, and  
and criticism, fault-finding  
and very often lack of  
it would seem that  
there are more  
than critics in the  
it would seem that  
are on the increase.  
eritic of institutions,  
and methods wins our  
we know that his mo-  
ty, and that he seeks  
a better and brighter  
wreongs, exposing  
bringing rogues to  
him continue and  
to him.

o-o-o  
relationships are in  
up of two things...  
criticism. Praise in-  
fection, respect, and  
and criticism, fault-finding  
and very often lack of  
it would seem that  
there are more  
than critics in the  
it would seem that  
are on the increase.  
eritic of institutions,  
and methods wins our  
we know that his mo-  
ty, and that he seeks  
a better and brighter  
wreongs, exposing  
bringing rogues to  
him continue and  
to him.

o-o-o  
relationships are in  
up of two things...  
criticism. Praise in-  
fection, respect, and  
and criticism, fault-finding  
and very often lack of  
it would seem that  
there are more  
than critics in the  
it would seem that  
are on the increase.  
eritic of institutions,  
and methods wins our  
we know that his mo-  
ty, and that he seeks  
a better and brighter  
wreongs, exposing  
bringing rogues to  
him continue and  
to him.

o-o-o  
relationships are in  
up of two things...  
criticism. Praise in-  
fection, respect, and  
and criticism, fault-finding  
and very often lack of  
it would seem that  
there are more  
than critics in the  
it would seem that  
are on the increase.  
eritic of institutions,  
and methods wins our  
we know that his mo-  
ty, and that he seeks  
a better and brighter  
wreongs, exposing  
bringing rogues to  
him continue and  
to him.

o-o-o  
relationships are in  
up of two things...  
criticism. Praise in-  
fection, respect, and  
and criticism, fault-finding  
and very often lack of  
it would seem that  
there are more  
than critics in the  
it would seem that  
are on the increase.  
eritic of institutions,  
and methods wins our  
we know that his mo-  
ty, and that he seeks  
a better and brighter  
wreongs, exposing  
bringing rogues to  
him continue and  
to him.

o-o-o  
relationships are in  
up of two things...  
criticism. Praise in-  
fection, respect, and  
and criticism, fault-finding  
and very often lack of  
it would seem that  
there are more  
than critics in the  
it would seem that  
are on the increase.  
eritic of institutions,  
and methods wins our  
we know that his mo-  
ty, and that he seeks  
a better and brighter  
wreongs, exposing  
bringing rogues to  
him continue and  
to him.

o-o-o  
relationships are in  
up of two things...  
criticism. Praise in-  
fection, respect, and  
and criticism, fault-finding  
and very often lack of  
it would seem that  
there are more  
than critics in the  
it would seem that  
are on the increase.  
eritic of institutions,  
and methods wins our  
we know that his mo-  
ty, and that he seeks  
a better and brighter  
wreongs, exposing  
bringing rogues to  
him continue and  
to him.

o-o-o  
relationships are in  
up of two things...  
criticism. Praise in-  
fection, respect, and  
and criticism, fault-finding  
and very often lack of  
it would seem that  
there are more  
than critics in the  
it would seem that  
are on the increase.  
eritic of institutions,  
and methods wins our  
we know that his mo-  
ty, and that he seeks  
a better and brighter  
wreongs, exposing  
bringing rogues to  
him continue and  
to him.

o-o-o  
relationships are in  
up of two things...  
criticism. Praise in-  
fection, respect, and  
and criticism, fault-finding  
and very often lack of  
it would seem that  
there are more  
than critics in the  
it would seem that  
are on the increase.  
eritic of institutions,  
and methods wins our  
we know that his mo-  
ty, and that he seeks  
a better and brighter  
wreongs, exposing  
bringing rogues to  
him continue and  
to him.

o-o-o  
relationships are in  
up of two things...  
criticism. Praise in-  
fection, respect, and  
and criticism, fault-finding  
and very often lack of  
it would seem that  
there are more  
than critics in the  
it would seem that  
are on the increase.  
eritic of institutions,  
and methods wins our  
we know that his mo-  
ty, and that he seeks  
a better and brighter  
wreongs, exposing  
bringing rogues to  
him continue and  
to him.

o-o-o  
relationships are in  
up of two things...  
criticism. Praise in-  
fection, respect, and  
and criticism, fault-finding  
and very often lack of  
it would seem that  
there are more  
than critics in the  
it would seem that  
are on the increase.  
eritic of institutions,  
and methods wins our  
we know that his mo-  
ty, and that he seeks  
a better and brighter  
wreongs, exposing  
bringing rogues to  
him continue and  
to him.

## Currently 150 Farmers In Haskell County Using FHA Credit Services

A total of \$5,600,000 in loan funds has been used in Haskell County to support family farms since the Farmers Home Administration was expanded six years ago, Donald R. Perry, local supervisor for the rural credit agency, said today.

Approximately \$1,041,420 was advanced in 1967.

Currently 150 farmers in Haskell County are using the supervised credit services of the Farmers Home Administration.

The supply of Farmers Home Administration credit, which supplements the credit supplied by banks and other private credit sources is one of the measures recommended by President Johnson to provide family farmers an opportunity to earn parity of income.

These loans have enabled farmers to stay in business who would otherwise have had to give up and go to the city. They have helped young farmers get established.

Farmers Home Administration loans can be used to buy land, refinance debts, acquire livestock and equipment, pay fertilizer and fuel bills and pay other expenses connected with farming.

The incomes of farmers using Farmers Home Administration credit in Haskell County in 1967 totaled approximately \$2,400,000.

Typical of the progress made with the aid of the supervised credit program is the record of the Grady Holmes family of Rt. 1, O'Brien, Texas.

Four years ago the Holmes family were ready to quit farming and go to the city and secure employment. Their 172-acre farm would not make them a living and pay their debts.

Instead of quitting, Farmers Home Administration helped them work out a livestock plan that would make them a living, repay the FHA debt, and would eventually pay back a large bank debt incurred in previous years of row crop farming. The Holmes family now have a well established hog and cattle operation which was added to their former operation. They have made good progress the past four years and plans are now in the mill to help them purchase an additional 80 acres to further strengthen their operation.



PAT MORRISON

## Final Rites Are Held For Pat Morrison

Pat Morrison, 42, superintendent of the Paint Creek School, passed away Wednesday, March 20th, at 5:30 p. m. in Haskell Memorial Hospital, of an apparent heart attack.

Funeral services were held Friday, March 22, at 2:00 p. m. from the First Baptist Church, Haskell, with Rev. J. V. Patterson, pastor of the Haskell and Paint Creek Methodist Churches, and Rev. Lesley White, pastor of the Paint Creek Baptist Church, officiating. Burial was in Willow Cemetery, Haskell.

Born April 5, 1925, in Itasca, he was a member of the Methodist Church. He was a member of the Haskell Masonic Lodge number 682 and a World War II veteran.

He was married to Wanda Johnson July 1, 1944, at Newcastle. He received his B.S. degree at Texas Wesleyan College at Fort Worth and his master's degree at North Texas State University at Denton. He was elementary principal for five years at Paint Creek and high school principal for one year. He was superintendent of Paint Creek public schools nine years.

Survivors include his wife; Vicki Lynn and Janay, both at Hardin-Simmons University and Jo of the home; one brother, Van Jr., of Mesquite; one half-sister, Mrs. Pauline McDaniel, of Richland; mother, Mrs. Van P. Morrison, Sr. of Mineral Wells.

## Weinert Church Of Christ Slates Special Sessions

With the theme, "Growing Spiritually," Bible centered sessions will begin Monday, April 1, at 7:30 p. m., and will continue through Friday, April 5th, at the Weinert Church of Christ. All evening meetings will begin at 7:30 o'clock.

Subject and speakers will be as follows:

Monday, "Deepening the Spiritual Life," T. J. Finley, Haskell; Tuesday, "Growing in Faith," John Green, of Rule; Wednesday, "Growing in Love," John Barnhill, Knox City; Thursday, "Growing in Morality," Bobby Pratt, of Munday; Friday, "Growing in Attendance," Tom Adams, of Goree.

Jilly Bob Shaw of Haskell will lead the singing.

## \$590 Raised For Veterans Memorial Fund

Contributions to the Veterans Memorial to be erected on the courthouse square, under the sponsorship of the Haskell Jaycees follows:

Chamber of Commerce, \$100; Lions Club, \$50; Rotary Club, \$50; I.O.O.F., \$25; American Legion, \$20; Young Home-makers, \$20; Fire Department, \$100; G. L. Forum, \$25; Mr. and Mrs. O. W. Cox, \$5.00; Mr. and Mrs. A. L. Comer, \$15. Total to date: \$590.00.

Construction is expected to begin in about two weeks, but another \$300 or \$400 is needed, Gordon Tidrow, chairman of the fund-raising campaign said.

Anyone desiring to contribute to the project may do so by leaving their donations at Jackson Drug, Rochester; Mayfield Grocery, Weinert; Woods Pharmacy, in Rule, or mail to Haskell Jaycees Memorial Fund, Box 744, Haskell, Texas 79521.

## Haskell County Spelling Bee Slated Friday Night

Haskell, Weinert, Rule, Rochester and Paint Creek, will have entrants to square off in the Haskell County Spelling Bee, to be held here Friday, March 29, at 7:30 p. m. in the Haskell High School Auditorium.

Contestants will include Darlene Abbott, Haskell; Walene Bredthauer, Weinert; Patti Simpson, Rule; Gayle McWhorter, Rochester; and Carolyn Silba, Paint Creek.

The Haskell Jaycees, sponsors, will present trophies to winners in each school bee and the county winner, according to Jerry Weatherly, chairman of the project, said.

Mrs. Arlos Weaver will serve as pronouncer and judges will be Rev. R. D. Williams, Mrs. Luther Burkett and Charles Thornhill.

The Haskell County winner will compete with 19 other county spelling champions in North Texas and Oklahoma area for the district spelling bee to be held at Midwestern University in Wichita Falls on May 4th.

Each school will receive a fountain pen and each county winner will receive a dictionary from the Wichita Falls Record News and Times, sponsor to the annual district spelling bee.

The public is invited to attend the county spelling bee here Friday night to hear and see these youngsters of Haskell county in action.

## FIRST BAPTIST CHURCH IN SCHOOL OF MISSIONS



DR. H. B. RAMSOUR

Sunday, March 31, will mark the beginning of a four-day School of Missions at the First Baptist Church, Troy Culpepper, pastor, announced.

Five different missionaries will speak in the church services during the school which will continue through Wednesday night, April 3. Week-long services will begin at 7:00 o'clock.

Dr. H. B. Ramsour, president of the Mexican Baptist Bible Institute in San Antonio, will speak Sunday morning. Dr. Ramsour served for 21 years in Japan, Argentina and Hawaii. He holds two doctor's degrees from Howard Payne College and Southwestern Baptist Theological Seminary in Fort Worth.

Other missionary speakers include: Mrs. S. S. Stover, Fred Levrets, Mrs. Roe Ross Beard and Lester Vinson.

Mr. Levrets is a Southern Baptist missionary serving in Northern Nigeria. Mrs. Roe Beard and her husband have served as Home Missionaries to the Ponca, Kaw, Pawnee and Cherokee Indians in Oklahoma since 1931. Lester Vinson serves as missionary to migrant workers and Latin Americans in the Harlingen area of South Texas.

## Chapman Receives National Honor Recognition

Charles Chapman, son of District Judge and Mrs. Ben Charles Chapman, of Haskell, has been selected as a member of the Zeta Gamma Sigma, national honor scholarship society for business students. This fraternal organization was founded in 1913, and is the only such organization recognized by the American Association of Collegiate Schools of Business.

Only the top ten per cent of the senior class each year are eligible for membership.

Charles completed his work on a degree in Bachelor of Business Administration, from Texas Christian University, Fort Worth, the latter part of January, 1968.

## Rites Held In El Paso For M. W. Johnson

M. W. Johnson, 74, retired automobile salesman of El Paso, former resident of Haskell, passed away Thursday, March 21, in an El Paso hospital. He was a brother-in-law of Mrs. Paul Koenstler of Haskell.

Mr. Johnson was a member of the First Christian Church.

Final rites were held Monday, March 25, at 1:00 p. m. at El Paso and interment was in the National Cemetery there.

Survivors in the immediate family include his wife of the home; one daughter, Mrs. Marion Josselle of Brownfield, and two granddaughters; five sisters, Mrs. H. Pinkerton, of Abilene, Mrs. Lina Bell of Houston, Mrs. Lois Mastin of Avon, Calif., Mrs. Vivian Alsten of Abilene and Mrs. Jessie Cothran of Pasadena, Texas; four brothers, Ira of Haskell, Otta of Mood, Texas, Hugh of Abilene, and Sidney of Houston and two great-grandchildren.

## Four Indictments Are Returned By Grand Jury

The 29th District Grand Jury in session here Thursday, March 21, returned four felony indictments and passed three cases.

District Attorney, Royce Adkins, said that 12 witnesses were called.

Billed were:

Bobby Lee Osborn, 28, of Wichita Falls, on two counts of burglary, on or about January 11, 1968, a barn belonging to District Attorney Royce Adkins of Haskell and a barn belonging to Loid Renfro also of Haskell.

Alfred John Annunzi, 24, of Fort Worth, on two burglary counts, on or about January 19, 1968, a store belonging to Claude Wheatley of Haskell and a store belonging to Alton Middleton also of Haskell.

Serving on the grand jury were F. D. Emerson, Joe B. Cloud, Bobby Kitley, M. S. Denton, H. L. Force, Roy Wiseman, James Lisle, Jr., Edd T. Fouts, Allen Isbell, Walter Speck, Justin Poeschel and E. L. Elmore.

Albert Mapes and T. A. Rhoades were riding bailiffs and T. P. Perdue, door bailiff.

F. D. Emerson, of O'Brien, served as foreman of the jury and Joe B. Cloud, secretary.

## 15 Area Towns Represented At Water Meeting

Roy Oliphant, Haskell City Water Superintendent, said that 44 persons, representing 15 area towns, were represented at a meeting of the Lone Star Water and Sewer Association here Wednesday night, March 20th, at 7:30 in the Bluebonnet Cafe.

Eli Magee, of Dallas, spoke to the group and demonstrated the "Powermaker," a standby unit for emergency starting and battery charging. Bill Moore and Harvey Owens, also of Dallas, accompanied Mr. Magee to Haskell.

Councilmen Carl Anderson, John Thomas and city secretary Ira Hester of Haskell were present for the water meeting.

## Rites Held Friday For Mrs. Neinst

Mrs. H. C. (Tillie) Neinst, 82, of 501 N. Ave. C, Haskell, passed away at 5:15 p. m. on Thursday, March 21, in Haskell Memorial Hospital, where she had been a patient for eight days.

Funeral was held at 2:30 p. m. Saturday in the Trinity Lutheran Church in Haskell, with the Rev. Sam Urrate, pastor, officiating. Burial was in Willow Cemetery under direction of Holden-McCauley Funeral Home.

Born March 16, 1886, in Perry, Falls County, she was married June 4, 1907, at Muenster. They moved to Haskell County and settled at Sagerton in 1916, and moved to Haskell in 1953.

Mr. Neinst died March 18, 1955.

Survivors include six daughters, Mrs. Frieda Quade of Wake Village, Texas, Mrs. Ida Walling of Haskell, Mrs. Alice Muegge of Haskell, Mrs. Pauline Dick of Haskell, Mrs. Elmore Scott of Hammond, Ind., Mrs. Sylvia Croxer of Hillsboro, Tex.; one son, Edward of Sagerton; two brothers, Fred Jander of Slaton and Will Jander of Benton, Ark.; two sisters, Mrs. Martha Moryner of Meridian, Idaho, and Mrs. Louise Siegmund of Whitesboro, Tex.; 15 grandchildren and 12 great-grandchildren. One daughter and two grandsons preceded her in death.

Palbearers were grandsons, Dean Quade, Ed Walling, Billy Norman, Jimmie Humphreys, Dan Humphreys, Kim Humphreys, Kenneth Neinst and Randy Crowe.

## Special Easter Service Slated On April 14th

Sponsored by the Haskell Ministerial Alliance, a city-wide Sunrise Easter Service will be held this year in the First Baptist Church on Sunday, April 14, at 7:00 a. m. with Dr. Edwin Skiles, president of Hardin-Simmons University, Abilene, as the speaker.

The choir for the special service will be composed of members from the various churches.

All who would like to help with the singing are asked to attend a joint rehearsal at the First Baptist Church, Sunday, March 31, at 4:00 p. m. for a practice session.

## Play Contest Set Tomorrow At Stamford

"Adaptations From As You Like It" is the title of the Haskell High School play to be entered in the District Interscholastic League contest which will be held at the High School Auditorium in Stamford, Tuesday, April 2, at 4:30 p. m.

The cast includes John Love, Pam Reeves, Debby Pharis, Linda Riley, Scott McDonald, Jim Smith, Thomas Williamson, Jo Nell Anderson, Johnny Stark and Alvin Schmidt.

## LL Mike Overton Reports For Active Duty

L. L. Mike Overton, reported for active duty Tuesday, March 26th, at the United States Army Artillery and Missile School at Fort Sill, Oklahoma. He received his commission as an Artillery Officer at Texas A&M in January, 1967. Following graduation, where he received his B.S. degree, in physical education and biology, he completed one semester of graduate work at Texas A&M. He was park director of Cole Park in Dallas last summer, and taught physical science and P. E. at the F. P. Caillet Elementary School in Dallas the fall semester.

L. L. Overton received the Outstanding R.O.T.C. Cadet of E. Company at Fort Sill during the summer training in 1965. He served as Scholastic Officer on the First Battalion Staff his senior year at A&M and was Distinguished Military Student.

He is the son of Mr. and Mrs. Gene Overton of Paint Creek.

## IN HOSPITAL

Rev. J. V. Patterson, pastor of the Haskell and Paint Creek Methodist Churches, is in the Haskell Memorial Hospital, where he is receiving treatment for an infection.

Rev. Patterson entered the hospital Saturday, and will have to remain there for several days, his attending physician said.

## City Council Sets Date Of Spring Clean-Up

In a meeting held Tuesday night, the city council accepted a bid on building of the rest rooms at the Trailer Park; voted to hire Lester Barry, Certified Public Accountant, of Abilene, to audit the city books, and set the date of the annual spring clean-up week, April 22-27.

Water Supt., Roy Oliphant; City Attorney, Joe Williams, and City Secretary, Ira Hester, and all members of the council were present for the meeting.

Mayor Woodard, Buster Gholson, John Thomas, W. O. Holden and Ira Hester will be in Quanah tonight, Thursday, March 28th, attending a Regional meeting of Texas League of Municipalities, Red River Valley

# Over 200 Women Attend District III T.H.D.A. Meeting

## Pre-School Teacher And Aides Are Honored At Meeting Of The P-TA

The Parent-Teacher Association of the Haskell Elementary School met March 20, at 3:00 in the cafeteria.

Mrs. Bailey Toliver honored the pre-school teacher and aides, Mrs. Sam Herren, Mrs. D. V. Hiebert and Mrs. Bob Greenroy. Mrs. George Fouts, Mrs. Shelby Johnson and Miss Jo Helen Elliott were not present because of a Title I meeting in Abilene.

Motion was adopted that the incoming president be a delegate to the District meeting in Paducah, April 30th.

It was announced that 14 PTA summer scholarships are available to teachers in Texas. Applications are due March 30, 1968, with notification in mid-April. Anyone interested in applying may contact Gerald McCoy, principal.

Mrs. Abe Turner, chairman, presented the nominating committee report. President, Mrs. A. C. Richardson; vice-president, Mrs. Tom Paul Barnett; secretary, Mrs. Roger Weatherford; treasurer, Mrs. Jack McAdoo; historian, Mrs. Wallace Cox, Jr.; and parliamentarian, Mrs. Robert Wheatley.

Election of officers was not held because a quorum of the membership was not present.

Mrs. Wm. J. Kemp, chairman of the School Education Committee, introduced the speaker of the afternoon, Dr. Hazel Weaver, high school English teacher and counselor. Dr. Weaver received her Bachelor of Science Degree from Abilene Christian College, Master of Science Degree from Hardin-Simmons University and Doctor of Education Degree from North Texas State University. For the past two summers, Dr. Weaver has been Assistant Professor of Education at Hardin-Simmons University and is a sponsor of the Haskell High Owl Club and the Quill and

Scroll Society. She is a member of several organizations which pertain to teaching. In her introduction, Mrs. Kemp said, "Haskellites, adult and student alike, are most fortunate to have this lady as a teacher and a friend."

Dr. Weaver's topic was "Keeping Youth in School." She stated that this was a nationwide problem. She said that only one has dropped out of Haskell High this year. The plus side of the drop-out includes some talent, perhaps latent, some aptitude. The minus side is that the drop-out is shy, too boisterous, has an inferiority complex, has many tensions, prejudices and is often from a poverty situation.

Those who drop-out often do so in the sophomore year or before. They are slow learners, have difficulty with reading and math, are consistent readers and have no motivation from home.

The drop-out situation has been growing since 1950 and with more requirements for occupations, something must be done and is being done in head-start programs, work with migrants and helping students with problems.

Our schools and society are middle class with an emphasis on a college education. Our schools are providing for masses of people and there is no way to settle individual differences.

The Haskell school system does not have industrial arts or crafts, or mechanical drawing. There are things we can do such as an in-service training program, adequate guidance program, first through the 12th grade and involve patrons and parents in efforts to do away with "square corners" such as dues and persistent requests for money, provide supervised extra-curricular activities for all students and co-operative edu-

## Sherman's Interior Decorating Shop Is Scene Of The Study Club Meeting

Sherman's Interior Decorating Shop was the scene of the March 21st meeting of the Progressive Study Club. Mrs. C. T. Everett, president, called the meeting to order and greeted the guests, Mrs. Ed Fouts, Mrs. C. R. Glenn, Mrs. Ed Fisher and Mrs. R. C. Couch.

## Eddie Hester, Cynthia Sayers To Wed April 6

An April 6th wedding in the chapel of Reese Air Force Base, Texas, is planned by Miss Cynthia Sayers to Eddie Hester.

Parents of the bride-elect are Major and Mrs. Bill K. Sayers, United States Air Force (retired), of Lubbock.

The future bridegroom is the son of Mr. and Mrs. Ed Hester of Haskell.

Miss Sayers is a graduate of Monterey High School, and attended Texas Technological College, Lubbock.

Mr. Hester is a graduate of Haskell High School and attended Austin College, Sherman.

## Jan Gannaway To Direct Play In Contest

Jan Gannaway, a senior at A&M College Station, has been elected to become a member of Phi Kappa Phi, an honorary fraternity for liberal arts majors. It is necessary to have an overall grade point average of 2.25 for election to the fraternity. Initiations and banquets will be held this spring.

Jan is doing her practice teaching at A&M consolidated High School, College Station. She has three freshman English classes and one senior speech class.

She is directing, "What Never Dies," the school's one-act play, for contest. The play will be presented Saturday, March 30th, at Conroe, Texas.

Mrs. Gannaway is the daughter of Mr. and Mrs. R. W. Herren, of Haskell.

## Stitching And Stewing

By Ruth Ann Fansler  
County H. D. Agent

If you want to beat the season and make like it's already spring, Strip! We don't mean the clothes-off variety of stripping, but the modest form practiced in professional laundry circles of removing the greenness from whites. Just the sight of a drier or line full of sparkling linens can lift the spirit and set the mood for spring.

Stripping involves nothing more than running your laundry through its regular wash cycle but minus detergent, softener, bleach or any other extra you're accustomed to use. All you add is washing soda...three to four tablespoons. It attacks the most common cause of greying... your over-enthusiastic use of detergent which may be more than the rinse cycle of your machine can cope with. The left-over detergent residue sticks to fabric and dulls it. As more and more accumulates with repeated laundering, dinginess grows. The washing soda loosens the residue as you'll see from the suds it kicks up when your machine goes into action. Not until the water is sudsless will every trace of the old detergent be gone. A single stripping may do it for the mild case of the dulldrums. For a bad case, however, you may have to repeat the process twice, even three times. Now launder as usual using washing soda again instead of detergent, for the soda softens the water, thereby giving the detergent more power.

More and more homemakers have discovered that by using washing soda regularly for their laundry they can dispense with costly additives, as it not only routs dirt but softens and brightens as well. And since you are using fewer products and less detergent, think of the money you save.

Mrs. Ben McGee, stenographer for Child Welfare Department, submitted this week's recipe. Sue is expecting her first child, so she will be temporarily leaving the 3rd floor of the courthouse. Her recipe for vanilla wafer cake is as follows:

- 1 cup sugar
- 1/2 cup shortening
- 3 eggs
- 1 cup coconut
- 1 large box of vanilla wafer crumbs
- 3/4 cup milk
- 1/2 teasn. baking powder
- 1/2 cup chopped pecans

Cream shortening and sugar; add eggs and beat well. Add remaining ingredients and mix thoroughly. Bake in greased tube pan at 350 degrees for 45-60 minutes.

- Filling
- 1 stick oleo
- 1 cup brown sugar
- 1/4 cup milk
- 2 cups confectioner's sugar
- 1/2 cup pecans

Mix together in saucepan and bring to boil. Add sifted confectioner's sugar and beat until creamy. Add pecans.

## Sherman's Interior Decorating Shop Is Scene Of The Study Club Meeting

Sherman's Interior Decorating Shop was the scene of the March 21st meeting of the Progressive Study Club. Mrs. C. T. Everett, president, called the meeting to order and greeted the guests, Mrs. Ed Fouts, Mrs. C. R. Glenn, Mrs. Ed Fisher and Mrs. R. C. Couch.

The names of Mrs. Buck Everett and Mrs. Charles McCauley were submitted and accepted to active membership.

The president reported on the Mesquite District Convention which was held at the Windsor Hotel in Abilene March 20-21. She announced the awards won by the Progressive Study Club, pointing out that there were 16 in all. These included eight first places and eight seconds.

Mrs. M. B. Powell, director of the evening, introduced the program, "Happiness is Redecorating." Mrs. Ed Hester spoke on "Floral Arrangements." Followed by "Pictures and Wall Hangings" by Mrs. Abe Turner.

Mrs. Alvin Sherman showed a film entitled "Good Taste in Decorating." She then told Club members about some of the newer products being used in interior design. Mrs. Gerald McCoy was the winner of the door prize, a beautiful wood candelabra with large green candles.

Mrs. Frankie Don Mullins and Mrs. Weldon Turnbow assisted Mrs. Sherman in leading the ladies through the shop. Hostesses for the evening were Mmes. Howard Perry, Glen Sammons and Joe Warren.

## Progressive Study Club Brings Home 16 Awards From District Convention

The Progressive Study Club had four members as representatives at the Mesquite District Convention held March 20-21 at the Windsor Hotel in Abilene. They were Mrs. R. W. Herren, Mrs. C. T. Everett, Mrs. Abe Turner and Mrs. Kenneth Lane. Mrs. Herren was serving as District Trustee, and Mrs. Turner and Mrs. Lane were Division Chairmen in the Public Affairs Department.

The club brought home 16 awards in all. Out of the eight departments, Progressive Study

Club won four first places and one second place. The first places were in Conservation, Education, Fine Arts and Home Life; and the second was in Public Affairs. There were also two division first place awards and seven second places. First place in Outstanding Club Program and first on its pressbook were also brought home by the Haskell Club.

Mrs. W. V. Wheeler of Moran, Texas, was elected to serve as president for the following two-year term.

Federation, and the procedures of each.

Her main topic for the evening was "The Total Woman," which was given at the state convention in Dallas by a committee of the Bryan, Texas club.

"The Total Woman" has poise and self confidence, and many other characteristics of greatness. "The Total Woman" is busy at all times, performing her duties and admired and respected in her town or community by everyone.

The women of today can be good homemakers and leaders and public servants. A woman has found her place professionally in the world, and acquires the quality which make her great.

The social hour was hosted by the Personal Development Committee, Ozelle Frierson, Veta Furrh and Dr. Robinson.

Special guests were Mrs. Geneva Kunkle, of Olney, and Mrs. N. L. McCallum of Haskell, an honorary member of the club.

## Members Hear Mrs. Bryan

Members of the B&PW Club assembled in the community room, Haskell National Bank, Tuesday evening, March 26th, at 7:30.

Mrs. Opal Adkins, president, presided for the short business session and called on Mrs. Lathur Burkett, the legislative chairman, to introduce Mrs. Thelma Bryan of Olney, guest speaker of the evening.

Mrs. Bryan is the treasurer of the Texas Federated Business and Professional Women's Club. She is a very busy career woman, being active in numerous civic organizations, and assuming responsibilities in each.

She spoke of her trip last year to the National Convention in New York City, after having been elected state treasurer. She stated many facts concerning various committees of the State

Treat yourself royally this summer. In a suit that looks and feels great, but doesn't cost a king's ransom. That's Royal Palm Beach, a suit of 65% Dacron polyester-35% wool worsted. Precision tailored in shape retaining wrinkle resisting fabric. In 1968 colorful new plaids that give you up-to-the-minute fashion. And in suave luster. Charles Wolfen pairs of trousers, this suit has yet to meet troublesome heat.

**\$55.00**

2 SPEED! 3 CYCLE! AUTOMATIC WASHER

**\$188.**

3 WATER TEMPS  
MAGIC-MIX FILTER  
MATCHING DRYER **\$128.**

FAMILY SIZE REFRIGERATOR WITH FULL-WIDTH TOP FREEZER

**\$148**

FULL-WIDTH MEAT TRAY  
ROOMY DOOR STORAGE  
LARGE CRISPER

"BOOKSHELF UPRIGHT FREEZER

**\$168**

FREEZES & STORES UP TO 374 POUNDS  
16 CU. FT. CHEST **\$198**

BIG 14.2 CU. FT. NO FROST REFRIGERATOR FREEZER NOW \$298  
HUGE 16.7 CU. FT. NO FROST REFRIGERATOR FREEZER NOW \$398

**SALE!**

**ONLY 3 MORE DAYS**

Thursday, Friday, Saturday

**FRAZIER'S APPLIANCES**

West Side of Square Phone 864-2758

A record breaking attendance of over 200 women were present for the District III, T.H.D.A. meeting held here Tuesday in the American Legion Hall.

Forty-five voting delegates, 17 Extension Home Demonstration Agents, and 142 Home Demonstration Club members were on hand for the all-day meeting. A total of 204 T.H.D.A. members plus 20 visitors were present at the noon-time style show.

One of the main highlights of the meeting was the style show. Mrs. Fred Kupatt held the audience attention with many clever antiques and the many colorful fashions spoke for themselves.

Stores participating and furnishing models were Cofield's Personality Shoppe, Hassen's Lane-Felker, Elma Guest, of Haskell, and Martin's of Rule.

"The Slipper Shoppe, City Florist, Chamber of Commerce, Jones-Cox, Mrs. Gene Overton and Mrs. Ray Overton also played a large role in helping make the style show such a success," Haskell County Agent, Miss Ruth Ann Fansler said.

Line-up of models included

## Presbyterian Ladies Hear Book Review

"The response of the Church in Changing Japan" was reviewed by Mrs. Jim Bob Daws, of Throckmorton, District Presbyterian chairman, to the women of the Presbyterian Church, at a luncheon held Monday in the home of Mrs. B. C. Chapman.

Mrs. W. V. Wheeler of Moran, Texas, was elected to serve as president for the following two-year term.

Other Throckmorton ladies attending were Mrs. Dona Taylor, Mrs. Fany Floy Marrs, Mrs. Tom Richards and Mrs. Ada Montgomery.

Attending the luncheon from Haskell were Mrs. Ira Hester, Mrs. Mildred Cahill, Mrs. Howard Perry, Mrs. Ruth Reid, Mrs. W. H. McBroom, Mrs. Jimmy Browning, Mrs. E. E. Frierson, Mrs. Carrie Williams, Mrs. Harry Scales, Mrs. Ed Hester, and the hostess, Mrs. B. C. Chapman.

In her most interesting and informative talk, Mrs. Daws related her visit to Japan with things brought out in the book, when she and her husband visited there.

Advertising doesn't cost... It Pays!

Mrs. Fred Kupatt, Debbie Campbell, Kathy Hager, Mrs. Opal Easkins, Mrs. Rachael Teicheiman, Mrs. Betty Albus, Mrs. C. B. Sprayberry, Mrs. Lewis Corzine, Mrs. Marie Howeth, Mrs. C. C. Campbell, Mrs. J. R. Davis, Mrs. Eloise Perrin, Mrs. Emma Bland, Mrs. Hubert Nierdeck, Mrs. Mildred Robertson, Larina Caddell, Mrs. Evelyn Hines, Cindy Pittecock, Mrs. Jack Chapman, Mrs. Glenn Caddell, Mrs. Lester Hutchinson, Mrs. Alton Sanders, Mrs. Melanie Whitley, Paulette Wilfong, Mrs. Brooksy Stamper, Betty Watkins.

Mrs. Fred Kupatt served as narrator and Mrs. Gene Overton sang a few select songs for the style show, with Mrs. Ray Overton accompanist.

City Florist was in charge of the flower arrangement. The Chamber of Commerce, sponsored badges and envelopes and the American Legion Hall was donated for the meeting.

During the business a resolution was passed to change the program of work schedule to end in July instead of January. The resolution will be presented at the state convention at McAllen September 16-17.

The electorate also decided to endorse outgoing district director, Mrs. Bill Hardy for state treasurer at the McAllen convention.

District III scholarship recipient Cecelia Childers of Iowa Park talked on citizenship.

Mrs. Sam Speir, state vice president from Manchaca near Austin, gave the history of HD clubs in Texas since 1926.

Miss Theima Wirges, Wichita County agent, presented the speech prepared by Mrs. Florence W. Low, assistant director

of a death in the family. Mrs. Low's talk was on the need for better education with the in 133 Texas counties.

The role of the woman changed from a producer to a consumer. Mrs. Wirges said.

Statistics saying that of the U. S. population, 40% live in one house were cited.

Featured at the sessions was a demonstration on fire safety by the Bureau safety director, Smetana of Waco, and doused seven times on stage as he talked to prevent and eliminate hazards.

The Imitators, Grove and Gary Lee High School students, folk music in the sessions style.

Discussed also was a national convention at Puerto Rico, October 1968. Mrs. C. B. Sprayberry called the meeting to the welcome was given by Mrs. Carl Evans, Haskell County T.H.D.A. chairman, and the response by Mrs. Carl Evans, County T.H.D.A. chairman.

Next year the T.H.D.A. meeting will be in some other county. Haskell County registered a record meeting as an organization in the very helpful in making the success was. Haskell County Miss Ruth Ann Fansler.

**C. H. (BUD) HERRE**  
Insurance and Real Estate  
Phone 864-3322  
22 N. Avenue D — Haskell, Texas  
Fire - Casualty - Life  
Your Patronage Sincerely Appreciated

**WHY NOT NOW?**

READY FOR REALLY BIG SAVINGS

**Whirlpool**

SPECIAL VALUES NOW FROM AMERICA'S LEADING MAKER OF QUALITY HOME APPLIANCES.....

2 SPEED! 3 CYCLE! AUTOMATIC WASHER **\$188.**

3 WATER TEMPS  
MAGIC-MIX FILTER  
MATCHING DRYER **\$128.**

FAMILY SIZE REFRIGERATOR WITH FULL-WIDTH TOP FREEZER **\$148**

FULL-WIDTH MEAT TRAY  
ROOMY DOOR STORAGE  
LARGE CRISPER

"BOOKSHELF UPRIGHT FREEZER **\$168**

FREEZES & STORES UP TO 374 POUNDS  
16 CU. FT. CHEST **\$198**

BIG 14.2 CU. FT. NO FROST REFRIGERATOR FREEZER NOW \$298  
HUGE 16.7 CU. FT. NO FROST REFRIGERATOR FREEZER NOW \$398

**SALE!**

**ONLY 3 MORE DAYS**

Thursday, Friday, Saturday

**FRAZIER'S APPLIANCES**  
West Side of Square Phone 864-2758



**Lane-Felker**

DRAMATIC COSTUMING IN TWO PARTS FOR EASTER. DISTINCTIVE SEAMING DETAIL IS THE KEY-NOTE OF THIS SUMMER FASHION.

COLORS: YELLOW, PINK.

COSTUMES OF THIS TYPE FROM \$30.00 TO \$125.00

**AMON LILES ELECTED TO THE BOARD OF TRUSTEES**

District of Texas Women's Clubs Eighteenth Convention March 20-21, with Al... serving as the... Liles of Weinert, the Weinert Mat... Haskell Mag... past Mesquite... was elected... Trustee... Mrs. Liles will...

**Larned To The Club**  
Larned was hostess... Club on Tues... The house was... decorated with sea...

**Menus . . .**

School lunch menus for week of April 1-5:  
Monday: Weiners stuffed with cheese, scalloped potatoes, English peas, tomato wedges, rolls, butter, banana pudding, milk.  
Tuesday: Baked chicken with rice, green beans, congealed fruit salad, rolls, butter, cherry cobbler, milk.  
Wednesday: Luncheon meat sandwiches, potato chips, lettuce and tomatoes, barbecued beans, raisin bars, milk.  
Thursday: Chili con Carne with beans, buttered spinach, baked potatoes, carrot sticks, cornbread, butter, peach slices, milk.  
Friday: Salmon croquettes, catsup or tartar sauce, mashed potatoes, buttered corn, orange juice, rolls, butter, brownies, milk.

**Haskell WSG Is Represented At Conference**

The Wesleyan Service Guild of the Haskell First Methodist Church was represented at the annual conference meeting at First Methodist Church in Midland last week-end by Doris Montgomery, Grace Bisbee, Mozelle Bland, Nina Gibson, Bonnie Buntyn and Novella Rastetter. Featured speaker was Joyce Hill, missionary to Chili.

**BELTON DUNCAN**  
D. B. A.  
Cahill & Duncan Agency  
N. First Street \* Phone 864-2646  
INSURANCE - REAL ESTATE  
AND LOANS  
SECURE YOUR RESIDENCE LOAN

**S. JIMMIE CAMPBELL**  
HAS LEASED

**sies Hi-Lander**  
806 S. AVENUE E  
Beginning Monday, April 1, will begin operation of El... Hi-Lander and want to so... the continued patronage of... present customers and in... our old ones to visit us in... new location.  
Our hours will be the same... you will receive the same... courteous, efficient service and... food as in the past. Every... port will be put forth to merit... return patronage.  
We would be ungrateful if we... led to express our sincere ap... eciation for the many friends... wonderful patronage we... had at the Dairy Cream.  
sit us and meet your friends... our new location.  
Mrs. Jimmie Campbell

**Haskell County H. D. Council Holds Meeting**

The Haskell County Home Demonstration Council met in the Community Room of the Haskell National Bank Building, March 20, 1968. Mrs. Lewis Corzine called the meeting to order. Thirteen member representatives from five Home Demonstration clubs and one visitor were present. Mrs. Eugene Teichelman led the invocation. Mrs. T. M. Patterson led the singing of the National Home Demonstration song. The Devotional was given by Mrs. Corzine. Mrs. A. R. Hannsz read the minutes of the last council meeting. Mrs. Leonard Kieko gave the treasurer's report. Plans for the District THDA meeting, March 26, were discussed. Council also voted on the menu to be served at the THDA meeting. It was announced that the Tri-County Rally would be at Seymour this year on April 23. The Tri-County Committee requested for Haskell Home Demonstration Council's approval of the proposed date. Each club was asked to report the number of people from their club that would be attending the Tri-County Rally Day event. Mrs. Henry Smith gave a summarized report of the meeting and Mrs. Eugene Teichelman moved the meeting be adjourned. Refreshments were served by the Mattson Club.

**Meeting On Pecan And Fruit Trees Is Set April 3rd**

A county-wide meeting for anyone interested in growing pecan and fruit trees is set for Wednesday afternoon, April 3, at 2:30. The meeting will be held at the Community Room of the Haskell National Bank, according to R. W. Schumann, Haskell County Agent. Schumann said that this should be a real good meeting for those persons interested in raising pecan and other fruit trees, either in an orchard or in the yard at home. Mr. B. G. Hancock, Horticulturist with the Texas Agricultural Extension Service, will discuss pecan and fruit tree varieties, diseases and insects, propagation, fertilization, training and pruning, and many other aspects of fruit and pecan tree horticulture. If possible, a demonstration will be given on budding and grafting pecans. "Every homeowner interested in horticulture should try to attend this meeting," Schumann said.

**Outdoor - In - Texas**

By Vern Sanford  
Texas has an astronomical fox population. There are few places in the state where this familiar animal is not found. Gray fox predominate. But in a few places there are some red foxes. Most people falsely believe the fox to be a real villain. They shoot every one in sight. Some counties even pay a bounty on each one killed. Many times the fox gets blamed for something he didn't do. He is a handy scapegoat. He's charged with everything from a reduction in the quail population to a decline in wild turkeys. But facts seldom convict the fox. Consider, for example, an incident which happened in New York state in 1947. There was a drastic reduction in the state's pheasant population and hunters were looking for something to blame it on. Unfortunately the fox got caught in the cross-fire between the politicians and the hunters. Since hunters can vote and foxes cannot, the politicians concluded that the matter needed serious study. Two areas were chosen. In one area all the foxes possible were eliminated. In the other area, foxes were protected and actually pampered. Each area had a comparable pheasant population. After the study it was concluded that fox control had no bearing whatsoever on pheasant numbers. What's claims to the contrary, the fox was an insignificant factor as far as pheasant survival was concerned. Actually the fox does more good than harm. One naturalist who studied foxes for 25 years, through observation of dens, stomachs and droppings, concluded that their main food was mice. In "The Mammals of Texas" (published by the Texas Parks and Wildlife Department), Dr. William B. Davis points out that the stomach of 42 gray foxes in Texas were examined, and the winter diet consisted mainly of small mammals like mice and poppers (56 per cent), with the rest being composed of insects (23 per cent) and birds (21 per cent). During the summer the fox's diet changed somewhat, with the bulk of it (30 per cent) being persimmons and acorns, followed by small mammals, insects and birds. In only one of the 42 stomachs examined was there evidence of domestic poultry and quail. "Consequently, as judged from these analyses, the usual food habits of the gray fox do not conflict much with man's own economy," Dr. Davis concluded. Despite man's efforts to eradicate it, the fox not only has survived, it actually has multiplied and expanded its range.

**Trav Hadaway's To Be Back At Dairy Cream**

Mr. and Mrs. Trav Hadaway announced that beginning Monday, April 1, they will again be operating the Dairy Cream, South Avenue E. "We will be happy to be back at your service, and we will offer the same wide variety of drinks and menu as before and we will be looking forward to seeing you," Mr. Hadaway said.

**Haskell Captures Two First Places At Ranger Meet**

Haskell captured two first place victories at the Red Dog Relyays at Ranger last Saturday. Darrell Davis captured first place in the 440-yard dash with a time of 51.0 and the mile relay team also "ran-away" with first place honors. Charles Franklin placed sixth in the 220 and Randy O'Neal sixth in the 440 dash.

**Fouts-Turnbow Wedding Plans Are Announced**

Mr. and Mrs. George W. Fouts announce the engagement and approaching marriage of their daughter, Betsy Ann, to Perry Payne Turnbow, son of Mr. and Mrs. W. W. Turnbow. The prospective bride and groom are graduates of Haskell High School, and are attending Texas Technological College, Lubbock. Wedding date has been set for Saturday, June 8th, at 8:00 o'clock in the evening at the First Baptist Church, Haskell.

**Spotlight Is Focused On Bobby Camp**

According to an article appearing in the Remcon News, South San Francisco Division News, the spotlight of the month was focused on Bobby Glen Camp, Office Manager of the South San Francisco Division office. Bob is the son of Mr. and Mrs. Johnny Camp of Haskell. He went to work for Remcon on October 6, 1958, as a laborer at the Southwestern Portland Cement Plant at Odessa. Since that time he has worked in various capacities from mail boy on up, striving all the time to continue his education in the accounting field. In 1959, Bob was transferred from the Odessa job to become Field Office Manager on the Federal Office Building project in Phoenix and a short time thereafter was moved to the El Paso Division office to become a trainee in the company's Accounting Department. Later he was sent to Tucson, Arizona, where he was field office manager on various projects such as St. Mary's Hospital, Redondo Towers Apartments, and the Tarleton Park Apartments. In January, 1966, when the South San Francisco Division Office was established, Bob was

**OUTDOORS - IN - TEXAS**  
By Vern Sanford

Much of this can be attributed to his adaptability. The fox can live under almost any conditions, and is clever enough to escape man's best efforts to do away with him. Ernest Thompson Seton, the late American naturalist, wrote in 1910 of a remarkable fox that seemed to have unlimited stamina. His father's pack of fox hounds chased the fox over hill and dale. Soon the fox seemed to be ready to drop from exhaustion, but suddenly the fox was as spry as ever. Suddenly it dawned on Seton and his companions that something was amiss. Every time the fox made a circle he went into a hollow log and out again. The hunters examined the log by banging on it. Out popped another fox. The two foxes had been running a relay. When one got tired he ran into the log and the fresh one scampered out the other side. Based on such evidence of survival, it is no wonder that the fox still is with us!

**Hospital Notes**

Admitted:  
Minnie Lee Francis, medical, Lulu Webb, medical, Rochester; H. E. Strickland, medical, Haskell; John A. Felker, medical, J. V. Patterson, medical, Willie Thomas, Jr., medical, Annie Mae Parks, medical, R. W. Bailey, surgical, Walter Payne, surgical, Ethel Bird, medical, Robert Trussell, medical, Alberto Stacy, medical, Jeffie Adams, medical, Weinert; Grover C. Walker, medical.

**Menus . . .**

School lunch menus for week of April 1-5:  
Monday: Weiners stuffed with cheese, scalloped potatoes, English peas, tomato wedges, rolls, butter, banana pudding, milk.  
Tuesday: Baked chicken with rice, green beans, congealed fruit salad, rolls, butter, cherry cobbler, milk.  
Wednesday: Luncheon meat sandwiches, potato chips, lettuce and tomatoes, barbecued beans, raisin bars, milk.  
Thursday: Chili con Carne with beans, buttered spinach, baked potatoes, carrot sticks, cornbread, butter, peach slices, milk.  
Friday: Salmon croquettes, catsup or tartar sauce, mashed potatoes, buttered corn, orange juice, rolls, butter, brownies, milk.

**Meeting On Pecan And Fruit Trees Is Set April 3rd**

A county-wide meeting for anyone interested in growing pecan and fruit trees is set for Wednesday afternoon, April 3, at 2:30. The meeting will be held at the Community Room of the Haskell National Bank, according to R. W. Schumann, Haskell County Agent. Schumann said that this should be a real good meeting for those persons interested in raising pecan and other fruit trees, either in an orchard or in the yard at home. Mr. B. G. Hancock, Horticulturist with the Texas Agricultural Extension Service, will discuss pecan and fruit tree varieties, diseases and insects, propagation, fertilization, training and pruning, and many other aspects of fruit and pecan tree horticulture. If possible, a demonstration will be given on budding and grafting pecans. "Every homeowner interested in horticulture should try to attend this meeting," Schumann said.

**Trav Hadaway's To Be Back At Dairy Cream**

Mr. and Mrs. Trav Hadaway announced that beginning Monday, April 1, they will again be operating the Dairy Cream, South Avenue E. "We will be happy to be back at your service, and we will offer the same wide variety of drinks and menu as before and we will be looking forward to seeing you," Mr. Hadaway said.

**Haskell Captures Two First Places At Ranger Meet**

Haskell captured two first place victories at the Red Dog Relyays at Ranger last Saturday. Darrell Davis captured first place in the 440-yard dash with a time of 51.0 and the mile relay team also "ran-away" with first place honors. Charles Franklin placed sixth in the 220 and Randy O'Neal sixth in the 440 dash.

**Fouts-Turnbow Wedding Plans Are Announced**

Mr. and Mrs. George W. Fouts announce the engagement and approaching marriage of their daughter, Betsy Ann, to Perry Payne Turnbow, son of Mr. and Mrs. W. W. Turnbow. The prospective bride and groom are graduates of Haskell High School, and are attending Texas Technological College, Lubbock. Wedding date has been set for Saturday, June 8th, at 8:00 o'clock in the evening at the First Baptist Church, Haskell.

**Spotlight Is Focused On Bobby Camp**

According to an article appearing in the Remcon News, South San Francisco Division News, the spotlight of the month was focused on Bobby Glen Camp, Office Manager of the South San Francisco Division office. Bob is the son of Mr. and Mrs. Johnny Camp of Haskell. He went to work for Remcon on October 6, 1958, as a laborer at the Southwestern Portland Cement Plant at Odessa. Since that time he has worked in various capacities from mail boy on up, striving all the time to continue his education in the accounting field. In 1959, Bob was transferred from the Odessa job to become Field Office Manager on the Federal Office Building project in Phoenix and a short time thereafter was moved to the El Paso Division office to become a trainee in the company's Accounting Department. Later he was sent to Tucson, Arizona, where he was field office manager on various projects such as St. Mary's Hospital, Redondo Towers Apartments, and the Tarleton Park Apartments. In January, 1966, when the South San Francisco Division Office was established, Bob was

**OUTDOORS - IN - TEXAS**  
By Vern Sanford

Much of this can be attributed to his adaptability. The fox can live under almost any conditions, and is clever enough to escape man's best efforts to do away with him. Ernest Thompson Seton, the late American naturalist, wrote in 1910 of a remarkable fox that seemed to have unlimited stamina. His father's pack of fox hounds chased the fox over hill and dale. Soon the fox seemed to be ready to drop from exhaustion, but suddenly the fox was as spry as ever. Suddenly it dawned on Seton and his companions that something was amiss. Every time the fox made a circle he went into a hollow log and out again. The hunters examined the log by banging on it. Out popped another fox. The two foxes had been running a relay. When one got tired he ran into the log and the fresh one scampered out the other side. Based on such evidence of survival, it is no wonder that the fox still is with us!

**Hospital Notes**

Admitted:  
Minnie Lee Francis, medical, Lulu Webb, medical, Rochester; H. E. Strickland, medical, Haskell; John A. Felker, medical, J. V. Patterson, medical, Willie Thomas, Jr., medical, Annie Mae Parks, medical, R. W. Bailey, surgical, Walter Payne, surgical, Ethel Bird, medical, Robert Trussell, medical, Alberto Stacy, medical, Jeffie Adams, medical, Weinert; Grover C. Walker, medical.

**Menus . . .**

School lunch menus for week of April 1-5:  
Monday: Weiners stuffed with cheese, scalloped potatoes, English peas, tomato wedges, rolls, butter, banana pudding, milk.  
Tuesday: Baked chicken with rice, green beans, congealed fruit salad, rolls, butter, cherry cobbler, milk.  
Wednesday: Luncheon meat sandwiches, potato chips, lettuce and tomatoes, barbecued beans, raisin bars, milk.  
Thursday: Chili con Carne with beans, buttered spinach, baked potatoes, carrot sticks, cornbread, butter, peach slices, milk.  
Friday: Salmon croquettes, catsup or tartar sauce, mashed potatoes, buttered corn, orange juice, rolls, butter, brownies, milk.

**Meeting On Pecan And Fruit Trees Is Set April 3rd**

A county-wide meeting for anyone interested in growing pecan and fruit trees is set for Wednesday afternoon, April 3, at 2:30. The meeting will be held at the Community Room of the Haskell National Bank, according to R. W. Schumann, Haskell County Agent. Schumann said that this should be a real good meeting for those persons interested in raising pecan and other fruit trees, either in an orchard or in the yard at home. Mr. B. G. Hancock, Horticulturist with the Texas Agricultural Extension Service, will discuss pecan and fruit tree varieties, diseases and insects, propagation, fertilization, training and pruning, and many other aspects of fruit and pecan tree horticulture. If possible, a demonstration will be given on budding and grafting pecans. "Every homeowner interested in horticulture should try to attend this meeting," Schumann said.

**Trav Hadaway's To Be Back At Dairy Cream**

Mr. and Mrs. Trav Hadaway announced that beginning Monday, April 1, they will again be operating the Dairy Cream, South Avenue E. "We will be happy to be back at your service, and we will offer the same wide variety of drinks and menu as before and we will be looking forward to seeing you," Mr. Hadaway said.

**Haskell Captures Two First Places At Ranger Meet**

Haskell captured two first place victories at the Red Dog Relyays at Ranger last Saturday. Darrell Davis captured first place in the 440-yard dash with a time of 51.0 and the mile relay team also "ran-away" with first place honors. Charles Franklin placed sixth in the 220 and Randy O'Neal sixth in the 440 dash.

**Fouts-Turnbow Wedding Plans Are Announced**

Mr. and Mrs. George W. Fouts announce the engagement and approaching marriage of their daughter, Betsy Ann, to Perry Payne Turnbow, son of Mr. and Mrs. W. W. Turnbow. The prospective bride and groom are graduates of Haskell High School, and are attending Texas Technological College, Lubbock. Wedding date has been set for Saturday, June 8th, at 8:00 o'clock in the evening at the First Baptist Church, Haskell.

**Spotlight Is Focused On Bobby Camp**

According to an article appearing in the Remcon News, South San Francisco Division News, the spotlight of the month was focused on Bobby Glen Camp, Office Manager of the South San Francisco Division office. Bob is the son of Mr. and Mrs. Johnny Camp of Haskell. He went to work for Remcon on October 6, 1958, as a laborer at the Southwestern Portland Cement Plant at Odessa. Since that time he has worked in various capacities from mail boy on up, striving all the time to continue his education in the accounting field. In 1959, Bob was transferred from the Odessa job to become Field Office Manager on the Federal Office Building project in Phoenix and a short time thereafter was moved to the El Paso Division office to become a trainee in the company's Accounting Department. Later he was sent to Tucson, Arizona, where he was field office manager on various projects such as St. Mary's Hospital, Redondo Towers Apartments, and the Tarleton Park Apartments. In January, 1966, when the South San Francisco Division Office was established, Bob was

**OUTDOORS - IN - TEXAS**  
By Vern Sanford

Much of this can be attributed to his adaptability. The fox can live under almost any conditions, and is clever enough to escape man's best efforts to do away with him. Ernest Thompson Seton, the late American naturalist, wrote in 1910 of a remarkable fox that seemed to have unlimited stamina. His father's pack of fox hounds chased the fox over hill and dale. Soon the fox seemed to be ready to drop from exhaustion, but suddenly the fox was as spry as ever. Suddenly it dawned on Seton and his companions that something was amiss. Every time the fox made a circle he went into a hollow log and out again. The hunters examined the log by banging on it. Out popped another fox. The two foxes had been running a relay. When one got tired he ran into the log and the fresh one scampered out the other side. Based on such evidence of survival, it is no wonder that the fox still is with us!

**Hospital Notes**

Admitted:  
Minnie Lee Francis, medical, Lulu Webb, medical, Rochester; H. E. Strickland, medical, Haskell; John A. Felker, medical, J. V. Patterson, medical, Willie Thomas, Jr., medical, Annie Mae Parks, medical, R. W. Bailey, surgical, Walter Payne, surgical, Ethel Bird, medical, Robert Trussell, medical, Alberto Stacy, medical, Jeffie Adams, medical, Weinert; Grover C. Walker, medical.

**Menus . . .**

School lunch menus for week of April 1-5:  
Monday: Weiners stuffed with cheese, scalloped potatoes, English peas, tomato wedges, rolls, butter, banana pudding, milk.  
Tuesday: Baked chicken with rice, green beans, congealed fruit salad, rolls, butter, cherry cobbler, milk.  
Wednesday: Luncheon meat sandwiches, potato chips, lettuce and tomatoes, barbecued beans, raisin bars, milk.  
Thursday: Chili con Carne with beans, buttered spinach, baked potatoes, carrot sticks, cornbread, butter, peach slices, milk.  
Friday: Salmon croquettes, catsup or tartar sauce, mashed potatoes, buttered corn, orange juice, rolls, butter, brownies, milk.

**Meeting On Pecan And Fruit Trees Is Set April 3rd**

A county-wide meeting for anyone interested in growing pecan and fruit trees is set for Wednesday afternoon, April 3, at 2:30. The meeting will be held at the Community Room of the Haskell National Bank, according to R. W. Schumann, Haskell County Agent. Schumann said that this should be a real good meeting for those persons interested in raising pecan and other fruit trees, either in an orchard or in the yard at home. Mr. B. G. Hancock, Horticulturist with the Texas Agricultural Extension Service, will discuss pecan and fruit tree varieties, diseases and insects, propagation, fertilization, training and pruning, and many other aspects of fruit and pecan tree horticulture. If possible, a demonstration will be given on budding and grafting pecans. "Every homeowner interested in horticulture should try to attend this meeting," Schumann said.

**Trav Hadaway's To Be Back At Dairy Cream**

Mr. and Mrs. Trav Hadaway announced that beginning Monday, April 1, they will again be operating the Dairy Cream, South Avenue E. "We will be happy to be back at your service, and we will offer the same wide variety of drinks and menu as before and we will be looking forward to seeing you," Mr. Hadaway said.

**Haskell Captures Two First Places At Ranger Meet**

Haskell captured two first place victories at the Red Dog Relyays at Ranger last Saturday. Darrell Davis captured first place in the 440-yard dash with a time of 51.0 and the mile relay team also "ran-away" with first place honors. Charles Franklin placed sixth in the 220 and Randy O'Neal sixth in the 440 dash.

**Fouts-Turnbow Wedding Plans Are Announced**

Mr. and Mrs. George W. Fouts announce the engagement and approaching marriage of their daughter, Betsy Ann, to Perry Payne Turnbow, son of Mr. and Mrs. W. W. Turnbow. The prospective bride and groom are graduates of Haskell High School, and are attending Texas Technological College, Lubbock. Wedding date has been set for Saturday, June 8th, at 8:00 o'clock in the evening at the First Baptist Church, Haskell.

**Spotlight Is Focused On Bobby Camp**

According to an article appearing in the Remcon News, South San Francisco Division News, the spotlight of the month was focused on Bobby Glen Camp, Office Manager of the South San Francisco Division office. Bob is the son of Mr. and Mrs. Johnny Camp of Haskell. He went to work for Remcon on October 6, 1958, as a laborer at the Southwestern Portland Cement Plant at Odessa. Since that time he has worked in various capacities from mail boy on up, striving all the time to continue his education in the accounting field. In 1959, Bob was transferred from the Odessa job to become Field Office Manager on the Federal Office Building project in Phoenix and a short time thereafter was moved to the El Paso Division office to become a trainee in the company's Accounting Department. Later he was sent to Tucson, Arizona, where he was field office manager on various projects such as St. Mary's Hospital, Redondo Towers Apartments, and the Tarleton Park Apartments. In January, 1966, when the South San Francisco Division Office was established, Bob was

**OUTDOORS - IN - TEXAS**  
By Vern Sanford

Much of this can be attributed to his adaptability. The fox can live under almost any conditions, and is clever enough to escape man's best efforts to do away with him. Ernest Thompson Seton, the late American naturalist, wrote in 1910 of a remarkable fox that seemed to have unlimited stamina. His father's pack of fox hounds chased the fox over hill and dale. Soon the fox seemed to be ready to drop from exhaustion, but suddenly the fox was as spry as ever. Suddenly it dawned on Seton and his companions that something was amiss. Every time the fox made a circle he went into a hollow log and out again. The hunters examined the log by banging on it. Out popped another fox. The two foxes had been running a relay. When one got tired he ran into the log and the fresh one scampered out the other side. Based on such evidence of survival, it is no wonder that the fox still is with us!

**Hospital Notes**

Admitted:  
Minnie Lee Francis, medical, Lulu Webb, medical, Rochester; H. E. Strickland, medical, Haskell; John A. Felker, medical, J. V. Patterson, medical, Willie Thomas, Jr., medical, Annie Mae Parks, medical, R. W. Bailey, surgical, Walter Payne, surgical, Ethel Bird, medical, Robert Trussell, medical, Alberto Stacy, medical, Jeffie Adams, medical, Weinert; Grover C. Walker, medical.

**Menus . . .**

School lunch menus for week of April 1-5:  
Monday: Weiners stuffed with cheese, scalloped potatoes, English peas, tomato wedges, rolls, butter, banana pudding, milk.  
Tuesday: Baked chicken with rice, green beans, congealed fruit salad, rolls, butter, cherry cobbler, milk.  
Wednesday: Luncheon meat sandwiches, potato chips, lettuce and tomatoes, barbecued beans, raisin bars, milk.  
Thursday: Chili con Carne with beans, buttered spinach, baked potatoes, carrot sticks, cornbread, butter, peach slices, milk.  
Friday: Salmon croquettes, catsup or tartar sauce, mashed potatoes, buttered corn, orange juice, rolls, butter, brownies, milk.

**Meeting On Pecan And Fruit Trees Is Set April 3rd**

A county-wide meeting for anyone interested in growing pecan and fruit trees is set for Wednesday afternoon, April 3, at 2:30. The meeting will be held at the Community Room of the Haskell National Bank, according to R. W. Schumann, Haskell County Agent. Schumann said that this should be a real good meeting for those persons interested in raising pecan and other fruit trees, either in an orchard or in the yard at home. Mr. B. G. Hancock, Horticulturist with the Texas Agricultural Extension Service, will discuss pecan and fruit tree varieties, diseases and insects, propagation, fertilization, training and pruning, and many other aspects of fruit and pecan tree horticulture. If possible, a demonstration will be given on budding and grafting pecans. "Every homeowner interested in horticulture should try to attend this meeting," Schumann said.

**Trav Hadaway's To Be Back At Dairy Cream**

Mr. and Mrs. Trav Hadaway announced that beginning Monday, April 1, they will again be operating the Dairy Cream, South Avenue E. "We will be happy to be back at your service, and we will offer the same wide variety of drinks and menu as before and we will be looking forward to seeing you," Mr. Hadaway said.

**Haskell Captures Two First Places At Ranger Meet**

Haskell captured two first place victories at the Red Dog Relyays at Ranger last Saturday. Darrell Davis captured first place in the 440-yard dash with a time of 51.0 and the mile relay team also "ran-away" with first place honors. Charles Franklin placed sixth in the 220 and Randy O'Neal sixth in the 440 dash.

**Fouts-Turnbow Wedding Plans Are Announced**

Mr. and Mrs. George W. Fouts announce the engagement and approaching marriage of their daughter, Betsy Ann, to Perry Payne Turnbow, son of Mr. and Mrs. W. W. Turnbow. The prospective bride and groom are graduates of Haskell High School, and are attending Texas Technological College, Lubbock. Wedding date has been set for Saturday, June 8th, at 8:00 o'clock in the evening at the First Baptist Church, Haskell.

**Spotlight Is Focused On Bobby Camp**

According to an article appearing in the Remcon News, South San Francisco Division News, the spotlight of the month was focused on Bobby Glen Camp, Office Manager of the South San Francisco Division office. Bob is the son of Mr. and Mrs. Johnny Camp of Haskell. He went to work for Remcon on October 6, 1958, as a laborer at the Southwestern Portland Cement Plant at Odessa. Since that time he has worked in various capacities from mail boy on up, striving all the time to continue his education in the accounting field. In 1959, Bob was transferred from the Odessa job to become Field Office Manager on the Federal Office Building project in Phoenix and a short time thereafter was moved to the El Paso Division office to become a trainee in the company's Accounting Department. Later he was sent to Tucson, Arizona, where he was field office manager on various projects such as St. Mary's Hospital, Redondo Towers Apartments, and the Tarleton Park Apartments. In January, 1966, when the South San Francisco Division Office was established, Bob was

**ATTENTION . . . ALL CAR OWNERS**  
We install Mufflers, Tail Pipes and Shock Absorbers. We also Balance Tires and wheels. All work done with the latest equipment and experienced personnel. All work done reasonable and Satisfaction Guaranteed.  
**HOWARD'S GOOD GULF SERVICE STATION**  
115 N. AVENUE E.—Phone 864-2200

**Volle Beauty: Jo Lester**  
Jo Lester chose a carefree 100% Dacron polyester "Whipped Cream" voile for a dressy little shift . . . completely lined with bow trimmed neckline in back. Accenting the front, a panel of intricate embroidery! White, pink, maize or blue. Sizes 10 to 20.  
\$19.00  
The Personality Shoppe  
**JO LESTER**  
Exciting Spring and Easter Fashions arriving daily . . . Select Yours Today!

**Buick Bargain Days are here.**



**Buick Bargain Days is that time of year when we stretch to make you a Buick owner. It's that time of year you get the best deal on the new Buick of your choice, equipped the way you'd like your new car to be. It means prices you've got to see to really believe. And it means the most liberal trade-in allowances of the year. Everything we're doing during Buick Bargain Days points to plenty of incentive for you to become a Buick owner. See your Buick dealer today.**

Special Buick Bargain Days feature: Buick Skylark Custom 2-dr. hardtop, bargain-equipped with whitewall tires, remote control outside mirror, convenience package, deluxe wheel covers, custom bright exterior moldings, and custom steering wheel.

**Wouldn't you really rather drive a Buick Bargain?**  
**MEDFORD BUICK-PONTIAC COMPANY**  
200 North Avenue E. Haskell, Texas.

### Lorena Diane Ware Killed In Mishap

Lorena Diane Ware, 5, daughter of Mr. and Mrs. L. D. Ware, was killed at Sweetwater Monday afternoon after she fell from her parent's car into the path of a truck.

The Ware family had been residing at 1544 North Avenue E. Haskell, for the past several weeks. Mr. Ware is with the Buck Construction Company.

Diane and her sister, Jo Ann, were in the car while it was parked on a driveway at Sweetwater, when the car began moving down the driveway, according to Sweetwater police.

Officers said apparently the little girl became frightened and jumped out and the car ran over her. Police said the mother had left the car momentarily when the accident happened.

Relatives of the mother were working inside the house at 1506 Henderson Street, Sweetwater, at the time, according to officers.

The child was taken to a Sweetwater hospital and was dead on arrival, police said. She was born October 30, 1962, in Sweetwater.

Survivors include her parents; one brother, Ricky; one sister, Jo Ann, of the home; her paternal grandparents, Mr. and Mrs. R. H. Ware of Sweetwater, and her maternal grandmother, Mrs. Irene Folks of Arizona.

### 1968 POLITICAL CALENDAR

**Primary and General Election**

Texas political calendar for 1968 of some of the important events, follow:

April 15-30: Absentee voting, first primary.

April 24-26: File campaign expenditure statement, first primary.

April 30: Last day, absentee voting.

May 4: First Primary Election.

May 11: Precinct Conventions.

May 11: County Conventions.

May 14: Supplemental campaign statement, First Primary.

May 22-24: File campaign expenditure statement, Second Primary.

May 22-28: Absentee voting, Second Primary.

May 28: Last day absentee voting, Second Primary.

June 1: Second Primary Election.

### "PAPER CAPERS"



"PAPER CAPERS", a sprightly fashion show of the latest wearing apparel in paper, will include daytime and evening dresses, hats, paper knits, active sportswear for both men and women, even a paper raincoat and paper beachwear. The 15-minute show with music is being staged several times daily at the "New Horizons in Paper" exhibit at the Allied Chemical Tower in Times Square.

Additional features of the industry-wide exhibit include a display of paper currency from the U.S. Treasury Department which will include a rarely-seen \$100,000 bill, an exhibition of origami (paper folding) and an amazing array of new paper products from a dog house to a baby's cradle. The exhibit will be open from Tuesday through Saturday from 10 A.M. until 8 P.M. Admission is free.

—Ends Jan. 31, 1969.

June 8: State Convention.

June 11: Supplemental campaign expenditure statement, Second Primary.

Sept. 6: First day to apply for absentee ballot by mail—General Election.

Sept. 17: State Convention (Parties holding Primaries).

Oct. 1: First day, Voter Registration period (1969 elections)

### News from Rule

MRS. FAYE DUNNAM

**Eighth Grade Banquet**

The members of the Eighth grade of Rule were entertained with their annual banquet on Saturday night, March 16 in the school cafeteria.

The banquet room was decorated with Hawaiian scenes and the table decorations and food carried out the Hawaiian theme.

Members of the eighth grade, junior high and elementary faculty members were guests.

Russell Morrow gave the invocation, Julie Yonge, class president, welcomed the group. Bobby Anders read the class prophecy. Diane Monse read the class will. Ray Fulewider, elementary principal, was the speaker of the evening. Lavon Beakley gave the benediction.

The Mark IV group furnished musical entertainment. The group is composed of Mark Davis, Sonny Self, Bobby Bishop and Bill Jones.

**"Gypsy Banquet"**

Monday night, March 18, the ladies of the Rule Church of Christ entertained members of the Rule Senior Class and their sponsors with a "Gypsy" banquet.

The Rule Recreation Center was decorated like a gypsy camp with clothes lines, camp fires, trees, etc. Each guest had a wooden box to eat off of and sat on the floor. Tin cups, tin plates and table spoons were the eating utensils. Each person was dressed like a gypsy.

Ray Fulewider gave the invocation. John Greeson, pastor, welcomed the group.

Mack Ed Swindle of Abilene Christian College, entertained with magic tricks. Two fortune tellers told the fortunes of all present.

Miss Jackie Eason and Lavon Beakley are class sponsors.

Mrs. Clyde Laughlin is in the Hendricks Hospital in Abilene after having surgery.

Mrs. Jess Leggett of Dallas is visiting her brother, the L. W. Normans.

Johnny Estes is visiting his parents, Mr. and Mrs. John Estes. He has just returned from Viet Nam and after his visit will be stationed in Rio De Janeiro. The Gerald Beck family of Lubbock joined the family Sunday for a visit.

Mr. and Mrs. Robin Spencer and Mrs. Lee Wyatt and son have been visiting Mr. and Mrs. Frank Campbell. The Spencers have been stationed in Corpus Christi and are being transferred to Norfolk, Va.

### OIL NOTES

Haskell County has gained site for a proposed 5,150-foot rotary wildcat in the area 15 miles east of Stamford.

It is James K. Anderson of Midland and G. W. Strake of Houston No. 2 Cobb.

Drill site is 467 feet from the north and 2,227 feet from the east lines of Section 4, Block 3, H&TC Survey. The lease is composed of 320 acres.

A re-entry project in the regular field 25 miles southeast of Haskell was plugged at 1827 ft.

The dry hole was M. E. Morrill et al of Albany No. K-1 T. A. Rodriguez survey.

Operator had set 4 1/2 inch casing at 1822 feet.

Location is in the O'Brien County. Site is 9 1/2 miles north and 1.20 miles east lines of A. Permit depth 4,950 feet with more than 400 and professional habilitation workers to help train the Texas Society.

More than 400 and professional habilitation workers to help train the Texas Society.

**RAINEY'S PLUMBING SHOP**

103 South Ave. F • Haskell

Telephone 864-2078 or 864-2079

DAY or NIGHT 24-HOUR SERVICE

Plumbing Supplies - Pipe cut and State Licensed Master Plumber

**XEROX COPYING MACHINE**

Custom Copying for the Public. Excellent copies up to 8 1/2 x 14 inch size. See us for additional copies of valuable papers. Only 15c per copy, cheaper in quantities of 20 or more.

J. BELTON DUNCAN  
D. B. A.  
Cahill & Duncan Agency  
Phone 864-2646

**CANDIDATE MAKES SENSE**

Don Yarborough may not be one of your favorite politicians. But the gubernatorial candidate made a statement recently while campaigning in Waxahachie that we will buy. Yarborough said: "Texas must stop the exodus of young people from the homes they love by providing more industrial and job opportunities in small towns. According to recent polls, 50% of the population want to live in small towns or rural areas but about 70% of the population live on 1% of the land ... Texas must place special emphasis on helping small towns obtain new industry to revive the economy of these corner stones of our society. ... We can no longer shrug off the problem of the exodus of young people from small towns and say 'let the cities worry about their new citizens.' It is senseless to dry up small towns just to create urban population problems when the situation can be solved by imaginative leadership willing to go all the way to find solutions."

That, friends, is what we have been thinking for a long while!

(PAID FOR BY ALVIN SHERMAN)

### Entertainment For HemisFair '68 Covers All Areas Show Business

The entertainment menu for HemisFair '68 covers all areas of show business, from the top comedians to serious opera.

The list of entertainers lined-up for the April 6 - October 6 World's Fair ranges from Bob Hope to the Mormon Tabernacle Choir and the Grand Ole Opry to the Verdi opera "Don Carlo."

The star-studded list will appear in the new \$13 million civic center complex built on the grounds of HemisFair by the city of San Antonio. The complex includes a 10,000-seat arena, 2,800-seat theater and exhibit hall.

The San Antonio symphony and opera "Don Carlo" will be the opening attraction in the theater April 6, while the Pan American Variety Show featuring spectacular acts from Mexico, Argentina, Spain and other Latin American countries will be featured in the arena from April 6 through 28.

Among the big name television and night club entertainers booked for the World's Fair are Jack Benny, Phyllis Diller, Jimmy Dean, Bob Newhart, Don Adams, John Gary, Wayne Newton and Hope.

The dazzling variety is pointed up with appearances by the Ballet Folklorico de Mexico, Grand Ole Opry, Ice Capades and Don Fleenor's Hell Drivers.

Booked for the 2,800-seat theater are "Don Carlo" on April 6, 8 and 11; San Antonio Symphony concert with pianist Hilde Comer on April 7; San Antonio Symphony with guest conductor Arthur Fiedler on April 13; and Los Ninos Cantores de Monterrey, the 20-voice choir from Father Alvarez's "Ciudad de los Ninos" in Monterrey, appearing April 14.

Ballet Folklorico de Mexico will be April 5-18, Texas Boys Choir April 19, and Isaac Stern Trio April 20. The John Gary Show will be seen April 29-May 4, and the great musical play, "Man from La Mancha," May 22-June 1.

Jack Benny and the Baja Marimba Band team up on the same program June 3-8. Ferrante and Teicher are scheduled June 10-13 followed by Don Adams Comedy Hour June 24-29.

The Bayanihan Philippine Dancers will appear in the theater July 2-8, Phyllis Diller and the Osmond Brothers July 15-20, Jimmy Dean July 29-Aug. 3, and Wayne Newton August 7-12. Bob Newhart is booked Aug. 19-24.

In the 10,000-seat arena, The Lutheran Hour is booked for April 21 in addition to the Pan American Variety Show, set April 6-28.

The Grand Ole Opry, featuring such stars as Roy Acuff, Sue Thompson and Homer and Jethro, will originate from the arena April 30-May 13 with three shows daily.

Bob Hope will have his show in the arena May 2-4 and the Water Follies of 1968 will be featured May 15-June 4. The Hell Drivers are booked June 5-15 and the Texas Youth Rodeo is set for June 24-30.

Miss Country Music U.S.A. contest will be held July 2 and the Mormon Tabernacle Choir will appear July 23-24. Tony Aguilar's Mexican Rodeo is set July 30-August 5 to start a Western month schedule in the huge building.

Roy Rogers and Dale Evans will appear August 12-25. Dale Robertson will bring his Western Show to HemisFair August 27-Sept. 2, and the Ice Capades will take over Sept. 12-29.

LEDGER SHEETS, boxed type-writer paper and columnar pads, get them at the Free Press. 37c

HEY-DAY CANDIDATES

Please come by the Haskell Free Press and pick-up your Hey-Day pictures, and also the ones from previous years. 35c

**KTXS-TV-12**

ABILENE \* SWEETWATER

**NOW FOR YOU... A FINER, CLEARER TELEVISION PICTURE! MORE POWERFUL, HIGH FIDELITY SOUND!**

See for yourself... Watch Channel 12 for the finest television entertainment.

All new equipment installed in the Southwest's finest broadcast studios, with complete color facilities. Operating on maximum power, giving KTXS-TV the largest coverage area of any TV station in the "Big Country." Now you can receive Columbia Broadcasting System and American Broadcasting Company programming direct from Channel 12, at no monthly cost to you.

**KTXS-TV NOW COVERS THIS VAST AREA**

**Trackdown an UNCATCHABLE**

**WATCH FOR FURTHER VITAL INFORMATION ON FINDING AN UNCATCHABLE IN NEXT WEEK'S HASKELL FREE PRESS**

**DON'T MISS IT . . . YOU'LL BE AMAZED!**

**BAILEY TOLIVER CHEVROLET CO.**

Phone 864-2626 Sales - Service Haskell, Texas



Rev. Address To Pastor Church At Monahans

The Rev. Ken Andress, a native of Haskell, has accepted the pastordship of the First Baptist Church of Monahans.

The son of Mrs. Willie Andress of Haskell, the Rev. Andress is a 1950 graduate of Haskell High School, a graduate of Hardin-Simmons University and the Southwestern Theological Seminary.

Mrs. Andress is the daughter of Mrs. Vennie Lytle of Haskell. The couple have three children.

Rev. Andress was formerly pastor of the Hillcrest Baptist Church of Carlsbad, N. M.

HEALTH and SAFETY TIPS

from the AMERICAN MEDICAL ASSOCIATION 535 N. DEARBORN STREET CHICAGO, ILLINOIS 60610

Cut Calory Intake To Trim Waistline

Counting calories is a favorite pastime among those of us who want to lose weight.

The term "calory" is used as a unit in expressing the energy-producing value of food. When we say that a tablespoon of honey contains about 100 calories, it means that the honey, when utilized by the tissues of the body, will release that amount of energy to be expended in bodily activity.

The usual weight-reduction goal of one or two pounds' loss per week is achieved by a daily intake of 500 to 1,000 calories less than the intake needed to maintain the weight at which reducing was begun.

The American Medical Association's home health book, Today's Health Guide points out that 1,000 calories represent the smallest practical intake that can provide the recommended daily allowances of essential minerals and vitamins through usual food sources. For children, the minimum figure on which to lose weight is close to 1,600 calories, with 1,800 often recommended to ensure a margin of safety.

But all of us are different, and calory needs are an individual affair. They should be worked out in consultation with your physician. He can help you arrive at a reasonable figure, permitting you to lose weight steadily and gradually, and at the same time maintain good health and not go lumpy.

Liquid formula diets unquestionably have helped many persons to lose weight. Although some of these preparations combine the merits of economy, acceptability and nutritional balance, they tend themselves to short-term, intensive



weight loss. This only postpones the day of reckoning when the dieter must return to usual food-stuffs.

Calory charts will help guide you in determining what you can eat, and in what quantity, to maintain your desired daily intake. Some diet specialists now recommend five or six small meals a day, rather than two or three large ones. Others favor periods of complete fasting at the onset of the diet for an excessively overweight person.

Whatever program your physician prescribes for you, there is one important thing to remember—calories do count. To lose weight, we must expend more energy than we take in.

Rotarians Hear Progress Report On Country Club

R. C. Couch, Jr., gave a progress report of the Haskell Country Club at last Thursday's noon-day luncheon meeting of the Rotary Club at Felker's Restaurant dining room.

Mr. Couch said that the club house is 95 per cent complete, and upon its completion other work at the site of the country club could be finished in a short while.

"The weather has hampered work on the project, but we hope to be able to stage our 'open house' in May," Couch said.

Bob Herren reported on the Rotary District Conference held in Fort Worth recently.

R. C. Couch, Jr., presided over the meeting. J. V. Patterson gave the invocation, and Bob Herren led the singing with Mrs. Henry Withers at the piano.

Guests included Lester Barry, of Abilene, and Haskell High School seniors John Love and Lucy Kennedy.

Cub Scout Pack 36 Meeting Night Monday

Cub Scout Pack 36 met in the Elementary School, Monday, March 25th, at 7:00 p. m.

The ceremony was opened with the pledge of allegiance by Den 8.

Scoutmaster Darold Roberson announced the new Dens. Den 6, Mrs. Golda Colbert, and Den 9, Mrs. Janet Frierson, assistant, Donna Thomas.

The Indians escorted the Bob Cats on the stage to receive their pins. Ten Bob Cats received pins from their parents. Mrs. Frierson's Den 9 includes Lee Andress, Gary Thomas, Dwain Weise, Vonnie Hise, Nathan Frierson, Mrs. Colbert's Den 6 consists of Jimmy Browning, Cris Colbert, Sam Cook, David Huss and Rex Pittman.

Gold Arrow awards were presented to James Culpepper, Eddie Medford and Silver arrows went to Duane Roberson, Clark Richardson, Craig Foster. Two Silver arrows were awarded Pavee O'Neal, and the Bear award (top award in Cubscouting) went to Terry Bruggeman. Terry will serve one year, and then will go into Boy Scouts.

John Smith's Webelos receiving awards were Derrel Smith, Jackie McAduo and Mark Shelton, Engineer Badge and two-year pins. Presented Engineer Badges were David Alexander, Billy Steele, Brian Toliver. Brian Toliver also was the recipient of the Forester Badge. A realistic Indian dance was

well received. Janice O'Neal's Den won the Cubbie.

Closing ceremony was given by Den 5.

All Cubscouts will be participating in the Kite Derby Sunday, April 7th, at 3:00 p. m., to be held at the Jimmy Browning wheat farm. Prizes will be given for the "most beautiful," "ugliest," "smallest," "biggest" and the "highest flying" kite.

The Easter...vides program for handicapped adults worth million.

BRIDES-TO-be genuine...announcements cards and...Haskell Free Press

Advertising...H P

DRIVE-IN THEATRE RULE, TEXAS

Thurs., Friday, Saturday—March 28, 29, 30



"BIKINI BEACH"

Sunday, Mon., Tues.—March 31, April 1, 2

"FIRE CREEK"

A Western in Color

—with— JAMES STEWART & HENRY FONDA

Wednesday, Thursday—April 3, 4

"FIRST TO FIGHT"

In Color with an All-Star Cast

Admission—\$1.50 per Car

FOR YOUR FENCING NEEDS Galvanized Smooth Wire lb. 19c Four Foot Steel Posts each 16c Plastic Insulators each 7 1/2c Six Ft. Steel T Posts each \$1.05 COBB LUMBER CO. —We Deliver— 111 N. Avenue D Phone 864-2833



Start pigs the Purina Way... and help your pigs

OUTRUN TROUBLE

Because they start pigs on the road to market so quickly, Purina Baby Pig Chow... and Purina Pig Startena... are called the "Fast-Start Twins".

And, growth-rate is mighty important to young pigs! Fast-growing pigs just seem to outrun trouble! Long before lots of baby pig difficulties have a chance to appear, Purina-fed pigs aren't pigs any more... they're hogs!

Purina-fed pigs grow fast because Baby Pig Chow contains built-in vitamin, mineral and antibiotic fortification little pigs need to help them through the dangers that threaten their very lives. Pig Startena, too, has developed over years of careful testing at Purina's own research farm.

See us for details. Let us help you grow your pigs strong... FAST!



Watch Our Special Every Week Special This Week thru March 28, 1968 PIG STARTENA—\$5.65 cwt. Purina 20% RANGE CUBES—\$3.30 cwt.

NINE POINT GRAIN, INC. Your Purina Dealer Haskell - Rochester LOW COST PRODUCTION... the reason why more farmers feed PURINA



A NEW WORLD... Astroworld, the new multimillion dollar family amusement and entertainment center just south of the Astrodome in Houston will open Saturday, June 1st, featuring 17 rides and scores of other attractions. Astroworld will have more than 2,400 tons of air conditioning in order to make it more comfortable for guests.

OPEN END, heavy brown kraft envelopes in all sizes for mailing pictures, manuscripts and other heavy mailing at the Haskell Free Press. 40t/p

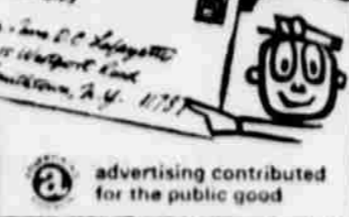
DISCOLORED 6 3/4 envelopes, box of 500, \$1.00, Haskell Free Press. 47t/p

The Texas Easter Seal Society served 16,322 handicapped children and adults in 1967.

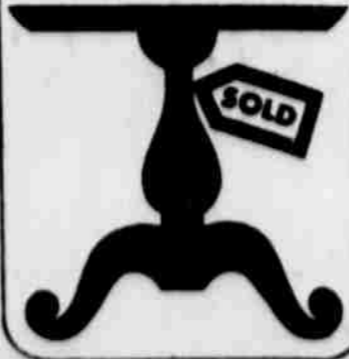
THE HASKELL FREE PRESS now has in stock the new 1968-1969 Texas Almanac. Good for gifts, home, office or school use. 47 t/p

LEDGER SHEETS, boxed typewriter paper, and columnar pads, get them at the Free Press. 37t/p

Get better mail service for the same money... mail early and use ZIP CODE



Ratzafratz! Missed out? There's plenty more. Look under FURNITURE DEALERS in the YELLOW PAGES. Where your fingers do the walking.



They passed the 160,000 acre test



NOW, YOU TEST THEM

110 H.P.\* 806 FARMALL and INTERNATIONAL

89 H.P.\* 706 FARMALL and INTERNATIONAL

NEW TOTAL POWER TRACTOR

...The people who bring you the machines that work

YES... YOU ARE RIGHT... We don't build 706's and 806's any more and they are 1967 models, BUT here are just a few reasons for buying these New Full Warranty Tractors:

- 1. They are nearly the same as our 1968 model 756 and 856. 2. A proven Tractor, built since 1963 and improved ever since. Ask the man who owns one. 3. Most important of all, a terrific price, New Equipment goes up every year, this makes used worth more—but, how much more? A lot of used Tractors approach what you can buy a new one for.

Take A Look At This for Eye Openers: RICHARDSON TRUCK & TRACTOR Phone 864-3474 —Throckmorton Highway— Haskell,

CLASSIFIED ADS DO THE JOB Day after day, year after year, our classified section creates a tremendous response for everything from mobile homes to baby carriages. Advertise your needs here. Our Want Ads pull! An ad in the classified is the biggest bargain in your newspaper; more sales results per dollar! Phone 864-2687 HASKELL FREE PRESS ASK FOR AN AD TAKER

WANT ADS BRING FAST RESULTS

# SECTION TWO

# HASKELL FREE PRESS



HASKELL, TEXAS 79521, THURSDAY, MARCH 28, 1968

NUMBER THIRTEEN

## Active Classes Saturday

Market was active at the Ranchers Livestock Market today, and strong calves by the head in the country. Cattle 778 and hogs 21-23; light fat, 18-19.50; enter, 16-20; old yearlings: good 22-24, standard 19-20; yearlings: choice 24-25.50, common 21-22.50; heifer yearlings: good 22-24, standard 19-20; yearlings: good 24-25.50, common 21-22.50; calves: choice, 26-29, good 24-26, common-medium 22-24.

30-36, good 28-30, common-medium 25-28. Stocker heifer calves: choice, 26-29, good 24-26, common-medium 22-24. Cows and calves by the pair, \$220-\$247, good pairs \$200-\$220, plain pairs \$150-\$200.

## Mrs. Campbell To Operate Elsie's "Hi-Lander"

Effective as of April 1, Mrs. Jimmie Campbell will operate Elsie's Hi-Lander, according to an announcement made this week, and solicits the continued patronage of customers. Mrs. Campbell said that the hours will be the same and customers will receive the same courteous, efficient service and good foods as has been the custom in the past. Mrs. Campbell has operated the Dairy Cream for the past several years. Elsie and Melvin Jacobs and daughter, Rowena, former owners and operators of Elsie's Hi-Lander, expressed thanks to their customers and friends for the fine patronage received. An advertisement concerning the change appears elsewhere in today's issue of the Free Press.

## Conservation District News

By Harry G. Koehler  
Conservation Technician  
Soil Conservation Service  
Haskell

David Frierson recently constructed a farm pond on his ranch. An adequate supply of livestock water located at planned areas in the pasture results in better grazing distribution. Cost-share assistance was provided through the Great Plains Conservation Program.

Don Nanny, Moreland Glass and Herman K. Henry have completed systems of parallel terraces on their farms with GPCP cost-share assistance.

Excessive rains have prevented a lot of terrace construction since the first of the year that would have been completed by now. Terrace construction will be slow until after wheat harvest.

"Soil and water conservation, as we see it, means using land within its capability and for a suitable purpose—suitable for both the land and the people involved."—D. A. Williams, SCS Administrator.

Mr. Williams' statement has been proved again in the development of several new conservation plans. New cooperators with the local soil and water conservation district since January 1st are:

California Creek SWCD: Herbert Williams, D. C. Allison, Emil Dukatnik, and Frank W. Moeller.

Wichita-Brazos SWCD: Glen Alsbrook, Ray Morehart, John L. Grand, the Meadows Trust Estate, and the Cahill Estate, J. W. Wheeler, Operator.

## LATE HOURS ON APRIL 1 TO ACCOMMODATE LAST-MINUTE DECISIONS

Haskell County residents who were born before July 1961 and have not enrolled for doctor-bill insurance under Medicare now have a last chance to sign up. Don Austin, field representative for social security, said today.

"If they do not sign up by April 1," according to Austin, "they will never have another chance to be covered by the provisions of the Medicare program that helps pay doctor bills and other medical expenses. Those born 8/01 through 9/03 can enroll early in 1969 if they miss out this time."

"This coverage will involve a \$1.40 monthly premium, 10% more than those who enroll before they are 65 will pay, and will be effective July 1."

Additional information regarding enrollment may be obtained at the Abilene Social Security Office, which will remain open until 9:00 p. m. on April 1, to accommodate all possible near last-minute decisions.

## Stamford Electric Co-Op Re-elects M. E. Overton

M. E. Overton, of the Paint Creek community, chairman of the board of directors of Stamford Electric Co-operative since it was formed 39 years ago, was named to that post again at the conclusion of the annual meeting of the organization held last week.

Despite inclement weather more than 400 members of the co-operative and their wives attended the meeting which was

held in the Round-up hall of the Texas Cowboy Reunion grounds, Stamford.

A barbecue lunch was served at noon.

This was the last annual meeting for C. M. Lester, who will retire as manager the first of the coming year. Charles Stenholm, assistant manager of the co-operative, will take over the manager's position following Lester's resignation.

All directors except one were re-elected. Leo McKeever was elected to take the place vacated by Dr. H. B. Haterius of the Ericksdahl community. On the

## Program Designed To Lead To Profitable Cotton Production

Directors of the Rolling Plains Cotton Growers, Inc., had agreed on cotton legislation proposals almost identical to ones adopted two weeks ago by the legislative committee of the recently organized Texas Association of Cotton Producers Organization, Charles G. Bragg, executive vice-president of RPCG, said Friday.

The 16 legislative proposals were adopted by the state-wide producer organization in a meeting March 14 at Dallas, attended by Bragg, RPCG president J. B. Cooper, Jr., and Charles Stenholm, former executive officer of RPCG. The proposals included:

Any extension of present cotton legislation must be designed to improve the current level of producers' income.

Extension of Food and Agriculture Act of 1965 for a minimum of four years with special modifications.

"These modifications," Bragg said, "include a program designed for domestic and export consumption that will lead to a return to profitable cotton production from the present legal minimum 16-million-acre national allotment.

Retention of provisions which provide protection against imposition of limitations on individual program benefits.

Also, directors favor continuation of skip-row rules for measuring cotton acreage; extension

of authority to transfer cotton allotments by sale or lease, with removal of the 100-acre-farm limit.

The TACPO committee approved a recommendation for the elimination of the 300,000-acre national small farm reserve, the 10-acre small farm minimum allotment and the "double-dip" small farm provisions of the diversion program.

Directors of RPCG had approved these eliminations at their early March meeting, explained Bragg.

Other major points producers agree to include no differentiation in payments or supports on "domestic" acreage and acreage grown for export; more equitable procedure for determining projected yields; retention of the Ellender amendment and better methods of setting premiums and discounts on qualities above and below middling one-inch cotton.

TYPING STUDENTS: Save money on typing paper. Buy in ream lots at the Free Press.

## FRESH NEW ...

1968 INTERNATIONAL Cadet 60 Riding Mower



Easy on-the-Pocket Book Prices  
Electric or Manual Start  
Electric Start \$485.00  
Manual Start \$399.00

Richardson Truck & Tractor  
—Throckmorton Highway—  
Phone 864-3474  
HASKELL, TEXAS

## Dear Citizens,

Again the time has come that we all must stand up and  
**DECLARE OUR RIGHTS TO VOTE AS WE PLEASE**  
Even during this time of strife and indecision, we still have this enalienable right.  
Finally, as your present Mayor, I realize the City Council has not been able to please each and every individual. However, to the best of our ability, we have endeavored to serve you fairly and impartially.  
Therefore again ask that you place your trust in the individuals listed on the city ballot.

**GO TO THE POLLS AND VOTE!**  
Respectfully,  
Mayor H. V. Woodard

(Political Adv. Paid for by H. V. Woodard)

Haskell, Texas —We Reserve the Right to Limit— Home Owned

# Dick's Super Market

506 North Second —Just West of Telephone Building— Phone 864-3454

	<b>27c</b> 4 Roll Pack		Morton HONEY BUNS 19c		<b>89c</b> With Purchase of \$5.00 or more in Groceries
			Libby's LEMONADE 6 oz. can 10c		

MISSION SWEET PEAS . . . . . 15c	303 SIZE CAN	JOY DISH WASHING DETERGENT . . . . . 49c	GIANT SIZE
LARGE 1 LB. CAN HERSHEY SYRUP . . . . . 25c		PURINA DOG CHOW . . . . . 69c	5 LB. SACK
CREST TOOTH PASTE . . . . . 59c	EXTRA LARGE SIZE	OUR DARLING CREAM STYLE CORN . . . . . 2 for 49c	303 SIZE CAN

Bama RED PLUM JAM 18 oz. glass 29c		<b>33c</b> King Size Carton	Roxey—15 1/2 oz. can DOG FOOD 3 cans for 25c
Nabisco VANILLA WAFERS 12 oz. box 33c			POST TOASTIES 8 oz. box 19c

	Libby's VIENNA SAUSAGE 5 cans for \$1.00	<b>GUARANTEED TENDER-FLAVORFUL MEATS</b>
Texas 5 lb. bag ORANGES . . . . . 39c	Shurfine EVAPORATED MILK 7 large cans \$1.00	Flavorite Sliced 2 Pound Box BACON . . . . . 89c
Golden Ripe BANANAS . . . . . 9c		All-Meat Pound BOLOGNA . . . . . 39c
Texas Pound GRAPEFRUIT . . . . . 9c		Chuck Pound ROAST . . . . . 49c

SHURFRESH ALL VEGETABLE MARGARINE . . . . . 19c	POUND	SO-SOFT FACE & HAND LOTION . . . . . 39c	LARGE PINT SIZE BOTTLE
BORDEN'S NON-FAT DRY INSTANT MILK . . . . . 89c	12-QUART SIZE	PAMPER BABY DIAPERS . . . . . 89c	15 COUNT BOX
BORDEN'S BUTTER MILK . . . . . 39c	HALF GALLON	KOTEX . . . . . 37c	12 COUNT BOX

**The Haskell Free Press**  
 Established January 1, 1886  
 PUBLISHED EVERY THURSDAY

**Member 1968**  
**TEXAS PRESS ASSOCIATION**

**JETTY V. CLARE—Owner and Publisher**  
**ALFRED HINDS—Editor**

Entered as second-class matter at the postoffice at Haskell, Texas 79521, under the Act of March 3, 1879.

**SUBSCRIPTION RATES**  
 Haskell, Throckmorton, Stonewall, Jones and Knox Counties, 1 Year .....\$3.00  
 6 Months .....\$1.75  
 Elsewhere in Texas, 1 Year .....\$4.00  
 6 Months .....\$2.50  
 Outside Texas, 1 Year .....\$4.75

NOTICE TO PUBLIC—Any erroneous reflection upon the character, reputation or standing of any firm, individual or corporation will be gladly corrected upon being called to the attention of the publishers.

**TAXPAYERS BEWARE**

According to news reports, 1968 is to be another bad year for taxpayers, not only at the federal level, but at the state level. Tax boost plans are showing up in state after state ... a \$300 million hike in taxes in New York, a proposed boost in the gasoline tax in Vermont, a request for an increase in auto-registration fees in Maryland, a governor's request for a new income tax in Rhode Island. These are samples of what is coming, and they are on top of record tax increases in 1967 at the state level. Meanwhile, there is little question but that federal taxes will also be hiked.

A good part of the increase in the federal tax load will not go to defray the cost of Viet Nam but to help cover the rise in non-defense expenditures which have increased by 97 per cent since 1960. There is much talk of taxpayers' revolt, but such a revolt will be meaningless as long as taxpayers continue to endorse proposals that mean bigger and bigger spending programs.

**You may never hear about the best insurance policy of all.**

Ask a company insurance salesman what's new in home and car insurance. He'll tell you.

The very latest word from the one insurance company he works for.

But the hitch is, there are new and better policies being developed all the time for your home, your car, your business.

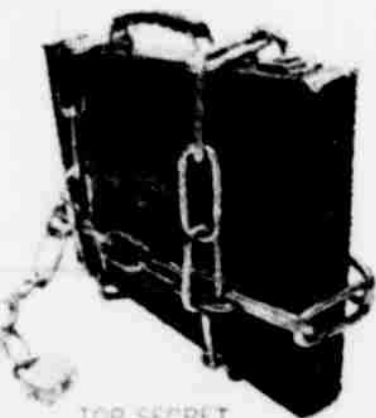
If you want to find out what's new and better in the business, call us. We represent not one, but several reliable companies.

You may be losing money right now because you didn't get our advice. (It doesn't cost you a cent.)

This symbol is your assurance that we are professional independent agents.

**Coggins & Hartsfield**  
 INSURANCE

Real Estate Loans  
 Phone 864-3301



TOP SECRET

**HASKELL COUNTY HISTORY**

**30 YEARS AGO**  
 (March 29, 1938)

The O'Brien girls won in the volleyball tournament at Rufe Friday night, March 18, defeating three teams for the victory. Mrs. Samuel Herren, Sr., left last Thursday for a visit with friends and relatives in Washington, New York and places in California.

Mrs. Ralph Duncan and Mrs. R. L. Lemmon were in Wichita Falls Saturday.

Courtney Hunt, Haskell's director in the West Texas Chamber of Commerce, has been appointed to membership on the advance registration committee for the annual convention of the regional association that will be held in Wichita Falls April 25-27.

G. R. Schumann, county agent of Archer County for the past two years, Saturday was named successor to B. W. Chesler, Haskell County farm agent who recently was appointed to a position with the United States Department of agriculture soil conservation service. The new agent will come to Haskell this week and will assume his duties April 1.

District Judge Dennis P. Ratliff will attend a meeting in Abilene Saturday of district judges of the 7th Administrative Judicial District of Texas.

Miss Madeline Hunt and Mrs. Jno. V. Davis and daughter, Jane, are in Dallas for a few days this week.

Building permit totals for the month of March went above the \$30,000 mark, to set a new high for any similar period in several years, according to records in the City Secretary's office. Total of all permits issued during the month amounted to \$51,725.00.

Mr. and Mrs. H. K. Henry of Bogata spent the past weekend in Haskell with friends and relatives.

Miss Mildred Vaughn and Mrs. Sam T. Chapman were in Abilene Thursday.

Courtney Hunt made a business trip to Dallas the first of the week.

Sam Scoggins of Rule was in Haskell, Saturday.

**40 YEARS AGO**  
 (March 29, 1928)

According to the final report of the Department of Commerce, Washington D. C., for the season 1927-28 there were 50,849 bales of cotton counting round bales as half bales, ginned in Haskell County from the crop of 1927, as compared with 53,752 bales for the crop of 1926.

The following article taken from the Abilene Reporter tells something of the work of a former Haskell boy, Frank Kimbrough, son of Dr. and Mrs. W. A. Kimbrough. "Wayland College has set for itself a high goal and athletic achievements for the coming year under the leadership of Frank Kimbrough, an outstanding West Texas baseball and football star who came to the college the first of this term after eight years experience in athletics of every character. Kimbrough has obtained the co-operation of the college authorities in his efforts to make of the athletic department one of the big attractions for high school athletes of the Panhandle-Plains territory, and through the successful organization of the Jackrabbit Club has sufficient finances in view to back his efforts.

A very enthusiastic group of some forty-two persons composed the first meeting of the recently organized Lions Club, held at the Tonkawa Hotel last Thursday night, when officers and a board of directors for the current year were selected, and a banquet was served to those present. Anson Lions conducted the preliminary work of organization, explaining the purpose

and methods of the club after which the selection of officers was made, the following being elected: Marvin H. Post, president; Eugene Hunter, vice-president; J. L. Southern, secretary; Wallace Cox, Lion tamer; E. Siegel, tail twister and directors R. C. Couch, O. E. Patterson, Henry King and J. M. Martin. The charter of the organization will be held open for a few days, and an effort is being made to increase the number of charter members to at least 50 or 60 if possible, before the next meeting. Regular meetings will be held each week in the future.

**60 YEARS AGO**  
 (March 28, 1908)

Mr. and Mrs. J. R. Elgan and two sons arrived here Wednesday night from Palmer, Ellis county, to make Haskell their home. They come well recommended and Haskell is pleased to welcome them.

On Monday, April 13th, Misses Louise Goodlet, Sallie Hughes and Fannie Lu Yeager will begin a private school. Miss Goodlet will have charge of the first three grades; Miss Hughes, the next three, and Miss Yeager the higher grades. Terms—\$2.00, \$2.50 and \$3.00 respectively.

On Thursday evening at 9:00 o'clock the Baptist Church was the scene of one of the prettiest and most interesting weddings that has been celebrated in Haskell in many a day. The high contracting parties were Miss Hazelle Hudson, the beautiful and accomplished daughter of Mr. and Mrs. W. T. Hudson, and Mr. Robert Reynolds, one of Haskell's enterprising and highly respected young business men. The bride and groom met under the central arch and the bride's maids were disrobed on either side and Rev. J. T. Nicholson advanced, and after the usual questions pronounced a beautiful and impressive ceremony and declared them husband and wife.

Sugerton is to have a newspaper with Mr. Clarke Dennington, an enterprising and energetic young man of this place, as editor and proprietor.

The Haskell Magazine Club gave a musical entertainment at the opera house Tuesday night which was highly appreciated by a large audience. Mrs. Marshall Pierson returned Wednesday from Dallas, where she visited relatives. Dr. A. G. Neathery, S. Bevers, H. G. McConnell and J. F. Collier left Friday morning to attend the Bailey meeting at Fort Worth. We are requested to state that Dr. S. S. Steel, a lecturer and preacher of National reputation, will deliver his famous lecture, "Home Life in Dixie During the War," at Stamford Collegiate Institute Tuesday night, April 2.

**Haskell Soldier Is Commended**

Mr. and Mrs. Kenneth R. Blair, of Haskell, received the following letter this week from John G. Parker, LTC, Artillery Deputy Commander concerning their son, Kenneth:

"On 7 March 1968, your son, Kenneth, was selected as the Colonel's Orderly during Guard Mount for the U. S. Army Training Center, Field Artillery. In the event that you are not familiar with these Army terms, this means that your son was selected as the neatest and best informed of approximately one hundred and ten soldiers when they were inspected prior to going on guard duty.

Your son is truly a fine soldier and you may be justly proud of his accomplishment. He possesses those qualities I enjoy seeing in the youth of our nation: intelligence, good character and the desire to excel.

May I congratulate you and say I am proud to have Kenneth in this command. He is a credit to you, to the U. S. Army, and

to his country. I am sure he will continue to be an outstanding soldier throughout his career of service with the U. S. Army.

to his country. I am sure he will continue to be an outstanding soldier throughout his career of service with the U. S. Army.

**THIS IS THE MAN**



Everyone who knows Dolph Briscoe will vote for Governor of Texas—Everyone

HERE'S WHAT DOLPH BRISCOE HAS DONE FOR FARMERS, RANCHERS, SCHOOL TEACHERS

- Sponsored Teachers' Pay Raise Measure
- Supported constructive Educational Legislation.
- Co-sponsored Colson-Briscoe Farm-to-Market Road Act which pulled rural Texas out of mud.
- Dolph Briscoe was the Prime Mover in the creation of screwworm from Texas livestock and in soil and water conservation.
- Dolph Briscoe will continue to work for Texans when he is Governor... just as he has in the past.

VOTE SATURDAY, MAY

**Dolph BRISCOE for GOVERNOR**

Paid for by Briscoe for Governor Committee—Judge Ross E. Dwyer

**FREE**



**"JUBILEE" TUMBLERS AT YOUR TEXACO DEALER**

Just drive into your Texaco Dealer's and you'll receive an 11 1/2-oz. gold Anchor Hocking tumbler FREE\* every time you fill up with a minimum purchase of 8 gallons of Sky Chief or Fire Chief gasoline! Why is your Texaco Dealer giving away tumblers? To bring you into his station. He figures if they bring you in *once*, his products and service are good enough to bring you back *again*. They must be. Texaco sells more gasoline than anybody else. We mean it when we say, "We're first... and we think that's a big responsibility."



\*With fill-up of minimum purchase of 8 gallons of Sky Chief or Fire Chief gasoline at Texaco Dealers displaying the tumbler sign.

**High Yield Sorghum Special!**



An introduction to sorghum quality

**1 free with every 3**

You'll save money this spring, and make money this fall! Take advantage of this special introductory offer—one bag free with every three. Plant your entire sorghum acreage with uniform, high-yielding Lindsey/Funk's-G sorghum. This is 10,000-pound-an-acre sorghum. The hybrid: 788A. The location: West Texas. This is the yield power you must have to realize your highest possible profit per

acre! Choose from the highest-yielding grain hybrids 788A and 755. Or top-tonnage silage hybrids 92F and 115F. Funk's-G means quality all over the world. For top quality year after year, plant 100-percent Funk's-G-Hybrid. See your Funk's-G dealer for these money-saving, money-making sorghums. And take advantage of this introductory offer of quality: get one bag free with every three!

FUNK BROS. SEED CO. OF TEXAS, INC. LUBBOCK, TEXAS 79404







# OPEN HOUSE

Thursday  
Friday  
Saturday  
MARCH  
28-29-30

## FREE DOOR PRIZES

\$50.00 IN GROCERIES . . . PLUS MANY OTHER VALUABLE PRIZES WILL BE GIVEN!

All You Have to Do Is Register . . . Thursday, Friday, Saturday. No Obligation. Do Not Have to Be Present to Win . . . Drawing Saturday evening.

### GREEN STAMPS

WILL BE GIVEN ON CHARGE ACCOUNTS ONLY if they are Paid IN FULL on or before the 10th of the Month



AMERICAN BEAUTY  
MACARONI  
ONE FREE  
WITH THE PURCHASE OF TWO  
AT REGULAR PRICE

SAVE • CLIP • SAVE

**SAVE 40¢**

WITH THIS COUPON  
GIANT SIZE TIDE ONLY

**49¢**

(Price includes coupon savings)  
Limit 1 coupon per box purchased. This offer expires on April 6th. Good only at Gholson's.

SAVE • CLIP • SAVE

King or Diet 6 Pack Carton  
**PEPSI-COLA . . . . 36¢**

Light Crust  
**FLOUR . . 25 lb. bag \$1.69**

Zee 80 Count pkg.  
**NAPKINS**  
**2 for 25¢**

Chiffon 200 count box  
**FACIAL TISSUE 29¢**

Comstock No. 2 can  
**PIE APPLES . . 29¢**

Hour-After-Hour Spray  
**DEODORANT . . 49¢**

Del Monte  
**TUNA . . . . can 29¢**

**GARDEN FRESH VEGETABLES**

Sweet 5 Pound Bag  
**ORANGES . . . . 43¢**

20 Pound Bag  
**POTATOES . . . 79¢**

Ruby Red Pound  
**GRAPEFRUIT . . 10¢**

**FREE** 1-lb. can **63¢**  
ENTRY ROOM AEROSOL CAN

**ODORANT 39¢**

WHIP SALAD  
**DRESSING 49¢** Quart Jar

TE  
**TSUP 39¢** Tribe Size

**ST 10'S 45¢**

NET  
**UNE JUICE 49¢** QUART

**Double**  
**GREEN STAMPS**  
Every Wednesday!



### CHOICE MEATS

Armour's Star  
**BACON** LB. **59¢**

Hormel Little Sizzlers  
**SAUSAGE** 12-oz. pkg. **49¢**

Ebner's All-Meat  
**FRANKS** 12-oz. pkg. **39¢**

Wright's Hickory Smoked  
**PICNICS** LB. **29¢**

Gold 'n Korn Corn Oil  
**MARGARINE 2 LBS. 49¢**

FREE DELIVERY BUT NO PHONE ORDERS ON WEDNESDAY

GANDY'S HALF GALLON  
**ICE CREAM 2 for 89¢**

JERGEN'S  
**LOTION 35¢** Reg. 65¢ size

**SWEET-10 69¢** 6 oz. bottle

HORMEL VIENNA  
**SAUSAGE 22¢** 4 oz. can

GLADIOLA 3 PACKAGES  
**CORN BREAD MIX 25¢**

DONALD DUCK FROZEN  
**ORANGE JUICE 39¢** 12-oz. can

PATIO  
**MEXICAN DINNERS 39¢**

FOLGER'S 10 OZ.  
**INSTANT COFFEE \$1.19**

# GHOLSON GROCERY

PLEASE PHONE 864-2929  
-- We Deliver --  
HASKELL, TEXAS  
PAY YOUR PHONE BILL HERE

News from Weinert . . .

MRS. O. W. VAUGHN

Church News

The members of the Church of Christ held a fellowship and devotional service after evening service Sunday night at the Community Center. Each family brought a basket of food and supper was served to all present.

Speaker At Baptist Church

"How TANE Works for You" was the theme of the speaker, Bill Huntmaker, professor at Wayland College in Plainview, who spoke at the 11:00 service at the Baptist Church Sunday.

Mr. and Mrs. Edward Alexander and Ronnie spent the weekend in Lubbock visiting her sisters, Mrs. E. A. Modawell, who had surgery and was in the hospital and Mrs. Jack Boykin who had just been released from the hospital. Both are reported to be doing nicely.

Mr. and Mrs. John Therwagner of Haskell visited in the home of Mr. and Mrs. Ben Britton Sunday afternoon.

Mrs. Bill King and Patsy spent the weekend in Fort Worth visiting Mr. and Mrs. W. C. Lahn and Mr. and Mrs. W. K. Warren. They then went to Denton to meet Mrs. King's sister, Mrs. A. L. Newberry and daughters of Littleton, Colorado. Mrs. King remained for the rest of the week in Denton, Dallas, Fort Worth and Arlington, visiting friends and relatives.

Mr. and Mrs. M. L. Raynes, Jr. of Alunday and Mrs. Frankie Jenkins of Haskell were Sunday afternoon visitors in the home of Mr. and Mrs. M. L. Raynes, Sr.

Mrs. Willard Wren visited her mother, Mrs. G. B. Cornett in Ranger Friday and Saturday of last week.

Mr. and Mrs. Larry Caddell

of Stephenville visited his parents, Mr. and Mrs. Glenn Caddell and sisters, Joan and Lorena, also Mr. and Mrs. Carl LeMay and children who are spending some time in the Caddell home.

Mr. and Mrs. E. S. McGuire visited relatives in Fort Worth over the weekend.

Visitors in the home of Mr. and Mrs. Ted Boykin last Friday were her nephew, Mr. and Mrs. Jerry Dickinson and girls of Odessa.

Word was received in Weine last week that Mrs. W. A. (Pearl) Tanner, a former long-time resident of Weine is now living in a rest home in San Angelo. Her address is Mrs. Pearl Tanner, 3847 Travis St., San Angelo, Texas 76901. She would be glad to be remembered with a letter or card from anyone who wishes to write her.

Mrs. C. L. Garrett spent last weekend with her son, Mr. and Mrs. Garth Garrett in Haskell.

Mrs. Jim Jenkins has gone to Ingleswood, Calif., for a two weeks' visit with her daughter, Mr. and Mrs. Ray Stephens and children.

Mr. and Mrs. John Earp spent the weekend in Vernon visiting their children and grandchildren, Mr. and Mrs. Al Dunnam, David and Sue. Mr. and Mrs. Johnny Earp and children drove up after church Sunday and spent the afternoon with the Dunnam's and Earps.

Mrs. Woody Turnbow and children of Wichita Falls visited her parents, Mr. and Mrs. George Gray and family Saturday.

Lynn Gray, Leo Fiesby and Ronnie Moody are home for a week between semesters.

Mr. and Mrs. James Smith of Fort Worth visited the George Gray family over the weekend and took Sherry home. Mrs. Smith returned home after visiting in Fort Worth a week.

Observance Of Nat'l. Library Week Planned

The Friends of the Haskell County Library announce that all books given in memory of or in honor of a person, may be left at the Haskell County Judge's office in the Court-house.

Because the library is not open every day it was felt that a central location for donations would be necessary.

Mrs. Wallace Stark, secretary to the County Judge, will type bookplates appropriate to the gift, and will notify the family of the gift.

The average cost of a book is \$7.00. A book or a cash gift may be made.

During the past week donations have come to the library as follows: magazines, books, two reading tables, two bookcases, folding chairs and two small tables. Children's chairs and a bulletin board will be presented as soon as repaired.

Anyone wishing to make donations, may contact Mrs. Gene Overton, Mrs. Wallace Cox, Jr. or Mrs. Elsie McGee, Librarian.

National Library Week will be observed April 21-27. Several things have been planned for the week and will be announced soon.

Dee Philips

Candidate for CONSTABLE PRECINCT 1



To you that see this, whom I have not been able to see, I would like to have called on you in person and presented you with my card. Different factors has made this impossible — but I hope this will not make any difference since the majority of you know me and know what I stand for.

If you feel that I am worthy of your support, I surely will appreciate it. My present business is too confining for me and if elected I will dispose of it as soon as possible.

I realize that I am getting up in years, but feel that I can do justice to the job I am asking for and want to solicit the vote and support of the people of Precinct 1. Illness and accident has prevented me from seeing many of you. Consequently you will see my picture here as you may recognize my face and not my name.

If elected my duties will be discharged fairly and honestly with the same policy and treatment to one and all.

(Political Ad Paid for by Dee Phillips)

A "JOLLY" GRADUATION TO TOTAL ELECTRIC LIVING



"Electric heating is healthier — we never have colds any more . . . we just love it." — Mrs. Grady Jolly

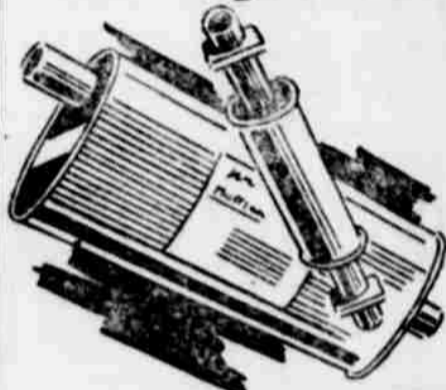
Built at the turn of the century — converted to total electric operation 1963. No structural changes — a few partitions added plus insulation and wiring. "Decorating was the big job!"

Take a happy, lively family like Dr. and Mrs. Grady B. Jolly, Randy, David, Don and Joy, put them slap-dab in the middle of a 40-acre suburban estate, surround them with horses, pets, vines, trees and old walls and they will make it into a lovely, livable home where friends meet and enjoy the fun!

The big country kitchen with its total electric convenience is the heart of the home. Mrs. Jolly's eye for antiques, knack with a paint brush and skill at her electric sewing machine has re-created the look of early America that loses none of its traditional charm amid the ultra modern electrical conveniences.

- Total electric Gold Medallion • 11 rooms — 3 baths — 6 in family • 40 acres electrified fence
- 2 water pumps — power tools • ALL FOR \$52.50 PER MONTH AVERAGE OPERATING COST • It's easy to convert to Total Electric Living. — See WTU or your building contractor

WEST TEXAS UTILITIES AN INVESTOR OWNED ELECTRIC COMPANY



Super Sioux Lifetime Guaranteed MUFFLERS

For Most Cars Installed for \$14.95

BRAKE & ALIGNMENT SERVICE SPECIAL This Month Only



\$8.95

Adjust brakes, add fluid, test. Inspect front wheel bearings. Align front-end. Rotate tires. Balance both front wheels.

VALUE DAYS SPECIALS

PICK-A-PAIR AND SAVE!

ON GE MATCHING WASHERS AND DRYERS

ECONOMY PAIR

BUY THE PAIR FOR ONLY \$249.95 Regular \$289.95 SAVE \$39.95

ECONOMY WASHER \$159.95

AUTOMATIC DRYER \$129.95

COMPLETE HOME LAUNDRY AT A BUDGET PRICE!

Get this matched pair . . . General Electric long lasting dependability. Porcelain top wash basket, Unbalanced load control — eliminates need for set button. Now, you can own GE matched washer and dryer.

ANDERSON TIRE CO.

— "It Must Be Right or We Make It Right" —

300 SOUTH AVENUE E HASKELL, TEXAS PHONE 864

SALE HURRY! OFFER ENDS SAT. NIGHT

GOODYEAR

FOUR PLY NYLON CORD

\$ 14.95

"SAFETY ALL-WEATHER" TIRE

Blackwalls — Check your size and price

- Our best selling replacement tire
- Wrap around tread for greater roadability

Add \$3.00 per Tire for Whitewalls

6.50/7.00 x 13 tubeless blackwall plus \$1.92 Fed. Ex. Tax No trade-in needed

Size	Blackwall Tubeless	Plus Fed. Ex. Tax No Trade-in Needed
5.90/6.00 x 13	\$12.95	\$1.58
7.75 x 14	\$19.95	\$2.19
7.75 x 15		\$2.21
8.25 x 14	\$19.95	\$2.35
8.15 x 15		\$2.36
8.55 x 14	21.95	\$2.56
8.45 x 15		\$2.54

"GOODYEAR NATION-WIDE 'NO LIMIT' GUARANTEE"

No limit on months. No limit on miles. No limit as to roads. No limit as to speed. For the entire life of the tread. ALL NEW GOODYEAR AUTO TIRES ARE GUARANTEED against defects in workmanship and materials and normal road hazards, except repairable punctures. This guarantee does not extend to auto tires used on trucks, or racing tires and tires stamped "Second", "Bismish" or "NA." IF A GOODYEAR TIRE FAILS UNDER THIS GUARANTEE any of more than \$0.000 Goodyear dealers in the United States and Canada will, at our option, either repair or make allowance on a comparable new tire based on original tread depth remaining, and Goodyear's printed "Predetermined Price for Adjustment" current at time of adjustment which price will fairly represent the actual retail selling price of the comparable tire design at time of adjustment.

KE YOUR SALADS Sing!



ADS GIVE 60-60-GO!

RISP DISHES

ello kg. 5c

SH SP

OTS

25c

0-JUICE

ANGES lb. 9c

DOUBLE FRONTIER STAMPS EACH WEDNESDAY

# STOREWIDE Food Sale

# M SYSTEM Your FRIENDLY SUPER MARKETS

HASKELL, TEXAS

Featuring... LOW, LOW PRICES... and FRONTIER STAMPS EVERY DAY

SPECIALS FOR THUR. FRIDAY & SATURDAY MARCH 28-29-30



## Duncan Hines LAYER CAKE MIXES

SAVE SHOP AND AT M-SYSTEM!

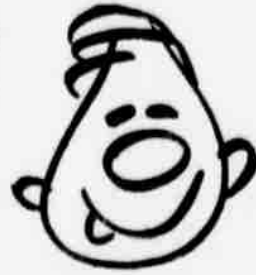
### 3 Boxes Assorted Flavor 1.00



Banquet FROZEN

## POT PIES CHICKEN - TURKEY BEEF

Comes Frozen - Just Brown'n Serve



RIGHT RESERVED TO LIMIT

### 6 for 99c



## LIPTON'S TEA 35c

Swift's Honey Cup MELLORINE half gal. 39c

## MISSION PEAS 303 Cans

### 6 99c



## SCOT TISSUE

Roll

### 10c

With Purchase of \$2.50 or More

**BOLD DETERGENT GIANT BOX**

**59c**

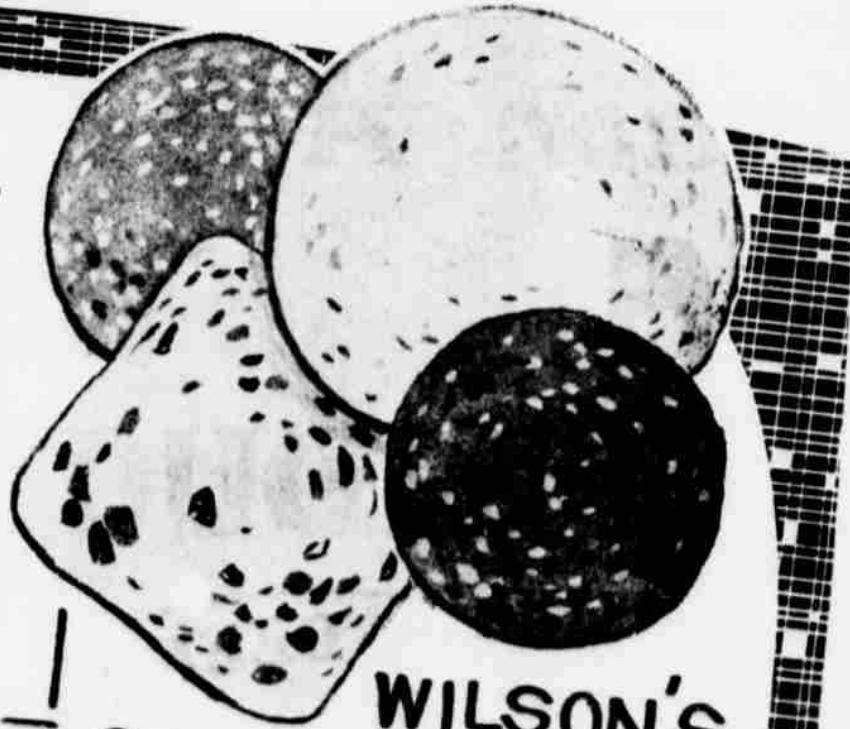
## WILSON'S Tasty LUNCH MEATS

- BOLOGNA - SPICED LUNCHEON
- PICKLE PIMIENTO
- PICKLE LOAF - OLIVE LOAF

Your Choice **4 PKGS. \$1.00**

CHUCK ROAST lb **55c**

BEEF CUTLETS LB. **59c**



WILSON'S CRISPITE BACON LB. **55c**

Gladiola Enriched **LOUR** 5lb. Bag **\$1.79**

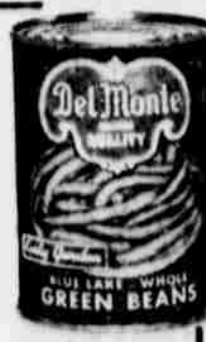


er's Mountain Grown **COFFEE** 1.38 10 oz. Instant **1.39**

LIPTON'S INSTANT **TEA** 6oz Jar **99c**

**NYLON HOSE** 3 pairs **\$1.00**

DEL MONTE WHOLE **GREEN BEANS** 3 303 Cans **89c**



CLIP AND SAVE! **"M" SYSTEM WIFE SAVERS**

Too much fat on soup or gravy? Place an ice cube or 2 in the center of a clean white cloth and twist the cloth to hold the ice in place. Gently skim it back and forth through the top of the soup or gravy. The ice solidifies the fat, causing it to cling to the cloth, which can then be put in the garbage can.

BELL **COFFEE** LB. CAN **69c**  
PKINS 200 COUNT PKG. **29c**

DIAMOND **SHORTENING** 3lb can **49c**  
WISHBONE NEW HICKORY BITS **DRESSING** Bottle **29c**

JERGEN'S **LOTION** 5 1/2 oz. Jar **49c**  
RUBBING **ALCOHOL** 2 Rins **25c**



**NEW ASSIGNMENT**  
 Army Private First Class James D. Halliburton, 20, son of Mr. and Mrs. J. C. Halliburton, Route 1, Rochester, was assigned as a tracked and wheeled vehicle mechanic with the 9th Infantry Division's 9th Supply and Transport Battalion in Vietnam, March 3. His wife, Claire, lives in Rule. Advertising doesn't cost... it Pays!

## SAGERTON NEWS

MRS. DELBERT LEFEVRE

Several members of the L. O. C. Home Demonstration Club took part in the T.H.D.A. District Convention held in Haskell Tuesday of this week. Mrs. Lewis Corzine is president of the Haskell County Council, and Mrs. Leonard Kieke is treasurer. Mrs. Fred Kupatt was the commentator for the style show Tuesday afternoon in which Mrs. Herbert Nordieck, Mrs. Clarence Toichman and Mrs. Corzine modeled spring outfits for stores in Haskell and Rule.

A large group enjoyed learning to square dance at the Sageron Community Center last Saturday night. They plan to meet each Friday night at 8:00 until 10:30 p. m.

A joint revival is being held of the Methodist Churches in Sageron and Rule each morning and night of this week at 7:30. Evangelist Hal Watkins of Lamesa is the guest speaker and Eugene Carter is song leader. Everyone is welcome to all the services.

Guests in the home of Mr. and Mrs. Leon Stegemoller for dinner on Sunday were: Mr. and Mrs. Will Neinast of Littlefield, Mr. and Mrs. Herman Raphael of Stamford, and Mr. and Mrs. Emanuel Riewe and family of Abilene and C. E. Stegemoller.

Mr. and Mrs. Walter Quade of Texarkana spent Sunday with Mr. and Mrs. Edward Neinast. Will Jander of Benton, Arkansas was here for the funeral of his sister, Mrs. Tillie Neinast of Haskell, and visited here with old friends and relatives over the weekend.

Guests in the Oscar Neinast home Sunday were: Mr. and Mrs. Audra Vee Neinast of Hamelin, Mr. and Mrs. Bill Stanhope and Phyllis of Stamford, and Mr. and Mrs. Ted Connally and Dwayne of Stamford and Will Jander from Arkansas.

Mrs. Lillie Handrick of Albany visited with her brother, Glyn Quade and his family over the weekend.

Mr. and Mrs. F. A. Ulmer spent the weekend with their children, Mr. and Mrs. Winston Ulmer, Brad and Mark, in San Antonio, and Mr. and Mrs. Keith Whiteaker in Austin.

Mr. and Mrs. Red Ewald of Karnes City, Texas visited with

Mrs. John Clark and her sons, Reece and Joe, a while Thursday of last week on their way to Lubbock.

Mr. and Mrs. J. M. Martin of Houston visited with Mrs. Ben Hess for a while Thursday afternoon of last week while they were enroute to Spur. He is the son of the J. W. Martins, who ran a drug store in the early days of the town of Sageron when it was being built and growing.

Mr. and Mrs. M. Y. Benton visited Mr. and Mrs. J. B. Marr in Haskell Sunday afternoon.

Mr. and Mrs. Paul Summers of Canyon, former residents of Sageron, visited with Mrs. Ben Hess Friday, March 22, on her birthday, and then spent the night with Mr. and Mrs. Melvin Lewis.

Many friends of Mrs. Herman Neinast attended the funeral for her at Haskell Friday. Mr. and Mrs. Neinast raised all their children here and were prominent citizens in the community before they retired and moved into Haskell.

Mrs. Clota Engleman of Spur and her grandson, Chris Henley, who is stationed at Sheppard AFB, Wichita Falls, visited here with Mrs. Ben Hess on Sunday.

Mr. and Mrs. Harvie Jordan have returned home after spending several weeks at the bedside of their parents in Lubbock. Mrs. Jordan's mother was buried Monday of last week at Lubbock. Bro. and Mrs. Manuel Reynolds and Mrs. John Clark and Mrs. Cliff DeFevre attended the services.

Charles New, son of Mr. and Mrs. Jimmy New, of Lubbock, spent Saturday with his grandparents. Mr. and Mrs. Melvin New.

### Two Members Of Haskell Squaws On All-District

Two members of the Haskell Squaws have been named to the All-District 5-AA Girls' Basketball Team. They are Kathy

Burson (first team, forward), years, and Marjane McAdoo (honorable mention, guard). Marjane is the four-year letterman daughter of Mr. and Mrs. C. G. Burson, Jr., and has played on the Haskell Girls' Varsity four team.

### Surplus Store Fixtures To Be Sold At Auction

Recently Gholson's Grocery moved into their new location and Mr. Gholson announced that he will sell surplus fixtures and equipment at Public Auction, Friday, March 29th, beginning at 1:30 p. m.

The Auction will be held at 410 North First, North Side of the square, in the building formerly occupied by Gholson Grocery.

### THOMAS McMEANS IS COMMISSIONED

Thomas G. McMeans, 23, son of Mr. and Mrs. T. B. McMeans, Jr., Route 1, Rule, was commissioned an Army second lieutenant upon graduation from the Officer Candidate School at the Army Artillery and Missile Center, Fort Sill, Okla., March 5th.

Gunnery was the primary subject taught during the 23-week course, designed to prepare men for officer duties in artillery units. He was also trained in artillery survey and transport, communications, map and aerial-photo reading, electronics, counterinsurgency and leadership.

# THANK YOU

WE HAVE LEASED ELSIE'S LANDER TO MRS. JIMMIE CAMPBELL AND WOULD LIKE TO EXPRESS OUR SINCERE THANKS TO EACH OF OUR CUSTOMERS! WE HAVE ENJOYED THE ASSOCIATION, AND WE WILL ALWAYS REMEMBER AND APPRECIATE EACH OF YOU.

ELSIE & MELVIN JACOBSON and Daughter, Rowena

## MR. FARMER ...

WHEN IT'S TIME TO PLANT

SEE TOMMY AT

FARM & RANCH SUPPLY

Haskell, Texas

FOR HIGH QUALITY FIELD SEEDS

That Are Adapted to This Area

Olin-Mathieson Fertilizers  
 Spreaders and Applicators  
 FURNISHED FREE

A Complete Line of Veterinary  
 Supplies

We Try to Have Everything  
 for the  
 Farmer and Rancher

YOUR BUSINESS APPRECIATED

—at—  
**FARM & RANCH  
 SUPPLY**  
 HASKELL, TEXAS

## EASTER SUNDAY - APRIL 14

Let us show you our new SUITS and SPORT COATS for Boys by CHIPS 'N TWIGS Priced \$9.95 \$27.95



Age 2 to 20

The DAD 'N LAD Shop  
 411 South First Street — Haskell, Texas

### Volleyball Tournney Set At Jayton

The Jayton Senior Class is sponsoring a men's and women's outsiders volleyball tournament Friday and Saturday, March 29-30. Games will be played to the best two-out-of-three.

Contact by mail, or call the Jayton Senior Class, for entry in the tournament.

There will not be any entry fee, but there will be an admission at the door. Trophies will be awarded to the top men and women's team.

### The Good Earth

By Mrs. B. F. Cobb

The sun is playing peekaboo in and out of the clouds today. According to the calendar spring has arrived, but it seems winter is inclined to linger on for a few more days. There was a heavy frost last night. I hope the damp air has protected fruit trees from being killed.

Flowers are pushing through the earth, as if they feel spring is here. Peach, pear, plum and apricot trees are in full bloom... Faces have taken on a brighter look... Birds wake up each morning with their sweet call... A Red Bird (Cardinal) perches on our neighbor's nial, high above our bedroom window and serenades us with a song that seems to say "...fish are biting"... I get a great urge to grab the old fishing pole and head for the lake, but one blast of the cold blustery wind changes my mind in a hurry.

Vegetables, such as carrots, beets, radishes, parsley and lettuce should be planted as soon as the ground is dry enough to till. Our neighbor has already planted his whole garden. If spring has really arrived they will be a jump ahead of most Haskell residents when it comes to fresh vegetables.

Our family likes oak leaf lettuce; it keeps fresh and sweet long after other lettuce has become bitter due to hot weather. Oak leaf lettuce never heads but the leaves make attractive garnishes for salads and meat dishes.

The bulbs we planted the first of February are covered in buds and should be in full bloom within a week. We have planted bulbs at three different times, about two weeks apart, and if the late ones send up blossoms as well as the ones planted the first of February did, we should have blossoms over a long period of time. Our yellow crocus have been blooming for two weeks. There are a number of them that have just burst through the soil so we should have a long time to watch these interesting flowers.

Be sure to plant Gladioli as soon as weather permits; to have a continuation of blooms plant Gladioli corms every two weeks.

We waited until late to plant our ranunculus as I was afraid the tubers would rot because of wet weather.

I visited the nursery not long ago and became so enchanted with the row after row of bedding plants, I could hardly leave. rows of celosia, candy tuft, petunias, marigolds, celosia, snapdragons, and many other plants I do not recall at this time, lined the shelves of the nursery. I had Mrs. Conner reserve forty petunia plants to go in our new garden. We have already planted eleven snapdragon plants.

Haskell Garden Club members are following District III's motto "Pull a weed, plant a seed." If all of Haskell would do this we would catch the eye of the country.

## Attention All Farmers

# BIG PRICE REDUCTIONS



GENUINE JOHN DEERE  
 HOEME SWEEPS

8 Inch	\$1.40
10 Inch	\$1.75
12 Inch	\$1.90
14 Inch	\$2.30
16 Inch	\$2.80
18 Inch	\$3.25
20 Inch	\$4.35

GENUINE JOHN DEERE  
 High Speed Cultivator Sweeps

6 Inch	\$1.00
8 Inch	\$1.05
10 Inch	\$1.15
12 Inch	\$1.65
14 Inch	\$2.20
16 Inch	\$2.70

# GILMORE IMPLEMENT CO.

5 North First Street

Haskell, Texas

Phone 864-2011

# AUCTION

FRIDAY, MARCH 29, 1968 --- 1:30 P.M.

## GROCERY STORE FIXTURES AND EQUIPMENT

410 NORTH FIRST—NORTH SIDE SQUARE  
 HASKELL, TEXAS

Gholson's Grocery has moved into their new location and will sell the following surplus fixtures and equipment at PUBLIC AUCTION:

- 1—10' Friedrich Vegetable and Fruit Case
- 1—12' Hussman Vegetable and Fruit Case
- 1—12' Friedrich Frozen Food Case, open top
- 1—12' Friedrich Dairy Case
- 1—6' Koch Open Meat Case (2 shelves)
- 1—10' Hussman Market Meat Case
- 1—5'x8' Friedrich Walk In - Reach In
- 1—5'x8' Walk In (no Compressor)
- 1—DS-96 Dr. Pepper Box Upright, Selection Chamber
- 1—Meat Block
- 1—22" Biro Meat Saw
- 1—"Sanitary" Sausage Mill (Large 1/2 HP)
- 1—"Steak Maker" Model 200 Tenderizer
- 1—Market Scales
- 1—Globe Slicing Machine
- 1—Burrighs Multi-Key Electric Adding Machine
- 1—Defiance Check Out Scales, 0-30 lb.
- 1—Globe-Stimpson Check Out Scales, 0-30 lb.
- 1—National Cash Register, Crank Model
- 1—Federal Cash Register
- 1—Dayton Check Out Scales
- 80' Wall Shelving
- 60' Island Gondola Shelves
- 2—Check Out Counters Complete
- 15—Grocery Carts
- 1—Produce Bin
- 1—Gas Lite