

SALE

THE JAYTON CHRONICLE



June 48 -- Number 23

Entered as Second Class Mail

Jayton, Kent County, Texas

\$4.00 Per Year

Thursday, July 13, 1972

No Exchanges
No Refunds
No Alterations

One Group Boys
Red Goose Shoes
Values to \$4.98
Now 99¢

Children's Sandals
1/2 Price

Cobblers Shoes
Hi-Brows - Giesels
Clearance \$2.99

Tennis Shoes
Keds - Regular \$3.99
Sale \$3.99

Ladies Shoes
One Group
\$2.99

Tennis Shoes
Men and Boys
All Sizes - \$7.98
Sale \$5.99

Men's Boots
Red Wing
\$2.00 Off

One Group Men
Nocona Boots
\$9.99

Men's Suits
One Group
\$89.98 Value
Sale \$39.99

Botany 500
Mens Double Knit
Regular Price \$110
Sale \$87.99

Double Knit
One Group Men
1/3 Off

Double Knit
One Group Men
\$2.00 Off

Double Knit
One Group White
1/3 Off

Tony Lama Boots
Regular \$49.98,
\$39.98,
\$34.98,
\$42.99 \$33.99
\$30.99

Men's Boots
Texas and Acme
\$2.00 Off

Y GABRIEL'S



The Healer Family Holds Reunion

The Healer reunion was recently held in Brownwood, in the East Adam Street Community Center. Opening with a song led by Delbert Davis of Sweetwater and Mrs. Janie Davis at the piano, the reunion was well on its way. James Healer of Malakoff, led the opening prayer. Scripture was read by Mrs. Odell Harrison of Jayton and message was brought by Rev. F. E. Healer of Sweetwater, closing with a prayer.

After a bountiful dinner was spread for 32 present, the president, Odell Harrison of Jayton opened the business hour. Officers elected for the new year were: President, Delbert Davis of Abilene; Vice President, Odell Harrison of Jayton; Sec. and Treas. Mrs. F. E. Healer, Sweetwater.

The oldest person present was O. V. Healer of Jayton; the youngest person being, James Donald Healer, 7 month old son of Mr. and Mrs. James Healer of Malakoff. The ones traveling the farthest were Mr. and Mrs. Hubert Sutton of Corpus Christi.

A standing ovation was given Mrs. Lawrence of Brownwood for securing our meeting place and all the necessities for the reunion.

Those present from Jayton were: Mr. and Mrs. O. V. Healer and Mr. and Mrs. Odell Harrison and Roy John.

Rye As Cover Crop



Cover crop of rye was broadcast into cotton on a parallel terrace system on the farm operated by Z. Roy Chisum. This cover crop should be left on or near the soil surface until April 1st for the protection from wind and water erosion.

B. J. Stanley Resigns As Sheriff And Tax Collector

In a surprise move here Monday, Sheriff Tax Assessor and Collector B. J. Stanley presented his resignation. Stanley had been Sheriff for more than six years, having first been appointed, when Sheriff Bob Gallagher resigned to be appointed County Judge at the death of County Judge Dean Young.

Stanley's resignation was accepted by the court in its Monday session.

In other action of the court:

A motion was made by G. L. Hamilton and duly seconded by Sarah Byrd for Kent County to participate in the proposed Radio Communication program as recommended by the West Central Council of Government. Vote on this matter was unanimous.

A motion was made by Carlos Dickerson and duly seconded by Donnie Carriker to pay all bills presented before the Court on this date. Vote on this matter was unanimous.

A motion was made by Sarah Byrd and duly seconded by Carlos Dickerson to enter into a contract for USDA Commodities with the Texas Department of Public Welfare. Vote on this matter was unanimous.

A motion was made by G. L. Hamilton and duly seconded by Sarah Byrd and duly seconded by Carlos Dickerson to enter into a contract for USDA Commodities with the Texas Department of Public Welfare. Vote on this matter was unanimous.

A motion was made by Donnie Carriker and duly seconded by Carlos Dickerson to enter into a contract with Sue Kelley as Community Center Supervisor to keep the Center open for 25 hours per week with the compensation to be \$54 per hour plus the proceeds from the pool table. Carlos Dickerson, Donnie Carriker and Norman Hahn voting for the motion G. L. Hamilton and Sarah Byrd voting against the motion.

Highway Department Begins Implementation Of New Billboard Act

The Texas Highway Department announced this week plans for administration of the State Highway Beautification Act which was passed by the last special session of the Legislature. The Act becomes effective Thursday (June 29).

The Beautification Act, also known as the Billboard Law, changes the Highway Department with responsibility for regulating outdoor advertising signs along the Interstate and Federal-aid primary highway systems in Texas. There are approximately 18 thousand miles of highways in the two systems in Texas.

The law provides that any persons who erect or maintain a sign within 660 feet of the highway must have a license to engage in outdoor advertising and a permit for each sign covered by the Act. Signs advertising the sale or lease of property upon which they are located or relating solely to activities conducted on the property and certain utility marker signs are exempt.

The Highway Department will issue all licenses. Application blanks will be available at the district offices or at the Right of Way Division in Austin. Sign permits will be issued by either the Highway district offices or by those cities which elect to issue their own sign permits. Persons interested should contact the Highway Department district serving the county where their sign is located.

At the present time cities are being contacted by the Highway Department to ascertain whether the cities desire to establish their own permit systems. Once this is decided, the Highway Department district or the cities will start to process sign permit applications for those persons who have obtained licenses.

Plans will be announced later for implementation of sections of the legislation dealing with the entire matter.

John Murdoch To Amarillo

John T. Murdoch Jr., has been called to be an Associate Pastor at the First Assembly of God Church in Amarillo. John is the son of Mr. and Mrs. J. T. Murdoch Sr. of Jayton and is a native of Kent County.

Pool Averages 1s 58 During June

An average of 58 persons per day used the Jayton swimming pool in the month of June, a report to the school board shows. This represents a monthly total of 1,345 altogether.

Total receipts from season tickets was \$225.00 and gate receipts \$374.25. Concessions sold during the month amounted to \$149.60.

Largest daily use of the pool was 66 on June 23 and the smallest was 45 on June 11.

COTTON MEANS JOBS
Cotton is a major industry in the United States. More than 5.7 million Americans live wholly or in very substantial part on incomes earned directly from cotton. In addition, the livelihoods of 12.5 million employees and dependents are closely related to cotton.

Kent Farmer On TV

Channel 11, TV Lubbock, will have a program Friday morning on its 6:30 farm news of special interest to many Kent County people.

Spike Wideman, now a farm reporter for Channel 11, will have an interview with Claud Sem of Jayton. The interview was taped Monday for Friday morning viewing.

Claud invites his friends to tune in the program for his first TV appearance.

4-H Club Dress Revue

The Kent County 4-H Dress Revue will be held on Friday at 8:30 P. M. in the Kent County Community Center in Jayton. The girls will be judged at the courthouse at 2:00 P. M. and they will be awarded sabbos at the dress revue.

Girls must complete their 4-H clothing records and enter the dress in order to complete the clothing project.

The public is invited to attend the dress revue.

Sweden says nuclear treaty is "bright zone."

Nixon urges Congress not to cut arms aid.

LIVE 'n LAFF



THAT DOUBLE T-BONE STEAK FOR THE LADY; ALL THE GENTLEMAN WANTS IS A HOLE PUNCHED IN HIS BELT SO HE CAN TIGHTEN IT!

School Board Will Call For Bids On Needed Supplies

In its Thursday night meeting this week the Jayton School board will call for bids from firms to supply milk, gasoline and oil, and butane during the next school year.

In the agenda sent out Monday to members of the board, and news media Sup. R. N. Pierce mentioned a problem they are facing in putting down a new floor in the gym. The contractor has recommended a concrete slab being poured and the floor being applied to that.

Pierce will be in a meeting this week studying reports on the new state school financing program. He will probably have some interesting notes for them.

The board will also be faced with the matter of employing a new math teacher after the resignation of Norman Hahn, who left the school to head the Commissioners Court.

Kent County Farmers Receive \$163,499.50 Set-Aside Payments - More Money Yet To Come

Approximately 81 farmers in Kent County received farm set-aside payments totaling \$163,499.50 during the first week of July, according to County Executive J. W. G. Gentry, Director of the Agricultural Conservation and Conservation Service (ACCS).

At the end of the month, the total will be about \$482,000 to 251 farmers.

A national objective of balancing supply and demand in certain commodities. These payments help to offset the loss of returns from cropland that otherwise would be used for income-yielding production, and on which the farmer is obliged to conserve steps, according to officials of the U. S. Department of Agriculture. Payments to producers are limited to \$55,000 per person for each of three crops--feed grains, wheat, and cotton--under the Agricultural Act of 1970.

Nationally total payments are expected to be about \$825 million, and wheat producers about \$1 billion. Preliminary payments to wheat producers are limited by law.

RENAL B. ROSSON
BOX 217
SNYDER, TEXAS 79549
LEGISLATIVE DISTRICT 71
BORDEN, CROSBY, FISHER, GARY,
HASKELL, KENT, KING, SCURRY,
AND STONEWALL COUNTIES

The State of Texas
House of Representatives
Austin, Texas
July 7, 1972

COMMITTEES:
CHAIRMAN: MENTAL HEALTH AND MENTAL RETARDATION
VICE-CHAIRMAN: JUDICIARY
MEMBER: CONSERVATION AND RECLAMATION
CRIMINAL JURISPRUDENCE
PUBLIC EDUCATION

Dear Mrs. Richards:

Enclosed please find a map of Texas designating Texas into three parts and showing the territories for Extended Coverage Insurance. These three territories are defined on the map as the North-Northwest Territory, Central Inland (1 and 2), and the Seacoast Territory. I am also enclosing herewith a copy of the Resolution adopted by the House of Representatives setting up a study on insurance problems as same pertains to Extended Coverage Insurance.

Myself and Representative E. L. Short, of Tahoka, along with others as shown on the Resolution, have researched discrepancies in insurance rates for a comparison of same between the three territories. For example, in the North-Northwest Territory in which we reside, the rate for a \$10,000.00 frame house is \$108.00, as compared to a rate cost of \$49.00 for the same house or building in the Seacoast Territory, with only a rate cost of \$30.00 for the same \$10,000.00 building or house in the Central Inland Territory. This Committee will try to determine if this high rate in the North-Northwest Territory, compared to the others is justifiable. Of course, the number of dollars a home is insured for increases the rate accordingly. On a \$20,000.00 home in the North-Northwest Territory the cost is \$192.00, compared to \$88.00 on the Seacoast and only \$53.00 in the Central Inland. This information is taken from the Texas General Basis Schedules, 10th Reprint, July 1, 1971.

In the 63rd Legislature we hope to make a recommendation to prove that owning a home in our west Texas area is not as hazardous to weather factors as has been charged to us by the State Board of Insurance and to, in this manner, bring other matters to the attention of the Board that will cause a substantial reduction in the area of Extended Coverage (commonly thought of as hail and windstorm coverage). We also feel that such a study could possibly lead to the dividing of the State into maybe 12-15 or 18 such districts, instead of the 3 areas, as is now believed to be arbitrarily drawn. I might also point out that, for the purpose of setting rates in automobile insurance, the State is divided into some 38-40 districts. Most, if not all, other types of insurance coverage have a more realistic basis for setting the rates (as is done in fire insurance).

Therefore, it is hoped that we will be able to gather information that will lead to a reduction in rates in the west Texas area to a more realistic comparison.

RBR:1
Sincerely yours,
RENAL B. ROSSON

se did
Pri-
s com-
was a
man se-
airs in
this

ntered
morn-
breed-
clas-

ies in-
show,
atched
rodeo.
's per-
after-

f win-
ble for
week.
omens
crops,
s.

money.
e for-
voiced
in the
of 1788
power
dis-
on the
d men
for it

legis-
as the
a gov-
nother

es that
in our
y and
mar-
blem
n with
le that
all
good
it is
f them
illage
under
a con-
time.
fit, he
back.
direct
course

I like
V sets
made
ibility
an de-

I sta-
l hos-
e are
nable
n be-
Tex-
ement
al Sen-
ation,
leave
or the

I be
e four
Texas
icense
ehicle
r Li-
ments
to the
rence,
le va-
part-
quests
e sta-
very

of ex-
man
orm

The Jayton Chronicle

Box 277, Jayton, Tex. 79528 Ph. 806-237-3593

Opal M. Richards... Editor
Clique Smith... Office Mgr.

Published every Thursday at Jayton, Texas. Entered as Second Class Mail, at Jayton, Texas, 79528 under Acts of Congress.

Subscription by mail, in Kent and adjoining Counties \$3.00 per year, elsewhere \$4.00 per year.

Advertising rates: 84c per column inch, 5c per word for the first insertion, and 4c per word for each following insertion, \$1.00 minimum. Cards of Thanks \$1.00.

Member 1972 TEXAS PRESS ASSOCIATION

As It Looks From Here

By Rep. Omar Bureson
Member of Congress, Texas



THE BROOKINGS INSTITUTION here in Washington is a non-partisan, non-profit research organization. In its economic studies it draws on some of the best scholars in the country.

IN A RECENT STUDY, A GROUP headed by Mr. Charles L. Schultz, who was Budget Director in the Johnson Administration, came to conclusions and opinions considerably different from those he and associates expressed in the early 60's.

AT THAT TIME, ALONG WITH other prominent economists, Mr. Schultz, Walter Heller and others saw a "fiscal dividend" in the country's economic growth immediately ahead. At that time they saw large amounts of revenue coming into the Federal Treasury permitting tax cuts, revenue sharing with states and localities and funds for programs of the "Great Society."

THE REPORT RECENTLY COMPLETED by these gentlemen and others has the

effect of repudiating many of the actions which were a part of the Great Society. The report calls for a reversal of direction for the Federal Government from producing goods and services and other complex schemes for aiding the poor, to increasing the quality of opportunity and improving the quality of public services. In clear terms it calls for drastic change in the spending programs of the Federal Government and warns of the fiscal plight which has overtaken it. One significant line stands out--"For the first time in American history, except during major wars, government spending--even without

any new programs--is now rising relentlessly faster than the growth of revenues from an expanding economy." In other words, the conclusion is that the government is overspending itself and the programs to which the government is committed can't be paid for without huge deficits.

WHAT IS NEEDED IS NEW INCENTIVE to reduce the tax drain and curb spending for programs of uncertain effect.

THIS SORT OF POLICY CONTRADICTS candidates on the campaign trail who dre a mingly promise to cut taxes and increase spending. It just can't be done and people know better.

WHAT IS NEEDED IS NEW INCENTIVE to reduce the tax drain and curb spending for programs of uncertain effect.

FOLLOWING THIS CONCLUSION, the report says that the overcommitted Federal Government can not spend any more on trying to solve social or other problems without a big tax increase. It says that even if the Congress enacts this year only the programs that President Nixon is proposing, and no more, the Federal Budget for 1975 will reach \$300 Billion and that this would be \$17 Billion more than tax revenues under present rates.

THE MAKEUP OF THE BROOKINGS GROUP who produced the report reflects a change of attitude on the part of liberal intellectuals who had considerable influence in shaping policies and programs now criticized. They refer to many programs as uncertain, wasteful and not providing solutions. It goes far in undermining the liberal intellectual belief in the Federal Government as the chief problem-solver in our society.

THE BROOKINGS PEOPLE SEEM TO AGREE with proposed reforms which have been around several years. Essentially what is needed, among other things, is (1) 5-year budget projection submitted annually; (2) pilot testing of any new programs; (3) a joint congressional committee to evaluate the total budget to determine both revenues and expenditures; and (4) more disciplined spending.

WHAT IS NEEDED IS NEW INCENTIVE to reduce the tax drain and curb spending for programs of uncertain effect.

THIS SORT OF POLICY CONTRADICTS candidates on the campaign trail who dre a mingly promise to cut taxes and increase spending. It just can't be done and people know better.

Unkle Zeke Sez

What it was at the country store Saturday night was what them Congressmen calls a fillerbuster. Ed Doolittle took the floor and afore the fellers could git him set down he had filled us with so many facts and figgers we was all about to bust. When Ed gits really cranked up, Mister Editor, he's as hard to git stopped as Senator Humphrey.

Ed was on his high boss on account of what he's been reading lately about some of the Democrats trying to git the jump on one another at the National Convention. Ed said he was particular worried about the way Senator McGovern has come on strong. Ed said McGovern is pulling the reverse of the usual politician trick in a election year.

Through the history of this country, allowed Ed, politicians has allus been magicians, they perform the difficult in a flash and the impossible in a little longer afore a election, and after the vote they become invisible. Ed was of the mind that McGovern started off invisible and now he's everywhere doing everthing and promising the rest. The only thing we can be shore about, went on Ed, is that McGovern is a 100 per cent Democrat.

Democrats is the champions and inventors of high taxes and the magic of over-balanced budgets and deficits of strength, allowed Ed. The Democrats has done more for cheap money in this country than anybody in the world since Julius Caesar, was Ed's words. And now comes McGovern with a plan to give everybody in the United States \$1,000 a year. Course, admitted Ed, they is more to his "income supplement" plan than spending \$200 billion right off the bat, but the idee is Democratic thinking pure and simple. On top of this, McGovern knows ways to cut defense spending by at least \$30 billion, and how to git all the money the Government needs from folks that make more than \$12,000 a year.

Ed went on like that til Clem Webster, that started voting Democrat back under Woodrow Wilson, snuck a word in sideways and went on to take issue with Ed on some items. Clem said it may of been the Democrats that tried to git everybody's head to the public trough, but it is the Republicans that let the big money boys crawl all the way in the trough and lay down longways.

Fer instant, went on Clem, the Nixon Administration may be drying up jobs all over the country, but they are making shore that AT&T and them big outfits gobble up all the little companies they want to. Furthermore, Clem said, all Nixon's running around over the world got as nothing but what the Chinamen and Russians figgered would be

IT NEVER FAILS



Keeping The FAITH

"Know Thyself," the ancient Greek dictum which has been quoted for centuries, remains an almost Herculian task. Even though man has explored nearly every horizon on earth, the most uncharted region remains the same -- his own interior.

We still have a great deal to learn about the processes that good for them. Personal, Mister Editor, I didn't git in the discussion I have noted in more than 50 year of observing politics that the best party allus is the one that's out of office.

Yours truly,
Unkle Zeke

result in our conscious thoughts and emotions. We know even less about this mind which produces visions.



voices, and hallucinations, and still find ourselves groping for explanations today.

Dr. Wilson Van Dusen, a practicing psychologist, has discovered that his recent clinical findings on the subject of hallucinations conformed to those of the 18th century scientist-theologian, Emanuel Swedenborg, whose detailed accounts of parapsychological experiences written over two hundred years ago have proved quite

helpful to modern day psychologists. Dr. Van Dusen's conclusions are strikingly similar to those of Swedenborg and are published in booklet form entitled *The Presence of Spirits in Madness*. They have radical implications for our self-understanding.

In another booklet, *Dreams, Hallucinations, Visions*, Dr. Ernst Benz, a leading German theologian, offers an objective study of such phenomena as recorded in the Bible, in writings of mystics, and in scientific annals.

Both copies of these fascinating booklets *Dreams, Hallucinations, Visions* and *The Presence of Spirits in Madness* are available for only \$1.00 (postpaid) at the Swedenborg Foundation, Dept. PP, 139 E. 23rd St., New York, N.Y. 10010.

ATTEND CHURCH SUNDAY

Baseball is one of the few experiences of life in which you learn immediately and unquestionably whether you're safe--or not. In other pursuits we can go on for years thinking we're safe when we're not.

Of course, in life as in baseball it is what a man attempts and decides to do, and how well he fulfills his aim, that determines whether he'll be safe. And in life, too, each venture calls for determination and a knowledge of the rules.

For many youngsters in our community the church is the sandlot of life. In the church's youth activities they find their training and experience--for one day on the "diamond" of life they'll be making decisions and pitting their strength against serious challenges, relying on the religious convictions and moral principles they gained on the way up.

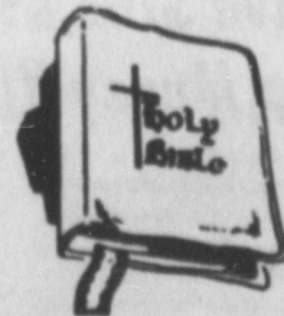
In weighing your child's need of spiritual development remember this: In life, each day doesn't offer a new ball game!



Copyright 1972 Kaiser Advertising Service, Inc., Strasburg, Virginia. Scriptures selected by the American Bible Society.

Sunday	Monday	Tuesday	Wednesday	Thursday	Friday	Saturday
Mark 14:26-38	1 Kings 3:7-14	Job 28:12-28	Psalms 37:30-40	Proverbs 1:2-9	Proverbs 3:1-10	1 Corinthians 1:17-25

- Cap Rock Telephone Co.
- Thos. Fowler Ins. Agency
- Vencil Lumber & Supply
- Parker Butane & Appl.
- Lula's Beauty Shop
- Jayton Co-op Gin
- Goodall Ford Sales
- Cheyne Welding Shop



- McAteer's Dept. Store
- Robert Hall Chevrolet
- Kent Co. State Bank
- Kent Co. Rest Home
- Jayton Chronicle
- The Teen Scene
- Spot Grocery

FIRST UNITED METHODIST CHURCH
Jayton, Texas
Rev. Bill Perkins, Pastor
Church School 10:00 a.m.
Morning Worship 10:50 a.m.
Evening Worship 7:00 p.m.
Wednesday Bible Study 8:00 p.m.
Youth and Childrens Bible Study 8:00 p.m.

CHURCH OF CHRIST
Jayton, Texas
Ben Pectol, Minister
Sunday School, 10 a. m.
Morning Service, 11 a. m.
Evening Service, 6 p. m.
Wed. Prayer Meeting, 7:30 p. m.

FIRST BAPTIST CHURCH
Jayton, Texas
Truett Kuenstler, Pastor
Sunday School, 10 a. m.
Morning Worship, 11 a. m.
Training Union, 6 p. m.
Evening Worship, 7 p. m.
Wed. Prayer Meeting, 8:15 p. m.
Choir Practice, 7:30 p. m.

FIRST ASSEMBLY OF GOD CHURCH
Jayton, Texas
Rev. A. D. Stewart, Pastor
Sunday School, 9:45 a. m.
Morning Worship, 11 a. m.
Youth Meeting, 6 p. m.
Evening Worship, 7 p. m.
Wed. Prayer Meeting 8 p. m.

CHURCH OF CHRIST
Girard, Texas
Abe Martin, Minister
Morning Service 10 a. m.
Evening Service 6 p. m.
Wednesday Evening Bible Classes, 7 p. m.

FIRST BAPTIST CHURCH
Girard, Texas
Rev. Victor Crabtree, Pastor
Sunday School, 10 a. m.
Morning Worship, 11 a. m.
Evening Worship 7 p. m.
Wed. Prayer Meeting 7 p. m.

Cr and 2
1/2 t
teasp
and 2
beat
Pc
pat.
drain
Ba
erate
serve
CHER
Ble
blespc
spoon
Ad
spoc
blespc
2/3 c
Co
stall
CHE
CHE
1 c
3 t
1/
1/
1/
2 c
3/
f
Com
spoons
mbx w
and sh
Chil
cheese
crea
toppi
Spread
Chilla
6 to 8
Ch
Sal
Lightly
with sa
olive c
Course
absorb
1/2
che
(To av
salad,



The summertime favorite

A Refrigerator-Freezer
With An Automatic Ice Maker

Visit your electric appliance dealer, now and trade up to a big, modern refrigerator-freezer--for convenience and better food storage space.



Live the carefree way with Famous Frigidaire Electric Appliances

West Texas Utilities Company

PUBLISHER'S COPY

Consolidated Report of Condition of Jayton in the State of Texas and Domestic Subsidiaries at the close of business on June 30, 1972

Table with columns for ASSETS, LIABILITIES, RESERVES ON LOANS AND SECURITIES, CAPITAL ACCOUNTS, and MEMORANDA. Includes sub-totals for Total Assets, Total Liabilities, and Total Reserves.

Leona Kidd, Cashier, of the above-named bank, do solemnly affirm that this report of condition is true and correct, to the best of my knowledge and belief.

This Week...

take any action, then there would be a write-in campaign for the office for the next four years. A member of the county committee told the Chronicle Tuesday, he could not see the committee taking such a step, and he personally would not participate in it if the rest of the committee decided to do so.

Judge Norman Hahn told the Chronicle this week several court-related activities are coming along nicely. Ladies have been busy erecting play ground equipment for the little folks in the park east of the court house.

Did you hear about the lady who went into the Drivers License Division office to get a renewal? She walked over to the spot marked X, took her stand and faced the camera with a wide grin.

The flushed-face kid came home from his first day at school, and threw his coat across the chair. "Well, that finishes it," he said, "I don't aim to go back to school anymore."

"I'VE BEEN PLAYING golf 14 or 15 years and this is my first hole in one. I carry a 2 to 3 handicap, but that is on that little par 66 course at Jayton. It would be higher on a better course," he surmised.

Waggoner teaches vocational courses at Jayton and is going to school here to further his teaching ability. This is his first year to teaching at Jayton.

He was the 69th male golfer to hit Tuesday. He was only one of a seemingly never ending line which stretched out to 185 golfers who took three swings (550 total shots) Tuesday.

Jayton Teacher Makes Hole-in-One at A & M

BY JERRY WAGGONER Bryan Daily Eagle Tommy Waggoner, a bespectacled, stout summer graduate student at Texas A&M, became the official leader of The Eagle's Hole-In-One Contest Tuesday when he made a hole-in-one.

The Jayton, Tex. High School teacher plays to a 2-3 handicap and this was his first ace. He hit a soft wedge shot to the ninth green at Bryan Municipal Golf Course and it rolled up to the cup and fell in without ever having hit the pin. The shot was made from 100 yards out.

This doesn't mean the tournament is over. We urge people to continue coming out to try to score an ace. Another ace would tie and there would have to be a shoot-off, second place going to the loser of the shoot-off. And the second and third place prizes are nice, too.

"I saw your name on the story in Monday's paper and started to cut it out and send it back home. I've got a brother named Jerry," Waggoner stated.

successfully Monday, is a student at A&M in research. He's working in the nuclear reactor building this summer. The next big excitement came when little Dale Sledge of 1405 E. 29th called one just past the pin, barely missing the hole and pulling up 15 inches away which ties him and first day leader Fred Hodge in fifth place. Coss is second.

AS THE BALL NEARED the hole Dale's father Buddy tried to coax the ball in with lung power. Dale surmised that the ball must have been out of round because he meant that shot to go into the hole.

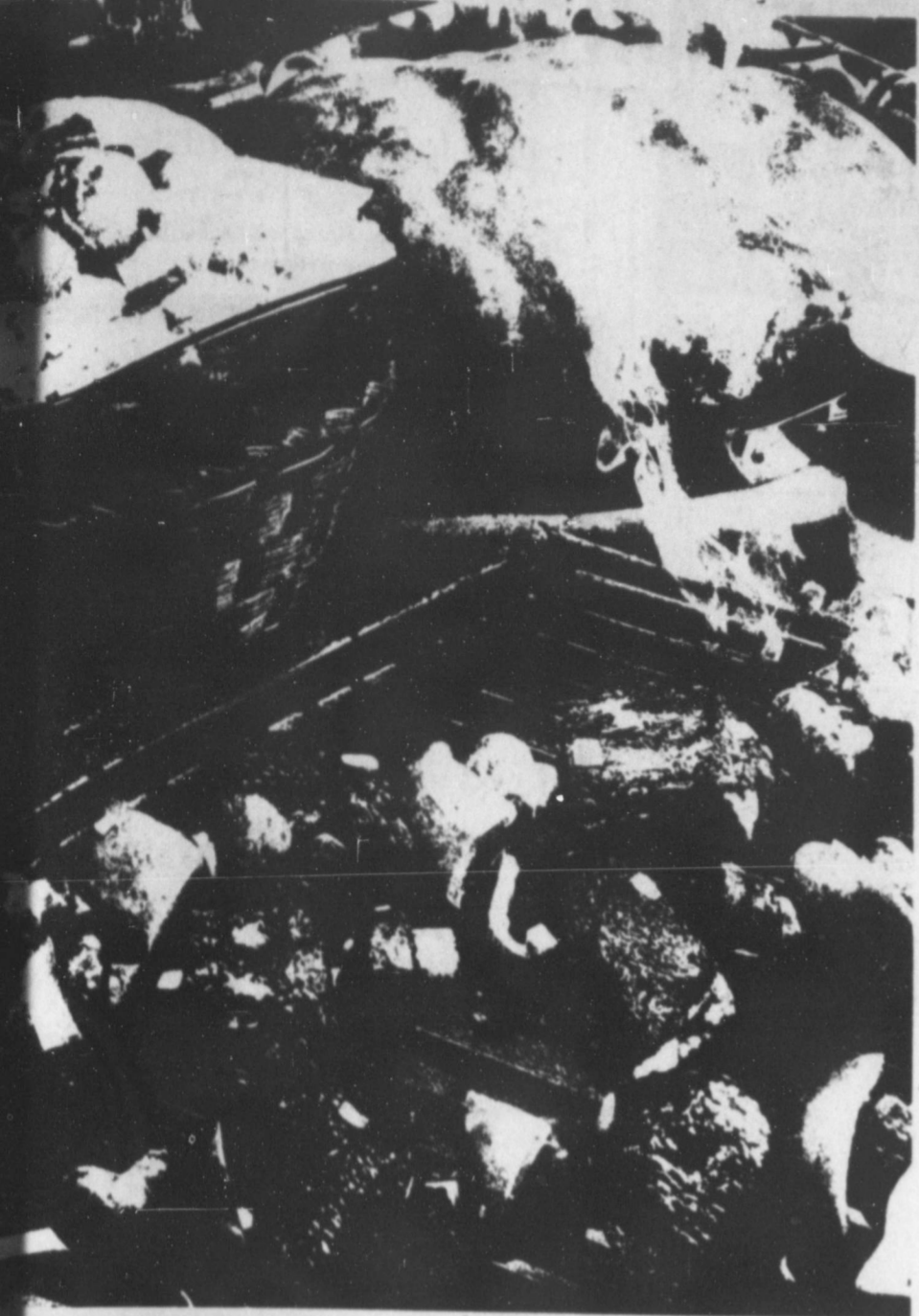
AS HE LEFT the tee he confidently said, "Don't worry, I'm going to win yet." He recently shot a 35 on one nine at Bryan Municipal Golf Course.

There now have been 330 golfers take part in two days. They've hit 1,017 shots and only the one has hit in the hole. Of those 1,017 shots, 18 have been inside the men's circle which is seven and a half feet in diameter.



Hole In One Scored Tommy Waggoner, B9B College View, removes the ball from the cup with which he hit a hole in one Tuesday during The Eagle's Hole-In-One Contest. He leans on the wedge which was the weapon which hit the ball 100 yards into the cup.

From The Recipe File of Opal Richards



Over the Coals

MEAT-ON-A-SKEWER 2 lbs. Boneless Chuck, 1/2 inch thick

chuck, on rack in broiler pan 6 inches from heat, 8 to 10 minutes on each side. Make sauce as directed, brushing on meat during last few minutes of broiling.

CORN BREAD ROUNDS 1 8 1/2 - or 14ounce package corn muffin mix

Combine muffin mix and milk powder, Beat egg and water to blend; add to mix, stirring just till moistened.

FRENCH BREAD IN FOIL 1. Make diagonal cuts at 1 inch intervals in a loaf of French or Italian bread-loaf about 14 inches long.

2. Spread herb or wine-garlic spread, between slices and over top of loaf. Wrap loaf in foil. 3. Adjust grill 3 inches from prepared coals. Heat bread 15 to 20 minutes or until heated through.

CORN ON THE COB 4 Ears of Corn Butter or margarine, softened Salt and pepper

Remove husks from corn. Spread corn generously with margarine or butter and sprinkle with salt and pepper. Wrap each ear in foil, sealing and twisting foil around ends.

Lunch Room Averages 267 Daily

The School Lunchroom program is about \$1,400,00 above funds budgeted, a report to the school board shows. Receipts are \$30,526.29 and expenses are \$31,917.22 the report shows.



ON THE TOWN—Black double-knit cotton gabardine is deftly tailored into an evening suit for the elegantly attired man-about-town.

to \$10,316.09 and transfer from local funds is \$8,000.00. In the expense column are food purchases of \$15,391.90, Labor \$12,344.88, supplies \$385.70, other expenses \$866.98 and special milk program \$2,928.16.



Count 'Em Five New Pens From Lindy

- Lindy Fine Point Pen 49c each
Lindy Medium Point Pen 19c each
Lindy Felt Tip Marker 39c each
Lindy Fine Tip Marker 59c Each
Lindy Broad Tip Marker 59c each

Buy them by the each, or by the dozen Jayton Chronicle

Vertical text on the far left edge of the page, including 'KTRA SAFETY', 'en', 'cial', 'Food', 'oom', 'Weddings, Annin', 'nn', 'rant', 'Jester', 'ITED', 'ST CHURCH', 'Perkins, Pastor', 'chool 10:00 a.m.', 'onship 10:50 a.m.', 'onship 7:00 p.m.', 'Bible Study 8:00 a.m.', 'Childrens', 'Bible Study 8:00 a.m.', 'OF CHRIST', 'exas', 'Minister', 'chool, 10 a. m.', 'ervice, 11 a. m.', 'ervice, 6 p. m.', 'er Meeting, 7:30 p. m.', 'PTIST CHURCH', 'y, Texas', 'entler, Pastor', 'chool, 10 a. m.', 'onship, 11 a. m.', 'nion, 6 p. m.', 'onship, 7 p. m.', 'er Meeting, 8:15', 'dics, 7:30 p. m.', 'EMBLEY OF', 'CH', 'Stewart, Pastor', 'ool, 9:45 a. m.', 'onship, 11 a. m.', 'ing, 6 p. m.', 'onship, 7 p. m.', 'r Meeting 8 p.m.', 'OF CHRIST', 'exas', 'Minister', 'ervice 10 a. m.', 'ervice 6 p. m.', 'y Evening', 'ames, 7 p. m.', 'ST CHURCH', 'Cmbrose, Pastor', 'l, 10 a. m.', 'hip, 11 a. m.', 'hip 7 p. m.', 'Meeting 7 p. m.', 't. Store', 'evrolet', 'te Bank', 'st Home', 'ronicle', 'n Scene', 'Grocery'

Vertical text on the far right edge of the page, including 'se di', 'd Fri', 'com-', 'was a', 'nase', 'fairs', 'in this', 'ntered', 'morn-', 'breed-', 'clas-', 'les in-', 'e show', 'atched', 'rodeo.', 's per-', 'after-', 'of win-', 'ble for', 'week.', 'omens', 'crops', 's.', 'money.', 'e for-', 'voiced', 'in the', 'of 1788', 'power', 'dis-', 'on the', 'd men', 'for it', 'legis-', 'as the', 'a gov-', 'nother', 'es that', 'in our', 'y and', 'mar-', 'blem', 'n with', 'ie that', 'ill all', 'good', 'it is', 'them', 'illage', 'under', 'a con-', 'time.', 'fit, he', 'back.', 'direct', 'course', 'I like', 'V sets', 'made', 'ibility', 'en de-', 'I sta-', 'I hose', 'are', 'nable', 'a be-', 'Tex-', 'ement', 'al Sea-', 'ation', 'leave', 'or the', 'I'll be', 'four', 'Texas', 'ense', 'ehicle', 'r Li-', 'ments', 'to the', 'rence', 'le va-', 'part-', 'quests', 'e sta-', 'every', 'of ex-', 'lman', 'motion', 'uniform'

ABOUT PEOPLE YOU KNOW

By Clique Smith Phone 237-3593

Mr. and Mrs. J. T. Leech recently spent several days in Abilene visiting with his brothers. While there he had a medical check up. He is getting pretty good reports in most cases.

Visiting in the Mark Montgomery home over the 4th week end were friends, Miss Betty Wright and Pat Williams from San Antonio.

Jan Montgomery received word of the death of her Aunt over the 4th week end, but was unable to attend the funeral.

Mrs. John Fowler and children are visiting with her parents, Mr. and Mrs. Adkin Cook in Lubbock for a while.

Mrs. Woodrow Murdoch was called to Midland when their new granddaughter, Vanessa, the daughter of Mr. and Mrs. Robert Hobson, became very ill. Mrs. Hobson is the former Sharon Murdoch.

Alice Davis Wilson wrote she had been elected to the Society for the preservation of cotton pickers. She sent a copy of the certificate from the secretary State Bob Pogue. Cotton pickers are a fast growing scarce. Not many of the younger generations can claim

such. But we that have spent many days at this job, will not in any way want to go back to those back breaking dusty days. Although the memories are nice and it was not all bad for we all had fun. We visited with each other when passing and sometime planned a party over the week end or a picnic. Radios were scarce, and T.V., well they had not been thought of.

Jack Brooks Jr. of Waxahachie is visiting with his grandparents Mr. and Mrs. J. T. Murdoch.

Mr. and Mrs. J. T. Murdoch and Jack Brooks visited with Mr. and Mrs. Calvin Shafer at Hext and went over and brought their Aunt, Mrs. Pearl Shafer of Mason and her son and all had a nice visit.

Calvin Shafer has been very sick and is now greatly improved still recuperating from an infection on a nerve.

Mr. and Mrs. Cleburne Murdoch of Hamlin visited with his parents Mr. and Mrs. J. T. Murdoch on July 4th.

Mrs. Astens B. (Wade) Hanson and daughter Joy Wade were visiting in Jayton recently. At one time Mrs. Wade was Kent County Treasurer. She moved to California during

the 40's war years, this is her first time to return since she left. Although 86, she is a very young 86.

They went to see her daughter Jimmie who lives in Texas and were on their way to visit with Mr. and Mrs. Ray Hoover her daughter at Ruidoso N.M.

There were not too many picture shows to see. We still had fun. All the schools around here would turn out 2 or 3 weeks in the fall and even the teachers picked or pulled holes to help supplement their salaries, which surely helped the farmers as every hole had to be pulled by hand, and the sooner the better. Thank goodness for the cotton strippers the mechanical kind. Thanks for writing Alice, it brought back some memories.

Little Miss Tonja Hooser visited with her grandparents, Mr. and Mrs. L. A. Wall while her mother Deborah was going through the clinic at Lubbock. They have returned home, where Deborah is receiving treatment there.

Mrs. Cora Lewis has returned to the nursing home from the hospital. Where she received treatment for a broken hip.

Mrs. Cora Lewis had her granddaughter of Spur visiting with her Friday.

Mrs. Milwee is spending several days with Mr. and Mrs. K. P. Brantner in Spur.

Mrs. Ella Hale has returned from a trip to her children.

Beula Page had her niece and two nephews visiting with her. They are the children of Faye Stephens Ross.

Pete Hale visited with his mother Friday.

Mr. and Mrs. L. A. (Leck) Wall have recently moved to Jayton after purchasing the Jimmy Montgomery home. They had made their home in Clairemont for many years.

Mrs. Lucene Morris of Amarillo spent several days last week with her sister, Oleta Moore.

E. G. (Garland) UPSHAW

INSURED CATTLE HAULING

RRC Permit # 28886 Phone 915/735-2062

DORRAS ROUTE ROTAN, TEXAS

BUSINESS & PROFESSIONAL DIRECTORY

Mary Dell Winfrey and children, Santa Fe, New Mexico visited with Mrs. Eunice Huls and other relatives and friends during the holidays.

Mrs. Woodrow Murdoch has recently returned from a trip to Calif. to see her sister, Rosalee who is very ill.



Choosing a New Name

Embarrassed by his "foreign" name, a young man went to court to have it Americanized. But at the hearing, his own parents showed up to protest. In their eyes, he was disgracing his family and denying his past. Nevertheless, the court approved the change.

"The law," said the court, "does not require a man to perpetuate the surname of his ancestors."

Unlike fingerprints, names may be changed with comparative ease. One way is to "get yourself known" by a new name. But a speedier, safer way, allowed almost everywhere, is to have the change formally approved in a court procedure.

Generally speaking, you may choose any name you please. However, courts do retain a certain amount of discretion to say no.

The most common reason for a refusal is to prevent fraud. In one case, a man seeking a name change admitted that he had seven unsatisfied judgments hanging over his head. The court turned him down, figuring that he was mainly interested in throwing creditors off his trail.

Commercial considerations also blocked another man's attempt to drop his first, middle, and last names in exchange for a single name. The court said: "Approval of the use of a single name would cause disruption of official records and complications in our economy, largely dependent on credit of easily identifiable persons."

Occasionally a change will be turned down because it is just too freakish.

Two actresses, paired as a night club team, once applied at the same time for exactly the same name. Under this arrangement, they pointed out to the court, neither one could get any more publicity than the other. They said they wanted to make certain that problems of professional jealousy would never arise between them.

But the judge foresaw so many mixups and complications that he denied their request. He said the two actresses would soon find themselves enacting a real-life "Comedy of Errors."

A public service feature of the American Bar Association and the State Bar of Texas. Written by Will Bernard.

© 1972 American Bar Association

Typewriter Ribbons at the Jayton Chronicle

Dr. O. R. Cloude CHIROPRACTOR Spur, Texas

FLOWERS For Every Occasion JAYTON FLOWER and Gift Shop Mrs. F. O. Harrison Phone 806 237-3965 GIRARD REPRESENTATIVE Tom Huskett Phn. 284-2256

See BLACKSHEAR LOCKER CO. for your meat processing and slaughter. We slaughter on Mondays, Wednesdays and Fridays a.m. Call 272-4371, for appointment. Can be brought in day before, Spur, Texas.

SEE ME FOR GRAVEL Gravel and stucco or plaster sand for sale, delivered on your location or loaded on your truck at the pit. CLAUD SENN

LITTLEPAGE FUNERAL HOME Dignified, Personalized Funeral Service

Sympathetic Attention to every detail 24-Hour Ambulance Service 949-3535 Appointment, Texas

NOTICE OF SALE OF REAL ESTATE UNDER EXECUTION THE STATE OF TEXAS COUNTY OF KENT

By virtue of an execution issued out of the District Court of Stonewall County, Texas, on a judgement rendered in said court on the 25th day of April, 1972, in favor of W.H. McKinzie and against T.H. Norvill in the case of W.H. McKinzie vs. T.H. Norvill, numbered 3219 upon the docket of said court, I did on the 3 day of July, 1972, at 11 o'clock a. m. levy upon the following described tracts and parcels of land situated in the County of Kent, State of Texas, as the property of the said T.H. Norvill, to-wit:

Being a tract of land, out of Block No. 3, in the Donoho Addition to the Town of Jayton, Texas, as shown by the official map or plat of said own and Addition thereto, recorded in the Deed Records of Kent County, Texas, to which reference is here now made, and described by metes and bounds as follows: BEGINNING at a point on the East line of said Block No. 3, Donoho Addition, being 175 feet North of the SE Corner of said Block No. 3, thence north along the East line of said Block No. 3, a distance of 108 feet to a point for corner of this tract; thence west a distance of 90 feet to a point on the west line of Block No. 3, for a corner of this tract; thence South a distance of 108 feet to a point on the West line thereof for a corner, such point being 175 feet North of the SW corner of said Block No. 3, Donoho Addition, thence East a distance of 90 feet to the place of beginning.

and on the 1st day of August, 1972, being the first Tuesday of said month, between the hours of 10 o'clock a. m. and 4 o'clock p. m. on said day, at the Courthouse door of said County I will offer for sale and sell at public auction, for cash, all of the right title and interest of the said T.H. Norvill in and to said property.

Dated at Jayton, Texas, this 3 day of July, 1972.

B. J. Stanley, Sheriff, Kent County, Texas, by Frank Chisum, Deputy.

HEGARI SEED for sale, recleaned and packed, \$10.00 per 100. Claude Senn, Jayton, 806 237-6222. 20-2tc

NOTICE

All persons living on city blocks that do not have alleys, are asked to please put your trash out at the front back to the street where it can be easily reached. It is very difficult for the trash man to back into your drive way to pick it up.

Will you please consider this request and cooperate with us in trying to keep the town clean.

Signed: Mayor Lewis

INTERVIEWER WANTED: For part-time telephone survey work this fall. Give phone number. Must have private line. Not a selling job. Airmail letter including education, work experience and names of references to: American Research Bureau, Field Operations, 4320 Amendale Road, Beltsville, Maryland 20705. 23-3tc



"When I got off that crowded bus this morning... there he was!" Jayton Chronicle \$3.00

CLOSE-OUTS! PRICES GOOD ALL WEEK!

MEN'S KHAKI PANTS & SHIRTS Permanent Press—Reg. \$9.95

Now Pants \$3.98 Shirts \$2.98 Reg. 25.00 Value, Men's

DOUBLE KNIT PANTS \$12.95 No Refunds — No Exchanges

BOY'S BOOTS One Table — Over 100 Pair

Size 4 to 12 \$3.00 Size 12 1/2 to 13 \$5.00 Size 3 to 6 \$7.00 All SADDLES & SADDLE GEAR 1/2-OFF

Reg. 8.98 Ladies Long Sleeve WESTERN BLOUSES \$4.98

MEN'S FALL COATS Have Arrived — Use Our Lay-Away!

CARTER'S WESTERN WEAR Snyder, Texas Northeast Corner Of Square

get BIG RESULTS with a low COST WANT AD

Classified Advertising Rates: First Insertion - 5¢ per word; Additional Insertions from same copy - 4¢ per word; Minimum per insertion, \$1.00

LADYBUGS give almost perfect control of aphids, thrip, flea hopper and bollworms with no harm to the ecology. For more information and orders call Claude Senn, Jayton, 806 237-6222, 22-6tc

FOR RENT: Three room house, furnished, close to school. See Clifford Dyer, Jayton 79528. 21-2tc

FOR SALE: Bundle type Hegari Seed, recleaned and sacked. Phone 271-3179 and 27-4402. 14-8tp

Expensive Ladies Wigs only \$1.00 plus wig styling cost. For details write: Discounts 1203 E. Chelton Philadelphia, Pa. 19138. 18-6tc

LINDY Marking pens, Will not dry out, Medium and fine point, at the Jayton Chronicle Office.

FOR SALE: African Millet Case Seed, Cleaned and sacked. Phone 271-3179 or 27-4402. 14-8tc

HEGARI SEED for sale, recleaned and packed, \$10.00 per 100. Claude Senn, Jayton, 806 237-6222. 20-2tc

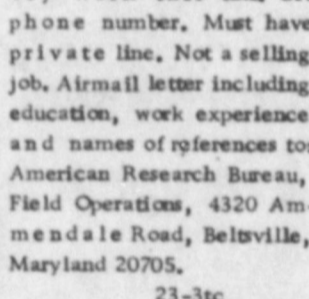
NOTICE

All persons living on city blocks that do not have alleys, are asked to please put your trash out at the front back to the street where it can be easily reached. It is very difficult for the trash man to back into your drive way to pick it up.

Will you please consider this request and cooperate with us in trying to keep the town clean.

Signed: Mayor Lewis

INTERVIEWER WANTED: For part-time telephone survey work this fall. Give phone number. Must have private line. Not a selling job. Airmail letter including education, work experience and names of references to: American Research Bureau, Field Operations, 4320 Amendale Road, Beltsville, Maryland 20705. 23-3tc



"When I got off that crowded bus this morning... there he was!" Jayton Chronicle \$3.00

Dr. John W. Kimble OPTOMETRIST In Rolling Plains Association Building in Spur each Tuesday afternoons.

Vet Supplies We have a complete line of Veterinary Supplies and Franklin Vaccines for all your livestock Needs. See us today... JAYTON TEXAS

Pickup-- and delivery service at KENT COUNTY NURSING HOME Mondays, Wednesdays and Fridays Kenady Drug ASPERMONT, TEXAS

DE' O'HARME'S HEALTH SPA, INC. Exercise Equipment - Steam Sauna and Whirlpool Baths Qualified and Experienced Staff Alternate Days For Men and Women DONNA GRAY, Co-Owner 2506 Ave F - Snyder - Phn. 573-8351

PRESCRIPTIONS ACCURATELY FILLED With Fresh Potent Ingredients Complete Line of Gift Items For the Family and the Home DAN'S PHARMACY Phone 272-3394 -- Spur, Texas

Foremost Milk and Ice Cream 121 W. 5th St. -- Spur We Appreciate Your Business Donnie Duboise, Owner

COSTUME JEWELRY..... Cuff Links, Tie Tacks, Masonic Rings, Watches Watch Bands, Etc. Famous Brands..... Gruben's Jewelry 311 N. Burlington - Spur - 272-3783

Trustworthy shoulders to lean on when your need is greatest WEATHERSBEE Funeral Home Phone 915 735-2255 ROTAN, TEXAS

THIS NEWSPAPER TO PUBLISH

PICTURES WILL BE TAKEN IN COLOR

TAKEN IN NATURAL COLOR

PICTURES OF LOCAL CHILDREN (RURAL INCLUDED)

FREE NO OBLIGATION!

PICTURES TAKEN IN FULL COLOR

Help us make this a good feature -- take your children to the place and at the time given below.

A Professional Child's photographer from PICTORIAL PUBLICATIONS will take several poses in COLOR. Please dress your children to take FULL ADVANTAGE of COLOR PHOTOGRAPHY.

You will be shown all proofs in NATURAL COLOR for your selection of the pose you wish to appear in this newspaper at a later date. NOTE: The picture of your children will RUN IN BLACK and WHITE in this Newspaper.

You may, if you wish however, ORDER COLOR PHOTOGRAPHS for your own use from the representative -- but this is entirely up to you.

HERE IS THE TIME AND THE PLACE

JAYTON COURTS

SAT. JULY 15

10 A. M. -- 6 P. M.

SEE NEWS STORY FOR ADDITIONAL DETAILS.

"Si, Senora, we take travelers checks from the"

Kent County State Bank MEMBER F.D.I.C.

SEE BLACKSHEAR LOCKER CO. for your meat processing and slaughter. We slaughter on Mondays, Wednesdays and Fridays a.m. Call 272-4371, for appointment. Can be brought in day before, Spur, Texas.

SEE ME FOR GRAVEL Gravel and stucco or plaster sand for sale, delivered on your location or loaded on your truck at the pit. CLAUD SENN

LITTLEPAGE FUNERAL HOME Dignified, Personalized Funeral Service

Sympathetic Attention to every detail 24-Hour Ambulance Service 949-3535 Appointment, Texas

CLOSE-OUTS! PRICES GOOD ALL WEEK!

MEN'S KHAKI PANTS & SHIRTS Permanent Press—Reg. \$9.95

Now Pants \$3.98 Shirts \$2.98 Reg. 25.00 Value, Men's

DOUBLE KNIT PANTS \$12.95 No Refunds — No Exchanges

BOY'S BOOTS One Table — Over 100 Pair

Size 4 to 12 \$3.00 Size 12 1/2 to 13 \$5.00 Size 3 to 6 \$7.00 All SADDLES & SADDLE GEAR 1/2-OFF

Reg. 8.98 Ladies Long Sleeve WESTERN BLOUSES \$4.98

MEN'S FALL COATS Have Arrived — Use Our Lay-Away!

CARTER'S WESTERN WEAR Snyder, Texas Northeast Corner Of Square

Foremost Milk and Ice Cream 121 W. 5th St. -- Spur We Appreciate Your Business Donnie Duboise, Owner

COSTUME JEWELRY..... Cuff Links, Tie Tacks, Masonic Rings, Watches Watch Bands, Etc. Famous Brands..... Gruben's Jewelry 311 N. Burlington - Spur - 272-3783

Trustworthy shoulders to lean on when your need is greatest WEATHERSBEE Funeral Home Phone 915 735-2255 ROTAN, TEXAS

Page 2 Ad 1/2 teasp teasp and 2 beat: Pa n, drain Ba erate serve

CHER Bl blesp spoon Ad spok blesp 2/3 Co stantl:

CHEI CHEI

I c 3 t 1/ 1/ c 1/ 2 c c f 3/ 4 Com' spoons mb w and sh Chil: cheese crea toppi Spread Chilla 6 to 8

Ch Sal

Lightly with a olive c Course absorb 1/2 che (To a v salad,

A Week

Compil Of The John C.

Rural D ns... Acreag giled... Su ting Plann

HOW TO ursed at ler vement. Ci sting since th ith. They me are they also rural devel culture, disc The 25-mer velopment, na iverment, i cation Chair mmittees to e stan meeting v ports

Raymond L. tension serv velopment Co icer. Their off stan adjoining the Texas Depart Governor's (mmission.

ABOUT 22, production of m the Texas C. The inform etermining h uesting crops anties in the st if you recee as accurate sible. Farm plied by the urate inform ture of Tex- formation is al keting progra

SUMMER T icultural Prod summertime yer's guide to Texas Depart as 78711.

Texas ranks 78,000 produ turkey prod 100,000 head anties are Gill ttland, Brown, Per capita c producers col duct.

A COMBI tification offh well as founda 14 at San Antc t of the meet was seed labora

LETTE

A, D, 1906 re Moreland bou d Triangle Ra e miles north ent town of J ght the land ell who move- g. The old ra e ar a cree shed a large ro

Ann

I Ha

Ruby'

n Jayton

Tuesday Skilled i

Call

lean

JEANNE W

A Weekly Report Of Agri Business News

armcast

Compiled From Sources
Of The Texas Department of Agriculture
John C. White, Commissioner

Rural Development Commission Makes
Acreage and Production Questionnaires To Be
Filed... Summer Time Is Turkey Time... Seed
Planting Planned...

HOW TO IMPLEMENT rural development was
discussed at length by members of the Texas Rural
Development Commission, holding only their second
meeting since they were appointed by Governor Preston
Smith. They met in the LBJ School of Public Affairs
where they also heard Will Erwin, deputy undersecretary
of rural development of the U.S. Department of
Agriculture, discuss their jobs.

The 25 member State Commission is attacking rural
development problems in eight areas: economic
development, natural resources, human resources, general
government, transportation, health, housing and
education. Chairman Roy Davis of Lubbock has named
committees to explore each category, and much of the
main meeting was taken up in discussion of committee
reports.

Raymond L. Prevett, formerly with the Texas A&M
Extension Service, is director of the Texas Rural
Development Commission, and Jim McAtister is planning
director. Their offices are in the John H. Reagan building in
Austin adjoining Texas Department of Agriculture offices.
The Texas Department of Agriculture is co-sponsor with
the Governor's Office of the Texas Rural Development
Commission.

ABOUT 22,000 Texas farmers will receive an acreage
and production questionnaire during the early part of July
from the Texas Crop and Livestock Reporting Service.

The information obtained will be the basis for
determining harvested acreage production of early
harvested crops for Texas and for each of the 254
counties in the state.

If you receive one of the questionnaires, please fill it
out as accurately as possible and return as soon as
possible. Farm programs are based on information
supplied by the Crop and Livestock Reporting Service.
Accurate information is essential so that an unbiased
picture of Texas agriculture can be obtained. The
information is also invaluable in planning production and
marketing programs.

SUMMER TIME is Turkey Time, and the Texas
Agricultural Products (TAP) program is promoting turkey
summertime good eating and good nutrition. A
Turkey's guide to Texas Turkey is available by writing to
Texas Department of Agriculture, Box 12847, Austin,
Texas 78711.

Texas ranks fifth in total turkey production with
78,000 produced last year. Bell County is the number
one turkey producing county in Texas with a total of
100,000 head grown out in 1971. Other leading
counties are Gillespie, Hill, Blanco, DeWitt, McLennan,
Cottland, Brown, Robertson, and Falls.

Per capita consumption of turkey is on a steady rise
as producers continue to improve the quality of the
product.

A **COMBINED** meeting of Southern Seed
Certification officials and southern seed control officials
as well as foundation seed personnel will be held July 11
and 12 at San Antonio. Fourteen states will be represented.
The meeting will be in the form of a tour of the
seed laboratory at Giddings.

LETTERS to EDITOR

Dear Clique and all Kent
Countians:
Have been intending to write
you and now I must! Enclosed
herewith is my renewal--
could not get along without
the Chronicle and all its news.
That article this week by
Uncle Zeke was so great.

Attached is a copy of the
Certificate of Reservation of
"Society for the Preservation
of Cotton Pickers". Have been
unable to spend much time
on it, but surely a benefactor
for such a worthy cause will
originate somewhere.

By the way, the office staff of
the British Consulate Houston
office, World Trade Building,
stated when I signed the
mourning book for the deceased

Duke of Windsor, "Most bring
their own lack pens to sign
with so they will have a souve-
nir of this momentous oc-
casion." It was a nicety, and
I added the thoughtful way
the British had the Memorial
for the Dead of America.
Little to do for the American
boys who died on British soil
in World War II. But they
assured me that it was still a
very proud part of Westminster
Palace in London. My beloved
deceased brother, T M Kenneth
Davis name is inscribed there-
in.

Best wishes for a bumper cotton
crop and for more drilling
to alleviate the energy demand.

Always sincerely,
Alice Davis Wilson

A Sacred Shrine

The Most Sacred Shrine in Texas
"The Alamo"

In a great and modern city
Where the zephyr breezes blow
Is a grim and silent building
Of the tragic long ago

While our State was in the making
And we vainly tried to throw
Off the yoke of Annexation
To a State of Mexico

There was gathered in this building
Men of honor and of pride
And they said, We all die for Texas
As they struggled side by side

When from off the old Cathedral
Troops were seen toward the West
Travis told his brave companions
We will do our very best.

They had left their homes and loved ones
Back upon the lonely farm
And they prayed to God to guide them
And protect them from all harm.

On the sixth of March we find them
Face to face with deadly hord
And they fight to save their country
As their souls go to their Lord

There was brave old Davy Crockett
Who shot more than a score
Then pulled his last trigger
On this Earth forevermore.

Also Colonel James Bowie
Sick he lay upon a cot
Raised himself upon an elbow
And more Mexicans were shot

To these men who died, we honor
and to them we homage pay
For they died to save our Country
On that dark and fatal day.

I wrote these lines in A. D. 1936
Tex Centenary year
Robert A. Moreland
Jayton, Texas

get out in freezing weather and
break the ice for the cattle to
drink. Before the day of city
water we had to haul water
from tanks and settle the water
or use Gyp water and break it
with cedar ash both which was
unsatisfactory. All the wells
around were Gyp. In the for-

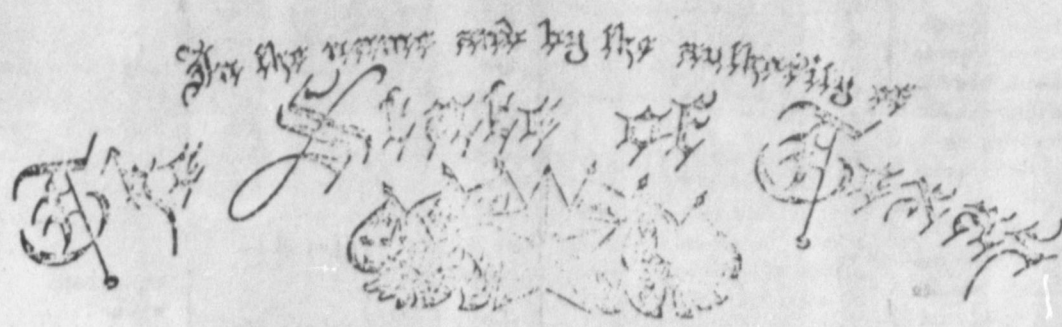
mer days a man ran a wagon
daily supplying the town in a
lim ited way. There was no
laundry nearer than Spur, a
rough road and few cars. Later
a man came down from Spur
to get laundry and take it
to Spur. Most houses had good
cisterns which would get dry.
When they had water it was
well preserved. The drinking
and kitchen water was hauled
from the old Kidd well, five
miles east of Jayton. Drink-
ing too much Gyp water was
like taking a laxative. This
was the situation here and
the country around. I hope
this rough sketch will be of
some help. Please excuse the
writing and composition. I
am 86 years of age. I can
not write like I used to, how-
ever I do quite a lot of writ-
ing such as this. I will close
wishing you success in your
venture.

Yours truly,
Adolphus Moreland

Visitors with the Robert
Harrisons over the 4th holidays
were: Mr. and Mrs. Tucker
Reeve, Patti and Stacy from
Cleburne, Mrs. Ronnie Tru-
sty and Jarrett, Hust; Mr. and
Mrs. Dwight Jones, Cleburne;
and Mr. and Mrs. Bob Harri-
son and Rob of Knox City.

ARCH ENEMY

Some products are difficult
to guarantee, as Montgomery
Ward's catalog of 1981 point-
ed out. "Perspiration from
some feet has the same
ruinous effect on leather as
a strong acid, hence we will
warrant boots worn without
socks."



OFFICE OF THE SECRETARY OF STATE

CERTIFICATE OF RESERVATION OF CORPORATE NAME OF

SOCIETY FOR THE PRESERVATION OF COTTON PICKERS

The undersigned, as Secretary of State of the State of Texas, hereby certifies
that the above corporate name has been reserved in this office for the exclusive
use of Alice Davis Wilson
for a period of one hundred twenty days after the date hereof, pursuant to the
provision of Article 2.06 of the Texas Business Corporation Act.

Dated May 30, 1972.

[Signature]
Secretary of State

Pinto Wagon: \$2265*

We put a lot into it.
You can put a lot in it.

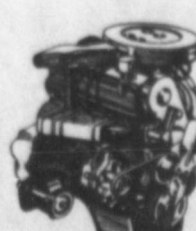


What you can put in: over 60 cubic
feet. Put the rear seat down and there's
60.6 cubic feet of carrying space. For com-
parison: VW Squareback and Vega
Kammback both give you a bit over
50 cubic feet.

The basic \$2265* model.
It's the ideal choice for people who
want an economy car that carries more
—or a wagon that costs less. The white
sidewall tires (shown here) are \$28.00.



Front Disc Brakes. Standard.
And there's precise rack-and-pinion
steering, which is normally found only in
some of the more expensive sports cars.



2000cc Overhead Cam
Engine. It's rugged, economical,
peppy—and standard equipment.
A 4-speed floor mounted all-
synchronesh transmission is also
standard.



Better idea for safety... buckle up!

The Squire Option. That distinctive wood-sided
wagon look, plus wheel covers, special trim, and more.
No other economy wagon offers anything like it.
Price with the Squire Option, \$2479.* The luggage rack
is \$45.53 extra. The white sidewall tires \$28.00.

FORD PINTO
FORD DIVISION

See Your Ford Dealer.

Goodall FORD Sales

JAYTON,

TEXAS

LETTERS to EDITOR

A. D. 1906 my brother
Moreland bought part of
old Trisagle Ranch, some
miles north east of the
best town of Jayton. He
bought the land from Will
Bell who moved to Wyo-
ning. The old ranch house
near a creek, and it
had a large room, side

room and a large half dugout.
My brother lived there until
he could build a home up on
the ridge. There was a large
dug well in front of the house
that contained fairly good
water. I lived with him and
I remember that the creek
usually contained water for
the stock. It was a chore to

get out in freezing weather and
break the ice for the cattle to
drink. Before the day of city
water we had to haul water
from tanks and settle the water
or use Gyp water and break it
with cedar ash both which was
unsatisfactory. All the wells
around were Gyp. In the for-

Announcing

I Have Purchased

Ruby's Beauty Shop

in Jayton And Invite You To Come In.

New Hours:

Tuesday thru Saturday - Early and Late Appointments
Skilled in Hair Styling -- Also Bleaching and Frosting

Call 237-3368 For Appointments

Jeanne's Beauty Salon

JEANNE WAGGONER

Box 444 Jayton, T



se di-
d Fri-
s com-
was a
mane-
fairs
in this

ntered
morn-
breed-
clas-

les in-
show,
atched
rodeo.
a per-
after-

of win-
ble for
week.
omens
crops,
s.

money.
e for-
voiced
in the
of 1788
power
dis-
on the
d men
for it

legis-
as the
a gov-
nother

es that
in our
y and
mar-
blem
n with
le that
ill all
good
it is
f them
illage
under
con-
time.
fit, he
back.
direct
course

I like
V sets
made
ibility
en de-

I sta-
l hos-
e are
nable
a be-
Text-
ement
al Se-
ation,
leave
or the

l be
s four
Texas
ehicle
r Li-
ments
to the
rence,
le va-
part-
quests
e sta-
every

of ex-
plan-
tion
uniform

JULY SALE!

McATEER'S
Jayton, Texas

Clearance

Sale Starts 9:00 A. M. Thursday July 13, 1972

Men And Boys Shirts

Reg. \$9.98 Sale \$6.98
Reg. \$8.48 Sale \$5.98
Reg. \$7.98 Sale \$5.48
Reg. \$6.98 Sale \$4.48
Reg. \$6.48 Sale \$4.28
Reg. \$5.98 Sale \$4.18
Reg. \$5.48 Sale \$3.98
Reg. \$4.98 Sale \$3.48
Reg. \$4.98 Sale \$3.48
Reg. \$4.48 Sale \$2.98
Reg. \$3.98 Sale \$2.68
Reg. \$3.48 Sale \$2.38
Reg. \$2.98 Sale \$2.18
Reg. \$1.98 Sale \$1.18

Large Selection Piece Goods

Reg. \$6.25 Sale \$4.48
Reg. \$5.98 Sale \$4.28
Reg. \$5.68 Sale \$4.18
Reg. \$5.28 Sale \$3.78
Reg. \$4.78 Sale \$3.48
Reg. \$3.98 Sale \$2.98
Reg. \$2.98 Sale \$2.18
Reg. \$2.48 Sale \$1.78
Reg. \$2.28 Sale \$1.68
Reg. \$1.98 Sale \$1.48
Reg. \$1.48 Sale \$0.98
Reg. 98c Sale 68c

Unbleached Domestic

NO LAY-A-WAY
NO GIFT WRAPPING
NO EXCHANGE
NO REFUND

Piece Goods

Many Beautiful Patterns

2 Yds. For \$1.00

Half Price

Ladies Dresses
Pant Suits
Skirts
Blouses
Shorts
Pants
Sleepwear
Swim Wear
1/2 Price

Large Selection
On All Items
On Sale

Bargain Window

Your Choice

\$1.98 Or Less

Girls
Sportswear
Sleep Wear
Swim Wear
1/2 Price

Resistol Mens
Straw Hats
1/2 Price

Men & Boys
Swim Wear
1/2 Price

One Group
Ladies Shoes
1/2 Price

McAteer's Department Store

Jayton, Texas

Western Shirts Men & Boys

Reg. \$9.98 Sale \$6.98
Reg. \$8.98 Sale \$6.48
Reg. \$7.98 Sale \$5.98
Reg. \$6.98 Sale \$4.98
Reg. \$5.98 Sale \$4.28
Reg. \$4.98 Sale \$3.68
Reg. \$3.98 Sale \$2.98
Reg. \$2.98 Sale \$2.28

Mens Wash And Wear Pants

Reg. \$23.00 Sale \$13.98
Reg. \$20.00 Sale \$12.98
Reg. \$18.00 Sale \$10.98
Reg. \$16.00 Sale \$ 9.98
Reg. \$15.00 Sale \$ 8.98
Reg. \$12.00 Sale \$ 6.98
Reg. 10.00 Sale \$ 6.48

We Will Be Closed

Wednesday

PREPARING FOR SALE

Many More Items On Sale Too Numerous To List

Page
9
Cr
and 2
Ad
1/2 t
teasp
teasp
and 2
beat
Pc
pan,
drain
Ba
erate
serve
CHER
Ble
blesp
spoon
Ad
spc
blesp
2/3 c
Co
stantl
CHEI
CHEI
1 c
c
3 t
1/
1 f
c
1/
2 c
c
F
3/
f
Com
spoon
mix w
and sh
Chil
chees
crea
topp
Spread
Chilla
6 to 8
Ch
Sal
Lightly
with sa
olive c
Course
absorb
1/2
che
(To a v
salad,

me 48
Pater is mod
Johnson, hig
a dress,
John
Mrs. C. Joh
and Mrs.
of Ja
promoted to
U.S. Air Forc
Lieutenant John
resistance
John, Ai
t ask of th
Chancellor wh
John's fo