

# Callahan County BURN BAN In Effect

Callahan County Star  
888-227-1708 or  
254-629-1707  
Fax 254-629-2092  
ecn@att.net

## Callahan County Baïrd Star

Shop At Our  
Many  
Antique Stores

Baird, Officially Designated Antique Capital Of West Texas

©2009 Eastland/Callahan County Newspapers

25¢

31¢ By Mail

Volume 122, Number 5

Baird, Texas 79504

Thursday, January 29, 2009

### Callahan County Water Supply Corp To Raise Rates

To the members of Callahan County Water Supply Corporation:

Due to a water rate increase from the City of Clyde to the Callahan County Water Supply Corporation, the Board of Directors of the Callahan County Water Supply Corporation met at their regularly scheduled meeting on November 24, 2008, and voted to pass the rate increase on to the corporation customers. The rate increase will be effective with the February, 2009 water billing.

The new rates are as follows:

Water Rates:

Effective February Billing 2009

Minimum: \$25.00 (no water included)

0 to 6,000 Gallons: \$7.38 per thousand gallons

6,001 to 10,000 Gallons: \$7.66 per thousand gallons

10,001 to 20,000 Gallons: \$8.01 per thousand gallons

20,001 to 30,000 Gallons: \$8.36 per thousand gallons

30,001 to 40,000 Gallons: \$8.76 per thousand gallons

40,001 to 50,000 Gallons: \$9.16 per thousand gallons

50,001 and Up: \$9.76 per thousand gallons

If you have any questions, please call the Callahan County Water Supply Corporation office at 325-893-3841.

### Fire In Callahan County

Volunteer fire departments from Baird, Buffalo Gap, Cross Plains, Clyde, Eula, Hamby and Potosi all helped with a fire that started near Eula before noon last Wednesday. It was reported that it burned more than 300 acres in Callahan County. It re-kindled in a few hot spots that evening, according to County officials.

The fire started when welders lost control of sparks that

then ignited nearby brush it was reported. It began at the north west corner of the intersection of Hwy 36 and 603. According to Callahan County Sheriff's office several homes were threatened and several residents were forced to evacuate.

Clyde and Eula crews returned to the scene to clean up some of the hot spots.

### Area Fire Departments Help With Jones County Fire

As of 2:30 a.m. last Friday morning, January 23, 2009, Incident Commander Clay Deatherage announced the Jones County Fire to be 100% contained.

Additionally, officials are estimating 5,400 acres or about 8.5 sections of land to be burned (this is estimated by ground level).

The roadblocks were removed, roads are open for travel and homeowners were allowed back in the area.

Last Friday morning a TXDPS helicopter enabled fire officials to survey the devastation left by Thursday's fires in Jones County. The helicopter is equipped with GPS (global positioning system) that allows the operator to measure with more accuracy.

This is what those officers were able to determine; six homes were destroyed; five cabins; twenty out buildings; 2500 acres of land were burned (about four sections)

On a positive note fire officials indicate over 200 homes were saved due to the

fire suppression efforts of the teams.

If there is any confusion on the number of acres in this report and those earlier reported, the earlier reports were best guesses from ground level. Technology is a wonderful thing!

Thanks to these agencies that helped with this fire:

Jones Co. Emergency Management, Hawley Fire Dept., Stamford Fire Dept., Anson Fire Dept., Lueders Fire Dept., Baird Fire Dept., Clyde Fire Dept., Hamby Fire Dept., Abilene Fire Dept., Texas Forestry Service, Comanche Shores Fire Dept., Stamford EMS, Eula Fire Dept., Haskell Fire Dept., Shackelford Fire Dept., Potosi Fire Dept., Anson EMS, Jones Co. SO, Hamby PD, Anson PD, American Red Cross, Abilene Hillcrest Church of Christ, Roby Fire Dept., Jones County Constable, Jones County Precincts, Wagley Construction, Liner Trucking Co., Texas Department of Transportation, Warren Cat, B.C. and Tommy Spraberry, Army Reserve, Callahan Co. SO, Texas Department of Public Safety, Lawn Fire Dept. And many more citizen volunteers that gave of their time to assist in many ways!

Sparky Dean, Senior Trooper

Texas Highway Patrol/ Public Information/ Education

Texas Department of Public Safety, Abilene

### Census Bureau Testing Day Scheduled February 12

A second application and testing for the 2010 Census will be held on Thursday, February 12th at the Clyde City Hall located at 220 Oak Street. The application and testing process will begin at 9 a.m. at the Clyde City Hall.

The Dallas Region of the Census Bureau is testing applicants in Callahan County.

Every 10 years, the United States Department of Commerce conducts a census of the population. The results help determine representation in local, state and federal government, as well as how federal funds are spent throughout the United States, on things like roads, parks, housing, schools, and public safety.

Census employees receive competitive pay on a weekly basis. Pay rates are from \$8.00 to \$19.25 per hour depending upon position and locations. In addition, Census employees will be

reimbursed for authorized mileage and related expenses.

All Census employees must be able to speak English, but bilingual skills in English and other languages are needed in communities that have large numbers of residents who speak a language other than English. If you have such skills, you are encouraged to apply. United States citizens are given preference and applicants must be 18 years of age or older.

Those applying need to bring two forms of identification.

Besides good pay, you'll have flexible hours, paid training, and the chance to work within your own community.

For more information, visit the Census Bureau website at [www.census.gov/rodal/www/empty.html](http://www.census.gov/rodal/www/empty.html) or call toll free 1-866-861-2010.

### Clyde Girls Softball Signup

Clyde Girls Softball League sign-ups will be held on Thursday, January 29 from 5:30 until 7:30 p.m. at the Clyde Elementary Cafeteria. The registration fee is \$40.00 and \$35.00 for the second child. Please bring your child's birth certificate if they have not played before. After January

31st all registration will be charged a \$10.00 late fee.

Coaching sign-ups will be on this date also. Coaches are needed for the league to be successful. Please be a volunteer.

If you have any questions, please call Cindy Gordon at 893-2927.

Share your color photos for possible print in your Hometown paper. E-mail to [ecn@att.net](mailto:ecn@att.net), mail to P.O. Box 29 Eastland, TX 76448. Photos will be returned. Anniversaries, weddings, new babies, grandchildren, pets or ?

### Immunization Clinics In Callahan County

Texas Department of State Health Services

233 N. Main

Time: 2-4

Immunization Clinics in Callahan County

Wednesday, February

Monday, February 9th

11th

Baird Cafetorium 400 W.

Clyde First Baptist

7th

Church

Time: 10-12

216 Austin

Cross Plains Housing

Time: 10-12 & 1:30-3

Authority

Please bring child's

**DPS Report**

Immunization Records.

1-18 to 1-24-09

If child has Medicaid or

CASES INVESTIGATED

CHIP, please bring card.

Warnings- 111

For more information

Complaints- 53

call 325-754-4945.

DWI- 1

Callahan County

Driving While License In-

Baird Star

valid- 2

Newspaper

ACCIDENTS

Deadlines

There was 1 accident in-

Tuesday

vestigated during this time

by 5:00 p.m.

Commissioners' Court

Minutes

1100 W. 4th St.

Baird, Texas 79504

January 26, 2009

THE STATE OF TEXAS

COUNTY OF CALLA-

HAN COUNTY

The Meeting of the Commissioners' Court was held at its regular meeting place in the Courthouse on January 26, 2009 A.D., with the following officers present to wit:

Roger Corn, Judge Presiding

Harold Hicks, Commissioner Precinct No. 1

Bryan Farmer, Commissioner, Precinct No. 2

Tom Windham, Commissioner Precinct No. 3

Cliff Kirkham, Commissioner Precinct No. 4

Dianne Gunter, County

Treasurer

Donna Bell, County Clerk,

and ex-Officio Clerk of the

Commissioners' Court and

the following items of business were transacted:

The meeting was called to

order at 9:30 A.M. by Judge

Corn. All Commissioners

were present.

\*\*\*\*\*

The minutes of the previ-

ous meeting were reviewed

and signed.

\*\*\*\*\*

Under Public Comment-

There was none

\*\*\*\*\*

Judge Corn made a mo-

tion to Proclaim February 6,

2009 as National Wear Red

Day to promote awareness

of Women's Heart Disease.

Commissioner Farmer sec-

onded the motion and the

motion carried 5-0. Exhibit

\*\*\*\*\*

After the discussion of

updating the current County

Road Policy Commissioner

Farmer made a motion to

amend the Policy. A sixth

condition which will read

that "all paved roads will

be bored and all other roads

will be at the discretion of

said Commissioner" will be

added to the current policy.

Commissioner Windham

seconded the motion and the

motion passed 5-0. Exhibit

\*\*\*\*\*

Commissioner Windham

made a motion to pay the ap-

proved bills. Commissioner

Kirkham seconded the mo-

tion which passed 5-0.

\*\*\*\*\*

A motion was made by

Commissioner Hicks and

seconded by Commissioner

Farmer to adjourn. The mo-

tion carried 5-0. Meeting

adjourned at 10:00 A.M.

\*\*\*\*\*

Roger Corn,

County Judge

The foregoing minutes

were read and approved this

26th day of January, 2009

\*\*\*\*\*

Donna Bell,

County Clerk

### Proclamation

Whereas, National Wear Red Day celebrates the extraordinary progress in women's heart health and recognizes that more needs to be done in Callahan County to safeguard women's health for generations to come.

Whereas, Heart disease is the #1 killer of women and one in four American women die as a result of heart disease.

Whereas, Most women do not know that heart disease is a woman's problem and they do not take it seriously.

Whereas, The risk factors for heart disease are smoking, high blood pressure, high cholesterol, overweight/obese, physical inactivity, diabetes, a family history of early heart disease, and age.

Whereas, Women can promote their own heart health and prevent disease and illness by taking steps to prevent and control the heart disease risk factors.

Whereas, Keeping women healthy and promoting awareness of women's health issues, including heart health, is an important responsibility and depends on the actions of many organizations and groups in our community.

Whereas, Women's health remains a priority for families, communities, and government, and our commitment to keeping women healthy is stronger than ever.

Whereas, The Heart Truth campaign and its Red Dress symbol are building awareness of women's heart disease risk and empowering them to reduce their risk and prevent heart disease.

Therefore, Callahan County women need to take action to make heart health a priority for themselves and their families, become aware of their personal risk factors for heart disease, and take action to lower their risk.

Now, therefore, I The Honorable Roger Corn, do hereby proclaim Friday, February 6, 2009, as

**National Wear Red Day**

in Callahan County and encourage all citizens to wear red to unite in the national movement to give women a personal and urgent wake-up call about their risk of heart disease.

Signed: Roger Corn 1/26/09

WELCOME TO BAIRD, TX - "A Happening Lil' Town" USA



# Obituaries

## Alethea 'Pinkie' Evans

CLYDE- Alethea 'Pinkie' Evans, 91, of Clyde, died Friday, January 23, 2009 at an Abilene nursing center.

Graveside services were held Sunday, January 25, 2009 at the Clyde Cemetery with Rev. H.B. Terry officiating. Bailey Funeral Home of Clyde directed.

Alethea was born August 2, 1917 in Edgewood in Van Zandt County to Marion (Buddy) and Ivy (Daniell) Turner. She graduated from Grand Saline High School in 1936 and City County Nursing School in Fort Worth in 1939. She served one year in the U.S. Army as a 2nd Lt. at Camp Bowie in Brownwood during World War II.

She was the widow of Dr. Robert Evans whom she married December 3, 1941 in Fort Worth. They moved from Fort Worth to Clyde on Oct. 29, 1947. She worked as a registered nurse at the Evans Clinic in Clyde that she and her husband owned for 24 years. When he passed away, she went to work part-time at the Callahan County Hospital in Baird. Then she worked as

the nursing supervisor at the Abilene State School for ten years, retiring in 1985. She was a member of the First Baptist Church in Clyde and the Clyde Study Club.

Survivors are four children, Janice Evans of Abilene, Linda Seelig and husband, Bill of Carrizo Springs, Robert (Bobby) Evans and his wife, Dana, of Bayfield, Colorado, and Lisa Dugan and husband, Michael, of Clyde; six grandchildren, Sandra Thalmann, Melissa Stephenson, Kurt Evans, Lynzi Evans, Brandi Dugan and Michael Dugan, Jr.; six great-grandchildren, Kadin Thalmann, Kambryn Thalmann, Porcha Stephenson, Dylan Fortune, and Kaimi and Ellie Evans.

She was preceded in death by her parents; her husband; and one grandchild, Johnny Steele.

The family requests memorials to the First Baptist Church Women's Prayer Group P.O. Box 600, Clyde, Texas 79510 or a favorite charity.

## Glen Dilworth Thomas

CLYDE- Glen Dilworth Thomas, 72, of Clyde died Tuesday, January 20, 2009 at a local hospital.

Funeral services were held at 1 p.m. Saturday, January 24, 2009 at the Bailey Chapel. Burial followed at the Clyde Cemetery directed by Bailey Funeral Home of Clyde.

Glenn was born January 7, 1937 in Marble Falls, Texas to Charles Monroe and Mary Francis (McCarty) Thomas, Sr. He was a graduate of Anson High School. He married Myrna Corley on July 15, 1960 in Abilene. The couple moved to Clyde from Duncanville in July of 2002. He worked as a federal food

inspector for the USDA. He was active in Boy Scouts for many years. He was a Baptist.

He was preceded in death by his parents and one brother, Charles Monroe Thomas, Jr.

Survivors include his wife Myrna Thomas of Clyde and two sons, Ricky Thomas and wife, Edith Thomas of Duncanville; one grandson, Richard Glenn Thomas of Duncanville; two granddaughters, Vanessa Fuller of Gatesville and Susan Winters of Duncanville; and 11 great-grandchildren.

## Larry Wayne Britton

CLYDE- Larry Wayne Britton died Tuesday, December 9, 2008 in Florida. Services were held at 4:40

p.m. Saturday, January 24, 2009 at Clyde Cemetery directed by Bailey Funeral Home of Clyde.

### To Help You Save:

NOW 25¢

Best Idea: To Your Address:

\$13 a year In Callahan County

Call 888-227-1708

## Country Cowboy Church

710 N. Seaman Eastland  
254-639-2155

Coffee & Donuts.....10:45 a.m.  
Worship Service.....11:00 a.m.  
Wednesday Night Bible Study...6:30 p.m.

Pastor Chad Gosnell



## CALLAHAN COUNTY BAIRD STAR

Publication No. (USPS 085-520)

©2009 Eastland County Newspapers, Inc.  
(254) 629-1707/1-888-227-1708  
211 Market St. Baird, TX 79504

Periodical Postage Paid at Baird, Texas  
under Act of Congress in March, 1870.  
Published every Thursday

Publisher.....H.V. & Gaynell O'Brien  
Editor.....H.V. O'Brien

POSTMASTER: Send address changes to  
Callahan County Star,  
211 Market St., Baird, TX 79504  
SUBSCRIPTION RATES

\$17 per year in Callahan County; \$19 per year for  
Counties Adjoining Callahan \$23 Out of State of Texas

## Jerraine Smedley Miller

CLYDE- Jerraine Smedley Miller, 87, long time resident of Eula, died Sunday, January 25, 2009 at a nursing home.

Services were held at 10 a.m. Tuesday, January 27, 2009 at Bailey Funeral Home in Clyde. Burial was in Eula Cemetery.

Jerraine was born August 23, 1921 to Jimmy P. and Bessie Lee Smedley at Rowden, Texas. She graduated from Baird High School in 1939 and married Ernest Grayson Miller in Coleman on November 16, 1940. She devoted her life to caring for her home and rearing her sons at times when she worked away from home. She served as dental

assistant for Dr. Nichols and Dr. Baker.

She was preceded in death by her husband, Grayson in 1985; two sons, Cosby, an infant, in 1947 and Richard in 1995; her parents; and two brothers, Sikes E. Smedley and Jimmy R. Smedley.

Survivors are two sons, David and wife Melba of Clyde and Paul and wife Sue of Eula; granddaughter, Mendy Meier and husband, Kevin of Clyde; two grandsons, Grayson Paul Miller and Kelley Lee Miller; 5 great-grandchildren; and two sisters-in-law, Mary Murphy and Vickie Smedley both of Abilene.

## Baird 2009 Jr. Stock Show Results

The Baird Jr. Livestock Show was held Saturday, January 10th at the Callahan County Show Barn in Cross Plains.

Rocky Vinson, Shackelford County Extension Agent served as judge of this year's show.

Results are as follows:

### RABBIT

Pen of fryers

1st Place and Champion Market

Rabbit- Coby McGonagill

2nd Place and Reserve Champion

Rose Wamsley

3rd Place Coby McGonagill

4th Place Allison Robbins

5th Place Michelle Robbins

Rabbit SHOWMANSHIP:

Rose Wamsley

### POULTRY

Broilers

1st place and Champion

Chris Whitworth

2nd place and Reserve

Champion

John Edwards

3rd Place Benjamin Shelly

Broiler SHOWMANSHIP:

John Edwards

### MARKET LAMB

Southdown Lamb

1st Place and Breed

Champion

Southdown -BreeAnn

Strickland

Cross Lamb

1st Place and Breed Champion

Cross

Katelynn Mitchell

Medium Wool Lamb

1st Place and Champion

Medium Wool

Rebecca Harris

2nd Place and Reserve

Champion Medium Wool

Rebecca Harris

3rd Place Rebecca Harris

4th Place Rebecca Harris

5th Place BreeAnn Strickland

Grand Champion Lamb

Rebecca Harris

Reserve Grand Champion

Lamb

Rebecca Harris

Lamb SHOWMANSHIP

Rebecca Harris

### MARKET GOAT

Class 1

1st Place Peyton McIntire

2nd Place Dakota Gibbs

3rd Place Lacy Jones

4th Place Kara McIntire

Class 2

1st Place Tate Rhoads

2nd Place Katelynn Mitchell

3rd Place Ben Shelly

4th Place Breanna Patterson

5th Place Jessica King

Class 3

1st Place Katelynn Mitchell

2nd Place Breanna Patterson

Class 4

1st Place Coby McGonagill

2nd Place Tate Rhoads

3rd Place Coby McGonagill

4th Place Dominique Bonds

Grand Champion Meat Goat

Coby McGonagill

Reserve Grand Champion

Meat Goat

Katelynn Mitchell

Goat SHOWMANSHIP

Katelynn Mitchell

### MARKET SWINE

White OPB

1st Place Coby Smith

2nd Place Jake Green

3rd Place Rowdy Nail

Champion White OPB

Cody Smith

Reserve Champion White

OPB

Jake Green

Black OPB

1st Place Garrett Jennings

2nd Place Tori Miller

3rd Place BreeAnn Strickland

4th Place BreeAnn Strickland

Champion Black OPB

Garrett Jennings

Reserve Champion Black

OPB

Tori Miller

Duroc Class Light Weight

1st Place Kaitlyn Robinson

2nd Place Kaitlyn Robinson

3rd Place Sam Green

Hamp Class Heavy Weight

1st Place Kaitlyn Robinson

2nd Place Hunter Rogers

Champion Hamp

Kaitlyn Robinson

Reserve Champion Hamp

Hunter Rogers

Cross Class Light Weight

1st Place Kaitlyn Robinson

2nd Place Cody Smith

3rd Place Garrett Jennings

Cross Class Heavy Weight

1st Place Kaitlyn Robinson

2nd Place Ryder Goosen

Champion Cross

Kaitlyn Robinson

Reserve Champion Cross

Hunter Rogers

Grand Champion Market

Swine

Kaitlyn Robinson

Reserve Grand Champion

Market Swine

Kaitlyn Robinson

Swine SHOWMANSHIP

Cody Smith

### MARKET STEERS

Angus Class English 1

1st Place Amber Clark

2nd Place Kaitlyn Robinson

2nd Place Class English 2

1st Place Preston Clark

2nd Place Arron Allen

Shorthorn Class English 3

1st Place Kaitlyn Robinson

2nd Place Issac Dickey

Champion English

Preston Clark

Reserve Champion English

Amber Clark

European Class Light

Weight

1st Place Amber Clark

2nd Place Preston Clark

European Class Heavy

Weight

1st Place Cody Smith

Champion European

Cody Smith

Reserve Champion

European

Amber Clark

Grand Champion Steer

Cody Smith

Reserve Grand Champion

Steer

Preston Clark

Beef Cattle

### SHOWMANSHIP

Issac Dickey



## Baird ISD School Menu

Thursday, January 29

Breakfast: Toast and

Cereal, Choice of Juice,

Choice of Milk

Lunch:

Friday, January 30

Breakfast: Long Johns,

Choice of Juice, Choice of

Milk

Lunch: Hot Dogs, Carrot

Sticks, Pork-N-Beans,

Fruit Cup, Peanut Butter

Krispies



## Clyde ISD School Menu

BREAKFAST

Thursday, Jan. 29

Cereal & toast or Breakfast

burrito, Breakfast sausage

pizza, fruit juice, milk

Friday, Jan. 30

Cereal & toast or Biscuit,

sausage, gravy or Sausage in

a blanket, Fruit Juice, milk

LUNCH

Thursday, January 29

High School & Jr. High

Chicken fried steak,

chicken tenders, sliced

turkey and gravy, mashed

potatoes, rolls, green beans,

orange, milk

Intermediate &

Elementary

Chili cheese dog,

chicken burger, grilled

chicken salad, baked beans,

carrot and celery sticks,

salad, Blue Bell ice cream,

milk

Steak fingers, chicken

Elementary

Intermediate &

Elementary

Chili cheese dog,

chicken burger, grilled

chicken salad, baked beans,

carrot and celery sticks,

salad, Blue Bell ice cream,

milk

Intermediate &

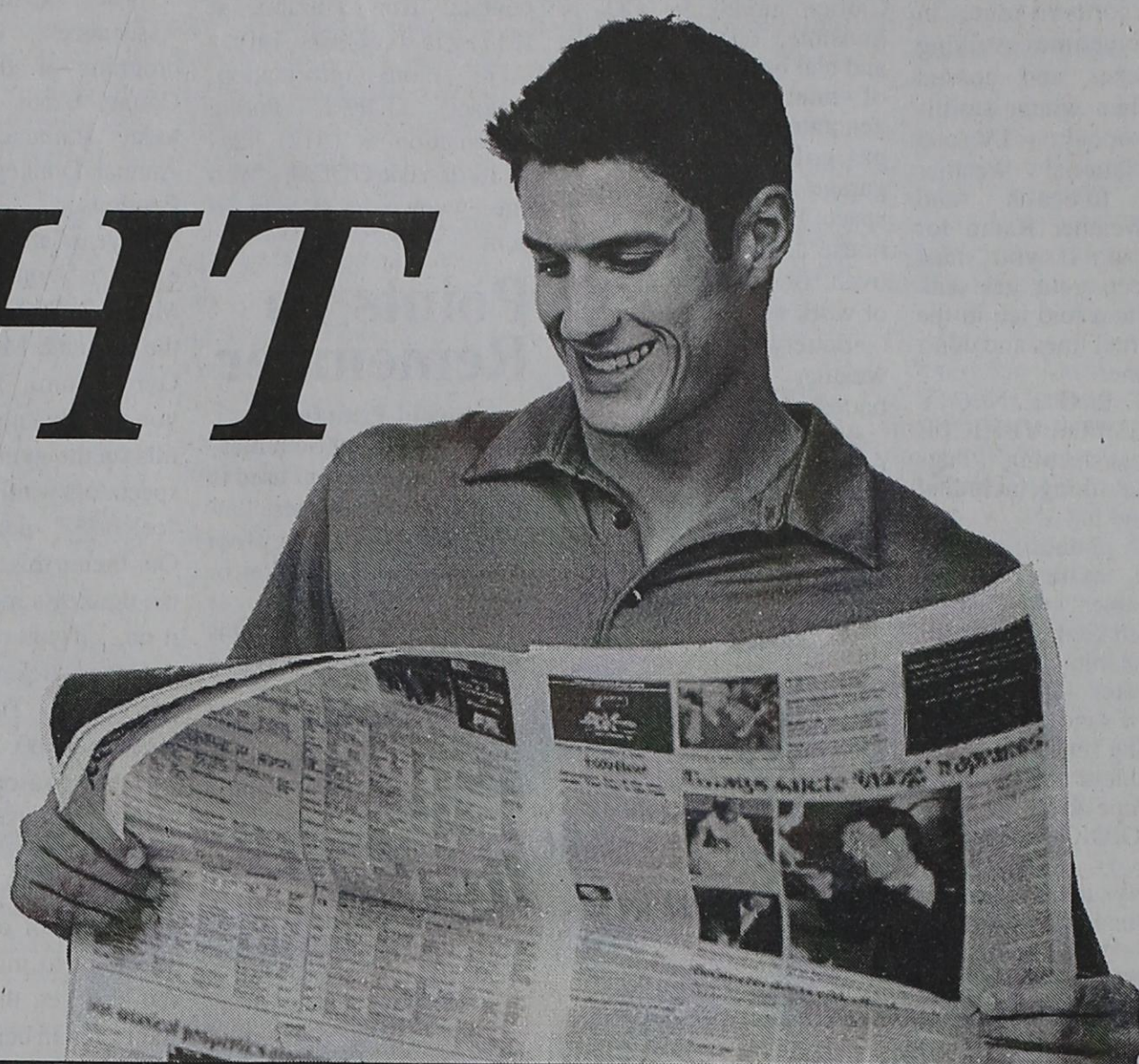
Elementary

Chili cheese dog,

chicken burger, grilled



*Delivered*  
**RIGHT**  
 to **YOU**



Don't miss out on news, views and features you won't find anywhere else.

**For more information call 254-629-1707**

**\$ 17 00** Local In County

**\$ 19 00** In Texas

**\$ 23 00** Out of State

Online subscriptions only \$5.00 more for print subscribers; \$10.00 for non-subscribers

## Eastland County Newspapers

Cisco Press    Eastland Telegram    Ranger Times  
 Callahan County Baird Star    The Rising Star

P. O. Box 29 • Eastland, TX 76448  
 254-629-1707    Fax 254-629-2092    email: ecn@att.net  
 Online e-cinc.com

Check One:  Cisco Press     Eastland Telegram     Ranger Times  
 Callahan County Baird Star     The Rising Star     Internet  
 New Subscriber    OR     Renewal

Name \_\_\_\_\_  
 Mailing Address \_\_\_\_\_  
 City \_\_\_\_\_ State \_\_\_\_\_ Zip \_\_\_\_\_

Payment:  Check     Money Order     Credit Card



If paying with credit card:

Credit Card No. \_\_\_\_\_  
 Name on Card \_\_\_\_\_ Expires \_\_\_\_\_  
 Signature required \_\_\_\_\_



### Winter Weather Emergency Checklist

**AUSTIN** - Winter storms can strand motorists traveling northern routes in Texas, sometimes striking South Texas and coastal areas. When winter storms threaten, monitor TV and radio, National Weather Service forecasts and NOAA Weather Radio for information. If you must travel, keep your gas tank near full to avoid ice in the tank and fuel lines and don't travel alone.

#### EMERGENCY SUPPLIES FOR VEHICLE

- Blankets/sleeping bags and extra clothing, including mittens and hat
- Cell phone, radio, flashlight, extra batteries, booster cables
- First-aid kit, high-calorie, non-perishable food and bottled water
- Sack of sand or cat litter for de-icing roadway
- Windshield scraper, tool kit, tow rope and shovel

#### EMERGENCY TIPS FOR HOME

If heavy ice on power lines cuts off utility service, be extremely

careful using generators or gas powered equipment. Carbon monoxide (CO) is invisible, odorless, deadly and can build up in a matter of minutes. Do not use generators, charcoal grills or gas grills inside the house, garage or other enclosed space. Do not try to heat the house using a gas range or oven. Be prepared at home or work with these supplies:

- Battery-powered NOAA weather radio, extra batteries
- Emergency supplies of food, water, medicine, medical supplies and items needed by babies or the elderly
- Heating fuel in the event fuel carriers cannot get through
- Properly ventilated emergency heating source such as a fireplace, wood stove or space heater
- Fire extinguisher, smoke detector, carbon monoxide detector.

For more winter weather preparedness information,

see: <http://www.weather.gov/> and for National Weather Service interviews, contact: Ron Trumbula at (817) 978-1111 (Ext. 140).

For more information, contact GDEM Public Information at (512) 424-2138 or visit GDEM's Web site: [www.txdps.state.tx.us/dem](http://www.txdps.state.tx.us/dem).

### Points To Remember

#### Avoid Fraudulent Check-Cashing Schemes

Common variations used in check-cashing schemes:

- Promising victims they won millions in a sweepstakes or foreign lottery
- Pleading with victims to serve as a conduit for a financial transaction
- Offering victims an inheritance
- Surprising victims with mystery or secret shopper opportunities
- Surprising charities with generous, unexpected donations
- Sending online sellers a larger amount than the agreed price
- Asking potential employees to cover travel and training expenses up front

To report a scam, contact the Texas Attorney General's Office at (800) 252-8011 or visit our Web site at [www.texasattorneygeneral.gov](http://www.texasattorneygeneral.gov)

### Crime Victim Assistance Center Donkey Basketball Fundraiser To Be Held March 7

The Crime Victim Assistance Center, a program of the Eastland County Crisis Center, Inc. today announced the 4th Annual Donkey Basketball Fundraiser.

This year's annual fundraiser event is going to be on March 7, 2009 at 7 p.m. at the Eastland Middle School Gymnasium. As many of you already know, this event fills up the gymnasium with spectators waiting to see our "celebrity" donkey riders. Our theme this year is [from the donkey's mouth] "Bring it on....if you can stay on!" Advance tickets this year are \$6.00. Tickets at the gate are \$8.00.

Our sponsors make this event a huge success. For 3 years, this event has been profitable due to the generosity of our sponsors. We want to make this year the best yet, those who are interested in being a sponsor the cost is \$125. Sponsors are listed on the team shirts and are also put in our advertising in the local newspaper and radio station. Each sponsor receives 4

tickets to the main event. The tickets can be donated back at the sponsor's request and will be given away on KTXS radio and the sponsor will be identified on the air.

Funds raised by this event provide support and assistance for victims of domestic violence, sexual assault and child abuse in Eastland and Stephens Counties. Some of the services and assistance that we provide are not provided for by the state and federal grants we receive. All services to victims are provided at no cost to the victim.

About the Eastland County Crisis Center - The Eastland County Crisis Center, Inc. has been providing services to domestic violence and sexual assault victims since 1994 as the Crime Victim Assistance Center (CVAC). The CVAC's mission is to provide services that are designed to meet the physical, social, and emotional needs of domestic violence and sexual assault victims by providing immediate, short, and long-term assistance. The CVAC has two offices being maintained in Eastland and Stephens County. This year we added a new program, the Eastland County Children's Advocacy Center to help children who have been abused or witnessed abuse and is offered to children of Eastland County.

Advertise in your LOCAL newspaper and get results



### Great Local Websites

- Newspaper**  
[www.e-cinc.com](http://www.e-cinc.com)
- Cities**  
**Main**  
[www.eastlandtx.com](http://www.eastlandtx.com)  
[www.ciscotx.com](http://www.ciscotx.com)  
[www.ranger-tx.com/index.php](http://www.ranger-tx.com/index.php)  
[www.gormantexas.us](http://www.gormantexas.us)  
[www.risingstartexas.com](http://www.risingstartexas.com)
- Chamber of Commerce**  
[www.eastlandchamber.com](http://www.eastlandchamber.com)  
[www.ciscotx.com/chamber.htm](http://www.ciscotx.com/chamber.htm)  
<http://gormantexas.us/6955.html>
- Law**  
[www.eastland.net/city/crimestoppers.htm](http://www.eastland.net/city/crimestoppers.htm)
- Auto**  
[www.hoodking.com](http://www.hoodking.com)  
[www.fullenmotors.com](http://www.fullenmotors.com)
- Medical**  
[www.eastlandmemorial.com](http://www.eastlandmemorial.com)  
[www.spinedoctorsdrx.com](http://www.spinedoctorsdrx.com)
- Food**  
[www.pizzapro.com](http://www.pizzapro.com)
- Photos**  
[www.photosbyterrysimmons.com](http://www.photosbyterrysimmons.com)
- Internet**  
**txol.net**
- Real Estate**  
[www.unitedcountry.com](http://www.unitedcountry.com)  
[www.tcrealty.net](http://www.tcrealty.net)  
[www.annwilliamsrealestate.com](http://www.annwilliamsrealestate.com)  
[www.rexfieldsagency.com](http://www.rexfieldsagency.com)  
[www.ross-realestate.com](http://www.ross-realestate.com)

For more information on placing your website in this listing call Gary Grady at (254) 629-1707

*Susan J. Schaefer*  
**Certified Public Accountant**  
P.O. Box 501 \*209 NW Main Street  
Cross Plains, Texas 76443  
Income Tax Preparation \* Electronic Filing  
Full Service Accounting \* Payroll \* Budgeting  
Farming \* Ranching \* Oil & Gas  
*New Clients Welcome!*  
Call (254) 725-6747  
for an appointment!

**KENNEDY FINANCIAL SERVICES**  
A Life Planning Firm

What is missing in your life plan?

254-629-3863  
Toll Free 800-588-6381  
[www.kennedy-financial.com](http://www.kennedy-financial.com)  
106 S. Seaman St.  
Eastland, TX 76448

Providing Leadership, Relationship and Creativity to Focus on What Matters Most

Securities & Advisory Services offered through VSR Financial Services, Inc., a Registered Investment Adviser and Member FINRA/SIPC. Kennedy Financial Services is independent of VSR Financial Services, Inc.

**Photos By Terry Simmons**  
Commercial \* Passport \* Hand Gun Portraits \* Weddings \* Digital  
By Appointment Only 254-631-6894  
[www.photosbyterrysimmons.com](http://www.photosbyterrysimmons.com)

REMEMBER TO RENEW YOUR SUBSCRIPTION TO THE NEWSPAPER

**COMMERCIAL & RESIDENTIAL ROOFERS**  
GENERAL CONTRACTORS **Home Town Service Since 1979**  
**BIG "S" COMPANY**  
**FREE ESTIMATES Fast & Friendly**  
★ EXPERIENCED CREWS ★ SHINGLES  
★ CLEAN JOB SITES ★ STEEL  
★ CLAIMS ASSISTANCE ★ HOT TAR  
★ 10 YEAR WARRANTIES ★ RUBBER  
**254-629-2550**  
715 West Main • Eastland, Texas  
[www.bigcompany.com](http://www.bigcompany.com)

**NOW**  
SUBSCRIBE, RENEW SUBSCRIPTIONS, ORDER GIFT SUBSCRIPTIONS, OR ORDER TEXAS MESSENGERS, PAY FOR ADVERTISING Over the Phone with Credit Cards:  
MasterCard VISA DISCOVER  
254-629-1707  
1-888-277-1708  
Fax 629-2092

**ABC Printing & Office Supply**  
254-559-3561  
Fax 254-559-2108  
139 E. Walker • Breckenridge, TX 76424  
**FREE FREIGHT** CALL TODAY  
And Let Us Register You For Your On-line Special Pricing.  
[www.abcprintingandofficesupply.com](http://www.abcprintingandofficesupply.com)

**CUSTOM HOME BUILDERS SINCE 1980**  
Let Us Build Your New Home or Room Addition  
*If You Can Dream It, We Can Build It!*  
**T. J. CLARK CONSTRUCTION CO., INC.**  
**(254) 734-2755**  
P. O. Box 176 111 E. Roberts St.  
Gorman, TX 76454  
General Building Contractors - All Work Guaranteed  
Custom Homes - Remodeling - Commercial - Industrial - Farm Financing - Free Estimates - Design, Engineering & Plan Services

**Leon River Cowboy Church**  
*"Just Good Folks Trying To Live For The Lord"*  
Pastor Paul Howie  
254-653-2840  
One mile east of the Texas Cattle Exchange  
**Jesus' Posse**  
9:30 a.m. Adult, Youth, & Children's Bible Study  
10:30 a.m. Coffee/Donuts  
11:00 a.m. Worship



## Abilene Grunts Association

### Annual TET Reunion February 7

Dear Fellow Veteran,  
Yes, everyone! It's coming up on that time of year again. The Abilene Grunts Association Annual TET Reunion will be on Saturday, February 7, 2008. It will be at its usual location at the Taylor County Fairgrounds Exhibition Hall. Doors open at noon and opening ceremonies will begin approximately 1 p.m. In addition to numerous vendors and representatives from local veterans' organizations, we always have our unique version of the "Bob Hope USO Tour" along with a meal prepared by our members and volunteers.

This event has been going on for over 20 years now and what started as a small

group of Vietnam veterans gathering to reminisce and tell stories has grown to become the largest TET reunion in the United States. We encourage and welcome veterans of all ages (not just Vietnam era) and have had attendees from as far away as Alaska! It's our own special way of honoring those who have served their country and those who made the ultimate sacrifice. It's a time of being thankful of the freedoms we enjoy because of those who are willing to serve.

We will be having our raffle fund raiser to help put on next year's event so if you have something you would like to donate, call us to come get it or bring it with you to the reunion. If you cannot attend (you will be missed!) and would like to help defray costs of the event, donations can be mailed to Abilene Grunts Association c/o Tom Stone 818 Washington Blvd. Abilene, TX 79601. Any and all donations are appreciated.

If you are unable to at-

tend, remember to use the west gate of the fairgrounds (across from the Shotwell Stadium) as the other guests will not provide access to our building. We look forward to seeing you at the Biggest TET Reunion ever!

God Bless America  
Vicky Hensley  
TET Reunion Committee  
Sgt. USMC veteran  
(325) 743-2195

22nd Annual TET Reunion honoring Vietnam Veterans to be held Saturday, February 7, 2009 at Taylor County Fairgrounds Display Bldg. in Abilene, Texas. Time: 12 noon. Bring "In Country" Memorabilia. All veterans and families welcome.

Food, drinks, displays, USO Show.

For more info. call 325-690-0750 or 325-672-4003.

## Ten Star All Star Basketball Camp

Applications are now being evaluated for the Ten Star All Star Summer Basketball Camp. The Ten Star All Star Summer Basketball Camp is by Invitation Only. Boys and Girls ages 10-19 are eligible to apply.

Past participants include: Michael Jordan, Tim Duncan, Vince Carter, Jerry Stackhouse, Grant Hill and Antawn Jamison. Players from 50 states and 11 foreign countries attended the 2008 Camp. College Basketball scholarships are possible for players selected to the All-American Team.

Camp locations include: Commerce, TX., Phoenix, Arizona, Babson Park, FL,

Gainesville, GA. Champaign, IL, Glassboro, NJ, Ithaca, NY, Marietta, OH, Lebanon, TN, and Blacksburg, VA. There is also a Summer Camp available for Boys and Girls ages 9-18 of all skill levels.

For a free brochure on these Summer Camps, please call 704-373-0873 anytime. www.tenstarcamp.com

## 11th Court Of Appeals

Eastland, Texas  
Proceedings (En Banc)  
January 22, 2009

### Affirmed

John Jacob Rousseau v. State of Texas, Ector. (Memorandum Opinion by Justice McCall) (Panel consists of: Chief Justice Wright, Justice McCall, Justice Strange)

Kenneth Neal Ratliff v. State of Texas, Palo Pinto. (Per Curiam Memorandum Opinion) (Panel consists of: Chief Justice Wright, Justice McCall, and Justice Strange)

### Affirmed in Part & Reversed & Remanded in Part

State Office of Risk Management v. Shawnee R. Foutz, Jefferson. (Opinion by Justice Strange) (Panel consists of: Chief Justice Wright, Justice McCall, Justice Strange)

### Reversed & Rendered in Part; Reversed & Remanded in Part; and Dismissed in Part

Veterans Land Board of the State of Texas et al v. Betty Yvon Lesley et al, Erath. (Opinion by Justice McCall) (Panel consists of: Chief Justice Wright, Justice McCall, and Senior Justice Boyd)

### Motions Submitted & Granted; Appeal Dismissed

Phillip Alan Adams v. State of Texas, Palo Pinto. Appellant's prose motion for leave requesting withdrawal of notice of appeal. (Per

Curiam Memorandum Opinion) (Panel consists of: Chief Justice Wright, Justice McCall, and Justice Strange)

### Order Not Disposing of Case

State Office of Risk Management v. Shawnee R. Foutz, Jefferson. (Per Curiam Order) (Panel consists of: Chief Justice Wright, Justice McCall, and Justice Strange)

### Motions Submitted & Granted

Daniel Ray Morris v. State of Texas, Eastland. State's first motion for extension of time to file brief.

Norma Fuqua and Owen Fuqua v. Oncor Electric Delivery Company, Brown. Appellant's second motion for extension of time within which to file brief. Appellant's second motion for extension of time within which to file brief.

Diane Garrett, as next friend of Cheyenne Garrett v. Patterson-UTI Drilling Company, L.P., and Ricky White, Scurry. Appellee's motion for extension of time to file brief of Ricky White.

Kenneth Neal Ratliff v. State of Texas, Palo Pinto. Motion to withdraw as court appointed counsel on appeal.

Monte J. Land, Carolyn J. Land, Robert Aldrich, Scott Wheatley, Heather Wheatley, Alvis H. Jackson and Deana G. Jackson v. Palo Pinto Appraisal District, Palo Pinto. Appellant's unopposed motion for second extension of time to file brief.

### Motions Submitted & Granted in Part

Juan Jose Ponce v. State of Texas, Ector. Appellant's second motion for extension of time to file brief.

### Motions Submitted & Overruled

Richard Lynn Winfrey, Sr. v. State of Texas, San Jacinto. Appellant's prose motion to abate.

David Jose, Jr. v. Susan Elizabeth Bates and Patrick Charles Bates, Ector. Appellant's prose motion requesting trial transcripts.

### Sudoku Answer

5	2	4	6	7	1	9	3	8
1	7	3	9	8	4	6	5	2
8	9	6	2	5	3	4	1	7
7	5	2	3	6	8	1	4	9
6	1	9	4	2	7	3	8	5
4	3	8	5	1	9	2	7	6
3	6	7	1	9	5	8	2	4
9	8	1	7	4	2	5	6	3
2	4	5	8	3	6	7	9	1

## BI-RITE AUTO

Cross Plains 254-725-7361 325-669-0999

4th Block E. of Light, Hwy 36 WE FINANCE

OPEN MON.-SAT. 8:30 - 5:30 CLOSED SUN.

**AUTOMOBILES**

00 Mercury Mystique 4 cyl., looks, runs good - red.	\$2750
00 Ford Lincoln Town Car, loaded & nice.	\$5750
02 Mercury Sable V6, nice car, white.	\$4150
02 Taurus SES Fully Loaded, power seats, etc., black.	\$4495
02 Taurus SE, looks, runs good, black.	\$3995
01 Ford Crown Victoria, V8, runs very good, white.	\$2450
99 Taurus V6, looks, runs, super good, maroon.	\$3450
99 Taurus V6, looks, runs good, green.	\$3295
98 Ford Contour, V6 runs good, green.	\$2350
95 Mercury Cougar XR7, V6, very nice car.	\$2450
94 Chevy Lumina, V6, very nice car, only 91,000 miles, white.	\$2450
93 Mercury Cougar XR7, V6, Super Nice Car, green.	\$2450
94 Ford Probe, looks, runs very good, grey.	\$2150
94 Dodge Intrepid, runs good, grey.	\$1695

**VANS - SUVs**

01 Ford Windstar V6, runs good, nice inside & out, blue.	\$4995
00 Ford Explorer, V6, auto., 4 dr., very nice, red, SPECIAL.	\$5250
99 Ford Explorer V6, Sport, auto., looks, runs very good, blue.	\$4750
97 Ford Explorer XLT Fully loaded and nice, black.	SPECIAL \$3750
97 Ford Explorer V6, auto., looks, runs good, white.	\$3495
90 Ford Bronco V6, very nice inside & out, runs good.	\$2450
95 Ford Aerostar Van, V6, looks, runs good - red.	\$1795

**DIESELS**

01 Ford F250 XLT, Super Duty, 4 dr., Super Cab, 6 sp.	\$7250
01 Ford F250 XLT, Super Duty, 4 dr., Super Cab, 6 sp.	\$7250
99 Ford F350 Crew Cab, Super Duty, 6 sp.	\$6750
99 Ford F250 Super Duty, 4 dr., Super Cab, 6 sp., Power Stroke.	\$5950
97 Ford F250 Heavy Duty Super Cab, Power Stroke.	\$4950
97 Ford F250 Heavy Duty Super Cab, Power Stroke, grey & white.	\$4950
95 Ford F250 Power Stroke, Super Cab, 5 sp., runs good.	\$3995
94 Ford F350 Crew Cab, Turbo Diesel, a nice truck.	\$4500
94 Chevy Diesel, Crew Cab, runs good, bad paint.	\$1950
93 Ford F350 Crew Cab Dually, flatbed, 7.3 Diesel, looks, runs good.	\$3950
89 Ford F250 Reg. Cab, 7.3 Diesel, looks, runs very good.	\$2150
87 Ford F250 Super Cab, 7.3 Diesel, a good buy at only.	\$1495
92 Chevy 2500 4x4, 6.5 Diesel, looks, runs very good, tan.	\$2750

**GAS TRUCKS-MISC.**

02 Ford Ranger XLT Super Cab, V6, 5 sp., looks, runs good.	\$5950
01 Ford F150 Super Cab 4.6 V8, auto., looks, runs good.	\$4950
99 Ford Ranger Super Cab, new V6 w/90 day warranty, a good buy at.	\$5250
98 Chevy S-10, 4 cyl., auto., looks, runs good, green.	\$3950
97 Ford F250 Crew Cab, V8, auto., a super nice truck, white.	SPECIAL \$3995
84 Chevy 3/4 Ton, looks, runs OK, black.	Cash Only \$895
83 Chevy 3/4 Ton 454 V8, a very clean nice pickup, white.	\$1595
85 Ford 4x4 F250, Wrecker Truck, everything works good.	\$1995

### NOTICE

Opinions expressed in articles and letters submitted by others do not necessarily reflect the opinions or beliefs of the Owners, Managers, and Staff of Eastland County Newspapers, Inc.

**Letters to the Editor:** All letters must be signed with name and phone number on the letter. If it is requested "name withheld" when someone asks we will give out the name of the person who wrote the letter, so they must be signed on the letter will not be printed.

**Errors and omissions** will be corrected to the extent of the specific error or omission in the next edition when called to the attention of the newspaper or publisher.

### Attention: All Advertisers

This newspaper is not responsible for errors or omissions printed in error, except to correct them in the next edition. It is the responsibility of the advertiser to notify this newspaper after the first appearance. Transfer of ownership of an advertised business and/or service does not alleviate the responsibility for payments of this obligation. A one and one half (1 & 1/2) percent interest will be added monthly to bills after 30 days in arrears.

**Responsibility and Liability:** The Eastland County Newspapers assumes no obligation, responsibility or liability for subject matter contained in copy placed by advertisers or their agents. The advertiser agrees that all materials and copy will comply with applicable state and federal laws and regulations. It is also understood the advertiser and/or his agents jointly and separately agree to indemnify the publisher and the newspaper against all expenses, loss or damage incurred or sustained by reason of printing such copy. All advertising copy submitted is subject to approval, revision or rejection by the publisher. To be binding upon the Eastland County Newspapers all instructions relative to the advertisement must be in written form. The Eastland County Newspapers is not bound by any terms or conditions, printed or otherwise, appearing on order blanks, advertising forms, or copy instructions, when the same is in conflict with terms and conditions of the newspapers rate card or policies. The publisher reserves the right to edit or reject advertisements deemed objectionable, illegal or of poor reproduction quality, or because of conditions beyond the newspapers control. All advertising must be on behalf of the advertiser's business or service exclusively. The Eastland County Newspapers reserves the right to insert the word Advertisement above all ads, including all copy ads which might be mistaken for news articles.

**Public-Legal Notice Advertising:** Rates for any public or legal notice or advertisement required by federal, state or local law or court order are in accordance with Texas Revised Statutes. Rates are based upon a 11.5 point typeset lines on a column width of 11.5 picas. Rate: 15¢ per word, per paper, per time.

**You are invited to a Creation vs. Evolution Seminar**

Did humans and dinosaurs coexist?  
Did humans evolve from ape-like creatures?  
How is atheism affecting your family?

We invite you to join us as we investigate the evidence. There will be a Q & A session following Fri & Sat night sessions. These lectures are FREE and open to all ages.

Rising Star church of Christ  
104 S. Miller St., Rising Star  
Fri., Feb. 6<sup>th</sup> 7:00pm Atheism's Attack on America  
Sat., Feb. 7<sup>th</sup> 6:30pm Genesis vs. Darwin  
7:30pm The Dinosaur Dilemma  
Sun. Feb 8<sup>th</sup> 9:30am Scientific Accuracy of the Bible  
10:30am 7 Reasons We are Losing our Kids

Featuring Guest Speaker:  
Brad Harrub, Ph.D.

Brad Harrub currently serves as the co-Founder of Focus Press. In addition, he is the co-editor of Think magazine. He earned a doctorate in Anatomy and Neurobiology. He is the author or coauthor of the books, *Dissecting the Truth, Diamonds in the Rough, The Truth About Human Origins, Matters of Life and Death, & Investigating Christian Evidences*. He was an invited speaker to the international conference on Creationism, he has appeared on the television show "Origins."

For more information, please call (254) 643-6162. 5-11

## CROSSWORD PUZZLE

1	2	3	4	5	6	7	8	9	10	11
12				13				14		
15				16				17		
18				19				20		
21				22				23		
24				25				26		
27				28				29		
30				31				32		33
34				35				36		
37				38				39		
40				41				42		
43				44				45		
46				47				48		49
50				51				52		
53				54				55		
56				57				58		
59				60				61		

- CLUES ACROSS**
- Bar checks
  - Russian male monarch (alt.)
  - Small amount
  - Gelling agent in foods
  - Away from wind
  - Japanese socks
  - Maidenhair or staghorn
  - Miniature racing vehicle
  - The absence of war
  - Doggedness
  - Semitic fertility god
  - A single unit
  - Auditory organ
  - Engaging in war
  - "16 Candles" actress Curtis
  - Haywire
  - Relating to endocrine secretions
  - Lake Champlain Fort
  - Spiced hot milk with rum
  - Small children
  - Sound practical judgment
  - Next to
  - CNN's founder Turner
  - Pitch
  - Cologne
  - Short sections of music
  - Full of conversation
  - Blats
  - Scarlett's home
  - La \_\_\_\_\_ Tar Pits, Hollywood
  - Stare at
  - Not closed
  - Had a meal
  - Crime fighter Eliot
  - Blend gradually

- CLUES DOWN**
- 27th U.S. President
  - "A Death in the Family" author
  - Farm building
  - Soluble ribonucleic acid
  - Picking or fetching
  - Traditional roofing material
  - Lofty nest of a bird of prey
  - Soak flax
  - Lake in the Philippines
  - Basic
  - Gambling cube
  - A steeped beverage
  - Factors that define a system
  - Incessantly
  - '93 failed Attny. Gen. nominee Zoe
  - \_\_\_\_\_ gate, lengthen
  - Early female flyers
  - Min dialect
  - Female children
  - Th \_\_\_\_\_ Scotch emblem
  - Edible red algae
  - Japanese mushroom
  - \_\_\_\_\_ goblin: Mischievous elf
  - Made older
  - Emit coherent radiation
  - Norwegian playwright
  - Prompted
  - Lowest singers
  - Afrikaans
  - One of the Blue Four artists
  - Oxalis tuberosa
  - One leaf of a book
  - Unit of matter
  - Stare in wonder
  - \_\_\_\_\_ ong: anon
  - Beach particle
  - Don't know when yet
  - The products of human creativity
  - Good (Gaelic)

This puzzle sponsored by

**EBA**  
**IRON**  
P. O. Box 877 Eastland, TX 76448

**Commercial & Residential Builders**  
GENERAL CONTRACTORS Home Town Service Since 1979

**BIG "S" COMPANY**

owner: Sam Williams

- ★ ROOFING
- ★ FENCES
- ★ VINYL SIDING
- ★ DECKS & PATIOS
- ★ CARPORTS & GARAGES

Fast & Friendly

- ★ NEW HOMES
- ★ DESIGN
- ★ CONSULTING
- ★ INSPECTIONS
- ★ REMODELING

715 West Main Eastland TX 76448

629-2550

Free estimates 1-800-941-2550

**Kevin Latimer, CPA, PC**  
CERTIFIED PUBLIC ACCOUNTANT

935 East Main St. Phone: 254-629-8901  
Eastland, TX 76448 Fax: 254-629-8785

Tax Return Preparation - Tax Planning - Payroll Processing  
Monthly Accounting - Financial Statement Compilation  
Business Organization Consulting

Two CPA's On Staff 5-64

**RONNIE'S AUTO SALES**  
2005 CONRAD HILTON - CISCO  
254-442-9900 254-653-7367

2008 Mercury loaded, leather int. only 5,000 mile	<b>SOLD</b>	ram car, \$13,900
2008 Ford Escorted, 24,000 miles, factory warranty,	<b>SOLD</b>	
2007 Chevy, C factory warrant	<b>SOLD</b>	rans., 21,000 miles,
2008 E350 12 Passenger Van, XLT, trim, fully loaded, 20,000 miles, factory warranty, 2 in stock, Reduced to \$12,900		
2006 Jeep Liberty V6, loaded, only 27,000 miles, factory warranty, "Just In" \$9,900.		
2007 Dodge D factory warrant 1 owner, \$16,50	<b>SOLD</b>	trim, 18,000 miles, heels, "big horn,"
2007 Chevy C1500 Reg. Cab, 5 sp., 17,000 miles, factory warranty, reduced to \$8,950		
2007 F150 Reg. Cab, 6 cyl., auto., XL trim, 22,000 miles, factory warranty, 1 owner, \$10,500		
2008 Dodge D1500, Reg. Cab, 22,000 miles, factory warranty, 1 owner, \$9,950		
2007 Ford F150 Reg. Cab, 6 cyl., 5 sp., 27,000 miles, factory warranty, reduced to \$8,950		
2007 D1500 Reg Cab, 6 sp., 11,000 miles, factory warranty, 1 owner, reduced to \$8,950		

5-8



# Country Wide Classifieds

Carbon, Gorman, Olden, Morton Valley, Desdemona, Kokomo

Baird Star • Cisco Press • Eastland Telegram • Ranger Times • Rising Star

Strawn, Mingus, Gordon, Putnam, Lake Leon, Flatwoods

Thursday, January 29, 2009

### FHA Advertising Rule:

FHA makes it illegal "to make, print, or publish, or cause to be made, printed, or published, any notice, statement, or advertisement, with respect to the sale or rental of a dwelling, that indicates any preference, limitation, or discrimination because of race, color, religion, sex, handicap, familial status, or national origin, or an intention to make any such preference, limitation, or discrimination."

### REAL ESTATE

Desdemona, 4 A m/l, 3-1 frame, well & septic, shop, stg. Bldg., beautiful location, large trees. \$59,900.

15 A north Gorman: Sandy land, 2

### SOLD

road on 2 sides, nice location for pond. \$3,000 acre

17 A N/E Gorman, 10 A wooded, nice large oak trees.

### SOLD

country location, great place for a new home! \$3,500 acre

38 A M/L south Gorman: Fronts FM 679, about 10 A large Pecan Trees, nice location for pond, good fences, sandy land. \$2,500 acre.

40 A near Gorman, paved road, pasture, fenced, small cabin, water well, small pond, elec., sandy soil. \$2,500 A.

NEW: Gorman, 44A, 2-2-2 bi-level frame home, 1728 sf, central a/h, metal roof, covered upper deck, several wells, buildings, coastal. Deer & other wildlife. \$250,000

77 A Sipe Springs, deer & turkey, 2 stocked ponds, Live & Post Oak, mineral rights. Insulated 30 x 40 steel bldg., a/c & living quarters. Nice getaway! \$3,250 acre

130 A, west Carbon, app. 40 a cult, 35 a coastal, pond, elec., county water. \$2,400 acre

156 A Carbon, 1/2 wooded- 1/2 fields, lots deer & turkey, 3 ponds, nice 2-2 mh, central a/c, barn, coral, county water. Hunter's Paradise! \$4,000 acre.

179 A south of Gorman: Part wooded, part old fields, deer & hogs, 2 nice ponds, sandy soil, elec., several water wells. \$1,950.00 acre

### MOBILE HOMES

NEW Starter Home \$298/mo with \$1,850 Down, 8.25%, 20 years. Stove, Refer, DW Washer/Dryer & Central AC! TrinityHomeSales.com 866-672-1499 RBI34909

New 3/2 with Stove, Refer, Dishwasher, Washer/Dryer & AC. \$1,850 Down; \$588/mo!! PAID OFF in 7 Years @ 8.25% TrinityHomeSales.com 866-672-1499 RBI 34909

### REAL ESTATE

Selling Comanche, Eastland and Brown Counties since 1954 and we WANT to sell yours. We solicit and appreciate your listings.

COGBURN REAL ESTATE DE LEON OFFICE (254) 893-6666 HOME 893-2642 758-2401 www.cogburnreal estate.com RS104

### HOMES FOR SALE

OLD VICTORIAN 1 & 1/2 story home for sale in CISCO... Great place to raise kids...possible 6 bdrm house...2 bdrms 1st floor, possible 4 bdrms 2nd floor. Central air/heat, 3 car carport, PLUS shed and extra carport, fruit trees, Circle Drive... No Owner Finance. 254-442-2732 leave message 301 Ave H, Cisco. C11

### FOR LEASE

Commercial property for lease, 700 square feet, office space, brand new construction. \$600 mth. For more information call 254-485-9159. E104

FOR LEASE OR SALE: 2 large commercial bldgs on 2 acres fenced w/l-20 frontage-Eastland. Owner financing. Dean 623-979-6732. E104

### FOR RENT

For Rent: Small singlewide \$450 a month, \$300 deposit. Pet deposit required. 2 BR, 1 BA. Well maintained. 254-631-0914 between hours of 8-5. E12

For Rent: 507 Seaman, Eastland, 3 BR, 1 BA. \$650 a month, \$500 deposit. 254-968-4420. E16

Advertise and Get Results

### MOBILE HOMES

HORN MANUFACTURED HOMES EXCELLENT STARTER home: New 16 x 56 Legacy 2 + 2. \$1,500 down, paid off in only 10 years at \$360. great rate 7.75% wac. 6500 I-20, Ranger. RBI 33526, 254-647-1300.

FRONT KITCHEN: New 16 x 60 Legacy 2+2. \$1,600 down, pays off in only 10 years at \$370 great rate 7.75% wac. Horn Manufactured Homes, 6500 I-20, Ranger. RBI 33526, 254-647-1300.

BIGGEST LITTLE house you have ever seen. 32 x 44 Legacy, open plan. \$2,400 down, pays off in only 10 years at \$562 great rate 7.75% wac. Horn Manufactured Homes, 6500 I-20, Ranger. RBI33526. 254-647-1300.

HUGE 4 BR, 2BA Legacy 2,200 SF, Hardipanel exterior, fireplace in den, tons of cabinets, gigantic master bedroom. \$3,350 down, 240 payments @ \$627. 9.75% wac. Horn Manufactured Homes, 6500 I-20, Ranger. RBI33526, 254-647-1300. R11

### APTS FOR RENT

GHOLSON HOTEL APTS If you are 62 years of age or older, or 18 and older and disabled and looking for a nice quiet historic place to live, come to 215 W. Main, in Ranger or call Richard at 254-647-1513 (Income limits apply). R104

### EASTLAND VILLAGE APARTMENTS

600 W. Sadosa Eastland, Texas 76448 (254) 629-2518 NEWLY REMODELED 1-2-3 BEDROOMS Instant move-in upon credit approval HUD vouchers accepted E10

### Read the Classifieds

### HELP WANTED

Immediate Openings Shipping/Receiving/Warehouse Sewing Machine Operators, Cutters. Will Train Apply in person Eastlander Design 202 N. College St. Eastland EOE 104

### APTS FOR RENT

COUNTRY VILLA APTS 1-2 bedrooms, kitchen appliances, Central H/A, W/D, pool. On site security and maintenance. (Behind Pizza Inn) 1099 Lago Vista Blvd. Eastland, Texas. Call 629-2769 or 631-9504. If no answer 629-2348. E104

### CEDAR RIDGE APARTMENTS

Clean Unfurnished Apartments Security Guard on grounds Maintenance Total Electric Laundry Central Heat/Air Near Schools/Hospital No Pets 254-629-2805 E104

### ROYAL OAKS APARTMENTS

Unfurnished 1 and 2 Bedroom; Carpet, Drapes, & Kitchen Appliances Furnished. Water, Trash Pickup & TV Cable Paid. Also Laundry Room at complex. Choice neighborhood. See and compare at 1304 Royal Lane, Cisco, or call 442-3232. Vacancies not always available. C104

### HELP WANTED

Waitstaff wanted Lone Cedar Country Club 18+ Call Levi Thurs.-Sat. 254-647-3468. E104

### HELP WANTED

Need an experienced Auto Body Technician with his own tools. Inquire in person at Joel's Paint & Body 1150 E. Main St., Eastland, TX. E15

### !!Help!! Wanted

Red Star Truck Stop Is Hiring Convenience Store Cashier

Part-Time Maintenance Apply at Red Star Corner of Hwy 6 & I-20 Eastland 5-104

### HELP WANTED

HELP WANTED! DQ of Ranger Hwy 80 W. now hiring. Must love working with and meeting people. Richeson Companies is a non-smoking, drug free environment. Drug testing required. Apply with manager, Alma Archer. E11

Disability Aide needed for Head Start in Ranger. \$6.58/hr. Deadline is 2/2/2009. Accepting applications for substitutes. Call (325) 625-4167. Central Texas Opportunities, Inc. is an E.O.E. E9

The Eastland County Sheriff's Office is taking applications for Corrections Officer, for information call 254-629-3298 or come by 201 West White Eastland, Texas. E10

Mighty Molding & Mfg. now hiring for Production Workers in a manufacturing environment. Pay DOE. Apply in person at 2016 Old Bankhead Hwy, Eastland. E104

ARAMARK at Cisco Junior College is now hiring a full time, experienced Cook. Apply in person from 2-4 p.m. Monday - Friday. C14

Need an experienced Auto Body Technician with his own tools. Inquire in person at Joel's Paint & Body 1150 E. Main St., Eastland, TX. E15

### HELP WANTED

Experienced book-keeping, payroll, taxes, filing, etc. Must be bondable. Contact Tammy for more info. 629-8801. E9

First United Methodist Church of Cisco is now taking applications for a new church secretary. This is a part time position with pay commensurate to abilities. Must have strong computer and accounting skills with pleasant communication skills. Pick up an application at 405 W. 8th, Cisco and interview with Pastor John Beckling. C104

Webmaster needed Cisco Chamber of Commerce Will be taking bids for a new webmaster until Jan. 31st send bids to 309 Conrad Hilton Cisco, TX 76437 C9

Now taking applications for all shifts. Apply in person Smokin Willie's 2009 Conrad Hilton, Cisco. C104

### Now Hiring For All Phases of Housing Construction

•Starting Pay \$10.00/hr. •Paid Vacation & Holidays •Medical •Dental •Life Insurance •401 k with 100% match up to 6% •Team Profit Sharing •Excellent Work Environment Apply in person at Karsten Homes 820 Industrial Blvd Breckenridge, TX 76424 It's All...About You! Karsten Homes Division of CMH Manufacturing E104

### HELP WANTED

Valentino's Italian Restaurant & Pizza now hiring for the following positions: Wait Staff Dishwasher Cashier Apply in person. E104

Sonic Drive-In looking for friendly employees cook and car hops. Also management opportunity. Apply in person Cisco Sonic. C104

### BUSINESS SERVICES

PB FENCING Gate Operators Barb Wire Privacy Fence Chain Link (Security) Game Fence 254-629-2757 E14

Tommy Cozart Dirt Works Dump Truck & Backhoe Service Sand, Gravel, Topsoil, etc. Delivered Demo. clean ups Driveways Your business is appreciated. Cell #254-631-5984 Carbon, TX. Home 254-639-3014 E16

State House Leveling Pier or beam foundations 254-433-9162 Free Estimates E14

Buck's Gun School Concealed Handgun License Classes Any Day You Call- I Teach 254-647-1449 E28

Ruth Schaefer Stewart, L.P.C. Licensed Professional Counselor Working with children and women's issues incorporating play, art, and sand tray Call for appointments at (254) 442-4280. C104

### WANTED

Singers Wanted: Community Choir come join the fun! 629-1550. \$10 per practice session. Eastland Music Co. E10

Wanted: Land for lease for grazing cattle primarily cow/ calf operation 25 plus acres preferably around Eastland County. 254-647-1029 or 254-433-9473. E12

Read the Classifieds

### WANTED

Wanted: Ranch for lease for grazing cattle, primarily cow/calf operation. In or around Eastland County. 817-243-4984. R104

### LOST PETS

LOST: Black Labrador Retriever, lost in Oakhollow area. 100 lbs., white spot on chest. Answers to name of "Cole". Reward offered. Call 254-433-1558. E10

### PETS

Four Puppies that were rescued need good homes 629-3522. E11

### AUTOS FOR SALE

For Sale: Platinum Edition '05 Cadillac Escalade, loaded, like new, leather seats, pearl white. Will sell for blue Book Value of \$28,000. Serious inquiries only. If you can finance or pay cash write Cadillac, P.O. Box 29, Eastland, TX 76448. E104

### FOR SALE

For Sale: 2000 20 ft. Voyager pontoon boat. 50 HP Yamaha, new upholstery. Try out on Lake Leon. \$7,000 OBO. 325-767-2190. E12

For Sale: 2000 Smokercraft welded aluminum bass boat. 16 ft. 2 inches. 60 HP Yamaha. Try out on Lake Leon. \$7,000 OBO. 325-767-2190. E12

Steel Buildings #1 Recession Discounted Some below Cost to Site Call for Availability www.scg-grp.com Source #12X Phone: 254-230-0059. E12

Donut Store For Sale: 115 E. 8th St., Cisco. Call Eldon 469-693-6438. C10

Brand New queen pillowtop/orthopedic mattress 2 pc set, in plastic Original warranty \$150 325-428-9172 E10

Double/Full orthopedic mattress set. FLAME RESISTANT, warranty. \$135 Twin mattress \$99 325-428-9172 E10

MUST SELL brand new king pillowtop mattress and box, in plastic. \$250 325-428-9172 E10

Body contouring memory foam mattress and foundation, still wrapped with warranty. \$375 325-428-9172 E10

### A Job That Really Rewards

At Rock House We Make A Difference

- Now hiring for positions assisting adults with disabilities
- FT and PT positions
- Weekend differential
- Benefit package
- Great profit-sharing plan
- Must be 20 years old with HS diploma or GED, current drivers license, driving and background check on potential hires

APPLY NOW Online: www.rockhouses.org In Person: 401-A E. Lens, Eastland E-Mail: hr@rockhouses.org Info: 254-629-8683 or 1-800-588-4004, Ext. 159 16

Work at Home at Spare Time! Help wanted for commission sales to qualified person. Up to 20% commission. Apply with short letter to: Commission Sales P.O. Box 29 Eastland, Texas 76448



**AVAILABLE FOR WORK**

**Clippers Lawn Service**  
Mowing, Leaf Clean-up, Shrub & Tree Trimming 254-442-2382.

**THANK YOU**

Thank you Eastland County!  
I could have had a lot worse holiday this year, but because of a lot of caring folks here I had a good one! First of all I would like to thank a couple of local businesses that donated items for a raffle on my behalf. To the "mom and pop" businesses - "Outdoor Specialties" and "Greer's Western Store & Fashions". Also, to all of the people that sold the raffle tickets (Terry, Amy and Tommy Rose of Outdoor Specialties), (Pat Greer, Leslie Greer-Pitts, and all of the numerous employees at Greer's), (Eddie & Youvonne, Kimberly Fullen and Jennifer Johnson at McMillan Insurance, (Dena at the courthouse), Brent, and other family and friends. We should be so thankful we live in a small town where people really step up when others need help. I want to thank everyone that purchased tickets and alot of

**THANK YOU**

The family of Eddie Sadler would like to thank everyone so much for the outpouring of love and sympathy during our time of loss. The many cards, visits, phone calls, food, floral and memorial remembrances and words of comfort is appreciated. To Jim Wright and Robbie Livingston - your words and stories of Eddie were such a comfort and time for reflecting on many cherished memories. We also appreciate Eddie's friends and family members who honored our family as serving as pallbearers and honorary pallbearers. Thanks for all the prayers offered on our behalf. Continue to pray for us as we live each day without our loved one.

Friends and neighbors - we appreciate you and cherish your friendship.

Linda Sadler  
Darren, Dedria, & Daila Sadler  
Darla French,  
Madyson & Tanner

**CHECK OUT OUR WEBSITE AT [www.e-cinc.com](http://www.e-cinc.com)**

**Our e-mail address is [ecn@att.net](mailto:ecn@att.net)**

Advertise in the Classifieds and Get Results

**Narcotics Anonymous**  
500 Ave. E (Ex-GI Bldg.)  
Cisco, TX 76437  
Monday 8:00 p.m.  
Open Meetings  
Wednesday 12:00 noon  
Friday 6:00 p.m.  
Book Study  
For more information contact 254-442-4462

**Grandpaw's Tool Shed Rental, Inc.**  
1304 E. Main,  
Eastland, TX 76448  
254-629-3363

Tired of all the same entertainment at your parties? We have the solution: Rent our New "Dunking Booth". A lot of fun for the whole family.

Also we have Temporary Storage Containers 8 x 20 at your location for rent.

people I was told just donated money. I cannot thank you enough. I know who most of you are and my sincere thanks go out to you. I am back at work now, and I go back to Lubbock on Feb. 3rd for my next checkup. I started my chemo last week and will be on that for at least a year. I truly appreciate everyone that has been praying for me; please keep me in your prayers! Thank you Gunsight Baptist Church! Without all of the prayers, I'm not sure things would've turned out so well. Praising is the main thing we can do! I cannot thank each and everyone of you enough! A special thanks goes out to my boss, Christina Dodrill, and everyone at the

County Courthouse. To all of my friends and co-workers that have stood by me and checked in on me - it has really meant a lot; I couldn't have better friends and family! I would like to thank my mother, Jackie, who stayed with me through this whole process. Thanks to Jim, Jimmy and Tommie Sue Bishop and several others. I could never mention

every single person, but just know that it's honestly appreciated! They had the drawing on the day of my surgery and Brandon Orms won the small motorcycle and Eddie McMillan won the boots! God bless everyone! Have a wonderful 2009!  
Gratefully and Sincerely,  
Tracy Maynard

**Points To Remember:**

**Child Support**

Children Who Receive Child Support:  
•Have better health and nutrition  
•Have fewer behavioral problems  
•Make better grades  
The Attorney General Will Help:  
•Establish your child's paternity  
•Locate a noncustodial parent  
•Establish and enforce child support and medical support orders  
•Review and adjust child support payments  
•Collect and distribute child support payments  
Apply for Child Support Services by:  
Visiting Child Support Interactive on the main Attorney General Web site:  
[www.texasattorneygeneral.gov](http://www.texasattorneygeneral.gov)  
Calling the 24-hour voice response system at (800) 252-8014  
Information on this and other topics is available on the Attorney General's Web site at [www.texasattorneygeneral.gov](http://www.texasattorneygeneral.gov)

**ATTENTION: ALL ADVERTISERS**

This newspaper is not responsible for errors or omissions printed in error, except to correct them in the next edition. It is the responsibility of the advertiser to notify this newspaper after the first appearance.

Our established and recorded policy on newspaper advertising placement provides that: **TRANSFER OF OWNERSHIP OF AN ADVERTISED BUSINESS AND/OR SERVICE DOES NOT ELIMINATE THE RESPONSIBILITY FOR PAYMENT BY THE PERSON OR FIRM THAT ORIGINALLY ORDERED THE ADVERTISEMENT.**

A one and one half (1 1/2) percent interest will be added monthly to bills after 30 days in arrears.

Eastland County Newspapers, Inc.,  
215 S. Seaman St.  
Eastland, TX 76448

**OUTZKIRTS**

By: David & Doreen Dotson

OUTZKIRTS BIZ



ADVERTISE IN THE CLASSIFIEDS AND GET THE RESULTS YOU HAVE BEEN LOOKING FOR

Email us at [ecn@att.net](mailto:ecn@att.net) with your favorite photo for our Photo of the Week on our Web page at this newspaper

**Announcing**  
A New Service Now Available  
At The  
Eastland County Newspapers.



Offering...  
Small/Large Print Jobs  
Fast Turn-A-Round  
Inexpensive Pricing

**Joe's Quick Print**  
215 S. Seaman St. - Eastland  
(254) 629-1707

**Newspaper Deadlines**

Monday by 5 p.m. for Thursday edition  
Thursday by 5 p.m. for Sunday edition

**CLASSIFIED AD RATES:**

\$10.00 the 1st run  
\$5.00 each run after the 1st run  
(25 words or less)

Classifieds run in all 5 Newspapers- Cisco, Eastland, Ranger, Rising Star & Baird Star

**Business Services**

To advertise in this section call Gary or Patrick at 629-1707 or come by 215 S. Seaman in Eastland

**Wind & Water Tight Rodent Proof Used Containers**  
Larry Singley  
Toll Free 800-992-9122 or 817-992-9122  
We Solve Storage Problems

Advertise in the Business Services section of the newspaper

**Master Electrician**  
All Types of Work  
254-639-2964  
254-433-1782  
State Licensed

**A-QUALITY WELDING & STEEL SUPPLY**  
METAL BUILDINGS • STRUCTURAL STEEL FABRICATION • BUILDING COMPONENTS • WELDING SUPPLIES & GASES  
Metal Bldg. Clearance Sale Call Now  
700 East I-20 Cisco, TX  
(254) 442-3036  
Check out our prices updated daily [www.aqualitysteel.net](http://www.aqualitysteel.net)

**Alcoholics Anonymous**  
302 N. College  
Eastland, TX 76448  
\*\*\*  
MONDAY 5:30 p.m. (Closed- Alcoholics Only)  
TUESDAY 8:00 p.m. (Open)  
THURSDAY 6:00 p.m. (Open)  
Big Book Study  
SATURDAY 8:00 p.m. (Open)  
\*\*\*  
442-4462 or 254-433-3340  
For questions or info. call 254-631-0271  
Parole/Probationers Welcome  
Please No Correctional Papers

To advertise in the Classifieds call 629-1707; Fax to 254-629-2092; E-mail to: [ecn@att.net](mailto:ecn@att.net) or come by 215 South Seaman St. in Eastland

Do you need to sell anything? Sell it in the classifieds. Do you need a job? Look in the classifieds. How about an automobile? Check for one in the classifieds.

Advertise in the Classifieds and get results!!!

**House Leveling & Foundation Repair**  
By David Lee & Co.  
Professional Work Since 1967  
\*Free Estimates\*  
No Payments Until Work Is Satisfactorily Completed  
• Solid Slab • Pier & Beam • Concrete Piers • Block & Pad • Floor Bracing  
Steel Piers To Bedrock  
Work Guaranteed Insurance Claims  
Licensed & Bonded  
254-629-2267 1-888-486-8588  
254-965-5635 915-675-6369  
[www.davidleedco.com](http://www.davidleedco.com)



**Diabetes And You**

**Five Facts About Diabetes**

By Griffin P. Rodgers, M.D., M.A.C.P., director, National Institute of Diabetes and Digestive and Kidney Diseases (NIDDK)

With so much health information readily available, it's not hard for the 24 million Americans living with diabetes to separate fact from fiction. To help people with diabetes better understand how to manage the disease, the National Diabetes Education Program provides five facts about diabetes.

Fact #1: Diabetes is a serious disease. It can lead to serious complications

such as heart attack, stroke, blindness, kidney failure, and lower limb amputations. People with diabetes can take steps to manage it and lower their risk for complications. Make healthy food choices, be physically active, and stay at a healthy weight. Good diabetes care includes managing the ABCs of diabetes--as measured by the A1C test, blood pressure, and cholesterol--to help avoid having a heart attack, stroke, or other problems.

Fact #2: The only way to know for sure what your levels are is to check your blood glucose. The absence

of symptoms of high blood glucose is an unreliable guide for judging glucose control, since symptoms may not occur until blood glucose reaches high levels. Diabetes is often called a "silent disease" because it can cause serious complications even before you have symptoms. Set your blood glucose targets with your diabetes care team. Ask your health care team to show you how to self-monitor your blood glucose. Keep a record of your results, and share them with your team. Also, know your A1C goal and keep a record of your test results, which reflect your average blood glucose levels over the past three months. It is the best way to know how well your

blood glucose is controlled overall.

Fact #3: Small amounts of foods that contain sugar can be part of a healthy meal plan. If you choose to eat sweet foods, just have a small amount at the end of a healthy meal, not every day, or have a piece of fruit rather than a sugary snack.

Fact #4: A healthy meal plan for people with diabetes is a healthy meal plan for everyone. Eat foods that are high in fiber and low in saturated fats, trans fats, cholesterol, salt (sodium), and added sugars. Healthy foods include a colorful mix of fruits and vegetables, fish, lean meats, chicken or turkey without the skin, dry

peas or beans, whole grains, and low-fat or skim milk and cheese. Ask your health care team for a healthy meal plan.

Fact #5: Physical activity is safe--and essential--for people with diabetes. Talk to your health care team about ways to safely increase your daily physical activity. Being physically active can help people with diabetes improve their blood glucose, cholesterol, blood pressure, and weight. It also helps improve strength, flexibility, and balance. Start by setting small goals until you reach at least 30 to 60 minutes of physical activity on most days of the week. Brisk walking is a good way to move more.

about diabetes, download or order the free Tips to Help You Stay Healthy tip sheet developed by the National Diabetes Education Program at [www.YourDiabetesInfo.org](http://www.YourDiabetesInfo.org)

**Veteran's News**

A PTSD (Post Traumatic Stress Disorder) meeting will be held on Wednesday, February 4, 2009 beginning 10 a.m. at the Ranger Recreation Building ("Old Gym") located on the corner of Marston St. and Pine in downtown Ranger.

A meeting for men will be held from 10:00 - 11:00 a.m.

A meeting for wives, mothers, daughters, partners, and other interested women will follow.

**AREA MEDICAL DIRECTORY**

**Healthy Ideas**

Studies show that certain nutrients, particularly antioxidants like lutein and zeaxanthin, help preserve eye health, but most people do not get enough. More information can be found at [www.ezeyes.com](http://www.ezeyes.com).

\*\*\*

A healthy diet that includes 10 percent orange juice, a 15-minute walk, rest and exercise can help increase your chances of maintaining a healthy and strong immune system and avoiding the flu.

\*\*\*

According to The Hormone Foundation, having diabetes requires that you take care of yourself every day. This means monitoring your blood sugar, getting regular physical activity and following a healthy diet.

\*\*\*

If someone you are close to is diagnosed with cancer, you need quick access to as much reliable information as possible. That's why the College of American Pathologists developed a new patient Web site, MyBiopsy.org.

\*\*\*

The American Academy of Ophthalmology reminds Americans of the importance of getting a baseline eye screening at age 40.

\*\*\*

Drinking antioxidant-rich beverages, such as 100 percent orange juice, can help maintain a healthy immune system, which helps your body fight against cold and

\*\*\*

Alzheimer's disease is a progressive, degenerative disorder that attacks the brain's nerve cells, resulting in memory loss, thinking and language skills impairment and behavioral changes. You can learn more about the Alzheimer's Association at [www.alz.org](http://www.alz.org), the Alzheimer's Foundation of America at [www.alzfdn.org](http://www.alzfdn.org) or at [www.alzheimersonline.com](http://www.alzheimersonline.com).

\*\*\*

Because stress affects both your mental and physical health, you should go online to play a game or watch a video to take a mental break.

Advertise In Your Local Newspaper

**Gentle Family DENTIST**  
 Accepting New Patients  
 Joe K. Reed, DDS  
 Over 30 years experience  
 In Baird Accepts  
**MEDICAID CHIPS**  
 & Most Dental Insurance  
 1-866-854-1173 • 325-854-1173

**Girling Health Care**  
 405 E. Commerce  
 Eastland, Texas  
 254-629-1268  
 800-950-0363

**Avi T. Deshmukh, M.D., F.A.C.S.**  
 Board Certified in Urology

**Frank V. Terrell, M.D.**  
 General Ophthalmology & Ophthalmic Surgery  
**Eastland Memorial Hospital**  
 For Appointment Call  
**(254) 629-2601**

"Go With The Best"  
 ★ ★ TRI-STAR ★ ★  
**HOME CARE**  
 "Gives Quality Care"

★ Home Health Care  
 ★ Primary Care  
 ★ C.B.A.

Cisco, TX 76437  
 Telephone (254) 442-4996

**NOW**  
 SUBSCRIBE, RENEW SUBSCRIPTIONS, ORDER GIFT SUBSCRIPTIONS, OR ORDER TEXAS MESSENGERS, PAY FOR ADVERTISING Over the Phone with Credit Cards:  
  
 254-629-1707  
 1-888-277-1708  
 Fax 629-2092

To advertise on the Medical Directory page call Gary or Patrick at 629-1707

**encompass**  
 HOME HEALTH

**Medicare Certified Home Health Services**

- Skilled Nursing
- Physical Therapy
- Speech Therapy
- Occupational Therapy
- Diabetic Care
- Medical Social Work
- Home Health Aides
- Psychiatric Nursing

1420 East Main Street, Eastland, TX 76448  
 866-488-8200 • 254-629-8200

a free seminar

**LIVING beyond CANCER**

If you or someone you know has cancer this group is for you. When you have cancer, you have many things to think about. LIVING BEYOND CANCER teaches you ways to help yourself and your family. You, your family and friends are welcome to attend. This group meets once a week for six weeks.

**No cost for attendance.**  
 Register by calling Cancer Services Network  
**325-672-0040**  
 or email [acolley@cancerservicesnetwork.org](mailto:acolley@cancerservicesnetwork.org)

**Cancer Services Network**  
 providing gifts of hope

First Christian Church 1420 North 3rd Street Perry Center entrance on Beech Street Tuesdays, January 27th to March 3rd 5:30 pm - 7:00 pm	Eastland Memorial Hospital 304 South Daugherty Street Teaching Conference Room Thursdays, January 29th to March 5th 5:30 pm - 7:00 pm
--	---

Funding by Cancer Prevention & Research Institute  
 Cancer Prevention & Research Institute



# Super Notes

By David Perry

Gorman ISD Superintendent

dperry@gorman.esc14.net

I don't know about you, but I am very concerned about the absence of rain. It is so dry and with the wind we've had lately the danger of fire grows greater every day. I especially worry about some of our students that go home to homes where there are no adults with transportation there for a couple of hours. When both parents work, this just can't be helped sometimes. That is why you need to have a plan right now, before there is an emergency so that your child will know who to call in case they need to leave before you get home. They need several people they can count on in your absence. They also need to know what to do in other types of emergencies like storms. Plan ahead so that your child will not only be safe, they will feel safe!

It is tough being the smallest school in District 14-A, especially when you have to play three of the largest class A schools in the state, DeLeon, Meridian, and Goldthwaite. All three school have previously been class 2-A but were short one or two students at the time of realignment so they now have the advantage of having many more student athletes from which to choose their teams which of course gives them a great advantage over those of us that were only seven students away from the minimum number of students. All that said, our kids are working very hard and win or lose they deserve your support. Remember that you have a job to do as a fan and that is to cheer them

on when they are winning and to hug and console them when they don't win and encourage them. See you at the games!

The new gym is going to be awesome! There poured the concrete last week for the walkways in the bleachers, the ramps, and steps. I expect our gym will be the best facility in the surrounding area and will attract playoff games as well as being a great place for tournaments. I believe it can be and will be a great help to our community with regard to growth. Everyone would like for their child to go to a new school where everything is new and I believe there will be an influx of people wanting their children to graduate from the new high school. Those of you with houses that could be fixed up to rent should prepare. Those of you with lots that need to be cleared should get busy!

Just in case you missed my article a couple of weeks ago regarding the raising of funds for a four sided center hung scoreboard for the new gym, I am including the information again here. We are presently trying to raise money for a four sided scoreboard for the new gymnasium that would hang from the ceiling in the center of the gym and have advertising on it and a score keeper's table which will have advertising on the front of it. The cost will be around \$25,000.00. I will be speaking with the major businesses in the area seeking donations in return for advertisement. I expect we need at least three or four major donors to find the project, but we are

also asking for donations from individuals. Our major benefactors will be considered "Diamond" sponsors for \$5,000.00 or more and receive advertising for the next 15 to 20 years. Donations of \$2,500.00 to \$4,999.99 will be considered "Platinum" sponsors and may include some advertising; Donations of \$1,000.00 to \$2,499.00 will be considered "Gold" sponsors. Donations of \$500.00 to \$999.00 will be considered "Silver" sponsors and donations of \$100.00 to 499.99 will be considered "Bronze" sponsors.

We will accept donations in any amount from those wishing to give, but all of the donors giving \$100.00 or more will be memorialized on a permanent plaque to be displayed in the foyer of the gymnasium. Any funds left over will be used to pay for the art work on the gymnasium walls & floor (Mascot, Panthers, Lady Panthers, etc.). I hope we have a great response to this fund raiser. We have structured it this way so that nobody gets left out that wants to participate. Remember the last time a gym was built in Gorman was over seventy years ago. Don't miss this opportunity to put your name on the plaque or to memorialize someone else. Please mail your donations to Gorman ISD, P.O. Box 8, Gorman, Texas 76454 and make checks payable to Gorman ISD with a note at the bottom that it is for the scoreboard fund. You may also bring donations by the Administration Office. For large donations, please contact me to work out the advertising details. Thank you!

There is always a lot going on at the Elementary Campus. Last week they participated in "Jump Rope

for Heart" and the gym was bussing with the sound of jump ropes and feet going up and down on the floor. I don't know how much money was raised, but we appreciate all of you that sponsored jumper in this worthy cause.

This Thursday our third graders travel to Abilene to visit Safety City. Safety City was built several years ago beside Rose Park in Abilene to education children on bicycle and pedestrian safety. It is sponsored by many Abilene and area businesses and is a great resource for all schools in the Big Country to education their third graders on safety. The kids love going there as well. It is a fun day for them.

The local Masonic Lodge has begun their annual drug awareness program with our fifth graders. We appreciate the Masons and the work they do for us and the community. This program brings in several law enforcement officials to explain the dangers of illegal drugs to the students as well as the consequences.

It is time for three week notices. They were mailed Monday. If you received one, please contact the teacher of the class in which your child is struggling and set up a conference so that you may as a team set up a plan to help your child succeed. That is what we are here for, to help your child succeed!

Remember, it takes community involvement for a school to be successful and you are welcome to get involved at Gorman ISD anytime.

This is your school; these are your children; and these children are your future! Your input is always welcome. Come help us shape the future. Thank you for all you do to support us!

## 'The Tale Of Despereaux' To Show At Majestic

The animated film called "The Tale Of Despereaux" will open at the Majestic Theater in Eastland on Friday, Jan. 30, and show at 7:30 nightly through Monday, Feb. 2.

Admission will be \$4.50 at the box office, with balcony seats (adults only) Priced at \$6.00.

This movie is rated G (comedy, kids/family), and based on a children's fantasy book written by Kate Dicamillo. It tells the story of a little mouse named Despereaux, who is on a quest to rescue a beautiful human princess named Princess Pea.

Hollywood actors lend their voices to this film, including Matthew Broderick, Tracey Ullman, Emma Watson, Tony Hale and Frances Conway. Universal Pictures distributes the movie.

Tiny and graced with oversized ears, Despereaux is a misfit in his little world.

But he refuses to live his life cowering. He learns to read books - rather than just eat them like the other mice do! In those books he revels in stories of knights, dragons, and fair maidens. But he manages to offend the King of the realm, and some other mice toss him in a dungeon with rats, who are much larger.

The Princess whom Despereaux admires also lands in this rat-infested dungeon, and this causes more complications in his life. But he is finally rescued by another outcast, Roscuro, who also wants to hear the tales in Despereaux's books. So he now has a chance to help the beautiful Princess.

This is fantasy and entertainment - something to brighten up the winter weather. As usual, the Majestic Theater will be warm and inviting.

**SEND US YOUR FAVORITE PHOTO TO PUT ON OUR WEBSITE FOR THE PHOTO OF THE WEEK**  
SEND TO [ecn@att.net](mailto:ecn@att.net)  
Check out the Photo of the Week each week at [www.e-cinc.com](http://www.e-cinc.com)

### Man Tries Out For Pro Team After Using Thera-Gesic®

BEXAR COUNTY- After applying Thera-Gesic to his sore right knee, Tom W. tried out for his favorite basketball team. When asked why a 5'9" older man could possibly think he would make the team, he painlessly replied: "None of your dang business!"



Go painlessly with Thera-Gesic®



Go Tom Go

## EM EXPRESS MEDICAL SUPPLY

Express Medical Supply is pleased to announce the opening of their new location at:

**1405 E. Main  
Suite 160  
Eastland, TX**

In the Eastland Plaza Shopping Center  
Between O'Reilly's and Check 'n Go

Effective:

**February 1, 2009**

**254.629.2225 800.562.6681**

*We Love Our Customers!*

4-9

## NEED PHYSICAL THERAPY?

### PLEXUS HEALTHCARE CENTER

#### Physical Therapy

1510 State Hwy 206 Cisco, Texas



### JEFF DAVIS, PT

Specializing in Sports Rehab  
Treating All Ages / All Injuries  
Pre and Post Surgeries  
Accepting Medicare, Medicaid,  
Workers Compensation  
Accepting Most Insurance Plans

## YOU HAVE A CHOICE

**Why go out of town?**

Call today for an appointment

**254.442.4878**



Only One of It's Kind  
**EASTLAND County**  
**GATHERING**  
*Something for Everyone!*  
**WHEN: ?**  
**WHERE: ?**  
**FREE!!**

## Can You Believe?

### Welcome:

IMAGINE, IF YOU CAN your first visit to the EASTLAND COUNTY GATHERING

When you drive up to the central location in the middle of Eastland County, you're met by a handsome Valet Parking Junior College Student who will give you a call ticket, and a beautiful uniform college Co-Ed will welcome you, and be your personal guide.

Where do we pay, you ask. Oh, it's all free, there's no charge, however there are attractive receptacles throughout the area, all with

prominent signs, reading: ALL FREE, however, your LOVE GIFTS 100% divided to 15 benevolent funds for exclusive use in Eastland County.

The first awning you see among the hundreds is one marked "We'll keep you things here." Your picnic basket is checked and other totables; you're given a call ticket and a map/listing of the activities, showing times for demonstrations, music

and other entertainments.

How did this come to be, you ask your Guide. Well, it's a county wide project to give all the people in the county and visitors an opportunity to get together for just a good time together. Some have said it's like an "all-day singing, with dinner on the ground. The County Judge, seeing the need, appointed a committee of like-minded volunteers who put the dream into action."

Why this time of year? Well, it was planned to compliment, not compete with all of the other wonderful events in the county. There's the Folk Life Festival in the Spring in Cisco, the Old Rip Commemorative in February and Parade in the Fall in Eastland, the Ranger Rodeo in the summer, the Peanut Festival in Gorman in the fall, and the Old-Timers Day in Rising Star; plus lighted yule parades.

"Is this a one day event?" Well, it is this first time, but we expect it to be a weekend, and then, who knows?

"Who's taking our picture?" These are professional photographers who will make free prints available to you later. And when you

hear a helicopter overhead, be sure to look up, so you'll be recognized in the Festival Pictures which also will be available for free, with a Love Gift appreciated. Yes, we're equipped to take credit an debit cards, cash and even I.O.U.'s.

We hear music everywhere, and never seen so many tents and awnings; are they all offering different things?

The County Youth Adult Choir Spectacular begins at 7.

Oh, yes, there are rare treats, soft drinks of all kinds, gourmet coffees, snacks, full meals if you like or you may join others in the picnic awning with your own basket. Everything is in easy walking distance, and there are emergency provisions in the event of illness or injury. They've tried to think of everything to make it a totally happy experience.

We were met by a musician with a fiddle, serenading newcomers; everywhere you look there are keen entertainers: balloon, clowns entertain children; mime, miming; magicians, magicing; and people having real, old-fashion get-together fun.

Are the various competitions serious?

Well, more or less, there are gifts, some really nice donated ones, to be won in the various categories...

Such as?

Horseshoes, checkers, dominos, '42, washer pitching, ring toss, bobbing for apples, chess, croquet, and even some sack races. The young folks are busy, busy a little more active.

The first wave of the antique cars in the county-wide rally is due within the hour. Bicyclers are circling the track, and the road races start soon. Want to run?

No, thanks, later maybe;

are there sit down places? Oh, yes, comfortable chairs in the shade to listen to poetry readings, western yarns, country, popular, and even some classical music. It's all a volunteer effort of the best we have to offer, and there's plenty of talent on display here.

Let us fend our way now; when does it close?

When the cows come home or when you play out, whichever comes first. If you're comfortable, I'll be greeting others. Folks are coming in droves.

Sure, here we want to give you a Love Gift for your guidance. We'll just explore on our own.

Let's see, the hospital is offering basic health tests, the churches all seem to be represented with fun and inspirational things to do and see. Are the banks really giving away money? Not really, but they do have some interesting offerings. Looks like every business in town has an awning with samples and information. We'd guess that every women's and men's organization in the county has special things.

Even the nursing home? We've never seen so many young people participating. And little kids everywhere having a really, safe good time together. I'll bet they're making friends. And they picked the ideal spot, no dust, no bugs, just a good seasonal cool breeze.

This is better than the state fair.

We like it a whole lot.

#### Crossword Answers

TABS	TSAR	TAD
AGAR	ALEE	YABI
FERN	KART	PEACE
TENACITY	BAAL	
ONE	EAR	
WAGING	LIANE	
AMISS	HORMONAL	
FORTTY	CONDEROGA	
SYLLABUS	TIKES	
SENSE	BESIDE	
TED	TAR	
KOLN	PASSAGES	
TALKY	BAAS	TARA
BREA	OGLE	OPEN
ATE	NESS	MELD

**GALLAGHER'S PAVING**  
 "WE WILL HAVE CREWS IN YOUR AREA SOON"  
 • DRIVEWAYS • ASPHALT PAVING  
 • RANCH ROADS • SEAL COATING  
 • PARKING LOTS • HOT RUBBER CRACK FILLING  
 • PRIVATE ROADS • CHIP SEALING  
 Visit Our Website [www.gallagherpaving.com](http://www.gallagherpaving.com)  
**FREE ESTIMATES** **FAX (817) 595-7229**  
**TOLL FREE 1-888-732-3536** **OFFICE (817) 745-4614**

**Homestead**  
 Long Term Care  
[www.homesteadltc.com](http://www.homesteadltc.com)

- 24 Hour Skilled Nursing
- Long-term Care
- Respite Care
- Hospice Care
- Restorative Care
- Physical Therapy
- Speech Therapy
- Occupational Therapy
- IV Therapy
- Wound/Ostomy Care
- Tracheotomy Care
- Special Diets
- Tube Feedings

We accept Medicare • Medicaid • Private Pay V.A. Insurance • Private Insurance

**Homestead Nursing & Rehabilitation Of Cisco**  
 1404 Front St. Cisco, TX  
 254-442-4202

**MAJESTIC THEATRE**  
 629-1322

THE  
**TALE OF DESPEREAUX**  
 Rated G

Voiced by:  
 Matthew Broderick, Robbie Coltrane

Fri. Sat. Sun. Mon.  
 All Showings: 7:30 p.m. - \$4.50  
 Adults Only Balcony Ticket - \$6.00  
 10-Admission Card - \$40.00  
 5-Admission Card - \$22.50

**Eastland County Veterans**  
 Check For Your Name  
[www.ecvet.com](http://www.ecvet.com)  
 See Our Sponsors

ADVERTISE IN YOUR LOCAL NEWSPAPER AND GET RESULTS!!!

**SUDOKU**

			6	7	1			
		3			4		5	
8	9							
	5				8		4	
				2		3		
4	8					2		
			1		5			4
	1							
	5			6	7	9		

Here's How It Works:  
 Sudoku puzzles are formatted as a 9x9 grid, broken down into nine 3x3 boxes. To solve a sudoku, the numbers 1 through 9 must fill each row, column and box. Each number can appear only once in each row, column and box. You can figure out the order in which the numbers will appear by using the numeric clues already provided in the boxes. The more numbers you name, the easier it gets to solve the puzzle!

We Clean The Most Neglected, Unsanitary Part Of Your Home:  
**YOUR AIR DUCT SYSTEM!**  
**J & J Air Conditioning, Inc.**  
 106 Pogue Eastland, TX  
 254-629-2251 TAELB00200C 800-585-2251

**COUNTY CALENDAR**

**COUNTY**  
 -Eastland County Water Supply Dist., 3rd Thurs., 6 PM  
 -Eastland County Commissioners Court meets in regular session on the 2nd and 4th Monday of the month at 9:00 a.m. in the Commissioners' Court Room of the County Courthouse.  
 -The Eastland County Historical Commission holds a meeting on the 2nd Tuesday of the month, 6:30 p.m. at locations throughout the county. Meetings are usually not held in November or December. The meetings alternate between a full meeting one month and an executive committee meeting the next.  
 -VFW Post 4136 Eastland holds a meeting on the 2nd Wednesday each month at 7:30 p.m. Ladies Auxiliary Post 4136 also holds a meeting on the same date, time, and place.  
 -PTSD (Post Traumatic Stress Disorder) meetings are held on the 2nd and 4th Thursday of each month at the Ranger Recreation Building ("Old Gym"), corner of Marston St. and Pine in downtown Ranger. The meetings begin at 10:00 a.m.  
 -Artists of Eastland County meet 3rd Thursday of each month, 6:30 p.m.; Every Monday Paint along 1:00-4:00 at Eastland Senior Citizens Center; 1st, 2nd, 4th Thursday Night Painting 6:00-9:00 at Eastland Senior Citizens Center.  
 -West Texas Rehab Auction, Quilts - 7 over \$1,000.00, 2 in Eastland County. Nancy Quilters Butterfly pattern - \$1,250; Morton Valley EE Club Fancy Sue - \$1,025.  
 - denotes regular meetings and events  
 \* denotes special events

**CISCO**  
 - Cisco Writer's Club meets 1st Tuesday of month, 7 PM, Community Room, American State Bank.

**MORTON VALLEY**  
 - Morton Valley EE Club, 2nd Wednesday of each month, 2 PM, Senior Citizens Bldg., on the Hill, Eastland.

**EASTLAND**  
 -The Chamber's Annual Meeting and Golden Deeds Awards Banquet will be held on Thursday, February 26, 2009, at 6:00 p.m. in the First Baptist Church's Multi-Purpose Center. More information provided later.  
 -EMH Volunteers Monthly Meeting, 2nd Tuesday of each month, (Eastland Memorial Hospital), 5:30 PM  
 -Eastland City Meeting 3rd Monday, 6 PM  
 -Eastland Memorial Hospital Meeting 3rd Thursday, 11 AM  
 -Eastland ISD Meeting 2nd Monday, 6:30 PM  
 -Eastland Economic Development Inc. meet 2nd Monday, noon  
 -Eastland Senior Citizens/AARP meet 3rd Tues., 6 PM  
 -Eastland Centre for the Arts meet 1st Tues., 5:30 PM

**GORMAN**  
 -Gorman Sr. Citizens meet every Wednesday, 11:30 in the Gorman Sr. Center  
 -Gorman 4-H meets second Monday of every month, 6 PM at First United Methodist Church fellowship hall

**RANGER**  
 -Texas Democratic Women of Eastland County Meeting: 1-20-09, 6:00 p.m. Ranger Community Center Bring a covered dish. Contact 254-433-3938 for more information.  
 -Ranger Historical Preservation Society meets on the 3rd Monday of the month, 6:00 PM., at the Ruth Terry Denney Library- Research Center, 1505 Loop 254 West, in Ranger. For more information call 254-647-3340.  
 -Ranger Governing Body meets in a regular meeting on the 2nd and 4th Monday of each month at 5:30 p.m. in City Hall, 400 W. Main.  
 -Ranger Kiwanis Club meets Wednesday, 12 Noon, Community Center on Pine St.  
 -Ranger Lions Club meets each Thursday noon at the Ranger Community Center on Pine.  
 -The Quarter Store in Ranger offers used clothing, shoes, and many other items for \$.25 per piece. The store is open Tuesday and Thursday from 8:00 a.m. to 12:00 noon, and on the 1st Saturday of each month from 8:00 a.m. - 12:00 noon. Proceeds benefit the Ranger Ministries United's "Meals on Wheels" program.  
 \* denotes regular meetings  
 \* denotes special meetings or events  
 WE CAN AVOID CONFLICTS IF WE ALL MAKE SURE ACTIVITIES ARE LISTED HERE WITH DATES (Note: activities will be deleted after dates)  
 (NOTE: PLEASE CONFINE CHURCH RELATED ITEMS TO SPECIAL EVENTS)  
 To list: call 254-442-2244, 254-629-1707, Fax 254-629-2092, toll free 888-227-1708, ccn@att.net, 215 S. Seaman, Eastland, TX 76448

**I-20 Motors Used Cars**  
 "Serving Cisco Since 1979"  
 800 West Interstate 20 • Cisco, Texas  
 (254) 442-4262

- 04 Ford Taurus SE: Auto, Air, AM/FM/CD, Power Windows/Locks/Seat, Cruise, 51K..... \$6,995
- 02 Ford Escort ZX2 5 sp., AM/FM/CD, air, 65K..... \$3,500
- 94 Ford F-150 XL Extended Cab 4X4: Automatic, V-6 ..... \$2,550
- 05 PT Cruiser Touring Edition: Auto, Air, AM/FM/CD, Power Windows/Locks/Seat, Cruise, 64K..... \$6,995
- 04 Kia Rio: Auto, air, AM/FM/CD..... \$4,250
- 04 Ford F-150: V-6, Manual Transmission, Air, AM/FM/CD, Short Bed, 62K..... \$6,995
- 02 Ford F150 LX: Auto, air, long bed..... \$5,750
- 05 Chevy Impala: Auto, air, AM/FM, Power Windows/Locks . \$6,995
- 98 Ford Crown Victoria: Auto, air, AM/FM/CASSETTE, Power Windows Locks Seats, Leather..... \$2,995
- 06 PT Cruiser: Auto, air, AM/FM/CD, Power windows, locks, red \$6,995

**Three Generations to Serve You, Poe Wee, Mike, and Michael.**



PATHOS · HUMOR · HISTORY · CREATIVE NON-FICTION

# CALLAHAN COUNTY STAR SPOTLIGHT

## WRITERS SHOWCASE

(All submitters retain ownership)

### American Life In Poetry

BY TED KOOSER, U.S. POET LAUREATE, 2004-2006

Don Welch lives in Nebraska and is one of those many talented American poets who have never received as much attention as they deserve. His poems are distinguished by the meticulous care he puts into writing them, and by their deep intelligence. Here is Welch's picture of a 14-year-old, captured at that awkward and painfully vulnerable step on the way to adulthood.

#### At 14

To be shy,  
to lower your eyes  
after making a greeting,  
to know  
wherever you go  
you'll be called on,  
to fear  
whoever you're near  
will ask you,  
to wear  
the softer sides of the air  
in rooms filled with angers,  
your ship  
always docked  
in transparent slips  
whose wharves  
are sheerer than membranes.

American Life in Poetry is made possible by The Poetry Foundation ([www.poetryfoundation.org](http://www.poetryfoundation.org)), publisher of Poetry magazine. It is also supported by the Department of English at the University of Nebraska-Lincoln. Poem copyright (c)2008 by Don Welch. Reprinted from "When Memory Gives Dust a Face," by Don Welch, published by Lewis-Clark Press, 2008, by permission of Don Welch and the publisher.

Introduction copyright (c) 2009 by The Poetry Foundation.

The introduction's author, Ted Kooser, served as United States Poet Laureate Consultant in Poetry to the Library of Congress from 2004-2006. We do not accept unsolicited manuscripts.

### Writers And Poets!

The Eastland/Callahan County Newspapers announce that the Baird Star will be publishing submitted poetry and short stories. We will also be publishing a literary journal in the near future.

1. We ask for first-time publishing rights. All other rights will remain with the author.
2. There will be no payment, but you will get your works before the general public. We will be sending sample copies to other organizations, the literary world and libraries for their archives and your notoriety.
3. Short stories should be brief. Poetry should be no longer than 24 lines.
4. Each submission should be typewritten, single spaced, with author's name and contact information in the top right hand corner. You must include a SASE for the return of the submission.

Please address all submissions to:  
**Literary Editor**  
Eastland/Callahan County  
Newspapers  
P. O. Box 29  
Eastland, TX 76448  
email: [thebairdspotlight@att.net](mailto:thebairdspotlight@att.net)

### Words To Use:

**Ptarmic:** This word can be a noun or an adjective that denotes something that is precipitating a sneeze. Find another word that mean the same as sneeze and you will have it.

**Oleic:** This fancy word describes something that is like oil. It has a good sound to it, but can be a slick word to pronounce.

**Myristicaceous:** If you can say it, you can use it to describe something having to do with the nutmeg tree. It has not recently been seen on the ingredients of packaged egg nog.

**Limnetic:** Some fishermen at Lake Leon, Texas are dealing with things that inhabit fresh water, but they rarely use this adjective to describe their fish or bait. Poets may use the word.

**inhume:** Here is a verb that means to bury something, like a dog does with a bone.



A tree in winter fog...photo by Patrick Ready

### Famous Poet Quotes

"Even when poetry has a meaning, as it usually has, it may be inadvisable to draw it out.... Perfect understanding will sometimes almost extinguish pleasure." ~ A.E. Housman

\*\*\*\*

"The purpose of a writer is to keep civilization from destroying itself." ~ Albert Camus

\*\*\*\*

"True Ease in Writing comes from Art, not Chance, As those move easiest who have learn'd to dance." ~ Alexander Pope, "An Essay on Criticism"

\*\*\*\*

"Each memorable verse of a true poet has two or three times the written content." ~ Alfred de Musset, *Le Poète déchu*, 1839

### Contacts of interest for writers:

NFSPS Poetry  
Contests for 2008  
Madelyn Eastlund  
310 South Adams Street  
Beverly Hills, Florida 34465

Poetry Society of Texas  
Membership Committee  
Lee Carroll  
3909 Gable Lane, #611  
Fort Worth, Texas 76155  
[leecarroll.fwps@gmail.com](mailto:leecarroll.fwps@gmail.com)



*The pen is mightier than the sword.*

Submissions sought to:

**Star**  
P.O. Box 29  
Eastland, TX  
76448

email: [thebairdspotlight@att.net](mailto:thebairdspotlight@att.net)

S.A.S.E. for returns

--WANTED--

20 lines,  
double spaced or less  
Poetry  
Fiction or Non

Each entry with brief biography notes. All must be family oriented; no smut, slander or liable material.

**WANTED: Poetry and/or short stories for this page each week. Mail to: Star P.O. Box 29 Eastland, TX 76448 or e-mail to [thebairdspotlight@att.net](mailto:thebairdspotlight@att.net)**

### Rhymes To Use

Rigor mortis

Abyss

Paralysis

Artifice

Edifice

Cowardice

### Braveheart the Crawfish

George Armstrong Custer was a pompous idiot

Braveheart the Crawfish is not.  
Fighting the red mud water, he treads against  
The mass motion of molecules  
Raging across this country road.  
He is assigned by nature both inside and out  
To defend his puddle  
Sent roaring across county road 127  
By this August deluge.

So as my two thousand pound Pontiac approaches,  
In spite of water surging over him,  
He rears on his hind legs  
To his full four inches.  
The current whips around his knees.  
Upraised forelegs, clinched fists and snapping antenna  
Give him fifty percent more presence.

Though a comrade lies two feet away  
A puddle of crawfish puree---  
Never once does he question  
Whether his territory  
Is worth defending.

I drove around him  
Because it is his territory---  
Just as Sitting Bull and Crazy Horse  
Drowned Custer in his own blood  
For violating the same rule.

- Jim Wilson

### Wanted: Writers & Poets

Any and all ages





# Callahan County 2009 Jr. Livestock Show Results

**Rabbits**  
**Junior Showmanship-** Cody Cedegren, Clyde 4-H  
**Senior Showmanship-** Skyler Archa, Eula 4-H  
**Breeding Rabbits**  
 1. Skyler Archa, Eula 4-H; 2. Jacob Archa, Eula 4-H; 3. Skyler Archa, Eula 4-H  
**Colored Bucks**  
 1. Cody Cedegren, Clyde 4-H; 2. Skyler Archa, Eula 4-H; 3. Jacob Archa, Eula 4-H  
**Champion Buck** -Cody Cedegren, Clyde 4-H  
**Reserve Champion Buck**- Skyler Archa, Eula 4-H  
**White Does**  
 1. Jacob Archa, Eula 4-H; 2. Skyler Archa, Eula 4-H; 3. Jacob Archa, Eula 4-H  
**Colored Does**  
 1. Jacob Archa, Eula 4-H; 2. Cody Cedegren, Clyde 4-H; 3. Skyler Archa, Eula 4-H  
**Champion Doe** -Jacob Archa, Eula 4-H  
**Reserve Champion Doe**- Cody Cedegren, Clyde 4-H  
**Market Rabbits**  
**Fryer Pen**  
 1. Cody Cedegren, Clyde 4-H; 2. Emily Foster, Cross Plains FFA; 3. Mackenzie Byrd, Cross Plains FFA  
**Champion Fryer Pen**- Cody Cedegren, Clyde 4-H  
**Reserve Champion Fryer Pen**- Emily Foster, Cross Plains FFA  
**Broilers**  
**Junior Showmanship-** Katy Jo Morgan, Cross Plains FFA  
**Senior Showmanship-**Maranda Williams, Cross Plains FFA  
**Pen of Three**  
 1. Katy Jo Morgan, Cross Plains FFA; 2. Kelbi Hyles, Cross Plains FFA; 3. Kelbi Hyles, Cross Plains FFA  
**Champion Broiler**- Katy Jo Morgan, Cross Plains FFA  
**Reserve Champion Broiler**- Kelbi Hyles, Cross Plains FFA  
**Swine**  
**Junior Showmanship-** Kelbi Hyles, Cross Plains FFA  
**Senior Showmanship-** Rode Merryman, Clyde FFA  
**Breeding Swine**  
**Hampshire Gilts**  
 1. Kelsey Tennon, Cross Plains FFA; 2. Whitney Richardson, Clyde FFA; 3. Barrett Ancinec, Clyde 4-H  
**White OPB Gilt**  
 1. Valerie Konecny, Clyde 4-H  
**Champion Breeding Gilt** - Kelsey Tennon, Cross Plains FFA  
**Reserve Champion Breeding Gilt**- Whitney Richardson, Clyde FFA  
**Market Swine**  
**Light Weight Black OPB**  
 1. Tanner Hall, Clyde 4-H; 2. Tori Miller, Baird 4-H; 3. Bree Ann Strickland, Baird 4-H  
**Medium Weight Black OPB**  
 1. Trendon Rouse, Clyde 4-H; 2. Kelbi Hyles, Cross Plains FFA; 3. Katy Jo Morgan, Cross Plains FFA  
**Heavy Weight Black OPB**  
 1. Chazney Gray, Clyde 4-H; 2. Janae Rouse, Clyde 4-H; 3. Rachelle Allen, Cross Plains FFA  
**Champion Black OPB**- Tanner Hall, Clyde 4-H  
**Reserve Champion Black OPB**- Chazney Gray, Clyde 4-H  
**Light Weight Duroc**  
 1. Dakota Brewster, Clyde 4-H; 2. Sheyenne Demment, Clyde FFA; 3. Kaitlyn Robinson, Baird FFA  
**Middle Weight Duroc**  
 1. Rode Merryman, Clyde FFA; 2. Kelbi Hyles, Cross Plains FFA; 3. Tori Miller, Baird 4-H  
**Heavy Weight Duroc**

## Congratulates to the ones that made the 2008 Class 1A All-Big Country Football Team

Honorable Mention: Wide Receiver- Cody Hunter, Baird, Sophomore

## Congratulations to the ones that made the 2008 Class 2A All-Big Country Football Team

Defensive Player of the Year: Tanner Parker, Clyde, Linebacker, Senior

Newcomer of the Year: Landon Liles, Clyde, Defensive Back, Sophomore

Offense: Corbin Benner, Lineman, Clyde, Senior  
Ty McDowell, Lineman, Clyde, Junior

Defense: Colby Smith, Lineman, Clyde, Senior  
Tanner Parker, Linebacker, Clyde, Senior

Landon Liles, Defensive Back, Clyde, Sophomore  
Honorable Mention:

Quarterback- Jacob Gonzales, Clyde, Senior  
Wide Receiver- P.J. Martinez, Clyde, Senior  
Wide Receiver- Jeremy Gordon, Clyde, Senior  
Defensive Back- Jeremy Gordon, Clyde, Senior

**Reserve Champion Fine-wool**- Justin Pope, Cross Plains FFA  
**Light Weight Finewool**  
 1. Kelsi Tennon, Cross Plains FFA; 2. T.J. Warren, Cross Plains FFA; 3. Kaitlyn Holland, Cross Plains FFA  
**Heavy Weight Finewool**  
 1. Kelby Dean, Eula 4-H; 2. Katelynn Mitchell, Baird 4-H; 3. James Rhyne, Cross Plains FFA  
**Champion Finewool**- Kelby Dean, Eula 4-H  
**Reserve Champion Fine-wool**- Kelsi Tennon, Cross Plains FFA  
**Light Weight Southdown**  
 1. Teagan Fortune, Cross Plains FFA; 2. Megan Scott, Eula FFA; 3. Garrett Scott, Eula FFA  
**Heavy Weight Southdown**  
 1. Garrett Scott, Eula FFA; 2. Nicki Carroll, Eula FFA  
**Champion Southdown**- Garrett Scott, Eula FFA  
**Reserve Champion Southdown**- Teagan Fortune, Cross Plains FFA  
**Light Weight Medium Wool**  
 1. Teagan Fortune, Cross Plains FFA; 2. Teagan Fortune, Cross Plains FFA; 3. Kelby Dean, Eula 4-H  
**Middle Weight Medium Wool**  
 1. T.J. Warren, Cross Plains FFA; 2. Becca Harris, Baird FFA; 3. Becca Harris, Baird FFA  
**Heavy Weight Medium Wool**  
 1. Emily Harris, Cross Plains FFA; 2. Kaysi Dean, Eula 4-H; 3. Tiffany Holland, Cross Plains FFA  
**Champion Medium Wool**- T.J. Warren, Cross Plains FFA  
**Reserve Champion Medium Wool**- Teagan Fortune, Cross Plains FFA  
**Grand Champion Market Lamb**- T.J. Warren, Cross Plains FFA  
**Reserve Grand Champion Market Lamb**- Teagan Fortune, Cross Plains FFA  
**Junior Showmanship-** Coby McGonagill, Baird 4-H  
**Senior Showmanship-** T.J. Warren, Cross Plains FFA  
**Breeding Goats**  
**Yearling Does**  
 1. Jurnee Thomas, Cross Plains FFA; 2. Kinsey Dean, Eula 4-H

# Baird I.S.D. Staff Spotlight Terry Hunter

BAIRD-It took me two trips around the school and a phone call to finally catch up to the very busy Terry Hunter. I found him fixing lights in the old gym, of course with a cup of coffee in hand. He is in this week's Baird I.S.D. staff member spotlight.

Terry has been the head of the maintenance department at Baird for two years now. He moved to Baird when he was a sophomore and graduated in 1978, he is still VERY young. I asked Terry what exactly he did at Baird High School and his humorous response was, "I just walk around and drink my coffee, Lane does all of the work," he changed his mind with, "I'm just pulling your leg! I'm a repairman. I fix what is broken and leave the rest

alone." If a problem occurs, then Terry is usually there to lend a funny helping hand. The Junior High football boys saw an interesting scene one morning when Hunter was running across the field with a baseball bat, chasing an armadillo. He noticed that the armadillos were becoming a problem, so he simply wanted to remove them. After catching four of them and setting them free elsewhere, unharmed, the problem was fixed.

Terry has several names like Mr. Hunter, slim, or my favorite, THunt, but whatever you call him he is probably going to put a big smile on your face. Thanks THunt for being our friend and helping us!

Written by: Rainy Burks, BHS Journalism class

# Obituary

## Paula Sue Hennigan

BAIRD- Paula Sue Hennigan, 55, of Baird, Texas, died Sunday, January 25, 2009 at Baylor Medical Center in Dallas.

Services will be at 2 p.m. Thursday, January 29, 2009 at Parker Funeral Home Chapel in Baird. Pastor Lupe Palacio officiating. Interment in the Ross Cemetery Annex in Baird. Services directed by Parker Funeral Home of Baird.

Visitation was held 5:30-7 p.m. Wednesday evening at the Funeral Home.

Paula was born May 14, 1953 in San Angelo, Texas to Lawrence and Sue Green Henningan. She graduated from everman High School. She moved from Abilene to Baird in 1986 where she worked for both King Hoermann Texaco and Grumpe's Specialties. She was a Baptist. Survivors are two sons, Brian Paske of DeBerry, Texas and Bradley Paske of Arlington; two daughters, Brandy Kirkland and husband, Stephen of Baird and Amanda Paske of Amarillo; her mother, Sue Hawkins of Baird; three brothers, Steve, Pat and Mike Hennigan; her grandchildren, Tess and Brandon Paske, Garrett, Kassie and Kailey Kirkland; and a number of nieces and nephews and two very close friends, Dee Hughes and Rita Treadway. Preceded in death by a brother, Tim Hennigan in 1993.

## Clyde C.I.S.D. 2008-2009

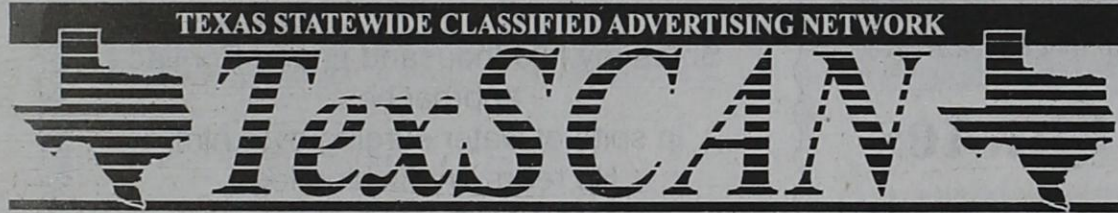
**School Calendar**  
 January 5th: Professional development/Workday.  
 January 6th: Beginning of 4th Six weeks.  
 January 19th: A.S.D. - Student Holiday.  
 February 20th: End of 4th Six Weeks (33 days)  
 February 23rd: Beginning of 5th Six Weeks  
 March 3rd-6th: TAKS Testing.  
 April 10th: Bad Weather Day/ Good Friday  
 April 17th: End of 5th Six Weeks (33 days)  
 April 20th: Beginning of 6th Six Weeks  
 April 26-30th: TAKS Testing  
 May 1st: TAKS Testing  
 May 19th: TAKS Re-Test  
 May 25th: Bad Weather Day/ Memorial Day  
 June 2nd: End of 6th Six Weeks (31 days)  
 2nd Semester (97 days)  
 June 2nd: Early Release Day - 12:30  
 June 3rd: Teacher Workday  
 June 5th: 2009 C.H.S. Graduation  
 July 1st TAKS Re-Test  
 July 4th: Independence Day  
 July 14th: TAKS Re-Test

2nd Semester - 97 days  
 Jan. 6th-Feb 20th: 33 days  
 Feb. 23rd-June 2nd: 31 days  
 April 20th-June 2nd: 31 days

177 instruction days  
 10 professional days  
 Alternative Staff Development Days (A.S.D.) (Formerly called comp days-updated term)  
 Monday, August 18th  
 Monday, January 19th  
 Friday, March 27th

School Holidays  
 Labor Day: September 1, 2008  
 Thanksgiving: November 26-28, 2008  
 Winter Break: December 22, 2008 through January 2, 2009  
 Spring Break: March 9-13, 2009

Early Release Days  
 December 3, 2008  
 December 19, 2008  
 March 25, 2009  
 June 2, 2009



**TEXAS STATEWIDE CLASSIFIED ADVERTISING NETWORK**

**TexSCAN Week of January 25, 2009**

**BUSINESS OPPORTUNITIES**

100% RECEPTION PROOF! Do you earn \$800 in a day? Your own local candy route. 25 machines and candy. All for \$9,995. 1-888-625-5481. Multi Vend, LLC.

OWN A COMPUTER, put it to work! Work from anywhere. Two step process. Request online information, Review Information, Set-up phone interview. Serious people only. www.PTMENTOR.com

**DRIVERS**

13 DRIVERS NEEDED Sign-On Bonus 35-41 cpm. Earn over \$1000 weekly, excellent benefits. Need CDL-A & 3 months recent OTR. 1-877-258-8782. www.mellotruck.com

CDL-DRIVERS EXPANDING Fleet offering Regional/OTR runs. Records, Grading services, Tutors. Outstanding pay package. Excellent benefits. Generous hometime. \$300 lease special on Volvos, anytime! E-mail: DrGMSykes@NationalCarriers. 1-888-707-SykesAcademy.com. Visit: www.SykesAcademy.com.

**DRIVER: JOIN PTL** today! Company Drivers-Earn up to 38¢ cpm. 1/2 cpm increase every 60K miles. Average 2,800 miles/week. CDL-A required. www.ptl-inc.com 1-877-740-6262.

**WE NEED 20** Long Haul Drivers! Texas based company so you will get home. Probably more than the wife wants you to! Call Paul at 1-713-674-4206

**FINANCIAL SERVICES**

**OVER YOUR HEAD** in debt? Carrying high credit card balances? Medical bills? Personal loans? Collections? "Pay debts off quickly & save money!" No loan required. Non-Profit organization since 1995. FREE Consultation! Call 1-800-556-1548 www.ancehorizon.org

**HOME SCHOOLS**

**HOME-SCHOOL WEBSITE:** Grades: 5-12th. Monthly-pay. Records, Workbooks, Legal. Mentors, Grading services, Tutors. Report-Cards, & Diplomas, All included! Open year-round. Start Justice. Job placement assistance. Computer available. Financial aid if qualified. Call 1-866-858-2121. www.CenturaOnline.com

**HOMES FOR SALE**

**FORECLOSURES & BANK REPOS!** 4BR/3BA \$30,357 or \$245 month! 3BR/2BA \$10,300 or \$199 month! (5% down, 30 years, buy@8%) These Homes won't last! For listings call 1-800-544-6258 Ext. 9847

**REAL ESTATE**

**COLORADO BANK FORECLOSURE!** SURE 35 AC \$29,900 Enjoy 300 days of sunshine, Rocky Mtn. views, utilities, Excellent financing. 1st come, 1st serve! Call Today 1-866-696-5263, ext. 4941

**GRAND LAKE HOMESITES** from \$29,900 1-877-909-5253, ext. 4935

**INTERNET**

**HUGHESNET HIGH-SPEED** internet via satellite. Free installation or \$100 rebate January only! Available anywhere, no phone line or dialing in necessary. Satellite Trend, 1-800-897-5385

**MISCELLANEOUS**

**AIRLINES ARE HIRING.** Train for high paying aviation maintenance career. FAA approved program. Financial aid if qualified. Housing available. Call Aviation Institute of Maintenance, 1-888-349-5387.

**ATTEND COLLEGE ONLINE** from home. Medical, Business, Paralegal, Computers, Criminal Justice. Job placement assistance. Computer available. Financial aid if qualified. Call 1-866-858-2121. www.CenturaOnline.com

**SALES**

**SALESPERSON \$50-\$70K** per year...looking for professional salespeople. Training, bonuses, benefits. jschilling@morganusa.com or call 1-800-935-0321. EOE/M/F/D/V

NOTICE: While most advertisers are reputable, we cannot guarantee products or services advertised. We urge readers to use caution and when in doubt, contact the Texas Attorney General at 1-800-621-0508 or the Federal Trade Commission at 1-877-FTC-HELP. The FTC web site is www.ftc.gov/bizop

Extend your advertising reach with TexSCAN, your Statewide Classified Ad Network.

**Baird Bear and Lady Bear Basketball Schedule**

Date	Opponent	Site	Time	Teams
1/23	*Winters	There	4:00	JVG/B, VG/B
1/27	*Albany	Here	4:00	JVG/B, VG/B
1/30	*Cross Plains	There	4:00	JVG/B, VG/B
2/3	*Eula	Here	4:00	JVG/B, VG/B
2/6	Open Date			
2/10	*Roscoe	There	4:00	JVG/B, VG/B
2/13	*Bronte	There	6:00	JVB/VB
2/17	*Winters	Here	6:00	JVB/VB

**Baird Jr. High Basketball Schedule**

Date	Opponent	Site	Time	Teams
1/7	Eula	There	5:00	7GB/8GB
1/14	Cross Plains	Home	5:00	7GB/8GB
1/21	Winters	There	5:00	7GB/8GB
2/4	Albany	Home	5:00	7GB/8GB

**Baird Bear and Lady Bear Basketball Schedule**

Date	Opponent	Site	Time	Teams
1/23	*Winters	There	4:00	JVG/B, VG/B
1/27	*Albany	Here	4:00	JVG/B, VG/B
1/30	*Cross Plains	There	4:00	JVG/B, VG/B
2/3	*Eula	Here	4:00	JVG/B, VG/B
2/6	Open Date			
2/10	*Roscoe	There	4:00	JVG/B, VG/B
2/13	*Bronte	There	6:00	JVB/VB
2/17	*Winters	Here	6:00	JVB/VB