

Mrs. L.A. Flyer  
Box 22  
City

## Chamber asks for nominations for annual citizenship awards

Area residents are urged to submit, in writing, their nominations for Citizen of the Year, Farmer of the Year, and Businessperson of the Year before the Feb. 28 to the Chamber office at P.O. Box 570.

These awards are given annually in conjunction with the Chamber of Commerce Banquet to outstanding citizens in each category. Those submitting nominations are asked to make a separate letter for each award to avoid confusion for the awards committee.

The Chamber Banquet is slated for Friday, March 12, at 7:30 p.m. in the high school cafeteria. Entertainment will be provided by the Community Choir under the direction of MariHoward Engelbrecht with a slide presentation featuring our community being presented with musical accompaniment.

The menu will consist of barbeque, baked potatoes, cole slaw, beans, french bread and a variety of homemade desserts. Tickets will be available from any Chamber board member and will sell for \$8 for adults and \$4 for children

under 12.

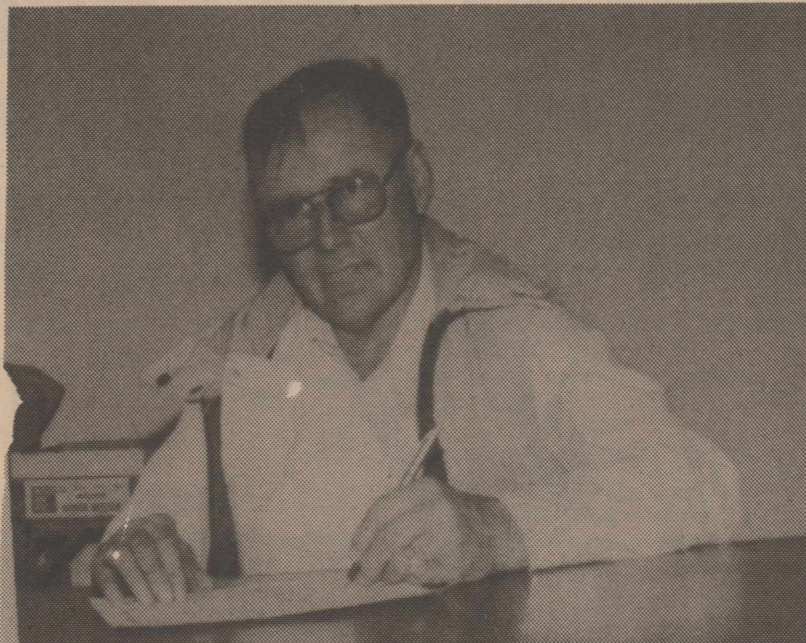
Past citizens of the year include Walter Lasley, Gail Carter, Joan Bell, V.O. Lasley, A.E. Pronger, Jr., Bill Kent, Bill Stadek, Don Riffe, Shirley Plunk, H.T. Galloway, Bill Frizzell, Fern Gupton, Cindy Crabtree, Gaynelle Riffe and B.A. Donelson. The Citizen of the Year award began in 1966.

The Farmer of the Year award was implemented in 1979 and past recipients include Paul Chesmer and L.B. Blake. Past recipients of the Businessperson of the Year include Darla Moon in 1979 and Ole Olson in 1980.

### Dr. Harlow to be away this week

Dr. Harlow will be out of town February 20 thru February 28.

## 'Farm Bureau Week' to be observed with enrollment drive



V.O. Lasley, president of Sherman County Farm Bureau, signs a proclamation concerning Farm Bureau membership drive.

During "Farm Bureau Week" Feb. 15-20, the Sherman County Farm Bureau will be seeking to enroll new members, according to V.O. Lasley of Stratford, president.

The local organization is out to increase the 1981 total of 1,020 member families, Lasley said. They are joining other counties across the state in an effort to exceed the Texas Farm Bureau's 1981 membership of 276,247 member families.

Fred Pronger of Stratford is county membership chairman.

The local leader said Farm Bureau

represents its members in legislative and governmental activities, and provides educational programs for producers.

The Texas Farm Bureau maintain a full-time legislative staff in Austin, and the American Farm Bureau Federation has a similar staff in the nation's capital.

Commodity activities play a major role in Farm Bureau on the state and national level. In Texas, producers are organized in ten commodity divisions--dairy, cotton, rice, beef cattle, peanuts, wheat, feed grains, soybeans, citrus, and sheep and goats.

## Volunteers make 'Meals on Wheels' program a reality



Barbara Chumley, one of the volunteers for Meals on Wheels program picks up the meals she will be distributing at the dining room of Coldwater Manor.

Barbara Chumley is one of the many volunteers who are keeping the Meals on Wheels program going. Through cold and snow the meals continue. The Meals on Wheels program began May 4, 1981, with five organizations taking turns in the delivery of the meals. The five organizations are: Baptist Church Group, Methodist Church group, Christian Church group, Church of Christ group, and Prospective Study Club.

The meals were started to provide a well-balanced, nutritional meal for any person over the age of 55 years old, regardless of whether or not they were

shut-ins. This provides a low cost meal delivered to the door and a social contact with someone else.

Surveys have proven that people that get a well-balanced meal a day are less prone to health problems, less sickness, and medical bills. The social contact with someone else is very essential. Families elsewhere can be assured that someone is checking on their loved one.

If you know of anyone who may be interested in participating in this program or would like more information, please contact Jack or Janie at Coldwater Manor.

## Coming Events...

THURSDAY, February 18  
7 p.m. Singles Organizational Mtg.  
E. Alquist's, 1218 N. Chestnut  
8 p.m. Masonic Lodge #874

MONDAY, February 22  
7:30 p.m. Cub Scout Blue & Gold Banquet, County Barn

TUESDAY, February 23  
Noon CofC luncheon, UMC Hall  
7:30 Fire Dept. Aux. Mtg.  
8 p.m. Malcolm's Round Dancers

THURSDAY, February 25  
Noon - SCOT, County Barn

## Comptroller's aid to assist county taxpayers

A representative of State Comptroller Bob Bullock will be in Stratford on February 17, 1982, to assist area taxpayers and answer tax questions.

According to Claudia Stravato, manager of the Comptroller's Amarillo Office, Cleve Elza, Enforcement Officer will meet with Sherman County taxpayers at the County Court House in Stratford from 10 to 12 noon.

Questions about taxes, the filing of tax returns or assistance on returns can be answered quickly and efficiently in these face-to-face meetings, Bullock said.

Taxpayers who are not able to meet with the Comptroller's representative on February 17, 1982, can still get their tax questions answered quickly by calling, from anywhere in Texas, toll-free 1-800-252-5555.

## Records needed for Kindergarden students

Mary Allen School is composing their list of kindergarden students for 1982-83. We will appreciate parent co-operation in notifying us if you have a child who will be five years old on or before Sept. 1, 1982. It is very important that you bring the birth certificate and immunization record by the Mary Allen School no later than March 15, 1982.

Required immunizations are as follows:  
DPT/DT - 3 required, with 1 after 4th birthday,  
Polio - 3 required, with one after 4th birthday.

Measles - 1 dose required after 1st birthday. Record of disease allowed only with doctor's note.  
Rubella - 1 dose required.  
Mumps - 1 dose required up to age 10.  
TB Test - 1 required by Stratford School District.

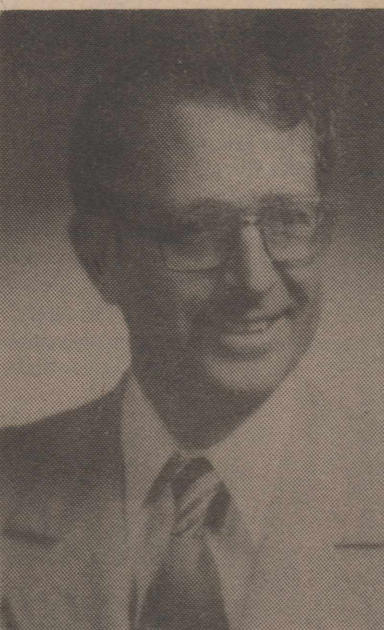
Steve W. Haynes, Principal  
Mary Allen School

## 'Week of Compassion' to be observed with guest speaker

First Christian Church will celebrate the Week of Compassion this Sunday, Feb. 21 with a guest speaker. He is the Rev. Herb Miller, Hi-Plains Area Minister for the Christian Church (Disciples of Christ). Rev. Miller will bring the message at Morning Worship, which begins at 10:45 a.m.

Rev. Miller has served in his capacity as Hi-Plains Area Minister for over seven years. He holds degrees from Drury College, Springfield, Mo., and from Drake University. Rev. Miller is a nationally-recognized leader in evangelism and church life, the author of several books, and the editor of "Net Results", a monthly newsletter published by the National Evangelistic Association of the Christian Church (Disciples of Christ). He has conducted hundreds of evangelism and church growth seminars. Rev. and Mrs. Miller have two adult children, a son who is a geologist, and a daughter who is an adult probation officer. The Millers reside in Lubbock. Rev. Miller has pastored churches in Arkansas, Iowa, and New Mexico. He served as head of the Department of Religion for the College of the Southwest in Hobbs, N.M. For two years he served as full-time counselor and administrator in charge of organizing psychology and psychiatric services for Norte Vista Medical Center in Hobbs.

Rev. Miller will preach on the Christian's need to evidence compassion



Rev. Herb Miller

for people in need, especially material need. An all church covered dish dinner will be served following the worship service. Mrs. Tom Wakefield, chairman of the church's World Outreach Committee, is in charge of the arrangements for the celebration. David Harker, minister of First Christian Church, invites everyone in the community to participate in this Week of Compassion celebration.

## Proposal to renovate Roxie Theatre to be presented at council meeting

A proposal to renovate the Roxie Theatre will be presented at the city council meeting, at 7:30 p.m., Thursday, Feb. 18.

Robin Hand, who has lived in Stratford for six months, told the Star that if his plan is accepted the condemned building could be in operation within the next two months, but admits there are several legal questions that have yet to be answered about the project.

### Meeting set for Feb. 18

Hand, who had lived in Amarillo for 13 years prior to moving to Stratford, said his family had owned a theatre in a small town in Oklahoma and that he was familiar with the operation of a motion picture facility.

Attorney David Lewis said the city plans to tear down the building because of health and safety problems in the

area, but said the city might reconsider for the right person.

## Crops & Weather

CROPS  
Wheat...\$3.72 bu.  
Milo...\$4.25 cwt.  
Corn...\$2.85 bu.

### WEATHER

Light snow and freezing temperatures Thursday night made driving conditions extremely hazardous but accounted for little moisture in the area. By Saturday temperatures had reached above the 70 degree mark. The weather has been mild the rest of the week.

Stratford/Sherman County/Texas/79084

"The Tip Top Town In Texas"

Fifteen Cents

# The Stratford Star

NUMBER 7

## Commissioners approve Barn Repairs

After meeting with County Extension Agent Susie Ehmann, the Commissioners' Court voted to approve repairs on the County Barn.

The action, which took place at the Feb. 8 Commissioners' meeting, approved electrical work for the kitchen that would increase the number of outlets at the facility and correct problems involving circuit overload.

In addition, the court asked that County Agent Jim Allison contact Hallmark Builders about roof leaks in the facility and also approved the purchase of \$55.45 worth of microwave reference books for the agent's office.

The court also decided to accept bids to sealcoat over 27 miles of county roads, after meeting with County Engineer Harvey Schmidt, who notified the court of the need for such a project.

Various other actions taken by the court were as follows:

--Western Data was chosen to place the Sherman County voter registration list on a computer system at an annual cost of 30 cents per voter.

--It was ordered by the court that all non-income producing vehicles be placed on the county tax roll.

--Dwight Reese and Lloyd Crownover were selected by the court to replace two citizens selected in January to serve on the salary grievance committee for the county. The two previous selections declined to serve.

--The Sherman County Judge was authorized to sign a contract with

Dallam and Hartley Counties and the Buckner Foundation to house and care for children from the three counties at the foster care center in Dalhart.

--The court accepted the proposal of Ramon Painting to repair the bottom hallway of the courthouse for a cost of \$375.

--It was ordered by the court that Sherman County would not make available IRA accounts with Mutual of Omaha to county employees through the payroll department.

--The court approved financial support of the Panhandle Alcoholic Recovery Center at a cost of \$317.40 for 1982.

## Local farmer cites weed control among keys in growing wind breaks

By Hinds McGowen

Travis Spurlock, Sherman County farmer, probably knows as much about the planting of trees for windbreaks as any person in the area. If you haven't seen this man's farmstead windbreak, sometime when you are in the Spurlock community, go by and take a look. You have an unexpected treat in store to see what evergreen trees such as Austrian Pine, Ponderosa Pine and Eastern Red Cedar will do in this country when they are properly grown. A talk with Spurlock on tree plantings can be quite enjoyable, also educational, to you if you are planning a farmstead windbreak.

Spurlock has 30 years experience with the planting and management of windbreaks. He has some red cedar trees that are above 20 feet tall and pines that are up to 40 feet in height. He has some elm and orange osage trees but plans to replace these with evergreens.

Spurlock took out a row of locust trees in 1979 and replaced them with nursery stock obtained through the local SWCD. He planted a single row of Austrian Pine which included 70 trees. He planted them a foot to fourteen inches in depth. The soil was well packed around the trees to avoid air pockets. A mound was thrown up around each tree. He watered them immediately after planting, applying approximately eight gallons per tree. He has left the ground around them well mulched to hold the moisture. Spurlock made individual cages of close mesh wire and put around the trees to protect them from rodents. He says, "Its best to make these at least two feet tall, otherwise rabbits will bite tops out of pine." These trees were 6 in. tall when planted. Today they are three feet tall and growing. The cages have long since been removed.

Last year (spring of 1981), he planted 60 Scotch Pine. These trees were obtained through the SWCD. The same planting procedure and management was used as was in 1979. These trees ranged in height from 9 in. to 12 in. Rodent protection was implemented. Today these trees are approximately two feet tall.

This year Spurlock has ordered 90 Eastern Red Cedar. These trees will be planted in a row outside of the pine trees which were planted in 1979 and 1981. The same planting methods and management will be used.

Spurlock says, "The key to growth of trees is water seedlings every week to 14 days and keep the weed competition controlled." He also suggested planting 10 feet between trees within the row and 30 feet between rows. This gives plenty of room to get your tractor between rows to plow the weeds.

Spurlock irrigates his 1979 and 1981 tree plantings now by use of furrow type system. He irrigates the trees at a rate of approximately eight gallons per tree the first year, 16 gallons per tree the second year and 32 gallons per tree each year afterwards.

It is not too late to get assistance from the Sherman County SWCD in ordering trees from the Colorado State Forest Service this year.

Potted trees available at 80 cents per tree include Austrian Pine, Ponderosa and Scotch Pine, Eastern Red Cedar, Rocky Mountain Juniper and Colorado Blue Spruce. These are also available bare rooted at 30 cents per tree, along with ash, Chinese elm, cottonwood, Golden willow, hackberry, honey locust, and Russian olive.



# Opinion

The Star Editorial

Sorry, but this is one of those weeks when I'm tired, hungry, and have no opinion on anything beyond that. As with most such weeks I will ramble somewhat aimlessly for a few paragraphs rather than give up immediately.

When I am through, you will notice several quotations at the bottom of the column. This took no great intelligence or effort on my part since they were clipped randomly from a book we editors frequently rely on.

The sayings are supposed to be "wise sayings," but frankly some of them are probably overrated. For example:

"A pure heart is an excellent thing—and so is a clean shirt."

G. C. Lichtenberg

Come on G.C., I had freshman psych too, most people can name two unrelated things that are excellent.

"Patience and delay achieve more than force and rage."  
Jean de La Fontaine

Who is Jean de La Fontaine? Why should I believe someone I've never heard of? He or she could be a member of the Manson cult, or worse yet, a politician for all I know.

"Diligence is the mother of good luck." Benjamin Franklin

This one got by because the author is famous for being intelligent despite the fact he organized the post office and wanted the turkey to be the national bird.

"No one asks about the pedigree of a good man."  
Spanish Proverb

This one got in because all ethnic groups have wise sayings, most of which lose something in English.

"The wise man is informed in what is right. The inferior man is informed in what will pay."  
Confucius

Confucius is both famous and ethnic which reminds me of these Confucius jokes about a man...

## The Stratford Star

Second class postage paid at Stratford, Texas, 79084. Subscription rates are \$8.00 per year in Sherman and adjoining counties; all other \$11.00 per year



**DALHART PEST CONTROL** 922 Olive Dalhart TX 79022  
(806) 396-2289

Now is the time to have your trees sprayed with dormant oil

Call us for

free estimate  
or free termite  
inspection

References furnished member Texas Pest Control Association and Dalhart Chamber of Commerce

We do guaranteed termite work

Call us collect 249-2289

## Many Happy Returns



### Gore resigns as administrator of Coldwater Manor

The Board of Directors of the Stratford Hospital District met at Coldwater Manor in Stratford for their regular monthly meeting Monday, Feb. 15, 1982 at 7 p.m. The following officers and directors were present: Ernestine Almquist, president; Fred Pronger, vice-president; Elaine Gurley, secretary-treasurer; Linda Keener, Robert Ragsdale.

Also present were Leland Lewis, Manager of Stratford Ambulance Service; Jack Gore, Administrator of Coldwater Manor; and Janie Kirkpatrick, secretary.

The monthly financial reports for Stratford Hospital District, Stratford Ambulance Service, and Coldwater Manor were read and filed.

A hot water heater will be replaced at Coldwater Manor.

The decision was made not to purchase the bus being offered for sale by Elizabeth Jane Bivins Foundation, but to continue looking for a bus more suitable to the needs of Coldwater Manor residents, particularly those confined to wheelchairs.

Following the Executive Session, the Stratford Hospital Board accepted the resignation of Jack Gore, Administrator of Coldwater Manor, effective Feb. 15, 1982.

An easement for a water line along the west boundary of Coldwater Manor

property was granted to Joe Shuping.

Architect M. Howard Ensign's plans for a proposed addition to Coldwater Manor of a multi-purpose room and additional office space were approved pending approval of a cost estimate to be submitted at a later date.

An election was ordered for April 3, 1982 with all legal notices to be posted.

### Hospital Report

At press time, Ruth Adams was in Room 439 in High Plains Baptist in Amarillo.

In St. Anthony's were Clifton Muir and Ronny Engelbrecht.

### Letter to the Editor

Dear Sir:

In behalf of the Stinnett Junior High Basketball teams, their coaches, and myself, we would like to express our appreciation for the kindness and generosity shown to us when we were stranded in Stratford due to the snow storm, on Monday night, February 8.

We would like to thank the following people for opening your homes and hearts to us: Messers and Mmes. James Spurlock, Don Riffe, Rex Christian, Jerry Johnson, B.A. Donelson, Jack Vincent, Mike Price, Leon Guthrie, Paul Chesmer, Les Dodson, Jack Slover, and Miss Loretta Rund.

A special thanks to Mr. and Mrs. Elwyn Bass, Mr. Sam Brite, and Mr. Steve Haynes for helping assign and deliver us to these homes.

Sincerely,  
Olin Johnson, Principal  
Elementary & Junior High

## Legal Notices

### NOTICE TO CONTRACTORS

Sealed proposals for sealcoating approximately 54,500 S.Y. of City Streets will be received at the office of the City Manager, City Hall, Stratford, Texas until 7 p.m., February 18, 1982, and then publicly opened and read.

All proposals shall be accompanied by a cashier's or certified check written upon a national or state bank in the amount of five (5%) percent of the total maximum bid price payable without recourse to the City of Stratford, or a bid bond in the same amount from a reliable surety company, as a guarantee that the bidder will enter into a contract and execute a performance bond within ten days after notice of award of contract to him. Bids without check or bid bond will not be considered.

The attention of bidder is called to the special provisions concerning minimum wage rates and hours of employment included in House Bill No. 115 of the Forty-fourth Legislature to the State of Texas. Compliance with the above wage and hour bill is required.

The City reserves the right to reject any or all bids, to waive informalities and to accept the bid deemed to be the most advantageous to the City. All bids received after the above closing hour will be returned unopened.

Plans, specifications and bidding documents may be secured from the office of McMorries and Burns, Inc., P.O. Box 142, Dumas, Texas 79029, on deposit of Twenty (\$20.00) Dollars per set, which sum so deposited a total of Fifteen (\$15.00) Dollars will be refunded, provided: (1) All documents are returned in good condition to McMorries and Burns, Inc., not later than 48 hours prior to the time for receiving bids; or (2) The Contractor submits a bid and all documents are returned in good condition to McMorries and Burns, Inc., not later than five days after the time that bids are received.

City of Stratford, Texas  
By John M. Wilson, Mayor  
(Published in The Stratford Star Jan. 28, Feb. 4, 11, 1982)

### Legal Notice

Notice is hereby given by the Parks and Wildlife Department that a public hearing will be held at 10 a.m. on March 18, 1982 at the County Courthouse at Stratford for the purpose of gathering information concerning proposed hunting, fishing and trapping regulations for Sherman County.

As the result of action by the Texas Legislature, the Texas Parks and Wildlife Commission is responsible for the setting of seasons, bag limits, and means and methods of taking the wildlife resources in Sherman County. All interested persons are urged to attend and comment upon the proposed regulations.  
(Published in The Stratford Star, Feb. 18, 1982)

### Legal Notice

Emery A. Hamilton is withdrawing his candidacy for county clerk.  
(Published in The Stratford Star, February 18, 1982)

XIT Rural Telephone Cooperative, Inc. has filed with the Federal Government a Compliance Assurance in which it assures the Rural Electrification Administration that it will comply fully with all requirements of Title VI of the Civil Rights Act of 1964 and the Rules and Regulations of the Department of Agriculture, issued thereunder, to the end that no person in the United States shall, on the ground of race, color, or national origin, be excluded from participation in, be denied the benefits of, or be otherwise subjected to discrimination in the conduct of its program and the operation of its facilities. Under this Assurance, this organization is committed not to discriminate against any person on the ground of race, color or national origin in its policies and practices relating to applications for service or any other policies and practices relating to treatment of beneficiaries and participants including rates, conditions and extension of service, use of any of its facilities, attendance at and participation in any meetings of beneficiaries and participants in the conduct of the operations of this organization.

Any person who believes himself, or any specific class of individuals, to be subjected by this organization to discrimination prohibited by Title VI of the Act and the Rules and Regulations issued thereunder may, by himself or a representative, file with the Secretary of Agriculture, Washington, D.C. 20250, or the Rural Electrification Administration, Washington, D.C. 20250, or this organization, or all, a written complaint. Such complaint must be filed not later than 180 days after the alleged discrimination, or by such later date to which the Secretary of Agriculture or the Rural Electrification Administration extends the time for filing. Identify of complainants will be kept confidential except to the extent necessary to carry out the purposes of the Rules and Regulations.  
(Published in The Stratford Star February 11, 1982)

### THE STATE OF TEXAS

TO: Unknown Persons, Firms, Corporations and Claimants  
GREETING: You are commanded to appear and answer the plaintiff's petition at or before 10 a.m. of the first Monday after the expiration of 42 days from the date of issuance of this Citation, the same being Monday the 22nd day of March, A.D., 1982, at or before 10 a.m., before the Honorable District Court of Sherman County, at the Court House in Stratford, Texas.

Said plaintiff's petition was filed on the 2nd day of February, 1982. The file number of said suit being No. 2456.

The names of the parties in said suit are: Charles F. Smith as Plaintiff, and Unknown Persons, Firms, Corporations and Claimants as Defendants.

The nature of said suit being substantially as follows, to wit: Tresspass to Try Title, upon the following: Lots Three (3) through and including Lot Twelve (12) in Block Nineteen (19) of the Original Town of Texhoma, Sherman County Texas, according to the duly recorded map or plat thereof on file in the office of the County Clerk of Sherman County, Texas.

Issued this the 8th day of February A.D., 1982. Given under my hand and seal of said Court, at office in Stratford, Texas, this the 8th day of February A.D., 1982.

M.W. Terrell, District Clerk  
Court, Sherman County, Texas  
(Published in The Stratford Star February 11, 18, 25, & March 4, 1982)

### Coldwater Manor 'employee of the month'

Our congratulations to Coldwater Manor Employee of the Month, Beth Bench. Beth works in the Dietary Department and has worked there most of the year she has been an employee. She is married to Tommy Bench who works in the Stratford Feedyard mill. They have been married for three years. They have two dogs and a bird named Snarf. Beth loves to ride horses and rides every chance she can. Beth has lived in Stratford all her life and attended school in Stratford.

### Statement Of Intent To Change Rates

General Telephone Company of the Southwest, in accordance with the Rules of the Public Utility Commission of Texas, hereby gives notice of the Company's intent to implement a new schedule of rates in Texas effective March 5, 1982.

The proposed changes in rates will affect all customer classes and are designed to increase the Company's intrastate revenue by 24 percent.

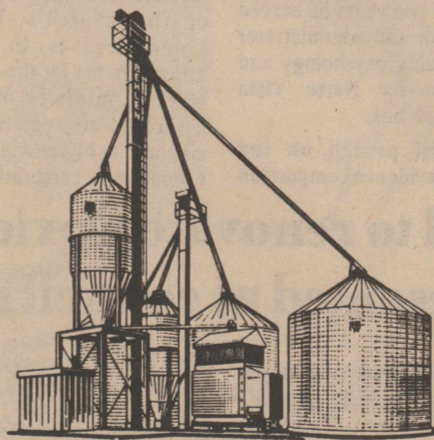
A complete set of revised rate schedules has been filed with the Public Utility Commission at Austin, Texas, and is available for public inspection in each of the Company's Business Offices in the State of Texas. A summary of the Company's rate filing has also been sent to the Mayor's Office of each affected Municipality.

## QUITTING BUSINESS SALE

7 pc Dinnette Swivel Chairs Reg. \$389.50 Sale \$289.50	7 pc Dining Room Suite Reg \$1189.00 Sale \$989.50	7 pc Dining Room Suite Reg \$866.50 Sale \$666.50
Early American Sofa Reg \$389.50 Sale \$299.50	Early American Hide A Bed Reg \$389.50 Sale \$269.50	Gold Spanish Sofa Velvet Reg \$519.50 Sale \$399.50
Floral Velvet Hide A Bed Reg \$579.50 Sale \$399.50	Plaid Sofa and Love Seat Reg \$1179.00 Sale \$979.00	Floral Velvet Hide A Bed Reg \$499.50 Sale \$395.00
Brown Vinyl Sofa Reg \$369.50 Sale \$279.50	Tweed Hid A Bed Queen Size Reg \$594.50 Sale \$474.50	Blue, Brown & Beige Velvet Sofa Reg \$599.50 Sale \$474.50
Sofa and Chair by A Brandt Reg \$619.50 Sale \$499.50	Sofa & Chair Nylon Velvet Reg \$529.50 Sale \$439.50	Green Velvet Sofa Reg \$444.00 Sale \$324.00
Floral Velvet Sofa Reg \$449.50 Sale \$349.50	Early American Hide A Bed Sofa Reg \$459.50 Sale \$349.50	Tweed Hide A Bed Sofa Reg \$399.50 Sale \$299.50
5 pc Solid Oak Bedroom Suite Reg \$1294.00 Sale \$999.50	Lamps 33 1/3 % Off	Trundle Beds with Mattresses Reg \$329.50 Sale \$249.50
Save On Platform Rockers	Carpet Roll End Remnants 1/2 Reg Price	Carpet Samples 5 for \$1.00

McMahen Furniture Co.

## Precision-matched to your needs today...expansion tomorrow.



Behlen grain systems give you all these advantages:

- Fully integrated components.
- Extra strength, weathertight storage and drying tanks.
- Fast, efficient dryers.
- Rugged, heavy-duty elevator legs.
- Hoppered holding tanks.
- Pre-engineered structural systems.

**BEHLEN.**  
Built right. Priced right. =  
Do it right. Stop by or call:



249-6616 or  
622-2412



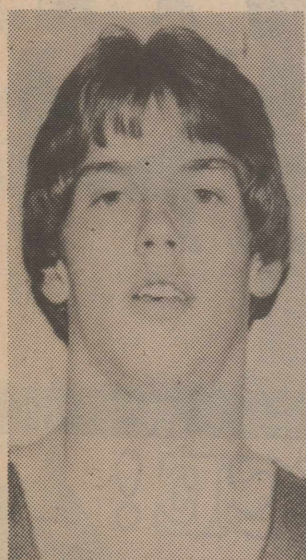
Call our new office in Dalhart to get a quote on your grain bins or building needs.  
Special 15 percent Mfg. Discounts thru Feb. 28.



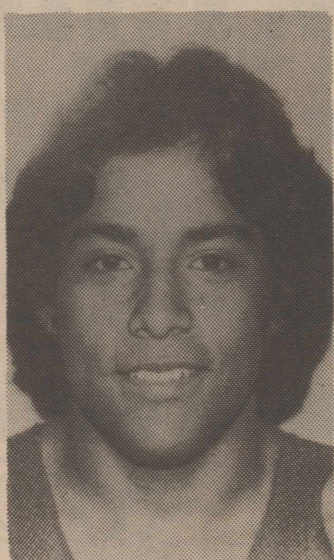
General Telephone



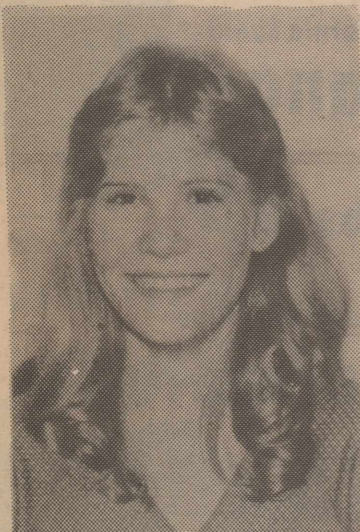
# Athlete of the Week *Elkettes win twice*



Kevin Stanley



Joel Olivas



Shari Robertson



Cherie Brown

"Player of the Week" honors went to Kevin Stanley, Joel Olivas, Cherie Brown, and Shari Robertson for their performances against White Deer and Gruver.

Stanley scored 32 points on the week including 28 against Gruver. He also had eight assists and six steals during this week's action.

Olivas, who was cited for his strong play off the bench, had two points and three rebounds and played good games in both contests.

For the Elkettes, Shari Robertson played very well and had four steals in the win over Gruver and sank two free

throws for the win over Phillips.

Cherie Brown had a big game against Gruver with eight points and six rebounds.

### Local woman admitted to society

Six Texas Tech University students have been admitted to the university chapter of Pi Omega Pi, national business education honorary society.

Among the new society members is Junior Jana Wiley, daughter of Mr. and Mrs. Raymond Wiley of Stratford.

The Elkettes took two district games this week improving their district mark to 6-7 on the year, and 3-3 during the second half of play.

The Elkettes opened the week with a tough 48-47 win over White Deer before traveling to Gruver for a one-sided 63-28 victory.

Stratford trailed 10-8 at the end of the first quarter in the White Deer game and fell behind 24-16 by the end of the first half. The Elkettes battled back to a 34-34 deadlock at the end of the third quarter before moving ahead late in the game on two free throws by Sheri Robertson.

Carol Chesher scored 18 points and had seven rebounds to lead Stratford in

both departments. Cherie Brown and ViAnn Ferguson each had eight points and six rebounds. Lane Johnson came up with six steals for the Elkettes.

The Elkettes led throughout their victory over Gruver pulling to a big 20-4 lead at the end of the first quarter and moving ahead 34-10 by the end of the half.

Stratford continued to dominate the second half of action and pulled to a 31-point lead at the end of the third quarter.

Carol Chesher and Diann Riffe each had 12 points to lead the Elkettes scoring attack. Nanette Boardman was the leading rebounder with seven. Sheri Robertson had four steals.

### Girls end 'perfect season'

The Stratford girls' eighth grade team finished with a perfect 15-0 record for the season with a 37-28 win over Gruver, Feb. 15.

Sheila Cummings was the leading scorer with 23 points, Shelley Harrington and Roxan Tillery each scored six, and Shawna Dettle had two points.

This same team was undefeated last year as the seventh grade squad with a 13-0 record. In addition the team has won the Spearman and Gruver Tournaments both in seventh and eighth grade.

## Menus

School Lunch Menus  
February 22-26

**MONDAY** - Corn dogs, brown beans, cole slaw, cornbread, butter, apple sauce, chocolate or plain milk.

**TUESDAY** - Beef stew with vegetables, crackers, cherry jello with mixed fruit, cinnamon rolls, chocolate or plain milk.

**WEDNESDAY** - Fried chicken, gravy, mashed potatoes, green beans, hot rolls, butter, peanut butter, sliced peaches, chocolate or plain milk.

**THURSDAY** - Bean with beef chalupas, lettuce with tomatoes, mixed vegetables, hot rolls, butter, pears, chocolate or plain milk.

**FRIDAY** - Hamburgers, cheese, onions, lettuce, pickle slices, tater tots, catsup, chocolate cake, chocolate or plain milk.

### Elks take two wins by 30 point margins

The Stratford Elks recorded two more district wins this week to improve their overall record to 26-3 and remain in a tie for the district championship with Sanford-Fritch.

The Elks breezed to victory in both games by 30-point margins, defeating White Deer 70-40 before the home fans, Tuesday night, and then turning back host Gruver 76-46, Friday night.

Stratford led throughout the White Deer game with Craig Sladek scoring 32 points and pulling down 12 rebounds, nine of which were off the offensive boards.

Chris Stanley was the only other Elk player in double figures. Lane Robertson, Sheri Robertson, and Danny Barrett each scored four points during the game.

The Elks hit on 55 percent of their shots and pulled down 38 rebounds with Rhett Ragsdale and Dean Mitts each contributing five. Dean Mitts had four steals and four assists, Kevin Stanley

had five assists. Chris Stanley had four assists, and Craig Sladek six blocked shots to contribute to the win.

At Gruver, things were much the same although the early going was a little tighter. Kevin Stanley scored a season high 28 points and was 12 of 15 from the field with six steals and three assists to lead the Elks.

Chris Stanley had 12 points, Dean Mitts nine points and six rebounds, Joe Bill Boren nine points, and Craig Sladek eight points and 16 rebounds.

Lane Robertson had six steals, Danny Barrett had four, and Craig Sladek had three blocked shots during the game.

If the Elks defeat Sunray Tuesday, Feb. 16, and Sanford-Fritch defeats Gruver in their next game there will be a playoff game to determine the district championship. The game will be played on an undetermined neutral court. The time of the contest had not been determined at press time.

**Effective Immediately**

**The Elk will Close at 3:00 p.m. on Saturdays Only**

and

**We are now Pleased to announce we now honor PCS Prescription Cards for recipients that carry this insurance.**

**PHARMACEUTICAL CARD SYSTEM, INC.**

**PCS**

A PRESCRIPTION PAYMENT SERVICE

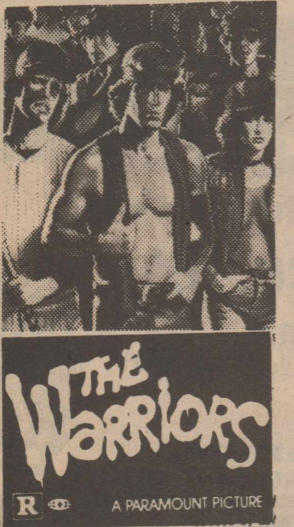
Dalhart Theatres  
Mission 1 Feb 19-25



Mission 2  
Feb 19-25

On Any  
Sunday  
II

El Rancho  
Feb 19-20-21



## Community Calendar for the month of February

SUNDAY	MONDAY	TUESDAY	WEDNESDAY	THURSDAY	FRIDAY	SATURDAY
	<b>1</b> 4 p.m. 7&8 B&G at Sunray 2 p.m. Manor Friends 7 p.m. EMT Meeting, County Barn	<b>2</b> 7 a.m. CofC Bd Mtg. Headquarters 7:30 p.m. OES, M. Hall 7:30 p.m. St. Josephs Altar Society	<b>3</b>	<b>4</b>	<b>5</b> 2 p.m. Pros. Study Club 4 p.m. A&B B&G at Panhandle	<b>6</b>
<b>7</b>	<b>8</b> 4 p.m. Stinnett 7&8 B&G here	<b>9</b> 4 p.m. White Deer A&B B&G here 2 p.m. Kerrick EH Club 2 p.m. Pros. C. Manor, Valentine Party 2:30 Historical Committee Commissioners Courtroom	<b>10</b>	<b>11</b> Gruver 7th Grade Tourney	<b>12</b> Gruver 7th Grade Tourney 4 p.m. A&B B&G at Gruver	<b>13</b> Gruver 7th Grade Tourney OES School, Amarillo 8 p.m. Square Dance, County Barn
<b>14</b>	<b>15</b> 4 p.m. 7&8 B&G at Gruver	<b>16</b> 8 a.m. CofC Women Bd. Meeting 4 p.m. Sunray A&B B&G here 7:30 p.m. OES, M. Hall 8 p.m. Malcolm's Round Dancers, Co. Barn	<b>17</b>	<b>18</b> 7 p.m. Singles Org. Mtg. E. Almquist's, 1218 Chestnut 8 p.m. Masonic Lodge #874	<b>19</b>	<b>20</b>
<b>21</b>	<b>22</b>	<b>23</b> 7:30 p.m. Fire Dept. Aux. Meeting Noon Luncheon, Women's CofC, Methodist Hall 8 p.m. Malcolm's Round Dancers, County Barn	<b>24</b>	<b>25</b> Noon - SCOT, Co. Barn	<b>26</b>	<b>27</b>
<b>28</b>						

<b>C &amp; C TEXACO PRODUCTS</b> Darrell Cotney	<b>CONSUMERS</b> 396-2261	<b>FIRST STATE BANK</b> of Stratford	<b>KING EQUIPMENT CO</b> Your IHC Dealer
<b>CIMARRON FEEDERS LTD</b> (405) 543-6383 Nights (405) 543-6375	<b>FARM BUREAU INSURANCE</b> Hwy. 54 East	<b>WALTER LASLEY &amp; SONS</b> TLA Feeding	<b>NORTH PLAINS SAVING ASSOCIATION</b> Your Money Store
<b>CUT RATE GROCERY</b>	<b>Church of Christ</b> Alfred White 3rd and Chestnut	<b>SHERMAN IMPLEMENT CO</b> Your John Deere Dealer	<b>STRATFORD GRAIN CO</b> 396-5541
<b>Assembly of God</b> Rev. Jesse Ashley Fulton and Purnell	<b>First Baptist</b> Rev. Geneva Goad 3rd and Fulton	<b>First Christian</b> Rev. David Harker Main and 5th	<b>Independent Baptist</b> Rev. James D. Jones South Main
		<b>St. Joseph's Catholic</b> Fr. Donald P. Rusch 519 S. Pearl	<b>United Methodist</b> Rev. Kenneth Metzger Main and 6th

David A. Harker, Minister  
First Christian Church

"Let's not give up the habit of meeting together, as some are doing. Instead, let us encourage one another all the more, since you see that the Day of the Lord is coming nearer. Hebrew 10:25 TEV

Sometimes when things are going well we are tempted to neglect the habit of meeting together. We are self-satisfied, and we feel no urgent need. When things are not so good we may stay home and pout.

In good times and bad God loves us and waits to bless us. Happy are those who assemble together in the name of Christ to receive their Father's blessing.



Shop your home owned & operated Cut Rate Family Center for

# ★★ WASHINGTON'S BIRTHDAY ★★ PRICE CHOPPERS

Shop Wednesday and SATURDAY for Double Value on Manufacturers Cents Off Coupons

## MEAT BUYS



USDA Choice Boneless  
**Chuck Steak**

lb \$ **1.89**

Fresh Daily 73% Lean  
**Ground Beef**

lb \$ **1.19**

Dak Sliced Cooked  
**Ham**

4 oz **99¢**



Wilson's Vacuum Pak Sliced  
**Bacon**

lb \$ **1.49**

USDA Choice Tenderized  
**Cube Steak**

lb \$ **2.09**

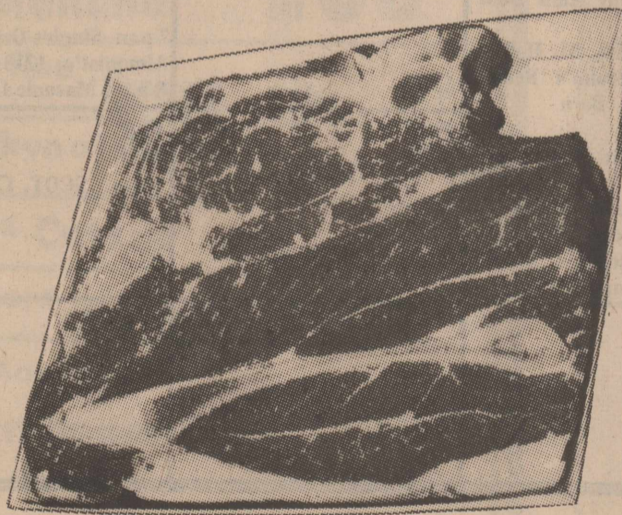


Kraft Harvest Moon  
**Cheese Singles**

12 oz \$ **1.39**

USDA Choice Boneless  
**Chuck Roast**

lb \$ **1.79**



Pepperidge Farms Assorted  
**"Deli" Pastries**

each \$ **2.19**

Lillshire Farms  
**Cheddarwurst**

lb \$ **2.19**

Delicious Broasted Chicken To Go USDA Choice Freezer  
Beef Cut & Wrapped Special Cut Steaks & Roasts - Give Us A Call

## DELICIOUS PRODUCE!

Mexico Fresh  
**Pineapple** each **79¢**

California Sunkist  
**Oranges**

3 lbs **99¢**

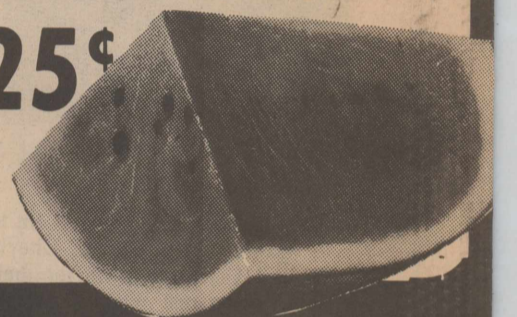
California Fresh Green  
**Onions**  
3 bunches **69¢**

Mexico Vine Ripe  
**Watermelons**

lb **25¢**



California Green Fuerte  
**Avocados**  
5 for \$ **1**



## GIANT FROZEN FOOD SAVINGS



Stouffer's Frozen 12 oz pkg  
**Spinach Soufle**  
**99¢**

Minute Maid Frozen Pink 6 oz can  
**Grapefruit Juice**  
**2/\$1**

**Cool Whip** **76¢**  
8 oz ctn



Wolf Brand Plain 19 oz  
**Chili** **99¢**

(with \$5 purchase or over excl. cigs.)

Wagner's 54 oz btl  
**Orange & Grape  
Drink** **99¢**



Bush's Showboat  
14 1/2 oz can

**Pork & Beans**  
**3/89¢**

**MULTI-UNIT  
SALE**



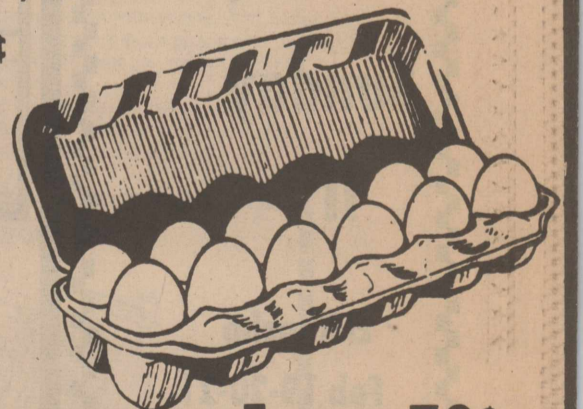
**bounce**  
40 ct pkg  
ONLY  
**2/\$3.99**



Star Kist (Green Label) 6 1/2 oz can  
Chunk Style  
**Tuna** **89¢**

Kounty Kist 303 can  
**Sweet Peas**

**3/\$1**



Shurfresh dozen Grade A Medium **Eggs** **79¢**

WITH THIS COUPON



Maxwell House Instant  
**Coffee** **\$2.99**  
6 oz

ONE COUPON PER PURCHASE  
COUPON GOOD THRU FEB 24, 1982

Cut Rate Grocery

WITH THIS COUPON



**Bisquick**  
40 oz box **\$1.39**

ONE COUPON PER PURCHASE  
COUPON GOOD THRU FEB 24, 1982

Cut Rate Grocery

WITH THIS COUPON

32 oz returnable btl.  
**Coca Cola**  
6 btl. ctn. **\$1.69**



ONE COUPON PER PURCHASE  
COUPON GOOD THRU FEB 24, 1982

Cut Rate Grocery



We Reserve  
the Right  
to Limit

Specials Good

Feb. 18-24, 1982

A  
Good Place  
to Meet Your  
**NEIGHBORS  
&  
FRIENDS**

# Cut Rate

GROCERY AND FAMILY CENTER

LOW,  
LOW  
EVERYDAY  
PRICES

Shop Here & Save  
with Cut Rate's  
Everyday  
Low  
Stampless  
Prices  
Why Pay More?

Stratford, Texas YOUR PATRONAGE APPRECIATED OPEN SEVEN DAYS A WEEK Sunray, Texas



Kraft 2 lb jar  
**Strawberry Jam**

\$1.99



Kraft Grated 3 oz can  
**Romano Cheese**

89¢



Gladiola paper bag 25 lb  
**Flour**

\$4.89



8 ct. pkg  
Pillsbury Crescent  
**Dinner Rolls**

2/\$1.79

Shurfresh 1/2 gal  
**Buttermilk**

99¢



Shurfresh pint  
**Half & Half  
Cream**

49¢



Sunshine 15 oz pkg  
**Hydrox Cookies**

\$1.09



Comstock 21 oz can  
**Cherry Pie Filling**

\$1.49



Schillings 4 oz btl  
**Vanilla**

\$2.99

Kraft 8 oz btl  
**Italian Dressing**

79¢



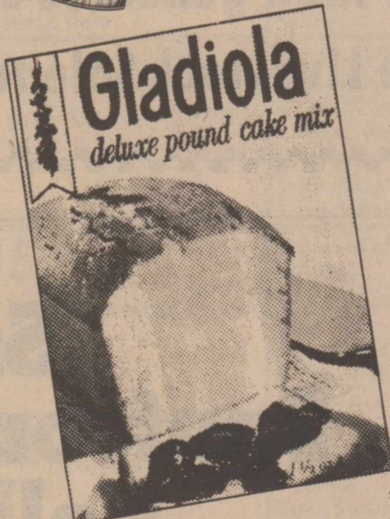
1 lb can  
Maryland Club  
regular-drip-ec  
**Coffee**

\$2.39



Bladiola Pound  
17 1/2 oz box  
**Cake Mix**

95¢

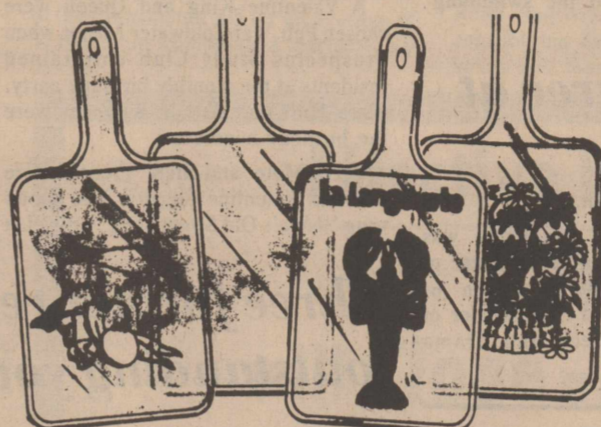


KRAFT  
**MIRACLE  
WHIP**  
32-OZ JAR

**99¢**

LIMIT 1 WITH \*10 PURCHASE  
OR MORE  
excl. cig.s

## BEN FRANKLIN®



**Paddle Shape Cutting Boards**

boards in a choice of kitchen patterns. 14x7-in.

Wood reg \$3.98

\$3.19

Plastic reg \$4.99

\$3.99



GE Food Processor. Reversible disc and stainless steel knife. Dual controls; safety interlock. \*Mail-in GE Rebate Coupon for \$7.00 good thru 12/31/81.

reg \$59.95

\$49.95

**Step Stools**

reg \$22.98 \$18.98



**Arthritis Pain Formula**

reg \$4.51 100's \$3.29

**Dristan Tablets**

reg \$2.24's \$2.09



Long Lasting Dristan  
**Nasal Mist**

reg \$2.83 1/2 oz

\$1.99



Old Spice Stick  
**Deodorant**

reg \$2.27 2 1/2 oz

\$1.75



Old Spice  
**After Shave**

reg \$3.99 4 1/4 oz

\$2.99

**19** Thursday, Feb. 25  
KING SIZE  
WALLET  
CREATIVE  
COLOR  
PORTRAITS  
FOR ONLY  
**99¢**

Kodak paper. For a Good Look at the Times of Your Life.



Extra Charge for GROUPS

WE USE KODAK PAPER

Shugart's inc.  
**COLOR  
PHOTOS**

Cut Rate Grocery Hwy. 54

ASK About Our  
**FREE**  
8 x 10  
OFFER

WITH THIS COUPON

1/2 gal round ctn Broden's  
**Ice Cream** \$1.39

ONE COUPON PER PURCHASE  
COUPON GOOD THRU FEB 24, 1982

Cut Rate Grocery

WITH THIS COUPON

Loaf Tender Crust  
**Bread** 49¢ 1 1/2 lb

Sandwich-Ranch-Big Bag

ONE COUPON PER PURCHASE  
COUPON GOOD THRU FEB 24, 1982

Cut Rate Grocery

WITH THIS COUPON

Shurfresh  
**Milk** \$1.89 1 Gal.

ONE COUPON PER PURCHASE  
COUPON GOOD THRU FEB 24, 1982

Cut Rate Grocery



## Society News

### Eastern Star members attend Amarillo district meeting

Area Eastern Stars gathered in Amarillo Friday and Saturday for their annual Dist. 2, Section 2 School of Instruction. It was held at Villa Inn. Registration for the event totaled 246.

"The Centennial of Loving Hearts" School was honored by the attendance of Mrs. Elise Hammack, Worthy Grand Matron, of Ft. Worth and Oliver B. Chamberlin, Worthy Grand Patron.

District Deputy Grand Matron Marjorie Errington and Deputy Grand Matron Edwina Cage, both of Amarillo, were in charge of the school.

Attending from Stratford Chapter 960 were Robbie Yates, PGM; Jess and Shirley Freer, Victor and Lillie

McAdams, Mildred Ottinger and Marylou McDaniel.

Jess Freer was Warder for the afternoon session, Mildred was Martha for afternoon and evening sessions, Lillie was Treasurer for morning and evening sessions.

Marylou sang two selections at the "Hearts on Parade" banquet. She was accompanied by Barbara Traylor of Dumas.

Former resident Tommie Garoutte served as Worthy Matron for the Fraternal Visit.

Eddie Freer enjoyed the swimming pool at the motel.



**VALENTINE KING AND QUEEN:** Chosen as Valentine royalty last week at Coldwater Manor were Cecil Mote and Bert French. Prospectus Study brought homemade ice cream and angel food cake for the monthly birthday party. February birthday people were Clara Huff and Arthur Bingham.

A Valentine King and Queen were chosen Feb. 9 at Coldwater Manor when Prospectus Study Club entertained residents at the monthly birthday party. Clara Huff and Arthur Bingham were the birthday honorees.

Cecil Mote and Bert French were crowned Valentine Royalty. The group sang "Love's Old Sweet Song" and "Let

Me Call You Sweetheart." Valentines were delivered to each of the residents. Red punch, homemade ice cream and angel food cake were served by Marylou McDaniel, Social Chairman, and Mary Peach Smith, Opal Reed, Oline Caraway, Joyce Hart, Margaret Reed, Betty Brown and Ethel Price.

### Local woman receives degree at NTSU commencement

Some 890 students were awarded degrees Dec. 19 at the North Texas State University winter commencement ceremonies.

In addition to 613 bachelor's degrees, the university granted 231 master's and 46 doctorate degrees, during ceremonies

in the NTSU Coliseum.

Among the NTSU graduates was Teresa Blynn Bryson, the daughter of Mr. and Mrs. B.A. Donelson of Stratford. She received the bachelor of arts degree in speech and drama (radio-television-film).

### Historical group interviews guest

Members of the Historical Commission met Tuesday, February 9, 1982 at the courthouse to interview their guest, Mrs. Frieda Dortch. Present for the interview were Selma Pendleton, Kenneth Borth, Millie Hacker, and Kay Williams. The meeting adjourned after an enjoyable interview.

The Baltimore Oriole was named for Lord Baltimore, who governed the colony of Maryland, where the bird was first discovered. It is orange and black, the colors on Lord Baltimore's coat of arms.

### Three former residents named 'outstanding young women'

Three former residents of Stratford have been named to the 1981 edition of "Outstanding Young Women of America." They are Sheri Waters, Canyon; Jana Pronger, Borger; and Sue Etta Haile, Monahans.

This program is designed to encourage women between the ages of 21 and 36, who distinguish themselves in their homes, their professions, and their communities.

The women selected are among 23,000 fellow Outstanding Young Women in America, who will be presented with the annual volumn of this publication.

### 'Thinking Day' to be celebrated by girl scouts

All former leaders of Girl Scouts and friends of Girl Scouting are invited to a "Thinking Day" celebration, Monday, Feb. 22 at 4 p.m. in the Fellowship Hall of First United Methodist Church.

The Girl Scouts will honor their guests with refreshments and a "Thank You" for their support in the past and their continued support.

"Thinking Day" is also a time of thinking about our sister scouts and guides with contributions for the World Friendship Fund.

## Tips & Topics

Susie Fhmann, CEA

### BE A SMART SHOPPER

Is inflation hitting hard at your pocketbook? Do you feel that behind every "exception" sale, there is a gimmick or the product is a lemon?

Don't despair! There is something you can do to sharpen your consumer shopping skills.

The Sherman County Family Living Committee and the Texas Agricultural Extension Service is sponsoring a six-part mailout series entitled "Be A Smart Shopper".

"Be A Smart Shopper" series will assist individuals to increase their awareness about promotions, false

advertising, sales, consumer complaints, and protections against gyps and frauds.

The series will run between March 10 and April 14, 1982. The series is free of charge and interested persons can enroll for the series by contacting the Extension office at 396-2122.

Remember, you do have control on the purchasing power of your dollars, so...Don't delay, sign up now!

Educational programs conducted by the Texas Agricultural Extension Service serve people of all ages regardless of socio-economic level, race, color, sex, religion, or national origin.

## Coldwater Manor

By Nola Brunton

We had a nice birthday party. The ladies from the Prospectus Study Club did a wonderful job. They sang "Happy Birthday" to Clara Huff and Arthur Bingham and we were served homemade ice cream, cake and punch. Everyone received lots of valentines. They also gave us a donation to Bingo. A Valentine King and Queen were selected. It was fun to see Bert French and Cecil Mote in their fancy crowns.

Thanks to Betty Brown and Kay Williams for the craft supplies. Crafts needs buttons. If you have odd ones you don't need, we can use them.

The Tip Top Twirlers Square Dance Club entertained us Saturday night with Ron Woods, Amarillo, as caller. We always enjoy having them. They are such a friendly bunch. Keep coming back.

**FIRST BAPTIST CHURCH**  
Stratford, Texas  
**CHANNEL 3**  
February 17-23  
**WEDNESDAY, February 17**  
7 p.m. Spring Street, USA  
8 p.m. Castle Hills Baptist Church, San Antonio  
**THURSDAY, February 18**  
7 p.m. First Baptist Church, Amarillo  
8 p.m. First Baptist Church, Houston  
**FRIDAY, February 19**  
7 p.m. Broadmoor Baptist Church, Shreveport, La.  
8 p.m. Day of Discovery  
**SATURDAY, February 20**  
No Programming  
**SUNDAY, February 21**  
3 p.m. First Baptist Church, Stratford, (Audio Only)  
3:30 p.m. Day of Discovery  
4 p.m. First Baptist Church, Amarillo  
5 p.m. Singing Jubilee  
**MONDAY, February 22**  
7 p.m. Immanuel Baptist Church, Little Rock, Ark.  
8 p.m. Singing Jubilee  
**TUESDAY, February 23**  
7 p.m. First Southern Baptist Church, Del City, Okla.  
8 p.m. Castle Hills First Baptist Church, San Antonio

**DALHART PEST CONTROL** 922 Olive Dalhart TX 79022 (806) 396-2289

Now is the time to have your trees sprayed with dormant oil

Call us for free estimate or free termite inspection. We do guaranteed termite work

References furnished member Texas Pest Control Association and Dalhart Chamber of Commerce

Call us collect 249-2289

PRICES EFFECTIVE FEB. 18-20, 1982 WHILE SUPPLIES LAST

**ALLSUP'S ICE CREAM** ASSORTED FLAVORS \$1.49 (1/2 GAL. RD. CTN.)

Sunbeam Cookies 5/\$1

If it's Borden, it's got to be good

1857 BORDEN 1982

BORDEN'S HI-PRO MILK 1/2 GAL. CTN. \$1.09

BORDEN'S 6 CT. PKG. POPSICLES 89¢

BORDEN'S 6 CT. PKG. FUDGESICLES 89¢

**ALLSUP'S POPCORN** FRESH POPPED, BUTTERED 29¢ (LARGE BAG)

Kraft Grape 32 oz jar \$1

<b>COOKED FOOD SPECIAL</b>	
Steak Sandwich	\$1.49
Receive Small Coke	FREE
Hot Dogs	2/60¢
Chili Dogs	2/70¢
Shurfine CRACKERS 1 LB. BOX	89¢
Shurfine Sugar 5 lbs	89¢
Chicken of the Sea Tuna	2/\$1.60
Heinz Catsup 32 oz	\$1.09
Folgers Coffee 1 lb can	\$2.00
Del Monte Corn-Beans-Peas	3/\$1

**The Stratford Elk Band** would like to say **THANK YOU** to Moore Implement Co, First State Bank Stratford Grain Co. V.O. Lasley

For their generous donations of hogs from the Livestock Sale to our organization

**Sniff gas? Snuff out the problem. Call 396-5681**

You know it the second you smell it. That special aromatic chemical added to natural gas to give it a unique smell.

When you smell it, even faintly, check your pilot lights. Look for a partially open burner valve. If the odor is strong, open a window, turn off open flames and leave your home immediately. Don't flip any electrical switches or use your phone. And never strike a match. Use a neighbor's phone or a public phone to call us. We'll come out day or night to locate the problem.

So when you sniff trouble, give us a call. We'll snuff out the problem. Help us keep natural gas one of the safest energies available.

**SOUTHERN UNION GAS COMPANY**





# Kerrick News

by Marylou McDaniel

It's Mexican Supper time again at Kerrick! The Ralph Hampton family will host the Thursday, Feb. 18 supper. Everyone is to bring a Mexican dish or something good to go with it. An added treat is homemade ice cream, the makers have already been designated.

Come at 6:30 p.m. and have your blood pressure taken. (Sure can't have it taken after you eat!) Bring your checkbook for a donation to the Heart Fund, also.

An entertaining film will be shown.

If the boys' basketball playoffs should happen to be held Thursday night, the Mexican supper will be rescheduled for Friday night, Feb. 19. Otherwise, the date for the supper remains Thursday, Feb. 18.

Kerrick EH met Tuesday, Feb. 9 at the home of Franny Taylor. Susie Ehmann, agent, gave the program, "Tricks with T-Shirts". President Lynn Wells conducted the business meeting. The club voted to buy two twin sized blankets for "The Bunkhouse". Pat Boren said that good used clothing from infant up was needed for the Welfare Department in Dalhart. This has nothing to do with the Bunkhouse, which could use outdoor play equipment.

Members are reminded to gather items for the Council Garage Sale. County-wide luncheon is slated for Feb. 26.

Present were Lynn Wells, Jo June McDaniel, Dayle Harris, Joyce Irbeck, Minnie Hampton, Annette Hampton, Pat Boren, Marylou McDaniel, Franny Taylor.

Remember--CPR Course, Feb. 25-26 at Community Center. Students of 7th and 12th grades will receive the course at school, but others of the community can take it at Kerrick.

Word has been received that Ethel Murdock will have surgery in Austin at St. David's Hospital on Feb. 24.

Kayo McDaniel was in Pampa over the weekend to help Whit and Diane McDaniel move into a new house. Monday he and Hank Rogers attended the REA Luncheon in Dalhart.

Jo June McDaniel and Barbara Avent were in Midland where Barbara visited with her daughter and family, Bevilyn and Jimmy Wright and Diana. Jo June visited with an aunt.

Hank and Mabel Rogers attended the National Association of Conservation Districts in Phoenix. They were gone Feb. 6-13. Accompanying them was Vicki Thompson who spent the time with her parents, Mr. and Mrs. Don Harper and sister, Donna at Payson, Arizona. The Harpers, Vicki and Rogerses enjoyed a luncheon at the Hyatt high revolving restaurant. They toured Indian ruins, collected rocks. Mabel took two interesting bus tours while Hank was in convention.

Ian stayed with Uncle David who had Joshua visiting for ten days. Joshua celebrated his fifth birthday while here.

On Feb. 1 the Rogerses attended funeral services at Fritch for his cousin, Lorena McConnell.

## SHS to host 1-AAA district basketball tournament

Stratford High School will host the District 1-AAA district basketball tournament, Feb. 18-19, it was announced this week by Athletic Director Jack Needham.

Teams participating in 1-AAA district competition are: Perryton, Dalhart, Spearman, River Road, and Boys Ranch.

The girls' bracket for the tournament will be as follows:

No. 2 vs. No. 3, 3 p.m., Feb. 18.  
No. 1 vs. No. 4, 6 p.m., Feb. 18.  
Winner game 1 vs. winner game 2, 6

p.m. Feb. 19, (for the championship).

The following is the boys' bracket for the tournament:

No. 4 vs. No. 5, 10:30 a.m., Feb. 18.  
No. 1 receives a bye.  
No. 2 vs. No. 3, 4:30 p.m., Feb. 18.  
No. 4-5 winner vs. No. 1, 7:30 p.m., Feb. 18.

No. 2-3 winner vs. No. 4, 5-1 winner, 8 p.m., Feb. 19, (for the championship).

Tickets will be \$2 for adults and \$1 for students at the door. There will be no advance ticket sales.

## Three named to PSU Dean's list

Martha M. Goad, Nell M. Ingham, and Pamela Ann Tollison of Stratford were named to the Dean's Honor Roll for the fall semester at Panhandle State University in Goodwell, Oklahoma. They were among the 140 students listed on the Dean's Honor Roll.

To be named to the Dean's Honor Roll, a student must have completed 12 credit hours during the semester, have no incomplete grades, no failing grades,

and a grade point average of 3.30 or better based on a 4.0 scale.

## Seventh grade basketball

The seventh grade girls' team dropped all three games last week by scores of 22-12 vs. Gruver, 20-12 vs. Fritch, and 15-9 vs. Gruver.

Leading scorers were: Ronna Jo Engelbrecht 6, and Shelly Pickens four, vs. Gruver; Mayle Haskell four, Shelly Pickens and Holly McKinney three vs. Fritch; and Holly McKinney four vs. Gruver.

The first American to enter the Olympic Pentathlon was George Patton, later General Patton.

**At General Telephone... We're Not Simply Talking About Service Improvements We're Making Them In Stratford**

At General Telephone, better service isn't just a goal, it's a solid commitment. General Telephone spent over 354 million dollars in 1981 on capital expenditure projects (i.e. new electronic switches, expanded cable projects, modernization), and GTE will spend over 410 million dollars in 1982 to provide you the best telecommunications available.

For Stratford this investment in service improvement is working as shown below. General Telephone is working hard to continually provide you with the best of service.

The Texas Public Utilities Commission (PUC) has established certain standards in public hearings, and our service results are listed against those standards.

	Texas PUC Standards	January 1981	Most Current Figure
% customer calls answered promptly business office/repair service	90	95.3	97.7
% service order commitments met as promised	90	100.0	97.6
* % local calls completed on 1st try	98	98.5	99.3
* % direct dialed long distance calls completed on 1st try	95	97.6	96.7
% out-of-service trouble cleared within 8 working hours	90	100.0	100.0

\*these results based on electronic testing



## 1982 Livestock Sale results

Total sales for the 1982 Junior Livestock Show and Sale reached the \$57,000 mark. The following list includes those who purchased animals and the young people who sold them.

Purchasers: First State Bank, Stratford Grain, King Equipment, North Plains Savings & Loan, Consumers, Empire Construction, Lasley & Sons, Cut Rate Grocery, W.E. Brannan & Sons, C&D Body Shop, Barber Oil, Texhoma Wheat Growers, Sherman Implement, Joe Everett, Panhandle Commodity Corp. V.O. Lasley; Borth, Dyess, & McWilliams.

Moore Implement, Stratford Feed-yards, Cimarron Feeders, Glenn White, L.B. Blake, Randy Williams, Coronado Feeders, C&C Texaco, First National of Texhoma, Brawley Cattle, A&I Parts, Jeff Hart, Jess Willard, Cone Donelson, Stratford Equity, Worley Mills, McBryde & McBryde, Terry Childers, B.A. Donelson, Dale Hamilton, Pat and Jerry Johnson, Lorel Haile, Mike Vincent, 3-D Cattle Co., J.L. Stowers, Judd Cattle Co., Blake & Sons, O.H. Quin, Lynn Hudson, Bill Sladek, Butler Bros., Shelley Seed, E.L. Bass, Amarillo Coin & Bullion, Keener Oil, Ernest Goule, Arthur Judd, Raymond Wiley, Genoa Goad, Frank Judd, Hoy Harrison, Farr Better Feeds, W.N. Jackson Estate, Scarmardo Livestock.

Those showing steers were: Lavert Avent, Paul White, Mark Harland, Seth Sawyer, Marty Butler, Lisa White, Sheri Bullock, Doug Bullock, Robbie Bullock, Jimmy Gillenwaters, and David White.

Lambs were shown by Lisa Harris, Shane Harland, Becky Goad, Lori Wiley, Bethann Jones, Parker Johnson, C.B. Ingham, Christy Pittman, Susan Cloyd, Christina Luther, Pat Oakley, Darren Pittman, Kristi Harrison, Lisa Wiley, Doug Pittman, Lane Johnson, Sheri

Goad, Steve O'Brien, Leah Oakley, Nicol Harland, Lisa O'Brien, Brad McBryde, JoDawn Shields, Larry Turner, Gared McBryde, Lonnie Asher, Charisse Harland, and Sami Oakley.

Those showing swine were Malcolm Waters, Chris Waters, Chris Stanley, Zenith Burton, Floyd Keener, Melanie Hembree, Brent Lane, Galen Knight, Kent Harrington, Wes Allison, Duane Mungia, Sherwin Burton, Christy Comer, Pete White, James Montoya, Tim Harland, Tony Goodnature, Justin Lane, Jamie Meyer, Millie Kautz, Steve Dyess, Daron Knight, James Kirkham, Collin McKinney, Gara Garoutte.

Richard Connel, Eddie Williams, Andrew Martinez, Craig Sladek, Shelly Summerour, Lane Robertson, Richard Cloyd, David Meyer, Chris Baker, Gregg Hudson, Boyd Dyess, Leigh Bass, Kevin Cotney, Clay Bearden, Ron Oquin, Vince Ramos, Jerry Vaughn, Rusty Harbour, Mark Hawkins, Leonard Ramos, Jackie Shelley, Lynette Artho, Tammy Haire, Cody West.

Mike Hudson, Paul Artho, Lupe Martinez, David Rhea, Jim Jones, Neff Dettle, Eric Artho, Todd Drake, Richard Ragsdale, Dean Mitts, Russell Brooks, Bryan Wright, Tod Thurman, Jason Weese, Amy Vincent, Travis Williams, Audra Meyer, Felix Saenz, Doug Mires, Cary Smith, Matt Powers, Rex Artho, Sami Gomez, Roger West, Rhett Ragsdale, Steven Pickens, Bobby Chesher, Paul Lundberg, Brett Cummings, Kevin Long, Mike Montoya, Quinten Bennett, Jeff Meyer, Bill Thurman, Rusty Hembree, Karen Lundberg, Tonya Dyess, Steve Albert, Chuck Williams, Emilio Ramos, Doug Pickens, Brent Spurlock, Robert Dill, Cody Haire, Leah Brown, Guy Ramos, Mike Powers, Shawn Meidinger, and David Naugle.

## SPS unloads first coal

The first trainload of coal at Southwestern Public Service Company's new electrical generating station near Muleshoe, Texas, was unloaded at the plant today.

The new power plant is named Talk Station, in tribute to Roy Talk, recently retired chairman of the SPS board of directors and a current board member. Mr. Talk threw the switch to dump the first car of coal.

Ben Green, plant manager, said the 110-car unit train delivered approximately 11,000 tons of coal to the Talk Station site.

With the arrival of additional shipments, about 200,000 tons of coal will be stored at the plant prior to

start-up of the first generating unit in June of this year. The 200,000 tons is enough fuel to run the 561,000-kilowatt generator for approximately 60 days during the start-up phase while operating at considerably reduced loads.

Green said the coal-handling system at Talk Station represents a departure from the system used at SPS's Harrington Station in Amarillo. During the unloading process the coal cars are turned upside down to dump the coal. The trains serving Harrington Station utilize coal cars that dump the coal through doors on the underside of the cars. Green said the coal cars used at Talk will be lighter weight and capable of carrying more coal than the cars used at Harrington.

## SPS requests rate increase of 12.7 percent locally

Southwestern Public Service Co. today announced it will request a 12.7 percent increase in the retail price of electricity in Texas, ranging from \$5 to \$10 per month for the typical residential customer.

The proposed increases include \$19.2 million in rates within Texas city jurisdictions and \$22.3 million in rural area rates which are set by the Texas Public Utility Commission outside city jurisdictions.

Bert Ballengee, the electric utility's president, said "The increase is imperative later this calendar year because of the need to change to coal as the fuel source in the Company's power plants, because of high money costs, and because of inflation."

Ballengee pointed out that "although inflation has totaled 23 percent since the last electricity rate adjustment two years ago, SPS is able to hold its request to half that amount as a rate increase."

A significant portion of the new revenue request will help pay for the first unit of the Company's second coal-fired power plant, Talk Station, which is scheduled to go into service early this summer.

"We must change our system from gas to coal because coal will save our customers money," Ballengee said.

Ballengee said that "even with a rate increase, the typical Southwestern Public Service residential customer in Texas will spend about \$4 to \$5 per month less than he would have, if the Company had not made the decision to move to coal and away from natural gas as boiler fuel in new power plants. For

all of the Company's customers, this amounts to a savings of about \$106 million a year when the new Talk Station is fully operating."

SPS managers in the 68 Texas cities and towns served by the utility and affected by the rate increase are now providing city officials with details of the Company's need for a rate increase.

Ballengee explained that extensive analysis of all revenue data and customer electrical demands indicates a need to file for the increase with the Texas city commissions and the Public Utility Commission. When the new rate is approved, a \$41.5 million annual revenue deficiency will be corrected.

The cost of electric service represents about two percent of the average family residential budget--the same as it was five years ago, Ballengee said. He added that the unit cost of electricity is now the same as it was in 1927, when most families used 500 units of energy each year. Now, most families use about 7,000 units a year, Ballengee said.

"We don't expect our customers to like the prospects of higher electric bills--but we believe they will understand the importance of keeping the increases to a minimum while maintaining a reliable electric system," Ballengee said.

Southwestern Public Service primarily provides electric utility service to a population of more than 1 million in a 45,000-square-mile area of the Panhandle and south plains of Texas, eastern and southeastern New Mexico, the Oklahoma Panhandle and southwestern Kansas.

## BE SOMEBODY!

Join the 3 million families across the nation who are members of Farm Bureau. In Texas, Farm Bureau Week will be observed Feb. 15-20 with special emphasis on enrolling new members.

- Speak with an organized voice.** Only the strongly organized can be effective with local, state and national governments. Alone, you are weak. Allied with 276,000 other Texas families you can influence decisions in Austin and Washington, D.C.
- Improve net farm income.** Become active in one of the 10 organized commodity divisions to help solve production, marketing and regulatory problems.
- Help preserve our system of government.** Farm Bureau offers citizenship training for our youth and educational programs for young farmers and ranchers.
- Save through economic services.** Members enjoy numerous benefits that are available only through group association--including insurance, tires, batteries and tillage tools.



**Join Farm Bureau today! Sherman County Farm Bureau**

# did you know?

Reporting a power outage helps SPS personnel restore service more quickly. During major power interruptions, plant operators receive a signal telling them that a problem exists. Calls from customers help these operators pinpoint the exact location of the outage, allowing service crews to make repairs quickly, with less inconvenience to customers.



Billy Mason, Area Dispatcher, Roswell.

The most energy-efficient portable appliances are those that can be used for more than one thing. For instance, an electric fry pan may be used to fry eggs and meats, make a cake, cook roasts or prepare one-dish meals. When buying portable appliances, look for good warranty coverage and local availability of replacement parts and service. And always read the use and care book provided by the manufacturer BEFORE using the appliance. Baking a cake in an electric skillet is twice as economical as in the oven.

Christye Waters, Home Service Advisor, Lubbock.



It takes nearly one pound of coal to produce one kilowatt-hour of electricity. Southwestern Public Service has long-term coal contracts with mines in Wyoming to provide the large supply of coal needed to generate electricity for its customers. Even though it is transported about 1,000 miles, in 110-car trains, coal is still the least expensive fuel.


Jerry Hermesmyer, Plant Manager, Harrington Station.

Knowing what electricity is worth is worth knowing. For answers to your questions, call or write your SPS manager.



**SOUTHWESTERN PUBLIC SERVICE COMPANY**

930.1



**New Shipment**

**Bloat Guard Blocks \$468<sup>00</sup> ton**

**New Sweettix Blocks \$443<sup>00</sup> ton with Rumensin**  
(For higher gains with what ever you are grazing.)

**Cotton Seed Meal \$225<sup>00</sup> ton**

**Cotton Seed Cake \$230<sup>00</sup> ton**


**For Better Branding**

**Let us order you an Electric Branding Iron \$40<sup>00</sup> & up**

**Tramison Injectable \$44<sup>00</sup> Solution 500 ml**

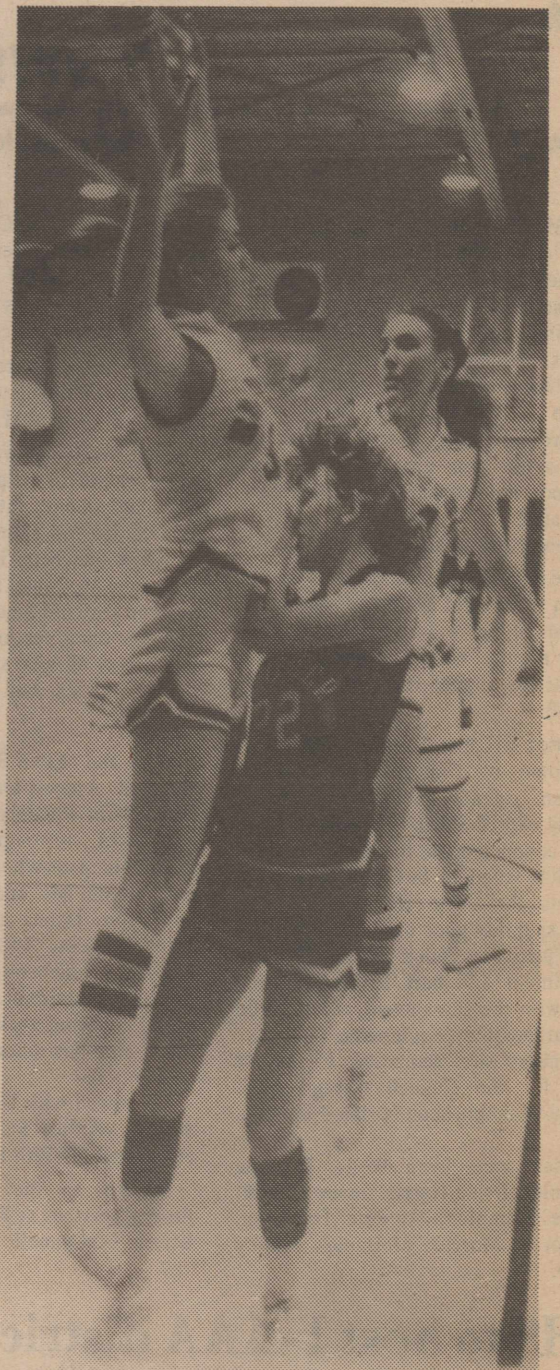
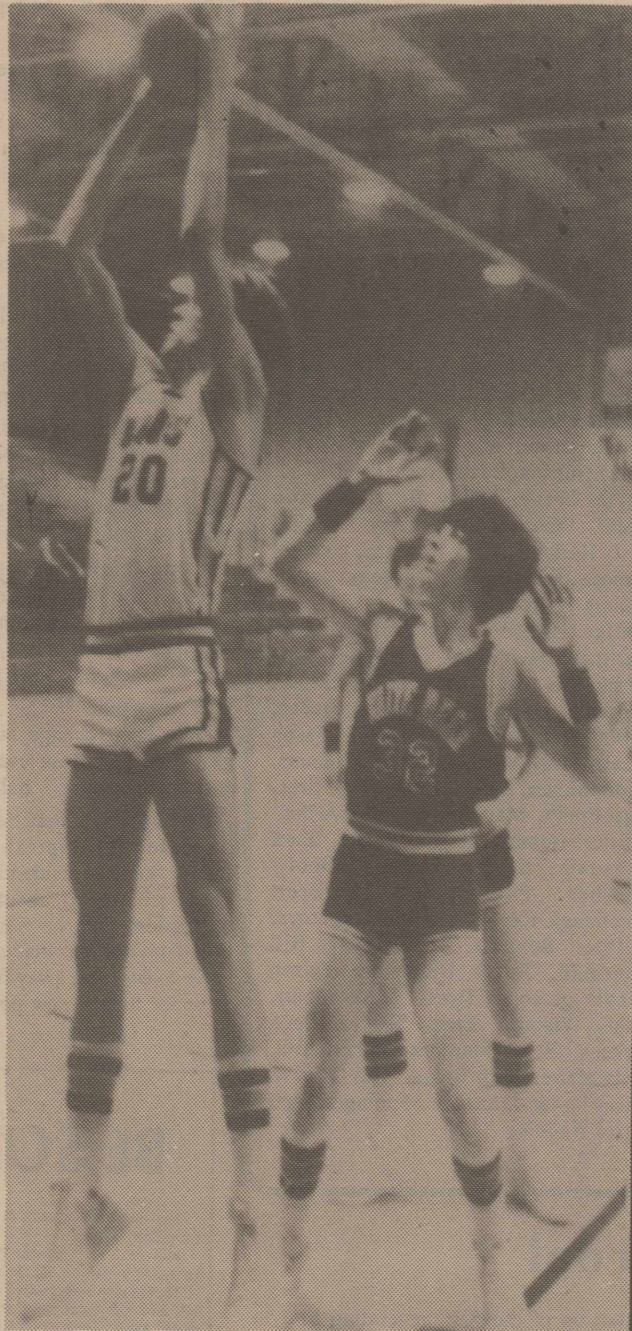
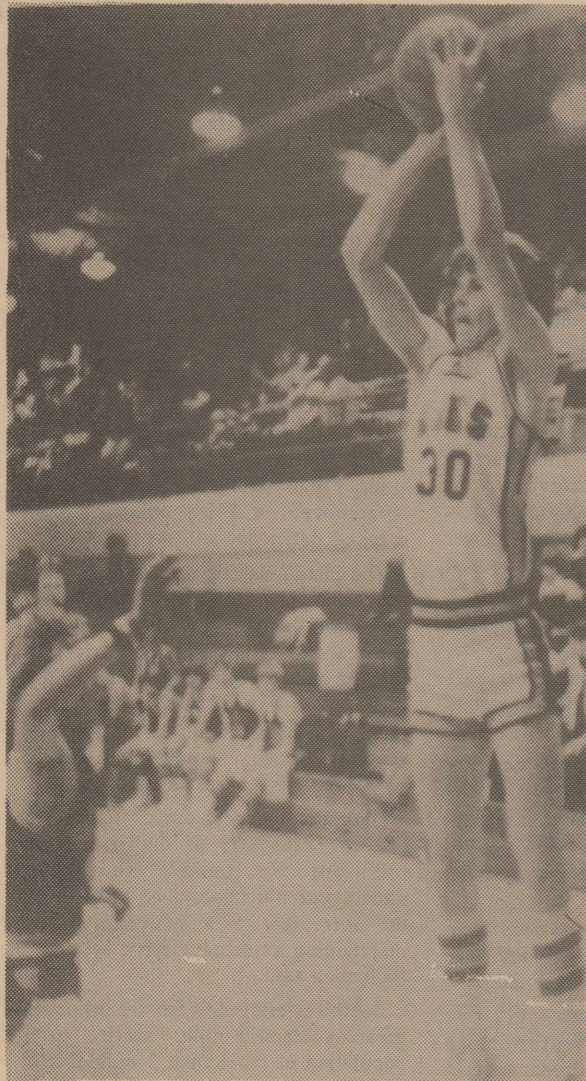
**Hol-Dem Electric Fencer Clips Weeds \$59<sup>45</sup>**

**Aladdin Portable Kerosene Heaters 11,300 BTU Good Price**

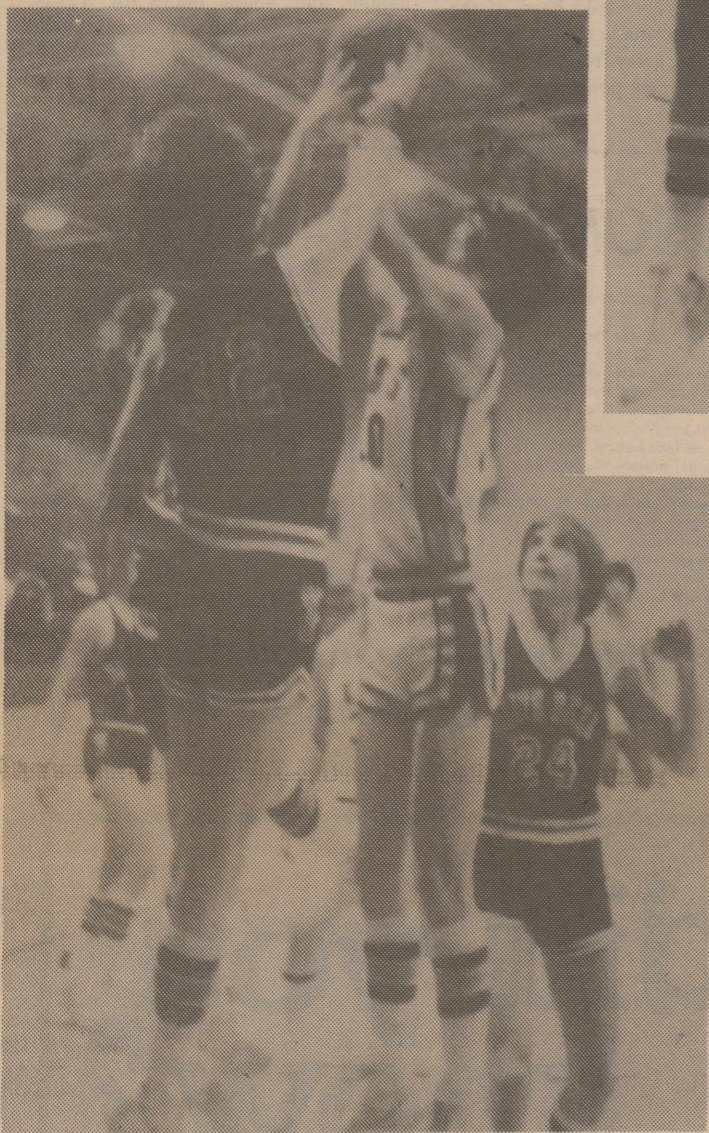




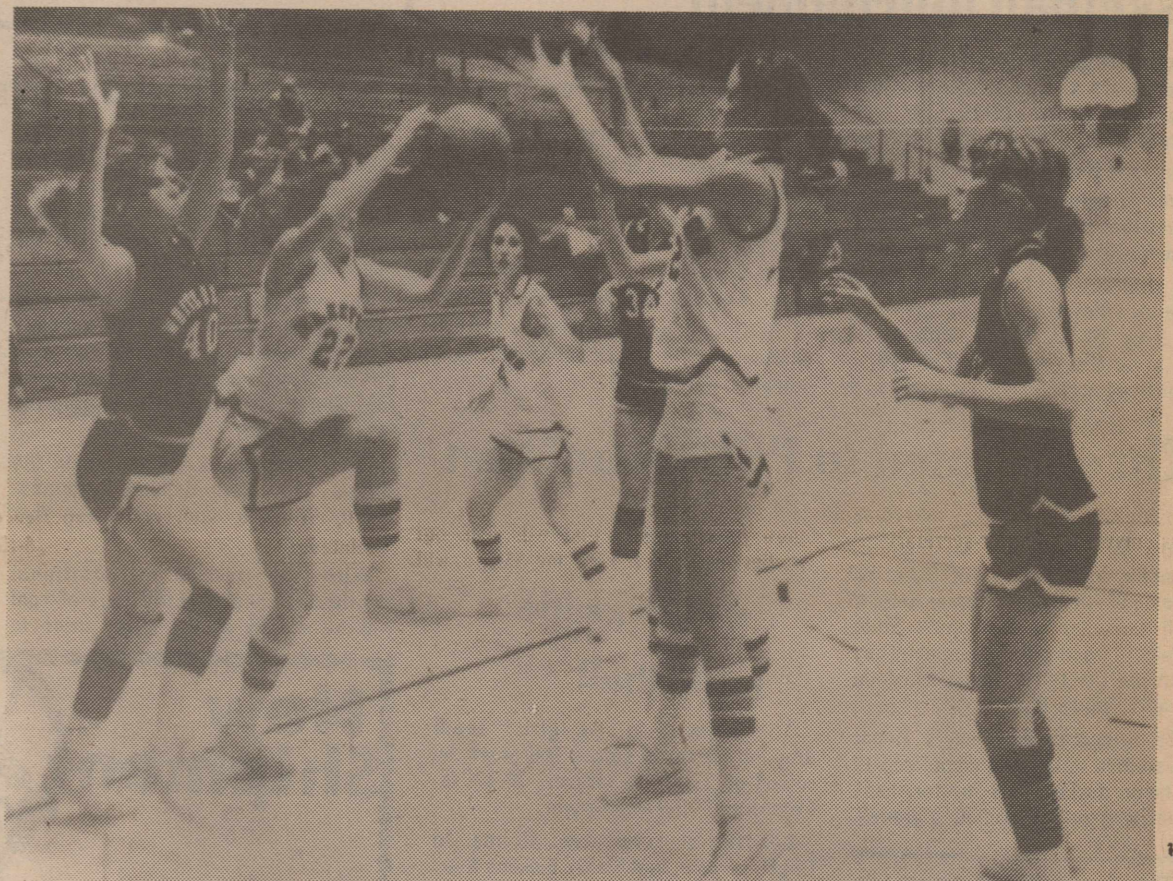
## Congratulations Elks and Elkettes



Girls top to bottom: Tania Wilson prepares to shoot over two defenders. Carol Chesher looks for a pass inside. Three Elkettes go after a loose ball.



Boys top to bottom: Kevin Stanley goes up for a jump shot against Phillips. Craig Sladek pulls down a first quarter rebound. Kevin Stanley battles for a rebound.



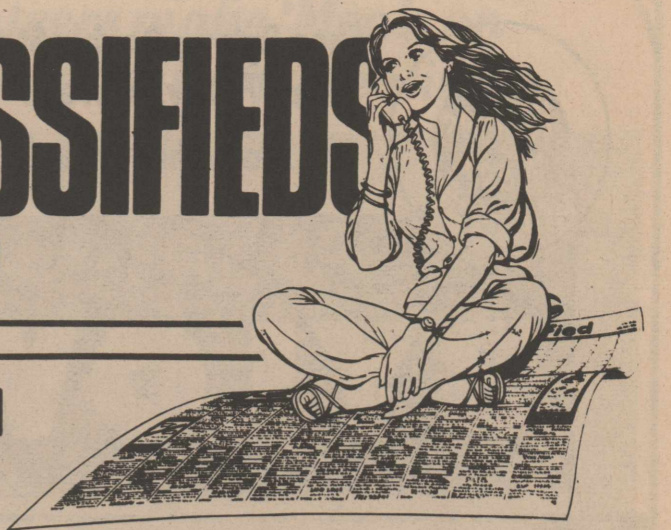
### These Businesses Boost the Elks and Elkettes and Urge You to Attend All of the Games

<b>Brown's Meat Locker</b> 396-2513 Stratford	<b>Duncan Chevrolet</b> 396-5557 The Duncans	<b>Robertson Drilling</b> 396-5601 396-5563 Hwy 287 S.	<b>Walter Lasley &amp; Sons Feedlot</b> 753-4411 TLC Cattle Feeding
<b>W.D. Brannan &amp; Sons Flying Service</b> 396-2157 Stratford		<b>TECO</b> 396-2300 Stratford	<b>Stratford Cablevision</b> 396-2020
<b>The Stratford Star</b> 396-5555 Stratford	<b>Elk Pharmacy</b> 396-5631 Stratford	<b>A &amp; I Parts Center</b> 396-5593 Stratford	<b>Stratford Feed Yards Inc.</b> 396-5501
<b>King Equipment Co.</b> 396-2221 or 396-2343 Your IHC Dealer	<b>Empire Wholesale</b> 396-5629 Stratford	<b>North Plains Savings &amp; Loan Association</b> 396-5534 Jerry Dyess	<b>Stratford Grain Co.</b> 396-5541 Stratford-Lautz
<b>Cimarron Feeders Ltd.</b> [405] 543-6383 Griggs Rt.	<b>The First State Bank of Stratford</b> 396-5521 Stratford	<b>Olson Automotive Machine &amp; Supply Co.</b> 396-5572 Ole Olson	<b>Stratford Printing Service</b> 396-5371 The Fergusons
<b>Consumers Company</b> 396-2261 Leon Guthrie, Mgr.	<b>Golden Spread Implement Co.</b> 396-5529 Your Case Dealer	<b>Smith Agency</b> 396-2031 Chuck Smith	<b>C's Male Box</b> 396-5971
<b>Corral Ford Inc.</b> 396-5511 Your Ford Dealer	<b>J Cattle Co.</b> 396-5577 Jerry Johnson	<b>Sherman Implement Co.</b> 396-5561 Your John Deere Dealer	<b>Shelley's Seed &amp; Supply</b> Stratford, Tx
<b>Cut Rate Grocery</b> 396-5586 Hwy. 54E	<b>JA's</b> 396-5951 Stratford		<b>Moore Implement Co.</b> 396-2101 The Ed Moores



# DO YOUR SHOPPING IN THE CLASSIFIEDS

BUYING OR SELLING, THE CLASSIFIEDS WORK FOR YOU!



Phone 396-5555 To Place Your Star Classified Ad

Classified ad rates 10 cents per word first insertion, 5 cents per word on subsequent insertions. Additional 25 cents if ad is billed.

**FOR SALE**

**THE CONSIGNMENT STORE**  
Our Motto - "We Sell Almost Anything for You." Hwy 54-87 Intersection, Dalhart, Ph. 249-5709. Business hours, 9 a.m. - 6:30 p.m. Mon.-Sat. 3-tfc

Do you need Degreaser, Aquila Make-Up, brushes, mops, or brooms. Contact your local Stanley dealer at 705 N. Wall. Lorelyn Powers. 2-tfc

HOUSE FOR SALE--3 BR, 3 bath, brick. Etter, Texas. David Jackson, 966-5402. 6-9p

FOR SALE--1974 Toyota Carolla, nice. \$1,350. Call 396-5950 or see at 613 N. Grace St. Stratford. 7-tfc

FOR SALE--3 BR, 2 bath, brick, patio, fenced on corner lots between schools at 1220 N. Division. Possible Lease-Purchase. Call 396-2230 or (505) 374-9454. 7-tfc

FOR SALE--1980 Chevrolet 3/4 ton pickup, 350-4 barrel carb, 4-speed, ps pb, 2 fuel tanks, am radio-tape deck, 18,500 miles. \$5,500. Call 396-5328 before 7 a.m. or after 8 p.m. Clois Osburn. 7-tfc

FOR SALE--Small, 2 BR house. Located at 206 N. Grace. Call 396-2125. 7-tfc

**SERVICES**

For Chimney Cleaning and Repair--Call or come by Plainsman Woodburners, 396-2445, 102 N. Main, Stratford, Texas. Open 8:30-5:30. 38-tfc

NOTICE: Keith Waters is now a representative for James H. Perkins & Associates Farm Sales. Call 396-5391 or 396-5801. 46-tfc

Eddie Williams now local representative for Wallace Monument Co. Clarendon. Call Eddie at 396-5330. 13-tfc

ALL CABINET WORK--custom built, Leo L. Scott, across from North Plains Building, Ph. 396-2219. tfc

Tallwater Pits cleaned, wet or dry Draglines Loaders Dozers Graders and Carryalls  
Lee Roy Mitchell since 1954  
733-2384 Gruver, TX 47-tfc

INCOME TAX? Yes, I still do 'em! Call 396-2040. Nell Wall 1-tfc

PAINTING--interior & exterior. Walls repaired. Carpentry. Ceramic tile installation or repair. C. Coble. 396-2034. 2-tfc

FINNEY FUR will be at Diamond Shamrock Station every Monday morning at 10:45. Buy carcass or dry skins. Pay cash. 5-8p

For your needs, please contact:  
Jackie R. Sheldon  
Independent Beauty Consultant  
216 Spruce  
Dumas, Texas 79029  
806-935-6577

Get your orders in before the price increase which will be effective February 16, 1982. Mail orders accepted. 6-9c

Does your Microwave oven leak? We now have a tester that will seek out radiation. Call us and for \$5 we will come to your home and test your microwave oven. True Value. 6-8c

Dr. Harlow will be out of town Feb. 20 thru Feb. 28. 7c

COME SEE US--Same service, new location, 207 N. Main. Arts, crafts, plaster picture frames. Open Monday through Friday. TIP TOP HOBBY SHOP 396-2250. 5-7p

The first soap powder was introduced by Benjamin T. Babbit around 1844 - he called it "Babbit's Best Soap."

**FOR RENT**

FOR RENT--North Chestnut apartment. Tired of heating a house? Live in a spacious all electric 2 BR apt. Call 396-5987. 6-tfc

FOR RENT--Stratford Hotel Apartments. Call 396-2505 or 5657. 34-tfc

FOR RENT--2 bedroom house trailer. Call 396-2298 or 396-5321. 32-tfc

FOR RENT--2 BR unfurnished apt. No pets. Phone 396-5325. 2-tfc

FOR RENT--Storage Units. Contact Nina Fedric at 396-2220 for information. 5-7c

FOR RENT--3 BR house, LR, Den, etc. 1212 N. Division. Call 396-2230 or 806/655-2301. 5-7c

FOR RENT--2 BR apartment at Sunset Motel. Now under new management. Phone 396-5615. 7-10c

APARTMENT FOR RENT. No pets. Phone 396-2102. 7-tfc

**WANTED**

BUS DRIVERS NEEDED. Stratford Ind. School. Call E.L. Bass, Supt. 396-5571, or Frank Vaughn, 396-5600. 38-tfc

TEXAS REFINERY CORP. offers PLENTY OF MONEY plus cash bonuses, fringe benefits to mature individual in Stratford area. Regardless of experience, write A.P. Sears, Pres., Texas Refinery Corp., Box 711, Fort Worth, Texas 76101. 7c

HELP WANTED--Applications being taken for night watchman job. Phone 396-5501. 7-8c

HELP WANTED--Position open for Chamber of Commerce manager/secretary. One person office, light typing skills required. Applicants please send resume to the Chamber office, Box 570, Stratford. Salary/job experience related. 5-tfc

APPLICATIONS are being received at City Hall for dogcatcher for City. 1-tfc

WANTED--14 ft. 3 BR late model mobile home. Call 396-5616 or 396-5688. 5-6c

**MISCELLANEOUS**

FREE--Dobberman puppies. Contact Dave, 396-5500 or come by Cargills Inc. 46-tfc

LOST--Dachshund, old. Answers to "Pebbles". If found, please contact Wayne Cummings at 727-4252. 7c

**Bell Steamway Professional Carpet Cleaning KERRICK, TEXAS**  
Collect 405-543-6356  
Visa & Master Card accepted

**HEARING AIDS**  
All Repairs, \$40  
Batteries - \$2, \$3, \$4  
9 a.m. to 5 p.m.  
Monday-Friday  
Your local representatives:  
Shirley Moore, H.A.S.  
A.W. McGinnis, M.S.  
Dumas Hearing Aid Center  
1301 Dumas Ave. 935-2213

**AUCTION**  
ARE YOU PLANNING AN AUCTION?  
Let us conduct it.  
**L.C. KELLEY**  
Amarillo, Texas  
806-622-0450  
SERVICE-EXPERIENCE-INTEGRITY

Dance to the music of Crossfire appearing at the Waterhole Club in Texhoma Friday, Feb. 19

**Legal Notices**

**Legal Notice**  
Last filing date for city election is March 3, 1982.

Offices available are two councilmen offices, mayor, treasurer-secretary.

The election is to be held April 3, 1982.

City of Texhoma, TX  
Clarence Thrasher, Sec'y-Treas.  
Box 309  
Texhoma, TX 73949

(Published in The Stratford Star, February 18, 1982)

**NOTICE HIGHWAY CONTRACTORS**

Sealed Bids, addressed to W.S. Frizzell, Jr., County Judge, Sherman County, Stratford, Texas 79084 will be received until 1:30 p.m., March 8, 1982 for furnishing all plant, labor, materials and equipment and performing all work required for the construction of Asphalt Seal Coat in Sherman County, Texas. The work consists of 11.1 miles in Precinct No. 1, 11.6 miles in Precinct No. 2, 1.0 miles in Precinct No. 3 and 7.5 miles in Precinct No. 4, a total of 31.2 miles.

All proposals shall be accompanied by cashier's or certified check upon a national or state bank in the amount of 5% total maximum bid price payable without recourse to the Commissioners' Court of Sherman County, Texas or a bid bond in the same amount from a reliable surety company, as a guarantee that the bidder will enter into contract and execute performance and payment bonds within ten (10) days after notice of award of contract to him. The notice of award of contract shall be given by the Owner within ten (10) days following the opening of bids.

The successful bidder must furnish performance and payment bonds upon the forms provided in the amount of 100% of the contract price from an approved surety company holding a permit from the State of Texas to act as surety.

The right is reserved, as the interest of the Owner may require, to reject any and all bids, and to waive any informality in bids received.

Plans, specifications and bidding documents may be secured from the office of Harvey W. Schmidt, Consulting Engineer, 314 Sunset, Amarillo, Texas, 79106.

Attention of bidders is directed to the provisions of Article 5159 A, Revised Civil Statutes of 1925, as amended, requiring that not less than the general prevailing rates of per diem wages for work of a similar character in the locality where the work is performed, shall be paid all laborers, workmen and mechanics employed in the construction of the foregoing projects.

Bidders shall inspect the sites of the work and fully inform themselves as to the conditions and matters which can in any way affect the work or the costs thereof.

THE COMMISSIONERS COURT  
SHERMAN COUNTY, TEXAS  
By: W.S. Frizzell, Jr.  
County Judge

(Published in The Stratford Star, Feb. 18, 25, 1982)

The first annual dog show in America was held in 1877 at Gilmore's Garden in New York, sponsored by the Westminster Kennel Club.

**Dukes Friday & Saturday Only**  
24 12 oz cans Bud Lite \$8.50 case

**For The Ultimate In STORM DOORS & WINDOWS**

Custom Built, Designed, And In Colors To Fit Your Home...  
Contact Howard Moyer at  
**Only Aluminum Industries**  
Guymon, OK 73942 114 W. 1st 405-338-6966 or after 6 p.m. 338-6170

**A TEXAS TRADITION**

**Pendleton Ford Lincoln - Mercury**  
Hwy 54 E DALHART, TEXAS

**CATHERINE D. TAYLOR CERTIFIED PUBLIC ACCOUNTANT**

North Plains Building  
401 N. 3rd. 396-2435  
Monday - Friday 9 a.m. - 5 p.m.

# THE CLASSIFIEDS

BRINGING BUYERS AND SELLERS TOGETHER

Whether you're buying or selling, you get good results here!



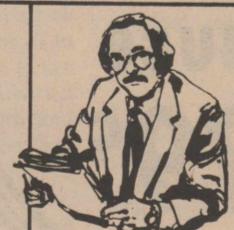
Over 200,000 people read the Herald Classifieds each and every day!



All kinds of people have found satisfaction through the Classifieds. Home-owners, businesspersons, students and retirees have successfully bought or sold something with our help. You, too, can count on the Classifieds. Our many categories include automobiles, real estate, odds and ends, business opportunities, antiques, garage sales, sports equipment, even baby-sitting services. So you see, no matter what you're buying or selling, the Classifieds put you in touch.



Our reasonable rates let you run your ad for practically pennies a day. And we guarantee good results or we will rerun your ad FREE for two days.



Turn To the Trenton Classifieds

Success is a phone call away. To place an ad, simply call our Classifieds department and give all the information to the representative who will compose your ad.

CALL TODAY

**396-5555**

**The Stratford Star**

P. O. Box 8  
Stratford, Texas 79084



Quantity Rights Reserved

Shop Bylow; Double Stamps Every Wednesday & Sunday  
Open 7 Days A Week "We do it all for you"

The store that brought low food prices back to Stratford



# BYLOW FOOD STORE

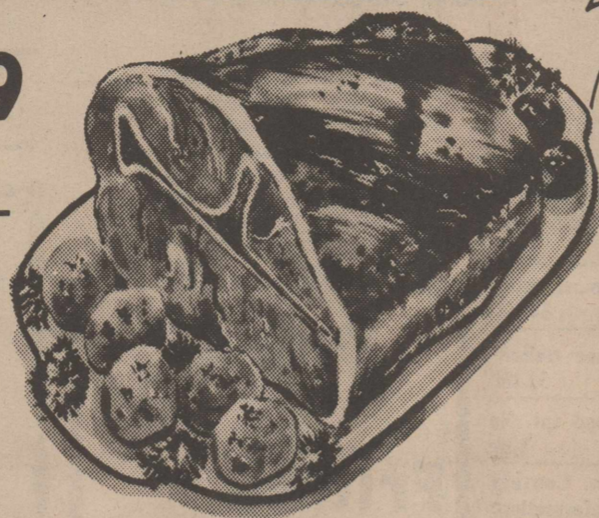
## Washington's Birthday



# SALE

Full Cut Boneless  
**Round Steak \$1.79**

Family Pack  
**Pork Chops \$1.39**



Center Cut  
**Pork Chops \$1.69**



RED RIND LONGHORN  
CHEDDAR  
CHEESE ..... LB. \$1.89

KRAFT  
**VELVEETA** 12 OZ. SLICES \$1.49 16 OZ. SLICES \$1.99

Prices Good Feb. 18-24, 1982  
**DECKER LUNCHMEATS**

- BEEF BOLOGNA
  - MEAT BOLOGNA
  - COOKED SALAMI
  - SPICED LUNCHEON
  - LIVER LOAF
  - PICKLE & PIMENTO LOAF
  - JALAPENO LOAF
- MIX OR MATCH 49¢**  
VAC PAC 6 OZ. PKG.

SUNNY FRESH  
**EGGS**  
LARGE SIZE CRTN. **79¢**

Regular. or Sugar Free  
**Dr. Pepper**  
6 pak 32 oz **\$2.09**

Tree Top 64 oz  
**Apple Juice**  
**\$1.99**



Sliced  
**Apples 99¢**  
20 oz

DEL MONTE MEDIUM  
**PRUNES** 16 OZ. **89¢**  
DEL MONTE  
**RAISINS** 15 OZ. **\$1.39**

WHITE SWAN  
**BISCUITS** 8 OZ. **5/\$1**  
ZEE BIG ROLL  
**PAPER TOWELS** **.69¢**

MR. COFFEE  
**COFFEE FILTERS**  
50 CT. **2/99¢**

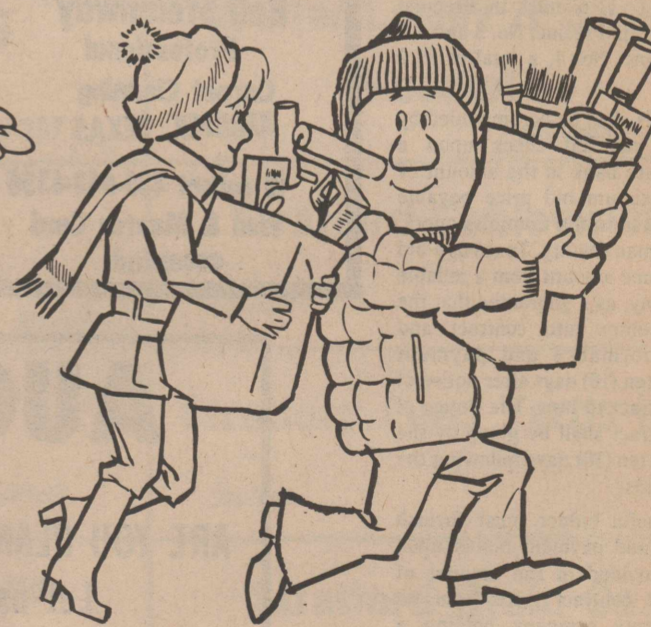
WHITE SWAN  
**CRACKERS** 1 LB. **59¢**  
AUTOMATIC DISHWASHER  
DETERGENT  
**CASCADE** 50 OZ. **\$2.19**

IVORY  
**LIQUID** 32 OZ. **\$1.59**  
AMERICAN BEAUTY  
**ELBORONI** 10 OZ. **49¢**

Kraft 18 oz  
**Barbecue Sauce**  
**79¢**

Hills Brox. 1 lb  
**Coffee**  
**\$1.99**

WOLF BRAND  
**CHILI**  
NO BEANS  
19 oz **99¢**



Hurry on over...  
best buys are here.

### Fresh Produce

CALIF. HASS  
**AVOCADOS** 4 FOR \$1

CALIFORNIA  
**CARROTS** 1 LB. BAGS 3 FOR \$1

FINE FOR BAKING  
**POTATOES** 4 FOR \$1

TEXAS RUBY RED  
**GRAPEFRUIT**  
4 LBS. \$1

RED DELICIOUS  
**APPLES**  
EXTRA FANCY LB. **49¢**

ARIZONA FRESH GRN.  
**ONIONS**  
5 BUNCHES \$1

### Frozen Foods

BIRDSEYE  
**BROCCOLI** SPEARS  
CHOPPED 10 OZ. **69¢**

STILLWELL BREADED  
**OKRA** 12 OZ. **59¢**

PET RITZ DEEP DISH  
**PIE SHELLS** 2 CT. **79¢**

