



Football Fever On The Reservation

Football fever has already hit sports-minded Indian fans, although it is some two weeks before the 1971 gridiron season officially gets underway.

In that two week period, however, there'll be a couple of scrimmages and a lot of concentrated training to prepare for the 1971 season. It'll give Indian fans a chance for a preview of the Indian line-up and time to "get in the mood" for football - as if that were needed.

After almost two weeks of practice, the Haskell Indians will put their "know-how" to test tomorrow, Friday, Aug. 27 when they scrimmage Roscoe at 6:00 p.m., at Mann Junior High, Abilene.

On Friday, Sept. 3, at 7:30, head coach Tommy McAdam's charges will scrimmage Colorado City, here at Indian Field.

"The boys are beginning to get in shape. Our defense is looking much better, but we need a lot more work on offense. The team's attitude is good, however, depth is our main problem", McAdams said.

The Indians will open the season against Eastland, here in a non-conference game, Fri. night, Sept. 10th at 8 o'clock.



TWO-A-DAY—Haskell Indians began getting in shape, under the watchful eye of coaches, last week. The workouts ended with a big ice cream supper in their honor hosted by the Booster Club Friday night at the field. Band Parent Club members have been burning midnight oil the past week, too, remodeling the concession stand at the field. Everybody on the Indian's reservation is more than ready for the 1971 season, which begins unofficially Friday night with a scrimmage game against Roscoe at 6 p.m. at Mann Junior High in Abilene. Officially, the season opens against Eastland here Friday, September 10 at 8 p.m. (Staff Photo by Don Comedy)

IT'S TOO WET TO PLOW—

Rain! Rain!

Rain in Haskell County may not be as "newsy" as it was several weeks ago since this is the fourth consecutive week that heavy rains have fallen in Haskell County.

The rains came again Monday, Tuesday and Wednesday of this week, totaled 4.61 inches in Haskell, according to Sam Herren, "The Weatherman".

Three Persons Are Injured In Two-Car Crash

Three persons were injured in a two-car head-on crash at 9:00 p. m., Wednesday of last week, about eight miles northwest of Rule on FM 617.

A 1957 Ford pick-up driven by Jimmy Crain, of Rochester, headed south, and a 1957 Chevrolet traveling north, driven by Henry Wayne Cameron of Rule, were involved in the mishap.

Passengers in the Crain pick-up were Mrs. Jimmy Crain and Cecil Sarabia of Rochester. George Goble was a passenger in the Cameron vehicle.

Mrs. Crain, George Goble and Cecil Sarabia were brought to the Haskell Memorial Hospital. Crain and Goble were treated in the emergency room for cuts and bruises and released. Sarabia, who received cuts on his leg, bruises and cuts about the head and face, and bruised ribs, was kept overnight in the hospital.

"Skip" Lane, Highway Patrol man who investigated the accident, said both vehicles were totaled.

Rice Springs Branch overflowed again for the second time this month and streets in Haskell ran curb high.

Others reporting rain:

Dwight Gotthard, O'Brien	5.10
Paint Creek Power Plant	5.00
J. R. Perry	4.00
Cobb Community	5.00
Mrs. D. LeFevre, Sagerton	1.50
Mrs. Dale Lewis, Rule	4.30
Harlan Weinert	2.85
O. R. Cox, Rochester	3.50
Charlie Campbell, Mattson	4.00
Bailey Guess	3.30
H. L. Guess	3.20
Weldon Norman	4.20

Haskell County Sheriff's Posse Places At Snyder

The Haskell County Sheriff's Posse continued its winning ways for parade honors at the Scurry County Rodeo, at Snyder, Wednesday of last week, and rode in the grand entry on Wednesday night.

Haskell placed third, with Howard County Sheriff Posse, first, and the Fischer County Sheriff's Posse, second.

Gene Hunter said that a large number of riding clubs competed in the downtown parade at Snyder. Only seven members of the local club made the "trek" to Snyder.

The Haskell County Sheriff's Posse will head for Roby, today, Thursday, August 26, and will journey to Albuquerque, N. M., on September 17th.

EASY SHOPPING IN HASKELL

The development and growth of our nation's shopping centers grew out of the need for convenient facilities for the family, but in the last 10 years, they have become more inconvenient than the original shopping areas they were built to supplement.

In a study of the business areas of Haskell, it has been found that the families of this trading district are closer to any business they want to

visit than to any shopping center. Store-side parking makes shopping comfortable and easy. The availability of products and merchandise is as great or greater than in the average shopping center. Credit services, lay-away policies, personal interest of businessmen and salespeople all combine to make it easy to shop in Haskell.

"EASY SHOPPING IN HASKELL" is a natural theme for this week's campaign of the Haskell business community.

These businessmen urge you to consider the time and cost

of traveling to a giant shopping center. They urge you to consider the inconvenience of distance between the actual parking place and the store you may want to visit. The long and tiresome walk from store to store and the lack of personal attention and interest of each business.

You will truly realize how convenient, comfortable and pleasant it is to shop in Haskell.

Check the special section of advertisements in this news paper for "EASY SHOPPING IN HASKELL" this week and every week of the year.

Business firms who joined this "Trade in Haskell" promotion include: White Auto Store, Haskell Paint & Body Shop, Hale Farm Supply, Brazelton Lumber Co., Kennedy Lumber Co., Fouts Dry Goods & Variety, Smitty's Auto Supply, Woodard Farm Sales, The Dad 'n Lad Shop, The Personality Shoppe, Cofield's Dept. Store, Bill Wilson Motor Co., Bailey Toliver Chevrolet, Anderson Tire Co., Hassen's, Wooten Oil Co., Rich-

ardson Truck & Tractor, Owens Radio & Electric, Lane Apparel & Cleaners, Sherman's Floors and Interiors, Lane-Felker, Biard's Cleaners, Oates Drug, Boggs & Johnson, Furr-Lane Agency, Farm & Ranch Supply and West Texas Sheet Metal.

C Of C Begins Unique Plan

The Membership Committee of the Haskell Chamber of Commerce has come up with a new and unique plan to increase the working capital of the Chamber. The new plan calls for the placement of one pound cans, enclosed in a colorful label, in each business firm in Haskell with a request that each employee participate as an honorary member of the Chamber of Commerce by placing a nickel a working day in the container. It will be strictly on a voluntary basis with no salary deductions involved and it will also be open to customers who would like to make a contribution to the Civic organization.

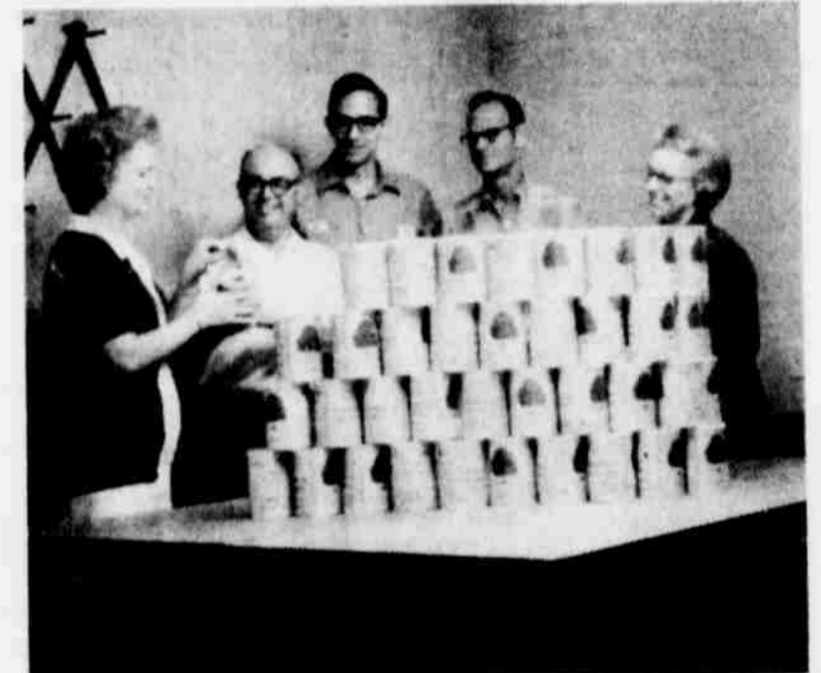
The label pictures an oak tree with acorns and the wording, "Mighty Oaks from Little Acorns Grow" and the lid of the can shows the picture of a kitten with the words, "Feed the Kitty for a Better Community."

At present the local chamber of commerce has a current membership of 155 merchants and individuals from whose dues the necessary funds must come to operate the chamber of commerce. Population wise, this figures out at 4.3 percent of the local citizens paying for the chamber of commerce organization which is constantly working to make Haskell a better place in which to live and conduct business.

The annual income of the chamber of commerce varies from approximately \$10,300 to \$11,000 with all expenditures of operation averaging \$10,500 annually. Consequently, all promotions of the chamber have to stand on their own feet which with sound planning they have done. However, there is practically nothing left to work on trying to secure additional industry for Haskell.

Including the fourth annual Haskell County Fair which is scheduled for the dates of September 30 and October 1 and 2nd, and the monthly dollar day program the chamber of commerce has been instrumental in backing or sponsoring a total of 75 special events with the sole idea of bringing people to Haskell from out of the trade area.

One of the long range programs of the chamber, begun



THE NEW PLAN: In order to increase working capital of the Chamber of Commerce the membership committee has come up with a new plan. Pictured left-to-right, Mrs. W. V. Felker, chairman; George Fouts, Charles Thornhill, Bob Philpot and Mrs. Opal Adkins. See related story. (Staff Photo)

some two years ago, was realized only recently when the Highway department took down the old State 24 highway signs and replaced them with U. S. Highway 380 signs. This is expected to create a lot of activity with improvements along the route as well as increased tourist travel. This puts Haskell at the crossroads of two major United States Highways and that certainly puts it in position to have the opportunity of increased business as a result.

ENROLLMENT IN HASKELL SCHOOLS IS ANNOUNCED

Hooper T. Wilkinson, Superintendent, announced that a total of 791 students were in classes in all grades on the opening day of the 1971-72 term, Monday, Aug. 23. This marks the 87th year of public instruction in Haskell.

Mrs. Jerry Sorrels, secretary to Supt. Wilkinson reported the following first day attendance totals received at the Superintendent's office: High school, 205; Junior Hi 142; Haskell Elementary, 444.

The high school first day attendance included 59 freshmen; 63 sophomores; 47 juniors and 36 seniors.

Hubert Bell, Junior High Principal, reported 66 seventh graders and 76 eighth graders in class Monday.

At the Elementary school, Principal Alex Swann reported the following registrations by grades: first, 61; second, 67; third, 75; fourth, 67; fifth, 65; sixth, 88; Kindergarten 21.

Farmers Co-Op Slates Meeting

The annual meeting of the members of the Farmers Cooperative Society No. 1, of Haskell, will be held Friday, August 27, at the Haskell Country Club in Haskell.

All members are urged to attend, as several important matters are scheduled, including report on the annual audit, election of directors, etc.

The meeting will be preceded by a barbecue for members, their families and guests at 6:30 p. m.

U. S. 380 Goes Thru Haskell

Approximately two years ago, representatives of chambers of commerce, and city and county governments, met with the State Highway Commission in Austin to request that United States Highway 380 be rerouted along State Highway 24.

This request has been granted, and last week the Highway 24 signs were removed and replaced with U. S. Highway 380 markers.

U. S. 380 will come in from the west at Old Glory and follow the old state highway 24 route to where it will intersect with U. S. Interstate 30 at Greenville.

The new designation of 380 through Haskell and other towns and cities along State Highway 24 is expected to alleviate the traffic problem to some extent around Fort Worth and Dallas and other major cities. It is also expected that extensive improvements along the route will be made in the near future. Present plans call for large signs at Greenville and Old Glory showing the route which can be used to travel to the west coast and also to the eastern states.

Representing Haskell at the meet in Austin were: Mayor H. V. Woodard; Ray Perry, commissioner; and Rex Felker, chamber of commerce manager.

Officials are of the opinion that increased tourist travel will result from this rerouting of United States Highway 380,



U. S. HIGHWAY 380 SIGNS GO UP—Left to right, chamber manager Rex Felker, Chamber President Elbert Johnson, Haskell Mayor H. V. Woodard, County Judge B. O. Roberson, Commissioner J. R. Perry and Belton Duncan proudly stood by to watch the new highway signs go up which will route more traffic through Haskell. (Staff Photo)

as well as the possibility of building and major improvements in the various towns along the route.

DEATH NOTICES

Clark
W. Clark, 75, of Haskell, died at 10:00 a. m. on August 18, 1971, at the Haskell Memorial Hospital. He was born December 18, 1910 in Stonewall County, Georgia. He was raised in Haskell County and married Cris O. Jones, August 31, 1929 in Haskell. Survivors are three sons; five daughters; five grandchildren; two sisters.

Mrs. Adkins
Mrs. Maude Edith Adkins, 75, of Rochester, passed away Thursday, August 19, at 3:20 a. m. in Leisure Lodge Care Home in Haskell. Funeral was held at 2:00 p. m. Friday in the First Baptist Church, Rochester. Rev. Hubert Segro of Haskell officiated. Burial was in Rule Cemetery under direction of Smith Funeral Home. Born, October 1, 1895 in Oxford, Mississippi, she was married to Ben Adkins, who passed away in 1947. She had lived in Rochester since 1920, and was a member of the First Baptist Church. Survivors include two sons, V. L. of Corna, N. M., and Robert of Crane; five grandchildren; five great-grandchildren; and two brothers, Edward and Raymond Purvis, both of Memphis, Tenn.; and one sister, Mrs. Sadie Patrick of Tennessee.

Baxter Harvey
Baxter Harvey, 72, of Haskell, passed away Thursday, August 19, at 11:30 a. m. in Hendrick Memorial Hospital, Abilene where he had been a patient for three days. Funeral was held at 10:00 a. m., Saturday, August 21 in the East Side Baptist Church, Haskell, with the pastor, Rev. R. D. Williams, officiating. Burial was in Willow Cemetery under the direction of Holden-McCauley Funeral Home. Born, February 3, 1899 in Guadalupe, Texas, he was a retired blacksmith. Survivors include two sons, Jack of Haskell and Cecil of Abilene; four grandchildren; one great-grandchild; one brother, Wyatt of Victoria; four sisters, Mrs. Howard Smith of Roswell, N.M., Mrs. Olen Bartley of Haskell, Mrs. Amos Carigan of Lubbock and Mrs. J. W. Martin of Victoria. Pallbearers were John Bartley, Dee Larned, N.J. Larned, Bobby Tidwell, Jimmy Owens and Dugan Starr.

J. E. Bernard
J. E. (Barney) Bernard, 82, retired cotton buyer, passed away Monday, August 23, at 10:40 a. m. in Haskell Memorial Hospital where he had been a patient for two days. Funeral services were held Tuesday, August 24 at 10:00 a. m. at Holden-McCauley Funeral Chapel, with Rev. H. O. Abbott, pastor of the First United Methodist Church, Haskell, officiating. Burial was in Willow Cemetery with Holden-McCauley Funeral Home in charge of arrangements. He was born October 23, 1888 at Selma, Alabama, and was married to Jessie Leona Wright, November 3, 1911 in Haskell. He was a member of the First United Methodist Church, Haskell. Mr. Bernard came to Seymour in 1909 as a cotton buyer for R. O. Harvey & Company of Wichita Falls. In 1910 he moved to Haskell as a cotton buyer. He was with Secret Service for the Federal Government in World War I. He was employed by Lockheed Aircraft in Los Angeles, Calif. from 1942-47. He returned to Haskell and was engaged in cotton buying until his retirement in 1962. Survivors include his wife of the home; one daughter, Mrs. Vivian Akins of Haskell; one son, Ralph Bernard of Lubbock; four grandchildren and four great-grandchildren. Pallbearers were Bob Segro, Robert Speer, Jimmy Owens, Leo Duncan, John Darnell, B. O. Roberson.

Lupe Maldonado
Justice of the Peace E. M. Sprayberry, of Anson, ruled the pedestrian-vehicle death of Guadalupe S. Maldonado, 29, of Sagerton, an accident. Maldonado was killed about 9:00 p. m., Sunday four miles south of Stamford on U. S. 277 when he was struck by a small foreign car driven by Andrew Thomas Smith of Ardmore, Oklahoma. Funeral mass was held Tues. at 10:00 a. m. at St. Ann's Catholic Church, Stamford, with Father William Cadigan, officiating. Kinney Funeral Home of Stamford was in charge of arrangements, and interment was in Highland Cemetery.

Mrs. Briscoe
Funeral services were held August 19th in Weatherford for Mrs. Palmer Lee Briscoe, mother of Mrs. I. T. and Raymond Briscoe of Haskell. Mrs. Briscoe, 81, was born December 14, 1890, and had lived in Parker County 40 years. She is survived by 10 children; several grandchildren; 44 great grandchildren; three great-great grandchildren; five brothers and two sisters.

ROBERTS CEMETERY
A meeting of the Roberts Cemetery Association will be held in the Community Room, Haskell National Bank, Friday, August 27th at 7:30 p. m. GET YOUR RECORDS and the new Pressure Sensitive letters and numbers, 1/2" to 3"; also heat letters, at the Haskell Free Press. 157p

Senior Class Elect Officers
The Senior Class of 1972 elected five officers on Monday Aug. 23. They are: Steve Guess, president; Forrest Mayfield, vice-president; Nancy Kay Middleton, secretary; Pam Colbert Reporter. Terry Walton was selected as the senior candidate for Miss Front Page. Denise Roberson was placed in charge of appointing two seniors to have the honor of being the guests of the Rotary Club each Thursday. A committee was named to bring some carefully studied suggestions before the class as to what the seniors should present to the school. Its members are: Judy Lehde, Connie Berry, Pat Harris, Bob Shea, and Jim Bob Mickler.

HASKELL FREE PRESS
Established January 1, 1886
PUBLISHED EVERY THURSDAY

PRESS ASSOCIATION
EDY, G. E. TALKINGTON—Co-Owners
BILL COMEDY—Publisher
ALFRED HINDS—Editor

HERMITES
Over Fish, Ants and Others
PEST CONTROL
S HAGER—Owner-Operator
Haskell, Texas

COOPERATIVE AGRICULTURAL EXTENSION SERVICE
The identity of the Cooperative Agriculture Extension Service should be maintained. Its primary responsibility should continue to be to serve the educational and informational needs of farmers. The Cooperative Agriculture Extension Service has made an outstanding contribution to farm people and must be continued and strengthened to meet the future needs of commercial agriculture. Farm Bureau will continue to support a sound Cooperative Agricultural Extension program. Effectiveness of the Service comes from local support in program development and financing. This concept must be maintained. Recent pressures on Extension to provide services for non-farm people and to influence farm opinion in support of particular public policies and programs are of concern to Farm Bureau. We urge State Farm Bureaus to consult with State Extension Services and AFBF to consult with the Federal Extension Service on all matters of common interest. We are opposed to any expansion of Extension into areas which may tend to dilute Extension's service to commercial agriculture. Recognizing that the young people of today will be the leaders of tomorrow, we support the present 4-H Club work program.

HASKELL COUNTY FARM BUREAU

Luther Kennamar
James Luther Kennamar, 75, of Fort Worth, former resident of Haskell county for 33 years passed away Tuesday, August 24, at 1:40 a. m. in Campbell Hospital, Weatherford, where he had been a patient nine days. Funeral services were held Wednesday, August 25, at 3:00 p. m. at Haskell Church of Christ with Bob Connel, minister, officiating. Holden-McCauley Funeral Home was in charge of arrangements, and burial was in Willow Cemetery. Born, January 19, 1896 in Lamar County, Texas, he came to Haskell County in January, 1910 and settled in the Center Point community, where his family was engaged in farming. He moved into Haskell in 1933 and operated a garage until 1943 when he moved to Ft. Worth. Survivors include four daughters, Mrs. Bobby Free of Muleshoe, Mrs. Travis Burson, Madrid Spain, Mrs. James Ray Camp of San Antonio and Mrs. LaDell Driver of Lubbock; one sister, Mrs. B. P. Wingo of Ft. Worth; one brother, Homer Kennamar of Elkland, Missouri and eleven grandchildren. Pallbearers were Richard Bischoffhausen, Hill Oates, Leslie Collins, Otis Elmore, Hollis Howard and R. A. Harris.

Arrangements, and interment was in Highland Cemetery.

Funeral services were held August 19th in Weatherford for Mrs. Palmer Lee Briscoe, mother of Mrs. I. T. and Raymond Briscoe of Haskell.

Funeral services were held August 25, at 3:00 p. m. at Haskell Church of Christ with Bob Connel, minister, officiating.

Funeral services were held August 24 at 10:00 a. m. at Holden-McCauley Funeral Chapel, with Rev. H. O. Abbott, pastor of the First United Methodist Church, Haskell, officiating.

Funeral mass was held Tues. at 10:00 a. m. at St. Ann's Catholic Church, Stamford, with Father William Cadigan, officiating.

Funeral services were held August 25, at 3:00 p. m. at Haskell Church of Christ with Bob Connel, minister, officiating.

Funeral services were held August 24 at 10:00 a. m. at Holden-McCauley Funeral Chapel, with Rev. H. O. Abbott, pastor of the First United Methodist Church, Haskell, officiating.

Funeral services were held August 25, at 3:00 p. m. at Haskell Church of Christ with Bob Connel, minister, officiating.

Funeral services were held August 24 at 10:00 a. m. at Holden-McCauley Funeral Chapel, with Rev. H. O. Abbott, pastor of the First United Methodist Church, Haskell, officiating.

Funeral services were held August 25, at 3:00 p. m. at Haskell Church of Christ with Bob Connel, minister, officiating.

Funeral services were held August 24 at 10:00 a. m. at Holden-McCauley Funeral Chapel, with Rev. H. O. Abbott, pastor of the First United Methodist Church, Haskell, officiating.

Funeral services were held August 25, at 3:00 p. m. at Haskell Church of Christ with Bob Connel, minister, officiating.

Funeral services were held August 24 at 10:00 a. m. at Holden-McCauley Funeral Chapel, with Rev. H. O. Abbott, pastor of the First United Methodist Church, Haskell, officiating.

Funeral services were held August 25, at 3:00 p. m. at Haskell Church of Christ with Bob Connel, minister, officiating.

Funeral services were held August 24 at 10:00 a. m. at Holden-McCauley Funeral Chapel, with Rev. H. O. Abbott, pastor of the First United Methodist Church, Haskell, officiating.

Funeral services were held August 25, at 3:00 p. m. at Haskell Church of Christ with Bob Connel, minister, officiating.

Funeral services were held August 24 at 10:00 a. m. at Holden-McCauley Funeral Chapel, with Rev. H. O. Abbott, pastor of the First United Methodist Church, Haskell, officiating.

Funeral services were held August 25, at 3:00 p. m. at Haskell Church of Christ with Bob Connel, minister, officiating.

Funeral services were held August 24 at 10:00 a. m. at Holden-McCauley Funeral Chapel, with Rev. H. O. Abbott, pastor of the First United Methodist Church, Haskell, officiating.

INSURANCE
Automobile - Fire - Casualty - Life
Belton Duncan
D B A
Cahill-Duncan Agency
206 North First Phone 864-2646

YOU*DESERVE*BOTHS*
BIG CASH SAVINGS GREEN STAMPS

Extra Savings With

GREEN STAMPS

3 POUND CAN

79¢

With The Purchase of \$5.00 or More

Libbys, Crushed or Sliced 1 1/2 Size Can	Pineapple 3 for 79¢	Bama, Ref. Jar 18 Oz.	Peanut Butter 59¢
Libbys, Fruit 303 Can	Cocktail 3 for 79¢	Lysol 14 Oz. Plastic Bottle	Disinfectant 44¢
Libbys, Cut Green 303 Can	BEANS 3 for 69¢	Wolf No. 2 Can	CHILI 69¢
Heinz, Bar-B-Que 16 Oz. Bottle	SAUCE 39¢	Wolf 300 Size	Tamales 3 for 99¢

BUDGET-PRICED TOP QUALITY MEATS

Deckers Quality

BACON LB. 59¢

Deckers, All Meat 12 Oz. Pkg.

FRANKS 49¢

End Cut Pork

CHOPS LB. 45¢

3 For 79¢

Spredd Brand—Cheese 2 Lb. Box

SPREAD 85¢

Gandys 5 Qt. Bucket

Ice Cream \$1.79

Shasta, All Flavors Or 28 Oz. Bottle

Gingerale 3 for 79¢

Rubbing Pt. Bottle

ALCOHOL 15¢

Faultless Spray 22 Oz. Can

STARCH 49¢

Bama Sandwich 16 Oz. Jar

SPREAD 29¢

GHOLSON GROCERY

Phone 864-2929 — Haskell, Texas Pay Your Telephone Bill Here

M SYSTEM

Your FRIENDLY SUPER MARKETS

"Where Your Dollar Buys More"
Haskell, Texas

SPECIALS FOR THUR. FRI. & SAT.
AUGUST 26-27-28TH

M-M-M! GOOD EATING!

DOUBLE S & H GREEN STAMPS WEDNESDAYS With The Purchase Of \$2.50 Or More



LIBBY'S GOLDEN CREAM STYLE CORN
5 303 CANS 99¢



22 fl. oz. GIANT SIZE JOY
COUPON WORTH **15¢**
OFFER EXPIRES Aug. 30
LIMIT 1 COUPON PER PURCHASE

TOMATOES VINE RIPE



LB. **29¢**

- RUSSET POTATOES 15 LB BAG **99¢**
- CALIFORNIA PEACHES lb. **29¢**
- LARGE GREEN CABBAGE lb. **8¢**
- CALIFORNIA CELERY Stalk **25¢**

LIBBY'S CUT GREEN BEANS

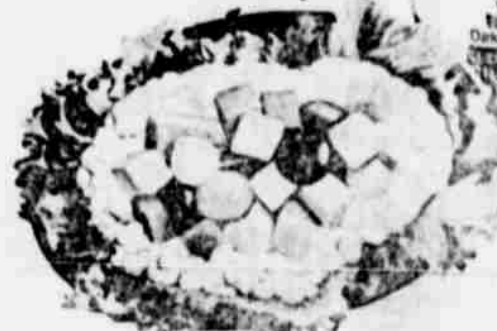
5 303 CANS 99¢



COTTAGE CHEESE & FRUIT COCKTAIL M-M-M GOOD!



OAK FARMS COTTAGE CHEESE



CTN. **29¢**

30¢ M SYSTEM COUPON

save 30¢

WITH THIS COUPON WHEN YOU BUY A 10 OZ. JAR OF INSTANT MAXWELL HOUSE COFFEE AT "M" SYSTEM

100Z. JAR ~~Save 30¢~~ WITH COUPON

ONE COUPON PER FAMILY - OFFER EXPIRES AUG. 30

30¢ VALUABLE COUPON

WITH THIS COUPON YOU CAN BUY SAVE MONEY ON LIPTON'S INSTANT TEA

4 OZ. JAR WITH THIS COUPON **99¢**

LIMIT ONE PER FAMILY * GOOD ONLY AT "M" SYSTEM

TJL-069 Coupon expires Aug. 30th

EAT WELL **TUNA 3 Cans For \$1.00**

DOWNY Large 64 Oz. Size **FABRIC SOFTENER 1.19**
LEAIZE **SPRAY AND WASH Can 59¢**

KAL KAN **DOG FOOD 4 Tall Cans \$1**

"M SYSTEM GRADE A" HOMOGENIZED SWEET MILK

Try Some TODAY It's Really Good

RIGHT RESERVED TO LIMIT

NOTE BOOK FILLER 300 COUNT

43¢

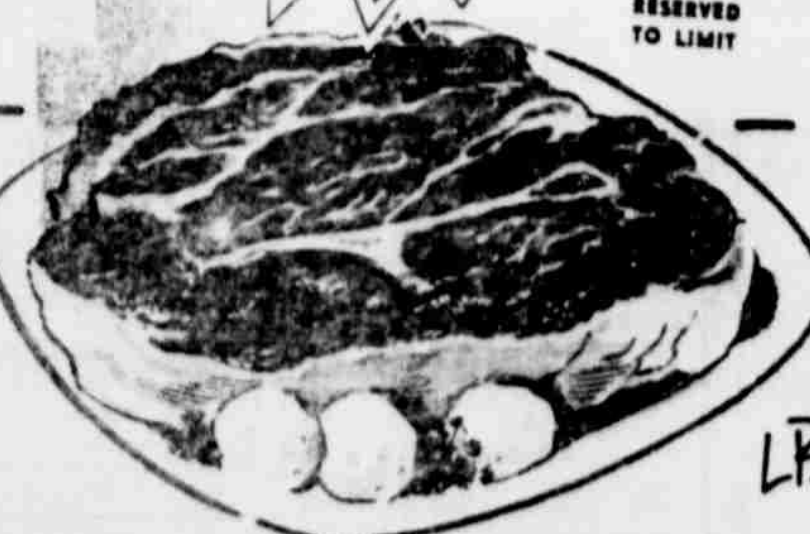
ZEE TOWELS Jumbo Roll **29¢**

KIMBELL COFFEE lb. CAN **79¢**

MORTON DINNERS

Chicken, Turkey, Salisbury Steak, Meat Loaf

2 FOR 79¢



CHUCK ROAST 69¢

GILLETTE RIGHT GUARD DEODORANT REG. \$1.19 **89¢**
LISTERINE ANTISEPTIC REG. \$1.29 **89¢**
DIAMOND PAPER PLATES 40ct. Cello Bag **79¢**

BEEF CUTLETS lb. **69¢**

BEEF RIBS lb. **29¢**

ALL MEAT BOLOGNA lb. **49¢**

KRAFT AMERICAN CHEESE lb. **69¢**

DIAMOND SHORTENING 3 lb. CAN **69¢**

FROSTEE ROOT BEER HALF GAL. **49¢**

MRS. BAIRD'S BREAKFAST TREATS REG. \$1.19 **39¢**

HAWAIIAN PUNCH 3 4oz. SIZE **\$1.00**



SECTION TWO

THE HASKELL FREE PRESS



HASKELL, TEXAS 79521, THURSDAY, AUGUST 26, 1971

NUMBER THIRTY-FOUR

of the square which were won by the Haskell County Sheriff's Posse? In winning these trophies, by competing for parade honors, the local riding club has gained a lot of recognition and publicity for Haskell. Yep, 'Podner, the members of the Haskell County Sheriff's Posse could not have won all those honors without their trusty steeds.

During the past number of years there has been some change in size, breed and color of ranch-riding horses, but their work has caused preference to be given to those possessing certain useful qualities in their riding horses, regardless of breed. Occasionally some have digressed from their own ideals as a result of breed promotional work, but eventually the characteristics which covered certain horses to be most useful for working cattle have prevailed and such ranchmen have turned back to the type experienced men recognize as the stock horse. This tendency to insist on utility character has been so strong that the ranchman's ideal often has modified breed type.

A man that says he is boss in his own home will lie about other things as well.

Overheard in the grocery store the other day... one fellow said to another, "They say your wife is outspoken." "By whom?" came the quick reply.

It is impossible to give too much credit to those who possess the virtue of punctuality. Those who do not possess it, having no regard for other people's time, are certainly criticized for not having this valuable virtue. Lack of punctuality causes more loss of time than does procrastination, because it generally involves wasting the time of one or more people other than the guilty party. A successful man

Mrs. S. Hassen And Raja Return From Lebanon

Mrs. S. Hassen and Raja returned Wednesday of last week from a three-and-one-half week's trip to Lebanon, the birthplace of Mrs. Hassen and the late S. Hassen.

Mrs. Hassen's last visit to her native land was in 1961; however, Raja had not been to Lebanon since he was six years old. They visited relatives and viewed many scenic places.

They departed from Haskell July 21 and boarded a plane at Abilene. Their first stop was at Love Field, Dallas, then on via plane to Detroit, Michigan; Paris, France; and to the Lebanese International Air Port.

Some of the highlights included viewing the fabulous Roman Ruins at Baalbek, built 5,000 years ago; dining on the rooftop of the famed Vendome Hotel overlooking the blue Mediterranean; and the folklore festival at Baalbek; reception by the president of Lebanon at which delegates were greeted and presented flowers to each returning Lebanese.

During the month of August some 24,000 people of Lebanon origin visited Lebanon, with the main purpose of strengthening relations between countries, and United Nation flags were on display.

conserves the time of those with whom he deals and associates.

Advertising is like making love to a widow... you can't overdo it.

Over at Mrs. Allen's Shoe Shop Prattler noticed this sign: "I'm not no preacher but I can save your soles."

play at the UNESCO building. In speaking of their trip the Hassens were very impressed with the bustling, progressive city of Beirut, the modern homes and buildings.

"The scenery in Lebanon is a thing of beauty and the people are very friendly," Raja said.

"We enjoyed our visit very much and had a wonderful time, but we are glad to be back in Haskell," Mrs. Hassen said.

Advertising doesn't cost... It Pays!

Special Farm User Permits To Be Issued

The last session of the State Legislature created a provision for a new permit for farm motor vehicles powered by LPG. This permit will be known as Special Farm User Permit and will be issued only by District Offices of this Department.

For taxpayer convenience, Field Representatives of the Abilene District, will be at the Commissioners' Courtroom.

Courthouse, Haskell, today, Thursday, August 26, Friday, August 27, and Wednesday, Sept. 1, to take applications and issue permits.

In the event that applicants for the permit cannot meet with the representatives on the dates or location listed above, permits will be issued Monday through Friday of this week at the District Office in Abilene.

The farm motor vehicle owner must produce the motor and serial number.

Jones County Open Horse Show Set Saturday

The Jones County Fair open horse show will be held at the Anson Fairpark arena at 9:00 on August 28th. Entry's will be taken the day of the show.

There will be youth halter and performance division and the performance division will be divided into two age groups: under 15 and 15 and over.

There also will be an adult open halter and performance classes. The performance classes are as follows: Flag Racing, Western Pleasure, Pole Bending, Reining, Barrel Racing and Jackpot Roping.

For additional information contact Gaylen Harris the Vocational Agricultural Teacher of Anson High School.

Junior Class Elect Officers

Monday, August 23, the Jr. Class showed a bit of Women's liberation when they elected seven women officers.

Presiding as president will be Mary Ann Elliott, assisted by Ellen Walling as vice-president. Secretary is Helen Mary Cadenhead. Paula Middleton will serve as treasurer and LuGene Lane will be the class reporter.

The two tag chairmen elected for the 1971 football season were Jill Fincher and Glenda Gayle Chapman. Also elected as the junior class candidate for Miss Front Page was Sherry Conner.

The juniors are ready and looking forward to an exciting and successful year.

HASKELL VISITORS

Mr. and Mrs. Don Peavy and sons, Michael and Danny, of Houston, visited here recently with his mother, Mrs. F. L. Peavy.

China Marker pens, general marking crayons. Listo wax pencils for price-marking, available at HASKELL FREE PRESS.

Haskell, Texas

—We Reserve the Right to Limit—

Home Owned

Dick's Super Market

506 North Second

—Just West of Telephone Building—

Phone 864-3454



69¢

Giant Size Box

PRODUCE SPECIALS

- Fresh CABBAGE 7c
- Vine Ripe TOMATOES 25c
- California AVOCADOS 10c

- Shur Fine 12 Oz. Canned POP . . . 10c
- Food King Pound OLEO 19c
- Soflin 200 Count NAPKINS . . . 33c
- SOFLIN 10 ROLL BATH TISSUE . . . 89c

Hunt's 300 Size Can **TOMATOES 19¢**

Our Darling Cream Style 303 Size Can **CORN 19¢**

Shur Fine 2 1/2 Size Can **PEACHES 29¢**

Shur Fine Crushed No. 1 Flat Size Can **PINEAPPLE 19¢**

- FROZEN FOODS**
- Libby 6 Oz. Can LEMONADE . . . 10c
- Captain Hook 1 1/2 Pound Box FISH STICKS . 79c

SHURFINE

39

5 LB. BAG

- Choice Meats AT SAVINGS**
- Gooch Blue Ribbon Pound SLICED BACON 49c
 - Armour All Meat Pound BOLOGNA 49c
 - Hormel Little Sizzler Pkg. LINK SAUSAGE 49c

Wagner Breakfast Qt. Bottle **DRINK 29¢**

Schilling Large 4 Oz. Can **Black PEPPER 49¢**

Heinz 14 Oz. Bottle **KETCHUP 29¢**

Dixie 100 Ct. Package **PAPER PLATES 69¢**

Purina 5 Lb. Bag **DOG CHOW 89¢**

BOUNTY **Paper Towels**

Fautless 22 Oz. Can **SPRAY STARCH 59¢**

29¢

LARGE ROLL

Ajax 14 Oz. Can **CLEANSER 2 for 35¢**

Shur Fine 48 Oz. Bottle **Vegetable Oil \$1.09**

TEXAS DODGE BOYS '71 SELL-OUT

'71 DODGE DART SWINGER



NO CHARGE the AUTOMATIC TRANSMISSION

Super "Sell-Out" savings for '71 when you settle on a Swinger! Here are year-end savings plus FREE automatic transmission. These Dart Swingers are loaded too! Vinyl roof and whitewalls. Deluxe wheel covers and bumper guards. Remote control mirror. But... our stock is low and these specially equipped Dart Swingers are going fast!

'71 DODGE CORONET



In addition to the special discounts during our '71 Sell-Out, we're giving the highest trades in our history. This is your chance to trade up to the beautiful '71 Dodge Coronet... family styled... but budget priced to let you save hundreds!

'71 DODGE DEMON



We are really dealing with Demons during our year-end Sell-Out! Low prices... high trades... and all the economy, power and room of the Dodge Demon! You can get the thrifty 198 cu. in. Six or the powerful Demon 340... pick your Demon today and SAVE!

Perry Motor Co.

304 S. 1st - Haskell, Texas - Phone 864-2550

Insure In Sure Insurance At Furrh - Lane

Insurance — one of the most vital needs of any citizen—is the business of Furrh-Lane Agency, located at 510 North First Street in Haskell. Stanley Furrh and Bud Lane formed their partnership agency January 1, 1969, and combined their knowledge and efforts in giving their customers the best coverage possible in many, many lines of dependable insurance. They employ Nell Russell to help them in the office.

From fire and casualty in-

FEISER COMPLETES TRAINING

Army Private Galen D. Peiser, 22, son of Mr. and Mrs. Willie E. Peiser, Route 1, Haskell, recently completed eight weeks of basic training at the U. S. Army Training Center, Infantry, Ft. Polk, La. He received instruction in drill and ceremonies, weapons, map reading, combat tactics, military courtesy, military justice, first aid, and army history and traditions.

AT FORT BLISS

Army Major Doyle Keaton Jetton, 38, son of Mr. and Mrs. Thomas W. Jetton of Haskell, has been assigned to the U. S. Army Defense School at Fort Bliss. Jetton came to his present assignment from Vietnam where he served with an artillery group at Pleiku.

PROGRAM AT LIBRARY

Mrs. Elsie McGee, Haskell County Librarian, announced that Reading Club Certificates will be presented during a special program to be held at the Library, 3:00 p.m., Saturday, August 28th.

insurance for the homeowner and business owner, down the line to special hazards insurance, the Furrh-Lane Agency offers it all. The list includes automobile, crop hail, business interruption, life, term, hospitalization, bonds and travel insurance. Their knowledge of your needs along these lines, combined with the dependable companies they represent, together gives their people the very best coverage for any given need.

Their represented companies include such solid companies as American Indemnity, Beacon National, Craven-Dargan, American General, Aviation of America, National Automobile Merchants Bonding Company, C. I. A., Lawyers Surety, Stone-wall Insurance Company, Western Surety, National Lloyds, Ranger Pan American, San Jacinto, Western General, Republic National, White Life and Interstate Fire & Casualty Company.

Once you have explained your special need for insurance to either of these partners, they work out the best plan at the most practical price for you. They explain the benefits in detail so that you know what coverage you're getting. And they write up that policy with the company that best handles whatever special coverage is required.

Dependability and complete understanding of the coverage is always foremost in their minds. Fast, efficient handling of claims is one more reason for dealing with people you know; people who are kept up to date on the fast-changing laws, coverages required, and needs of their neighbors.

It is a special service of Stanley Furrh and Bud Lane to serve the needs of the people in this trade area. They feel doubly responsible to give the best service possible, because their customers are their neighbors and friends. They invite everyone to check with them, when they need insurance.

SEE US FOR ALL YOUR LAWN AND GARDEN EQUIPMENT NEEDS!



CADET

60

Riding Mower

32 inch cut

Electric or

Manual Start

—1 Full Year Guarantee—

Electric Start \$555.00 Recoil Start \$495.00

LAWN SWEEPER \$122.00

THIS LAWN SWEEPER FREE

NO GIMMICK . . . WITH PURCHASE OF EITHER OF ABOVE LAWN MOWERS . . . SEE US NOW FOR CLOSEOUT SPECIALS.

Richardson Truck & Tractor

—Throckmorton Highway—
PHONE 864-3474
HASKELL, TEXAS

MR. FARMER STRETCH YOUR SUMMER GRAZING

WITH

PRO-LIX LIQUID SUPPLEMENT

America's FIRST Fermented Liquid Feed Supplement

Provides 23 Essential Nutrients for faster fattening of Beef Cattle and for greater milk production from cows at lower feeding costs.

SPEND A FEW MINUTES . . . SAVE SEVERAL DOLLARS . . . ASK FOR ADDITIONAL INFORMATION ON

PRO-LIX . . . at

FARM & RANCH SUPPLY

303 S. First - - Pho. 864-3255
HASKELL, TEXAS

EASY SHOPPING IN HASKELL

and

EASY CAR CARE

at

Wooten Oil

HASKELL, TEXAS

GO HAND IN HAND

.....

TRY US FIRST

Hassen's Is A Complete Family Store

Supplying the clothing and household goods needs for the entire family in a gracious and friendly atmosphere, is the desire of Fadwa and Raja Hassen at Hassen's in Haskell. The two are proud of their complete department store, proud of its 38 year history of serving the people of this trade area, and proud of the hundreds of famous nationally-advertised lines of merchandise they carry. These lines include clothing, gifts for every occasion, piece goods, lingerie, household goods, shoes and hats.

Ladies brands include Royal Park suits and dresses, Cardinal, Red Leaf, Jo Berry and Tumbleweed. Lorrie Deb and Nadine Junior and regular formals are featured and junior dresses include Tina Page, Junior Copy and Miss Eileen Jr. brands. Devon sportswear and Young Street sportswear by Royal Park are only two of the lines they carry in this department. Those famous and comfortable Daniel Green shoes and Kayser and Loraine lingerie are also available for ladies.

Men's wear department includes brands by Stetson, Palm Beach, Adams, Manhattan, Levi, Haggard and Campus, and



HASSEN'S DEPARTMENT STORE in Haskell is a complete family store that's a convenient place to shop. Courtesy and a desire to serve are uppermost in the efforts of every one of the sales personnel and they invite you to come in often.

are displayed for easy selection.

Samsonite luggage is only one item you'll find in the gift department that's loaded with beautiful gift items for every occasion. The infant's wear department is complete and stocks every need for the baby from birth on.

Beautiful Bates bedspreads and Cannon linens fill the

shelves and are easily coordinated for a new look in your home. Each department in the store is displayed like a specialty shop and it's so easy to shop for the entire family and the home in one trip to Hassen's.

The friendly sales personnel are always willing to please, and the Hassen's invite all

their friends and customers in this trade area to visit the store; shop the racks; look over the merchandise; compare the prices and check the quality offered. It's their desire to keep Hassen's a friendly and courteous place to visit, always, and to continue to be a vital part of the growth of the Haskell business community.

Frigidaire Ranges make oven cleaning easier



Now you can live the carefree electric way with this modern miracle! Gone forever is the dreaded oven-cleaning chore. The ELECTRIC SELF-CLEANING OVEN cleans itself! Takes only a moment of a homemaker's time. Set the electric controls and no other attention is needed.

Frigidaire Electri-clean

FREE WIRING BONUS

Normal FREE 220 volt wiring — in a permanently constructed residence served by WTU — for Electric Range, Dryer, Water Heater (40 gal. or larger) or a Room Air-Conditioner (1 hp. or larger) purchased from a local dealer. Ask for details.

WEST TEXAS UTILITIES
AN INVESTOR OWNED ELECTRIC COMPANY
Equal Opportunity Employer

HASSEN'S FINAL SUMMER CLEARANCE NOW IN PROGRESS

You will be pleased with these outstanding Values.

YOUR PATRONAGE IS ALWAYS APPRECIATED!



Does Your Car Need A NEW LOOK?



RESTORE NEW CAR BEAUTY FOR LESS THAN YOU THINK . . . MODERN FACILITIES FOR THE BEST PAINT JOB

Free Body Work Estimates

HASKELL PAINT & BODY SHOP

301 S. Ave. E — 864-3422

Easy Shopping In Haskell

Our Shop is Completely up for Your Convenience Show Room, Parts Department, Paint and Body Shop. All in the Same Building.

IT'S EASY TO SHOP WITH US.

BAILEY TOLIN CHEVROLET

Haskell, Texas

DARD FARM SALES

HANDLE A FULL LINE OF



PARTS FOR EVERY ITEM THEY SELL

offer speedy pick-up and service on all Ford Equipment.

Highway—864-2401

BARGAIN DAYS AT Smitty's

STP, REG. \$2.95 Radiator Coolant **\$1³⁹**

For All Cars, Each Sealed Beam Headlamps **\$1¹⁹**

J WAX, Reg. \$1.50 Instant Cleaner **79**

J WAX, Reg. \$1.50 Vinyl Top Cleaner **79^c**

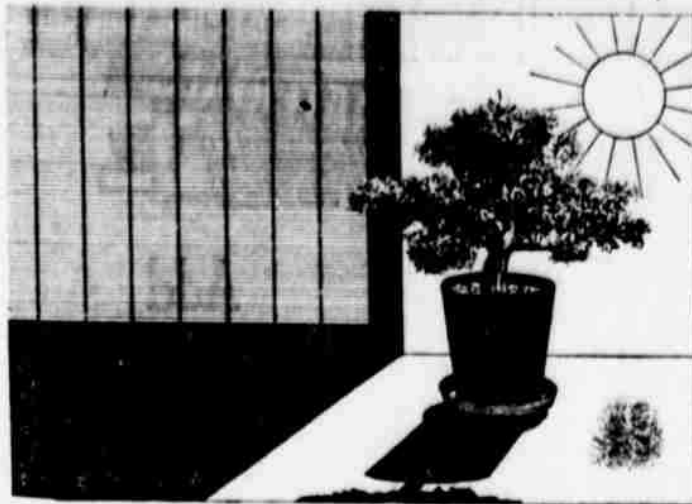
Thurs., Fri., & Sat.—26-27-28

WE SELL THE NAME BRANDS

SMITTY'S

LOW RENT DISTRICT—HASKELL

FOR YOUR SUNNY WINDOWS AND DOORS



INSTALL

SHADESCREEN[®] by KAISER ALUMINUM

The Amazing Louvered Aluminum Window Screen That Keeps Rooms UP TO 15° Cooler!

- Blocks out hot sun and glare
- Increases daytime privacy
- Helps protect against sun-fading
- Lets in soft light and breezes
- Reduces air conditioner load
- Available for all standard window sizes

KENNEDY LUMBER CO.

106 N. E. First

Phone 864-2861 — Haskell, Texas

EASY SHOPPING IN HASKELL

EARLY AMERICAN STYLE



The MELVILLE • B4727M Fabulous Decorator Series Early American styled full base console. Genuine Maple veneers and select hardwood solids.

TITAN 110 Chassis

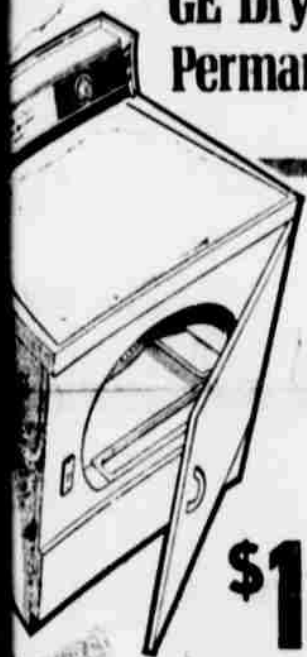
- SUPER GVG TUNER
- AUTOMATIC TINT GUARD
- ZENITH AFC

OWEN'S RADIO & ELECTRIC

Phone 864-2536—512 North First HASKELL, TEXAS

ically Tested for Dependability

GE Dryer with Permanent Press



\$159⁹⁵

drying performance at a budget price! Four to choose from including permanent press—press fabrics retain their wrinkle-free, no-iron "huff without heat" setting is just one more science... stores freshness to garments that are dried or packed away. Electronically tested for

PERSON TIRE CO.

Not Right—We Make It Right—

Telephone 864-2900—

h Avenue E • Haskell, Texas

Hale Farm Supply Looks To The Future

"It's a great feeling to know that you have the best shop, run by the best men, selling the best farm equipment, in the best county in Texas," said Pat Hale as he reviewed the history of Hale Farm Supply, Inc. "We are proud to know that the John Deere economists surveyed the entire State of Texas and found that Haskell is one of the smaller towns that is predicted to grow to proportions that this dealership will one day become one of the largest in the country. It not only gives us the confidence to work to build our business into the best service for the farmers in this area, but instills a new pride in our town."

Pat Hale and A. L. (Dusty) Rhoades, Abilene attorney, are the principal stockholders in the corporation that is the John Deere dealership for this area. Pat Hale manages the business. Hale Farm Supply employs six people to handle all phases of the business, and they are proud of every one of them and feel they have the best people possible. Howard Hopkins is parts manager and has an impressive knowledge of the entire department and many years of experience. Shop foreman Billy Paul Cypert has over 18 years of experience and has attended some 15 or 20 service schools to keep pace with new and improved equipment service. Claude Payne



HALE FARM SUPPLY ... Your John Deere Dealer

and Joe Muhle are mechanics and Muhle is truck driver for the firm. Mrs. Mary Lowe is bookkeeper.

Stock inventory in the parts department is \$97,000.00 and the complete stock and equipment inventory stays around \$400,000.00 so that every farm equipment item and part that can possibly be needed in a hurry is right there for fast

delivery or installation. Their radio-equipped trucks and 24-hour service and on-the-farm service makes the business available to the farmer the instant it is needed.

The dealership was bought from Braxton Gilmore January 1, 1969 and the new building on the Weinert Seymour highway was immediately begun. The dealership moved in

in May of that year and the added space both inside and outside gives them plenty of room for expansion and growth.

"We are here to serve the agricultural community, and our services are available to everyone in the Big Country," said manager Pat Hale. "We welcome you to Hale Farm Supply anytime we can be of service to you in any way."

EASY SHOPPING IN HASKELL

Boys Department

ment of Billy the Kid Jeans
ment of Mann Jeans
Purple, Green, Orchid, Pink and Red
ks to r...ch

Girls Department

LARGE ASSORTMENT
Alicen Sportswear, Plain and Lace Boots
re to check our Junior Department
ment of Dresses, Alicen Sportswear, Robe
Pajamas, and Coats by Jet Set

AUGUST WHITE SALE

00% OFF

SHEETS, TOWELS, BLANKETS

WELLS DEPT. STORE

Side of Square—Haskell, Texas

Attention!

PICK-UP OWNERS

WORRIED ABOUT GAS TANK EXPLOSIONS?

LET US BUILD A CUSTOM GAS TANK FOR YOU

Tank fits under your tool box. Wide Bed Tank has 54 gallon capacity.

All fittings, only

\$71.75

WEST TEXAS SHEET METAL COMPANY

906 S. Ave. E—Phone 864-3210

Clothing for Back to School and College

Curlee Suits and Sport Coats . . . Johnny Carson Suits and Sport Coats . . . Student Suits and Sport Coats by Chips 'N Twigs . . . Haggard and Levi Slacks in Flairs . . . Pedwin Shoes . . . Burlington Socks . . . Gorel Belts . . . Arrow Shirts Rob Roy Shirts . . . Mr. John Ties

Double Knit Slacks for Boys—\$13.00 to \$15.00
Double Knit Slacks for Men—\$20.00 to \$25.00

The DAD 'N LAD Shop

411 South First Street - Haskell, Texas



CUT SOME OF THAT WORK TIME

We know how hard you work your farm . . . the problems that arise because of unreliable fuel for equipment. We can change that . . . Save you money and time, too, with LP-Gas. Call for details.

DEAN BUTANE CO.

Phone 864-2681—Haskell, Texas

If No Answer—Dial 864-2420

"We Are Proud Of Our Town"

Enter the Age of Aquarius in style with a water-bed! Sherman's is noted for being "first with the most." Come by Sherman's and see and try the water-beds. These were bought especially for you, our customers, to get acquainted with! Fun, Fad or Fashion! We all like to know what it is all about!

See and try the water-beds at Sherman's

Leaders of the Week

CARPET—"Town Square" Acrylan Brick Pattern, Green or Gold Heather. Regularly \$12.95 sq. yd. **\$9.95**
Installed over heavy foam pad

LAMP SHADES, Early American or Modern. All sizes **10% off**

SHERMAN'S

FLOORS and INTERIORS

ALVIN AND WINNIE SHERMAN

Northwest Corner of Square & South Ave. E

Easy Shopping in Haskell

THE FALL OF THE YEAR
IS THE TIME TO FIND
THE BEST VALUE ON
YOUR OLD CAR.
WHEN YOU TRADE IT IN
ON A BRAND NEW, 1971
CAR OR PICK-UP!

See Us First!

**BILL WILSON
MOTOR CO.**

209 S. Avenue E—Pho. 864-2611

YOUR HOME CENTER FOR LUMBER AND BUILDING MATERIALS



Add
Instant
Indoor
Beauty

To any room in your home.
Shop our fine selection of
Pre-Finished Paneling.

All Colors

**BRAZELTON
LUMBER CO.**

211 North First Phone 864-3030
Haskell, Texas

school-time CASUALS



Lace-Up
SHOES
(Crepe or Leather Soles)



Stylish
SCHOOL SHOES
(Asst. Colors and Styles)



Charley Browns
For Fall
(Leather or Suede)



Girls'
High Top Shoes
For Pants
(Leather or Suede)

WE HAVE A LARGE SELECTION OF NEW
FALL PURSES FOR YOU TO CHOOSE FROM.

Fouts Dry Goods

We Give S&H Green Stamps

END-O-SUMMER
**Close Out
PRICES
SLASHED**
—ON—
**Summer
Products**
WHITE AU
WEST SIDE OF SQUARE

Easy Shopping . . .

Know what makes it so easy to shop L-F? It's the little courtesies that all our sales staff offers to each customer they serve — coffee and a tidbit to slow the pace; a quiet corner with comfortable chairs where you can wait while your purchases are readied; a special order on an item that is not available in your size . . . it's all a vital part of personalized service that L-F gives to every customer that walks through their doors.

Lane-Felker



DEAN BUTANE COMPANY: Left-to-right, Homer Josselet, owner Jesse Dean, and Lee Roy Isbell are pictured by one of the big trucks used to deliver butane and propane to the customers, fast. The three are at the service of the people of this area at all times, to keep these fuels supplied.

Fuel Needs Are Filled By Dean Butane Company

Dean Butane Company, 110 N. 1st, is owned and operated by Jesse Dean, Mr. Dean and Fred Gilliam opened Gilliam & Dean Butane Company in July, 1950 at the Texaco Wholesale Co., S. 1st. The present building was built in April, 1955. Dean purchased Gilliam's interest in 1957 and became the sole owner.

Assisting Mr. Dean in operating the progressive business are two employees, Homer Josselet and Lee Roy Isbell.

Dean Butane not only handles Butane, Propane and Diesel fuel for farm and domestic customers but installs L.P. gas fuel systems, and domestic systems for L.P. gas.

During the past few years the business has included City Service oil and greases and they sell and service Gould and Ruth-Berry water pumps and stock parts and plastic pipe for all water needs.

"We also sell Day & Night hot water heaters and Dearborn and Hearth-Glow heaters," Dean said, "and we invite everyone in our trade area to call on us when you need fast, dependable delivery on butane, propane and diesel fuel, or when you need any of our other services. We are proud to serve you."



DAD 'N LAD SHOP owner, W. V. Felker, has been in the men's wear business for 28 years and is well qualified to help select the best color-coordinated lines for men and boys, in all their clothing needs.

Dad 'N Lad Shop Offers Latest Styles

W. V. Felker, of The Dad 'N Lad Shop on the south side of the Haskell square, has been in the men's wear business about 28 years and all that time has carried Curlee brand clothing and Arrow shirts. He and R. A. Lane began in the men's wear business October, 1943 on the north side of the square; moved to the Lane-Felker building in 1952; and were there six years before selling the stock in 1958.

In February of 1959, W. V. Felker opened The Dad 'N Lad Shop at its present location.

He employs Mrs. Pauline Norman and Mrs. Betty Watson. Pauline has been with him for ten years and Betty for 4 years. All three are well schooled in the art of combining color and style to outfit men and boys in the latest fashions. The store offers free gift-wrapping and free altering on regular priced merchandise.

Brand names include, other than Curlee and Arrow, Johnny Carson, Enro, Munsingwear, Pedwin shoes, Weyenberg Masgic shoes, and Levi and Haggard slacks.

It is the policy of The Dad 'N Lad Shop to keep up with the latest style clothing for men and boys, and everyone is invited to come in and look over the wide array of nationally advertised brands in the newest fashions.



WE'RE
EXACT
MAGICIAN
But we
have so
nifty little

tricks for getting clothes spruced up. Good service and the Best Quality work is a must with us.

BIARD CLEAN

516 North First — Haskell, Tex.
"GOOD GROOMING IS AN ART"

ANNOUNCING GRAND OPENING SALE

SEPT. 1st

Register for \$2,000.00 in Free Door Prizes
Free Dry Cleaning Certificate with each purchase
Store completely remodeled with new merchandise
Prices cut on everything

Door Prizes

- One pair Tony Lama Boots
- One pair Western pants by Mesquite
- One Resistol \$25.00 Fl. Worth hat
- Two pair Jarman shoes
- One pair Floresheim shoes
- One Merit Noble Manor Sport Coat
- 1/2 dozen Wembley ties
- One pair Hubbard double knit slacks
- One Jayson shirt
- One jumpsuit by Pool

Drawing will be held Saturday, Sept. 18
Best Quality At Unheard of Prices

**Lane Apparel
and
Cleaners**
(FORMERLY HUNTER'S)

Make Your SHOPPING EASY

by Shopping

The PERSONALITY SHOPPE FIRST for your

Complete Fall Wardrobe
Our Special Feature
August 26-27-28 only

SPECIAL COAT BONANZA

2 Easy Ways

20% off Cash Sales Only

or

Lay away-\$5.00 will hold yours
(Regular Payments — Weekly or Monthly)

PERSONALITY SHOPPE
HASKELL

Get the "NEW SLANT" in CORDLESS SHAVES

Get the New REMINGTON® LEKTRO BLADE® LBX CORDLESS SHAVER



• NEW COMFORT CONTROL
• NEW DISPOSABLE BLADES
\$24.95

New COMFORT CONTROL adjusts shaver exactly right for shaving or trimming. As for closeness . . . new sharp, they have to get dull. Just change them economically, and keep on shaving super close. Heads extend for easy cleaning or blade replacement. Recharges on any A.C. current. Comes in travel pack with extra set of blades.

OATES DRUG
Phone 864-2515—24 Hour Service—Phone 864-2815

ONE-OF-A-KIND SALE

Gold Cover Club Chair Reg. \$49.50 \$29.50 w.t.	All Cloth Early Am Recliner Reg. \$79.50 \$79.50
Early American Rocking Love Seat Patchwork Cover Reg. \$119.50 \$69.50 w.t.	Early Am Sleeping Reg. \$199.50 \$199.50
General Electric Freezer \$189.50 w.t.	General Dishwasher Reg. \$144.00 \$144.00
Rock Maple Telephone Bench Reg. \$39.50 \$29.95	Big Plush Early Am Rocking (Brown Nylon) Reg. \$69.50 \$69.50
7 Pc. Chrome Dinette Reg. \$109.50 w.t. \$69.50 w.t.	

Boggs & Johnson
FURNITURE - APPLIANCES