



Say, it would seem that not only yours truly got their fill of having to drive around over the ice last week. After our paper hit the streets practically everyone said how they agreed that it was high time something was done about their condition.

Naturally, this was not 100 percent accepted by all parties concerned. However, despite the confrontation concerning the streets, good old Mr. Sun did a lot of good over the weekend in helping the situation.

We tried to make our thoughts known last week, not only from the danger situation concerning walking and driving on the ice, but our city has a sizeable chunk of money invested in paving. We have all seen what continued ice and snow can do to asphalt paving and believe me, it ain't pretty!

We believe our streets should've been seal-coated this past year just as insurance against the winter snow and ice. This wasn't done you recall.

Who knows, we may be lucky and not lose any appreciable amount of paving this winter, but this last spell sure hasn't helped any.

XXXX

Speaking of more non-controversial subjects, did you attend last Friday night's games at Spearman?

If you didn't, you missed a couple of exciting games. The Elkettes played a fine ballgame and downed the Lynxettes for the first time since way back in 1966 or 1967. The win at Spearman was also the first ever suffered by the Lynxettes at home in a district battle. Now, that covers back to 1961 or 1962 and that is a long time!

Then to cap off what was already an enjoyable night for blue and white fans, Coach Sam Brite's charges back the Lynx on a last second field goal by Mark Beaty.

XXXX

We got a bunch of material this week from the Federal Energy Office (FEO) outlining what will happen if gasoline rationing becomes a reality.

Personally we do not want any kind of rationing, but we don't always get our "druthers."

The FEO material pointed out that all plans have been made to where they can begin gasoline rationing by March 1, 1974, if deemed necessary.

Now, we admit the FEO said they will be ready by March 1, not begin any rationing on that date.

The material also pointed out the FEO hopes to avoid rationing and will do so if we all do some necessary things...

...voluntarily try to stay within 10 gallons per week use for private cars.

...have a 55 mph speed limit.

...keep a ban on Sunday gasoline sales.

...use a car pool.

The FEO added "if the American public continues to cooperate, more stringent measures can be avoided, for example:

Further restrictions on gasoline sales, two days per week service station closings; a ban on individual driving one day per week; rationing;..."

The material also pointed out that all drivers 18 years of age and older will be issued the gasoline coupons [wonder how much Cain the younger drivers in Sherman County will raise if this goes into effect].

The FEO also outlined details of the proposed rationing system that may be put into action come March 1.

We hope this doesn't come to pass, if we all work together, perhaps it will not.

We observed the Moore County News put it this way..."The way things are going, the Arabs will all be driving Cadillacs and we will be driving camels."

XXXX

We would encourage anyone who has not completed their high school education, or interested in learning the English language to attend

[Continued on Page 2]

IN LOCAL POLITICS

Three Men Seek Post In Commissioner Race

This year already promises to be an interesting election year as three men have already filed to run as candidates for the office of Sherman County Commissioner for Precinct 4, according to the records of Pat Johnson, Sherman County Democrat Chairman.

Three candidates who have already filed their intentions to seek the Democratic nomination for Pct 4 Commissioner include E.A. Hamilton, Ted Reynolds and Tommy Wakefield.

Incumbent Commissioner S.J. Lavake announced that he would not be seeking reelection to the office earlier this month.

In other local races, W.S. [Bill] Frizzell Jr., has filed to seek reelection to the office of Sherman County Judge. Mrs. Marguerite Terrell has filed her intention to seek reelection to the office of County and District Clerk, J.R. [Bob] Marshall has filed for reelection to the office of Justice of Peace, Pct. 4.

As of Monday, no candidate

had filed with Sherman County Republican Chairman Mrs. C.T. Watson.

Deadline for all candidates to file for the Democratic and Republican Primaries is February 4. The actual Primary Election will be held on Tuesday, May 7.

Anyone interested in filing as a candidate for any county office may do so by contacting either Mrs. Pat Johnson if they wish to run on the Democratic ticket, or Mrs. C.T. Watson, if they wish

to run on the Republican ticket.

Mrs. Madge Lowe, who is the incumbent Sherman County Treasurer, has informed The Star that she will seek reelection to that office, but as of Monday noon, Mrs. Lowe had not filed with either Mrs. Johnson or Mrs. Watson as a bonafide candidate.

With the several county offices up before the voters this year a bigger race will be for the office of Congressman for the 13th Congressional District

which includes the Panhandle.

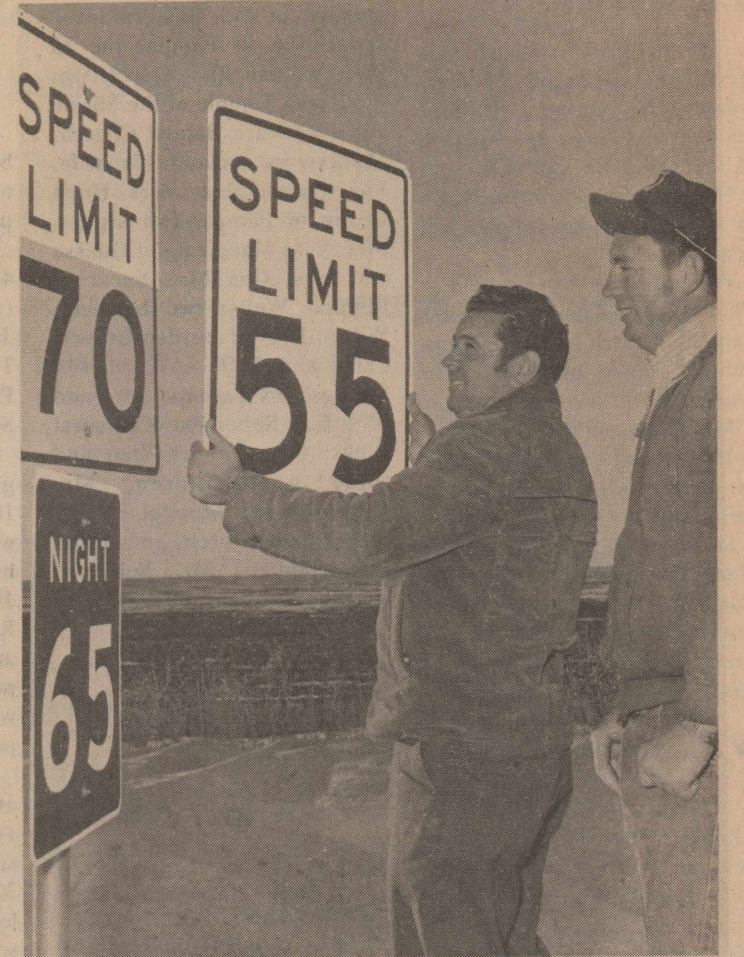
Republican Bob Price of Pampa currently holds this office and is certain to seek reelection.

As of this week two Democrats have signified their intentions to see the Democratic nomination to face Price in the November General Election.

Ray Ruffin of Amarillo and Jack Hightower of Vernon are the two Democrats who will have heated opposition in the Primary and probably from the Republicans this November.

All citizens are urged to register to become qualified voters this year as it will be an important political year.

Another issue which will probably come up for voter approval this year may be a new Texas Constitution. Currently, members of the Constitutional Convention are in Austin in an effort to rewrite the current state document. If, and when, this Constitutional Convention comes up with a new document, voters will have the final approval at the polls.



NEW SPEED SIGNS--Effective Sunday morning at one minute after midnight, speed laws in Texas go back to 55 mph. Texas highway Dept. employees Leland Lewis and Jimmy Lyle change signs on the Gruver highway out of Stratford Monday.

STRATFORD, SHERMAN COUNTY, TEXAS 79084

THURSDAY, JANUARY 17, 1974

THE STRATFORD STAR

Tip Top Town in Texas

VOLUME 74

12 PAGES

NUMBER 3

GIRLS BREAK RECORD

Boys, Girls Down Spearman In District Action There

Stratford's Elks and Elkettes combined to chalk up two consecutive wins in District 1 AA action last week with big wins over Phillips and Spearman.

The Elkettes victory over Spearman was a sweet one as this is the first time a Spearman girl's team had been beaten in a district game on their own home court, a record that goes back some 13 years.

The two wins this past week put the Elkettes at 3-0 in district while the Elks are 2-0 in loop play.

Gene Wilson Wins Eighth Top Award

Gene Wilson, Stratford manager for Southwestern Public Service Company, has again earned his company's "manager of the year" award in competition with 13 other managers in towns similar in size to Stratford.

This is the eighth time Wilson has earned the award and has gained the honor for seven consecutive years. Both of these accomplishments are records.

Cliff Milnar, marketing vice president for Southwestern, made the awards presentation today at the division sales meeting in Amarillo. A microwave oven is part of the honor.

Stratford earned 7 first place positions and achieved quota, or better in 13 to 15 areas of sales competition to bring the award to Wilson.

Calendar of Events

THURSDAY, JANUARY 17
9:30 - 11:30 a.m. Social Security Representative at Court House
6 p.m. 9 boys vs Sunray here
8 p.m. Square Dance lessons at Legion Hall

FRIDAY, JANUARY 18
4 p.m. A&B boys and girls vs Panhandle there
7 p.m. Kerrick Community covered dish supper

SATURDAY, JANUARY 19
7:30 p.m. Bingo at the Country Club

SUNDAY, JANUARY 20
ATTEND CHURCH OF YOUR CHOICE

7 p.m. Gospel Singing Group at the Methodist Church

MONDAY, JANUARY 21
5 p.m. 7.8 girls vs Spearman there
5 p.m. 7.8,9 boys vs Spearman here

7 p.m. Lions Club
7 p.m. Adult Education at Jr. High School

TUESDAY, JANUARY 22
2 p.m. Music Club at Mrs. Ken Kendrick's
4 p.m. A&B boys and girls vs Dalhart here

The Elkettes-Phillips game last Tuesday night was a nip and tuck affair and the decision of the winner rested on a last second field goal by Cindy Stokes who sunk a 15 footer as the buzzer sounded to give the Elkettes a 58-56 win.

The Elkettes lead early 20-9 then saw this whittled down in the second as they went into the half owning a slim 30-27 margin. Phillips came back out hustling in the third and tied the score at 44-44 at the end of the third stanza. The two teams then exchanged goals and fought tooth and nail all the way in the fourth quarter. Phillips' Coach Clemmons took advantage of time outs in the final minutes to change big Jill Rankin, a 6'2" forward from front to back court and kept the Elkettes offense off balance.

However, with the score tied at 56-56 and two seconds left on the clock, Cindy Stokes put the ball in the air and it zipped through the net to give the Elkettes the margin of victory.

D'Lynn Brown and Miss John Apel Home

Burned In Fire

The home of the John Apels was damaged by a sudden fire last week which began in the floor furnace. Damage to the structure was minimal, however, many articles of furniture and clothing of the couple was damaged and smoked during the blaze.

Both the Apels are employed in the Stratford schools, and neither were at home when a neighbor saw smoke coming from the home and turned in the alarm. Firemen of the Stratford Volunteer Fire Department responded quickly keeping damage low in the blaze.

No amount of damage was known at presstime.



CRASH MONDAY MORNING--Mrs. Wilma Cameron was a lot more humiliated than injured early Monday when her auto which was parked in front of The Bumble Bee decided to go on a trip alone. Apparently Mrs. Cameron left the auto running but not in "Park." The auto circled out onto Main, then cut back and into the front of the old bank building. Not a bad job for a driverless car!

Rankin both tied for high point honors with 26 points each in the game. Miss Stokes and Phyllis Miller both made 16 points each for the winners.

Friday night the Elkettes hit the road to play the Spearman Lynxettes in their own gym.

The Elkettes were tight as a drum in the first quarter but owned a 12-9 first stanza lead with Miss Brown and Miss Stokes hitting six points each.

In the second stanza the Elkettes outscored Spearman 11-10 to own a 23-19 halftime lead.

During the third quarter the Elkettes put it all together with Guards Melinda Zaricor, Betty Hacker and Daleen Prescott playing excellent defense and the Elkettes forwards racked up 16 points while allowing Spearman only six to own a

All Region Band Plays At Canyon

Fifteen members of the Stratford Elk Band, plus one alternate participated in the All Region Band Concert last weekend at West Texas State University in Canyon.

The 15 members who qualified for All Region were Tammy Cameron, oboe; Gina Bass, clarinet; Gloria Pleyer, flute; Joe Escamilla, cornet; Karen Pleyer, cornet; Andrea Pilch, french horn; Ginger Borth, french horn; Mike Armstrong, trombone; Pete Wall, baritone; David Maas, baritone; Bob Zimmer, tuba; Terry Brooks, tuba and Joe Hart, alternate.

The Elk Band is under the direction of Gary Laramore. Laramore is assisted by Bill Surface, director of the Stratford Junior High Band.

39-25 lead going to the final quarter.

In the final stanza, Coach P.D. Fletcher substituted for his guards with Jode Lasley and Natalie Engelbrecht coming off the bench and doing a fine job also.

The Elkettes put another 16 points through the hoop and Spearman got only 12 points, three field goals and the remainder charity shots to win by a 55-37 margin.

Miss Brown has high scorer for the Elks with 23 points while Peggy Floyd of Spearman was high pointer with 24 points. Miss Stokes hit for 18 and Miss Miller hit for 14 in the contest.

Recapping the Elk action this past week, Coach Sam Brite's Kardiac Kids won two consecutive ball games with last second field goals.

Mark Beaty was the Elk under pressure in both games but managed to come up with almost identical shots just prior to the buzzer to sink the ball and give the Elks a win.

Last Tuesday night the Elks trailed Phillips here 13-10 at the end of the first stanza and 21-20 at the half. The Elks came on stronger in the third and owned a narrow 28-27 lead going to the final eight minutes.

With less than a minute to go, and the score tied at 36-36, Phillips' Mike Strickland sunk the first shot of a one and one to go ahead. The Elks took the rebound, went down the court but lost the ball. Phillips called a time out and in throwing the ball back in lost possession and it was passed to Mark Beaty who hit from the top of the circle just before the buzzer sounded to give the Elks a 38-37 win.

Beaty was high scorer for the Elks with 14 points and Strickland lead the Blackhaws with 11.

[Continued on Page 2]

Lions Club Set For Pancake Event

Johnny Brannan entertained members of the Lions Club with slides of Vietnam at the club's regular meeting Monday night.

Ed Staton was installed as a new member and plans were made for the Pancake Supper on January 29.

The Pancake Supper will be served from 5 until 7:30 p.m. at the high school cafeteria on Jan. 29.

Bill Cox is general chairman of the event this year with Joy Smith, and Dave McReynolds in charge of the meat preparation; Joe Walsh, Arthur Judd and Bill Sladek in charge of cooking pancakes.

Bill Riffe and Joe Wells will be in charge of serving with E.R. Bell and Rex Christian in charge of the tables. Coffee will be under supervision of W.D. Brannan and R.J. Hill with John Richter in charge of cleanup. Phil Bain is chairman of the dishwashers with Bill Dyess in charge of ticket sales.

The Pancake Supper proceeds this year will go toward the High Plains Eye Bank for 50 percent of the monies and the remainder will go for other Lions Club civic activities.

Tickets this year will be \$2 for adults and children under 12 for \$1 each.

Older Texan First Meeting Set Thursday

All residents of the area 55 years of age and older are urged to mark the date of Thursday, January 24, at 2 p.m. on their calendar.

This will be the date of the initial meeting of all Older Texans at the County Barn in Stratford.

A group of concerned residents in Stratford have been at work planning this project and are now ready to invite all Older Texans to attend this first event.

A program will be presented, refreshments will be served, there will be group singing and games provided.

All Older Texans can help make this a time "to greet old friends and to make new friends."

The new organization has grown out of what many concerned residents felt was a need to recognize and make something happen for benefit of our older citizens to whom we all owe so much.

The meeting will be for their benefit, to come and go as they wish and do what meets their needs.

All residents of this area are invited to attend. If anyone is confined to their home and transportation is a problem, just dial 396-2178 or 396-2013 and transportation will be provided.

The meeting is planned to last approximately two hours. All Older Texans are urged to attend and bring someone with them.

Commissioners Okay New Radio Network

Sherman County Commissioners passed a resolution for the county to enter into agreement with the Panhandle Regional Planning Commission to participate in the upcoming communications changeover.

The changeover will take place sometime during 1974. All area law enforcement radios will be changed from frequencies now utilized to higher frequencies to enable them to get better reception and more channels available.

Seventy-five percent of the cost of the changeover will be paid by Federal funds through the PRPC with the other costs borne by the counties and participating governmental subdivisions.

Sherman County's cost for the changeover will be \$3,316.44. In other action, the Court acted upon a request by the Sherman County Home Demonstration Council to provide a portable stage which will be used in the County Barn.

The Court also selected the Salary Grievance Committee for 1974. This is a group of area citizens plus elected county officials to hear grievances concerning county salaries during the coming year.

The four lay members elected Monday include Mrs. D.G. Cluck, Mrs. Joe Ray Brown, Lyle Harmon and Lynn Hudson. County officials include Clois Vaughn, Marguerite Terrell, Madge Lowe, Gene Sadler and Bill Dyess. Judge Bill Frizzell serves as chairman of the group but is a non-voting member.

The Commissioners Court were feted with a dinner by members of the Sherman County HD Council Monday at noon at the County Barn.

The meal was prepared by the

HDC and entertainment included several numbers by members of the Stratford High School Stage Band.

"Speaking on behalf of the Court, we would like to express our appreciation to members of the HD Council and to the Stage Band for their thoughtfulness this past Monday," said Judge Frizzell.

Adult Ed Program On Monday

A total of 36 residents showed up Monday night for the organizational session of the Adult Education Program at Stratford High School.

These classes, which will begin at 7 p.m. and last until 10 p.m. when they get underway, are designed to help anyone with their education.

One class will be for those who wish to learn English, others will be for those who wish to get their high school diplomas and all ranges in between.

"This program is for everyone interested," Supt. E.L. Bass pointed out. "There is no cost to the student, textbooks and materials are furnished by the State of Texas and become property of the student," he added.

All residents of the area are urged to be on hand next Monday night. The West Door of the Junior High will be open and classes will be held in the Junior High School area.

Enrollment is still open and we want anyone interested in learning to speak English, to read, to write or continue their education at any level to come, Bass added.



PLANNING SESSION--The Rev. J. Frank Peery, pastor, First United Methodist Church, is shown here with Mr. and Mrs. R.K. Everett Sr., as the group makes plans for the Older Texan meeting set for next Thursday at the County Barn.

OBITUARIES

J.B. Adams

Word was received this week of the death of J.B. Adams, 69, former Stratford resident and longtime employee of the Santa Fe Railroad.

Mr. Adams died in his home in Lubbock Friday following a heart attack.

Funeral services were held at 10 a.m. Monday in the First Baptist Church with Sanders Funeral Home of Lubbock in charge of the arrangements.

Mr. Adams moved to Lubbock in 1942. He was a member of the First Baptist Church and a member of the Masonic Lodge.

Survivors include the widow; Mary Ruth; a brother; J.C. Adams of Plainview; two sons, Lewis of Lubbock and Robert of Arizona; and two granddaughters.

W.L. Roberson

Funeral services for W.L. "Robbie" Roberson, 68, were held at 2 p.m. Friday in the Schooler-Gordon Colonial Chapel of Amarillo with Dr. Winfred Moore, pastor of the First Baptist Church, officiating.

Burial was in Memory Gardens Cemetery.

A native of Strawn and a resident of Amarillo for the past 21 years, he died at 8 a.m. Wednesday in the Southwest

Osteopathic Hospital. Mr. Robertson was a retired steamfitter and was a member of local union 196. He was also a member of the Master Mason Lodge 966 in Pampa, the El Paso Scottish Rite Association, the Khiva Temple of the Shrine and the Grace Baptist Church.

Survivors include his wife, Violet; a daughter, Mrs. Hugh Gegan of Pampa; two sisters, Mrs. Vera Mae Craig of Odessa and Mrs. Ona Mae Spear of Mineral Wells; two brothers, Wilson Dyer of Garden Grove, Calif. and D.D. Dyer of Big Springs; his parents, Mr. and Mrs. E.L. Robertson of Mineral Wells; four grandchildren and three great-grandchildren. Mr. Robertson of Mineral Wells; four grandchildren and three great-grandchildren and three great-grandchildren. Mr. Robertson of Mineral Wells; four grandchildren and three great-grandchildren.

TOWN TALK

The Elliott Crabtree family spent Christmas in Weslaco, Texas visiting Mr. and Mrs. W.D. Heil and Mr. and Mrs. Nick Dynis. They enjoyed a trip to the beach while they were there.

TOWN TALK

Five couples from Stratford spent the weekend skiing at Santa Fe. They included Mr. and Mrs. David Bornstein, Mr. and Mrs. Steve Dettle, Mr. and Mrs. Doug McBryde, Mr. and Mrs. Hoy Harrison, and Mr. and Mrs. Johnny Brannan and Stephanie.

PREP BASKETBALL Junior High Teams Move Into District

Stratford's Junior Varsity boys and girls won one and lost one each in district action this past week.

The JV girls won over Phillips 44-30 on Tuesday night but lost to Spearman JV on Friday 38-30.

The JV boys also downed Phillips 55-45 but lost to Spearman on Friday 51-47.

Recapping the action, the JV girls lead Phillips all the way 10-8 25-18 and 38-20 before winning 44-30. Kim Cotney was high scorer in the contest for the JV Elkettes with 23 points. Rhonda Fortenberry hit for 12 and Jeanne Engelbrecht got 9 points in the game. Hoffman was high for Phillips with 14 points.

Friday night the JV girls lost at Spearman 38-30. They trailed 14-0 at the end of the first stanza, 26-9 at the half and 30-14 at the end of the third and lost 38-30. Miss Fortenberry was high with 17 followed by Kim Cotney with 12 and Miss Engelbrecht got a single. Carla Harper was high scorer for Spearman with 21 points.

The JV Elks lead Phillips all the way in their game 21-15, 35-28 and 48-36 and won 55-45. Tommy Ewers was high scorer

for the JV Elks with 14 points while Joel Hart got 12. Leonard Duncan got 11 and Leon Payne hit for 10. Other scorers included Will Allen and Jeff Wiley with two and four points each.

Friday night the JV Elks trailed 11-10 at the end of the first, were down 29-20 at the half but lead at the end of the third 37-34 but couldn't hold out and lost 51-37. Wiley was high with 12 points followed by Payne with 11, Duncan got 9, Allen hit for 6 and Harris got 4 in the game.

In girl's action this week against Phillips, the seventh grade suffered their first loss. In the first quarter, Stratford put up only one free throw to end up on the short end of the stick 16-1. At the half, Phillips was ahead 35-12. Phillips got cold in the third scoring only 2 points but the score was 37-25 in their favor at the end of the third. Phillips pulled out in front in the fourth to end the game 43-25. Barrie Donelson was high for Stratford with 16 while LaRonda Stacy put up 5 and Jean Ann Keener put up 4. Phillips high scorer was Rankin with 30. Stratford's eighth grade girls

pulled out for an early lead of 10-5 at the end of the first. The score at half time was 16-10 with Stratford still leading. Stratford continued to dominate the game with 24-16 at the end of the third and 30-20 to win the game.

Patti Dietrich was high for Stratford with 12 with Kaye Lewis and Brenda Hawkins each scoring 8 and Patti Pool putting up 2. High scorer for Phillips was Thompson with 9.

In boy's action this week, the Seventh grade slipped by Phillips with a score of 22-21. The score was 8-6 at the end of the first; 15-7 at the half. Phillips tied the score up at the end of the third with 18 all. Stratford managed to pull it out and win by one point. High scorers for Stratford were Toby Wisdom and Chet Everett with 9 followed by Ingham and hesmer with 2. Taylor was high for Phillips with 8.

Stratford's Eighth grade were held nearly scoreless by their opponents with a final score of 32-6. Phillips led throughout the game with a score of 6-0 at the end of the first; 14-2 at the half; and 28-4 at the end of the third. Johnson, Ferguson and McClellan all put up 2 for Stratford. Guillot was high for Phillips with 10.

The Ninth grade boys got a running start on Phillips and kept it throughout the game to end the first with 17-4. At the half Stratford led 29-16 and at the end of the third with a score of 40-26. The final score was

55-32. Bill Stroud led the scoring with 21 followed by Hudson with 13 and Harris with 10. Kendrick got 5 in the game with Albert putting up 4 and Haggard getting 2. Kurht got 14 for Phillips.

Local Youth To Compete At Amarillo

Fifteen Sherman County youngsters will be carrying animals for exhibit at the Amarillo Stock Show this week, announced Jim Allison, county agricultural agent.

The youths represent members of the Stratford Future Farmers of America and the Sherman County 4-H Clubs.

Jack Burkhalter has been working with Allison in preparing these animals for the show.

FFA students making the trip to Amarillo include Mark Wright, Tommy Ewers, Chip Caraway, Jesse Boardman, all with steers, and Kerry Bell with a pig and Jeff Pronger with a lamb.

Members of 4-H going to Amarillo include Duane Gillenwaters, Honey Hart, Blake Sladek, Mark Keener, Maria Jurado, all with steers. Those with swine include Jim Ferguson, Tommy Cartrite, Wes Spurlock and Jeff Spurlock.

Steer show at Amarillo will be Friday at 8 a.m. with the Lamb Show following at 9 a.m. The Swine Show will be on Saturday beginning at 8 a.m.

The Sherman County Junior Livestock Show will be held during February.

TRACKS

...from page 1

Monday night's Adult Education Classes which will be held at the Junior High.

This first Monday night a total of 36 attended and next week they will decide upon various grade levels. We would urge all employers in the area who have people who may be interested to help these folks continue their education.

Anyone interested in details may contact Supt. E.L. Bass at his office.

XXXX

THE STRATFORD STAR Second class postage paid at Stratford, Texas 79084. SUBSCRIPTION RATES:

The Stratford Star will be mailed in Sherman, or adjoining counties for \$5.00 per year or elsewhere for \$6.00 per year.

Dave McReynolds Editor & Publisher

CLASSIFIED & LEGAL RATES A charge of 10 cents per word for the first insertion, 5 cents per word for second insertion payable in advance. If billed a charge of 25 cents will be added. Minimum charge, paid in advance, \$1. Monthly rates upon request or see table on Classified Page. Display rates upon request. This newspaper is a member of the National Press Association, Texas Press, West Texas and Panhandle Press Association.

Warming weather and sunshine this week, and most welcome. We are sorry not to have the highs and lows, but Horace Sneed is in the hospital this week. We wish him a quick return to better health and to home.

Commodity prices Tuesday showed wheat selling for \$5.41, grain sorghum at \$4.30 per cwt and corn at \$2.79 per bushel on local markets.



BILL FRIZZELL ...seeks reelection

Bill Frizzell Seeks Reelection As Judge

W.S. (Bill) Frizzell Jr. has announced his candidacy for reelection to the office of Sherman County Judge and Ex Officio Superintendent of schools in Sherman County subject to the action of the Democratic Primary Election.

Judge Frizzell took office on July 1, 1962, and has served as President of the Panhandle County Judge & Commissioners Association.

The Judge has no outside business interests and devotes his full time to the office of Sherman County Judge.

In making his announcement, Judge Frizzell authorized The Star to make the following statement... "I greatly appreciate the fact that the citizens of Sherman County have had so much confidence in me and I certainly intend to continue to operate the office in a conscientious manner. Any help which I may receive from the voters of Sherman County will be greatly appreciated in the coming election."

Judge Frizzell is a graduate of Stratford High School and then served in the Medical Corps during World War II. He has

BASKETBALL

...from page 1

In Friday night's game at Spearman, the Elks lead 14-12 and 26-20 at the half. They continued to lead 34-30 at the end of the third, but saw the game get all knotted with 1:56 left. As the final seconds ticked away Spearman hit one shot of a one and one situation to go ahead 46-45 and Phil Walden rebounded the ball and the Elks took possession. Both teams missed shots in these final seconds and with five seconds left on the clock, Beaty put up a 15 footer which knocked the

bottom out of the bucket to provide the Elks with a 46-45 win. Spearman got the ball out of bounds with two seconds left but Steve Keener got a hand on the ball as it sailed downcourt and it was intercepted by Beaty as the time clicked away.

Beaty was high scorer with 24 points while Fewell was high for Spearman with 13 points.

Monday night the Elkettes hit the road to Keyes where they won their contest 73-51 over our neighbors to the north.

Phyllis Miller lead the Elkettes with 30 points in the game while Cindy Stokes hit for 21. D'Lynn Brown got 18 and Gina Bass got a pair.

Whitehead of Keyes was high for the losers with 29 points.

The Elkettes lead 17-13 at the end of the first quarter and extended their lead in the second going in with a 41-26 margin. They came on back with 18 more points in the third to lead 59-40 and won 73-51.

***** made his home here since moving to Stratford with his parents in 1929.

He is married to the former June McDaniel, and the couple have one daughter, Rebecca Hooker of Tucson, Ariz. and one son, Blair, of the home. Judge Frizzell also has one step-son, Terry Mathews, also of the home.

TOWN TALK

Cone Donelson was admitted to St. Anthony's Hospital in Amarillo where he underwent tests last Friday and Saturday. He is back home as of Sunday.

ALL EXPENSES PAID... BY YOUR SAVINGS HERE!

SAVE REGULAR, budget-sized amounts, and we'll help with generous earnings. Soon you're off on the vacation of your dreams—all expenses paid. Start saving soon!

DALHART FEDERAL SAVINGS PO Box 950 Mail It Today Dalhart, Texas

The First State Bank of Stratford Statement of Condition

At Close Of Business December 31, 1973 State Bank No. 1791

Form 649 (State) - Revised June, 1971

State Bank No. 1791

PUBLISHER'S COPY

Consolidated Report of Condition of "The First State Bank of Stratford" of Stratford in the State of Texas and Domestic Subsidiaries at the close of business on December 31, 1973.

Table with columns: ASSETS, LIABILITIES, RESERVES ON LOANS AND SECURITIES, CAPITAL ACCOUNTS, MEMORANDA. Rows include Cash and due from banks, U.S. Treasury securities, Obligations of other U.S. Government agencies, etc.

I, John M. Wilson, Vice President & Cashier, of the above-named bank, do solemnly affirm that this report of condition is true and correct, to the best of my knowledge and belief.

Correct - Attest: John M. Wilson, Director. Sandra Roberson, Director. W.L. Roberson, Director.

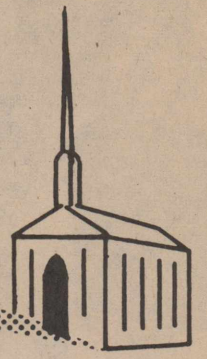
State of Texas, County of Sherman, ss: Sworn to and subscribed before me this 14 day of January, 1974, and I hereby certify that I am not an officer or director of this bank. My commission expires June 1, 1975. Notary Public.

GYMON'S BEAUTIFUL - SUBURBAN THEATRE. MATINEE on SUNDAY at 2:00 PM. American Graffiti. Vanishing Wilderness. Sisters. RAW MEAT.

"Thou wilt shew me the path of life:
in thy presence is fulness of Joy..."

PSALM 16-11

HERE IS THE PATH



B&W Feed & Mineral
Box 1037
396-2368
Purina Chow

W.D. Brannan & Sons
Complete Flight Services
Ph 396-2157

Brown's Meat Locker
Baskin & Betty
Brown's Pharmacy
Ph 396-2281 Day or Nite

C & C Texaco Products
Box 125 Stratford

CIMARRON FEEDERS Ltd.
Gateway to Better Feeding
Griggs, Okla Ph 543-2411

Consumers Company
Compliments Of
Corral Ford Inc.
Ph 396-5511

Elk Pharmacy
Ph 396-5631 Nite 396-5975
Bill & Kay Hammons

Fern's Cafe
401 S. Poplar 396-9811
Stratford, Texas

Compliments Of
The First State Bank of Stratford

Foxworth-Galbraith Lbr. Co.
Harold Roberts, Mgr.

Hindquarters Restaurant
Buffets
Hwy 54 396-9819

J Cattle Co.
Box 888, Stratford
396-5576

J & B Implement Co.
Minneapolis-Moline Dealer
Ph 396-2271

Kerrick Farm Supply
Conoco Gasoline
Kerrick, Tx. 367-9221

King Equipment Co.
Your International
Harvester Dealer

Attitude... OF PRAYER

"Give ear to my words, O Lord, con-
sider my meditation. Harken unto
the voice of my cry, my King, and
my God: for unto thee will I pray."

Psalms 5: 1-2

God hears and answers prayers, but
not everyone knows how to pray.
Even the Lord's disciples asked that
he teach them how to pray.

Attitude of the individual is impor-
tant in prayer. Prayer is the oppor-
tunity that we have to tell God of
our blessings and give thanks. It is
an opportunity to petition for help,
but above all, our hearts should be
willing that God's will be done.

Prayer should be offered individ-
ually and in groups.

ATTEND CHURCH
AND
PRAY WITH OTHERS



The Church is God's appointed agency in this world for spreading the knowledge of His love for man and of His demand for man to respond to that love by loving his neighbor. Without this grounding in the love of God, no government or society or way of life will long persevere and the freedoms which we hold so dear will inevitably perish. Therefore, even from a selfish point of view, one should support the Church for the sake of the welfare of himself and his family. Beyond that, however, every person should uphold and participate in the Church because it tells the truth about man's life, death and destiny; the truth which alone will set him free to live as a child of God.

Coleman Adv. Ser.



Walter Lasley & Sons, Inc.
Custom T.L.C. Cattle Feeding
Tender Loving Care Box 147
396-5961 or 367-2246

McGavock Pump & Machine
Sales-Service- Well Drilling
Machine Shopwelding
396-5601 or nights: 396-5976

Monsanto Farm Store
For All Your Needs
Kerrick 367-2347

Nortex Feedlot Co.
Ph 384-2311 Dalhart

Oakley's Floral & Nursery arts
George & Gaynelle Oakley
Florafax Wire Service
Hwy 54 East 396-2092

**Cut Rate Grocery
of Stratford**
Hwy 54 E Ph. 396-5586

Sherman Implement Co.
Your John Deere Dealer
Ph 396-5561 Hwy 54 E

Stratford Auto Electric
119 Wall Ph 396-5941

Stratford Bi-Products
Your Local Used Cow Dealer
Ph 396-5350 Gene Romero, Mgr

Compliments Of
Stratford Grain Co.

**Stratford Of Texas
Feedyard Division**
3rd & Chestnut 396-5507

Sunset Motel
"Pleasing You Pleases Us"
716 N. Poplar 396-5525
or 396-2090 Stratford

Compliments of
TOC Motor Co.
396-2038

Tip Top Hobby Shop
Crafts-Arts-Gifts
396-2250

Top Of Texas
The Paul Shives
Kerrick 367-2162

ASSEMBLY OF GOD

North Wall at Third Street
Sunday School.....9:45 a.m.
Morning Worship.....11:00 a.m.
Evening Worship.....7:00 p.m.
Wednesday Services.....8:00 p.m.
Rev. J.M. Ashley

CHURCH OF CHRIST

Third at Chestnut Streets
Sunday Bible School.....10:00 a.m.
Morning Worship.....10:55 a.m.
Ladies Bible Class (Tuesday).....9:30 a.m.
Wednesday Bible Classes.....8:00 p.m.
Minister Bob Beaty

FIRST BAPTIST

Third at Fulton Streets
Sunday School.....10:00 a.m.
Morning Worship.....11:00 a.m.
Church Training.....6:00 p.m.
Evening Worship.....7:00 p.m.
Wednesday Services.....7:30 p.m.
Rev. Bruce Mitchell

FIRST UNITED METHODIST

Main at Sixth Street
Church School.....9:40 a.m.
Morning Worship.....10:50 a.m.
Youth Activities.....5:30 p.m.
Evening Worship.....6:30 p.m.
Rev. J. Frank Peery

FIRST CHRISTIAN

North Main At Fifth Streets
Church School.....9:50 a.m.
Morning Worship.....10:50 a.m.
Evening Worship.....6:00 p.m.
Wednesday Bible Study.....7:00 p.m.
Choir Practice.....8:00 p.m.
Rev. David Harker

INDEPENDENT BAPTIST

Sunday School.....10 a.m.
Church Services.....11 a.m.
Wednesday Nites.....7:30 p.m.
Sunday Nite.....7:00 p.m.
Training Union.....6:00 p.m.
Elder Earnest Vanover

ST. JOSEPH CATHOLIC

519 South Pearl Street
Schedule of Masses:
Sundays.....9:00 and 11:00 a.m.
Saturdays.....7:30 p.m.
Holy Days.....7 a.m. and 7:30 p.m.
Wednesdays.....7:30 p.m.
Confessions Before Saturday
and Sunday Masses
Rev. Richard Neyer

**The Churches
Of
Stratford**

Welcome Your Family

**This Series of Church Ads Is Being Published Through the Cooperation of the Local Ministerial Alliance and Is Sponsored By
The Undersigned Individuals and Business Institutions**



AFS STUDENTS GIVE PROGRAM--Lieu Hoang and Anne Marie Steyne spoke to members of the Contemporary Study Club last week. Lieu is from South Viet Nam and is living with the Dave McReynolds family and Anne Marie is from South Africa and is staying with the Ray Gressett family in Spearman. When the photo was made Anne Marie was spending three days with the McReynolds in Stratford.

AFS Students Talk To Contemporary

The Contemporary Study Club held a meeting Thursday in the home of Mrs. Ronnie Hager. A program on International Affairs was presented by our foreign exchange student, Lieu Hoang. Lieu is presently a senior at Stratford High School. Lieu presented a very interesting and informative talk concerning his home country,

South Vietnam. He accompanied his talk with slides taken of this country. Lieu was accompanied by Ann Marie Steyn, a foreign exchange student from South Africa. She is a senior at Spearman High School. She gave a short talk following Lieu's talk. Mrs. Dave McReynolds escorted the two students to the meeting and explained and answered questions when needed. Refreshments were served by Mrs. Ronnie Hager and Mrs. Charles Clements.

4-H CLUB NEWS

The Stratford 4-H Club met Thursday in the County Barn. The meeting was called to order at 4:30 p.m.

Emily McReynolds served refreshments. Those present were: Susan and Clint Fesler, Jill Pronger, Emily McReynolds, Leslie and Annette Flores and the leaders, Mrs. Pronger and Mrs. Flores. Reporter, Leslie Flores

The Sherman County Livestock Club met last Saturday at 9 a.m. After a short business meeting, about 25 members went on a tour of the members projects. The tour ended about noon Saturday.

Lunch was eaten during the tour. Mrs. Bill Sladek was our guide for the day's program.

Music Club Set For Tuesday Nite

Music Club is slated to meet Tuesday, Jan. 22 at the home of Mrs. Kenneth Kendrick at 2 p.m. The program "Foreign Invasion of 1848", the influence of foreign musicians on American music, is to be presented by Mrs. Gail McDaniel. Vocal and piano solos are planned by Mrs. L.G. Blake and Mrs. Ronald Engelbrecht. Mrs. Jim Ingham is program director.

Co-hostesses are Mrs. Blake and Mrs. George Bonds.

TOWN TALK

Leory Kautz and Merle Haskell spent the weekend in Red River, New Mexico snow-mobiling. ***

Of Interest To THE WOMEN

Women's Day Event At Christian Church

Women's Day will be observed next Sunday morning, January 20, at First Christian Church with a guest speaker, guest organist and with the ladies of the church conducting the worship service. Mrs. Dwight Hester will lead worship. The guest speaker is Mrs. Charles (Evelyn) Cunningham of Perryton. Mrs. Cunningham was born and raised at Elkland, Missouri. A resident of Perryton for twenty-five years, Mrs. Cunningham is employed at Interstate Savings and Loan. She has two married daughters, a son in the Navy and three grand-children. Her husband is a building contractor. A life-long Christian, Mrs. Cunningham is active in First Christian Church. She sings in the choir; has worked exten-

sively with youth; she is chairman of the Worship Committee; and she is the first woman to be an elder of the Perryton congregation. She is a member of the Hi-Plains Area Board of the Christian Church (Disciples of Christ).

Mrs. John (Phyllis) Claycomb will be the guest organist for the special day. She teaches music at Panhandle State College and is organist at First Christian Church, Guymon. She is the daughter-in-law of Mr. and Mrs. Dale Schriber of Stratford.

A covered-dish Fellowship Dinner will follow the Morning Worship service. Church School begins at 9:45 a.m. and Morning Worship begins at 10:45 a.m. Everyone is cordially invited.

Bad Weather Hurts Embroidery Event

The Embroidery Club met with Cleve Garrison last Thursday. A very enjoyable time was spent by all.

Delicious refreshments of sandwiches and cake was served. Due to the bad weather the crowd was not large.

Bumblebee Has New Ownership

It was announced this week that the interests of Bobbie Cummings and Marilyn Albert in the Bumble Bee, a floral and gift shop, has been purchased by Lavon Hughes and Pat Johnson.

The new owners stated that they welcomed all former customers and friends and invited everyone to drop by. The same high standard of services will be offered.

Mrs. Albert will remain for the present as manager of the store.

Mrs. Hughes and Mrs. Johnson also stated that they planned to increase the gift line with new and different items for Stratford Shoppers.

Home Demo Club News

"Clothing expresses you", Star Home Demonstration members were told Tuesday by Janice Sladek. She presented a list of values and attitudes and each member have her favorite color and why she was wearing the clothes they had on.

Emma Naylor was hostess for the noon luncheon.

Janice Sladek, president, conducted a short business meeting.

Members were reminded that the County Commissioners Luncheon will be held January 14 at the County Barn with a covered dish luncheon.

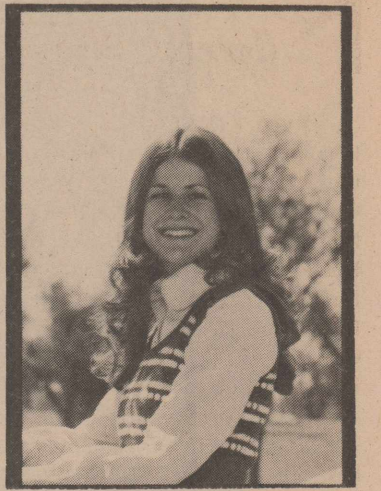
The Fat Stock Show will be February 16, more details about this later.

There will be a meeting January 24 at 2 p.m. at the County Barn for "older Texans".

The election of a nominee for District Meeting was postponed until the next meeting.

Gladys Kirkwood will be hostess January 15 at noon at the County Barn.

Members present were Janice Sladek, Ava Keener, Irene Wakefield, Elizabeth Peery, Penny Bennett, Vera Pronger, one guest, Sonja Ragsdale and hostess, Emma Naylor.



Becky Hodges Gets Degree At Tech

Becky Hodges, daughter of Mr. and Mrs. Kenneth Hodges received a BA degree in Spanish and French from Texas Technological University with a grade point average of 3.75.

Becky in a 1970 graduate of Stratford High School. She will work in the French Department as an assistant teacher while continuing to study for her Masters.



The Better Homes Home Demonstration Club met in the home of Mrs. W.D. Brannan with Co-hostess Mrs. Lance Harrington last Wednesday afternoon.

A program "Accessories for a Total Look" was given by Marty Bain and Brenda Broth. Accessories were loaned for display by JA's.

Members present included Betty McMillion, Deana McMullen, Marty Bain, Roberta Stanley, Sherry Harrington, Lorna Robertson, Winnie McClelland, Brenda Borth, Zola Brannan and Arlene Baker.

The next meeting will be Jan. 23 at 1 p.m. Hostesses will be Winnie McClelland and Rita Harker.

TOWN TALK

Wesley Hawkins, who has been undergoing treatment in Houston, was home for a while this week.

MONDAY--Steaks, creamed gravy, mashed potatoes, green beans, hot rolls, butter, peanut butter, cookies, milk.

TUESDAY--Chili brown beans, cole slaw, crackers, cinnamon rolls, milk.

WEDNESDAY--Hamburgers, onions, tatter tots, catsup, lettuce salad, pickle slices, apple cobbler, milk.

THURSDAY--Breaded fish, tartar sauce, macaroni, tomatoes, English peas, hot rolls, butter, chocolate cake, milk.

FRIDAY--Bean, beef chulapas, lettuce tomato salad, mixed vegetables, hot rolls, butter fruit, milk.



TO SING SUNDAY NIGHT--The Revelations, a Gospel Singing group from Amarillo, will appear at the First United Methodist Church in a special evening program and the public is cordially invited to attend. The program will begin at 7 p.m.

Gospel Group Plans For Program Here

The Revelations, a gospel quartet from Amarillo, will provide a full evening of gospel music on January 20 at 7 p.m. in the First United Methodist Church. The public is invited to attend.

The Revelations group was organized in April of 1971 and have appeared throughout the Tri-State area at various churches, civic clubs, banquets and community organizations. As a Religious Quartet they have achieved several firsts, perhaps the most unique being three appearances in concerts with the Amarillo Symphony, combining Symphonic and Gospel Music, receiving standing ovations from the thousands in attendance.

Members of the Quartet are:

Wayne Pitner--accompanist, Leon Hudson bass, Jack Carter--baritone, Larry Jones--lead and Mel Adkins--tenor. Wayne Pitner is Business Administrator and a member of Polk Street Methodist Church. Leon Hudson is with Southwestern Insurance and a member of First Baptist Church. Jack Carter is an Engineering Technician with the Texas Highway Department and a member of South Georgia Baptist Church. Larry Jones is an agent for State Farm Insurance Co. and a member of First Baptist Church. Mel Adkins is the owner of Decorative Finishes, a furniture refinishing firm, and a member of First Baptist Church.

The group has released an album entitled "The Rev-

elations Sing About Jesus", on the Garden Sight and Sound Label and due to the tremendous response are currently in the process of producing another album to be released this summer.

The new album "Jesus is the Lighthouse" has been released and is now available.



Den II met at the home of Mrs. James Spurlock. We had refreshments and worked on our projects.

We played some games and then had our closing.

Clubs present were: Craig Sladek, Randy Mitchell, Barton Spurlock, Brent Spurlock, Kevin Robertson, Johny Pulliam and Jerry Vaughn. Reporter, Jerry Vaughn

ANNUAL CLEARANCE

Men's Long Sleeve SHIRTS 2 For Price Of 1	Men & Boys Knit Pants 40% off
Sport Coats 50% off	Sweaters 2 For Price Of 1
Sweat Hoods 40% off	Winter Coats 50% off
Over Boots 25% off	Men & Boys Western SHIRTS 50% off
Resistol Hats 40% off	Boys Pants & Shirts 50% off
Mann Coordinates 50% off	Western Belt Buckles 40% off

SHOP NOW AND SAVE

Bill's men & boy's wear

STRATFORD, TEXAS

Flip A Coin Sale
It's A Whole New Thing

We've Cut Our Prices Again

Just About Everything In Our Store Is On Sale At Up To 30% to 50% off

If an item is not on sale, we'll flip a coin to see if you get 20% or 50% off - you call it!

Thursday - Friday - Saturday

LuAnn's LITTLE PEOPLE SHOP
In The Mini Mall on Hwy 287 in Stratford

SALE

ONE GROUP

Fall Bags 1/3 off

One Small Group

Purses 20% off

Only A Few Left

COATS 1/2 price plus \$5

Many more items on sale not listed

New Spring Merchandise Arriving Daily

Shop Now At **JA'S**



Kerrick News
by Mrs. Fred McDaniel

Kerrick HD Club enjoyed a luncheon using mixes Jan. 8 at the Community Center. Mrs. Charles Durr was hostess. Members prepared dishes of Herbed Bread Crumb Meat Balls, Herbed Meat Loaf, Biscuits, Tanga Coleslaw, Cauliflower Salad, Vanilla Pudding, Cocoa.

A Pant Workshop started Tuesday, Jan. 15 at the Center. It's not too late to join the meetings of Jan. 29 and Feb. 5. Check with Mrs. Ted Irlbeck for time. Another workshop will be held at city Hall in Dalhart, Feb. 20, 1:30-3:30 p.m. Kerrick members will assist there.

Mrs. Ted Irlbeck was elected nominee for Dist. THDA meet to be held in Borger April 18.

Other important dates announced by Mrs. Marian Moore were Dist. 4-H Food Show April 6; Dist. 4-H Roundup April 20;

State Roundup June 4-6; Electric Camp July 1-4.

The community will have a program on Food Stamps on a future date. They are also planning a short course on Landscape & Pruning.

Mrs. Moore, Dallam HD agent, presented the program, "Are You a Good Eater?" Present were Mesdames Ralph Hampton, Don McKee, R.E. Florida, Don Moon, Fred McDaniel, Bill Boren, Hank Rogers, Irlbeck, Durr, Moore, and a new member, Leda Stanley and son, James.

Kerrick Community will have a covered dish supper Friday, Jan. 18 at 7 p.m. Cliff Siess of Amarillo College will be here to assist in setting up short courses for the community. Everyone is invited.

A large crowd heard Raymond Wylie of Stratford speak Sunday night at Worship Services. It was voted to dismiss next week to allow those wishing to attend First United Methodist Church at 7 p.m. to hear "The Revelations", a

gospel quartet from Amarillo.

Holiday visitors in the Hank Rogers home included Mr. and Mrs. Jim Rogers, Odem, Ark.; David Rogers, Austin; Mr. and Mrs. Rob Weems, Amarillo; Mr. and Mrs. Robert Murdock and Nancy, Laramie, Wyo.; Mr. and Mrs. Lyall Murdock, Jr. Veda & Melissa and Mrs. Jim Murray, Dallas; Mrs. Ethel Murdock, Stratford; Mr. and Mrs. Bill Murdock & Casey, Felt, Okla.; Roger Crabtree, Boise City.

Mr. and Mrs. Hank Rogers visited with son Eddie at Fort Lynns, Colo. this week on the occasion of his birthday.

New Reading Course

Reading Improvement will be offered at Panhandle State College on Thursday night from 6:30-9:00 in room 119, Hamilton Hall.

The course is a two-credit hour course with the cost being \$10.50 per hour.

Persons interested in enrolling should contact Dr. Wilbur Jones or the office of the Registrar as soon as possible.

Cook of Week



COOK OF WEEK--Denna Harris is a graduate of Stratford High school where she won the Fighting Heart Award her senior year for Girls Spring Sports. She is the daughter of Mr. and Mrs. Clarence Coble and Deena is now employed at The First State Bank of Stratford.

An SHS Graduate

Our cook for this week is a native of Amarillo and graduated from Stratford High School in 1969. Mrs. Jim (Deena) Harris is now employed at the First State Bank as a receptionist and also works with the safety deposits.

Deena's parents are Mr. and Mrs. Clarence Coble, who own and operate not one but two motels, the Sunset Motel here and the Texan Courts in Platoro, Colorado.

Deena's husband, Jim, is employed by the Stratford Cattle Company, where he doctors cattle for the company. Deena and Jim have been married nine months.

Deena and Jim met in Amarillo and his parents, Mr. and Mrs. James O. Harris, still reside there.

Deena and Jim moved back to Stratford in September after spending the first six months of their married life in Platoro. Deena and Jim spent some

pretty snowy months in Platoro as they arrived in Platoro in April of last year. Deena said there were many drifts that reached 10 and 15 ft. with an average of 6 ft. of snow on the ground.

Deena says that she likes to snow ski and both of the Harrises like to water ski. They are taking square dance lessons and are really enjoying that. Needless to say, they both love the mountains. Jim likes rodeoing and roping in addition to all of these other interests.

Deena has given us two meat recipes and after trying one of them, I can hardly wait to try the other one, so I'm sure that everyone will get lots of good out of these recipes.

MEXICAN POTATOES AND PORK CHOPS

Make layers of the following in a deep kettle:
Potatoes-sliced
slices of cheese
ortego chilies-diced
Onion slices
mushrooms
cream of mushroom and cream of cheddar cheese soup [add a little water with soup and mix]
Place pork chops on top of layers and cook until potatoes are tender at 350 degrees or less.

CORNERED BEEF AND CABBAGE

1-3 lb. cornered beef brisket
4 sm. potatoes
1-2 lb. head cabbage
prepared mustard
1/2 c. dark brown sugar
2T. sugar
1 T. vinegar
2 T. dry mustard
mayonnaise
Wash cornered beef in cold

water; place in a large kettle. Cover with water; simmer for about 3 hrs. or until tender. Remove cornered beef from kettle. Dice potatoes; shred cabbage. Add potatoes and cabbage to broth; cook for app. 20 to 30 minutes or until well done.

Combine brown sugar, 3 T. prepared mustard and enough broth to make a thick paste. Place cornered beef in baking dish; spread mustard mixture over top. Bake at 400 degrees for about 15 minutes or until bubbly. Combine sugar, vinegar, dry mustard, 1/4 c. each prepared mustard and mayonnaise; mix until smooth. Serve with cornered beef. Yield is 5 servings.

Underarm stains on a nylon slip caused by a dress that faded can be removed with no sweat. Pour some rubbing alcohol on a washcloth and rub the spot.

Accidentally spilling bleach on a black dress holds bleak prospects for the wearer. She can, however, try using black shoe polish on the spots. It usually works beautifully and will not come out when the dress is cleaned.

Chamber Collum

The regular monthly directors meeting was held last week with George Jeffcoat, James Spurlock, B.A. Donelson, Martha Mitts, Marilyn Albert and Lance Harrington present.

It was announced by the Entertainment Chairman, James Spurlock, that the annual banquet will be held March 9. The meal will be catered by Sutphens. The feature of the evening will be Miss Bellinda Myrick, former Miss Texas, who will entertain the group with a short act and country music. Miss Myrick has appeared at numerous events in the South Texas and Dallas area. An enjoyable dinner and evening is anticipated. More details on that later!

The featured business for this weeks column is Stratford of Texas, Inc. Delta Industries is a wholly owned subsidiary. There are five feedyards, Stratford Feedyards, Inc., Stratford Cattle Co., Cactus Feeders, Inc., Dalhart Feedyards, Inc., and Bar L.

The Division Headquarters office for the Feedyards and Delta Industries is located at North Third and Chestnut. They would be happy for you to drop in and have a cup of coffee and visit their office.

There are approximately 500 employees in the Division office, five yards and Delta. Of these 500 persons, a large share work in the Stratford area. The combined payroll is approximately \$300,000.00 monthly.

When you consider revenue from taxes, services rendered to this Company and a share of the salary money spent here, Stratford of Texas, Inc., does increase the business activity and flow of money in our community.

Stratford is growing and we hope improving in every way. If everyone joins in--we can certainly have an outstanding city.

Mark your calendar now--March 9th, CHAMBER OF COMMERCE BANQUET!

Clearance Sale

COATS

Size 3 to 24 1/2

40% off

Blouses & Body Suits

30% to 40% off

Lingerie

Below 1/2 price

Ladies, Misses & Junior DRESSES

40% off

Ladies, Misses & Junior Sizes

PANT SUITS

30% OFF

The BOUTIQUE

505 East First

Dumas

7 1/2 %
[4-Year -- \$5,000 Minimum Certificate]

ANOTHER EXTRA MARGIN!

You can earn a whopping 7 1/2 percent on a \$5,000 Certificate of Deposit at North Plains Savings and Loan!

And that's not all! Passbook savings now earn day-to-day, day in right up to day of withdrawal.

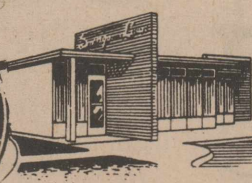
Where you save DOES make a difference.



Annual Rate	Savings Plans
7.50%	4-Year Certificates; minimum \$5,000
6.75%	3 year 36 month Certificates; minimum \$5,000
6.50%	1-year Certificates; minimum \$5,000
5.75%	6 mos. Certificates; minimum \$1,000
5.25%	Passbook Savings

Note: A substantial interest penalty is required for early withdrawal.

FOR ADDITIONAL INFORMATION COME BY OR CALL:



NORTH PLAINS SAVINGS AND LOAN ASSOCIATION

Stratford and Dumas



CLEARANCE

OF SELECTED BRAND NAME WATCHES

MENS AND LADIES STYLES... ALL TYPES AND STYLES

10% TO 40% OFF

Huge Savings On The Fine Watches Now
...Stem-Wind, Automatic Day/Date Models In Both Stainless Steel And Yellow Gold, Plus Some Electronic Models

Come Early While Selections Are The Greatest

Sherman Jewelry
622 Dumas Avenue 935-4801



We've Got The Only WATER HEATER In Town That's Insulated On All Sides

It's always cool to the touch... you can store anything you want right next to or on top of an electric water heater... and there's space available, too, because electric water heaters require no flue or vent... all they need are water pipes and an electrical outlet... so you can install an electric water heater almost anywhere. Get all the facts on an electric water heater!



WE SELL 'EM--Call Us! 27-2

Equal Opportunity Employer

FROZEN FOOD BUYS

Treesweet
ORANGE JUICE 12 oz **2 for 89¢**



Morton's Mini
DONUTS
10 oz Pkgs.
2 for 89¢

Birdseye
AWAKE 12 oz **3 for 89¢**



Assorted
JELLO
3 oz Box **10¢**



Shurfine W/Kernel
GOLDEN CORN
12 oz Can **5 for \$1**



Shurfine
SHORTENING
W/5.00 Pur or Over Excl Cig
3 lb Can **89¢**

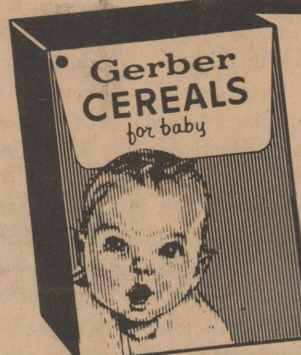
Zee
PAPER TOWELS 3 for **89¢**
Jumbo Printed



Duncan Hines
CAKE MIXES
37¢



Finish
DISHWASHER DETERGENT 59 oz Box **79¢**



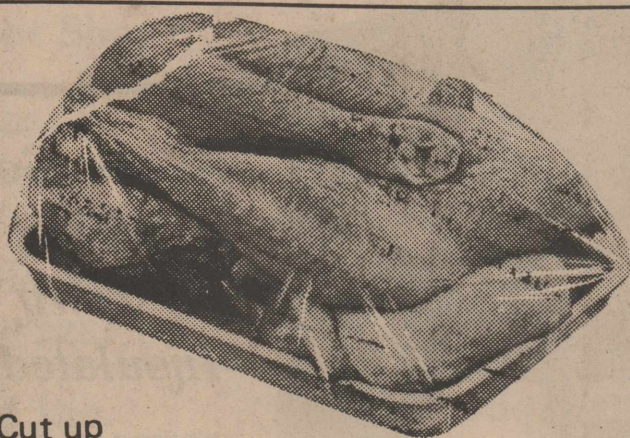
Gerbers
CEREAL
Mixed
8 oz Box **21¢**



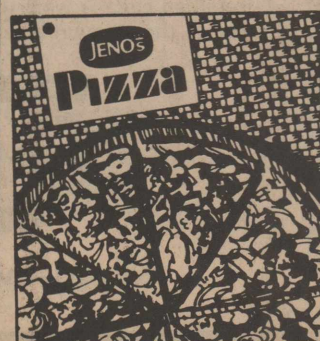
Shillings
PEPPER BLACK
4 oz Can **47¢**



Fresh Dressed
FRYERS lb. **39¢**



Cut up
FRYERS lb. **43¢**



JENOS PIZZA
Hamburger, Sausage or Cheese
13 oz **75¢**

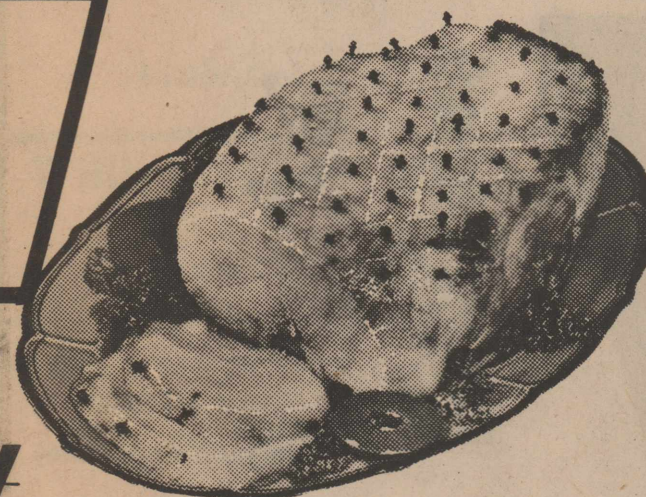


Morton Economy
FROZEN DINNERS
Beans - Franks
Macaroni - Beef
Macaroni - Cheese
Spagetti & Meat Balls
2 for 79¢

Shurfresh
CHEESE Longhorn lb. **\$1.09**

MEAT SPECIALS

Sliced
BEEF LIVER
lb. **69¢**



Boneless Fully
Cooked Canned

7 HAMS
3 lb Can **\$4.95**

LOWEST QUALITY

AT CUT RATE OF STR
By The Can or By The Case No One B

WE GLADLY ACCEPT

Trappeys W/Jalapeno
BLACKEYE PEAS
300 Can **5 for \$1**

Wolf
CHILI
No Beans
19 oz Can **79¢**



Shurfine
SALAD DRESSING
32 oz Jar **49¢**



Shillings
PEPPER BLACK
4 oz Can **47¢**

Kraft
ITALIAN DRESSING
8 oz Btl **35¢**



IVORY LIQUID
48 oz Btl **89¢**



Cut 7
GROCERY & FA



WE WELCOME
FOOD STAMP
CUSTOMERS

Highway 54 East - Stratford, Texas

Open Monday Thru Satu
Prices effective January

LOW PRICES

FOODS

Yes - We pay 1% on
our cash register slips
to your favorite church or
charity

Cut Rate of Stratford - Sunray

SAVE 30¢ WHEN YOU BUY A LB. CAN of FOLGER'S COFFEE

SPECIAL PRICE WITH THIS COUPON



WITHOUT COUPON \$1.13
Coupon cash value 1/20 of 1¢

GOOD THRU (1-23-74)

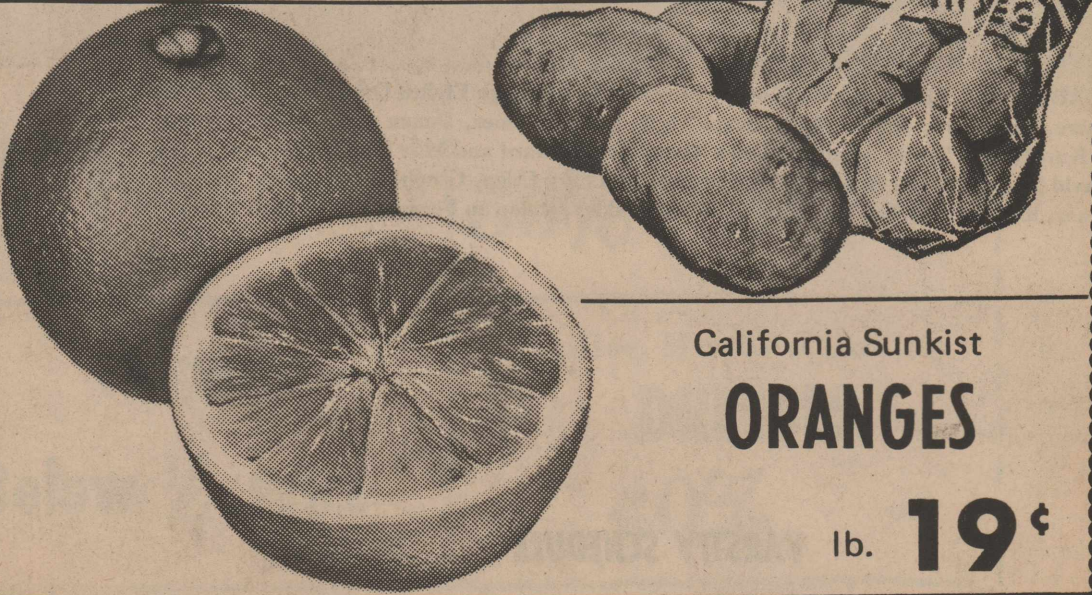
ATFORD OR SUNRAY

buys For Less No One Sells For Less

U.S.D.A. FOOD STAMPS

PRODUCE SPECIALS

All Purpose Russet
POTATOES 20 lb Bag **\$1.09**



California Sunkist
ORANGES
lb. **19¢**

Ruby Red
GRAPEFRUIT
2 for **25¢**

White
ONIONS
lb. **19¢**

Bordens
ICE CREAM
Round Carton
1/2 Gal **87¢**



Gladiola
FLOUR
W/5.00 Pur or
Over Excl Cig
5 lb Bag **69¢**



COCA-COLA
Returnable Bottle
32 oz Btl
6 for **99¢**



Hi-C DRINKS
Assorted
46oz Can 3 for **\$1**



Bulk
Pinto Beans
3 lbs **\$1**



Shurfine
HAMBURGER HELPER
Cheeseburger or Beef Noodle
7 oz Box **41¢**

AURORA
Aurora
BATHROOM TISSUE
Assorted Colors
2 Roll Pkg 3 for **\$1**

NESTLES QUIK
CHOCOLATE FLAVOR
2 lb Can **79¢**



Zesta
saltine crackers
NET WT 7 OZ
Keebler
SALTINE CRACKERS
1 lb Box **38¢**

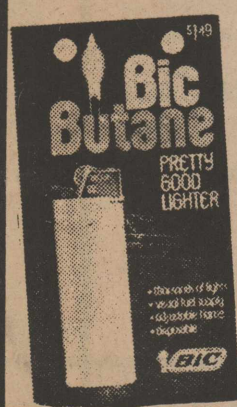


CUT RATE FAMILY CENTER

Groom & Clean
HAIRDRESSING
Reg. .99
3 oz **77¢**



BIC BUTANE
DISPOSABLE LIGHTER
Reg 1.49
99¢ Ea.



Bayer
ASPIRIN
Reg. .75
50 Ct. Btl **58¢**



PLASTIC FOOD
STORAGE BOWLS
Reg. .20
Each **13¢**



Aqua Net
HAIR SPRAY
Reg. .89
13 oz Can **58¢**



My School
BOXES
Reg. .99
Set of 3 **77¢**

BERRY BOWLS
Reg. .29
Each 2 for **29¢**

Apothecary Bottle
LISTERINE
Reg. 1.69
20 oz **\$1.19**



JUICE GLASSES
Reg 1.17
Set Of 4 **77¢**



EGGBEATER
Reg 1.49
Each **\$1.09**

Close-up
Close Up
TOOTH PASTE
Reg 1.09
Family Size **77¢**

Rate

FAMILY CENTER

604 Main Street - Sunray, Texas

Monday 7:30 a.m. to 8 p.m.

10-11-1974



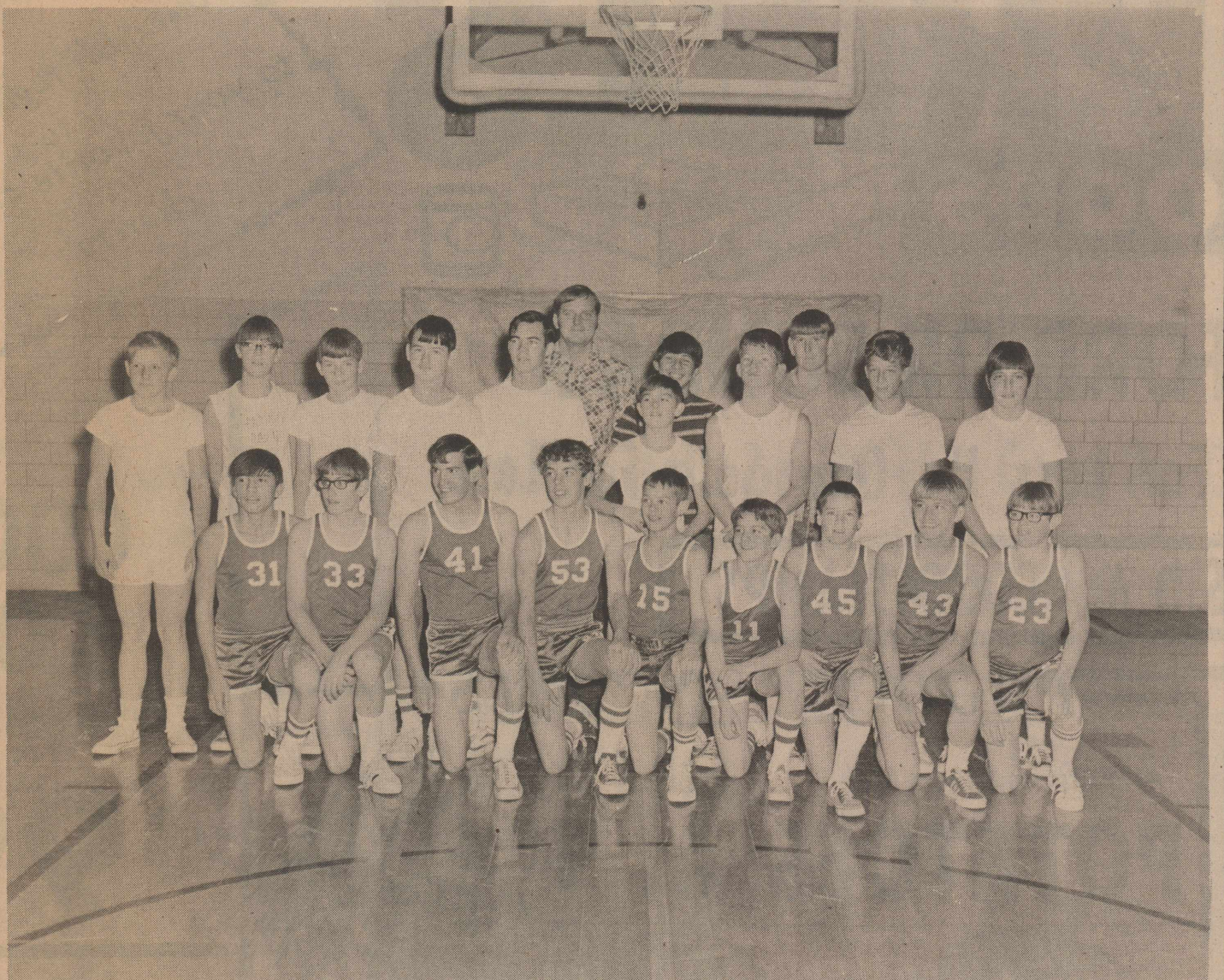
SHURFRESH
WHOLESOME
GOODNESS

BACK OUR BOYS and GIRLS

Horn 'Em Elks Elkettes!



EIGHTH GRADE GIRLS TEAM-Members of the Stratford Junior High Eighth Grade Basketball team are shown above. Front row, left to right, Brenda Baker, Brenda Hawkins, Patti Dietrich, Connie Moore, Toni Vincent, Laura Riffe, Donna Ray, Sherry Beavers, Pat Emerson and Dena Dodson. Back row, Brenda Gross, Teresa Ewers, Lori Stroud, Patty Pool, Cindy Summerour, [assistant coach] Coach P.D. Fletcher, Natalie Engelbrecht, assistant coach, Belinda Sladek, Kay Lewis and Sherry Waters.



EIGHTH GRADE BOYS TEAM-Members of the Stratford Junior High Eighth Grade Basketball team are shown here. Front row, left to right, David Vigil, Ralph Keener, Duane Gillenwaters, Jimmy McClelland, Kurt Harris, Taylor Johnson, Bevin Avent, Jeff Howard and Max Plunk. Back row, Lynn Williams, David Pronger, Matt Brannan, Russell Luther, Corky Crisp, Coach Karl French, Manager Denny Martinez, Ken Ingham, Gaylon Sweeten, Wyatt Oakley, Donovan Ferguson and Keith Hackett.

JUNIOR HIGH

Thursday, January 17, 9 boys vs Sunray here 6 p.m.

Monday, January 21, 7 & 8 Girls vs Spearman there 5 p.m.

Monday, January 21, 7,8,9 Boys vs Spearman here 5 p.m.

VARSITY SCHEDULE

Friday, January 18, A & B Boys & Girls vs Panhandle there 4 p.m.

Tuesday, January 22, A & B Boys & Girls vs Dalhart here 4 p.m.

These Merchants Boost You All The Way!

Abstract & Title Company Phone Enterprise 2083	Elk Pharmacy - The Hammonds - Phone 396-5631	King Equipment Co. Your IHC Dealer Phone 396-2221	Sherman Implement Co. Your John Deere Dealer Phone 396-5561
Bill's Men & Boys Shop - Bill Mires -	Empire Construction Co. Phone 396-5566	LuAnn's Little People Shop	Smith Insurance Agency B.L. (Chuck) Smith Phone 396-2031
Brown's Discount Pharmacy Joe Ray Brown Phone 396-2281	The First State Bank of Stratford	William T. (Bill) McMinn Insurance & Investments	Stratford Chamber of Commerce
Brown's Meat Locker - The Baskin Browns -	Fern's Cafe - Fern Gupton -	North Plains Savings & Loan Ph. 396-2376	Stratford Department Store Phone 396-2161
Buster's Boot Shop - Buster Whitlock -	Foxworth - Galbraith Lbr. Co. Harold Roberts, Mgr.	Oakley Floral & Nursery Phone 396-2092	Stratford Grain Co. Stratford - Lantz Phone 396-5541
Consumers Company Leon Guthrie, Mgr Phone 396-2261	Golden Spread Implement Co. Your Case Dealer Phone 396-5520	Olson Auto & Supply Ole Olson	Stratford Printing Service Phone 396-5371
Corral Ford Inc. Your Ford Dealer	Hindquarters Restaurant Backing the Elks & Elkettes	Plunk 66 Oil Co. C.C. (Pinky) Plunk	Cut Rate Grocery of Stratford Hwy 54 E Ph. 396-5586
Duncan Chevrolet The Leonard Duncans	J & B Implement Co. Your MM - White Dealer Phone 396-2271	Queen O Cream - The Arnolds -	TOC Motor Co. Phone 396-2038
Elk Barber Shop The Pretty Shoppe	JA's Phone 396-5951	Ron's Texaco Service - Ron Hager -	Woolsey's Appliances Phone 396-2152

FOR NEW CROP YEAR

Sunray CoOp Pioneers Group Marketing Sales

A new group-marketing system that will allow area grain producers to sell a designated part of his crop at advantageous intervals over an extensive marketing period is getting nation-wide notice for the Sunray Co-op Elevator that is putting the new system into effect with the 1974 crop year.

"We've had stories in two national co-op publications and in the Des Moines (Iowa) Times-Register on the new system, and I've had calls from several bankers over the midwest asking for information," reports Don Lechner, manager of Sunray Co-op.

The new grain-marketing concept, that could be termed "pooling," has been used in similar form for several years by rice growers, and some cotton growers have gone into the cooperative system the past year.

"It's pretty flexible system and the purpose, simply, is to

sell grain better and with less risk from the market by pooling amounts from a number of growers and selling grain off at the best times indicated by the market, and allowing a grower to sell only a fraction of his crop at a time—thereby spreading risk."

"The system is sort of like a mutual fund for stock owners," Lechner points out, "it allows a grain grower to market his crop - or a designated part of his crop acres-in small amounts by pooling his grain with other growers and letting the pool sell a part if its total when the market looks good."

Under this arrangement the Sunray Co-op becomes the marketing agent for grain growers, not an intermediate buying and selling agent as elevators traditionally have been.

"This will tend to even out marketing," Lechner adds, "without requiring that the

seller or the elevator try to outguess the market on a given day, with one or both of them often missing it, and making a bad sale.

"The elevator always has had to trade between the grower and the central buyer, and try to turn a profit in doing so," the Co-op manager explains.

Under the pool system we are representing buyers directly, we are his marketing agent and our interest is the same-to get him the fullest price for his grain over a marketing period.

The system works simply. A wheat grower, for example, may commit perhaps 100 of 300 acres to the pool. The pool starts selling grain from those acres well before the crop is ready, when a good market exists, with a goal of having 15 percent of the crop sold before harvest time.

This selling would be done on the grain futures market, which requires delivery at the future

time for which sold. However, the new cooperative agreements offer a buffer if the grower loses a crop through hail or other calamity.

"If a hail wipes out part of the acres committed, and they are designated in the agreement, then the grower who loses the crop is not responsible for delivery," Lechner says.

The amounts of grain sold by a grower in the pool are geared to the amount he has in the pool. If the marketing elevator has 3,000 acres in pool, it can sell as little as a bushel or two from an acre at different times when the market looks good. Each member of the pool receives the same price per bushel, or pound, from each sale made.

"We can't guarantee to get the high price in a marketing period, but the system does guard against a grower getting the low price," Lechner adds. "By having a pool of grain from which to sell we can average out prices, and shoot for the best price by selling when the market appears at a good figure."

"The aim is to have an orderly market, instead of growers - and elevators - trying to outguess a changing market that has fluctuated as much as 50 cents a bushel on wheat in 24

hours recently." "Guessing against the market has cost some Moore producers a lot of money this past crop year," the Co-op manager declares.

The pool arrangement also provides the loans for members against the grain they have in the pool, with loans no less than the current federal crop loans for grain. "This allows a flow of money to growers while the pool grain is being marketed," Lechner adds.

The system also allows a grower to take deferred payment on his grain, to better balance out his tax years. Although wheat may be sold on a futures market this spring, a farmer can delay taking payment from his pool sales until Jan. 15, 1975.

Marketing from the pool can be started when the pool is closed, and closing time for 1974 wheat is Feb. 1. "We have some 2,500 acres already signed for the pool, enough to let us go ahead, but we would like to have more before closing," Lechner says.

Midwest bankers have shown special interest in the Sunray Co-op program, especially since the Des Moines newspaper article. Lechner has had

telephone calls from several bankers and inquires from a number of co-ops over the midwest and southwest.

The pool-selling agreement is tailored to meet the wheat-milo-corn crops of the Moore area, but it parallels contracts used by coastal rice growers for several years, by the cotton cooperative on the South Plains, and an Arizona cooperative which has used it the past couple years on milo sales.

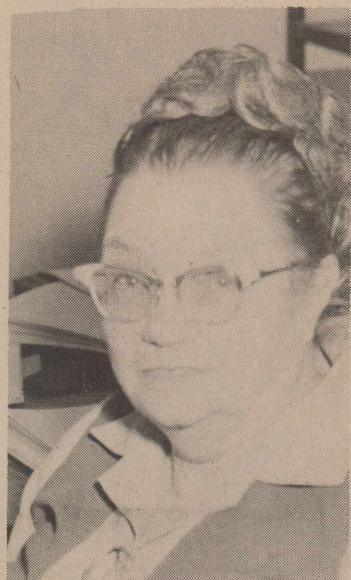
An official of the Arizona co-op talked to Sunray Co-op directors and members last summer while they were studying the pooling system.

The aim, Lechner emphasizes, is "to maintain an orderly market, to get the grower and his elevator out of the speculation business. We think it will make farming and related agri-business a lot more stable."

TOWN TALK

Several local residents took advantage of the snow to ski this past weekend at Angel Fire in New Mexico. Among those on the slopes include the Jerry Johnsons, the Phillip Bains, Phyllis, Duane and Buddy Miller, and Tom and David McReynolds.

Madge Lowe Seeks New Term As Treasurer



MADGE LOWE ..seeks reelection

Madge Lowe has announced her candidacy for reelection to the office of Sherman County Treasurer subject to action of the Democratic Primary slated for May 6.

Mrs. Lowe has held the office of County Treasurer since 1962. She has lived in Sherman

County practically all her life and is a member of The First Christian Church. Mrs. Lowe is an active participant in Home Demonstration work in the county and is always interested in community activities.

In making her announcement, Mrs. Lowe stated "I have always appreciated the support and friendship of the residents of Sherman County and if elected to the office will continue to serve to the best of my ability."

TOWN TALK

Bessie Hodges is home after a stay in the Dumas Memorial Hospital.

Mr. and Mrs. W.D. Heil, former Stratford residents, traveled to Houston to attend the Vince Lombardi dinner on January 10. They went to the Super Bowl on Sunday.

Mr. and Mrs. Don Doyle of Hastings, Colo. and Dorothy Frizzell attended the funeral of their brother and brother-in-law, Howard L. Doyle, in Albuquerque, on December 31. Mr. Doyle was a veteran of World War II and a member of the Masonic lodge in Albuquerque.

What will the price of wheat be in 1974?

This big question hasn't any answer now, but . . .

SUNRAY CO OP

has a system that will take a lot of gamble out of what the price will be in July, or next January!

HERE'S HOW IT WORKS:

STATE OF TEXAS

UNIFORM MARKETING AGREEMENT—SUNRAY CO-OP

COUNTY OF MOORE

THIS AGREEMENT is this the _____ day of _____, 197____, made and entered into by and between Sunray Co-op, hereinafter referred to merely as Association, of Sunray, Moore County, Texas, and the undersigned contracting grower, who is a qualified member of the Association, hereinafter referred to merely as Grower. In consideration of the mutual covenants and obligations herein contained, the parties hereto agree as follows:

SECTION ONE — SALE OF PRODUCTS

Grower agrees to sell to the Association all milo, corn or wheat grown, produced and/or controlled by Grower as hereinafter described on the terms and conditions hereinafter set out, the grain subject to this agreement for the first year being located on farms described as follows:

County	Section No.	Acres	Type of Commodity

Term of wheat marketing will be as follows:

Uniform Marketing Agreement must be signed by January 30 of each year stating all information, including acres, requested above—liquidation will be on or before June 1 of the following year.

Term of milo or corn marketing will be as follows:

Uniform Marketing Agreement must be signed by July 1 of each year stating all information, including acres, requested above—liquidation will be on or before September 1 of the following year.

SECTION TWO — DELIVERY

Grower agrees to deliver to the Association at its place of business in Sunray, Moore County, Texas, the grain now grown or to be grown by Grower on the acreage or farm designated above for processing, storing, and marketing.

SECTION THREE

This agreement is intended by the parties to pass absolute title to all such products (wheat, milo or corn) as soon as they have a potential existence, but such products shall be at the risk of Grower until actual delivery to the Association. All products shall be delivered by Grower at his expense at the earliest reasonable time after harvesting to the Association. After delivery of said products to the Association, it shall have the sole and exclusive right to commingle, pool, pledge as security for loans through farmer from Commodity Credit Corporation or any other financing agency, sell the products in either the natural or processed state, and if it so desire, engage in hedging operations on any board of trade.

SECTION FOUR

Association shall make rules and regulations governing the method of weighing, handling, sampling, grade analysis and storing. Grower agrees to observe and be bound by such rules and regulations and to accept the grade analysis determined as therein provided. Association shall have the right to reject any grain tendered for delivery that is in a non-marketable condition. Association agrees that all grain received will be fully insured up to the fair market value against loss or damage by fire, lightning, tornado, inherent explosions, windstorm and cyclone as so stated on Association posted tariff effective April 1, 1973.

SECTION FIVE

Payment to the Grower for products delivered under the terms of this agreement shall be made, at the option of the Grower, by one of the two methods as follows:

Option 1: Promptly after delivery and grading, Association shall pay to Grower a partial payment per hundredweight or bushel which shall be as large an amount as is practicable and which may vary with the grade of grain delivered and which shall not be less than the Government loan rate. The amount of the partial payment shall be determined from time to time by the Board of Directors. Subsequent additional payments may be made. Final payment shall be made promptly after liquidation of the pool to which Grower's grain is assigned. All payments shall be made at office of Association in Sunray, Texas.

Option 2: Deferred Payment: Grower shall have the option of deferring all payments of any kind to January 15 of the year next succeeding the year of production, after which date the Association shall pay to Grower a partial payment per hundredweight or bushel which shall be as large in amount as is practical and which may vary with the grade of grain delivered, which partial payment shall be the same as those paid to other growers under options 1 and 2.

SECTION SIX

Grower shall be paid his proportionate part of the net proceeds from the sales of grain in the pool or pools to which his grain is assigned. All sales shall be made at the sole and exclusive discretion of the Association acting under such guidelines as the Board of Directors of the Association may prescribe from time to time. In determining Grower's proportionate part an adjustment will be made based upon quantity and grade analysis.

In determining net proceeds there shall first be deducted from the gross sales price all costs, expenses, and outlays (other than for capital purposes) made or incurred directly attributable to the grain in each pool, and all general overhead, maintenance, operating expenses and outlays (other than for capital purposes) of every kind or character equitably chargeable to the pool in accordance with generally accepted accounting principles.

SECTION SEVEN

Association shall allocate on a pro rata basis to its members and non-members alike all deductions made for capital purposes as authorized in paragraph 6. Such allocations shall be made by Association at the discretion of its Board of Directors in any one or more of the following ways: (1) by giving each patron credit on its books, which credit, at the discretion of the Board of Directors, may be paid or may be converted into certificates of equity; (2) by the issuance of non-cumulative certificates of equity on which interest not to exceed eight percent (8%) per annum may be authorized and paid; or (3) by the issuance of certificates for preferred stock or for credit on the purchase of such stock.

SECTION EIGHT — PRIOR LIENS AND/OR OWNERSHIP

Grower agrees to notify Association of any and all ownership interest in and/or liens against products delivered hereunder at or before the time of delivery to the Association. Grower authorizes Association to pay off any such liens before any payment is made to the Grower. In the event any advances are made to the Grower and it later develops that a third person has an interest and/or a lien in said products delivered hereunder, Grower agrees to fully and completely indemnify the Association against further payment which exceeds the amount of Grower's advances as hereinabove provided for in this agreement, which indemnity to the Association includes but is not necessarily limited to travel expenses, court costs, bonds and attorney's fees.

SECTION NINE

Nothing in this agreement shall be construed as requiring Grower to continue the growing of grain. It is understood that the principle object of Grower entering into this agreement and of other growers signing similar agreements is to obtain the advantages accruing from the cooperative marketing of grains and all other services which may be rendered in connection therewith.

In the event that Grower has not notified Association by July 1 on corn and milo, and by Jan. 30 on wheat, Grower will not be able to market his grain on this agreement for the following year. This agreement for such year shall be void and of no effect at the option of either party.

SECTION TEN

Grower agrees that by entering into this agreement with the Association he hereby consents that the amount of any distribution with respect to his patronage occurring after the date of this agreement which are made in written notices of allocation by the Association (as defined in 26 U.S.C. 1388) and which are received by him from the cooperative will be taken into account by him at their stated dollar amounts in the manner provided in 26 U.S.C. 1385 (a) in the taxable year in which such written notices of allocation are received by him.

SECTION ELEVEN — DAMAGES

Because the remedy at law would be inadequate and it would be impracticable and difficult to determine the actual damage to Association should Grower fail to deliver the products covered hereby, regardless of the cause of such failure (save and except acts of God alone excepted) which Grower fails and/or refuses to deliver to the Association in accordance with the terms of this agreement, it is therefore agreed that for such failure to deliver either in full or in part, the Grower agrees to pay to the Association at its office in Sunray, Moore County, Texas \$25.00 per acre as designated in Paragraph One hereof as agreed and liquidated damages for breach of this agreement. Both parties hereby agree that this agreement is one of a series depending for its true value on the adherence of all contracting parties to all the agreements that the cancellation of any other valid agreement or the failure of any other parties thereto to comply therewith shall not effect the validity of this agreement. It is further agreed that if the Association brings any action whatsoever by reason of a breach or threatened breach of this agreement, Grower shall pay all costs of court, bonds, travel expenses and all other expenses arising out of or caused by the litigation including reasonable attorney's fees expended or incurred by Association in such proceedings, and all such costs and expenses shall be included in the judgment.

SECTION TWELVE — ENTIRE AGREEMENT

It is agreed that the Articles of Incorporation and Bylaws of the Association, now or hereinafter in effect, and this agreement shall constitute the entire agreement between the Association and Grower and that there are no oral or other conditions, promises, covenants, representations or inducements in addition to or at variance with any of the terms hereof.

SECTION THIRTEEN — APPLICATION FOR MEMBERSHIP

If Grower is not already a member of Sunray Co-op he does by signing this agreement make application to become a member of the Association and agrees to abide by its Articles of Incorporation, Bylaws and any other rules and regulations governing the conduct of the Association.

SECTION FOURTEEN — PLACE OF PERFORMANCE

This contract is performable in Moore County, Texas, and is binding upon the parties hereto, their heirs, executors and successors, and it is further agreed that this contract may not be assigned by the Grower without prior written consent of the Association.

IN WITNESS WHEREOF, the parties have executed this Agreement at Sunray, Texas, the day and year first above written.

GROWER

SUNRAY CO-OP

Social Security No. _____

by: _____

Get The Complete Details -- Call Today: 948-4124, Sunray Co Op

What's New At Your School. . .



The main objective in Mathematics at Stratford High School is to impress on the participants that mathematics is a useful tool for solving problems and making decisions. It is presented with the goal that the students will be able to apply what they learn to real life situations as well as to help them acquire a background for continued formal study.

Mr. French is responsible for the related mathematics. This is offered to students who plan to terminate the study of mathematics after satisfying the requirements for graduation, or do not plan to complete high school.

At the present time they are working at problem solving using equations.

Mr. Haynes continues with the program by teaching Algebra I and Plane Geometry.

The objectives of the individual students of Algebra I are probably more diverse than any other course in the department. It is a required

course of study for most students, and also is the ground work for those students wishing to proceed through advanced classes. As a result of the diversity of needs, the instructional objectives must be channeled toward helping both groups reach their goals without sacrificing one for the other. We are trying to blend the aspects of practical problem solving and decision making with enough technical background to satisfy those who need it. The key to retaining methods of problem solving, as in anything else, is to practice and drill until the rules and methods become somewhat intuitive. A major portion of the Algebra period is spent in active problem solving by students in a variety of ways.

The Plane Geometry is approached in an entirely different view from Algebra. Most of the students in Geometry plan further study of mathematics and it is here that they begin to learn the technical mathematical methods. The students are involved almost

entirely with the mathematical proof in which things are placed in logical sequence leaving nothing to chance or guesswork in order to prove something is true. The students in Plane Geometry are primarily Sophomores who have completed Algebra as a Freshman.

Mr. Pilch works with the students who plan to go to further their education, either at the college level or at a technical school. The responsibility here is Algebra II, Trigonometry, and Modern Introductory Analysis.

Algebra II is the basic advanced course for further studies in mathematics and science. The students at the present time are working with factoring, graphing and using equations in solving problems relating to everyday situations.

The Senior students have just completed Trigonometry and are being introduced to Introductory Analysis. This year the object of the course is to review the concepts in Advanced Algebra and the place more emphasis on Analytical Geometry.

The Algebra II class and the Introductory Analysis class are also helping to preview film on mathematics with the purpose of helping PESO (Area Media Center) make a decision as to how valuable each film would be in presenting the concepts it is intended for. The titles of the films now being previewed are "Infinity", "Mean, Media, Mode", and "Probability".

TOWN TALK

Mrs. Lois (Raymond) Green underwent surgery at the Dumas Memorial Hospital this past week.



CANDIDATE VISITS--Ray Ruffin, left, a Democratic candidate for Congressman for the 13th District, is shown visiting with Arthur Judd in front of the bank Monday. Ruffin's grandfather used to own a store in Texhoma back in pioneer days and is well known to many old timers hereabouts.

**STRATFORD INDEPENDENT SCHOOL DISTRICT
STRATFORD, TEXAS**

**LIST ALL CHILDREN WHO WILL BE 6 YEARS OLD
ON OR BEFORE SEPTEMBER 1, 1974**

LAST NAME	FIRST NAME	MI	MO	DAY	YEAR	SEX

**LIST ALL CHILDREN WHO WILL BE 5 YEARS OLD
ON OR BEFORE SEPTEMBER 1, 1974**

LAST NAME	FIRST NAME	MI	MO	DAY	YEAR	SEX

FATHERS NAME _____

MOTHERS NAME _____

PARENTS ADDRESS AND PHONE NO. _____

PLEASE COMPLETE THIS FORM AND RETURN TO SCHOOL IMMEDIATELY

**ALL
EXPENSES
PAID...
BY
YOUR
SAVINGS
HERE!**

SAVE REGULAR, budget-sized amounts, and we'll help with generous earnings. Soon you're off on the vacation of your dreams—all expenses paid. Start saving soon!



**DALHART
FEDERAL
SAVINGS**

PO Box 950
Mail It Today
Dalhart, Texas

The Latest in Aerial Application

NO - DRIFT FOAM

Spraying Services
Flight Instruction
Complete Flight Service
W.D. BRANNAN & SONS
Ph 396-2157 Stratford

GREETINGS TO ALL CATTLEMEN

FRIDAY, January 11, was the day for our cattle auction in Texhoma. The "Action" began at 12 Noon [Daylight Savings Time] and was completed at 12:40 A.M. 5676 cattle and calves were sold thru the arena. A very active sale prevailed thruout.

FRIDAY, JANUARY 18 and FRIDAY, JANUARY 25 are both arranged as consignment sales. NOTICE: We are now taking advanced consignments for every FRIDAY in February. We can do you a better job marketing your cattle if we know of your plans in advance.

Your Cattle Auction with "Action" Every FRIDAY

TEXHOMA LIVESTOCK COMMISSION CO., INC.
TEXHOMA, OKLAHOMA

Phone [405]423-3251
CF [Chf] Augustine, Gen. Mgr.
Raymond Choate, Yd-Mgr.
Cattle Dept.-Wayne Roberts, Elkhart, Ks. and
Auctioneers - Al Banks, Limon, Colo. and

P.O. Box 70
Euline Smith, Off-Mgr.
Bonnie Anderson, Asst. Off-Mgr.
Walter Hall, Amistad, N.M.
Don Demaree, Amarillo, Tex.

THANKS FOR 10 GOOD YEARS

In late 1963 I became the Farm Bureau Insurance Agent for Sherman County and have devoted the majority of my efforts to this job ever since.

In 1973 the people of Stratford and Sherman County purchased over \$1,000,000 of new Southern Farm Bureau Life Insurance from me personally.

This is the 10th consecutive year that Sherman County Farm Bureau members have purchased over \$1,000,000 of new Life Insurance from The Southern Farm Bureau Life Insurance Company. This amounts to approximately 800 policies worth more than \$12 million of financial security to Sherman County residents.

We are very grateful for your confidence in our Company. We promise to do our very best to look after the estates and security you have created. We consider it the highest privilege to have been of service to you.

Thank you so very much,
JOE P. FLORES
Your Farm Bureau Service Agent

CLASSIFIED ADS *get action* Phone 396-5555

Letters To The Editor

Dear Editor:
Well I have a gripe about the dogs. I was 15 minutes late to work on Saturday because 12 or 15 dogs surrounded my car followed me to the shop and I couldn't even get out, so I went to the Court House, up Main Street and finally I decided to go to my husband's shop.
I got on the highway and gunned the car and they finally left. I went to work with my customers waiting. So I have a petition at the Pioneer Beauty Shop for anybody who wishes to sign.
Please come by, that is the only way to enforce the leash law.

Sincerely,
Reba Pittman
PS I just hope they don't attack a child.

Dear Dave,
I noticed in your column last week that you made a reference to the snow on our streets. I decided it was time someone else spoke out.

For two winters, I've muttered under my breath and complained to neighbors about why the city wasn't cleaning our streets when it snowed. Now I happen to know from my husband's serving as a councilman that the city purchased a grader (making 2 for the city) for the purpose of keeping the streets clean and preserving our pavement. I know we have men available to run these machines. I see that Wayland and his man manage to have the highways through

town and the county cleaned in record time. So why aren't our city men out? I understand they might have to be out in a little bad weather and out a little early. But why not? Everyone else has to and their job needs them. Everyone has to work overtime occasionally and everyone has to work in bad weather sometimes. I suspect that the overtime would not pay for the pavement that will have to be replaced next spring. I've been told that someone at city hall has said that they were afraid the men might quit if they're asked to do anymore. Then why do we need them?

I believe in an honest day's work for an honest day's pay and I've not observed the city employees hurting themselves. I have observed 1 hr. coffee breaks at the city park. Surely, with the lay-offs all over the country, there are men that would like to work.

Saturday afternoon was the last straw for me! Streets all over town were slushy and soft for the first time since Christmas and no grader appeared, anywhere.

In one afternoon most of the streets in town could have been cleaned. Why weren't they?

I must also put in a good word where it is deserved. The gentlemen that empties the trash containers is a pleasant man to meet. He does his job well and has a pleasant manner whenever you meet him. He is to be commended. We need more like him. I'm proud of my town and I want it to be the best

in the panhandle. Even if that means the cleanest streets in winter.

Sincerely,
Mrs. Glenn Hart

Auto Registrations

- 1-7-74 Lavada Kaye Davis 69 Chev Duncan Chev.
- 1-7-74 Russell H. Brooks 64 Ford Floyd Motor Co.
- 1-7-74 Raymond Wiley 73 Chev. Duncan Chev.
- 1-7-74 Jack Scarth 74 Chev. Duncan Chev.
- 1-7-74 John Dee Meir 69 Chev. Central Motors
- 1-7-74 Edgar O. Hill 66 Chev. Duncan Chev.
- 1-7-74 K. Kendrick 74 Ford Corral Ford
- 1-7-74 O.H. Oquin 74 Ford Corral Ford
- 1-7-74 John Vigil 66 Ford Duncan Chev.
- 1-7-74 J.L. Stowers 74 Ford Corral Ford
- 1-7-74 Homer Blake 74 Chev. Duncan Chev.
- 1-8-74 V.O. Lasley 74 GMC Farm Service Inc.
- 1-8-74 Max Brown 70 Lincoln Corral Ford
- 1-8-74 Alton Gross 72 GMC Moore Imp.
- 1-9-74 Juanita Gross 66 Pont. Rodger Schooley
- 1-10-74 Robert Jenkins 67 Cad. Wilson Rich Autos
- 1-10-84 Robert Jenkins 52 GMC Raymond H. Cramer
- 1-10-74 Woolsey Appliance 66 Ford Corral Ford
- 1-10-74 Michelle Delane Dowda 63 Ford Hinds A. McGowen, Jr.
- 1-11-74 Robert Bauman 73 Javelin Corral Ford
- 1-11-74 Sherman Imp. 72 Ford Inter. Harvester
- 1-11-74 Hart and Sons 74 Merc. Mckinzie Linc. Merc.

Big Sale At Texhoma

5676 cattle and calves were sold thru the arena in Texhoma last Friday. Buyers and order buyers were here from several states to absorb the offering.

Steer and heifer calves sold fully steady and very active with the previous week. Some representative sales were as follows: 9 WF Steer Calves Av. Wt. 300# at \$70.25 per cwt.; 22 WF Steer Calves Av. Wt. 416 # at \$66.10 per cwt.; 10 WF Heifer Calves Av. Wt. 301 at \$63.50 per cwt.; 15 WF Steers Av. Wt. 500# at \$60.50 per cwt.; 56 WF Heifers Av. Wt. 618# at \$53.30 per cwt.

Next Friday, we are expecting 3000 to 3500 cattle, depending on weather conditions. We have many real fine consignments already arranged.

Jack's T.V. Service

319 N. Grace
New limited service due to non-paying customers.

1. NO HOUSE CALLS
2. ALL WORK STRICTLY CASH
3. SERVICE CHARGE FOR PICK UP AND DELIVERY.
4. NO SET LEAVES SHOP UNTIL BILL IS PAID.
5. ANY SET HELD FOR OVER 30 DAYS WILL BE SOLD FOR COST OF REPAIRS.

Social Security News

The year 1974 will be an important one in the lives of many Americans as the Supplemental Security Income (SSI; program became operative January 1. SSI is administered by the Social Security Administration, according to Robert H. Schaller, Social Security Branch Manager in Guymon.

The aim of the new program is to provide a basic cash income to people in need who are 65 or older or who are blind or disabled. Assets of up to \$1500 for an individual or \$2250 for a couple excluding a home of reasonable value can be owned without making one ineligible. The actual amount of the SSI payment will depend on how much income a person has.

The new Federal program is not the same as Social Security, even though SSI will be handled by Social Security offices. The money to make SSI payments will come from general revenues and not from the Social Security trust funds from which monthly social security benefits are paid.

SSI replaces the present Federal State public assistance payments made to be aged, blind, and disabled. Under SSI, it's estimated there will be millions of additional people eligible. Applications for SSI are being accepted in Social Security Offices across the country at present.

If a person wants additional information about SSI, they should contact the Social Security Office.

REAL ESTATE

FOR SALE--3 acres zoned commercial, contact Arthur Stokes, Johnson Land Co., Phone 396-5346 in Stratford. 42-tfc

FOR SALE--3 bedroom home on corner lot, fenced yard, assume equity. Ph. 396-2544. 51-tfc

LOTS ON BEAUTIFUL LAKE MEREDITH--Restricted or Mobile home lots; Paved roads, water, electricity, phone; Private boat ramp, dock, and swimming pool. only 10 percent down. JOHNSON LAND COMPANY, Box 391, Dumas, Texas 79029 Dumas 935-5673; Stinnett 878-2392. 28-tfc

FOR SALE--3 corner lots on S. Wall on pavement, also 3 acres, zoned commercial. Contact Arthur Stokes, Johnson Land Co. Ph. 396-5346 in Stratford. 3-tfc

NEW HOMES for sale, in ideal location near schools, Sherman Development Company, contact Bill Pendleton, agent, at 396-2230. tfc

LOST AND FOUND

LOST Black, short-haired male cat, neutered; 7 months old Ph. 396-2426 3-1tc

I will not be responsible for any debts other than those made by myself.
Clifford Garouette.
2-2tc

TEXAS OIL COMPANY
Has opening in Stratford area. No experience necessary. Age not important. Good character a must. We train. Air Mail A.K. Dickerson, Pres., Southwestern Petroleum Corp., Ft. Worth, Tex.

Shoe Repair
Boots - Saddles
Leather Goods
Buster's Boot Shop
103 W. 3rd Stratford

HELP WANTED

MAN WANTED--to learn lumber business, good wages, fringe benefits, 25 years of age or older. Apply in person at Foxworth Galbraith Lbr. Co. in Stratford. 2-tfc

Applications are being received at **Stratford City Hall** for the following jobs: Containerized Trash Truck Operator, Motor Grader Operator, and City Patrolman. Contact Max Stephenson, City Secretary. 3-2tc

WANTED--experienced mechanic, two openings, guarantee plus commission, uniforms, permanent position and insurance. Culbertson Ford, Lincoln and Mercury Dealers, Dalhart, Texas. Contact Jewell Gaddy. Ph. 806-249-5551 3-3tc

WANTED--Need evening dishwasher to work 2 p.m. until 10 p.m. Contact Headquarters Restaurant in Stratford. 51-tfc

Soil Sample Useful Data For Farmers

Farmers concerned with using the best available acreage to increase their cropland can get valuable data from a soil survey. Edward E. Thomas, state conservationist for the U.S. Soil Conservation Service, said today.

"Soil survey field work has been completed for 123 counties in Texas," Thomas said. "And the data is available to anyone making land use decisions."

"With a soil survey map, you can read the land like a book," said Thomas. "Some soils are ideal for a particular crop. Others are better off in another crop, or left in grass, trees, or as wetland. And on some soils, the owner can choose between pasture, trees, or crops."

"The point is that a great deal of soil information is available to farmers and other land users. Even where surveys are not yet completed, the Soil Conservation Service--working through local conservation often can provide at least partial soils data to anyone considering a change in land use."

Thomas added, "Although farmers are the biggest group of users, soil survey information is also very helpful to engineers and urban land use planners who need to know about drainage patterns, depth to bedrock, foundation hazards, or other uses being planned for them. A number of cities in Texas have made changes in their land use plans after checking a soil map--and as a result, they saved a great deal of money in construction costs."

Local soil survey maps and information can be obtained from the nearest Soil Conservation Service office.

MIS. FOR SALE

FOR SALE--G.E. portable washer and dryer, 2 sofas, 1 chair, 1 coffee table and a Yamaha 350 motorcycle. Ph. 396-5368 3-1tc

FOR SALE--12x20 inch oven broiler. Ph. 396-5343. 3-1tc

FOR SALE--17 ft. upright deep freeze; 701 N. Wall St. Ph. 396-2116. 3-1tp

FOR SALE--4,000 lb. Wetmore Roller Mixer Feed Mill See Leo Meek. 3-1tp

FOR SALE--1970 12x60 Mobile Home--\$200 down and assume \$79.79 payments. Two bedroom, central heat, Contact L.G. Smith 367-2340 or 396-5586. 2-2tc

FOR SALE--1973 Mercury Montego, 4 door, air-conditioned and all power--10,000 actual miles, still in warranty. Will take \$800 for \$1475 equity. Ph. 396-5317. 3-1tc

FOR SALE--electric range 4 yrs. old. Phone 396-2544. tfc

FOR SALE--used dish washer and a sofa. Ph. 396-2472. 3-1tc

SERVICES

GET YOUR WIGS & COSMETICS at the Merle Norman Studio, 207 E. 7th in Dumas, Phone 935-3804. 19-tfc

CONVALESCENT AIDES--We have a complete line of Convalescent Aides available for rent or for sale. Come by ELK PHARMACY OR Phone 396-5631. 32-tfc

CESS POOL PUMPING--See Bob Bradford at Conlen or call 384-2124. 47-tfc

STOP LEAKS--with rubberized aluminized asbestos fiber roof coating. For all metal roofs, including quonset, metal buildings of all kinds, and trailer tops. Carpenter work and repairs. Free estimates all work guaranteed. Earnest Vanover. Phone 396-2089 18-tfc

NOW EQUIPPED--with larger draglines for larger pits. Call LeRoy Mitchell, 806-733-2384. 52-tfc

ALL CABINET WORK--Custom built. Any ceramic or formica work. Leo L. Scott, across alley from Stratford of Texas. Ph. 396-2219 11-tfc

Burned up about scorched clothing? You needn't be if you heed this hint. Rub scorches with a piece of raw onion and leave them for a while. Then soak them in cold water. The marks fade.



Bill Minkleys Injured In Auto Crash

Two former Stratfordites were involved in a near head-on crash near the Monsanto Chemical Company four miles north of Dumas last Friday morning about 9:30 a.m.

Mr. and Mrs. Bill Minkley were driving north on Highway 287 in their Chevrolet station wagon when their vehicle skidded out of control on a patch of ice.

The skid threw the station wagon into the front of a pickup being driven by Mrs. Theda Turner of Elkhart, Kansas. The two vehicles hit nearly head-on. Mrs. Minkley, the former Glenda Green of Stratford, was rushed to Dumas Memorial Hospital, then onto Amarillo's High Plains Baptist Hospital for treatment of head injuries and severe head lacerations. Her husband was treated in Dumas Memorial Hospital for a broken leg and concussion.

Mrs. Cherry Painter, daughter of Mrs. Turner, was in Northwest Texas Hospital in Amarillo with Multiple fractures and possible internal injuries. Mrs. Turner suffered extensive fractures and contusions but was reported in good condition this weekend.

Both vehicles were virtually demolished and rescuers at the scene reported two trucks had to be utilized in order to remove Minkley from his crushed auto.

The Minkleys are both graduates of Stratford High School. Minkley is an attorney in Dumas where he is associated with the firm of Lovell, Lyle, Cobb & Renfer.

Stratford Loda# 874
Jim Ingham, W.M.
W. S. Frizzell, Sec'y
Stated Communication,
3rd Thursday monthly
7 p.m.

Kirby Co.
of Dumas
Authorized Sales
And Service
New & Rebuilt
D.A. FLEMING
800 Dumas Ave
Box 953, Dumas
Ph 935-2524

DR. V. G. MARTIN
DR. J. W. McCORMICK
DR. D. A. RIDDELSBURGER
OPTOMETRISTS
Visual Analysis
Contact Lenses
Office: 605 Bliss Dumas Phone 935-6491
Stratford Office
10 AM - 12 Noon
1:15 - 5 PM
3rd & Main Ph. 396-5516
Monday & Thursday

REAMY
UPHOLSTERING
O.C. Reamy
INTERIOR DECORATOR
BEEN IN BUSINESS
30 YRS.
FURNITURE UPHOLSTERY
Car, Boat, Cafe Furniture
1013 N. Main
Phone 338-8038
in GUYMON

CARD of THANKS
I would like to thank everyone for the visits, flowers, cards and other acts of kindness during my stay in the hospital and since my return home.
Hal Bennett
3-1tc

MANURE SPREADING
MAX BROWN
Ph 396-5501 Stratford
Ph 935-4834 Dumas

Mobile Homes
Low down, up to 15 year terms At
W.T. Corbitt Motors & Trailer Sales
809 Tenn. Ave. Dalhart Ph. 249-4264

TRACTOR OWNERS!
We're Firestone equipped for IN-THE-FIELD service

Our up-to-date Firestone farm service truck delivers fast on-the-spot tire repairs, replacements and expert Hydro-Flation...when and where you need it.
...JUST CALL US!

BAIN OIL CO.
Phillip Bain
Stratford Ph 396-5341

CARD of THANKS
We want to thank our friends for their kindness and concern in the loss of our loved one.
Mr. and Mrs. Ed Moore and family
3-1tc

CARD of THANKS
A great big Thank You to all our customers and friends who have supported The Bumble Bee. We have sold to Pat Johnson and Lavon Hughes and we hope each of you will support them as you have us.
Bobbie Cummings and Marillyn Albert
3-1tc

Real Estate... Machinery... Livestock
SALES
LARGE OR SMALL
"WE APPRECIATE OUR BUSINESS"
LEE R. JOHNSON
EVA, OKLAHOMA 545-3486

Your local Used Cow Dealer is
Stratford Bi - Products

farmers ranchers
Gentlemen:
Seven days a week dead stock removal
please call as soon as possible
Thank you
396 - 5350

 <p>Proten BEEF RUMP ROAST USDA CHOICE BONE IN LB. 1¹⁹</p>	 <p>Round Steak Full cut USDA Choice Beef Lb. 1¹⁹</p>	 <p>OWENS SAUSAGE Whole Hog 1⁰⁹ 1 Lb. Pkg. 2 LB. Pkg. \$2.15</p>	 <p>FRANKS Wilson Certified ALL MEAT 69¢ 12 OZ. PKG.</p>	 <p>Ground BEEF 3 LBS. OR MORE LB. 88¢ 12 Oz. pack 79¢ 12-14 lb. avg. lb. 58¢</p>
<p>Sliced Bacon Pikes Peak Roast</p>	<p>Longhorn Cheese Boneless lb \$1¹⁹</p>	<p>Hormel Little Sizzlers Roast Rite Hen Turkeys Block Style Lb. 1¹⁶</p>		

FOODWAY DISCOUNT FOODS

PRICES GOOD AT FOODWAY JANUARY 17-23, 1974

<p>HUNTS Tomato Sauce 5 ^{15 OZ.} \$1</p>	<p>KOUNTRY FRESH BREAKFAST DRINK EVERYDAY LOW DISCOUNT 3 ^{32 OZ.} 98¢</p>	<p>KOUNTRY FRESH EGGS LARGE GRADE A DOZEN 79¢ SPECIAL Discount SPECIAL</p>	<p>VAN CAMP Grated Tuna 6 1/4 OZ. CANS 3 for \$1 SPECIAL Discount SPECIAL</p>	<p>VAN CAMP PORK and BEANS 16 OZ. CAN 19¢</p>	<p>KIMBELL GREEN BEANS 5 ^{15 1/2 OZ. CANS} \$1 SPECIAL Discount SPECIAL</p>
<p>Kimbell Coffee Creamer SPECIAL Discount SPECIAL 11 OZ. 59¢</p>	<p>Kimbell COFFEE WITH THIS COUPON Kimbell Lb. Can 79¢ With S-27 Coupon Without Coupon .99¢ Good Only at Foodway Coupon Expires Jan. 23 SAVE</p>	<p>Holly SUGAR WITH THIS COUPON Holly 5 Lb. Bag 59¢ With S-25 Coupon Without Coupon .76¢ Good Only at Foodway Coupon Expires Jan. 23 SAVE</p>	<p>Kimbell COFFEE WITH THIS COUPON Diamond Solid Lb. 19¢ With S-15 Coupon Without Coupon .34¢ Good Only at Foodway Coupon Expires Jan. 23 SAVE</p>	<p>Kimbell FLOUR WITH THIS COUPON Big K 5 Lb. Bag 59¢ With S-20 Coupon Without Coupon .78¢ Good Only at Foodway Coupon Expires Jan. 23 SAVE</p>	<p>TANG BREAKFAST DRINK Powdered 18 OZ. 79</p>
<p>CRISCO Vegetable Shortening 3 lb Can 99¢</p>	<p>Tomato Sauce Kimbell 8 Oz. 12¢ Green Chilies Mountain Pass (Whole or Chopped), 4 Oz. 22¢ Grape Jelly Kimbell 3 Lb. \$1.09 Picante Sauce Paces 8 Oz. 36¢</p>	<p>Vegetable Soup KIMBELL 10 1/2 OZ. CAN 6/59¢ Grapefruit Juice Kimbell 46 Oz. 45¢ Solid Pack Tomatoes Kimbell 28 Oz. 43¢ Potted Meat Kimbell 3 Oz. 39¢</p>	<p>Kold Country ORANGE JUICE 12 OZ. CANS 39¢</p>	<p>Whip Topping Kold Country 10 Oz. 49¢ Coffee Creamer Kold Country 16 Oz. 29¢ Cut Green Beans Kold Country 9 Oz. 27¢ Corn Kold Country 10 Oz. 24¢ Rhubarb Kold Country 20 Oz. 53¢ French Fries Kold Country 2 Lb. 49¢</p>	

W /\$5 purchase or more **LIMIT 1**

 <p>FRESH CAULIFLOWER Lb. 29¢</p>	 <p>YELLOW ONIONS LB. 15¢</p>	 <p>POTATOES SELECT RUSSET No. 1 5 LB. BAG 39¢</p>	 <p>TOMATOES Red RIPE Lb. 29¢</p>	 <p>BANANAS EXTRA FANCY Lb. 10¢</p>
--	--	--	--	--

<p>Sucrets THROAT LOZENGES Reg. & Children's 79¢</p>	<p>RAGU Spaghetti Sauce 15 1/2 OZ. 48¢ SPECIAL Discount SPECIAL</p>	<p>Long Spaghetti American Beauty 10 Oz. 33¢ Dog Food Vita Pep 25 Lb. Bag \$ 3.98 Liquid Detergent Diamond Pink 32 Oz. 33¢ Biscuits Kountry Fresh (Sweet Milk or Buttermilk), 10 Count 3/29¢ Crescent Rolls Kountry Fresh 8 Oz. 37¢ Cinnamon Rolls Kountry Fresh 9 1/2 Oz. 39¢ Parmesan Cheese Kraft Grated 3 Oz. 47¢ Cheese Slices Kountry Fresh (American or Pimiento), 8 Oz. 69¢</p>	<p>SHASTA POP 12 OZ. CANS 10⁹⁸¢</p>	<p>PEPSODENT Toothpaste Med. 49¢</p>
--	---	---	--	--