

# THE HASKELL FREE PRESS

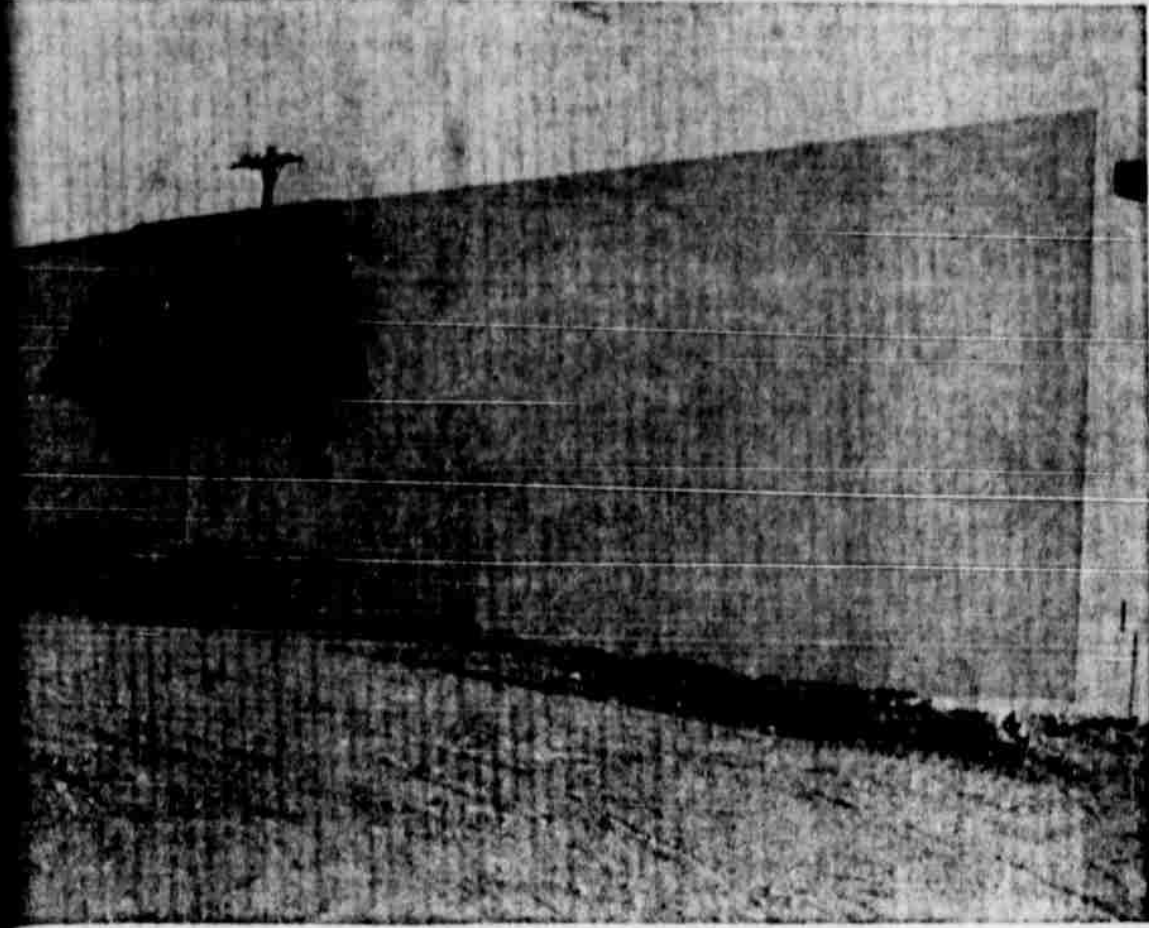


"HASKELL — A GOOD PLACE TO VISIT; A BETTER PLACE TO LIVE"

PAGE EIGHT

HASKELL, TEXAS 79521, THURSDAY, FEBRUARY 7, 1974

NUMBER SIX



**MARCUS, INC. OF HASKELL**—The beautiful building built by Haskell Industrial Building Co. to the specifications of H.M. is now complete, and production is in full swing. Paving and parking are planned in the near future. (Photo by Don Comedy)

## Chamber Banquet Friday Night

Leonard Passmore, well-known humorist and after-dinner speaker, is headlined for the 38th annual Haskell Chamber of Commerce Banquet. Slated tomorrow night (Friday) Feb. 8, at 7:30 p. m. in the Elementary School Cafeteria, the banquet will highlight "A Salute To Industry."

Passmore, Associate Counsel of the Texas Bankers Association, was born in Pickton, Texas, and received his BS degree from East Texas State Teachers College in 1941, and his LL.B. degree from the University of Texas in 1949.

He began the practice of law at Sulphur Springs, and later moved to Mt. Vernon and was elected County Attorney. He lived there till 1957 when he moved to Austin where he served as Assistant Attorney General under Will Wilson until Jan. 1, 1963.

During the final two years of his stay in the Attorney General's Office, he was the Attorney General's first assistant in

which position he had general supervision over the legal work of some 85 attorneys in the office.

When he left the Attorney



LEONARD PASSMORE

General's office, he entered private law practice in Austin with six other attorneys until Dec. 1, 1964 when he became Associate Counsel of the Texas Bankers Association.

He is married to the former Evelyn Birdsong, and they have one daughter, Mary Sue.

Charles Dickey, well-known in the Haskell area for his fine entertainment, will be featured through the banquet at the concert organ.

Dr. Gaines Post, Haskell's witty emcee, will again carry this responsibility, and will introduce special guests. Royce Adkins, president of Haskell Industrial Foundation, will conduct a special recognition and salute to Haskell's new industry, Herman-Marcus, Inc.

Chamber of Commerce president Royce L. Williams, will introduce his officers and direc-

tors, and install new officers and directors for the coming year.

Tickets are on sale at the Chamber of Commerce office, and will be on sale at the door, if any are left.

### Questionnaire For WTC Ext. Courses Offered

Inside this issue of the Free Press is a questionnaire from Western Texas College in Snyder, for requests of summer courses to be taught here through the Haskell Extension.

Please read the questionnaire carefully and, if you have a college student who wants to do some summer work, contact them to find which courses they need. These fully accredited courses will be taught here in Haskell this summer, if enough interest is shown.

Residents of Haskell and the surrounding area who would like to take the summer courses are asked to clip the questionnaire, fill it in, and either leave it at the Chamber of Commerce office, or send it to the college, by March 1.

Courses being considered for the summer program include English, government, history, mathematics, psychology and speech. Prospective students are invited to list other courses they would like to take. Each class must have a minimum of 15 students.

The courses would meet in two six-week terms with classes held from 6:30-9:30 p. m. on Monday, Tuesday and Thursday nights.

It is important that we know as soon as possible just what courses Haskell area residents would like to have offered in summer sessions," Dr. Brock vice president of WTC, said. "There are several courses which can be taught if we have enough students interested, and we would like to hear from those interested, as soon as possible so we can work out the arrangements to the convenience of those involved."

## Herman Marcus Growing Steadily

Herman Marcus, Inc. of Haskell, has graduated formally, Friday night. Industry is shipping garments per and has been ready for planting—two months.

Planting—the result of a beautiful Haskell Grounds ready for planting is completed; paving and paving are done.

Planting began in December. The plant is now in full operation. The plant is now in full operation.

Planting began in December. The plant is now in full operation. The plant is now in full operation.

Planting began in December. The plant is now in full operation. The plant is now in full operation.

Planting began in December. The plant is now in full operation. The plant is now in full operation.

Planting began in December. The plant is now in full operation. The plant is now in full operation.

Planting began in December. The plant is now in full operation. The plant is now in full operation.

Commission. Since the first school, another has graduated, giving the plant more prospective employees. As the thirteen original operators gain experience, they are moved to different jobs within the plant. As their best skills are noted by plant supervisors, they are assigned work.

At this point, the plant employs 20 single-needle operators, and hopes to double the original employment figures within six months of operation; and double that figure by the end of the year.

Plant Manager Amelia Perry, and Plant Production Specialist Claude Lester, both are very pleased with the progress of H-M growth, and ship 750 garments of the first line of the Herman Marcus brand to Dal-

### Al Hinds Enters Baylor Hospital

Al Hinds, former editor of Haskell Free Press, entered Baylor Hospital in Dallas Tuesday morning. He had been in Haskell Memorial Hospital for several weeks before his release last week.

His sister, Mrs. Thelma Armstrong of Houston, arrived in Haskell Jan. 29, to spend some time with Al and Mrs. Hinds, and a sister, Mr. and Mrs. Jetty V. Clare.

Mrs. Armstrong and Mrs. Hinds took him to Dallas Tuesday, where he will undergo further tests.

### Ball Line Passes For Democratic Primary

Edwards, and Colen Hammer. Incumbent JP of Precinct 1, H. M. Bledsoe's opponent is Olen Dotson for that office.

Cleatus W. (Biggon) Drinnon has placed his name on the ballot for County School Superintendent. Miss Jessie Vick is not seeking re-election.

Carolyn (Lusk) Reynolds seeks re-election to the office of District Clerk, unopposed; as does W. P. Ratliff for District Judge. Judge Ratliff was appointed by Gov. Dolph Briscoe to fill the unexpired term of Judge Ben Charlie Chapman, last year.

In State offices, State Rep. Charles Finnell of Holliday seeks the State Senate seat vacated by Sen. Jack Hightower, in the 30th District, and is opposed by Ray Farabee of Wichita Falls.

State Rep. W. S. (Bill) Heatley seeks re-election in Dist. 101, and is opposed by L. Max Courtney.

All these candidates are subject to the action of the Democratic Primary.

las, each week.

Room for expansion is plentiful in the huge building. Some 69 machines are already installed, and only 30 are now in use. 32 job applications now await employment in the industry, and all but three of those now employed have been through the H-M Training School; the machine operators here in Haskell, and the office

### Finnell Says Branch Banking Ban To Be Kept In State Constitution

AUSTIN — Rep. Charles Finnell of Holliday expressed optimism this week that the constitutional prohibition on branch banking will be retained in any proposed revision adopted by the Constitutional Convention.

Finnell, who has consistently opposed branch banking, said he believes that a big majority of his fellow delegates at the convention "now see the light and realize that independently-owned community banks must stay independent."

"Branch banking threatens the financial independence of

### Mrs. Redwine Has Surgery In Abilene

Mrs. T. C. Redwine, circulation and classified manager of Haskell Free Press, entered Hendrick Memorial Hospital in Abilene Monday for surgery.

Mrs. Vern Foreman of Odessa, Mrs. Redwine's daughter, and Mrs. Gaylon Head of Breckenridge, her sister, were in Abilene to be with Lois and Charlie for a few days after the surgery.

She is in Room C215, Hendrick Hospital.

She will be on leave of absence for about six weeks from the Free Press and Mrs. Ray Sefcik began work Monday morning in the circulation and classified department.

### Rule Meeting Set Friday Night

A covered dish supper, sponsored by the Volunteer Services of Rule, will be held Friday night, Feb. 8, at 5:30 p. m. in the Rule Philadelphian Club House.

All persons 55 years of age and older who might be interested in forming an Association of Retired Persons, are invited to attend.

John Greeson, minister of the Church of Christ, will explain the program, and if enough are interested, the association will be formed. A person is not required to be retired, to join.

Interested persons are invited to bring a covered dish and attend the meeting.

personnel in the Dallas office.

Lester has just returned from a week at the Monahans plant, where another Training School has just been completed there, and is now back at work in Haskell.

The Herman Marcus growth is a thing of pride to all Haskell residents, and has grown more already than was hoped on its opening in Haskell.

our smaller communities in West Texas," Finnell said.

"Banking is like government in that it best serves its people and community when its control is kept local."

Finnell said, "The big city banks, with their corporate ownerships, and the big bank holding companies aren't getting anywhere with their arguments to bring chain-store banking to Texas."

"The prohibition on branch banking was put in the present constitution 70 years ago, and it represents one of the many old sound principles and practices we must preserve," he said.

Finnell said that as his convention duties permit, he plans to travel in West Texas and has scheduled visits in Haskell, Knox City, Munday, Seymour and Henrietta.

### County 4-H Food Show Set March 9

Youthful chefs will focus on Texas foods when the Haskell County 4-H Food Show gets underway March 9th with a number competing in senior and junior divisions.

Following a 'Lone Star Foods' theme, local youth will whip up main dishes, side dishes, breads and desserts, or snacks and beverages as they choose one of the four entry classes for competition.

Youth ages 14-19 will compete in the senior division, while the younger division contest involves ages 9-13, or younger.

"Both the senior and junior divisions will offer a first, second and third place ribbon in each of the four entry classes," according to Mrs. Barbara Elliott, County Extension Agent.

"Because our foods program emphasizes nutrition, contestants will be asked to demonstrate knowledge of nutrition, meal planning, food buying and meal service as well as the ability to prepare food," she added.

Haskell County 4-H Food Show is sponsored by the Texas Agricultural Extension Service, Texas A&M University System.

### Be Careful Of Grass Fires!

Dry weather and grass fires go together, and Satch Lusk at Haskell Fire Department says our present situation is no exception.

In the month of January alone the Haskell Fire Department has answered 22 grass fire calls... some huge and damaging; others quickly controlled and relatively harmless.

But, only three grass fire calls were answered last year in January, when we had had winter rains. And the high, gusty winds of late hamper the firemen in their efforts to contain the fires.

We urge you—DO NOT attempt to burn your trash, or to burn 'just a little patch of dry weeds' that seems so easy. City ordinances prohibit either, and your own property safety should convince you—dry, windy February is not the time to take chances!

### Vehicle Tags Going At A Brisk Pace

Haskell County Tax Assessor-Collector Jimmy Owens and his able staff in the courthouse have been busier than usual since Friday, when motor vehicle registration got underway in Haskell County.

Since beginning the sales last Friday morning, his office has sold 500 passenger car tags; 200 commercial tags; 100 farm truck tags; 8 disabled veteran tags; 7 personalized tags; and six special tags for district officials.

Owens requests that everyone coming in for their registrations bring their renewal cards with them. It makes it easier on the office personnel, and much faster for the citizen.

### Flu Bug Hits School Attendance

Haskell schools were hard-hit by the flu and respiratory ailments this week as classes resumed Tuesday, after a teacher's workday, and student holiday Monday.

Supt. H. T. Wilkinson said Tuesday afternoon that there were 78 absentees in high school, 51 in junior high, and 74 in elementary school, that day. "Last week," he said, "there were very few absentees, even as late as Friday. This seems to have hit over the weekend, and we'll just have to see how it goes."

Some Texas schools have been forced to close by absenteeism caused by the flu, but Haskell so far has maintained enough students present to continue classes.

### Dairy Queen Buys Haskell County Steer

A Haskell youth's ribbon winning steer at the 1974 Fort Worth Fat Stock Show has been purchased by Dairy Queen of Midland, Inc., which is now building a Dairy Queen in Haskell.

Owner and exhibitor of the 910-pound Maine Anjou, which finished ninth in its class at the Fort Worth show, was Calvin Wilfong of Haskell. The Dairy Queen organization purchase was made by I. B. (Barney) Chapman II, president of Dairy Queen of Midland, Inc., which encompasses 12 locations in addition to the one under construction in Haskell.

Chapman is also president of eight other Dairy Queen and Big Top Corporations, including some 50 of the drive-in restaurants in West Texas, Central Texas and the Dallas-Ft. Worth metropolitan.

The Dairy Queens were the largest purchasers of steers at the 1974 Fort Worth Fat Stock Show, except for major grocery chains.



**THE CROSS AND THE FLAME**—The new sign at First United Methodist Church was erected last week in memory of Mrs. Nina Gibson, well-loved and longtime church secretary. Formal dedication ceremonies will be held in the near future. The empty cross signifies the living and victorious Christ, and the flame signifies the Holy Spirit of God with us. (Photo by Don Comedy)



# Carpenter, Lucy Vows Read

airway Baptist Church in Wichita Falls was the setting Friday evening for the marriage of Miss Karen Jean Carter and Johnny Joe Carpenter, Jr., are the bride's parents. Lucy is the son of Mrs. Lucille Lucy, all of Wichita Falls. Mr. and Mrs. M. H. Soron of Haskell are the grandparents of the bride.

Mr. Herman Hendrix, pastor, officiated at the 7:00 p. m. ceremony. Mrs. Gary Barron of Mesa and Miss Sharon Middleton of Wichita Falls were organist and pianist and accompanied Mr. Jim Jackson, soloist, in the candelabras of white roses entwined with garlands of ivy formed the background of the ceremony. White doves in brass stands holding ferns and greenery completed the decorations. Pews were marked with clusters of wedding bells with satin ribbon and similar.

The bride's father gave her marriage. She wore a gown fashioned of pearl the sole with empire bodice, wide port neckline and long sleeves, edged in French lace reembodyed in French net was on the face, and the skirt extended a chapel train. The headpiece was a Juliet cap covered in lace and embroidered with pearls. She carried a casual arrangement of white carnations, roses, baby's breath, and ivy, centered with a white orchid.

Mrs. Jim Fite of Dallas was matron of honor. She wore a floor-length empire gown of burgandy velvet with pink gailon lace on the bodice. She carried a nosegay of pink carnations, baby's breath, and ivy. Miss Nan Gentry of Lubbock was maid of honor, and bridesmaids were Misses Georgann Higgins and Margaret Myers of Wichita Falls. They were dressed identically to the honor matron.

Candlelighters were Miss Cherrie Carpenter and Tony Sorenson of Amarillo and Colorado City, both cousins of the bride. Flower girl was Miss Julie Bishop of Oklahoma City, and ring bearer was Timothy McClellan of Wichita Falls.

Gary Gilmore was best man and groomsmen and ushers were Ronnie Carpenter, brother of the bride and of Richardson; Freddie Daume; and Steve Smith.

Mrs. Mike Linder and Miss Barbara Tidrow registered the guests as they entered the church foyer. The bride's parents hosted the reception in Fellowship Hall of the church. The bride's table was covered with a white lace over white satin cloth, and a silver tiered candelabra. An all white three-tiered cake with white daisies centered in pink was served to the guests. The bride's chosen colors also were carried out in the sparkling burgandy punch.

The groom's table was covered with a white linen cloth where chocolate cake and coffee were served. The centerpiece was a brass pyramid candelabra holding burgandy votive

bags. The groom's mother hosted the rehearsal dinner at Luby's Cafeteria.

After a wedding trip to Dallas, the couple will live in Wichita Falls.

The bride is a cum laude graduate of Midwestern University where she was elected Class Favorite her senior year and named Outstanding Woman in Physical Education. She has been a member of the University Choir, the women's varsity tennis team, and has served as president of Alpha Phi sorority. She is employed by the Wichita Falls Public School System.

The groom is a graduate of Midwestern University where

he was a member of Kappa Alpha Order. His senior year he was named Class Favorite, Greek God, and was a nominee for Lord Midwestern. He is employed as office manager of Smith's Garden Town in Wichita Falls.

W. R. Baker  
Receives Award  
At MU Meeting

Knox City School Superintendent W. R. Baker was given special recognition and awarded a plaque by region IX Council of Exceptional Children Friday evening at Clark Student Center on the campus of Midwestern University in Wichita Falls during the banquet meeting.

Two hundred teachers and administrators attending the 5th annual midwinter conference of the council watched as Baker received the award for pioneering service as the first school administrator in the state to serve as fiscal agent for a "Plan A" rural cooperative. As a result of the pioneering efforts of Baker and cooperating school personnel in Haskell and Knox counties the administrative patterns for establishing similar cooperatives statewide were laid down.

"Plan A" systems offer help to students who need more or different instructional resources than they can be given in regular classrooms. Speech therapy, homebound or hospital services, resource rooms and some vocational settings are provided. These are not available to smaller individual schools except through a cooperative arrangement such as that devised through the ten schools in Haskell and Knox counties. Haskell-Knox consortium and four large urban schools have served as models so that by 1976 all schools in the state will operate "Plan A" programs.

Attending the meeting with Baker was John McLaughy, director of Haskell-Knox consortium. McLaughy assisted with registration and presentation of awards.

It's In The LIBRARY

Will Rogers His Life and His Time" by Richard M. Ketchum published by the American Heritage Publishing Co.

For much of the first third of this century, Will Rogers was not only America's pre-eminent humorist; he was the down-to-earth, horse-sense conscience of the nation. "Will Rogers, The Man and His Times" is a fine evocation of a turbulent age as well as the moving story of an American who richly earned the honor and affection that he still receives from his fellow citizens.

Rogers' life (1879-1935) personified a great range of the American experience. Part Cherokee, he spent his boyhood in what was still Indian Territory, and his earliest ambition was to become the world's best trick roper. Yet here you see how he also became the most popular and best-loved columnist, speaker, broadcaster and movie actor in the history of the U. S. — a friend of Presidents, statesmen, politicians and prominent figures.

On page 350 of this new book mention is made of a July 4th trip to Texas for a cowboy reunion and that has to be Stamford, Texas. The year was 1935.

Woman Seeks Senate Post

PLAINVIEW — A Plainview school teacher who has been active in area and state Republican Party circles for many years has announced her candidacy for nomination as the Republican candidate for state senator from the 30th Senatorial District in the May primary.

Mrs. Mary Virginia Kirchoff, who presently serves the 30th District as state committeewoman for the GOP, made the announcement in her hometown of Plainview.

Having lived in Texas 40 years, Mrs. Kirchoff is a native of Missouri and a graduate of Texas Christian University in Fort Worth, and has attended Wayland Baptist College and Texas Tech University. Mrs. Kirchoff is an instructor in Speech and English at Coronado Junior High School in Plainview. She will take a leave of absence to campaign for the state post.

Discussing her candidacy on the Republican ticket, the 47-year-old Mrs. Kirchoff said, "I don't believe party lines really make any difference if the candidate is someone the people can trust, who has their confidence, who is interested in our area, and who will speak out for us in Austin."

The first woman elected to serve on the board of directors of the West Texas Chamber of Commerce, she organized and served as chairman of the Woman's Activities Committee of the WTCC, which covers 132 counties in the western half of Texas.

Mrs. Kirchoff also assisted in organizing the West Texas "Small Towns task force" for the WTCC. Her instructional material is used on the local, state and national level.

Active in District Girl Scout Work, the Plainview Junior Service League and a life member of the Parent-Teacher Association, Mrs. Kirchoff also has served as president of the Plainview Classroom Teachers' Association and was elected teacher of the year for Coronado in 1972. She has served the District and State in many capacities, including advisory to the Constitutional Revision Committee.

An active member of Plainview's First Christian Church, she was among the first women to serve on the board of directors in 1953, and at various times also served as a deaconess, choir director, president of the Christian Women's Fellowship, and youth director.

A steady worker for the GOP since the early 1960's, Mrs. Kirchoff has been a delegate to the state convention six times since 1964, attended the 1964 national convention as an official guest, and served as a delegate to both the national

and state Federation of Republican Women since 1971.

She also has served as campaign chairman for numerous GOP candidates, and her daughter, Karen, seems to be following in her footsteps. Karen, a sophomore at Texas Tech University in Lubbock, served as a page representing Texas in the 1971 National Federation meeting in Washington, D. C.

Her husband, John, is a farmer, stockman and investor, and her son, John E., is also a farmer and stockman.

training at Ft. Polk troop training at Ft. G. and commencing Ft. Bragg, N. C., graduated with distinction in Special Forces, and he also wears the Paratrooper's wings and the badge.

Pfc. Black comes from a military family, as his father, Black Sr., was in the service during WWII, and for 1 1/2 years in Germany his brother, R. V. Black, was a Captain in the 1st Air Cavalry during the Vietnam War. Black has just recently been discharged after 5 1/2 years of service.

Pfc. Black went to Haskell from the 1st Air Cavalry through eleven months of training and then he went to school with his brother, R. V. Black, and then he went to Lubbock to see other relatives who were on leave recently.



MRS. JOHNNY JOE LUCY  
formerly Karen Carpenter

**RAND** Stamford  
Fri. 8, Sat. 9, Sun. 10  
"PAPER MOON"  
Ryan O'Neal  
Color

**DRIVE-IN** Theatre  
WINTER POLICY  
OPEN WED. THRU SUN  
Fri. 8, Sat. 9, Sun. 10  
"DILLINGER"  
Warrren Oates  
Color

Wed. 13 - Thurs. 14  
X-ADULTS ONLY  
No One Under 18  
Proof Required  
"PRISON BABIES"  
Nude Color

**TOWER**  
DRIVE-IN  
RULE, TEXAS  
Fri. 8 - Sat. 9  
"Deaf Smith and Johnny Ears"  
Anthony Quinn  
Sun. Only, Feb. 10  
"Let the Good Times Roll"

## First Federal Savings & Loan Association Of Stamford

ANNUAL RATE ANNUAL YIELD \*

PASS BOOKS	5.25%	5.39%
Effective January 1, 1974		
90-Day Notice Certificate	5.75%	5.92%
\$500.00 Minimum		
12-Month Certificate	6.25%	6.45%
\$1,000 Minimum		
12-Month Certificate	6.50%	6.72%
\$5,000.00 Minimum		
24-Month Certificate	6.50%	6.72%
\$1,000 Minimum		
30-Month Certificate	6.75%	6.98%
\$5,000.00 Minimum		
48-Month Certificate	7.50%	7.79%
\$5,000.00 Minimum		

\*A Substantial Interest Penalty is Required for Early Withdrawal

\*Where Interest is Accumulated and Compounded

WHERE YOUR SAVINGS INTEREST IS COMPOUNDED DAILY ... PAID QUARTERLY

Box 511—Stamford, Texas 79553—915-773-2711

Your "FIRST" Federal Savings and Loan Association

Lions Program Given By Haskell Co. HD Agent

Mrs. Barbara Elliott, Haskell County Home Demonstration Agent, was guest speaker at the regular noon luncheon of Haskell Lions Club Tuesday at Haskell Steak House. She presented a slide program and explained her duties as an agent, then introduced Carol Dudenising and Susan Lewis.

These two girls also gave a slide program on their recent trip to Washington, D. C., through a Citizenship Seminar. Carol is the daughter of Mr. and Mrs. Wallace Dudenising of Sagerton and Susan's parents are Mr. and Mrs. Cecil Lewis of Rule. Both girls attend Rule schools.

Lion President Gene Long presided over the business meeting. Jimmy Owens led the prayer; Rev. Dudley Bragg led the singing, accompanied at the piano by Lion Sweetheart Becky Gholson.

Jimmy Browning was a guest of Joe Searcy and Mrs. Bud Herren was also a guest at the meeting.

County Clerk's Monthly Report

Monthly report of fees collected in the County Clerk's office of Haskell by Jonny Brazell, Clerk, for the month ending January 31, 1974:

Recording fees, \$467.50; Chatted Mortgage fees, \$290.00; Marriage license fees, \$25.00; All copies, \$79.60; Civil Court fees, \$5.00; Criminal Court fees, \$160.00; Probate Court fees, \$102.00; Sheriff, Judge, Co. Atty., \$356.00; Law Library, \$25.00; Fines collected, \$357.00; Comp. \$45.00; Fees earned but not collected, cattle brands, \$6.00. Total, \$1,918.10.

**EMERGENCY ROOM FUND**  
In memory of J. C. Pierson, Sweetwater  
Mr. and Mrs. A. C. Pierson  
In memory of Thurman Rhoads Otis, Marie and W. O. Elmore  
Mr. and Mrs. H. G. Hammer  
Mr. and Mrs. A. B. McDonald  
Mr. and Mrs. Willie Bueger  
In memory of Jack Pippin  
Mr. and Mrs. Willie Bueger  
Total donated to date, \$1,494.23

**FILING CABINETS**, large and small; also check files for those end of the year records. Small guard valuable papers. Haskell Free Press.

YOUR NEEDS COME FIRST

**PAY YOUR INCOME TAX WITH A FARMERS NATIONAL BANK PERSONAL LOAN**

At our bank you can arrange for an income tax loan in a few minutes if your credit is good and you have a steady job. Just call us today and ask about our loan plan.

For ALL Your Banking Needs  
**FARMERS NATIONAL BANK**  
—MEMBER F.D.I.C.—  
RULE, TEXAS

**FINAL MARKDOWN**  
—on—  
**FALL MERCHANDISE**  
Earrings and Key Rings . . . 50¢

Wrangler Pants, Knit Tops  
**\$3.00**

**THREE BIG MARKDOWN RACKS OF**  
Dresses - Blouses - Pants  
and Skirts  
**\$5.00 - \$10.00 - \$15.00**

All Better  
**DRESSES & PANT SUITS**  
Values to \$98.00  
**\$25.00**

**Fincher's**  
Haskell, Texas

Restaurants are in the





## Around Town

CLYDENE AND LOIS

**Mr. and Mrs. John Smith** had their son, Jack, home from Tarleton this weekend.

**The A. C. Richardsons**, the Abe Turners, the Wilda Medfords, Roy Pitman and Mrs. W. H. Pitman were among those that travelled to Ruidoso for the weekend. Teenagers enjoying skiing were Les Lane, John Larned, Debbie Thomas, Brian Toliver, Amy Medford, Mike Turner, Eddie Medford, Clark Richardson and Rex Pitman.

**Mrs. Annie Fry** of Abilene spent the weekend in the home of her brother, Mr. and Mrs. E. B. Callaway.

**The E. B. Callaways** and the H. R. Callaways attended funeral services for Bud Hinsley in Floydada. He is a relative of both Callaways.

**W. O. and Joel Nanny** and Danny Josselot went rattlesnake hunting over the weekend. The longest caught was 52 inches.

**Mr. and Mrs. Wilbert H. Klose**, Pamela and Camille, visited the Billy Giles family in Lubbock Sunday and Monday.

**Mr. and Mrs. Bill Marr** visited Mr. and Mrs. Billy Marr and Sherree and Mr. and Mrs. Truman Murphy, Basil and Renee in Denton over the weekend.

Guests in the home of Mr. and Mrs. Fred Jones the past week were their son, Gordon, and Shirley Johnston and family of El Paso; daughter, Dor-

is and Joe McReynolds of Fort Smith, Ark., grandson and family, Gene, Joe, Genie and Candice Johnston of McKinney; a niece and nephew, Francis and Billy Stanforth of South Plains and several friends.

**Girl Scout Troop 465** took a field trip Tuesday afternoon and visited the Free Press to see how the newspaper is printed. Girls making the tour were Gina Brooks, Kelei Sefcik, Patricia Atkinson, Cindy Everett, Pam Hale, Emily Cox, Edgwyna Medford, Leisha Sosomon, Kim Hale, Lori Johnson, Jonna Wheatley, Patsy Butler, Ember Miller, Clara Tatum and Silvia Ann Garcia. Also touring were Tim Johnson, Dana Hale and Sherree Brooks. Leaders with the girls were Jean Hale, Elna Weise and Charlene Dumas. Bobbie Johnson also a leader, was not present.

**Commercial and Residential Fences**  
Types of Ornamental Iron  
FREE ESTIMATES  
2-2282, 823-3927—Call Collect  
ANSON, TEXAS 79501

**"You're a nice Insurance Man!"**

We win every time there is a serious local insurance loss and then learn it wasn't covered by insurance. But we can't insure people who don't ask us to do so. Take advantage of Hartsfield Agency's free survey of your risks and insurance to be certain of adequate protection.

buy or sell a property? It may be if you list with us. We have loans for various types of property and loan connections, too.

**HARTSFIELD AGENCY**  
PH. 864-2665

# SHOE SALE

FEBRUARY 7TH thru FEBRUARY 12TH

## FAMED BRAND SHOES

Annual Savings on Our Regular to \$20.95

- ... Values you must not miss!
- ... Styles to wear now
- ... All broken sizes

**5 DAYS**

# Slipper Shoppe

1000 Square \* Haskell, Texas

### Easter Seal Fund Drive Set By Weinert Club

Weinert Matrons Club voted to sponsor the Easter Seal Fund Drive in Weinert for the Rehabilitation Center in Abilene, at their regular meeting held Jan. 31, in the home of Mrs. Floyd McGuire.

President Mrs. W. A. King presided over the business meeting in which the club also approved recommendations reported by Mrs. V. C. Derr concerning grade school posters contest on Pollution. There will be three divisions: grades 1 and 2; grades 3 and 4; and grades 5 and 6. Cash awards will be given each division for first, second and third places. Feb. 27 is deadline for judging of the posters. Kim Hager, Tammy Herricks and Cindy Walker, Girl Scout Cadets, will serve as aides to judges.

February 6 at 1:30 p. m., members of the club are asked to meet at Erma Liles' for the Club Reports Work Day.

Program for the meeting was 'Our Concern for International Clubs,' and director was Mrs. J. A. Mayfield. Federated Clubs of Australia and New Zealand was given by Mrs. Floyd McGuire. Mrs. W. C. Winchester told of the Lithuanian Federation. The Hawaii and Gaum Federated reports was given by Mrs. R. W. Raynes.

Refreshments were served by the hostesses, Mrs. V. C. Derr and Mrs. Floyd McGuire. Eleven club members were present.

Club members went to Rochester Feb. 7 for a Friendship meeting at the school cafeteria at 4:15 p. m. and heard Mrs. Clay Smith of Haskell review 'The Late Liz', by E. Burns.

**Club Enjoys Tour Of Country Store**

The Progressive Study Club thoroughly enjoyed a meeting Jan. 24 at 7:30 p. m. in Jones Cox Country Store. Hostess Jo Cox toured them through the store, and as they gathered upstairs, she gave a program on the history and background of the business—one of Haskell's oldest.

Members and guests then spent some time browsing through the store. Decorations supplied by Ruby Turner, Jane McAdoo and Nedra McCauley, were red lanterns to light the stairway. Refreshments were served to approximately thirty members and guests present, after they returned downstairs.

### HD Training Meet Held January 30

Fashions in Foods was the title of a Home Demonstration Leader Training Meeting held on January 30th in the meeting room of the Haskell National Bank.

The training was conducted by Mrs. Barbara Elliott, County Extension Agent and the leaders from each of the Home Demonstration Clubs in the county attended.

The training was conducted on ways of using leftover foods. The training included ideas for using leftover meat, vegetables, desserts, breads and salads.

The training also included the length of time different foods should be stored in the cabinet, refrigerator and freezer.

Each of the club members who attended prepared a dish showing ways leftovers could be used.

Included below are some of the recipes exchanged at the meeting. Each of the club members will be presenting the program to their club during February club meetings.

**Potato Salad**  
2 cups cooked diced potatoes  
2 hard boiled eggs, chopped salt to taste  
1 tbs. chopped onions  
2 pickles, chopped  
Salad dressing to taste  
Mix above ingredients and serve with your favorite salad greens. — Mrs. Georgia Wade Evans Club.

**Leftover Green Beans**  
Add to green beans:  
1 slice crisp fried bacon (cut bacon into small pieces)  
1 small purple onion, sliced and cut into half  
1 small jar sliced pimento  
2 tbs. white vinegar  
2 tbs. hot bacon grease  
Season with lemon, pepper and celery salt. Serve hot or cold. — Mrs. Edna Anderson, Josselot Club.

**Bean Salad**  
1 can beans  
1/2 cup chopped celery  
1/2 cup chopped onion  
1/3 cup oil  
2/3 cup vinegar  
3/4 cup sugar  
Mix all ingredients and let stand for 24 hours. — Mrs. Carl Bailey, Josselot Club.

**Jello Dessert**  
Dissolve 1 pkg. jello in 1 cup boiling water, add 1/3 cup sugar, add 1/2 cup cold water. Let chill until hard.  
Whip 1 envelope Dream Whip as directed, then fold in jello and whip well. Add 1/2 cup nuts. — Mrs. Leonard Kieck, L.O.C. Club.

**Hawaiian Delight**  
2 sticks margarine  
2 cups sugar  
Cream together until fluffy. Add: 5 eggs (beat after each addition). Add:  
1 tsp. vanilla  
1 can coconut  
1 pkg. graham crackers (13-3/4 oz. pkg.) crushed  
1 cup milk  
1 No. 2 can drained crushed pineapple  
1 cup pecans  
Pour into 12x8x2 pan and bake at 350 degrees for 40 minutes or until done. — Mrs. Lewis Corzine, L.O.C. Club.

**Meat Casserole**  
Leftover Meat (roast, ribs, round, chicken, or etc.)  
Spaghetti rings  
Add according to proportion of meat and spaghetti:  
Pimentos  
Chopped onion  
Chopped celery  
Mix above ingredients and cook in oven at 325 degrees F until thoroughly warmed. — Mrs. Gus Rueffer, Weinert Club.

### Brazos-West Art Sets Program

The Brazos-West Art Association will meet Tuesday, Feb. 12, for their regular monthly meeting. Meeting times have been changed from the second Monday night to the second Tuesday night of each month at 7:00 p. m.

Program chairman this month is Melanie Whitley from Knox City.

The program will be on gold leafing and 3 1/2 dimensional and brought by Cordell Offutt and Aree Tidwell of Munday.

Hostesses this meeting will be members from Knox City.

President Gladys O'Neal wishes to invite ladies interested in arts and crafts to attend this interesting demonstration.

**WMU MEETING**  
The WMU of South Side Baptist Mission met Tuesday, Jan. 29, at 1 p. m. in the home of Mrs. Colone Moody.

The call to prayer was read by Faye Thompson. Each member present enjoyed reading the story of the Navajo Indian. Prayers were offered by all present.

# Vows Exchanged By Moeller, Braden

Marilyn Braden became the bride of Dalton Edward Moeller, Saturday, Jan. 19, at 4:00 p. m. in St. Lawrence Catholic Church, St. Lawrence. The ceremony was performed by Rev. Augustine Lucca.

The altar setting was enhanced with baskets of red and white carnations and greenery for the double-ring ceremony. Organist was Laurie Lange. Music was by the church choir. Soloist was Cathy Batla.

Mrs. Moeller is the daughter of Mr. and Mrs. Melvin Braden, St. Lawrence Rt., Garden City. Bridegroom's parents are Mr. and Mrs. Edward R. Moeller of San Angelo, Texas.

He is the grandson of Mr.

and Mrs. Virgil Conner and the late Mr. and Mrs. George Moeller, all of Haskell.

Carrying a cascade of white carnations and red sweetheart roses with lilies of the valley and white satin streamers, the bride was attired in a formal gown of white velvet with flounce appliques of valencia rose lace, seed pearls, and iridescent sequins enhanced the fitted bodice which featured a sweetheart neckline and long-fitted fingertip sleeves with Venice rose lace inserts. The soft gathered skirt adorned in Venice rose lace ruffles, iridescent sequins and seed pearls flowed fully from the hips to form the chapel length train.

Her veil of English illusion was held by a cluster of white velvet roses.

Miss Phyllis Moeller of San Angelo, sister of the bridegroom, was maid of honor. Mrs. Wilbert Halfmann of Angelo, sister of the bride was matron of honor. Bridesmaids were Mrs. Alton Braden, San Angelo, sister-in-law of the bride; and Mrs. Roland Halfmann of St. Lawrence, cousin of the bride.

They were identically attired in floor-length gowns of red velvet, with long full sleeved ruffled cuffs, yoke and neck, their matching headpieces were red velvet roses. Each carried a nosegay of red and white velvet roses and satin streamers. The flower girl was Emily Halfmann of San Angelo, niece of the bride.

Ringbearer was Leon Braden of Wall, Texas, cousin of the bride.

Arnold Braden, brother of the bride, St. Lawrence, served as best man, and groomsmen were Danny Williams, San Angelo; Roger Moeller, Haskell, cousin of the bridegroom; and Gary Conner, Amarillo, uncle of the bridegroom.

Kenneth Conner of Big Spring, Hughie Peiser of Dallas, Alton Braden, San Angelo, and Wilbert Halfmann of San Angelo seated the guests.

The wedding was followed in the evening with a reception dinner in the parish hall hosted by the parents of the bride.

Preceding the nuptials the bridegroom's parents hosted the rehearsal dinner at Zentner's Steak House in San Angelo.

After a wedding trip to Cloud Croft, N. M., the couple are making their home in Wall.

Dalton, a graduate of San Angelo Central High School, attended San Angelo State University and is currently in business with his father.

Mrs. Moeller, a graduate of Garden City High School, is employed in San Angelo by General Telephone Company of the Southwest.



MRS. DALTON EDWARD MOELLER  
... formerly Marilyn Braden

## The Haskell Free Press

Established January 1, 1886  
PUBLISHED EVERY THURSDAY

MEMBER

CLYDENE COMEDY—Editor  
RUEFFER COMEDY—Publisher

Second-class matter at the postoffice at Haskell, Texas 79521 under the Act of March 3, 1879

SUBSCRIPTION RATES			
In Haskell and Adjoining Counties			
	Sub	Tax	Total
One Year	\$ 5.00	.25	\$ 5.25
Six Months	\$ 3.00	.15	\$ 3.15
Two Years	\$ 9.50	.48	\$ 9.98
Elsewhere in Texas			
One Year	\$ 6.00	.30	\$ 6.30
Six Months	\$ 4.00	.24	\$ 4.20
Two Years	\$11.50	.58	\$12.08
Outside of Texas			
One Year	\$ 8.00	.40	\$ 8.40
Six Months	\$ 4.50	.23	\$ 4.73
Two Years	\$15.50	.78	\$16.28

NOTICE TO PUBLIC—Any erroneous reflection upon the character, reputation or standing of any firm, individual or corporation will be gladly corrected upon being called to the attention of the publishers

# OATES DRUG STORE

- DELIVERY SERVICE
- 30 DAY CHARGE
- PRESCRIPTION RECORD SERVICE
- 24 HOUR EMERGENCY SERVICE
- MASTER CHARGE
- FAST, DEPENDABLE SERVICE
- HEALTH AID RENTALS

Doyle High Owner  
Phones: 864-2515 - 864-2815

SAVE ON ALL YOUR DRUG NEEDS

VALENTINE DAY IS FEBRUARY 14th

Your Sweetheart deserves the Best

**PANGBURN'S**  
Western Style  
CHOCOLATES

\$2.50 to \$13.50

Give your Sweetheart Pangburn's Chocolates made with Milk and Honey. Sure to please her most because she knows Pangburn's best. Select from our big display.

GET YOUR VALENTINE CANDY NOW... WHILE THE SELECTIONS ARE COMPLETE

## VALENTINE SPECIAL

Dorothy Gray

# DRY SKIN CLEANSER

\$5.30 Value

# \$3.50

Dorothy Gray

# TEXTURE LOTION

\$5.00 Value

# \$3.00





WASHINGTON  
"As I look  
from here"  
OMAR SURLESON  
Congressman  
17th District

WASHINGTON, D. C. — The dying American small town, once the backbone of the new Nation and more recently the heralded symbol of the death of our National innocence, may not be dying at all.

There appears to be evidence that a resurgence of a sort is taking place across the Country for small town living. Evidence suggests this attitude goes beyond just escaping to the suburbs from inner cities.

This is the observation of a group of experts on population movements who concluded at a recent conference that the small town, while not thriving, is in a remarkable number of cases, holding its own. The participants in the conference reached the consensus that what is most needed to reverse the trends of movement to the cities is an infusion of thoughtful public policy to make once again the smaller community a good place to live for a significant number of city-sick Americans.

The panelists at the three-day conference on "The Future of the Small Town," at Oak Ridge, Tenn., represented both private and Governmental agencies, agreed generally on these points:

While there is reason for concern about the future of the small towns of America, their demise, as was stated by Mark Twain about himself, is greatly exaggerated. Because of the pessimistic attitude of some government planners, their feeling has been that programs to aid rural towns and communities is a waste of time. This same thinking has permeated many communities to the point that there has not been much innovation, and

business has avoided the risk of investment.

Reports suggest that towns which have made a decision to survive and grow and have acted upon it, in many cases, had remarkable success.

In surveys reported to the conference in Oak Ridge, people say they want to live in small towns or at least in the suburbs and favor the more country environment for bringing up children. Only 9 percent of people want to live in cities of more than a half-million population, although 29 percent do live there.

The conference also found in a collective opinion that, although there are many Federal programs which directly or indirectly aim to help small towns, there has been no clear and consistent national policy with definite stated goals towards providing better attractions for living. The group also had discussions that, while the growing problems of urban core cities and the drabness of many suburbs were driving more and more families to want to live in smaller towns, the towns themselves were generally unable to support new residents either with city services, health care and cultural attractions, and even more fundamentally, with jobs.

This latter, of course, is the key to it all. As much as people might want more wholesome living, after all, they have to work.

There has been a tendency among businesses and industries to move from the core cities along with the residents, but, of course, what keeps people from living where they want to is economic necessity. There are simply not enough jobs in small towns and rural areas. Industries cannot locate in areas which have a lack of adequate water, sewer, police and fire protection, schools and so forth. This is where leadership comes in and some places are doing it.

Participants in the conference finally concluded that an overall National Policy is needed, but the ingredient for success must come from the local level. There is the talent and the ambition in or towns to put to work these processes.

MAKE YOUR OWN inexpensive photo albums or scrapbooks. Put together colorful vinyl ring books and clear sheet protectors. Sheets have wide reinforcing flap furnished with black mounting sheet.—Haskell Free Press.

"Dietetic" Label Doesn't Always Mean Fewer Calories In Food

Don't be misled by a 'dietetic' label on foods.

"Dietetic" doesn't necessarily mean the product has fewer calories than the regular product, Mrs. Barbara Elliott, County Extension Agent, noted.

In fact, many products labeled "dietetic" aren't meant for persons on low sodium, low cholesterol, diabetic or other special diets, she explained.

Calorie-wise, many dietetic foods don't differ much from regular foods.

For example, one-half cup regular ice cream contains 230-248 calories, while the same portion of dietetic ice cream has 200-211 calories.

The main difference between them involves substituting sorbitol or mannitol for sugar in the dietetic product.

Sorbitol and mannitol — like sugar—are metabolized as carbohydrates in the body. They provide the same number of calories as sugar, but at a slower rate. This is important for diabetics, who can't metabolize sugar adequately.

So, dietetic ice cream—which usually costs more and lacks the taste of regular ice cream—is intended for the diabetic rather than the weight-conscious person, the agent said.

Dieters or weight-watchers will find that ice milk has lower fat content—and fewer calories, she added.

Another example involves "diet" bread, which has the

same number of calories per ounce as regular bread—but is sliced a little thinner.

However, dietetic flavored gelatin actually contains fewer calories than regular flavored gelatin—nine calories per one-half cup, compared to 70 calories for regular flavored gelatin.

To find other foods low in calories, the agent advised weight-

watchers to read the content of the ingredient list. Ingredients are listed in order of largest amount, such as fat or product preservatives, honey or low in calories.

ENGAGEMENT ANNOUNCED—Mr. and Mrs. O. P. Collins of Haskell announce the betrothal of their granddaughter, Debra Nell Miller, to Rickey Dale Brantley, both of Irving. The bride-elect's parents are Mr. and Mrs. James R. Miller. His parents are Mr. and Mrs. Ray Brantley. The wedding is planned for September 14, 1974 in Irving. Debra is also the niece of Mr. and Mrs. Billy Jack Ray, and the granddaughter of the late Mr. and Mrs. O. L. Miller.

SALE-SALE-FINAL REDUCT

Thursday 7th - Friday 8th - Saturday 9th

Exciting Bargains on Quality Merchandise

Shop Today for GREATER SAVINGS

BLOUSES

Rib Knits. Perfect for long skirts. Reg. value to \$24.00 \$10.00

BODY SHIRTS

Dacron and Rayon. Reg. and Jr. sizes. Reg. value to \$18.00 While they last \$3.00 & \$5.00

Sleeveless Sweaters

Pastel colors. Reg. val. to \$18.00 \$5.00 to \$8.00

Cardigans, Slip-Overs, Shells

A Great Selection \$2.00 to \$4.00

SLIPS

(32 short and average) Baby Dolls, Short Gowns \$4.00 & \$5.00

Briefs, Bikinis, 1/2 Slips

Reg. \$4.00 to \$6.00 1/2 price & less

SCARVES

Oblong and squares in chiffon and silks. 1/2 Price

COATS

Cashmere. All Weather look. Reg. values to \$25.00 \$15.00 to \$50.00

Regular Dresses

A great group. Reg. \$18.00 \$15.00 to \$25.00

JR. DRESSES

While they last \$5.00 to \$15.00

BETTER DRESSES

Truly a bargain to \$12.00 Reg. \$65.00 to \$125.00 \$30.00 to \$55.00

LONG DRESSES

Reg. and half sizes. Reg. value to \$75.00 \$10.00 to \$25.00

The Personality Shop

Important Notice

**L-F**

SWEETHEART SALE

A romance with all of you, our Customers, goes on all the time, but especially at this time when we give you such Fantastic Prices!

Group COATS 1/2 price and less

Jr. Dresses—1/2 price

Group Misses Dresses—1/2 price and less

Group Jewelry—1/2 price and less

Group Sportswear—1/4 price (Never before reduced)

Group Sportswear—1/2 price

Group Sportswear—1/2 of 1/2 price

Boots... best boot buy of the season Buy 2 pr. for the price of 1 or 1-3 off

One Group Boots 1/2 price

Group of Long Dresses—1/2 and less

Group Formals—1/2 and less

Group Pant Suits—1/2 price

1 Group Dresses values to \$50—\$15.00

1 Group Dresses values to \$15.00 \$30.00

Lane-Felker

RCA XL-100 100% Solid State Color TV

Bring a breath of Old Spain to your home decor with the Mallada. This ornate cabinet The MALLADA Model GS708 23" diagonal picture. Also available with remote control (optional, extra)

RCA XL-100 in bold Spanish Styling \$598.00 w.t.

masterwork will be easy to fit into your room plan—it's only 37 1/4" wide, and moves easily on concealed casters.

- Super AccuColor black matrix picture tube—RCA's finest big screen color picture tube ever!
- RCA's most powerful XL-100, 100% solid state chassis, combined with RCA's Super AccuColor black matrix picture tube, for the most brilliant and crisply detailed big screen color TV in RCA history.
- AccuMatic IV brings color, tint, brightness and contrast within a normal pre-set range at the touch of a button.
- Automatic Fine Tuning electronically pinpoints and accurately holds the correct picture signal on each channel.
- RCA's 70-position solid state UHF tuner. (Model GS708 only). Separate "click" positions and channel number identification for every UHF channel.

Frazier's IN HASKELL

VALENTINE'S REMEMBER FEB. 14

BRACH'S Valentine NOUGAT KISSES 11 oz. box 49c

BRACH'S Finest Quality CHOCOLATES 1 lb. box \$1.99

BROCK'S Cordially Yours Milk Chocolate CHERRIES 10 oz. box Regular 69c 47c box

BROCK'S Imperial Milk Chocolate CORDIAL 16 oz. (1 lb.) \$1.29

BROCK'S Conversation HEARTS 10 oz. bag 39c

Asst. Chocolates Heart Shape Box 3 5/8 oz. 69c

Gold 'N Sparkle VALENTINES 40 Valentines With Envelopes 69c

40 VALENTINES A Special Card for Teacher 69c

Be My Valentine Assorted CHOCOLATES 8 oz. box \$1.29

perry's Haskell, Texas



# Girl Visits In Rule

...receive a drivers license, are allowed to vote and allowed to have a large party and receive

**Farmcast**  
A Weekly Report Of Agri-Business News  
Compiled From Sources Of The Texas Department of Agriculture  
John C. White, Commissioner

**Placements Decline; Pecan Crop Unchanged; Texas ranks Among the Top 10.**  
Cattle feeders are losing \$100 and more per head as beef prices have declined more than 30 per cent since summer high levels. As a result, the number of placements going into feedlots is down 20 to 26 per cent throughout the major feedlot states.

Texas continues to be the number one cattle feeding state in the nation with 2,277,000 head on feed as of Dec. 1. This is three per cent below a month ago.

Placements into Texas feedlots during November are 10 percent below November a year ago and 26 percent below the previous month.

In the seven major feeding states—Texas, Arizona, California, Colorado, Iowa, Nebraska and Kansas—placements are down 20 percent.

**TEXAS** pecan crop as of December 1 is still set at a puny 23,000,000 lbs., almost two-thirds below the 1972 production.

Nationwide, the 1973 pecan crop is forecast at 263,000,000 lbs., 43 percent more than last year's crop.

Pecan harvest is active throughout the state with most of the crop having been gathered.

**SMALL** grain statistics for Texas for 1973 are now available. Texas ranks in the top 10 in production of oats, wheat, rye, and flaxseed. Texas ranked 17th in the nation during 1973 in production of barley.

The state was sixth in oat production, sixth in wheat, 10th in rye, and fifth in flaxseed.

The top 10 counties in oat production during 1973 in Texas are Coleman, Hamilton, Collin, Denton, Bosque, Cooke, Medina, Coryell, Grayson and Brown.

The top 10 counties in barley production in Texas during 1973 are Parmer, Pecos, Reeves, El Paso, Hudspeth, Wichita, Ochiltree, Wilbarger, Knox and Jones.

Counties in the top 10 in winter wheat production in Texas are Ochiltree, Sherman, Hansford, Deaf Smith, Randall, Carson, Moore, Parmer, Swisher, and Hartley.

Counties in the top 10 in rye production are Hale, Henderson, Erath, Deaf Smith, Denton, Dallam, Motley, Castro, Collingsworth and Wheeler.

The top 10 counties in flaxseed production in Texas during 1973 are Karnes, Atascosa, Bee, Live Oak, Wilson, Duval, Guadalupe, Frio, Jim Wells, and La Salle.

A limited number of copies of 1973 Texas Small Grain Statistics are available by writing the Texas Department of Agriculture, or the Texas Crop and Livestock Reporting Service, Austin, Texas.

A FINAL reminder—if you are one of the 75,000 Texas farmers or livestock producers who have received a questionnaire from the Texas Crop and Livestock Reporting Service be sure and fill it out and return it promptly.

This will be used to present the economic picture of Texas agriculture. None of the reports will be used on an individual basis. They will be compiled into county, district, and state totals.

Agriculture continues to be Texas' largest and most important industry, so as true a picture of it as can be obtained is essential.

**DRYLOT** sheep feeders with a lot of capacity of 2,000 head or more had 91,000 sheep and lambs on feed as of Dec. 1. This is two per cent below the number on feed a month earlier and 22 percent below the number on feed a year ago.

school until the first week of December, breaking for five weeks. Their school year runs from January until December. In 1975 a completely new educational system will be put into effect and school will be three terms instead of four.

Following completion of high school, each student must take major exams of work done during the past two years. While with the Wilson's she called home and learned she had passed her exams in each subject.

The Afrikaans religion is the Dutch Reformed Church. Other churches are also represented in South Africa. South Africa has a union form of government. They have a state president, but a prime minister and cabinet govern the country. All laws made by the government apply to the entire country which is divided into four provinces: Transvaal (where Aylana lives), Orange Free State (similar to Texas), Cape Province and Natal.

Afrikaners are very conservative people and deeply religious. Shops are closed on Sundays. During the week they open at 8:30 a. m. and close between 5 and 5:30, except Saturdays, when they close at 1:00 p. m.

American tourists have given South African people a bad image of Americans and Aylana was glad to have visited here and she has changed her opinion of Americans during her stay and would very much like to return to America some day to visit. She plans to attend college to get a Bachelor of Arts social work degree and do social work.

Aylana arrived in America on December 13 in Chicago, where she spent the night and then flew the next day with five other students to Indianapolis, Ind., where the students were met by their host families. She visited in New Castle, Ind., for 15 days with Mr. and Mrs. H. D. Ankrom and family. She was met in Graham by the Wilsons on Saturday, Dec. 29, and spent eight days. She returned to Dallas Sunday, Jan. 6, for Houston, where she will be for 11 days, then to Rio De Janeiro for two days and then home.

Supply. He is a service man for refrigerated air conditioning, heating, electric work and plumbing. He is a graduate of TSTI, and worked in Sweetwater prior to coming to Haskell. He also worked for WTU before coming to Haskell. He is married to the former Brenda Allison of Rule, and they have one son, Joe Craig, 9 months old. They live at 5 S. Ave. P, and Brenda is employed at Martha's Beauty Center.

**Haskell Welcomes New Residents**  
Mr. Joe Bob Whitworth, formerly of Sweetwater, is now associated with Letz Builder's

WEATHER SUMMARY  
MONTH OF JANUARY  
By Sam Herren  
TEMPERATURE  
Hi 84  
Lo 10  
RAINFALL  
.03  
.08  
January Total .11  
January Normal .01

Haskell, Texas

—We Reserve the Right to Limit—

Home Owned

# Parker's Super Market

506 North Second

—Just West of Telephone Building—  
USDA Food Stamp Coupons Gladly Accepted

Phone 864-3454

White Swan  
**SOFT MARGARINE**  
**43¢**  
1 lb. plastic tub



We Sell only USDA Choice Beef

USDA Choice Pound  
**CHUCK ROAST . 89¢**  
Armour Star All Meat 12 oz. pkg.  
**FRANKS . . . . . 79¢**  
Gooch's Pound  
**HOT LINKS . . . 79¢**

Van Camp's  
Grated  
**LIGHT TUNA**  
**39¢**  
6 1/4 oz. can

Kraft's Regular

**Barbecue Sauce 39¢**  
White Swan Reg. Drip, Elec. Perk  
**Coffee 99¢**  
1 lb. can

18 oz. USDA Inspected

**Whole Fryers LB. 47¢**  
Kin-Folks Brand 15 oz. cans  
**Pinto Beans 6 for \$1**

**FROZEN FOODS**  
Trophy SLICED

**STRAWBERRIES**  
10 oz. pkg. 29¢

Morton's  
**HONEY BUNS**  
9 oz. pkg. 39¢

Del Monte  
**TOMATO CATSUP**

**29¢**

14 ounce size

**SPARKLING FRESH PRODUCE**

Texas Ruby Red Each  
**GRAPEFRUIT . . 12¢**

Texas Pound  
**CABBAGE . . . . . 6¢**

Calif. 1 lb. cello pkg.  
**CARROTS . 2 for 29¢**

White Swan Vegetable

**Shortening** 3 lb. can **\$1<sup>19</sup>**

White Swan Free-Running

**Salt** Box **11¢**

Pint Size

**Clear Alcohol** **19¢**

12 in. by 25 ft.

**Reynolds Wrap** **27¢**

Giant Size

**Bold Detergent** 49 oz. **79¢**

5 1/4 ounce

**Bath Size Zest** **24¢**

Sweet Texas

**Oranges** 5 lb. bag **49¢**

Russet

**Potatoes** 10 lb. bag **99¢**

14 ounce size

**COMET CLEANSER** **19¢**

ONE GALLON!

**WISK LIQUID DETERGENT**

No Phosphates

**\$2<sup>99</sup>**

## Is the Crop We Cultivate



...it may be your own!

WHO THINKS and plans ahead is successful. Here at the Land Bank, we who think success—because success is cultivate. If you see an opportunity to organize your operation, come in and talk it over . . . and we may be able to help!



LAND BANK ASSOCIATION OF HASKELL

JOE HARPER—Manager

at Haskell, Anson and Seymour

one: 864-2002—Anson Telephone: VA 4-1142

loans on farms and ranches in Haskell, Baylor and Knox Counties.

## IT'S OUR 15TH BIRTHDAY

As we celebrate our 15th Anniversary we want to express our sincere Thanks for the fine patronage we have enjoyed since opening The Dad N' Lad Shop.

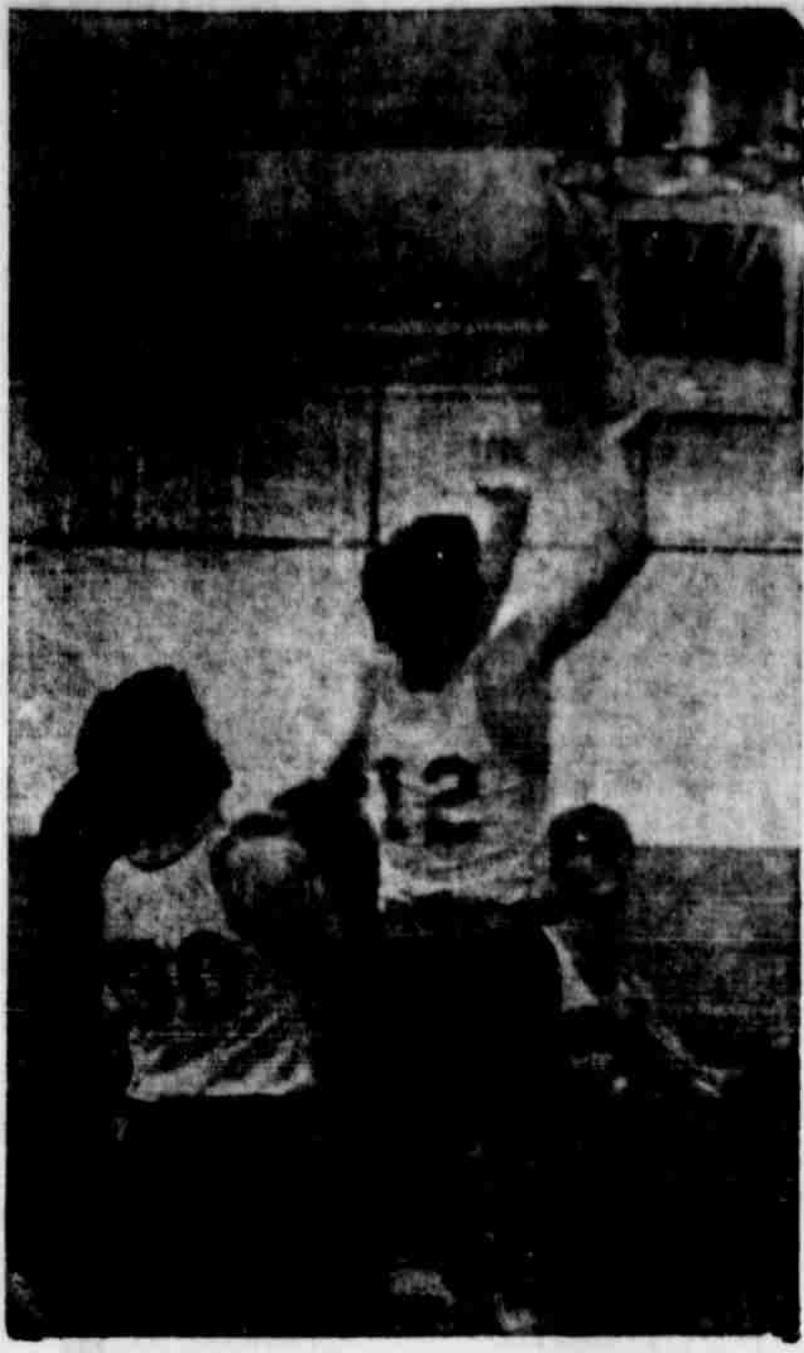
We have been in the clothing business for thirty years.

Upon reaching our 15th milestone, words cannot express our appreciation to the fine people of this trade area.

In the future, as in the past, we will continue to serve you to the very best of our ability.

**The DAD 'N LAD SHOP**  
HASKELL, TEXAS





### HHS Cagers Have Their Chance At District Titles

The basketball season is getting down to the wire, and Haskell's two varsity teams are still contenders for the district title. Haskell won three games against Stamford there Friday night. The B team won 63-46; the girls won 67-30, and the boys won by a 101-68 margin.

The girls will play Hamlin in Aspermont Thursday night, Feb. 7, for the district title. Fonda Horn led the Stamford game scoring with 30 points and Margie Kretschmer followed with 17. Karen Croft and Shirley Abbott both made six and Gena Lancaster and Emily Thigpen made 4 each. Lee Ann Toliver, Nean Newton, Debbie Young, Cynthia Escobedo, Cathy Pringle, Lisa Stocks and Marcie Mickler were guards during the game.

The A boys were led by Tim Pringle with 25 points, followed by Robin Colbert with 21, Martin Randle with 16, James McCoy with 15, Randy Ivy 10, Chris Love 6 and Cliff Grand with 4. Jackie McAdoo, Jamie Mickler, Randy Plemister and George Brown also saw action in the game.

The B team was led by Jessie Billington with 20 points and Randy Darden tied him with 20. Jackson added 10 more.

The Haskell boys downed another opponent in their final chance at District Tuesday night when they beat Ballinger a resounding 101-81. Robin Colbert led his team with 24 points, closely followed by Tim Pringle and James McCoy who tossed in 23 each. Randy Ivy made 14; Martin Randle 10; Chris Love, 5, and Cliff Grand 4. Other boys seeing action were Jackie McAdoo, Randy Plemister, J. Larned and Jessie Billington.

So, Friday night is the big game for the Haskell boys, when they meet Hamlin here. If they win the game, their chance at the district title is open, and they will again play Hamlin.

Thursday (tonight) is the girls chance at the title, when they meet Hamlin in Aspermont. Let's support both teams on their way to district.



HASKELL HIGH SCHOOL MAIDENS—Left to right, back row: Coach David Burson, Lee Ann Toliver, Karen Croft, Fonda Horn, Lisa Lancaster; middle row: Marcie Mickler, Cynthia Escobedo, Debbie Young, Margie Kretschmer, Cathy Pringle; bottom row: Emilie Thigpen, Nean Newton, Marsha Berry and Linda Bartley. (Photo by Don Comedy)

McCOY 30, PRINGLE 12, AND COLBERT 24, are one of Coach Ray Sefcik's winning combinations that have helped the Indians to their chance at the District basketball title this year. These three led the scoring against Ballinger Tuesday night. The team meets Hamlin here Friday night in the deciding game. (Photo by Don Comedy)

### Subscribers

- R. C. Couch Jr., Haskell
- E. L. Hilliard, Haskell
- J. C. Davis Jr., Austin
- Mrs. Audie Pennick, Sweetwater
- Claudia Mowell, Ft. Worth
- Elizabeth Leflar, Tekachapi, Calif.
- T. W. Perrin, Custer, Colo.
- R. F. Coston, Haskell
- Mrs. Carrie McAnulty, Haskell
- Wayne Bradford, Okla. City
- Lynn Pace III, Haskell
- J. C. Montgomery, Haskell
- C. C. Muse, Haskell
- R. G. Walton, Haskell
- Mrs. Paul Josselot, Haskell
- L. B. White, Rochester
- Mrs. Della I. Dean, Haskell
- Paul Green, Haskell
- R. C. Cook, Haskell
- Wayne Perrin, Lubbock
- Clay Smith, Haskell
- Hoyt Perry, Haskell
- Mrs. Wayne Blacklock, Austin
- Mrs. Pearl Conner, Rule
- Hallie Chapman, Haskell
- C. H. F. Moeller, Haskell
- Carl J. Moeller, Alma, Okla.
- E. A. Baty, Weinert

### IRS Deadline Noted For All Taxpayers

Wichita Falls, Texas — Four important tax deadlines face taxpayers and employers in Texas during January. Omas T. Roberts, administrative officer of Internal Revenue Service for the Wichita Falls area, said today.

Employers are reminded that the deadline to give employees their 1973 W-2 forms is Thursday, Jan. 31, 1974. The form should show earnings, income tax withheld and social security information. January 31 is also the deadline for reporting Social Security information. January 31 is also the deadline for reporting Social Security and withheld income taxes for the calendar quarter ended Dec. 31, 1973. If employers make timely deposits of the full amount of the tax due, ten additional days are allowed to file the return. Roberts said that employers who received a pre-addressed Form 941, "Employer's Quarterly Federal Tax Return," should use this form to report their tax liability. Other employers can obtain blank copies from their local IRS office.

The last day of January is also the last day to report and pay any balance of Federal Unemployment Tax not over \$100.00 for 1973, using Form 940. If the balance of tax due is over \$100.00, the employer must make a deposit with FTD Form 508. If the full amount of the tax is deposited on time, employers may then file the return no later than Feb. 11, 1974.

Texas farmers and fishermen who have not filed their 1973 declaration of estimated Federal Income tax must file and pay that tax by Tuesday, Jan. 15. The sole exception to this rule is if they file their income tax return and pay the total tax due by March 1.

Farmers and fishermen are defined as those persons who earned at least two-thirds of their 1973 gross income from farming or fishing.

### 4-H News

The Busy Homemakers met in the County Kitchen and studied Breads and Cereals at their last meeting.

Members present were Tammy Letterman, Ember Miller, Donna Green, Janet Wallace, Laurie Reynolds, Julie Wallace, Vicki Wallace and Cam Klose.

### HEALTH OFFICER NAMED

Dr. T. W. Williams was re-appointed County Health Officer of Haskell County, at the Jan. 29 meeting of Haskell County Commissioners Court. All members were present, along with County Clerk Jenny Brazell.

### ATTENTION!

Starr Welding Company, Dugan Starr, owner, has moved his business to a New location at Hale Farm Supply... and is now in operation there. We appreciate your past business and look forward to further opportunities to serve you.



HALE FARM SUPPLY  
Pat Hale, President  
Phone 864-2692 - Haskell, Tex

# THANK YOU!!

## AS WE CELEBRATE OUR 10TH BIRTHDAY

in Haskell, we want to express our Sincere Appreciation for the wonderful patronage and friendship we have enjoyed.

You, our customers, have made the past 10 years very pleasant... We want to say Thank You!!

As in the past, we will continue to serve the people of Haskell and surrounding area to the best of our ability. So when we can be of assistance to you on farm machinery and repairs, please call on us.

AGAIN WE SAY THANK YOU!

# Richardson Truck & Tractor

Your International Truck & Tractor Dealer  
Throckmorton Highway—Phone 864-3474  
I-H Parts—Factory Trained Mechanic



# CLASSIFIED \* ADS \*

### WANTED

WANTED: Lady to work in Chiropractic office. Come by 4 N. Ave. D, east side of square, Haskell, for interview. 5-6p

### REAL ESTATE FOR SALE

REAL ESTATE FOR SALE: Large 4 bedroom, 2 bath, Native stone and brick veneer house built on corner with adjoining lot 109'x140', over 2500 sq. ft. of air conditioned living space besides lots of closet and storage space. Asbestos cement shingle roof (total up to date has been \$7,500). Real fireplace by Joe Smith of Rule. Built in garage and carports for 3 cars. Built in kitchen range, dishwasher, garbage disposal and ironing board. Large den, large living room, laundry room, plumbed with copper. Large fenced and walled in back yard with 2 water wells. Covered patio with trash burner and brick barbecue pit. 18 bearing papered beam trees. 3 room tiled and brick apartment or guest house in back yard. Washed air cond. with asbestos ceiling shingled roof. TV tower. Contrary to what you may have been told, we do want to sell this place and will show it to you by appointment. Even though we have to give it up, our friends think we are well. We don't need to keep up the home. Call 864-2881 or 864-2012. Call on 1411 Bell Wood.

FOR SALE: Nancy Allen farm between Rule and Rochester, 180 acres with 2 bedroom home, Robert E. Sutton, Realtors, 3922 Kenwood, Odessa, Texas 79762. 915-362-7509. Home 915-360-4633. Charles K. Perry. 31fe

FOR SALE: 2 bedroom house, Call Lee Roy Schaake, 864-2307. 3-6p

FOR SALE: Small house and two lots, north of Fair Park, Ivey Rhodes place. If interested, see or call Dora Cook, 406 N. 3rd, Apt. 3, 864-2136. 3-6p

FOR RENT: Furnished apartment, and rooms by the week at the former Lazy-S Motel. Under new management. Call 864-3644. 6-7c

FURNISHED apartment for rent, one bedroom, bills paid. Contact Dee Larned 864-2409. 6-7c

FOR RENT OR SALE: 2 bedroom house in country. Panded den, living room, dining room with built in hutch; kitchen. Call Doyle Baugh, Rule 997-2186. 6-7c

**PUBLIC NOTICE**  
W. P. HISE Welding and Drilling. Welding, Blacksmithing and Water Well Drilling. 864-2857, Haskell. 6tfn

**LACKEY'S AUCTION**  
Reopening in new location. First building east of car wash on Throckmorton Highway 380, formerly Kelson's lawn mower repair shop. We have restocked with lots of old and modern furniture, some antiques. We buy, sell and trade. Come in and look around, Haskell, Texas, phone 817/864-3197 anytime. Lackey's Auction, Mr. and Mrs. Cecil Lackey, owners and operators. 6-9c

**HELP WANTED**  
WANTED: Ambitious individual to be our partner in the cosmetics business in Haskell area. We will supply the stock for the right person. You supply honesty, integrity and goodwill. We will interview thru replies received at Box 577, Haskell, Texas 79521. 6-7p

WANTED: Tractor mechanic. Maintenance on tractors and assembly of equipment. Woodard Farm Sales. 6tfn

**Only the Newspaper**  
Newspapers serve people's interest best in cultural pursuits as the public appetite grows, devoting columns and articles on books, theatre, music, and art—welcome services to the reader.

### POLITICAL CALENDAR

The Free Press is authorized to make the following announcements for office in Haskell County, subject to the action of the Democratic Primaries in 1974. All political advertising, announcements, and printing is cash in advance.

**STATE SENATOR**  
30th Senatorial District  
Charles Fennell  
Ray Farabee

**STATE REP., DISTRICT 101**  
W. S. (Bill) Heatly  
(Re-election)  
L. Max Courtney

**DISTRICT JUDGE**  
W. P. Radloff

**DISTRICT CLERK**  
Carilyn (Lusk) Reynolds  
(Re-election)

**COUNTY SUPERINTENDENT**  
Cecilia W. (Bigson) Drigmon

**HASKELL COUNTY CLERK**  
Jenny Brazell  
Mary Lowe

**COUNTY TREASURER**  
Art's Bradley  
(Re-election)  
John Wayne McDermott

**JUSTICE OF PEACE, Prec. 1**  
H. M. Blodson  
(Re-election)  
Olen Dotson

**COUNTY COMMISSIONER, PRECINCT 4**  
H. C. Collins  
(Re-election)  
C. A. (Bud) Turnbow

**COUNTY JUDGE, Haskell Co.**  
B. O. Roberson  
(Re-election)  
O. E. Patterson  
W. H. (Bill) Pennington

**COUNTY COMMISSIONER, PRECINCT 2:**  
W. R. Hager Jr.  
R. L. (Jiggs) Edwards  
Celen Hammer

**A COURTESY REMINDER:**  
Please remember that classified ads are cash in advance for individuals not owning businesses and not having charge accounts with the Haskell Free Press. Rate is 5c per word for the first insertion and 4c per word thereafter with a minimum of \$1.50 per week. Please bring your ad by (we will be happy to help you with it) or mail it with your check. Classified display \$1.50 per in. Thank you for your cooperation. Classified Ad Dept. 6tf

**TALLEY'S PAINTING SERVICE**  
Exterior & Interior Painting  
Residential & Commercial  
Caulk, Putty, General Repair  
Quality Work Guaranteed  
Reasonable Rates  
Pho. 864-2459—Haskell 48-9p

**Xerox Copy Service—10c Per Copy**  
Reproductions in Excess of 5 of An Original Are 5c Per Copy  
**FOYT FEDERAL TAX SERVICES**  
Seymour, Texas

**PIGG'S TREE SERVICE**  
We do shrub and tree pruning, transplanting, topping, feeding and removal. Satisfaction guaranteed, free estimates. Call Jerry Pigg, day or night, 864-3681 or 864-3193. I am Pigg enough to want all your business... Man enough to appreciate it. 3-6c

**We Buy, Sell, Trade Used Furniture and Antiques One Piece or An Estate**  
**H. A. SHERMAN**  
864-2491 15tfc

**JUNK-A-TIQUES**, glassware, furniture, baby bed, books, dishes, bottles, record player, radios, ice cream chair, dolls, misc. We buy, sell or trade. 1704 N. First St. Mrs. Harley Langford. 11tfc

**American Chemical Co.** process Furniture stripping... wood or metal, paint or varnish. By chance or by appointment. Call A. A. Smith & Son, 817 - 422 4265, Munday, Texas. 6-9p

## DEATH NOTICES

### Mrs. Hollingsworth

Funeral services for Mrs. Lue Della Mae Hollingsworth, 86, of Rule, were held Wednesday, Feb. 6, at 3 p. m. in the First Baptist Church of Rule. The Rev. J. R. Williams, pastor, and John Greeson, minister of Rule Church of Christ, officiated and burial was in Rochester Cemetery under direction of Smith Funeral Home.

She died at 10:30 Monday in Stamford Memorial Hospital. Born August 3, 1887 in Brady, she married William Hollingsworth Oct. 12, 1907 in Brady. He died in 1962. She lived in Chillicothe until 1949 when she moved to Rule. She was a member of the Baptist Church.

Survivors are two daughters, Mrs. Maude Bowden of Abilene and Mrs. Minnie Conner of Rule; 53 grandchildren, 15 great grandchildren and four great great grandchildren. Three of her children preceded her in death.

### Mrs. Weathersby

Funeral services for Julia Effie Weathersby, 83, of Rule, were held at 4 p. m. Monday, Feb. 4, in the Rule Church of Christ. Don Greeson, minister, officiated and burial was in Willow Cemetery in Haskell under the direction of Pinkard Funeral Home.

She died at 9:30 p. m. Saturday in Haskell Memorial Hospital. Born Feb. 13, 1891, in Callahan County, she married John Weathersby May 4, 1896, in Rule. She was a member of the Rule Church of Christ. She had lived in Rule since 1961.

Survivors are the husband, three daughters, Lola M. Decker and Jean Pinnell, both of Chula Vista, Calif., and Thelma Tilman of Liberty; a son, Robert Rex of Rule; two sisters, Louise Robertson of Beaumont, Calif., and Bonnie Moore of San Angelo; five grandchildren; and nine great grandchildren.

Palbearers were John W. Lee, Randall Ross, Pete Kittley, Ennis Webb, Jack Kittley, Chilton Rhinehart, Wally Allison and Dick Frazier.

### Paul R. Ford

Funeral services for Paul R. Ford, 65, of Fort Worth, were held Monday morning at 10:30 a. m. in Owens-Brumley Funeral Home Chapel, and burial was in Laurel Land Cemetery. He died Friday, Feb. 1, in a Fort Worth hospital from an apparent heart attack.

He is the son of the late Mr. and Mrs. J. A. Ford, and all were former Haskell residents. He has lived in Fort Worth the past 35 years, and worked for Sheriff Lon Evans as jailer for the past 10 years.

He was a member of Friendship Baptist Church in Haltom City. He is survived by the wife, Ida Faye of the home; one son, Joe Don of Houston; one daughter, Mrs. Sue Lazier of Fort Worth; 7 grandchildren; one sister, Mrs. Billie Schlee of Ft. Worth; three brothers, Jack and Fred of Fort Worth, and Willard of Anaheim, Calif.; and several nieces and nephews.

**NOTICE:** Effective Jan. 1, 1974, classified ad rates will be 5c per word first insertion; 4c per word each subsequent insertion without change of copy. Minimum \$1.50 per week. Haskell Free Press.

### W. H. Murchison Jr.

Word was received here of the death of W. H. (Walter) Murchison Jr., Sept. 20, of last year, at the age of 66 in Temple. Mr. Murchison grew up in Haskell, graduated from high school here, and attended the University of Texas and graduated from UT School of Law. He became a licensed attorney in 1929.

His father, W. H. Murchison, Sr., was a pioneer lawyer of Haskell. Mr. Murchison first practiced law with French Robertson, and served for several years as county attorney of Haskell County.

He is survived by a sister, Mrs. Mary Sue Ireland of Clovis, N. M.; a brother, R. G. Murchison of Leander, and several nieces and nephews.

### Manuel G. Barrera

Funeral services for Manuel G. Barrera, 58, of Old Glory, were held Monday, Feb. 4, at 2 p. m. in the Aspermont Church of Christ. Ray Rice, minister, officiated and burial was in Aspermont Cemetery under direction of McCoy Funeral Home of Aspermont.

Barrera was pronounced dead on arrival at West Texas Medical Center in Abilene at 3:00 a. m. Saturday. He died of injuries suffered in a two-car accident Thursday night near Haskell. He died while being transferred from Haskell Memorial Hospital to West Texas Medical Center.

The accident occurred on USH 380, 2.9 miles west of Rule. DPS Officer Larry Gilbreath of Haskell reported that Barrera had apparently been having engine trouble and pulled to the side of the highway with two wheels of his pickup on the edge of the pavement.

At 10:30 p. m. Gilbreath said, a car driven by Mary Reynolds Brieden of Knox City, traveling west on 380, struck the rear of the Barrera vehicle. Barrera was apparently standing at the front of the pickup, working on the engine, and the vehicle was knocked into him. He sustained internal injuries in the chest, said Gilbreath.

The Brieden vehicle overturned in the middle of the highway after hitting the pickup and its driver was hospitalized for observation in the Haskell Memorial Hospital. A passenger in the car, Lee Thomas Reynolds, was uninjured.

Mr. Barrera was born July 17, 1916, in Frontera. He married Mary Parente in Mexico Jan. 2, 1950. He had been a resident of Old Glory since 1967, and was a custodian in the school system there. He was a veteran of World War II.

He is survived by the wife; five sons, Freddy, Manuel Jr., Joe Louis, Johnny and Tony; seven daughters, Jane, Virginia, Yolanda, Rosa, Rachel, Vanessa and Jackie; three grandchildren; his mother, Geneva Barrera of Illinois; and four sisters and three brothers.

**BEST SELLER, BEST BUY!**  
Only \$8.50 for Webster's Seventh New Collegiate Dictionary. Advertising doesn't cost It Pays!

## SPECIAL FRIDAY AND SATURDAY

### Steak Burgers - 59c

Open 10 A. M. - 11 P. M. - 7 Days A Week

## WIGWAM DRIVE IN

Locally Owned  
Mr. and Mrs. Woodyly Davis

## The Living Hands Singers

Will Be At The

## First Assembly of God Church

400 South Ave. E  
SAT., FEB. 9—7:30 P. M.  
—Also—  
SUN., FEB. 10—8:30 P. M.  
Public Is Cordially Invited

## Subscribers

A. J. Moody, Haskell  
J. F. Hallmark, Haskell  
Bob Duncan, San Benito  
Henry Druessedow, Haskell  
Woodrow Frazier, Haskell  
Mrs. R. C. Couch Sr., Haskell  
H. C. King, Haskell  
Mrs. C. E. Turnbow, Haskell  
A. D. Johnson, Stephenville  
Mrs. Beulah Lackey, Stamford  
A. E. Stocks, Haskell  
Audie Verner, Rule  
Bobby Rexrode, Sherman  
Mrs. Carrie Helen Spurik, Rule  
Olen Dotson, Haskell  
Glenn Alsabrook, Haskell  
Paul Cothern, Haskell  
Johnny Wheatley, Haskell  
Mrs. V. W. Meadors Jr., Munday  
Mrs. Frank Spencer, Weinert  
Dr. Frank Spencer, New York, N. Y.  
Rex Murray, Rule  
Mrs. Vernay Moody, Haskell  
J. V. Pike, Divine  
Mrs. August Stremmel, Sager-ton  
Sam Rosser, Haskell  
G. R. Couch Jr., Ringling, Okla.  
T. C. Griffin, Seymour  
H. A. Marsh, Weinert  
Mrs. Millard Melton, Haskell  
Gwendolyn Freeman, Haskell  
O. G. Lewis, Rule  
C. E. Tidwell, Haskell  
J. V. Hudson, Haskell  
Annie M. Fry, Abilene  
Elton Klose, Haskell

Mrs. G. W. Mullins, Haskell  
C. W. Dunnam, Rule  
O. T. Janson, Haskell  
Mrs. R. C. Ketrion, Haskell  
Kenneth L. Ketrion, Big Spring  
Neal Aten, Seminole  
David M. Ketrion, Monticello, Utah  
Henry C. Ketrion, Sulphur, Ariz.  
Mrs. Betty Cooper, Haskell  
E. B. Lusk, Rule  
T. C. Beason, O'Brien  
Mrs. Ida Patterson, Haskell  
R. P. Riley, Ranger  
F. J. Hennigan, Rule  
Mrs. R. L. Hedgepeth, Rule  
E. S. McGuire, Weinert  
G. C. Marshall, O'Brien  
Bill Wilson, Snyder  
Mrs. A. J. Schauriger, San Antonio  
Phil Spain, Denton  
H. H. Hartsfield, Haskell  
Virgil Sonnemaker, Haskell  
Johnny Dragon, Houston  
Chas. E. Smith, Haskell  
Lone Star Gas Co., Haskell  
Dr. Wm. J. Kemp, Haskell  
Doyle Hish, Haskell  
Michael Felker, Lubbock  
J. M. Comedy, Coleman  
H. Coffield, Haskell  
E. W. Andrews, Haskell  
Jackie Beauchamp, Lubbock  
Bobby Sego, Dallas  
Charles A. Foyt, Seymour  
Tony McWhorter, Rochester  
Homer W. Hutchens, Grandview  
Douglas Myers, Munday  
Frederick M. Gholson, FPO, New York  
Mrs. L. M. Jeter, Haskell  
Eddie Harris, Lubbock

## NEW FURNITURE

Small, barrel back Kroehler chair in gold velvet, reg. \$129.95 for \$65.00

Thomasville 6/6 King size headboard and frame, reg. \$239.95 for \$119.95

Bassett Canopy Provincial white bed, reg. \$169.95 for \$89.95

White Canopy frame by Bassett, Reg. \$34.95 for \$17.50

1 large Spanish Bassett square lamp table, regular \$114.95 for \$59.95

2 chrome Director's chairs in black vinyl. Reg. \$44.95 for \$29.95 ea.

Attractive Early American love seat by Kroehler in heavy, nylon gold tweed, Reg. \$279.95 for \$199.95 and trade.

Kroehler Brown Naugahyde Sleeper with full size mattress. Reg. \$349.95 for only \$249.95 and trade

Kroehler extra large Spanish Sofa in gold cut velvet fabric. Reg. \$429.95 for only \$299.95 and trade

Matching large occasion chair by Kroehler. Reg. \$249.95 for only \$159.95

Small Kroehler Early American gold print sleeper—tough mattress. Reg. \$279.95 for only \$199.95 & trade

8 piece Spanish dark pecan dining room suite by Bassett. Reg. \$599.95 for only \$399.95

Rocking loveseat by "La-Z-Boy", called a "Sofette"—two recliners into one loveseat. Heavy nylon print cover—Early American style. Reg. \$489.95, half price only \$256.00 and trade

## USED FURNITURE

Extra clean hide-a-bed. Recovered in rose beige nylon cover. Mattress good, older frame style. \$89.95

Platform Rocker—Early American maple arms and wings, two loose cushions \$19.95

Heavy, solid oak, square lamp ("Ranch Oak") table by A. Brandt, \$70.00 new \$29.95

Three 3/3 or twin mattress sets by Englander and Dell Peoples, good condition \$39.95 a set

Heavy Student Desk, solid "Ranch Oak" by A. Brandt, \$130.00 new \$59.95

Matching Desk Chair in solid oak, with black vinyl seat \$24.95

The above items came out of my boys' bedroom—W. H. Cox Jr.

Large highback Early American sofa in brown tweed \$89.95

Large king size recliner. Good condition \$39.95

White vinyl bucket seat recliner by Stratolounger. Excellent condition \$49.95

Danish modern Love Seat, wooden arms \$34.95

Large Early American Diamond Back Sofa by Kroehler in brown tweed \$89.95

Early American TV swivel wing chair in rust tweed—good condition \$39.95

6-drawer double dresser, base only, antique green—\$29.95.

Tell City 48" formica dining table, used 2 months. Two 12" leaves, one leaf defective. Reg. \$199.95 for \$125.00

## JONES-COX & CO.

### COUNTRY STORE





**CHAMPION SIMMENTAL STEER**—Kyle Wilfong, son of Mr. and Mrs. Andy Wilfong of Haskell, proudly shows his Simmental steer that was named champion of its breed at the recent South western Exposition and Fat Stock Show at Fort Worth. Kyle is a steady contender in the stock shows both at home, and all over Texas.



**CHAMPION POLLED HEREFORD**—Kim Hager, daughter of Mr. and Mrs. W. R. Hager of Weinert, is at Haskell Hereford that was named breed champion of the Southwestern Exposition and Fat Stock Show at Fort Worth. The steer judge George Strathearn of Burlingame, Calif.; the secretary of Polled Hereford Auxiliary, Cindy Moore, and Kim. The secretary is holding a tooled leather, three-leg stool engraved with Kim's name, presented by the Haskell Hereford Association for the Champion Polled Hereford Steer.

### Retirement Planning By Farmer Can Save Him Some Taxes In The Future

COLLEGE STATION — "This may be the year when many Texas farmers, ranchers and other agribusinessmen want to start on a tax sheltered retirement plan," says Dr. Wayne Hayenga, economist for the Texas Agricultural Extension Service.

"Farmers and other self-employed individuals can take advantage of a 1962 Congressional law which extended the advantage of the same tax sheltered pensions and profit-sharing plans long enjoyed by corporate employees. They do this by enrolling in a self-employed retirement plan, commonly called a Keogh plan, that is available through many major banks, insurance companies and mutual funds."

Under the law, a self-employed person can set aside a certain portion of his income in a retirement fund, explains the Texas A&M University System specialist. Earnings on the accumulated money are not taxable until the individual retires. Then the money may be taxed as capital gain or ordinary income, depending on the method of withdrawal.

"The plan is completely voluntary and any self-employed person is eligible. Under the

making any decision to participate in a retirement plan, check with a banker, attorney or investment counselor, advises the economist.

### Pamper Your Fake Furs

Some fake furs need pampering almost as much as the real thing.

Yet others require only simple maintenance to keep their good looks, Mrs. Barbara Elliott, County Extension Agent, noted.

Check the care label carefully, when considering a fake fur garment. It pays to study the label first.

Instructions may state 'washable' or 'machine washable' or 'dry clean only.'

Also look for shrinkage information on the label. Some fabric furs aren't pre-shrunk prior to garment construction—so shrinkage could present a problem.

Even 'washable' garments should be treated with care—according to instructions. For example, use warm—not hot—water and a milk soap or detergent.

Agitation speed also makes a difference.

Rapid action of the water results in fur clumping and matting. So for best results, set

washing machine for a slow or delicate speed and a shorter cycle.

Line dry the garment or lay it on a terry towel to dry. These methods help prevent matting of the fur. Although it may look shaggy and matted after drying, a gentle brushing or combing usually fluffs it up again.

So, check the label before buying a fake fur garment—not all are easy to maintain.

### Vets May Still Utilize Program

Persons retired from military service who previously decided they would not participate in the Survivor Benefit Program have been presented with one last opportunity to change their minds. This announcement was made today by C. H. Herren, Veterans Service Officer for Haskell County.

Public Law 92-425, which went into effect Sept. 21, 1972, allows military retirees to provide a monthly annuity for their widows and children. A retiree may provide a survivor payment of up to 55% of his or her retired pay at the time of death, and the cost of such protection is very nominal for the retired person. Under the provisions of this law, anyone who was retired from military service prior to Sept. 21, 1972, was provided with a one-year period ending Sept. 21, 1973, in which to elect coverage for his survivors. Those who failed to enter the program by Sept. 21, 1973, were barred from participating.

The Congress has now enacted Public Law 93-155, which extends this deadline date for entering the Survivor Benefit Program to March 30, 1974. Any person who retired from military service prior to Sept. 21, 1972, and has elected not to participate in the Survivor Benefit Program, may now wish to reconsider their position. It is unlikely that Congress will again extend this deadline, and those who wish to participate must act as soon as possible. Anyone desiring to enter the program may use the forms which were previously furnished by the service department or by writing to the retired pay center of his own branch of service.

### SUBSCRIBERS

- George Klose, Haskell
- Durwood Wheatley, Wichita F.
- G. R. Wheatley, Arlington
- Elmer Wheatley, Haskell
- H. E. Walton, Haskell
- A. A. Stewart, Haskell
- R. L. Foote, Haskell
- R. G. Foote, Haskell
- Fritz Steinfath, Haskell
- Robert E. Speer, Haskell
- Mrs. A. T. Ballard, Haskell
- Mrs. Betty B. Doyle, Phoenix, Ariz.
- Fred Smith, Arlington
- C. O. Davis, Rule
- Mrs. F. L. Peavy, Haskell
- Radio Station KDWT, Stamford
- Mrs. L. B. Ivey, Haskell
- H. G. Hammer, Haskell
- Dr. Gertrude Robinson, Haskell



**14 PIECE PACKAGE**  
Model No. SPR422XY

- \* 949Y AM-FM-Stereo 8 Track
- \* B31 BSR Changer

### BONUS PACK

- 1—02 Headphone
- 2—Mikes
- 5—Blank Tapes
- 1—Prerecorded 8 Track Tape
- 1—Record

Regular \$229

SPECIAL PRICE . . .

**188**

**Anderson Tire Co.**

—Phone 864-2900

206 South Avenue



## CLEARANCE FAMILY SHOES

A "wall" of ladies' shoes red-tagged to show reductions of 1/3 to 1/2. Also racks and tables of men's and children's shoes displayed for clearance at similarly reduced prices. Good buys for all the family.

### DRESS SALE

Women's Juniors, Girls' sizes

Reduced to **1/2** Price

### COAT SALE

Men's Women's, Children's Coats

Reduced **1/4 1/3 1/2**

**The C & B Store**

EAST SIDE SQUARE—

TELEPHONE 864-2250



TION  
NTS  
JR.  
onist



mittee will select the district winners. District winners, along with their parents, teachers and principals will be guests of the District at the Annual Awards Banquet to be held on Monday, March 18, at the Stamford High School Cafeteria. The district awards will be presented at that time.

### Weinert Girl Named Best Dressed At H-SU



ALEXIA MAYFIELD

Alexia Mayfield, a junior from Weinert, has been selected as Best Dressed Coed for 1974 at Hardin-Simmons University.

The announcement came Friday after the five finalists had been interviewed by a panel of judges. Criteria for judging included candidate's appearance—fashion and grooming; candidate's poise and grace—walking, talking, etc.; candidate's ability to express herself; and candidate's major field and what she intends to do with it.

Miss Mayfield, a music education major, is a member of Sigma Alpha Iota, women's professional music fraternity, and the Concert Choir. She represented Phi Mu Alpha, men's professional music fraternity. She is the club's sweetheart.

### Menus...

School lunch menus for the week of Feb. 11-15:  
Monday: Hamburgers, lettuce, tomatoes, onions, pickles, ranch beans, tater tots, grapefruit juice, cinnamon crispies, milk.  
Tuesday: Barbecued weiners, potato salad, blackeyed peas, green pepper sticks, celery sticks, rolls, butter, cake with pineapple topping, milk.  
Wednesday: Enchilada casserole, buttered corn, cabbage slaw, cornbread, butter, cranberry crunch, milk.  
Thursday: Macaroni and cheese, chili beans, spinach, carrot sticks, cornbread, butter, peach halves, milk.  
Friday: Spaghetti and meat balls, seasoned green beans, tossed salad, hot rolls, butter, banana pudding, milk.

### College News

WICHITA FALLS — Among Midwestern University students who achieved listing on honor rolls during the fall semester were the following:  
Dean's Honor Roll — Patsy Robertson Blakley, wife of Bill B. Blakley, 304 N. Ave. D, Haskell; Lelia Jones Hix, Mr. and Mrs. Jesse Jones, Haskell.  
University Honor Roll — Sue Walker Freeman, wife of James G. Freeman, Box 73, Munday; Sue Reeves Gleghorn, Lester M. Reeves, Seymour; Billye J. Graves, Box 8, Crowell; Karen Sue Holcomb, Mr. and Mrs. Kenneth W. Holcomb, Clyde, Tex.; Barry Keith McDonald, Claude C. McDonald, 510 NW Ave. G, Hamlin; Pamela Colbert McDonald, Dr. R. E. Colbert, Haskell; Sharolyn Ruth Freeman Murphy, A. V. Freeman, 867 N. LaSalle, Abilene.

ABILENE—Six students from the Haskell area were named to the dean's honor roll at Abilene Christian College for the fall semester of 1973.  
Sophomore students making the honor roll are Marja Lou Beakley, daughter of Mr. and Mrs. Lavon Beakley, Box 728, of Rule, and Joan LaVerne Cad-

# SECTION TWO

# THE HASKELL FREE PRESS

HASKELL, TEXAS 79521, THURSDAY, FEBRUARY 7, 1974

NUMBER SIX

dell Hurst, daughter of Mr. and Mrs. Glenn W. Caddell, Box 235, of Weinert.

Juniors were Larry Kyle Hartsfield, son of Mr. and Mrs. H. H. Hartsfield, Box 607, and Lorenia Ophelia Caddell, and the daughter of Mr. and Mrs. Caddell, of Weinert.

Seniors on the honor roll include Bettye Elizabeth Hester McBroom, daughter of Mrs. Ed Hester, Star Route, and Rhonda Sue Woodard, daughter of Mr. H. V. Woodard, 1700 North Ave. F.

A grade point of 3.45 on a

scale of 4.0 is the necessary qualification for the dean's honor roll at ACC.

### HEART MONITOR DEFIBRILATOR FUND

In memory of Thurman Rhoads Mr. and Mrs. Bill Ratliff  
Mrs. M. R. Hemphill  
Mr. and Mrs. R. R. Overton  
Mr. and Mrs. T. B. Roberson  
Mr. and Mrs. Danny Josselet  
Mr. and Mrs. George E. Free  
Mr. and Mrs. Tom Bevel  
Mr. and Mrs. Nored Boone  
In memory of Jack Pippin  
Mr. and Mrs. T. B. Roberson

Mr. and Mrs. Nored Boone  
In memory of Bob Mobley  
Mr. and Mrs. T. B. Roberson  
In memory of Lonnie Martin, Rule  
Mr. and Mrs. T. B. Roberson  
In memory of Mrs. Virgil Meadows  
Mr. and Mrs. Tom Bevel  
In memory of Mrs. Sam Parks  
T. V. Burson Family  
In memory of Owen Pelsue  
T. V. Burson Family  
Mr. and Mrs. Nored Boone  
Total donated to date \$309.50.

### HOSPITAL NOTES

Admitted  
MEDICAL: Edwin Davis, Odessa; Willamet Oliphant, Haskell; Ira Lee Carruth, Munday; Loy Allen Hohn, Aspermont; J. E. Jetton, Weinert; Frances Villa, Haskell; Manuel Barrera, Old Glory; Mary Webb, Knox City; Sharon Whitely, Throckmorton; Hollis Howard, Haskell; Karen (Herman) Burgess, Haskell; Gayla West, Munday; Wanda (Robert) Watson, Haskell; James Hill, Haskell; Marvin Y. Benton, Sager-ton; Ola Mae (Robert) Johnson,

Haskell.  
SURGICAL: Dalya (Travis) Hight, Old Glory; Rufus Lopez, Rochester.

Dismissed  
Edwin Davis, Dalya Hight, Ira Lee Carruth, Loy Allen Hohn, J. E. Jetton, Manuel Barrera, Mary Webb, Sharon Whitely, Rufus Lopez, Karen Burgess, Gayla Yost.

PLASTIC SHEET PROTECTORS, 11x8 1/2, punched 3 holes, wide reinforcing flap, comes with black mounting sheet. Haskell Free Press.

### SURANCE

Auto - Fire - Casualty - Life  
John Duncan  
DBA  
Phill-Duncan Agency  
Phone 864-2646

### PAINT & BODY

Paint and Body Repair  
BOBBY HANSON  
3631—Night Ph. 858-3616

### BARBER SHOP

Side Barber Shop  
JIMMY MATTHEWS

### VALENTINE!

Make yourself beautiful for Valentine by getting a permanent by Ogilvie...  
HOME PERMANENT  
Conditioning Shampoo  
Regular \$2.50  
Valentine Special - \$1.90

### Pharmacy

PRESCRIPTION CENTER  
North First—Haskell, Texas  
10 to 6 P. M.—Closed Sunday  
and Sundays call 864-3439

## SPECIALS PLUS SERVICE PLUS WINEY EVERY DAY

Pogue Grocery  
2 LB. CAN OF  
FOLGER'S COFFEE  
SPECIAL PRICE WITH THIS COUPON  
\$1.69  
GOOD THRU 2-16-74

Hamburger  
**Meat** LB. 89¢  
(Stuff These 5c Bell Peppers)

Center Cut  
**Pork Chops** LB. \$1.19

End Cut  
**Pork Chops** LB. 98¢

Sliced Slab  
**Bacon** LB. 98¢

Gooch Smoked  
**Sausage** LB. 98¢

Hormel Pound  
**Pressed Ham** \$1.29

I. G.  
**Milk** 1 gallon plastic jug \$1.59  
Del Monte Cut No. 303 can

**Green Beans** 29¢

### Produce

Fresh Green  
**Bell Pepper** Each 5¢

**CARROTS** Bag 15¢

Foremost  
**Big Dip** 1/2 gallon 69¢

**NESTEA** 3 oz. jar 99¢

Nestea  
**MIX** 5 oz. pkg. 29¢

Armour's Texas Brand  
**Chili** 19 oz. can 89¢

Ocean Spray Cranberry Juice  
**Cocktail** 32 oz. bottle 69¢

Libby's  
**Kraut** 16 oz. can 27¢

Yardley Old English  
**Bar Soap** 39¢

Trial Size  
**BIG WALLY** 25¢  
**CHEER** Giant Size 79¢

# POGUE GROCERY

—EXTRA PARKING BEHIND STORE. HOME OWNED AND OPERATED—  
113 NORTH AVENUE E HASKELL, TEXAS PHONE 864-2015



# RULE ROUNDUP

BY: OLETA CORNELIUS—PHONE 997-2167

The U. M. W. of the FUMC met Jan. 29 for their annual pledge service and installation of officers for 1974. Mrs. H. H. Hines was in charge of the program and installed the new officers using the theme of jewelry. She presented each officer a jewel and told them of the meaning and the responsibility of their office.

Officers are: Mrs. R. O. Henry, president; Mrs. J. N. Cornelius, vice president; Mrs. C. E. Franklin, secretary; Mrs. Rex Murray, treasurer; Mrs. A. R. Eaton, spiritual growth; Mrs. Morris Neal, missionary education; Mrs. O. G. Lewis, Christian social relations; Mrs. J. C. Levis, program materials and Mrs. Ois Macon, local church activities.

Following the installation, Mrs. Rex Murray conducted the pledge service for 1974. Mrs. H. H. Hines closed the program with prayer.

### MYSTERY SHOW

The junior class of Rule will present "The Great Merlin Mystery Show", Feb. 11, at 8 p. m. in the school auditorium. Admission will be \$2 for adults, \$1.50 for students and \$1.00 for children under 12. Adult tickets purchased before the Monday night performance will be \$1.50 but \$2.00 at the door.

### VOWS EXCHANGED

Mr. and Mrs. James Moore of Rule announce the marriage of their daughter, Marsha, to Larry Simpson, son of Mr. and Mrs. Ernest Simpson of Rule. Vows were exchanged Saturday, Jan. 26, at 8 p. m. in Trinity Baptist Church of Haskell. Rev. Kenneth Blair read the double ring ceremony. The bride is a graduate of Rule High School and is employed in the tax office of Jimmy Owens of Haskell. Simpson is a graduate of Rule

High School and is self employed in farming in Rule where the couple will make their home.

### BULLETIN BOARD

Jr. Hi vs. Old Glory, Feb. 7. Rule at Goree, Feb. 8, Boys. Sagerton Musical, Feb. 9. Phil. Club Bake Sale, Feb. 9. Lions Club, Feb. 11. Rule at Rochester, Feb. 12, boys U.M.W., Feb. 12. Busy Bees, Feb. 14. Volunteer Services Covered Dish Supper, persons 55 or older, Fri., Feb. 8, 5:30 p. m., Philadelphia Club House.

Mr. and Mrs. H. H. Hines visited last week in Levelland with Mr. and Mrs. Glen Hines and family and accompanied them to Lubbock to hear their granddaughter, Nancy, play in the AAA and AAAA Regional band. She won third chair coronet.

Mr. and Mrs. Jeff Wheeler of Lubbock visited last week with Mr. and Mrs. J. J. Wheeler. Patients from Rule in the Haskell Hospital last week were Mrs. W. C. Grissom, Mrs. Wilmon and Jim Cross.

### VOLUNTEER SERVICE

Members of Volunteer Services met Jan. 31 at 7 p. m. in Fellowship Hall of United Methodist Church with 20 members present.

Members agreed to show a film on aging, with the date to be set later. John Greeson reported on the possibility of forming an Association of Retired Persons or an organization similar to this one. Plans were made for Volunteer Service to sponsor a meeting for persons interested in this organization in the form of a covered dish supper, Friday, Feb. 8, at 5:30 p. m. in the Rule Philadelphia Club House. This will be an organization for all persons 55 years of age or older, whether they are retired or not. Volunteering to pick up persons with no transportation was Patsy Davis, 997-2228; John Greeson, 997-2141, and Ruth Wilcox, 997-2194.

Following a talk by Aubrey Headstream, members broke up into groups and acted out the characters talked about. The group will meet again, Feb. 14, at 7 p. m.

Mr. and Mrs. Richard Cornelius of Abilene visited over the weekend with Mr. and Mrs. Carl Hertel and Mr. and Mrs. J. N. Cornelius and Tommy. Mr. and Mrs. Paul Cornelius of Wichita Falls visited over the weekend with Mr. and Mrs. J. N. Cornelius and Tommy and also with Mr. and Mrs. Vernon Mahler.

Miss Sue Lewis of Lubbock visited with Mr. and Mrs. J. C. Lewis over the weekend. Miss Patti Simpson of McMurray and Mr. and Mrs. Robert Harris of Sweetwater were guests of Mrs. Leslie Simpson Sunday. Visiting with Mr. and Mrs.

Lafle Williams Sunday was his son, Howard, and grandson, Danny, of Lubbock.

### COFFEE

Mrs. Hal Holt, the former Nelda James, was honored with a coffee Feb. 2 between 9:30 and 11 a. m. in the home of Mrs. Malcolm Herttenberger. Receiving guests with the honoree was her mother, Mrs. Delbert Howell; her aunt, Mrs. James Riley of Spearman; her grandmother, Mrs. Ed Robeson and her sister, Mrs. Jackie Betts. Mrs. Roy Letz greeted guests at the door and presented them to the honoree.

Miss Joni Letz registered the guests at a small table covered with a gold and green velvet cloth with the bride's book on it.

The serving table was laid with a white cloth trimmed in lace. Miss LaNell Williams and Miss Cynthia Carroll served. Serving appointments were crystal.

Hostess for the coffee were Mmes. Dick Andrews, Dennis Briles, Olan Bogard, Joann Carroll, Bill Dunning, Malcolm Herttenberger, Roy Letz, James

A. Lisle Jr., Sam Turner and Jack Wilcox. Mr. and Mrs. Holt are at home in Dumas, following their marriage in January.

### BASKETBALL

Rule played Benjamin Jan. 29 and split the bill with the girls winning 81-26 and the boys losing 41-54. On Feb. 1st, they were host to Weinert and took both games; the boys 98-27 and the girls 62-41. The girls will now play Goree to determine who will represent the district. Date at this time has not been decided.

The boys will be host to Old Glory, Feb. 5; will play at Goree, Feb. 8, and close out district play at Rochester Feb. 12. Junior high played Rochester Jan. 31. The boys won 47-28, and the girls lost 30-32.

### YOUNG HOMEMAKERS

The Rule Chapter of Young Homemakers will meet Feb. 18 at 7:30 p. m. for a covered dish supper in the Home Economics room. A special guest will be speaker from the West Texas Rehab Center in Abilene.

## Leisure Lodge News

By Alice Andress

Rev. and Mrs. L. D. Regeon of the Trinity Baptist Church in Stamford, visited Albert Andress Monday.

We have three new patients, and welcome them—Raymond Wheeler, Henry Akins and Mrs. Erma Birden.

Mrs. Nellie Reeves and Mrs. Beulah Grissom of Leisure Lodge are both still in the hospital and we wish them a speedy recovery.

Mrs. Dewie Wester made a business trip to Abilene Wednesday.

Mr. Wendel Jones and children Christie, James and Rusty, all of Dallas, visited his mother, Mrs. Rilby Moon, over the weekend.

Mr. and Mrs. L. C. Robinson of Lamesa visited their relatives, Mrs. D. A. Jones and Albert Andress, Wednesday.

Mrs. Trudie Bush and Mrs. Etta Crosson spent the day in Rule last Sunday with Cleo Bush and family.

Mr. and Mrs. Snyder of Seymour visited here this week. Our thanks to Mrs. Bertha Pelsue for all the nice pajamas she gave the home.

Mr. and Mrs. Marvin Hall of Stamford visited Mrs. Alvilda Reese Thursday.

Ronnie Hisley and R. L. Copeland of Plainview visited their grandmother, Mrs. Trudie Bush Sunday.

Mr. and Mrs. Frank Wilson of Ballinger and their daughter, Diann of Abilene, visited Mrs. Etta Crosson Wednesday.

Mr. and Mrs. Grady Bristow of Roswell, N. M., visited here Wednesday.

C. L. Kluting spent the weekend in Aspermont visiting his son, Steve, and family.

Mrs. Doris McFadden, her daughter, Jana, and Cleo Tatum entertained the patients with beautiful singing Tuesday.

Mr. and Mrs. G. C. Brockett of Munday, Mrs. Pearl Lackey and Mr. and Mrs. R. E. Tidwell visited Mrs. Mary Collins and Welton Howard.

Visiting Mrs. Hiebers this week were Mrs. Corine McKinney, Alice Sanz, Helen Gonzales, and Wayne McKinney of Knox City.

Donald Ray Heibers of Archer City, Dorothy and Dee Ann Dodd of Rule, and Mr. and Mrs. Blair and family of Iowa Park and Iola Everett also visited Mrs. Heibers.

## Scout Program Heard By Rotary

The Haskell Rotary Club members and guests met at the City Cafe at noon, Jan. 31st for their regular weekly meeting. Charles Thornhill, president, presided.

Abe Turner, program chairman, showed beautiful colored slides taken at the National Boy Scout Jamboree, West, taken in the State of Idaho, in 1973. He explained that the National Jamboree, East, was held in Pennsylvania as the camp had been divided into two phases for convenience. Approximately 30,000 boy scouts from practically all over the civilized part of the world, were in attendance. Pictures of numerous impressive ceremonies and daily activities of the scouts were shown to a most attentive audience. Due to the extreme drouth, campfires could not be burned as had been done in the past but all cooking was done over charcoal embers as a measure to prevent forest fires.

The invocation was given by H. O. Abbott and the pledge to the flag, was led by C. A. Thomas Jr. Bob Herren led the group in a song session with club pianist Rene Abbott providing accompaniment.

Guests were introduced by Bill Comedy. They were Jimmy Browning, guest of Abe Turner, and Raja Hassen, guest of Roy Wiseman, and student guests Janna Hise and Becky Stubblefield.

President Thornhill reported that 42 persons completed the club sponsored Defensive Drivers' Course and that a nice profit was made for the Rotary Club. He also called a board meeting of officers and directors for 7 a. m., today, in the City Cafe.

## SAGERTON NEWS

Sagerton residents are looking forward to Saturday night when the regular monthly musical will be held in the Community Center Auditorium at 8 p. m. There is no admission and all area bands are welcome. We had a good line-up of musicians last month, including two new bands, the Moonlighters from Aspermont, and the Rounders from Abilene. We hope they will be back again this month. We are always privileged to have the Melody Makers from Haskell and some good local talent also. The Sagerton 4-H Club girls

have begun their food project for 1974. The Jr. girls met on Tuesday in the home of Mrs. Billie Kupatt, their sponsor. Their theme for this year is "All-American Foods." Bonnie Woods is the president, Mary Macias vice president, Secretary-treasurer, Debra Soto, and Council delegate Kris Kupatt. The girls who are over 14 and in the Senior group meet in the home of Mrs. Joyce LeFevre. They are studying "Meals for Today—the Easy Way." All recipes for the food show will need to be in by February 15.

## Rice Springs News

By Princella Ford

Mr. Sam Wright had a special guest today, Jan. 25, his wife. This visit always makes Sam happy.

Mrs. Eda Roberts, who is in Hendrick Hospital, has had eye surgery and is doing fine.

Mrs. Lillie Hagle of Rice Springs is spending a few days with relatives.

Mrs. Faye Thompson entertained the Rice Springs residents with her piano playing.

Mr. and Mrs. Ed Hicks visited Mrs. Pinkie Robertson. Mr. Hicks is Mrs. Robertson's brother from Friona, Texas.

Mr. Milton Reeves from Knox City and Mrs. Ona Mae Price from Sweetwater announced their engagement to her sister, Mrs. Ada Brothers, her brother, Joe Teague and her nephew, Gene Collier, all residents of Rice Springs. They were all very happy for Mrs. Price.

Rev. Sharp, pastor of First Christian Church, preached Jan. 27 on "Getting Our Prayers Answered." We were all spellbound.

Mrs. J. B. Edwards of Rice Springs went out with her son, Elder Elmo Edwards from Plainview.

Mrs. Fannie Nichols of Rice Springs enjoyed a visit from her son, Pete, and daughter-in-law Loraine, from Fort Worth.

Mrs. Ada Brother's son, Arlis Brothers, took his mother out this afternoon.

Mrs. Daisy West is still sick, but her daughter, Mrs. Harrell, is with her often. She also had other visitors, Mrs. Anna Day of Waco and Mrs. C. B. Kurt of Fort Worth.

Larry Suttle, pastor of the Church of Christ, sermon was "Forgiveness." It was a most enlightening sermon.

Mrs. Paul Bell from Rule took her father, Mr. Goad, from Rice Springs home with her for a few days. She brought him back today. She gave candy to all the residents. We thank you, Mrs. Bell.

Mr. Joe Teague got a phone call from his son, Hank, in Sweetwater. Joe learned his oldest daughter, Rita Joe Cockran, is living in Florida.

Mrs. Hibberts from Throckmorton took her mother, Mrs. R. S. Highnote of the home, for an outing. Mrs. Highnote was all smiles when she returned.

Mrs. Delie Rose of Stamford visited her sister-in-law, Mrs. Ethel Rose, of Rice Springs.

Mr. Charles Abernathy from Aspermont surprised his mother, Mrs. Mollie Abernathy, with a visit to Rice Springs.

The ladies from the Church of Christ had their monthly birthday party at Rice Springs for everyone born in January. Those having birthdays are: Mrs. Mattie Peavy, 16th; Mrs. Ida Phemister, 16th; Mrs. Mary Wilson, 16th; Mrs. Martha Collins, 13th; James A. Gladish, 25th; Mr. Willie Goad, 31st; Susie Lassetter, 31st. We sang Happy Birthday to all. Refresh-

**WESTERN TEXAS COLLEGE**  
**SUMMER SCHOOL AT HASKELL**

It is possible that courses may be offered by Western Texas College this summer at Haskell High School. In two six-weeks terms, classes would be held from 6:30-9:30 p. m. on Monday, Tuesday and Thursday.

Please indicate below classes you would take if courses were offered:

- English 131 (Composition I) \_\_\_\_\_
- English 132 (Composition II) \_\_\_\_\_
- English 231 (American Lit.) \_\_\_\_\_
- English 232 (British Lit.) \_\_\_\_\_
- Government 231 (U. S. Govt.) \_\_\_\_\_
- Government 232 (Texas State & Local Govt.) \_\_\_\_\_
- History 131 (U. S. Hist. to 1865) \_\_\_\_\_
- History 132 (U. S. Hist. Since 1865) \_\_\_\_\_
- Mathematics 133 (College Algebra) \_\_\_\_\_
- Mathematics 134 (College Trig.) \_\_\_\_\_
- Psychology 231 (Gen. Psy.) \_\_\_\_\_
- Speech 131 (Fund. of Speech) \_\_\_\_\_
- Speech 232 (Bus. and Prof. Speech) \_\_\_\_\_

Other courses you would take if offered:

\_\_\_\_\_

\_\_\_\_\_

\_\_\_\_\_

\_\_\_\_\_

\_\_\_\_\_

Mail this form before March 1 to:

Dr. Ben Brock  
Vice President  
Western Texas College  
Snyder, Texas 79549

or mail or take to Haskell Chamber of Commerce,  
Haskell, Texas 79521

NAME \_\_\_\_\_

ADDRESS \_\_\_\_\_

**AUCTION**  
**MONDAY, FEB. 11, 1974—10:30 A. M.**  
**W. A. FISCHER FARM—RULE, TEXAS**  
Located 6 miles south of Rule, Texas on Highway 283, Then east 4 1/2 miles on F. M. Road 1225  
Or from Stamford, Texas, or Haskell, Texas on Highway 277, turn west on F. M. Road 1225 for 5 miles.  
"Watch for Auction Signs and Black Smoke Signals"  
Rain or Shine!

- 1968 '930' Case Diesel Tractor, Comfort King
- Moline 4 Bt. Rollover Mold-board (New)
- Moline 40 Disc Wheel Type Tandem w/cylinder
- 1960 John Deere '45' Combine w/ cab & L.P. (A-1)
- 5 row Double Tool Bar, 3 pt. w/ foot pieces
- Moline Front End Bedder with gauge wheels
- Moline Front End Cultivator with gauge wheels (4 row)
- Art-Way Feed Mixer
- (3) John Deere Tool Bars 24" & 2 1/2", 128" long
- Massey-Ferguson Rear End Scoop
- Noble Clod Buster 18" (New)
- Precision Tool Bar Planter
- (3) Set of Gauge Wheels
- John Deere 8x20' Comb. Grain & Cotton Trailer
- Oliver 7x16' Comb. Seed and Grain Trailer
- Tool bars spacers, Floation tires and wheels, comfort cover, windshield, row markers, log chains, mud chains, used tractor tires, foot pieces, chisel shanks, busters, bull wire, sweeps. Plus other related items too numerous to mention—Loader Tractor available, No Charge.
- 1 Pt. Post Hole Digger
- Continental 5 ft. Shredder 3 pt. with gauge wheels
- Ford 3 pt. Tool Bar 10 ft.
- 3 pt. Tool Carrier
- Whirlwind Fertilizer
- (2) IHC Rotary Hoes
- Grain Auger Wagon
- Case Front & Rear Weights
- 2 Wheel Stock Trailer
- Sioux Grain Bin, 2700 bu. cap. w/ perforated floor, shielded sweep auger, dryer (to be moved)
- 1"—41 ft. grain auger wheel mounted w/ 5 h.p. electric motor
- (2) 21 ft. and 11 ft. grain auger
- 3 pt. rear end lift
- Practically new Transcient Level
- 180 Amp. Airco Electric Welder with leads
- Acetylene Cutting Torch, hose and regulators.

COL. TEX HERRING, AUCTIONEER  
(FULL TIME AUCTIONEER)  
PHONE 915-583-2346—LAWN, TEXAS  
Catering by Handy-Ann of Abilene

**Announcing**  
**JOE BOB WHITWORTH**  
IS NOW ASSOCIATED WITH  
**LETZ BUILDERS SUPPLY**

He is a graduate of TSTI in Sweetwater, and worked in Sweetwater before coming to Haskell.

He is well qualified and will be doing refrigerator, air conditioning, heating, electrical and plumbing.

We are very happy to have Joe Bob with us.

**Letz Builders Supply**  
HASKELL, TEXAS

**ONCE A YEAR SALE**  
**SHIRTS - TIES - SWEATERS - SHOES**

Lot—150 Knit Shirts. Beautiful solids. Regular \$14.95, Now \_\_\_\_\_

1 Rack of \$5.00 and \$6.00 Ties All now \_\_\_\_\_

1 Lot—150 Perma Press Shirts, Values to \$10.95, Now \_\_\_\_\_

1 Lot Jeans and Odds and Ends Shirts Values to \$17.00, Now \_\_\_\_\_

All Sweater and Knit Casuals, Values to \$18.95, Now \_\_\_\_\_

Large lot Suits, Knits, Sports and W. Values to \$79.95 Now \_\_\_\_\_

Large Lot Shoes, all kinds. Values to \$30.00. Your choice \_\_\_\_\_

**COME WHERE THE REAL BARGAINS ARE**

**Wallace's Exxco**  
WALLACE BIRD

**NOTICE**  
UNTIL FURTHER NOTICE I WILL SELL MONDAY - WEDNESDAY FRIDAY  
We will do Service Work TUESDAYS & THURSDAYS  
I am sorry for the inconvenience to my customers.



Goes Farm Meeting

Jan. 31-Feb. 1 at the TFB headquarters in Waco. He is Dan Griffith of Haskell, chairman of the Haskell County Farm Bureau Cotton Committee.

The Texas Farm Bureau Cotton Division is comprised of cotton divisions in 59 major cotton-producing counties. Cotton committees on the county level are responsible for giving leadership to county cotton divisions which are comprised of cotton producers in the county Farm Bureau.



MEETING—Dan Griffith (left) of Haskell, Haskell County Farm Bureau Cotton Committee, TFB Cotton Advisory Committee, attended meeting of the Texas Farm Bureau Cotton Division at the TFB headquarters in Waco. Shown with him are Rogers, Chairman, TFB Cotton Advisory Committee. Cotton Division is comprised of county cotton major cotton-producing counties in Texas. Subject of the two-day meeting included the fuel and forward contracting, Farm Bureau policies on weevil control, and cotton root rot research.

Several outstanding speakers discussed cotton-related subjects at the Waco meeting. Warren Newberry, TFB executive director, explained the structure of the Farm Bureau Commodity Activities Division. County committee chairmen reported on the farm fuel and fertilizer situation in their respective counties. Farm Bureau staff members discussed forward contracting and explained 1974 Farm Bureau policies relating to cotton.

Dr. Jarvis Miller, director of the Texas A&M Experiment Station, discussed current work being carried on by his organization. A report on the boll weevil control program was given by Dr. Perry Adkisson, head of Texas A&M University Entomology Dept. Dan Pustejovsky, Hillsboro cotton and grain farmer and a member of the TFB Board of Directors, presented the farmer's view of the control program.

Cotton root rot research was discussed by three specialists, Dr. Stuart D. Lyda, associate professor of soil microbiology, Texas A&M University; Dr. Luther E. Bird, professor, Plant Science, Texas A&M; and Dr. Earl Burnett, director and soil scientist, Blackland Research Center, Temple.

Rural Development Act, supplements the Farmers Home Administration's water and waste disposal loan program.

"We are constantly striving to improve the quality of life in our state's small towns and outlying communities," Mr. Futch said. "Our water and sewer loan program has financed over 763 systems with more than \$134 million and benefited 532,000 rural people since the start of the program. Now we are in position to assist with more diverse projects."

Most of the loans are expected to be made to public bodies such as towns up to 10,000 population, counties and some special purpose districts, Mr. Futch said. Some assistance may go to non-profit corporations, provided they prepare plans for adequate repayment. Mr. Futch pointed out that priority will be given to municipal borrowers in communities smaller than 5,500 people to improve a deteriorating water supply or to enlarge or modify a water system or an inadequate sewer system. Proposed plans must be consistent with areawide development plans.

Borrowers may use funds to acquire land and/or water rights, to construct buildings of modest design, size and cost essential to the operation of the community facility, and to provide for a large variety of other needs. Additional information is available through any of Texas' 143 county FHA offices, usually located in county seat towns.

Rural Sections To Have Support Of FHA In Future

Small rural communities will soon have increased federal support to update or develop needed facilities, according to announcement today by Mr. J. Lynn Futch, Director of the U. S. Department of Agriculture's Farmers Home Administration programs in Texas. State Director Futch said FHA can make credit available to small rural towns for a wide range of community facilities such as industrial parks, fire fighting equipment, streets, ambulance services, community centers and even for community recreation. The new program authorized under provisions of the 1972

County Cancer Center Report

The Haskell County Cancer Center meets each Thursday afternoon from two to four p. m. in the northwest room on the third floor of the Courthouse. Those working in January were Mmes. Alice Mayes, Ira Davis, Jim Darden, Bertha Klose, John Thomas, Pauline Stiewert, Howard Parker, Wilma Wallace, Frank McCurley, Howard Montgomery, R. R. Overton, George Klose, Frank Underwood, and H. Russell. Coffee and cookies were served by two of the workers. Please don't forget — we need old sheets.

Community Bank Is Responsive To The Individual

By ABE TURNER, Pres., Haskell Nat'l. Bank

Some startling facts about the way Americans feel toward their country were reported the other day by Louis Harris, who heads an organization that makes national surveys of public opinion. Interviewers who talked to people across the nation found that a majority of Americans have a personal sense of being without power and are "alienated" — strangers in their own land, so to speak. The people were asked how they felt about such statements as, "Rich get richer and poor get poorer"; "What you think doesn't count much anymore"; "People running the country don't really care what happens to you"; and "Feel left out of things around you."

These questions have been asked in polls taken every year since 1966. The number of people who tend to feel that the above statements are true has risen steadily through the years. Now, a majority of Americans feel alienated and powerless, the Louis Harris interviewers found. How could this have happened in a nation so dedicated to liberty and so full of natural resources?

The basic reason is that many of our key institutions of government and business have become so big and bureaucratic that they are no longer responsive to the people. This is a sad situation for the oldest democracy in history. It has happened because we have permitted our government and our industries to grow in size without examining the human values implied in unrestrained growth. Now the chickens are coming home to roost as we find that many of our most important institutions have grown away from the people.

There is hope, however. One indication is the fact that the industry which is the very lifeblood of the economy—banking—has not fallen into the hands of a few giant corporations, conglomerates or the federal government. With more than 14,000 separate banks from which to choose in this country, the consumer can still shop around for banking services. We have small banks to serve smaller customers and large banks that cater to the Standard Oil-sized companies. Under the present system, the consumer can talk to the president of his bank, and if he does not like the conversation, he



THE LIVING HANDS SINGERS, a recently organized sign language choir of Southwestern Assemblies of God College, Waxahachie, Texas, will appear in the First Assembly of God Church, at 400 S. Ave. E in a sacred concert, according to Rev. J. C. Amburn, pastor, on Saturday, Feb. 9, 1974, at 7:30 o'clock p. m. Also Sunday, Feb. 10, at 6:30 p. m. The 22-voice choir, comprised of 16 ladies and 6 men, is under the direction of Chip Hawkins. There are 3 accompanists: Olivia Amburn, piano (alternate); Lois Murray, organ; and Valinda Perkins, piano. The choir is comprised of students from 8 states with a variety of backgrounds and all of them are well trained in the sign language. This sign group of singers are dedicated to ministering to both the hearing and the deaf as they sing vocally and in the sign language simultaneously. The public is cordially invited to hear The Living Hands Singers and especially to bring the deaf who understand the sign language for this unusual sacred concert.

can walk away and find a variety of other banks in the area. The independent, community bank must be responsive to the individual.

Imagine what your reception at a bank would be like if our banking system were reduced to a few gigantic institutions. Yet there are powerful forces today that would like to reduce our banking system to just that position.

There are two principal ways in which the banking system can be taken over by a handful of giant banking systems. One is through expansion of branch banking, and the other is through the multibank holding company. There are differences between these two systems that are of interest to bankers. To the consumer, however, the effect of both systems is the same: a reduction in the number of competing banking units as independent, community banks disappear and are replaced by offices controlled from a headquarters building in a distant large city.

If you believe that destruction of our independent banking system would be a disadvantage to you, to our community and our country, then write your representatives in the legislature and in Congress today and ask them to oppose any expansion of banking through branching and multibank holding companies.

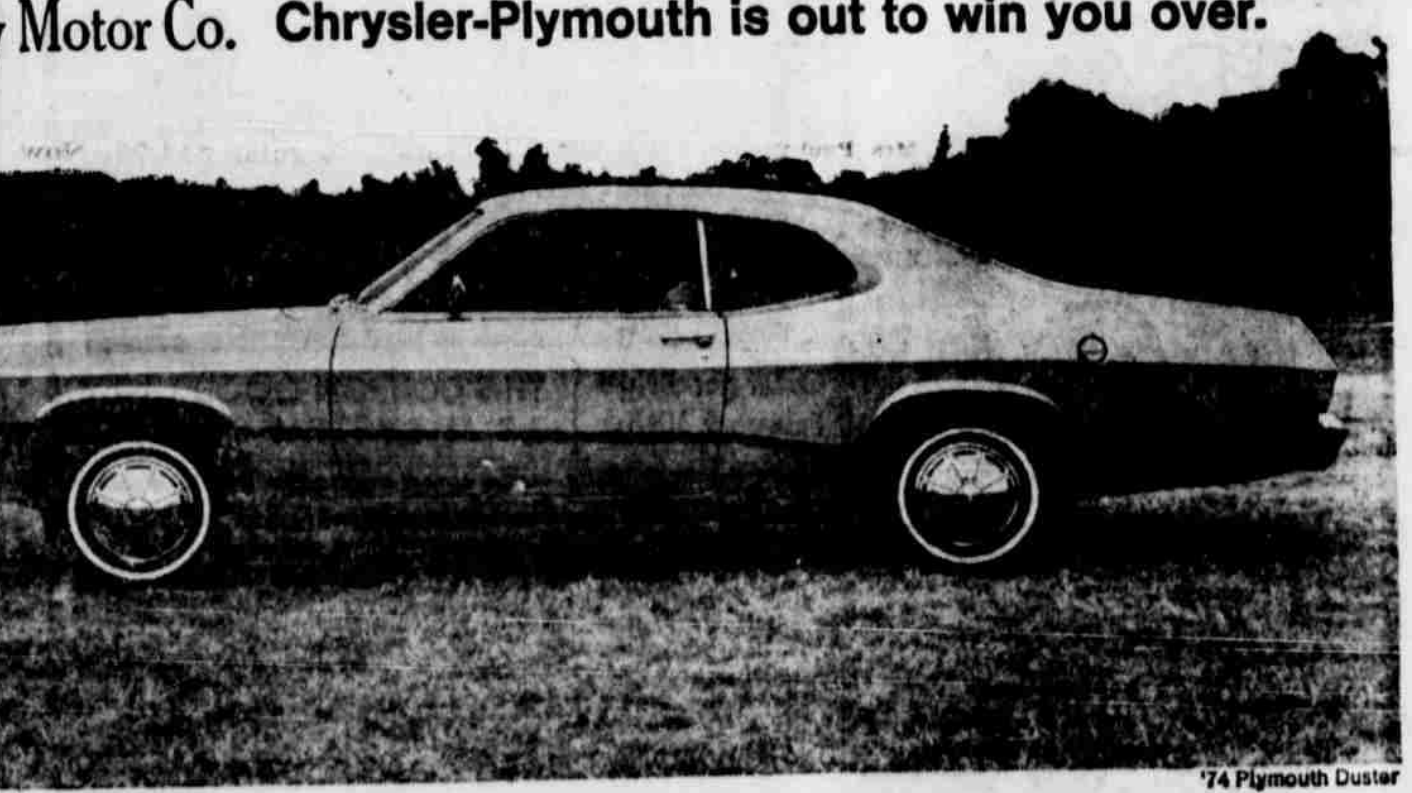
Henry Block has 17 reasons why you should come to us for income tax help.

Reason 3. We take all the time we need when it comes to preparing your return. We conduct in-depth interviews to make sure we understand your personal tax situation. And we keep all information completely confidential.



**HENRY BLOCK**  
THE INCOME TAX PEOPLE  
111 NORTH AVE. E  
Open 9 a. m. - 5 p. m., 9-12 Sat.—Phone 864-3322  
—NO APPOINTMENT NECESSARY—

**INSURANCE**  
Automobile - Fire - Life  
and Casualty  
**Sh Lane Agency**  
North First — Phone 864-3216



**Plymouth Duster. More miles per gallon than Nova, Comet, Maverick, Apollo and Ventura.**

If you're concerned about gas mileage, the tests Popular Science magazine conducted should be of interest to you. The tests they conducted on '73 vehicles (and adjusted by them for 1974 models and the results of E.P.A. tests) show the "Slant Six" engine that's standard in our Duster can go farther on a gallon of gas than Maverick, Nova, Comet, Ventura and Apollo.

**...Priced less than VW Super Bug.**

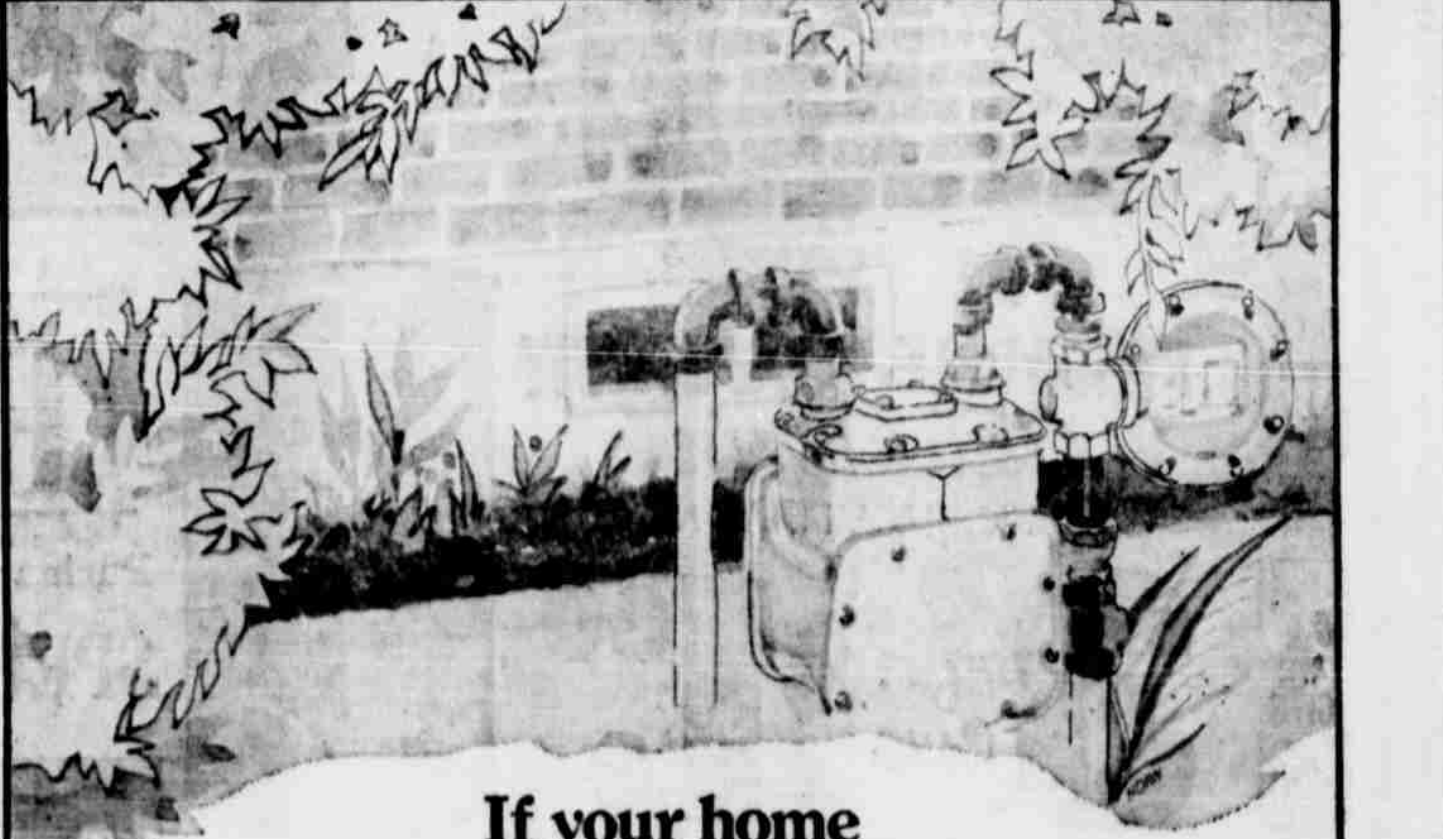
The manufacturer's suggested sticker price for Plymouth Duster is actually less than Volkswagen's Super Bug. The prices, naturally, don't include comparable destination charges, state and local taxes or dealer prep charges. Even though you pay less for Duster, you get a lot more. For example, Duster has room for five inside. VW—only four. Duster's got three times the



trunk space of VW. And Duster's got an electronic ignition that virtually eliminates ignition tune-ups. VW doesn't even offer one. Duster gas mileage and price. Two ways we're out to win you over to Duster this year.



**Plymouth Duster. One of eight great small car buys from...  
RY MOTOR COMPANY - 301 S. First St., Haskell**



**If your home depends on natural gas you can depend on having enough.**

Despite today's national gas shortage, homeowners in the Lone Star area can be assured of continuing supplies of efficient, clean-burning natural gas for years to come. The reason: Lone Star's advance planning and the investment of some \$150 million in gas supply projects in the last two years.

Today Lone Star is working around the clock, drilling deeper wells and exploring new areas. We're participating with gas industry research on "synthetic" gas and other forms of energy.

Easing this country's energy crisis by increasing energy supplies is going to take cooperation between the government and the gas industry. And you can help also! By conserving energy in your home whenever you have the opportunity.

Rest assured that Lone Star Gas families who depend on natural gas can depend on having enough.

For more information about home energy conservation, contact:

Consumer Relations  
Lone Star Gas Company  
301 South Harwood  
Dallas, Texas 75201



Clean energy for today and tomorrow



