

Basketball

HASKELL
JVB-VB vs Petrolia
 Fri., Jan. 3, 2 p.m.
 at Haskell
JVG-VG vs Hamlin
 Fri., Jan. 3, 5 p.m.
 at Hamlin
JH vs Hamlin
 Mon., Jan. 6, 5 p.m.
 at Haskell
JVB-G, VB-G vs Munday
 Tues., Jan. 7, 4 p.m.
 at Haskell
PAINT CREEK
VG vs Newcastle
 Fri., Jan. 3, 6:30 p.m.
 at Paint Creek
VB vs Highland
 Fri., Jan. 3, 6:30 p.m.
 at Highland
JH vs Grafard
 Mon., Jan. 6 at Paint Creek
VG vs Grafard
 Tues., Jan. 7, 6:30 p.m.
 at Grafard
VB vs Highland
 Tues., Jan. 7, 8 p.m.
 at Paint Creek
RULE
VG-VB vs Knox City
 Fri., Jan. 3, 6 p.m.
 at Rule
VG-VB vs Chillicothe
 Tues., Jan. 7, 6 p.m.
 at Chillicothe

Calendar

Study Club

The Progressive Study Club of Haskell will meet Thurs., Jan. 9, at 7 p.m. in the Conference Room of the Haskell County Library for a program on "The Miracle of Youth" with the program being presented by the Haskell County 4-H Club. In the business meeting to follow the program, members will vote on Outstanding Club Woman nominee, Best Progressive Study Club Program and Best Federation Program. Federation news will be presented by Dorothy Hartsfield.

Potluck meal

The First United Methodist Church in Haskell will host an all-church potluck meal Sun., Jan. 12 following worship services. This will replace the meal planned in December during the ice storm.

Art Association

The Brazos West Art Association will meet Mon., Jan. 13 at 6:30 p.m. at the Church of Christ annex. Joe Harold Cloud of Rule will present the program and show his wildflower slides. Hostesses are Barbara Fouts, Betty Hook and Gary Conn.

Society to meet

The Haskell County Historical and Genealogical Society will begin having quarterly meetings in 2014. The meetings will be on the first Monday of March, June, September and December at 6:00 p.m. in the Haskell County Library.

AWANA to meet

The AWANA Club (Approved Workmen Are Not Ashamed) will meet at the Cornerstone Fellowship Baptist Church, 1600 N. 1st St., Haskell on Mondays, from 6:30 to 8:00 p.m. Children must be age 5 by Sept. 1 through sixth grade. For more information call 940-864-5557.

Deadlines

All deadlines for issues of the Haskell Free Press are at noon on Mondays.

Index

Out of the Past.... Page 2
 Obituaries..... Page 3
 Menus Page 4
 Classifieds..... Page 5

Shop Haskell first

The Haskell Free Press

VOL. 128-NO. 1, ©JANUARY 2, 2014

"The People's Choice"

6 PAGES-ONE SECTION-75 CENTS



SPECIAL DELIVERY—Members of the Willow Creek Quilting Guild pieced and quilted 30 lap quilts for Christmas gifts for residents at Haskell Healthcare Center. Making the special delivery were, l-r, Kay Smith, Gwen Williams, Georgia Turnbow, Bill Overton, Cathy Ray and Jennifer Smith Brown. Other members of the club are Mary Jennings, Jane Powers, Sue McGee, Geraldine Baker, Janis McDaniel, Sandy Brigham, Diane Reed, Deen Lowery and Judy Whitten.

Farmers and ranchers urged to vote in upcoming County Committee elections

USDA Farm Service Agency (FSA) Administrator Juan M. Garcia announced that the FSA County Committee Elections began Dec. 20, with the mailing of ballots to eligible voters. The deadline to return the ballots to local FSA offices is Jan. 17, 2014.

Producers have been instructed to destroy the FSA County Committee Election ballots (FSA-669's) mailed on Nov. 4. The new ballots mailed to producers will have the word "corrected" printed on the outside of the mailing, the ballot itself, and the return envelope. Producers must complete and return the corrected FSA-669 to have their vote

counted.

Eligible voters who do not receive a ballot in the coming week can obtain one from their local USDA Service Center. The last day for voters to submit corrected ballots in person to local USDA Service Centers is Jan. 17, 2014. Ballots returned by mail must be postmarked no later than Jan. 17. Newly elected committee members and their alternates will take office Feb. 18, 2014.

County committee members are an important component of the operations of FSA and provide a link between the agricultural community and USDA. Farmers and ranchers elected to county

committees help deliver FSA programs at the local level, applying their knowledge and judgment to make decisions on commodity price support programs; conservation programs; incentive indemnity and disaster programs for some commodities; emergency programs and eligibility. FSA committees operate within official regulations designed to carry out federal laws.

To be an eligible voter, farmers and ranchers must participate or cooperate in an FSA program. A person who is not of legal voting age, but supervises and conducts the farming operations of an entire farm may also be

eligible to vote. Agricultural producers in each county submitted candidate nominations during the nomination period, which ended on Aug. 1.

Close to 7,700 FSA county committee members serve in the 2,124 FSA offices nationwide. Each committee consists of three to 11 members who serve three-year terms. Approximately one-third of county committee seats are up for election each year. More information on county committees, such as the 2013 fact sheet and brochures, can be found on the FSA website at www.fsa.usda.gov/elections or at a local USDA Service Center.

Ag Conference set Jan. 14 in Stamford

The Texas A & M AgriLife Extension Service will conduct the 2014 Rolling Plains Cotton and Agricultural Conference from 8 a.m. to 2:30 p.m. Jan. 14 in Stamford.

The event, conducted by the AgriLife Extension offices in Jones and Haskell counties, will take place in the Texas Cowboy Reunion Bunkhouse on the Texas Cowboy Reunion rodeo grounds, on Farm-to-Market Road 2834 and U.S. Highway 277.

Individual registration due upon arrival. Organizers ask those planning to attend to RSVP by Jan. 10 to the

AgriLife Extension office in Jones County by calling 325-823-2432 or Haskell County by calling 940-864-2658.

Three Texas Department of Agriculture continuing education units, one laws and regulations, one integrated pest management and one drift minimization, will be available.

"Our focus for the program will be on new technologies," said Steve Estes, AgriLife Extension agent in Jones County. "There is so much new technology becoming available these days, especially related to cotton, that a large part of our program will not only

center around what those new technologies are, but also how to best manage them.

"We will also be spending some time updating producers on the farm bill and how any pending changes relating to it might affect our area farmers. Our slate of speakers are very current in their knowledge relating to their specific topics, so this program should be ideal for getting the new farming year off to a good start."

Topics and speakers will include:

- Farm Bill Update, Dr. Joe Outlaw, AgriLife Extension economist, College Station.

- Alternative Crops and the Farm Bill-How Will they Fit? and Cotton Market Outlook, Bill Thompson AgriLife Extension economist, San Angelo.

- Using TopGuard to Manage Cotton Root Rot and Small Grains Integrated Pest Management Update, Rick Minzenmayer, AgriLife Extension entomologist for Runnels and Tom Green counties.

- Utilizing New Herbicide Technologies in Weed Management, Dr. Peter Dotray, AgriLife Extension weed and herbicides specialist, Lubbock.

- Managing Chemical Applications-Current and New Technologies, Dr. Adam Hixson, technical service representative, BASF, Lubbock.

- Cotton Variety and Herbicide Trial Results, Dr. David Drake, AgriLife Extension agronomist, San Angelo.

- Pesticide Laws and Regulations, Paul Weiser, Texas Department of

Haskell Co. Jr. Livestock Show, Sale set Jan. 9-11

The annual Haskell County Junior Livestock Show and Sale will be held Jan. 9-11 at the Haskell County Show Barn.

Arrival and weigh in time for entries of steers, heifers, lambs and swine is Thurs., Jan. 9 by 4:00 p.m. Poultry and rabbits arrival time is Thurs., Jan. 9 by 5:30 p.m.

Show time schedules are Thurs., Jan. 9 at 7:00 p.m. for poultry and rabbits; and Fri., Jan. 10 at 8:00 a.m. for lambs, followed by swine. Then beginning at 2:00 p.m. for steers, followed by heifers.

Judge for the lambs, swine, steers and heifers will be Matt Allen of Abilene.

Judge for rabbits and chickens will be Chris Beard, AST-Albany.

Auctioneers/announcers for the sale, which begins at 11:00 a.m. on Sat., Jan. 11 are Rex Ford of Stamford, Keith Medford and John Foster of Haskell.

The County Judge and County Commissioners will be serving hamburgers both Friday and Saturday. In addition, the Haskell County Extension Education Association (EEA Club) will have a concession stand set up serving food and drinks on Thursday. Friday and Saturday they will have only drinks, chips and snacks.

At last year's show, 104 participants entered their animals, 183 entries. The sale brought a total of \$88,550. Lance Sloan of Rochester is the president of the Haskell County Junior Livestock Show Association.

Haskell Co. Arrest Report

The following arrests were reported by the Haskell County Sheriff's Office during the week of Dec. 24-29:

Amy Lynne Strickland, simple assault.
 Sterling Jones, possession of controlled substance 1 to 4 grams. Also charges out of Jones County aggravated kidnapping 1st degree felony unauthorized use of motor vehicle.
 Thirty-four calls were made to 911.

FOR NEWS ITEMS OR TO SUBSCRIBE, CALL 940-864-2686

OPINION

TEXAS PRESS ASSOCIATION

State Capital



HIGHLIGHTS By Ed Sterling

Dewhurst orders health services studies

AUSTIN - Lt. Gov. David Dewhurst on Dec. 20 delivered charges for the Senate Committee on Health & Human Services to tackle before the 2015 Texas Legislature convenes.

Dewhurst, who presides over the Senate, ordered the panel of nine senators to study what is being done by the state to enhance the health of Texas women. He also called on the committee to assess the effectiveness of programs designed to improve mental health for all Texans.

The committee will monitor all state-provided women's health programs, access to preventative services, efforts to reduce unplanned pregnancies and the maximizing of efficiencies, Dewhurst said.

Also, the lieutenant governor said, the committee will monitor programs designed to improve mental health and substance abuse services, assess their outcomes and address any gaps in the system.

Perry takes various actions

Gov. Rick Perry on Dec. 20 renewed for another month the current drought disaster proclamation for 114 of Texas' 254 counties. Perry originally issued the proclamation on July 5, 2011.

Meanwhile, also on Dec. 20, the federal government approved Perry's Dec. 13 request for disaster assistance to three central Texas counties—Travis, Hays and Caldwell—for damages attributed to severe flooding that occurred when hard rains hit the region at the end of October through mid-November.

In addition to the approval, the U.S. Small Business Administration granted Perry's request for additional assistance that will allow homeowners, renters and businesses in 11 central Texas counties to apply for long-term, low-interest disaster loans, the governor's office reported.

In other news, on Dec. 19, the governor posted notice of clemency he granted to 12 individuals "after each case was favorably recommended for clemency by the Texas Board of Pardons and Paroles."

And, on Dec. 24, Gov. and Mrs. Perry publicized their wishes for "a happy and blessed Christmas to everyone in Texas, and to Texans all around the world."

More laws take effect

While most new laws are written to take effect either as soon as the governor signs them or on Sept. 1, some 47 pieces of legislation passed by the Texas Legislature were written to take effect as new laws on Jan. 1, 2014.

Here are five of them:

•House Bill 294 by Rep. Eddie Rodriguez, D-Austin, and sponsored by Sen. Kirk Watson, D-Austin: An exemption from ad valorem taxation of certain property owned by a charitable organization and used in providing housing and related services to certain homeless individuals.

•House Bill 1349 by Rep. Lyle Larson, R-San Antonio, and sponsored by Sen. Donna Campbell, R-New Braunfels: Stipulating that the Department of Public Safety is not required to request, and an applicant would not be required to provide, the applicant's social security number as part of an application for a concealed handgun license.

•House Bill 1772 by Rep. Chris Turner, D-Arlington, and sponsored by Sen. Wendy Davis, D-Fort Worth: Requiring a utility customer to provide written notice of disconnection to each tenant or owner at a "nonsubmetered, master metered multifamily property" prior to disconnection of electric or gas service.

•House Bill 1847 by Rep. Stefani Carter, R-Dallas, and sponsored by Sen. Joan Huffman, R-Houston: Requiring prosecuting attorneys to complete one hour of ethics training relating to a duty to disclose certain information in a criminal case within 180 days of assuming duties. Additional related training thereafter would be based upon rules promulgated by the court of criminal appeals.

•Senate Bill 945 by Sen. Jane Nelson, R-Lewisville, and sponsored by Rep. Sarah Davis, R-Houston: Requiring a health care provider in a hospital to wear a photo identification badge clearly stating the provider's name, department, and title. If applicable, the badge must also state the provider's status as a student, intern, trainee or resident.

TxDOT chief moves to LCRA

Texas Department of Transportation announced its executive director, Phil Wilson, is leaving the agency to join the Lower Colorado River Authority, a public utility company founded in 1934 that serves all or part of 61 counties.

Wilson, who was appointed by the governor to head TxDOT in October 2011, is to start as general manager and chief executive officer of the LCRA on Feb. 1.

Before joining TxDOT, Wilson was a senior vice president of public affairs and a corporate officer of Luminant, a large power company based in Dallas. Before that, Wilson served as Texas secretary of state from July 2007 to July 2008.

10 Years Ago January 1, 2004

Haskell Elementary held its annual Christmas carnival at the Haskell Civic Center. Cathy Garison, coordinator of the event, said the hope is to give parents and children some quality time together during the holidays.

The Head Start and Early Childhood students at Haskell combined a learning project with a giving project. Teacher Missy Burson said students learned about healthy foods while collecting canned goods, and about helping others as they donated it to the Haskell County Food Distribution Center.

Winners of the Haskell Chamber of Commerce's lighting contest were Bob and Darlene Smith, Linda Martinez and Raymond Rodela. Winners in the business division were the Courthouse, H&R Block and Henderson Bookstore.

20 Years Ago January 6, 1994

Fifteen Haskell High

students qualified for the State Science Olympiad to be held in Houston. Qualifying were seniors Teresa Diaz, Blake Henshaw, Wayne Hodgin, Robert Huff, Janeen Jordan and Andy Martin; junior Amy Cunningham; sophomores Tonya Burson, Aaron Earles, Heather Guess and Charissa Huff; freshmen Sarah Cothron, Wendy Dulaney, Lyle Fouts and Mary Kay Watson.

Four incumbent Haskell County officials will face opposition in the Democratic primary election. In the race for County Judge will be B.O. Robertson, Giles Kemp, James Raughton and Jerrell Johnson. Others filing are County Commissioner Prect. 2, Ronnie Chapman, Jimmy Hannsz and Elmer Adams; Commissioner Prect. 4, Bud Turnbow and Don Hisey; Justice of Peace, Gina Brown and Don Flippin.

30 Years Ago January 5, 1984

The Haskell Indians defeated Eula for the championship in the Kiwanis

Club's First Annual Holiday Basketball Tournament. Indian Shane Hadaway accepted the trophy from club member Elbert Johnson.

Mr. and Mrs. W.H. Reynolds of Haskell, celebrated their 50th wedding anniversary with a reception hosted by their eight children. They were married in Truscott and have lived in Haskell for 25 years. Mr. Reynolds is a retired blacksmith.

Mr. and Mrs. Harmon Custer of Rule, announce the arrival of their son, Jason Lewis Custer. He was born at Haskell Memorial Hospital, weighing 8 lbs. 1 oz.

40 Years Ago January 3, 1974

The Haskell Maidens won the Rotan tournament by defeating Rotan, Spur and Roby. Shirley Abbott led the scoring in the Rotan game with 26 points. Fonda Horn and Margie Kretschmer each had 17 points against Spur and Horn had 23 points in the Roby game.

Haskell Superintendent

H.T. Wilkinson announced new class starting times when clocks will be set an hour earlier, in the government's efforts to ease the energy crisis.

Girl Scouting in Haskell is in full swing with 85 registered scouts. Adult leaders are Mrs. Eddie McKeever, Mrs. Charles Thornhill, Mrs. Abe Turner, Mrs. Dale Burris, Mrs. Pat Hale, Mrs. Loraine Johnson, Mrs. Ned Phillips, Mrs. J.W. Wallace and Mrs. Earl Proctor.

50 Years Ago January 2, 1964

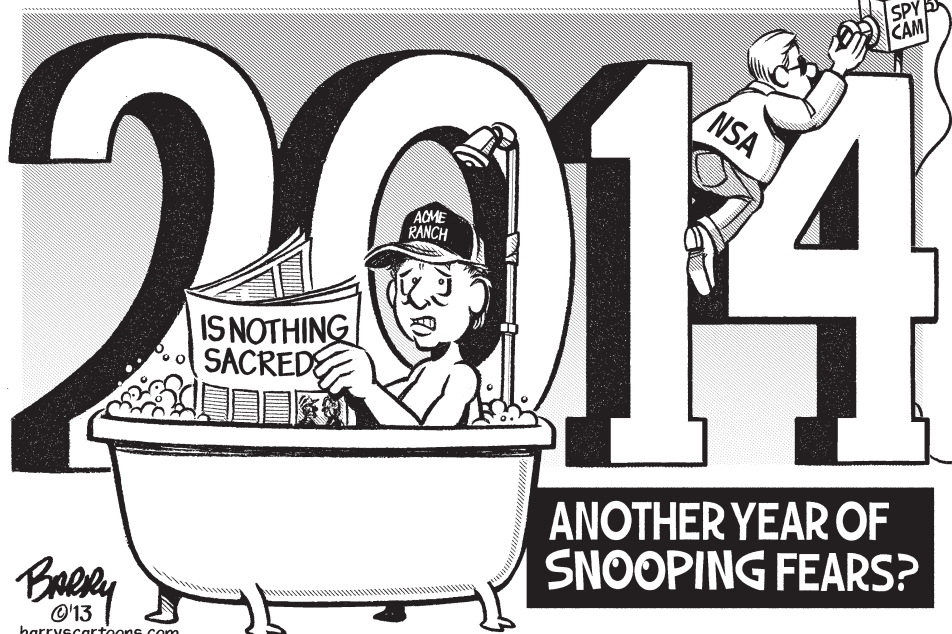
Doyle Keaton Jetton, a 1951 graduate of Weinert High School and son of Mr. and Mrs. T.W. Jetton, has been promoted to the rank of captain in the U.S. Army at Landsburg, Germany, where he is currently stationed.

Haskell's Ray Overton was named Coach of the Year in the 1963 All-Area Football selections. Also named to the All-Area squad were Indians Joe Josselet, Eddie Smart, Joe Thigpen, Charles Chapman, James Davis and Sammy Larned.

100 Years Ago January 3, 1914

Marvin Post, a Texas University student, came home to spend the holidays with his parents, Mr. and Mrs. Henry Post. He is keeping up the good record that Haskell boys have always made at college, both in successful work and department.

Willie Ballard and Ethel Albin, two of Rochester's most popular young people, were married at O'Brien by Rev. E.B. Speck. They will make Rochester their home.



2014 tax season to open Jan. 31; e-file and Free File can speed refunds

The Internal Revenue Service has announced plans to open the 2014 filing season on Jan. 31 and encouraged taxpayers to use e-file or Free File as the fastest way to receive refunds.

The new opening date for individuals to file their 2013 tax returns will allow the IRS adequate time to program and test its tax processing systems. The annual process for updating IRS systems saw significant delays in October following the 16-day federal government closure.

"Our teams have been working hard throughout the fall to prepare for the upcoming tax season," IRS Acting Commissioner Danny Werfel said. "The late January opening gives us enough time to get things right with our programming, testing and systems validation. It's a complex process, and our bottom-line

goal is to provide a smooth filing and refund process for the nation's taxpayers."

The government closure meant the IRS had to change the original opening date from Jan. 21 to Jan. 31, 2014. The 2014 date is one day later than the 2013 filing season opening, which started on Jan. 30, 2013, following January tax law changes made by Congress on Jan. 1 under the American Taxpayer Relief Act (ATRA). The extensive set of ATRA tax changes affected many 2012 tax returns, which led to the late January opening.

The IRS noted that several options are available to help taxpayers prepare for the 2014 tax season and get their refunds as easily as possible. New year-end tax planning information has been added to IRS.gov this week.

In addition, many software companies are expected to begin accepting

tax returns in January and hold those returns until the IRS systems open on Jan. 31. More details will be available in January.

The IRS cautioned that it will not process any tax returns before Jan. 31, so there is no advantage to filing on paper before the opening date. Taxpayers will receive their tax refunds much faster by using e-file or Free File with the direct deposit option.

The April 15 tax deadline is set by statute and will remain in place. However, the IRS reminds taxpayers that anyone can request an automatic six-month extension to file their tax return. The request is easily done with Form 4868, which can be filed electronically or on paper.

IRS systems, applications and databases must be updated annually to reflect tax law updates, business process changes and programming updates in

time for the start of the filing season.

The October closure came during the peak period for preparing IRS systems for the 2014 filing season. Programming, testing and deployment of more than 50 IRS systems is needed to handle processing of nearly 150 million tax returns. Updating these core systems is a complex, year-round process with the majority of the work beginning in the fall of each year.

About 90 percent of IRS operations were closed during the shutdown, with some major work streams closed entirely during this period, putting the IRS nearly three weeks behind its tight timetable for being ready to start the 2014 filing season. There are additional training, programming and testing demands on IRS systems this year in order to provide additional refund fraud and identity theft detection and prevention.

Calendar

Al-Anon

Al-Anon meets Thursday evenings at 8 p.m. at the AA building across from the RV park in Haskell.

Water conservation

The City of Haskell has implemented stage three of the Drought Contingency Plan of the City of Haskell Water Conservation Plan. Stage three calls for a mandatory 25% reduction in water use by all City of Haskell water customers. Please make every effort to conserve and help secure our water supply

as long as possible. For more information or a copy of the water conservation plan, contact Haskell City Hall.

Gin Report

Dec. 23, 2013
Haskell
Haskell County Gin 3,800
Haskell Co-op Gin 6,389
O'Brien
O'Brien Co-op 8,500
Rule
Rule Co-op Gin 9,303
Weinert
Griff's Gin 154
Weinert Gin 3,750
Total bales. 31,896

Letter to the Editor

Dear editor,
The Haskell Goodfellows would like to express sincere thanks to those who helped with our 2013 project. The donations of money, food, toys and time are appreciated.
A total of 50 packages were distributed to needy families. Volunteers helped pack the boxes that were delivered by members of the Haskell Volunteer Fire Dept. and Haskell Lions Club.
This year's Goodfellows

project was a community effort, which was spearheaded by the Haskell Lions Club, the Haskell County Child Welfare Board and the Haskell Fire Department. Also assisting in this endeavor was the Haskell Free Press.
Sincerely,
Donnie Rieger
Haskell Lions Club
and Linda Haynes
Haskell Co.
Child Welfare Board

The Haskell Free Press

Established January 1, 1886
PUBLISHED EVERY THURSDAY
420 North First Street • P. O. Box 555
HASKELL, TEXAS 79521
Phone 940-864-2686 • Fax 940-864-2687
hfp@valornet.com

John McDougalPublisher
Lisa ShawBusiness Manager
Doris McDougalProduction
Caron YatesEditor

Periodical Paid Haskell, Texas 79521
(USPS 237-040)

SUBSCRIPTION RATES:

Haskell County, one year, \$25.00.
Outside of Haskell County, one year, \$34.00.

NOTICE TO PUBLIC-Any erroneous reflection upon the character, reputation or standing of any firm, individual or corporation will be gladly corrected upon being called to the attention of the publisher.

POSTMASTER: Send address changes to The Haskell Free Press, P.O. Box 555, Haskell, TX. 79521-0555.

This issue mailed Tues., Dec. 31, 2013



Obituaries

Neoma Pauline Kirby



Born Feb. 12, 1924 in Haskell, she was the daughter of Edith (Cox) and James R. Lankford. One of ten children, nine being sisters, Neoma was third from the oldest in this large family. Growing up in Haskell, Neoma started first grade at Douglas School, east of Haskell, and continued her education in Haskell. She married J.B. Kirby Dec. 23, 1944 in Stamford. The two remained in the area where J.B. was a tractor mechanic and Neoma worked as the bookkeeper, although she was known to be right along side J.B. working on a tractor. A faithful member of East Side Baptist Church, Neoma enjoyed teaching Sunday School and Vacation Bible School. Neoma enjoyed writing poetry.

NEOMA KIRBY
Graveside services for Neoma Pauline Kirby, 89, of Haskell were held Fri., Dec. 27 at Willow Cemetery in Haskell with Bro. Morris Johnson officiating. Arrangements were under the direction of Smith Family Funeral Homes.

Mrs. Kirby passed away Saturday afternoon, Dec. 21 at The Oaks at Radford Hills in Abilene.

She was preceded in death by her husband of 51 years, J.B. Kirby; her parents, J.R. and Edith Lankford; a

Antonia Pena

Funeral services for Antonia Pena, 85, of Haskell were held Sat., Dec. 21 at Abilene Funeral Home Chapel of Hope with Pastor Jose Lara officiating. Burial was at Elmwood Memorial Park Cemetery in Abilene under the direction of Abilene Funeral Home.

Mrs. Pena passed away Wed., Dec. 18. Born Jan. 18, 1928 in Ganger, she was the daughter of Eduardo Rodrigues and Herlinda Guzman. She married Cruz Pena Jan. 17, 1954.

She was preceded in death by her loving husband.

Survivors include her three sons, Angel Pena and Joe Pena, both of Haskell, and Sonny Pena of Austin; four daughters, Rosa Gonzales, Dee Rojas and Yolanda Pena, all of Haskell, and Angie Duran of Abilene; two brothers, Luis Rodrigues of Abilene and Juan Rodrigues of Fort Worth; two sisters, Margie Carrion of Fort Worth and Dominga Guerrero of Haskell. She loved all her grandchildren and great grandchildren and her beloved dog Buddy and cat Baby.

Online condolences and guest book may be signed at www.abilenefuneralhome.com.

Mary S. Dixon



of Haskell were held Sat., Dec. 28 at Willow Cemetery in Haskell with Rev. Dustin Wilhite officiating. Arrangements were made under the direction of Smith Family Funeral Home.

Mrs. Dixon passed away Tues., Dec. 24 at Ennis Care Center in Ennis.

Mary S. Byrd was born July 16, 1936 in Denton. She married Hollis Dale Dixon July 27, 1955 in Haskell. She was a member of Watermark Church in Dallas.

Survivors include her

brother who died at birth, R.J. Lankford; four sisters, Gladys, Ora Mae, Bell and Rosie.

Survivors include her two children; daughter, Jeanette Kirby of Midland and son, James Kirby of Elk City, Oklahoma; four grandchildren, Joe Kirby and wife Marcy of Midland, Robert Kirby of Florida, Michael Kirby of Elk City, Kimberly Park of Hawaii; four great grandchildren; Kaylee Kirby, McKinzie Kirby, Christopher Baker, Braden Baker; and four sisters, Jean Dodson, Mirtie Irene Buner, Evelyne Graham and Geneva Mills.

Memorials may be made in Neoma's name to the American Cancer Society, 3402 N. 1st St., Abilene, Texas 79603.

Online condolences may be shared at www.smithfamilyfh.com.

PD. NOTICE

Rule lighting contest, poster winners named

Winners in the Rule Chamber of Commerce Home and Yard Lighting contest on Dec. 21, have been announced.

Winning \$50 and first place was Paul Leonard. Second prize of \$35 was won by Bill Jones and winning \$25 and third place was Cory Logan.

The Children's Christmas Poster Contest winners were also announced.

Pre-Kindergarten: Hailey Spencer, first place; Leslie Caldwell, second place; and Trinity Pittman and Cason Ballard, third place.

Kindergarten: Haelynn Logan, first place; Leland Short, second place; and Kaitlyn Saffel, Dallas Silvas, Skylor Kreger, Rylan Green, Jayden Carver and Brylee Teague, third place.

First grade: Kyleik Mason, first place; Jelena Alvarez, second place; Michael Ervin and Julio Tapia, third place.

Second grade: Astrid Guzman, first place; Shelby Saffel, second place; and Wayland Isabell, third place.

Third grade: Ethan Jones, first place; Ragen Thompson, second place; and Trevor Henry, third place.

Fourth grade: Lenzi Manske, first place; Jaella Alvarez, second place; Jillian Herrera, Macy Rogers, Kurt Leek and Abigail Ortiz, third place.

Fifth grade: Jysela Alvarez, first place; Fette Jackson, second place; Kayla Hollingsworth, Vanessa Elmore, Ariel Continez, Eric Perkins and Dean Kreger, third place.

Clear Fork Crime Stoppers
1-800-222-TIPS

E-mail your news, photos and ads to The Haskell Free Press at hfpnews@lycos.com or hfp@valornet.com



GONZALES CARPET CLEANING
Carpet Cleaning • Upholstery Cleaning
Emergency Water Extraction • Expert Floor Care
Waxing Polishing & Cleaning

Robert Gonzales
P. O. Box 929
Stamford, Tx
79553

Residential & Commercial
(325) 721-8195 • (325) 773-2258

Personality-Slipper Shoppe Winter Clearance SALE

Everything in Store
(Excluding Brighton, SAS Shoes and Merle Norman)
Buy 1 Item of Clothes or Shoes and Get 2nd Item 1/2 Price
Sale Begins Thurs., Jan. 2nd
(Located South Side of Square)
413 S. 1st - Haskell, TX 940-864-2501

2014

New Year.

NEW SAVINGS!

SRTC brings you the latest technology with great savings for your new gadgets! Got a new TV? Signup for SRTV and receive one month free of a premium channel of your choice. New computer or tablet? Signup for SRTC High-Speed Internet and receive 3 months of SecureIt Plus free!

All signups during the month of January will be eligible for a drawing of 3 months of free SRTV or 6 months of free DSL service!



VERNON OFFICE 7110 US Hwy 287 E Vernon, TX 76384 (940) 886-2217 (888) 886-2217	HASKELL OFFICE 113 N Ave. D Haskell, TX 79521 (940) 863-1125 (888) 863-1125	SEYMOUR OFFICE 310 W California Seymour, TX 76380 (940) 889-1125 (877) 889-1125
---	--	--

ask@srcaccess.net

Some restrictions may apply. Services where available.
1 year signed service agreement required.

5-C Smokehouse
Catering & Custom Smoked Meats
Brisket, Ribs, Pork loin, Sausage, Ham and Turkey Sides Available Also!
Pre-Orders ONLY
Call us for All of Your Catering and Special Cooking Needs!
940-997-0020 • 940-923-0813
Ray Don and Joe Campbell Owners
804 Gladstone • Rule, Texas 79547

SALE
All Christmas Items 50% off
GIFTED
Bridal Registry — Baby Registry
411 1/2 South 1st • Haskell, Texas
940-864-2006

After Christmas SALE
All Apparel and Shoes on Sale!
Super Discounts throughout the Store!
Everything 20-30% off
Where Winners Shop
Sport-About of Haskell 940-864-3891 402 N. 1st
We accept Discover, VISA, AMEX, MasterCard

"Home Town Service You Deserve"
•Oxygen •Wheelchairs •Hospital Beds
•Trapeze Bars •Walkers •Canes
•Bedside Commodes •Lift Chair
•Diabetic Supplies •Nebulizers
•Power Mobility •Ten Units •So Much More!
Seymour Medical Supply, Inc.
Hardeman • Foard • Wilbarger • Wichita • King
Knox • Baylor • Archer • Haskell • Throckmorton
Young • Jack • Cottle
110 W. Reiman, Seymour, TX 76380
940-889-6060 • 866-889-1076
Call 24 hrs a day, 7 days a week!

Merry Christmas and Happy New Year
from the staff of
Haskell Home Health
Michelle Johnson, RN Branch Supervisor
Shelley Myers, RN
Jalenn Earle, Secretary
Vicky Cochran, LVN
Jeryl Anne Cooper, LVN
Patricia Hemphill, HHA
Charles Townsend, PT
417 South First
Haskell, Texas 79521
Phone 940-864-5074 • Fax 940-864-6163

Go Indians! Go Maidens!



Be Prepared for Spring Storms!

A+ Shelters
Haskell, Texas
325-280-2100
325-280-2200

Haskell School Menu

Jan. 6-10
Breakfast

Milk variety and 100% fruit juice is available at every meal

Monday: French toast sticks or cereal variety and Texas Toast

Tuesday: Scrambled eggs, biscuit, gravy or cereal variety and Texas Toast

Wednesday: Breakfast club or cereal variety and Texas toast

Thursday: Breakfast burrito or cereal variety and Texas Toast

Friday: No school
Lunch

Milk variety is available at every meal.

Monday: BBQ rib sandwich, corn chips, refried beans, garden salad, salsa, hot cinnamon apples

Tuesday: Grilled Cheese sandwich, vegetable soup, baby carrots, fruit cup

Wednesday: Hot dogs, potato rounds, fresh veggie cup, fresh seasonal fruit

Thursday: Cheeseburger, hamburger garnish, seasoned corn, baby carrots, sliced peaches

Friday: No school

Water conservation

The City of Rule has implemented Stage Four of its Drought Contingency Plan Emergency Water Shortage/Water Allocations. Please contact Rule City Hall or call 940-996-2214 for more information.



TRAPPED—Haskell Maidens #23 Crissy Bassett and #21 Destini Pierce get in place to trap a Ranger player.

Paint Creek School Menu

Jan. 6-10
Breakfast

Milk and juice are served daily.

Monday: Pancakes, bacon
Tuesday: Biscuits, eggs, gravy

Wednesday: Sunrise sandwich

Thursday: Oatmeal, cinnamon toast

Friday: No school

Lunch

Milk is served daily.
Monday: Chicken quesadilla, black beans, baby carrots, oranges

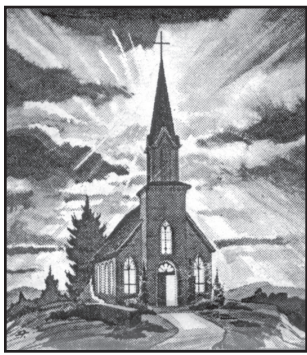
Tuesday: Taco salad, chips, corn, snowball salad

Wednesday: Chicken nuggets, mashed potatoes, gravy, green beans, roll, apple-pineapple d'lite

Thursday: Pizza, salad, veggie cup, mixed fruit

Friday: No school

This Week's Devotional Message:



Even the busiest families can find time for prayers

Despite their best intentions, today's family members spend a lot more time apart than together. Dad is at work all day, and if he has to travel, for even longer periods. Mom may also work, or if the children are old enough to fend for themselves, she may get involved in community service or some other volunteer effort. The children have school, football practice, piano

lessons, paper route, and you name it. Family vacation? Yes, if it can be fitted in around summer school, year round school, campouts, etc. However, the one thing that families should try to do together is attend their house of worship, so that they can bridge the chasm of all that time they must spend apart with a lasting bond of understanding and love.

ATTEND CHURCH THIS SUNDAY

—HASKELL—

- East Side Baptist Church**
Shawn Smith, Youth & Worship pastor
Sun. 9:45 a.m., 11 a.m., 6 p.; Wed. 7 p.m.
600 N. 1st East, Haskell
- Christian Church**
Sun. 10:45 a.m.
107 N. Ave. F, Haskell
- Church of God**
Bruce Ray, pastor
Sun. 10:30 a.m. Thurs. 7:00 p.m.
714 North First East, Haskell
- Trinity Lutheran Church**
Rev. David White, pastor
Sunday School 9:30 a.m., Worship 10:30
Hwy 380 East, Haskell
- Iglesia Bautista El Calvario**
Art Flores, Interim pastor
Sun. 9:45 a., 10:45 a., 5 p.m.; Wed. 7 p.m.
607 S. 7th, Haskell
- First United Methodist Church**
Rev. Dustin Wilhite, pastor
Sun. 9:45 a.m., 10:50 a.m. 6 p.m.
Wed. 6 p.m.
201 N. Ave. F, Haskell
- First Assembly of God**
Rev. J.C. Amburn
Sun. 9:45 a., 10:45 a., 6 p.m.; Wed. 7 p.m.
1500 N. Ave. E, Haskell
- St. George Catholic Church**
Father George Roney
Sat. Mass 7 p.m.; Sun. Morn. 9:00 a.m.
901 N. 16th, Haskell
- Church of Christ**
Philip Sims, minister
Sun. 9:30 a.m., 10:30 a.m., 6 p.m.;
Wed. 7 p.m.
510 N. Ave. E, Haskell
- First Presbyterian Church**
Kelly Pigott, interim pastor
Sun. Morn. 9:30 a.m.
306 N. Ave. E, Haskell
- Trinity Baptist Church**
Larry White, pastor
Sun. 10 a., 11 a., 6:30 p.m.; Wed. 6:30 p.
114 S. Ave. D, Haskell

- Hopewell Baptist Church**
Sun. 9:30 a.m., 11:00 a.m.; Wed. 7 p.m.
908 N. Ave. A, Haskell
- Greater Independent Baptist Church**
Rev. Earnest Flanders, Jr., pastor
Sun. 9:30 a., 11:00 a., 6:30 p.; Wed. 7 p.
301 N. 3rd St., Haskell, 940-863-4405
- New Covenant Foursquare**
Bill and Renee Glass, pastors
Sun. 10 a.m., 11 a.m., 6:30 p.m.
Wed. 7 p.
200 S. Ave. F, Haskell
- First Baptist Church**
Rev. Jim McCurley
Jason Daniels, minister of Youth and Music
Sun. 9:45 a., 10:55 a., 6 p.m.; Wed. 6:30 p.m.
301 N. Ave. E, Haskell
- Cornerstone Fellowship Baptist Church**
Morris R. Johnson, pastor
Sun. 9:30 a.m. 10:45 a.m., 6 p.m.
Wed. 7 p.m.
1600 N. First St., Haskell
- God Loves You Ministries**
Mark Wallace, pastor
Church Service 10 a.m.
West side of square, Haskell
- WEINERT—**
- First Baptist Church**
Dan Bullock, pastor
Sun. 10 a.m., 11 a.m., 6 p.m.; Wed. 7 p.m.
Weinert
- Weinert Foursquare Church**
Rev. Robert Harrison
Sunday 11 a.m
Weinert
- ROCHESTER—**
- Church of Christ**
Mitchell Greer, minister
Sun. 10 a.m., 10:45 a.m.
West on Main Street, Rochester
- First Baptist Church**
Bishop Helsley, pastor
Sun. 9:45 a.m., 11 a.m., 6 p.m.;
Prayer Time/Team Kids 5 p.m.;
Wed. Youth meeting 7 p.m.
500 Main, Rochester
- Union Chapel Baptist Church**
Clovie Dever
Sun. 9:45 a., 10:45 a., 6 p.m.; Wed. 7 p.m.
Rochester

- Faith Chapel of Rochester**
Randy Hollingsworth, minister
Sun. 10 a.m., 11 a.m., Wed. 6 p.m.
Hwy 6, Rochester
- SAGERTON—**
- Sagerton Methodist Church**
Cory Graham, pastor
Sun. Morn. 9:45 a.m.
Sagerton
- Faith Lutheran Church**
Anna Robbins, pastor
Sun. 10:30 a.m.
Sagerton
- RULE—**
- First Baptist Church**
Scott Hensley, pastor
Sun. 9:45 a., 11:00 a., 5 p.m.; Wed. 7 p.m.
1001 Union Ave., Rule
- Primitive Baptist Church**
Dale Turner Jr., pastor
First & Third Sundays 10 a.m.
Corner of 8th & Robins, Rule
- Church of Christ**
John Greeson, minister
Sun. 9:45 a., 10:40 a., 6 p.m.; Wed. 7 p.m.
811 Union, Rule
- Primera Iglesia Bautista**
Alfa y Omegas
Manuel Marin, pastor
Sun. 10 a., 11:00 a., 5 p.m.; Wed. 6 p.m.
500 Elm Street, Rule
- Sweet Home Baptist Church**
Russell Stanley, pastor
Sunday 10 a.m.
Gladstone Ave., Rule, 940-997-2296
- West Bethal Baptist Church**
Rev. Clovis Dever
Sun. 10 a., 11 a., 8 p.m.; Wed. 7:30 p.m.
300 Sunny Ave., Rule
- PAINT CREEK—**
- Paint Creek Baptist Church**
Sun. 10:00 a.m., 11:00 a.m., 6 p.m.
Paint Creek
- O'BRIEN—**
- O'Brien Baptist Church**
Jim Reid, pastor
Sun. 9:45 a., 11 a., 5 p., 6 p, Wed. 6 p.m.
O'Brien

SRTV ULTRA.

OVER 100 CHANNELS,
INCLUDING YOUR FAVORITE
LOCAL PROGRAMMING.

SRTV brings you national broadcasting, but doesn't forget about local coverage. Sign-up today and receive over 100 channels, including local favorites, like Channel 12 KTXS and Channel 52 CW.



VERNON OFFICE 7110 US Hwy 287 E Vernon, TX 76384 (940) 886-2217 (888) 886-2217	HASKELL OFFICE 113 N. Ave. D Haskell, TX 79521 (940) 863-1125 (888) 863-1125	SEYMOUR OFFICE 310 W California Seymour, TX 76380 (940) 889-1125 (877) 889-1125
---	---	--

ask@srcaccess.net
Services where available. Some Restrictions may apply.

Looking for a Great Rate?

We can customize a loan to meet your needs. Ask about our:

- Competitive rates
- Terms up to 30 years
- Choice of payment plans

See us for all your rural mortgage financing.



550 South 2nd
Haskell, Texas 79521
940-864-8565

Part of the Farm Credit System

Sonic Drive-In
1402 N. Ave. E
864-8533
Randy Phelps, Manager

Steele Fire Apparatus
Hwy. 380 East • 864-2208

Modern Way Food Store
1202 N. Ave. E • 864-3763

HANSON PAINT & BODY SHOP
207 S. 1st • 864-3631
Professional Auto Body Repair
Glass Installation • 24 Hour Wrecker Service

Rule Co-op Gin & Elevator
301 Adams • Rule • 996-2421

Smitty's Auto Parts
107 N. 1st East • 864-2607

The Haskell Free Press

"The People's Choice"
420 N. First
Haskell, Texas
940-864-2686





UP FOR TWO—Haskell Indian Senior Dakota Silvas going up for two points in the game against Ranger.



LOOKING TO SCORE—Haskell Maiden #5 Jacie Klose looks for a bucket for the Maidens in the game against Ranger.



PUSHES TO SCORE—Haskell Indian #12 Kelby Bell pushed towards the basket for the Indians.

Shop The Haskell Free Press CLASSIFIEDS

940-864-2686 ALL DEADLINES MONDAY AT NOON • hfpnews@lycos.com 940-864-2686

Help Wanted

HELP WANTED: Immediate openings. Haskell County Gin. 864-2358. 41tfc

WES-T-GO convenience store is now accepting applications. Apply in person at store. 400 N. Ave. E. 50-6c

SUBWAY in Haskell is now accepting applications for a manager. Apply in person at store. 400 N. Ave. E. 50-6c

GIBSON CARE CENTER is hiring LVNs and CNAs. CNAs, full-time at \$9.00 per hour with benefits part-time at \$10.00 per hour, no benefits. LVNs call for information, full-time and part-time needed. For more information, contact Administrator Steve King or April Roby at 940-989-3526. 50-1c

HELP WANTED: LVN for weekend coverage. \$1,000 sign-on bonus. Throckmorton Nursing & Rehab. Contact Suzette or Misty 940-849-2861.51-1c

POSITIONS opening at Majestic Senior Living Haskell. Must pass background screening. Apply at 1302 N. 1st. 1c

For Rent

FOR LEASE: Retail and office space. Big Country Real Estate 864-2238. 3tfc

Dodson Concrete Construction
Commercial - Residential
David Dodson
704 N. Ave. F • Haskell
940-864-2038
Over 30 Years in the Business
FREE ESTIMATES

For Rent

RESIDENTIAL and commercial leasing available. Companies welcome. Westex Properties. 940-256-2930. 45tfc

S&S STORAGE in Haskell has storage units for rent. Call 864-2208. 1c

Public Notices

NOTICE OF PUBLIC HEARING

The Commissioners Court of Haskell County, Texas, pursuant to §222.1071 of the Texas Transportation Code, hereby gives notice of a Public Hearing and Intent to Consider Creation of one or more County Energy Transportation Reinvestment Zone, (CETRZ) to be held on the 6th day of January, 2014, at 9:00 o'clock a.m. at the Haskell County Courthouse, to receive public comment on the following topics:

1. Whether or not to create one or more County Energy Transportation Reinvestment Zone (CETRZ), as authorized by law, to promote one or more infrastructure projects to be located within the County to be funded by the CETRZ. Additional information on this topic may be found on the Texas Department of Transportation website: <http://www.roadsfortexasenergy.com>

Public Notices

Individuals wishing to participate in the public hearing by either oral or written testimony will be asked to complete a Speaker's Form to be provided at the meeting. Oral testimony should be limited to three (3) minutes in the interest of time and to permit maximum participation by others. Rules of Decorum will apply.

The Commissioners Court may, 30 days after

closing the Public Hearing, take appropriate action on the matter as the Commissioners Court may in its discretion determine to be in the best interest of the County. 1c

FOR RENT

Forks \$25 per day
Digger 9" & 12" Auger \$50 per day
Tree Sheer \$75 per day
Steele Fire
940-864-2208

WE BUY SCRAP METALS!

Copper, Brass, Aluminum Cans, Batteries, etc.
Pick up available for **JUNK CARS!**
Anson Metal Recycling
3014 FM 707, Anson
325-823-2500

POLITICAL CALENDAR

The Haskell Free Press is authorized to make the following announcement for the political office in Haskell County, subject to the action of the 2014 Primaries. Unless otherwise specified the candidates listed paid for the announcement, and have designated themselves as campaign treasurer. All political advertising is cash in advance.
Comm. Precinct 2
Tiffen Mayfield

Public Notices

closing the Public Hearing, take appropriate action on the matter as the Commissioners Court may in its discretion determine to be in the best interest of the County. 1c

Clear Fork Crime Stoppers
1-800-222-TIPS

E-mail your news, photos and ads to The Haskell Free Press at hfpnews@lycos.com or hfp@valornet.com

RIKE REAL ESTATE LLC
Mary Rike Broker John Rike, Agent Megan Cox, Agent
mary@rikerealestate.com john@rikerealestate.com megan@rikerealestate.com
415 S. First St. • Haskell, TX 79521
940-864-2411 325-370-6572
www.rikerealestate.com

1 AVE K EAST-3/1.5 on large corner lot. \$64,500-NEW
101 N. AVE. G-3/1 with many original features. \$29,900-NEW
300 N. AVE. N-2/1. \$58,000-NEW
807 N. 8TH-2/1. \$19,000-NEW
707 S. AVE. E-Commercial stand alone bldg. w/extra lots. \$57,500-NEW
1001 N. G-Beautiful historic 3/3 with wonderful yard and many amenities. \$175,000-NEW
265 AC. NW HASKELL CO.-Cultivated farmland. \$825/ac.-NEW
1106 N. L-2/1. Move in ready Cottage! \$42,500.-NEW
412 N. 1ST-Commercial bldg. C/HC, living quarters and large upstairs. \$52,500-NEW
7734 HWY. 6-Rule Drive in theater on 4 ac. \$60,000-NEW
NORTH OF RULE, HWY. 6-61.1 Ac. CRP farm. \$65,000-NEW
103 N. H-2/1 with possibilities. \$49,900
503 S. 9TH-3/1. \$23,500
503 N. AVE. F-Investment! 2/1. \$19,000
EARLES CAMP, Lake Stamford-2/2. \$25,000
707 N. H-Beautiful 4/3. \$212,500
2112 EAST ROAD-2 acre lot. \$8,500
HASKELL 40 AC. FARM-Tank, septic and electricity, pens and more. \$80,000
1001 N. 4TH ST. EAST-3/2. \$75,000
703 N. E- 4/3. \$192,000
807 N. H-3/2. \$89,900-PENDING
1703 N. F-3/2.5. \$139,900.-PENDING
95 ACRES-Close to city limits with beautiful views and many amenities.-PENDING
600 N. 5TH ST.-3 or 4/3 with basement. \$119,000-REDUCED
608 6TH ST. ROCHESTER-2/2 with great parking. \$45,000-REDUCED
509 N. AVE. F-3/3. \$44,500-REDUCED
7H RANCH-2779+/- Ac. of prime Haskell County land. \$950/Ac.-REDUCED
300 N. AVE. L-Large 4/3. \$114,500-REDUCED
13 AVE. E-Commercial building! \$54,500-REDUCED
701 N. E-4/3. \$59,500-REDUCED
1007 N. 8TH ST.-4/2.5 on large corner lot. \$174,500-REDUCED
1208 N. THIRD-Site built. 4/3 on acreage. \$79,500-REDUCED
Texas Realtors

HCR
HASKELL COUNTY REALTY
103 N. Ave. E
Haskell, TX 79521
940-864-2665
1-800-658-6342
Chan Guess, Rhonda Lisle, Roger Roewe - agents
Bridget Guess - broker
www.haskellcountyrealty.com

RESIDENTIAL:

- 7485 HWY. 380 E-RANCH LIVING, LOG HOME ON 40+/-ACRES! 5/2 \$225,000 **SOLD**
- 8047 CR 1694-KNOX CITY-40 +/- ACRES, GREAT COUNTRY LIVING! 4/2. \$250,000 **REDUCED**
- 2245 FM 2163-ROCHESTER-LARGE BRICK HOME ON 12 +/- ACRES. \$199,900 **REDUCED**
- 5131 FM 2163-COUNTRY HOME BEAUTIFULLY UPDATED THROUGHOUT ON +/- 14 ACRES! 4/1.5 \$158,000
- 1310 N. AVE. H-NEWLY RENOVATED AND MOVE IN READY! MOTIVATED SELLER! 4/2. \$149,900
- 121 N. 12TH AVE., MUNDAY-BEAUTIFUL BRICK HOME W/UNENDING AMENITIES! 4/2. \$104,500
- 2062 HWY 380W-SPACIOUS FAMILY HOME ON 2.5 +/- ACRES! 4/3. \$99,900 **UNDER CONTRACT**
- 1605 N. AVE. E-NEW IMPROVEMENTS! 3/2 \$89,900. **REDUCED**
- 1201 N. AVE. K-THE COMPLETE PACKAGE! MUST SEE! 3/2. \$74,900 **NEW**
- 504 N. 7TH-SURPRISINGLY SPACIOUS! 3 (OR) 4/2 (REPAIR ALLOWANCE AVAILABLE) \$69,900 **UNDER CONTRACT**
- 506 S. AVE. F-COZY! PACKAGE DEAL! 2/1. \$29,900 **REDUCED**
- 504 S. AVE. F-GREAT CURB APPEAL! PACKAGE DEAL! 4/1. \$49,900 **REDUCED**
- 705 ROBBINS, RULE-VERY NICE! 3/2 BRICK HOME W/ FIREPLACE & OPEN FLOOR PLAN! \$53,000 **UNDER CONTRACT**
- 1200 N. AVE. L-CORNER LOT & SPACIOUS! 2/2. \$47,500 **REDUCED**
- 5275 FM 2163-JUST OUTSIDE OF TOWN! 2.6 +/- ACRES- 2/1. \$20,000 **UNDER CONTRACT**

For more listings call or go to haskellcountyrealty.com.

Langford Roustabout Services, LLC
8348 U.S Hwy 277 N.
Haskell, TX 79521

Scott Langford
Owner
940-256-0535

Doug Sorrells
Supervisor
940-256-0536

Office
940-864-3490

Fax
940-864-3491

Producers need to anticipate payment reductions

USDA's Farm Service Agency (FSA) is reminding farmers and ranchers who participate in FSA programs to plan accordingly in FY2014 for automatic spending reductions known as sequestration. The Budget Control Act of 2011 (BCA) mandates that federal agencies implement automatic, annual reductions to discretionary and mandatory spending limits. For mandatory programs, the sequestration rate for FY2014 is 7.2%. Accordingly, FSA is implementing sequestration for the following programs:

- Dairy Indemnity Payment Program;
- Marketing Assistance Loans;
- Loan Deficiency Payments;
- Sugar Loans;
- Noninsured Crop Disaster Assistance Program;
- Tobacco Transition Payment Program;
- 2013 Direct and Counter-Cyclical Payments;
- 2013 Average Crop Revenue Election Program;
- 2011 and 2012 Supplemental Revenue Assistance Program;
- Storage, handling; and Economic Adjustment Assistance for upland cotton

Conservation Reserve Program payments are specifically exempt by statute from sequestration, thus these payments will not be reduced.

These sequester percentages reflect current law estimates; however with the continuing budget uncertainty, Congress still may adjust the exact percentage reduction. Today's announcement intends to help producers plan for the impact of sequestration cuts in FY2014.

At this time, FSA is required to implement the sequester reductions. Due to the expiration of the Farm Bill on September 30, FSA does not have the flexibility to cover these payment reductions in the same manner as in FY13. FSA will provide notification as early as practicable on the specific payment reductions.

For information about FSA programs, visit your county USDA Service Center or go to www.fsa.usda.gov/.



ON THE MOVE—Maiden Reagan Hadaway takes the ball downcourt during the matchup with Ranger.



MOVING DOWNCOURT—Haskell Maiden #33 Jacee Guess moves the ball downcourt for the Maidens.

REID'S CONSTRUCTION CO.

Our Trade Skills include:

- Carpentry
- Woodwork
- Painting
- Texture • Tile
- Flooring
- Electrical
- Decks
- All types of roofing
- Laminate
- Composition
- Metal
- Flat Roofs
- Siding
- Additions
- Major remodels



Call Jim

Cell 903-204-3706

Knox City, Texas 79529

"One Company, One Job, One Price!"

"The only job worth doing, is the one well done"

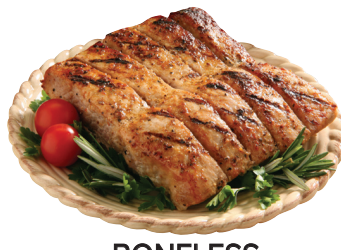
Jim Reid, Owner

Knox City • Munday • Haskell • Stamford

CASHSAVER

COST PLUS FOOD OUTLET

"WE SAVE YOU CASH"
1513 N. SWENSON AVE. IN STAMFORD



BONELESS COUNTRY STYLE PORK RIBS
VALUE PACK

\$1.68 lb.

PLUS 10% ADDED AT CHECKOUT



BOTTOM ROUND STEAKS
VALUE PACK

\$2.98 lb.

PLUS 10% ADDED AT CHECKOUT



FROZEN WINGS
FAMILY PACK

\$1.28 lb.

PLUS 10% ADDED AT CHECKOUT



CORN KING BACON
12 OZ. PKG.

\$2.78 ea.

PLUS 10% ADDED AT CHECKOUT



LITTLE CUTIES CLEMENTINES
3 LB. BAG

\$2.77 ea.

PLUS 10% ADDED AT CHECKOUT



LARGE AVOCADOES

77¢ ea.

PLUS 10% ADDED AT CHECKOUT



BUSH'S BEST BLACKEYE PEAS
15.8 OZ.
REGULAR OR WITH SNAPS

68¢

PLUS 10% ADDED AT CHECKOUT



WOLF BRAND CHILI
15 OZ.
SELECTED VARIETIES

\$1.12

PLUS 10% ADDED AT CHECKOUT



ROTEL DICED TOMATOES WITH GREEN CHILIES
10 OZ.
SELECTED VARIETIES

90¢

PLUS 10% ADDED AT CHECKOUT



OCEAN SPRAY 100% JUICE, JUICE COCKTAIL OR SPARKLING JUICE
60-64 OZ. OR 4 PACK
SELECTED VARIETIES

\$1.86

PLUS 10% ADDED AT CHECKOUT



LAY'S POTATO CHIPS
9.5 OZ.
SELECTED VARIETIES

\$1.96

PLUS 10% ADDED AT CHECKOUT



FOLGERS COUNTRY ROAST GROUND COFFEE
34.5 OZ.

\$6.31

PLUS 10% ADDED AT CHECKOUT



HUNT'S PASTA SAUCE
24 OZ.
SELECTED VARIETIES

96¢

PLUS 10% ADDED AT CHECKOUT



CHEF BOYARDEE PASTA & MEAT MEAL OR HUNT'S SNACK PACK PUDDING OR JUICY GELS
7.5-15 OZ. CHEF BOYARDEE OR 4 PACK SNACK PACKS
SELECTED VARIETIES

92¢

PLUS 10% ADDED AT CHECKOUT



SWISS MISS HOT COCOA MIX
10 CT.
MILK CHOCOLATE OR WITH MARSHMALLOWS

\$1.18

PLUS 10% ADDED AT CHECKOUT



NIAGARA WATER
24 PACK
16.9 OZ. BOTTLES

\$1.97

PLUS 10% ADDED AT CHECKOUT



SPAM LUNCHEON MEAT
12 OZ.
SELECTED VARIETIES

\$2.31

PLUS 10% ADDED AT CHECKOUT



RED BARON CLASSIC CRUST PIZZA
20.6-23.45 OZ.
SELECTED VARIETIES

\$2.92

PLUS 10% ADDED AT CHECKOUT



BLUE BELL ICE CREAM
PINT
SELECTED VARIETIES

\$1.25

PLUS 10% ADDED AT CHECKOUT



BUDWEISER, BUD LIGHT, COORS, COORS LIGHT OR MILLER LITE
12 PACK
12 OZ. CANS OR BOTTLES

\$10.70

PLUS 10% ADDED AT CHECKOUT

PRICES EFFECTIVE JANUARY 1 THRU JANUARY 7, 2014

First Bank ★ Texas

- Agriculture Loans
- Home Improvement Loans
- Personal Loans
- Construction Loans
- Real Estate Loans
- Commercial Loans

Munday Office

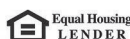
111 South Munday Ave. • (940) 422-4522

Haskell Office

200 S Avenue E. • (940) 864-8555

Stamford Office

610 Columbia • (325) 773-2122



MEMBER FDIC