





# Christmas Gifting

## Made Easy!

Now Your Home Town

Newspaper Is On

# Sale

Through The  
Month Of  
December

# SAVE

# \$2

On The  
**DEPORT TIMES, BOGATA NEWS,  
TALCO TIMES Or BLOSSOM TIMES!**

Return This Blank With Your Check  
Enjoy Home Town News All Next Year

Name \_\_\_\_\_

Address \_\_\_\_\_

City \_\_\_\_\_

State \_\_\_\_\_ Zip \_\_\_\_\_

Amount Enclosed

Are You Getting The Paper Now?

Is This A New Subscription?

**The Deport Times**

Box 98, Deport, Tex. 75435

**The Bogata News**

Box 306, Bogata, Tex. 75417

**The Talco Times**

Box 98, Deport, Tex. 75435

**The Blossom Times**

Box 98, Deport, Tex. 75435

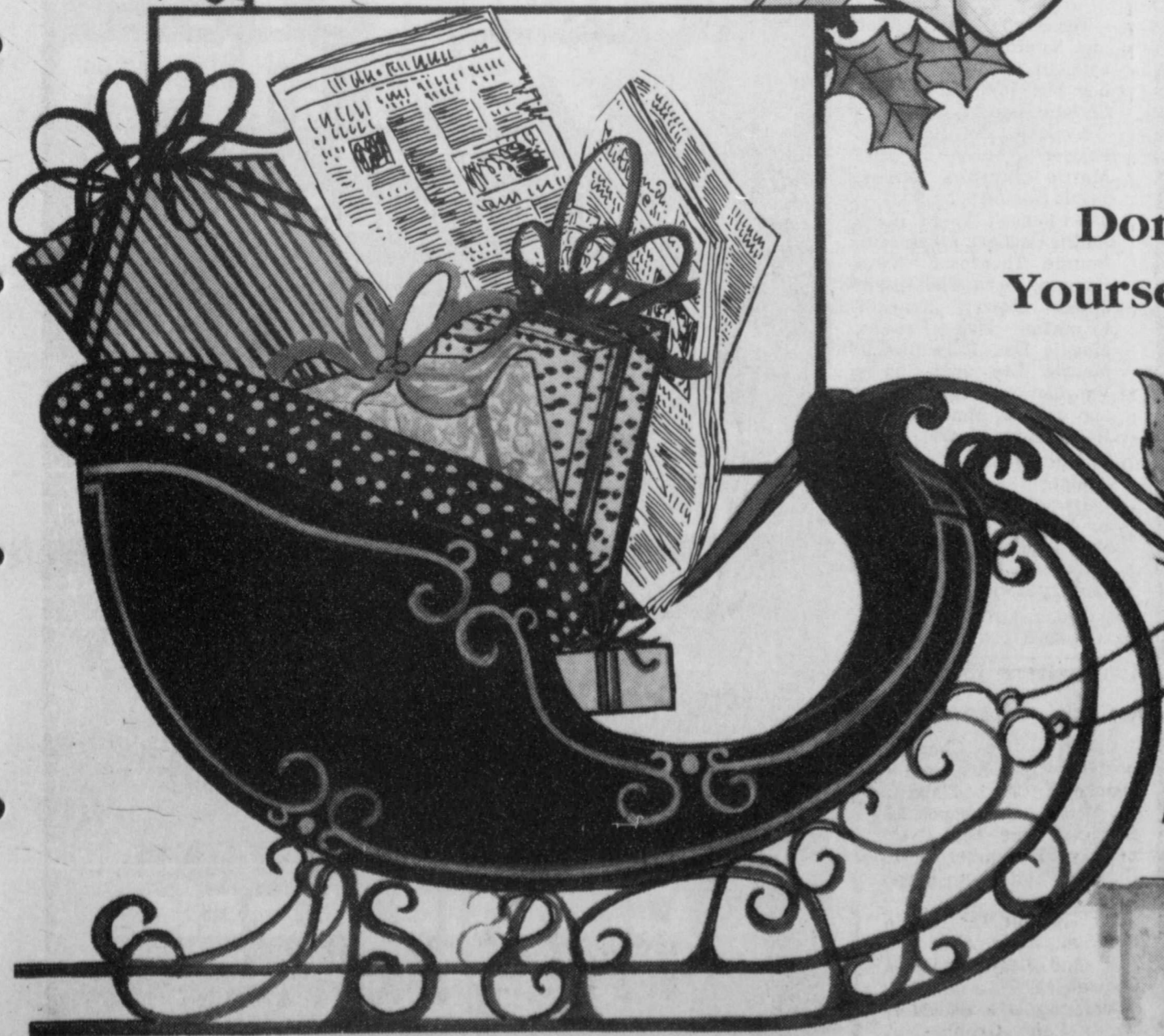
**\$ 550** In Lamar, Red River  
and Titus Counties

**\$ 700** Within The State, But Not  
In Above Counties

**\$ 1050** Out of State

The Perfect Gift At A Great Price!  
Where Else Can You Buy A Gift  
That Lasts ALL YEAR LONG  
For As Little As \$550

Don't Forget To Put  
Yourself On The List Too!





### Christmas Specials KAYE'S HAIRITAGE



Has  
**Wanda Dyer**  
Working With  
Her Now, She  
Has 10 Years  
Experience  
In Houston.

Specials Through  
December

Include All Perms \$15.00

Haircut With Shampoo & Set \$6.00

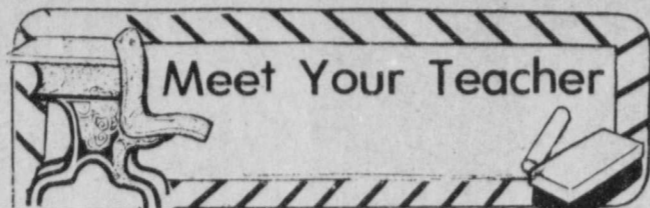
Specilizing In Mens Cuts

& Styles \$5.00

Walk-ins Welcome

OPEN Tues, thru Sat. Late Hours On Thurs.

632-4572 Bogata



Milford (Coach) Groves graduated from Bridgeport High School and received a Bachelor of Science degree from North Texas State College with majors in math and physical education. Coach Groves chose teaching as a career because it gave him "an opportunity to fulfill a desire to help young people develop their minds and bodies and to help guide them on their way to a successful, happy life." He enjoys teaching because he feels he is associated with some of the best people in the world, both adults and young people. It was for these reasons Groves has been in his field for eighteen years. He has taught at Lake Worth, Newton, Beckville, Holiday and for the past seven years at Rivercrest

where he teaches math and athletics. His win-lose record at Rivercrest is 46-23-3 and has won or tied for district championship four out of seven years. Coach Groves enjoys the summer months so he and his family, Wife Patricia, who teaches English and general business at Rivercrest and daughter, Kim, a first grader at Bogata, can spend time together traveling and camping. He is a wilderness trip guide for a lodge in Colorado. He also enjoys sports of all kinds especially football, golf and horseback riding.

Coach Groves is a member of the Texas High School Coaches Association, National Coaches Association and ATPE.



Milford Groves

**NOTICE TO THE PUBLIC OF CHANGES BY ARKANSAS LOUISIANA GAS COMPANY IN CONTRACT RATES CHARGED TO INDUSTRIAL CUSTOMERS FOR NATURAL GAS IN ITS EAST TEXAS SERVICE AREA.** ARKANSAS LOUISIANA GAS COMPANY ("Arkla"), pursuant to the requirements of Section 43(a) of Article 1446c, V.A.T.S. hereby gives this notice to the public of its proposal and intent to change contract rates to its industrial customers in its East Texas service area. The proposed changes are only by contract executed with the individual industrial customers in the area. Each affected customer has already received individual notice of the contract changes. A detail of the proposed changes is on file with the governing body of the towns in which such contract industrial customers are located, and with the Railroad Commission of Texas for those contract industrial customers located outside incorporated municipal limits.

J.N. Clayton, Vice President  
Arkansas Louisiana Gas Company  
A Division of Arkla, Inc.

## Fulbright News

By Betty Rodgers  
Mrs. Bill Hammer of Aikin Grove spent Tuesday with her sisters, Mrs. Travis King and Mrs. Weldon Campbell. Betty, Melissa and Monte Rodgers visited Sunday afternoon with Mr. and Mrs. Edgar Rodgers in Bogata. Mrs. Rodney Yarborough, Tammy and Jami were in

Brenham Thursday until Sunday visiting relatives. Mr. and Mrs. Duane King of Paris visited Friday evening with Mr. and Mrs. Travis King. Mrs. Lilly Stevens returned home from McCuiston Medical Center, after being a patient for a few days. Mrs. Sue Wolfe, Tracy and Waylan went to Sulphur Springs Friday to visit her daughter and family, Mr. and Mrs. Steve McFarland. Mr. and Mrs. Roy Legate were in Arkansas during the weekend visiting her sister. Mrs. Travis King and Mrs. Ethel Epps were in Paris shopping Wednesday and visited at McCuiston Hospital with Mrs. Johnnye Clayton, Bro. Curtis Hoover



### David Rozell Gets A Layup

DAVID ROZELL, No. 34, of the Rivercrest Rebels comes down after this layup during the Rivercrest Tourney last weekend. The Rebels took first consolation in the Tourney. (Staff Photo by Diana Eudy)

### Accurate Records Crucial

Keeping accurate financial reports is probably one of the best tax saving actions that a taxpayer can take, the Internal Revenue Service advises. More detailed information about recordkeeping appears in the free IRS Publication 552, "Recordkeeping Requirements and a List of Tax Publications."

When the time comes for filing a federal tax return, good records can mean the difference between filing an accurate return or an inaccurate one, the Internal Revenue Service says. Also, good reports can ensure that taxpayers take all the deductions and benefits to which they are entitled.

### Cuthand Club Meets To Quilt

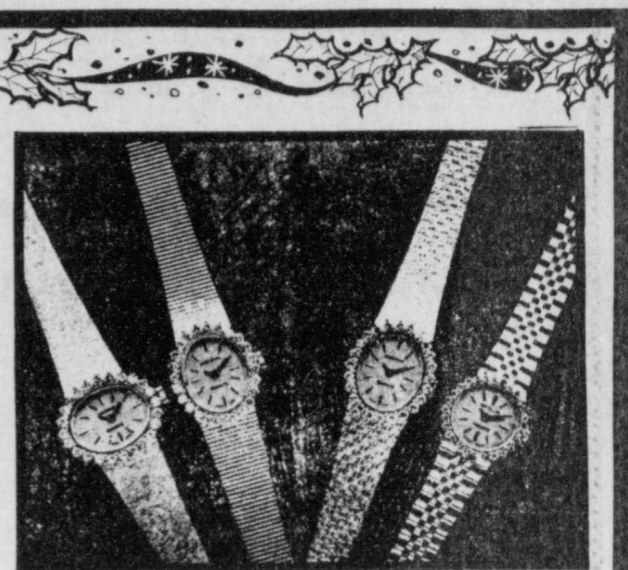
By Wootie Harville  
The Cuthand Cemetery Club met Thursday, December 2 with seven members present. One quilt was finished. A covered dish lunch was served and Christmas gifts exchanged. The business meeting was to order by president, Lillie Harville. Odella Cheatwood led the opening prayer. The devotional was given by Wootie Harville. Minutes and financial report was read by secretary-treasurer, Wootie Harville.

Those present were Lillie Harville, Maggie Taylor, Norma Williams, Oma Moore, Odella Cheatwood, Jettie Minschew and Wootie Harville. The next quilting day will be December 16.

### Calvary Baptist Has Assortment Of Events

The Children's Department of the Calvary Baptist Church presented their annual Christmas play Sunday night, December 5. This year, the play was entitled "The Best Christmas of All" about 20 of the children participated in the program directed by Linda Wood.

The Adult Choir of the Calvary Baptist Church will present "The Night the Angels Sang" a Christmas Cantata by John Peterson on Sunday afternoon, December 19 at 5 p.m. Following the presentation there will be a barbeque dinner for those who wish to attend. Reservations and cost of the meal may be arranged by calling the church before Monday, December 13. The public is invited to attend.



### Diamond Watches

Regular \$695.00 And Up

Now Thru Christmas

40% OFF

### Bankhead Jewelers

415 N. Jefferson  
Mt. Pleasant  
572-5441

Home Owned and Operated

Jungle Gardenia <b>COLOGNE</b> 2 oz. Spray <b>\$8.50</b>	Mens <b>ARAMIS</b> Cologne 1/2 oz. Reg. \$8.99 Value <b>\$5.27</b>	For Men <b>MUSK</b> Jovan Oil Cologne 4 oz. <b>\$7.97</b>
<b>TRIAMINIC</b> Syrup 4 oz. <b>\$1.98</b>	World Of Nature <b>VITAMIN B-12</b> 500 Mg. 100 Ct. <b>\$3.27</b>	New - 3 <b>ANACIN</b> Childrens Elixir 100% Aspirin Free 4 oz. <b>\$3.23</b>
New From Norwich <b>ASPRIN</b> Extra Strength 500 Mg. 150 Ct. <b>\$2.27</b>	Prime <b>VITAMIN E</b> 400 Unit 130 Capsules <b>\$3.67</b>	Genaton Liquid <b>ANTACID</b> Gavison Formula 12 oz. <b>\$3.27</b>
<b>DRAMAMINE</b> Tablets 12 Ct. <b>\$1.98</b>	World Of Nature <b>CALCIUM</b> Oyster Shell 100 Ct. <b>\$1.98</b>	
<b>FEEN-a-MINT</b> Laxative 30 Ct. <b>\$1.48</b>		

## WAL-MART

### Pharmacy

Bill Bryson—Pharmacist  
Clarksville



## Three new ways to improve your home/business communications with Continental "phownership!"

### Answer/record

Automatically answers incoming calls and records messages.  Eliminates missed calls while you are out of the office or away from home.  Monitors incoming calls while you are too busy to answer.



### Speakerphone

Two-way telephone conversations without lifting the receiver.  Hands-free operation allows you to continue working as you speak.  Group conferencing or family get-togethers at Speakerphone station.



### Automatic dialer

Fast, one-digit dialing for up to 32 or 60 frequently called numbers.  Quick connections to anywhere.  Fingertip convenience to reach family, friends, customers, suppliers, emergency numbers.



Telephone accessories for home and office work with any conventional telephone. Installation is fast and easy. So is phownership. Every Continental communications product and system—standard telephones, modern Trendlines, accessories or multi-line desk sets—is available for purchase at any Continental Telephone location. For more information, visit your local Phone Fair or call your Continental business office today.

**Continental Telephone**  
An Equal Opportunity Employer. Of Texas

## ALL NEW GLYN'S BOOT STORE

3 Buildings North of  
Glyn's Western Wear

**NOW OPEN**  
Just In Time For Christmas Shopping

**ONE GROUP  
BOOTS 20% OFF**

When you buy a men's or ladies boot at regular price, get a men's or student's jean FREE

See stacks and stacks of men's, women's, children's boots all on display at Glyn's new boot store

Lizard Boots  
**169.98**  
and  
**199.98**

Smooth Ostrich Reg. 225.98  
**179.98**

Buy a men's or ladies shirt or top at regular price and get 5.00 off any men's or ladies' jean.

Open till 8 p.m. nightly till Christmas

## GLYN'S

206 N. Jefferson Mt. Pleasant

**SHOPPING FOR CHRISTMAS!**

Consider  
**Big Selection Of  
BEDROOM FURNITURE  
From Lehigh And DMI**  
PRICES Start At \$279<sup>95</sup> & Up  
(Includes Dresser, Mirror,  
Chest, Night Stand,  
Headboard & Frame)  
**SLATON FURNITURE**

East Side Square Clarksville, Texas



**Coupon Clipping**

There is no substitute for looking at the coupon with a wary eye. If you don't need the product, or will be unable to use it, don't clip the coupon. Even with the coupon the price of the item may be well above similar products with which you are satisfied. Read the conditions on the coupon. How many will you have to buy to get the rebate? Will you be able to use that amount before the product goes bad? Look for an expiration date. Will you be able to buy the product before the coupon expires? Check the redemption requirements. Some coupons must be sent to the manufacturer while the retailer can redeem others. Don't forget you may be able to use both a store's and a manufacturer's coupon on the same item. "Double plays" can make some very expensive items quite reasonable. A stockpile of unexpired coupons can be the basis for such redemptions.



**Rebelette Tony McGee Goes Up For Two**

TONY McGEE, No. 20, goes up for two during the Rivercrest Invitational Tournament last weekend. Other Rebelettes shown are Mary Savage, No. 15 and Rhonda Branch, No. 23. (Staff Photo by Diana Eudy)

**11 x 14  
Wall Portrait  
in  
Living Color**

Never before offered at this Price!

AT  
**99¢**

Plus 75¢ for handling

This very special offer is presented as an expression of our thanks for your patronage.



Compare at \$25.00!

- FREE to all Senior Citizens
- NO CHARGE for groups
- LIMITED OFFER one per subject, one per family

**PRESTIGE PHOTOGRAPHY, INC.**

P.O. BOX 6587  
MOBILE, ALA. 36606  
205-476-6990

- Talco **Windjammer Restaurant**  
Monday, Dec. 13  
2 - 7 p.m.
- Bogata **Bell's Beauty Shop**  
Tues. Dec. 14  
10 - 1 & 2 - 6 p.m.
- Deport **Giffords Food Store**  
Tues. Dec. 14  
10 - 1 & 2 - 6 p.m.



By Margie Rice

Get a head-start on your Christmas week meals by mixing up a big batch of Christmas Frozen Fruit Salad. This is a spin-off from Deport's Margaret Park's recipe. The creamy, cold dessert is a delicious contrast to the warm foods that make up many of our winter-time meals. The recipe makes approximately 32 cup-cake size servings. Cup-cake pans (Muffin tins) are exactly what I freeze the dessert salads in. Once they are solidly frozen, I flip the individual salads out of the pans and store them in zip-lock freezer bags. Then, however many you need for a meal can be easily and quickly retrieved.

**Christmasy Frozen Fruit Salad**

1 large can crushed pineapple  
4 Tbsp. lemon juice  
5 bananas, mashed  
two thirds cup sugar  
1 small jar red maraschino cherries (drained)

1 small jar green maraschino cherries (drained)  
1 pint whipping cream, whipped  
...OR 1 large Cool Whip  
1 pint sour cream  
1 cup chopped pecans (optional)  
12 cup peaches, diced (canned or frozen partially thawed) (optional)  
Mix pineapple and lemon juice. Add bananas, cherries and peaches. Stir in sugar and pecans and fold in whipped cream or Cool Whip and sour cream. Freeze in muffin-tins or in shallow freezing containers. Let stand at room temperature a few minutes, to soften, before serving.



**FIVE GENERATIONS—** Left to right, back row: Loree Morris, Leora McDonald and Betty Morris. Front row: Roxann Beaty, baby Andrea Morris and Ethel Brown.

**American Viewpoints**



Whatever makes men good Christians, makes them good citizens.  
—Daniel Webster

have a nice weekend...

**NOTICE TO THE PUBLIC**  
OF CHANGES PROPOSED BY ARKANSAS LOUISIANA GAS COMPANY IN RATES CHARGED TO RESIDENTIAL AND COMMERCIAL CONSUMERS FOR NATURAL GAS AND NATURAL GAS SERVICE IN THE UNINCORPORATED AREAS SERVED BY THE COMPANY IN EAST TEXAS.

ARKANSAS LOUISIANA GAS COMPANY ("Arkla"), a division of Arkla, Inc., pursuant to the requirements of Section 43 (a) of Article 1446c, V.A.T.S., hereby gives this notice to the public, and files this public statement, of its proposal and intent to change gas rates (effective January 1, 1983) now being charged residential and commercial customers in all unincorporated areas served by Arkla in East Texas. The proposed change is an increase in the present base rates of 10.7¢ per hundred cubic feet of gas furnished to all residential and commercial consumers in the affected unincorporated areas, subject to continuation of the currently effective provision for cost of gas adjustment with certain revisions. A detail of the proposed change and a detailed study showing Arkla's present deficiency in revenues which averages 10.7¢ per hundred cubic feet of gas sold to its residential and commercial customers in East Texas are on file with the Railroad Commission of Texas. The proposed new rates would be the same rates, charged under the same conditions, as are now effective in the nearest incorporated municipality. Standard identical rates have been approved by municipal ordinance in all the towns in Arkla's East Texas service area.

J.N. Clayton, Vice President  
Arkansas Louisiana Gas Company  
A Division of Arkla, Inc.

Specials Run Thurs. Fri. & Sat. **DEAN WARD'S GROCERY** Regular Gas 109.9  
Halesboro St. Across From Bogata Elem.  
Hours 5 a.m. - 11 p.m. 7 Days Week

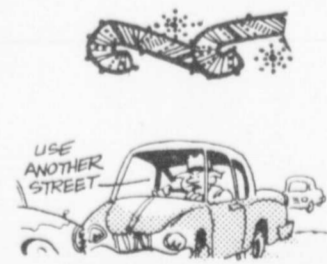
<b>MILK</b> Borden's - Gallon  <b>\$1.89</b>	<b>PIE FILLING</b> Win-You Cherry 21 oz. Jar <b>93¢</b>	<b>ORANGE JUICE</b> Generic Frozen 12 oz. <b>69¢</b>	<b>PORK CHOPS</b>  Fresh - Lb. <b>\$1.29</b>
<b>BREAD</b> Mrs. Baird's Ideal <b>45¢</b>	<b>BISCUITS</b> Parade <b>5/89¢</b>	<b>PORK &amp; BEANS</b> Van Camp 16 oz. Can <b>2/79¢</b>	<b>TREET</b> Lunch Meat 12 oz. Can <b>\$1.19</b>
<b>EGGS</b> large - Dozen <b>65¢</b>	<b>FLOUR</b> Generic 5 Lb. Bag <b>69¢</b>	<b>ROTTEL TOMATOES</b> <b>2/89¢</b>	<b>BACON</b> Slab Sliced - Lb. <b>\$1.43</b>
<b>PEPSI COLA</b> 2 Liter <b>79¢</b>	<b>COTTAGE CHEESE</b> Borden's 16 oz. Buy 1 Get 1 Free <b>\$1.25</b>	<b>BUTTERFINGER</b> Candy Pkg. of 6 Bars <b>99¢</b>	<b>GROUND MEAT</b> Fresh - Lb. <b>\$1.29</b>
	<b>BABY RUTH</b> Candy Pkg. of 6 Bars <b>99¢</b>	<b>TIDE</b> 49 oz. Box <b>\$2.15</b>	
		<b>TISSUE</b> Charmin 4 Roll Pkg. <b>99¢</b>	
		<b>ICE CREAM</b> Borden's 1/2 Gallon Old Fashioned <b>\$1.69</b>	

**WMU Meets At Calvary Baptist**

The WMU of Calvary Baptist Church of Talco met Tuesday for the week of prayer for foreign missions. Mrs. Elsie Weatherall, mission support chairman, had charge of the programs. Mrs. Sue Coon led the opening prayer. The entire program was divided into five shorter program each one with an account of mission fields that are already established and also the newest fields of mission work which are now being organized.

The theme of the entire program was "Look at the Fields". The scripture was Matt. 9:36-38. Mrs. Sue Coon, Georgia Easterling, Mary McKelvey, Lucille Mathews and Mary Kelley helped the

support chairman with the programs. A covered dish luncheon was served at the noon hour. Mrs. Elsie Weatherall led the closing prayer.



"Now tell me, just what could the other driver have done to avoid this accident?" "He could have gone down another street."

**Christmas Gift Ideas**  
From the Handyman's Christmas Store  
**PARIS LUMBER**  
**And BUILDING CENTER**  
LADIES!! Shop Our One Of A Kind Lighting Center.  
Elegant Chandeliers Of All Styles, Beautiful Contemporary Lighting For Both Inside And Outside Your Home Or Office.  
OPEN: 7:30 - 5:00 Mon.-Fri.  
7:30 - 1:30 Saturday  
785-0771 Paris  
Loop 286 And Pine Mill Rd.

### Grandson Of Local Couple Gets Football "Plusses"

The following item was taken from the sports section of an Abilene paper and written by Assistant Sports Editor Bill Hart and given to the Talco Times by Mr. and Mrs. E.O. Frye.

The final statistical charts showed that Abilene Christian University middle linebacker Paul Frye made only two unassisted tackles, as in on 12 others, broke up pass and recovered a teammate's fumble punt. It seemed like his name was called all afternoon by the public address announcer during the Wildcat's 21-14 season closing victory over Toward Payne Saturday afternoon.

Frye, a freshman from Arlington, found out last Sunday he was going to start when the doctors ruled out like Funderburg playing because of a neck injury. "I had a good week to prepare, so I knew what to do," he said "I got a lot of help from other starters and the seniors and it sure helped. This was my first chance to play and I wanted to make the most of it."

Frye had played in every game for the Wildcats, but mainly he was backup for

Funderburg, which meant little playing time, maybe three or four plays, but in some instances a few more.

He admitted he was nervous at the start, but on the game's third play he tackled quarterback Andy Townsend after a four-yard gain, forcing a punt.

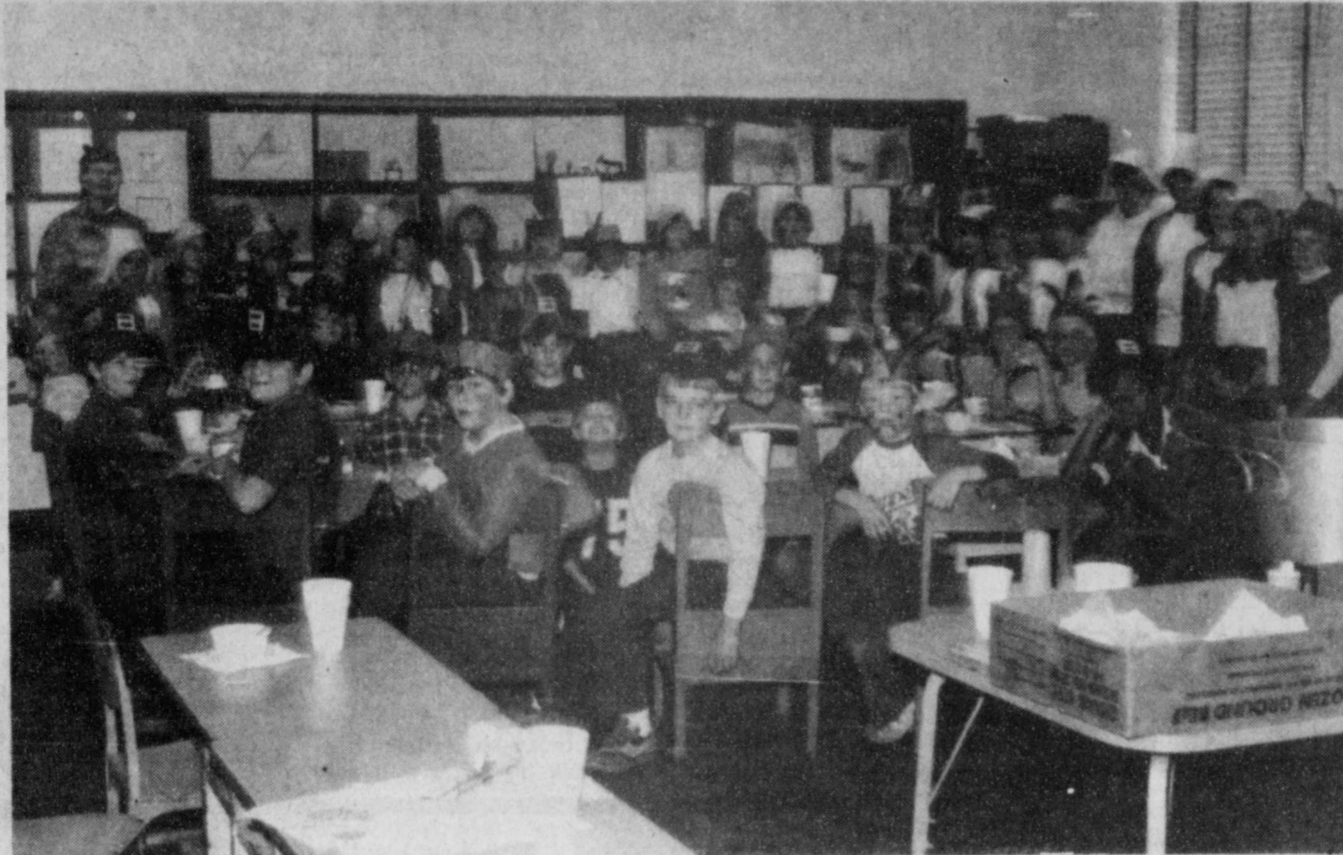
"I was so nervous I couldn't catch my breath that first series, but after that I was all right," he said.

On the next series, the candidate for Wildcat of the Week on defense recovered Mark Jackson's punt-return fumble at the ACU 27 to get his team out of a possible jam.

Chances are when spring drills roll around, Frye won't be backing up Funderburg, if Saturday's game means anything. He may be switched to the strong side linebacker position being vacated by the graduating Jim Tuttle, who also had a fine game Saturday, with six unassisted tackles.

"The coaches have told me they might move me over here, I don't care. All I want to do is play," he said.

And that's what he did Saturday afternoon, quite impressively, at that.



**FOURTH GRADE Pilgrims of Talco Elementary sent invitations to the third grade Indians inviting them to the first Thanksgiving feast. The**

Indians responded. The fourth grade Pilgrims made a delicious stew which served with crackers, banana bread, pumpkin bread and an Indian cake. Games were

played and much friendship was shown between the groups. The Indians brought popcorn which was more than they could handle. Therefore, the Indians decided to have the Pilgrims over for a

pop-in the following week. The pop-in was a big success and enjoyed by everyone. (Staff Photo)

Ladies Short

**COATS**

**1/2 Price**

---

**SUITS** 6 Ladies **1/2 Price**

---

**JACKETS** Odd Lot Mens **1/2 Price**

---

**DRESSES** All Ladies **20% Discount**

---

**BLOUSES** All **10% Discount**

FREE Gift Wrapping

**TURNER'S**  
DRY GOODS  
BOGATA, TEXAS

## Cunningham News

By Berniece Wyatt

Word has been received of the death of Nixon Wilson of Esquite. He was the husband of the former Jewel Baumgardner. Sympathy is extended to the family.

Mrs. Boyce Morrison of Columbia, La. visited Mr. and Mrs. Joe B. Williams and Berniece Wyatt Friday. Dorothy Baker of Longview spent the weekend with Mr. and Mrs. Clifford Lyles.

Relatives received word of the death of William Ball of Lubbock. He married the former Margie Temple. The community extends sympathy to the family.

Mr. and Mrs. Freeman Phillips of Pittsburg visited Berniece Bledsoe Sunday night.

Members of the Methodist and their pastor, Rev. Marlin Fenn and several members of the Baptist Church enjoyed a pre-Christmas dinner at the Community Center Saturday night. Out of town guests were Dist. Supt. and Mrs. Don Renshaw of Paris, Rev. and Mrs. John Hawkins of Sulphur Springs, Dorothy Baker of Longview, Mrs. Mac Webb, Mrs. Ross Skaggs and Sammy Kelsey of Deport, Mr. and Mrs. Walker Devlin, Mr. and Mrs. Warren Denison, Mrs. Tommie Dennis and Mrs. Glenna Norrell of Minter.

Mr. and Mrs. Andy Smith of Paris are staying with Mr. and Mrs. William Cooper while working on their trailer house.

Mr. and Mrs. Bob Allen and John and Mr. and Mrs. Terry Fry of Blossom, Kim Allen of Paris and Pam Allen of Tulsa, Ok. and Bob Allen II of Commerce visited Mr. and Mrs. Fred Allen Saturday afternoon.

Velma Cox with Jo Berryman and Jack Devlin of San Gabriel, Ca. were Tuesday dinner guests of Mr. and Mrs. Lloyd Williams of Shady Grove.

Mrs. Vida Smith is a patient in St. Joseph Hospital.

Mrs. William Cooper visited Mr. and Mrs. Joe Betterton of Deport Thursday.

Mrs. Allie Rees, Mrs. Buddy Taylor, Mrs. Leslie Taylor, Justin and Jennifer spent Sunday with Mr. and Mrs. Ronald Kelsoe of Naples.

Mr. and Mrs. Bill Pritchett entertained members of the Life Tabernacle Church with a chili supper at their home Saturday night.

Rev. and Mrs. Don Whitt of Hot Springs, Ark. were Sunday dinner guests of Mr. and Mrs. Almer Norwood.

Mrs. Clyde Slusher who underwent surgery in Baylor Hospital several days ago, has been dismissed and is recovering nicely at her home here.

Mr. and Mrs. Dean Black, Roy Dean and Jeff, Mr. and Mrs. Charles Black and Brian of Paris spent Sunday with Mrs. Delcia Wilson.

Velma Cox with Jo Berryman and Jack Devlin were dinner guests of Mrs. Dora Hester of Paris Wednesday.

Mr. and Mrs. Dale Smith and family of Blossom, Mr. and Mrs. Donald R. Smith of Deport and Mr. and Mrs. Keith Sarrow of Paris visited Mr. and Mrs. Alfonso Smith. Mr. and Mrs. Almer Norwood were supper guests of Mr. and Mrs. Darold



SCHAYNE Whitney holds a 9 pound and 6 pound channel catfish caught at

TP&L Lake last Wednesday by Marshall Reese. (Staff Photo)

Norwood of Paris.

Jack Devlin and Jo Berryman of San Gabriel, Ca. returned home Saturday after an extended visit with their sister, Velma Cox and other relatives.

Mr. and Mrs. Brit Phillips and family of Lone Star visited Mr. and Mrs. William Cooper Sunday afternoon.

### Courthouse Squares



### THOUGHT FOR FOOD

**Cheese Crumble Apple Pie**  
1 9-inch unbaked pie shell

**Topping:**  
1/2 cup all-purpose flour  
1/2 cup sugar  
1/2 cup firmly packed light brown sugar  
1/2 tsp. cinnamon  
5 tsp. butter

**Filling:**  
5-6 (approx. 1 1/2 lbs.) peeled, thinly sliced cooking apples  
1 tbsp. fresh lemon juice  
1 1/2 cups (6 oz.) shredded Cheddar cheese  
4 tsp. flour  
1/4 tsp. nutmeg  
Preheat oven to 375 °F. Make a high rim on pie shell. For topping, combine flour with sugars and cinnamon. Cut in butter. Set aside. For filling, toss together apples and lemon juice. Mix together cheese, flour and nutmeg; toss with apples. Arrange apples in pie shell. Sprinkle on topping. Bake 40 to 50 minutes. Serve warm.  
American Dairy Association

have a nice weekend...

# Do Yourself An Energy-Saving Favor



## Caulk And Weatherstrip Your Home Now

Caulking and weatherstripping your home is an easy, do-it-yourself way for you to save energy. With just a few inexpensive materials, you can caulk and weatherstrip around all your doors and windows. Caulking and weatherstripping seals heated air indoors to keep your home comfortable with less energy. When you save energy you save on heating costs. So caulk and weatherstrip your home now before the heating season begins and save energy all winter long.



E49-82

**CATNAPPER \$129<sup>00</sup>**

**5 Year Warranty On Frame & Mechanism**  
**Herculon Fabric**

**CASH & CARRY FURNITURE**

2301 N. Main St. Paris 785-7577

**TRI-STATE MOBIL HOMES**

1803 W. Ferguson Of Mt. Pleasant

**Wishes To Announce A Christmas Sale.**

Phone 572-7901

**3 Bedroom, 2 Bath Delivered & Set Up, With One Years Insurance, For ONLY \$16,530<sup>00</sup> With \$1,630<sup>00</sup> Down For 180 Months ONLY \$188<sup>52</sup> FHA - VA - Conventional Financing**

**SALE NOW IN PROGRESS ENDS January 5th, 1983.**



Economic news? These are the days, my friend, when all the piggybanks go to market.

### Now Is Time To Plan Vegetable Garden

By Chris Bull  
County Extension Agent  
Now is the time to decide on varieties and types of vegetables you want to plant next spring. Visit garden centers, seed stores or browse through seed catalogues for new ideas. The county extension office also has information on suggested varieties and planting dates.  
Taking a soil sample from the garden and having it tested would be a good idea for this time of the year. If the pH needs increasing, an application of agricultural limestone made now will begin to have an effect by planting season. The county extension office will send off your soil sample to be tested at a cost of \$4 for the regular test and \$7 for the regular test plus iron, zinc and manganese.

Some folks have already started pruning their trees; however, the best time to do this is from December to February. Contrary to popular belief, pruning at the wrong time of the year does not kill plants, but continual improper pruning results in damaged or weakened plants.  
Have you longed for more shade trees in your yard during the hot summer just past, now is the time to start taking some action. Most folks think of spring as the proper tree planting time, but planting at this time of the year offers distinct advantages. The root systems of trees planted now will develop and become well established before growth starts in the spring. Use only container-grown or balled-and-burlapped trees; the bare-root trees are still not

completely dormant and should not be planted until January and February. Before adding any woody plant to the landscape, though, be sure it is the correct mature size or has the proper growing habit for the location. Plan before planting.  
Now, is also the time for winterizing your lawn and garden tools. Come spring you are going to want that lawn and garden equipment to run smoothly so take a few minutes to make sure everything is cleaned, repaired and stored properly.  
Two excellent publications from the Texas Agricultural Extension Service concerning gardening and pruning are available at the county extension office. Just ask for publication B-1347

and B-1397, "Gardening Guidelines" and "Pruning and Training Landscape Plants."



DECORATIONS  
ADORNING the halls of Talco's Elementary School gives one the feeling that Christmas time is here and Santa will soon be making his trip from the North Pole to Talco. These decorations were made by Mrs. Willie Mae Hobson's third grade students. (Staff Photo)



**HAPPY  
18th  
BIRTHDAY**

La Trecia  
Traylor

Love,  
Mom & Dad



### Weekly Agriculture Briefs

By Paul D. Payne  
The winners of the 1982 Lamar County Food & Fiber Producer and Agri-business Awards will be announced at a Thursday noon meeting of the Lamar County Overall Program Committee. The meeting, to be held in the new community center building at the fairgrounds, is a yearly gathering of committee members of all the Extension Service Advisory Committees and resource people.  
Members and their guests will first enjoy a "Washpot Chill" meal to be followed by a report from Robert Parker. Mr. Parker is chairman of a statewide agricultural study committee appointed by Gov. Clements.

The two agricultural awards will be presented for the eighth time and are given to recognize an agricultural producer and agri-businessman who have actively promoted the Lamar County food and fiber industry.  
The producer award is sponsored by the Paris Kiwanis Club while First City National Bank of Paris provides the agri-business award.  
Previous recipients of the producer award have been Fred Gilliam, Alfred Mackin, Marion Neisler, David Lindsey, Robert Ledbetter, Ernest Nelson and Leo Parsons.  
A number of agricultural meetings are being planned for January and February to

provide producers with up to date information.  
On January 10, there will be an Agricultural Financial Management Meeting beginning at 7 p.m. in the Texas Power & Light Building. James Ahrenholz, Agricultural Economist from Texas A&M University, will be speaker.  
There will be a herd health meeting for dairymen on January 13 beginning at 10:30 in the Production Credit Association meeting room. Paris veterinarian, Dr. Lyle Nottingham, will be discussing a plan for improving reproduction problems and reducing calving interval.  
At the Cunningham Community Center on January 18, the winter cotton production meeting will be held with Dr. James Robinson, Extension Entomologist, as the speaker.  
The schedule for February includes a chemical weed and grass control meeting, a wheat disease prevention discussion and a dairy nutrition shortcourse.

**Homemade Carmel Corn**  
Ready for Christmas Gifts & Parties  
Call Jane Glass By December 18th  
Decorated Buckets For Holidays  
**\$6<sup>00</sup>** Gal.  
632-4425 Bogata

**GRANDCHILD OF THE WEEK**

**Shana Lanae Dodd**  
Daughter of Mr. & Mrs. Eddie Dodd.  
Grandparents are Mrs. Nadine Caldwell of Talco and Mr. & Mrs. Grady Dodd of Jhrltown.  
Great Grandparents are Mrs. Bob McClung of Talco and W. N. Dodd of Bogata and Mr. & Mrs. E. C. Watts of Jhrltown.

This Salute Sponsored By  
**BOGATA FUNERAL HOME**

**Marriage Licenses**  
Marriage Licenses issued from the office of Mary Hausler, County Clerk, Red River County, from October 1st through October 31st, 1982 are:  
John Bedford Hall and Bobbie Jannette Smyers, Clarksville;  
Stephen Michale Shoulders and Dalia Maria Shoulders, Clarksville;  
Louis Allen Nicholas and Rebecca Gail DeRouen, Avery;  
Ricky Joe Holt and Billie Jo Phillips, Clarksville;  
Ray Edmond Miller and Norma Joyce Carrell, Clarksville;  
Louis Martin and Audrey Ruth Despain, Clarksville;  
E.G. Burgess and Ina Lee Watson, Clarksville;  
Gary Lee Gray and Laura Lea Hackney, Clarksville;  
Robert Lee Taylor and Ramona Sue Lamon, Avery;  
Alan Wayne Petri and Mary Beth Petri of Clarksville.

**have a nice weekend...**

<b>MILK</b> Bordens - Gallon <b>\$2<sup>08</sup></b>	<b>FLOUR</b> Gladiola 5 Lb. Bag <b>85¢</b>	<b>COFFEE</b> Maryland Club Lb. Can <b>\$2<sup>09</sup></b>
<b>JUICE</b> Del Monte Prune 32 oz. <b>99¢</b>	<b>OLEO</b> Grayson - Lb. <b>33¢</b>	<b>CORN FLAKES</b> Post Toasties 18 oz. Box <b>\$1<sup>19</sup></b>
<b>BUTTERMILK</b> Bordens 1/2 Gallon <b>89¢</b>	<b>SUASAGE</b> Carls 2 Lb. Roll <b>\$3<sup>09</sup></b>	<b>BACON</b> Slab Sliced - Lb. <b>\$1<sup>39</sup></b>

**JOE FORD GROCERY**  
Specials Good Thurs. Fri. & Sat.    Dec. 9-10-11    Quantities Reserved

# Deregulation of your telephone ...how will it affect you

Deregulation. What does it mean to the nation's telephone industry — and the customers it serves? All of the hows, whys and maybes are not determined, but here are answers to some often-asked questions.

- Q. What is deregulation?**  
A. Simply, it's the process of removing state and federal controls from many services provided by the telecommunications industry. It means customers can select equipment and services in a competitive market without regulation by a regulatory commission.
- Q. When does it happen?**  
A. Deregulation isn't new. Federal Communications Commission rulings over the past three decades have allowed some competition in terminal equipment (telephones, multi-line systems, etc.) and in long-distance services. But deregulation surfaced as a major public issue when the FCC mandated total deregulation of new terminal equipment, effective January 1, 1983.
- Q. Why does the FCC want the telephone industry to be deregulated?**  
A. The FCC believes competitive markets are most efficient. Deregulation — and competition — will encourage new services and open more options to customers.
- Actually, the FCC is but one of the driving forces behind deregulation. Congress, the Justice Department and the Reagan Administration (like others before it) all are eager to deregulate the American telephone business.
- Q. What is GTE's position regarding deregulation?**  
A. GTE feels that deregulation ultimately will benefit all concerned. Competition is the American way and GTE expects to compete aggressively.
- Q. Just what services will continue under regulation?**  
A. After January 1, the basic local and long-distance switching networks will continue to be regulated. So will all in-place equipment on customer premises. New equipment will be excluded from regulation, as will "enhanced" services, which combine basic service with computer processing to provide additional, different or restructured information.
- Q. How does this affect customers?**  
A. The big change is in lease and purchase arrangements for telephones, multi-line systems and other equipment in a customer's home or business.  
After January 1, existing customers may continue to lease their phones from General Telephone. In addition, they have the option of purchasing phones — either from General Telephone or another supplier.  
New customers also will be able to buy phones anywhere they choose (including General Telephone). Cost of equipment purchased by customers will be determined by the marketplace — not regulatory commissions. Lease options also will be available to new customers, but again will be determined by the marketplace — not the regulators.  
There's another important point. By definition, anyone who alters existing service will be classified as a new customer. People who move from one residence to another — even though both are served by General Telephone — would be considered new customers under deregulation guidelines.
- Q. Will all customers be affected by deregulation?**  
A. No. The FCC's order applies only to single-line service. Customers on multi-party lines may continue to lease phones from General Telephone with all the traditional services. For a period after deregulation begins, party line customers may have some options that will not be available after January 1, 1983 to single-line customers.
- Q. Will it affect the cost of telephone service?**  
A. Deregulation will have an impact on virtually every aspect of the telephone industry — including cost. It should result in lower prices for some services and higher prices for others. The net effect of deregulation — and the competition it creates — is that each product or service provided by General Telephone must pay its own way, without subsidies from other segments of the business.  
For example, revenues from various optional services have traditionally subsidized the cost of providing basic local service. That ensured basic telephone service was affordable to nearly everyone. But competition will force prices to more closely reflect the true cost of any service. Local rates probably will rise; others may decrease. Either way, customers will be asked to pay for the cost of the services they use.
- Q. So what are the benefits to the consumer?**  
A. With deregulation comes competition. With competition comes the suppliers' desire to provide customers with what they want, when they want it, resulting in many options, introduction of new technology and keeping costs at the lowest possible level.
- Q. Won't there be a lot of people who will be unable to afford a telephone?**  
A. GTE expects to help customers meet increases in telephone rates by phasing in certain options for flat rate pricing, including Usage Sensitive Service (USS) which is a measured service.

**General Telephone**







First and second graders at Bogata Elementary dressed up like Pilgrims and Indians to celebrate Thanksgiving. They had a lot of fun making their costumes and showing them off.

## Bogata Locals

Thanksgiving dinner guests of Mr. and Mrs. Horace Adams and Randy Randolph were Mr. and Mrs. Duane King, Mr. and Mrs. Kyle King, Nicki, Shelley and Travis, of Paris, Mr. and Mrs. Kerry King and Jeremy of Mt. Pleasant and Mr. and Mrs. Asa Chambless of Durant, Ok. Visiting later in the day were Mr. and Mrs. Monte Randolph and Mr. and Mrs. Danny Eudy, Adam and Aaron.

Thanksgiving guests of Mr. and Mrs. R.J. Holt were Mr. and Mrs. Jack Holt and family. They attended the wedding of Anita Holt and Jessie Fox and also visited Mr. and Mrs. S.R. Arnold of Reno.

Mr. and Mrs. Gene Hawkins visited Thursday and Friday in Little Rock with their daughter and family, the Rev. and Mrs. C.O. Magee, Jr., Clarence and Kristen. Their granddaughter, Kimberly Magee, a student at Southwestern University in Memphis was also a guest.

Mrs. Vera Craddock and Neale Mauldin were Thanksgiving guests of Mr. and Mrs. A.D. Stephenson and D'Ann.

Mrs. Pauline Hutson visited recently with her sisters, Mr. and Mrs. W.L. Murphy of Abilene and Mr. and Mrs. W.C. Wright of Carlsbad.

Dan and Edna Kiser from

Houston have spent the last week visiting her mother, Lillie Mauldin. They also attended the funeral of her aunt, Mrs. Mary Smith.

Mrs. Steven Letwich, Kim and Charlie and Mrs. Cheryl McDaniel and Anna Lisa of Odessa spent the weekend with Mr. and Mrs. Ray Letwich of Odessa.

Mrs. Frances Summers and Mrs. Dude Lassiter accompanied a Trans-America Tour group from Idabel, Ok. to Natchitoches, La. Saturday where they attended parades during the

day and their annual Christmas lighting festival Saturday night. They spent Saturday night in Shreveport and returned home Sunday afternoon.

Guests last week of Mr. and Mrs. Alfred Brown were her daughter, Mr. and Mrs. R.E. McDonald of Fredricksburg and her granddaughter, Mrs. Betty Morris of Odessa.

## Cuthand Locals

By Wootie Harville  
Visiting with Mr. and Mrs. Albert Harville Sunday were Mr. and Mrs. Walter Bankston of Seymour, Mr. and Mrs. Vernon McConnell of Stephens, Ark. and Mr. and Mrs. Sam McConnell of Bogata.

last week guest her sister, Mrs. Rossie Byrns of Rosalie.

Ray Hudson, who is a patient in VA Hospital in Dallas spent the weekend at home with his family.

Bill Eudy was Friday guest of Mr. and Mrs. Lonzo

Eudy. Mr. and Mrs. J.D. Barnett, Mrs. Bell Borders and Mrs. George Lindsey spent the

weekend in Terrell with their father, brother and sister, enjoying an early Christmas with them.



### Bull Receives Award

CHRIS BULL, County Extension Agent of Clarksville received a Certificate of Completion for an Agricultural Financial Management Seminar from Richard L. Trimble, Program Chairman and Economist-Management of the Texas Agricultural Extension Service. The week long seminar was conducted during the week of October 25-29 for 40 selected Texas

Agricultural Extension Service employees who counsel with farmers and ranchers on financial matters. Topics included financial statements and accounting rules, record keeping systems, making cash flow projections, investment analysis and forms of business organization. The seminar was put on with financial assistance from the G. Rollie White Charitable Trust.

### Third Graders Thank Drama Club

After seeing the presentation of "The Wizard of Oz" on Thursday, the third grade of Talco Elementary School wrote thank you notes to the Drama Club. Following is an excerpt of those letters:

Dear Drama Club,  
I really liked the Wizard of Oz play. I'm glad you took the time to learn your parts. I liked the little puppy. It was cute. Scarecrow, I'm glad you got some brains. Tin man I'm glad you got a heart. Lion I hope your not


scared of this letter. Dorothy, I'm glad you got to go home. Thank you for putting it on for us. I wish you would put Sleeping Beauty in January before Christmas. It will give us something to do.  
Your fan,  
Faye Whitney

Dear Drama Club,  
I like all the characters in the play, even the dog. I like it best when they put that big red ball in. It was funny and it was excellent. I loved it. If I was your teacher, I will give you a 100 for it.  
Your fan,  
Jesse Lynn Woods

Dear Drama Club,  
My class enjoyed your play. Thank you for you putting the play on and getting us out of class.  
Ms. Wood told us about Stan. He also thought ya'll were good for ya'lls age.  
Your fan,  
Tonya Pace

Dear Drama Club,  
I enjoyed the play ya'll put on. I couldn't of done better myself. I wished Dorothy and the dog could have visited us.  
P.S. The Tin Man is a killer.  
Your fan,  
David Anderson

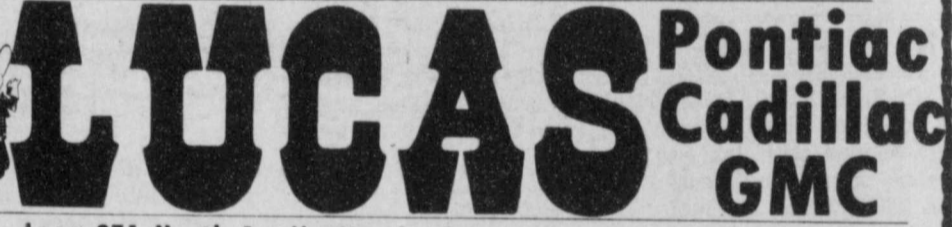





**Service Department  
Is Completely Redone.  
All New Staff!**

**We Have 10.9% Financing  
On All 1982 Model  
GMC, Pontiac Or Cadillacs.**

**We Now Have A Complete  
Line of 1983  
GMC, Cadillac or Pontiacs**



Loop 271 North 1 mile North of I-30 Mt. Pleasant 214/572-6636



**BANK  
CENTS**

By Neil Rozell  
President, First National Bank, Bogata

There is a significant difference between Bank Examiners and Auditors. Bank Examiners are representing the supervisory authorities in their efforts to classify the bank's investments, whereas the Auditors are employed by the Board of Directors to verify deposits, notes, savings accounts. All of this verification is to make sure that each customer of the bank is protected against fraud, embezzlement or any other type of mishandling of his accounts in the bank. Since this practice was started in most all banks in the country in the middle 50's, fraud, embezzlement and other misdeeds by bank people has virtually disappeared.

We want you to know more about our business!!!

**FIRST NATIONAL  
BANK**

BOGATA MEMBER F.D.I.C.

**CREATE AN ESTATE  
AND  
EARN 14.75% Tax  
Deferred  
Interest**

For Complete Details Fill Out This Ad And Mail it To:

**SECURITY MARKETING GROUP**  
101 1/2 North Locust, Clarksville, Texas 75426

NAME \_\_\_\_\_  
ADDRESS \_\_\_\_\_  
PHONE \_\_\_\_\_ AGE \_\_\_\_\_

(\$25.00 Monthly Minimum Investment)

**SECURITY MARKETING GROUP**  
214-427-5411

### NOTICE OF VOTE ON TAX RATE

The City of Bogata conducted a public hearing on a proposal to increase your property taxes by 100% percent on December 6, 1982, 7 p.m. conducted)

A public meeting to vote on the tax rate will be held on 12-14-1982 7 p.m. at City Hall