

All Around the Town



by Mary Ann Sarchet

Beef imports may be the root of the problem in agriculture today.

The figures on which this article is based are taken from information compiled by The Concerned Cattlemen of the Dakotas Taskforce.

The United States imports 22 pounds of beef for every one pound it exports and 10 head of live cattle for every one head it exports. The two billion pounds of carcass weight meat imported is two and a half times more than any other country imports.

The five million head imported furnish the beef diet for 18 million American people, and mean 50 million acres less needed for grassland. Consequently, the 50 million acres not needed for grazing has been converted into cropland.

Imported beef has kept prices depressed for American stockmen and has brought about liquidation of livestock which has resulted in 100 million acres of cropland being created where pastures were plowed up.

This imported meat, much of which is manufactured into hamburger, is said to make up about 50 per cent of the supply of that type of meat. Packing plants buy the imported meat which is boned and trimmed and mix it with fat from choice carcasses in order to buy at bottom dollar and sell at top dollar.

This creates a massive problem for ranchers and farmers.

Countries that ship meat into the United States have embargoes or discretionary licensing that prohibits U. S. meat from entering those countries.

Before grain producers can expect livestock producers to accept higher grain prices, the price of livestock must go up. If beef prices rise to near parity level, cattlemen can then justify paying more for feed.

The increase in the price of meat at the market would not hurt consumers as much as producers are being hurt by the present import program.

The questions I now have to ask are these: Why does the United States import things we can produce in this country? And why is our country unwilling to protect the interests of the producers in America?

Stopping the imports of beef would: 1. Increase prices for beef in this country; 2. Decrease the number of acres now in cropland; 3. Increase the demand for grain in this country; 4. Help eliminate the commodity surplus problem in this country. Wouldn't we all be willing to pay a few cents more for beef at the grocery store to help our farm economy?

C. D. Copelin, 65 Buried At Tulia

Funeral services for Chester D. Copelin, 65, were conducted at 2:00 p. m. Tuesday at Wallace Funeral Home Chapel in Tulia. Officiating was the Rev. Roland Moore, pastor of the Vigo Park United Methodist Church.

Burial was in Rose Hill Cemetery at Tulia, with arrangements under the direction of Wallace Funeral Home.

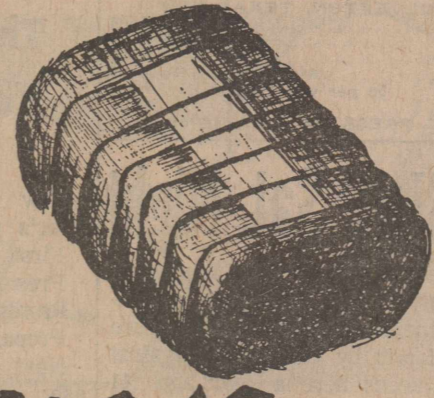
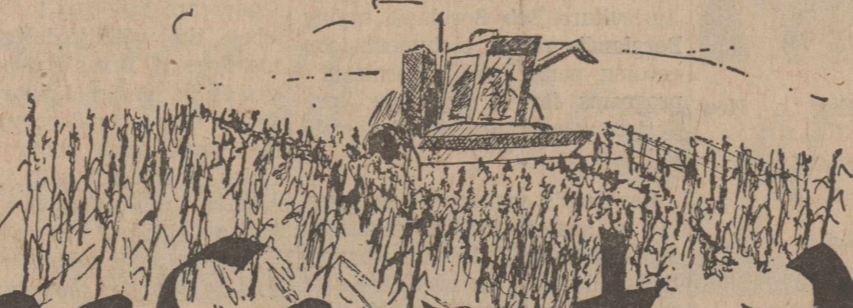
Mr. Copelin, a Silverton resident who formerly lived in Swisher County, died at 8:20 p. m. Sunday in Lockney General Hospital after a lengthy illness. He had been a patient in the hospital since January 3.

Born January 17, 1912 on the Rodgers Ranch in Swisher County, Mr. Copelin was a long-time resident of Swisher County. A retired cowboy, he moved to Silverton five years ago from the Vigo Park community northwest of Silverton. He was a member of the Baptist Church.

Mr. Copelin married the former Blanche Orr August 21, 1937 in Plainview. He entered the Lockney Care Center on November 23.

Surviving are his wife; one daughter, Mrs. Julia Caffee of Midlothian; two sons, Samuel Louis Copelin of Big Spring and Billy Copelin of the U. S. Army; two brothers, Landon R. Copelin of Sunray and Charles L. Copelin of Anchorage, Alaska; three sisters, Mrs. Una Mae Finney of Plainview, Mrs. Lena Buchanan

Silverton: Home of Scenic Lake Mackenzie



Briscoe County News

THURSDAY, JANUARY 19, 1978

VOLUME 70 NUMBER 3

Junior Livestock Show Winners Named Here

Teams Win Three From Cotton Center

Silverton's varsity Owlettes, junior varsity and varsity Owls took big wins from Cotton Center here Tuesday night in the first home games the teams had played since the middle of December.

The junior varsity boys started the series with a 38-32 victory. Led in scoring by Bill Denton with 14 points, the Owls held their lead at the end of each of the four quarters. Mark Brown scored six points; Diji Couch, five; Kelly Comer, four; Nicky McJimsey, three, and Bobby McPherson, Russell Couch and Cam Forbes each contributed two points.

The Owlettes romped home to a big 88-26 victory with six forwards sharing the scoring. Twila Wood burned the baskets with 32 points, while Linda Vaughn rang up 22. Ruegena Davidson was also in double figures with 16 points, Connie Rowell and Kim Cornett contributed seven points each, and Jennifer Martin added a pair of points.

The Owlettes finished the first quarter with a 16-point lead, doubled it to 32 by halftime, led by 48 at the end of the third period and finished up 62 points ahead.

The varsity Owls also did a good job in their game, leading at the end of each period. Jackie Vaughn led the offense with 30 big points and Brent Brannon rang up 15. Kirk Durham tossed in six points; Jace Francis, five; James Alan Patton, four; Mitchell Roehr, three; Earl Jarrett, two, and Paul Brannon, one point.

The teams will be traveling to Ralls Friday night for three games beginning at 5:00 p. m. Tuesday night, they will open district warfare when they host Nazareth at 5:00 p. m.

Silverton Mayor Fred Mercer has proclaimed Tuesday as "BEAT NAZARETH DAY" and is urging all citizens to wear red and white all day Tuesday and to attend the games in support of the teams' efforts to win district trophies.

Silverton Mayor Fred Mercer has proclaimed Tuesday as "BEAT NAZARETH DAY" and is urging all citizens to wear red and white all day Tuesday and to attend the games in support of the teams' efforts to win district trophies.

Silverton Mayor Fred Mercer has proclaimed Tuesday as "BEAT NAZARETH DAY" and is urging all citizens to wear red and white all day Tuesday and to attend the games in support of the teams' efforts to win district trophies.

Silverton Mayor Fred Mercer has proclaimed Tuesday as "BEAT NAZARETH DAY" and is urging all citizens to wear red and white all day Tuesday and to attend the games in support of the teams' efforts to win district trophies.

Silverton Mayor Fred Mercer has proclaimed Tuesday as "BEAT NAZARETH DAY" and is urging all citizens to wear red and white all day Tuesday and to attend the games in support of the teams' efforts to win district trophies.

Silverton Mayor Fred Mercer has proclaimed Tuesday as "BEAT NAZARETH DAY" and is urging all citizens to wear red and white all day Tuesday and to attend the games in support of the teams' efforts to win district trophies.

Silverton Mayor Fred Mercer has proclaimed Tuesday as "BEAT NAZARETH DAY" and is urging all citizens to wear red and white all day Tuesday and to attend the games in support of the teams' efforts to win district trophies.

Silverton Mayor Fred Mercer has proclaimed Tuesday as "BEAT NAZARETH DAY" and is urging all citizens to wear red and white all day Tuesday and to attend the games in support of the teams' efforts to win district trophies.

Silverton Mayor Fred Mercer has proclaimed Tuesday as "BEAT NAZARETH DAY" and is urging all citizens to wear red and white all day Tuesday and to attend the games in support of the teams' efforts to win district trophies.

Silverton Mayor Fred Mercer has proclaimed Tuesday as "BEAT NAZARETH DAY" and is urging all citizens to wear red and white all day Tuesday and to attend the games in support of the teams' efforts to win district trophies.

Put up a sign in the window of your business, home or car, urging the teams on to victory. The games played so far this season don't mean a thing; the important ones are the few that are still ahead.

PROCLAMATION

Silverton Mayor Fred Mercer has proclaimed Tuesday, January 24, as "BEAT NAZARETH DAY," and has also issued the official order to residents of Silverton to wear red and white that day.

The Mayor's proclamation also issues an invitation to everyone to be present at 5:00 p. m. when the varsity Owlettes, varsity and junior varsity Owls begin their campaign for the district title in the Silverton School Gym.

TEAMS SPLIT GAMES WITH ABERNATHY

The Owls and Owlettes split their games with Abernathy last Friday night, the Owls taking a 55-48 victory and the Owlettes losing a close 37-35 decision.

Twila Wood led the scoring for the Owlettes with 16 points. Linda Vaughn caged 15 points and Ruegena Davidson tossed in four points.

Jackie Vaughn led the offense for the Owls with 24 points. Jace Francis rang up 11 points, Kirk Durham added eight, Brent Brannon caged seven and Paul Brannon added five points. The boys varsity game was also very close, with the Owls holding a small lead at the end of each quarter. They extended their lead to seven points in the final frame.

The junior varsity Owls lost to Abernathy, 65-51. Led in scoring by Kelly Comer and Bill Denton, who scored 13 points each, the Owls really did a pretty good job against the Antelopes. Mark Brown caged nine points, Diji Couch rang up eight, and Bobby McPherson and Brandon Jarrett scored four points each.

The junior varsity Owls lost to Abernathy, 65-51. Led in scoring by Kelly Comer and Bill Denton, who scored 13 points each, the Owls really did a pretty good job against the Antelopes. Mark Brown caged nine points, Diji Couch rang up eight, and Bobby McPherson and Brandon Jarrett scored four points each.

The junior varsity Owls lost to Abernathy, 65-51. Led in scoring by Kelly Comer and Bill Denton, who scored 13 points each, the Owls really did a pretty good job against the Antelopes. Mark Brown caged nine points, Diji Couch rang up eight, and Bobby McPherson and Brandon Jarrett scored four points each.

The junior varsity Owls lost to Abernathy, 65-51. Led in scoring by Kelly Comer and Bill Denton, who scored 13 points each, the Owls really did a pretty good job against the Antelopes. Mark Brown caged nine points, Diji Couch rang up eight, and Bobby McPherson and Brandon Jarrett scored four points each.

The junior varsity Owls lost to Abernathy, 65-51. Led in scoring by Kelly Comer and Bill Denton, who scored 13 points each, the Owls really did a pretty good job against the Antelopes. Mark Brown caged nine points, Diji Couch rang up eight, and Bobby McPherson and Brandon Jarrett scored four points each.

The junior varsity Owls lost to Abernathy, 65-51. Led in scoring by Kelly Comer and Bill Denton, who scored 13 points each, the Owls really did a pretty good job against the Antelopes. Mark Brown caged nine points, Diji Couch rang up eight, and Bobby McPherson and Brandon Jarrett scored four points each.

The junior varsity Owls lost to Abernathy, 65-51. Led in scoring by Kelly Comer and Bill Denton, who scored 13 points each, the Owls really did a pretty good job against the Antelopes. Mark Brown caged nine points, Diji Couch rang up eight, and Bobby McPherson and Brandon Jarrett scored four points each.

The junior varsity Owls lost to Abernathy, 65-51. Led in scoring by Kelly Comer and Bill Denton, who scored 13 points each, the Owls really did a pretty good job against the Antelopes. Mark Brown caged nine points, Diji Couch rang up eight, and Bobby McPherson and Brandon Jarrett scored four points each.

The junior varsity Owls lost to Abernathy, 65-51. Led in scoring by Kelly Comer and Bill Denton, who scored 13 points each, the Owls really did a pretty good job against the Antelopes. Mark Brown caged nine points, Diji Couch rang up eight, and Bobby McPherson and Brandon Jarrett scored four points each.

The junior varsity Owls lost to Abernathy, 65-51. Led in scoring by Kelly Comer and Bill Denton, who scored 13 points each, the Owls really did a pretty good job against the Antelopes. Mark Brown caged nine points, Diji Couch rang up eight, and Bobby McPherson and Brandon Jarrett scored four points each.

The junior varsity Owls lost to Abernathy, 65-51. Led in scoring by Kelly Comer and Bill Denton, who scored 13 points each, the Owls really did a pretty good job against the Antelopes. Mark Brown caged nine points, Diji Couch rang up eight, and Bobby McPherson and Brandon Jarrett scored four points each.

The junior varsity Owls lost to Abernathy, 65-51. Led in scoring by Kelly Comer and Bill Denton, who scored 13 points each, the Owls really did a pretty good job against the Antelopes. Mark Brown caged nine points, Diji Couch rang up eight, and Bobby McPherson and Brandon Jarrett scored four points each.

The junior varsity Owls lost to Abernathy, 65-51. Led in scoring by Kelly Comer and Bill Denton, who scored 13 points each, the Owls really did a pretty good job against the Antelopes. Mark Brown caged nine points, Diji Couch rang up eight, and Bobby McPherson and Brandon Jarrett scored four points each.

The junior varsity Owls lost to Abernathy, 65-51. Led in scoring by Kelly Comer and Bill Denton, who scored 13 points each, the Owls really did a pretty good job against the Antelopes. Mark Brown caged nine points, Diji Couch rang up eight, and Bobby McPherson and Brandon Jarrett scored four points each.

The junior varsity Owls lost to Abernathy, 65-51. Led in scoring by Kelly Comer and Bill Denton, who scored 13 points each, the Owls really did a pretty good job against the Antelopes. Mark Brown caged nine points, Diji Couch rang up eight, and Bobby McPherson and Brandon Jarrett scored four points each.

Competition was keen among 4-H and FFA showmen Saturday in the annual Briscoe County Junior Livestock Show held in the Show Barn in Silverton.

Kori Baird was exhibitor of the Grand Champion Barrow, while Mike Martin showed the Reserve Champion Barrow. Showmanship Award for barrows went to Bryan Burson.

Grand Champion Lamb was shown by Billy Hughes, and Angie Clay was exhibitor of the Reserve Champion. Top Showmanship Award for lambs went to Greg Hill.

Sally Northcutt was the exhibitor of the Grand and Reserve Champion Steers, and also walked away with the Showmanship Award.

Placings in the various classes were:

CHESTER WHITE BARROWS
Lightweight Class
1. Kerry Baird; 2. Eric Patton; 3. James Alan Patton; 4. Kim Cornett; 5. Kirby Chandler

HEAVYWEIGHT CLASS
1. Todd Reagan; 2. Craig Patton; 3. Zane Reagan; 5. Mark Patton; 6. Alesha Patton; 7. Tad Cornett

DUROC BARROWS
Lightweight Class
1. Kirby Chandler; 2. Kim Cornett; 3. Kerry Baird; 4. Zane Reagan; 5. Jeannita Stephens; 6. Roger Cantwell; 7. Stephen Stephens

MEDIUMWEIGHT CLASS
1. Mike Martin; 2. Craig Patton; 3. Bryan Burson; 4. Roger Cantwell; 5. Shane Reagan; 6. Todd Reagan

HEAVYWEIGHT CLASS
1. Eric Patton; 2. Tad Cornett; 3. Kim Cornett; 4. Mike Cornett; 5. Donna Hale; 6. Stephen Stephens

HAMPSHIRE BARROWS
1. Kori Baird; 2. Roger Cantwell; 3. Eric Patton; 4. Donna Hale; 5. James Alan Patton; 6. Mike Cornett

OTHER PUREBRED BARROWS
Lightweight Class
1. Mike Martin; 2. Walter Perkins; 3. Tony Denton; 4. Ron Boling; 5. Brett Cheatham

HEAVYWEIGHT CLASS
1. Mark Patton; 2. Alesha Patton; 3. Bryan Burson; 4. Brett Cheatham; 5. Bill Settle; 6. Tim Dea

CROSSBRED BARROWS
Lightweight Class
1. Kori Baird; 2. Tad Cornett; 3. Mark Patton; 4. Shane Reagan; 5. Mike Cornett; 6. Ron Boling; 7. Tony Denton

HEAVYWEIGHT CLASS
1. Todd Reagan; 2. Zane Reagan; 3. James Alan Patton; 4. Craig Patton; 5. Alesha Patton; 6. Tim Dea

FINEWOL LAMBS
1. Mike Cornett; 2. Robbie Helms; 3. Paula Helms; 4. Tad Cornett; 5. Greg Hill; 6. Monroe Hill; 7. Paula Helms

FINEWOL CROSSBRED LAMBS
1. Angie Clay; 2. Monroe Hill; 3. Larry Clay; 4. Mike Cornett; 5. Lori Clay; 6. Larry Stephens

MEDIUM WOOL LAMBS
Lightweight Class
1. Robbie Helms; 2. Paula Helms; 3. Kerry Baird; 4. Kim Cornett; 5. Kim Cornett; 6. Kim Cornett; 7. Greg Hill; 8. Lori Clay

HEAVYWEIGHT CLASS
1. Billy Hughes; 2. Monroe Hill; 3. Mike Cornett; 4. Greg Hill; 5. Kori Baird; 6. Tad Cornett; 7. Tad Cornett; 8. Larry Clay

STEERS
Sally Northcutt was the only exhibitor in the steers division of the show, with a Charolais Crossbred steer which was judged Grand Champion and a Hereford Crossbred steer which was chosen

as the Reserve Champion. Jerry Hawkins of Clarendon College was judge for the Briscoe County Show.

as the Reserve Champion. Jerry Hawkins of Clarendon College was judge for the Briscoe County Show.

Mrs. Reid Is Seeking Re-Election

Mildred J. Reid authorized this newspaper to announce this week that she is a candidate for re-election as Treasurer of Briscoe County, subject to action by the Democratic Primary next May. She made the following statement:

"I wish to announce that I will be a candidate for re-election to the office of County Treasurer of Briscoe County.

"It has been my pleasure to serve the people of Briscoe County in the past, and I will make every effort to be of service in the future.

"I thank you for your loyal cooperation and solicit your support and influence in my behalf."

NEW ARRIVAL

Mr. and Mrs. Leo Comer proudly announce the arrival of a new grandson, Cy Douglas Comer, born January 11 in Aracaju, Brazil.

Parents are Mr. and Mrs. Larry Comer. Mrs. Comer is the former Cindy Cross.

Other grandparents are Mr. and Mrs. Pete Doyle, Oklahoma City, Oklahoma and G. W. Lee, Silverton. Great-grandparents include Mr. and Mrs. Stewart of Tulia and Mrs. George Lee of Lubbock.

as the Reserve Champion. Jerry Hawkins of Clarendon College was judge for the Briscoe County Show.

Construction Underway In Silverton

New construction is underway at several locations in Silverton, but all of it has been delayed by the weather. Temperatures have hovered below the freezing mark most of this week, and workmen have not been able to stay with their original construction schedules.

In downtown Silverton, Verlin B. Towe is the owner of an office building that is being built east of the First State Bank to house the Department of Agriculture's Stabilization and Conservation Service. Original estimate on date of completion was between February 15 and March 1, but Mr. Towe told the Briscoe County News today that he is sure now that it can't be finished before the first of March.

The new steel building will contain 2,000 square feet of office space, and is being built on a corner lot where an older stucco and frame building was recently razed.

An addition to the Silverton High School vocational agriculture department is also under construction. The 40x60 steel structure was begun about a week ago.

According to School Superintendent O. C. Rampley, the work was

to have been finished about the middle of January, but due to the weather the completion date is not known.

The classroom area of the present vocational agriculture department was too small to accommodate its classes, and the present ag shop building is being partitioned to provide a larger class facility. Part of the original shop building will remain in use as a shop and there will be a door connecting it to the new 2,400 square foot building. Most of the remodeling of the present building will be done by vocational agriculture students.

Mr. and Mrs. Richard Whitfill are in the process of building a new solar energy home on South Main Street. The walls and roof show the modern design of the home, but this construction also has been stalled by the inclement weather.

Also on Main Street, Fogerson Lumber & Supply is continuing to work on the remodeling and addition which Mr. and Mrs. Clarence Ward are doing to their home. All of this work is now going on inside, and is progressing in spite of the frigid weather.

Orders Being Taken For Second Printing Of County History

The Briscoe County Historical Survey Committee held a called meeting January 16, 1978, to determine if the book, "Footprints of Time—Briscoe County 1876-1976" could be re-ordered for those wanting a book.

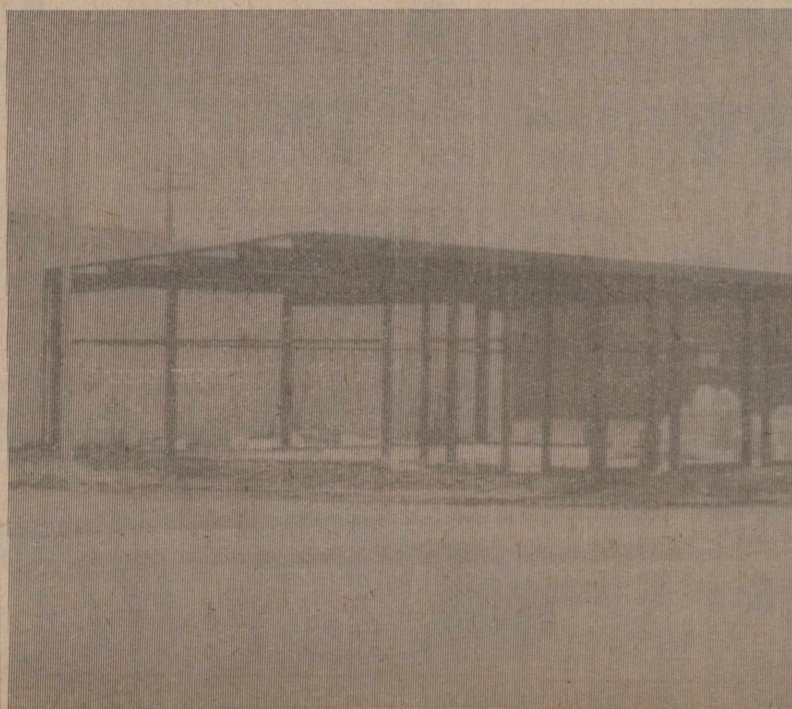
The price of the book would be \$40.00 if not to be mailed, and \$42.50 for those to be mailed.

The committee should be contacted on or before March 1, 1978 to comply with the publisher's

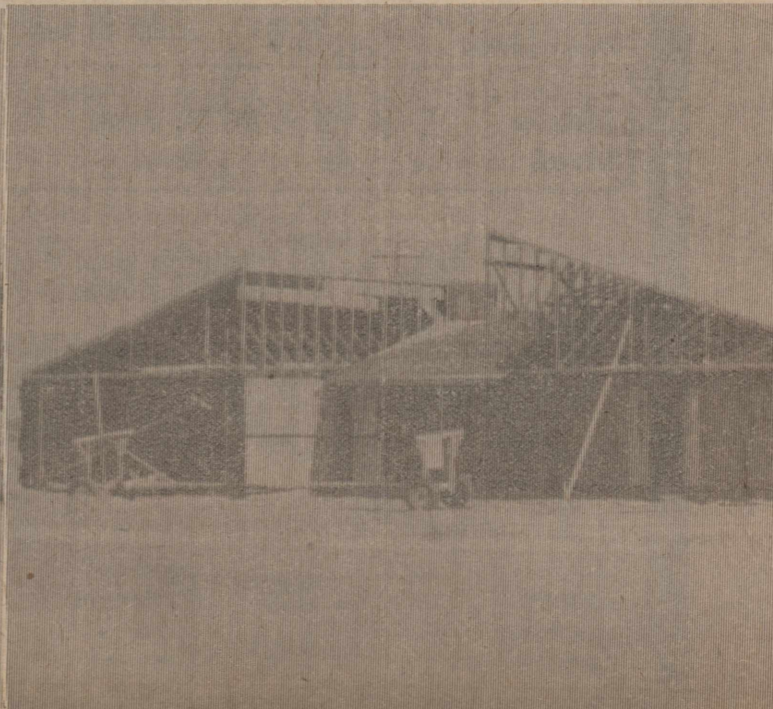
deadline. The Silverton address is Mrs. Edwin Dickerson, Box 354, Silverton, Texas 79257, and the Quitaque address is Mrs. Murry Morrison, Box 357, Quitaque, Texas 79255.

Those interested in ordering, please mail your check, made payable to the Briscoe County Historical Committee, to either of the above addresses on or before said date and the committee will enter your order promptly.

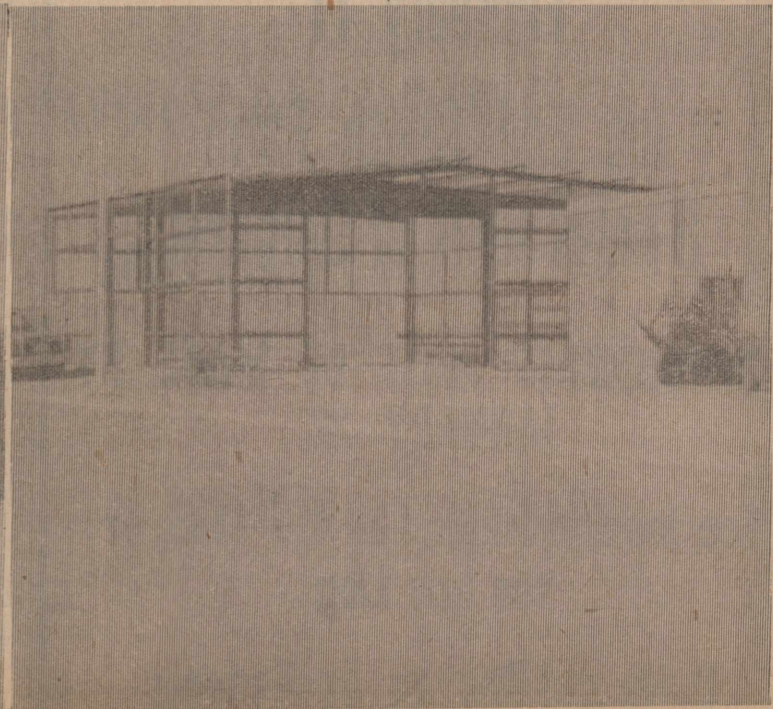
—Norma L. Birdwell, reporter



NEW GOVERNMENT OFFICE BUILDING



NEW HOME OF MR. AND MRS. RICHARD WHITFILL



NEW ADDITION TO SCHOOL AGRICULTURE DEPARTMENT

BRISCOE COUNTY NEWS

PUBLISHED EVERY THURSDAY AT SILVERTON, TEXAS 79257
 BY CHARLES AND MARY ANN SARCHET
 SECOND CLASS POSTAGE PAID AT SILVERTON, TEXAS 79257
 CHARLES R. SARCHET..... PUBLISHER
 MARY ANN SARCHET..... EDITOR
 SUBSCRIPTION RATE..... \$4.50
 Display Advertising Rates..... Available on Request
 Classified and Legal Rates, Each Insertion..... 5c per word, \$1.00 minimum
 Cards of Thanks.....
 MEMBER TEXAS AND PANHANDLE PRESS ASSOCIATIONS \$1.00

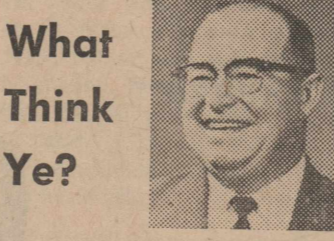
Queens Battle Delta State Sat. Night

By Eddie Owens
 What has rapidly developed into one of the country's best basketball rivalries—Wayland and Delta State—unfolds again this week in the featured attraction for Plainview basketball fans.
 It's Wayland's Flying Queens, ranked No. 1 in the latest coaches poll, against Delta State's three-time national champion Lady Statesmen, and a sellout crowd of some 3,100 fans is expected when the rivalry renews itself for the fourth time here Saturday night.
 That battle will be the second of the week for the top-ranked Queens, who host Gay Benson's much-improved Texas Tech team Thursday night in Hutcherson.
 Game time for both battles is 7:30 p. m., and Saturday night's match will be preceded by a 5:30 p. m. game involving Wayland's junior varsity Queen Bees and Panhandle State University's girls' team.
 And Wayland's Pioneers will have most of the week to prepare for the weekend road games with Texas Wesleyan (in Fort Worth Friday night) and Dallas Baptist (Saturday evening). Both are key Texoma Conference games and will also figure into the playoff picture in NAIA District 8.
 The Queens-Lady Statesmen matchup dates back to the 1975-76 season playoffs, when the Lucia Harris-led quintet from Cleveland, Mississippi took a one-point 61-60 win over Wayland in the semifinals of the AIAW national tournament.
 Delta went on to win its second of three consecutive AIAW national titles that year, while Wayland had to settle for third place after downing William Penn of Iowa, 74-54.
 And last year, the two teams met for the first time in regular season on a home-and-home basis, with the Lady Statesmen running their series record to 3-0 with a 62-59 win here before a standing-room-only crowd, and a 64-54 victory in Cleveland. Delta later went on to defeat LSU for its third national crown in as many years.
 This year's scenario will be somewhat different, however, when the national champions again visit Hutcherson Gym. Most notably missing will be the presence of the 6-3 All-American Harris and team leader Wanda Hairston. Those two combined to lead Delta to a four-year record of 109 wins against only six losses in addition to the three national titles.
 But three starters—Cornelia Ward, Ramona Von Boeckman and 4-11 Debbie Brock—will be back, along with several new faces which are expected to again make the Lady Statesmen title contenders. Before this weekend's action, Delta was 9-2 for the year.
 Brock, the tiny playmaker who

burned the nets for 17 points against the Queens in the semifinal match, took some pressure off Harris by canning 16 against the Queens here a year ago (11 above her average then). The Queens held the 6-3 All-American in check most of the evening, holding her to 18 points (10 below her norm).
 The top-ranked Queens return six of their top seven players from that team which finished at 31-5 after falling in the AIAW regional semifinals to national tournament participant Baylor.
 The Dean Weese-led Wayland squad suffered its first setback of the year last Thursday night by a 98-86 count to fourth ranked North Carolina State in a mild upset.
 This week's action will all but wrap up the Queens' home season, with only a February 14 Homecoming date with 9th-rated Texas left on the schedule.

Farabee Supports Higher Farm Prices

State Senator Ray Farabee expressed support for higher market prices for farmers and ranchers in a letter written to the U. S. Secretary of Agriculture this week.
 "Recent protests have brought public attention to what many of us have known for more than a decade. American farmers have been feeding this country and the world, and it is time for people in agriculture to get a fair share of the dollars spent for food and fiber," Farabee stated to Secretary Robert Bergland.
 Briscoe County has an average annual income of \$17 million dollars from agriculture. He continued, "When costs of production exceed that income, it not only hurts the people of Briscoe County, but it hurts Texas and America, and destroys the family farm which has been responsible for making this country the most productive in the world."
 Although parity and higher target prices must come from an improved farm bill by our federal Congress, Farabee outlined three things which the Texas Legislature can and should do:
 1) Provide for taxation of agricultural land on the basis of productivity.
 2) Increase the State inheritance tax exemption.
 3) Increase State funding for agricultural research and rural development.



What Think Ye?
 How about planting a New Year's garden?
 First, plant four rows of peas:
 Presence
 Promptness
 Preparation
 Next, plant three rows of squash:
 Squash gossip
 Squash indifference
 Squash criticism
 Then, plant five rows of lettuce:
 Let us obey rules and regulations
 Let us be true to all obligations
 Let us be faithful to duty
 Let us love one another
 Let us be loyal and unselfish
 Now, plant some turnips:
 Turn up at meetings
 Turn up with a smile
 Turn up with new ideas
 Turn up with determination to make everything count for something.
 —Earl I. Cantwell

Mr. and Mrs. Melvin Watkins of Canyon visited Ollie McMinn Friday and attended the funeral of Irving McJimsey.

Texas Farm Leader Blasts Bergland

Texas Farmers Union President Jay Naman of Waco has issued a statement blasting Secretary of Agriculture Bob Bergland, saying Bergland's recent statements concerning parity and government programs for farmers are "preposterous and almost unbelievable."
 Bergland's comments came during a speech to the American Farm Bureau Federation convention in Houston in which he said that the government could NOT protect farmers with programs allowing for 100% of parity because it would amount to a monstrosity of costs and government controls.
 Naman says Bergland's speech has "shocked and disappointed farmers to hear the Secretary of Agriculture repudiate the preservation of the family farm system by rejecting the concept of 100% of parity."
 Naman continues by accusing Bergland of "playing politics with agricultural policy by telling each farm group with which he meets that he is in agreement with their particular approach to solving problems." He also says that the speech means "Secretary Bergland identified himself with and joined the American Farm Bureau's traditional attack on the family farm and farm programs which would provide 100% parity prices to farmers."
 The sentiments of the state farm leader are expected to be echoed when the voting delegates and members of Texas Farmers Union gather in Austin, January 20 and 21 for their annual convention. At the same time many Farmers Union members will be taking part in a national protest in Washington. National Farmers Union says its Washington office is ready for the fight for amendments and additions to the inadequate farm bill when Congress reconvenes and expects action during February.
 "I must remind the Secretary," says Naman, "that farm programs in the past have provided farmers with 100% of parity without the detrimental implications which he described in his speech. I must further remind him that other farmers in the free world are protected by their governments with various programs and pricing mechanisms that guarantee the farmers of those countries a fair return. In fact, this country under this administration is one of the few of the developed countries in the world that is unwilling to protect farm income."
 Naman says that essentially Bergland has told the nation's farmers that "they would be bet-

ter off bankrupt than to have to comply with the restraints of an adequate farm program." While not calling for Bergland's resignation forthright, Naman says that the remarks have "destroyed his effectiveness as Secretary of Agriculture" and that "his continuation in government can serve no constructive purpose."



YOU ARE INVITED
 TO SEE OUR LARGE SELECTION OF PAPER ITEMS FOR THE BRIDE
WEDDING INVITATIONS
 100 For \$13.90 and up
NAPKINS, GUEST BOOKS
THANK YOU NOTES
 LATEST STYLES

SEE US FOR ALL TYPES COMMERCIAL PRINTING

MEMORIAL PROGRAM

Your Memorial Gift is a fitting tribute to a loved one. This remembrance helps support the research, education and service programs of the American Cancer Society.
 Memorial gift funds may be sent to your local Unit of the Society.
AMERICAN CANCER SOCIETY

Venture FOODS

Wonderful Winter Meals Start Here!


Wolf Chili 79¢ 19 OZ CAN	Keg-O-Ketchup 79¢ 32 OZ BTL	Paper Towels 49¢ JUMBO ROLL	Golden Corn 89¢ 3 17 OZ CANS
Shurfine Shortening \$1.49 48 OZ CAN	Super Suds 69¢ GIANT SIZE BOX	Kraft Dinners 4 \$1 7 1/2 OZ BOXES	
Bathroom Tissue 69¢ 4 ROLL PKG.	Pine-Sol Disinfectant 89¢ 15 OZ BTL	Del Monte Fruit Cocktail 2 89¢ 303 CANS	Shurfine Frozen Green Peas 3 \$1 10 OZ PKGS
Spaghetti 3 89¢ 8 OZ PKGS	Shurfine 15% OZ Spaghetti Sauce 49¢ JAR	Del Monte Whole Green Beans 2 79¢ 303 CANS	Sara Lee Cakes \$1.19 Chocolate
Black Pepper 89¢ 4 OZ CAN	Campbell Soup 4 \$1 NO. 1 CANS	Hunt's Tomato Sauce 5 \$1 BUFF CANS	Life 'N Lucious Dinners 2 \$1 14 OZ PKG
Meat Specials	Slab Bacon \$1.29 HICKORY SMOKED SLICED LB	Lachoy Chicken or Beef Chow Mein \$1.49 BI-PAK 42 OZ CAN	Patito Mexican Asstd. Dinners 2 \$1 12 OZ PKG
Oscar Mayer Wieners or Beef Franks \$1.29 1 LB PKG	Bologna 89¢ 12 OZ PKG	Alamo Dry Dog Food \$1.99 8 LB BAG	Kraft Deluxe American Pimento Cheese Slices \$1.09 12 OZ PKG
U.S.D.A. Choice Tenderized Beef Cutlets \$1.79 LB	U.S.D.A. Choice Beef Boneless Sirloin Tip Roast \$1.49 LB	U.S.D.A. Choice Beef Boneless Sirloin Tip Steak \$1.59 LB	Signal Mouthwash & Gargle 89¢ 12 OZ BTL
U.S.D.A. Choice Beef Boneless Sirloin Tip Steak \$1.59 LB	U.S.D.A. Choice Beef Boneless Sirloin Tip Steak \$1.59 LB	U.S.D.A. Choice Beef Boneless Round Steak \$1.49 LB	Crest Toothpaste 69¢ REGULAR OR MINT 3 OZ TUBE
U.S.D.A. Choice Beef Boneless Round Steak \$1.49 LB	73% Lean Fresh Ground Beef 79¢ LB	U.S.D.A. Choice Beef Boneless Round Steak \$1.49 LB	Secret Roll-On \$1.19 REG. OR UNSCENTED DEODORANT 15 OZ BTL
Tomatoes 39¢ VINE RIPENED LB	California Green Pascal Celery 25¢ EXTRA FANCY LB	Large Bell Peppers 3 \$1 CALIFORNIA SUNKIST LEMONS 3 \$1	Prell Liquid \$1.69 SHAMPOO 11 OZ BTL

NANCE'S
Venture FOODS

WE RESERVE THE RIGHT TO LIMIT PRICES EFFECTIVE Friday, January 20 and Saturday, January 21

FARM SALE
 sponsored by
QUITAQUE LIONS CLUB
 February 11
 Joe Edd Smith Farm
 8 miles south of Quitaque
 CONSIGNMENTS MUST BE MADE BY
 JANUARY 22
 See Joe Edd Smith, Call 455-1133, or
 see any Lion
 Dulin and Reagan, Auctioneers

AN OPEN LETTER TO OUR FARMING FRIENDS



PIONEER.

PIONEER HI-BRED INTERNATIONAL, INC.
SOUTHWESTERN DIVISION
BOX 788 • PLAINVIEW, TEXAS 76072 • PHONE (806) 293-8251

An Open Letter To Our Farming Friends--

Charges are being made to the effect that Pioneer Hi-Bred International, Inc., is not sympathetic to the financial difficulties you are experiencing. I want to emphatically state that such is not the case. Nothing could be further from the true stand of Pioneer Hi-Bred International, Inc.

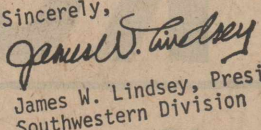
No company or organization is more aware of the contribution American farmers make to the economic health of the U.S. and to the survival of the world's population. In fact, Pioneer has spent untold manhours and dollars telling this story to the general public and to economic and governmental leaders...NOT for just the past four or five months, but from our company's earliest beginnings.

No company or organization is more aware of the economic pressures put on you, either. In fact, our success is directly tied to you. You're not just a customer. Many of you participate in the research that develops our products. Others of you help produce our seed. And then many of you also help market Pioneer brand seeds. To understand your problems is as basic to our business as is the research, production and marketing of our planting seed.

The man who founded Pioneer Hi-Bred International, Inc., dedicated his life to the welfare of the American farmer. It was our founder, Henry A. Wallace, who first produced and marketed hybrid seed on a large scale...which may be the greatest individual contribution in the history of agriculture. To suggest that the company he founded does not understand or support you, the farmer, is a serious error and a supreme injustice.

A letter written by an individual of the Garst and Thomas Hybrid Corn Company of Coon Rapids, Iowa--an independent company which distributes Pioneer brand products in Southwestern Iowa, Kansas, Nebraska, Colorado and Missouri--is being circulated among farmers. The comments in that letter do not reflect Pioneer policy and attitudes. The letter was NOT written by an official of Pioneer Hi-Bred International, Inc. It reflects ONLY the views of its writer.

I will not speculate about who is spreading this charge among you...or why it is being done. Farmers who know Pioneer, and the work we've done to support your cause, will know this charge is NOT true. If you don't know already, we hope you'll recognize that, through honest error or malicious intent, you are being misled if told that Pioneer Hi-Bred International, Inc., is not the farmer's friend and champion.

Sincerely,

James W. Lindsey, President
Southwestern Division

PLANTING SEED - HYBRID CORN - COTTON - HYBRID SORGHUM - HYBRID WHEAT - ALFALFA

© Registered trademark of Pioneer Hi-Bred International, Inc.

Cotton Talks

PCG OFFICIALS CHALLENGE "DO NOTHING" CHARGE

In the heat of a recent discussion of this year's low cotton prices and the absence of better price guarantees in the 1978-1981 farm law, a cotton producer was heard to say "Plains Cotton Growers has never done anything for us." And that's a statement PCG officials say cannot be left unchallenged.

"To remain silent would be unfair to all the past PCG Presidents, beginning with the late 'Mr. Bill' Fortenberry, and unfair to the hundreds of sincere cotton producers and cotton allied businessmen who have given of their own time and money to serve, without pay, as PCG directors at one time or another since 1956," states PCG Executive Vice President Donald Johnson, Lubbock.

"The truth is," Johnson continues, "that PCG work has returned millions upon millions of dollars to High Plains cotton producers and, indirectly, a host of benefits to ginners, compress owners and other related businesses."

As a first example, PCG cites the disaster provisions of the farm law that went into effect with the 1974 crop and remains in effect through 1979. The idea of a payment for producers who lost crops because of conditions beyond their control originated with the PCG Board, and it was PCG that gathered the necessary support within the industry and the Congress to get it enacted.

"Every check that has been mailed to cotton, wheat or feed grain producers here or elsewhere came as a direct result of PCG," Johnson reminds, "and since 1974 there have been over \$170 million worth of such checks in the 25 High Plains counties on cotton alone which would be an average of about \$8,500 to each of an estimated 20,000 producers."

Since 1963 PCG has conducted the High Plains boll weevil control program without which entomologists say every High Plains cotton farmer would be fighting boll weevils at a cost of some \$30 per acre every year.

In 1967 PCG prevented Commodity Credit Corporation from selling short staple government cotton for less than 120 points over the loan price, meaning some 700,000 bales of High Plains cotton sold that year for about \$6 per bale more than would have otherwise

Water Inc. To Have Annual Meeting

"A Growing Awareness" will be the theme of the 11th Annual Membership Meeting of Water, Inc., February 11 at the Quality Inn in Amarillo.

The twofold theme recognizes the increased concern nationally and worldwide over a potential water crisis and it notes the contributions of agriculture to the American way of life.

"We on the High Plains have long recognized the importance and value of water," said Water, Inc., President J. W. Buchanan. "Now there are growing indications that people elsewhere in this country and the world are beginning to look at their water supplies not as inexhaustible, but as a precious and limited natural resource. We see indications of this daily through stories in newspapers and magazines and on radio and television. There is a growing awareness about our wa-

been the case.

In 1973 PCG research convinced USDA that 50 points of the "bar-ky" penalty was not justified, and 378,000 bales of 1974-crop cotton were automatically worth about \$2.50 more per bale.

"And these are just a few of the things that come to mind which can be easily proved and on which it is easy to put a firm dollar value," Johnson says. "They do not cover the times when loan levels have been higher because of PCG's representation; the advances in production and harvesting technology resulting from PCG-supported research; the regulatory measures that have been avoided or softened because there was an organization to speak up against them; the markets that have been developed and strengthened through utilization research, promotion and advertising of High Plains cotton, or any of the other less visible benefits that have accrued to the High Plains cotton producer and to the industry in general."

For these things Johnson believes the High Plains owes a debt of gratitude to the people who have served the industry as PCG directors over the years.

"Moreover," he concludes, "I believe the vast majority of cotton people on the High Plains recognize the value of their organization and in fact do feel grateful to the directors they elected to help make them possible."

ter resources." For instance, the General Accounting Office recently warned of "increasing signs that the next great resource crisis—an inadequate water supply—may be rapidly approaching." The GAO report warned that such a crisis may be more difficult to solve than the energy problem.

The Water, Inc., theme also recognizes the High Plains farmer for his annual contribution to the well-being of this nation. High Plains agriculture, on the average, produces 18 percent of the nation's cotton, 24 percent of its grain sorghum, 14 percent of its fed cattle, 3 percent of its wheat and 3 percent of its corn annually. "Often the farmer is not adequately compensated for his work nor properly thanked for his efforts," Buchanan said, "but we all owe him our appreciation for providing us with the best stocked cupboards in the world."

More than 200 people are expected to attend the Water, Inc. session which is being dedicated to Congressman George Mahon of Lubbock for his outstanding contributions to the region, the state and the nation.

Turkey Shoot Winners Named

Winners of the December 17 Silverton Young Farmers turkey shoot were Joe Wood, Steve Barbour, Perry Brunson, Mike Cullwell, Lee Roberts, Guy Breedlove, Hand Baird, Jeff Tiffin,

Also, Doug Bradford, Walter Dunham, Ken Sarchet, Donald Thomas, Mr. Laughlin, Al Hall, John Baird, Howard Davis, Berry McMinimy, Bruce Tiffin, Dee Davidson, Dana Martin and Gene Rodgers.

Club Holds Christmas Party

Silverton Young Farmers held their annual Christmas party December 16 in the P. C. A. community room.

After a dinner of ham and pheasant, everyone played 42.

Those present included Wayne and Betty Stephens, Wayland and Flo Fitzgerald, Orville and Carolyn Turner, Van and Sue Breedlove, Jeep and Polly Jarrett, Fred and Lois Hill, Jerry, Vicki and Kristi Bean, Donnie and Sandy Perkins, Fred and Linda Minyard, Doug and Jeanetta Bradford, Tobe Riddell, Merle Roehr, Fred Bran-non and Clinton Dickerson.

NET

One of the definitions for a net is a trap or a snare. A net is used to catch a fish. There are times in every man's life when, like Job, he feels that God has trapped him in a net. Job 19:6 reads, "Know now that God hath overthrown me, and hath compassed me with his net."

But our troubles and afflictions are never caused by our God. Moreover, His Word says He is ever faithful to deliver His people. The Psalmist asserts: "Mine eyes are ever toward the Lord; for he shall pluck my feet out of the net."

How wonderful are His promises. These promises are proclaimed from the pulpit by your pastor each week for the blessing and edifying of God's people. Won't you attend church this week and partake of this blessing?

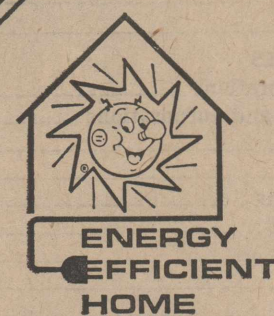
The Church is God's appointed agency in this world for spreading the knowledge of His love for man and of His demand for man to respond to that love by loving his neighbor. Without this grounding in the love of God, no government or society or way of life will long persevere and the freedoms which we hold so dear will inevitably perish. Therefore, even from a selfish point of view, one should support the Church for the sake of the welfare of himself and his family. Beyond that, however, every person should uphold and participate in the Church because it tells the truth about man's life, death and destiny; the truth which alone will set him free to live as a child of God.



Coleman Adv. Ser.



First State Bank

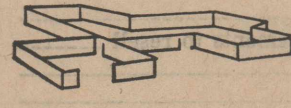


built to save

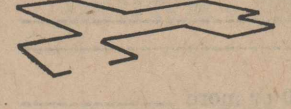
The **key** to saving **IS INSIDE...**



... THE WALLS AND CEILINGS
The outside walls of the ENERGY EFFICIENT HOME meet standards according to three options. The first option uses 6 inch studs with 6 inch batt-type (R-19) insulation. Option two has 4 inch studs and 3 inch insulation (R-11) with 3/4 inch styrofoam sheathing. The third option uses R-15 minimum insulation with any other method. All options include a vapor barrier of 6 mil. polyethylene or foil-backed sheetrock. Sill insulation or sill caulking between the bottom plate and the floor also is required. The ceiling is insulated with R-30.



... THE DOORS AND WINDOWS
Outside doors and all windows on the ENERGY EFFICIENT HOME are weather stripped and caulked. In addition, double pane glass or storm windows and insulated core or storm doors are vital contributors to the dollar-wise built to save ENERGY EFFICIENT HOME. A recommendation is made that maximum glass area comprise 8% or less of floor space.



... THE FLOORS
The very foundation of the ENERGY EFFICIENT HOME — the floor — is an important factor in saving energy and money. Slab floors contain vermiculite in the cavity between bricks and slab up to the top of the floor. An alternate is a layer of rigid urethane or styrofoam (minimum of 3/4 inch thickness) from top of floor along the outside edge of the slab down to the brick ledge. Wood floors (pier and beam) must be insulated with R-13.

When you're planning to buy or build a new home, you start by taking a really good look inside. Because the key to comfort and saving is INSIDE... INSIDE the walls, in the doors and windows, under the floor and in the ceiling. So peek INSIDE the ENERGY EFFICIENT HOME — really INSIDE. You can see that it's BUILT TO SAVE — Energy and Money.



OUR GENERATION IS FOR YOU!

1909.3

Farm and Ranch Progress Night Set At Quitaque

The annual Farm and Ranch Progress Night will be held Tuesday night, January 24, 1978 at 7:00 in the Community Building at Quitaque, according to an announcement by Briscoe County Extension Agent Earnest C. Kiker.

Among the topics to be discussed will be: "Pesticide Laws and Regulations," discussed by a representative from the Texas Department of Agriculture. The new Farm Program will be discussed by Marvin Sartin, Area Economist for the Texas Agricultural Extension Service (TAES). Dr. Zoel Daugherty, Area Agronomist with TAES, will discuss Weed Control in Briscoe County. He will be followed by Dr. John McNeil, Area Beef Specialist with TAES, talking about Feeding Livestock. Dr. James Supak, Area Agronomist—Cotton, will then discuss the New Cotton Varieties. Closing the program will be Marvin Sartin, Area Economist, discussing the ways of reducing cost.

The program will be very informative. It should last approximately two and one half hours with time allotted for all your questions.

I appreciate the credit you gave me, and I am glad to have contributed, in a very small way, something to such a fine piece of work.

That caprock from Tule Crossing to Quitaque Creek is, without doubt, one of the most beautiful and fascinating, yet deeply mysterious of any area in America.

All good wishes to you and your committee.

Yours truly,
Joe H. (Heflin) Smith
4858 Somerset Drive
Riverside, Ca. 92507

The program will be very informative. It should last approximately two and one half hours with time allotted for all your questions.

NEW CHAPTER ORGANIZED

The efforts and encouragement of the Silvertown Young Homemakers was climaxed over the weekend when Carolyn Turner traveled to Perryton to act as installation officer for the recently-organized chapter of Perryton Young Homemakers.

The formal ceremony took place Saturday, January 14, in Perryton High School's Home Economics

Historical Survey Committee Has Luncheon Meeting

The Briscoe County Historical Survey Committee, with eight members present, met for a business luncheon Saturday, January 7, 1978, at the Sportsman's Cafe in Quitaque.

Mrs. Edwin Dickerson, committee chairman, directed the business meeting. New officers elected were Mrs. C. L. McWilliams, historian, and Mrs. E. A. Birdwell, reporter. A new member of the committee, Mrs. Grady Tyler, was recognized and welcomed.

The re-ordering of the Briscoe County history, "Footprints of Time—Briscoe County 1876-1976," was discussed, with specific attention to the fact that the committee has a list of those who have expressed a wish to buy a book.

The interest of those who would like a book will determine whether the committee can re-order.

The increase in the publisher's cost will necessitate an increase over the price of the first printing.

Also presented to the committee was the progress on written reports on Briscoe County sites being submitted to the Texas Historical Commission. Sites now being considered are the Mackenzie Dam northwest of Silvertown and the Gasoline Gin in the Gasoline community four miles south of Quitaque. The historical marker for the Folsom Site at Lake Theo

IMMUNIZATION CLINIC

There will be an immunization clinic at which children and adults may receive without charge protection against several childhood diseases from 1:00 until 3:00 p. m. January 27 at the Silvertown School.

Further information regarding the clinic is available from the school nurse, Mrs. Margie Pinkerton.

Mrs. Wynona Lyde of Lubbock visited in the Leo Comer home from Tuesday to Thursday of last week.

north of Quitaque is expected later this month.

Mrs. C. L. McWilliams, committee member, submitted the written report to the State Historical Commission on the Folsom Site.

Mrs. McWilliams has been notified that she has been selected to be included in "Personalities of the South, 1976-1977." This recognition was received because of her work in the preservation of the history of Briscoe County.

A letter of notification from the Texas Historical Commission indicates that the Red Butte Complex 41 BI 237, 238, 248, 250 and 251 located on the H. T. Luther Ranch in east Briscoe County has been considered eligible for nomination to the National Register of Historic Places. The information for this report was submitted by H. T. Luther and O. R. Stark, jr.

—Norma L. Birdwell, reporter

Hightower Seeking Re-Election

To Congress

Congressman Jack Hightower today announced that he has filed for re-election to Congress. His statement follows:

"Today I am announcing my candidacy for re-election to Congress from the 13 District.

"It has been a high honor to have served this area of Texas for the past three years. I will continue to do my best to represent each of you with diligence, determination and plain hard work.

"I will continue to communicate closely with citizens in all parts of this large district, to be constantly aware of your interests.

"I will continue to communicate closely with other members of Congress, to try to make them aware that our interests, and the national interest, are one. Members of Congress from urban areas, who are the majority, must be made aware that agricultural and energy producers from our area and the consumers of our products from their areas are dependent upon one another. They must be made aware that the costs of producing the food we eat, the fiber for the clothes we wear and the energy to sustain all production must be paid, and must be shared.

"Throughout the past three years much of my time and effort

has been devoted to the House Agriculture Committee. No more serious problem faces our country than the plight of agriculture. The cost-price squeeze on farmers and ranchers threatens to grow steadily worse. The problem demands the full attention of the Congress and the Administration. A strong national economy is impossible without a strong agricultural economy.

"During the past three years I have spoken and voted for energy proposals that would increase our energy supplies and thereby protect the interests of producers and consumers. I have spoken and voted against programs that would increase federal involvement in energy production and that would promote energy conservation through the artificial means of taxation.

"I will continue to consider myself a steward of taxpayers' money, to support expenditures only when I believe there will be a positive return on the investment. I will continue to press for greater accountability by those agencies and departments that absorb the federal budget and to curtail or eliminate those who have outlived their usefulness.

"I appreciate the support you have given me. I will try to merit your continuing support in the future."

Mr. and Mrs. J. R. Steele returned last week from a vacation in California and points of interest in the west. Even though Cali-

McJimsey Services Held Here Friday

Funeral services for George Irving McJimsey, 62, were conducted at 2:00 p. m. Friday at the First Baptist Church in Silvertown. Officiating were the pastor, Rev. Royce Denton, and a former pastor, Rev. C. H. Murphy, jr., of Friona.

Burial was in the Silvertown Cemetery, with arrangements under the direction of the Moore-Rose Silvertown Funeral Home.

The Oklahoma native moved to Briscoe County in 1927. He married the former Lillus Ruth Ledbetter in December of 1936 in Silvertown. He was a retired farmer and a deacon of the First Baptist Church in Silvertown.

Survivors include his wife, Lillus Ruth; a daughter, Mrs. Roxana Schofield of San Antonio; a son, George of Amarillo; his mother, Mrs. Stella McJimsey of Silvertown; a brother, Harvey of Silvertown; two sisters, Mrs. Helen Strickland of Lubbock and Mrs. Ellie Mize of Noble, Oklahoma; and four grandchildren.

Pallbearers were Seymour Brannon, Joe Brannon, Roy Mack Walker, Jarus Flowers, Duane Reynolds, Johnnie Burson, O. R. Stark, jr., Elbert Stephens, Troy Jones and Walter Brannon. Honorary pallbearers were members of the board of deacons of the First Baptist Church in Silvertown.

Funeral services were held in Friona. It had been raining every day they were there.

CONSOLIDATED REPORT OF CONDITION OF First State Bank

OF SILVERTOWN IN THE STATE OF TEXAS AND DOMESTIC SUBSIDIARIES AT THE CLOSE OF BUSINESS ON DEC. 30, 1977

ASSETS	
Cash and due from banks	1,948
U. S. Treasury securities	490
Obligations of other U. S. Government agencies and corporations	-
Obligations of States and political subdivisions	1,762
Other bonds, notes, and debentures	-
Corporate stock	-
Trading account securities	-
Federal funds sold and securities purchased under agreements to resell	-
a. Loans, Total (excluding unearned income)	9,536
b. Less: Reserve for possible loan losses	140
c. Loans, Net	9,396
Direct lease financing	-
Bank premises, furniture and fixtures, and other assets representing bank premises	50
Real estate owned other than bank premises	-
Investments in unconsolidated subsidiaries and associated companies	-
Customers' liability to this bank on acceptances outstanding	-
Other assets	-
TOTAL ASSETS	13,646

LIABILITIES	
Demand deposits of individuals, partnerships, and corporations	5,228
Time and savings deposits of individuals, partnerships, and corporations	6,553
Deposits of United States Government	44
Deposits of States and political subdivisions	728
Deposits of foreign governments and official institutions	-
Deposits of commercial banks	-
Certified and officers' checks	117
TOTAL DEPOSITS	12,670
a. Total demand deposits	5,622
b. Total time and savings deposits	7,048
Federal funds purchased and securities sold under agreements to repurchase	-
Other liabilities for borrowed money	-
Mortgage indebtedness	-
Acceptances executed by or for account of this bank and outstanding	-
Other liabilities	-
TOTAL LIABILITIES (excluding subordinated notes and debentures)	12,670
Subordinated notes and debentures	-

EQUITY CAPITAL	
Preferred stock	None
Common stock	300
Surplus	500
Undivided profits	176
Reserve for contingencies and other capital reserves	-
TOTAL EQUITY CAPITAL	976
TOTAL LIABILITIES AND EQUITY CAPITAL	13,646

MEMORANDA	
Average for 15 or 30 calendar days ending with call date:	
a. Cash and due from banks	871
b. Federal funds sold and securities purchased under agreements to resell	None
c. Total loans	13,816
d. Time deposits of \$100,000 or more	625
e. Total deposits	8,106
f. Federal funds purchased and securities sold under agreements to repurchase	None
g. Other liabilities for borrowed money	None
Standby letters of credit outstanding	None
Time deposits of \$100,000 or more:	
a. Time certificates of deposit in denominations of \$100,000 or more	None
b. Other time deposits in amounts of \$100,000 or more	625

I, David Tipton, Vice President, of the above-named bank, do solemnly swear/affirm that this report of condition is true and correct, to the best of my knowledge and belief.

/s/ David Tipton

Correct—Attest:
D. T. Northcutt Directors
Alvin Redin
Pat L. Northcutt

State of Texas, County of Briscoe, ss:
Sworn to and subscribed before me this 13th day of January, 1978,
and I hereby certify that I am not an officer or director of this bank.
My commission expires September 30, 1978, /s/ Bessie Garrison, Notary Public

CAPROCK FOOD

SHURFINE DILL PICKLES 16 oz. 49¢	SHURFINE PEAS 303 can 2^FOR 69¢
WOLF BRAND With BEANS CHILI 15 oz. can 53¢	CAMPBELLS CHICKEN NOODLE SOUP 4 ^F OR 95¢
TEXSUN ORANGE JUICE 64 oz. btl. 99¢	CAMPBELLS Cream of Mushroom Soup 4 ^F OR 95¢
SHURFINE APPLE SAUCE 303 can 2^FOR 79¢	SHURFINE CRACKERS 1 lb. box 49¢
SHURFINE ASPARAGUS 15 oz. can 77¢	FRANCO AMERICAN SPAGHETTI 15 oz. can 3^FOR 79¢

Reg. White Rain 7.5 oz.
HAIR SPRAY **89¢**
Reg. \$1.39

Agree Cream 8 oz.
HAIR RINSE **99¢**
Reg. \$1.99

BIG SAVINGS
PLUS
S & H GREEN STAMPS
Double on Wednesday
Specials good Fri. and Sat.

Crest 7 oz.
TOOTH PASTE **83¢**
Reg. \$1.59

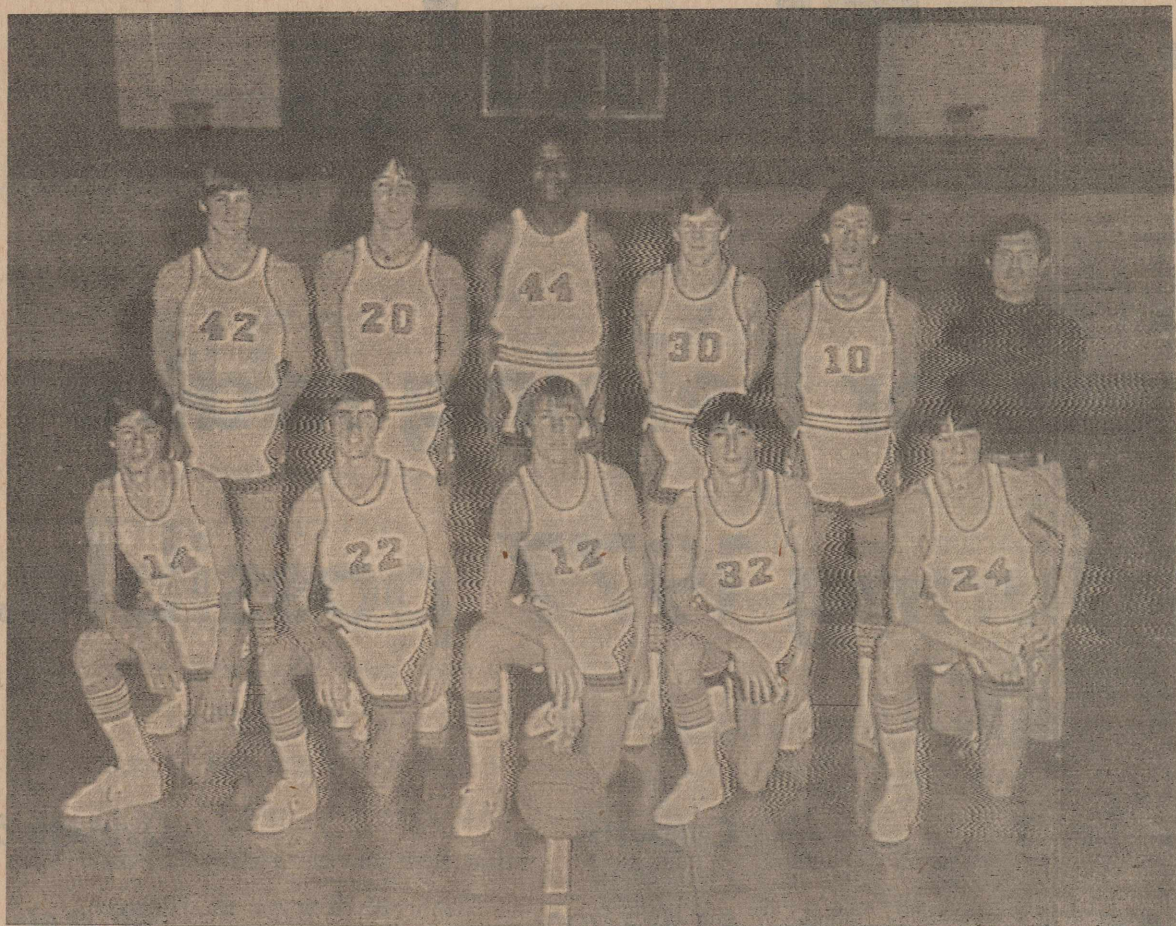
Jergens 10 oz.
HAND LOTION **1.09**
Reg. \$1.89

"Quality Meats"
SLICED SLAB
BACON lb. **\$1¹⁹**
ROUND STEAK lb. **\$1³⁹**
HILLSHIRE FARM
SMOKED SAUSAGE lb. **\$1³⁹**
EXTRA LEAN
BEEF RIBS lb. **59¢**

"Fresh Produce"
GOLDEN RIPE
BANANAS lb. **17¢**
CALIF. SUNKIST
ORANGES lb. **25¢**
ST. NECK YELLOW
SQUASH lb. **31¢**
MEXICO
BELL PEPPERS lb. **25¢**



GOOD LUCK OWLS AND OWLETTES, BEAT NAZARETH



Varsity Owls—Kneeling, from left, Paul Brannon, Doug McJimsey, Kyle Bean, Cam Forbes, Kirk Durham; standing, James Alan

Patton, Jace Francis, Jackie Vaughn, Earl Jarrett, Brent Brannon and Coach Lyndel Norwood. —B. J. Willis Photo



Varsity Owlettes—Sitting, from left, Kim Cornett, Ruegena Davidson, Debbie Storie, Karen Martin, Liz Brown, Connie Rowell; standing, Arlene Lavy, Linda

Vaughn, Twila Wood, Coach Jim Kirkland, Jennifer Martin, Mig-none Rauch and Ramona Clay. —B. J. Willis Photo

RHODE PIPE COMPANY

JACK'S PHARMACY

ASHEL McDANIEL TEXACO

FIRST STATE BANK

SILVERTON AUTO PARTS

FARM BUREAU INSURANCE

VERLIN B. TOWE AGENCY

POTPOURRI Flowers and Gifts

JONES DEPT. STORE

SILVERTON OIL COMPANY

RAY THOMPSON IMPLEMENT, INC.

BROWN - McMURTRY IMPLEMENT CO.

NANCE'S FOOD STORE

FOGERSON LUMBER & SUPPLY

D & D CHEMICAL & FERTILIZERS, INC.

BRISCOE COOPERATIVES

BROWN HARDWARE AND FURNITURE

GRABBE-SIMPSON CHEVROLET CO., INC.

BRISCOE COUNTY NEWS

FLEMING WELL SERVICE

Teams Win Trophies In Tournament

Silverton's junior varsity Owls lost their game to Childress in the championship but brought home the second-place trophy from the Valley Junior Varsity Tournament last weekend, and the Owlettes, who dropped their second game in the tournament to Nazareth, won third place.

The Owlettes won their first game of the tournament from Lockney, who had defeated them earlier in the season, 29-28. Sally Northcutt led the scoring for the Owlettes with seven points. Staci Mayfield caged six points, Rose Lee Perkins rang up four, Scotti Fleming and Shelly Harris got three points each, Susie Tipton and Teresa Crosslin added two points each, and Penny Cogdell tossed in a free throw.

Owlette JV	7	15	21	29
Lockney	6	17	19	28

In their second game, the Owlettes lost to Nazareth by nine points, after having trailed by 24 points at one time during the contest. The girls really had a hard time getting the ball to go down into the basket. Staci Mayfield, Sally Northcutt and Scotti Fleming led the offense with seven points each. Rose Lee Perkins and Penny Cogdell added six points each; Kim Fitzgerald caged five points, and Shelly Harris and Teresa Crosslin got two points each.

Owlette JV	4	12	20	42
Nazareth	15	26	42	51

The Owlettes defeated to the Childress "B" team to win third place in the tournament. Scotti Fleming led the team with 12

points, while Sally Northcutt caged 11. Rose Lee Perkins and Susie Tipton each rang up three points, and Staci Mayfield and Shelly Harris each added a pair of points.

Owlette JV	4	16	31	44
Childress "B"	2	11	26	35

The Owls also won their first game from Lockney, 48-45. Kyle Bean led the team offensively with 18 points. Bill Denton caged eight points, Kelly Comer tossed in seven, Diji Couch and Bobby McPherson rang up six points each, and Mark Brown added three points.

The game was a very close one which saw the Owls come from behind to win.

Owl JV	9	24	35	48
Lockney	12	23	37	45

In the second round of the tournament, the Owls defeated Matador 56-51. Bobby McPherson led the scoring with 14 points, closely followed by Kelly Comer with 13. Mark Brown tossed in eight, Kyle Bean got seven, and Bill Denton and Russell Couch each added two points. This game was another squeaker, which provided excitement

ment aplenty for fans of both teams.

Owl JV	13	27	40	56
Matador	14	31	41	51

In the championship game Saturday night, the Owls lost a close decision to Childress "B", 46-44. Kyle Bean led the scoring with 25 big points. Mark Brown caged nine, Bill Denton rang up four, Kelly Comer got three, Diji Couch made two and Bobby McPherson added a point. Childress jumped out to a large first quarter lead, but the Owls kept working and were almost able to pull out a victory. As it was they brought home a beautiful second place trophy.

Owl JV	6	16	34	44
Childress	18	27	36	46

Leading scorers for the tournament for the Owlettes were Sally Northcutt, 25; Scotti Fleming, 22; Staci Mayfield, 15, and Rose Lee Perkins, 13. For the Owls, the top point-getters were Bean, 50; Comer, 23; McPherson, 21; Brown, 20; D. Couch, 17; Denton, 14.

Junior High Wins Games From Valley

The junior high teams hosted Valley for a three-game series Monday night, and managed to win two of the three games.

The eighth grade Owlettes, up against a very good competitor, lost their game 34-12. Lupe Garcia and Vicki McJimsey led the scoring for Silverton with four points each. DeAnn Strange and Katy Francis caged two points each.

8th Owlettes	2	8	12	12
Valley	12	20	32	34

The seventh grade Owls came from behind to take a one-point victory 29-28. Bob Arnold led the scoring for the Owls with 10 points, closely followed by Michael Martin, who tossed in nine points. Shane Reagan rang up five points, Craig Patton got four and Kerry Baird added a point.

7th Owls	3	5	15	29
Valley	7	11	18	28

The eighth grade Owls also had to come from behind for their win, which has not been their usual procedure during the past two years. They ended the first quarter trailing 7-2, but had come from behind before halftime and led at the end of the other periods, winning 28-17. Casey Bean and David Vaughn led the scoring with 10 points each. Andy Fabela got six points and Kelly McMurtry added a pair of points.

8th Owls	2	14	24	28
Valley	7	11	13	17

The teams will be playing in the Kress Tournament Thursday and Saturday, and will travel to Nazareth for return games Monday night of next week.

The Congregation Of The CHURCH OF CHRIST Meeting At Rock Creek

EXTENDS A GRACIOUS WELCOME TO ALL TO
ATTEND ANY AND ALL OF OUR SERVICES.

SUNDAY

Morning Worship	10:30 a.m.
Evening Worship	6:00 p.m.

WEDNESDAY

Evening	7:00 p.m.
---------	-----------

WELCOME!

TO OUR

MEETING

AT

ROCK CREEK

JANUARY 20 - 22

FRIDAY AND SATURDAY 7:00 P.M.

SUNDAY 10:30 A.M. - 6:00 P.M.

OUR SPEAKER

JACK HUTTON

Our Sincere Thanks

To the people of this area for helping make this outstanding growth during 1977 possible.

	12-31-76	12-31-77	Growth	Growth %
Total Assets	\$24,071,215	\$32,349,005	\$8,277,790	34%
Total Savings	20,939,087	27,469,595	6,530,508	31%
Mortgage Loans	20,405,333	27,352,067	6,946,734	34%
Total Interest paid on Savings	1,248,532	1,665,707	417,175	33%

Our pledge of 1978 -- to continue our "More for Your Money" policy by giving the very best service possible, pay the highest rates on savings allowed under Federal Regulations and charge the lowest possible rates on loans consistent with sound management policies.

We extend a special invitation to others in this area to join the thousands already doing business with us and get "More for Your Money."

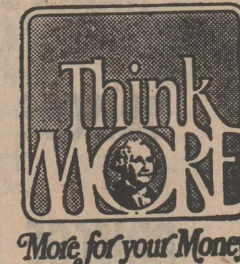
Central Plains Savings Association

416 Main Street
Silverton, Texas
823-2056

2804 Olton Road
Plainview, Texas
293-2607

200 N. Maxwell
Tulia, Texas
995-3521

700 Main
Hale Center, Texas
839-2446





ASSEMBLY OF GOD

Lemy L. Pike, Pastor

Sunday

Sunday School..... 9:45 a.m.
 Worship Service..... 11:00 a.m.
 Evening Service..... 7:00 p.m.

Wednesday

Worship Service..... 7:30 p.m.



CHURCH OF CHRIST SILVERTON

Ted Kingery, Minister

Sunday

Sunday School..... 9:45 a.m.
 Morning Worship..... 10:45 a.m.
 Evening Worship..... 6:00 p.m.

Wednesday

Bible Study..... 7:30 p.m.



FIRST BAPTIST CHURCH

Sunday

Library Opens..... 9:15 a.m.
 Sunday School..... 9:45 a.m.
 Worship Service..... 11:00 a.m.
 Library Opens..... 4:30 p.m.
 Youth Choir..... 4:30 p.m.
 Training Union..... 5:00 p.m.
 Mission Friends, G.A.
 and R.A..... 5:00 p.m.
 Evening Worship..... 6:00 p.m.

Second Monday

Night W. M. S..... 7:00 p.m.

Second and Fourth Tuesday

W. M. S..... 9:30 a.m.

Wednesday

Junior High Acteens..... 3:35 p.m.
 High School Acteens, first
 and third Wednesday..... 3:35 p.m.
 Mid-Week Service..... 7:00 p.m.
 Choir Rehearsal..... 7:45 p.m.

Second Saturday

Baptist Men..... 7:00 a.m.



LITTLE FRIEND

Any mother can tell about a child's love for her doll, and the world of *PRETEND* that they live in. They confide in the doll, reprimand them, and care for them.

The church is a real and true friend. The church may be counted on in times of need, in times of trouble, and in times of sorrow. The church also wants to share in your times of joy.

"A friend loveth at all times."

The Church is God's appointed agency in this world for spreading the knowledge of His love for man and of His demand for man to respond to that love by loving his neighbor. Without this grounding in the love of God, no government or society or way of life will long persevere and the freedoms which we hold so dear will inevitably perish. Therefore, even from a selfish point of view, one should support the Church for the sake of the welfare of himself and his family. Beyond that, however, every person should uphold and participate in the Church because it tells the truth about man's life, death and destiny; the truth which alone will set him free to live as a child of God.

FIRST UNITED METHODIST CHURCH

Jesse Dea, Pastor

Sunday

Sunday School..... 9:45 a.m.
 Worship Service..... 11:00 a.m.
 M. Y. F..... 5:00 p.m.
 Evening Worship..... 6:00 p.m.

Wednesday

Choir Practice..... 6:00 p.m.



NEW FELLOWSHIP BAPTIST MISSION

Sunday

Sunday School..... 9:45 a.m.
 Worship Service..... 11:00 a.m.
 Training Union..... 5:00 p.m.
 Evening Service..... 6:00 p.m.

Wednesday

Choir Rehearsal..... 7:00 p.m.
 Prayer Service..... 8:00 p.m.



OUR LADY OF LORETO CATHOLIC CHURCH

Father David Greka

Sunday

Mass..... 10:00 a.m.



ROCK CREEK CHURCH OF CHRIST

Earl Cantwell, Minister

Sunday

Worship Service..... 10:30 a.m.
 Evening Worship..... 6:00 p.m.

Wednesday

Worship Service..... 7:00 p.m.

BROWN - McMURTRY IMPLEMENT CO.

SILVERTON AUTO PARTS

RHODE PIPE COMPANY

NANCE'S FOOD STORE

JONES DEPT. STORE

SILVERTON FUNERAL HOME

BRISCOE COOPERATIVES

BRISCOE COUNTY NEWS

VERLIN B. TOWE AGENCY

D & D CHEMICAL & FERTILIZERS, INC.

ASHEL McDANIEL TEXACO

GRABBE - SIMPSON CHEVROLET CO., INC.

FOGERSON LUMBER & SUPPLY

JACK'S PHARMACY

SILVERTON OIL COMPANY

BROWN HARDWARE AND FURNITURE

RAY THOMPSON IMPLEMENT, INC.

FIRST STATE BANK

THE COFFEE SHOP

FOR SALE

TWO-STORY HOUSE FOR SALE:
800 Main, Phone 823-2015 or 823-2470. 2-4tc

FOR SALE: 1972 CHEVROLET
4-door Caprice. 823-2440. 2-3tc

1974 OLDSMOBILE FOR SALE:
Delta 88. See or call Michael Long, 823-2262, or Beryl Long. 2-2tp

ONE THERMAFAX SECRETARIAL
copying machine for sale; also one 3-M Casual Desk Copier. Silvertown Metal Works. 2-4tc

F. C. GATEWOOD HOUSE, SHOP
and three lots For Sale. Contact F. E. Hutsell, 823-2067 or 823-2189. 46-tfc

HOUSE FOR SALE: 703 BRAID-
foot Street. Jay Towe, 823-2482 or 823-2046. 37-tfc

FOR SALE: 3 BEDROOM HOUSE:
carpeted; central heat and air; double garage with cellar and 50 acres of land. Call Dick or Blanche Franklin, 806-645-8782, O'Donnell, Texas. 40-tfc

SAVE HAY-USE DAVIS "RANGE-
master" Round Hay Feeder. Only \$87.50 each. Transport bales with the Davis Round Bale Carrier, \$575.00. See at Brown-McMurtry Implement Company. 3-4tc

FOR SALE: TRASH BARRELS.
Silvertown Fire Department, ask at City Hall. 20-tfnc

66, 68 JOHN DEERE MOWERS.
Ray Thompson Implement Co.

TIRE SALE: SOME TIRES BE-
low dealer's cost. Hester & Sons Service Center. 43-tfc

THE YARN SHOP
"Something for Everyone!"
W. E. Schott Res. 406 Briscoe

HOUSE FOR SALE: TWO BED-
rooms and Garage. See by appointment. 823-2209. 39-tfc

KIRBY SALES AND SERVICE.
James Canida, Dealer. In Silvertown, call Helen Strange. 33-tfc

SINGER SEWING MACHINES
Vacuum Cleaners, Smith-Corona Typewriters, Adding Machines, Stereos. Sales, Service, Financing. Here every two weeks on Thursdays. Memphis Sewing Machine Co. 29-tfc

FAMBRO GATES AND PANELS.
Designed by and built for ranchers. All steel; wind proof; custom made. Full details available from the local dealer, Brown Hardware in Silvertown.

MY BUSINESS IS "SHOCKING
and Exhausting;" Brake Service, too! Lonnie's Muffler & Brake Service. Phone 995-4733, North Highway 87, Tullia, Texas. 15-tfc

JANUARY CLEARANCE SALE
continuing at The Yarn Shop. 10% to 50% off. 406 Briscoe, Silvertown. 3-2tc

WE HAVE A SPECIAL OIL TO
fit your needs from the smallest two cycle lawn mower to the largest diesel tractor. Brown-McMurtry Implement. 38-tfc

OLD SCRATCH CATTLE OILERS:
Sales, service, parts and insecticides available through Henry T. Hamblen, Wayside, Texas. 806 764-2762. 27-tfc

MOORMAN'S FEEDS
To better utilize your grazing, use Moorman Mineral and Protein It Pays To Figure Feed Cost
DONNIE MARTIN
Silvertown, Texas

"OUR BUSINESS IS EXHAUSTING"
We specialize in aa. mufflers, tail pipes, duals and shocks.
DON'S SMALL ENGINE
123 West California
Floydada, Texas
Phone 983-2273

HOT WATER HEATERS: 20, 30,
40 Gallon; Gas and Butane.
Brown Hardware. 36-tfc

FOR SALE: 4 750 by 16 6 ply
tires. W. Hamilton. 50-tfc

SEE BROWN - McMURTRY FOR
your International Electric Fencers, insulators and wire. 38-tfc

FOR SALE: 4 BEDROOM STUC-
co house and lot with cellar in Silvertown. Close to school. \$12,000.00 or will sell house to be moved. Need listings on dry-land farms, grassland for lease or sale. J. C. Harris Agency. Office Phone 684-2218, Home Phone 684-2511. 49-tfc

DRY CLEANING, LAUNDRY:
Briscoe County News is the Silvertown pick-up station for Tullia Laundry and Cleaners. Clothes will be picked up and delivered on Thursdays only. 31-tfc

Your Nearest
H&R BLOCK OFFICE
is at 106 West Missouri
in Floydada
PHONE 983-5233
2-14tc

TAX, BOOKKEEPING SERVICE
Ray Jackson
Briscoe Farm Bureau Office
PHONE 823-2153
In Silvertown on Thursdays 1-tfc

CUSTOM FARMING
Subsoil Chisel
Disc Rip and Bed
Listing
TREFLAN APPLIED WITH:
Disc Sweeps and Rake
Rolling Cultivator
WENDELL HARDIN
847-2215 51-5tc

CUSTOM FARMING-ALL TYPES.
Guaranteed to your satisfaction. 995-3077, Tullia. Call Louis or Johnny Malone. 48-tfc

Silvertown Chapter No. 900
ORDER OF THE EASTERN STAR
Meets at 7:30 p.m.
Fourth Tuesday of Each Month
Silvertown Masonic Lodge
43-tfnc

SALE NEEDLEPOINT, CREWEL,
cross stitch, quilt tops and table cloths, Christmas kits, crochet and knitting yarns. Dan's of Canyon. 3-3tc

FOR SALE: 1974 BLAZER. 823-
2440. 3-3tc

HOUSE AND THREE ACRES
land for sale: Dwin Davis,
Phone 823-2106. 3-tfc

TWO BEDROOM HOUSE FOR
sale. 705 Loretta. 823-2463.

TURQUOISE JEWELRY FOR
Sale. Made by Lee Clay. Rings, bracelets, necklaces and earrings. Come by and see what we have or contact Lee at 823-2279. Special orders taken. 3-tfc

FOR SALE: 3 PILLOW EARLY
American divan; 1 Lazy Boy Lounger, green; 1 black lounge. Ollie McMinn. 3-tfc

WANTED

SIGN PAINTING OR REPAINT-
ing, Advertising Logos, Commercial art. Lorna Powell, 847-2254 or 823-2333. 2-tfnc

Underground
Irrigation Pipe
Plastic Gas Pipe
RHODE PIPE CO.
Phone 823-2458 or 823-2459
Silvertown, Texas

MAC'S BACKHOE SERVICE
Call Harvey McJimsey
Silvertown, Texas 17-tfc

OIL CHANGE & LUBRICATION SPECIAL

\$8.95 plus tax

Includes

5 quarts Single Wt. or Multi Wt. Oil

Oil Filter

and Chassis Lubrication

This Offer Good Jan. 19 thru Jan. 26

SILVERTON 66 SERVICE

823-2384

I WOULD LIKE TO DO SEWING
for the public in my home. Call Cathey Weaks, 847-2234. 3-4tc

FOR SALE: BLACK AND WHITE
13" General Electric TV. H. M. Cowell, 805 Seventh Street. 3-tfc

CARD OF THANKS
I would like to say thanks for all the cards, flowers, phone calls and visits while I was in the hospital.
Lisa Younger

CARD OF THANKS
Thanks to Harold, Ellen and Cynthia Edwards and Earnest and Vicki Kiker for helping with my show calves and to James Kitchens for showing one of the calves for me.
Sally Northcutt

CARD OF THANKS
I want to thank my Secret Granddaughter for the lovely ceramic box and card. It made my Christmas even more special.
Iwana Monroe

CARD OF THANKS
I would like to take this opportunity to thank each person for the prayers and many acts of kindness shown to me and my family while I was in the hospital and since I have been at home. The cards, visits, flowers, gifts and food were appreciated very much and will always be remembered.
Thank you again.
LaQuetta Schott

CARD OF THANKS
Thank you so much for the cards, flowers and visits while I was in the hospital and since I've been home. I really appreciated all your thoughtfulness.
Glenna Cornett

FOR ALL YOUR LIFE INSURANCE and HOSPITALIZATION NEEDS - USE
Archie Castleberry
SOUTHLAND LIFE
11th and Washington
Amarillo, Texas

Bill's Trim Shop
We specialize in Pickup Seats, Car Interior
995-4616
1/4 301 SE 2nd 1/4
on Highway 86 in Tullia

SENIOR CITIZENS TO MEET FRIDAY AT NOON

Senior Citizens will have their regular monthly meeting Friday at noon in the old clinic building. The noon luncheon will begin at 12:00 o'clock.

Mrs. Don Smith of Lone Star, daughter-in-law of Mr. and Mrs. Glen Lindsey, was scheduled to enter Methodist Hospital in Lubbock Tuesday and to undergo major surgery there on Wednesday. Mrs. Lindsey was unable to be in Lubbock with her son during the surgery, but Mr. Lindsey was at the hospital with Don.

Dave Francis is scheduled to enter Methodist Hospital in Lubbock today (Thursday). Friday he is to undergo surgery on his right

arm to repair torn and dislocated ligaments. This was from an old injury that he had over a year ago.

DAVID DEA ON DEAN'S LIST

David Dea has been named to the Dean's List for Fall Quarter at Asbury College, Christian liberal arts school in Wilmore, Kentucky. Dea is the son of Rev. and Mrs. Jesse Dea of Silvertown.

With an enrollment of 1,279 students from 40 states and 15 foreign countries, Asbury College is interdenominational. Since 1890 the College has sent over 8,000 graduates into business, teaching, law, medicine and church vocations, according to Dr. Howard Barnett, Associate Dean of Academic Affairs.

NOTICE

Beginning January 1978, we will be unable to carry any accounts over 30 days. After the 15th of the 30 day limit, all purchases will be cash. We regret that this action has to be taken but we are forced to implement this policy.

SILVERTON AUTO PARTS

Distinctive

Wedding

STATIONERY

By  **Carlson Craft**

INVITATIONS and ANNOUNCEMENTS
NAPKINS
BRIDAL BOOKS
ACCESSORIES

Fast Service,
Beautiful Styles,
Reasonably Priced!



RAY TEEPLE FEEDLOT

TROJAN HYBRID CORN AND HYBRID MAIZE
POWDER RIVER LIVESTOCK HANDLING EQUIPMENT
CATTLE VACCINE AND HEALTH AIDS
BONDED STATE INDEPENDENT PUBLIC WEIGHER

Delivery Service On All Feeds — Ralston Purina

Credit On All Approved Accounts
CHECK WITH US FOR YOUR FEED NEEDS
847-2665 Silvertown, Texas

DR. O. R. McINTOSH

OPTOMETRIST

316 South Main Phone 983-3460
FLOYDADA, TEXAS

INSULATION

FIRE-RESISTANT, INSTALLED and GUARANTEED

MARR INSULATION CO.

Tom Marr Owner 652-3593
or Call F. E. Hutsell 823-2189

Free Residential and Commercial Estimates

(D-D-J) INSULATION

Specialist In Safe Economical Insulation

FHA - UL - VA - Approved

Alden Carthel 502 N. Second
Ph. 806-983-2601 Night 806-983-5320
Night 806-983-3200 Floydada, Texas

CHECK WITH US, FOR ALL YOUR FARM CHEMICAL NEEDS

BRISCOE COOPERATIVE

Diamond Industrial Supply Co., Inc.

Phone Days 296-7418 — Nights 293-1200 or 296-7828
1014 Broadway
Plainview, Texas

Chain Sprockets V-Belts Sheaves U-Joints Oil Seals O-Rings Wisconsin SKF BCA TIMKEN BOWER
"We Appreciate Your Business More"

TREFLAN

55 gal. drum \$1200.00
5 gal. can \$ 110.00

Prices Subject to Change

PRODUCERS COOPERATIVE ELEVATOR
(Call Us Collect)
Floydada, Texas 983-2821

Announcing

As of January 1, 1978, Stanley and Lynda have acquired ownership of Fogerson Lumber and Supply.

We have been in the lumber business here for the past 30 years and we feel it is time for us to slow down. We will still be around.

We appreciate the kindnesses and the business you have given us in the past years, and trust you will continue with Stanley and Lynda.

WARE AND SYLVIA FOGERSON