





# Briscoe County News

(SECD-065280)

PUBLISHED EVERY THURSDAY AT SILVERTON, TEXAS 79257  
 BY CHARLES AND MARY ANN SARCHET  
 SECOND CLASS POSTAGE PAID AT SILVERTON, TEXAS 79257  
 Postmaster: Send Address Changes to Briscoe County News, Box 130, Silverton, Texas 79257

CHARLES R. SARCHET, PUBLISHER  
 MARY ANN SARCHET, EDITOR  
 SUBSCRIPTION RATE PER YEAR \$5.00

## KIKER'S KORNER

Earnest Kiker  
 Briscoe County Extension Agent

### COPIING WITH FINANCIAL CRISIS

Texas farmers and ranchers continue to be caught in a severe cost-price squeeze.

They have had to deal with sharp increases in the cost of energy, interest and other production inputs while farm prices have continued under pressure. To add to their misery, the state is now in the grips of a severe drought.

To cope with this crisis situation of economic survival, producers need to take a close look at possible adjustments in the areas of financing, marketing and production economics.

To curb rampaging inflation, the Federal Reserve Board and the federal government launched programs early this year to tighten money supplies and restrict credit. Resulting skyrocketing interest rates and tightening credit hit farmers and ranchers hard.

However, interest rates have started down recently, with a prime rate of 11-12 percent forecast by November. But interest rates on farm loans will likely fall more slowly than the prime rate, just as they lagged behind the prime rate when interest rates were increasing.

While producers have generally been able to obtain loans to cover operating costs, loans to finance capital expenditures have been hard to come by. Now, through the Economic Emergency Loan Program, \$1 billion has been made available to states (\$31,859,000 to Texas) to help farmers and ranchers pay installments on existing debts, reorganize farms to make them more viable, or pay farm operating expenses. Where drought has severely reduced farm income, emergency loan funds are being expanded for use by eligible producers.

The availability of loan funds to finance capital expenditures in 1981 will be influenced mainly by how well producers repay their 1980 debt commitments and by the projected farm income

### PUBLIC NOTICE

I, Jerry Patton, Tax Assessor-Collector for the City of Silverton, in accordance with the provisions of Article 7244C, V.T.C.S., have calculated the tax rate which may not be exceeded by more than three (3) percent by the City Council without holding a public hearing as required by Article 7244C, V.T.C.S. That rate is as follows:

\$1.50 per \$100 of assessed value  
 Jerry Patton  
 Tax Assessor-Collector  
 City of Silverton, Texas  
 August 28, 1980 35-1c

## \* New Arrivals

Mr. and Mrs. Tommy Davis of Slaton are parents of a daughter, Trista Leona, born August 6 at Lockney General Hospital. She weighed seven pounds, three and one-half ounces.

She has a brother, Terry Jeff, who is 16 months old.

Grandparents are Mr. and Mrs. Joe Davis and Mr. and Mrs. Willard Vardell, all of Silverton.

Great-grandparents are Mr. and Mrs. Homer Ragland, sr., of Mathgum, Oklahoma; Mr. and Mrs. Haskell Jackson of Tulia, and Mrs. Thelma Reagan of Silverton.

Mr. and Mrs. J. T. Nuchols of 510 22nd Street in Canyon are parents of a son, John Ryan, born at 7:10 p.m. August 10 at High Plains Baptist Hospital in Amarillo. He weighed six pounds, six and one-half ounces.

Grandparents are Mrs. Anne McMurtry, Wayne McMurtry, and Mr. and Mrs. Travis Nuchols of Clovis, New Mexico. Great-grandparents include Mr. and Mrs. Rufe Jordan of Pampa.

Mr. and Mrs. Fred Kellum of Canadian are parents of a daughter, Suzanne Elaine, born at 9:07 p.m. Saturday, August 23. She weighed six pounds and eleven ounces.

She has two brothers, Edward,

picture at that time. Many farmers may have a tough time qualifying for credit in 1981 due to their deteriorating net worth statement.

A side effect of the dry, hot weather, however, is less production and a higher price level for some commodities. This may contribute to a substantial improvement in 1981 income for many Texas farmers.

To help obtain financing for the year ahead, producers must know how to prepare financial statements and how to apply for emergency credit. Key tools necessary to negotiate financing of any type are the cash flow statement, income statement and balance sheet.

The cash flow statement provides a monthly summary of expected cash outflows (for operating expenses, debt servicing, necessary capital expenses and family living) and cash inflows (from farm product sales, off-farm income and other available sources).

The income statement provides a summary of operating expenses and income for the farm's operation over a specified period, usually one year.

Finally, the balance sheet provides a financial summary of all assets and liabilities of the farm business as of a specific date.

For in-depth information dealing with the current economic problems faced by farmers and ranchers, I suggest a copy of "Coping with Economic Crisis in Agriculture," available at my office.

## JERRY LEWIS TELETHON

SET FOR AUGUST 31 -

SEPTEMBER 1 BROADCAST

The 15th annual Jerry Lewis Labor Day Telethon Against Muscular Dystrophy will be broadcast in the Panhandle area by KFDA-TV, Channel 10, August 31 - September 1.

Originating from Las Vegas, the TV spectacular is held to benefit the medical services and research programs of the Muscular Dystrophy Association (MDA). The entertainment marathon will be carried by a "Love Network" of more than 200 TV stations in the continental U. S., Hawaii, Alaska and Puerto Rico. Ed McMahon will again serve as Jerry Lewis' anchorman.

Last year the 21½-hour super show produced a record pledge total of over \$30 million for the national health agency's work, and was seen by an estimated 93 million persons. The show's unduplicated total audience included 50% of the households with TV sets in the U. S.

Robert Considine, the show's who is ten, and John, six years old.

Grandparents are Mr. and Mrs. Charles E. Uglov of Quitman, Texas, and Mr. and Mrs. Allen Kellum of Silverton.

Great-grandparents are Mr. and Mrs. Welch of Dallas.

## Showtime Is Funtime at Astroworld

No matter what your age or fancy, AstroWorld has a show to

fill your summer with fun. The Houston based theme park presents lively entertainment from "The Gay 90's" and the "sock hoppin' 50's"; from the world of children and the not-so-wild-west. A world of water is waiting with dancing dolphins, high diving thrills and comedy on skis; and a "Fantasy of Fire" lights the evening with sparkling colors.

Experience a "blast from the past" with a tribute to the 50's and the King of Rock and Roll—Elvis Presley—in the Coney Island Showcase Theatre. The nine-member thunderbolt grease slapper band, Grease Lightning, rocks and rolls the audience with tunes from days of "greasy kid's stuff." "A Touch of Elvis," featuring Ron Furrer, sparks chills in a presentation of Presley's classics, spanning nearly two decades. "Hey There, Good Times" is Vaudville revived in a fast-paced performance of singing, dancing, comedy and magic in Western Junction's Crystal Palace Theatre. Children's World comes alive when Marvel McFey takes to the stage. AstroWorld's Ambassador of Happiness and his enchanted friends sing and dance in a show just for the little ones.

## HI PLAINS UPHOLSTERY & TRIM

Complete Line Furniture Fabrics

and Car Trim Fabrics

Free Pickup and Delivery 30 Miles

210 S. E. Second

Phone 995-4821

Tulia, Texas

## The Congregation Of The CHURCH OF CHRIST Meeting At Rock Creek

EXTENDS A GRACIOUS WELCOME TO ALL TO ATTEND ANY AND ALL OF OUR SERVICES.

SUNDAY  
 Morning Worship ..... 10:30 a.m.  
 Evening Worship ..... 6:00 p.m.  
 WEDNESDAY  
 Evening ..... 7:00 p.m.

# THE PRICE FIGHTER IS HAVING A SMASHING LABOR DAY SALE! TO HELP YOU BEAT THE CRUNCH OF INFLATION!

### PRICE FIGHTERS

ARMOUR Potted Meat	3 3oz. CANS	79¢
ROYAL OAK Charcoal	10 LB. BAG	\$1.79
FOLGER'S CRYSTALS Coffee	6 OZ. JAR	\$3.29
UNSWEETENED Kool-Aid	7 PKGS.	\$1
SWEETENED Kool-Aid	2 QT. PKG.	53¢
SWEETENED Kool-Aid	10 QT. CAN	\$2.29
TRAPPEY'S W/BACON OR JALA W/BACON Blackeyes	2 NO. 300 CANS	79¢
SHURFINE CRU/SLI Pineapple	3 NO. 1 FLAT CANS	\$1
KRAFT 1000 ISLAND Dressing	16 OZ. BTL.	\$1.19
SHURFINE FRESH PAK WHOLE Dill Pickles	32 OZ. JAR	89¢
RUG & ROOM DEODORIZER	20 OZ. CAN	\$1.59
Love-My-Carpet	IN TRIGGER BOTTLE	\$1.29
Windex	22 OZ. BTL.	\$1.29

### MEAT SPECIALS

GOOCH'S GERMAN BRAND	12 OZ. PKG.	\$1.49
Smoked Sausage	12 OZ. PKG.	99¢
GLOVER'S MEXICAN STYLE Hot Links	LB.	\$1.49
OSCAR MAYER REG./JBD Meat Wieners	LB. PKG.	\$1.49
OSCAR MAYER REG./THICK OR THIN Sliced Bologna	12 OZ. PKG.	\$1.49
OSCAR MAYER SLICED Beef Bologna	12 OZ. PKG.	\$1.59
OSCAR MAYER COTTO SALAMI Luncheon Loaf	8 OZ. PKG.	\$1.19
OSCAR MAYER SLICED Cooked Ham	6 OZ. PKG.	\$1.39
OSCAR MAYER SLICED CHOPPED Ham & Cheese	8 OZ. PKG.	\$1.39

### WILSON'S CERTIFIED FULLY COOKED WATER ADDED BONELESS

# Half Hams \$1.89

4-6 LB. AVERAGE

LEAN FRESH GUARANTEED 73% LEAN

Ground Beef \$1.39

WRIGHT'S HICKORY SMOKED SLAB Bacon \$1.19

### SUNKIST VALENCIA Oranges

# 3 \$1

WE SMASH PRICES!

CENTRAL AMERICAN Bananas	3 LBS.	\$1
CALIFORNIA Carrots	LB. PKG.	23¢
CALIFORNIA BARTLETT Pears	LB.	49¢
CALIFORNIA GREEN Pascal Celery	LG. STALK	29¢

### 100% TEA Nestea

# 3 OZ. JAR \$1.99

### RANCH STYLE Beans

# 3 15 OZ. CANS \$1

### COCA COLA

# 32 oz. 6 pack \$2.29

### KRAFT WITHOUT COUPON \$1.19

# Miracle Whip 99¢

LIMIT ONE WITH COUPON QT. JAR

### MARGARINE WITHOUT COUPON \$0.59

# Parkay Quarters 39¢

LIMIT ONE WITH COUPON LB. PKG.

### SHURFINE FROZEN WITHOUT COUPON \$0.59

# Orange Juice 39¢

LIMIT ONE WITH COUPON 12 OZ. CAN

### BATHROOM WITHOUT COUPON \$0.99

# Delsey Tissue 79¢

LIMIT ONE WITH COUPON 4 ROLL PKG.

### ZEE PAPER Towels

# JBO ROLL 69¢

### DAIRY & FROZEN FOODS

KRAFT PLAIN PHILADELPHIA Cream Cheese	8 OZ. PKG.	89¢
KRAFT HALFMOON CHEDDAR/Colby Cheese	10 OZ. PKG.	\$1.39

### HEALTH & BEAUTY AIDS

EXTRA LARGE TOOTHPASTE Gleem	5 OZ. TUBE	89¢
HEAD & SHOULDERS JAR/TUBE Shampoo	4 OZ. SIZE	\$1.59

### 15¢ OFF LABEL Tide Giant

# \$1.59

BOX

### SMASHING HIGH PRICES WITH VENTURE

### MISS BRECK Hair Spray

# 9 OZ. CAN \$1.39

### ANTI-PERSPIRANT REG/UNSCENTED AEROSOL Secret

# 4 OZ. CAN \$1.69

## the price fighter Venture FOODS

WE RESERVE THE RIGHT TO LIMIT QUANTITY PRICES EFFECTIVE AUGUST 24-30, 1980

### LADY VICTORIA FINE CRYSTAL STEAMWARE IMPORTED FROM FRANCE

# On The Rock Glasses \$3.99

OUR REG. DISCOUNT PRICE \$4.99 SET OF 4 WITH COUPON WITH EACH \$100 PURCHASE COUPON EXPIRES AUGUST 31, 1980

## olan mills THE NATION'S STUDIO

8x10 Natural Color Portrait - \$1.50

Your choice of Family Group or Individual One special offer per family, one per person.

photographer will be at:

### CITY HALL MEETING ROOM

Friday, September 5th 1-8 p.m.  
 Silverton, Texas



**LINES FROM  
Y  
N  
D  
A**

Lynda Fogerson  
Briscoe County Extension  
Agent—Home Economics

Home canners can enjoy good-tasting, nutritious food and get a sense of satisfaction and accomplishment, as well as save family food dollars by canning garden produce.

The key to successful home canning is to follow recommended procedures. Some of you may say, "But I've always done it this way and never had any trouble." My mother does several things that are not recommended and as always had perfect results. However, she is scrupulously clean, sterilizes everything, and handles all food and canning equipment with the best of care.

As a home economist, I can only give you the recommended procedures which will give the best results. Why risk failure or food poisoning when you can follow the recommendations of food researchers?

The following questions have been asked by home canners:

"I like to add celery, green pepper, and onion to tomatoes when I can them. Is this safe?"

Adding other vegetables lowers the acidity of tomatoes, which can provide a favorable environment for the growth of botulism bacteria. This product would require the pressure canner method of processing and use of reliable directions.

"I can all the time using the open kettle method. What's wrong with that?"

With this method, food is cook-

ed in an ordinary kettle, then packed into hot jars and sealed without processing. Temperatures in open kettle canning are not high enough to destroy spoilage organisms that may be in food. Spoilage bacteria may also enter the food when it is transferred from kettle to jar. It is NOT recommended, except for jellies.

"We're on special diets at our house. Is it safe to can without salt or sugar?"

Salt and sugar are not necessary for safe processing of fruits and vegetables. The salt in recipes for pickle products and sugar in jams and jellies should not be reduced as the measures given are needed to provide good quality.

"Can you tell if home canned food is spoiled?"

It is possible for these foods to contain the poison causing botulism—a serious food poisoning—without showing signs of spoilage. To avoid this risk, your canning equipment needs to be in top shape and it's important that you follow reliable canning recommendations. As a precaution, it's a good idea to boil home canned vegetables and meats before tasting. Bring vegetables to a rolling boil; then cover and boil for at least 10 minutes. (Boil meats, spinach and corn 20 minutes). If the container of food has a bulging end or lid, a leak, or spurts liquid or has an off odor when opened, destroy it out of reach of children or pets, without tasting the food.

"Can lids and screwbands be reused?"

Flat metal lids with sealing compound should not be reused. Screwbands in good condition may be reused.

"Can lids and screwbands be reused?"

Flat metal lids with sealing compound should not be reused. Screwbands in good condition may be reused.

**'81 Wheat Program  
Details Announced**

Secretary of Agriculture Bob Bergland has said for the second year in a row U. S. wheat producers would not need to set aside acreage to be eligible for the farmer-owned reserve, commodity loans and target price protection. "Wheat producers need only to be sure they plant within their normal crop acreage to be eligible for all program benefits in 1981," Bergland said.

The farmer-owned reserve release and call prices will be increased from the current \$4.20 and \$5.25 to keep them consistent with the cost of producing wheat, he said. The exact amount of the increase will be decided when more precise cost information becomes available.

Bergland said he expects the Congress to authorize a special reserve loan that will provide an additional incentive to wheat producers to make more effective use of the farmer-owned grain reserve. The measure under consideration by the Congress would set the special reserve loan for wheat at not less than \$3.30 a bushel for the 1981 crop. It may be increased to provide adequate incentive for producers to use the reserve program, Bergland said.

"The 1981 crop target price will be increased from \$3.63 for the 1980 crop to at least \$3.81, with the final amount dependent upon the magnitude of the increase in short-run production costs," Bergland said.

The loan price will be at least \$3.00 a bushel. After Congress completes action on the measure that provides for a special re-

serve loan, and supply prospects are clearer, we will make that determination, he said.

Bergland said wheat supplies are expected to be adequate, but not excessive in 1981 and major uncertainties remain over grain and oilseed production this year. Even greater uncertainties exist over production prospects for the 1981 season.

"If conditions change by spring and it becomes evident by next spring that our wheat supplies will be excessive in 1981, a paid diversion program will be offered to wheat producers," Bergland said. The final decision on a haying and grazing program will also be made before the spring grazing period begins.

"While wheat producers can market wheat from the farmer-owned reserve without penalty through August 31, I do not expect large quantities will be sold," Bergland said. "This means the supply of wheat available to the market at the current farm price is limited. I also expect farmers will place a sufficient quantity of 1980 crop wheat into the reserve so the farm price will have to rise above the \$4.20 reserve release price to satisfy 1980-81 market requirements.

"A farm price above \$4.20 a bushel would tend to encourage a high proportion of our wheat producers to stay out of a set-aside program if one were offered. Our analysts tell me that only about half of the 1981 crop would be in the provision if we offered a 10 percent set-aside. Those who did not participate would be ineligible for any of the 1981 crop program benefits, including the opportunity to participate in the farmer-owned reserve, to obtain loans, or to qualify for deficiency or disaster payments," he said.

Bergland stressed the importance of the reserve program in allowing producers themselves to manage supplies. "Under the current situation and the outlook for 1981, the farmer-owned reserve program becomes the prin-

**AS A MAN THINKETH**

Gerald Beasley

**P E A C E**

Some live on a diet of fingernails by day and tranquilizers by night. With Job they say, "When I lie down, I say, When shall I arise, and the night be gone? And I am full of tossings to and fro unto the dawning of the day."

Some feel bad when they feel good for fear they will feel worse when they feel better.

One pessimistic soul declared, "I feel so good I feel bad because I know I will never feel this good again." Such a one hears only the patter of little defeats. He can hardly wait for the future to get here so he can look back with regret.

It is not how the day looks at you but how you look at the day. Blind optimism is, of course, to be avoided. Consider the falling skyscraper window washer who shouts as he plummets past each office window, "So far, so good!"

But I believe the Holy Spirit-inspired apostle Paul is totally reliable when he instructs that

capital tool for achieving a market balance which works in the interests of producers and consumers.

The preliminary national program acreage for the 1981 wheat crop has been determined to be 71 million acres, but is subject to change depending upon subsequent developments. A harvested acreage of 71 million acres, according to current estimates and assuming average weather patterns, would produce enough to satisfy the expected wheat demand during the 1981-82 season and bring wheat stocks to a level that would provide the assurance that the U. S. can be a reliable supplier of wheat in the national and international markets.

"Those who want to be guaranteed target price protection on the normal production from their entire 1981 crop will need to hold plantings to no more than was planted for harvest in 1980," Bergland said.

**MAYOR'S PROCLAMATION**

WHEREAS Muscular Dystrophy and related neuromuscular diseases afflict thousands of our fellow citizens throughout the nation, many of them children; and

WHEREAS the programs of basic and clinical research, and medical services, maintained by the Muscular Dystrophy Association represent the only concerted effort to find the causes and develop effective treatments for these crippling disorders, and to provide patients with free medical care; and

WHEREAS the annual Jerry Lewis Labor Day Telethon carries the good news of these vital services to patients coast to coast

there is a circumstance in which one truly can "Rejoice always" (Philip. 4:4). This potential blessedness which introduces "the peace that passeth understanding" is "in the Lord."

"Learn of me," says He, "and ye shall find rest unto your souls" (Matt. 11:29).

and is a primary source of nationwide public support for these life-extending programs; and

WHEREAS recent new insights into the nature of human muscle and of neuromuscular disease have raised realistic hope for significant further progress in the fight against neuromuscular disease in the foreseeable future,

NOW THEREFORE I, Charles Sarchet, mayor of Silverton, hereby proclaim Monday, September 1, 1980, as JERRY LEWIS TELETHON DAY in Silverton, and urge that all citizens of this city join in support of the work of the Muscular Dystrophy Association by contributing to the Jerry Lewis Telethon—so all those who wait to be set free from the burdens of neuromuscular disease may have their dream fulfilled.

IN WITNESS WHEREOF I have hereunto set my hand and caused this seal of the City of Silverton to be affixed this 28th day of August, 1980.

/s/ Charles R. Sarchet  
Mayor

**HAVE AIRLESS SPRAY GUN**  
Will Paint Houses, Roofs, Etc.  
Call For An Estimate on any Painting Job  
**J. C. HALL**  
823-2349 Silverton

**SEED WHEAT CLEANING**  
Bulk or Bag - - Double Treated  
**PRODUCERS COOPERATIVE ELEVATOR**  
Call Collect For Appointment  
806 983-2821 Floydada, Texas

**Labor Day**

**Tribute To Our Labor Force**

Hard working people...are what this country is all about. Together, we've made this a prosperous nation...strong and unified. Let's take this Labor Day, to salute America's working people...in celebration of a job well done.

**FDIC**  
First State Bank  
Silverton, Texas

**PICK UP BIG WEEK-END SPECIALS AT ALLSUP'S CONVENIENCE STORES**

WE RESERVE THE RIGHT TO LIMIT PRICES EFFECTIVE AUGUST 28-30, 1980. SPECIALS GOOD WHILE SUPPLY LASTS - LIMITED SUPPLY

<b>KRAFT QUARTERS PARKAY</b> 1 LB. PKG.	<b>49¢</b>	<b>DR. PEPPER</b> 8 PACK 12 OZ. CANS	<b>\$1.39</b>
<b>KRAFT GRAPE JELLY</b> 2 LB. JAR	<b>99¢</b>	<b>KRAFT VELVEETA</b> 2 LB. BOX	<b>\$2.99</b>
<b>KRAFT MIRACLE WHIP</b> 32 OZ. JAR	<b>99¢</b>	<b>CLOVER CLIP POTATO CHIPS</b> PKG.	<b>79¢</b>
<b>BALLARD BUTTERMILK/SWEETMILK BISCUITS</b> 8 OZ. CANS	<b>\$1.00</b>	<b>NEW! BUTTER ALMOND CRACKER JACKS</b> 8 OZ. PKG.	<b>89¢</b> (REG. \$1.19)
<b>FOLGER'S COFFEE</b> ALL GRINDS 1 LB. CAN	<b>\$2.99</b>	<b>BORDEN'S ASSTD. FRUIT DRINK</b> GAL.	<b>89¢</b>
<b>BORDEN'S PREMIUM ICE CREAM</b> 1/2 GAL. 80. CTN.	<b>\$1.39</b>	<b>BORDEN'S ASSTD. YOGURT</b> 3 8 OZ. CTNS.	<b>\$1.00</b> (Reg. \$1.25)
<b>CASCADE</b> 20 oz.	<b>69¢</b>		



**LOOKING FOR A JOB? LOOKING FOR HELP?**

# Want Ads

## For Sale

**FOR SALE: BENNETT BREATHING machine.** Call 823-2111. Marie Boling or Ora Isbell. 33-4tp

**FOR SALE: 75'x150' LOT.** 823-2097, J. R. Steele. 26-tfc

**HOT WATER HEATERS:** 20, 30, 40 Gallon; Gas and Butane. Brown Hardware. 36-tfc

**FOR SALE: WE ARE A DEALER for Sanitas Wallpaper.** Prompt delivery. Sample books available. Fogerson Lumber & Supply. 34-tfc

**NEED A V-BELT? BROWN-McMurtry Implement now has a good stock of V-Belts in the most needed sizes.** 30-tfc

**FOR SALE: 2 Bedroom, 1 Bath stucco house.** 707 West 6th. 823-2350. 13-tfc

**SEE BROWN - McMURTRY FOR your International Electric Fences, insulators and wire.** 38-tfc

**FOR SALE: TRASH BARRELS.** Silvertown Fire Department. Ask at City Hall. 20-tfc

**66. 68 JOHN DEERE MOWERS:** Ray Thompson Implement Co. SEED: CASCOT AND PAYMASTER Cottonseed; Funks, NC+, Taylor-Evans Cane and Sudans; Soybeans. Lone Star Chemical, 823-2376. 19-tfc

**FAMBRO GATES AND PANELS.** Designed by and built for ranchers. All steel; wind proof; custom made. Full details available from the local dealer, Brown Hardware in Silvertown. 27-tfc

**Underground Plastic Irrigation Water and Gas Pipe Installed**  
**SILVERTON METAL WORKS**  
806-823-2431 or 823-2173

## Diamond Industrial Supply Co., Inc.

Phone Days 296-7418 — Nights 293-1200 or 296-7828  
1014 Broadway  
Plainview, Texas

SKF BCA TIMKEN BOWER  
"We Appreciate Your Business More"  
Chain U-Joints  
Sprockets Oil Seats  
V-Belts O-Rings  
Sheaves Wisconsin

## Ray Teeple Fertilizers, Inc.

Proper Fertilizer Blends  
Insecticides - Herbicides  
Custom Application  
Airplane -- Ground Rig  
Tool Bar Rigs Furnished  
Phone 847-2620

## DR. O. R. McINTOSH

OPTOMETRIST  
South Main Street Phone 983-3460  
FLOYDADA, TEXAS

LET US HELP YOU  
WITH YOUR FERTILIZER  
AND CHEMICAL NEEDS

# BRISCOE COOPERATIVES

This Is Your Business -  
Use It!

**WE NOW HAVE IN STOCK THE Amazing "Lightning Rod" Wick Applicator,** to control Johnson Grass and weeds in your crops. You can run in wind without worry of damage to your crop, saving you many hours of down time; also you will notice a considerable saving in chemical cost with this proven method of application. Drop in and ask about The "Lightning Rod." Lone Star Chemical, Silvertown 823-2376, Lockney 652-2761, Residence 652-3434.

**MOORMAN'S FEEDS**  
To better utilize your grazing, use Moorman Mineral and Protein **It Pays To Figure Cost**  
**DONNIE MARTIN**  
Silvertown, Texas

**OLD SCRATCH CATTLE OILERS:** Sales, Service, Parts and Insecticides available through Henry T. Hamblen, Wayside, Texas. 806-764-3461. 27-tfc

**POWDER RIVER NOW IN STOCK**  
Livestock Handling Equipment  
**RAY TEEPLE FERTILIZERS**  
847-2665 847-2620  
17-tfc

**FOR SALE: MAYTAG WASHERS and Dryers.** Service and Parts. Fogerson Lumber & Supply. 19-tfc

**TREFLAN AND OTHER FARM Chemicals** competitively priced. Check with us first. Anhydrous Ammonia Liquid Blends Available now. Lone Star Chemical, 823-2376 or 652-2761. 7-tfc

**MAKE US YOUR CULTIVATOR and Tillage Tool Headquarters.** We have Graham-Boeme, Adams, Nichols, and IH—both in plain and hardfaced. Brown-McMurtry Implement, Silvertown, Texas. 17-tfc

**FOR SALE OR RENT: JONES Dept. Store Building.** Contact John Will Nichols, Drawer CC, Tulia, Texas 79088. Call collect 806/995-3575. 32-tfc

**WATCH FOR AD — SALE** September 11-13. Almost everything in store marked down. Savings 10-50%—Mostly 50%. **POTPOURRI.** 35-2tc

**FOR SALE: USED TABLE SAW,** six-inch Jointer. Can be seen at Fogerson Lumber & Supply. 35-tfc

**FOR SALE: 1979 Z-28 CAMARO;** good condition; low mileage. Call 847-2560. 35-2tp

**FOR SALE: 1975 MAZDA Station Wagon RX-3;** 24,000 miles. Contact Leo Fleming. 35-tfc

**FOR SALE: BOIS'D ARC POST Crossesties.** Call 983-3077. 35-2tc

**FOR SALE: BALED SUDAX Hay** in stack. 847-2620, Ray Teeple. 32-tfc

**FOR SALE: 1973 CHEVROLET Van;** 9 passenger. Good condition, good tires. Call 823-2352 or 823-2134. 33-3tc

**FOR SALE: HUNTSMAN MOTOR Home.** Ford chassis, power plant, Michelin tires. Very clean. Call 823-2352 or 823-2134. 33-3tc

## Garage Sales

**GARAGE SALE STARTING AT 9:00 a.m. Friday and Saturday.** 902 Commerce. Lots of clothes, dishes, fruit jars and a few Avon bottles. 35-1tc

## Wanted

**SCHOOL BUS DRIVER WANTED.** Contact Superintendent O. C. Rampley, 823-2476. 34-2tc

**WANTED: OLD VENETIAN Blinds.** Silvertown Volunteer Fire Department. 27-tfc

## For Rent

**SMALL DITCHING MACHINE and Electric Concrete Mixer** For Lease. Fogerson Lumber & Supply. 24-tfc

## Real Estate

**LOT FOR SALE: LOCATED** near school. Make an offer. Mrs. T. C. Cherry, 355-5967, Amarillo. 32-5tp

**FOR SALE: THREE BEDROOM,** two bath House; Cellar; Carport; Two Lots. 706 Pulitzer. Contact Mrs. Fern Minyard, 847-2579. 34-tfc

FOR ALL YOUR  
LIFE INSURANCE  
HOSPITALIZATION  
NEEDS - USE  
and  
SOUTHLAND LIFE

**Archie Castleberry**  
11th and Washington  
Amarillo, Texas

**TWO BEDROOM HOUSE FOR Sale:** two lots; storm cellar. House in excellent condition. Call for appointment before 9:00 p.m. Beryl Long, 823-2154. 13-tfc

**FOR SALE: BEN O. KING House** at 202 Pulitzer. Contact L. B. Garvin, jr., 823-2235. 34-tfc

## Services

**WE NOW CARRY A LARGE selection of invitations,** thank-you's, baby announcements, shower invitations and stationery. **POTPOURRI.** 35-4tc

**FOLIAR FEED YOUR CROP** with Allied Folan 12-4-4-5 Sulphur - 1 Iron. Ray Teeple Fertilizers, 847-2620. 24-tfc

**FOR AIRPLANE APPLICATION and all Insecticides and all Chemicals.** TDA Commercial Applicator. Licensed and Insured. Ray Teeple Fertilizers, 847-2620. 24-tfc

**SINGER SEWING MACHINES,** Vacuum Cleaners, Smith Corona Typewriters, Adding Machines, Kirby Sales and Service. Buy here, service here. Call in Silvertown 823-2333. Office located at 620 Noel in Memphis. Here every two weeks on Thursdays. 21-tfc

## OUR BUSINESS IS EXHAUSTING . . .

Custom Tailpipes for Pickups, Cars, Tractors and Combines. Dual Exhaust a Specialty. **DON'S MUFFLER SHOP**  
123 W. California Street  
Floydada, Texas 983-2273

**LOCKNEY MEAT COMPANY**  
USDA Inspection  
Kill Days Monday through Friday  
**CUSTOM PROCESSING**  
Wholesale and Retail Meat  
Half and Quarter cut, wrapped, frozen and fully guaranteed  
**SAM & KELLY FORTENBERRY**  
652-3305  
Corner of US 70 and Farm Road 378 South

**NEED YOUR CATTLE WORKED?** Call Fred Arnold, 823-2440, or Jerry Millhollon, 847-2577. 28-tfc

**SHEAR DELIGHT BEAUTY SALON** is now taking appointments Tuesdays through Fridays. Phone 823-2468. Shirley Henderson. 44-tfc

**DRY CLEANING, LAUNDRY:** Briscoe County News is the Silvertown pick-up station for Tulia Laundry and Cleaners. Clothes will be picked up and delivered on Thursdays only. 31-tfc

**THE CONCRETE MAN**  
Rice Construction  
995-2750 Tulia, Texas 47-tfc

**CARPENTRY WORK, PANELING,** Custom Cabinets and Concrete Work. Rice Construction, 995-2750, Tulia, Texas. 47-tfc

**CHECK OUR CHEMICAL PRICES.** We Have Liquid Fertilizer Available. Lone Star Chemical, 823-2376 or 652-2761. 4-tfc

**INSULATION INSTALLED AND guaranteed.** Fire resistant. Marr Insulation Co., 652-3593, Lockney, or call Flute Hutsell. 42-tfc

**LET US DO YOUR HERBICIDE and Insecticide Spraying.** We have two ground rigs and airplane. Lone Star Chemical.

## Lost and Found

**LOST: SEWER TAPES.** PLEASE return the sewer tapes to the City Hall. 26-tfc

## Cards of Thanks

### CARD OF THANKS

We wish to thank everyone for the cards, prayers, and every act of kindness shown to us in our time of sorrow.

May God bless each of you. Elton and Lanita Cantwell Mary Chris, Brenda and Roger Mark and Debbie Burk

### CARD OF THANKS

More words cannot express the appreciation and humbleness I feel for everything that has been done for me since my surgery.

Each phone call, card and visit, plus the good food, meant more than I can ever say.

With heartfelt gratitude, I thank you.  
Roberta Griffin

**For Fast Results READ and USE THE WANT ADS REGULARLY!**

## LETTER AND OFFSET PRESS PRINTING

Call 823-2333 For Estimate  
**BRISCOE COUNTY NEWS**

## SILVERTON LODGE

meets  
Second Tuesday Every Month  
8:00 p.m.  
33-tfnc

## MAC'S BACKHOE SERVICE

Call Harvey McJimsey  
Silvertown, Texas

**Underground Irrigation Pipe Plastic Gas Pipe RHODE PIPE CO.**  
823-2458 - 823-2459  
Silvertown, Texas

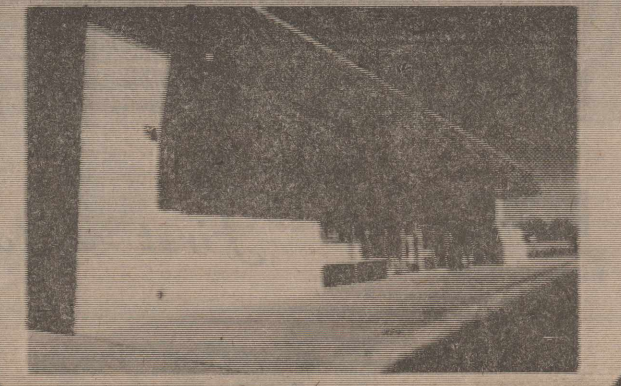
# ALLSUP'S CONVENIENCE STORES



**INTRODUCING**  
Our New Expanded Deli  
Always Fresh Food  
Available 24 Hours Per Day  
365 Days a Year

## MENU

Burritos... Bean and Beef	
New Cheese and Bean	.69
New Beef Taco Roll	.69
Gooch Old Style German Sausage	.79
Allsup's Hot and Mild Links	.79
Whole BBQ Chicken	3.49
BBQ Beef Brisket Sandwich	1.49
Mouth Watering BBQ Spare Ribs, Per Lb.	3.99
Allsup's BBQ Beef Sandwich	1.25
Hot Southern Fried Pies	.39
Apple	
Peach	
New Mexican Style Taquitas	.35
New Chile Rellenos	.99
New Hot Tamales	.39
New 1/4 lb. Ham Sandwich	1.49
Oscar Mayer 1/4 lb. Big One Hot Dogs	1.19
Southern Fried Chicken Quarters	1.19
Beer Batter Cod Fish Sandwich	1.25
Crispy Golden Corn Dogs	.59
New Allsup's Pochitos (Mexican Hot Dog)	.69
Good Ol' American Hot Dogs	.49
Introducing	
Chicken Fried Steak Sandwich	1.25
New Steakfinger Sandwich	1.25



# \$1000 REBATE

## ON INTERNATIONAL TRACTORS

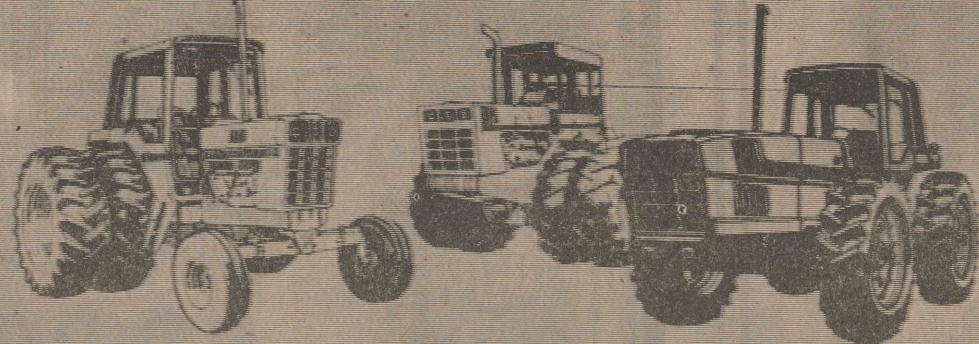
Buy before August 31... and save!

There's never been a better time to Go Red Power than right now. That's because you can get a great deal on a new International tractor, plus a \$1000 rebate. That's right! Buy any new International Series 86 over 86 PTO hp, 2 + 2, or 4-Wheel Drive tractor before August 31, and agree to take delivery before September 10, 1980 - International Harvester will send you a check for \$1000.

Choose from our dependable Series 86 line, the tractors known for productivity and comfort. Or the revolutionary 2 + 2's... the only tractors that offer you two wheel performance plus two wheels more drive. Or for larger operations, there's the International 4-Wheel Drive tractors, 230 to 350 engine horsepower.

Whatever your choice, Go Red Power. Get a \$1000 Red Power Rebate, too. See us today. For a great deal, a great tractor—and a great rebate from International Harvester.

Ask us about IH Credit Power, the Waiver of Finance program that lets you buy now and delay finance charges until later.



**Brown-McMurtry Implement Company**  
Your IH Dealer  
Silvertown, Texas