



(SECD-065280)
 PUBLISHED EVERY THURSDAY AT SILVERTON, TEXAS 79257
 BY CHARLES AND MARY ANN SARCHET
 SECOND CLASS POSTAGE PAID AT SILVERTON, TEXAS 79257
 Postmaster: Send Address Changes to Briscoe County News, Box
 130, Silverton, Texas 79257
 SUBSCRIPTION RATE PER YEAR \$5.00
 CHARLES R. SARCHET PUBLISHER
 MARY ANN SARCHET EDITOR



Mr. and Mrs. Charles Gowin

Mr. and Mrs. Gowin To Observe
 Sixtieth Anniversary In Tulia

In honor of the sixtieth wedding anniversary of Mr. and Mrs. Charles Gowin, their children and grandchildren request your presence at a reception Sunday, December 20, 1981 at the Willie Room in Tulia from 2:00 until 5:00 p.m. All friends and relatives are invited to attend. (No gifts, please; your presence is gift enough.)

Ambulance Service
 Elects Officers

Silverton Volunteer Ambulance Service met at the City Hall Tuesday night and elected officers and directors.

Directors whose terms will expire in 1982 are Helen Strange, Bess McWilliams and Ted Strange. Those whose terms will expire in 1983 are Lynn Frizzell and Tom Burson. The terms of Anthony Kingery and Jeff Jones will expire in 1984.

Re-elected as president was Anthony Kingery. Lynn Frizzell was chosen to continue serving as vice-president. Helen Strange was elected secretary-treasurer to replace Bess McWilliams, and the group voted a resolution of commendation for Mrs. McWilliams for the service she has rendered as secretary-treasurer during the past two years.

Mrs. Strange reported on a Panhandle Emergency Medical Service Continuing Education meeting she and Faye Self attended in Amarillo last week.

Members voted to buy a filing cabinet for the ambulance service records. They also voted by secret ballot on an Ambulance Attendant of the Year for 1981 to be announced at the group's family banquet to be held January 16. Emmett Tomlin was placed in charge of arrangements for the banquet, and Lynn Frizzell was chosen to buy plaques to be used for the Ambulance Attendant of the Year award.

Cookies and cakes baked by Kathy Kingery were enjoyed with coffee and soft drinks.

Following the meeting, the members swept the ambulance garage, cleaned the sinks and storage cabinets and provided maintenance for the ambulance engines.

Attending were Tom Burson, Dale McWaters, Jeff Jones, James Edwards, Lynn Frizzell, Bruce Tiffin, Anthony Kingery, Bill Boling, Bess McWilliams, Mary Ann Sarchet, Helen Strange and Emmett Tomlin.

FORMER RESIDENT
 MARRIES IN IRVING

Marriage vows were exchanged November 25, 1981 at the Beltline Road Baptist Church in Irving by Miss Gayla Tate and Randy Gillis.

Parents of the couple are Mr. and Mrs. Kenneth Tate, formerly of Silverton, and Mr. and Mrs. W. M. Gillis of Doddsville, Mississippi.

The bridegroom is a graduate of Mississippi Delta Junior College with an associate degree in electronics. He is presently employed as plant manager of Zack's Candy Company in Irving where the couple is making their home.

They spent their honeymoon and Thanksgiving in Durango, Colorado.

JUST IN TIME FOR CHRISTMAS!

1982 - 1983

TEXAS ALMANAC

with 1980 Census Data

\$4.95 Each

BRISCOE COUNTY NEWS



His birth inspired all mankind with renewed faith and hope. May you each experience the inner serenity and enlightenment that this special holiday brings.

We Will Be Closed The Week
 of December 23

FLOYDADA LIVESTOCK SALES

983-2153

Floydada, Texas

ENERGAS

Cooking with gas saves 46 percent

Cooking with a new gas range costs 46% less than cooking with an electric model. And, pilotless ignition, instant-on instant-off heat, precise controls and smokeless closed-door broiling add enjoyment and convenience to your cooking. Ask for our booklet with conservation tips to help you use energy even more efficiently. At Energas, we're committed to helping you save with efficient gas appliances.

ENERGAS
 Efficient Gas Energy for West Texas

Based on 1981 D.O.E. Established Average Values

IH SUPER SAVING TIME

PARTS VALUE OF THE MONTH

Christmas Bell Ringer Sale!
 Give Dad the useful, practical gift of quality IH tools

<p>14-pc. wrench set Chrome plated combination wrench set is a big value Special price \$79.95 Save \$40.00</p>	<p>7-pc. screwdriver set Five flat bladed, two Phillips head An exceptional value Now \$10.99 <small>(based on individual piece price)</small></p>	<p>60 amp charger, booster, tester Charges to 80 amps, boosts to 300 amps for jump starting. Tests alternators and batteries. Has timer and dual meters. Special price \$189.95 Save \$81.74</p>	<p>IH 15-piece 3/4" drive socket set For all the tough jobs. Finest quality. Lifetime replacement warranty. If a tool fails under normal use, we replace it free. Special price \$109.95 Save \$80.00 <small>(based on individual piece price)</small></p>			
<p>10 amp battery charger The perfect choice for home or farm. Charges either 6 or 12-volt batteries. \$34.97 save 24.77</p>	<p>26-piece 1/2" and 3/8" drive socket set Includes nine 1/2" sockets, nine 3/8" sockets, extensions, spark plug socket, adapter, 1/2" handle and ratchet. Special price \$20.95 Save \$9.00</p>	<p>14-piece 1/2" drive socket set Basic field quality tractor set includes ten 12-pt. sockets 7/16" to 1" two extensions, ratchet and metal case. Special price \$21.95 Save \$8.00</p>	<p>AM/FM-pushbutton stereo radio Especially made for tractors and combines. Push-button tuning, complete stereo controls. Special price \$119.95 Save \$67.05</p>	<p>12-ft. booster cables Tangleproof all copper cables. Color coded, all steel insulated clamps. Get an extra set for your car! \$16.49 save 5.51</p>	<p>Tire Gauge \$4.95</p>	<p>SOLID STATE Electric Fence WITH REPLACEABLE CIRCUIT BOARDS only \$57.95</p>

(Savings based on regular IH suggested list price)

Brown-McMurtry Implement Company
 Your IH Dealer
 Phone 823-2441 Silverton, Texas

INTERNATIONAL AGRICULTURAL EQUIPMENT

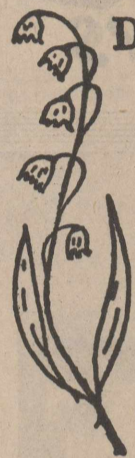
CALLIGRAPHY

NoNonsense Pen by Sheaffer

The centuries-old art form that makes all your writing more distinctive.

Set 1 - Pen and three nibs - - - - \$5.95

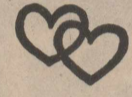
Set 2 - Pen, three nibs, 14 skip ink cartridges, ruled calligraphy practice pad, calligraphy booklet - - - - - \$9.95



Distinctive

Wedding

STATIONERY

By 
Carlson Craft

INVITATIONS and
ANNOUNCEMENTS
NAPKINS
BRIDAL BOOKS
ACCESSORIES

Fast Service,
Beautiful Styles,
Reasonably Priced!



NOW ORDERING

X Custom Stampers

Pre-Inked, Re-Inkable
No Stamp Pad Needed

Four Colors to Choose From—
Black, Red, Blue, Green

WE HAVE JUST RECEIVED A
NEW SHIPMENT OF

GREETING CARDS

Sympathy, Get-Well, Birthday,
All Occasion

BUY BY THE BOX,
IT'S CHEAPER



Phone 823-2333
Silverton, Texas

LINES FROM
Y
N
D
A

Lynda Fogerson
Briscoe County Extension Agent
KEEP WARM:

A SEVEN - POINT PLAN

Our beautiful fall weather has suddenly turned into winter. If you decide to save money and energy by lowering the thermostat, but don't like being cold, attack the situation with a seven-point plan. The thermostat setting is only one of seven factors that influence thermal comfort.

Comfort also depends on clothing, radiant heating, humidity, activities, drafts, each different room and your own physical fitness—all working against each other or together, depending on you.

(1) Thermostat setting can work for you ONLY if the area in which the thermostat is actually located has the same conditions as the room(s) you want heated. Check each room's temperature. Close off unused rooms, if necessary.

(2) Clothing offers an insulative value, so take advantage of this. Wear layers of relatively thin clothing. Air will be trapped between the layers and warmed by body heat. As you warm up, remove a layer or two. As you cool off, add some.

(3) Radiant heat is heat from sun rays or heat that bounces off the bricks in your fireplace. Work where you can get the benefit of this "extra" economical heat.

(4) Humidity can undo all the good you've done with other methods of comfort creation, so control it. High humidity—lots of moisture in the house—causes already-cool temperatures to feel even cooler.

(5) Activities generate heat, especially when the large muscles of legs and arms are involved, so stay active.

(6) Drafts have a cooling effect, of course, so stop them. Locate them and minimize their power or stay out of draft areas.

(7) Your physical fitness is the final key—those who are physi-

cally fit and active can better adapt to temperature changes than those who are not fit.

Remember, you can control what you wear and what you do. I have a publication, "Clothing Tips for Energy Savers" in my office. If you would like to have a free copy, call 823-2343 or come by my office in the courthouse.

1981-1982 SCHEDULE

Dec. 18—*Silverton at Hedley
Dec. 22—Open
Jan. 5—*Groom at Silverton

THURSDAY, DECEMBER 17, 1981

Jan. 7-8-9—Claude Tournament
Jan. 12—*Silverton at Estelline
Jan. 15—*Silverton at Valley
Jan. 19—*Claude at Silverton
Jan. 22—*Silverton at Lakeview
Jan. 26—Open
Jan. 29—*Hedley at Silverton
Feb. 2—*Silverton at Groom
Feb. 5—*Estelline at Silverton
Feb. 9—*Valley at Silverton
Feb. 12—*Silverton at Claude
*Denotes District Games

The junior high boys and girls will begin its schedule of

games November 16. Head coach for the junior high will be Tamera Buxton, and she will be assisted by Joe Stubblefield.

JUNIOR HIGH SCHEDULE

Jan. 7-8-9—Tulia Tournament
Jan. 11—Hedley at Silverton
Jan. 18—Silverton at Lakeview
Jan. 25—Estelline at Silverton
Jan. 28-29-30—Lakeview Tourn.
Feb. 1—To be announced
Feb. 8—Silverton at Hedley

YOU ARE INVITED

TO SEE OUR
LARGE SELECTION
OF PAPER ITEMS
FOR THE BRIDE

WEDDING INVITATIONS
100 For \$13.90 and up
NAPKINS, GUEST BOOKS
THANK YOU NOTES
• LATEST STYLES •

BRISCOE COUNTY NEWS

FINAL CLOSE-OUT COUNTRY CRAFTS & CERAMICS

Tulia, Texas

DISCOUNTS UP TO 75% OFF

GREENWARE 60%
NEW & USED MOLDS 60%
CERAMIC PAINT 50%
NATURAL SPONGES 60%
CLOCK WORKS 60%
BASKET WEAVE 75%
MACRAME 60%

FELT & POM POMS 60%
ART FOAM 75%
FLORAL RIBBON 75%
OIL PANTS —
SHIVA & GRUMBACHER 40%
ACRYLIC PAINTS 40%
ALL ART SUPPLIES 40%

WOOD 50%
SILK-FLOWER SUPPLIES 60%
FUN FUR 60%
BOOKS 60%
STENCILS 75%
STAINED GLASS 60%
ART MATTS 60%

All Display Racks Priced Below Cost

We Will Close December 23

COUNTRY CRAFTS & CERAMICS

M-F 9:00 - 5:30
Sat. 9:00 - 12:00

126 N. Maxwell
Tulia, Texas 79088

806-995-3492

First State Bank

SILVERTON, TEXAS

OFFERS THE FOLLOWING

SERVICES

NOW ACCOUNTS

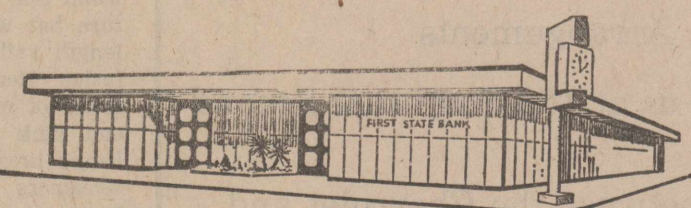
FREE: SOCIAL SECURITY DIRECT
DEPOSITS

PASSBOOKS SAVINGS

FREE: CHECKING TO SENIOR CITIZENS
(65 and older)

REGULAR CERTIFICATE OF DEPOSITS

MONEY MARKET CERTIFICATE OF
DEPOSITS (at government rates)



We invite you to use our Bank-by-mail Service and Wire-Transfer Service.



MRS. JOHN TRUE BURSON

★ ★ ★ ★ ★
Johnson - Burson Vows Exchanged
In Pretty Church Ceremony

On Saturday evening, December 12, Denise Johnson repeated wedding promises with John True Burson at the South Plains Baptist Church. Parents of the couple are Mr.

and Mrs. L. N. Johnson of South Plains and Mr. and Mrs. Don Burson of Silverton. The bride is the granddaughter of the late Mr. and Mrs. Carl Daniel and O. A. Johnson of Pampa and the late Mrs. Johnson. The groom is the grandson of Mrs. Iris Burson and the late True Burson and Mrs. Nannie Bomar and the late Tom Bomar.

Hollis Shewmake, Baptist minister from Levelland, directed the exchange of double ring vows.

The altar area of the church was decorated with large ivory vases containing dark red roses and ivory broomweed beneath an arch of brass horseshoes centered with the couple's personal brand. Behind this was a double arch candelabra holding sixty-four lighted cranberry tapers. Vases of roses and broomweed flanked the area and were also in planter boxes alongside the musical instruments. Aisle pews were marked with brass horseshoes. Windows of the church held candle arrangements.

At the close of the ceremony the newlyweds lighted the unity candle which was on the kneeling bench rail.

Mrs. LaRue Garvin of Silverton was organist and accompanied Pamela Hull of Lubbock as she sang "The Rose," "Through the Eyes of Love," "Walk Through This World With Me" and "Color My World," in which she was joined by Deneen Johnson on the flute. Mrs. Hull also sang "The Lord's Prayer" at the close of the ceremony.

The mother of the bride was escorted by her son and a greige chiffon gown complimented with a corsage of rubrum lilies. The groom's mother was escorted by her son, Bryan Burson, and was attired in a deep teal blue with an orchid corsage.

Preceding the bride down the aisle were Miss Deneen Johnson, maid of honor and twin sister of the bride; Mrs. Shari Smith, sister of the bride; Mrs. Diane Johnson, sister-in-law of the bride, and Mrs. Debra Burson, sister-in-law of the groom; ring bearers, Tanner Jay Johnson and Ryon Lee Smith, both nephews of the bride; and flower girl, Catharine West of Lubbock.

Bridal attendants wore cranberry polyester knit floor-length dresses with pleated skirts falling from empire waists and topped with short, sleeveless jackets of crystal pleated chiffon with ruffles at the neck and arms. They carried bouquets of dark red roses, rose hibiscus and ivory broomweed backed with lace trimmed handkerchiefs of rose in a small design. The bouquets were made by the bride's sister, Shari Smith. The flower girl wore a long pink chiffon dress and carried an ivory lace basket containing rose petals.

Bryan Burson was his brother's best man and groomsmen, who also served as ushers, were Tom Burson, brother of the groom, Carlton Johnson, brother of the bride, and Brad Smith, brother-in-law of the bride. They wore black tuxedos and ivory shirts with dark red rose boutonieres. They entered the sanctuary wearing white Stetson hats, then removed them and hung them on a brass hat tree.

Mrs. Ruby Lee Higginbotham of South Plains registered guests and handed out wedding programs.

Presented by her father in marriage, the bride wore an ivory gown made for her by her mother. It featured a long sleeved jacket of heavily pearl encrusted re-embroidered Alencon lace with a scalloped peplum and double ruffles of crystal pleated nylon at the neck and wrists. The front was closed with tiny covered buttons and was tied at the waist with a satin bow. The skirt of chiffon over polyester ended in a chapel train. She wore a matching picture hat with a bow and floor-length veil of point d'esprit illusion. Her bridal bouquet consisted of minuet roses, dark red and pink sweetheart roses and baby's breath. Tied in the ivory streamers were the wedding bands of her paternal grandparents.

The reception featured a complete barbecue supper prepared and served by Mrs. Ruby Higginbotham and members of her family, Mr. and Mrs. Warren Cyfert and Mr. and Mrs. Dick Gugenhiem, all of Amarillo.

The bride's table was presided over by Mrs. Elizabeth Burgess of Dumas, aunt of the bride. It featured a cake of pink iced in

ivory, decorated with miniature cowboy hats, boots and saddles, and was encircled at the base with dark red roses. It also held a silver tray filled with white chocolate mints decorated with tiny dark red roses.

Miss Shelly Harris of Silverton, served the groom's cake, which was a full size chocolate version of a pair of the groom's boots. A full size pewter hat and silver spurs completed the decorations. The table was laid with an off-white burlap cloth.

Wheat bags, in lieu of rice bags, were passed to the guests by Tanner Johnson and Ryon Smith.

Following their honeymoon, the couple will reside east of Silverton where the groom is engaged in ranching.

The bride, who is a candidate for December graduation with a degree in agriculture education from Texas Tech University, was graduated in 1977 from Lockney High School and attended Clarendon College. The groom was graduated in 1973 from Silverton High School, attended Clarendon College, and received his bachelor of science degree in agriculture economics from Texas Tech University.

The groom's parents hosted the rehearsal dinner at K-Bob's in Tulia with guests seated at tables centered with Christmas decorations.

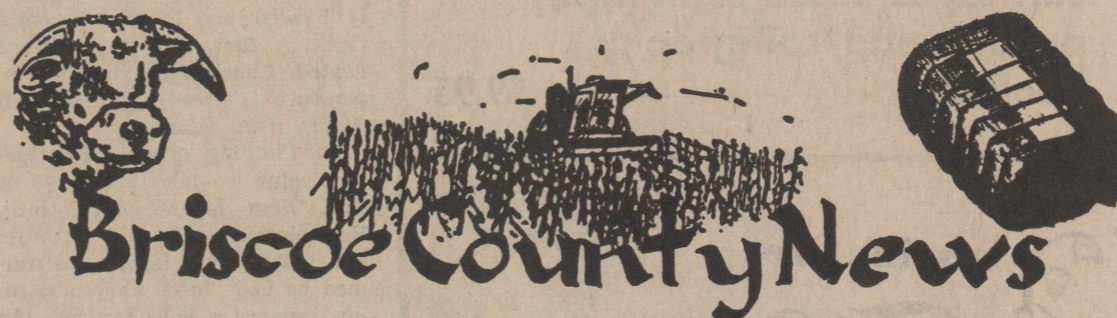
COMMERCIAL PRINTING

Letterheads, Envelopes, Statements, Calling Cards

GREETING CARDS

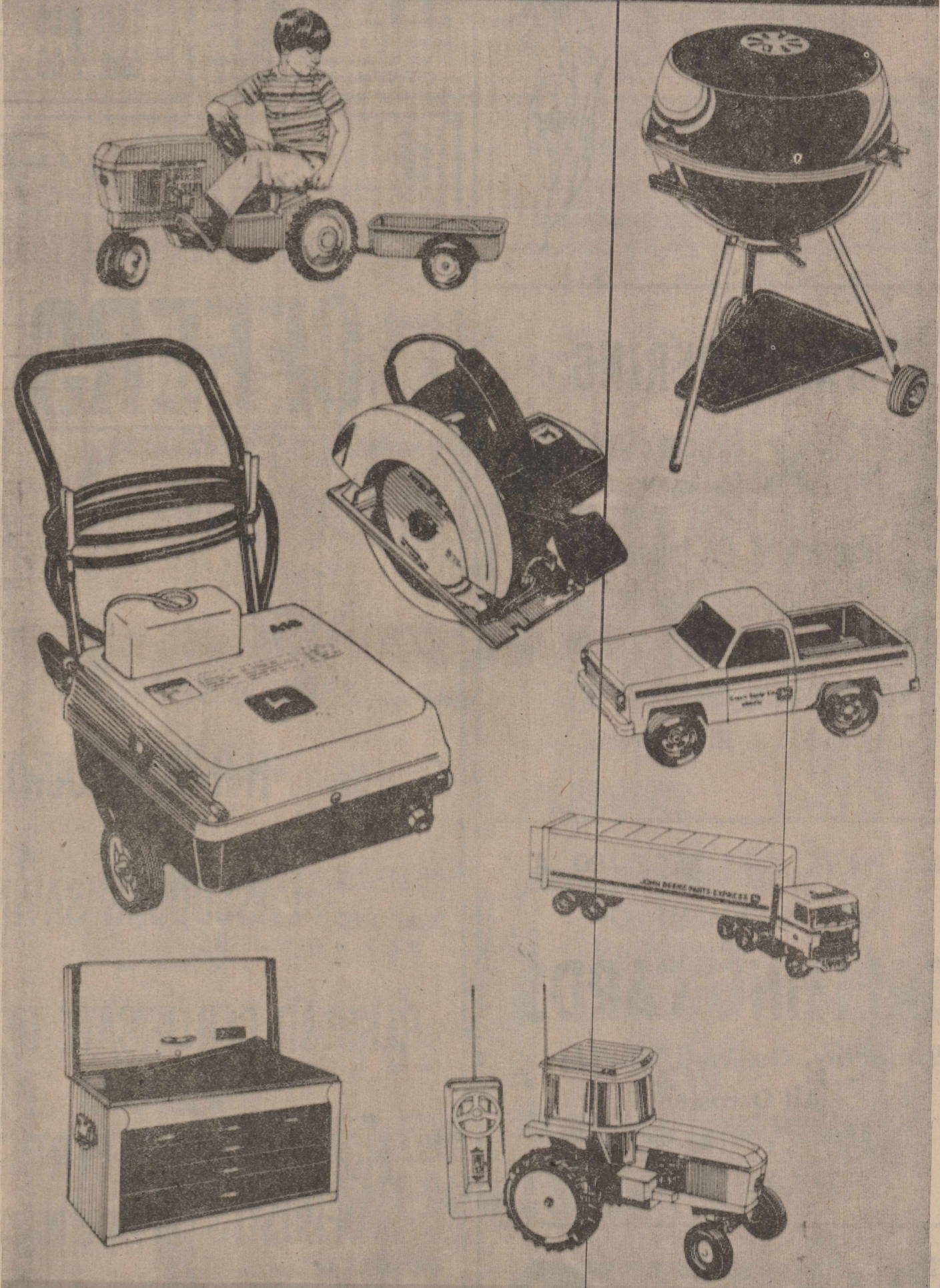
Birthday, Get Well, Sympathy, All Occasion

SCHOOL SUPPLIES



THE WISH STORE

YOUR JOHN DEERE DEALER MAKES CHRISTMAS WISHES COME TRUE



RAY THOMPSON IMPLEMENT, INC.
 Silverton, Texas

See the Land Bank and put your long-range plans to work.

Why delay a productive plan, waiting for cash to put it to work? Get a long-term loan from your Federal Land Bank Association.



The Land Bank

FLBA OF FLOYDADA — 105 SOUTH WALL FLOYDADA, TEXAS 79235 — (806) 983-2480 DONALD L. CRANFORD, MANAGER

"A Study of the Marriage Vows"

Sermon Topic, 10 a.m.
 December 13
 and
 December 20

Silverton Church of Christ

OPEN HOUSE

ALL DAY SATURDAY

THE MINI SHOP

Specializing in Silk Flower Arrangements

Come to see us at 102 Southeast Second in Tulia (between the Chevrolet and Royal Theater).

We Would Like To Help You With Gifts For Showers and Weddings.

Joyce Burnam 995-3719 Pat Tidwell

Junior High Owlettes Win Tournament

Silverton's junior high Owlettes were winners of the Floydada Tournament last weekend, defeating Idalou 29-15, Hale Center 44-22 and Floydada 43-33.

Kathy Brown, with 12 points, led the offense in the first round of the tournament. Adding to the point total were Shonda Stafford, seven; Lee Ann Durham, four; Kori Baird, Shavonne Lowrey and Necole Whitfill, two points each.

Owlettes 7 14 20 29
Idalou 1 4 10 15

Kathy Brown and Shonda Stafford tied for scoring honors with 16 points each in the second game of the tournament. Lee Ann Durham caged six points; Hope Patino, three; Necole Whitfill, two, and Kori Baird, one point.

Owlettes 10 27 41 44
Hale Center 6 10 12 22

In the championship game, Kathy Brown rang up 20 big points while Shonda Stafford poured in 15 more. Necole Whitfill got four points; Lee Ann Durham, two; Kori Baird and Shavonne Lowrey, one point each.

Owlettes 15 24 32 43
Floydada 10 14 26 33

The Owls lost their games to Idalou, 31-29, and to Crosbyton, 40-25.

Russell Simpson led the scoring with 10 points in the first game. Also scoring were Cal Brannon, eight; Barry Eddleman, five; Matt Clardy, four; Joe Ramirez and Ricky Clardy, two points each.

Owls 5 16 20 29
Idalou 14 17 27 31

Barry Eddleman scored 17 big points in the Owls' second game. Ricky Clardy got four points, and Matt Clardy and Russell Simpson added a pair of points each.

Owls 5 5 17 25
Crosbyton 13 13 17 40

Monday night of this week the junior high teams had games scheduled with Estelline, but since Estelline has only fifth and sixth graders playing this year, Silverton played its seventh grade Owlettes against them, winning 44-4.

Shellie Cornett led the attack with 12 points, closely followed by Tonnette Miller with 10. Adding to the score were DeLynn Fitzgerald and Jeannita Stephens, six points each; Katrice Minyard and Suzann Settle, four points each, and Stephanie Ramirez, two points.

7th Owlettes 8 22 34 44
Estelline 0 0 4 4

The Owls also smashed Estelline to the tune of 60-6. Ricky

Clardy and Todd Reagan led their team with eight points each. Russell Simpson, Scotty Harris and Barry Eddleman caged six points each; Cal Brannon, Norby Garcia and Philip Bridges, four points each, and Joe Ramirez, one point.

Owls 20 32 44 60
Estelline 0 2 6 6

Next games for the junior high teams will be after the holidays.

**For Fast Results
READ and USE
THE WANT ADS
REGULARLY!**

**REMEMBER
THOSE
YOU LOVED
WITH A
MEMORIAL GIFT
TO THE
AMERICAN
CANCER
SOCIETY**

For that Special Lady . . .

Surprise her with a

MARY KAY GIFT SET

Also several individual gift items.

See or Call

CARLYE HILL
823-2161 or 823-2146

**The Congregation Of The
CHURCH OF CHRIST
Meeting At Rock Creek**

EXTENDS A GRACIOUS WELCOME TO ALL TO
ATTEND ANY AND ALL OF OUR SERVICES

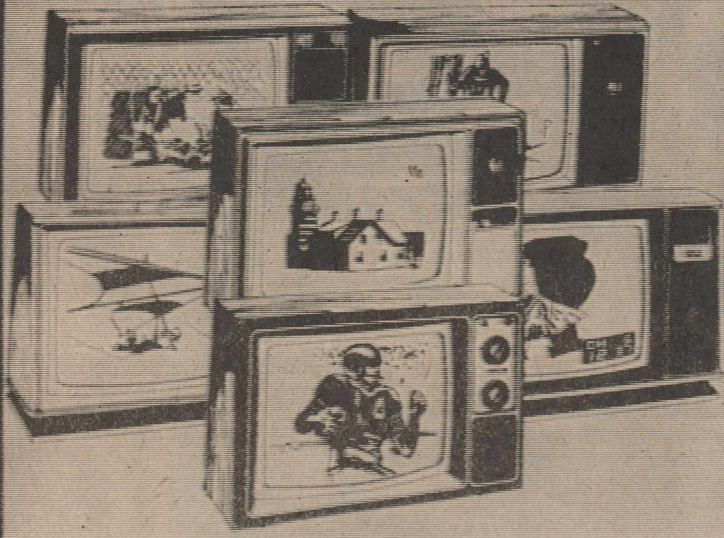
Morning Worship 10:30 a.m.
Evening Worship 6:00 p.m.
WEDNESDAY
Evening 7:00 p.m.

Zenith Spring Special!

Save up to **\$50**

on **ZENITH**

big-screen portable color TVs!



\$299⁹⁵

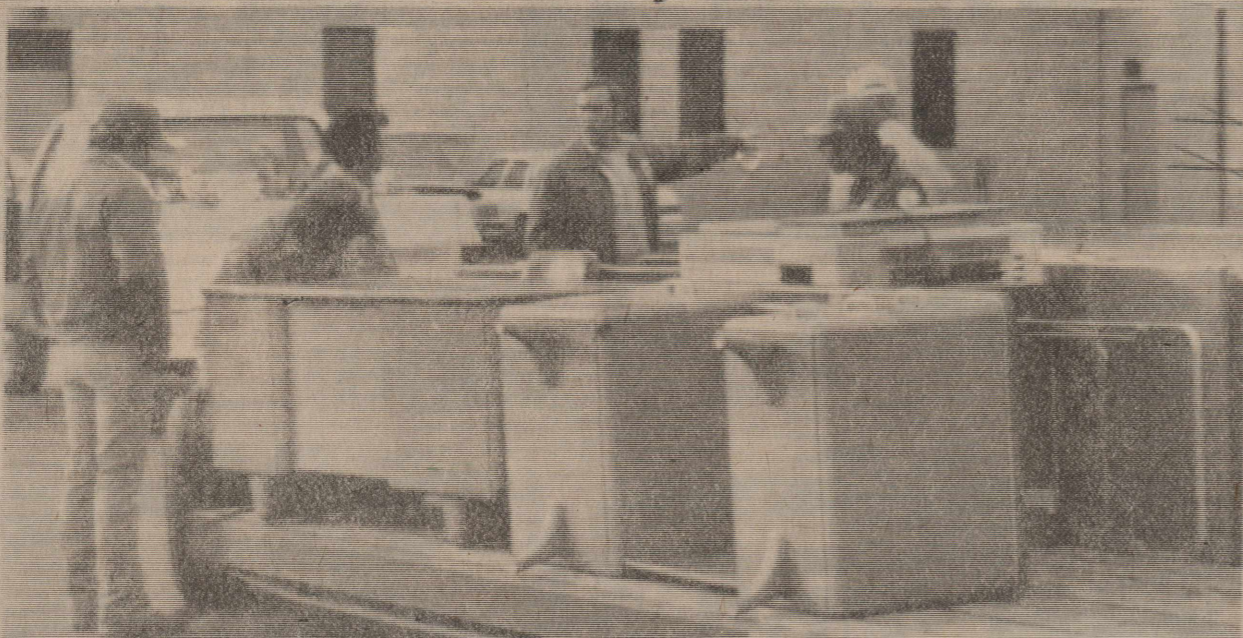
WILTON'S

FURNITURE & APPLIANCE

100 S. Maxwell 995-3319 Tulia, Tex.

WE'VE MOVED

Our New Location is **HIGHWAY
70 EAST** in Floydada



We would like to extend an invitation to come by our new headquarter facilities in Floydada. Our Open House and Dedication will follow at a later date.

**LIGHTHOUSE
ELECTRIC
COOPERATIVE**

NOTE

BOOK

PAPER

200

COUNT

95[¢]

While Supply Lasts

Briscoe County News
SILVERTON, TEXAS
"FOR ALL YOUR PRINTING NEEDS"

Miss Payne Is Shower Honoree

Miss Susan Payne, bride-elect of Gene Pool, was guest of honor at a miscellaneous bridal shower from 9:30 until 11:00 a.m. Saturday, December 12, in the home of Mrs. Walter Bean.

Guests were greeted by Mrs. Bean and presented to the honoree and her mother, Mrs. Norma Payne.

The refreshment table was covered with a pink cloth with white lace overlay. The centerpiece was an arrangement of pink and burgundy silk flowers. Serving coffee, cranberry tea, fruit cake cookies, Mexican wedding cookies, cheese pennies and

nuts were Mrs. Ramona Craddock of Hollis, Oklahoma and Mrs. Becky Dunn.

Guests were registered by Miss Debbie Storie.

Out-of-town guests included Debbie and Cheyanne Davis and Debbie Storie, Amarillo; Colleen Smith, Paducah; Mrs. Bill Cushing and Mrs. Mike Smith, Brice; Nancy Philley and Mrs. Ruth Stephenson, Claude; Mildred Hamm and Juanita Teeple, South Plains; Brenda Cantwell and Kathy Ballard, Canyon; Cearle Fyffe, Floydada; Mary Jo Hermsmeyer and Pearl Hermsmeyer, Clarendon; Mrs. Ethel Payne, grandmother of the honoree, Matador.

The hostesses' gift was a kitchen center. Assisting Mrs. Bean as hostesses were Mmes. Norma

Birdwell, Vaughnell Brannon, Ada Clay, Darlene Cole, Ramona Craddock, Pat Fitzgerald, Ima Nell Francis, Donaleta Garrison, Wilma Gill, Rita Mullin, Becky Dunn, Sandy Perkins, Roy Reed, Mary Ann Rauch, Janelle Reeves, Shirley Reynolds, Dora Storie, and Wanda Wallace.

Dear Editor:

We're told a nuclear waste disposal site in our area would include dumping from other nations. We don't have a nuclear power plant in operation in our area and we sure wouldn't like to have our land used for nuclear waste for foreign nations. This refers to purchase of about 400 surface acres and restriction of an additional possible 12,000 acres. This restriction would stop any mineral exploration and extraction and underground water usage.

Even if this disposal was completely safe—it's not a proven fact, and those who are supposed to know disagree—we would still feel the pain of being uprooted from our homes and in some cases our heritage. Many would have to give up their homes in the restricted areas.

Swisher citizens have grouped to resist a nuclear waste disposal site in our area. We feel now is the time to resist and the more involved in our letter writing, educating, etc., the more chance for success. We've been dubbed Serious Texans Against Nuclear Dumping (STAND).

We would appreciate any way you can help.

Sincerely,
Mrs. Kenneth Littlefield

Mrs. Onar Cornett was taken to High Plains Baptist Hospital in Amarillo last Thursday by the Silvertown Volunteer Ambulance Service. She has continued to receive treatment this week.

Mrs. Rosalie Chitty has been a patient at Northwest Texas Hospital in Amarillo. She was undergoing tests.

Due to Inflation and Increasing Costs Of POSTAGE and NEWSPRINT, AFTER JANUARY 1, 1982 SUBSCRIPTIONS WILL BE \$6.50 Per Year

The Minimum Price For Classified Advertising and Cards of Thanks Will Become \$1.50 Per Insertion



Phone someone this Christmas.



This year, say Merry Christmas with a phone from GTE. We've got phones that say it the old-fashioned way, phones that take the modern approach, and phones that stand on their own two feet (and come with their own two ears). What's more, you can actually take these phones home, wrap them up and put them under the tree. So call your local General Telephone business office. For a gift that really communicates.

General Telephone **GTE**

PRICES EFFECTIVE
DECEMBER 17-19, 1981

SUPPLIES LIMITED
SHOP AND SAVE TODAY!



OPEN 24 HOURS A DAY
OPEN 365 DAYS A YEAR

WE ACCEPT
FOOD STAMPS

"THERE'S ONE NEAR YOU"

HOLIDAY VALUES

Shurline
2 Liter
ASST. DRINKS
2 FOR \$99¢

ROCK/EASY LISTENING/
COUNTRY & WESTERN
8-TRACK TAPES
3 FOR \$5
LARGE SELECTION
OR \$2.49 EACH

SHURFINE STRAWBERRY
PRESERVES 1 LB. 2 OZ. **69¢**

SHURFINE BLACKEYE
PEAS or SPINACH **6 FOR \$1.00**

BORDEN'S
BUTTERMILK 1/2 GAL. CTR. **\$1.19**

SHURFINE 32 OUNCE
CATSUP **69¢**

KRAFT 32 OZ.
MAYONNAISE **\$1.59**

SHURFINE PANCAKE OR WAFFLE
SYRUP 32 OZ. **79¢**

SHURFINE MAC. & CHEESE
DINNERS **6 FOR \$1.00**

COOL WHIP
8 Ounce
99¢

TENDERCRUST
BROWN 'N SERVE ROLLS
12 CT. PKGS. **99¢** WHILE SUPPLY LASTS!

GLADIOLA YELLOW/WHITE
MIX CORNBREAD 4 8 OZ. PKGS. **\$1**

SHURFINE
CRACKERS 1 LB. BOX **59¢**

MARYLAND CLUB ALL GRINDS
COFFEE 3 LB. CAN **\$4.59**

GLADIOLA
FLOUR 5 LB. BAG **\$1.29**

Doritos
MACHO/REGULAR FLAVOR
FRITO-LAY
DORITOS **\$1.89**
REG. \$2.29

DELICIOUS
BORDEN'S
EGG NOG **99¢**
QT.

ASSORTED FLAVORS
BORDEN'S
ICE CREAM **\$1.59**
1/2 GAL. HD. CTR.

SELF-BASTING
WITH BUILT-IN TIMER
SHURFRESH
TURKEYS **49¢**
WHILE THEY LAST!
10-14 LBS. AVERAGE

MORISON BEEF/CHICKEN
POT PIES 3 8 OZ. PKGS. **\$1**

SCILLING'S
SAGE 1/8 OZ. CAN **99¢**

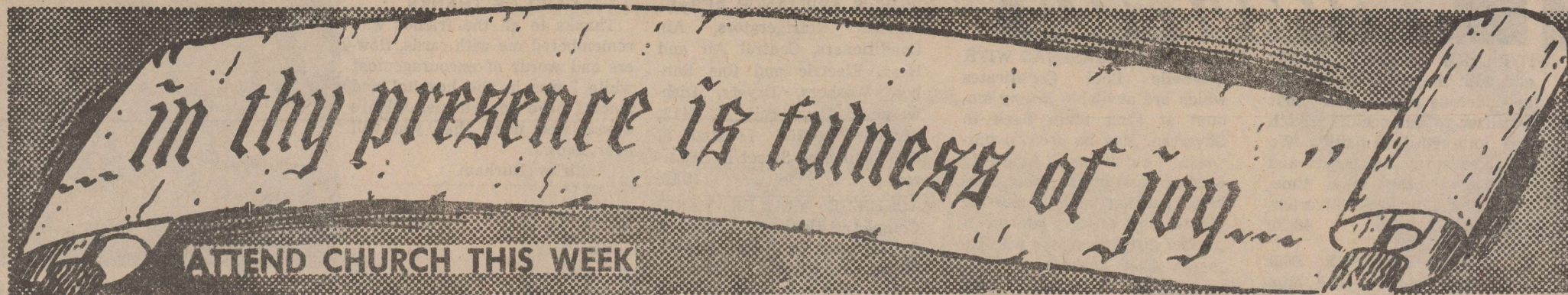
DISCOUNT CHRISTMAS TREES

LARGE SELECTION
NORTHERN NEW MEXICO
BLUE SPRUCE/FIRS/BALSAM
YOUR CHOICE **\$11.99**

FARM GROWN IN MICHIGAN
SCOTCH PINES

PURPLE TAG 4 TO 5 FEET **\$15.99**
ORANGE TAG 5 TO 6 FEET **\$19.99**

NEW SHIPMENT - JUST ARRIVED



ASSEMBLY OF GOD

Mrs. Marilyn Bridges, Pastor

Sunday

Sunday School.....9:45 a.m.
 Worship Service.....11:00 a.m.
 Evening Service.....6:00 p.m.

Wednesday

Worship Service.....7:00 p.m.

★

SILVERTON CHURCH OF CHRIST

Gerald Beasley, Minister

Sunday

Sunday School.....9:00 a.m.
 Morning Worship.....10:00 a.m.
 Evening Worship.....6:00 p.m.

Wednesday

Bible Study.....7:00 p.m.

★

FIRST BAPTIST CHURCH

Royce Denton, Pastor

Sunday

Library Opens.....9:15 a.m.
 Sunday School.....9:45 a.m.
 Worship Service.....11:00 a.m.
 Library Opens.....4:30 p.m.
 Youth Choir.....4:30 p.m.
 Training Union.....5:00 p.m.
 Mission Friends, G.A.
 and R.A.....5:00 p.m.
 Evening Worship.....6:00 p.m.

Second Monday

Night W.M.S.....7:00 p.m.

Second and Fourth Tuesday

W. M. S.9:30 a.m.

Wednesday

Junior High Acteens.....3:35 p.m.
 High School Acteens, first
 and third Wednesday.....3:35 p.m.
 Mid-Week Service.....7:00 p.m.
 Choir Rehearsal.....7:45 p.m.

Second Saturday

Baptist Men.....7:00 a.m.

FOUNDATION

Our nation is witnessing a building boom, such as has never before been seen. Every day new foundations are being dug and laid. Any builder will tell you that it takes a firm foundation to support today's skyscraper.

Our Lord, in His sermon on the mount, compared those that heed His word, to the wise man that built his house upon a rock, and those that did not heed His word to the foolish man that built his house upon sand and it was washed away.

Build your house upon a rock... Attend church regularly.



The Church is God's appointed agency in this world for spreading the knowledge of His love for man and of His demand for man to respond to that love by loving his neighbor. Without this grounding in the love of God, no government or society or way of life will long persevere and the freedoms which we hold so dear will inevitably perish. Therefore, even from a selfish point of view, one should support the Church for the sake of the welfare of himself and his family. Beyond that, however, every person should uphold and participate in the Church because it tells the truth about man's life, death and destiny, the truth which alone will set him free to live as a child of God.

Coleman Adv. Ser.

FIRST UNITED METHODIST

CHURCH

Pastor: Rev. Billy Wilson

Sunday

Sunday School.....9:45 a.m.
 Worship Service.....11:00 a.m.
 M. Y. F.....5:00 p.m.
 Evening Worship.....6:00 p.m.

Wednesday

Choir Practice.....6:00 p.m.

★

NEW FELLOWSHIP BAPTIST

MISSION

Sunday

Sunday School.....9:45 a.m.
 Worship Service.....11:00 a.m.
 Training Union.....5:00 p.m.
 Evening Service.....6:00 p.m.

Wednesday

Choir Rehearsal.....7:00 p.m.
 Prayer Service.....8:00 p.m.

★

OUR LADY OF LORETO CATHOLIC CHURCH

Sunday

Mass.....10:00 a.m.

★

ROCK CREEK CHURCH OF CHRIST

Sunday

Worship Service.....10:30 a.m.
 Evening Worship.....6:00 p.m.

Wednesday

Worship Service.....7:00 p.m.

JONES DEPT. STORE

BROWN - McMURTRY IMPLEMENT CO.

HAMILTON OIL COMPANY

SILVERTON AUTO PARTS

NANCE'S FOOD STORE

SILVERTON OIL COMPANY

BRISCOE-COUNTY NEWS

BRISCOE COOPERATIVES

RHODE PIPE COMPANY

JERRY'S MALT SHOP

FOGERSON LUMBER & SUPPLY

SILVERTON FUNERAL HOME

JACK'S PHARMACY

FIRST STATE BANK

GRABBE - SIMPSON CHEVROLET CO., INC.

RAY THOMPSON IMPLEMENT CO., INC.

SHEAR DELIGHT BEAUTY SALON

VERLIN B. TOWE AGENCY

SILVERTON WELL SERVICE

LOOKING FOR A JOB? LOOKING FOR HELP?

Want Ads

For Sale

FOR SALE: NICE 19 INCH PORTABLE RCA TV, black and white solid state. First \$100 gets it. May be seen at Jones Dept. Store. 51-tfc

WITH THE RECENT RAINS and with the wheat looking so good, let us talk to you about fertilizer to balance the growth and improve the quality. We can also spray for weeds and fertilize at the same time. Lone Star Chemical, Silvertown, 823-2376. 48-tfc

SAY MERRY CHRISTMAS WITH CowBelle Beef Certificates which are available in any amount at First State Bank in Silvertown. May be used to purchase nutritious American beef at restaurants, meat markets, packing and processing plants, and grocery stores. A perfect gift for anyone who enjoys a good steak! 50-3tc

FOR SALE: 1981 DATSUN PICKUP, King Cab, 4-wheel drive, all weather rubber, extra low mileage. Call Glenn Ramsey, 455-1342, Quitaque, Texas. 51-tfc

CARD OF THANKS Thank you for the cards, visits, and calls while I was in the hospital and since I've been home. God bless each one of you. Buck Wesley

CARD OF THANKS Thanks to all the friends who remembered me with cards, flowers and words of encouragement while I was in the hospital and since I have been home. All are appreciated more than you will ever know. Shirley Durham



All Pesticides - Wet or Dry FOR ALL TYPES OF AERIAL SPRAYING SEE FRANCIS SPRAYING SERVICE ALVIE FRANCIS 847-2523 TOMMY SHERMAN 652-3436



Wedding * INVITATIONS * NAPKINS, BOOKS * THANK YOU NOTES A complete selection that will please every Bride, yet the prices are moderate. Your Bridal Headquarters

SCHOOL SUPPLIES-BRISCOE COUNTY NEWS

Ray Teeple Fertilizers, Inc. Proper Fertilizer Blends Insecticides - Herbicides Custom Application Airplane -- Ground Rig Tool Bar Rigs Furnished Phone 847-2620

Advertisement for Shear Delight Beauty Salon, featuring a woman's portrait and contact information: 823-2468, Sixth and Braidfoot, Silvertown, Texas.

Advertisement for Diamond Industrial Supply Co., Inc. listing various mechanical parts like SKF BC, TIMKEN BOWER, Chain, Sprockets, V-Belts, Sheaves, U-Joints, Oil Seats, O-Rings, and Wisconsin.

Advertisement for Dr. O. R. McIntosh, an optometrist located at South Main Street, Floydada, Texas, with phone number 983-3460.

Advertisement for Farm Bureau Mutual Insurance Company, offering 30% off regular rate with Texas Farm Bureau Mutual Insurance Company's Deviation. Lists various policies like Farm & Ranch Owners And Homeowners Policies, AUTO, FARM LIABILITY, COMMERCIAL, LIFE, RETIREMENT, CROP HAIL, SOUTHERN FARM BUREAU LIFE, SOUTHERN FARM BUREAU CASUALTY, TEXAS FARM BUREAU INSURANCE CO.

Large advertisement for Briscoe Cooperatives, stating 'LET US HELP YOU WITH YOUR FERTILIZER AND CHEMICAL NEEDS' and 'This Is Your Business - Use It!'.

MOORMAN'S FEEDS To better utilize your grazing, use Moorman Mineral and Protein. It Pays To Figure Cost. DONNIE MARTIN, Silvertown, Texas.

FOR SALE: CANE HAY IN Round Bales. 847-2611, Harold Storie. 43-tfc

FOR SALE: ROUND BALED Sudax Hay. Ray Teeple, 847-2620. 41-tfc

OLD SCRATCH CATTLE OILERS: Sales, Service, Parts and Insecticides available through Henry T. Hamblen, Wayside, Texas. 806-764-3461. 27-tfc

TREFLAN AND OTHER FARM Chemicals competitively priced. Caek with us first. Anhydrous Ammonia Liquid Blends Available now. Lone Star Chemical, 823-2376 or 652-2761. 7-tfc

FOR SALE: WE ARE A DEALER for Sanitas Wallpaper. Prompt delivery. Sample books available. Fogerson Lumber & Supply. 34-tfc

FOR SALE: THREE BEDROOM House, two one room office buildings, and gin building to be moved from site of former Dempsey Gin. Contact Harley Redin, 806-293-1311, Plainview, Texas. 51-2tc

CLEAN, REMODELED TWO Bedroom, One Bath House For Rent. 847-2537. 50-tfc

FOR SALE OR RENT: JONES Dept. Store Building. Contact John Will Nichols, Drawer CC, Tullia, Texas 79088. Call collect 806/995-3575. 32-tfc

HOUSE FOR SALE: TWO BEDROOM, 1 1/2 bath, utility room, cellar. Garage. On corner lot. 807 Loretta Street. Phone 823-2146. 19-tfc

SINGER SEWING MACHINES, Vacuum Cleaners, Smith Corona Typewriters, Adding Machines, Kirby Sales and Service. Buy here, service here. Call in Silvertown 823-2333. Office located at 620 Noel in Memphis. Here every two weeks on Thursdays. 21-tfc

LET US DO YOUR HERBICIDE and Insecticide Spraying. We have two ground rigs and airplane. Lone Star Chemical.

VISITING NURSE SERVICE, Inc. is now accepting patient referrals in Briscoe County and immediate area. Call Becky Woods, R.N., 823-2132 Glenda McGavock, GVN, 823-2489 or the Lubbock office, 793-9067. 51-4tc

DRY CLEANING, LAUNDRY: Briscoe County News is the Silvertown pick-up station for Tullia Steam Laundry. Clothes will be picked up and delivered on Thursdays. 24-tfc

BUSINESS OPPORTUNITY. Are you interested in health and skin care? Start marketing products and earn \$\$\$\$. Will sell retail. Call Lubbock, 762-0493. 48-4tc

OUR BUSINESS IS EXHAUSTING... Custom Tailpipes for Pickups Cars, Tractors and Combines. Dual Exhaust a Specialty. DON'S MUFFLER SHOP 123 W. California Street Floydada, Texas 983-2273

For Rent SMALL DITCHING MACHINE and Electric Concrete Mixer For Lease. Fogerson Lumber & Supply. 24-tfc

Wanted ROUND BALE HAULING. JIMmy Burson, 847-2257. 51-2tp

NEEDED: BALE AND MODULE truck drivers. Harris Gin, 823-2310. 44-tfc

\$50.00 REWARD FOR NAME OF person or persons who vandalized the fence around the Silvertown swimming pool. Contact Lynn Frizzell. 50-2tnc

ATTENTION HUNTERS & TRAPPERS Fur buyer will be in Silvertown at Silvertown Oil Company each Tuesday from 12:15 until 1:15 p.m. beginning November 24. We buy green and dry furs of all kinds. Skin case all furs, (like opossums), not open up the middle. We also buy deer hides. Well handled furs bring TOP PRICES!

Northwestern Fur Co. 915-728-2295 241 Walnut Colorado City, Texas 79512 47-3tc

TO GIVE AWAY: TWO MONTH old part German Shepherd Pups. 847-2572. 51-2tp

Cards of Thanks I could never express in words my sincere appreciation to the people of Silvertown for the gracious way you have accepted me as I represented Southwestern Public Service Company for the past 32 years. You have helped to make these years a very enjoyable time in my life. I am sure that you will give the girl who will replace me the same consideration that you have given me. Thank you to each one who came to my reception and for the gifts. A very special "thank you" to Lee and Ada Clay for all they did to prepare for my reception and to help make one of the happiest days of my life. Lillian Lindsey

Advertisement for Silvertown Well Service, listing contact information for Jack Davis (823-2263) and Leon Lavy (823-2188) in Silvertown, Texas.

Advertisement for Commercial Printing, listing services like PRESS PRINTING, LETTER AND OFFSET, and 'SEE US FOR ALL TYPES COMMERCIAL PRINTING'.

Advertisement for 'DRIVE AND ARRIVE SAFELY' featuring a graphic of a car and the slogan 'The Liter Criter Says...'

Advertisement for Rhode Pipe Co., offering Underground Irrigation Pipe, Plastic Gas Pipe, and Rhodie Pipe Co. with contact number 823-2458 - 823-2459 in Silvertown, Texas.

Advertisement for Archie Castleberry, offering LIFE INSURANCE HOSPITALIZATION NEEDS - USF and SOUTH LAND LIFE, located at 11th and Washington, Amarillo, Texas.

Advertisement for Silvertown Metal Works, offering Underground Plastic Irrigation Water and Gas Pipe Installed, with contact number 806-823-2431 or 823-2173.

Large public notice regarding utility rate changes, including a table of affected cities and counties. The notice states: 'In compliance with Sec. 43(a) of Art. 1446c, V.A.C.S., West Texas Utilities Company hereby publishes NOTICE that it has filed, on November 25, 1981, its statement of intent to make changes in its rates charged for electricity and services sold and rendered inside and outside municipal jurisdictions, such proposed changes to be effective January 1, 1982. Such Statement of Intent includes the proposed revisions, tariffs and schedules, and a statement specifying in detail each proposed change, the effect the proposed change is expected to have on the revenues of the Company, and the classes and numbers of utility customers affected. Gross revenues are expected to be increased 15.4 per cent over adjusted test year revenues by the new rates. Statements of intent were filed with the Public Utility Commission of Texas and with the following municipalities: Abilene, Alpine, Amson, Aspermont, Baird, Balmorhea, Ballinger, Benjamin, Big Lake, Blackwell, Bronie, Buffalo Gap, Childress, Cisco, Clarendon, Clyde, Cross Plains, Crowell, Dodson, Eden, Eldorado, Estelline, Goree, Hamlin, Haskell, Hawley, Hollley, Impact, Irwin, Jayton, Junction, Knox City, Lawn, Lueders, Marfa, McCamey, Melvin, Memphis, Menard, Merkel, Mertzon, Miles, Moran, Munday, O'Brien, Paducah, Paint Rock, Presidio, Putnam, Quanah, Quitaque, Rankin, Rising Star, Roaring Springs, Rochester, Rule, San Angelo, Santa Anna, Shamrock, Sonora, Spur, Stamford, Sterling City, Talpa, Throckmorton, Trent, Turkey, Tuscobia, Tye, Valentine, Wainert, Wellington, Winters, Woodson. Areas affected by the filing with the Public Utility Commission of Texas are in the following: Cities: Albany, Chillicothe, Dickens, Lakeview, Matador, Robert Lee, Roby, Rotan. Counties: Baylor, Brewster, Briscoe, Brown, Callahan, Childress, Coke, Coleman, Collingsworth, Coeche, Cottle, Crane, Crockett, Dickens, Donley, Eastland, Edwards, Fisher, Fossil, Gillespie, Hall, Hardeman, Haskell, Irion, Jeff Davis, Jones, Kent, Kimble, King, Knox, Mason, McCallen, Menard, Motley, Nolan, Pecos, Presidio, Reagan, Reeves, Runnels, Schleicher, Shackelford, Stephens, Sterling, Stone, Sutton, Taylor, Throckmorton, Tom Green, Upton, Wheeler, Wilbarger.'