



THE WHEELER TIMES
 (USPS-681-960)
 VOLUME 83, NUMBER 28 THURSDAY, JUNE 23, 2016 SINGLE COPY **50c**
 "Wheeler; town of friendship and pride"

NATURE'S BEAUTY: Chester Jones sent us this picture of Wheeler County wildflowers.

31ST ANNUAL CHAMBER OF COMMERCE CELEBRATION

4th Of July Celebration Draws Near

Plans are well underway for Wheeler's 31st Annual 4th of July Celebration. There are activities planned for Saturday, July 2nd – Monday, July 4th.

This annual event is the work of the Wheeler Chamber of Commerce and numerous Wheeler county citizens that donate their time and money to bringing fun activities to our community. Many have supported the chamber's ef-

forts this year with generous donations.

The fun will kick off Friday evening, with the "Let's Rodeo" BBQ Cook-Off registration at 7pm at the Wheeler County Courthouse Gazebo (Southwest corner). Reg-

istration forms, rules and guidelines are available at the Wheeler Chamber office (under the water tower) or by contacting Wade at 940.300.3382.

Saturday is jammed pack with events, starting with the Wheeler Co-Ed Softball Tournament at 9 am at the Tom Britt Memorial Park. There is

a cash prize of \$400 to the winning team. Entry fee is \$200 per team, double elimination, each team must have 5 females. Registration is still

open but with only 2 spots remaining. All teams can register with Kimberly Gaines at 806.570.2146. The entry cut off is June 24, 2016.

There will also be a "Let's Rodeo" Goat Roping held at the City Park starting at 10 am – 9 pm on Saturday, Sun-

(Continued Page 2)

Co. Historical Committee's

Red River Wars Summit

You are invited to attend the Red River War Summit on June 26th and 27th in Old Mobeetie, Texas, hosted by the Wheeler County Historical Commission. The purpose of the gathering is to provide an educational and entertaining community event as well as create a commemorative tourism initiative to inform

communities and travelers about the clash between two cultures that became known as the Red River War. Partners in organizing and promoting this event include the Panhandle Tourism Marketing Council, the Panhandle Plains Historical Museum and the Texas Plains Trail Region.

(Continued Page 2)

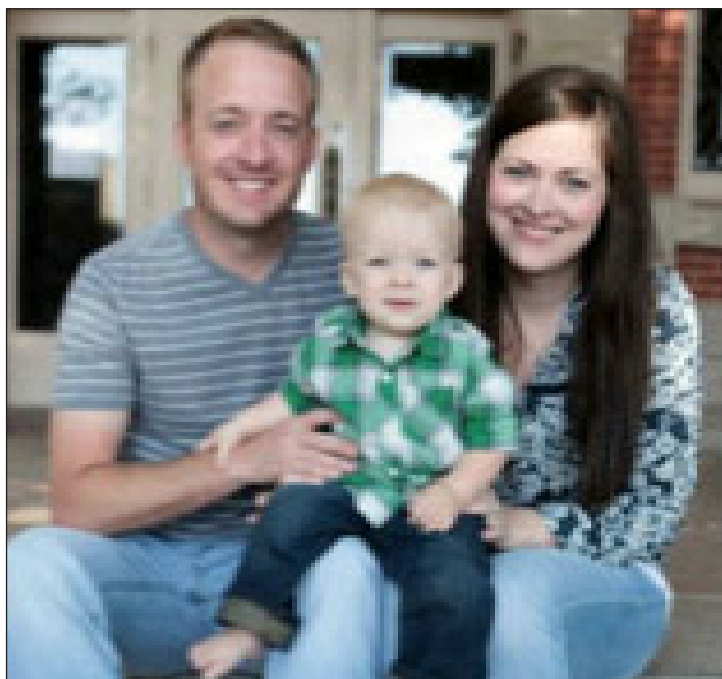
FourPoint Energy Acquires Chesapeake's Anadarko Basin

FourPoint Energy, LLC announced today the signing of a definitive agreement to acquire all of Chesapeake Energy's remaining Western Anadarko Basin oil and gas assets for a purchase price of \$385 million. The assets to be acquired include an interest in nearly 3,500 producing wells primarily in the Granite Wash, Missourian Wash, Upper and Lower Cleveland and Tonkawa formations. The pro-

duction mix is approximately 67 percent natural gas and 33 percent oil and natural gas liquids. The assets cover approximately 473,000 net acres, within 15 counties in Western Oklahoma and the Texas Panhandle and are 98 percent held by production. The closing of the acquisition, which is expected to occur on April 29, 2016, is subject to customary conditions to closing. FourPoint will assume full operations of the assets at closing.

George Solich, President and CEO of FourPoint said, "This acquisition will significantly increase our position in the Western Anadarko Basin and will give us greater operatorship and capital control. The properties to be acquired create visibility into decades of development growth and closely overlap FourPoint's current acreage footprint. By optimizing our position we

(Continued Page 5)



Dr. Ryan Hill and family

Dr. Ryan Hill, D.C., Practicing Here Each Friday At 307 East Ninth

Dr. Ryan Hill is a local product of the Texas Panhandle. He returned to his hometown after practicing in the Dallas, TX. Dr. Hill graduated with a Bachelor of Science Degree in Biology in Anatomy and Bachelor of Science Degree in Health & Wellness, including his Doctorate from Parker

University in Dallas, TX.

Dr. Hill's passion is raising (Continued Page 5)

Wheeler County's Farmers' Market Set To Open Wednesday, June 29

The Wheeler County Farmers' Market is going to begin on Wednesday, June 29th, from 3:00 p.m. until 6:00 p.m. on the east side of the courthouse in Wheeler. Vendors are welcome from all over Wheeler County with each vendor providing his own table, chairs, bags, cash box, etc. Last season we had

as many as 10 vendors and this summer we are hoping for more. With all the early growing season, more people should have plentiful gardens, and the market provides an excellent outlet source for the sale of agricultural products to the public. Only products grown in Wheeler County should be sold at our mar-

(Continued Page 5)



The 4th is going to be here before we know it. Only two weeks away.

— cwe —

A Tip of the Hat, to Kristen Moody. She is doing a fantastic job getting the 4th of July Celebration put together.

— cwe —

It is best to get your entry forms filled out as early as possible.

— cwe —

Take note of all the activities planned in addition to the (Continued Page 7)

STORM REPORT



As Reported by...
Stormie Meriwether,
 Seventh Grade Student

Dear Friends, Father's Day is for all the dads. I love my dad because he does everything with me. He cooks pancakes, waffles and bacon for me. I love to check the cows with my dad and he let's me read to him. We had fa-

(Continued Page 7)

Former Wheeler County Sheriff Jimmy Adams Services June 25



Jimmy Adams

Services for Jimmy Adams will be Saturday, June 25, at the Wheeler Gym at 10:00 A.M. Under the direction of Peppers Family Funeral Home.

Hibler's Standing

2016 College National Finals are in the books! Zach Hibler ended up fifth for the first round, fourteenth for the second round, fifth for the third round, and seventh in the short round. Overall he was seventh in the Nation. What a way to finish out his freshman year at Western Texas college!

Kelton FFA Comptes In State Meet

Kelton FFA Competes in the State FFA Trap Shoot

Six members of the Kelton FFA competed in the State FFA Trap Shoot sponsored by the Texas Parks & Wildlife. This event was held at the National Shooting Complex held at the National Shooting Complex in San Antonio. Kelton FFA competed in Trap and Sporting Clays at this event. Members competing were Justin Baker, Kade Hathaway,

Brylee Mosser, LeighAnne Cook, and Quentin Parker.

Brylee Mosser, LeighAnne Cook, Kade Hathaway, and Kaleb Kimbro competed as a mixed team in both Trap and Sporting Clays. Quentin Parker and Justin Baker competed as individuals in Trap.

Kaleb tied for 7th with his score and Kade tied for 11th in overall standings at this event.

See Picture Page 6)



WHEELER COUNTY GRAPES: Chester and Vivian Jones show us the Concord grapes in their orchard east of Wheeler. These will be offered at Wheeler Farmer's Market later in the year, along with produce from their large garden. The Farmers' Market will open June 29 on east side of the Courthouse Square at 3:00 p.m. Wheeler County farmers and gardeners are invited to bring their home grown produce to the market on Wednesday afternoon and/or Saturday morning. The public is invited to shop and enjoy fresh Wheeler County fruits and vegetables. Locally prepared Jams, Jellies and baked items are also available.



Doris Shirey

Services June 21 For Doris Shirey

Doris (Magruder) Shirey, 85, died Friday, June 17, 2016 in Wichita Falls, TX. Funeral services were held on Tuesday, June 21, 2016 at 2:00 PM at the First Baptist Church, Wheeler, TX, with (Continued Page 5)



Bill Caswell

Services June 23 For Bill Caswell

Bill W. Caswell, 76, of Pampa, died June 17, 2016 in Amarillo.

Services will be 11:00 AM Thursday, June 23, 2016, at Briarwood Church, 1800 W. Harvester, with Rev. Lynn Hancock, pastor, and James Morton, Bill's son-in-law, officiating. Graveside services will be at 2:30 PM Thursday, at Wheeler Cemetery under the direction of Carmichael-Whately Funeral Directors.

Mr. Caswell was born February 10, 1940 in Wheeler, graduating from Wheeler High School in 1958. In his younger years, he was active in Boy Scouts, and was a great roller skater. At the age of 20, he began his career with Southwestern Bell Telephone Company as a lineman and inspector, retir-

(Continued Page 5)

Tomato Troubles

Tomato gardening, while not particularly difficult, can prove frustrating when your plants seem healthy one day, and sickly the next. During this time of year, there are several questions asked about home grown Tomatoes. Below are quick facts and tips for a few frequently asked questions.

Tomato Cracking

Cracking is a disorder caused by soil moisture fluctuations (fluctuating from too dry to too moist). When the

tomato reaches the mature green stage and the water supply to the plant is reduced or cut off, the tomato will begin to ripen. At this time a cellophane-like wrapper around the outer surface of the tomato becomes thicker and more rigid to protect the tomato during and after harvest. If the water supply is restored after ripening begins, the plant will resume taking in nutrients and moisture into the fruit. This will cause the fruit to enlarge; which in turn splits the wrapper around the fruit and results in cracking. The single best control for cracking is a constant and regular water supply. Apply a layer of organic mulch to the base of the plant. This serves as a buffer and pre-

vents soil moisture fluctuation. Water plants thoroughly every week. This is especially important when the fruits are maturing. Some varieties are resistant to cracking, but their skin is tougher.

Black Spots

Black Spots found on the bottom of Tomato plants are a common Tomato disease called Blossom End Rot. Symptoms may occur at any stage in the development of the fruit. As the name of the disease implies, symptoms appear only at the blossom end of the fruit. First, a water-soaked spot appears, which enlarges and darkens rapidly as the fruits develop. The spot may enlarge until it covers as much as 1/3 to 1/2 of the entire fruit surface. Spots dry out and become flattened, black, and leathery in appearance and texture. Blossom End Rot is caused by improper moisture. To control Blossom End Rot, tomatoes should be planted in well drained, adequately aerated soils. Maintain uniform soil moisture always. Tomatoes planted early in cold soil are likely to develop blossom end rot on the first fruits. Thus, planting tomatoes in warmer soils helps to prevent the problem. Mulching of the soil is often helpful in maintaining soil water in times of moisture stress. In home gardens, shading the plants is often helpful when hot, dry winds are blowing, and soil moisture is low. Always remove affected fruit.

Yellow Stunted Plant & Root Knots

These are root knot nematodes. Root knot is a species of nematode which causes galls or swellings on plant roots. It restricts the uptake of nutrients from the root system to the foliage, resulting in a yellow and stunted plant. Root knot nematodes live in the soil and can survive on a number of weed and vegetable crops. Crop rotation is often stressed as a way to control nematodes and plant diseases. Simply, plant tomatoes in different parts of your home garden year to year. Rotating the same crops to different areas each year not only aids in the reduction of nematodes but soil borne diseases will also decrease. Some Tomato varieties are Nematode resistant. This is indicated by the letter N after the tomato name. Example: Celebrity VFN.

Blooms but No Fruit

Several conditions can cause tomatoes to not set

fruit. Too much nitrogen fertilizer, nighttime temperatures over 70 degrees, low temperatures below 50 degrees, irregular watering, insects such as Thrips or planting the wrong variety may result in poor fruit set. Any of these conditions can cause poor

4th (from Page 1)

day and Monday. There will be awards/cash back given to the high winners. Contact Wade at 940.300.3382 for more information.

Ben Ed and Lee Ann Hillhouse will be hosting another Clay Target Shoot Tournament at the Wheeler Rodeo Grounds on Saturday, July 2nd at 2pm. It is a 5 stand (\$15 per round) and a knock-out (\$3 per round). There will be multiple prizes given away. Eye and ear protection required. Please contact Ben Ed for more information at 806.826.5821.

You will want to end up at the Courthouse Square around 6 pm when the judging starts for the "Let's Rodeo" BBQ Cook-Off. There are 5 categories for participants to enter; Brisket, Steak, Port Butt, Beans and Bloody Mary. There will be prize money given to the winners. There is also an opportunity for a "People's Choice Award," so be sure to come out and vote for your favorite BBQ competitor. The Shep Band will kick off the evening at 6pm with live music, be sure to BYOB and your lawn chairs. Then at 9 pm, Wheeler's very own "Texas Pearl Snaps" will begin and play until midnight.

The 3rd Annual Mr. and Miss Firecracker Pageant will be held in the 1st Lt. Benjamin Britt Auditorium at Wheeler ISD school at 3 pm on Sunday, July 3rd. Contestants are encouraged to pick up their forms at the Wheeler Chamber office (under the water tower) and turn them in by Thursday, June 30th. It will be a cool place to watch all our favorite little firecrackers strut their stuff and show off their patriotism and talent. For more information, contact Abby Bond at 806.334.0079.

If you want a good laugh, you will want to join us at the WISD Practice/Track Field for the Knockerball Soccer Tournament. There are a few open spots left for 5 person

fruit set, but combinations can cause failures. In many varieties, if any less than 8-10 hours of direct sunlight hits the plant directly it can result in a spindly growing, nonproductive plant with healthy foliage. Pollination relies heav-

ily on humidity in the air. Too much or too little humidity can prevent a plant from self-pollinating.

For more information, contact the Wheeler County Extension Office at 806-826-5243



teams to enter and play. This is a single elimination, 8 team tournament. This will be quite a sight, as kids/adults jump into large inflatable balls and knock each other around while trying to score! It's sure to be a hit. Get a team or gather your family and friends and come out to the field at 6 pm on Sunday. Contact Kristen at the Wheeler Chamber for more information 806.826.3408 or chamber@wheelerextexas.org.

Registration forms are available at Wheeler Chamber office, the Wheeler Vet Clinic or Hyland's Pharmacy for the 11th Annual 1st Lt. Ben Britt Fun Run/Walk and 3rd Annual Red, White and Blue Powder Run/Walk. The cost w/t-shirt and powder is \$15 for pre-registration (by Friday, June 24th) and \$20 the day of the run. You can also register the day of the race from 7am - 7:30am. The race starts at 7:35 am at the southwest corner of the courthouse square. Please fill out the forms and return them as soon as possible to Lee Ann Hillhouse 826.5821, Tammy G. Moore 334.0990 or Kristen Moudy 826.3408. A fax number to fax the forms is 806.826.5557 or 806.826.5601. It is important to register early. T-shirts need to be ordered so you will have them to wear.

The parade will begin at 9:00 am and will take the route from in front of the school, down Main Street to 6th Street and then head east to end at the park. The annual parade gets bigger every year. Awards will be presented in eight separate divisions: Business, Club/Organization, Classic Car, Church, Family, Just for Fun, Motorcycle/ATV, and Open. Parade Entry Forms are available at the Wheeler Chamber office (under the water tower). Each division is assigned a specific area on the school property to meet before the parade, which is listed on the parade forms. Line-up starts at 8:15 am, judging will begin at 8:30 am and awards will be handed out before the parade.

Activities at the park will include food booths, activity booths and numerous different events. The following events will kick off at 10 am: 3-on-3 Carolyn Sabbe Basketball Tournament, Water polo, Turtle Race, Punt, Pass & Kick, Bounce Houses, Outdoor Games & Activities, Confetti Eggs & Water Balloons, Vendors and Food Booths. We also have scheduled the Tug-o-war (2 pm) and Rock the Pool—High Dive Competition (4 pm).

If you are interested in setting up a booth for the park activities, please contact the Wheeler Chamber of Commerce at 806.826.3408 or stop by the Chamber office under the water tower (505 S. Alan L. Bean Blvd) to pick up a form.

Closing the day's activities at the park will be the Moore FMX Stunt Show before closing ceremonies, where jaw

dropping stunts will be performed in the air on ATVs. Then we will have the announcement of the Wheeler Chamber of Commerce's "Man/Woman/Employee/Teenager/Business of the

Red (from Page 1)

Part one, held on Sunday June 26th is the event to kick-off, celebrate and announce to the world that the history of the Red River War campaign is alive and ready to move forward, leading to Monday's workshop. Native American, U.S. military and Texan storytellers and historical re-enactors will dramatically recount the history and events leading up to the 1874-75 Red River War Campaign. This family friendly day will be held in the Old Mobeetie Arbor / Old Fort Elliott, starting 5 PM on June 26th with a tour, Native American Blessing and Storytelling by moonlight. The chuckwagon meal is by reservation only; reservations closed June 11.

Part two, held on Monday June 27th will be a collaborative strategy work-shop for analyzing how the story of the Red River War might be best told and effectively imparted through coordinated outreach efforts extended to the public. Strategies will be devised for implementing interpretation, education, and promotion benefiting museums, sites, and communities within the Red River War region. The strategy workshop will begin at 9am in the Old Mobeetie Jail Museum Visitors Center Conference Room.

This important day of hands-on sessions will be spent working on the Red River War project and discovering how institutions can take part. The Red River War project would benefit from input provided by area museums, marketing professionals, visitor bureaus, chambers of commerce, historians and educators to help create a tourism experience in the area. Those experienced in these areas and who can help devise partnerships and marketing initiatives are needed and welcomed to join in this effort. All stakeholders in preserving, teaching, and promoting the history of the Red River War are encouraged to participate. The work accomplished during these sessions will provide the foundation for this important tourism and education initiative in Texas focused on the events of the Red River War.

Sunday's program is free. **Bring your own lawn chairs.** The meals are not free; they are by reservation only and the deadline has past.

Canadian Redi-Mix, Inc.
... for all your Concrete Needs!

806-323-5379

OLD TIMES NOT FORGOTTEN
By Roland Miles

COONS & SKINNY-LEGGED GIRLS

When it comes to food, wild critters can sometimes make you wonder who's the smartest, you or them. In our case, the coons come around every night and clean out any leftovers the cats leave. Four or five years ago, we decided to start feeding the birds. In order to see them up pretty close, I put the feeder on a plastic pedestal that was made to be a bird bath. I placed it about four feet from our back porch, then set the feeder on it. That was another of my bad ideas. It got to where the coons would turn it over and spill the sunflower seeds on the ground. One night I turned the porch light on and there were four coons busily eating. They just stood there eating and blinking at the light. My next idea was worse. I hung the feeder on a low-hanging tree limb, about thirty inches above the ground. Their solution to that was to jump up and grab the feeder, then hang on until it finally broke. After repairing it two or three times, I quit using that feeder and got a small, cylindrical one. The obvious answer, was to hang it high enough, they couldn't reach it. About five feet off the ground should be plenty. The problem was, the limb I needed to hang it from, was too high for me to reach. Not a problem for a wise old retired welder. I just took a piece of thin aluminum strap and bent a hook on each end. Some problems are so easy to solve. I just hung the top hook on a limb and hung the feeder on the hook on the other end.

Let them solve that! The next morning the feeder was on the ground, empty! My aluminum strap was lying on the tree limb. They had climbed the tree, walked out on the limb, pulled the strap up level, and the feeder handle just slid right out of the hook. After that, it was a simple matter of climbing down and eating. We've got four old skinny-legged turkey hens that come around and eat what's left most mornings. It's surprising to us that they don't seem to be the least bit afraid of the cats. Something else interesting, was a young squirrel on the ground eating, only about a foot away from a turkey. Since I don't seem to be able to outsmart the critters, I've resorted to bringing in the feeder at night. As you can tell, life's pretty high-speed and stressful out here.

Answer to last week's history trivia question: In 1850, Congress passed a revision to the Donation Land Act, cutting the amount of free acres of land from 640 acres to 320. The frontier men actually advertised in the newspapers back east, for women who were interested in getting married. The wife was also, eligible for 320 acres, so a married couple could still get 640 acres.

This week's question: Which President's daughter underwent breast cancer surgery in an upstairs room of her parent's house, without benefit of anesthesia? Answer next week.

DOUG BOYD MOTOR CO.
Buy Here / Pay Here
No Credit Check • Areas Largest Selection
Pampa • Corner of Hwy 60 @ Hwy 70
806-669-6062 • www.dougboydmotors.com

Panhandle Plains Realty
Making Dreams Come True
— Let us list your Real Estate —
Linda Laycock Broker, ABR, GREEN, SRES. E-PRO 806.662.1312
Larry Hadley Assoc. 806.662.2779
Tisha Calhoun Assoc. 806.440.4153
Pampa MLS www.panhandleplainsrealty.com Amarillo MLS

JUNE 20TH, 2016
Wheeler County JP #1 Weekly Docket

Magistrations/ Arraignments:

- Curtis Henley Jr.
- Curtis Henley Jr.
- Chele Felicitia Johnson
- Paige Swinehart
- Jakob Clayton
- Paige Swinehart

- Driving While Intoxicated - Bond \$15,000.00
- Possession of Controlled Substance - Bond \$2,500.00
- Aggravated Assault W/Deadly Weapon - Bond \$20,000.00
- Class C Arraignment - Possession of Drug Paraphernalia
- Class C Arraignment - Possession of Drug Paraphernalia
- Fugitive From Justice- Colorado Warrant - Bond \$ Denied

County Citations Issued:

- Peter Anthony Lepp
- Mykal Shane Attaway
- Miguel Angel Martinez Gordillo
- Brady Lee Hess
- Benigno Gabriel Melchor Meza
- Raymundo Cruz Lugo
- Jorge H Alvarado Torres
- Ricky Lee Marcum
- Melinda Ann Beck
- Michael Blake Allen
- Kellie Jo Benefield
- Veronica Vadillo

- Public Intoxication - WCSO Citation
- Speeding 10% Over Posted Limit- WCSO Citation
- No Seat Belt - WCSO Citation
- Speeding 10% Over Posted Limit- WCSO Citation
- Speeding 10% Over Posted Limit- WCSO Citation
- Brake Violation - CMV Citation
- Tire Violation/ Equipment Violation- CMV Citation
- Brake Violation/ Operating CMV Without Corrective Lenses/ CMV Citation
- Speeding 10% Over Posted Limit- TXDPS Citation
- Speeding 10% Over Posted Limit- TXDPS Citation
- Speeding 10% Over Posted Limit- TXDPS Citation
- No Driver's License/No Insurance/ Exp Registration/ Fictitious Registration

Municipal Citations Issued -City of Wheeler -City Ordinances

- Nestor Maqueda Badillo City Ordinance - Rubbish in Yard

Civil Cases Filed:

- SC- 423 Bobby Joe Edwards, As Member of Edwards Vs. Cosme Velasquez

Inquests:

- None

Administrative Hearing:

- None

Hyland's Pharmacy
Downtown Wheeler — 826-5561
Wedding Selections:
Haley Sparks & Brent Darnell
Date: June 26
Location: Wheeler First Baptist
Kinsey Brown & Matt Kiker
Date: June 25
Location: Allison Methodist Church
Baby Shower:
Jason & Amber (Maddox) James
Baby Girl
Date: July 31
Place: Home of Tyna Horn
Michael & Lauren Mendoza
Baby Girl—Penelope Quinn
Date: August 7
Location: Shamrock First Baptist Church
The store for all your needs: Prescriptions, Gifts gifts for you loved ones.

Wheeler Banking Center **USB**

P.O. Box 1040 Wheeler, Texas 806-826-5566
 BOWIE ★ CANADIAN ★ CHILDRESS ★ MEMPHIS ★ WHEELER ★ WELLINGTON
 MEMBER FDIC

Invites You to Wheeler Chamber of Commerce...

31st 4th of July Celebration July 2-4, 2016

"LET'S RODEO" HORSESHOE TOURNAMENT
 SUNDAY, JULY 3RD
 AT THE WHEELER CITY PARK

Entry Fees:
 \$50 team/doubles
 \$20 man/sing/tee

Gate at 7:00 pm
 Play at 8:00 pm

FOR MORE INFORMATION CONTACT WADE 940.300.3382

Wheeler Chamber of Commerce Presents
4th of July A HOMETOWN Family Fun Celebration
 Events - Food - Music - Fun

HOME OF THE TREE
 SATURDAY, JULY 2ND
 CO-ED SOFTBALL TOURNAMENT @ TOM BRITT PARK
 CLAY TARGET SHOOT @WHEELER GROUNDS
 "LET'S RODEO" GOAT ROPING @CITY PARK
 "LET'S RODEO" GOAT ROPING @CITY PARK
 "LET'S RODEO" GOAT ROPING @CITY PARK

BECAUSE OF THE WAVE
 SUNDAY, JULY 3RD
 "LET'S RODEO" GOAT ROPING @CITY PARK
 MR. & MISS FIRECRACKER PAGEANT @WHEELER AUDITORIUM
 KNOCKERBALL SOCCER TOURNAMENT @WHEELER FOOTBALL FIELD

MONDAY, JULY 4TH
 COLOR FUN RUN/WALK, PARADE, TURTLE RACES, GAMES/CONTESTS
 3-ON-3 BASKETBALL, PUNT/PASS/KICK, BOUNCE HOUSES, TUG-O-WAR
 "LET'S RODEO" GOAT ROPING, MOORE FMX STUNT SHOW & FIREWORKS

CHAMBER@WHEELERTXAS.ORG - 806.826.3408

WHEELER CHAMBER OF COMMERCE

MOORE FMX Free Style Show

#31STYLE

WHEELER, TEXAS
 WHEELER CITY PARK
 AFTERNOON WARM UPS
 MAIN SHOW BEFORE FIREWORKS

MONDAY JULY 4TH, 2016

11th Annual 1st Lt. Benjamin Britt
red white & blue fun run/walk
 7.4.16

7 am REGISTRATION | 7:35 am RACE STARTS
 SW Corner of the Wheeler Courthouse

Wheeler Co-Ed Softball Tournament
 July 2, 2016
 Tom Britt Park

- Entry Fee \$200 Per Team
- Double Elimination
- Each Team MUST Have 5 Females (minimum)
- Minimum 8 Teams/Maximum 12 Teams (Minimum of 12 players per team)

\$400 CASH TO WINNING TEAM

Contact Info
 Kimberly Gaines @ 806-570-2148
 kimberlygaines@tcc.com

• Entry Date Cut Off June 20, 2016

"LET'S RODEO!!!"

GOAT ROPING!!

JULY 2ND, 3RD & 4TH
 WHEELER CITY PARK
 10AM - DUSK

BUCKLES GIVEN TO THE HIGH WINNERS

HOSTED BY: WHEELER RODEO ASSOCIATION
 CONTACT: WADE BUTLER 940.300.3382

CAROLYN SABBE
3ON3
 7-4-16

4th of July
TUG-O-WAR
 JULY 4TH 2:00 PM
 Wheeler City Park
 \$50 per team -- 1,000 lb. weight limit per team
 Contact: Wheeler Chamber of Commerce
 806.826.3408

WHEELER CHAMBER OF COMMERCE PRESENTS

FOURTH of JULY

knockerball soccer tournament

SUNDAY, JULY 3, 2016
WISD FOOTBALL FIELD @ 6PM
 5 PERSON TEAM - SIGN UP WITH KRISTEN @ 806.826.3408

MR & MISS FIRECRACKER PAGEANT

starts at 3pm
 sunday, July 3rd
 1st Lt. ben britt auditorium

CLAY TARGET SHOOT
 Saturday July 2nd 2pm - Dusk

Wheeler Rodeo Grounds

& 5 Stand (\$15 per round)
 Knockout (\$3 per round)

\$1,000 in Prizes

EYE & EAR Protection Required

CONTACT: Ben Ed Hillhouse 806.826.5821
 1/2 MILE EAST OF 4-WAY ON EAST HWY 152
 TURN NORTH ON RODEO ROAD

Entry Blanks Available at Wheeler City Office, at the Water Tower



City of Wheeler Turns 100 Aug. 6, '05 Celebration Planned... P.O. Box 1080 Wheeler, Texas 79096 Phone: 806/826-3123

THE BUSINESS DIRECTORY

CROSS COUNTRY BARN 24 Hr. Gas & Diesel Convenience Store... Phone: 806-826-2276

It pays to Advertise in THE WHEELER TIMES... Classified Rate Cash—\$6.00 for 1st 20 wds.

Sunoco Logistics is Now Seeking Drivers! Must have CDL/Tanker & Haz Mat Endorsements & Excellent Driving Record!

Want Ads

Parttime Help Wanted for Econolodge and Route 66 in Shamrock. Apply in person. 6/23-30c

Quería ayudar a tiempo parcial para el Econolodge y Ruta 66 en Shamrock. Solicitar en persona. 6/23-30c

Wheeler County Farm Service Agency seeks applicants for a Full Time, Temporary Program Technician. Must be U.S. citizen, and a high school graduate or the equivalent.

KPDR-FM, 90.3 WHEELER, TEXAS Saturdays: 9:00 a.m. to Noon

Wheeler. Applications are due by June 28, 2016 For information, call (806) 826-5578. FSA is an Equal Opportunity Employer

ANGUS BULLS FOR SALE: Black Angus-Com-posite, 2 yrs old, LBW, gentle, Moderate size, range raised, no grain, Heavy muscled, reasonable price, tested, Joe VanZandt. 845-2101, Cell: 669-5436 4/21-7-28c

Land for Sale: 157.5 acres west of Wheeler. Can be sold as 157.5 acres or sold in 39.375 lots. Sold as is. Asking price \$1500.00 per acre. Contact Calvin Sechrist at 832-647-0009

FREE! I have a number of Oklahoma blackwalnut tree sprouted. 405-200-9705

NOTICE The Wheeler County Com-

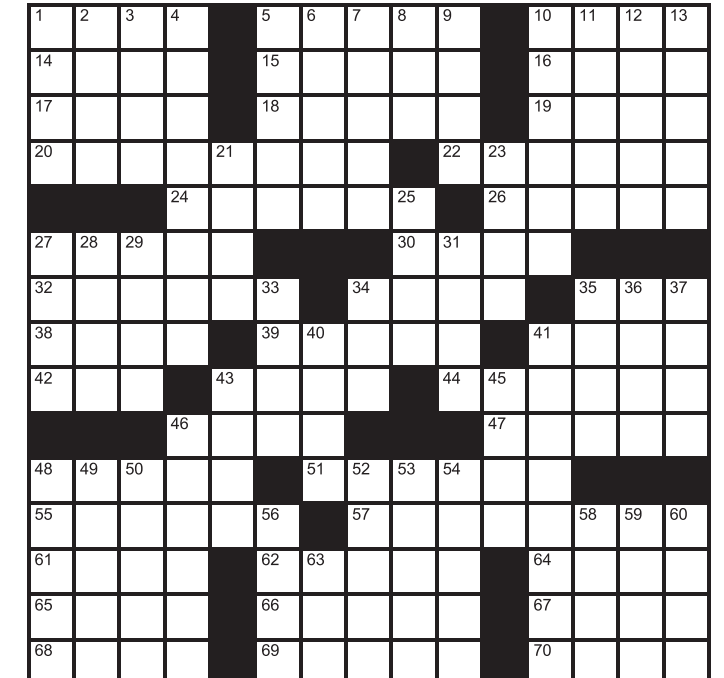
COLDWELL BANKER FIRST EQUITY, REALTORS 5701 Time Square Blvd., Suite 190, Amarillo, TX 79119 Large 4 BR, 2 bath Brick home with fireplace on approximately 32 acres of Grassland.

Oil & Gas NEWS

missioners Court is currently accepting proposals for a 50 ft. x 30 ft. steel building with a 10 ft. x 50 ft. porch cover, all with 4" concrete; 26 gauge metal; 10 ft. sidewalls; plumbing studded in; two (2) 48" walk through doors; eight (8) windows; blown in insulation; everything ADA accessible for 4-H Shooting Range at Shamrock, Texas.

Andy Rooney . . . I've learned....That we should be glad God doesn't give us everything we ask for. I've learned....That money doesn't buy class.

Crossword PUZZLE



- Across 1. Ivan the Terrible, e.g. 5. Razor sharpener 10. Kind of testimony 14. Ring 15. Lurch 16. Construction site sight 17. BBs, e.g. 18. Stock holder? 19. Hamster's home 20. Precedent setter 22. Rehab candidate 24. Anticlimax 26. Well 27. Like some lingerie

H&HTIRE Chad Helton, Owner 806-826-5759 714 W. Okla. Ave. Wheeler, TX 79096

- 61. Passing remarks? 62. Give voice to 64. Directed 65. Arctic sight 66. Pot contents 67. Coffee choice 68. Ward (off) 69. Global warming treaty city 70. Beak

TEXAS STATEWIDE CLASSIFIED ADVERTISING NETWORK TexSCAN

EMPLOYMENT Walk-in bathtub sales person wanted. \$100,000+ \$4,000/mo guaranteed. REAL ESTATE 28.66 acres, South of Rocksprings. Heavy Oak, cedar, pinon pine cover.

Extend your advertising reach with TexSCAN, your Statewide Classified Ad Network.

NATIONAL ASSOCIATION OF ROYALTY OWNERS Annual TEXAS Convention June 29-July 1 FT. WORTH

WE BUY OIL, GAS & MINERAL RIGHTS Both non-producing and producing, including Non-Participating Royalty Interest (NPRI)

PUBLIC AUCTION Selling 19 Lots Reserve at Pagosa Peak BUILDING ITES WILDLIFE

Guest Lodge 197A Santino Place, Pagosa Springs, CO Questions call Property: LaWana 970-749-6521

PUBLIC AUCTION 3,533± Cabin on 60± Acres LAKE CITY COLORADO 4 Bedroom - 5.5 Bath

LIPPAUD AUCTIONEERS MURPHY REALTY

Market (from Page 1)

5-17-2015, tested 4-11-2016, potential 2114 mcf, 139 bbls cond, 52 bbls wtr, 803# ftp, 973# SIWHP, TVD 8025', MD 12674' API 42-211-35461, Horizontal Recompletion Re-class Oil to Gas
HEMPHILL (HEMPHILL, Douglas) Le Norman Operating LLC, #2803H Flowers 'C', 17 mi SE from Canadian, Sec 28, Blk A1, H&GN Surv, A-905, spud 12-30-2015, compl 2-227-2016, tested 5-12-2016, potential 1951 mcf, 277 bbls cond, 300 bbls wtr, 279# ftp, 1091# SIWHP, TVD 8042', MD 12485' API 42-211-35532, Horizontal

Dr. Ryan (from Page 1)

health awareness throughout the communities in the Texas Panhandle. His goal is for every patient to Eat, Think, and Move better! By this philosophy, Dr. Hill envisions all patients living a healthy and proactive lifestyle.

While Dr. Hill is not treating patients, he is educating students as a Professor of Anatomy and Physiology at Amarillo College. In addition to teaching, Dr. Hill serves as one of the team doctors for Amarillo/Grand Prairie Texas Air Hogs professional baseball team and for the Panhandle Region of the Great Southwest Collegiate Baseball League.

In his spare time, Dr. Hill enjoys being outdoors hunting, fishing, golfing, and spending time with his beautiful wife and two boys.

Dr. Hill comes to Wheeler each Friday to his office at 307 East Ninth, across the street north of the hospital. Call his office in Amarillo to make an appointment: High Plains Chiropractic, 806-331-0555.

LEXOPHILIA

- They told me I had type-A blood, but it was a Typo.
- I changed my iPod's name to Titanic. It's syncing now.

Oil (from Page 4)

MOORE (PANHANDLE, West) Pantera Energy Company, #1622 E. C. Britain, 5 mi SE from Sunray, Sec 162, Blk 3T, T&NO Surv, A-665, spud 2-25-2016, compl 4-22-2016, tested 5-27-2016, potential 70 mcf, 0 bbls cond, 0 bbls wtr, 2# ftp, 15# SIWHP, TVD 3144', PBD n/s' API 42-341-33378, Vertical
OCHILTREE (PAN PETRO, Cleveland) BP America Production Company, #6547H Roy Linn -C-, 28.8 mi NW from Canadian, Sec 654, Blk 43, H&TC Surv, A-598, spud 10-13-2015, compl 1-5-2016, tested 5-26-2016, potential 807 mcf, 5 bbls cond, 83 bbls wtr, 80# ftp, 98# SIWHP,

TVD 7239', MD 10316' PBMD 10271' API 42-357-33583, Horizontal
OCHILTREE (PAN PETRO, Cleveland) BP America Production Company, #6536H Roy Linn, 27.3 mi NW from Canadian, Sec 580, Blk 43, H&TC Surv, A-599, spud 11-6-2015, compl 3-11-2016, tested 5-10-2016, potential 1781 mcf, 13 bbls cond, 225 bbls wtr, 115# ftp, 130# SIWHP, TVD 7132', MD 12425' PBMD 12377' API 42-357-33596, Horizontal
Oil Completions None
Week of June 6-12, 2016
Intents to Drill

DALLAM (WILDCAT, HARTLEY WEST, Canyon) H & L Exploration Company, LLC, #1 Chaloupka, (640 acres) 250' FWL & 300' FNL, Blk B, T H Espy Surv, A-731, 18 mi E from Dalhart TD 7000', (sgd. Kristi Casler 806-353-4331) Vertical Amended

LIPSCOMB (LIPSCOMB, S.E., Cleveland) Jones Energy, LLC, #5H Laubhan 526, (636.4 acres) 250' FSL & 2017' FWL, Sec 531, Blk 43, H&TC Surv, A-224, 6 mi NW from Higgins TD 9000', (BHL: 330' FSL & 2017' FWL Sec 526, Blk 43, H&TC, A-796) (sgd. Colten Sander 512-328-2953, x4882) Horizontal

LIPSCOMB (DARROUZETT, Morrow Lower) Midstates Petroleum Company LLC, #1 Jude 1161, (640 acres) 467' FWL & 467' FSL, Sec 1161, Blk 43, H&TC Surv, A-438, 1 mi SW from Darrouzett TD 10750', (sgd. Kristin Gray 918-947-8514) Vertical Field Transfer

ROBERTS (Wildcat, SHOENAIL, Cherokee, LARD RANCH, Des Moines, LIPSCOMB, Cleveland, SHOENAIL WEST, Cherokee, LARD RANCH, Granite Wash -C-, LARD RANCH, Granite Wash, HANSFORD, Morrow, Lower, COURSON RANCH, Morrow, Upper, LIPS, Mississippian, TUFFY, Chester, ALPAR-LIPS, St. Louis, ALPAR-LIPS, Cleveland, ALPAR-LIPS, Douglas, ALPAR-LIPS, Douglas Lower) Latigo Petroleum, LLC, #112 Mayo Clinic B, (1199.1 acres) 3860' FNL & 1056' FWL, Sec 12, Blk A, H&GN Surv, A-751, 25 mi NW from Miami TD

10000', (sgd. Rebecca Dunn 806-665-0338) Vertical Gas Completions
HEMPHILL (HEMPHILL, Douglas) Le Norman Operating LLC, #2H Ramp 30, 12 mi SE from Canadian, Sec 30, Blk A1, H&GN Surv, A-1159, spud 1-8-2016, compl 2-22-2016, tested 6-1-2016, potential 1134.5 mcf, 190 bbls cond, 578 bbls wtr, 210# ftp, 500# SIWHP, TVD 8166', MD 12751' API 42-211-35526, Horizontal
OCHILTREE (PAN PETRO, Cleveland) BP America Production Company, #8258H

Market (from Page 1)

ket; therefore no Colorado peaches, Okla-homa watermelons, Floydada pumpkins, etc. would be allowed. The exception would be made by a general consensus vote of the participating vendors on a one-by-one basis.

Some gardens were planted early this year and with recent rains results should be great. It promises to be a good fruit year with lots of blackberries, plums, apples, grapes, etc. available; however there are very few apricots and peaches this year. There should be lots of summer squash, winter squash, tomatoes, peppers, peas, okra, corn, turnips, radishes, melons, cantaloupes, cucumbers, etc. In addition to the fruit and vegetables for sale, the usual fare of agricultural products including honey, eggs, nuts, etc. will be available as well as baked goods and canned goods.

Market will be held every Wednesday from 3 until 6 and starting Saturday, July 2nd, every Saturday from 9:00 a.m. until 12 noon on the west side of the courthouse in Wheeler. The vendors should honor the starting times and may sell out before the closing time; so come early for those vine-ripened tomatoes, sweet Wheeler County watermelons, and all of your other summer-time favorites like black-eyed peas, sweet corn, etc.

This is our 14th year to have our market and Chester Jones again is serving as market coordinator and can receive questions and concerns at 806-438-5095. The market is open to all Wheeler County citizens regardless of age. Let's make this the best summer market in years.

Thoughts

... from the Internet

My people skills are just fine. It's my tolerance to idiots that needs work.

I'm only responsible for what I say not for what you understand.

So when is this "Old enough to know better" supposed to kick in?

Have you ever listened to someone for a while and wondered..."who ties your shoelaces for you?"

I prefer not to think before speaking. I like being just as surprised as everyone else by what comes out of my mouth.

I hate it when the voices in my head go silent...I never know what they are planning.

Morris Estate D, 29.8 mi NW from Canadian, Sec 825, Blk 43, H&TC Surv, A-254, spud 11-7-2015, compl 2-2-2016, tested 5-26-2016, potential 1265 mcf, 9 bbls cond, 155 bbls wtr, 94# ftp, 125# SIWHP, TVD 7278', MD 11675' API 42-357-33586, Horizontal
Oil Completions MOORE (PANHANDLE, Red

Cave) Adams Affiliates, Inc., #212 Masterson Red Cave Unit, 1.9 mi W from Masterson, Sec 27, Blk PMC, EL&RR Surv, A-365, spud 10-13-2015, compl 1-5-2016, tested 1-7-2016, potential 37 bbls-oil, 46 mcf, 25 bbls wtr, 0# ftp, 0# CP, TVD 2552', PBD n/s' API 42-341-33370, Vertical



THE WHEELER TIMES

Page 5 — Thursday, June 23, 2016

"Wheeler: town of friendship and pride"

Caswell (from Page 1)

ing after 27 years of service. He was a member of the Army Reserve for five years. In 1979, Bill gave his life to his Lord and Savior while driving in the car between Shamrock and Wheeler. He always had a deep concern for his family and friends who were not saved. He married Patsy Duncan in 1995 in Hot Springs, Arkansas. Bill was an avid cattleman, and he owned and operated numerous small businesses throughout his life. He was a member and elder at Briarwood Church, past president of Top O' Texas Rodeo Association, and a calf roper. He was active in promoting the "Go Tell Ministries." Bill loved playing his guitar with his wife and friends.

Survivors include his wife, Patsy Caswell of the home; two daughters, Whitney Morton and husband James of Pampa, and Kelley Lovelace and husband Kenneth of Garland; two stepsons, Ross Kelso of Gruver, and Curt Duncan and wife Mindy of Mobeetie; stepdaughter, Alana Etchison and husband Larry of Pampa; his sister, Betty Muse and husband Harper of Amarillo; a special nephew, Greg Wright and wife Shelly of Godley; three granddaughters, Tandi Hudson and husband Bryce of Pampa, Kelsey McMillan of Plainview, and Karly Lovelace of Garland; a grandson, Austin Morton of Lubbock; four step grandchildren, Hayden Duncan, Gatlin Duncan, Kelsey Smith and Shelbie Watson; and ten great grandchildren, four of which he called his "little buddies" Gavin Hudson, Londyn Hudson, Jacob Morton and Baron Hudson. Bill was preceded in death by his parents, Frank and Esther Caswell; and his late wife Kay.

Memorials may be made to Go Tell Crusades, PO Box 2138, Duluth, Georgia 30096-0037

Sign the online guest register at www.carmichael-whatley.com

Shirey (from Page 1)

Rev. C.W. Parker, officiated. Burial followed in the Wheeler Cemetery under the direction of Peppers Family Funeral Home of Wheeler, TX.

Doris June (Magruder) Shirey was born on June 6, 1931 in Laketon, TX, to the late Mr. James H. Magruder and Mrs. Noshia M. (Anderson) Magruder. She graduated from Wheeler High School. Doris married Loyd R. Shirey on May 15, 1955 at Shamrock, TX. He preceded her in death on December 18, 1984

She was a member of the First Baptist Church of Archer City, TX.

Doris was preceded in death by her parents, her husband, and one infant son, Kenneth Shirey.

Survivors include her one son, Jim Shirey of Wheeler, TX; two daughters, Debbie Glassey of Wheeler, TX, Yreva Shirey of Wichita Falls, TX; four grandchildren, Misty Ondelacy and husband, Jim of North Richland Hills, TX, Christina Pittman and husband, Eric of Amarillo, TX, Joe Don Glassey of Euless, TX, James Shirey and wife, Lindsey of Wheeler, TX; six great-grandchildren, Trenton Barrett of Amarillo, TX, Michael and Marcus Ondelacy of North Richland Hills, TX, Jackson Glassey of Frisco, TX, Kathryn Ondelacy of Lewisville, TX, Kelli and Michael Kasberg of Carrollton, TX; and a host of nieces and nephews.

Family received friends for visitation on Monday, June 20, 2016 from 6-8:00 PM.

News, Views & Commentary

KPDR-FM, 90.3

WHEELER, TEXAS
 Weekdays: 6:00 a.m. to 7:00 a.m.

Roy's Water Well Service
 17032 Hwy 47 W.
 Reydon, Okla. 73660
 580-655-4438
 Roy Harley 580-497-7243 Jason Harley 580-497-7277 Cory Harley 580-729-0299
 Solar Pumps - Submersible Pumps - Jet Pumps
 Windmills - Well Drilling - Ditching
 Call for free Estimates Complete Sales & Service No extra cleanup charge

RiverCrest Concrete
Chip Hill
 806-334-2108
 P.O. Box 1320
 Wheeler, TX 79096
chip@rivercrestproperty.com
Foundations
Driveways
 Proudly Serving the Texas Panhandle

Wheeler United Methodist Church
 Eighth at Main St. — P.O. Box 89
 Wheeler, TX 79096
 806-826-3114 Fax 806-826-3780
wheelerumc@windstream.net
Sunday Schedule
 Coffee & Donut Fellowship—9:30 a.m.
 Sunday School—9:45 a.m.
 Sunday Worship—11:00 a.m.
Wednesday Schedule
 Youth Fellowship—6:00 p.m.
 Choir Rehearsal—7:00 p.m.

P.O. BOX 582
 WHEELER, TX 79096
806-331-1522
 PAUL TOPPER, JR.
 OWNER
BIGTOP ENTERPRISE, LLC
 TBA TOPPER HEAT & AIR SERVICE
 TX LICENSED HEAT & AIR SEPTIC SYSTEM INSTALLER
 Tx License #TACLB-40888E 03-002886
806-334-1522

Four (from Page 1)

enhance optionality in drilling inventory allowing us to target the best upside locations that achieve the most economic rates of return."

Tad Herz, Executive Vice President and CFO said, "As the markets continue to remain volatile, acquiring an attractive producing asset that will significantly increase our current asset base while providing a stable cash flow profile should give FourPoint the financial flexibility to modify and adapt our development plan."

Kamil Tazi, Executive Vice President and COO noted, "As we integrate these assets within our organization, FourPoint will continue to develop operating efficiencies and capitalize on synergies resulting from the combined asset. This significant increase to our operated position coupled with our extensive technical expertise will give us much greater optionality to execute on a well-developed plan to grow reserves, production and cash flow."

Pro forma for the acquisition and prior to customary post-closing adjustments, FourPoint's footprint will exceed 884,000 net acres with net production estimated at 435 Mmcfed from more than 7,600 gross wells, with approximately 40 percent of the production coming from oil and natural gas liquids.

Jefferies LLC acted as financial advisor and Andrews Kurth LLP acted as legal advisor to FourPoint Energy in connection with the transaction.

FourPoint Energy is a privately held acquisition, exploration and production company headquartered in Denver, Colorado. Join our team at FourPointEnergy.com.

GRAY AG AIR
 ALL TYPES OF AERIAL SPRAYING CHEMICAL & SEED SALES
 Serrin Hollis and Wellington
 P.O. Box 306
 Hollis, OK 73550
 (580) 688-2548 OR
 (580) 688-2558
LYNN GRAY
 Mobile: (580) 381-0306
REID ROBINSON
 Mobile: (580) 318-2604

NO TRENCHING
NO MESS
Rick's Lawn Sprinklers
RAIN BIRD SPRINKLERS
 33 YEARS EXPERIENCE
580.477.0915
 Dirt Work & Turf
 FREE ESTIMATES
 LIC. #19097 & 4823
800.466.0915

THESE PICTURES SPONSORED BY:

FIRST STATE BANK

Mobeetie Office:
First & Wheeler St.
Mobeetie, Texas
845-2311

Wheeler Office:
1408 S. Alan Bean Blvd.
Wheeler, Texas
826-5546



Six members of the Kelton FFA competed in the State FFA Trap Shoot sponsored by the Texas Parks & Wildlife. Pictured (l. to r.) are Justin Baker, Kade Hathaway, Brylee Mosser, LeighAnne Cook, and Quentin Parker. See story on Page 1



Here are a few of the youngsters enjoying the Summer Reading Program at the Wheeler Public Library.



ZUCCHINI & EGG PLANT: Chester Jones picks a Zucchini in the insert and stands with his Eggplants in the larger picture.



CROWDER PEAS: Crowder Peas at the Jones Farm are thriving. One of several items to be offered for sale at the Wheeler County Farmers' Market starting June 29.



Kash Long showed the Champion Polled Hereford Heifer at the State Hereford Show.

Wheeler County COURT RECORDS

List of instruments filed in the Wheeler County Clerk's Office from June 13, 2016 – June 17, 2016.

JUNE 13, 2016
 SUB. TRUSTEE DEED-Shamrock Hotel Group LLC to Perfection Hospitality LLC, 6-7-16, 20.7 acs. SE/4 Sec. 57, Blk. 17, H&GN Ry. Company Survey.
 NOTICE CHILD SUPPORT LIEN-Kristin Nicole Ross to Malvin Maloria Prater, 5-27-16.
 TRUSTEES DEED-William E. Richardson Irrevocable Inter Vivos Trust to William E. Richardson Trust B, 5-1-16, Sec. 5, Blk. H, A. W. Wallace (Editor's Note: No. such Survey in Wheeler County).
 C/C ORDER FINAL ACCOUNT-Thomas Roosevelt (Estate), et al to Ex Parte, 6-9-16, 20 acs. SW/4 Sec. 3, Blk. A-3, H&GN Ry. Company Survey.
 DEED-City of Shamrock to B. F. Westmoreland, 6-9-16, NE/4 Sec. 2, J. Poitevent Survey.
 DEED-Jacob Seymour to Eloy Torres Estrada, 3-2-16, Lots 5-8, Blk. IV, Romans Addition, Shamrock.
 SURFACE LEASE SW DISP. AGREE.-Dennis Hefley to Samson Lone Star Limited Partnership, 5-11-16, E/2 NW/4 Sec. 48, Blk. M-1, H&GN Ry. Company Survey.
 DEED-Clint Orr to Jonathan Robertson, et ux, 6-10-16, 7.52 acs. NW/4 Sec. 39, Blk. 17, H&GN Ry. Company Survey.
 JUNE 14, 2016
 RDT-InterBank to Brandon G. Angeley, et ux, 7-8-16, Lot 3 & N 6 1/2" Lot 4, Blk. 2, Original Town, Shamrock.
 STIPULATION OF OWNERSHIP-Richard N. Sechrist, et al to Richard N. Sechrist, et al, 5-26-16, 5 acs. NW/4 & Pt. SW/4 Sec. 9, Blk. A-4, H&GN Ry. Company Survey.
 DEED-Richard N. Sechrist, et al to Matthew D. Moore, et ux, 6-1-16, 5 acs. NW/4 & Pt. SW/4 Sec. 9, Blk. A-4, H&GN Ry. Company Survey.
 DT-Unit Petroleum Company to Bank of Oklahoma, 5-18-16, See Instrument.
 DEED-Donald S. Bradley, et ux to Sharla Blair, et al, 5-19-16, S 12' Lot 3 & All Lot 4, Blk. 5, Mont-Lew Addition, Shamrock.
 POA-Donald S. Bradley to Sharla Blair, et al, 5-19-16.
 POA-Nelda Ruth Bradley to Sharla Blair, et al, 5-19-16.
 SUPPLEMENTAL SECOND AMENDED DT-FourPoint Energy LLC to JPMorgan Chase Bank NA, 6-7-16, See Instrument.
 AMENDMENT UCC DT-FourPoint Energy LLC to JPMorgan Chase Bank NA, -- -- --, See Instrument.
 JUNE 15, 2016
 MODIFICATION DT-Debra Bonner to AimBank, 6-10-16, Lot 15, Outlot 1, Shamrock.
 MODIFICATION DT-Community Printers GP to AimBank, 5-16-16, Lot 1, Blk. 2, Original Town, Shamrock.
 MODIFICATION DT-Community Printers GP to AimBank, 5-16-16, Lot 1, Blk. 2, Original Town, Shamrock.
 AMENDED DT-GBK Investments LLC to JPMorgan Chase Bank NA, 5-31-16, See Instrument.
 JUNE 16, 2016
 CD-Zybach Cemetery Association to Richard Kiker, 3-22-16, Lots 2 & 4, Blk. 25, West Helton Additoin, Zybach Cemetery.
 DEED-Bonnie Mae Davidson, et al to Joe Cortez Lisle Jr., et al to Anna Marie Jones, et al, 6-13-16, 33.46 acs. out of 200.73 acs. Sec. 55, Blk. 17, H&GN Ry. Company Survey, (except minerals).
 AFF-Lynn Gilligan Everhart to Mynda Gilligan, et al, 5-16-16, W/2 Sec. 49 & W/2 & SE/4 Sec. 56, Blk. 23, H&GN Ry. Company Survey, (An Undivided 1/4 Interest).
 HEIRSHIP AFF-Lynn Gilligan Everhart to Ora Mae Harvey Gilligan Rooney, 5-16-16, W/2 Sec. 49 & W/2 & SE/4 Sec. 56,



THE WHEELER TIMES

Page 6 — Thursday, June 23, 2016

"Wheeler: town of friendship and pride"

Farm Service Agency

Co. Committee Nominations Needed

— The U.S. Department of Agriculture (USDA) announced today that the nomination period for farmers and ranchers to serve on local Farm Service Agency (FSA) county committees begins Wednesday, June 15, 2016.

"Through the county committees, farmers and ranchers have a voice. Their opinions and ideas get to be heard on federal farm programs," said FSA Administrator Val Dolcini. "I encourage all eligible farmers and ranchers across the spectrum of American agriculture, to get involved in this year's elections. We have seen an increase in the number of qualified nominees, especially among women and minorities, and I hope that trend continues."

To be eligible to serve on a FSA county committee, a person must participate or cooperate in an FSA administered program, be eligible to vote in a county committee election and reside in the local administrative area where they are nominated.

Farmers and ranchers may nominate themselves or others. Organizations representing minorities and women also may nominate candidates. To become a candidate, an eligible individual must sign an FSA-669A nomination form. The form and other information about FSA county committee elections are available at www.fsa.usda.gov/elections. 2016 nomination forms must be postmarked or received in the local USDA Service Center by close of business on Aug. 1, 2016.

FSA will mail election ballots to eligible voters beginning Nov. 7, 2016. Ballots must be returned to the local county office via mail or in person by Dec. 5, 2016. Newly-elected committee members and alternates will take office on Jan. 1, 2017.

Nationwide, there are approximately 7,800 farmers and ranchers serving on FSA county committees. These individuals make decisions on disaster and conservation programs, emergency programs, commodity price support loan programs, and other agricultural issues. Committees consist of three to 11 members that are elected by eligible producers, and members serve three-year terms.

To learn more about county committees, contact your local FSA county office or visit <http://offices.usda.gov> to find a county office near you.

Since 2009, USDA has worked to strengthen and support American agriculture, an industry that supports one in 11 American jobs, provides American consumers with more than 80 percent of the food we consume, ensures that Americans spend less of their paychecks at the grocery store than most people in other countries, and supports markets for homegrown renewable energy and materials. USDA has also provided \$5.6 billion in disaster relief to farmers and ranchers; expanded risk management tools with products like Whole Farm Revenue Protection; and helped farm businesses grow with \$36 billion in farm credit. The Department has engaged its resources to support a strong next generation of farmers and ranchers by improving access to land and capital; building new markets and market opportunities; and extending new conservation opportunities. USDA has developed new markets for rural-made products, including more than 2,500 bio-based products through USDA's BioPreferred program; and invested \$64 billion in infrastructure and community facilities to help improve the quality of life in rural America. For more information, visit www.usda.gov/results

USDA Assistance For Cotton Farmers

USDA Provides Targeted Assistance to Cotton Producers to Share in the Cost of Ginning.

One-time Payments to Begin in July to Assist with 2016 Ginning Season.

Agriculture Secretary Tom Vilsack today announced that the U.S. Department of Agriculture (USDA) Farm Service Agency (FSA) will provide an estimated \$300 million in cost-share assistance payments to cotton producers through the new Cotton Ginning Cost-Share program, in order to expand and maintain the domestic marketing of cotton.

"Today's announcement shows USDA continues to stand with America's cotton producers and our rural communities," said Vilsack. "The Cotton Ginning Cost Share program will offer meaningful, timely and targeted assistance to cotton growers to help with their anticipated ginning costs and to facilitate marketing. The program will provide, on average, approximately 60 percent more assistance per farm and per producer than the 2014 program that provided cotton transition assistance."

Through the Cotton Ginning Cost-Share program, eligible producers can receive a one-time cost share payment, which is based on a producer's 2015 cotton acres reported to FSA, multiplied by 40 percent of the average ginning cost for each production region. With the pressing need to provide assistance ahead of the 2016 ginning season this fall, USDA will ensure the application process is straight-forward and efficient. The program estimates the costs based on planting of cotton in 2015, and therefore the local FSA offices already have this information for the vast majority of eligible producers and the applications will be pre-populated with existing data. Sign-up for the program will begin June 20 and run through Aug. 5, 2016 at the producer's local FSA office. Payments will be processed as applications are received, and are expected to begin in July.

Since 2011, cotton fiber markets have experienced dramatic changes. As a result of low cotton prices and global oversupply, cotton producers are facing economic uncertainty that has led to many producers having lost equity and having been forced to liquidate equipment and land to satisfy loans. The ginning of cotton is necessary prior to marketing the lint for fiber, or the seed for oil or feed. While the Cotton Ginning Cost-Share program makes payments to cotton producers for cotton ginning costs, the benefits of the program will be felt by the broader marketing chain associated with cotton and cottonseed, including cotton gins, cooperatives, marketers and cottonseed crushers and the rural communities that depend on them.

The program has the same eligibility requirements as were used for the 2014 Cotton Transition Assistance Program, including a \$40,000 per producer payment limit, requirement to be actively engaged in farming, meet conservation compliance and a \$900,000 adjusted gross income limit.-more-

To learn more about the Cotton Ginning Cost-Share program, visit www.fsa.usda.gov/cgcs or contact a local FSA county office. To find your local FSA county office, visit <http://offices.usda.gov>.

(Continued Page 7)

Court (from Page 6)

Blk. 23, H&GN Ry. Company Survey, (An Undivided 1/4 Interest).
 HEIRSHIP AFF.-Wilson Everhart Jr. to Ora Mae Harvey Gilligan Rooney, 5-16-16, W/2 Sec. 49 & W/2 & SE/4 Sec. 56,

Chat (from Page 4)

activities at the park on the Fourth.

— cwe —

It is almost time for the Farmers' Market to open. If the other gardens are going as well as the Jones', there should be lots to choose from.

— cwe —

If you need a place to stay, it might be wise to contact Baymont Inn or Sandy Basin Inn and make your reservations.

— cwe —

Sorry to hear of the loss of a friend, Jimmy Adams, Monday. Our sympathy to the family.

— cwe —

I had an enjoyable Fathers' Day weekend. Ronal, Juanita and Ian came from Sherman. Colby accompanied the Fishers, and William was on hand for cards. LeRoy, Rhonda and Stormie was there also.

— cwe —

I had to divide the yard work up into two day. It was too hot and I am too old to get it all done in one day. And, Barbara pointed out that it "needs to be done again" as we pulled in Sunday evening.

— cwe —

The temperature 93°, Monday at 5, is bad enough, but the humidity must be over the top.

— cwe —

I am in real trouble with my grandson, **Ronal Jr.** I failed to mention his birthday last week and then failed to get him called on his birthday, June 16. Sorry I am late, **Happy Birthday, Ronal Jr.**

— cwe —

On June 25, my sister-in-law, **Darla Stas**, will be another year older. She probably wouldn't mind if I forgot her birthday. **Happy Birthday, Darla.**

— cwe —

Also forgot to mention Jennifer was promoted to National Check Professional at Quail Springs Bank in OKC. Congratulations!

Storm (from Page 1)

ther's day dinner on Saturday at Jennifer's house. Ronal (Stas) can cook a good steak! We went to church in Hinton on Father's Day. Then we went to Mark and Carol's for dinner and to play with Adalyn and Clark. We were outside. The little ones were playing in the water. I saw a huge snake in the grass! I stopped still and called my mom. I didn't scream, because I knew it was a good snake. My mom made the snake go outside the fence, but it just came right back. Finally it hid under a big bush. It was a black snake with beautiful yellow and red stripes. It was a Red Stripped Ribbon Snake. Clark and Adalyn are too little to know if a snake is good or not so we have to keep them away from all snakes. Good snakes eat mice and keep bad snakes away.

Well this is a sad day. My big friend passed away. I am sad for Big Jimmy's (Adams) family and friends, but he is in a better place now. He doesn't have to suffer anymore. He had cancer and the chemo didn't work. I do not like anything about cancer. It is so mean to take our friends and family away.

I remember Jimmy for all my life. He is always funny. He picks on my mom and that makes me laugh. He teases me too. He always wanted to eat my food. He did fireworks for all the kids and let us do sparklers. I wanted Big Jimmy to be our sheriff, but I couldn't vote. He wanted to keep us safe. Big Jimmy was like a big Teddy Bear and I love him. That's it!

Blk. 23, H&GN Ry. Company Survey, (An Undivided 1/4 Interest).
 DEED-Lynn Gilligan Everhart to Gary B. Harvey, 6-9-16, W/2 Sec. 49 & W/2 & SE/4 Sec. 56, Blk. 23, H&GN Ry. Company Survey, (My Undivided Interest).
 HEIRSHIP AFF.-Christopher Luke Gilligan to Ora Mae Harvey Gilligan Rooney, 5-11-16, W/2 Sec. 49 & W/2 & SE/4 Sec. 56, Blk. 23, H&GN Ry. Company Survey, (An Undivided 1/4 Interest).

HEIRSHIP AFF.-Nancy Ann Donner Harvey to Ora Mae Harvey Gilligan Rooney, 5-11-16, W/2 Sec. 49 & W/2 & SE/4 Sec. 56, Blk. 23, H&GN Ry. Company Survey, (An Undivided 1/4 Interest).

DEED-Bonnie Mae Davidson, et al to Debbie Lee Lisle, 6-13-16, Pt. Sec. 55, Blk. 17, H&GN Ry. Company Survey, (Except Minerals).

DEED Bonnie Mae Davidson, et al to Nellie Faye Johnson, 6-15-16, 33.46 acs. out of 200.73 acs. Sec. 55, Blk. 17, H&GN Ry. Company Survey

NOTICE LIS PENDENS-Harry Sanders to WTB Services Inc., 6-16-16, Pt. E/2 of S 20' Lot

Company Survey, (An Undivided 1/4 Interest).
 DEED-Christopher Luke Gilligan to Gary B. Harvey, 6-14-16, W/2 Sec. 49 & W/2 & SE/4 Sec. 56, Blk. 23, H&GN Ry. Company Survey, (My Undivided Interest).

DEED-Bonnie Mae Davidson, et al to Debbie Lee Lisle, 6-13-16, Pt. Sec. 55, Blk. 17, H&GN Ry. Company Survey, (Except Minerals).

DEED Bonnie Mae Davidson, et al to Nellie Faye Johnson, 6-15-16, 33.46 acs. out of 200.73 acs. Sec. 55, Blk. 17, H&GN Ry. Company Survey

NOTICE LIS PENDENS-Harry Sanders to WTB Services Inc., 6-16-16, Pt. E/2 of S 20' Lot

Company Survey, (An Undivided 1/4 Interest).
 DEED-Christopher Luke Gilligan to Gary B. Harvey, 6-14-16, W/2 Sec. 49 & W/2 & SE/4 Sec. 56, Blk. 23, H&GN Ry. Company Survey, (My Undivided Interest).

DEED-Bonnie Mae Davidson, et al to Debbie Lee Lisle, 6-13-16, Pt. Sec. 55, Blk. 17, H&GN Ry. Company Survey, (Except Minerals).

DEED Bonnie Mae Davidson, et al to Nellie Faye Johnson, 6-15-16, 33.46 acs. out of 200.73 acs. Sec. 55, Blk. 17, H&GN Ry. Company Survey

NOTICE LIS PENDENS-Harry Sanders to WTB Services Inc., 6-16-16, Pt. E/2 of S 20' Lot

Company Survey, (An Undivided 1/4 Interest).
 DEED-Christopher Luke Gilligan to Gary B. Harvey, 6-14-16, W/2 Sec. 49 & W/2 & SE/4 Sec. 56, Blk. 23, H&GN Ry. Company Survey, (My Undivided Interest).

DEED-Bonnie Mae Davidson, et al to Debbie Lee Lisle, 6-13-16, Pt. Sec. 55, Blk. 17, H&GN Ry. Company Survey, (Except Minerals).

DEED Bonnie Mae Davidson, et al to Nellie Faye Johnson, 6-15-16, 33.46 acs. out of 200.73 acs. Sec. 55, Blk. 17, H&GN Ry. Company Survey

NOTICE LIS PENDENS-Harry Sanders to WTB Services Inc., 6-16-16, Pt. E/2 of S 20' Lot

Company Survey, (An Undivided 1/4 Interest).
 DEED-Christopher Luke Gilligan to Gary B. Harvey, 6-14-16, W/2 Sec. 49 & W/2 & SE/4 Sec. 56, Blk. 23, H&GN Ry. Company Survey, (My Undivided Interest).

DEED-Bonnie Mae Davidson, et al to Debbie Lee Lisle, 6-13-16, Pt. Sec. 55, Blk. 17, H&GN Ry. Company Survey, (Except Minerals).

DEED Bonnie Mae Davidson, et al to Nellie Faye Johnson, 6-15-16, 33.46 acs. out of 200.73 acs. Sec. 55, Blk. 17, H&GN Ry. Company Survey

NOTICE LIS PENDENS-Harry Sanders to WTB Services Inc., 6-16-16, Pt. E/2 of S 20' Lot

Company Survey, (An Undivided 1/4 Interest).
 DEED-Christopher Luke Gilligan to Gary B. Harvey, 6-14-16, W/2 Sec. 49 & W/2 & SE/4 Sec. 56, Blk. 23, H&GN Ry. Company Survey, (My Undivided Interest).

DEED-Bonnie Mae Davidson, et al to Debbie Lee Lisle, 6-13-16, Pt. Sec. 55, Blk. 17, H&GN Ry. Company Survey, (Except Minerals).

DEED Bonnie Mae Davidson, et al to Nellie Faye Johnson, 6-15-16, 33.46 acs. out of 200.73 acs. Sec. 55, Blk. 17, H&GN Ry. Company Survey

Company Survey, (An Undivided 1/4 Interest).
 DEED-Christopher Luke Gilligan to Gary B. Harvey, 6-14-16, W/2 Sec. 49 & W/2 & SE/4 Sec. 56, Blk. 23, H&GN Ry. Company Survey, (My Undivided Interest).

DEED-Bonnie Mae Davidson, et al to Debbie Lee Lisle, 6-13-16, Pt. Sec. 55, Blk. 17, H&GN Ry. Company Survey, (Except Minerals).

DEED Bonnie Mae Davidson, et al to Nellie Faye Johnson, 6-15-16, 33.46 acs. out of 200.73 acs. Sec. 55, Blk. 17, H&GN Ry. Company Survey

NOTICE LIS PENDENS-Harry Sanders to WTB Services Inc., 6-16-16, Pt. E/2 of S 20' Lot

Company Survey, (An Undivided 1/4 Interest).
 DEED-Christopher Luke Gilligan to Gary B. Harvey, 6-14-16, W/2 Sec. 49 & W/2 & SE/4 Sec. 56, Blk. 23, H&GN Ry. Company Survey, (My Undivided Interest).

DEED-Bonnie Mae Davidson, et al to Debbie Lee Lisle, 6-13-16, Pt. Sec. 55, Blk. 17, H&GN Ry. Company Survey, (Except Minerals).

DEED Bonnie Mae Davidson, et al to Nellie Faye Johnson, 6-15-16, 33.46 acs. out of 200.73 acs. Sec. 55, Blk. 17, H&GN Ry. Company Survey

NOTICE LIS PENDENS-Harry Sanders to WTB Services Inc., 6-16-16, Pt. E/2 of S 20' Lot

Company Survey, (An Undivided 1/4 Interest).
 DEED-Christopher Luke Gilligan to Gary B. Harvey, 6-14-16, W/2 Sec. 49 & W/2 & SE/4 Sec. 56, Blk. 23, H&GN Ry. Company Survey, (My Undivided Interest).

DEED-Bonnie Mae Davidson, et al to Debbie Lee Lisle, 6-13-16, Pt. Sec. 55, Blk. 17, H&GN Ry. Company Survey, (Except Minerals).

DEED Bonnie Mae Davidson, et al to Nellie Faye Johnson, 6-15-16, 33.46 acs. out of 200.73 acs. Sec. 55, Blk. 17, H&GN Ry. Company Survey

NOTICE LIS PENDENS-Harry Sanders to WTB Services Inc., 6-16-16, Pt. E/2 of S 20' Lot

Company Survey, (An Undivided 1/4 Interest).
 DEED-Christopher Luke Gilligan to Gary B. Harvey, 6-14-16, W/2 Sec. 49 & W/2 & SE/4 Sec. 56, Blk. 23, H&GN Ry. Company Survey, (My Undivided Interest).

DEED-Bonnie Mae Davidson, et al to Debbie Lee Lisle, 6-13-16, Pt. Sec. 55, Blk. 17, H&GN Ry. Company Survey, (Except Minerals).

DEED Bonnie Mae Davidson, et al to Nellie Faye Johnson, 6-15-16, 33.46 acs. out of 200.73 acs. Sec. 55, Blk. 17, H&GN Ry. Company Survey

NOTICE LIS PENDENS-Harry Sanders to WTB Services Inc., 6-16-16, Pt. E/2 of S 20' Lot

Company Survey, (An Undivided 1/4 Interest).
 DEED-Christopher Luke Gilligan to Gary B. Harvey, 6-14-16, W/2 Sec. 49 & W/2 & SE/4 Sec. 56, Blk. 23, H&GN Ry. Company Survey, (My Undivided Interest).

DEED-Bonnie Mae Davidson, et al to Debbie Lee Lisle, 6-13-16, Pt. Sec. 55, Blk. 17, H&GN Ry. Company Survey, (Except Minerals).

DEED Bonnie Mae Davidson, et al to Nellie Faye Johnson, 6-15-16, 33.46 acs. out of 200.73 acs. Sec. 55, Blk. 17, H&GN Ry. Company Survey

NOTICE LIS PENDENS-Harry Sanders to WTB Services Inc., 6-16-16, Pt. E/2 of S 20' Lot

Company Survey, (An Undivided 1/4 Interest).
 DEED-Christopher Luke Gilligan to Gary B. Harvey, 6-14-16, W/2 Sec. 49 & W/2 & SE/4 Sec. 56, Blk. 23, H&GN Ry. Company Survey, (My Undivided Interest).

DEED-Bonnie Mae Davidson, et al to Debbie Lee Lisle, 6-13-16, Pt. Sec. 55, Blk. 17, H&GN Ry. Company Survey, (Except Minerals).

DEED Bonnie Mae Davidson, et al to Nellie Faye Johnson, 6-15-16, 33.46 acs. out of 200.73 acs. Sec. 55, Blk. 17, H&GN Ry. Company Survey

NOTICE LIS PENDENS-Harry Sanders to WTB Services Inc., 6-16-16, Pt. E/2 of S 20' Lot

Company Survey, (An Undivided 1/4 Interest).
 DEED-Christopher Luke Gilligan to Gary B. Harvey, 6-14-16, W/2 Sec. 49 & W/2 & SE/4 Sec. 56, Blk. 23, H&GN Ry. Company Survey, (My Undivided Interest).

DEED-Bonnie Mae Davidson, et al to Debbie Lee Lisle, 6-13-16, Pt. Sec. 55, Blk. 17, H&GN Ry. Company Survey, (Except Minerals).

4 & E/2 Lots 5 & 6, Blk. 19, Original Town, Shamrock.
 C/C PROBATE-Carl Ray Mason to Ex Parte, 6-13-16.
 C/C PROBATE-Donnie Ray Johnson to Ex Parte, 6-8-16.
 ROW-Fort Elliott Consolidated Independent School District to Fort Elliott Consolidated Independent School District. JUNE 17, 2016
 HEIRSHIP AFF.-Julie Reed to Janette A. Hink Umsted, 6-16-16.
 DEED-Ruby L. Craig to William A. McWhorter, et ux, 5-20-16, .78 ac. SE/4 Sec. 6, Blk. A-4, H&GN Ry. Company Survey, (Except Minerals).
 TDT UCC-National Bank of Commerce to AimBank, -- --

THE WHEELER TIMES
 Page 7 — Thursday, June 23, 2016
 "Wheeler: town of friendship and pride"

--, Lot 4, Blk LXVII, Romans Addition, Shamrock.
 ROW-Doug Fowler to Enervest Operating LLC, 6-8-16, Pt. N/2 N/2 NW/4 & Pt. N/2 N/2 NE/4 Sec. 20, Blk. A-3, H&GN Ry. Company Survey.
 TRUSTEE S ROY./MD-Tradewinds Properties Trust to Nina Hardison, et al, 6-3-16, Sec. 19, Blk. A-3, H&GN Ry. Company Survey, plus all other mineral interest in Wheeler County.
 TRUSTEE DEED-Alford Paul Corcoran and Jolene Corcoran Revocable Trust to Alford Paul Corcoran, et ux, 5-18-16, All my mineral interest in Pt. of Secs. 6 & 15, Blk. A-5, H&GN Ry. Company Survey.
 QCD-Flora Marie Brogden to John Henry Brogden, 5-26-16, Sec. 3, Blk. C, S. R. Cooper Survey and Sec. 1, Camp County School Land. (Interest in Wells).
 DT-Todd Robinson, et ux to Russell Ramsland Jr. (Trustee), 10-31-14, Sec. 38, Blk. A-9, H&GN Ry. Company Survey.

"Let's Light Up the Pool"

\$5 Floating Candle Lanterns
"IN MEMORY OF"

\$5 for each floating lantern (One name per Lantern)

Name: _____

Phone#: _____

Address: _____

Amount Enclosed: \$ _____

IN MEMORY OF: _____

IN MEMORY OF: _____

IN MEMORY OF: _____

IN MEMORY OF: _____

IN MEMORY OF: _____

Drop off this form to:
 Wheeler City at 505 S. Alan L. Bean
 OR Mail to Attn: Wheeler Area Aquatics
 PO Box 221 Wheeler, TX 79096
 Make checks payable to "WAAC-POOL"

((((((Lanterns will light up the pool Monday, July 4th before fireworks))))))

2016 Wheeler Chamber of Commerce Nomination Form

Please select the category you are nominating for:

MAN OF THE YEAR	WOMAN OF THE YEAR	EMPLOYEE OF THE YEAR
TEENAGER OF THE YEAR	BUSINESS OF THE YEAR	

I would like to nominate: _____

Nominated by (not required): _____

Please write something about the person you are nominating. Let us know why you think they deserve this award. A committee will form to read the nominations and decide the winners of each group. They will make their decisions based on what you write about them – so give us all you got!

Return the form to the Chamber Office (under the water tower) or mail it to PO Box 221, Wheeler, TX 79096 or email chamber@wheeler-texas.org ASAP!!!! Awards will be handed out at 8:30 pm on Monday, July 4th at the Wheeler City Park (Before the fireworks). Please contact Kristen at 806.826.3408 with any questions. Thank you for your participation.

TEXAS
 • SHAMROCK • SUNRAY
 • WELLINGTON • WHEELER
 OKLAHOMA
 • CHEYENNE • HINTON

PRICES EFFECTIVE
 WEDNESDAY JUNE 22 THRU TUESDAY JUNE 28, 2016

211.244.217.220, 1398, 1322 NOT LIABLE FOR TYPOGRAPHICAL OR PICTORIAL ERRORS. WE RESERVE THE RIGHT TO LIMIT QUANTITIES. SOME ITEMS NOT AVAILABLE IN ALL STORES.



Market Square

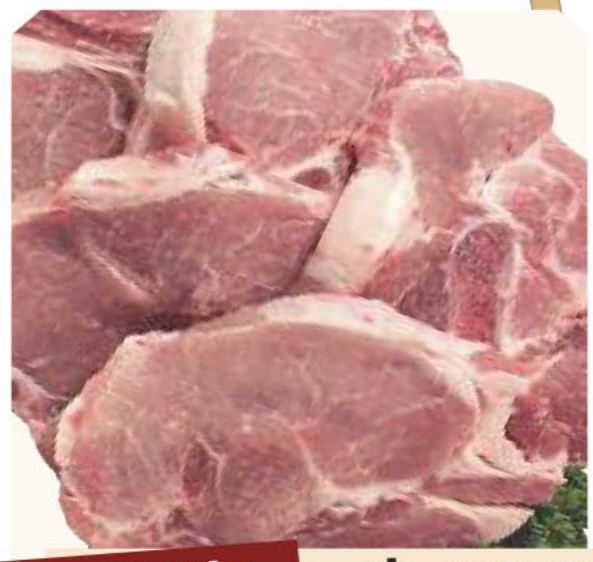
THRIFTWAY

AF AFFILIATED
 FOODS INC.
 MEMBER STORES

www.marketsquareonline.com



Beat the Heat DEALS



**Quarter Loin
 Pork Chops**
 lb. **\$1.69**



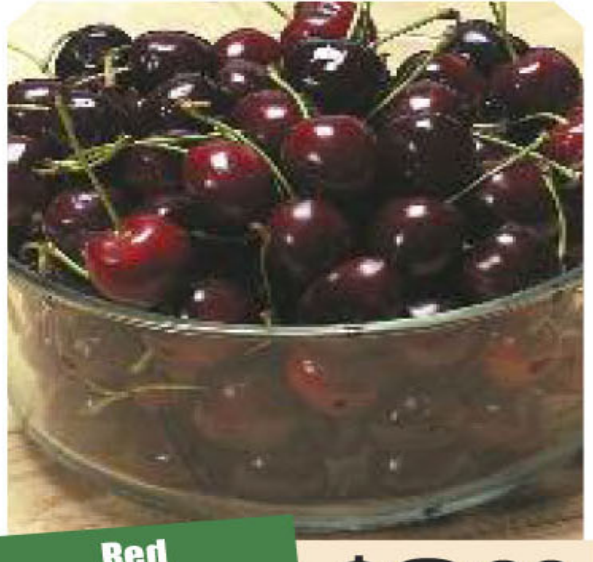
**Beef Shoulder
 Steaks**
 FAMILY PACK
 PREFERRED TRIM
 BONELESS
 lb. **\$2.99**



**Whole Fryer
 Chicken**
 VACUUM PACK
 PREVIOUSLY FROZEN
 lb. **59¢**



**Russet
 Potatoes**
 HARVEST CLASSIC
 U.S. NO. 1 - 10 LB. BAG
2\$5
 for



**Red
 Cherries**
 Northwest
 Cherries
 lb. **\$3.99**



**Seedless
 Grapes**
 RED OR
 GREEN
 lbs. **4\$5**



20-24 OZ. KETCHUP,
 12 OZ. DELI STYLE MUSTARD,
 32 OZ. YELLOW MUSTARD,
 18 OZ. BARBECUE SAUCE,
 OR 10 OZ. SWEET RELISH
**SELECT VARIETIES
 Shur Fine
 Condiments**
 10-32 OZ.
88¢



**SHURFINE ASSORTED
 Canned
 Tomatoes**
 14.5 OZ. CAN
2\$1
 for



**SHURFINE SELECT VARIETIES
 Canned
 Vegetables**
 11-15.25 OZ. CAN
2\$1
 for
 INCLUDING:
 GREEN BEANS,
 GOLDEN CORN,
 SWEET PEAS,
 OR MIXED



**SHURFINE ASSORTED
 Greek
 Yogurt**
 5.3 OZ. TUB
58¢



**ASSORTED VARIETIES
 SHREDDED OR CHUNK
 Shur Fine
 Cheese**
 8 OZ. PKG.
\$1.18



**SHURFINE
 BUTTERMILK OR BUTTERY
 Jumbos
 Biscuits**
 5 CT. CAN
77¢



**SHURFINE CHILLED
 ORIGINAL OR PLUS CALCIUM
 Orange
 Juice**
 64 OZ. BTL.
\$1.88



**SHURFINE
 ASSORTED FLAVORS
 Premium
 Ice Cream**
 56 OZ. OVAL CTN.
**SHURFINE
 Jumbo
 Cups**
 12 CT. BOX
98¢
2\$5
 for



**GRANULATED
 Shur Fine
 Sugar**
 4 LB. BAG
3\$5
 for



**SHURFINE ASSORTED
 Tomato
 Sauce**
 8 OZ. CAN
3\$1
 for



**KIBBLE OR MIXED BLEND
 True Pals
 Dog Food**
 15 LB. BAG
\$4.99



**WESTERN FAMILY
 SELECT A SIZE OR ULTRA
 Tuff n' Soft
 Paper Towels**
 8 ROLL PKG.
\$4.99